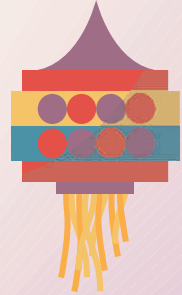


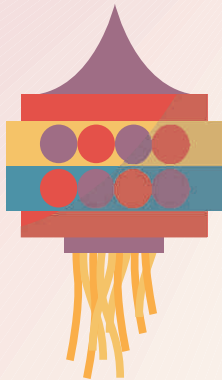


Happy
Diwali



YARN PRICES
10th November
2023

SOOTBAZAR.COM



COUNT	MILL'S NAME	WEIGHT	RATE	COUNT	MILL'S NAME	WEIGHT	RATE
6s	VIRAT SPNRS-O/E (1750CSP)	42		42s	SIDDHIVINAYAK (DRK) - KR D / KARDED COMPACT	45.36	AVAILABLE
7s	VIRAT SPNRS-O/E (1750CSP)	42		46s	PREMIER - KARDED	60	
8s	VIRAT SPNRS-O/E (1750CSP)	42		47s	TIRUPATI - KARDED	60*	
9s	VIRAT SPNRS-O/E (1750CSP)	42		50s	GIMATEX - COMBED COMPACT	45.36	305
10s	TRIDENT - O/E-1500CSP / 1700 CSP	39.60	/		TRIDENT - CBD COMPACT / CBD CMPT CONTAMINATION FREE	45.36	-- / 329
	VIRAT SPNRS-O/E (1750CSP)	42			SINTEX - CBD COMPACT / CONTAMINATION FREE	45.36	307 / --
12s	VIRAT-O/E (1750CSP)	42			NITIN SPINNERS - COMBED COMPACT	48.00	310
16s	NSL TEXTILES - O/E (1600CSP)	45			ARUN - CBD COMPACT - 10% GIZA / 25% GIZA	45.36	345 / 405
	TRIDENT - O/E-1500CSP / 1700 CSP	39.60	/		SANDHYA - CBD COMPACT - 25% GIZA / 50% GIZA	45.36	/
	VISHNU SHANKAR - O/E	54	178		ARUN - CBD COMPACT - 25% GIZA - HIGH TWIST	40	485
	SUDIVA - KARDED	47		51s	JAYAVARMA / MANCHESTER - COMBED DELUX (COMPACT)	45.36	-- / 303
20s	NSL TEXTILES - O/E (1600CSP)	45			NSL TEXTILES - COMBED COMPACT	45.36	
	SANDHYA - O/E	54	188		MOHAN SPINTEX - COMBED COMPACT	45.36	
	TRIDENT - O/E-1700 CSP	39.60			GOWTHAMI SPINTEX - COMBED COMPACT	45.36	304
	NAHAR - KARDED COMPACT				SVPB - COMBED COMPACT	45.36	
	SHRINIWAS - KARDED / KARDED COMPACT	45.36	-- / --		VISHNU SHANKAR - COMBED COMPACT	45.36	307
	SUDIVA - KARDED / KARDED COMPACT	47	/		TRIDENT - COMBED COMPACT	45.36	308
	DAMODAR - COMBED COMPACT	45.36	250		SPINKOTTEX (SUMATI) - COMBED COMPACT	45.36	309
	SHRINIWAS - COMBED / COMBED COMPACT	45.36	-- / --		SINTEX - COMBED COMPACT	45.36	311
21s	SHRINIWAS - KARDED / KARDED COMPACT	45.36	-- / --	54s	JAYAVARMA - COMBED	60	1510
30s	SIDDHIVINAYAK - KARDED	45.36		60s	GOKAK TEXTILES - KARDED	50	
	PARTAP / SUDARSHAN JEANS - KARDED 100% COTTON	45.36	AVAILABLE		VASK SPINTEX - KARDED	50	1360
	SPINKOTTEX (SUMATI) - KARDED	45.36	232		SVPB / SVA - COMBED - HIGH TWIST	50	
	DHANLAXMI - KARDED	60.48	232		SVA / GVG / SVPB - COMBED AUTO - DELUX	45.36	321
	AUTADE SPINNERS - KARDED	45.36			RAMABHADRA - COMBED COMPACT	45.36	325
	TRIDENT - KARDED	45.36			JAYAVARMA - COMBED COMPACT	45.36	
	SHRINIWAS SPINTEX - KARDED AUTO	45.36			GVG / SVA / SVPB - COMBED COMPACT	45.36	
	SINTEX YARNS - KARDED / KR D COMPACT	45.36	-- / 238		GVG ELITE - COMBED COMPACT CLASSIC	45.36	
	SUDARSHAN JEANS - 100% KR D COMPACT	45.36	AVAILABLE		SATYANARAYAN - COMBED COMPACT	45.36	328
	SUDIVA - KARDED COMPACT	46			SINTEX - CBD CMPT / CBD CMPT CONTAMINATION FREE	45.10	330 / --
	MANJEET - COMBED / COMBED COMPACT	45.36	AVAILABLE		GIMATEX - COMBED COMPACT	45.36	333
	V.S.FIBRE (VANKAR) - COMBED / COMBED COMPACT	45.30	253 / --		TRIDENT - COMBED COMPACT - CONTAMINATION FREE	45.36	351
	SHRINIWAS - COMBED / COMBED COMPACT	45.36	-- / 255		SANATHAN - CBD COMPACT / CONTAMINATION FREE	45.36	
	GIMATEX - COMBED / COMBED COMPACT	45.36	254 / 260		ARUN - COMBED COMPACT - 10% GIZA	45.36	385
	SUDIVA - COMBED / COMBED COMPACT	46	-- / --		SANDHYA - COMBED COMPACT 25% GIZA / 50% GIZA	45.36	/
	TRIDENT - COMBED / COMBED COMPACT	45.36	254 / 257		ARUN - CBD CMPT - 25% GIZAMIX / 50% GIZAMIX	45.36	445 / --
	RSWM - COMBED COMPACT	47.00			ARUN TEX - 25% GIZA - HIGH TWIST	40	545
	NAHAR SPNG - COMBED / COMBED COMPACT	45	255 / 260		VISHNU SHANKAR - CBD COMPACT 100% GIZA	45.36	
	SINTEX - CBD COMPACT / CONTAMINATION FREE	45.36	261 / --	61s	RAJAPALAYAM - CBD COMPACT 100% PIMA	45.36	
	ARUN - CBD COMPACT - 10% GIZA - HIGH TWIST	40	375		ANNAMALAIAR - KARDED	60	1430
32s	SIDDHIVINAYAK - KARDED	45.36			PRACHIDHI - KARDED COMPACT	51	294
	DHANLAXMI - KARDED	60.48	235		RAGHUL / GEETHA KRISHNA - KARDED COMPACT	45.36/60	296
	SPINKOTTEX (SUMATI) - KARDED	45.36	235		PREMIER - KARDED COMPACT	60	298
	GOWTHAMI SOLVENT - KARDED	45.36			SANDHYA / VISHNU SHANKAR / RJP-TEX - KR D COMPACT - WEFT	45.36	310
	VASK SPINTEX - KARDED COMPACT	60.48			RAMCO / SANDHYA / VISHNU SHANKAR - KR D COMPACT	45.36	314
	ALOK IND LTD - KARDED	45.36			MANCHESTER / JAYAVARMA - CBD DELUX	45.36	316
	AUTADE SPINNERS - KARDED	45.36			RAGHUPATHY - COMBED COMPACT	45.36	
	V.S.FIBRE (VANKAR) - KARDED AUTO	45.36			PREMIER - COMBED COMPACT	45.36	298
	SHRINIWAS - KARDED AUTO	45.36			MOHAN SPINTEX - COMBED COMPACT	45.36	
	SINTEX YARNS - KARDED / KR D COMPACT	45.36	-- / --		PRACHIDHI - COMBED / COMBED COMPACT	60/45.36	-- / --
	SUDARSHAN JEANS - KARDED 100% COTTON YARN	45.36			JAYAVARMA - COMBED COMPACT	45.36	319
	PARTAP - 100% KARDED COTTON	45.36			GOKAK - COMBED COMPACT	45.36	
	RAVALI - KARDED COMPACT	45.36			GOWTHAMI SOLVENT - COMBED COMPACT	45.36	
	PVR SPNG - KARDED COMPACT	45.36			AUTADE SPINNERS - COMBED COMPACT	45.36	328
	MANJEET - COMBED / COMBED COMPACT	45.36			NSL TEXTILES - COMBED COMPACT	45.36	
	V.S.FIBRE (VANKAR) - CBD AUTO / CBD COMPACT	45.36	257 / --		SANDHYA / VISHNU SHANKAR - COMBED COMPACT DELUX	45.36	328
	TRIDENT - COMBED / COMBED COMPACT	45.36	258 / 261		GVG / SVPB / SVA - COMBED COMPACT	45.36	329
	SUDIVA - COMBED / COMBED COMPACT	46	-- / --		MANJEET - COMBED COMPACT		
	NAHAR SPINNING - COMBED COMPACT	45			ALOK IND LTD - COMBED COMPACT	45.36	
	SHRINIWAS - COMBED COMPACT	45.36			SVA / GVG IND - COMBED COMPACT - ICON	45.36	331
	SINTEX - COMBED COMPACT	45.36			SATYANARAYAN - COMBED COMPACT	45.36	
	SUDARSHAN JEANS (AMARAVATI) - COMBED COMPACT	45.36	AVAILABLE		SPINKOTTEX (SUMATI) - COMBED COMPACT	45.36	
34s	GOKAK TEXTILES - KARDED	64			RAMCO / SANDHYA - CBD COMPACT - GOLD	45.36	-- / 332
	KALLAM BROS - KARDED		235		GVG ELITE / SVPB - COMBED COMPACT - CLASSIC	45.36	333
	VASK SPINTEX - KARDED	60.48			TRIDENT - COMBED COMPACT	45.36	
	PARTAP - 100% KARDED COTTON	45.36	AVAILABLE		SINTEX - COMBED COMPACT	45.36	334
	SUDARSHAN JEANS (AMARAVATI) - 100% KR D / KR D COMPACT	45.36	AVAILABLE		SANATHAN - COMBED COMPACT	45.36	
40s	SIDDHIVINAYAK (DRK) - KARDED	45.36	AVAILABLE	62s	SIDDHIVINAYAK (MARUTI) - COMBED AUTO	45.36	AVAILABLE
	ALOK IND LTD - COMBED	45.36			GEETHA KRISHNA - COMBED - HIGH TWIST	50	1600
	NSL TEXTILES - COMBED	45.36			SANATHAN - COMBED COMPACT	45.36	
	MANJEET - COMBED COMPACT	45.36		64s	GEETHA KRISHNA - KARDED / KR D COMPACT	51	-- / --
	MAHARAJA UMAID - COMBED COMPACT		280		RAGHUL - KARDED COMPACT	51	1520
	TRIDENT - COMBED / COMBED COMPACT	45.36	/		ANNAMALAIAR - KARDED	51	1540
	SHRINIWAS - COMBED / COMBED COMPACT	45.36	-- / 275		PRACHIDHI - COMBED AUTO / COMBED GOLD	55*	1840 / 1850
	GIMATEX - COMBED / COMBED COMPACT	45.36	272 / 278		ANNAMALAIAR - COMBED	55	1860
	SPINKOTTEX (SUMATI) - CBD COMPACT	45.36			SELVARAJA - COMBED AUTO / COMBED (COMPACT)	55	1880 / --
	SUMEET - COMBED COMPACT	45.36	279		SUGUNA - COMBED AUTO	55	
	NITIN - COMBED COMPACT	49.50	281		GVG IND / SVA / SVPB - COMBED AUTO	55*	1890
	SINTEX - CBD CMPT / CBD CMPT CONTAMINATION FREE	45.40	282 / --	68s	RAGHUPATHY - COMBED COMPACT	55	1850
	RSWM LTD - COMBED COMPACT	47			SUNDARAM / DATTATRAY - CBD COMPACT	55	-- / 1850
	TRIDENT - COMBED COMPACT - CONTAMINATION FREE	45.36	304		GALLESSIA GLOBAL - COMBED / CBD GOLD	55	1730 / --
	SANATHAN - COMBED COMPACT / CONTAMINATION FREE	45.36	-- / --	70s	KUMARAGIRI - COMBED COMPACT	55*	1860
	ARUN - CBD COMPACT - 10% GIZA / HT 36 TPI	45.36	315 / 375		ARUN - COMBED COMPACT - 25% GIZA	45.36	
	ARUN - CBD COMPACT - 25% GIZA / 50% GIZA	45.36	375 / 425		SANDHYA - COMBED COMPACT 100% GIZA	45.36	
41s	ALOK IND LTD - KARDED / COMBED	45.36		80s	SELVARAJA - COMBED COMPACT	50	
	AUTADE SPINNERS - KARDED	45.36	249		SUGUNA - COMBED COMPACT	50	
	GOWTHAMI SOLVENT - KR D AUTO / KR D COMPACT	45.36	/		GANESH - CBD COMPACT / CBD CMPT (77 COUNT)	50	380 / 374
	SPINKOTTEX (SUMATI) - KR D AUTO / KR D COMPACT	45.36	-- / 255		KUMARAGIRI - COMBED COMPACT	50	386
	SHRINIWAS - KR D AUTO / KR D COMPACT	45.36	-- / --		NSL TEXTILES - COMBED COMPACT	50	386
	SUDARSHAN JEANS (AMARAVATI) - 100% KARDED COMPACT	45.36	AVAILABLE		DATTATRAY - COMBED COMPACT	50	
	GOWTHAMI SPINTEX - KARDED COMPACT	45.36			GVG - COMBED COMPACT - SUPER DELUX	50	413
	SIDDHIVINAYAK - KARDED COMPACT	45.36	AVAILABLE		ALOK IND LTD - COMBED COMPACT	45.36	
	VASK SPINTEX - KARDED COMPACT	60.48			SINTEX - COMBED COMPACT	45.36	440
	LOYAL TEXTILES - KARDED COMPACT	45.36			SATYANARAYAN - COMBED COMPACT	45.36	440
	RAVALI - KARDED COMPACT	45.36			RAMCO - COMBED COMPACT - 100% GIZA	45.36	
	MOHAN SPINTEX - KARDED COMPACT	45.36			RAJAPALAYAM - CBD COMPACT / CBD CMPT 100% PIMA		440 / --
	PVR SPNG - KARDED COMPACT	45.36	261	84s	SUGUNA / GANESH - COMBED	50	1890 / 1880
	DHARNI - COMBED AUTO	60.48	245		PALANI MUTHU / KUMARAGIRI - CBD COMPACT	50	-- / --
	SUDARSHAN JEANS - COMBED COMPACT	45.36	AVAILABLE	92s	GANESH - COMBED / COMBED COMPACT	50	1910 / --
	SHRINIWAS - COMBED / COMBED COMPACT	45.36	-- / --		RAGHUPATHY - COMBED COMPACT	50	1980
	SIDDHIVINAYAK (MARUTI) - COMBED AUTO	45.36			PALANI MUTHU - COMBED COMPACT	50	1990
	TRIDENT - COMBED / COMBED COMPACT	45.36	275 / 281	100s	RAMABHADRA - COMBED COMPACT	54	470
	SUDIVA - CBD AUTO / CBD COMPACT	46	276 / --		DATTATRAY - COMBED COMPACT	50*	475
	MANJEET - COMBED / COMBED COMPACT	45.36	AVAILABLE		RAJAPALAYAM - COMBED COMPACT / 100% PIMA	40	545 / --
	AUTADE SPINNERS - COMBED COMPACT	45.36	276		SATYANARAYAN - CBD, COMPACT WARP - 3250 CSP	50.40	570
	SPINKOTTEX (SUMATI) - COMBED COMPACT	45.36	281	101s	GANESH - COMBED	50	2000
	SUMICOT - COMBED COMPACT	45.36	282	105s	GANESH - COMBED COMPACT	50	
	NITIN SPINNERS - COMBED COMPACT	49.50	284	120s	RAMABHADRA - COMBED COMPACT	45	
	SINTEX - COMBED COMPACT	45.36	285		DATTATRAY - COMBED COMPACT	50*	615
	NSL TEXTILES - COMBED COMPACT	45.36			VISHNU SHANKAR - COMBED COMPACT	40	630
42s	VASK SPINTEX - KARDED	60.48			RAJAPALAYAM - COMBED COMPACT / 100% PIMA	40	/
	TIRUPATI - KARDED	52*	1240	140s	SATYANARAYAN - COMBED COMPACT	50	730
					SUDARSANAM RJP - COMBED COMPACT 100% GIZA	40	

COUNT	MILL'S NAME	WEIGHT	RATE	COUNT	MILL'S NAME	WEIGHT	RATE
6s	SUDIVA SPINNERS -O/E P/C (48:52)	60			COTTON-DOUBLING YARNS		
	RSWM LTD. -O/E P/C (40:60)	28.50	145				
7s	RSWM LTD. -O/E P/C (40:60)	28.50	146	2/18s	DAMODAR - FATTY SLUB		
8s	SUDIVA SPINNERS -O/E P/C (48:52)	60		2/20s	DAMODAR - KARDED -TFO (14TPI)	45.36	240
10s	RSWM. -100% POLYSTER-ULTIMA / ABS	48.60	143 / 116		DAMODAR - COMBED	45.36	
	SUDIVA SPNRS -O/E P/C (48:52)	60		2/30s	SITARAM -COMBED -ELETWIST/COMBED TFO	45.36	242 / 271
	RSWM LTD. -O/E P/C (65:35)/(40:60)	28.50	143 / 148		NAHAR SPNG -COMBED COMPACT -ELETWIST	45	255
12s	SUDIVA SPNRS -O/E P/C (48:52)	60			SIDDHIVINAYAK - KARDED COMPACT	45.36	AVAILABLE
	RSWM LTD. -O/E P/C (65:35)/(40:60)	28.50	145 / 150		GIMATEX -COMBED -TFO/COMBED COMPACT	44	278 / --
14s	SUDIVA SPINNERS -O/E P/C (48:52)	60			SUMIT - COMBED COMPACT	45	290
	RSWM LTD. -O/E P/C (65:35)/(40:60)	30	147 / 152		NAHAR SPNG -COMBED COMPACT -TFO	45	292
15s	ALOK IND LTD - 100% POLYSTER	48			NITIN SPNRS -COMBED COMPACT -TFO	45.36	294
	RSWM.LTD -100%POLYSTER-ULTIMA / ABS	48.60	147 / 120	2/32s	SIDDHIVINAYAK - KARDED COMPACT	45.36	AVAILABLE
	SUDIVA SPNRS -O/E P/C (65:35)	60	170		NAHAR SPNG -COMBED COMPACT -ELETWIST	45	257
	R.S.W.M.LTD. - P/V (65:35)-ULTIMA	48.60	165		SITARAM - KARDED ELITWIST	45.36	223
16s	SUDIVA SPINNERS -O/E P/C (48:52)	60		2/40s	SIDDHIVINAYAK - KARDED COMPACT	45.36	AVAILABLE
	RSWM LTD. -O/E P/C (65:35)/(40:60)	28.50	154 / 158		SUDIVA-KARDED ELITWIST	47	
20s	PEE VEE TEXTILES - 100% POLYSTER	66	133		SITARAM-KRD/CBD ELITWIST	45.36	225 / 249
	R.S.W.M.LTD. -100% POLYSTER ULTIMA	48.60	152		SUDIVA-COMBED COMPACT ELITWIST	47	
	R.S.W.M.LTD. - P/C O/E (65:35)/(40:60)	30	158 / 162		NAHAR-COMBED COMPACT -ELETWIST	45	262
	SUDIVA SPNRS -O/E P/C (48:52)	60			SUMIT - COMBED COMPACT - TFO		310
	PEE VEE -P/C COMBED (65:35) VORTEX	66	196		GIMATEX - COMBED -TFO	44	302
	DAMODAR -P/C KARDED (65:35)	60.48			GOWTHAMI SOLVENT-CBD COMPACT		300
	PEE VEE TEX -P/C COMBED (65:35)	66	198		ARUN TEX -COMBED COMPACT -TFO -10% GIZA	45.36	345
	PEE VEE TEX -P/V (65:35) /HIGH TWIST (65:35)	66	168 / 188	2/50s	ARUN TEX -COMBED COMPACT -TFO -10% GIZA	45.36	385
	R.S.W.M.LTD. - P/V (65:35)-ULTIMA	48.60	169	2/60s	SANDHYA - KARDED TFO	45.36	365
	R.S.W.M.LTD. - VISCOSE				GVG INDUSTRIES - COMBED	60	388
30s	ALOK IND LTD - 100% POLYSTER	48			ARUN TEX - COMBED COMPACT -TFO -10% GIZA	45.36	435
	PEEVEE TEX -100% POLYSTER	66	146	2/100s	RAJAPALAYAM-COMBED COMPACT -TFO	40	
	GIMATEX - 100% POLYSTER	64	153	2/120s	RAJAPALAYAM-COMBED COMPACT	40	
	RSWM.LTD -100% POLYSTER-ULTIMA / ABS	48.60	162 / 130				
	MUTHUR MURUGAN -P/C (75:25) WARP	60			P/V, P/C & POLYSTER DOUBLING YARN		
	NAHAR TEX - P/C (40:60)		227				
	PEE VEE TEX -P/V (65:35) /HIGH TWIST (65:35)	66	171 / 198	2/15s	R.S.W.M.LTD. - P/V (65:35)	68	170
	PEE VEE -P/C COMBED (65:35) VORTEX	66	204	2/20s	R.S.W.M.LTD. - P/V (65:35)	68	178
	NAHAR TEX - P/C COMBED (48:52)		215	2/30s	RSWM.LTD.-100% POLYSTER-ULTIMA	41.40	174
	SINTEX -C/P COMBED (52:48) / (60:40)	49.58	/		SINTEX - P/C KARDED (65:35)		
	SINTEX - P/V (65:35)	45.36			DAMODAR IND -P/C (65:35) KARDED	60.48	
	GIMATEX - P/V (65:35) / BLACK	64	170 / 192		LOYAL TEXTILES - P/C (65:35)	60.48	
	R.S.W.M.LTD. -P/V (65:35) /P/V ULTIMA	67	168 / 175		R.S.W.M.LTD. -P/V (65:35) / P/V-ULTIMA	67/41.4	186 / 194
	GIMATEX - P/V (67:33) 2% BLACK				GIMATEX -P/V (65:35) BLACK / 17 TPI	60	210 / 190
	R.S.W.M.LTD. -P/V (65:35) 2% BLACK	67	200	2/40s	DEVENTHIRA SPINNERS -PV (65:35)	60	214
	PEE VEE TEXTILES -P/C COMBED (65:35)	66	206		R.S.W.M.LTD. - P/V (65:35)	67	205
	PEE VEE TEX -VISCOSE VORTEX	64	193		GIMATEX - P/V (65:35) / 19 TPI		220 / 225
	RSWM.LTD -VISCOSE /VISCOSE COMPACT	51.50	195 / 200		GIMATEX - VISCOSE	60	250
	GIMATEX -VISCOSE (MVS) /VISCOSE COMPACT	48*	199 / 205		MAHARAJA SHREE UMAID -VISCOSE COMPACT		255
31s	DAMODAR IND -P/C (80:20) KARDED	45.36		2/60s	DAMODAR - P/C COMBED		
	MUTHUR MURUGAN -P/C (70:30) WARP	60	154		DEVENTHIRA SPINNERS -PV (65:35)	60	275
	MUTHUR MURUGAN -P/C (65:35) VORTEX	60		2/76s	DEVENTHIRA SPINNERS -PV (65:35)	60	374
32s	ALOK IND LTD - 100% POLYSTER	48	140				
	DAMODAR INDUSTRIES - P/C (65:35)	60.48			COTTON SLUB & SPANDEX YARN		
33s	SARMANGAL - P/C (70:30) NEW	60		8s	DAMODAR - FATTY SLUB	45.36	238
	JAGAJYOTI - P/C -GOLD	60		10s	SITARAM -LYCRA-70D	45.36	238
	MUTHUR MURUGAN -P/C (75:25) WARP	60	156	15s	GIMATEX - VISCOSE SLUB		191
	DAMODAR IND -P/C (80:20) KARDED	45.36		16s	DAMODAR - ENCOUNTER SLUB	45.36	240
36s	RSWM.LTD -P/V (65:35) G.K -RELICANCE CATIONIC	48	229		DAMODAR - FATTY SLUB	45.36	240
36.5s	RSWM.LTD -P/V (65:35) HM -RELICANCE CATIONIC	48	211		SITARAM -LYCRA-70D	45.36	252
40s	ALOK IND LTD - 100% POLYSTER	48			MAHARAJA SHREE UMAID - KARDED 7% SPANDEX		
	PEEVEE TEX -100% POLYSTER	66	173	20s	SUDIVA - KARDED SLUB	47	
	R.S.W.M.LTD. -100% POLY / ULTIMA	48.60	168 / 177		SUDIVA - COMBED SLUB	47	
	GIMATEX - 100% POLYSTER	60	175		DAMODAR - MAXER SLUB	45.36	248
	SINTEX YARNS - P/V (65:35)	46	179		DAMODAR IND.LTD. -LV SLUB	45.36	248
	R.S.W.M.LTD. - P/V (65:35) AGNIVEER	45	180		SITARAM -LYCRA-70D	45.36	263
	GIMATEX - P/V (65:35) / P/V BLACK	64	191 / 217		NAHAR TEX -SPANDEX-KARDED (70D)		
	PEE VEE TEX -P/V (65:35) /HIGH TWIST (65:35)	66	181 / 213		MAHARAJA SHREE UMAID - KARDED 7% SPANDEX	45.36	
	DEVENTHIRA SPINNERS -PV (65:35)	60	187		GIMATEX - KARDED SPANDEX (70 D)	45.36	277
	PEE VEE -P/C COMBED (65:35) VORTEX	66	213		SIDDHIVINAYAK - KARDED - LSW	45.36	
	NAHAR TEX - P/C (40:60)				SIDDHIVINAYAK - KARDED - GSL	45.36	
	PEE VEE TEX -P/C COMBED (65:35)	66	213	21s	GOKAK TEXTILES-RANCHO SLUB	48.00	230
	SINTEX -C/P COMBED (52:48) / (60:40)	49.60	/		DAMODAR - RANCHO SLUB	45.36	
	GIMATEX -VISCOSE (MVS) /VISCOSE COMPACT	48	222 / 228		DAMODAR -COTLIN /CORAL SLUB	45.36	252 / 252
	R.S.W.M.LTD. - VISCOSE	51.50			MOHITE TEX -RANCHO COMPACT SLUB		AVAILABLE
41s	TRIDENT - P/V (65:35)	47.70	180		SIDDHIVINAYAK - KARDED -COTLINE	45.36	
	SINTEX YARNS - P/V (65:35)	46	181	30s	DAMODAR-KARDED SLUB		
	R.S.W.M.LTD. - P/V (65:35) AGNIVEER	45			GIMATEX - COMBED SLUB	45.36	274
42s	PEE VEE TEX - P/V (65:35)	66	182		GIMATEX - COMBED SPANDEX (40 D)		325
	TRIDENT - P/V (65:35)		182		MAHARAJA SHREE UMAID -COMBED SPANDEX	45.36	326
	R.S.W.M.LTD. - P/V (65:35) AGNIVEER	45	183		SITARAM - COMBED LYCRA-70D	45.36	334
	SINTEX YARNS - P/V (65:35)	46	183		NAHAR TEX -SPANDEX-COMBED (40D)		332
	DEVENTHIRA SPINNERS -P/V (65:35)	60	192	30.5s	SIDDHIVINAYAK-COMBED-MAX SLUB	45.36	AVAILABLE
	SRI AKKAMMA - P/V	60	192	31s	GOKAK TEXTILES-KARDED-MAX SLUB	48	247
45s	R.S.W.M.LTD. - P/V (65:35)	45	193		SUDIVA-COMBED VELOCITY (MAX) SLUB	47.00	
	GIMATEX - P/V (65:35) / (48:52)	64	205 / 225		MOHITE TEX - KARDED COMPACT SLUB		AVAILABLE
	DEVENTHIRA SPINNERS -PV (48:52)	60	227		SIDDHIVINAYAK -KARDED COMPACT SLUB	45.36	
49s	JAGAJYOTI - P/C GOLD	60	185		NAHAR TEX-KARDED SLUB /COMBED SLUB		265 /--
58s	JAGAJYOTI - P/C	60	196	40s	ADWAITH - COMBED SLUB	48	315
60s	NAHAR TEX - CVC (60:40)		328		SRI RAMCO SPNRS - COMBED SLUB	45.36	
64s	THIRUMATHI MUTHAMMAL -P/C (80:20)	60			ARUN - COMBED COMPACT -25% GIZA SLUB	45.36	405
65s	ANNAMALAI SPNG -100% POLY	60			SITARAM - COMBED LYCRA-40D	45.36	
67s	SURYAVARADA - P/C (70:30)	50			ADWAITH - COMBED LYCRA (40D)	50	
	FANCY YARNS						
12s	PKPN SPNG.-VISCOSE / LINEN (70:30)	64.00			NITIN SPNRS - COMBED SLUB		320
	P.K.P.N.SPNG. - COTTON/LINEN (70:30)	48	295	50s	RJP-SPINTEXT -COMBED 9% CORE YARN	40	425
16s	PKPN SPNG.-VISCOSE / LINEN (70:30)	48			SITARAM - COMBED LYCRA-40D	45.36	413
	P.K.P.N.SPNG. - COTTON/LINEN (70:30)	48	305		ARUN -COMBED COMPACT -25% GIZA SLUB	45.36	445
21s	PKPN SPNG.-VISCOSE / LINEN (70:30)	64.00		60s	RJP-SPINTEXT -CBD. 9% CORE 30 DEN / 11% CORE 40 DEN	40*	520 / 525
	P.K.P.N.SPNG. - COTTON/LINEN (70:30)	64	315		ADWAITH - COMBED LYCRA (40 D)	50	
30s	GIMATEX-MODAL BIRLA / LENZING	60	319 / --		ADWAITH - COMBED SLUB /COMPACT SLUB	60	-- / 410
	GIMATEX - EXCELL/TENCIL	60	271 / 285		SRI RAMCO SPNRS - COMBED SLUB	45.36	
	PKPN SPNG.-VISCOSE / LYCRA	45		70s	ARUN - CBD CMPT -25% GIZA SLUB / 50% GIZA SLUB	45.36	495 / --
	PKPN SPNG.-COTTON / LINEN (70:30)	45	405	80s	RJP-SPINTEXT - COMBED 9% LYCRA (20 DENIER)	40*	680
	SANDHYA - LINEN /COTTON (55:45)				RJP-SPINTEXT -COMBED COMPACT -25% GIZA	45.36	
40s	GIMATEX - TENCIL	60		12s	SRI RAMCO SPNRS - COMBED SLUB	40	630
	GIMATEX-MODAL BIRLA / LENZING	60	344 / --	16s	DAMODAR-COTTON/LINEN (80:20)	45.36	
	PKPN SPNG.-VISCOSE / LYCRA	45		20s	DAMODAR-COTTON/LINEN (80:20)	45.36	
60s	GIMATEX-MICRO MODAL BIRLA/LENZING	60	440 / --	30s	DAMODAR-COTTON/LINEN (80:20)	45.36	-- / 345
					DAMODAR - TY-23 / TY-07	45.36	

Note: All Rates are EXCLUDING GST & TCS.

COUNT	TYPE	MILL NAME	PACK	GST+ 5%	RATE
OPEN END					
8s	OE (1450 CSP)	ARYAA	54/18	157.25	165.11
12S	O E (1500 CSP)	PREMIER	50/24	164.25	172.46
16S	O E (1700 CSP)	LAXMI COTSPIN		N.A	N.A
	O E (1500 CSP)	PREMIER	50/24	170.25	178.76
	O E (1700 CSP)	RAMA		180.25	189.26
20S	O E (1500 CSP)	PREMIER	50/24	175.25	184.01
	O E (1700 CSP)	LAXMI		183.25	192.41
	O E (1750 + CSP)	NITIN SPINNER		197.25	207.11
	O E (1850+ CSP)	NAHAR SPINNING		N.A	N.A
21S	O E (1500 CSP)	PREMIER	50/24	177.25	186.11
30S	O E (1450 CSP)	LAXMI	45/18	200.25	210.26
	O E (1500 CSP)	SUDARSHAN JEANS		217.25	228.11
RING - FRAME					
10s	KW	EXPORT	45.36/24	211.25	221.81
12S	KW	EXPORT	45.36/24	213.25	223.91
14S	KW	EXPORT	45.36/24	215.25	226.01
16S	KW	EXPORT	45.36/24	217.25	228.11
20S	KW	EXPORT	45.36/24	220.25	231.26
	CW	GRV		242.25	254.36
	CW CPT	NAHAR SPINNING	45.36/18	249.25	261.71
21s	KW	EXPORT	45.36/24	223.25	234.41
30s	KW	PARTAP	45.36/24	232.25	243.86
	KW	NAHAR SPINNING	45.36/18	238.25	250.16
	CW	VITHAL	45.36/24	249.25	261.71
	CW	NAGREEKA	45.36/24	250.25	262.76
	CW	NAHAR SPINNING	45.36/18	253.25	265.91
	CW CPT	VITHAL	45.36/24	253.25	265.91
	CW CPT	TULIP		253.25	265.91
	CW CPT	VANKAR	45.36/24	255.25	268.01
	CW CPT	OSWAL	45.36/18	256.25	269.06
	CW CPT	SAGAR	45.36/24	258.25	271.16
	CW CPT	NAHAR SPINNING	45.36/18	258.25	271.16
32S	KW	PARTAP	45.36/24	235.25	247.01
	KW	TRIDENT	45.36/18	240.25	252.26
	KW	NAHAR SPINNING	45/18	242.25	254.36
	KW CPT	SITARAM	45.36/18	235.25	247.01
	CW	NAGREEKA	45.36/18	253.25	265.91
	CW	VITHAL	45.36/24	N.A	N.A
	CW	LAXMI		N.A	N.A
	CW	VANKAR	45.36/24	N.A	N.A
	CW	NAHAR SPINNING	45.36/18	258.25	271.16
	CW CPT	VITHAL	45.36/24	256.25	269.06
	CW CPT	LAXMI	45.36/24	258.25	271.16
	CW CPT	VANKAR	45.36/18	258.25	271.16
	CW CPT	TRIDENT	45.36/18	261.25	274.31
	CW CPT	NAHAR SPINNING	45.36/18	263.25	276.41
34S	KW	PARTAP	45.36/24	N.A	N.A
40S	CW CPT	NAGREEKA	45.36/24	272.25	285.86
	CW CPT	TRIDENT	45.36/24	276.25	290.06
	CW CPT	SAGAR	45.36/24	277.25	291.11
	CW CPT	NAHAR SPINNING	45.36/18	278.25	292.16
	CW CPT	SANATHAN	45.36/18	277.25	291.11
	CW CPT	OSWAL	45.36/18	N.A	N.A
	CW CPT CF	SANATHAN	45.36/24	N.A	N.A
41S	KW CPT	PARTAP	45.36/24	N.A	N.A
	CW	NAGREEKA	45.36/24	271.25	284.81
	CW	LAXMI COTSPIN	45.36/24	N.A	-
	CW	TRIDENT	45.36/24	275.25	289.01
	CW CPT	FABTECH	45.36/24	270.25	283.76
	CW CPT	VITHAL	45.36/24	275.25	289.01
	CW CPT	NAGREEKA	45.36/24	275.25	289.01
	CW CPT	LAXMI	45.36/24	276.25	290.06
	CW CPT	SUMICOT	45.36/24	280.25	294.26
	CW CPT	SAGAR	45.36/24	282.25	296.36
	CW CPT	NAHAR SPINNING	45.36/18	282.25	296.36
50S	CW CPT	SANATHAN	45.15/18	306.25	321.56
	CW CPT	NAGREEKA	45.36/24	305.25	320.51
	CW CPT	RUBY		N.A	-
	CW CPT CF	SANATHAN	45.15/18	N.A	-
51S	CW CPT	FABTECH	45.36/24	298.25	313.16
	CW CPT	NAGREEKA	45.36/24	307.25	322.61
	CW CPT	TRIDENT	45.36/24	307.25	322.61
	CW CPT	SANATHAN	18/45.15	309.25	324.71
60S	CW CPT	SANATHAN	45.15/18	327.25	343.61
	CW CPT	RUBY		336.25	353.06
	CW CPT CF	SANATHAN	45.15/18	369.25	387.71
61S	CW CPT	SHANMUGPRIYA	45.36/24	320.25	336.26
	CW CPT	FABTECH	45.36/24	322.25	338.36
	CW CPT	NAGREEKA	45.36/24	328.25	344.66
	CW CPT	TRIDENT	45.36/24	328.25	344.66
	CW CPT	SANATHAN	45.15/18	331.25	347.81
	CW CPT	RUBY		341.25	358.31

COUNT	TYPE	MILL NAME	PACK	GST+ 5%	RATE
TFO YARN					
2/30s	KW TFO	NAHAR SPINNING	45.36/24	262.25	275.36
	KW CPT TFO	EXPORT	45.36/24	265.25	278.51
	CW CPT TFO	LAXMI	45.36/48	276.25	290.06
	CW CPT TFO	PIOTEX		280.25	294.26
	CW CPT TFO	SITARAM		N.A	N.A
	CW CPT TFO	SAGAR	34.02/18	282.25	296.36
	CW CPT TFO	NAHAR SPINNING	45.36/24	290.25	304.76
2/32s	CW CPT TFO	SITARAM	45.36/24	284.25	298.46
	CW CPT TFO	LAXMI	45.36/24	280.25	294.26
2/40s	CW CPT TFO	SAGAR	34.02/18	310.25	325.76
2/41s	KW CPT TFO	PARTAP	45.36/24	282.25	296.36
	CW TFO	NAGREEKA	45.36/24	305.25	320.51
2/61s	CCW TFO	FABTECH		375.25	394.01
ELI - TWIST					
2/32s	KW CPT ELITWIST	SITARAM	45.36/18	227.25	238.61
	CW CPT ELITWIST	NAHAR SPINNING	45.36/18	254.25	266.96
2/40s	KW CPT ELITWIST	SITARAM		230.25	241.76
2/40s	CW CPT ELITWIST	SAGAR	45.36/24	260.25	273.26
	CW CPT ELITWIST	NAHAR	45.36/24	260.25	273.26
	CW CPT ELITWIST	SITARAM	45.36/24	255.25	268.01
LYCRA					
10S	KW CSY (70 D)	SITARAM	45.36/24	235.25	247.01
12S	KW CSY (70 D)	SITARAM	45.36/24	243.25	255.41
16s	KW CSY (70 D)	SITARAM	45.36/24	N.A	N.A
20s	KW CSY (70 D)	SITARAM	45.36/24	260.25	273.26
30s	CW CSY 40 D	NAGREEKA	45.36/24	340.25	357.26
	CW CSY (40 D)	SITARAM	45.36/24	339.25	356.21
42s	CW CSY (40 D)	SITARAM	45.36/24	420.25	441.26
SLUB YARN					
12S	KW SLUB	LAXMINARAYAN		230.25	241.76
16s	KW GRAND SLUB	LAXMINARAYAN	45.36/24	234.25	245.96
	ENCOUNTER SLUB	LAXMINARAYAN	45.36/24	235.25	247.01
	KW CPT GRAND SLU	NAHAR SPINNING	45.36/24	236.25	248.06
20S	MAXER SLUB	LAXMINARAYAN	45.36/24	240.25	252.26
20s	COMMANDO SLUB	GIRIRAJ	45.36/24	245.25	257.51
21s	KW SLUB RANCHO	LAXMINARAYAN	45.36/24	237.25	249.11
	KW ZAYKA SLUB	LAXMINARAYAN	45.36/24	245.25	257.51
	COTLIN SLUB	LAXMINARAYAN	45.36/24	243.25	255.41
30.5s	CW SLUB	NAGREEKA	45.36/24	270.25	283.76
31s	CW MAX SLUB	SAGAR		274.25	287.96
	KW SLUB	LAXMINARAYAN	45.36/24	245.25	257.51
	KW CPT SLUB	NAHAR SPINNING	45.36/24	251.25	263.81
	CW MAXI SLUB	NAHAR SPINNING	45.36/24	280.25	294.26
32s	KW SLUB	NAGREEKA	45.36/24	273.25	286.91
40s	CW SLUB	NAGREEKA	45.36/24	312.25	327.86
PV and PC Yarn					
30s	PC KW (65:35)	AVANI	50.40/18	181.25	203.00
2/30.	PC KW (65:35)	AVANI	50.40/18	205.25	229.88
31s	PC CW SLUB(40:60)	NAHAR SPINNING		240.25	252.26
40s	PV (65:35)	NAHAR IND		180.25	201.88
42s	PV (65:35)	DIAMOND		184.25	206.36
42s	PV (65:35)	NAHAR IND	51.5/18	184.25	206.36
Polyster - 100 %					
30s	PSF (RING)	NAHAR SPINNING		142.25	159.32
2/30.	PSF (RING TFO)	NAHAR SPINNING		162.25	181.72
Viscose and Modal					
16S	VISCOSE SLUB	RAJGURU		202.25	N.A
20s	VISCOSE RING	RAJGURU	60.00/24	N.A	N.A
30s	VISCOSE RING	RAJGURU	60.00/24	N.A	N.A
	VISCOSE VORTEX	TRIDENT	21.00/12	190.25	213.08
	CCW CTN MODAL (60:40)	TRIDENT	45.36/18	250.25	262.76
40s	VISCOSE RING	RAJGURU	60.00/24	N.A	N.A

COUNT	MILL NAME	PACKING	RATE/KG(+GST)	RATE/5KG (NETT)	
34KRD	Sree Astalaxmi	32/60.48 KGS	234	1229	
34CPT	Sree Astalaxmi	24/45.36 KGS	235	1234	2 BAGS
39KRD	SreeAstalaxmi	32/60.48 KGS	247	1297	
40KRD	Sree Astalaxmi	32/60.48 KGS	247	1297	11 BAGS
41KCPT	Sree Astalaxmi	32/60.48 KGS	248	1302	10 BAGS
41KRD	Sree Astalaxmi	24/45.36 KGS	248	1302	BOOKING
42KRD	Sree Astalaxmi	32/60.48 KGS	249	1307	
47KRD	Sree Astalaxmi	32/60.48 KGS	252	1323	BOOKING
61 CW	Sree Astalaxmi	24/45.360KGS	310	1628	25 BAGS
61K CPT	Sree Astalaxmi	40/60 KGS	287	1507	
61CCW	Sree Astalaxmi	40/60 KGS	311	1633	3BAGS

NOTE :- THE ABOVE COUNTS WILL BE GIVEN WITH SAME QUALITY AS PER YOUR REQUIREMENTS.

AIRJET WARP/WEFT/POWERLOOM WARP QUALITIES READILY AVAILABLE AT ICHALKARANJI GODOWN.

ALL RATES ARE NEGOTIABLE AT THE TIME OF BOOKING

COUNT	CSP	Packing	Rate	Delivery
Name		Cone/kg Bag	Per Kg	Status
6s OE				
Amaravathi	1700	18/45.00 KG	168.25	Ready
Amaravathi	1450	24/60.00 KG	152.25	Ready
CP Pdm 52/48 (Blend)	2700	18/50.00 KG	☎	Booking
7s OE				
Amaravathi	1500+	24/60.00 KG	156.25	Ready
CP Pdm 52/48 (Blend)	2700	18/50.00 KG	☎	Ready
8s OE				
Amaravathi	1550	18/45.00 KG	161.25	Ready
Amaravathi	1550	24/60.00 KG	161.25	Ready
Ambala	1450	18/50.00 KG	158.25	Ready
CP Pdm 52/48 (Blend)	2700	18/50.00 KG	☎	Booking
10s OE				
Amravathi	1700	24/60.00 KG	180.25	Ready
Kallam	1600	24/60.00 KG	178.25	Booking
Amaravathi	1450	24/60.00 KG	☎	Ready
K.G.	****	30/60.00 KG	133.25	Ready
CP Pdm	****	18/50.00 KG	95.25	Ready
Cp Arihant	****	18/50.00 KG	96.25	Ready
12s OE				
Amravathi	1700	24/60.00 KG	183.25	25 Bag Ready
Amravathi	1400	24/60.00 KG	170.25	Ready
Cp Arihant	1600	18/50.00 KG	☎	Ready
14s OE				
White Gold (Warp)	1650	18/50.00 KG	☎	Ready
Jyoti (Weft)	1550	18/M. L.	177.25	Ready
PC P.D.M 65/35	2400	18/50.00 KG		Nil
16s OE				
Amaravathi	1700+	18/45.00 KG	190.25	Booking
Jyoti	1700+	18/M. L.	183.25	Ready
Jyoti	1550	18/M. L.	☎	Ready
Sunrise (Weft)	1450	18/50.00 KG	175.25	Ready
CP Pdm	1600+	18/50.00 KG	109.25	Ready
CP Jaijothi (New Lot)	1800	18/50.00 KG	106.25	Ready
20s OE				
Kallam	1700+	24/60.00 KG	☎	Booking
Jyoti Thread	1650	18/M. L.	☎	Ready
Jyoti Thread	1500	18/46.00 KG	185.25	Ready
White Gold (Warp)	1550	18/50.00 KG	184.25	Ready
SSM (Shree Madhav)	1450	24/50.00 KG	177.25	Ready
CP Pdm	1600	18/50.00 KG	110.25	Ready
PC ST COTTEX	****	18/48.00 KG		Nil
Cp ST COTTEX	1600	18/50.00 KG		Nil
21s OE				
Jyoti	1650	24/50.00 KG	☎	Ready

COUNT	CSP	Packing	Rate	Delivery
Name		Cone/kg Bag	Per Kg	Status
30s OE				
Amaravathi(New Lot)	1500+	24/48.00 KG	212.25	Ready
30s CP				
PDM (Warp Guarantee)	2000	24/50.00 KG	☎	Ready
30s CP				
Arihant	1600	18/50.00 KG	☎	Ready
16s KW				
Alok	2700	24/45.360 KG	228.25	Ready
20s KW				
Gurulaxmi	2700	24/45.360 KG	☎	☎
2/20 KW				
Damodhar	2800	30/60.00 KG	☎	Ready
2/32s Eli CPT				
Ahuja	3000	18/45.360 KG	232.25	Ready
2/40s Eli CPT				
Ravali	3000	18/45.360 KG	☎	Ready
20 Lycra 70 D				
Ravali	****	24/45.360 KG	272.25	Ready
16 Lycra 70 D				
Ravali	*****	24/45.360 KG	265.25	Ready
15 PSF				
Alok	****	18/48.00 KG	☎	Ready
20 PSF				
Alok	****	18/48.00 KG	☎	Ready
30 PSF				
Alok	****	18/48.00 KG	☎	Ready
32 PSF				
Alok	****	18/48.00 KG	☎	Ready
40 PSF				
Alok	****	18/48.00 KG	☎	Ready
2/40 PSF				
Alok	****	18/M. L.	☎	Ready

COUNT	TYPE	MILL NAME	PACK	GST+ 5%	RATE	COUNT	TYPE	MILL NAME	PACK	GST+ 5%	RATE
4s	OE (LIGHT)	JK SPINNER	3060	95	100.20	40s	CBD COMPACT	SINTEX	18/45.4	0	
6s	OE (LIGHT)	JK SPINNERS	3060	98	103.20		CBD COMPACT	TRIMURTHI	24/45.36	0	
	OE (C.P)	SUNRISE	18/50	00	00.00		CBD COMPACT	SIDDHARTH -VSP	18/45	274	288.20
7s	OE	ALOK	18/50	00			CBD COMPACT	MOHAN SPINTEX	24/45.36	0	00.00
8s	OE (LIGHT)	JK SPINNERS	3060	00	00.00		CBD COMPACT	NITIN SPINERS	18/49.50	0	
	OE	ALOK	18/50	00							
	OE	AMARAVATHI	24/60	157	165.20	40s	KRD COMPACT	VARDHMAN	24/45.36	262	275.20
						41s	KARDED	GIRNAR (AMIT)	24/45.3	251	263.20
10s	OE (LIGHT)	JK SPINNER	3060	00							
	OE (DELUXE)	JK SPINNER	3060	00							
	OE	PATIDAR -1500	18/50	157	165.20	41s	KRD COMPACT	GIRNAR (AMIT)	24/45.3	254	266.20
	OE	MOHAN -1500	18/45	162	170.20		KRD COMPACT	TRIMURTHI	24/45.3	255	268.20
	OE	KG. MILLS	3060	00			KRD COMPACT	MAHESH SP.	24/45.3	254	266.20
	OE	SUNRISE	12/30.24	160	168.20		KRD COMPACT	MOHAN	24/45.36	0	
	OE	KALLAM SPINING	24/60	00			KRD COMPACT	R M MOHITE	24/45.36	0	
							KRD COMPACT	KALLAM	32/64	250	262.20
							KRD COMPACT	SIDDHI	24/45.4	0	
12s	OE	KALLAM SPINING	24/60	176	185.20						
	OE	SVPT Csp-1450	18/50.4	172	180.20						
	OE (DELUXE)	JK SPINNER	3060	00							
	OE	SITARAMA 1400	18/45	00			COMBED	MARUTI	24/45.36	0	
	OE	SVPT - CSP - 1750	18/50.4	186	195.20		COMBED	ALOK	24/45.36	270	283.20
16s	OE	J K SPINNERS	3060	00			COMBED	AVTADE	24/45.36	00	
	OE	MAULI	24/60	168	176.20						
	OE	KALLAM SP - 1600	24/60	00	184.20						
	OE	SUNRISE - 1600	24/60	170	178.20		CBD COMPACT	SINTEX	18/45.36	00	
	OE	SITARAMA - 1300	18/45	170	178.20		CBD COMPACT	TRIMURTHI	24/45.3	277	291.20
	OE	SITARAMA - 1700	18/45	00			CBD COMPACT	MOHAN SPINTEX	24/45.36	0	
	OE	NITIN SPINERS - 1700	Sep-30	00	00.00		CBD COMPACT	KALLAM	24/48	273	286.20
							CBD COMPACT	SITARAMA	24/45.36	273	286.20
20s	OE	JAGANNATH-1550	3060	178	187.20		CBD COMPACT	AJINKYA TARA	24/45.36	275	289.20
	OE	KALLAM CSP-1700	24/60	00			CBD COMPACT	VITTAL	24/45.36	0	
	OE	MOHAN	24/48	188	197.20		CBD COMPACT	AVTADE	24/45.36	00	
	OE	NITIN SPINERS-1700	9/31	203	213.20						
	OE	NITIN SPINERS-1900	9/31	00							
	OE	J K SPINNERS	3060	00		42s	KARDED	DRK	24/45.3	242	254.20
							KARDED	NILKANT	24/45.3	0	
21s	OE	KALLAM SPINING	24/60	00	00.00		KARDED	I CO (MANIBHADRA)	24/45.36	246	258.20
	OE	MOHAN	24/48	191	200.20		KARDED	PARVATI	24/45.36	0	
	OE	J K SPINNERS	3060	00			KARDED	RAJENDRA	24/45.36	0	
		RING FRAME									
16s	COMBED	LOKNAYAK	18/45.36	243	255.20	50s	CBD COMPACT	SINTEX	24/45.3	0	
20s	KRD COMPACT	MAHESH SPINNING	24/45.36	227	238.20		CBD COMPACT	SALUJA	24/50.400	306	321.20
20s	CBD COMPACT	SUNRISE	24/45.36	248	260.20		CBD COMPACT	NITIN SPINERS	24/46	310	325.20
	CBD COMPACT	SITARAMA	24/45.36	00							
	CBD COMPACT	NITIN SPINERS	18/49.50	00		51s	CBD COMPACT	SINTEX	24/45.3	310	325.20
							CBD COMPACT	MANIBHADRA	24/45.3	0	00.00
							COMBED	R M MOHITE	24/45.36	0	00.00
30s	KARDED	SINTEX	18/45.3	00							
	KARDED	SIDDHI	24/45.3	00		60s	CBD COMPACT	SINTEX - SICO	24/45.3	328	344.20
	KRD COMPACT	MAHESH	24/45.3	237	249.20						
	KRD COMPACT	CHOUNDRESHWARI	24/45.36	00		61s	COMBED	R M MOHITE	24/45.36	0	
	COMBED	ALOK	24/45.36	248	260.20						
	COMBED	AVTADE	24/45.36	00		61s	CBD COMPACT	SINTEX - SICO	24/45.4	332	348.20
	CBD COMPACT	SINTEX INDS.	18/45.4	00			CBD COMPACT	ALOK	24/45.36	00	
	CBD COMPACT	NITIN SPINERS	18/49.50	00			CBD COMPACT	MOHAN SPINTEX	24/45.36	0	00.00
	CBD COMPACT	AVTADE	24/45.36	00			CBD COMPACT	AVTADE	24/45.36	00	
32s	KARDED	RAJI VJI	24/45.3	00		62s	COMBED	MARUTI	24/45.36	00	
	KARDED	SITARAMA	24/45.36	231	242.20						
	KARDED	PARAVATI	24/45.36	00		80s	CBD COMPACT	SINTEX	24/45.4	435	457.20
	KARDED	VITTAL	24/45.36	00	00.00						
	KARDED	AJINKYA TARA	24/45.36	00							
	KARDED	DHANLAXMI	32/60.48	00	00.00						
	KARDED	MANIBHADRA	24/45.36	00	00.00	21s	COTLINE	SIDDHI	24/45.3	00	
	KARDED	K EWALRAM	12/22.68	238	250.20		KRD SLUB	MAHESH	24/45.3	235	247.20
	KARDED	SIDDHI	24/45.36	00			KRD SLUB	I CO (MANIBHADRA)	24/45.3	234	246.20
	KARDED	SINTEX	18/45.3	240	252.20	31s	KRD SLUB	SIDDHI	24/45.3	00	
	KRD COMPACT	KALLAM SP.	32/60.48	234	246.20	31s	KRD SLUB	MAHESH	24/45.3	00	
	KRD COMPACT	AJINKYA TARA	24/45.36	236	248.20	40s	KRD SLUB	NAV MAHA	24/45.3	286	300.20
	KRD COMPACT	MAHESH	24/45.3	240	252.20	30.5	COMBED SLUB	SIDDHI	24/45.36	00	
						41s	COMBED SLUB	TRIMURTHI	24/45.3	315	331.20
	COMBED	ALOK	24/45.36	00		51s	COMBED SLUB	R M MOHITE	24/45.3	391	410.20
	COMBED	VITTAL	24/45.36	00		60s	COMBED SLUB	R M MOHITE	24/45.3	0	00.00
	COMBED	AVTADE	24/45.36	00							
	CBD COMPACT	AVTADE	24/45.36	00							
34s	KARDED	KALLAM SPINNING	32/64	00	00.00						
	KRD COMPACT	MAHESH	24/45.36	00	00.00						

COUNT	TYPE	MILL NAME	PACK	GST+ 5%	RATE	COUNT	TYPE	MILL NAME	PACK	GST+ 5%	RATE
		TFO YARN						LYCRA			
2/30s	CCW TFO	SINTEX	24/45.36	290	304.20	10s	KW-LYCRA-70D	SITARAMA	24/45.36	236	248.20
2/30s	CCW TFO	SITARAMA	24/45.36	278	292.20	12s	KW-LYCRA-70D	SITARAMA	24/45.36	0	
2/32s	CCW TFO	SITARAMA	24/45.36	281	295.20	16s	KW-LYCRA-70 D	SITARAMA	24/45.36	251	263.20
2/32s	KARDED TFO	SIDDHI	24/45.36	00		20s	KW-LYCRA-70 D	SITARAMA	24/45.36	262	275.20
2/40s	KARDED TFO	SIDDHI	24/45.36	00		30s	CW-LYCRA-40D	SITARAMA	24/45	0	
2/60s	CCW TFO	SVPT	40	00	00.00	30s	CW-LYCRA-40D	ALOK	24/45	334	350.20
						30s	CW-LYCRA-40D	SINTEX	24/45	338	355.20
						42s	CW-LYCRA-40D	SITARAMA	24/45	429	450.20
		ELI-TWIST									
2/32s	KW ELI-TWIST	SITARAMA	24/45.36	229	240.20	20s	PC (45 / 55) LY-40 D	SITARAMA	24/45	0	
2/40s	KW ELI-TWIST	SITARAMA	24/45.36	234	245.20						
2/30s	CWC ELI-TWIST	SITARAMA	24/45.36	00	00.00						
2/32s	CWC ELI-TWIST	SITARAMA	24/45.36	00	00.00						
2/42s	CWC ELI-TWIST	SITARAMA	24/45.36	00	00.00						

PV, PC, Synthetic & Spandex (Lycra) GST- 12 %

COUNT	TYPE	MILL NAME	PACK	GST+ 12%	RATE	COUNT	TYPE	MILL NAME	PACK	GST+ 12%	RATE
		Polyster / Cotton						Texturised Yarn			
33s	KW P/C (85 / 15)	EXPORT	15/37.80	152	170.20	97s	POLY-LYCRA(80/20)W	SANATHAN	23.4	152	170.20
45s	CW P/C (65 / 35)	MOHAN	24/45.36	00	00.00						
						220s	POLY-LY - WHITE-BLAC	SANATHAN	23.4	0	
		Polyster - 100 %						Viscose - 100 %			
30s	PSF 100%	SITARAMA	15/37.80	00							
32s	PSF 100%	EXPORT	15/37.80	140	157.20	30s	VORTEX	KT	12/30.24	190	213.20
32s	PSF 100%	SITARAMA	24/45.36								
41s	PV (65 / 35)	SINTEX	18/49	184	206.20						
42s	PV (65 / 35)	SINTEX	18/49	186	208.20						
42s	PV (65 / 35)	HARIHARAN	32/60	181	202.20						

COUNT	MILL NAME	STOCK	WEIGHT	WITH GST
		BAG		
16'S	LAXMI		45.36 KG	178.25
20'S	LYCRA VARDHAMAN		45.00 KG	278.25
30'S	VISCOSE NISAN		50.00 KG	190.25 +GST
30'S	KALLAM		64.00 KG	239.25
30'S	PRANAV		45.36 KG	242.25
2/32'S	(CBD COMPACT) AUTADE		45.36 KG	295.25
30'S	(CBD COMPACT) AUTADE		45.36 KG	265.25
30'S	(CBD COMPACT) LAXMI		45.36 KG	265.25
30'S	(CBD COMPACT) SANGAM	1		265.25
32'S	YINDU		45.36 KG	247.25
32'S	DHANLAXMI		60.48 KG	244.25
32'S	PRANAV		45.36 KG	244.25
32'S	VITTHAL		45.36 KG	244.25
32'S	(CBD) AUTADE		45.36 KG	265.25
32'S	(CRD COMPACT) GOPALKRISHNA		60.48 KG	244.25
32'S	(CBD COMPACT) SHREEJI		45.36 KG	266.25
41'S	(CBD) LAXMI		45.36 KG	287.25
41'S	(KRD COMPACT) SHAHI	1	45.36 KG	262.25
42'S	(P. V.) NAHAR (18 CONE PACKING)		53.90 KG	185.25+GST
42'S	RAJENDRA		45.36 KG	253.25
61'S	(KRD COMPACT) LAXMI		60.00 KG	310.25
2	ARVIND			
30'S	(KRD COMPACT) ARVIND (READY)		45.36 KG	248.25
32'S	(KRD COMPACT) ARVIND (READY)		45.36 KG	252.25
41'S	(KRD COMPACT) ARVIND (READY)		45.36 KG	267.25
41'S	(CBD COMPACT) ARVIND (READY)		45.36 KG	292.25
61'S	(CBD COMPACT) ARVIND (READY)		45.36 KG	330.25+GST
3	VITTHAL			
30'S	(CBD) VITTHAL (READY)		45.36 KG	260.25
30'S	(CBD COMPACT) VITTHAL (BOOKING)		45.36 KG	265.25
32'S	(CBD) VITTHAL (BOOKING)		45.36 KG	265.25
32'S	(CBD COMPACT) VITTHAL (BOOKING)		45.36 KG	270.25
41'S	(CBD COMPACT) VITTHAL (BOOKING)		45.36 KG	288.25
4	MAHATMA			
21'S	SLUB MAHATMA		45.36 KG	
31'S	SLUB MAHATMA		45.36 KG	
41'S	(CRD COMPACT) MAHATMA		45.36 KG	
5	BOOKING			
16'S	LYCRA SITARAM		45.36 KG	261.25
41'S	UMA		45.36 KG	262.25
41'S	(KRD COMPACT) LALITA PARMESWARI		45.36 KG	265.25
41'S	(CBD COMPACT) NITIN			
61'S	(CBD COMPACT) NSL		45.36	327.25+GST
41	(KRD COMPACT) EXPORTS			262.25
6	LAXMI			
41'S	(CBD) (BOOKING)		45.36KG	287.25
41'S	(CBD COMPACT) (BOOKING)		45.36KG	291.25
7	K. K. SPITEX			
40'S	P. V. K. K.			186.25+GST
45'S	P. V. K. K.			205.25+GST
52'S	P. V. K. K.			228.25+GST
60'S	P. V. K. K.			248.25+GST
2/30'S	P. V. K. K.			191.25+GST
2/40'S	P. V. K. K.			216.25+GST
2/50'S	P. V. K. K.			256.25+GST
2/60'S	P. V. K. K.			284.25+GST
2/76'S	P. V. K. K.			383.25+GST
2/90'S	P. V. K. K.			475.25+GST