

2025-08-23

Time of Issue: 07:50:00 hours IST
(Morning)

ALL INDIA WEATHER SUMMARY AND FORECAST BULLETIN

Significant Weather Features

Weather Systems, Forecast and Warnings:

East & Central India:

- Isolated **heavy rainfall** likely over Madhya Pradesh, Chhattisgarh during next 6-7 days; Odisha, Jharkhand, Bihar, West Bengal during 23rd-26th; Vidarbha on 27th & 28th August with isolated **very heavy rainfall over West Madhya Pradesh, Bihar, Jharkhand and Chhattisgarh on 23rd August**
- Light to moderate rainfall at most/many places accompanied with thunderstorm & lightning likely over the region during next 5 days.

Northwest India:

- **Extremely heavy rainfall** very likely over East Rajasthan on 23rd August.
- Isolated **heavy rainfall** likely over Himachal Pradesh, Uttarakhand, Rajasthan during next 7 days; Haryana during 23rd-27th; Uttar Pradesh during 23rd-25th; Punjab during 23rd-26th; Jammu & Kashmir on 23rd & 24th August with **isolated very heavy rainfall over East Rajasthan during 24th-26th; Haryana on 23rd; Uttarakhand during 23rd-24th; West Rajasthan during 23rd-25th August.**
- Light/moderate rainfall at most/many places accompanied with thunderstorm & lightning likely over Jammu-Kashmir-Ladakh-Gilgit-Baltistan-Muzaffarabad, Uttarakhand & Rajasthan during next 7 days.

West India:

- **Heavy to very heavy rainfall is very likely to continue over north Gujarat till 23rd August. A fresh spell of Heavy to Very Heavy Rainfall over Gujarat state from 25th August onwards.**
- **Heavy rainfall** is very likely to continue over Konkan on 25th; Madhya Maharashtra on 26th and **very heavy rainfall over Konkan & Goa during 26th-28th and ghat areas of Madhya Maharashtra on 27th & 28th August.**
- Strong surface winds (speed reaching 40-50 kmph) very likely over Gujarat coast during next 5 days and over Maharashtra coast 25th & 26th August.
- Light to moderate rainfall at most/many places very likely over the region during next 7 days.

Northeast India:

- Isolated **heavy rainfall** likely to continue over Assam & Meghalaya, Nagaland,

*Red color warning does not mean "Red Alert" Red color warning means "Take Action"

Forecast and warning for any day is valid from 0830 hours IST of day till 0830 hours IST of next day

For more details kindly visit <https://mausam.imd.gov.in> or contact 011-2434-4599

(Service to the nation since 1875)



Manipur, Mizoram & Tripura during 23rd-27th and Arunachal Pradesh during 23rd-25th August.

- Light/moderate rainfall at many places accompanied with thunderstorm & lightning likely during next 2 days.

South Peninsular India:

- Isolated **heavy rainfall** likely over Coastal Karnataka, Kerala during 26th-28th; Coastal Andhra Pradesh on 26th & 27th August.
- Light to moderate rainfall at most/many places accompanied with thunderstorm & lightning likely over Tamil Nadu, Telangana on 23rd; Coastal Andhra Pradesh & Yanam and interior Karnataka during next 5 days.

Main Weather Observations:

Rainfall distribution (from 0830 hours IST to 1730 hours IST of yesterday): **at most places** over Jharkhand, Konkan & Goa, Saurashtra & Kutch, Gangetic West Bengal, Odisha, East Rajasthan, Gujarat Region and East Madhya Pradesh; **at many places** over West Uttar Pradesh, West Madhya Pradesh, Arunachal Pradesh, West Rajasthan, Himachal Pradesh, Kerala & Mahe, Haryana Chandigarh & Delhi, Uttarakhand, Sub-himalayan West Bengal & Sikkim, Nagaland, Manipur, Mizoram & Tripura, Coastal Karnataka, Bihar, Tamilnadu Puducherry & Karaikal, Assam & Meghalaya, East Uttar Pradesh, Chhattisgarh, North Interior Karnataka, Vidarbha, Andaman & Nicobar Islands and Madhya Maharashtra; **Dry** over rest of the country.

Significant rainfall recorded(in cm) (from 0830 hours IST to 1730 hours IST of yesterday): **Jharkhand**: Chaibasa (dist West Singhbhum) 9; **Bihar**: Dehri (dist Rohtas) 5; **Odisha**: Rourkela (dist Sundargarh), Dhenkanal (dist Dhenkanal) 4 Each, Jharsuguda (dist Jharsuguda), Sambalpur (dist Sambalpur) 3 Each; East Rajasthan: Kota AP (dist Kota) 4; Tamilnadu Puducherry & Karaikal: Tiruttani (dist Tiruvallur) 3; Assam & Meghalaya: Silchar (dist Cachar) 3; Gujarat region: Baroda AP (dist Vadodara) 3, Vallabh Vidyanagar (dist Anand) 2; East Madhya Pradesh: Malanjkhanda (dist Balaghat) 3, Mandla (dist Mandla) 2; **Chhattisgarh**: Ambikapur (dist Surguja) 3, Bilaspur (dist Bilaspur) 2; East Uttar Pradesh: Basti-obs (dist Basti) 3; West Madhya Pradesh: Pachmarhi (dist Narmadapuram) 2; Konkan & Goa: Matheran (dist Raigad) 2; Gangetic west Bengal: Kolkata-Howrah-Uluberia (dist Howrah), Canning (dist South 24 Parganas), Berhampore (dist Murshidabad), Asansol (dist Paschim Bardhaman) 2 Each; Sub-Himalayan west Bengal: Malda (dist Malda) 2.

❖ **Heavy Rainfall observed** (from 0830 hours IST to 1730 hours IST of yesterday): **Heavy rain** at isolated places over Jharkhand.

❖ **Minimum Temperature Departures (as on 22-08-2025): markedly above normal(> 5.1°C)** at few places over East Madhya Pradesh; at isolated places over Assam & Meghalaya, Bihar, East Uttar Pradesh, West Uttar Pradesh, Himachal Pradesh, Jammu-KashmirLadakh-Gilgit-Baltistan-Muzaffarabad, West Rajasthan and West Madhya Pradesh. **appreciably above normal(3.1°C to 5.0°C)** at isolated places over Odisha, Gujarat Region and Saurashtra & Kutch. **above normal(1.6°C to 3.0°C)** at many places over Punjab; at few places over Haryana-Chandigarh-Delhi, Coastal Andhra Pradesh & Yanam, Kerala & Mahe and Lakshadweep; at isolated places over Sub Himalayan West Bengal & Sikkim, East Rajasthan, Konkan & Goa, Madhya Maharashtra, Chhattisgarh, Telangana, Rayalaseema, Tamil Nadu, Puducherry & Karaikal and South Interior Karnataka. **near normal(-1.5°C to 1.5°C)** at many places over Uttarakhand; at most places over Andaman & Nicobar Islands, Nagaland, Manipur, Mizoram & Tripura, Gangetic West Bengal, Jharkhand, Marathwada, Vidarbha, Coastal Karnataka and North Interior Karnataka. **The lowest minimum temperature** of 18.0°C is reported at KHANDWA (MADHYA PRADESH) over the Plains of India.

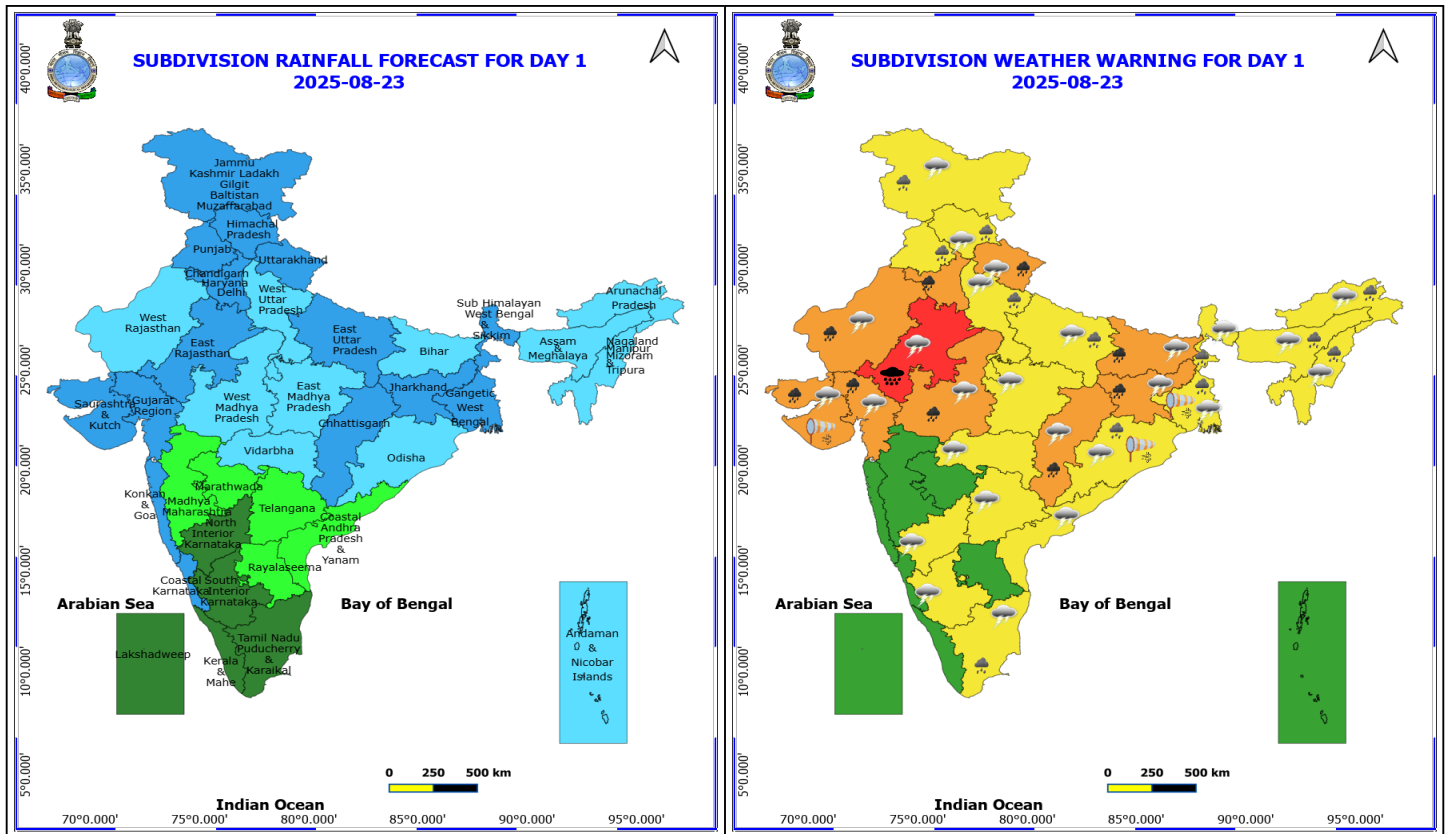
❖ **Maximum Temperature Departures (as on 22-08-2025): markedly above normal(> 5.1°C)** at isolated places over Jammu-KashmirLadakh-Gilgit-Baltistan-Muzaffarabad. **appreciably above normal(3.1°C to 5.0°C)** at isolated places over Assam & Meghalaya, Haryana-Chandigarh-Delhi, Punjab and Tamil Nadu, Puducherry & Karaikal. **above normal(1.6°C to 3.0°C)** at many places over Himachal Pradesh; at few places over Vidarbha, Telangana, Kerala & Mahe and Lakshadweep; at isolated places over Bihar, West Uttar Pradesh, West Rajasthan, East Rajasthan, Chhattisgarh and Coastal Andhra Pradesh & Yanam. **near normal(-1.5°C to 1.5°C)** at many places over Sub Himalayan West Bengal & Sikkim, East Uttar Pradesh, Uttarakhand, East Madhya Pradesh, Saurashtra & Kutch, Rayalaseema and South Interior Karnataka; at most places over Arunachal Pradesh, Nagaland, Manipur, Mizoram & Tripura, Konkan & Goa, Madhya Maharashtra, Marathwada, Coastal Karnataka and North Interior Karnataka; at few places over Andaman & Nicobar Islands, West Madhya Pradesh and Gujarat Region; at isolated places over Gangetic West Bengal and Odisha. **The highest maximum temperature** of 38.9°C is reported at SRIGANGANAGAR (RAJASTHAN).

Meteorological Analysis (Based on 0530 hours IST)

- **The Low Pressure area** over Gangetic West Bengal & neighbourhood persists over the same region at 0530 hrs IST of today, the 23rd August, 2025. The associated **upper air cyclonic circulation** extends upto 7.6 km above mean sea level tilting southwestwards with height. It is likely to move west northwestwards across Jharkhand during next 24 hours and weaken gradually thereafter.
- The **monsoon trough** at mean sea level now passes through Ganganagar, Churu, Gawlior, Satna, Daltonganj, centre of low-pressure area over Gangetic West Bengal & neighbourhood, Digha and thence east southeastwards to northeast Bay of Bengal.
- The **upper air cyclonic circulation** over southwest Uttar Pradesh & neighbourhood now lies over central parts of north Madhya Pradesh & adjoining areas of south Uttar Pradesh and extends upto 7.6 km above mean sea level tilting southwestwards with height.
- The **upper air cyclonic circulation** over West Rajasthan & neighbourhood now lies over Punjab & neighbourhood and extends upto 1.5 km above mean sea level.
- A fresh **low-pressure area** is likely to form over northwest Bay of Bengal off Odisha-West Bengal coasts around 25th August 2025.

Weather Outlook for subsequent 3 days

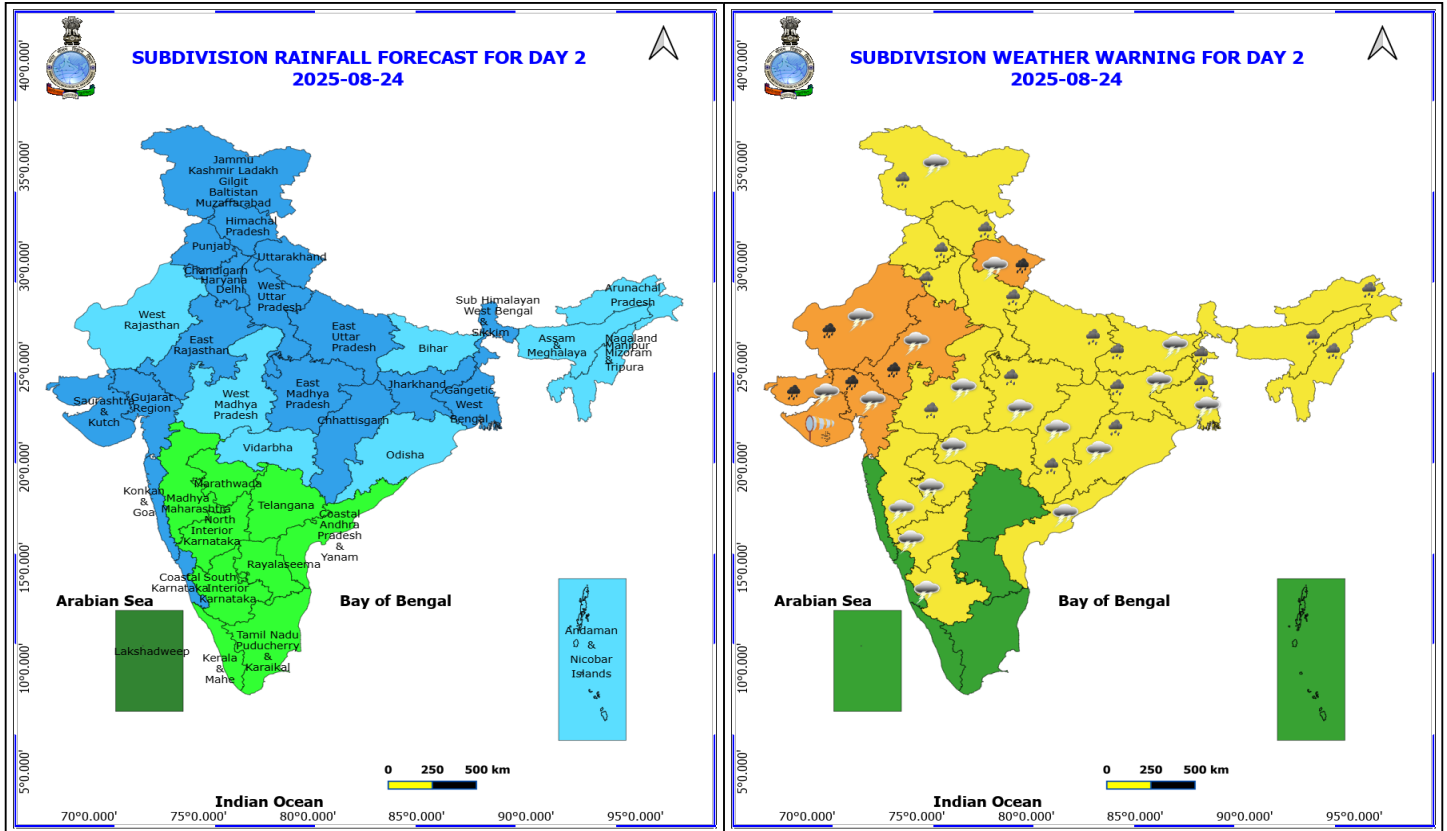
- Scattered to Fairly widespread rainfall likely over northern, western India, western peninsular and eastern India.



23 August (Day 1)

- ❖ **Heavy to Very Heavy Rainfall with isolated Extremely Heavy Rainfall** very likely at isolated places over East Rajasthan.
- ❖ **Heavy to Very Heavy Rainfall** very likely at isolated places over Bihar, Chhattisgarh, Gujarat State, Haryana, Chandigarh & Delhi, Jharkhand, Uttarakhand, West Madhya Pradesh and West Rajasthan.
- ❖ **Heavy Rainfall** very likely at isolated places over Arunachal Pradesh, Assam & Meghalaya, Himachal Pradesh, Jammu-Kashmir-Ladakh-Gilgit-Baltistan-Muzaffarabad, Nagaland, Manipur, Mizoram and Tripura, Odisha, Punjab, Tamil Nadu Puducherry & Karaikal, Uttar Pradesh and West Bengal & Sikkim.
- ❖ **Thunderstorm accompanied with lightning & gusty winds(30-40kmph)** very likely at isolated places over Bihar, Interior Karnataka, Jammu-Kashmir-Ladakh-Gilgit-Baltistan-Muzaffarabad, Jharkhand, Odisha, Telangana and West Bengal & Sikkim.
- ❖ **Thunderstorm accompanied with Lightning** very likely at isolated places over Arunachal Pradesh, Assam & Meghalaya, Chhattisgarh, Coastal Andhra Pradesh, Gujarat State, Himachal Pradesh, Madhya Pradesh, Nagaland, Manipur, Mizoram and Tripura, Rajasthan, Tamil Nadu Puducherry & Karaikal, Uttar Pradesh, Uttarakhand and Vidarbha.
- ❖ **Strong Surface Winds** very likely at isolated places over Gangetic West Bengal, Odisha and Saurashtra & Kutch.

No Fishermen Warning



24 August (Day 2)

- ❖ **Heavy to Very Heavy Rainfall** very likely at isolated places over Gujarat State, Rajasthan and Uttarakhand.
- ❖ **Heavy Rainfall** very likely at isolated places over Arunachal Pradesh, Assam & Meghalaya, Bihar, Chhattisgarh, Haryana, Chandigarh & Delhi, Himachal Pradesh, Jammu-Kashmir-Ladakh-Gilgit-Baltistan-Muzaffarabad, Jharkhand, Madhya Pradesh, Nagaland, Manipur, Mizoram and Tripura, Odisha, Punjab, Uttar Pradesh and West Bengal & Sikkim.
- ❖ **Thunderstorm accompanied with lightning & gusty winds(30-40kmph)** very likely at isolated places over Bihar, Gangetic West Bengal, Interior Karnataka, Jammu-Kashmir-Ladakh-Gilgit-Baltistan-Muzaffarabad, Jharkhand and Odisha.
- ❖ **Thunderstorm accompanied with Lightning** very likely at isolated places over Chhattisgarh, Coastal Andhra Pradesh, Gujarat State, Madhya Pradesh, Maharashtra, Rajasthan and Uttarakhand.
- ❖ **Strong Surface Winds** very likely at isolated places over Saurashtra & Kutch.

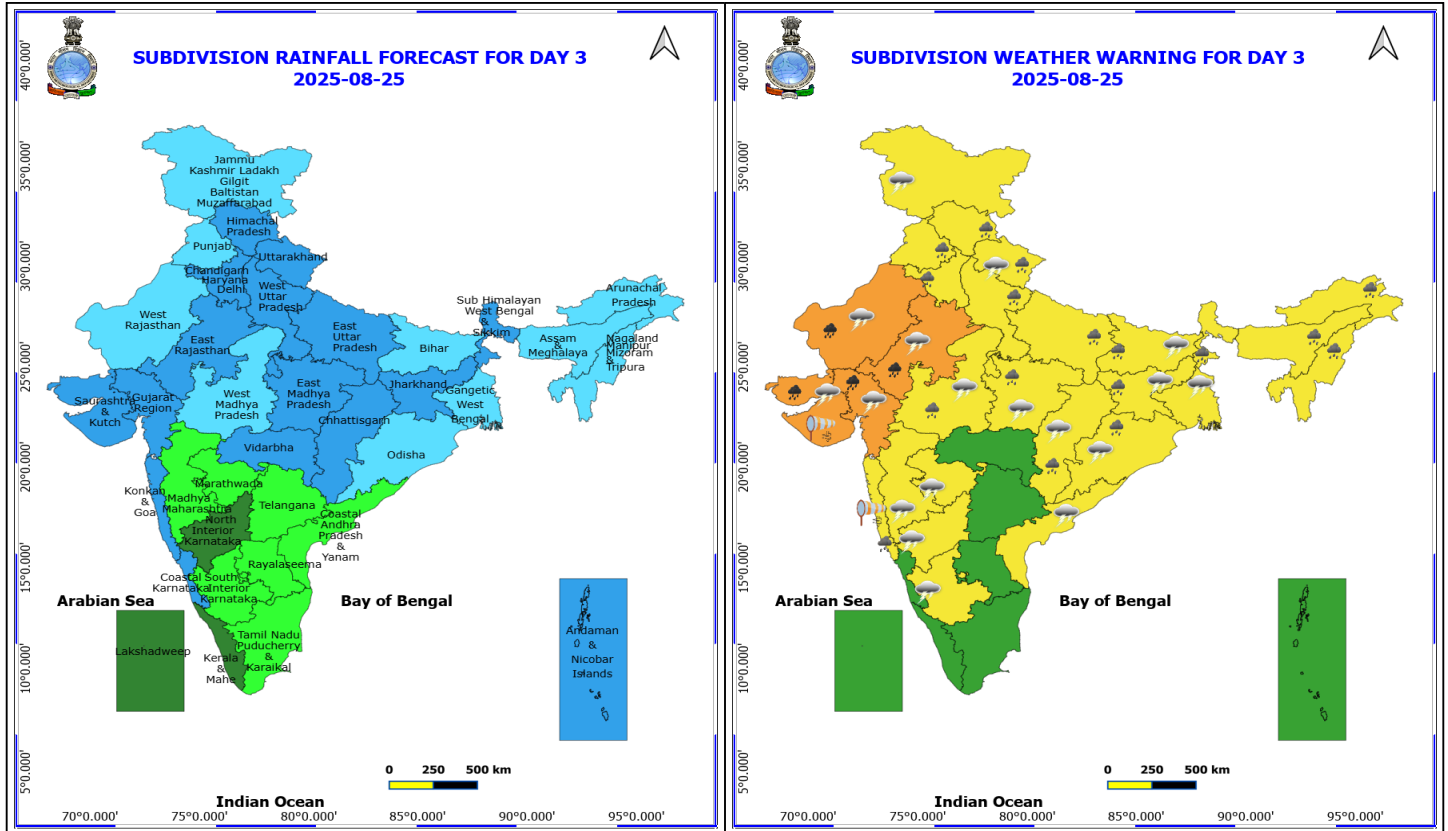
No Fishermen Warning

***Red color warning does not mean "Red Alert" Red color warning means "Take Action"**

Forecast and warning for any day is valid from 0830 hours IST of day till 0830 hours IST of next day

For more details kindly visit <https://mausam.imd.gov.in> or contact 011-2434-4599

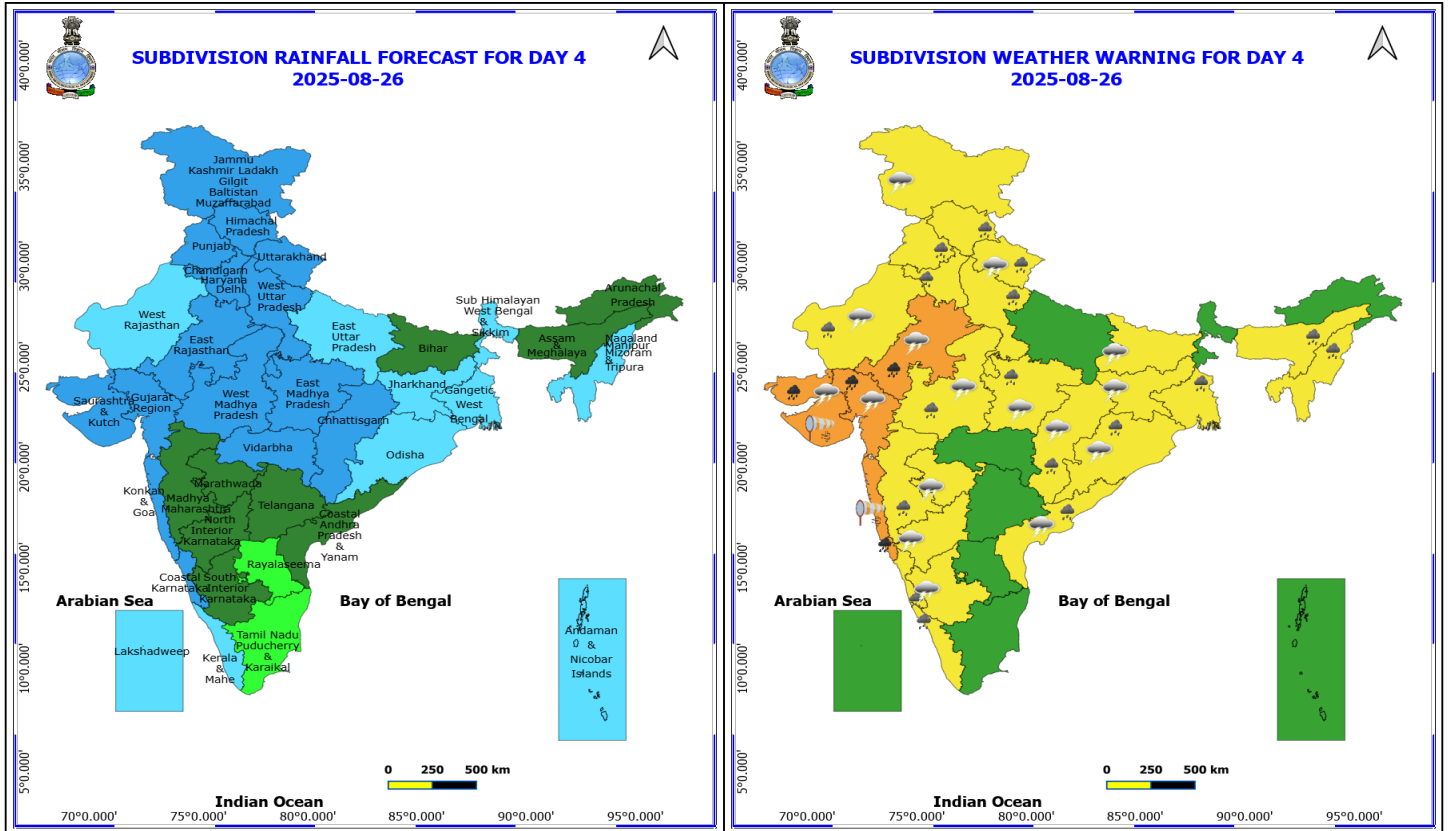
(Service to the nation since 1875)



25 August (Day 3)

- ❖ **Heavy to Very Heavy Rainfall** very likely at isolated places over Gujarat State and Rajasthan.
- ❖ **Heavy Rainfall** very likely at isolated places over Arunachal Pradesh, Assam & Meghalaya, Bihar, Chhattisgarh, Haryana, Chandigarh & Delhi, Himachal Pradesh, Jharkhand, Konkan & Goa, Madhya Pradesh, Nagaland, Manipur, Mizoram and Tripura, Odisha, Punjab, Sub Himalayan West Bengal & Sikkim, Uttar Pradesh and Uttarakhand.
- ❖ **Thunderstorm accompanied with lightning & gusty winds(30-40kmph)** very likely at isolated places over Bihar, Gangetic West Bengal, Interior Karnataka, Jammu-Kashmir-Ladakh-Gilgit-Baltistan-Muzaffarabad, Jharkhand and Odisha.
- ❖ **Thunderstorm accompanied with Lightning** very likely at isolated places over Chhattisgarh, Coastal Andhra Pradesh, Gujarat State, Madhya Maharashtra, Madhya Pradesh, Marathwada, Rajasthan and Uttarakhand.
- ❖ **Strong Surface Winds** very likely at isolated places over Konkan & Goa and Saurashtra & Kutch.

No Fishermen Warning



26 August (Day 4)

- ❖ **Heavy to Very Heavy Rainfall** likely at isolated places over East Rajasthan, Gujarat State and Konkan & Goa.
- ❖ **Heavy Rainfall** likely at isolated places over Assam & Meghalaya, Chhattisgarh, Coastal Andhra Pradesh, Coastal Karnataka, Gangetic West Bengal, Haryana, Chandigarh & Delhi, Himachal Pradesh, Kerala & Mahe, Madhya Maharashtra, Madhya Pradesh, Nagaland, Manipur, Mizoram and Tripura, Odisha, Punjab, Uttarakhand, West Rajasthan and West Uttar Pradesh.
- ❖ **Thunderstorm accompanied with lightning & gusty winds(30-40kmph)** likely at isolated places over Bihar, Interior Karnataka, Jammu-Kashmir-Ladakh-Gilgit-Baltistan-Muzaffarabad, Jharkhand and Odisha.
- ❖ **Thunderstorm accompanied with Lightning** likely at isolated places over Chhattisgarh, Coastal Andhra Pradesh, Gujarat State, Madhya Pradesh, Marathwada, Rajasthan and Uttarakhand.
- ❖ **Strong Surface Winds** likely at isolated places over Konkan & Goa and Saurashtra & Kutch.

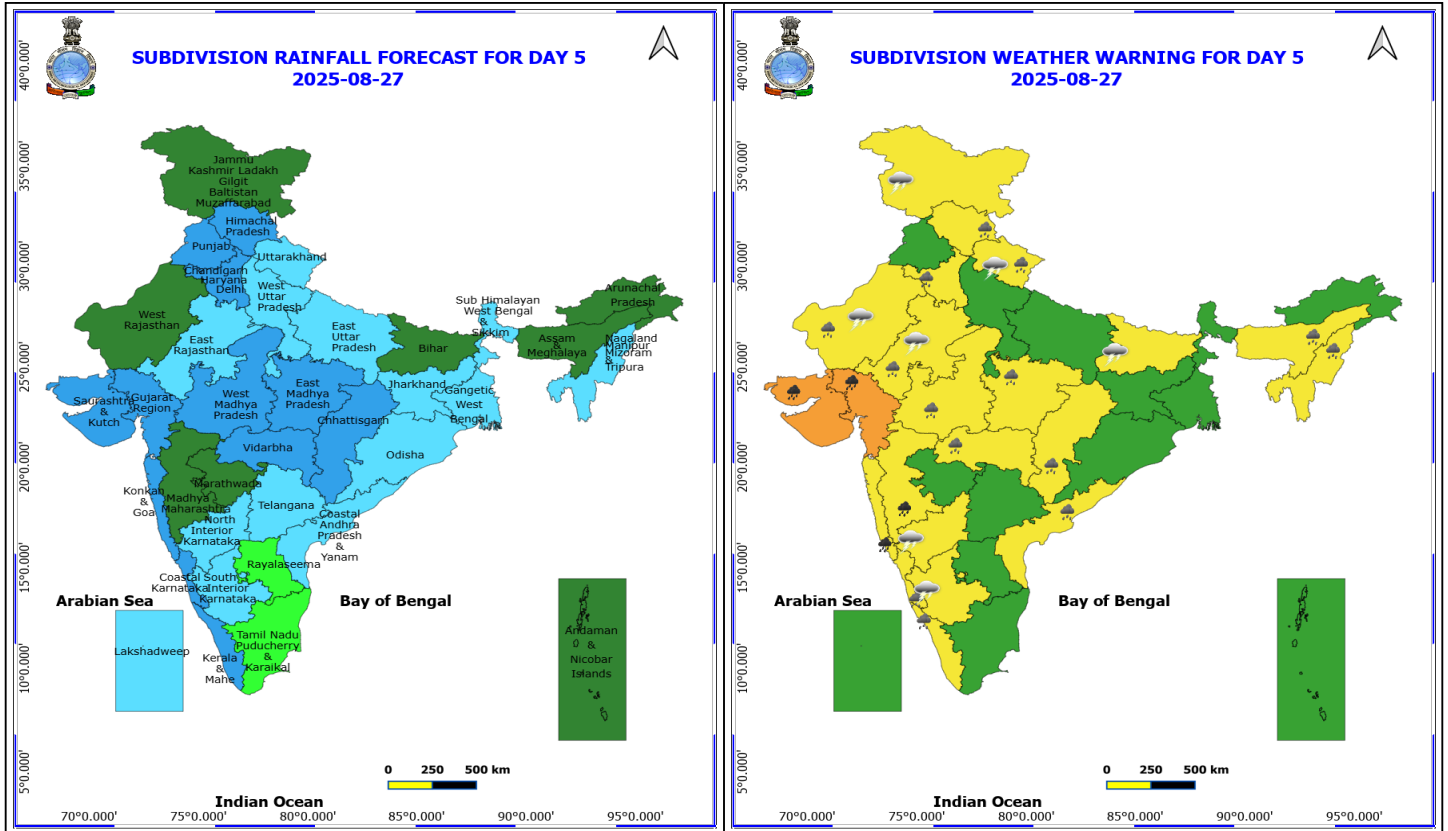
No Fishermen Warning

***Red color warning does not mean "Red Alert" Red color warning means "Take Action"**

Forecast and warning for any day is valid from 0830 hours IST of day till 0830 hours IST of next day

For more details kindly visit <https://mausam.imd.gov.in> or contact 011-2434-4599

(Service to the nation since 1875)



27 August (Day 5)

- ❖ **Heavy to Very Heavy Rainfall** likely at isolated places over Gujarat State, Konkan & Goa and Madhya Maharashtra.
- ❖ **Heavy Rainfall** likely at isolated places over Assam & Meghalaya, Chhattisgarh, Coastal Andhra Pradesh, Coastal Karnataka, Haryana, Chandigarh & Delhi, Himachal Pradesh, Kerala & Mahe, Madhya Pradesh, Nagaland, Manipur, Mizoram and Tripura, Rajasthan, Uttarakhand and Vidarbha.
- ❖ **Thunderstorm accompanied with lightning & gusty winds(30-40kmph)** likely at isolated places over Bihar, Interior Karnataka and Jammu-Kashmir-Ladakh-Gilgit-Baltistan-Muzaffarabad.
- ❖ **Thunderstorm accompanied with Lightning** likely at isolated places over Rajasthan and Uttarakhand.

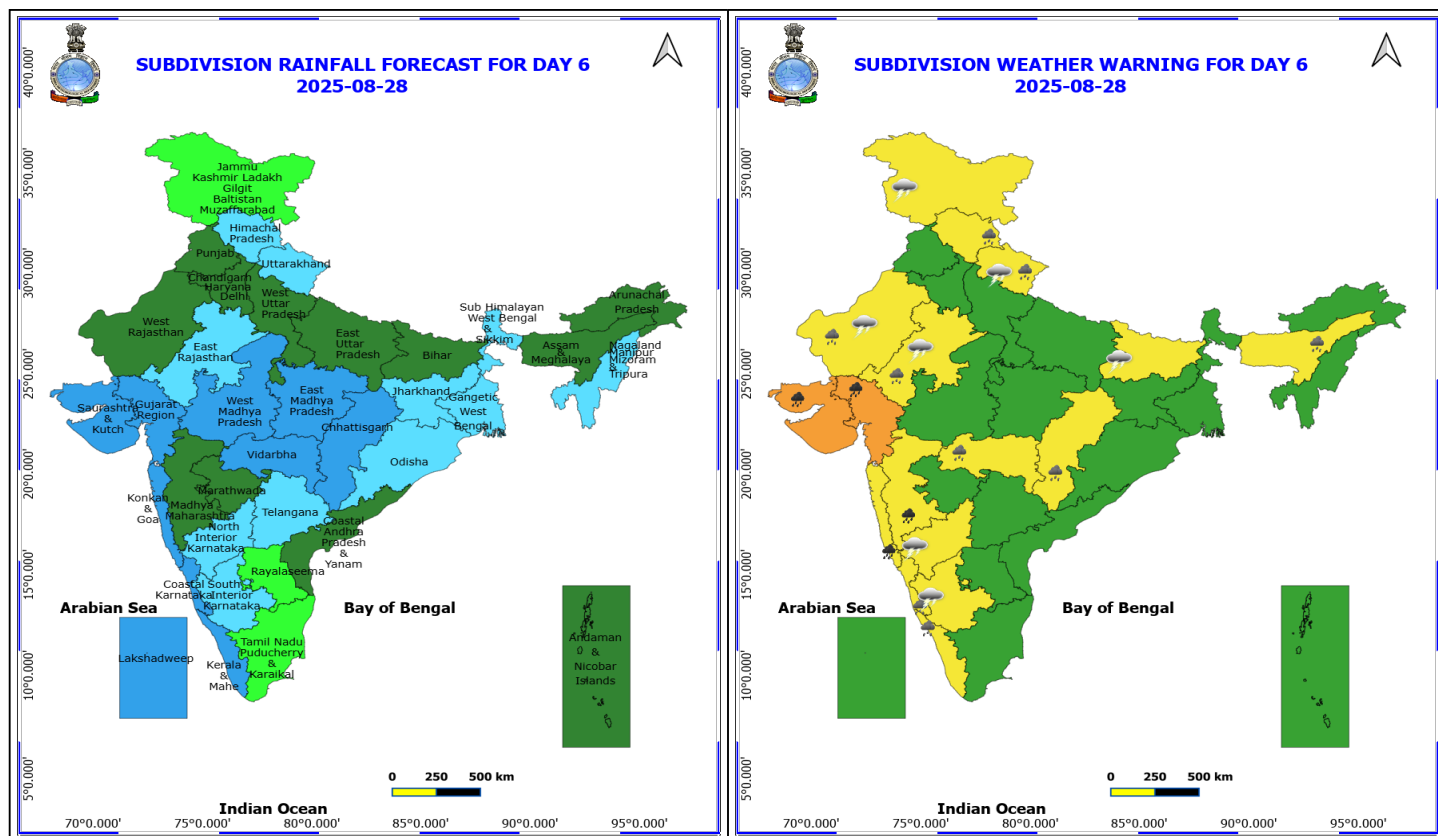
No Fishermen Warning

***Red color warning does not mean "Red Alert" Red color warning means "Take Action"**

Forecast and warning for any day is valid from 0830 hours IST of day till 0830 hours IST of next day

For more details kindly visit <https://mausam.imd.gov.in> or contact 011-2434-4599

(Service to the nation since 1875)



28 August (Day 6)

- ❖ **Heavy to Very Heavy Rainfall** likely at isolated places over Gujarat State, Konkan & Goa and Madhya Maharashtra.
- ❖ **Heavy Rainfall** likely at isolated places over Assam & Meghalaya, Chhattisgarh, Coastal Karnataka, Himachal Pradesh, Kerala & Mahe, Rajasthan, Uttarakhand and Vidarbha.
- ❖ **Thunderstorm accompanied with lightning & gusty winds(30-40kmph)** likely at isolated places over Bihar, Interior Karnataka and Jammu-Kashmir-Ladakh-Gilgit-Baltistan-Muzaffarabad.
- ❖ **Thunderstorm accompanied with Lightning** likely at isolated places over Rajasthan and Uttarakhand.

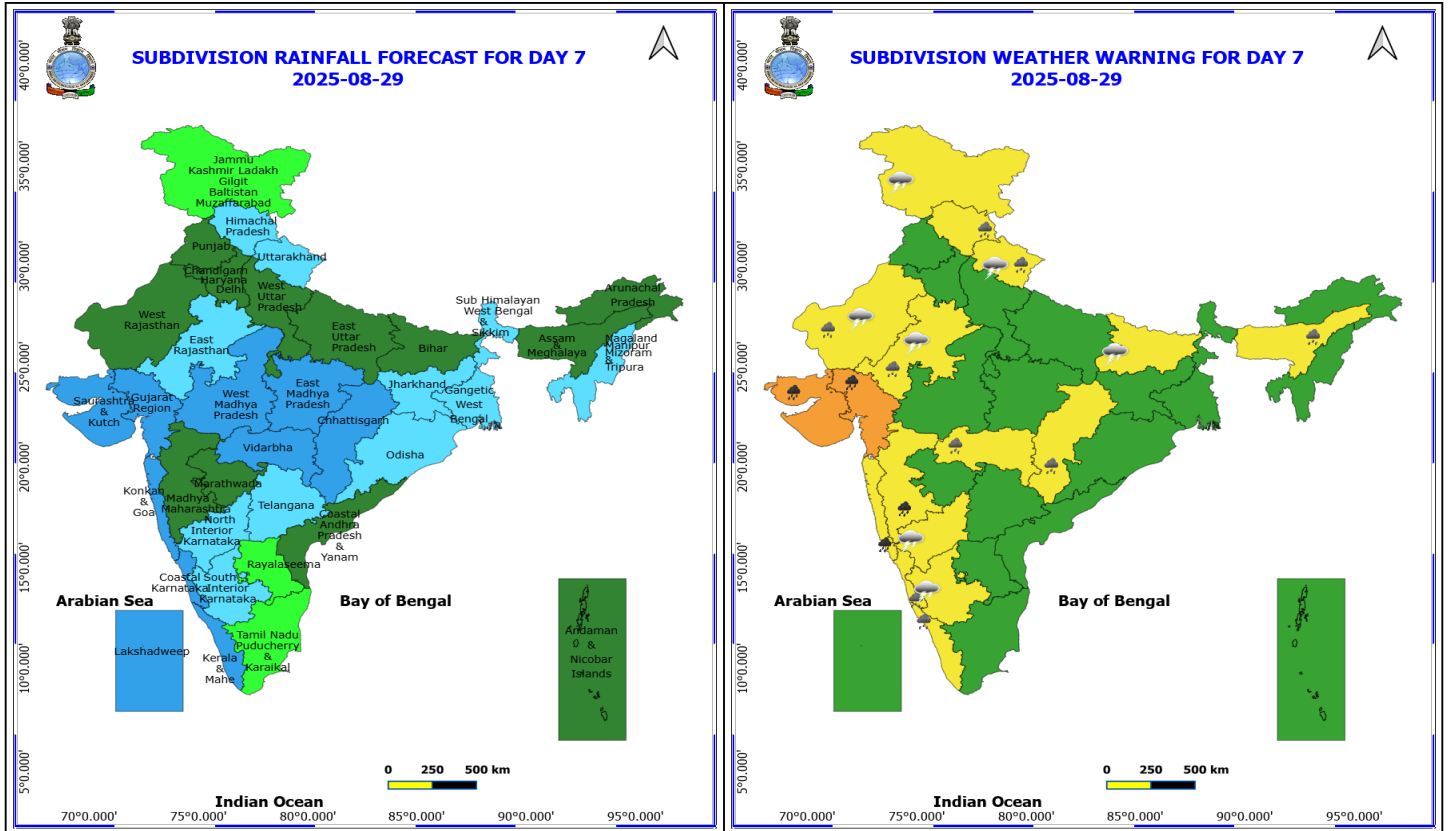
No Fishermen Warning

***Red color warning does not mean "Red Alert" Red color warning means "Take Action"**

Forecast and warning for any day is valid from 0830 hours IST of day till 0830 hours IST of next day

For more details kindly visit <https://mausam.imd.gov.in> or contact 011-2434-4599

(Service to the nation since 1875)



29 August (Day 7)

- ❖ **Heavy to Very Heavy Rainfall** likely at isolated places over Gujarat State, Konkan & Goa and Madhya Maharashtra.
- ❖ **Heavy Rainfall** likely at isolated places over Assam & Meghalaya, Chhattisgarh, Coastal Karnataka, Himachal Pradesh, Kerala & Mahe, Rajasthan, Uttarakhand and Vidarbha.
- ❖ **Thunderstorm accompanied with lightning & gusty winds(30-40kmph)** likely at isolated places over Bihar, Interior Karnataka and Jammu-Kashmir-Ladakh-Gilgit-Baltistan-Muzaffarabad.
- ❖ **Thunderstorm accompanied with Lightning** likely at isolated places over Rajasthan and Uttarakhand.

No Fishermen Warning

Flash Flood Warnings

24 hours Outlook for the Flash Flood Risk (FFR) till 0530 IST of 24-08-2025 :

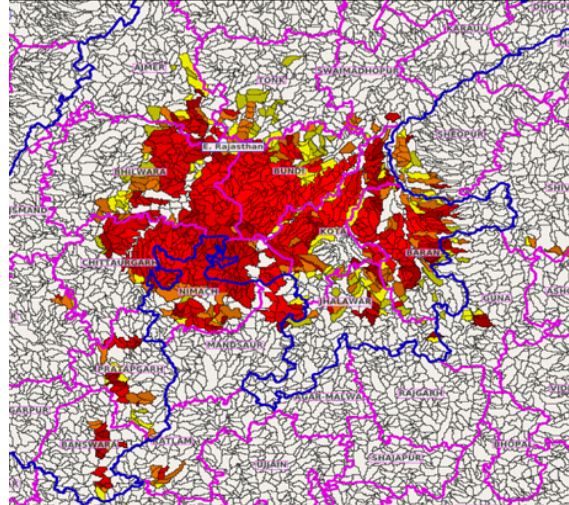
Low to Moderate flash flood risk likely over few watersheds & neighbourhoods of following Met Sub-divisions during next 24 hours.

East Rajasthan - Ajmer, Banswara, Baran, Bhilwara, Bundi, Chittaurgarh, Jhalawar, Kota, Pratapgarh, Swaimadhampur, Tonk and Udaipur districts.

West Madhya Pradesh - Guna, Mandasaur, Nimach, Ratlam, Sheopur and Shivpuri districts.

Surface runoff/ Inundation may occur at some fully saturated soils & low-lying areas over Area of Concern (AoC) as shown in map due to expected rainfall occurrence in next 24 hours.

Product: WRF FFR | Timescale: 24-hr | Region: "INDIA"
Product Date: 2025-08-23 00:00 UTC | Valid Date: 2025-08-24 00:00 UTC



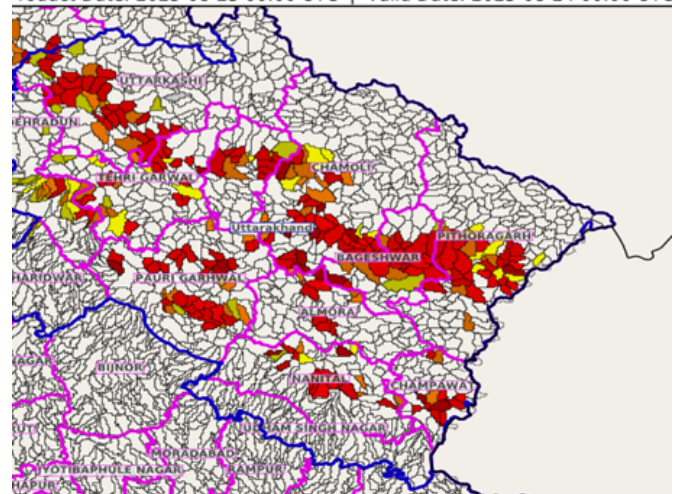
24 hours Outlook for the Flash Flood Risk (FFR) till 0530 IST of 24-08-2025 :

Low to Moderate flash flood risk likely over few watersheds & neighbourhoods of following Met Sub-divisions during next 24 hours.

Uttarakhand - Almora, Bageshwar, Chamoli, Champawat, Dehradun, Nanital, Pauri Garhwal, Pithoragarh, Rudraprayag, Tehri Garwal and Uttarkashi districts.

Surface runoff/ Inundation may occur at some fully saturated soils & low-lying areas over Area of Concern (AoC) as shown in map due to expected rainfall occurrence in next 24 hours.

Product: WRF FFR | Timescale: 24-hr | Region: "INDIA"
Product Date: 2025-08-23 00:00 UTC | Valid Date: 2025-08-24 00:00 UTC



24 hours Outlook for the Flash Flood Risk (FFR) till 0530 IST of 24-08-2025 :

Low to Moderate flash flood risk likely over few watersheds & neighbourhoods of following Met Sub-divisions during next 24 hours.

Chhattisgarh - Balarampur, Jashpur, Korba, Korea, Mungeli, Raigarh, Surajpur and Surguja districts.

Odisha - Anugul, Baleshwar, Baragarh, Deogarh, Jajapur, Jharsuguda, Kendujhar, Mayurbhanj, Sambalpur, Subarnapur and Sundargarh districts.

Jharkhand - Bokaro, Dhanbad, East Singhbhum, Garhwa, Gumla, Hazaribagh, Khunti, Latehar, Lohardaga,

***Red color warning does not mean "Red Alert" Red color warning means "Take Action"**

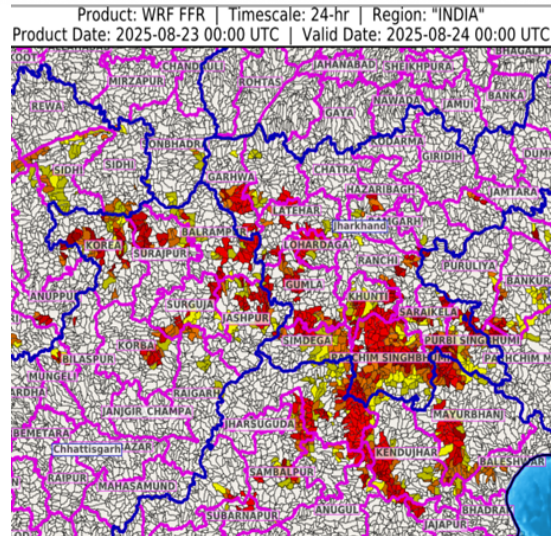
Forecast and warning for any day is valid from 0830 hours IST of day till 0830 hours IST of next day

For more details kindly visit <https://mausam.imd.gov.in> or contact 011-2434-4599

(Service to the nation since 1875)

Palamu, Ranchi, Saraikela, Simdega and West Singhbhum districts.

Surface runoff/ Inundation may occur at some fully saturated soils & low-lying areas over Area of Concern (AoC) as shown in map due to expected rainfall occurrence in next 24 hours.



***Red color warning does not mean "Red Alert" Red color warning means "Take Action"**

Forecast and warning for any day is valid from 0830 hours IST of day till 0830 hours IST of next day

For more details kindly visit <https://mausam.imd.gov.in> or contact 011-2434-4599

(Service to the nation since 1875)



Table-1

7 Days Rainfall Forecast

S.No.	Subdivision	23-Aug	24-Aug	25-Aug	26-Aug	27-Aug	28-Aug	29-Aug
		Day 1	Day 2	Day 3	Day 4	Day 5	Day 6	Day 7
1	ANDAMAN & NICOBAR ISLANDS	FWS	FWS	WS	FWS	SCT	SCT	SCT
2	ARUNACHAL PRADESH	FWS	FWS	FWS	SCT	SCT	SCT	SCT
3	ASSAM & MEHGHALAYA	FWS	FWS	FWS	SCT	SCT	SCT	SCT
4	N. M. M. & T.	FWS	FWS	FWS	FWS	FWS	FWS	FWS
5	S.H. WEST BENGAL & SIKKIM	WS	WS	WS	FWS	FWS	FWS	FWS
6	GANGETIC WEST BENGAL	WS	WS	FWS	FWS	FWS	FWS	FWS
7	ODISHA	FWS	FWS	FWS	FWS	FWS	FWS	FWS
8	JHARKHAND	WS	WS	WS	FWS	FWS	FWS	FWS
9	BIHAR	FWS	FWS	FWS	SCT	SCT	SCT	SCT
10	EAST UTTAR PRADESH	WS	WS	WS	FWS	FWS	SCT	SCT
11	WEST UTTAR PRADESH	FWS	WS	WS	WS	FWS	SCT	SCT
12	UTTARAKHAND	WS	WS	WS	WS	FWS	FWS	FWS
13	HARYANA, CHD & DELHI	WS	WS	WS	WS	WS	SCT	SCT
14	PUNJAB	WS	WS	FWS	WS	WS	SCT	SCT
15	HIMACHAL PRADESH	WS	WS	WS	WS	WS	FWS	FWS
16	JAMMU AND KASHMIR AND LADAKH	WS	WS	FWS	WS	SCT	ISOL	ISOL
17	WEST RAJASTHAN	FWS	FWS	FWS	FWS	SCT	SCT	SCT
18	EAST RAJASTHAN	WS	WS	WS	WS	FWS	FWS	FWS
19	WEST MADHYA PRADESH	FWS	FWS	FWS	WS	WS	WS	WS
20	EAST MADHYA PRADESH	FWS	WS	WS	WS	WS	WS	WS
21	GUJRAT REGION	WS	WS	WS	WS	WS	WS	WS
22	SAURASHTRA & KUTCH	WS	WS	WS	WS	WS	WS	WS
23	KONKAN & GOA	WS	WS	WS	WS	WS	WS	WS
24	MADHYA MAHARASHTRA	ISOL	ISOL	ISOL	SCT	SCT	SCT	SCT
25	MARATHWADA	ISOL	ISOL	ISOL	SCT	SCT	SCT	SCT
26	VIDARBHA	FWS	FWS	WS	WS	WS	WS	WS
27	CHATTISGARH	WS	WS	WS	WS	WS	WS	WS
28	COASTAL ANDHRA PRADESH	ISOL	ISOL	ISOL	SCT	FWS	SCT	SCT
29	TELANGANA	ISOL	ISOL	ISOL	SCT	FWS	FWS	FWS
30	RAYALASEEMA	ISOL	ISOL	ISOL	ISOL	ISOL	ISOL	ISOL
31	TAMILNADU & PUDUCHERRY	SCT	ISOL	ISOL	ISOL	ISOL	ISOL	ISOL
32	COSTAL KARNATAKA	WS	WS	WS	WS	WS	WS	WS
33	NORTH INTERIOR KARNATAKA	SCT	ISOL	SCT	SCT	FWS	FWS	FWS
34	SOUTH INTERIOR KARNATAKA	SCT	ISOL	ISOL	SCT	FWS	FWS	FWS
35	KERALA	SCT	ISOL	SCT	FWS	WS	WS	WS
36	LAKSHDWEEP	SCT	SCT	SCT	FWS	FWS	WS	WS

Legend	Category	%Stations
WS	Widespread/Most Places	76-100
FWS	Fairly Widespread/Many Places	51-75
SCT	Scattered/ A Few Places	26-50
ISOL	Isolated Places	1-25
DRY	No Rain	0

*Red color warning does not mean "Red Alert" Red color warning means "Take Action"

Forecast and warning for any day is valid from 0830 hours IST of day till 0830 hours IST of next day

For more details kindly visit <https://mausam.imd.gov.in> or contact 011-2434-4599

(Service to the nation since 1875)

Fig. 1: Maximum Temperatures Dated 2025-08-23

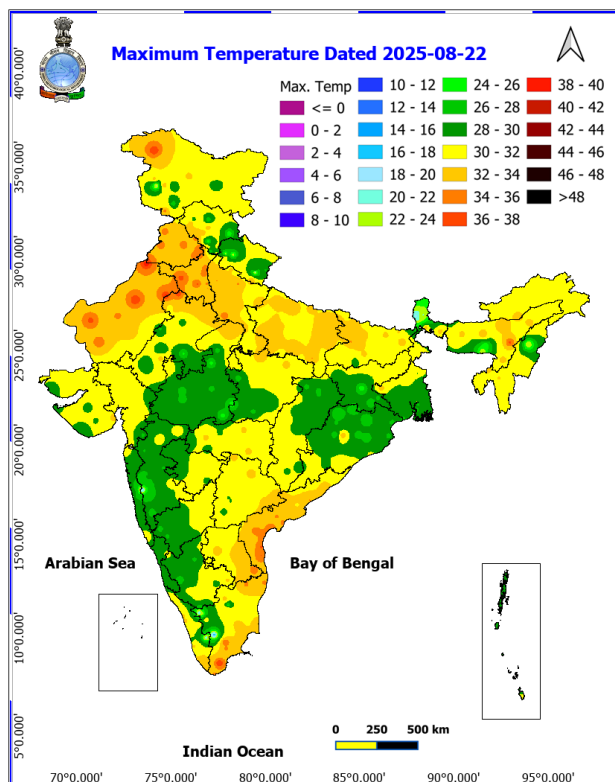


Fig. 2: Departure of Maximum Temp. Dated 2025-08-23

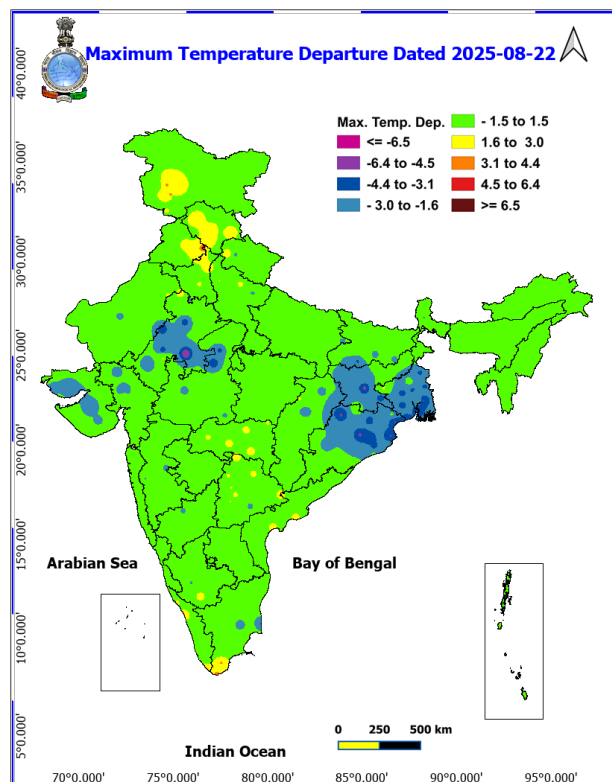


Fig. 3: Minimum Temperatures Dated 2025-08-23

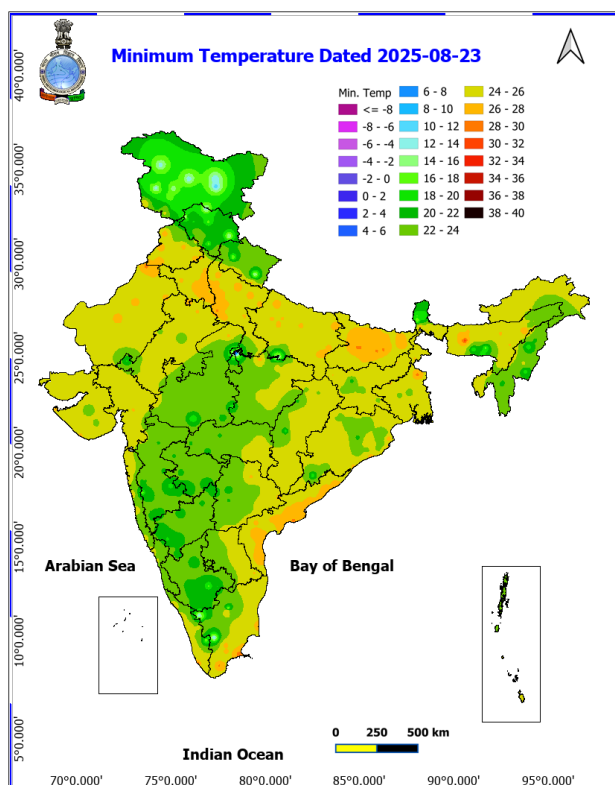
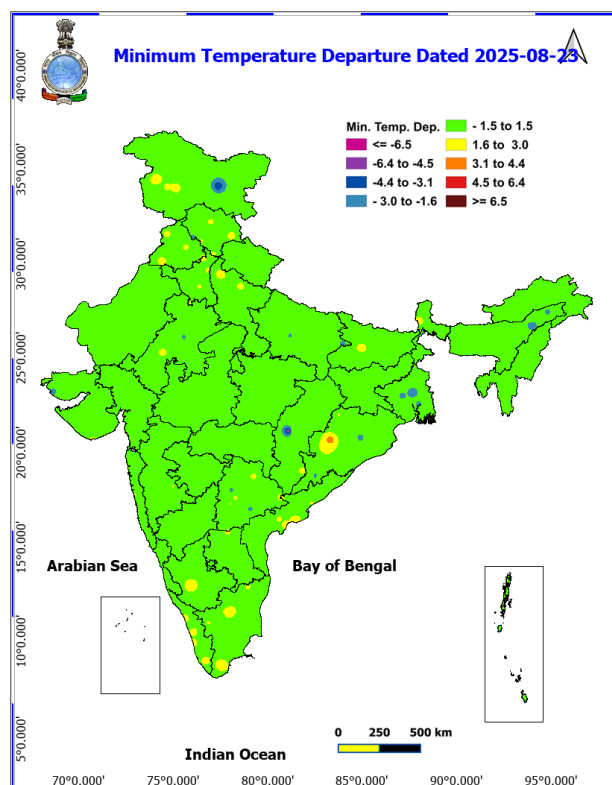
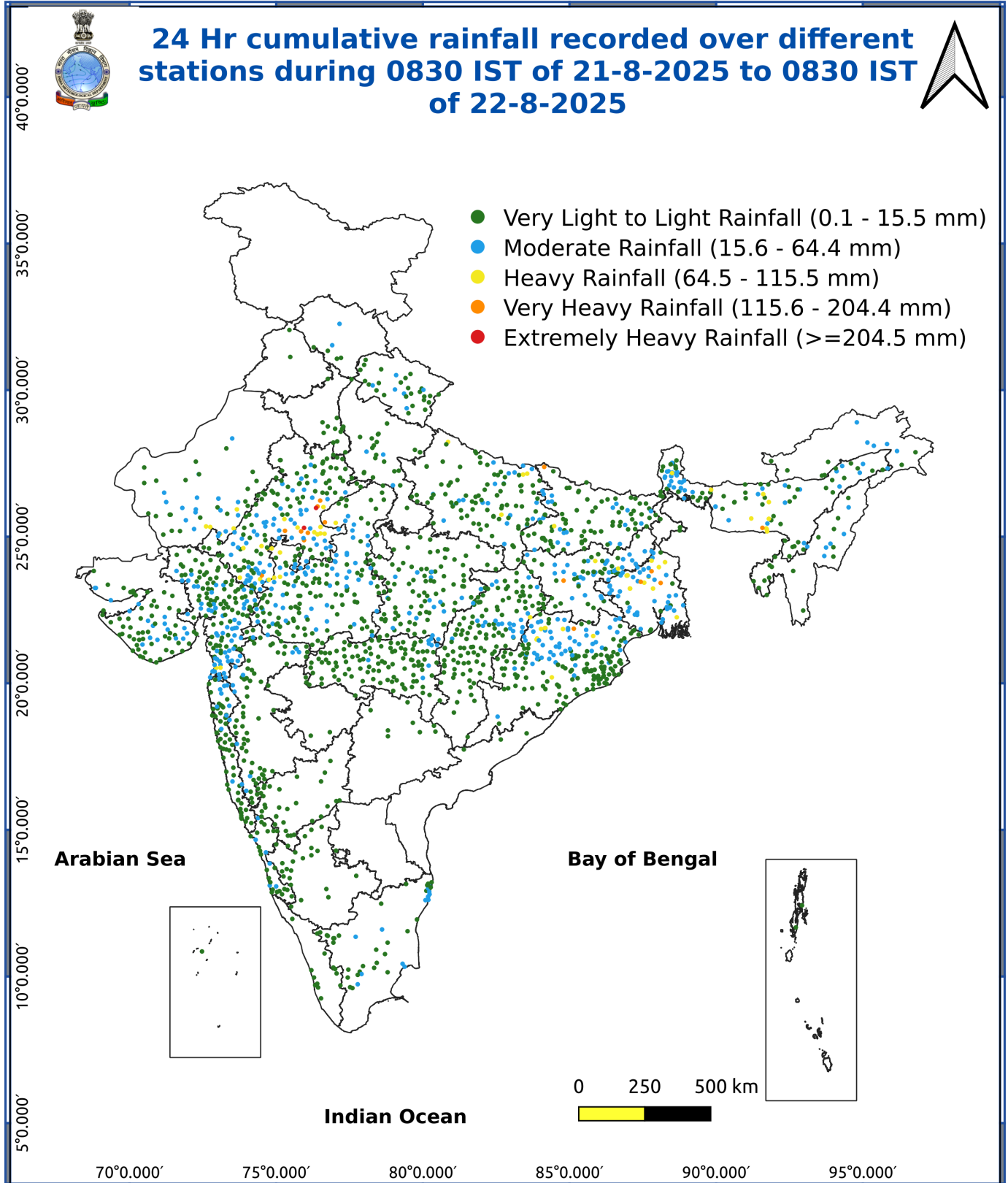


Fig. 4: Departure of Minimum Temp. Dated 2025-08-23





*Red color warning does not mean "Red Alert" Red color warning means "Take Action"

Forecast and warning for any day is valid from 0830 hours IST of day till 0830 hours IST of next day

For more details kindly visit <https://mausam.imd.gov.in> or contact 011-2434-4599

(Service to the nation since 1875)

Impact and action suggested:

Extremely heavy rainfall very likely over East Rajasthan on 23rd August
Isolated very heavy rainfall over Gujarat state during 23rd-28th; West Madhya Pradesh, Bihar on 23rd; Jharkhand, Chhattisgarh, Haryana on 23rd; East Rajasthan during 24th-26th; Uttarakhand during 23rd-24th; West Rajasthan during 23rd-25th; Konkan & Goa during 26th-28th and ghat areas of Madhya Maharashtra on 27th & 28th August.

Impact Expected

Localized Flooding of roads, water logging in low lying areas and closure of underpasses mainly in urban areas of the above region.

Occasional reduction in visibility due to heavy rainfall.

Disruption of traffic in major cities due to water logging in roads leading to increased travel time. Minor damage to kutch roads.

Possibilities of damage to vulnerable structure.

Localized Landslides/Mudslides/landslips/mudslips/landsinks/mudsinks. Damage to horticulture and standing crops in some areas due to inundation.

It may lead to riverine flooding in some river catchments (for riverine flooding please visit Web page of CWC)

Action Suggested

Check for traffic congestion on your route before leaving for your destination. Follow any traffic advisories that are issued in this regard.

Avoid going to areas that face the water logging problems often. Avoid staying in vulnerable structure.

Agromet advisories for various parts of the country

Agromet advisories for likely impact of Heavy / Heavy to Very Heavy / Extremely Heavy Rainfall

(Based on the IBF and advisories issued by different AMFUs)

In **Sub-Himalayan West Bengal**, make provision to drain out excess water from *aman* rice and vegetable fields (chilli, bitter gourd, pointed gourd, okra, brinjal etc.) and cover the chilli seedlings with plastic to protect them from heavy rains in **Terai Zone**. In **Gangetic West Bengal**, ensure proper drainage in fields of rice and groundnut in **Laterite and Red Soil Zone**; rice and vegetables in **New Alluvial Zone** and vegetable beds, standing vegetable crops and betel gardens in **Coastal Saline Zone**.

In **Odisha**, make provision for draining out excess rain water from fields of green gram, black gram, sugarcane, vegetables and fruit orchards in **East and South Eastern Coastal Plain Zone**; rice, maize, black gram and vegetables in **North Central Plateau Zone**; rice, vegetables and fruit orchards in **North Eastern Coastal Plain Zone**; rice, maize and vegetables in **West Central Table Land Zone** and rice, groundnut and vegetables in **North Eastern Plateau Zone**.

In **Bihar**, ensure proper drainage from standing crops such as pigeon pea, turmeric, yam, sunflower and maize as well as from vegetable nurseries in **South Bihar Alluvial Zone**.

In **Jharkhand**, ensure adequate drainage facilities in fields of rice, maize, black gram, green gram, tuber crops and vegetables in **Western Plateau Zone**.

In **Madhya Pradesh**, provide adequate drainage in fields of soybean, maize and vegetables in **Malwa Plateau Zone**; soybean, black gram, maize, cotton and vegetables in **Jhabua Hills Zone**; rice, soybean, maize and vegetables in **Kymore Plateau and Satpura Hill Zone** and rice, maize, soybean, green gram, pigeon pea and vegetables in **Gird Zone**.

*Red color warning does not mean "Red Alert" Red color warning means "Take Action"

Forecast and warning for any day is valid from 0830 hours IST of day till 0830 hours IST of next day

For more details kindly visit <https://mausam.imd.gov.in> or contact 011-2434-4599

(Service to the nation since 1875)

In **Gujarat**, provide mechanical support to horticultural crops and staking or support to vegetables and young fruit plants to avoid lodging due to heavy rains and strong winds. Make arrangements to drain out excess water from fields of rice, sugarcane, vegetables and tuber crops in **South Gujarat Heavy Rainfall Zone**; rice, cotton, sugarcane and pigeon pea in **South Gujarat Zone**; groundnut, cotton, soybean, black gram, green gram, sesame and pigeon pea in **South Saurashtra Zone**; groundnut, cotton, sesame, black gram and green gram in **North Saurashtra Zone**; rice, cotton, green gram, black gram, pigeon pea, pearl millet and vegetables in **Bhal and Coastal Zone**; rice, pearl millet, pigeon pea and cotton in **Middle Gujarat Zone** and castor, cotton, groundnut, pearl millet and sesame in **North Gujarat Zone** and **North West Zone**.

In **East Rajasthan**, make arrangements to drain out excess water from fields of pearl millet, sesame, black gram and vegetables in **Flood Prone Eastern Plain Zone**; groundnut, green gram, moth bean, cowpea and pearl millet in **Semi-Arid Eastern Plain Zone**; rice, maize, soybean, black gram and groundnut in **Southeastern Humid Plain Zone**; maize, green gram and soybean in **Sub Humid Southern Plain and Aravali Hill Zone** and soybean, maize, cotton and rice in **Southern Humid Plain Zone**. In **West Rajasthan**, make provision to drain out excess water from fields of sesame, moth bean, pearl millet, green gram and cluster bean in **Arid Western Plain Zone**.

In **Himachal Pradesh**, maintain proper drainage channels in ginger, turmeric and maize fields in **Mid Hills Sub Humid Zone** and rice, maize and vegetable fields in **Sub Montane and Low Hills Sub Tropical Zone**. In **High Hills Sub Temperate Wet Zone**, harvest ripened tomatoes and ensure proper drainage in maize, kidney bean, vegetable fields and fruit orchards.

In **Uttarakhand**, maintain proper drainage channels in fields of soybean, maize, pulses, finger millet, ginger, vegetable and fruit orchards in **Hill Zone**; barnyard millet, finger millet and green gram in **Sub Humid Sub Tropic Zone** and rice, green gram, black gram, sugarcane, maize, soybean, groundnut and vegetables in **Bhabar and Tarai Zone**.

In **Punjab**, maintain proper drainage in chilli fields and remove stagnant rainwater immediately after rainfall in **Undulating Plain Zone**. Ensure proper drainage in fields of sugarcane, maize, soybean and green gram in **Sub-Montane Undulating Zone** and sugarcane, maize and cotton in **Central Plain Zone**.

In **Haryana**, make arrangements to drain out excess water from fields of sugarcane, cotton, maize, pearl millet and vegetables in **Eastern Zone**.

In **Meghalaya**, maintain proper drainage in ginger and vegetable fields and fruit orchards. Provide support to banana plants to prevent lodging. Maintain a thin 2-3 cm layer of stagnant water in rice fields after transplanting.

In **Arunachal Pradesh**, ensure proper drainage in rice fields and maintain 5-7 cm water level. Maintain drainage channels in finger millet, banana and vegetable fields. Strengthen the bunds in millet fields to prevent erosion and seedling washout.

Livestock / Fishery

Keep the animals inside the shed during heavy rainfall and provide them balanced feed.

Store feed and fodder in a safe place to prevent spoilage.

Construct an outlet with proper netting around the ponds to drain out excess water, thereby preventing fish from escaping in case of overflow.

Agromet advisories for likely impact of Thunderstorm / Gusty Winds / Squally Winds

(Based on the IBF and advisories issued by different AMFUs)

Provide mechanical support to horticultural crops and staking or support to vegetables and young fruit plants / fruit-bearing plants to avoid lodging due to strong winds.

LEGENDS

- 1 अंडमान और निकोबार द्वीप समुह
- 2 अरुणाचल प्रदेश
- 3 असम और मेघालय
- 4 नागालैंड मनीपुर मीजोरम और त्रिपुरा
- 5 उप हिमालय पश्चिम बंगाल एवं सिक्किम
- 6 पश्चिम बंगाल
- 7 ओडिसा
- 8 झारखंड
- 9 बिहार
- 10 पूर्वी उत्तर प्रदेश
- 11 पश्चिम उत्तर प्रदेश
- 12 उत्तराखंड
- 13 हरियाणा चंडीगढ़ एवं दिल्ली
- 14 पंजाब
- 15 हिमाचल प्रदेश
- 16 जम्मू एवं कश्मीर एवं लद्दाख
- 17 पश्चिम राजस्थान
- 18 पूर्वी राजस्थान
- 19 पश्चिम मध्य प्रदेश
- 20 पूर्वी मध्य प्रदेश
- 21 गुजरात क्षेत्र
- 22 सौराष्ट्र एवं कच्छ
- 23 कोंकण एवं गोवा
- 24 मध्य महाराष्ट्र
- 25 मराठावाड़ा
- 26 विदर्भ
- 27 छत्तीसगढ़
- 28 तटीय आंध्र प्रदेश एवं यनम
- 29 तेलंगाना
- 30 रायलसीमा
- 31 तमिलनाडु, पुदुचेरी एवं कराईकल
- 32 तटिय कर्नाटक
- 33 आंतरिक उत्तरी कर्नाटक
- 34 आंतरिक दक्षिणी कर्नाटक
- 35 केरल एवं माहे
- 36 लक्षद्वीप



1. Andaman & Nicobar Islands
2. Arunachal Pradesh
3. Assam & Meghalaya
4. Nagaland, Manipur, Mizoram & Tripura
5. Sub-Himalayan West Bengal & Sikkim
6. Gangetic West Bengal
7. Orissa
8. Jharkhand
9. Bihar
10. East Uttar Pradesh
11. West Uttar Pradesh
12. Uttarakhand
13. Haryana, Chd & Delhi
14. Punjab
15. Himachal Pradesh
16. Jammu & Kashmir and Ladakh
17. West Rajasthan
18. East Rajasthan
19. West Madhya Pradesh
20. East Madhya Pradesh
21. Gujarat
22. Saurashtra
23. Konkan & Goa
24. Madhya Maharashtra
25. Marathwada
26. Vidharbha
27. Chhattisgarh
28. Coastal Andhra Pradesh & Yanam
29. Telangana
30. Rayalaseema
31. Tamilnadu, Puducherry & Karaikal
32. Coastal Karnataka
33. North Interior Karnataka
34. South Interior Karnataka
35. Kerala & Mahe
36. Lakshadweep

SPATIAL DISTRIBUTION (% of Stations reporting)













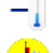




% Stations	Category	% Stations	Category
76-100	Widespread (WS/Most Places)	26-50	Scattered (SCT/ A Few Places)
51-75	Fairly Widespread (FWS/ Many Places)	1-25	Isolated (ISOL)

Subdivision Colour

- NO WARNING
- WATCH (BE UPDATED)
- ALERT (BE PREPARED TO TAKE ACTION)
- WARNING (TAKE ACTION)

Probabilistic Forecast

Terms	Probability of Occurrence (%)
Unlikely	< 25
Likely	25 - 50
Very Likely	50 - 75
Most Likely	> 75

-  Heavy Rain
-  Very Heavy Rain
-  Extremely Heavy Rain
-  Heavy Snow
-  Thunderstorm & Lightning
-  Hailstorm
-  Dust Storm
-  Dust Raising Winds
-  Strong surface winds
-  Heat Wave
-  Hot Day
-  Warm Night
-  Cold Wave
-  Cold Day
-  Ground Frost
-  FOG Fog
-  Hot & Humid

*Red color warning does not mean "Red Alert" Red color warning means "Take Action"

Forecast and warning for any day is valid from 0830 hours IST of day till 0830 hours IST of next day

For more details kindly visit <https://mausam.imd.gov.in> or contact 011-2434-4599

(Service to the nation since 1875)

LEGENDS

WARNING

WARNING (TAKE ACTION)
ALERT (BE PREPARED)
WATCH (BE UPDATED)
NO WARNING (NO ACTION)

Probabilistic Forecast

Terms	Probability of Occurrence (%)
Unlikely	< 25
Likely	25 - 50
Very Likely	50 - 75
Most Likely	> 75



Heavy: 64.5 to 115.5 mm/cm *
Very Heavy: 115.6 to 204.4 mm/cm *
Extremely Heavy: > 204.4 mm/cm *



When maximum temperature of a station reaches $\geq 40^{\circ}\text{C}$ for plains and $\geq 30^{\circ}\text{C}$ for hilly regions
(a) Based on Departure from normal

Heat Wave: Maximum Temperature Departure from normal 4.5°C to 6.4°C .
Severe Heat Wave: Maximum Temperature Departure from normal $\geq 6.5^{\circ}\text{C}$

(b). Based on Actual maximum temperature

Heat Wave: When actual maximum temperature $\geq 45^{\circ}\text{C}$.
Severe Heat Wave: When actual maximum temperature $\geq 47^{\circ}\text{C}$

(c). Criteria for heat wave for coastal stations

When maximum temperature departure is $> 4.5^{\circ}\text{C}$ from normal. Heat Wave may be described provided maximum temperature $\geq 37^{\circ}\text{C}$



When maximum temperature remains 40°C

Warm Night: When minimum temperature departure 4.5°C to 6.4°C .
Severe Warm Night: When minimum temperature departure $> 6.4^{\circ}\text{C}$.



When minimum temperature of a station $\leq 10^{\circ}\text{C}$ for plains and $\leq 0^{\circ}\text{C}$ for hilly regions.

(a). Based on departure

Cold Wave: Minimum Temperature Departure from normal -4.5°C to -6.4°C .
Severe Cold Wave: Minimum Temperature Departure from normal $\leq -6.5^{\circ}\text{C}$

(b) Based on actual Minimum Temperature (for Plains only)

Cold Wave: When Minimum Temperature is $\leq 4.0^{\circ}\text{C}$
Severe Cold Wave: When Minimum Temperature is $\leq 2.0^{\circ}\text{C}$

(c) For Coastal Stations

When Minimum Temperature departure is $\leq -4.5^{\circ}\text{C}$ & actual Minimum Temperature is $\leq 15^{\circ}\text{C}$



When minimum temperature of a station $\leq 10^{\circ}\text{C}$ for plains and $\leq 0^{\circ}\text{C}$ for hilly regions
Based on departure

Cold Day: Maximum Temperature Departure from normal -4.5°C to -6.4°C .
Severe Cold Day: Maximum Temperature Departure from normal $\leq -6.5^{\circ}\text{C}$



Phenomenon of small droplets suspended in air and the horizontal visibility $< 1\text{km}$

Moderate Fog: When the visibility between 500-200 metres
Dense Fog: when the visibility between 50-200 metres
Very Dense Fog: when the visibility < 50 metres



Sudden electrical discharges manifested by a flash of light (Lightning) and a sharp rumbling sound (thunder)



An ensemble of particles of dust or sand energetically lifted to great heights by a strong and turbulent wind.



Ice deposits on ground

Air temperature $\leq 4^{\circ}\text{C}$ (over Plains)



A strong wind that rises suddenly, lasts for at least 1 minute.

Moderate: Wind speed 52-61 kmph
Severe: Wind speed 62-87 kmph
Very Severe: Wind speed > 87 kmph



Effect of various waves in the sea over specific area

Rough to very rough: Wind speed 41-62 kmph (22-33 knots) & Wave height 2.5-6 metre
High to very high: Wind speed 63-117 kmph (34-63 knots) & Wave height 6-14 metre
Phenomenal: Wind speed > 117 kmph (> 63 knots) & Wave height > 14 metre



Cyclonic Storm: Wind speed 62-87 kmph (34-47 knots)

Severe Cyclonic Storm: Wind speed 88-117 kmph (48-63 knots)

Very Severe Cyclonic Storm: Wind speed 118-165 kmph (64-89 knots)

Extremely Severe Cyclonic Storm: Wind speed 166-220 kmph (90-119 knots)

Super Cyclone Storm: Wind speed > 220 kmph (> 119 knots)

*Red color warning does not mean "Red Alert" Red color warning means "Take Action"

Forecast and warning for any day is valid from 0830 hours IST of day till 0830 hours IST of next day

For more details kindly visit <https://mausam.imd.gov.in> or contact 011-2434-4599

(Service to the nation since 1875)