

2025-09-20

Time of Issue: 08:45:00 hours IST
(Morning)

ALL INDIA WEATHER SUMMARY AND FORECAST BULLETIN

Significant Weather Features

Weather Forecast and Warnings:

East & Central India:

- Light to moderate rain/thunderstorm at most/many places with isolated **heavy rainfall** likely over West Madhya Pradesh on 20th, Vidarbha on 24th & 25th, Chhattisgarh during 23rd – 25th; Bihar on 20th, 23rd & 24th September; Odisha during 23rd -25th; Sub-Himalayan West Bengal & Sikkim on 20th September with **Very Heavy rainfall** at isolated places over Andaman & Nicobar Islands on 20th September.
- Thunderstorm & gusty winds (speed reaching 30-40 kmph) very likely over East India during next 4-5 days.

Northeast India:

- Light/moderate rain/thunderstorm at many/some places with isolated **heavy rainfall** likely over Arunachal Pradesh on 20th; Assam & Meghalaya during 20th-23rd and Nagaland, Manipur, Mizoram & Tripura during 20th-23rd September.

South Peninsular India:

- Light to moderate rain/thunderstorm at many/some places with isolated **heavy rainfall** likely over north tamil Nadu on 20th; Coastal Andhra Pradesh & Yanam during 23rd – 25th; Interior Karnataka on 20th September.
- Strong surface winds (speed reaching 30-40 kmph) very likely over Tamil Nadu, Coastal Andhra Pradesh & Yanam and Rayalaseema during next 5 days.

West India:

- Light to moderate rain/thunderstorm at many/some places likely over the region during next 5 days with isolated heavy rainfall at isolated places over Gujarat region.
- Thunderstorm & gusty winds (speed reaching 30-40 kmph) very likely over West India during next 4-5 days.

*Red color warning does not mean "Red Alert" Red color warning means "Take Action"

Forecast and warning for any day is valid from 0830 hours IST of day till 0830 hours IST of next day

For more details kindly visit <https://mausam.imd.gov.in> or contact 011-2434-4599

(Service to the nation since 1875)

Main Weather Observations:

❖ **Rainfall distribution** (from 0830 hours IST to 1730 hours IST of yesterday): **at most places** over Sub-himalayan West Bengal & Sikkim, Konkan & Goa, Andaman & Nicobar Islands, Bihar and Coastal Karnataka; **at many places** over West Uttar Pradesh, Assam & Meghalaya, Gujarat Region, Vidarbha, Saurashtra & Kutch, Jharkhand, East Rajasthan, Coastal Andhra Pradesh & Yanam, Jammu & Kashmir and Ladakh, Punjab, East Uttar Pradesh, Telangana, Himachal Pradesh, Madhya Maharashtra, West Madhya Pradesh, Gangetic West Bengal, Uttarakhand, Rayalaseema, Tamilnadu Puducherry & Karaikal, East Madhya Pradesh, Odisha, Marathwada, Kerala & Mahe, South Interior Karnataka and North Interior Karnataka; **Dry** over rest of the country.

❖ **Significant rainfall recorded(in cm)** (from 0830 hours IST to 1730 hours IST of yesterday): Assam & Meghalaya: Halflong (dist Dima Hasao) 60; Konkan & Goa: Mumbai (santacruz) AP (dist) 6; Madhya Maharashtra: Malegaon (dist Nashik) 5; Andaman & Nicobar Islands: Long Island (dist North And Middle Andaman) 4, Hut Bay (dist South Andaman) 2; **Bihar**: Patna-airport (dist Patna) 4, Muzaffarpur-obs (dist Muzaffarpur) 2; West Madhya Pradesh: Betul (dist Betul), Ratlam-obs (dist Ratlam) 3 Each; Gangetic West Bengal: Contai (dist Purba Medinipur) 2; **Uttarakhand**: Dehra Dun-mokampur (dist Dehradun) 2; Himachal Pradesh: Kangra (dist Kangra) 2; **Rayalaseema**: Tirupathi (dist Tirupati) 2; East Madhya Pradesh: Chhindwara-obs (dist Chhindwara) 2.

❖ **Heavy Rainfall observed** (from 0830 hours IST to 1730 hours IST of yesterday): **Extremely heavy rain** at isolated places over Assam & Meghalaya

❖ **Minimum Temperature Departures (as on 19-09-2025)**: **markedly above normal(> 5.1°C)** at isolated places over Assam & Meghalaya, Bihar, East Uttar Pradesh, Himachal Pradesh and West Madhya Pradesh. **appreciably above normal(3.1°C to 5.0°C)** at few places over East Madhya Pradesh; at isolated places over Sub Himalayan West Bengal & Sikkim, Odisha, West Uttar Pradesh, Jammu-Kashmir Ladakh-Gilgit-Baltistan-Muzaffarabad, West Rajasthan, Gujarat Region, Saurashtra & Kutch and Madhya Maharashtra. **above normal(1.6°C to 3.0°C)** at many places over Uttarakhand; at few places over Gangetic West Bengal, Jharkhand, East Rajasthan and Chhattisgarh; at isolated places over Haryana-Chandigarh-Delhi, Punjab, Marathwada, Vidarbha, Coastal Andhra Pradesh & Yanam, Telangana, Tamil Nadu, Puducherry & Karaikal and South Interior Karnataka. **near normal(-1.5°C to 1.5°C)** at most places over Andaman & Nicobar Islands, Arunachal Pradesh, Nagaland, Manipur, Mizoram & Tripura, Konkan & Goa, Rayalaseema, Coastal Karnataka, North Interior Karnataka, Kerala & Mahe and Lakshadweep. **The lowest minimum temperature** of 17.0°C was reported at HALFLONG (ASSAM) over the Plains of India.

❖ **Maximum Temperature Departures (as on 19-09-2025)**: **markedly above normal(> 5.1°C)** at isolated places over Chhattisgarh. **appreciably above normal(3.1°C to 5.0°C)** at isolated places over Assam & Meghalaya, Odisha and Coastal Andhra Pradesh & Yanam. **above normal(1.6°C to 3.0°C)** at many places over Uttarakhand; at most places over Nagaland, Manipur, Mizoram & Tripura; at few places over Arunachal Pradesh, Gangetic West Bengal, Vidarbha and Telangana; at isolated places over Jharkhand, Haryana-Chandigarh-Delhi, Jammu-Kashmir Ladakh-Gilgit-Baltistan-Muzaffarabad, West Rajasthan, East Rajasthan, East Madhya Pradesh, Gujarat Region, Saurashtra & Kutch, Madhya Maharashtra, Marathwada and Kerala & Mahe. **near normal(-1.5°C to 1.5°C)** at many places over Sub Himalayan West Bengal & Sikkim, Bihar, West Uttar Pradesh, Konkan & Goa, Rayalaseema, Coastal Karnataka and North Interior Karnataka; at most places over Punjab, Himachal Pradesh, South Interior Karnataka and Lakshadweep; at few places over East Uttar Pradesh, West Madhya Pradesh and Tamil Nadu, Puducherry & Karaikal; at isolated places over Andaman & Nicobar Islands. **The highest maximum temperature** of 39.1°C was reported at CHURU (RAJASTHAN).

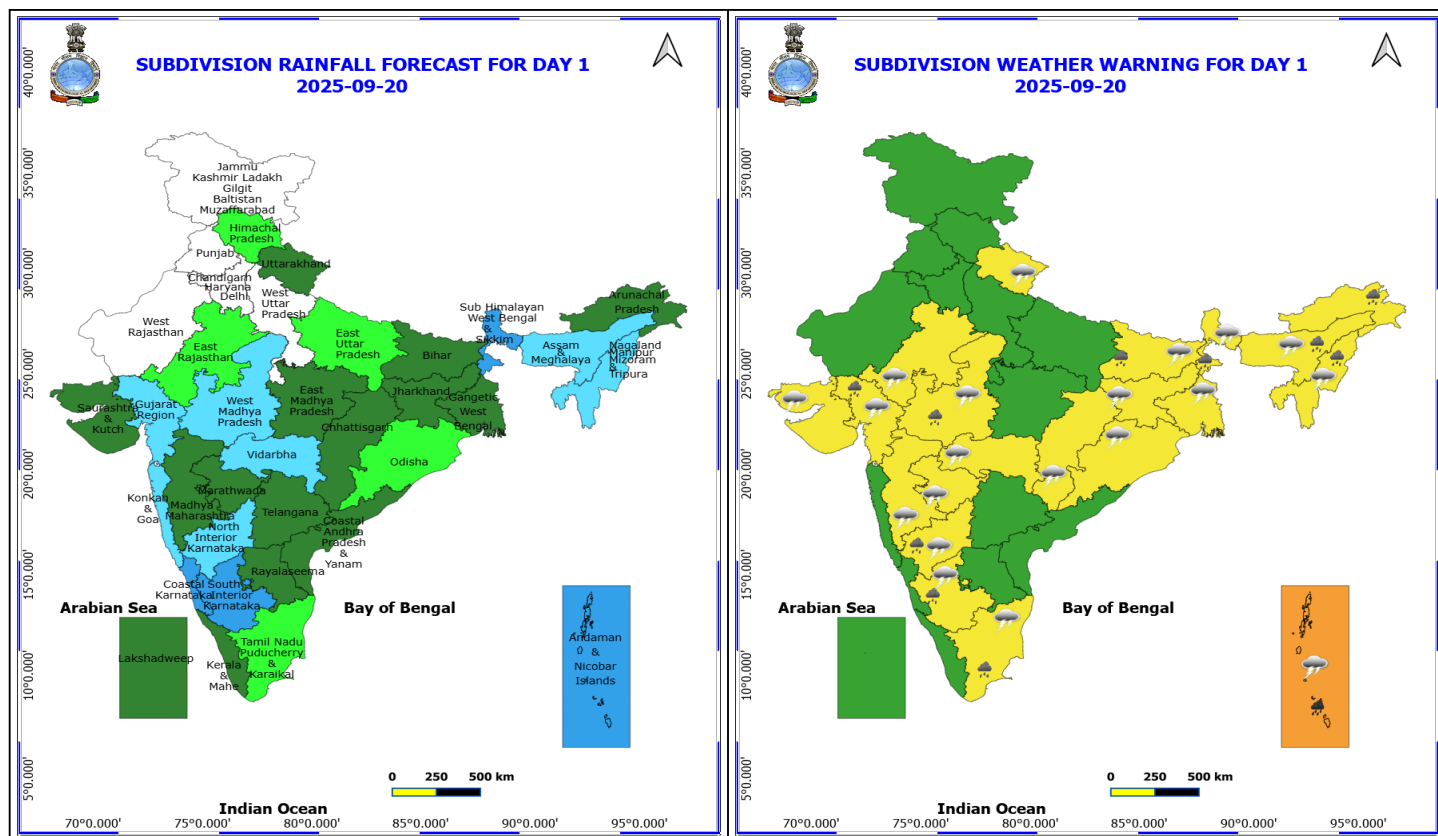
Meteorological Analysis (Based on 0530 hours IST)

- The **line of withdrawal of southwest monsoon** continues to pass through 31°N/74°E, Bhatinda, Fatehabad, Pilani, Ajmer, Deesa, Bhuj and 23°N/68°E.
- Conditions are becoming favourable for further withdrawal of southwest monsoon from some more parts of Gujarat, Rajasthan, Haryana and Punjab; some parts of Himachal Pradesh and Jammu & Kashmir during next 3-4 days.
- The **upper air cyclonic circulation** over north Andaman Sea & adjoining Myanmar coast extending upto 3.1 km above mean sea level persists. It is very likely to move nearly north-northwestwards and reach north Bay of Bengal around 22nd September, 2025.
- A fresh **low pressure area** is likely to emerge into eastcentral & adjoining northeast Bay of Bengal off Myanmar- Bangladesh coasts around 25th September, 2025.
- The **upper air cyclonic circulation** over East Uttar Pradesh & neighbourhood at 1.5 km above mean sea level persists.
- The **upper air cyclonic circulation** over south Marathwada & neighbourhood at 1.5 km above mean sea level persists.
- The **north-south trough** from central parts of South Uttar Pradesh to Marathwada across Madhya Pradesh, Vidarbha extending upto 1.5 Km above mean sea level persists.
- The **trough** from the above **upper air cyclonic circulation** over north Andaman Sea & adjoining Myanmar coast to south Maharashtra coast across central Bay of Bengal, south Coastal Andhra Pradesh, Rayalaseema and North Interior Karnataka at 3.1 km above mean sea level persists.
- The **Western Disturbance** as a **trough** in middle tropospheric westerlies with its axis at 5.8 km above mean sea level now runs roughly along Long. 73°E to the north of Lat. 30°N.

Weather Outlook for subsequent 3 days

Fairly widespread to widespread rainfall likely over Islands, Northeast, East, West and Central India.

Isolated to scattered rainfall likely over the South penninsular India and Isolated rainfall over the Western Himalayan region.



20 September (Day 1)

- ❖ **Heavy to Very Heavy Rainfall** very likely at isolated places over Andaman & Nicobar Islands.
- ❖ **Heavy Rainfall** very likely at isolated places over Arunachal Pradesh, Assam & Meghalaya, Bihar, Gujarat Region, Interior Karnataka, Nagaland, Manipur, Mizoram and Tripura, Sub Himalayan West Bengal & Sikkim, Tamil Nadu Puducherry & Karaikal and West Madhya Pradesh.
- ❖ **Thunderstorm accompanied with lightning & gusty winds(40-50kmph)** very likely at isolated places over Andaman & Nicobar Islands.
- ❖ **Thunderstorm accompanied with lightning & gusty winds(30-40kmph)** very likely at isolated places over Tamil Nadu Puducherry & Karaikal and West Bengal & Sikkim.
- ❖ **Thunderstorm accompanied with Lightning** very likely at isolated places over Andaman & Nicobar Islands, Assam & Meghalaya, Bihar, Chhattisgarh, East Rajasthan, Gujarat State, Interior Karnataka, Jharkhand, Maharashtra, Nagaland, Manipur, Mizoram and Tripura, Odisha, Uttarakhand and West Madhya Pradesh.

Squally wind with speed reaching 45 kmph to 55 kmph gusting to 65 kmph is likely to prevail over some parts of southwest & westcentral Arabian Sea, along and off Somalia coast.

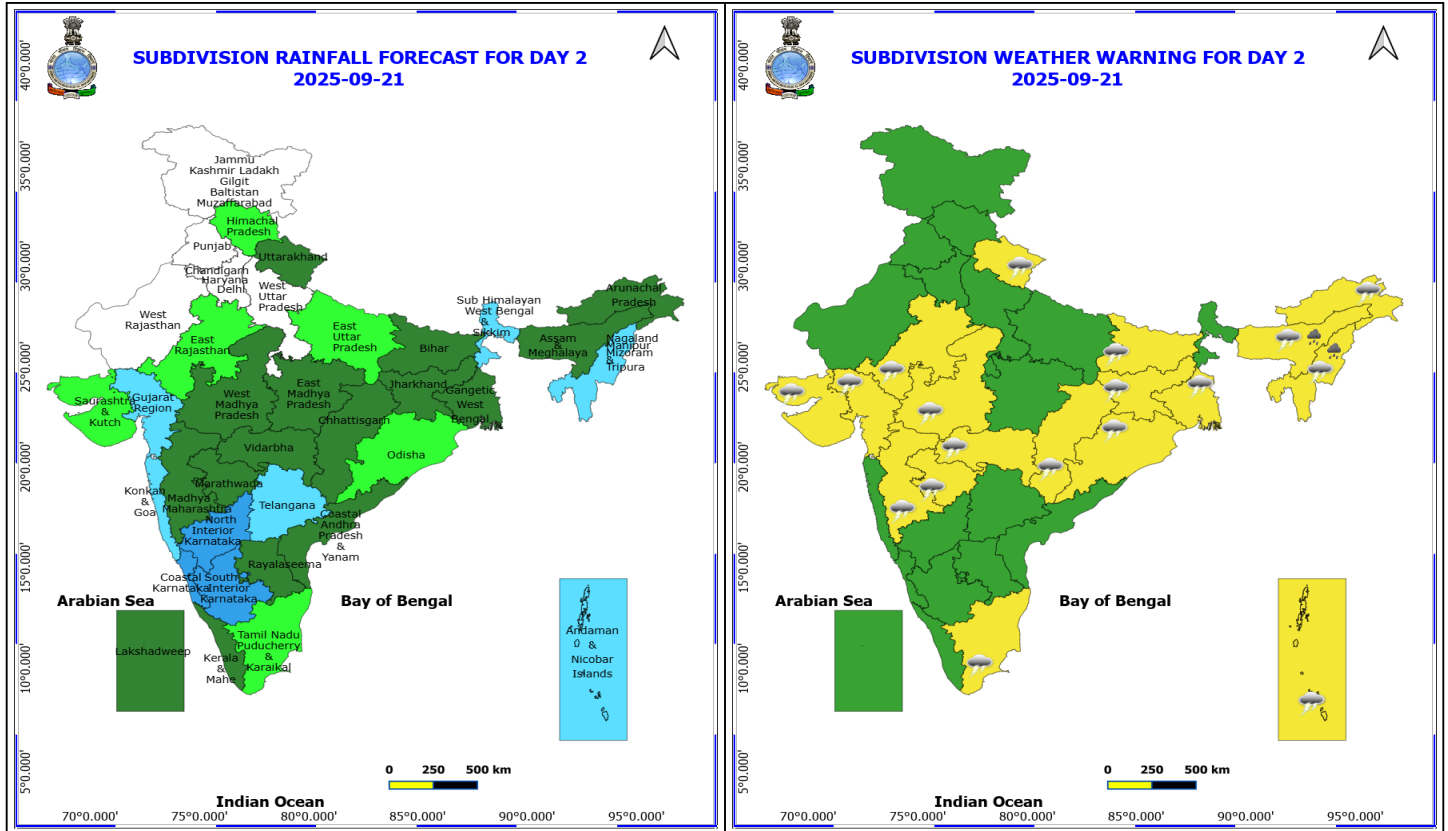
Squally weather with wind speed reaching 35 - 45 kmph gusting to 55 kmph likely to prevail over Gulf of Mannar & adjoining Comorin area, over many parts of south Bay of Bengal, along and off Sri Lanka coast and over Andaman Sea.

***Red color warning does not mean "Red Alert" Red color warning means "Take Action"**

Forecast and warning for any day is valid from 0830 hours IST of day till 0830 hours IST of next day

For more details kindly visit <https://mausam.imd.gov.in> or contact 011-2434-4599

(Service to the nation since 1875)



21 September (Day 2)

❖ **Heavy Rainfall** very likely at isolated places over Assam & Meghalaya and Nagaland, Manipur, Mizoram and Tripura.

❖ **Thunderstorm accompanied with lightning & gusty winds(30-40kmph)** very likely at isolated places over Andaman & Nicobar Islands, Gangetic West Bengal and Tamil Nadu Puducherry & Karaikal.

❖ **Thunderstorm accompanied with Lightning** very likely at isolated places over Arunachal Pradesh, Assam & Meghalaya, Bihar, Chhattisgarh, East Rajasthan, Gujarat State, Jharkhand, Maharashtra, Nagaland, Manipur, Mizoram and Tripura, Odisha, Uttarakhand and West Madhya Pradesh.

Squally wind with speed reaching 45 kmph to 55 kmph gusting to 65 kmph is likely to prevail over some parts of southwest & few parts of westcentral Arabian Sea, along and off Somalia coast.

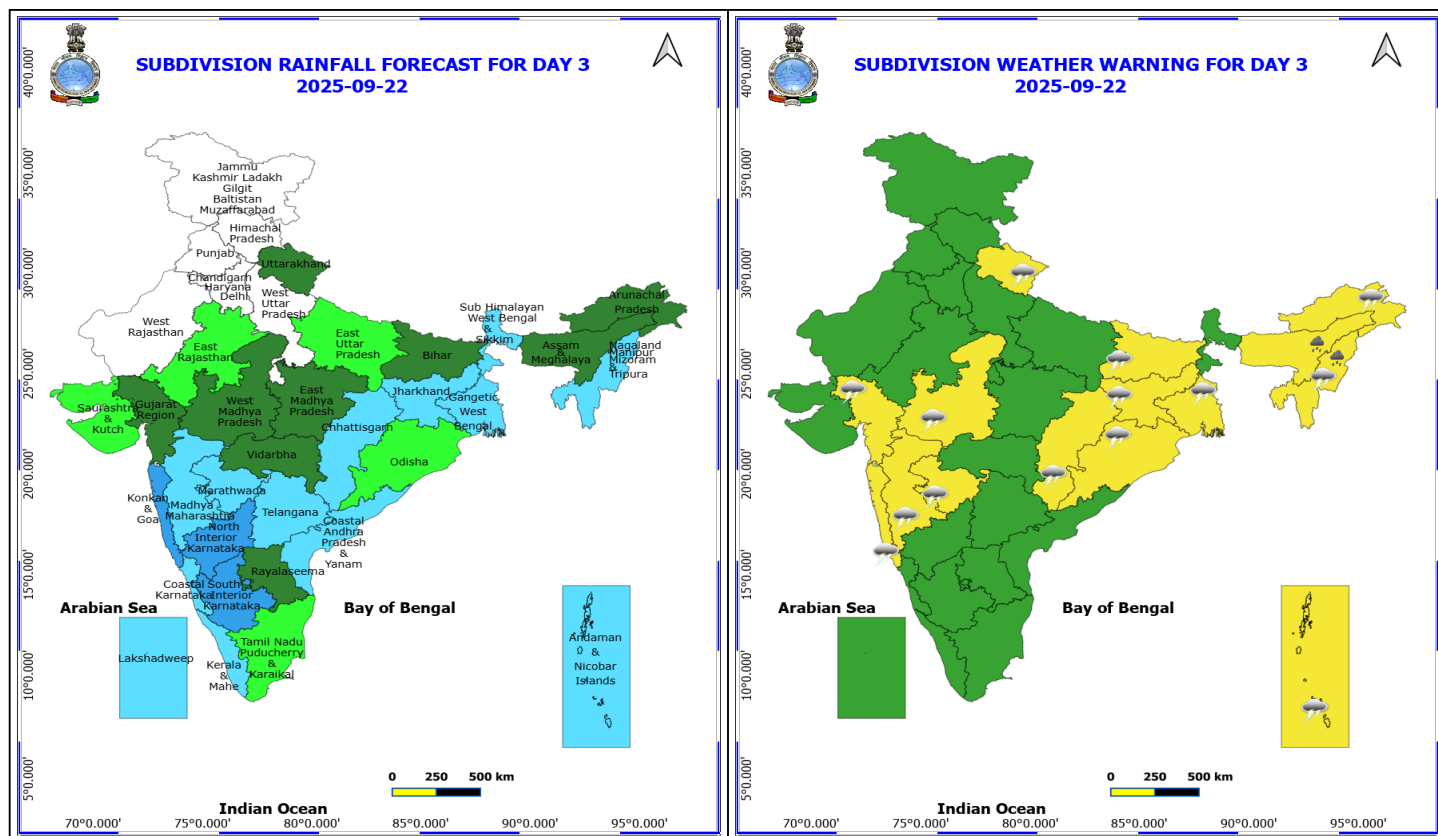
Squally weather with wind speed reaching 35 - 45 kmph gusting to 55 kmph likely to prevail over Gulf of Mannar & adjoining Comorin area, over most parts of south Bay of Bengal, along and off Sri Lanka coast and over Andaman Sea.

***Red color warning does not mean "Red Alert" Red color warning means "Take Action"**

Forecast and warning for any day is valid from 0830 hours IST of day till 0830 hours IST of next day

For more details kindly visit <https://mausam.imd.gov.in> or contact 011-2434-4599

(Service to the nation since 1875)



22 September (Day 3)

- ❖ **Heavy Rainfall** very likely at isolated places over Assam & Meghalaya and Nagaland, Manipur, Mizoram and Tripura.
- ❖ **Thunderstorm accompanied with lightning & gusty winds(30-40kmph)** very likely at isolated places over Andaman & Nicobar Islands and Gangetic West Bengal.
- ❖ **Thunderstorm accompanied with Lightning** very likely at isolated places over Arunachal Pradesh, Bihar, Chhattisgarh, Gujarat Region, Jharkhand, Konkan & Goa, Madhya Maharashtra, Marathwada, Nagaland, Manipur, Mizoram and Tripura, Odisha, Uttarakhand and West Madhya Pradesh.

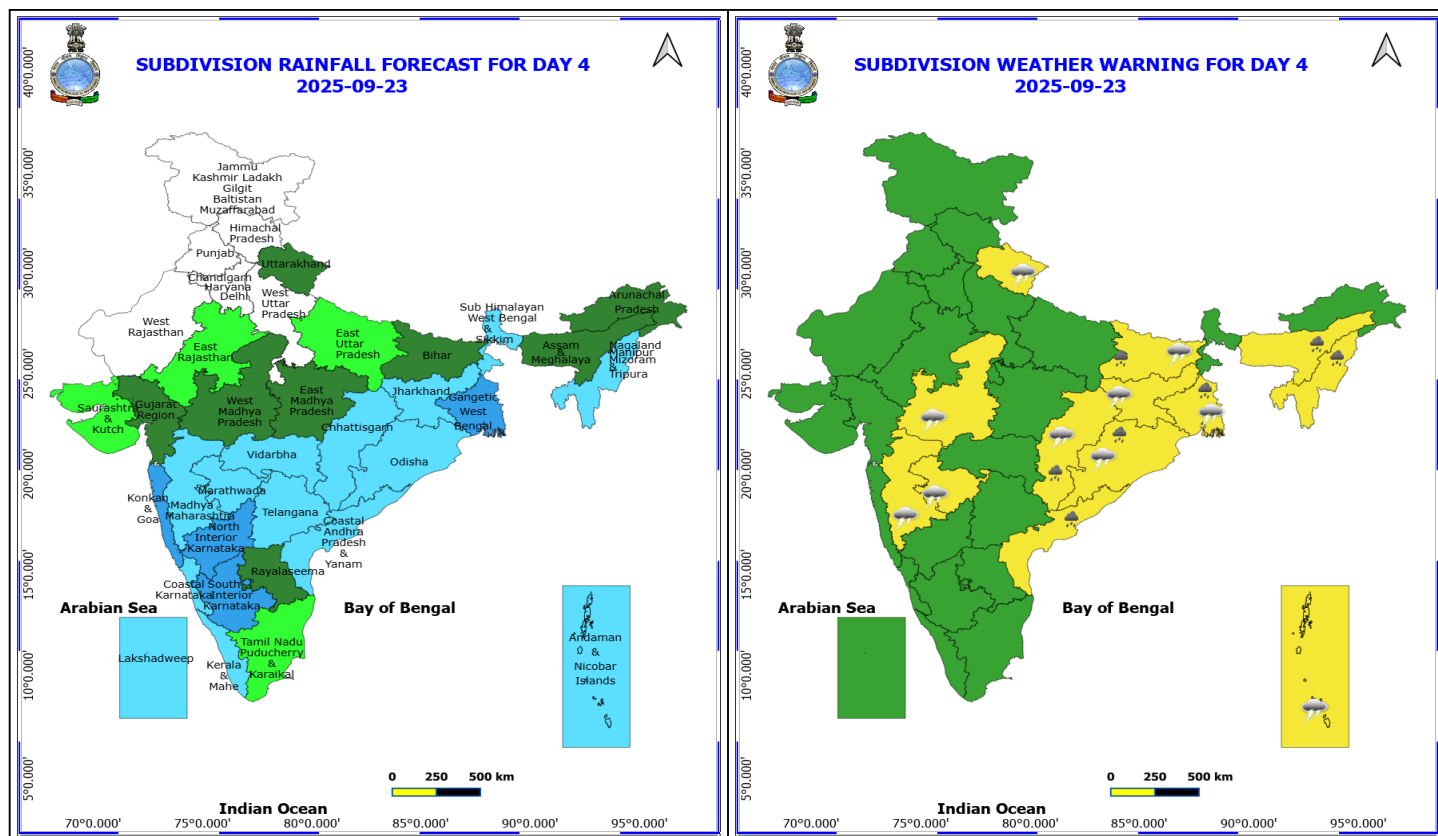
No Fishermen Warning

*Red color warning does not mean "Red Alert" Red color warning means "Take Action"

Forecast and warning for any day is valid from 0830 hours IST of day till 0830 hours IST of next day

For more details kindly visit <https://mausam.imd.gov.in> or contact 011-2434-4599

(Service to the nation since 1875)



23 September (Day 4)

- ❖ **Heavy Rainfall** likely at isolated places over Assam & Meghalaya, Bihar, Chhattisgarh, Coastal Andhra Pradesh, Gangetic West Bengal, Nagaland, Manipur, Mizoram and Tripura and Odisha.
- ❖ **Thunderstorm accompanied with lightning & gusty winds(30-40kmph)** likely at isolated places over Andaman & Nicobar Islands and Gangetic West Bengal.
- ❖ **Thunderstorm accompanied with Lightning** likely at isolated places over Bihar, Chhattisgarh, Jharkhand, Madhya Maharashtra, Marathwada, Odisha, Uttarakhand and West Madhya Pradesh.

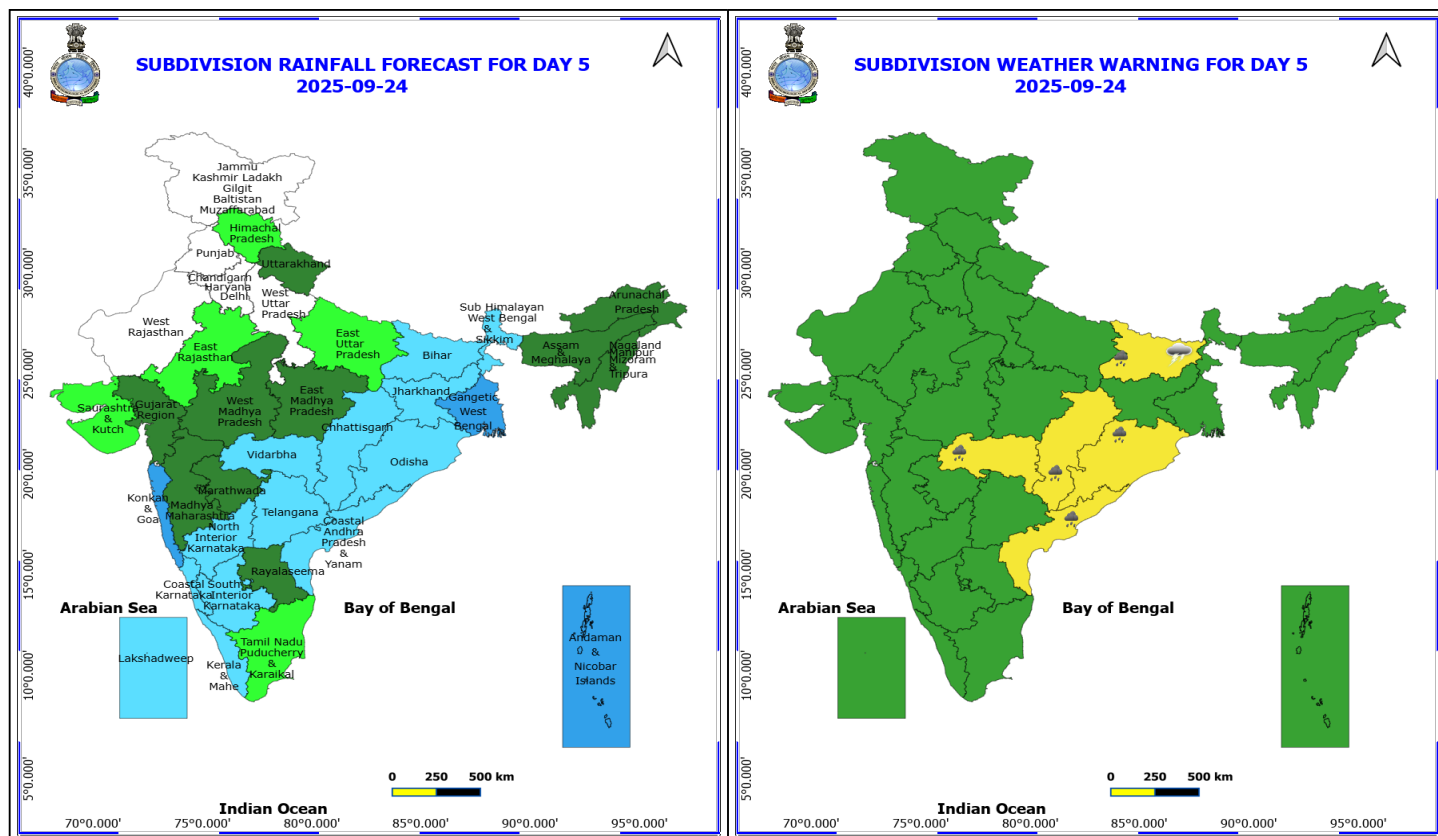
No Fishermen Warning

***Red color warning does not mean "Red Alert" Red color warning means "Take Action"**

Forecast and warning for any day is valid from 0830 hours IST of day till 0830 hours IST of next day

For more details kindly visit <https://mausam.imd.gov.in> or contact 011-2434-4599

(Service to the nation since 1875)



24 September (Day 5)

- ❖ **Heavy Rainfall** likely at isolated places over Bihar, Chhattisgarh, Coastal Andhra Pradesh, Odisha and Vidarbha.
- ❖ **Thunderstorm accompanied with Lightning** likely at isolated places over Bihar.

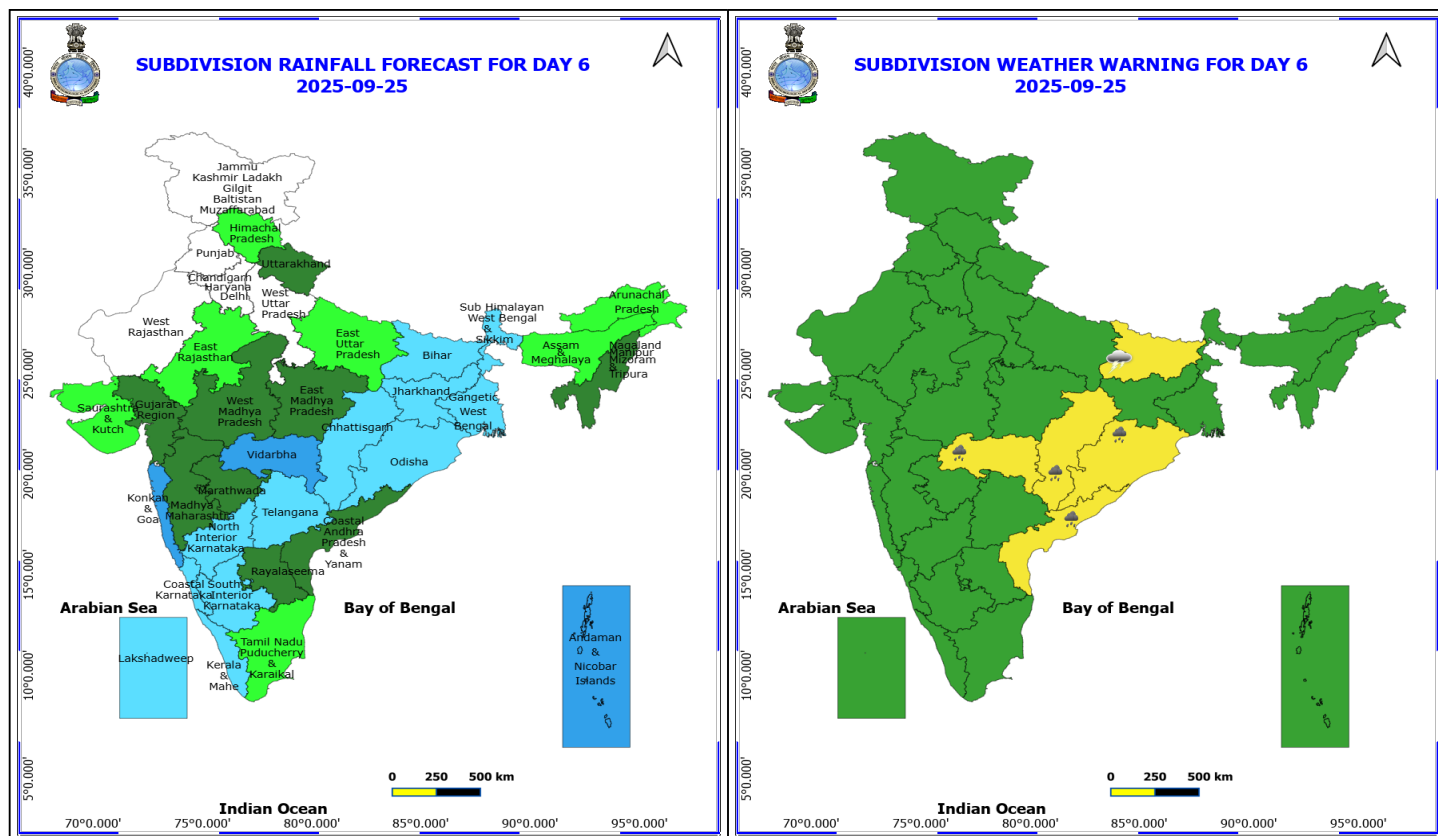
No Fishermen Warning

***Red color warning does not mean "Red Alert" Red color warning means "Take Action"**

Forecast and warning for any day is valid from 0830 hours IST of day till 0830 hours IST of next day

For more details kindly visit <https://mausam.imd.gov.in> or contact 011-2434-4599

(Service to the nation since 1875)



25 September (Day 6)

- ❖ **Heavy Rainfall** likely at isolated places over Chhattisgarh, Coastal Andhra Pradesh, Odisha and Vidarbha.
- ❖ **Thunderstorm accompanied with Lightning** likely at isolated places over Bihar.

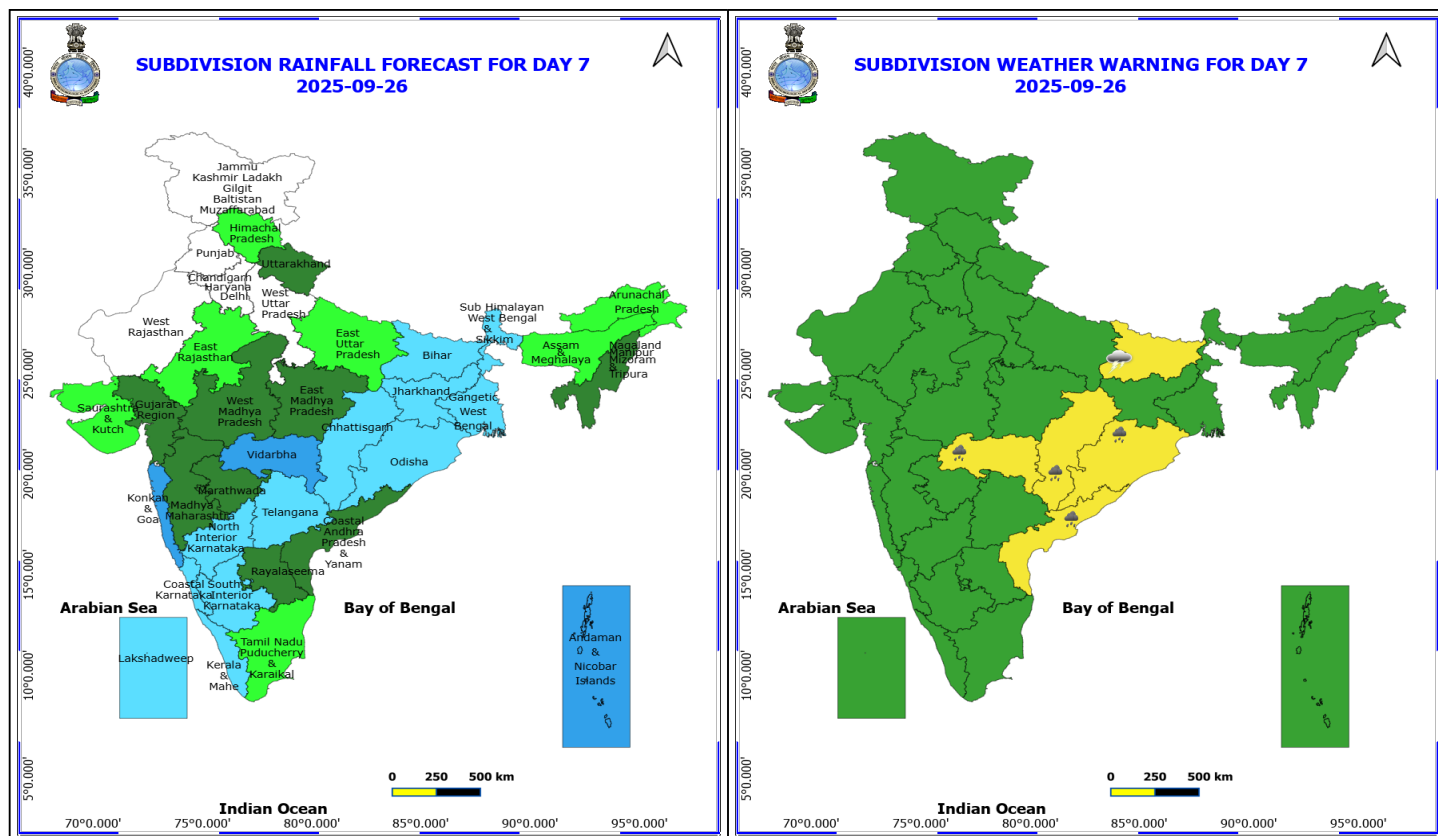
No Fishermen Warning

***Red color warning does not mean "Red Alert" Red color warning means "Take Action"**

Forecast and warning for any day is valid from 0830 hours IST of day till 0830 hours IST of next day

For more details kindly visit <https://mausam.imd.gov.in> or contact 011-2434-4599

(Service to the nation since 1875)



26 September (Day 7)

- ❖ **Heavy Rainfall** likely at isolated places over Bihar, Chhattisgarh, Coastal Andhra Pradesh, Odisha and Vidarbha.
- ❖ **Thunderstorm accompanied with Lightning** likely at isolated places over Bihar.

No Fishermen Warning

*Red color warning does not mean "Red Alert" Red color warning means "Take Action"

Forecast and warning for any day is valid from 0830 hours IST of day till 0830 hours IST of next day

For more details kindly visit <https://mausam.imd.gov.in> or contact 011-2434-4599

(Service to the nation since 1875)



Table-1

7 Days Rainfall Forecast

S.No.	Subdivision	20-Sep	21-Sep	22-Sep	23-Sep	24-Sep	25-Sep	26-Sep
		Day 1	Day 2	Day 3	Day 4	Day 5	Day 6	Day 7
1	ANDAMAN & NICOBAR ISLANDS	WS	FWS	FWS	FWS	WS	WS	WS
2	ARUNACHAL PRADESH	SCT	SCT	SCT	SCT	SCT	ISOL	ISOL
3	ASSAM & MEHGHALAYA	FWS	SCT	SCT	SCT	SCT	ISOL	ISOL
4	N. M. M. & T.	FWS	FWS	FWS	FWS	SCT	SCT	SCT
5	S.H. WEST BENGAL & SIKKIM	WS	FWS	FWS	FWS	FWS	FWS	FWS
6	GANGETIC WEST BENGAL	SCT	SCT	FWS	WS	WS	FWS	FWS
7	ODISHA	ISOL	ISOL	ISOL	FWS	FWS	FWS	FWS
8	JHARKHAND	SCT	SCT	FWS	FWS	FWS	FWS	FWS
9	BIHAR	SCT	SCT	SCT	SCT	FWS	FWS	FWS
10	EAST UTTAR PRADESH	ISOL	ISOL	ISOL	ISOL	ISOL	ISOL	ISOL
11	WEST UTTAR PRADESH	DRY	DRY	DRY	DRY	DRY	DRY	DRY
12	UTTARAKHAND	SCT	SCT	SCT	SCT	SCT	SCT	SCT
13	HARYANA, CHD & DELHI	DRY	DRY	DRY	DRY	DRY	DRY	DRY
14	PUNJAB	DRY	DRY	DRY	DRY	DRY	DRY	DRY
15	HIMACHAL PRADESH	ISOL	ISOL	DRY	DRY	ISOL	ISOL	ISOL
16	JAMMU AND KASHMIR AND LADAKH	DRY	DRY	DRY	DRY	DRY	DRY	DRY
17	WEST RAJASTHAN	DRY	DRY	DRY	DRY	DRY	DRY	DRY
18	EAST RAJASTHAN	ISOL	ISOL	ISOL	ISOL	ISOL	ISOL	ISOL
19	WEST MADHYA PRADESH	FWS	SCT	SCT	SCT	SCT	SCT	SCT
20	EAST MADHYA PRADESH	SCT	SCT	SCT	SCT	SCT	SCT	SCT
21	GUJRAT REGION	FWS	FWS	SCT	SCT	SCT	SCT	SCT
22	SAURASHTRA & KUTCH	SCT	ISOL	ISOL	ISOL	ISOL	ISOL	ISOL
23	KONKAN & GOA	FWS	FWS	WS	WS	WS	WS	WS
24	MADHYA MAHARASHTRA	SCT	SCT	FWS	FWS	SCT	SCT	SCT
25	MARATHWADA	SCT	SCT	FWS	FWS	SCT	SCT	SCT
26	VIDARBHA	FWS	SCT	SCT	FWS	FWS	WS	WS
27	CHATTISGARH	SCT	SCT	FWS	FWS	FWS	FWS	FWS
28	COASTAL ANDHRA PRADESH	SCT	SCT	FWS	FWS	FWS	SCT	SCT
29	TELANGANA	SCT	FWS	FWS	FWS	FWS	FWS	FWS
30	RAYALASEEMA	SCT	SCT	SCT	SCT	SCT	SCT	SCT
31	TAMILNADU & PUDUCHERRY	ISOL	ISOL	ISOL	ISOL	ISOL	ISOL	ISOL
32	COSTAL KARNATAKA	WS	WS	FWS	FWS	FWS	FWS	FWS
33	NORTH INTERIOR KARNATAKA	FWS	WS	WS	WS	FWS	FWS	FWS
34	SOUTH INTERIOR KARNATAKA	WS	WS	WS	WS	FWS	FWS	FWS
35	KERALA	SCT	SCT	FWS	FWS	FWS	FWS	FWS
36	LAKSHDWEEP	SCT	SCT	FWS	FWS	FWS	FWS	FWS

Legend	Category	%Stations
WS	Widespread/Most Places	76-100
FWS	Fairly Widespread/Many Places	51-75
SCT	Scattered/ A Few Places	26-50
ISOL	Isolated Places	1-25
DRY	No Rain	0

*Red color warning does not mean "Red Alert" Red color warning means "Take Action"

Forecast and warning for any day is valid from 0830 hours IST of day till 0830 hours IST of next day

For more details kindly visit <https://mausam.imd.gov.in> or contact 011-2434-4599

(Service to the nation since 1875)

Fig. 1: Maximum Temperatures Dated 2025-09-20

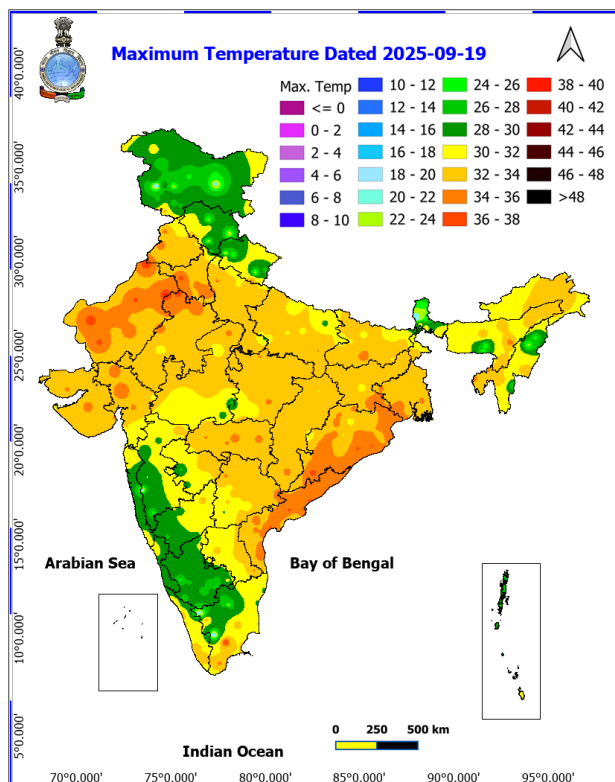


Fig. 2: Departure of Maximum Temp. Dated 2025-09-20

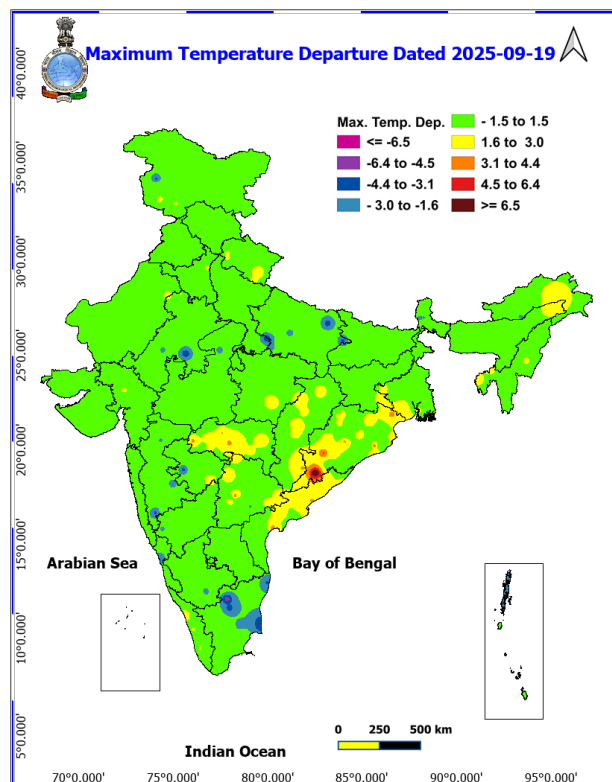


Fig. 3: Minimum Temperatures Dated 2025-09-20

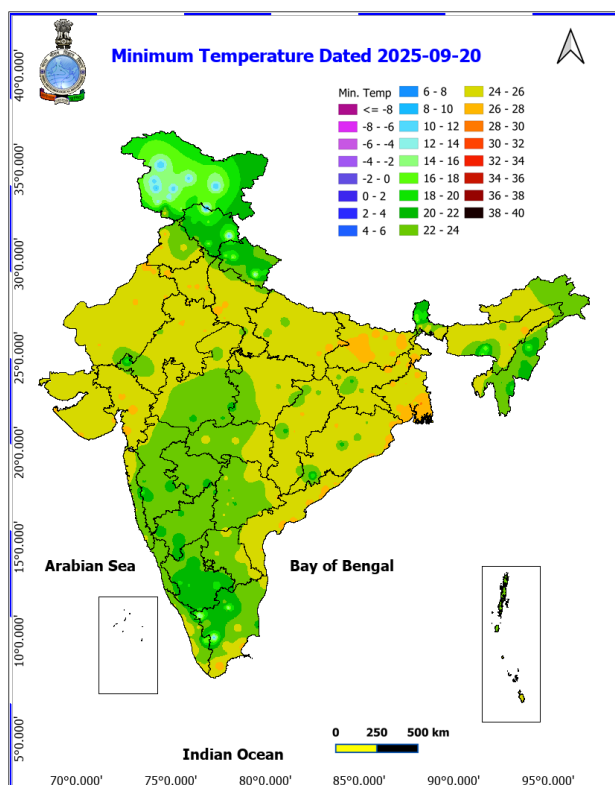
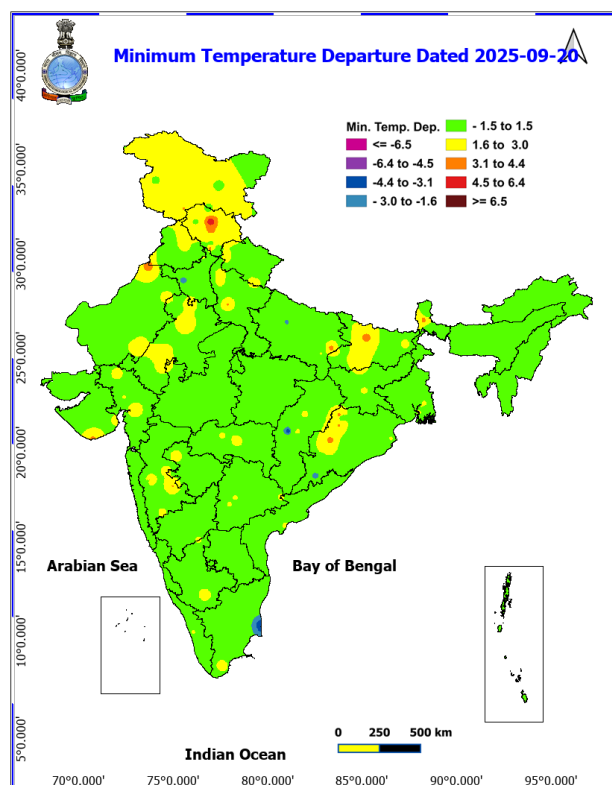
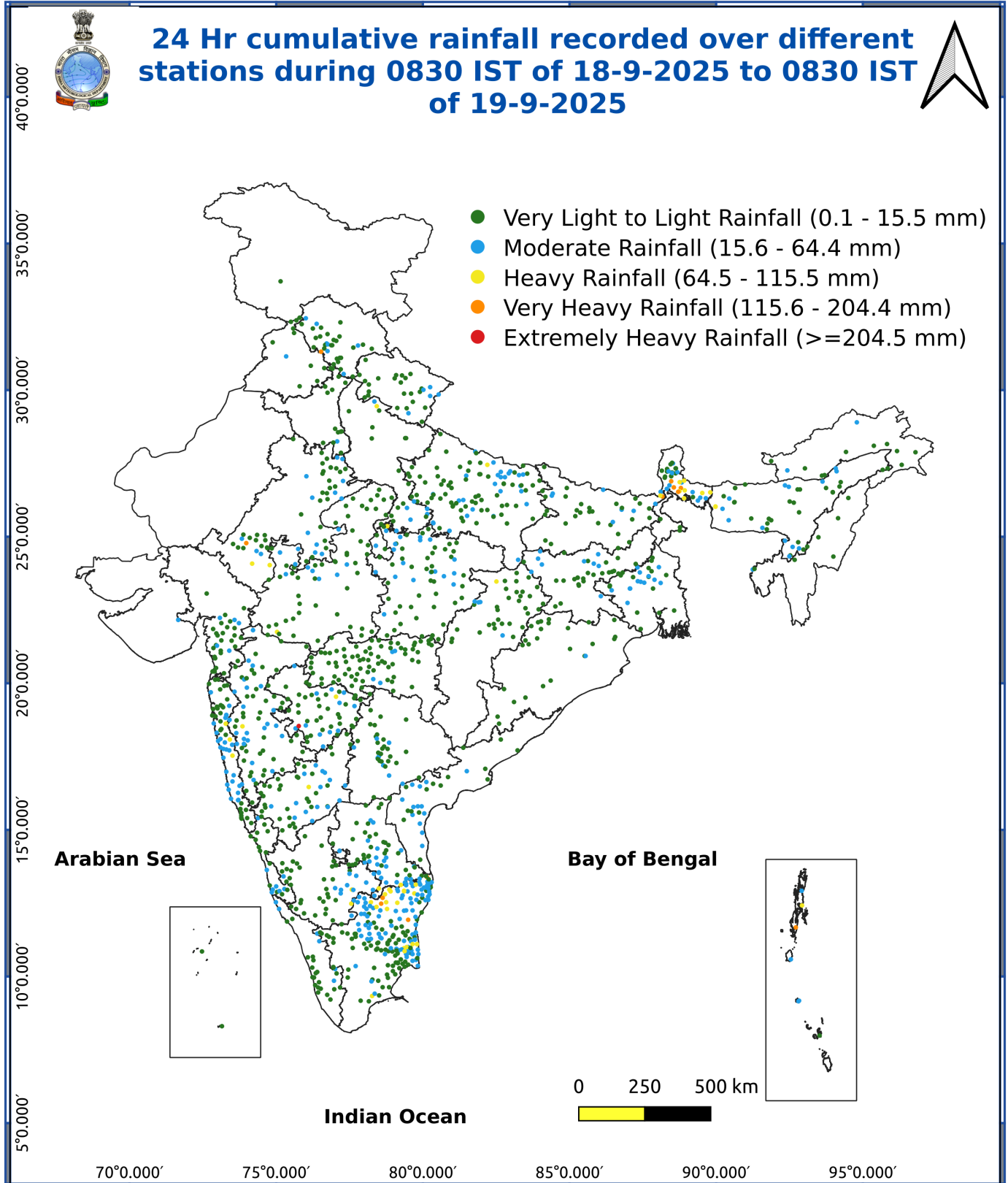


Fig. 4: Departure of Minimum Temp. Dated 2025-09-20





*Red color warning does not mean "Red Alert" Red color warning means "Take Action"

Forecast and warning for any day is valid from 0830 hours IST of day till 0830 hours IST of next day

For more details kindly visit <https://mausam.imd.gov.in> or contact 011-2434-4599

(Service to the nation since 1875)

Agromet advisories for various parts of the country

In Uttarakhand, drain out excess water from the fields of green gram, black gram, soybean, barnyard millet and finger millet in Sub Humid Sub Tropic Zone; and pigeon pea and vegetable crops in Hill Zone. Ensure proper drainage from the fields of rice, maize, finger millet, pigeon pea, soybean, green gram, black gram and vegetables in Nainital district.

In Himachal Pradesh, drain out excess water from the fields of vegetable and fruit orchards in Mid Hills Sub Humid Zone. Keep the harvested produce in safer places.

In Sub-Himalayan West Bengal, drain out excess water from the fields of rice and vegetable in Terai Zone and ensure proper drainage from the fields of green gram, black gram, finger millet, dalley khorsani, vegetables and fruit orchards in Hill Zone.

In Bihar, ensure proper drainage of excess rainwater from the fields of rice and vegetables in North West Alluvial Plain Zone.

In West Madhya Pradesh, drain out excess water from the fields of rice, soybean, maize, cotton, sugarcane and vegetables.

In Maharashtra, drain out excess water from fields of rice, vegetables and fruit orchards in Konkan and rice, sugarcane, pigeon pea, soybean, maize, vegetables and fruit orchards in Madhya Maharashtra.

In Arunachal Pradesh, maintain proper drainage in standing crops such as rice, soybean, finger millet, vegetables and fruit orchards to avoid water stagnation. Keep the harvested produce of upland paddy, maize, chillies and banana at safer places.

In Assam, ensure proper drainage to drain out excess water from the fields of rice and already sown black gram in Barak Valley Zone and rice, sesame and vegetables in North Bank Plain Zone. In Lower Brahmaputra Valley Zone, ensure proper drainage system in Sali rice fields and nursery bed of vegetables. Cover the nursery bed with thin polythene to avoid the damages due to heavy rainfall. In Upper Brahmaputra Valley Zone, harvest the matured vegetables and fruits and transfer it to a safer location and make arrangements to drain out excess water from the standing crop fields.

In Meghalaya, drain out excess water from rice, vegetable nurseries and ginger. Provide support to tall and fragile crops like banana, papaya, pumpkin, etc. to prevent lodging.

In Telangana, ensure adequate drainage facilities to drain out excess rain water in fields of rice, maize, cotton, soybean, pigeon pea, turmeric and vegetables.

Livestock / Fishery

Keep the animals inside the shed during heavy rainfall and provide them balanced feed.

Store feed and fodder in a safe place to prevent spoilage.

Construct an outlet with proper netting around the ponds to drain out excess water, thereby preventing fish from escaping in case of overflow.

Agromet advisories for likely impact of Thunderstorm / Gusty Winds / Squally Winds

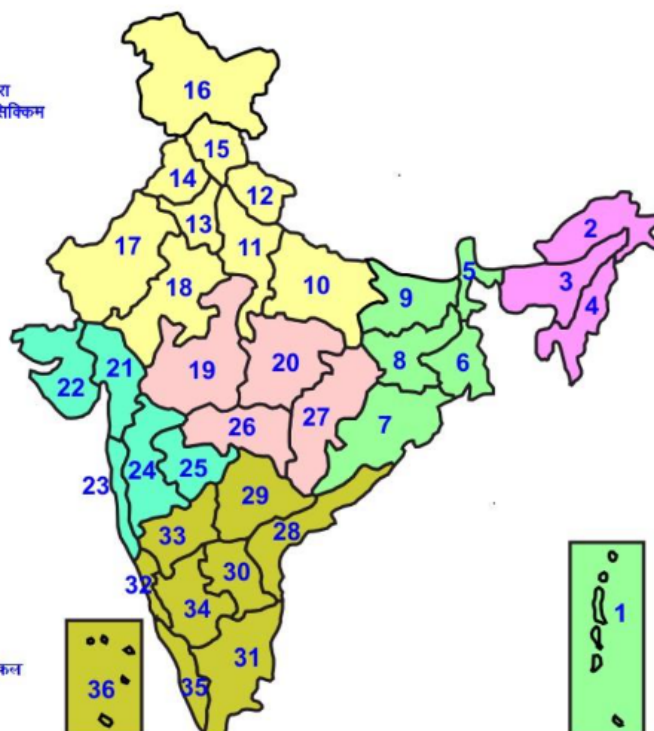
(Based on the IBF and advisories issued by different AMFUs)



Provide mechanical support to horticultural crops and staking or support to vegetables and young fruit plants / fruit-bearing plants to avoid lodging due to strong winds.

LEGENDS

- 1 अंडमान और निकोबार द्वीप समुह
- 2 अरुणाचल प्रदेश
- 3 असम और मेघालय
- 4 नागालैंड मनीपुर मीजोरम और त्रिपुरा
- 5 उप हिमालय पश्चिम बंगाल एवं सिक्किम
- 6 पश्चिम बंगाल
- 7 ओडिसा
- 8 झारखंड
- 9 बिहार
- 10 पूर्वी उत्तर प्रदेश
- 11 पश्चिम उत्तर प्रदेश
- 12 उत्तराखंड
- 13 हरियाणा चंडीगढ़ एवं दिल्ली
- 14 पंजाब
- 15 हिमाचल प्रदेश
- 16 जम्मू एवं कश्मीर एवं लद्दाख
- 17 पश्चिम राजस्थान
- 18 पूर्वी राजस्थान
- 19 पश्चिम मध्य प्रदेश
- 20 पूर्वी मध्य प्रदेश
- 21 गुजरात क्षेत्र
- 22 सौराष्ट्र एवं कच्छ
- 23 कोंकण एवं गोवा
- 24 मध्य महाराष्ट्र
- 25 मराठावाड़ा
- 26 विदर्भ
- 27 छत्तीसगढ़
- 28 तटीय आंध्र प्रदेश एवं यनम
- 29 तेलंगाना
- 30 रायलसीमा
- 31 तमिलनाडु, पुदुचेरी एवं कराईकल
- 32 तटिय कर्नाटक
- 33 आंतरिक उत्तरी कर्नाटक
- 34 आंतरिक दक्षिणी कर्नाटक
- 35 केरल एवं माहे
- 36 लक्षद्वीप



1. Andaman & Nicobar Islands
2. Arunachal Pradesh
3. Assam & Meghalaya
4. Nagaland, Manipur, Mizoram & Tripura
5. Sub-Himalayan West Bengal & Sikkim
6. Gangetic West Bengal
7. Orissa
8. Jharkhand
9. Bihar
10. East Uttar Pradesh
11. West Uttar Pradesh
12. Uttarakhand
13. Haryana, Chd & Delhi
14. Punjab
15. Himachal Pradesh
16. Jammu & Kashmir and Ladakh
17. West Rajasthan
18. East Rajasthan
19. West Madhya Pradesh
20. East Madhya Pradesh
21. Gujarat
22. Saurashtra
23. Konkan & Goa
24. Madhya Maharashtra
25. Marathawada
26. Vidharbha
27. Chhattisgarh
28. Coastal Andhra Pradesh & Yanam
29. Telangana
30. Rayalaseema
31. Tamilnadu, Puducherry & Karaikal
32. Coastal Karnataka
33. North Interior Karnataka
34. South Interior Karnataka
35. Kerala & Mahe
36. Lakshadweep

SPATIAL DISTRIBUTION (% of Stations reporting)


% Stations	Category	% Stations	Category
76-100	Widespread (WS/Most Places)	26-50	Scattered (SCT/ A Few Places)
51-75	Fairly Widespread (FWS/ Many Places)	1-25	Isolated (ISOL)


Subdivision Colour


- NO WARNING
- WATCH (BE UPDATED)
- ALERT (BE PREPARED TO TAKE ACTION)
- WARNING (TAKE ACTION)


Probabilistic Forecast


Terms	Probability of Occurrence (%)
Unlikely	< 25
Likely	25 - 50
Very Likely	50 - 75
Most Likely	> 75


-  Heavy Rain


 Thunderstorm & Lightning


 Strong surface winds


 Cold Wave


 Hot & Humid


 Very Heavy Rain


 Hailstorm

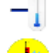
 Heat Wave


 Cold Day


 Extremely Heavy Rain


 Dust Storm


 Hot Day

 Ground Frost

 Heavy Snow

 Dust Raising Winds

 Warm Night

 Fog

*Red color warning does not mean "Red Alert" Red color warning means "Take Action"

Forecast and warning for any day is valid from 0830 hours IST of day till 0830 hours IST of next day

For more details kindly visit <https://mausam.imd.gov.in> or contact 011-2434-4599

(Service to the nation since 1875)

LEGENDS

WARNING

WARNING (TAKE ACTION)
ALERT (BE PREPARED)
WATCH (BE UPDATED)
NO WARNING (NO ACTION)

Probabilistic Forecast

Terms	Probability of Occurrence (%)
Unlikely	< 25
Likely	25 - 50
Very Likely	50 - 75
Most Likely	> 75



Heavy: 64.5 to 115.5 mm/cm *
Very Heavy: 115.6 to 204.4 mm/cm *
Extremely Heavy: > 204.4 mm/cm *



When maximum temperature of a station reaches $\geq 40^{\circ}\text{C}$ for plains and $\geq 30^{\circ}\text{C}$ for hilly regions
(a) Based on Departure from normal

Heat Wave: Maximum Temperature Departure from normal 4.5°C to 6.4°C .
Severe Heat Wave: Maximum Temperature Departure from normal $\geq 6.5^{\circ}\text{C}$

(b). Based on Actual maximum temperature

Heat Wave: When actual maximum temperature $\geq 45^{\circ}\text{C}$.
Severe Heat Wave: When actual maximum temperature $\geq 47^{\circ}\text{C}$

(c). Criteria for heat wave for coastal stations

When maximum temperature departure is $> 4.5^{\circ}\text{C}$ from normal. Heat Wave may be described provided maximum temperature $\geq 37^{\circ}\text{C}$



When maximum temperature remains 40°C

Warm Night: When minimum temperature departure 4.5°C to 6.4°C .
Severe Warm Night: When minimum temperature departure $> 6.4^{\circ}\text{C}$.



When minimum temperature of a station $\leq 10^{\circ}\text{C}$ for plains and $\leq 0^{\circ}\text{C}$ for hilly regions.

(a). Based on departure

Cold Wave: Minimum Temperature Departure from normal -4.5°C to -6.4°C .
Severe Cold Wave: Minimum Temperature Departure from normal $\leq -6.5^{\circ}\text{C}$

(b) Based on actual Minimum Temperature (for Plains only)

Cold Wave: When Minimum Temperature is $\leq 4.0^{\circ}\text{C}$
Severe Cold Wave: When Minimum Temperature is $\leq 2.0^{\circ}\text{C}$

(c) For Coastal Stations

When Minimum Temperature departure is $\leq -4.5^{\circ}\text{C}$ & actual Minimum Temperature is $\leq 15^{\circ}\text{C}$



When minimum temperature of a station $\leq 10^{\circ}\text{C}$ for plains and $\leq 0^{\circ}\text{C}$ for hilly regions
Based on departure

Cold Day: Maximum Temperature Departure from normal -4.5°C to -6.4°C .
Severe Cold Day: Maximum Temperature Departure from normal $\leq -6.5^{\circ}\text{C}$



Phenomenon of small droplets suspended in air and the horizontal visibility $< 1\text{km}$

Moderate Fog: When the visibility between 500-200 metres
Dense Fog: when the visibility between 50-200 metres
Very Dense Fog: when the visibility < 50 metres



Sudden electrical discharges manifested by a flash of light (Lightning) and a sharp rumbling sound (thunder)



An ensemble of particles of dust or sand energetically lifted to great heights by a strong and turbulent wind.



Ice deposits on ground

Air temperature $\leq 4^{\circ}\text{C}$ (over Plains)



A strong wind that rises suddenly, lasts for at least 1 minute.

Moderate: Wind speed 52-61 kmph
Severe: Wind speed 62-87 kmph
Very Severe: Wind speed > 87 kmph



Effect of various waves in the sea over specific area

Rough to very rough: Wind speed 41-62 kmph (22-33 knots) & Wave height 2.5-6 metre
High to very high: Wind speed 63-117 kmph (34-63 knots) & Wave height 6-14 metre
Phenomenal: Wind speed > 117 kmph (> 63 knots) & Wave height > 14 metre



Cyclonic Storm: Wind speed 62-87 kmph (34-47 knots)

Severe Cyclonic Storm: Wind speed 88-117 kmph (48-63 knots)
Very Severe Cyclonic Storm: Wind speed 118-165 kmph (64-89 knots)
Extremely Severe Cyclonic Storm: Wind speed 166-220 kmph (90-119 knots)
Super Cyclone Storm: Wind speed > 220 kmph (> 119 knots)

*Red color warning does not mean "Red Alert" Red color warning means "Take Action"

Forecast and warning for any day is valid from 0830 hours IST of day till 0830 hours IST of next day

For more details kindly visit <https://mausam.imd.gov.in> or contact 011-2434-4599

(Service to the nation since 1875)