

2025-09-26

Time of Issue: 08:44:00 hours IST
(Morning)

ALL INDIA WEATHER SUMMARY AND FORECAST BULLETIN

Significant Weather Features

East & Central India:

Light to moderate rain/thunderstorm at most/many places with isolated **heavy rainfall** likely over Chhattisgarh, Vidarbha during 26th -29th; East Madhya Pradesh on 29th & 30th; West Madhya Pradesh during 28th -30th; during; Andaman & Nicobar Islands on 27th September & 01st October; Gangetic West Bengal on 27th; Odisha on 26th & 27th September with **very heavy rainfall over Odisha on 26th & 27th September.**

Thunderstorm & gusty winds (speed reaching 30-50 kmph) very likely over Andaman & Nicobar Islands, Vidarbha, Chhattisgarh during next 4 days; Gangetic West Bengal, Odisha during 26th-28th September.

West India:

Light to moderate rain/thunderstorm at many/some places with **isolated heavy rainfall** likely over Madhya Maharashtra, Konkan & Goa during 26th September-01st October; Marathawada during 26th -28th; Gujarat Region during 27th-30th; Saurashtra & Kutch during 28th-30th September with **very heavy rainfall over Marathawada on 27th September and Madhya Maharashtra, Konkan & Goa on 29th with Extremely heavy rainfall also likely at isolated places over Konkan & Goa and Ghat areas of Madhya Maharashtra on 27th & 28th September.**

Northeast India:

Light/moderate rain/thunderstorm at some/isolated places with isolated **heavy rainfall** likely over during 27th September-01st October; Nagaland, Manipur, Mizoram & Tripura during 29th September-01st October and Arunachal Pradesh on 01st October.

South Peninsular India:

Light to moderate rain/thunderstorm at many/some places with isolated **heavy rainfall** likely over Telangana, Tamil Nadu, Kerala & Mahe, Coastal Andhra Pradesh & Yanam on 26th & 27th; Lakshadweep on 26th; North Interior Karnataka during 26th -29th; South Interior Karnataka on 26th; Rayalaseema, Coastal Karnataka on 26th & 27th September with **very heavy rainfall over Telangana and Coastal Andhra Pradesh & Yanam on 26th September.**

Strong surface winds (speed reaching 40-50 kmph) very likely over Coastal Andhra Pradesh & Yanam during next 5 days.

Strong surface winds (speed reaching 30-40 kmph) very likely over Rayalaseema during next 5 days; Interior Karnataka on 26th & 27th September.

***Red color warning does not mean "Red Alert" Red color warning means "Take Action"**

Forecast and warning for any day is valid from 0830 hours IST of day till 0830 hours IST of next day

For more details kindly visit <https://mausam.imd.gov.in> or contact 011-2434-4599

(Service to the nation since 1875)

Main Weather Observations:

❖ **Rainfall distribution** (from 0830 hours IST of yesterday to 0530 hours IST of today): **at most places** over Andaman & Nicobar Islands, Gangetic West Bengal, Kerala & Mahe, Telangana, North Interior Karnataka, Coastal Karnataka, Vidarbha and Lakshadweep ; **at many places** over Tamilnadu Puducherry & Karaikal, Odisha, Jharkhand, Nagaland, Manipur, Mizoram & Tripura, Coastal Andhra Pradesh & Yanam, South Interior Karnataka, Rayalaseema, East Madhya Pradesh, Chhattisgarh, West Madhya Pradesh, Madhya Maharashtra , Konkan & Goa and Gujarat Region; **Dry** over rest of the country.

❖ **Significant rainfall recorded(in cm)** (from 0830 hours IST of yesterday to 0530 hours IST of today): **Kerala & Mahe:** Thiruvananthapuram 12, Thiruvananthapuram Airport(Chakka) 11, Alappuzh Akarumadi, Ernakulam Naryamanglam 10 each; Sengulam Dam , Pathanamthitta 8 each; Punalur (dist Kollam) 6 Each, Kozhikode (calicut) (dist Kozhikode) 3; **East Madhya Pradesh:** REWA_KVK 11, Rewa (dist Rewa), Mandla (dist Mandla) 4 Each, Sidhi (dist Sidhi) 2; **Andaman & Nicobar Islands:** South Andaman Shaheed_Dweep 8, Port Blair (dist South Andaman), Nm Andaman Mayabunder 6 Each, Car Nicobar (vecx) (dist Nicobar) 2; **Tamilnadu Puducherry & Karaikal:** Kanyakumari Thirupathisaram_Amfu, Kanyakumari Neyyoor 7 each; Tiruchirappalli Manaparai, Cuddalore Vridha_Chalam 6 Each, Pondicherry (dist Puducherry), Kanyakumari (dist Kanyakumari) 4 Each, Tiruchirappalli AP (dist Tiruchirappalli), Madurai AP (dist Madurai) 3 Each; **Vidarbha:** Chandrapur (chanda) (dist Chandrapur) 3; **Telangana:** Hanamkonda (dist Hanamakonda) 3, Nizamabad (dist Nizamabad), Ramgundam (dist Peddapalli), 3 Each, Adilabad (dist Adilabad) 2; **East Uttar Pradesh:** Churk (dist Sonbhadra) 2; **Odisha:** Bhubaneswar-cutack (dist Khordha), Chandbali (dist Bhadrak) 2 each.

❖ **Heavy Rainfall observed** (from 0830 hours IST of yesterday to 0530 hours IST of today): **Very Heavy rain** at a few places over Kerala & Mahe; **Heavy rain** at isolated places over Tamilnadu Puducherry, Andaman & Nicobar Islands, East Madhya Pradesh.

❖ **Minimum Temperature Departures (as on 25-09-2025): markedly above normal(> 5.1°C)** at most places over Himachal Pradesh; at isolated places over Assam & Meghalaya, Sub Himalayan West Bengal & Sikkim, Bihar, East Uttar Pradesh, West Uttar Pradesh, Jammu-Kashmir Ladakh-Gilgit-Baltistan-Muzaffarabad and West Madhya Pradesh. **appreciably above normal(3.1°C to 5.0°C)** at many places over East Madhya Pradesh; at few places over Uttarakhand; at isolated places over Gangetic West Bengal, Odisha and Haryana-Chandigarh-Delhi. **above normal(1.6°C to 3.0°C)** at most places over Punjab; at few places over Andaman & Nicobar Islands, Arunachal Pradesh, East Rajasthan, Gujarat Region and Vidarbha; at isolated places over Nagaland, Manipur, Mizoram & Tripura, Jharkhand, West Rajasthan, Saurashtra & Kutch, Konkan & Goa, Chhattisgarh, Tamil Nadu, Puducherry & Karaikal and South Interior Karnataka. **near normal(-1.5°C to 1.5°C)** at many places over Marathwada and Telangana; at most places over Madhya Maharashtra, Coastal Andhra Pradesh & Yanam, Rayalaseema, Coastal Karnataka, North Interior Karnataka, Kerala & Mahe and Lakshadweep. **The lowest minimum temperature** of 17.0°C was reported at JEUR (MAHARASHTRA) over the Plains of India.

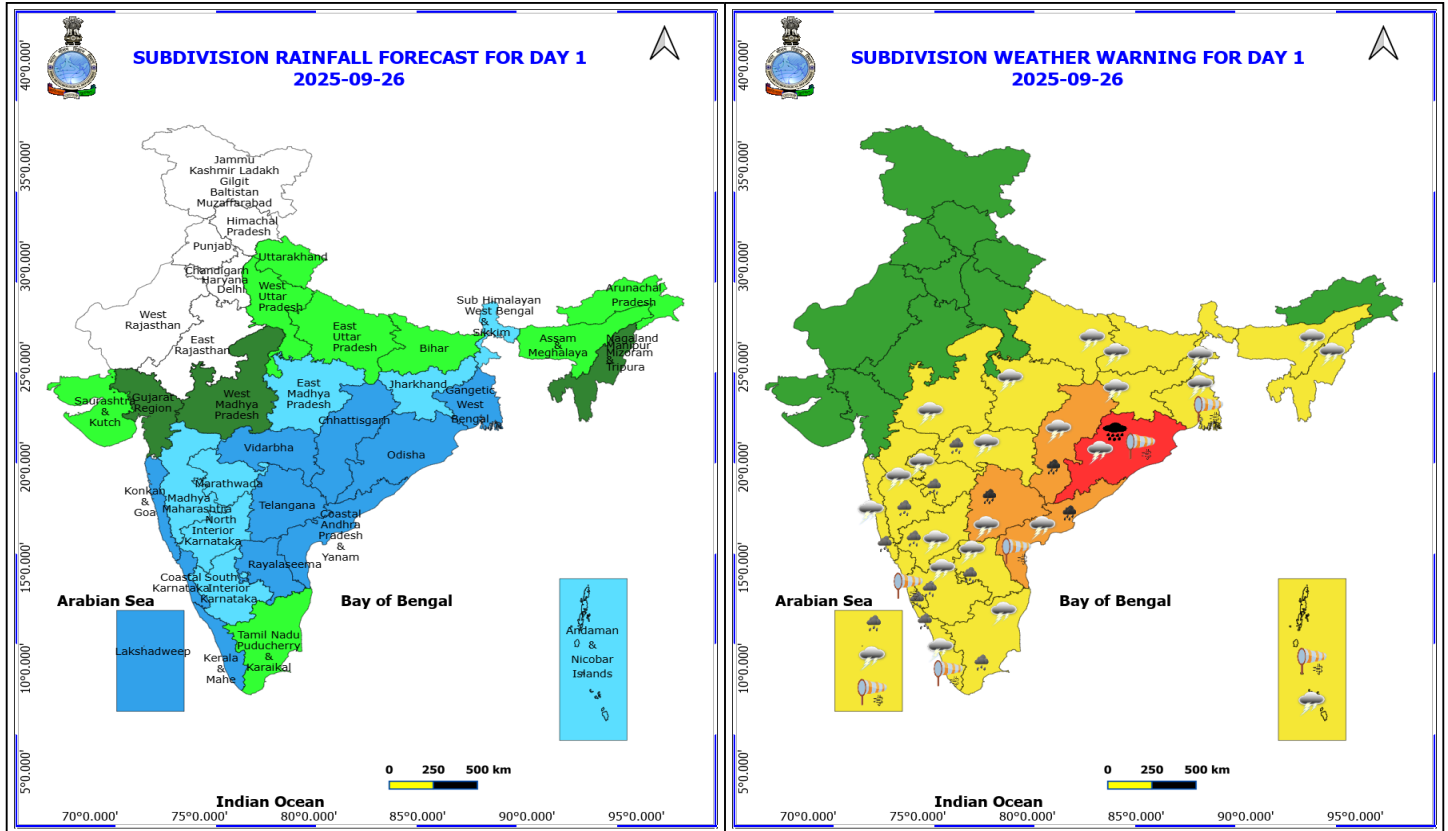
❖ **Maximum Temperature Departures (as on 25-09-2025): markedly above normal(> 5.1°C)** at few places over Arunachal Pradesh, Assam & Meghalaya, Sub Himalayan West Bengal & Sikkim and Himachal Pradesh; at isolated places over Uttarakhand. **appreciably above normal(3.1°C to 5.0°C)** at few places over Jammu-Kashmir Ladakh-Gilgit-Baltistan-Muzaffarabad; at isolated places over Gangetic West Bengal, Bihar, East Uttar Pradesh, West Uttar Pradesh, Haryana-Chandigarh-Delhi, Punjab and Chhattisgarh. **above normal(1.6°C to 3.0°C)** at many places over Jharkhand; at few places over Nagaland, Manipur, Mizoram & Tripura; at isolated places over Odisha, Saurashtra & Kutch, Madhya Maharashtra, Tamil Nadu, Puducherry & Karaikal and Kerala & Mahe. **near normal(-1.5°C to 1.5°C)** at many places over Gujarat Region, Coastal Andhra Pradesh & Yanam, Rayalaseema, Coastal Karnataka, North Interior Karnataka and Lakshadweep; at most places over West Rajasthan, East Rajasthan and Konkan & Goa; at few places over Andaman & Nicobar Islands, West Madhya Pradesh, East Madhya Pradesh, Marathwada and South Interior Karnataka; at isolated places over Vidarbha. **The highest maximum temperature** of 38.4°C was reported at SRIGANGANAGAR (RAJASTHAN).

Meteorological Analysis (Based on 0530 hours IST)

- The **line of withdrawal of southwest monsoon** continues to pass through 37.5°N/ 73°E, Rampur Bushahr, Haridwar, Moradabad, Etawah, Banswara, Vallabh Vidyanagar, Veraval, 20.5°N/69°E.
- Conditions are favourable for further withdrawal of southwest monsoon from remaining parts of Gujarat, Rajasthan, Himachal Pradesh and Jammu & Kashmir; some more parts of Madhya Pradesh, Uttar Pradesh and Uttarakhand during next 2 days.
- The **low pressure** area over central parts of north and adjoining central Bay of Bengal moved westwards and lay as a **well marked low pressure area** over northwest and adjoining central Bay of Bengal at 0530 hrs IST of today, the 26th September. The associated cyclonic circulation extended upto 7.6 km above mean sea level tilting southwards with height. Moving further westwards, it is very likely to concentrate into a depression over northwest and adjoining westcentral Bay of Bengal off South Odisha- North Andhra Pradesh coasts during next 24 hours. It is very likely to cross South Odisha-North Andhra Pradesh coasts around 27th September morning.
- The other **upper air cyclonic circulation** over northwest Bay of Bengal and adjoining areas of west central Bay of Bengal, south Odisha-north Andhra Pradesh coasts has merged with the above system.
- The **trough** now runs from the cyclonic circulation associated with the **well marked low pressure area** over northwest and adjoining central Bay of Bengal to south Maharashtra Coast across Telangana, North Interior Karnataka between 3.1 & 5.8 km above mean sea level.
- The **upper air cyclonic circulation** over Kutch & neighbourhood at 3.1 km above mean sea level persists.

Weather Outlook for subsequent 3 days

- Fairly widespread to widespread rainfall likely over Islands, Northeast, East, West and Central India.
- Isolated to scattered rainfall likely over the South penninsular India and Isolated rainfall over the Western Himalayan region.



26 September (Day 1)

- ❖ **Heavy to Very Heavy Rainfall with isolated Extremely Heavy Rainfall** very likely at isolated places over Odisha.
- ❖ **Heavy to Very Heavy Rainfall** very likely at isolated places over Chhattisgarh, Coastal Andhra Pradesh and Telangana.
- ❖ **Heavy Rainfall** very likely at isolated places over Karnataka, Kerala & Mahe, Konkan & Goa, Lakshadweep, Maharashtra, Rayalaseema and Tamil Nadu Puducherry & Karaikal.
- ❖ **Thunderstorm accompanied with lightning & gusty winds(40-50kmph)** very likely at isolated places over Andaman & Nicobar Islands and Coastal Andhra Pradesh.
- ❖ **Thunderstorm accompanied with lightning & gusty winds(30-40kmph)** very likely at isolated places over Bihar, Jharkhand, Kerala & Mahe, Lakshadweep, Odisha, Rayalaseema, Telangana, Vidarbha and West Bengal & Sikkim.
- ❖ **Thunderstorm accompanied with Lightning** very likely at isolated places over Assam & Meghalaya, Chhattisgarh, East Uttar Pradesh, Interior Karnataka, Konkan & Goa, Madhya Maharashtra, Madhya Pradesh, Marathwada, Nagaland, Manipur, Mizoram and Tripura and Tamil Nadu Puducherry & Karaikal.
- ❖ **Strong Surface Winds** very likely at isolated places over Andaman & Nicobar Islands, Coastal Andhra Pradesh, Coastal Karnataka, Gangetic West Bengal, Kerala & Mahe, Lakshadweep and Odisha.

Squally wind with speed reaching 45 kmph to 55 kmph gusting to 65 kmph is likely to prevail over some parts of southwest & westcentral Arabian Sea, along and off Somalia coast.

***Red color warning does not mean "Red Alert" Red color warning means "Take Action"**

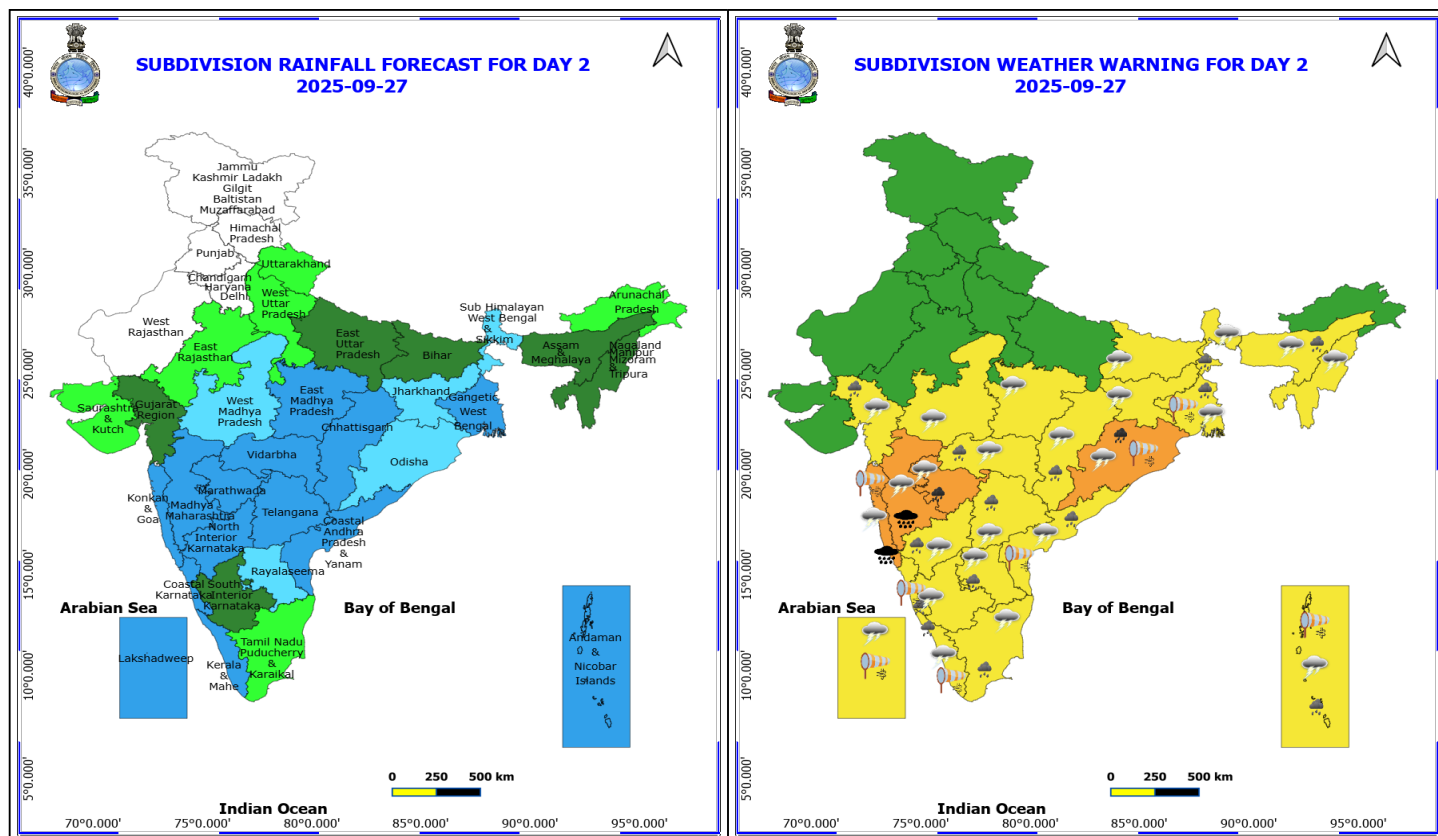
Forecast and warning for any day is valid from 0830 hours IST of day till 0830 hours IST of next day

For more details kindly visit <https://mausam.imd.gov.in> or contact 011-2434-4599

(Service to the nation since 1875)

Squally weather with wind speed reaching 40 - 50 kmph gusting to 60 kmph likely to prevail along and off south Konkan and Goa, Karnataka, Kerala coasts & adjoining Lakshadweep area, over Gulf of Mannar & adjoining Comorin area, over most parts of south Bay, central Bay and north Bay of Bengal, along and off Sri Lanka coast, Tamil Nadu, Andhra Pradesh, Odisha, West Bengal, Bangladesh, Myanmar coasts.

Squally weather with wind speed reaching 45 - 55 kmph gusting to 65 kmph likely to prevail over Andaman Sea, many parts of central, south Bay of Bengal, some parts of north Bay of Bengal.



27 September (Day 2)

- ❖ **Heavy to Very Heavy Rainfall with isolated Extremely Heavy Rainfall** very likely at isolated places over Konkan & Goa and Madhya Maharashtra.
- ❖ **Heavy to Very Heavy Rainfall** very likely at isolated places over Marathwada and Odisha.
- ❖ **Heavy Rainfall** very likely at isolated places over Andaman & Nicobar Islands, Andhra Pradesh, Assam & Meghalaya, Chhattisgarh, Coastal Karnataka, Gujarat Region, Kerala & Mahe, North Interior Karnataka, Tamil Nadu Puducherry & Karaikal, Telangana, Vidarbha and West Bengal & Sikkim.
- ❖ **Thunderstorm accompanied with lightning & gusty winds(40-50kmph)** very likely at isolated places over Andaman & Nicobar Islands, Coastal Andhra Pradesh and Gangetic West Bengal.
- ❖ **Thunderstorm accompanied with lightning & gusty winds(30-40kmph)** very likely at isolated places over Bihar, Jharkhand, Kerala & Mahe, Lakshadweep, Odisha, Rayalaseema, Sub Himalayan West Bengal & Sikkim and Telangana.
- ❖ **Thunderstorm accompanied with Lightning** very likely at isolated places over Assam & Meghalaya, Chhattisgarh, Gujarat Region, Interior Karnataka, Konkan & Goa, Madhya Pradesh, Maharashtra, Nagaland, Manipur, Mizoram and Tripura and Tamil Nadu Puducherry & Karaikal.
- ❖ **Strong Surface Winds** very likely at isolated places over Andaman & Nicobar Islands, Coastal Andhra Pradesh, Coastal Karnataka, Gangetic West Bengal, Kerala & Mahe, Konkan & Goa, Lakshadweep and Odisha.

Squally wind with speed reaching 45 kmph to 55 kmph gusting to 65 kmph is likely to prevail over some parts of southwest & westcentral Arabian Sea, along and off Somalia coast.

***Red color warning does not mean "Red Alert" Red color warning means "Take Action"**

Forecast and warning for any day is valid from 0830 hours IST of day till 0830 hours IST of next day

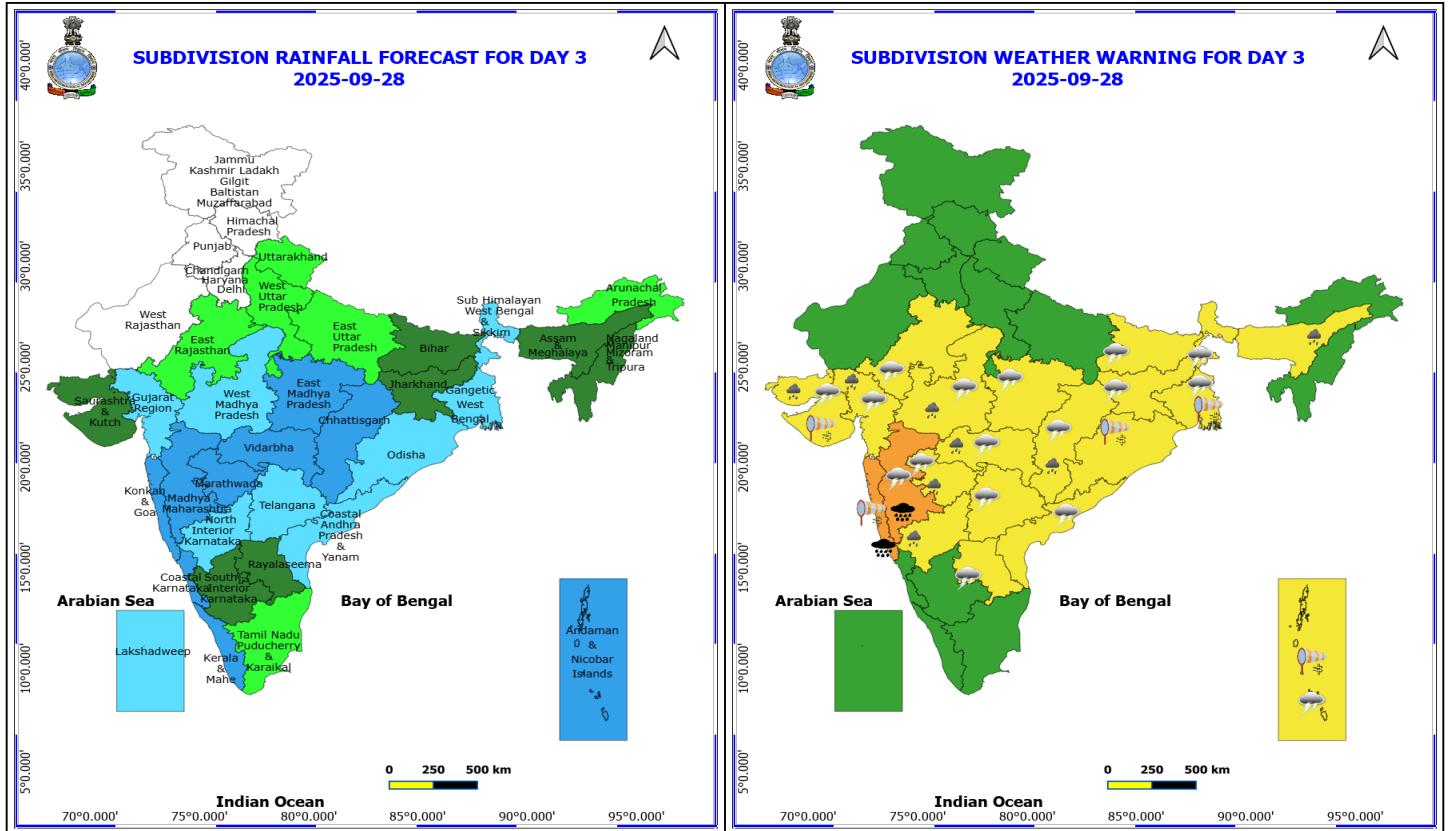
For more details kindly visit <https://mausam.imd.gov.in> or contact 011-2434-4599

(Service to the nation since 1875)



Squally weather with wind speed reaching 40 - 50 kmph gusting to 60 kmph likely to prevail along and off South Gujarat, Konkan and Goa, Karnataka, Kerala coasts & adjoining Lakshadweep area, over Gulf of Mannar & adjoining Comorin area, over most parts of south Bay, central Bay and north Bay of Bengal, along and off Sri Lanka coast, Tamil Nadu, Andhra Pradesh, Odisha, West Bengal, Bangladesh, Myanmar coasts.

Squally weather with wind speed reaching 45 - 55 kmph gusting to 65 kmph likely to prevail over Andaman Sea, many parts of central, south Bay of Bengal, some parts of north Bay of Bengal.



28 September (Day 3)

- ❖ **Heavy to Very Heavy Rainfall with isolated Extremely Heavy Rainfall** very likely at isolated places over Konkan & Goa and Madhya Maharashtra.
- ❖ **Heavy Rainfall** very likely at isolated places over Assam & Meghalaya, Chhattisgarh, Gujarat State, Marathwada, North Interior Karnataka, Vidarbha and West Madhya Pradesh.
- ❖ **Thunderstorm accompanied with lightning & gusty winds(40-50kmph)** very likely at isolated places over Andaman & Nicobar Islands, Coastal Andhra Pradesh and Gangetic West Bengal.
- ❖ **Thunderstorm accompanied with lightning & gusty winds(30-40kmph)** very likely at isolated places over Bihar, Jharkhand, Rayalaseema, Sub Himalayan West Bengal & Sikkim and Telangana.
- ❖ **Thunderstorm accompanied with Lightning** very likely at isolated places over Chhattisgarh, East Rajasthan, Gujarat State, Madhya Pradesh and Maharashtra.
- ❖ **Strong Surface Winds** very likely at isolated places over Andaman & Nicobar Islands, Gangetic West Bengal, Konkan & Goa, Odisha and Saurashtra & Kutch.

Squally wind with speed reaching 45 kmph to 55 kmph gusting to 65 kmph is likely to prevail over some parts of southwest & westcentral Arabian Sea, along and off Somalia coast.

Squally weather with wind speed reaching 40 - 50 kmph gusting to 60 kmph likely to prevail along and off South Gujarat, Konkan coast, over Gulf of Mannar & adjoining Comorin area, over most parts of south Bay, central Bay and north Bay of Bengal, along and off Sri Lanka coast, Tamil Nadu, Andhra Pradesh, Odisha, West Bengal, Bangladesh, Myanmar coasts.

***Red color warning does not mean "Red Alert" Red color warning means "Take Action"**

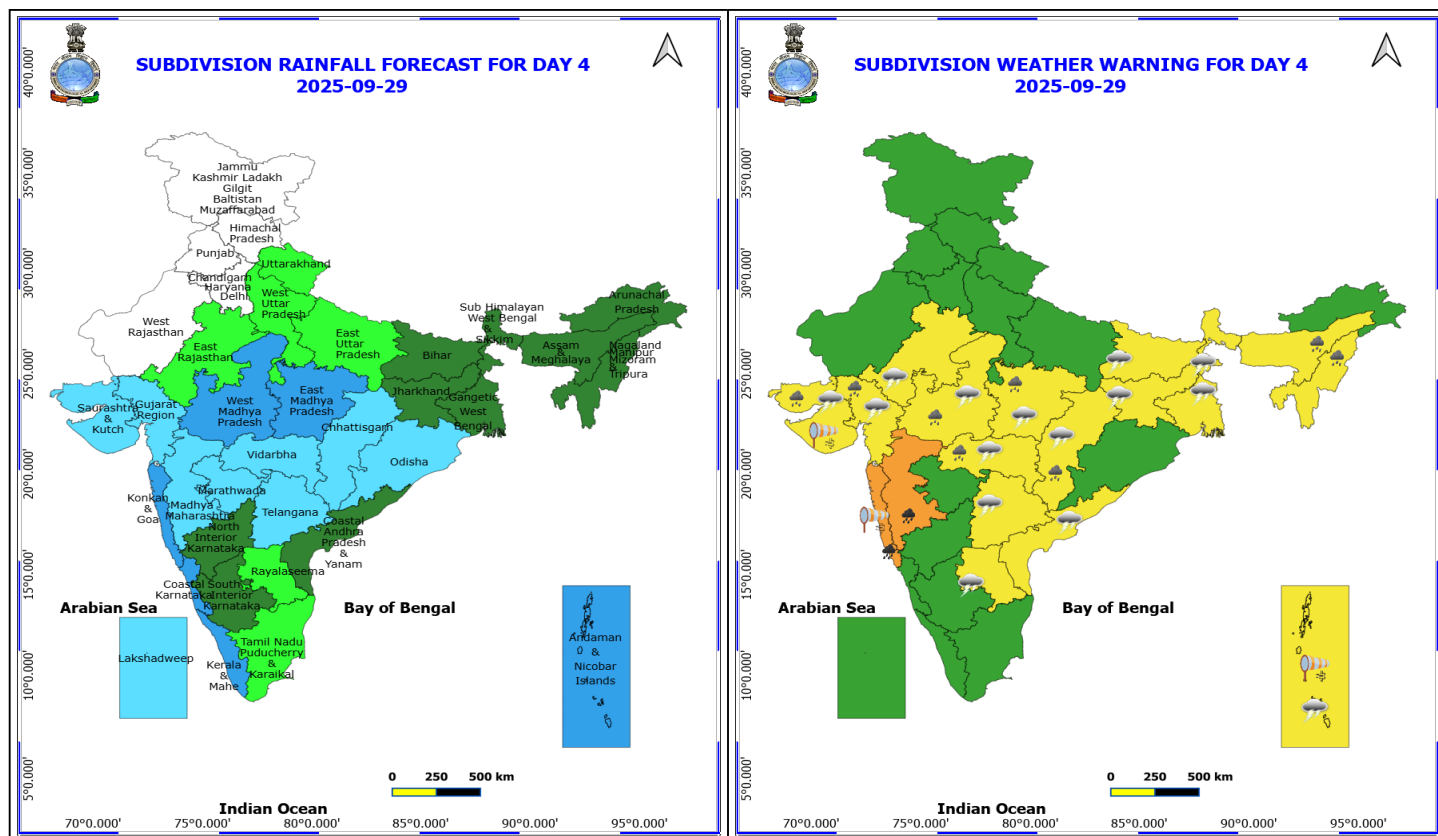
Forecast and warning for any day is valid from 0830 hours IST of day till 0830 hours IST of next day

For more details kindly visit <https://mausam.imd.gov.in> or contact 011-2434-4599

(Service to the nation since 1875)



Squally weather with wind speed reaching 45 - 55 kmph gusting to 65 kmph likely to prevail over Andaman Sea, many parts of central, south Bay of Bengal, some parts of north Bay of Bengal.



29 September (Day 4)

- ❖ **Heavy to Very Heavy Rainfall** likely at isolated places over Konkan & Goa and Madhya Maharashtra.
- ❖ **Heavy Rainfall** likely at isolated places over Assam & Meghalaya, Chhattisgarh, Gujarat State, Madhya Pradesh, Nagaland, Manipur, Mizoram and Tripura and Vidarbha.
- ❖ **Thunderstorm accompanied with lightning & gusty winds(40-50kmph)** likely at isolated places over Andaman & Nicobar Islands and Coastal Andhra Pradesh.
- ❖ **Thunderstorm accompanied with lightning & gusty winds(30-40kmph)** likely at isolated places over Bihar, Jharkhand, Rayalaseema, Telangana and West Bengal & Sikkim.
- ❖ **Thunderstorm accompanied with Lightning** likely at isolated places over Chhattisgarh, East Rajasthan, Gujarat State, Madhya Pradesh and Vidarbha.
- ❖ **Strong Surface Winds** likely at isolated places over Andaman & Nicobar Islands, Konkan & Goa and Saurashtra & Kutch.

Squally wind with speed reaching 45 kmph to 55 kmph gusting to 65 kmph is likely to prevail over some parts of southwest & westcentral Arabian Sea, along and off Somalia coast.

Squally weather with wind speed reaching 40 - 50 kmph gusting to 60 kmph likely to prevail along and off South Gujarat, Konkan coast, over Gulf of Mannar & adjoining Comorin area, over most parts of south Bay, central Bay of Bengal, along and off Sri Lanka coast, north Andhra Pradesh coasts and Andaman Sea.

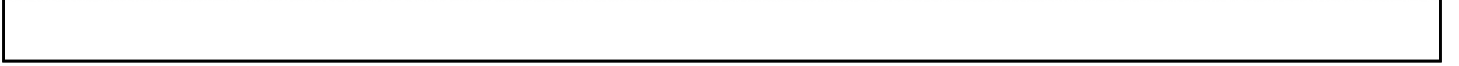
Squally weather with wind speed reaching 45 - 55 kmph gusting to 65 kmph likely to prevail over many parts of southwest and westcentral Bay of Bengal.

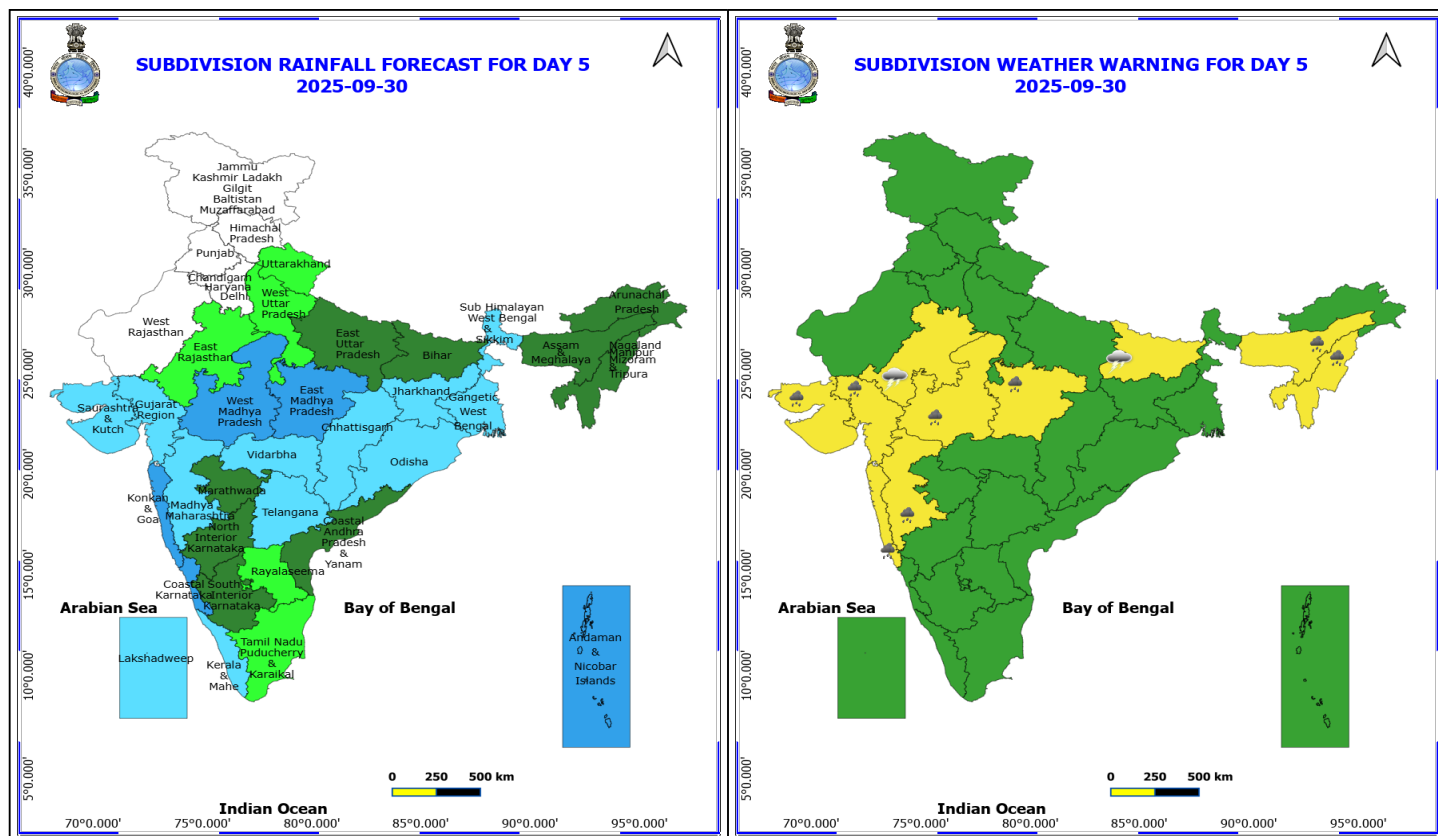
***Red color warning does not mean "Red Alert" Red color warning means "Take Action"**

Forecast and warning for any day is valid from 0830 hours IST of day till 0830 hours IST of next day

For more details kindly visit <https://mausam.imd.gov.in> or contact 011-2434-4599

(Service to the nation since 1875)





30 September (Day 5)

- ❖ **Heavy Rainfall** likely at isolated places over Assam & Meghalaya, Gujarat State, Konkan & Goa, Madhya Maharashtra, Madhya Pradesh and Nagaland, Manipur, Mizoram and Tripura.
- ❖ **Thunderstorm accompanied with lightning & gusty winds(30-40kmph)** likely at isolated places over Bihar.
- ❖ **Thunderstorm accompanied with Lightning** likely at isolated places over East Rajasthan.

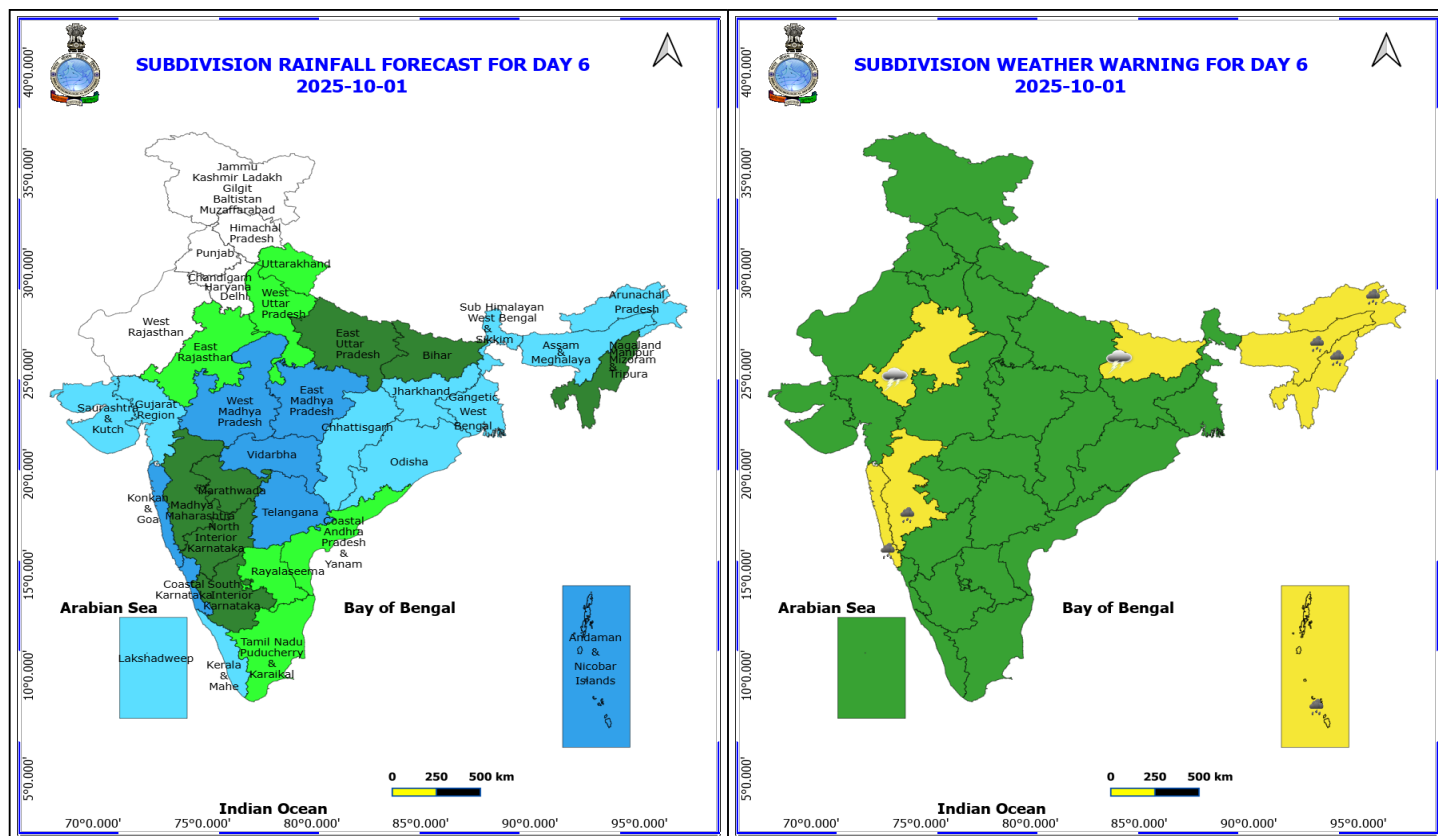
No Fishermen Warning

***Red color warning does not mean "Red Alert" Red color warning means "Take Action"**

Forecast and warning for any day is valid from 0830 hours IST of day till 0830 hours IST of next day

For more details kindly visit <https://mausam.imd.gov.in> or contact 011-2434-4599

(Service to the nation since 1875)



1 October (Day 6)

- ❖ **Heavy Rainfall** likely at isolated places over Andaman & Nicobar Islands, Arunachal Pradesh, Assam & Meghalaya, Konkan & Goa, Madhya Maharashtra and Nagaland, Manipur, Mizoram and Tripura.
- ❖ **Thunderstorm accompanied with lightning & gusty winds(30-40kmph)** likely at isolated places over Bihar.
- ❖ **Thunderstorm accompanied with Lightning** likely at isolated places over East Rajasthan.

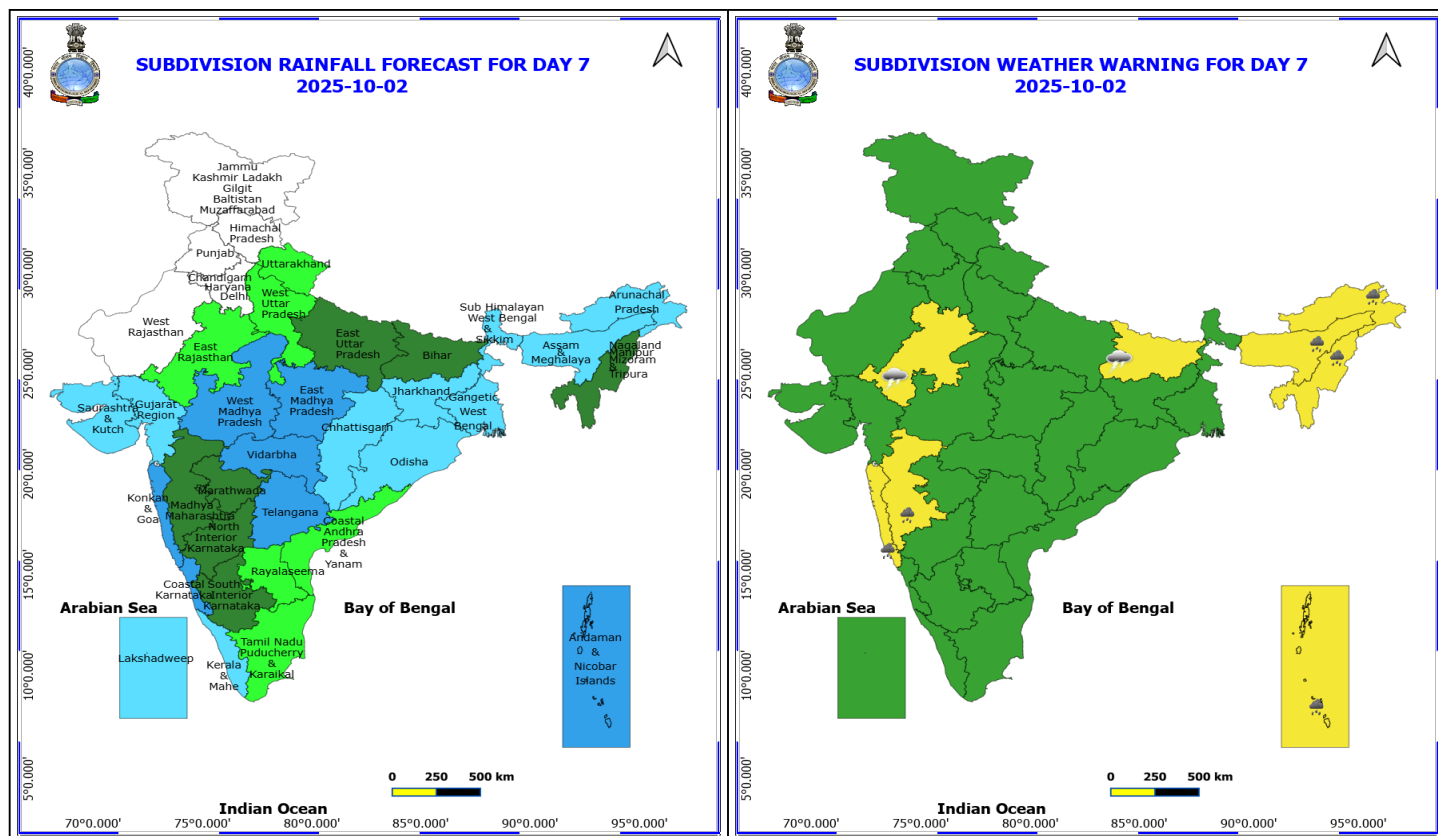
No Fishermen Warning

***Red color warning does not mean "Red Alert" Red color warning means "Take Action"**

Forecast and warning for any day is valid from 0830 hours IST of day till 0830 hours IST of next day

For more details kindly visit <https://mausam.imd.gov.in> or contact 011-2434-4599

(Service to the nation since 1875)



2 October (Day 7)

- ❖ **Heavy Rainfall** likely at isolated places over Assam & Meghalaya, Gujarat State, Konkan & Goa, Madhya Maharashtra, Madhya Pradesh and Nagaland, Manipur, Mizoram and Tripura.
- ❖ **Thunderstorm accompanied with lightning & gusty winds(30-40kmph)** likely at isolated places over Bihar.
- ❖ **Thunderstorm accompanied with Lightning** likely at isolated places over East Rajasthan.

No Fishermen Warning

***Red color warning does not mean "Red Alert" Red color warning means "Take Action"**

Forecast and warning for any day is valid from 0830 hours IST of day till 0830 hours IST of next day

For more details kindly visit <https://mausam.imd.gov.in> or contact 011-2434-4599

(Service to the nation since 1875)



Table-1

7 Days Rainfall Forecast

S.No.	Subdivision	26- Sep	27- Sep	28- Sep	29- Sep	30- Sep	1- Oct	2- Oct
		Day 1	Day 2	Day 3	Day 4	Day 5	Day 6	Day 7
1	ANDAMAN & NICOBAR ISLANDS	FWS	WS	WS	WS	WS	WS	WS
2	ARUNACHAL PRADESH	ISOL	ISOL	ISOL	SCT	SCT	FWS	FWS
3	ASSAM & MEHGHALAYA	ISOL	SCT	SCT	SCT	SCT	FWS	FWS
4	N. M. M. & T.	SCT	SCT	SCT	SCT	SCT	SCT	SCT
5	S.H. WEST BENGAL & SIKKIM	FWS	FWS	FWS	SCT	FWS	FWS	FWS
6	GANGETIC WEST BENGAL	WS	WS	FWS	SCT	FWS	FWS	FWS
7	ODISHA	WS	FWS	FWS	FWS	FWS	FWS	FWS
8	JHARKHAND	FWS	FWS	SCT	SCT	FWS	FWS	FWS
9	BIHAR	ISOL	SCT	SCT	SCT	SCT	SCT	SCT
10	EAST UTTAR PRADESH	ISOL	SCT	ISOL	ISOL	SCT	SCT	SCT
11	WEST UTTAR PRADESH	ISOL	ISOL	ISOL	ISOL	ISOL	ISOL	ISOL
12	UTTARAKHAND	ISOL	ISOL	ISOL	ISOL	ISOL	ISOL	ISOL
13	HARYANA, CHD & DELHI	DRY	DRY	DRY	DRY	DRY	DRY	DRY
14	PUNJAB	DRY	DRY	DRY	DRY	DRY	DRY	DRY
15	HIMACHAL PRADESH	DRY	DRY	DRY	DRY	DRY	DRY	DRY
16	JAMMU AND KASHMIR AND LADAKH	DRY	DRY	DRY	DRY	DRY	DRY	DRY
17	WEST RAJASTHAN	DRY	DRY	DRY	DRY	DRY	DRY	DRY
18	EAST RAJASTHAN	DRY	ISOL	ISOL	ISOL	ISOL	ISOL	ISOL
19	WEST MADHYA PRADESH	SCT	FWS	FWS	WS	WS	WS	WS
20	EAST MADHYA PRADESH	FWS	WS	WS	WS	WS	WS	WS
21	GUJRAT REGION	SCT	SCT	FWS	FWS	FWS	FWS	FWS
22	SAURASHTRA & KUTCH	ISOL	ISOL	SCT	FWS	FWS	FWS	FWS
23	KONKAN & GOA	WS	WS	WS	WS	WS	WS	WS
24	MADHYA MAHARASHTRA	FWS	WS	WS	FWS	FWS	SCT	SCT
25	MARATHWADA	FWS	WS	WS	FWS	SCT	SCT	SCT
26	VIDARBHA	WS	WS	WS	FWS	FWS	WS	WS
27	CHATTISGARH	WS	WS	WS	FWS	FWS	FWS	FWS
28	COASTAL ANDHRA PRADESH	WS	WS	FWS	SCT	SCT	ISOL	ISOL
29	TELANGANA	WS	WS	FWS	FWS	FWS	WS	WS
30	RAYALASEEMA	WS	FWS	SCT	ISOL	ISOL	ISOL	ISOL
31	TAMILNADU & PUDUCHERRY	ISOL	ISOL	ISOL	ISOL	ISOL	ISOL	ISOL
32	COSTAL KARNATAKA	WS	WS	WS	WS	WS	WS	WS
33	NORTH INTERIOR KARNATAKA	FWS	WS	FWS	SCT	SCT	SCT	SCT
34	SOUTH INTERIOR KARNATAKA	FWS	SCT	SCT	SCT	SCT	SCT	SCT
35	KERALA	WS	WS	WS	WS	FWS	FWS	FWS
36	LAKSHDWEEP	WS	WS	FWS	FWS	FWS	FWS	FWS

Legend	Category	%Stations
WS	Widespread/Most Places	76-100
FWS	Fairly Widespread/Many Places	51-75
SCT	Scattered/ A Few Places	26-50
ISOL	Isolated Places	1-25
DRY	No Rain	0

*Red color warning does not mean "Red Alert" Red color warning means "Take Action"

Forecast and warning for any day is valid from 0830 hours IST of day till 0830 hours IST of next day

For more details kindly visit <https://mausam.imd.gov.in> or contact 011-2434-4599

(Service to the nation since 1875)

Fig. 1: Maximum Temperatures Dated 2025-09-26

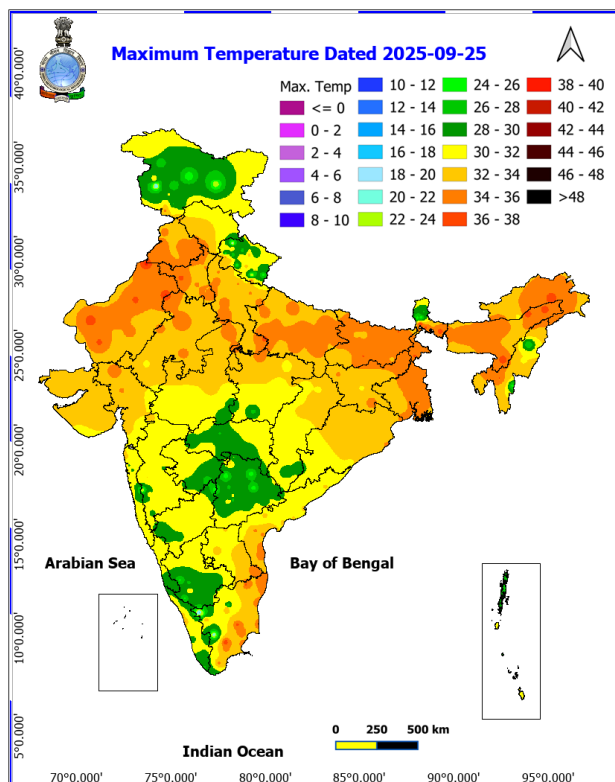


Fig. 2: Departure of Maximum Temp. Dated 2025-09-26

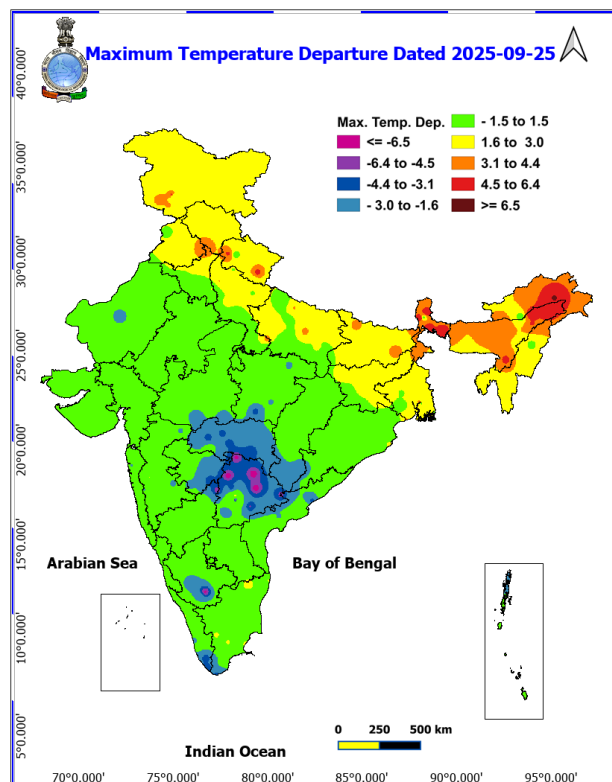


Fig. 3: Minimum Temperatures Dated 2025-09-26

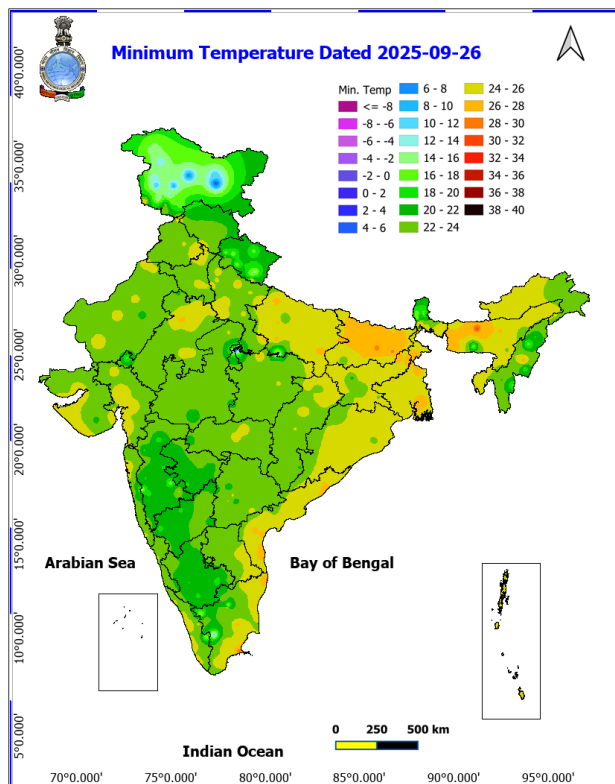
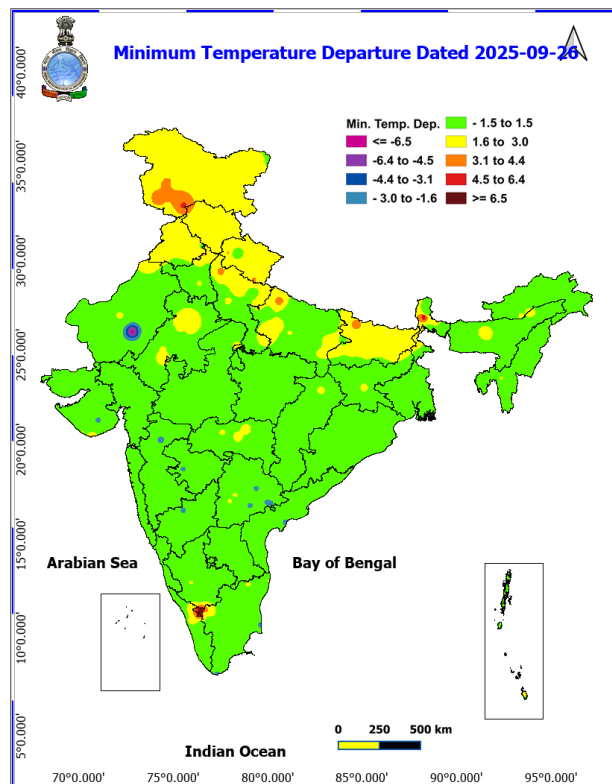
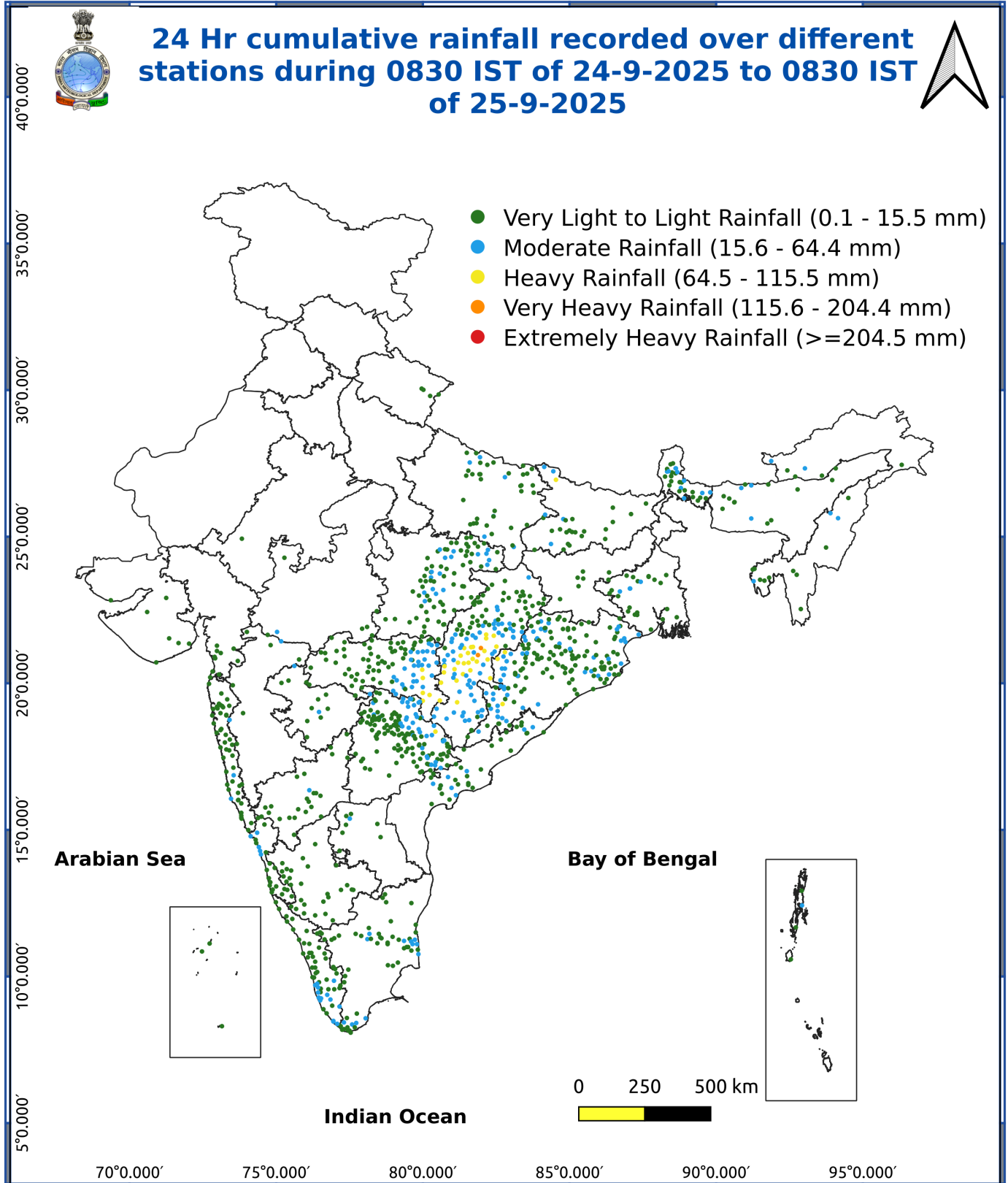


Fig. 4: Departure of Minimum Temp. Dated 2025-09-26





*Red color warning does not mean "Red Alert" Red color warning means "Take Action"

Forecast and warning for any day is valid from 0830 hours IST of day till 0830 hours IST of next day

For more details kindly visit <https://mausam.imd.gov.in> or contact 011-2434-4599

(Service to the nation since 1875)

Impact & Action Suggested due to

Extremely heavy rainfall (≥ 21 cm) also likely at isolated places over Konkan & Goa and ghat areas of Madhya Maharashtra on 27th & 28th September.

Very heavy rainfall (12-20 cm) at isolated places over Telangana, Coastal Andhra Pradesh & Yanam on 26th; Odisha on 26th & 27th; Madhya Maharashtra, Konkan & Goa on 29th; Marathawada on 27th September.

Impact Expected

Water logging/ flooding in many parts of low lying area and river banks

Localized and short term disruption to municipal services (water, electricity, etc.)

Major disruption of traffic flow. Major roads/local trains affected.

Possibility of danger to very old buildings and unmaintained structures, falling of trees etc

Closure of roads crossing low water bridges.

Action Suggested

Traffic may be regulated effectively

People in the affected area may restrict their movement

Agromet advisories for various parts of the country

In **Odisha**, make provision for draining out excess rain water from fields of rice, maize, vegetables and fruit orchards in **West Central Table land Zone**; rice, maize, green gram, groundnut, finger millet, vegetables and fruit orchards (banana, papaya etc.) in **North Central Plateau Zone**; rice, maize, finger millet and vegetables in **North Eastern Plateau Zone**; rice, sugarcane, vegetables and fruit orchards (guava, papaya etc.) in **North Eastern Coastal Plain Zone**; rice, groundnut and vegetables in **North Eastern Ghat Zone** and rice, maize, finger millet, vegetables, ginger and turmeric in **Eastern Ghat High Land Zone** and **South Eastern Ghat Zone**.

In **Jharkhand**, make proper arrangements for drainage of excess water in fields of maize, finger millet, pulses and vegetables in **Western Plateau Zone**.

In **Chhattisgarh**, ensure adequate drainage facilities in vegetable fields and banana and papaya plantations in **Bastar Plateau Zone** and rice, maize, pigeon pea, black gram and groundnut fields in **Chattisgarh Plain Zone**.

In **Maharashtra**, keep the harvested produce of green gram and black gram at safer places and make provision to drain out excess rain water from fields of cotton, pigeon pea, soybean, maize, vegetables and fruit in **Madhya Maharashtra**. In **Marathwada**, undertake harvesting of sapota and custard apple and store in safe place. Provide adequate drainage facilities in fields of soybean, cotton, pigeon pea, vegetables and fruit orchards and keep the harvested produce of black gram at safer places. Make arrangements to drain out excess water from vegetable fields and fruit orchards in **Konkan** and pigeon pea, cotton, soybean, sorghum, maize and vegetable fields in **Vidarbha**.

In **Andhra Pradesh**, make arrangements to drain out excess water from fields of rice, maize, pigeon pea and

***Red color warning does not mean "Red Alert" Red color warning means "Take Action"**

Forecast and warning for any day is valid from 0830 hours IST of day till 0830 hours IST of next day

For more details kindly visit <https://mausam.imd.gov.in> or contact 011-2434-4599

(Service to the nation since 1875)

cotton in **Krishna Godavari Zone**; rice, maize, cotton, pigeon pea, green gram, groundnut, sugarcane and vegetables in **North Coastal Zone** and rice, sugarcane, maize, finger millet, groundnut, ginger, turmeric, vegetables and fruit orchards in **High Altitude Tribal Zone**.

In **Telangana**, make provision to drain out excess rain water from fields of rice, maize, cotton, soybean, pigeon pea and turmeric in **Northern Telangana Zone** and rice, cotton, soybean, maize and pigeon pea in **Southern Telangana Zone**.

In **Mizoram**, undertake harvesting of matured vegetables (okra, tomato etc.) and matured cobs of maize and keep the harvested produce in safe place.

In **Nagaland**, continue harvesting of sesame, *Jhum* rice and Naga King chilli and keep harvested produce at safer places.

Livestock / Fishery

Keep the animals inside the shed during heavy rainfall and provide them balanced feed.

Store feed and fodder in a safe place to prevent spoilage.

Construct an outlet with proper netting around the ponds to drain out excess water, thereby preventing fish from escaping in case of overflow.

Agromet advisories for likely impact of Thunderstorm / Gusty Winds / Squally Winds

Provide mechanical support to horticultural crops and staking or support to vegetables and young fruit plants / fruit-bearing plants to avoid lodging due to strong winds.

LEGENDS

- 1 अंडमान और निकोबार द्वीप समुह
- 2 अरुणाचल प्रदेश
- 3 असम और मेघालय
- 4 नागालैंड मनीपुर मीजोरम और त्रिपुरा
- 5 उप हिमालय पश्चिम बंगाल एवं सिक्किम
- 6 पश्चिम बंगाल
- 7 ओडिसा
- 8 झारखंड
- 9 बिहार
- 10 पूर्वी उत्तर प्रदेश
- 11 पश्चिम उत्तर प्रदेश
- 12 उत्तराखंड
- 13 हरियाणा चंडीगढ़ एवं दिल्ली
- 14 पंजाब
- 15 हिमाचल प्रदेश
- 16 जम्मू एवं कश्मीर एवं लद्दाख
- 17 पश्चिम राजस्थान
- 18 पूर्वी राजस्थान
- 19 पश्चिम मध्य प्रदेश
- 20 पूर्वी मध्य प्रदेश
- 21 गुजरात क्षेत्र
- 22 सौराष्ट्र एवं कच्छ
- 23 कोंकण एवं गोवा
- 24 मध्य महाराष्ट्र
- 25 मराठावाड़ा
- 26 विदर्भ
- 27 छत्तीसगढ़
- 28 तटीय आंध्र प्रदेश एवं यनम
- 29 तेलंगाना
- 30 रायलसीमा
- 31 तमिलनाडु, पुदुचेरी एवं कराईकल
- 32 तटिय कर्नाटक
- 33 आंतरिक उत्तरी कर्नाटक
- 34 आंतरिक दक्षिणी कर्नाटक
- 35 केरल एवं माहे
- 36 लक्षद्वीप



1. Andaman & Nicobar Islands
2. Arunachal Pradesh
3. Assam & Meghalaya
4. Nagaland, Manipur, Mizoram & Tripura
5. Sub-Himalayan West Bengal & Sikkim
6. Gangetic West Bengal
7. Orissa
8. Jharkhand
9. Bihar
10. East Uttar Pradesh
11. West Uttar Pradesh
12. Uttarakhand
13. Haryana, Chd & Delhi
14. Punjab
15. Himachal Pradesh
16. Jammu & Kashmir and Ladakh
17. West Rajasthan
18. East Rajasthan
19. West Madhya Pradesh
20. East Madhya Pradesh
21. Gujarat
22. Saurashtra
23. Konkan & Goa
24. Madhya Maharashtra
25. Marathwada
26. Vidharbha
27. Chhattisgarh
28. Coastal Andhra Pradesh & Yanam
29. Telangana
30. Rayalaseema
31. Tamilnadu, Puducherry & Karaikal
32. Coastal Karnataka
33. North Interior Karnataka
34. South Interior Karnataka
35. Kerala & Mahe
36. Lakshadweep

SPATIAL DISTRIBUTION (% of Stations reporting)


% Stations	Category	% Stations	Category
76-100	Widespread (WS/Most Places)	26-50	Scattered (SCT/ A Few Places)
51-75	Fairly Widespread (FWS/ Many Places)	1-25	Isolated (ISOL)


Subdivision Colour


- NO WARNING
- WATCH (BE UPDATED)
- ALERT (BE PREPARED TO TAKE ACTION)
- WARNING (TAKE ACTION)

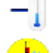
Probabilistic Forecast


Terms	Probability of Occurrence (%)
Unlikely	< 25
Likely	25 - 50
Very Likely	50 - 75
Most Likely	> 75


-  Heavy Rain


 Thunderstorm & Lightning


 Strong surface winds


 Cold Wave


 Hot & Humid


 Very Heavy Rain


 Hailstorm


 Heat Wave


 Cold Day


 Extremely Heavy Rain


 Dust Storm


 Hot Day

 Ground Frost

 Heavy Snow

 Dust Raising Winds

 Warm Night

 Fog

*Red color warning does not mean "Red Alert" Red color warning means "Take Action"

Forecast and warning for any day is valid from 0830 hours IST of day till 0830 hours IST of next day

For more details kindly visit <https://mausam.imd.gov.in> or contact 011-2434-4599

(Service to the nation since 1875)

LEGENDS

WARNING

WARNING (TAKE ACTION)
ALERT (BE PREPARED)
WATCH (BE UPDATED)
NO WARNING (NO ACTION)

Probabilistic Forecast

Terms	Probability of Occurrence (%)
Unlikely	< 25
Likely	25 - 50
Very Likely	50 - 75
Most Likely	> 75



Heavy: 64.5 to 115.5 mm/cm *
Very Heavy: 115.6 to 204.4 mm/cm *
Extremely Heavy: > 204.4 mm/cm *



When maximum temperature of a station reaches $\geq 40^{\circ}\text{C}$ for plains and $\geq 30^{\circ}\text{C}$ for hilly regions
(a) Based on Departure from normal

Heat Wave: Maximum Temperature Departure from normal 4.5°C to 6.4°C .
Severe Heat Wave: Maximum Temperature Departure from normal $\geq 6.5^{\circ}\text{C}$

(b). Based on Actual maximum temperature

Heat Wave: When actual maximum temperature $\geq 45^{\circ}\text{C}$.
Severe Heat Wave: When actual maximum temperature $\geq 47^{\circ}\text{C}$

(c). Criteria for heat wave for coastal stations

When maximum temperature departure is $> 4.5^{\circ}\text{C}$ from normal. Heat Wave may be described provided maximum temperature $\geq 37^{\circ}\text{C}$



When maximum temperature remains 40°C

Warm Night: When minimum temperature departure 4.5°C to 6.4°C .
Severe Warm Night: When minimum temperature departure $> 6.4^{\circ}\text{C}$.



When minimum temperature of a station $\leq 10^{\circ}\text{C}$ for plains and $\leq 0^{\circ}\text{C}$ for hilly regions.

(a). Based on departure

Cold Wave: Minimum Temperature Departure from normal -4.5°C to -6.4°C .
Severe Cold Wave: Minimum Temperature Departure from normal $\leq -6.5^{\circ}\text{C}$

(b) Based on actual Minimum Temperature (for Plains only)

Cold Wave: When Minimum Temperature is $\leq 4.0^{\circ}\text{C}$
Severe Cold Wave: When Minimum Temperature is $\leq 2.0^{\circ}\text{C}$

(c) For Coastal Stations

When Minimum Temperature departure is $\leq -4.5^{\circ}\text{C}$ & actual Minimum Temperature is $\leq 15^{\circ}\text{C}$



When minimum temperature of a station $\leq 10^{\circ}\text{C}$ for plains and $\leq 0^{\circ}\text{C}$ for hilly regions
Based on departure

Cold Day: Maximum Temperature Departure from normal -4.5°C to -6.4°C .
Severe Cold Day: Maximum Temperature Departure from normal $\leq -6.5^{\circ}\text{C}$



Phenomenon of small droplets suspended in air and the horizontal visibility $< 1\text{km}$

Moderate Fog: When the visibility between 500-200 metres
Dense Fog: when the visibility between 50-200 metres
Very Dense Fog: when the visibility < 50 metres



Sudden electrical discharges manifested by a flash of light (Lightning) and a sharp rumbling sound (thunder)



An ensemble of particles of dust or sand energetically lifted to great heights by a strong and turbulent wind.



Ice deposits on ground

Air temperature $\leq 4^{\circ}\text{C}$ (over Plains)



A strong wind that rises suddenly, lasts for at least 1 minute.

Moderate: Wind speed 52-61 kmph
Severe: Wind speed 62-87 kmph
Very Severe: Wind speed > 87 kmph



Effect of various waves in the sea over specific area

Rough to very rough: Wind speed 41-62 kmph (22-33 knots) & Wave height 2.5-6 metre
High to very high: Wind speed 63-117 kmph (34-63 knots) & Wave height 6-14 metre
Phenomenal: Wind speed > 117 kmph (> 63 knots) & Wave height > 14 metre



Cyclonic Storm: Wind speed 62-87 kmph (34-47 knots)

Severe Cyclonic Storm: Wind speed 88-117 kmph (48-63 knots)

Very Severe Cyclonic Storm: Wind speed 118-165 kmph (64-89 knots)

Extremely Severe Cyclonic Storm: Wind speed 166-220 kmph (90-119 knots)

Super Cyclone Storm: Wind speed > 220 kmph (> 119 knots)

*Red color warning does not mean "Red Alert" Red color warning means "Take Action"

Forecast and warning for any day is valid from 0830 hours IST of day till 0830 hours IST of next day

For more details kindly visit <https://mausam.imd.gov.in> or contact 011-2434-4599

(Service to the nation since 1875)