

2025-09-23

Time of Issue: 08:30:00 hours IST
(Morning)

ALL INDIA WEATHER SUMMARY AND FORECAST BULLETIN

Significant Weather Features

Weather Forecast and Warnings:

East & Central India:

Light to moderate rain/thunderstorm at most/many places with isolated heavy rainfall likely over Odisha, Chhattisgarh during 23rd-27th; Bihar on 25th & 26th; Jharkhand during 23rd-25th; Gangetic West Bengal on 23rd; Vidarbha during 24th-27th September **with very heavy rainfall over Odisha during 23rd - 26th; Gangetic West Bengal on 23rd; Chhattisgarh on 24th & 25th September.**

Thunderstorm & gusty winds (speed reaching 30-40 kmph) very likely over East India during next 5 days.

West India:

Light to moderate rain/thunderstorm at many/some places with isolated heavy rainfall likely over Madhya Maharashtra during next 7 days except on 24th; Konkan & Goa during 25th -29th; Marathwada on 23rd, 26th & 27th with **very heavy rainfall over Konkan & Goa during 26th-29th September.**

Northeast India:

Light/moderate rain/thunderstorm at many/some places with isolated heavy rainfall likely over Assam & Meghalaya during 23rd-25th and Nagaland, Manipur, Mizoram & Tripura on 23rd, 24th, 28th & 29th September.

South Peninsular India:

Light to moderate rain/thunderstorm at many/some places with isolated heavy rainfall likely over Coastal Andhra Pradesh & Yanam, Telangana, North Interior Karnataka during 23rd-29th; Tamil Nadu, Kerala & Mahe on 26th & 27th; Rayalaseema, Coastal & South Interior Karnataka during 26th-29th; September.

Strong surface winds (speed reaching 30-40 kmph) very likely over Coastal Andhra Pradesh & Yanam and Rayalaseema during next 5 days.

Fishermen warnings:

Squally wind speed reaching 40-50 kmph gusting to 60 kmph with Rough to Very Rough Sea condition is likely to prevail over north and adjoining central Bay of Bengal and along & off Andhra Pradesh -Odisha-West Bengal coasts during 25th - 27th September.

Fishermen are advised not to venture into north and adjoining central Bay of Bengal and along & off Andhra Pradesh -Odisha-West Bengal coasts during 25th - 27th September.

Fishermen out at sea are advised to return to coast by 24th September.



Main Weather Observations:

❖ **Significant rainfall recorded(in cm)** (from 0830 hours IST of yesterday to 0530 hours IST of today): **Gangetic West Bengal:** Kolkata-alipur (dist Kolkata) 24, Kolkata (dum Dum) AP (dist North 24 Parganas) 6, Diamond Harbour (dist South 24 Parganas) 4, Haldia (dist Purba Medinipur) 2; **Nagaland, Manipur, Mizoram & Tripura:** Dimapur (dist Dimapur) 5; **Andaman & Nicobar Islands:** Port Blair (dist South Andaman) 4; **Telangana:** Hyderabad (dist Hyderabad) 4; **Chhattisgarh:** Jagdalpur (dist Bastar) 4; **Madhya Maharashtra:** Nashik (dist Nashik) 4; **Konkan & Goa:** Mumbai (colaba) (dist) 3, Mumbai (santacruz) AP (dist) 2; **Bihar:** Purnea (dist Purnia) 3; **Tamilnadu, Puducherry & Karaikal:** Pondicherry (dist Puducherry) 2; **Coastal Andhra Pradesh & Yanam:** Amaravati-ap-obs2 (dist Guntur) 2; **West Madhya Pradesh:** Indore (dist Indore) 2; **Jharkhand:** Ranchi AP (dist Ranchi) 2; **Assam & Meghalaya:** Silchar (dist Cachar), Barapani/shillong (dist East Khasi Hills) 2 Each.

❖ **Heavy Rainfall observed** (from 0830 hours IST of yesterday to 0530 hours IST of today): **Extremely heavy rain** at isolated places over Gangetic West Bengal.

❖ **Minimum Temperature Departures (as on 22-09-2025):** **markedly above normal(> 5.1°C)** at few places over Assam & Meghalaya; at isolated places over Bihar, East Uttar Pradesh, West Uttar Pradesh, Himachal Pradesh, West Rajasthan, East Rajasthan and West Madhya Pradesh. **appreciably above normal(3.1°C to 5.0°C)** at many places over East Madhya Pradesh; at isolated places over Sub Himalayan West Bengal & Sikkim, Jammu-KashmirLadakh-Gilgit-Baltistan-Muzaffarabad, Gujarat Region, Saurashtra & Kutch and Madhya Maharashtra. **above normal(1.6°C to 3.0°C)** at many places over Uttarakhand; at most places over Punjab; at few places over Andaman & Nicobar Islands, Vidarbha and Coastal Karnataka; at isolated places over Jharkhand, Haryana-Chandigarh-Delhi, Chhattisgarh, Coastal Andhra Pradesh & Yanam, Tamil Nadu, Puducherry & Karaikal and South Interior Karnataka. **near normal(-1.5°C to 1.5°C)** at many places over Kerala & Mahe; at most places over Arunachal Pradesh, Nagaland, Manipur, Mizoram & Tripura, Gangetic West Bengal, Odisha, Konkan & Goa, Marathwada, Telangana, Rayalaseema, North Interior Karnataka and Lakshadweep. **The lowest minimum temperature** of 18.5°C is reported at HALFLONG (ASSAM), and JEUR (MAHARASHTRA) over the Plains of India.

❖ **Maximum Temperature Departures (as on 22-09-2025):** **markedly above normal(> 5.1°C)** at few places over Uttarakhand; at isolated places over Assam & Meghalaya, Odisha and Jammu-KashmirLadakh-Gilgit-Baltistan-Muzaffarabad. **appreciably above normal(3.1°C to 5.0°C)** at few places over Arunachal Pradesh and Sub Himalayan West Bengal & Sikkim; at isolated places over Bihar, West Madhya Pradesh, East Madhya Pradesh, Vidarbha, Chhattisgarh and Tamil Nadu, Puducherry & Karaikal. **above normal(1.6°C to 3.0°C)** at many places over East Uttar Pradesh, West Uttar Pradesh, Punjab and Himachal Pradesh; at few places over Jharkhand, Haryana-Chandigarh-Delhi, West Rajasthan and East Rajasthan; at isolated places over Saurashtra & Kutch, Marathwada, South Interior Karnataka and Kerala & Mahe. **near normal(-1.5°C to 1.5°C)** at many places over Gujarat Region and North Interior Karnataka; at most places over Nagaland, Manipur, Mizoram & Tripura, Coastal Andhra Pradesh & Yanam, Telangana, Coastal Karnataka and Lakshadweep; at few places over Andaman & Nicobar Islands and Gangetic West Bengal; at isolated places over Konkan & Goa, Madhya Maharashtra and Rayalaseema. **The highest maximum temperature** of 39.5°C is reported at SRIGANGANAGAR (RAJASTHAN).

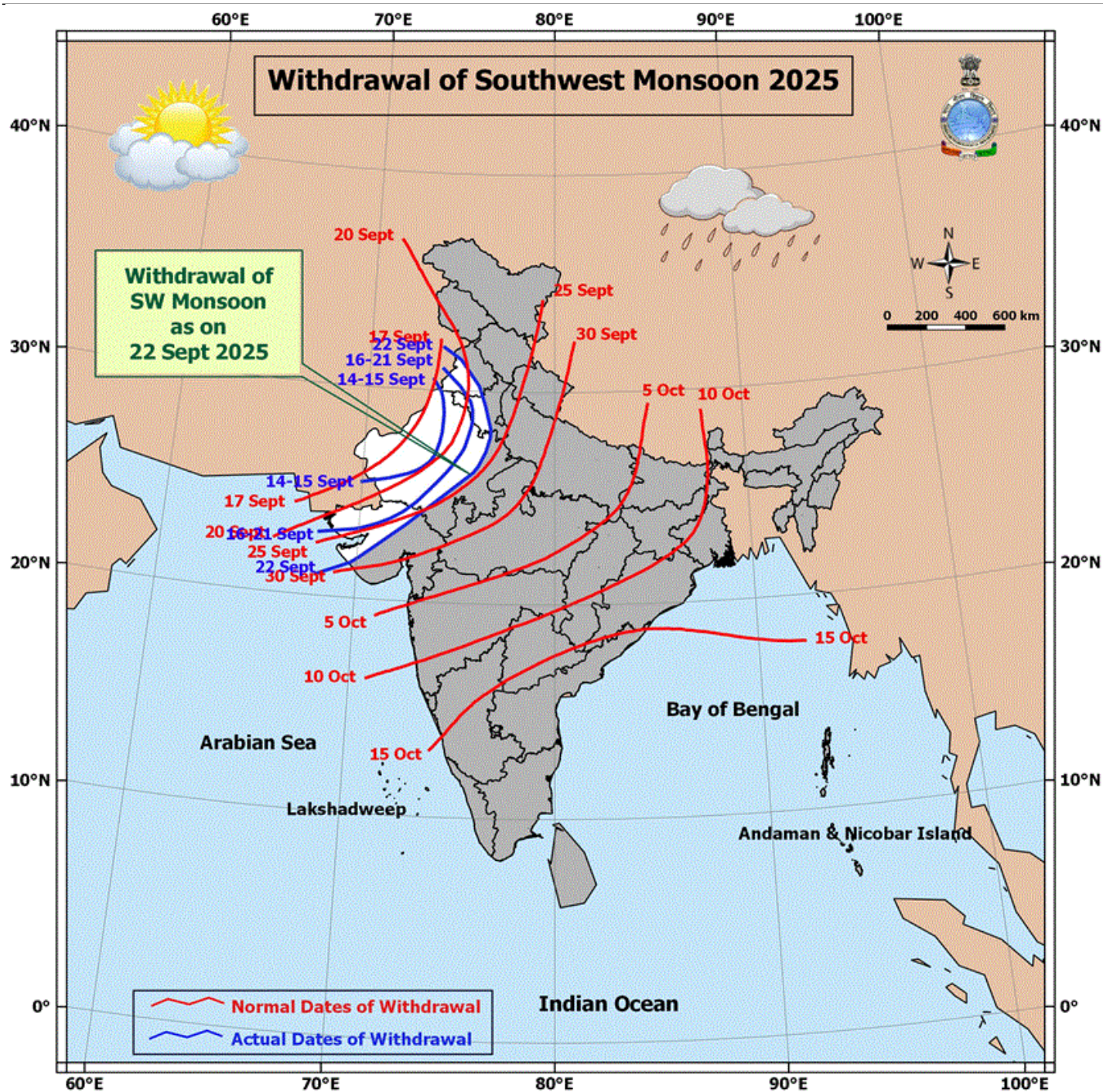


Meteorological Analysis (Based on 0530 hours IST)

- The **line of withdrawal of southwest monsoon** continue to pass through 32°N/ 74°E, Tarn Taran, Sangrur, Jind, Rewari, Tonk, Mahesana, Porbandar, 21°N/68°E.
- Conditions are becoming favourable for further withdrawal of southwest monsoon from some more parts of Gujarat, Rajasthan, Haryana and Punjab; some parts of Uttar Pradesh, Delhi, Himachal Pradesh, Jammu & Kashmir during next 2 days.
- The **low pressure area** over North Bay of Bengal lay over Northwest Bay of Bengal and adjoining coastal areas of West Bengal-north Odisha at 0530 hrs IST of today, the 23rd Sept 2025. The associated cyclonic circulation extending upto 5.8 km above mean sea levels.
- Another fresh **low pressure area** is likely to form over eastcentral and adjoining north Bay of Bengal around 25th September. Moving west-northwestwards, it is very likely to become a **depression** over northwest & adjoining westcentral Bay of Bengal off South Odisha- North Andhra Pradesh coasts around 26th September. It is very likely to cross South Odisha-North Andhra Pradesh coasts around 27th September.
- The **trough** now runs from the **upper air cyclonic circulation** associated with **Low-Pressure** area over Northwest Bay of Bengal and adjoining coastal areas of West Bengal-north Odisha to Telangana across Odisha between 3.1 & 5.8 km above mean sea level.
- The **upper air cyclonic circulation** over central parts of Coastal Andhra Pradesh & neighbourhood at 5.8 km above mean sea level has merged with the above trough.
- The **upper air cyclonic circulation** over northeast Uttar Pradesh & neighbourhood extending upto 1.5 km above mean sea level persists.
- The **upper air cyclonic circulation** over south Tamil Nadu & neighbourhood at 5.8 km above mean sea level has become less marked.

Weather Outlook for subsequent 3 days

- Fairly widespread to widespread rainfall likely over Islands, Northeast, East, West and Central India.
- Isolated to scattered rainfall likely over the South penninsular India and Isolated rainfall over the Western Himalayan region

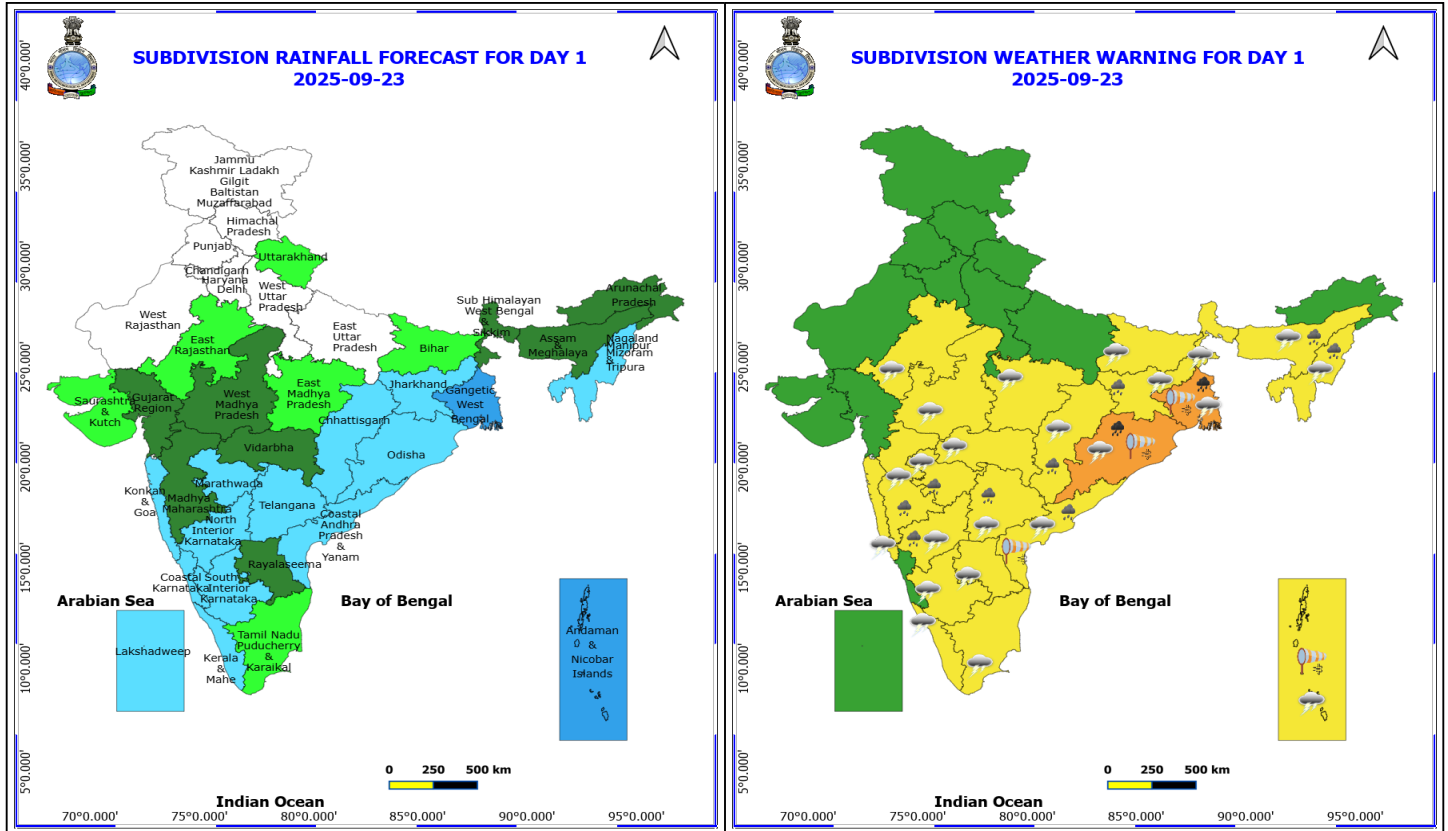


*Red color warning does not mean "Red Alert" Red color warning means "Take Action"

Forecast and warning for any day is valid from 0830 hours IST of day till 0830 hours IST of next day

For more details kindly visit <https://mausam.imd.gov.in> or contact 011-2434-4599

(Service to the nation since 1875)



23 September (Day 1)

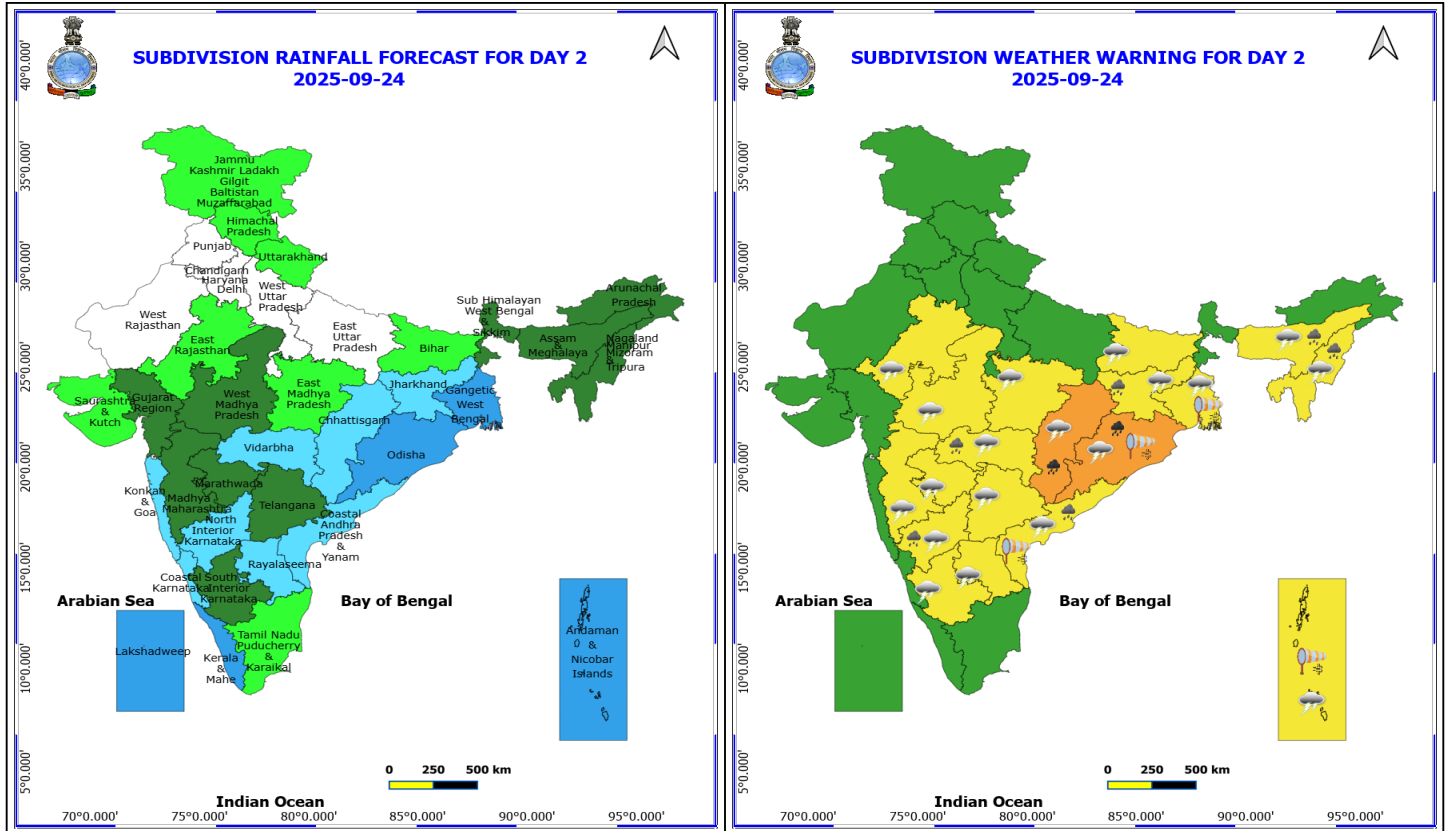
- ❖ **Heavy to Very Heavy Rainfall** very likely at isolated places over Gangetic West Bengal and Odisha.
- ❖ **Heavy Rainfall** very likely at isolated places over Assam & Meghalaya, Chhattisgarh, Coastal Andhra Pradesh, Jharkhand, Madhya Maharashtra, Marathwada, Nagaland, Manipur, Mizoram and Tripura, North Interior Karnataka and Telangana.
- ❖ **Thunderstorm accompanied with lightning & gusty winds(40-50kmph)** very likely at isolated places over Andaman & Nicobar Islands, Coastal Andhra Pradesh, Gangetic West Bengal and Odisha.
- ❖ **Thunderstorm accompanied with lightning & gusty winds(30-40kmph)** very likely at isolated places over Bihar, Jharkhand, North Interior Karnataka, Rayalaseema, Sub Himalayan West Bengal & Sikkim and Telangana.
- ❖ **Thunderstorm accompanied with Lightning** very likely at isolated places over Assam & Meghalaya, Chhattisgarh, East Rajasthan, Kerala & Mahe, Konkan & Goa, Madhya Pradesh, Maharashtra, Nagaland, Manipur, Mizoram and Tripura, South Interior Karnataka and Tamil Nadu Puducherry & Karaikal.
- ❖ **Strong Surface Winds** very likely at isolated places over Andaman & Nicobar Islands, Coastal Andhra Pradesh, Gangetic West Bengal and Odisha.
- ❖ **Squally wind with speed reaching 45 kmph to 55 kmph gusting to 65 kmph** is likely to prevail over some parts of southwest & westcentral Arabian Sea, along and off Somalia coast.
- ❖ **Squally weather with wind speed reaching 40 - 50 kmph gusting to 60 kmph** likely to prevail over Gulf of Mannar & adjoining Comorin area, over most parts of south Bay of Bengal, most parts of central Bay of Bengal, along and off Sri Lanka coast, northeast and adjoining northwest Bay of Bengal, along and off West Bengal, Bangladesh, Myanmar coasts and over Andaman Sea.

***Red color warning does not mean "Red Alert" Red color warning means "Take Action"**

Forecast and warning for any day is valid from 0830 hours IST of day till 0830 hours IST of next day

For more details kindly visit <https://mausam.imd.gov.in> or contact 011-2434-4599

(Service to the nation since 1875)



24 September (Day 2)

- ❖ **Heavy to Very Heavy Rainfall** very likely at isolated places over Chhattisgarh and Odisha.
- ❖ **Heavy Rainfall** very likely at isolated places over Assam & Meghalaya, Coastal Andhra Pradesh, Jharkhand, Nagaland, Manipur, Mizoram and Tripura, North Interior Karnataka and Vidarbha.
- ❖ **Thunderstorm accompanied with lightning & gusty winds(40-50kmph)** very likely at isolated places over Andaman & Nicobar Islands, Coastal Andhra Pradesh, Gangetic West Bengal and Odisha.
- ❖ **Thunderstorm accompanied with lightning & gusty winds(30-40kmph)** very likely at isolated places over Bihar, Jharkhand, North Interior Karnataka, Rayalaseema and Telangana.
- ❖ **Thunderstorm accompanied with Lightning** very likely at isolated places over Assam & Meghalaya, Chhattisgarh, East Rajasthan, Madhya Pradesh, Maharashtra, Nagaland, Manipur, Mizoram and Tripura and South Interior Karnataka.
- ❖ **Strong Surface Winds** very likely at isolated places over Andaman & Nicobar Islands, Coastal Andhra Pradesh, Gangetic West Bengal and Odisha.
- ❖ **Squally wind with speed reaching 45 kmph to 55 kmph gusting to 65 kmph** is likely to prevail over some parts of southwest & westcentral Arabian Sea, along and off Somalia coast.
- ❖ **Squally weather with wind speed reaching 40 - 50 kmph gusting to 60 kmph** likely to prevail over Gulf of Mannar & adjoining Comorin area, over most parts of south Bay of Bengal, central Bay of Bengal, along and off Sri Lanka coast, along and off West Bengal, Bangladesh, Myanmar coasts and over Andaman Sea.
- ❖ **Squally weather with wind speed reaching 45 - 55 kmph gusting to 65 kmph** likely to prevail over Andaman

***Red color warning does not mean "Red Alert" Red color warning means "Take Action"**

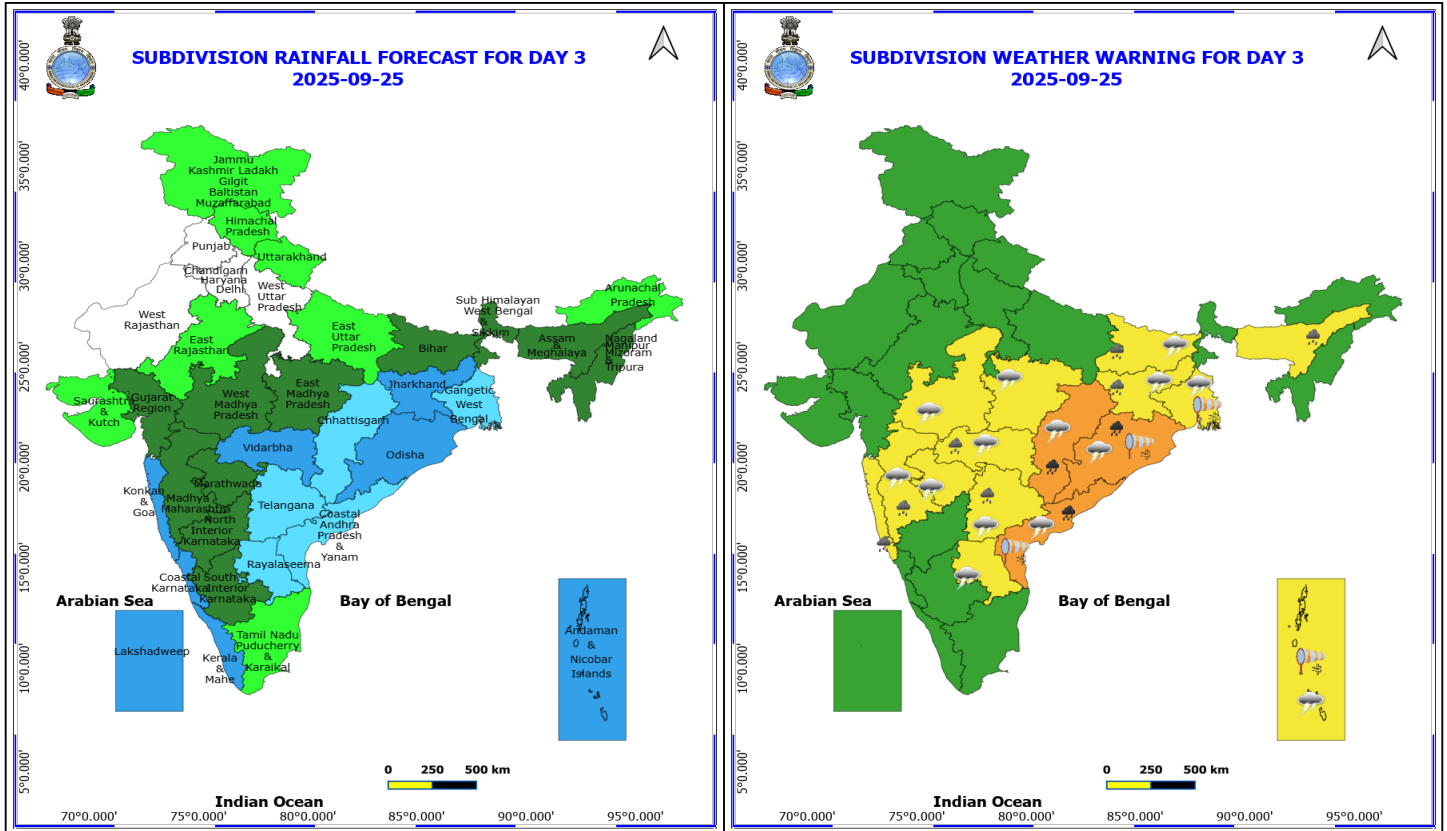
Forecast and warning for any day is valid from 0830 hours IST of day till 0830 hours IST of next day

For more details kindly visit <https://mausam.imd.gov.in> or contact 011-2434-4599

(Service to the nation since 1875)



Sea.



25 September (Day 3)

- ❖ **Heavy to Very Heavy Rainfall** very likely at isolated places over Chhattisgarh, Coastal Andhra Pradesh and Odisha.
- ❖ **Heavy Rainfall** very likely at isolated places over Assam & Meghalaya, Bihar, Jharkhand, Konkan & Goa, Madhya Maharashtra, Telangana and Vidarbha.
- ❖ **Thunderstorm accompanied with lightning & gusty winds(40-50kmph)** very likely at isolated places over Andaman & Nicobar Islands, Coastal Andhra Pradesh, Gangetic West Bengal and Odisha.
- ❖ **Thunderstorm accompanied with lightning & gusty winds(30-40kmph)** very likely at isolated places over Bihar, Jharkhand, Rayalaseema and Telangana.
- ❖ **Thunderstorm accompanied with Lightning** very likely at isolated places over Chhattisgarh, Madhya Pradesh and Maharashtra.
- ❖ **Strong Surface Winds** very likely at isolated places over Andaman & Nicobar Islands, Coastal Andhra Pradesh, Gangetic West Bengal and Odisha.
- ❖ **Squally wind with speed reaching 45 kmph to 55 kmph gusting to 65 kmph** is likely to prevail over some parts of southwest & westcentral Arabian Sea, along and off Somalia coast.
- ❖ **Squally weather with wind speed reaching 40 - 50 kmph gusting to 60 kmph** likely to prevail along and off Karnataka, Kerala coasts & adjoining Lakshadweep area, over Gulf of Mannar & adjoining Comorin area, over most parts of south Bay of Bengal, central Bay of Bengal, along and off Sri Lanka coast, along and off Tamil Nadu, Andhra Pradesh, Odisha, West Bengal, Bangladesh, Myanmar coasts and over Andaman Sea.

*Red color warning does not mean "Red Alert" Red color warning means "Take Action"

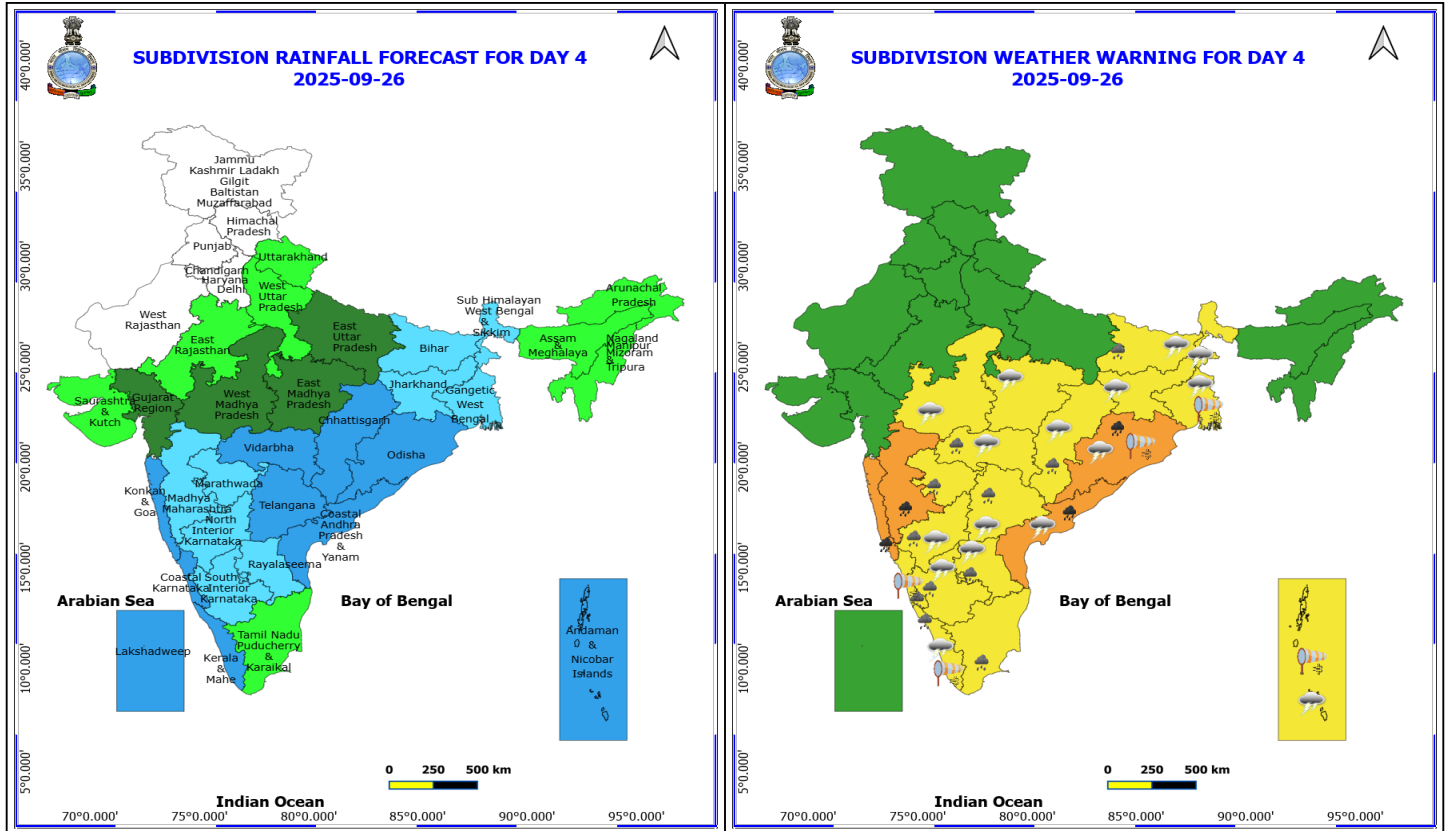
Forecast and warning for any day is valid from 0830 hours IST of day till 0830 hours IST of next day

For more details kindly visit <https://mausam.imd.gov.in> or contact 011-2434-4599

(Service to the nation since 1875)



❖ **Squally weather with wind speed reaching 45 - 55 kmph gusting to 65 kmph** likely to prevail over Andaman Sea, many parts of central, south Bay of Bengal, some parts of north Bay of Bengal.



26 September (Day 4)

- ❖ **Heavy to Very Heavy Rainfall** likely at isolated places over Coastal Andhra Pradesh, Konkan & Goa, Madhya Maharashtra and Odisha.
- ❖ **Heavy Rainfall** likely at isolated places over Bihar, Chhattisgarh, Karnataka, Kerala & Mahe, Marathwada, Rayalaseema, Tamil Nadu Puducherry & Karaikal, Telangana and Vidarbha.
- ❖ **Thunderstorm accompanied with lightning & gusty winds(40-50kmph)** likely at isolated places over Andaman & Nicobar Islands, Coastal Andhra Pradesh, Gangetic West Bengal and Odisha.
- ❖ **Thunderstorm accompanied with lightning & gusty winds(30-40kmph)** likely at isolated places over Bihar, Jharkhand, North Interior Karnataka, Rayalaseema, Sub Himalayan West Bengal & Sikkim and Telangana.
- ❖ **Thunderstorm accompanied with Lightning** likely at isolated places over Chhattisgarh, Kerala & Mahe, Madhya Pradesh, South Interior Karnataka and Vidarbha.
- ❖ **Strong Surface Winds** likely at isolated places over Andaman & Nicobar Islands, Coastal Karnataka, Gangetic West Bengal, Kerala & Mahe and Odisha.
- ❖ **Squally wind with speed reaching 45 kmph to 55 kmph gusting to 65 kmph** is likely to prevail over some parts of southwest & westcentral Arabian Sea, along and off Somalia coast.
- ❖ **Squally weather with wind speed reaching 40 - 50 kmph gusting to 60 kmph** likely to prevail along and off Karnataka, Kerala coasts & adjoining Lakshadweep area, over Gulf of Mannar & adjoining Comorin area, over most parts of south Bay of Bengal, central Bay of Bengal, along and off Sri Lanka coast, along and off Tamil Nadu, Andhra Pradesh, Odisha, West Bengal, Bangladesh, Myanmar coasts and over Andaman Sea.

***Red color warning does not mean "Red Alert" Red color warning means "Take Action"**

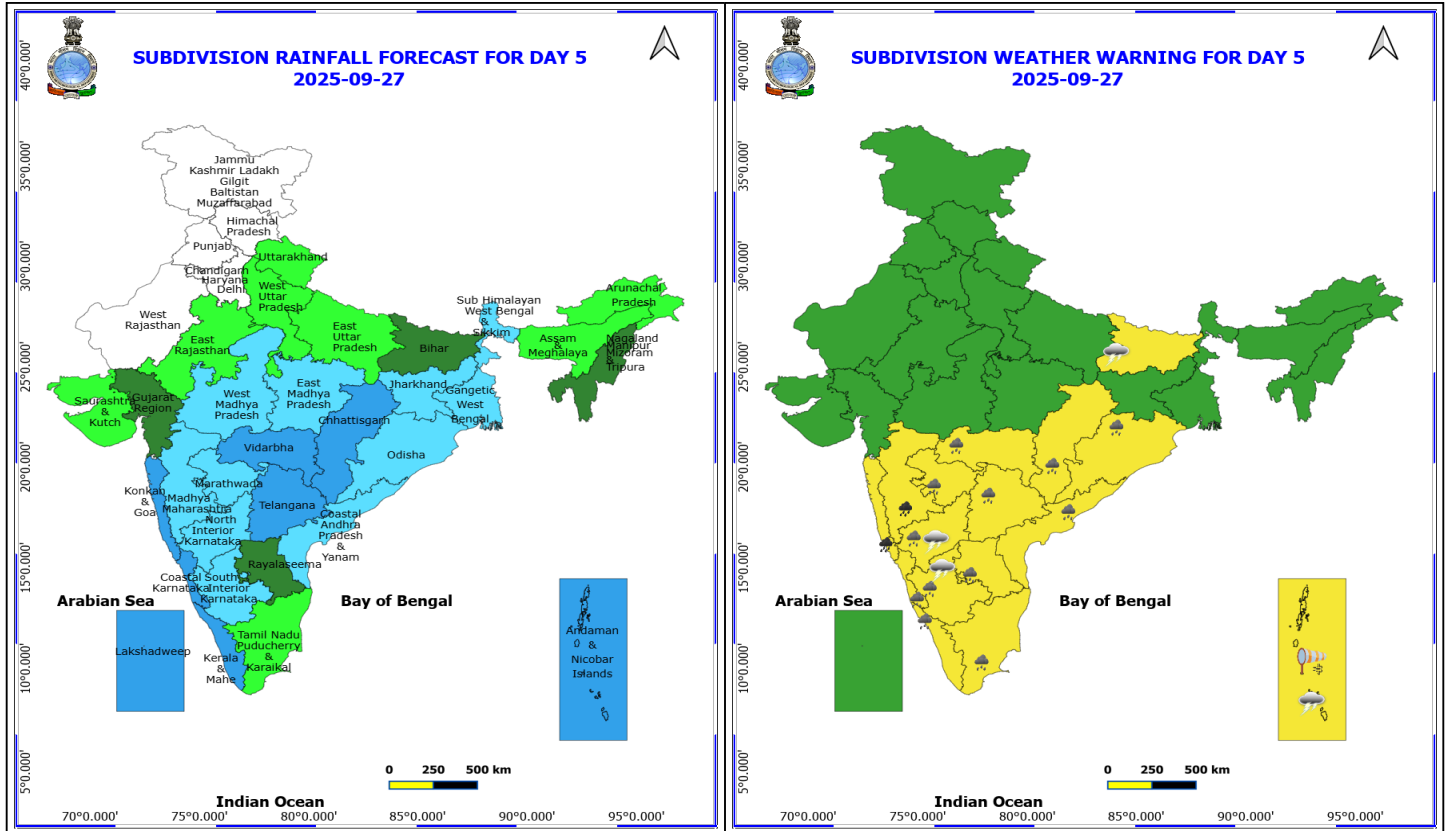
Forecast and warning for any day is valid from 0830 hours IST of day till 0830 hours IST of next day

For more details kindly visit <https://mausam.imd.gov.in> or contact 011-2434-4599

(Service to the nation since 1875)



❖ **Squally weather with wind speed reaching 45 - 55 kmph gusting to 65 kmph** likely to prevail over Andaman Sea, many parts of central, south Bay of Bengal, some parts of north Bay of Bengal.



27 September (Day 5)

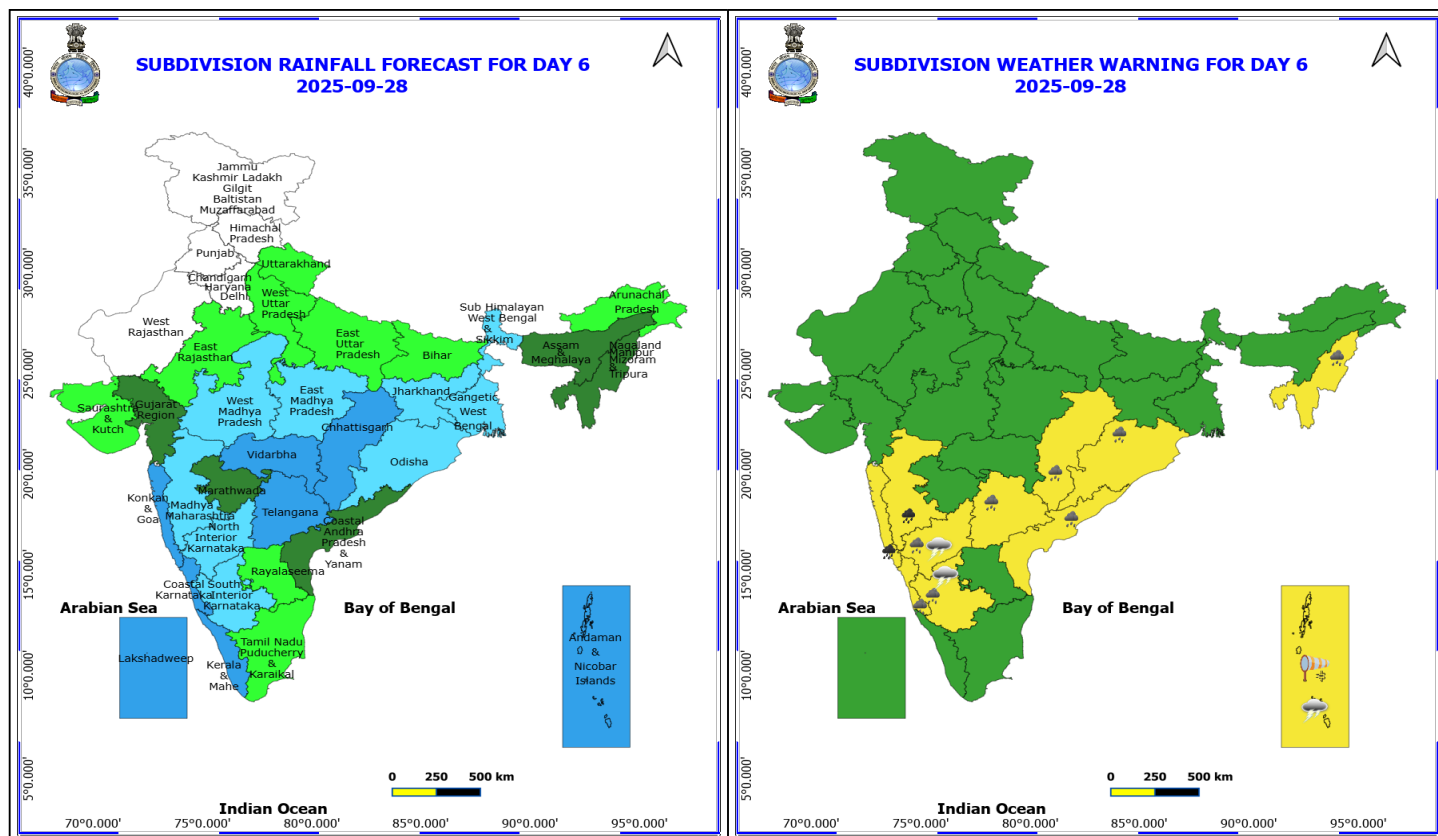
- ❖ **Heavy to Very Heavy Rainfall** likely at isolated places over Konkan & Goa and Madhya Maharashtra.
- ❖ **Heavy Rainfall** likely at isolated places over Andhra Pradesh, Chhattisgarh, Karnataka, Kerala & Mahe, Marathwada, Odisha, Tamil Nadu Puducherry & Karaikal, Telangana and Vidarbha.
- ❖ **Thunderstorm accompanied with lightning & gusty winds(40-50kmph)** likely at isolated places over Andaman & Nicobar Islands.
- ❖ **Thunderstorm accompanied with lightning & gusty winds(30-40kmph)** likely at isolated places over Bihar and North Interior Karnataka.
- ❖ **Thunderstorm accompanied with Lightning** likely at isolated places over South Interior Karnataka.
- ❖ **Strong Surface Winds** likely at isolated places over Andaman & Nicobar Islands.
- ❖ **Squally wind with speed reaching 45 kmph to 55 kmph gusting to 65 kmph** is likely to prevail over some parts of southwest & westcentral Arabian Sea, along and off Somalia coast.
- ❖ **Squally weather with wind speed reaching 40 - 50 kmph gusting to 60 kmph** likely to prevail along and off Karnataka, Kerala coasts & adjoining Lakshadweep area, over Gulf of Mannar & adjoining Comorin area, over most parts of south Bay of Bengal, central Bay of Bengal, along and off Sri Lanka coast, along and off Tamil Nadu, Andhra Pradesh, Odisha, West Bengal, Bangladesh, Myanmar coasts and over Andaman Sea.
- ❖ **Squally weather with wind speed reaching 45 - 55 kmph gusting to 65 kmph** likely to prevail over Andaman Sea, many parts of central, south Bay of Bengal, some parts of north Bay of Bengal.

***Red color warning does not mean "Red Alert" Red color warning means "Take Action"**

Forecast and warning for any day is valid from 0830 hours IST of day till 0830 hours IST of next day

For more details kindly visit <https://mausam.imd.gov.in> or contact 011-2434-4599

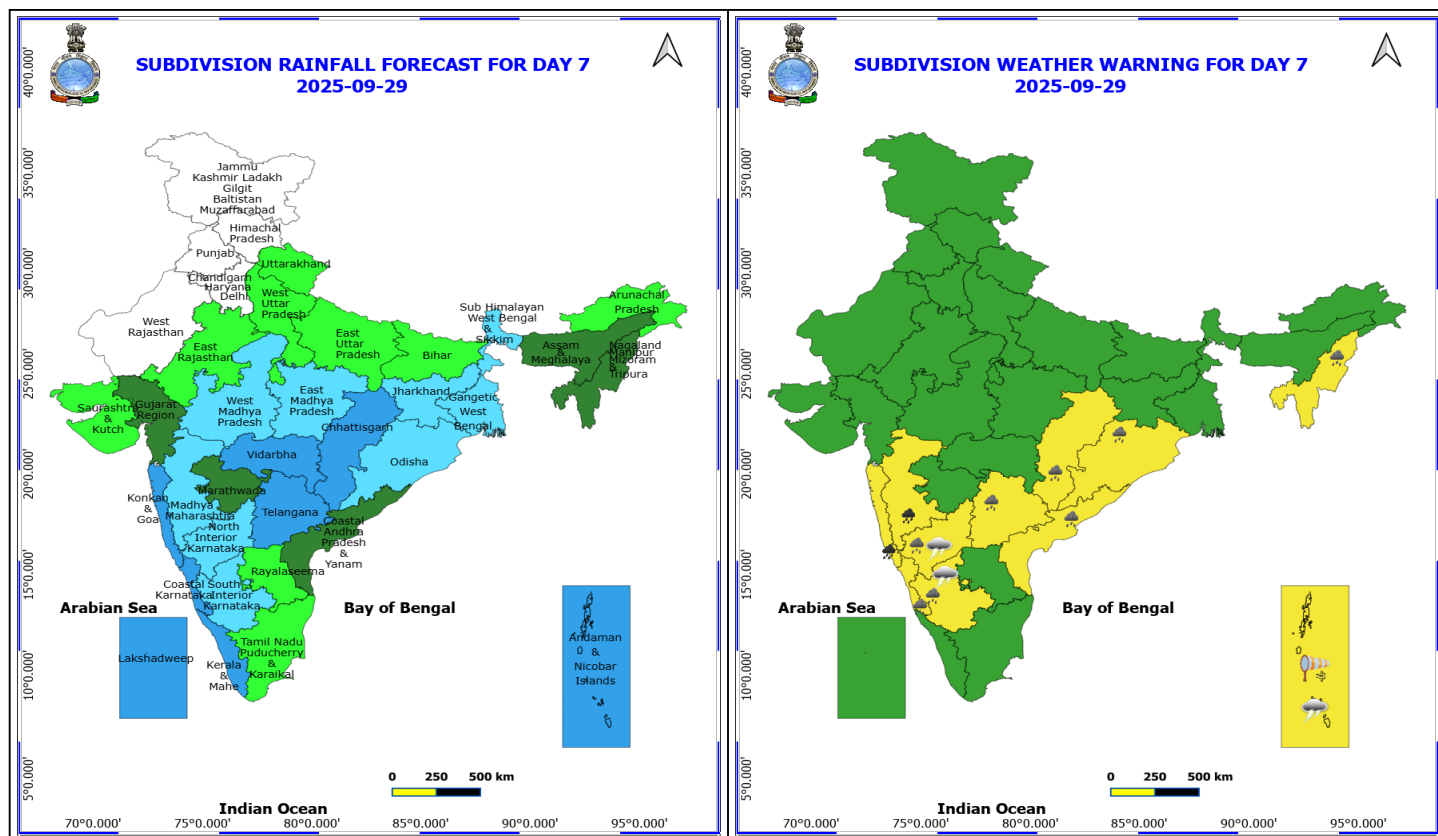
(Service to the nation since 1875)



28 September (Day 6)

- ❖ **Heavy to Very Heavy Rainfall** likely at isolated places over Konkan & Goa and Madhya Maharashtra.
- ❖ **Heavy Rainfall** likely at isolated places over Chhattisgarh, Coastal Andhra Pradesh, Karnataka, Nagaland, Manipur, Mizoram and Tripura, Odisha and Telangana.
- ❖ **Thunderstorm accompanied with lightning & gusty winds(40-50kmph)** likely at isolated places over Andaman & Nicobar Islands.
- ❖ **Thunderstorm accompanied with lightning & gusty winds(30-40kmph)** likely at isolated places over North Interior Karnataka.
- ❖ **Thunderstorm accompanied with Lightning** likely at isolated places over South Interior Karnataka.
- ❖ **Strong Surface Winds** likely at isolated places over Andaman & Nicobar Islands.

No Fishermen Warning



29 September (Day 7)

- ❖ **Heavy to Very Heavy Rainfall** likely at isolated places over Konkan & Goa and Madhya Maharashtra.
- ❖ **Heavy Rainfall** likely at isolated places over Andhra Pradesh, Chhattisgarh, Karnataka, Kerala & Mahe, Marathwada, Odisha, Tamil Nadu Puducherry & Karaikal, Telangana and Vidarbha.
- ❖ **Thunderstorm accompanied with lightning & gusty winds(40-50kmph)** likely at isolated places over Andaman & Nicobar Islands.
- ❖ **Thunderstorm accompanied with lightning & gusty winds(30-40kmph)** likely at isolated places over Bihar and North Interior Karnataka.
- ❖ **Thunderstorm accompanied with Lightning** likely at isolated places over South Interior Karnataka.
- ❖ **Strong Surface Winds** likely at isolated places over Andaman & Nicobar Islands.

No Fishermen Warning

***Red color warning does not mean "Red Alert" Red color warning means "Take Action"**

Forecast and warning for any day is valid from 0830 hours IST of day till 0830 hours IST of next day

For more details kindly visit <https://mausam.imd.gov.in> or contact 011-2434-4599

(Service to the nation since 1875)

Flash Flood Warnings

24 hours Outlook for the Flash Flood Risk (FFR) till 0530 IST of 24-09-2025:

Low to Moderate flash flood risk likely over few watersheds & neighbourhoods of following Met Sub-divisions during next 24 hours.

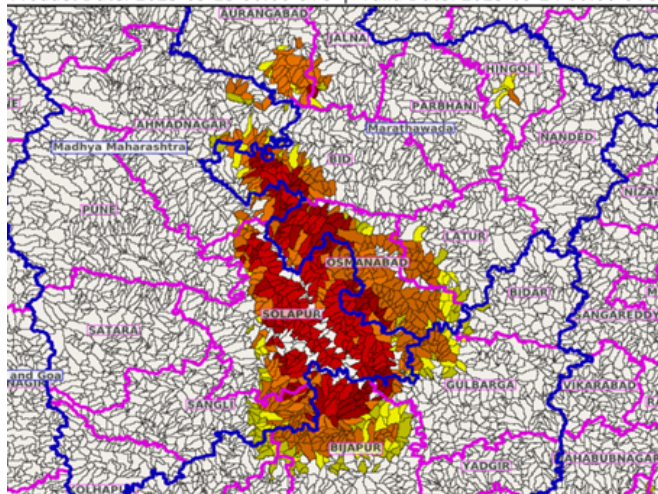
North Interior Karnataka - Belgaum, Bijapur and Gulbarga districts.

Madhya Maharashtra - Ahmadnagar, Sangli and Solapur districts.

Marathawada - Aurangabad, Bid, Hingoli, Jalna, Latur and Osmanabad districts.

Surface runoff/ Inundation may occur at some fully saturated soils & low-lying areas over Area of Concern (AoC) as shown in map due to expected rainfall occurrence in next 24 hours.

Product: GFS FFR | Timescale: 24-hr | Region: "REGIONAL"
Product Date: 2025-09-23 00:00 UTC | Valid Date: 2025-09-24 00:00 UTC



24 hours Outlook for the Flash Flood Risk (FFR) till 0530 IST of 24-09-2025:

Low to Moderate flash flood risk likely over few watersheds & neighbourhoods of following Met Sub-divisions during next 24 hours.

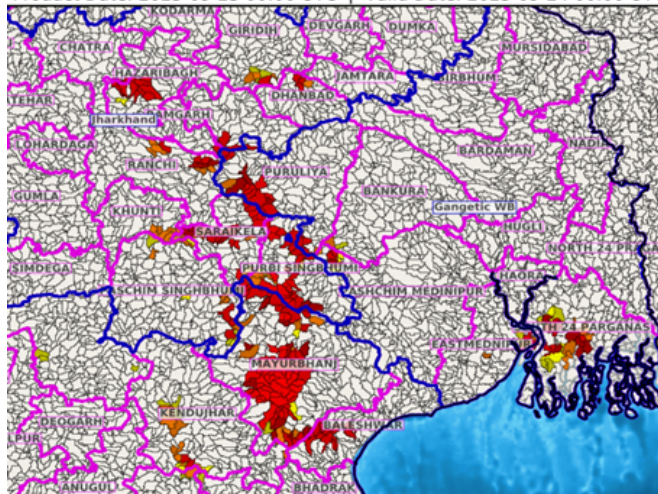
Odisha - Baleshwar, Kendujhar, Mayurbhanj and Sundargarh districts.

Gangetic West Bengal - Eastmednipur, Pashchim Medinipur, Puruliya and South 24 Parganas districts.

Jharkhand - Bokaro, Dhanbad, East Singhbhum, Giridih, Khunti, Ramgarh, Ranchi, Saraikela and West Singhbhum districts.

Surface runoff/ Inundation may occur at some fully saturated soils & low-lying areas over Area of Concern (AoC) as shown in map due to expected rainfall occurrence in next 24 hours.

Product: GFS FFR | Timescale: 24-hr | Region: "REGIONAL"
Product Date: 2025-09-23 00:00 UTC | Valid Date: 2025-09-24 00:00 UTC



*Red color warning does not mean "Red Alert" Red color warning means "Take Action"

Forecast and warning for any day is valid from 0830 hours IST of day till 0830 hours IST of next day

For more details kindly visit <https://mausam.imd.gov.in> or contact 011-2434-4599

(Service to the nation since 1875)



Table-1

7 Days Rainfall Forecast

S.No.	Subdivision	23-Sep	24-Sep	25-Sep	26-Sep	27-Sep	28-Sep	29-Sep
		Day 1	Day 2	Day 3	Day 4	Day 5	Day 6	Day 7
1	ANDAMAN & NICOBAR ISLANDS	WS	WS	WS	WS	WS	WS	WS
2	ARUNACHAL PRADESH	SCT	SCT	ISOL	ISOL	ISOL	ISOL	ISOL
3	ASSAM & MEHGHALAYA	SCT	SCT	SCT	ISOL	ISOL	SCT	SCT
4	N. M. M. & T.	FWS	SCT	SCT	ISOL	SCT	SCT	SCT
5	S.H. WEST BENGAL & SIKKIM	SCT	SCT	SCT	FWS	FWS	FWS	FWS
6	GANGETIC WEST BENGAL	WS	WS	FWS	FWS	FWS	FWS	FWS
7	ODISHA	FWS	WS	WS	WS	FWS	FWS	FWS
8	JHARKHAND	FWS	FWS	WS	FWS	FWS	FWS	FWS
9	BIHAR	ISOL	ISOL	SCT	FWS	SCT	ISOL	ISOL
10	EAST UTTAR PRADESH	DRY	DRY	ISOL	SCT	ISOL	ISOL	ISOL
11	WEST UTTAR PRADESH	DRY	DRY	DRY	ISOL	ISOL	ISOL	ISOL
12	UTTARAKHAND	ISOL	ISOL	ISOL	ISOL	ISOL	ISOL	ISOL
13	HARYANA, CHD & DELHI	DRY	DRY	DRY	DRY	DRY	DRY	DRY
14	PUNJAB	DRY	DRY	DRY	DRY	DRY	DRY	DRY
15	HIMACHAL PRADESH	DRY	ISOL	ISOL	DRY	DRY	DRY	DRY
16	JAMMU AND KASHMIR AND LADAKH	DRY	ISOL	ISOL	DRY	DRY	DRY	DRY
17	WEST RAJASTHAN	DRY	DRY	DRY	DRY	DRY	DRY	DRY
18	EAST RAJASTHAN	ISOL	ISOL	ISOL	ISOL	ISOL	ISOL	ISOL
19	WEST MADHYA PRADESH	SCT	SCT	SCT	SCT	FWS	FWS	FWS
20	EAST MADHYA PRADESH	ISOL	ISOL	SCT	SCT	FWS	FWS	FWS
21	GUJRAT REGION	SCT	SCT	SCT	SCT	SCT	SCT	SCT
22	SAURASHTRA & KUTCH	ISOL	ISOL	ISOL	ISOL	ISOL	ISOL	ISOL
23	KONKAN & GOA	FWS	FWS	WS	WS	WS	WS	WS
24	MADHYA MAHARASHTRA	SCT	SCT	SCT	FWS	FWS	FWS	FWS
25	MARATHWADA	FWS	SCT	SCT	FWS	FWS	SCT	SCT
26	VIDARBHA	SCT	FWS	WS	WS	WS	WS	WS
27	CHATTISGARH	FWS	FWS	FWS	WS	WS	WS	WS
28	COASTAL ANDHRA PRADESH	FWS	FWS	FWS	WS	FWS	SCT	SCT
29	TELANGANA	FWS	SCT	FWS	WS	WS	WS	WS
30	RAYALASEEMA	SCT	FWS	FWS	FWS	SCT	ISOL	ISOL
31	TAMILNADU & PUDUCHERRY	ISOL	ISOL	ISOL	ISOL	ISOL	ISOL	ISOL
32	COSTAL KARNATAKA	FWS	FWS	WS	WS	WS	WS	WS
33	NORTH INTERIOR KARNATAKA	FWS	FWS	SCT	FWS	FWS	FWS	FWS
34	SOUTH INTERIOR KARNATAKA	FWS	SCT	SCT	FWS	FWS	FWS	FWS
35	KERALA	FWS	WS	WS	WS	WS	WS	WS
36	LAKSHDWEAP	FWS	WS	WS	WS	WS	WS	WS

Legend	Category	%Stations
WS	Widespread/Most Places	76-100
FWS	Fairly Widespread/Many Places	51-75
SCT	Scattered/ A Few Places	26-50
ISOL	Isolated Places	1-25
DRY	No Rain	0

*Red color warning does not mean "Red Alert" Red color warning means "Take Action"

Forecast and warning for any day is valid from 0830 hours IST of day till 0830 hours IST of next day

For more details kindly visit <https://mausam.imd.gov.in> or contact 011-2434-4599

(Service to the nation since 1875)

Fig. 1: Maximum Temperatures Dated 2025-09-23

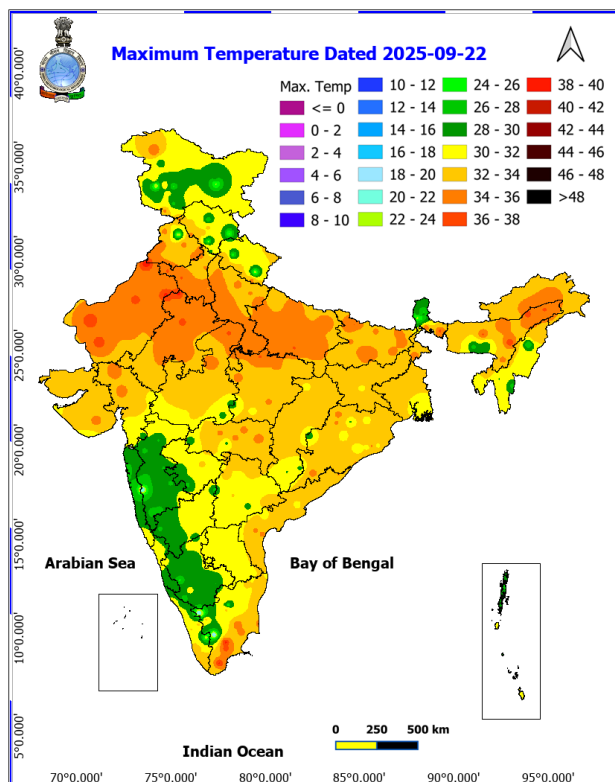


Fig. 2: Departure of Maximum Temp. Dated 2025-09-23

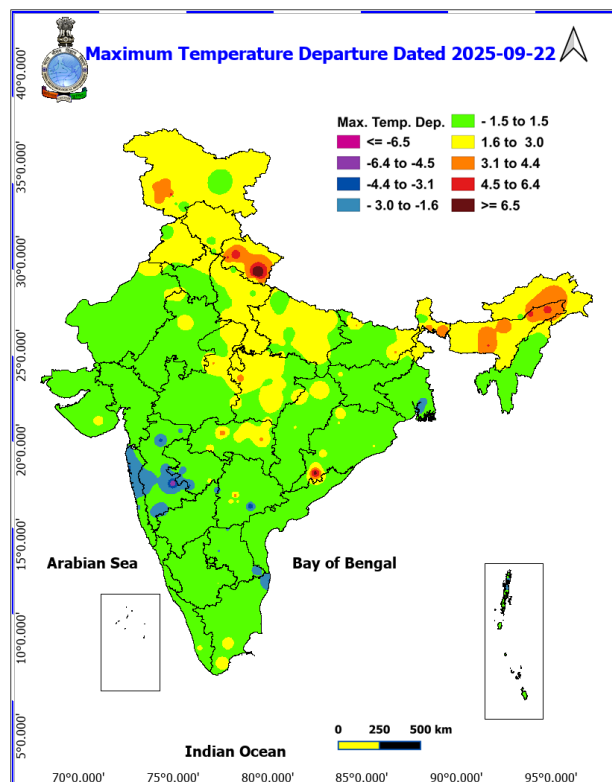


Fig. 3: Minimum Temperatures Dated 2025-09-23

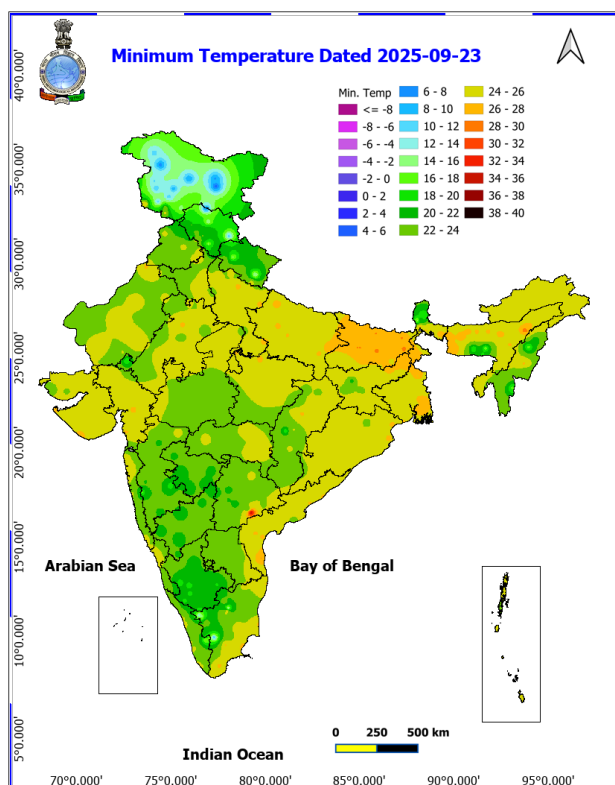
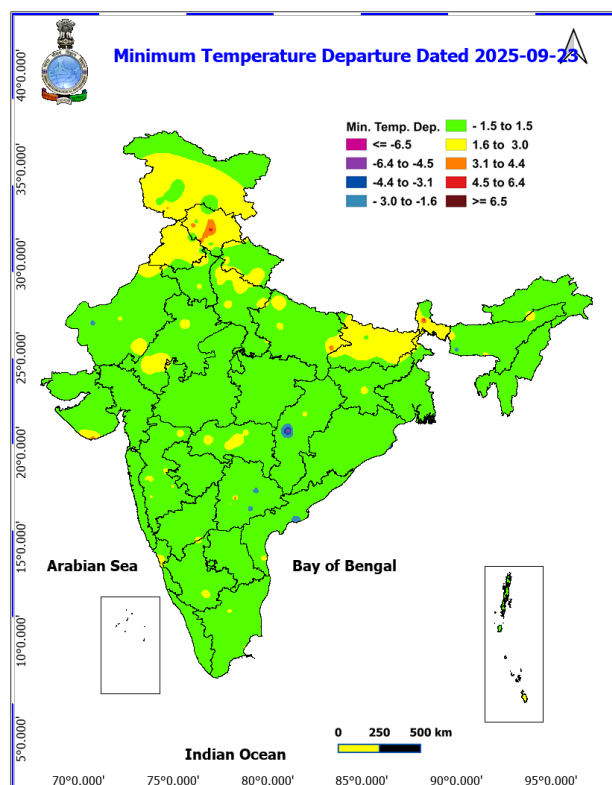
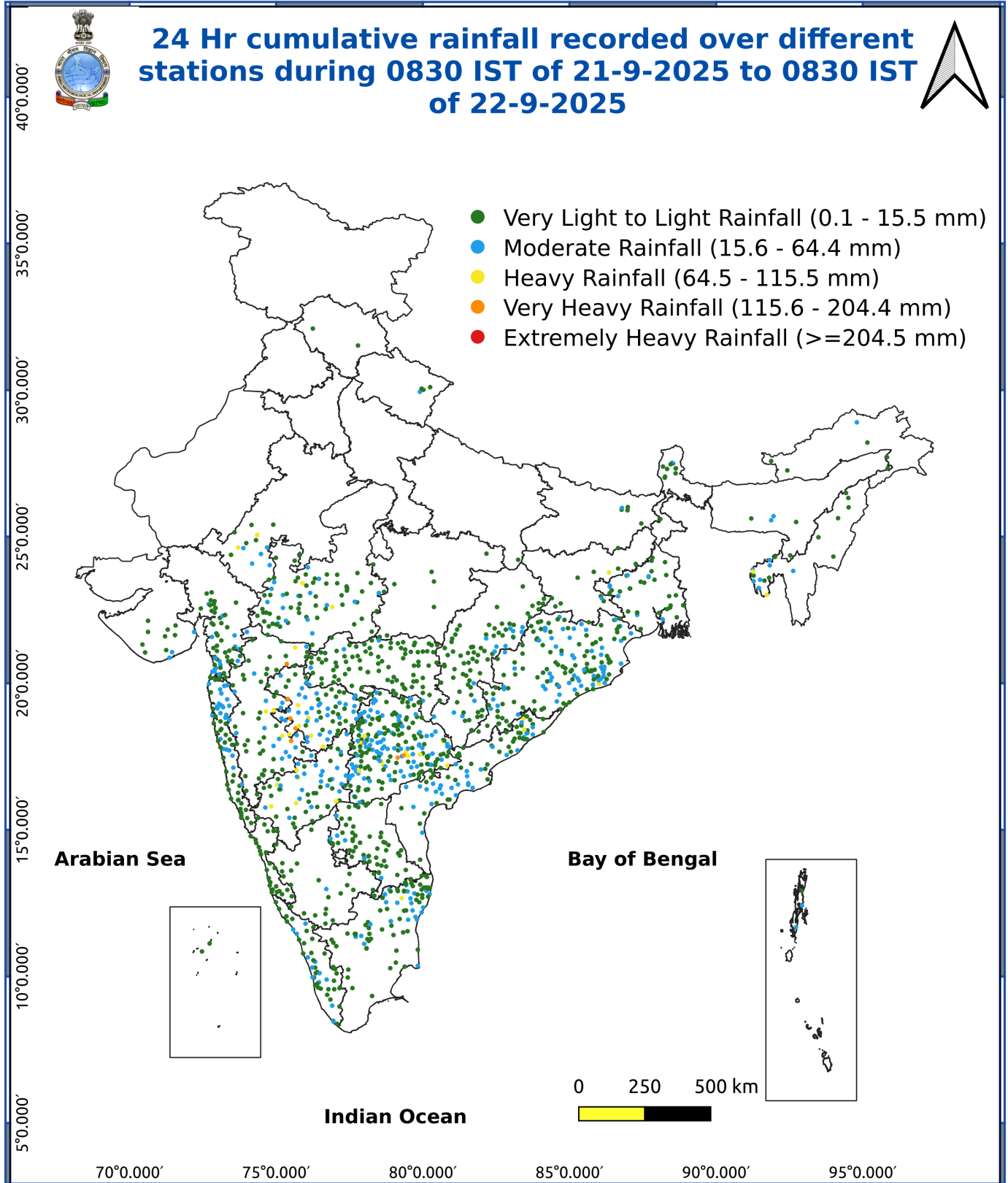


Fig. 4: Departure of Minimum Temp. Dated 2025-09-23





*Red color warning does not mean "Red Alert" Red color warning means "Take Action"

Forecast and warning for any day is valid from 0830 hours IST of day till 0830 hours IST of next day

For more details kindly visit <https://mausam.imd.gov.in> or contact 011-2434-4599

(Service to the nation since 1875)

Impact & Action Suggested due to

- **Heavy to very heavy rainfall (12-20 cm)** at isolated places over Gangetic West Bengal on 23rd; Odisha during 23rd-26th; Chhattisgarh on 24th & 25th; Konkan & Goa during 26th-29th and Madhya Maharashtra during 26th-29th September.

Impact Expected

- Water logging/ flooding in many parts of low lying area and river banks
- Localized and short term disruption to municipal services (water, electricity, etc.)
- Major disruption of traffic flow. Major roads/local trains affected.
- Possibility of danger to very old buildings and unmaintained structures, falling of trees etc
- Closure of roads crossing low water bridges.

Action Suggested

- Traffic may be regulated effectively
- People in the affected area may restrict their movement

Agromet advisories for various parts of the country

Agromet advisories for likely impact of Heavy / Heavy to Very Heavy Rainfall

(Based on the IBF and advisories issued by different AMFUs)

- In **Odisha**, harvest the matured vegetables such as pumpkin, okra, brinjal etc. and store them at safe places and maintain drainage channels to remove excess water from fields of rice, green gram, maize, pigeon pea, finger millet and vegetables in **North Central Plateau Zone**. Make provision for draining out excess rain water from fields of maize, finger millet and vegetables in **North Eastern Ghat Zone** and rice, pigeon pea, maize, ginger and vegetables in **Eastern Ghat High Land Zone** and **South Eastern Ghat Zone**.
- In **Gangetic West Bengal**, ensure proper drainage in winter vegetable fields and betel vine gardens in **Coastal Saline Zone** and rice and vegetable fields in **Laterite and Red Soil Zone**.
- In **Jharkhand**, make proper arrangements for drainage of excess water in fields of pigeon pea, maize, finger millet and vegetables in **Western Plateau Zone**.
- In **Chhattisgarh**, ensure adequate drainage facilities in fields of rice, maize, groundnut, pigeon pea, black gram and vegetables.
- In **Maharashtra**, undertake harvesting of matured crops of groundnut and sorghum and keep the harvested produce at safer places and make provision to drain out excess rain water from fields of cotton, pigeon pea, soybean, maize, vegetables and fruit orchards in **Madhya Maharashtra**. In **Marathwada**, keep the harvested produce of black gram at safer places and provide adequate drainage facilities in fields of soybean, cotton, pigeon pea, vegetables and fruit orchards.
- In **Gujarat**, make arrangements to drain out excess rain water from fields of castor, cotton, pigeon pea and fruit orchards (banana and mango) in **South Gujarat Zone**.
- In **North Interior Karnataka**, ensure proper drainage facilities in fields of sugarcane, pigeon pea, soybean, maize, vegetables and fruit orchards in **North Dry Zone**.
- In **Andhra Pradesh**, make arrangements to drain out excess water from fields of rice, maize, cotton, mesta, green gram, black gram, groundnut, sugarcane and vegetables in **North Coastal Zone** and rice, sugarcane, maize, finger millet, groundnut, ginger, turmeric, vegetables and fruit orchards in **High Altitude Tribal Zone**.
- In **Telangana**, make provision to drain out excess rain water from fields of rice, cotton, soybean, maize and pigeon pea in **Southern Telangana Zone**.
- In **Manipur**, undertake harvesting of matured pods of soybean and groundnut and store at safer places. Avoid waterlogging in fields of rice, soybean, groundnut, black gram and ginger.
- In **Mizoram**, undertake harvesting of matured cobs of maize and matured upland *Jhum* rice and keep the

*Red color warning does not mean "Red Alert" Red color warning means "Take Action"

Forecast and warning for any day is valid from 0830 hours IST of day till 0830 hours IST of next day

For more details kindly visit <https://mausam.imd.gov.in> or contact 011-2434-4599

(Service to the nation since 1875)

harvested produce in safe place.

- In **Nagaland**, continue harvesting of sesame and *Jhum* rice and keep harvested produce at safer places. Maintain proper drainage in fields of rice and soybean.

Livestock / Fishery

- Keep the animals inside the shed during heavy rainfall and provide them balanced feed.
- Store feed and fodder in a safe place to prevent spoilage.
- Construct an outlet with proper netting around the ponds to drain out excess water, thereby preventing fish from escaping in case of overflow.

Agromet advisories for likely impact of Thunderstorm / Gusty Winds / Squally Winds

(Based on the IBF and advisories issued by different AMFUs)

- Provide mechanical support to horticultural crops and staking or support to vegetables and young fruit plants / fruit-bearing plants to avoid lodging due to strong winds.

Legends & abbreviations:

Region wise classification of meteorological Sub-Divisions:

Northwest India: Western Himalayan Region (Jammu-Kashmir-Ladakh-Gilgit-Baltistan-Muzaffarabad, Himachal Pradesh and Uttarakhand); Punjab, Haryana-Chandigarh-Delhi; West Uttar Pradesh, East Uttar Pradesh, West Rajasthan and East Rajasthan.

Central India: West Madhya Pradesh, East Madhya Pradesh, Vidarbha and Chhattisgarh.

East India: Bihar, Jharkhand, Sub-Himalayan West Bengal & Sikkim; Gangetic West Bengal, Odisha and Andaman & Nicobar Islands.

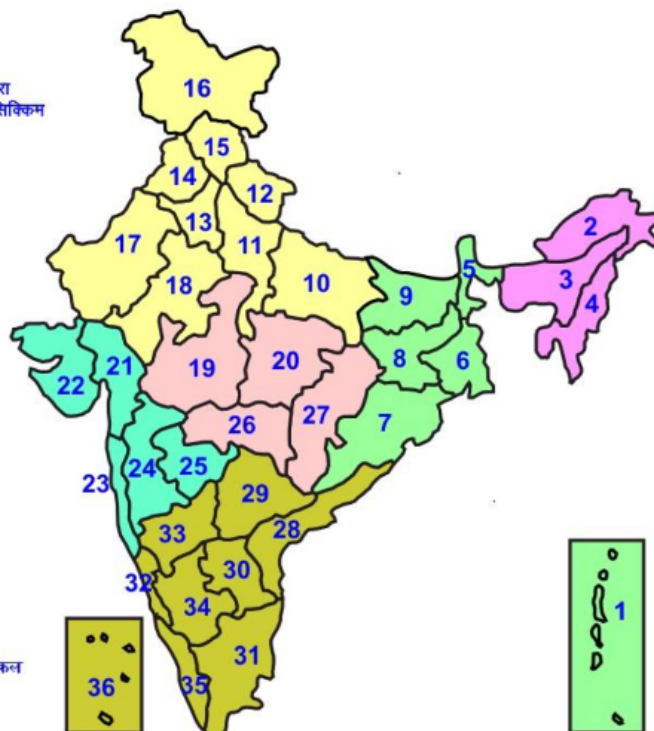
Northeast India: Arunachal Pradesh, Assam & Meghalaya and Nagaland, Manipur, Mizoram & Tripura.

West India: Gujarat Region, Saurashtra & Kutch, Konkan & Goa, Madhya Maharashtra and Marathawada.

South India: Coastal Andhra Pradesh & Yanam, Telangana, Rayalaseema, Coastal Karnataka, North Interior Karnataka, South Interior Karnataka, Kerala & Mahe, Tamil Nadu, Puducherry & Karaikal and Lakshadweep.

LEGENDS

- 1 अंडमान और निकोबार द्वीप समुह
- 2 अरुणाचल प्रदेश
- 3 असम और मेघालय
- 4 नागालैंड मनीपुर मीजोरम और त्रिपुरा
- 5 उप हिमालय पश्चिम बंगाल एवं सिक्किम
- 6 पश्चिम बंगाल
- 7 ओडिसा
- 8 झारखंड
- 9 बिहार
- 10 पूर्वी उत्तर प्रदेश
- 11 पश्चिम उत्तर प्रदेश
- 12 उत्तराखंड
- 13 हरियाणा चंडीगढ़ एवं दिल्ली
- 14 पंजाब
- 15 हिमाचल प्रदेश
- 16 जम्मू एवं कश्मीर एवं लद्दाख
- 17 पश्चिम राजस्थान
- 18 पूर्वी राजस्थान
- 19 पश्चिम मध्य प्रदेश
- 20 पूर्वी मध्य प्रदेश
- 21 गुजरात क्षेत्र
- 22 सौराष्ट्र एवं कच्छ
- 23 कोंकण एवं गोवा
- 24 मध्य महाराष्ट्र
- 25 मराठावाड़ा
- 26 विदर्भ
- 27 छत्तीसगढ़
- 28 तटीय आंध्र प्रदेश एवं यनम
- 29 तेलंगाना
- 30 रायलसीमा
- 31 तमिलनाडु, पुदुचेरी एवं कराईकल
- 32 तटिय कर्नाटक
- 33 आंतरिक उत्तरी कर्नाटक
- 34 आंतरिक दक्षिणी कर्नाटक
- 35 केरल एवं माहे
- 36 लक्षद्वीप



1. Andaman & Nicobar Islands
2. Arunachal Pradesh
3. Assam & Meghalaya
4. Nagaland, Manipur, Mizoram & Tripura
5. Sub-Himalayan West Bengal & Sikkim
6. Gangetic West Bengal
7. Orissa
8. Jharkhand
9. Bihar
10. East Uttar Pradesh
11. West Uttar Pradesh
12. Uttarakhand
13. Haryana, Chd & Delhi
14. Punjab
15. Himachal Pradesh
16. Jammu & Kashmir and Ladakh
17. West Rajasthan
18. East Rajasthan
19. West Madhya Pradesh
20. East Madhya Pradesh
21. Gujarat
22. Saurashtra
23. Konkan & Goa
24. Madhya Maharashtra
25. Marathwada
26. Vidharbha
27. Chhattisgarh
28. Coastal Andhra Pradesh & Yanam
29. Telangana
30. Rayalaseema
31. Tamilnadu, Puducherry & Karaikal
32. Coastal Karnataka
33. North Interior Karnataka
34. South Interior Karnataka
35. Kerala & Mahe
36. Lakshadweep

SPATIAL DISTRIBUTION (% of Stations reporting)













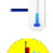




% Stations	Category	% Stations	Category
76-100	Widespread (WS/Most Places)	26-50	Scattered (SCT/ A Few Places)
51-75	Fairly Widespread (FWS/ Many Places)	1-25	Isolated (ISOL)

Subdivision Colour

- NO WARNING
- WATCH (BE UPDATED)
- ALERT (BE PREPARED TO TAKE ACTION)
- WARNING (TAKE ACTION)

Probabilistic Forecast

Terms	Probability of Occurrence (%)
Unlikely	< 25
Likely	25 - 50
Very Likely	50 - 75
Most Likely	> 75

-  Heavy Rain
-  Very Heavy Rain
-  Extremely Heavy Rain
-  Heavy Snow
-  Thunderstorm & Lightning
-  Hailstorm
-  Dust Storm
-  Dust Raising Winds
-  Strong surface winds
-  Heat Wave
-  Hot Day
-  Warm Night
-  Cold Wave
-  Cold Day
-  Ground Frost
-  FOG Fog
-  Hot & Humid

*Red color warning does not mean "Red Alert" Red color warning means "Take Action"

Forecast and warning for any day is valid from 0830 hours IST of day till 0830 hours IST of next day

For more details kindly visit <https://mausam.imd.gov.in> or contact 011-2434-4599

(Service to the nation since 1875)

LEGENDS

WARNING

WARNING (TAKE ACTION)
ALERT (BE PREPARED)
WATCH (BE UPDATED)
NO WARNING (NO ACTION)

Probabilistic Forecast

Terms	Probability of Occurrence (%)
Unlikely	< 25
Likely	25 - 50
Very Likely	50 - 75
Most Likely	> 75



Heavy: 64.5 to 115.5 mm/cm *
Very Heavy: 115.6 to 204.4 mm/cm *
Extremely Heavy: > 204.4 mm/cm *



When maximum temperature of a station reaches $\geq 40^{\circ}\text{C}$ for plains and $\geq 30^{\circ}\text{C}$ for hilly regions
(a) Based on Departure from normal

Heat Wave: Maximum Temperature Departure from normal 4.5°C to 6.4°C .
Severe Heat Wave: Maximum Temperature Departure from normal $\geq 6.5^{\circ}\text{C}$

(b). Based on Actual maximum temperature

Heat Wave: When actual maximum temperature $\geq 45^{\circ}\text{C}$.
Severe Heat Wave: When actual maximum temperature $\geq 47^{\circ}\text{C}$

(c). Criteria for heat wave for coastal stations

When maximum temperature departure is $> 4.5^{\circ}\text{C}$ from normal. Heat Wave may be described provided maximum temperature $\geq 37^{\circ}\text{C}$



When maximum temperature remains 40°C

Warm Night: When minimum temperature departure 4.5°C to 6.4°C .
Severe Warm Night: When minimum temperature departure $> 6.4^{\circ}\text{C}$.



When minimum temperature of a station $\leq 10^{\circ}\text{C}$ for plains and $\leq 0^{\circ}\text{C}$ for hilly regions.

(a). Based on departure

Cold Wave: Minimum Temperature Departure from normal -4.5°C to -6.4°C .
Severe Cold Wave: Minimum Temperature Departure from normal $\leq -6.5^{\circ}\text{C}$

(b) Based on actual Minimum Temperature (for Plains only)

Cold Wave: When Minimum Temperature is $\leq 4.0^{\circ}\text{C}$
Severe Cold Wave: When Minimum Temperature is $\leq 2.0^{\circ}\text{C}$

(c) For Coastal Stations

When Minimum Temperature departure is $\leq -4.5^{\circ}\text{C}$ & actual Minimum Temperature is $\leq 15^{\circ}\text{C}$



When minimum temperature of a station $\leq 10^{\circ}\text{C}$ for plains and $\leq 0^{\circ}\text{C}$ for hilly regions
Based on departure

Cold Day: Maximum Temperature Departure from normal -4.5°C to -6.4°C .
Severe Cold Day: Maximum Temperature Departure from normal $\leq -6.5^{\circ}\text{C}$



Phenomenon of small droplets suspended in air and the horizontal visibility $< 1\text{km}$

Moderate Fog: When the visibility between 500-200 metres
Dense Fog: when the visibility between 50-200 metres
Very Dense Fog: when the visibility < 50 metres



Sudden electrical discharges manifested by a flash of light (Lightning) and a sharp rumbling sound (thunder)



An ensemble of particles of dust or sand energetically lifted to great heights by a strong and turbulent wind.



Ice deposits on ground

Air temperature $\leq 4^{\circ}\text{C}$ (over Plains)



A strong wind that rises suddenly, lasts for at least 1 minute.

Moderate: Wind speed 52-61 kmph
Severe: Wind speed 62-87 kmph
Very Severe: Wind speed > 87 kmph



Effect of various waves in the sea over specific area

Rough to very rough: Wind speed 41-62 kmph (22-33 knots) & Wave height 2.5-6 metre
High to very high: Wind speed 63-117 kmph (34-63 knots) & Wave height 6-14 metre
Phenomenal: Wind speed > 117 kmph (> 63 knots) & Wave height > 14 metre



Cyclonic Storm: Wind speed 62-87 kmph (34-47 knots)

Severe Cyclonic Storm: Wind speed 88-117 kmph (48-63 knots)
Very Severe Cyclonic Storm: Wind speed 118-165 kmph (64-89 knots)
Extremely Severe Cyclonic Storm: Wind speed 166-220 kmph (90-119 knots)
Super Cyclone Storm: Wind speed > 220 kmph (> 119 knots)

*Red color warning does not mean "Red Alert" Red color warning means "Take Action"

Forecast and warning for any day is valid from 0830 hours IST of day till 0830 hours IST of next day

For more details kindly visit <https://mausam.imd.gov.in> or contact 011-2434-4599

(Service to the nation since 1875)