



Wednesday, September 27, 2023
Time of Issue: 1330 hours IST
(MID-DAY)

ALL INDIA WEATHER SUMMARY AND FORECAST BULLETIN

Significant Weather Features

Withdrawal of Southwest Monsoon:

- Conditions are becoming favourable for further withdrawal of Southwest Monsoon from some more parts of Northwest and adjoining Westcentral India during next 2-3 days.
- The line of withdrawal of Southwest Monsoon continues to pass through 28.3°N/72.0°E, Nokhra, Jodhpur, Barmer and 25.7°N/70.3°E.

Significant Weather features:

- ❖ A cyclonic circulation lies over south Chhattisgarh & neighbourhood and a trough runs from north Coastal Karnataka to this cyclonic circulation in lower tropospheric levels.
- ❖ A cyclonic circulation is likely to emerge over Eastcentral Bay of Bengal & adjoining north Andaman Sea off Myanmar coast around 29th September. Under its influence, a low pressure area is likely to form over Eastcentral Bay of Bengal off Myanmar coast during subsequent 24 hours. Thereafter, it is likely to move northwestwards with possibility of gradual intensification.

Weather Forecast and Warnings:

East India: Light/moderate fairly widespread to widespread rainfall/thunderstorm & lightning with **isolated heavy rainfall** very likely over Andaman & Nicobar Islands during 27th - 30th; Odisha on 29th September to 01st October; Gangetic West Bengal on 30th and Jharkhand on 30th September & 01st October.

Isolated very heavy rainfall very likely over Andaman & Nicobar Islands on 28th & 29th September. Squally weather with wind speed reach 45-55 gusting to 65 likely over Andaman Islands during 28th-30th September, 2023.

South India: Light/moderate fairly widespread to widespread rainfall with **isolated heavy rainfall** very likely over Tamil Nadu during 27th-29th; Coastal Karnataka during 27th September-01st October; Kerala & Mahe during 28th-30th and Interior Karnataka during 29th September-01st October.

West India: Light/moderate fairly widespread to widespread rainfall/thunderstorm & lightning with **isolated heavy rainfall** very likely over Konkan-Goa during 27th-30th; Madhya Maharashtra during 27th-29th and Marathwada on 27th September. **Isolated very heavy rainfall very likely over Konkan -Goa on 28th & 29th and Madhya Maharashtra on 27th September.**

Central India: Light/moderate fairly widespread to widespread rainfall/thunderstorm & lightning with **isolated heavy rainfall** very likely over Chhattisgarh on 30th September & 01st October.

No significant weather over rest parts of the country.

Main Weather Observations:

- ❖ **Rainfall distribution** (from 0830 hours of yesterday to 0830 hours IST of today): **at most places** over Konkan & Goa, Madhya Maharashtra, Coastal Karnataka and Andaman & Nicobar Islands; **at many places** over Marathwada, Vidarbha, South Interior Karnataka, Kerala & Mahe and Lakshadweep; **at a few places** over Jharkhand, Rayalaseema, Coastal Andhra Pradesh & Yanam, Tamil Nadu, Puducherry & Karaikal, Chhattisgarh, West Madhya Pradesh, Gujarat Region, North Interior Karnataka, Arunachal Pradesh, Sub-Himalayan West Bengal & Sikkim and Odisha and **at isolated places** over Jammu-Kashmir-Ladakh-Gilgit-Baltistan-Muzaffarabad, East Madhya Pradesh, Rajasthan, East Uttar Pradesh, Saurashtra & Kutch, Gangetic West Bengal, Assam & Meghalaya, Telangana and Bihar.
- ❖ **Significant rainfall recorded** (from 0830 hours of yesterday to 0830 hours IST of today): **(in cm): Madhya Maharashtra:** Gaganbawada (dist Kolhapur) 13, Paud Mulshi (dist Pune) 9; **Tamil Nadu:** Poondi (dist Tiruvallur) 10, Thamaraipakkam (dist Tiruvallur) 9, Wallajah dist Ranipet) 8; **Konkan & Goa:** Poladpur (dist Raigad) 9, Chiplun (dist Ratnagiri) 9, Pernem (dist North Goa) 8, Mapusa (dist North Goa) 8, Mahad (dist Raigad) 7; **Chhattisgarh:** Kusmi (dist Balrampur) 9; **Jharkhand:** Balumath-8; **Marathwada:** Purna (dist Parbhani) 8, Ardhapur (dist Nanded) 7; **Sikkim:** Ravangla (ARG): 7; **Coastal Karnataka:** Ankola (dist Uttara Kannada) 7, Karwar Obsy (dist Uttara Kannada) 7, Kumta (dist Uttara Kannada) 7, Manki (dist Uttara Kannada) 7, Gokarna (dist Uttara Kannada) 7.
- ❖ **Heavy to very heavy rainfall** at isolated places over Madhya Maharashtra and **heavy rainfall** at isolated places over Coastal Karnataka, Sikkim, Konkan & Goa, Chhattisgarh, Jharkhand, Marathwada and Tamil Nadu.
- ❖ **Minimum Temperature Departures (as on 27-09-2023):** Minimum temperatures are **appreciably above normal (3.1°C to 5.0°C)** at a few places over Sub-Himalaya West Bengal & Sikkim; at isolated places over Madhya Maharashtra and Saurashtra & Kutch; **above normal (1.6°C to 3.0°C)** at many places over West Rajasthan; at a few places over East Uttar Pradesh, Bihar, Gangetic West Bengal and Gujarat Region; at isolated places over Jammu-Kashmir-Ladakh-Gilgit-Baltistan-Muzaffarabad, Uttarakhand, Punjab, Haryana-Chandigarh-Delhi, East Rajasthan, Madhya Pradesh, Jharkhand, Chhattisgarh, Odisha, Marathwada and Nagaland, Manipur, Mizoram & Tripura. They are **below normal (-1.6°C to -3.0°C)** at isolated places over Coastal Andhra Pradesh & Yanam and **near normal** over rest parts of the country. Today, **the lowest minimum temperature of 16.5°C** is reported at **Raisen (West Madhya Pradesh)** over the plains of the country.
- ❖ **Maximum Temperature Departures (as on 26-09-2023):** Maximum temperatures were **appreciably above normal (3.1°C to 5.0°C)** at many places over Nagaland, Manipur, Mizoram & Tripura; at a few places over Arunachal Pradesh and Assam & Meghalaya; at isolated places over Himachal Pradesh and Sub-Himalaya West Bengal & Sikkim; **above normal (1.6°C to 3.0°C)** at a few places over Gangetic West Bengal; at isolated places over Punjab, Haryana-Chandigarh-Delhi, Uttar Pradesh, West Rajasthan, East Madhya Pradesh, Chhattisgarh, Bihar, Odisha, Coastal Andhra Pradesh & Yanam and Kerala & Mahe. They were **appreciably below normal (-3.1°C to -5.0°C)** at many places over Marathwada; at isolated places over Madhya Maharashtra; **below normal** at isolated places over Telangana, Tamil Nadu, Puducherry & Karaikal and Andaman & Nicobar Islands and **near normal** over rest parts of the country. Yesterday, **the highest maximum temperature of 38.2°C** is reported at **Jaisalmer (West Rajasthan)**.

* Red color warning does not mean "Red Alert" Red color warning means "Take Action".

Forecast and Warning for any day is valid from 0830 hours IST of day till 0830 hours IST of next day For more details kindly visit <https://mausam.imd.gov.in> or contact : 011-2434-4599

(Service to the Nation since 1875)

Meteorological Analysis (Based on 0830 hours IST)

- ❖ Conditions are becoming favourable for further withdrawal of Southwest Monsoon from some more parts of Northwest and adjoining Westcentral India during next 2-3 days.
- ❖ The line of withdrawal of Southwest Monsoon continues to pass through 28.3°N/72.0°E, Nokhra, Jodhpur, Barmer and 25.7°N/70.3°E.
- ❖ **Western Disturbance** as a trough in westerlies in mid-tropospheric levels with its axis at 5.8 km above mean sea level now runs roughly along Long. 63°E to the north of Lat. 32°N.
- ❖ A **cyclonic circulation** lies over Gangetic West Bengal & neighbourhood at 1.5 km above mean sea level.
- ❖ The **cyclonic circulation** over Telangana & neighbourhood now lies over south Chhattisgarh & neighbourhood extending upto 3.1 km above mean sea level.
- ❖ A **trough** runs from north Coastal Karnataka to the cyclonic circulation over south Chhattisgarh across North Interior Karnataka, Telangana & Vidarbha at 1.5 km above mean sea level.
- ❖ A **cyclonic circulation** lies over North Interior Karnataka & neighbourhood between 3.1 & 5.8 km above mean sea level.
- ❖ The **cyclonic circulation** over Westcentral Bay of Bengal off Andhra Pradesh now lies over Southwest Bay of Bengal off Tamil Nadu coast between 4.5 & 5.8 km above mean sea level.
- ❖ A cyclonic circulation is likely to emerge over Eastcentral Bay of Bengal & adjoining north Andaman Sea off Myanmar coast around 29th September. Under its influence, a low pressure area is likely to form over Eastcentral Bay of Bengal off Myanmar coast during subsequent 24 hours. Thereafter, it is likely to move northwestwards with possibility of gradual intensification.
- ❖ The **cyclonic circulation** over East Uttar Pradesh & adjoining Bihar at 3.1 km above mean sea level has become less marked.
- ❖ The **trough** from east Vidarbha to south Konkan between 4.5 & 5.8 km above mean sea level has become less marked.

Weather Forecast for next 5 days (Upto 0830 hours IST of 02nd October, 2023)

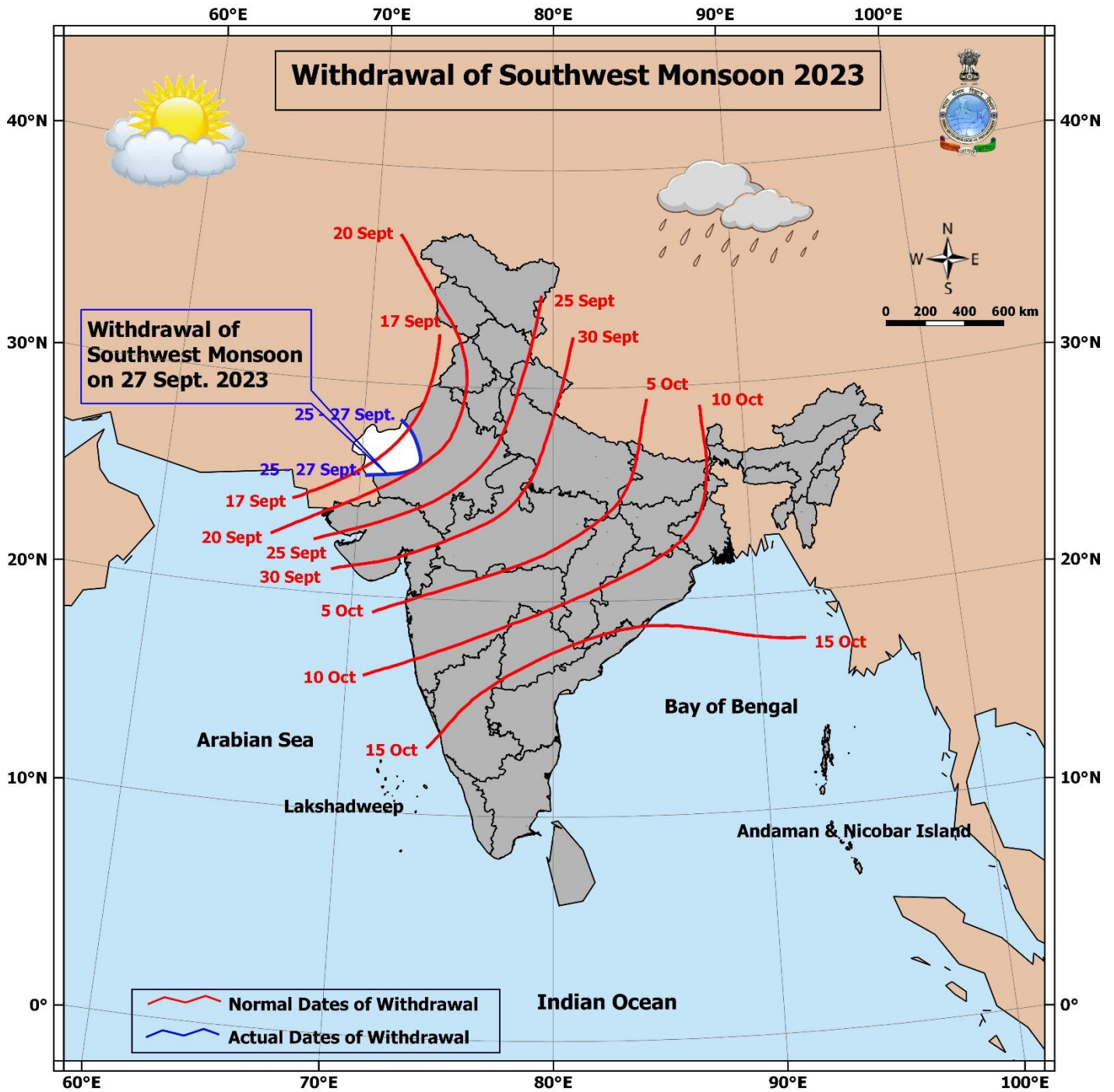
- ❖ Meteorological sub-division wise detailed 5 days rainfall forecast is given in Table-1.
- ❖ No significant change in maximum temperatures likely over most parts of country during next 5 days.

Weather Outlook for subsequent 2 days

- ❖ Fairly widespread to widespread light/moderate rainfall likely over parts of east & adjoining central and northeast India.
- ❖ Dry weather likely to prevail over rest parts of the country except isolated rainfall likely over south peninsular India.

* Red color warning does not mean "Red Alert" Red color warning means "Take Action".

Forecast and Warning for any day is valid from 0830 hours IST of day till 0830 hours IST of next day For more details kindly visit <https://mausam.imd.gov.in> or contact : 011-2434-4599 (Service to the Nation since 1875)



* Red color warning does not mean "Red Alert" Red color warning means "Take Action".

Forecast and Warning for any day is valid from 0830 hours IST of day till 0830 hours IST of next day For more details kindly visit <https://mausam.imd.gov.in> or contact : 011-2434-4599

(Service to the Nation since 1875)



Table-1

7 Days Rainfall Forecast								
S. No.	Subdivision	27-Sep	28-Sep	29-Sep	30-Sep	01-Oct	02-Oct	03-Oct
		Day 1	Day 2	Day 3	Day 4	Day 5	Day 6	Day 7
1	ANDAMAN & NICOBAR ISLANDS	WS	WS	WS	WS	WS	WS	WS
2	ARUNACHAL PRADESH	SCT	SCT	SCT	SCT	SCT	FWS	FWS
3	ASSAM & MEGHALAYA	SCT	SCT	SCT	SCT	FWS	FWS	WS
4	NAGALAND, MANIPUR, MIZORAM & TRIPURA	SCT	SCT	FWS	FWS	FWS	WS	WS
5	SUB-HIMALAYAN WEST BENGAL & SIKKIM	ISOL	ISOL	SCT	SCT	SCT	FWS	FWS
6	GANGETIC WEST BENGAL	ISOL	SCT	FWS	WS	FWS	WS	WS
7	ODISHA	ISOL	ISOL	SCT	FWS	WS	WS	WS
8	JHARKHAND	ISOL	ISOL	SCT	FWS	FWS	WS	WS
9	BIHAR	ISOL	ISOL	ISOL	SCT	SCT	SCT	FWS
10	EAST UTTAR PRADESH	ISOL	ISOL	ISOL	SCT	SCT	SCT	SCT
11	WEST UTTAR PRADESH	DRY	DRY	DRY	DRY	ISOL	ISOL	ISOL
12	UTTARAKHAND	DRY	DRY	DRY	ISOL	ISOL	ISOL	ISOL
13	HARYANA CHANDIGARH & DELHI	DRY	DRY	DRY	DRY	DRY	DRY	DRY
14	PUNJAB	DRY	DRY	DRY	DRY	DRY	DRY	DRY
15	HIMACHAL PRADESH	DRY	DRY	DRY	DRY	DRY	ISOL	ISOL
16	JAMMU & KASHMIR AND LADAKH	DRY	DRY	DRY	dry	DRY	DRY	DRY
17	WEST RAJASTHAN	DRY	DRY	DRY	DRY	DRY	DRY	DRY
18	EAST RAJASTHAN	ISOL	DRY	DRY	DRY	DRY	DRY	DRY
19	WEST MADHYA PRADESH	ISOL	ISOL	ISOL	ISOL	ISOL	ISOL	ISOL
20	EAST MADHYA PRADESH	ISOL	ISOL	SCT	SCT	FWS	FWS	FWS
21	GUJARAT REGION	SCT	ISOL	ISOL	ISOL	ISOL	DRY	DRY
22	SAURASHTRA & KUTCH	SCT	ISOL	ISOL	ISOL	DRY	DRY	DRY
23	KONKAN & GOA	WS	WS	WS	WS	FWS	SCT	SCT
24	MADHYA MAHARASHTRA	WS	FWS	FWS	SCT	SCT	ISOL	ISOL
25	MARATHAWADA	FWS	SCT	SCT	ISOL	ISOL	ISOL	ISOL
26	VIDARBHA	SCT	SCT	FWS	FWS	FWS	FWS	FWS
27	CHHATTISGARH	FWS	FWS	FWS	FWS	WS	WS	WS
28	COASTAL ANDHRA PRADESH & YANAM	FWS	FWS	SCT	SCT	SCT	SCT	SCT
29	TELANGANA	SCT	FWS	FWS	FWS	FWS	ISOL	ISOL
30	RAYALASEEMA	SCT	SCT	SCT	SCT	SCT	SCT	ISOL
31	TAMILNADU PUDUCHERRY & KARAIKAL	SCT	SCT	SCT	ISOL	ISOL	ISOL	ISOL
32	COASTAL KARNATAKA	WS	WS	WS	WS	WS	FWS	FWS
33	NORTH INTERIOR KARNATAKA	FWS	FWS	FWS	FWS	FWS	SCT	SCT
34	SOUTH INTERIOR KARNATAKA	FWS	FWS	FWS	FWS	FWS	SCT	SCT
35	KERALA & MAHE	WS	WS	WS	WS	WS	WS	FWS
36	LAKSHADWEEP	WS	WS	WS	WS	WS	WS	FWS

Legend	Category	% Stations
WS	Widespread/Most Places	76-100
FWS	Fairly Widespread/Many Places	51-75
SCT	Scattered/ A Few Places	26-50
ISOL	Isolated Places	1-25
DRY	No Rain	0

* Red color warning does not mean "Red Alert" Red color warning means "Take Action".
Forecast and Warning for any day is valid from 0830 hours IST of day till 0830 hours IST of next day For
more details kindly visit <https://mausam.imd.gov.in> or contact : 011-2434-4599
(Service to the Nation since 1875)

Fig. 1: Maximum Temperatures Dated 26.09.2023

Fig. 2: Departure of Maximum Temp. Dated 26.09.2023

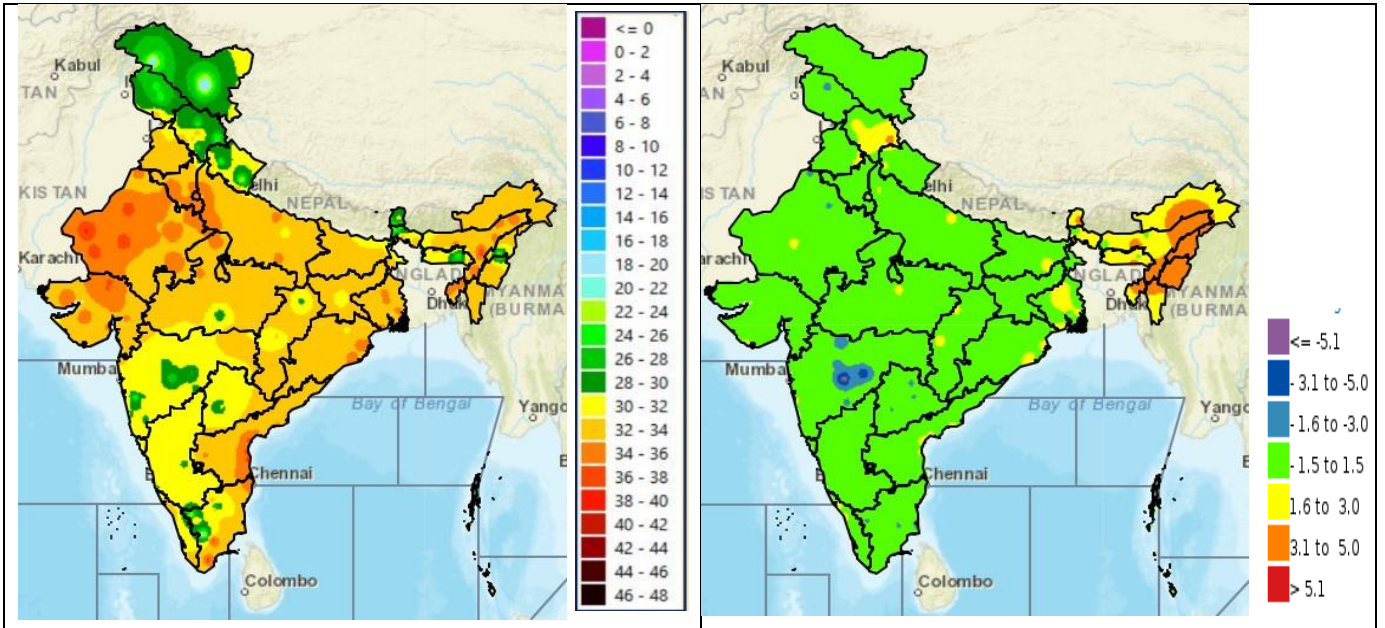


Fig. 3: Minimum Temperatures Dated 27.09.2023

Fig. 4: Departure of Minimum Temp. Dated 27.09.2023

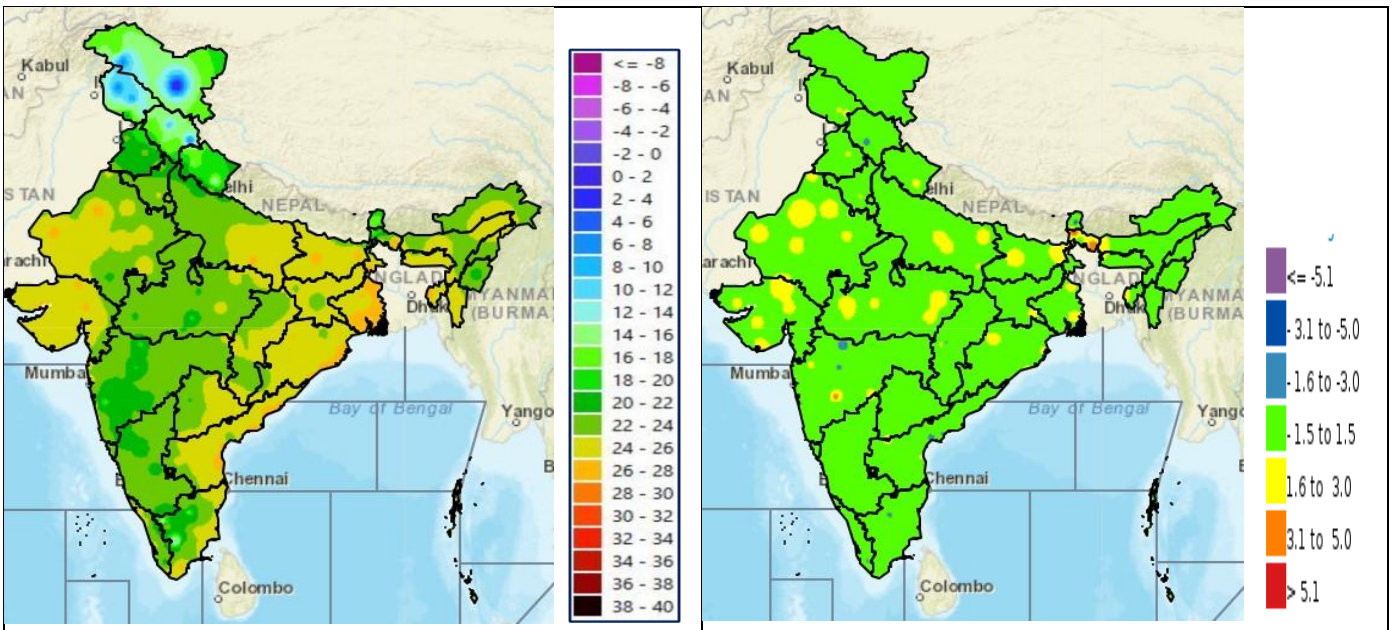
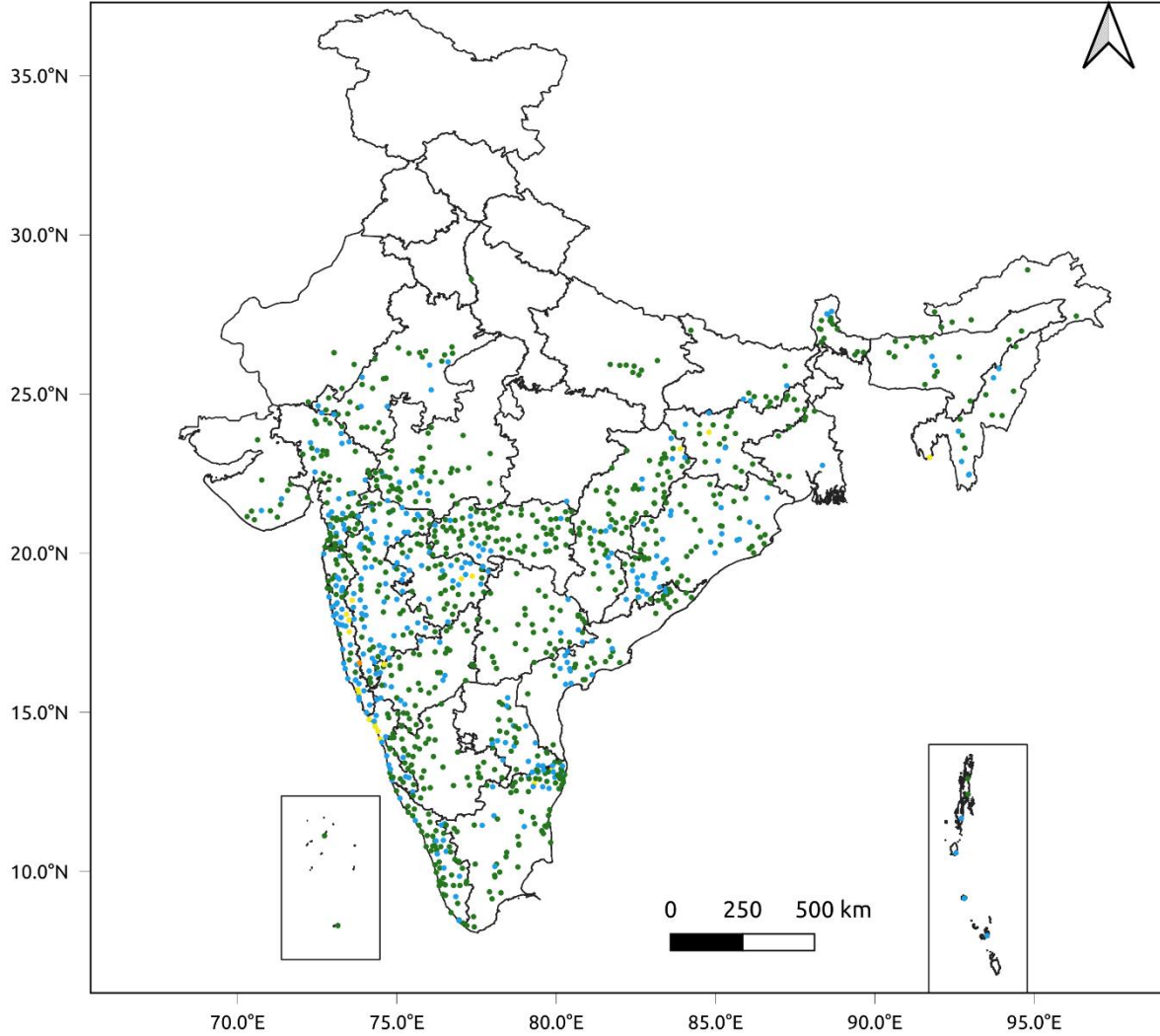


Fig. 5: Accumulated Rainfall (mm) during past 24 hours

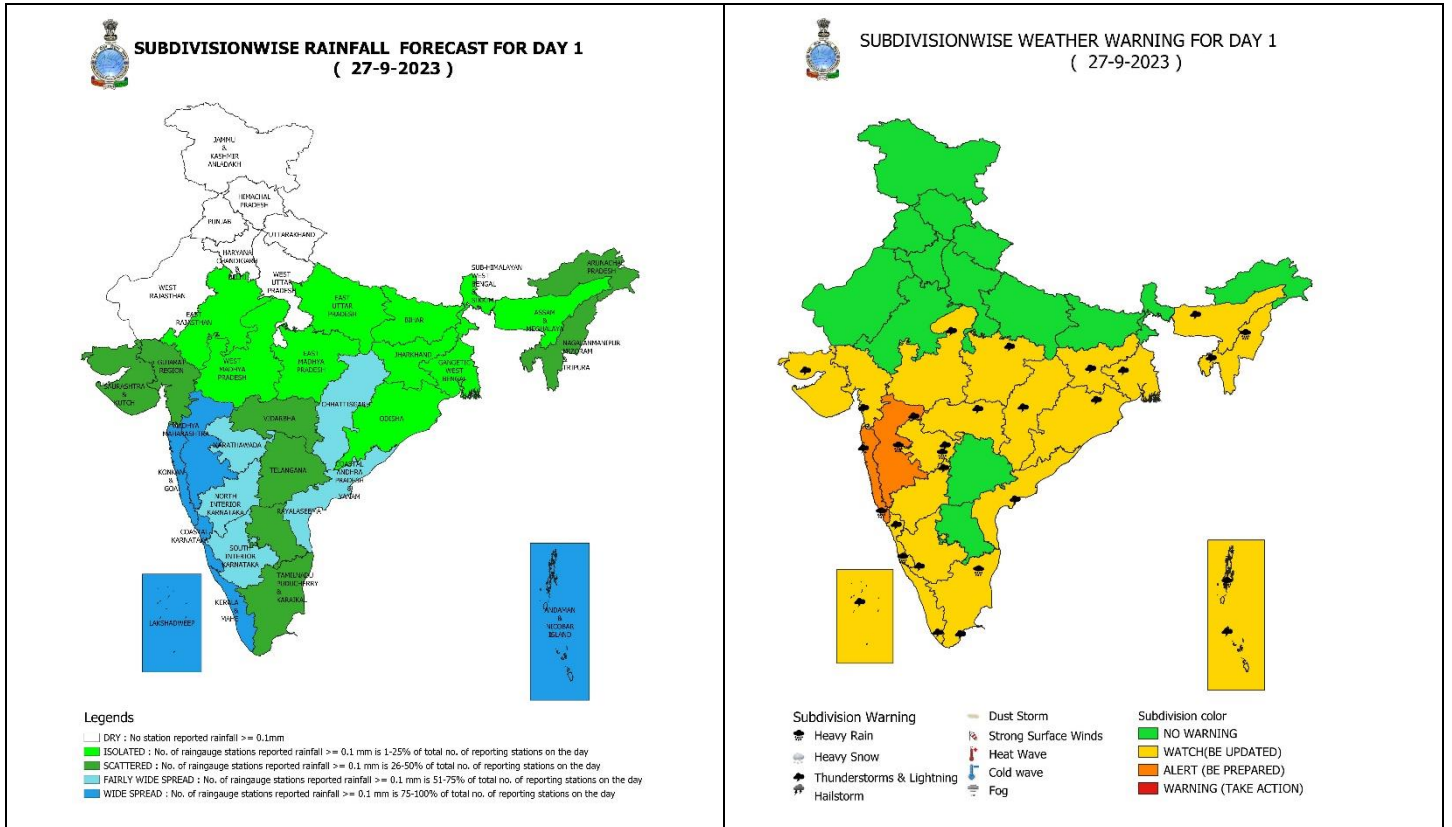


24 Hr cumulative rainfall recorded over different stations during 0830 IST of 26-9-2023 to 0830 IST of 27-9-2023



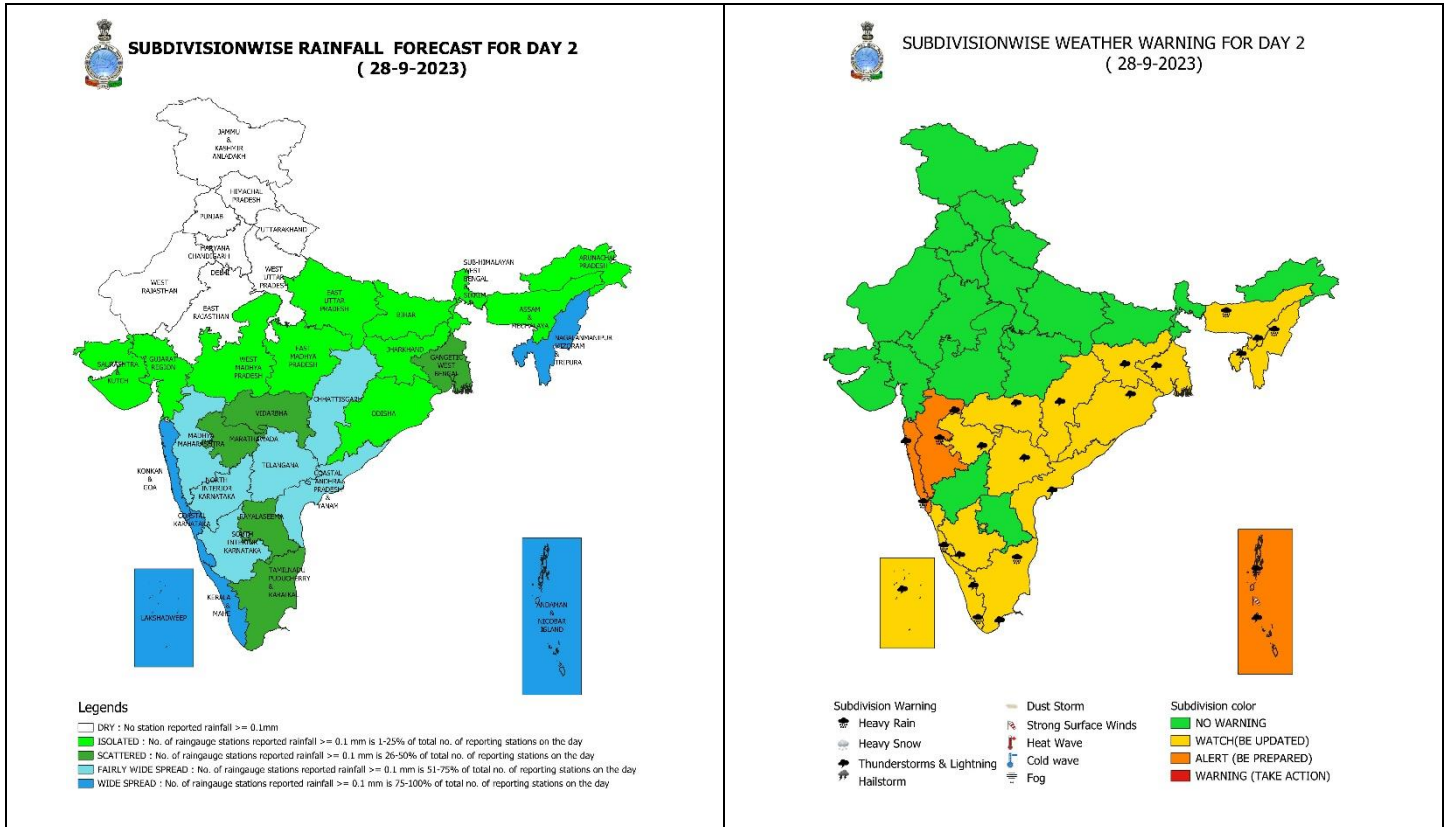
Legends

- Very Light to Light Rainfall (0.1 - 15.5 mm)
- Moderate Rainfall (15.6 - 64.4 mm)
- Heavy Rainfall (64.5 - 115.5 mm)
- Very Heavy Rainfall (115.6 - 204.4 mm)
- Extremely Heavy Rainfall (≥ 204.5 mm)



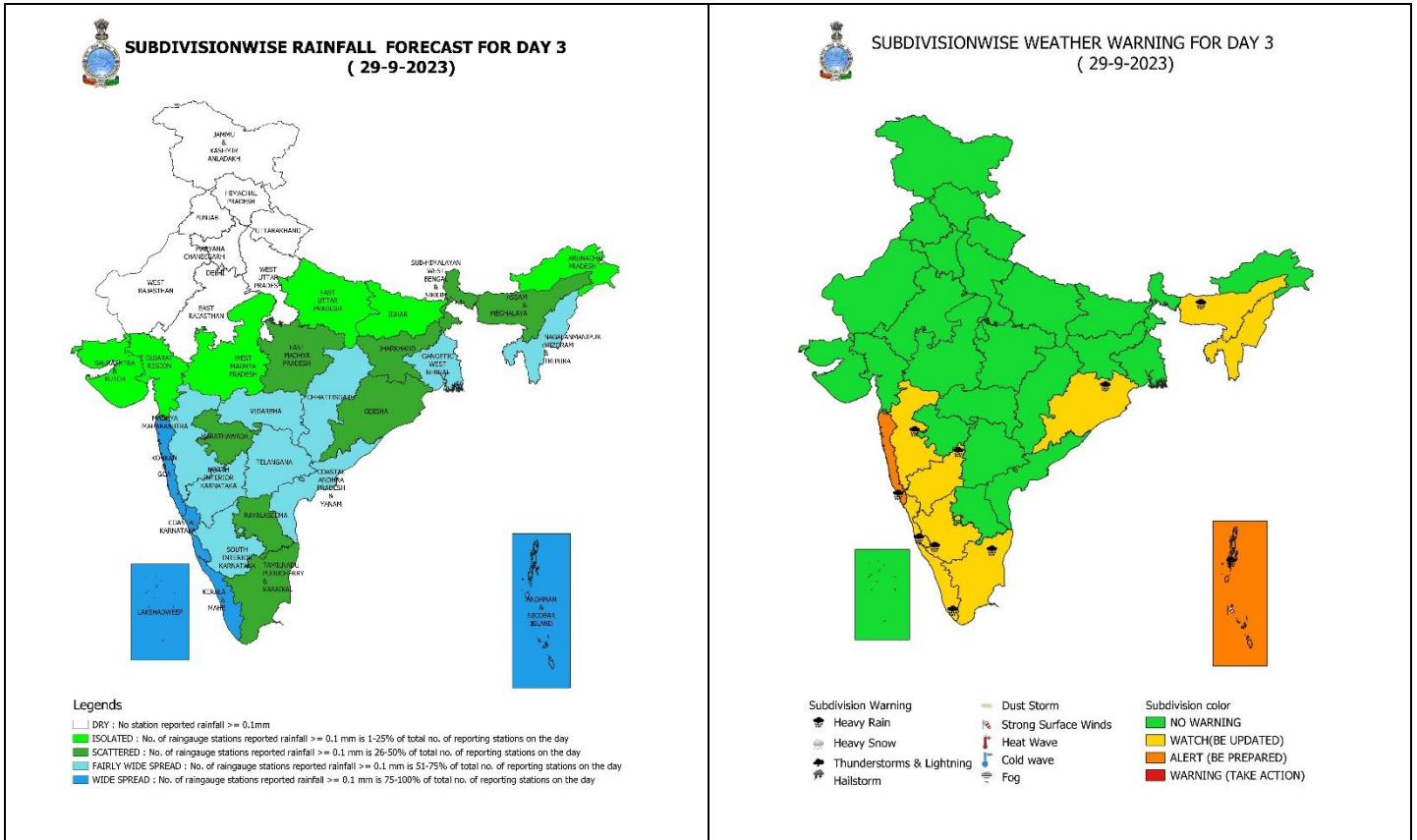
27 September (Day 1): -

- ❖ **Heavy rainfall** very likely at isolated places over Andaman & Nicobar Islands, Nagaland, Manipur, Mizoram & Tripura, Konkan & Goa, Madhya Maharashtra, Marathwada, Coastal Karnataka, Tamil Nadu, Puducherry & Karaikal.
- ❖ **Thunderstorm with lightning & gusty winds (speed 30-40 kmph)** very likely at isolated places over Andaman & Nicobar Islands; **with lightning** at isolated places over Madhya Pradesh, Vidarbha, Chhattisgarh, Gangetic West Bengal, Odisha, Assam & Meghalaya, Nagaland, Manipur, Mizoram & Tripura, Konkan & Goa, Madhya Maharashtra, Marathwada, Gujarat state, Coastal Andhra Pradesh & Yanam, Karnataka, Tamil Nadu, Puducherry & Karaikal, Kerala & Mahe and Lakshadweep.
- ❖ **Squally wind speed of 45-55 kmph gusting to 65 kmph** likely over Southwest and adjoining Westcentral Arabian Sea and **Squally weather speed of 40-45 kmph gusting to 55 kmph** Likely over Eastcentral Arabian Sea, along & off Maharashtra coast, Southwest & adjoining Southeast Bay of Bengal, North Andaman Sea. **Fishermen are advised not to venture into these areas.**



28 September (Day 2): -

- ❖ **Heavy to very heavy rainfall** likely at isolated places over Andaman & Nicobar Islands and Konkan & Goa; **Heavy rainfall** at isolated places over Assam & Meghalaya, Nagaland, Manipur, Mizoram & Tripura, Coastal Karnataka, Tamil Nadu, Kerala & Mahe.
- ❖ **Thunderstorm with lightning & gusty winds (speed 30-40 kmph)** very likely at isolated places over Andaman & Nicobar Islands; **with lightning** likely at isolated places over Gangetic West Bengal, Jharkhand, Odisha, Assam & Meghalaya, Nagaland, Manipur, Mizoram & Tripura, Konkan & Goa, Madhya Maharashtra, Marathwada, Vidarbha, Chhattisgarh, Coastal Andhra Pradesh & Yanam, Telangana, South Interior Karnataka, Tamil Nadu, Puducherry & Karaikal, Kerala & Mahe and Lakshadweep.
- ❖ **Squally wind speed of 45-55 kmph gusting to 65 kmph** likely over Southwest and adjoining Westcentral Arabian Sea and **Squally weather speed of 40-45 kmph gusting to 55 kmph** likely over Eastcentral Arabian Sea, along & off Maharashtra coast, South & adjoining Eastcentral Bay of Bengal and North Andaman Sea. **Fishermen are advised not to venture into these areas.**



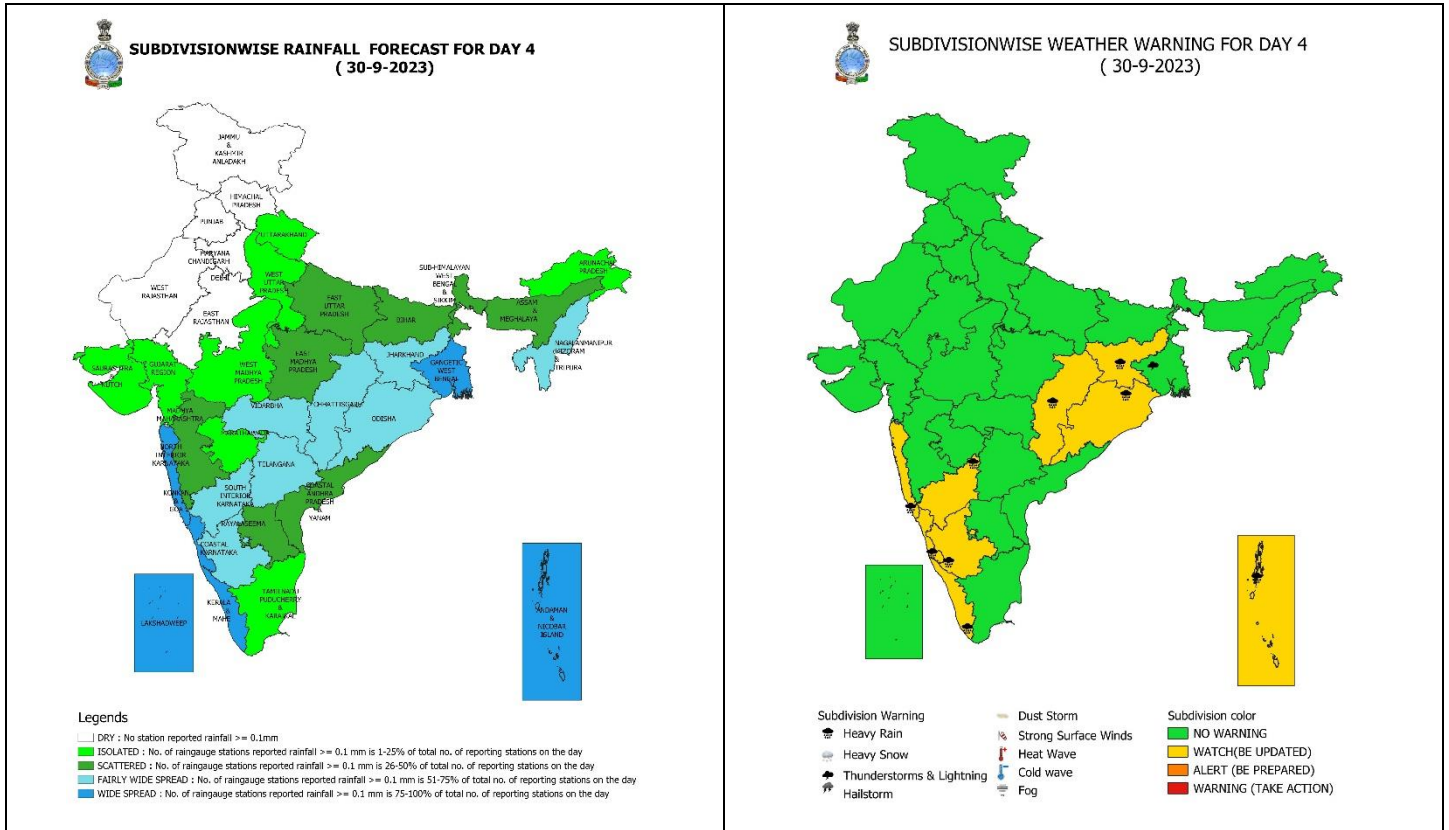
29 September (Day 3): -

- ❖ **Heavy to very heavy rainfall** likely at isolated places over Andaman & Nicobar Islands and Konkan & Goa; **Heavy rainfall** at isolated places over Odisha, Assam & Meghalaya, Madhya Maharashtra, Karnataka, Tamil Nadu and Kerala & Mahe.
- ❖ **Thunderstorm with lightning & gusty winds (speed 30-40 kmph)** very likely at isolated places over Andaman & Nicobar Islands and Kerala & Mahe; **with lightning** likely at isolated places over West Bengal & Sikkim, Jharkhand, Odisha, Assam & Meghalaya, Nagaland, Manipur, Mizoram & Tripura, Konkan & Goa, Madhya Maharashtra, Marathwada, Telangana, South Interior Karnataka, Tamil Nadu, Puducherry & Karaikal.
- ❖ **Squally wind speed of 45-55 kmph gusting to 65 kmph** likely over Southwest and adjoining Westcentral Arabian Sea and **Squally weather speed of 45-55 kmph gusting to 55 kmph** likely over Eastcentral & Southeast Arabian Sea, along & off Maharashtra & Kerala coasts, South and Eastcentral Bay of Bengal and North Andaman Sea. **Fishermen are advised not to venture into these areas.**

*** Red color warning does not mean "Red Alert" Red color warning means "Take Action".**

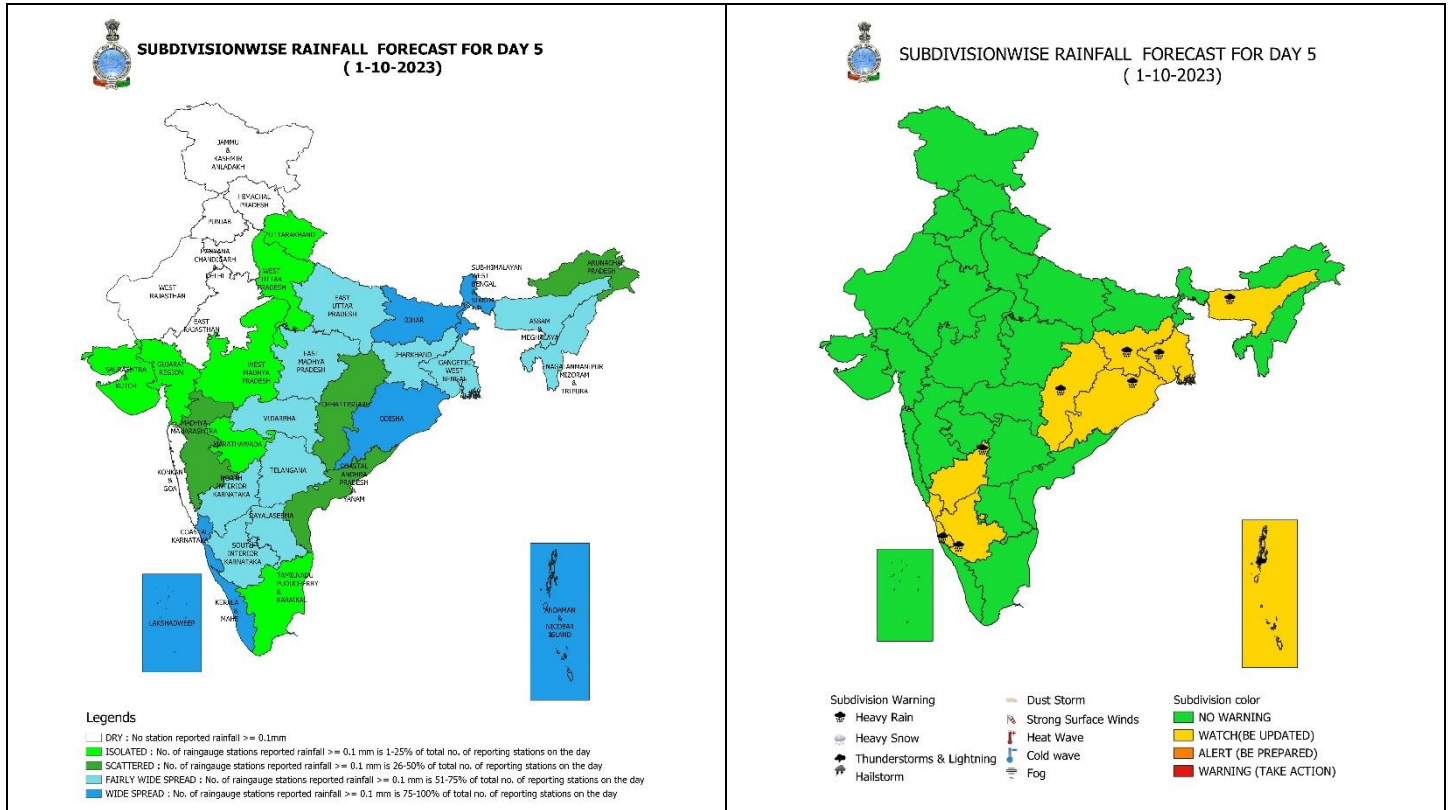
Forecast and Warning for any day is valid from 0830 hours IST of day till 0830 hours IST of next day For more details kindly visit <https://mausam.imd.gov.in> or contact : 011-2434-4599

(Service to the Nation since 1875)



30 September (Day 4): -

- ❖ **Heavy rainfall** likely at isolated places over Andaman & Nicobar Islands, Chhattisgarh, Gangetic West Bengal, Jharkhand, Odisha, Konkan & Goa, Karnataka and Kerala & Mahe.
- ❖ **Thunderstorm with lightning & gusty winds (speed 30-40 kmph)** likely at isolated places over Andaman & Nicobar Islands and Kerala & Mahe; **with lightning** at isolated places over East Madhya Pradesh, Vidarbha, Chhattisgarh, West Bengal & Sikkim, Bihar, Jharkhand, Odisha, Konkan & Goa, Coastal Andhra Pradesh & Yanam.
- ❖ **Squally wind speed of 45-55 kmph gusting to 65 kmph** likely over Southwest and adjoining Westcentral Arabian Sea and **Squally weather speed of 45-55 kmph gusting to 55 kmph** likely over Eastcentral & Southeast Arabian Sea, along & off Maharashtra & Kerala coasts, South & adjoining Central and Northwest Bay of Bengal and North Andaman Sea. **Fishermen are advised not to venture into these areas.**



01 October (Day 5): -

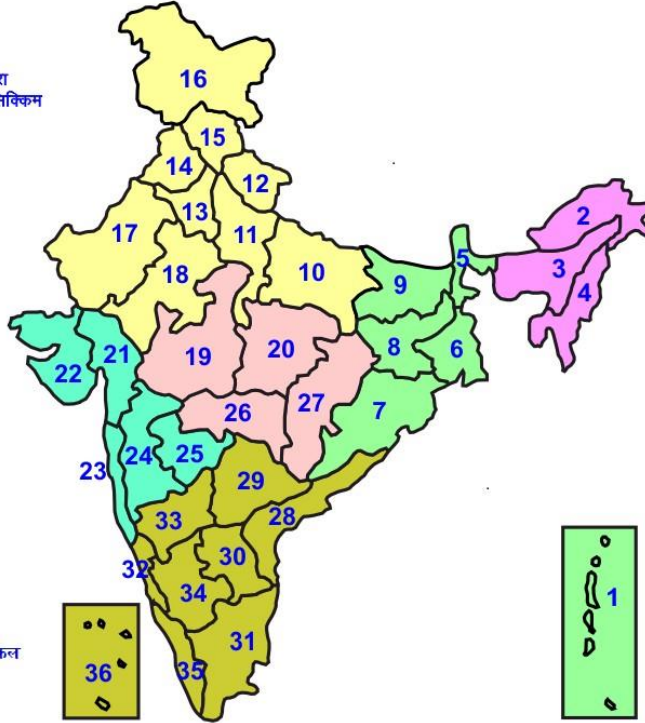
- ❖ **Heavy to very heavy rainfall** likely at isolated places over Odisha; **Heavy rainfall** at isolated places over Chhattisgarh, Jharkhand, Assam & Meghalaya and Karnataka.
- ❖ **Thunderstorm with lightning & gusty winds (speed 30-40 kmph)** very likely at isolated places over Andaman & Nicobar Islands and Kerala & Mahe; **with lightning** likely at isolated places over East Madhya Pradesh, Vidarbha, Chhattisgarh, Sub-Himalayan West Bengal & Sikkim, Jharkhand, Bihar, Coastal Andhra Pradesh & Yanam.
- ❖ **Squally wind speed of 45-55 kmph gusting to 65 kmph** likely over Southwest and adjoining Westcentral Arabian Sea and **Squally weather speed of 40-45 kmph gusting to 55 kmph** likely over South & adjoining Central and Northwest Bay of Bengal and North Andaman Sea. **Fishermen are advised not to venture into these areas.**

*** Red color warning does not mean "Red Alert" Red color warning means "Take Action".**

Forecast and Warning for any day is valid from 0830 hours IST of day till 0830 hours IST of next day For more details kindly visit <https://mausam.imd.gov.in> or contact : 011-2434-4599 (Service to the Nation since 1875)

LEGENDS

- 1 अंडमान और निकोबार द्वीप समुह
- 2 अरुणाचल प्रदेश
- 3 असम और मेघालय
- 4 नागालैंड मनीपुर मीजोरम और त्रिपुरा
- 5 उप हिमालय पश्चिम बंगाल एवं सिक्किम
- 6 पश्चिम गंगेय बंगाल
- 7 ओडिसा
- 8 झारखंड
- 9 बिहार
- 10 पूर्वी उत्तर प्रदेश
- 11 पश्चिम उत्तर प्रदेश
- 12 उत्तराखंड
- 13 हरियाणा चंडिगढ़ एवं दिल्ली
- 14 पंजाब
- 15 हिमाचल प्रदेश
- 16 जम्मू एवं कश्मीर एवं लद्दाख
- 17 पश्चिम राजस्थान
- 18 पूर्वी राजस्थान
- 19 पश्चिम मध्य प्रदेश
- 20 पूर्वी मध्य प्रदेश
- 21 गुजरात क्षेत्र
- 22 सौराष्ट्र एवं कच्छ
- 23 कोंकण एवं गोवा
- 24 मध्य महाराष्ट्र
- 25 मराठावाडा
- 26 विदर्भ
- 27 छत्तीसगढ़
- 28 तटीय आंध्र प्रदेश एवं यनम
- 29 तेलंगाना
- 30 रायलसीमा
- 31 तमिलनाडु, पुदुचेरी एवं कराईकल
- 32 तटिय कर्नाटक
- 33 आंतरिक उत्तरी कर्नाटक
- 34 आंतरिक दक्षिणी कर्नाटक
- 35 केरल एवं माहे
- 36 लक्षद्वीप



1. Andaman & Nicobar Islands
2. Arunachal Pradesh
3. Assam & Meghalaya
4. Nagaland, Manipur, Mizoram & Tripura
5. Sub-Himalayan West Bengal & Sikkim
6. Gangetic West Bengal
7. Orissa
8. Jharkhand
9. Bihar
10. East Uttar Pradesh
11. West Uttar Pradesh
12. Uttarakhand
13. Haryana, Chd & Delhi
14. Punjab
15. Himachal Pradesh
16. Jammu & Kashmir and Ladakh
17. West Rajasthan
18. East Rajasthan
19. West Madhya Pradesh
20. East Madhya Pradesh
21. Gujarat
22. Saurashtra
23. Konkan & Goa
24. Madhya Maharashtra
25. Marathawada
26. Vidharbha
27. Chhattisgarh
28. Coastal Andhra Pradesh & Yanam
29. Telangana
30. Rayalaseema
31. Tamilnadu, Puducherry & Karaikal
32. Coastal Karnataka
33. North Interior Karnataka
34. South Interior Karnataka
35. Kerala & Mahe
36. Lakshadweep

SPATIAL DISTRIBUTION (% of Stations reporting)

% Stations	Category	% Stations	Category
76-100	Widespread (WS/ Most Places)	26-50	Scattered (SCT/ A Few Places)
51-75	Fairly Widespread (FWS/ Many Places)	1-25	Isolated (ISOL)

WARNING

WARNING (TAKE ACTION)
ALERT (BE PREPARED)
WATCH (BE UPDATED)
NO WARNING (NO ACTION)

Probabilistic Forecast

Terms	Probability of Occurrence (%)
Unlikely	< 25
Likely	25 - 50
Very Likely	50 - 75
Most Likely	> 75



Heavy Rain



Heavy Snow



Thunderstorm



Dust Storm



Strong Winds



Visibility



Cyclone



Squall/ Hail



Frost



Cold Wave



Heat Wave



Sea State

* Red color warning does not mean "Red Alert" Red color warning means "Take Action".

Forecast and Warning for any day is valid from 0830 hours IST of day till 0830 hours IST of next day For more details kindly visit <https://mausam.imd.gov.in> or contact : 011-2434-4599

(Service to the Nation since 1875)

LEGENDS

WARNING

WARNING (TAKE ACTION)
ALERT (BE PREPARED)
WATCH (BE UPDATED)
NO WARNING (NO ACTION)

Probabilistic Forecast

Terms	Probability of Occurrence (%)
Unlikely	< 25
Likely	25 - 50
Very Likely	50 - 75
Most Likely	> 75



Rain/ Snow *

Heavy: 64.5 to 115.5 mm/cm *
Very Heavy: 115.6 to 204.4 mm/cm*
Extremely Heavy: > 204.4 mm/cm *



Heat Wave

When maximum temperature of a station reaches $\geq 40^{\circ}\text{C}$ for plains and $\geq 30^{\circ}\text{C}$ for hilly regions
(a) Based on Departure from normal

Heat Wave: Maximum Temperature Departure from normal 4.5°C to 6.4°C .

Severe Heat Wave: Maximum Temperature Departure from normal $\geq 6.5^{\circ}\text{C}$

(b). Based on Actual maximum temperature

Heat Wave: When actual maximum temperature $\geq 45^{\circ}\text{C}$.

Severe Heat Wave: When actual maximum temperature $\geq 47^{\circ}\text{C}$

(c). Criteria for heat wave for coastal stations

When maximum temperature departure is $> 4.5^{\circ}\text{C}$ from normal. Heat Wave may be described provided maximum temperature $\geq 37^{\circ}\text{C}$



Warm Night

When maximum temperature remains 40°C

Warm Night: When minimum temperature departure 4.5°C to 6.4°C .

Severe Warm Night: When minimum temperature departure $> 6.4^{\circ}\text{C}$.



Cold Wave

When minimum temperature of a station $\leq 10^{\circ}\text{C}$ for plains and $\leq 0^{\circ}\text{C}$ for hilly regions.

(a). Based on departure

Cold Wave: Minimum Temperature Departure from normal -4.5°C to -6.4°C .

Severe Cold Wave: Minimum Temperature Departure from normal $\leq -6.5^{\circ}\text{C}$

(b) Based on actual Minimum Temperature (for Plains only)

Cold Wave : When Minimum Temperature is $\leq 4.0^{\circ}\text{C}$

Severe Cold Wave: When Minimum Temperature is $\leq 2.0^{\circ}\text{C}$

(c) For Coastal Stations

When Minimum Temperature departure is $\leq -4.5^{\circ}\text{C}$ & actual Minimum Temperature is $\leq 15^{\circ}\text{C}$



Cold Day

When minimum temperature of a station $\leq 10^{\circ}\text{C}$ for plains and $\leq 0^{\circ}\text{C}$ for hilly regions
Based on departure

Cold Day: Maximum Temperature Departure from normal -4.5°C to -6.4°C .

Severe Cold Day: Maximum Temperature Departure from normal $\leq -6.5^{\circ}\text{C}$



Fog

Phenomenon of small droplets suspended in air and the horizontal visibility $< 1\text{km}$

Moderate Fog: When the visibility between 500-200 metres

Dense Fog: when the visibility between 50- 200 metres

Very Dense Fog: when the visibility < 50 metres



Thunderstorm

Sudden electrical discharges manifested by a flash of light (Lightning) and a sharp rumbling sound (thunder)



Dust/Sand Storm

An ensemble of particles of dust or sand energetically lifted to great heights by a strong and turbulent wind.



Frost

Ice deposits on ground

Air temperature $\leq 4^{\circ}\text{C}$ (over Plains)



Squall

A strong wind that rises suddenly, lasts for atleast 1 minute.

Moderate: Wind speed 52-61 kmph

Severe: Wind speed 62-87 kmph

Very Severe: Wind speed > 87 kmph



Sea State

Effect of various waves in the sea over specific area

Rough to very rough: Wind speed 41-62 kmph (22-33 knots) & Wave height 2.5-6 metre

High to very high: Wind speed 63-117 kmph (34-63 knots) & Wave height 6-14 metre

Phenomenal: Wind speed > 117 kmph (> 63 knots) & Wave height > 14 metre



Cyclone

Cyclonic Storm: Wind speed 62-87 kmph (34-47 knots)

Severe Cyclonic Storm: Wind speed 88-117 kmph (48-63 knots)

Very Severe Cyclonic Storm: Wind speed 118-165 kmph (64 - 89 knots)

Extremely Severe Cyclonic Storm: Wind speed 166-220 kmph (90 -119 knots)

Super Cyclone Storm: Wind speed > 220 kmph (> 119 knots)

* Red color warning does not mean "Red Alert" Red color warning means "Take Action".

Forecast and Warning for any day is valid from 0830 hours IST of day till 0830 hours IST of next day For more details kindly visit <https://mausam.imd.gov.in> or contact : 011-2434-4599

(Service to the Nation since 1875)