



Thursday, October 26, 2023
Time of Issue: 0800 hours IST
(MORNING)

ALL INDIA WEATHER SUMMARY AND FORECAST BULLETIN

Significant Weather Features

Significant Weather features:

- ❖ The Well Marked Low pressure area over north Mizoram and adjoining Manipur & Myanmar has become less marked. However, the associated cyclonic circulation lies over north Myanmar & neighbourhood and extends upto 3.1 km above mean sea level.

Weather forecast & warnings for next 5 days:

South India:

- ❖ Light to moderate rainfall at many places with thunderstorm, lightning & gusty winds very likely over Kerala & Mahe and Tamil Nadu during next 5 days. Isolated heavy rainfall also very likely on 29th & 30th October.

Northeast India:

- ❖ Light to moderate rainfall is very likely at many places over Nagaland, Manipur and east Arunachal Pradesh on 26th October.
- **No significant weather over rest parts of the country during next 5 days.**



Main Weather Observations:

- ❖ **Rainfall distribution** (from 0830 hours IST to 1730 hours IST of yesterday): **at many places** over Kerala & Mahe; **at a few places** over Uttarakhand, Nagaland, Manipur, Mizoram & Tripura and **at isolated places** over Assam & Meghalaya, Odisha, Himachal Pradesh, Jammu-Kashmir-Ladakh-Gilgit-Baltistan-Muzaffarabad, Tamil Nadu, Puducherry & Karaikal.
- ❖ **Significant rainfall recorded** (from 0830 hours IST to 1730 hours IST of yesterday) (in cm): **Jammu-Kashmir:** Kathua-5; **Kerala & Mahe:** Palakkad, Kollam-3 each.
- ❖ **Minimum Temperature Departures (as on 25-10-2023):** Minimum temperatures were **appreciably above normal (3.1°C to 5.0°C)** at isolated places over West Rajasthan, East Madhya Pradesh, Madhya Maharashtra, Assam & Meghalaya, Nagaland, Manipur, Mizoram & Tripura; **above normal (1.6°C to 3.0°C)** at isolated places over Punjab, Konkan & Goa, Odisha, Bihar, Jharkhand, Gangetic West Bengal, Coastal Andhra Pradesh & Yanam, Kerala & Mahe, Tamil Nadu, Puducherry & Karaikal, Arunachal Pradesh. They were **below normal (-1.6°C to -3.0°C)** at many places over Telangana, Sub-Himalayan West Bengal & Sikkim; at a few places over Marathwada, Rayalaseema; at isolated places over Jammu-Kashmir-Ladakh-Gilgit-Baltistan-Muzaffarabad, Uttar Pradesh, Karnataka and near normal over rest parts of the country. Yesterday, **the lowest minimum temperature of 13.2°C** was reported at **Jalgaon (Madhya Maharashtra)** over the plains of the country.
- ❖ **Maximum Temperature Departures (as on 25-10-2023):** Maximum temperatures were **appreciably above normal (3.1°C to 5.0°C)** at isolated places over Sub-Himalayan West Bengal & Sikkim; **above normal (1.6°C to 3.0°C)** at most places over Karnataka, Rayalaseema, Kerala & Mahe, Tamil Nadu, Puducherry & Karaikal; at many places over Coastal Andhra Pradesh & Yanam, Telangana; at isolated places over Bihar, Assam & Meghalaya, Chhattisgarh, Odisha, Himachal Pradesh. They were **below normal (-1.6°C to -3.0°C)** at isolated places Jammu-Kashmir-Ladakh-Gilgit-Baltistan-Muzaffarabad, Nagaland, Manipur, Mizoram & Tripura and **near normal** over rest parts of the country. Yesterday, **the highest maximum temperature of 38.6°C** was reported at **Bhuj (Saurashtra & Kutch)**.



Meteorological Analysis (Based on 0530 hours IST)

- ❖ The Well Marked Low pressure area over north Mizoram and adjoining Manipur & Myanmar has become less marked. However, the associated cyclonic circulation lies over north Myanmar & neighbourhood and extends upto 3.1 km above mean sea level.
- ❖ The feeble **Western Disturbance** as a trough in middle tropospheric levels with its axis at 5.8 km above mean sea level roughly along Long. 80°E to the north of Lat. 30°N is moving away east-northeastwards.
- ❖ The **cyclonic circulation** over Westcentral Bay of Bengal & adjoining south Coastal Andhra Pradesh extending upto 1.5 km above mean sea level persists.
- ❖ The **cyclonic circulation** over north Kerala & neighbourhood at 0.9 km above mean sea level persists.

Weather Forecast for next 5 days (Upto 0830 hours IST of 31st October, 2023)

- ❖ Meteorological sub-division wise detailed 5 days rainfall forecast is given in Table-1.

Weather Outlook for subsequent 2 days

- ❖ Scattered to fairly widespread light/moderate rainfall likely over extreme south peninsular India and Andhra Pradesh.
- ❖ Isolated light/moderate rainfall likely over Andaman & Nicobar Islands.
- ❖ Mainly dry weather likely to prevail over rest parts of the country.



Table-1

7 Days Rainfall Forecast

S. No.	Subdivision	26- Oct	27- Oct	28- Oct	29- Oct	30- Oct	31- Oct	01- Nov
		Day 1	Day 2	Day 3	Day 4	Day 5	Day 6	Day 7
1	ANDAMAN & NICOBAR ISLANDS	FWS	FWS	FWS	SCT	SCT	SCT	SCT
2	ARUNACHAL PRADESH	ISOL	DRY	DRY	DRY	DRY	DRY	DRY
3	ASSAM & MEGHALAYA	ISOL	DRY	DRY	DRY	DRY	DRY	DRY
4	NAGALAND, MANIPUR, MIZORAM & TRIPURA	ISOL	DRY	DRY	DRY	DRY	DRY	DRY
5	SUB-HIMALAYAN WEST BENGAL & SIKKIM	DRY	DRY	DRY	DRY	DRY	DRY	DRY
6	GANGETIC WEST BENGAL	DRY	DRY	DRY	DRY	DRY	DRY	DRY
7	ODISHA	DRY	DRY	DRY	DRY	DRY	DRY	DRY
8	JHARKHAND	DRY	DRY	DRY	DRY	DRY	DRY	DRY
9	BIHAR	DRY	DRY	DRY	DRY	DRY	DRY	DRY
10	EAST UTTAR PRADESH	DRY	DRY	DRY	DRY	DRY	DRY	DRY
11	WEST UTTAR PRADESH	DRY	DRY	DRY	DRY	DRY	DRY	DRY
12	UTTARAKHAND	DRY	DRY	DRY	DRY	DRY	DRY	DRY
13	HARYANA CHANDIGARH & DELHI	DRY	DRY	DRY	DRY	DRY	DRY	DRY
14	PUNJAB	DRY	DRY	DRY	DRY	DRY	DRY	DRY
15	HIMACHAL PRADESH	DRY	DRY	DRY	DRY	DRY	DRY	DRY
16	JAMMU & KASHMIR AND LADAKH	DRY	DRY	DRY	DRY	DRY	DRY	DRY
17	WEST RAJASTHAN	DRY	DRY	DRY	DRY	DRY	DRY	DRY
18	EAST RAJASTHAN	DRY	DRY	DRY	DRY	DRY	DRY	DRY
19	WEST MADHYA PRADESH	DRY	DRY	DRY	DRY	DRY	DRY	DRY
20	EAST MADHYA PRADESH	DRY	DRY	DRY	DRY	DRY	DRY	DRY
21	GUJARAT REGION	DRY	DRY	DRY	DRY	DRY	DRY	DRY
22	SAURASHTRA & KUTCH	DRY	DRY	DRY	DRY	DRY	DRY	DRY
23	KONKAN & GOA	DRY	DRY	DRY	DRY	DRY	DRY	DRY
24	MADHYA MAHARASHTRA	DRY	DRY	DRY	DRY	DRY	DRY	DRY
25	MARATHAWADA	DRY	DRY	DRY	DRY	DRY	DRY	DRY
26	VIDARBHA	DRY	DRY	DRY	DRY	DRY	DRY	DRY
27	CHHATTISGARH	DRY	DRY	DRY	DRY	DRY	DRY	DRY
28	COASTAL ANDHRA PRADESH & YANAM	ISOL	ISOL	ISOL	ISOL	ISOL	ISOL	ISOL
29	TELANGANA	DRY	DRY	DRY	DRY	DRY	DRY	DRY
30	RAYALASEEMA	DRY	DRY	DRY	ISOL	ISOL	ISOL	ISOL
31	TAMILNADU PUDUCHERRY & KARAIKAL	ISOL	ISOL	ISOL	SCT	SCT	SCT	SCT
32	COASTAL KARNATAKA	DRY	DRY	ISOL	ISOL	ISOL	ISOL	ISOL
33	NORTH INTERIOR KARNATAKA	DRY	DRY	DRY	DRY	DRY	DRY	DRY
34	SOUTH INTERIOR KARNATAKA	DRY	DRY	ISOL	ISOL	ISOL	ISOL	ISOL
35	KERALA & MAHE	FWS	FWS	FWS	FWS	FWS	FWS	FWS
36	LAKSHADWEEP	SCT	SCT	SCT	SCT	SCT	SCT	SCT

Legend	Category	% Stations
WS	Widespread/Most Places	76-100
FWS	Fairly Widespread/Many Places	51-75
SCT	Scattered/ A Few Places	26-50
ISOL	Isolated Places	1-25
DRY	No Rain	0

* Red color warning does not mean "Red Alert" Red color warning means "Take Action".
Forecast and Warning for any day is valid from 0830 hours IST of day till 0830 hours IST of next day For
more details kindly visit <https://mausam.imd.gov.in> or contact : 011-2434-4599
(Service to the Nation since 1875)

Fig. 1: Maximum Temperatures Dated 25.10.2023

Fig. 2: Departure of Maximum Temp. Dated 25.10.2023

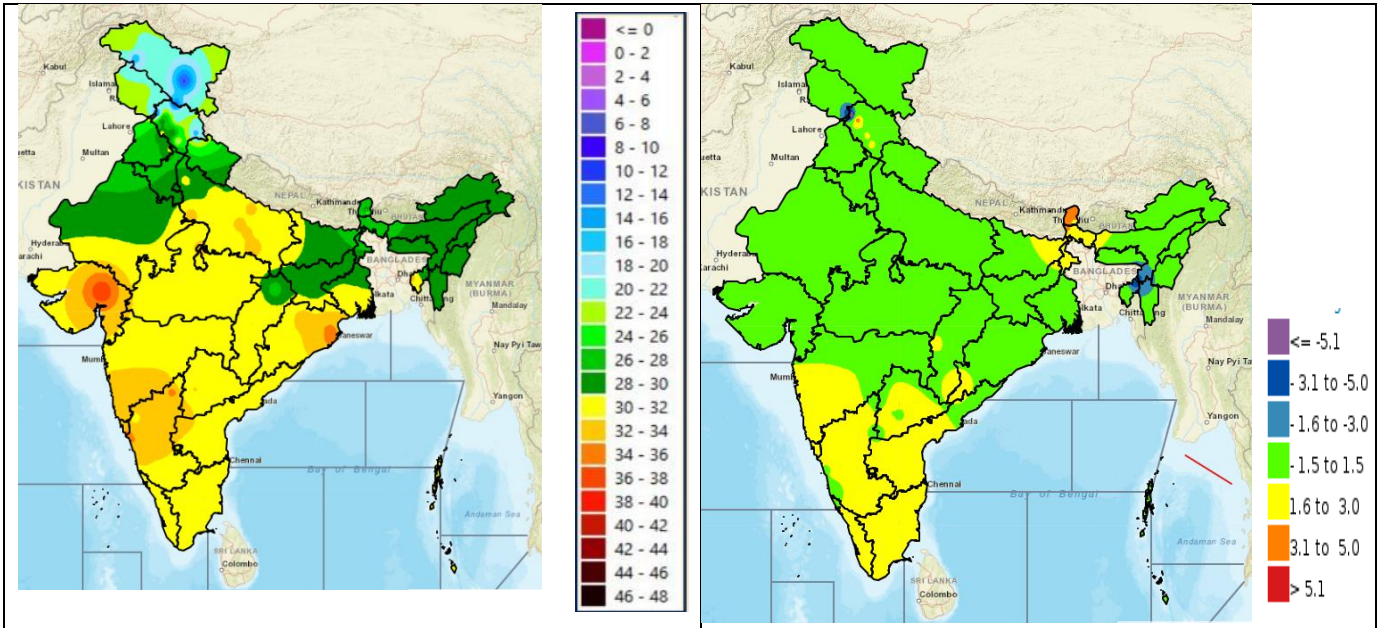
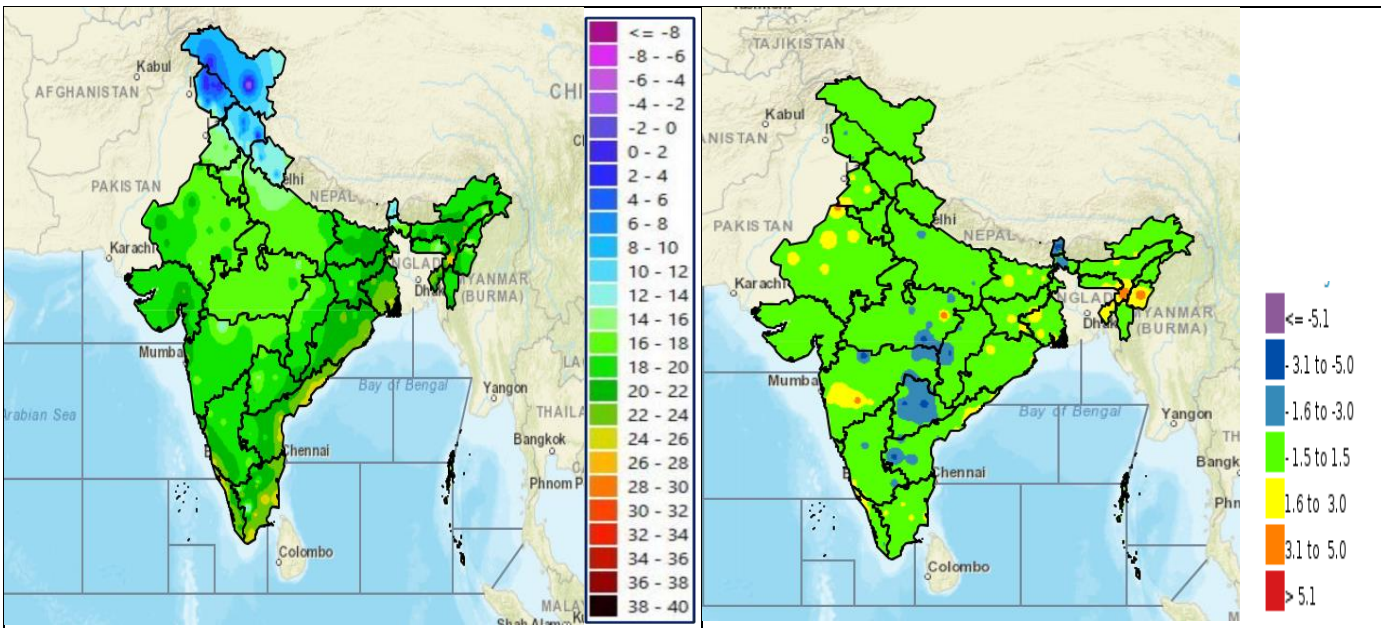


Fig. 3: Minimum Temperatures Dated 25.10.2023

Fig. 4: Departure of Minimum Temp. Dated 25.10.2023

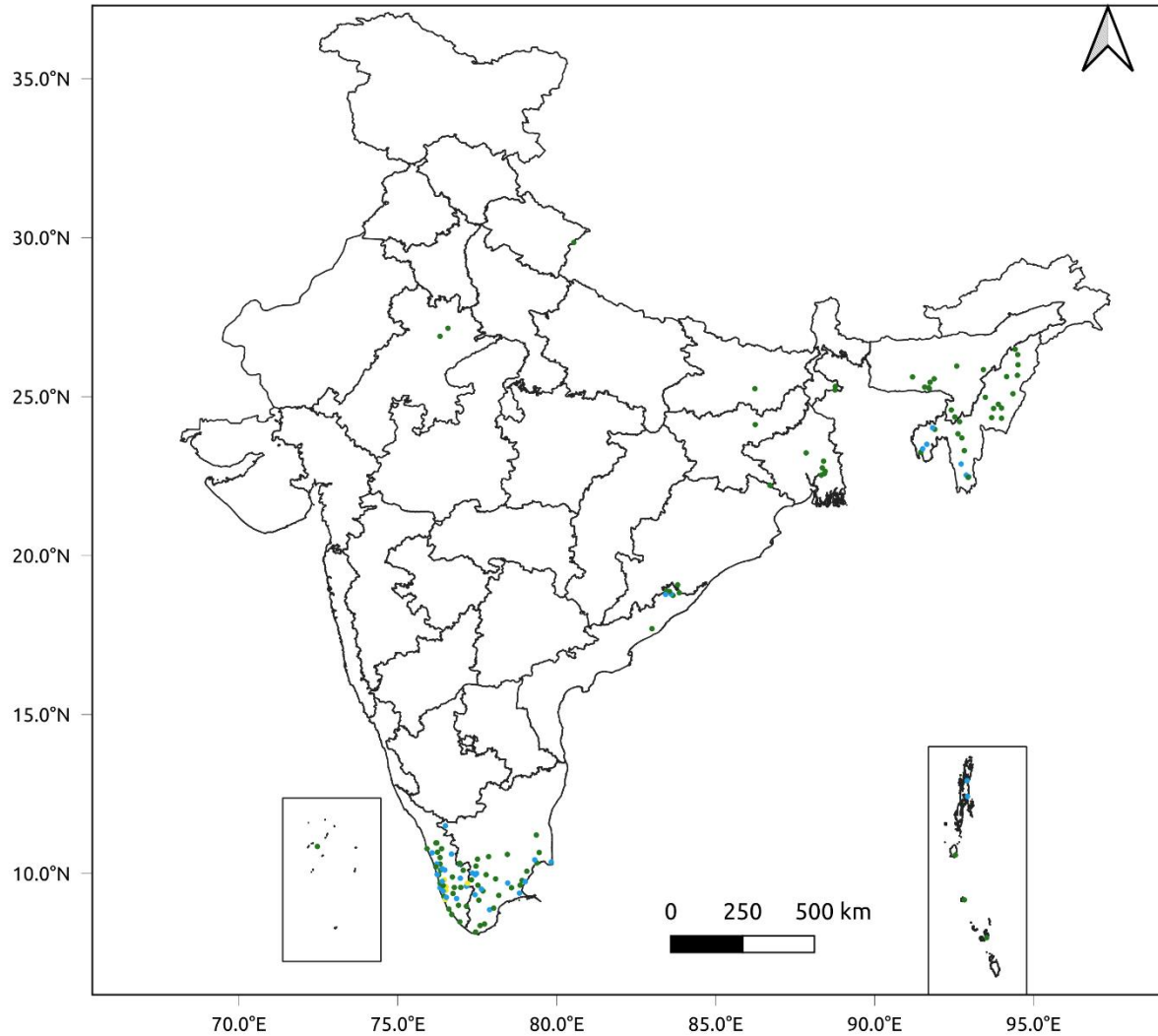


*** Red color warning does not mean "Red Alert" Red color warning means "Take Action".**
Forecast and Warning for any day is valid from 0830 hours IST of day till 0830 hours IST of next day For
more details kindly visit <https://mausam.imd.gov.in> or contact : 011-2434-4599
(Service to the Nation since 1875)

Fig. 5: Accumulated Rainfall (mm) during past 24 hours

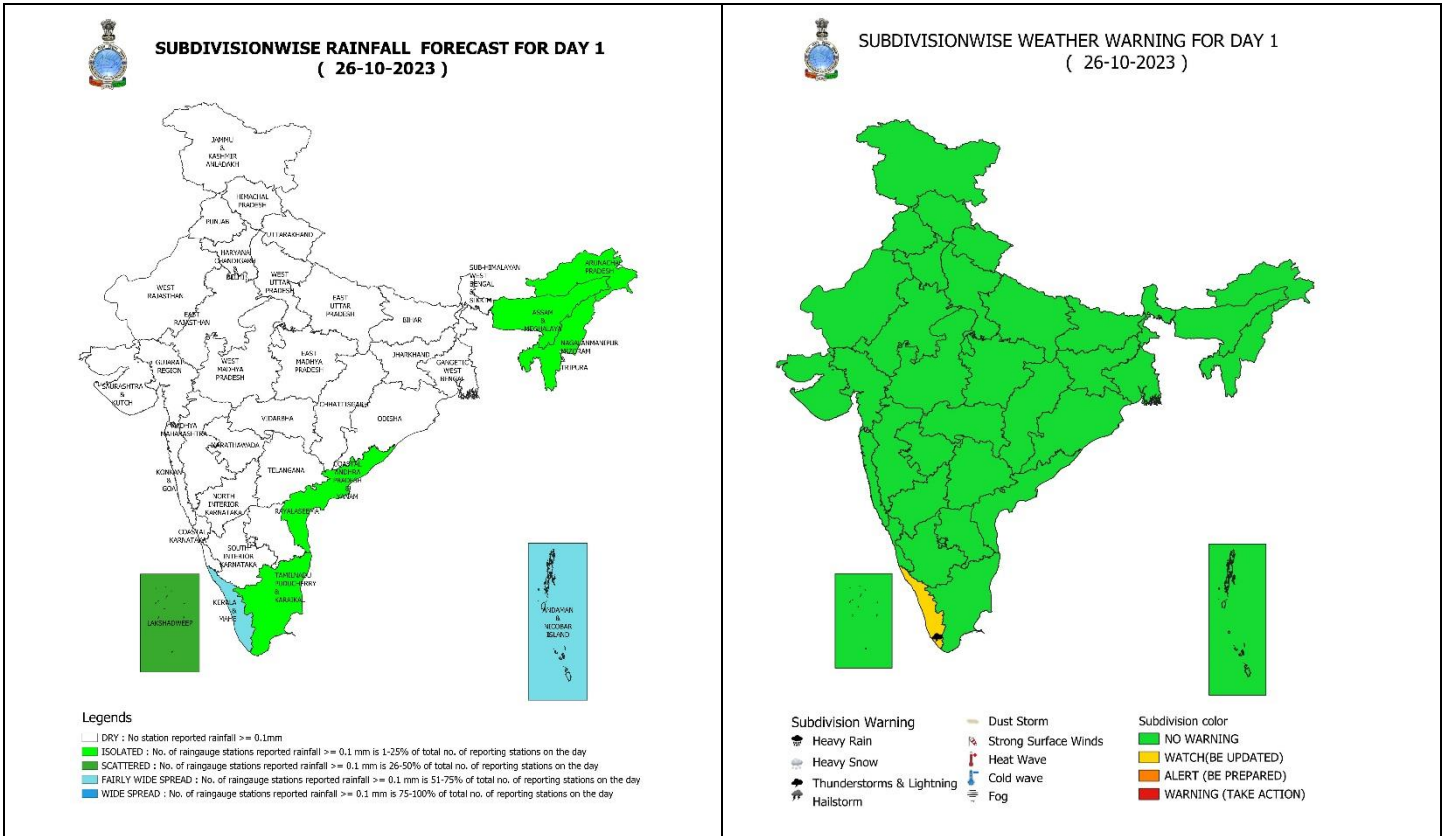


24 Hr cumulative rainfall recorded over different stations during 0830 IST of 24-10-2023 to 0830 IST of 25-10-2023



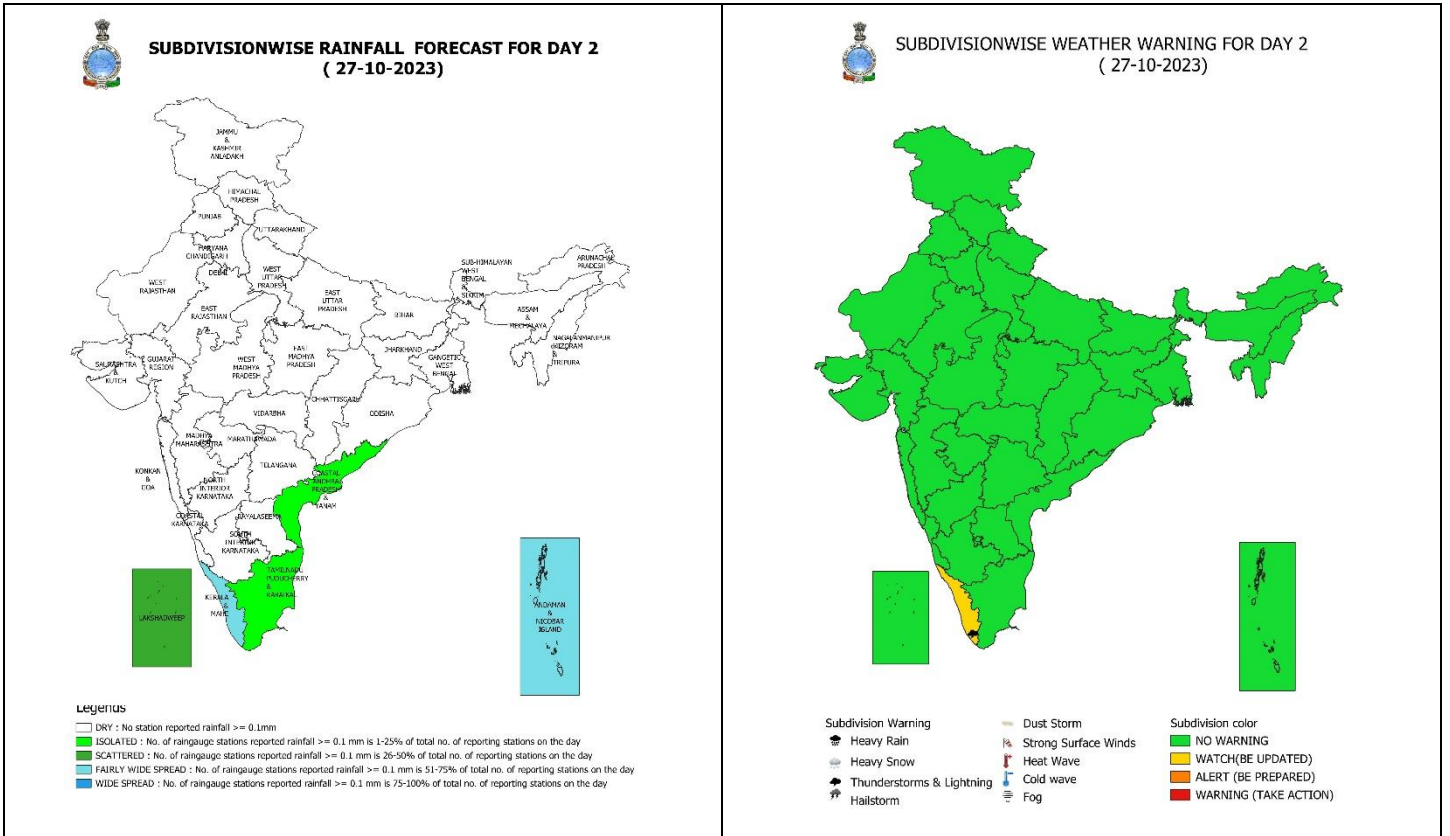
Legends

- Very Light to Light Rainfall (0.1 - 15.5 mm)
- Moderate Rainfall (15.6 - 64.4 mm)
- Heavy Rainfall (64.5 - 115.5 mm)
- Very Heavy Rainfall (115.6 - 204.4 mm)
- Extremely Heavy Rainfall (≥ 204.5 mm)



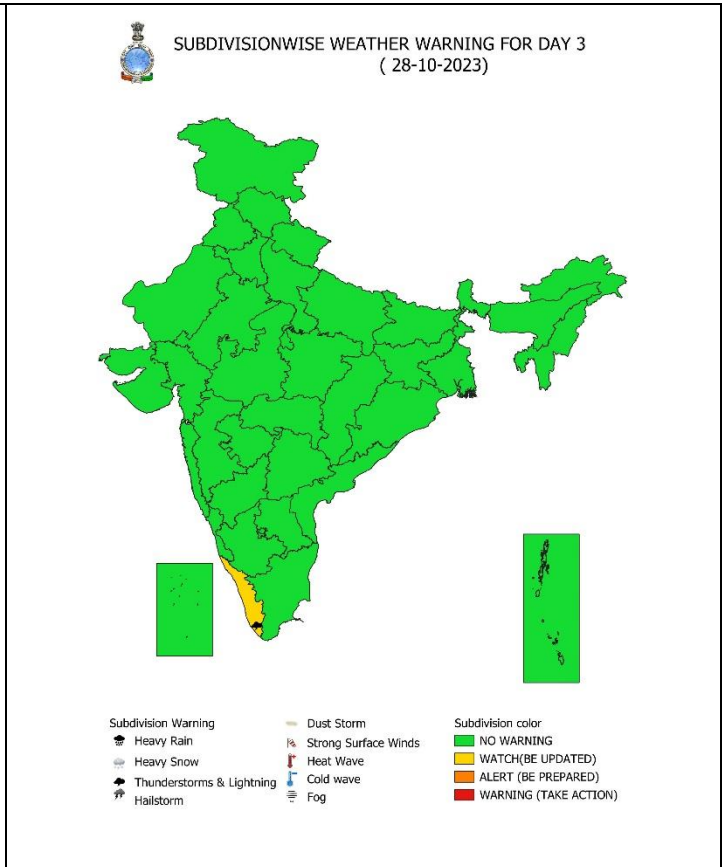
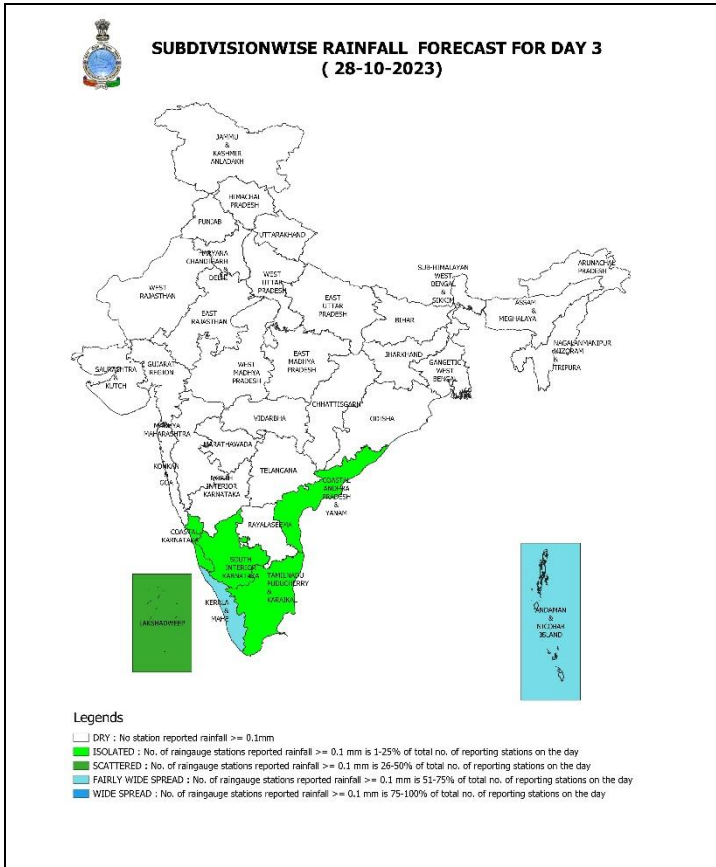
26 October (Day 1):

❖ **Thunderstorm with lightning & gusty winds (30-40 kmph)** very likely at isolated places over Kerala & Mahe.



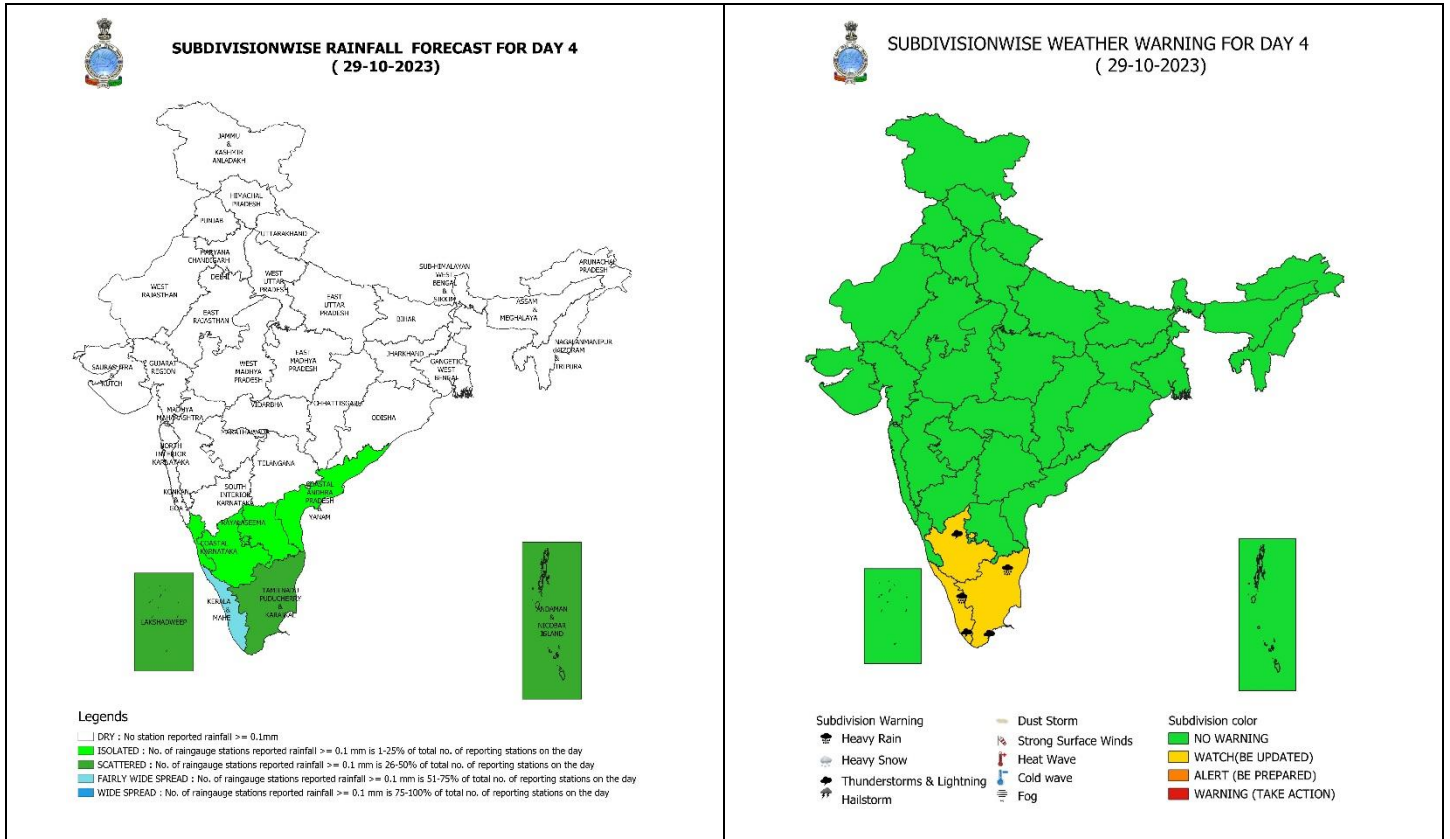
27 October (Day 2):

❖ **Thunderstorm with lightning & gusty winds (30-40 kmph) very likely at isolated places over Kerala & Mahe.**



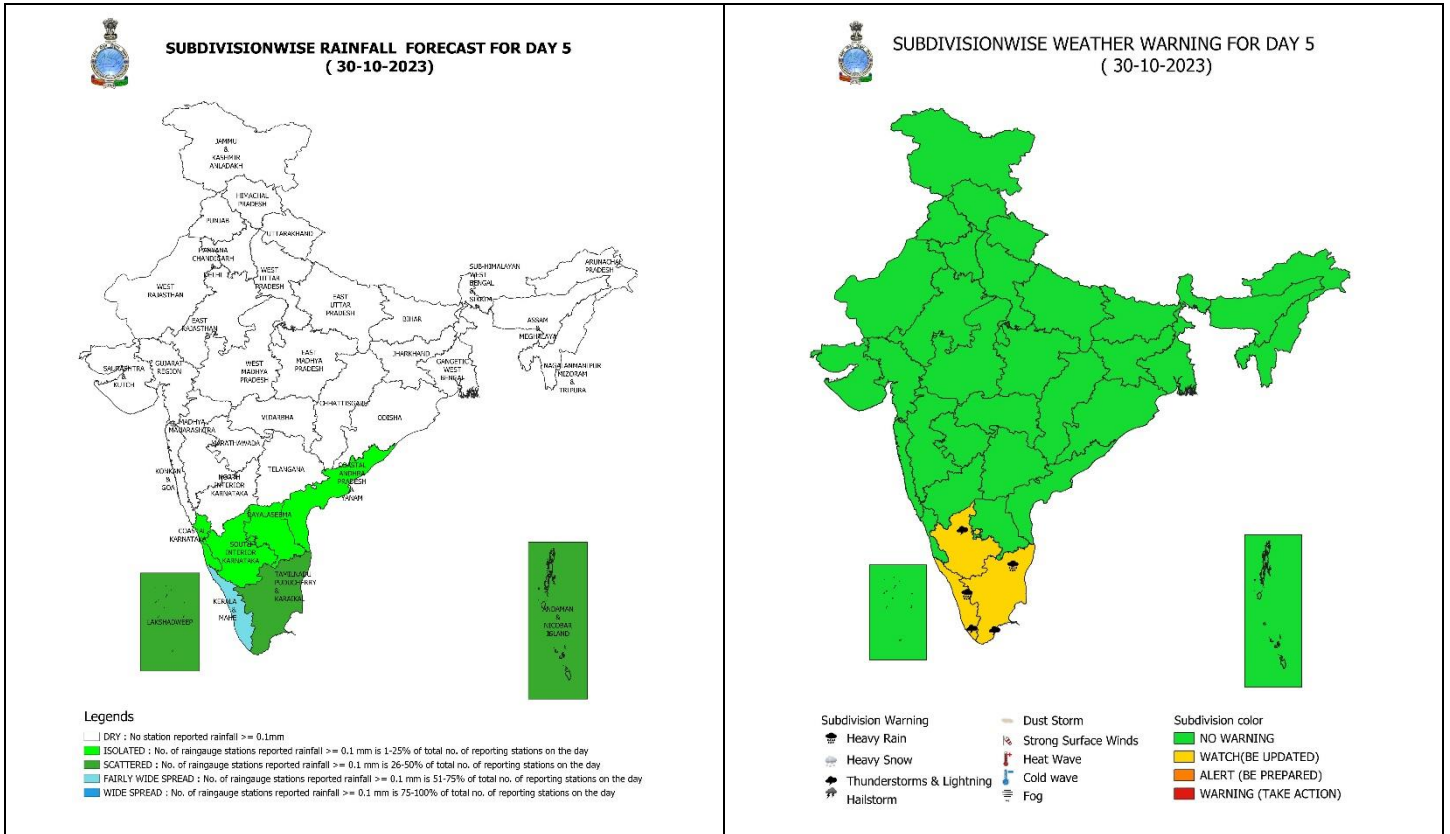
28 October (Day 3):

❖ **Thunderstorm with lightning & gusty winds (30-40 kmph) very likely at isolated places over Kerala & Mahe.**



29 October (Day 4):

- ❖ **Heavy rainfall** likely at isolated places over Kerala & Mahe and Tamil Nadu.
- ❖ **Thunderstorm with lightning & gusty winds (30-40 kmph)** likely at isolated places over Kerala & Mahe and with **lightning at isolated places** over Tamil Nadu, Puducherry & Karaikal and South Interior Karnataka.

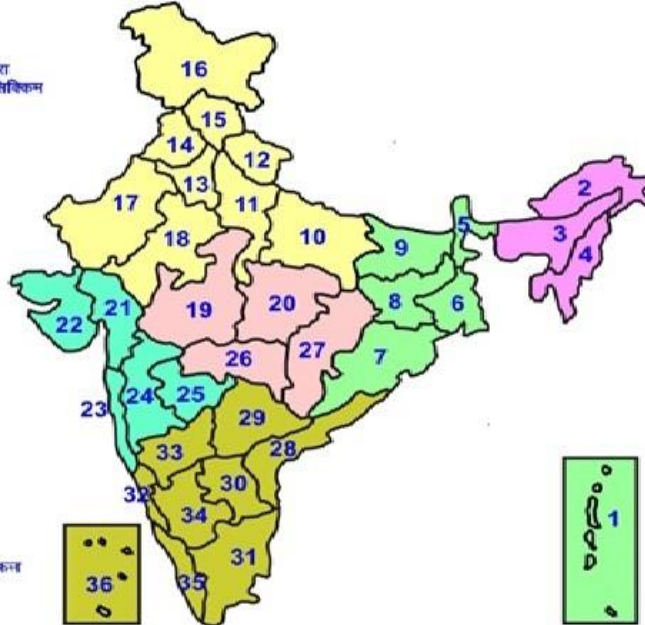


30 October (Day 5):

- ❖ **Heavy rainfall** likely at isolated places over Kerala & Mahe and Tamil Nadu.
- ❖ **Thunderstorm with lightning & gusty winds (30-40 kmph)** likely at isolated places over Kerala & Mahe and with **lightning** at isolated places over Tamil Nadu, Puducherry & Karaikal and South Interior Karnataka.

LEGENDS

- 1 अंडमान और निकोबार द्वीप समूह
- 2 अरुणाचल प्रदेश
- 3 असम और मेघालय
- 4 नागालैंड मनीपुर मीजोरम और त्रिपुरा
- 5 उप हिमालय पश्चिम बंगाल एवं सिक्किम
- 6 पश्चिम बंगाल
- 7 ओडिशा
- 8 झारखंड
- 9 बिहार
- 10 पूर्वी उत्तर प्रदेश
- 11 पश्चिम उत्तर प्रदेश
- 12 उत्तराखंड
- 13 हरियाणा चंडीगढ़ एवं दिल्ली
- 14 पंजाब
- 15 हिमाचल प्रदेश
- 16 जम्मू एवं कश्मीर एवं लद्दाख
- 17 पश्चिम राजस्थान
- 18 पूर्वी राजस्थान
- 19 पश्चिम मध्य प्रदेश
- 20 पूर्वी मध्य प्रदेश
- 21 गुजरात
- 22 सौराष्ट्र
- 23 कोंकण
- 24 मध्य महाराष्ट्र
- 25 महाराष्ट्र
- 26 विदर्भ
- 27 छत्तीसगढ़
- 28 तटीय आंध्र प्रदेश एवं यनम
- 29 तेलंगाना
- 30 चण्डीगढ़
- 31 तमिलनाडु, पुदुचेरी एवं कराईकल
- 32 तटिय कर्नाटक
- 33 आंतरिक उत्तरी कर्नाटक
- 34 आंतरिक दक्षिणी कर्नाटक
- 35 केरल एवं माहे
- 36 लक्षद्वीप



1. Andaman & Nicobar Islands
2. Arunachal Pradesh
3. Assam & Meghalaya
4. Nagaland, Manipur, Mizoram & Tripura
5. Sub-Himalayan West Bengal & Sikkim
6. Gangetic West Bengal
7. Odisha
8. Jharkhand
9. Bihar
10. East Uttar Pradesh
11. West Uttar Pradesh
12. Uttarakhand
13. Haryana, Chd & Delhi
14. Punjab
15. Himachal Pradesh
16. Jammu & Kashmir and Ladakh
17. West Rajasthan
18. East Rajasthan
19. West Madhya Pradesh
20. East Madhya Pradesh
21. Gujarat
22. Saurashtra
23. Konkan & Goa
24. Madhya Maharashtra
25. Marathawada
26. Vidharbha
27. Chhattisgarh
28. Coastal Andhra Pradesh & Yanam
29. Telangana
30. Rayalaseema
31. Tamilnadu, Puducherry & Karaikal
32. Coastal Karnataka
33. North Interior Karnataka
34. South Interior Karnataka
35. Kerala & Mahe
36. Lakshadweep

SPATIAL DISTRIBUTION (% of Stations reporting)

% Stations	Category	% Stations	Category
76-100	Widespread (WS/ Most Places)	26-50	Scattered (SCT/ A Few Places)
51-75	Fairly Widespred (FWS/ Many Places)	1-25	Isolated (ISOL)

WARNING

WARNING (TAKE ACTION)
ALERT (BE PREPARED)
WATCH (BE UPDATED)
NO WARNING (NO ACTION)

Probabilistic Forecast

Terms	Probability of Occurance (%)
Unlikely	< 25
Likely	25 - 50
Very Likely	50 - 75
Most Likely	> 75



Heavy Rain



Heavy Snow



Thunderstorm



Dust Storm



Strong Winds



Visibility



Cyclone



Squall/ Hail



Frost



Cold Wave



Heat Wave



Sea State

* Red color warning does not mean "Red Alert" Red color warning means "Take Action".

Forecast and Warning for any day is valid from 0830 hours IST of day till 0830 hours IST of next day For more details kindly visit <https://mausam.imd.gov.in> or contact : 011-2434-4599

(Service to the Nation since 1875)

LEGENDS

WARNING

WARNING (TAKE ACTION)
ALERT (BE PREPARED)
WATCH (BE UPDATED)
NO WARNING (NO ACTION)

Probabilistic Forecast

Terms	Probability of Occurrence (%)
Unlikely	< 25
Likely	25 - 50
Very Likely	50 - 75
Most Likely	> 75



Rain/ Snow *

Heavy: 64.5 to 115.5 mm/cm *
Very Heavy: 115.6 to 204.4 mm/cm*
Extremely Heavy: > 204.4 mm/cm *



Heat Wave

When maximum temperature of a station reaches $\geq 40^{\circ}\text{C}$ for plains and $\geq 30^{\circ}\text{C}$ for hilly regions
(a) Based on Departure from normal

Heat Wave: Maximum Temperature Departure from normal 4.5°C to 6.4°C .
Severe Heat Wave: Maximum Temperature Departure from normal $\geq 6.5^{\circ}\text{C}$

(b). Based on Actual maximum temperature

Heat Wave: When actual maximum temperature $\geq 45^{\circ}\text{C}$.
Severe Heat Wave: When actual maximum temperature $\geq 47^{\circ}\text{C}$

(c). Criteria for heat wave for coastal stations

When maximum temperature departure is $> 4.5^{\circ}\text{C}$ from normal. Heat Wave may be described provided maximum temperature $\geq 37^{\circ}\text{C}$



Warm Night

When maximum temperature remains 40°C

Warm Night: When minimum temperature departure 4.5°C to 6.4°C .
Severe Warm Night: When minimum temperature departure $> 6.4^{\circ}\text{C}$.



Cold Wave

When minimum temperature of a station $\leq 10^{\circ}\text{C}$ for plains and $\leq 0^{\circ}\text{C}$ for hilly regions.
(a). Based on departure

Cold Wave: Minimum Temperature Departure from normal -4.5°C to -6.4°C .
Severe Cold Wave: Minimum Temperature Departure from normal $\leq -6.5^{\circ}\text{C}$

(b) Based on actual Minimum Temperature (for Plains only)

Cold Wave : When Minimum Temperature is $\leq 4.0^{\circ}\text{C}$
Severe Cold Wave: When Minimum Temperature is $\leq 2.0^{\circ}\text{C}$

(c) For Coastal Stations

When Minimum Temperature departure is $\leq -4.5^{\circ}\text{C}$ & actual Minimum Temperature is $\leq 15^{\circ}\text{C}$



Cold Day

When minimum temperature of a station $\leq 10^{\circ}\text{C}$ for plains and $\leq 0^{\circ}\text{C}$ for hilly regions
Based on departure

Cold Day: Maximum Temperature Departure from normal -4.5°C to -6.4°C .
Severe Cold Day: Maximum Temperature Departure from normal $\leq -6.5^{\circ}\text{C}$



Fog

Phenomenon of small droplets suspended in air and the horizontal visibility $< 1\text{km}$

Moderate Fog: When the visibility between 500-200 metres
Dense Fog: when the visibility between 50- 200 metres
Very Dense Fog: when the visibility < 50 metres



Thunderstorm

Sudden electrical discharges manifested by a flash of light (Lightning) and a sharp rumbling sound (thunder)



Dust/Sand Storm

An ensemble of particles of dust or sand energetically lifted to great heights by a strong and turbulent wind.



Frost

Ice deposits on ground

Air temperature $\leq 4^{\circ}\text{C}$ (over Plains)



Squall

A strong wind that rises suddenly, lasts for atleast 1 minute.

Moderate: Wind speed 52-61 kmph
Severe: Wind speed 62-87 kmph
Very Severe: Wind speed > 87 kmph



Sea State

Effect of various waves in the sea over specific area

Rough to very rough: Wind speed 41-62 kmph (22-33 knots) & Wave height 2.5-6 metre
High to very high: Wind speed 63-117 kmph (34-63 knots) & Wave height 6-14 metre
Phenomenal: Wind speed > 117 kmph (> 63 knots) & Wave height > 14 metre



Cyclone

Cyclonic Storm: Wind speed 62-87 kmph (34-47 knots)
Severe Cyclonic Storm: Wind speed 88-117 kmph (48-63 knots)
Very Severe Cyclonic Storm: Wind speed 118-165 kmph (64 - 89 knots)
Extremely Severe Cyclonic Storm: Wind speed 166-220 kmph (90 -119 knots)
Super Cyclone Storm: Wind speed > 220 kmph (> 119 knots)

* Red color warning does not mean "Red Alert" Red color warning means "Take Action".

Forecast and Warning for any day is valid from 0830 hours IST of day till 0830 hours IST of next day For more details kindly visit <https://mausam.imd.gov.in> or contact : 011-2434-4599

(Service to the Nation since 1875)