



2025-07-26

Time of Issue: 09:01:00 hours IST
(Morning)

ALL INDIA WEATHER SUMMARY AND FORECAST BULLETIN

Significant Weather Features

Weather System and Warnings

East & Central India:

- **Extremely heavy rainfall** is very likely at isolated places over Vidarbha, Madhya Maharashtra, Chhattisgarh & East Madhya Pradesh, Jharkhand on 26th; West Madhya Pradesh on 26th & 27th July.
- Isolated **heavy to very heavy rainfall** very likely to continue over Madhya Pradesh, Vidarbha, Chhattisgarh, Gangetic West Bengal, Jharkhand during 26th-30th, Odisha on 26th; isolated **heavy rainfall** over Odisha during 27th -29th; Sub-Himalayan West Bengal & Sikkim during 26th-28th and Bihar during 26th-30th July
- Light to moderate rainfall at most places accompanied with thunderstorm, lightning & gusty winds (speed reaching 30-40 Kmph) likely over the region during next 7 days.

South Peninsular India:

- Isolated **heavy to very heavy rainfall** likely over Kerala & Mahe, Coastal Karnataka during 26th-29th; South Interior Karnataka on 26th & 27th; isolated **heavy rainfall** over Tamil Nadu, North Interior Karnataka on 26th & 27th; Telangana, Coastal Andhra Pradesh & Yanam on 26th July with isolated **very heavy rainfall** over Tamil Nadu on 26th July.
- **Strong surface winds** (speed reaching 40-50 kmph) very likely over South Peninsular India during next 5 days.
- Light to moderate rainfall at most/many places over Kerala & Mahe, Lakshadweep, Karnataka, Rayalaseema, Coastal Andhra Pradesh & Yanam and Telanganaduring next 7 days.

West India:

- **Extremely heavy rainfall** very likely at isolated places over Konkan and Ghat areas of Madhya Maharashtra on 26th July.
- **Heavy to very heavy rainfall** likely at isolated to some places over Konkan & Goa, Ghat areas of Madhya Maharashtra, Gujarat region during 26th-29th July and **heavy rainfall** over Marathwada on 26th; Saurashtra & Kutch during 26th-29th July with isolated **very heavy rainfall** over Marathwada on 26th July. Light to moderate rainfall at many places very likely over the region during next 6-7 days.

Northwest India:

- **Extremely heavy rainfall** very likely at isolated places over East Rajasthan on 27th July.
- Isolated **very heavy rainfall over East Rajasthan on 28th & 29th; Uttarakhand on**

*Red color warning does not mean "Red Alert" Red color warning means "Take Action"

Forecast and warning for any day is valid from 0830 hours IST of day till 0830 hours IST of next day

For more details kindly visit <https://mausam.imd.gov.in> or contact 011-2434-4599

(Service to the nation since 1875)

27th & 28th ; West Uttar Pradesh on 28th July.

- Isolated **heavy rainfall** likely over Jammu and Kashmir during 29th-31st; Himachal Pradesh, Uttarakhand, East Rajasthan, Uttar Pradesh during 26th-31st; Haryana during 27th-29th and West Rajasthan during 27th-30th July.
- Light/moderate rainfall at many places accompanied with thunderstorm, lightning likely over Western Himalayan region and some places over the plains during next 7 days.

Northeast India:

- Light/moderate rainfall at many places accompanied with **thunderstorm, lightning and isolated heavy rainfall** likely to continue over Northeast India during next 4 days with **very heavy rainfall** over Arunachal Pradesh, Meghalaya on 26th & 27th; Mizoram & Tripura on 26th July.

Fishermen Warnings:

- Fishermen are advised to avoid venturing into the following from 26th to 30th July 2025 to the following Areas:
- **Arabian Sea:** Along and off Gujarat, Konkan, Goa, Karnataka, Kerala coasts and adjoining sea area during 26th to 29th July; over Lakshadweep, Maldives, Comorin areas, many parts of southeast, eastcentral, northeast Arabian Sea & some parts of southwest, few parts of westcentral Arabian Sea; along and off the Somalia coast and adjoining sea areas, south Oman and adjoining Yemen coast & adjoining sea areas during 26th to 30th July.
- **Bay of Bengal:** most parts of South Bay of Bengal, central and north Bay of Bengal along and off Tamil Nadu coast during 26th to 28th July; Andhra Pradesh, Odisha, Gangetic West Bengal, Bangladesh, Myanmar coasts, Gulf of Mannar during 26th to 30th July; many parts of south Bay of Bengal for 29th July; some parts south Bay of Bengal during 28th July; Entire Andaman Sea on 26th & 27th July; north Andaman Sea during 27th to 29th July.

Main Weather Observations:

❖ **Rainfall distribution** (from 0830 hours IST to 1730 hours IST of yesterday): **at most places** over Konkan & Goa, East Madhya Pradesh, Coastal Karnataka, South Interior Karnataka, Kerala & Mahe, Marathawada, Vidarbha, North Interior Karnataka, Coastal Andhra Pradesh & Yanam, Jharkhand, Telangana, Chhattisgarh, East Uttar Pradesh and Gangetic West Bengal; **at many places** over Odisha, West Uttar Pradesh, Madhya Maharashtra, Himachal Pradesh, Assam & Meghalaya, Uttarakhand, Sub-himalayan West Bengal & Sikkim, Rayalaseema, East Rajasthan, West Rajasthan, Jammu & Kashmir and Ladakh, Bihar, Nagaland, Manipur, Mizoram & Tripura, Andaman & Nicobar Islands, Tamilnadu Puducherry & Karaikal, West Madhya Pradesh, Saurashtra & Kutch and Lakshadweep; **Dry** over rest of the country.

❖ **Significant rainfall recorded(in cm)** (from 0830 hours IST to 1730 hours IST of yesterday): **Gujarat Region:** Valsad-16, Daman (dist Daman) 6, Surat-5, Navsari 4; **Odisha:** Baripada-obs (dist Mayurbhanj) 13, Sonepur (dist Subarnapur) 4; **East Madhya Pradesh:** Sidhi (dist Sidhi) 12; **Konkan & goa:** Matheran (dist Raigad) 9, Mumbai (Santacruz) AP (dist) 7, F.B.I. (dist Thane) 5; **Gangetic west Bengal:** Midnapore (dist Paschim Medinipur) 8, Kolkata-Howrah-Uluberia (dist Howrah) 6, Kolkata (Dum Dum) AP (dist North 24 Parganas) 5; **East Uttar Pradesh:** Allahabad (dist Prayagraj) 6, Churk (dist Sonbhadra) 4; **Telangana:** Hanam Konda (dist Hanumatodi) 4; **Chhattisgarh:** Pendra Road (dist Gaurella-Pendra-Marwahi) 4; **Madhya Maharashtra:** Mahabaleshwar (dist Satara) 4; **West Madhya Pradesh:** Panchmarhi (dist Narmada Puram) 4.

❖ **Heavy Rainfall observed** (from 0830 hours IST to 1730 hours IST of yesterday): **Heavy to very heavy rain** at isolated places over Gujarat Region, Odisha and East Madhya Pradesh **Heavy rain** at a few places over Coastal Karnataka, at isolated places over Gangetic West Bengal and Konkan & Goa.

❖ **Minimum Temperature Departures (as on 25-07-2025):** **markedly above normal(> 5.1°C)** at isolated places over Assam & Meghalaya, Bihar, East Uttar Pradesh, West Uttar Pradesh, Himachal Pradesh, West Madhya Pradesh, East Madhya Pradesh and Saurashtra & Kutch. **appreciably above normal(3.1°C to 5.0°C)** at few places over Sub Himalayan West Bengal & Sikkim and Gujarat Region; at isolated places over Andaman & Nicobar Islands, Gangetic West Bengal and Odisha. **above normal(1.6°C to 3.0°C)** at few places over Nagaland, Manipur, Mizoram & Tripura, Haryana-Chandigarh-Delhi, East Rajasthan and Lakshadweep; at isolated places over Jharkhand, Uttarakhand, Punjab, Jammu-Kashmir-Ladakh-Gilgit-Baltistan-Muzaffarabad, West Rajasthan, Madhya Maharashtra, Vidarbha,

*Red color warning does not mean "Red Alert" Red color warning means "Take Action"

Forecast and warning for any day is valid from 0830 hours IST of day till 0830 hours IST of next day

For more details kindly visit <https://mausam.imd.gov.in> or contact 011-2434-4599

(Service to the nation since 1875)

Chhattisgarh, Tamil Nadu, Puducherry & Karaikal and South Interior Karnataka. **near normal**(-1.5°C to 1.5°C) at many places over Telangana and Kerala & Mahe; at most places over Arunachal Pradesh, Konkan & Goa, Marathwada, Coastal Andhra Pradesh & Yanam, Rayalaseema, Coastal Karnataka and North Interior Karnataka. **The lowest minimum temperature** of 18.8°C was reported at MATHERAN (MAHARASHTRA) over the Plains of India.

❖ **Maximum Temperature Departures (as on 25-07-2025): markedly above normal(> 5.1°C)** at few places over Arunachal Pradesh; at isolated places over Assam & Meghalaya and Uttarakhand. **appreciably above normal(3.1°C to 5.0°C)** at many places over Himachal Pradesh; at few places over East Uttar Pradesh and West Uttar Pradesh; at isolated places over Sub Himalayan West Bengal & Sikkim, Odisha, Haryana-Chandigarh-Delhi, West Madhya Pradesh and Gujarat Region. **above normal(1.6°C to 3.0°C)** at many places over Jammu-KashmirLadakh-Gilgit-Baltistan-Muzaffarabad; at most places over East Rajasthan; at few places over Nagaland, Manipur, Mizoram & Tripura and Punjab; at isolated places over Andaman & Nicobar Islands, West Rajasthan, Saurashtra & Kutch and Kerala & Mahe. **near normal(-1.5°C to 1.5°C)** at many places over Madhya Maharashtra and North Interior Karnataka; at most places over Lakshadweep; at few places over Gangetic West Bengal, Bihar, East Madhya Pradesh, Konkan & Goa, Vidarbha, Tamil Nadu, Puducherry & Karaikal and Coastal Karnataka; at isolated places over Jharkhand, Chhattisgarh and Coastal Andhra Pradesh & Yanam. **The highest maximum temperature** of 39.0°C was reported at BIKANER (RAJASTHAN).

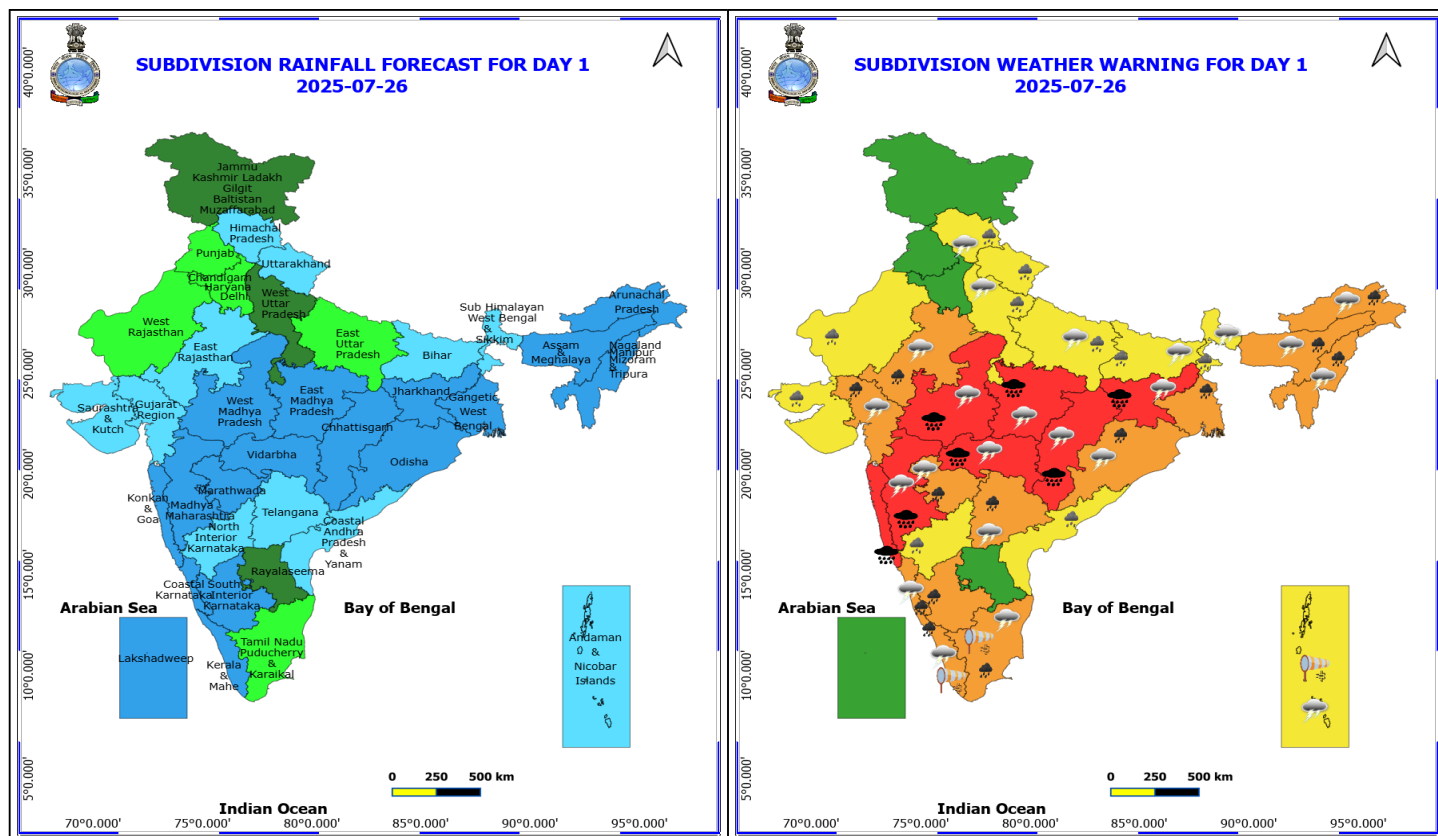


Meteorological Analysis (Based on 0530 hours IST)

- The **Depression** over Gangetic West Bengal and adjoining Jharkhand moved west-northwestwards with a speed of 25 kmph during past 6 hours and lay centered at 0530 hrs IST of today, the 26th July over Jharkhand and neighbourhood, near Lat. 23.4°N and Long. 85.2°E, about 20 km northwest of Ranchi (Jharkhand), 120 km west-northwest of Jamshedpur (Jharkhand), 120 km east-northeast of Jashpurnagar (Chhattisgarh) and 200 km east of Ambikapur (Chhattisgarh). It is very likely to continue to move west-northwestwards across Jharkhand, & adjoining north Chhattisgarh and northeast Madhya Pradesh & adjoining southeast Uttar Pradesh during next 36 hours.
- The **monsoon trough** at mean sea level now passes through Suratgarh, Churu, Hindon, Agra, Jhansi, Satna, Daltonganj center of Depression over Jharkhand and neighbourhood, Bankura, Digha and thence southeastwards to the east central Bay of Bengal.
- The **upper air cyclonic circulation** over Haryana & neighbourhood extending upto 1.5 km above mean sea level persists.
- The **trough** now runs from southeast Madhya Pradesh to centre of Depression over Jharkhand and neighbourhood across north Chhattisgarh at 3.1km above mean sea level.
- The **trough** now runs from southeast Rajasthan to cyclonic circulation associated with Depression over Jharkhand and neighbourhood across southern parts of Madhya Pradesh, north Chhattisgarh at 5.8 km above mean sea level.
- The off-shore **trough** at sea level along Maharashtra-Kerala coasts persists.
- The **Western Disturbance** as a cyclonic circulation over Jammu & Kashmir and neighbourhood between 3.1 & 5.8 km above mean sea level persists.
- The **upper air cyclonic circulation** over north Chhattisgarh & neighbourhood between 4.5 & 5.8 km above mean sea level has become less marked.

Weather Outlook for subsequent 3 days

- Fairly widespread to widespread rainfall very likely over Northwest India, Central India, Northeast India, Gujarat, Konkan & Goa, Coastal Karnataka, Kerala & Mahe and Islands.
- Isolated to scattered rainfall is likely over East India and remaining parts of the South peninsular India.



26 July (Day 1)

- ❖ **Heavy to Very Heavy Rainfall with isolated Extremely Heavy Rainfall** very likely at isolated places over Chhattisgarh, Jharkhand, Konkan & Goa, Madhya Maharashtra, Madhya Pradesh and Vidarbha.
- ❖ **Heavy to Very Heavy Rainfall** very likely at isolated places over Arunachal Pradesh, Assam & Meghalaya, Coastal Karnataka, East Rajasthan, Gangetic West Bengal, Gujarat Region, Kerala & Mahe, Marathwada, Nagaland, Manipur, Mizoram and Tripura, Odisha, South Interior Karnataka, Tamil Nadu Puducherry & Karaikal and Telangana.
- ❖ **Heavy Rainfall** very likely at isolated places over Bihar, Coastal Andhra Pradesh, Himachal Pradesh, North Interior Karnataka, Saurashtra & Kutch, Sub Himalayan West Bengal & Sikkim, Uttar Pradesh, Uttarakhand and West Rajasthan.
- ❖ **Thundersquall with wind speed reaching(50-60kmph)** very likely at isolated places over Kerala & Mahe.
- ❖ **Thunderstorm accompanied with lightning & gusty winds(40-50kmph)** very likely at isolated places over Tamil Nadu Puducherry & Karaikal.
- ❖ **Thunderstorm accompanied with lightning & gusty winds(30-40kmph)** very likely at isolated places over Andaman & Nicobar Islands, Bihar, Coastal Karnataka, Jharkhand, Odisha and Sub Himalayan West Bengal & Sikkim.
- ❖ **Thunderstorm accompanied with Lightning** very likely at isolated places over Arunachal Pradesh, Assam & Meghalaya, Chhattisgarh, East Rajasthan, Gujarat Region, Himachal Pradesh, Madhya Pradesh, Maharashtra, Nagaland, Manipur, Mizoram and Tripura, Telangana and Uttar Pradesh.
- ❖ **Strong Surface Winds** very likely at isolated places over Andaman & Nicobar Islands, Kerala & Mahe and Tamil Nadu Puducherry & Karaikal.

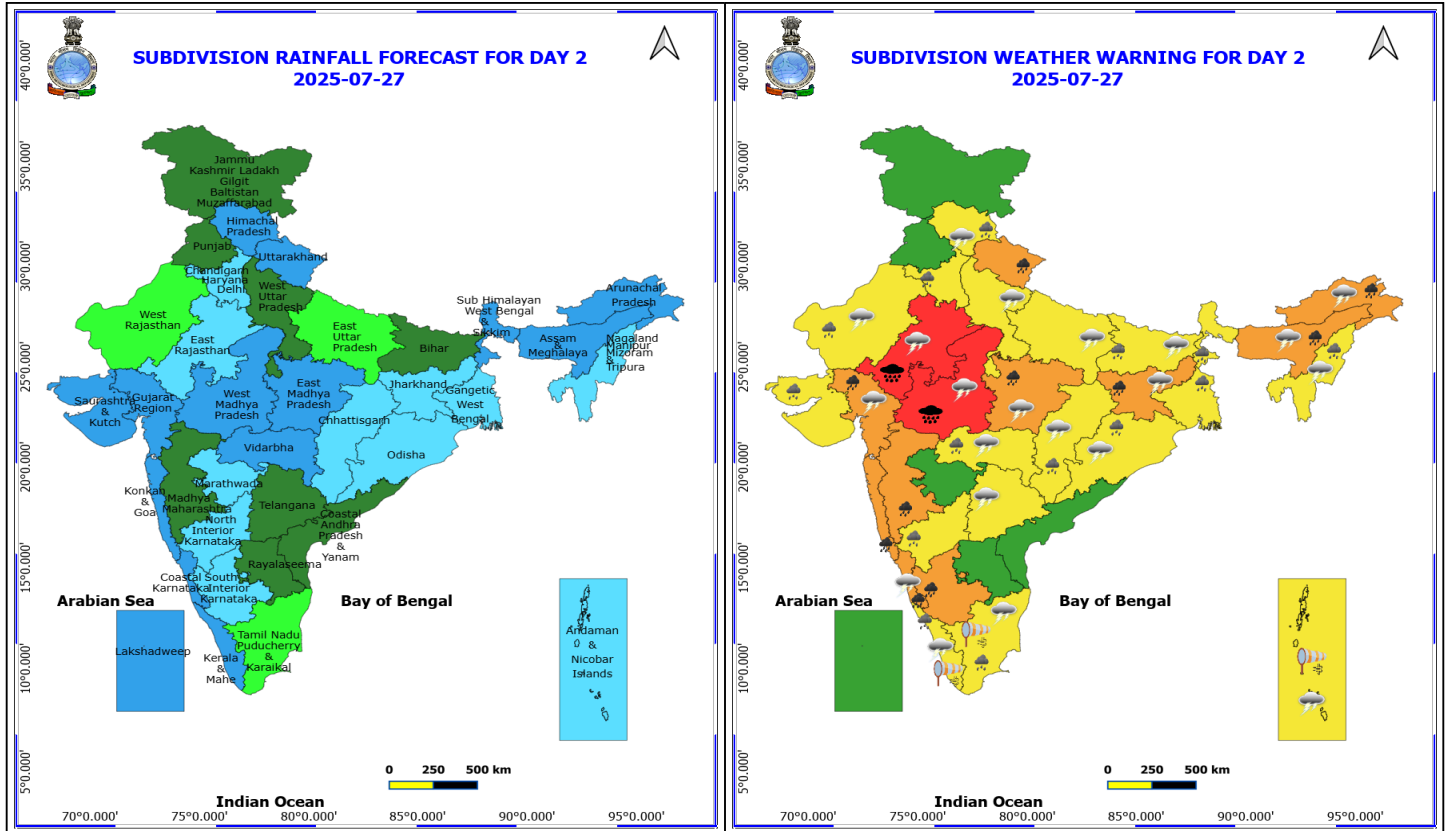
***Red color warning does not mean "Red Alert" Red color warning means "Take Action"**

Forecast and warning for any day is valid from 0830 hours IST of day till 0830 hours IST of next day

For more details kindly visit <https://mausam.imd.gov.in> or contact 011-2434-4599

(Service to the nation since 1875)

- ❖ Squally wind speed reaching 45 kmph to 55 kmph gusting to 65 kmph is likely to prevail along and off Somalia, Yemen & south Oman coasts, most parts of westcentral Arabian Sea & eastcentral Arabian Sea, many parts of southwest Arabian Sea, southern parts of north Arabian Sea.
- ❖ Squally weather with wind speed 40 - 50 kmph gusting to 60 kmph likely to prevail over many parts of southeast Arabian Sea & adjoining, some parts of southwest Arabian Sea, many parts of northeast Arabian Sea & adjoining parts of northwest Arabian Sea, along and off north Gujarat, Kerala, Karnataka coasts, north Tamil Nadu, south Andhra Pradesh, West Bengal, Bangladesh, Myanmar coasts, over Lakshadweep, Maldives, Comorin areas, over south, central & north Bay of Bengal, over Gulf of Mannar, along and off Sri Lanka coast, over Andaman Sea.
- ❖ Squally weather with wind speed 45 - 55 kmph gusting to 65 kmph likely to prevail along and off south Gujarat, Konkan, Goa, north Andhra Pradesh, Odisha coasts and adjoining sea areas, over most parts of central and adjoining parts of north Bay of Bengal.



27 July (Day 2)

- ❖ **Heavy to Very Heavy Rainfall with isolated Extremely Heavy Rainfall** very likely at isolated places over East Rajasthan and West Madhya Pradesh.
- ❖ **Heavy to Very Heavy Rainfall** very likely at isolated places over Arunachal Pradesh, Assam & Meghalaya, Coastal Karnataka, East Madhya Pradesh, Gujarat Region, Jharkhand, Konkan & Goa, Madhya Maharashtra, South Interior Karnataka and Uttarakhand.
- ❖ **Heavy Rainfall** very likely at isolated places over Bihar, Chhattisgarh, Haryana, Chandigarh & Delhi, Himachal Pradesh, Kerala & Mahe, Nagaland, Manipur, Mizoram and Tripura, North Interior Karnataka, Odisha, Saurashtra & Kutch, Tamil Nadu Puducherry & Karaikal, Vidarbha, West Bengal & Sikkim and West Rajasthan.
- ❖ **Thunderstorm accompanied with lightning & gusty winds(40-50kmph)** very likely at isolated places over Kerala & Mahe.
- ❖ **Thunderstorm accompanied with lightning & gusty winds(30-40kmph)** very likely at isolated places over Andaman & Nicobar Islands, Bihar, Coastal Karnataka, Jharkhand and Odisha.
- ❖ **Thunderstorm accompanied with Lightning** very likely at isolated places over Arunachal Pradesh, Assam & Meghalaya, Chhattisgarh, Gujarat Region, Himachal Pradesh, Madhya Pradesh, Nagaland, Manipur, Mizoram and Tripura, Rajasthan, Tamil Nadu Puducherry & Karaikal, Telangana, Uttar Pradesh and Vidarbha.
- ❖ **Strong Surface Winds** very likely at isolated places over Andaman & Nicobar Islands, Kerala & Mahe and Tamil Nadu Puducherry & Karaikal.
- ❖ Squally wind speed reaching 45 kmph to 55 kmph gusting to 65 kmph is likely to prevail along and off Somalia, Yemen & south Oman coasts, most parts of westcentral Arabian Sea & adjoining, many parts of eastcentral Arabian

***Red color warning does not mean "Red Alert" Red color warning means "Take Action"**

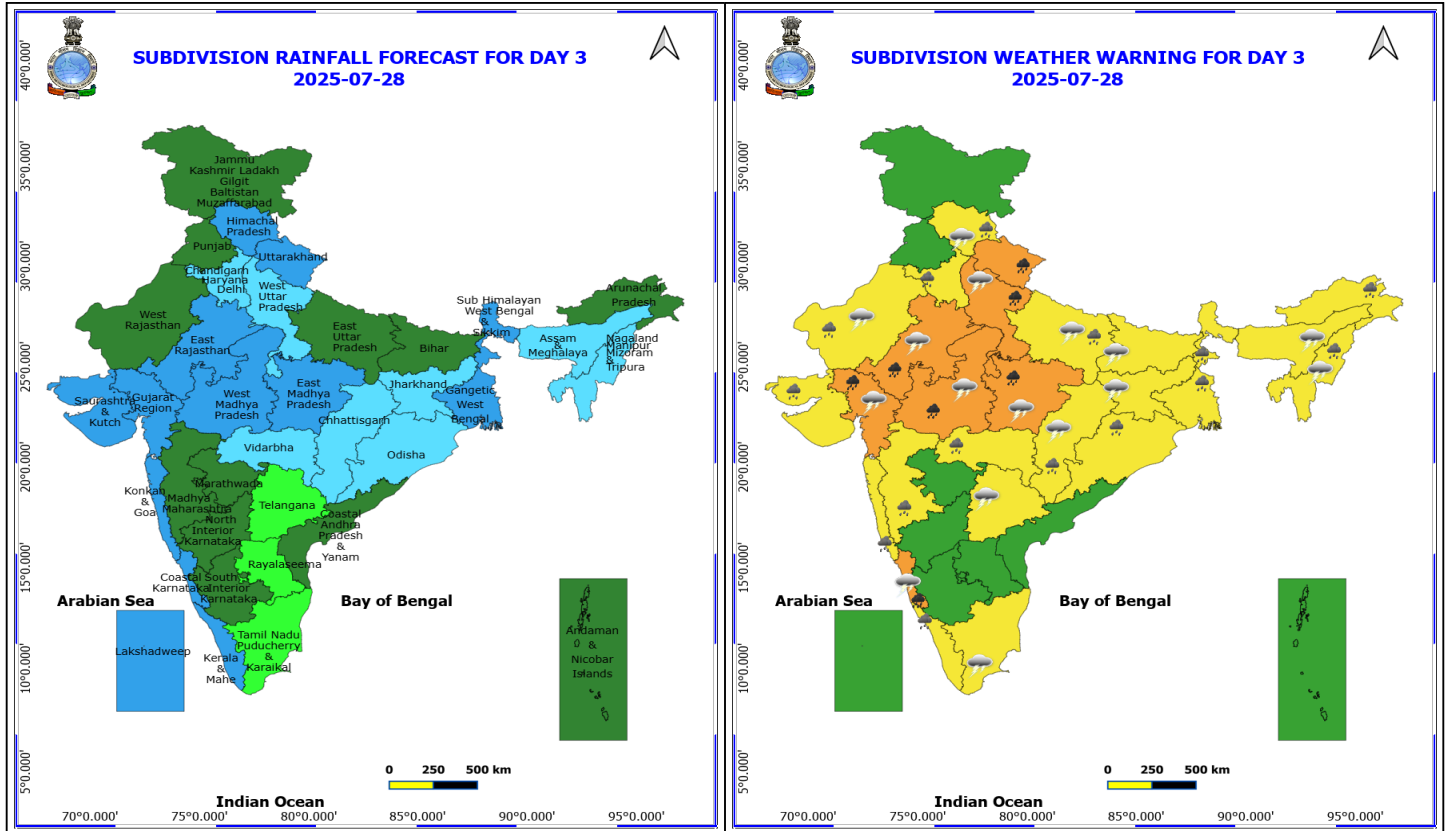
Forecast and warning for any day is valid from 0830 hours IST of day till 0830 hours IST of next day

For more details kindly visit <https://mausam.imd.gov.in> or contact 011-2434-4599

(Service to the nation since 1875)

Sea, many parts of southwest Arabian Sea, southern parts of north Arabian Sea.

- ❖ Squally weather with wind speed 40 - 50 kmph gusting to 60 kmph likely to prevail over many parts of southeast Arabian Sea & adjoining, some parts of southwest Arabian Sea, many parts of northeast Arabian Sea & adjoining parts of northwest Arabian Sea, along and off south Gujarat, Kerala, Karnataka coasts, Andhra Pradesh, Odisha, West Bengal, Bangladesh, Myanmar coasts, over Lakshadweep, Maldives, Comorin areas, over south, central & north Bay of Bengal, over Gulf of Mannar, along and off Sri Lanka coast, over north Andaman Sea.
- ❖ Squally weather with wind speed 45 - 55 kmph gusting to 65 kmph likely to prevail along and off south Gujarat, Konkan, Goa coasts and adjoining sea areas, over some parts of central Bay of Bengal.



28 July (Day 3)

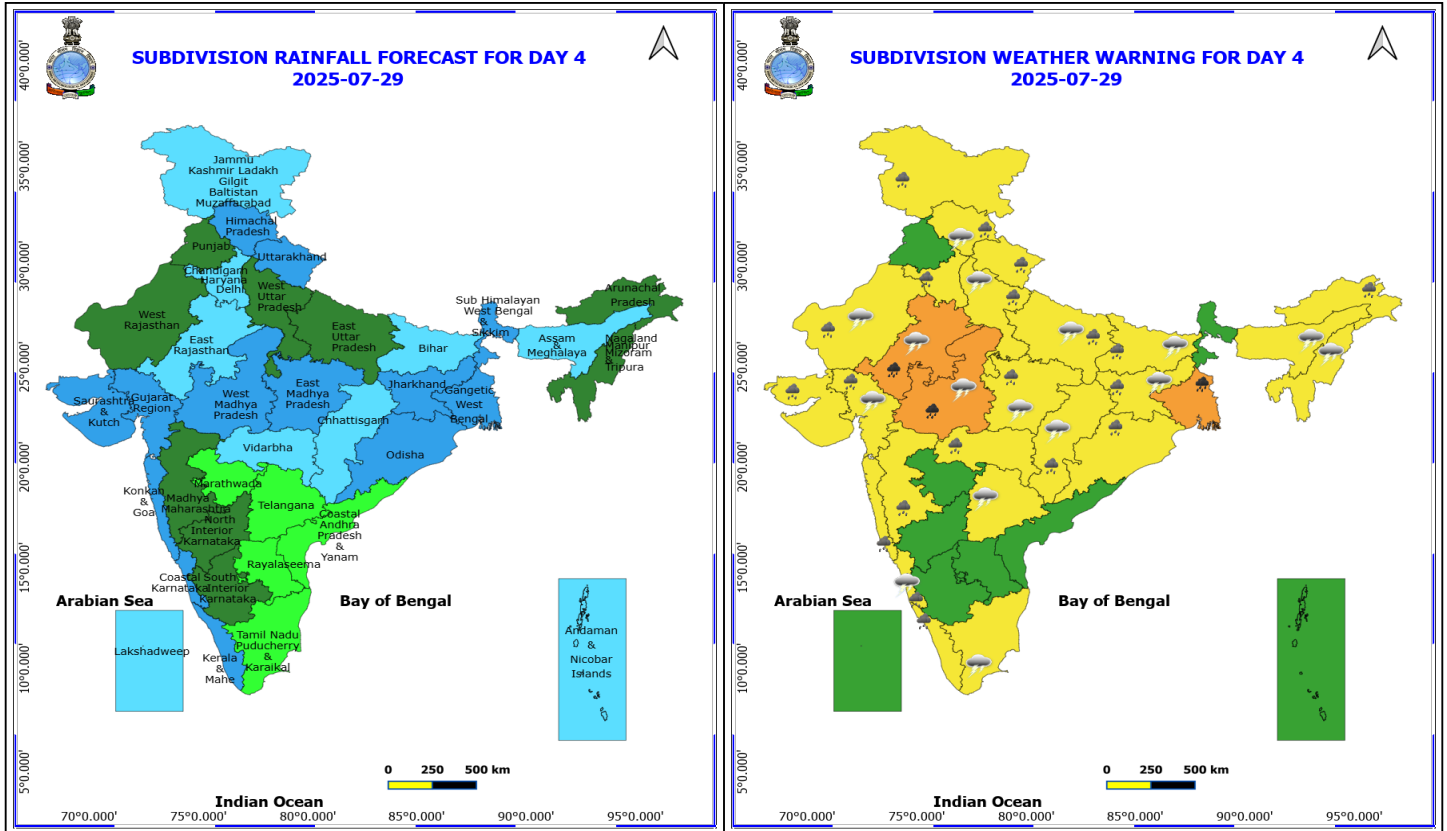
- ❖ **Heavy to Very Heavy Rainfall** very likely at isolated places over Coastal Karnataka, East Rajasthan, Gujarat Region, Madhya Pradesh, Uttarakhand and West Uttar Pradesh.
- ❖ **Heavy Rainfall** very likely at isolated places over Arunachal Pradesh, Chhattisgarh, East Uttar Pradesh, Haryana, Chandigarh & Delhi, Himachal Pradesh, Kerala & Mahe, Konkan & Goa, Madhya Maharashtra, Nagaland, Manipur, Mizoram and Tripura, Odisha, Saurashtra & Kutch, Vidarbha, West Bengal & Sikkim and West Rajasthan.
- ❖ **Thunderstorm accompanied with lightning & gusty winds(30-40kmph)** very likely at isolated places over Bihar, Coastal Karnataka and Jharkhand.
- ❖ **Thunderstorm accompanied with Lightning** very likely at isolated places over Assam & Meghalaya, Chhattisgarh, Gujarat Region, Himachal Pradesh, Madhya Pradesh, Nagaland, Manipur, Mizoram and Tripura, Rajasthan, Tamil Nadu Puducherry & Karaikal, Telangana and Uttar Pradesh.
- ❖ Squally wind speed reaching 45 kmph to 55 kmph gusting to 65 kmph is likely to prevail along and off Somalia, Yemen & south Oman coasts, most parts of westcentral Arabian Sea & adjoining, many parts of eastcentral Arabian Sea, many parts of southwest Arabian Sea, southern parts of north Arabian Sea.
- ❖ Squally weather with wind speed 40 - 50 kmph gusting to 60 kmph likely to prevail over some parts of eastcentral Arabian Sea & adjoining, some parts of westcentral Arabian Sea, many parts of southeast Arabian Sea & adjoining, some parts of southwest Arabian Sea, some parts of northeast Arabian Sea, along and off Andhra Pradesh, Odisha, West Bengal, Bangladesh, Myanmar coasts, over Lakshadweep, Maldives, Comorin areas, over south, central & north Bay of Bengal, over Gulf of Mannar, along and off Sri Lanka coast.
- ❖ Squally weather with wind speed 45 - 55 kmph gusting to 65 kmph likely to prevail along and off Gujarat, Konkan, Goa coasts and adjoining sea areas, over most parts of central and adjoining parts of north Bay of Bengal.

*Red color warning does not mean "Red Alert" Red color warning means "Take Action"

Forecast and warning for any day is valid from 0830 hours IST of day till 0830 hours IST of next day

For more details kindly visit <https://mausam.imd.gov.in> or contact 011-2434-4599

(Service to the nation since 1875)



29 July (Day 4)

- ❖ **Heavy to Very Heavy Rainfall** likely at isolated places over East Rajasthan, Gangetic West Bengal and West Madhya Pradesh.
- ❖ **Heavy Rainfall** likely at isolated places over Arunachal Pradesh, Bihar, Chhattisgarh, Coastal Karnataka, East Madhya Pradesh, Gujarat State, Haryana, Chandigarh & Delhi, Himachal Pradesh, Jammu-Kashmir-Ladakh-Gilgit-Baltistan-Muzaffarabad, Jharkhand, Kerala & Mahe, Konkan & Goa, Madhya Maharashtra, Odisha, Uttar Pradesh, Uttarakhand, Vidarbha and West Rajasthan.
- ❖ **Thunderstorm accompanied with lightning & gusty winds(30-40kmph)** likely at isolated places over Bihar, Coastal Karnataka and Jharkhand.
- ❖ **Thunderstorm accompanied with Lightning** likely at isolated places over Assam & Meghalaya, Chhattisgarh, Gujarat Region, Himachal Pradesh, Madhya Pradesh, Nagaland, Manipur, Mizoram and Tripura, Rajasthan, Tamil Nadu Puducherry & Karaikal, Telangana and Uttar Pradesh.
- ❖ Squally wind speed reaching 45 kmph to 55 kmph gusting to 65 kmph is likely to prevail along and off Somalia, Yemen & south Oman coasts, most parts of westcentral Arabian Sea & adjoining, many parts of eastcentral Arabian Sea, many parts of southwest Arabian Sea, southern parts of north Arabian Sea.
- ❖ Squally weather with wind speed 40 - 50 kmph gusting to 60 kmph likely to prevail over some parts of eastcentral Arabian Sea & adjoining, some parts of westcentral Arabian Sea, many parts of southeast Arabian Sea & adjoining, some parts of southwest Arabian Sea, some parts of northeast Arabian Sea, along and off Andhra Pradesh, Odisha, West Bengal, Bangladesh, Myanmar coasts, over Lakshadweep, Maldives, Comorin areas, over south, central & north Bay of Bengal, over Gulf of Mannar, along and off Sri Lanka coast.
- ❖ Squally weather with wind speed 45 - 55 kmph gusting to 65 kmph likely to prevail along and off Gujarat, Konkan,

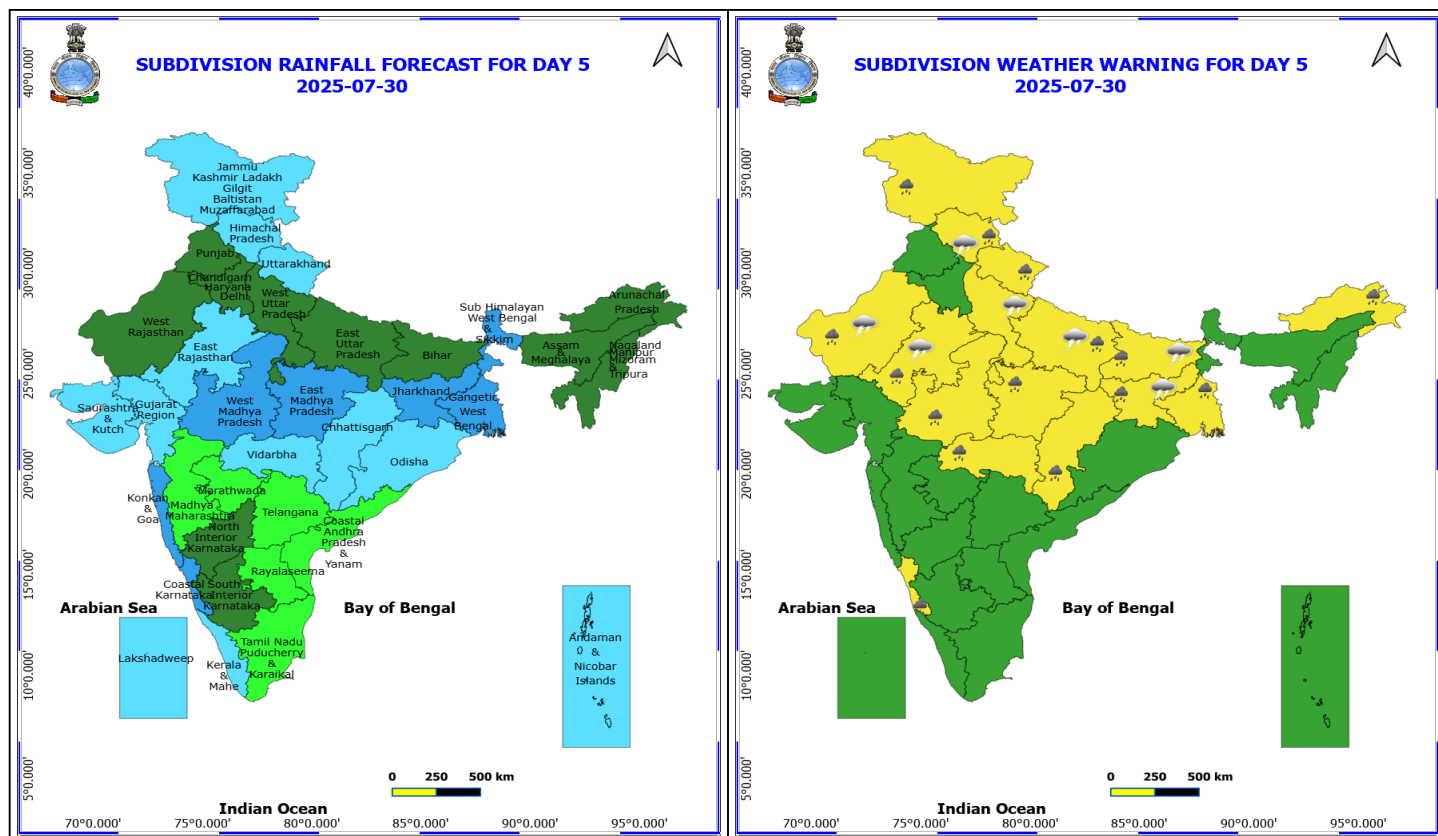
***Red color warning does not mean "Red Alert" Red color warning means "Take Action"**

Forecast and warning for any day is valid from 0830 hours IST of day till 0830 hours IST of next day

For more details kindly visit <https://mausam.imd.gov.in> or contact 011-2434-4599

(Service to the nation since 1875)

Goa coasts and adjoining sea areas, over most parts of central and adjoining parts of north Bay of Bengal.



30 July (Day 5)

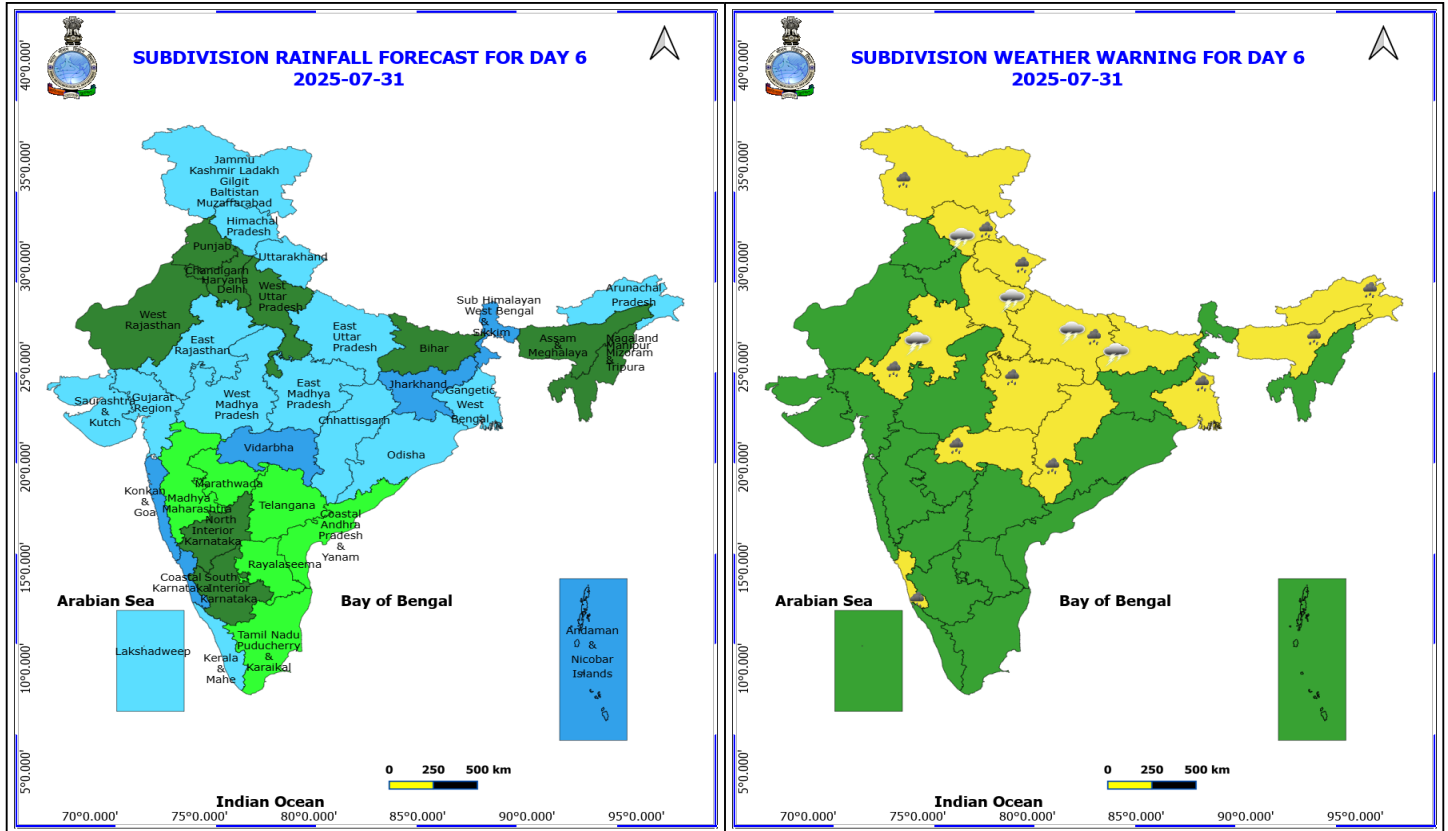
- ❖ **Heavy Rainfall** likely at isolated places over Arunachal Pradesh, Bihar, Chhattisgarh, Coastal Karnataka, East Uttar Pradesh, Gangetic West Bengal, Himachal Pradesh, Jammu-Kashmir-Ladakh-Gilgit-Baltistan-Muzaffarabad, Jharkhand, Madhya Pradesh, Rajasthan, Uttarakhand and Vidarbha.
 - ❖ **Thunderstorm accompanied with lightning & gusty winds(30-40kmph)** likely at isolated places over Bihar and Jharkhand.
 - ❖ **Thunderstorm accompanied with Lightning** likely at isolated places over Himachal Pradesh, Rajasthan and Uttar Pradesh.
- No Fishermen Warning**

*Red color warning does not mean "Red Alert" Red color warning means "Take Action"

Forecast and warning for any day is valid from 0830 hours IST of day till 0830 hours IST of next day

For more details kindly visit <https://mausam.imd.gov.in> or contact 011-2434-4599

(Service to the nation since 1875)



31 July (Day 6)

- ❖ **Heavy Rainfall** likely at isolated places over Arunachal Pradesh, Assam & Meghalaya, Chhattisgarh, Coastal Karnataka, East Madhya Pradesh, East Rajasthan, East Uttar Pradesh, Gangetic West Bengal, Himachal Pradesh, Jammu-Kashmir-Ladakh-Gilgit-Baltistan-Muzaffarabad, Uttarakhand and Vidarbha.
- ❖ **Thunderstorm accompanied with lightning & gusty winds(30-40kmph)** likely at isolated places over Bihar.
- ❖ **Thunderstorm accompanied with Lightning** likely at isolated places over East Rajasthan, Himachal Pradesh and Uttar Pradesh.

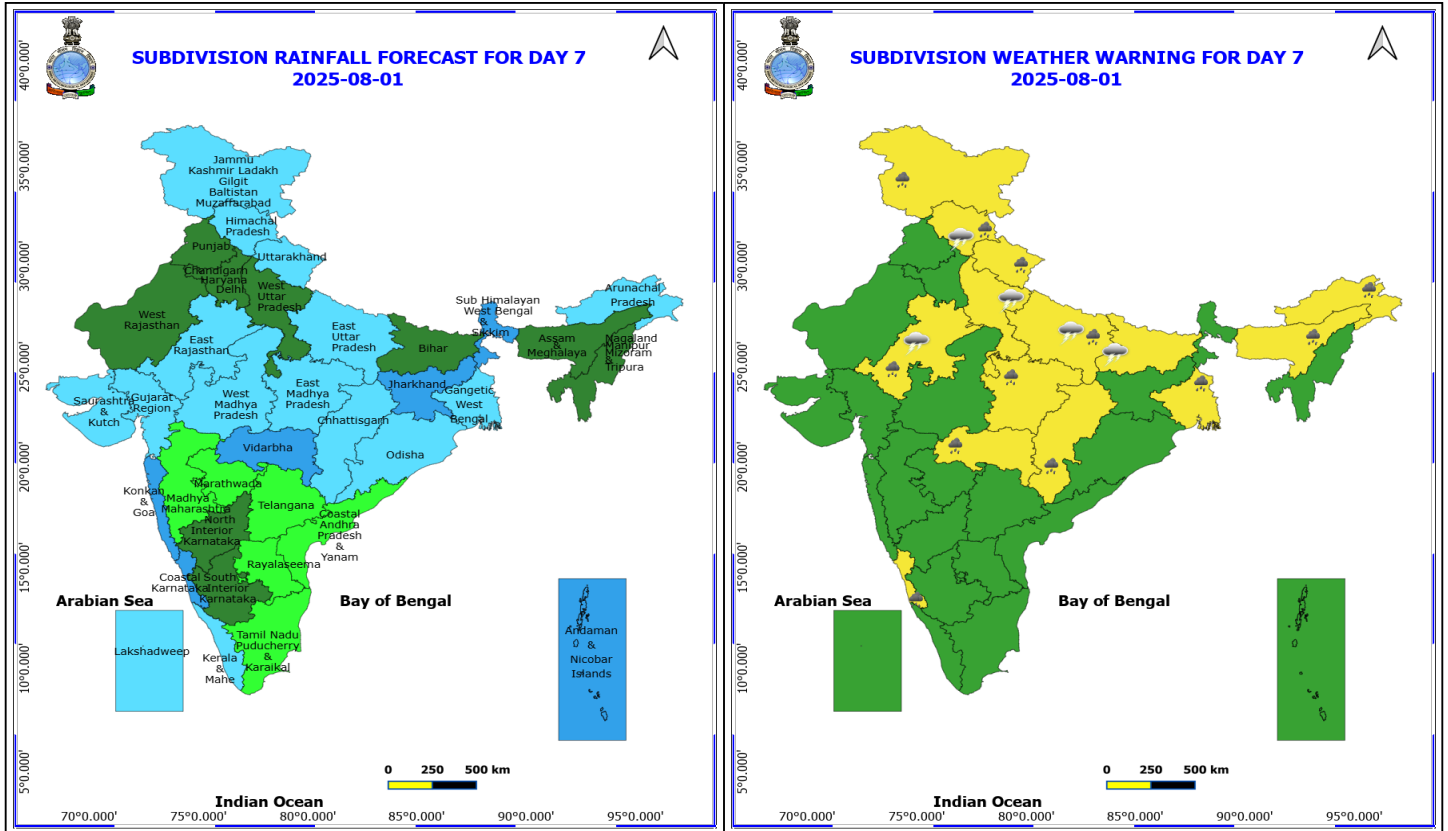
No Fishermen Warning

***Red color warning does not mean "Red Alert" Red color warning means "Take Action"**

Forecast and warning for any day is valid from 0830 hours IST of day till 0830 hours IST of next day

For more details kindly visit <https://mausam.imd.gov.in> or contact 011-2434-4599

(Service to the nation since 1875)



1 August (Day 7)

- ❖ **Heavy Rainfall** likely at isolated places over Arunachal Pradesh, Assam & Meghalaya, Chhattisgarh, Coastal Karnataka, East Madhya Pradesh, East Rajasthan, East Uttar Pradesh, Gangetic West Bengal, Himachal Pradesh, Jammu-Kashmir-Ladakh-Gilgit-Baltistan-Muzaffarabad, Uttarakhand and Vidarbha.
- ❖ **Thunderstorm accompanied with lightning & gusty winds(30-40kmph)** likely at isolated places over Bihar.
- ❖ **Thunderstorm accompanied with Lightning** likely at isolated places over East Rajasthan, Himachal Pradesh and Uttar Pradesh.

No Fishermen Warning

***Red color warning does not mean "Red Alert" Red color warning means "Take Action"**

Forecast and warning for any day is valid from 0830 hours IST of day till 0830 hours IST of next day

For more details kindly visit <https://mausam.imd.gov.in> or contact 011-2434-4599

(Service to the nation since 1875)

Flash Flood Warnings

24 hours Outlook for the Flash Flood Risk (FFR) till 0530 IST of 27-07-2025 :

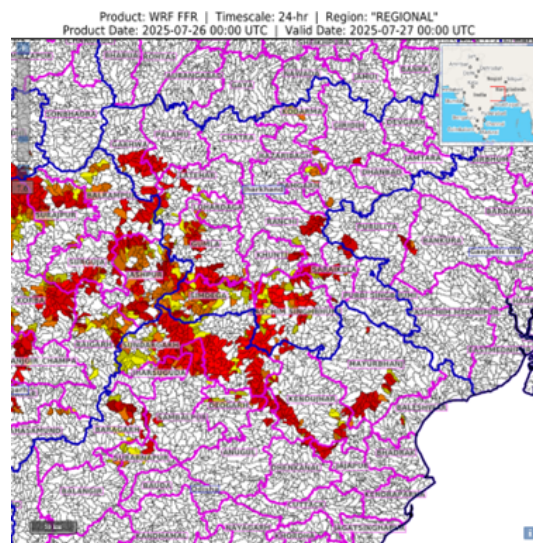
Moderate to High flash flood risk likely over few watersheds & neighbourhoods of following Met Sub-divisions during next 24 hours.

Odisha - Baragarh, Deogarh, Jajapur Jharsuguda, Kendujhar, Mayurbhanj, Sambalpur, Subarnapur and Sundargarh districts.

Gangetic West Bengal - Bankura, Pashchim Medinipur, Puruliya districts.

Jharkhand - East Singhbhum, Garhwa, Gumla, Khunti, Latehar, Lohardaga, Palamu, Ranchi, Saraikela, Simdega and WestSinghbhum districts.

Surface runoff/ Inundation may occur at some fully saturated soils & low-lying areas overArea ofConcern (AoC) as shown in map due to expected rainfall occurrence in next 24 hours.



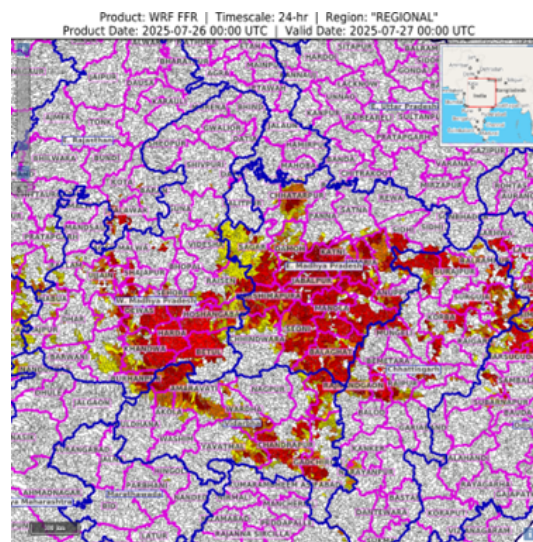
24 hours Outlook for the Flash Flood Risk (FFR) till 0530 IST of 27-07-2025 :

Moderate to High flash flood risk likely over few watersheds & neighbourhoods of following Met Sub-divisions during next 24 hours.

Chhattisgarh - Balarampur, Baloda Bazar, Bilaspur, Durg, Janjgir_Champa, Jashpur, Kawardha, Korba, Korea, Mungeli, Rajnandgaon, Raipur, Raigarh, Surajpur and Surguja districts.

East Madhya Pradesh - Anuppur, Balaghat, Chhindwara, Chhatarpur, Damoh, Dindori, Jabalpur, Katni, Mandla, Narshimapura, Niwari, Panna, Rewa, Sagar, Satna, Seoni, Shahdol, Sidhi, Singrauli, Tikamgarh and Umaria districts.

West Madhya Pradesh - Ashoknagar, Agar Malwa, Betul, Bhopal, Burhanpur, Dewas, Guna, Harda, Indore, Kandwa, Khargone, Raisen, Rajgarh, Sehore, Shivpuri, Shajapur, Ujjain, Videsha and Hoshangabad districts.
Vidarbha – Amarawati, Akola, Bhandara, Chandrapur, Gadchiroli, Gondiya, Nagpur, Yavatmal and Wardha districts.



***Red color warning does not mean "Red Alert" Red color warning means "Take Action"**

Forecast and warning for any day is valid from 0830 hours IST of day till 0830 hours IST of next day

For more details kindly visit <https://mausam.imd.gov.in> or contact 011-2434-4599

(Service to the nation since 1875)

Surface runoff/ Inundation may occur at some fully saturated soils & low-lying areas over Area of Concern (AoC) as shown in map due to expected rainfall occurrence in next 24 hours.

24 hours Outlook for the Flash Flood Risk (FFR) till 0530 IST of 27-07-2025 :

Low to Moderate flood risk likely over few watersheds & neighbourhoods of following Met Sub-divisions during next 24 hours.

Coastal Karnataka - Dakshin Kannada, Udupi and Uttar Kannada districts.

Konkan & Goa - North Goa, South Goa, Mumbai City, Palghar, Raigarh, Ratnagiri, Sindhudurg, Suburban Mumbai and Thane districts.

Surface runoff/ Inundation may occur at some fully saturated soils & low-lying areas over Area of Concern (AoC) as shown in map due to expected rainfall occurrence in next 24 hours.

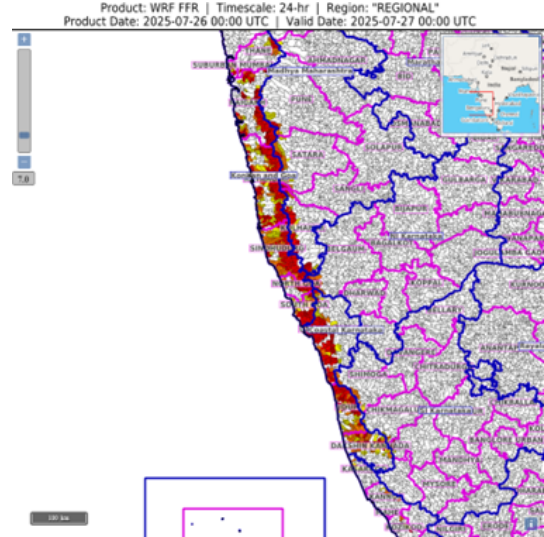




Table-1

7 Days Rainfall Forecast

S.No.	Subdivision	26- Jul	27- Jul	28- Jul	29- Jul	30- Jul	31- Jul	1- Aug
		Day 1	Day 2	Day 3	Day 4	Day 5	Day 6	Day 7
1	ANDAMAN & NICOBAR ISLANDS	FWS	FWS	SCT	FWS	FWS	WS	WS
2	ARUNACHAL PRADESH	WS	WS	SCT	SCT	SCT	FWS	FWS
3	ASSAM & MEHGHALAYA	WS	WS	FWS	FWS	SCT	SCT	SCT
4	N. M. M. & T.	WS	FWS	FWS	SCT	SCT	SCT	SCT
5	S.H. WEST BENGAL & SIKKIM	FWS	WS	WS	WS	WS	WS	WS
6	GANGETIC WEST BENGAL	WS	FWS	WS	WS	WS	FWS	FWS
7	ODISHA	WS	FWS	FWS	WS	FWS	FWS	FWS
8	JHARKHAND	WS	FWS	FWS	WS	WS	WS	WS
9	BIHAR	FWS	SCT	SCT	FWS	SCT	SCT	SCT
10	EAST UTTAR PRADESH	ISOL	ISOL	SCT	SCT	SCT	FWS	FWS
11	WEST UTTAR PRADESH	SCT	SCT	FWS	SCT	SCT	SCT	SCT
12	UTTARAKHAND	FWS	WS	WS	WS	FWS	FWS	FWS
13	HARYANA, CHD & DELHI	ISOL	FWS	FWS	FWS	SCT	SCT	SCT
14	PUNJAB	ISOL	SCT	SCT	SCT	SCT	SCT	SCT
15	HIMACHAL PRADESH	FWS	WS	WS	WS	FWS	FWS	FWS
16	JAMMU AND KASHMIR AND LADAKH	SCT	SCT	SCT	FWS	FWS	FWS	FWS
17	WEST RAJASTHAN	ISOL	ISOL	SCT	SCT	SCT	SCT	SCT
18	EAST RAJASTHAN	FWS	FWS	WS	FWS	FWS	FWS	FWS
19	WEST MADHYA PRADESH	WS	WS	WS	WS	WS	FWS	FWS
20	EAST MADHYA PRADESH	WS	WS	WS	WS	WS	FWS	FWS
21	GUJRAT REGION	FWS	WS	WS	WS	FWS	FWS	FWS
22	SAURASHTRA & KUTCH	FWS	WS	WS	WS	FWS	FWS	FWS
23	KONKAN & GOA	WS	WS	WS	WS	WS	WS	WS
24	MADHYA MAHARASHTRA	WS	SCT	SCT	SCT	ISOL	ISOL	ISOL
25	MARATHWADA	WS	FWS	SCT	ISOL	ISOL	ISOL	ISOL
26	VIDARBHA	WS	WS	FWS	FWS	FWS	WS	WS
27	CHATTISGARH	WS	FWS	FWS	FWS	FWS	FWS	FWS
28	COASTAL ANDHRA PRADESH	FWS	SCT	SCT	ISOL	ISOL	ISOL	ISOL
29	TELANGANA	FWS	SCT	ISOL	ISOL	ISOL	ISOL	ISOL
30	RAYALASEEMA	SCT	SCT	ISOL	ISOL	ISOL	ISOL	ISOL
31	TAMILNADU & PUDUCHERRY	ISOL	ISOL	ISOL	ISOL	ISOL	ISOL	ISOL
32	COSTAL KARNATAKA	WS	WS	WS	WS	WS	WS	WS
33	NORTH INTERIOR KARNATAKA	FWS	FWS	SCT	SCT	SCT	SCT	SCT
34	SOUTH INTERIOR KARNATAKA	WS	FWS	SCT	SCT	SCT	SCT	SCT
35	KERALA	WS	WS	WS	WS	FWS	FWS	FWS
36	LAKSHDWEAP	WS	WS	WS	FWS	FWS	FWS	FWS

Legend	Category	%Stations
WS	Widespread/Most Places	76-100
FWS	Fairly Widespread/Many Places	51-75
SCT	Scattered/ A Few Places	26-50
ISOL	Isolated Places	1-25
DRY	No Rain	0

*Red color warning does not mean "Red Alert" Red color warning means "Take Action"

Forecast and warning for any day is valid from 0830 hours IST of day till 0830 hours IST of next day

For more details kindly visit <https://mausam.imd.gov.in> or contact 011-2434-4599

(Service to the nation since 1875)

Fig. 1: Maximum Temperatures Dated 2025-07-26

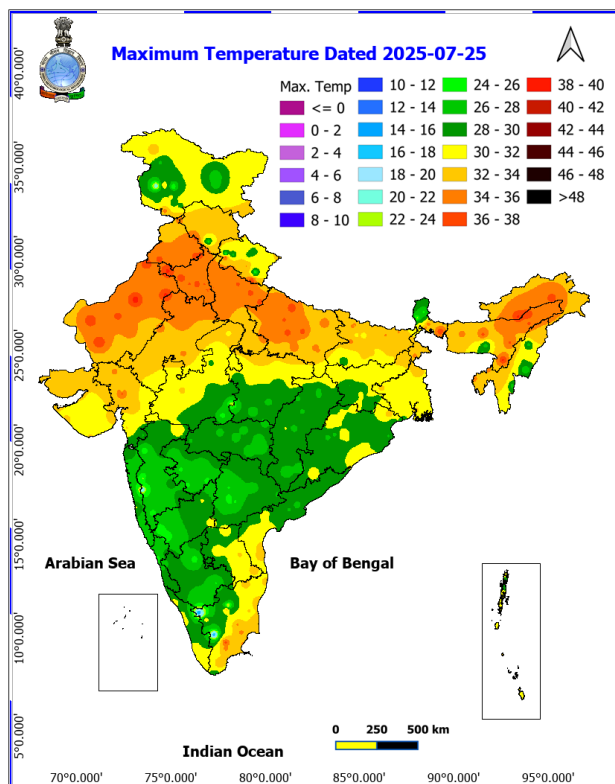


Fig. 2: Departure of Maximum Temp. Dated 2025-07-26

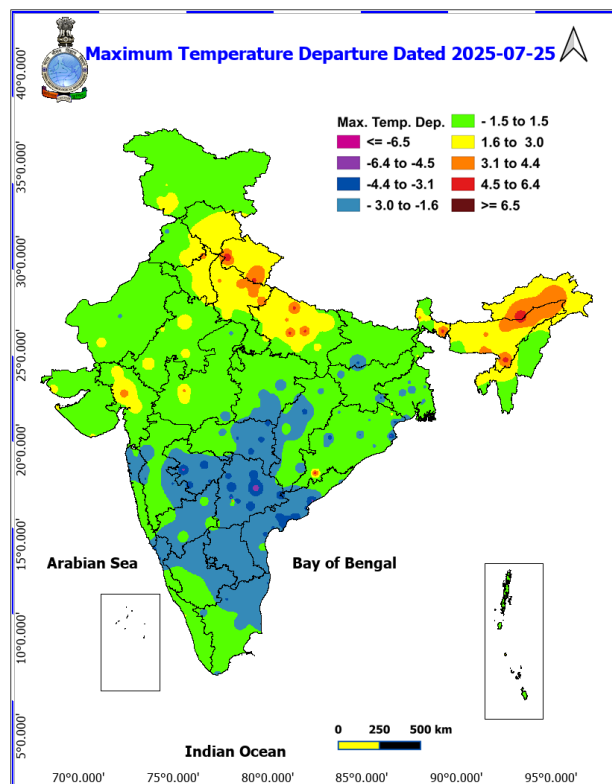


Fig. 3: Minimum Temperatures Dated 2025-07-26

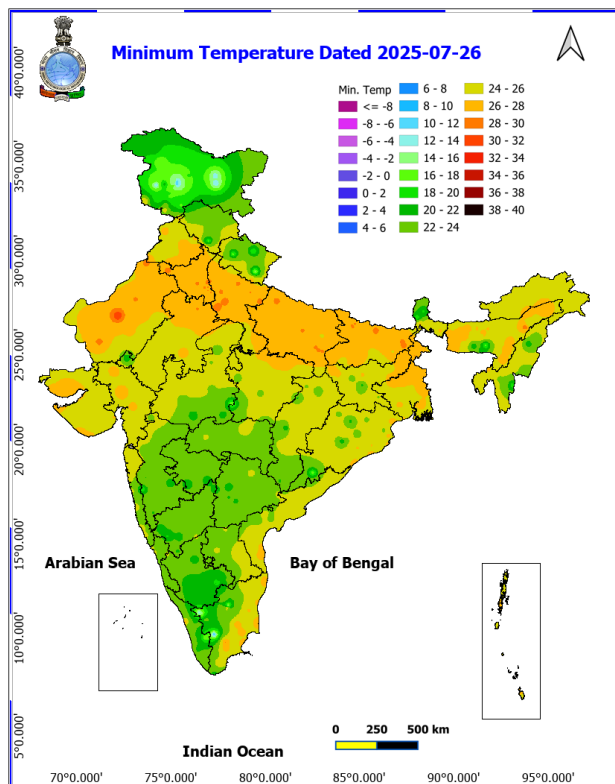
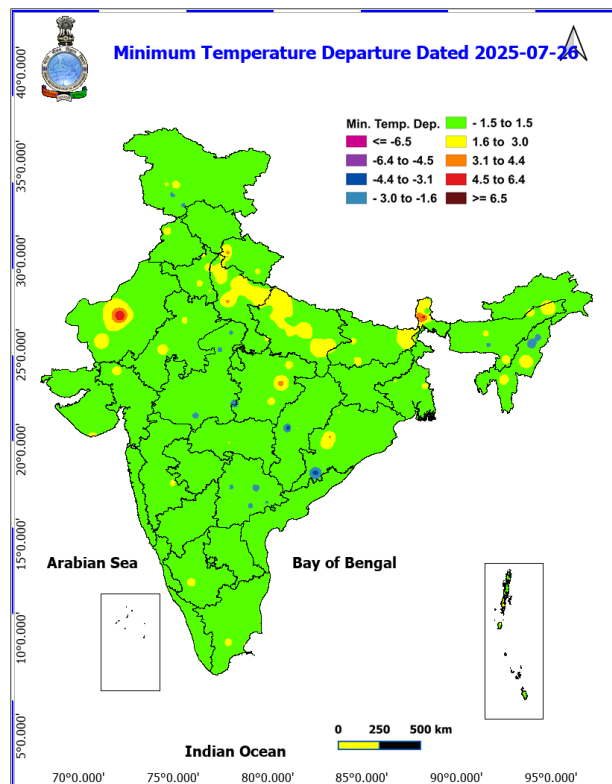
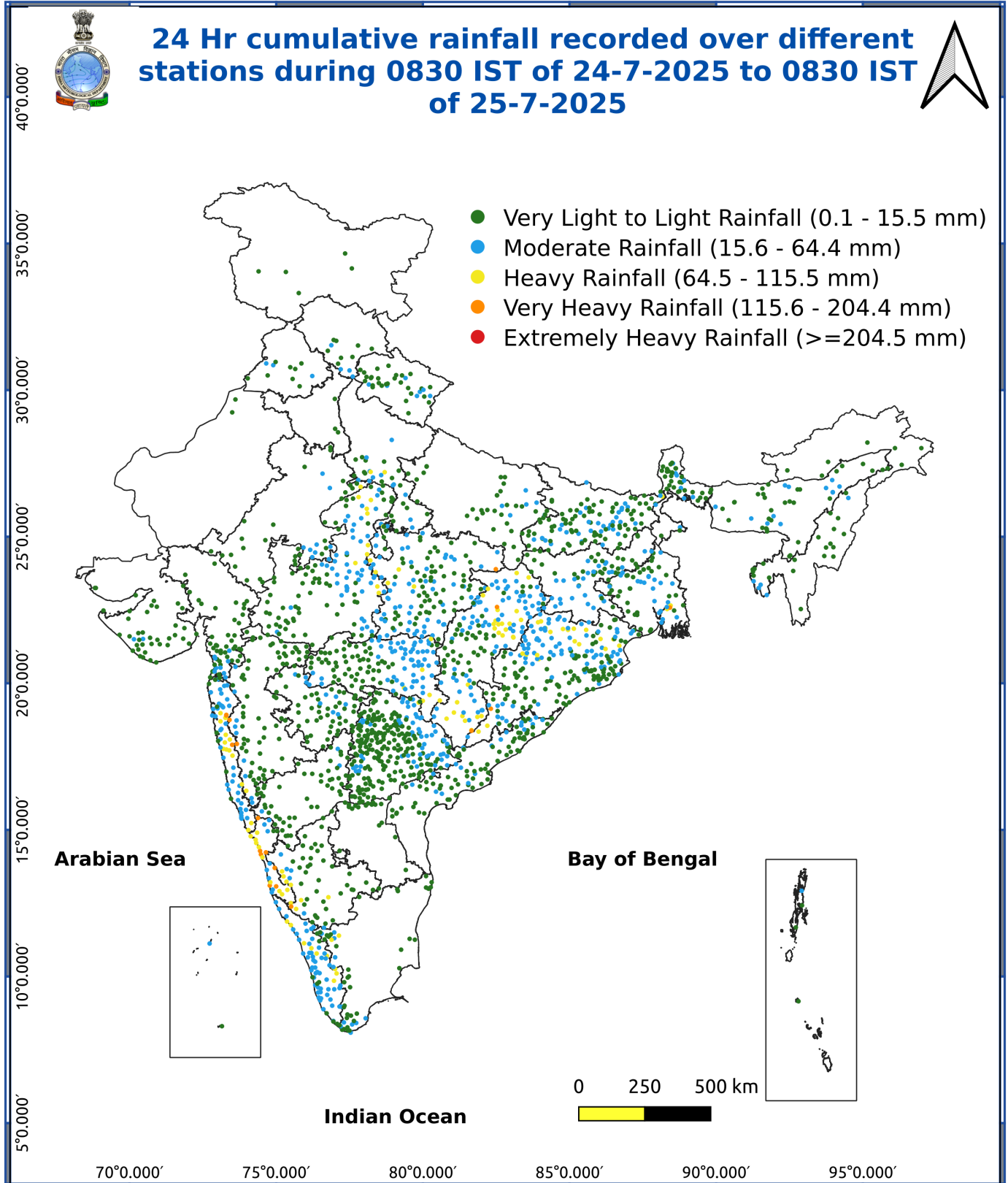


Fig. 4: Departure of Minimum Temp. Dated 2025-07-26





*Red color warning does not mean "Red Alert" Red color warning means "Take Action"

Forecast and warning for any day is valid from 0830 hours IST of day till 0830 hours IST of next day

For more details kindly visit <https://mausam.imd.gov.in> or contact 011-2434-4599

(Service to the nation since 1875)



Extremely heavy rainfall is very likely at isolated places over Vidarbha, Chhattisgarh, Konkan and Ghat areas of Madhya Maharashtra on 26th; West Madhya Pradesh on 26th & 27th; East Madhya Pradesh on 26th and over East Rajasthan on 27th July Isolated **very heavy rainfall** likely over Kerala & Mahe, Coastal Karnataka, Madhya Pradesh during 26th-29th; Marathawada, Tamil Nadu, Mizoram & Tripura, Jharkhand, Odisha on 26th July. North Interior Karnataka on 26th; East Rajasthan on 26th, 28th & 29th; Uttarakhand on 27th & 28th and West Uttar Pradesh on 28th and Arunachal Pradesh, Meghalaya on 26th & 27th July.

Impact Expected

Localized Flooding of roads, water logging in low lying areas and closure of underpasses mainly in urban areas of the above region.

Occasional reduction in visibility due to heavy rainfall.

Disruption of traffic in major cities due to water logging in roads leading to increased travel time. Minor damage to kutcha roads.

Possibilities of damage to vulnerable structure.

Localized Landslides/Mudslides/landslips/mudslips/landsinks/mudsinks. Damage to horticulture and standing crops in some areas due to inundation.

It may lead to riverine flooding in some river catchments (for riverine flooding please visit Web page of CWC)

Action Suggested

Check for traffic congestion on your route before leaving for your destination. Follow any traffic advisories that are issued in this regard.

Avoid going to areas that face the water logging problems often. Avoid staying in vulnerable structure.

Agromet advisories for various parts of the country

Agromet advisories for likely impact of Heavy / Heavy to Very Heavy / Extremely Heavy Rainfall (Based on the IBF and advisories issued by different AMFUs):

In Gangetic West Bengal, avoid transplanting of aman paddy during heavy rainfall and arrange good drainage system in vegetable seed bed, standing vegetable crops and betel vine garden in Coastal Saline Zone. In Laterite and Red Soil Zone, avoid transplanting of rice and sowing of groundnut during heavy rainfall and drain out excess water from already sown fields of groundnut and vegetables.

In Odisha, postpone sowing of maize and transplanting of vegetables and drain out excess water from rice nurseries and fields of transplanted rice, maize, pulses, vegetable and plantation crops in North Central Plateau Zone. In Mid

***Red color warning does not mean "Red Alert" Red color warning means "Take Action"**

Forecast and warning for any day is valid from 0830 hours IST of day till 0830 hours IST of next day

For more details kindly visit <https://mausam.imd.gov.in> or contact 011-2434-4599

(Service to the nation since 1875)

Central Table Land Zone, postpone sowing of sesame and groundnut and drain out excess water from the fields of rice, sugarcane, maize, sesame, groundnut, vegetables and plantations of banana and papaya. In East and South Eastern Coastal Plain Zone, postpone sowing of maize and groundnut and drain out excess water from the fields of rice, sugarcane, maize, groundnut, black gram, green gram, vegetables and plantations of papaya. Drain out excess water from the fields of rice, jute, sugarcane, vegetables and plantations of coconut and papaya in North Eastern coastal plain Zone; rice, cotton, pigeon pea, maize, vegetables and plantations of banana in Western undulating Zone; rice, maize, vegetables and fruit orchards in West Central Table land Zone; rice nurseries and transplanted rice fields, maize, pulses and vegetables in North Eastern Plateau Zone and rice, maize and vegetables in Eastern Ghat High Land Zone and South Eastern Ghat Zone.

In South Jharkhand, maintain proper drainage in fields of rice, maize and pulses like pigeon pea, green gram and black gram.

In Maharashtra, make arrangement to drain out excess water from rice and finger millet nurseries, groundnut, vegetables and orchards in Konkan; rice and finger millet nurseries in ghat areas of Madhya Maharashtra and fields of soybean, cotton, pigeon pea, sorghum, maize, green gram, black gram and turmeric in Vidarbha. In Madhya Pradesh, provide adequate drainage in the fields of soybean, rice, maize and pigeon pea in Vindhyan Plateau Zone; rice, maize and soybean in Kymore Plateau and Satpura Hill Zone; rice and vegetables in Bundelkhand Zone; maize, soybean, cotton, sugarcane and vegetables in Satpura Plateau Zone; rice, soybean, maize, sugarcane and vegetables in Central Narmada Valley Zone and soybean, pigeon pea, cotton and vegetables in Nimar Valley Zone. In Gird Zone, postpone sowing of pearl millet and make arrangement to drain out excess water in fields of soybean, pigeon pea and transplanted rice.

In Chhattisgarh, drain out excess water from rice nurseries, soybean, pigeon pea, green gram, black gram, maize, sugarcane and vegetables in Plain Zone and rice, minor millets, maize, pulses and oilseeds in Bastar Plateau Zone. In Northern Hill Zone, postpone fresh transplanting of rice in low lands. Drain out excess water from the fields of transplanted rice and vegetables. Undertake staking / propping in banana and papaya.

In East Rajasthan, provide adequate drainage in fields of soybean, black gram, green gram, sesame and maize in Southeastern Humid Plain Zone; maize, cotton, soybean and rice in Southern Humid Plain Zone; maize, soybean, green gram, black gram and groundnut in Sub Humid Southern Plain and Aravali Hill Zone; pearl millet, sesame, black gram and vegetables in Flood Prone Eastern Plain Zone and pearl millet and groundnut in Semi Arid Eastern Plain Zone.

In Uttarakhand, maintain proper drainage channels in fields of rice in Bhabar and Tarai Zone, black gram in Hill Zone and rice, barnyard millet, finger millet and cucumber in Sub Humid SubTropic Zone.

In Kerala, provide adequate drainage in fields of rice, coconut, banana and ginger. Postpone nursery / transplanting of rice. Provide staking in vegetables.

In Karnataka, postpone nursery sowing of rice and provide drainage in arecanut fields and banana orchards in Coastal Zone. In Hill Zone, make arrangements to drain out excess water from rice nurseries, fields of maize, cotton, ginger and plantations of arecanut. In Southern Transition Zone, provide proper drainage in arecanut and coconut fields. In Southern Dry Zone, provide staking / support to maize, tomato and banana crop. Ensure proper drainage to prevent waterlogging especially in rice, vegetables and spice crops.

In North Coastal Andhra Pradesh, undertake direct sowing or nursery sowing of rice after cessation of rains by utilizing the available soil moisture. Make arrangements for draining out excess water from the fields of sugarcane, already sown direct seeded rice, maize, bajra, ragi and red gram. Undertake propping in sugarcane, banana and staking in vegetables.

In Telangana, ensure proper drainage facilities in the fields of rice, maize, groundnut, cotton, soybean, red gram and vegetables.

Livestock / Fishery

Keep the animals inside the shed during heavy rainfall and provide them balanced feed. Store feed and fodder in a safe place to prevent spoilage.

Construct an outlet with proper netting around the ponds to drain out excess water, thereby preventing fish from escaping in case of overflow.

Agromet advisories for likely impact of Thunderstorm / Gusty Winds / Squally Winds (Based on the IBF and advisories issued by different AMFUs)

Provide mechanical support to horticultural crops and staking or support to vegetables and young fruit plants / fruit-bearing plants to avoid lodging due to strong winds.

***Red color warning does not mean "Red Alert" Red color warning means "Take Action"**

Forecast and warning for any day is valid from 0830 hours IST of day till 0830 hours IST of next day

For more details kindly visit <https://mausam.imd.gov.in> or contact 011-2434-4599

(Service to the nation since 1875)

LEGENDS

- 1 अंडमान और निकोबार द्वीप समुह
- 2 अरुणाचल प्रदेश
- 3 असम और मेघालय
- 4 नागालैंड मनीपुर मीजोरम और त्रिपुरा
- 5 उप हिमालय पश्चिम बंगाल एवं सिक्किम
- 6 पश्चिम बंगाल
- 7 ओडिसा
- 8 झारखंड
- 9 बिहार
- 10 पूर्वी उत्तर प्रदेश
- 11 पश्चिम उत्तर प्रदेश
- 12 उत्तराखंड
- 13 हरियाणा चंडीगढ़ एवं दिल्ली
- 14 पंजाब
- 15 हिमाचल प्रदेश
- 16 जम्मू एवं कश्मीर एवं लद्दाख
- 17 पश्चिम राजस्थान
- 18 पूर्वी राजस्थान
- 19 पश्चिम मध्य प्रदेश
- 20 पूर्वी मध्य प्रदेश
- 21 गुजरात क्षेत्र
- 22 सौराष्ट्र एवं कच्छ
- 23 कोंकण एवं गोवा
- 24 मध्य महाराष्ट्र
- 25 मराठावाड़ा
- 26 विदर्भ
- 27 छत्तीसगढ़
- 28 तटीय आंध्र प्रदेश एवं यनम
- 29 तेलंगाना
- 30 रायलसीमा
- 31 तमिलनाडु, पुदुचेरी एवं कराईकल
- 32 तटिय कर्नाटक
- 33 आंतरिक उत्तरी कर्नाटक
- 34 आंतरिक दक्षिणी कर्नाटक
- 35 केरल एवं माहे
- 36 लक्षद्वीप



1. Andaman & Nicobar Islands
2. Arunachal Pradesh
3. Assam & Meghalaya
4. Nagaland, Manipur, Mizoram & Tripura
5. Sub-Himalayan West Bengal & Sikkim
6. Gangetic West Bengal
7. Orissa
8. Jharkhand
9. Bihar
10. East Uttar Pradesh
11. West Uttar Pradesh
12. Uttarakhand
13. Haryana, Chd & Delhi
14. Punjab
15. Himachal Pradesh
16. Jammu & Kashmir and Ladakh
17. West Rajasthan
18. East Rajasthan
19. West Madhya Pradesh
20. East Madhya Pradesh
21. Gujarat
22. Saurashtra
23. Konkan & Goa
24. Madhya Maharashtra
25. Marathawada
26. Vidharbha
27. Chhattisgarh
28. Coastal Andhra Pradesh & Yanam
29. Telangana
30. Rayalaseema
31. Tamilnadu, Puducherry & Karaikal
32. Coastal Karnataka
33. North Interior Karnataka
34. South Interior Karnataka
35. Kerala & Mahe
36. Lakshadweep

SPATIAL DISTRIBUTION (% of Stations reporting)

% Stations	Category	% Stations	Category
76-100	Widespread (WS/Most Places)	26-50	Scattered (SCT/ A Few Places)
51-75	Fairly Widespread (FWS/ Many Places)	1-25	Isolated (ISOL)

Subdivision Colour

- NO WARNING
- WATCH (BE UPDATED)
- ALERT (BE PREPARED TO TAKE ACTION)
- WARNING (TAKE ACTION)

Probabilistic Forecast

Terms	Probability of Occurrence (%)
Unlikely	< 25
Likely	25 - 50
Very Likely	50 - 75
Most Likely	> 75

-  Heavy Rain

 Thunderstorm & Lightning

 Strong surface winds

 Cold Wave

 Hot & Humid

 Very Heavy Rain

 Hailstorm

 Heat Wave

 Cold Day

 Extremely Heavy Rain

 Dust Storm

 Hot Day

 Ground Frost

 Heavy Snow

 Dust Raising Winds

 Warm Night

 Fog

*Red color warning does not mean "Red Alert" Red color warning means "Take Action"

Forecast and warning for any day is valid from 0830 hours IST of day till 0830 hours IST of next day

For more details kindly visit <https://mausam.imd.gov.in> or contact 011-2434-4599

(Service to the nation since 1875)

LEGENDS

WARNING

WARNING (TAKE ACTION)
ALERT (BE PREPARED)
WATCH (BE UPDATED)
NO WARNING (NO ACTION)

Probabilistic Forecast

Terms	Probability of Occurrence (%)
Unlikely	< 25
Likely	25 - 50
Very Likely	50 - 75
Most Likely	> 75



Heavy: 64.5 to 115.5 mm/cm *
Very Heavy: 115.6 to 204.4 mm/cm *
Extremely Heavy: > 204.4 mm/cm *



When maximum temperature of a station reaches $\geq 40^{\circ}\text{C}$ for plains and $\geq 30^{\circ}\text{C}$ for hilly regions
(a) Based on Departure from normal

Heat Wave: Maximum Temperature Departure from normal 4.5°C to 6.4°C .
Severe Heat Wave: Maximum Temperature Departure from normal $\geq 6.5^{\circ}\text{C}$

(b). Based on Actual maximum temperature

Heat Wave: When actual maximum temperature $\geq 45^{\circ}\text{C}$.
Severe Heat Wave: When actual maximum temperature $\geq 47^{\circ}\text{C}$

(c). Criteria for heat wave for coastal stations

When maximum temperature departure is $> 4.5^{\circ}\text{C}$ from normal. Heat Wave may be described provided maximum temperature $\geq 37^{\circ}\text{C}$



When maximum temperature remains 40°C

Warm Night: When minimum temperature departure 4.5°C to 6.4°C .
Severe Warm Night: When minimum temperature departure $> 6.4^{\circ}\text{C}$.



When minimum temperature of a station $\leq 10^{\circ}\text{C}$ for plains and $\leq 0^{\circ}\text{C}$ for hilly regions.

(a). Based on departure

Cold Wave: Minimum Temperature Departure from normal -4.5°C to -6.4°C .
Severe Cold Wave: Minimum Temperature Departure from normal $\leq -6.5^{\circ}\text{C}$

(b) Based on actual Minimum Temperature (for Plains only)

Cold Wave: When Minimum Temperature is $\leq 4.0^{\circ}\text{C}$
Severe Cold Wave: When Minimum Temperature is $\leq 2.0^{\circ}\text{C}$

(c) For Coastal Stations

When Minimum Temperature departure is $\leq -4.5^{\circ}\text{C}$ & actual Minimum Temperature is $\leq 15^{\circ}\text{C}$



When minimum temperature of a station $\leq 10^{\circ}\text{C}$ for plains and $\leq 0^{\circ}\text{C}$ for hilly regions
Based on departure

Cold Day: Maximum Temperature Departure from normal -4.5°C to -6.4°C .
Severe Cold Day: Maximum Temperature Departure from normal $\leq -6.5^{\circ}\text{C}$



Phenomenon of small droplets suspended in air and the horizontal visibility $< 1\text{km}$

Moderate Fog: When the visibility between 500-200 metres
Dense Fog: when the visibility between 50-200 metres
Very Dense Fog: when the visibility < 50 metres



Sudden electrical discharges manifested by a flash of light (Lightning) and a sharp rumbling sound (thunder)



An ensemble of particles of dust or sand energetically lifted to great heights by a strong and turbulent wind.



Ice deposits on ground

Air temperature $\leq 4^{\circ}\text{C}$ (over Plains)



A strong wind that rises suddenly, lasts for at least 1 minute.

Moderate: Wind speed 52-61 kmph
Severe: Wind speed 62-87 kmph
Very Severe: Wind speed > 87 kmph



Effect of various waves in the sea over specific area

Rough to very rough: Wind speed 41-62 kmph (22-33 knots) & Wave height 2.5-6 metre
High to very high: Wind speed 63-117 kmph (34-63 knots) & Wave height 6-14 metre
Phenomenal: Wind speed > 117 kmph (> 63 knots) & Wave height > 14 metre



Cyclonic Storm: Wind speed 62-87 kmph (34-47 knots)

Severe Cyclonic Storm: Wind speed 88-117 kmph (48-63 knots)
Very Severe Cyclonic Storm: Wind speed 118-165 kmph (64-89 knots)
Extremely Severe Cyclonic Storm: Wind speed 166-220 kmph (90-119 knots)
Super Cyclone Storm: Wind speed > 220 kmph (> 119 knots)

*Red color warning does not mean "Red Alert" Red color warning means "Take Action"

Forecast and warning for any day is valid from 0830 hours IST of day till 0830 hours IST of next day

For more details kindly visit <https://mausam.imd.gov.in> or contact 011-2434-4599

(Service to the nation since 1875)