

Friday, May 30, 2025
Time of Issue: 0830 hours IST
(MORNING)

ALL INDIA WEATHER SUMMARY AND FORECAST BULLETIN

Significant Weather Features:

South Peninsular India:

- ❖ Fairly widespread to widespread light/moderate rainfall accompanied with **thunderstorm, lightning & gusty winds speed reaching 40-50 kmph** over Kerala & Mahe, Karnataka during 30th May-01st June; Isolated to scattered light/moderate rainfall accompanied with **thunderstorm, lightning & gusty winds speed reaching 40-50 kmph** likely over Tamilnadu Puducherry & Karaikal, Coastal Andhra Pradesh & Yanam, Rayalaseema and Telangana on 30th -31st May.
- ❖ Isolated heavy rainfall likely over Coastal Karnataka on 31st May & 01st June, South Interior Karnataka on 30th, Kerala & Mahe on 01st & 02nd June and isolated heavy to very heavy rainfall over Tamilnadu Puducherry & Karaikal, Coastal Karnataka on 30th, Kerala & Mahe on 31st may.
- ❖ Isolated extremely heavy rainfall very likely over Kerala & Mahe on 30th.

Northeast India:

- ❖ Fairly widespread to widespread light/moderate rainfall over Northeast India during next 7 days.
- ❖ Isolated heavy to very heavy rainfall very likely over Sub-Himalayan West Bengal & Sikkim during 30th May- 01st June, Assam & Meghalaya, Arunachal Pradesh, Nagaland, Manipur, Mizoram & Tripura during next 7 days with isolated extremely heavy rainfall also likely over Assam & Meghalaya, Nagaland, Manipur, Mizoram & Tripura on 30th, Arunachal Pradesh on 30th May.

West India:

- ❖ Isolated heavy rainfall likely over Konkan & Goa on 01st & 02nd June.

East & Central India:

- ❖ Scattered to fairly widespread light/moderate rainfall accompanied with **thunderstorm, lightning & gusty winds speed reaching 40-50 kmph** likely over Vidarbha, Chhattisgarh, Gangetic West Bengal, Jharkhand, Odisha, Madhya Pradesh, Bihar during 30th May- 01st June with **Thundersquall wind speed reaching 50-60 kmph gusting to 70 kmph** likely over East Madhya Pradesh, Chhattisgarh on 30th May.
- ❖ Isolated heavy rainfall likely over Vidarbha, Chhattisgarh on 30th, Gangetic West Bengal, Odisha on 30th May.

Northwest India:

- ❖ Scattered to fairly widespread light/moderate rainfall accompanied with **thunderstorm, lightning & gusty winds speed reaching 40-50 kmph** likely over likely over Jammu-Kashmir-Ladakh-Gilgit-Baltistan-Muzaffarabad, Himachal Pradesh, Uttarakhand, Punjab, Haryana Chandigarh & Delhi; isolated to scattered rainfall over Uttar Pradesh, Rajasthan during 30th May- 02nd June with **Thundersquall wind speed reaching 50-60 kmph gusting to 70 kmph** likely over Rajasthan, Punjab, Haryana Chandigarh & Delhi on 30th, Himachal Pradesh on 31st may & 01st June.
- ❖ Isolated heavy rainfall also likely over Jammu-Kashmir-Ladakh-Gilgit-Baltistan-Muzaffarabad on 30th & 31st, Himachal Pradesh on 31st may & 01st June, Uttarakhand during 30th May -02nd June.
- ❖ Dust storm also very likely at isolated places over West Rajasthan on 30th May.

Heat wave warnings:

- ❖ Heat wave conditions very likely in isolated pockets of West Rajasthan on 30th & 31st May.

FISHERMEN WARNINGS:

- (A) Fishermen are advised not to venture over south Arabian Sea & southern parts of central Arabian Sea from 30th to 0530 IST of 01st June; over southeast Arabian Sea, Lakshadweep, Maldives, Comorin areas from 0530 IST of 31st May to 0530 IST of 03rd June; over Gulf of Mannar from 1130 IST of 30th May of 03rd June; and along & off Kerala, Karnataka coasts from 0830 IST of 30th to 0530 IST of 02nd June; along and off Somalia coasts and adjoining sea areas from 30th to 0530 IST of 03rd June; along and off Gujarat coast from 0530 IST of 30th to 0530 IST of 02nd June; off north Gujarat coast on 02nd June.
- (B) Fishermen are advised not to venture along & off Tamil Nadu, Andhra Pradesh, Odisha, West Bengal, Bangladesh, Myanmar coasts, over entire Bay of Bengal from 30th to 0530 IST of 31st May; off Tamil Nadu, Andhra Pradesh, Odisha, West Bengal, Bangladesh, Myanmar coasts from 0530 IST of 31st May to 0530 IST of 01st June; Most parts of Bay of Bengal from 0530 IST of 01st June to 0530 IST of 03rd June.
- (C) Fishermen are advised not to venture into the Andaman Sea on 30th May.

Total suspension of fishing operations over above-mentioned areas and dates.

Main Weather Observations:

- ❖ **Significant rainfall recorded(in cm)** (from 0830 hours IST of yesterday to 0530 hours IST of today):
Assam & Meghalaya: Cherrapunji (dist East Khasi Hills) 15, Shillong (dist East Khasi Hills) 11, Dhubri (dist Dhubri) 4, Guwahati (dist Kamrup Metropolitan) 3, North Lakhimpur (dist Lakhimpur), Tezpur (dist Sonitpur), Silchar (dist Cachar) 2 Each; **Kerala & Mahe:** Cannanore (kannur) (dist Kannur) 12, Thiruvananthapuram-city (dist Thiruvananthapuram) 4; **Nagaland, Manipur, Mizoram & Tripura:** Agartala AP (dist West Tripura) 11, Kailashahar AP (dist Unakoti) 7, Imphal (tulihal) AP (dist Imphal East) 3; **Coastal Karnataka:** Mangalore (bajpe) AP (dist Dakshina Kannada) 9; **Lakshadweep :** Amini Divi (dist Lakshadweep) 8, Minicoy (dist Lakshadweep) 4; **North interior Karnataka:** Gadag (dist Gadag) 5; **Konkan & Goa:** Panjim (dist North Goa) 3; **Odisha:** Paradip Port (dist Jagatsinghapur) 3; **Coastal Andhra Pradesh & Yanam:** Amaravati-ap-obs2 (dist Guntur) 3; **Madhya Maharashtra:** Solapur (dist Solapur) 3; **Arunachal pradesh:** Pasighat (dist East Siang) 2; **West rajasthan:** Barmer (dist Barmer) 2; **Jammu & kashmir and ladakh:** Banihal (dist Doda), Kukernag (dist Anantnag), Kupwara (dist Kupwara) 2 Each; **Gangetic west bengal:** Kolkata (dum Dum) AP (dist North 24 Parganas) 2; **East uttar pradesh:** Sultanpur-obs2 (dist Sultanpur) 2; **Sub-himalayan west bengal & sikkim:** Malda (dist Malda) 2.
- ❖ **Heavy Rainfall** (from 0830 hours IST of yesterday to 0530 hours IST of today): **Heavy to very heavy rain** at a few places over Kerala & Mahe, at isolated places over Assam & Meghalaya **Heavy rain** at many places over Nagaland, Manipur, Mizoram & Tripura, at most places over Coastal Karnataka, at a few places over Lakshadweep.
- ❖ **Minimum Temperature Departures (as on 29-05-2025):** Minimum Temperature Departures were **markedly above normal (> 5.1°C)** at few places over East Madhya Pradesh; at isolated places over Assam & Meghalaya, Bihar, East Uttar Pradesh, West Uttar Pradesh, Himachal Pradesh, Jammu-KashmirLadakh-Gilgit-Baltistan-Muzaffarabad, West Rajasthan, West Madhya Pradesh and Saurashtra & Kutch. **appreciably above normal (3.1°C to 5.0°C)** at isolated places over Andaman & Nicobar Islands, Sub Himalayan West Bengal & Sikkim, Odisha, Uttarakhand, Haryana-Chandigarh-Delhi, East Rajasthan, Gujarat Region, Madhya Maharashtra and Tamil Nadu, Puducherry & Karaikal. **above normal (1.6°C to 3.0°C)** at most places over Arunachal Pradesh and Punjab; at few places over Rayalaseema; at isolated places over Gangetic West Bengal, Jharkhand, Coastal Andhra Pradesh & Yanam and Kerala & Mahe. **near normal (-1.5°C to 1.5°C)** at many places over North Interior Karnataka and Lakshadweep; at most places over Nagaland, Manipur, Mizoram & Tripura and South Interior Karnataka; at few places over Konkan & Goa and Chhattisgarh; at isolated places over Telangana. Today, **the lowest minimum temperature of 19.2°C was reported at Matheran (Maharashtra)** over the Plains of India.
- ❖ **Maximum Temperature Departures (as on 29-05-2025):** Maximum Temperature were **markedly above normal (> 5.1°C)** at isolated places over West Uttar Pradesh and Himachal Pradesh. **appreciably above normal (3.1°C to 5.0°C)** at isolated places over Jammu-KashmirLadakh-Gilgit-Baltistan-Muzaffarabad, East Madhya Pradesh and Tamil Nadu, Puducherry & Karaikal. **above normal (1.6°C to 3.0°C)** at few places over Punjab; at isolated places over Assam & Meghalaya, Sub Himalayan West Bengal & Sikkim, Bihar, East Uttar Pradesh, West Rajasthan and West Madhya Pradesh. **near normal (-1.5°C to 1.5°C)** at many places over Uttarakhand and Haryana-Chandigarh-Delhi; at most places over Arunachal Pradesh and Saurashtra & Kutch; at few places over Andaman & Nicobar Islands, Odisha, East Rajasthan, Gujarat Region, Konkan & Goa and Lakshadweep; at isolated places over Nagaland, Manipur, Mizoram & Tripura, Gangetic West Bengal, Coastal Andhra Pradesh & Yanam and Kerala & Mahe. Today, **the highest maximum temperature of 45.3°C was reported at Sri Ganganagar (West Rajasthan).**

* Red colour warning does not mean "Red Alert", Red colour warning means "Take Action".

Forecast and Warning for any day is valid from 0830 hours IST of day till 0830 hours IST of next day.

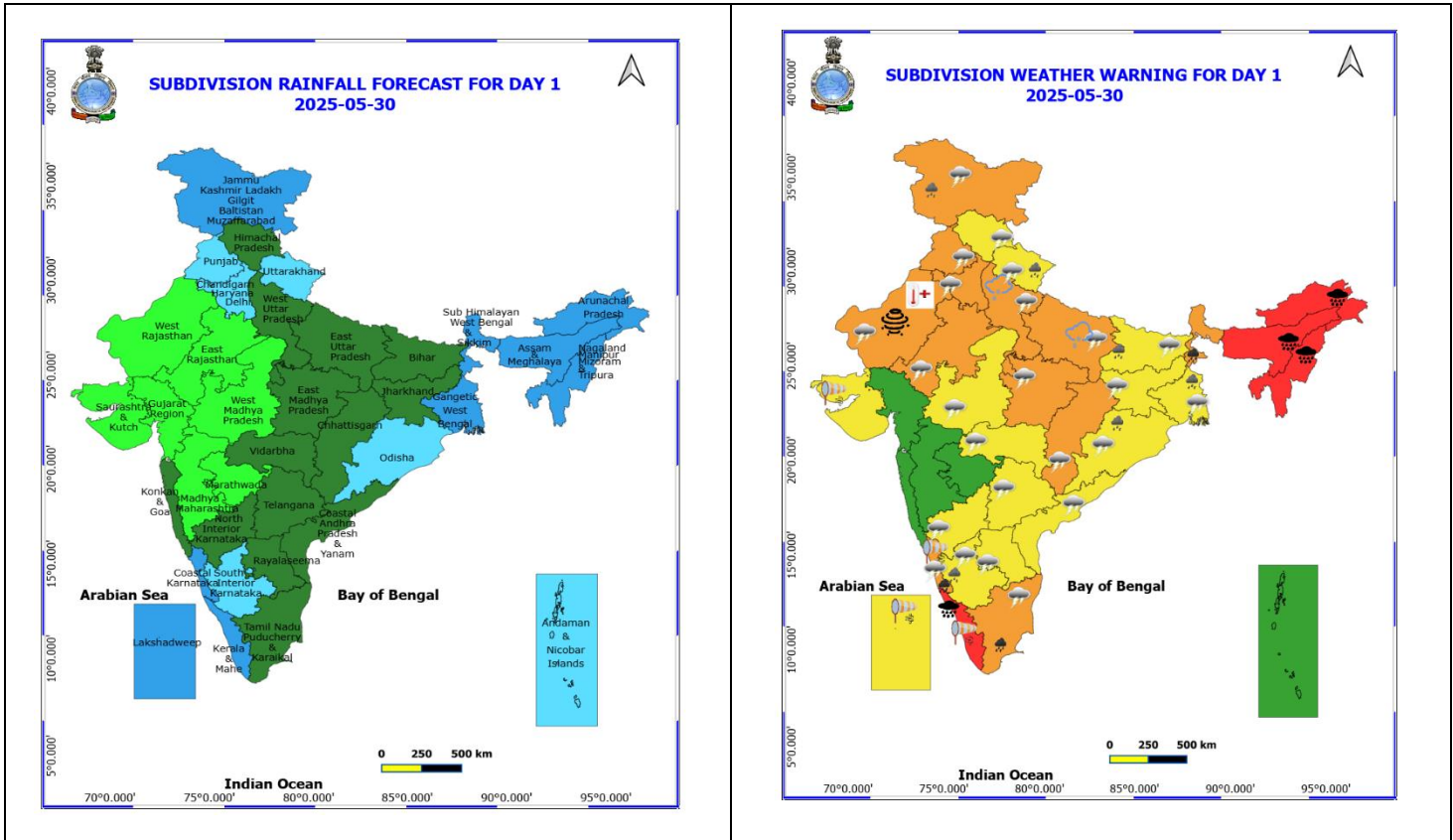
For more details, kindly visit <https://mausam.imd.gov.in> or contact: 011-2434-4599

(Service to the Nation since 1875)

Meteorological Analysis (Based on 0530 hours IST)

- ❖ The Northern Limit of Monsoon continues to pass through 17.0°N/55°E, 17.5°N/60°E, 18°N/65°E, 18.5°N/70°E, Mumbai, Ahilyanagar, Adilabad, Bhawanipatna, Puri, Sandhead Island, 23.5°N/89.5°E, Balurghat, 30°N/85°E.
- ❖ Conditions are favourable for further advance of southwest monsoon over some more parts of West Bengal and Bihar during next 1-2 days.
- ❖ The deep depression over Bangladesh and adjoining Gangetic West Bengal moved north-northeastwards with a speed of 20 kmph during past 6 hours, weakened into a depression and lay centred at 0530 hours IST of today, the 30th May 2025 over Bangladesh near latitude 24.1° N and longitude 89.4° E, about 60 km west-southwest of Tangail (Bangladesh), 110 west-northwest of Dhaka (Bangladesh), 120 km northeast to Berhampore (India) and 300 km west-southwest of Shillong (India). It is very likely to move nearly north-northeastwards and weaken into a well-marked low-pressure area during next 24 hours.
- ❖ The **upper air cyclonic circulation** over south Punjab & neighbourhood now lies over Punjab at 0.9 km above mean sea level.
- ❖ The **upper air cyclonic circulation** over northern parts of central Uttar Pradesh now lies central parts of Uttar Pradesh at 0.9 km above mean sea level.
- ❖ The **trough** now runs from the **cyclonic circulation** over Punjab to the centre of Depression over Bangladesh across Haryana, cyclonic circulation over central parts of Uttar Pradesh, north Jharkhand at 0.9 km above mean sea level.
- ❖ The **Western Disturbance** as an upper air cyclonic circulation over Jammu-Kashmir at 3.1 km above mean sea level with a trough aloft in middle & upper troposphere with its axis at 5.8 km above mean sea level roughly along Long. 75°E to the north of Lat. 32°N persists.
- ❖ The other **Western Disturbance** as a cyclonic circulation over North Afghanistan & neighbourhood between 3.1 & 7.6 km above mean sea level persists.
- ❖ The **upper air cyclonic circulation** over west Rajasthan at 1.5 km above mean sea level has become less marked.

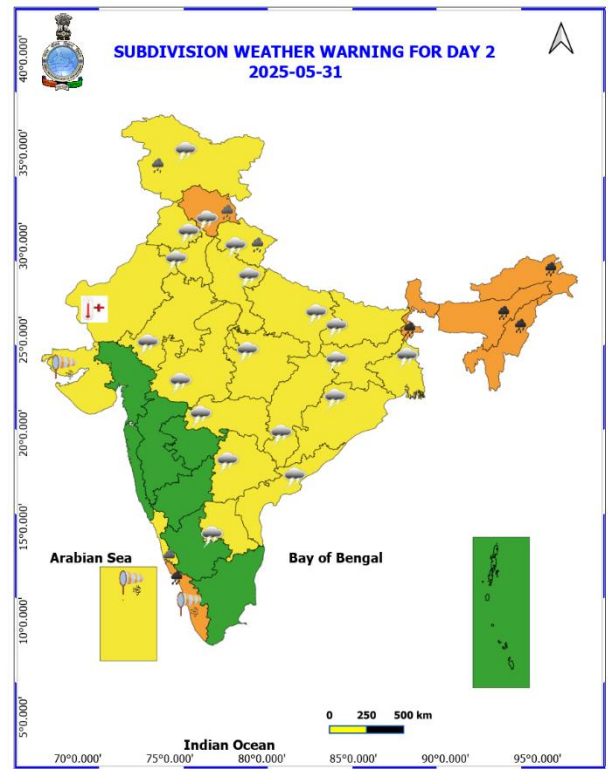
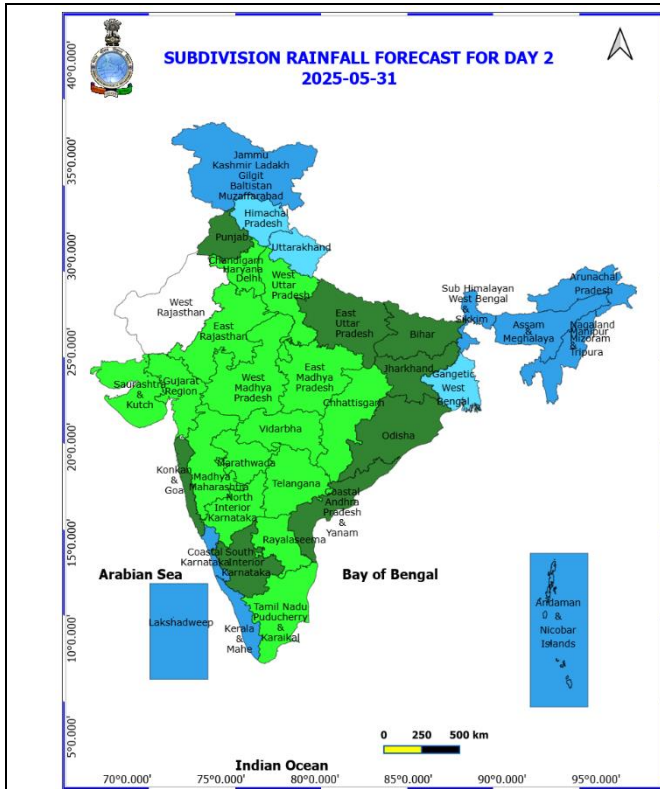
Weather Forecast & Warnings for next 7 days (Upto 0830 hours IST of 06th June, 2025)



30th May (Day 1)

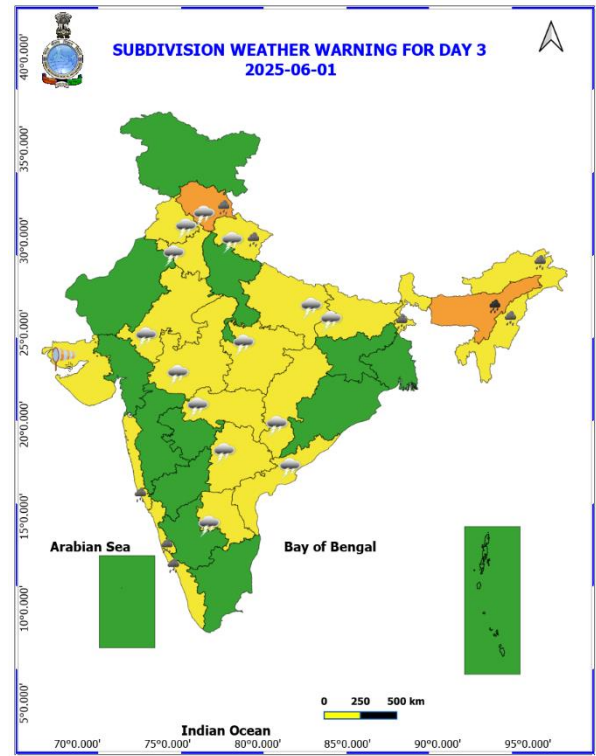
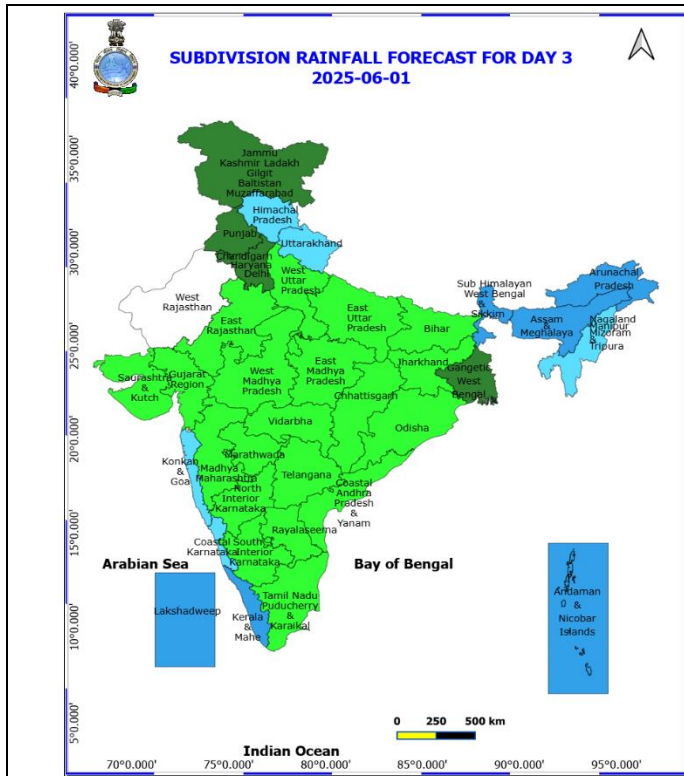
- ❖ **Heavy to Very Heavy Rainfall with isolated Extremely Heavy Rainfall** very likely at isolated places over Arunachal Pradesh, Assam & Meghalaya, Kerala & Mahe and Nagaland, Manipur, Mizoram and Tripura.
- ❖ **Heavy to Very Heavy Rainfall** very likely at isolated places over Coastal Karnataka, Sub Himalayan West Bengal & Sikkim and Tamil Nadu Puducherry & Karaikal.
- ❖ **Heavy Rainfall** very likely at isolated places over Bihar, Gangetic West Bengal, Jammu-Kashmir-Ladakh-Gilgit-Baltistan-Muzaffarabad, Odisha, South Interior Karnataka and Uttarakhand.
- ❖ **Thunderstorm accompanied with Hailstorm** very likely at isolated places over Uttar Pradesh.
- ❖ **Thundersquall with wind speed reaching(50-60kmph)** very likely at isolated places over Chhattisgarh, East Madhya Pradesh, Haryana, Chandigarh & Delhi, Punjab and Rajasthan.
- ❖ **Thunderstorm accompanied with lightning & gusty winds(40-50kmph)** very likely at isolated places over Andhra Pradesh, Bihar, Himachal Pradesh, Jammu-Kashmir-Ladakh-Gilgit-Baltistan-Muzaffarabad, Odisha, Tamil Nadu Puducherry & Karaikal, Uttar Pradesh, Uttarakhand, Vidarbha and West Madhya Pradesh.
- ❖ **Thunderstorm accompanied with lightning & gusty winds(30-40kmph)** very likely at isolated places over Coastal Karnataka, Gangetic West Bengal, Interior Karnataka, Jharkhand and Telangana.
- ❖ **Dust Storm** very likely at isolated places over West Rajasthan.
- ❖ **Strong Surface Winds** very likely at isolated places over Coastal Karnataka, Kerala & Mahe, Lakshadweep and Saurashtra & Kutch.
- ❖ **Heat Wave conditions** very likely at isolated places over West Rajasthan.
- ❖ **Squally wind with speed 45 kmph to 55 kmph gusting to 65 kmph** likely to prevail along and off Somalia coast and northern parts of southwest Arabian Sea and adjoining west central Arabian Sea, along and off Gujarat coast and adjoining northeast Arabian Sea. **Squally weather with wind speed 35 kmph to 45 kmph gusting to 55 kmph** prevailing over south Arabian Sea, southern parts of central Arabian Sea; along and off Kerala, Karnataka coasts, over Lakshadweep area, Maldives area, Comorin area, over Gulf of Mannar, along and off Sri Lanka, Tamil Nadu, Andhra Pradesh, Myanmar coasts, over south and central Bay of Bengal, over Andaman Sea. **Squally weather with wind speed 40 kmph to 50 kmph gusting to 60 kmph** along and off Odisha and West Bengal, Bangladesh coasts, over north Bay of Bengal. **Squally weather with wind speed 45 kmph to 55 kmph gusting to 65 kmph** prevailing over many parts of north Bay of Bengal, some parts of central and southwest Bay of Bengal. Fishermen are advised not to venture into these areas.

* Red colour warning does not mean "Red Alert", Red colour warning means "Take Action".
Forecast and Warning for any day is valid from 0830 hours IST of day till 0830 hours IST of next day.
For more details, kindly visit <https://mausam.imd.gov.in> or contact: 011-2434-4599
(Service to the Nation since 1875)



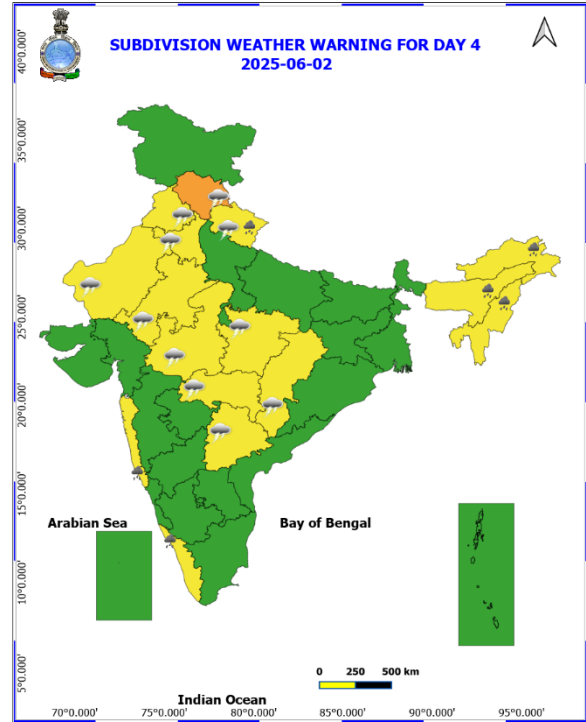
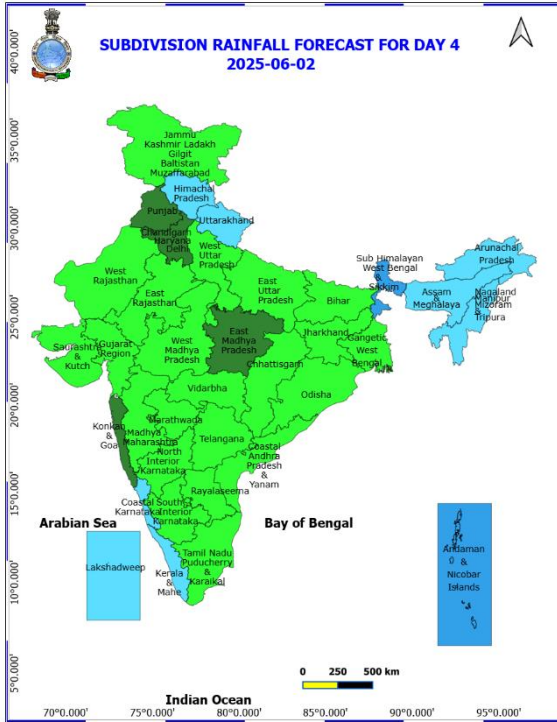
31st May (Day 2)

- ❖ **Heavy to Very Heavy Rainfall** very likely at isolated places over Arunachal Pradesh, Assam & Meghalaya, Kerala & Mahe, Nagaland, Manipur, Mizoram and Tripura and Sub Himalayan West Bengal & Sikkim.
- ❖ **Heavy Rainfall** very likely at isolated places over Costal Karnataka, Himachal Pradesh, Jammu-Kashmir-Ladakh-Gilgit-Baltistan-Muzaffarabad and Uttarakhand.
- ❖ **Thundersquall with wind speed reaching(50-60kmph)** very likely at isolated places over Himachal Pradesh.
- ❖ **Thunderstorm accompanied with lightning & gusty winds(40-50kmph)** very likely at isolated places over Andhra Pradesh, Chhattisgarh, East Rajasthan, East Uttar Pradesh, Jammu-Kashmir-Ladakh-Gilgit-Baltistan-Muzaffarabad, Madhya Pradesh and Vidarbha.
- ❖ **Thunderstorm accompanied with lightning & gusty winds(30-40kmph)** very likely at isolated places over Bihar, Haryana, Chandigarh & Delhi, Jharkhand, Odisha, Punjab, Telangana, Uttarakhand and West Uttar Pradesh.
- ❖ **Thunderstorm accompanied with Lightning** very likely at isolated places over Gangetic West Bengal.
- ❖ **Strong Surface Winds** very likely at isolated places over Kerala & Mahe, Lakshadweep and Saurashtra & Kutch.
- ❖ **Heat Wave conditions** very likely at isolated places over West Rajasthan.
- ❖ **Squally wind with speed 45 kmph to 55 kmph gusting to 65 kmph** likely to prevail along and off Somalia coast and northern parts of southwest Arabian Sea and adjoining parts of west central Arabian Sea, along and off Gujarat coast and adjoining northeast Arabian Sea. **Squally weather with wind speed 35 kmph to 45 kmph gusting to 55 kmph** prevailing over south Arabian Sea, southern parts of central Arabian Sea; along and off Kerala, Karnataka coasts, over Lakshadweep area, Maldives area, Comorin area, over Gulf of Mannar, off Sri Lanka, Tamil Nadu, Andhra Pradesh, Odisha, West Bengal coasts, over most parts of south, central & north Bay of Bengal. **Squally weather with wind speed 45 kmph to 55 kmph gusting to 65 kmph** prevailing over many parts of central Bay of Bengal & adjoining parts of south Bay of Bengal. Fishermen are advised not to venture into these areas.



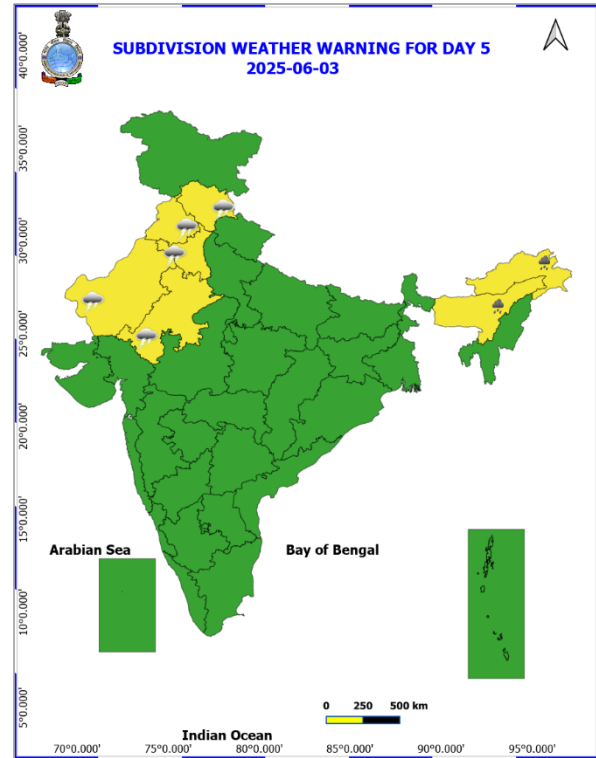
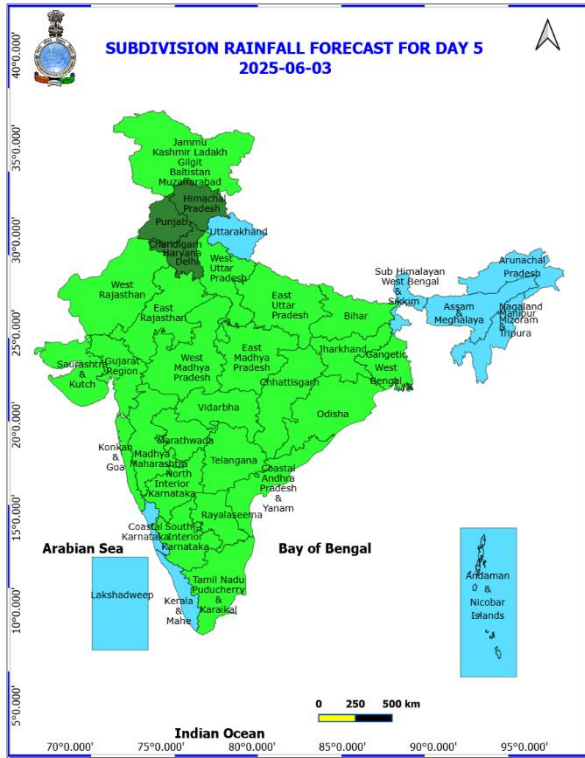
01st May (Day 3)

- ❖ **Heavy to Very Heavy Rainfall** likely at isolated places over Assam & Meghalaya.
- ❖ **Heavy Rainfall** likely at isolated places over Arunachal Pradesh, Costal Karnataka, Himachal Pradesh, Kerala & Mahe, Konkan & Goa, Nagaland, Manipur, Mizoram and Tripura, Sub Himalayan West Bengal & Sikkim and Uttarakhand.
- ❖ **Thundersquall with wind speed reaching(50-60kmph)** likely at isolated places over Himachal Pradesh.
- ❖ **Thunderstorm accompanied with lightning & gusty winds(40-50kmph)** likely at isolated places over East Rajasthan, Madhya Pradesh and Vidarbha.
- ❖ **Thunderstorm accompanied with lightning & gusty winds(30-40kmph)** likely at isolated places over Andhra Pradesh, Bihar, Chhattisgarh, East Uttar Pradesh, Haryana, Chandigarh & Delhi, Punjab, Telangana and Uttarakhand.
- ❖ **Strong Surface Winds** likely at isolated places over Saurashtra & Kutch.
- ❖ **Squally wind with speed 45 kmph to 55 kmph gusting to 65 kmph** likely to prevail along and off Somalia coast and northern parts of southwest Arabian Sea and adjoining parts of west central Arabian Sea, along and off Gujarat coast and adjoining northeast Arabian Sea. **Squally weather with wind speed 35 kmph to 45 kmph gusting to 55 kmph** prevailing over south Arabian Sea, southern parts of central Arabian Sea; along and off Kerala, Karnataka coasts, over Lakshadweep area, Maldives area, Comorin area, over Gulf of Mannar, off Sri Lanka, Tamil Nadu, Andhra Pradesh, Odisha, West Bengal coasts, over most parts of south, central & north Bay of Bengal. **Squally weather with wind speed 45 kmph to 55 kmph gusting to 65 kmph** prevailing over many parts of central Bay of Bengal & adjoining parts of south Bay of Bengal. Fishermen are advised not to venture into these areas.



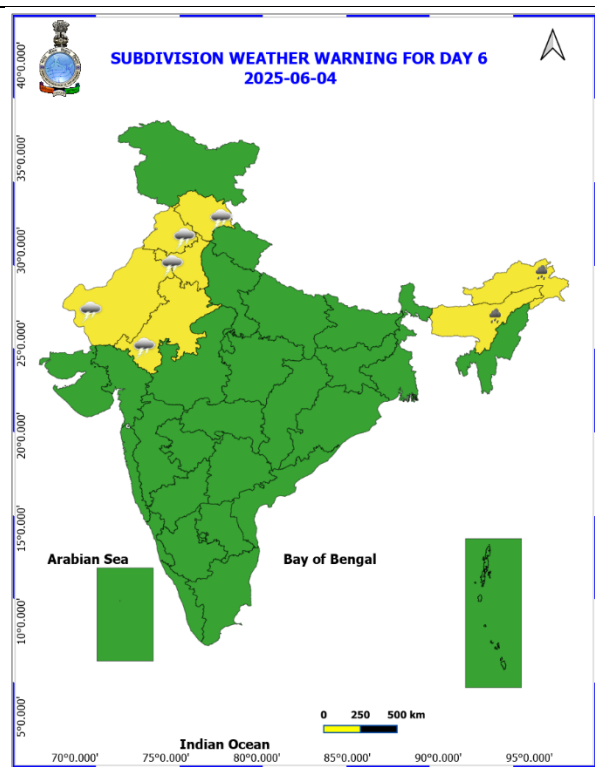
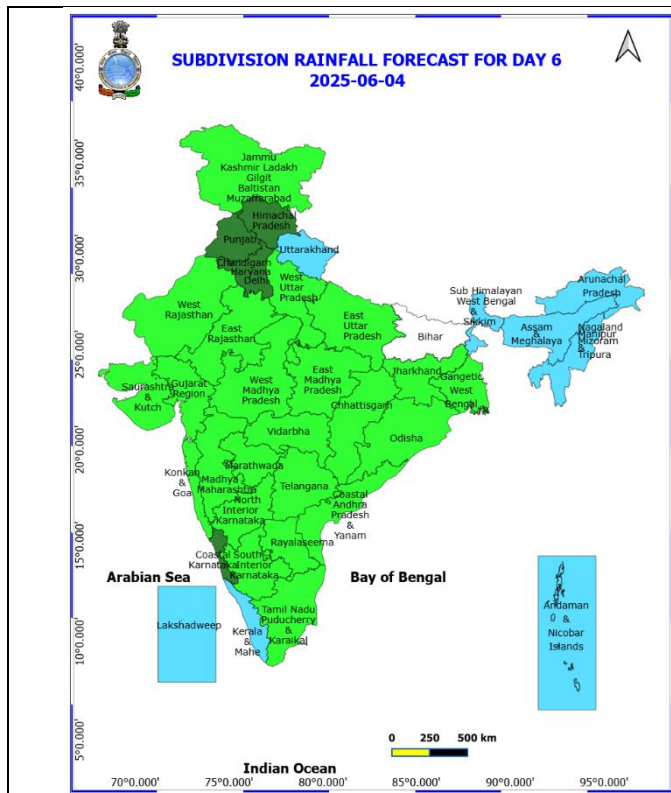
02nd June (Day 4)

- ❖ **Heavy Rainfall** likely at isolated places over Arunachal Pradesh, Assam & Meghalaya, Kerala & Mahe, Konkan & Goa, Nagaland, Manipur, Mizoram and Tripura and Uttarakhand.
- ❖ **Thundersquall with wind speed reaching(50-60kmph)** likely at isolated places over Himachal Pradesh.
- ❖ **Thunderstorm accompanied with lightning & gusty winds(40-50kmph)** likely at isolated places over Madhya Pradesh, Rajasthan and Vidarbha.
- ❖ **Thunderstorm accompanied with lightning & gusty winds(30-40kmph)** likely at isolated places over Chhattisgarh, Haryana, Chandigarh & Delhi, Punjab, Telangana and Uttarakhand.
- ❖ **Squally wind with speed 45 kmph to 55 kmph gusting to 65 kmph** likely to prevail along and off Somalia coast and adjoining sea area, off north Gujarat coast and some parts of northeast Arabian Sea. **Squally weather with wind speed 35 kmph to 45 kmph gusting to 55 kmph** prevailing over southeast Arabian Sea, Lakshadweep, Maldives and Comorin areas, Gulf of Mannar, most parts of south, central & north Bay of Bengal. Fishermen are advised not to venture into these areas.



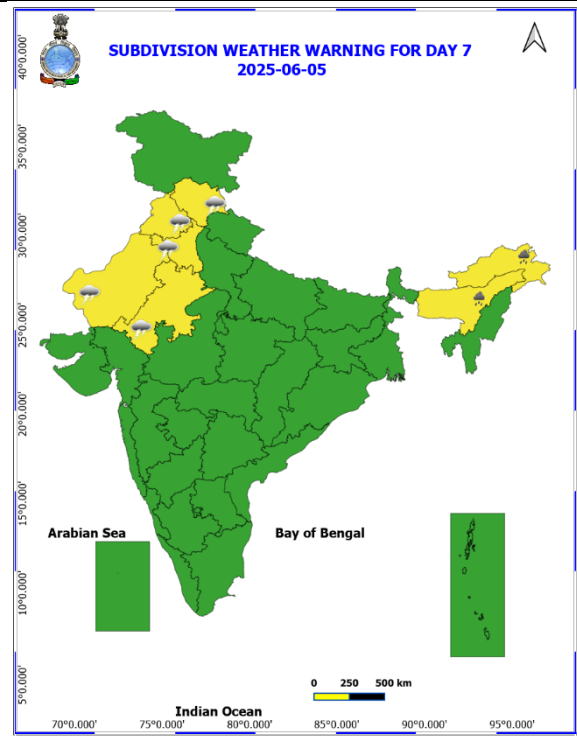
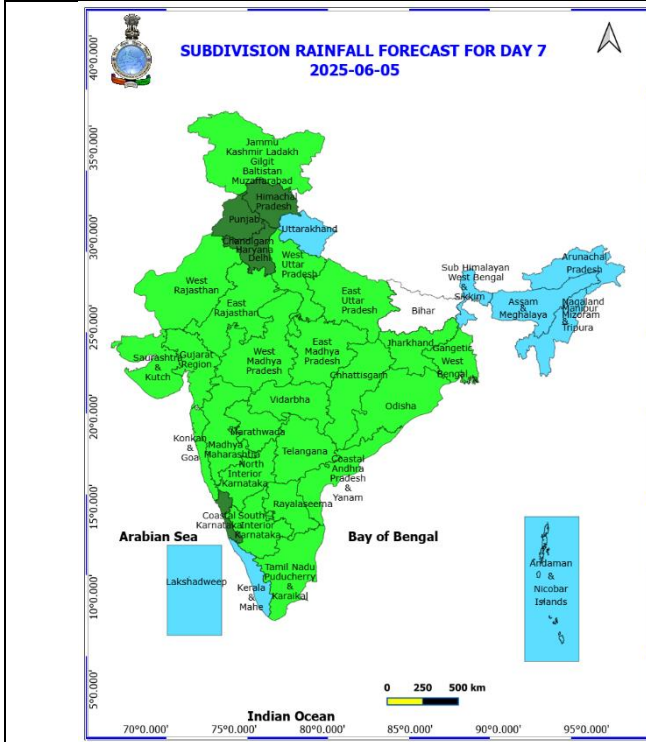
03rd June (Day 5)

- ❖ **Heavy Rainfall** likely at isolated places over Arunachal Pradesh and Assam & Meghalaya.
- ❖ **Thunderstorm accompanied with lightning & gusty winds(40-50kmph)** likely at isolated places over Himachal Pradesh and Rajasthan.
- ❖ **Thunderstorm accompanied with lightning & gusty winds(30-40kmph)** likely at isolated places over Haryana, Chandigarh & Delhi and Punjab.



04th June (Day 6)

- ❖ **Heavy Rainfall** likely at isolated places over Arunachal Pradesh and Assam & Meghalaya.
- ❖ **Thunderstorm accompanied with lightning & gusty winds(40-50kmph)** likely at isolated places over Himachal Pradesh and Rajasthan.
- ❖ **Thunderstorm accompanied with lightning & gusty winds(30-40kmph)** likely at isolated places over Haryana, Chandigarh & Delhi and Punjab.



05th June (Day 7)

- ❖ **Heavy Rainfall** likely at isolated places over Arunachal Pradesh and Assam & Meghalaya.
- ❖ **Thunderstorm accompanied with lightning & gusty winds(40-50kmph)** likely at isolated places over Himachal Pradesh and Rajasthan.
- ❖ **Thunderstorm accompanied with lightning & gusty winds(30-40kmph)** likely at isolated places over Haryana, Chandigarh & Delhi and Punjab.

Weather Outlook for subsequent 3 days (During 06th June- 08th June, 2025)

- ❖ **Fairly widespread to widespread** rainfall activity likely over Northeast India, West Bengal & Sikkim, Andaman & Nicobar Islands, Lakshadweep, Konkan & Goa, Coastal Karnataka and Kerala & Mahe.
- ❖ **Isolated to scattered rainfall** likely over Jammu-Kashmir-Ladakh, Uttarakhand, Himachal Pradesh, Odisha, south Chhattisgarh adjoining Coastal Andhra Pradesh & Yanam.

Action may be taken based on **ORANGE AND RED** COLOUR warnings.

- Vulnerable regions likely urban and hilly areas action may be initiated for heavy rainfall warning.
- As the lead period increases forecast accuracy decreases.

Fig. 1: Maximum Temperatures

Fig. 2: Departure of Maximum Temperatures

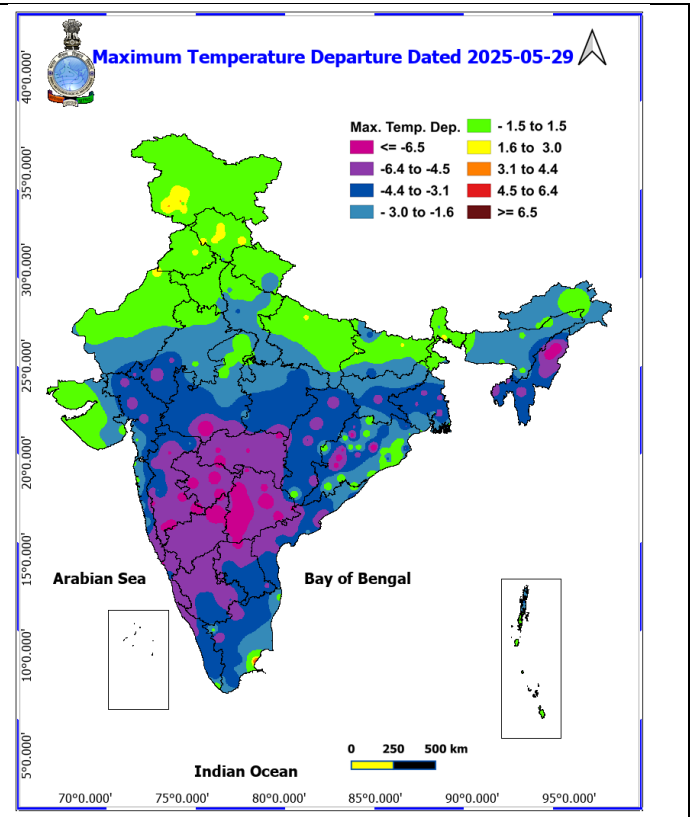
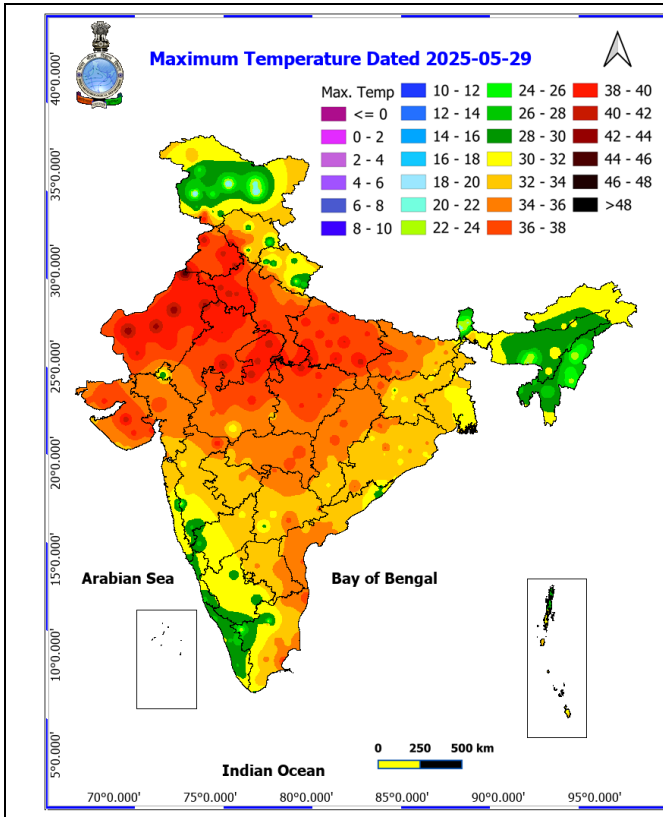


Fig. 3: Minimum Temperatures

Fig. 4: Departure of Minimum Temperatures

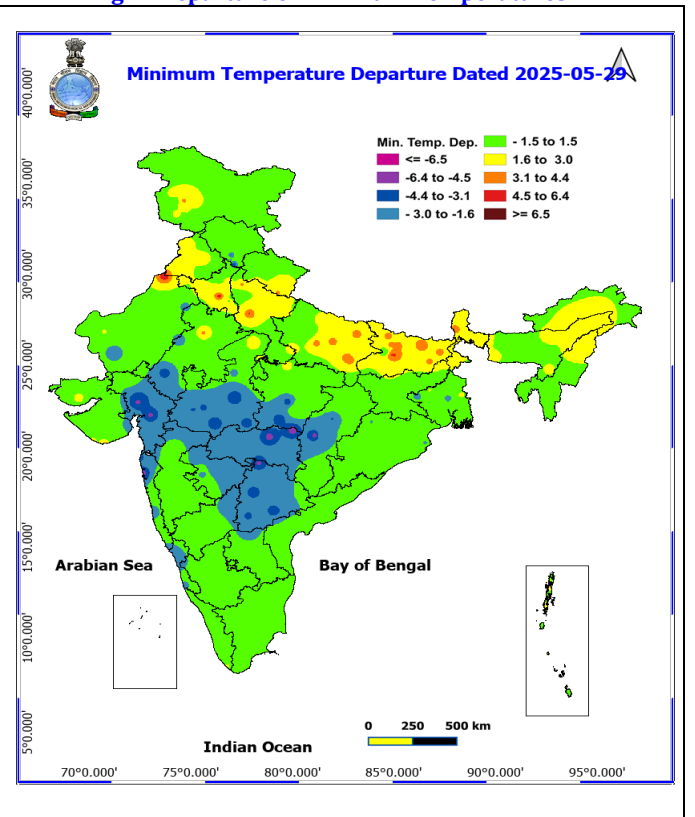
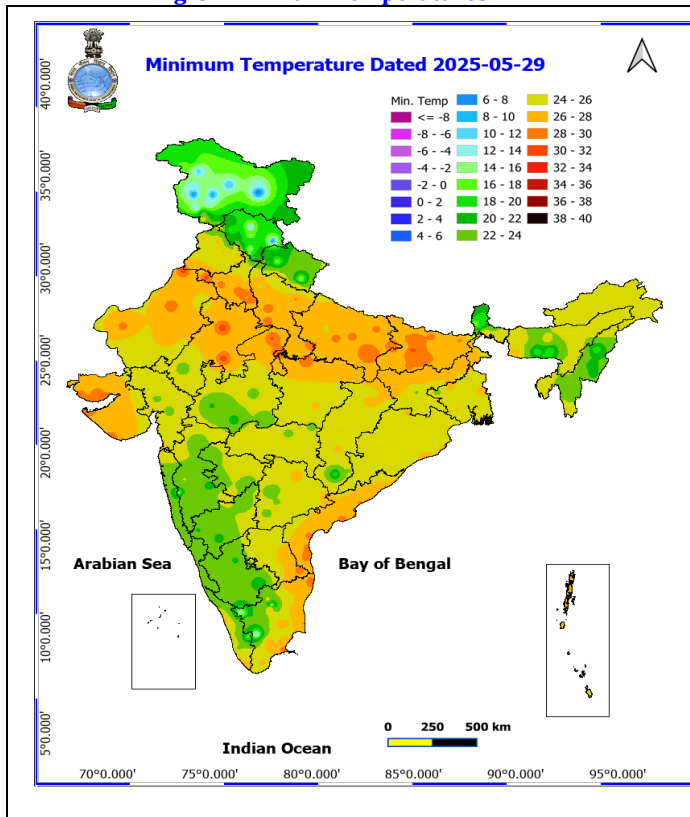
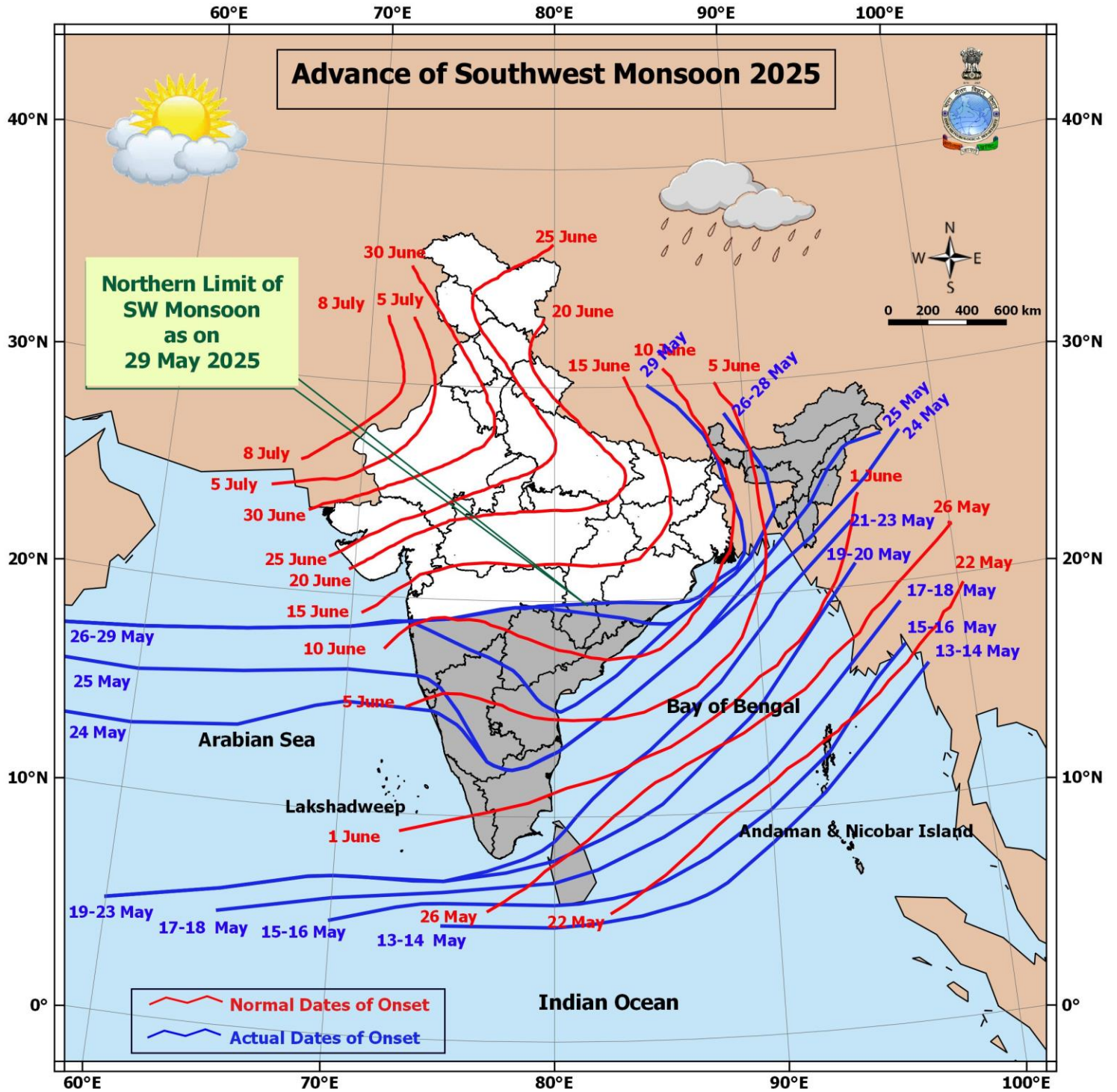
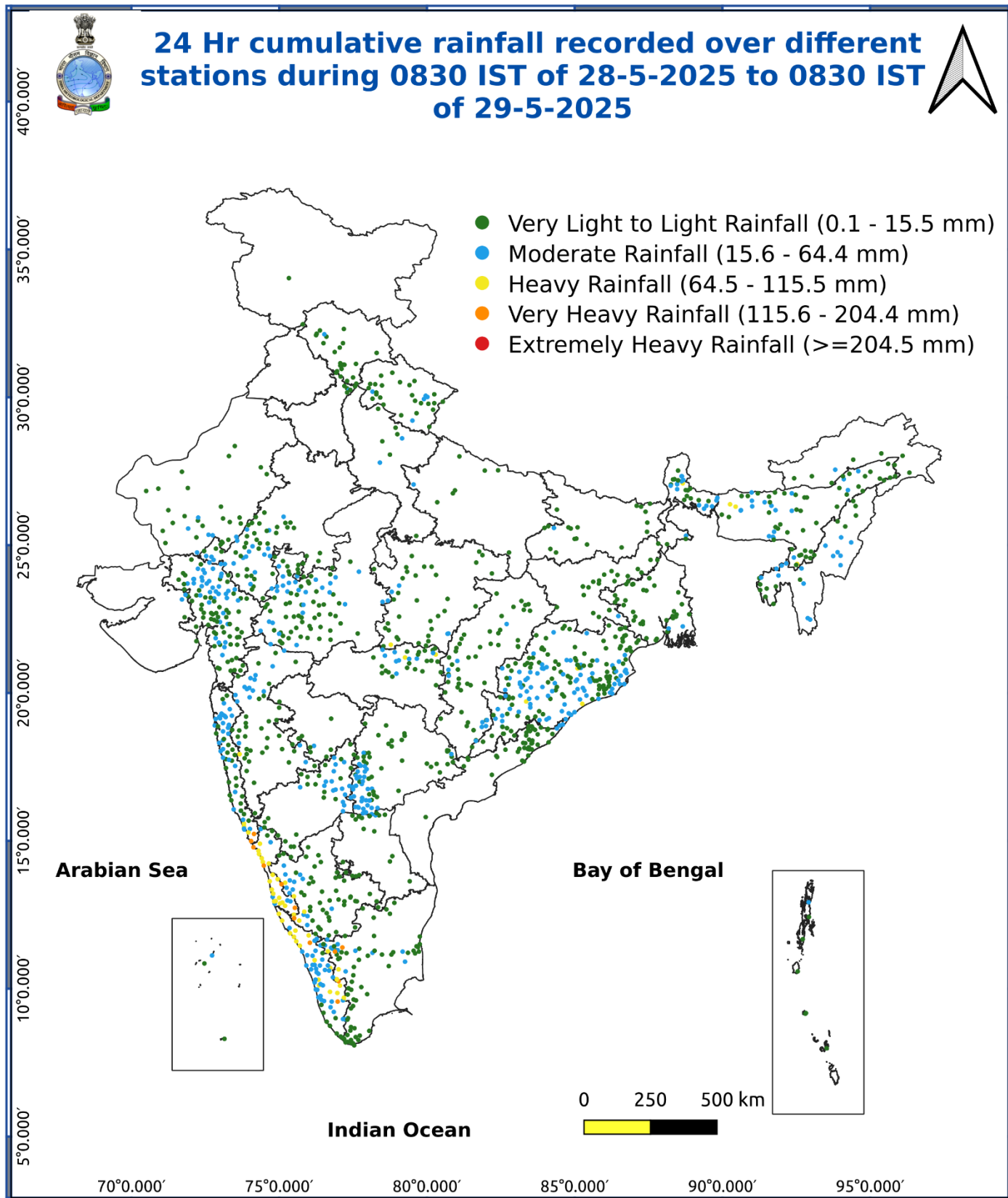


Fig. 5: Advance of Southwest Monsoon 2025



* Red colour warning does not mean "Red Alert", Red colour warning means "Take Action".
Forecast and Warning for any day is valid from 0830 hours IST of day till 0830 hours IST of next day.
For more details, kindly visit <https://mausam.imd.gov.in> or contact: 011-2434-4599
(Service to the Nation since 1875)

Fig. 6: Accumulated Rainfall (mm) during past 24 hours



* Red colour warning does not mean "Red Alert", Red colour warning means "Take Action".
Forecast and Warning for any day is valid from 0830 hours IST of day till 0830 hours IST of next day.
For more details, kindly visit <https://mausam.imd.gov.in> or contact: 011-2434-4599
(Service to the Nation since 1875)

Impact expected and action suggested over Northeastern States, Sub-Himalayan West Bengal & Sikkim due to heavy rainfall (orange and red areas) and squally winds

Impact expected:

- ❖ Breaking of tree branches, uprooting of small trees like banana, papaya, drum sticks. Strong wind and rain may damage plantation, horticulture and standing crops.
- ❖ Partial damage to vulnerable structures due to strong winds and rain.
- ❖ Minor damage to kutcha houses/walls, huts and roads due to heavy rain.
- ❖ Loose objects may fly.
- ❖ Onshore and offshore operations may get affected.
- ❖ Small ships, trawlers and boats may be affected.
- ❖ Road and rail traffic may be affected due to heavy rain and squally winds.
- ❖ There could be localised landslides, mudslides, landslips, water logging, inundation and flooding over low lying areas.
- ❖ Occasional reduction in visibility due to heavy rainfall.
- ❖ Helicopter services may get affected.

Action suggested:

- ❖ People are advised to keep a watch on the weather for worsening conditions and be ready to move to safer places accordingly.
- ❖ Take safe shelters; do not take shelter under trees, as there could be lightning.
- ❖ In case of expected lightning, unplug electrical/ electronic appliances, immediately, get out of water bodies and keep away from all the objects that conduct electricity.
- ❖ Tourism and recreational activities to be regulated.
- ❖ Onshore and offshore activities to be judiciously regulated.
- ❖ Helicopter services to be regulated.

Impact & Action Suggested due to Extremely and heavy to very heavy rainfall over west coast and other areas (For Red & Orange colour warning areas)

- ❖ **Isolated exceptionally heavy rainfall** also likely over Meghalaya on 30th may.
- ❖ **Extremely heavy rainfall** at isolated places over Kerala & Mahe Assam & Meghalaya, Nagaland, Manipur, Mizoram & Tripura and Arunachal Pradesh on 30th May.

Impact Expected

- ❖ Localized Flooding of roads, water logging in low lying areas of the above region.
- ❖ Occasional reduction in visibility due to heavy rainfall.
- ❖ Minor damage to kutcha roads.
- ❖ Possibilities of damage to vulnerable structure.
- ❖ Localized Landslides/Mudslides
- ❖ Damage to horticulture and standing crops in some areas due to inundation.
- ❖ It may lead to riverine flooding in some river catchments (for riverine flooding please visit Web page of CWC).

Action Suggested

- ❖ Check for traffic congestion on your route before leaving for your destination.
- ❖ Follow any traffic advisories that are issued in this regard.
- ❖ Avoid going to areas that face the water logging problems often.
- ❖ Avoid staying in vulnerable structure.

Impact expected and action suggested due to isolated thunderstorm with lightning/gusty & Squally winds over

- ✓ **Thundersquall wind speed reaching 50-60 kmph gusting to 70 kmph** over likely over East Madhya Pradesh, Chhattisgarh, Rajasthan, Punjab, Haryana Chandigarh & Delhi on 30th, Himachal Pradesh on 31st may & 01st June.

Impact expected:

- Minor to Major damage to banana and papaya trees.
- Strong wind/hail may damage plantation, horticulture and standing crops.
- Partial damage to vulnerable structures due to strong winds.
- Minor damage to kutcha houses/walls and huts.
- Loose objects may fly.

Action suggested:

- People are advised to keep a watch on the weather for worsening conditions and be ready to move to safer places accordingly.
- Stay indoors, close windows & doors and avoid travel if possible.
- Take safe shelters; do not take shelter under trees.
- Do not lie on concrete floors and do not lean against concrete walls.
- Unplug electrical/ electronic appliances.
- Immediately get out of water bodies.
- Keep away from all the objects that conduct electricity.

Agromet advisories for likely impact of Heavy Rainfall / Hailstorms / Gusty Winds / Heat Wave

- In North Eastern States, West Bengal & Sikkim, Odisha, Bihar, Jammu & Kashmir, Chhattisgarh, Konkan & Goa, Madhya Maharashtra, Vidarbha, Tamil Nadu, Kerala, Karnataka and Telangana, drain out excess water and ensure proper drainage in fields with standing crops and vegetables.
- In East Uttar Pradesh, use hail nets and hail caps to prevent mechanical damage in vegetables and orchards due to the possibility of hailstorms.
- Shift the harvested produce in safer places or cover the produce with tarpaulin sheets in the fields. Tie the harvested crops properly and cover them to minimise the risk of displacement due to strong surface winds.
- Provide mechanical support to horticultural crops and staking to vegetables to avoid lodging.
- In West Rajasthan, apply light and frequent irrigation in the evening to protect standing crops, vegetables and orchards from the adverse effects of heat waves and high temperatures.

Livestock / Poultry / Fishery

- Keep the animals inside the shed during heavy rainfall / hailstorm and provide them balanced feed.
- Store feed and fodder in a safe place to prevent spoilage.
- Construct an outlet with proper netting around the ponds to drain out excess water, thereby preventing fish from escaping in case of overflow.
- To reduce the effect of heat wave/high temperature, cover the roof of poultry sheds with grass. Also, provide clean, hygienic and plenty of drinking water to animals.

Flash Flood Guidance:

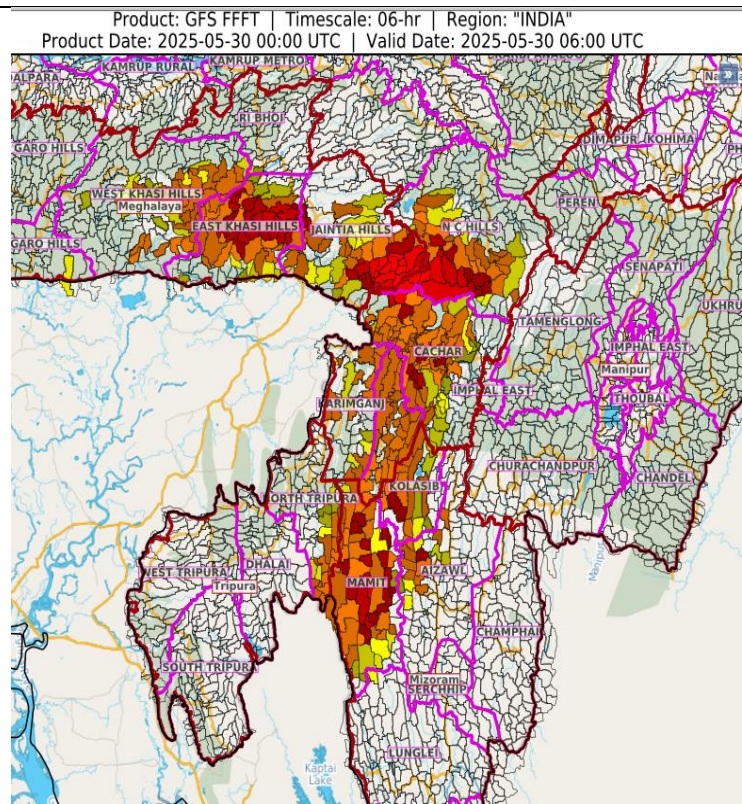
Persistent Flash Flood Threat (PFFT) till 1130 IST of 30-05-2025:

Moderate to High flash flood threat likely over few watersheds & neighbourhoods of following Met Sub-divisions during next 6 hours.

Assam & Meghalaya - Cachar, N.C Hills, Karimganj, East Khasi Hills, South Garo Hills, West Khasi Hills and Jaintia Hills districts.

Nagaland Mizoram Manipur Tripura (NMMT) - Aizawl, Kolasib, Mamit and North Tripura districts.

Surface runoff/ Inundation may occur at some fully saturated soils & low-lying areas over Area of Concern (AoC) as shown in map due to expected rainfall occurrence in next 6 hours.



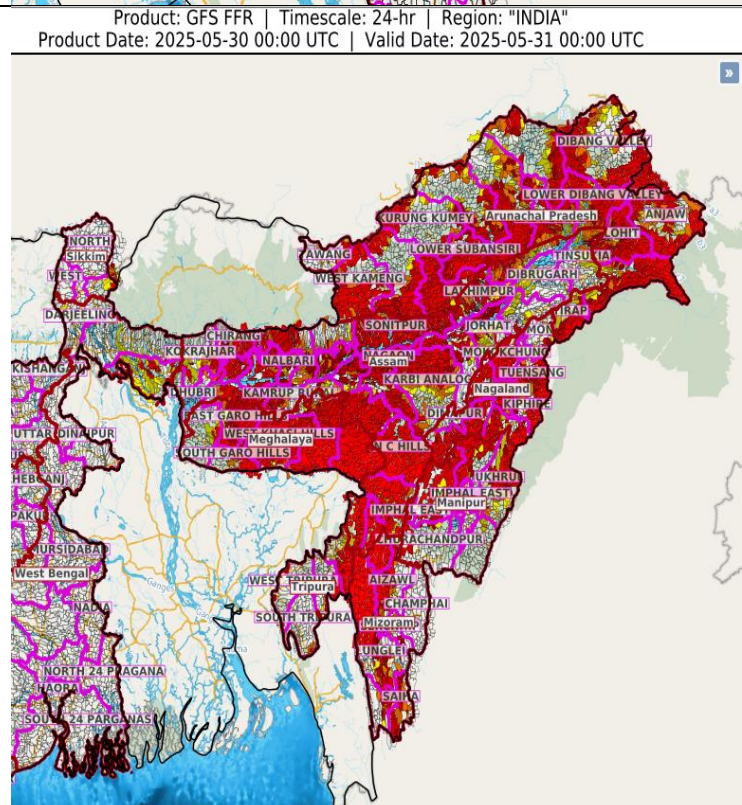
24 hours Outlook for the Flash Flood Risk (FFR) till 0530 IST of 31-05-2025 :

Moderate to High flash flood risk likely over few watersheds & neighbourhoods of following Met Sub-divisions during next 24 hours.

Arunachal Pradesh - Changlang, Dibang Valley, East Kameng, East Siang, Lohit, Lower Dibang Valley, Lower Subansiri, Papum-Pare, Tawang, Tirap, West Kameng, West Siang, Anjaw, Upper Siang and Kurung Kumey districts.

Assam & Meghalaya - Baksa, Barpeta, Bongaigaon, Cachar, Chirang, Darrang, Dhemaji, Dibrugarh, Goalpara, Golaghat, Hailakandi, Jorhat, Kamrup Metro, Kamrup Rural, Karbi Analog, Kokrajhar, Lakhimpur, Morigaon, N.C Hills, Nagaon, Nalbari, Sibsagar, Sonitpur, Tinsukia, Udalguri, Karimganj, East Garo Hills, East Jaintia Hills, East Khasi Hills, North Garo Hills, Ri Bhoi, South Garo Hills, South West Garo Hills, South West Khasi Hills, West Garo Hills, West Jaintia Hills, West Khasi Hills, Dhubri and Jaintia Hills districts.

Nagaland Mizoram Manipur Tripura (NMMT) - Bishnupur, Chandel, Churachandpur, Imphal East, Imphal West, Senapati, Tamenglong,



* Red colour warning does not mean "Red Alert", Red colour warning means "Take Action".
Forecast and Warning for any day is valid from 0830 hours IST of day till 0830 hours IST of next day.
For more details, kindly visit <https://mausam.imd.gov.in> or contact: 011-2434-4599
(Service to the Nation since 1875)

Thoubal, Ukhrul, Aizawl, Kolasib, Lawngtlai, Lunglei, Mamit, Saiha, Serchhip, Dimapur, Kiphire, Kohima, Longleng, Mokokchung, Mon, Peren, Phek, Tuensang, Wokha, Zunheboto, Dhalai, Gomati, Khowai, North Tripura, Sipahijala, South Tripura and Unakoti districts.

Sub-Himalayan West Bengal & Sikkim - East Sikkim, Darjeeling, Jalpaiguri and Kochbihar districts.

Surface runoff/ Inundation may occur at some fully saturated soils & low-lying areas over Area of Concern (AoC) as shown in map due to expected rainfall occurrence in next 24 hours.

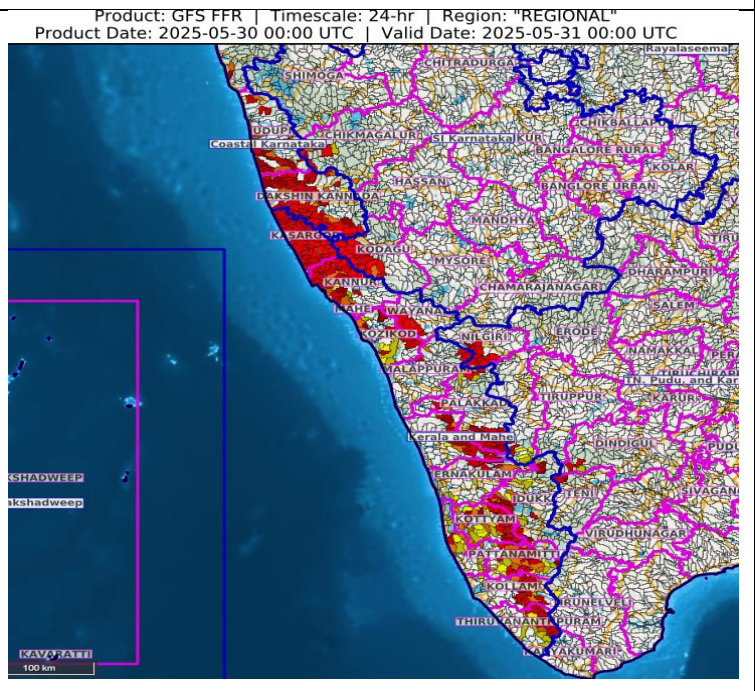
24 hours Outlook for the Flash Flood Risk (FFR) till 0530 IST of 31-05-2025:

Moderate to High flash flood risk likely over few watersheds & neighbourhoods of following Met Sub-divisions during next 24 hours.

Coastal Karnataka - Dakshin Kannada, Udupi and Uttar Kannada districts.

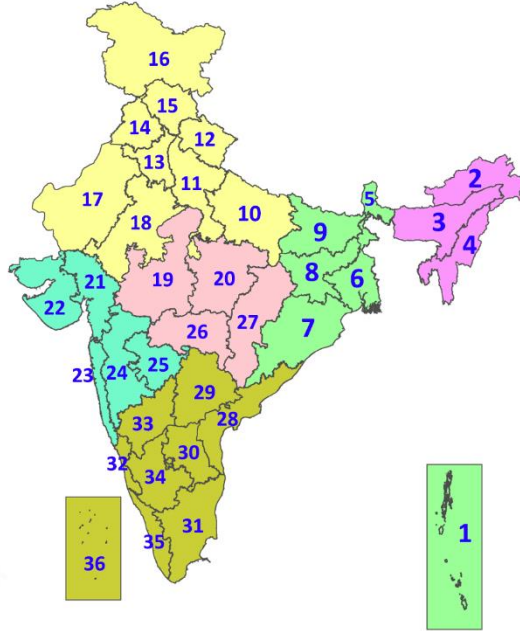
Kerala & Mahe - Alappuzha, Ernakulam, Idukki, Kannur, Kasargod, Kollam, Kottayam, Kozhikode, Mahe, Malappuram, Palakkad, Pattanamittia, Thiruvananthapuram, Trishur and Wayanad districts.

Surface runoff/ Inundation may occur at some fully saturated soils & low-lying areas over Area of Concern (AoC) as shown in map due to expected rainfall occurrence in next 24 hours.



LEGENDS

1. अंडमान और निकोबार द्वीपसमूह
2. अरुणाचल प्रदेश
3. असम और मेघालय
4. नागालैंड, मणिपुर, मिजोरम और त्रिपुरा
5. उप-हिमालयी पश्चिम बंगाल और सिक्किम
6. गंगीय पश्चिम बंगाल
7. ओडिशा
8. झारखंड
9. बिहार
10. पूर्वी उत्तर प्रदेश
11. पश्चिम उत्तर प्रदेश
12. उत्तराखंड
13. हरियाणा, चंडीगढ़ और दिल्ली
14. पंजाब
15. हिमाचल प्रदेश
16. जम्मू और कश्मीर और लद्दाख
17. पश्चिम राजस्थान
18. पूर्वी राजस्थान
19. पश्चिम मध्य प्रदेश
20. पूर्वी मध्य प्रदेश
21. गुजरात
22. सौराष्ट्र
23. कोंकण और गोवा
24. मध्य महाराष्ट्र
25. मराठवाड़ा
26. विदर्भ
27. छत्तीसगढ़
28. तटीय आंध्र प्रदेश और यनम
29. तेलंगाना
30. रायलसीमा
31. तमिलनाडु, पुडुचेरी और कराईकल
32. तटीय कर्नाटक
33. आंतरिक उत्तरी कर्नाटक
34. आंतरिक दक्षिणी कर्नाटक
35. केरल और माहे
36. लक्षद्वीप



1. Andaman & Nicobar Islands
2. Arunachal Pradesh
3. Assam & Meghalaya
4. Nagaland, Manipur, Mizoram & Tripura
5. Sub-Himalayan West Bengal & Sikkim
6. Gangetic West Bengal
7. Odisha
8. Jharkhand
9. Bihar
10. East Uttar Pradesh
11. West Uttar Pradesh
12. Uttarakhand
13. Haryana, Chandigarh & Delhi
14. Punjab
15. Himachal Pradesh
16. Jammu & Kashmir and Ladakh
17. West Rajasthan
18. East Rajasthan
19. West Madhya Pradesh
20. East Madhya Pradesh
21. Gujarat
22. Saurashtra
23. Konkan & Goa
24. Madhya Maharashtra
25. Marathwada
26. Vidarbha
27. Chhattisgarh
28. Coastal Andhra Pradesh & Yanam
29. Telangana
30. Rayalaseema
31. Tamilnadu, Puducherry & Karaikal
32. Coastal Karnataka
33. North Interior Karnataka
34. South Interior Karnataka
35. Kerala & Mahe
36. Lakshadweep

SPATIAL DISTRIBUTION (% of Stations reporting)

% Stations	Category	% Stations	Category
76-100	Widespread (WS/Most Places)	26-50	Scattered (SCT/A Few Places)
51-75	Fairly Widespread (FWS/Many Places)	1-25	Isolated (ISOL)

- | | | |
|----------------------|----------------------|--------------|
| Fog | Heavy Snow | Cold Wave |
| Heavy Rain | Dust Storm | Cold Day |
| Very Heavy Rain | Heat Wave | Ground Frost |
| Extremely Heavy Rain | Warm Night | |
| Thunder & Lightning | Hot Day | |
| Hailstorm | Hot & Humid | |
| Dust Raising Winds | Strong Surface Winds | |

COLOUR CODED WARNING

No Warning (No Action)
Watch (Be Aware)
Alert (Be Prepared To Take Action)
Warning (Take Action)

Probabilistic Forecast

Terms	Probability of Occurrence (%)
Unlikely	< 25
Likely	25 - 50
Very Likely	50 - 75
Most Likely	> 75

DEFINITION/CRITERIA

Rain/ Snow *

Heavy: 64.5 to 115.5 mm/cm *
Very Heavy: 115.6 to 204.4 mm/cm*
Extremely Heavy: > 204.4 mm/cm *

Heat Wave

When maximum temperature of a station reaches $\geq 40^\circ\text{C}$ for plains and $\geq 30^\circ\text{C}$ for hilly regions
(a) Based on Departure from normal

Heat Wave: Maximum Temperature Departure from normal 4.5°C to 6.4°C .

Severe Heat Wave: Maximum Temperature Departure from normal $\geq 6.5^\circ\text{C}$

(b). Based on Actual maximum temperature

Heat Wave: When actual maximum temperature $\geq 45^\circ\text{C}$.

Severe Heat Wave: When actual maximum temperature $\geq 47^\circ\text{C}$

(c). Criteria for heat wave for coastal stations

When maximum temperature departure is $> 4.5^\circ\text{C}$ from normal. Heat Wave may be described provided maximum temperature $\geq 37^\circ\text{C}$

Warm Night

When maximum temperature remains 40°C

Warm Night: When minimum temperature departure 4.5°C to 6.4°C .

Severe Warm Night: When minimum temperature departure $> 6.4^\circ\text{C}$.

Cold Wave

When minimum temperature of a station $\leq 10^\circ\text{C}$ for plains and $\leq 0^\circ\text{C}$ for hilly regions.
(a). Based on departure

Cold Wave: Minimum Temperature Departure from normal -4.5°C to -6.4°C .

Severe Cold Wave: Minimum Temperature Departure from normal $\leq -6.5^\circ\text{C}$

(b) Based on actual Minimum Temperature (for Plains only)

Cold Wave : When Minimum Temperature is $\leq 4.0^\circ\text{C}$

Severe Cold Wave: When Minimum Temperature is $\leq 2.0^\circ\text{C}$

(c) For Coastal Stations

When Minimum Temperature departure is $\leq -4.5^\circ\text{C}$ & actual Minimum Temperature is $\leq 15^\circ\text{C}$

Cold Day

When minimum temperature of a station $\leq 10^\circ\text{C}$ for plains and $\leq 0^\circ\text{C}$ for hilly regions
Based on departure

Cold Day: Maximum Temperature Departure from normal -4.5°C to -6.4°C .

Severe Cold Day: Maximum Temperature Departure from normal $\leq -6.5^\circ\text{C}$

Fog

Phenomenon of small droplets suspended in air and the horizontal visibility $< 1\text{km}$

Moderate Fog: When the visibility between 500-200 metres

Dense Fog: when the visibility between 50- 200 metres

Very Dense Fog: when the visibility < 50 metres

Thunderstorm

Sudden electrical discharges manifested by a flash of light (Lightning) and a sharp rumbling sound (thunder)

Dust/Sand Storm

An ensemble of particles of dust or sand energetically lifted to great heights by a strong and turbulent wind.

Frost

Ice deposits on ground

Air temperature $\leq 4^\circ\text{C}$ (over Plains)

Squall

A strong wind that rises suddenly, lasts for atleast 1 minute.

Moderate: Wind speed 52-61 kmph

Severe: Wind speed 62-87 kmph

Very Severe: Wind speed > 87 kmph

Sea State

Effect of various waves in the sea over specific area

Rough to very rough: Wind speed 41-62 kmph (22-33 knots) & Wave height 2.5-6 metre

High to very high: Wind speed 63-117 kmph (34-63 knots) & Wave height 6-14 metre

Phenomenal: Wind speed > 117 kmph (> 63 knots) & Wave height > 14 metre

Cyclone

Cyclonic Storm: Wind speed 62-87 kmph (34-47 knots)

Severe Cyclonic Storm: Wind speed 88-117 kmph (48-63 knots)

Very Severe Cyclonic Storm: Wind speed 118-165 kmph (64 - 89 knots)

Extremely Severe Cyclonic Storm: Wind speed 166-220 kmph (90 -119 knots)

Super Cyclone Strom: Wind speed > 220 kmph (> 119 knots)