



Tuesday, August 01, 2023
Time of Issue: 0930 hours IST
(MORNING)

ALL INDIA WEATHER SUMMARY AND FORECAST BULLETIN

Significant Weather Features

Significant Weather features:

- ❖ **The Well Marked Low Pressure Area** over central parts of North Bay of Bengal concentrated into a **depression** and lay centered at 0530 hours IST of today, the 1st August, 2023 over northeast Bay of Bengal near latitude 20.5°N and longitude 91.5°E about 200 km southeast of Khepupara (Bangladesh) and 430 km east-southeast of Digha (West Bengal). It is likely to intensify further into a **Deep Depression** and move northwestwards and cross Bangladesh coast near Khepupara around evening of today, the 1st August. Thereafter, it is very likely to move west-northwestwards across Gangetic West Bengal during subsequent 24 hours.
- ❖ The Western end of the Monsoon Trough at mean sea level runs close to foothills of Himalayas and Eastern end passes through Darbhanga, Deoghar, Canning and thence southeast to the center of **depression** over northeast Bay of Bengal.
- ❖ A cyclonic circulation lies over southwest Uttar Pradesh & neighbourhood in middle tropospheric levels.
- ❖ The Western Disturbance as a trough in mid-tropospheric westerlies runs roughly from Long. 74°E & 38°N to Long. 62°E & 27°N.

Weather Forecast and Warning:

Northwest India: Light/moderate scattered to fairly widespread rainfall with isolated **heavy rainfall** is very likely over Uttarakhand, East Uttar Pradesh during 01st-05th August; Haryana, West Uttar Pradesh during 02nd-05th August; Himachal Pradesh & East Rajasthan on 03rd, 04th & 05th and over Punjab 03rd August.

Isolated very heavy rainfall also likely over Uttarakhand & West Uttar Pradesh on 02nd & 03rd August and over East Uttar Pradesh on 02nd August.

Central India: Light/moderate scattered to fairly widespread rainfall with isolated **heavy rainfall** is very likely over East Madhya Pradesh during 01st-03rd; north Chhattisgarh on 01st & 02nd, over Northwest Madhya Pradesh on 02nd & 03rd and Vidarbha on 02nd August. **Isolated very heavy rainfall also likely over East Madhya Pradesh on 02nd August.**

East India: Light/moderate fairly widespread to widespread rainfall with thunderstorm/lightning and **heavy rainfall** at isolated places very likely over Bihar during 01st-05th August; Odisha during 01st to 03rd August; over Gangetic West Bengal and Jharkhand during 01st to 02nd August; over Sub-Himalaya West Bengal & Sikkim during 03rd-05th August.

Isolated very heavy rainfall also very likely over Odisha, Jharkhand and over Gangetic West Bengal on 01st & 02nd August and Sub-Himalaya West Bengal & Sikkim during 03rd-05th August, 2023.

Northeast India: Light/moderate fairly widespread to widespread rainfall with **isolated heavy rainfall** very likely over the region during next 5 days with **isolated very heavy rainfall during 03rd - 05th August, 2023.**

West India: Light/moderate fairly widespread to widespread rainfall with **isolated heavy rainfall** very likely to continue over Konkan & Goa and ghat areas of Madhya Maharashtra during next 5 days with possibility of very heavy rainfall on 03rd August, 2023.

South India: Light/moderate widespread rainfall with **isolated heavy rainfall** very likely over Coastal Karnataka during 02nd-05th August and subdued rainfall activity over the remaining regions.

Fishermen Warning: Fishermen are advised not to venture into North & adjoining Central Bay of Bengal and along & off along & off Bangladesh-West Bengal-North Odisha coasts till forenoon of 2nd August.

* Red color warning does not mean "Red Alert" Red color warning means "Take Action".

Forecast and Warning for any day is valid from 0830 hours IST of day till 0830 hours IST of next day For more details kindly visit <https://mausam.imd.gov.in> or contact : 011-2434-4599

(Service to the Nation since 1875)



Main Weather Observations

- ❖ **Rainfall/thundershowers observed** (from 0830 hours IST to 1730 hours IST of yesterday): **at most places** over Konkan & Goa and Coastal Karnataka; **at many places** over Jharkhand and Odisha; **at a few places** over Himachal Pradesh, Uttarakhand, Madhya Pradesh, Gujarat state, Madhya Maharashtra, Marathwada, Coastal Andhra Pradesh & Yanam, Telangana and Kerala & Mahe and **at isolated places** over Jammu-Kashmir-Ladakh-Gilgit-Baltistan-Muzaffarabad, Punjab, Uttar Pradesh, Bihar, West Bengal & Sikkim, Assam & Meghalaya, Nagaland, Manipur, Mizoram & Tripura, Vidarbha, North Interior Karnataka, Tamil Nadu, Puducherry & Karaikal and Lakshadweep.
- ❖ **Heavy rainfall observed** (from 0830 hours IST to 1730 hours IST of yesterday): **Heavy to very heavy rainfall** at isolated places over Odisha and **heavy rainfall** at isolated places over Madhya Maharashtra.
- ❖ **Significant rainfall recorded** (from 0830 hours IST to 1730 hours IST of yesterday): **(in cm): Odisha:** Bhubaneswar-19, Chandabali-9, Paradip & Puri-1 each; **East Madhya Pradesh:** Narsinghpur-3, Jabalpur & Umaria-1 each; **Meghalaya:** Shillong-2; **Madhya Maharashtra:** Mahabaleshwar- 8; **Konkan & Goa:** Harnai-3; **East Uttar Pradesh:** Hamirpur-2; **Himachal Pradesh:** Nahan-1; **Gangetic West Bengal:** Midnapore & Diamond Harbour-1 each; **Telangana:** Medak-1.
- ❖ **Thunderstorm observed** (from 0830 hours IST of yesterday to 0530 hours IST of today): at isolated places over Himachal Pradesh, Haryana, West Rajasthan, Gangetic West Bengal, West Uttar Pradesh, West Madhya Pradesh, Bihar, Jharkhand, Telangana, North Interior Karnataka, Tripura and Odisha.
- ❖ **Minimum Temperature Departures (as on 31-07-2023):** Minimum temperatures were **above normal (1.6°C to 3.0°C)** at many places over Chhattisgarh and Jharkhand; at a few places over East Madhya Pradesh, Odisha, Bihar, West Bengal & Sikkim and Coastal Andhra Pradesh & Yanam and at isolated places over Punjab, East Uttar Pradesh, Rayalaseema and Andaman & Nicobar Islands. They were **below normal (-1.6°C to -3.0°C)** at a few places over Haryana-Chandigarh-Delhi and **near normal** over rest parts of the country. Yesterday, **the lowest minimum temperature of 20.0°C** was reported at **Bangalore (South Interior Karnataka)** over the plains of the country.
- ❖ **Maximum Temperature Departures (as on 31-07-2023):** Maximum temperatures were **appreciably above normal (3.1°C to 5.0°C)** at many places over Assam & Meghalaya and Arunachal Pradesh; at a few places over Bihar, Nagaland, Manipur, Mizoram & Tripura, Kerala & Mahe and Tamil Nadu, Puducherry & Karaikal and at isolated places over East Uttar Pradesh and West Bengal & Sikkim; **above normal (1.6°C to 3.0°C)** at many places over Himachal Pradesh, Uttarakhand, West Uttar Pradesh, Jharkhand and Odisha; at a few places over Madhya Pradesh, Vidarbha and Chhattisgarh. They were **below normal (-1.6°C to -3.0°C)** at isolated places over Saurashtra & Kutch and Coastal Andhra Pradesh & Yanam and **near normal** over rest parts of the country. Yesterday, **the highest maximum temperature of 41.0°C** was reported at **Madurai (Tamil Nadu)**.



Meteorological Analysis (Based on 0530 hours IST)

- ❖ **The Well Marked Low Pressure Area** over central parts of North Bay of Bengal concentrated into a **depression** and lay centered at 0530 hours IST of today, the 1st August, 2023 over northeast Bay of Bengal near latitude 20.5°N and longitude 91.5°E about 200 km southeast of Khepupara (Bangladesh) and 430 km east-southeast of Digha (West Bengal). It is likely to intensify further into a **Deep Depression** and move northwestwards and cross Bangladesh coast near Khepupara around evening of today, the 1st August. Thereafter, it is very likely to move west-northwestwards across Gangetic West Bengal during subsequent 24 hours.
- ❖ The Western end of the Monsoon Trough at mean sea level runs close to foothills of Himalayas and Eastern end continue to pass through Darbhanga, Deoghar, Canning and thence southeast to the center of **depression** over northeast Bay of Bengal.
- ❖ The cyclonic circulation over southwest Uttar Pradesh & neighbourhood at 5.8 km above mean sea level persists.
- ❖ The Western Disturbance as a trough in mid-tropospheric westerlies roughly from Long. 74°E & 38°N to Long. 62°E & 27°N at 5.8 km above mean sea level persists.

Weather Forecast for next 5 days (Upto 0830 hours IST of 05th August, 2023)

- ❖ Meteorological sub-division wise detailed 5 days rainfall forecast is given in Table-1.
- ❖ No significant change in maximum temperatures likely over most parts of country during next 5 days.
- ❖ Thunderstorm accompanied with lightning likely over Northwest & Central India during next 4-5 days and over Northeast India during next 2 days.

Weather Outlook for subsequent 2 days

- ❖ Fairly widespread to widespread light/moderate rainfall likely over parts of northwest, central, east & northeast India, along the west coasts and islands and isolated to scattered rainfall over rest parts of the country.



Table-1

| 7 Days Rainfall Forecast | | | | | | | | |
|--------------------------|--------------------------------------|-------|-------|-------|-------|-------|-------|-------|
| S. No. | Subdivision | 1-Aug | 2-Aug | 3-Aug | 4-Aug | 5-Aug | 6-Aug | 7-Aug |
| | | Day 2 | Day 3 | Day 4 | Day 5 | Day 6 | Day 7 | Day 7 |
| 1 | ANDAMAN & NICOBAR ISLANDS | WS | WS | FWS | FWS | FWS | FWS | FWS |
| 2 | ARUNACHAL PRADESH | WS | WS | WS | WS | WS | WS | WS |
| 3 | ASSAM & MEGHALAYA | WS | WS | WS | WS | WS | WS | WS |
| 4 | NAGALAND, MANIPUR, MIZORAM & TRIPURA | WS | WS | FWS | FWS | FWS | FWS | FWS |
| 5 | SUB-HIMALAYAN WEST BENGAL & SIKKIM | WS | WS | WS | WS | WS | WS | WS |
| 6 | GANGETIC WEST BENGAL | FWS | SCT | SCT | FWS | FWS | FWS | FWS |
| 7 | ODISHA | FWS | FWS | SCT | SCT | SCT | SCT | SCT |
| 8 | JHARKHAND | FWS | FWS | FWS | FWS | FWS | FWS | FWS |
| 9 | BIHAR | FWS | FWS | FWS | FWS | FWS | FWS | FWS |
| 10 | EAST UTTAR PRADESH | FWS | FWS | FWS | FWS | FWS | FWS | FWS |
| 11 | WEST UTTAR PRADESH | FWS | FWS | FWS | FWS | FWS | FWS | FWS |
| 12 | UTTARAKHAND | WS | WS | WS | WS | WS | WS | WS |
| 13 | HARYANA CHANDIGARH & DELHI | FWS | WS | WS | FWS | FWS | FWS | FWS |
| 14 | PUNJAB | FWS | FWS | FWS | FWS | FWS | FWS | FWS |
| 15 | HIMACHAL PRADESH | WS | WS | WS | WS | WS | WS | WS |
| 16 | JAMMU & KASHMIR AND LADAKH | SCT | SCT | SCT | SCT | SCT | SCT | SCT |
| 17 | WEST RAJASTHAN | ISOL | ISOL | ISOL | ISOL | ISOL | ISOL | ISOL |
| 18 | EAST RAJASTHAN | SCT | FWS | FWS | SCT | SCT | SCT | SCT |
| 19 | WEST MADHYA PRADESH | FWS | SCT | SCT | SCT | SCT | SCT | SCT |
| 20 | EAST MADHYA PRADESH | FWS | SCT | SCT | SCT | SCT | SCT | SCT |
| 21 | GUJARAT REGION | ISOL | ISOL | ISOL | ISOL | ISOL | ISOL | ISOL |
| 22 | SAURASHTRA & KUTCH | ISOL | ISOL | ISOL | ISOL | ISOL | ISOL | ISOL |
| 23 | KONKAN & GOA | WS | WS | WS | WS | WS | WS | WS |
| 24 | MADHYA MAHARASHTRA | FWS | FWS | SCT | SCT | SCT | SCT | SCT |
| 25 | MARATHAWADA | SCT | SCT | ISOL | ISOL | ISOL | ISOL | ISOL |
| 26 | VIDARBHA | FWS | SCT | SCT | SCT | SCT | SCT | SCT |
| 27 | CHHATTISGARH | SCT | SCT | SCT | SCT | SCT | SCT | SCT |
| 28 | COASTAL ANDHRA PRADESH & YANAM | ISOL | ISOL | ISOL | ISOL | ISOL | ISOL | ISOL |
| 29 | TELANGANA | SCT | SCT | SCT | SCT | SCT | SCT | SCT |
| 30 | RAYALASEEMA | ISOL | ISOL | ISOL | ISOL | ISOL | ISOL | ISOL |
| 31 | TAMILNADU PUDUCHERRY & KARAIKAL | ISOL | ISOL | ISOL | ISOL | ISOL | ISOL | ISOL |
| 32 | COASTAL KARNATAKA | WS | WS | WS | WS | WS | WS | WS |
| 33 | NORTH INTERIOR KARNATAKA | SCT | SCT | ISOL | ISOL | ISOL | ISOL | ISOL |
| 34 | SOUTH INTERIOR KARNATAKA | SCT | SCT | SCT | SCT | SCT | SCT | SCT |
| 35 | KERALA & MAHE | FWS | FWS | FWS | FWS | FWS | FWS | FWS |
| 36 | LAKSHADWEEP | SCT | SCT | SCT | SCT | SCT | SCT | SCT |

| Legend | Category | % Stations |
|--------|-------------------------------|------------|
| WS | Widespread/Most Places | 76-100 |
| FWS | Fairly Widespread/Many places | 51-75 |
| SCT | Scattered/ A Few Places | 26-50 |
| ISOL | Isolated Places | 1-25 |
| DRY | No Rain | 0 |

* Red color warning does not mean "Red Alert" Red color warning means "Take Action".
Forecast and Warning for any day is valid from 0830 hours IST of day till 0830 hours IST of next day For
more details kindly visit <https://mausam.imd.gov.in> or contact : 011-2434-4599
(Service to the Nation since 1875)

Fig. 1: Maximum Temperatures Dated 31.07.2023

Fig. 2: Departure of Maximum Temp. Dated 31.07.2023

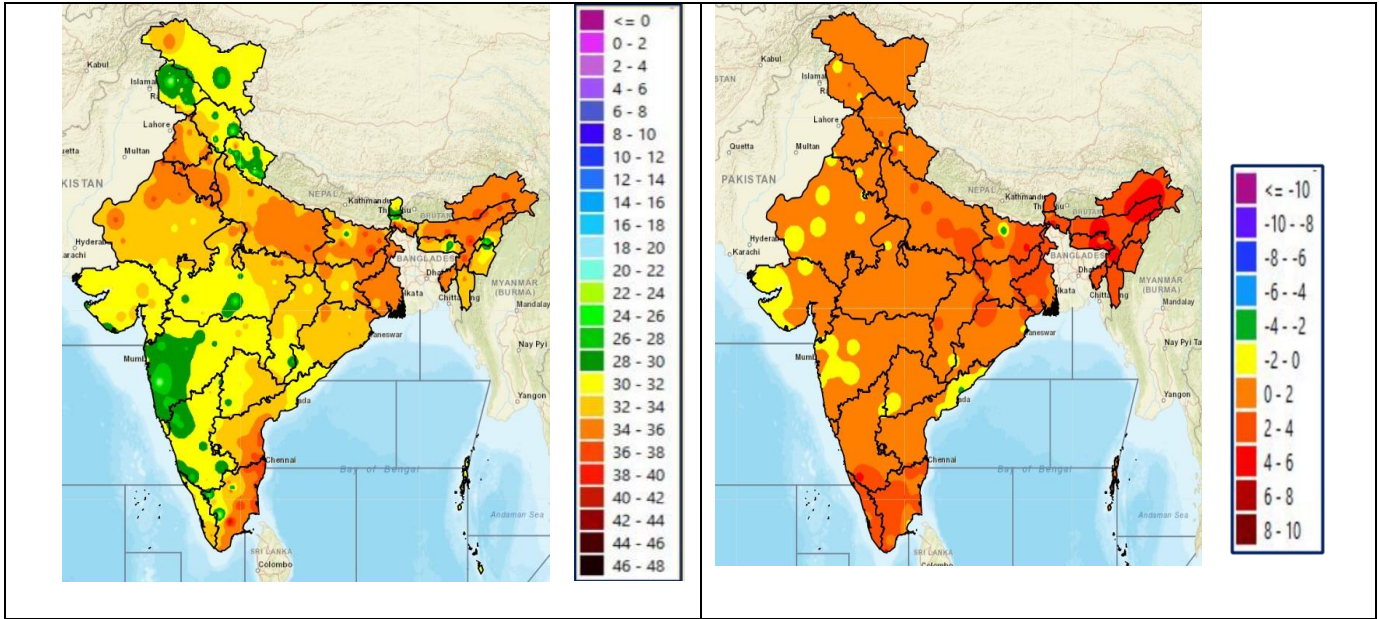


Fig. 3: Minimum Temperatures Dated 31.07.2023

Fig. 4: Departure of Minimum Temp. Dated 31.07.2023

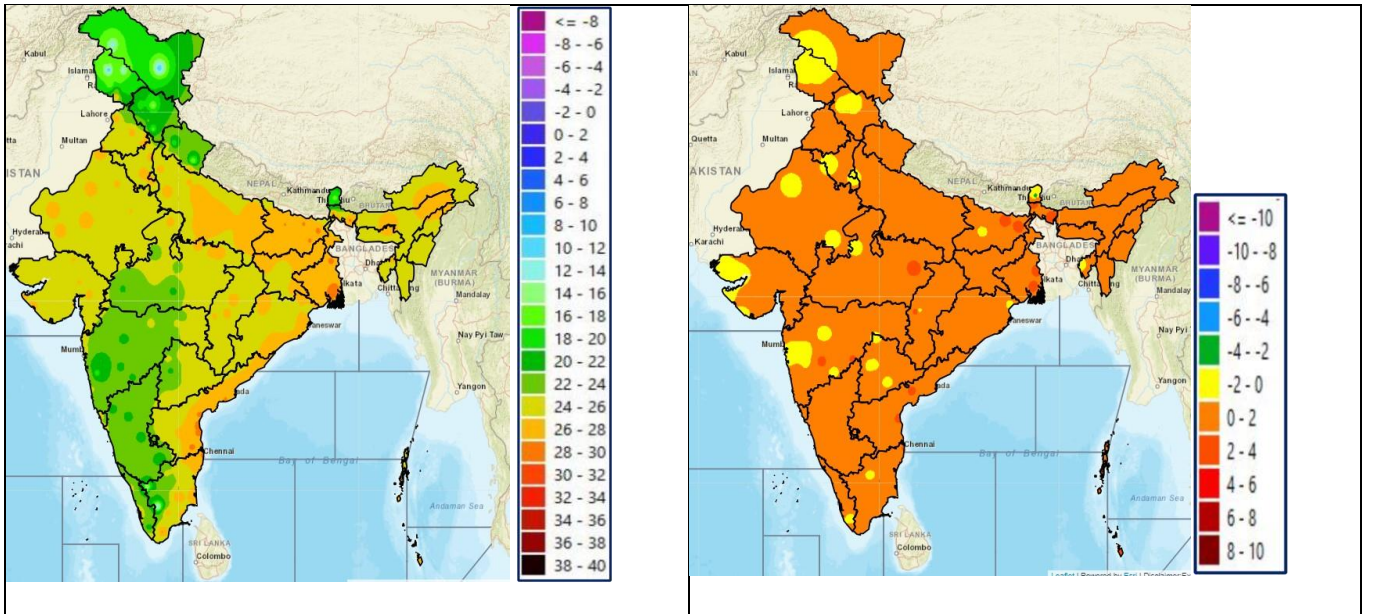
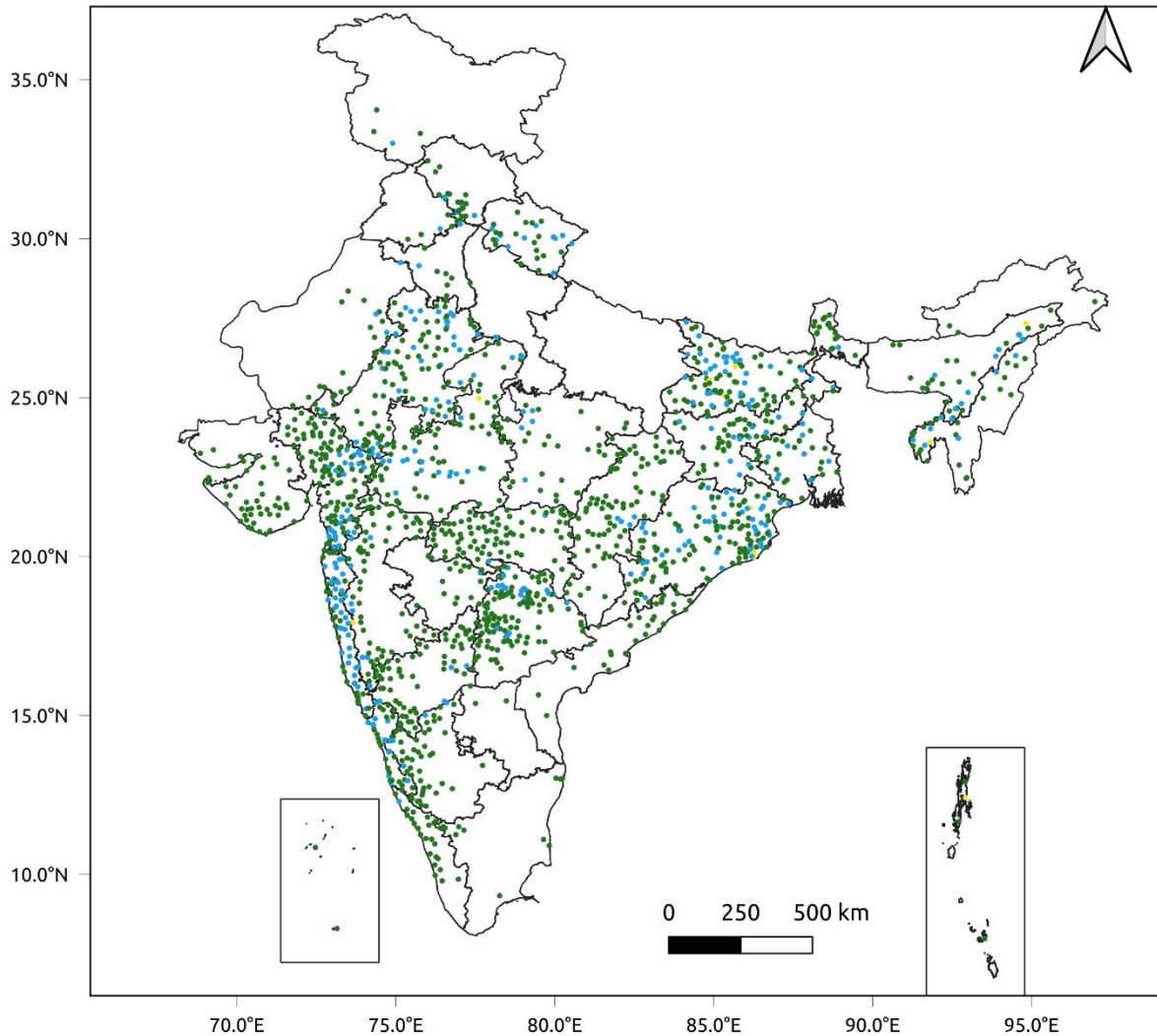


Fig. 5: Accumulated Rainfall (mm) during past 24 hours



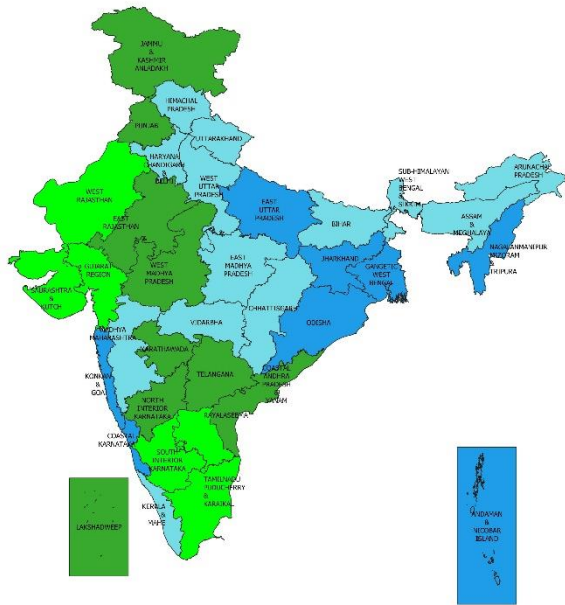
24 Hr cumulative rainfall recorded over different stations during 0830 IST of 30-7-2023 to 0830 IST of 31-7-2023



Legends

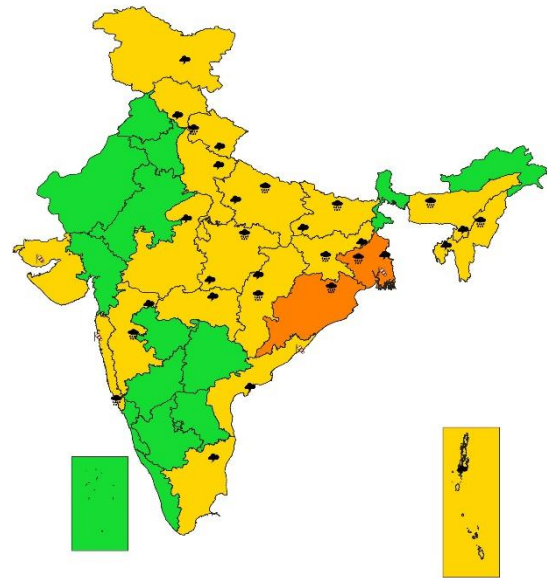
- Very Light to Light Rainfall (0.1 - 15.5 mm)
- Moderate Rainfall (15.6 - 64.4 mm)
- Heavy Rainfall (64.5 - 115.5 mm)
- Very Heavy Rainfall (115.6 - 204.4 mm)
- Extremely Heavy Rainfall (≥ 204.5 mm)

**SUBDIVISIONWISE RAINFALL FORECAST FOR DAY 1
(1-8-2023)**



Legends
 □ DRY : No station reported rainfall ≥ 0.1 mm
 ■ ISOLATED : No. of rain gauge stations reported rainfall ≥ 0.1 mm is 1-25% of total no. of reporting stations on the day
 ■ SCATTERED : No. of rain gauge stations reported rainfall ≥ 0.1 mm is 26-50% of total no. of reporting stations on the day
 ■ FAIRLY WIDE SPREAD : No. of rain gauge stations reported rainfall ≥ 0.1 mm is 51-75% of total no. of reporting stations on the day
 ■ WIDE SPREAD : No. of rain gauge stations reported rainfall ≥ 0.1 mm is 75-100% of total no. of reporting stations on the day

**SUBDIVISIONWISE WEATHER WARNING FOR DAY 1
(1-8-2023)**



Subdivision Warning
 ☁ Heavy Rain
 ❄ Heavy Snow
 ⚡ Thunderstorms & Lightning
 🌨 Hailstorm
 🌪 Dust Storm
 🌪 Strong Surface Winds
 🌡 Heat Wave
 🌡 Cold wave
 🌫 Fog

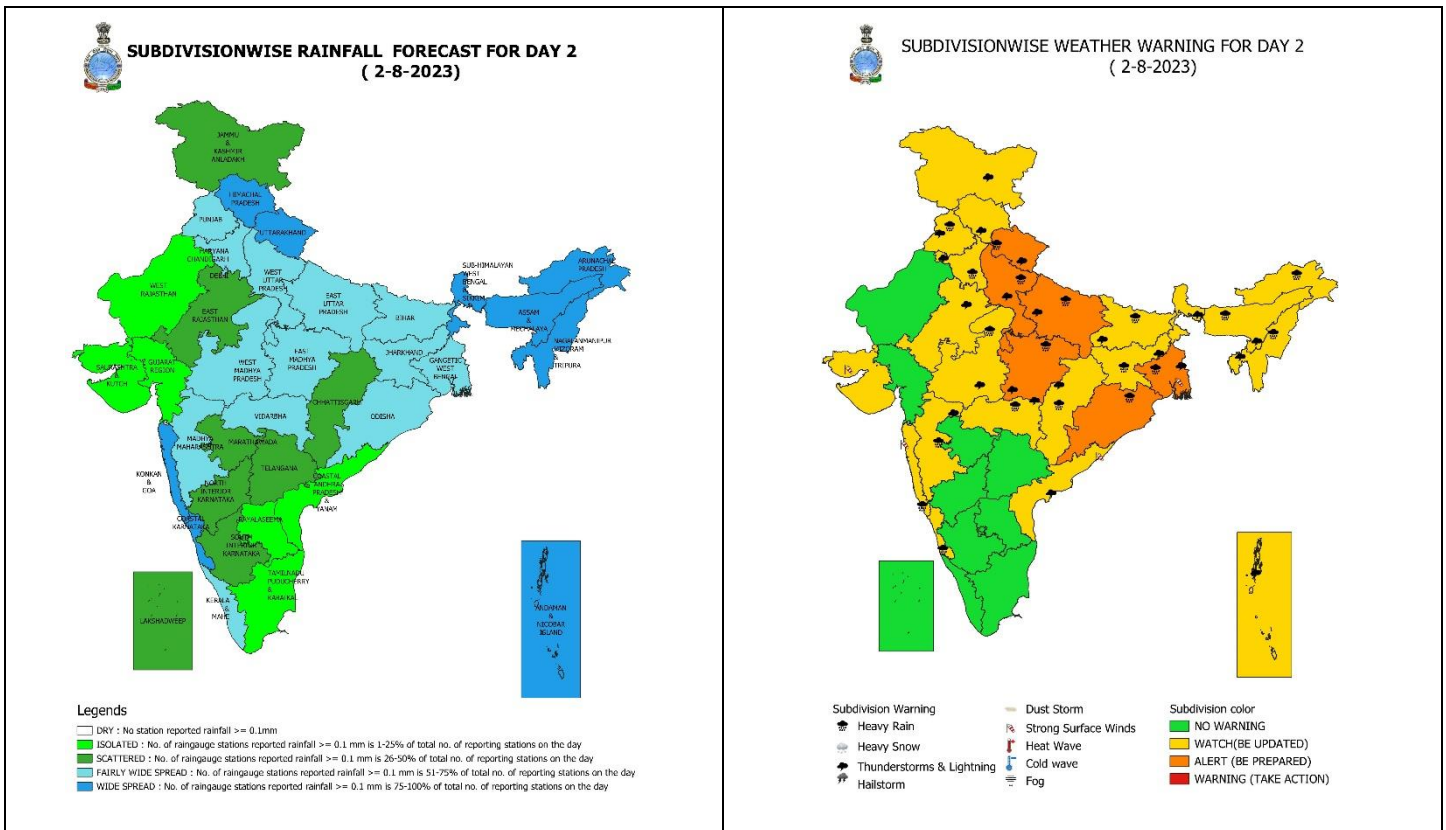
Subdivision color
 ■ NO WARNING
 ■ WATCH (BE UPDATED)
 ■ ALERT (BE PREPARED)
 ■ WARNING (TAKE ACTION)

01 August (Day 1):

- ❖ **Heavy to very heavy rainfall** likely at isolated places over Gangetic West Bengal, Jharkhand, Odisha and Nagaland, Manipur, Mizoram & Tripura; **Heavy rainfall** very likely at isolated places over Uttarakhand, East Uttar Pradesh, East Madhya Pradesh, Chhattisgarh, Bihar, Assam & Meghalaya, Konkan & Goa and Madhya Maharashtra.
- ❖ **Thunderstorm with lightning gusty (wind speed 30-40 kmph) very likely** at isolated places over Andaman & Nicobar Islands; **with lightning** likely at isolated places over Jammu-Kashmir-Ladakh-Gilgit-Baltistan-Muzaffarabad, Himachal Pradesh, Uttarakhand, East Uttar Pradesh, Gangetic West Bengal, Bihar, Jharkhand, Assam & Meghalaya, Nagaland, Manipur, Mizoram & Tripura, Coastal Andhra Pradesh & Yanam and Tamil Nadu, Puducherry & Karaikal.
- ❖ **Squally wind speed reaching 45-55 kmph gusting to 65 kmph** is prevailing over North & adjoining Central Bay of Bengal and along & off Bangladesh-West Bengal coasts and 40-50 kmph gusting to 60 kmph is prevailing along & off North Odisha coast. It is likely to increase and become 55-65 kmph gusting to 75 kmph over North & adjoining Central Bay of Bengal and along & off West Bengal-Bangladesh coasts during next 12-hours and 45-55 kmph gusting to 65 kmph along & off North Odisha coast during the same period. Thereafter, the same wind speed would continue over the above regions for subsequent 12 hours and decrease thereafter.
- ❖ **Squally wind speed of 45-55 kmph gusting to 65 kmph** over Southwest, Westcentral & adjoining Eastcentral Arabian Sea, along & off Gujarat coast; over Comorin area and southwest Bay of Bengal. **Squally weather with wind speed reaching 40-45 kmph gusting to 55 kmph** over south Bay of Bengal, northwest, Westcentral Bay of Bengal. **Squally weather with wind speed reaching 45-55 kmph gusting to 65 kmph** over Northeast, Eastcentral Bay of Bengal & adjoining north Andaman Sea. Fishermen are advised not to venture into these areas.

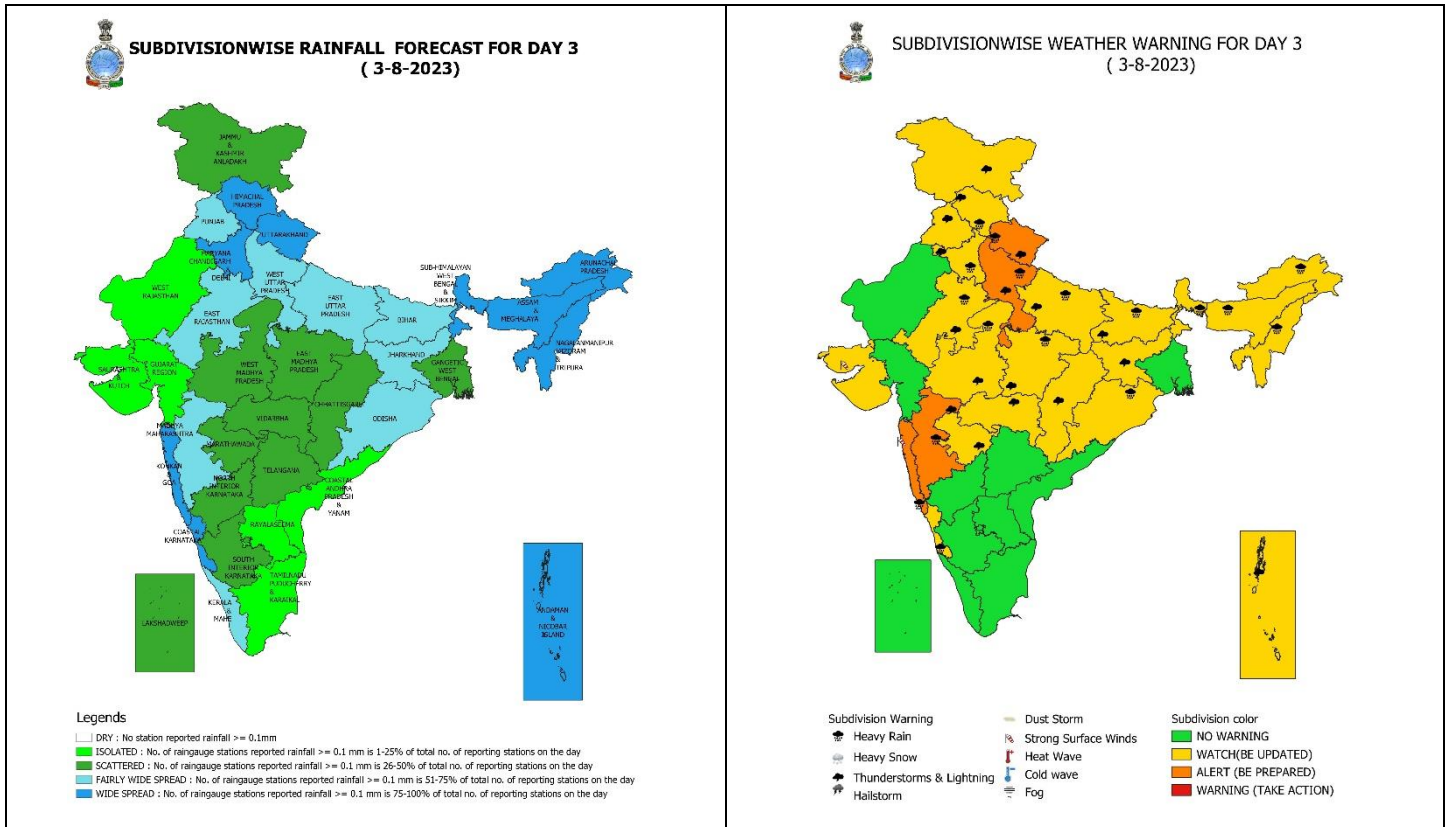
* Red color warning does not mean "Red Alert" Red color warning means "Take Action".

Forecast and Warning for any day is valid from 0830 hours IST of day till 0830 hours IST of next day For more details kindly visit <https://mausam.imd.gov.in> or contact : 011-2434-4599 (Service to the Nation since 1875)



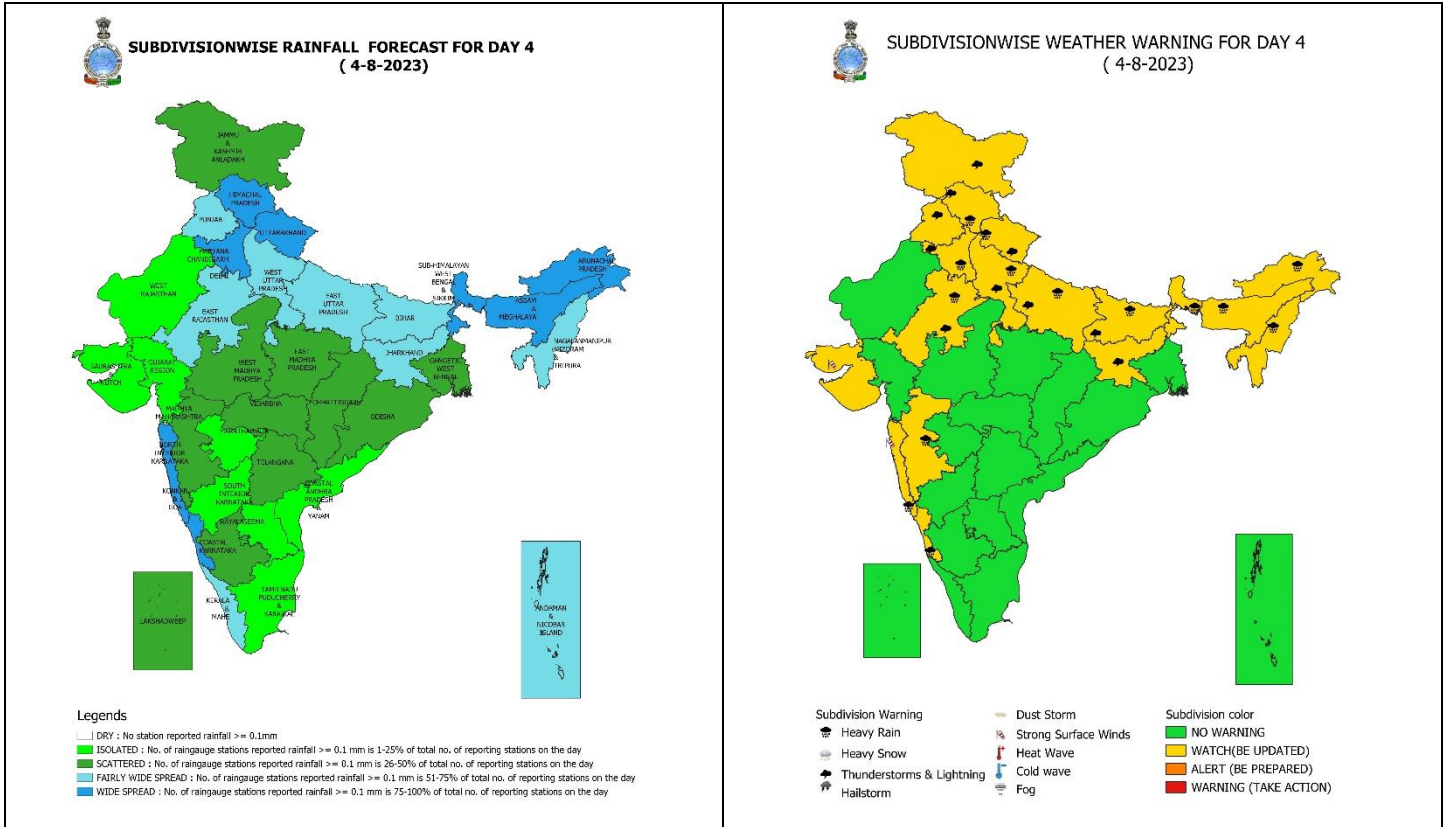
02 August (Day 2):

- ❖ **Heavy to very heavy rainfall** likely at isolated places over Uttarakhand, Uttar Pradesh, East Madhya Pradesh, Gangetic West Bengal, Jharkhand and Odisha; **Heavy rainfall** very likely at isolated places over Haryana, West Madhya Pradesh, Vidarbha, Chhattisgarh, Bihar, Arunachal Pradesh, Assam & Meghalaya, Nagaland, Manipur, Mizoram & Tripura, Konkan & Goa, Madhya Maharashtra and Coastal Karnataka.
- ❖ **Thunderstorm with lightning gusty (wind speed 30-40 kmph) very likely** at isolated places over Andaman & Nicobar Islands; **with lightning** likely at isolated places over West Bengal & Sikkim, Bihar, Jharkhand, Assam & Meghalaya, Nagaland, Manipur, Mizoram & Tripura and Coastal Andhra Pradesh & Yanam.
- ❖ **Squally wind speed of 45-55 kmph gusting to 65 kmph** over Westcentral & adjoining Eastcentral and north Arabian Sea, along & off Gujarat, north Maharashtra coasts; over Comorin area. **Squally weather with wind speed reaching 40-45 kmph gusting to 55 kmph** south & adjoining Westcentral Bay of Bengal and along & off West Bengal & Odisha coasts. **Squally weather with wind speed reaching 45-55 kmph gusting to 65 kmph** over north & adjoining Eastcentral Bay of Bengal and adjoining north Andaman Sea. Fishermen are advised not to venture into these areas.



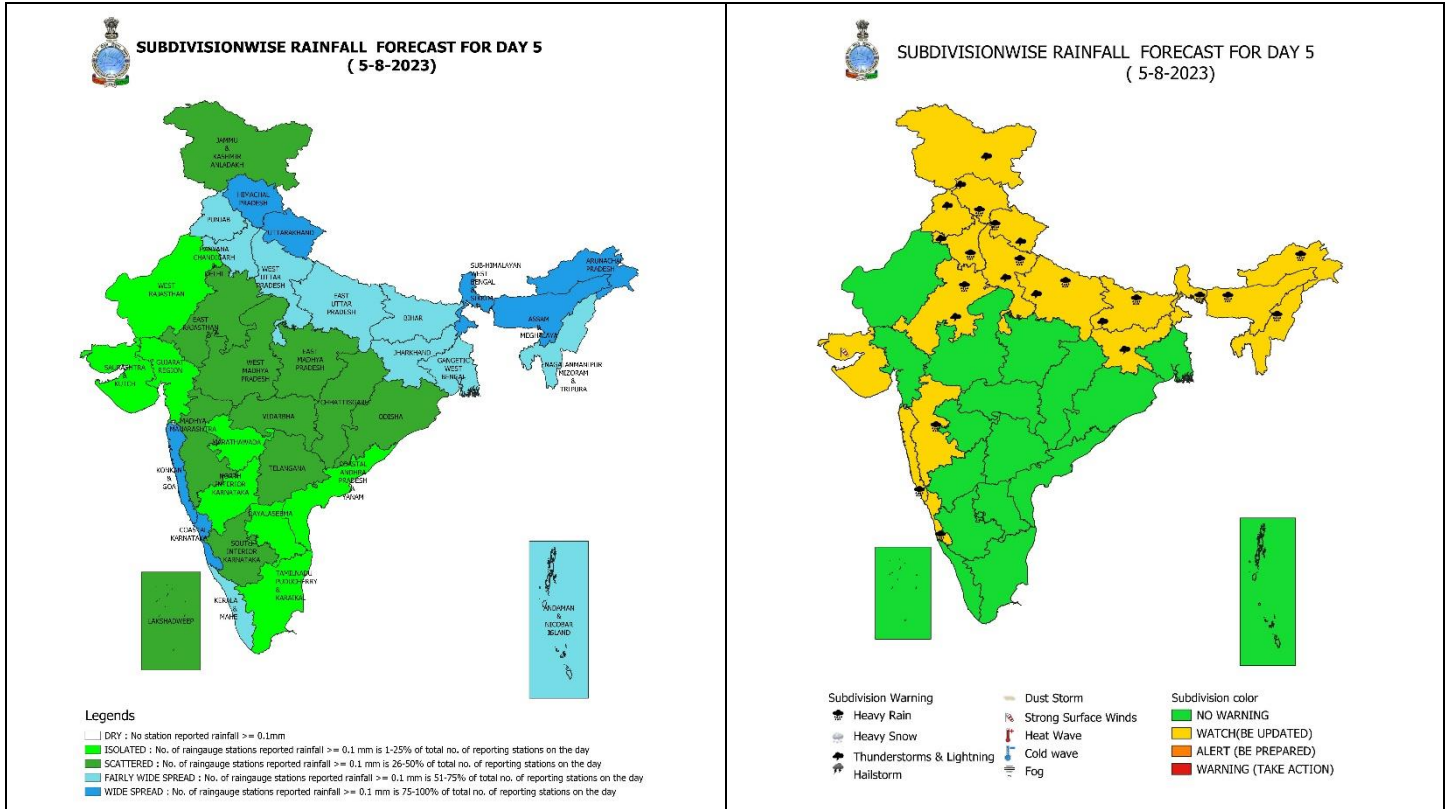
03 August (Day 3):

- ❖ **Heavy to very heavy rainfall** likely at isolated places over Uttarakhand, West Uttar Pradesh, Sub-Himalaya West Bengal & Sikkim, Arunachal Pradesh, Assam & Meghalaya, Nagaland, Manipur, Mizoram & Tripura, Konkan & Goa and Madhya Maharashtra; **Heavy rainfall** likely at isolated places over Himachal Pradesh, Punjab, Haryana, East Uttar Pradesh, East Rajasthan, Madhya Pradesh, Bihar, Odisha and Coastal Karnataka.
- ❖ **Thunderstorm with lightning gusty (wind speed 30-40 kmph) very likely** at isolated places over Andaman & Nicobar Islands; **with lightning** likely at isolated places over Bihar and Jharkhand.
- ❖ **Squally wind speed of 45-55 kmph gusting to 65 kmph** over Westcentral & adjoining Eastcentral and north Arabian Sea, along & off Gujarat, north Maharashtra coasts; over Comorin area. **Squally weather with wind speed reaching 40-45 kmph gusting to 55 kmph** south and north Bay of Bengal and along & off West Bengal & Odisha coasts. **Squally weather with wind speed reaching 45-55 kmph gusting to 65 kmph** over Central Bay of Bengal and adjoining north Andaman Sea. Fishermen are advised not to venture into these areas.



04 August (Day 4):

- ❖ **Heavy to very heavy rainfall** likely at isolated places over Sub-Himalaya West Bengal & Sikkim, Arunachal Pradesh, Assam & Meghalaya, Nagaland, Manipur, Mizoram & Tripura; **Heavy rainfall** likely at isolated places over Himachal Pradesh, Uttarakhand, Haryana, Uttar Pradesh, East Rajasthan, Bihar, Konkan & Goa, Madhya Maharashtra and Coastal Karnataka.
- ❖ **Thunderstorm with lightning with lightning** likely at isolated places over Bihar and Jharkhand.
- ❖ **Squally wind speed of 45-55 kmph gusting to 65 kmph** over Westcentral & adjoining Eastcentral and north Arabian Sea; over Comorin area. **Squally weather with wind speed reaching 40-45 kmph gusting to 55 kmph** southwest & adjoining southeast Bay of Bengal. **Squally weather with wind speed reaching 45-55 kmph gusting to 65 kmph** over Central Bay of Bengal. Fishermen are advised not to venture into these areas.



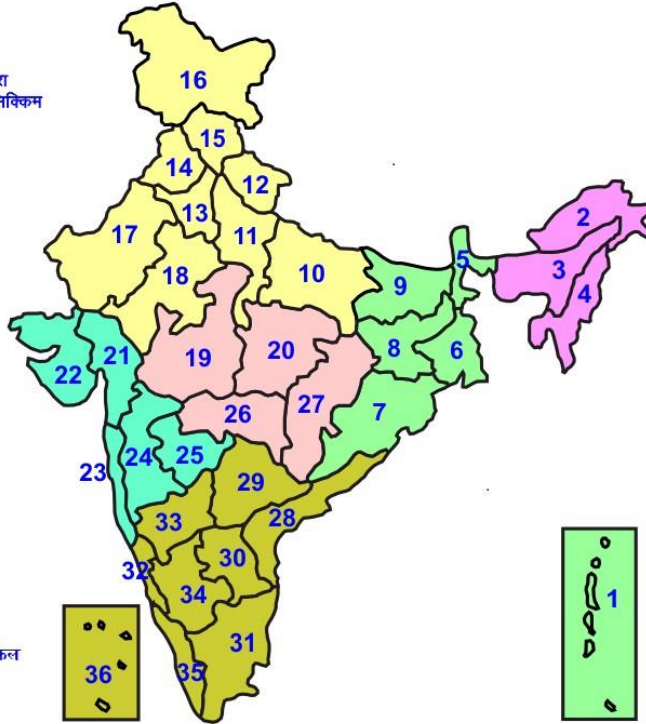
04 August (Day 5):

- ❖ **Heavy to very heavy rainfall** likely at isolated places over Sub-Himalaya West Bengal & Sikkim, Arunachal Pradesh, Assam & Meghalaya, Nagaland, Manipur, Mizoram & Tripura; **Heavy rainfall** likely at isolated places over Himachal Pradesh, Uttarakhand, Haryana, Uttar Pradesh, East Rajasthan, Bihar, Konkan & Goa, Madhya Maharashtra and Coastal Karnataka.
- ❖ **Thunderstorm with lightning with lightning** likely at isolated places over Bihar and Jharkhand.
- ❖ **Squally wind speed of 45-55 kmph gusting to 65 kmph** over Westcentral & adjoining Eastcentral and north Arabian Sea; over Comorin area. **Squally weather with wind speed reaching 40-45 kmph gusting to 55 kmph** southwest & adjoining southeast Bay of Bengal. **Squally weather with wind speed reaching 45-55 kmph gusting to 65 kmph** over Central Bay of Bengal. Fishermen are advised not to venture into these areas.



LEGENDS

- 1 अंडमान और निकोबार द्वीप समुह
- 2 अरुणाचल प्रदेश
- 3 असम और मेघालय
- 4 नागालैंड मनीपुर मीजोरम और त्रिपुरा
- 5 उप हिमालय पश्चिम बंगाल एवं सिक्किम
- 6 पश्चिम गंगेय बंगाल
- 7 ओडिशा
- 8 झारखंड
- 9 बिहार
- 10 पूर्वी उत्तर प्रदेश
- 11 पश्चिम उत्तर प्रदेश
- 12 उत्तराखंड
- 13 हरियाणा चंडिगढ़ एवं दिल्ली
- 14 पंजाब
- 15 हिमाचल प्रदेश
- 16 जम्मू एवं कश्मीर एवं लद्दाख
- 17 पश्चिम राजस्थान
- 18 पूर्वी राजस्थान
- 19 पश्चिम मध्य प्रदेश
- 20 पूर्वी मध्य प्रदेश
- 21 गुजरात क्षेत्र
- 22 सौराष्ट्र एवं कच्छ
- 23 कोंकण एवं गोवा
- 24 मध्य महाराष्ट्र
- 25 मराठावाड़ा
- 26 विदर्भ
- 27 छत्तीसगढ़
- 28 तटीय आंध्र प्रदेश एवं यनम
- 29 तेलंगाना
- 30 रायलसीमा
- 31 तमिलनाडु, पुदुचेरी एवं कराईकल
- 32 तटिय कर्नाटक
- 33 आंतरिक उत्तरी कर्नाटक
- 34 आंतरिक दक्षिणी कर्नाटक
- 35 केरल एवं माहे
- 36 लक्षद्वीप



1. Andaman & Nicobar Islands
2. Arunachal Pradesh
3. Assam & Meghalaya
4. Nagaland, Manipur, Mizoram & Tripura
5. Sub-Himalayan West Bengal & Sikkim
6. Gangetic West Bengal
7. Orissa
8. Jharkhand
9. Bihar
10. East Uttar Pradesh
11. West Uttar Pradesh
12. Uttarakhand
13. Haryana, Chd & Delhi
14. Punjab
15. Himachal Pradesh
16. Jammu & Kashmir and Ladakh
17. West Rajsthan
18. East Rajsthan
19. West Madhya Pradesh
20. East Madhya Pradesh
21. Gujarat
22. Saurashtra
23. Konkan & Goa
24. Madhya Maharashtra
25. Marathawada
26. Vidharbha
27. Chhattisgarh
28. Coastal Andhra Pradesh & Yanam
29. Telangana
30. Rayalaseema
31. Tamilnadu, Puducherry & Karaikal
32. Coastal Karnataka
33. North Interior Karnataka
34. South Interior Karnataka
35. Kerala & Mahe
36. Lakshadweep

SPATIAL DISTRIBUTION (% of Stations reporting)

| % Stations | Category | % Stations | Category |
|------------|--------------------------------------|------------|-------------------------------|
| 76-100 | Widespread (WS/Most Places) | 26-50 | Scattered (SCT/ A Few Places) |
| 51-75 | Fairly Widespread (FWS/ Many Places) | 1-25 | Isolated (ISOL) |

WARNING

| |
|--------------------------------|
| WARNING (TAKE ACTION) |
| ALERT (BE PREPARED) |
| WATCH (BE UPDATED) |
| NO WARNING (NO ACTION) |

Probabilistic Forecast

| Terms | Probability of Occurrence (%) |
|-------------|-------------------------------|
| Unlikely | < 25 |
| Likely | 25 - 50 |
| Very Likely | 50 - 75 |
| Most Likely | > 75 |



Heavy Rain



Heavy Snow



Thunderstorm



Dust Storm



Strong Winds



Visibility



Cyclone



Squall/ Hail



Frost



Cold Wave



Heat Wave



Sea State

* Red color warning does not mean "Red Alert" Red color warning means "Take Action".

Forecast and Warning for any day is valid from 0830 hours IST of day till 0830 hours IST of next day For more details kindly visit <https://mausam.imd.gov.in> or contact : 011-2434-4599

(Service to the Nation since 1875)

LEGENDS

WARNING

| |
|--------------------------------|
| WARNING (TAKE ACTION) |
| ALERT (BE PREPARED) |
| WATCH (BE UPDATED) |
| NO WARNING (NO ACTION) |

Probabilistic Forecast

| Terms | Probability of Occurrence (%) |
|-------------|-------------------------------|
| Unlikely | < 25 |
| Likely | 25 - 50 |
| Very Likely | 50 - 75 |
| Most Likely | > 75 |



Rain/ Snow *

Heavy: 64.5 to 115.5 mm/cm *
Very Heavy: 115.6 to 204.4 mm/cm*
Extremely Heavy: > 204.4 mm/cm *



Heat Wave

When maximum temperature of a station reaches $\geq 40^{\circ}\text{C}$ for plains and $\geq 30^{\circ}\text{C}$ for hilly regions
(a) Based on Departure from normal

Heat Wave: Maximum Temperature Departure from normal 4.5°C to 6.4°C .
Severe Heat Wave: Maximum Temperature Departure from normal $\geq 6.5^{\circ}\text{C}$

(b). Based on Actual maximum temperature

Heat Wave: When actual maximum temperature $\geq 45^{\circ}\text{C}$.
Severe Heat Wave: When actual maximum temperature $\geq 47^{\circ}\text{C}$

(c). Criteria for heat wave for coastal stations

When maximum temperature departure is $> 4.5^{\circ}\text{C}$ from normal. Heat Wave may be described provided maximum temperature $\geq 37^{\circ}\text{C}$



Warm Night

When maximum temperature remains 40°C

Warm Night: When minimum temperature departure 4.5°C to 6.4°C .
Severe Warm Night: When minimum temperature departure $> 6.4^{\circ}\text{C}$.



Cold Wave

When minimum temperature of a station $\leq 10^{\circ}\text{C}$ for plains and $\leq 0^{\circ}\text{C}$ for hilly regions.

(a). Based on departure

Cold Wave: Minimum Temperature Departure from normal -4.5°C to -6.4°C .
Severe Cold Wave: Minimum Temperature Departure from normal $\leq -6.5^{\circ}\text{C}$

(b) Based on actual Minimum Temperature (for Plains only)

Cold Wave : When Minimum Temperature is $\leq 4.0^{\circ}\text{C}$
Severe Cold Wave: When Minimum Temperature is $\leq 2.0^{\circ}\text{C}$

(c) For Coastal Stations

When Minimum Temperature departure is $\leq -4.5^{\circ}\text{C}$ & actual Minimum Temperature is $\leq 15^{\circ}\text{C}$



Cold Day

When minimum temperature of a station $\leq 10^{\circ}\text{C}$ for plains and $\leq 0^{\circ}\text{C}$ for hilly regions
Based on departure

Cold Day: Maximum Temperature Departure from normal -4.5°C to -6.4°C .
Severe Cold Day: Maximum Temperature Departure from normal $\leq -6.5^{\circ}\text{C}$



Fog

Phenomenon of small droplets suspended in air and the horizontal visibility $< 1\text{km}$

Moderate Fog: When the visibility between 500-200 metres
Dense Fog: when the visibility between 50- 200 metres
Very Dense Fog: when the visibility < 50 metres



Thunderstorm

Sudden electrical discharges manifested by a flash of light (Lightning) and a sharp rumbling sound (thunder)



Dust/Sand Storm

An ensemble of particles of dust or sand energetically lifted to great heights by a strong and turbulent wind.



Frost

Ice deposits on ground

Air temperature $\leq 4^{\circ}\text{C}$ (over Plains)



Squall

A strong wind that rises suddenly, lasts for atleast 1 minute.

Moderate: Wind speed 52-61 kmph
Severe: Wind speed 62-87 kmph
Very Severe: Wind speed > 87 kmph



Sea State

Effect of various waves in the sea over specific area

Rough to very rough: Wind speed 41-62 kmph (22-33 knots) & Wave height 2.5-6 metre
High to very high: Wind speed 63-117 kmph (34-63 knots) & Wave height 6-14 metre
Phenomenal: Wind speed > 117 kmph (> 63 knots) & Wave height > 14 metre



Cyclone

Cyclonic Storm: Wind speed 62-87 kmph (34-47 knots)
Severe Cyclonic Storm: Wind speed 88-117 kmph (48-63 knots)
Very Severe Cyclonic Storm: Wind speed 118-165 kmph (64 - 89 knots)
Extremely Severe Cyclonic Storm: Wind speed 166-220 kmph (90 -119 knots)
Super Cyclone Strom: Wind speed > 220 kmph (> 119 knots)

* Red color warning does not mean "Red Alert" Red color warning means "Take Action".

Forecast and Warning for any day is valid from 0830 hours IST of day till 0830 hours IST of next day For more details kindly visit <https://mausam.imd.gov.in> or contact : 011-2434-4599

(Service to the Nation since 1875)