

2025-07-21

Time of Issue: 08:14:00 hours IST
(Morning)

ALL INDIA WEATHER SUMMARY AND FORECAST BULLETIN

Significant Weather Features

Northwest India:

- Isolated **very heavy rainfall** over Jammu and Kashmir on 21st, Uttarakhand on 21st & 22th, Himachal Pradesh during 21st-23rd July with **heavy rainfall** likely over Punjab, Jammu and Kashmir during 21st-24th, West Uttar Pradesh on 21st; East Uttar Pradesh on 26th & 27th, East Rajasthan on 22nd, 26th & 27th; Haryana on 21st & 22nd July.
- Light/moderate rainfall at most places accompanied with thunderstorm, lightning likely over western Himalayan region and some places over the plains during next 7 days.

West India:

- **Heavy to very heavy rainfall** likely at isolated places over Konkan & Goa, Ghat areas of Madhya Maharashtra during 21st-27th July and **heavy rainfall** over Marathwada on 21st July.
- Light/moderate rainfall at many/some places very likely over the region during next 5 days.

South Peninsular India:

- Isolated **heavy to very heavy rainfall** likely over Coastal Andhra Pradesh, Rayalaseema on 21st; Kerala & Mahe, Coastal and South Interior Karnataka during 21st-27th; Tamil Nadu on 21st & 22nd July; Telangana during 21st-24th July; isolated **heavy rainfall** over North Interior Karnataka during 21st-27th, Coastal Andhra Pradesh & Yanam during 21st-24th July.
- **Strong surface winds** (speed reaching 40-50 kmph) very likely over South Peninsular India during next 5 days.
- Light/moderate rainfall at many/some places over Kerala & Mahe, Lakshadweep, Karnataka, Rayalaseema; isolated to scattered rainfall over Coastal Andhra Pradesh & Yanam, Telangana during next 7 days.

East & Central India:

- Isolated **very heavy rainfall** over Vidarbha, Chhattisgarh, Odisha, Gangetic West Bengal during 23rd-25th July with **heavy rainfall** very likely to continue over Sub-Himalayan West Bengal & Sikkim on 21st-22nd, Vidarbha, Chhattisgarh during 21st-25th, Madhya Pradesh, Gangetic West Bengal, Jharkhand during 23rd-27th, Odisha during 21st-27th, Bihar on 21st and during 24th-27th July.
- Light/moderate rainfall at most/many places accompanied with accompanied with thunderstorm & lightning likely over the region during next 7 days.

Northeast India:

- Light/moderate rainfall at many places accompanied with **thunderstorm, lightning** likely to continue over Northeast India during next 7 days.
- **heavy rainfall** very likely over Assam & Meghalaya during 21st-27th, Arunachal Pradesh on 21st & 22nd and during 25th-27th, Nagaland & Tripura on 21st and during 24th-27th July.

*Red color warning does not mean "Red Alert" Red color warning means "Take Action"

Forecast and warning for any day is valid from 0830 hours IST of day till 0830 hours IST of next day

For more details kindly visit <https://mausam.imd.gov.in> or contact 011-2434-4599

(Service to the nation since 1875)

Main Weather Observations:

❖ **Significant rainfall recorded(in cm)** (from 0830 hours IST of yesterday to 0530 hours IST of today): **Jammu & Kashmir and Ladakh:** Katra (dist Reasi) 17; **Coastal Andhra Pradesh & Yanam:** Vijayawada-gannavaram (dist Krishna) 8, Kalingapatanam (dist Srikakulam), Bapatla (dist Bapatla) 6 Each, Amaravati-ap-obs2 (dist Guntur) 5, Ongole (dist Prakasam) 4, Nellore (dist Sri Potti Sriramulu Nellore) 2; **Gujarat Region:** Surat (dist Surat) 8; **Lakshadweep** : Amini Divi (dist Lakshadweep) 5; **Odisha:** Jharsuguda (dist Jharsuguda) 5; **Himachal Pradesh:** Sundernagar (dist Mandi) 5; **Uttarakhand:** Dehra Dun-mokampur (dist Dehradun) 4; **Konkan & Goa:** Mumbai (santacruz) AP (dist), Panjim (dist North Goa) 4 Each, Ratnagiri (dist Ratnagiri) 2; **Andaman & Nicobar Islands:** Port Blair (dist South Andaman) 4; **Nagaland, Manipur, Mizoram & Tripura:** Kailashahar AP (dist Unakoti) 4; **Vidarbha:** Nagpur-sonegaon Airport (dist Nagpur) 3; **Kerala & Mahe:** Thiruvananthapuram-city (dist Thiruvananthapuram), Kochi (cochin) (dist Ernakulam) 3 Each; **Coastal Karnataka:** Mangalore (bajpe) AP (dist Dakshina Kannada) 3; **Royalaseema:** Kurnool (dist Kurnool) 3, Tirupathi (dist Tirupati) 2; **Chhattisgarh:** Pendra Road (dist Gaurella-pendra-marwahi) 3, Bilaspur (dist Bilaspur) 2; **Assam & Meghalaya:** Tezpur (dist Sonitpur), Barapani/shillong (dist East Khasi Hills) 2 Each; **East Uttar Pradesh:** Varanasi (dist Varanasi) 2.

❖ **Heavy Rainfall observed** (from 0830 hours IST of yesterday to 0530 hours IST of today):**Heavy to very heavy rain** at isolated places over Jammu & Kashmir and Ladakh **Heavy rain** at isolated places over Gujarat Region and Coastal Andhra Pradesh & Yanam.

❖ **Minimum Temperature Departures (as on 20-07-2025):** **markedly above normal(> 5.1°C)** at isolated places over Assam & Meghalaya, Bihar, East Uttar Pradesh, West Uttar Pradesh, Himachal Pradesh, West Madhya Pradesh, East Madhya Pradesh and Saurashtra & Kutch. **appreciably above normal(3.1°C to 5.0°C)** at isolated places over Sub Himalayan West Bengal & Sikkim, Gangetic West Bengal, Odisha, Uttarakhand, Jammu-KashmirLadakh-Gilgit-Baltistan-Muzaffarabad, West Rajasthan, Gujarat Region and Vidarbha. **above normal(1.6°C to 3.0°C)** at few places over Arunachal Pradesh, Nagaland, Manipur, Mizoram & Tripura and Marathwada; at isolated places over Andaman & Nicobar Islands, Jharkhand, Haryana-Chandigarh-Delhi, Punjab, Konkan & Goa, Coastal Andhra Pradesh & Yanam, Telangana and Tamil Nadu, Puducherry & Karaikal. **near normal(-1.5°C to 1.5°C)** at many places over Chhattisgarh and Kerala & Mahe; at most places over East Rajasthan, Madhya Maharashtra, Royalaseema, Coastal Karnataka, North Interior Karnataka, South Interior Karnataka and Lakshadweep. **The lowest minimum temperature** of 19.5°C is reported at JEUR (MAHARASHTRA) over the Plains of India.

❖ **Maximum Temperature Departures (as on 20-07-2025):** **markedly above normal(> 5.1°C)** at few places over Arunachal Pradesh; at isolated places over Assam & Meghalaya and Coastal Andhra Pradesh & Yanam. **appreciably above normal(3.1°C to 5.0°C)** at few places over Jammu-KashmirLadakh-Gilgit-Baltistan-Muzaffarabad, Marathwada and Vidarbha; at isolated places over Nagaland, Manipur, Mizoram & Tripura, Gangetic West Bengal, Odisha, West Uttar Pradesh, Himachal Pradesh, West Madhya Pradesh, East Madhya Pradesh and Madhya Maharashtra. **above normal(1.6°C to 3.0°C)** at few places over Telangana and North Interior Karnataka; at isolated places over Sub Himalayan West Bengal & Sikkim, Uttarakhand, Haryana-Chandigarh-Delhi, Punjab, Gujarat Region and Chhattisgarh. **near normal(-1.5°C to 1.5°C)** at many places over Jharkhand, Saurashtra & Kutch, Konkan & Goa, Royalaseema, South Interior Karnataka and Lakshadweep; at most places over East Uttar Pradesh; at few places over Andaman & Nicobar Islands, Bihar, East Rajasthan and Tamil Nadu, Puducherry & Karaikal. **The highest maximum temperature** of 39.0°C is reported at TANJAVUR (TAMIL NADU).

***Red color warning does not mean "Red Alert" Red color warning means "Take Action"**

Forecast and warning for any day is valid from 0830 hours IST of day till 0830 hours IST of next day

For more details kindly visit <https://mausam.imd.gov.in> or contact 011-2434-4599

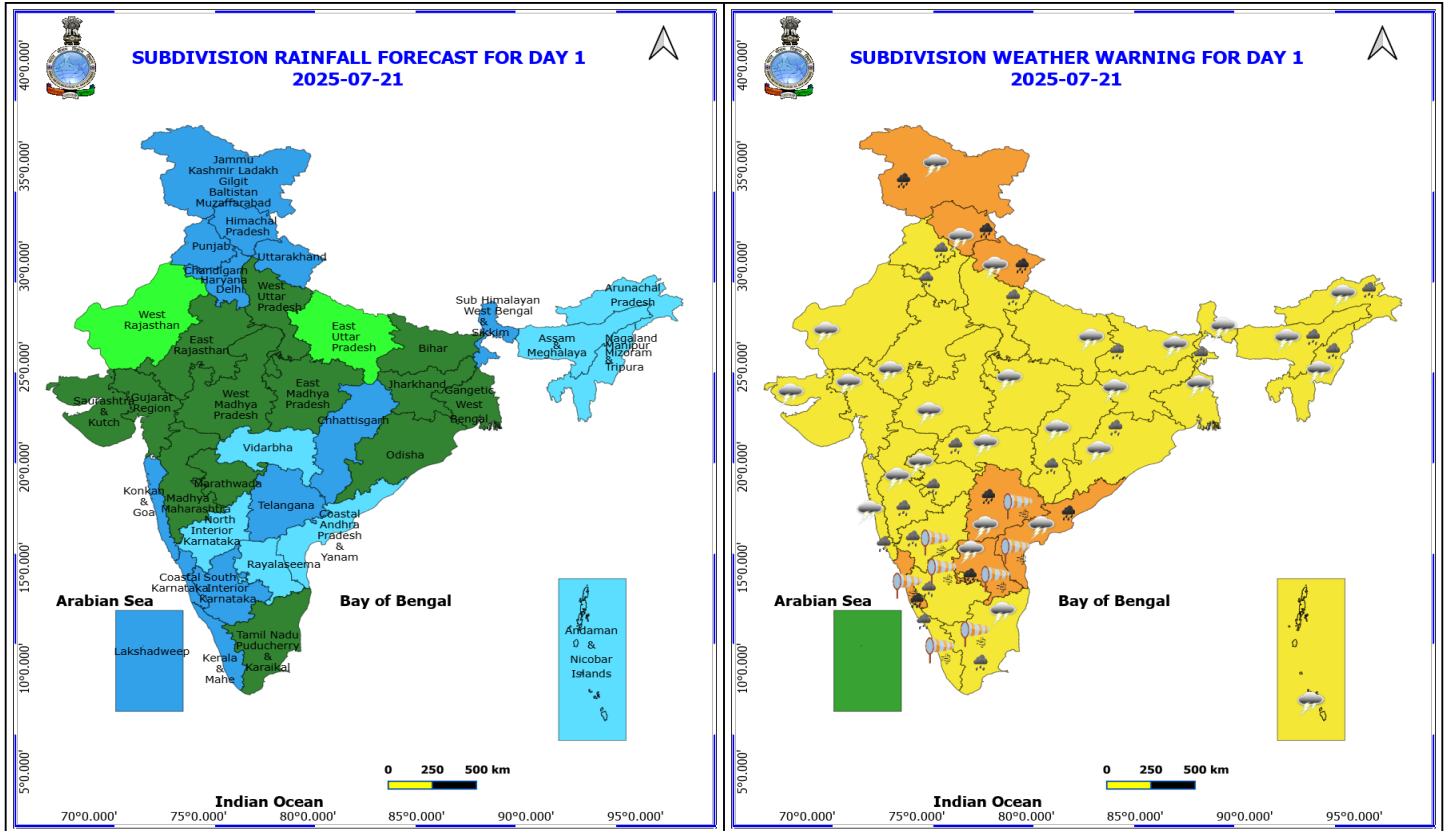
(Service to the nation since 1875)

Meteorological Analysis (Based on 0530 hours IST)

- The **Low pressure area** over west Rajasthan and adjoining Pakistan has become less marked. However, the associated **cyclonic circulation** lies over west Rajasthan and adjoining Pakistan extends upto 3.1 km above mean level tilting southwards with height.
- The **monsoon trough** at mean sea level now passes through Amritsar, Chandigarh, Bareilly, Lucknow, Varanasi, Ranchi, Digha and thence East-southeastwards to northeast Bay of Bengal.
- The **trough** from central parts of north Bihar to Odisha now runs from Gangetic West Bengal to south interior Odisha across Jharkhand at 0.9 km above mean sea level.
- The **Upper air cyclonic circulation** over westcentral & adjoining northwest Bay of Bengal off south Odisha north Coastal Andhra Pradesh persists and now seen between 1.5 & 5.8 km above mean sea level.
- The **east-west trough** roughly along Lat. 13°N from south Karnataka to south Coastal Andhra Pradesh at 5.8 km above mean sea level persists.
- An **Upper air cyclonic circulation** lies over northeast Assam & neighbourhood at 0.9 km above mean sea level.
- A fresh **Low Pressure area** is likely to form over north Bay of Bengal around 24th July, 2025.
- The **Upper air cyclonic circulation** over northeast Bangladesh & neighbourhood at 0.9 km above mean sea level has become less marked.

Weather Outlook for subsequent 3 days

- **Fairly widespread to widespread rainfall** very likely over most parts of the country except Tamil Nadu where isolated to scattered rainfall is likely.



21 July (Day 1)

- ❖ **Heavy to Very Heavy Rainfall** very likely at isolated places over Andhra Pradesh, Coastal Karnataka, Himachal Pradesh, Jammu-Kashmir-Ladakh-Gilgit-Baltistan-Muzaffarabad, Telangana and Uttarakhand.
 - ❖ **Heavy Rainfall** very likely at isolated places over Arunachal Pradesh, Assam & Meghalaya, Bihar, Chhattisgarh, Haryana, Chandigarh & Delhi, Interior Karnataka, Kerala & Mahe, Konkan & Goa, Maharashtra, Nagaland, Manipur, Mizoram and Tripura, Odisha, Punjab, Sub Himalayan West Bengal & Sikkim, Tamil Nadu Puducherry & Karaikal and West Uttar Pradesh.
 - ❖ **Thundersquall with wind speed reaching(50-60kmph)** very likely at isolated places over Andaman & Nicobar Islands and Sub Himalayan West Bengal & Sikkim.
 - ❖ **Thunderstorm accompanied with lightning & gusty winds(30-40kmph)** very likely at isolated places over Bihar, Gangetic West Bengal, Jammu-Kashmir-Ladakh-Gilgit-Baltistan-Muzaffarabad, Jharkhand, Odisha and Uttarakhand.
 - ❖ **Thunderstorm accompanied with Lightning** very likely at isolated places over Andhra Pradesh, Arunachal Pradesh, Assam & Meghalaya, Chhattisgarh, East Uttar Pradesh, Gujarat State, Himachal Pradesh, Konkan & Goa, Madhya Pradesh, Maharashtra, Nagaland, Manipur, Mizoram and Tripura, Rajasthan, Tamil Nadu Puducherry & Karaikal and Telangana.
 - ❖ **Strong Surface Winds** very likely at isolated places over Andhra Pradesh, Karnataka, Kerala & Mahe, Tamil Nadu Puducherry & Karaikal and Telangana.
- Squally wind speed reaching 45 kmph to 55 kmph gusting to 65 kmph** is likely to prevail along and off Somalia, Yemen & south Oman coasts, most parts of westcentral Arabian Sea & adjoining parts of eastcentral Arabian Sea, some parts of southwest Arabian Sea.

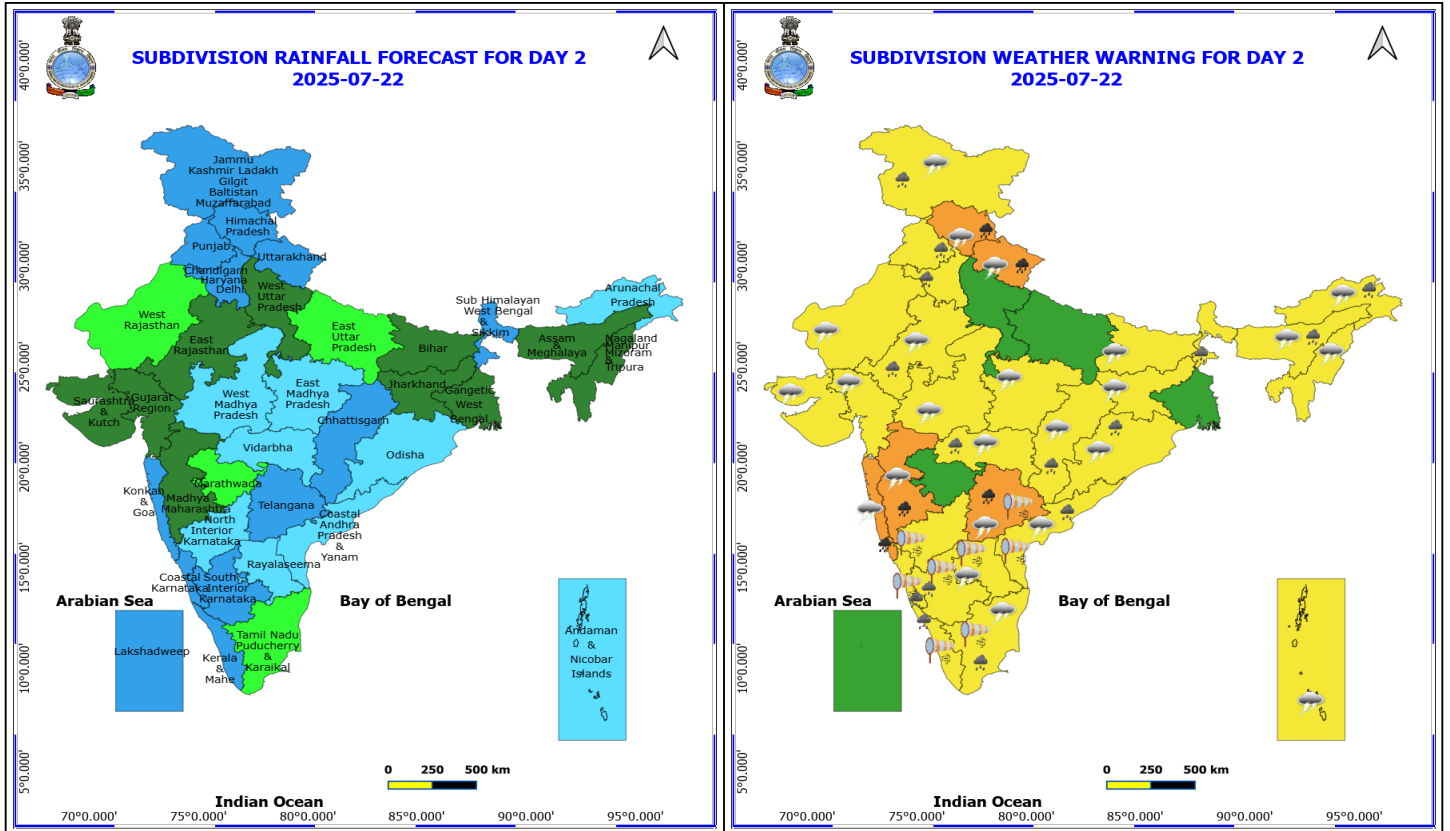
***Red color warning does not mean "Red Alert" Red color warning means "Take Action"**
Forecast and warning for any day is valid from 0830 hours IST of day till 0830 hours IST of next day
For more details kindly visit <https://mausam.imd.gov.in> or contact 011-2434-4599

(Service to the nation since 1875)



Squally weather with wind speed 40 - 50 kmph gusting to 60 kmph likely to prevail over many parts of eastcentral Arabian Sea & adjoining, some parts of westcentral Arabian Sea, northern parts of southeast Arabian Sea and adjoining southwest Arabian Sea, along and off Kerala, Karnataka, Tamil Nadu, South Andhra Pradesh coasts, over Lakshadweep, Maldives, Comorin areas, south Bay of Bengal & many parts of central Bay of Bengal, over Gulf of Mannar, along and off Sri Lanka coast, over Andaman Sea.

Squally weather with wind speed 45 - 55 kmph gusting to 65 kmph likely to prevail over many parts of southwest, some parts of southeast Bay of Bengal, some parts of north Andaman Sea.



22 July (Day 2)

- ❖ **Heavy to Very Heavy Rainfall** very likely at isolated places over Himachal Pradesh, Konkan & Goa, Madhya Maharashtra, Telangana and Uttarakhand.
 - ❖ **Heavy Rainfall** very likely at isolated places over Arunachal Pradesh, Assam & Meghalaya, Chhattisgarh, Coastal Andhra Pradesh, Coastal Karnataka, East Rajasthan, Haryana, Chandigarh & Delhi, Jammu-Kashmir-Ladakh-Gilgit-Baltistan-Muzaffarabad, Kerala & Mahe, Odisha, Punjab, South Interior Karnataka, Sub Himalayan West Bengal & Sikkim, Tamil Nadu Puducherry & Karaikal and Vidarbha.
 - ❖ **Thundersquall with wind speed reaching(50-60kmph)** very likely at isolated places over Andaman & Nicobar Islands.
 - ❖ **Thunderstorm accompanied with lightning & gusty winds(30-40kmph)** very likely at isolated places over Bihar, Jammu-Kashmir-Ladakh-Gilgit-Baltistan-Muzaffarabad, Jharkhand, Odisha and Uttarakhand.
 - ❖ **Thunderstorm accompanied with Lightning** very likely at isolated places over Andhra Pradesh, Arunachal Pradesh, Assam & Meghalaya, Chhattisgarh, Gujarat State, Himachal Pradesh, Konkan & Goa, Madhya Maharashtra, Madhya Pradesh, Nagaland, Manipur, Mizoram and Tripura, Rajasthan, Tamil Nadu Puducherry & Karaikal, Telangana and Vidarbha.
 - ❖ **Strong Surface Winds** very likely at isolated places over Andhra Pradesh, Karnataka, Kerala & Mahe, Tamil Nadu Puducherry & Karaikal and Telangana.
- Squally wind speed reaching 45 kmph to 55 kmph gusting to 65 kmph** is likely to prevail along and off Somalia, Yemen & south Oman coasts, most parts of westcentral Arabian Sea & adjoining parts of eastcentral Arabian Sea, some parts of southwest Arabian Sea.

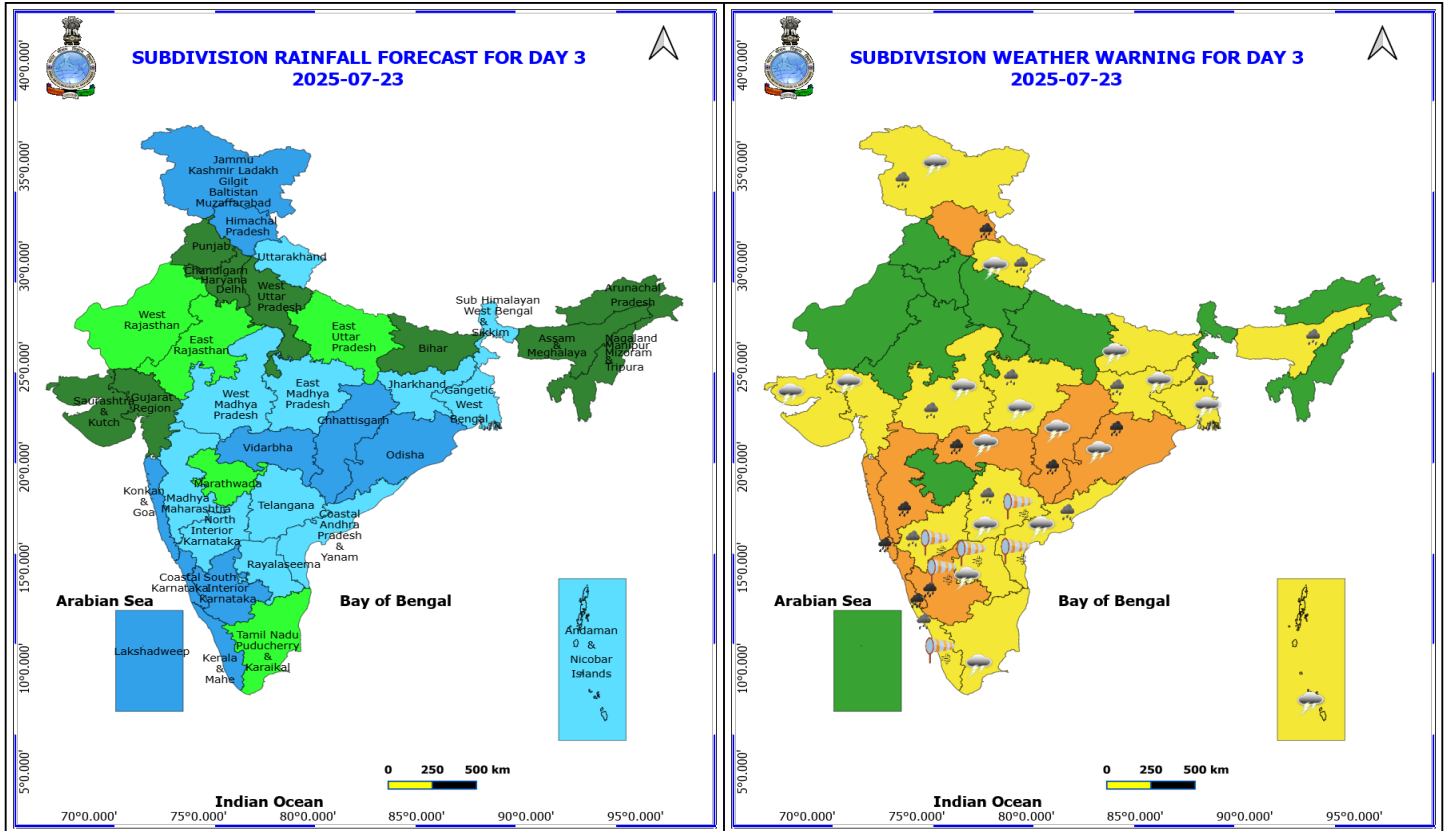
***Red color warning does not mean "Red Alert" Red color warning means "Take Action"**
Forecast and warning for any day is valid from 0830 hours IST of day till 0830 hours IST of next day
For more details kindly visit <https://mausam.imd.gov.in> or contact 011-2434-4599

(Service to the nation since 1875)



Squally weather with wind speed 40 - 50 kmph gusting to 60 kmph likely to prevail over many parts of eastcentral Arabian Sea & adjoining, some parts of westcentral Arabian Sea, northern parts of southeast Arabian Sea and adjoining southwest Arabian Sea, along and off Kerala, Karnataka, Goa & south Konkan coasts, Tamil Nadu, South Andhra Pradesh coasts, over Lakshadweep, Maldives, Comorin areas, south Bay of Bengal & many parts of central Bay of Bengal, over Gulf of Mannar, along and off Sri Lanka coast, over Andaman Sea.

Squally weather with wind speed 45 - 55 kmph gusting to 65 kmph likely to prevail over many parts of central and adjoining south Bay of Bengal, many parts of north Andaman Sea.



23 July (Day 3)

- ❖ **Heavy to Very Heavy Rainfall** very likely at isolated places over Chhattisgarh, Coastal Karnataka, Himachal Pradesh, Konkan & Goa, Madhya Maharashtra, Odisha, South Interior Karnataka and Vidarbha.
 - ❖ **Heavy Rainfall** very likely at isolated places over Assam & Meghalaya, Coastal Andhra Pradesh, Gangetic West Bengal, Jammu-Kashmir-Ladakh-Gilgit-Baltistan-Muzaffarabad, Jharkhand, Kerala & Mahe, Madhya Pradesh, North Interior Karnataka, Telangana and Uttarakhand.
 - ❖ **Thundersquall with wind speed reaching(50-60kmph)** very likely at isolated places over Andaman & Nicobar Islands.
 - ❖ **Thunderstorm accompanied with lightning & gusty winds(30-40kmph)** very likely at isolated places over Bihar, Jammu-Kashmir-Ladakh-Gilgit-Baltistan-Muzaffarabad, Jharkhand, Odisha, Uttarakhand and Vidarbha.
 - ❖ **Thunderstorm accompanied with Lightning** very likely at isolated places over Andhra Pradesh, Chhattisgarh, Gangetic West Bengal, Gujarat State, Madhya Pradesh, Tamil Nadu Puducherry & Karaikal and Telangana.
 - ❖ **Strong Surface Winds** very likely at isolated places over Andhra Pradesh, Interior Karnataka, Kerala & Mahe and Telangana.
- Squally wind speed reaching 45 kmph to 55 kmph gusting to 65 kmph** is likely to prevail along and off Somalia, Yemen & south Oman coasts, most parts of westcentral Arabian Sea & adjoining parts of eastcentral Arabian Sea, some parts of southwest Arabian Sea.

Squally weather with wind speed 40 - 50 kmph gusting to 60 kmph likely to prevail over many parts of eastcentral Arabian Sea & adjoining, some parts of westcentral Arabian Sea, northern parts of southeast Arabian Sea and adjoining southwest Arabian Sea, along and off Gujarat & Konkan coasts, Tamil Nadu, South Andhra

***Red color warning does not mean "Red Alert" Red color warning means "Take Action"**

Forecast and warning for any day is valid from 0830 hours IST of day till 0830 hours IST of next day

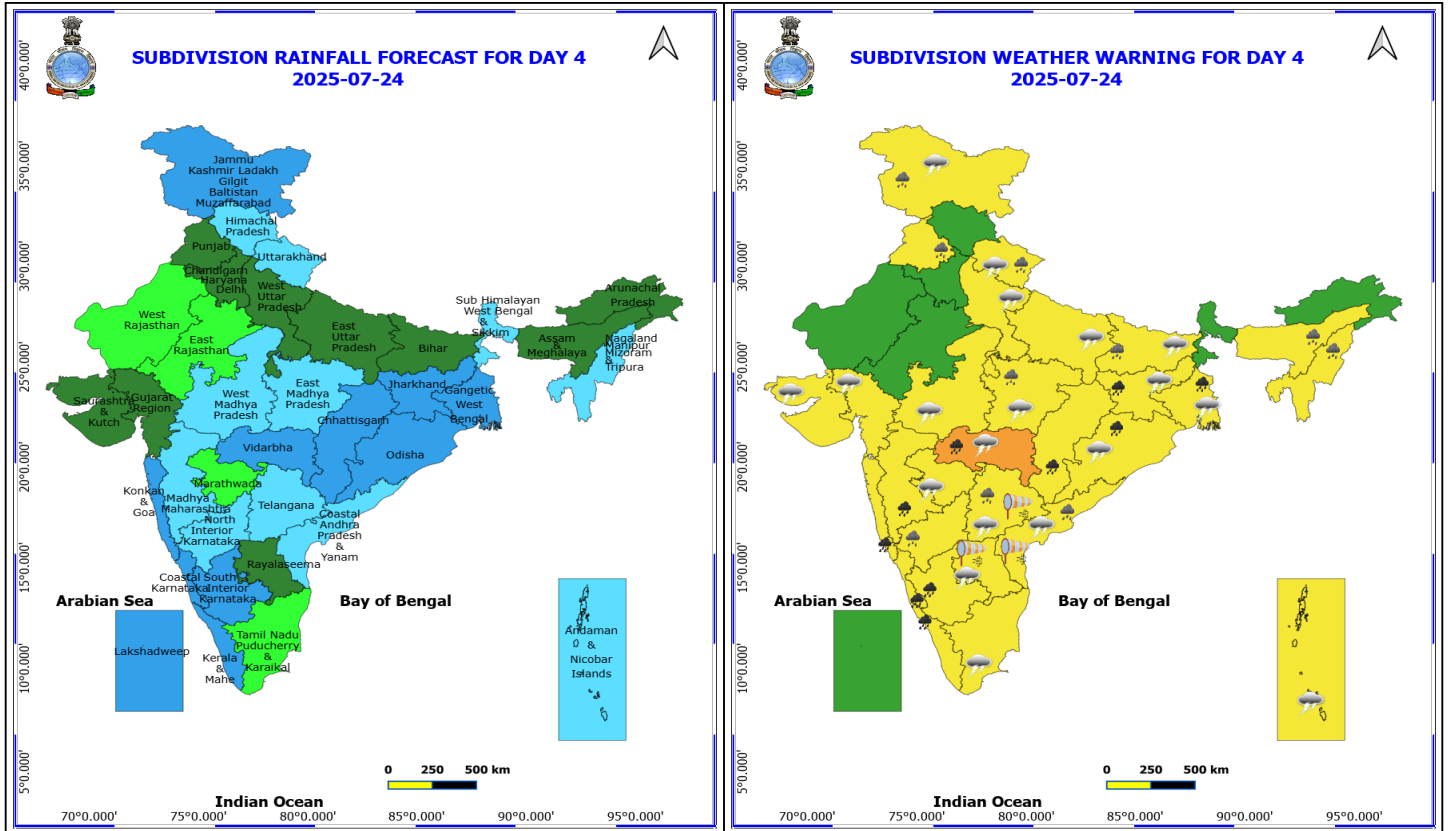
For more details kindly visit <https://mausam.imd.gov.in> or contact 011-2434-4599

(Service to the nation since 1875)



Pradesh coasts, over Lakshadweep, Maldives, Comorin areas, south Bay of Bengal & most parts of central Bay of Bengal, over Gulf of Mannar, along and off Sri Lanka coast, over Andaman Sea.

Squally weather with wind speed 45 - 55 kmph gusting to 65 kmph likely to prevail over many parts of central and south Bay of Bengal, many parts of north Andaman Sea.



24 July (Day 4)

- ❖ **Heavy to Very Heavy Rainfall** likely at isolated places over Chhattisgarh, Coastal Karnataka, Gangetic West Bengal, Jharkhand, Kerala & Mahe, Konkan & Goa, Madhya Maharashtra, Odisha, South Interior Karnataka and Vidarbha.
- ❖ **Heavy Rainfall** likely at isolated places over Assam & Meghalaya, Bihar, Coastal Andhra Pradesh, East Madhya Pradesh, Jammu-Kashmir-Ladakh-Gilgit-Baltistan-Muzaffarabad, Nagaland, Manipur, Mizoram and Tripura, North Interior Karnataka, Punjab, Telangana and Uttarakhand.
- ❖ **Thunderstorm accompanied with lightning & gusty winds(30-40kmph)** likely at isolated places over Andaman & Nicobar Islands, Bihar, Jammu-Kashmir-Ladakh-Gilgit-Baltistan-Muzaffarabad, Jharkhand, Odisha, Uttarakhand and Vidarbha.
- ❖ **Thunderstorm accompanied with Lightning** likely at isolated places over Andhra Pradesh, Gangetic West Bengal, Gujarat State, Madhya Pradesh, Marathwada, Tamil Nadu Puducherry & Karaikal, Telangana and Uttar Pradesh.
- ❖ **Strong Surface Winds** likely at isolated places over Andhra Pradesh and Telangana.

Squally wind speed reaching 45 kmph to 55 kmph gusting to 65 kmph is likely to prevail along and off Somalia, Yemen & south Oman coasts, most parts of westcentral Arabian Sea & adjoining parts of eastcentral Arabian Sea, some parts of southwest Arabian Sea.

Squally weather with wind speed 40 - 50 kmph gusting to 60 kmph likely to prevail over many parts of eastcentral Arabian Sea & adjoining, some parts of westcentral Arabian Sea, northern parts of southeast Arabian Sea and adjoining southwest Arabian Sea, along and off Gujarat & Konkan coasts, Tamil Nadu, Andhra Pradesh, Odisha & West Bengal coasts, over Lakshadweep, Maldives, Comorin areas, south Bay of Bengal, most parts of

***Red color warning does not mean "Red Alert" Red color warning means "Take Action"**

Forecast and warning for any day is valid from 0830 hours IST of day till 0830 hours IST of next day

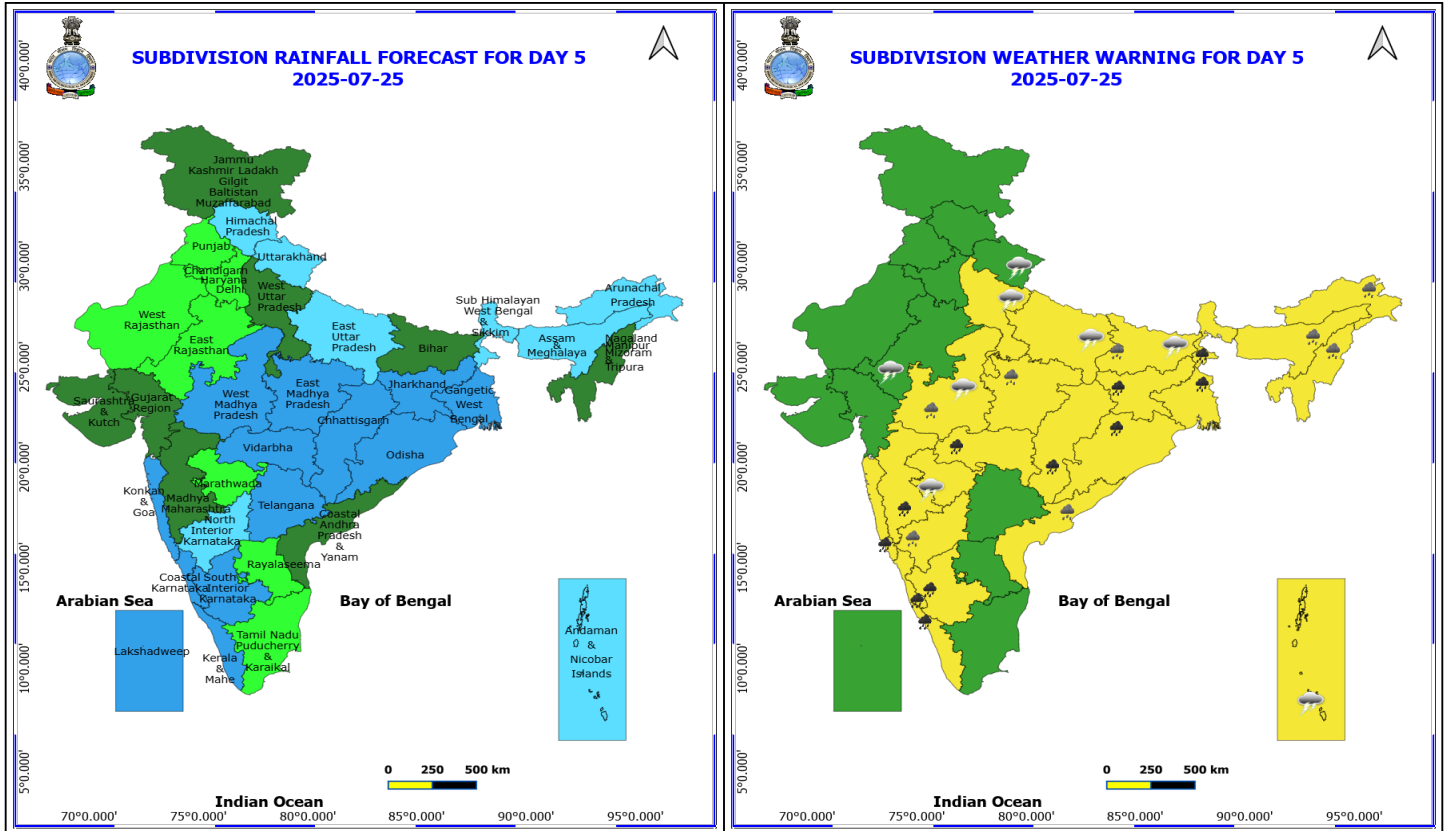
For more details kindly visit <https://mausam.imd.gov.in> or contact 011-2434-4599

(Service to the nation since 1875)



central Bay of Bengal & adjoining parts of north Bay of Bengal, over Gulf of Mannar, along and off Sri Lanka coast, over Andaman Sea.

Squally weather with wind speed 45 - 55 kmph gusting to 65 kmph likely to prevail over most parts of central and south Bay of Bengal, many parts of north Andaman Sea.



25 July (Day 5)

- ❖ **Heavy to Very Heavy Rainfall** likely at isolated places over Chhattisgarh, Coastal Karnataka, Jharkhand, Kerala & Mahe, Konkan & Goa, Madhya Maharashtra, Odisha, South Interior Karnataka, Vidarbha and West Bengal & Sikkim.
- ❖ **Heavy Rainfall** likely at isolated places over Arunachal Pradesh, Assam & Meghalaya, Bihar, Coastal Andhra Pradesh, Madhya Pradesh, Nagaland, Manipur, Mizoram and Tripura and North Interior Karnataka.
- ❖ **Thunderstorm accompanied with lightning & gusty winds(30-40kmph)** likely at isolated places over Andaman & Nicobar Islands, Bihar and Uttarakhand.
- ❖ **Thunderstorm accompanied with Lightning** likely at isolated places over East Rajasthan, Marathwada, Uttar Pradesh and West Madhya Pradesh.

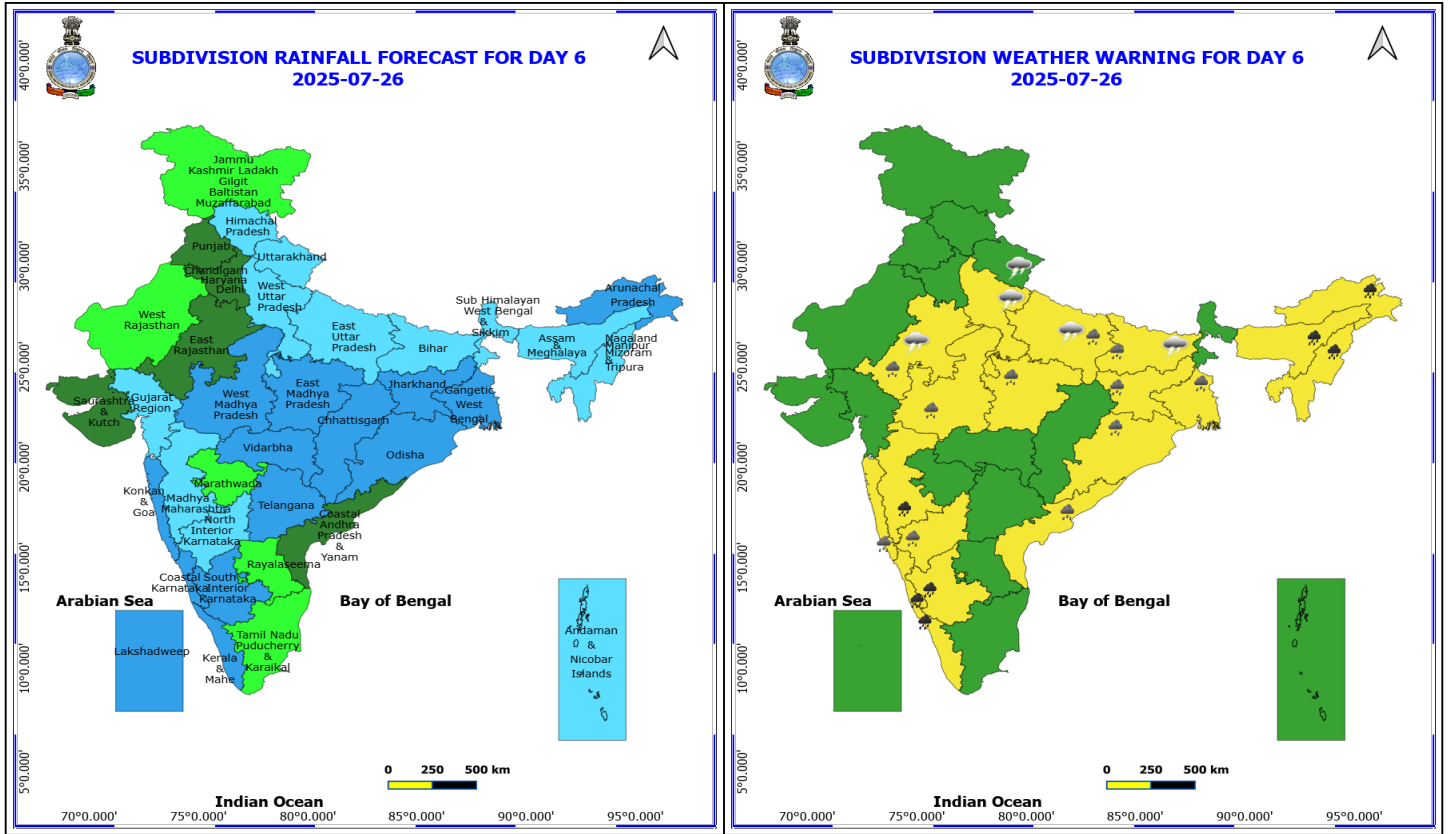
Squally wind speed reaching 45 kmph to 55 kmph gusting to 65 kmph is likely to prevail along and off Somalia, Yemen & south Oman coasts, most parts of westcentral Arabian Sea & adjoining parts of eastcentral Arabian Sea, some parts of southwest Arabian Sea.

Squally weather with wind speed 40 - 50 kmph gusting to 60 kmph likely to prevail over many parts of eastcentral Arabian Sea & adjoining, some parts of westcentral Arabian Sea, northern parts of southeast Arabian Sea and adjoining southwest Arabian Sea, along and off Gujarat & Konkan coasts, Tamil Nadu, Andhra Pradesh, Odisha & West Bengal coasts, over Lakshadweep, Maldives, Comorin areas, south Bay of Bengal, most parts of central Bay of Bengal & adjoining parts of north Bay of Bengal, over Gulf of Mannar, along and off Sri Lanka coast, over Andaman Sea.

Squally weather with wind speed 45 - 55 kmph gusting to 65 kmph likely to prevail over most parts of central and south Bay of Bengal, many parts of north Andaman Sea.

***Red color warning does not mean "Red Alert" Red color warning means "Take Action"**
Forecast and warning for any day is valid from 0830 hours IST of day till 0830 hours IST of next day
For more details kindly visit <https://mausam.imd.gov.in> or contact 011-2434-4599

(Service to the nation since 1875)



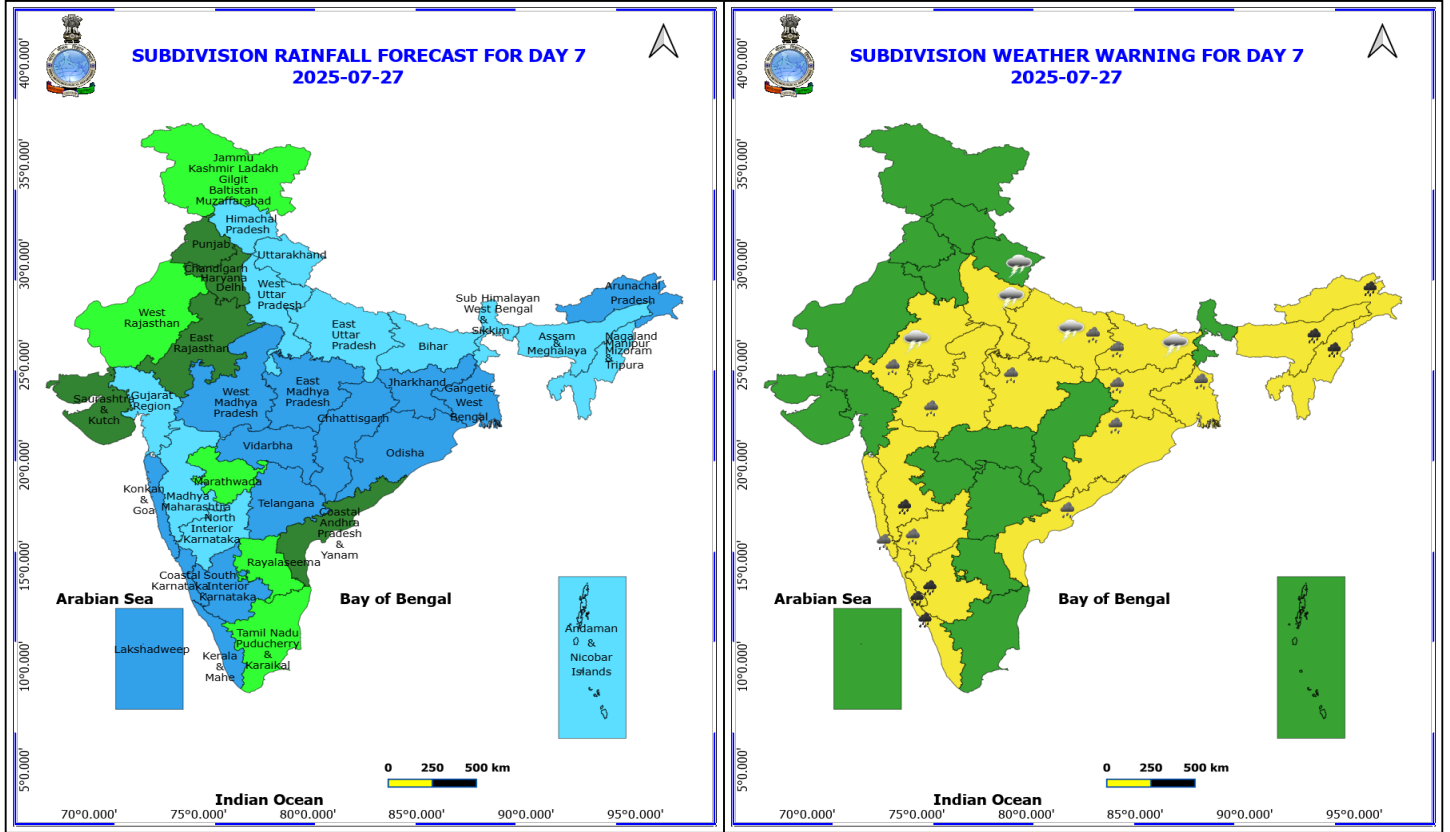
26 July (Day 6)

- ❖ **Heavy to Very Heavy Rainfall** likely at isolated places over Arunachal Pradesh, Assam & Meghalaya, Coastal Karnataka, Kerala & Mahe, Madhya Maharashtra, Nagaland, Manipur, Mizoram and Tripura and South Interior Karnataka.
- ❖ **Heavy Rainfall** likely at isolated places over Bihar, Coastal Andhra Pradesh, East Rajasthan, East Uttar Pradesh, Gangetic West Bengal, Jharkhand, Konkan & Goa, Madhya Pradesh, North Interior Karnataka and Odisha.
- ❖ **Thunderstorm accompanied with lightning & gusty winds(30-40kmph)** likely at isolated places over Bihar and Uttarakhand.
- ❖ **Thunderstorm accompanied with Lightning** likely at isolated places over East Rajasthan and Uttar Pradesh.

No Fishermen Warning

***Red color warning does not mean "Red Alert" Red color warning means "Take Action"**
Forecast and warning for any day is valid from 0830 hours IST of day till 0830 hours IST of next day
For more details kindly visit <https://mausam.imd.gov.in> or contact 011-2434-4599

(Service to the nation since 1875)



27 July (Day 7)

- ❖ **Heavy to Very Heavy Rainfall** likely at isolated places over Chhattisgarh, Coastal Karnataka, Jharkhand, Kerala & Mahe, Konkan & Goa, Madhya Maharashtra, Odisha, South Interior Karnataka, Vidarbha and West Bengal & Sikkim.
- ❖ **Heavy Rainfall** likely at isolated places over Arunachal Pradesh, Assam & Meghalaya, Bihar, Coastal Andhra Pradesh, Madhya Pradesh, Nagaland, Manipur, Mizoram and Tripura and North Interior Karnataka.
- ❖ **Thunderstorm accompanied with lightning & gusty winds(30-40kmph)** likely at isolated places over Andaman & Nicobar Islands, Bihar and Uttarakhand.
- ❖ **Thunderstorm accompanied with Lightning** likely at isolated places over East Rajasthan, Marathwada, Uttar Pradesh and West Madhya Pradesh.

No Fishermen Warning

***Red color warning does not mean "Red Alert" Red color warning means "Take Action"**
Forecast and warning for any day is valid from 0830 hours IST of day till 0830 hours IST of next day
For more details kindly visit <https://mausam.imd.gov.in> or contact 011-2434-4599

(Service to the nation since 1875)

Flash Flood Warnings

24 hours Outlook for the Flash Flood Risk (FFR) till 0530 IST of 22-07-2025:

Low to Moderate flash flood risk likely over few watersheds & neighbourhoods of following Met Sub-divisions during next 24 hours.

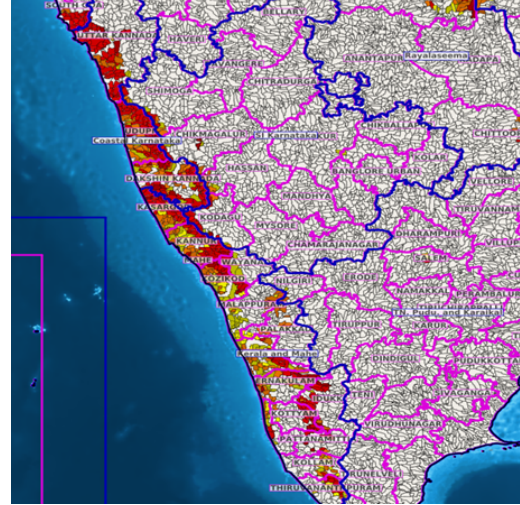
Coastal Karnataka - Dakshin Kannada, Udupi and Uttar Kannada districts.

Kerala & Mahe - Alappuzha, Ernakulam, Idukki, Kannur, Kasargod, Kollam, Kottayam, Kozikod, Mahe, Malappuram, Palakkad, Pattanamittia, Thiruvananthpuram, Trishur and Wayanad districts.

Adjoining Konkan & Goa - South Goa district.

Surface runoff/ Inundation may occur at some fully saturated soils & low-lying areas over Area of Concern (AoC) as shown in map due to expected rainfall occurrence in next 24 hours.

Product: WRF FFR | Timescale: 24-hr | Region: "REGIONAL"
Product Date: 2025-07-21 00:00 UTC | Valid Date: 2025-07-22 00:00 UTC



24 hours Outlook for the Flash Flood Risk (FFR) till 0530 IST of 22-07-2025 :

Low to Moderate flash flood risk likely over few watersheds & neighbourhoods of following Met Sub-divisions during next 24 hours.

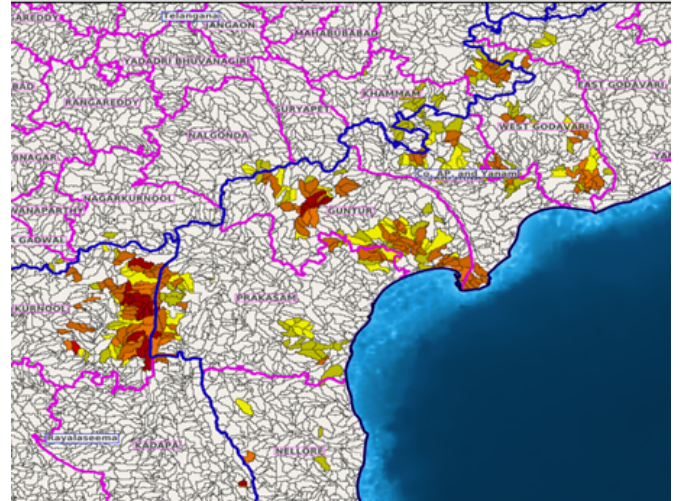
Coastal Andhra Pradesh & Yanam - East Godavari, Guntur, Krishna, Prakasam, Nellore and West Godavari districts.

Adjoining Rayalaseema - Kurnool and Kadapa districts.

Adjoining Telangana - B. Kothagudem, Khammam, Nagarkurnool and Nalgonda districts.

Surface runoff/ Inundation may occur at some fully saturated soils & low-lying areas over Area of Concern (AoC) as shown in map due to expected rainfall occurrence in next 24 hours.

Product: WRF FFR | Timescale: 24-hr | Region: "REGIONAL"
Product Date: 2025-07-21 00:00 UTC | Valid Date: 2025-07-22 00:00 UTC



24 hours Outlook for the Flash Flood Risk (FFR) till 0530 IST of 22-07-2025 :

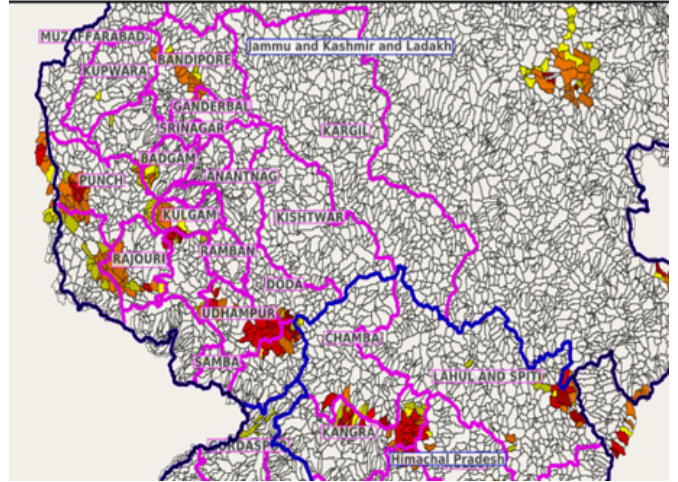
Low to Moderate flash flood risk likely over few watersheds & neighbourhoods of following Met Sub-divisions during next 24 hours.

Himachal Pradesh - Chamba, Kangra and Lahul&Spiti districts.

Jammu & Kashmir & Ladakh - Badgam, Bandipore, Doda, Kathua, Kulgam, Kupwara, Punch, Rajouri, Riasi, Samba, Udhampur, Leh And Ladakh and Mirpur districts.

Surface runoff/ Inundation may occur at some fully saturated soils & low-lying areas over Area of Concern (AoC) as shown in map due to expected rainfall occurrence in next 24 hours.

Product: GFS FFR | Timescale: 24-hr | Region: "INDIA"
Product Date: 2025-07-21 00:00 UTC | Valid Date: 2025-07-22 00:00 UTC



24 hours Outlook for the Flash Flood Risk (FFR) till 0530 IST of 22-07-2025 :

Moderate to High flash flood risk likely over few watersheds & neighbourhoods of following Met Sub-divisions during next 24 hours.

Adjoining Haryana - Chandigarh & Delhi - Chandigarh, Ambala, Panchkula and Yamunanagar districts.

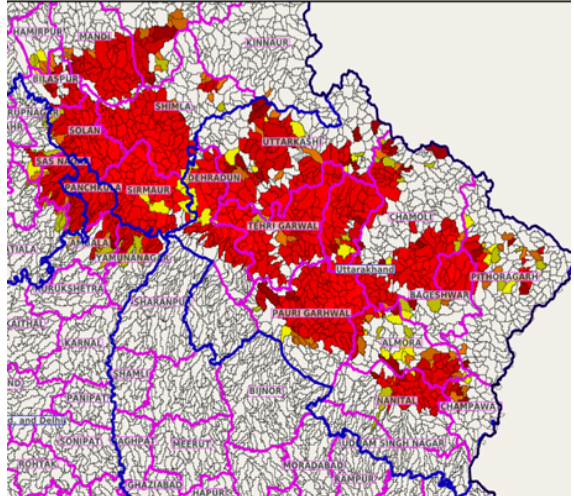
Himachal Pradesh - Bilaspur, Kinnaur, Kullu, Mandi, Shimla, Sirmaur and Solan districts.

Adjoining Punjab - Patiala, Rupnagar and Sas Nagar districts.

Uttarakhand - Almora, Bageshwar, Chamoli, Champawat, Dehradun, Nanital, Pauri Garhwal, Pithoragarh, Rudraprayag, Tehri Garwal and Uttarkashi districts.

Surface runoff/ Inundation may occur at some fully saturated soils & low-lying areas over Area of Concern (AoC) as shown in map due to expected rainfall occurrence in next 24 hours.

Product: GFS FFR | Timescale: 24-hr | Region: "INDIA"
Product Date: 2025-07-21 00:00 UTC | Valid Date: 2025-07-22 00:00 UTC



***Red color warning does not mean "Red Alert" Red color warning means "Take Action"**

Forecast and warning for any day is valid from 0830 hours IST of day till 0830 hours IST of next day

For more details kindly visit <https://mausam.imd.gov.in> or contact 011-2434-4599

(Service to the nation since 1875)



Table-1

7 Days Rainfall Forecast

S.No.	Subdivision	21- Jul	22- Jul	23- Jul	24- Jul	25- Jul	26- Jul	27- Jul
		Day 1	Day 2	Day 3	Day 4	Day 5	Day 6	Day 7
1	ANDAMAN & NICOBAR ISLANDS	FWS	FWS	FWS	FWS	FWS	FWS	FWS
2	ARUNACHAL PRADESH	FWS	FWS	SCT	SCT	FWS	WS	WS
3	ASSAM & MEHGHALAYA	FWS	SCT	SCT	SCT	FWS	FWS	FWS
4	N. M. M. & T.	FWS	SCT	SCT	FWS	SCT	FWS	FWS
5	S.H. WEST BENGAL & SIKKIM	WS	WS	FWS	FWS	FWS	FWS	FWS
6	GANGETIC WEST BENGAL	SCT	SCT	FWS	WS	WS	WS	WS
7	ODISHA	SCT	FWS	WS	WS	WS	WS	WS
8	JHARKHAND	SCT	SCT	FWS	WS	WS	WS	WS
9	BIHAR	SCT	SCT	SCT	SCT	SCT	FWS	FWS
10	EAST UTTAR PRADESH	ISOL	ISOL	ISOL	SCT	FWS	FWS	FWS
11	WEST UTTAR PRADESH	SCT	SCT	SCT	SCT	SCT	FWS	FWS
12	UTTARAKHAND	WS	WS	FWS	FWS	FWS	FWS	FWS
13	HARYANA, CHD & DELHI	WS	WS	SCT	SCT	ISOL	SCT	SCT
14	PUNJAB	WS	WS	SCT	SCT	ISOL	SCT	SCT
15	HIMACHAL PRADESH	WS	WS	WS	FWS	FWS	FWS	FWS
16	JAMMU AND KASHMIR AND LADAKH	WS	WS	WS	WS	SCT	ISOL	ISOL
17	WEST RAJASTHAN	ISOL	ISOL	ISOL	ISOL	ISOL	ISOL	ISOL
18	EAST RAJASTHAN	SCT	SCT	ISOL	ISOL	ISOL	SCT	SCT
19	WEST MADHYA PRADESH	SCT	FWS	FWS	FWS	WS	WS	WS
20	EAST MADHYA PRADESH	SCT	FWS	FWS	FWS	WS	WS	WS
21	GUJRAT REGION	SCT	SCT	SCT	SCT	SCT	FWS	FWS
22	SAURASHTRA & KUTCH	SCT	SCT	SCT	SCT	SCT	SCT	SCT
23	KONKAN & GOA	WS	WS	WS	WS	WS	WS	WS
24	MADHYA MAHARASHTRA	SCT	SCT	FWS	FWS	SCT	FWS	FWS
25	MARATHWADA	SCT	ISOL	ISOL	ISOL	ISOL	ISOL	ISOL
26	VIDARBHA	FWS	FWS	WS	WS	WS	WS	WS
27	CHATTISGARH	WS	WS	WS	WS	WS	WS	WS
28	COASTAL ANDHRA PRADESH	FWS	FWS	FWS	FWS	SCT	SCT	SCT
29	TELANGANA	WS	WS	FWS	FWS	WS	WS	WS
30	RAYALASEEMA	FWS	FWS	FWS	SCT	ISOL	ISOL	ISOL
31	TAMILNADU & PUDUCHERRY	SCT	ISOL	ISOL	ISOL	ISOL	ISOL	ISOL
32	COSTAL KARNATAKA	WS	WS	WS	WS	WS	WS	WS
33	NORTH INTERIOR KARNATAKA	FWS	FWS	FWS	FWS	FWS	FWS	FWS
34	SOUTH INTERIOR KARNATAKA	WS	WS	WS	WS	WS	WS	WS
35	KERALA	WS	WS	WS	WS	WS	WS	WS
36	LAKSHDWEEP	WS	WS	WS	WS	WS	WS	WS

Legend	Category	%Stations
WS	Widespread/Most Places	76-100
FWS	Fairly Widespread/Many Places	51-75
SCT	Scattered/ A Few Places	26-50
ISOL	Isolated Places	1-25
DRY	No Rain	0

*Red color warning does not mean "Red Alert" Red color warning means "Take Action"
Forecast and warning for any day is valid from 0830 hours IST of day till 0830 hours IST of next day
For more details kindly visit <https://mausam.imd.gov.in> or contact 011-2434-4599

(Service to the nation since 1875)

Fig. 1: Maximum Temperatures Dated 2025-07-21

Fig. 2: Departure of Maximum Temp. Dated 2025-07-21

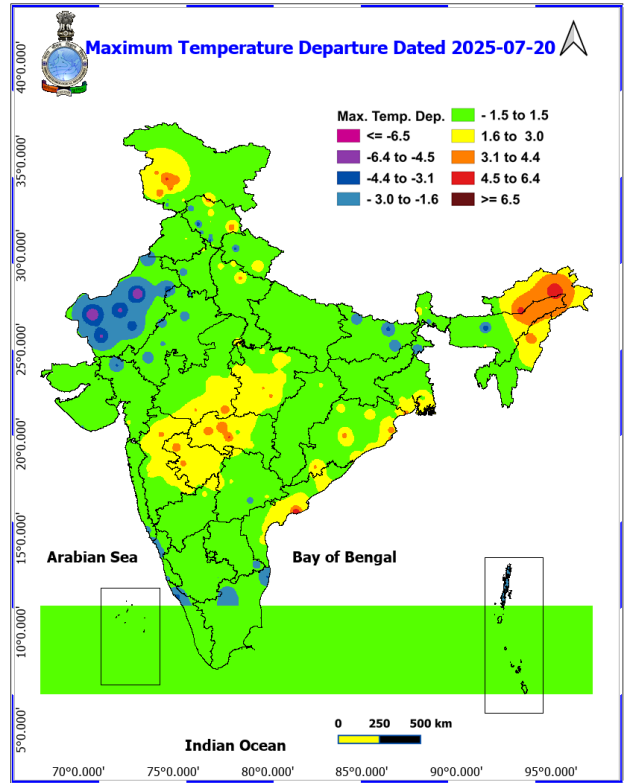
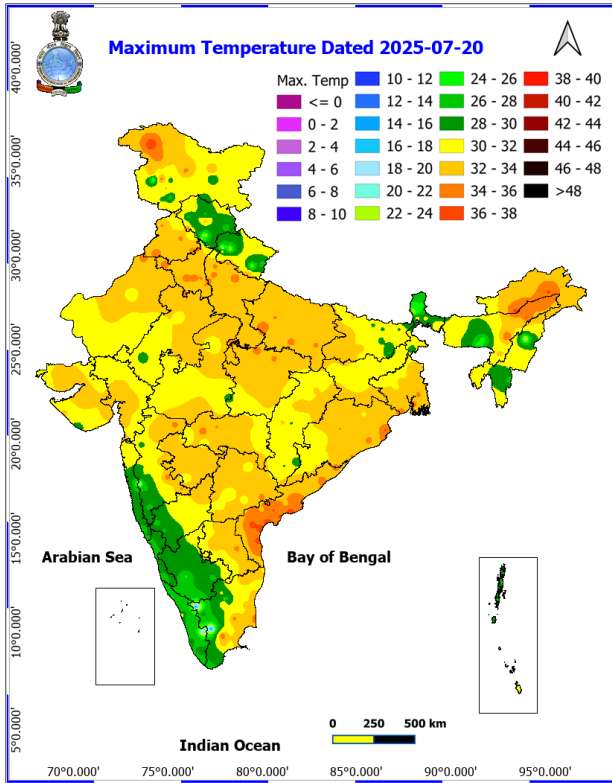
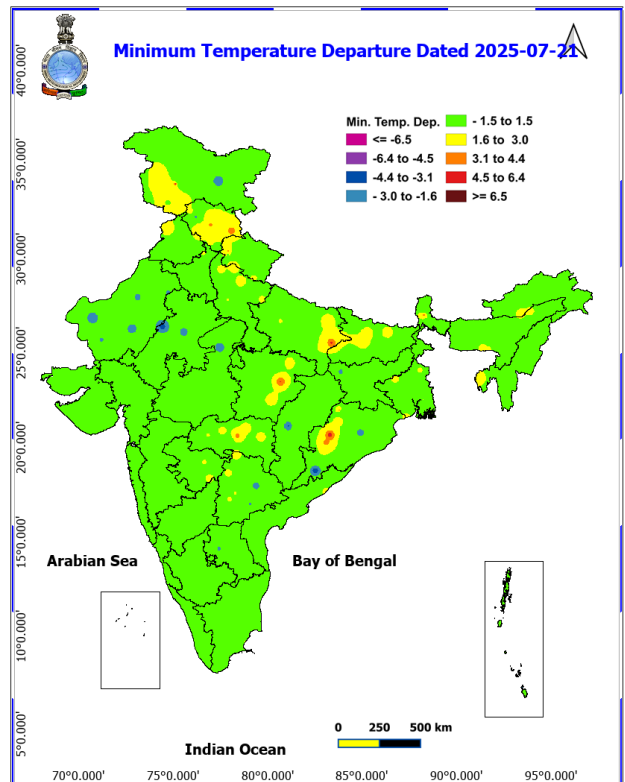
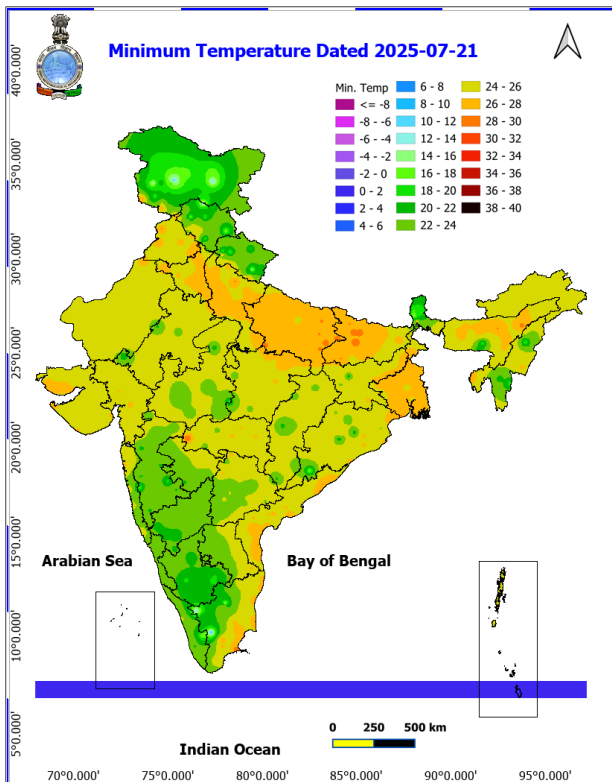


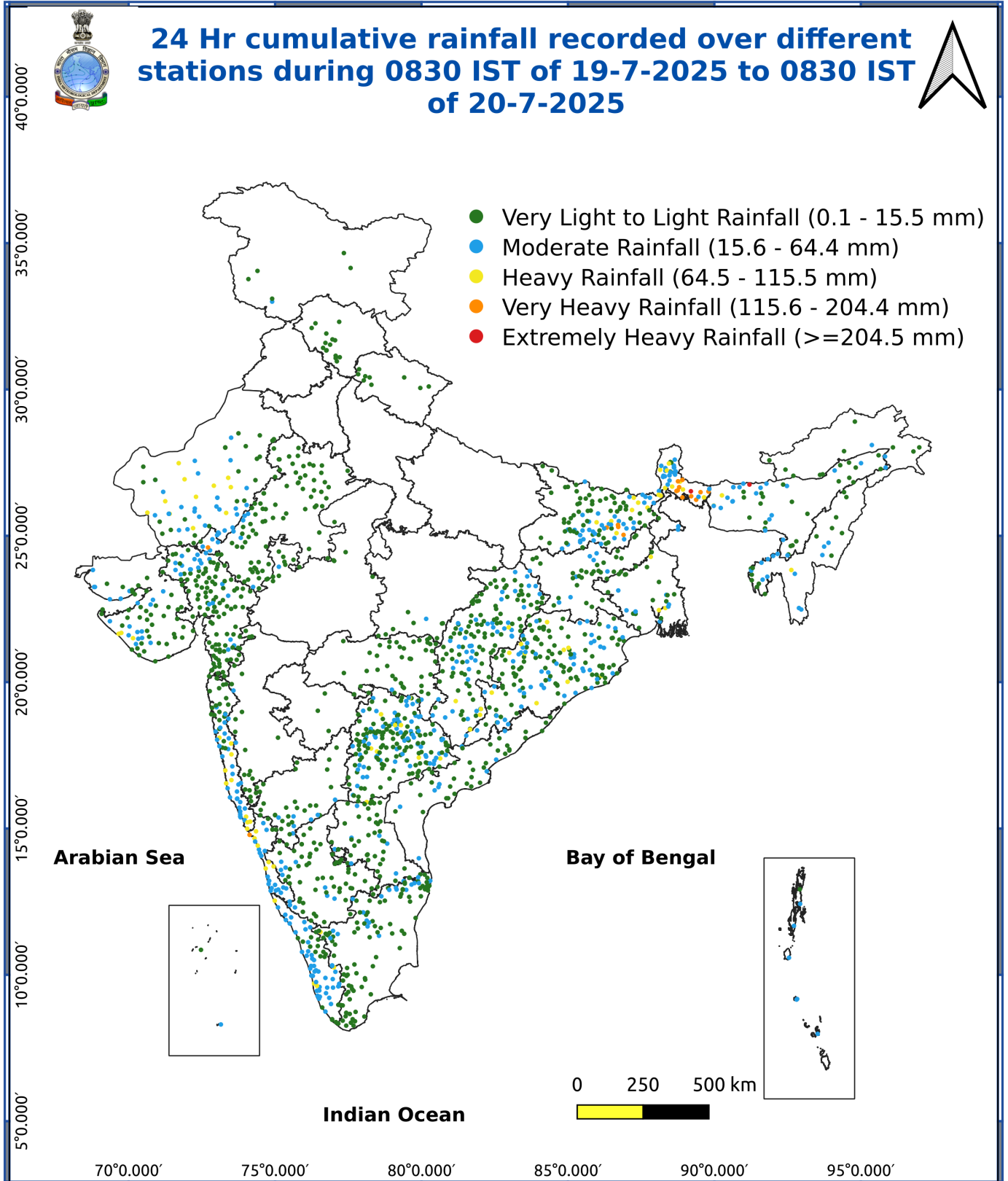
Fig. 3: Minimum Temperatures Dated 2025-07-21

Fig. 4: Departure of Minimum Temp. Dated 2025-07-21



***Red color warning does not mean "Red Alert" Red color warning means "Take Action"**
Forecast and warning for any day is valid from 0830 hours IST of day till 0830 hours IST of next day
For more details kindly visit <https://mausam.imd.gov.in> or contact 011-2434-4599

(Service to the nation since 1875)



Impact & Action Suggested

Very heavy rainfall over Jammu, Kashmir & Ladakh, Coastal Andhra Pradesh, Tamil Nadu and Rayalaseema on 21st, Uttarakhand on 21st-22nd, Himachal Pradesh during 21st-23rd, Konkan & Goa, Ghat areas of Madhya Maharashtra, Kerala & Mahe, Coastal and South Interior Karnataka during 21st-27th; Telangana during 21st-24th, Vidarbha, Chhattisgarh, Odisha, Gangetic West Bengal during 23rd-25th July.

Impact Expected

- Localized Flooding of roads, water logging in low lying areas and closure of underpasses mainly in urban areas of (Rajasthan and West Madhya Pradesh) the above region.
- Occasional reduction in visibility due to heavy rainfall.
- Disruption of traffic in major cities due to water logging in roads leading to increased travel time.
- Minor damage to kutcha roads.
- Possibilities of damage to vulnerable structure.
- Localized Landslides/Mudslides/landslips/mudslips/landsinks/mudsinks.
- Damage to horticulture and standing crops in some areas due to inundation.
- It may lead to riverine flooding in some river catchments (for riverine flooding please visit Web page of CWC).

Action Suggested

- Check for traffic congestion on your route before leaving for your destination.
- Follow any traffic advisories that are issued in this regard.
- Avoid going to areas that face the water logging problems often.
- Avoid staying in vulnerable structure.

Agromet advisories for various parts of the country

Agromet advisories for likely impact of Heavy / Heavy to Very Heavy Rainfall

In Sub-Himalayan West Bengal, maintain proper drainage in kharif rice, jute and vegetables in Terai Zone. Maintain proper drainage channels to remove excess water from the rice fields, ginger, vegetables and fruit orchards in Hill Zone.

In Bihar, drain out excess water from paddy nurseries, maize, pigeon pea, finger millet, horticulture and vegetables crops. In Odisha, drain out excess water from rice nurseries and fields of transplanted rice, maize, pulses, vegetable and plantation crops.

In Rajasthan, drain out excess water from already sown green gram, sesame, moth bean, cluster bean and pearl millet crops in Arid Western Plain Zone. Make arrangement to drain out excess water from the fields of already sown sugarcane, banana, rice, maize, cotton, soybean, and groundnut fields in Sub Humid Southern Plain and Aravali Hill

Zone. Ensure proper drainage facilities to remove excess water from fields of already sown crops of sorghum, maize, mung bean, cluster bean, cowpea, moth bean, and pearl millet in Semi Arid Eastern Plain Zone.

In Uttarakhand, maintain proper drainage channels in rice field in Bhabar and Tarai Zone. Maintain proper drainage channels in black gram in Hill Zone. Make necessary arrangements to drain out excess water from barnyard millet, finger millet, cucumber and rice fields in Sub Humid SubTropic Zone.

In Himachal Pradesh, make proper drainage channels in the standing crops like maize, finger millet and vegetable fields. Provide staking to tall and leguminous crops and cucumber vines. In Mid Hills Sub Humid Zone, undertake harvesting of matured tomato, brinjal, capsicum and fruits and keep the harvested produce at safer places.

In Arunachal Pradesh, keep the harvested soybean crop at safer places. Postpone sowing / transplanting of millet and transplanting of rice during heavy rainfall. Maintain drainage in already sown / transplanted finger millet, orchards, vegetables and transplanted rice. Cover the nursery bed of millet with plastic sheet or shed, and cover the surface of already sown seed with light layer of natural mulches like leaves.

In Meghalaya, maintain proper drainage channels around the nursery beds of rice. Ensure adequate drainage in maize, cow pea, okra, brinjal and pumpkin crop fields to prevent waterlogging. Provide support to banana plant to

***Red color warning does not mean "Red Alert" Red color warning means "Take Action"**

Forecast and warning for any day is valid from 0830 hours IST of day till 0830 hours IST of next day

For more details kindly visit <https://mausam.imd.gov.in> or contact 011-2434-4599

(Service to the nation since 1875)

prevent lodging.

In Tamilnadu, provide drainage in rice nursery and recently transplanted rice fields in Western Zone; sorghum, sugarcane, maize, rice, banana and coconut fields in Southern Zone and standing crops in High altitude Hilly Zone. Provide support to banana plants in Cauvery Delta Zone.

In Kerala, provide mechanical support to protect banana plants. Ensure proper drainage facilities in banana, coconut and rice in Central Zone; banana, coconut, ginger and vegetable fields in Southern Zone and rice nursery in High Altitude Zone. In Northern Zone, postpone sowing / nursery preparation for transplanting of rice.

Karnataka - In Coastal Zone, postpone nursery sowing of rice and provide drainage in arecanut fields and banana orchards. In Hill Zone, make arrangements to drain out excess water from rice nurseries, fields of maize, cotton, ginger and plantations of arecanut. In Southern Transition Zone, provide proper drainage in arecanut and coconut fields. Cover young seedlings in rice nursery and vegetables with coverings like plastic sheets or agro-shade nets. Postpone transplanting of rice. In Southern Dry Zone, provide staking / support to maize, tomato and banana crop. Ensure proper drainage to prevent waterlogging especially in rice, vegetables and spice crops. Cover young rice seedlings with plastic sheets or agro-shade nets and postpone transplanting.

In Konkan, make arrangement to drain out excess water from rice and finger millet nurseries, groundnut, vegetables and orchards. In ghat areas of Madhya Maharashtra drain out excess water from rice and finger millet nurseries.

In Chhattisgarh, make arrangements for drainage of excess water from fields of rice, maize, pigeon pea, minor millets and vegetables. Provide mechanical support to tall/weak crops with stakes or bamboo to prevent lodging or breakage.

Livestock / Fishery

Keep the animals inside the shed during heavy rainfall and provide them balanced feed.

Store feed and fodder in a safe place to prevent spoilage.

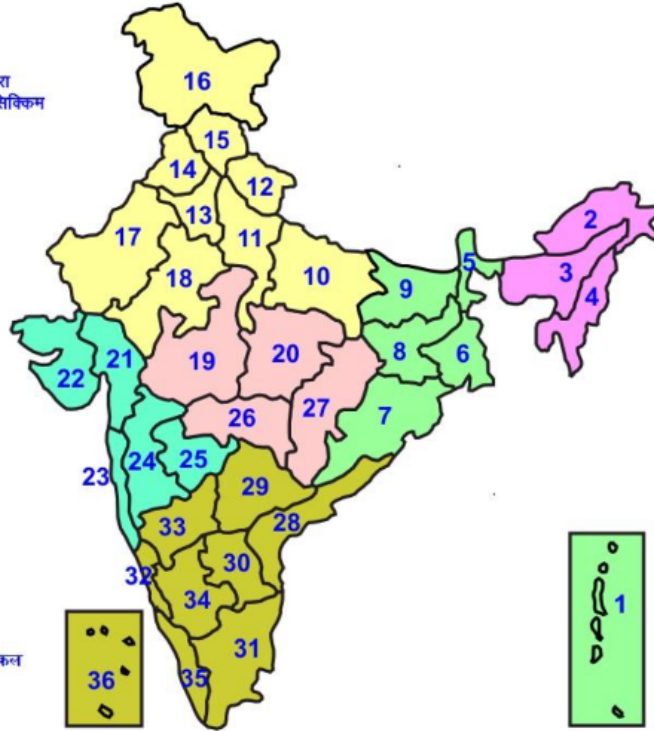
Construct an outlet with proper netting around the ponds to drain out excess water, thereby preventing fish from escaping in case of overflow.

Agromet advisories for likely impact of Thunderstorm / Gusty Winds / Squally Winds

Provide mechanical support to horticultural crops and staking or support to vegetables and young fruit plants / fruit bearing plants to avoid lodging due to strong winds.

LEGENDS

- 1 अंडमान और निकोबार द्वीप समुह
- 2 अरुणाचल प्रदेश
- 3 असम और मेघालय
- 4 नागालैंड मनीपुर मीजोरम और त्रिपुरा
- 5 उप हिमालय पश्चिम बंगाल एवं सिक्किम
- 6 पश्चिम बंगाल
- 7 ओडिसा
- 8 झारखंड
- 9 बिहार
- 10 पूर्वी उत्तर प्रदेश
- 11 पश्चिम उत्तर प्रदेश
- 12 उत्तराखंड
- 13 हरियाणा चंडिगढ़ एवं दिल्ली
- 14 पंजाब
- 15 हिमाचल प्रदेश
- 16 जम्मू एवं कश्मीर एवं लद्दाख
- 17 पश्चिम राजस्थान
- 18 पूर्वी राजस्थान
- 19 पश्चिम मध्य प्रदेश
- 20 पूर्वी मध्य प्रदेश
- 21 गुजरात क्षेत्र
- 22 सौराष्ट्र एवं कच्छ
- 23 कोंकण एवं गोवा
- 24 मध्य महाराष्ट्र
- 25 मराठावाडा
- 26 विदर्भ
- 27 छत्तीसगढ़
- 28 तटीय आंध्र प्रदेश एवं यनम
- 29 तेलंगाना
- 30 रायलसीमा
- 31 तमिलनाडु, पुदुचेरी एवं कराईकल
- 32 तटिय कर्नाटक
- 33 आंतरिक उत्तरी कर्नाटक
- 34 आंतरिक दक्षिणी कर्नाटक
- 35 केरल एवं माहे
- 36 लक्षद्वीप



1. Andaman & Nicobar Islands
2. Arunachal Pradesh
3. Assam & Meghalaya
4. Nagaland, Manipur, Mizoram & Tripura
5. Sub-Himalayan West Bengal & Sikkim
6. Gangetic West Bengal
7. Orissa
8. Jharkhand
9. Bihar
10. East Uttar Pradesh
11. West Uttar Pradesh
12. Uttarakhand
13. Haryana, Chd & Delhi
14. Punjab
15. Himachal Pradesh
16. Jammu & Kashmir and Ladakh
17. West Rajasthan
18. East Rajasthan
19. West Madhya Pradesh
20. East Madhya Pradesh
21. Gujarat
22. Saurashtra
23. Konkan & Goa
24. Madhya Maharashtra
25. Marathawada
26. Vidharbha
27. Chhattisgarh
28. Coastal Andhra Pradesh & Yanam
29. Telangana
30. Rayalaseema
31. Tamilnadu, Puducherry & Karaikal
32. Coastal Karnataka
33. North Interior Karnataka
34. South Interior Karnataka
35. Kerala & Mahe
36. Lakshadweep

SPATIAL DISTRIBUTION (% of Stations reporting)

% Stations	Category	% Stations	Category
76-100	Widespread (WS/ Most Places)	26-50	Scattered (SCT/ A Few Places)
51-75	Fairly Widespread (FWS/ Many Places)	1-25	Isolated (ISOL)

Subdivision Colour

- NO WARNING
- WATCH (BE UPDATED)
- ALERT (BE PREPARED TO TAKE ACTION)
- WARNING (TAKE ACTION)

Probabilistic Forecast

Terms	Probability of Occurrence (%)
Unlikely	< 25
Likely	25 - 50
Very Likely	50 - 75
Most Likely	> 75

- | | | | |
|--------------------------|-----------------|----------------------|--------------------|
| Heavy Rain | Very Heavy Rain | Extremely Heavy Rain | Heavy Snow |
| Thunderstorm & Lightning | Hailstorm | Dust Storm | Dust Raising Winds |
| Strong surface winds | Heat Wave | Hot Day | Warm Night |
| Cold Wave | Cold Day | Ground Frost | Fog |
| Hot & Humid | | | |

*Red color warning does not mean "Red Alert" Red color warning means "Take Action"

Forecast and warning for any day is valid from 0830 hours IST of day till 0830 hours IST of next day

For more details kindly visit <https://mausam.imd.gov.in> or contact 011-2434-4599

(Service to the nation since 1875)

LEGENDS

WARNING

WARNING (TAKE ACTION)
ALERT (BE PREPARED)
WATCH (BE UPDATED)
NO WARNING (NO ACTION)

Probabilistic Forecast

Terms	Probability of Occurrence (%)
Unlikely	< 25
Likely	25 - 50
Very Likely	50 - 75
Most Likely	> 75



Heavy: 64.5 to 115.5 mm/cm *
Very Heavy: 115.6 to 204.4 mm/cm*
Extremely Heavy: > 204.4 mm/cm *



When maximum temperature of a station reaches $\geq 40^{\circ}\text{C}$ for plains and $\geq 30^{\circ}\text{C}$ for hilly regions
(a) Based on Departure from normal

Heat Wave: Maximum Temperature Departure from normal 4.5°C to 6.4°C .
Severe Heat Wave: Maximum Temperature Departure from normal $\geq 6.5^{\circ}\text{C}$

(b). Based on Actual maximum temperature

Heat Wave: When actual maximum temperature $\geq 45^{\circ}\text{C}$.
Severe Heat Wave: When actual maximum temperature $\geq 47^{\circ}\text{C}$

(c). Criteria for heat wave for coastal stations

When maximum temperature departure is $> 4.5^{\circ}\text{C}$ from normal. Heat Wave may be described provided maximum temperature $\geq 37^{\circ}\text{C}$



When maximum temperature remains 40°C

Warm Night: When minimum temperature departure 4.5°C to 6.4°C .
Severe Warm Night: When minimum temperature departure $> 6.4^{\circ}\text{C}$.



When minimum temperature of a station $\leq 10^{\circ}\text{C}$ for plains and $\leq 0^{\circ}\text{C}$ for hilly regions.

(a). Based on departure

Cold Wave: Minimum Temperature Departure from normal -4.5°C to -6.4°C .
Severe Cold Wave: Minimum Temperature Departure from normal $\leq -6.5^{\circ}\text{C}$

(b) Based on actual Minimum Temperature (for Plains only)

Cold Wave : When Minimum Temperature is $\leq 4.0^{\circ}\text{C}$
Severe Cold Wave: When Minimum Temperature is $\leq 2.0^{\circ}\text{C}$

(c) For Coastal Stations

When Minimum Temperature departure is $\leq -4.5^{\circ}\text{C}$ & actual Minimum Temperature is $\leq 15^{\circ}\text{C}$



When minimum temperature of a station $\leq 10^{\circ}\text{C}$ for plains and $\leq 0^{\circ}\text{C}$ for hilly regions
Based on departure

Cold Day: Maximum Temperature Departure from normal -4.5°C to -6.4°C .
Severe Cold Day: Maximum Temperature Departure from normal $\leq -6.5^{\circ}\text{C}$



Phenomenon of small droplets suspended in air and the horizontal visibility $< 1\text{km}$

Moderate Fog: When the visibility between 500-200 metres
Dense Fog: when the visibility between 50- 200 metres
Very Dense Fog: when the visibility < 50 metres



Sudden electrical discharges manifested by a flash of light (Lightning) and a sharp rumbling sound (thunder)



An ensemble of particles of dust or sand energetically lifted to great heights by a strong and turbulent wind.



Ice deposits on ground

Air temperature $\leq 4^{\circ}\text{C}$ (over Plains)



A strong wind that rises suddenly, lasts for atleast 1 minute.

Moderate: Wind speed 52-61 kmph
Severe: Wind speed 62-87 kmph
Very Severe: Wind speed > 87 kmph



Effect of various waves in the sea over specific area

Rough to very rough: Wind speed 41-62 kmph (22-33 knots) & Wave height 2.5-6 metre
High to very high: Wind speed 63-117 kmph (34-63 knots) & Wave height 6-14 metre
Phenomenal: Wind speed > 117 kmph (> 63 knots) & Wave height > 14 metre



Cyclonic Storm: Wind speed 62-87 kmph (34-47 knots)
Severe Cyclonic Storm: Wind speed 88-117 kmph (48-63 knots)
Very Severe Cyclonic Storm: Wind speed 118-165 kmph (64 - 89 knots)
Extremely Severe Cyclonic Storm: Wind speed 166-220 kmph (90 -119 knots)
Super Cyclone Storm: Wind speed > 220 kmph (> 119 knots)

*Red color warning does not mean "Red Alert" Red color warning means "Take Action"

Forecast and warning for any day is valid from 0830 hours IST of day till 0830 hours IST of next day

For more details kindly visit <https://mausam.imd.gov.in> or contact 011-2434-4599

(Service to the nation since 1875)