

## ALL INDIA WEATHER SUMMARY AND FORECAST BULLETIN

### Significant Weather Features

#### South Peninsular India:

- Light/moderate rainfall at many/some places accompanied with isolated **thunderstorm, lightning & gusty winds speed reaching 40-50 kmph** over Tamil Nadu, Puducherry & Karaikal on 16<sup>th</sup> and Telangana during 16<sup>th</sup>-19<sup>th</sup> June.
- Isolated **heavy rainfall** likely over Tamil Nadu, Puducherry & Karaikal on 17<sup>th</sup>, Kerala & Mahe on 18<sup>th</sup> & 19<sup>th</sup>, Coastal Andhra Pradesh & Yanam on 16<sup>th</sup>, Karnataka during 16<sup>th</sup>-18<sup>th</sup> with
- **very heavy rainfall** likely at isolated places over Tamil Nadu, Puducherry & Karaikal on 16<sup>th</sup>. Kerala & Mahe, Karnataka during 16<sup>th</sup>-17<sup>th</sup> with **Extremely heavy rainfall (>20 cm/24 hours) likely at isolated places over Coastal Karnataka on 16<sup>th</sup> June.**
- **Strong surface winds** (speed reaching 40-60 kmph) very likely over Kerala & Mahe, Lakshadweep during 16<sup>th</sup>-17<sup>th</sup>, Rayalaseema and Coastal Andhra Pradesh & Yanam during 16<sup>th</sup>-19<sup>th</sup> June.

#### West India:

- Light/moderate rainfall at most/many places accompanied with **thunderstorm, lightning & gusty winds speed reaching 30-40 kmph** likely over Gujarat State during 16<sup>th</sup> -17<sup>th</sup> June.
- Isolated **heavy rainfall** likely over Konkan & Goa, Madhya Maharashtra, Saurashtra & Kutch during 18<sup>th</sup>-21<sup>st</sup>; Gujarat Region on 18<sup>th</sup> & 19<sup>th</sup> June with **very heavy rainfall** at isolated places over Konkan & Goa during 16<sup>th</sup>-18<sup>th</sup>, Madhya Maharashtra, Saurashtra & Kutch during 16<sup>th</sup>-17<sup>th</sup>; Gujarat Region on 16<sup>th</sup> June with **Extremely heavy rainfall (>20 cm/24 hours) likely at isolated places over Konkan & Goa on 16<sup>th</sup> June.**

#### East & Central India:

- Light/moderate rainfall at most/many places accompanied with **thunderstorm, lightning & gusty winds speed reaching 40-50 kmph** likely over Madhya Pradesh, Vidarbha, Chhattisgarh during 16<sup>th</sup>-19<sup>th</sup>; Gangetic West Bengal, Bihar, Jharkhand, Odisha during 16<sup>th</sup>-20<sup>th</sup> during June with **Thundersquall (wind speed reaching 50-60 kmph gusting to 70 kmph)** very likely at isolated places over West Madhya Pradesh on 16<sup>th</sup>, East Madhya Pradesh during 16<sup>th</sup>-19<sup>th</sup>, Chhattisgarh, Bihar on 16<sup>th</sup> June.
- Isolated **heavy rainfall** also likely over West Madhya Pradesh on 20<sup>th</sup> & 21<sup>st</sup>, East Madhya Pradesh, Chhattisgarh, Vidarbha, Sub-Himalayan West Bengal & Sikkim during 16<sup>th</sup>-20<sup>th</sup>, Gangetic West Bengal, Bihar, during 16<sup>th</sup>-21<sup>st</sup> and Jharkhand, Odisha during 16<sup>th</sup>-20<sup>th</sup> June with **very heavy rainfall** over Chhattisgarh, Gangetic West Bengal on 17<sup>th</sup>, Jharkhand, Odisha on 17<sup>th</sup> & 18<sup>th</sup> and over Bihar on 18<sup>th</sup> & 19<sup>th</sup>, East Madhya Pradesh on 19<sup>th</sup> & 20<sup>th</sup>, June.

#### Northwest India:

- Light/moderate rainfall at some/isolated places accompanied with **thunderstorm, lightning & gusty winds speed reaching 40-50 kmph** likely over Northwest India during 16<sup>th</sup>-21<sup>st</sup> June with **Thundersquall (wind speed reaching 50-60 kmph gusting to 70 kmph)** over Rajasthan during 16<sup>th</sup>-17<sup>th</sup> June.
- Isolated **heavy rainfall** likely over Himachal Pradesh on 20<sup>th</sup> & 21<sup>st</sup>, Haryana on 21<sup>st</sup>, West Uttar Pradesh during 18<sup>th</sup>-21<sup>st</sup>, East Uttar Pradesh during 18<sup>th</sup>-21<sup>st</sup>, West Rajasthan on 16<sup>th</sup>, East Rajasthan on 16<sup>th</sup>, 20<sup>th</sup> & 21<sup>st</sup> June with **very heavy rainfall** on Uttarakhand during 16<sup>th</sup>-21<sup>st</sup> June.

#### Northeast India:

- Light/moderate rainfall at many/most places accompanied with **thunderstorm, lightning & gusty winds speed reaching 30-50 kmph** likely to continue over Northeast India during next 7 days with **isolated heavy rainfall** over Arunachal Pradesh, Assam & Meghalaya on 16<sup>th</sup> June with **very heavy rainfall** over Arunachal Pradesh during 17<sup>th</sup>-21<sup>st</sup>, Assam & Meghalaya during 16<sup>th</sup>-21<sup>st</sup>, Nagaland, Manipur, Mizoram & Tripura during next 7 days.

**\*Red color warning does not mean "Red Alert" Red color warning means "Take Action"**

Forecast and warning for any day is valid from 0830 hours IST of day till 0830 hours IST of next day

For more details kindly visit <https://mausam.imd.gov.in> or contact 011-2434-4599

(Service to the nation since 1875)



**Maximum Temperature Forecast:**

- Maximum Temperatures likely to fall by 3-5°C over Northwest India during next 24 hours and no significant change thereafter.
- No significant change in maximum temperatures likely over Central India during next 24 hours and gradual fall by 2-4°C thereafter during subsequent 5 days.
- Maximum Temperatures likely to fall by 3-4°C over Northwest India during next 3 days and no significant change thereafter.
- No significant change in maximum temperatures likely over rest parts of the country.

### Main Weather Observations:

❖ **Rainfall distribution** (from 0830 hours IST of yesterday to 0530 hours IST of today): **at most places** over Coastal Karnataka, Uttarakhand, Gujarat Region, Assam & Meghalaya, Gangetic West Bengal, Odisha, Marathwada, Himachal Pradesh, West Rajasthan, East Madhya Pradesh, Andaman & Nicobar Islands, South Interior Karnataka, West Uttar Pradesh, North Interior Karnataka, Chhattisgarh, Coastal Andhra Pradesh & Yanam, Madhya Maharashtra, Lakshadweep, Jammu & Kashmir and Ladakh, Konkan & Goa and Kerala & Mahe; **at many places** over Bihar, Nagaland, Manipur, Mizoram & Tripura, Jharkhand, Punjab, Arunachal Pradesh, Saurashtra & Kutch, Vidarbha, Telangana, Tamilnadu Puducherry & Karaikal, Rayalaseema, East Uttar Pradesh, East Rajasthan and West Madhya Pradesh; **Dry** over rest of the country.

❖ **Significant rainfall recorded(in cm)** (from 0830 hours IST of yesterday to 0530 hours IST of today): **Coastal karnataka:** Mangalore (bajpe) AP (dist Dakshina Kannada) 19; **West uttar pradesh:** Bareilly (dist Bareilly) 14; **Kerala & mahe:** Cannanore (kannur) (dist Kannur) 12, Kochi (cochin) (dist Ernakulam), Kozhikode (calicut) (dist Kozhikode) 7 Each, Thiruvananthapuram-city (dist Thiruvananthapuram) 4; **Konkan & goa :** Mumbai (colaba) (dist ) 9, Mumbai (santacruz) AP (dist ) 7, Panjim (dist North Goa) 6, Ratnagiri (dist Ratnagiri) 5; **Assam & Meghalaya:** Cherrapunji (dist East Khasi Hills) 6, Guwahati (dist Kamrup Metropolitan), Silchar (dist Cachar) 4 Each; **Uttarakhand:** Dehra Dun-mokampur (dist Dehradun) 6; **East rajasthan:** Kota AP (dist Kota) 5; **Jammu & kashmir and ladakh:** Jammu (dist Jammu) 5; **Lakshadweep :** Minicoy (dist Lakshadweep) 5; **East uttar pradesh:** Gorakhpur (dist Gorakhpur) 5; **Madhya maharashtra :** Nashik (dist Nashik) 4; **Gujarat region:** Surat (dist Surat) 4.

❖ **Heavy Rainfall observed** (from 0830 hours IST of yesterday to 0530 hours IST of today): **Heavy to very heavy rain** at isolated places over Kerala & Mahe, Coastal Karnataka, West Uttar Pradesh; **Heavy rain** at isolated places over Kerala & Mahe, Uttarakhand, Konkan & Goa.

❖ Yesterday, Heat wave conditions prevailed over isolated places over East Uttar Pradesh.

❖ **Minimum Temperature Departures (as on 15-06-2025): markedly above normal(> 5.1°C)** at isolated places over Assam & Meghalaya, Sub Himalayan West Bengal & Sikkim, Odisha, Bihar, West Uttar Pradesh, Punjab, Himachal Pradesh, West Rajasthan, East Madhya Pradesh and Saurashtra & Kutch. **appreciably above normal(3.1°C to 5.0°C)** at few places over Jharkhand, East Uttar Pradesh and Haryana-Chandigarh-Delhi; at isolated places over Gangetic West Bengal, West Madhya Pradesh, Gujarat Region, Madhya Maharashtra and Vidarbha. **above normal(1.6°C to 3.0°C)** at many places over Jammu-KashmirLadakh-Gilgit-Baltistan-Muzaffarabad; at few places over Andaman & Nicobar Islands, Arunachal Pradesh, Nagaland, Manipur, Mizoram & Tripura, Uttarakhand and Rayalaseema; at isolated places over Chhattisgarh, Coastal Andhra Pradesh & Yanam and Tamil Nadu, Puducherry & Karaikal. **near normal(-1.5°C to 1.5°C)** at many places over Kerala & Mahe; at most places over East Rajasthan, Konkan & Goa, Marathwada, Telangana, Coastal Karnataka, North Interior Karnataka and South Interior Karnataka; at few places over Lakshadweep. **The lowest minimum temperature** of 20.0°C was reported at NEW DELHI (SAFDARJUNG) (DELHI UT), KHANDWA (MADHYA PRADESH), and DHARWAD (KARNATAKA) over the Plains of India.

❖ **Maximum Temperature Departures (as on 15-06-2025): markedly above normal(> 5.1°C)** at most places over Arunachal Pradesh; at isolated places over Assam & Meghalaya, East Uttar Pradesh and Himachal Pradesh. **appreciably above normal(3.1°C to 5.0°C)** at isolated places over Sub Himalayan West Bengal & Sikkim, Odisha, Bihar, Jammu-KashmirLadakh-Gilgit-Baltistan-Muzaffarabad, East Madhya Pradesh, Vidarbha and Chhattisgarh. **above normal(1.6°C to 3.0°C)** at few places over Jharkhand and Gujarat Region; at isolated places over Nagaland, Manipur, Mizoram & Tripura, Gangetic West Bengal, Punjab, West Madhya Pradesh, Saurashtra & Kutch, Telangana and Tamil Nadu, Puducherry & Karaikal. **near normal(-1.5°C to 1.5°C)** at many places over Andaman & Nicobar Islands, West Uttar Pradesh, West Rajasthan, East Rajasthan, Konkan & Goa, Madhya Maharashtra, Marathwada and Coastal Andhra Pradesh & Yanam; at few places over Haryana-Chandigarh-Delhi and Lakshadweep; at isolated places over Uttarakhand, Rayalaseema, South Interior Karnataka and Kerala & Mahe. **The highest maximum temperature** of 43.2°C was reported at VARANASI (UTTAR PRADESH).

**\*Red color warning does not mean "Red Alert" Red color warning means "Take Action"**

**Forecast and warning for any day is valid from 0830 hours IST of day till 0830 hours IST of next day**

**For more details kindly visit <https://mausam.imd.gov.in> or contact 011-2434-4599**

**(Service to the nation since 1875)**

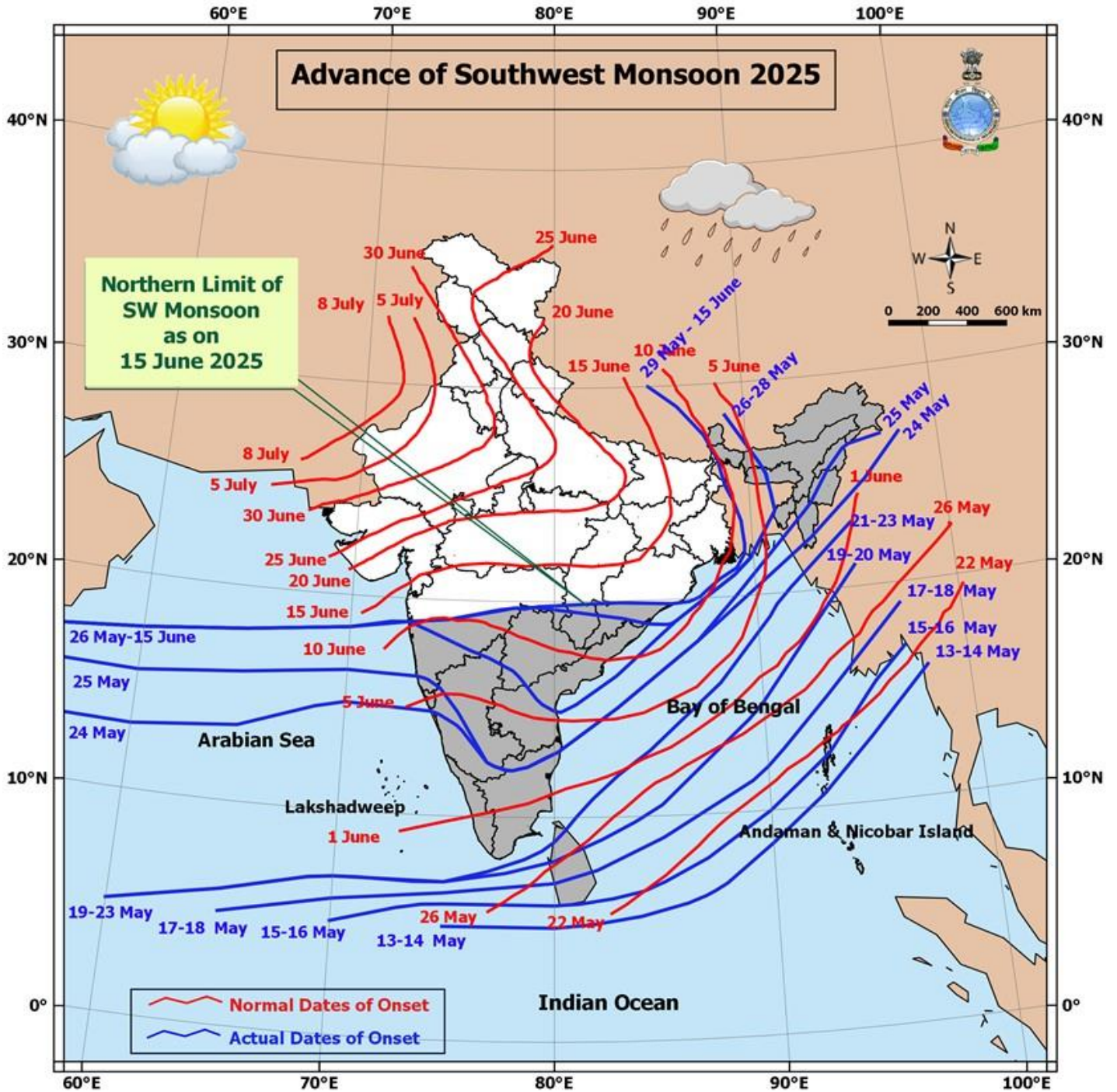


### Meteorological Analysis (Based on 0530 hours IST)

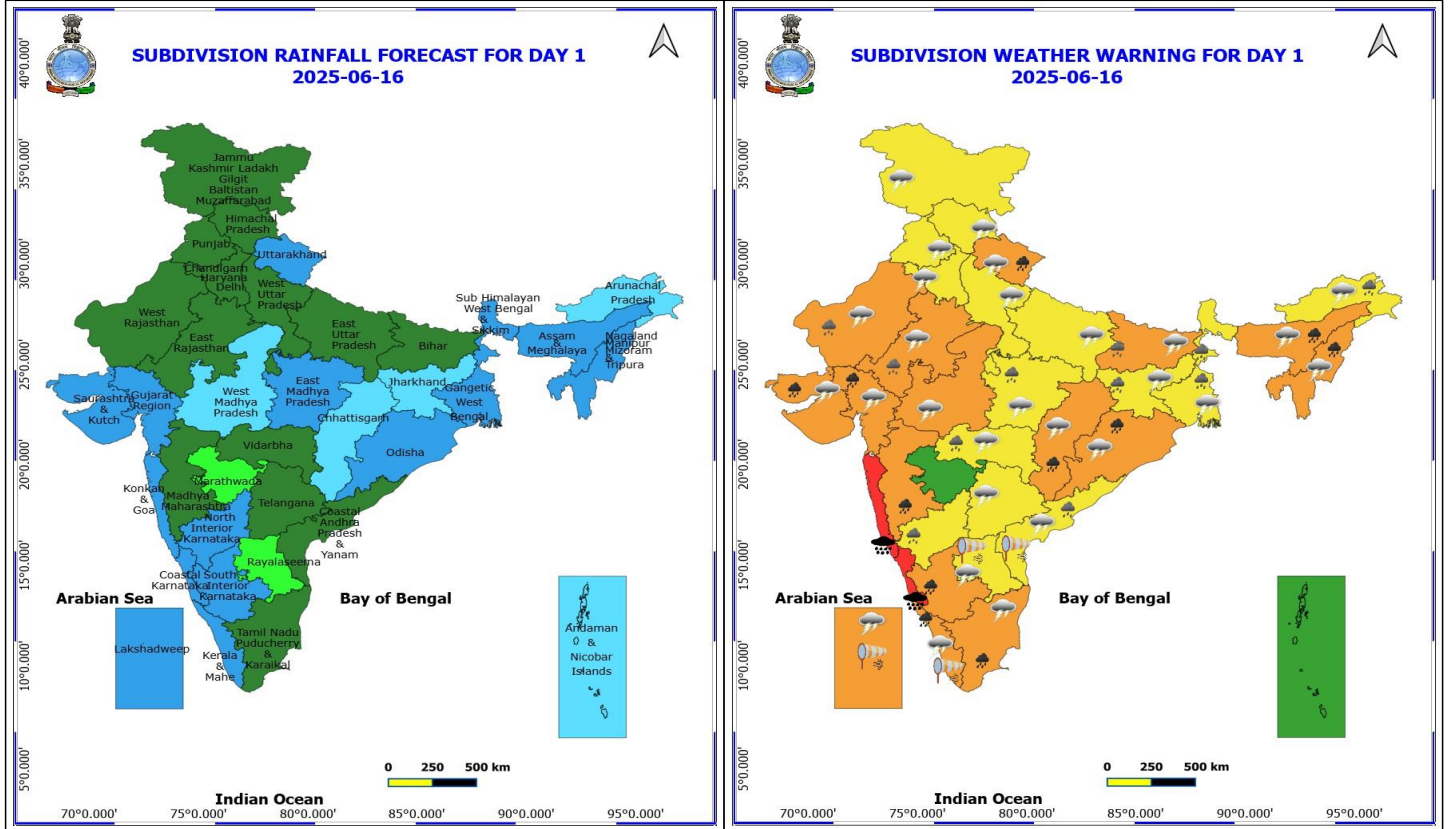
- ❖ The Northern Limit of Monsoon continues to pass through 17.0°N/55°E, 17.5°N/60°E, 18°N/65°E, 18.5°N/70°E, Mumbai, Ahilyanagar, Adilabad, Bhawanipatna, Puri, Sandhead Island, 23.5°N/89.5°E, Balurghat, 30°N/85°E.
- ❖ Conditions are favourable for further advancement of Southwest monsoon over some parts of Gujarat, some more parts of Vidarbha, Chhattisgarh & Odisha during next 24 hours; over some parts of West Bengal, Jharkhand, Bihar and East Uttar Pradesh during subsequent 3 days.
- ❖ The **cyclonic circulation** over Northwest Bay of Bengal & neighbourhood between 3.1 & 7.6 km above mean sea level tilting Southwestwards with height persists.
- ❖ The **upper air cyclonic circulation** over central parts of Konkan and adjoining eastcentral Arabian sea & extends upto 7.6 km above mean sea level tilting southwestwards with height persists.
- ❖ The **trough** from East Madhya Pradesh to Bangladesh across Chhattisgarh, Jharkhand & Gangetic West Bengal extending upto 1.5 km above mean sea level tilting southwestwards with height persists.
- ❖ The **upper air cyclonic circulation** over North Rajasthan & neighbourhood extending upto 1.5 km above mean sea level persists.
- ❖ The **trough** from the above upper air cyclonic circulation to West Madhya Pradesh at 1.5 km above mean sea level persists.
- ❖ The **upper air cyclonic circulation** over south Himachal Pradesh & adjoining north Uttarakhand persists and now seen between 1.5 & 3.1 km above mean sea level.
- ❖ The **Western Disturbance** as a trough in middle tropospheric westerlies with its axis at 5.8 km above mean sea level roughly along Long. 70°E to the north of Lat. 26°N persists.
- ❖ The **cyclonic circulation** over Central Assam & neighbourhood at 4.5 km above mean sea level has become less marked.
- ❖ The **upper air cyclonic circulation** over East Uttar Pradesh & neighbourhood at 0.9 km above mean sea level has become less marked.
- ❖
- ❖

### Weather Outlook for subsequent 3 days

Fairly widespread to widespread rainfall activity likely over West, Northwest, East, Northeast India, Chhattisgarh, Madhya Pradesh, Coastal Karnataka, North Coastal Andhra Pradesh and Lakshadweep; Isolated to scattered rainfall likely over Remaining parts of the country.



\*Red color warning does not mean "Red Alert" Red color warning means "Take Action"  
Forecast and warning for any day is valid from 0830 hours IST of day till 0830 hours IST of next day  
For more details kindly visit <https://mausam.imd.gov.in> or contact 011-2434-4599  
(Service to the nation since 1875)



## 16 June (Day 1)

- ❖ **Heavy to Very Heavy Rainfall with isolated Extremely Heavy Rainfall** very likely at isolated places over Coastal Karnataka and Konkan & Goa.
- ❖ **Heavy to Very Heavy Rainfall** very likely at isolated places over Assam & Meghalaya, Chhattisgarh, Gujarat State, Kerala & Mahe, Madhya Maharashtra, Nagaland, Manipur, Mizoram and Tripura, Odisha, South Interior Karnataka, Tamil Nadu Puducherry & Karaikal and Uttarakhand.
- ❖ **Heavy Rainfall** very likely at isolated places over Arunachal Pradesh, Bihar, Coastal Andhra Pradesh, East Madhya Pradesh, Jharkhand, North Interior Karnataka, Rajasthan, Vidarbha and West Bengal & Sikkim.
- ❖ **Thundersquall with wind speed reaching(50-60kmph)** very likely at isolated places over Bihar, Chhattisgarh, Kerala & Mahe, Lakshadweep, Madhya Pradesh and Rajasthan.
- ❖ **Thunderstorm accompanied with lightning & gusty winds(40-50kmph)** very likely at isolated places over Assam & Meghalaya, Gujarat State, Haryana, Chandigarh & Delhi, Himachal Pradesh, Jammu-Kashmir-Ladakh-Gilgit-Baltistan-Muzaffarabad, Jharkhand, Punjab, Tamil Nadu Puducherry & Karaikal, Uttar Pradesh, Uttarakhand and Vidarbha.
- ❖ **Thunderstorm accompanied with lightning & gusty winds(30-40kmph)** very likely at isolated places over Gangetic West Bengal, Nagaland, Manipur, Mizoram and Tripura, Odisha and Telangana.
- ❖ **Thunderstorm accompanied with Lightning** very likely at isolated places over Andhra Pradesh and Arunachal Pradesh.
- ❖ **Strong Surface Winds** very likely at isolated places over Andhra Pradesh, Kerala & Mahe and Lakshadweep.

**\*Red color warning does not mean "Red Alert" Red color warning means "Take Action"**

Forecast and warning for any day is valid from 0830 hours IST of day till 0830 hours IST of next day

For more details kindly visit <https://mausam.imd.gov.in> or contact 011-2434-4599

(Service to the nation since 1875)

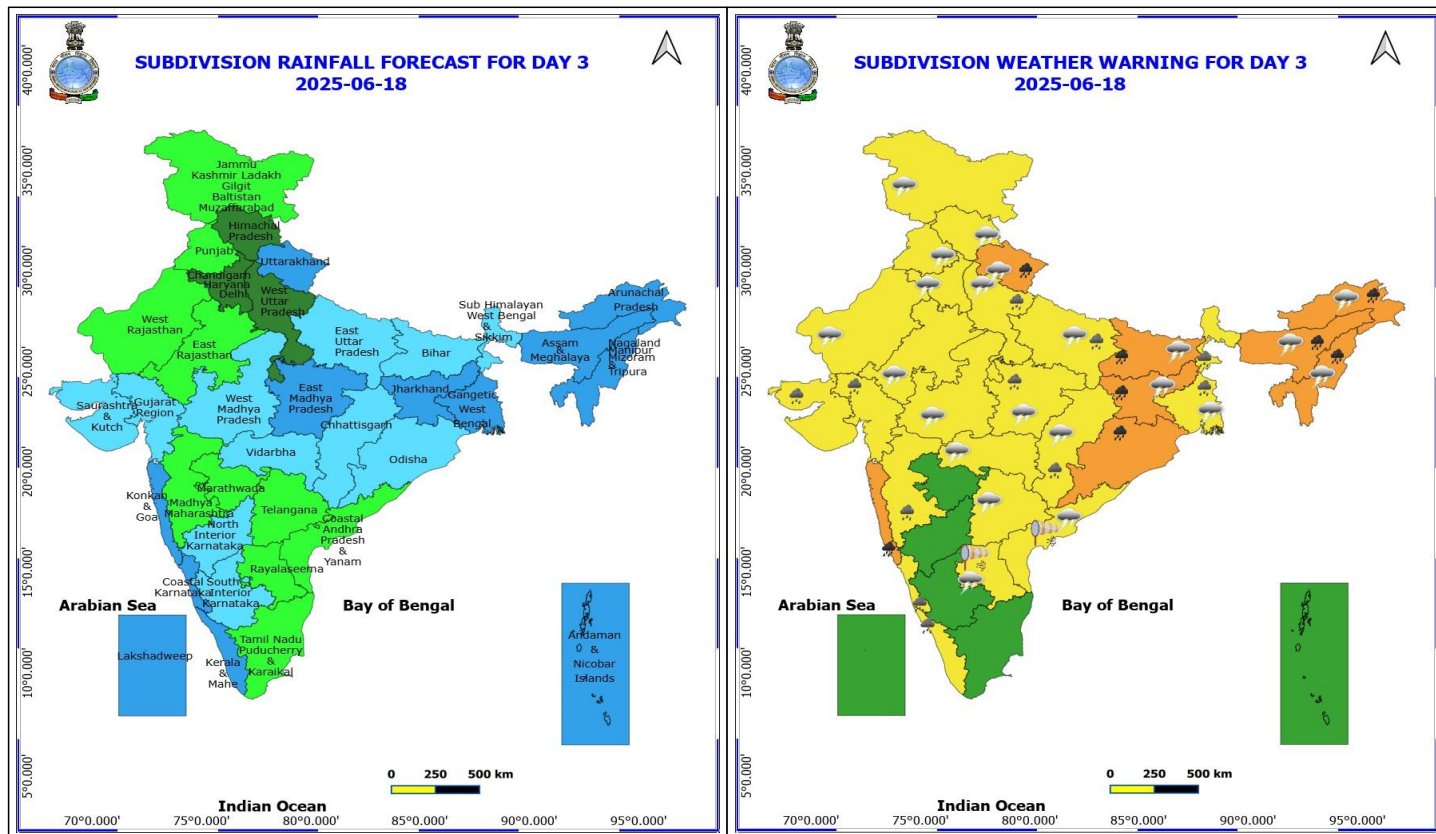


❖❖ Squally wind with speed 45 kmph to 55 kmph gusting to 65 kmph likely to prevail along and off Somalia coast, most parts of westcentral Arabian Sea & adjoining, some parts of eastcentral Arabian Sea, many parts of southwest Arabian Sea, adjoining parts of southeast Arabian Sea, along and off Oman & adjoining Yemen coasts. Squally weather with wind speed 40 - 50 kmph gusting to 60 kmph likely to prevail along and off Gujarat, Konkan, Goa, Karnataka, Kerala, Sri Lanka, Tamil Nadu, Andhra Pradesh coasts, over southeast Arabian Sea, most parts of eastcentral Arabian Sea, many parts of southwest Arabian sea & westcentral Arabian Sea, over many parts of northeast Arabian Sea, over Lakshadweep, Maldives, Comorin areas, over Gulf of Mannar, over most parts of southwest and adjoining southeast Bay of Bengal, over central Bay of Bengal, and over north Andaman Sea. Squally weather with wind speed 45 - 55 kmph gusting to 65 kmph likely to prevail many parts of central Bay of Bengal & adjoining parts of southwest Bay of Bengal. Fishermen are advised not to venture into these areas.





❖ Squally wind with speed 45 kmph to 55 kmph gusting to 65 kmph likely to prevail along and off Somalia coast, most parts of westcentral Arabian Sea & adjoining, some parts of eastcentral Arabian Sea, many parts of southwest Arabian Sea, adjoining parts of southeast Arabian Sea, along and off Oman & adjoining Yemen coasts. Squally weather with wind speed 40 - 50 kmph gusting to 60 kmph likely to prevail along and off Gujarat, Konkan, Goa, Karnataka, Kerala, Sri Lanka, Tamil Nadu, Andhra Pradesh, Odisha, West Bengal coasts, over southeast Arabian Sea, most parts of eastcentral Arabian Sea, many parts of southwest Arabian sea & westcentral Arabian Sea, over many parts of northeast Arabian Sea, over Lakshadweep, Maldives, Comorin areas, over Gulf of Mannar, over most parts of southwest and adjoining southeast Bay of Bengal, over most parts of central and north Bay of Bengal, and over north Andaman Sea. Squally weather with wind speed 45 - 55 kmph gusting to 65 kmph likely to prevail many parts of westcentral Bay of Bengal, adjoining and some parts of eastcentral Bay of Bengal. Fishermen are advised not to venture into these areas.



**18 June (Day 3)**

- ❖ **Heavy to Very Heavy Rainfall** very likely at isolated places over Arunachal Pradesh, Assam & Meghalaya, Chhattisgarh, Coastal Karnataka, Gangetic West Bengal, Jharkhand, Kerala & Mahe, Konkan & Goa, Madhya Maharashtra, Nagaland, Manipur, Mizoram and Tripura, Odisha, Saurashtra & Kutch, South Interior Karnataka and Uttarakhand.
- ❖ **Heavy Rainfall** very likely at isolated places over Bihar, East Madhya Pradesh, Gujarat Region, North Interior Karnataka, Sub Himalayan West Bengal & Sikkim, Tamil Nadu Puducherry & Karaikal and Vidarbha.
- ❖ **Thundersquall with wind speed reaching(50-60kmph)** very likely at isolated places over East Madhya Pradesh and Rajasthan.
- ❖ **Thunderstorm accompanied with lightning & gusty winds(40-50kmph)** very likely at isolated places over Assam & Meghalaya, Bihar, Haryana, Chandigarh & Delhi, Himachal Pradesh, Jharkhand, Kerala & Mahe, Lakshadweep, Nagaland, Manipur, Mizoram and Tripura, Punjab, Uttar Pradesh, Uttarakhand and West Madhya Pradesh.
- ❖ **Thunderstorm accompanied with lightning & gusty winds(30-40kmph)** very likely at isolated places over Gangetic West Bengal, Gujarat State, Jammu-Kashmir-Ladakh-Gilgit-Baltistan-Muzaffarabad, Odisha, Telangana and Vidarbha.
- ❖ **Thunderstorm accompanied with Lightning** very likely at isolated places over Andhra Pradesh, Arunachal Pradesh and Chhattisgarh.
- ❖ **Strong Surface Winds** very likely at isolated places over Andhra Pradesh, Kerala & Mahe and Lakshadweep.
- ❖ Squally wind with speed 45 kmph to 55 kmph gusting to 65 kmph likely to prevail along and off Somalia coast,

**\*Red color warning does not mean "Red Alert" Red color warning means "Take Action"**

Forecast and warning for any day is valid from 0830 hours IST of day till 0830 hours IST of next day

For more details kindly visit <https://mausam.imd.gov.in> or contact 011-2434-4599

(Service to the nation since 1875)



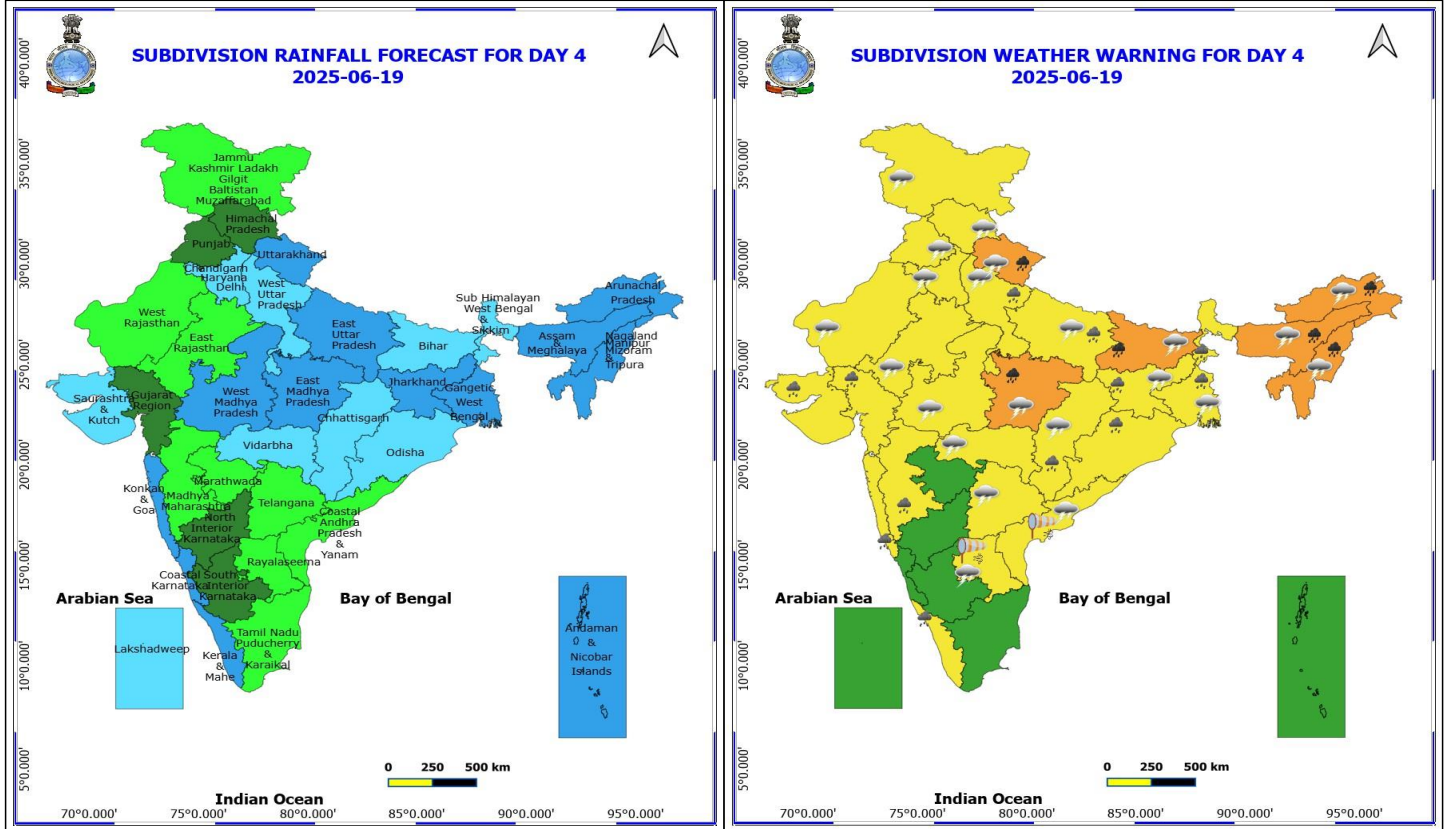
most parts of westcentral Arabian Sea & adjoining, some parts of eastcentral Arabian Sea, many parts of southwest Arabian Sea, adjoining parts of southeast Arabian Sea, along and off Oman & adjoining Yemen coasts. Squally weather with wind speed 40 - 50 kmph gusting to 60 kmph likely to prevail along and off Gujarat, Konkan, Goa, Karnataka, Kerala, north Andhra Pradesh, Odisha, West Bengal coasts, over southeast Arabian Sea, most parts of eastcentral Arabian Sea, many parts of southwest Arabian sea & westcentral Arabian Sea, over most parts of northeast Arabian Sea, over Lakshadweep, Maldives, Comorin areas, over Gulf of Mannar, over some parts of southwest and few parts of southeast Bay of Bengal, over most parts of central and north Bay of Bengal, and over north Andaman Sea. Squally weather with wind speed 45 - 55 kmph gusting to 65 kmph likely to prevail over few northern parts of central Bay of Bengal. Fishermen are advised not to venture into these areas.

**\*Red color warning does not mean "Red Alert" Red color warning means "Take Action"**

Forecast and warning for any day is valid from 0830 hours IST of day till 0830 hours IST of next day

For more details kindly visit <https://mausam.imd.gov.in> or contact 011-2434-4599

(Service to the nation since 1875)



#### 19 June (Day 4)

- ❖ **Heavy to Very Heavy Rainfall** likely at isolated places over Arunachal Pradesh, Assam & Meghalaya, Bihar, Jharkhand, Konkan & Goa, Nagaland, Manipur, Mizoram and Tripura, Odisha and Uttarakhand.
- ❖ **Heavy Rainfall** likely at isolated places over Chhattisgarh, Coastal Karnataka, East Madhya Pradesh, Gujarat State, Kerala & Mahe, Madhya Maharashtra, Uttar Pradesh and West Bengal & Sikkim.
- ❖ **Thundersquall with wind speed reaching(50-60kmph)** likely at isolated places over East Madhya Pradesh.
- ❖ **Thunderstorm accompanied with lightning & gusty winds(40-50kmph)** likely at isolated places over Assam & Meghalaya, Bihar, Haryana, Chandigarh & Delhi, Himachal Pradesh, Nagaland, Manipur, Mizoram and Tripura, Punjab, Rajasthan, Uttar Pradesh, Uttarakhand and West Madhya Pradesh.
- ❖ **Thunderstorm accompanied with lightning & gusty winds(30-40kmph)** likely at isolated places over Gangetic West Bengal, Jammu-Kashmir-Ladakh-Gilgit-Baltistan-Muzaffarabad, Jharkhand, Telangana and Vidarbha.
- ❖ **Thunderstorm accompanied with Lightning** likely at isolated places over Andhra Pradesh, Arunachal Pradesh and Chhattisgarh.
- ❖ **Strong Surface Winds** likely at isolated places over Andhra Pradesh.
- ❖ Squally wind with speed 45 kmph to 55 kmph gusting to 65 kmph likely to prevail along and off Somalia coast, most parts of westcentral Arabian Sea & adjoining, some parts of eastcentral & northwest Arabian Sea, many parts of southwest Arabian Sea, along and off Oman & adjoining Yemen coasts. Squally weather with wind speed 40 - 50 kmph gusting to 60 kmph likely to prevail along and off Gujarat, Konkan, Goa, Karnataka, Kerala, north Andhra Pradesh, Odisha, West Bengal coasts, over southeast Arabian Sea, most parts of eastcentral Arabian Sea, many parts of southwest Arabian sea & westcentral Arabian Sea, over most parts of northeast Arabian Sea, over

**\*Red color warning does not mean "Red Alert" Red color warning means "Take Action"**

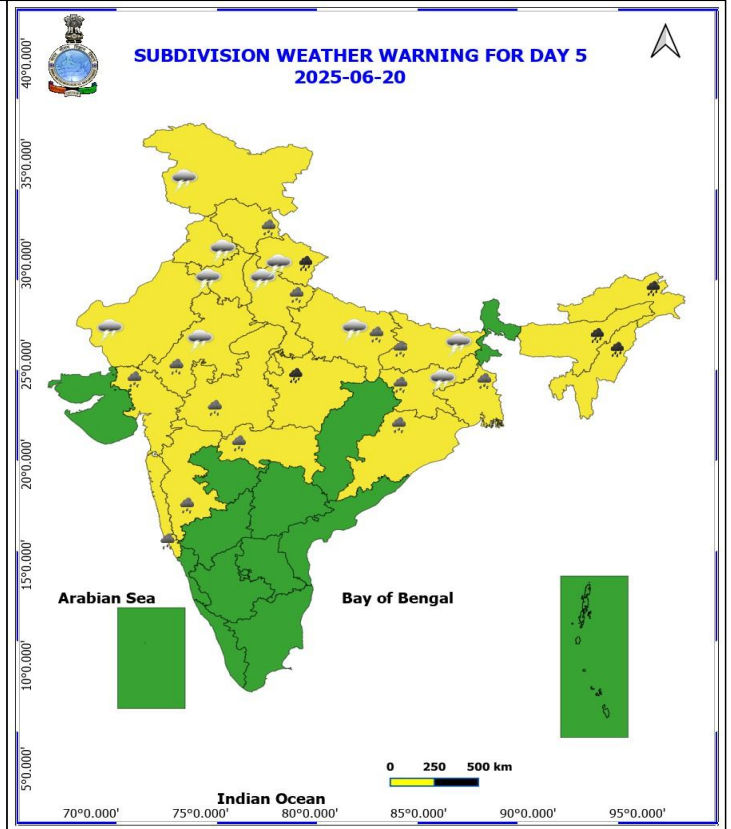
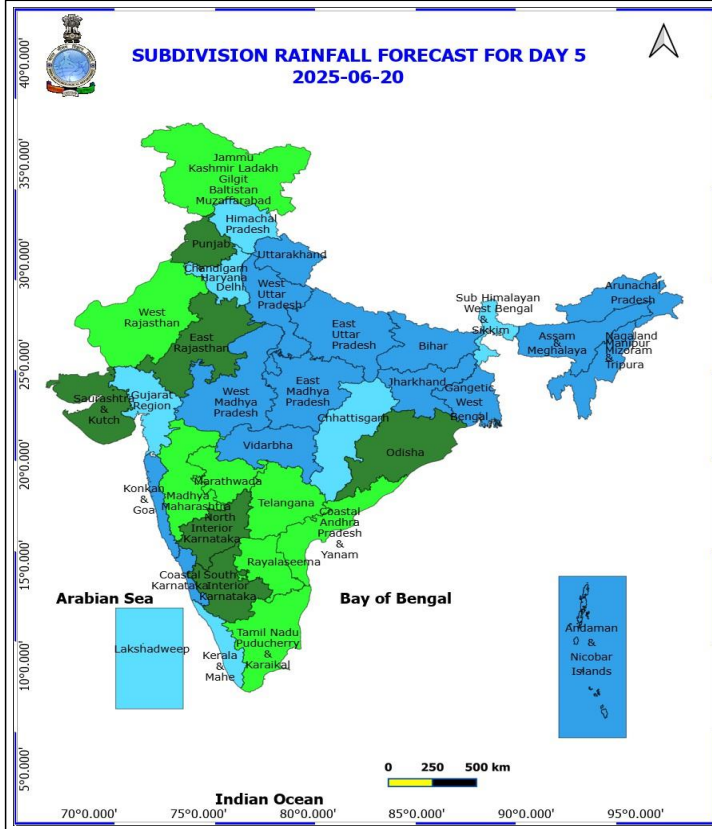
**Forecast and warning for any day is valid from 0830 hours IST of day till 0830 hours IST of next day**

**For more details kindly visit <https://mausam.imd.gov.in> or contact 011-2434-4599**

**(Service to the nation since 1875)**



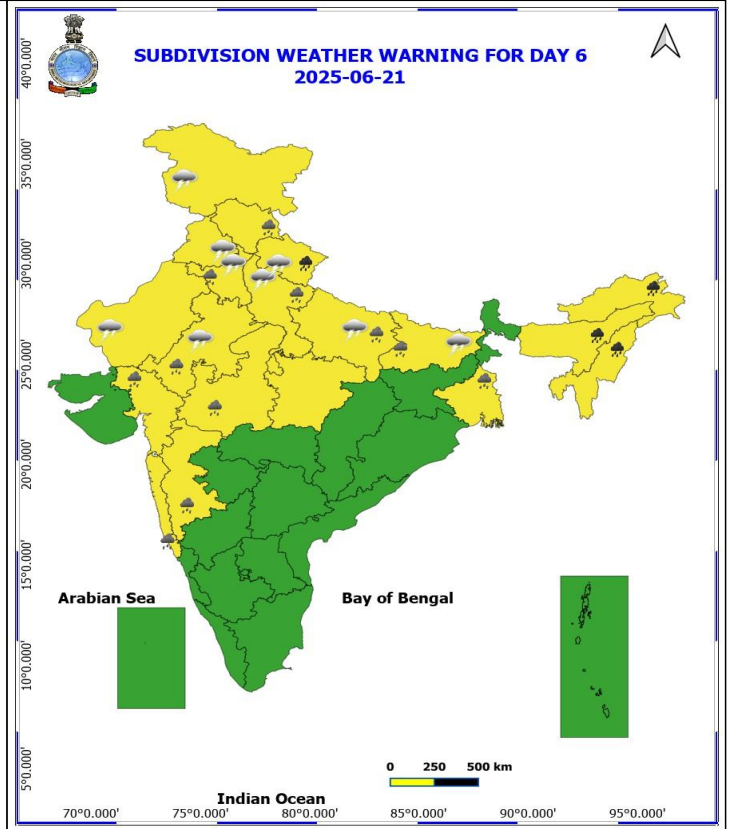
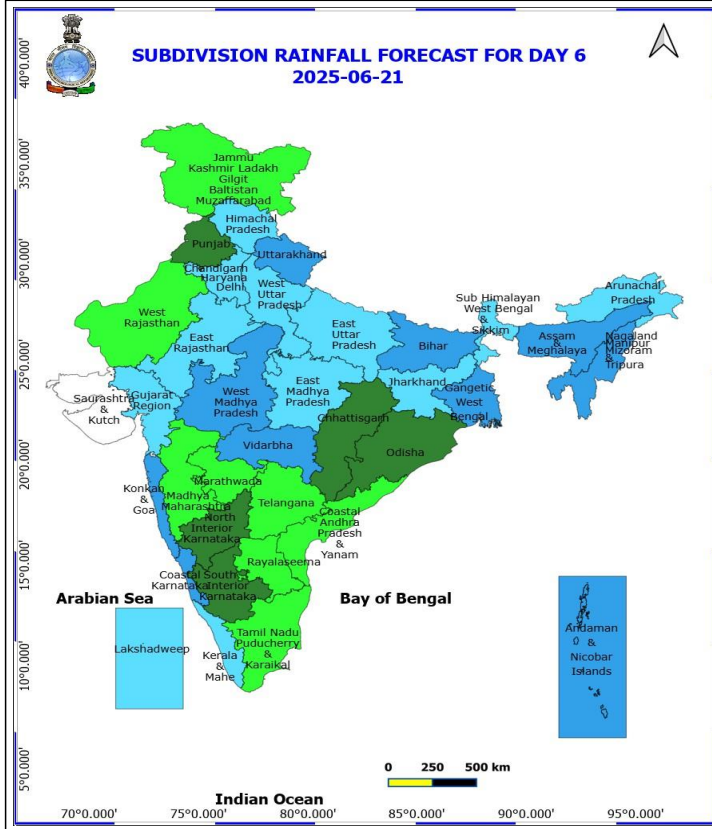
Lakshadweep, Maldives, Comorin areas, over Gulf of Mannar, over some parts of southwest and few parts of southeast Bay of Bengal, over most parts of central and north Bay of Bengal, and over north Andaman Sea. Squally weather with wind speed 45 - 55 kmph gusting to 65 kmph likely to prevail over few northern parts of central Bay of Bengal. Fishermen are advised not to venture into these areas.



## 20 June (Day 5)

- ❖ **Heavy to Very Heavy Rainfall** likely at isolated places over Arunachal Pradesh, Assam & Meghalaya, East Madhya Pradesh, Nagaland, Manipur, Mizoram and Tripura and Uttarakhand.
- ❖ **Heavy Rainfall** likely at isolated places over Bihar, East Rajasthan, Gangetic West Bengal, Gujarat Region, Himachal Pradesh, Jharkhand, Konkan & Goa, Madhya Maharashtra, Odisha, Uttar Pradesh, Vidarbha and West Madhya Pradesh.
- ❖ **Thunderstorm accompanied with lightning & gusty winds(40-50kmph)** likely at isolated places over Bihar, Haryana, Chandigarh & Delhi, Punjab, Rajasthan, Uttar Pradesh and Uttarakhand.
- ❖ **Thunderstorm accompanied with lightning & gusty winds(30-40kmph)** likely at isolated places over Jammu-Kashmir-Ladakh-Gilgit-Baltistan-Muzaffarabad and Jharkhand.

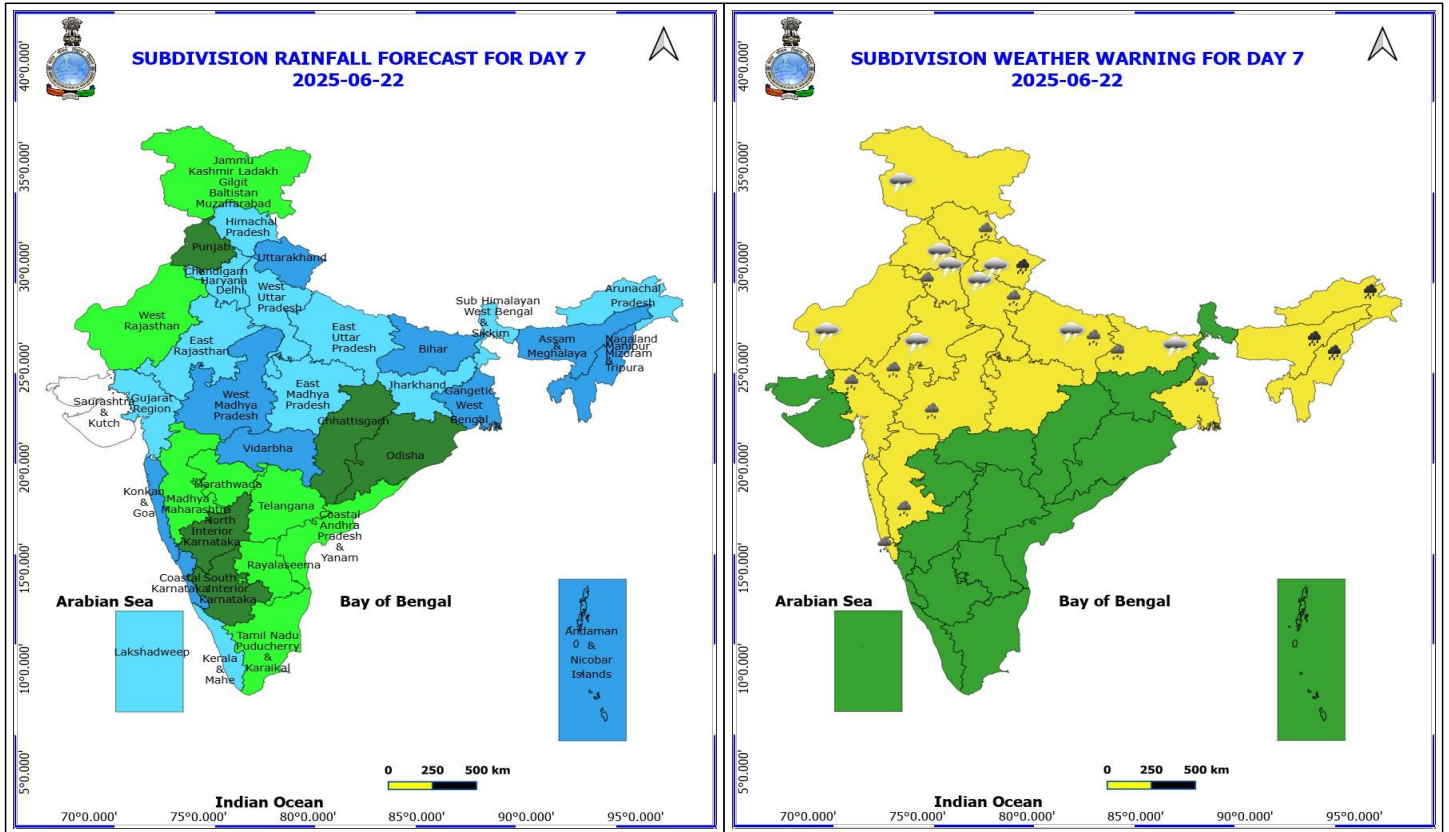
**No Fishermen Warning**



## 21 June (Day 6)

- ❖ **Heavy to Very Heavy Rainfall** likely at isolated places over Arunachal Pradesh, Assam & Meghalaya, East Madhya Pradesh, Nagaland, Manipur, Mizoram and Tripura and Uttarakhand.
- ❖ **Heavy Rainfall** likely at isolated places over Bihar, East Rajasthan, Gangetic West Bengal, Gujarat Region, Himachal Pradesh, Jharkhand, Konkan & Goa, Madhya Maharashtra, Odisha, Uttar Pradesh, Vidarbha and West Madhya Pradesh.
- ❖ **Thunderstorm accompanied with lightning & gusty winds(40-50kmph)** likely at isolated places over Bihar, Haryana, Chandigarh & Delhi, Punjab, Rajasthan, Uttar Pradesh and Uttarakhand.
- ❖ **Thunderstorm accompanied with lightning & gusty winds(30-40kmph)** likely at isolated places over Jammu-Kashmir-Ladakh-Gilgit-Baltistan-Muzaffarabad and Jharkhand.

**No Fishermen Warning**



**22 June (Day 7)**

- ❖ **Heavy to Very Heavy Rainfall** likely at isolated places over Arunachal Pradesh, Assam & Meghalaya, Bihar, East Madhya Pradesh, Nagaland, Manipur, Mizoram and Tripura and Uttarakhand.
- ❖ **Heavy Rainfall** likely at isolated places over Chhattisgarh, Gujarat State, Jharkhand, Kerala & Mahe, Konkan & Goa, Madhya Maharashtra, Odisha, Uttar Pradesh and West Bengal & Sikkim.
- ❖ **Thundersquall with wind speed reaching(50-60kmph)** likely at isolated places over East Madhya Pradesh.
- ❖ **Thunderstorm accompanied with lightning & gusty winds(40-50kmph)** likely at isolated places over Bihar, Haryana, Chandigarh & Delhi, Himachal Pradesh, Punjab, Rajasthan, Uttar Pradesh, Uttarakhand and West Madhya Pradesh.
- ❖ **Thunderstorm accompanied with lightning & gusty winds(30-40kmph)** likely at isolated places over Assam & Meghalaya, Gangetic West Bengal, Jammu-Kashmir-Ladakh-Gilgit-Baltistan-Muzaffarabad, Jharkhand, Nagaland, Manipur, Mizoram and Tripura, Telangana and Vidarbha.
- ❖ **Thunderstorm accompanied with Lightning** likely at isolated places over Andhra Pradesh, Arunachal Pradesh and Chhattisgarh.
- ❖ **Strong Surface Winds** likely at isolated places over Andhra Pradesh.

**No Fishermen Warning**



## Table-1

### 7 Days Rainfall Forecast

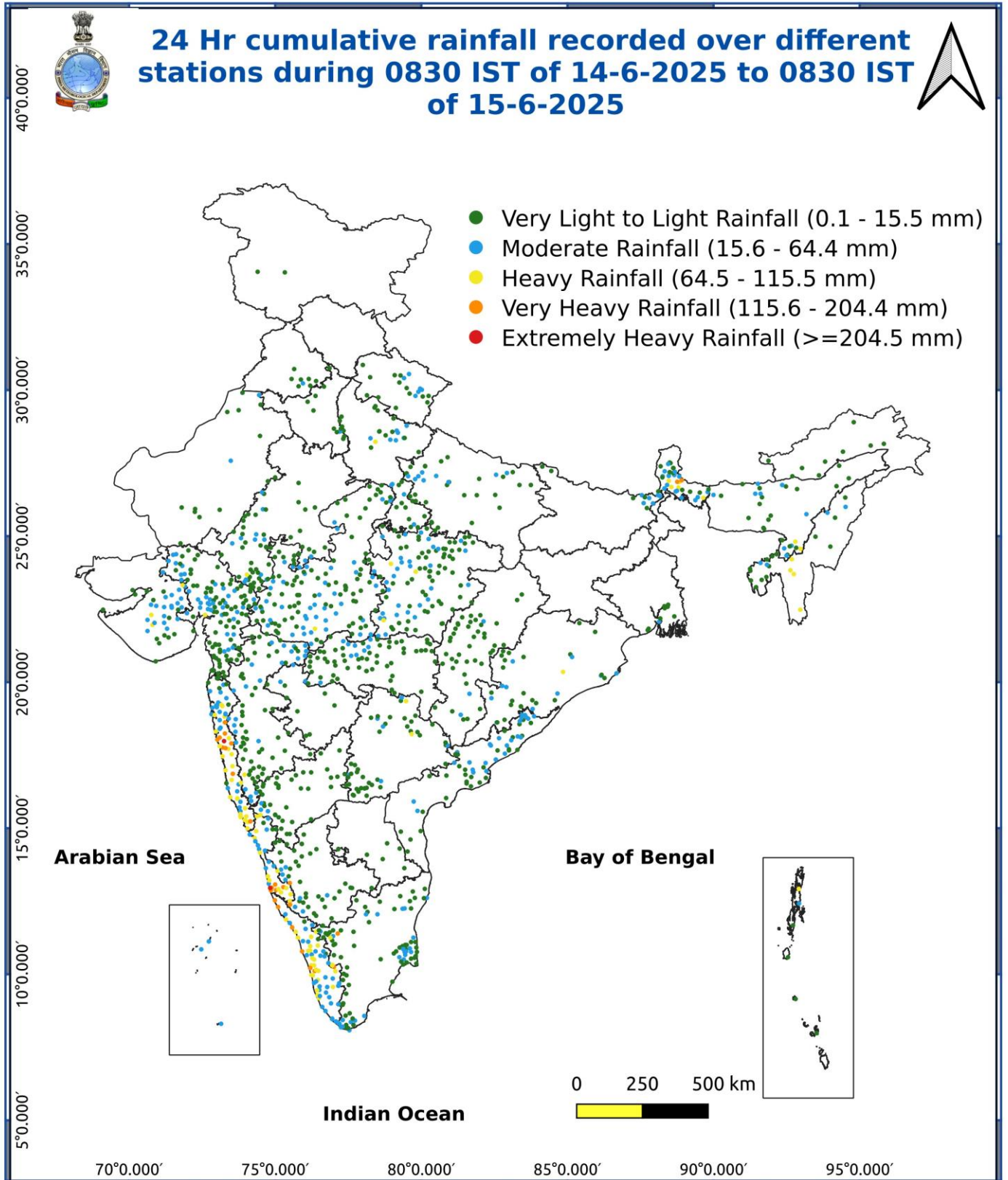
S.No.	Subdivision	16- Jun	17- Jun	18- Jun	19- Jun	20- Jun	21- Jun	22- Jun
		Day 1	Day 2	Day 3	Day 4	Day 5	Day 6	Day 7
1	ANDAMAN & NICOBAR ISLANDS	FWS	WS	WS	WS	WS	WS	WS
2	ARUNACHAL PRADESH	FWS	WS	WS	WS	WS	FWS	FWS
3	ASSAM & MEHGHALAYA	WS	WS	WS	WS	WS	WS	WS
4	N. M. M. & T.	WS	WS	WS	WS	WS	WS	WS
5	S.H. WEST BENGAL & SIKKIM	WS	FWS	FWS	FWS	FWS	FWS	FWS
6	GANGETIC WEST BENGAL	WS	WS	WS	WS	WS	WS	WS
7	ODISHA	WS	WS	FWS	FWS	SCT	SCT	SCT
8	JHARKHAND	FWS	WS	WS	WS	WS	FWS	FWS
9	BIHAR	SCT	FWS	FWS	FWS	WS	WS	WS
10	EAST UTTAR PRADESH	SCT	FWS	FWS	WS	WS	FWS	FWS
11	WEST UTTAR PRADESH	SCT	SCT	SCT	FWS	WS	FWS	FWS
12	UTTARAKHAND	WS	WS	WS	WS	WS	WS	WS
13	HARYANA, CHD & DELHI	SCT	ISOL	SCT	FWS	FWS	FWS	FWS
14	PUNJAB	SCT	ISOL	ISOL	SCT	SCT	SCT	SCT
15	HIMACHAL PRADESH	SCT	SCT	SCT	SCT	FWS	FWS	FWS
16	JAMMU AND KASHMIR AND LADAKH	SCT	ISOL	ISOL	ISOL	ISOL	ISOL	ISOL
17	WEST RAJASTHAN	SCT	ISOL	ISOL	ISOL	ISOL	ISOL	ISOL
18	EAST RAJASTHAN	SCT	ISOL	ISOL	ISOL	SCT	FWS	FWS
19	WEST MADHYA PRADESH	FWS	FWS	FWS	WS	WS	WS	WS
20	EAST MADHYA PRADESH	WS	WS	WS	WS	WS	FWS	FWS
21	GUJRAT REGION	WS	FWS	FWS	SCT	FWS	FWS	FWS
22	SAURASHTRA & KUTCH	WS	WS	FWS	FWS	SCT	DRY	DRY
23	KONKAN & GOA	WS	WS	WS	WS	WS	WS	WS
24	MADHYA MAHARASHTRA	SCT	SCT	ISOL	ISOL	ISOL	ISOL	ISOL
25	MARATHWADA	ISOL	ISOL	ISOL	ISOL	ISOL	ISOL	ISOL
26	VIDARBHA	SCT	FWS	FWS	FWS	WS	WS	WS
27	CHATTISGARH	FWS	FWS	FWS	FWS	FWS	SCT	SCT
28	COASTAL ANDHRA PRADESH	SCT	SCT	ISOL	ISOL	ISOL	ISOL	ISOL
29	TELANGANA	SCT	ISOL	ISOL	ISOL	ISOL	ISOL	ISOL
30	RAYALASEEMA	ISOL	ISOL	ISOL	ISOL	ISOL	ISOL	ISOL
31	TAMILNADU & PUDUCHERRY	SCT	SCT	ISOL	ISOL	ISOL	ISOL	ISOL
32	COSTAL KARNATAKA	WS	WS	WS	WS	WS	WS	WS
33	NORTH INTERIOR KARNATAKA	WS	FWS	FWS	SCT	SCT	SCT	SCT
34	SOUTH INTERIOR KARNATAKA	WS	FWS	FWS	SCT	SCT	SCT	SCT
35	KERALA	WS	WS	WS	WS	FWS	FWS	FWS
36	LAKSHDWEEP	WS	WS	WS	FWS	FWS	FWS	FWS

Legend	Category	%Stations
WS	Widespread/Most Places	76-100
FWS	Fairly Widespread/Many Places	51-75
SCT	Scattered/ A Few Places	26-50
ISOL	Isolated Places	1-25
DRY	No Rain	0

\*Red color warning does not mean "Red Alert" Red color warning means "Take Action"  
Forecast and warning for any day is valid from 0830 hours IST of day till 0830 hours IST of next day  
For more details kindly visit <https://mausam.imd.gov.in> or contact 011-2434-4599

(Service to the nation since 1875)





**\*Red color warning does not mean "Red Alert" Red color warning means "Take Action"**  
Forecast and warning for any day is valid from 0830 hours IST of day till 0830 hours IST of next day  
For more details kindly visit <https://mausam.imd.gov.in> or contact 011-2434-4599

(Service to the nation since 1875)

Impact & suggested due to Extremely and heavy to very heavy rainfall over

**Extremely heavy rainfall (>20 cm/24 hours) likely at isolated places over Coastal Karnataka, Konkan & Goa on 16<sup>th</sup> June.**

**Very heavy rainfall** on Tamil Nadu, Puducherry & Karaikal on 16<sup>th</sup>. Kerala & Mahe, Karnataka, Madhya Maharashtra, Saurashtra & Kutch during 16<sup>th</sup>-17<sup>th</sup> Konkan & Goa during 16<sup>th</sup>-18<sup>th</sup>, Gujarat Region on 16<sup>th</sup> June, Chhattisgarh, Gangetic West Bengal on 17<sup>th</sup>, Jharkhand, Odisha on 17<sup>th</sup> & 18<sup>th</sup> and over Bihar on 18<sup>th</sup> & 19<sup>th</sup>, East Madhya Pradesh on 19<sup>th</sup> & 20<sup>th</sup>, Uttarakhand, Assam & Meghalaya during 16<sup>th</sup>-21<sup>st</sup> Arunachal Pradesh during 17<sup>th</sup>-21<sup>st</sup>, Nagaland, Manipur, Mizoram & Tripura during next 7 days.

#### Impact Expected

Localized Flooding of roads, water logging in low lying areas and closure of underpasses mainly in urban areas of the above region.

Occasional reduction in visibility due to heavy rainfall.

Disruption of traffic in major cities due to water logging in roads leading to increased travel time.

Minor damage to kutcha roads.

Possibilities of damage to vulnerable structure.

Localized Landslides/Mudslides/landslips/mudslips/landsinks/mudsinks.

Damage to horticulture and standing crops in some areas due to inundation.

It may lead to riverine flooding in some river catchments (for riverine flooding please visit Web page of CWC)

#### Action Suggested

Check for traffic congestion on your route before leaving for your destination.

Follow any traffic advisories that are issued in this regard.

Avoid going to areas that face the water logging problems often.

Avoid staying in vulnerable structure.

Impact & suggested expected due to isolated thunderstorm with lightning/gusty & Squally winds & Hailstorm over

**Thundersquall (wind speed reaching 50-60 kmph gusting to 70 kmph)** at isolated places over Rajasthan during 16<sup>th</sup>-17<sup>th</sup>, West Madhya Pradesh, Chhattisgarh, Bihar on 16<sup>th</sup>, East Madhya Pradesh during 16<sup>th</sup>-19<sup>th</sup> June.

**Strong surface winds** (speed reaching 40-60 kmph) over Kerala & Mahe, Lakshadweep during 16<sup>th</sup>-17<sup>th</sup>, Rayalaseema and Coastal Andhra Pradesh & Yanam during 16<sup>th</sup>-19<sup>th</sup> June.

#### Impact expected:

**\*Red color warning does not mean "Red Alert" Red color warning means "Take Action"**

Forecast and warning for any day is valid from 0830 hours IST of day till 0830 hours IST of next day

For more details kindly visit <https://mausam.imd.gov.in> or contact 011-2434-4599

(Service to the nation since 1875)

Breaking of tree branches, uprooting of large avenue trees. Large dead limbs blown from trees. Damage to Standing crops.

Minor to Major damage to banana and papaya trees.

Minor to major damage to power and communication lines due to breaking of branches.

Strong wind/hail may damage plantation, horticulture and standing crops.

Partial damage to vulnerable structures due to strong winds.

Minor damage to kutcha houses/walls and huts.

Loose objects may fly.

**Action suggested:**

People are advised to keep a watch on the weather for worsening conditions and be ready to move to safer places accordingly.

Stay indoors, close windows & doors and avoid travel if possible.

Take safe shelters; do not take shelter under trees.

Do not lie on concrete floors and do not lean against concrete walls.

Unplug electrical/ electronic appliances.

Immediately get out of water bodies.

Keep away from all the objects that conduct electricity.

**Agromet advisories for various parts of the country**

In **Kerala**, ensure proper drainage facilities in rice nurseries, transplanted rice fields, coconut and banana plantations to prevent water logging. Postpone land preparation of main field for rice transplanting. Undertake propping in banana to protect the plants from heavy rains.

In **Tamil Nadu**, postpone nursery sowing / transplanting of rice and sowing of sorghum and cumbu. Ensure proper drainage facilities in rice nurseries, cotton, sugarcane, groundnut and transplanted rice fields, coconut and banana plantations to prevent water logging. Provide staking or support to tender plants of cotton, young plants of sugarcane and fruit-bearing plants of banana to avoid lodging. Avoid de-topping and de-trashing in sugarcane during continuous rainfall.

In **Coastal Karnataka**, postpone nursery sowing of rice. Ensure proper drainage facilities in rice nurseries, banana, coconut and arecanut plantations to prevent water logging. In **South Interior Karnataka**, postpone nursery sowing of rice and sowing of pigeon pea, maize and onion. Cover young seedlings of rice with plastic sheets or agro-shade nets to protect them from heavy rains. Provide adequate drainage to remove excess water from rice nurseries, coffee, cardamom, coconut and arecanut plantations to prevent water logging. Provide support to sugarcane and banana to prevent lodging. In **North Interior Karnataka**, postpone sowing of green gram, cotton, maize, groundnut, rice, pigeon pea, soybean and onion. Drain out excess water from the crops which are at seedling stage to prevent water logging.

In **Konkan & Goa**, postpone nursery sowing of rice. In **Konkan & Goa** and **ghat areas of Madhya Maharashtra**,

**\*Red color warning does not mean "Red Alert" Red color warning means "Take Action"**

**Forecast and warning for any day is valid from 0830 hours IST of day till 0830 hours IST of next day**

**For more details kindly visit <https://mausam.imd.gov.in> or contact 011-2434-4599**

**(Service to the nation since 1875)**

make arrangement to drain out excess water from rice nurseries to prevent water logging.

In **Sub-Himalayan West Bengal**, maintain proper drainage channels in rice nurseries and fields of jute and ginger to avoid water stagnation. Avoid sowing of rice in low lands to avoid losses due to heavy rainfall.

In **Bhabar and Tarai Zone of Uttarakhand**, harvest matured potato, vegetables (tomato, French beans etc.) and fruits (peach and plum). Postpone sowing of pigeon pea, millets and soybean and ensure proper drainage in already sown crops.

In **Assam**, keep the harvested produce of sesame, foxtail millet, *Boro* rice, banana and citrus at safer places. Ensure proper drainage in *Sali* rice nursery, maize and sugarcane fields, arecanut and coconut plantations to prevent water logging.

In **Meghalaya**, ensure proper drainage in the fields of maize, ginger, French bean, cowpea, vegetables and around rice nurseries to prevent water logging. Provide strong bamboo stakes or trellis support to cow pea, cucumber and bottle gourd to prevent vines from trailing on wet ground. Provide support to banana plant to prevent lodging.

In **Mizoram**, ensure proper drainage facilities in maize and low land pre-*kharif* rice to avoid water stagnation. Undertake propping in five-month-old sugarcane crop to avoid lodging.

In **Arunachal Pradesh**, carry out harvesting of soybean and vegetables such as chilli and okra and keep the produce at a safer place. Ensure proper drainage in rice nurseries, kiwi and apple orchards to avoid water logging.

#### **Livestock / Fishery**

Keep the animals inside the shed during heavy rainfall and provide them balanced feed.

Store feed and fodder in a safe place to prevent spoilage.

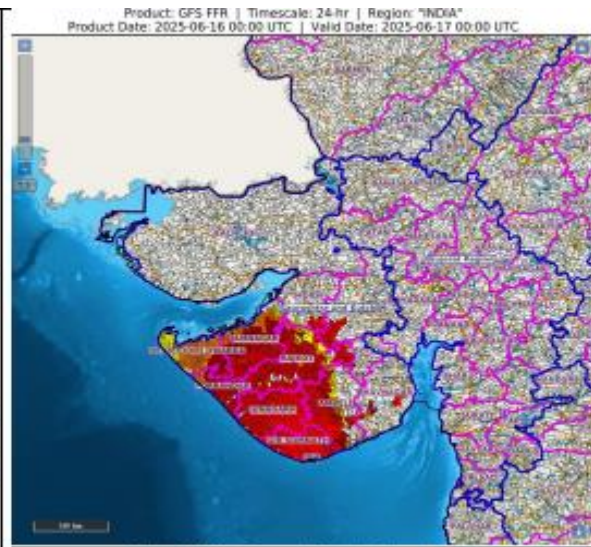
Construct an outlet with proper netting around the ponds to drain out excess water, thereby preventing fish from escaping in case of overflow.

**24 hours Outlook for the Flash Flood Risk (FFR) till 0530 IST of 17-06-2025 :**

**Moderate to High flash flood risk** likely over few watersheds & neighbourhoods of following Met Sub-divisions during next 24 hours.

**Saurashtra & Kutch** – Rajkot, Jamnagar, Porbandar, Gir, somnath, Junagarh, Amreli, Devbhoomi Dwarka, Morbi, Surendemagar, Botad and Bhavnagar

Surface runoff/ Inundation may occur at some fully saturated soils & low-lying areas over Area of Concern (AoC) as shown in map due to expected rainfall occurrence in next 24 hours.



**24 hours Outlook for the Flash Flood Risk (FFR) till 0530 IST of 17-06-2025 :**

**Low to Moderate flash flood risk** likely over few watersheds & neighbourhoods of following Met Sub-divisions during next 24 hours.

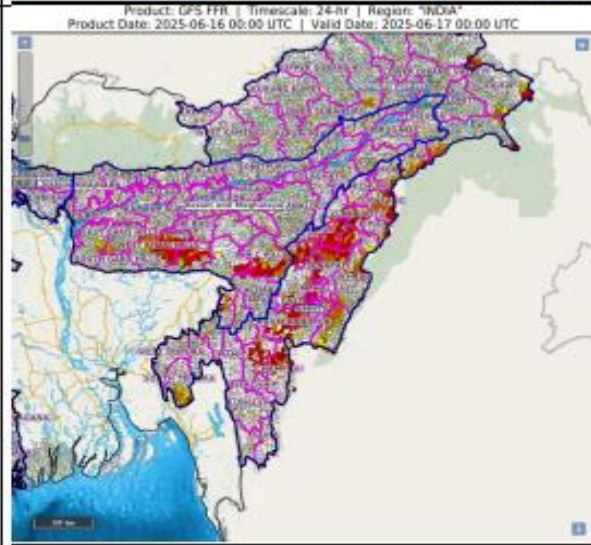
**Assam & Meghalaya** - Cachar, Karbi Analog, N.C Hills, East Garo Hills, East Khasi Hills, South West Garo Hills, West Garo Hills, West Khasi Hills and Jaintia Hills districts.

**Nagaland Mizoram Manipur Tripura (NMMT)**

**Manipur** – Churachandpur, Imphal East, Senapati, Champai

**Mizoram** – Aizawl, Champhai, Lawngtlai, Lunglei, Mamit, Saiha, Serchhip

**Nagaland** – Dimapur, Kiphire, Kohima,



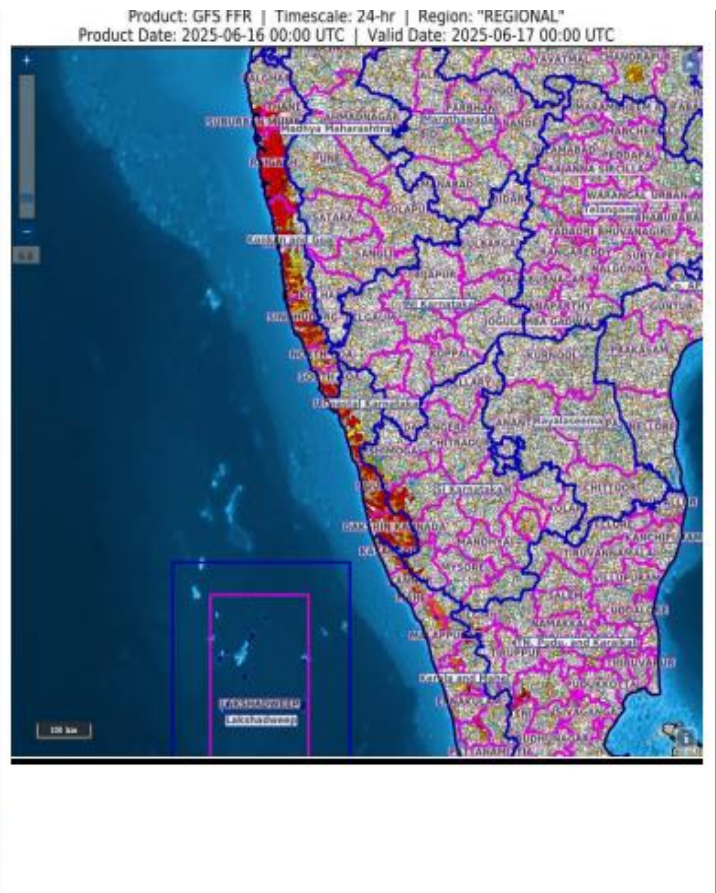
**24 hours Outlook for the Flash Flood Risk (FFR) till 0530 IST of 17-06-2025 :**

**Moderate to High flash flood risk** likely over few watersheds & neighbourhoods of following Met Sub-divisions during next 24 hours.

**Konkan & Goa** - North Goa, South Goa, Mumbai City, Palghar, Raigarh, Ratnagiri, Sindhudurg, Suburban Mumbai and Thane districts.

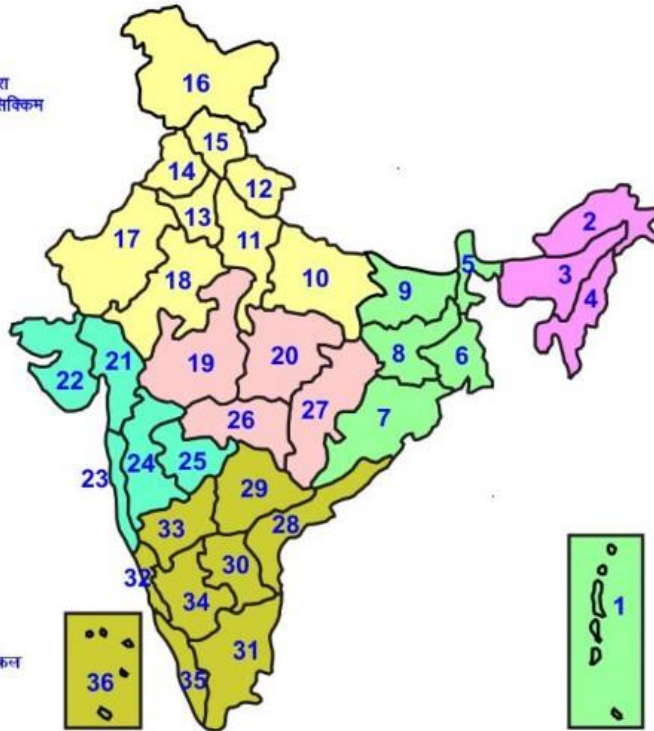
**Coastal Karnataka** - Dakshin Kannada, Udupi and Uttar Kannada districts.

Surface runoff/ Inundation may occur at some fully saturated soils & low-lying areas over Area of Concern (AoC) as shown in map due to expected rainfall occurrence in next 24 hours.



## LEGENDS

- 1 अंडमान और निकोबार द्वीप समुह
- 2 अरुणाचल प्रदेश
- 3 असम और मेघालय
- 4 नागालैंड मनीपुर मीजोरम और त्रिपुरा
- 5 उप हिमालय पश्चिम बंगाल एवं सिक्किम
- 6 पश्चिम बांग्लेय
- 7 ओडिसा
- 8 झारखंड
- 9 बिहार
- 10 पूर्वी उत्तर प्रदेश
- 11 पश्चिम उत्तर प्रदेश
- 12 उत्तराखंड
- 13 हरियाणा चंडिगढ़ एवं दिल्ली
- 14 पंजाब
- 15 हिमाचल प्रदेश
- 16 जम्मू एवं कश्मीर एवं लद्दाख
- 17 पश्चिम राजस्थान
- 18 पूर्वी राजस्थान
- 19 पश्चिम मध्य प्रदेश
- 20 पूर्वी मध्य प्रदेश
- 21 गुजरात क्षेत्र
- 22 सौराष्ट्र एवं कच्छ
- 23 कोंकण एवं गोवा
- 24 मध्य महाराष्ट्र
- 25 मराठावाडा
- 26 विदर्भ
- 27 छत्तीसगढ़
- 28 तटीय आंध्र प्रदेश एवं यनम
- 29 तेलंगाना
- 30 रायलसीमा
- 31 तमिलनाडु, पुदुचेरी एवं कराईकल
- 32 तटिय कर्नाटक
- 33 आंतरिक उत्तरी कर्नाटक
- 34 आंतरिक दक्षिणी कर्नाटक
- 35 केरल एवं माहे
- 36 लक्षद्वीप



1. Andaman & Nicobar Islands
2. Arunachal Pradesh
3. Assam & Meghalaya
4. Nagaland, Manipur, Mizoram & Tripura
5. Sub-Himalayan West Bengal & Sikkim
6. Gangetic West Bengal
7. Orissa
8. Jharkhand
9. Bihar
10. East Uttar Pradesh
11. West Uttar Pradesh
12. Uttarakhand
13. Haryana, Chd & Delhi
14. Punjab
15. Himachal Pradesh
16. Jammu & Kashmir and Ladakh
17. West Rajasthan
18. East Rajasthan
19. West Madhya Pradesh
20. East Madhya Pradesh
21. Gujarat
22. Saurashtra
23. Konkan & Goa
24. Madhya Maharashtra
25. Marathwada
26. Vidharbha
27. Chhattisgarh
28. Coastal Andhra Pradesh & Yanam
29. Telangana
30. Rayalaseema
31. Tamilnadu, Puducherry & Karaikal
32. Coastal Karnataka
33. North Interior Karnataka
34. South Interior Karnataka
35. Kerala & Mahe
36. Lakshadweep

## SPATIAL DISTRIBUTION (% of Stations reporting)

% Stations	Category	% Stations	Category
76-100	Widespread (WS/ Most Places)	26-50	Scattered (SCT/ A Few Places)
51-75	Fairly Widespread (FWS/ Many Places)	1-25	Isolated (ISOL)

### Subdivision Colour

- NO WARNING
- WATCH (BE UPDATED)
- ALERT (BE PREPARED TO TAKE ACTION)
- WARNING (TAKE ACTION)

### Probabilistic Forecast

Terms	Probability of Occurrence (%)
Unlikely	< 25
Likely	25 - 50
Very Likely	50 - 75
Most Likely	> 75

- |                          |                 |                      |                    |
|--------------------------|-----------------|----------------------|--------------------|
| Heavy Rain               | Very Heavy Rain | Extremely Heavy Rain | Heavy Snow         |
| Thunderstorm & Lightning | Hailstorm       | Dust Storm           | Dust Raising Winds |
| Strong surface winds     | Heat Wave       | Hot Day              | Warm Night         |
| Cold Wave                | Cold Day        | Ground Frost         | Fog                |
| Hot & Humid              |                 |                      |                    |

\*Red color warning does not mean "Red Alert" Red color warning means "Take Action"

Forecast and warning for any day is valid from 0830 hours IST of day till 0830 hours IST of next day

For more details kindly visit <https://mausam.imd.gov.in> or contact 011-2434-4599

(Service to the nation since 1875)

## LEGENDS

### WARNING

WARNING (TAKE ACTION)
ALERT (BE PREPARED)
WATCH (BE UPDATED)
NO WARNING (NO ACTION)

### Probabilistic Forecast

Terms	Probability of Occurrence (%)
Unlikely	< 25
Likely	25 - 50
Very Likely	50 - 75
Most Likely	> 75



Heavy: 64.5 to 115.5 mm/cm \*  
Very Heavy: 115.6 to 204.4 mm/cm \*  
Extremely Heavy: > 204.4 mm/cm \*



When maximum temperature of a station reaches  $\geq 40^{\circ}\text{C}$  for plains and  $\geq 30^{\circ}\text{C}$  for hilly regions  
(a) Based on Departure from normal

Heat Wave: Maximum Temperature Departure from normal  $4.5^{\circ}\text{C}$  to  $6.4^{\circ}\text{C}$ .  
Severe Heat Wave: Maximum Temperature Departure from normal  $\geq 6.5^{\circ}\text{C}$

(b). Based on Actual maximum temperature

Heat Wave: When actual maximum temperature  $\geq 45^{\circ}\text{C}$ .  
Severe Heat Wave: When actual maximum temperature  $\geq 47^{\circ}\text{C}$

(c). Criteria for heat wave for coastal stations

When maximum temperature departure is  $> 4.5^{\circ}\text{C}$  from normal. Heat Wave may be described provided maximum temperature  $\geq 37^{\circ}\text{C}$



When maximum temperature remains  $40^{\circ}\text{C}$

Warm Night: When minimum temperature departure  $4.5^{\circ}\text{C}$  to  $6.4^{\circ}\text{C}$ .  
Severe Warm Night: When minimum temperature departure  $> 6.4^{\circ}\text{C}$ .



When minimum temperature of a station  $\leq 10^{\circ}\text{C}$  for plains and  $\leq 0^{\circ}\text{C}$  for hilly regions.

(a). Based on departure

Cold Wave: Minimum Temperature Departure from normal  $-4.5^{\circ}\text{C}$  to  $-6.4^{\circ}\text{C}$ .  
Severe Cold Wave: Minimum Temperature Departure from normal  $\leq -6.5^{\circ}\text{C}$

(b) Based on actual Minimum Temperature (for Plains only)

Cold Wave : When Minimum Temperature is  $\leq 4.0^{\circ}\text{C}$   
Severe Cold Wave: When Minimum Temperature is  $\leq 2.0^{\circ}\text{C}$

(c) For Coastal Stations

When Minimum Temperature departure is  $\leq -4.5^{\circ}\text{C}$  & actual Minimum Temperature is  $\leq 15^{\circ}\text{C}$



When minimum temperature of a station  $\leq 10^{\circ}\text{C}$  for plains and  $\leq 0^{\circ}\text{C}$  for hilly regions  
Based on departure

Cold Day: Maximum Temperature Departure from normal  $-4.5^{\circ}\text{C}$  to  $-6.4^{\circ}\text{C}$ .  
Severe Cold Day: Maximum Temperature Departure from normal  $\leq -6.5^{\circ}\text{C}$



Phenomenon of small droplets suspended in air and the horizontal visibility  $< 1\text{km}$

Moderate Fog: When the visibility between 500-200 metres  
Dense Fog: when the visibility between 50- 200 metres  
Very Dense Fog: when the visibility  $< 50$  metres



Sudden electrical discharges manifested by a flash of light (Lightning) and a sharp rumbling sound (thunder)



An ensemble of particles of dust or sand energetically lifted to great heights by a strong and turbulent wind.



Ice deposits on ground

Air temperature  $\leq 4^{\circ}\text{C}$  ( over Plains)



A strong wind that rises suddenly, lasts for atleast 1 minute.

Moderate: Wind speed 52-61 kmph  
Severe: Wind speed 62-87 kmph  
Very Severe: Wind speed  $> 87$  kmph



Effect of various waves in the sea over specific area

Rough to very rough: Wind speed 41-62 kmph (22-33 knots) & Wave height 2.5-6 metre  
High to very high: Wind speed 63-117 kmph ( 34-63 knots) & Wave height 6-14 metre  
Phenomenal: Wind speed  $> 117$  kmph ( $> 63$  knots) & Wave height  $> 14$  metre



Cyclonic Storm: Wind speed 62-87 kmph (34-47 knots)  
Severe Cyclonic Storm: Wind speed 88-117 kmph (48-63 knots)  
Very Severe Cyclonic Storm: Wind speed 118-165 kmph (64 - 89 knots)  
Extremely Severe Cyclonic Storm: Wind speed 166-220 kmph (90 -119 knots)  
Super Cyclone Storm: Wind speed  $> 220$  kmph ( $> 119$  knots)

\*Red color warning does not mean "Red Alert" Red color warning means "Take Action"

Forecast and warning for any day is valid from 0830 hours IST of day till 0830 hours IST of next day

For more details kindly visit <https://mausam.imd.gov.in> or contact 011-2434-4599

(Service to the nation since 1875)