

2025-06-10

Time of Issue: 0800 hours IST
(MORNING)

ALL INDIA WEATHER SUMMARY AND FORECAST BULLETIN

Significant Weather Features

Weather Forecast and Warnings

South Peninsular India:

- Light/moderate rainfall at most/many place over Kerala & Mahe, Karnataka, Lakshadweep during next 7 days and Light/moderate rainfall at many/some places accompanied with isolated **thunderstorm, lightning & gusty winds speed reaching 30-50 kmph** over Tamil Nadu, Puducherry & Karaikal, Rayalaseema, Telangana during 10th-13th June with **Thundersquall (wind speed reaching 50-60 kmph gusting to 70 kmph)** very likely at isolated places over Coastal Andhra Pradesh & Yanam during 10th-12th; Telangana & Interior Karnataka on 12th & 13th June.
- Isolated **heavy rainfall** likely over Tamil Nadu, Puducherry & Karaikal during 10th-12th; Kerala & Mahe during 10th & 11th, Coastal Andhra Pradesh & Yanam on 11th & 12th; Rayalaseema during 10th-13th, Telangana on 12th; Karnataka on 09th & 10th; Lakshadweep on 13th with **very heavy rainfall** over Tamil Nadu, Puducherry & Karaikal during 13th-15th; Kerala & Mahe during 12th-15th; Coastal Karnataka on 11th & 15th; Interior Karnataka during 11th-15th June with **Extremely heavy rainfall** likely over Coastal Karnataka during 12th-14th; North Interior Karnataka on 13th; South Interior Karnataka on 12th & 13th June.

West India:

- Light/moderate rainfall at some/isolated places accompanied with accompanied with **thunderstorm, lightning & gusty winds speed reaching 40-50 kmph** likely over Marathwada during 10th-15th; with **lightning** over Madhya Maharashtra during 10th-14th June with **Thundersquall (wind speed reaching 50-60 kmph gusting to 70 kmph)** very likely at isolated places over Konkan & Goa and Marathwada on 13th & 14th June.
- Isolated **heavy rainfall** likely over Madhya Maharashtra on 12th, Marathwada during 12th-14th June with **very heavy falls** on Konkan & Goa on 12th & 15th; Madhya Maharashtra during 13th-15th June with **Extremely heavy rainfall** likely over Konkan & Goa on 13th & 14th June.

East & Central India:

- Light/moderate rainfall at some places likely to continue over Sub-Himalayan West Bengal & Sikkim during next 7 days and Light/moderate rainfall at isolated/some places accompanied with **thunderstorm, lightning & gusty winds speed reaching 40-50 kmph** likely over Andaman & Nicobar Islands on 10th & 11th; Madhya Pradesh, West Bengal & Sikkim during 11th-13th; Vidarbha, Chhattisgarh, Odisha during 10th-13th; Bihar during 11th-15th; Jharkhand during 10th-13th June with **Thundersquall (wind speed reaching 50-60 kmph gusting to 70 kmph)** very likely at isolated places over Vidarbha on 11th; Chhattisgarh during 11th-13th; Bihar on 11th-12th June.
- Isolated **heavy rainfall** also likely over Andaman & Nicobar Islands on 11th & 12th; Sub-Himalayan West Bengal & Sikkim on 12th, 14th & 15th; Odisha on 10, 14th & 15th June.

Northwest India:

- Light/moderate rainfall at some/isolated places accompanied with accompanied with **thunderstorm, lightning & gusty winds speed reaching 40-50 kmph** likely over Himachal Pradesh, Haryana Chandigarh & Delhi, West Uttar Pradesh & East Rajasthan during 13th-15th; Uttarakhand, East Uttar Pradesh during 11th-15th; Punjab on 14th & 15th June.
- Isolated **heavy rainfall** likely over Uttarakhand during 12th-15th June.
- Strong surface winds (speed 20-30 kmph) very likely over plains of Northwest India on 10-11th June.

Northeast India:

***Red color warning does not mean "Red Alert" Red color warning means "Take Action"**

Forecast and warning for any day is valid from 0830 hours IST of day till 0830 hours IST of next day

For more details kindly visit <https://mausam.imd.gov.in> or contact 011-2434-4599

(Service to the nation since 1875)

- Light/moderate rainfall at many/some places likely to continue over northeast India during next 7 days with **isolated heavy rainfall** over Arunachal Pradesh during 12th-15th; south Assam & Meghalaya during 10th-15th; Nagaland, Manipur, Mizoram & Tripura during 10 th-15th June.

Light/moderate rainfall at some/isolated places accompanied with **thunderstorm, lightning & gusty winds speed reaching 30-40 kmph** over south Assam on 10th; Nagaland, Manipur, Mizoram & Tripura during 10th-13th June.

Maximum Temperature Forecast:

- No significant change in maximum temperatures likely over Northwest India during next 5 days and gradual fall by 2-3°C thereafter.
- No significant change in maximum temperatures likely over Central & East India during next 2-3 days and gradual fall by 2-3°C thereafter.
- No significant change in maximum temperatures likely over rest parts of the country.

Heat wave, Hot & Humid weather and Warn Night warnings:

- **Heat wave condition** very likely at many/some places over West Rajasthan during 10th-13th with **severe heat wave conditions** at isolated/some parts on 10th June.
- **Heat wave conditions are** likely to prevail over Jammu-Kashmir during 10th-12th, Punjab during 10th-13th; Haryana, Chandigarh & Delhi during 10th-12th; West Uttar Pradesh during 10th-12th, East Uttar Pradesh on 10th, East Rajasthan & north Madhya Pradesh during 09th-11th June.
- **Hot & humid weather** is likely to prevail over Gangetic West Bengal, Coastal Andhra Pradesh & Yanam on 10th; Bihar on 10th & 11th June.
- **Warm night conditions** very likely in isolated pockets over Punjab, Haryana Chandigarh & Delhi during on 10th & 11th; West Uttar Pradesh & Rajasthan on 10th June.

***Red color warning does not mean "Red Alert" Red color warning means "Take Action"**

Forecast and warning for any day is valid from 0830 hours IST of day till 0830 hours IST of next day

For more details kindly visit <https://mausam.imd.gov.in> or contact 011-2434-4599

(Service to the nation since 1875)

Main Weather Observations:

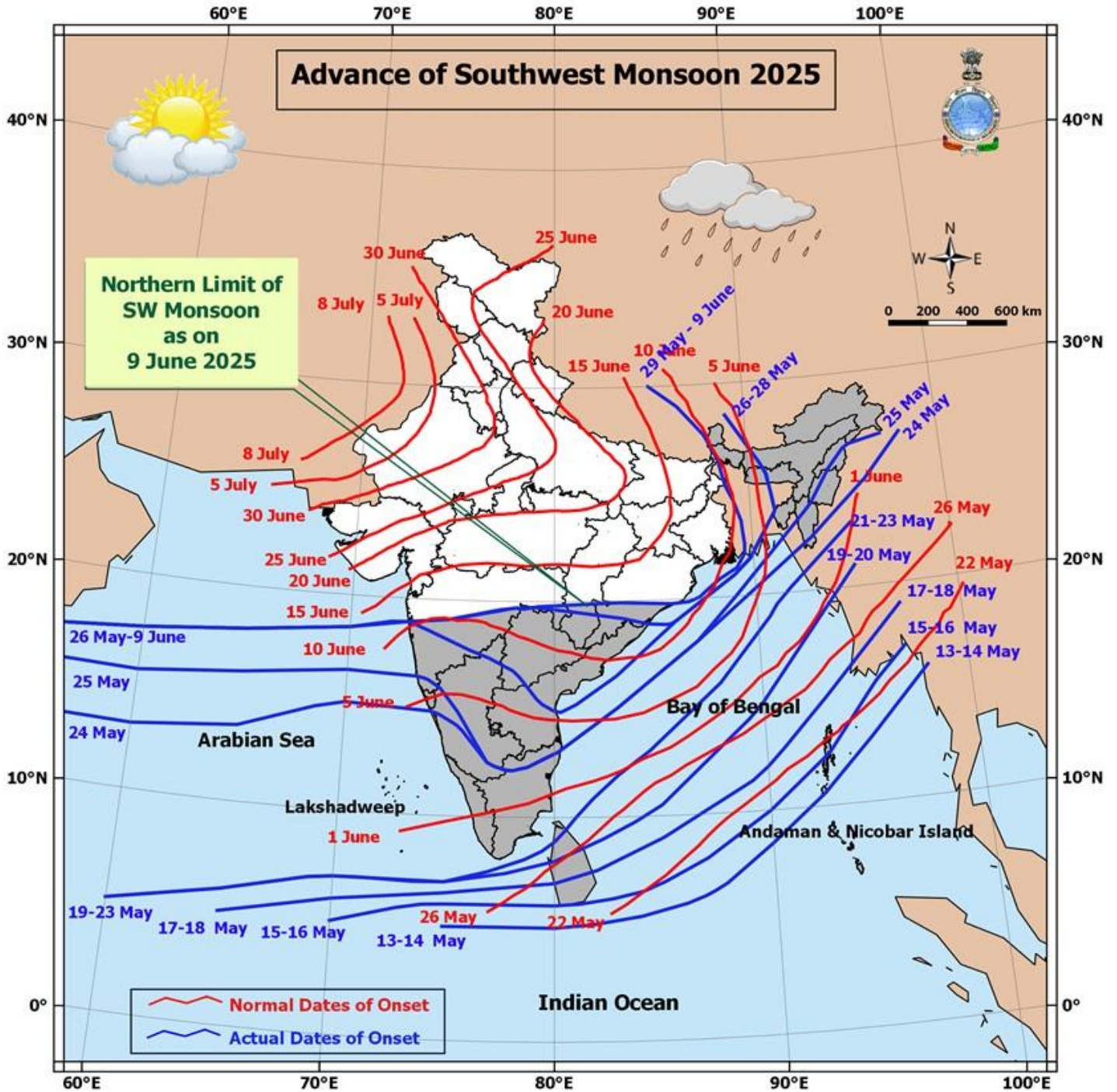
- ❖ **Rainfall distribution** (from 0830 hours IST to 1730 hours IST of yesterday): **at many places** over Andaman & Nicobar Islands; **at a few places** over Coastal Karnataka, Lakshadweep; **at isolated places** over Konkan & Goa, Madhya Maharashtra, Interior Karnataka, Telangana, Kerala & Mahe, Tamil Nadu, Puducherry & Karaikal, Vidarbha, Chhattisgarh, Odisha, Jharkhand.
- ❖ **Significant rainfall recorded (in cm)** (from 0830 hours IST to 1730 hours IST of yesterday): **Odisha**: Angul (dist. Angul) 3, Keonjhar 2; South interior Karnataka: Bangalore HAL 2; Tamilnadu Puducherry & Karaikal: Chennai (Nungambakkam) (dist. Chennai) 2.
- ❖ Yesterday, **Heat wave** conditions prevailed at a few places over Rajasthan.
- ❖ **Minimum Temperature Departures (as on 09-06-2025): markedly above normal(> 5.1°C)** at few places over Assam & Meghalaya, East Madhya Pradesh and Gujarat Region; at isolated places over Bihar, West Uttar Pradesh, Uttarakhand, Himachal Pradesh, West Rajasthan, West Madhya Pradesh and Saurashtra & Kutch. **appreciably above normal(3.1°C to 5.0°C)** at few places over Sub Himalayan West Bengal & Sikkim and Jammu-KashmirLadakh-Gilgit-Baltistan-Muzaffarabad; at isolated places over Gangetic West Bengal, Odisha, Jharkhand, Haryana-Chandigarh-Delhi, Punjab, East Rajasthan and Coastal Andhra Pradesh & Yanam. **above normal(1.6°C to 3.0°C)** at most places over Arunachal Pradesh and East Uttar Pradesh; at few places over Nagaland, Manipur, Mizoram & Tripura, Vidarbha, Rayalaseema and Lakshadweep; at isolated places over Andaman & Nicobar Islands, Konkan & Goa, Madhya Maharashtra and Tamil Nadu, Puducherry & Karaikal. **near normal(-1.5°C to 1.5°C)** at many places over Coastal Karnataka and North Interior Karnataka; at most places over Chhattisgarh, South Interior Karnataka and Kerala & Mahe; at few places over Marathwada and Telangana. **The lowest minimum temperature** of 19.2°C was reported at UDGIR (MAHARASHTRA) over the Plains of India.
- ❖ **Maximum Temperature Departures (as on 09-06-2025): markedly above normal(> 5.1°C)** at most places over Arunachal Pradesh; at few places over Assam & Meghalaya, Jammu-KashmirLadakh-Gilgit-Baltistan-Muzaffarabad and East Madhya Pradesh; at isolated places over Sub Himalayan West Bengal & Sikkim, East Uttar Pradesh, Haryana-Chandigarh-Delhi, Himachal Pradesh, West Madhya Pradesh and Coastal Andhra Pradesh & Yanam. **appreciably above normal(3.1°C to 5.0°C)** at most places over Bihar and Punjab; at few places over West Uttar Pradesh and West Rajasthan; at isolated places over Nagaland, Manipur, Mizoram & Tripura, Gangetic West Bengal, Odisha, Uttarakhand, East Rajasthan, Tamil Nadu, Puducherry & Karaikal and Kerala & Mahe. **above normal(1.6°C to 3.0°C)** at few places over Vidarbha and Lakshadweep; at isolated places over Jharkhand, Saurashtra & Kutch and Chhattisgarh. **near normal(-1.5°C to 1.5°C)** at many places over Madhya Maharashtra, Marathwada and South Interior Karnataka; at most places over Gujarat Region, Konkan & Goa, Coastal Karnataka and North Interior Karnataka; at few places over Andaman & Nicobar Islands, Telangana and Rayalaseema. **The highest maximum temperature** of 47.3°C was reported at SRIGANGANAGAR (RAJASTHAN).

Meteorological Analysis (Based on 0530 hours IST)

- ❖ The Northern Limit of Monsoon continues to pass through 17.0°N/55°E, 17.5°N/60°E, 18°N/65°E, 18.5°N/70°E, Mumbai, Ahilyanagar, Adilabad, Bhawanipatna, Puri, Sandhead Island, 23.5°N/89.5°E, Balurghat, 30°N/85°E.
- ❖ The **upper air cyclonic circulation** over northwest Uttar Pradesh and neighbourhood extending upto 1.5 km above mean sea level persists.
- ❖ The **trough** from above cyclonic circulation over northwest Uttar Pradesh & neighbourhood to Telangana across Madhya Pradesh & Vidarbha at 0.9 km above mean sea level persists.
- ❖ The **Western Disturbance** as a trough in middle tropospheric westerlies with its axis at 5.8 km above mean sea level now runs roughly along Long. 60°E to the north of Lat. 28°N.
- ❖ The **upper air cyclonic circulation** over Southeast & adjoining eastcentral Bay of Bengal now lies over central parts of Bay of Bengal between 5.8 & 7.6 km above mean sea level.
- ❖ The **trough** from north Tamil Nadu to south Maharashtra coast across Interior Karnataka between 3.1 & 4.5 km above mean sea level persists.
- ❖ The **upper air cyclonic circulation** over northwest Bay of Bengal and adjoining north coastal Odisha & south Gangetic West Bengal between 1.5 & 5.8 km above mean sea level persists.

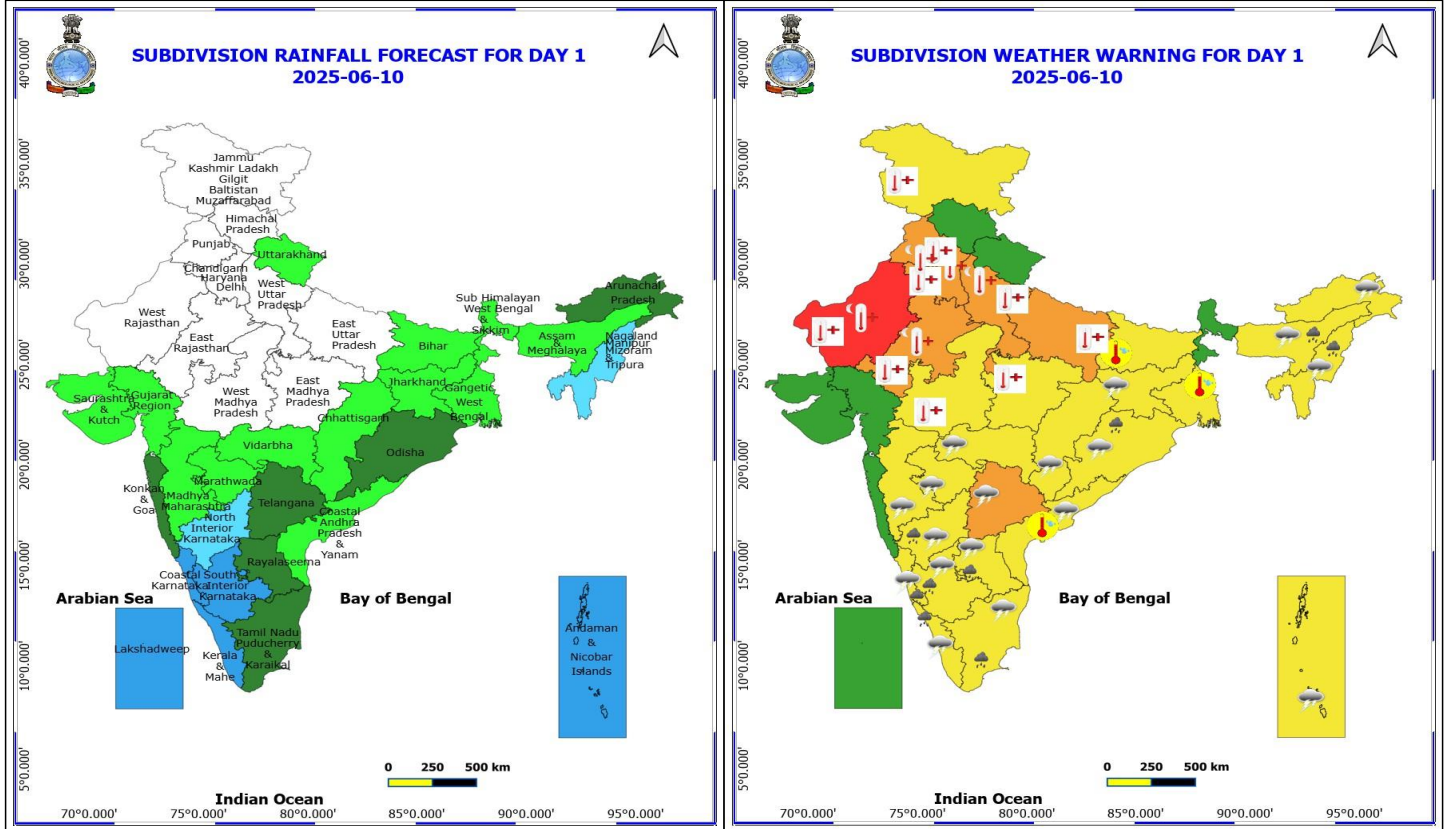
Weather Outlook for subsequent 3 days (During 15th June- 17th June, 2025)

- ❖ **Fairly widespread to widespread** rainfall activity likely over Northeast India, Sub-Himalayan West Bengal & Sikkim, Andaman & Nicobar Islands, Lakshadweep, Konkan & Goa, Marathwada, Madhya Maharashtra Coastal and Interior Karnataka, Telangana, Rayalaseema and Kerala & Mahe.
- ❖ **Isolated to scattered rainfall** likely over Jammu-Kashmir-Ladakh-Gilgit-Baltistan-Muzaffarabad, Uttarakhand, Odisha, south Chhattisgarh, Vidarbha, Madhya Pradesh, Uttar Pradesh, Bihar and Jharkhand.



*Red color warning does not mean "Red Alert" Red color warning means "Take Action"
Forecast and warning for any day is valid from 0830 hours IST of day till 0830 hours IST of next day
For more details kindly visit <https://mausam.imd.gov.in> or contact 011-2434-4599

(Service to the nation since 1875)



10 June (Day 1)

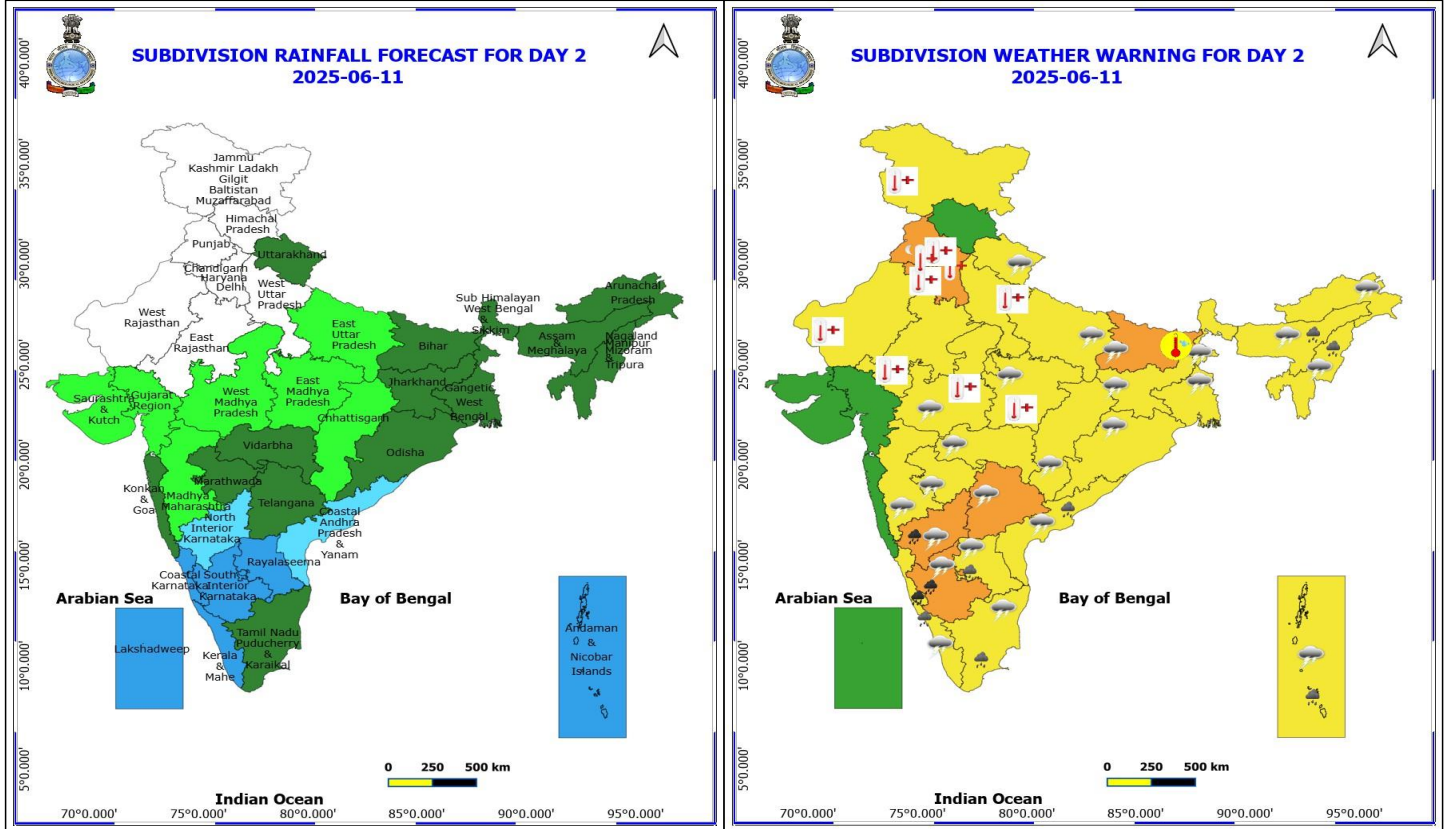
- ❖ **Heavy Rainfall** very likely at isolated places over Assam & Meghalaya, Coastal Karnataka, Interior Karnataka, Kerala & Mahe, Nagaland, Manipur, Mizoram and Tripura, Odisha, Rayalaseema and Tamil Nadu Puducherry & Karaikal.
- ❖ **Thundersquall with wind speed reaching(50-60kmph)** very likely at isolated places over Coastal Andhra Pradesh.
- ❖ **Thunderstorm accompanied with lightning & gusty winds(40-50kmph)** very likely at isolated places over Interior Karnataka and Vidarbha.
- ❖ **Thunderstorm accompanied with lightning & gusty winds(30-40kmph)** very likely at isolated places over Andaman & Nicobar Islands, Assam & Meghalaya, Chhattisgarh, Coastal Karnataka, Jharkhand, Kerala & Mahe, Marathwada, Nagaland, Manipur, Mizoram and Tripura, Odisha, Rayalaseema, Tamil Nadu Puducherry & Karaikal and Telangana.
- ❖ **Thunderstorm accompanied with Lightning** very likely at isolated places over Arunachal Pradesh and Madhya Maharashtra.
- ❖ **Heat Wave conditions** very likely at isolated places over Haryana, Chandigarh & Delhi, Jammu-Kashmir-Ladakh-Gilgit-Baltistan-Muzaffarabad, Madhya Pradesh, Punjab, Rajasthan and Uttar Pradesh.
- ❖ **Hot and Humid weather** very likely at isolated places over Bihar, Coastal Andhra Pradesh and Gangetic West Bengal.
- ❖ **Warm Night conditions** very likely at isolated places over Haryana, Chandigarh & Delhi, Punjab, Rajasthan and West Uttar Pradesh.
- ❖ **Squally wind with speed 45 kmph to 55 kmph gusting to 65 kmph** likely to prevail along and off Somalia coast and adjoining parts of southwest and westcentral Arabian Sea, and Gulf of Mannar. **Squally weather with wind speed 35 - 45 kmph gusting to 55 kmph** likely to prevail over, southern parts of south Bay of Bengal, over Andaman Sea.

*Red color warning does not mean "Red Alert" Red color warning means "Take Action"

Forecast and warning for any day is valid from 0830 hours IST of day till 0830 hours IST of next day

For more details kindly visit <https://mausam.imd.gov.in> or contact 011-2434-4599

(Service to the nation since 1875)



11 June (Day 2)

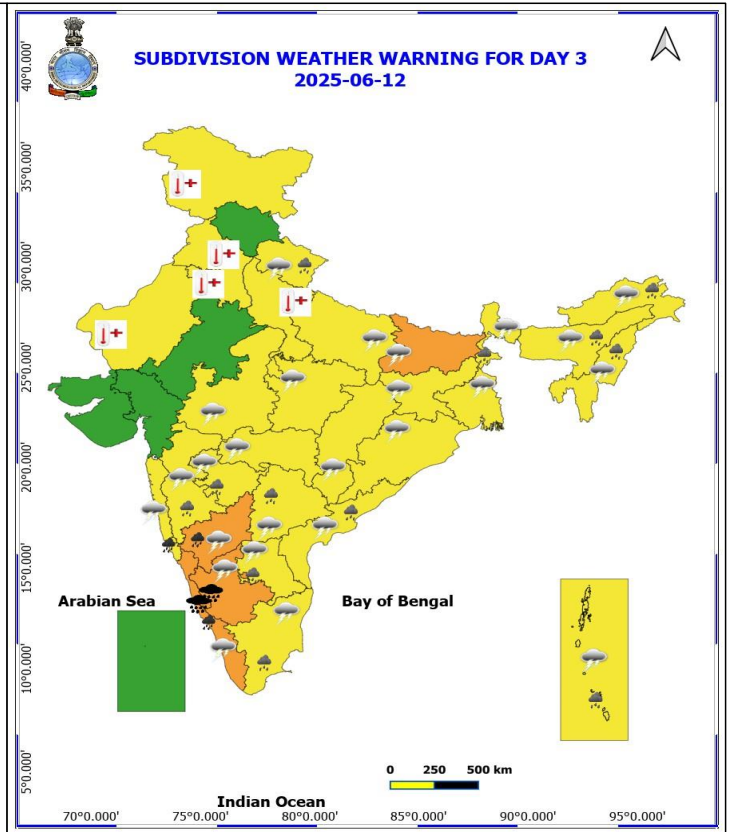
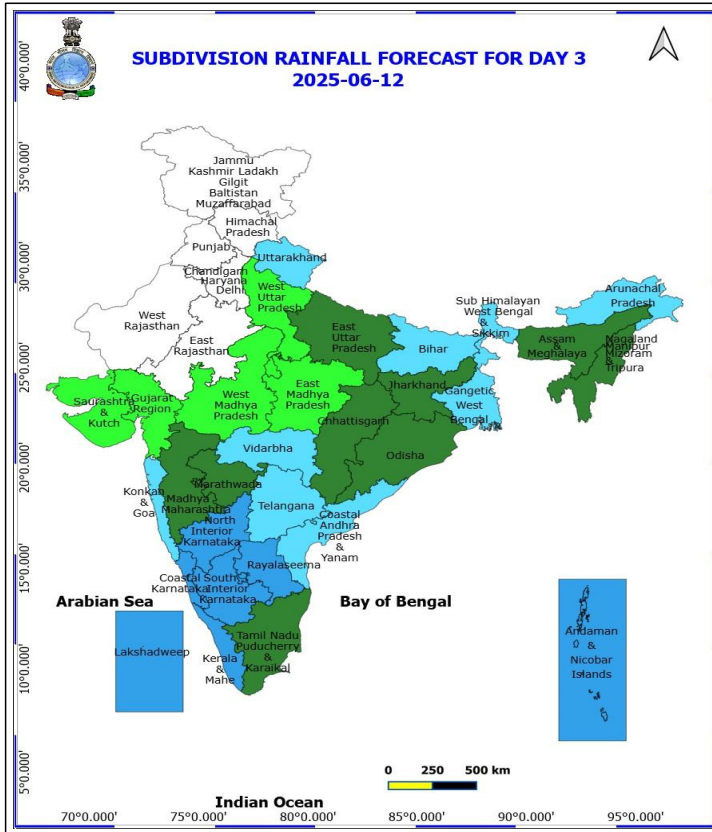
- ❖ **Heavy Rainfall** very likely at isolated places over Assam & Meghalaya, Coastal Karnataka, Interior Karnataka, Kerala & Mahe, Nagaland, Manipur, Mizoram and Tripura, Odisha, Rayalaseema and Tamil Nadu Puducherry & Karaikal.
- ❖ **Thundersquall with wind speed reaching(50-60kmph)** very likely at isolated places over Coastal Andhra Pradesh.
- ❖ **Thunderstorm accompanied with lightning & gusty winds(40-50kmph)** very likely at isolated places over Interior Karnataka and Vidarbha.
- ❖ **Thunderstorm accompanied with lightning & gusty winds(30-40kmph)** very likely at isolated places over Andaman & Nicobar Islands, Assam & Meghalaya, Chhattisgarh, Coastal Karnataka, Jharkhand, Kerala & Mahe, Marathwada, Nagaland, Manipur, Mizoram and Tripura, Odisha, Rayalaseema, Tamil Nadu Puducherry & Karaikal and Telangana.
- ❖ **Thunderstorm accompanied with Lightning** very likely at isolated places over Arunachal Pradesh and Madhya Maharashtra.
- ❖ **Heat Wave conditions** very likely at isolated places over Haryana, Chandigarh & Delhi, Jammu-Kashmir-Ladakh-Gilgit-Baltistan-Muzaffarabad, Madhya Pradesh, Punjab, Rajasthan and Uttar Pradesh.
- ❖ **Hot and Humid weather** very likely at isolated places over Bihar, Coastal Andhra Pradesh and Gangetic West Bengal.
- ❖ **Warm Night conditions** very likely at isolated places over Haryana, Chandigarh & Delhi, Punjab, Rajasthan and West Uttar Pradesh.
- ❖ **Squally wind with speed 45 kmph to 55 kmph gusting to 65 kmph** likely to prevail along and off Somalia coast and adjoining parts of southwest and westcentral Arabian Sea, and Gulf of Mannar. **Squally weather with wind speed 35 - 45 kmph gusting to 55 kmph** likely to prevail over Comorin area, many parts of south Bay of Bengal, off South Sri Lanka coast, and over Andaman Sea.

*Red color warning does not mean "Red Alert" Red color warning means "Take Action"

Forecast and warning for any day is valid from 0830 hours IST of day till 0830 hours IST of next day

For more details kindly visit <https://mausam.imd.gov.in> or contact 011-2434-4599

(Service to the nation since 1875)



12 June (Day 3)

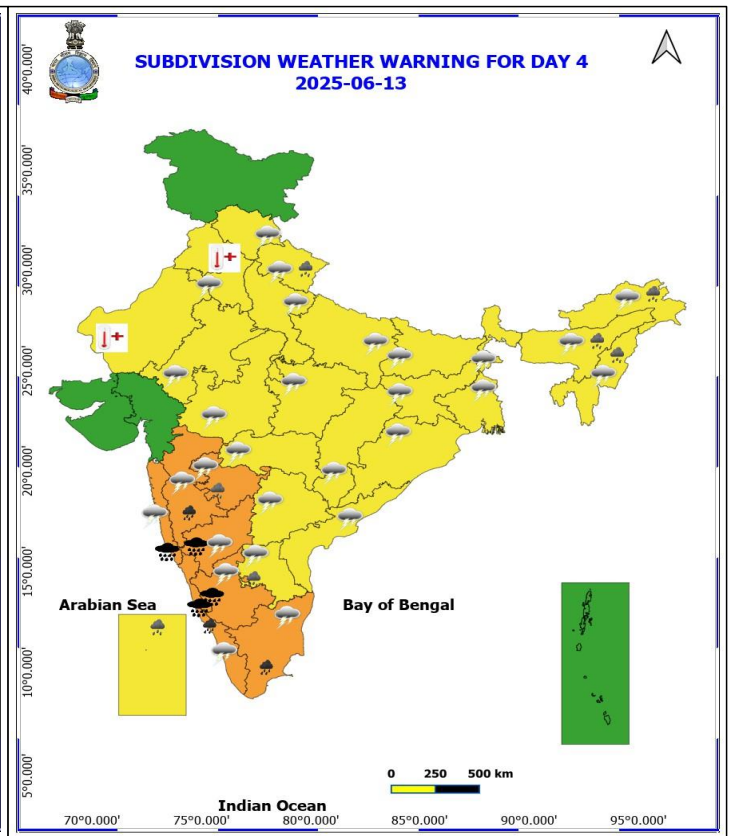
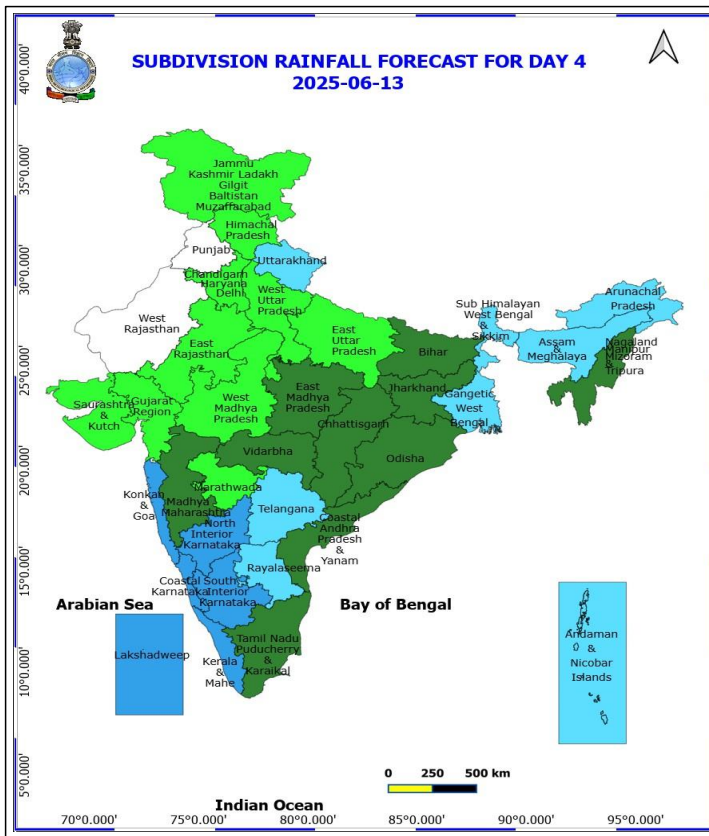
- ❖ **Heavy to Very Heavy Rainfall** very likely at isolated places over Coastal Karnataka and Interior Karnataka.
- ❖ **Heavy Rainfall** very likely at isolated places over Andaman & Nicobar Islands, Andhra Pradesh, Assam & Meghalaya, Kerala & Mahe, Nagaland, Manipur, Mizoram and Tripura and Tamil Nadu Puducherry & Karaikal.
- ❖ **Thundersquall with wind speed reaching(50-60kmph)** very likely at isolated places over Bihar, Chhattisgarh, Coastal Andhra Pradesh and Vidarbha.
- ❖ **Thunderstorm accompanied with lightning & gusty winds(40-50kmph)** very likely at isolated places over East Uttar Pradesh, Gangetic West Bengal, Interior Karnataka, Marathwada and Uttarakhand.
- ❖ **Thunderstorm accompanied with lightning & gusty winds(30-40kmph)** very likely at isolated places over Andaman & Nicobar Islands, Jharkhand, Kerala & Mahe, Madhya Pradesh, Nagaland, Manipur, Mizoram and Tripura, Odisha, Rayalaseema, Sub Himalayan West Bengal & Sikkim, Tamil Nadu Puducherry & Karaikal and Telangana.
- ❖ **Thunderstorm accompanied with Lightning** very likely at isolated places over Arunachal Pradesh, Assam & Meghalaya and Madhya Maharashtra.
- ❖ **Heat Wave conditions** very likely at isolated places over Haryana, Chandigarh & Delhi, Jammu-Kashmir-Ladakh-Gilgit-Baltistan-Muzaffarabad, Madhya Pradesh, Punjab, Rajasthan and West Uttar Pradesh.
- ❖ **Hot and Humid weather** very likely at isolated places over Bihar.
- ❖ **Warm Night conditions** very likely at isolated places over Haryana, Chandigarh & Delhi and Punjab.
- ❖ **Squally wind with speed 45 kmph to 55 kmph gusting to 65 kmph** likely to prevail along and off Somalia coast and adjoining parts of southwest and westcentral Arabian Sea, and Gulf of Mannar. **Squally weather with wind speed 35 - 45 kmph gusting to 55 kmph** likely to prevail over Comorin area, most parts of south Bay of Bengal, off Sri Lanka, Tamil Nadu coasts, and over Andaman Sea.

*Red color warning does not mean "Red Alert" Red color warning means "Take Action"

Forecast and warning for any day is valid from 0830 hours IST of day till 0830 hours IST of next day

For more details kindly visit <https://mausam.imd.gov.in> or contact 011-2434-4599

(Service to the nation since 1875)



13 June (Day 4)

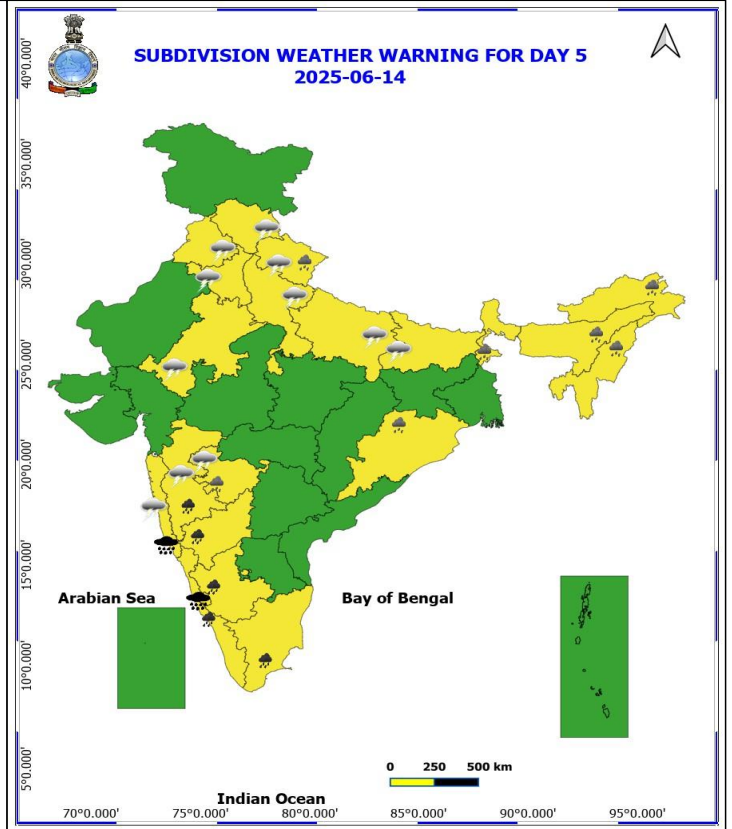
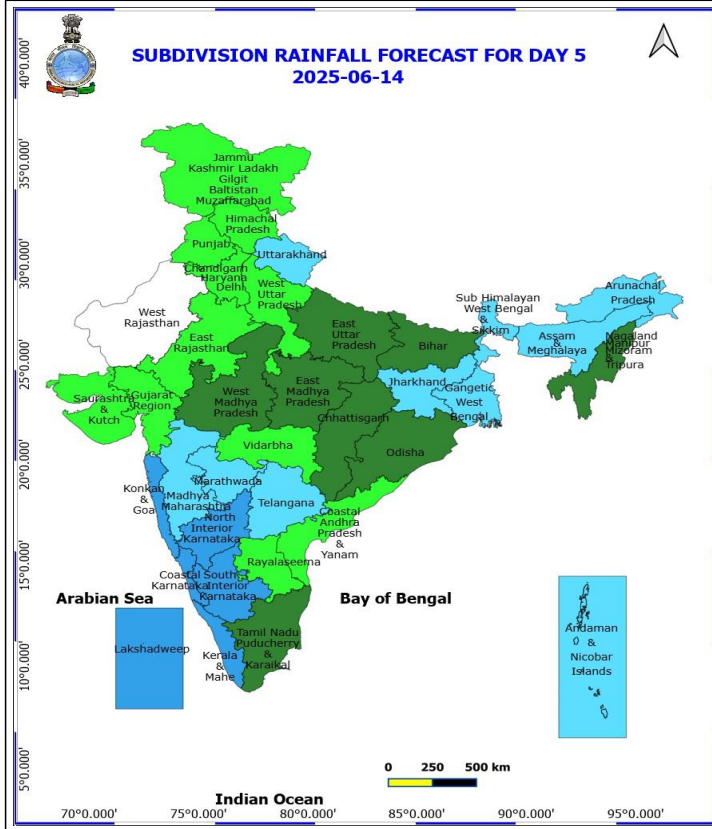
- ❖ **Heavy to Very Heavy Rainfall with isolated Extremely Heavy Rainfall** likely at isolated places over Coastal Karnataka and South Interior Karnataka.
- ❖ **Heavy to Very Heavy Rainfall** likely at isolated places over Kerala & Mahe, Konkan & Goa and North Interior Karnataka.
- ❖ **Heavy Rainfall** likely at isolated places over Andaman & Nicobar Islands, Andhra Pradesh, Arunachal Pradesh, Assam & Meghalaya, Madhya Maharashtra, Marathwada, Nagaland, Manipur, Mizoram and Tripura, Sub Himalayan West Bengal & Sikkim, Tamil Nadu Puducherry & Karaikal, Telangana and Uttarakhand.
- ❖ **Thundersquall with wind speed reaching(50-60kmph)** likely at isolated places over Bihar, Chhattisgarh, Coastal Andhra Pradesh, Interior Karnataka and Telangana.
- ❖ **Thunderstorm accompanied with lightning & gusty winds(40-50kmph)** likely at isolated places over Andaman & Nicobar Islands, East Uttar Pradesh, Gangetic West Bengal, Kerala & Mahe, Marathwada, Uttarakhand and Vidarbha.
- ❖ **Thunderstorm accompanied with lightning & gusty winds(30-40kmph)** likely at isolated places over Jharkhand, Madhya Pradesh, Nagaland, Manipur, Mizoram and Tripura, Odisha, Rayalaseema, Sub Himalayan West Bengal & Sikkim and Tamil Nadu Puducherry & Karaikal.
- ❖ **Thunderstorm accompanied with Lightning** likely at isolated places over Arunachal Pradesh, Assam & Meghalaya, Konkan & Goa and Madhya Maharashtra.
- ❖ **Heat Wave conditions** likely at isolated places over Haryana, Chandigarh & Delhi, Jammu-Kashmir-Ladakh-Gilgit-Baltistan-Muzaffarabad, Punjab, West Rajasthan and West Uttar Pradesh.
- ❖ **Squally wind with speed 45 kmph to 55 kmph gusting to 65 kmph** likely to prevail along and off Somalia coast and adjoining parts of southwest and westcentral Arabian Sea, and Gulf of Mannar. Squally weather with wind **speed 35 - 45 kmph gusting to 55 kmph** likely to prevail along and off south Konkan, Goa, Karnataka, Kerala coasts, Lakshadweep, Maldives, Comorin areas, over south Bay of Bengal, adjoining central Bay of Bengal, along and off Sri Lanka, Tamil Nadu coasts, and over Andaman Sea.

***Red color warning does not mean "Red Alert" Red color warning means "Take Action"**

Forecast and warning for any day is valid from 0830 hours IST of day till 0830 hours IST of next day

For more details kindly visit <https://mausam.imd.gov.in> or contact 011-2434-4599

(Service to the nation since 1875)



14 June (Day 5)

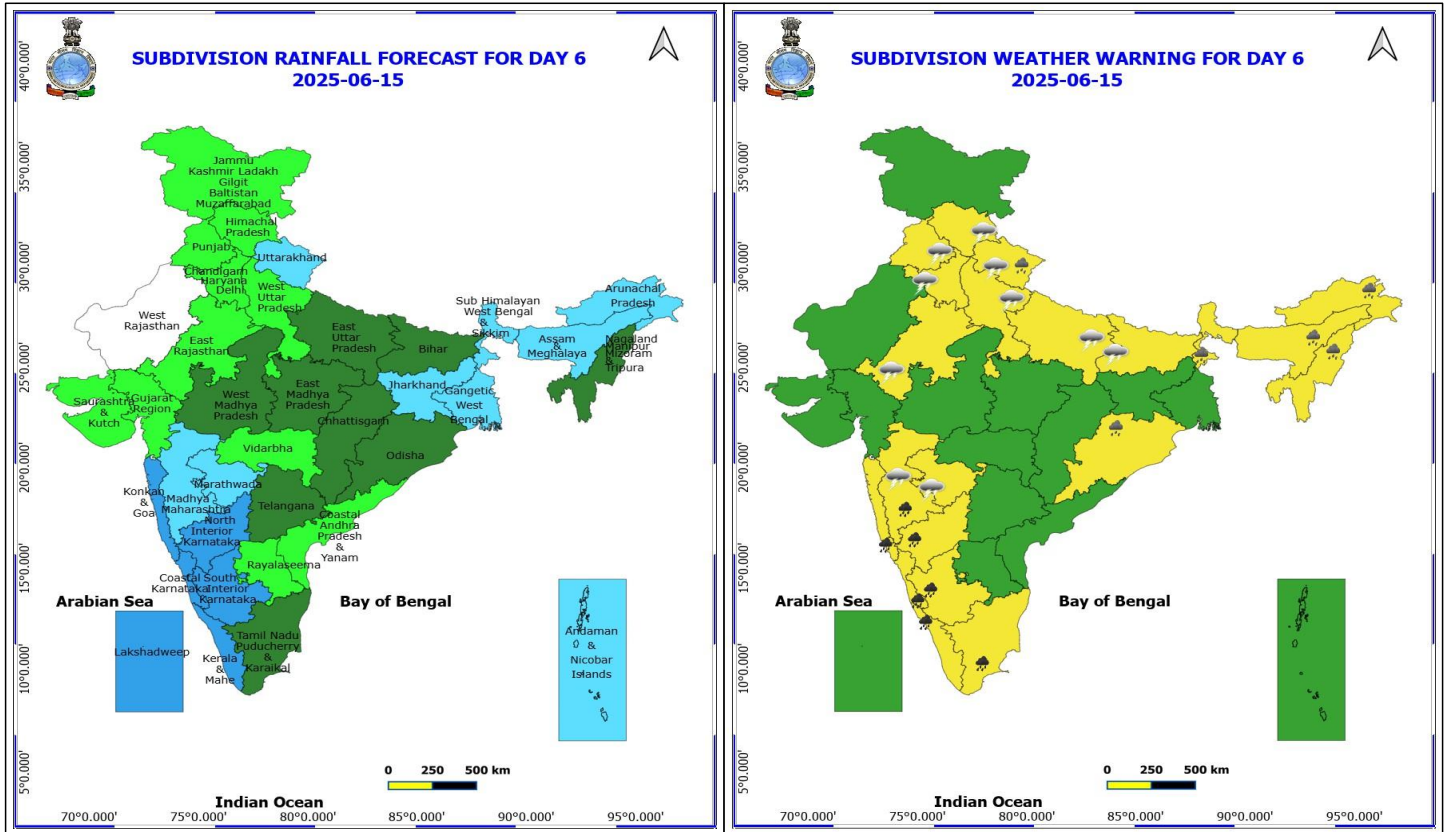
- ❖ **Heavy to Very Heavy Rainfall with isolated Extremely Heavy Rainfall** likely at isolated places over Costal Karnataka, Interior Karnataka and Konkan & Goa.
- ❖ **Heavy to Very Heavy Rainfall** likely at isolated places over Kerala & Mahe, Madhya Maharashtra and Tamil Nadu Puducherry & Karaikal.
- ❖ **Heavy Rainfall** likely at isolated places over Arunachal Pradesh, Assam & Meghalaya, Lakshadweep, Marathwada, Nagaland, Manipur, Mizoram and Tripura, Rayalaseema and Uttarakhand.
- ❖ **Thundersquall with wind speed reaching(50-60kmph)** likely at isolated places over Chhattisgarh, Interior Karnataka, Konkan & Goa, Marathwada and Telangana.
- ❖ **Thunderstorm accompanied with lightning & gusty winds(40-50kmph)** likely at isolated places over East Rajasthan, Gangetic West Bengal, Haryana, Chandigarh & Delhi, Himachal Pradesh, Kerala & Mahe, Uttar Pradesh, Uttarakhand and Vidarbha.
- ❖ **Thunderstorm accompanied with lightning & gusty winds(30-40kmph)** likely at isolated places over Andhra Pradesh, Bihar, Jharkhand, Madhya Pradesh, Nagaland, Manipur, Mizoram and Tripura, Odisha, Sub Himalayan West Bengal & Sikkim and Tamil Nadu Puducherry & Karaikal.
- ❖ **Thunderstorm accompanied with Lightning** likely at isolated places over Arunachal Pradesh, Assam & Meghalaya and Madhya Maharashtra.
- ❖ **Heat Wave conditions** likely at isolated places over Punjab and West Rajasthan.
- ❖ **Squally wind with speed 45 kmph to 55 kmph gusting to 65 kmph** likely to prevail along and off Somalia coast and adjoining parts of southwest and westcentral Arabian Sea, and Gulf of Mannar. Squally weather with wind **speed 35 - 45 kmph gusting to 55 kmph** likely to prevail over southeast Arabian Sea & adjoining parts of southwest and eastcentral Arabian Sea, along and off south Konkan, Goa, Karnataka, Kerala coasts, Lakshadweep, Maldives, Comorin areas, over south Bay of Bengal, adjoining central Bay of Bengal, along and off Sri Lanka, Tamil Nadu coasts, and over Andaman Sea.

***Red color warning does not mean "Red Alert" Red color warning means "Take Action"**

Forecast and warning for any day is valid from 0830 hours IST of day till 0830 hours IST of next day

For more details kindly visit <https://mausam.imd.gov.in> or contact 011-2434-4599

(Service to the nation since 1875)

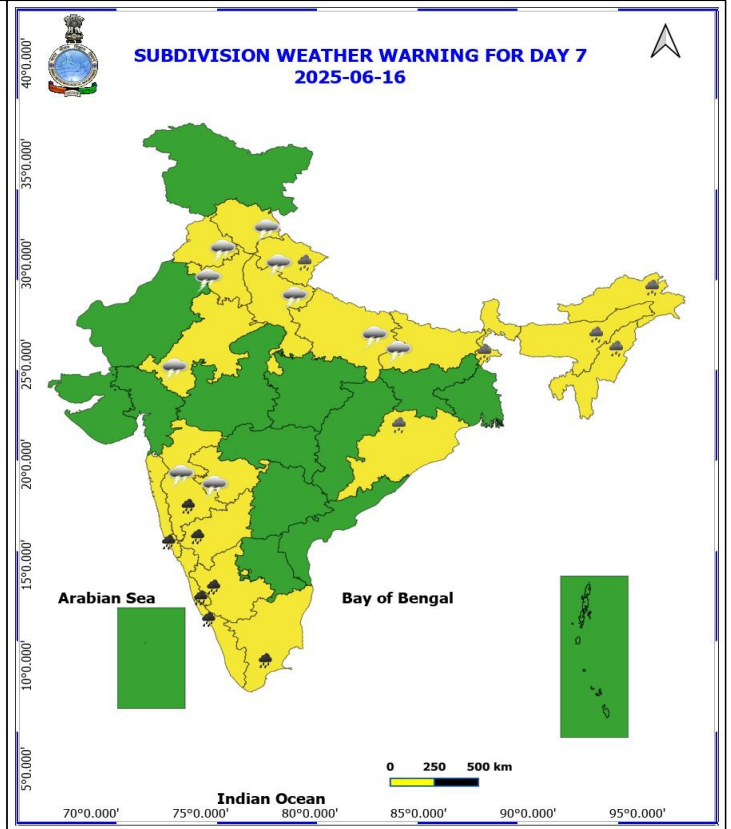
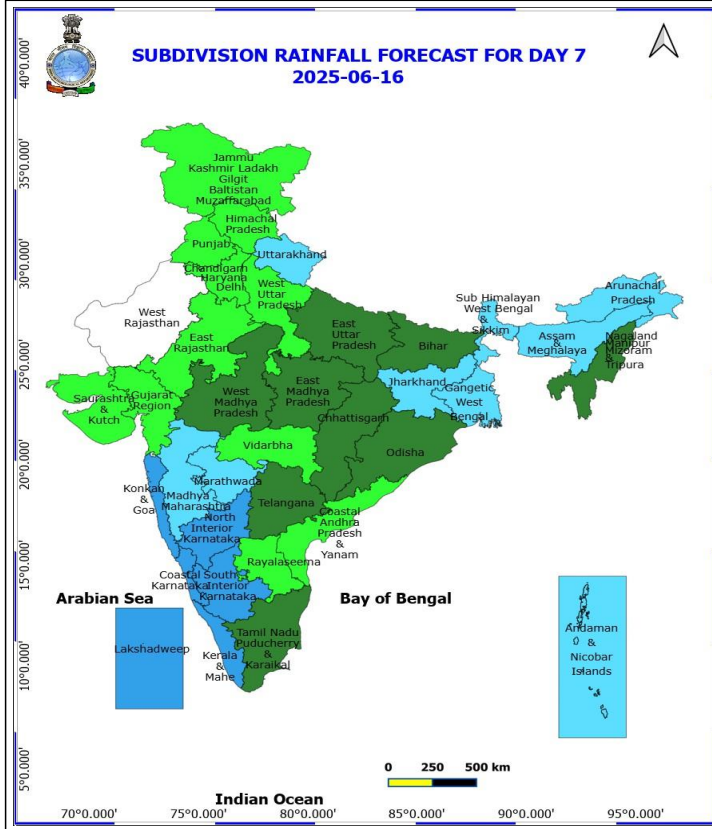


15 June (Day 6)

- ❖ **Heavy to Very Heavy Rainfall with isolated Extremely Heavy Rainfall** likely at isolated places over Costal Karnataka and Konkan & Goa.
- ❖ **Heavy to Very Heavy Rainfall** likely at isolated places over Interior Karnataka, Kerala & Mahe, Madhya Maharashtra and Tamil Nadu Puducherry & Karaikal.
- ❖ **Heavy Rainfall** likely at isolated places over Arunachal Pradesh, Assam & Meghalaya, Marathwada, Nagaland, Manipur, Mizoram and Tripura, Odisha, Sub Himalayan West Bengal & Sikkim and Uttarakhand.
- ❖ **Thundersquall with wind speed reaching(50-60kmph)** likely at isolated places over Konkan & Goa and Marathwada.
- ❖ **Thunderstorm accompanied with lightning & gusty winds(40-50kmph)** likely at isolated places over East Rajasthan, Haryana, Chandigarh & Delhi, Himachal Pradesh, Punjab, Uttar Pradesh and Uttarakhand.
- ❖ **Thunderstorm accompanied with lightning & gusty winds(30-40kmph)** likely at isolated places over Bihar.
- ❖ **Thunderstorm accompanied with Lightning** likely at isolated places over Madhya Maharashtra.

***Red color warning does not mean "Red Alert" Red color warning means "Take Action"**
Forecast and warning for any day is valid from 0830 hours IST of day till 0830 hours IST of next day
For more details kindly visit <https://mausam.imd.gov.in> or contact 011-2434-4599

(Service to the nation since 1875)



16 June (Day 7)

- ❖ **Heavy to Very Heavy Rainfall with isolated Extremely Heavy Rainfall** likely at isolated places over Costal Karnataka, Interior Karnataka and Konkan & Goa.
- ❖ **Heavy to Very Heavy Rainfall** likely at isolated places over Kerala & Mahe, Madhya Maharashtra and Tamil Nadu Puducherry & Karaikal.
- ❖ **Heavy Rainfall** likely at isolated places over Arunachal Pradesh, Assam & Meghalaya, Lakshadweep, Marathwada, Nagaland, Manipur, Mizoram and Tripura, Rayalaseema and Uttarakhand.
- ❖ **Thundersquall with wind speed reaching(50-60kmph)** likely at isolated places over Chhattisgarh, Interior Karnataka, Konkan & Goa, Marathwada and Telangana.
- ❖ **Thunderstorm accompanied with lightning & gusty winds(40-50kmph)** likely at isolated places over East Rajasthan, Gangetic West Bengal, Haryana, Chandigarh & Delhi, Himachal Pradesh, Kerala & Mahe, Uttar Pradesh, Uttarakhand and Vidarbha.
- ❖ **Thunderstorm accompanied with lightning & gusty winds(30-40kmph)** likely at isolated places over Andhra Pradesh, Bihar, Jharkhand, Madhya Pradesh, Nagaland, Manipur, Mizoram and Tripura, Odisha, Sub Himalayan West Bengal & Sikkim and Tamil Nadu Puducherry & Karaikal.
- ❖ **Thunderstorm accompanied with Lightning** likely at isolated places over Arunachal Pradesh, Assam & Meghalaya and Madhya Maharashtra.
- ❖ **Heat Wave conditions** likely at isolated places over Punjab and West Rajasthan.

***Red color warning does not mean "Red Alert" Red color warning means "Take Action"**

Forecast and warning for any day is valid from 0830 hours IST of day till 0830 hours IST of next day

For more details kindly visit <https://mausam.imd.gov.in> or contact 011-2434-4599

(Service to the nation since 1875)



Table-1

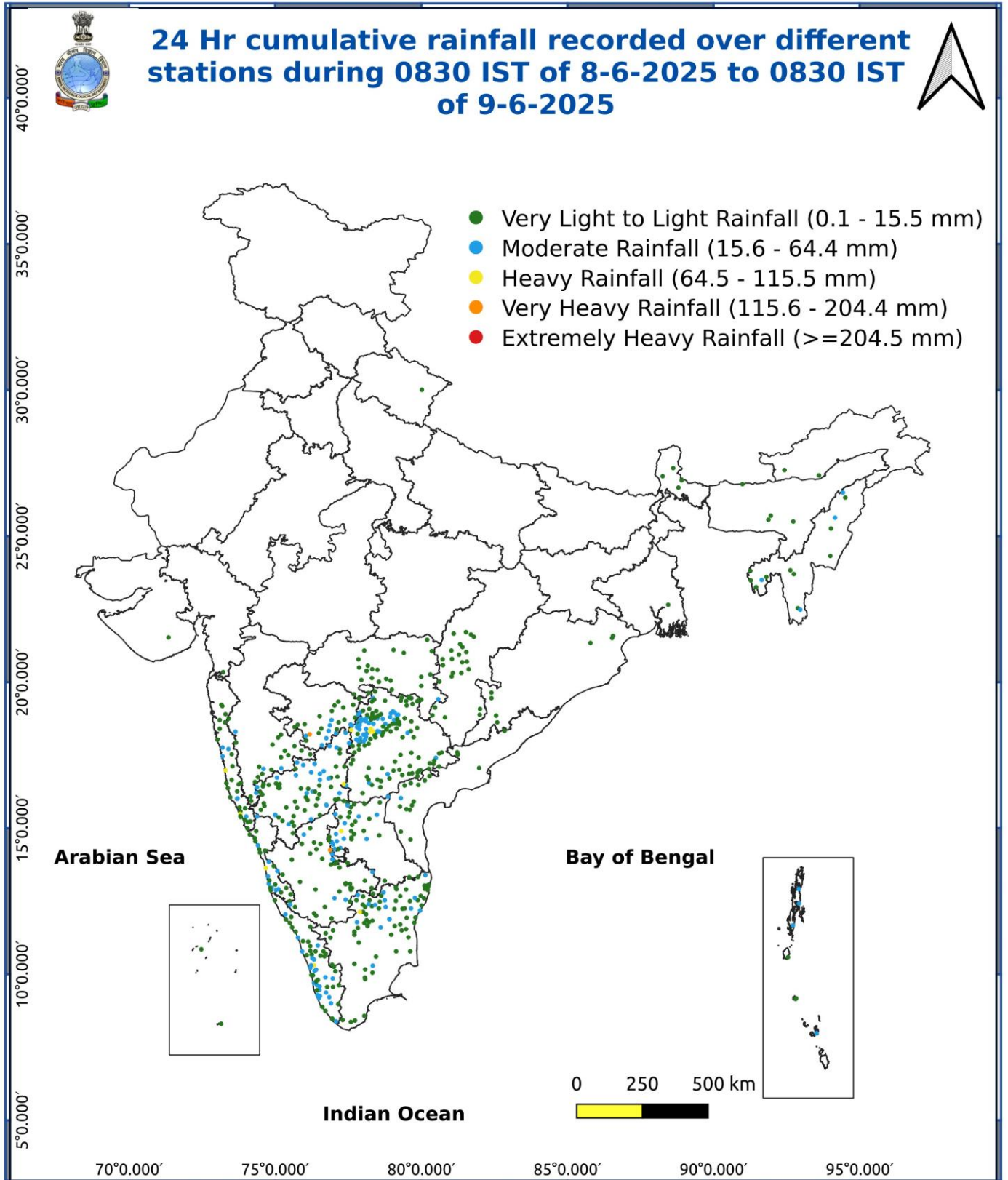
7 Days Rainfall Forecast

S.No.	Subdivision	10- Jun	11- Jun	12- Jun	13- Jun	14- Jun	15- Jun	16- Jun
		Day 1	Day 2	Day 3	Day 4	Day 5	Day 6	Day 7
1	ANDAMAN & NICOBAR ISLANDS	WS	WS	WS	FWS	FWS	FWS	FWS
2	ARUNACHAL PRADESH	SCT	SCT	FWS	FWS	FWS	FWS	FWS
3	ASSAM & MEHGHALAYA	ISOL	SCT	SCT	FWS	FWS	FWS	FWS
4	N. M. M. & T.	FWS	SCT	SCT	SCT	SCT	SCT	SCT
5	S.H. WEST BENGAL & SIKKIM	ISOL	SCT	FWS	FWS	FWS	FWS	FWS
6	GANGETIC WEST BENGAL	ISOL	SCT	FWS	FWS	FWS	FWS	FWS
7	ODISHA	SCT	SCT	SCT	SCT	SCT	SCT	SCT
8	JHARKHAND	ISOL	SCT	SCT	SCT	FWS	FWS	FWS
9	BIHAR	ISOL	SCT	FWS	SCT	SCT	SCT	SCT
10	EAST UTTAR PRADESH	DRY	ISOL	SCT	ISOL	SCT	SCT	SCT
11	WEST UTTAR PRADESH	DRY	DRY	ISOL	ISOL	ISOL	ISOL	ISOL
12	UTTARAKHAND	ISOL	SCT	FWS	FWS	FWS	FWS	FWS
13	HARYANA, CHD & DELHI	DRY	DRY	DRY	ISOL	ISOL	ISOL	ISOL
14	PUNJAB	DRY	DRY	DRY	DRY	ISOL	ISOL	ISOL
15	HIMACHAL PRADESH	DRY	DRY	DRY	ISOL	ISOL	ISOL	ISOL
16	JAMMU AND KASHMIR AND LADAKH	DRY	DRY	DRY	ISOL	ISOL	ISOL	ISOL
17	WEST RAJASTHAN	DRY	DRY	DRY	DRY	DRY	DRY	DRY
18	EAST RAJASTHAN	DRY	DRY	DRY	ISOL	ISOL	ISOL	ISOL
19	WEST MADHYA PRADESH	DRY	ISOL	ISOL	ISOL	SCT	SCT	SCT
20	EAST MADHYA PRADESH	DRY	ISOL	ISOL	SCT	SCT	SCT	SCT
21	GUJRAT REGION	ISOL	ISOL	ISOL	ISOL	ISOL	ISOL	ISOL
22	SAURASHTRA & KUTCH	ISOL	ISOL	ISOL	ISOL	ISOL	ISOL	ISOL
23	KONKAN & GOA	SCT	SCT	FWS	WS	WS	WS	WS
24	MADHYA MAHARASHTRA	ISOL	ISOL	SCT	SCT	FWS	FWS	FWS
25	MARATHWADA	ISOL	SCT	SCT	ISOL	FWS	FWS	FWS
26	VIDARBHA	ISOL	SCT	FWS	SCT	ISOL	ISOL	ISOL
27	CHATTISGARH	ISOL	ISOL	SCT	SCT	SCT	SCT	SCT
28	COASTAL ANDHRA PRADESH	ISOL	FWS	FWS	SCT	ISOL	ISOL	ISOL
29	TELANGANA	SCT	SCT	FWS	FWS	FWS	SCT	SCT
30	RAYALASEEMA	SCT	WS	WS	FWS	ISOL	ISOL	ISOL
31	TAMILNADU & PUDUCHERRY	SCT	SCT	SCT	SCT	SCT	SCT	SCT
32	COSTAL KARNATAKA	WS	WS	WS	WS	WS	WS	WS
33	NORTH INTERIOR KARNATAKA	FWS	FWS	WS	WS	WS	WS	WS
34	SOUTH INTERIOR KARNATAKA	WS	WS	WS	WS	WS	WS	WS
35	KERALA	WS	WS	WS	WS	WS	WS	WS
36	LAKSHDWEEP	WS	WS	WS	WS	WS	WS	WS

Legend	Category	%Stations
WS	Widespread/Most Places	76-100
FWS	Fairly Widespread/Many Places	51-75
SCT	Scattered/ A Few Places	26-50
ISOL	Isolated Places	1-25
DRY	No Rain	0

***Red color warning does not mean "Red Alert" Red color warning means "Take Action"**
Forecast and warning for any day is valid from 0830 hours IST of day till 0830 hours IST of next day
For more details kindly visit <https://mausam.imd.gov.in> or contact 011-2434-4599

(Service to the nation since 1875)



Impact & Action Suggested due to extremely heavy falls/ very heavy rainfall over

- ✓ **Extremely heavy rainfall** over Coastal Karnataka during 12th-14th; North Interior Karnataka on 13th; South Interior Karnataka on 12th & 13th; Konkan & Goa on 13th & 14th June.
- ✓ **Very heavy rainfall** over Madhya Maharashtra, Tamil Nadu, Puducherry & Karaikal during 13th-15th; Kerala & Mahe, Konkan & Goa during 12th-15th; Coastal Karnataka on 11th & 15th; Interior Karnataka during 11th-15th June.

Impact Expected

- Localized Flooding of roads, water logging in low lying areas and closure of underpasses mainly in urban areas of the above region.
- Occasional reduction in visibility due to heavy rainfall.
- Disruption of traffic in major cities due to water logging in roads leading to increased travel time.
- Minor damage to kutcha roads.
- Possibilities of damage to vulnerable structure.
- Localized Landslides/Mudslides/landslips/mudslips/landsinks/mudsinks.
- Damage to horticulture and standing crops in some areas due to inundation.
- It may lead to riverine flooding in some river catchments (for riverine flooding please visit Web page of CWC)

Action Suggested

- Check for traffic congestion on your route before leaving for your destination.
- Follow any traffic advisories that are issued in this regard.
- Avoid going to areas that face the water logging problems often.
- Avoid staying in vulnerable structure.

Impact expected and action suggested due to

- ❖ **Heat wave condition** at many/some places over West Rajasthan during 10th-13th with **severe heat wave conditions** at isolated/some parts on 10th June.
- ❖ **Heat wave conditions** over Jammu-Kashmir during 10th-12th, Punjab during 10th-13th; Haryana, Chandigarh & Delhi during 10th-12th; West Uttar Pradesh during 10th-12th, East Uttar Pradesh on 10th, East Rajasthan & north Madhya Pradesh on 10th & th June.

Red alert Areas

- Very high likelihood of developing heat illness and heat stroke in all ages.
- Extreme care needed for vulnerable people.

Orange alert Areas:

- High temperature & increased likelihood of heat illness symptoms in people who are either exposed to sun for a prolonged period or doing heavy work.
- High health concern for vulnerable people e.g. infants, elderly, people with chronic diseases.
- Avoid heat exposure- keep cool. Avoid dehydration.
- Drink sufficient water- even if not thirsty.
- Use ORS, homemade drinks like lassi, torani (rice water), lemon water, buttermilk, etc. to keep yourself hydrated.

Yellow alert Areas:

- Moderate temperature & heat is tolerable for general public but moderate health concern likely for vulnerable people e.g. infants, elderly, people with chronic diseases.
- Avoid heat exposure.
- Wear lightweight, light colour, loose, cotton clothes.
- Cover your head, use a cloth, hat or umbrella.

Impact expected and action suggested due to isolated thunderstorm with lightning/gusty & Squally winds over

***Red color warning does not mean "Red Alert" Red color warning means "Take Action"**
Forecast and warning for any day is valid from 0830 hours IST of day till 0830 hours IST of next day
For more details kindly visit <https://mausam.imd.gov.in> or contact 011-2434-4599

(Service to the nation since 1875)

- ✓ **Thundersquall (wind speed reaching 50-60 kmph gusting to 70 kmph)** at isolated places over Vidarbha on 11th; Chhattisgarh during 11th-13th; Bihar on 11th-12th; Coastal Andhra Pradesh & Yanam during 10th-12th; Telangana & Interior Karnataka on 12th & 13th; Konkan & Goa and Marathawada on 13th & 14th Vidarbha on 11th; Chhattisgarh during 11th-13th; Bihar on 11th-12th June.

Impact expected:

- Breaking of tree branches, uprooting of large avenue trees. Large dead limbs blown from trees. Damage to Standing crops.
- Minor to Major damage to banana and papaya trees.
- Minor to major damage to power and communication lines due to breaking of branches.
- Strong wind/hail may damage plantation, horticulture and standing crops.
- Partial damage to vulnerable structures due to strong winds.
- Minor damage to kutcha houses/walls and huts.
- Loose objects may fly.

Action suggested:

- People are advised to keep a watch on the weather for worsening conditions and be ready to move to safer places accordingly.
- Stay indoors, close windows & doors and avoid travel if possible.
- Take safe shelters; do not take shelter under trees.
- Do not lie on concrete floors and do not lean against concrete walls.
- Unplug electrical/ electronic appliances.
- Immediately get out of water bodies.
- Keep away from all the objects that conduct electricity.

Agromet advisories for likely impact of Rainfall / Gusty Winds / Heat Wave

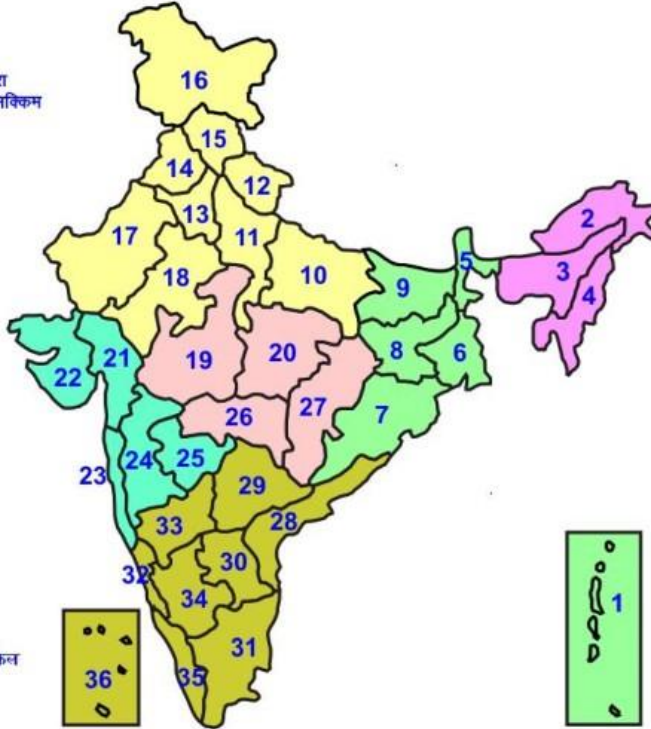
- Drain out excess water and ensure proper drainage in standing crops, vegetables and orchards in **Tamil Nadu, Kerala, Karnataka, and NMMT**.
- Shift the harvested produce in safer places or cover the produce with tarpaulin sheets in the fields. Tie the harvested crops properly and cover them to minimise the risk of displacement due to strong surface winds.
- Provide mechanical support and propping to horticultural crops and staking to vegetables to avoid lodging.
- In **Jammu & Kashmir, Punjab, Haryana, Uttar Pradesh, Rajasthan** and **north Madhya Pradesh** apply light and frequent irrigation in the evening to protect standing crops, vegetables and orchards from the adverse effects of heat waves and high temperatures. Undertake mulching with crop residue, straw, polythene or soil to conserve soil moisture.

Livestock / Poultry

- Keep the animals inside the shed during rainfall and provide them balanced feed.
 - Store feed and fodder in a safe place to prevent spoilage.
 - To reduce the effect of heat wave/high temperature, cover the roof of poultry sheds with grass. Also, provide clean, hygienic and plenty of drinking water to animals.
-

LEGENDS

- 1 अंडमान और निकोबार द्वीप समुह
- 2 अरुणाचल प्रदेश
- 3 असम और मेघालय
- 4 नागालैंड मनीपुर मीजोरम और त्रिपुरा
- 5 उप हिमालय पश्चिम बंगाल एवं सिक्किम
- 6 पश्चिम गंगेय बंगाल
- 7 ओडिसा
- 8 झारखंड
- 9 बिहार
- 10 पूर्वी उत्तर प्रदेश
- 11 पश्चिम उत्तर प्रदेश
- 12 उत्तराखंड
- 13 हरियाणा चंडिगढ़ एवं दिल्ली
- 14 पंजाब
- 15 हिमाचल प्रदेश
- 16 जम्मू एवं कश्मीर एवंम लद्दाख
- 17 पश्चिम राजस्थान
- 18 पूर्वी राजस्थान
- 19 पश्चिम मध्य प्रदेश
- 20 पूर्वी मध्य प्रदेश
- 21 गुजरात क्षेत्र
- 22 सौराष्ट्र एवं कच्छ
- 23 कोंकण एवं गोवा
- 24 मध्य महाराष्ट्र
- 25 मराठवाडा
- 26 विदर्भ
- 27 छत्तीसगढ़
- 28 तटीय आंध्र प्रदेश एवं यनम
- 29 तेलंगाना
- 30 रायलसीमा
- 31 तमिलनाडु, पुदुचेरी एवंम कराईकल
- 32 तटिय कर्नाटक
- 33 आंतरिक उत्तरी कर्नाटक
- 34 आंतरिक दक्षिणी कर्नाटक
- 35 केरल एवंम माहे
- 36 लक्षद्वीप



1. Andaman & Nicobar Islands
2. Arunachal Pradesh
3. Assam & Meghalaya
4. Nagaland, Manipur, Mizoram & Tripura
5. Sub-Himalayan West Bengal & Sikkim
6. Gangetic West Bengal
7. Orissa
8. Jharkhand
9. Bihar
10. East Uttar Pradesh
11. West Uttar Pradesh
12. Uttarakhand
13. Haryana, Chd & Delhi
14. Punjab
15. Himachal Pradesh
16. Jammu & Kashmir and Ladakh
17. West Rajasthan
18. East Rajasthan
19. West Madhya Pradesh
20. East Madhya Pradesh
21. Gujarat
22. Saurashtra
23. Konkan & Goa
24. Madhya Maharashtra
25. Marathwada
26. Vidharbha
27. Chhattisgarh
28. Coastal Andhra Pradesh & Yanam
29. Telangana
30. Rayalaseema
31. Tamilnadu, Puducherry & Karaikal
32. Coastal Karnataka
33. North Interior Karnataka
34. South Interior Karnataka
35. Kerala & Mahe
36. Lakshadweep

SPATIAL DISTRIBUTION (% of Stations reporting)

% Stations	Category	% Stations	Category
76-100	Widespread (WS/Most Places)	26-50	Scattered (SCT/ A Few Places)
51-75	Fairly Widespread (FWS/ Many Places)	1-25	Isolated (ISOL)

Subdivision Colour

- NO WARNING
- WATCH (BE UPDATED)
- ALERT (BE PREPARED TO TAKE ACTION)
- WARNING (TAKE ACTION)

Probabilistic Forecast

Terms	Probability of Occurrence (%)
Unlikely	< 25
Likely	25 - 50
Very Likely	50 - 75
Most Likely	> 75

- | | | | |
|--------------------------|-----------------|----------------------|--------------------|
| Heavy Rain | Very Heavy Rain | Extremely Heavy Rain | Heavy Snow |
| Thunderstorm & Lightning | Hailstrom | Dust Strom | Dust Raising Winds |
| Strong surface winds | Heat Wave | Hot Day | Warm Night |
| Cold Wave | Cold Day | Ground Frost | Fog |
| Hot & Humid | | | |

LEGENDS

WARNING

WARNING (TAKE ACTION)
ALERT (BE PREPARED)
WATCH (BE UPDATED)
NO WARNING (NO ACTION)

Probabilistic Forecast

Terms	Probability of Occurrence (%)
Unlikely	< 25
Likely	25 - 50
Very Likely	50 - 75
Most Likely	> 75



Heavy: 64.5 to 115.5 mm/cm *
Very Heavy: 115.6 to 204.4 mm/cm *
Extremely Heavy: > 204.4 mm/cm *



When maximum temperature of a station reaches $\geq 40^{\circ}\text{C}$ for plains and $\geq 30^{\circ}\text{C}$ for hilly regions
(a) Based on Departure from normal

Heat Wave: Maximum Temperature Departure from normal 4.5°C to 6.4°C .
Severe Heat Wave: Maximum Temperature Departure from normal $\geq 6.5^{\circ}\text{C}$

(b). Based on Actual maximum temperature

Heat Wave: When actual maximum temperature $\geq 45^{\circ}\text{C}$.
Severe Heat Wave: When actual maximum temperature $\geq 47^{\circ}\text{C}$

(c). Criteria for heat wave for coastal stations

When maximum temperature departure is $> 4.5^{\circ}\text{C}$ from normal. Heat Wave may be described provided maximum temperature $\geq 37^{\circ}\text{C}$



When maximum temperature remains 40°C

Warm Night: When minimum temperature departure 4.5°C to 6.4°C .
Severe Warm Night: When minimum temperature departure $> 6.4^{\circ}\text{C}$.



When minimum temperature of a station $\leq 10^{\circ}\text{C}$ for plains and $\leq 0^{\circ}\text{C}$ for hilly regions.

(a). Based on departure

Cold Wave: Minimum Temperature Departure from normal -4.5°C to -6.4°C .
Severe Cold Wave: Minimum Temperature Departure from normal $\leq -6.5^{\circ}\text{C}$

(b) Based on actual Minimum Temperature (for Plains only)

Cold Wave : When Minimum Temperature is $\leq 4.0^{\circ}\text{C}$
Severe Cold Wave: When Minimum Temperature is $\leq 2.0^{\circ}\text{C}$

(c) For Coastal Stations

When Minimum Temperature departure is $\leq -4.5^{\circ}\text{C}$ & actual Minimum Temperature is $\leq 15^{\circ}\text{C}$



When minimum temperature of a station $\leq 10^{\circ}\text{C}$ for plains and $\leq 0^{\circ}\text{C}$ for hilly regions
Based on departure

Cold Day: Maximum Temperature Departure from normal -4.5°C to -6.4°C .
Severe Cold Day: Maximum Temperature Departure from normal $\leq -6.5^{\circ}\text{C}$



Phenomenon of small droplets suspended in air and the horizontal visibility $< 1\text{km}$

Moderate Fog: When the visibility between 500-200 metres
Dense Fog: when the visibility between 50- 200 metres
Very Dense Fog: when the visibility < 50 metres



Sudden electrical discharges manifested by a flash of light (Lightning) and a sharp rumbling sound (thunder)



An ensemble of particles of dust or sand energetically lifted to great heights by a strong and turbulent wind.



Ice deposits on ground

Air temperature $\leq 4^{\circ}\text{C}$ (over Plains)



A strong wind that rises suddenly, lasts for atleast 1 minute.

Moderate: Wind speed 52-61 kmph
Severe: Wind speed 62-87 kmph
Very Severe: Wind speed > 87 kmph



Effect of various waves in the sea over specific area

Rough to very rough: Wind speed 41-62 kmph (22-33 knots) & Wave height 2.5-6 metre
High to very high: Wind speed 63-117 kmph (34-63 knots) & Wave height 6-14 metre
Phenomenal: Wind speed > 117 kmph (> 63 knots) & Wave height > 14 metre



Cyclonic Storm: Wind speed 62-87 kmph (34-47 knots)
Severe Cyclonic Storm: Wind speed 88-117 kmph (48-63 knots)
Very Severe Cyclonic Storm: Wind speed 118-165 kmph (64 - 89 knots)
Extremely Severe Cyclonic Storm: Wind speed 166-220 kmph (90 -119 knots)
Super Cyclone Storm: Wind speed > 220 kmph (> 119 knots)

*Red color warning does not mean "Red Alert" Red color warning means "Take Action"

Forecast and warning for any day is valid from 0830 hours IST of day till 0830 hours IST of next day

For more details kindly visit <https://mausam.imd.gov.in> or contact 011-2434-4599

(Service to the nation since 1875)