

2025-07-31

Time of Issue: 08:33:00 hours IST
(Morning)

ALL INDIA WEATHER SUMMARY AND FORECAST BULLETIN

Significant Weather Features

Weather Forecast and Warnings

Northwest India:

- **Isolated very heavy rainfall over East Rajasthan on 31st.**
- Isolated **heavy rainfall** likely over Uttarakhand, Himachal Pradesh during 31st July-04th August; Jammu and Kashmir on 31st; Uttar Pradesh on 03rd & 04th August; Punjab, Haryana & Chandigarh on 03rd & 04th August; East Rajasthan on 01st & 02nd August and West Rajasthan on 31st July.
- Light/moderate rainfall at many places accompanied with thunderstorm, lightning likely over Western Himalayan region and some places over the plains during next 7 days.

West India:

- Light to moderate rainfall at many places very likely over the region during next 6-7 days.

Northeast India:

- Light/moderate rainfall at many places accompanied with **thunderstorm, lightning and isolated heavy rainfall** likely to continue over Arunachal Pradesh, Assam & Meghalaya and Nagaland, Manipur, Mizoram & Tripura during 31st July-04th August with increased activity from 01st August.

East & Central India:

- Isolated **heavy rainfall** likely over Madhya Pradesh on 31st; Sub-Himalayan West Bengal & Sikkim, Bihar during 31st July-04th August; Isolated **very heavy rainfall** over Sub-Himalayan West Bengal & Sikkim during 02nd-04th August. Light to moderate rainfall at most/many places accompanied with thunderstorm, lightning & gusty winds (speed reaching 30-40 Kmph) likely over the region during next 5 days.

South Peninsular India:

- **Strong surface winds** (speed reaching 40-50 kmph) very likely over South Peninsular India during next 3 days.
- Light to moderate rainfall at some/many places over Kerala & Mahe, Lakshadweep, Karnataka, Rayalaseema, Coastal Andhra Pradesh & Yanam and Telanganaduring next 7 days.

***Red color warning does not mean "Red Alert" Red color warning means "Take Action"**

Forecast and warning for any day is valid from 0830 hours IST of day till 0830 hours IST of next day

For more details kindly visit <https://mausam.imd.gov.in> or contact 011-2434-4599

(Service to the nation since 1875)

Main Weather Observations:

❖ **Rainfall distribution** (from 0830 hours IST of yesterday to 0530 hours IST of today): **at most places** over Kerala & Mahe, Marathwada, Konkan & Goa, North Interior Karnataka, Uttarakhand, Jharkhand, Sub-himalayan West Bengal & Sikkim, East Uttar Pradesh, West Uttar Pradesh, Jammu & Kashmir and Ladakh, East Rajasthan, Gangetic West Bengal, Punjab, West Madhya Pradesh, East Madhya Pradesh, Haryana Chandigarh & Delhi, Himachal Pradesh, Nagaland, Manipur, Mizoram & Tripura, Odisha, Telangana, Coastal Karnataka and Lakshadweep; **at many places** over Assam & Meghalaya, Chhattisgarh, Madhya Maharashtra, West Rajasthan, Bihar, South Interior Karnataka, Vidarbha, Coastal Andhra Pradesh & Yanam and Rayalaseema; **Dry** over rest of the country.

❖ **Significant rainfall recorded(in cm)** (from 0830 hours IST of yesterday to 0530 hours IST of today): Assam & Meghalaya: Cherrapunji (dist East Khasi Hills) 9; East Uttar Pradesh: Varanasi (babatpur) AP (dist Varanasi) 5, Varanasi (dist Varanasi) 3; Jammu & Kashmir and Ladakh: Katra (dist Reasi) 5, Bhaderwah (dist Doda) 4, Jammu (dist Jammu), Banihal, Batote (dist Doda) 2 Each; East Rajasthan: Jaipur (dist Jaipur) 4; Gangetic West Bengal: Kolkata-alipur (dist Kolkata) 4, Kolkata (dum Dum) AP (dist North 24 Parganas), Haldia (dist Purba Medinipur) 3 Each, Digha (dist North 24 Parganas) 2; **Punjab**: Patiala (dist Patiala), Chandigarh (dist Chandigarh) 4 Each; West Madhya Pradesh: Gwalior (dist Gwalior) 3; East Madhya Pradesh: Jabalpur (dist Jabalpur) 3; West Uttar Pradesh: Bareilly (dist Bareilly) 3; Haryana Chandigarh & Delhi: New Delhi (safdarjung), New Delhi (palam) AP (dist South West Delhi), Hissar (dist Hisar) 3 Each; Himachal Pradesh: Sundernagar (dist Mandi) 3; Nagaland, Manipur, Mizoram & Tripura: Dimapur (dist Dimapur) 2; **Odisha**: Jharsuguda (dist Jharsuguda), Rourkela (dist Sundargarh) 2 Each.

❖ **Heavy Rainfall observed** (from 0830 hours IST of yesterday to 0530 hours IST of today): **Heavy rain** at isolated places over Assam & Meghalaya

❖ **Minimum Temperature Departures (as on 30-07-2025): markedly above normal(> 5.1°C)** at few places over Assam & Meghalaya; at isolated places over Bihar, East Uttar Pradesh, West Uttar Pradesh, Jammu-KashmirLadakh-Gilgit-Baltistan-Muzaffarabad, East Rajasthan, West Madhya Pradesh and Saurashtra & Kutch. **appreciably above normal(3.1°C to 5.0°C)** at few places over East Madhya Pradesh; at isolated places over Sub Himalayan West Bengal & Sikkim, Odisha, West Rajasthan and Madhya Maharashtra. **above normal(1.6°C to 3.0°C)** at most places over Andaman & Nicobar Islands; at few places over Himachal Pradesh, Gujarat Region, Coastal Andhra Pradesh & Yanam, Coastal Karnataka and Lakshadweep; at isolated places over Gangetic West Bengal, Jharkhand, Uttarakhand, Konkan & Goa, Marathwada, Rayalaseema and Tamil Nadu, Puducherry & Karaikal. **near normal(-1.5°C to 1.5°C)** at many places over Chhattisgarh and Kerala & Mahe; at most places over Arunachal Pradesh, Nagaland, Manipur, Mizoram & Tripura, Haryana-Chandigarh-Delhi, Punjab, Vidarbha, Telangana, North Interior Karnataka and South Interior Karnataka. **The lowest minimum temperature** of 17.0°C was reported at KHANDWA (MADHYA PRADESH) over the Plains of India.

❖ **Maximum Temperature Departures (as on 30-07-2025): markedly above normal(> 5.1°C)** at few places over Jammu-KashmirLadakh-Gilgit-Baltistan-Muzaffarabad; at isolated places over Assam & Meghalaya and Odisha. **appreciably above normal(3.1°C to 5.0°C)** at isolated places over Nagaland, Manipur, Mizoram & Tripura, Tamil Nadu, Puducherry & Karaikal and Kerala & Mahe. **above normal(1.6°C to 3.0°C)** at most places over Arunachal Pradesh; at few places over Coastal Andhra Pradesh & Yanam; at isolated places over Andaman & Nicobar Islands, East Uttar Pradesh, Uttarakhand and Telangana. **near normal(-1.5°C to 1.5°C)** at many places over Sub Himalayan West Bengal & Sikkim, Himachal Pradesh, Gujarat Region, Madhya Maharashtra, Chhattisgarh and Rayalaseema; at most places over Bihar, Saurashtra & Kutch, Konkan & Goa, Vidarbha, Coastal Karnataka, South Interior Karnataka and Lakshadweep; at few places over Jharkhand, West Uttar Pradesh, West Rajasthan, Marathwada and North Interior Karnataka; at isolated places over Gangetic West Bengal, Haryana-Chandigarh-Delhi, Punjab, West Madhya Pradesh and East Madhya Pradesh. **The highest maximum temperature** of 40.5°C was reported at MADURAI (A) (TAMIL NADU).

*Red color warning does not mean "Red Alert" Red color warning means "Take Action"

Forecast and warning for any day is valid from 0830 hours IST of day till 0830 hours IST of next day

For more details kindly visit <https://mausam.imd.gov.in> or contact 011-2434-4599

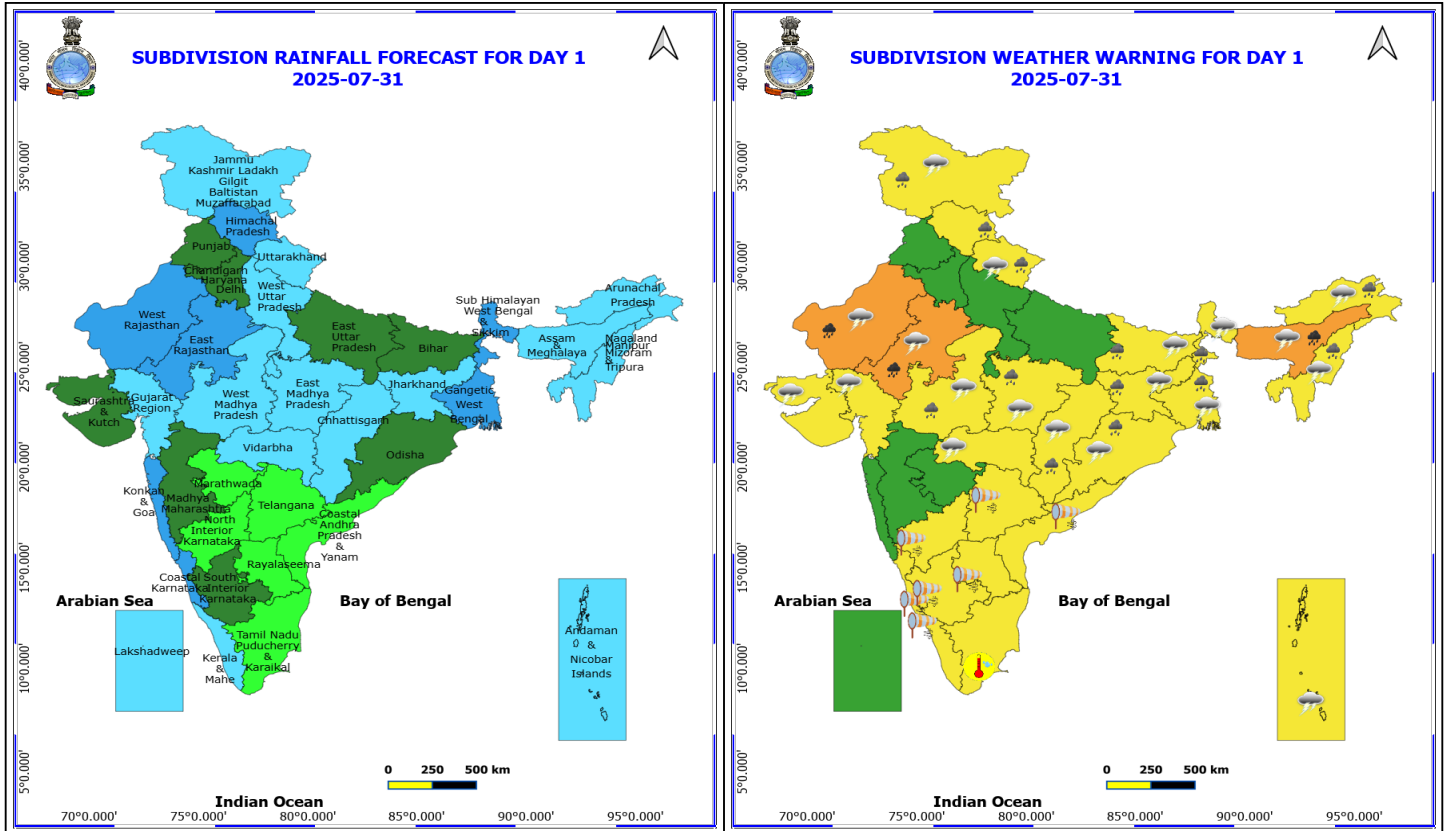
(Service to the nation since 1875)

Meteorological Analysis (Based on 0530 hours IST)

- The **monsoon trough** at mean sea level now passes through Sri Ganganagar, Pilani, Gwalior, Prayagraj, Ranchi, Diamond Harbour and thence southeastwards to the northeast Bay of Bengal.
- The **upper air cyclonic circulation** over Southwest Uttar Pradesh & neighbourhood persisted and now extends upto 5.8 km above mean sea level tilting southwestwards with height.
- The **upper air cyclonic circulation** over northwest Bay of Bengal & adjoining Gangetic West Bengal and Odisha coasts now lies over **Gangetic West Bengal** adjoining Bangladesh and extends upto 7.6 km above mean sea level.
- The **upper air cyclonic circulation** over southwest Rajasthan & neighbourhood at 1.5 km above mean sea level persists.
- The **Western Disturbance** now seen as a trough in middle & upper tropospheric levels with its axis at 5.8 km above mean sea level runs roughly along Long. 70°E to the north of Lat. 32°N.
- The **trough** now runs from Haryana to Bangladesh across south up, Jharkhand, Gangetic West Bengal at 0.9 km above mean sea level.
- A **trough** runs from central parts of east Rajasthan to Bangladesh across upper air cyclonic circulation over Southwest Uttar Pradesh & neighbourhood, south Bihar, Jharkhand, **Gangetic West Bengal**.

Weather Outlook for subsequent 3 days

- Fairly widespread to widespread rainfall likely over northwest, northeast, eastern India.
- Scattered to fairly widespread rainfall likely over central and peninsular India.



31 July (Day 1)

- ❖ **Heavy to Very Heavy Rainfall** very likely at isolated places over Assam & Meghalaya and Rajasthan.
- ❖ **Heavy Rainfall** very likely at isolated places over Arunachal Pradesh, Bihar, Chhattisgarh, Himachal Pradesh, Jammu-Kashmir-Ladakh-Gilgit-Baltistan-Muzaffarabad, Jharkhand, Madhya Pradesh, Nagaland, Manipur, Mizoram and Tripura, Odisha, Uttarakhand and West Bengal & Sikkim.
- ❖ **Thunderstorm accompanied with lightning & gusty winds(30-40kmph)** very likely at isolated places over Bihar, Gangetic West Bengal, Jammu-Kashmir-Ladakh-Gilgit-Baltistan-Muzaffarabad and Jharkhand.
- ❖ **Thunderstorm accompanied with Lightning** very likely at isolated places over Andaman & Nicobar Islands, Arunachal Pradesh, Assam & Meghalaya, Chhattisgarh, Gujarat State, Madhya Pradesh, Nagaland, Manipur, Mizoram and Tripura, Odisha, Rajasthan, Sub Himalayan West Bengal & Sikkim, Uttarakhand and Vidarbha.
- ❖ **Strong Surface Winds** very likely at isolated places over Andhra Pradesh, Karnataka, Kerala & Mahe and Telangana.
- ❖ **Hot and Humid weather** very likely at isolated places over Tamil Nadu Puducherry & Karaikal.
- ❖ **Squally wind with speed reaching 45 kmph to 55 kmph gusting to 65 kmph** is likely to prevail along and off Somalia, Yemen & Oman coasts, most parts of westcentral Arabian Sea & adjoining, some parts of eastcentral Arabian Sea, many parts of southwest Arabian Sea, southern parts of north Arabian Sea.
- ❖ **Squally weather with wind speed reaching 40 - 50 kmph gusting to 60 kmph** likely to prevail along and off Kerala, Karnataka, Goa, Konkan, Gujarat coasts, over many parts of eastcentral Arabian Sea, some parts of southeast Arabian Sea and adjoining, some parts of southwest Arabian Sea, over some parts of Maldives, Comorin areas, over over Gulf of Mannar, over most parts of eastcentral, many parts of westcentral Bay of Bengal & adjoining

***Red color warning does not mean "Red Alert" Red color warning means "Take Action"**

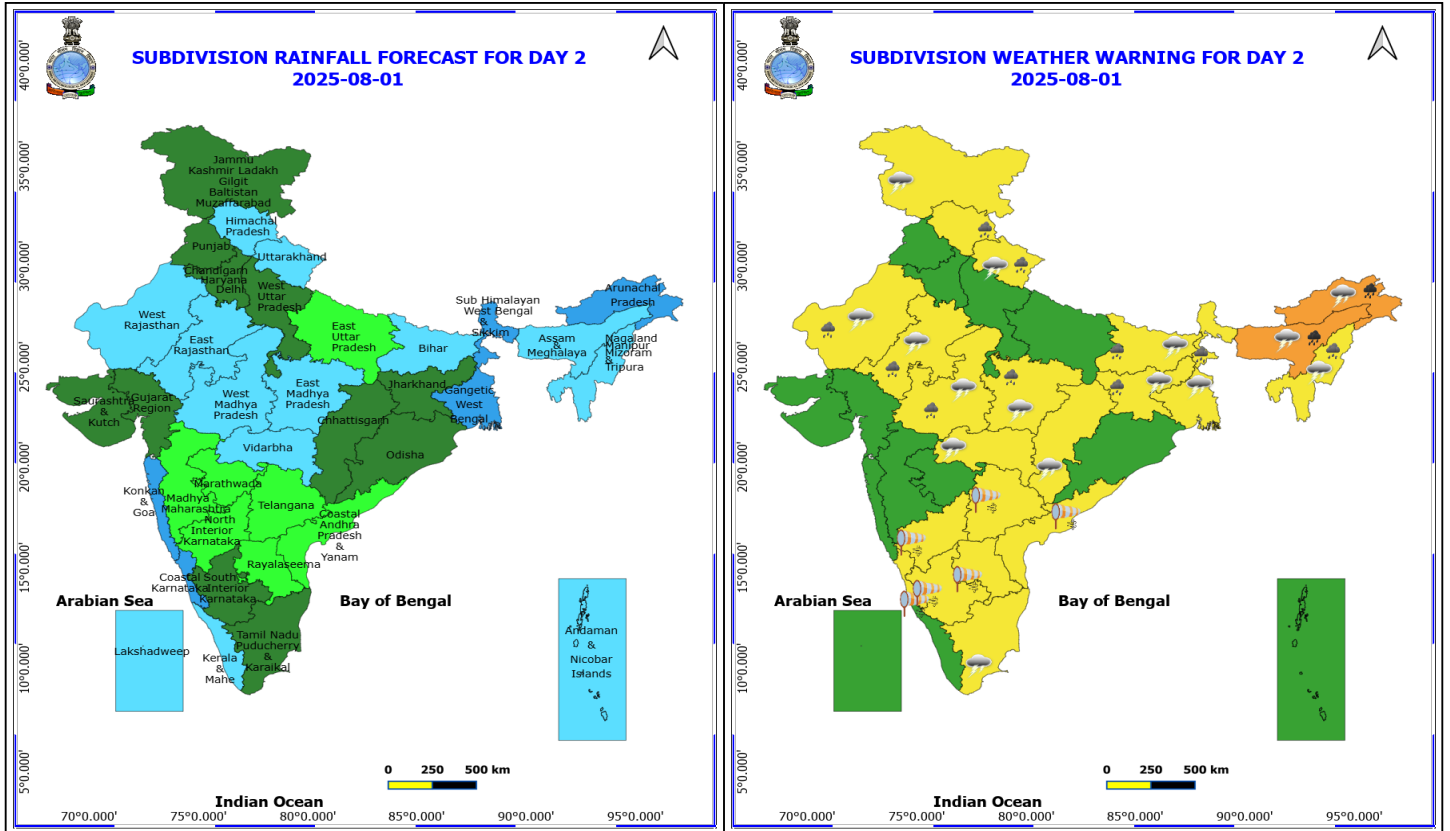
Forecast and warning for any day is valid from 0830 hours IST of day till 0830 hours IST of next day

For more details kindly visit <https://mausam.imd.gov.in> or contact 011-2434-4599

(Service to the nation since 1875)



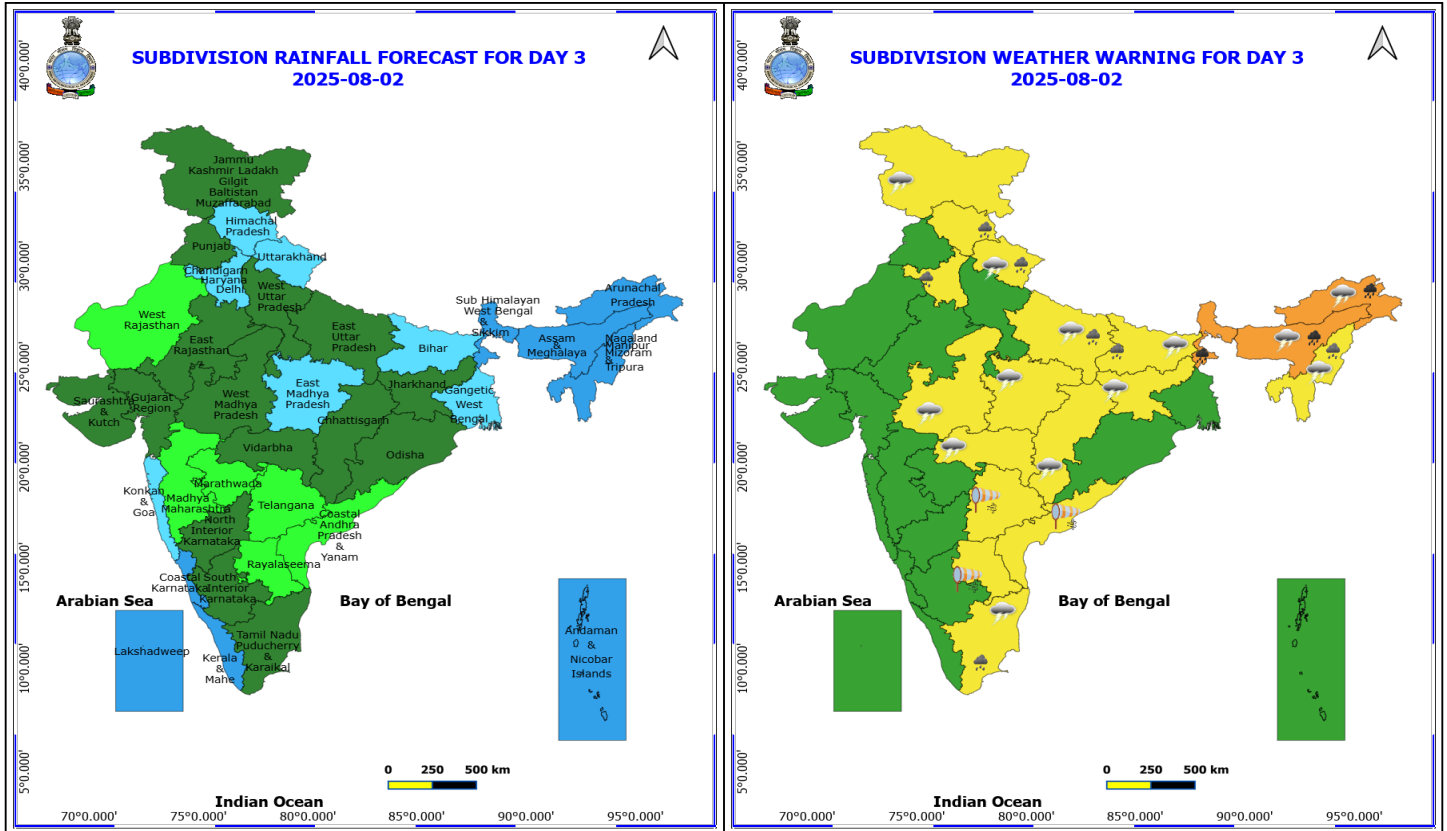
north Bay of Bengal, some parts of southwest Bay of Bengal.



1 August (Day 2)

- ❖ **Heavy to Very Heavy Rainfall** very likely at isolated places over Arunachal Pradesh and Assam & Meghalaya.
- ❖ **Heavy Rainfall** very likely at isolated places over Bihar, Himachal Pradesh, Jharkhand, Madhya Pradesh, Nagaland, Manipur, Mizoram and Tripura, Rajasthan, Sub Himalayan West Bengal & Sikkim and Uttarakhand.
- ❖ **Thunderstorm accompanied with lightning & gusty winds(30-40kmph)** very likely at isolated places over Bihar, Gangetic West Bengal, Jammu-Kashmir-Ladakh-Gilgit-Baltistan-Muzaffarabad and Jharkhand.
- ❖ **Thunderstorm accompanied with Lightning** very likely at isolated places over Arunachal Pradesh, Assam & Meghalaya, Chhattisgarh, Madhya Pradesh, Nagaland, Manipur, Mizoram and Tripura, Rajasthan, Tamil Nadu Puducherry & Karaikal, Uttarakhand and Vidarbha.
- ❖ **Strong Surface Winds** very likely at isolated places over Andhra Pradesh, Karnataka and Telangana.
- ❖ **Squally wind with speed reaching 45 kmph to 55 kmph gusting to 65 kmph** is likely to prevail along and off Somalia, Yemen & south Oman coasts, most parts of westcentral Arabian Sea & adjoining, some parts of eastcentral Arabian Sea, many parts of southwest Arabian Sea, southern parts of north Arabian Sea.
- ❖ **Squally weather with wind speed reaching 40 - 50 kmph gusting to 60 kmph** likely to prevail along and off Goa, Konkan, Gujarat coasts, over many parts of eastcentral Arabian Sea, some parts of southeast Arabian Sea and adjoining Lakshadweep area, some parts of southwest Arabian Sea, over some parts of Comorin area, over Gulf of Mannar, over some northern parts of eastcentral, adjoining westcentral Bay of Bengal & adjoining north Bay of Bengal, few parts of southwest Bay of Bengal.

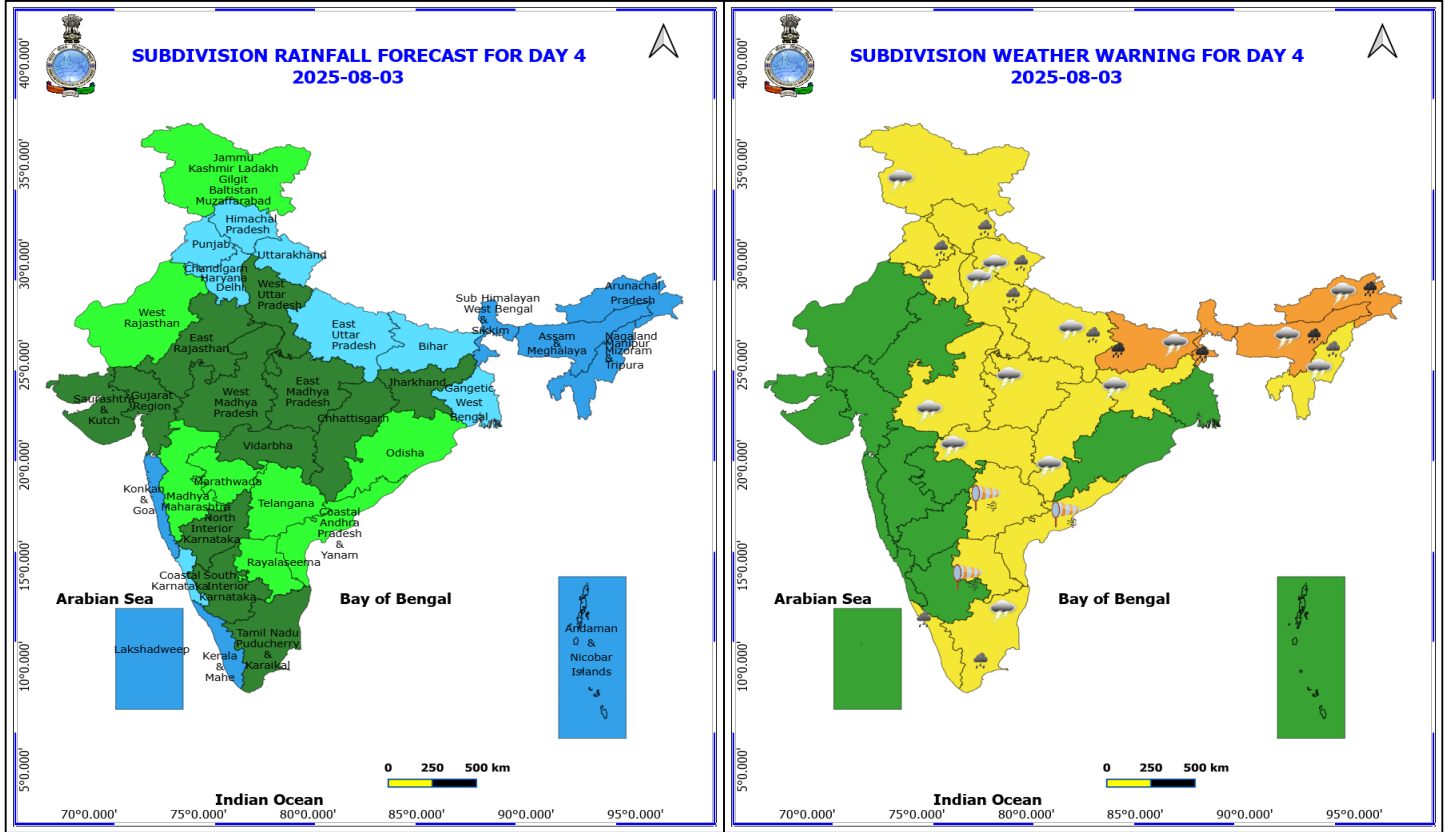
***Red color warning does not mean "Red Alert" Red color warning means "Take Action"**
Forecast and warning for any day is valid from 0830 hours IST of day till 0830 hours IST of next day
For more details kindly visit <https://mausam.imd.gov.in> or contact 011-2434-4599
 (Service to the nation since 1875)



2 August (Day 3)

- ❖ **Heavy to Very Heavy Rainfall** very likely at isolated places over Arunachal Pradesh, Assam & Meghalaya and Sub Himalayan West Bengal & Sikkim.
- ❖ **Heavy Rainfall** very likely at isolated places over Bihar, East Uttar Pradesh, Haryana, Chandigarh & Delhi, Himachal Pradesh, Nagaland, Manipur, Mizoram and Tripura, Tamil Nadu Puducherry & Karaikal and Uttarakhand.
- ❖ **Thunderstorm accompanied with lightning & gusty winds(30-40kmph)** very likely at isolated places over Bihar, Jammu-Kashmir-Ladakh-Gilgit-Baltistan-Muzaffarabad and Jharkhand.
- ❖ **Thunderstorm accompanied with Lightning** very likely at isolated places over Arunachal Pradesh, Assam & Meghalaya, Chhattisgarh, East Uttar Pradesh, Madhya Pradesh, Nagaland, Manipur, Mizoram and Tripura, Tamil Nadu Puducherry & Karaikal, Uttarakhand and Vidarbha.
- ❖ **Strong Surface Winds** very likely at isolated places over Andhra Pradesh and Telangana.
- ❖ **Squally wind with speed reaching 45 kmph to 55 kmph gusting to 65 kmph** is likely to prevail along and off Somalia, Yemen & south Oman coasts, most parts of westcentral Arabian Sea & adjoining, some parts of eastcentral Arabian Sea, many parts of southwest Arabian Sea, southern parts of north Arabian Sea.
- ❖ **Squally weather with wind speed reaching 40 - 50 kmph gusting to 60 kmph** likely to prevail along and off south Gujarat coast, over many parts of eastcentral Arabian Sea, some parts of southeast Arabian Sea, some parts of southwest Arabian Sea, over some parts of Comorin area, over Gulf of Mannar, over few parts of southwest Bay of Bengal.

***Red color warning does not mean "Red Alert" Red color warning means "Take Action"**
 Forecast and warning for any day is valid from 0830 hours IST of day till 0830 hours IST of next day
 For more details kindly visit <https://mausam.imd.gov.in> or contact 011-2434-4599
 (Service to the nation since 1875)



3 August (Day 4)

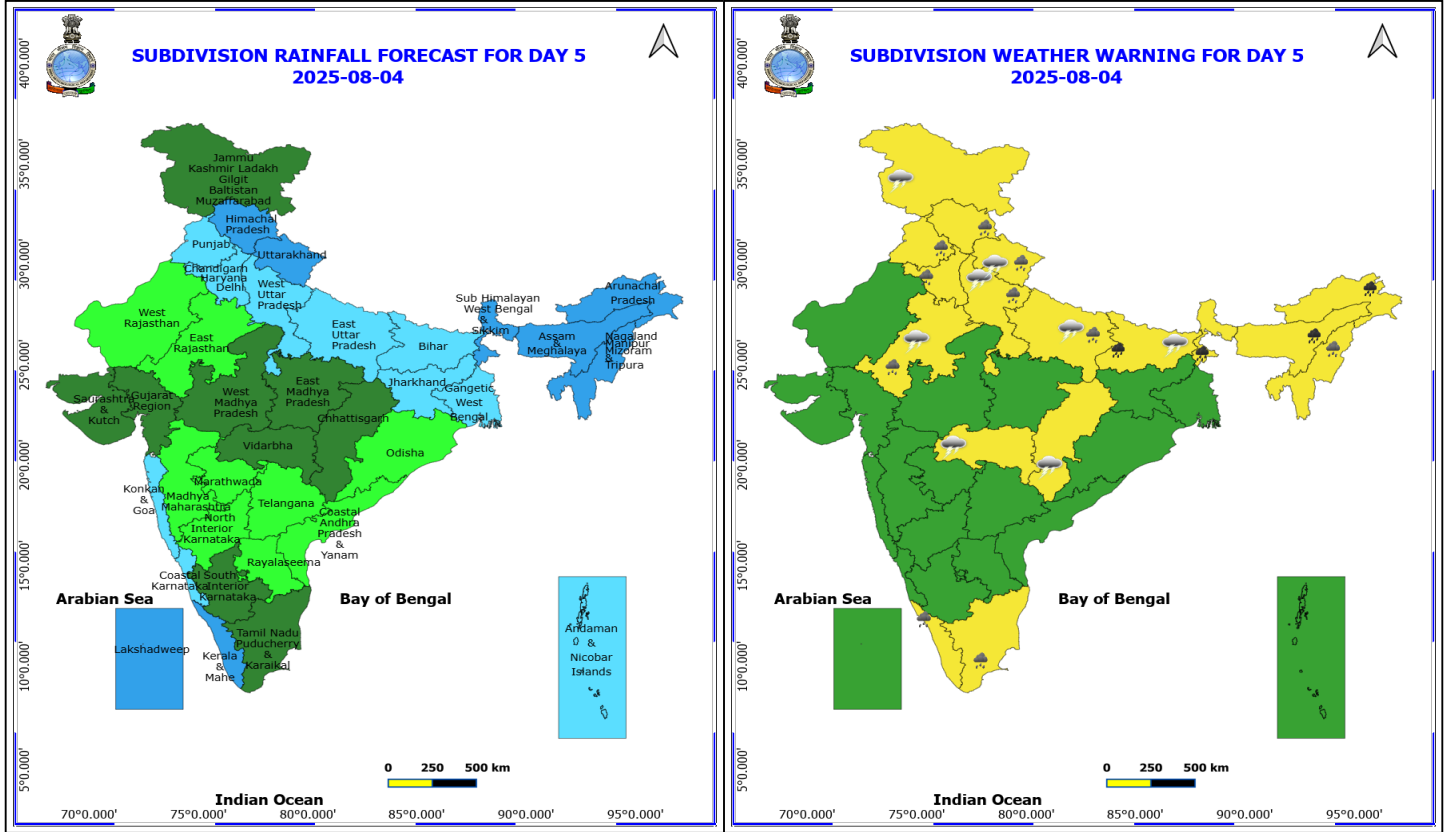
- ❖ **Heavy to Very Heavy Rainfall** likely at isolated places over Arunachal Pradesh, Assam & Meghalaya, Bihar and Sub Himalayan West Bengal & Sikkim.
- ❖ **Heavy Rainfall** likely at isolated places over Haryana, Chandigarh & Delhi, Himachal Pradesh, Kerala & Mahe, Nagaland, Manipur, Mizoram and Tripura, Punjab, Tamil Nadu Puducherry & Karaikal, Uttar Pradesh and Uttarakhand.
- ❖ **Thunderstorm accompanied with lightning & gusty winds(30-40kmph)** likely at isolated places over Bihar, Jammu-Kashmir-Ladakh-Gilgit-Baltistan-Muzaffarabad and Jharkhand.
- ❖ **Thunderstorm accompanied with Lightning** likely at isolated places over Arunachal Pradesh, Assam & Meghalaya, Chhattisgarh, Madhya Pradesh, Nagaland, Manipur, Mizoram and Tripura, Tamil Nadu Puducherry & Karaikal, Uttar Pradesh, Uttarakhand and Vidarbha.
- ❖ **Strong Surface Winds** likely at isolated places over Andhra Pradesh and Telangana.
- ❖ **Squally wind with speed reaching 45 kmph to 55 kmph gusting to 65 kmph** is likely to prevail along and off Somalia, Yemen & south Oman coasts, most parts of westcentral Arabian Sea & adjoining, some parts of eastcentral Arabian Sea, many parts of southwest Arabian Sea, some northern parts of southeast Arabian Sea.
- ❖ **Squally weather with wind speed reaching 40 - 50 kmph gusting to 60 kmph** likely to prevail off Karnataka coast, over many parts of eastcentral Arabian Sea, many parts of southeast Arabian Sea, some parts of southwest Arabian Sea, over some parts of Lakshadweep, Maldives areas, over Comorin area, over Gulf of Mannar, over some parts of southwest Bay of Bengal.

***Red color warning does not mean "Red Alert" Red color warning means "Take Action"**

Forecast and warning for any day is valid from 0830 hours IST of day till 0830 hours IST of next day

For more details kindly visit <https://mausam.imd.gov.in> or contact 011-2434-4599

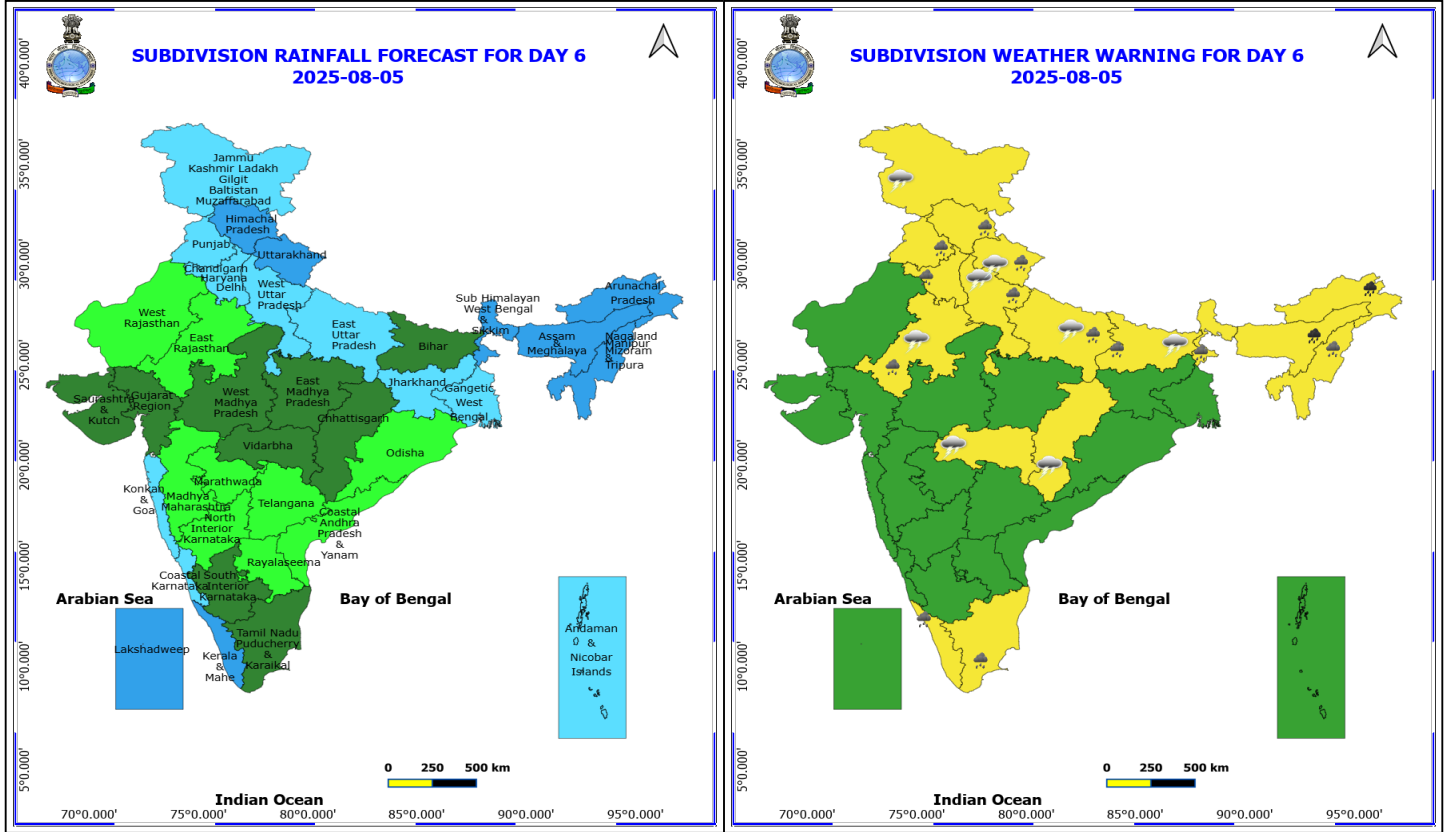
(Service to the nation since 1875)



4 August (Day 5)

- ❖ **Heavy to Very Heavy Rainfall** likely at isolated places over Arunachal Pradesh, Assam & Meghalaya, Bihar and Sub Himalayan West Bengal & Sikkim.
- ❖ **Heavy Rainfall** likely at isolated places over East Rajasthan, Haryana, Chandigarh & Delhi, Himachal Pradesh, Kerala & Mahe, Nagaland, Manipur, Mizoram and Tripura, Punjab, Tamil Nadu Puducherry & Karaikal, Uttar Pradesh and Uttarakhand.
- ❖ **Thunderstorm accompanied with lightning & gusty winds(30-40kmph)** likely at isolated places over Bihar and Jammu-Kashmir-Ladakh-Gilgit-Baltistan-Muzaffarabad.
- ❖ **Thunderstorm accompanied with Lightning** likely at isolated places over Chhattisgarh, East Rajasthan, Uttar Pradesh, Uttarakhand and Vidarbha.

No Fishermen Warning



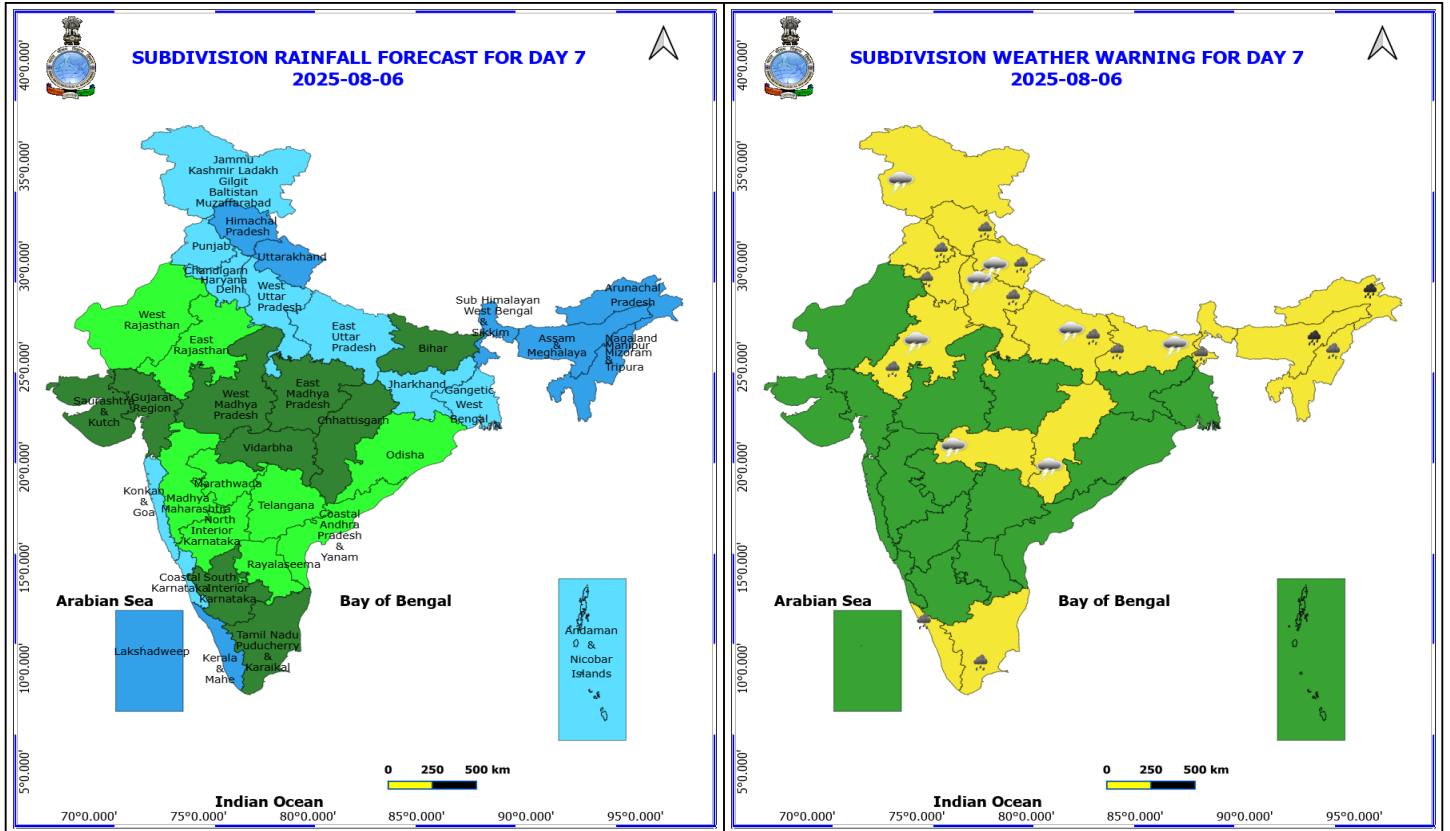
5 August (Day 6)

- ❖ **Heavy to Very Heavy Rainfall** likely at isolated places over Arunachal Pradesh and Assam & Meghalaya.
- ❖ **Heavy Rainfall** likely at isolated places over Bihar, East Rajasthan, Haryana, Chandigarh & Delhi, Himachal Pradesh, Kerala & Mahe, Nagaland, Manipur, Mizoram and Tripura, Punjab, Sub Himalayan West Bengal & Sikkim, Tamil Nadu Puducherry & Karaikal, Uttar Pradesh and Uttarakhand.
- ❖ **Thunderstorm accompanied with lightning & gusty winds(30-40kmph)** likely at isolated places over Bihar and Jammu-Kashmir-Ladakh-Gilgit-Baltistan-Muzaffarabad.
- ❖ **Thunderstorm accompanied with Lightning** likely at isolated places over Chhattisgarh, East Rajasthan, Uttar Pradesh, Uttarakhand and Vidarbha.

No Fishermen Warning

***Red color warning does not mean "Red Alert" Red color warning means "Take Action"**
Forecast and warning for any day is valid from 0830 hours IST of day till 0830 hours IST of next day
For more details kindly visit <https://mausam.imd.gov.in> or contact 011-2434-4599

(Service to the nation since 1875)



6 August (Day 7)

- ❖ **Heavy to Very Heavy Rainfall** likely at isolated places over Arunachal Pradesh, Assam & Meghalaya, Bihar and Sub Himalayan West Bengal & Sikkim.
- ❖ **Heavy Rainfall** likely at isolated places over East Rajasthan, Haryana, Chandigarh & Delhi, Himachal Pradesh, Kerala & Mahe, Nagaland, Manipur, Mizoram and Tripura, Punjab, Tamil Nadu Puducherry & Karaikal, Uttar Pradesh and Uttarakhand.
- ❖ **Thunderstorm accompanied with lightning & gusty winds(30-40kmph)** likely at isolated places over Bihar and Jammu-Kashmir-Ladakh-Gilgit-Baltistan-Muzaffarabad.
- ❖ **Thunderstorm accompanied with Lightning** likely at isolated places over Chhattisgarh, East Rajasthan, Uttar Pradesh, Uttarakhand and Vidarbha.

No Fishermen Warning

***Red color warning does not mean "Red Alert" Red color warning means "Take Action"**
Forecast and warning for any day is valid from 0830 hours IST of day till 0830 hours IST of next day
For more details kindly visit <https://mausam.imd.gov.in> or contact 011-2434-4599

(Service to the nation since 1875)

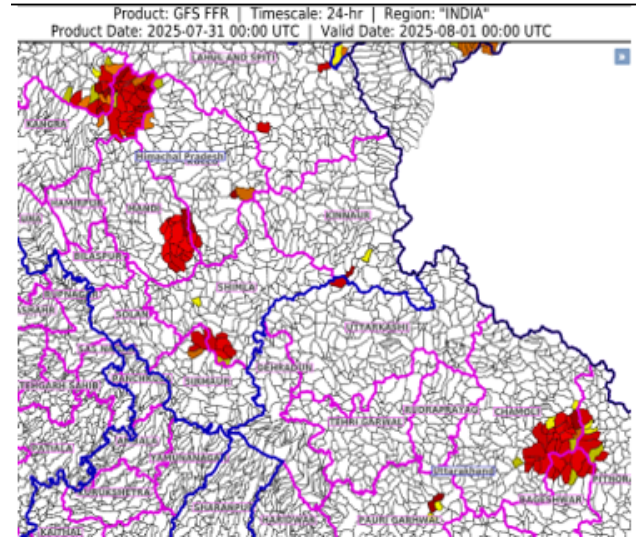
Flash Flood Warnings

24 hours Outlook for the Flash Flood Risk (FFR) till 0530 IST of 01-08-2025 :

Low to Moderate flash flood risk likely over few watersheds & neighbourhoods of following Met Sub-divisions during next 24 hours.
Himachal Pradesh – Chamba, Kangra, Mandi, Sirmaur, Shimla and Kullu districts.

Uttarakhand– Chamoli, Bageshwar and Pithoragarh districts.

Surface runoff/ Inundation may occur at some fully saturated soils & low-lying areas over Area of Concern (AoC) as shown in map due to expected rainfall occurrence in next 24 hours.



24 hours Outlook for the Flash Flood Risk (FFR) till 0530 IST of 01-08-2025 :

Moderate flash flood risk likely over few watersheds & neighbourhoods of following Met Sub-divisions during next 24 hours.
East Rajasthan – Sikar and Jhunjhunun districts.

Adjoining West Rajasthan– Churu and Nagaur districts.

Surface runoff/ Inundation may occur at some fully saturated soils & low-lying areas over Area of Concern (AoC) as shown in map due to expected rainfall occurrence in next 24 hours.

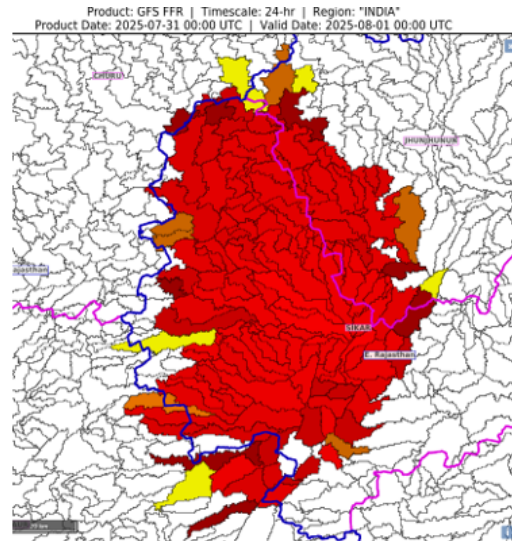




Table-1

7 Days Rainfall Forecast

S.No.	Subdivision	31- Jul	1- Aug	2- Aug	3- Aug	4- Aug	5- Aug	6- Aug
		Day 1	Day 2	Day 3	Day 4	Day 5	Day 6	Day 7
1	ANDAMAN & NICOBAR ISLANDS	FWS	FWS	WS	WS	FWS	FWS	FWS
2	ARUNACHAL PRADESH	FWS	WS	WS	WS	WS	WS	WS
3	ASSAM & MEHGHALAYA	FWS	FWS	WS	WS	WS	WS	WS
4	N. M. M. & T.	FWS	FWS	WS	WS	WS	WS	WS
5	S.H. WEST BENGAL & SIKKIM	WS	WS	WS	WS	WS	WS	WS
6	GANGETIC WEST BENGAL	WS	WS	FWS	FWS	FWS	FWS	FWS
7	ODISHA	SCT	SCT	SCT	ISOL	ISOL	ISOL	ISOL
8	JHARKHAND	FWS	SCT	SCT	SCT	FWS	FWS	FWS
9	BIHAR	SCT	FWS	FWS	FWS	FWS	SCT	SCT
10	EAST UTTAR PRADESH	SCT	ISOL	SCT	FWS	FWS	FWS	FWS
11	WEST UTTAR PRADESH	FWS	SCT	SCT	SCT	FWS	FWS	FWS
12	UTTARAKHAND	FWS	FWS	FWS	FWS	WS	WS	WS
13	HARYANA, CHD & DELHI	SCT	SCT	FWS	FWS	FWS	FWS	FWS
14	PUNJAB	SCT	SCT	SCT	FWS	FWS	FWS	FWS
15	HIMACHAL PRADESH	WS	FWS	FWS	FWS	WS	WS	WS
16	JAMMU AND KASHMIR AND LADAKH	FWS	SCT	SCT	ISOL	SCT	FWS	FWS
17	WEST RAJASTHAN	WS	FWS	ISOL	ISOL	ISOL	ISOL	ISOL
18	EAST RAJASTHAN	WS	FWS	SCT	SCT	ISOL	ISOL	ISOL
19	WEST MADHYA PRADESH	FWS	FWS	SCT	SCT	SCT	SCT	SCT
20	EAST MADHYA PRADESH	FWS	FWS	FWS	SCT	SCT	SCT	SCT
21	GUJRAT REGION	FWS	SCT	SCT	SCT	SCT	SCT	SCT
22	SAURASHTRA & KUTCH	SCT	SCT	SCT	SCT	SCT	SCT	SCT
23	KONKAN & GOA	WS	WS	FWS	WS	FWS	FWS	FWS
24	MADHYA MAHARASHTRA	SCT	ISOL	ISOL	ISOL	ISOL	ISOL	ISOL
25	MARATHWADA	ISOL	ISOL	ISOL	ISOL	ISOL	ISOL	ISOL
26	VIDARBHA	FWS	FWS	SCT	SCT	SCT	SCT	SCT
27	CHATTISGARH	FWS	SCT	SCT	SCT	SCT	SCT	SCT
28	COASTAL ANDHRA PRADESH	ISOL	ISOL	ISOL	ISOL	ISOL	ISOL	ISOL
29	TELANGANA	ISOL	ISOL	ISOL	ISOL	ISOL	ISOL	ISOL
30	RAYALASEEMA	ISOL	ISOL	ISOL	ISOL	ISOL	ISOL	ISOL
31	TAMILNADU & PUDUCHERRY	ISOL	SCT	SCT	SCT	SCT	SCT	SCT
32	COSTAL KARNATAKA	WS	WS	WS	FWS	FWS	FWS	FWS
33	NORTH INTERIOR KARNATAKA	ISOL	ISOL	SCT	SCT	ISOL	ISOL	ISOL
34	SOUTH INTERIOR KARNATAKA	SCT	SCT	SCT	SCT	SCT	SCT	SCT
35	KERALA	FWS	FWS	WS	WS	WS	WS	WS
36	LAKSHDWEEP	FWS	FWS	WS	WS	WS	WS	WS

Legend	Category	%Stations
WS	Widespread/Most Places	76-100
FWS	Fairly Widespread/Many Places	51-75
SCT	Scattered/ A Few Places	26-50
ISOL	Isolated Places	1-25
DRY	No Rain	0

*Red color warning does not mean "Red Alert" Red color warning means "Take Action"
Forecast and warning for any day is valid from 0830 hours IST of day till 0830 hours IST of next day
For more details kindly visit <https://mausam.imd.gov.in> or contact 011-2434-4599

(Service to the nation since 1875)

Fig. 1: Maximum Temperatures Dated 2025-07-31

Fig. 2: Departure of Maximum Temp. Dated 2025-07-31

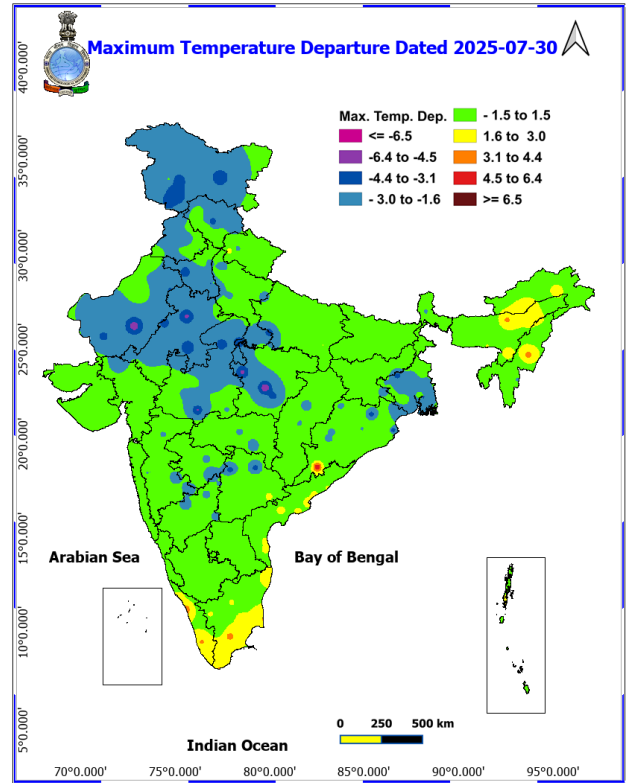
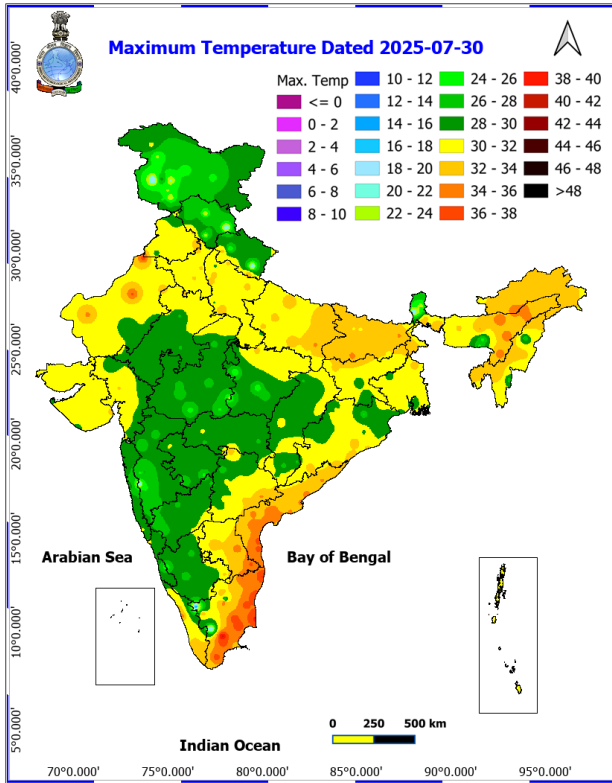
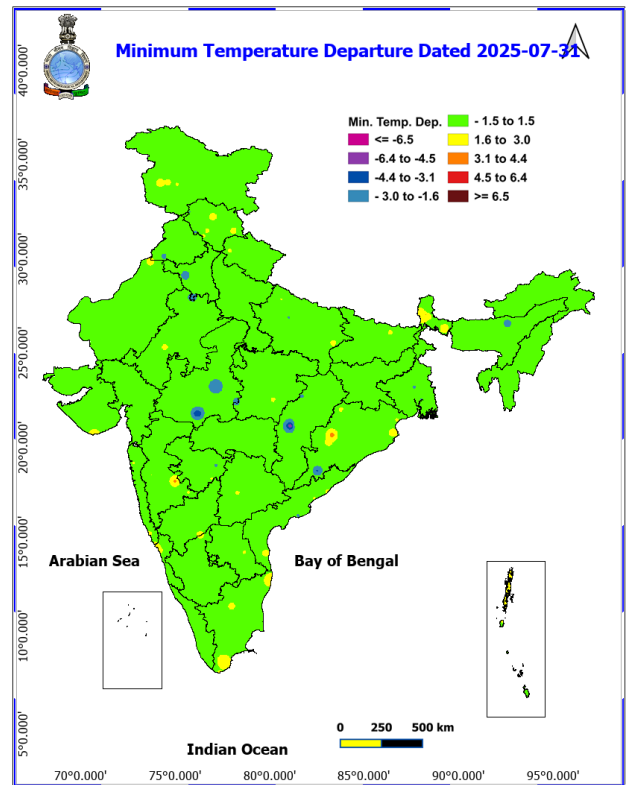
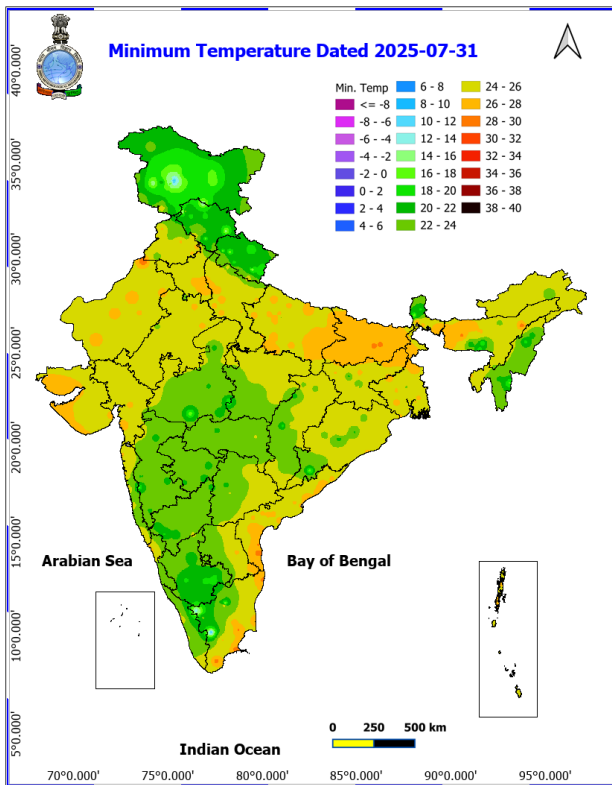
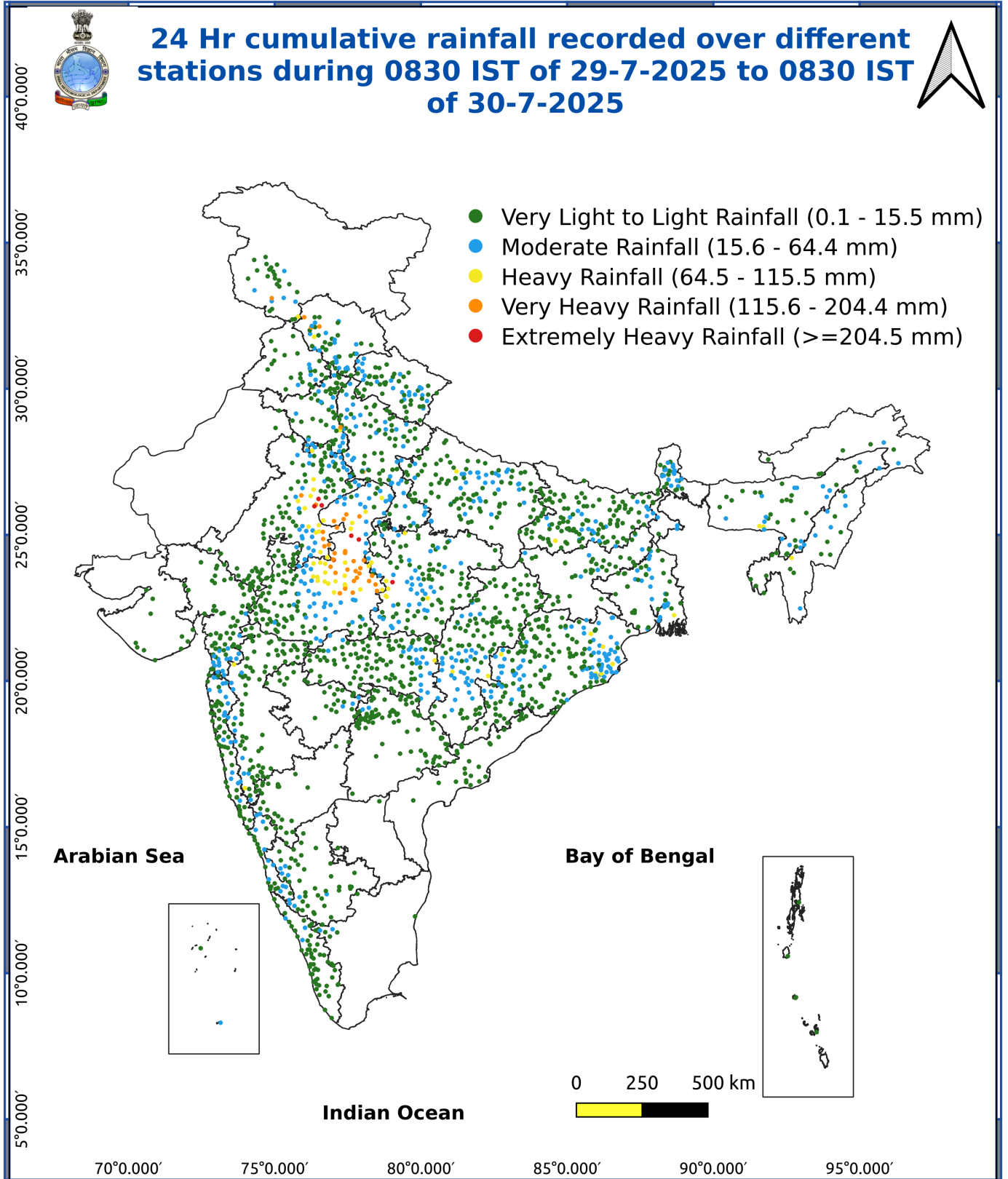


Fig. 3: Minimum Temperatures Dated 2025-07-31

Fig. 4: Departure of Minimum Temp. Dated 2025-07-31





Impact & Action Suggested due to

- **Very heavy rainfall** over West Rajasthan & East Rajasthan on 31st; Arunachal Pradesh during 01st-05th August; Assam & Meghalaya during 31st July-05th August; Sub-Himalayan West Bengal & Sikkim during 02nd-04th; Bihar on 03rd & 04th August.

Impact Expected

- Localized Flooding of roads, water logging in low lying areas and closure of underpasses mainly in urban areas of the above region.
- Occasional reduction in visibility due to heavy rainfall.
- Disruption of traffic in major cities due to water logging in roads leading to increased travel time.
- Minor damage to kutcha roads.
- Possibilities of damage to vulnerable structure.
- Localized Landslides/Mudslides/landslips/mudslips/landsinks/mudsinks.
- Damage to horticulture and standing crops in some areas due to inundation.
- It may lead to riverine flooding in some river catchments (for riverine flooding please visit Web page of CWC)

Action Suggested

- Check for traffic congestion on your route before leaving for your destination.
- Follow any traffic advisories that are issued in this regard.
- Avoid going to areas that face the water logging problems often.
- Avoid staying in vulnerable structure.

Agromet advisories for various parts of the country

Agromet advisories for likely impact of Heavy / Heavy to Very Heavy / Extremely Heavy Rainfall

- In **East Rajasthan**, postpone sowing of green gram, pearl millet, cluster bean and sesame till cessation of heavy rains and make arrangement for removal of excess water from already sown fields in **Sub Humid Southern Plain and Aravali Hill Zone** and **Flood Prone Eastern Plain Zone**. In **Southern Humid Plain Zone**, postpone sowing of maize till cessation of heavy rains and ensure proper drainage in cotton and soybean fields to remove excess water. Make provision to drain out excess water from rice nurseries, fields of maize, soybean and black gram in **Southeastern Humid Plain zone** and fields of pearl millet and groundnut in **Semi Arid Eastern Plain Zone**.
- In **Madhya Pradesh**, provide adequate drainage in the fields of soybean and maize in **Malwa Plateau Zone**; rice, maize and soybean in **Kymore Plateau and Satpura Hill Zone**; soybean, rice, maize and pigeon pea in **Vindhyan Plateau Zone**; rice and vegetables in **Bundelkhand Zone**; maize, soybean, cotton, sugarcane and vegetables in **Satpura Plateau Zone**; soybean, maize, cotton and black gram in **Jhabua Hills Zone**; rice, soybean, maize, sugarcane and vegetables in **Central Narmada Valley Zone** and soybean, pigeon pea, cotton and vegetables in **Nimar Valley Zone**. In **Gird Zone**, postpone sowing of pearl millet and make arrangement to drain out excess water in fields of soybean, pigeon pea and transplanted rice.
- In **Gujarat**, make necessary arrangements to drain out excess water from fields of transplanted rice, cotton, pearl millet, pigeon pea, soybean and vegetables in **Middle Gujarat Zone**; sugarcane, rice and vegetables in **South Gujarat Heavy Rainfall Zone** and sugarcane, cotton, pigeon pea, transplanted rice and vegetables in **South Gujarat Zone**.
- In **Maharashtra**, make arrangement to drain out excess water from rice and finger millet fields in **ghat areas of Madhya Maharashtra**.
- In **Uttarakhand**, maintain proper drainage channels in fields of rice in **Bhabar and Tarai Zone**, black gram in **Hill Zone** and rice, barnyard millet, finger millet and cucumber in **Sub Humid SubTropic Zone**.
- In **Himachal Pradesh**, make proper drainage channels in the standing crops like maize, finger millet and vegetable fields. Provide staking to tall and leguminous crops and cucumber vines.

*Red color warning does not mean "Red Alert" Red color warning means "Take Action"

Forecast and warning for any day is valid from 0830 hours IST of day till 0830 hours IST of next day

For more details kindly visit <https://mausam.imd.gov.in> or contact 011-2434-4599

(Service to the nation since 1875)



- In **Bihar**, provide adequate drainage in the fields of paddy, Pigeon pea, kharif maize, Okra and plantations in **South Bihar Alluvial Zone**.
- In **Arunachal Pradesh**, harvest matured soybean immediately and store in safer place.
- In **Meghalaya**, avoid sowing of rice in nurseries especially in valley lands. Maintain proper drainage channels around the nursery beds. Make provision for draining out excess water from vegetable fields and repair bunds in lowland paddy fields.
- In **Mizoram**, harvest matured cobs of maize. Create strong bunds around rice fields to retain rainwater and reduce runoff.

Livestock / Fishery

- Keep the animals inside the shed during heavy rainfall and provide them balanced feed.
- Store feed and fodder in a safe place to prevent spoilage.
- Construct an outlet with proper netting around the ponds to drain out excess water, thereby preventing fish from escaping in case of overflow.

Agromet advisories for likely impact of Thunderstorm / Gusty Winds / Squally Winds

- Provide mechanical support to horticultural crops and staking or support to vegetables and young fruit plants / fruit-bearing plants to avoid lodging due to strong winds.

LEGENDS

- 1 अंडमान और निकोबार द्वीप समुह
- 2 अरुणाचल प्रदेश
- 3 असम और मेघालय
- 4 नागालैंड मनीपुर मीजोरम और त्रिपुरा
- 5 उप हिमालय पश्चिम बंगाल एवं सिक्किम
- 6 पश्चिम बंगाल
- 7 ओडिसा
- 8 झारखंड
- 9 बिहार
- 10 पूर्वी उत्तर प्रदेश
- 11 पश्चिम उत्तर प्रदेश
- 12 उत्तराखंड
- 13 हरियाणा चंडिगढ़ एवं दिल्ली
- 14 पंजाब
- 15 हिमाचल प्रदेश
- 16 जम्मू एवं कश्मीर एवं लद्दाख
- 17 पश्चिम राजस्थान
- 18 पूर्वी राजस्थान
- 19 पश्चिम मध्य प्रदेश
- 20 पूर्वी मध्य प्रदेश
- 21 गुजरात क्षेत्र
- 22 सौराष्ट्र एवं कच्छ
- 23 कोंकण एवं गोवा
- 24 मध्य महाराष्ट्र
- 25 मराठावाडा
- 26 विदर्भ
- 27 छत्तीसगढ़
- 28 तटीय आंध्र प्रदेश एवं यनम
- 29 तेलंगाना
- 30 रायलसीमा
- 31 तमिलनाडु, पुदुचेरी एवं कराईकल
- 32 तटिय कर्नाटक
- 33 आंतरिक उत्तरी कर्नाटक
- 34 आंतरिक दक्षिणी कर्नाटक
- 35 केरल एवं माहे
- 36 लक्षद्वीप



1. Andaman & Nicobar Islands
2. Arunachal Pradesh
3. Assam & Meghalaya
4. Nagaland, Manipur, Mizoram & Tripura
5. Sub-Himalayan West Bengal & Sikkim
6. Gangetic West Bengal
7. Orissa
8. Jharkhand
9. Bihar
10. East Uttar Pradesh
11. West Uttar Pradesh
12. Uttarakhand
13. Haryana, Chd & Delhi
14. Punjab
15. Himachal Pradesh
16. Jammu & Kashmir and Ladakh
17. West Rajasthan
18. East Rajasthan
19. West Madhya Pradesh
20. East Madhya Pradesh
21. Gujarat
22. Saurashtra
23. Konkan & Goa
24. Madhya Maharashtra
25. Marathawada
26. Vidharbha
27. Chhattisgarh
28. Coastal Andhra Pradesh & Yanam
29. Telangana
30. Rayalaseema
31. Tamilnadu, Puducherry & Karaikal
32. Coastal Karnataka
33. North Interior Karnataka
34. South Interior Karnataka
35. Kerala & Mahe
36. Lakshadweep

SPATIAL DISTRIBUTION (% of Stations reporting)

% Stations	Category	% Stations	Category
76-100	Widespread (WS/Most Places)	26-50	Scattered (SCT/ A Few Places)
51-75	Fairly Widespread (FWS/ Many Places)	1-25	Isolated (ISOL)

Subdivision Colour

- NO WARNING
- WATCH (BE UPDATED)
- ALERT (BE PREPARED TO TAKE ACTION)
- WARNING (TAKE ACTION)

Probabilistic Forecast

Terms	Probability of Occurrence (%)
Unlikely	< 25
Likely	25 - 50
Very Likely	50 - 75
Most Likely	> 75

- | | | | |
|--------------------------|-----------------|----------------------|--------------------|
| Heavy Rain | Very Heavy Rain | Extremely Heavy Rain | Heavy Snow |
| Thunderstorm & Lightning | Hailstorm | Dust Storm | Dust Raising Winds |
| Strong surface winds | Heat Wave | Hot Day | Warm Night |
| Cold Wave | Cold Day | Ground Frost | Fog |
| Hot & Humid | | | |

*Red color warning does not mean "Red Alert" Red color warning means "Take Action"

Forecast and warning for any day is valid from 0830 hours IST of day till 0830 hours IST of next day

For more details kindly visit <https://mausam.imd.gov.in> or contact 011-2434-4599

(Service to the nation since 1875)

LEGENDS

WARNING

WARNING (TAKE ACTION)
ALERT (BE PREPARED)
WATCH (BE UPDATED)
NO WARNING (NO ACTION)

Probabilistic Forecast

Terms	Probability of Occurrence (%)
Unlikely	< 25
Likely	25 - 50
Very Likely	50 - 75
Most Likely	> 75



Heavy: 64.5 to 115.5 mm/cm *
Very Heavy: 115.6 to 204.4 mm/cm*
Extremely Heavy: > 204.4 mm/cm *



When maximum temperature of a station reaches $\geq 40^{\circ}\text{C}$ for plains and $\geq 30^{\circ}\text{C}$ for hilly regions
(a) Based on Departure from normal

Heat Wave: Maximum Temperature Departure from normal 4.5°C to 6.4°C .
Severe Heat Wave: Maximum Temperature Departure from normal $\geq 6.5^{\circ}\text{C}$

(b). Based on Actual maximum temperature

Heat Wave: When actual maximum temperature $\geq 45^{\circ}\text{C}$.
Severe Heat Wave: When actual maximum temperature $\geq 47^{\circ}\text{C}$

(c). Criteria for heat wave for coastal stations

When maximum temperature departure is $> 4.5^{\circ}\text{C}$ from normal. Heat Wave may be described provided maximum temperature $\geq 37^{\circ}\text{C}$



When maximum temperature remains 40°C

Warm Night: When minimum temperature departure 4.5°C to 6.4°C .
Severe Warm Night: When minimum temperature departure $> 6.4^{\circ}\text{C}$.



When minimum temperature of a station $\leq 10^{\circ}\text{C}$ for plains and $\leq 0^{\circ}\text{C}$ for hilly regions.
(a). Based on departure

Cold Wave: Minimum Temperature Departure from normal -4.5°C to -6.4°C .
Severe Cold Wave: Minimum Temperature Departure from normal $\leq -6.5^{\circ}\text{C}$

(b) Based on actual Minimum Temperature (for Plains only)

Cold Wave : When Minimum Temperature is $\leq 4.0^{\circ}\text{C}$
Severe Cold Wave: When Minimum Temperature is $\leq 2.0^{\circ}\text{C}$

(c) For Coastal Stations

When Minimum Temperature departure is $\leq -4.5^{\circ}\text{C}$ & actual Minimum Temperature is $\leq 15^{\circ}\text{C}$



When minimum temperature of a station $\leq 10^{\circ}\text{C}$ for plains and $\leq 0^{\circ}\text{C}$ for hilly regions
Based on departure

Cold Day: Maximum Temperature Departure from normal -4.5°C to -6.4°C .
Severe Cold Day: Maximum Temperature Departure from normal $\leq -6.5^{\circ}\text{C}$



Phenomenon of small droplets suspended in air and the horizontal visibility $< 1\text{km}$

Moderate Fog: When the visibility between 500-200 metres
Dense Fog: when the visibility between 50- 200 metres
Very Dense Fog: when the visibility < 50 metres



Sudden electrical discharges manifested by a flash of light (Lightning) and a sharp rumbling sound (thunder)



An ensemble of particles of dust or sand energetically lifted to great heights by a strong and turbulent wind.



Ice deposits on ground

Air temperature $\leq 4^{\circ}\text{C}$ (over Plains)



A strong wind that rises suddenly, lasts for atleast 1 minute.

Moderate: Wind speed 52-61 kmph
Severe: Wind speed 62-87 kmph
Very Severe: Wind speed > 87 kmph



Effect of various waves in the sea over specific area

Rough to very rough: Wind speed 41-62 kmph (22-33 knots) & Wave height 2.5-6 metre
High to very high: Wind speed 63-117 kmph (34-63 knots) & Wave height 6-14 metre
Phenomenal: Wind speed > 117 kmph (> 63 knots) & Wave height > 14 metre



Cyclonic Storm: Wind speed 62-87 kmph (34-47 knots)
Severe Cyclonic Storm: Wind speed 88-117 kmph (48-63 knots)
Very Severe Cyclonic Storm: Wind speed 118-165 kmph (64 - 89 knots)
Extremely Severe Cyclonic Storm: Wind speed 166-220 kmph (90 -119 knots)
Super Cyclone Storm: Wind speed > 220 kmph (> 119 knots)

*Red color warning does not mean "Red Alert" Red color warning means "Take Action"

Forecast and warning for any day is valid from 0830 hours IST of day till 0830 hours IST of next day

For more details kindly visit <https://mausam.imd.gov.in> or contact 011-2434-4599

(Service to the nation since 1875)