

2025-08-27

Time of Issue: 09:00:00 hours IST
(Morning)

ALL INDIA WEATHER SUMMARY AND FORECAST BULLETIN

Significant Weather Features

Weather Forecast and Warnings:

Northwest India:

Isolated **heavy rainfall** likely to continue over Uttarakhand, Himachal Pradesh, East Rajasthan, Jammu & Kashmir, Haryana, Punjab during next 7 days; Uttar Pradesh, West Rajasthan on during 29th August-01st September with **isolated very heavy rainfall over Himachal Pradesh, East Rajasthan during 29th August-01st September and Uttarakhand on 28th & 29th August.**

Light/moderate rainfall at most/many places over Northwest India and accompanied with thunderstorm & lightning likely over the Jammu-Kashmir-Ladakh-Gilgit-Baltistan-Muzaffarabad, Uttarakhand during next 7 days.

East & Central India:

Isolated **heavy rainfall** likely over Chhattisgarh, Odisha, Vidarbha during next 5 days; Sub-Himalayan West Bengal & Sikkim during 27th-30th; Bihar during 30th August-01st September; Madhya Pradesh during 28th August-01st September; Jharkhand on 29th & 30th August with **isolated very heavy rainfall over Chhattisgarh during 27th-28th; Odisha on 27th; southeast Madhya Pradesh on 29th August.**

Light to moderate rainfall at most/many places accompanied with thunderstorm & lightning likely over the region during next 7 days.

West India:

Isolated heavy rainfall is very likely over Gujarat region, Konkan & Goa, Madhya Maharashtra during next 6-7 days and Marathwada on 28th August with **very heavy rainfall** over ghat areas of Madhya Maharashtra on 27th & 28th August.

Light to moderate rainfall at most/many places very likely over the region during next 7 days.

Northeast India:

Isolated **heavy rainfall** likely to continue over Assam & Meghalaya, Arunachal Pradesh during 27th-31st August; Nagaland, Manipur, Mizoram & Tripura during next 7 days.

Light/moderate rainfall at many places accompanied with thunderstorm & lightning likely during next 5 days.

South Peninsular India:

Isolated **heavy rainfall** likely over Coastal Andhra Pradesh & Yanam, Telangana during 27th-28th; Kerala & Mahe during 27th-29th; Coastal Karnataka during 27th-30th; Interior Karnataka on 27th & 28th; Tamil Nadu during 27th-29th August.

Light to moderate rainfall at some places accompanied with thunderstorm & lightning likely over the region during next 3 days.

***Red color warning does not mean "Red Alert" Red color warning means "Take Action"**

Forecast and warning for any day is valid from 0830 hours IST of day till 0830 hours IST of next day

For more details kindly visit <https://mausam.imd.gov.in> or contact 011-2434-4599

(Service to the nation since 1875)

Main Weather Observations:

❖ **Rainfall distribution** (from 0830 hours IST to 1730 hours IST of yesterday): **at most places** over Konkan & Goa , Himachal Pradesh, Haryana Chandigarh & Delhi, Jammu & Kashmir and Ladakh, Punjab, Coastal Andhra Pradesh & Yanam and Coastal Karnataka; **at many places** over West Uttar Pradesh, Odisha, Madhya Maharashtra , Assam & Meghalaya, Sub-himalayan West Bengal & Sikkim, East Uttar Pradesh, Saurashtra & Kutch, Bihar, Uttarakhand, West Rajasthan, East Rajasthan, East Madhya Pradesh, Gujarat Region, Marathwada, Andaman & Nicobar Islands, Rayalaseema, Kerala & Mahe, South Interior Karnataka, North Interior Karnataka, Tamilnadu Puducherry & Karaikal, Telangana, Gangetic West Bengal, West Madhya Pradesh, Vidarbha, Chhattisgarh, Nagaland, Manipur, Mizoram & Tripura and Lakshadweep ; **Dry** over rest of the country.

❖ **Significant rainfall recorded(in cm)** (from 0830 hours IST to 1730 hours IST of yesterday): **Jammu & Kashmir and Ladakh:** Jammu (dist Jammu) 25, Katra (dist Reasi) 19, Reasi 18, Samba 15, Doda 13, Kathua & Udhampur 10 each, Kishtwar & Banihal (dist Doda) 5 each, Ramban & Verinag, Kukernag, Pahalgam (dist Anantnag), Qazigund 4 Each, Srinagar- City (dist Srinagar) 2; **East Rajasthan:** Banswara district 15; **Gujarat:** Valsad 5, Dang & Chotaudepur 3 each, Panchmahal & Vadodara 2 each; **Coastal Andhra Pradesh & Yanam:** Visakhapatnam, Vishakhapatnam (dist Visakhapatnam) 5 Each, Kalingapatnam (dist Srikakulam) 2; **Nagaland, Manipur, Mizoram & Tripura:** Aizawl (dist Aizawl) 5; **Coastal Karnataka:** Karwar (dist Uttara Kannada) 5, Mangalore (bajpe) AP (dist Dakshina Kannada) 3; **Chhattisgarh:** Jagdalpur (dist Bastar) 5; **Gujarat:** Valsad 5, Dang & Chotaudepur 3 each, Panchmahal & Vadodara 2 each; **Vidarbha:** Gadchiroli (dist Gadchiroli) 4; **West Rajasthan:** Jodhpur 4, **Himachal Pradesh:** Dharamshala (dist Kangra) 4, Kangra (dist Kangra) 2; **West Madhya Pradesh:** Ratlam-obs (dist Ratlam) 3; **Madhya Maharashtra:** Mahabaleshwar (dist Satara) 2; **Haryana Chandigarh & Delhi:** Rohtak (dist Rohtak) 2; **Konkan & Goa:** Ratnagiri (dist Ratnagiri), Matheran (dist Raigad) 2 Each; **Gangetic West Bengal:** Diamond Harbour (dist South 24 Parganas) 2..

❖ **Heavy Rainfall observed** (from 0830 hours IST to 1730 hours IST of yesterday):**Extremely heavy rain** at isolated places over Jammu & Kashmir and Ladakh **Heavy to very heavy rain** at isolated places over Jammu & Kashmir and Ladakh **Heavy rain** at isolated places over Odisha.

❖ **Minimum Temperature Departures (as on 26-08-2025):** **markedly above normal(> 5.1°C)** at isolated places over Assam & Meghalaya, Bihar, East Uttar Pradesh, West Uttar Pradesh, Himachal Pradesh and West Madhya Pradesh. **appreciably above normal(3.1°C to 5.0°C)** at many places over East Madhya Pradesh; at isolated places over Sub Himalayan West Bengal & Sikkim, Odisha, Jammu-KashmirLadakh-Gilgit-Baltistan-Muzaffarabad, West Rajasthan and Saurashtra & Kutch. **above normal(1.6°C to 3.0°C)** at many places over Lakshadweep; at few places over Andaman & Nicobar Islands and Gujarat Region; at isolated places over Nagaland, Manipur, Mizoram & Tripura, Gangetic West Bengal, Uttarakhand, East Rajasthan, Konkan & Goa, Madhya Maharashtra, Coastal Andhra Pradesh & Yanam, Telangana and Tamil Nadu, Puducherry & Karaikal. **near normal(-1.5°C to 1.5°C)** at many places over Haryana-Chandigarh-Delhi and Chhattisgarh; at most places over Arunachal Pradesh, Jharkhand, Marathwada, Vidarbha, Rayalaseema, Coastal Karnataka, North Interior Karnataka, South Interior Karnataka and Kerala & Mahe; at isolated places over Punjab. **The lowest minimum temperature** of 18.8°C is reported at Khargone (West Madhya Pradesh) over the Plains of India.

❖ **Maximum Temperature Departures (as on 26-08-2025):** **appreciably above normal(3.1°C to 5.0°C)** at few places over Arunachal Pradesh and Assam & Meghalaya; at isolated places over Chhattisgarh, Tamil Nadu, Puducherry & Karaikal and Kerala & Mahe. **above normal(1.6°C to 3.0°C)** at many places over Nagaland, Manipur, Mizoram & Tripura; at few places over Sub Himalayan West Bengal & Sikkim and Lakshadweep; at isolated places over Gangetic West Bengal, Bihar, East Uttar Pradesh, West Uttar Pradesh, East Madhya Pradesh, Madhya Maharashtra, Coastal Andhra Pradesh & Yanam and Rayalaseema. **near normal(-1.5°C to 1.5°C)** at many places over Andaman & Nicobar Islands, Jharkhand, East Rajasthan, West Madhya Pradesh, Gujarat Region, Saurashtra & Kutch, Marathwada, North Interior Karnataka and South Interior Karnataka; at most places over Odisha and Vidarbha; at few places over Uttarakhand, West Rajasthan, Konkan & Goa, Telangana and Coastal Karnataka; at isolated places over Himachal Pradesh. **The highest maximum temperature** of 39.5°C is reported at MADURAI (A) (TAMIL NADU).

***Red color warning does not mean "Red Alert" Red color warning means "Take Action"**

Forecast and warning for any day is valid from 0830 hours IST of day till 0830 hours IST of next day

For more details kindly visit <https://mausam.imd.gov.in> or contact 011-2434-4599

(Service to the nation since 1875)

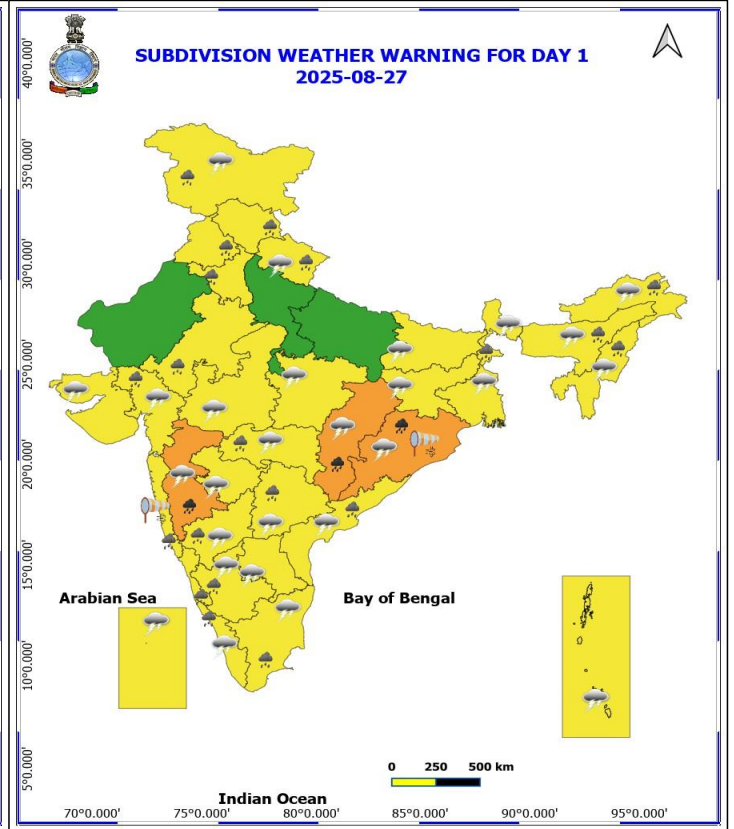
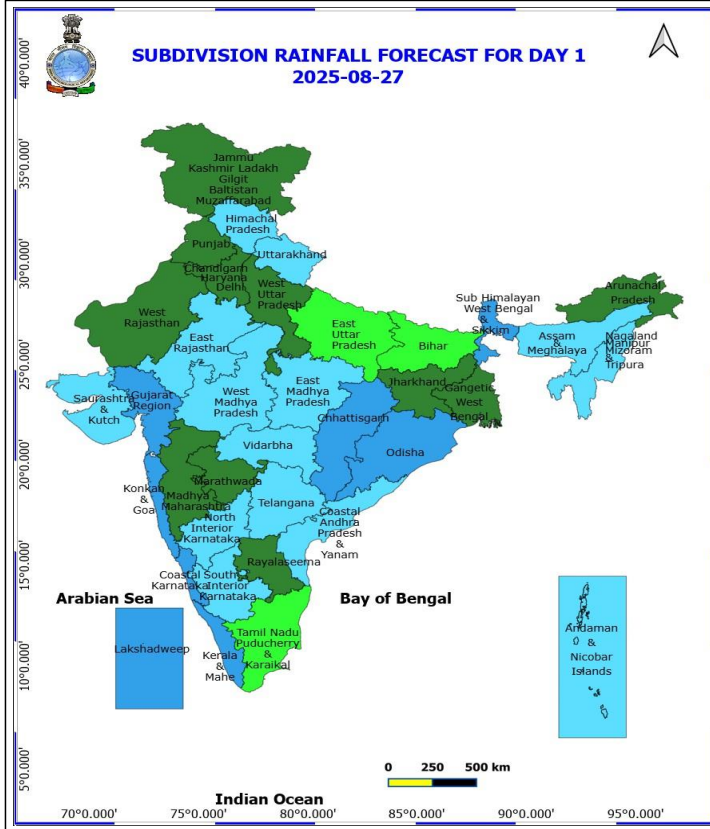


Meteorological Analysis (Based on 0530 hours IST)

- ❖ The Low Pressure Area over northwest Bay of Bengal off Odisha coasts moved slowly west-northwestwards and became **Well Marked Low Pressure area** over the same region at 0530 hrs IST of today, the 27th August 2025. The associated cyclonic circulation extended upto 7.6 km above mean sea level tilting southwestwards with height. It is likely to move slowly west-northwestwards across Odisha in next 24 hrs.
- ❖ The **upper air cyclonic circulation** over south Haryana and adjoining northeast Rajasthan persists and now extends upto 1.5 km above mean sea level tilting southwards with height.
- ❖ The **monsoon trough** now passes through Suratgarh, Alwar, Agra, Satna, Daltonganj, Jamshedpur, Chandbali to the centre of Well Marked **low-pressure area** over northwest Bay of Bengal off Odisha coast and thence to southeastward to east central Bay of Bengal and extends upto 1.5 km above mean sea level and continues to pass through above two embedded cyclonic circulations.
- ❖ The **Western Disturbance** as a trough in middle & upper tropospheric levels with its axis at 5.8 km above mean sea level runs roughly along Long. 72°E to north of Lat. 30°N.

Weather Outlook for subsequent 3 days

- ◆ Scattered to Fairly widespread rainfall likely over northern, western India, western peninsular and eastern India.



27 August (Day 1)

- ❖ **Heavy to Very Heavy Rainfall** very likely at isolated places over Chhattisgarh, Madhya Maharashtra and Odisha.
- ❖ **Heavy Rainfall** very likely at isolated places over Arunachal Pradesh, Assam & Meghalaya, Coastal Andhra Pradesh, East Rajasthan, Gujarat Region, Haryana, Chandigarh & Delhi, Himachal Pradesh, Jammu-Kashmir-Ladakh-Gilgit-Baltistan-Muzaffarabad, Karnataka, Kerala & Mahe, Konkan & Goa, Nagaland, Manipur, Mizoram and Tripura, Punjab, Sub Himalayan West Bengal & Sikkim, Tamil Nadu Puducherry & Karaikal, Telangana, Uttarakhand and Vidarbha.
- ❖ **Thunderstorm accompanied with lightning & gusty winds(40-50kmph)** very likely at isolated places over Kerala & Mahe, Lakshadweep and Tamil Nadu Puducherry & Karaikal.
- ❖ **Thunderstorm accompanied with lightning & gusty winds(30-40kmph)** very likely at isolated places over Andaman & Nicobar Islands, Bihar, Gujarat State, Interior Karnataka, Jammu-Kashmir-Ladakh-Gilgit-Baltistan-Muzaffarabad, Jharkhand and Telangana.
- ❖ **Thunderstorm accompanied with Lightning** very likely at isolated places over Andhra Pradesh, Arunachal Pradesh, Assam & Meghalaya, Chhattisgarh, Madhya Pradesh, Maharashtra, Nagaland, Manipur, Mizoram and Tripura, Odisha, Uttarakhand and West Bengal & Sikkim.
- ❖ **Strong Surface Winds** very likely at isolated places over Konkan & Goa and Odisha.
 - Squally wind with speed reaching 45 kmph to 55 kmph gusting to 65 kmph is likely to prevail along and off Somalia, Oman coasts, most parts of westcentral Arabian sea, adjoining & some parts of southwest, eastcentral Arabian Sea, adjoining parts of northwest Arabian Sea.
 - Squally weather with wind speed reaching 40 - 50 kmph gusting to 60 kmph likely to prevail along and off south Gujarat, Konkan, Goa, Karnataka, Kerala coasts, Lakshadweep, Comorin areas, and most parts of

***Red color warning does not mean "Red Alert" Red color warning means "Take Action"**

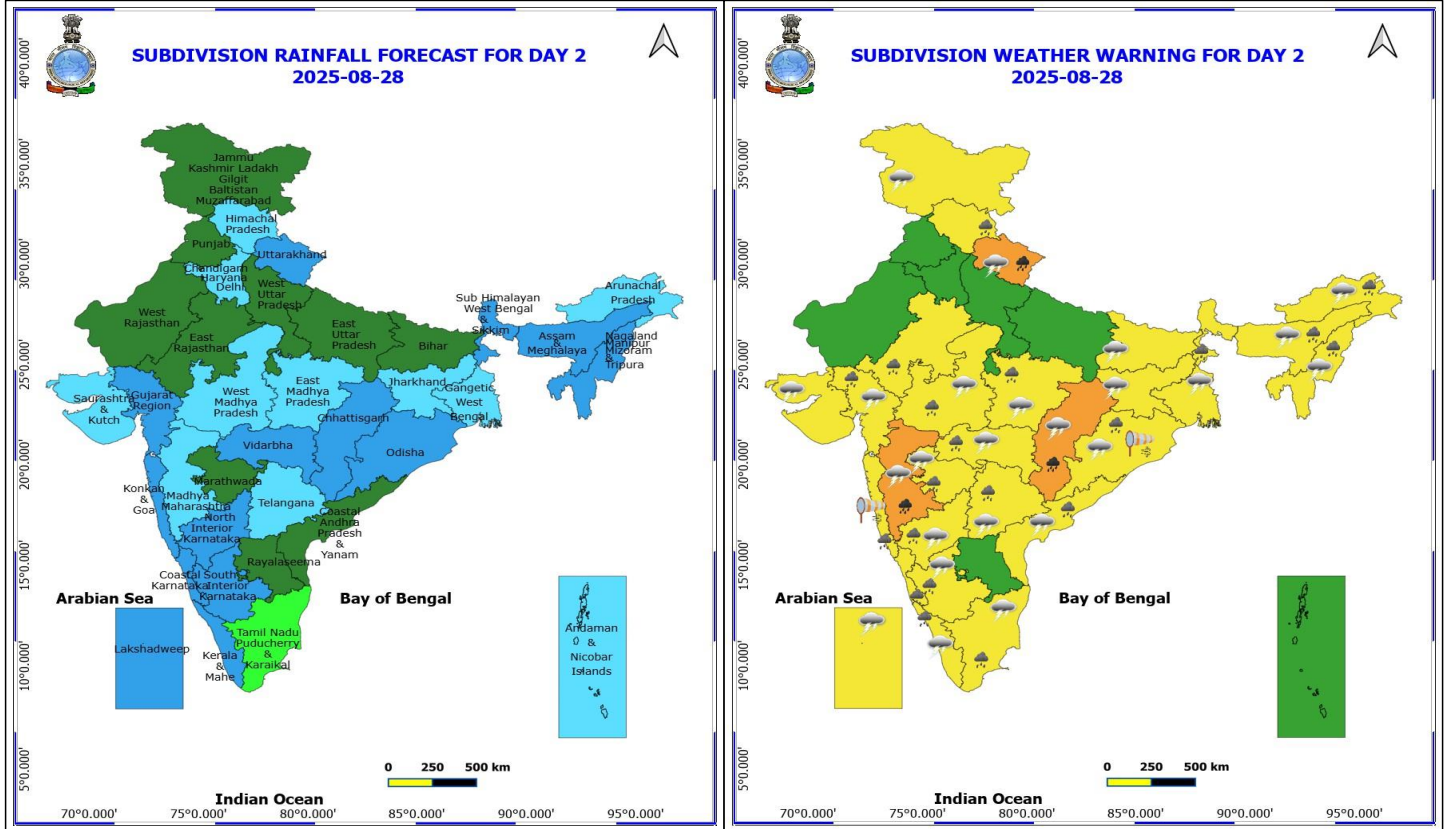
Forecast and warning for any day is valid from 0830 hours IST of day till 0830 hours IST of next day

For more details kindly visit <https://mausam.imd.gov.in> or contact 011-2434-4599

(Service to the nation since 1875)



eastcentral Arabian Sea; along and off Andhra Pradesh, Odisha, West Bengal, Bangladesh coasts, over north Bay of Bengal & most parts of central Bay of Bengal, over many parts of southwest Bay of Bengal off south Sri Lanka coast, over Gulf of Mannar.



28 August (Day 2)

- ❖ **Heavy to Very Heavy Rainfall** very likely at isolated places over Chhattisgarh, Madhya Maharashtra and Uttarakhand.
- ❖ **Heavy Rainfall** very likely at isolated places over Arunachal Pradesh, Assam & Meghalaya, Coastal Andhra Pradesh, East Rajasthan, Gujarat Region, Himachal Pradesh, Karnataka, Kerala & Mahe, Konkan & Goa, Madhya Pradesh, Marathwada, Nagaland, Manipur, Mizoram and Tripura, Odisha, Sub Himalayan West Bengal & Sikkim, Tamil Nadu Puducherry & Karaikal, Telangana and Vidarbha.
- ❖ **Thunderstorm accompanied with lightning & gusty winds(40-50kmph)** very likely at isolated places over Tamil Nadu Puducherry & Karaikal.
- ❖ **Thunderstorm accompanied with lightning & gusty winds(30-40kmph)** very likely at isolated places over Bihar, Gujarat State, Interior Karnataka, Jammu-Kashmir-Ladakh-Gilgit-Baltistan-Muzaffarabad, Jharkhand, Kerala & Mahe, Lakshadweep and Telangana.
- ❖ **Thunderstorm accompanied with Lightning** very likely at isolated places over Arunachal Pradesh, Assam & Meghalaya, Chhattisgarh, Coastal Andhra Pradesh, Gangetic West Bengal, Madhya Pradesh, Maharashtra, Nagaland, Manipur, Mizoram and Tripura, Odisha and Uttarakhand.
- ❖ **Strong Surface Winds** very likely at isolated places over Konkan & Goa and Odisha.
 - Squally wind with speed reaching 45 kmph to 55 kmph gusting to 65 kmph is likely to prevail along and off Somalia, Oman coasts, most parts of westcentral Arabian sea, adjoining & some parts of southwest, eastcentral Arabian Sea.
 - Squally weather with wind speed reaching 40 - 50 kmph gusting to 60 kmph likely to prevail along and off south Gujarat, Konkan, Goa, Karnataka, Kerala coasts, Lakshadweep, Comorin areas, and most parts of

***Red color warning does not mean "Red Alert" Red color warning means "Take Action"**

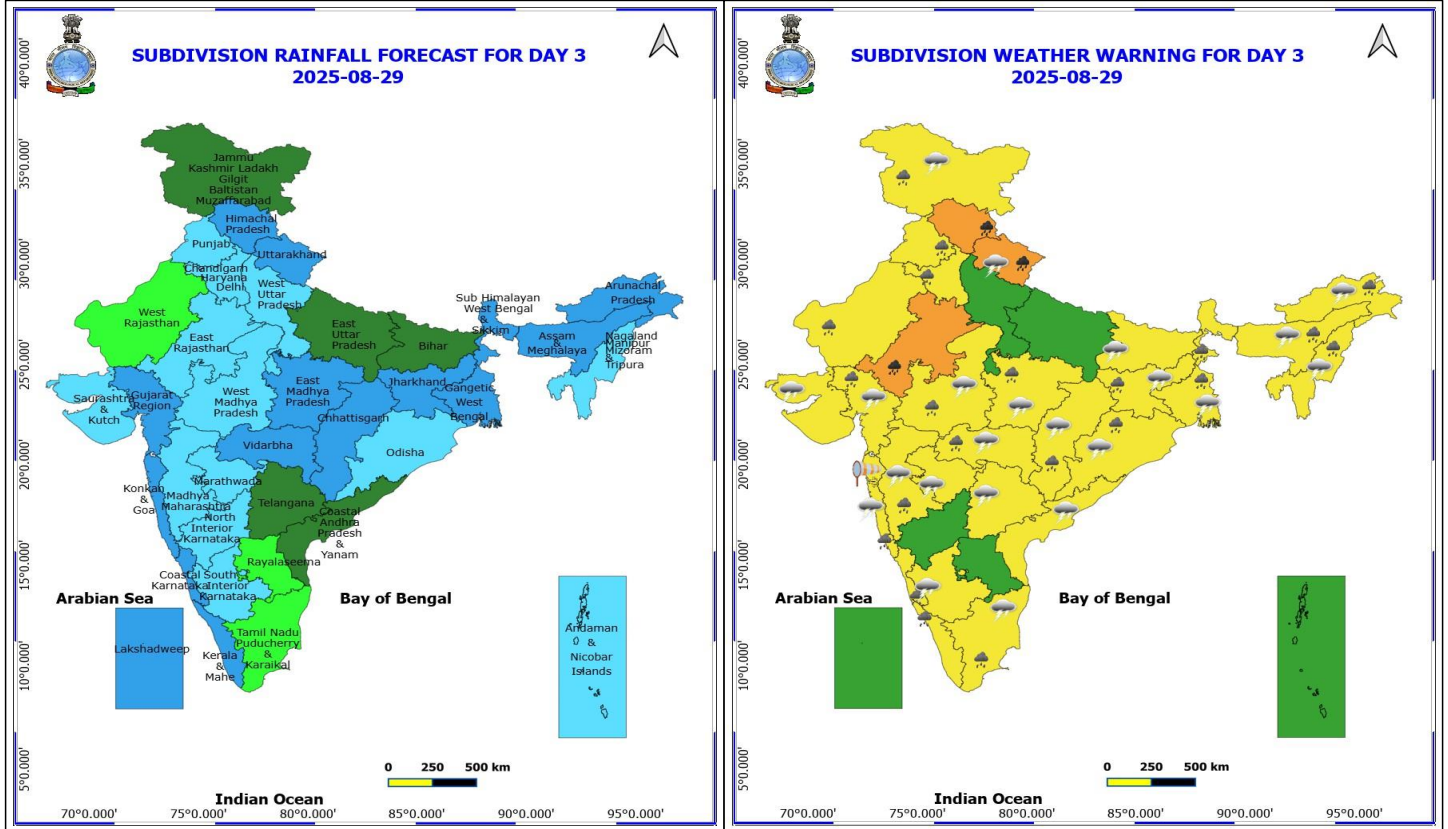
Forecast and warning for any day is valid from 0830 hours IST of day till 0830 hours IST of next day

For more details kindly visit <https://mausam.imd.gov.in> or contact 011-2434-4599

(Service to the nation since 1875)



eastcentral Arabian Sea; along and off Andhra Pradesh, Odisha, West Bengal, Bangladesh coasts, over north Bay of Bengal & most parts of central Bay of Bengal, over most parts of southwest Bay of Bengal and adjoining southeast Bay of Bengal, off Sri Lanka coast, over Gulf of Mannar.



29 August (Day 3)

- ❖ **Heavy to Very Heavy Rainfall** very likely at isolated places over East Rajasthan, Himachal Pradesh and Uttarakhand.
- ❖ **Heavy Rainfall** very likely at isolated places over Arunachal Pradesh, Assam & Meghalaya, Chhattisgarh, Coastal Karnataka, Gujarat Region, Haryana, Chandigarh & Delhi, Jammu-Kashmir-Ladakh-Gilgit-Baltistan-Muzaffarabad, Jharkhand, Kerala & Mahe, Konkan & Goa, Madhya Maharashtra, Madhya Pradesh, Nagaland, Manipur, Mizoram and Tripura, Odisha, Punjab, Tamil Nadu Puducherry & Karaikal, Vidarbha, West Bengal & Sikkim and West Rajasthan.
- ❖ **Thunderstorm accompanied with lightning & gusty winds(30-40kmph)** very likely at isolated places over Bihar, Gujarat State, Jammu-Kashmir-Ladakh-Gilgit-Baltistan-Muzaffarabad, Jharkhand, South Interior Karnataka, Tamil Nadu Puducherry & Karaikal and Telangana.
- ❖ **Thunderstorm accompanied with Lightning** very likely at isolated places over Arunachal Pradesh, Assam & Meghalaya, Chhattisgarh, Coastal Andhra Pradesh, Gangetic West Bengal, Konkan & Goa, Madhya Pradesh, Maharashtra, Nagaland, Manipur, Mizoram and Tripura, Odisha and Uttarakhand.
- ❖ **Strong Surface Winds** very likely at isolated places over Konkan & Goa.
 - Squally wind with speed reaching 45 kmph to 55 kmph gusting to 65 kmph is likely to prevail along and off Somalia, Oman coasts, most parts of westcentral Arabian sea, adjoining & some parts of southwest, eastcentral Arabian Sea.
 - Squally weather with wind speed reaching 40 - 50 kmph gusting to 60 kmph likely to prevail along and off south Gujarat, Konkan, Goa, Karnataka, Kerala coasts, Lakshadweep, Comorin areas, and most parts of eastcentral Arabian Sea; along and off Andhra Pradesh, Odisha, West Bengal, Bangladesh coasts, over north Bay of Bengal & most parts of central Bay of Bengal, over most parts of southwest Bay of Bengal and

***Red color warning does not mean "Red Alert" Red color warning means "Take Action"**

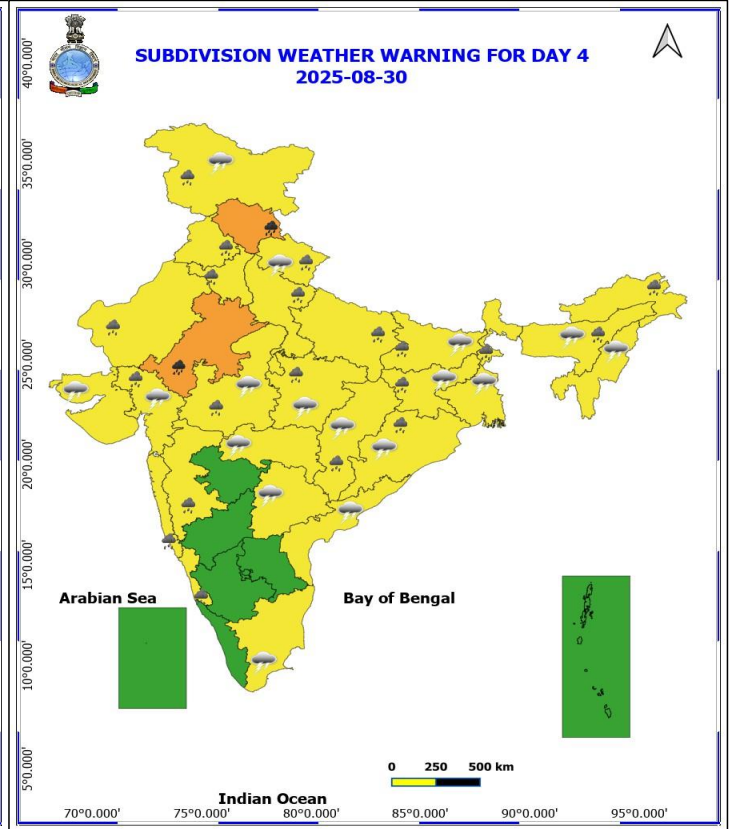
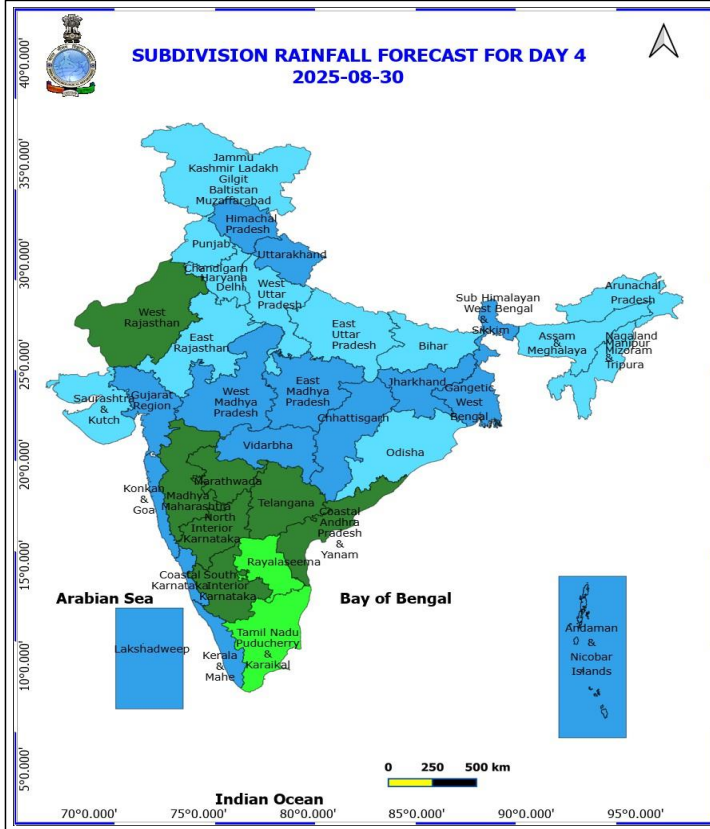
Forecast and warning for any day is valid from 0830 hours IST of day till 0830 hours IST of next day

For more details kindly visit <https://mausam.imd.gov.in> or contact 011-2434-4599

(Service to the nation since 1875)



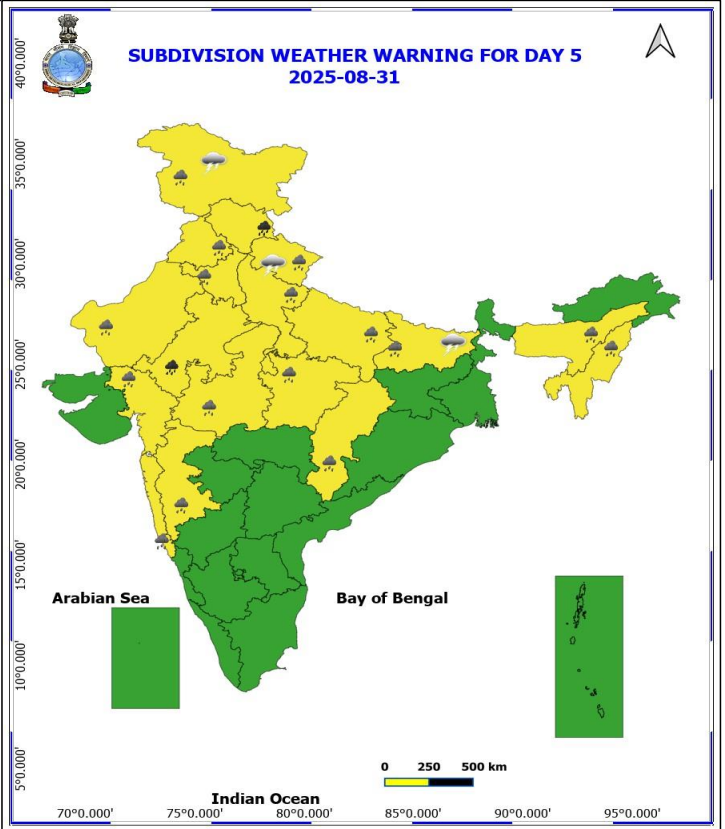
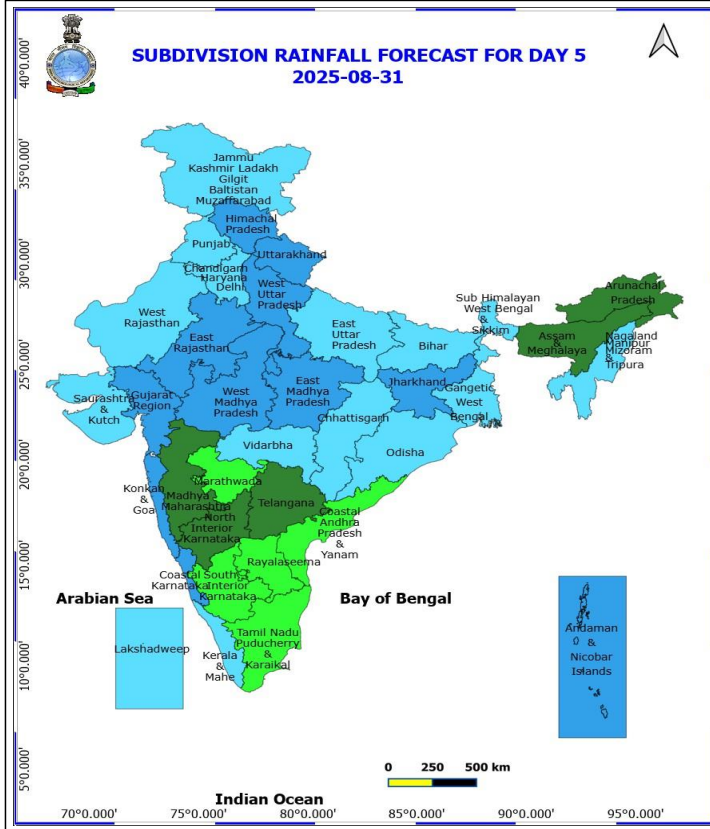
adjoining southeast Bay of Bengal, off Sri Lanka coast, over Gulf of Mannar.



30 August (Day 4)

- ❖ **Heavy to Very Heavy Rainfall** likely at isolated places over East Rajasthan and Himachal Pradesh.
- ❖ **Heavy Rainfall** likely at isolated places over Arunachal Pradesh, Assam & Meghalaya, Bihar, Chhattisgarh, Coastal Karnataka, Gujarat Region, Haryana, Chandigarh & Delhi, Jammu-Kashmir-Ladakh-Gilgit-Baltistan-Muzaffarabad, Jharkhand, Konkan & Goa, Madhya Maharashtra, Madhya Pradesh, Odisha, Punjab, Sub Himalayan West Bengal & Sikkim, Uttar Pradesh, Uttarakhand and West Rajasthan.
- ❖ **Thunderstorm accompanied with lightning & gusty winds(30-40kmph)** likely at isolated places over Bihar, Gujarat State, Jammu-Kashmir-Ladakh-Gilgit-Baltistan-Muzaffarabad, Jharkhand and Telangana.
- ❖ **Thunderstorm accompanied with Lightning** likely at isolated places over Assam & Meghalaya, Chhattisgarh, Coastal Andhra Pradesh, Gangetic West Bengal, Madhya Pradesh, Nagaland, Manipur, Mizoram and Tripura, Odisha, Tamil Nadu Puducherry & Karaikal, Uttarakhand and Vidarbha.

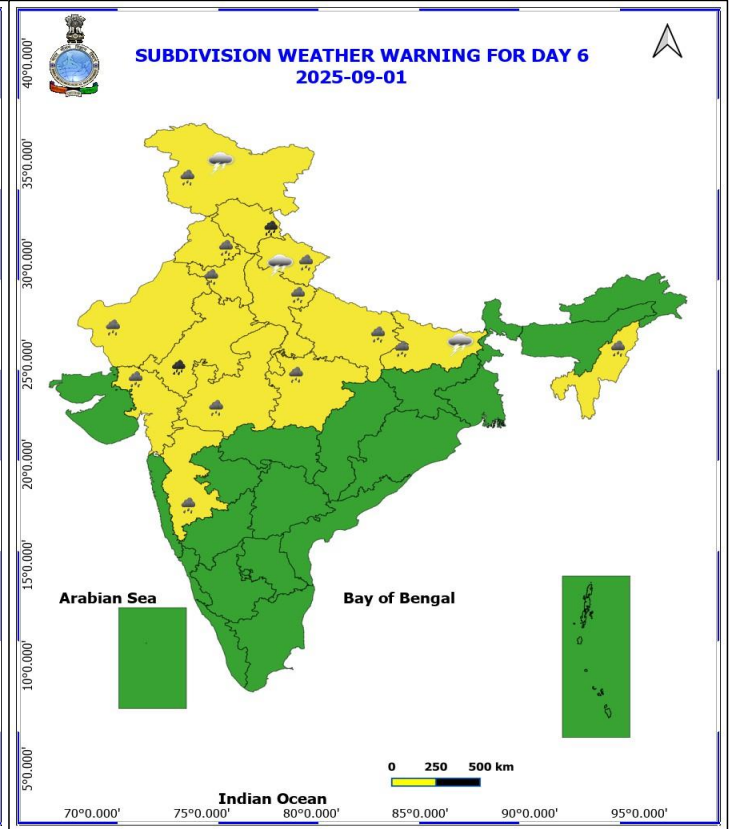
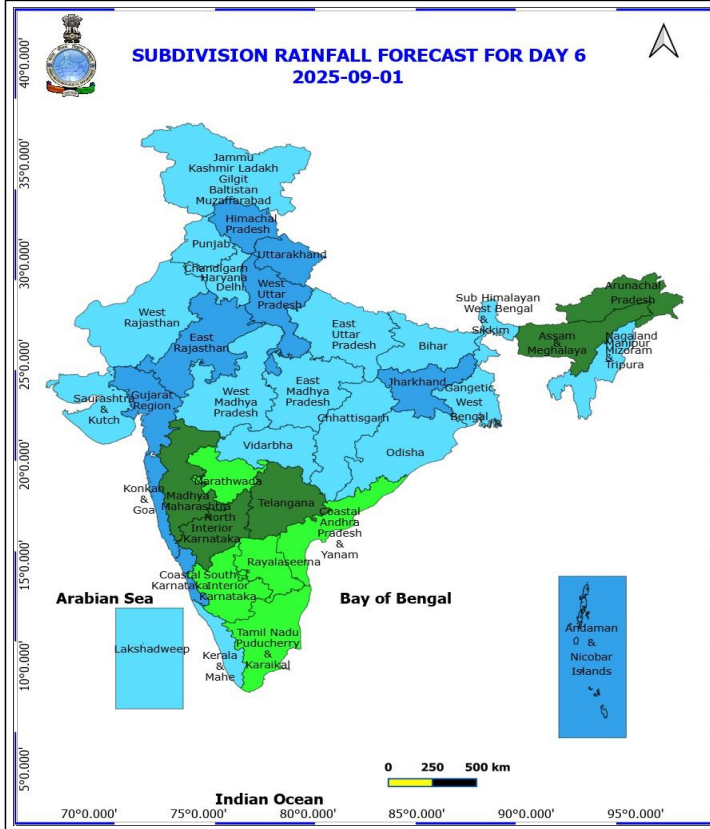
No Fishermen Warning



31 August (Day 5)

- ❖ **Heavy to Very Heavy Rainfall** likely at isolated places over East Rajasthan and Himachal Pradesh.
- ❖ **Heavy Rainfall** likely at isolated places over Assam & Meghalaya, Bihar, Chhattisgarh, Gujarat Region, Haryana, Chandigarh & Delhi, Jammu-Kashmir-Ladakh-Gilgit-Baltistan-Muzaffarabad, Konkan & Goa, Madhya Maharashtra, Madhya Pradesh, Nagaland, Manipur, Mizoram and Tripura, Punjab, Uttar Pradesh, Uttarakhand and West Rajasthan.
- ❖ **Thunderstorm accompanied with lightning & gusty winds(30-40kmph)** likely at isolated places over Bihar and Jammu-Kashmir-Ladakh-Gilgit-Baltistan-Muzaffarabad.
- ❖ **Thunderstorm accompanied with Lightning** likely at isolated places over Uttarakhand.

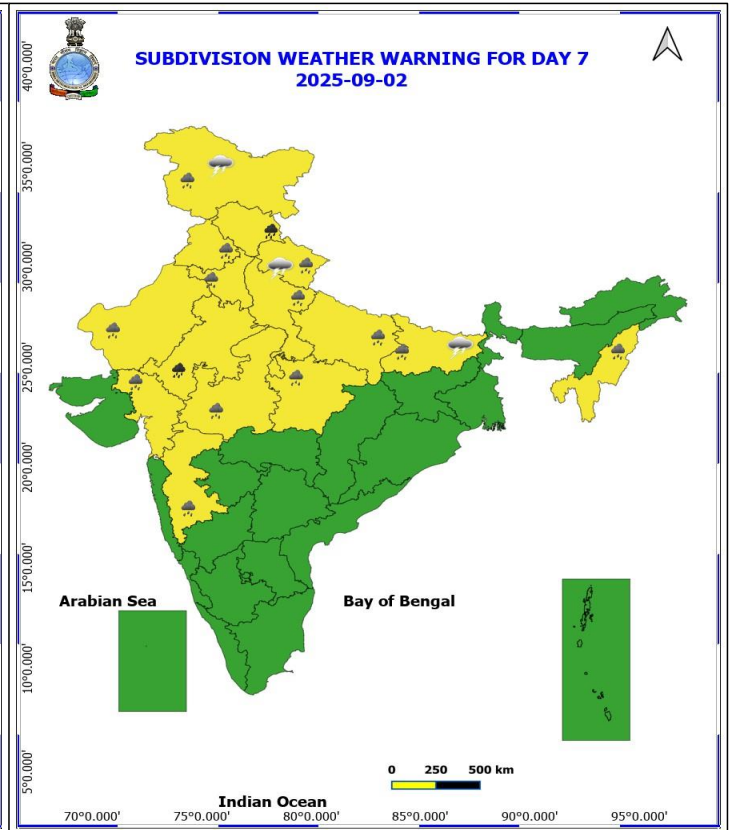
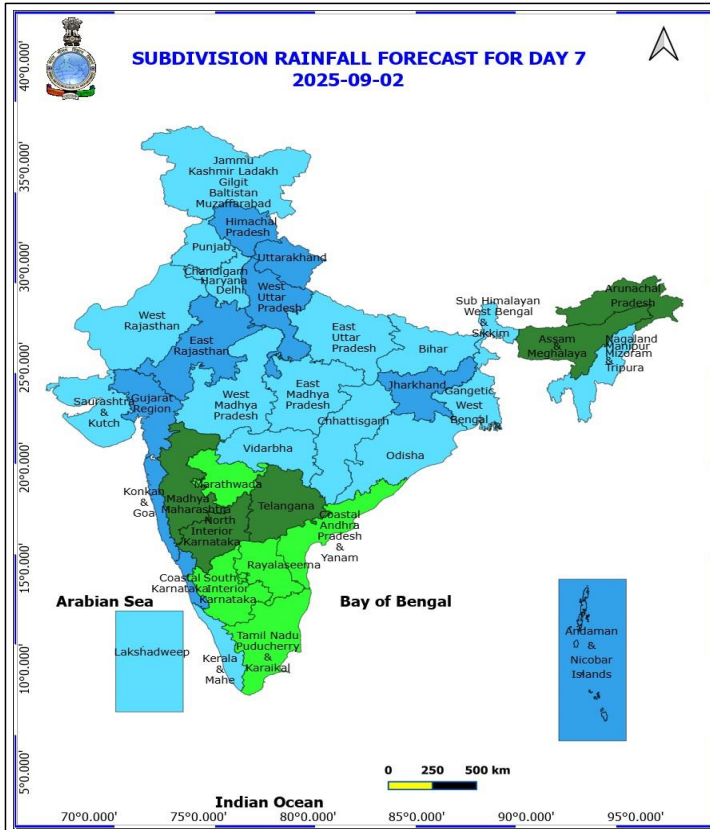
No Fishermen Warning



1 September (Day 6)

- ❖ **Heavy to Very Heavy Rainfall** likely at isolated places over East Rajasthan and Himachal Pradesh.
- ❖ **Heavy Rainfall** likely at isolated places over Bihar, Gujarat Region, Haryana, Chandigarh & Delhi, Jammu-Kashmir-Ladakh-Gilgit-Baltistan-Muzaffarabad, Madhya Maharashtra, Madhya Pradesh, Nagaland, Manipur, Mizoram and Tripura, Punjab, Uttar Pradesh, Uttarakhand and West Rajasthan.
- ❖ **Thunderstorm accompanied with lightning & gusty winds(30-40kmph)** likely at isolated places over Bihar and Jammu-Kashmir-Ladakh-Gilgit-Baltistan-Muzaffarabad.
- ❖ **Thunderstorm accompanied with Lightning** likely at isolated places over Uttarakhand.

No Fishermen Warning



2 September (Day 7)

- ❖ **Heavy to Very Heavy Rainfall** likely at isolated places over East Rajasthan and Himachal Pradesh.
- ❖ **Heavy Rainfall** likely at isolated places over Bihar, Gujarat Region, Haryana, Chandigarh & Delhi, Jammu-Kashmir-Ladakh-Gilgit-Baltistan-Muzaffarabad, Madhya Maharashtra, Madhya Pradesh, Nagaland, Manipur, Mizoram and Tripura, Punjab, Uttar Pradesh, Uttarakhand and West Rajasthan.
- ❖ **Thunderstorm accompanied with lightning & gusty winds(30-40kmph)** likely at isolated places over Bihar and Jammu-Kashmir-Ladakh-Gilgit-Baltistan-Muzaffarabad.
- ❖ **Thunderstorm accompanied with Lightning** likely at isolated places over Uttarakhand.

No Fishermen Warning

Flash Flood Warnings

24 hours Outlook for the Flash Flood Risk (FFR) till 0530 IST of 28-08-2025 :

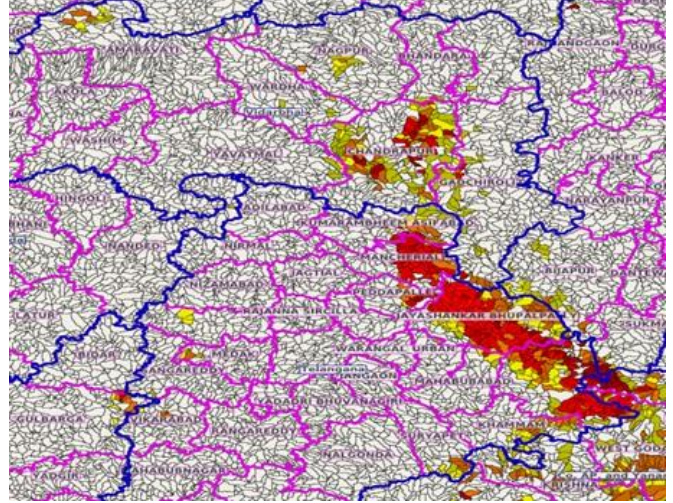
Low to Moderate flash flood risk likely over few watersheds & neighbourhoods of following Met Sub-divisions during next 24 hours.

Telangana - B. Kothagudem, J. Bhupalpally, Kamareddy, Khammam, Kumaram Bheem, Mancherial, Peddapalle, Sangareddy, Suryapet and Vikarabad districts.

Vidarbha - Amaravati, Chandrapur, Gadchiroli, Gondiya, Nagpur, Wardha and Yavatmal districts.

Surface runoff/ Inundation may occur at some fully saturated soils & low-lying areas over Area of Concern (AoC) as shown in map due to expected rainfall occurrence in next 24 hours.

Product: WRF FFR | Timescale: 24-hr | Region: "INDIA"
Product Date: 2025-08-27 00:00 UTC | Valid Date: 2025-08-28 00:00 UTC



24 hours Outlook for the Flash Flood Risk (FFR) till 0530 IST of 28-08-2025 :

Low to Moderate flash flood risk likely over few watersheds & neighbourhoods of following Met Sub-divisions during next 24 hours.

Uttarakhand - Almora, Bageshwar, Chamoli, Champawat, Dehradun, Nanital, Pauri Garhwal, Pithoragarh, Rudraprayag, Tehri Garwal and Uttarkashi districts.

Surface runoff/ Inundation may occur at some fully saturated soils & low-lying areas over Area of Concern (AoC) as shown in map due to expected rainfall occurrence in next 24 hours.

Product: WRF FFR | Timescale: 24-hr | Region: "INDIA"
Product Date: 2025-08-27 00:00 UTC | Valid Date: 2025-08-28 00:00 UTC

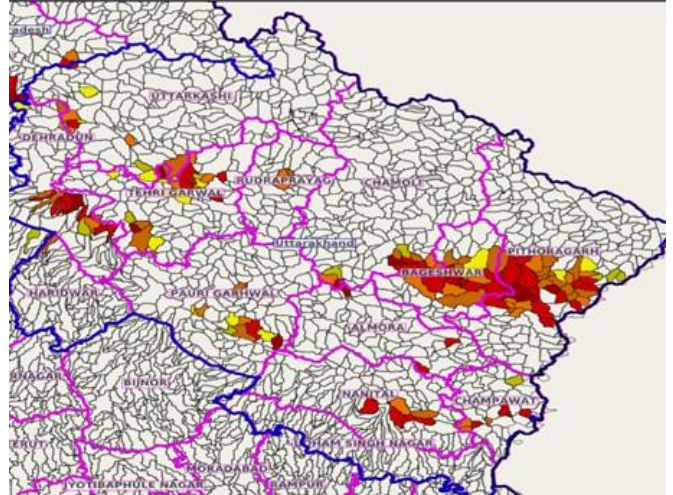




Table-1

7 Days Rainfall Forecast

S.No.	Subdivision	27- Aug	28- Aug	29- Aug	30- Aug	31- Aug	1- Sep	2- Sep
		Day 1	Day 2	Day 3	Day 4	Day 5	Day 6	Day 7
1	ANDAMAN & NICOBAR ISLANDS	FWS	FWS	FWS	WS	WS	WS	WS
2	ARUNACHAL PRADESH	SCT	FWS	WS	FWS	SCT	SCT	SCT
3	ASSAM & MEHGHALAYA	FWS	WS	WS	FWS	SCT	SCT	SCT
4	N. M. M. & T.	FWS	WS	FWS	FWS	FWS	FWS	FWS
5	S.H. WEST BENGAL & SIKKIM	WS	WS	WS	WS	FWS	FWS	FWS
6	GANGETIC WEST BENGAL	SCT	FWS	WS	WS	FWS	FWS	FWS
7	ODISHA	WS	WS	FWS	FWS	FWS	FWS	FWS
8	JHARKHAND	SCT	FWS	WS	WS	WS	WS	WS
9	BIHAR	ISOL	SCT	SCT	FWS	FWS	FWS	FWS
10	EAST UTTAR PRADESH	ISOL	SCT	SCT	FWS	FWS	FWS	FWS
11	WEST UTTAR PRADESH	SCT	SCT	FWS	FWS	WS	WS	WS
12	UTTARAKHAND	FWS	WS	WS	WS	WS	WS	WS
13	HARYANA, CHD & DELHI	SCT	FWS	FWS	FWS	FWS	FWS	FWS
14	PUNJAB	SCT	SCT	FWS	FWS	FWS	FWS	FWS
15	HIMACHAL PRADESH	FWS	FWS	WS	WS	WS	WS	WS
16	JAMMU AND KASHMIR AND LADAKH	SCT	SCT	SCT	FWS	FWS	FWS	FWS
17	WEST RAJASTHAN	SCT	SCT	ISOL	SCT	FWS	FWS	FWS
18	EAST RAJASTHAN	FWS	SCT	FWS	FWS	WS	WS	WS
19	WEST MADHYA PRADESH	FWS	FWS	FWS	WS	WS	FWS	FWS
20	EAST MADHYA PRADESH	FWS	FWS	WS	WS	WS	FWS	FWS
21	GUJRAT REGION	WS	WS	WS	WS	WS	WS	WS
22	SAURASHTRA & KUTCH	FWS	FWS	FWS	FWS	FWS	FWS	FWS
23	KONKAN & GOA	WS	WS	WS	WS	WS	WS	WS
24	MADHYA MAHARASHTRA	SCT	FWS	FWS	SCT	SCT	SCT	SCT
25	MARATHWADA	SCT	SCT	FWS	SCT	ISOL	ISOL	ISOL
26	VIDARBHA	FWS	WS	WS	WS	FWS	FWS	FWS
27	CHATTISGARH	WS	WS	WS	WS	FWS	FWS	FWS
28	COASTAL ANDHRA PRADESH	FWS	SCT	SCT	SCT	ISOL	ISOL	ISOL
29	TELANGANA	FWS	FWS	SCT	SCT	SCT	SCT	SCT
30	RAYALASEEMA	SCT	SCT	ISOL	ISOL	ISOL	ISOL	ISOL
31	TAMILNADU & PUDUCHERRY	ISOL	ISOL	ISOL	ISOL	ISOL	ISOL	ISOL
32	COSTAL KARNATAKA	WS	WS	WS	WS	WS	WS	WS
33	NORTH INTERIOR KARNATAKA	FWS	WS	FWS	SCT	SCT	SCT	SCT
34	SOUTH INTERIOR KARNATAKA	FWS	WS	FWS	SCT	ISOL	ISOL	ISOL
35	KERALA	WS	WS	WS	WS	FWS	FWS	FWS
36	LAKSHDWEEP	WS	WS	WS	WS	FWS	FWS	FWS

Legend	Category	%Stations
WS	Widespread/Most Places	76-100
FWS	Fairly Widespread/Many Places	51-75
SCT	Scattered/ A Few Places	26-50
ISOL	Isolated Places	1-25
DRY	No Rain	0

*Red color warning does not mean "Red Alert" Red color warning means "Take Action"
Forecast and warning for any day is valid from 0830 hours IST of day till 0830 hours IST of next day
For more details kindly visit <https://mausam.imd.gov.in> or contact 011-2434-4599

(Service to the nation since 1875)

Fig. 1: Maximum Temperatures Dated 2025-08-27

Fig. 2: Departure of Maximum Temp. Dated 2025-08-27

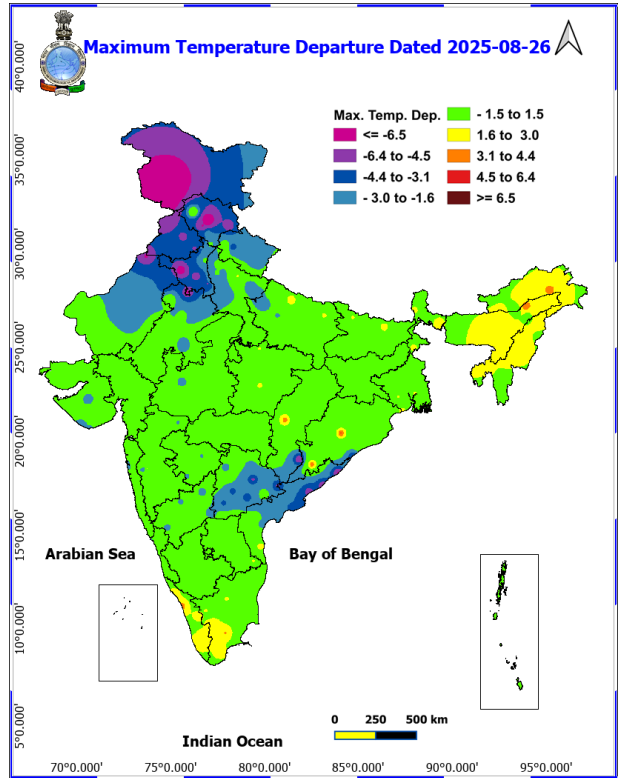
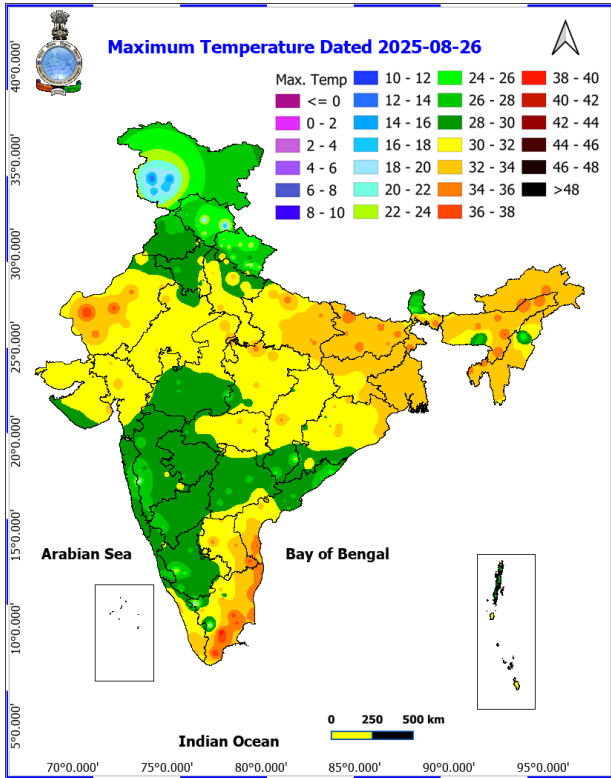
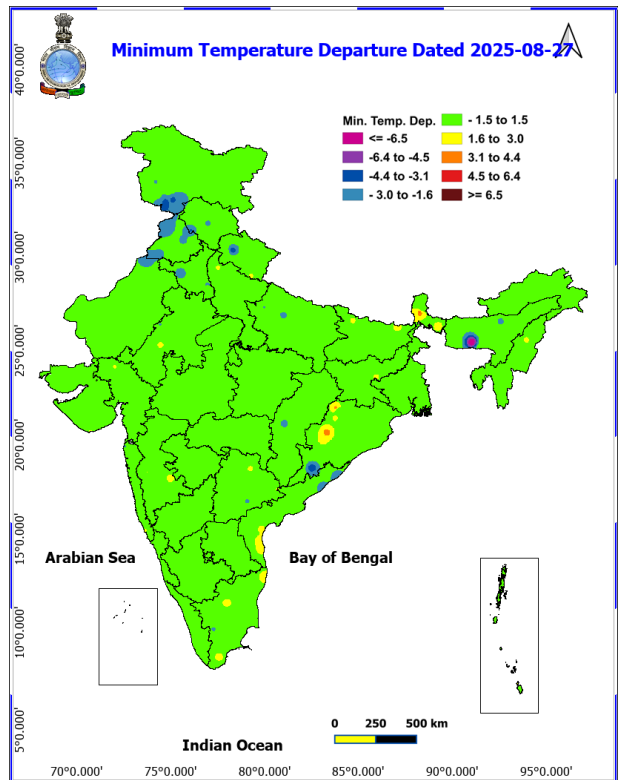
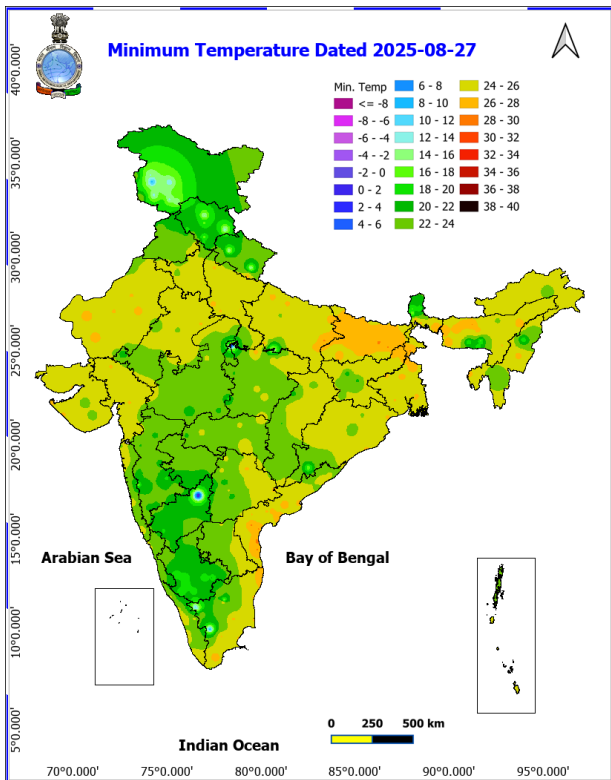


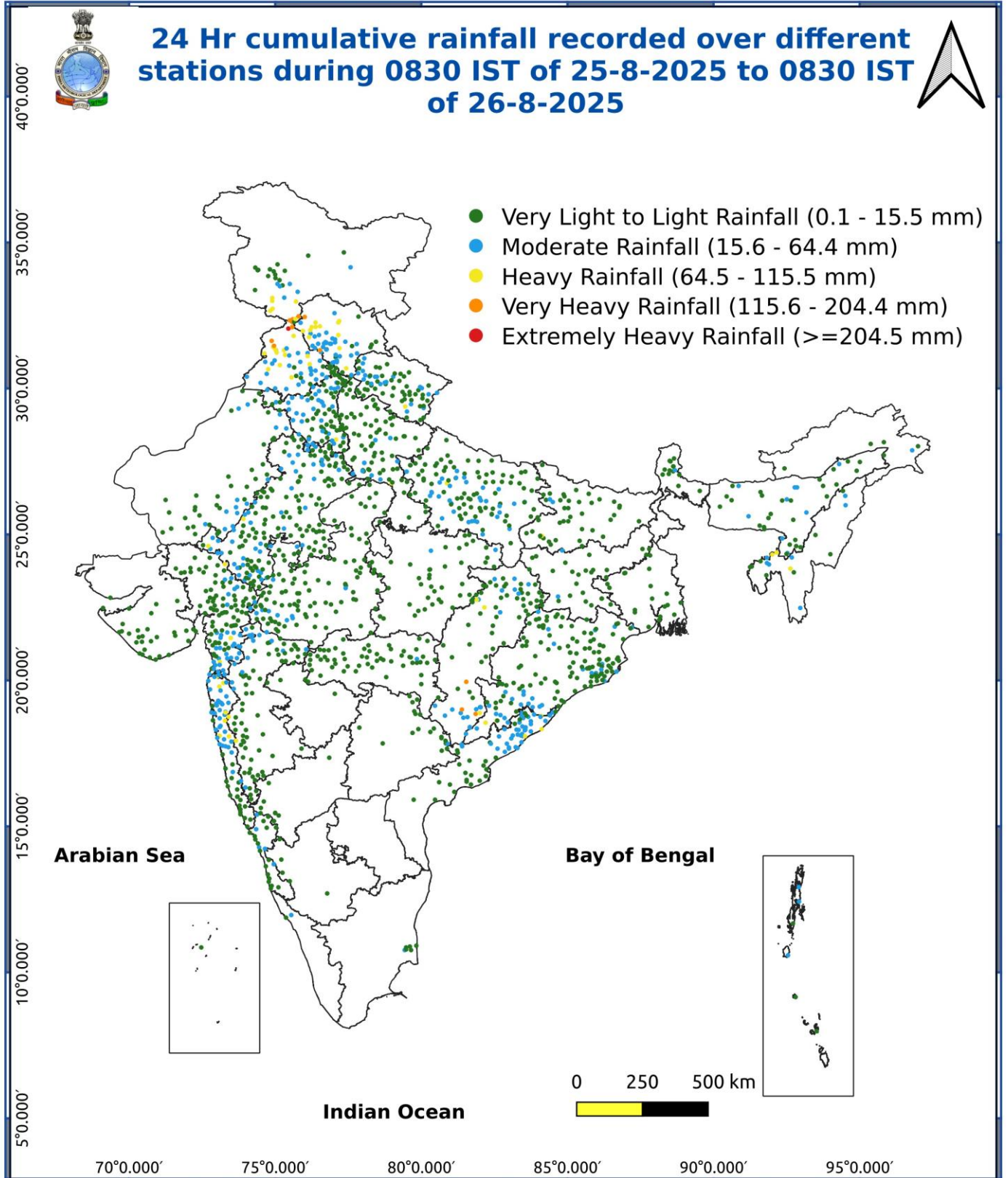
Fig. 3: Minimum Temperatures Dated 2025-08-27

Fig. 4: Departure of Minimum Temp. Dated 2025-08-27



***Red color warning does not mean "Red Alert" Red color warning means "Take Action"**
Forecast and warning for any day is valid from 0830 hours IST of day till 0830 hours IST of next day
For more details kindly visit <https://mausam.imd.gov.in> or contact 011-2434-4599

(Service to the nation since 1875)



Impact and Action Suggested due to:

Isolated very heavy rainfall over Himachal Pradesh, East Rajasthan during 29th August-01st September and Uttarakhand on 28th & 29th; Chhattisgarh during 27th-28th; Odisha on 27th; southeast Madhya Pradesh on 29th and ghat areas of Madhya Maharashtra on 27th & 28th August.

Impact Expected

Localized Flooding of roads, water logging in low lying areas and closure of underpasses mainly in urban areas of the above region.

Occasional reduction in visibility due to heavy rainfall.

Disruption of traffic in major cities due to water logging in roads leading to increased travel time. Minor damage to kutcha roads.

Possibilities of damage to vulnerable structure.

Localized Landslides/Mudslides/landslips/mudslips/landsinks/mudsinks. Damage to horticulture and standing crops in some areas due to inundation.

It may lead to riverine flooding in some river catchments (for riverine flooding please visit Web page of CWC)

Action Suggested

Check for traffic congestion on your route before leaving for your destination. Follow any traffic advisories that are issued in this regard.

Avoid going to areas that face the water logging problems often. Avoid staying in vulnerable structure.

Agromet advisories for various parts of the country

Agromet advisories for likely impact of Heavy / Heavy to Very Heavy / Extremely Heavy Rainfall

In Jammu and Kashmir, do not allow water to stagnate in fields of maize, pulses, cowpea, bajra and vegetables in Sub Tropical Zone. Ensure proper drainage in the fields of rice, maize, pulses, horticultural and vegetable crops in Intermediate Zone and maize, kidney bean and vegetables in Valley Temperate Zone.

In Himachal Pradesh, maintain proper drainage channels in ginger, turmeric and maize fields in Mid Hills Sub Humid Zone and rice, maize and vegetable fields in Sub Montane and Low Hills Sub Tropical Zone. In High Hills Sub Temperate Wet Zone, harvest ripened tomatoes and ensure proper drainage in maize, kidney bean, vegetable fields and fruit orchards.

In Uttarakhand, maintain proper drainage channels in fields of soybean, maize, pulses, finger millet, ginger, vegetable and fruit orchards in Hill Zone; barnyard millet, finger millet and green gram in Sub Humid Sub Tropic Zone and rice, green gram, black gram, sugarcane, maize, soybean, groundnut and vegetables in Bhabar and Tarai Zone.

In Punjab, maintain proper drainage in chilli fields and remove stagnant rainwater immediately after rainfall in Undulating Plain Zone. Ensure proper drainage in fields of cotton and maize in Western Zone; sugarcane, maize and cotton in Central Plain Zone; cotton in Western Plain Zone and sugarcane, maize, soybean and green gram in Sub-Montane Undulating Zone.

In Haryana, to prevent waterlogging make arrangements to drain out excess water from fields of cotton, pearl millet, green gram and cluster bean in Western Zone and sugarcane, cotton, maize, pearl millet and vegetables in Eastern Zone.

In East Rajasthan, make arrangements to drain out excess water from fields of maize, soybean, groundnut and

***Red color warning does not mean "Red Alert" Red color warning means "Take Action"**

Forecast and warning for any day is valid from 0830 hours IST of day till 0830 hours IST of next day

For more details kindly visit <https://mausam.imd.gov.in> or contact 011-2434-4599

(Service to the nation since 1875)

vegetable nurseries in Sub Humid Southern Plain and Aravali Hill Zone and soybean, maize and cotton in Southern Humid Plain Zone.

In Odisha, make provision for draining out excess rain water from fields of pulses, maize, groundnut and vegetables in Eastern Ghat High Land Zone and South Eastern Ghat Zone; green gram, black gram, sugarcane, vegetables and fruit orchards in East and South Eastern Coastal Plain Zone; pulses, maize, pigeon pea, groundnut and vegetables in North Eastern Ghat Zone and rice, maize, black gram and vegetables in North Central Plateau Zone.

In Coastal Andhra Pradesh, make arrangements for draining excess water from fields of maize, green gram, groundnut, mesta and cotton in North Coastal Zone and maize, groundnut, finger millet, ginger, turmeric and vegetables in High Altitude Tribal Zone.

In Chhattisgarh, ensure proper drainage in fields of rice, minor millets, maize, pulses and oilseeds in Bastar Plateau Zone; rice and vegetables in North Hill Zone and maize, groundnut, soybean, pigeon pea and vegetables in Chattisgarh Plain Zone.

In ghat areas of Madhya Maharashtra, make arrangements to drain out excess water from rice, maize, groundnut, soybean, vegetable fields and fruit orchards.

Livestock / Fishery

Keep the animals inside the shed during heavy rainfall and provide them balanced feed. Store feed and fodder in a safe place to prevent spoilage.

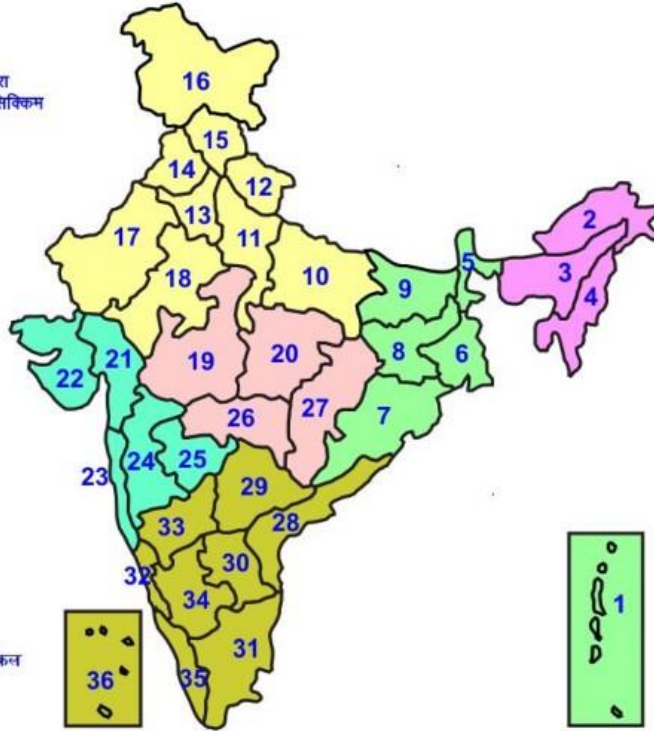
Construct an outlet with proper netting around the ponds to drain out excess water, thereby preventing fish from escaping in case of overflow

Agromet advisories for likely impact of Thunderstorm / Gusty Winds / Squally Winds (Based on the IBF and advisories issued by different AMFUs)

Provide mechanical support to horticultural crops and staking or support to vegetables and young fruit plants / fruit-bearing plants to avoid lodging due to strong winds.

LEGENDS

- 1 अंडमान और निकोबार द्वीप समुह
- 2 अरुणाचल प्रदेश
- 3 असम और मेघालय
- 4 नागालैंड मनीपुर मीजोरम और त्रिपुरा
- 5 उप हिमालय पश्चिम बंगाल एवं सिक्किम
- 6 पश्चिम बंगाल
- 7 ओडिसा
- 8 झारखंड
- 9 बिहार
- 10 पूर्वी उत्तर प्रदेश
- 11 पश्चिम उत्तर प्रदेश
- 12 उत्तराखंड
- 13 हरियाणा चंडिगढ़ एवं दिल्ली
- 14 पंजाब
- 15 हिमाचल प्रदेश
- 16 जम्मू एवं कश्मीर एवं लद्दाख
- 17 पश्चिम राजस्थान
- 18 पूर्वी राजस्थान
- 19 पश्चिम मध्य प्रदेश
- 20 पूर्वी मध्य प्रदेश
- 21 गुजरात क्षेत्र
- 22 सौराष्ट्र एवं कच्छ
- 23 कोंकण एवं गोवा
- 24 मध्य महाराष्ट्र
- 25 मराठावाडा
- 26 विदर्भ
- 27 छत्तीसगढ़
- 28 तटीय आंध्र प्रदेश एवं यनम
- 29 तेलंगाना
- 30 रायलसेमा
- 31 तमिलनाडु, पुदुचेरी एवं कराईकल
- 32 तटिय कर्नाटक
- 33 आंतरिक उत्तरी कर्नाटक
- 34 आंतरिक दक्षिणी कर्नाटक
- 35 केरल एवं माहे
- 36 लक्षद्वीप



1. Andaman & Nicobar Islands
2. Arunachal Pradesh
3. Assam & Meghalaya
4. Nagaland, Manipur, Mizoram & Tripura
5. Sub-Himalayan West Bengal & Sikkim
6. Gangetic West Bengal
7. Orissa
8. Jharkhand
9. Bihar
10. East Uttar Pradesh
11. West Uttar Pradesh
12. Uttarakhand
13. Haryana, Chd & Delhi
14. Punjab
15. Himachal Pradesh
16. Jammu & Kashmir and Ladakh
17. West Rajasthan
18. East Rajasthan
19. West Madhya Pradesh
20. East Madhya Pradesh
21. Gujarat
22. Saurashtra
23. Konkan & Goa
24. Madhya Maharashtra
25. Marathwada
26. Vidharbha
27. Chhattisgarh
28. Coastal Andhra Pradesh & Yanam
29. Telangana
30. Rayalaseema
31. Tamilnadu, Puducherry & Karaikal
32. Coastal Karnataka
33. North Interior Karnataka
34. South Interior Karnataka
35. Kerala & Mahe
36. Lakshadweep

SPATIAL DISTRIBUTION (% of Stations reporting)

% Stations	Category	% Stations	Category
76-100	Widespread (WS/ Most Places)	26-50	Scattered (SCT/ A Few Places)
51-75	Fairly Widespread (FWS/ Many Places)	1-25	Isolated (ISOL)

Subdivision Colour

- NO WARNING
- WATCH (BE UPDATED)
- ALERT (BE PREPARED TO TAKE ACTION)
- WARNING (TAKE ACTION)

Probabilistic Forecast

Terms	Probability of Occurrence (%)
Unlikely	< 25
Likely	25 - 50
Very Likely	50 - 75
Most Likely	> 75

- | | | | |
|--------------------------|-----------------|----------------------|--------------------|
| Heavy Rain | Very Heavy Rain | Extremely Heavy Rain | Heavy Snow |
| Thunderstorm & Lightning | Hailstorm | Dust Storm | Dust Raising Winds |
| Strong surface winds | Heat Wave | Hot Day | Warm Night |
| Cold Wave | Cold Day | Ground Frost | Fog |
| Hot & Humid | | | |

*Red color warning does not mean "Red Alert" Red color warning means "Take Action"

Forecast and warning for any day is valid from 0830 hours IST of day till 0830 hours IST of next day

For more details kindly visit <https://mausam.imd.gov.in> or contact 011-2434-4599

(Service to the nation since 1875)

LEGENDS

WARNING

WARNING (TAKE ACTION)
ALERT (BE PREPARED)
WATCH (BE UPDATED)
NO WARNING (NO ACTION)

Probabilistic Forecast

Terms	Probability of Occurrence (%)
Unlikely	< 25
Likely	25 - 50
Very Likely	50 - 75
Most Likely	> 75



Heavy: 64.5 to 115.5 mm/cm *
Very Heavy: 115.6 to 204.4 mm/cm *
Extremely Heavy: > 204.4 mm/cm *



When maximum temperature of a station reaches $\geq 40^{\circ}\text{C}$ for plains and $\geq 30^{\circ}\text{C}$ for hilly regions
(a) Based on Departure from normal

Heat Wave: Maximum Temperature Departure from normal 4.5°C to 6.4°C .
Severe Heat Wave: Maximum Temperature Departure from normal $\geq 6.5^{\circ}\text{C}$

(b). Based on Actual maximum temperature

Heat Wave: When actual maximum temperature $\geq 45^{\circ}\text{C}$.
Severe Heat Wave: When actual maximum temperature $\geq 47^{\circ}\text{C}$

(c). Criteria for heat wave for coastal stations

When maximum temperature departure is $> 4.5^{\circ}\text{C}$ from normal. Heat Wave may be described provided maximum temperature $\geq 37^{\circ}\text{C}$



When maximum temperature remains 40°C

Warm Night: When minimum temperature departure 4.5°C to 6.4°C .
Severe Warm Night: When minimum temperature departure $> 6.4^{\circ}\text{C}$.



When minimum temperature of a station $\leq 10^{\circ}\text{C}$ for plains and $\leq 0^{\circ}\text{C}$ for hilly regions.

(a). Based on departure

Cold Wave: Minimum Temperature Departure from normal -4.5°C to -6.4°C .
Severe Cold Wave: Minimum Temperature Departure from normal $\leq -6.5^{\circ}\text{C}$

(b) Based on actual Minimum Temperature (for Plains only)

Cold Wave : When Minimum Temperature is $\leq 4.0^{\circ}\text{C}$
Severe Cold Wave: When Minimum Temperature is $\leq 2.0^{\circ}\text{C}$

(c) For Coastal Stations

When Minimum Temperature departure is $\leq -4.5^{\circ}\text{C}$ & actual Minimum Temperature is $\leq 15^{\circ}\text{C}$



When minimum temperature of a station $\leq 10^{\circ}\text{C}$ for plains and $\leq 0^{\circ}\text{C}$ for hilly regions
Based on departure

Cold Day: Maximum Temperature Departure from normal -4.5°C to -6.4°C .
Severe Cold Day: Maximum Temperature Departure from normal $\leq -6.5^{\circ}\text{C}$



Phenomenon of small droplets suspended in air and the horizontal visibility $< 1\text{km}$

Moderate Fog: When the visibility between 500-200 metres
Dense Fog: when the visibility between 50- 200 metres
Very Dense Fog: when the visibility < 50 metres



Sudden electrical discharges manifested by a flash of light (Lightning) and a sharp rumbling sound (thunder)



An ensemble of particles of dust or sand energetically lifted to great heights by a strong and turbulent wind.



Ice deposits on ground

Air temperature $\leq 4^{\circ}\text{C}$ (over Plains)



A strong wind that rises suddenly, lasts for atleast 1 minute.

Moderate: Wind speed 52-61 kmph
Severe: Wind speed 62-87 kmph
Very Severe: Wind speed > 87 kmph



Effect of various waves in the sea over specific area

Rough to very rough: Wind speed 41-62 kmph (22-33 knots) & Wave height 2.5-6 metre
High to very high: Wind speed 63-117 kmph (34-63 knots) & Wave height 6-14 metre
Phenomenal: Wind speed > 117 kmph (> 63 knots) & Wave height > 14 metre



Cyclonic Storm: Wind speed 62-87 kmph (34-47 knots)
Severe Cyclonic Storm: Wind speed 88-117 kmph (48-63 knots)
Very Severe Cyclonic Storm: Wind speed 118-165 kmph (64 - 89 knots)
Extremely Severe Cyclonic Storm: Wind speed 166-220 kmph (90 -119 knots)
Super Cyclone Storm: Wind speed > 220 kmph (> 119 knots)

*Red color warning does not mean "Red Alert" Red color warning means "Take Action"

Forecast and warning for any day is valid from 0830 hours IST of day till 0830 hours IST of next day

For more details kindly visit <https://mausam.imd.gov.in> or contact 011-2434-4599

(Service to the nation since 1875)