

Sunday, August 25, 2024  
Time of Issue: 2015 hours IST  
(NIGHT)

## ALL INDIA WEATHER SUMMARY AND FORECAST BULLETIN

### Significant Weather Features:

#### Weather Systems:

- ✓ The **depression** over Rajasthan and adjoining northwest Madhya Pradesh moved west-southwestwards with a speed of 15 kmph during past 6 hours and lay centered at 1730 hours IST of today, the 25<sup>th</sup> August over northwest Madhya Pradesh and adjoining east Rajasthan near latitude 24.4°N and longitude 75.6°E, about 110 km east-southeast of Chittorgarh (Rajasthan), 130 km north-northeast of Ratlam (Madhya Pradesh) and 190 km east of Udaipur (East Rajasthan). It is likely to continue to move nearly west-southwestwards, intensify further into a deep depression over east Rajasthan during next 12 hours. Continuing to further move slowly west-southwestwards across south Rajasthan and Gujarat, it would emerge into northeast Arabian Sea off Saurashtra & Kutch and adjoining Pakistan coasts around morning of 29<sup>th</sup> August.
- ✓ The **low pressure** area formed over south Bangladesh & neighbourhood persisted over the same region at 1730 hours IST of today, the 25<sup>th</sup> August 2024. It is likely to become more marked and move west-northwestwards across Gangetic West Bengal, north Odisha and Jharkhand during next 2 days.
- ✓ The western end of the Monsoon trough lies south of its normal position while the eastern end is at the normal position.
- ✓ The offshore trough runs from south Gujarat to north Kerala coast.

#### Forecast & Warnings (upto 7 days):

##### ❖ West & Central India

- ✓ Fairly widespread to widespread light/moderate rainfall very likely over West & Central India during the week.
- ✓ Isolated **heavy rainfall** very likely over East Madhya Pradesh on 25<sup>th</sup>-26<sup>th</sup>; Marathwada on 25<sup>th</sup>; Vidarbha on 25<sup>th</sup>, 30<sup>th</sup> & 31<sup>st</sup>; Konkan & Goa during 28<sup>th</sup>-30<sup>th</sup>; Madhya Maharashtra on 28<sup>th</sup> & 29<sup>th</sup>; Chhattisgarh on 25<sup>th</sup> & during 29<sup>th</sup>-31<sup>st</sup>; Gujarat Region on 30<sup>th</sup>; Saurashtra & Kutch on 31<sup>st</sup> August.
- ✓ Isolated **very heavy rainfall** also very likely over West Madhya Pradesh on 26<sup>th</sup>; Konkan & Goa and Madhya Maharashtra on 27<sup>th</sup> August.
- ✓ Isolated **extremely heavy rainfall also very likely** over West Madhya Pradesh on 25<sup>th</sup>; Gujarat Region during 25<sup>th</sup>-28<sup>th</sup>; Saurashtra & Kutch during 25<sup>th</sup>-29<sup>th</sup>; Konkan & Goa and ghat areas of Madhya Maharashtra on 25<sup>th</sup> & 26<sup>th</sup> August.

##### ❖ East & Northeast India

- ✓ Fairly widespread to widespread light/moderate rainfall very likely over East & Northeast India, during the week.
- ✓ Isolated **heavy rainfall** very likely over Assam on 25<sup>th</sup>; Arunachal Pradesh on 25<sup>th</sup> & 31<sup>st</sup>; Jharkhand on 25<sup>th</sup>, 27<sup>th</sup> & 28<sup>th</sup>; Assam & Meghalaya during 26<sup>th</sup>-28<sup>th</sup>; Odisha on 26<sup>th</sup>, 28<sup>th</sup> & 29<sup>th</sup>; Nagaland, Manipur, Mizoram & Tripura during 26<sup>th</sup>-28<sup>th</sup> & on 30<sup>th</sup> & 31<sup>st</sup>; Gangetic West Bengal on 26<sup>th</sup>; Bihar on 26<sup>th</sup> & 27<sup>th</sup>; Andaman & Nicobar Islands on 27<sup>th</sup>-29<sup>th</sup> August.
- ✓ Isolated **very heavy rainfall** also very likely over Meghalaya, Gangetic West Bengal on 25<sup>th</sup>; Odisha and Jharkhand on 26<sup>th</sup> August.
- ✓ Isolated **extremely heavy rainfall also very likely** over Tripura, Mizoram on 25<sup>th</sup> August.

##### ❖ South Peninsular India:

- ✓ Scattered to Fairly widespread light/moderate rainfall very likely over Kerala & Mahe, Lakshadweep, Coastal Andhra Pradesh & Yanam, Coastal Karnataka, Interior Karnataka; isolated to scattered rainfall over Tamil Nadu, Puducherry & Karaikal, Rayalaseema & Telangana during the week.
- ✓ Isolated **heavy rainfall** very likely over Kerala & Mahe during 25<sup>th</sup>-31<sup>st</sup>; Telangana on 25<sup>th</sup> & 29<sup>th</sup>; North Interior Karnataka during 25<sup>th</sup>, 26<sup>th</sup> & 31<sup>st</sup>; South Interior Karnataka on 25<sup>th</sup>, 29<sup>th</sup> & 30<sup>th</sup>; Coastal Karnataka during 27<sup>th</sup>-28<sup>th</sup> & 30<sup>th</sup>-31<sup>st</sup> August.
- ✓ Isolated **very heavy rainfall** also very likely over Coastal Karnataka during 25<sup>th</sup>, 26<sup>th</sup> & 29<sup>th</sup> August.

##### ❖ Northwest India

- ✓ Fairly widespread to widespread light/moderate rainfall very likely over Himachal Pradesh, Uttarakhand, Rajasthan; isolated to scattered rainfall over Jammu-Kashmir-Ladakh-Gilgit-Baltistan-Muzaffarabad, Punjab, Uttar Pradesh Haryana-Chandigarh-Delhi during the week.
- ✓ Isolated **heavy rainfall** very likely over Uttar Pradesh on 25<sup>th</sup> & 26<sup>th</sup>; Uttarakhand on 25<sup>th</sup> & 27<sup>th</sup>; Jammu-Kashmir-Ladakh-Gilgit-Baltistan-Muzaffarabad during 26<sup>th</sup>-29<sup>th</sup>; Himachal Pradesh on 27<sup>th</sup>; Punjab & Haryana-Chandigarh on 27<sup>th</sup> & 28<sup>th</sup> August.
- ✓ Isolated **very heavy rainfall** also very likely over West Rajasthan on 25<sup>th</sup> & 27<sup>th</sup>; East Rajasthan on 27<sup>th</sup> August.
- ✓ Isolated **extremely heavy rainfall also very likely** over East Rajasthan on 25<sup>th</sup> & 26<sup>th</sup>; West Rajasthan on 26<sup>th</sup> August.

\* Red colour warning does not mean "Red Alert", Red colour warning means "Take Action".

Forecast and Warning for any day is valid from 0830 hours IST of day till 0830 hours IST of next day.

For more details, kindly visit <https://mausam.imd.gov.in> or contact: 011-2434-4599

(Service to the Nation since 1875)

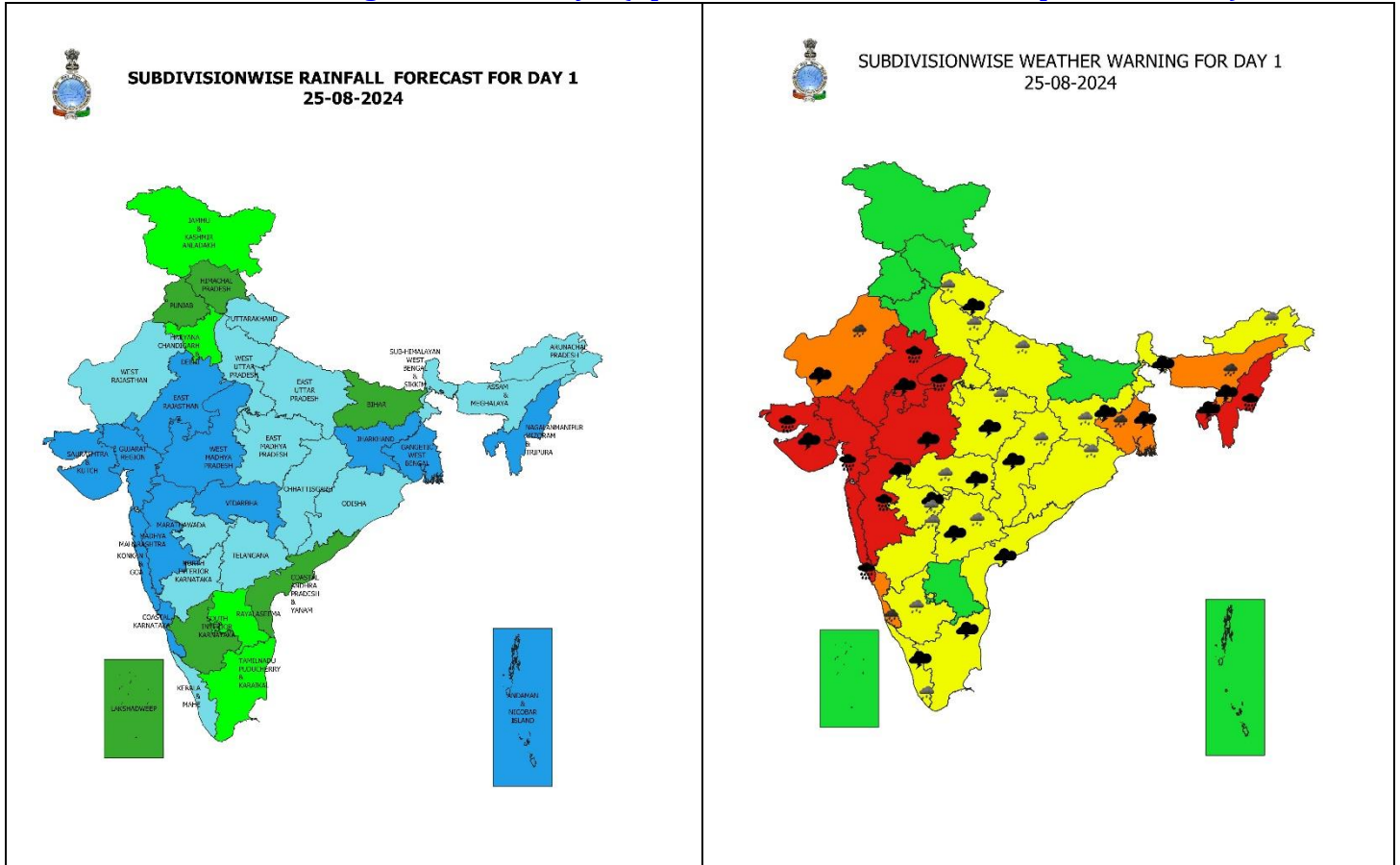
### Main Weather Observations:

- ❖ **Rainfall distribution** (from 0830 hours IST to 1730 hours IST of today): **at most places** over Konkan & Goa, Madhya Maharashtra, Kerala & Mahe, Andaman & Nicobar Islands; **at many places** over Coastal Andhra Pradesh & Yanam, Uttarakhand, Sub-Himalayan West Bengal & Sikkim, Gujarat state, Tamil Nadu, Puducherry & Karaikal, Telangana; **at a few places** over Chhattisgarh, Madhya Pradesh, East Rajasthan, Arunachal Pradesh, Himachal Pradesh, Punjab, Haryana-Chandigarh-Delhi, Uttar Pradesh, Bihar, Jharkhand, Nagaland, Manipur, Mizoram & Tripura, Assam & Meghalaya, Gangetic West Bengal ; **at isolated places** over West Rajasthan, Marathwada, Vidarbha, Interior Karnataka, Jammu-Kashmir-Ladakh-Gilgit-Baltistan-Muzaffarabad.
- ❖ **Heavy rainfall recorded** (from 0830 hours IST to 1730 hours IST of today): **Heavy to very heavy rainfall** at isolated places over Saurashtra & Kutch; **Heavy rainfall** at isolated places over Konkan & Goa, East Rajasthan.
- ❖ **Significant amount of rainfall** (from 0830 hours IST to 1730 hours IST of today) (in cm): **Saurashtra & Kutch:** Rajkot 17, Bhavnagar 3, Surendranagar 2, **East Rajasthan:** Bhilwara 10, Beawar 7, Chittorgarh 8, Ajmer 3, Udaipur 2; **Konkan & Goa:** Dahanu 9, Matheran 7, Ratnagiri 2, Mumbai (Colaba) 2, Panjim 2, **Madhya Maharashtra:** Mahabaleshwar 6, Satara 3, Malegaon 3, Kolhapur 2, **West Madhya Pradesh:** Ujjain 3; **East Madhya Pradesh:** Nowgong 2; **Odisha:** Bhadrak, Sundargarh 2 each,
- ❖ **Minimum Temperature Departures (as on 25-08-2024):** Minimum temperatures are **appreciably above normal (3.1°C to 5.0°C)** at isolated places over East Uttar Pradesh; **above normal (1.6°C to 3.0°C)** at isolated places over West Uttar Pradesh, Haryana-Chandigarh-Delhi, East Madhya Pradesh, Saurashtra & Kutch, Bihar, Sub-Himalayan West Bengal & Sikkim, Assam & Meghalaya, Coastal Andhra Pradesh & Yanam, Tamil Nadu, Puducherry & Karaikal, Kerala & Mahe. These are **below normal (-1.6°C to -3.0°C)** at isolated places over Gujarat Region, Vidarbha, Telangana, and **near normal** over rest parts of the country. Today, **the lowest minimum temperature of 19.6°C** is reported at **Rajgarh (West Madhya Pradesh)** over the plains of the country (Fig.4).
- ❖ **Maximum Temperature Departures (as on 25-08-2024):** Maximum temperatures are **appreciably above normal (3.1°C to 5.0°C)** at isolated places over Assam & Meghalaya, Jammu-Kashmir-Ladakh-Gilgit-Baltistan-Muzaffarabad, Tamil Nadu, Puducherry & Karaikal; **above normal (1.6°C to 3.0°C)** at isolated places over Punjab, Uttarakhand, Coastal Andhra Pradesh & Yanam, Kerala & Mahe. These are **appreciably above normal (-3.1°C to -5.0°C)** at a few places over West Madhya Pradesh and Odisha; at isolated places over Gujarat Region, Madhya Maharashtra, East Rajasthan; **below normal (-1.6°C to -3.0°C)** at a few places over Gangetic West Bengal and East Madhya Pradesh; at isolated places over Vidarbha, Marathwada and **near normal** over rest parts of the country. Today, **the highest Maximum Temperature of 38.4°C** is reported at **Tirupathi (Rayalaseema)** over the country (Fig. 2).

## Meteorological Analysis (Based on 1730 hours IST)

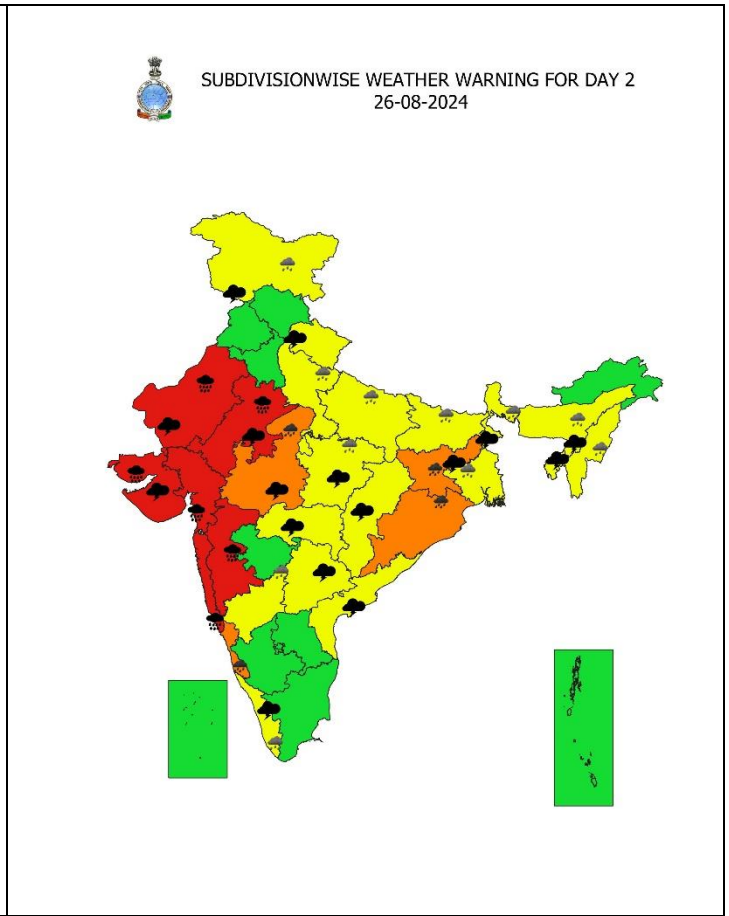
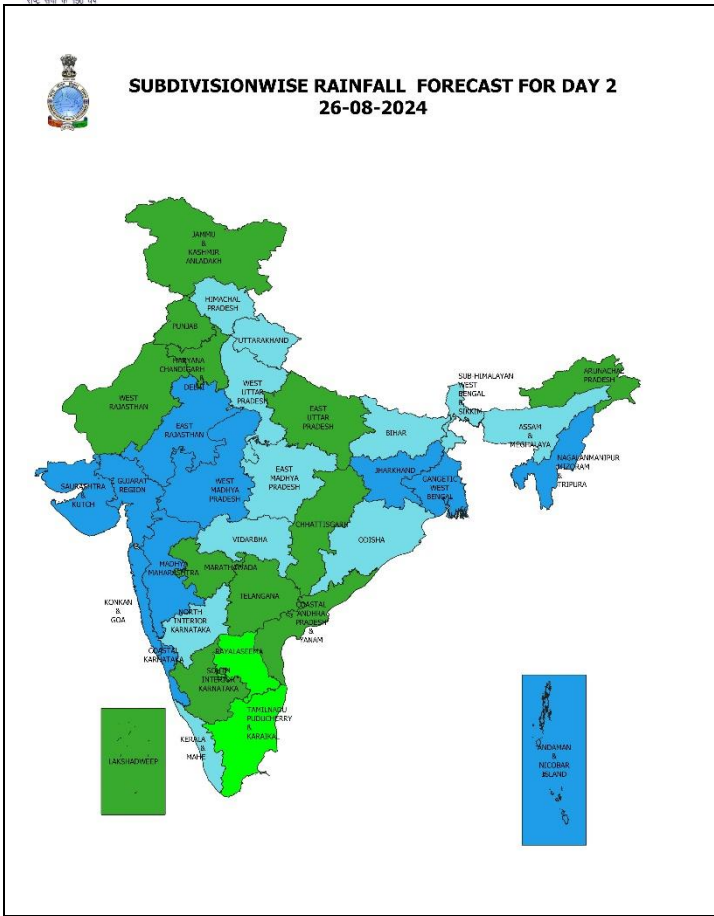
- ❖ The **depression** over Rajasthan and adjoining northwest Madhya Pradesh moved west-southwestwards with a speed of 15 kmph during past 6 hours and lay centered at 1730 hours IST of today, the 25<sup>th</sup> August over northwest Madhya Pradesh and adjoining east Rajasthan near latitude 24.4°N and longitude 75.6°E, about 110 km east-southeast of Chittorgarh (Rajasthan), 130 km north-northeast of Ratlam (Madhya Pradesh) and 190 km east of Udaipur (East Rajasthan). It is likely to continue to move nearly west-southwestwards, intensify further into a deep depression over east Rajasthan during next 12 hours. Continuing to further move slowly west-southwestwards across south Rajasthan and Gujarat, it would emerge into northeast Arabian Sea off Saurashtra & Kutch and adjoining Pakistan coasts around morning of 29<sup>th</sup> August.
- ❖ The **low pressure** area formed over south Bangladesh & neighbourhood persisted over the same region at 1730 hours IST of today, the 25<sup>th</sup> August 2024. It is likely to become more marked and move west-northwestwards across Gangetic West Bengal, north Odisha and Jharkhand during next 2 days.
- ❖ The **Monsoon trough** at mean sea level now passes through Jaisalmer, centre of depression over northwest Madhya Pradesh, Sidhi, Daltonganj, Bankura, low pressure area over south Bangladesh & neighbourhood and thence southeastwards to northeast Bay of Bengal.
- ❖ The **offshore trough** runs from south Gujarat to north Kerala coast Persists.
- ❖ The **Western Disturbance** as a trough in middle tropospheric westerlies with its axis at 7.6 km above mean sea level roughly along Long. 72°E to the north of Lat. 28°N persists.

Weather Forecast & Warnings for next 7 days (Upto 0830 hours IST of 01<sup>st</sup> September, 2024)



25 August (Day 1):

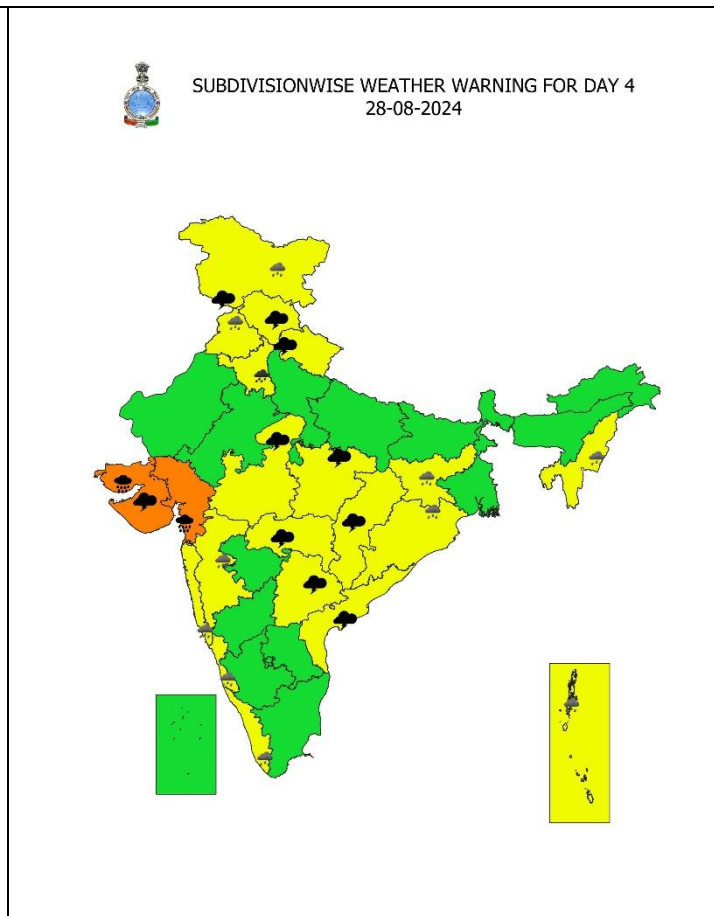
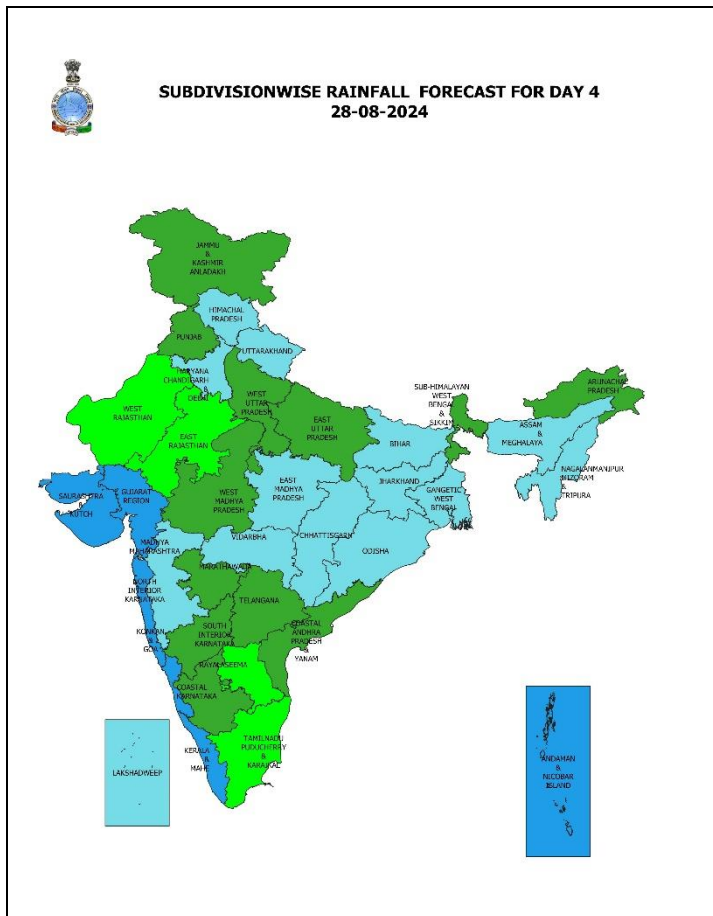
- ❖ **Heavy to very heavy rainfall with extremely heavy falls (> 20 cm)** very likely at isolated places over East Rajasthan, West Madhya Pradesh, Mizoram & Tripura, Konkan & Goa, ghat area of Madhya Maharashtra, Gujarat state; **Heavy to very heavy rainfall (≥ 12 cm)** at isolated places over Meghalaya, Nagaland, Manipur, Coastal Karnataka, Gangetic West Bengal, West Rajasthan; **Heavy rainfall (≥ 7 cm)** at isolated places over Chhattisgarh, Uttarakhand, Uttar Pradesh, East Madhya Pradesh, Vidarbha, Jharkhand, Odisha, Arunachal Pradesh, Marathwada, Kerala & Mahe, Telangana, Interior Karnataka, Assam.
- ❖ **Thunderstorm accompanied with lighting and gusty winds (speed reaching 40-50 kmph)** very likely at isolated places over Rajasthan; **gusty winds (speed reaching 40-50 kmph)** at isolated places over Kerala & Mahe, Telangana; **with lightning** very likely at isolated places over Uttarakhand, Madhya Pradesh, Vidarbha, Chhattisgarh, West Bengal & Sikkim, Jharkhand, Assam & Meghalaya, Nagaland, Manipur, Mizoram & Tripura, Madhya Maharashtra, Marathwada, Saurashtra & Kutch, Tamil Nadu, Puducherry & Karaikal, Coastal Andhra Pradesh & Yanam .
- ❖ **Squally weather with wind speed reaching 35 kmph to 45 kmph gusting to 55 kmph** is likely to prevail over most parts of central Arabian sea and southern parts of north Arabian sea; western parts of southwest Arabian sea, along and off Gujarat, Maharashtra Konkan goa, Karnataka, coasts, over gulf of Mannar, and Sri Lanka coast; most parts of southwest Bay of Bengal & adjoining parts of southeast Bay of Bengal, most parts of central and north Bay of Bengal, along and off north Andhra Pradesh coast, Odisha, Gangetic west Bengal coasts. **squally weather with winds speed reaching 45 kmph to 55 kmph gusting to 65 kmph** likely to prevail along and off south Gujarat coast, off Maharashtra coast, parts of eastcentral Arabian sea. **squally winds with speed reaching 45 kmph to 55 kmph gusting to 65 kmph** likely to prevail over some parts of westcentral, western parts of southwest Arabian sea, along and off Somalia, south Oman coasts. Fishermen are advised not to venture into these areas.
- ❖ **Strong surface wind speed reaching 30-40 kmph gusting to 50 kmph** is very likely to prevail over Madhya Pradesh, South Rajasthan.



## 26 August (Day 2):

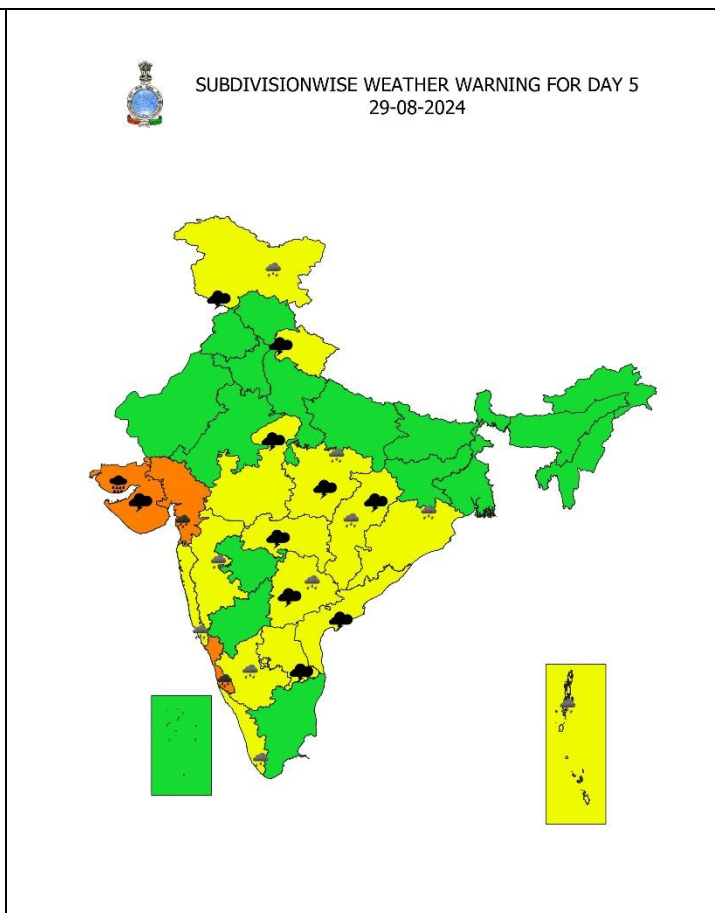
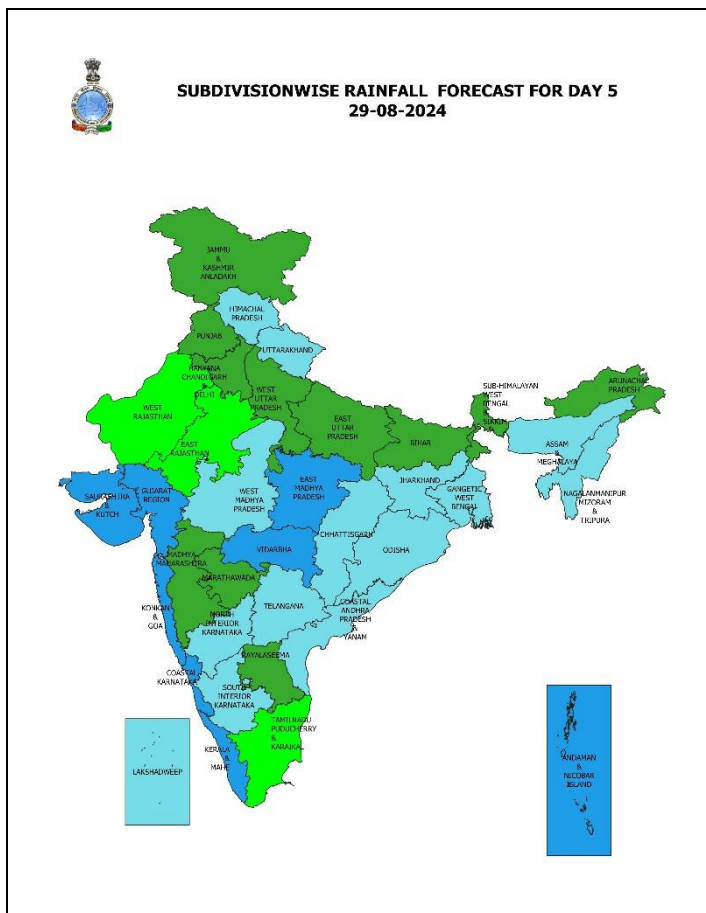
- ❖ **Heavy to very heavy rainfall with extremely heavy falls (> 20 cm)** very likely at isolated places over south Rajasthan, Madhya Maharashtra, Gujarat state; **Heavy to very heavy rainfall ( $\geq 12$  cm)** at isolated places over West Madhya Pradesh, Jharkhand, Odisha, Konkan & Goa, Coastal Karnataka; **Heavy rainfall ( $\geq 7$  cm)** at isolated places over Jammu-Kashmir-Ladakh-Gilgit-Baltistan-Muzaffarabad, Uttar Pradesh, East Madhya Pradesh, Gangetic West Bengal, Bihar, Assam & Meghalaya, Nagaland, Manipur, Mizoram & Tripura, Kerala & Mahe, North Interior Karnataka.
- ❖ **Thunderstorm accompanied with lightning and gusty winds (speed reaching 40-50 kmph)** very likely at isolated places over Rajasthan; **gusty winds (speed reaching 40-50 kmph)** at isolated places over Kerala & Mahe, Telangana; **with lightning** very likely at isolated places over Jammu-Kashmir-Ladakh-Gilgit-Baltistan-Muzaffarabad, Uttarakhand, Madhya Pradesh, Vidarbha, Chhattisgarh, Sub-Himalayan West Bengal & Sikkim, Jharkhand, Assam & Meghalaya, Nagaland, Manipur, Mizoram & Tripura, Saurashtra & Kutch, Tamil Nadu, Puducherry & Karaikal, Coastal Andhra Pradesh & Yanam .
- ❖ **Squally weather with wind speed reaching 35 kmph to 45 kmph gusting to 55 kmph** is likely to prevail over most parts of central Arabian sea and southern parts of north Arabian sea; western parts of southwest Arabian sea, along and off Gujarat, Maharashtra Konkan goa, Karnataka, coasts, over gulf of Mannar, and Sri Lanka coast; most parts of southwest Bay of Bengal & adjoining parts of southeast Bay of Bengal, most parts of central and north Bay of Bengal, along and off north Andhra Pradesh coast, off Odisha, Gangetic west Bengal coasts. squally weather with winds speed reaching 45 kmph to 55 kmph gusting to 65 kmph likely to prevail along and off Gujarat coast, Maharashtra coast, parts of northeast and eastcentral Arabian sea. squally winds with speed reaching 45 kmph to 55 kmph gusting to 65 kmph likely to prevail over some parts of northeast, central, western parts of southwest Arabian sea, along and off Somalia, south Oman coasts. Fishermen are advised not to venture into these areas.
- ❖ **Strong surface wind speed reaching 30-40 kmph gusting to 50 kmph** is very likely to prevail over Madhya Pradesh, South Rajasthan, Gujarat state, along and off Gujarat & adjoining Pakistan and north Maharashtra coasts and northeast Arabian Sea





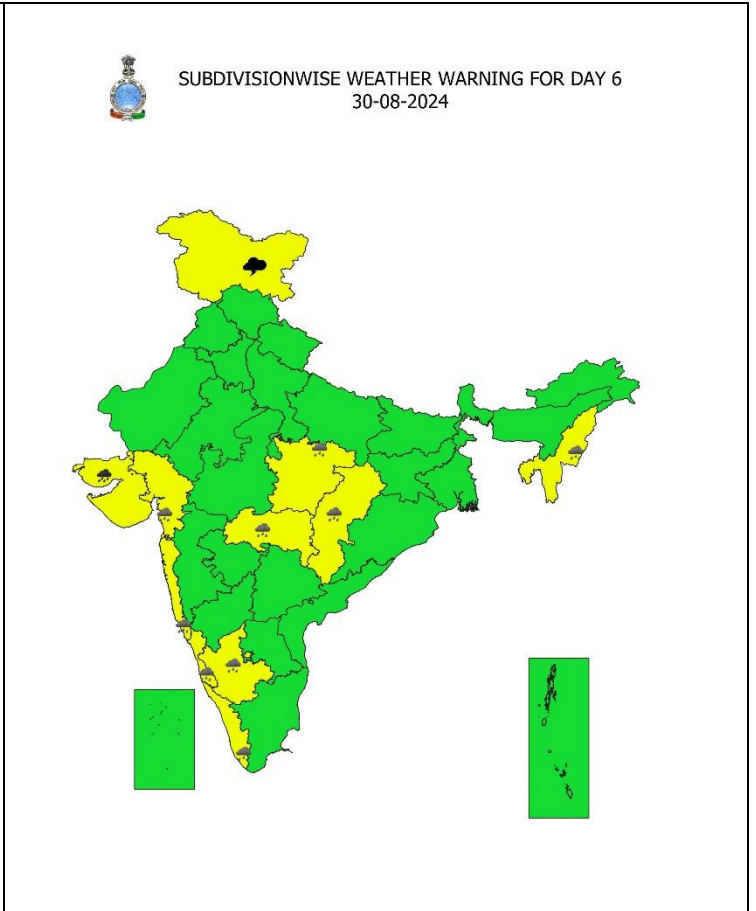
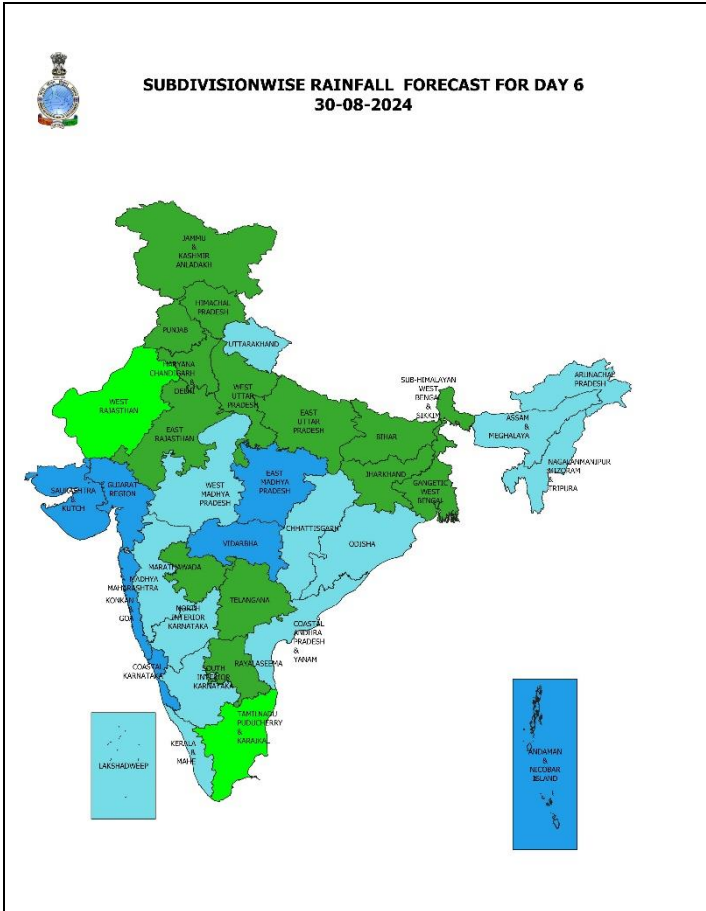
### 28 August (Day 4):

- ❖ **Heavy to very heavy rainfall with extremely heavy falls (> 20 cm)** likely at isolated places over Gujarat state; **Heavy rainfall ( $\geq 7$  cm)** at isolated places over Jammu-Kashmir-Ladakh-Gilgit-Baltistan-Muzaffarabad, Punjab, Haryana-Chandigarh, Andaman & Nicobar Islands, Jharkhand, Odisha, Assam & Meghalaya, Nagaland, Manipur, Mizoram & Tripura, Konkan & Goa, Madhya Maharashtra, Kerala & Mahe, Coastal Karnataka.
- ❖ **Thunderstorm accompanied with lighting and gusty winds (speed reaching 40-50 kmph)** at isolated places over Kerala & Mahe, Telangana; **with lightning** very likely at isolated places over Jammu-Kashmir-Ladakh-Gilgit-Baltistan-Muzaffarabad, Himachal Pradesh, Uttarakhand, Madhya Pradesh, Vidarbha, Chhattisgarh, Saurashtra & Kutch, Coastal Andhra Pradesh & Yanam.
- ❖ **Squally weather with wind speed reaching 35 kmph to 45 kmph gusting to 55 kmph** is likely to prevail over most parts of central Arabian sea and southern parts of north Arabian sea; western parts of southwest Arabian sea, Konkan goa, coasts, over gulf of Mannar, and Sri Lanka coast; some parts of southwest Bay of Bengal & many parts of southeast Bay of Bengal, many parts of central Bay of Bengal. **squally weather with winds speed reaching 45 kmph to 55 kmph gusting to 65 kmph** likely to prevail along and off Gujarat, Maharashtra coasts, most parts of eastcentral Arabian sea and adjoining areas of north east Arabian sea. squally winds with speed reaching 45 kmph to 55 kmph gusting to 65 kmph likely to prevail over many parts of westcentral, western parts of southwest Arabian sea, along and off Somalia coast, south Oman coasts. Fishermen are advised not to venture into these areas.
- ❖ **Squally wind speed reaching 40-50 kmph gusting to 60 kmph** is likely to prevail on Gujarat & adjoining Pakistan and north Maharashtra coasts and northeast Arabian Sea, along and off north Maharashtra coasts



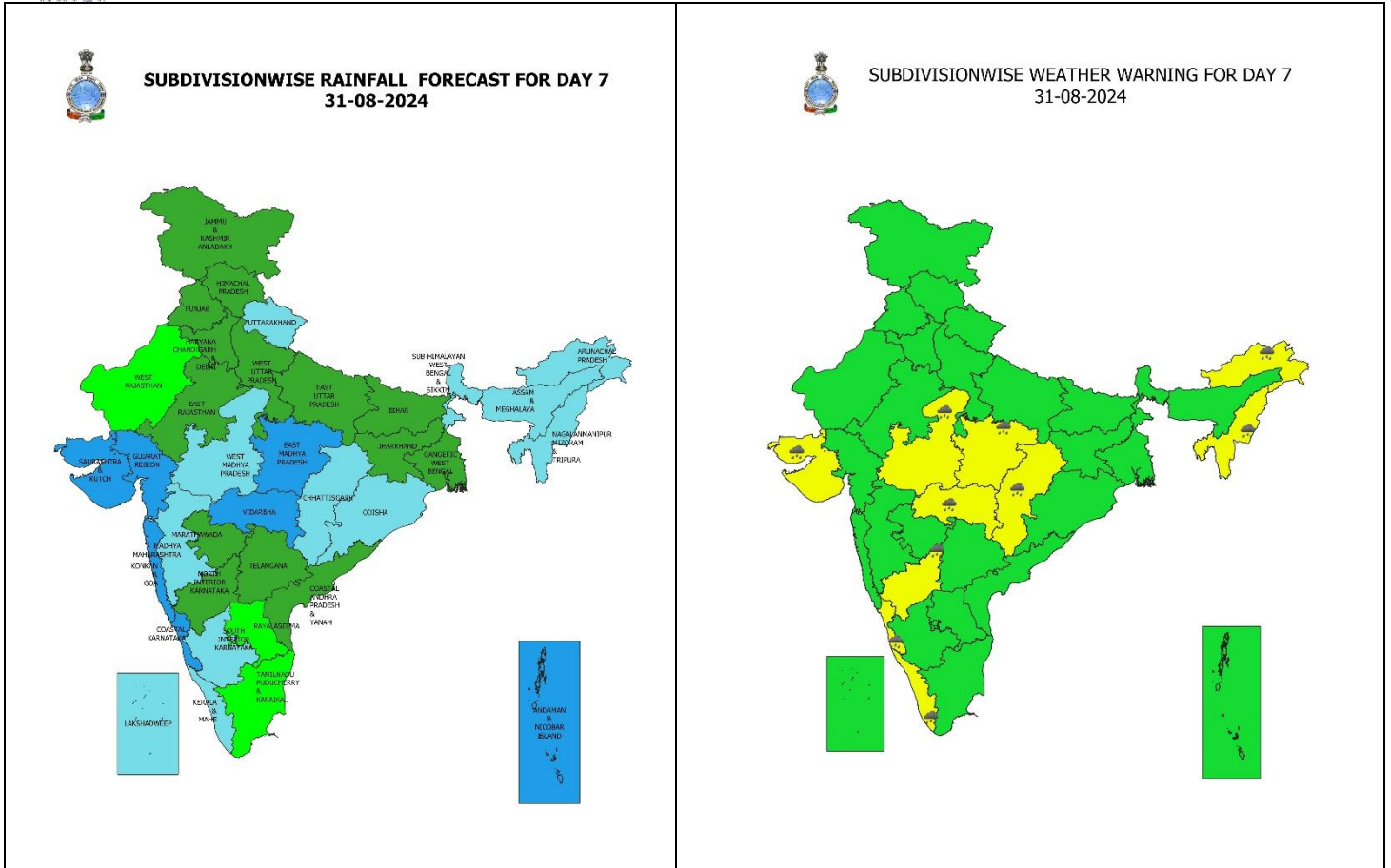
**29 August (Day 5):**

- ❖ **Heavy to very heavy rainfall with extremely heavy falls (> 20 cm)** likely at isolated places over Saurashtra & Kutch; **Heavy to very heavy rainfall (≥ 12 cm)** at isolated places over Gujarat Region, Coastal Karnataka; **Heavy rainfall (≥ 7 cm)** likely at isolated places over Jammu-Kashmir-Ladakh-Gilgit-Baltistan-Muzaffarabad, East Madhya Pradesh, Chhattisgarh, Andaman & Nicobar Islands, Odisha, Konkan & Goa, Madhya Maharashtra, Kerala & Mahe, Telangana, South Interior Karnataka.
- ❖ **Thunderstorm accompanied with lighting and gusty winds (speed reaching 40-50 kmph)** at isolated places over Kerala & Mahe, Telangana; **with lightning** very likely at isolated places over Jammu-Kashmir-Ladakh-Gilgit-Baltistan-Muzaffarabad, Uttarakhand, Madhya Pradesh, Vidarbha, Chhattisgarh, Saurashtra & Kutch, Coastal Andhra Pradesh & Yanam, Rayalaseema.
- ❖ **Squally weather with wind speed reaching 35 kmph to 45 kmph gusting to 55 kmph** is likely to prevail over parts of northeast and eastcentral Arabian sea; Konkan goa coasts, over gulf of Mannar, and Sri Lanka coast; some parts of south Bay of Bengal, some parts of central Bay of Bengal, north andman sea. **squally weather with winds speed reaching 45 kmph to 55 kmph gusting to 65 kmph** likely to prevail along and off Gujarat, Maharashtra coasts, most parts of northeast and eastcentral Arabian sea. some parts of eastcentral Bay of Bengal. **squally winds with speed reaching 45 kmph to 55 kmph gusting to 65 kmph** likely to prevail over some parts of north Arabian sea, many parts of central Arabian sea, western parts of southwest Arabian sea, along and off Somalia coast, south Oman coasts. Fishermen are advised not to venture into these areas.
- ❖ **Squally wind speed reaching 40-50 kmph gusting to 60 kmph** for interior district of Gujarat state, along and off north Maharashtra coasts. **Squally wind speed reaching 55-65 kmph gusting to 75 kmph** is likely to prevail along & off Gujarat & adjoining Pakistan coasts and northeast and adjoining eastcentral Arabian Sea.



**30 August (Day 6):**

- ❖ **Heavy to very heavy rainfall ( $\geq 12$  cm)** at isolated places over Saurashtra & Kutch; Heavy rainfall ( $\geq 7$  cm) likely at isolated places over Madhya Pradesh, Vidarbha, Chhattisgarh, Nagaland, Manipur, Mizoram & Tripura, Konkan & Goa, Gujarat Region, Kerala & Mahe, Coastal Karnataka, South Interior Karnataka.



**31 August (Day 7):**

- ❖ **Heavy rainfall ( $\geq 7$  cm)** likely at isolated places over East Madhya Pradesh, Vidarbha, Chhattisgarh, Arunachal Pradesh, Nagaland, Manipur, Mizoram & Tripura, Saurashtra & Kutch, Kerala & Mahe, Coastal Karnataka, North Interior Karnataka.

**Weather Outlook for subsequent 3 days (During 01<sup>st</sup> September– 03<sup>rd</sup> September, 2024)**

- ❖ Fairly widespread to widespread rainfall likely over most parts of the country except Jammu-Kashmir-Ladakh-Gilgit-Baltistan-Muzaffarabad, West Rajasthan, Punjab, Haryana-Chandigarh-Delhi and Tamil Nadu, Puducherry & Karaikal where isolated to scattered rainfall likely.

- Action may be taken based on **ORANGE AND RED COLOUR** warnings.
- **Vulnerable regions likely urban and hilly areas** action may be initiated for heavy rainfall warning.
- As the lead period increases forecast accuracy decreases.

\* Red colour warning does not mean "Red Alert", Red colour warning means "Take Action".  
Forecast and Warning for any day is valid from 0830 hours IST of day till 0830 hours IST of next day.  
For more details, kindly visit <https://mausam.imd.gov.in> or contact: 011-2434-4599  
(Service to the Nation since 1875)

## Impact due to

- ✓ **Isolated extremely heavy rainfall very likely over** Tripura, Mizoram, West Madhya Pradesh on 25<sup>th</sup>; East Rajasthan, Konkan & Goa and ghat areas of Madhya Maharashtra on 25<sup>th</sup> & 26<sup>th</sup>; West Rajasthan on 26<sup>th</sup>; Gujarat Region during 25<sup>th</sup>-28<sup>th</sup>; Saurashtra & Kutch during 25<sup>th</sup>-29<sup>th</sup> August.
- ✓ **Very heavy rainfall** at isolated over Assam & Meghalaya, Gangetic West Bengal on 25<sup>th</sup>; West Rajasthan on 25<sup>th</sup> & 27<sup>th</sup>; West Madhya Pradesh, Odisha and Jharkhand on 26<sup>th</sup>; East Rajasthan, Konkan & Goa and Madhya Maharashtra on 27<sup>th</sup>; Coastal Karnataka during 25<sup>th</sup>, 26<sup>th</sup> & 29<sup>th</sup> August.
- **Moderate to High flash flood risk** likely over East Rajasthan, Gujarat Region, Madhya Maharashtra, West Madhya Pradesh, Madhya Maharashtra; **Low to Moderate flash flood risk** likely over Himachal Pradesh, Uttarakhand, Konkan & Goa on 25<sup>th</sup> & 26<sup>th</sup> August. **(ANNEXURE I)**
- ✓ Localized Flooding of roads, water logging in low lying areas and closure of underpasses mainly in urban areas of the above region.
- ✓ Occasional reduction in visibility due to heavy rainfall.
- ✓ Disruption of traffic in major cities due to water logging in roads leading to increased travel time.
- ✓ Minor damage to kutcha roads.
- ✓ Possibilities of damage to vulnerable structure.
- ✓ Localized Landslides/Mudslides/landslips/mud slips/land sinks/mud sinks.
- ✓ Damage to horticulture and standing crops in some areas due to inundation.
- ✓ It may lead to riverine flooding in some river catchments (for riverine flooding please visit Web page of CWC)

## Action Suggested

- ✓ Check for traffic congestion on your route before leaving for your destination.
- ✓ Follow any traffic advisories that are issued in this regard.
- ✓ Avoid going to areas that face the water logging problems often.
- ✓ Avoid staying in vulnerable structure.

## Agromet advisories for Heavy Rainfall likely over various parts of the country

- Drain out excess water from field crops and horticultural crops in Assam & Meghalaya, Nagaland, Manipur, Mizoram & Tripura, Uttarakhand, Rajasthan, Madhya Pradesh, Chhattisgarh, Gujrat, Odisha, Jharkhand, Bihar, Gangetic Wet Bengal, Konkan & Goa, Madhya Maharashtra.
- Make provision for draining out excess water from standing crop fields and fruit orchards to avoid water stagnation in Arunachal Pradesh, Uttar Pradesh, Sub Himalayan West Bengal, Marathwada, Vidarbha, Coastal Karnataka and Telangana.
- Postpone sowing of black gram and green gram in Assam.
- Due to continuous heavy rain transplanted rice and vegetables are submerged in low lying areas, recovery of young rice seedlings is unlikely, farmers are advised to collect short duration rice varieties after cessation of rain otherwise can wait a bit and prepare in advance for winter vegetables in Tripura.
- Drain out excess water from kharif rice, groundnut, sesame, soyabean, ginger, turmeric and vegetables to prevent the water logging in Mizoram.
- Provide mechanical support to horticultural crops & staking to vegetables.

**Flash Flood Guidance:**

**ANNEXURE I**

**24 hours Outlook for the Flash Flood Risk (FFR) till 1730 IST of 26-08-2024 :**

**Moderate to High flash flood risk** likely over few watersheds & neighbourhoods of following Met Sub-divisions during next 24 hours.

**East Rajasthan** - Banswara, Chittaurgarh, Dungarpur, Pratapgarh, Sirohi and Udaipur districts.

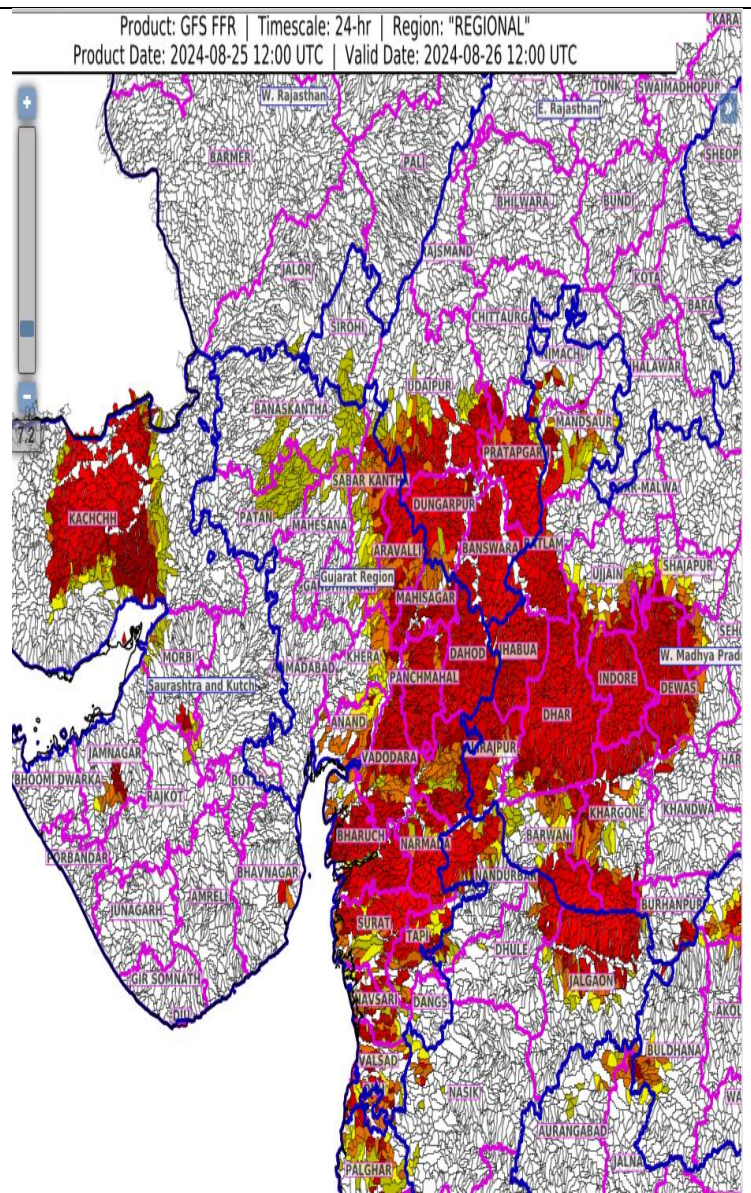
**West Madhya Pradesh** - Alirajpur, Barwani, Dewas, Dhar, Indore, Jhabua, Khargone, Mandsaur, Ratlam, Shajapur and Ujjain districts.

**Gujarat Region** - Dadar & Nagar Haveli, Daman, Anand, Aravalli, Banaskantha, Bharuch, Chhota Udepur, Dangs, Gandhinagar, Khera, Mahesana, Mahisagar, Narmada, Navsari, Patan, Sabar Kantha, Surat, Tapi, Vadodara and Valsad districts.

**Madhya Maharashtra** - Dhule and Jalgaon districts.

**Saurashtra & Kutch** - Bhavnagar, Jamnagar, Morbi and Kachchh districts.

Surface runoff/ Inundation may occur at some fully saturated soils & low-lying areas over AoC as shown in map due to expected rainfall occurrence in next 24 hours.

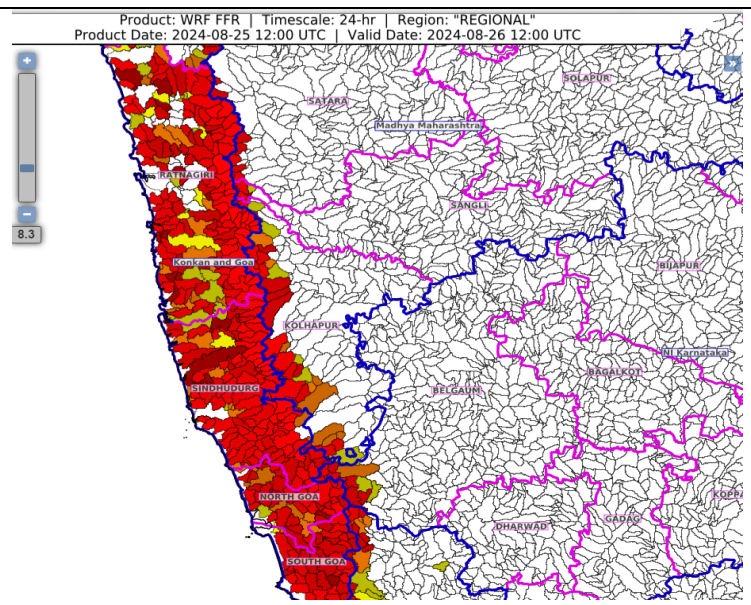


**24 hours Outlook for the Flash Flood Risk (FFR) till 1730 IST of 26-08-2024 :**

**Low to Moderate flash flood risk** likely over few watersheds & neighbourhoods of following Met Sub-divisions during next 24 hours.

**Konkan & Goa** - North Goa, South Goa, Ratnagiri and Sindhudurg districts.

Surface runoff/ Inundation may occur at some fully saturated soils & low-lying areas over AoC as shown in map due to expected rainfall occurrence in next 24 hours.



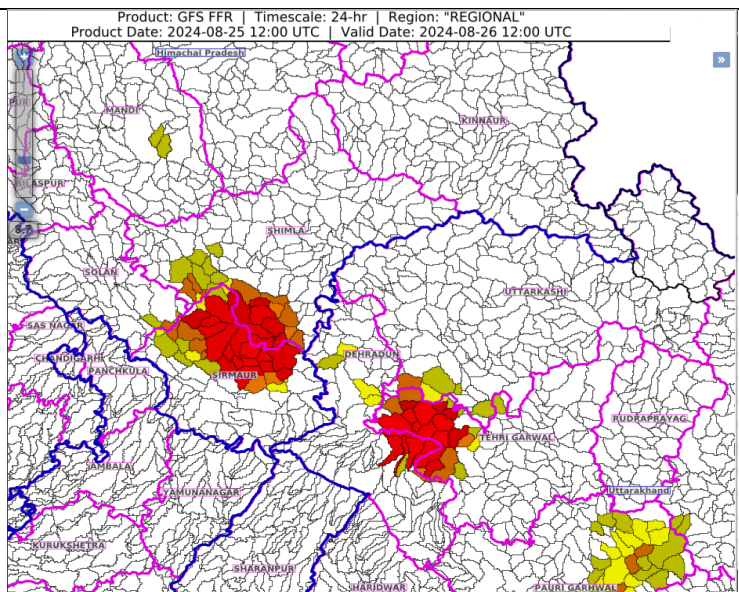
**24 hours Outlook for the Flash Flood Risk (FFR) till 1730 IST of 26-08-2024 :**

**Low to Moderate flash flood risk** likely over few watersheds & neighbourhoods of following Met Sub-divisions during next 24 hours.

**Himachal Pradesh** - Shimla and Sirmaur districts.

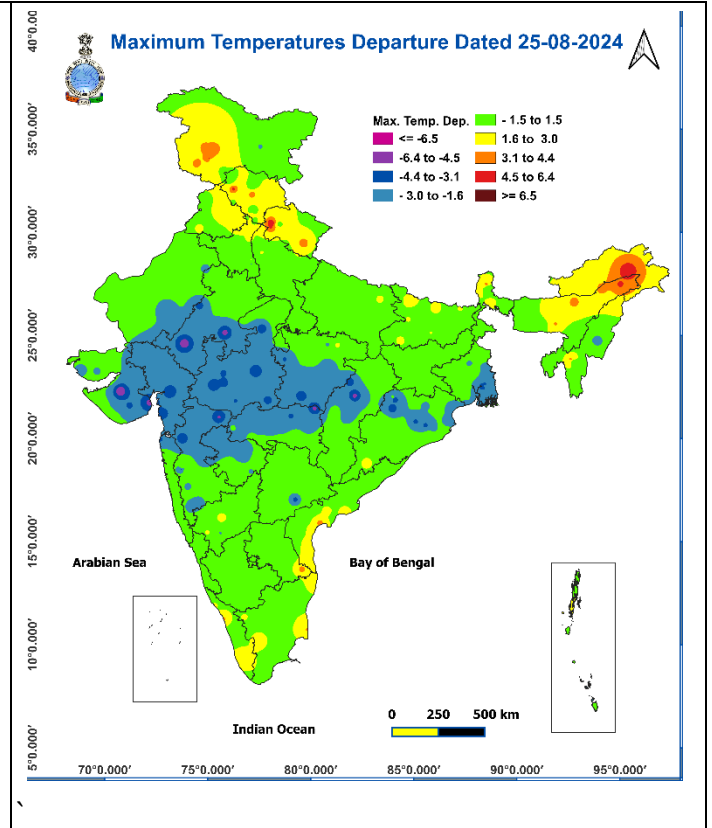
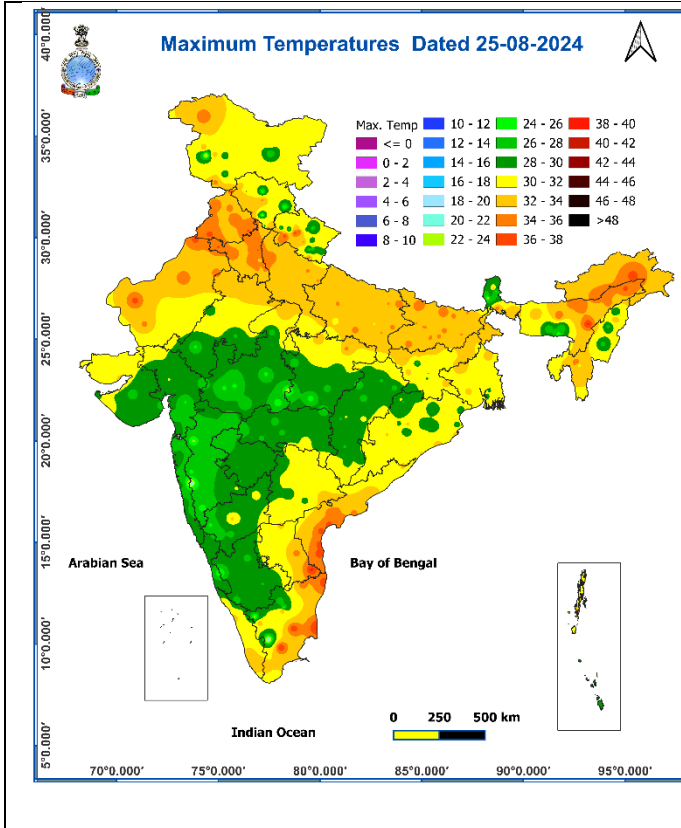
**Uttarakhand** - Dehradun, Pauri Garhwal and Tehri Garwal districts.

Surface runoff/ Inundation may occur at some fully saturated soils & low-lying areas over AoC as shown in map due to expected rainfall occurrence in next 24 hours.



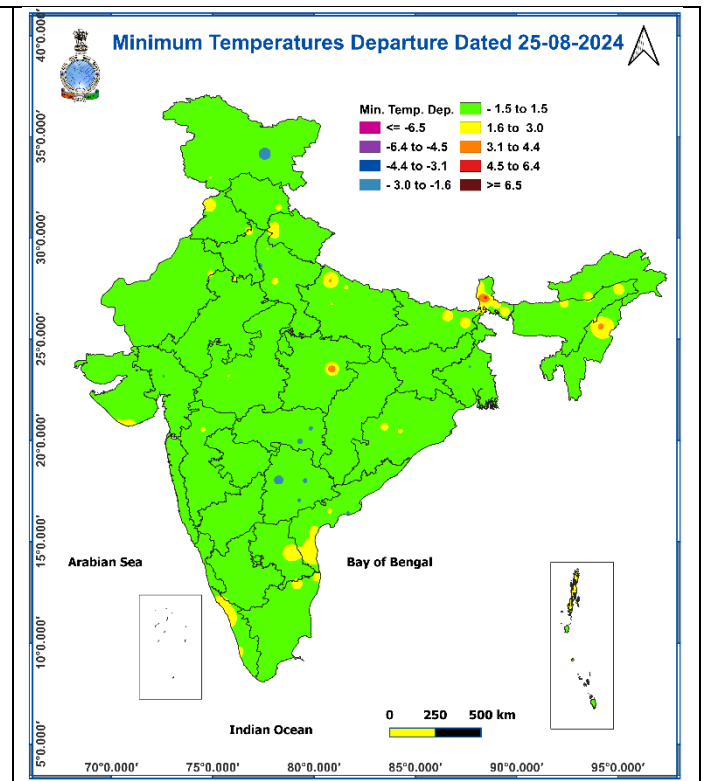
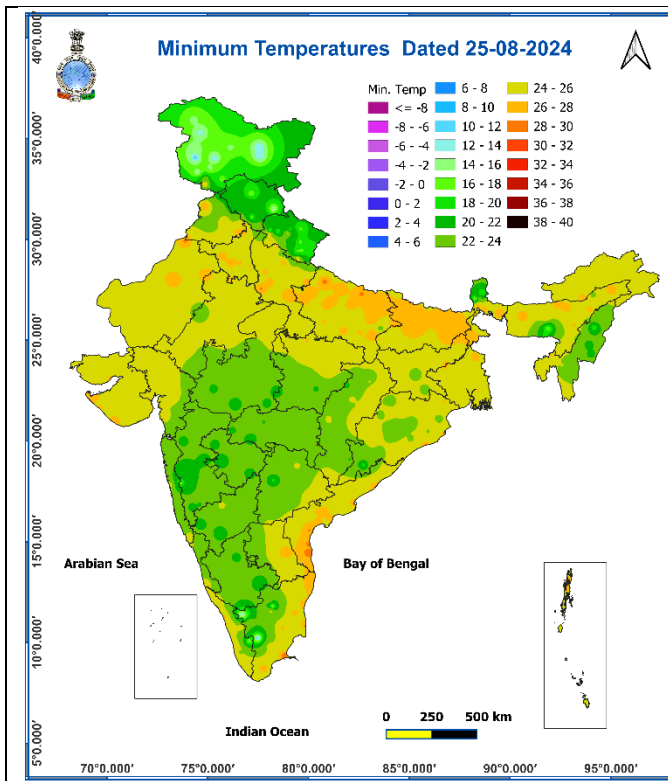
**Fig. 1: Maximum Temperatures**

**Fig. 2: Departure of Maximum Temperatures**



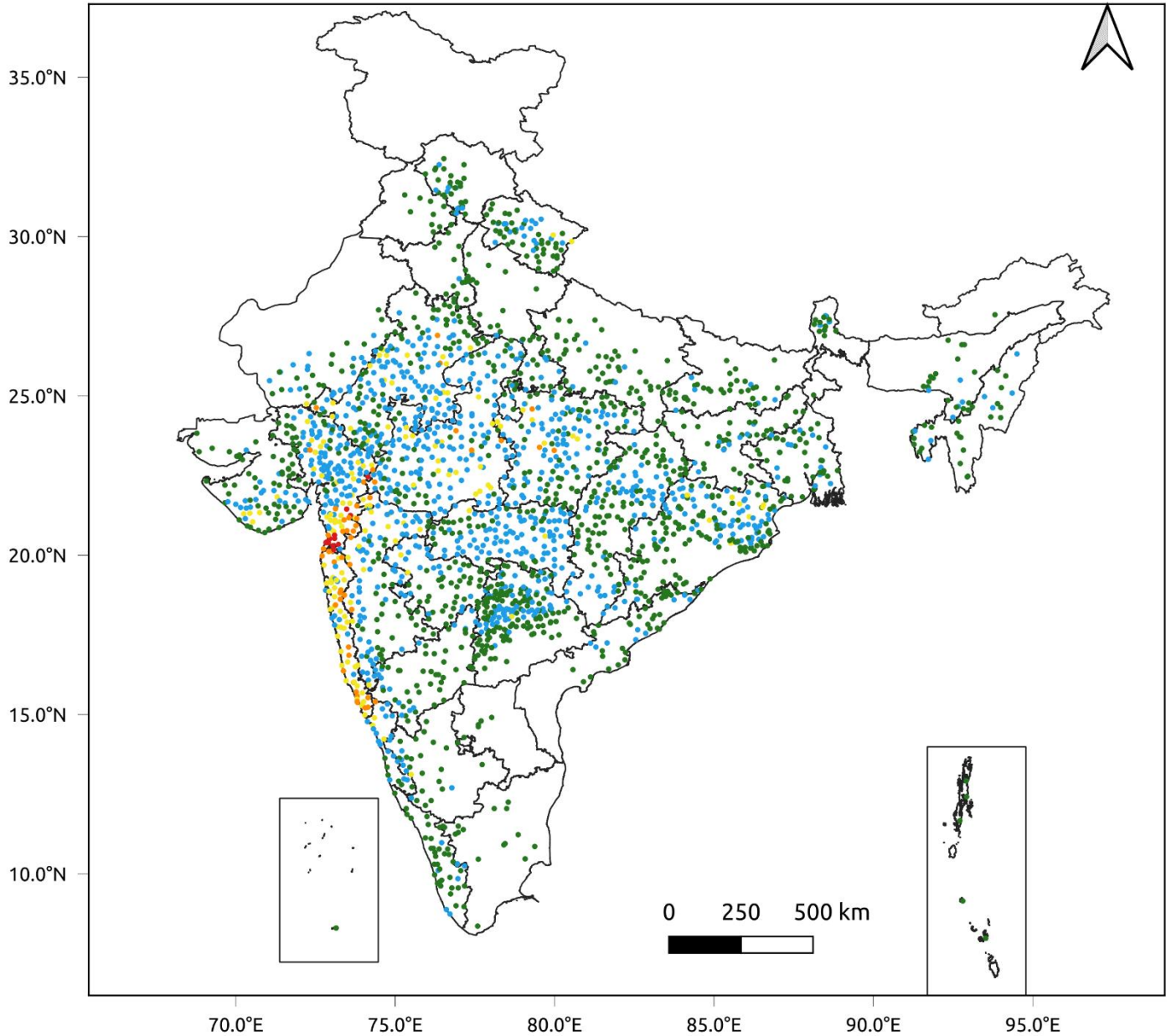
**Fig. 3: Minimum Temperatures**

**Fig. 4: Departure of Minimum Temperatures**



**Fig. 5: Accumulated Rainfall (mm) during past 24 hours**

24 Hr cumulative rainfall recorded over different stations during 0830 IST of 24-8-2024 to 0830 IST of 25-8-2024

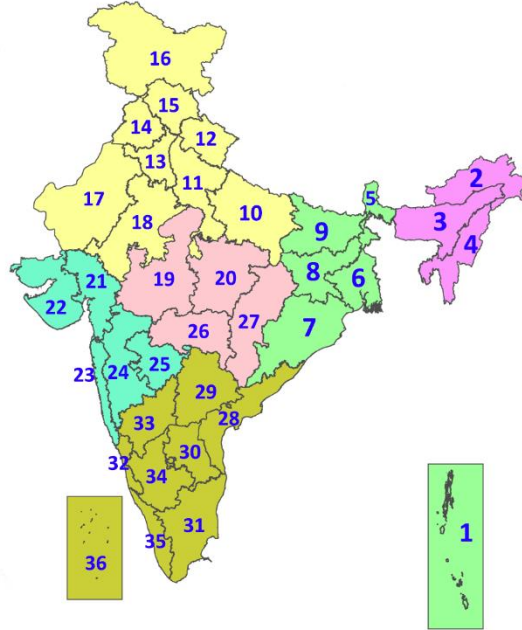


## Legends

- Very Light to Light Rainfall (0.1 - 15.5 mm)
- Moderate Rainfall (15.6 - 64.4 mm)
- Heavy Rainfall (64.5 - 115.5 mm)
- Very Heavy Rainfall (115.6 - 204.4 mm)
- Extremely Heavy Rainfall ( $\geq 204.5$  mm)

## LEGENDS

1. अंडमान और निकोबार द्वीपसमूह
2. अरुणाचल प्रदेश
3. असम और मेघालय
4. नागालैंड, मणिपुर, मिजोरम और त्रिपुरा
5. उप-हिमालयी पश्चिम बंगाल और सिक्किम
6. गंगीय पश्चिम बंगाल
7. ओडिशा
8. झारखंड
9. बिहार
10. पूर्वी उत्तर प्रदेश
11. पश्चिम उत्तर प्रदेश
12. उत्तराखंड
13. हरियाणा, चंडीगढ़ और दिल्ली
14. पंजाब
15. हिमाचल प्रदेश
16. जम्मू और कश्मीर और लद्दाख
17. पश्चिम राजस्थान
18. पूर्वी राजस्थान
19. पश्चिम मध्य प्रदेश
20. पूर्वी मध्य प्रदेश
21. गुजरात
22. सौराष्ट्र
23. कोंकण और गोवा
24. मध्य महाराष्ट्र
25. मराठवाड़ा
26. विदर्भ
27. छत्तीसगढ़
28. तटीय आंध्र प्रदेश और यनम
29. तेलंगाना
30. रायलसीमा
31. तमिलनाडु, पुडुचेरी और कराईकल
32. तटीय कर्नाटक
33. आंतरिक उत्तरी कर्नाटक
34. आंतरिक दक्षिणी कर्नाटक
35. केरल और माहे
36. लक्षद्वीप



1. Andaman & Nicobar Islands
2. Arunachal Pradesh
3. Assam & Meghalaya
4. Nagaland, Manipur, Mizoram & Tripura
5. Sub-Himalayan West Bengal & Sikkim
6. Gangetic West Bengal
7. Odisha
8. Jharkhand
9. Bihar
10. East Uttar Pradesh
11. West Uttar Pradesh
12. Uttarakhand
13. Haryana, Chandigarh & Delhi
14. Punjab
15. Himachal Pradesh
16. Jammu & Kashmir and Ladakh
17. West Rajasthan
18. East Rajasthan
19. West Madhya Pradesh
20. East Madhya Pradesh
21. Gujarat
22. Saurashtra
23. Konkan & Goa
24. Madhya Maharashtra
25. Marathwada
26. Vidarbha
27. Chhattisgarh
28. Coastal Andhra Pradesh & Yanam
29. Telangana
30. Rayalaseema
31. Tamilnadu, Puducherry & Karaikal
32. Coastal Karnataka
33. North Interior Karnataka
34. South Interior Karnataka
35. Kerala & Mahe
36. Lakshadweep

## SPATIAL DISTRIBUTION (% of Stations reporting)

% Stations	Category	% Stations	Category
76-100	Widespread (WS/Most Places)	26-50	Scattered (SCT/A Few Places)
51-75	Fairly Widespread (FWS/Many Places)	1-25	Isolated (ISOL)



Fog



Heavy Snow



Cold Wave

### COLOUR CODED WARNING

No Warning (No Action)

Watch (Be Aware)

Alert (Be Prepared To Take Action)

Warning (Take Action)



Heavy Rain



Dust Storm



Cold Day



Very Heavy Rain



Heat Wave



Ground Frost



Extremely Heavy Rain



Warm Night



Thunder & Lightning



Hot Day



Hailstorm



Hot & Humid



Dust Raising Winds



Strong Surface Winds

### Probabilistic Forecast

Terms	Probability of Occurrence (%)
Unlikely	< 25
Likely	25 - 50
Very Likely	50 - 75
Most Likely	> 75

## DEFINITION/CRITERIA

### Rain/ Snow \*

Heavy: 64.5 to 115.5 mm/cm \*  
Very Heavy: 115.6 to 204.4 mm/cm\*  
Extremely Heavy: > 204.4 mm/cm \*

### Heat Wave

When maximum temperature of a station reaches  $\geq 40^\circ\text{C}$  for plains and  $\geq 30^\circ\text{C}$  for hilly regions

(a) Based on Departure from normal

Heat Wave: Maximum Temperature Departure from normal  $4.5^\circ\text{C}$  to  $6.4^\circ\text{C}$ .

Severe Heat Wave: Maximum Temperature Departure from normal  $\geq 6.5^\circ\text{C}$

(b). Based on Actual maximum temperature

Heat Wave: When actual maximum temperature  $\geq 45^\circ\text{C}$ .

Severe Heat Wave: When actual maximum temperature  $\geq 47^\circ\text{C}$

( c ). Criteria for heat wave for coastal stations

When maximum temperature departure is  $> 4.5^\circ\text{C}$  from normal. Heat Wave may be described provided maximum temperature  $\geq 37^\circ\text{C}$

### Warm Night

When maximum temperature remains  $40^\circ\text{C}$

Warm Night: When minimum temperature departure  $4.5^\circ\text{C}$  to  $6.4^\circ\text{C}$ .

Severe Warm Night: When minimum temperature departure  $> 6.4^\circ\text{C}$ .

### Cold Wave

When minimum temperature of a station  $\leq 10^\circ\text{C}$  for plains and  $\leq 0^\circ\text{C}$  for hilly regions.

(a). Based on departure

Cold Wave: Minimum Temperature Departure from normal  $-4.5^\circ\text{C}$  to  $-6.4^\circ\text{C}$ .

Severe Cold Wave: Minimum Temperature Departure from normal  $\leq -6.5^\circ\text{C}$

(b) Based on actual Minimum Temperature (for Plains only)

Cold Wave : When Minimum Temperature is  $\leq 4.0^\circ\text{C}$

Severe Cold Wave: When Minimum Temperature is  $\leq 2.0^\circ\text{C}$

( c ) For Coastal Stations

When Minimum Temperature departure is  $\leq -4.5^\circ\text{C}$  & actual Minimum Temperature is  $\leq 15^\circ\text{C}$

### Cold Day

When minimum temperature of a station  $\leq 10^\circ\text{C}$  for plains and  $\leq 0^\circ\text{C}$  for hilly regions  
Based on departure

Cold Day: Maximum Temperature Departure from normal  $-4.5^\circ\text{C}$  to  $-6.4^\circ\text{C}$ .

Severe Cold Day: Maximum Temperature Departure from normal  $\leq -6.5^\circ\text{C}$

### Fog

Phenomenon of small droplets suspended in air and the horizontal visibility  $< 1\text{km}$

Moderate Fog: When the visibility between 500-200 metres

Dense Fog: when the visibility between 50- 200 metres

Very Dense Fog: when the visibility  $< 50$  metres

### Thunderstorm

Sudden electrical discharges manifested by a flash of light (Lightning) and a sharp rumbling sound (thunder)

### Dust/Sand Storm

An ensemble of particles of dust or sand energetically lifted to great heights by a strong and turbulent wind.

### Frost

Ice deposits on ground

Air temperature  $\leq 4^\circ\text{C}$  ( over Plains)

### Squall

A strong wind that rises suddenly, lasts for atleast 1 minute.

Moderate: Wind speed 52-61 kmph

Severe: Wind speed 62-87 kmph

Very Severe: Wind speed  $> 87$  kmph

### Sea State

Effect of various waves in the sea over specific area

Rough to very rough: Wind speed 41-62 kmph (22-33 knots) & Wave height 2.5-6 metre

High to very high: Wind speed 63-117 kmph ( 34-63 knots) & Wave height 6-14 metre

Phenomenal: Wind speed  $> 117$  kmph ( $> 63$  knots) & Wave height  $> 14$  metre

### Cyclone

Cyclonic Storm: Wind speed 62-87 kmph (34-47 knots)

Severe Cyclonic Storm: Wind speed 88-117 kmph (48-63 knots)

Very Severe Cyclonic Storm: Wind speed 118-165 kmph (64 - 89 knots)

Extremely Severe Cyclonic Storm: Wind speed 166-220 kmph (90 -119 knots)

Super Cyclone Strom: Wind speed  $> 220$  kmph ( $> 119$  knots)