

Wednesday, May 28, 2025  
Time of Issue: 0845 hours IST  
(MORNING)

## ALL INDIA WEATHER SUMMARY AND FORECAST BULLETIN

### Significant Weather Features:

#### South peninsular India:

- ❖ Fairly widespread to widespread light/moderate rainfall accompanied with **thunderstorm, lightning & gusty winds speed reaching 40-50 kmph with heavy to very heavy rainfall at a few places over Kerala & Mahe, Coastal Karnataka and at isolated places over South Interior Karnataka during 28<sup>th</sup> May-02<sup>nd</sup> June; over interior Karnataka during 28<sup>th</sup>-30<sup>th</sup> May.**
- ❖ Isolated **extremely heavy rainfall** very likely over Kerala & Mahe during 28<sup>th</sup>-30<sup>th</sup> May.
- ❖ **Scattered to fairly widespread** light/moderate rainfall accompanied with **thunderstorm, lightning & gusty winds speed reaching 40-50 kmph** likely over Coastal Andhra Pradesh & Yanam, Rayalaseema and Telangana during next 5 days. **Isolated heavy rainfall** likely over Coastal Andhra Pradesh & Yanam, Telangana during 28<sup>th</sup> -29<sup>th</sup>, Rayalaseema on 28<sup>th</sup> with very heavy rainfall over Telangana on 28<sup>th</sup> & 29<sup>th</sup> May.
- ❖ **Isolated to scattered** light/moderate rainfall accompanied with **thunderstorm, lightning & gusty winds speed reaching 40-50 kmph with heavy rainfall at a few places with very heavy rainfall at isolated places very likely over Tamilnadu Puducherry & Karaikal during 28<sup>th</sup> May-02<sup>nd</sup> June Thundersquall wind speed reaching 50-60 kmph gusting to 70 kmph** likely over South Interior Karnataka during 28<sup>th</sup>-30<sup>th</sup>, Coastal Andhra Pradesh & Yanam, Rayalaseema during 28<sup>th</sup>-29<sup>th</sup> May.

#### West India:

- ❖ **Scattered to fairly widespread** light/moderate rainfall accompanied with **thunderstorm, lightning & gusty winds speed reaching 40-50 kmph over Konkan & Goa, Madhya Maharashtra during 28<sup>th</sup> May-02<sup>nd</sup> June; Gujarat State, Marathwada during 28<sup>th</sup>-29<sup>th</sup> May with Thundersquall wind speed reaching 50-60 kmph gusting to 70 kmph** likely over Gujarat State on 28<sup>th</sup> May.
- ❖ **Isolated heavy rainfall** likely over Gujarat State during 28<sup>th</sup>-29<sup>th</sup> and isolated **heavy to very heavy rainfall** at some places over Konkan & Goa during 28<sup>th</sup> May-02<sup>nd</sup> June, Madhya Maharashtra during 28<sup>th</sup>-29<sup>th</sup> May.

#### Northeast India:

- ❖ **Fairly widespread to widespread** light/moderate rainfall accompanied with **thunderstorm, lightning** over Northeast India during next 7 days. **Isolated heavy to very heavy rainfall** likely over Arunachal Pradesh, Assam & Meghalaya, Nagaland, Manipur, Mizoram & Tripura during 28<sup>th</sup> May - 02<sup>nd</sup> June
- ❖ Isolated **extremely heavy rainfall** very likely over Mizoram on 28<sup>th</sup>, Assam & Meghalaya on 29<sup>th</sup> & 30<sup>th</sup> May.

#### East & Central India:

- ❖ **Scattered to fairly widespread** light/moderate rainfall accompanied with **thunderstorm, lightning & gusty winds speed reaching 40-50 kmph** likely over Vidarbha, Chhattisgarh, West Bengal & Sikkim, Jharkhand, Odisha during 28<sup>th</sup>-31<sup>st</sup> May. **Isolated to scattered** light/moderate rainfall accompanied with **thunderstorm, lightning & gusty winds speed reaching 40-50 kmph** likely over Madhya Pradesh, Bihar during 28<sup>th</sup>-31<sup>st</sup> May with **Thundersquall wind speed reaching 50-60 kmph gusting to 70 kmph** likely over Odisha during 28<sup>th</sup>-29<sup>th</sup>, Bihar on 29<sup>th</sup> May.
- ❖ **Isolated heavy rainfall** likely over Andaman & Nicobar Islands on 28<sup>th</sup>, Chhattisgarh during 28<sup>th</sup>-29<sup>th</sup>, Gangetic West Bengal, Odisha during 28<sup>th</sup>-31<sup>st</sup>, Jharkhand during 28<sup>th</sup>-30<sup>th</sup>, Sub-Himalayan West Bengal & Sikkim during 29<sup>th</sup> May-01<sup>st</sup> June with isolated **very heavy rainfall** over Odisha on 29<sup>th</sup>, Gangetic West Bengal during 29<sup>th</sup>-30<sup>th</sup>, Sub-Himalayan West Bengal & Sikkim during 29<sup>th</sup> -31<sup>st</sup> May.
- ❖ Isolated **extremely heavy rainfall** very likely over Sub-Himalayan West Bengal & Sikkim on 30<sup>th</sup> May.

#### Northwest India:

- ❖ **Scattered to fairly widespread** light/moderate rainfall accompanied with **thunderstorm, lightning & gusty winds speed reaching 40-50 kmph** likely over likely over Jammu-Kashmir-Ladakh-Gilgit-Baltistan-Muzaffarabad, Himachal Pradesh, Uttarakhand, Punjab, Haryana Chandigarh & Delhi; isolated to scattered rainfall over Uttar Pradesh, Rajasthan during 28<sup>th</sup> May-02<sup>nd</sup> June with **Thundersquall wind speed reaching 50-60 kmph gusting to 70 kmph** likely over Jammu-Kashmir-Ladakh-Gilgit-Baltistan-Muzaffarabad on 28<sup>th</sup> & 29<sup>th</sup>, Punjab on 29<sup>th</sup> & 30<sup>th</sup>, Himachal Pradesh, Haryana Chandigarh & Delhi on 30<sup>th</sup> & 31<sup>st</sup>, West Uttar Pradesh on 31<sup>st</sup>, East Rajasthan on 29<sup>th</sup> & 30<sup>th</sup> May.
- ❖ **Isolated hailstorm** over Himachal Pradesh on 28<sup>th</sup> May.
- ❖ **Isolated heavy rainfall** also likely over Uttarakhand during 28<sup>th</sup> May-02<sup>nd</sup> June; Himachal Pradesh on 31<sup>st</sup> May.

#### Maximum Temperature Forecast:

- ❖ Rise by about 2-3°C in maximum temperatures likely over Northwest India during next 24 hours and gradual fall by 2-4°C thereafter for subsequent 4-5 days.
- ❖ No significant change in maximum temperatures likely over Central India during next 2 days and gradual rise by 2-3°C thereafter for subsequent 4 days.
- ❖ No significant change in maximum temperatures likely over East India during next 4 days and gradual rise by 2-3°C thereafter for subsequent 2 days.
- ❖ No significant change in maximum temperatures likely over rest parts of the country.

#### Heat wave warnings:

- ❖ **Heat wave conditions** very likely in isolated pockets of West Rajasthan on 28<sup>th</sup> May.

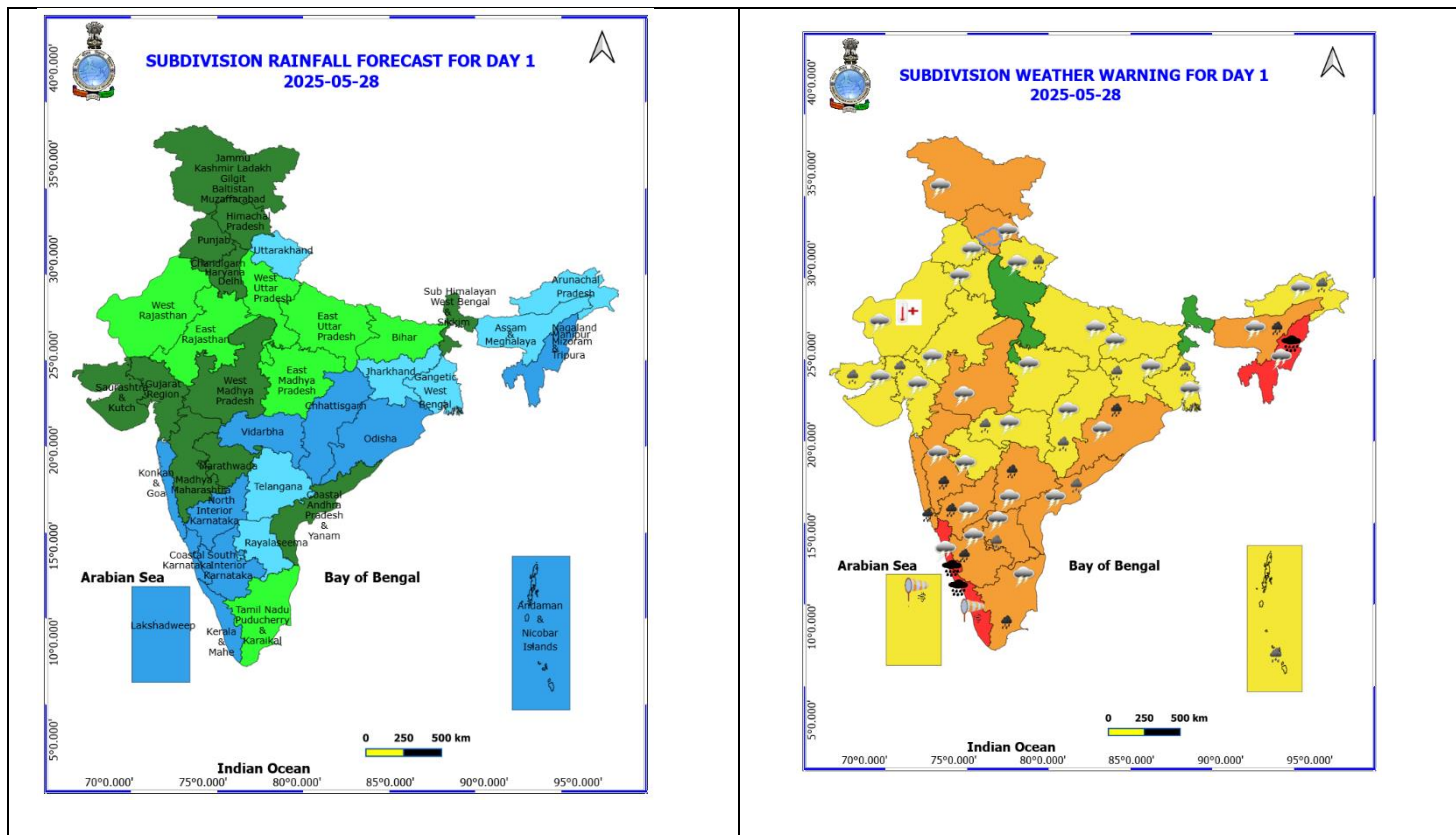
## Main Weather Observations:

- ❖ **Significant rainfall recorded(in cm)** (from 0830 hours IST to 1730 hours IST of yesterday): **Konkan & Goa** : Alibag (dist Raigad) 18, Ratnagiri (dist Ratnagiri), Mumbai (Colaba) (dist ) 2 Each; **Madhya Maharashtra** : Ahmednagar (dist Ahmednagar) 7, Pune- Shivajinagar (dist Pune) 2; **Telangana**: Adilabad (dist Adilabad) 5, Ramgundam (dist Peddapalli) 2; **Kerala & Mahe**: Palakkad (Palghat) (dist Palakkad), Karipur, Kozhikode (dist Kozhikode) 5 Each, Kozhikode (Calicut) (dist Kozhikode) 2; **Saurashtra & Kutch**: Mahuva (dist Bhavnagar) 4; **Marathawada**: Beed (Bir) (dist Beed) 4; **Coastal Karnataka**: Honavar (dist Uttara Kannada) 3, Mangalore (Bajpe) AP (dist Dakshina Kannada) 2; **Odisha**: Sambalpur (dist Sambalpur), Paradip Port (dist Jagatsinghapur), Bhawani Patna (dist Kalahandi) 3 Each, Chandbali (dist Bhadrak), Dhenkanal (dist Dhenkanal) 2 Each; **Tamilnadu Puducherry & Karaikal**: Valparai(Upasitri) (dist Coimbatore) 3; **Chhattisgarh**: Raipur-Lalpur (dist Raipur), Pendra Road (dist Gaurella-Pendra-Marwahi) 2 Each.
- ❖ **Heavy Rainfall observed** (from 0830 hours IST to 1730 hours IST of yesterday): **Heavy to very heavy rain** at isolated places over Konkan & Goa; **Heavy rain** at isolated places over Madhya Maharashtra.
- ❖ **Minimum Temperature Departures (as on 27-05-2025)**: Minimum Temperature Departures were **markedly above normal (> 5.1°C)** at few places over Himachal Pradesh, West Rajasthan, East Madhya Pradesh and Gujarat Region; at isolated places over Assam & Meghalaya, Bihar, East Uttar Pradesh, West Uttar Pradesh, Jammu-KashmirLadakh-Gilgit-Baltistan-Muzaffarabad, West Madhya Pradesh and Saurashtra & Kutch. **appreciably above normal (3.1°C to 5.0°C)** at few places over Sub Himalayan West Bengal & Sikkim; at isolated places over Odisha, Punjab and East Rajasthan. **above normal (1.6°C to 3.0°C)** at few places over Arunachal Pradesh, Uttarakhand and Haryana-Chandigarh-Delhi; at isolated places over Andaman & Nicobar Islands, Gangetic West Bengal, Jharkhand, Madhya Maharashtra, Rayalaseema and Tamil Nadu, Puducherry & Karaikal. These were **near normal (-1.5°C to 1.5°C)** at many places over Konkan & Goa, Coastal Andhra Pradesh & Yanam, Kerala & Mahe and Lakshadweep; at most places over Nagaland, Manipur, Mizoram & Tripura and South Interior Karnataka; at few places over Vidarbha and North Interior Karnataka; at isolated places over Chhattisgarh and Telangana. **The lowest minimum temperature** of 17.6°C was reported at **Matheran (Maharashtra)** over the Plains of India.
- ❖ **Maximum Temperature Departures (as on 27-05-2025)**: Maximum Temperature were **markedly above normal (> 5.1°C)** at few places over Jammu-KashmirLadakh-Gilgit-Baltistan-Muzaffarabad; at isolated places over Assam & Meghalaya. **appreciably above normal (3.1°C to 5.0°C)** at few places over Arunachal Pradesh, Sub Himalayan West Bengal & Sikkim and Himachal Pradesh; at isolated places over Nagaland, Manipur, Mizoram & Tripura, West Uttar Pradesh, West Rajasthan, East Madhya Pradesh and Tamil Nadu, Puducherry & Karaikal. **above normal (1.6°C to 3.0°C)** at isolated places over Bihar and Saurashtra & Kutch. **near normal (-1.5°C to 1.5°C)** at many places over East Rajasthan; at most places over Lakshadweep; at few places over Andaman & Nicobar Islands, Odisha, East Uttar Pradesh, Uttarakhand, Punjab, Gujarat Region and Coastal Andhra Pradesh & Yanam; at isolated places over Gangetic West Bengal, Haryana-Chandigarh-Delhi, West Madhya Pradesh, South Interior Karnataka and Kerala & Mahe. **The highest maximum temperature of 46.6°C was reported at Barmer (West Rajasthan).**

## Meteorological Analysis (Based on 0530 hours IST)

- ❖ The Northern Limit of Monsoon continues to pass through 17.0°N/55°E, 17.5°N/60°E, 18°N/65°E, 18.5°N/70°E, Mumbai, Pune, Sholapur, Kalaburagi, Mahbubnagar, Kavali, 16.5°N/83°E, 19°N/86°E, 21°N/89°E, Agartala, Goalpara and 28.5°N/89°E.
- ❖ Conditions are favourable for further advance of Southwest Monsoon into remaining parts of central Arabian Sea, some more parts of Maharashtra, remaining parts of Karnataka, some more parts of Telangana, Andhra Pradesh, some parts of Chhattisgarh & Odisha, most parts of westcentral & some more parts of North Bay of Bengal and remaining parts Northeastern states and some parts of West Bengal and Sikkim during next 2-3 days.
- ❖ The Low Pressure area over Northwest Bay of Bengal off Odisha coast became well marked over the same region at 0530 hrs IST of today, the 28th May 2025; with the associated cyclonic circulation extending upto 7.6 km above mean sea level tilting southwards with height. It is likely to move slowly northwards and concentrate into a Depression during next 24 hours.
- ❖ The **Western Disturbance** in middle tropospheric westerlies with its axis at 5.8 km above mean sea level now runs roughly along Long. 70°E to north of Lat. 30°N.
- ❖ An **upper air cyclonic circulation** lies over south Punjab and its neighbourhood and extends upto 1.5 km above mean sea level.
- ❖ An **upper air cyclonic circulation** lies over central parts of Rajasthan at 0.9 km above mean sea level.
- ❖ The **upper air cyclonic circulation** over central parts of west Madhya Pradesh now lies over northeast Madhya Pradesh at 1.5km above mean sea level.
- ❖ The **trough** now runs from southwest Rajasthan to Chhattisgarh across east Rajasthan and Madhya Pradesh at 0.9 km above mean sea level.
- ❖ The **shear zone** roughly along the Lat. 17°N over the Indian Region between 3.1 and 7.6 km above mean sea level tilting southwards with height persists.
- ❖ The **upper air cyclonic circulation** over North Konkan & adjoining Eastcentral Arabian Sea at 1.5 km above mean sea level persists.
- ❖ The **cyclonic circulation** over south Chhattisgarh & adjoining east Vidarbha at 1.5 km above mean sea level persists has become less marked.
- ❖ The **upper air cyclonic circulation** over northeast Assam & neighbourhood at 1.5 km above mean sea level has become less marked.
- ❖ The **upper air cyclonic circulation** over west Assam & neighbourhood at 3.1 km above mean sea level has become less marked.

Weather Forecast & Warnings for next 7 days (Upto 0830 hours IST of 04<sup>th</sup> June, 2025)

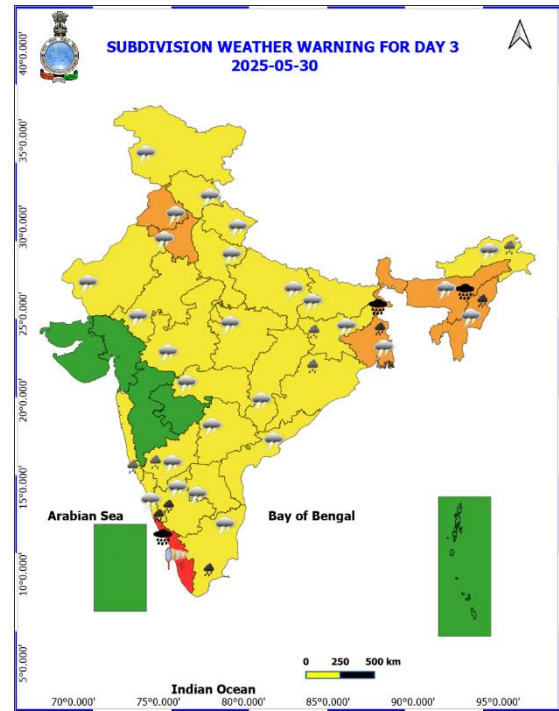
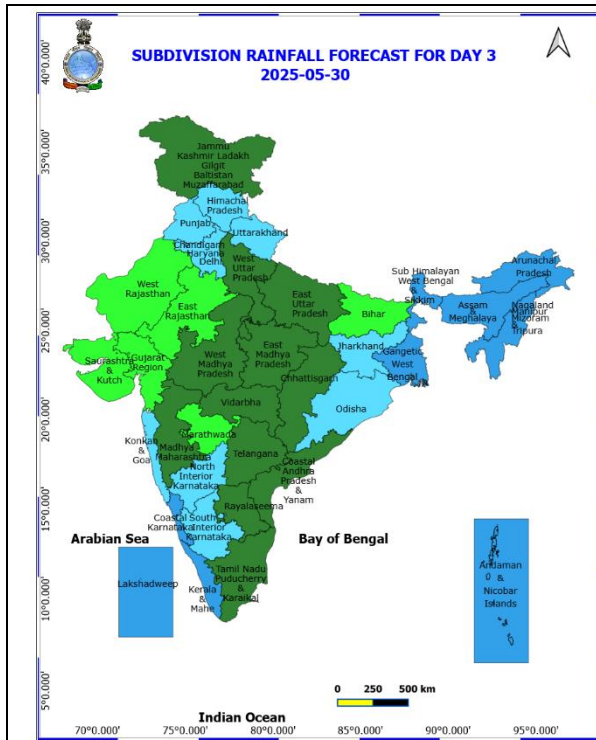


28<sup>th</sup> May (Day 1)

- ❖ **Heavy to Very Heavy Rainfall with isolated Extremely Heavy Rainfall** very likely at isolated places over Costal Karnataka, Kerala & Mahe and Nagaland, Manipur, Mizoram and Tripura.
- ❖ **Heavy to Very Heavy Rainfall** very likely at isolated places over Assam & Meghalaya, Interior Karnataka, Konkan & Goa, Madhya Maharashtra, Odisha, Tamil Nadu Puducherry & Karaikal and Telangana.
- ❖ **Heavy Rainfall** very likely at isolated places over Andaman & Nicobar Islands, Andhra Pradesh, Arunachal Pradesh, Chhattisgarh, Gangetic West Bengal, Gujarat State, Jharkhand, Uttarakhand and Vidarbha.
- ❖ **Thunderstorm accompanied with Hailstorm** very likely at isolated places over Himachal Pradesh.
- ❖ **Thundersquall with wind speed reaching(50-60kmph)** very likely at isolated places over Andhra Pradesh, Jammu-Kashmir-Ladakh-Gilgit-Baltistan-Muzaffarabad, Odisha and South Interior Karnataka.
- ❖ **Thunderstorm accompanied with lightning & gusty winds(40-50kmph)** very likely at isolated places over Chhattisgarh, Costal Karnataka, Gujarat State, Haryana, Chandigarh & Delhi, Himachal Pradesh, Madhya Pradesh, Nagaland, Manipur, Mizoram and Tripura, North Interior Karnataka, Punjab, Tamil Nadu Puducherry & Karaikal, Uttarakhand, Vidarbha and West Rajasthan.
- ❖ **Thunderstorm accompanied with lightning & gusty winds(30-40kmph)** very likely at isolated places over Bihar, East Rajasthan, East Uttar Pradesh, Gangetic West Bengal, Jharkhand and Telangana.
- ❖ **Thunderstorm accompanied with Lightning** very likely at isolated places over Arunachal Pradesh, Assam & Meghalaya, Madhya Maharashtra and Marathwada.
- ❖ **Strong Surface Winds** very likely at isolated places over Kerala & Mahe and Lakshadweep.
- ❖ **Heat Wave conditions** very likely at isolated places over West Rajasthan.
- ❖ **Squally wind with speed 45 kmph to 55 kmph gusting to 65 kmph** likely to prevail along and off Somalia coast and northern parts of southwest Arabian Sea and adjoining west central Arabian Sea. **Squally wind speed reaching 40-50 kmph** likely over north and adjoining central Bay of Bengal, along & off Odisha, West Bengal and Bangladesh coasts. **Squally weather with wind speed 35 kmph to 45 kmph gusting to 55 kmph** prevailing over south Arabian Sea, eastcentral Arabian Sea, many parts of westcentral Arabian Sea; along and off Konkan, Goa, Kerala, Karnataka coasts, over Lakshadweep area, Maldives area, Comorin area, over Gulf of Mannar, along and off Sri Lanka, Tamil Nadu, Andhra Pradesh and Myanmar coasts over south Bay of Bengal; over Andaman Sea. **Squally weather with wind speed 45 kmph to 55 kmph gusting to 65 kmph** prevailing along and off Konkan coast, many parts of south Bay of Bengal and some parts of central Bay of Bengal. Fishermen are advised not to venture into these areas.

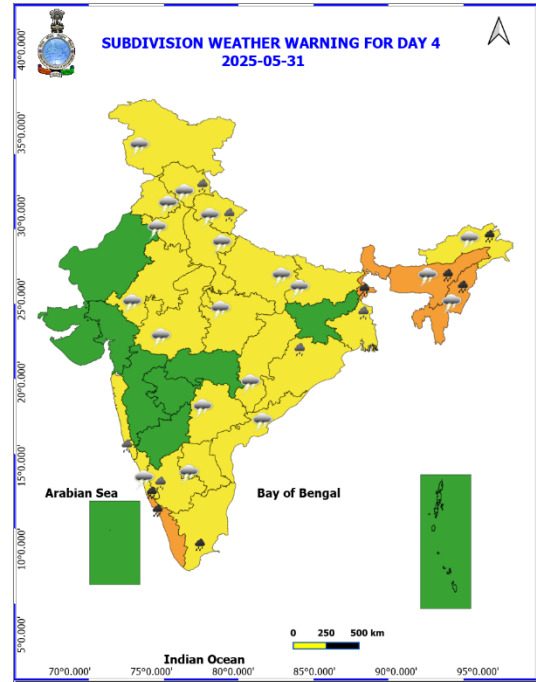
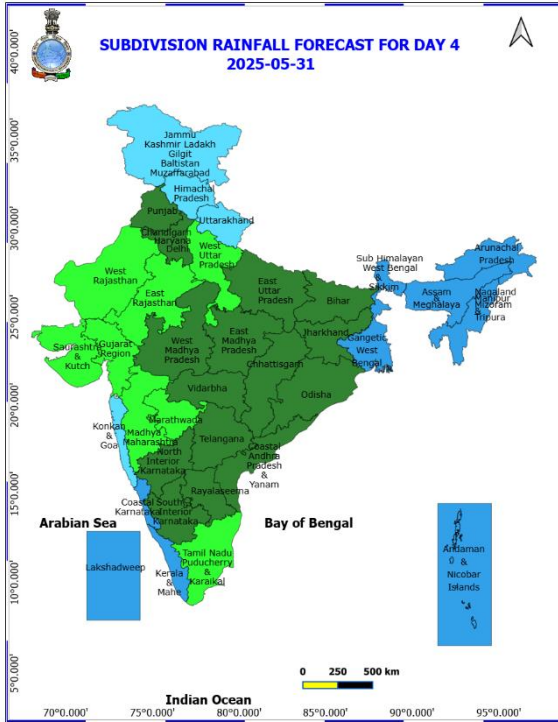
\* Red colour warning does not mean "Red Alert", Red colour warning means "Take Action".  
Forecast and Warning for any day is valid from 0830 hours IST of day till 0830 hours IST of next day.  
For more details, kindly visit <https://mausam.imd.gov.in> or contact: 011-2434-4599  
(Service to the Nation since 1875)





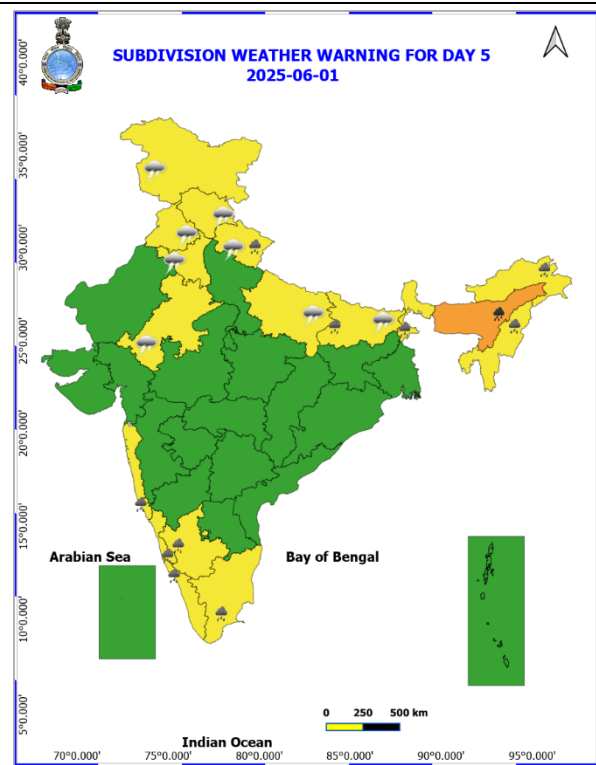
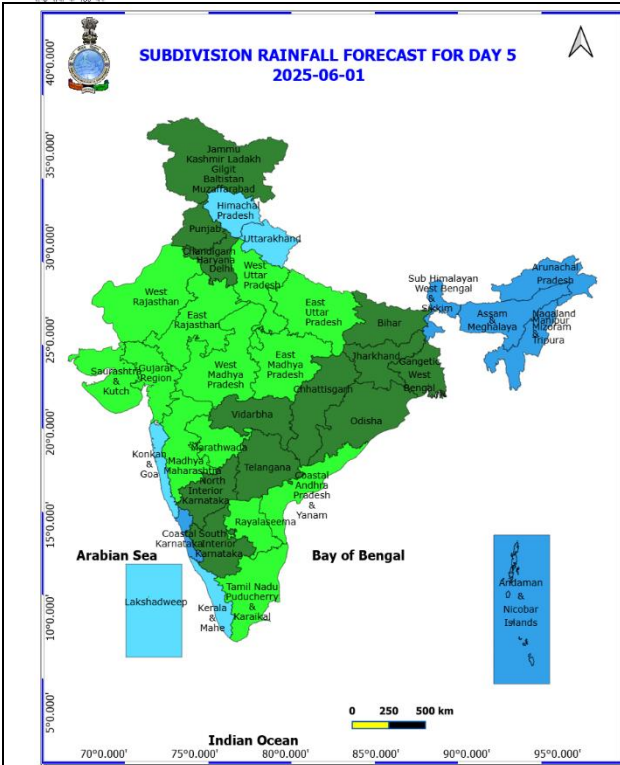
### 30<sup>th</sup> May (Day 3)

- ❖ **Heavy to Very Heavy Rainfall with isolated Extremely Heavy Rainfall** likely at isolated places over Assam & Meghalaya, Kerala & Mahe and Sub Himalayan West Bengal & Sikkim.
- ❖ **Heavy to Very Heavy Rainfall** likely at isolated places over Costal Karnataka, Gangetic West Bengal, Nagaland, Manipur, Mizoram and Tripura, South Interior Karnataka and Tamil Nadu Puducherry & Karaikal.
- ❖ **Heavy Rainfall** likely at isolated places over Arunachal Pradesh, Jharkhand, Konkan & Goa, North Interior Karnataka and Odisha.
- ❖ **Thundersquall with wind speed reaching(50-60kmph)** likely at isolated places over East Rajasthan, Haryana, Chandigarh & Delhi, Himachal Pradesh, Punjab and South Interior Karnataka.
- ❖ **Thunderstorm accompanied with lightning & gusty winds(40-50kmph)** likely at isolated places over Andhra Pradesh, Chhattisgarh, Costal Karnataka, Gangetic West Bengal, Jammu-Kashmir-Ladakh-Gilgit-Baltistan-Muzaffarabad, Madhya Pradesh, North Interior Karnataka, Uttar Pradesh and West Rajasthan.
- ❖ **Thunderstorm accompanied with lightning & gusty winds(30-40kmph)** likely at isolated places over Assam & Meghalaya, Bihar, Nagaland, Manipur, Mizoram and Tripura, Tamil Nadu Puducherry & Karaikal, Telangana, Uttarakhand and Vidarbha.
- ❖ **Thunderstorm accompanied with Lightning** likely at isolated places over Arunachal Pradesh and Jharkhand.
- ❖ **Strong Surface Winds** likely at isolated places over Kerala & Mahe.
- ❖ **Squally wind with speed 45 kmph to 55 kmph gusting to 65 kmph** likely to prevail along and off Somalia coast and northern parts of southwest Arabian Sea and adjoining parts of west central, eastcentral and southeast Arabian Sea, along and off Gujarat coast and adjoining northeast Arabian Sea. **Squally weather with wind speed 35 kmph to 45 kmph gusting to 55 kmph** prevailing over entire south Arabian Sea, eastcentral Arabian Sea, most parts of westcentral Arabian Sea; along and off Konkan, Goa, Kerala, Karnataka coasts, over Lakshadweep area, Maldives area, Comorin area, over Gulf of Mannar, along and off Sri Lanka, Tamil Nadu, Andhra Pradesh, Odisha and West Bengal, Bangladesh, Myanmar coasts, over entire south Bay of Bengal, central and north Bay of Bengal; over Andaman Sea. **Squally weather with wind speed 45 kmph to 55 kmph gusting to 65 kmph** prevailing along and off, many parts of south Bay of Bengal and some parts of central Bay of Bengal. Fishermen are advised not to venture into these areas.



### 31<sup>th</sup> May (Day 4)

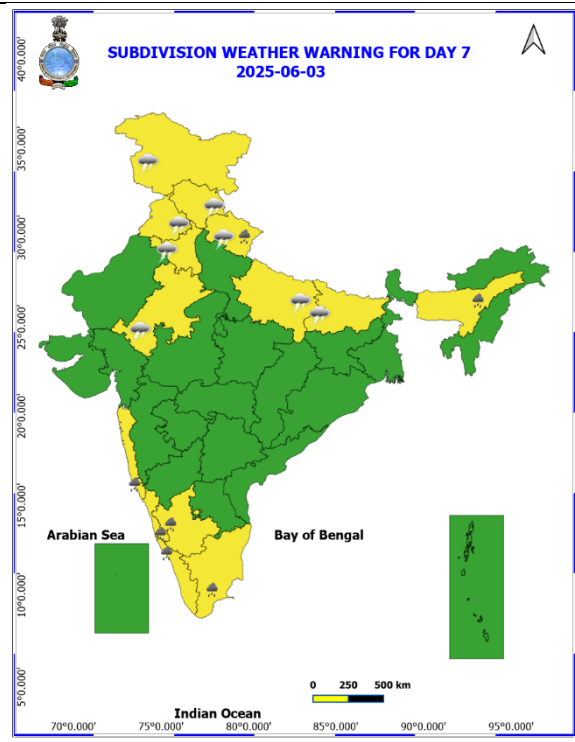
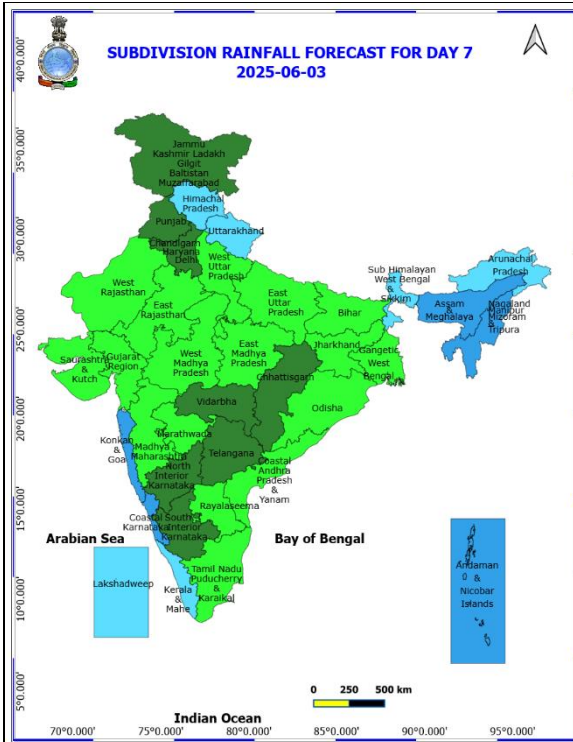
- ❖ **Heavy to Very Heavy Rainfall** likely at isolated places over Arunachal Pradesh, Assam & Meghalaya, Costal Karnataka, Kerala & Mahe, Nagaland, Manipur, Mizoram and Tripura, Sub Himalayan West Bengal & Sikkim and Tamil Nadu Puducherry & Karaikal.
- ❖ **Heavy Rainfall** likely at isolated places over Gangetic West Bengal, Himachal Pradesh, Konkan & Goa, Odisha, South Interior Karnataka and Uttarakhand.
- ❖ **Thundersquall with wind speed reaching(50-60kmph)** likely at isolated places over Haryana, Chandigarh & Delhi, Himachal Pradesh and West Uttar Pradesh.
- ❖ **Thunderstorm accompanied with lightning & gusty winds(40-50kmph)** likely at isolated places over Andhra Pradesh, Chhattisgarh, Costal Karnataka, East Rajasthan, East Uttar Pradesh, Jammu-Kashmir-Ladakh-Gilgit-Baltistan-Muzaffarabad and Madhya Pradesh.
- ❖ **Thunderstorm accompanied with lightning & gusty winds(30-40kmph)** likely at isolated places over Bihar, Telangana and Uttarakhand.
- ❖ **Thunderstorm accompanied with Lightning** likely at isolated places over Arunachal Pradesh, Assam & Meghalaya, Nagaland, Manipur, Mizoram and Tripura and Punjab.
- ❖ **Squally wind with speed 45 kmph to 55 kmph gusting to 65 kmph** likely to prevail along and off Somalia coast and northern parts of southwest Arabian Sea and adjoining parts of west central, eastcentral and southeast Arabian Sea, along and off Gujarat coast and adjoining northeast Arabian Sea. **Squally weather with wind speed 35 kmph to 45 kmph gusting to 55 kmph** prevailing over entire south Arabian Sea, eastcentral Arabian Sea, most parts of westcentral Arabian Sea; along and off Konkan, Goa, Kerala, Karnataka coasts, over Lakshadweep area, Maldives area, Comorin area, over Gulf of Mannar, along and off Sri Lanka, Tamil Nadu coasts, off Andhra Pradesh, Odisha coasts, along and off Myanmar coast, over most parts of south and central and north Bay of Bengal & adjoining parts of north Bay of Bengal. **Squally weather with wind speed 45 kmph to 55 kmph gusting to 65 kmph** prevailing over central parts of Bay of Bengal. Fishermen are advised not to venture into these areas.



### 01<sup>st</sup> June (Day 5)

- ❖ **Heavy to Very Heavy Rainfall** likely at isolated places over Assam & Meghalaya.
- ❖ **Heavy Rainfall** likely at isolated places over Arunachal Pradesh, Bihar, Costal Karnataka, Kerala & Mahe, Konkan & Goa, Nagaland, Manipur, Mizoram and Tripura, South Interior Karnataka, Sub Himalayan West Bengal & Sikkim, Tamil Nadu Puducherry & Karaikal and Uttarakhand.
- ❖ **Thunderstorm accompanied with lightning & gusty winds(40-50kmph)** likely at isolated places over East Rajasthan, East Uttar Pradesh, Himachal Pradesh and Jammu-Kashmir-Ladakh-Gilgit-Baltistan-Muzaffarabad.
- ❖ **Thunderstorm accompanied with lightning & gusty winds(30-40kmph)** likely at isolated places over Bihar and Uttarakhand.
- ❖ **Thunderstorm accompanied with Lightning** likely at isolated places over Haryana, Chandigarh & Delhi and Punjab.





### 03<sup>rd</sup> June (Day 7)

- ❖ **Heavy Rainfall** likely at isolated places over Assam & Meghalaya, Costal Karnataka, Kerala & Mahe, Konkan & Goa, South Interior Karnataka, Tamil Nadu Puducherry & Karaikal and Uttarakhand.
- ❖ **Thunderstorm accompanied with lightning & gusty winds(40-50kmph)** likely at isolated places over East Rajasthan, East Uttar Pradesh, Himachal Pradesh and Jammu-Kashmir-Ladakh-Gilgit-Baltistan-Muzaffarabad.
- ❖ **Thunderstorm accompanied with lightning & gusty winds(30-40kmph)** likely at isolated places over Bihar and Uttarakhand.
- ❖ **Thunderstorm accompanied with Lightning** likely at isolated places over Haryana, Chandigarh & Delhi and Punjab.

### Weather Outlook for subsequent 3 days (During 04<sup>th</sup> June- 06<sup>th</sup> June, 2025)

- ❖ **Fairly widespread to widespread** rainfall activity likely over Northeast India, West Bengal & Sikkim, Andaman & Nicobar Islands, Lakshadweep, Konkan & Goa, Coastal Karnataka and Kerala & Mahe.
- ❖ **Isolated to scattered** rainfall likely over Jammu-Kashmir-Ladakh, Uttarakhand, Himachal Pradesh, Odisha, south Chhattisgarh adjoining Coastal Andhra Pradesh & Yanam.

Action may be taken based on **ORANGE AND RED** COLOUR warnings.

- Vulnerable regions likely urban and hilly areas action may be initiated for heavy rainfall warning.
- As the lead period increases forecast accuracy decreases.

Fig. 1: Maximum Temperatures

Fig. 2: Departure of Maximum Temperatures

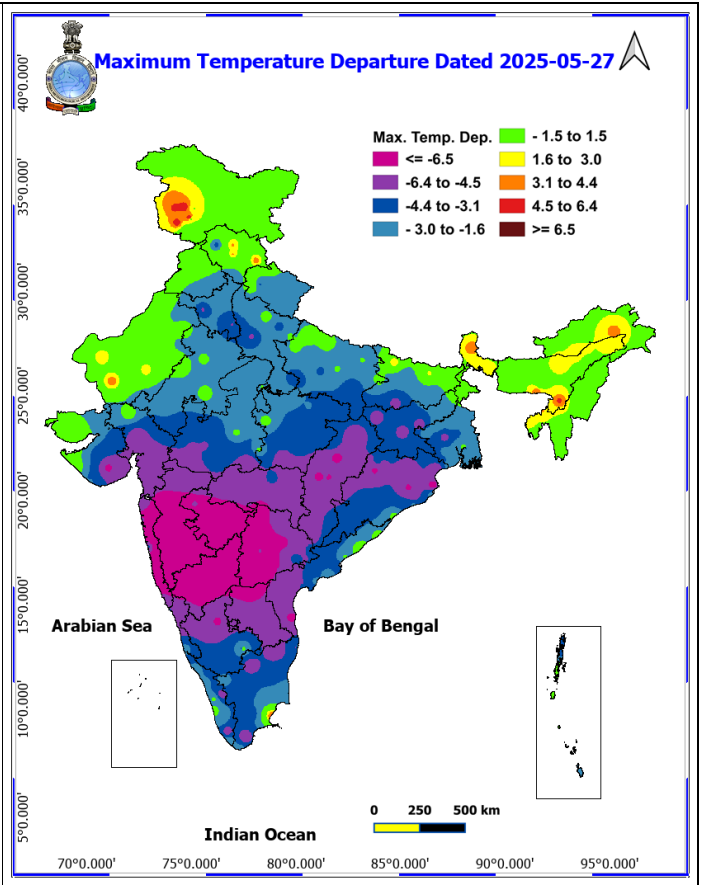
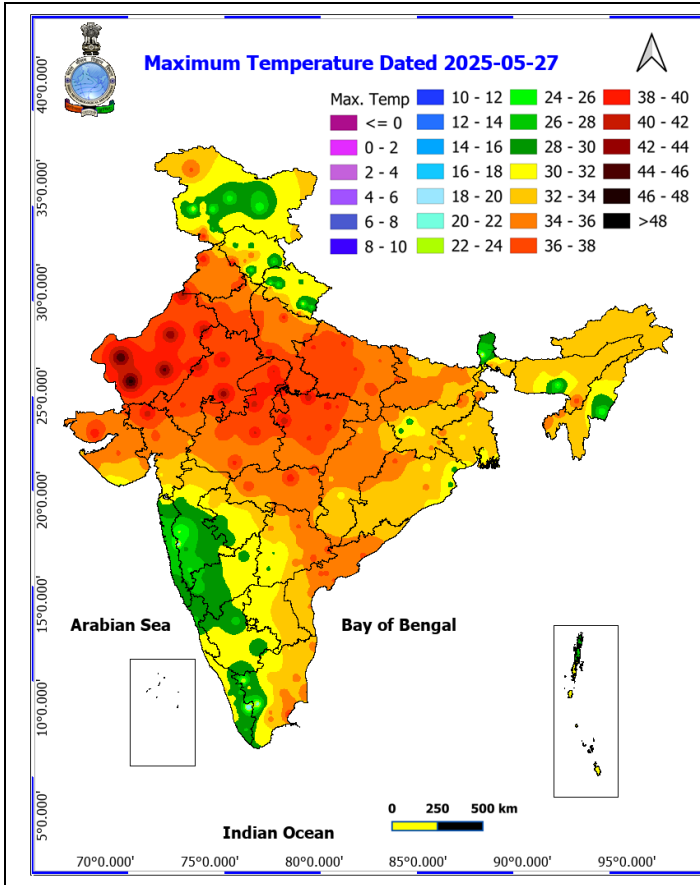


Fig. 3: Minimum Temperatures

Fig. 4: Departure of Minimum Temperatures

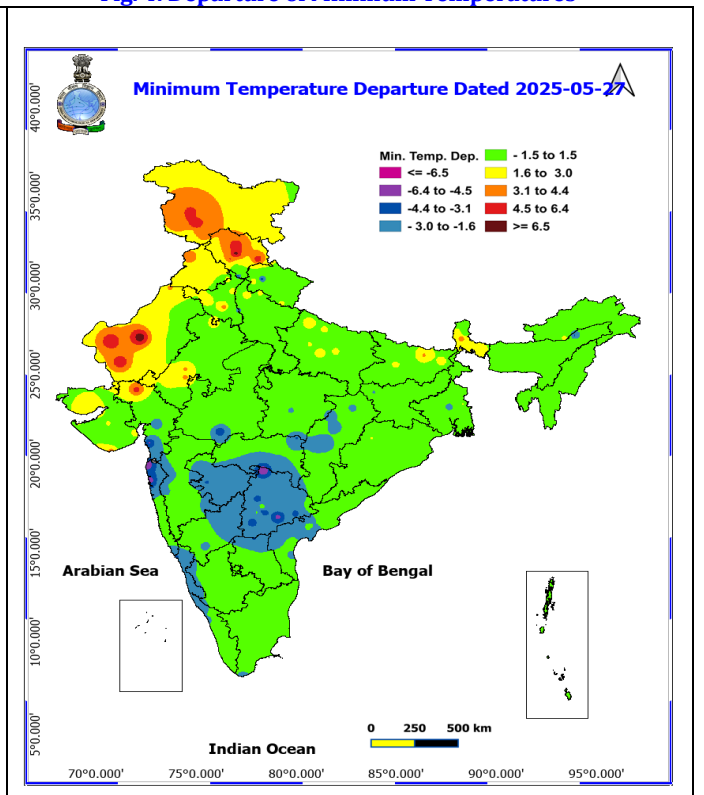
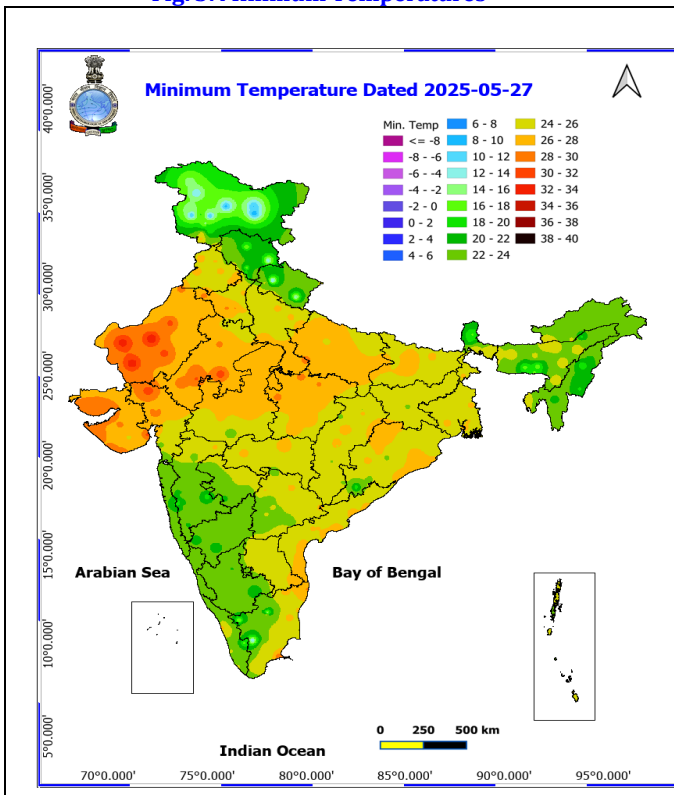
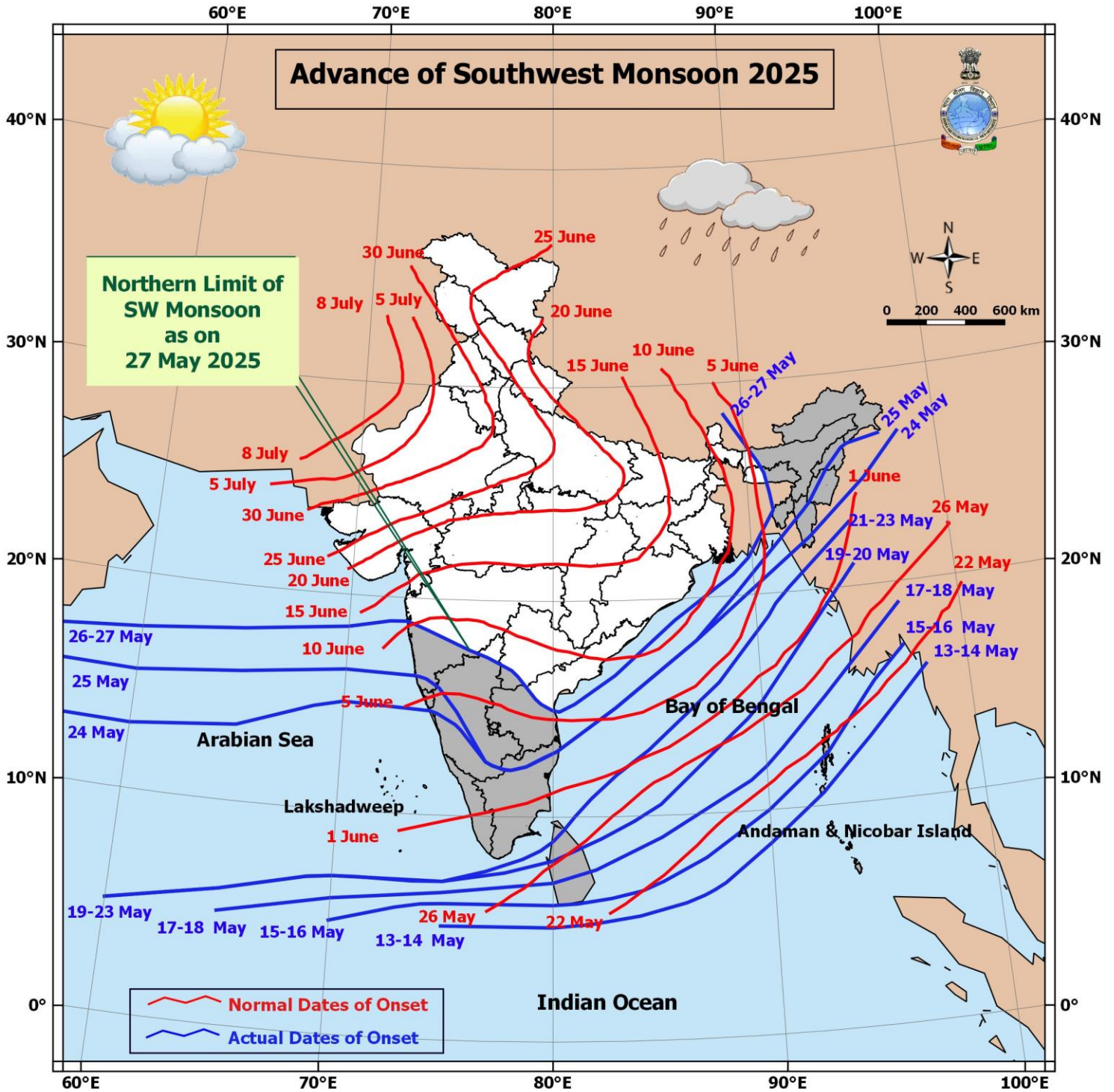
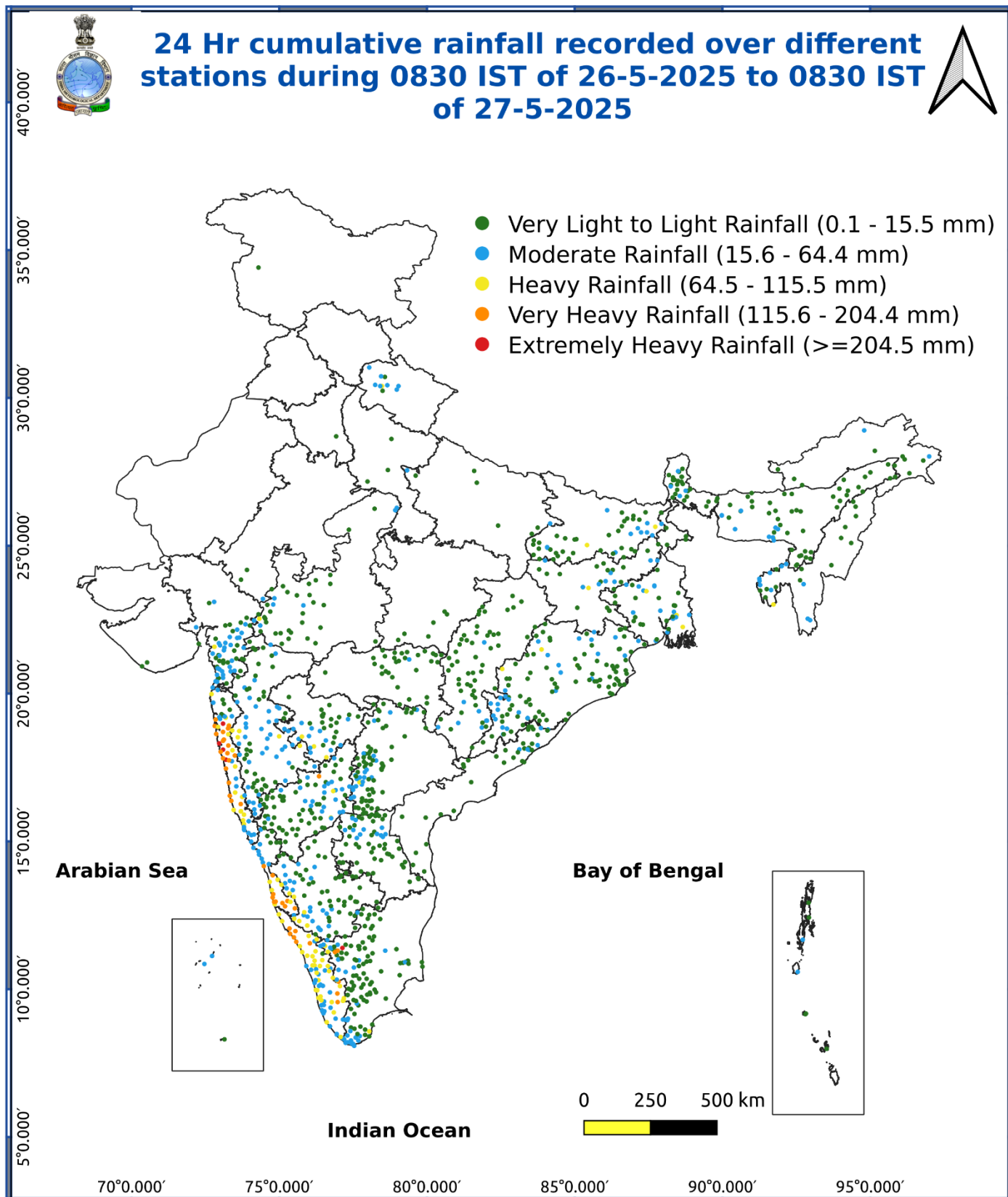


Fig. 5: Advance of Southwest Monsoon 2025



\* Red colour warning does not mean "Red Alert", Red colour warning means "Take Action".  
Forecast and Warning for any day is valid from 0830 hours IST of day till 0830 hours IST of next day.  
For more details, kindly visit <https://mausam.imd.gov.in> or contact: 011-2434-4599  
(Service to the Nation since 1875)

Fig. 6: Accumulated Rainfall (mm) during past 24 hours



\* Red colour warning does not mean "Red Alert", Red colour warning means "Take Action".  
Forecast and Warning for any day is valid from 0830 hours IST of day till 0830 hours IST of next day.  
For more details, kindly visit <https://mausam.imd.gov.in> or contact: 011-2434-4599  
(Service to the Nation since 1875)

### Impact expected and action suggested due to isolated thunderstorm with lightning/gusty & Squally winds & Hailstorm over

- ❖ **Thundersquall wind speed reaching 50-60 kmph gusting to 70 kmph** over likely over South Interior Karnataka during 28<sup>th</sup>-30<sup>th</sup>, Coastal Andhra Pradesh & Yanam, Rayalaseema, Odisha, Jammu-Kashmir-Ladakh-Gilgit-Baltistan-Muzaffarabad on 28<sup>th</sup> & 29<sup>th</sup>, Bihar on 29<sup>th</sup>, Himachal Pradesh, Haryana Chandigarh & Delhi on 30<sup>th</sup> & 31<sup>st</sup>, West Uttar Pradesh on 31<sup>st</sup>, East Rajasthan, Punjab on 29<sup>th</sup> & 30<sup>th</sup> May.
- ❖ **Isolated hailstorm** over Himachal Pradesh on 28<sup>th</sup> May.

#### Impact expected:

- Breaking of tree branches, uprooting of large avenue trees. Large dead limbs blown from trees. Damage to Standing crops.
- Minor to Major damage to banana and papaya trees.
- Minor to major damage to power and communication lines due to breaking of branches.
- Strong wind/hail may damage plantation, horticulture and standing crops.
- Hail may injure people and cattle at open places.
- Partial damage to vulnerable structures due to strong winds.
- Minor damage to kutcha houses/walls and huts.
- Loose objects may fly.

#### Action suggested:

- People are advised to keep a watch on the weather for worsening conditions and be ready to move to safer places accordingly.
- Stay indoors, close windows & doors and avoid travel if possible.
- Take safe shelters; do not take shelter under trees.
- Do not lie on concrete floors and do not lean against concrete walls.
- Unplug electrical/ electronic appliances.
- Immediately get out of water bodies.
- Keep away from all the objects that conduct electricity.

### Impact expected and action suggested due to Heat wave conditions in isolated pockets of West Rajasthan on 28<sup>th</sup> May.

#### Yellow alert Areas

- Moderate temperature & heat is tolerable for general public but moderate health concern likely for vulnerable people e.g. infants, elderly, people with chronic diseases.
- Avoid heat exposure.
- Wear lightweight, light colour, loose, cotton clothes.
- Cover your head, use a cloth, hat or umbrella.

### Agromet advisories for likely impact of Heavy Rainfall / Hailstorms / Gusty Winds / Heat Wave

- In **North Eastern States, Andaman & Nicobar Islands, Gangetic West Bengal, Odisha, Uttarakhand, West Madhya Pradesh, Chhattisgarh, Maharashtra, Gujarat, Tamil Nadu, Kerala, Karnataka, Coastal Andhra Pradesh and Telangana**, drain out excess water and ensure proper drainage in fields with standing crops and vegetables.
- In **Himachal Pradesh**, use hail nets and hail caps to prevent mechanical damage in vegetables and orchards due to the possibility of hailstorms.
- Shift the harvested produce in safer places or cover the produce with tarpaulin sheets in the fields. Tie the harvested crops properly and cover them to minimise the risk of displacement due to strong surface winds.
- Provide mechanical support to horticultural crops and staking to vegetables to avoid lodging.
- In **West Rajasthan**, apply light and frequent irrigation in the evening to protect standing crops, vegetables and orchards from the adverse effects of heat waves and high temperatures.

#### Livestock / Poultry / Fishery

- Keep the animals inside the shed during heavy rainfall / hailstorm and provide them balanced feed.
- Store feed and fodder in a safe place to prevent spoilage.
- Construct an outlet with proper netting around the ponds to drain out excess water, thereby preventing fish from escaping in case of overflow.
- To reduce the effect of heat wave/high temperature, cover the roof of poultry sheds with grass. Also, provide clean, hygienic and plenty of drinking water to animals.

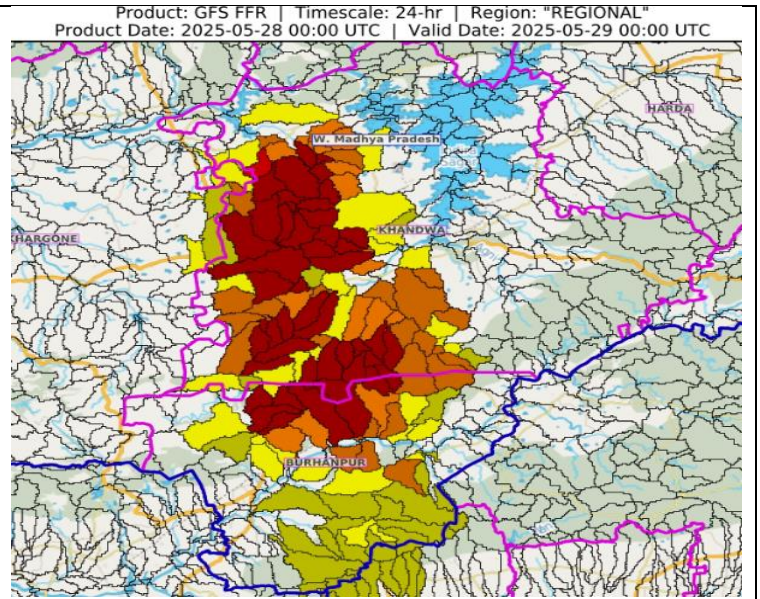
**Flash Flood Guidance:**

**24 hours Outlook for the Flash Flood Risk (FFR) till 0530 IST of 29-05-2025 :**

**Low to Moderate flash flood risk** likely over few watersheds & neighbourhoods of following Met Sub-divisions during next 24 hours.

**West Madhya Pradesh** - Burhanpur, Khandwa and Khargone districts.

Surface runoff/ Inundation may occur at some fully saturated soils & low-lying areas over Area of Concern (AoC) as shown in map due to expected rainfall occurrence in next 24 hours.

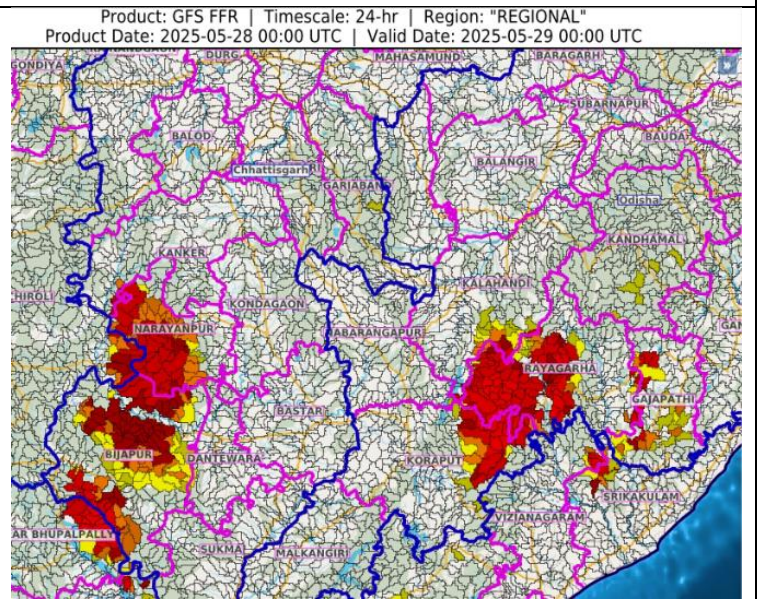


**24 hours Outlook for the Flash Flood Risk (FFR) till 0530 IST of 29-05-2025 :**

**Low to Moderate flash flood risk** likely over few watersheds & neighbourhoods of following Met Sub-divisions during next 24 hours.

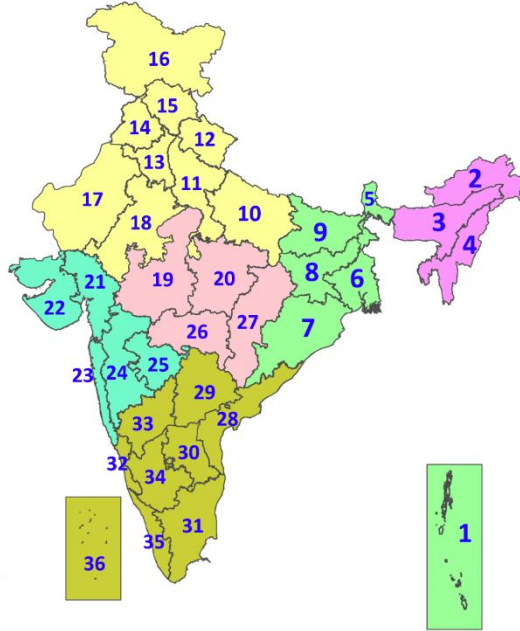
**Chhattisgarh** - Bijapur, Dantewara, Kanker and Narayanpur districts.  
**Odisha** - Gajapathi, Kalahandi, Kandhamal, Koraput and Rayagarha districts.

Surface runoff/ Inundation may occur at some fully saturated soils & low-lying areas over Area of Concern (AoC) as shown in map due to expected rainfall occurrence in next 24 hours.



## LEGENDS

1. अंडमान और निकोबार द्वीपसमूह
2. अरुणाचल प्रदेश
3. असम और मेघालय
4. नागालैंड, मणिपुर, मिजोरम और त्रिपुरा
5. उप-हिमालयी पश्चिम बंगाल और सिक्किम
6. गंगीय पश्चिम बंगाल
7. ओडिशा
8. झारखंड
9. बिहार
10. पूर्वी उत्तर प्रदेश
11. पश्चिम उत्तर प्रदेश
12. उत्तराखंड
13. हरियाणा, चंडीगढ़ और दिल्ली
14. पंजाब
15. हिमाचल प्रदेश
16. जम्मू और कश्मीर और लद्दाख
17. पश्चिम राजस्थान
18. पूर्वी राजस्थान
19. पश्चिम मध्य प्रदेश
20. पूर्वी मध्य प्रदेश
21. गुजरात
22. सौराष्ट्र
23. कोंकण और गोवा
24. मध्य महाराष्ट्र
25. मराठवाड़ा
26. विदर्भ
27. छत्तीसगढ़
28. तटीय आंध्र प्रदेश और यनम
29. तेलंगाना
30. रायलसीमा
31. तमिलनाडु, पुडुचेरी और कराईकल
32. तटीय कर्नाटक
33. आंतरिक उत्तरी कर्नाटक
34. आंतरिक दक्षिणी कर्नाटक
35. केरल और माहे
36. लक्षद्वीप



1. Andaman & Nicobar Islands
2. Arunachal Pradesh
3. Assam & Meghalaya
4. Nagaland, Manipur, Mizoram & Tripura
5. Sub-Himalayan West Bengal & Sikkim
6. Gangetic West Bengal
7. Odisha
8. Jharkhand
9. Bihar
10. East Uttar Pradesh
11. West Uttar Pradesh
12. Uttarakhand
13. Haryana, Chandigarh & Delhi
14. Punjab
15. Himachal Pradesh
16. Jammu & Kashmir and Ladakh
17. West Rajasthan
18. East Rajasthan
19. West Madhya Pradesh
20. East Madhya Pradesh
21. Gujarat
22. Saurashtra
23. Konkan & Goa
24. Madhya Maharashtra
25. Marathwada
26. Vidarbha
27. Chhattisgarh
28. Coastal Andhra Pradesh & Yanam
29. Telangana
30. Rayalaseema
31. Tamilnadu, Puducherry & Karaikal
32. Coastal Karnataka
33. North Interior Karnataka
34. South Interior Karnataka
35. Kerala & Mahe
36. Lakshadweep

## SPATIAL DISTRIBUTION (% of Stations reporting)

% Stations	Category	% Stations	Category
76-100	Widespread (WS/Most Places)	26-50	Scattered (SCT/A Few Places)
51-75	Fairly Widespread (FWS/Many Places)	1-25	Isolated (ISOL)

- |                      |                      |              |
|----------------------|----------------------|--------------|
| Fog                  | Heavy Snow           | Cold Wave    |
| Heavy Rain           | Dust Storm           | Cold Day     |
| Very Heavy Rain      | Heat Wave            | Ground Frost |
| Extremely Heavy Rain | Warm Night           |              |
| Thunder & Lightning  | Hot Day              |              |
| Hailstorm            | Hot & Humid          |              |
| Dust Raising Winds   | Strong Surface Winds |              |

### COLOUR CODED WARNING

No Warning (No Action)
Watch (Be Aware)
Alert (Be Prepared To Take Action)
Warning (Take Action)

### Probabilistic Forecast

Terms	Probability of Occurrence (%)
Unlikely	< 25
Likely	25 - 50
Very Likely	50 - 75
Most Likely	> 75

## DEFINITION/CRITERIA

### Rain/ Snow \*

Heavy: 64.5 to 115.5 mm/cm \*  
Very Heavy: 115.6 to 204.4 mm/cm\*  
Extremely Heavy: > 204.4 mm/cm \*

### Heat Wave

When maximum temperature of a station reaches  $\geq 40^{\circ}\text{C}$  for plains and  $\geq 30^{\circ}\text{C}$  for hilly regions  
(a) Based on Departure from normal

Heat Wave: Maximum Temperature Departure from normal  $4.5^{\circ}\text{C}$  to  $6.4^{\circ}\text{C}$ .

Severe Heat Wave: Maximum Temperature Departure from normal  $\geq 6.5^{\circ}\text{C}$

(b). Based on Actual maximum temperature

Heat Wave: When actual maximum temperature  $\geq 45^{\circ}\text{C}$ .

Severe Heat Wave: When actual maximum temperature  $\geq 47^{\circ}\text{C}$

(c). Criteria for heat wave for coastal stations

When maximum temperature departure is  $>4.5^{\circ}\text{C}$  from normal. Heat Wave may be described provided maximum temperature  $\geq 37^{\circ}\text{C}$

### Warm Night

When maximum temperature remains  $40^{\circ}\text{C}$

Warm Night: When minimum temperature departure  $4.5^{\circ}\text{C}$  to  $6.4^{\circ}\text{C}$ .

Severe Warm Night: When minimum temperature departure  $>6.4^{\circ}\text{C}$ .

### Cold Wave

When minimum temperature of a station  $\leq 10^{\circ}\text{C}$  for plains and  $\leq 0^{\circ}\text{C}$  for hilly regions.  
(a). Based on departure

Cold Wave: Minimum Temperature Departure from normal  $-4.5^{\circ}\text{C}$  to  $-6.4^{\circ}\text{C}$ .

Severe Cold Wave: Minimum Temperature Departure from normal  $\leq -6.5^{\circ}\text{C}$

(b) Based on actual Minimum Temperature (for Plains only)

Cold Wave : When Minimum Temperature is  $\leq 4.0^{\circ}\text{C}$

Severe Cold Wave: When Minimum Temperature is  $\leq 2.0^{\circ}\text{C}$

(c) For Coastal Stations

When Minimum Temperature departure is  $\leq -4.5^{\circ}\text{C}$  & actual Minimum Temperature is  $\leq 15^{\circ}\text{C}$

### Cold Day

When minimum temperature of a station  $\leq 10^{\circ}\text{C}$  for plains and  $\leq 0^{\circ}\text{C}$  for hilly regions  
Based on departure

Cold Day: Maximum Temperature Departure from normal  $-4.5^{\circ}\text{C}$  to  $-6.4^{\circ}\text{C}$ .

Severe Cold Day: Maximum Temperature Departure from normal  $\leq -6.5^{\circ}\text{C}$

### Fog

Phenomenon of small droplets suspended in air and the horizontal visibility  $< 1\text{km}$

Moderate Fog: When the visibility between 500-200 metres

Dense Fog: when the visibility between 50- 200 metres

Very Dense Fog: when the visibility  $< 50$  metres

### Thunderstorm

Sudden electrical discharges manifested by a flash of light (Lightning) and a sharp rumbling sound (thunder)

### Dust/Sand Storm

An ensemble of particles of dust or sand energetically lifted to great heights by a strong and turbulent wind.

### Frost

Ice deposits on ground

Air temperature  $\leq 4^{\circ}\text{C}$  ( over Plains)

### Squall

A strong wind that rises suddenly, lasts for atleast 1 minute.

Moderate: Wind speed 52-61 kmph

Severe: Wind speed 62-87 kmph

Very Severe: Wind speed  $>87$  kmph

### Sea State

Effect of various waves in the sea over specific area

Rough to very rough: Wind speed 41-62 kmph (22-33 knots) & Wave height 2.5-6 metre

High to very high: Wind speed 63-117 kmph ( 34-63 knots) & Wave height 6-14 metre

Phenomenal: Wind speed  $>117$  kmph ( $>63$  knots) & Wave height  $>14$  metre

### Cyclone

Cyclonic Storm: Wind speed 62-87 kmph (34-47 knots)

Severe Cyclonic Storm: Wind speed 88-117 kmph (48-63 knots)

Very Severe Cyclonic Storm: Wind speed 118-165 kmph (64 - 89 knots)

Extremely Severe Cyclonic Storm: Wind speed 166-220 kmph (90 -119 knots)

Super Cyclone Strom: Wind speed  $>220$  kmph ( $>119$  knots)