

2025-10-11

Time of Issue: 07:56:00 hours IST  
(Morning)

**ALL INDIA WEATHER SUMMARY AND FORECAST BULLETIN**

**Significant Weather Features**

**Weather Forecast and Warnings:**

**South Peninsular India:**

Light to moderate rain/thunderstorm at some/ isolated places with isolated **heavy rainfall** likely over Tamil Nadu, South Interior Karnataka, Coastal Andhra Pradesh & Yanam and Kerala & Mahe during 11th -13th; Rayalaseema on 11<sup>th</sup> ; with **very heavy rainfall** over north Tamil Nadu, Kerala & Mahe and Coastal & South Interior Karnataka on 11<sup>th</sup> October.

Strong surface winds (speed reaching 30-40 kmph) over Coastal Andhra Pradesh & Yanam on 11<sup>th</sup> October.

Thunderstorm with lightning likely over south Peninsular India during next 4-5 days.

**East and Central India:**

Light to moderate rain/thunderstorm at some/ isolated places with isolated **heavy rainfall** likely over Odisha on 11<sup>th</sup> October.

Thunderstorm with lightning and gusty winds (speed reaching 30-40 kmph) likely over Odisha, on 11<sup>th</sup> &12<sup>th</sup>; Gangetic West Bengal on 11<sup>th</sup>; with lightning over Chhattisgarh on 11<sup>th</sup> October.

**Northeast India:**

Light/moderate rain/thunderstorm at some/isolated places with isolated **heavy rainfall** likely over Nagaland, Manipur, Mizoram & Tripura on 11<sup>th</sup> October.

**\*Red color warning does not mean "Red Alert" Red color warning means "Take Action"**

Forecast and warning for any day is valid from 0830 hours IST of day till 0830 hours IST of next day

For more details kindly visit <https://mausam.imd.gov.in> or contact 011-2434-4599

(Service to the nation since 1875)

**Main Weather Observations:**

❖ **Rainfall distribution** (from 0830 hours IST of yesterday to 0530 hours IST of today): **at most places** over South Interior Karnataka, Gangetic West Bengal, Assam & Meghalaya, Andaman & Nicobar Islands, Nagaland, Manipur, Mizoram & Tripura, Arunachal Pradesh and Kerala & Mahe; **at many places** over Odisha, Jammu & Kashmir and Ladakh, Chhattisgarh, Konkan & Goa, Coastal Andhra Pradesh & Yanam, Lakshadweep, Tamilnadu Puducherry & Karaikal and Rayalaseema; **Dry** over rest of the country.

❖ **Significant rainfall recorded(in cm)** (from 0830 hours IST of yesterday to 0530 hours IST of today): South interior karnataka: Bengaluru (dist Bengaluru Urban) 7, Bengaluru HAL (dist ) 2; Gangetic west bengal: Kolkata-alipur (dist Kolkata) 7, Haldia (dist Purba Medinipur) 6, Diamond Harbour (dist South 24 Parganas) 5, Kolkata (dum Dum) AP (dist North 24 Parganas) 3, Digha (dist North 24 Parganas) 2; Konkan & goa : Panjim (dist North Goa) 6; Andaman & nicobar islands: Port Blair (dist South Andaman) 4; Nagaland, manipur, mizoram & tripura: Agartala AP (dist West Tripura) 3, Imphal (tulihal) AP (dist Imphal East), Aizawl-lengpui (dist Mamit) 2 Each; Coastal andhra pradesh & yanam: Kavali (dist Sri Potti Sriramulu Nellore) 3; Arunachal pradesh: Pasighat (dist East Siang) 2; **Lakshadweep** : Amini Divi (dist **Lakshadweep**) 2; Assam & meghalaya: Silchar (dist Cachar), Shillong, Cherrapunji (dist East Khasi Hills) 2 Each.

❖ **Heavy Rainfall observed** (from 0830 hours IST of yesterday to 0530 hours IST of today):**Heavy rain** at a few places over South Interior Karnataka, at isolated places over Gangetic West Bengal

❖ **Minimum Temperature Departures (as on 10-10-2025): markedly above normal(> 5.1°C)** at isolated places over Assam & Meghalaya and West Uttar Pradesh. **appreciably above normal(3.1°C to 5.0°C)** at isolated places over Sub Himalayan West Bengal & Sikkim, Bihar, East Uttar Pradesh, Konkan & Goa and South Interior Karnataka. **above normal(1.6°C to 3.0°C)** at few places over East Madhya Pradesh; at isolated places over Nagaland, Manipur, Mizoram & Tripura, Odisha, Jharkhand, Madhya Maharashtra, Chhattisgarh, Coastal Andhra Pradesh & Yanam, Tamil Nadu, Puducherry & Karaikal and North Interior Karnataka. **near normal(-1.5°C to 1.5°C)** at many places over Himachal Pradesh, Jammu-KashmirLadakh-Gilgit-Baltistan-Muzaffarabad, West Rajasthan, West Madhya Pradesh, Saurashtra & Kutch and Vidarbha; at most places over Andaman & Nicobar Islands, Arunachal Pradesh, Gangetic West Bengal, Uttarakhand, Punjab, Telangana, Rayalaseema, Coastal Karnataka, Kerala & Mahe and Lakshadweep; at few places over Haryana-Chandigarh-Delhi, East Rajasthan and Gujarat Region; at isolated places over Marathwada. **The lowest minimum temperature** of 14.5°C was reported at MANDI (HIMACHAL PRADESH) over the Plains of India.

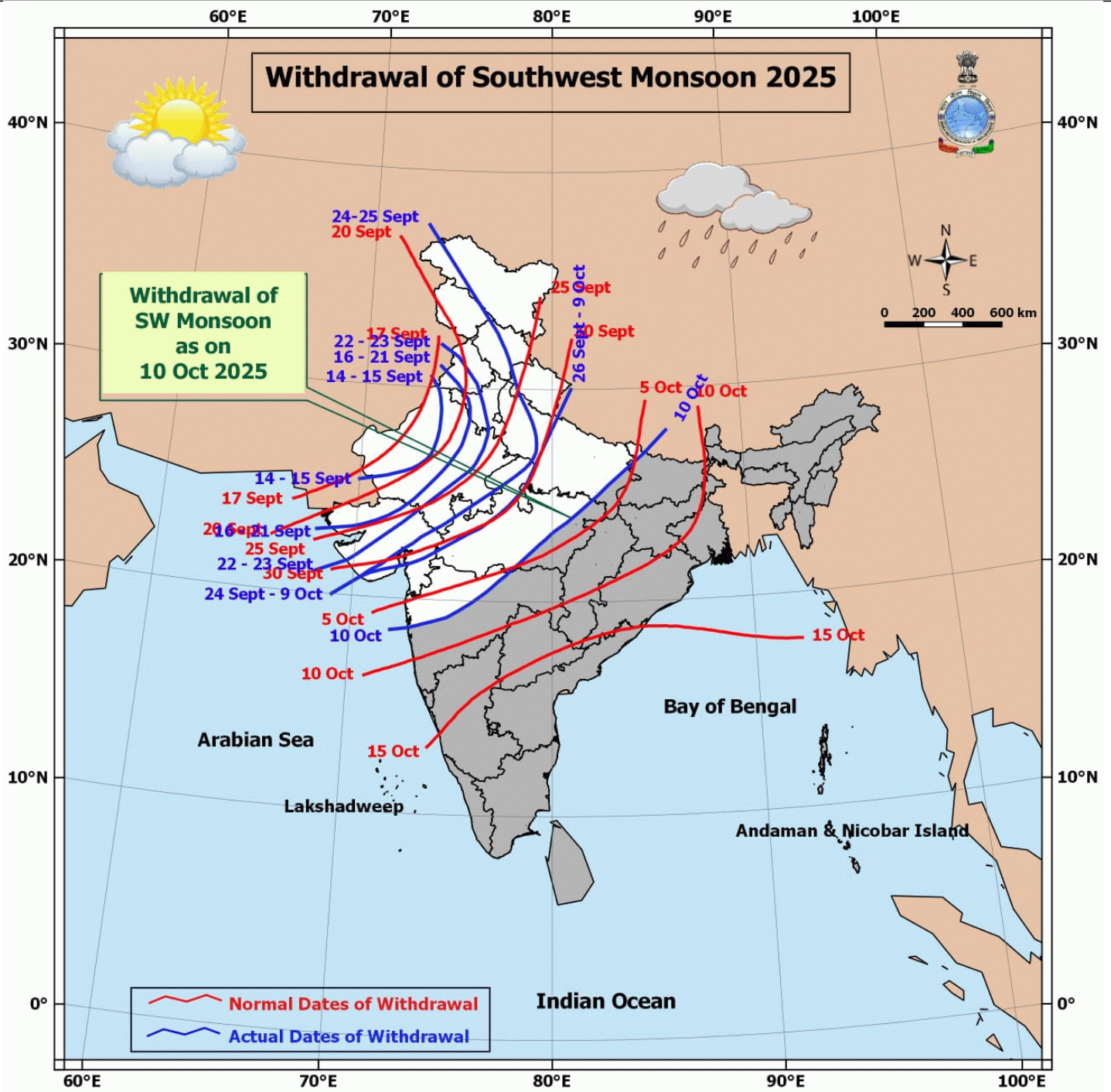
❖ **Maximum Temperature Departures (as on 10-10-2025): appreciably above normal(3.1°C to 5.0°C)** at isolated places over Assam & Meghalaya and Kerala & Mahe. **above normal(1.6°C to 3.0°C)** at few places over Sub Himalayan West Bengal & Sikkim, Coastal Karnataka and Lakshadweep; at isolated places over Bihar, Himachal Pradesh, Konkan & Goa, Madhya Maharashtra, Vidarbha, Coastal Andhra Pradesh & Yanam, Telangana and Tamil Nadu, Puducherry & Karaikal. **near normal(-1.5°C to 1.5°C)** at many places over Nagaland, Manipur, Mizoram & Tripura, Jharkhand, Jammu-KashmirLadakh-Gilgit-Baltistan-Muzaffarabad and South Interior Karnataka; at most places over Gangetic West Bengal, Marathwada, Chhattisgarh and North Interior Karnataka; at few places over Andaman & Nicobar Islands, Arunachal Pradesh, East Uttar Pradesh, Uttarakhand, Saurashtra & Kutch and Rayalaseema; at isolated places over Odisha, West Uttar Pradesh, Haryana-Chandigarh-Delhi, Punjab and Gujarat Region. **The highest maximum temperature** of 36.0°C was reported at MADURAI (A) (TAMIL NADU).

### Meteorological Analysis (Based on 0530 hours IST)

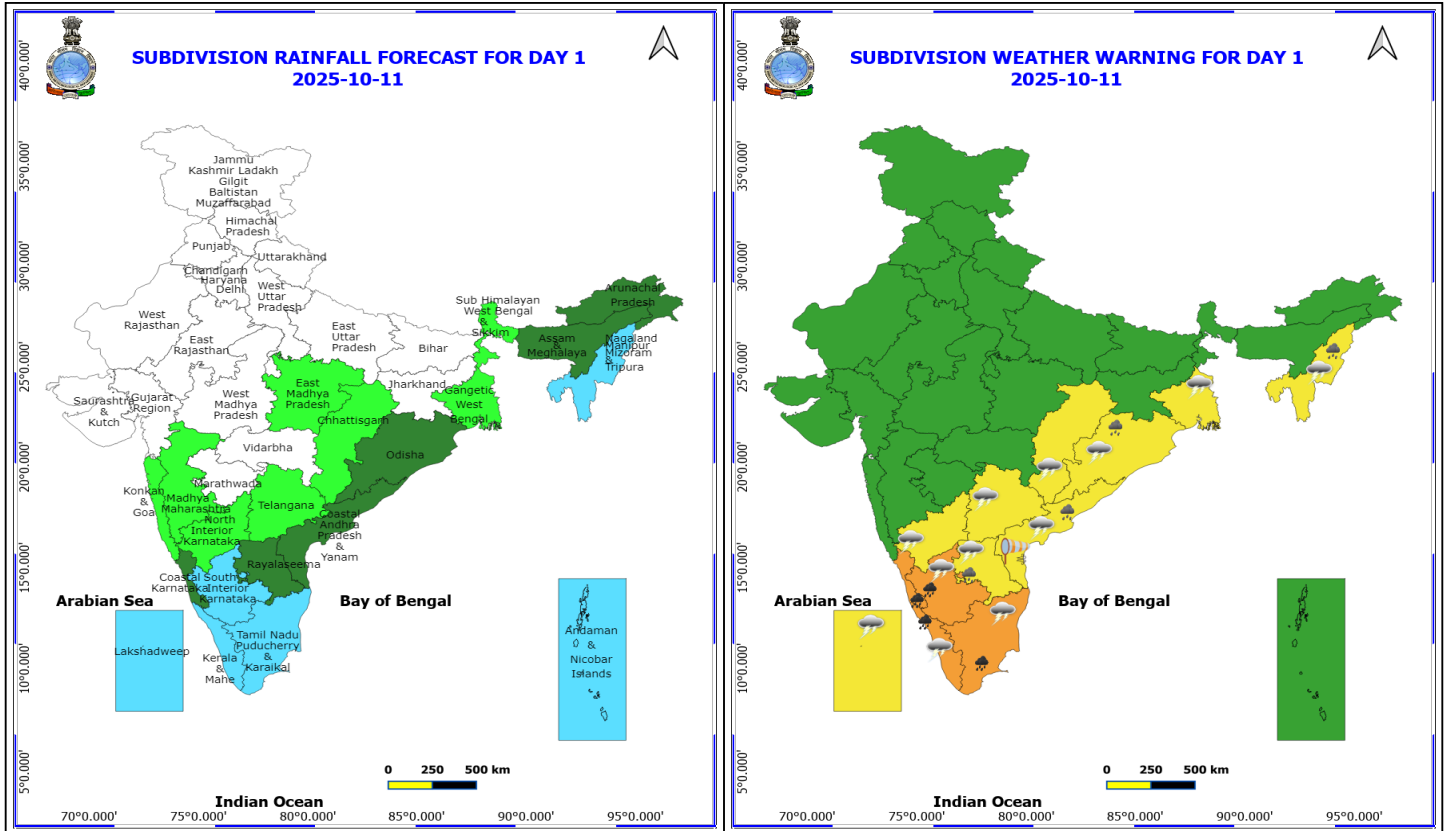
- The **line of withdrawal of southwest monsoon** now passes through 28°N/86°E, Raxaul, Varanasi, Jabalpur, Akola, Ahilyanagar, Alibag and 18.5°N/ 72°E.
- Conditions are favourable for further withdrawal of southwest monsoon from remaining parts of Maharashtra, Madhya Pradesh, Uttar Pradesh and Bihar; entire Jharkhand & Chhattisgarh and some parts of West Bengal, Sikkim, Odisha & Telangana during next 2-3 days.
- The **low pressure area (Remnant of Cyclonic Storm “Shakhti” [Pronunciation: Shakhti])** over westcentral Arabian Sea alongwith the associated **cyclonic circulation** extending upto 5.8 km above mean sea level persisted over the same region at 0530 hrs IST of today, the 11<sup>th</sup> October, 2025.
- An **upper air cyclonic circulation** lay over central Assam & neighbourhood between 1.5 & 3.1 km above mean sea level.
- The **upper air cyclonic circulation** over south Bangladesh & adjoining north Bay of Bengal persists and now extends upto at 3.1 km above mean sea level.
- The **upper air cyclonic circulation** over north Coastal Andhra Pradesh & neighbourhood now lies over south coastal Andhra Pradesh & neighbourhood and extends upto 3.1 km above mean sea level.
- An **upper air cyclonic circulation** lay over south east Arabian sea and adjoining south Kerala coast between 4.5 & 5.8 km above mean sea level.
- The **Western Disturbance** as a cyclonic circulation over Haryana & neighbourhood lay over northwest **Uttar Pradesh** & neighbourhood between 3.1 & 4.5 km above mean sea level with a trough aloft in middle tropospheric westerlies with its axis at 5.8 km above mean sea level now runs roughly along Long. 78°E to the north of Lat. 28°N.
- The **upper air cyclonic circulation** over North Coastal Tamil Nadu & neighbourhood extending upto 4.5 km above mean sea level has become less marked.
- The **upper air cyclonic circulation** over south assam & neighbourhood at 0.9 km above mean sea level has become less marked.

### Weather Outlook for subsequent 3 days

- Isolated to scattered rainfall activity likely over South peninsular India.



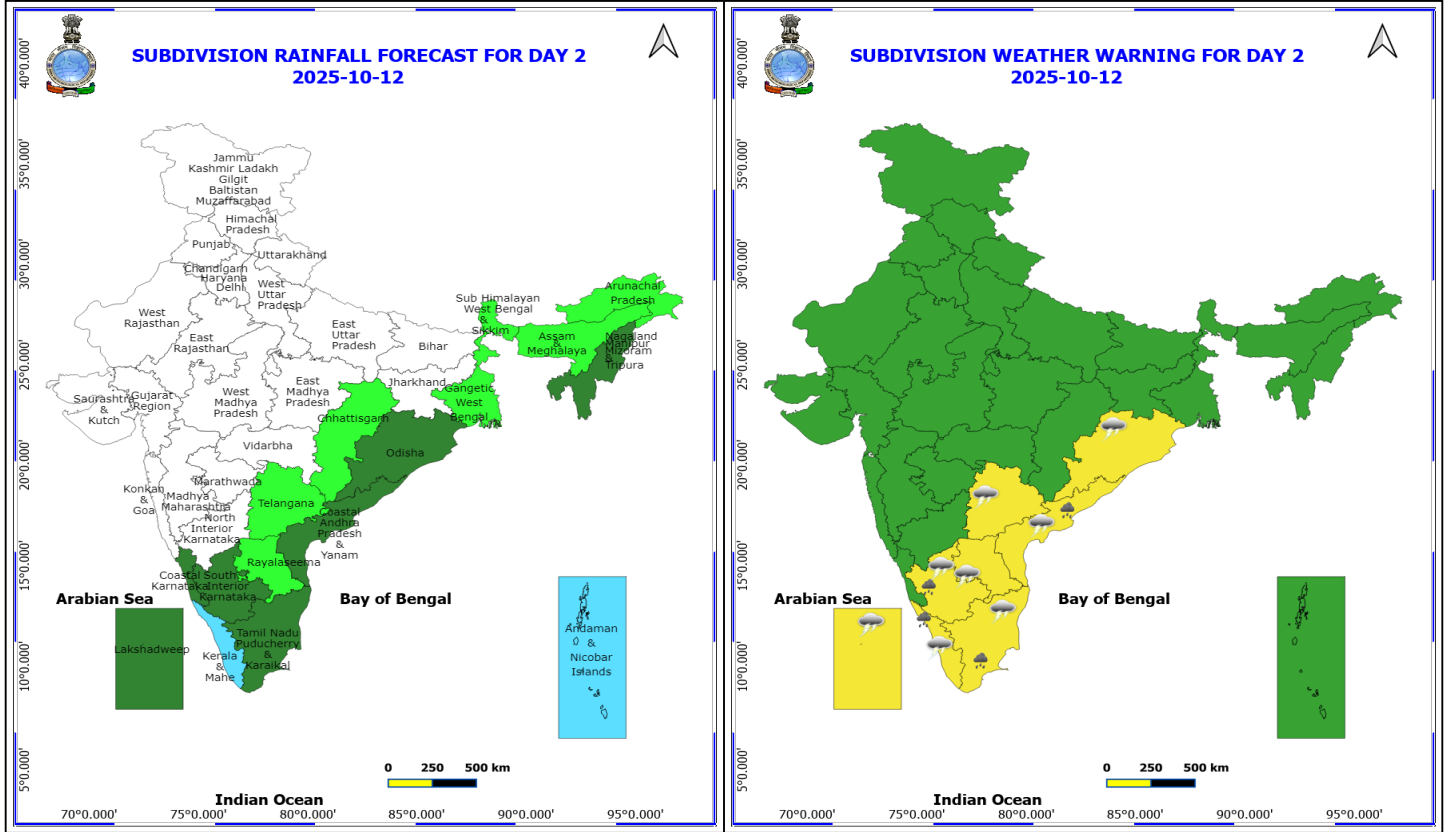
\*Red color warning does not mean "Red Alert" Red color warning means "Take Action"  
Forecast and warning for any day is valid from 0830 hours IST of day till 0830 hours IST of next day  
For more details kindly visit <https://mausam.imd.gov.in> or contact 011-2434-4599  
(Service to the nation since 1875)



**11 October (Day 1)**

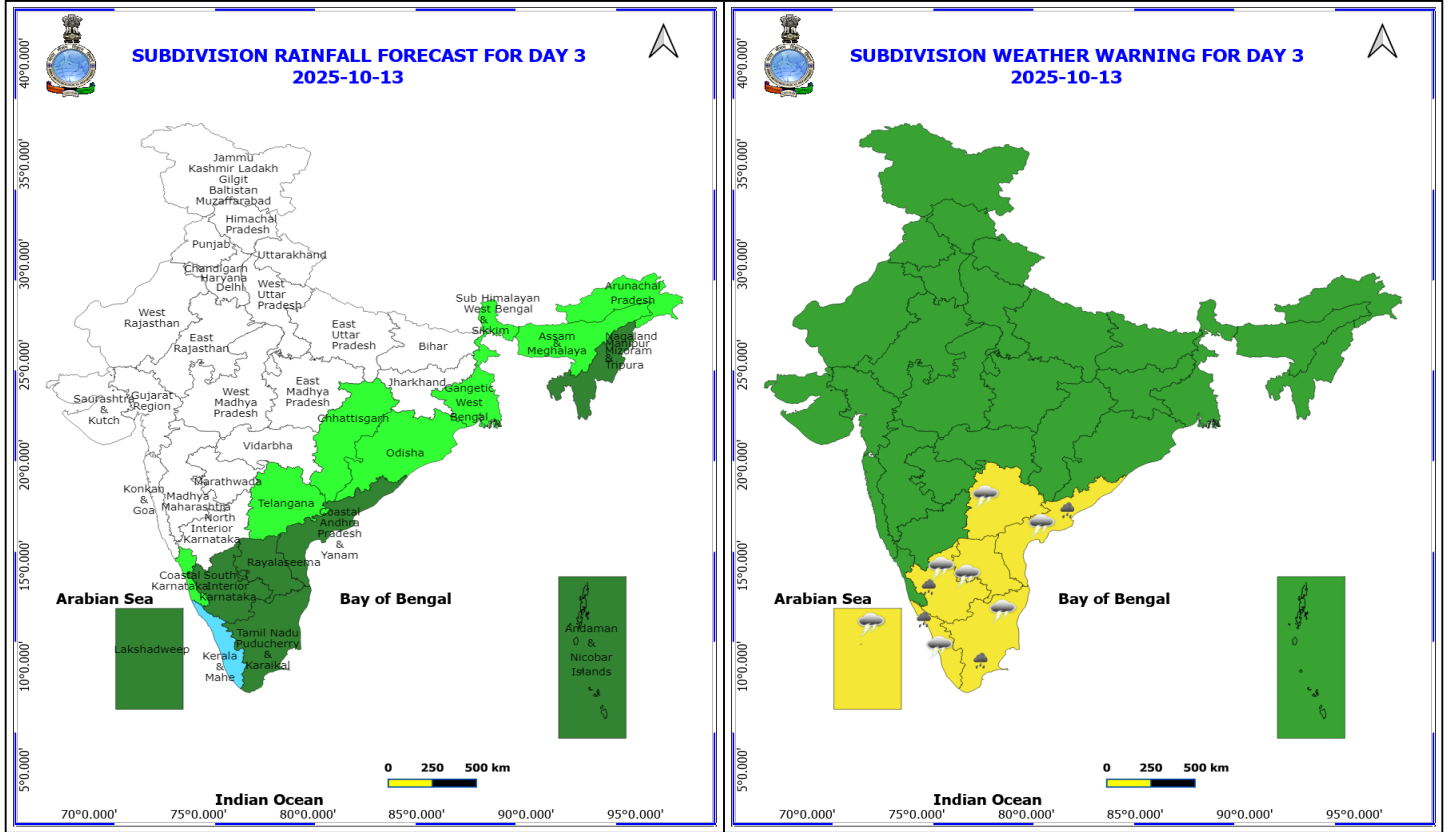
- ❖ **Heavy to Very Heavy Rainfall** very likely at isolated places over Coastal Karnataka, Kerala & Mahe, South Interior Karnataka and Tamil Nadu Puducherry & Karaikal.
- ❖ **Heavy Rainfall** very likely at isolated places over Andhra Pradesh, Nagaland, Manipur, Mizoram and Tripura and Odisha.
- ❖ **Thunderstorm accompanied with lightning & gusty winds(30-40kmph)** very likely at isolated places over Coastal Andhra Pradesh, Gangetic West Bengal and Odisha.
- ❖ **Thunderstorm accompanied with Lightning** very likely at isolated places over Chhattisgarh, Interior Karnataka, Kerala & Mahe, Lakshadweep, Nagaland, Manipur, Mizoram and Tripura, Rayalaseema, Tamil Nadu Puducherry & Karaikal and Telangana.
- ❖ **Strong Surface Winds** very likely at isolated places over Coastal Andhra Pradesh.
- ❖ Squally weather iwth wind speed reaching 35-45 kmph gusting to 55 kmph likely to previal over Gulf of Mannar & adjoining Comoring area.

**\*Red color warning does not mean "Red Alert" Red color warning means "Take Action"**  
**Forecast and warning for any day is valid from 0830 hours IST of day till 0830 hours IST of next day**  
**For more details kindly visit <https://mausam.imd.gov.in> or contact 011-2434-4599**  
**(Service to the nation since 1875)**



**12 October (Day 2)**

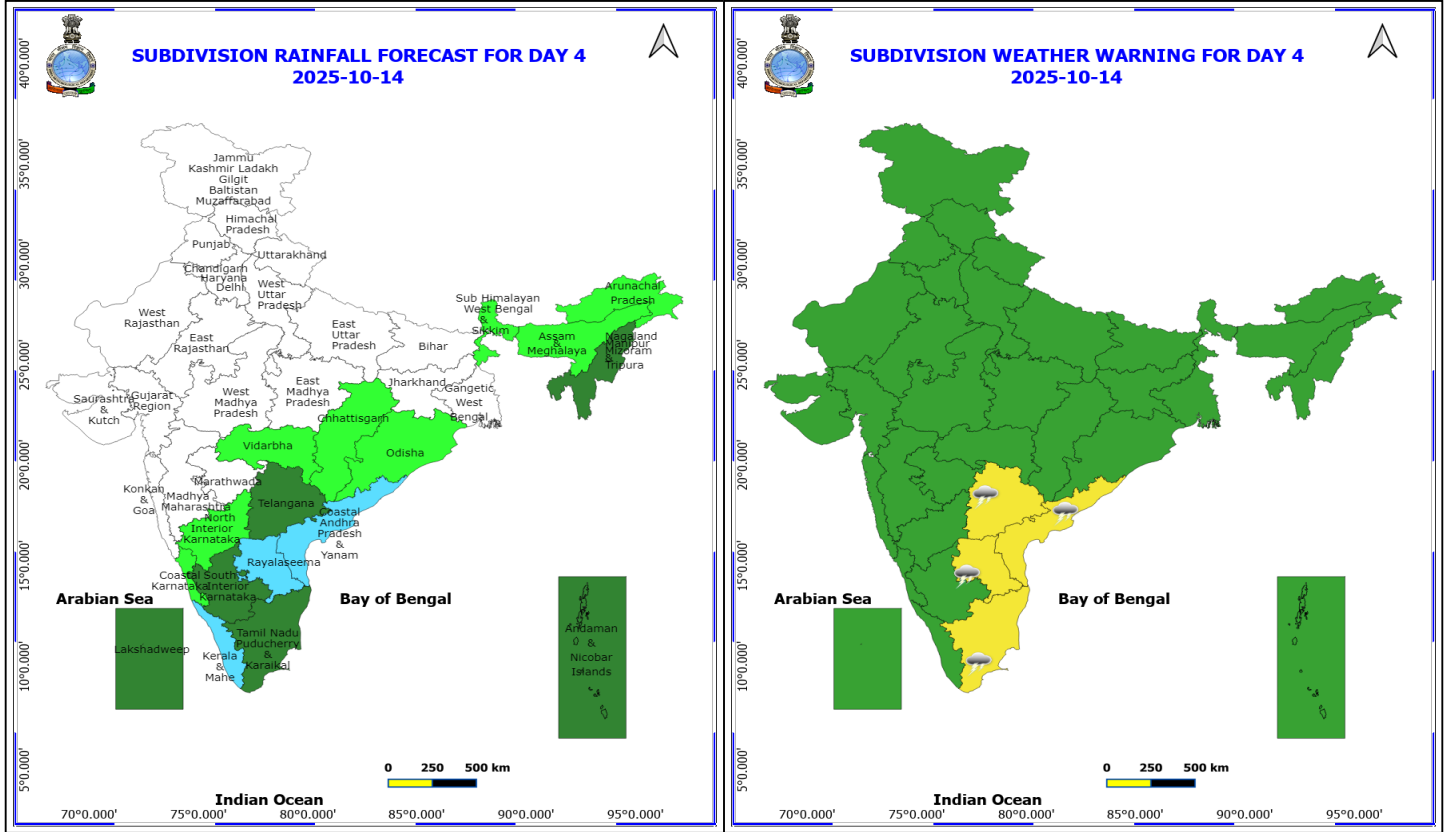
- ❖ **Heavy Rainfall** very likely at isolated places over Coastal Andhra Pradesh, Kerala & Mahe, South Interior Karnataka and Tamil Nadu Puducherry & Karaikal.
- ❖ **Thunderstorm accompanied with lightning & gusty winds(30-40kmph)** very likely at isolated places over Odisha.
- ❖ **Thunderstorm accompanied with Lightning** very likely at isolated places over Andhra Pradesh, Kerala & Mahe, Lakshadweep, South Interior Karnataka, Tamil Nadu Puducherry & Karaikal and Telangana.



**13 October (Day 3)**

- ❖ **Heavy Rainfall** very likely at isolated places over Coastal Andhra Pradesh, Kerala & Mahe, South Interior Karnataka and Tamil Nadu Puducherry & Karaikal.
- ❖ **Thunderstorm accompanied with Lightning** very likely at isolated places over Andhra Pradesh, Kerala & Mahe, Lakshadweep, South Interior Karnataka, Tamil Nadu Puducherry & Karaikal and Telangana.

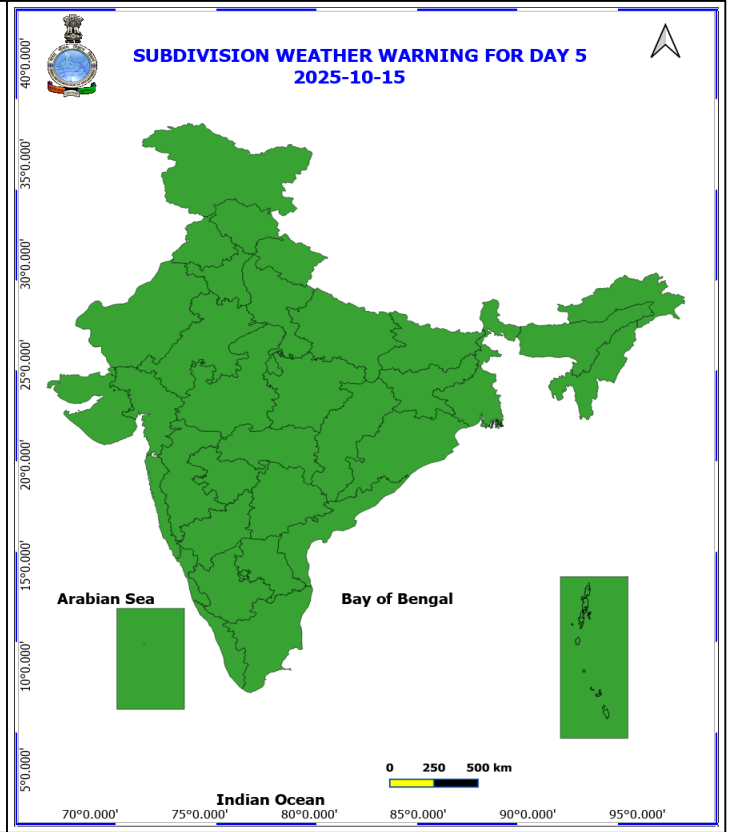
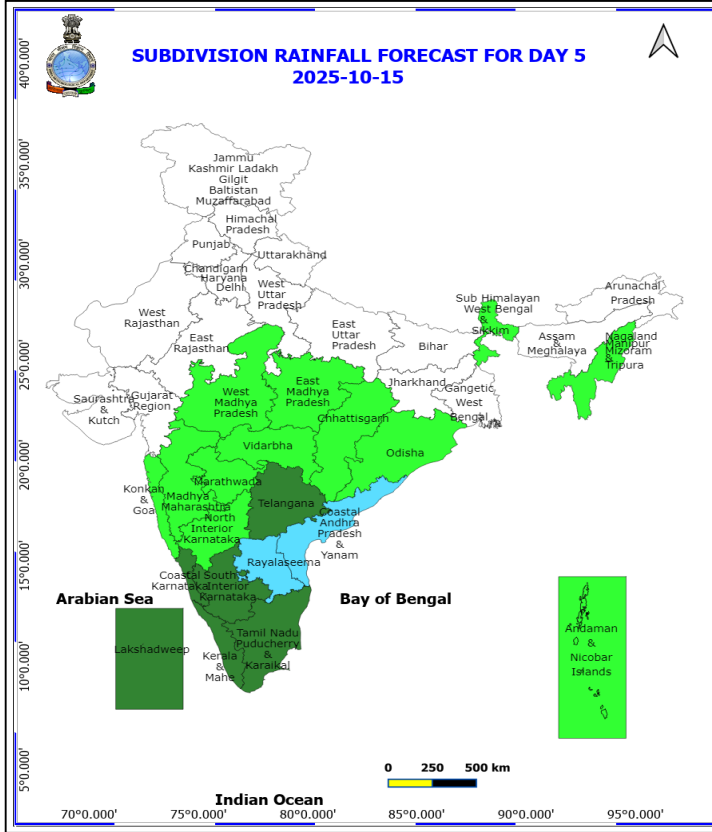
**No Fishermen Warning**



**14 October (Day 4)**

❖ **Thunderstorm accompanied with Lightning** likely at isolated places over Andhra Pradesh, Tamil Nadu Puducherry & Karaikal and Telangana.

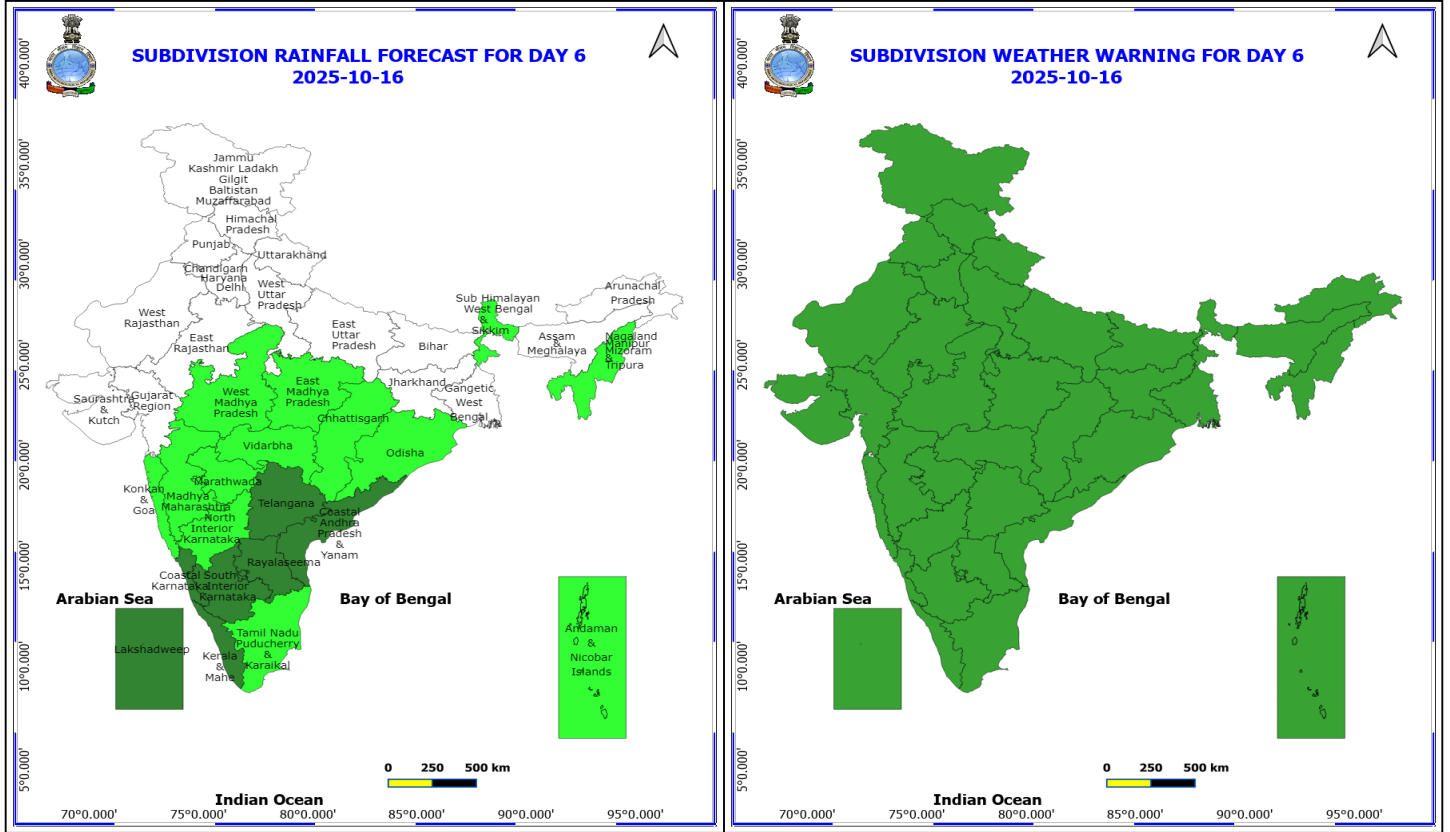
**No Fishermen Warning**



**15 October (Day 5)**

**No Warning**  
**No Fishermen Warning**

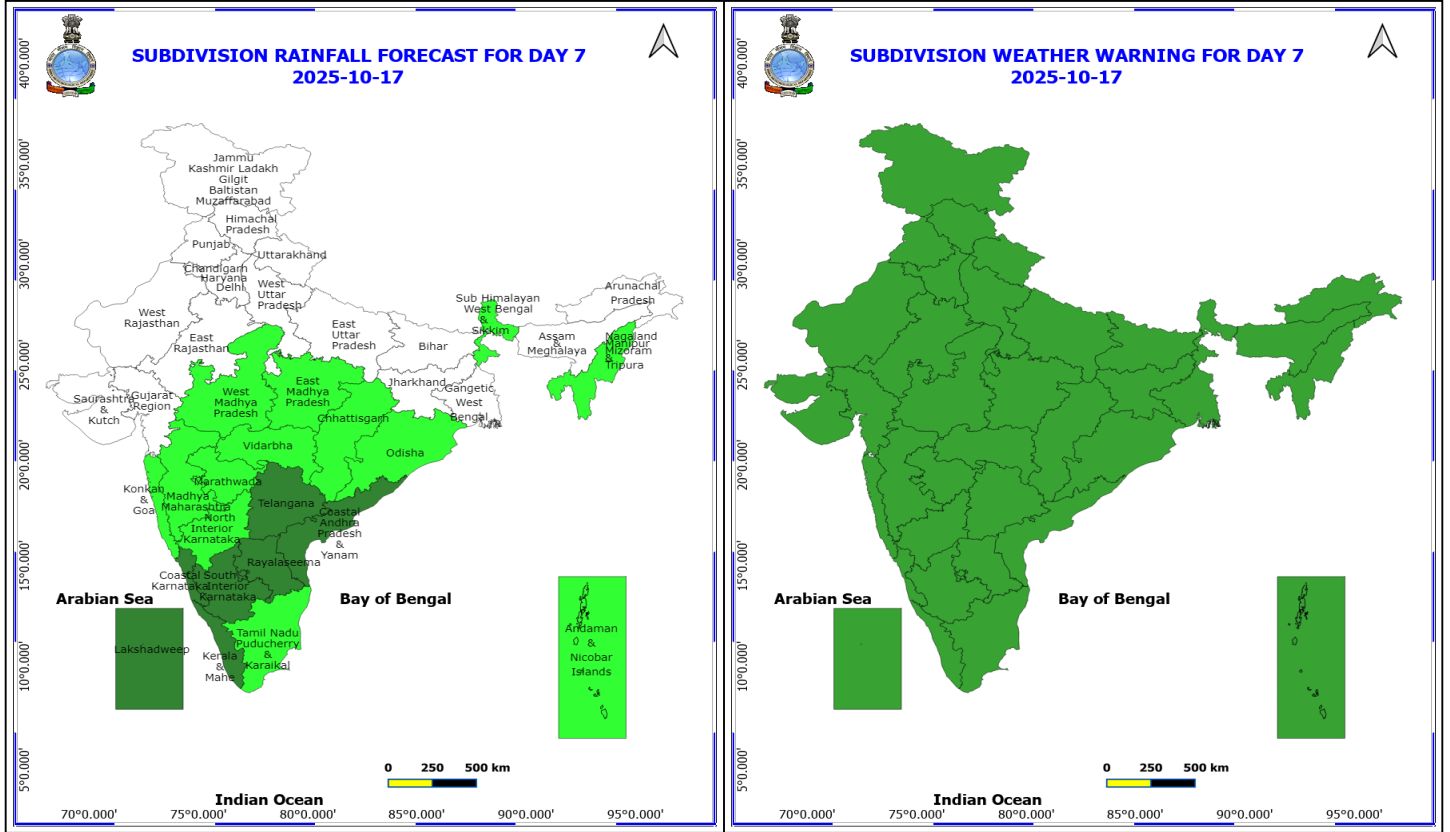
\*Red color warning does not mean "Red Alert" Red color warning means "Take Action"  
Forecast and warning for any day is valid from 0830 hours IST of day till 0830 hours IST of next day  
For more details kindly visit <https://mausam.imd.gov.in> or contact 011-2434-4599  
(Service to the nation since 1875)



**16 October (Day 6)**

**No Warning**  
**No Fishermen Warning**

\*Red color warning does not mean "Red Alert" Red color warning means "Take Action"  
Forecast and warning for any day is valid from 0830 hours IST of day till 0830 hours IST of next day  
For more details kindly visit <https://mausam.imd.gov.in> or contact 011-2434-4599  
(Service to the nation since 1875)



**17 October (Day 7)**

**No Warning**

**No Fishermen Warning**

**\*Red color warning does not mean "Red Alert" Red color warning means "Take Action"**  
 Forecast and warning for any day is valid from 0830 hours IST of day till 0830 hours IST of next day  
 For more details kindly visit <https://mausam.imd.gov.in> or contact 011-2434-4599  
 (Service to the nation since 1875)



## Table-1

### 7 Days Rainfall Forecast

S.No.	Subdivision	11- Oct	12- Oct	13- Oct	14- Oct	15- Oct	16- Oct	17- Oct
		Day 1	Day 2	Day 3	Day 4	Day 5	Day 6	Day 7
1	ANDAMAN & NICOBAR ISLANDS	FWS	FWS	SCT	SCT	ISOL	ISOL	ISOL
2	ARUNACHAL PRADESH	SCT	ISOL	ISOL	ISOL	DRY	DRY	DRY
3	ASSAM & MEHGHALAYA	SCT	ISOL	ISOL	ISOL	DRY	DRY	DRY
4	N. M. M. & T.	FWS	SCT	SCT	SCT	ISOL	ISOL	ISOL
5	S.H. WEST BENGAL & SIKKIM	ISOL	ISOL	ISOL	ISOL	ISOL	ISOL	ISOL
6	GANGETIC WEST BENGAL	ISOL	ISOL	ISOL	DRY	DRY	DRY	DRY
7	ODISHA	SCT	SCT	ISOL	ISOL	ISOL	ISOL	ISOL
8	JHARKHAND	DRY	DRY	DRY	DRY	DRY	DRY	DRY
9	BIHAR	DRY	DRY	DRY	DRY	DRY	DRY	DRY
10	EAST UTTAR PRADESH	DRY	DRY	DRY	DRY	DRY	DRY	DRY
11	WEST UTTAR PRADESH	DRY	DRY	DRY	DRY	DRY	DRY	DRY
12	UTTARAKHAND	DRY	DRY	DRY	DRY	DRY	DRY	DRY
13	HARYANA, CHD & DELHI	DRY	DRY	DRY	DRY	DRY	DRY	DRY
14	PUNJAB	DRY	DRY	DRY	DRY	DRY	DRY	DRY
15	HIMACHAL PRADESH	DRY	DRY	DRY	DRY	DRY	DRY	DRY
16	JAMMU AND KASHMIR AND LADAKH	DRY	DRY	DRY	DRY	DRY	DRY	DRY
17	WEST RAJASTHAN	DRY	DRY	DRY	DRY	DRY	DRY	DRY
18	EAST RAJASTHAN	DRY	DRY	DRY	DRY	DRY	DRY	DRY
19	WEST MADHYA PRADESH	DRY	DRY	DRY	DRY	ISOL	ISOL	ISOL
20	EAST MADHYA PRADESH	ISOL	DRY	DRY	DRY	ISOL	ISOL	ISOL
21	GUJRAT REGION	DRY	DRY	DRY	DRY	DRY	DRY	DRY
22	SAURASHTRA & KUTCH	DRY	DRY	DRY	DRY	DRY	DRY	DRY
23	KONKAN & GOA	ISOL	DRY	DRY	DRY	ISOL	ISOL	ISOL
24	MADHYA MAHARASHTRA	ISOL	DRY	DRY	DRY	ISOL	ISOL	ISOL
25	MARATHWADA	DRY	DRY	DRY	DRY	ISOL	ISOL	ISOL
26	VIDARBHA	DRY	DRY	DRY	ISOL	ISOL	ISOL	ISOL
27	CHATTISGARH	ISOL	ISOL	ISOL	ISOL	ISOL	ISOL	ISOL
28	COASTAL ANDHRA PRADESH	SCT	SCT	SCT	FWS	FWS	SCT	SCT
29	TELANGANA	ISOL	ISOL	ISOL	SCT	SCT	SCT	SCT
30	RAYALASEEMA	SCT	ISOL	SCT	FWS	FWS	SCT	SCT
31	TAMILNADU & PUDUCHERRY	FWS	SCT	SCT	SCT	SCT	ISOL	ISOL
32	COSTAL KARNATAKA	SCT	SCT	ISOL	ISOL	SCT	SCT	SCT
33	NORTH INTERIOR KARNATAKA	ISOL	DRY	DRY	ISOL	ISOL	ISOL	ISOL
34	SOUTH INTERIOR KARNATAKA	FWS	SCT	SCT	SCT	SCT	SCT	SCT
35	KERALA	FWS	FWS	FWS	FWS	SCT	SCT	SCT
36	LAKSHDWEEP	FWS	SCT	SCT	SCT	SCT	SCT	SCT

Legend	Category	%Stations
WS	Widespread/Most Places	76-100
FWS	Fairly Widespread/Many Places	51-75
SCT	Scattered/ A Few Places	26-50
ISOL	Isolated Places	1-25
DRY	No Rain	0

\*Red color warning does not mean "Red Alert" Red color warning means "Take Action"  
Forecast and warning for any day is valid from 0830 hours IST of day till 0830 hours IST of next day  
For more details kindly visit <https://mausam.imd.gov.in> or contact 011-2434-4599

(Service to the nation since 1875)

Fig. 1: Maximum Temperatures Dated 2025-10-10

Fig. 2: Departure of Maximum Temp. Dated 2025-10-10

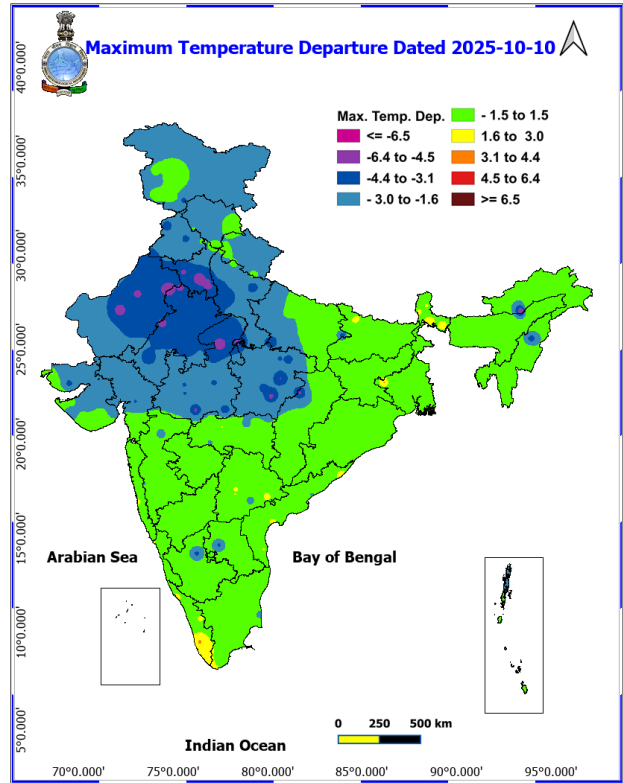
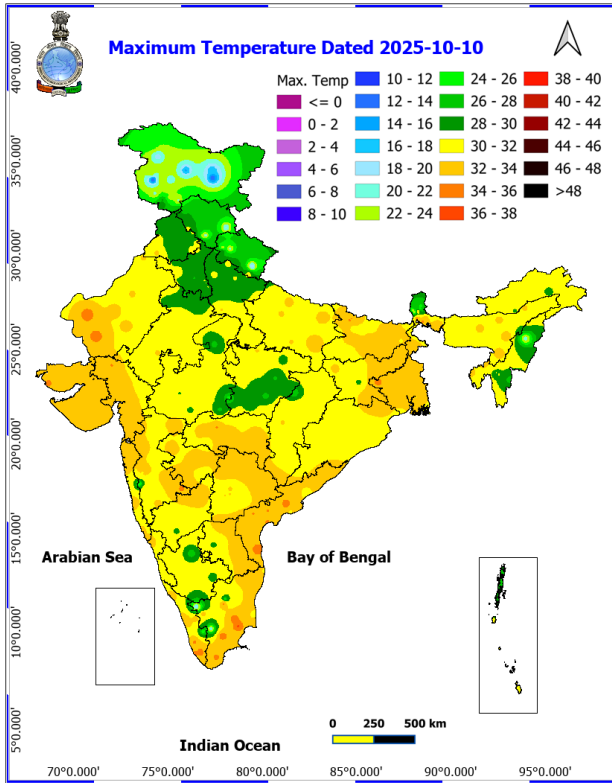
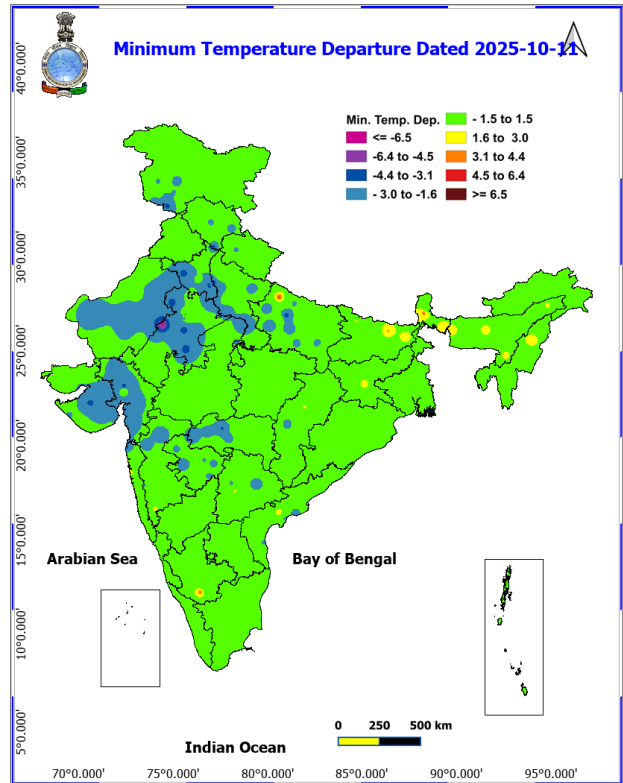
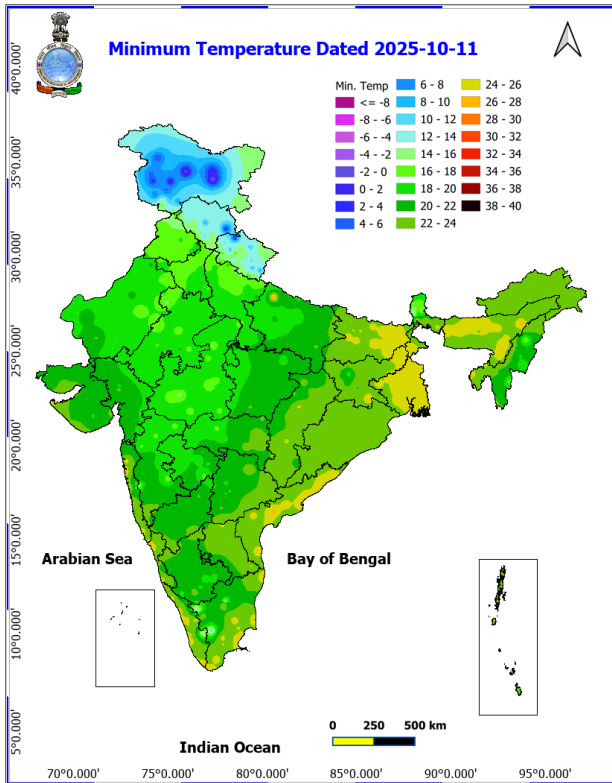
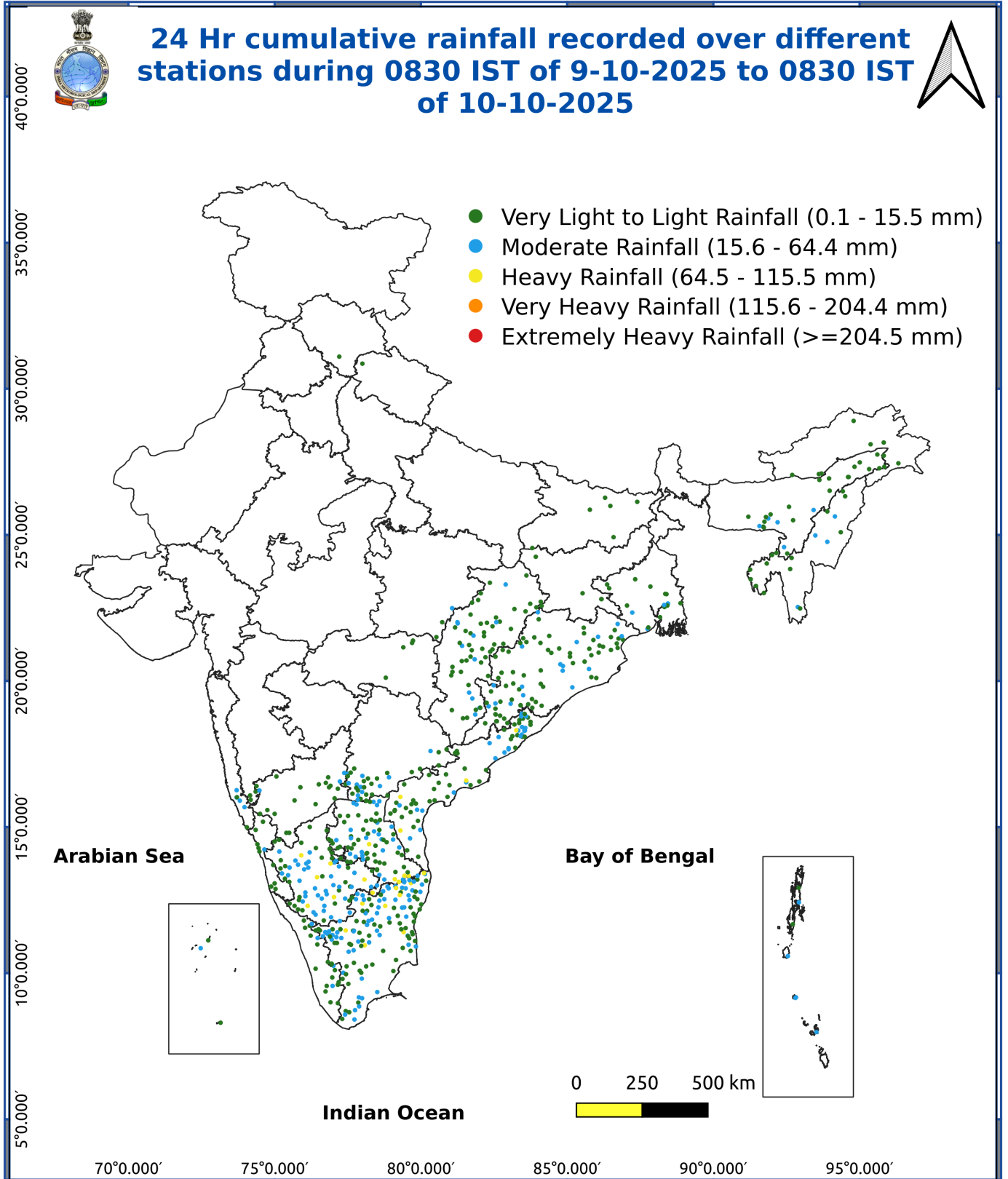


Fig. 3: Minimum Temperatures Dated 2025-10-10

Fig. 4: Departure of Minimum Temp. Dated 2025-10-10





**Very heavy rainfall** over Tamil Nadu, Kerala & Mahe, Coastal & South Interior Karnataka on 11<sup>th</sup> October.

#### Impact Expected

- Localized Flooding of roads, water logging in low lying areas and closure of underpasses mainly in urban areas of the above region.
- Occasional reduction in visibility due to heavy rainfall.
- Disruption of traffic in major cities due to water logging in roads leading to increased travel time.
- Minor damage to kutcha roads.
- Possibilities of damage to vulnerable structure.
- Localized Landslides/Mudslides/landslips/mudslips/landsinks/mudsinks.
- Damage to horticulture and standing crops in some areas due to inundation.
- It may lead to riverine flooding in some river catchments mainly over Bihar, Jharkhand and West Bengal (for riverine flooding please visit Web page of CWC)

#### Action Suggested

- Check for traffic congestion on your route before leaving for your destination.
- Follow any traffic advisories that are issued in this regard.
- Avoid going to areas that face the water logging problems often.
- Avoid staying in vulnerable structure.

#### Agromet advisories for various parts of the country

##### Agromet advisories for likely impact of Heavy / Heavy to Very Heavy Rainfall

- In South Interior Karnataka, keep the harvested produce of groundnut, maize, pepper, cardamom, turmeric and coffee to dry, covered and ventilated areas or cover them with tarpaulins in the fields. Drain out excess water from fields of rice, maize, finger millet, pigeon pea, soybean, groundnut, vegetable crops and plantations of banana, black pepper, coconut and arecanut to avoid waterlogging.
- In Tamil Nadu, store the harvested produce of rice and groundnut in safer places.
- Provide adequate drainage facilities in fields of rice, cotton, turmeric and vegetables and plantations of coconut and banana to avoid water stagnation.
- In Kerala, make provision to drain out excess water from rice fields and plantations of banana, coconut, arecanut and black pepper.
- In Rayalseema, store the harvested fruits and vegetables in safer places. Drain out excess water from fields of rice, groundnut, cotton, turmeric and vegetables.
- In Coastal Andhra Pradesh, provide adequate drainage facilities in fields of rice, maize, pigeon pea, black gram, green gram, groundnut, turmeric, vegetables and plantations of coconut, arecanut, banana, coffee and black pepper.
- In Coastal Karnataka, make necessary arrangements to drain out excess water from fields of rice and plantations of coconut and arecanut.
- In Assam, harvest all the matured vegetables (tomato, cucumber, brinjal etc).
- Ensure proper drainage of excess water from fields of Sali rice, black gram, green gram and vegetables.
- In Meghalaya, make necessary arrangements to drain out excess water from fields of standing crops, vegetables and fruit orchards.
- In Odisha, ensure proper drainage in fields of rice, maize, green gram, black gram, groundnut, cotton and vegetables to prevent waterlogging.

#### Livestock / Fishery

- Keep the animals inside the shed during heavy rainfall and provide them balanced feed.
- Store feed and fodder in a safe place to prevent spoilage.
- Construct an outlet with proper netting around the ponds to drain out excess water,

**\*Red color warning does not mean "Red Alert" Red color warning means "Take Action"**  
Forecast and warning for any day is valid from 0830 hours IST of day till 0830 hours IST of next day  
For more details kindly visit <https://mausam.imd.gov.in> or contact 011-2434-4599

(Service to the nation since 1875)

- thereby preventing fish from escaping in case of overflow.

#### **Agromet advisories for likely impact of Thunderstorm / Gusty Winds / Squally Winds**

- Provide mechanical support to horticultural crops and staking or support to vegetables and young fruit plants / fruit-bearing plants to avoid lodging due to strong winds.
- Tie the harvested crops properly and cover them to minimise the risk of displacement due to strong surface winds.

#### **Legends & abbreviations:**

#### **Region wise classification of meteorological Sub-Divisions:**

**Northwest India:** Western Himalayan Region (Jammu-Kashmir-Ladakh-Gilgit-Baltistan-Muzaffarabad, Himachal Pradesh and Uttarakhand); Punjab, Haryana-Chandigarh-Delhi; West Uttar Pradesh, East Uttar Pradesh, West Rajasthan and East Rajasthan.

**Central India:** West Madhya Pradesh, East Madhya Pradesh, Vidarbha and Chhattisgarh.

**East India:** Bihar, Jharkhand, Sub-Himalayan West Bengal & Sikkim; Gangetic West Bengal, Odisha and Andaman & Nicobar Islands.

**Northeast India:** Arunachal Pradesh, Assam & Meghalaya and Nagaland, Manipur, Mizoram & Tripura.

**West India:** Gujarat Region, Saurashtra & Kutch, Konkan & Goa, Madhya Maharashtra and Marathwada.

**South India:** Coastal Andhra Pradesh & Yanam, Telangana, Rayalaseema, Coastal Karnataka, North Interior Karnataka, South Interior Karnataka, Kerala & Mahe, Tamil Nadu, Puducherry & Karaikal and Lakshadweep.

## LEGENDS

- 1 अंडमान और निकोबार द्वीप समुह
- 2 अरुणाचल प्रदेश
- 3 असम और मेघालय
- 4 नागालैंड मनीपुर मीजोरम और त्रिपुरा
- 5 उप हिमालय पश्चिम बंगाल एवं सिक्किम
- 6 पश्चिम बंगाल
- 7 ओडिसा
- 8 झारखंड
- 9 बिहार
- 10 पूर्वी उत्तर प्रदेश
- 11 पश्चिम उत्तर प्रदेश
- 12 उत्तराखंड
- 13 हरियाणा चंडिगढ़ एवं दिल्ली
- 14 पंजाब
- 15 हिमाचल प्रदेश
- 16 जम्मू एवं कश्मीर एवं लद्दाख
- 17 पश्चिम राजस्थान
- 18 पूर्वी राजस्थान
- 19 पश्चिम मध्य प्रदेश
- 20 पूर्वी मध्य प्रदेश
- 21 गुजरात क्षेत्र
- 22 सौराष्ट्र एवं कच्छ
- 23 कोंकण एवं गोवा
- 24 मध्य महाराष्ट्र
- 25 मराठावाडा
- 26 विदर्भ
- 27 छत्तीसगढ़
- 28 तटीय आंध्र प्रदेश एवं यनम
- 29 तेलंगाना
- 30 रायलसीमा
- 31 तमिलनाडु, पुदुचेरी एवं कराईकल
- 32 तटिय कर्नाटक
- 33 आंतरिक उत्तरी कर्नाटक
- 34 आंतरिक दक्षिणी कर्नाटक
- 35 केरल एवं माहे
- 36 लक्षद्वीप



1. Andaman & Nicobar Islands
2. Arunachal Pradesh
3. Assam & Meghalaya
4. Nagaland, Manipur, Mizoram & Tripura
5. Sub-Himalayan West Bengal & Sikkim
6. Gangetic West Bengal
7. Orissa
8. Jharkhand
9. Bihar
10. East Uttar Pradesh
11. West Uttar Pradesh
12. Uttarakhand
13. Haryana, Chd & Delhi
14. Punjab
15. Himachal Pradesh
16. Jammu & Kashmir and Ladakh
17. West Rajasthan
18. East Rajasthan
19. West Madhya Pradesh
20. East Madhya Pradesh
21. Gujarat
22. Saurashtra
23. Konkan & Goa
24. Madhya Maharashtra
25. Marathawada
26. Vidharbha
27. Chhattisgarh
28. Coastal Andhra Pradesh & Yanam
29. Telangana
30. Rayalaseema
31. Tamilnadu, Puducherry & Karaikal
32. Coastal Karnataka
33. North Interior Karnataka
34. South Interior Karnataka
35. Kerala & Mahe
36. Lakshadweep

## SPATIAL DISTRIBUTION (% of Stations reporting)

% Stations	Category	% Stations	Category
76-100	Widespread (WS/ Most Places)	26-50	Scattered (SCT/ A Few Places)
51-75	Fairly Widespread (FWS/ Many Places)	1-25	Isolated (ISOL)

### Subdivision Colour

- NO WARNING
- WATCH (BE UPDATED)
- ALERT (BE PREPARED TO TAKE ACTION)
- WARNING (TAKE ACTION)

### Probabilistic Forecast

Terms	Probability of Occurrence (%)
Unlikely	< 25
Likely	25 - 50
Very Likely	50 - 75
Most Likely	> 75

- |                          |                 |                      |                    |
|--------------------------|-----------------|----------------------|--------------------|
| Heavy Rain               | Very Heavy Rain | Extremely Heavy Rain | Heavy Snow         |
| Thunderstorm & Lightning | Hailstorm       | Dust Storm           | Dust Raising Winds |
| Strong surface winds     | Heat Wave       | Hot Day              | Warm Night         |
| Cold Wave                | Cold Day        | Ground Frost         | Fog                |
| Hot & Humid              |                 |                      |                    |

\*Red color warning does not mean "Red Alert" Red color warning means "Take Action"

Forecast and warning for any day is valid from 0830 hours IST of day till 0830 hours IST of next day

For more details kindly visit <https://mausam.imd.gov.in> or contact 011-2434-4599

(Service to the nation since 1875)

## LEGENDS

### WARNING

WARNING (TAKE ACTION)
ALERT ( BE PREPARED)
WATCH (BE UPDATED)
NO WARNING ( NO ACTION)

### Probabilistic Forecast

Terms	Probability of Occurrence (%)
Unlikely	< 25
Likely	25 - 50
Very Likely	50 - 75
Most Likely	> 75



Heavy: 64.5 to 115.5 mm/cm \*  
Very Heavy: 115.6 to 204.4 mm/cm\*  
Extremely Heavy: > 204.4 mm/cm \*



When maximum temperature of a station reaches  $\geq 40^{\circ}\text{C}$  for plains and  $\geq 30^{\circ}\text{C}$  for hilly regions  
(a) Based on Departure from normal

Heat Wave: Maximum Temperature Departure from normal  $4.5^{\circ}\text{C}$  to  $6.4^{\circ}\text{C}$ .  
Severe Heat Wave: Maximum Temperature Departure from normal  $\geq 6.5^{\circ}\text{C}$

(b). Based on Actual maximum temperature

Heat Wave: When actual maximum temperature  $\geq 45^{\circ}\text{C}$ .  
Severe Heat Wave: When actual maximum temperature  $\geq 47^{\circ}\text{C}$

(c). Criteria for heat wave for coastal stations

When maximum temperature departure is  $> 4.5^{\circ}\text{C}$  from normal. Heat Wave may be described provided maximum temperature  $\geq 37^{\circ}\text{C}$



When maximum temperature remains  $40^{\circ}\text{C}$

Warm Night: When minimum temperature departure  $4.5^{\circ}\text{C}$  to  $6.4^{\circ}\text{C}$ .  
Severe Warm Night: When minimum temperature departure  $> 6.4^{\circ}\text{C}$ .



When minimum temperature of a station  $\leq 10^{\circ}\text{C}$  for plains and  $\leq 0^{\circ}\text{C}$  for hilly regions.

(a). Based on departure

Cold Wave: Minimum Temperature Departure from normal  $-4.5^{\circ}\text{C}$  to  $-6.4^{\circ}\text{C}$ .  
Severe Cold Wave: Minimum Temperature Departure from normal  $\leq -6.5^{\circ}\text{C}$

(b) Based on actual Minimum Temperature (for Plains only)

Cold Wave : When Minimum Temperature is  $\leq 4.0^{\circ}\text{C}$   
Severe Cold Wave: When Minimum Temperature is  $\leq 2.0^{\circ}\text{C}$

(c) For Coastal Stations

When Minimum Temperature departure is  $\leq -4.5^{\circ}\text{C}$  & actual Minimum Temperature is  $\leq 15^{\circ}\text{C}$



When minimum temperature of a station  $\leq 10^{\circ}\text{C}$  for plains and  $\leq 0^{\circ}\text{C}$  for hilly regions  
Based on departure

Cold Day: Maximum Temperature Departure from normal  $-4.5^{\circ}\text{C}$  to  $-6.4^{\circ}\text{C}$ .  
Severe Cold Day: Maximum Temperature Departure from normal  $\leq -6.5^{\circ}\text{C}$



Phenomenon of small droplets suspended in air and the horizontal visibility  $< 1\text{km}$

Moderate Fog: When the visibility between 500-200 metres  
Dense Fog: when the visibility between 50- 200 metres  
Very Dense Fog: when the visibility  $< 50$  metres



Sudden electrical discharges manifested by a flash of light (Lightning) and a sharp rumbling sound (thunder)



An ensemble of particles of dust or sand energetically lifted to great heights by a strong and turbulent wind.



Ice deposits on ground

Air temperature  $\leq 4^{\circ}\text{C}$  ( over Plains)



A strong wind that rises suddenly, lasts for atleast 1 minute.

Moderate: Wind speed 52-61 kmph  
Severe: Wind speed 62-87 kmph  
Very Severe: Wind speed  $> 87$  kmph



Effect of various waves in the sea over specific area

Rough to very rough: Wind speed 41-62 kmph (22-33 knots) & Wave height 2.5-6 metre  
High to very high: Wind speed 63-117 kmph ( 34-63 knots) & Wave height 6-14 metre  
Phenomenal: Wind speed  $> 117$  kmph ( $> 63$  knots) & Wave height  $> 14$  metre



Cyclonic Storm: Wind speed 62-87 kmph (34-47 knots)  
Severe Cyclonic Storm: Wind speed 88-117 kmph (48-63 knots)  
Very Severe Cyclonic Storm: Wind speed 118-165 kmph (64 - 89 knots)  
Extremely Severe Cyclonic Storm: Wind speed 166-220 kmph (90 -119 knots)  
Super Cyclone Storm: Wind speed  $> 220$  kmph ( $> 119$  knots)

\*Red color warning does not mean "Red Alert" Red color warning means "Take Action"

Forecast and warning for any day is valid from 0830 hours IST of day till 0830 hours IST of next day

For more details kindly visit <https://mausam.imd.gov.in> or contact 011-2434-4599

(Service to the nation since 1875)