

2025-08-04

Time of Issue: 08:45:00 hours IST
(Morning)

ALL INDIA WEATHER SUMMARY AND FORECAST BULLETIN

Significant Weather Features

Northeast India:

- Light/moderate rainfall at many places accompanied with thunderstorm, lightning and isolated **heavy rainfall** likely to continue over Arunachal Pradesh, Assam & Meghalaya and Nagaland, Manipur, Mizoram & Tripura during 04th -09th August with isolated **very heavy rainfall** over Arunachal Pradesh on 04th & during 06th -09th August; Assam & Meghalaya on 04th & during 07th -09th August.

East & Central India:

- Isolated **heavy rainfall** likely over Sub-Himalayan West Bengal & Sikkim, Bihar during 04th-09th; West Madhya Pradesh on 04th-05th; East Madhya Pradesh on 04th; Chhattisgarh on 08th & 09th; Odisha on 06th & 07th; Gangetic West Bengal on 07th August with isolated **very heavy rainfall** over Sub-Himalayan West Bengal & Sikkim on 04th; Bihar on 04th August.
- Light to moderate rainfall at most/many places accompanied with thunderstorm & lightning likely over the region during next 5 days.

Northwest India:

- **Extremely heavy rainfall** very likely at isolated places over Uttar Pradesh on 04th August.
- Isolated **heavy rainfall** likely over Jammu-Kashmir during 04th-06th August; Himachal Pradesh & Uttar Pradesh during 04th-06th; Uttarakhand during 04th-09th; Punjab on 05th & 09th; Haryana on 04th-05th; East Rajasthan on 08th & 09th August with **very heavy rainfall** over Himachal Pradesh on 04th & 05th; Uttarakhand during 04th-05th; Haryana on 05th August.
- Light/moderate rainfall at many places accompanied with thunderstorm & lightning likely over Western Himalayan region and many/some places over the plains during next 7 days.

South Peninsular India:

- **Extremely heavy rainfall** very likely at isolated places over Kerala and Tamil Nadu on 05th August.
- Isolated **heavy rainfall** likely over Tamil Nadu during 04th-07th; Kerala & Mahe, Coastal & South Interior Karnataka during 04th-09th; Lakshadweep during 04th-06th; North Interior Karnataka during 06th-08th; Coastal Andhra Pradesh & Yanam during 05th-07th; Rayalaseema during 04th-08th August with **very heavy rainfall** over Tamil Nadu on 04th; Kerala & Mahe during 04th-07th; Coastal & South Interior Karnataka during 05th-07th; Rayalaseema on 05th August.
- Strong surface winds (speed reaching 40-50 kmph) very likely over South Peninsular India during next 5 days.
- Light to moderate rainfall at some/many places accompanied with thunderstorm & lightning likely over Tamil Nadu, Kerala & Mahe, Lakshadweep, Karnataka, Rayalaseema, Coastal Andhra Pradesh & Yanam and Telangana during next 5 days.

West India:

- Isolated **heavy rainfall** likely over Marathwada on 06th & 07th and Konkan & Goa during 07th-09th August.
- Light to moderate rainfall at many/some places very likely over the region during next 5-6 days.

*Red color warning does not mean "Red Alert" Red color warning means "Take Action"

Forecast and warning for any day is valid from 0830 hours IST of day till 0830 hours IST of next day

For more details kindly visit <https://mausam.imd.gov.in> or contact 011-2434-4599

(Service to the nation since 1875)

Main Weather Observations:

❖ **Significant rainfall recorded(in cm)** (from 0830 hours IST of yesterday to 0530 hours IST of today): **Bihar:** Purnea (dist Purnea) 26, Patna-airport (dist Patna), Bhagalpur (dist Bhagalpur) 3 Each; **Assam & Meghalaya:** Cherrapunji (dist East Khasi Hills) 15, Dhubri (dist Dhubri) 3, Silchar (dist Cachar), Shillong (dist East Khasi Hills) 2 Each; **East Uttar Pradesh:** Lucknow (amausi) AP (dist Lucknow) 8, Bahraich (dist Bahraich), Gorakhpur (dist Gorakhpur), Allahabad (dist Prayagraj) 4 Each, Sultanpur-obs2 (dist Sultanpur), Kanpur Airforce (dist Kanpur Nagar) 2 Each; **West Uttar Pradesh:** Bareilly (dist Bareilly) 7; **Odisha:** Chandbali (dist Bhadrak) 6; **Uttarakhand:** Dehra Dun-mokampur (dist Dehradun) 5; **Arunachal Pradesh:** Pasighat (dist East Siang) 4; **South Interior Karnataka:** Bengaluru (dist Bengaluru Urban) 4, Bengaluru HAL (dist) 2; **Chhattisgarh:** Ambikapur (dist Surguja) 4; **Gangetic West Bengal:** Kolkata-alipur (dist Kolkata) 4, Kolkata (dum Dum) AP (dist North 24 Parganas) 2; **Jharkhand:** Jamshedpur AP (dist East Singhbhum) 3; **Nagaland, Manipur, Mizoram & Tripura:** Agartala AP (dist West Tripura) 3; **Lakshadweep:** Amini Divi (dist Lakshadweep) 3; **Sub-Himalayan West Bengal & Sikkim:** Malda (dist Malda) 2; **Royalaseema:** Anantapur (dist Anantapuramu) 2; **East Madhya Pradesh:** Satna (dist Satna) 2.

❖ **Heavy Rainfall observed** (from 0830 hours IST of yesterday to 0530 hours IST of today): **Extremely heavy rain** at isolated places over Bihar **Heavy to very heavy rain** at isolated places over Assam & Meghalaya **Heavy rain** at a few places over West Uttar Pradesh, at isolated places over East Uttar Pradesh.

❖ **Minimum Temperature Departures (as on 03-08-2025):** **markedly above normal(> 5.1°C)** at many places over Jammu-Kashmir-Ladakh-Gilgit-Baltistan-Muzaffarabad; at few places over Assam & Meghalaya; at isolated places over Odisha, West Uttar Pradesh, Himachal Pradesh, West Madhya Pradesh, East Madhya Pradesh and Saurashtra & Kutch. **appreciably above normal(3.1°C to 5.0°C)** at few places over Sub Himalayan West Bengal & Sikkim; at isolated places over Gangetic West Bengal and Gujarat Region. **above normal(1.6°C to 3.0°C)** at many places over Uttarakhand; at most places over Andaman & Nicobar Islands; at few places over Nagaland, Manipur, Mizoram & Tripura, Vidarbha, Coastal Andhra Pradesh & Yanam and Royalaseema; at isolated places over East Uttar Pradesh, Haryana-Chandigarh-Delhi, Punjab, Madhya Maharashtra, Marathwada, Chhattisgarh and Tamil Nadu, Puducherry & Karaikal. **near normal(-1.5°C to 1.5°C)** at many places over Kerala & Mahe; at most places over Arunachal Pradesh, Jharkhand, Bihar, West Rajasthan, East Rajasthan, Konkan & Goa, Telangana, Coastal Karnataka, North Interior Karnataka, South Interior Karnataka and Lakshadweep. **The lowest minimum temperature** of 19.4°C is reported at Narsinghpur (East Madhya Pradesh) over the Plains of India.

❖ **Maximum Temperature Departures (as on 03-08-2025):** **markedly above normal(> 5.1°C)** at many places over Jammu-Kashmir-Ladakh-Gilgit-Baltistan-Muzaffarabad; at isolated places over Odisha, Madhya Maharashtra and Chhattisgarh. **appreciably above normal(3.1°C to 5.0°C)** at many places over Vidarbha; at few places over Coastal Andhra Pradesh & Yanam and Telangana; at isolated places over Gangetic West Bengal and Marathwada. **above normal(1.6°C to 3.0°C)** at many places over Coastal Karnataka; at few places over Konkan & Goa and North Interior Karnataka; at isolated places over Assam & Meghalaya, Uttarakhand, Himachal Pradesh, West Madhya Pradesh, East Madhya Pradesh, Gujarat Region, Saurashtra & Kutch, Royalaseema and Kerala & Mahe. **near normal(-1.5°C to 1.5°C)** at many places over Andaman & Nicobar Islands, East Rajasthan, South Interior Karnataka and Lakshadweep; at most places over Nagaland, Manipur, Mizoram & Tripura, Haryana-Chandigarh-Delhi, Punjab and West Rajasthan; at few places over Arunachal Pradesh, Sub Himalayan West Bengal & Sikkim, Jharkhand, Bihar and Tamil Nadu, Puducherry & Karaikal; at isolated places over West Uttar Pradesh. **The highest maximum temperature** of 39.0°C is reported at TANJAVUR (TAMIL NADU).

***Red color warning does not mean "Red Alert" Red color warning means "Take Action"**

Forecast and warning for any day is valid from 0830 hours IST of day till 0830 hours IST of next day

For more details kindly visit <https://mausam.imd.gov.in> or contact 011-2434-4599

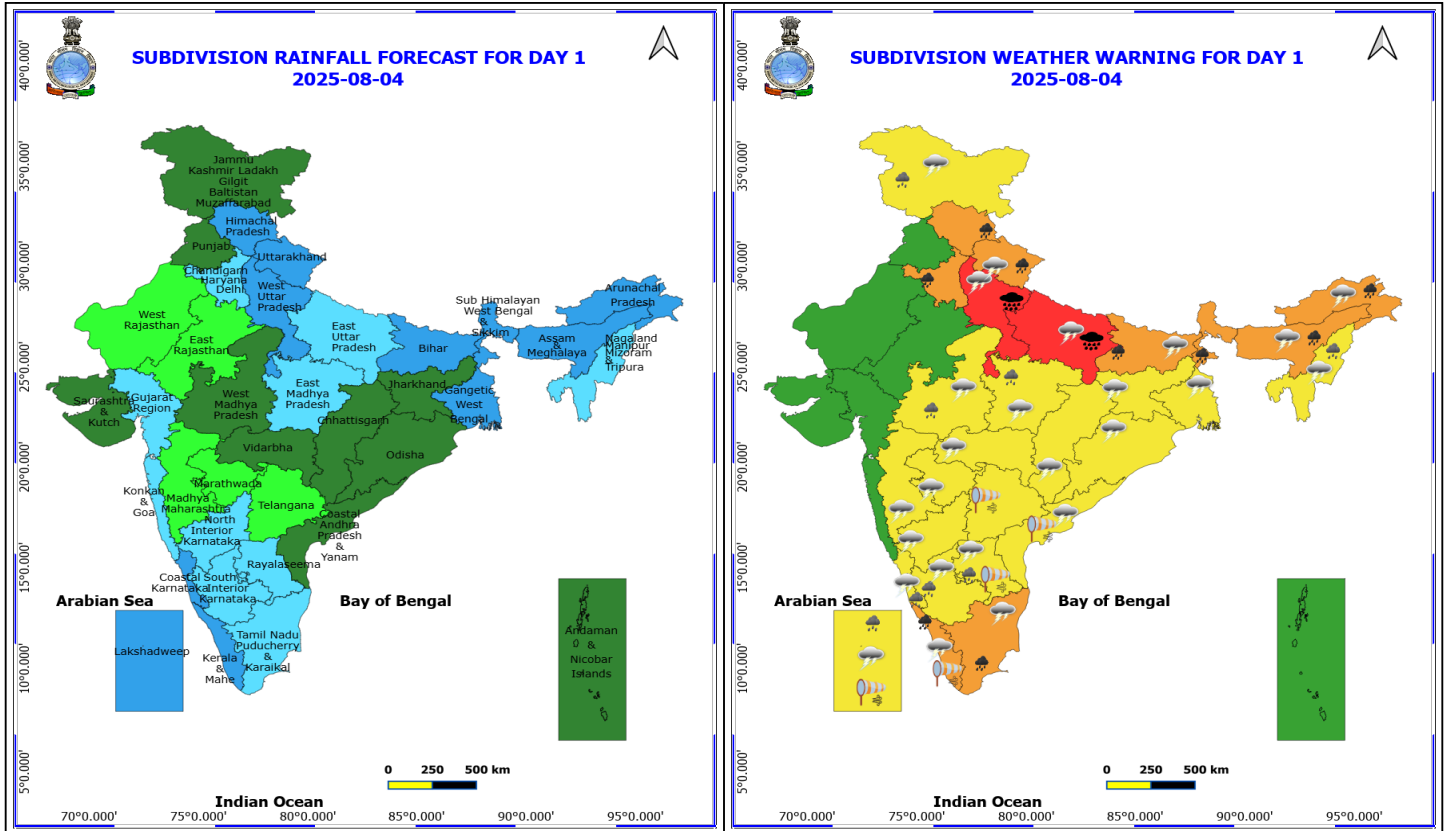
(Service to the nation since 1875)

Meteorological Analysis (Based on 0530 hours IST)

- The **monsoon trough** at mean sea level now passes through Amritsar, Dehradun, Bareilly, Gorakhpur, Patna, Purnea and thence southeastwards to the northeast Bay of Bengal.
- A **trough** runs from northwest Uttar Pradesh to northeast Bihar across east Uttar Pradesh at 0.9 km above mean sea level.
- The **upper air cyclonic circulation** over southwest Bay off North Tamil Nadu coast persists and now seen between 3.1 km & 5.8 km above mean sea level tilting southward with height persisted.
- The east-west **trough** now roughly along Lat. 10°N from southeast Arabian sea to central parts of south Bay of Bengal between 4.5 & 7.6 km above mean sea level.
- The **upper air cyclonic circulation** over northeast Arabian sea & neighbourhood at 5.8 km above mean sea level persisted.
- The **upper air cyclonic circulation** over north Gujarat & adjoining south Rajasthan at 3.1 km above mean sea level persisted.
- The **Western Disturbance** as a trough in middle & upper tropospheric levels with its axis at 5.8 km above mean sea level roughly along Long. 74°E to the north of Lat. 32°N persisted.
- The **upper air cyclonic circulation** over Punjab & neighbourhood extending upto 4.5 km above mean sea level has become less marked.
- The **upper air cyclonic circulation** over northwest Bihar & adjoining northeast Uttar Pradesh now lies over northeast Uttar Pradesh & neighbourhood extending upto 4.5 km above mean sea level tilting southwestwards with height has become less marked.

Weather Outlook for subsequent 3 days

- Fairly widespread to widespread rainfall likely over the most parts of the country except Madhya Maharashtra and Marathwada where Isolated rainfall is likely.



4 August (Day 1)

- ❖ **Heavy to Very Heavy Rainfall with isolated Extremely Heavy Rainfall** very likely at isolated places over Uttar Pradesh.
- ❖ **Heavy to Very Heavy Rainfall** very likely at isolated places over Arunachal Pradesh, Assam & Meghalaya, Bihar, Haryana, Chandigarh & Delhi, Himachal Pradesh, Kerala & Mahe, Sub Himalayan West Bengal & Sikkim, Tamil Nadu Puducherry & Karaikal and Uttarakhand.
- ❖ **Heavy Rainfall** very likely at isolated places over Coastal Karnataka, Jammu-Kashmir-Ladakh-Gilgit-Baltistan-Muzaffarabad, Lakshadweep, Madhya Pradesh, Nagaland, Manipur, Mizoram and Tripura, Rayalaseema and South Interior Karnataka.
- ❖ **Thunderstorm accompanied with lightning & gusty winds(40-50kmph)** very likely at isolated places over Kerala & Mahe, Lakshadweep and Rayalaseema.
- ❖ **Thunderstorm accompanied with lightning & gusty winds(30-40kmph)** very likely at isolated places over Bihar, Coastal Andhra Pradesh, Gangetic West Bengal, Jammu-Kashmir-Ladakh-Gilgit-Baltistan-Muzaffarabad, Jharkhand, Karnataka and West Madhya Pradesh.
- ❖ **Thunderstorm accompanied with Lightning** very likely at isolated places over Arunachal Pradesh, Assam & Meghalaya, Chhattisgarh, East Madhya Pradesh, Maharashtra, Nagaland, Manipur, Mizoram and Tripura, Odisha, Tamil Nadu Puducherry & Karaikal, Uttar Pradesh and Uttarakhand.
- ❖ **Strong Surface Winds** very likely at isolated places over Andhra Pradesh, Kerala & Mahe, Lakshadweep and Telangana.

Squally wind with speed reaching 45 kmph to 55 kmph gusting to 65 kmph is likely to prevail along and off Somalia,

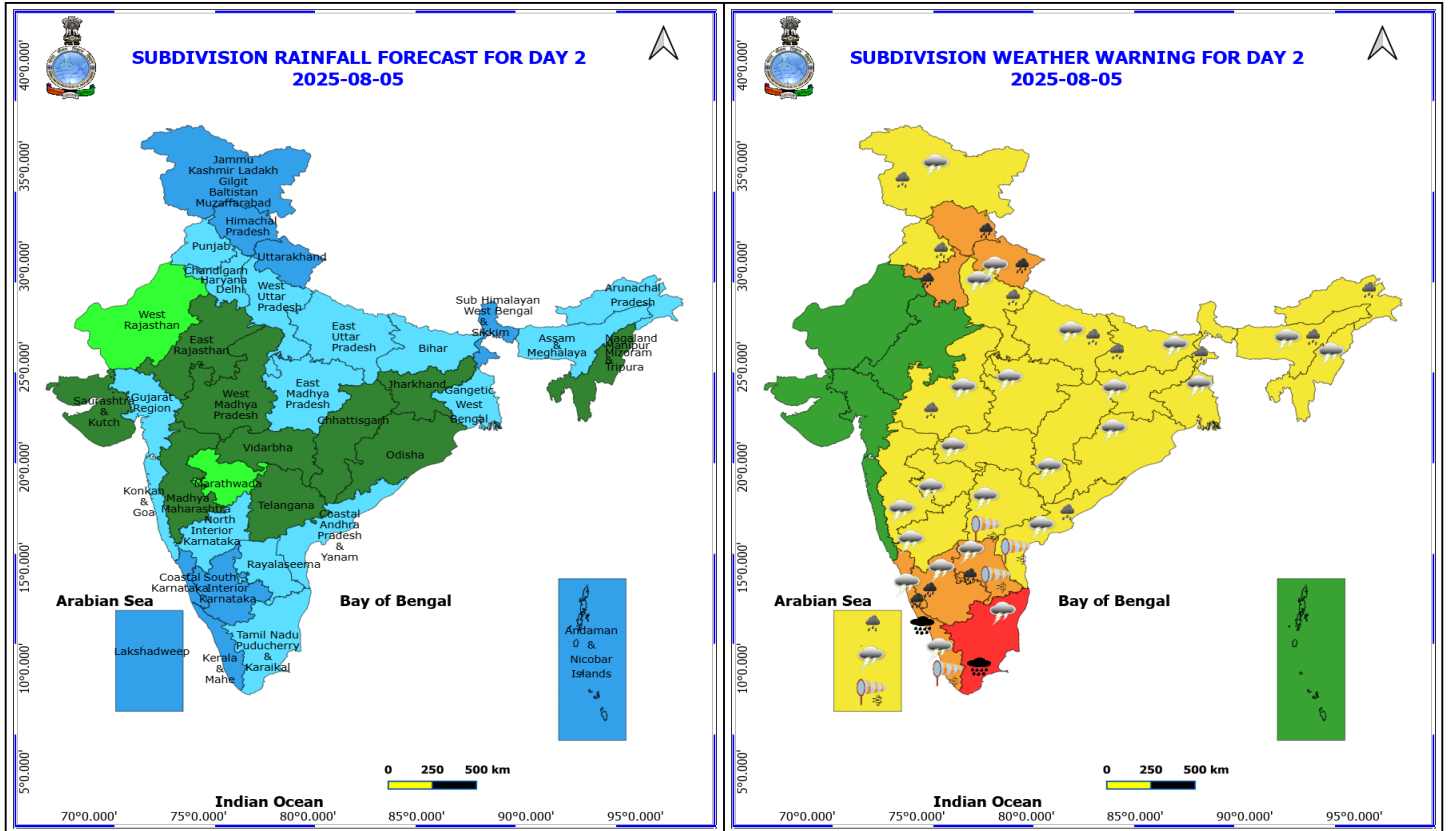
***Red color warning does not mean "Red Alert" Red color warning means "Take Action"**
Forecast and warning for any day is valid from 0830 hours IST of day till 0830 hours IST of next day
For more details kindly visit <https://mausam.imd.gov.in> or contact 011-2434-4599

(Service to the nation since 1875)



Yemen & Oman coasts, most parts of westcentral Arabian Sea & adjoining parts of eastcentral Arabian Sea, many parts of southwest Arabian Sea.

Squally weather with wind speed reaching 40 - 50 kmph gusting to 60 kmph likely to prevail over many parts of eastcentral Arabian Sea, many parts of southeast and southwest Arabian Sea, over northeast & adjoining northwest Arabian Sea, along and off north Gujarat, Kerala, Karnataka coasts, over Lakshadweep, Maldives, Comorin areas, over Gulf of Mannar, many parts of southwest Bay of Bengal, few parts of southeast Bay of Bengal.



5 August (Day 2)

- ❖ **Heavy to Very Heavy Rainfall with isolated Extremely Heavy Rainfall** very likely at isolated places over Kerala & Mahe and Tamil Nadu Puducherry & Karaikal.
- ❖ **Heavy to Very Heavy Rainfall** very likely at isolated places over Coastal Karnataka, Haryana, Chandigarh & Delhi, Himachal Pradesh, Rayalaseema, South Interior Karnataka and Uttarakhand.
- ❖ **Heavy Rainfall** very likely at isolated places over Arunachal Pradesh, Assam & Meghalaya, Bihar, Coastal Andhra Pradesh, Jammu-Kashmir-Ladakh-Gilgit-Baltistan-Muzaffarabad, Lakshadweep, Punjab, Sub Himalayan West Bengal & Sikkim, Uttar Pradesh and West Madhya Pradesh.
- ❖ **Thunderstorm accompanied with lightning & gusty winds(40-50kmph)** very likely at isolated places over Kerala & Mahe, Lakshadweep and Rayalaseema.
- ❖ **Thunderstorm accompanied with lightning & gusty winds(30-40kmph)** very likely at isolated places over Bihar, Coastal Andhra Pradesh, Gangetic West Bengal, Jammu-Kashmir-Ladakh-Gilgit-Baltistan-Muzaffarabad, Jharkhand, Karnataka and West Madhya Pradesh.
- ❖ **Thunderstorm accompanied with Lightning** very likely at isolated places over Assam & Meghalaya, Chhattisgarh, East Madhya Pradesh, Maharashtra, Nagaland, Manipur, Mizoram and Tripura, Odisha, Tamil Nadu Puducherry & Karaikal, Telangana, Uttar Pradesh and Uttarakhand.
- ❖ **Strong Surface Winds** very likely at isolated places over Andhra Pradesh, Kerala & Mahe, Lakshadweep and Telangana.

Squally wind with speed reaching 45 kmph to 55 kmph gusting to 65 kmph is likely to prevail along and off Somalia, Yemen & Oman coasts, most parts of westcentral Arabian Sea & adjoining eastcentral Arabian Sea, southern parts

***Red color warning does not mean "Red Alert" Red color warning means "Take Action"**

Forecast and warning for any day is valid from 0830 hours IST of day till 0830 hours IST of next day

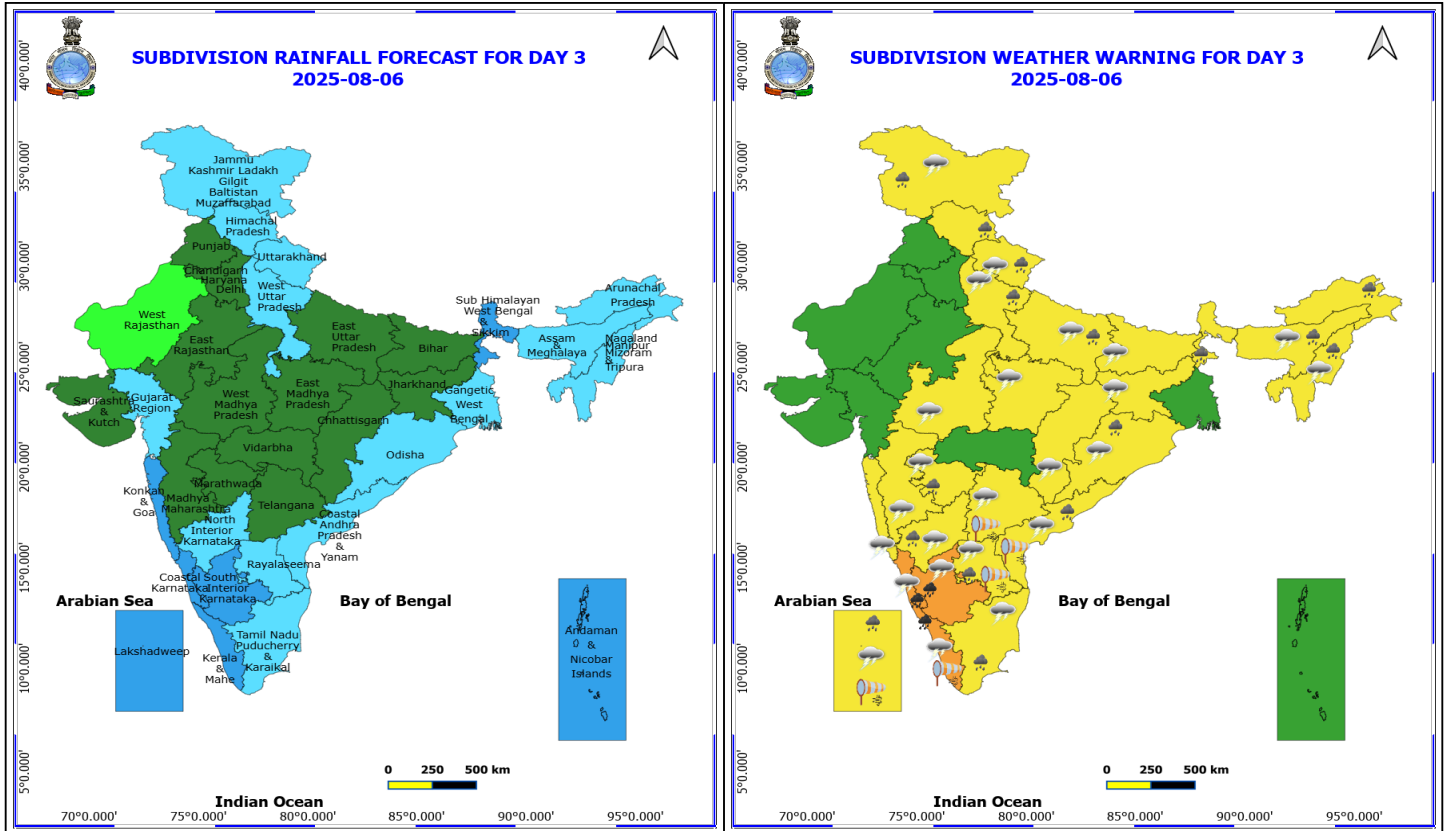
For more details kindly visit <https://mausam.imd.gov.in> or contact 011-2434-4599

(Service to the nation since 1875)



of northwest Arabian Sea, many parts of southwest & southeast Arabian Sea.

Squally weather with wind speed reaching 40 - 50 kmph gusting to 60 kmph likely to prevail over many parts of eastcentral Arabian Sea, many parts of southeast and southwest Arabian Sea, over northeast & adjoining northwest Arabian Sea, along and off north Gujarat, Kerala, Karnataka coasts, over Lakshadweep, Maldives, Comorin areas, over Gulf of Mannar, many parts of southwest and adjoining southeast Bay of Bengal.



6 August (Day 3)

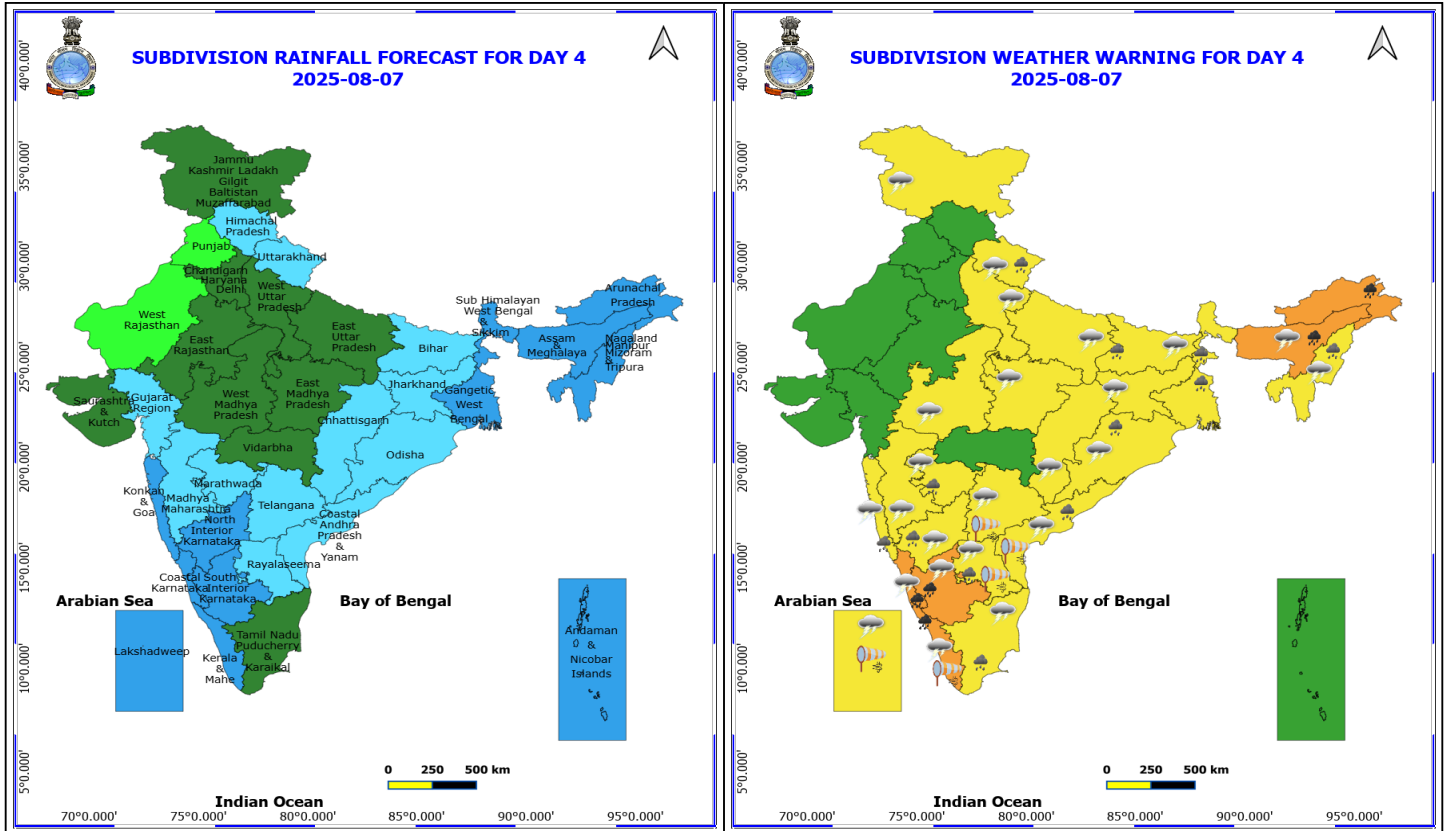
- ❖ **Heavy to Very Heavy Rainfall** very likely at isolated places over Coastal Karnataka, Kerala & Mahe and South Interior Karnataka.
- ❖ **Heavy Rainfall** very likely at isolated places over Andhra Pradesh, Arunachal Pradesh, Assam & Meghalaya, Himachal Pradesh, Jammu-Kashmir-Ladakh-Gilgit-Baltistan-Muzaffarabad, Lakshadweep, Marathwada, Nagaland, Manipur, Mizoram and Tripura, North Interior Karnataka, Odisha, Sub Himalayan West Bengal & Sikkim, Tamil Nadu Puducherry & Karaikal, Uttar Pradesh and Uttarakhand.
- ❖ **Thunderstorm accompanied with lightning & gusty winds(40-50kmph)** very likely at isolated places over Kerala & Mahe, Lakshadweep and Rayalaseema.
- ❖ **Thunderstorm accompanied with lightning & gusty winds(30-40kmph)** very likely at isolated places over Bihar, Coastal Andhra Pradesh, Jharkhand, Karnataka and West Madhya Pradesh.
- ❖ **Thunderstorm accompanied with Lightning** very likely at isolated places over Assam & Meghalaya, Chhattisgarh, East Madhya Pradesh, Jammu-Kashmir-Ladakh-Gilgit-Baltistan-Muzaffarabad, Konkan & Goa, Madhya Maharashtra, Marathwada, Nagaland, Manipur, Mizoram and Tripura, Odisha, Tamil Nadu Puducherry & Karaikal, Telangana, Uttar Pradesh and Uttarakhand.
- ❖ **Strong Surface Winds** very likely at isolated places over Andhra Pradesh, Kerala & Mahe, Lakshadweep and Telangana.

Squally wind with speed reaching 45 kmph to 55 kmph gusting to 65 kmph is likely to prevail along and off Somalia, Yemen & Oman coasts, many parts of westcentral Arabian Sea, southern parts of northwest Arabian Sea, many parts of southwest & southeast Arabian Sea.

***Red color warning does not mean "Red Alert" Red color warning means "Take Action"**
 Forecast and warning for any day is valid from 0830 hours IST of day till 0830 hours IST of next day
 For more details kindly visit <https://mausam.imd.gov.in> or contact 011-2434-4599
 (Service to the nation since 1875)



Squally weather with wind speed reaching 40 - 50 kmph gusting to 60 kmph likely to prevail over many parts of eastcentral Arabian Sea, many parts of southeast and southwest Arabian Sea, over northeast & adjoining northwest Arabian Sea, along and off north Gujarat, Kerala, Karnataka coasts, over Lakshadweep, Maldives, Comorin areas, over Gulf of Mannar, many parts of southwest and adjoining southeast Bay of Bengal.



7 August (Day 4)

- ❖ **Heavy to Very Heavy Rainfall** likely at isolated places over Arunachal Pradesh, Assam & Meghalaya, Coastal Karnataka, Kerala & Mahe and South Interior Karnataka.
- ❖ **Heavy Rainfall** likely at isolated places over Andhra Pradesh, Bihar, Konkan & Goa, Marathwada, Nagaland, Manipur, Mizoram and Tripura, North Interior Karnataka, Odisha, Tamil Nadu Puducherry & Karaikal, Uttarakhand and West Bengal & Sikkim.
- ❖ **Thunderstorm accompanied with lightning & gusty winds(40-50kmph)** likely at isolated places over Kerala & Mahe, Lakshadweep and Rayalaseema.
- ❖ **Thunderstorm accompanied with lightning & gusty winds(30-40kmph)** likely at isolated places over Bihar, Coastal Andhra Pradesh, Jharkhand, Karnataka and West Madhya Pradesh.
- ❖ **Thunderstorm accompanied with Lightning** likely at isolated places over Assam & Meghalaya, Chhattisgarh, East Madhya Pradesh, Jammu-Kashmir-Ladakh-Gilgit-Baltistan-Muzaffarabad, Konkan & Goa, Madhya Maharashtra, Marathwada, Nagaland, Manipur, Mizoram and Tripura, Odisha, Tamil Nadu Puducherry & Karaikal, Telangana, Uttar Pradesh and Uttarakhand.
- ❖ **Strong Surface Winds** likely at isolated places over Andhra Pradesh, Kerala & Mahe, Lakshadweep and Telangana.

Squally wind with speed reaching 45 kmph to 55 kmph gusting to 65 kmph is likely to prevail along and off Somalia, Yemen & Oman coasts, many parts of westcentral Arabian Sea, southern parts of northwest Arabian Sea, many parts of southwest & southeast Arabian Sea.

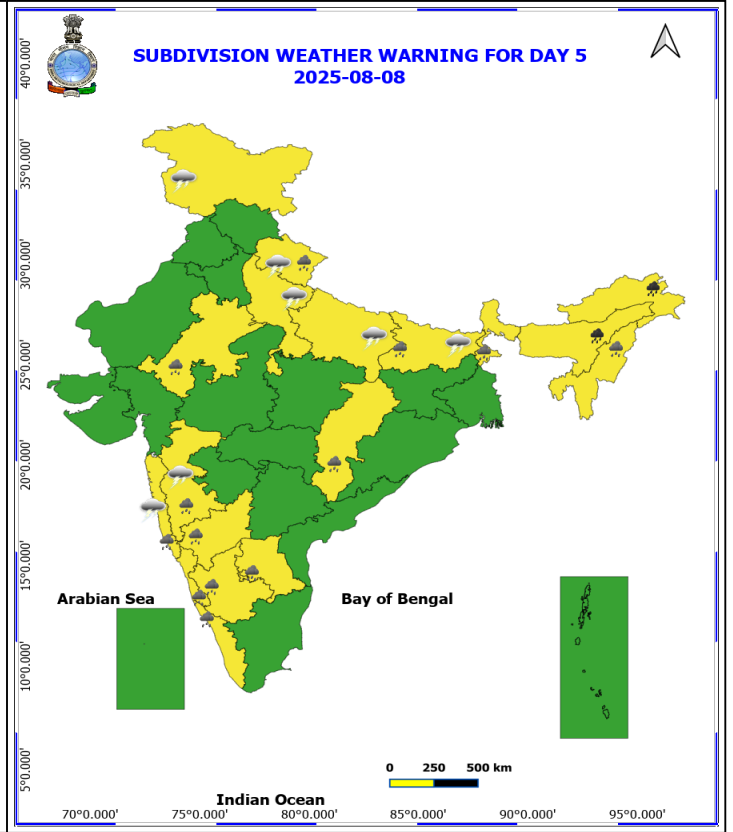
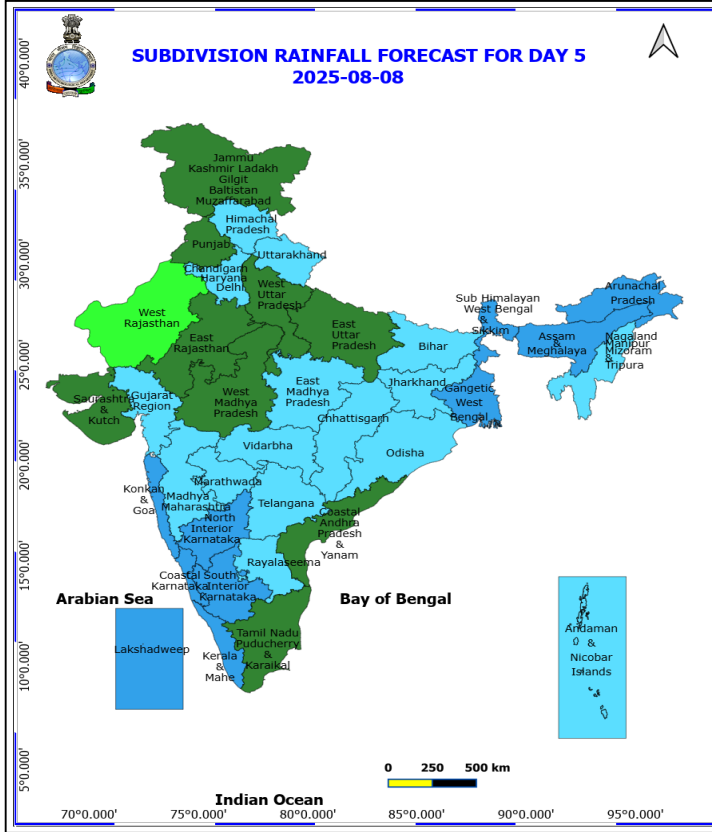
Squally weather with wind speed reaching 40 - 50 kmph gusting to 60 kmph likely to prevail over many parts of

***Red color warning does not mean "Red Alert" Red color warning means "Take Action"**
Forecast and warning for any day is valid from 0830 hours IST of day till 0830 hours IST of next day
For more details kindly visit <https://mausam.imd.gov.in> or contact 011-2434-4599

(Service to the nation since 1875)



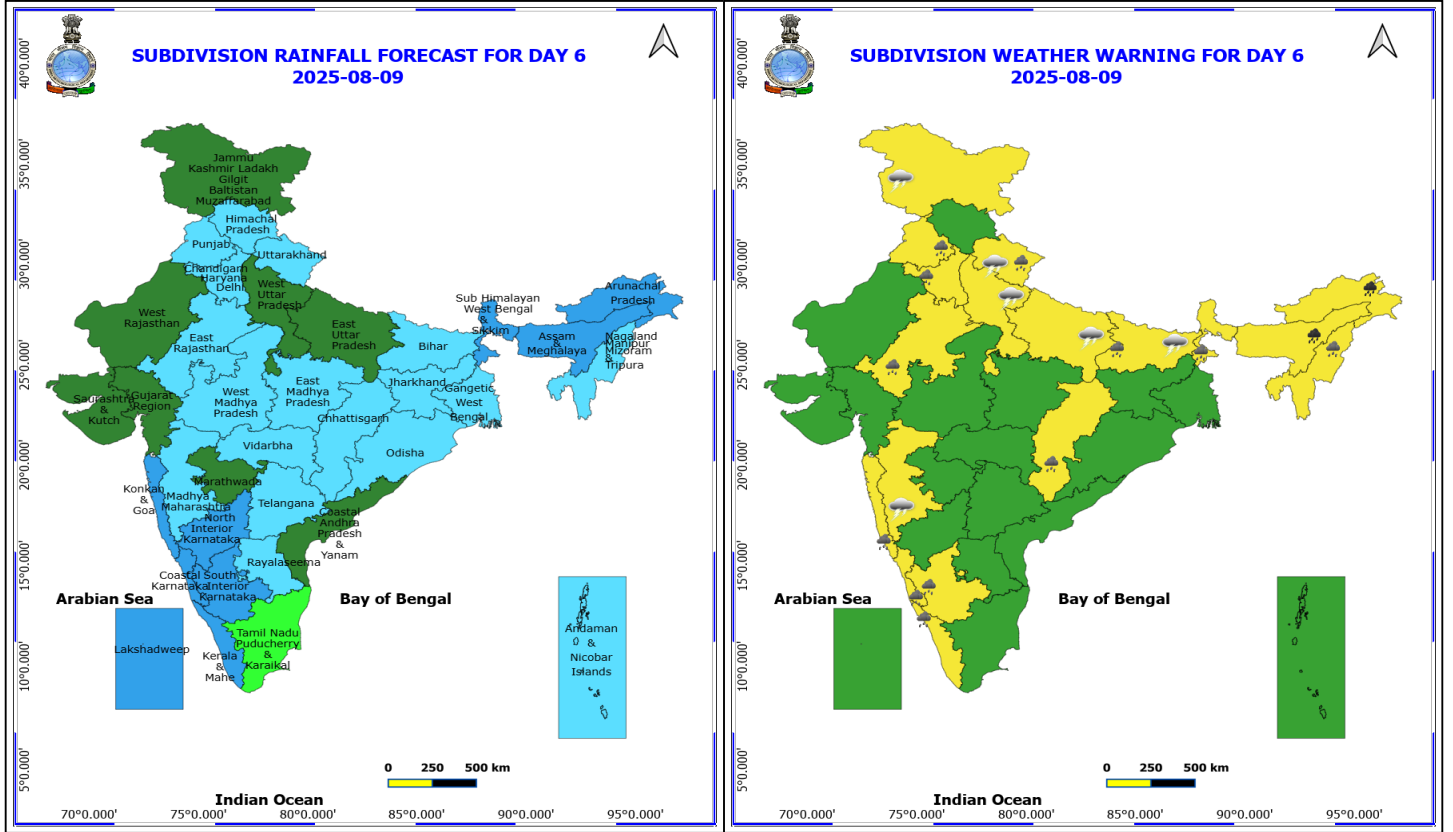
eastcentral Arabian Sea, many parts of southeast and southwest Arabian Sea, over northeast & adjoining northwest Arabian Sea, along and off north Gujarat, Kerala, Karnataka coasts, along & off Tamil Nadu & south Andhra Pradesh coasts, over Lakshadweep, Maldives, Comorin areas, over Gulf of Mannar, many parts of southwest and adjoining southeast Bay of Bengal, southwestern parts of westcentral Bay of Bengal.



8 August (Day 5)

- ❖ **Heavy to Very Heavy Rainfall** likely at isolated places over Arunachal Pradesh and Assam & Meghalaya.
- ❖ **Heavy Rainfall** likely at isolated places over Bihar, Chhattisgarh, East Rajasthan, Karnataka, Kerala & Mahe, Konkan & Goa, Madhya Maharashtra, Nagaland, Manipur, Mizoram and Tripura, Rayalaseema, Sub Himalayan West Bengal & Sikkim and Uttarakhand.
- ❖ **Thunderstorm accompanied with lightning & gusty winds(30-40kmph)** likely at isolated places over Bihar.
- ❖ **Thunderstorm accompanied with Lightning** likely at isolated places over Jammu-Kashmir-Ladakh-Gilgit-Baltistan-Muzaffarabad, Konkan & Goa, Madhya Maharashtra, Uttar Pradesh and Uttarakhand.

No Fishermen Warning



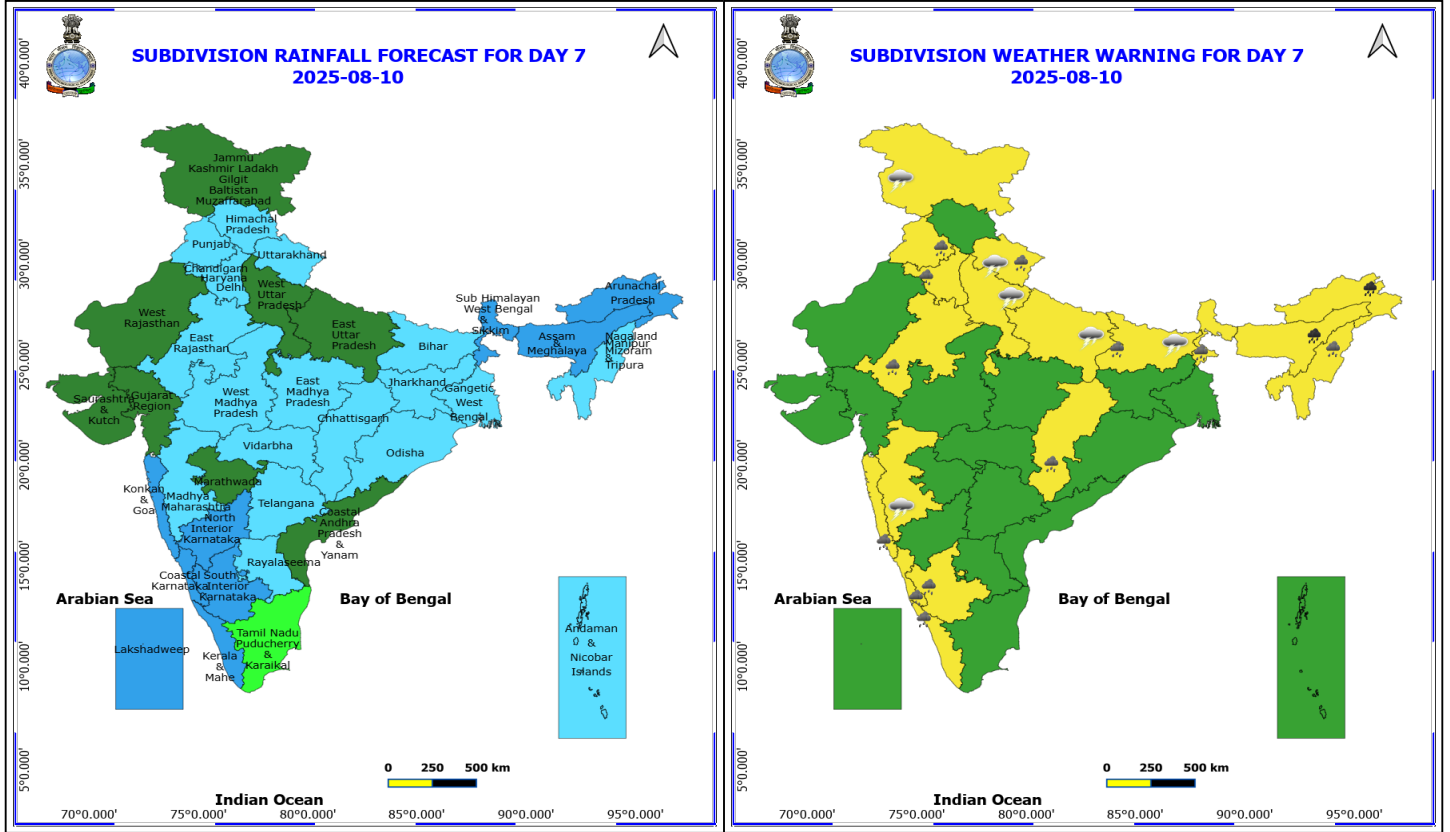
9 August (Day 6)

- ❖ **Heavy to Very Heavy Rainfall** likely at isolated places over Arunachal Pradesh and Assam & Meghalaya.
- ❖ **Heavy Rainfall** likely at isolated places over Bihar, Chhattisgarh, Coastal Karnataka, East Rajasthan, Haryana, Chandigarh & Delhi, Kerala & Mahe, Konkan & Goa, Nagaland, Manipur, Mizoram and Tripura, Punjab, South Interior Karnataka, Sub Himalayan West Bengal & Sikkim and Uttarakhand.
- ❖ **Thunderstorm accompanied with lightning & gusty winds(30-40kmph)** likely at isolated places over Bihar and Jammu-Kashmir-Ladakh-Gilgit-Baltistan-Muzaffarabad.
- ❖ **Thunderstorm accompanied with Lightning** likely at isolated places over Madhya Maharashtra, Uttar Pradesh and Uttarakhand.

No Fishermen Warning

***Red color warning does not mean "Red Alert" Red color warning means "Take Action"**
Forecast and warning for any day is valid from 0830 hours IST of day till 0830 hours IST of next day
For more details kindly visit <https://mausam.imd.gov.in> or contact 011-2434-4599

(Service to the nation since 1875)



10 August (Day 7)

- ❖ **Heavy to Very Heavy Rainfall** likely at isolated places over Arunachal Pradesh and Assam & Meghalaya.
- ❖ **Heavy Rainfall** likely at isolated places over Bihar, Chhattisgarh, Coastal Karnataka, East Rajasthan, Haryana, Chandigarh & Delhi, Kerala & Mahe, Konkan & Goa, Nagaland, Manipur, Mizoram and Tripura, Punjab, South Interior Karnataka, Sub Himalayan West Bengal & Sikkim and Uttarakhand.
- ❖ **Thunderstorm accompanied with lightning & gusty winds(30-40kmph)** likely at isolated places over Bihar and Jammu-Kashmir-Ladakh-Gilgit-Baltistan-Muzaffarabad.
- ❖ **Thunderstorm accompanied with Lightning** likely at isolated places over Madhya Maharashtra, Uttar Pradesh and Uttarakhand.

No Fishermen Warning

***Red color warning does not mean "Red Alert" Red color warning means "Take Action"**
Forecast and warning for any day is valid from 0830 hours IST of day till 0830 hours IST of next day
For more details kindly visit <https://mausam.imd.gov.in> or contact 011-2434-4599

(Service to the nation since 1875)

Flash Flood Warnings

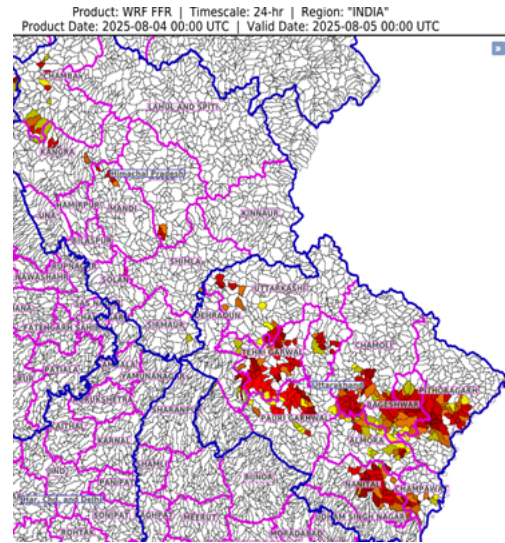
24 hours Outlook for the Flash Flood Risk (FFR) till 0530 IST of 05-08-2025:

Low to Moderate flash flood risk likely over few watersheds & neighbourhoods of following Met Sub-divisions during next 24 hours.

Himachal Pradesh – Chamba, Kangra, Mandi, Sirmaur, Shimla and Kullu districts.

Uttarakhand– Dehradun, Uttarkashi, Pauri Garhwal, Tehri Garhwal, Rudraprayag, Chamoli, Bageshwar, Almora, Nainital, Champawat and Pithoragarh districts.

Surface runoff/ Inundation may occur at some fully saturated soils & low-lying areas over Area of Concern (AoC) as shown in map due to expected rainfall occurrence in next 24 hours.



24 hours Outlook for the Flash Flood Risk (FFR) till 0530 IST of 05-08-2025:

Low to Moderate flash flood risk likely over few watersheds & neighbourhoods of following Met Sub-divisions during next 24 hours.

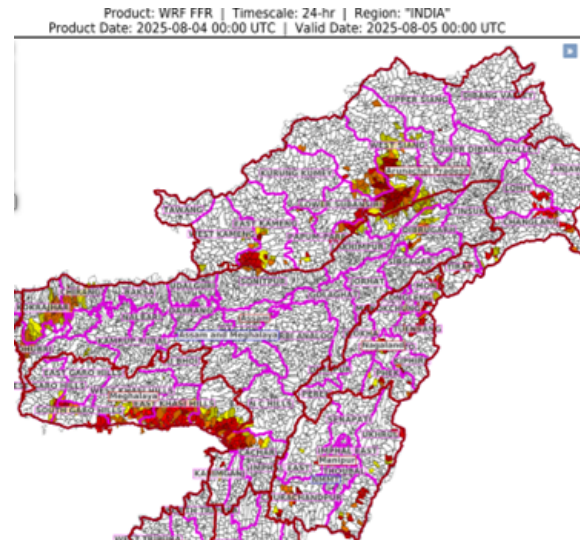
Assam & Meghalaya – Chirang, Kokrajhar, Dhubri, Goalpara, West Garo Hills, South Garo Hills, West Khasi Hills, East Khasi Hills, Jaintia Hills, N C Hills, Karimganj, Dhimaji, Dibrugarh, Lakhimpur and Cachar districts.

Arunachal Pradesh– West Kameng, East Kameng, Papum Pure, Kurung Kume, Lower Subansiri, Upper Subansiri, West Siang, East Siang, Tirap, Changlang and Lohit districts.

Nagaland – Mong, Longleng, Tuensang, Wokha, Zunheboto, Kiphire, Mokochung and Phek districts.

Manipur – Ukhrul, Tamenglong, Churachandpur and Chandel districts.

Surface runoff/ Inundation may occur at some fully saturated soils & low-lying areas over Area of Concern (AoC) as shown in map due to expected rainfall occurrence in next 24 hours.



*Red color warning does not mean "Red Alert" Red color warning means "Take Action"

Forecast and warning for any day is valid from 0830 hours IST of day till 0830 hours IST of next day

For more details kindly visit <https://mausam.imd.gov.in> or contact 011-2434-4599

(Service to the nation since 1875)



Table-1

7 Days Rainfall Forecast

S.No.	Subdivision	4- Aug	5- Aug	6- Aug	7- Aug	8- Aug	9- Aug	10- Aug
		Day 1	Day 2	Day 3	Day 4	Day 5	Day 6	Day 7
1	ANDAMAN & NICOBAR ISLANDS	SCT	WS	WS	WS	FWS	FWS	FWS
2	ARUNACHAL PRADESH	WS	FWS	FWS	WS	WS	WS	WS
3	ASSAM & MEHGHALAYA	WS	FWS	FWS	WS	WS	WS	WS
4	N. M. M. & T.	FWS	SCT	FWS	WS	FWS	FWS	FWS
5	S.H. WEST BENGAL & SIKKIM	WS	WS	WS	WS	WS	WS	WS
6	GANGETIC WEST BENGAL	WS	FWS	FWS	WS	WS	FWS	FWS
7	ODISHA	SCT	SCT	FWS	FWS	FWS	FWS	FWS
8	JHARKHAND	SCT	SCT	SCT	FWS	FWS	FWS	FWS
9	BIHAR	WS	FWS	SCT	FWS	FWS	FWS	FWS
10	EAST UTTAR PRADESH	FWS	FWS	SCT	SCT	SCT	SCT	SCT
11	WEST UTTAR PRADESH	WS	FWS	FWS	SCT	SCT	SCT	SCT
12	UTTARAKHAND	WS	WS	FWS	FWS	FWS	FWS	FWS
13	HARYANA, CHD & DELHI	FWS	FWS	SCT	SCT	FWS	FWS	FWS
14	PUNJAB	SCT	FWS	SCT	ISOL	SCT	FWS	FWS
15	HIMACHAL PRADESH	WS	WS	FWS	FWS	FWS	FWS	FWS
16	JAMMU AND KASHMIR AND LADAKH	SCT	WS	FWS	SCT	SCT	SCT	SCT
17	WEST RAJASTHAN	ISOL	ISOL	ISOL	ISOL	ISOL	SCT	SCT
18	EAST RAJASTHAN	ISOL	SCT	SCT	SCT	SCT	FWS	FWS
19	WEST MADHYA PRADESH	SCT	SCT	SCT	SCT	SCT	FWS	FWS
20	EAST MADHYA PRADESH	FWS	FWS	SCT	SCT	FWS	FWS	FWS
21	GUJRAT REGION	FWS	FWS	FWS	FWS	FWS	SCT	SCT
22	SAURASHTRA & KUTCH	SCT	SCT	SCT	SCT	SCT	SCT	SCT
23	KONKAN & GOA	FWS	FWS	WS	WS	WS	WS	WS
24	MADHYA MAHARASHTRA	ISOL	SCT	SCT	FWS	FWS	FWS	FWS
25	MARATHWADA	ISOL	ISOL	SCT	FWS	FWS	SCT	SCT
26	VIDARBHA	SCT	SCT	SCT	SCT	FWS	FWS	FWS
27	CHATTISGARH	SCT	SCT	SCT	FWS	FWS	FWS	FWS
28	COASTAL ANDHRA PRADESH	SCT	FWS	FWS	FWS	SCT	SCT	SCT
29	TELANGANA	ISOL	SCT	SCT	FWS	FWS	FWS	FWS
30	RAYALASEEMA	FWS	FWS	FWS	FWS	FWS	FWS	FWS
31	TAMILNADU & PUDUCHERRY	FWS	FWS	FWS	SCT	SCT	ISOL	ISOL
32	COSTAL KARNATAKA	WS	WS	WS	WS	WS	WS	WS
33	NORTH INTERIOR KARNATAKA	FWS	FWS	FWS	WS	WS	WS	WS
34	SOUTH INTERIOR KARNATAKA	FWS	WS	WS	WS	WS	WS	WS
35	KERALA	WS	WS	WS	WS	WS	WS	WS
36	LAKSHDWEEP	WS	WS	WS	WS	WS	WS	WS

Legend	Category	%Stations
WS	Widespread/Most Places	76-100
FWS	Fairly Widespread/Many Places	51-75
SCT	Scattered/ A Few Places	26-50
ISOL	Isolated Places	1-25
DRY	No Rain	0

*Red color warning does not mean "Red Alert" Red color warning means "Take Action"
Forecast and warning for any day is valid from 0830 hours IST of day till 0830 hours IST of next day
For more details kindly visit <https://mausam.imd.gov.in> or contact 011-2434-4599

(Service to the nation since 1875)

Fig. 1: Maximum Temperatures Dated 2025-08-04

Fig. 2: Departure of Maximum Temp. Dated 2025-08-04

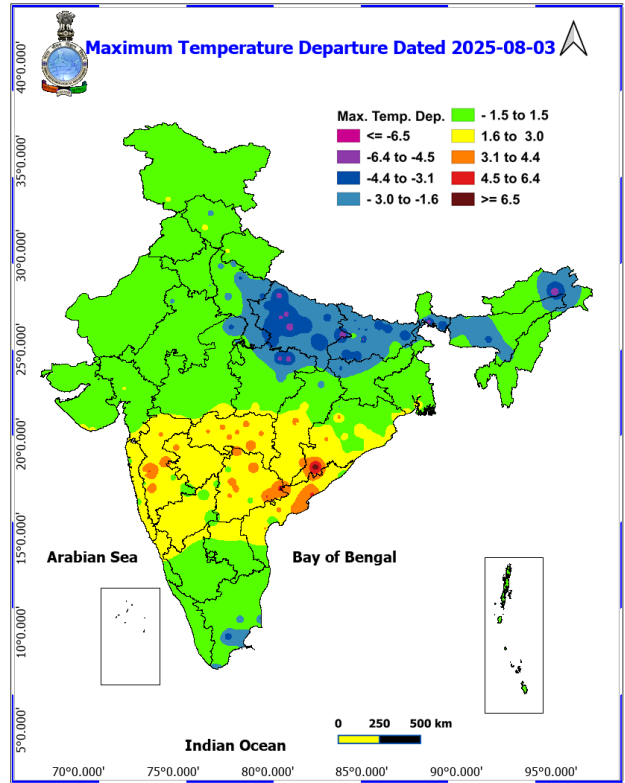
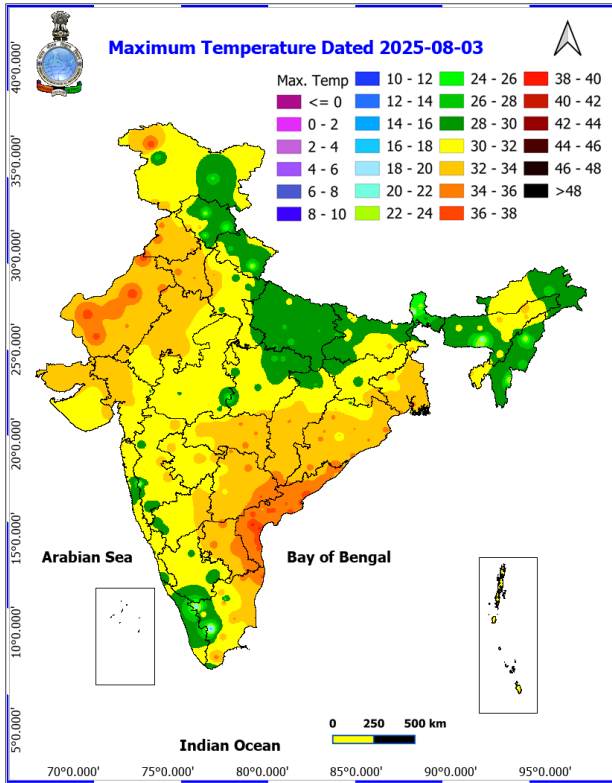
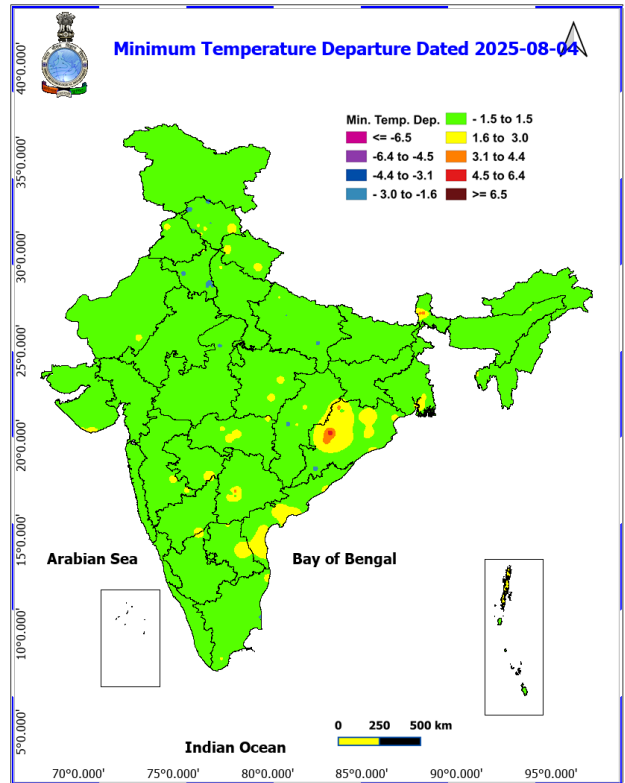
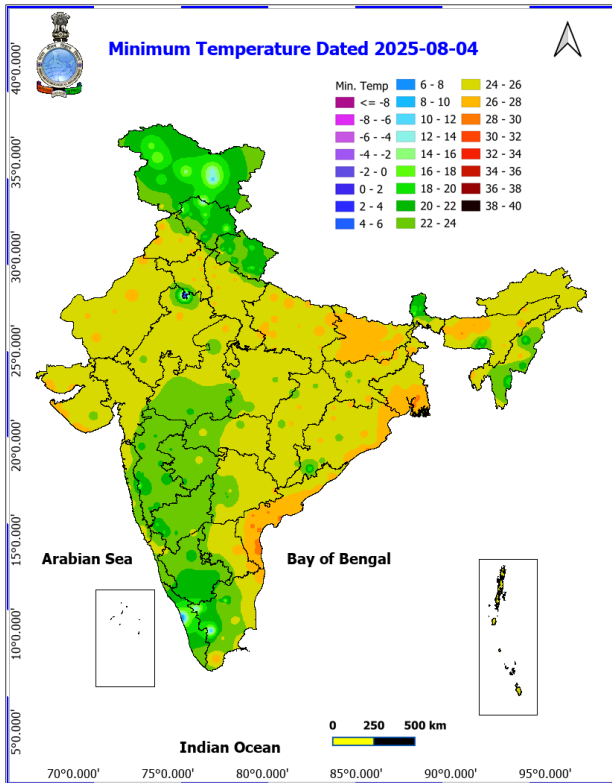


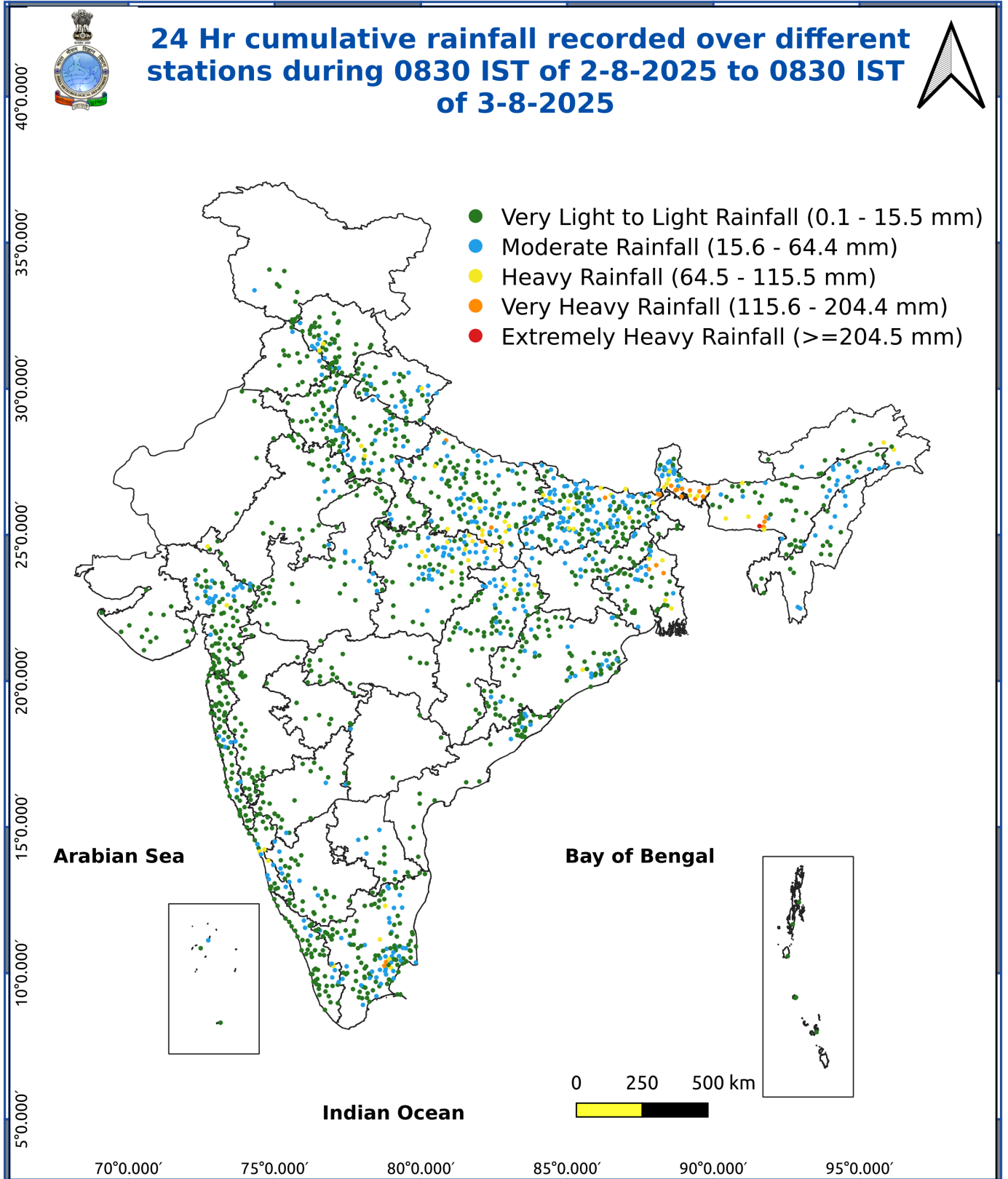
Fig. 3: Minimum Temperatures Dated 2025-08-04

Fig. 4: Departure of Minimum Temp. Dated 2025-08-04



***Red color warning does not mean "Red Alert" Red color warning means "Take Action"**
Forecast and warning for any day is valid from 0830 hours IST of day till 0830 hours IST of next day
For more details kindly visit <https://mausam.imd.gov.in> or contact 011-2434-4599

(Service to the nation since 1875)



Impact & Suggestions Due to

- **Extremely heavy rainfall** at isolated places over Uttar Pradesh on 04th; Kerala and Tamil Nadu on 05th August.
- **Very heavy rainfall** over

(i) Arunachal Pradesh on 04th & during 06th-09th; Assam & Meghalaya on 04th & during 07th-09th; Kerala & Mahe during 04th-07th August.

(ii) Sub-Himalayan West Bengal & Sikkim, Bihar, Tamil Nadu on 04th; Uttarakhand, Himachal Pradesh on 04th & 05th; Haryana, Rayalaseema on 05th; Coastal & South Interior Karnataka during 05th-07th August.

Impact Expected

- Localized Flooding of roads, water logging in low lying areas and closure of underpasses mainly in urban areas of the above region.
- Occasional reduction in visibility due to heavy rainfall.
- Disruption of traffic in major cities due to water logging in roads leading to increased travel time.
- Minor damage to kutch roads.
- Possibilities of damage to vulnerable structure.
- Localized Landslides/Mudslides/landslips/mudslips/landsinks/mudsinks.
- Damage to horticulture and standing crops in some areas due to inundation.
- It may lead to riverine flooding in some river catchments (for riverine flooding please visit Web page of CWC)

Action Suggested

- Check for traffic congestion on your route before leaving for your destination.
- Follow any traffic advisories that are issued in this regard.
- Avoid going to areas that face the water logging problems often.
- Avoid staying in vulnerable structure.

Agromet advisories for various parts of the country

Agromet advisories for likely impact of Heavy / Heavy to Very Heavy / Extremely Heavy Rainfall

(Based on the IBF and advisories issued by different AMFUs)

- In **Arunachal Pradesh**, postpone all fresh sowing operations till cessation of heavy rains. Avoid fresh transplanting of rice in lowlands during heavy rainfall. Cover rice fields with natural mulches like dry leaves or straw to avert the adverse impact of rain. Ensure proper drainage in rice, maize, finger millet, soybean and vegetables and fruit orchards to avoid waterlogging. Provide strong support to fruit-bearing plants to prevent them from bending or breaking during heavy rains.
- In **Assam**, postpone the sowing of sesame, green gram and pigeon pea till cessation of heavy rains in **Kokrajhar** and **Bongaigaon** districts. In **Central Brahmaputra Valley Zone**, harvest matured jute immediately and keep the bundles of harvested produce in high land or shed to avoid retting in contaminated water. Avoid sowing of sesame during heavy rainfall. To prevent waterlogging, ensure proper drainage in *Sali* rice, green gram and pigeon pea fields in **Lower Brahmaputra Valley Zone**; *Sali* rice, turmeric and already sown sesame fields in **Central Brahmaputra Valley Zone**; rice and sesame fields in **Hill Zone** and *Sali* rice fields in **North Bank Plain Zone, Upper Brahmaputra Valley Zone** and **Barak Valley Zone**.
- In **Meghalaya**, avoid transplanting of rice during heavy rainfall. Ensure proper drainage in rice, maize, turmeric, chilli, okra and bitter gourd fields to prevent waterlogging. Provide staking / support to tall and fragile crops like banana, papaya, bottle gourd etc. to prevent lodging.
- In **Sub-Himalayan West Bengal**, make provision to drain out excess water from rice, ginger, vegetable fields and fruit orchards in **Hill Zone** and *aman* paddy and vegetable fields in **Terai Zone**. Cover the chilli seedlings

*Red color warning does not mean "Red Alert" Red color warning means "Take Action"

Forecast and warning for any day is valid from 0830 hours IST of day till 0830 hours IST of next day

For more details kindly visit <https://mausam.imd.gov.in> or contact 011-2434-4599

(Service to the nation since 1875)

with plastic to protect them from heavy rains in **Terai Zone**.

- In **Bihar**, ensure proper drainage in maize, vegetables, ragi, kodo, sava, etc. in low-lying areas and strengthen field bunds in **South Bihar Alluvial Zone**. Maintain proper drainage in maize fields and do not allow rain water to accumulate in the fields of ragi, kodo, sava, china etc. in **North East Alluvial Zone**.
- In **Uttarakhand**, to avoid waterlogging, maintain proper drainage channels in fields of rice, sugarcane, maize, black gram, green gram, soybean, and vegetables in **Bhabar and Tarai Zone** and barnyard millet, finger millet, green gram and black gram in **Sub Humid Sub Tropic Zone**. Postpone sowing of green gram and soybean in **Nainital** district. In **Hill Zone**, strengthen the bunds to prevent surface runoff of water. Postpone sowing of vegetable pea in case of excessive wet soil conditions. Maintain proper drainage channels in the crop fields.
- In **Himachal Pradesh**, cover the cauliflower nursery with plastic sheets to prevent damage from heavy rainfall in **High Hills Sub Temperate Wet Zone**. Make proper drainage channels in vegetable fields in **Mid Hills Sub Humid Zone**; rice, maize and vegetable fields in **Sub Montane and Low Hills Sub Tropical Zone** and kidney beans, finger millet, cucurbits and vegetables in **High Hills Sub Temperate Wet Zone**.
- In **Madhya Pradesh**, provide adequate drainage in the fields of rice and vegetables in **Bundelkhand Zone**.
- In **Chhattisgarh**, drain out excess water from the fields of pigeon pea, vegetables and transplanted rice in **North Hill Zone**.
- In **Uttar Pradesh**, postpone sowing of pigeon pea, chilli, onion and planting of banana and papaya in Bundelkhand Zone and make necessary arrangements for drainage of excess water from the fields. In Eastern Plain Zone, provide proper drainage in the fields of pigeon pea, soybean, maize, groundnut, green gram, black gram and barnyard millet.
- In **Kerala**, provide adequate drainage in fields of rice, coconut, banana and ginger. Provide support to banana plantations. Make the vegetable pandals stronger.
- In **Tamil Nadu**, provide support to sugarcane and banana plants to prevent lodging. Provide proper drainage facility in rice nursery in **North Eastern Zone** and standing crop fields in **Cauvery Delta Zone**.

Livestock / Fishery

- Keep the animals inside the shed during heavy rainfall and provide them balanced feed.
- Store feed and fodder in a safe place to prevent spoilage.
- Construct an outlet with proper netting around the ponds to drain out excess water, thereby preventing fish from escaping in case of overflow.

Agromet advisories for likely impact of Thunderstorm / Gusty Winds / Squally Winds

(Based on the IBF and advisories issued by different AMFUs)

- Provide mechanical support to horticultural crops and staking or support to vegetables and young fruit plants / fruit-bearing plants to avoid lodging due to strong winds.

Legends & abbreviations:

Region wise classification of meteorological Sub-Divisions:

- **Northwest India:** Western Himalayan Region (Jammu-Kashmir-Ladakh-Gilgit-Baltistan-Muzaffarabad, Himachal Pradesh and Uttarakhand); Punjab, Haryana-Chandigarh-Delhi; West Uttar Pradesh, East Uttar Pradesh, West Rajasthan and East Rajasthan.
- **Central India:** West Madhya Pradesh, East Madhya Pradesh, Vidarbha and Chhattisgarh.
- **East India:** Bihar, Jharkhand, Sub-Himalayan West Bengal & Sikkim; Gangetic West Bengal, Odisha and Andaman & Nicobar Islands.
- **Northeast India:** Arunachal Pradesh, Assam & Meghalaya and Nagaland, Manipur, Mizoram & Tripura.
- **West India:** Gujarat Region, Saurashtra & Kutch, Konkan & Goa, Madhya Maharashtra and Marathawada.
- **South India:** Coastal Andhra Pradesh & Yanam, Telangana, Rayalaseema, Coastal Karnataka, North Interior Karnataka, South Interior Karnataka, Kerala & Mahe, Tamil Nadu, Puducherry & Karaikal and Lakshadweep.

*Red color warning does not mean "Red Alert" Red color warning means "Take Action"

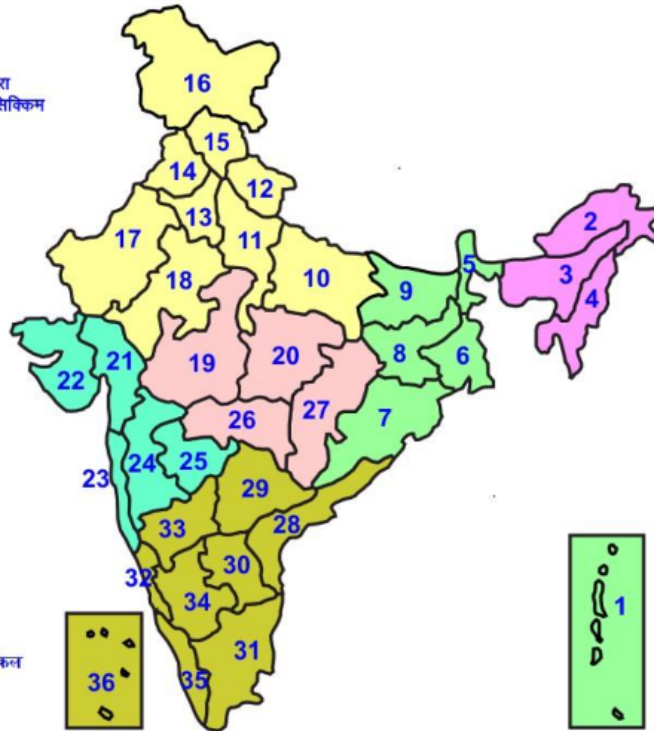
Forecast and warning for any day is valid from 0830 hours IST of day till 0830 hours IST of next day

For more details kindly visit <https://mausam.imd.gov.in> or contact 011-2434-4599

(Service to the nation since 1875)

LEGENDS

- 1 अंडमान और निकोबार द्वीप समुह
- 2 अरुणाचल प्रदेश
- 3 असम और मेघालय
- 4 नागालैंड मनीपुर मीजोरम और त्रिपुरा
- 5 उप हिमालय पश्चिम बंगाल एवं सिक्किम
- 6 पश्चिम बंगाल
- 7 ओडिसा
- 8 झारखंड
- 9 बिहार
- 10 पूर्वी उत्तर प्रदेश
- 11 पश्चिम उत्तर प्रदेश
- 12 उत्तराखंड
- 13 हरियाणा चंडिगढ़ एवं दिल्ली
- 14 पंजाब
- 15 हिमाचल प्रदेश
- 16 जम्मू एवं कश्मीर एवं लद्दाख
- 17 पश्चिम राजस्थान
- 18 पूर्वी राजस्थान
- 19 पश्चिम मध्य प्रदेश
- 20 पूर्वी मध्य प्रदेश
- 21 गुजरात क्षेत्र
- 22 सौराष्ट्र एवं कच्छ
- 23 कोंकण एवं गोवा
- 24 मध्य महाराष्ट्र
- 25 मराठावाडा
- 26 विदर्भ
- 27 छत्तीसगढ़
- 28 तटीय आंध्र प्रदेश एवं यनम
- 29 तेलंगाना
- 30 रायलसीमा
- 31 तमिलनाडु, पुदुचेरी एवं कराईकल
- 32 तटिय कर्नाटक
- 33 आंतरिक उत्तरी कर्नाटक
- 34 आंतरिक दक्षिणी कर्नाटक
- 35 केरल एवं माहे
- 36 लक्षद्वीप



1. Andaman & Nicobar Islands
2. Arunachal Pradesh
3. Assam & Meghalaya
4. Nagaland, Manipur, Mizoram & Tripura
5. Sub-Himalayan West Bengal & Sikkim
6. Gangetic West Bengal
7. Orissa
8. Jharkhand
9. Bihar
10. East Uttar Pradesh
11. West Uttar Pradesh
12. Uttarakhand
13. Haryana, Chd & Delhi
14. Punjab
15. Himachal Pradesh
16. Jammu & Kashmir and Ladakh
17. West Rajasthan
18. East Rajasthan
19. West Madhya Pradesh
20. East Madhya Pradesh
21. Gujarat
22. Saurashtra
23. Konkan & Goa
24. Madhya Maharashtra
25. Marathawada
26. Vidharbha
27. Chhattisgarh
28. Coastal Andhra Pradesh & Yanam
29. Telangana
30. Rayalaseema
31. Tamilnadu, Puducherry & Karaikal
32. Coastal Karnataka
33. North Interior Karnataka
34. South Interior Karnataka
35. Kerala & Mahe
36. Lakshadweep

SPATIAL DISTRIBUTION (% of Stations reporting)

% Stations	Category	% Stations	Category
76-100	Widespread (WS/ Most Places)	26-50	Scattered (SCT/ A Few Places)
51-75	Fairly Widespread (FWS/ Many Places)	1-25	Isolated (ISOL)

Subdivision Colour

- NO WARNING
- WATCH (BE UPDATED)
- ALERT (BE PREPARED TO TAKE ACTION)
- WARNING (TAKE ACTION)

Probabilistic Forecast

Terms	Probability of Occurrence (%)
Unlikely	< 25
Likely	25 - 50
Very Likely	50 - 75
Most Likely	> 75

- | | | | |
|--------------------------|-----------------|----------------------|--------------------|
| Heavy Rain | Very Heavy Rain | Extremely Heavy Rain | Heavy Snow |
| Thunderstorm & Lightning | Hailstorm | Dust Storm | Dust Raising Winds |
| Strong surface winds | Heat Wave | Hot Day | Warm Night |
| Cold Wave | Cold Day | Ground Frost | Fog |
| Hot & Humid | | | |

*Red color warning does not mean "Red Alert" Red color warning means "Take Action"

Forecast and warning for any day is valid from 0830 hours IST of day till 0830 hours IST of next day

For more details kindly visit <https://mausam.imd.gov.in> or contact 011-2434-4599

(Service to the nation since 1875)

LEGENDS

WARNING

WARNING (TAKE ACTION)
ALERT (BE PREPARED)
WATCH (BE UPDATED)
NO WARNING (NO ACTION)

Probabilistic Forecast

Terms	Probability of Occurrence (%)
Unlikely	< 25
Likely	25 - 50
Very Likely	50 - 75
Most Likely	> 75



Rain/ Snow *
Heavy: 64.5 to 115.5 mm/cm *
Very Heavy: 115.6 to 204.4 mm/cm*
Extremely Heavy: > 204.4 mm/cm *



Heat Wave
When maximum temperature of a station reaches $\geq 40^{\circ}\text{C}$ for plains and $\geq 30^{\circ}\text{C}$ for hilly regions
(a) Based on Departure from normal

Heat Wave: Maximum Temperature Departure from normal 4.5°C to 6.4°C .
Severe Heat Wave: Maximum Temperature Departure from normal $\geq 6.5^{\circ}\text{C}$

(b). Based on Actual maximum temperature

Heat Wave: When actual maximum temperature $\geq 45^{\circ}\text{C}$.
Severe Heat Wave: When actual maximum temperature $\geq 47^{\circ}\text{C}$

(c). Criteria for heat wave for coastal stations

When maximum temperature departure is $> 4.5^{\circ}\text{C}$ from normal. Heat Wave may be described provided maximum temperature $\geq 37^{\circ}\text{C}$



Warm Night
When maximum temperature remains 40°C

Warm Night: When minimum temperature departure 4.5°C to 6.4°C .
Severe Warm Night: When minimum temperature departure $> 6.4^{\circ}\text{C}$.



Cold Wave
When minimum temperature of a station $\leq 10^{\circ}\text{C}$ for plains and $\leq 0^{\circ}\text{C}$ for hilly regions.

(a). Based on departure

Cold Wave: Minimum Temperature Departure from normal -4.5°C to -6.4°C .
Severe Cold Wave: Minimum Temperature Departure from normal $\leq -6.5^{\circ}\text{C}$

(b) Based on actual Minimum Temperature (for Plains only)

Cold Wave : When Minimum Temperature is $\leq 4.0^{\circ}\text{C}$
Severe Cold Wave: When Minimum Temperature is $\leq 2.0^{\circ}\text{C}$

(c) For Coastal Stations

When Minimum Temperature departure is $\leq -4.5^{\circ}\text{C}$ & actual Minimum Temperature is $\leq 15^{\circ}\text{C}$



Cold Day
When minimum temperature of a station $\leq 10^{\circ}\text{C}$ for plains and $\leq 0^{\circ}\text{C}$ for hilly regions
Based on departure

Cold Day: Maximum Temperature Departure from normal -4.5°C to -6.4°C .
Severe Cold Day: Maximum Temperature Departure from normal $\leq -6.5^{\circ}\text{C}$



Fog
Phenomenon of small droplets suspended in air and the horizontal visibility $< 1\text{km}$

Moderate Fog: When the visibility between 500-200 metres
Dense Fog: when the visibility between 50- 200 metres
Very Dense Fog: when the visibility < 50 metres



Thunderstorm
Sudden electrical discharges manifested by a flash of light (Lightning) and a sharp rumbling sound (thunder)



Dust/Sand Storm
An ensemble of particles of dust or sand energetically lifted to great heights by a strong and turbulent wind.



Frost
Ice deposits on ground

Air temperature $\leq 4^{\circ}\text{C}$ (over Plains)



Squall
A strong wind that rises suddenly, lasts for atleast 1 minute.

Moderate: Wind speed 52-61 kmph
Severe: Wind speed 62-87 kmph
Very Severe: Wind speed > 87 kmph



Sea State
Effect of various waves in the sea over specific area

Rough to very rough: Wind speed 41-62 kmph (22-33 knots) & Wave height 2.5-6 metre
High to very high: Wind speed 63-117 kmph (34-63 knots) & Wave height 6-14 metre
Phenomenal: Wind speed > 117 kmph (> 63 knots) & Wave height > 14 metre



Cyclone
Cyclonic Storm: Wind speed 62-87 kmph (34-47 knots)

Severe Cyclonic Storm: Wind speed 88-117 kmph (48-63 knots)
Very Severe Cyclonic Storm: Wind speed 118-165 kmph (64 - 89 knots)
Extremely Severe Cyclonic Storm: Wind speed 166-220 kmph (90 -119 knots)
Super Cyclone Storm: Wind speed > 220 kmph (> 119 knots)

*Red color warning does not mean "Red Alert" Red color warning means "Take Action"

Forecast and warning for any day is valid from 0830 hours IST of day till 0830 hours IST of next day

For more details kindly visit <https://mausam.imd.gov.in> or contact 011-2434-4599

(Service to the nation since 1875)