

2025-09-09

Time of Issue: 08:36:00 hours IST
(Morning)

ALL INDIA WEATHER SUMMARY AND FORECAST BULLETIN

Significant Weather Features

West and Northwest India:

- Light to moderate rain/thunderstorm at many places with isolated **heavy rainfall over West Rajasthan and Saurashtra & Kutch on 09th September.**
- Light to moderate rain/thunderstorm at many/some places **with isolated heavy rainfall** is very likely over Uttarakhand on 12th & 13th; West Uttar Pradesh on 12th & 13th; East Uttar Pradesh on 11th & 12th September.

East & Central India:

- Light to moderate rain/thunderstorm at most/many places with isolated **heavy rainfall** likely over West Madhya Pradesh on 14th & 15th; East Madhya Pradesh on 10th, 11th & 13th; Vidarbha during 11th-13th; Chhattisgarh, Sub-Himalayan West Bengal & Sikkim during 09th-15th; Andaman & Nicobar Islands on 10th & 11th; Bihar during 09th-13th; Odisha during 10th-13th September and **heavy to very heavy falls over Sub-Himalayan West Bengal & Sikkim on 09th-10th and Odisha on 11th & 12th September.**

Northeast India:

- Light/moderate rain/thunderstorm at many/some places with isolated **heavy rainfall** likely over Nagaland, Manipur, Mizoram & Tripura on 09th & during 11th-15th; Arunachal Pradesh during 09th-15th; Assam & Meghalaya during 09th-15th September and **heavy to very heavy falls over Arunachal Pradesh, Assam & Meghalaya during 12th-15th and Nagaland & Manipur on 11th & 12th September.**

South Peninsular India

- Light to moderate rain/thunderstorm & gusty wind (speed 30-40 kmph) with isolated **heavy rainfall** likely over Tamil Nadu and Kerala & Mahe on 09th & 10th; Coastal Andhra Pradesh & Yanam during 09th – 12th; Interior Karnataka on 10th; Rayalaseema on 11th & 12th and Telangana during 10th-15th September.
- Strong surface winds (speed reaching 30-40 kmph) very likely over Coastal Andhra Pradesh & Yanam and Rayalaseema during next 5 days..

*Red color warning does not mean "Red Alert" Red color warning means "Take Action"

Forecast and warning for any day is valid from 0830 hours IST of day till 0830 hours IST of next day

For more details kindly visit <https://mausam.imd.gov.in> or contact 011-2434-4599

(Service to the nation since 1875)

Main Weather Observations:

❖ **Rainfall distribution** (from 0830 hours IST of yesterday to 0530 hours IST of today): **at most places** over Uttarakhand, Arunachal Pradesh, Jammu & Kashmir and Ladakh, Himachal Pradesh, Marathwada, East Madhya Pradesh, Chhattisgarh, Konkan & Goa and Andaman & Nicobar Islands; **at many places** over Saurashtra & Kutch, East Rajasthan, West Rajasthan, East Uttar Pradesh, Jharkhand, Odisha, Sub-himalayan West Bengal & Sikkim, Nagaland, Manipur, Mizoram & Tripura, Gujarat Region, Assam & Meghalaya, Punjab, Bihar, Madhya Maharashtra and Coastal Andhra Pradesh & Yanam; **Dry** over rest of the country.

❖ **Significant rainfall recorded(in cm)** (from 0830 hours IST of yesterday to 0530 hours IST of today): Saurashtra & Kutch: Bhuj_IAF (dist Kachchh) 9, Bhuj Rudramata 8, Kandla AP (dist Kachchh) 5, Naliya, New Kandla (dist Kachchh) 4 Each; East Uttar Pradesh: Lakhimpur Kheri (dist Lakhimpur Kheri) 8, Kanpur/Chakeri (dist Kanpur Nagar), Barabanki (dist Barabanki) 4 Each; Assam & Meghalaya: Cherrapunji (dist East Khasi Hills) 5; **Odisha**: Paralakhemundi-obs (dist Gajapati) 5.

❖ **Heavy Rainfall observed** (from 0830 hours IST of yesterday to 0530 hours IST of today): **Heavy rain** at isolated places over Saurashtra & Kutch.

❖ **Minimum Temperature Departures (as on 08-09-2025):** **markedly above normal(> 5.1°C)** at many places over Jammu-KashmirLadakh-Gilgit-Baltistan-Muzaffarabad; at isolated places over Assam & Meghalaya, Sub Himalayan West Bengal & Sikkim, East Uttar Pradesh, West Uttar Pradesh, Himachal Pradesh, West Madhya Pradesh and East Madhya Pradesh. **appreciably above normal(3.1°C to 5.0°C)** at isolated places over Gangetic West Bengal, Odisha, Bihar, Uttarakhand, Saurashtra & Kutch and Tamil Nadu, Puducherry & Karaikal. **above normal(1.6°C to 3.0°C)** at few places over Nagaland, Manipur, Mizoram & Tripura and Lakshadweep; at isolated places over Jharkhand, Haryana-Chandigarh-Delhi, West Rajasthan, Gujarat Region, Vidarbha and Coastal Andhra Pradesh & Yanam. **near normal(-1.5°C to 1.5°C)** at many places over East Rajasthan, Chhattisgarh and South Interior Karnataka; at most places over Andaman & Nicobar Islands, Arunachal Pradesh, Punjab, Konkan & Goa, Madhya Maharashtra, Marathwada, Telangana, Rayalaseema, Coastal Karnataka and Kerala & Mahe; at few places over North Interior Karnataka. **The lowest minimum temperature** of 18.0°C was reported at JEUR (MAHARASHTRA), and MYSORE (KARNATAKA) over the Plains of India.

❖ **Maximum Temperature Departures (as on 08-09-2025):** **markedly above normal(> 5.1°C)** at isolated places over Assam & Meghalaya, Odisha, Chhattisgarh and Coastal Andhra Pradesh & Yanam. **appreciably above normal(3.1°C to 5.0°C)** at isolated places over Sub Himalayan West Bengal & Sikkim, Gangetic West Bengal, Jharkhand, East Uttar Pradesh, Jammu-KashmirLadakh-Gilgit-Baltistan-Muzaffarabad, East Madhya Pradesh and Vidarbha. **above normal(1.6°C to 3.0°C)** at most places over Uttarakhand; at few places over Bihar, Telangana, Rayalaseema and Kerala & Mahe; at isolated places over Andaman & Nicobar Islands, West Uttar Pradesh, Haryana-Chandigarh-Delhi, Madhya Maharashtra, Marathwada, Tamil Nadu, Puducherry & Karaikal, North Interior Karnataka and South Interior Karnataka. **near normal(-1.5°C to 1.5°C)** at many places over Gujarat Region; at most places over Arunachal Pradesh, Nagaland, Manipur, Mizoram & Tripura, Punjab, Himachal Pradesh, Konkan & Goa, Coastal Karnataka and Lakshadweep; at few places over West Madhya Pradesh; at isolated places over East Rajasthan and Saurashtra & Kutch. **The highest maximum temperature** of 38.8°C was reported at KAVALI (ANDHRA PRADESH).

***Red color warning does not mean "Red Alert" Red color warning means "Take Action"**

Forecast and warning for any day is valid from 0830 hours IST of day till 0830 hours IST of next day

For more details kindly visit <https://mausam.imd.gov.in> or contact 011-2434-4599

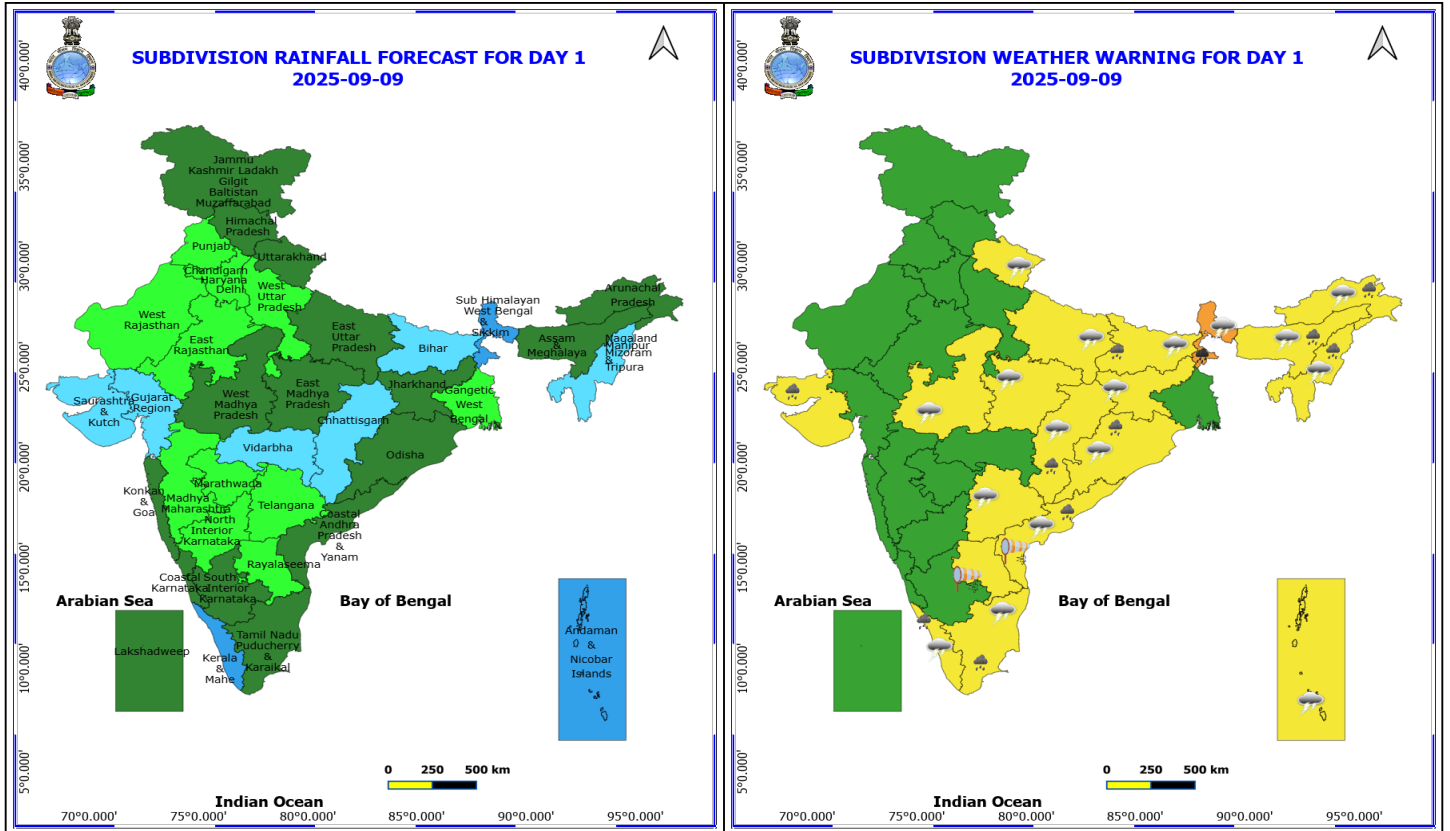
(Service to the nation since 1875)

Meteorological Analysis (Based on 0530 hours IST)

- The **depression** over Southeast Pakistan and adjoining Rajasthan moved slowly west-southwestwards with the speed of 05 kmph during past 6 hours, lay centred at 0530 hrs IST of today, the 09th September, 2025, over southeast Pakistan near latitude 25.8°N and longitude 68.7°E, about 50 km north-northeast of Hyderabad (Pakistan), 60 km south-southeast of Nawabshah (Pakistan), 130km south-southeast of Padidan and 250 km west-southwest of Jaisalmer (Rajasthan). It is very likely to continue to move west-southwestwards across south Pakistan and weaken gradually into a **Well-marked low-pressure** area during next 12 hours.
- The **monsoon trough** at mean sea level now passes through centre of depression over the Southeast Pakistan, Ajmer, Agra, Prayagraj, Ranchi, Digha and thence eastwards to northeast Bay of Bengal.
- The **trough** now runs from cyclonic circulation associated with **depression** over the Southeast Pakistan to northwest Rajasthan and extends upto 3.1 km above mean sea level.
- The **upper air cyclonic circulation** over northwest Bay of Bengal & adjoining west central Bay of Bengal off south Odisha & north Andhra Pradesh coasts now lies over South Odisha and north Coastal Andhra Pradesh and extends upto 4.5 km above mean sea level tilting southwards with height.
- The **upper air cyclonic circulation** over south Punjab and neighbourhood at 0.9 km above mean sea level has become less marked.

Weather Outlook for subsequent 3 days

- Isolated to scattered rainfall likely over the entire country.

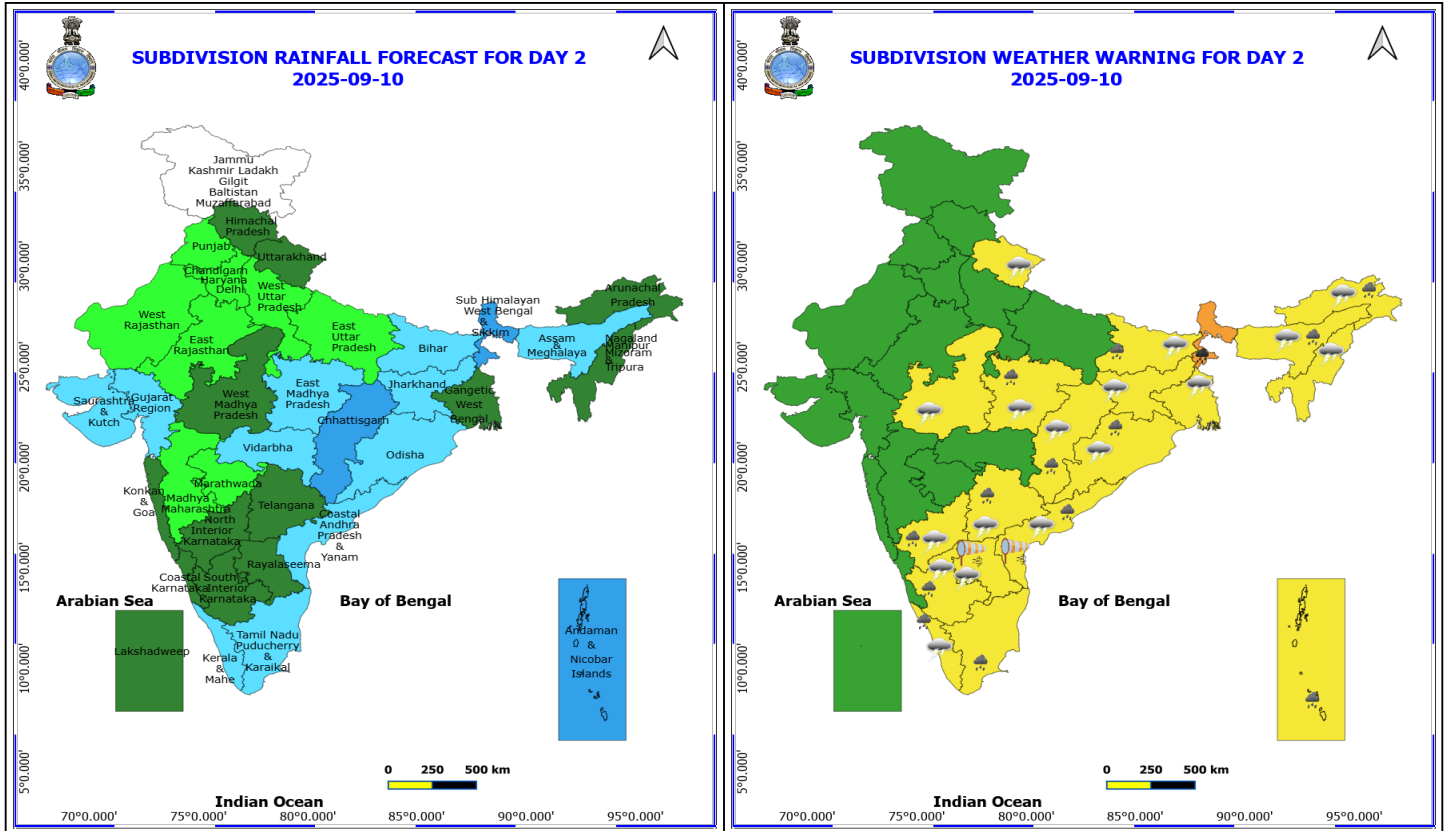


9 September (Day 1)

- ❖ **Heavy to Very Heavy Rainfall** very likely at isolated places over Sub Himalayan West Bengal & Sikkim.
- ❖ **Heavy Rainfall** very likely at isolated places over Arunachal Pradesh, Assam & Meghalaya, Bihar, Chhattisgarh, Coastal Andhra Pradesh, Kerala & Mahe, Nagaland, Manipur, Mizoram and Tripura, Odisha, Saurashtra & Kutch and Tamil Nadu Puducherry & Karaikal.
- ❖ **Thunderstorm accompanied with lightning & gusty winds(30-40kmph)** very likely at isolated places over Andaman & Nicobar Islands, Bihar, Jharkhand, Kerala & Mahe, Odisha, Tamil Nadu Puducherry & Karaikal and Telangana.
- ❖ **Thunderstorm accompanied with Lightning** very likely at isolated places over Arunachal Pradesh, Assam & Meghalaya, Chhattisgarh, Coastal Andhra Pradesh, East Uttar Pradesh, Madhya Pradesh, Nagaland, Manipur, Mizoram and Tripura, Sub Himalayan West Bengal & Sikkim and Uttarakhand.
- ❖ **Strong Surface Winds** very likely at isolated places over Andhra Pradesh.

Squally wind with speed reaching 45 kmph to 55 kmph gusting to 65 kmph is likely to prevail along and off Somalia and Oman coasts, some parts of westcentral & southwest Arabian sea.

Squally weather with wind speed reaching 40 - 50 kmph gusting to 60 kmph likely to prevail along and off north Gujarat adjoining Pakistan coasts; few parts of northeast Arabian sea and Comorin area.1



10 September (Day 2)

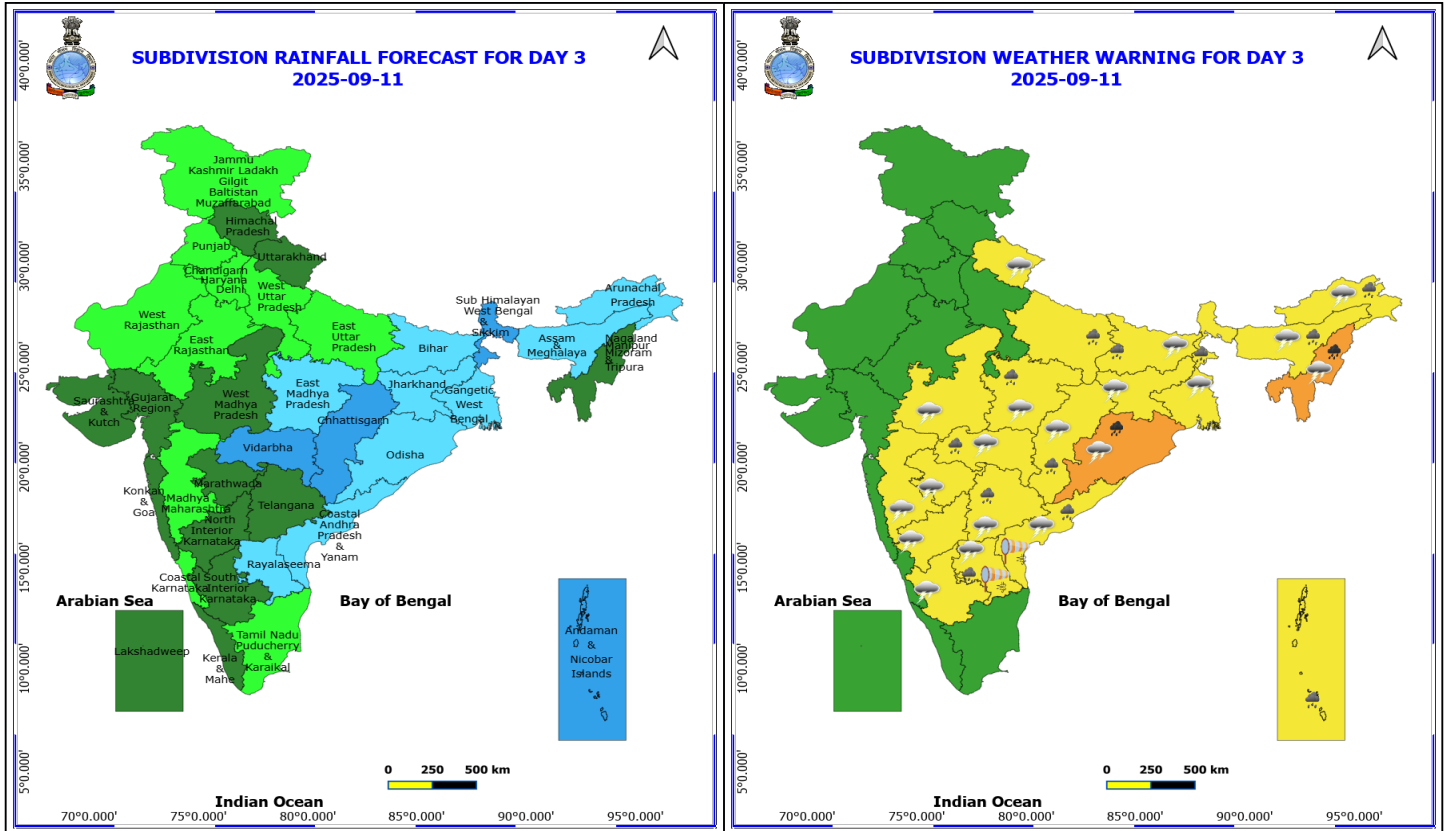
- ❖ **Heavy to Very Heavy Rainfall** very likely at isolated places over Sub Himalayan West Bengal & Sikkim.
- ❖ **Heavy Rainfall** very likely at isolated places over Andaman & Nicobar Islands, Arunachal Pradesh, Assam & Meghalaya, Bihar, Chhattisgarh, Coastal Andhra Pradesh, East Madhya Pradesh, Interior Karnataka, Kerala & Mahe, Odisha, Tamil Nadu Puducherry & Karaikal and Telangana.
- ❖ **Thunderstorm accompanied with lightning & gusty winds(30-40kmph)** very likely at isolated places over Bihar, Gangetic West Bengal, Jharkhand, Kerala & Mahe, Odisha and Telangana.
- ❖ **Thunderstorm accompanied with Lightning** very likely at isolated places over Andhra Pradesh, Arunachal Pradesh, Assam & Meghalaya, Chhattisgarh, Interior Karnataka, Madhya Pradesh, Nagaland, Manipur, Mizoram and Tripura and Uttarakhand.
- ❖ **Strong Surface Winds** very likely at isolated places over Andhra Pradesh.

Squally wind with speed reaching 45 kmph to 55 kmph gusting to 65 kmph is likely to prevail along and off Somalia and Oman coasts, some parts of westcentral & southwest Arabian sea.

Squally weather with wind speed reaching 40 - 50 kmph gusting to 60 kmph likely to prevail along and off Pakistan coasts adjoining north Arabian sea.

***Red color warning does not mean "Red Alert" Red color warning means "Take Action"**
Forecast and warning for any day is valid from 0830 hours IST of day till 0830 hours IST of next day
For more details kindly visit <https://mausam.imd.gov.in> or contact 011-2434-4599

(Service to the nation since 1875)



11 September (Day 3)

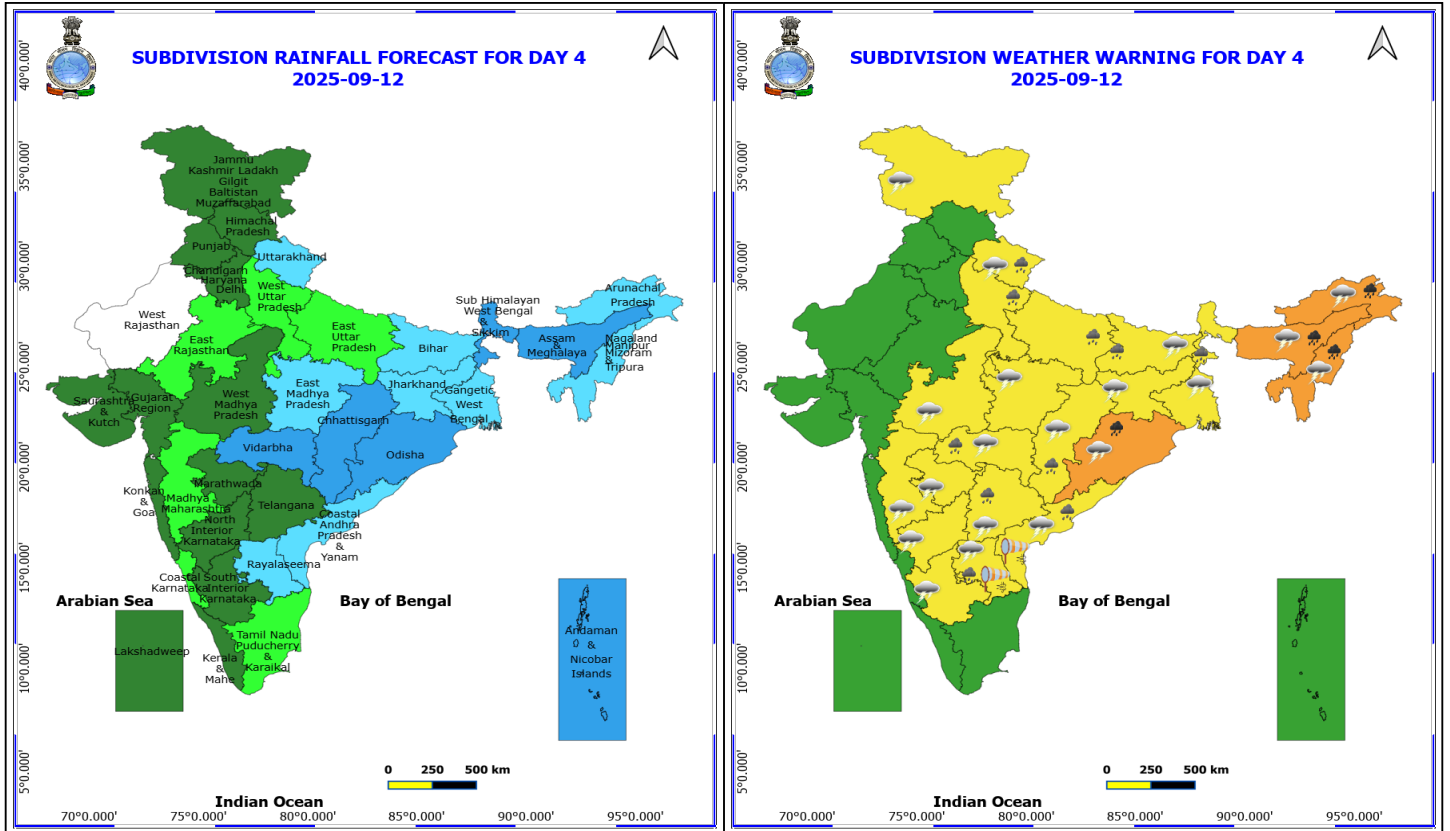
- ❖ **Heavy to Very Heavy Rainfall** very likely at isolated places over Nagaland, Manipur, Mizoram and Tripura and Odisha.
- ❖ **Heavy Rainfall** very likely at isolated places over Andaman & Nicobar Islands, Andhra Pradesh, Arunachal Pradesh, Assam & Meghalaya, Bihar, Chhattisgarh, East Madhya Pradesh, East Uttar Pradesh, Sub Himalayan West Bengal & Sikkim, Telangana and Vidarbha.
- ❖ **Thunderstorm accompanied with lightning & gusty winds(30-40kmph)** very likely at isolated places over Bihar, Gangetic West Bengal, Jharkhand, Odisha and Telangana.
- ❖ **Thunderstorm accompanied with Lightning** very likely at isolated places over Andhra Pradesh, Arunachal Pradesh, Assam & Meghalaya, Chhattisgarh, Interior Karnataka, Madhya Pradesh, Maharashtra, Nagaland, Manipur, Mizoram and Tripura and Uttarakhand.
- ❖ **Strong Surface Winds** very likely at isolated places over Andhra Pradesh.

Squally wind with speed reaching 45 kmph to 55 kmph gusting to 65 kmph is likely to prevail along and off Somalia coasts, some parts of southwest & westcentral Arabian Sea.

Squally weather with wind speed reaching 40 - 50 kmph gusting to 60 kmph likely to prevail over Gulf of Mannar; Tamil Nadu coasts off south Andhra Pradesh coasts and many parts of southwest; adjoining some parts of westcentral & southeast Bay of Bengal.

***Red color warning does not mean "Red Alert" Red color warning means "Take Action"**
Forecast and warning for any day is valid from 0830 hours IST of day till 0830 hours IST of next day
For more details kindly visit <https://mausam.imd.gov.in> or contact 011-2434-4599

(Service to the nation since 1875)



12 September (Day 4)

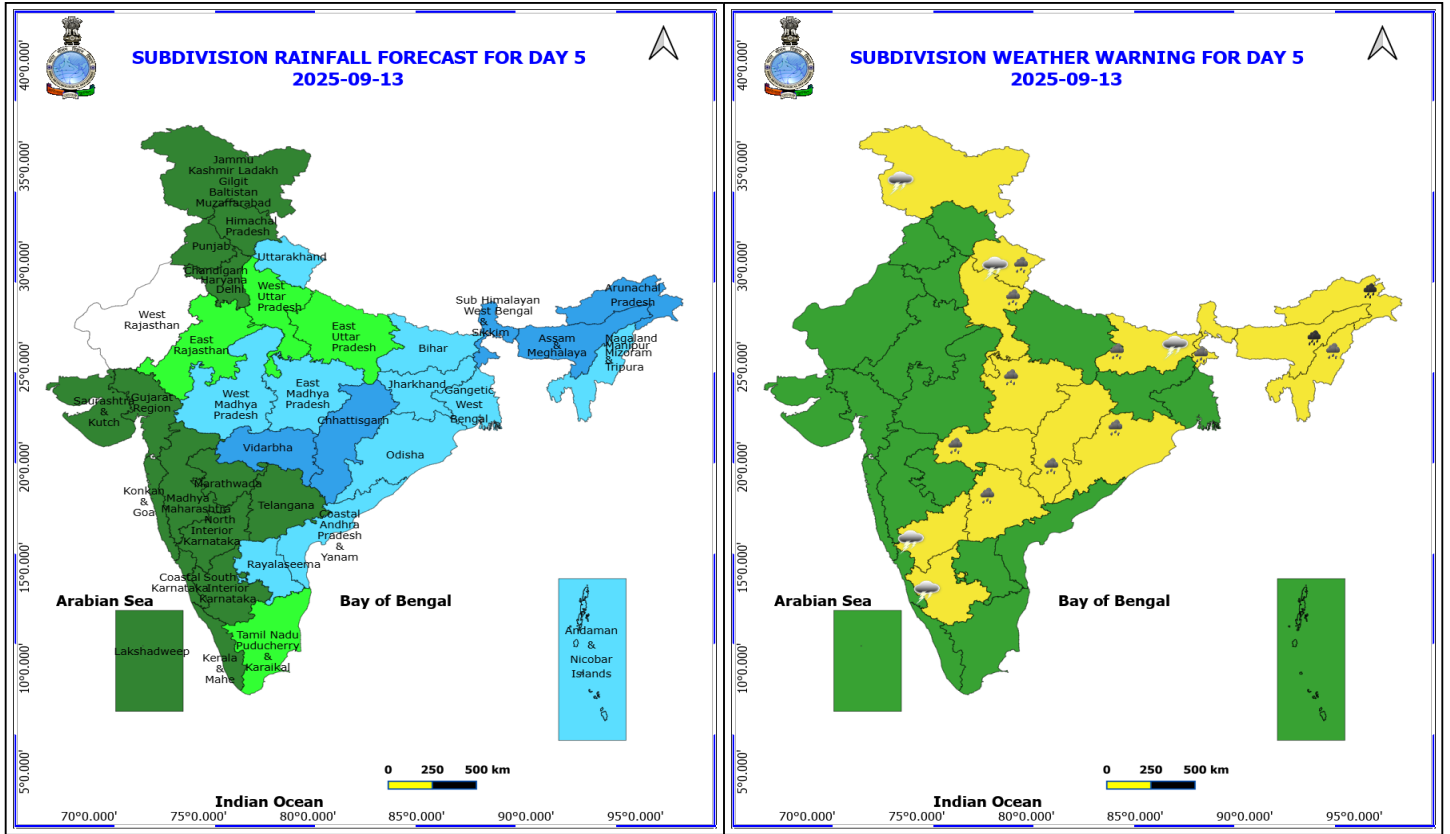
- ❖ **Heavy to Very Heavy Rainfall** likely at isolated places over Arunachal Pradesh, Assam & Meghalaya, Nagaland, Manipur, Mizoram and Tripura and Odisha.
- ❖ **Heavy Rainfall** likely at isolated places over Andhra Pradesh, Bihar, Chhattisgarh, Sub Himalayan West Bengal & Sikkim, Telangana, Uttar Pradesh, Uttarakhand and Vidarbha.
- ❖ **Thunderstorm accompanied with lightning & gusty winds(30-40kmph)** likely at isolated places over Bihar, Gangetic West Bengal, Jammu-Kashmir-Ladakh-Gilgit-Baltistan-Muzaffarabad, Jharkhand, Odisha and Telangana.
- ❖ **Thunderstorm accompanied with Lightning** likely at isolated places over Andhra Pradesh, Arunachal Pradesh, Assam & Meghalaya, Chhattisgarh, Interior Karnataka, Madhya Pradesh, Maharashtra, Nagaland, Manipur, Mizoram and Tripura and Uttarakhand.
- ❖ **Strong Surface Winds** likely at isolated places over Andhra Pradesh.

Squally wind with speed reaching 45 kmph to 55 kmph gusting to 65 kmph is likely to prevail along and off Somalia and Oman coasts, some parts of southwest & westcentral Arabian Sea.

Squally weather with wind speed reaching 40 - 50 kmph gusting to 60 kmph likely to prevail over Gulf of Mannar; Tamil Nadu coasts, many parts of southwest Bay of Bengal; adjoining few parts of southeast Bay of Bengal, some parts of central Bay of Bengal.

***Red color warning does not mean "Red Alert" Red color warning means "Take Action"**
Forecast and warning for any day is valid from 0830 hours IST of day till 0830 hours IST of next day
For more details kindly visit <https://mausam.imd.gov.in> or contact 011-2434-4599

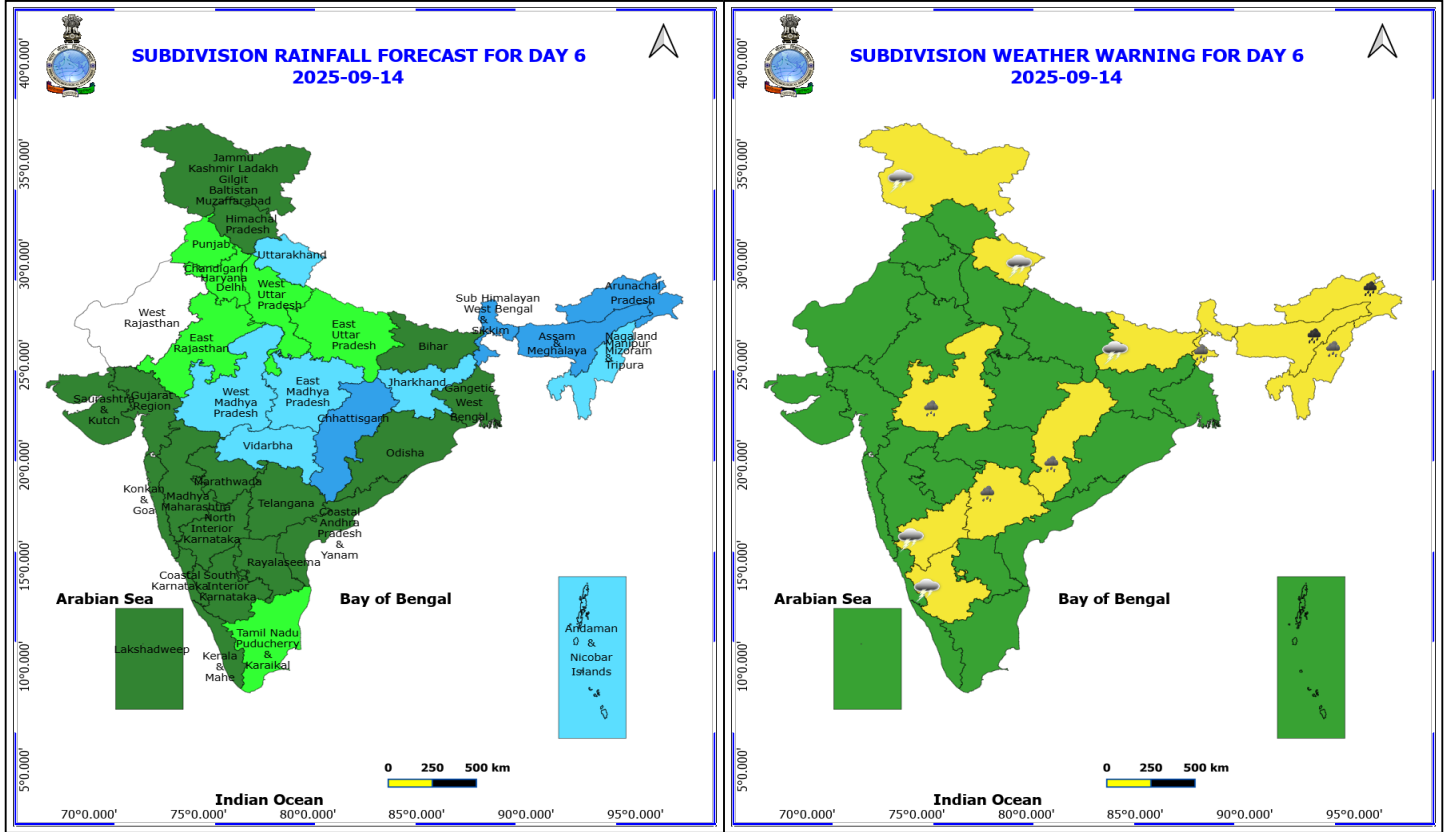
(Service to the nation since 1875)



13 September (Day 5)

- ❖ **Heavy to Very Heavy Rainfall** likely at isolated places over Arunachal Pradesh and Assam & Meghalaya.
- ❖ **Heavy Rainfall** likely at isolated places over Bihar, Chhattisgarh, East Madhya Pradesh, Nagaland, Manipur, Mizoram and Tripura, Odisha, Sub Himalayan West Bengal & Sikkim, Telangana, Uttarakhand, Vidarbha and West Uttar Pradesh.
- ❖ **Thunderstorm accompanied with lightning & gusty winds(30-40kmph)** likely at isolated places over Bihar and Jammu-Kashmir-Ladakh-Gilgit-Baltistan-Muzaffarabad.
- ❖ **Thunderstorm accompanied with Lightning** likely at isolated places over Interior Karnataka and Uttarakhand.

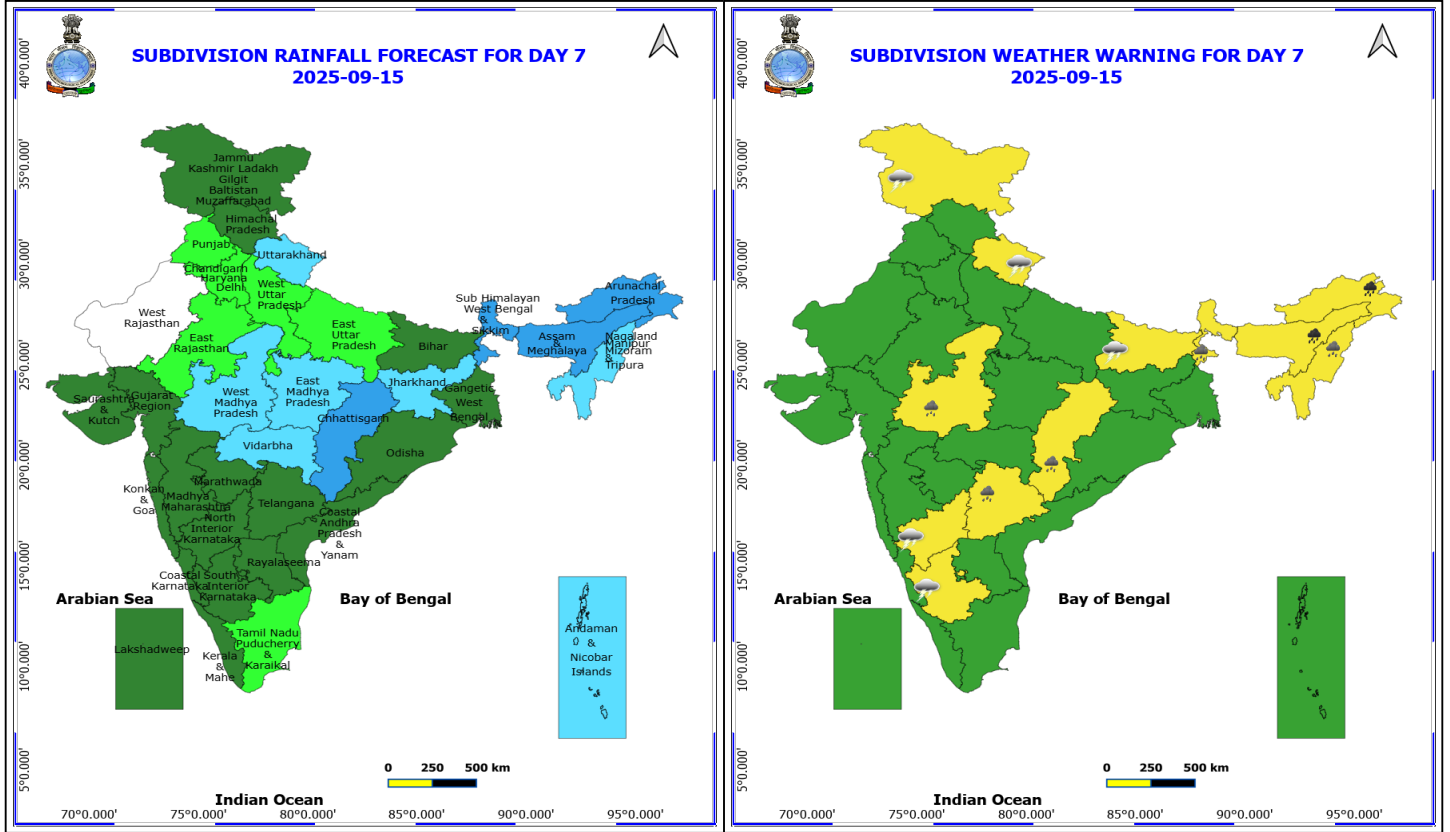
No Fishermen Warning



14 September (Day 6)

- ❖ **Heavy to Very Heavy Rainfall** likely at isolated places over Arunachal Pradesh and Assam & Meghalaya.
- ❖ **Heavy Rainfall** likely at isolated places over Chhattisgarh, Nagaland, Manipur, Mizoram and Tripura, Sub Himalayan West Bengal & Sikkim, Telangana and West Madhya Pradesh.
- ❖ **Thunderstorm accompanied with lightning & gusty winds(30-40kmph)** likely at isolated places over Bihar and Jammu-Kashmir-Ladakh-Gilgit-Baltistan-Muzaffarabad.
- ❖ **Thunderstorm accompanied with Lightning** likely at isolated places over Interior Karnataka and Uttarakhand.

No Fishermen Warning



15 September (Day 7)

- ❖ **Heavy to Very Heavy Rainfall** likely at isolated places over Arunachal Pradesh and Assam & Meghalaya.
- ❖ **Heavy Rainfall** likely at isolated places over Chhattisgarh, Nagaland, Manipur, Mizoram and Tripura, Sub Himalayan West Bengal & Sikkim, Telangana and West Madhya Pradesh.
- ❖ **Thunderstorm accompanied with lightning & gusty winds(30-40kmph)** likely at isolated places over Bihar and Jammu-Kashmir-Ladakh-Gilgit-Baltistan-Muzaffarabad.
- ❖ **Thunderstorm accompanied with Lightning** likely at isolated places over Interior Karnataka and Uttarakhand.

No Fishermen Warning



Table-1

7 Days Rainfall Forecast

S.No.	Subdivision	9- Sep	10- Sep	11- Sep	12- Sep	13- Sep	14- Sep	15- Sep
		Day 1	Day 2	Day 3	Day 4	Day 5	Day 6	Day 7
1	ANDAMAN & NICOBAR ISLANDS	WS	WS	WS	WS	FWS	FWS	FWS
2	ARUNACHAL PRADESH	SCT	SCT	FWS	FWS	WS	WS	WS
3	ASSAM & MEHGHALAYA	SCT	FWS	FWS	WS	WS	WS	WS
4	N. M. M. & T.	FWS	SCT	SCT	FWS	FWS	FWS	FWS
5	S.H. WEST BENGAL & SIKKIM	WS	WS	WS	WS	WS	WS	WS
6	GANGETIC WEST BENGAL	ISOL	SCT	FWS	FWS	FWS	SCT	SCT
7	ODISHA	SCT	FWS	FWS	WS	FWS	SCT	SCT
8	JHARKHAND	SCT	FWS	FWS	FWS	FWS	FWS	FWS
9	BIHAR	FWS	FWS	FWS	FWS	FWS	SCT	SCT
10	EAST UTTAR PRADESH	SCT	ISOL	ISOL	ISOL	ISOL	ISOL	ISOL
11	WEST UTTAR PRADESH	ISOL	ISOL	ISOL	ISOL	ISOL	ISOL	ISOL
12	UTTARAKHAND	SCT	SCT	SCT	FWS	FWS	FWS	FWS
13	HARYANA, CHD & DELHI	ISOL	ISOL	ISOL	SCT	SCT	ISOL	ISOL
14	PUNJAB	ISOL	ISOL	ISOL	SCT	SCT	ISOL	ISOL
15	HIMACHAL PRADESH	SCT	SCT	SCT	SCT	SCT	SCT	SCT
16	JAMMU AND KASHMIR AND LADAKH	SCT	DRY	ISOL	SCT	SCT	SCT	SCT
17	WEST RAJASTHAN	ISOL	ISOL	ISOL	DRY	DRY	DRY	DRY
18	EAST RAJASTHAN	ISOL	ISOL	ISOL	ISOL	ISOL	ISOL	ISOL
19	WEST MADHYA PRADESH	SCT	SCT	SCT	SCT	FWS	FWS	FWS
20	EAST MADHYA PRADESH	SCT	FWS	FWS	FWS	FWS	FWS	FWS
21	GUJRAT REGION	FWS	FWS	SCT	SCT	SCT	SCT	SCT
22	SAURASHTRA & KUTCH	FWS	FWS	SCT	SCT	SCT	SCT	SCT
23	KONKAN & GOA	SCT	SCT	SCT	SCT	SCT	SCT	SCT
24	MADHYA MAHARASHTRA	ISOL	ISOL	ISOL	ISOL	SCT	SCT	SCT
25	MARATHWADA	ISOL	ISOL	SCT	SCT	SCT	SCT	SCT
26	VIDARBHA	FWS	FWS	WS	WS	WS	FWS	FWS
27	CHATTISGARH	FWS	WS	WS	WS	WS	WS	WS
28	COASTAL ANDHRA PRADESH	SCT	FWS	FWS	FWS	FWS	SCT	SCT
29	TELANGANA	ISOL	SCT	SCT	SCT	SCT	SCT	SCT
30	RAYALASEEMA	ISOL	SCT	FWS	FWS	FWS	SCT	SCT
31	TAMILNADU & PUDUCHERRY	SCT	FWS	ISOL	ISOL	ISOL	ISOL	ISOL
32	COSTAL KARNATAKA	SCT	SCT	ISOL	ISOL	SCT	SCT	SCT
33	NORTH INTERIOR KARNATAKA	ISOL	SCT	SCT	SCT	SCT	SCT	SCT
34	SOUTH INTERIOR KARNATAKA	SCT	SCT	SCT	SCT	SCT	SCT	SCT
35	KERALA	WS	FWS	SCT	SCT	SCT	SCT	SCT
36	LAKSHDWEEP	SCT	SCT	SCT	SCT	SCT	SCT	SCT

Legend	Category	%Stations
WS	Widespread/Most Places	76-100
FWS	Fairly Widespread/Many Places	51-75
SCT	Scattered/ A Few Places	26-50
ISOL	Isolated Places	1-25
DRY	No Rain	0

*Red color warning does not mean "Red Alert" Red color warning means "Take Action"
Forecast and warning for any day is valid from 0830 hours IST of day till 0830 hours IST of next day
For more details kindly visit <https://mausam.imd.gov.in> or contact 011-2434-4599

(Service to the nation since 1875)

Fig. 1: Maximum Temperatures Dated 2025-09-09

Fig. 2: Departure of Maximum Temp. Dated 2025-09-09

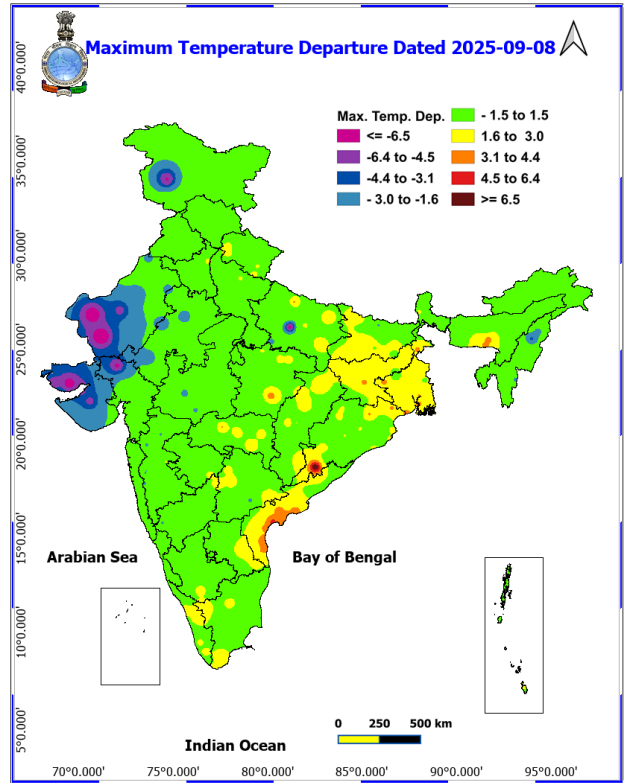
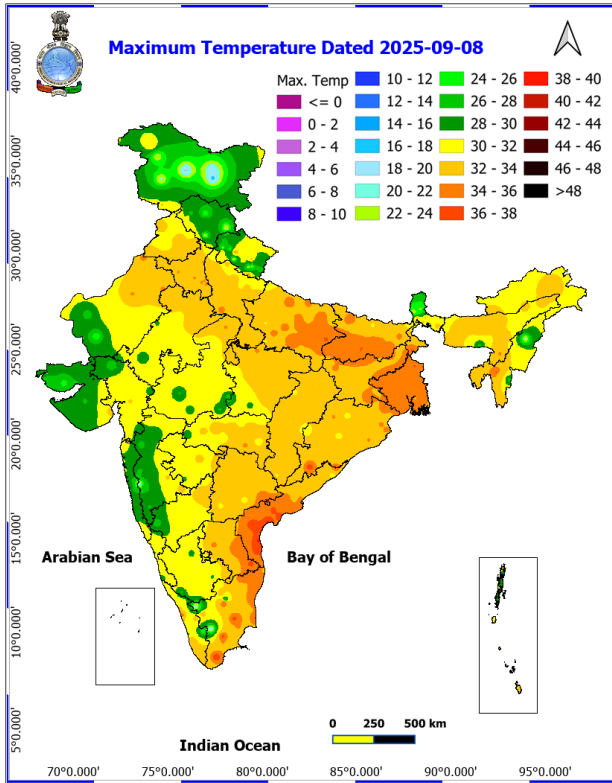
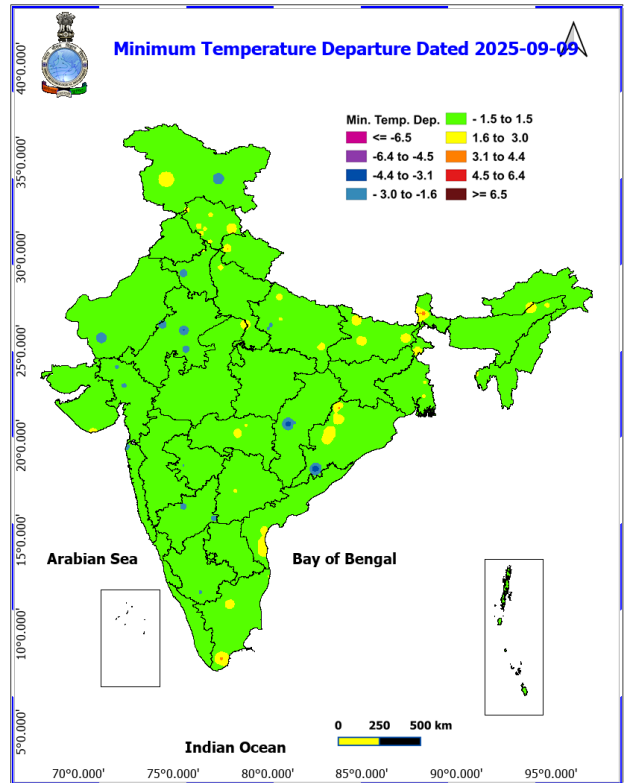
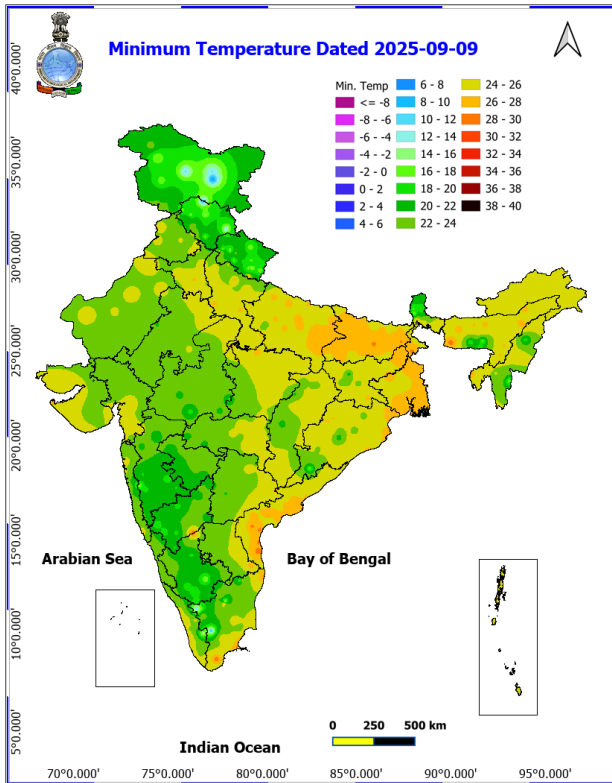
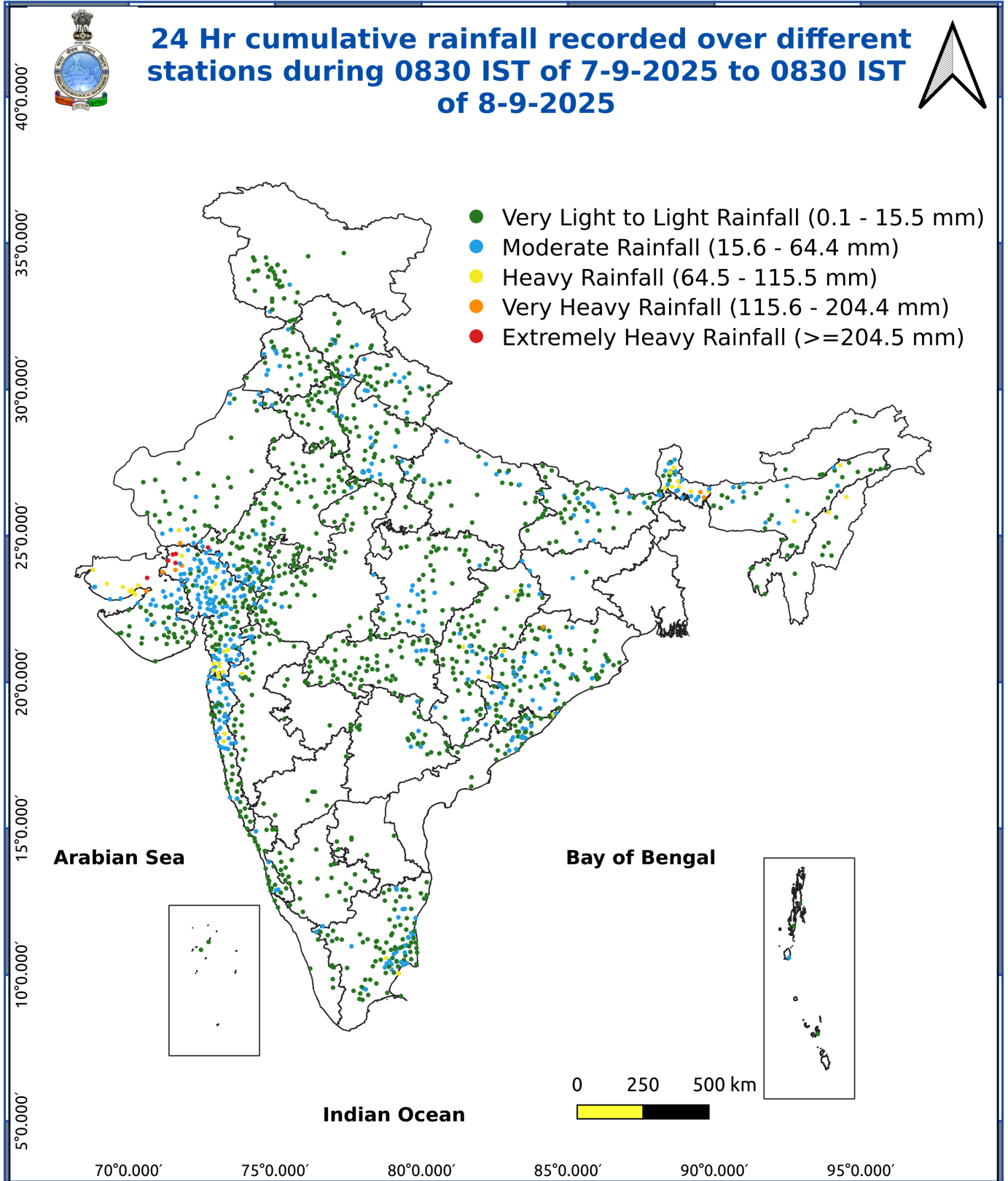


Fig. 3: Minimum Temperatures Dated 2025-09-09

Fig. 4: Departure of Minimum Temp. Dated 2025-09-09





Impact & Action Suggested due to

- **Heavy to very heavy rainfall (12-20 cm)** at isolated places over Sub-Himalayan West Bengal & Sikkim on 09th-10th; Nagaland, Manipur, Odisha on 11th & 12th; Arunachal Pradesh, Assam & Meghalaya during 12th-15th September.

Impact Expected

- Localized Flooding of roads, water logging in low lying areas and closure of underpasses mainly in urban areas of the above region.
- Occasional reduction in visibility due to heavy rainfall.
- Disruption of traffic in major cities due to water logging in roads leading to increased travel time.
- Minor damage to kutcha roads.
- Possibilities of damage to vulnerable structure.
- Localized Landslides/Mudslides/landslips/mudslips/landsinks/mudsinks.
- Damage to horticulture and standing crops in some areas due to inundation.
- It may lead to riverine flooding in some river catchments (for riverine flooding please visit Web page of CWC)

Action Suggested

- Check for traffic congestion on your route before leaving for your destination.
- Follow any traffic advisories that are issued in this regard.
- Avoid going to areas that face the water logging problems often.
- Avoid staying in vulnerable structure.

Agromet advisories for various parts of the country

Agromet advisories for likely impact of Heavy / Heavy to Very Heavy / Extremely Heavy Rainfall

(Based on the IBF and advisories issued by different AMFUs)

- In **Gujarat**, drain out excess rain water from fields of castor, cotton, groundnut, pearl millet, sesame, maize and vegetables in **North Gujarat Zone**; *khari* groundnut, cotton, soybean, black gram and sesame in **North West Zone**; groundnut, cotton and soybean in **North Saurashtra Zone**; groundnut, cotton, soybean, black gram, green gram, sesame and pigeon pea in **South Saurashtra Zone**; rice, sugarcane, okra, tuber crops and vegetables in **South Gujarat Heavy Rainfall Zone** and rice, cotton, pigeon pea and fruit orchards (banana and mango) in **South Gujarat Zone**.
- In **Rajasthan**, drain out excess water from fields of green gram, cluster bean, moth bean and castor in **Arid Western Plain Zone** and cotton, maize, soybean, groundnut and pulses in **Sub Humid Southern Plain and Aravali Hill Zone**.
- In **Sub-Himalayan West Bengal**, make provision to drain out excess water from *aman* paddy and vegetable fields (chilli, bitter gourd, pointed gourd, okra, brinjal etc.) in **Terai Zone**.

Livestock / Fishery

- Keep the animals inside the shed during heavy rainfall and provide them balanced feed.
- Store feed and fodder in a safe place to prevent spoilage.
- Construct an outlet with proper netting around the ponds to drain out excess water, thereby preventing fish from escaping in case of overflow.

Agromet advisories for likely impact of Thunderstorm / Gusty Winds / Squally Winds

- Provide mechanical support to horticultural crops and staking or support to vegetables and young fruit plants / fruit-bearing plants to avoid lodging due to strong winds.

*Red color warning does not mean "Red Alert" Red color warning means "Take Action"

Forecast and warning for any day is valid from 0830 hours IST of day till 0830 hours IST of next day

For more details kindly visit <https://mausam.imd.gov.in> or contact 011-2434-4599

(Service to the nation since 1875)

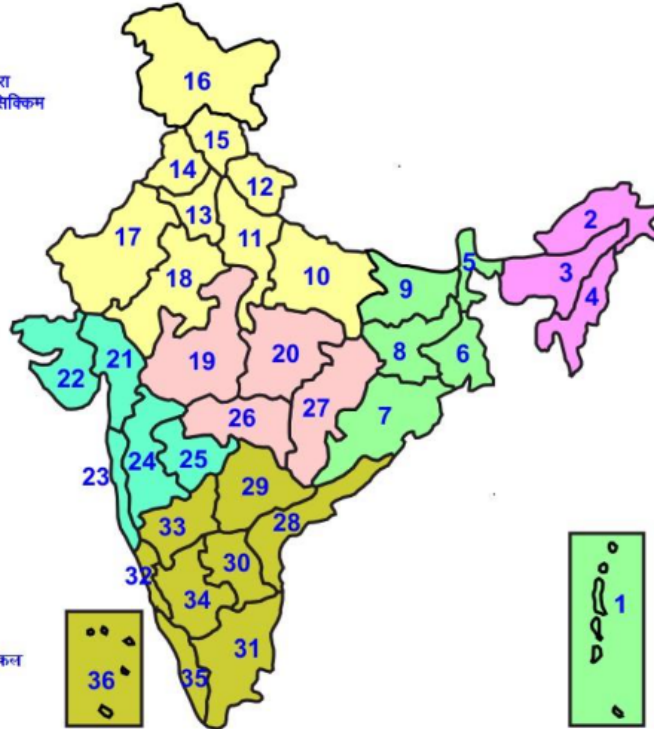
Legends & abbreviations:

Region wise classification of meteorological Sub-Divisions:

- **Northwest India:** Western Himalayan Region (Jammu-Kashmir-Ladakh-Gilgit-Baltistan-Muzaffarabad, Himachal Pradesh and Uttarakhand); Punjab, Haryana-Chandigarh-Delhi; West Uttar Pradesh, East Uttar Pradesh, West Rajasthan and East Rajasthan.
- **Central India:** West Madhya Pradesh, East Madhya Pradesh, Vidarbha and Chhattisgarh.
- **East India:** Bihar, Jharkhand, Sub-Himalayan West Bengal & Sikkim; Gangetic West Bengal, Odisha and Andaman & Nicobar Islands.
- **Northeast India:** Arunachal Pradesh, Assam & Meghalaya and Nagaland, Manipur, Mizoram & Tripura.
- **West India:** Gujarat Region, Saurashtra & Kutch, Konkan & Goa, Madhya Maharashtra and Marathawada.
- **South India:** Coastal Andhra Pradesh & Yanam, Telangana, Rayalaseema, Coastal Karnataka, North Interior Karnataka, South Interior Karnataka, Kerala & Mahe, Tamil Nadu, Puducherry & Karaikal and Lakshadweep.

LEGENDS

- 1 अंडमान और निकोबार द्वीप समुह
- 2 अरुणाचल प्रदेश
- 3 असम और मेघालय
- 4 नागालैंड मनीपुर मीजोरम और त्रिपुरा
- 5 उप हिमालय पश्चिम बंगाल एवं सिक्किम
- 6 पश्चिम बंगाल
- 7 ओडिसा
- 8 झारखंड
- 9 बिहार
- 10 पूर्वी उत्तर प्रदेश
- 11 पश्चिम उत्तर प्रदेश
- 12 उत्तराखंड
- 13 हरियाणा चंडिगढ़ एवं दिल्ली
- 14 पंजाब
- 15 हिमाचल प्रदेश
- 16 जम्मू एवं कश्मीर एवं लद्दाख
- 17 पश्चिम राजस्थान
- 18 पूर्वी राजस्थान
- 19 पश्चिम मध्य प्रदेश
- 20 पूर्वी मध्य प्रदेश
- 21 गुजरात क्षेत्र
- 22 सौराष्ट्र एवं कच्छ
- 23 कोंकण एवं गोवा
- 24 मध्य महाराष्ट्र
- 25 मराठावाडा
- 26 विदर्भ
- 27 छत्तीसगढ़
- 28 तटीय आंध्र प्रदेश एवं यनम
- 29 तेलंगाना
- 30 रायलसीमा
- 31 तमिलनाडु, पुदुचेरी एवं कराईकल
- 32 तटिय कर्नाटक
- 33 आंतरिक उत्तरी कर्नाटक
- 34 आंतरिक दक्षिणी कर्नाटक
- 35 केरल एवं माहे
- 36 लक्षद्वीप



1. Andaman & Nicobar Islands
2. Arunachal Pradesh
3. Assam & Meghalaya
4. Nagaland, Manipur, Mizoram & Tripura
5. Sub-Himalayan West Bengal & Sikkim
6. Gangetic West Bengal
7. Orissa
8. Jharkhand
9. Bihar
10. East Uttar Pradesh
11. West Uttar Pradesh
12. Uttarakhand
13. Haryana, Chd & Delhi
14. Punjab
15. Himachal Pradesh
16. Jammu & Kashmir and Ladakh
17. West Rajasthan
18. East Rajasthan
19. West Madhya Pradesh
20. East Madhya Pradesh
21. Gujarat
22. Saurashtra
23. Konkan & Goa
24. Madhya Maharashtra
25. Marathawada
26. Vidharbha
27. Chhattisgarh
28. Coastal Andhra Pradesh & Yanam
29. Telangana
30. Rayalaseema
31. Tamilnadu, Puducherry & Karaikal
32. Coastal Karnataka
33. North Interior Karnataka
34. South Interior Karnataka
35. Kerala & Mahe
36. Lakshadweep

SPATIAL DISTRIBUTION (% of Stations reporting)

% Stations	Category	% Stations	Category
76-100	Widespread (WS/ Most Places)	26-50	Scattered (SCT/ A Few Places)
51-75	Fairly Widespread (FWS/ Many Places)	1-25	Isolated (ISOL)

Subdivision Colour

- NO WARNING
- WATCH (BE UPDATED)
- ALERT (BE PREPARED TO TAKE ACTION)
- WARNING (TAKE ACTION)

Probabilistic Forecast

Terms	Probability of Occurrence (%)
Unlikely	< 25
Likely	25 - 50
Very Likely	50 - 75
Most Likely	> 75

- | | | | |
|--------------------------|-----------------|----------------------|--------------------|
| Heavy Rain | Very Heavy Rain | Extremely Heavy Rain | Heavy Snow |
| Thunderstorm & Lightning | Hailstorm | Dust Storm | Dust Raising Winds |
| Strong surface winds | Heat Wave | Hot Day | Warm Night |
| Cold Wave | Cold Day | Ground Frost | Fog |
| Hot & Humid | | | |

*Red color warning does not mean "Red Alert" Red color warning means "Take Action"

Forecast and warning for any day is valid from 0830 hours IST of day till 0830 hours IST of next day

For more details kindly visit <https://mausam.imd.gov.in> or contact 011-2434-4599

(Service to the nation since 1875)

LEGENDS

WARNING

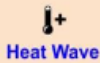
WARNING (TAKE ACTION)
ALERT (BE PREPARED)
WATCH (BE UPDATED)
NO WARNING (NO ACTION)

Probabilistic Forecast

Terms	Probability of Occurrence (%)
Unlikely	< 25
Likely	25 - 50
Very Likely	50 - 75
Most Likely	> 75



Heavy: 64.5 to 115.5 mm/cm *
Very Heavy: 115.6 to 204.4 mm/cm*
Extremely Heavy: > 204.4 mm/cm *



When maximum temperature of a station reaches $\geq 40^{\circ}\text{C}$ for plains and $\geq 30^{\circ}\text{C}$ for hilly regions
(a) Based on Departure from normal

Heat Wave: Maximum Temperature Departure from normal 4.5°C to 6.4°C .
Severe Heat Wave: Maximum Temperature Departure from normal $\geq 6.5^{\circ}\text{C}$

(b). Based on Actual maximum temperature

Heat Wave: When actual maximum temperature $\geq 45^{\circ}\text{C}$.
Severe Heat Wave: When actual maximum temperature $\geq 47^{\circ}\text{C}$

(c). Criteria for heat wave for coastal stations

When maximum temperature departure is $> 4.5^{\circ}\text{C}$ from normal. Heat Wave may be described provided maximum temperature $\geq 37^{\circ}\text{C}$



When maximum temperature remains 40°C

Warm Night: When minimum temperature departure 4.5°C to 6.4°C .
Severe Warm Night: When minimum temperature departure $> 6.4^{\circ}\text{C}$.



When minimum temperature of a station $\leq 10^{\circ}\text{C}$ for plains and $\leq 0^{\circ}\text{C}$ for hilly regions.

(a). Based on departure

Cold Wave: Minimum Temperature Departure from normal -4.5°C to -6.4°C .
Severe Cold Wave: Minimum Temperature Departure from normal $\leq -6.5^{\circ}\text{C}$

(b) Based on actual Minimum Temperature (for Plains only)

Cold Wave : When Minimum Temperature is $\leq 4.0^{\circ}\text{C}$
Severe Cold Wave: When Minimum Temperature is $\leq 2.0^{\circ}\text{C}$

(c) For Coastal Stations

When Minimum Temperature departure is $\leq -4.5^{\circ}\text{C}$ & actual Minimum Temperature is $\leq 15^{\circ}\text{C}$



When minimum temperature of a station $\leq 10^{\circ}\text{C}$ for plains and $\leq 0^{\circ}\text{C}$ for hilly regions
Based on departure

Cold Day: Maximum Temperature Departure from normal -4.5°C to -6.4°C .
Severe Cold Day: Maximum Temperature Departure from normal $\leq -6.5^{\circ}\text{C}$



Phenomenon of small droplets suspended in air and the horizontal visibility $< 1\text{km}$

Moderate Fog: When the visibility between 500-200 metres
Dense Fog: when the visibility between 50- 200 metres
Very Dense Fog: when the visibility < 50 metres



Sudden electrical discharges manifested by a flash of light (Lightning) and a sharp rumbling sound (thunder)



An ensemble of particles of dust or sand energetically lifted to great heights by a strong and turbulent wind.



Ice deposits on ground

Air temperature $\leq 4^{\circ}\text{C}$ (over Plains)



A strong wind that rises suddenly, lasts for atleast 1 minute.

Moderate: Wind speed 52-61 kmph
Severe: Wind speed 62-87 kmph
Very Severe: Wind speed > 87 kmph



Effect of various waves in the sea over specific area

Rough to very rough: Wind speed 41-62 kmph (22-33 knots) & Wave height 2.5-6 metre
High to very high: Wind speed 63-117 kmph (34-63 knots) & Wave height 6-14 metre
Phenomenal: Wind speed > 117 kmph (> 63 knots) & Wave height > 14 metre



Cyclonic Storm: Wind speed 62-87 kmph (34-47 knots)
Severe Cyclonic Storm: Wind speed 88-117 kmph (48-63 knots)
Very Severe Cyclonic Storm: Wind speed 118-165 kmph (64 - 89 knots)
Extremely Severe Cyclonic Storm: Wind speed 166-220 kmph (90 -119 knots)
Super Cyclone Storm: Wind speed > 220 kmph (> 119 knots)

*Red color warning does not mean "Red Alert" Red color warning means "Take Action"

Forecast and warning for any day is valid from 0830 hours IST of day till 0830 hours IST of next day

For more details kindly visit <https://mausam.imd.gov.in> or contact 011-2434-4599

(Service to the nation since 1875)