

2025-07-25

Time of Issue: 09:26:00 hours IST
(Morning)

ALL INDIA WEATHER SUMMARY AND FORECAST BULLETIN

Significant Weather Features

Weather Forecast and Warnings

East & Central India:

- **Extremely heavy rainfall** very likely at isolated places over Odisha on 25th; Madhya Pradesh on 26th & 27th; Chhattisgarh on 25th & 26th; Vidarbha and Gangetic West Bengal on 25th July.
- Isolated **heavy to very heavy rainfall** very likely to continue over Madhya Pradesh, Vidarbha, Chhattisgarh, Odisha, Gangetic West Bengal, Jharkhand during 25th-28th; isolated **heavy rainfall** over Bihar, Sub-Himalayan West Bengal & Sikkim during 25th-27th July.
- Light to moderate rainfall at most places accompanied with thunderstorm, lightning & gusty winds (speed reaching 30-40 Kmph) likely over the region during next 7 days with **moderate lightning over Bihar on 25th July**.

South Peninsular India:

- Isolated **heavy to very heavy rainfall** likely over Kerala & Mahe, Coastal & South Interior Karnataka during 25th-29th; isolated **heavy rainfall** over Tamil Nadu, Telangana, Coastal Andhra Pradesh & Yanam, North Interior Karnataka during 25th-27th July with isolated **very heavy rainfall** over Telangana and Coastal Andhra Pradesh & Yanam on 25th July.
- **Strong surface winds** (speed reaching 40-50 kmph) very likely over South Peninsular India during next 4 days.
- Light to moderate rainfall at most/many places over Kerala & Mahe, Lakshadweep, Karnataka, Rayalaseema, Coastal Andhra Pradesh & Yanam and Telanganaduring next 7 days.

West India:

- **Extremely heavy rainfall** very likely at isolated places over Konkan and Ghat areas of Madhya Maharashtra on 25th July.
- **Heavy to very heavy rainfall** likely at isolated to some places over Konkan & Goa, Ghat areas of Madhya Maharashtra during 25th-31st July and **heavy rainfall** over Marathawada on 25th & 26th; Gujarat region during 25th-29th; Saurashtra & Kutch during 26th-29th July with isolated **very heavy rainfall** over Gujarat Region on 27th & 28th July.
- Light to moderate rainfall at many places very likely over the region during next 6-7 days.

Northwest India:

- Isolated **very heavy rainfall over East Rajasthan on 27th & 28th and West Uttar Pradesh on 28th July**.
- Isolated **heavy rainfall** likely over Jammu and Kashmir during 29th-31st; Himachal Pradesh, East Rajasthan during 26th-31st; Uttar Pradesh, Uttarakhand during 25th-31st; Punjab, Haryana on 27th & 28th July.
- Light/moderate rainfall at many places accompanied with thunderstorm, lightning likely over Western Himalayan region and some places over the plains during next 7 days.

Northeast India:

- Light/moderate rainfall at many places accompanied with **thunderstorm, lightning and isolated heavy rainfall** likely to continue over Northeast India during next 5 days with **very heavy rainfall** over Arunachal Pradesh and Mizoram & Tripura on 26th July.

*Red color warning does not mean "Red Alert" Red color warning means "Take Action"

Forecast and warning for any day is valid from 0830 hours IST of day till 0830 hours IST of next day

For more details kindly visit <https://mausam.imd.gov.in> or contact 011-2434-4599

(Service to the nation since 1875)

Main Weather Observations:

❖ **Significant rainfall recorded(in cm)** (from 0830 hours IST of yesterday to 0530 hours IST of today): **Kerala & Mahe:** Cannanore (kannur) (dist Kannur) 6, Kozhikode (calicut) (dist Kozhikode) 4, Thiruvananthapuram-city (dist Thiruvananthapuram) 2; **Coastal Karnataka:** Mangalore (bajpe) AP (dist Dakshina Kannada) 6; **Gangetic West Bengal:** Kolkata-alipur (dist Kolkata) 6, Diamond Harbour (dist South 24 Parganas) 3, Kolkata (dum Dum) AP (dist North 24 Parganas), Haldia (dist Purba Medinipur) 2 Each; **Odisha:** Jharsuguda (dist Jharsuguda) 6, Keonjhar (dist Kendujhar) 5; **West Madhya Pradesh:** Gwalior (dist Gwalior) 5, Bhopal-arera Hills (dist Bhopal) 3; **Nagaland, Manipur, Mizoram & Tripura:** Dimapur (dist Dimapur) 5; **Chhattisgarh:** Ambikapur (dist Surguja) 5, Bilaspur (dist Bilaspur) 4, Jagdalpur (dist Bastar) 2; **Jharkhand:** Ranchi AP (dist Ranchi) 4, Jamshedpur AP (dist East Singhbhum) 2; **West Uttar Pradesh:** Jhansi (dist Jhansi) 3; **Himachal Pradesh:** Sundernagar (dist Mandi) 2; **Tamilnadu Puducherry & Karaikal:** Kanyakumari (dist Kanyakumari) 2; **Konkan & Goa :** Mumbai (santacruz) AP, Mumbai (colaba) (dist) 2 Each; **Lakshadweep :** Ammini Divi (dist Lakshadweep) 2; **Assam & Meghalaya:** Barapani/shillong (dist East Khasi Hills) 2.

❖ **Minimum Temperature Departures (as on 24-07-2025):** markedly above normal(> 5.1°C) at many places over Himachal Pradesh; at few places over Assam & Meghalaya; at isolated places over Sub Himalayan West Bengal & Sikkim, East Uttar Pradesh, West Madhya Pradesh, East Madhya Pradesh and Saurashtra & Kutch. **appreciably above normal(3.1°C to 5.0°C)** at many places over Andaman & Nicobar Islands and Bihar; at isolated places over Gangetic West Bengal, Odisha, Uttarakhand, West Rajasthan and Gujarat Region. **above normal(1.6°C to 3.0°C)** at most places over Arunachal Pradesh; at isolated places over Nagaland, Manipur, Mizoram & Tripura, Jharkhand, West Uttar Pradesh, Punjab, East Rajasthan, Madhya Maharashtra and Coastal Andhra Pradesh & Yanam. **near normal(-1.5°C to 1.5°C)** at many places over Haryana-Chandigarh-Delhi, Jammu-KashmirLadakh-Gilgit-Baltistan-Muzaffarabad, Chhattisgarh, Rayalaseema, Tamil Nadu, Puducherry & Karaikal and Kerala & Mahe; at most places over Konkan & Goa, Marathwada, Vidarbha, Coastal Karnataka, North Interior Karnataka and South Interior Karnataka; at few places over Telangana and Lakshadweep. **The lowest minimum temperature** of 18.4°C is reported at SHIMOGA (KARNATAKA) over the Plains of India.

❖ **Maximum Temperature Departures (as on 24-07-2025):** markedly above normal(> 5.1°C) at many places over Sub Himalayan West Bengal & Sikkim; at most places over Arunachal Pradesh; at few places over Assam & Meghalaya and Himachal Pradesh; at isolated places over East Uttar Pradesh. **appreciably above normal(3.1°C to 5.0°C)** at few places over Bihar; at isolated places over Gangetic West Bengal, Odisha, Uttarakhand and North Interior Karnataka. **above normal(1.6°C to 3.0°C)** at many places over Nagaland, Manipur, Mizoram & Tripura; at few places over West Uttar Pradesh, Haryana-Chandigarh-Delhi and Punjab; at isolated places over Jharkhand, East Rajasthan, East Madhya Pradesh, Gujarat Region, Madhya Maharashtra, Chhattisgarh and Tamil Nadu, Puducherry & Karaikal. **near normal(-1.5°C to 1.5°C)** at many places over Andaman & Nicobar Islands, Jammu-KashmirLadakh-Gilgit-Baltistan-Muzaffarabad and West Rajasthan; at most places over Saurashtra & Kutch, Konkan & Goa and Lakshadweep; at few places over Vidarbha; at isolated places over West Madhya Pradesh, Coastal Andhra Pradesh & Yanam, South Interior Karnataka and Kerala & Mahe. **The highest maximum temperature** of 39.2°C is reported at SILIGURI (WEST BENGAL).

***Red color warning does not mean "Red Alert" Red color warning means "Take Action"**

Forecast and warning for any day is valid from 0830 hours IST of day till 0830 hours IST of next day

For more details kindly visit <https://mausam.imd.gov.in> or contact 011-2434-4599

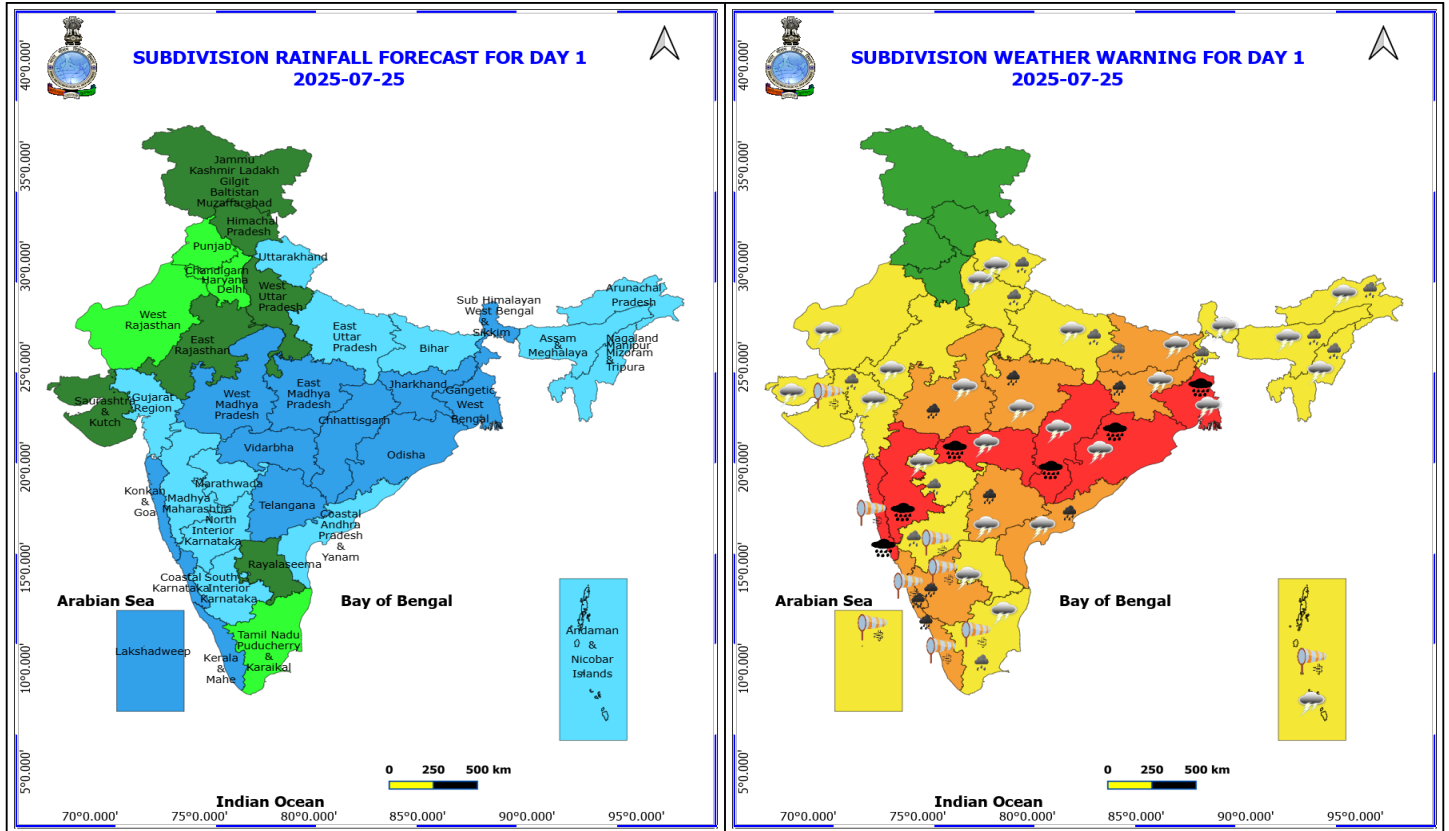
(Service to the nation since 1875)

Meteorological Analysis (Based on 0530 hours IST)

- The **well-marked low pressure area** over the north Bay of Bengal moved slowly west-northwestwards and concentrated into a **Depression** & lay centred at 0530 hrs IST of today, the 25th July over Northwest Bay of Bengal and adjoining areas of coastal West Bengal and Bangladesh near Lat. 21.4°N and Long. 89.5°E, about 130 km south of Mongla (Bangladesh), about 150 km east-southeast of Sagar Island (West Bengal), about 170 km southeast of Kolkata (West Bengal). It is very likely to move west-northwestwards and cross West Bengal and adjoining Bangladesh coasts during forenoon of today, the 25 July 2025. Thereafter, it is likely to continue to move west-northwestwards across Gangetic West Bengal and adjoining North Odisha and Jharkhand during subsequent 24 hours.
- The **monsoon trough** at mean sea level now passes through Ludhiana, Bareilly, Gorakhpur, Patna, Bankura, center of Depression over northwest Bay of Bengal and adjoining areas of coastal West Bengal and Bangladesh.
- An **upper air cyclonic circulation** lies over interior Odisha adjoining Chhattisgarh at 5.8 km above mean sea level.
- The **trough** now runs from Marathwada to above cyclonic circulation over interior Odisha adjoining Chhattisgarh at 5.8 km above mean sea level persisted.
- The **Western Disturbance** as a cyclonic circulation now lies over Jammu & Kashmir and neighbourhood between 3.1 & 5.8 km above mean sea level.
- An **upper air cyclonic circulation** lies over northwest Uttar Pradesh & neighbourhood and extends upto 3.1 km above mean sea level
- The off-shore **trough** at sea level along Maharashtra-Kerala coasts persisted.
- An **upper air cyclonic circulation** over East Uttar Pradesh at 1.5 km above mean sea level has become less marked.
- The **upper air cyclonic circulation** over northeast Bangladesh & neighbourhood at 0.9 km above mean sea level has become less marked.
- An **upper air cyclonic circulation** lies over Odisha at 1.5 km above mean sea level has become less marked.
- The **upper air cyclonic circulation** over southwest Rajasthan at 3.1 km above mean sea level has become less marked

Weather Outlook for subsequent 3 days

- Fairly widespread to widespread rainfall very likely over Northwest India, Central India, Northeast India, Gujarat, Konkan & Goa, Coastal Karnataka, Kerala & Mahe and Islands.
- Isolated to scattered rainfall is likely over East India and remaining parts of the South peninsular India.



25 July (Day 1)

- ❖ **Heavy to Very Heavy Rainfall with isolated Extremely Heavy Rainfall** very likely at isolated places over Chhattisgarh, Gangetic West Bengal, Konkan & Goa, Madhya Maharashtra, Odisha and Vidarbha.
- ❖ **Heavy to Very Heavy Rainfall** very likely at isolated places over Coastal Andhra Pradesh, Coastal Karnataka, Jharkhand, Kerala & Mahe, Madhya Pradesh, South Interior Karnataka and Telangana.
- ❖ **Heavy Rainfall** very likely at isolated places over Arunachal Pradesh, Assam & Meghalaya, Bihar, Gujarat Region, Marathwada, Nagaland, Manipur, Mizoram and Tripura, North Interior Karnataka, Sub Himalayan West Bengal & Sikkim, Tamil Nadu Puducherry & Karaikal, Uttar Pradesh and Uttarakhand.
- ❖ **Thunderstorm accompanied with lightning & gusty winds(40-50kmph)** very likely at isolated places over Andaman & Nicobar Islands and Jharkhand.
- ❖ **Thunderstorm accompanied with lightning & gusty winds(30-40kmph)** very likely at isolated places over Bihar, Odisha, Uttarakhand and West Bengal & Sikkim.
- ❖ **Thunderstorm accompanied with Lightning** very likely at isolated places over Andhra Pradesh, Arunachal Pradesh, Assam & Meghalaya, Chhattisgarh, Gujarat State, Madhya Pradesh, Marathwada, Nagaland, Manipur, Mizoram and Tripura, Rajasthan, Tamil Nadu Puducherry & Karaikal, Telangana, Uttar Pradesh and Vidarbha.
- ❖ **Strong Surface Winds** very likely at isolated places over Andaman & Nicobar Islands, Karnataka, Kerala & Mahe, Konkan & Goa, Lakshadweep, Saurashtra & Kutch and Tamil Nadu Puducherry & Karaikal.
- **Squally wind speed reaching 45 kmph to 55 kmph gusting to 65 kmph** is likely to prevail along and off Somalia, Yemen & south Oman coasts, most parts of westcentral Arabian Sea & adjoining, many parts of eastcentral Arabian Sea, many parts of southwest Arabian Sea, southern parts of north Arabian Sea.

***Red color warning does not mean "Red Alert" Red color warning means "Take Action"**

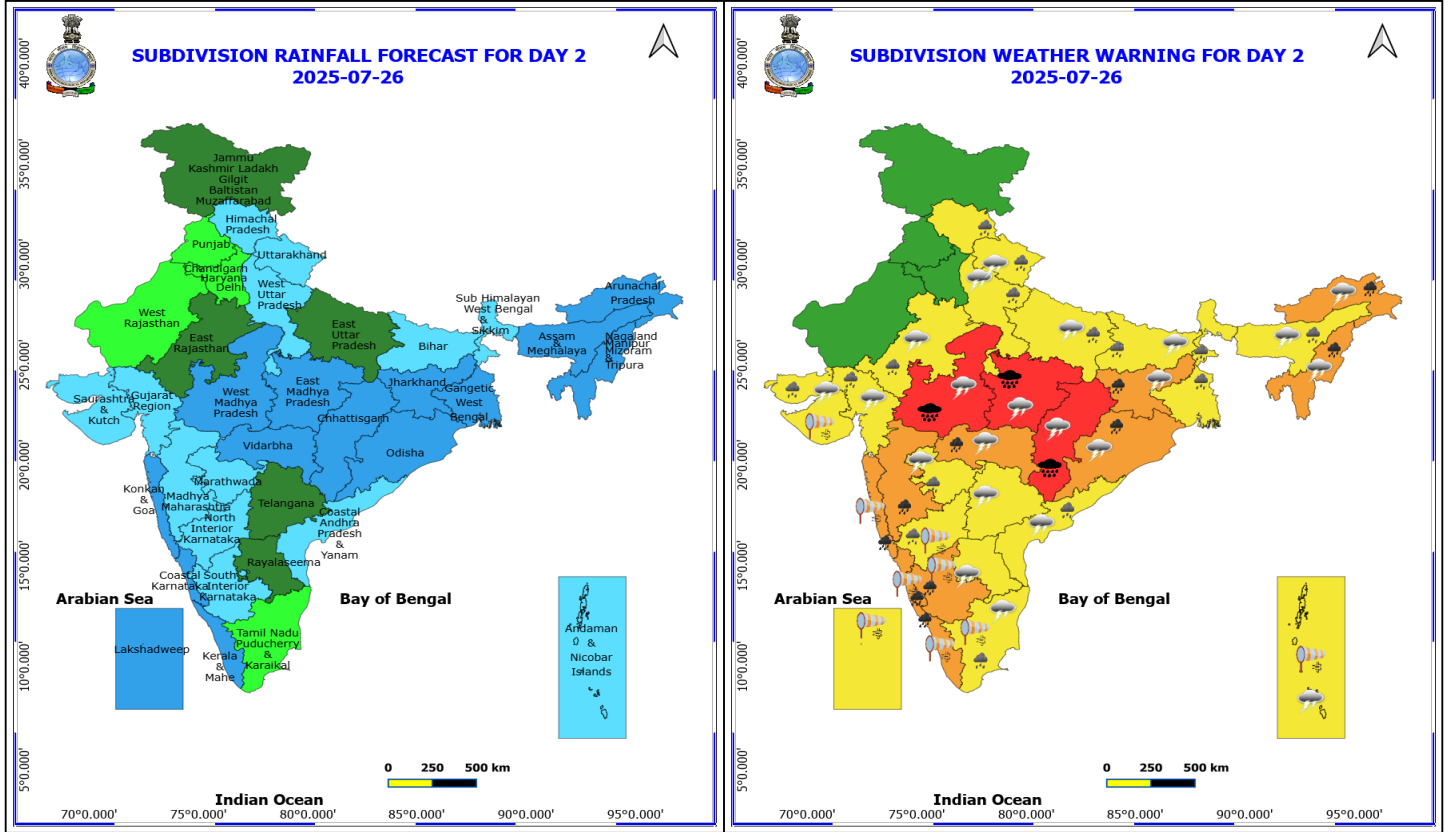
Forecast and warning for any day is valid from 0830 hours IST of day till 0830 hours IST of next day

For more details kindly visit <https://mausam.imd.gov.in> or contact 011-2434-4599

(Service to the nation since 1875)



- **Squally weather with wind speed 40 - 50 kmph gusting to 60 kmph** likely to prevail over some parts of eastcentral Arabian Sea & adjoining, some parts of westcentral Arabian Sea, many parts of southeast Arabian Sea & adjoining southwest Arabian Sea, many parts of northeast Arabian Sea & adjoining parts of northwest Arabian Sea, along and off Gujarat, Konkan, Goa, Kerala, Karnataka coasts, Tamil Nadu, Andhra Pradesh, Odisha, West Bengal, Bangladesh, Myanmar coasts, over Lakshadweep, Maldives, Comorin areas, over south, central & north Bay of Bengal, over Gulf of Mannar, along and off Sri Lanka coast, over Andaman Sea.
- **Squally weather with wind speed 45 - 55 kmph gusting to 65 kmph** likely to prevail along and off south Gujarat, Konkan Goa coasts and adjoining sea areas, over many parts of central and adjoining, many parts of south Bay of Bengal, many parts of north Bay of Bengal, many parts of north Andaman Sea.



26 July (Day 2)

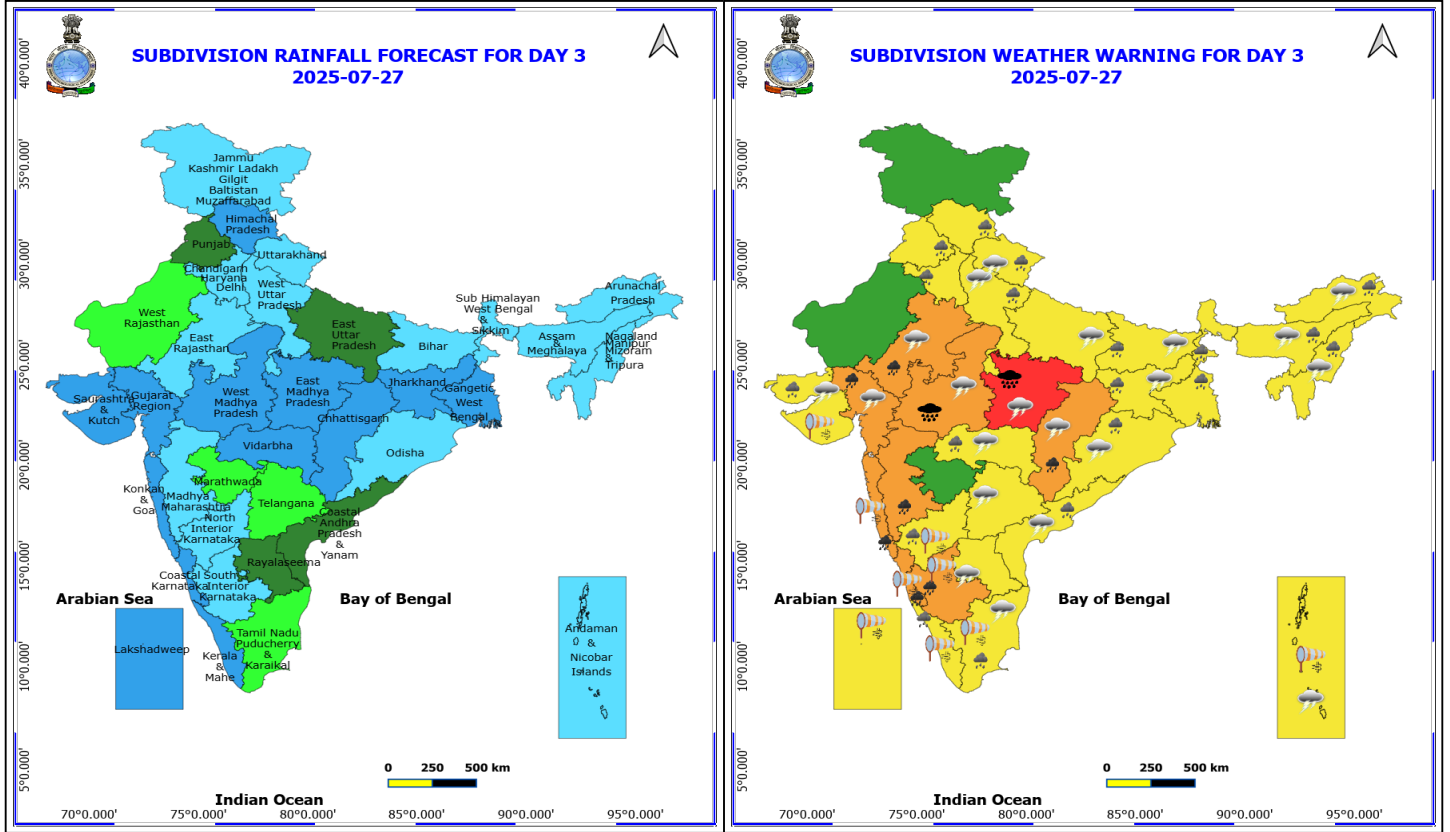
- ❖ **Heavy to Very Heavy Rainfall with isolated Extremely Heavy Rainfall** very likely at isolated places over Chhattisgarh and Madhya Pradesh.
- ❖ **Heavy to Very Heavy Rainfall** very likely at isolated places over Arunachal Pradesh, Coastal Karnataka, Jharkhand, Kerala & Mahe, Konkan & Goa, Madhya Maharashtra, Nagaland, Manipur, Mizoram and Tripura, Odisha, South Interior Karnataka and Vidarbha.
- ❖ **Heavy Rainfall** very likely at isolated places over Assam & Meghalaya, Bihar, Coastal Andhra Pradesh, East Rajasthan, Gujarat State, Himachal Pradesh, Marathwada, North Interior Karnataka, Tamil Nadu Puducherry & Karaikal, Uttar Pradesh, Uttarakhand and West Bengal & Sikkim.
- ❖ **Thunderstorm accompanied with lightning & gusty winds(40-50kmph)** very likely at isolated places over Jharkhand.
- ❖ **Thunderstorm accompanied with lightning & gusty winds(30-40kmph)** very likely at isolated places over Andaman & Nicobar Islands, Bihar, Odisha and Uttarakhand.
- ❖ **Thunderstorm accompanied with Lightning** very likely at isolated places over Andhra Pradesh, Arunachal Pradesh, Assam & Meghalaya, Chhattisgarh, East Rajasthan, Gujarat State, Madhya Pradesh, Marathwada, Nagaland, Manipur, Mizoram and Tripura, Tamil Nadu Puducherry & Karaikal, Telangana, Uttar Pradesh and Vidarbha.
- ❖ **Strong Surface Winds** very likely at isolated places over Andaman & Nicobar Islands, Karnataka, Kerala & Mahe, Konkan & Goa, Lakshadweep, Saurashtra & Kutch and Tamil Nadu Puducherry & Karaikal.
- **Squally wind speed reaching 45 kmph to 55 kmph gusting to 65 kmph** is likely to prevail along and off

***Red color warning does not mean "Red Alert" Red color warning means "Take Action"**
 Forecast and warning for any day is valid from 0830 hours IST of day till 0830 hours IST of next day
 For more details kindly visit <https://mausam.imd.gov.in> or contact 011-2434-4599
 (Service to the nation since 1875)



Somalia, Yemen & south Oman coasts, most parts of westcentral Arabian Sea & adjoining, many parts of eastcentral Arabian Sea, many parts of southwest Arabian Sea.

- **Squally weather with wind speed 40 - 50 kmph gusting to 60 kmph** likely to prevail over some parts of eastcentral Arabian Sea & adjoining, some parts of westcentral Arabian Sea, many parts of southeast Arabian Sea & adjoining, some parts of southwest Arabian Sea, many parts of northeast Arabian Sea & adjoining parts of northwest Arabian Sea, along and off Gujarat, Konkan, Goa, Kerala, Karnataka coasts, Tamil Nadu, Andhra Pradesh, Odisha, West Bengal, Bangladesh, Myanmar coasts, over Lakshadweep, Maldives, Comorin areas, over south, central & north Bay of Bengal, over Gulf of Mannar, along and off Sri Lanka coast, over Andaman Sea.
- **Squally weather with wind speed 45 - 55 kmph gusting to 65 kmph** likely to prevail along and off south Gujarat, Konkan Goa coasts and adjoining sea areas, over most parts of central and adjoining parts of south and north Bay of Bengal.



27 July (Day 3)

- ❖ **Heavy to Very Heavy Rainfall with isolated Extremely Heavy Rainfall** very likely at isolated places over Madhya Pradesh.
- ❖ **Heavy to Very Heavy Rainfall** very likely at isolated places over Chhattisgarh, Coastal Karnataka, East Rajasthan, Gujarat Region, Konkan & Goa, Madhya Maharashtra and South Interior Karnataka.
- ❖ **Heavy Rainfall** very likely at isolated places over Arunachal Pradesh, Assam & Meghalaya, Bihar, Coastal Andhra Pradesh, Haryana, Chandigarh & Delhi, Himachal Pradesh, Jharkhand, Kerala & Mahe, Nagaland, Manipur, Mizoram and Tripura, North Interior Karnataka, Odisha, Punjab, Saurashtra & Kutch, Tamil Nadu Puducherry & Karaikal, Uttarakhand, Vidarbha, West Bengal & Sikkim and West Uttar Pradesh.
- ❖ **Thunderstorm accompanied with lightning & gusty winds(40-50kmph)** very likely at isolated places over Jharkhand.
- ❖ **Thunderstorm accompanied with lightning & gusty winds(30-40kmph)** very likely at isolated places over Andaman & Nicobar Islands, Bihar, Odisha and Uttarakhand.
- ❖ **Thunderstorm accompanied with Lightning** very likely at isolated places over Andhra Pradesh, Arunachal Pradesh, Assam & Meghalaya, Chhattisgarh, East Rajasthan, Gujarat State, Madhya Pradesh, Nagaland, Manipur, Mizoram and Tripura, Tamil Nadu Puducherry & Karaikal, Telangana, Uttar Pradesh and Vidarbha.
- ❖ **Strong Surface Winds** very likely at isolated places over Andaman & Nicobar Islands, Karnataka, Kerala & Mahe, Konkan & Goa, Lakshadweep, Saurashtra & Kutch and Tamil Nadu Puducherry & Karaikal.
- **Squally wind speed reaching 45 kmph to 55 kmph gusting to 65 kmph** is likely to prevail along and off Somalia, Yemen & south Oman coasts, most parts of westcentral Arabian Sea & adjoining, many parts of

***Red color warning does not mean "Red Alert" Red color warning means "Take Action"**

Forecast and warning for any day is valid from 0830 hours IST of day till 0830 hours IST of next day

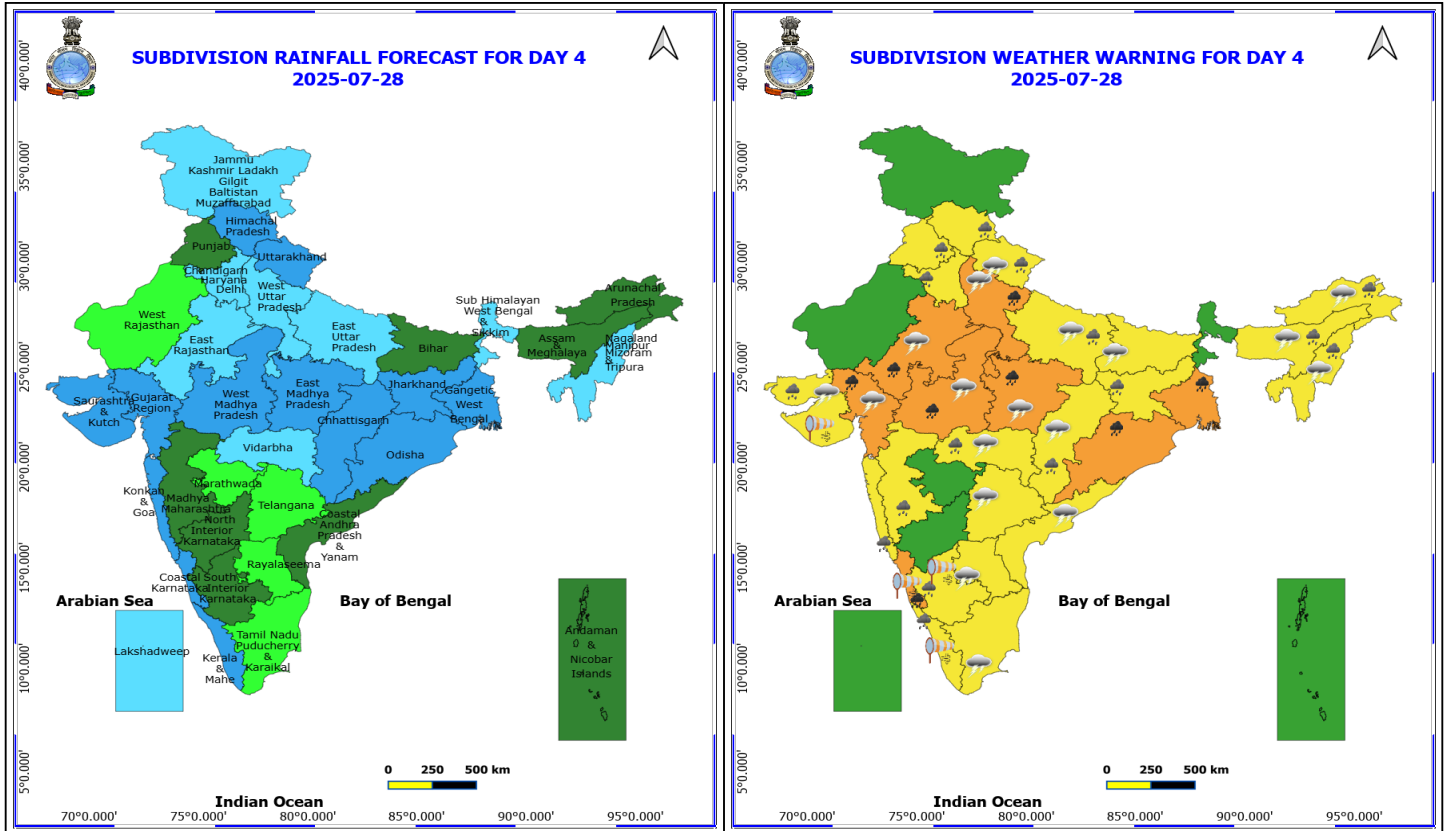
For more details kindly visit <https://mausam.imd.gov.in> or contact 011-2434-4599

(Service to the nation since 1875)



eastcentral Arabian Sea, many parts of southwest Arabian Sea, southern parts of north Arabian Sea.

- **Squally weather with wind speed 40 - 50 kmph gusting to 60 kmph** likely to prevail over some parts of eastcentral Arabian Sea & adjoining, some parts of westcentral Arabian Sea, many parts of southeast Arabian Sea & adjoining, some parts of southwest Arabian Sea, many parts of northeast Arabian Sea & adjoining parts of northwest Arabian Sea, along and off Gujarat, Konkan, Goa, Kerala, Karnataka coasts, Tamil Nadu, Andhra Pradesh, Odisha, West Bengal, Bangladesh, Myanmar coasts, over Lakshadweep, Maldives, Comorin areas, over south, central & north Bay of Bengal, over Gulf of Mannar, along and off Sri Lanka coast, over Andaman Sea.
- **Squally weather with wind speed 45 - 55 kmph gusting to 65 kmph** likely to prevail along and off south Gujarat, Konkan Goa coasts and adjoining sea areas, over most parts of central and adjoining parts of north Bay of Bengal.



28 July (Day 4)

- ❖ **Heavy to Very Heavy Rainfall** likely at isolated places over Coastal Karnataka, East Rajasthan, Gangetic West Bengal, Gujarat Region, Madhya Pradesh, Odisha and West Uttar Pradesh.
- ❖ **Heavy Rainfall** likely at isolated places over Arunachal Pradesh, Assam & Meghalaya, Chhattisgarh, East Uttar Pradesh, Haryana, Chandigarh & Delhi, Himachal Pradesh, Jharkhand, Kerala & Mahe, Konkan & Goa, Madhya Maharashtra, Nagaland, Manipur, Mizoram and Tripura, Punjab, Saurashtra & Kutch, South Interior Karnataka, Uttarakhand and Vidarbha.
- ❖ **Thunderstorm accompanied with lightning & gusty winds(30-40kmph)** likely at isolated places over Bihar and Uttarakhand.
- ❖ **Thunderstorm accompanied with Lightning** likely at isolated places over Andhra Pradesh, Arunachal Pradesh, Assam & Meghalaya, Chhattisgarh, East Rajasthan, Gujarat State, Madhya Pradesh, Nagaland, Manipur, Mizoram and Tripura, Tamil Nadu Puducherry & Karaikal, Telangana, Uttar Pradesh and Vidarbha.
- ❖ **Strong Surface Winds** likely at isolated places over Coastal Karnataka, Kerala & Mahe, Saurashtra & Kutch and South Interior Karnataka.
- **Squally wind speed reaching 45 kmph to 55 kmph gusting to 65 kmph** is likely to prevail along and off Somalia, Yemen & south Oman coasts, most parts of westcentral Arabian Sea & adjoining, many parts of eastcentral Arabian Sea, many parts of southwest Arabian Sea, southern parts of north Arabian Sea.
- **Squally weather with wind speed 40 - 50 kmph gusting to 60 kmph** likely to prevail over some parts of eastcentral Arabian Sea & adjoining, some parts of westcentral Arabian Sea, many parts of southeast Arabian Sea & adjoining, some parts of southwest Arabian Sea, some parts of northeast Arabian Sea, along and off Gujarat, Konkan, Goa, Kerala, Karnataka coasts, Andhra Pradesh, Odisha, West Bengal, Bangladesh, Myanmar coasts, over Lakshadweep, Maldives, Comorin areas, over south, central & north Bay

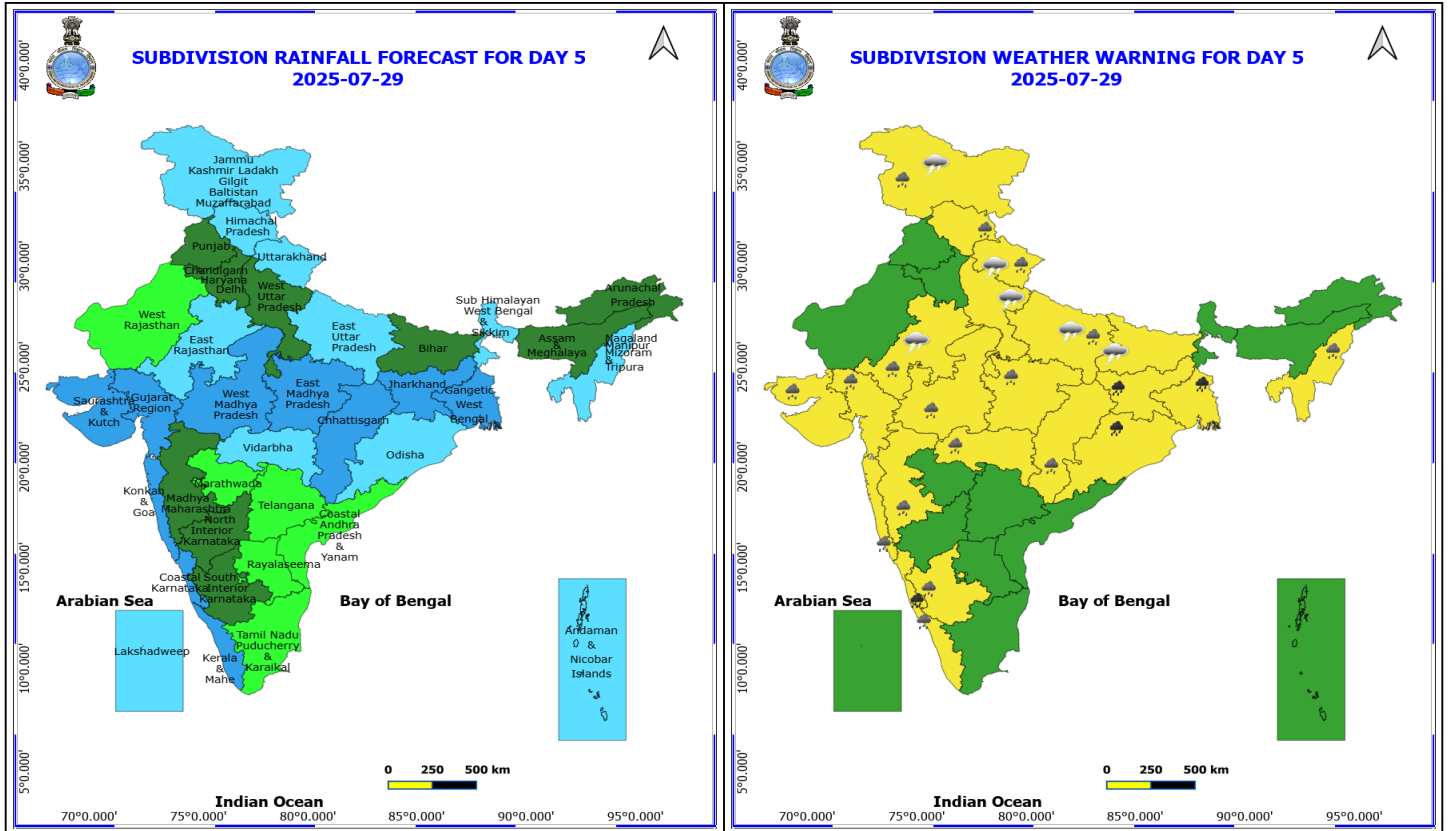
***Red color warning does not mean "Red Alert" Red color warning means "Take Action"**
Forecast and warning for any day is valid from 0830 hours IST of day till 0830 hours IST of next day
For more details kindly visit <https://mausam.imd.gov.in> or contact 011-2434-4599

(Service to the nation since 1875)



of Bengal, over Gulf of Mannar, along and off Sri Lanka coast, over north Andaman Sea.

- **Squally weather with wind speed 45 - 55 kmph gusting to 65 kmph** likely to prevail along and off south Gujarat, Konkan Goa coasts and adjoining sea areas, over most parts of central and adjoining parts of north Bay of Bengal.

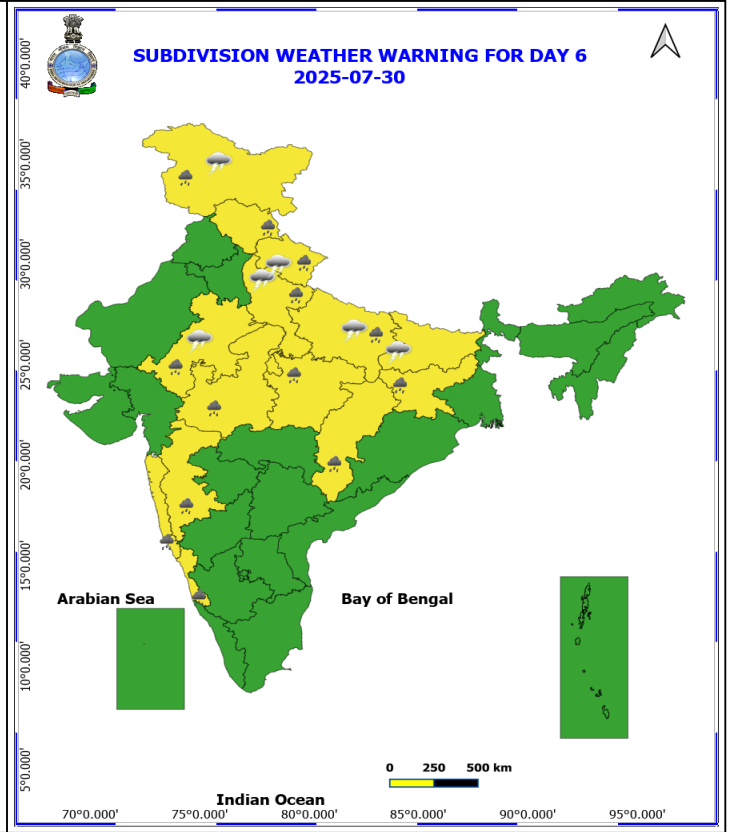
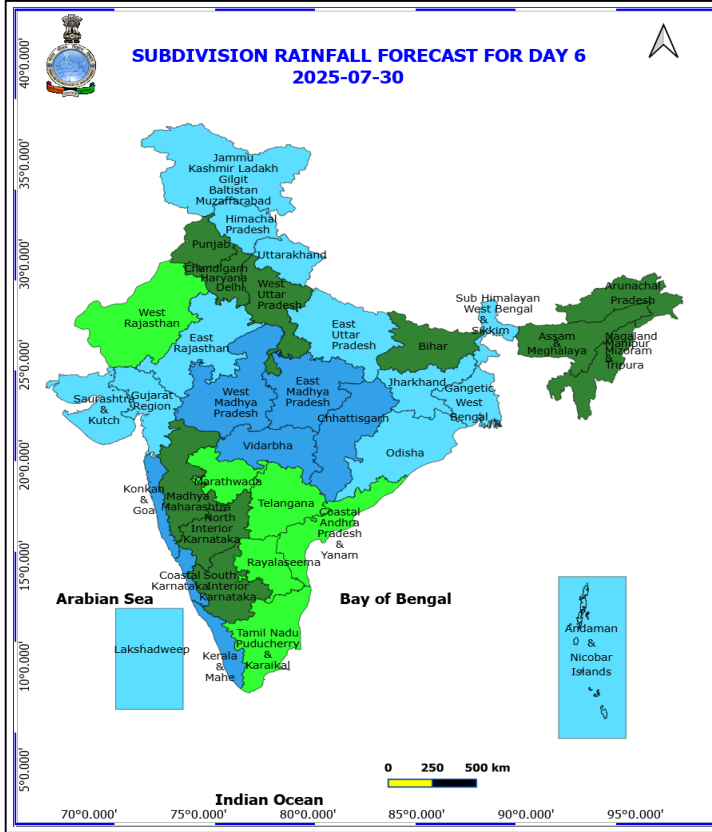


29 July (Day 5)

- ❖ **Heavy to Very Heavy Rainfall** likely at isolated places over Coastal Karnataka, Gangetic West Bengal, Jharkhand and Odisha.
- ❖ **Heavy Rainfall** likely at isolated places over Chhattisgarh, East Rajasthan, East Uttar Pradesh, Gujarat State, Himachal Pradesh, Jammu-Kashmir-Ladakh-Gilgit-Baltistan-Muzaffarabad, Kerala & Mahe, Konkan & Goa, Madhya Maharashtra, Madhya Pradesh, Nagaland, Manipur, Mizoram and Tripura, South Interior Karnataka, Uttarakhand and Vidarbha.
- ❖ **Thunderstorm accompanied with lightning & gusty winds(30-40kmph)** likely at isolated places over Bihar, Jammu-Kashmir-Ladakh-Gilgit-Baltistan-Muzaffarabad and Uttarakhand.
- ❖ **Thunderstorm accompanied with Lightning** likely at isolated places over East Rajasthan and Uttar Pradesh.
- **Squally wind speed reaching 45 kmph to 55 kmph gusting to 65 kmph** is likely to prevail along and off Somalia, Yemen & south Oman coasts, most parts of westcentral Arabian Sea & adjoining, many parts of eastcentral Arabian Sea, many parts of southwest Arabian Sea, southern parts of north Arabian Sea.
- **Squally weather with wind speed 40 - 50 kmph gusting to 60 kmph** likely to prevail over some parts of eastcentral Arabian Sea & adjoining, some parts of westcentral Arabian Sea, many parts of southeast Arabian Sea & adjoining, some parts of southwest Arabian Sea, some parts of northeast Arabian Sea, along and off Gujarat, Konkan, Goa, Kerala, Karnataka coasts, Andhra Pradesh, Odisha, West Bengal, Bangladesh, Myanmar coasts, over Lakshadweep, Maldives, Comorin areas, over south, central & north Bay of Bengal, over Gulf of Mannar, along and off Sri Lanka coast, over north Andaman Sea.
- **Squally weather with wind speed 45 - 55 kmph gusting to 65 kmph** likely to prevail along and off south Gujarat, Konkan Goa coasts and adjoining sea areas, over most parts of central and adjoining parts of north Bay of Bengal.

***Red color warning does not mean "Red Alert" Red color warning means "Take Action"**
Forecast and warning for any day is valid from 0830 hours IST of day till 0830 hours IST of next day
For more details kindly visit <https://mausam.imd.gov.in> or contact 011-2434-4599

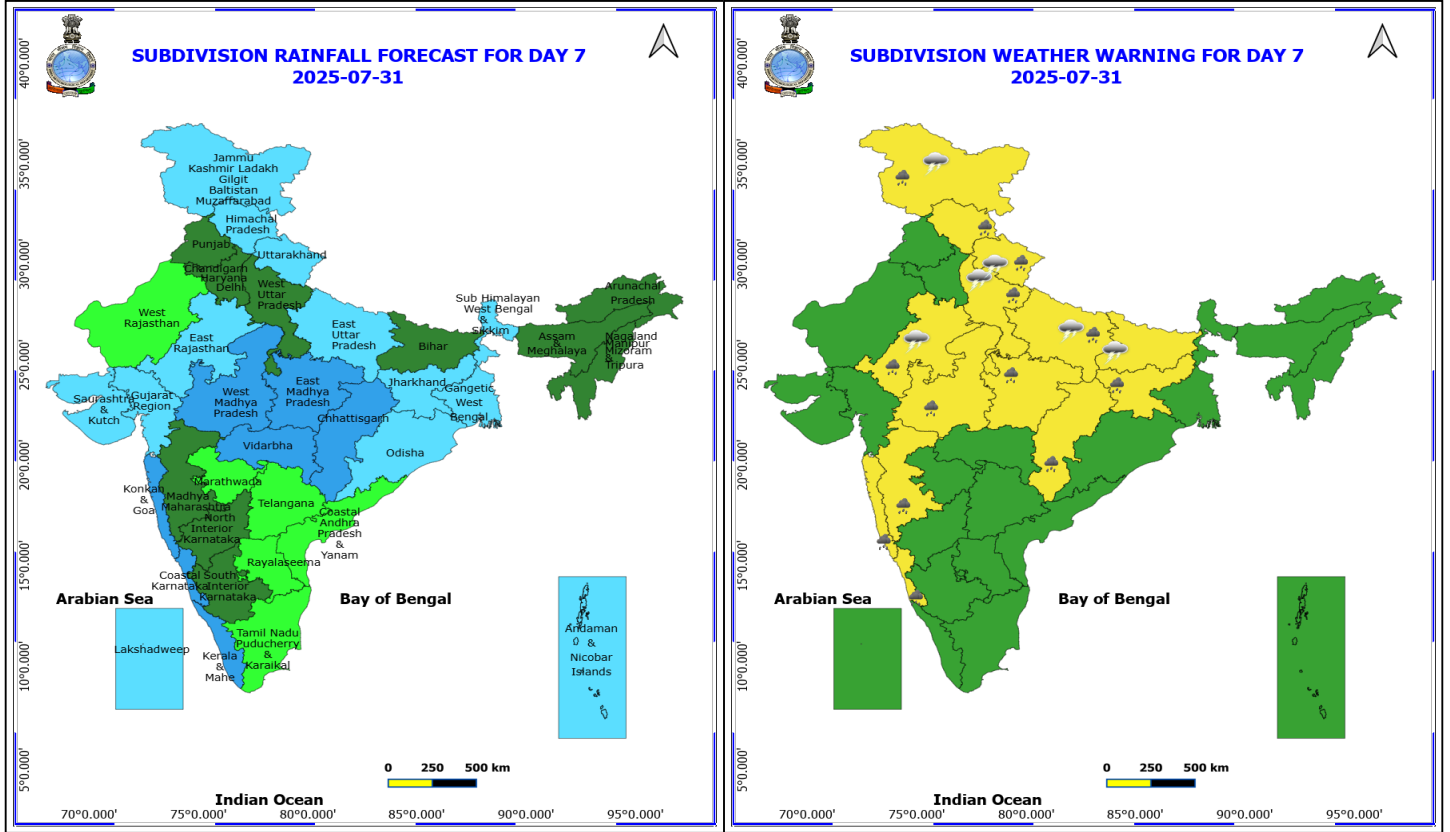
(Service to the nation since 1875)



30 July (Day 6)

- ❖ **Heavy Rainfall** likely at isolated places over Chhattisgarh, Coastal Karnataka, East Rajasthan, Himachal Pradesh, Jammu-Kashmir-Ladakh-Gilgit-Baltistan-Muzaffargarh, Jharkhand, Konkan & Goa, Madhya Maharashtra, Madhya Pradesh, Uttar Pradesh and Uttarakhand.
 - ❖ **Thunderstorm accompanied with lightning & gusty winds(30-40kmph)** likely at isolated places over Bihar, Jammu-Kashmir-Ladakh-Gilgit-Baltistan-Muzaffargarh and Uttarakhand.
 - ❖ **Thunderstorm accompanied with Lightning** likely at isolated places over East Rajasthan and Uttar Pradesh.
- No Fishermen Warning**

***Red color warning does not mean "Red Alert" Red color warning means "Take Action"**
Forecast and warning for any day is valid from 0830 hours IST of day till 0830 hours IST of next day
For more details kindly visit <https://mausam.imd.gov.in> or contact 011-2434-4599
(Service to the nation since 1875)



31 July (Day 7)

- ❖ **Heavy to Very Heavy Rainfall** likely at isolated places over Coastal Karnataka, Gangetic West Bengal, Jharkhand and Odisha.
- ❖ **Heavy Rainfall** likely at isolated places over Chhattisgarh, East Rajasthan, East Uttar Pradesh, Gujarat State, Himachal Pradesh, Jammu-Kashmir-Ladakh-Gilgit-Baltistan-Muzaffarabad, Kerala & Mahe, Konkan & Goa, Madhya Maharashtra, Madhya Pradesh, Nagaland, Manipur, Mizoram and Tripura, South Interior Karnataka, Uttarakhand and Vidarbha.
- ❖ **Thunderstorm accompanied with lightning & gusty winds(30-40kmph)** likely at isolated places over Bihar, Jammu-Kashmir-Ladakh-Gilgit-Baltistan-Muzaffarabad and Uttarakhand.
- ❖ **Thunderstorm accompanied with Lightning** likely at isolated places over East Rajasthan and Uttar Pradesh.

No Fishermen Warning

***Red color warning does not mean "Red Alert" Red color warning means "Take Action"**
Forecast and warning for any day is valid from 0830 hours IST of day till 0830 hours IST of next day
For more details kindly visit <https://mausam.imd.gov.in> or contact 011-2434-4599
(Service to the nation since 1875)

Flash Flood Warnings

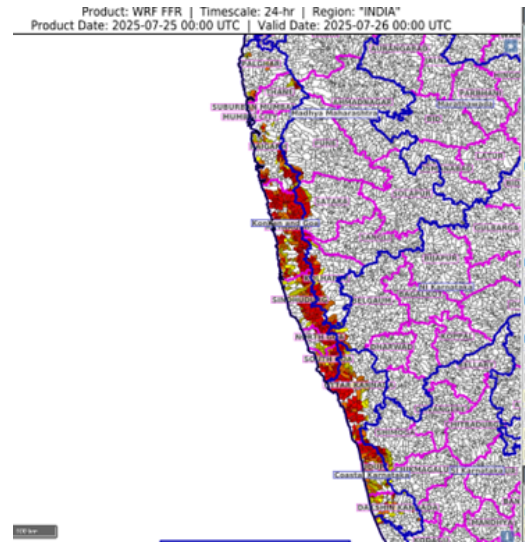
24 hours Outlook for the Flash Flood Risk (FFR) till 0530 IST of 26-07-2025 :

Low to Moderate flash flood risk likely over few watersheds & neighbourhoods of following Met Sub-divisions during next 24 hours.

Konkan & Goa – South Goa, North Goa, Sindhudurg, Ratnagiri, Raigarh, Suburban Mumbai, Thane and Palghar districts.

Coastal Karnataka – Uttar Kannada, Dakshin Kannada and Udupi districts.

Surface runoff/ Inundation may occur at some fully saturated soils & low-lying areas over Area of Concern (AoC) as shown in map due to expected rainfall occurrence in next 24 hours.



24 hours Outlook for the Flash Flood Risk (FFR) till 0530 IST of 26-07-2025 :

Low to Moderate flash flood risk likely over few watersheds & neighbourhoods of following Met Sub-divisions during next 24 hours.

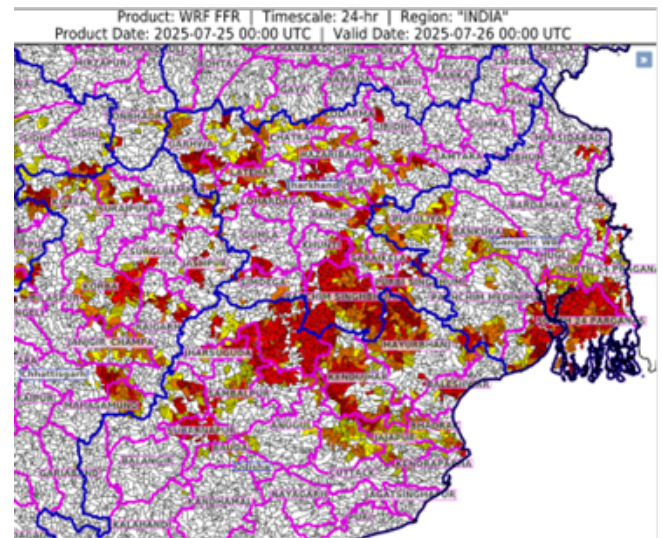
Chhattisgarh – Balarampur, Baloda Bazar, Bilaspur, Janjgir_Champa, Jashpur, Korba, Korea, Mahasamund, Mungeli, Raigarh, Surajpur and Surguja districts.

Jharkhand – Garhwa, Palamu, Latehar, Lohardaga, Gumla, Simdega, Khunti, Ranchi, Ramgarh, Bokaro, Pashchim Singhbhum, Purbi Singhbhum, Saraikela, Chatra, Giridih, Dhanbad and Hazaribagh districts.

Odisha – Anugul, Baleshwar, Baragarh, Bauda, Bhadrak, Cuttack, Kendraparha, Deogarh, Dhenkenal, Jajapur, Jharsuguda, Kendujhar, Mayurbhanj, Sambalpur and Subarnapur districts.

Gangetic West Bengal - Eastmednipur, Haora, North 24 Pragana, Pashchim Medinipur, Puruliya, Bankura, Mursidabad, Nadia and South 24 Parganas districts.

Surface runoff/ Inundation may occur at some fully saturated soils & low-lying areas over Area of Concern (AoC) as shown in map due to expected rainfall occurrence in next 24 hours.



*Red color warning does not mean "Red Alert" Red color warning means "Take Action"

Forecast and warning for any day is valid from 0830 hours IST of day till 0830 hours IST of next day

For more details kindly visit <https://mausam.imd.gov.in> or contact 011-2434-4599

(Service to the nation since 1875)

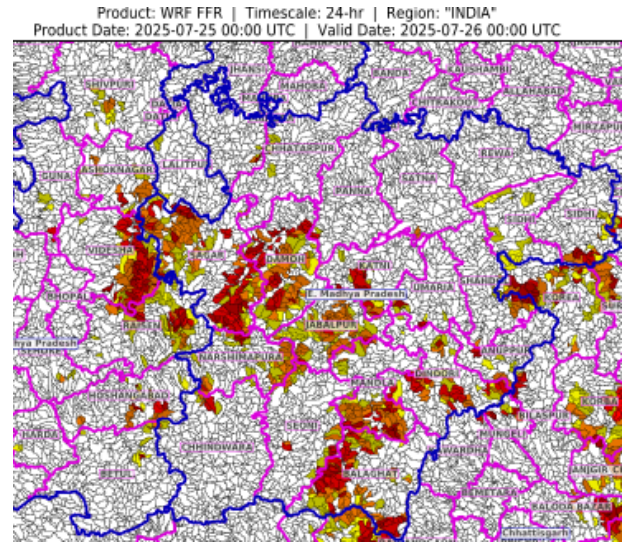
24 hours Outlook for the Flash Flood Risk (FFR) till 0530 IST of 26-07-2025 :

Low to Moderate flash flood risk likely over few watersheds & neighbourhoods of following Met Sub-divisions during next 24 hours.

East Madhya Pradesh – Anuppur, Balaghat, Chhatarpur, Chhindwara, Damoh, Dindori, Jabalpur, Katni, Mandla, Narshimpura, Panna, Rewa, Sagar, Tikamgarh, Satna, Seoni, Shahdol, Sidhi and Umaria districts.

Adjoining West Madhya Pradesh - Ashoknagar, Guna, Raisen, Shivpuri, Narmadapuram, Betul and Videsha districts

Surface runoff/ Inundation may occur at some fully saturated soils & low-lying areas over Area of Concern (AoC) as shown in map due to expected rainfall occurrence in next 24 hours.



***Red color warning does not mean "Red Alert" Red color warning means "Take Action"**

Forecast and warning for any day is valid from 0830 hours IST of day till 0830 hours IST of next day

For more details kindly visit <https://mausam.imd.gov.in> or contact 011-2434-4599

(Service to the nation since 1875)



Table-1

7 Days Rainfall Forecast

S.No.	Subdivision	25- Jul	26- Jul	27- Jul	28- Jul	29- Jul	30- Jul	31- Jul
		Day 1	Day 2	Day 3	Day 4	Day 5	Day 6	Day 7
1	ANDAMAN & NICOBAR ISLANDS	FWS	FWS	FWS	SCT	FWS	FWS	FWS
2	ARUNACHAL PRADESH	FWS	WS	FWS	SCT	SCT	SCT	SCT
3	ASSAM & MEHGHALAYA	FWS	WS	FWS	SCT	SCT	SCT	SCT
4	N. M. M. & T.	FWS	WS	FWS	FWS	FWS	SCT	SCT
5	S.H. WEST BENGAL & SIKKIM	WS	FWS	FWS	FWS	FWS	FWS	FWS
6	GANGETIC WEST BENGAL	WS	WS	WS	WS	WS	FWS	FWS
7	ODISHA	WS	WS	FWS	WS	FWS	FWS	FWS
8	JHARKHAND	WS	WS	WS	WS	WS	FWS	FWS
9	BIHAR	FWS	FWS	FWS	SCT	SCT	SCT	SCT
10	EAST UTTAR PRADESH	FWS	SCT	SCT	FWS	FWS	FWS	FWS
11	WEST UTTAR PRADESH	SCT	FWS	FWS	FWS	SCT	SCT	SCT
12	UTTARAKHAND	FWS	FWS	FWS	WS	FWS	FWS	FWS
13	HARYANA, CHD & DELHI	ISOL	ISOL	FWS	FWS	SCT	SCT	SCT
14	PUNJAB	ISOL	ISOL	SCT	SCT	SCT	SCT	SCT
15	HIMACHAL PRADESH	SCT	FWS	WS	WS	FWS	FWS	FWS
16	JAMMU AND KASHMIR AND LADAKH	SCT	SCT	FWS	FWS	FWS	FWS	FWS
17	WEST RAJASTHAN	ISOL	ISOL	ISOL	ISOL	ISOL	ISOL	ISOL
18	EAST RAJASTHAN	SCT	SCT	FWS	FWS	FWS	FWS	FWS
19	WEST MADHYA PRADESH	WS	WS	WS	WS	WS	WS	WS
20	EAST MADHYA PRADESH	WS	WS	WS	WS	WS	WS	WS
21	GUJRAT REGION	FWS	FWS	WS	WS	WS	FWS	FWS
22	SAURASHTRA & KUTCH	SCT	FWS	WS	WS	WS	FWS	FWS
23	KONKAN & GOA	WS	WS	WS	WS	WS	WS	WS
24	MADHYA MAHARASHTRA	FWS	FWS	FWS	SCT	SCT	SCT	SCT
25	MARATHWADA	FWS	FWS	ISOL	ISOL	ISOL	ISOL	ISOL
26	VIDARBHA	WS	WS	WS	FWS	FWS	WS	WS
27	CHATTISGARH	WS	WS	WS	WS	WS	WS	WS
28	COASTAL ANDHRA PRADESH	FWS	FWS	SCT	SCT	ISOL	ISOL	ISOL
29	TELANGANA	WS	SCT	ISOL	ISOL	ISOL	ISOL	ISOL
30	RAYALASEEMA	SCT	SCT	SCT	ISOL	ISOL	ISOL	ISOL
31	TAMILNADU & PUDUCHERRY	ISOL	ISOL	ISOL	ISOL	ISOL	ISOL	ISOL
32	COSTAL KARNATAKA	WS	WS	WS	WS	WS	WS	WS
33	NORTH INTERIOR KARNATAKA	FWS	FWS	FWS	SCT	SCT	SCT	SCT
34	SOUTH INTERIOR KARNATAKA	FWS	FWS	FWS	SCT	SCT	SCT	SCT
35	KERALA	WS	WS	WS	WS	WS	WS	WS
36	LAKSHDWEEP	WS	WS	WS	FWS	FWS	FWS	FWS

Legend	Category	%Stations
WS	Widespread/Most Places	76-100
FWS	Fairly Widespread/Many Places	51-75
SCT	Scattered/ A Few Places	26-50
ISOL	Isolated Places	1-25
DRY	No Rain	0

*Red color warning does not mean "Red Alert" Red color warning means "Take Action"
Forecast and warning for any day is valid from 0830 hours IST of day till 0830 hours IST of next day
For more details kindly visit <https://mausam.imd.gov.in> or contact 011-2434-4599

(Service to the nation since 1875)

Fig. 1: Maximum Temperatures Dated 2025-07-25

Fig. 2: Departure of Maximum Temp. Dated 2025-07-25

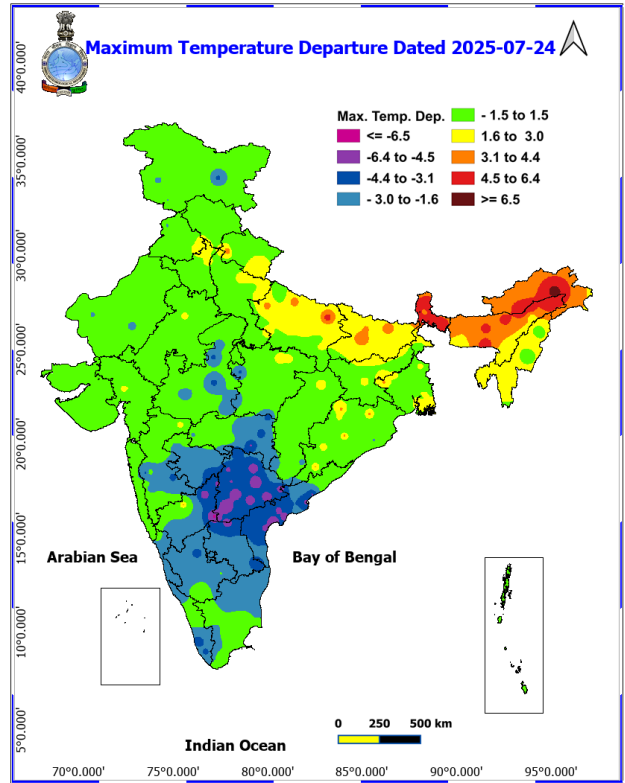
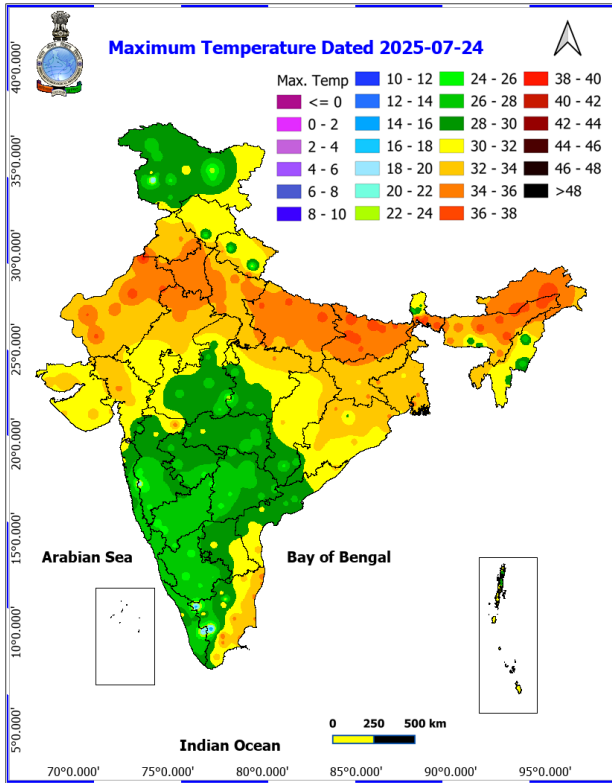
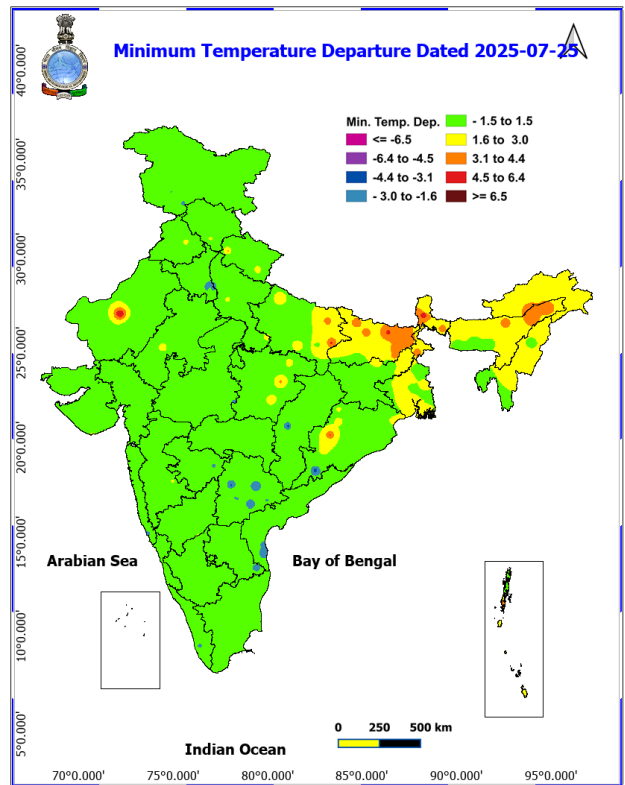
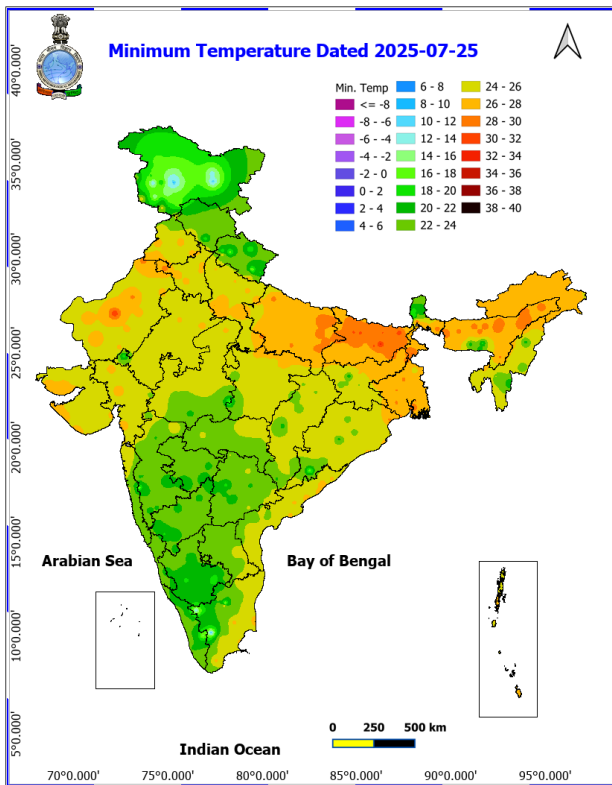
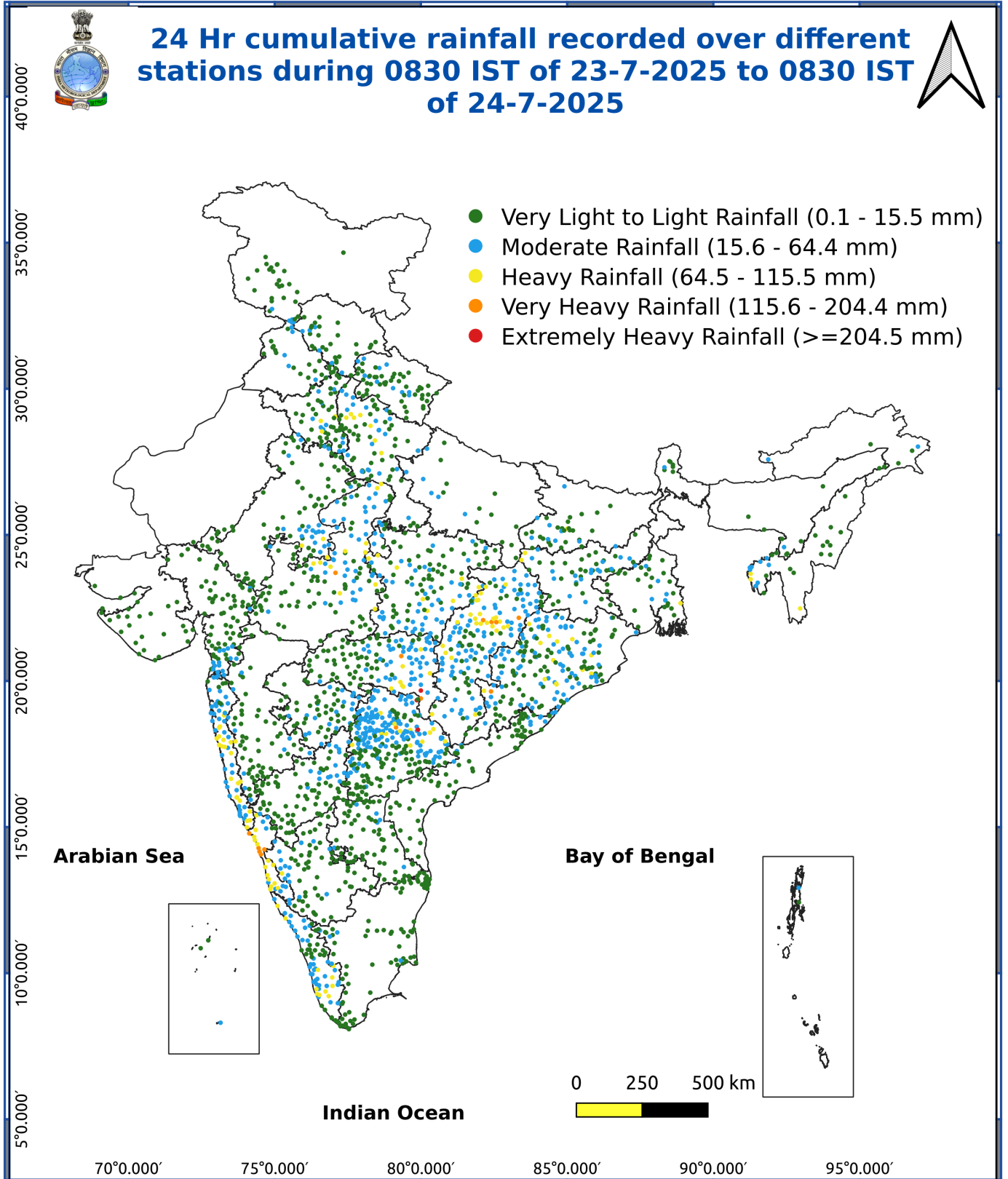


Fig. 3: Minimum Temperatures Dated 2025-07-25

Fig. 4: Departure of Minimum Temp. Dated 2025-07-25





Impact & Action Suggested due to

- **Extremely heavy falls** very likely at isolated places over Odisha, Konkan and Ghat areas of Madhya Maharashtra, Vidarbha and Gangetic West Bengal on 25th; Madhya Pradesh on 26th & 27th; Chhattisgarh on 25th & 26th July.
- **Very heavy rainfall** over Konkan & Goa, Ghat areas of Madhya Maharashtra during 25th-31st; Gujarat Region, East Rajasthan on 27th & 28th and West Uttar Pradesh on 28th; Arunachal Pradesh and Mizoram & Tripura on 26th; Madhya Pradesh, Chhattisgarh during 25th-27th; Telangana and Coastal Andhra Pradesh & Yanam on 25th July.

Impact Expected

- Localized Flooding of roads, water logging in low lying areas and closure of underpasses mainly in urban areas of the above region.
- Occasional reduction in visibility due to heavy rainfall.
- Disruption of traffic in major cities due to water logging in roads leading to increased travel time.
- Minor damage to kutcha roads.
- Possibilities of damage to vulnerable structure.
- Localized Landslides/Mudslides/landslips/mudslips/landsinks/mudsinks.
- Damage to horticulture and standing crops in some areas due to inundation.
- It may lead to riverine flooding in some river catchments (for riverine flooding please visit Web page of CWC)

Action Suggested

- Check for traffic congestion on your route before leaving for your destination.
- Follow any traffic advisories that are issued in this regard.
- Avoid going to areas that face the water logging problems often.
- Avoid staying in vulnerable structure.

Agromet advisories for various parts of the country

Agromet advisories for likely impact of Heavy / Heavy to Very Heavy Rainfall

- In **Telangana**, postpone sowing of rice nurseries in **Southern Telangana** and transplanting of rice in **Northern Telangana**. Ensure proper drainage facilities from the fields of paddy, maize, groundnut, cotton, soybean, red gram and vegetables.
- In **Maharashtra**, make arrangement to drain out excess water from paddy and finger millet nurseries, groundnut, vegetables and orchards in **Konkan** and rice and finger millet nurseries in **ghat areas of Madhya Maharashtra**. Provide adequate drainage facilities in fields of soybean, cotton, pigeon pea, sorghum, maize, green gram, black gram and turmeric in **Vidarbha**.
- In **Jammu & Kashmir**, provide adequate drainage facilities in fields of maize, green gram, vegetables and transplanted rice in **Sub Tropical Zone**. In **Intermediate Zone**, postpone intercultural operations in maize and vegetables. Make arrangement to drain out excess water from the maize, vegetables and pulses.
- In **Uttarakhand**, maintain proper drainage channels in fields of rice in **Bhabar and Tarai Zone** and black gram in **Hill Zone**. Make necessary arrangements to drain out excess water from barnyard millet, finger millet, cucumber and rice fields in **Sub Humid SubTropic Zone**.
- In **Himachal Pradesh**, make proper drainage channels in the standing crops like maize, finger millet and vegetable fields. Provide staking to tall and leguminous crops and cucumber vines. In **Mid Hills Sub Humid Zone**, undertake harvesting of matured tomato, brinjal, capsicum and fruits and keep the harvested produce at safer places.
- In **Kerala**, provide adequate drainage in fields of paddy, coconut, banana and ginger. Postpone nursery / transplanting of rice. Provide staking in vegetables.
- In **Karnataka**, postpone nursery sowing of rice and provide drainage in arecanut fields and banana orchards in

*Red color warning does not mean "Red Alert" Red color warning means "Take Action"

Forecast and warning for any day is valid from 0830 hours IST of day till 0830 hours IST of next day

For more details kindly visit <https://mausam.imd.gov.in> or contact 011-2434-4599

(Service to the nation since 1875)

Coastal Zone. In **Hill Zone**, make arrangements to drain out excess water from rice nurseries, fields of maize, cotton, ginger and plantations of arecanut. In **Southern Transition Zone**, provide proper drainage in arecanut and coconut fields. In **Southern Dry Zone**, provide staking / support to maize, tomato and banana crop. Ensure proper drainage to prevent waterlogging especially in rice, vegetables and spice crops. Cover young seedlings in rice nurseries and vegetables with coverings like plastic sheets or agro-shade nets.

- In **Coastal Andhra Pradesh**, ensure proper drainage channels in fields of maize and direct seeded rice in **Krishna Godavari Zone**.
- In, **Chhattisgarh**, drain out excess water from rice nurseries, soybean, red gram, green gram, black gram, sugarcane and vegetables in Plain Zone. In Northern Hill Zone, postpone fresh transplanting of rice in low lands. Drain out excess water from transplanted rice and vegetables. Undertake staking / propping in banana and papaya. In Bastar Plateau Zone, drain out excess water from rice, minor millets, maize, pulses and oilseeds.
- **MadhyaPradesh**, provide adequate drainage to soybean, cotton, maize, black gram and vegetables in **Jhabua Hill Zone**. In **Gird Zone**, provide adequate drainage in soybean and red gram.
- In **Odisha**, drain out excess water from rice nurseries and fields of transplanted rice, maize, pulses, vegetable and plantation crops.

Livestock / Fishery

- Keep the animals inside the shed during heavy rainfall and provide them balanced feed.
- Store feed and fodder in a safe place to prevent spoilage.
- Construct an outlet with proper netting around the ponds to drain out excess water, thereby preventing fish from escaping in case of overflow.

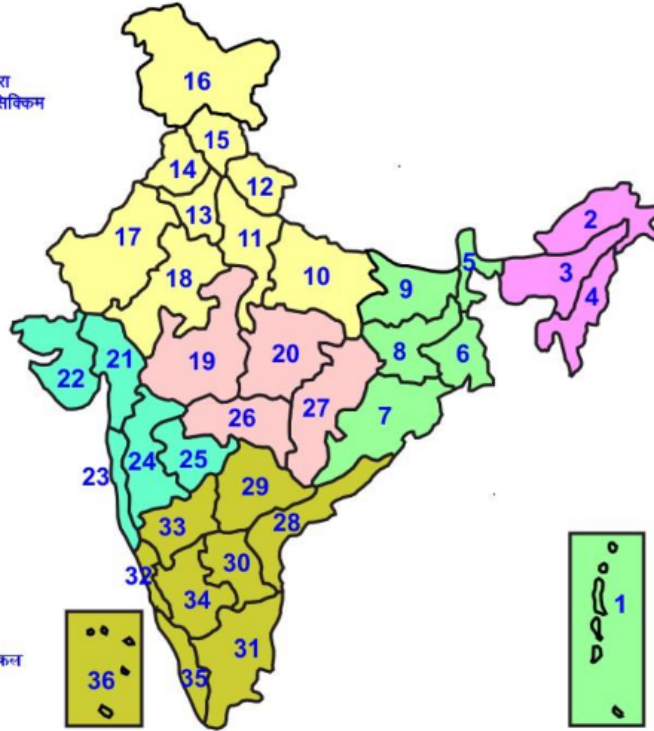
Agromet advisories for likely impact of Thunderstorm / Gusty Winds / Squally Winds

(Based on the IBF and advisories issued by different AMFUs)

- Provide mechanical support to horticultural crops and staking or support to vegetables and young fruit plants / fruit-bearing plants to avoid lodging due to strong winds.

LEGENDS

- 1 अंडमान और निकोबार द्वीप समुह
- 2 अरुणाचल प्रदेश
- 3 असम और मेघालय
- 4 नागालैंड मनीपुर मीजोरम और त्रिपुरा
- 5 उप हिमालय पश्चिम बंगाल एवं सिक्किम
- 6 पश्चिम बांगाल
- 7 ओडिसा
- 8 झारखंड
- 9 बिहार
- 10 पूर्वी उत्तर प्रदेश
- 11 पश्चिम उत्तर प्रदेश
- 12 उत्तराखंड
- 13 हरियाणा चंडिगढ़ एवं दिल्ली
- 14 पंजाब
- 15 हिमाचल प्रदेश
- 16 जम्मू एवं कश्मीर एवं लद्दाख
- 17 पश्चिम राजस्थान
- 18 पूर्वी राजस्थान
- 19 पश्चिम मध्य प्रदेश
- 20 पूर्वी मध्य प्रदेश
- 21 गुजरात क्षेत्र
- 22 सौराष्ट्र एवं कच्छ
- 23 कोंकण एवं गोवा
- 24 मध्य महाराष्ट्र
- 25 मराठावाडा
- 26 विदर्भ
- 27 छत्तीसगढ़
- 28 तटीय आंध्र प्रदेश एवं यनम
- 29 तेलंगाना
- 30 रायलसीमा
- 31 तमिलनाडु, पुदुचेरी एवं कराईकल
- 32 तटिय कर्नाटक
- 33 आंतरिक उत्तरी कर्नाटक
- 34 आंतरिक दक्षिणी कर्नाटक
- 35 केरल एवं माहे
- 36 लक्षद्वीप



1. Andaman & Nicobar Islands
2. Arunachal Pradesh
3. Assam & Meghalaya
4. Nagaland, Manipur, Mizoram & Tripura
5. Sub-Himalayan West Bengal & Sikkim
6. Gangetic West Bengal
7. Orissa
8. Jharkhand
9. Bihar
10. East Uttar Pradesh
11. West Uttar Pradesh
12. Uttarakhand
13. Haryana, Chd & Delhi
14. Punjab
15. Himachal Pradesh
16. Jammu & Kashmir and Ladakh
17. West Rajasthan
18. East Rajasthan
19. West Madhya Pradesh
20. East Madhya Pradesh
21. Gujarat
22. Saurashtra
23. Konkan & Goa
24. Madhya Maharashtra
25. Marathawada
26. Vidharbha
27. Chhattisgarh
28. Coastal Andhra Pradesh & Yanam
29. Telangana
30. Rayalaseema
31. Tamilnadu, Puducherry & Karaikal
32. Coastal Karnataka
33. North Interior Karnataka
34. South Interior Karnataka
35. Kerala & Mahe
36. Lakshadweep

SPATIAL DISTRIBUTION (% of Stations reporting)

% Stations	Category	% Stations	Category
76-100	Widespread (WS/ Most Places)	26-50	Scattered (SCT/ A Few Places)
51-75	Fairly Widespread (FWS/ Many Places)	1-25	Isolated (ISOL)

Subdivision Colour

- NO WARNING
- WATCH (BE UPDATED)
- ALERT (BE PREPARED TO TAKE ACTION)
- WARNING (TAKE ACTION)

Probabilistic Forecast

Terms	Probability of Occurrence (%)
Unlikely	< 25
Likely	25 - 50
Very Likely	50 - 75
Most Likely	> 75

- | | | | |
|--------------------------|-----------------|----------------------|--------------------|
| Heavy Rain | Very Heavy Rain | Extremely Heavy Rain | Heavy Snow |
| Thunderstorm & Lightning | Hailstorm | Dust Storm | Dust Raising Winds |
| Strong surface winds | Heat Wave | Hot Day | Warm Night |
| Cold Wave | Cold Day | Ground Frost | Fog |
| Hot & Humid | | | |

*Red color warning does not mean "Red Alert" Red color warning means "Take Action"

Forecast and warning for any day is valid from 0830 hours IST of day till 0830 hours IST of next day

For more details kindly visit <https://mausam.imd.gov.in> or contact 011-2434-4599

(Service to the nation since 1875)

LEGENDS

WARNING

WARNING (TAKE ACTION)
ALERT (BE PREPARED)
WATCH (BE UPDATED)
NO WARNING (NO ACTION)

Probabilistic Forecast

Terms	Probability of Occurrence (%)
Unlikely	< 25
Likely	25 - 50
Very Likely	50 - 75
Most Likely	> 75



Heavy: 64.5 to 115.5 mm/cm *
Very Heavy: 115.6 to 204.4 mm/cm*
Extremely Heavy: > 204.4 mm/cm *



When maximum temperature of a station reaches $\geq 40^{\circ}\text{C}$ for plains and $\geq 30^{\circ}\text{C}$ for hilly regions
(a) Based on Departure from normal

Heat Wave: Maximum Temperature Departure from normal 4.5°C to 6.4°C .
Severe Heat Wave: Maximum Temperature Departure from normal $\geq 6.5^{\circ}\text{C}$

(b). Based on Actual maximum temperature

Heat Wave: When actual maximum temperature $\geq 45^{\circ}\text{C}$.
Severe Heat Wave: When actual maximum temperature $\geq 47^{\circ}\text{C}$

(c). Criteria for heat wave for coastal stations

When maximum temperature departure is $> 4.5^{\circ}\text{C}$ from normal. Heat Wave may be described provided maximum temperature $\geq 37^{\circ}\text{C}$



When maximum temperature remains 40°C

Warm Night: When minimum temperature departure 4.5°C to 6.4°C .
Severe Warm Night: When minimum temperature departure $> 6.4^{\circ}\text{C}$.



When minimum temperature of a station $\leq 10^{\circ}\text{C}$ for plains and $\leq 0^{\circ}\text{C}$ for hilly regions.

(a). Based on departure

Cold Wave: Minimum Temperature Departure from normal -4.5°C to -6.4°C .
Severe Cold Wave: Minimum Temperature Departure from normal $\leq -6.5^{\circ}\text{C}$

(b) Based on actual Minimum Temperature (for Plains only)

Cold Wave : When Minimum Temperature is $\leq 4.0^{\circ}\text{C}$
Severe Cold Wave: When Minimum Temperature is $\leq 2.0^{\circ}\text{C}$

(c) For Coastal Stations

When Minimum Temperature departure is $\leq -4.5^{\circ}\text{C}$ & actual Minimum Temperature is $\leq 15^{\circ}\text{C}$



When minimum temperature of a station $\leq 10^{\circ}\text{C}$ for plains and $\leq 0^{\circ}\text{C}$ for hilly regions
Based on departure

Cold Day: Maximum Temperature Departure from normal -4.5°C to -6.4°C .
Severe Cold Day: Maximum Temperature Departure from normal $\leq -6.5^{\circ}\text{C}$



Phenomenon of small droplets suspended in air and the horizontal visibility $< 1\text{km}$

Moderate Fog: When the visibility between 500-200 metres
Dense Fog: when the visibility between 50- 200 metres
Very Dense Fog: when the visibility < 50 metres



Sudden electrical discharges manifested by a flash of light (Lightning) and a sharp rumbling sound (thunder)



An ensemble of particles of dust or sand energetically lifted to great heights by a strong and turbulent wind.



Ice deposits on ground

Air temperature $\leq 4^{\circ}\text{C}$ (over Plains)



A strong wind that rises suddenly, lasts for atleast 1 minute.

Moderate: Wind speed 52-61 kmph
Severe: Wind speed 62-87 kmph
Very Severe: Wind speed > 87 kmph



Effect of various waves in the sea over specific area

Rough to very rough: Wind speed 41-62 kmph (22-33 knots) & Wave height 2.5-6 metre
High to very high: Wind speed 63-117 kmph (34-63 knots) & Wave height 6-14 metre
Phenomenal: Wind speed > 117 kmph (> 63 knots) & Wave height > 14 metre



Cyclonic Storm: Wind speed 62-87 kmph (34-47 knots)
Severe Cyclonic Storm: Wind speed 88-117 kmph (48-63 knots)
Very Severe Cyclonic Storm: Wind speed 118-165 kmph (64 - 89 knots)
Extremely Severe Cyclonic Storm: Wind speed 166-220 kmph (90 -119 knots)
Super Cyclone Storm: Wind speed > 220 kmph (> 119 knots)

*Red color warning does not mean "Red Alert" Red color warning means "Take Action"

Forecast and warning for any day is valid from 0830 hours IST of day till 0830 hours IST of next day

For more details kindly visit <https://mausam.imd.gov.in> or contact 011-2434-4599

(Service to the nation since 1875)