



Friday, August 25, 2023
Time of Issue: 0800 hours IST
(MORNING)

ALL INDIA WEATHER SUMMARY AND FORECAST BULLETIN

Significant Weather Features

Significant Weather features:

- ❖ The western end of the Monsoon Trough lies to the north of its normal position and it is likely to remain so during next 6-7 days. However, the eastern end of the monsoon trough passes through Patna, Deoghar, Diamond Harbour and thence southeastwards to eastcentral Bay of Bengal.
- ❖ An east-west trough runs from northeast Uttar Pradesh to east Assam in lower tropospheric levels.
- ❖ The Western Disturbance as a trough in middle tropospheric westerlies runs roughly along Long. 69°E to the north of Lat. 28°N.

Weather Forecast and Warnings:

Northwest India: Light/moderate fairly widespread to widespread rainfall with isolated **heavy rainfall** likely over Himachal Pradesh, Uttarakhand, East Uttar Pradesh on 25th August, 2023.

East India: Light/moderate fairly widespread to widespread rainfall/thunderstorm & lightning with **isolated heavy rainfall** activity very likely over West Bengal & Sikkim, Bihar, Odisha on 25th & 26th and Jharkhand on 25th August, 2023.

Isolated very heavy rainfall also likely over Sub-Himalayan West Bengal & Sikkim and Bihar on 25th August 2023.

Northeast India: Light/moderate fairly widespread to widespread rainfall/thunderstorm & lightning with isolated **heavy rainfall** activity very likely over the region during next 5 days.

Isolated very heavy rainfall also likely over Assam & Meghalaya on 25th & 26th and over Arunachal Pradesh on 25th August, 2023.

No significant weather over rest parts of the country during next 5 days.

Main Weather Observations:

- ❖ **Rainfall/thundershowers observed** (from 0830 hours IST to 1730 hours IST of yesterday): **at many places** over Arunachal Pradesh, Assam & Meghalaya, Sub-Himalaya West Bengal & Sikkim, Bihar, Jharkhand, Uttarakhand and Konkan & Goa; **at a few places** over Nagaland, Manipur, Mizoram & Tripura, Odisha, Chhattisgarh, East Uttar Pradesh, Himachal Pradesh, Jammu-Kashmir-Ladakh-Gilgit-Baltistan-Muzaffarabad and Gujarat Region and **at isolated places** over Gangetic West Bengal, West Uttar Pradesh, Punjab, Haryana-Chandigarh-Delhi, Madhya Pradesh, Madhya Maharashtra, Marathwada, Vidarbha, Saurashtra & Kutch, Interior Karnataka, Telangana, Coastal Andhra Pradesh & Yanam, Kerala & Mahe, Tamil Nadu, Puducherry & Karaikal and Andaman & Nicobar Islands.
- ❖ **Significant rainfall recorded** (from 0830 hours IST to 1730 hours IST of yesterday): **(in cm): Uttar Pradesh:** Mohana-3, Saifai-2; **Himachal Pradesh:** Dharmsala-1; **Uttarakhand:** Jakhnidhar-4, Didihat & Kichha-2 each; **Odisha:** Soro-6, Keonjhar-3, Balangir-2; **Bihar:** Patna-5, Danapur, Khagaria, Purnea & Bhagalpur-4 each, Sheikhpura & Harnaut-3 each; **Sikkim:** Manga & Soreng-3 each, Yuksom, Mangan & Ravangla-2 each; **Jharkhand:** Deoghar-6, Pakur-3, Khunti-2; **Assam & Meghalaya:** Fakiragram-4, Tangla-3, Ampati & Nongstoin-2 each; **Nagaland, Manipur, Mizoram & Tripura:** Kohima, Bagafa & Chawnhu-2 each; **Madhya Maharashtra:** Mahabaleshwar-3; **Jammu-Kashmir:** Baderwah, Sheshnag & Chandanwari- 1each.
- ❖ **Minimum Temperature Departures (as on 24-08-2023):** Minimum temperatures were **above normal (1.6°C to 3.0°C)** at isolated places over Jammu-Kashmir-Ladakh-Gilgit-Baltistan-Muzaffarabad, Gujarat state, Madhya Pradesh, Odisha, Rayalaseema, Telangana, Kerala & Mahe. They were **below normal (-1.6°C to -3.0°C)** at isolated places over Uttar Pradesh, Gangetic West Bengal, Marathwada and **near normal** over rest parts of the country. Yesterday, **the lowest minimum temperature of 18.0°C** was reported at **Koraput (Odisha)** over the plains of the country.
- ❖ **Maximum Temperature Departures (as on 24-08-2023):** Maximum temperatures were **above normal (1.6°C to 3.0°C)** at many places over Kerala & Mahe and Coastal Karnataka; at a few places over Telangana, Coastal Andhra Pradesh & Yanam, Tamil Nadu, Puducherry & Karaikal, Interior Karnataka, Madhya Maharashtra and Rayalaseema and at isolated places over Himachal Pradesh and Gujarat state. They were **below normal (-1.6°C to -3.0°C)** at many places over Sub-Himalaya West Bengal & Sikkim and Jharkhand; at a few places over West Rajasthan, Bihar, Gangetic West Bengal, Arunachal Pradesh, Assam & Meghalaya, Chhattisgarh, Madhya Pradesh and at isolated places over Uttarakhand, Haryana-Chandigarh-Delhi, East Rajasthan, Uttar Pradesh and Odisha and **near normal** over rest parts of the country. Yesterday, **the highest maximum temperature of 40.0°C** was reported at **K. Paramathy & Palayankottai (Tamil Nadu)**.



Meteorological Analysis (Based on 0530 hours IST)

- ❖ The **Monsoon Trough** at mean sea level continues to pass through Firozpur, Karnal, Meerut, Azamgarh, Patna, Deoghar, Diamond Harbour and thence southeastwards to eastcentral Bay of Bengal.
- ❖ The trough from northeast Uttar Pradesh to east Assam across Bihar, Sub-Himalayan West Bengal at 0.9 km above mean sea level persists.
- ❖ The cyclonic circulation over West Uttar Pradesh between 3.1 & 7.6 km above mean sea level tilting southwards with height persists.
- ❖ The cyclonic circulation over central Pakistan & adjoining West Rajasthan extending upto 1.5 km above mean sea level persists.
- ❖ The cyclonic circulation over Sub-Himalayan West Bengal & Sikkim between 3.1 & 5.8 km above mean sea level persists.
- ❖ The **Western Disturbance** as a trough in middle tropospheric westerlies with its axis at 5.8 km above mean sea level roughly along Long. 69°E to the north of Lat. 28°N persists.
- ❖ The north-south trough from South Interior Karnataka to Comorin area across Tamil Nadu at 0.9 km above mean sea level persists.

Weather Forecast for next 5 days (Upto 0830 hours IST of 28th August, 2023)

- ❖ Meteorological sub-division wise detailed 5 days rainfall forecast is given in Table-1.
- ❖ No significant change in maximum temperatures likely over most parts of country during next 5 days.

Weather Outlook for subsequent 2 days

- ❖ Fairly widespread to widespread light/moderate rainfall likely over along the foothills of the Himalayas, parts of east & northeast India, along the west coasts and islands.
- ❖ Subdued rainfall activity with isolated to scattered rainfall likely over rest parts of the country.



Table-1

7 Days Rainfall Forecast

| S. No. | Subdivision | 25-Aug | 26-Aug | 27-Aug | 28-Aug | 29-Aug | 30-Aug | 31-Aug |
|--------|--------------------------------------|--------|--------|--------|--------|--------|--------|--------|
| | | Day 1 | Day 2 | Day 3 | Day 4 | Day 5 | Day 6 | Day 7 |
| 1 | ANDAMAN & NICOBAR ISLANDS | FWS | FWS | FWS | WS | WS | WS | WS |
| 2 | ARUNACHAL PRADESH | WS | WS | FWS | FWS | FWS | SCT | SCT |
| 3 | ASSAM & MEGHALAYA | WS | WS | WS | FWS | FWS | FWS | FWS |
| 4 | NAGALAND, MANIPUR, MIZORAM & TRIPURA | FWS | FWS | FWS | FWS | WS | WS | WS |
| 5 | SUB-HIMALAYAN WEST BENGAL & SIKKIM | WS | WS | FWS | FWS | FWS | FWS | FWS |
| 6 | GANGETIC WEST BENGAL | WS | WS | SCT | ISOL | ISOL | ISOL | ISOL |
| 7 | ODISHA | FWS | FWS | SCT | SCT | SCT | SCT | SCT |
| 8 | JHARKHAND | FWS | SCT | ISOL | ISOL | ISOL | ISOL | ISOL |
| 9 | BIHAR | WS | FWS | SCT | SCT | SCT | SCT | SCT |
| 10 | EAST UTTAR PRADESH | SCT | SCT | ISOL | ISOL | ISOL | ISOL | ISOL |
| 11 | WEST UTTAR PRADESH | ISOL | ISOL | ISOL | ISOL | ISOL | ISOL | ISOL |
| 12 | UTTARAKHAND | WS | FWS | SCT | SCT | SCT | SCT | SCT |
| 13 | HARYANA CHANDIGARH & DELHI | ISOL | ISOL | ISOL | ISOL | ISOL | ISOL | ISOL |
| 14 | PUNJAB | SCT | SCT | ISOL | ISOL | ISOL | ISOL | ISOL |
| 15 | HIMACHAL PRADESH | FWS | SCT | SCT | SCT | SCT | SCT | SCT |
| 16 | JAMMU & KASHMIR AND LADAKH | SCT | SCT | ISOL | SCT | ISOL | ISOL | ISOL |
| 17 | WEST RAJASTHAN | DRY | DRY | DRY | DRY | DRY | DRY | DRY |
| 18 | EAST RAJASTHAN | ISOL | DRY | DRY | DRY | DRY | DRY | DRY |
| 19 | WEST MADHYA PRADESH | ISOL | ISOL | ISOL | ISOL | ISOL | ISOL | ISOL |
| 20 | EAST MADHYA PRADESH | ISOL | ISOL | ISOL | ISOL | ISOL | ISOL | ISOL |
| 21 | GUJARAT REGION | ISOL | ISOL | ISOL | ISOL | ISOL | ISOL | ISOL |
| 22 | SAURASHTRA & KUTCH | ISOL | DRY | DRY | DRY | DRY | DRY | DRY |
| 23 | KONKAN & GOA | WS | WS | WS | WS | WS | WS | WS |
| 24 | MADHYA MAHARASHTRA | SCT | SCT | SCT | ISOL | ISOL | ISOL | ISOL |
| 25 | MARATHAWADA | ISOL | ISOL | ISOL | ISOL | ISOL | ISOL | ISOL |
| 26 | VIDARBHA | SCT | ISOL | ISOL | ISOL | ISOL | ISOL | ISOL |
| 27 | CHHATTISGARH | SCT | SCT | ISOL | ISOL | ISOL | ISOL | ISOL |
| 28 | COASTAL ANDHRA PRADESH & YANAM | SCT | SCT | SCT | SCT | SCT | ISOL | ISOL |
| 29 | TELANGANA | SCT | SCT | SCT | SCT | ISOL | ISOL | ISOL |
| 30 | RAYALASEEMA | ISOL | ISOL | ISOL | ISOL | ISOL | ISOL | ISOL |
| 31 | TAMILNADU PUDUCHERRY & KARAIKAL | ISOL | ISOL | SCT | SCT | ISOL | ISOL | ISOL |
| 32 | COASTAL KARNATAKA | SCT | SCT | SCT | SCT | SCT | SCT | SCT |
| 33 | NORTH INTERIOR KARNATAKA | ISOL | ISOL | ISOL | ISOL | ISOL | ISOL | ISOL |
| 34 | SOUTH INTERIOR KARNATAKA | ISOL | SCT | SCT | ISOL | ISOL | ISOL | ISOL |
| 35 | KERALA & MAHE | ISOL | ISOL | ISOL | ISOL | ISOL | ISOL | ISOL |
| 36 | LAKSHADWEEP | SCT | SCT | SCT | SCT | SCT | SCT | SCT |

| Legend | Category | % Stations |
|--------|-------------------------------|------------|
| WS | Widespread/Most Places | 76-100 |
| FWS | Fairly Widespread/Many places | 51-75 |
| SCT | Scattered/ A Few Places | 26-50 |
| ISOL | Isolated Places | 1-25 |
| DRY | No Rain | 0 |

* Red color warning does not mean "Red Alert" Red color warning means "Take Action".
Forecast and Warning for any day is valid from 0830 hours IST of day till 0830 hours IST of next day For
more details kindly visit <https://mausam.imd.gov.in> or contact : 011-2434-4599
(Service to the Nation since 1875)

Fig. 1: Maximum Temperatures Dated 24.08.2023

Fig. 2: Departure of Maximum Temp. Dated 24.08.2023

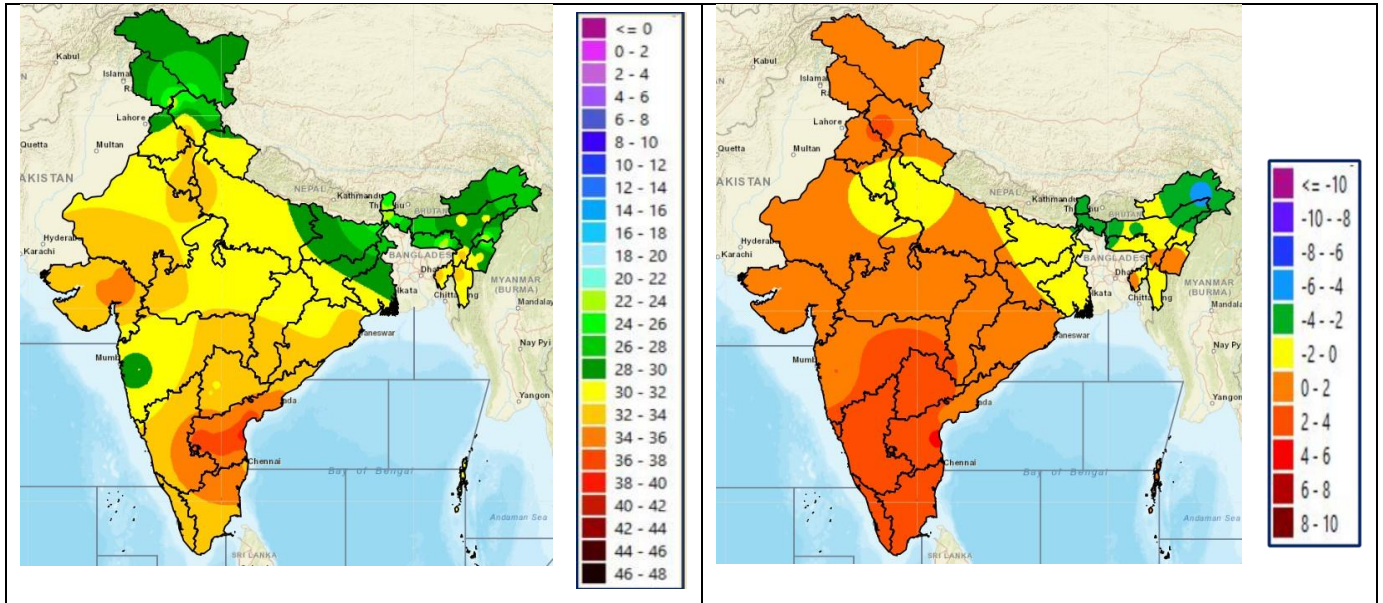
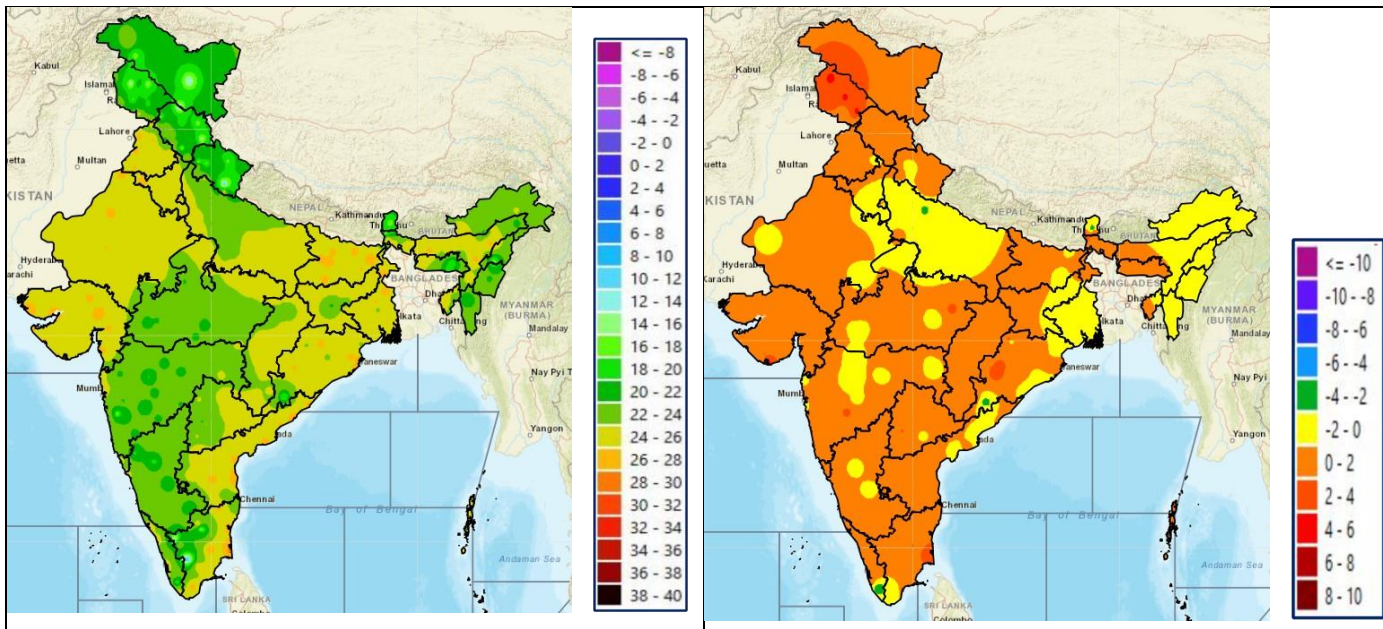


Fig. 3: Minimum Temperatures Dated 24.08.2023

Fig. 4: Departure of Minimum Temp. Dated 24.08.2023

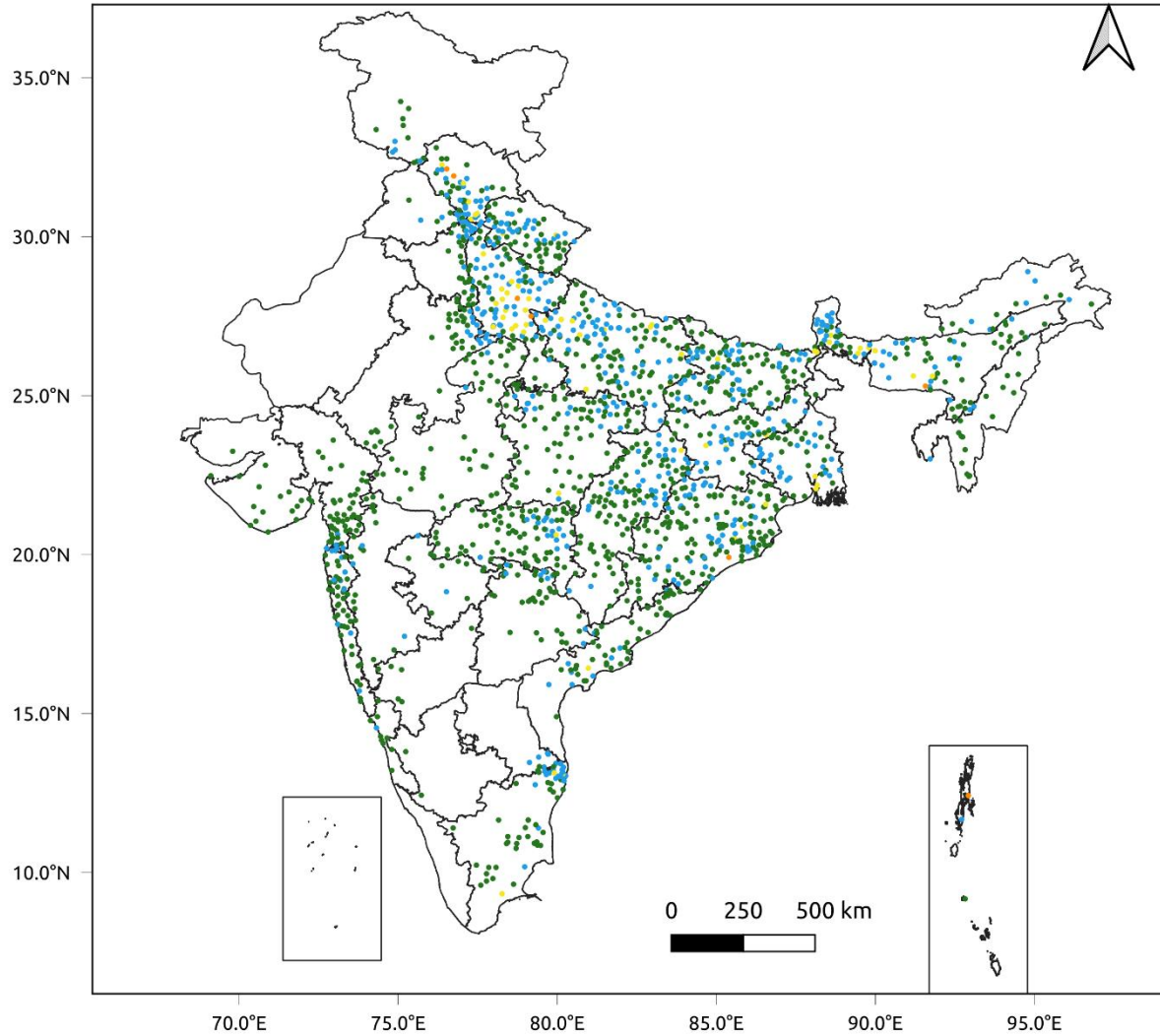


*** Red color warning does not mean "Red Alert" Red color warning means "Take Action".**
Forecast and Warning for any day is valid from 0830 hours IST of day till 0830 hours IST of next day For
more details kindly visit <https://mausam.imd.gov.in> or contact : 011-2434-4599
(Service to the Nation since 1875)

Fig. 5: Accumulated Rainfall (mm) during past 24 hours

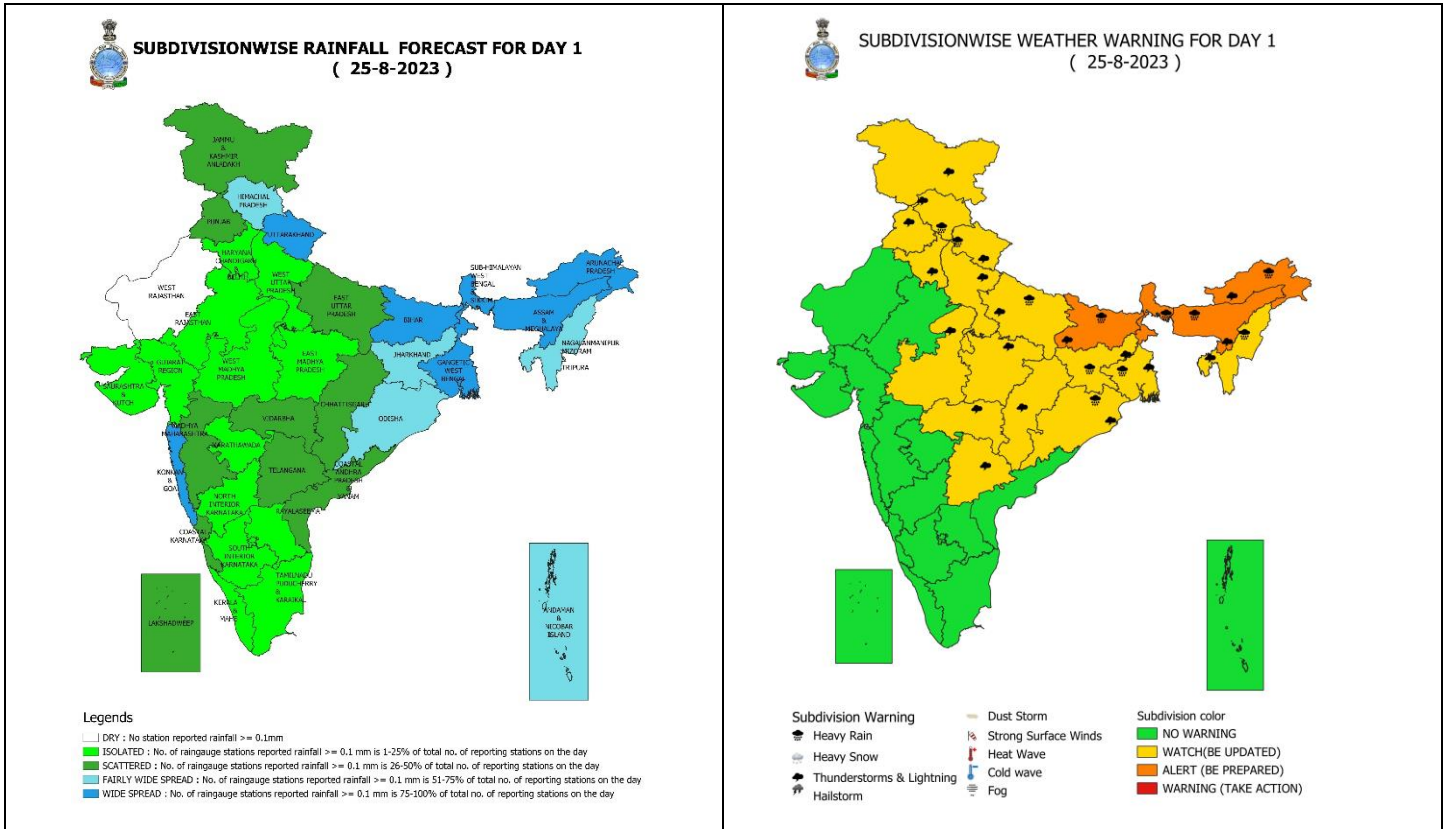


24 Hr cumulative rainfall recorded over different stations during 0830 IST of 23-8-2023 to 0830 IST of 24-8-2023



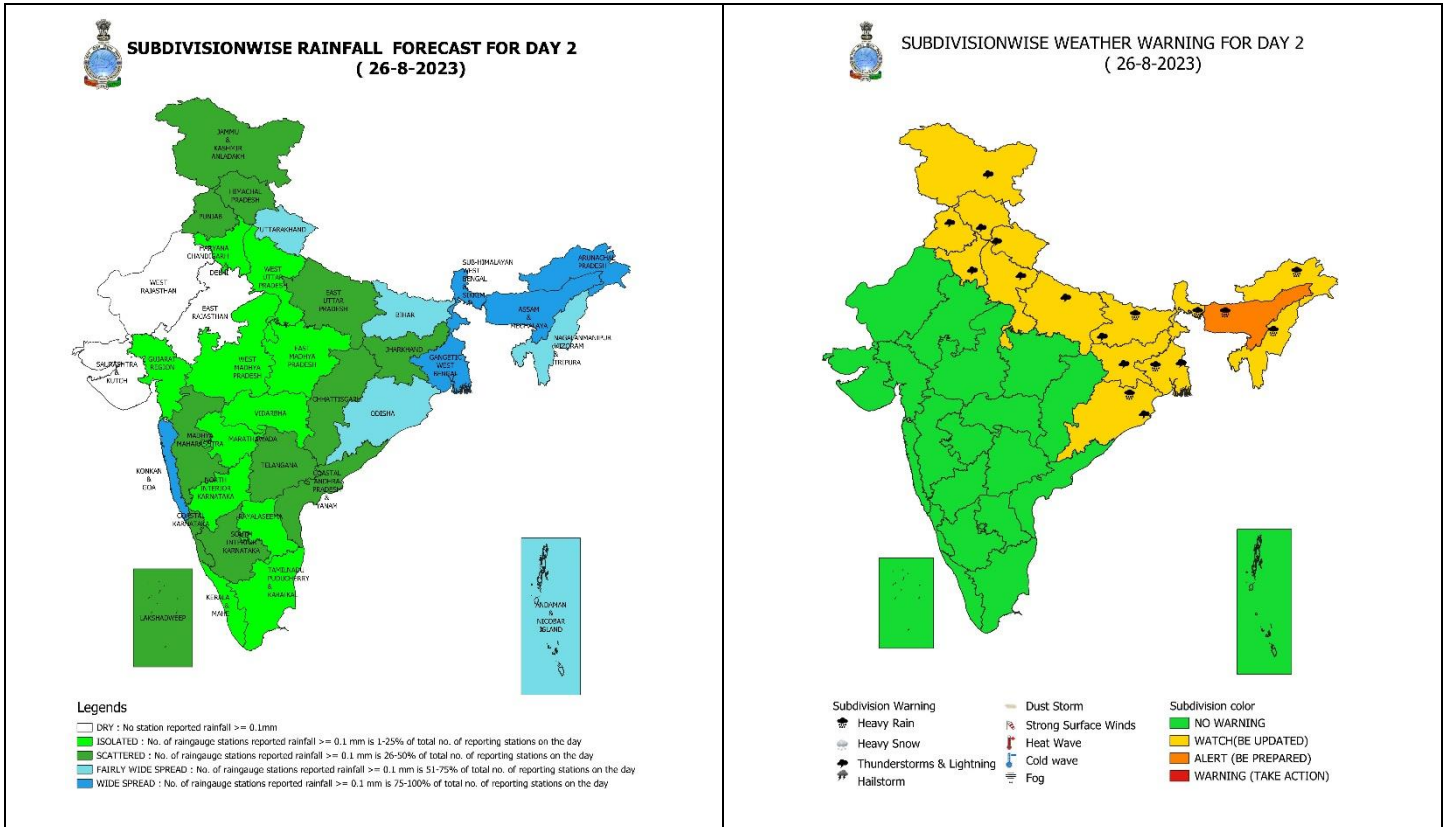
Legends

- Very Light to Light Rainfall (0.1 - 15.5 mm)
- Moderate Rainfall (15.6 - 64.4 mm)
- Heavy Rainfall (64.5 - 115.5 mm)
- Very Heavy Rainfall (115.6 - 204.4 mm)
- Extremely Heavy Rainfall (≥ 204.5 mm)



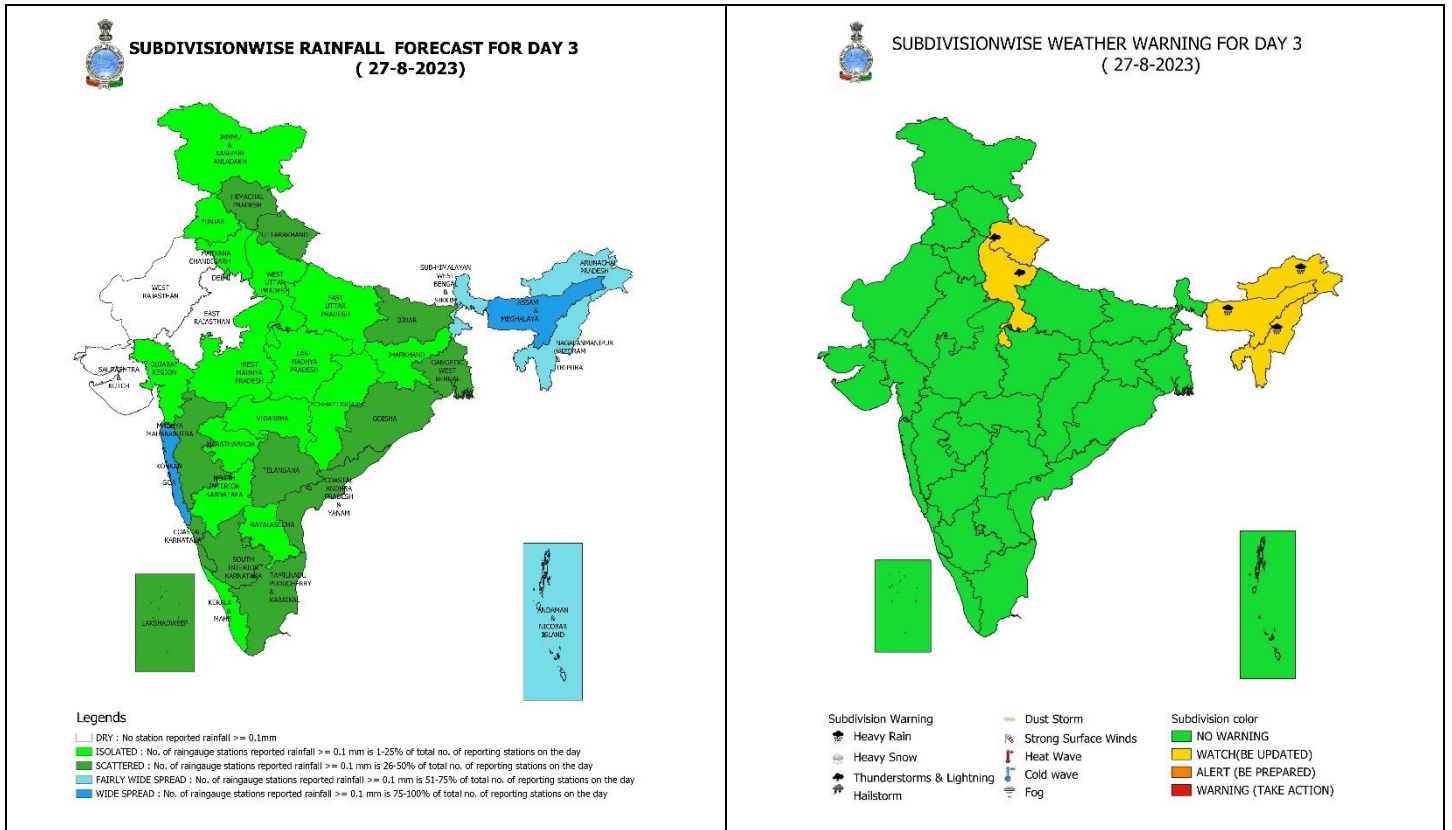
25 August (Day 1) :-

- ❖ **Heavy to very heavy rainfall** very likely at isolated places over Sub-Himalaya West Bengal & Sikkim, Bihar, Arunachal Pradesh, Assam & Meghalaya and **Heavy rainfall** at isolated places over Himachal Pradesh, Uttarakhand, East Uttar Pradesh, Gangetic West Bengal, Jharkhand, Odisha, Nagaland, Manipur, Mizoram & Tripura.
- ❖ **Thunderstorm with lightning** very likely at isolated places over Jammu-Kashmir-Ladakh-Gilgit-Baltistan-Muzaffarabad, Himachal Pradesh, Uttarakhand, Punjab, Haryana-Chandigarh-Delhi, Uttar Pradesh, Madhya Pradesh, Vidarbha, Chhattisgarh, Gangetic West Bengal, Bihar, Jharkhand, Odisha, Arunachal Pradesh, Assam & Meghalaya, Nagaland, Manipur, Mizoram & Tripura, Telangana.
- ❖ **Squally wind speed of 45-55 kmph gusting to 65 kmph** very likely over Westcentral and adjoining Southwest Arabian Sea; **Squally wind speed of 40-50 kmph gusting to 60 kmph** over north adjoining central Bay of Bengal. **Fishermen are advised not to venture into these areas.**



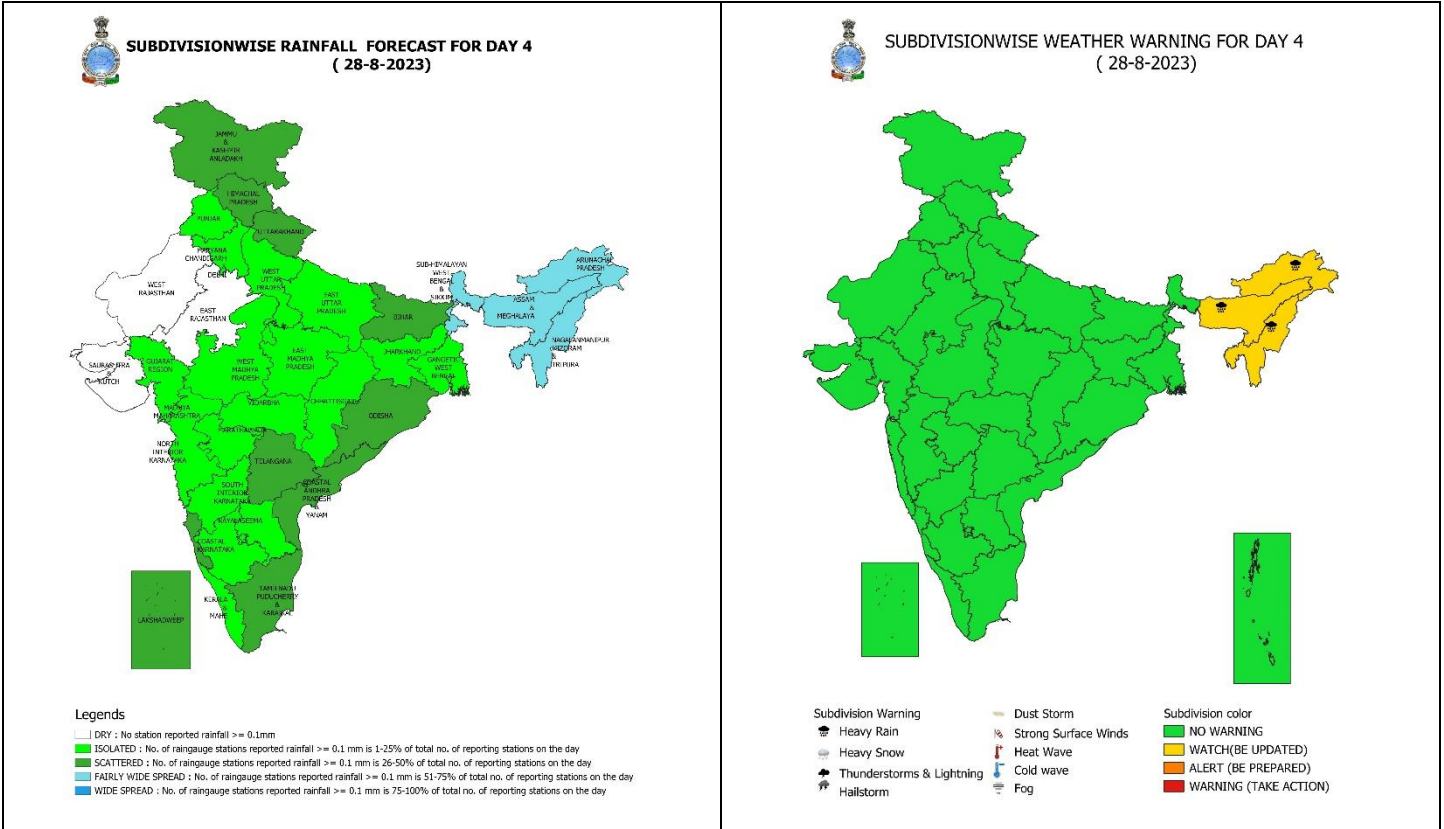
26 August (Day 2): -

- ❖ **Heavy to very heavy rainfall** likely at isolated places over Assam & Meghalaya and **Heavy rainfall** at isolated places over West Bengal & Sikkim, Bihar, Odisha, Arunachal Pradesh, Nagaland, Manipur, Mizoram & Tripura.
- ❖ **Thunderstorm with lightning** very likely at isolated places over Jammu-Kashmir-Ladakh-Gilgit-Baltistan-Muzaffarabad, Himachal Pradesh, Uttarakhand, Punjab, Haryana-Chandigarh-Delhi, Uttar Pradesh, Gangetic West Bengal, Bihar, Jharkhand, Odisha.
- ❖ **Squally wind speed of 45-55 kmph gusting to 65 kmph** likely over Westcentral and adjoining Southwest Arabian Sea. **Fishermen are advised not to venture into these areas.**



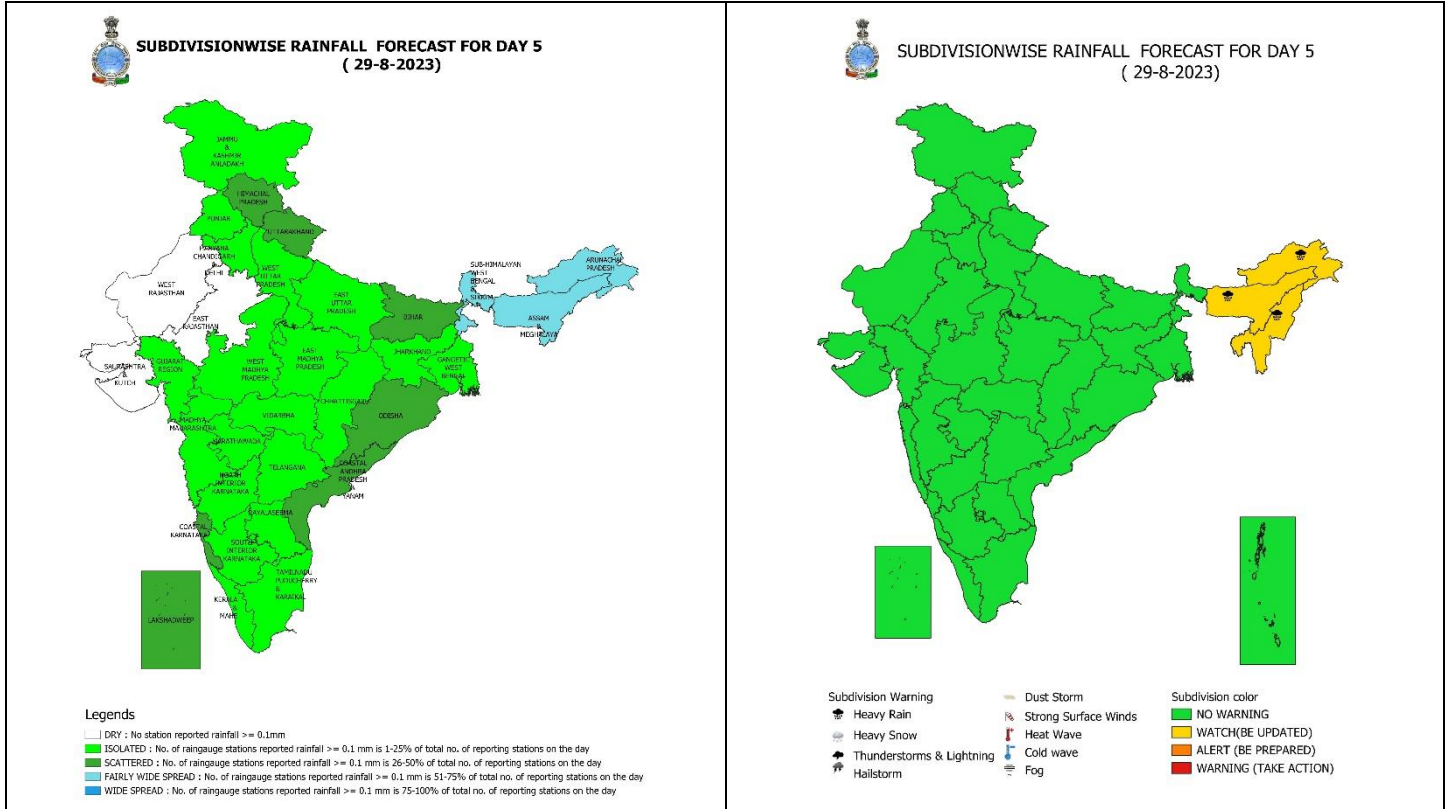
27 August (Day 3): -

- ❖ **Heavy rainfall** at isolated places over Arunachal Pradesh, Assam & Meghalaya, Nagaland, Manipur, Mizoram & Tripura.
- ❖ **Thunderstorm with lightning** very likely at isolated places over Uttarakhand, West Uttar Pradesh.
- ❖ **Squally wind speed of 45-55 kmph gusting to 65 kmph** likely over Westcentral and adjoining Southwest, Northwest & Eastcentral Arabian Sea. **Fishermen are advised not to venture into these areas.**



28 August (Day 4): -

- ❖ **Heavy rainfall** at isolated places over Arunachal Pradesh, Assam & Meghalaya, Nagaland, Manipur, Mizoram & Tripura.
- ❖ **Squally wind speed of 45-55 kmph gusting to 65 kmph** likely over Westcentral and adjoining Southwest, Northwest & Eastcentral Arabian Sea. **Fishermen are advised not to venture into these areas.**



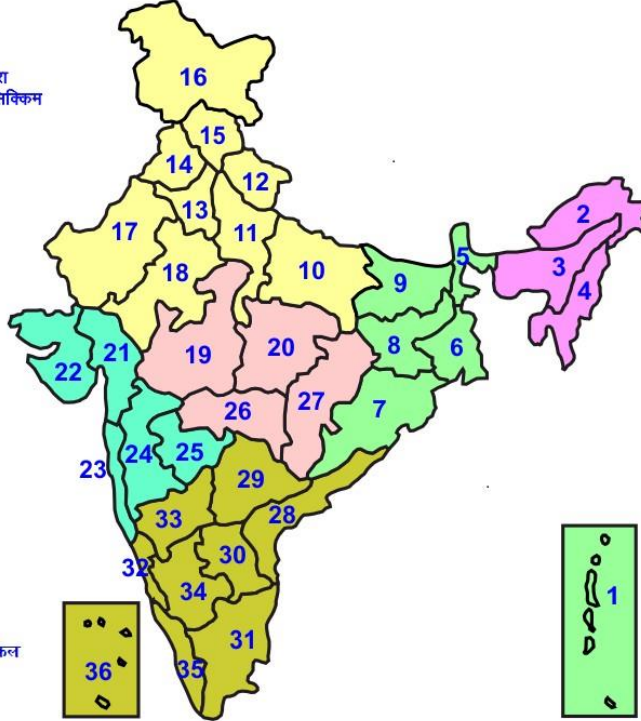
29 August (Day 5): -

- ❖ **Heavy rainfall** at isolated places over Arunachal Pradesh, Assam & Meghalaya, Nagaland, Manipur, Mizoram & Tripura.
- ❖ **Squally wind speed of 45-55 kmph gusting to 65 kmph** likely over Westcentral and adjoining Southwest, Northwest & Eastcentral Arabian Sea. **Fishermen are advised not to venture into these areas.**



LEGENDS

- 1 अंडमान और निकोबार द्वीप समुह
- 2 अरुणाचल प्रदेश
- 3 असम और मेघालय
- 4 नागालैंड मनीपुर मीजोरम और त्रिपुरा
- 5 उप हिमालय पश्चिम बंगाल एवं सिक्किम
- 6 पश्चिम गंगेय बंगाल
- 7 ओडिसा
- 8 झारखंड
- 9 बिहार
- 10 पूर्वी उत्तर प्रदेश
- 11 पश्चिम उत्तर प्रदेश
- 12 उत्तराखंड
- 13 हरियाणा चंडिगढ़ एवं दिल्ली
- 14 पंजाब
- 15 हिमाचल प्रदेश
- 16 जम्मू एवं कश्मीर एवं लद्दाख
- 17 पश्चिम राजस्थान
- 18 पूर्वी राजस्थान
- 19 पश्चिम मध्य प्रदेश
- 20 पूर्वी मध्य प्रदेश
- 21 गुजरात क्षेत्र
- 22 सौराष्ट्र एवं कच्छ
- 23 कोंकण एवं गोवा
- 24 मध्य महाराष्ट्र
- 25 मराठावाड़ा
- 26 विदर्भ
- 27 छत्तीसगढ़
- 28 तटीय आंध्र प्रदेश एवं यनम
- 29 तेलंगाना
- 30 रायलसेमा
- 31 तमिलनाडु, पुदुचेरी एवं कराईकल
- 32 तटिय कर्नाटक
- 33 आंतरिक उत्तरी कर्नाटक
- 34 आंतरिक दक्षिणी कर्नाटक
- 35 केरल एवं माहे
- 36 लक्षद्वीप



1. Andaman & Nicobar Islands
2. Arunachal Pradesh
3. Assam & Meghalaya
4. Nagaland, Manipur, Mizoram & Tripura
5. Sub-Himalayan West Bengal & Sikkim
6. Gangetic West Bengal
7. Orissa
8. Jharkhand
9. Bihar
10. East Uttar Pradesh
11. West Uttar Pradesh
12. Uttarakhand
13. Haryana, Chd & Delhi
14. Punjab
15. Himachal Pradesh
16. Jammu & Kashmir and Ladakh
17. West Rajasthan
18. East Rajasthan
19. West Madhya Pradesh
20. East Madhya Pradesh
21. Gujarat
22. Saurashtra
23. Konkan & Goa
24. Madhya Maharashtra
25. Marathwada
26. Vidharbha
27. Chhattisgarh
28. Coastal Andhra Pradesh & Yanam
29. Telangana
30. Rayalaseema
31. Tamilnadu, Puducherry & Karaikal
32. Coastal Karnataka
33. North Interior Karnataka
34. South Interior Karnataka
35. Kerala & Mahe
36. Lakshadweep

SPATIAL DISTRIBUTION (% of Stations reporting)

| % Stations | Category | % Stations | Category |
|------------|--------------------------------------|------------|-------------------------------|
| 76-100 | Widespread (WS/ Most Places) | 26-50 | Scattered (SCT/ A Few Places) |
| 51-75 | Fairly Widespread (FWS/ Many Places) | 1-25 | Isolated (ISOL) |

WARNING

| |
|--------------------------------|
| WARNING (TAKE ACTION) |
| ALERT (BE PREPARED) |
| WATCH (BE UPDATED) |
| NO WARNING (NO ACTION) |

Probabilistic Forecast

| Terms | Probability of Occurrence (%) |
|-------------|-------------------------------|
| Unlikely | < 25 |
| Likely | 25 - 50 |
| Very Likely | 50 - 75 |
| Most Likely | > 75 |



Heavy Rain



Heavy Snow



Thunderstorm



Dust Storm



Strong Winds



Visibility



Cyclone



Squall/ Hail



Frost



Cold Wave



Heat Wave



Sea State

* Red color warning does not mean "Red Alert" Red color warning means "Take Action".

Forecast and Warning for any day is valid from 0830 hours IST of day till 0830 hours IST of next day For more details kindly visit <https://mausam.imd.gov.in> or contact : 011-2434-4599

(Service to the Nation since 1875)

LEGENDS

WARNING

| |
|-------------------------|
| WARNING (TAKE ACTION) |
| ALERT (BE PREPARED) |
| WATCH (BE UPDATED) |
| NO WARNING (NO ACTION) |

Probabilistic Forecast

| Terms | Probability of Occurrence (%) |
|-------------|-------------------------------|
| Unlikely | < 25 |
| Likely | 25 - 50 |
| Very Likely | 50 - 75 |
| Most Likely | > 75 |



Rain/ Snow *

Heavy: 64.5 to 115.5 mm/cm *
Very Heavy: 115.6 to 204.4 mm/cm*
Extremely Heavy: > 204.4 mm/cm *



Heat Wave

When maximum temperature of a station reaches $\geq 40^{\circ}\text{C}$ for plains and $\geq 30^{\circ}\text{C}$ for hilly regions
(a) Based on Departure from normal

Heat Wave: Maximum Temperature Departure from normal 4.5°C to 6.4°C .
Severe Heat Wave: Maximum Temperature Departure from normal $\geq 6.5^{\circ}\text{C}$

(b). Based on Actual maximum temperature

Heat Wave: When actual maximum temperature $\geq 45^{\circ}\text{C}$.
Severe Heat Wave: When actual maximum temperature $\geq 47^{\circ}\text{C}$

(c). Criteria for heat wave for coastal stations

When maximum temperature departure is $> 4.5^{\circ}\text{C}$ from normal. Heat Wave may be described provided maximum temperature $\geq 37^{\circ}\text{C}$



Warm Night

When maximum temperature remains 40°C

Warm Night: When minimum temperature departure 4.5°C to 6.4°C .
Severe Warm Night: When minimum temperature departure $> 6.4^{\circ}\text{C}$.



Cold Wave

When minimum temperature of a station $\leq 10^{\circ}\text{C}$ for plains and $\leq 0^{\circ}\text{C}$ for hilly regions.

(a). Based on departure

Cold Wave: Minimum Temperature Departure from normal -4.5°C to -6.4°C .
Severe Cold Wave: Minimum Temperature Departure from normal $\leq -6.5^{\circ}\text{C}$

(b) Based on actual Minimum Temperature (for Plains only)

Cold Wave : When Minimum Temperature is $\leq 4.0^{\circ}\text{C}$
Severe Cold Wave: When Minimum Temperature is $\leq 2.0^{\circ}\text{C}$

(c) For Coastal Stations

When Minimum Temperature departure is $\leq -4.5^{\circ}\text{C}$ & actual Minimum Temperature is $\leq 15^{\circ}\text{C}$



Cold Day

When minimum temperature of a station $\leq 10^{\circ}\text{C}$ for plains and $\leq 0^{\circ}\text{C}$ for hilly regions
Based on departure

Cold Day: Maximum Temperature Departure from normal -4.5°C to -6.4°C .
Severe Cold Day: Maximum Temperature Departure from normal $\leq -6.5^{\circ}\text{C}$



Fog

Phenomenon of small droplets suspended in air and the horizontal visibility < 1km

Moderate Fog: When the visibility between 500-200 metres
Dense Fog: when the visibility between 50- 200 metres
Very Dense Fog: when the visibility < 50 metres



Thunderstorm

Sudden electrical discharges manifested by a flash of light (Lightning) and a sharp rumbling sound (thunder)



Dust/Sand Storm

An ensemble of particles of dust or sand energetically lifted to great heights by a strong and turbulent wind.



Frost

Ice deposits on ground

Air temperature $\leq 4^{\circ}\text{C}$ (over Plains)



Squall

A strong wind that rises suddenly, lasts for atleast 1 minute.

Moderate: Wind speed 52-61 kmph
Severe: Wind speed 62-87 kmph
Very Severe: Wind speed >87 kmph



Sea State

Effect of various waves in the sea over specific area

Rough to very rough: Wind speed 41-62 kmph (22-33 knots) & Wave height 2.5-6 metre
High to very high: Wind speed 63-117 kmph (34-63 knots) & Wave height 6-14 metre
Phenomenal: Wind speed >117 kmph (>63 knots) & Wave height >14 metre



Cyclone

Cyclonic Storm: Wind speed 62-87 kmph (34-47 knots)
Severe Cyclonic Storm: Wind speed 88-117 kmph (48-63 knots)
Very Severe Cyclonic Storm: Wind speed 118-165 kmph (64 - 89 knots)
Extremely Severe Cyclonic Storm: Wind speed 166-220 kmph (90 -119 knots)
Super Cyclone Storm: Wind speed >220 kmph (>119 knots)

* Red color warning does not mean "Red Alert" Red color warning means "Take Action".

Forecast and Warning for any day is valid from 0830 hours IST of day till 0830 hours IST of next day For more details kindly visit <https://mausam.imd.gov.in> or contact : 011-2434-4599

(Service to the Nation since 1875)