

2025-12-03

Time of Issue: 09:11:00 hours IST
(Morning)

ALL INDIA WEATHER SUMMARY AND FORECAST BULLETIN

Significant Weather Features

Weather Forecast and Warnings

- **Tamil Nadu & Puducherry:** Heavy to very heavy rainfall at isolated places on 03rd December, 2025.
- **South Coastal Andhra Pradesh & Rayalaseema:** Light to moderate rainfall at most places with heavy to very heavy rainfall at isolated places is very likely on 03rd December, 2025.
- **Kerala:** Light to moderate rainfall at most places with heavy rainfall at isolated places is very likely on 3rd December, 2025

Forecast of minimum temperatures:

- No significant change in minimum temperature likely over many parts of Northwest India for next 24 hours, fall by 2-4^oC during subsequent 4 days and no significant change thereafter.
- No significant change in minimum temperature likely over Central India for next 24 hours, fall by 2-3^oC during subsequent 4 days and no significant change thereafter.
- Gradual fall in minimum temperature likely by 3-4^oC over East India during next 4 days and no significant change thereafter.
- Gradual fall in minimum temperature likely by 2-3^oC over Maharashtra during next 3 days and no significant change thereafter.
- No significant change in minimum temperature likely over Northeast India for next 3 days, fall by 2-3^oC during subsequent 2 days and no significant change thereafter.

Dense Fog & Cold wave warning Warnings:

- **Cold wave conditions** very likely to prevail in isolated pockets over Punjab and north Madhya Maharashtra during 03rd-05th and north Rajasthan during 05th-07th December, 2025.
- **Dense fog conditions** very likely to prevail during early morning hours in isolated pockets of Himachal Pradesh, Assam & Meghalaya, Nagaland, Manipur, Mizoram & Tripura, during 03rd-05th; over Odisha on 03rd & 04th December.

Wind Warning, Sea Condition, Fisherman Warning:

(i) Wind Warning:

(a) Southwest and adjoining westcentral Bay of Bengal and along & off north Tamil Nadu, Puducherry and South Andhra Pradesh Coasts

Squally wind speed reaching 45-55 gusting to 65 kmph is very likely to prevail and gradually decrease thereafter becoming 35-45 gusting to 55 kmph by 3rd morning.

(b) Along & off south Tamil Nadu coast, Gulf of Mannar, Comorin area and north Sri Lanka coast

Squally wind speed reaching 40-50 gusting to 60 kmph is very likely to prevail and gradually decrease thereafter becoming 35-45 gusting to 55 kmph by 3rd morning.

(ii) Sea Condition:

(a) Southwest and adjoining westcentral Bay of Bengal and along & off north Tamil Nadu, Puducherry and South Andhra Pradesh Coasts:

Very Rough to Rough Sea conditions are likely to prevail till 3rd December morning and gradually improve thereafter.

(b) Along & off south Tamil Nadu coast, Gulf of Mannar, Comorin area and north Sri Lanka coast

*Red color warning does not mean "Red Alert" Red color warning means "Take Action"

Forecast and warning for any day is valid from 0830 hours IST of day till 0830 hours IST of next day

For more details kindly visit <https://mausam.imd.gov.in> or contact 011-2434-4599

(Service to the nation since 1875)



Very Rough to Rough Sea conditions are likely to prevail till 3rd December morning and gradually improve thereafter.

(iii) Fishermen Warning:

Total suspension of fishing operations over southwest and adjoining westcentral Bay of Bengal and along & off Tamil Nadu, Puducherry, south coastal Andhra Pradesh & north Sri Lanka coasts, Gulf of Mannar and Comorin area till 3rd December morning.

Those out at sea should avoid southwest and adjoining westcentral Bay of Bengal and along & off Tamil Nadu, Puducherry, south coastal Andhra Pradesh & north Sri Lanka coasts, Gulf of Mannar and Comorin area till 3rd December morning.

Main Weather Observations:

- **Rainfall distribution** (from 0830 hours IST of yesterday to 0530 hours IST of today): **at most places** over Tamilnadu Puducherry & Karaikal and Coastal Andhra Pradesh & Yanam; **at many places** over Rayalaseema and South Interior Karnataka; **Dry** over rest of the country.
- **Significant rainfall recorded (in cm)** (from 0830 hours IST of yesterday to 0530 hours IST of today): **Coastal Andhra Pradesh & Yanam:** Chittamur_ARG (dist. Tirupati) 28, Edagali (dist Sri Potti Sriramulu Nellore) & Alampadu (dist Tirupati) 24 each, Vidyanagar (dist Tirupati) 20, Gunupudu (dist. Tirupati) 19, Manubolu (dist Sri Potti Sriramulu Nellore) 18, Nellore (dist Sri Potti Sriramulu Nellore) 9; **Tamilnadu Puducherry & Karaikal:** Hindustan_Univesity (dist. Kanchipuram) 14, VIT_ Chennai (Chengalpattu) 11, Tondi (dist Ramanathapuram) & Sathyabama_Univesity (dist. Kanchipuram) 10 each, Tiruvarur (dist. Tiruvarur) 9, Karaikal (dist Karaikal) 7, Chennai (Nungambakkam) (dist Chennai) 5, Nagapattinam (dist Nagapattinam) 5, Cuddalore (dist Cuddalore) 4, Madurai AP (dist Madurai), Chennai (minambakkam) AP (dist Chennai) 3 Each; **Kerala:** Udumbannoor (dist. Idukki) 9, Vannamada (dist. Palakkad) 7, Pothundy dam (dist. Palakkad) & Cheruthoni (dist. Palakkad) 5 each; **Rayalaseema:** Tirupathi (dist Tirupati) 2.
- **Heavy Rainfall observed** (from 0830 hours IST of yesterday to 0530 hours IST of today): **Extremely Heavy rainfall** at isolated places over Coastal Andhra Pradesh; **Very Heavy Rainfall** at isolated places over Tamil nadu Puducherry & Karaikal; **Heavy rain** at isolated places over Kerala, Coastal Andhra Pradesh & Yanam.
- **Fog Condition Observed (at 0530 hours of today):** **Moderate fog conditions:** at isolated places over Nagaland, Manipur, Mizoram & Tripura **Shallow fog conditions:** at a few places over Nagaland, Manipur, Mizoram & Tripura, West Uttar Pradesh and Punjab, at isolated places over Assam & Meghalaya, Odisha, Bihar, East Uttar Pradesh and West Madhya Pradesh.
- **Visibility reported (at 0530 hours of today):** **Nagaland, Manipur, Mizoram & Tripura:** Imphal (tuliha) AP (dist Imphal East) 200.0, Agartala AP (dist West Tripura), Kailashahar AP (dist Unakoti) 500.0 Each; **West Madhya Pradesh:** Gwalior (dist Gwalior) 500.0; **East Uttar Pradesh:** Kanpur Airforce (dist Kanpur Nagar) 500.0; **Assam & Meghalaya:** Dhubri (dist Dhubri) 500.0; **Punjab:** Amritsar (rajasansi) AP (dist Amritsar) 500.0; **Odisha:** Jharsuguda (dist Jharsuguda) 500.0; **West Uttar Pradesh:** Agra (IAF) (dist Agra) 500.0; **Bihar:** Purnea (dist Purnia) 500.0.
- **Minimum Temperature Departures (as on 02-12-2025):** The lowest minimum temperature of 10.0°C is reported at NALIYA (GUJARAT) over the Plains of India.
- **Maximum Temperature Departures (as on 02-12-2025):** The highest maximum temperature of 34.8°C is reported at KARWAR (KARNATAKA).

*Red color warning does not mean "Red Alert" Red color warning means "Take Action"

Forecast and warning for any day is valid from 0830 hours IST of day till 0830 hours IST of next day

For more details kindly visit <https://mausam.imd.gov.in> or contact 011-2434-4599

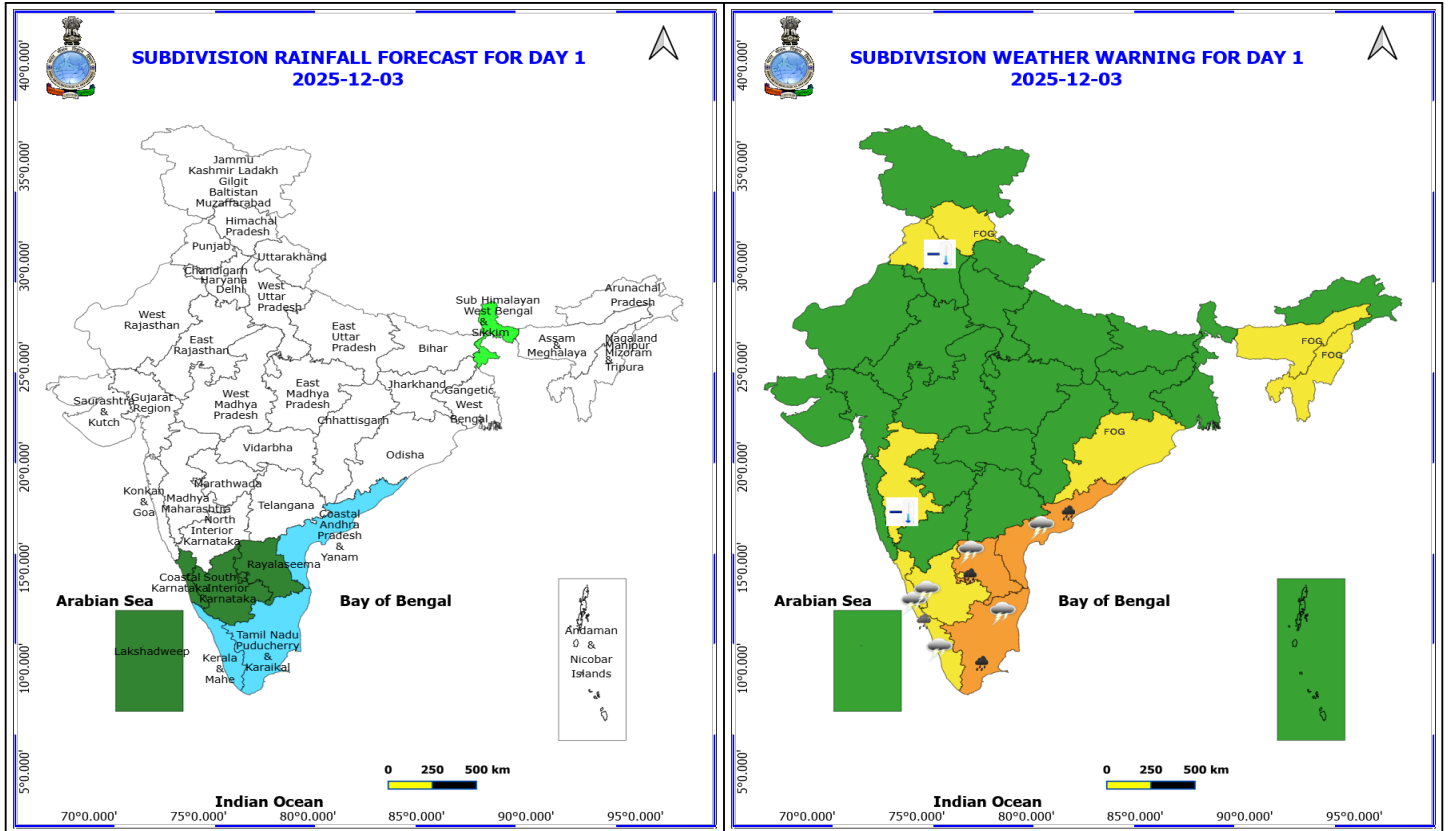
(Service to the nation since 1875)

Meteorological Analysis (Based on 0530 hours IST)

- The **Depression (Remnant of Cyclonic Storm Ditwah)** over southwest Bay of Bengal and adjoining North Tamil Nadu- Puducherry coasts moved slowly southwestwards and weakened into a **Well Marked Low Pressure** area over North Tamil Nadu-Puducherry coasts and neighbourhood at 0530 hrs IST of today, the 03rd December 2025. It is very likely to continue to move southwestwards slowly across north coastal Tamil Nadu and Puducherry and weaken further into a low-pressure area during next 24 hours.
- A trough runs from above **Well Marked Low Pressure** area over North Tamil Nadu-Puducherry coasts and neighbourhood to Lakshadweep area across North Interior Tamil Nadu, South Interior Karnataka, north Kerala at 0.9km above mean sea level.
- The **Western disturbance** as an **upper air cyclonic circulation** over north Pakistan & neighbourhood now lies over north Pakistan & adjoining Punjab between 3.1 & 4.5 km above mean sea level. However, the trough aloft in middle tropospheric level with its axis at 5.8 km above mean sea level roughly along Long. 74°E to the north of Lat. 27°N.
- The **induced cyclonic circulation** over south Himachal Pradesh & neighbourhood now lies over northwest Uttar Pradesh & neighbourhood and extends upto 1.5 km above mean sea level.
- A fresh feeble **Western Disturbance** is likely to influence western Himalayan region from 05th December 2025.

Weather Outlook for subsequent 3 days

- Isolated to Scattered rainfall activity over Western Himalayan region, South Kerala, South Tamil Nadu and Islands.



3 December (Day 1)

? **Heavy to Very Heavy Rainfall** very likely at isolated places over Andhra Pradesh and Tamil Nadu Puducherry & Karaikal.

? **Heavy Rainfall** very likely at isolated places over Kerala & Mahe.

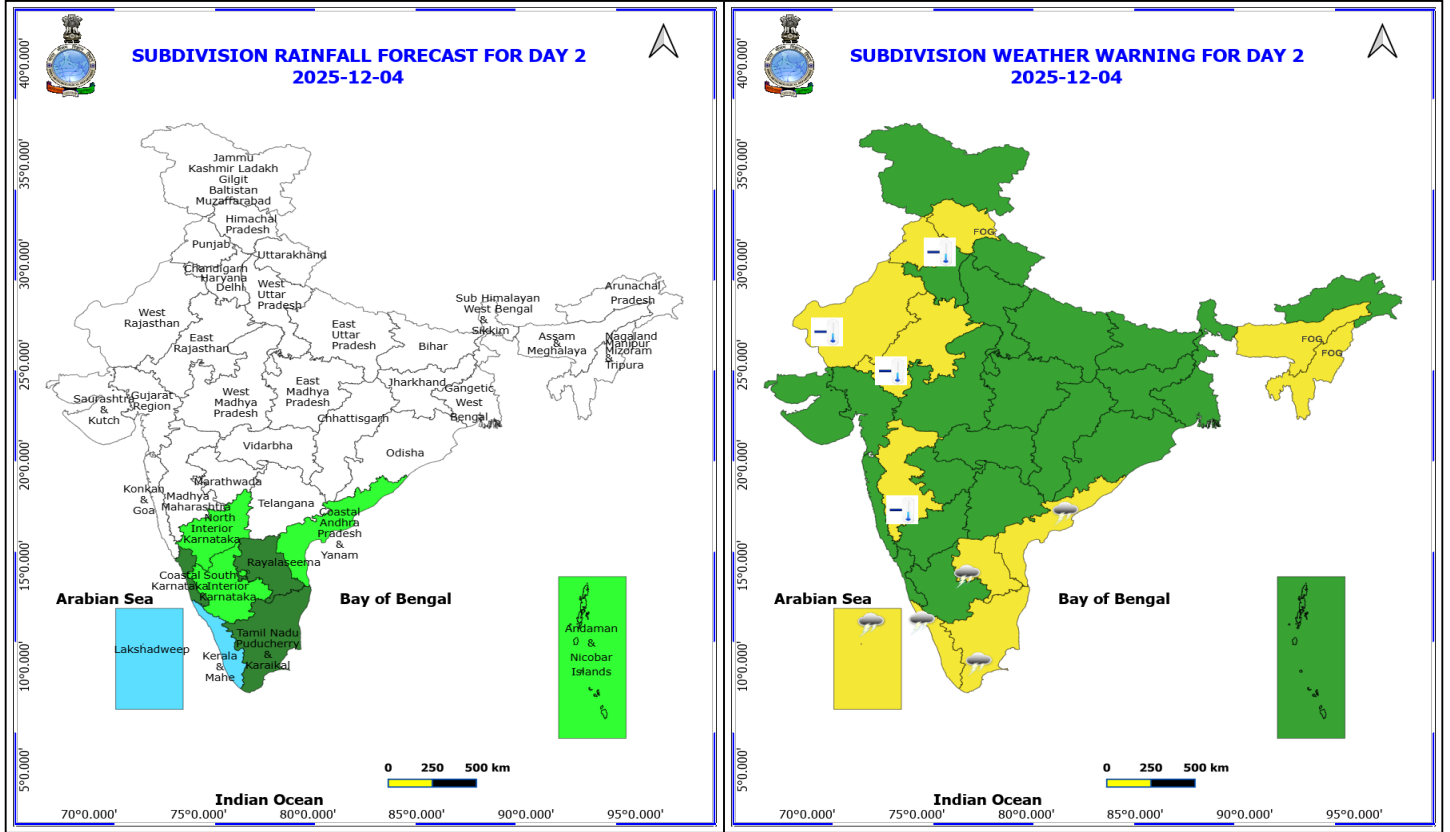
? **Thunderstorm accompanied with lightning & gusty winds(30-40kmph)** very likely at isolated places over Andhra Pradesh.

? **Thunderstorm accompanied with Lightning** very likely at isolated places over Coastal Karnataka, Kerala & Mahe, South Interior Karnataka and Tamil Nadu Puducherry & Karaikal.

? **Cold wave conditions** very likely at isolated places over Madhya Maharashtra and Punjab.

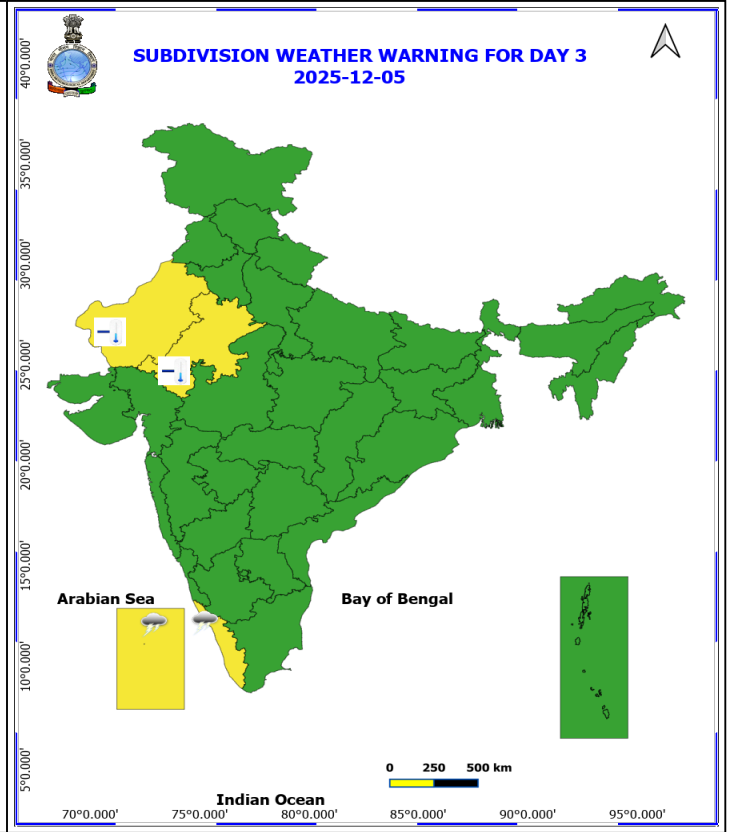
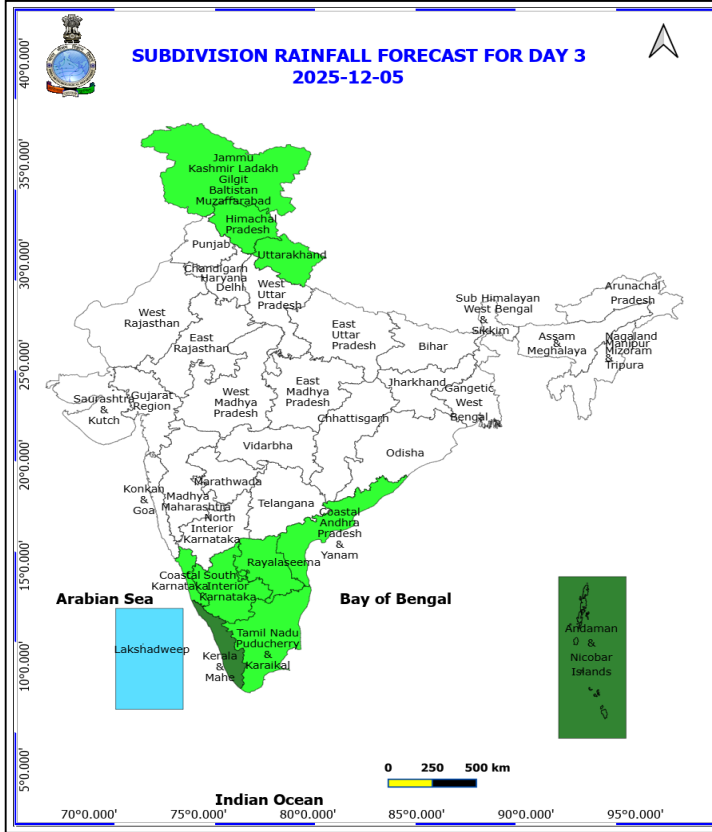
? **Fog** very likely at isolated pockets over Assam & Meghalaya, Himachal Pradesh, Nagaland, Manipur, Mizoram and Tripura and Odisha.

❖ Total suspension of fishing operations over southwest and adjoining westcentral Bay of Bengal and along & off Tamil Nadu, Puducherry, south coastal Andhra Pradesh & north Sri Lanka coasts, Gulf of Mannar and Comorin area till 3rd December morning.



4 December (Day 2)

- ❖ **Thunderstorm accompanied with lightning & gusty winds(30-40kmph)** very likely at isolated places over Andhra Pradesh.
- ❖ **Thunderstorm accompanied with Lightning** very likely at isolated places over Kerala & Mahe, Lakshadweep and Tamil Nadu Puducherry & Karaikal.
- ❖ **Cold wave conditions** very likely at isolated places over Madhya Maharashtra, Punjab and Rajasthan.
- ❖ **Fog** very likely at isolated pockets over Assam & Meghalaya, Himachal Pradesh and Nagaland, Manipur, Mizoram and Tripura.
- ❖ Total suspension of fishing operations over southwest and adjoining westcentral Bay of Bengal and along & off Tamil Nadu, Puducherry, south coastal Andhra Pradesh & north Sri Lanka coasts, Gulf of Mannar and Comorin area till 3rd December morning.



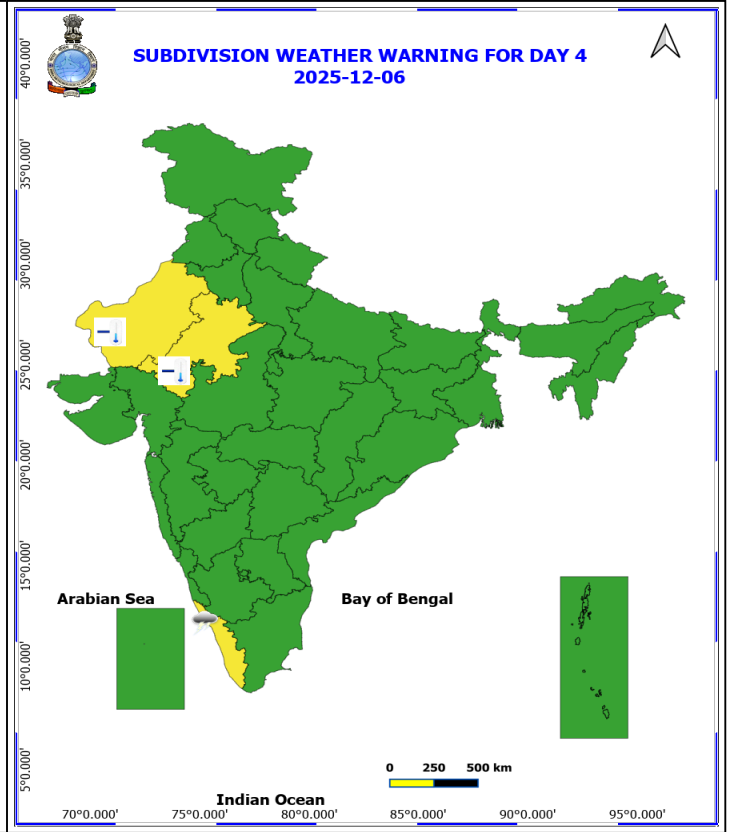
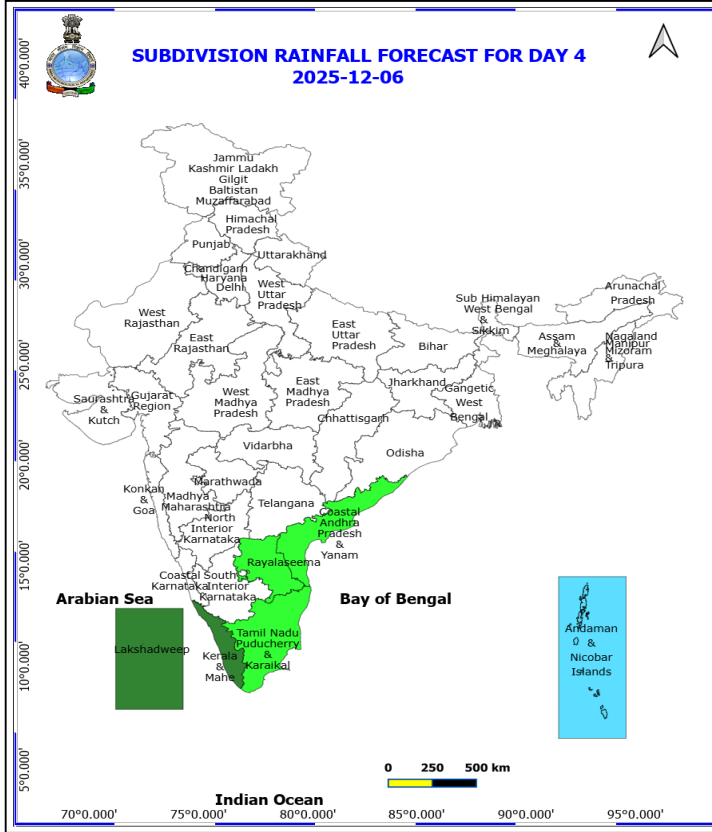
5 December (Day 3)

❖ **Thunderstorm accompanied with Lightning** very likely at isolated places over Kerala & Mahe and Lakshadweep.

❖ **Cold wave conditions** very likely at isolated places over Rajasthan.

No Fishermen Warning

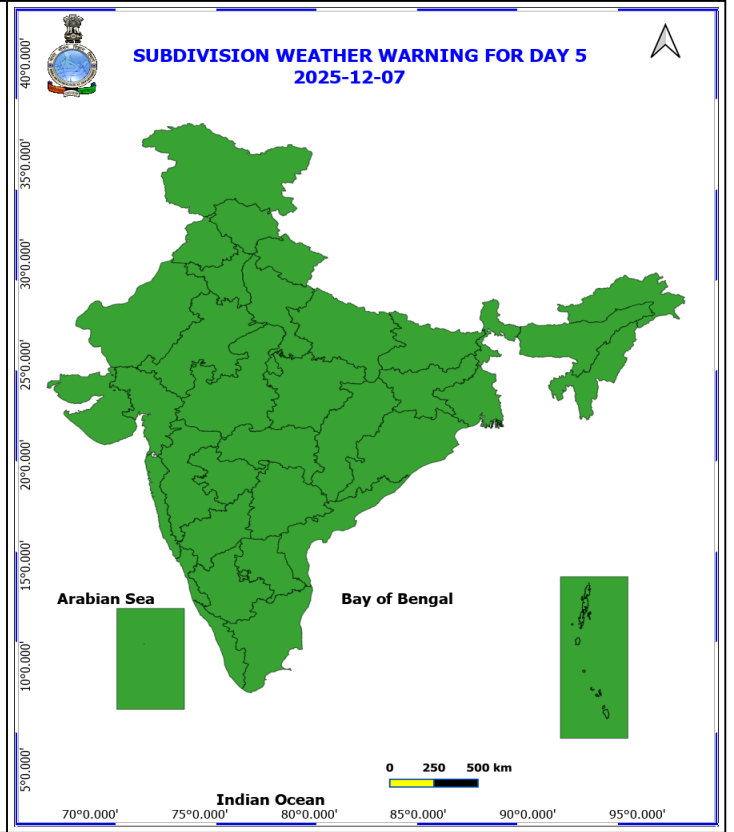
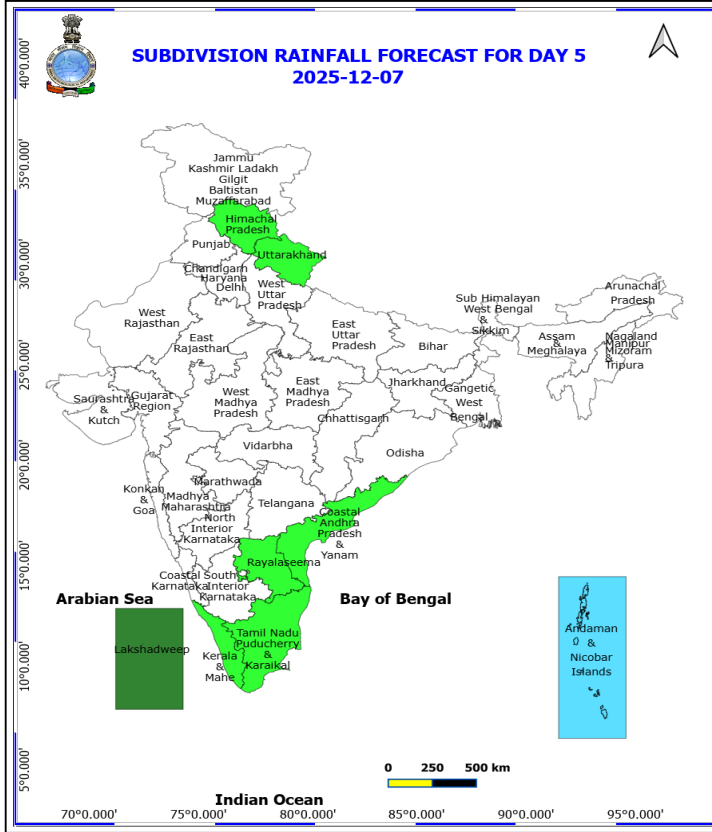
***Red color warning does not mean "Red Alert" Red color warning means "Take Action"**
Forecast and warning for any day is valid from 0830 hours IST of day till 0830 hours IST of next day
For more details kindly visit <https://mausam.imd.gov.in> or contact 011-2434-4599
(Service to the nation since 1875)



6 December (Day 4)

- ❖ Thunderstorm accompanied with Lightning likely at isolated places over Kerala & Mahe.
- ❖ Cold wave conditions likely at isolated places over Rajasthan.

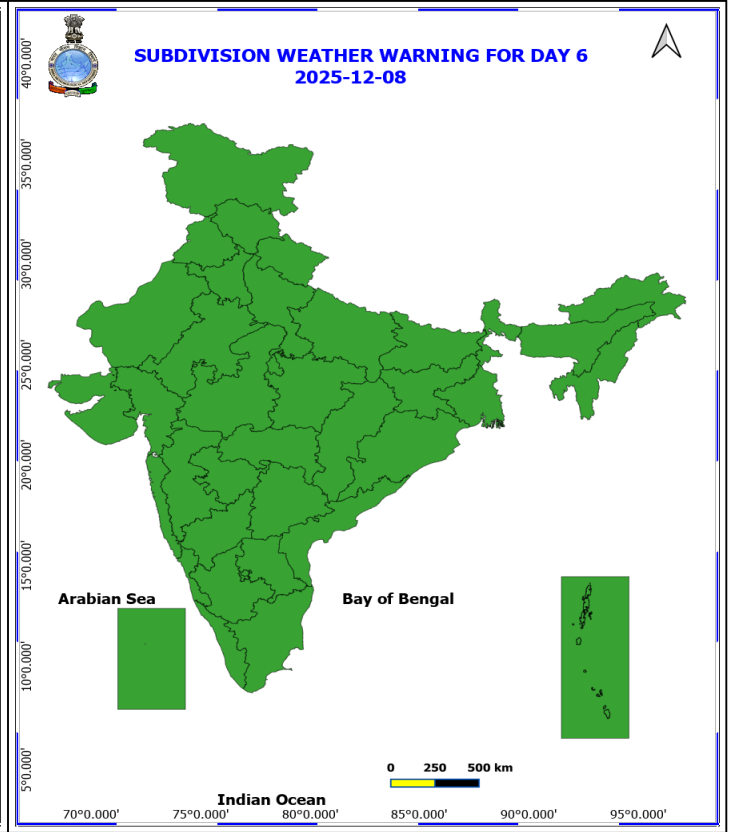
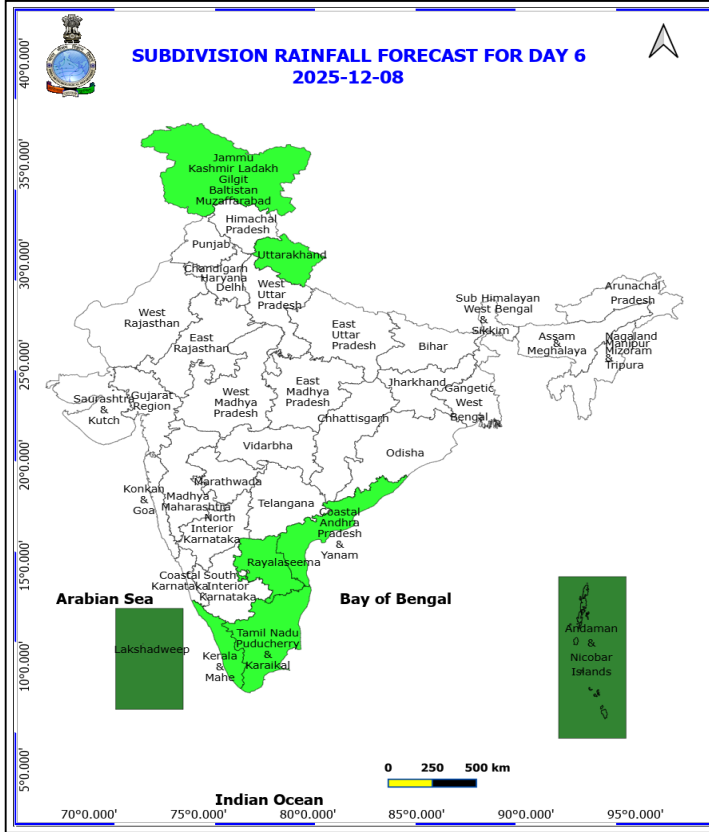
No Fishermen Warning



7 December (Day 5)

No Warning

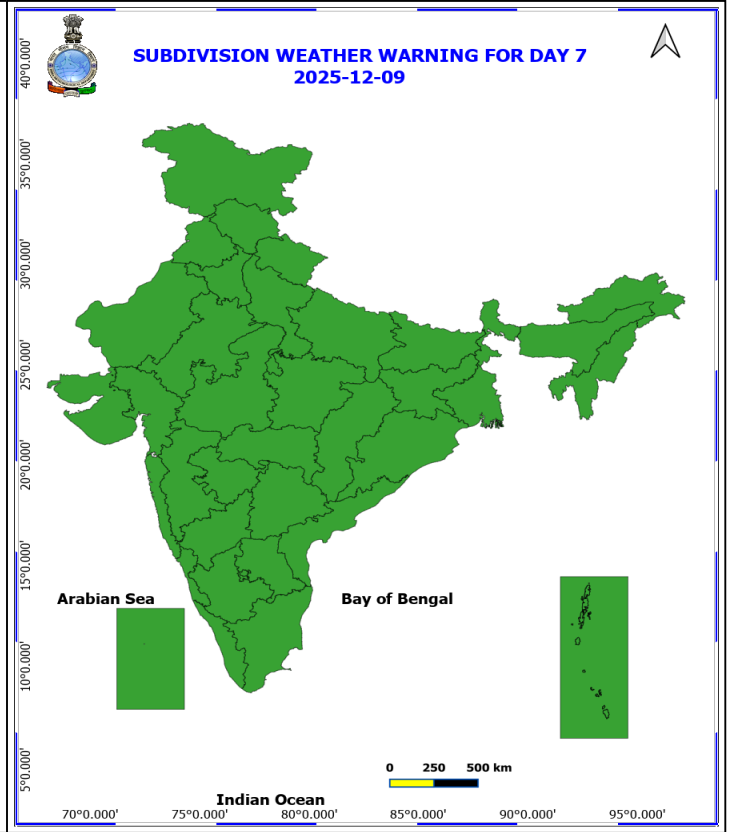
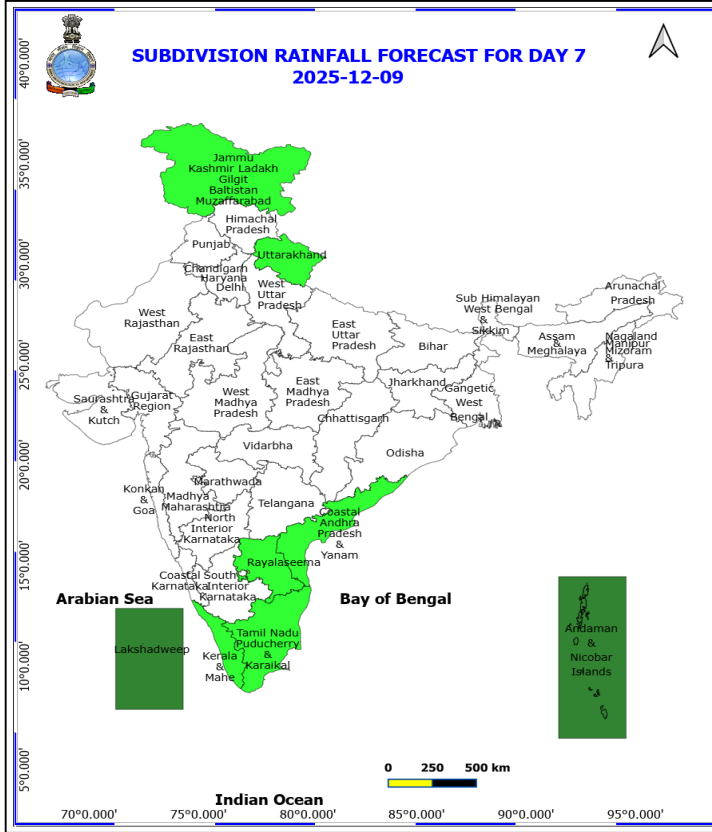
No Fishermen Warning



8 December (Day 6)

No Warning

No Fishermen Warning



9 December (Day 7)

No Warning

No Fishermen Warning

Flash Flood Warnings

24 hours Outlook for the Flash Flood Risk (FFR) till 0530 IST of 04-12-2025 :

Low to Moderate flash flood risk likely during next 24 hours.

Coastal Andhra Pradesh & Yanam – Nellore district.

Rayalaseema – Chittoor (Tirupati) district.

Surface runoff/ Inundation may occur at some fully saturated soils & low-lying areas over Area of Concern (AoC) as shown in map due to expected rainfall occurrence in next 24 hours.

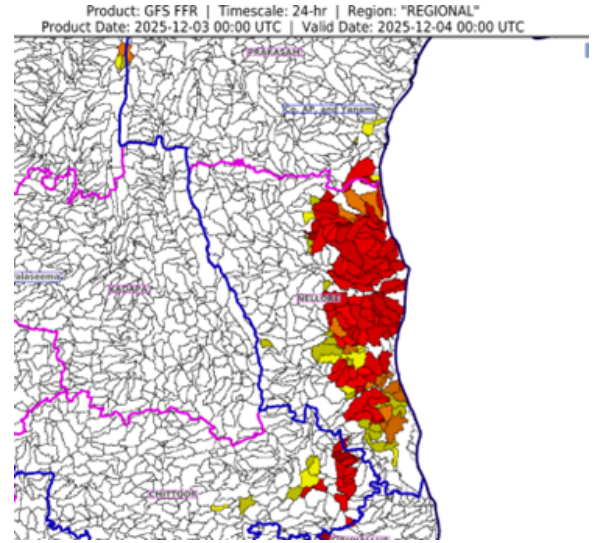




Table-1

7 Days Rainfall Forecast

| S.No. | Subdivision | 3- Dec | 4- Dec | 5- Dec | 6- Dec | 7- Dec | 8- Dec | 9- Dec |
|-------|------------------------------|--------|--------|--------|--------|--------|--------|--------|
| | | Day 1 | Day 2 | Day 3 | Day 4 | Day 5 | Day 6 | Day 7 |
| 1 | ANDAMAN & NICOBAR ISLANDS | DRY | ISOL | SCT | FWS | FWS | SCT | SCT |
| 2 | ARUNACHAL PRADESH | DRY | DRY | DRY | DRY | DRY | DRY | DRY |
| 3 | ASSAM & MEHGHALAYA | DRY | DRY | DRY | DRY | DRY | DRY | DRY |
| 4 | N. M. M. & T. | DRY | DRY | DRY | DRY | DRY | DRY | DRY |
| 5 | S.H. WEST BENGAL & SIKKIM | ISOL | DRY | DRY | DRY | DRY | DRY | DRY |
| 6 | GANGETIC WEST BENGAL | DRY | DRY | DRY | DRY | DRY | DRY | DRY |
| 7 | ODISHA | DRY | DRY | DRY | DRY | DRY | DRY | DRY |
| 8 | JHARKHAND | DRY | DRY | DRY | DRY | DRY | DRY | DRY |
| 9 | BIHAR | DRY | DRY | DRY | DRY | DRY | DRY | DRY |
| 10 | EAST UTTAR PRADESH | DRY | DRY | DRY | DRY | DRY | DRY | DRY |
| 11 | WEST UTTAR PRADESH | DRY | DRY | DRY | DRY | DRY | DRY | DRY |
| 12 | UTTARAKHAND | DRY | DRY | ISOL | DRY | ISOL | ISOL | ISOL |
| 13 | HARYANA, CHD & DELHI | DRY | DRY | DRY | DRY | DRY | DRY | DRY |
| 14 | PUNJAB | DRY | DRY | DRY | DRY | DRY | DRY | DRY |
| 15 | HIMACHAL PRADESH | DRY | DRY | ISOL | DRY | ISOL | DRY | DRY |
| 16 | JAMMU AND KASHMIR AND LADAKH | DRY | DRY | ISOL | DRY | DRY | ISOL | ISOL |
| 17 | WEST RAJASTHAN | DRY | DRY | DRY | DRY | DRY | DRY | DRY |
| 18 | EAST RAJASTHAN | DRY | DRY | DRY | DRY | DRY | DRY | DRY |
| 19 | WEST MADHYA PRADESH | DRY | DRY | DRY | DRY | DRY | DRY | DRY |
| 20 | EAST MADHYA PRADESH | DRY | DRY | DRY | DRY | DRY | DRY | DRY |
| 21 | GUJRAT REGION | DRY | DRY | DRY | DRY | DRY | DRY | DRY |
| 22 | SAURASHTRA & KUTCH | DRY | DRY | DRY | DRY | DRY | DRY | DRY |
| 23 | KONKAN & GOA | DRY | DRY | DRY | DRY | DRY | DRY | DRY |
| 24 | MADHYA MAHARASHTRA | DRY | DRY | DRY | DRY | DRY | DRY | DRY |
| 25 | MARATHWADA | DRY | DRY | DRY | DRY | DRY | DRY | DRY |
| 26 | VIDARBHA | DRY | DRY | DRY | DRY | DRY | DRY | DRY |
| 27 | CHATTISGARH | DRY | DRY | DRY | DRY | DRY | DRY | DRY |
| 28 | COASTAL ANDHRA PRADESH | FWS | ISOL | ISOL | ISOL | ISOL | ISOL | ISOL |
| 29 | TELANGANA | DRY | DRY | DRY | DRY | DRY | DRY | DRY |
| 30 | RAYALASEEMA | SCT | SCT | ISOL | ISOL | ISOL | ISOL | ISOL |
| 31 | TAMILNADU & PUDUCHERRY | FWS | SCT | ISOL | ISOL | ISOL | ISOL | ISOL |
| 32 | COSTAL KARNATAKA | SCT | SCT | ISOL | DRY | DRY | DRY | DRY |
| 33 | NORTH INTERIOR KARNATAKA | DRY | ISOL | DRY | DRY | DRY | DRY | DRY |
| 34 | SOUTH INTERIOR KARNATAKA | SCT | ISOL | ISOL | DRY | DRY | DRY | DRY |
| 35 | KERALA | FWS | FWS | SCT | SCT | ISOL | ISOL | ISOL |
| 36 | LAKSHDWEEP | SCT | FWS | FWS | SCT | SCT | SCT | SCT |

| Legend | Category | %Stations |
|--------|-------------------------------|-----------|
| WS | Widespread/Most Places | 76-100 |
| FWS | Fairly Widespread/Many Places | 51-75 |
| SCT | Scattered/ A Few Places | 26-50 |
| ISOL | Isolated Places | 1-25 |
| DRY | No Rain | 0 |

*Red color warning does not mean "Red Alert" Red color warning means "Take Action"
Forecast and warning for any day is valid from 0830 hours IST of day till 0830 hours IST of next day
For more details kindly visit <https://mausam.imd.gov.in> or contact 011-2434-4599

(Service to the nation since 1875)

Fig. 1: Maximum Temperatures Dated 2025-12-02

Fig. 2: Departure of Maximum Temp. Dated 2025-12-02

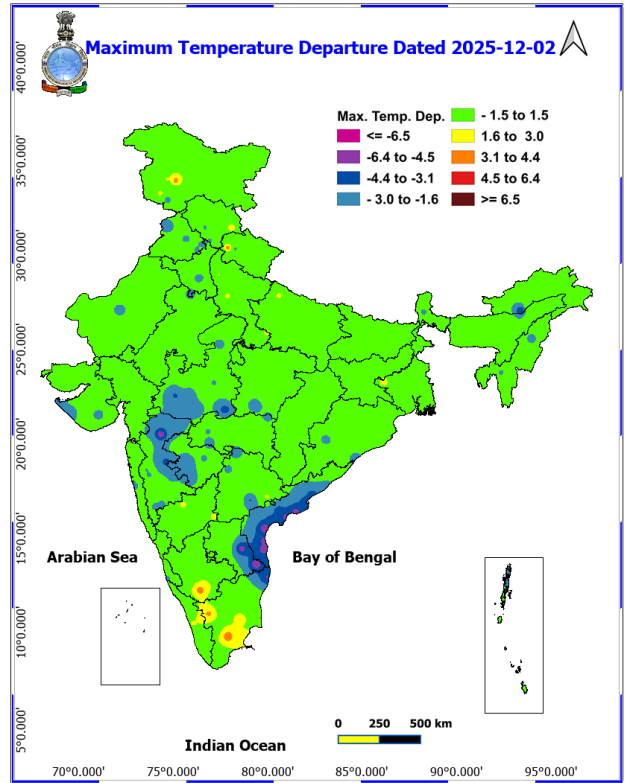
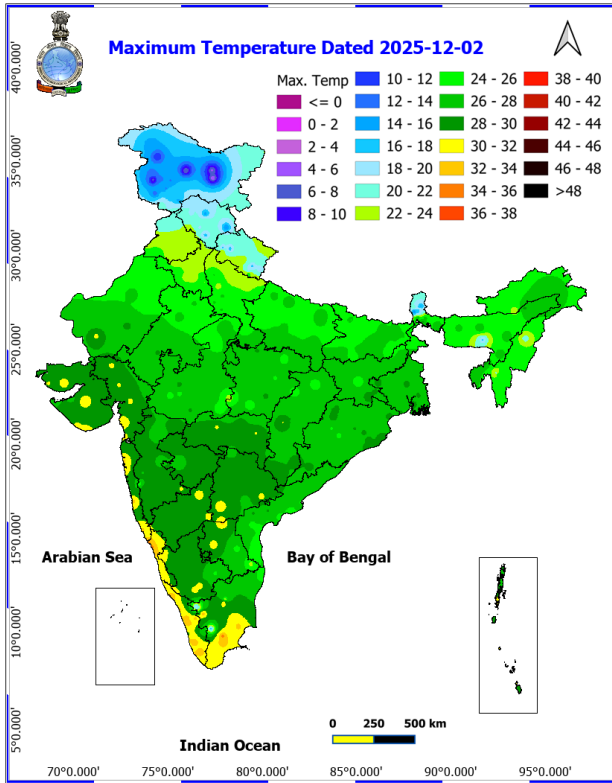
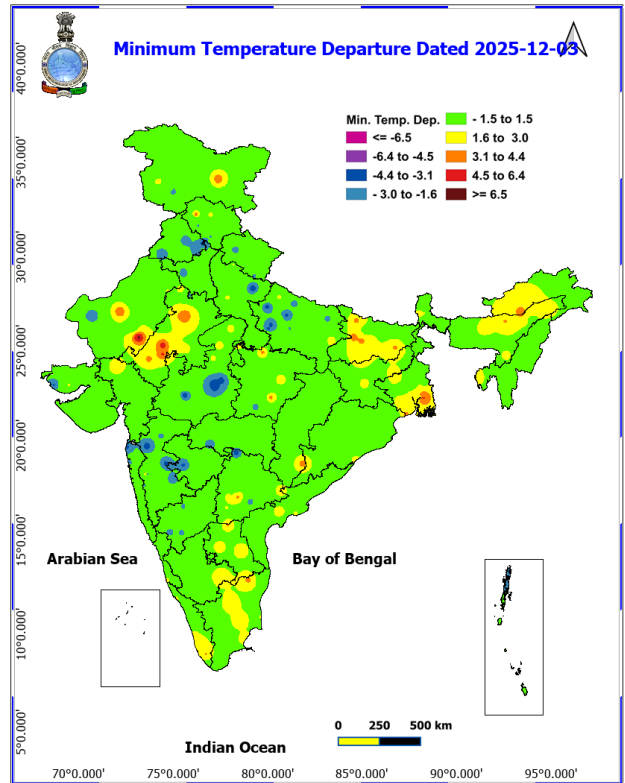
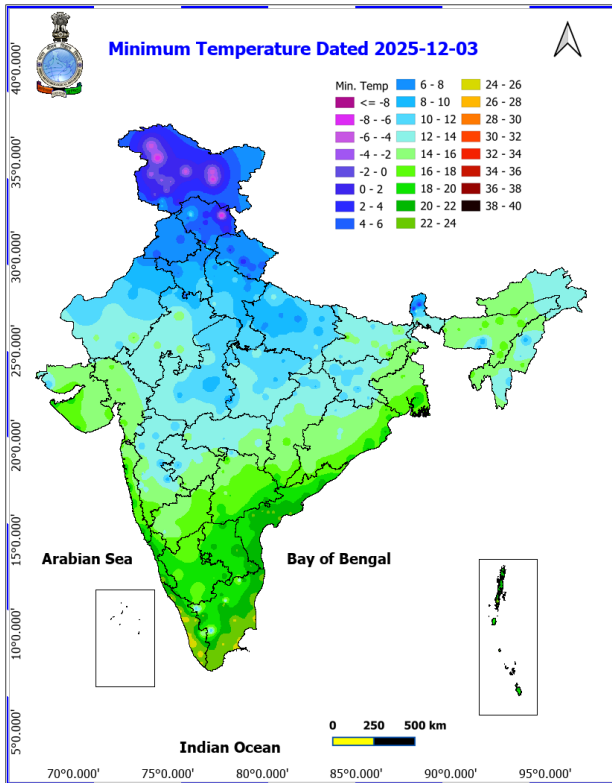
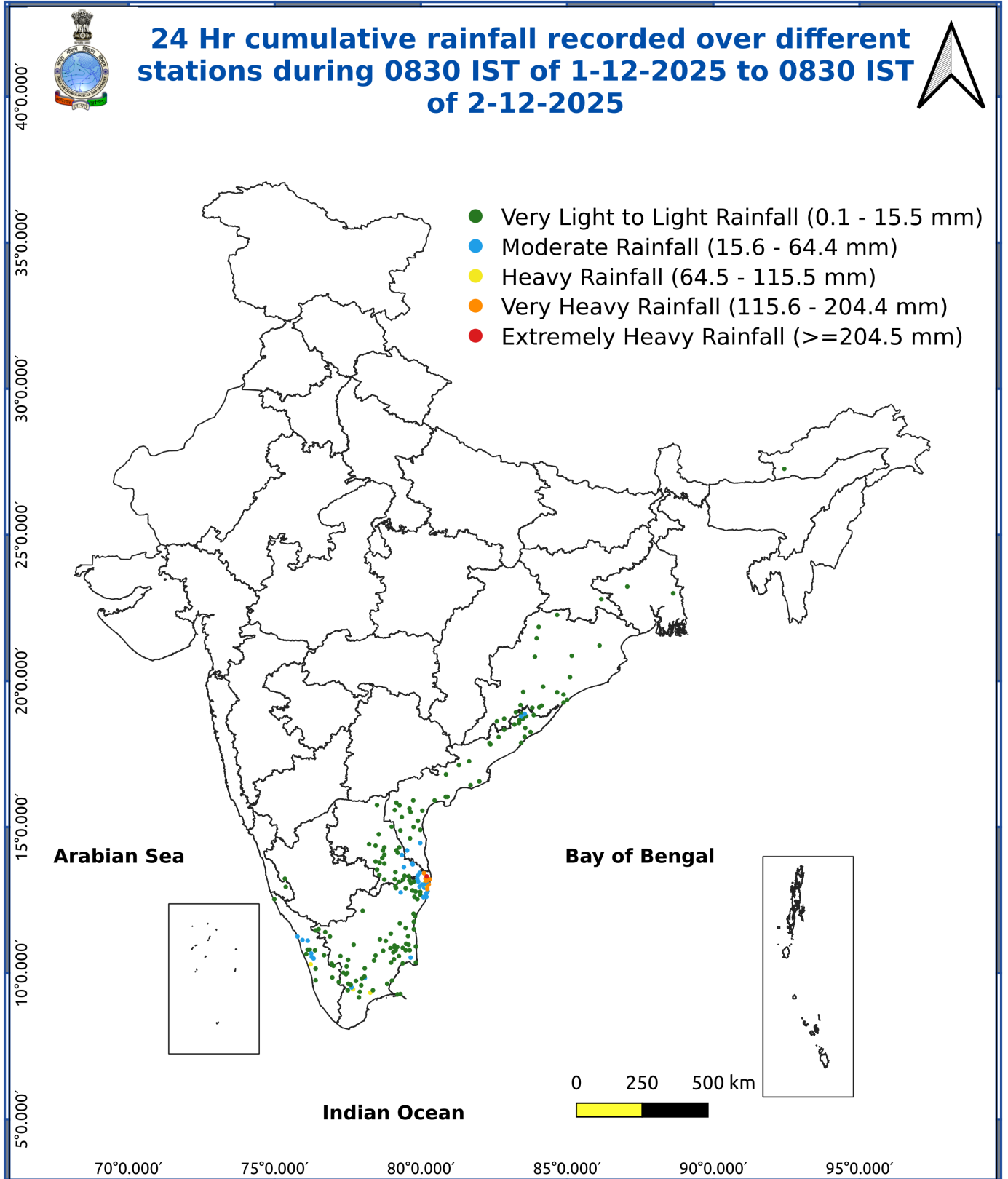


Fig. 3: Minimum Temperatures Dated 2025-12-03

Fig. 4: Departure of Minimum Temp. Dated 2025-12-03





Impact and Actions

- **Isolated heavy to very heavy rain and strong winds coastal districts of north Tamil Nadu, Puducherry , south coastal Andhra Pradesh and Rayalseema on 3rd December.**

Impact Expected:

- Breaking of tree branches, uprooting of small trees. Damage to orchards, horticulture & floriculture, standing crops including banana, papaya and drumstick trees due to inundation, winds and sea spray.
- Damage to Kutcha roads and culverts.
- Inundation/ water logging in low-lying areas in coastal districts due to heavy rainfall and flash flood. Flooding of escape routes and damage to salt pans.
- Riverine flooding in some river catchments. Please refer advisories by Central Water Commission in this regard.
- Occasional reduction in visibility due to heavy rainfall.
- Disruption of traffic due to water logging.
- Localized Landslides/Mudslides.

Action suggested:

- Total suspension of fishing operations.
- People in affected areas to remain indoors.
- Take safe shelters; do not take shelter under trees, as there could be lightning.
- Movement in motor boats unsafe.
- Judicious regulation of offshore/onshore operations
- People are advised to keep a watch on the weather for worsening conditions and be ready to move to safer places accordingly.
- Tourism and recreational activities to be regulated.
- Surface transport and helicopter services to be regulated.

Agromet advisories for various parts of the country

Agromet advisories for likely impact of Heavy Rainfall

- In **Tamil Nadu**, drain out excess rain water from the fields of rice, groundnut, sugarcane, cotton, black gram, maize and vegetables and plantations of coconut, banana, areca nut, mango, rubber, cinnamon and black pepper. Strengthen irrigation channels and field bunds in rice to avoid crop lodging. Provide support to banana plants with wooden poles to prevent them from falling.
- In **Andhra Pradesh**, provide extensive drainage in *rabi* rice nurseries, transplanted rice, Bengal gram, red gram, maize, jowar, already sown crops of ragi, chickpea, black gram, vegetables and orchards. Keep the harvested produce of rice, maize, groundnut and cotton to safer places. Postpone picking of cotton, harvesting of rice and sowing of ragi, chickpea & black gram.
- In **Kerala**, make necessary arrangements to drain out excess rain water from the fields of rice, vegetables and plantations of banana, coconut, cardamom and black pepper. Carry out propping in banana to prevent their falling due to heavy rainfall. Undertake staking for vegetables grown in pandals.

Livestock / Fishery

- Keep the animals inside the shed during heavy rainfall and provide them balanced feed.
- Store feed and fodder in a safe place to prevent spoilage.
- Construct an outlet with proper netting around the ponds to drain out excess water, thereby preventing fish from escaping in case of overflow.

Agromet advisories for likely impact of Thunderstorm / Gusty Winds

***Red color warning does not mean "Red Alert" Red color warning means "Take Action"**
Forecast and warning for any day is valid from 0830 hours IST of day till 0830 hours IST of next day
For more details kindly visit <https://mausam.imd.gov.in> or contact 011-2434-4599

(Service to the nation since 1875)

- Provide mechanical support to horticultural crops and staking or support to vegetables and young fruit plants / fruit-bearing plants to avoid lodging due to strong winds.

Agromet advisories for likely impact of Cold Waves/ Low Temperatures

- In **Punjab, Rajasthan** and **north Madhya Maharashtra**, apply light and frequent irrigation to the standing crops in the evening to protect the crops from low temperature stress. Use mulching and cover vegetable nurseries and young fruit plants with straw / polythene sheets to maintain optimum soil temperature. Cover banana bunches with 6% perforated plastic bags for protection from low temperatures. In **north Madhya Maharashtra**, erect shade nets around grape vines and pomegranate orchards to minimize cold impact.

Legends & abbreviations:

Region wise classification of meteorological Sub-Divisions:

- **Northwest India:** Western Himalayan Region (Jammu-Kashmir-Ladakh-Gilgit-Baltistan-Muzaffarabad, Himachal Pradesh and Uttarakhand); Punjab, Haryana-Chandigarh-Delhi; West Uttar Pradesh, East Uttar Pradesh, West Rajasthan and East Rajasthan.
- **Central India:** West Madhya Pradesh, East Madhya Pradesh, Vidarbha and Chhattisgarh.
- **East India:** Bihar, Jharkhand, Sub-Himalayan West Bengal & Sikkim; Gangetic West Bengal, Odisha and Andaman & Nicobar Islands.
- **Northeast India:** Arunachal Pradesh, Assam & Meghalaya and Nagaland, Manipur, Mizoram & Tripura.
- **West India:** Gujarat Region, Saurashtra & Kutch, Konkan & Goa, Madhya Maharashtra and Marathawada.
- **South India:** Coastal Andhra Pradesh & Yanam, Telangana, Rayalaseema, Coastal Karnataka, North Interior Karnataka, South Interior Karnataka, Kerala & Mahe, Tamil Nadu, Puducherry & Karaikal and Lakshadweep.

LEGENDS

- 1 अंडमान और निकोबार द्वीप समुह
- 2 अरुणाचल प्रदेश
- 3 असम और मेघालय
- 4 नागालैंड मनीपुर मीजोरम और त्रिपुरा
- 5 उप हिमालय पश्चिम बंगाल एवं सिक्किम
- 6 पश्चिम बंगाल
- 7 ओडिसा
- 8 झारखंड
- 9 बिहार
- 10 पूर्वी उत्तर प्रदेश
- 11 पश्चिम उत्तर प्रदेश
- 12 उत्तराखंड
- 13 हरियाणा चंडिगढ़ एवं दिल्ली
- 14 पंजाब
- 15 हिमाचल प्रदेश
- 16 जम्मू एवं कश्मीर एवं लद्दाख
- 17 पश्चिम राजस्थान
- 18 पूर्वी राजस्थान
- 19 पश्चिम मध्य प्रदेश
- 20 पूर्वी मध्य प्रदेश
- 21 गुजरात क्षेत्र
- 22 सौराष्ट्र एवं कच्छ
- 23 कोंकण एवं गोवा
- 24 मध्य महाराष्ट्र
- 25 मराठावाडा
- 26 विदर्भ
- 27 छत्तीसगढ़
- 28 तटीय आंध्र प्रदेश एवं यनम
- 29 तेलंगाना
- 30 रायलसीमा
- 31 तमिलनाडु, पुदुचेरी एवं कराईकल
- 32 तटिय कर्नाटक
- 33 आंतरिक उत्तरी कर्नाटक
- 34 आंतरिक दक्षिणी कर्नाटक
- 35 केरल एवं माहे
- 36 लक्षद्वीप



1. Andaman & Nicobar Islands
2. Arunachal Pradesh
3. Assam & Meghalaya
4. Nagaland, Manipur, Mizoram & Tripura
5. Sub-Himalayan West Bengal & Sikkim
6. Gangetic West Bengal
7. Orissa
8. Jharkhand
9. Bihar
10. East Uttar Pradesh
11. West Uttar Pradesh
12. Uttarakhand
13. Haryana, Chd & Delhi
14. Punjab
15. Himachal Pradesh
16. Jammu & Kashmir and Ladakh
17. West Rajasthan
18. East Rajasthan
19. West Madhya Pradesh
20. East Madhya Pradesh
21. Gujarat
22. Saurashtra
23. Konkan & Goa
24. Madhya Maharashtra
25. Marathawada
26. Vidharbha
27. Chhattisgarh
28. Coastal Andhra Pradesh & Yanam
29. Telangana
30. Rayalaseema
31. Tamilnadu, Puducherry & Karaikal
32. Coastal Karnataka
33. North Interior Karnataka
34. South Interior Karnataka
35. Kerala & Mahe
36. Lakshadweep

SPATIAL DISTRIBUTION (% of Stations reporting)

| % Stations | Category | % Stations | Category |
|------------|--------------------------------------|------------|-------------------------------|
| 76-100 | Widespread (WS/ Most Places) | 26-50 | Scattered (SCT/ A Few Places) |
| 51-75 | Fairly Widespread (FWS/ Many Places) | 1-25 | Isolated (ISOL) |

Subdivision Colour

- NO WARNING
- WATCH (BE UPDATED)
- ALERT (BE PREPARED TO TAKE ACTION)
- WARNING (TAKE ACTION)

Probabilistic Forecast

| Terms | Probability of Occurrence (%) |
|-------------|-------------------------------|
| Unlikely | < 25 |
| Likely | 25 - 50 |
| Very Likely | 50 - 75 |
| Most Likely | > 75 |

- | | | | |
|--------------------------|-----------------|----------------------|--------------------|
| Heavy Rain | Very Heavy Rain | Extremely Heavy Rain | Heavy Snow |
| Thunderstorm & Lightning | Hailstorm | Dust Storm | Dust Raising Winds |
| Strong surface winds | Heat Wave | Hot Day | Warm Night |
| Cold Wave | Cold Day | Ground Frost | Fog |
| Hot & Humid | | | |

*Red color warning does not mean "Red Alert" Red color warning means "Take Action"

Forecast and warning for any day is valid from 0830 hours IST of day till 0830 hours IST of next day

For more details kindly visit <https://mausam.imd.gov.in> or contact 011-2434-4599

(Service to the nation since 1875)

LEGENDS

WARNING

| |
|-------------------------|
| WARNING (TAKE ACTION) |
| ALERT (BE PREPARED) |
| WATCH (BE UPDATED) |
| NO WARNING (NO ACTION) |

Probabilistic Forecast

| Terms | Probability of Occurrence (%) |
|-------------|-------------------------------|
| Unlikely | < 25 |
| Likely | 25 - 50 |
| Very Likely | 50 - 75 |
| Most Likely | > 75 |



Heavy: 64.5 to 115.5 mm/cm *
Very Heavy: 115.6 to 204.4 mm/cm*
Extremely Heavy: > 204.4 mm/cm *



When maximum temperature of a station reaches $\geq 40^{\circ}\text{C}$ for plains and $\geq 30^{\circ}\text{C}$ for hilly regions
(a) Based on Departure from normal

Heat Wave: Maximum Temperature Departure from normal 4.5°C to 6.4°C .
Severe Heat Wave: Maximum Temperature Departure from normal $\geq 6.5^{\circ}\text{C}$

(b). Based on Actual maximum temperature

Heat Wave: When actual maximum temperature $\geq 45^{\circ}\text{C}$.
Severe Heat Wave: When actual maximum temperature $\geq 47^{\circ}\text{C}$

(c). Criteria for heat wave for coastal stations

When maximum temperature departure is $> 4.5^{\circ}\text{C}$ from normal. Heat Wave may be described provided maximum temperature $\geq 37^{\circ}\text{C}$



When maximum temperature remains 40°C

Warm Night: When minimum temperature departure 4.5°C to 6.4°C .
Severe Warm Night: When minimum temperature departure $> 6.4^{\circ}\text{C}$.



When minimum temperature of a station $\leq 10^{\circ}\text{C}$ for plains and $\leq 0^{\circ}\text{C}$ for hilly regions.

(a). Based on departure

Cold Wave: Minimum Temperature Departure from normal -4.5°C to -6.4°C .
Severe Cold Wave: Minimum Temperature Departure from normal $\leq -6.5^{\circ}\text{C}$

(b) Based on actual Minimum Temperature (for Plains only)

Cold Wave : When Minimum Temperature is $\leq 4.0^{\circ}\text{C}$
Severe Cold Wave: When Minimum Temperature is $\leq 2.0^{\circ}\text{C}$

(c) For Coastal Stations

When Minimum Temperature departure is $\leq -4.5^{\circ}\text{C}$ & actual Minimum Temperature is $\leq 15^{\circ}\text{C}$



When minimum temperature of a station $\leq 10^{\circ}\text{C}$ for plains and $\leq 0^{\circ}\text{C}$ for hilly regions
Based on departure

Cold Day: Maximum Temperature Departure from normal -4.5°C to -6.4°C .
Severe Cold Day: Maximum Temperature Departure from normal $\leq -6.5^{\circ}\text{C}$



Phenomenon of small droplets suspended in air and the horizontal visibility $< 1\text{km}$

Moderate Fog: When the visibility between 500-200 metres
Dense Fog: when the visibility between 50- 200 metres
Very Dense Fog: when the visibility < 50 metres



Sudden electrical discharges manifested by a flash of light (Lightning) and a sharp rumbling sound (thunder)



An ensemble of particles of dust or sand energetically lifted to great heights by a strong and turbulent wind.



Ice deposits on ground

Air temperature $\leq 4^{\circ}\text{C}$ (over Plains)



A strong wind that rises suddenly, lasts for atleast 1 minute.

Moderate: Wind speed 52-61 kmph
Severe: Wind speed 62-87 kmph
Very Severe: Wind speed > 87 kmph



Effect of various waves in the sea over specific area

Rough to very rough: Wind speed 41-62 kmph (22-33 knots) & Wave height 2.5-6 metre
High to very high: Wind speed 63-117 kmph (34-63 knots) & Wave height 6-14 metre
Phenomenal: Wind speed > 117 kmph (> 63 knots) & Wave height > 14 metre



Cyclonic Storm: Wind speed 62-87 kmph (34-47 knots)
Severe Cyclonic Storm: Wind speed 88-117 kmph (48-63 knots)
Very Severe Cyclonic Storm: Wind speed 118-165 kmph (64 - 89 knots)
Extremely Severe Cyclonic Storm: Wind speed 166-220 kmph (90 -119 knots)
Super Cyclone Storm: Wind speed > 220 kmph (> 119 knots)

*Red color warning does not mean "Red Alert" Red color warning means "Take Action"

Forecast and warning for any day is valid from 0830 hours IST of day till 0830 hours IST of next day

For more details kindly visit <https://mausam.imd.gov.in> or contact 011-2434-4599

(Service to the nation since 1875)