

2025-08-19

Time of Issue: 19:52:00 hours IST  
(Night)

**ALL INDIA WEATHER SUMMARY AND FORECAST BULLETIN**

**Significant Weather Features**

**Weather Forecast and Warnings:**

**West India:**

**Extremely heavy rainfall** very likely at isolated places over **north Konkan (including Mumbai), south Gujarat state and Madhya Maharashtra on 19<sup>th</sup> & 20<sup>th</sup>; Saurashtra & Kutch during 19<sup>th</sup>-21<sup>st</sup> August.**

Isolated to scattered **heavy to very heavy rainfall** likely over Madhya Maharashtra, Konkan (including Mumbai) & Goa during 19<sup>th</sup>-21<sup>st</sup>; Gujarat State during 19<sup>th</sup>-22<sup>nd</sup> August.

Isolated **heavy rainfall** likely over Konkan & Goa, Madhya Maharashtra, Gujarat State during 7 days, Marathwada on 19<sup>th</sup> August.

Strong surface winds (speed reaching 40-50 kmph) very likely over the region till 22<sup>nd</sup> August.

Light to moderate rainfall at most/many places very likely over the region during next 7 days.

**South Peninsular India:**

**Extremely heavy rainfall** very likely at isolated places over north Telangana on 19<sup>th</sup> August.

Isolated **heavy rainfall** likely over Coastal Karnataka, Telangana on 19<sup>th</sup> & 20<sup>th</sup>; Kerala & Mahe, Coastal Andhra Pradesh, Interior Karnataka on 19<sup>th</sup> August with isolated **very heavy rainfall over South Interior Karnataka and Coastal Karnataka on 19<sup>th</sup> August.**

Strong surface winds (speed reaching 40-50 kmph) very likely over South Peninsular India till 19<sup>th</sup> August.

Light to moderate rainfall at most/many places accompanied with thunderstorm & lightning likely over Rayalaseema, Tamil Nadu, Coastal Andhra Pradesh & Yanam and Telangana during next 5 days.

**East & Central India:**

**Extremely heavy rainfall** very likely at isolated places over Vidarbha on 19<sup>th</sup> August.

Isolated **heavy rainfall** likely over Madhya Pradesh, Chhattisgarh, Sub-Himalayan West Bengal & Sikkim during next 7 days; Vidarbha on 19<sup>th</sup>, 20<sup>th</sup>, 24<sup>th</sup> & 25<sup>th</sup>; Odisha on 19<sup>th</sup>, during 21<sup>st</sup>-23<sup>rd</sup>; Gangetic West Bengal, Jharkhand during 21<sup>st</sup>-25<sup>th</sup>; Bihar during 20<sup>th</sup>-25<sup>th</sup> August **with isolated very heavy rainfall over Chhattisgarh, Madhya Pradesh on 19<sup>th</sup>; Jharkhand on 22<sup>nd</sup>; Bihar on 22<sup>nd</sup> & 23<sup>rd</sup> and Madhya Pradesh during 23<sup>rd</sup>-25<sup>th</sup> and Chhattisgarh during 24<sup>th</sup>-25<sup>th</sup> August.**

Light to moderate rainfall at most/many places accompanied with thunderstorm & lightning likely over the region during next 5 days.

**Northwest India:**

Isolated **heavy rainfall** likely over, Jammu-Kashmir during 22<sup>nd</sup>-24<sup>th</sup>; Himachal Pradesh, Uttarakhand, East Rajasthan during next 7 days; West Rajasthan on 19<sup>th</sup>, Punjab, Haryana on 19<sup>th</sup>, during 22<sup>nd</sup>-25<sup>th</sup>; Uttar Pradesh during 22<sup>nd</sup>-25<sup>th</sup> August with **very heavy rainfall over Uttarakhand, West Uttar Pradesh during 23<sup>rd</sup>-25<sup>th</sup>; East Uttar**

**\*Red color warning does not mean "Red Alert" Red color warning means "Take Action"**

**Forecast and warning for any day is valid from 0830 hours IST of day till 0830 hours IST of next day**

**For more details kindly visit <https://mausam.imd.gov.in> or contact 011-2434-4599**

**(Service to the nation since 1875)**

**Pradesh during 22<sup>nd</sup>-24<sup>th</sup> August.**

Light/moderate rainfall at most/many places accompanied with thunderstorm & lightning likely over Jammu-Kashmir-Ladakh-Gilgit-Baltistan-Muzaffarabad, Uttarakhand & Rajasthan during next 7 days.

**Northeast India:**

Isolated **heavy rainfall** likely to continue over Assam & Meghalaya, Nagaland, Manipur, Mizoram & Tripura, Arunachal Pradesh during 7 days with **very heavy rainfall over Arunachal Pradesh on 21<sup>st</sup>-23<sup>rd</sup>; Tripura, Mizoram during 21<sup>st</sup>-25<sup>th</sup> and Assam & Meghalaya during 21<sup>st</sup>-24<sup>th</sup> August.**

Light/moderate rainfall at many places accompanied with thunderstorm & lightning likely during next 3 days.

### Main Weather Observations:

- ❖ **Rainfall distribution** (from 0830 hours IST to 1730 hours IST of today): **at most places** over Konkan & Goa , Haryana Chandigarh & Delhi, Jharkhand, Gangetic West Bengal, Arunachal Pradesh, Telangana, Chhattisgarh and North Interior Karnataka; **at many places** over West Uttar Pradesh, Odisha, Sub-himalayan West Bengal & Sikkim, Himachal Pradesh, Madhya Maharashtra , Jammu & Kashmir and Ladakh, Punjab, Uttarakhand, Bihar, East Rajasthan, East Uttar Pradesh, West Rajasthan, Nagaland, Manipur, Mizoram & Tripura, Assam & Meghalaya, Andaman & Nicobar Islands, West Madhya Pradesh, Marathwada, Vidarbha, Coastal Andhra Pradesh & Yanam, East Madhya Pradesh, Rayalaseema, Saurashtra & Kutch, Tamilnadu Puducherry & Karaikal, Coastal Karnataka, South Interior Karnataka, Kerala & Mahe, Gujarat Region and Lakshadweep ; **Dry** over rest of the country.
- ❖ **Significant rainfall recorded(in cm)** (from 0830 hours IST to 1730 hours IST of today): Konkan & goa : Matheran (dist Raigad) 18, Mumbai (santacruz) AP (dist ) 16, Vikhroli 16, Juhu 12, Bandra 10, Byculla 10, Dahanu (dist Palghar) 13, T.b.i.a (dist Thane) 11, Mumbai (colaba) (dist ) 6; Saurashtra & kutch: Dwarka (dist Devbhumi Dwarka) 14; Kutch 5, Jamnagar 4, Amreli 3; Gujarat Region: Valsad 7, Daman 4; Madhya maharashtra : Mahabaleshwar (dist Satara) 14; West madhya pradesh: Indore (dist Indore) 7; Himachal pradesh: Solan (dist Solan) 6.
- ❖ **Heavy Rainfall observed** (from 0830 hours IST to 1730 hours IST of today):**Heavy to very heavy rain** at a few places over Konkan & Goa , at isolated places over Saurashtra & Kutch and Madhya Maharashtra **Heavy rain** at isolated places over West Madhya Pradesh
- ❖ **Minimum Temperature Departures (as on 19-08-2025): markedly above normal(> 5.1°C)** at few places over West Madhya Pradesh and East Madhya Pradesh; at isolated places over Assam & Meghalaya, West Uttar Pradesh, Himachal Pradesh and Saurashtra & Kutch. **appreciably above normal(3.1°C to 5.0°C)** at isolated places over Sub Himalayan West Bengal & Sikkim, Odisha, Bihar, East Uttar Pradesh, East Rajasthan and Gujarat Region. **above normal(1.6°C to 3.0°C)** at many places over Lakshadweep; at few places over Uttarakhand, Haryana-Chandigarh-Delhi and West Rajasthan; at isolated places over Andaman & Nicobar Islands, Gangetic West Bengal, Jharkhand, Madhya Maharashtra, Vidarbha, Chhattisgarh and Tamil Nadu, Puducherry & Karaikal. **near normal(-1.5°C to 1.5°C)** at many places over Jammu-KashmirLadakh-Gilgit-Baltistan-Muzaffarabad, Konkan & Goa, Coastal Andhra Pradesh & Yanam and Telangana; at most places over Arunachal Pradesh, Nagaland, Manipur, Mizoram & Tripura, Punjab, Marathwada, Rayalaseema, Coastal Karnataka, North Interior Karnataka, South Interior Karnataka and Kerala & Mahe. **The lowest minimum temperature** of 16.2°C is reported at GADAG (KARNATAKA) over the Plains of India.
- ❖ **Maximum Temperature Departures (as on 19-08-2025): appreciably above normal(3.1°C to 5.0°C)** at few places over West Rajasthan; at isolated places over Assam & Meghalaya, Sub Himalayan West Bengal & Sikkim, West Uttar Pradesh, Haryana-Chandigarh-Delhi, Punjab, East Rajasthan, West Madhya Pradesh, East Madhya Pradesh, Saurashtra & Kutch and Tamil Nadu, Puducherry & Karaikal. **above normal(1.6°C to 3.0°C)** at many places over Uttarakhand; at few places over Bihar, East Uttar Pradesh, Gujarat Region and Lakshadweep; at isolated places over Odisha, Himachal Pradesh, Vidarbha, Chhattisgarh and Kerala & Mahe. **near normal(-1.5°C to 1.5°C)** at many places over Gangetic West Bengal, Jharkhand and Coastal Karnataka; at most places over Arunachal Pradesh and Nagaland, Manipur, Mizoram & Tripura; at few places over Andaman & Nicobar Islands, Jammu-KashmirLadakh-Gilgit-Baltistan-Muzaffarabad and Madhya Maharashtra; at isolated places over Konkan & Goa, Coastal Andhra Pradesh & Yanam and Telangana. **The highest maximum temperature** of 40.0°C is reported at BARMER (RAJASTHAN), and MADURAI (A) (TAMIL NADU).

\*Red color warning does not mean "Red Alert" Red color warning means "Take Action"

Forecast and warning for any day is valid from 0830 hours IST of day till 0830 hours IST of next day

For more details kindly visit <https://mausam.imd.gov.in> or contact 011-2434-4599

(Service to the nation since 1875)

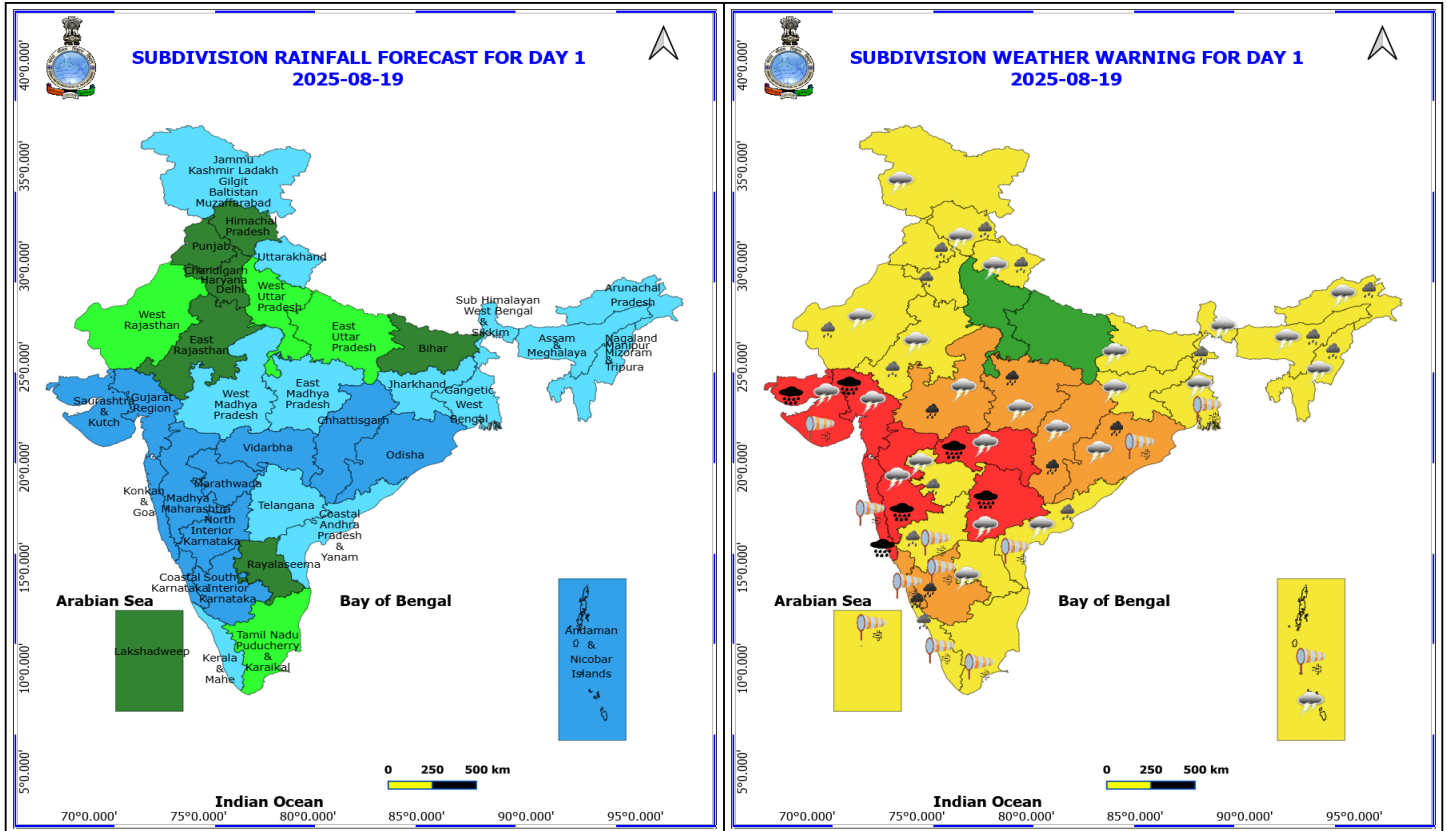


### Meteorological Analysis (Based on 1730 hours IST)

- The **Depression** over south interior Odisha moved west-northwestwards, weakened into a well marked low pressure area and lay over central parts of Chhattisgarh & neighbourhood at 1730 hrs IST of today, the 19<sup>th</sup> August. It is likely to continue to move west-northwestwards across Chhattisgarh and weaken further into a low pressure area over East Madhya Pradesh during next 12 hours.
- 
- The **monsoon trough** now passes through Porbandar, Surat, Nandubar, center of **well marked low pressure area** over central parts of Chhattisgarh & neighbourhood, Puri & thence east southeastward to east Central Bay of Bengal extending upto 1.5 km above mean sea level.
- 
- The **upper air cyclonic circulation** over northeast Arabian Sea & adjoining Gujarat between 5.8 km & 7.6 km above mean sea level persisted.
- 
- The **shear zone** roughly along Lat. 20°N over the Indian region between 3.1 & 4.5 km above mean sea level persisted.
- 
- The **off shore trough** at mean sea level from south Gujarat to north Kerala coasts persisted.
- 
- The **Western Disturbance** as a trough in middle tropospheric westerlies with its axis at 5.8 km above mean sea level roughly along Long. 71°E to the north of Lat. 30°N persisted.
- 

### Weather Outlook for subsequent 3 days

- Scattered to Fairly widespread rainfall likely over western India, western peninsular India.
- Isolated to Scattered rainfall likely over the rest parts of the country.



### 19 August (Day 1)

- ❖ **Heavy to Very Heavy Rainfall with isolated Extremely Heavy Rainfall** very likely at isolated places over Gujarat State, Konkan (including Mumbai) & Goa, Madhya Maharashtra, Telangana and Vidarbha.
- ❖ **Heavy to Very Heavy Rainfall** very likely at isolated places over Chhattisgarh, Coastal Karnataka, Madhya Pradesh, Odisha and South Interior Karnataka.
- ❖ **Heavy Rainfall** very likely at isolated places over Arunachal Pradesh, Assam & Meghalaya, Coastal Andhra Pradesh, Rajasthan, Haryana, Chandigarh & Delhi, Himachal Pradesh, Kerala & Mahe, Marathwada, Nagaland, Manipur, Mizoram and Tripura, North Interior Karnataka, Punjab, Sub Himalayan West Bengal & Sikkim, Uttarakhand and West Madhya Pradesh.
- ❖ **Thunderstorm accompanied with lightning & gusty winds(30-40kmph)** very likely at isolated places over Andaman & Nicobar Islands, Bihar, Jammu-Kashmir-Ladakh-Gilgit-Baltistan-Muzaffarabad, Jharkhand, Odisha and West Bengal & Sikkim.
- ❖ **Thunderstorm accompanied with Lightning** very likely at isolated places over Andhra Pradesh, Arunachal Pradesh, Assam & Meghalaya, Chhattisgarh, Gujarat State, Himachal Pradesh, Madhya Pradesh, Maharashtra, Nagaland, Manipur, Mizoram and Tripura, Rajasthan, Telangana and Uttarakhand.
- ❖ **Strong Surface Winds** very likely at isolated places over Andaman & Nicobar Islands, Coastal Andhra Pradesh, Gangetic West Bengal, Karnataka, Kerala & Mahe, Konkan & Goa, Lakshadweep, Odisha, Saurashtra & Kutch and Tamil Nadu Puducherry & Karaikal.

Squally wind with speed reaching 45 kmph to 55 kmph gusting to 65 kmph is likely to prevail along and off Somalia, Oman coasts, most parts of westcentral Arabian sea and adjoining areas of southwest, eastcentral Arabian Sea.

**\*Red color warning does not mean "Red Alert" Red color warning means "Take Action"**  
Forecast and warning for any day is valid from 0830 hours IST of day till 0830 hours IST of next day  
For more details kindly visit <https://mausam.imd.gov.in> or contact 011-2434-4599

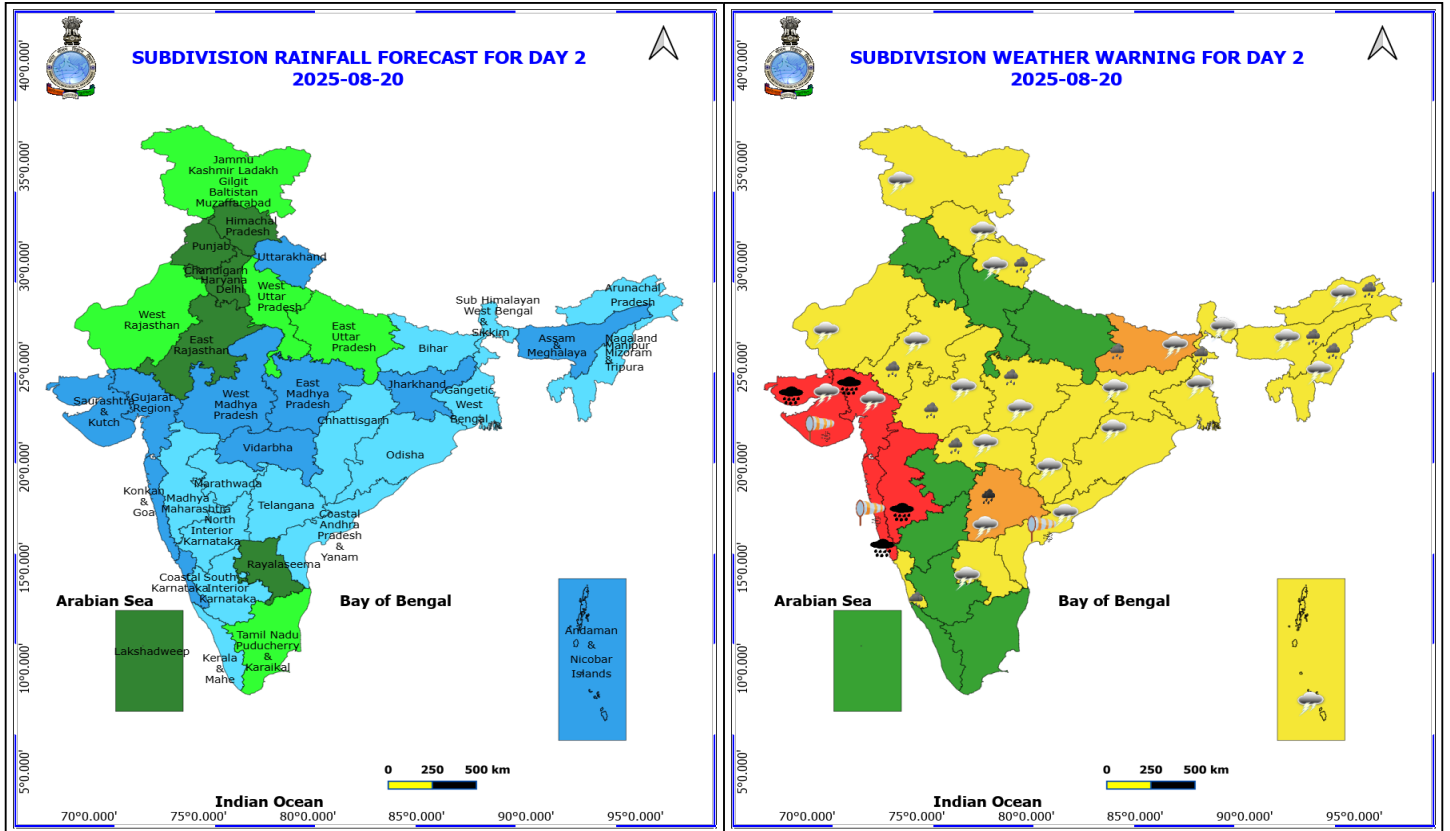
(Service to the nation since 1875)



Squally weather with wind speed reaching 40 - 50 kmph gusting to 60 kmph likely to prevail along and off north Gujarat, Karnataka & Kerala coasts, over Lakshadweep & Comorin areas, Gulf of Mannar, along and off Sri-Lanka coast, over most parts of Bay of Bengal, along and off Tamil Nadu, Andhra Pradesh & Odisha, West Bengal, adjoining Bangladesh coasts, over Andaman Sea.

Squally weather with wind speed reaching 45 - 55 kmph gusting to 65 kmph likely to prevail over along & off south Gujarat coast, Konkan, Goa coasts and adjoining sea areas, most parts of eastcentral, & few parts of northeast Arabian Sea.

Squally wind with speed reaching 50 - 60 kmph gusting to 70 kmph likely to prevail along and off north Konkan, south Gujarat coast and adjoining sea areas.



**20 August (Day 2)**

- ❖ **Heavy to Very Heavy Rainfall with isolated Extremely Heavy Rainfall** very likely at isolated places over Gujarat State, Konkan (including Mumbai) & Goa and Madhya Maharashtra.
  - ❖ **Heavy to Very Heavy Rainfall** very likely at isolated places over Telangana.
  - ❖ **Heavy Rainfall** very likely at isolated places over Arunachal Pradesh, Assam & Meghalaya, Bihar, Coastal Karnataka, East Rajasthan, Madhya Pradesh, Nagaland, Manipur, Mizoram and Tripura, Sub Himalayan West Bengal & Sikkim, Uttarakhand and Vidarbha.
  - ❖ **Thunderstorm accompanied with lightning & gusty winds(30-40kmph)** very likely at isolated places over Andaman & Nicobar Islands, Bihar, Jammu-Kashmir-Ladakh-Gilgit-Baltistan-Muzaffarabad, Jharkhand, Odisha and West Bengal & Sikkim.
  - ❖ **Thunderstorm accompanied with Lightning** very likely at isolated places over Andhra Pradesh, Arunachal Pradesh, Assam & Meghalaya, Chhattisgarh, Gujarat State, Himachal Pradesh, Madhya Pradesh, Nagaland, Manipur, Mizoram and Tripura, Rajasthan, Telangana, Uttarakhand and Vidarbha.
  - ❖ **Strong Surface Winds** very likely at isolated places over Coastal Andhra Pradesh, Konkan & Goa and Saurashtra & Kutch.
- Squally wind with speed reaching 45 kmph to 55 kmph gusting to 65 kmph is likely to prevail along and off Somalia, Oman coasts, most parts of westcentral Arabian sea, adjoining & some parts of southwest, eastcentral Arabian Sea.
- Squally weather with wind speed reaching 40 - 50 kmph gusting to 60 kmph likely to prevail along and off north Gujarat, Karnataka coasts, over most parts westcentral & adjoining eastcentral Bay of Bengal, northwest and adjoining northeast Bay of Bengal, many parts of south Bay of Bengal, north Andhra Pradesh & Odisha, West Bengal

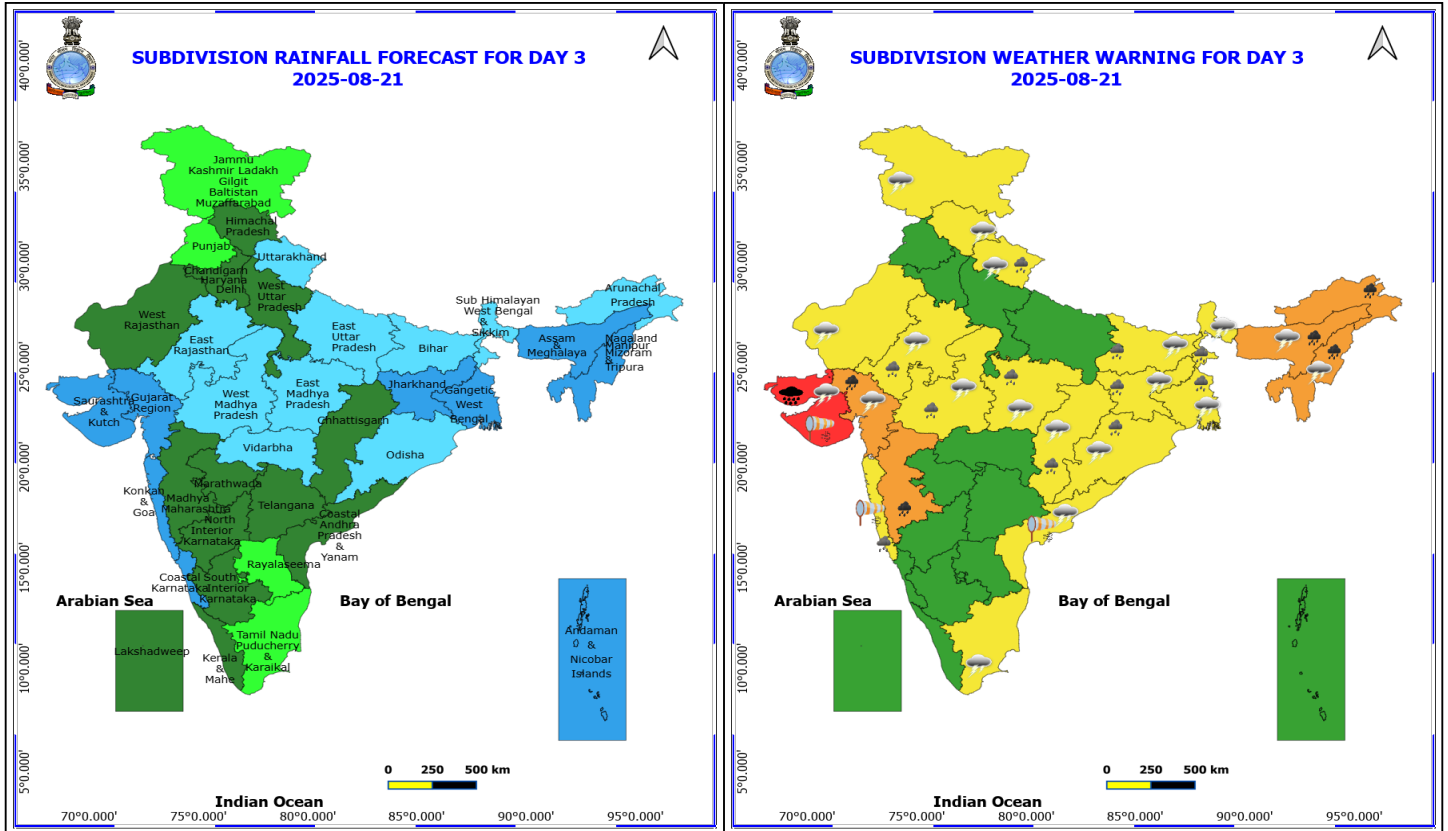
**\*Red color warning does not mean "Red Alert" Red color warning means "Take Action"**  
Forecast and warning for any day is valid from 0830 hours IST of day till 0830 hours IST of next day  
For more details kindly visit <https://mausam.imd.gov.in> or contact 011-2434-4599

(Service to the nation since 1875)

coasts, over Gulf of Mannar.

Squally weather with wind speed reaching 45 - 55 kmph gusting to 65 kmph likely to prevail over along & off south Gujarat coast, Konkan & Goa coasts and adjoining sea areas, most parts of eastcentral Arabian Sea, off north Konkan coast.

Squally wind with speed reaching 50 - 60 kmph gusting to 70 kmph likely to prevail over some parts of eastcentral Arabian sea and off north Konkan coast.



### 21 August (Day 3)

- ❖ **Heavy to Very Heavy Rainfall with isolated Extremely Heavy Rainfall** very likely at isolated places over Saurashtra & Kutch.
- ❖ **Heavy to Very Heavy Rainfall** very likely at isolated places over Arunachal Pradesh, Assam & Meghalaya, Gujarat Region, Madhya Maharashtra and Nagaland, Manipur, Mizoram and Tripura.
- ❖ **Heavy Rainfall** very likely at isolated places over Bihar, Chhattisgarh, East Rajasthan, Jharkhand, Konkan & Goa, Madhya Pradesh, Odisha, Uttarakhand and West Bengal & Sikkim.
- ❖ **Thunderstorm accompanied with lightning & gusty winds(30-40kmph)** very likely at isolated places over Bihar, Jammu-Kashmir-Ladakh-Gilgit-Baltistan-Muzaffarabad, Jharkhand, Odisha and West Bengal & Sikkim.
- ❖ **Thunderstorm accompanied with Lightning** very likely at isolated places over Assam & Meghalaya, Chhattisgarh, Coastal Andhra Pradesh, Gujarat State, Himachal Pradesh, Madhya Pradesh, Nagaland, Manipur, Mizoram and Tripura, Rajasthan, Tamil Nadu Puducherry & Karaikal and Uttarakhand.
- ❖ **Strong Surface Winds** very likely at isolated places over Coastal Andhra Pradesh, Konkan & Goa and Saurashtra & Kutch.

Squally wind with speed reaching 45 kmph to 55 kmph gusting to 65 kmph is likely to prevail along and off Somalia, Oman coasts, most parts of westcentral Arabian sea, adjoining & some parts of southwest, eastcentral Arabian Sea.

Squally weather with wind speed reaching 40 - 50 kmph gusting to 60 kmph likely to prevail over Lakshadweep area, some parts of south Arabian Sea, most parts central & south Bay of Bengal, some parts of northwest Bay of Bengal, Gulf of Mannar.

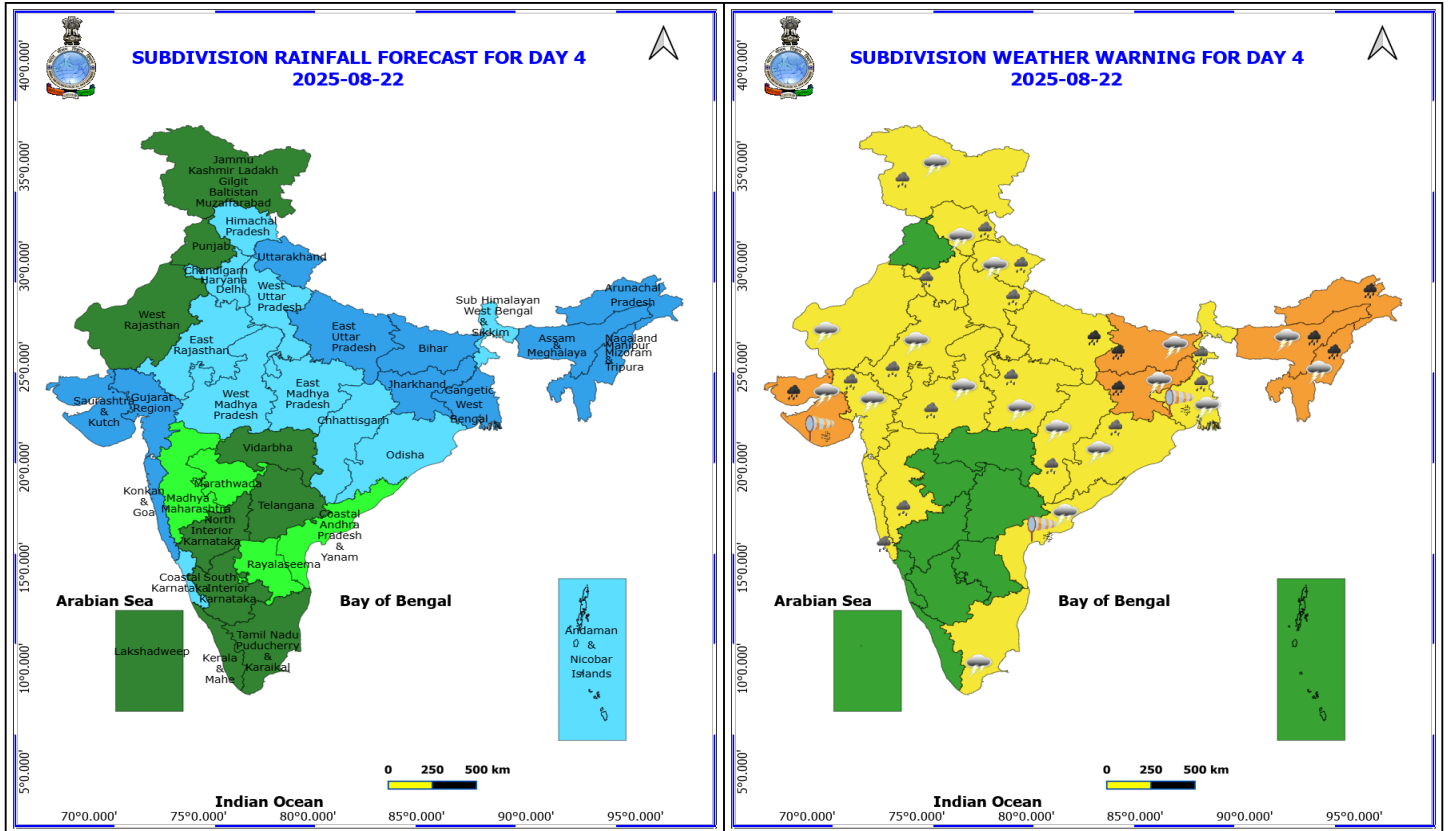
**\*Red color warning does not mean "Red Alert" Red color warning means "Take Action"**  
Forecast and warning for any day is valid from 0830 hours IST of day till 0830 hours IST of next day  
For more details kindly visit <https://mausam.imd.gov.in> or contact 011-2434-4599

(Service to the nation since 1875)



Squally weather with wind speed reaching 45 - 55 kmph gusting to 65 kmph likely to prevail over along & off Gujarat Konkan & Goa coasts and adjoining sea areas, most parts of eastcentral, & northeast Arabian Sea.

Squally wind with speed reaching 50 - 60 kmph gusting to 70 kmph likely to prevail over some parts of eastcentral & adjoining northeast Arabian sea, and off north Konkan coast.



**22 August (Day 4)**

- ❖ **Heavy to Very Heavy Rainfall** likely at isolated places over Arunachal Pradesh, Assam & Meghalaya, Bihar, East Uttar Pradesh, Jharkhand, Nagaland, Manipur, Mizoram and Tripura and Saurashtra & Kutch.
- ❖ **Heavy Rainfall** likely at isolated places over Chhattisgarh, East Rajasthan, Gujarat Region, Haryana, Chandigarh & Delhi, Himachal Pradesh, Jammu-Kashmir-Ladakh-Gilgit-Baltistan-Muzaffarabad, Konkan & Goa, Madhya Maharashtra, Madhya Pradesh, Odisha, Uttarakhand, West Bengal & Sikkim and West Uttar Pradesh.
- ❖ **Thunderstorm accompanied with lightning & gusty winds(30-40kmph)** likely at isolated places over Bihar, Gangetic West Bengal, Jammu-Kashmir-Ladakh-Gilgit-Baltistan-Muzaffarabad, Jharkhand and Odisha.
- ❖ **Thunderstorm accompanied with Lightning** likely at isolated places over Assam & Meghalaya, Chhattisgarh, Coastal Andhra Pradesh, Gujarat State, Himachal Pradesh, Madhya Pradesh, Nagaland, Manipur, Mizoram and Tripura, Rajasthan, Tamil Nadu Puducherry & Karaikal and Uttarakhand.
- ❖ **Strong Surface Winds** likely at isolated places over Coastal Andhra Pradesh, Gangetic West Bengal and Saurashtra & Kutch.

Squally wind with speed reaching 45 kmph to 55 kmph gusting to 65 kmph is likely to prevail along and off Somalia, Oman coasts, most parts of westcentral Arabian sea, adjoining & some parts of southwest, eastcentral Arabian Sea.

Squally weather with wind speed reaching 40 - 50 kmph gusting to 60 kmph likely to prevail along and off south Konkan, Goa coasts, some parts of southeast Arabian Sea, Lakshadweep area, over many parts of central & north Bay of Bengal, along and off West Bengal, adjoining Bangladesh coast.

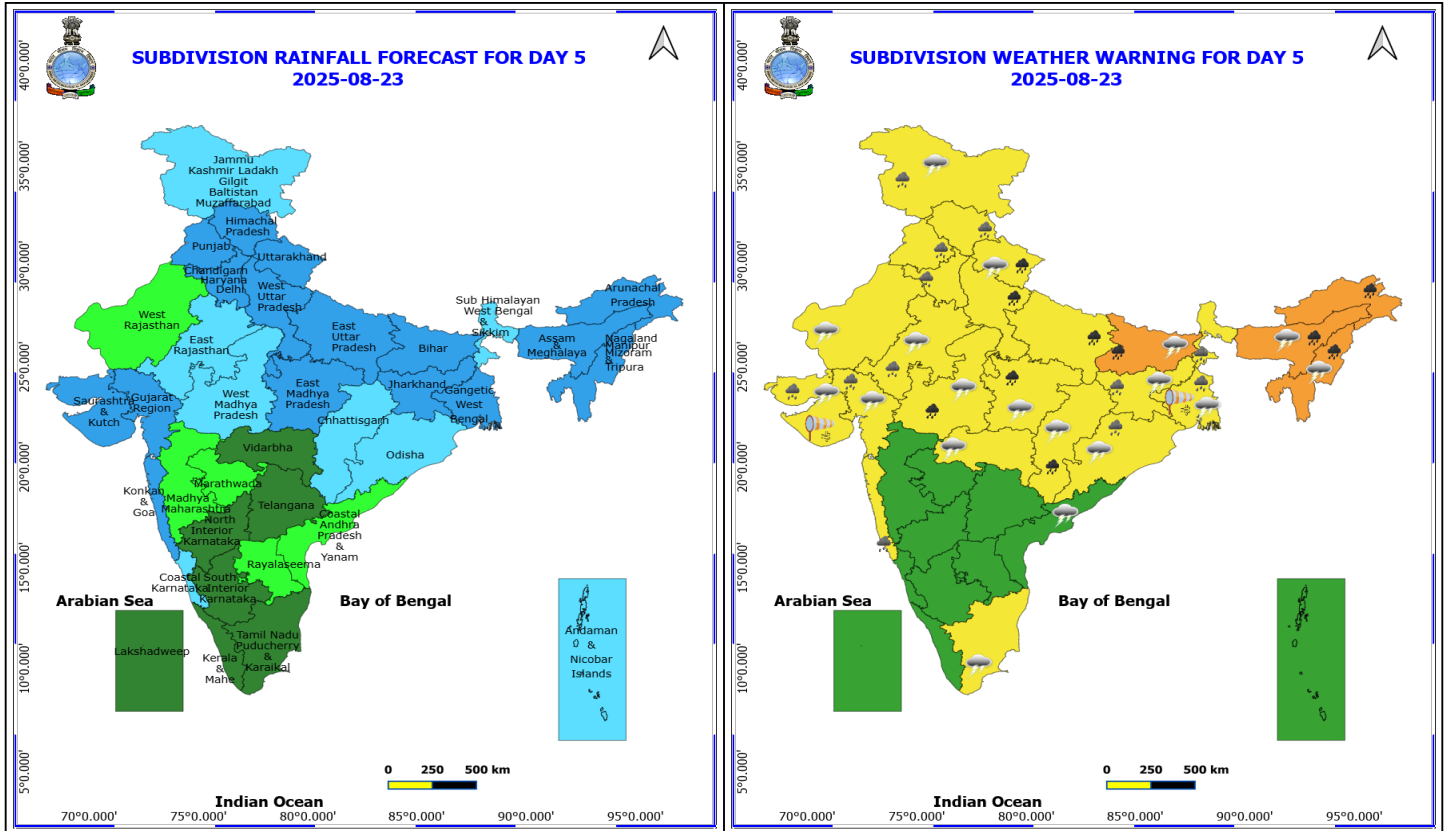
Squally weather with wind speed reaching 45 - 55 kmph gusting to 65 kmph likely to prevail over Gujarat, north Konkan coasts and adjoining sea areas, most parts of eastcentral, northeast Arabian Sea.

**\*Red color warning does not mean "Red Alert" Red color warning means "Take Action"**  
Forecast and warning for any day is valid from 0830 hours IST of day till 0830 hours IST of next day  
For more details kindly visit <https://mausam.imd.gov.in> or contact 011-2434-4599

(Service to the nation since 1875)



Squally weather with wind speed reaching 50 - 60 kmph gusting to 70 kmph likely to prevail over few parts eastcentral & northeast Arabian sea.



## 23 August (Day 5)

- ❖ **Heavy to Very Heavy Rainfall** likely at isolated places over Arunachal Pradesh, Assam & Meghalaya, Bihar, Chhattisgarh, Madhya Pradesh, Nagaland, Manipur, Mizoram and Tripura, Uttar Pradesh and Uttarakhand.
- ❖ **Heavy Rainfall** likely at isolated places over East Rajasthan, Gujarat State, Haryana, Chandigarh & Delhi, Himachal Pradesh, Jammu-Kashmir-Ladakh-Gilgit-Baltistan-Muzaffarabad, Jharkhand, Konkan & Goa, Odisha, Punjab and West Bengal & Sikkim.
- ❖ **Thunderstorm accompanied with lightning & gusty winds(30-40kmph)** likely at isolated places over Bihar, Gangetic West Bengal, Jammu-Kashmir-Ladakh-Gilgit-Baltistan-Muzaffarabad, Jharkhand and Odisha.
- ❖ **Thunderstorm accompanied with Lightning** likely at isolated places over Assam & Meghalaya, Chhattisgarh, Coastal Andhra Pradesh, Gujarat State, Madhya Pradesh, Nagaland, Manipur, Mizoram and Tripura, Rajasthan, Tamil Nadu Puducherry & Karaikal, Uttarakhand and Vidarbha.
- ❖ **Strong Surface Winds** likely at isolated places over Gangetic West Bengal and Saurashtra & Kutch.

Squally wind with speed reaching 45 kmph to 55 kmph gusting to 65 kmph is likely to prevail along and off Somalia, Oman coasts, many parts of northwest Arabian Sea, most parts of westcentral Arabian sea, adjoining & some parts of southwest, eastcentral Arabian Sea.

Squally weather with wind speed reaching 40 - 50 kmph gusting to 60 kmph likely to prevail along and off south Konkan, Goa coasts, over many parts of central & north Bay of Bengal, along and off West Bengal, adjoining Bangladesh coast.

Squally weather with wind speed reaching 45 - 55 kmph gusting to 65 kmph likely to prevail over Gujarat, north Konkan coasts and adjoining sea areas, most parts of eastcentral, northeast Arabian Sea, over some parts of north

**\*Red color warning does not mean "Red Alert" Red color warning means "Take Action"**

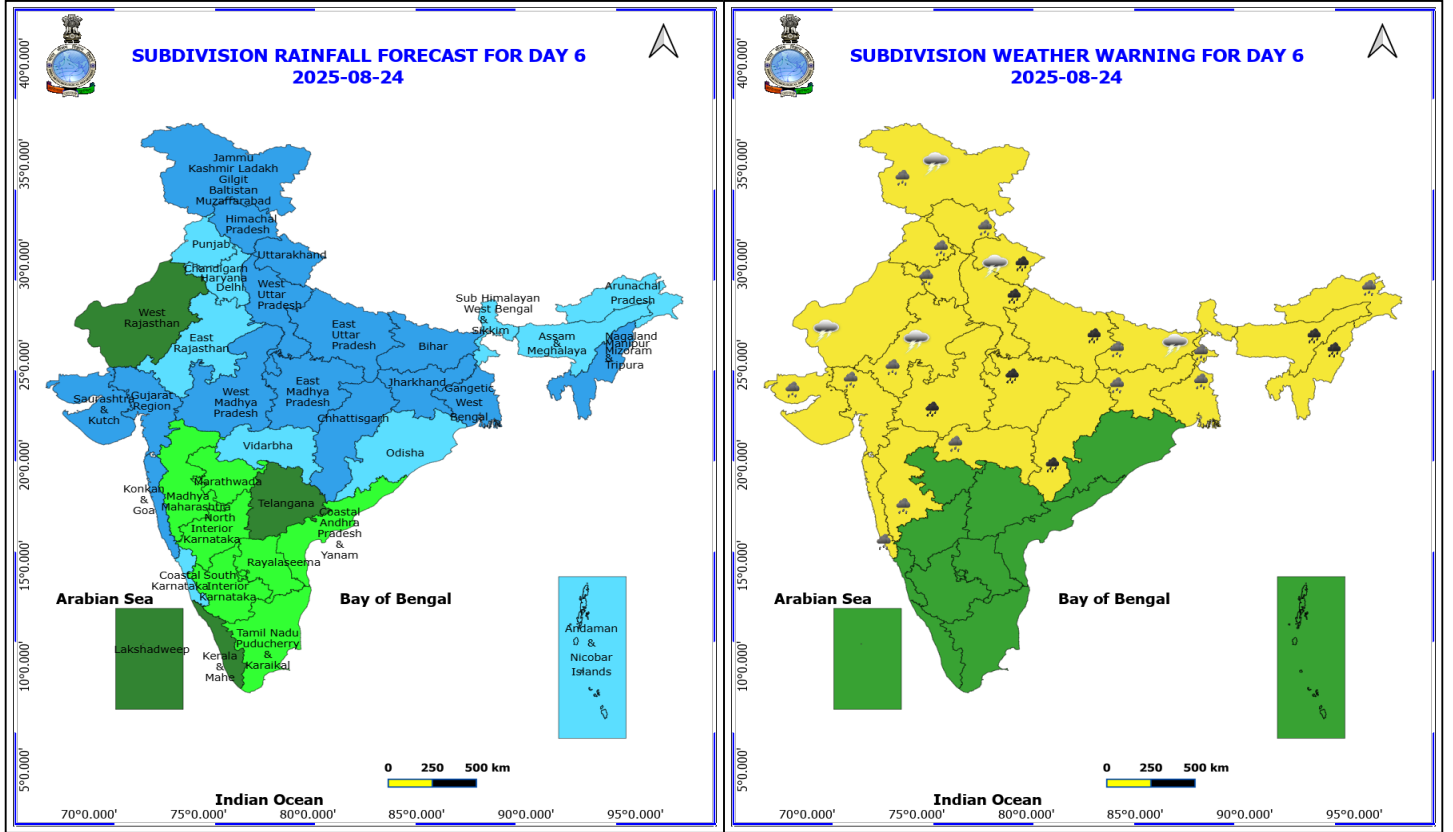
Forecast and warning for any day is valid from 0830 hours IST of day till 0830 hours IST of next day

For more details kindly visit <https://mausam.imd.gov.in> or contact 011-2434-4599

(Service to the nation since 1875)



Bay of Bengal.



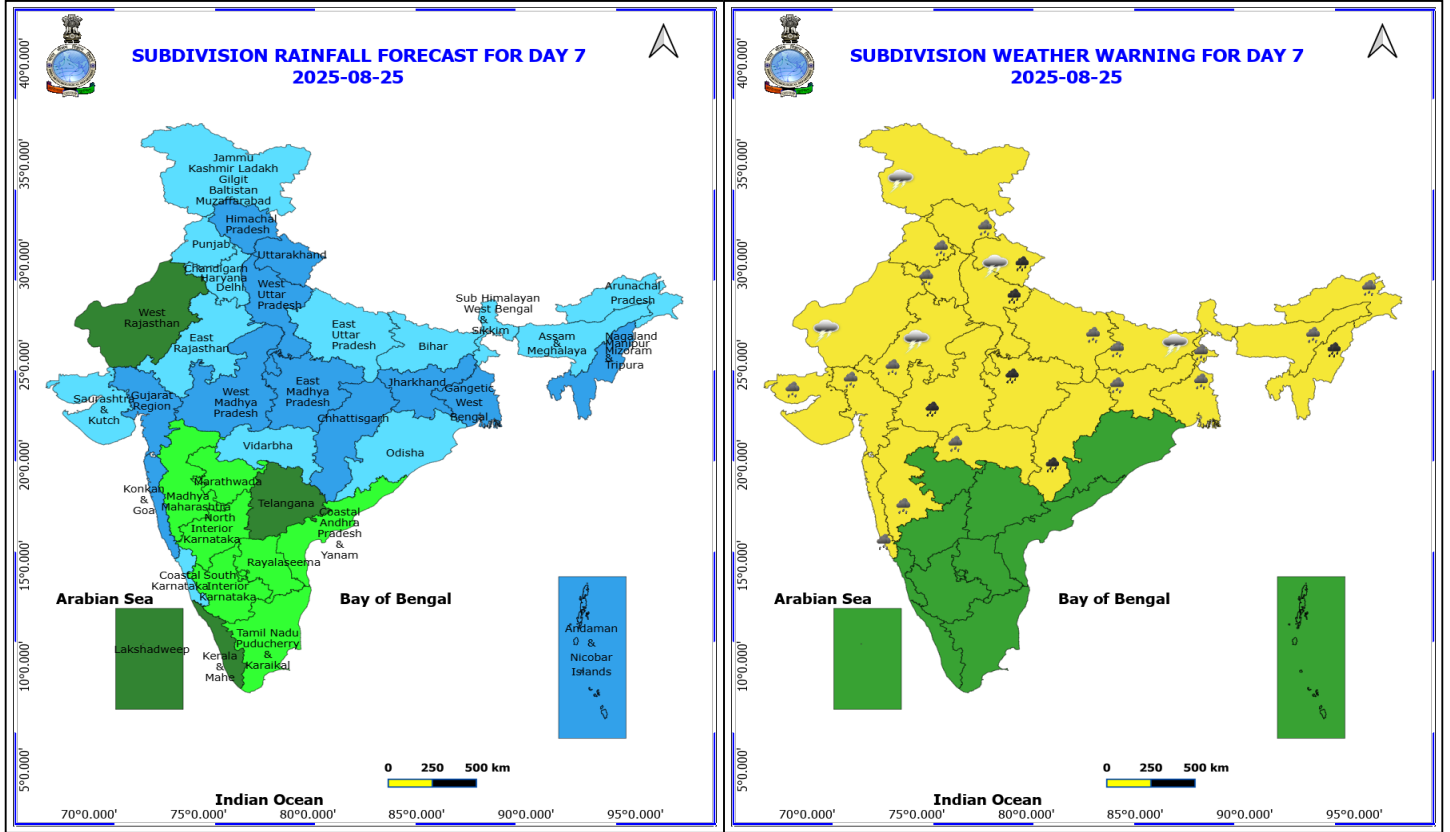
**24 August (Day 6)**

- ❖ **Heavy to Very Heavy Rainfall** likely at isolated places over Assam & Meghalaya, Chhattisgarh, Madhya Pradesh, Nagaland, Manipur, Mizoram and Tripura, Uttar Pradesh and Uttarakhand.
- ❖ **Heavy Rainfall** likely at isolated places over Arunachal Pradesh, Bihar, East Rajasthan, Gujarat State, Haryana, Chandigarh & Delhi, Himachal Pradesh, Jammu-Kashmir-Ladakh-Gilgit-Baltistan-Muzaffarabad, Jharkhand, Konkan & Goa, Madhya Maharashtra, Punjab, Vidarbha and West Bengal & Sikkim.
- ❖ **Thunderstorm accompanied with lightning & gusty winds(30-40kmph)** likely at isolated places over Bihar and Jammu-Kashmir-Ladakh-Gilgit-Baltistan-Muzaffarabad.
- ❖ **Thunderstorm accompanied with Lightning** likely at isolated places over Rajasthan and Uttarakhand.

**No Fishermen Warning**

**\*Red color warning does not mean "Red Alert" Red color warning means "Take Action"**  
Forecast and warning for any day is valid from 0830 hours IST of day till 0830 hours IST of next day  
For more details kindly visit <https://mausam.imd.gov.in> or contact 011-2434-4599

(Service to the nation since 1875)



## 25 August (Day 7)

- ❖ **Heavy to Very Heavy Rainfall** likely at isolated places over Arunachal Pradesh, Assam & Meghalaya, Bihar, Chhattisgarh, Madhya Pradesh, Nagaland, Manipur, Mizoram and Tripura, Uttar Pradesh and Uttarakhand.
- ❖ **Heavy Rainfall** likely at isolated places over East Rajasthan, Gujarat State, Haryana, Chandigarh & Delhi, Himachal Pradesh, Jammu-Kashmir-Ladakh-Gilgit-Baltistan-Muzaffarabad, Jharkhand, Konkan & Goa, Odisha, Punjab and West Bengal & Sikkim.
- ❖ **Thunderstorm accompanied with lightning & gusty winds(30-40kmph)** likely at isolated places over Bihar, Gangetic West Bengal, Jammu-Kashmir-Ladakh-Gilgit-Baltistan-Muzaffarabad, Jharkhand and Odisha.
- ❖ **Thunderstorm accompanied with Lightning** likely at isolated places over Assam & Meghalaya, Chhattisgarh, Coastal Andhra Pradesh, Gujarat State, Madhya Pradesh, Nagaland, Manipur, Mizoram and Tripura, Rajasthan, Tamil Nadu Puducherry & Karaikal, Uttarakhand and Vidarbha.
- ❖ **Strong Surface Winds** likely at isolated places over Gangetic West Bengal and Saurashtra & Kutch.

**No Fishermen Warning**

**\*Red color warning does not mean "Red Alert" Red color warning means "Take Action"**  
Forecast and warning for any day is valid from 0830 hours IST of day till 0830 hours IST of next day  
For more details kindly visit <https://mausam.imd.gov.in> or contact 011-2434-4599

(Service to the nation since 1875)

### Flash Flood Warnings

24 hours Outlook for the Flash Flood Risk (FFR) till 1730 IST of 20-08-2025 :

**Low to Moderate flash flood risk** likely over few watersheds & neighbourhoods of following Met Sub-divisions during next 24 hours.

**Coastal Karnataka** - Dakshin Kannada, Udupi and Uttar Kannada districts.

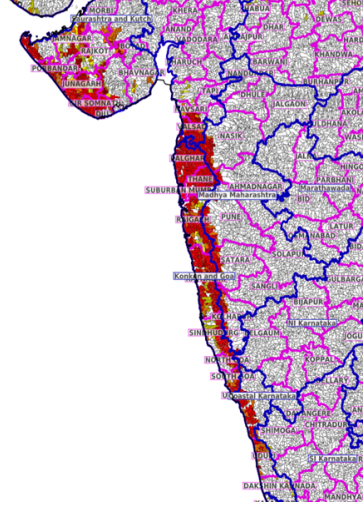
**Gujarat Region** - Dadar & Nagar Haveli, Daman, Bharuch, Navsari, Surat and Valsad districts.

**Konkan & Goa** - North Goa, South Goa, Mumbai City, Palghar, Raigarh, Ratnagiri, Sindhudurg, Suburban Mumbai and Thane districts.

**Saurashtra & Kutch** - Amreli, Bhavnagar, Botad, Devbhoomi Dwarka, Diu, Gir Somnath, Jamnagar, Junagarh, Porbandar, Rajkot, Surendranagar and Morbi districts.

Surface runoff/ Inundation may occur at some fully saturated soils & low-lying areas over Area of Concern (AoC) as shown in map due to expected rainfall occurrence in next 24 hours.

Product: WRF FFR | Timescale: 24-hr | Region: "REGIONAL"  
Product Date: 2025-08-19 12:00 UTC | Valid Date: 2025-08-20 12:00 UTC



24 hours Outlook for the Flash Flood Risk (FFR) till 1730 IST of 20-08-2025 :

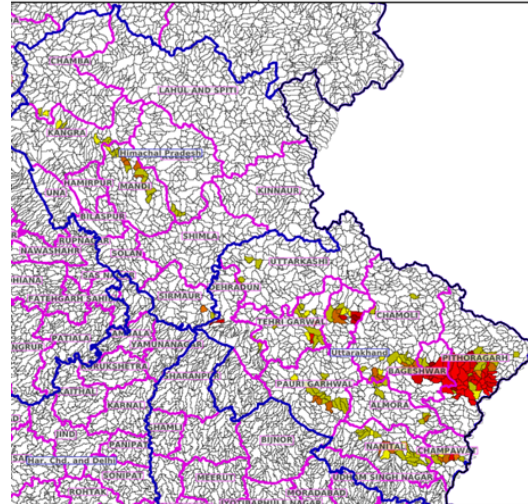
**Low to Moderate flash flood risk** likely over few watersheds & neighbourhoods of following Met Sub-divisions during next 24 hours.

**Himachal Pradesh** - Chamba, Kangra, Kullu, Mandi and Sirmaur districts.

**Uttarakhand** - Almora, Bageshwar, Chamoli, Champawat, Nanital, Pauri Garhwal, Pithoragarh, Rudraprayag, Tehri Garwal and Uttarkashi districts.

Surface runoff/ Inundation may occur at some fully saturated soils & low-lying areas over Area of Concern (AoC) as shown in map due to expected rainfall occurrence in next 24 hours.

Product: WRF FFR | Timescale: 24-hr | Region: "INDIA"  
Product Date: 2025-08-19 12:00 UTC | Valid Date: 2025-08-20 12:00 UTC



\*Red color warning does not mean "Red Alert" Red color warning means "Take Action"

Forecast and warning for any day is valid from 0830 hours IST of day till 0830 hours IST of next day

For more details kindly visit <https://mausam.imd.gov.in> or contact 011-2434-4599

(Service to the nation since 1875)



## Table-1

### 7 Days Rainfall Forecast

S.No.	Subdivision	19- Aug	20- Aug	21- Aug	22- Aug	23- Aug	24- Aug	25- Aug
		Day 1	Day 2	Day 3	Day 4	Day 5	Day 6	Day 7
1	ANDAMAN & NICOBAR ISLANDS	WS	WS	WS	FWS	FWS	FWS	WS
2	ARUNACHAL PRADESH	FWS	FWS	FWS	WS	WS	FWS	FWS
3	ASSAM & MEHGHALAYA	FWS	WS	WS	WS	WS	FWS	FWS
4	N. M. M. & T.	FWS	FWS	WS	WS	WS	WS	WS
5	S.H. WEST BENGAL & SIKKIM	FWS	FWS	FWS	FWS	FWS	FWS	FWS
6	GANGETIC WEST BENGAL	FWS	FWS	WS	WS	WS	WS	WS
7	ODISHA	WS	FWS	FWS	FWS	FWS	FWS	FWS
8	JHARKHAND	FWS	WS	WS	WS	WS	WS	WS
9	BIHAR	SCT	FWS	FWS	WS	WS	WS	FWS
10	EAST UTTAR PRADESH	ISOL	ISOL	FWS	WS	WS	WS	FWS
11	WEST UTTAR PRADESH	ISOL	ISOL	SCT	FWS	WS	WS	WS
12	UTTARAKHAND	FWS	WS	FWS	WS	WS	WS	WS
13	HARYANA, CHD & DELHI	SCT	SCT	SCT	FWS	WS	FWS	FWS
14	PUNJAB	SCT	SCT	ISOL	SCT	WS	FWS	FWS
15	HIMACHAL PRADESH	SCT	SCT	SCT	FWS	WS	WS	WS
16	JAMMU AND KASHMIR AND LADAKH	FWS	ISOL	ISOL	SCT	FWS	WS	FWS
17	WEST RAJASTHAN	ISOL	ISOL	SCT	SCT	ISOL	SCT	SCT
18	EAST RAJASTHAN	SCT	SCT	FWS	FWS	FWS	FWS	FWS
19	WEST MADHYA PRADESH	FWS	WS	FWS	FWS	FWS	WS	WS
20	EAST MADHYA PRADESH	FWS	WS	FWS	FWS	WS	WS	WS
21	GUJRAT REGION	WS	WS	WS	WS	WS	WS	WS
22	SAURASHTRA & KUTCH	WS	WS	WS	WS	WS	WS	FWS
23	KONKAN & GOA	WS	WS	WS	WS	WS	WS	WS
24	MADHYA MAHARASHTRA	WS	FWS	SCT	ISOL	ISOL	ISOL	ISOL
25	MARATHWADA	WS	FWS	SCT	ISOL	ISOL	ISOL	ISOL
26	VIDARBHA	WS	WS	FWS	SCT	SCT	FWS	FWS
27	CHATTISGARH	WS	FWS	SCT	FWS	FWS	WS	WS
28	COASTAL ANDHRA PRADESH	FWS	FWS	SCT	ISOL	ISOL	ISOL	ISOL
29	TELANGANA	FWS	FWS	SCT	SCT	SCT	SCT	SCT
30	RAYALASEEMA	SCT	SCT	ISOL	ISOL	ISOL	ISOL	ISOL
31	TAMILNADU & PUDUCHERRY	ISOL	ISOL	ISOL	SCT	SCT	ISOL	ISOL
32	COSTAL KARNATAKA	WS	WS	WS	FWS	FWS	FWS	FWS
33	NORTH INTERIOR KARNATAKA	WS	FWS	SCT	SCT	SCT	ISOL	ISOL
34	SOUTH INTERIOR KARNATAKA	WS	FWS	SCT	SCT	SCT	ISOL	ISOL
35	KERALA	FWS	FWS	SCT	SCT	SCT	SCT	SCT
36	LAKSHDWEEP	SCT	SCT	SCT	SCT	SCT	SCT	SCT

Legend	Category	%Stations
WS	Widespread/Most Places	76-100
FWS	Fairly Widespread/Many Places	51-75
SCT	Scattered/ A Few Places	26-50
ISOL	Isolated Places	1-25
DRY	No Rain	0

\*Red color warning does not mean "Red Alert" Red color warning means "Take Action"  
Forecast and warning for any day is valid from 0830 hours IST of day till 0830 hours IST of next day  
For more details kindly visit <https://mausam.imd.gov.in> or contact 011-2434-4599

(Service to the nation since 1875)

Fig. 1: Maximum Temperatures Dated 2025-08-19

Fig. 2: Departure of Maximum Temp. Dated 2025-08-19

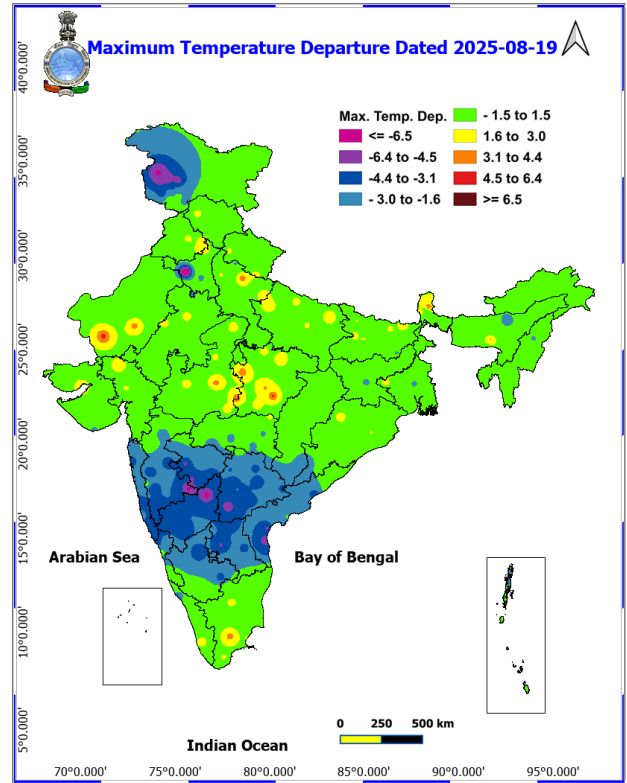
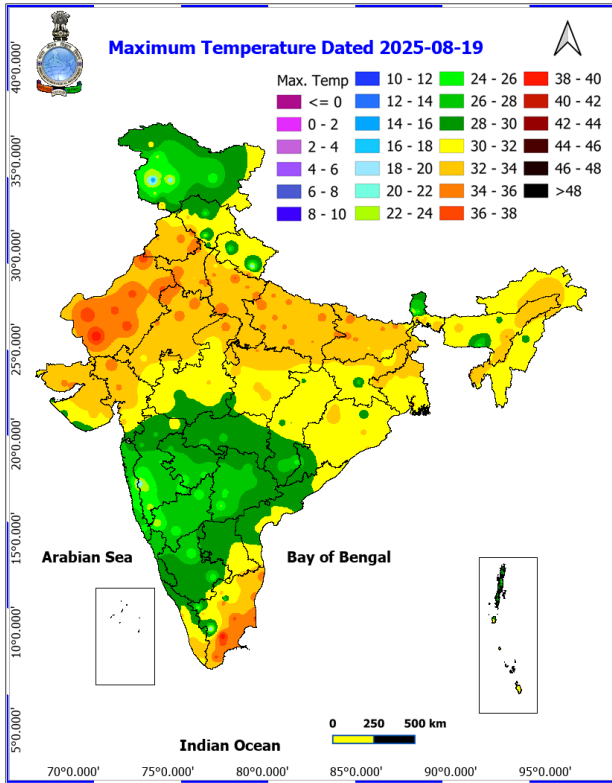
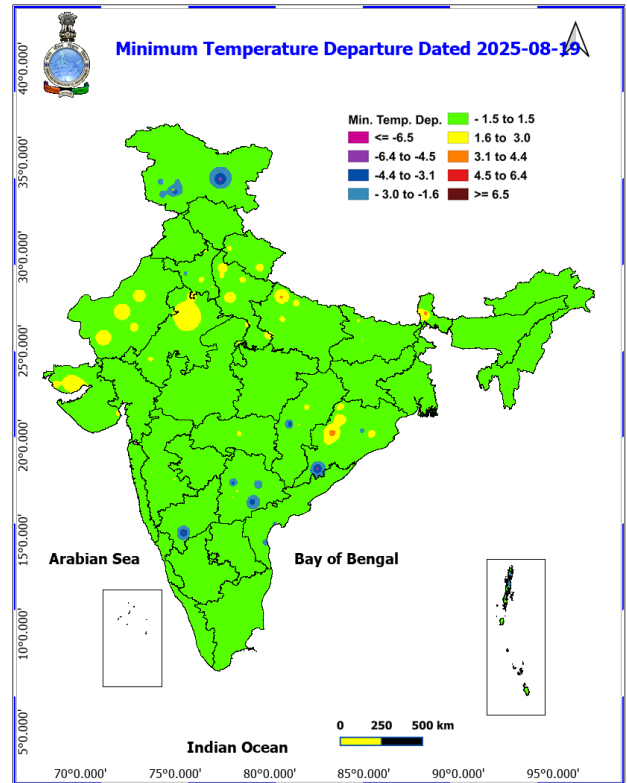
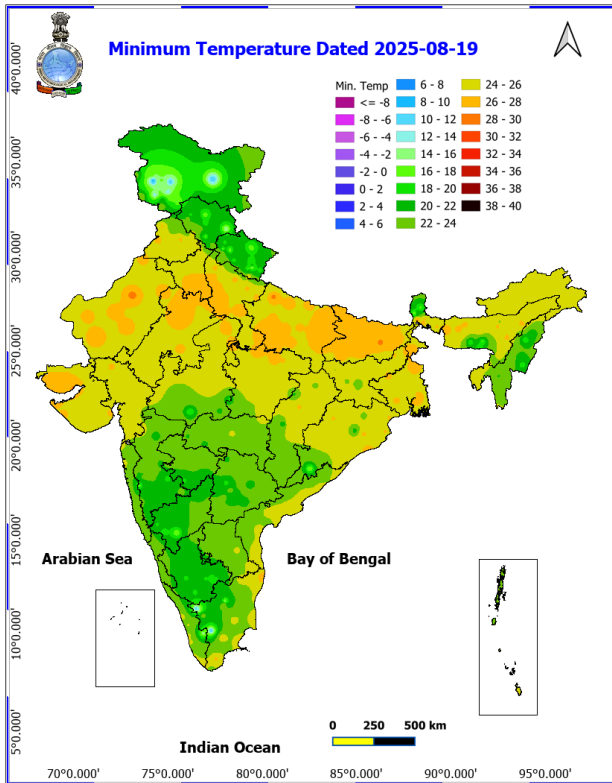


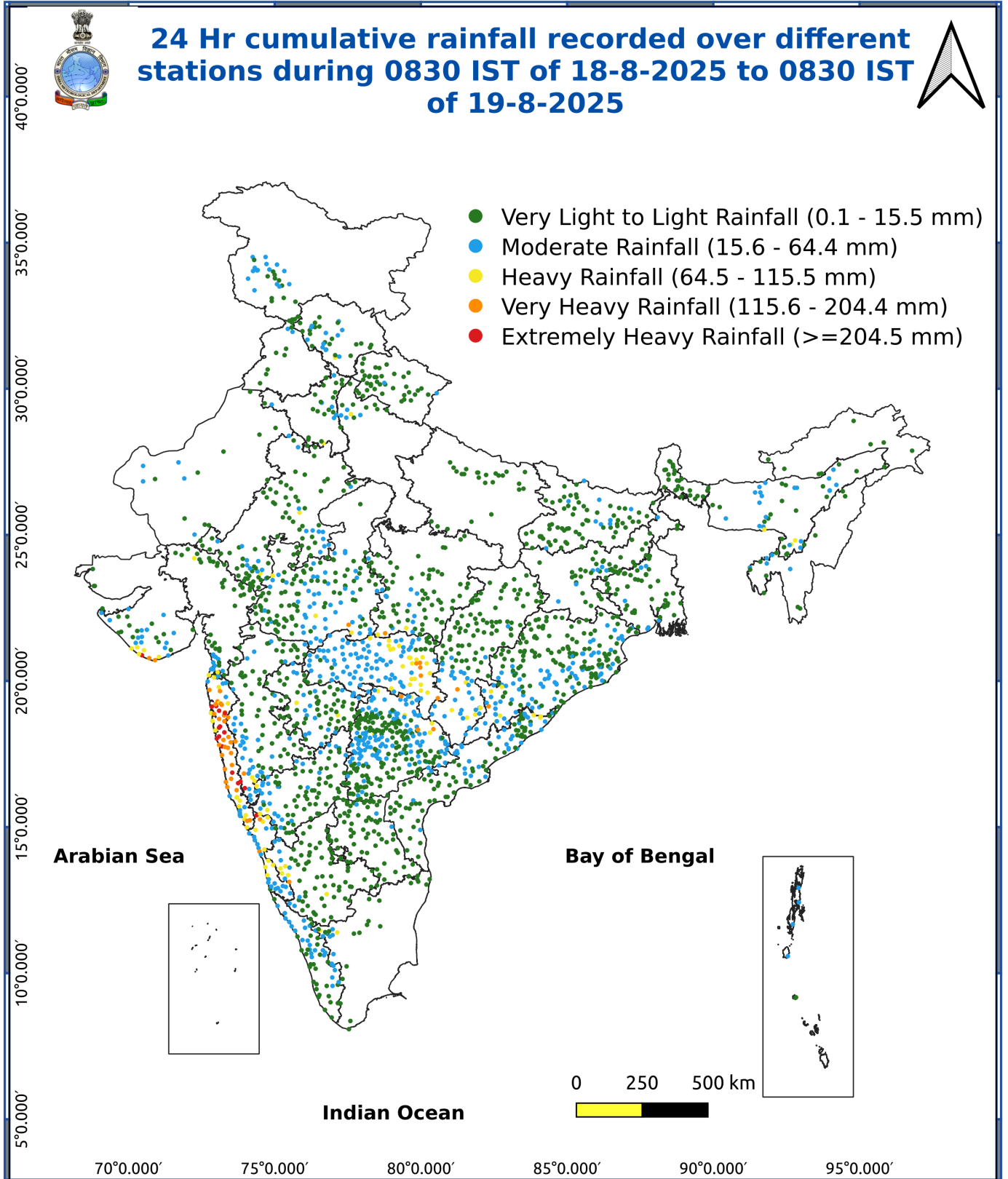
Fig. 3: Minimum Temperatures Dated 2025-08-19

Fig. 4: Departure of Minimum Temp. Dated 2025-08-19



**\*Red color warning does not mean "Red Alert" Red color warning means "Take Action"**  
Forecast and warning for any day is valid from 0830 hours IST of day till 0830 hours IST of next day  
For more details kindly visit <https://mausam.imd.gov.in> or contact 011-2434-4599

(Service to the nation since 1875)



- **Extremely heavy rainfall** very likely at isolated places over Konkan (including Mumbai) & Goa, Vidarbha, north Telangana on 19<sup>th</sup>; north Konkan (including Mumbai) on 20<sup>th</sup>; Gujarat State, Ghat areas of Madhya Maharashtra on 19<sup>th</sup> & 20<sup>th</sup> August.
- Isolated to scattered **heavy to very heavy rainfall** likely over Madhya Maharashtra, Konkan (including Mumbai) & Goa during 19<sup>th</sup>-21<sup>st</sup>; Gujarat State during 19<sup>th</sup>-22<sup>nd</sup> August; South Interior Karnataka and Coastal Karnataka, Chhattisgarh, Madhya Pradesh on 19<sup>th</sup>; Jharkhand on 22<sup>nd</sup>; Bihar on 22<sup>nd</sup> & 23<sup>rd</sup> and Madhya Pradesh, Chhattisgarh, Uttarakhand, West Uttar Pradesh during 23<sup>rd</sup>-25<sup>th</sup>; East Uttar Pradesh during 22<sup>nd</sup>-24<sup>th</sup>; Arunachal Pradesh on 21<sup>st</sup>-23<sup>rd</sup>; Tripura, Mizoram during 21<sup>st</sup>-25<sup>th</sup> and Assam & Meghalaya during 21<sup>st</sup>-24<sup>th</sup> August.

### Impact Expected

Localized Flooding of roads, water logging in low lying areas and closure of underpasses mainly in urban areas of the above region.

Occasional reduction in visibility due to heavy rainfall.

Disruption of traffic in major cities due to water logging in roads leading to increased travel time.

Minor damage to kutcha roads.

Possibilities of damage to vulnerable structure.

Localized Landslides/Mudslides/landslips/mudslips/landsinks/mudsinks.

Damage to horticulture and standing crops in some areas due to inundation.

It may lead to riverine flooding in some river catchments (for riverine flooding please visit Web page of CWC)

### Action Suggested

Check for traffic congestion on your route before leaving for your destination.

Follow any traffic advisories that are issued in this regard.

Avoid going to areas that face the water logging problems often.

Avoid staying in vulnerable structure.

### Agromet advisories for various parts of the country

**Agromet advisories for likely impact of Heavy / Heavy to Very Heavy / Extremely Heavy Rainfall**

**(Based on the IBF and advisories issued by different AMFUs)**

**\*Red color warning does not mean "Red Alert" Red color warning means "Take Action"**  
Forecast and warning for any day is valid from 0830 hours IST of day till 0830 hours IST of next day  
For more details kindly visit <https://mausam.imd.gov.in> or contact 011-2434-4599

(Service to the nation since 1875)

In **Maharashtra**, make arrangements to drain out excess water from rice fields maintaining 2.5 to 5 cm water level in **Konkan** and **ghat areas** of **Madhya Maharashtra**. In **Marathwada**, keep the harvested green gram produce in safer places. To prevent waterlogging, make provision for draining out excess water from fields of finger millet, turmeric, groundnut, vegetables and fruit orchards in **Konkan**; maize, groundnut, soybean, vegetables and fruit orchards in **ghat areas** of **Madhya Maharashtra**; groundnut, black gram, green gram, soybean, cotton, pigeon pea, pearl millet, turmeric, sugarcane, vegetables and fruit orchards in **Marathwada**; soybean and cotton in **West Vidarbha** and rice, soybean, cotton, pigeon pea, vegetables and fruit orchards in **East Vidarbha**.

In **Gujarat**, make arrangements to drain out excess water from fields of rice, sugarcane, vegetables and tuber crops in **South Gujarat Heavy Rainfall Zone**; rice, cotton, sugarcane and pigeon pea in **South Gujarat Zone**; groundnut, cotton, soybean, black gram, green gram, sesame and pigeon pea in **South Saurashtra Zone**; groundnut, cotton and sesame in **North Saurashtra Zone** and rice, cotton, green gram, black gram, pigeon pea, pearl millet and vegetables in **Bhal and Coastal Zone**.

In **Madhya Pradesh**, provide adequate drainage in fields of maize, soybean, cotton and vegetables in **Satpura Plateau Zone**; soybean, maize and vegetables in **Malwa Plateau Zone**; rice, soybean, maize, sugarcane and vegetables in **Central Narmada Valley Zone**; soybean, pigeon pea, cotton and vegetables in **Nimar Valley Zone** and maize, soybean, black gram, cotton, and pigeon pea in **Vindhyan Plateau Zone**.

In **Chhattisgarh**, drain out excess water from fields of *kharif* maize, rice, minor millets, pulses and vegetables in **Bastar Plateau Zone**.

In **Kerala**, provide adequate drainage in rice, coconut, banana and ginger fields. Provide support to banana plantations. Make the vegetable pandals stronger.

In **Karnataka**, provide adequate drainage facilities in rice and ginger fields, and plantations of arecanut, coconut and banana in **Coastal Zone**; fields of rice, maize, cotton, ginger and plantations of arecanut in **Hill Zone** and fields of rice, maize and plantations of arecanut and coconut in **Southern Transition Zone**.

In **Telangana**, drain out excess water from fields of rice, cotton, maize, soybean, pigeon pea, turmeric and vegetables in **Northern Telangana Zone** and rice, cotton, soybean, vegetables and vegetable nurseries in **Southern Telangana Zone**.

In **Andhra Pradesh**, make arrangements to drain out excess water from fields of maize, cotton, sugarcane, rice, mesta, red gram, green gram, black gram and groundnut in **North Coastal Zone** and rice, maize and vegetable fields in **High Altitude Tribal Zone**.

In **Odisha**, make arrangements to drain out excess water from the fields of rice, maize, green gram, black gram, ginger, turmeric, vegetables and orchards in **Eastern Ghat High Land Zone** and **South Eastern Ghats**.

In **Himachal Pradesh**, maintain proper drainage channels in ginger, turmeric and maize fields in **Mid Hills Sub Humid Zone** and rice, maize and vegetable fields in **Sub Montane and Low Hills Sub Tropical Zone**. In **High Hills Sub Temperate Wet Zone**, harvest ripened tomatoes and ensure proper drainage in maize, kidney bean, vegetables and orchards.

In **Uttarakhand**, maintain proper drainage channels in fields of soybean, maize, pulses, finger millet, ginger, vegetable fields and fruit orchards in **Hill Zone**; barnyard millet, finger millet and already sown green gram in **Sub Humid Sub Tropic Zone**. Ensure proper drainage in rice, maize, soybean, green gram, and vegetables in Nainital district.

In **Punjab**, In **Undulating Plain Zone**, maintain proper drainage in chilli fields and remove stagnant rainwater immediately after rainfall. In **Sub-Montane Undulating Zone**, ensure proper drainage in sugarcane maize, soybean and green gram.

In **Haryana** - In **Eastern Zone**, postpone irrigation in cotton and pearl millet crop fields and make drainage system to drain out excess water.

\*Red color warning does not mean "Red Alert" Red color warning means "Take Action"

Forecast and warning for any day is valid from 0830 hours IST of day till 0830 hours IST of next day

For more details kindly visit <https://mausam.imd.gov.in> or contact 011-2434-4599

(Service to the nation since 1875)

### **Livestock / Fishery**

Keep the animals inside the shed during heavy rainfall and provide them balanced feed.

Store feed and fodder in a safe place to prevent spoilage.

Construct an outlet with proper netting around the ponds to drain out excess water, thereby preventing fish from escaping in case of overflow.

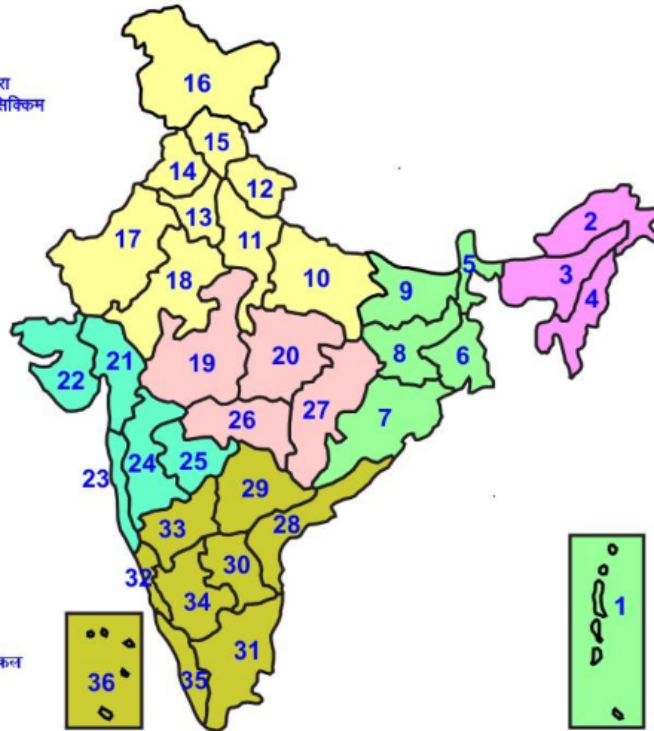
### **Agromet advisories for likely impact of Thunderstorm / Gusty Winds / Squally Winds**

**(Based on the IBF and advisories issued by different AMFUs)**

Provide mechanical support to horticultural crops and staking or support to vegetables and young fruit plants / fruit-bearing plants to avoid lodging due to strong winds.

## LEGENDS

- 1 अंडमान और निकोबार द्वीप समुह
- 2 अरुणाचल प्रदेश
- 3 असम और मेघालय
- 4 नागालैंड मनीपुर मीजोरम और त्रिपुरा
- 5 उप हिमालय पश्चिम बंगाल एवं सिक्किम
- 6 पश्चिम बंगाल
- 7 ओडिसा
- 8 झारखंड
- 9 बिहार
- 10 पूर्वी उत्तर प्रदेश
- 11 पश्चिम उत्तर प्रदेश
- 12 उत्तराखंड
- 13 हरियाणा चंडिगढ़ एवं दिल्ली
- 14 पंजाब
- 15 हिमाचल प्रदेश
- 16 जम्मू एवं कश्मीर एवं लद्दाख
- 17 पश्चिम राजस्थान
- 18 पूर्वी राजस्थान
- 19 पश्चिम मध्य प्रदेश
- 20 पूर्वी मध्य प्रदेश
- 21 गुजरात क्षेत्र
- 22 सौराष्ट्र एवं कच्छ
- 23 कोंकण एवं गोवा
- 24 मध्य महाराष्ट्र
- 25 मराठावाडा
- 26 विदर्भ
- 27 छत्तीसगढ़
- 28 तटीय आंध्र प्रदेश एवं यनम
- 29 तेलंगाना
- 30 रायलसीमा
- 31 तमिलनाडु, पुदुचेरी एवं कराईकल
- 32 तटिय कर्नाटक
- 33 आंतरिक उत्तरी कर्नाटक
- 34 आंतरिक दक्षिणी कर्नाटक
- 35 केरल एवं माहे
- 36 लक्षद्वीप



1. Andaman & Nicobar Islands
2. Arunachal Pradesh
3. Assam & Meghalaya
4. Nagaland, Manipur, Mizoram & Tripura
5. Sub-Himalayan West Bengal & Sikkim
6. Gangetic West Bengal
7. Orissa
8. Jharkhand
9. Bihar
10. East Uttar Pradesh
11. West Uttar Pradesh
12. Uttarakhand
13. Haryana, Chd & Delhi
14. Punjab
15. Himachal Pradesh
16. Jammu & Kashmir and Ladakh
17. West Rajasthan
18. East Rajasthan
19. West Madhya Pradesh
20. East Madhya Pradesh
21. Gujarat
22. Saurashtra
23. Konkan & Goa
24. Madhya Maharashtra
25. Marathawada
26. Vidharbha
27. Chhattisgarh
28. Coastal Andhra Pradesh & Yanam
29. Telangana
30. Rayalaseema
31. Tamilnadu, Puducherry & Karaikal
32. Coastal Karnataka
33. North Interior Karnataka
34. South Interior Karnataka
35. Kerala & Mahe
36. Lakshadweep

## SPATIAL DISTRIBUTION (% of Stations reporting)

% Stations	Category	% Stations	Category
76-100	Widespread (WS/ Most Places)	26-50	Scattered (SCT/ A Few Places)
51-75	Fairly Widespread (FWS/ Many Places)	1-25	Isolated (ISOL)

### Subdivision Colour

- NO WARNING
- WATCH (BE UPDATED)
- ALERT (BE PREPARED TO TAKE ACTION)
- WARNING (TAKE ACTION)

### Probabilistic Forecast

Terms	Probability of Occurrence (%)
Unlikely	< 25
Likely	25 - 50
Very Likely	50 - 75
Most Likely	> 75

- |                          |                 |                      |                    |
|--------------------------|-----------------|----------------------|--------------------|
| Heavy Rain               | Very Heavy Rain | Extremely Heavy Rain | Heavy Snow         |
| Thunderstorm & Lightning | Hailstorm       | Dust Storm           | Dust Raising Winds |
| Strong surface winds     | Heat Wave       | Hot Day              | Warm Night         |
| Cold Wave                | Cold Day        | Ground Frost         | Fog                |
| Hot & Humid              |                 |                      |                    |

\*Red color warning does not mean "Red Alert" Red color warning means "Take Action"

Forecast and warning for any day is valid from 0830 hours IST of day till 0830 hours IST of next day

For more details kindly visit <https://mausam.imd.gov.in> or contact 011-2434-4599

(Service to the nation since 1875)

## LEGENDS

### WARNING

WARNING (TAKE ACTION)
ALERT ( BE PREPARED)
WATCH (BE UPDATED)
NO WARNING ( NO ACTION)

### Probabilistic Forecast

Terms	Probability of Occurrence (%)
Unlikely	< 25
Likely	25 - 50
Very Likely	50 - 75
Most Likely	> 75



Heavy: 64.5 to 115.5 mm/cm \*  
Very Heavy: 115.6 to 204.4 mm/cm\*  
Extremely Heavy: > 204.4 mm/cm \*



When maximum temperature of a station reaches  $\geq 40^{\circ}\text{C}$  for plains and  $\geq 30^{\circ}\text{C}$  for hilly regions  
(a) Based on Departure from normal

Heat Wave: Maximum Temperature Departure from normal  $4.5^{\circ}\text{C}$  to  $6.4^{\circ}\text{C}$ .  
Severe Heat Wave: Maximum Temperature Departure from normal  $\geq 6.5^{\circ}\text{C}$

(b). Based on Actual maximum temperature

Heat Wave: When actual maximum temperature  $\geq 45^{\circ}\text{C}$ .  
Severe Heat Wave: When actual maximum temperature  $\geq 47^{\circ}\text{C}$

(c). Criteria for heat wave for coastal stations

When maximum temperature departure is  $> 4.5^{\circ}\text{C}$  from normal. Heat Wave may be described provided maximum temperature  $\geq 37^{\circ}\text{C}$



When maximum temperature remains  $40^{\circ}\text{C}$

Warm Night: When minimum temperature departure  $4.5^{\circ}\text{C}$  to  $6.4^{\circ}\text{C}$ .  
Severe Warm Night: When minimum temperature departure  $> 6.4^{\circ}\text{C}$ .



When minimum temperature of a station  $\leq 10^{\circ}\text{C}$  for plains and  $\leq 0^{\circ}\text{C}$  for hilly regions.

(a). Based on departure

Cold Wave: Minimum Temperature Departure from normal  $-4.5^{\circ}\text{C}$  to  $-6.4^{\circ}\text{C}$ .  
Severe Cold Wave: Minimum Temperature Departure from normal  $\leq -6.5^{\circ}\text{C}$

(b) Based on actual Minimum Temperature (for Plains only)

Cold Wave : When Minimum Temperature is  $\leq 4.0^{\circ}\text{C}$   
Severe Cold Wave: When Minimum Temperature is  $\leq 2.0^{\circ}\text{C}$

(c) For Coastal Stations

When Minimum Temperature departure is  $\leq -4.5^{\circ}\text{C}$  & actual Minimum Temperature is  $\leq 15^{\circ}\text{C}$



When minimum temperature of a station  $\leq 10^{\circ}\text{C}$  for plains and  $\leq 0^{\circ}\text{C}$  for hilly regions  
Based on departure

Cold Day: Maximum Temperature Departure from normal  $-4.5^{\circ}\text{C}$  to  $-6.4^{\circ}\text{C}$ .  
Severe Cold Day: Maximum Temperature Departure from normal  $\leq -6.5^{\circ}\text{C}$



Phenomenon of small droplets suspended in air and the horizontal visibility  $< 1\text{km}$

Moderate Fog: When the visibility between 500-200 metres  
Dense Fog: when the visibility between 50- 200 metres  
Very Dense Fog: when the visibility  $< 50$  metres



Sudden electrical discharges manifested by a flash of light (Lightning) and a sharp rumbling sound (thunder)



An ensemble of particles of dust or sand energetically lifted to great heights by a strong and turbulent wind.



Ice deposits on ground

Air temperature  $\leq 4^{\circ}\text{C}$  ( over Plains)



A strong wind that rises suddenly, lasts for atleast 1 minute.

Moderate: Wind speed 52-61 kmph  
Severe: Wind speed 62-87 kmph  
Very Severe: Wind speed  $> 87$  kmph



Effect of various waves in the sea over specific area

Rough to very rough: Wind speed 41-62 kmph (22-33 knots) & Wave height 2.5-6 metre  
High to very high: Wind speed 63-117 kmph ( 34-63 knots) & Wave height 6-14 metre  
Phenomenal: Wind speed  $> 117$  kmph ( $> 63$  knots) & Wave height  $> 14$  metre



Cyclonic Storm: Wind speed 62-87 kmph (34-47 knots)  
Severe Cyclonic Storm: Wind speed 88-117 kmph (48-63 knots)  
Very Severe Cyclonic Storm: Wind speed 118-165 kmph (64 - 89 knots)  
Extremely Severe Cyclonic Storm: Wind speed 166-220 kmph (90 -119 knots)  
Super Cyclone Storm: Wind speed  $> 220$  kmph ( $> 119$  knots)

\*Red color warning does not mean "Red Alert" Red color warning means "Take Action"

Forecast and warning for any day is valid from 0830 hours IST of day till 0830 hours IST of next day

For more details kindly visit <https://mausam.imd.gov.in> or contact 011-2434-4599

(Service to the nation since 1875)