

2025-07-24

Time of Issue: 07:30:00 hours IST
(Morning)

ALL INDIA WEATHER SUMMARY AND FORECAST BULLETIN

Significant Weather Features

Weather Forecast and Warnings

South Peninsular India:

- ♦ **Extremely heavy falls** very likely at isolated places over Coastal Karnataka on 24th & 25th July.
- ♦ Isolated **heavy to very heavy rainfall** likely over Kerala & Mahe, Coastal & South Interior Karnataka, Coastal Andhra Pradesh & Yanam during 24th-29th; isolated **heavy rainfall** over Tamil Nadu, Telangana during 24th-27th July with isolated **very heavy rainfall** over Telangana on 24th July.
- ♦ **Strong surface winds** (speed reaching 40-50 kmph) very likely over South Peninsular India during next 5 days.
- ♦ Light to moderate rainfall at most/many places over Kerala & Mahe, Lakshadweep, Karnataka, Rayalaseema, Coastal Andhra Pradesh & Yanam and Telangana during next 7 days.

West India:

- ♦ **Extremely heavy falls** very likely at isolated places over Konkan and Ghat areas of Madhya Maharashtra on 24th & 25th July.
- ♦ **Heavy to very heavy rainfall** likely at isolated to some places over Konkan & Goa, Ghat areas of Madhya Maharashtra during 24th-29th July and **heavy rainfall** over Marathwada on 26th; Gujarat region during 24th-29th; Saurashtra & Kutch during 26th-29th July with isolated **very heavy rainfall** over Gujarat Region on 27th & 28th July.
- ♦ Light to moderate rainfall at many places very likely over the region during next 5 days.

East & Central India:

- ♦ **Extremely heavy falls** very likely at isolated places over Odisha on 25th July.
- ♦ Isolated **heavy rainfall** very likely to continue over Madhya Pradesh, Vidarbha, Chhattisgarh, Odisha, Gangetic West Bengal, Bihar, Jharkhand during 24th-28th; Sub-Himalayan West Bengal & Sikkim during 25th-27th July with isolated **very heavy rainfall over West Madhya Pradesh during 26th-28th; East Madhya Pradesh during 25th-28th; Vidarbha, Jharkhand during 25th-27th; Chhattisgarh, Odisha during 24th-26th; Gangetic West Bengal on 24th & 25th July.**
- ♦ Light to moderate rainfall at most places accompanied with thunderstorm, lightning & gusty winds (speed reaching 30-40 Kmph) likely over the region during next 7 days with **moderate lightning over Bihar on 24th & 25th July.**

Northwest India:

- ♦ Isolated **heavy rainfall** likely over Jammu and Kashmir on 24th and during 27th-29th; Himachal Pradesh during 27th-29th; Uttarakhand during 24th-29th; Punjab, Haryana on 24th & 28th; West Uttar Pradesh during 26th-29th; East Uttar Pradesh during 25th-28th; West Rajasthan during 27th-29th and East Rajasthan during 26th-29th July with **very heavy rainfall over East Rajasthan on 27th & 28th July.**
- ♦ Light/moderate rainfall at many places accompanied with thunderstorm, lightning likely over Western Himalayan region and some places over the plains during next 7 days.

Northeast India:

- ♦ **Light/moderate rainfall at many places accompanied with thunderstorm, lightning and isolated heavy rainfall likely to continue over Northeast India during next 7 days.**

*Red color warning does not mean "Red Alert" Red color warning means "Take Action"

Forecast and warning for any day is valid from 0830 hours IST of day till 0830 hours IST of next day

For more details kindly visit <https://mausam.imd.gov.in> or contact 011-2434-4599

(Service to the nation since 1875)

Main Weather Observations:

- ❖ **Rainfall distribution** (from 0830 hours IST to 1730 hours IST of yesterday): **at most places** over Uttarakhand, Konkan & Goa , Coastal Karnataka, Jammu & Kashmir and Ladakh, West Uttar Pradesh, South Interior Karnataka, Kerala & Mahe and Lakshadweep ; **at many places** over Odisha, Madhya Maharashtra , Sub-himalayan West Bengal & Sikkim, Vidarbha, West Madhya Pradesh, East Madhya Pradesh, Gujarat Region, Himachal Pradesh, Haryana Chandigarh & Delhi, East Uttar Pradesh, Jharkhand, Gangetic West Bengal, Nagaland, Manipur, Mizoram & Tripura, North Interior Karnataka, Andaman & Nicobar Islands, Marathwada, Chhattisgarh, Coastal Andhra Pradesh & Yanam, Saurashtra & Kutch, Telangana, Rayalaseema, Tamilnadu Puducherry & Karaikal, Punjab and East Rajasthan; **Dry** over rest of the country.
- ❖ **Significant rainfall recorded(in cm)** (from 0830 hours IST to 1730 hours IST of yesterday): West uttar pradesh: Meerut (dist Meerut) 11, Muzaffarnagar-obs (dist Muzaffarnagar) 5; **Odisha**: Bhubaneswar (dist Khordha) 7, Chhatrapur (dist Ganjam) 4; East rajasthan: Kota AP (dist Kota) 6; Madhya maharashtra : Mahabaleshwar (dist Satara) 6; **Vidarbha**: Chandrapur (chanda) (dist Chandrapur) 6; Konkan & goa : Harnai (dist Ratnagiri) 5, Mumbai (santacruz) AP (dist),T.b.i.a (dist Thane) 4 Each, Ratnagiri (dist Ratnagiri), Matheran (dist Raigad) 3 Each; West madhya pradesh: Guna (dist Guna) 5, Gwalior (dist Gwalior), Hoshangabad (dist Narmadapuram) 4 Each; East madhya pradesh: Chhindwara- obs (dist Chhindwara) 5; **Punjab**: Patiala (dist Patiala) 3; Coastal karnataka: Mangalore (bajpe) AP (dist Dakshina Kannada), Karwar, Honavar (dist Uttara Kannada) 3 Each; Kerala & mahe: Cannanore (kannur) (dist Kannur) 3.
- ❖ **Heavy Rainfall observed** (from 0830 hours IST to 1730 hours IST of yesterday): **Heavy rain** at isolated places over Odisha and West Uttar Pradesh
- ❖ **Minimum Temperature Departures (as on 23-07-2025): markedly above normal(> 5.1°C)** at isolated places over Assam & Meghalaya, Nagaland, Manipur, Mizoram & Tripura, Sub Himalayan West Bengal & Sikkim, Odisha, Bihar, East Uttar Pradesh, West Uttar Pradesh, Himachal Pradesh, West Madhya Pradesh, East Madhya Pradesh, Gujarat Region and Saurashtra & Kutch. **appreciably above normal(3.1°C to 5.0°C)** at few places over Jammu- KashmirLadakh-Gilgit-Baltistan-Muzaffarabad; at isolated places over Andaman & Nicobar Islands, Gangetic West Bengal and West Rajasthan. **above normal(1.6°C to 3.0°C)** at most places over Arunachal Pradesh; at few places over Jharkhand, Uttarakhand, East Rajasthan, Vidarbha and Chhattisgarh; at isolated places over Madhya Maharashtra, Marathwada and Tamil Nadu, Puducherry & Karaikal. **near normal(-1.5°C to 1.5°C)** at many places over Haryana-Chandigarh-Delhi, Punjab, Telangana and Kerala & Mahe; at most places over Konkan & Goa, Coastal Andhra Pradesh & Yanam, Rayalaseema, Coastal Karnataka, North Interior Karnataka and South Interior Karnataka; at few places over Lakshadweep. **The lowest minimum temperature** of 19.0°C was reported at MATHERAN (MAHARASHTRA) and SHIMOGA (KARNATAKA) over the Plains of India.
- ❖ **Maximum Temperature Departures (as on 23-07-2025): markedly above normal(> 5.1°C)** at most places over Arunachal Pradesh; at few places over Sub Himalayan West Bengal & Sikkim; at isolated places over Assam & Meghalaya, Gangetic West Bengal and East Uttar Pradesh. **appreciably above normal(3.1°C to 5.0°C)** at many places over Odisha; at few places over Nagaland, Manipur, Mizoram & Tripura, Bihar, East Madhya Pradesh and Chhattisgarh; at isolated places over Jharkhand. **above normal(1.6°C to 3.0°C)** at few places over Himachal Pradesh and Vidarbha; at isolated places over West Uttar Pradesh, Madhya Maharashtra and Coastal Andhra Pradesh & Yanam. **near normal(-1.5°C to 1.5°C)** at many places over Punjab, Gujarat Region, Saurashtra & Kutch and South Interior Karnataka; at most places over East Rajasthan, Marathwada and Lakshadweep; at few places over Andaman & Nicobar Islands, Uttarakhand, Haryana-Chandigarh-Delhi, West Madhya Pradesh, Konkan & Goa, North Interior Karnataka and Kerala & Mahe; at isolated places over West Rajasthan. **The highest maximum temperature** of 38.2°C was reported at MOTIHARI (BIHAR).

***Red color warning does not mean "Red Alert" Red color warning means "Take Action"**

Forecast and warning for any day is valid from 0830 hours IST of day till 0830 hours IST of next day

For more details kindly visit <https://mausam.imd.gov.in> or contact 011-2434-4599

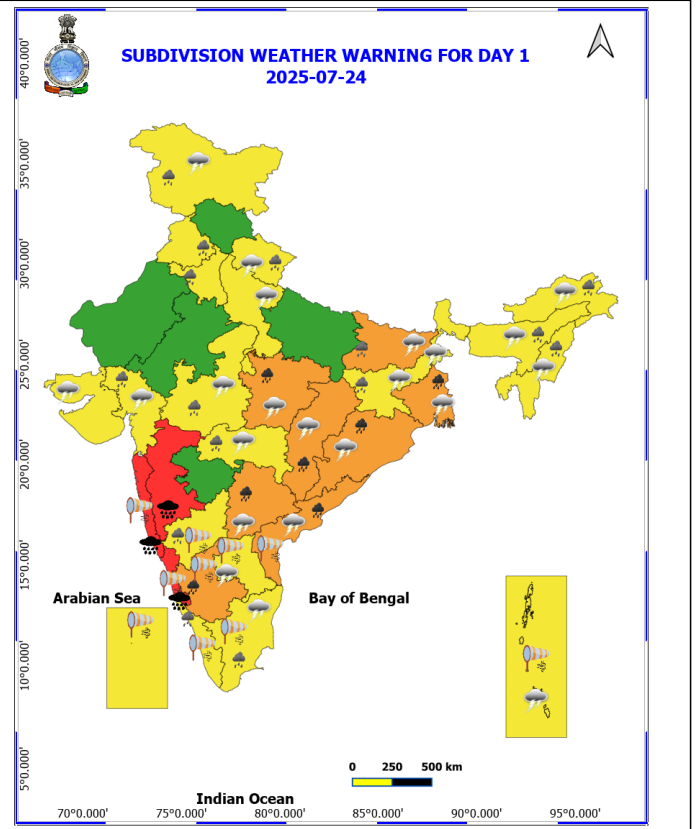
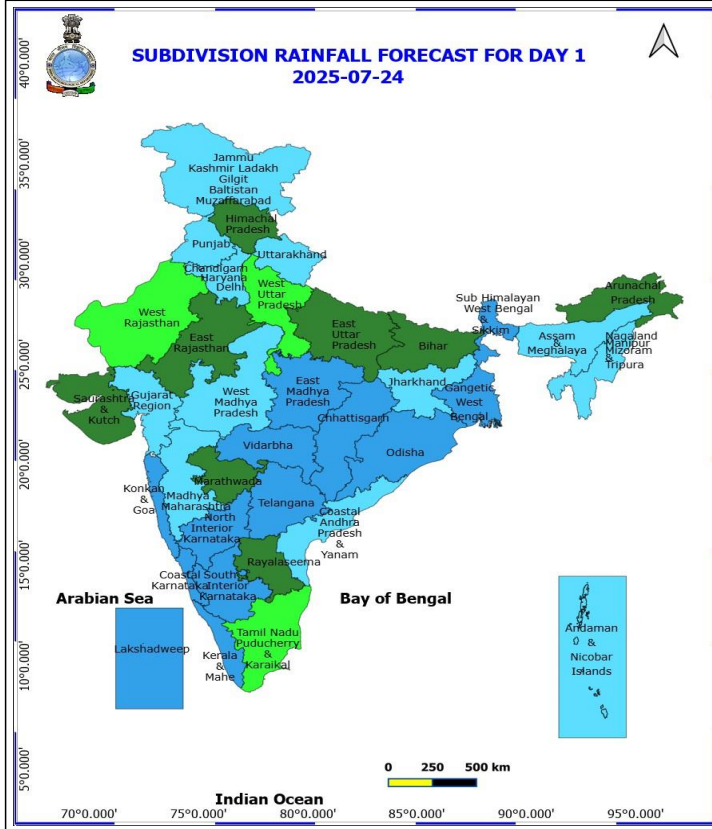
(Service to the nation since 1875)

Meteorological Analysis (Based on 0530 hours IST)

- ❖ The Remnant of Tropical Cyclone “WIPHA” has emerged and under its influence, a **Low Pressure area** has formed over the **north Bay of Bengal** at 0530 hrs of today, the 24th July 2025. The associated **cyclonic circulation** extended upto 7.6 km above mean sea level tilting southwestwards with heights. It is likely to become **Well Marked during next 24 hours**. It is likely to move west-northwestwards towards North Odisha & adjoining West Bengal coasts during next 48 hours.
- ❖ The upper **air cyclonic circulation** over westcentral and adjoining northwest Bay of Bengal has merged with above system.
- ❖ The **monsoon trough** at mean sea level now passes through Sri Ganganagar, Hissar, Hindon, Varanasi, Jamshedpur, Digha and thence Southeastwards to the centre of the Low-Pressure area over north Bay of Bengal.
- ❖ The **trough** now runs from Vidarbha to the cyclonic circulation associated with **low Pressure** area over north Bay of Bengal across south Chhattisgarh at 5.8 km above mean sea level.
- ❖ The **upper air cyclonic circulation** over southwest Rajasthan at 3.1 km above mean sea level persists.
- ❖ The **Western Disturbance** as a cyclonic circulation over Jammu & Kashmir and adjoining Himachal Pradesh between 3.1 & 5.8 km above mean sea level persists.
- ❖ The **upper air cyclonic circulation** over northeast Assam & neighbourhood now lay over northeast Bangladesh & neighbourhood at 0.9 km above mean sea level.

Weather Outlook for subsequent 3 days

- ♦ Fairly widespread to widespread rainfall activity likely over the Northwest India, Central India, Northeast India, Gujarat, Konkan & Goa, Costal Karnataka, Kerala & Mahe and Islands.
- ♦ Isolated to Scattered rainfall activity likley over East India and the remaining parts of South Peninsular India.



24 July (Day 1)

- ❖ **Heavy to Very Heavy Rainfall with isolated Extremely Heavy Rainfall** very likely at isolated places over Coastal Karnataka, Konkan & Goa and Madhya Maharashtra.
- ❖ **Heavy to Very Heavy Rainfall** very likely at isolated places over East Madhya Pradesh, Chhattisgarh, Coastal Andhra Pradesh, Gangetic West Bengal, Odisha, South Interior Karnataka and Telangana.
- ❖ **Heavy Rainfall** very likely at isolated places over Arunachal Pradesh, Assam & Meghalaya, Bihar, Gujarat Region, Haryana, Chandigarh & Delhi, Jammu-Kashmir-Ladakh-Gilgit-Baltistan-Muzaffargarh, Jharkhand, Kerala & Mahe, Madhya Pradesh, Nagaland, Manipur, Mizoram and Tripura, North Interior Karnataka, Punjab, Tamil Nadu Puducherry & Karaikal, Uttarakhand and Vidarbha.
- ❖ **Thunderstorm accompanied with lightning & gusty winds(40-50kmph)** very likely at isolated places over Andaman & Nicobar Islands and Jharkhand.
- ❖ **Thunderstorm accompanied with lightning & gusty winds(30-40kmph)** very likely at isolated places over Bihar, Jammu-Kashmir-Ladakh-Gilgit-Baltistan-Muzaffargarh, Odisha, Uttarakhand and West Bengal & Sikkim.
- ❖ **Thunderstorm accompanied with Lightning** very likely at isolated places over Andhra Pradesh, Arunachal Pradesh, Assam & Meghalaya, Chhattisgarh, Gujarat State, Madhya Pradesh, Nagaland, Manipur, Mizoram and Tripura, Tamil Nadu Puducherry & Karaikal, Telangana, Vidarbha and West Uttar Pradesh.
- ❖ **Strong Surface Winds** very likely at isolated places over Andaman & Nicobar Islands, Andhra Pradesh, Karnataka, Kerala & Mahe, Konkan & Goa, Lakshadweep and Tamil Nadu Puducherry & Karaikal.

Squally weather with wind speed 40 - 50 kmph gusting to 60 kmph likely to prevail over many parts of north, central and adjoining south Bay of Bengal & along and off Odisha and West Bengal coasts in the next 48 hrs. Fishermen are advised not to venture into these areas

Squally wind speed reaching 45 kmph to 55 kmph gusting to 65 kmph is likely to prevail along and off Somalia, Yemen & south Oman coasts, most parts of westcentral Arabian Sea & adjoining, many parts of eastcentral Arabian Sea, some parts of southwest Arabian Sea.

***Red color warning does not mean "Red Alert" Red color warning means "Take Action"**

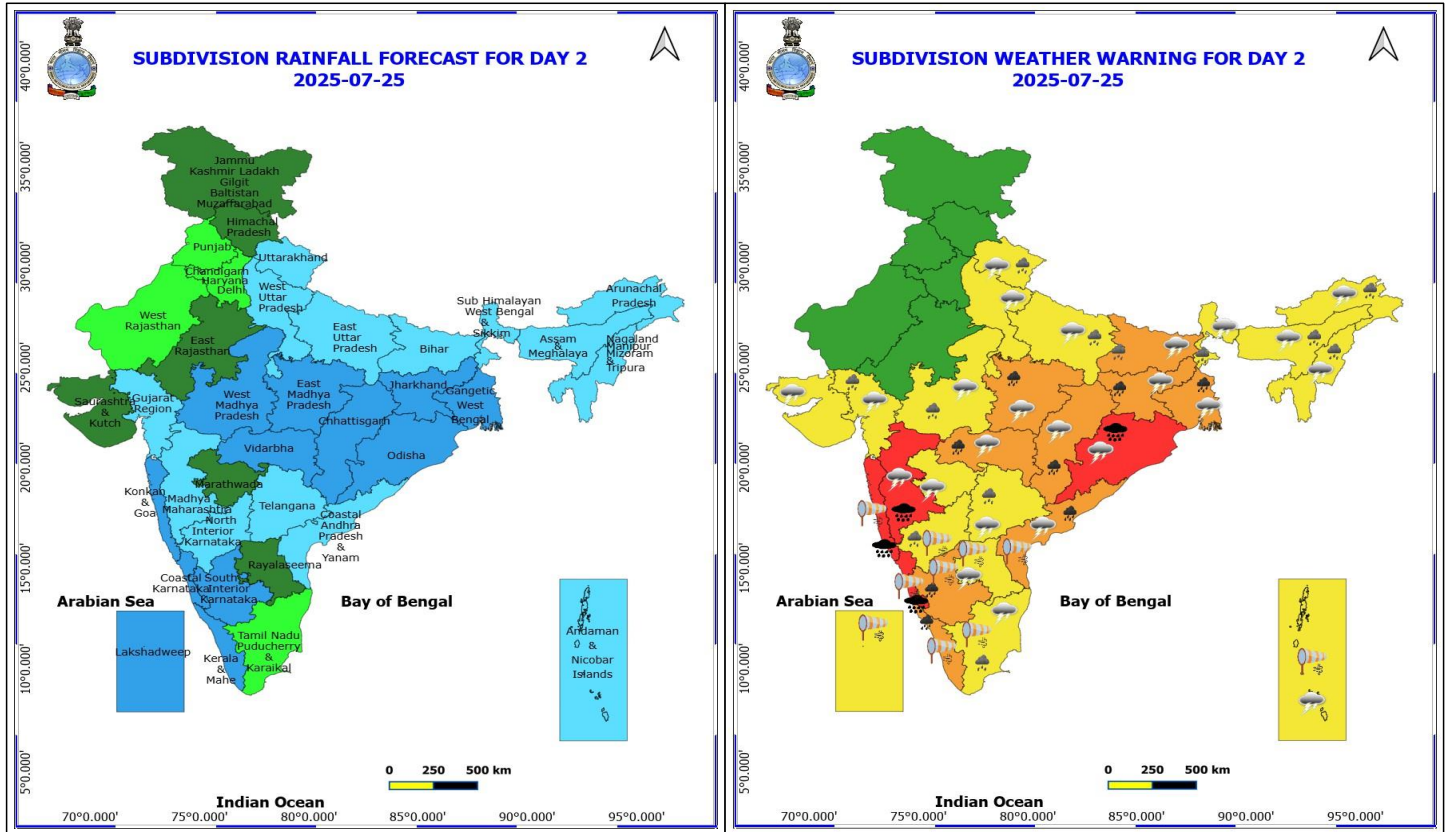
Forecast and warning for any day is valid from 0830 hours IST of day till 0830 hours IST of next day

For more details kindly visit <https://mausam.imd.gov.in> or contact 011-2434-4599

(Service to the nation since 1875)



- ♦ Squally weather with wind speed 40 - 50 kmph gusting to 60 kmph likely to prevail over some parts of eastcentral Arabian Sea & adjoining, some parts of westcentral Arabian Sea, some parts of southeast Arabian Sea, some parts of northeast Arabian Sea, along and off Gujarat, Konkan, Goa, Kerala, Karnataka coasts, Tamil Nadu, Andhra Pradesh coasts, over Lakshadweep, Maldives, Comorin areas, south Bay of Bengal & most parts of central Bay of Bengal, over Gulf of Mannar, along and off Sri Lanka coast, over Andaman Sea.
- ♦



25 July (Day 2)

- ❖ **Heavy to Very Heavy Rainfall with isolated Extremely Heavy Rainfall** very likely at isolated places over Coastal Karnataka, Konkan & Goa, Madhya Maharashtra and Odisha.
- ❖ **Heavy to Very Heavy Rainfall** very likely at isolated places over Chhattisgarh, Coastal Andhra Pradesh, East Madhya Pradesh, Gangetic West Bengal, Jharkhand, Kerala & Mahe, South Interior Karnataka and Vidarbha.
- ❖ **Heavy Rainfall** very likely at isolated places over Arunachal Pradesh, Assam & Meghalaya, Bihar, East Uttar Pradesh, Gujarat Region, Nagaland, Manipur, Mizoram and Tripura, North Interior Karnataka, Sub Himalayan West Bengal & Sikkim, Tamil Nadu Puducherry & Karaikal, Telangana, Uttarakhand and West Madhya Pradesh.
- ❖ **Thunderstorm accompanied with lightning & gusty winds(40-50kmph)** very likely at isolated places over Andaman & Nicobar Islands.
- ❖ **Thunderstorm accompanied with lightning & gusty winds(30-40kmph)** very likely at isolated places over Bihar, Jharkhand, Odisha, Uttarakhand and West Bengal & Sikkim.
- ❖ **Thunderstorm accompanied with Lightning** very likely at isolated places over Andhra Pradesh, Arunachal Pradesh, Assam & Meghalaya, Chhattisgarh, Gujarat State, Madhya Pradesh, Maharashtra, Nagaland, Manipur, Mizoram and Tripura, Tamil Nadu Puducherry & Karaikal, Telangana and Uttar Pradesh.
- ❖ **Strong Surface Winds** very likely at isolated places over Andaman & Nicobar Islands, Andhra Pradesh, Karnataka, Kerala & Mahe, Konkan & Goa, Lakshadweep and Tamil Nadu Puducherry & Karaikal.
- ❖ Squally wind speed reaching 45 kmph to 55 kmph gusting to 65 kmph is likely to prevail along and off Somalia, Yemen & south Oman coasts, most parts of westcentral Arabian Sea & adjoining, many parts of eastcentral Arabian Sea, some parts of southwest Arabian Sea.

***Red color warning does not mean "Red Alert" Red color warning means "Take Action"**

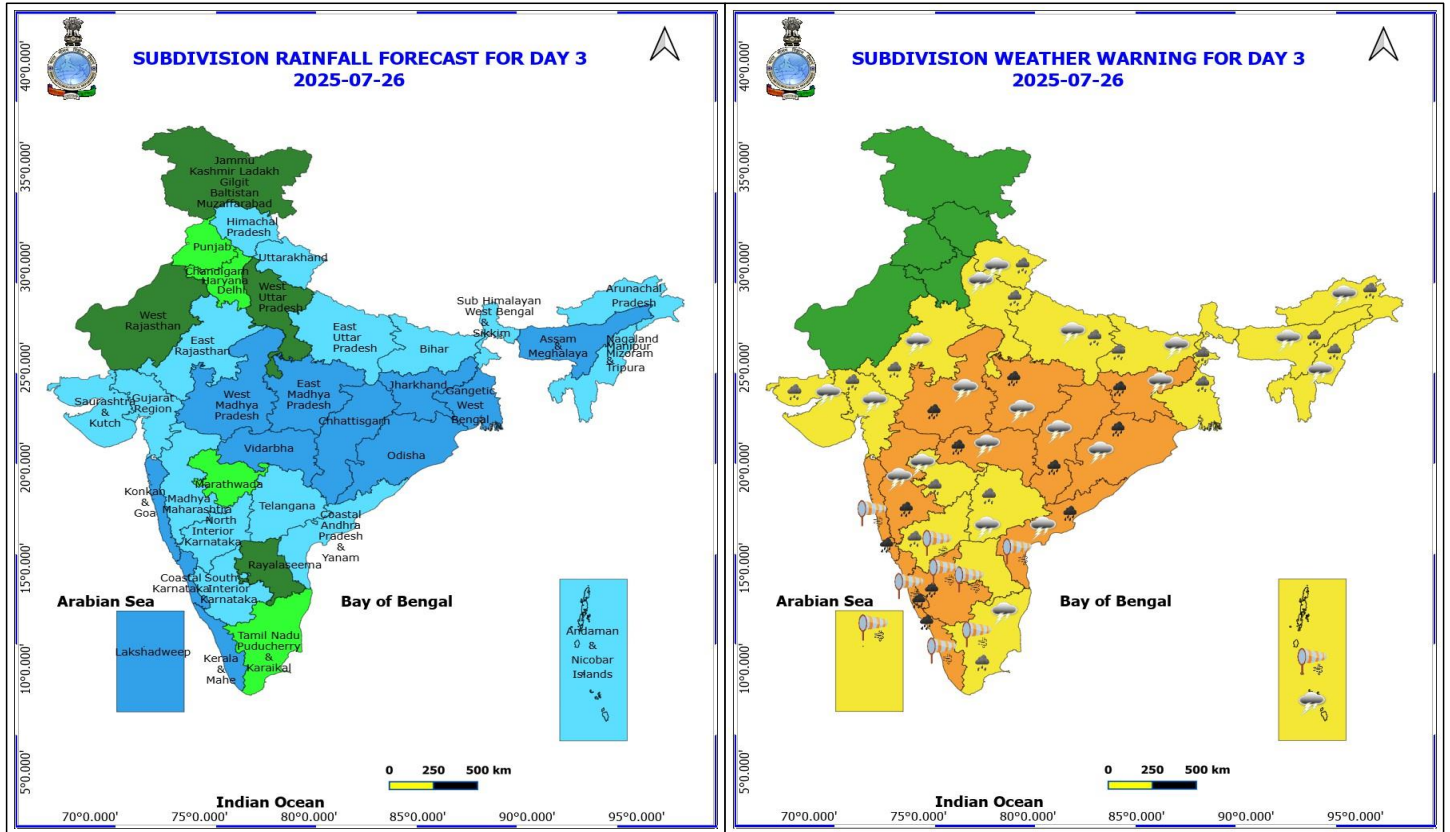
Forecast and warning for any day is valid from 0830 hours IST of day till 0830 hours IST of next day

For more details kindly visit <https://mausam.imd.gov.in> or contact 011-2434-4599

(Service to the nation since 1875)



- Squally weather with wind speed 40 - 50 kmph gusting to 60 kmph likely to prevail over some parts of eastcentral Arabian Sea & adjoining, some parts of westcentral Arabian Sea, many parts of southeast Arabian Sea & adjoining southwest Arabian Sea, some parts of northeast Arabian Sea, along and off Gujarat, Konkan, Goa, Kerala, Karnataka coasts, Tamil Nadu, Andhra Pradesh, Odisha, West Bengal, Bangladesh, Myanmar coasts, over Lakshadweep, Maldives, Comorin areas, over south, central & north Bay of Bengal, over Gulf of Mannar, along and off Sri Lanka coast, over Andaman Sea.
- Squally weather with wind speed 45 - 55 kmph gusting to 65 kmph likely to prevail over south Konkan & Goa coasts, most parts of central and many parts of south Bay of Bengal, many parts of north Andaman Sea.



26 July (Day 3)

- ❖ **Heavy to Very Heavy Rainfall** very likely at isolated places over Chhattisgarh, Coastal Andhra Pradesh, Coastal Karnataka, Jharkhand, Kerala & Mahe, Konkan & Goa, Madhya Maharashtra, Madhya Pradesh, Odisha, South Interior Karnataka and Vidarbha.
 - ❖ **Heavy Rainfall** very likely at isolated places over Arunachal Pradesh, Assam & Meghalaya, Bihar, East Rajasthan, Gujarat State, Marathwada, Nagaland, Manipur, Mizoram and Tripura, North Interior Karnataka, Tamil Nadu Puducherry & Karaikal, Telangana, Uttar Pradesh, Uttarakhand and West Bengal & Sikkim.
 - ❖ **Thunderstorm accompanied with lightning & gusty winds(30-40kmph)** very likely at isolated places over Andaman & Nicobar Islands, Bihar, Jharkhand, Odisha and Uttarakhand.
 - ❖ **Thunderstorm accompanied with Lightning** very likely at isolated places over Arunachal Pradesh, Assam & Meghalaya, Chhattisgarh, Coastal Andhra Pradesh, East Rajasthan, Gujarat State, Madhya Pradesh, Maharashtra, Nagaland, Manipur, Mizoram and Tripura, Tamil Nadu Puducherry & Karaikal, Telangana and Uttar Pradesh.
 - ❖ **Strong Surface Winds** very likely at isolated places over Andaman & Nicobar Islands, Andhra Pradesh, Karnataka, Kerala & Mahe, Konkan & Goa, Lakshadweep and Tamil Nadu Puducherry & Karaikal.
- Squally wind speed reaching 45 kmph to 55 kmph gusting to 65 kmph is likely to prevail along and off Somalia, Yemen & south Oman coasts, most parts of westcentral Arabian Sea & adjoining, many parts of eastcentral Arabian Sea, many parts of southwest Arabian Sea.
 - Squally weather with wind speed 40 - 50 kmph gusting to 60 kmph likely to prevail over some parts of eastcentral Arabian Sea & adjoining, some parts of westcentral Arabian Sea, many parts of southeast Arabian Sea & adjoining southwest Arabian Sea, some parts of northeast Arabian Sea, along and off Gujarat, Konkan, Goa, Kerala, Karnataka coasts, Tamil Nadu, Andhra Pradesh, Odisha, West Bengal, Bangladesh, Myanmar coasts, over Lakshadweep, Maldives, Comorin areas, over south, central & north Bay of Bengal,

***Red color warning does not mean "Red Alert" Red color warning means "Take Action"**

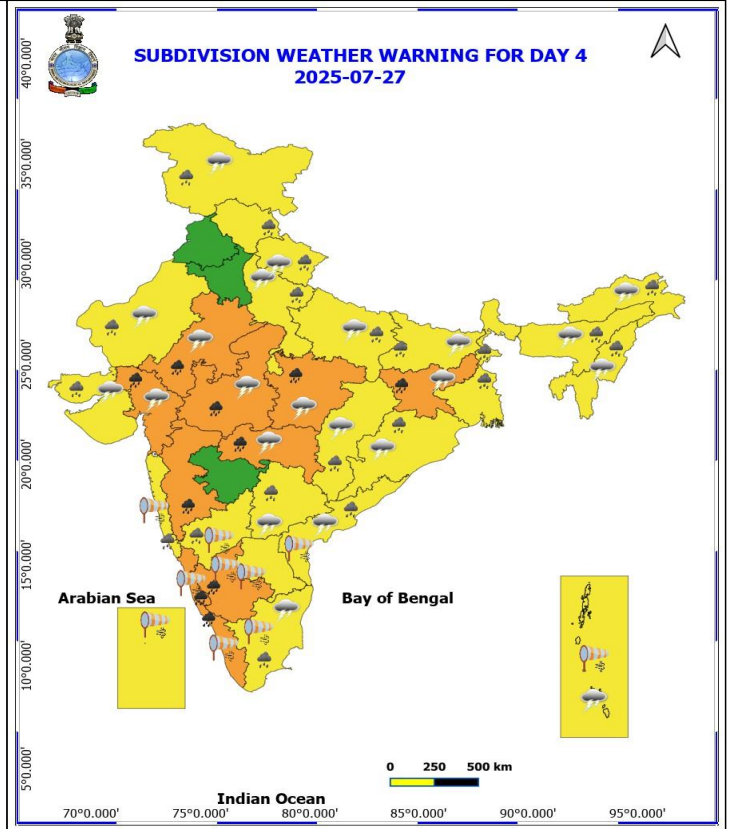
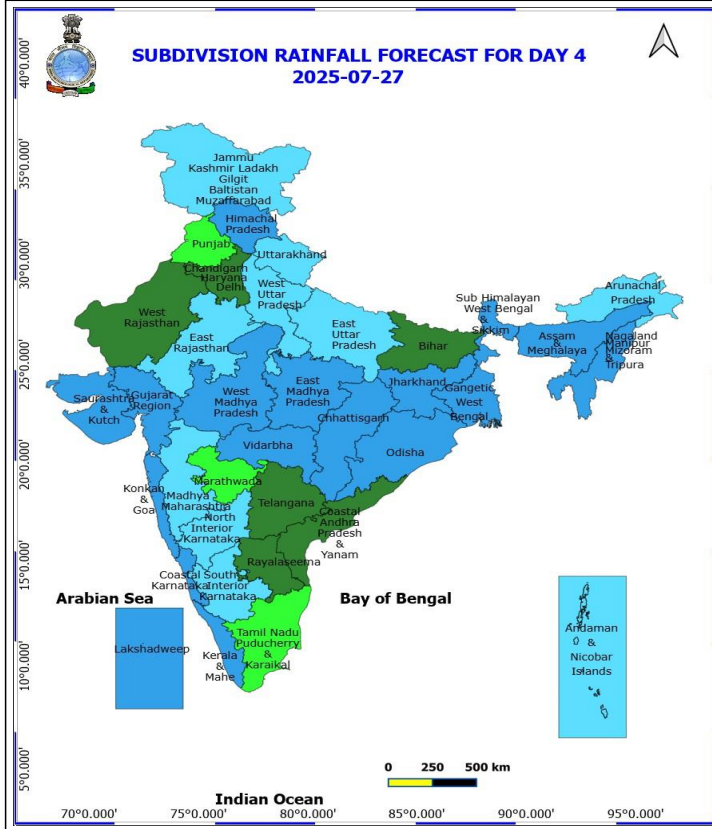
Forecast and warning for any day is valid from 0830 hours IST of day till 0830 hours IST of next day

For more details kindly visit <https://mausam.imd.gov.in> or contact 011-2434-4599

(Service to the nation since 1875)



- over Gulf of Mannar, along and off Sri Lanka coast, over Andaman Sea.
- Squally weather with wind speed 45 - 55 kmph gusting to 65 kmph likely to prevail along and off south Gujarat, Konkan Goa coasts and adjoining sea areas, over many parts of central and adjoining parts of south Bay of Bengal, many parts of north Andaman Sea.



27 July (Day 4)

- ❖ **Heavy to Very Heavy Rainfall** likely at isolated places over Coastal Karnataka, East Rajasthan, Gujarat Region, Jharkhand, Kerala & Mahe, Madhya Maharashtra, Madhya Pradesh, South Interior Karnataka and Vidarbha.
 - ❖ **Heavy Rainfall** likely at isolated places over Arunachal Pradesh, Assam & Meghalaya, Bihar, Chhattisgarh, Coastal Andhra Pradesh, Himachal Pradesh, Jammu-Kashmir-Ladakh-Gilgit-Baltistan-Muzaffarabad, Konkan & Goa, Nagaland, Manipur, Mizoram and Tripura, North Interior Karnataka, Odisha, Saurashtra & Kutch, Tamil Nadu Puducherry & Karaikal, Telangana, Uttar Pradesh, Uttarakhand, West Bengal & Sikkim and West Rajasthan.
 - ❖ **Thunderstorm accompanied with lightning & gusty winds(30-40kmph)** likely at isolated places over Andaman & Nicobar Islands, Bihar, Jammu-Kashmir-Ladakh-Gilgit-Baltistan-Muzaffarabad, Jharkhand, Odisha and Uttarakhand.
 - ❖ **Thunderstorm accompanied with Lightning** likely at isolated places over Arunachal Pradesh, Assam & Meghalaya, Chhattisgarh, Coastal Andhra Pradesh, Gujarat State, Madhya Pradesh, Nagaland, Manipur, Mizoram and Tripura, Rajasthan, Tamil Nadu Puducherry & Karaikal, Telangana, Uttar Pradesh and Vidarbha.
 - ❖ **Strong Surface Winds** likely at isolated places over Andaman & Nicobar Islands, Andhra Pradesh, Karnataka, Kerala & Mahe, Konkan & Goa, Lakshadweep and Tamil Nadu Puducherry & Karaikal.
- Squally wind speed reaching 45 kmph to 55 kmph gusting to 65 kmph is likely to prevail along and off Somalia, Yemen & south Oman coasts, most parts of westcentral Arabian Sea & adjoining, many parts of eastcentral Arabian Sea, many parts of southwest Arabian Sea.
 - Squally weather with wind speed 40 - 50 kmph gusting to 60 kmph likely to prevail over some parts of eastcentral Arabian Sea & adjoining, some parts of westcentral Arabian Sea, many parts of southeast Arabian Sea & adjoining southwest Arabian Sea, some parts of northeast Arabian Sea, along and off Gujarat, Konkan, Goa, Kerala, Karnataka coasts, Tamil Nadu, Andhra Pradesh, Odisha, West Bengal, Bangladesh,

***Red color warning does not mean "Red Alert" Red color warning means "Take Action"**

Forecast and warning for any day is valid from 0830 hours IST of day till 0830 hours IST of next day

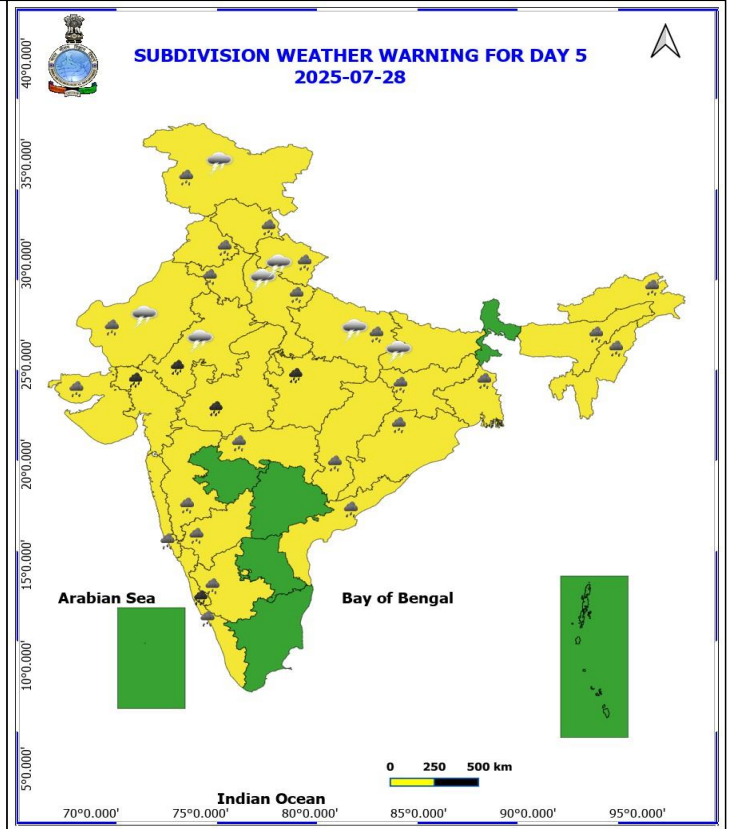
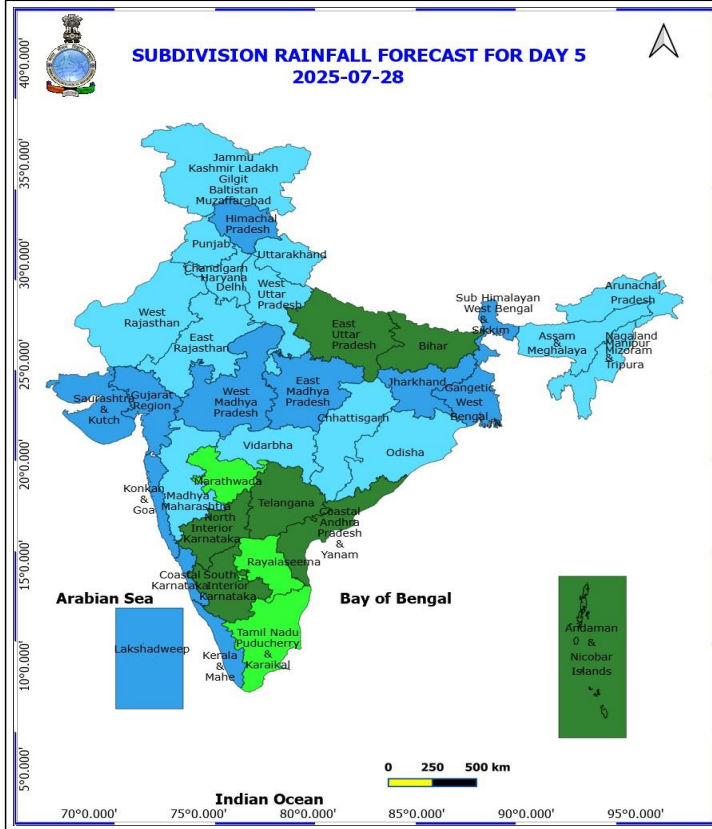
For more details kindly visit <https://mausam.imd.gov.in> or contact 011-2434-4599

(Service to the nation since 1875)



Myanmar coasts, over Lakshadweep, Maldives, Comorin areas, over south, central & north Bay of Bengal, over Gulf of Mannar, along and off Sri Lanka coast, over Andaman Sea.

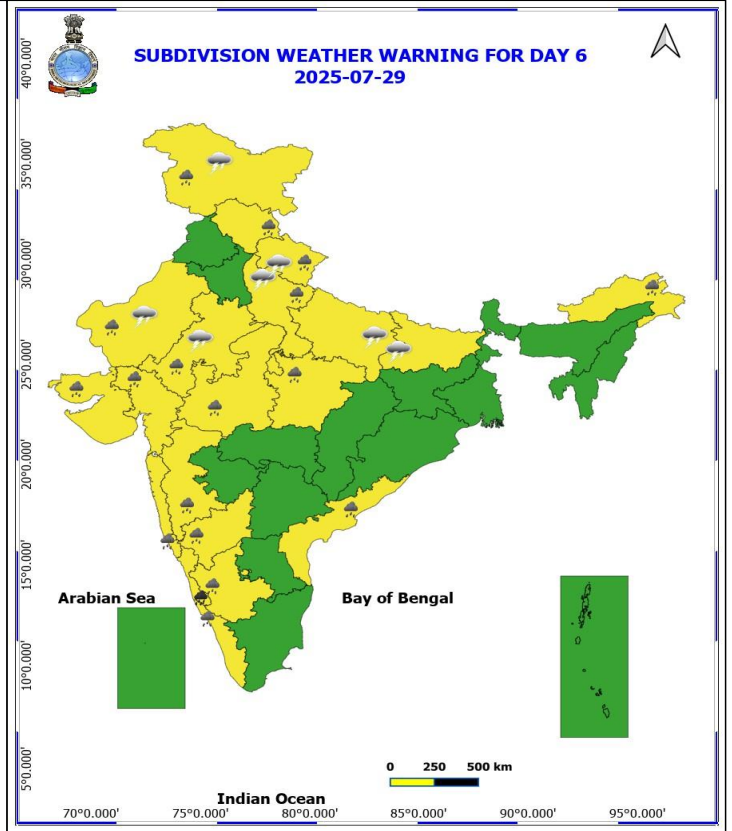
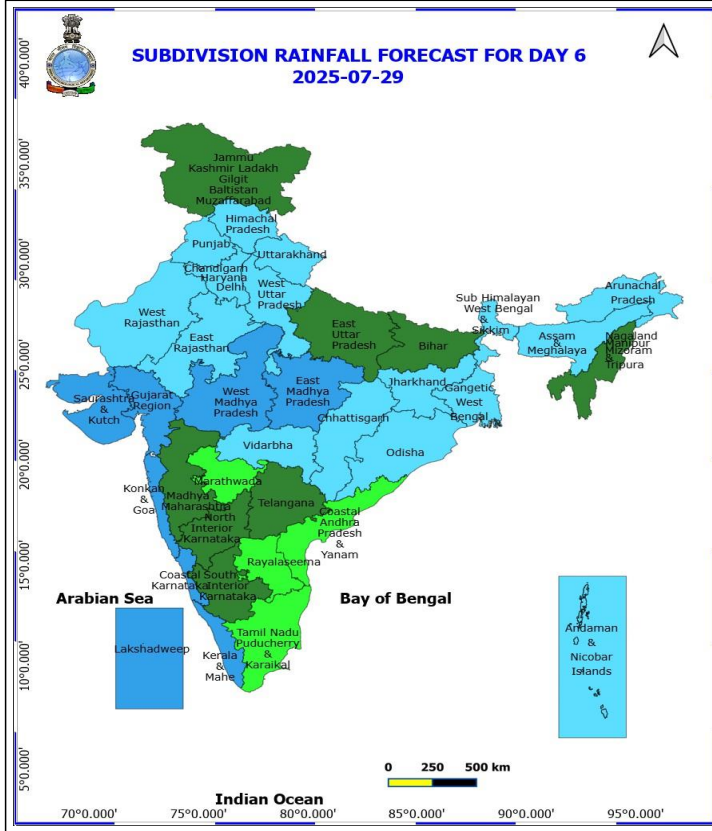
- Squally weather with wind speed 45 - 55 kmph gusting to 65 kmph likely to prevail along and off south Gujarat, Konkan Goa coasts and adjoining sea areas, over many parts of central and adjoining parts of south Bay of Bengal, southern parts of northwest and many parts of northeast Bay of Bengal.



28 July (Day 5)

- ❖ **Heavy to Very Heavy Rainfall** likely at isolated places over Coastal Karnataka, East Rajasthan, Gujarat Region and Madhya Pradesh.
- ❖ **Heavy Rainfall** likely at isolated places over Arunachal Pradesh, Assam & Meghalaya, Chhattisgarh, Coastal Andhra Pradesh, Gangetic West Bengal, Haryana, Chandigarh & Delhi, Himachal Pradesh, Interior Karnataka, Jammu-Kashmir-Ladakh-Gilgit-Baltistan-Muzaffarabad, Jharkhand, Kerala & Mahe, Konkan & Goa, Madhya Maharashtra, Nagaland, Manipur, Mizoram and Tripura, Odisha, Punjab, Saurashtra & Kutch, Uttar Pradesh, Uttarakhand, Vidarbha and West Rajasthan.
- ❖ **Thunderstorm accompanied with lightning & gusty winds(30-40kmph)** likely at isolated places over Bihar, Jammu-Kashmir-Ladakh-Gilgit-Baltistan-Muzaffarabad and Uttarakhand.
- ❖ **Thunderstorm accompanied with Lightning** likely at isolated places over Rajasthan and Uttar Pradesh.

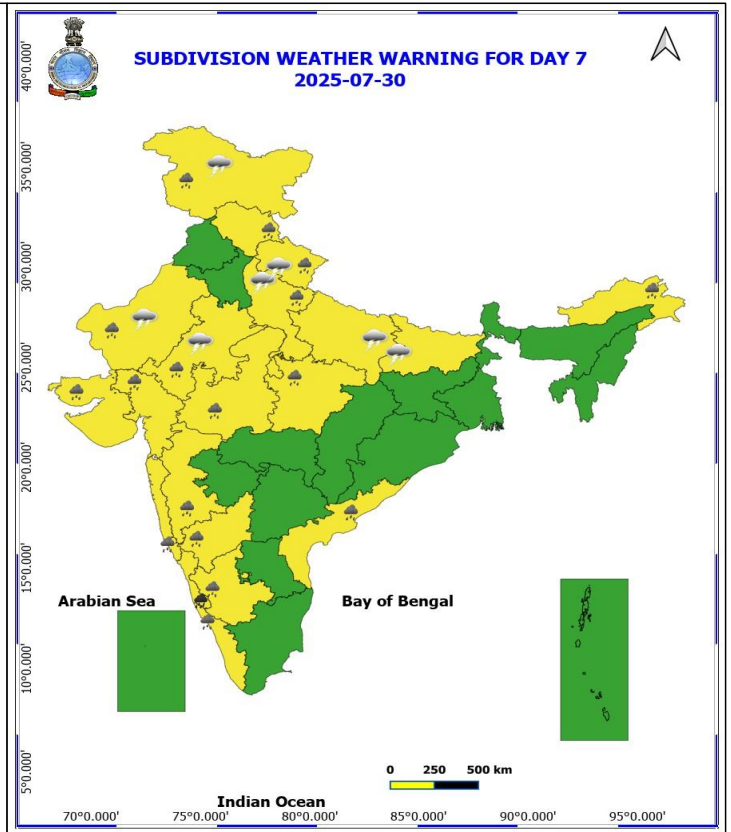
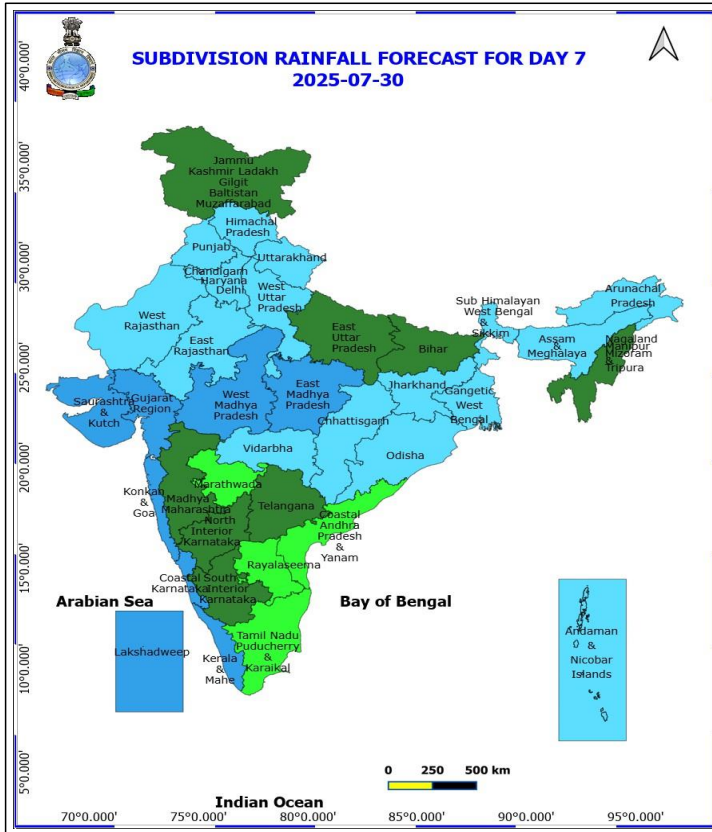
No Fishermen Warning



29 July (Day 6)

- ❖ **Heavy to Very Heavy Rainfall** likely at isolated places over Coastal Karnataka.
- ❖ **Heavy Rainfall** likely at isolated places over Arunachal Pradesh, Coastal Andhra Pradesh, Gujarat State, Himachal Pradesh, Interior Karnataka, Jammu-Kashmir-Ladakh-Gilgit-Baltistan-Muzaffarabad, Kerala & Mahe, Konkan & Goa, Madhya Maharashtra, Madhya Pradesh, Rajasthan, Uttarakhand and West Uttar Pradesh.
- ❖ **Thunderstorm accompanied with lightning & gusty winds(30-40kmph)** likely at isolated places over Bihar, Jammu-Kashmir-Ladakh-Gilgit-Baltistan-Muzaffarabad and Uttarakhand.
- ❖ **Thunderstorm accompanied with Lightning** likely at isolated places over Rajasthan and Uttar Pradesh.

No Fishermen Warning



30 July (Day 7)

- ❖ **Heavy to Very Heavy Rainfall** likely at isolated places over Coastal Karnataka.
- ❖ **Heavy Rainfall** likely at isolated places over Arunachal Pradesh, Coastal Andhra Pradesh, Gujarat State, Himachal Pradesh, Interior Karnataka, Jammu-Kashmir-Ladakh-Gilgit-Baltistan-Muzaffarabad, Kerala & Mahe, Konkan & Goa, Madhya Maharashtra, Madhya Pradesh, Rajasthan, Uttarakhand and West Uttar Pradesh.
- ❖ **Thunderstorm accompanied with lightning & gusty winds(30-40kmph)** likely at isolated places over Bihar, Jammu-Kashmir-Ladakh-Gilgit-Baltistan-Muzaffarabad and Uttarakhand.
- ❖ **Thunderstorm accompanied with Lightning** likely at isolated places over Rajasthan and Uttar Pradesh.

No Fishermen Warning

Flash Flood Warnings

24 hours Outlook for the Flash Flood Risk (FFR) till 0530 IST of 25-07-2025 :

Low to Moderate flash flood risk likely over few watersheds & neighbourhoods of following Met Sub-divisions during next 24 hours.

NMMT

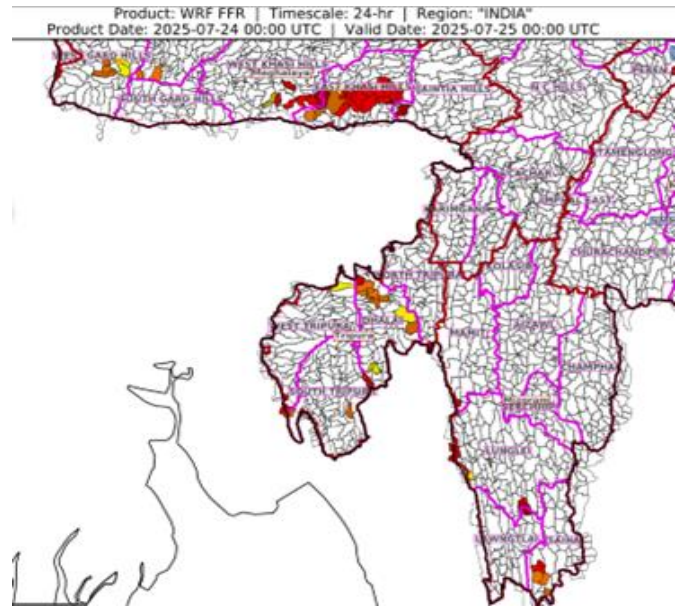
Tripura – West Tripura, South Tripura and Dhalai districts.

Mizoram – Lawngtalai, Saiha and Lunglei districts.

Assam & Meghalaya

Meghalaya – West Garo Hills, South Garo Hills, West Khasi Hills, East Khasi Hills and Jaintia Hills districts.

Surface runoff/ Inundation may occur at some fully saturated soils & low-lying areas over Area of Concern (AoC) as shown in map due to expected rainfall occurrence in next 24 hours.



24 hours Outlook for the Flash Flood Risk (FFR) till 0530 IST of 25-07-2025 :

Low to Moderate flash flood risk likely over few watersheds & neighbourhoods of following Met Sub-divisions during next 24 hours.

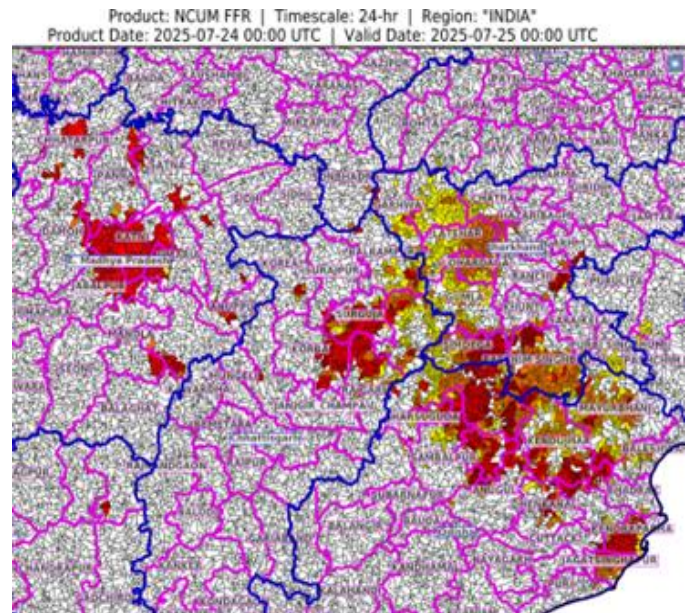
East Madhya Pradesh – Chhattarpur, Damoh, Panna, Satna, Katni, Umaria, Jabalapur, Mandla, Dindori, Anuppur and Shahdol districts.

Chhattisgarh – Korea, Surajpur, Surguja, Balrampur, Jashpur, Raigarh, Korba, Bilaspur and Mungeli districts.

Jharkhand – Garhwa, Palamu, Latehar, Lohardaga, Gumla, Simdega, Khunti, Ranchi, Ramgarh, Bokaro, Pashchim Singhbhum, Purbi Singhbhum, Saraikela, Chatra and Hazaribagh districts.

Odisha – Sundergarh, Jharsuguda, Deogarh, Sambalpur, Anugul, Dhenkenal, Mayurbhanj, Kendujhar, Baleswar, Jajapur, Bhadrak, Kendraparha, Jagatsinghpur and Puri districts.

Surface runoff/ Inundation may occur at some fully saturated soils & low-lying areas over Area of Concern (AoC) as shown in map due to expected rainfall occurrence in next 24 hours.



***Red color warning does not mean "Red Alert" Red color warning means "Take Action"**

Forecast and warning for any day is valid from 0830 hours IST of day till 0830 hours IST of next day

For more details kindly visit <https://mausam.imd.gov.in> or contact 011-2434-4599

(Service to the nation since 1875)



Table-1

7 Days Rainfall Forecast

S.No.	Subdivision	24- Jul	25- Jul	26- Jul	27- Jul	28- Jul	29- Jul	30- Jul
		Day 1	Day 2	Day 3	Day 4	Day 5	Day 6	Day 7
1	ANDAMAN & NICOBAR ISLANDS	FWS	FWS	FWS	FWS	SCT	FWS	FWS
2	ARUNACHAL PRADESH	SCT	FWS	FWS	FWS	FWS	FWS	FWS
3	ASSAM & MEHGHALAYA	FWS	FWS	WS	WS	FWS	FWS	FWS
4	N. M. M. & T.	FWS	FWS	FWS	WS	FWS	SCT	SCT
5	S.H. WEST BENGAL & SIKKIM	WS	FWS	FWS	WS	WS	FWS	FWS
6	GANGETIC WEST BENGAL	WS	WS	WS	WS	WS	FWS	FWS
7	ODISHA	WS	WS	WS	WS	FWS	FWS	FWS
8	JHARKHAND	FWS	WS	WS	WS	WS	FWS	FWS
9	BIHAR	SCT	FWS	FWS	SCT	SCT	SCT	SCT
10	EAST UTTAR PRADESH	SCT	FWS	FWS	FWS	SCT	SCT	SCT
11	WEST UTTAR PRADESH	ISOL	FWS	SCT	FWS	FWS	FWS	FWS
12	UTTARAKHAND	FWS	FWS	FWS	FWS	FWS	FWS	FWS
13	HARYANA, CHD & DELHI	FWS	ISOL	ISOL	SCT	FWS	FWS	FWS
14	PUNJAB	FWS	ISOL	ISOL	ISOL	FWS	FWS	FWS
15	HIMACHAL PRADESH	SCT	SCT	FWS	WS	WS	FWS	FWS
16	JAMMU AND KASHMIR AND LADAKH	FWS	SCT	SCT	FWS	FWS	SCT	SCT
17	WEST RAJASTHAN	ISOL	ISOL	SCT	SCT	FWS	FWS	FWS
18	EAST RAJASTHAN	SCT	SCT	FWS	FWS	FWS	FWS	FWS
19	WEST MADHYA PRADESH	FWS	WS	WS	WS	WS	WS	WS
20	EAST MADHYA PRADESH	WS	WS	WS	WS	WS	WS	WS
21	GUJRAT REGION	FWS	FWS	FWS	WS	WS	WS	WS
22	SAURASHTRA & KUTCH	SCT	SCT	FWS	WS	WS	WS	WS
23	KONKAN & GOA	WS	WS	WS	WS	WS	WS	WS
24	MADHYA MAHARASHTRA	FWS	FWS	FWS	FWS	FWS	SCT	SCT
25	MARATHWADA	SCT	SCT	ISOL	ISOL	ISOL	ISOL	ISOL
26	VIDARBHA	WS	WS	WS	WS	FWS	FWS	FWS
27	CHATTISGARH	WS	WS	WS	WS	FWS	FWS	FWS
28	COASTAL ANDHRA PRADESH	FWS	FWS	FWS	SCT	SCT	ISOL	ISOL
29	TELANGANA	WS	FWS	FWS	SCT	SCT	SCT	SCT
30	RAYALASEEMA	SCT	SCT	SCT	SCT	ISOL	ISOL	ISOL
31	TAMILNADU & PUDUCHERRY	ISOL	ISOL	ISOL	ISOL	ISOL	ISOL	ISOL
32	COSTAL KARNATAKA	WS	WS	WS	WS	WS	WS	WS
33	NORTH INTERIOR KARNATAKA	WS	FWS	FWS	FWS	SCT	SCT	SCT
34	SOUTH INTERIOR KARNATAKA	WS	WS	FWS	FWS	SCT	SCT	SCT
35	KERALA	WS	WS	WS	WS	WS	WS	WS
36	LAKSHDWEEP	WS	WS	WS	WS	WS	WS	WS

Legend	Category	%Stations
WS	Widespread/Most Places	76-100
FWS	Fairly Widespread/Many Places	51-75
SCT	Scattered/ A Few Places	26-50
ISOL	Isolated Places	1-25
DRY	No Rain	0

*Red color warning does not mean "Red Alert" Red color warning means "Take Action"
Forecast and warning for any day is valid from 0830 hours IST of day till 0830 hours IST of next day
For more details kindly visit <https://mausam.imd.gov.in> or contact 011-2434-4599

(Service to the nation since 1875)

Fig. 1: Maximum Temperatures Dated 2025-07-23

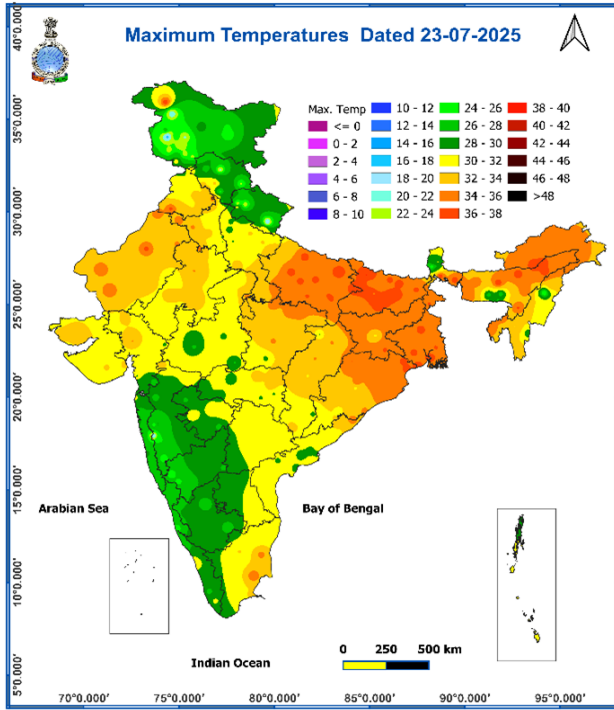


Fig. 2: Departure of Maximum Temp. Dated 2025-07-23

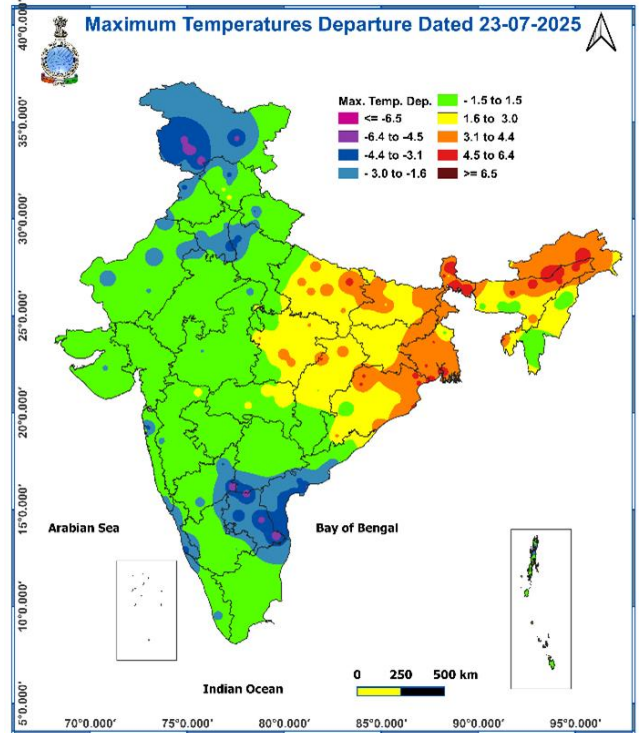


Fig. 3: Minimum Temperatures Dated 2025-07-23

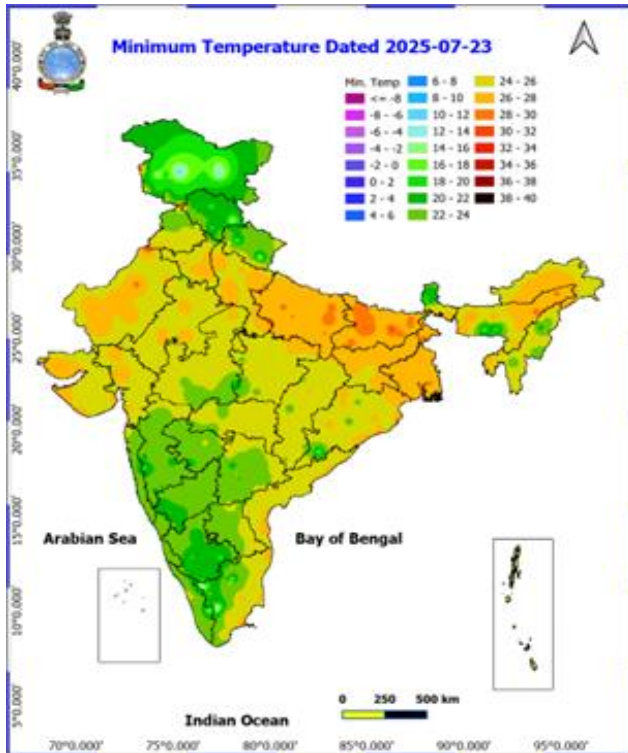
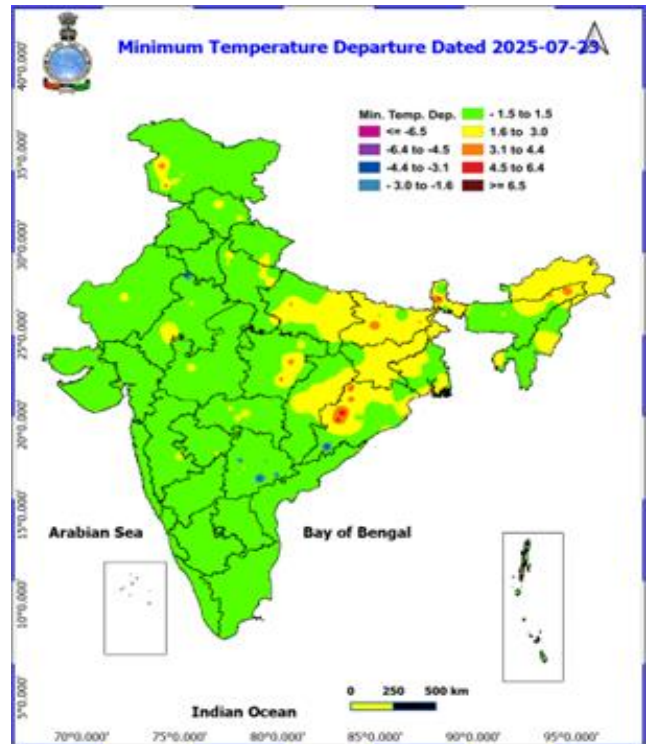
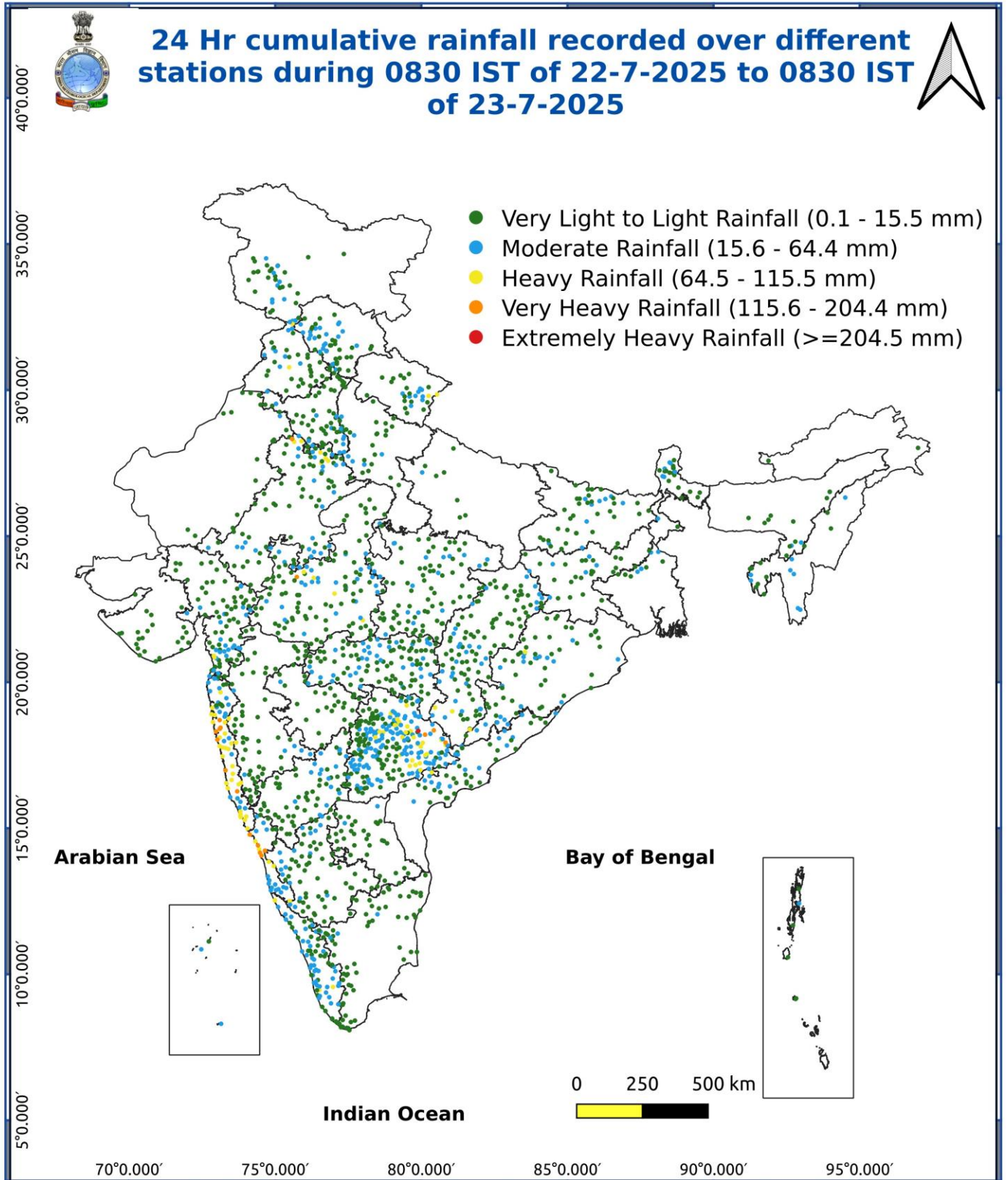


Fig. 4: Departure of Minimum Temp. Dated 2025-07-23





*Red color warning does not mean "Red Alert" Red color warning means "Take Action"
Forecast and warning for any day is valid from 0830 hours IST of day till 0830 hours IST of next day
For more details kindly visit <https://mausam.imd.gov.in> or contact 011-2434-4599

(Service to the nation since 1875)

♦ **Impact expected and Action Suggested due to light to moderate rainfall with thunderstorm/lightning:**

- Be cautious and take precautionary measures, though there is the likelihood of thunderstorms/lightning.
- Damage to standing crops, Minor to major damage to power and communication lines due to breaking of branches, Partial damage to vulnerable structures due to strong winds, Loose objects may fly.
- People are advised to keep a watch on the weather for worsening conditions and be ready to move to safer places accordingly, stay indoors, close windows & doors and avoid travel if possible, take safe shelters; do not take shelter under trees, do not lie on concrete floors and do not lean against concrete walls, unplug electrical/ electronic appliances, immediately get out of water bodies, keep away from all the objects that conduct electricity.

Impact & Action Suggested

- ♦ **Extremely heavy falls** very likely at isolated places over Coastal Karnataka, Konkan and ghat areas of Madhya Maharashtra on 24th & 25th and Odisha on 25th July
- ♦ **Isolated very heavy rainfall likely over Kerala & Mahe, Coastal & South Interior Karnataka, Coastal Andhra Pradesh & Yanam during 24th-27th; West Madhya Pradesh during 26th-28th; East Madhya Pradesh during 25th-28th; Vidarbha, Jharkhand during 25th-27th; Chhattisgarh, Odisha during 24th-26th; Gangetic West Bengal on 24th & 25th and East Rajasthan on 27th & 28th July.**

Impact Expected

- Localized Flooding of roads, water logging in low lying areas and closure of underpasses mainly in urban areas of (Rajasthan and West Madhya Pradesh) the above region.
- Occasional reduction in visibility due to heavy rainfall.
- Disruption of traffic in major cities due to water logging in roads leading to increased travel time.
- Minor damage to kutcha roads.
- Possibilities of damage to vulnerable structure.
- Localized Landslides/Mudslides/landslips/mudslips/landsinks/mudsinks.
- Damage to horticulture and standing crops in some areas due to inundation.
- It may lead to riverine flooding in some river catchments (for riverine flooding please visit Web page of CWC)

Action Suggested

- Check for traffic congestion on your route before leaving for your destination.
- Follow any traffic advisories that are issued in this regard.
- Avoid going to areas that face the water logging problems often.
- Avoid staying in vulnerable structure.

Agromet advisories for likely impact of Heavy / Heavy to Very Heavy Rainfall

- In **Telangana**, ensure proper drainage facilities from the fields of paddy, maize, cotton, soybean and vegetables.
- In **Maharashtra**, provide adequate drainage facilities in fields of soybean, cotton, pigeon pea, sorghum, maize, green gram, black gram and turmeric in **Vidarbha**. Make arrangement to drain out excess water from paddy and finger millet nurseries, groundnut, vegetables and orchards in **Konkan** and rice and finger millet nurseries in **ghat areas** of **Madhya Maharashtra**.
- In **Jammu & Kashmir**, provide adequate drainage facilities in fields of maize, green gram, vegetables and transplanted rice in **Sub Tropical Zone** and maize fields and kharif pulses in **Intermediate Zone**.
- In **Uttarakhand**, maintain proper drainage channels in fields of rice in **Bhabar and Tarai Zone** and black gram in **Hill Zone**. Make necessary arrangements to drain out excess water from barnyard millet, finger millet, cucumber and rice fields in **Sub Humid SubTropic Zone**.
- In **Himachal Pradesh**, make proper drainage channels in the standing crops like maize, finger millet and vegetable fields. Provide staking to tall and leguminous crops and cucumber vines. In **Mid Hills Sub Humid Zone**, undertake harvesting of matured tomato, brinjal, capsicum and fruits and keep the harvested produce at safer places.



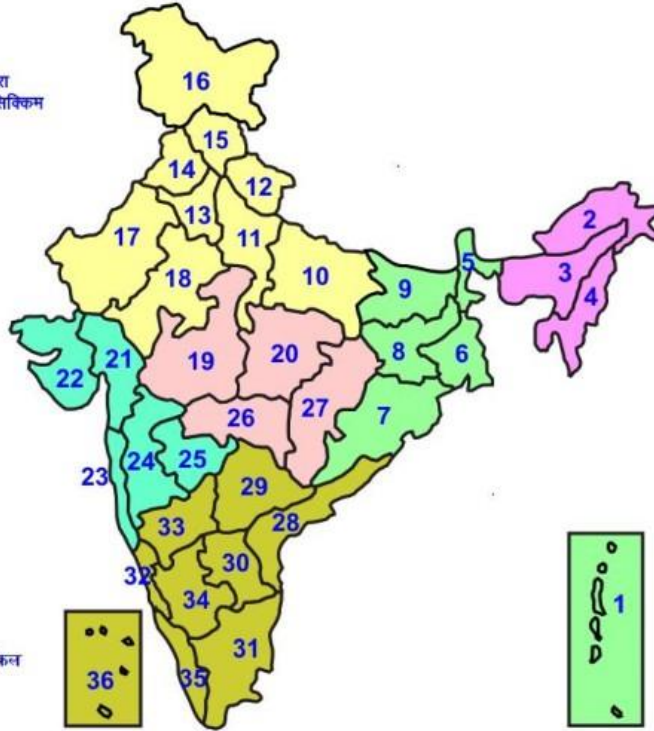
- In **Kerala**, provide mechanical support to protect banana plants. Ensure proper drainage facilities in banana, coconut and rice in **Central Zone**; banana, coconut, ginger and vegetable fields in **Southern Zone** and rice nursery in **High Altitude Zone**. In **Northern Zone**, postpone sowing / nursery preparation of rice.
- In **Karnataka**, postpone nursery sowing of rice and provide drainage in arecanut fields and banana orchards in **Coastal Zone**. In **Hill Zone**, make arrangements to drain out excess water from rice nurseries, fields of maize, cotton, ginger and plantations of arecanut. In **Southern Transition Zone**, provide proper drainage in arecanut and coconut fields. In **Southern Dry Zone**, provide staking / support to maize, tomato and banana crop. Ensure proper drainage to prevent waterlogging especially in rice, vegetables and spice crops.
- In **Coastal Andhra Pradesh**, ensure proper drainage channels in fields of maize and direct seeded rice in **Krishna Godavari Zone**.
- In **Chhattisgarh**, make arrangements for drainage of excess water from fields of rice, maize, pigeon pea, minor millets and vegetables. Provide mechanical support to tall/weak crops with stakes or bamboo to prevent lodging or breakage.
- In **Odisha**, drain out excess water from rice nurseries and fields of transplanted rice, maize, pulses, vegetable and plantation crops.
- In **Arunachal Pradesh**, maintain drainage in finger millet, orchards, vegetables and transplanted rice. Cover the nursery bed of millet with plastic sheet or shed, and cover the surface of already sown seed with light layer of natural mulches like leaves.
- In **Meghalaya**, maintain proper drainage channels around the nursery beds of rice. Ensure adequate drainage in maize, cow pea, okra, brinjal and pumpkin crop fields to prevent waterlogging. Provide support to banana plant to prevent lodging.

Livestock / Fishery

- Keep the animals inside the shed during heavy rainfall and provide them balanced feed.
- Store feed and fodder in a safe place to prevent spoilage.
- Construct an outlet with proper netting around the ponds to drain out excess water, thereby preventing fish from escaping in case of overflow.

LEGENDS

- 1 अंडमान और निकोबार द्वीप समुह
- 2 अरुणाचल प्रदेश
- 3 असम और मेघालय
- 4 नागालैंड मनीपुर मीजोरम और त्रिपुरा
- 5 उप हिमालय पश्चिम बंगाल एवं सिक्किम
- 6 पश्चिम बंगाल
- 7 ओडिसा
- 8 झारखंड
- 9 बिहार
- 10 पूर्वी उत्तर प्रदेश
- 11 पश्चिम उत्तर प्रदेश
- 12 उत्तराखंड
- 13 हरियाणा चंडिगढ़ एवं दिल्ली
- 14 पंजाब
- 15 हिमाचल प्रदेश
- 16 जम्मू एवं कश्मीर एवं लद्दाख
- 17 पश्चिम राजस्थान
- 18 पूर्वी राजस्थान
- 19 पश्चिम मध्य प्रदेश
- 20 पूर्वी मध्य प्रदेश
- 21 गुजरात क्षेत्र
- 22 सौराष्ट्र एवं कच्छ
- 23 कोंकण एवं गोवा
- 24 मध्य महाराष्ट्र
- 25 मराठावाडा
- 26 विदर्भ
- 27 छत्तीसगढ़
- 28 तटीय आंध्र प्रदेश एवं यनम
- 29 तेलंगाना
- 30 रायलसीमा
- 31 तमिलनाडु, पुदुचेरी एवं कराईकल
- 32 तटिय कर्नाटक
- 33 आंतरिक उत्तरी कर्नाटक
- 34 आंतरिक दक्षिणी कर्नाटक
- 35 केरल एवं माहे
- 36 लक्षद्वीप



1. Andaman & Nicobar Islands
2. Arunachal Pradesh
3. Assam & Meghalaya
4. Nagaland, Manipur, Mizoram & Tripura
5. Sub-Himalayan West Bengal & Sikkim
6. Gangetic West Bengal
7. Orissa
8. Jharkhand
9. Bihar
10. East Uttar Pradesh
11. West Uttar Pradesh
12. Uttarakhand
13. Haryana, Chd & Delhi
14. Punjab
15. Himachal Pradesh
16. Jammu & Kashmir and Ladakh
17. West Rajasthan
18. East Rajasthan
19. West Madhya Pradesh
20. East Madhya Pradesh
21. Gujarat
22. Saurashtra
23. Konkan & Goa
24. Madhya Maharashtra
25. Marathwada
26. Vidharbha
27. Chhattisgarh
28. Coastal Andhra Pradesh & Yanam
29. Telangana
30. Rayalaseema
31. Tamilnadu, Puducherry & Karaikal
32. Coastal Karnataka
33. North Interior Karnataka
34. South Interior Karnataka
35. Kerala & Mahe
36. Lakshadweep

SPATIAL DISTRIBUTION (% of Stations reporting)

% Stations	Category	% Stations	Category
76-100	Widespread (WS/Most Places)	26-50	Scattered (SCT/ A Few Places)
51-75	Fairly Widespread (FWS/ Many Places)	1-25	Isolated (ISOL)

Subdivision Colour

- NO WARNING
- WATCH (BE UPDATED)
- ALERT (BE PREPARED TO TAKE ACTION)
- WARNING (TAKE ACTION)

Probabilistic Forecast

Terms	Probability of Occurrence (%)
Unlikely	< 25
Likely	25 - 50
Very Likely	50 - 75
Most Likely	> 75

- | | | | |
|--------------------------|-----------------|----------------------|--------------------|
| Heavy Rain | Very Heavy Rain | Extremely Heavy Rain | Heavy Snow |
| Thunderstorm & Lightning | Hailstorm | Dust Storm | Dust Raising Winds |
| Strong surface winds | Heat Wave | Hot Day | Warm Night |
| Cold Wave | Cold Day | Ground Frost | Fog |
| Hot & Humid | | | |

*Red color warning does not mean "Red Alert" Red color warning means "Take Action"

Forecast and warning for any day is valid from 0830 hours IST of day till 0830 hours IST of next day

For more details kindly visit <https://mausam.imd.gov.in> or contact 011-2434-4599

(Service to the nation since 1875)

LEGENDS

WARNING

WARNING (TAKE ACTION)
ALERT (BE PREPARED)
WATCH (BE UPDATED)
NO WARNING (NO ACTION)

Probabilistic Forecast

Terms	Probability of Occurrence (%)
Unlikely	< 25
Likely	25 - 50
Very Likely	50 - 75
Most Likely	> 75



Heavy: 64.5 to 115.5 mm/cm *
Very Heavy: 115.6 to 204.4 mm/cm*
Extremely Heavy: > 204.4 mm/cm *



When maximum temperature of a station reaches $\geq 40^{\circ}\text{C}$ for plains and $\geq 30^{\circ}\text{C}$ for hilly regions
(a) Based on Departure from normal

Heat Wave: Maximum Temperature Departure from normal 4.5°C to 6.4°C .
Severe Heat Wave: Maximum Temperature Departure from normal $\geq 6.5^{\circ}\text{C}$

(b). Based on Actual maximum temperature

Heat Wave: When actual maximum temperature $\geq 45^{\circ}\text{C}$.
Severe Heat Wave: When actual maximum temperature $\geq 47^{\circ}\text{C}$

(c). Criteria for heat wave for coastal stations

When maximum temperature departure is $> 4.5^{\circ}\text{C}$ from normal. Heat Wave may be described provided maximum temperature $\geq 37^{\circ}\text{C}$



When maximum temperature remains 40°C

Warm Night: When minimum temperature departure 4.5°C to 6.4°C .
Severe Warm Night: When minimum temperature departure $> 6.4^{\circ}\text{C}$.



When minimum temperature of a station $\leq 10^{\circ}\text{C}$ for plains and $\leq 0^{\circ}\text{C}$ for hilly regions.

(a). Based on departure

Cold Wave: Minimum Temperature Departure from normal -4.5°C to -6.4°C .
Severe Cold Wave: Minimum Temperature Departure from normal $\leq -6.5^{\circ}\text{C}$

(b) Based on actual Minimum Temperature (for Plains only)

Cold Wave : When Minimum Temperature is $\leq 4.0^{\circ}\text{C}$
Severe Cold Wave: When Minimum Temperature is $\leq 2.0^{\circ}\text{C}$

(c) For Coastal Stations

When Minimum Temperature departure is $\leq -4.5^{\circ}\text{C}$ & actual Minimum Temperature is $\leq 15^{\circ}\text{C}$



When minimum temperature of a station $\leq 10^{\circ}\text{C}$ for plains and $\leq 0^{\circ}\text{C}$ for hilly regions
Based on departure

Cold Day: Maximum Temperature Departure from normal -4.5°C to -6.4°C .
Severe Cold Day: Maximum Temperature Departure from normal $\leq -6.5^{\circ}\text{C}$



Phenomenon of small droplets suspended in air and the horizontal visibility $< 1\text{km}$

Moderate Fog: When the visibility between 500-200 metres
Dense Fog: when the visibility between 50- 200 metres
Very Dense Fog: when the visibility < 50 metres



Sudden electrical discharges manifested by a flash of light (Lightning) and a sharp rumbling sound (thunder)



An ensemble of particles of dust or sand energetically lifted to great heights by a strong and turbulent wind.



Ice deposits on ground

Air temperature $\leq 4^{\circ}\text{C}$ (over Plains)



A strong wind that rises suddenly, lasts for atleast 1 minute.

Moderate: Wind speed 52-61 kmph
Severe: Wind speed 62-87 kmph
Very Severe: Wind speed > 87 kmph



Effect of various waves in the sea over specific area

Rough to very rough: Wind speed 41-62 kmph (22-33 knots) & Wave height 2.5-6 metre
High to very high: Wind speed 63-117 kmph (34-63 knots) & Wave height 6-14 metre
Phenomenal: Wind speed > 117 kmph (> 63 knots) & Wave height > 14 metre



Cyclonic Storm: Wind speed 62-87 kmph (34-47 knots)
Severe Cyclonic Storm: Wind speed 88-117 kmph (48-63 knots)
Very Severe Cyclonic Storm: Wind speed 118-165 kmph (64 - 89 knots)
Extremely Severe Cyclonic Storm: Wind speed 166-220 kmph (90 -119 knots)
Super Cyclone Storm: Wind speed > 220 kmph (> 119 knots)

*Red color warning does not mean "Red Alert" Red color warning means "Take Action"

Forecast and warning for any day is valid from 0830 hours IST of day till 0830 hours IST of next day

For more details kindly visit <https://mausam.imd.gov.in> or contact 011-2434-4599

(Service to the nation since 1875)