

ALL INDIA WEATHER SUMMARY AND FORECAST BULLETIN

Significant Weather Features

Weather Systems, Forecast and Warnings:

West India:

- ♦ **Heavy to very heavy rainfall** at isolated places likely over Konkan & Goa, Ghat areas of Madhya Maharashtra, Gujarat region and **isolated heavy rainfall** over Saurashtra & Kutch during 26th June-01st July.
- ♦ Light/moderate rainfall at most/many places likely over the region during next 7 days.

Northwest India:

- ♦ Isolated **heavy rainfall** likely over Punjab, Haryana, Himachal Pradesh, Uttarakhand, West Uttar Pradesh during 26th June-01st July; Rajasthan during 26th-29th; Jammu-Kashmir on 26th & 27th; East Uttar Pradesh during 28th June-01st July with **very heavy rainfall** over East Rajasthan during 26th-28th; Uttarakhand on 26th & 27th, Haryana, West Rajasthan on 27th; Punjab on 26th, West Uttar Pradesh on 01st July 27th and East Uttar Pradesh on 30th June & 01st July.
- ♦ Light/moderate rainfall at most/many places accompanied with accompanied with **thunderstorm, lightning & gusty winds speed reaching 30-40 kmph** likely over Northwest India during 26th June-01st July.

East & Central India:

- ♦ Isolated **heavy rainfall** over Madhya Pradesh, Vidarbha, Chhattisgarh during 26th June-01st July; Jharkhand, Odisha, Gangetic West Bengal during 26th-28th, Sub-Himalayan West Bengal & Sikkim, Bihar during 27th June-01st July with **very heavy rainfall** over Madhya Pradesh on 26th June & 01st July; Sub-Himalayan West Bengal & Sikkim on 28th; Bihar on 28th & 29th; Jharkhand, Odisha on 26th June.
- ♦ Light/moderate rainfall at most/many places accompanied with **thunderstorm, lightning & gusty winds speed reaching 40-50 kmph** likely over Andaman & Nicobar Islands, Madhya Pradesh, Vidarbha, Chhattisgarh, Gangetic West Bengal, Bihar, Jharkhand, Odisha during 26th June-01st July.

Northeast India:

- ♦ Light/moderate rainfall at most places accompanied with **thunderstorm, lightning and isolated heavy rainfall** likely to continue over Northeast India during next 7 days with **very heavy rainfall** over Arunachal Pradesh on 28th June.

South Peninsular India:

- ♦ Isolated **heavy rainfall** likely over Kerala, Karnataka, Tamil Nadu during 26th-28th; Ghat areas of Tamil Nadu, Coastal Karnataka and Kerala on 26th June.
- ♦ **Strong surface winds** (speed reaching 40-60 kmph) very likely over Karnataka, Coastal Andhra Pradesh & Yanam, Rayalaseema, Telangana during 26th-29th June.
- ♦ Light/moderate rainfall at many/some places over Kerala & Mahe, Lakshadweep, Coastal Karnataka; isolated to scattered rainfall accompanied with isolated **thunderstorm, lightning** over Coastal Andhra Pradesh & Yanam, Telangana, Interior Karnataka during 26th-29th June.

***Red color warning does not mean "Red Alert" Red color warning means "Take Action"**

Forecast and warning for any day is valid from 0830 hours IST of day till 0830 hours IST of next day

For more details kindly visit <https://mausam.imd.gov.in> or contact 011-2434-4599

(Service to the nation since 1875)

Main Weather Observations:

❖ **Rainfall distribution** (from 0830 hours IST to 1730 hours IST of yesterday): **at most places** over Nagaland, Manipur, Mizoram & Tripura, Himachal Pradesh, Odisha, Kerala & Mahe, Gangetic West Bengal, Jharkhand, Uttarakhand, Coastal Karnataka, Punjab, South Interior Karnataka and Lakshadweep ; **at many places** over West Uttar Pradesh, Konkan & Goa , Madhya Maharashtra , Vidarbha, Sub-Himalayan West Bengal & Sikkim, East Uttar Pradesh, Gujarat Region, Tamilnadu Puducherry & Karaikal, East Madhya Pradesh, Saurashtra & Kutch, West Rajasthan, Assam & Meghalaya, Bihar, Haryana Chandigarh & Delhi, Jammu & Kashmir and Ladakh, East Rajasthan, Coastal Andhra Pradesh & Yanam, Andaman & Nicobar Islands, Telangana, West Madhya Pradesh, Marathwada, Rayalaseema, North Interior Karnataka and Chhattisgarh; **Dry** over rest of the country.

❖ **Significant rainfall recorded(in cm)** (from 0830 hours IST to 1730 hours IST of yesterday): East Madhya Pradesh: Satna (dist. Satna) 6, Khajuraho (dist. Chhatarpur) 4; Tamilnadu Puducherry & Karaikal: Valparai(pastry) (dist. Coimbatore) 6; Kerala & mahe: Palakkad (palghat) (dist Palakkad) 5, Thrissur (dist Thrissur) 4, Cannanore (Kannur) (dist Kannur) 3; **Odisha**: Bhubaneshwar (dist Khordha) 5, Balasore (dist Balasore) 4; Nagaland, manipur, mizoram & tripura: Aizawl (dist Aizawl) 4; Himachal pradesh: Dharamshala (dist Kangra) 4; Coastal andhra pradesh & yanam: Visakhapatnam (dist Visakhapatnam) 4, Tuni (dist Kakinada), Vishakhapatnam (dist Visakhapatnam) 3 Each; **Punjab**: Amritsar (rajasansi) AP (dist Amritsar) 3; West madhya pradesh: Bhopal-arera Hills (dist Bhopal), Khargone-obs (dist Khargone) 3 Each.

❖ **Minimum Temperature Departures (as on 25-06-2025): markedly above normal(> 5.1°C)** at many places over Jammu-KashmirLadakh-Gilgit-Baltistan-Muzaffarabad; at few places over Himachal Pradesh; at isolated places over Assam & Meghalaya, Bihar, East Uttar Pradesh, West Uttar Pradesh, West Madhya Pradesh and Saurashtra & Kutch. **appreciably above normal(3.1°C to 5.0°C)** at few places over East Madhya Pradesh; at isolated places over Andaman & Nicobar Islands, Sub Himalayan West Bengal & Sikkim, Odisha, Gujarat Region and Tamil Nadu, Puducherry & Karaikal. **above normal(1.6°C to 3.0°C)** at many places over Uttarakhand; at few places over Nagaland, Manipur, Mizoram & Tripura, Gangetic West Bengal, Jharkhand, Haryana-Chandigarh-Delhi, Punjab, West Rajasthan, Konkan & Goa, Coastal Karnataka, Kerala & Mahe and Lakshadweep; at isolated places over Madhya Maharashtra, Marathwada, Chhattisgarh, Coastal Andhra Pradesh & Yanam and Rayalaseema. **near normal(-1.5°C to 1.5°C)** at most places over Vidarbha, Telangana, North Interior Karnataka and South Interior Karnataka; at few places over East Rajasthan. **The lowest minimum temperature** of 18.6°C was reported at NARSINGHPUR (MADHYA PRADESH) over the Plains of India.

❖ **Maximum Temperature Departures (as on 25-06-2025): markedly above normal(> 5.1°C)** at isolated places over Odisha. **appreciably above normal(3.1°C to 5.0°C)** at few places over Arunachal Pradesh; at isolated places over Sub Himalayan West Bengal & Sikkim and Tamil Nadu, Puducherry & Karaikal. **above normal(1.6°C to 3.0°C)** at many places over Jammu-KashmirLadakh-Gilgit-Baltistan-Muzaffarabad; at few places over Assam & Meghalaya, Nagaland, Manipur, Mizoram & Tripura and Lakshadweep; at isolated places over East Uttar Pradesh, Himachal Pradesh, West Rajasthan and Kerala & Mahe. **near normal(-1.5°C to 1.5°C)** at many places over Andaman & Nicobar Islands, Konkan & Goa, Madhya Maharashtra, Marathwada and Chhattisgarh; at most places over Gangetic West Bengal, Bihar and Coastal Karnataka; at few places over Saurashtra & Kutch, Vidarbha, Telangana and Rayalaseema; at isolated places over Jharkhand, West Uttar Pradesh, West Madhya Pradesh and Coastal Andhra Pradesh & Yanam. **The highest maximum temperature** of 42.4°C was reported at JAISALMER (RAJASTHAN).

*Red color warning does not mean "Red Alert" Red color warning means "Take Action"

Forecast and warning for any day is valid from 0830 hours IST of day till 0830 hours IST of next day

For more details kindly visit <https://mausam.imd.gov.in> or contact 011-2434-4599

(Service to the nation since 1875)

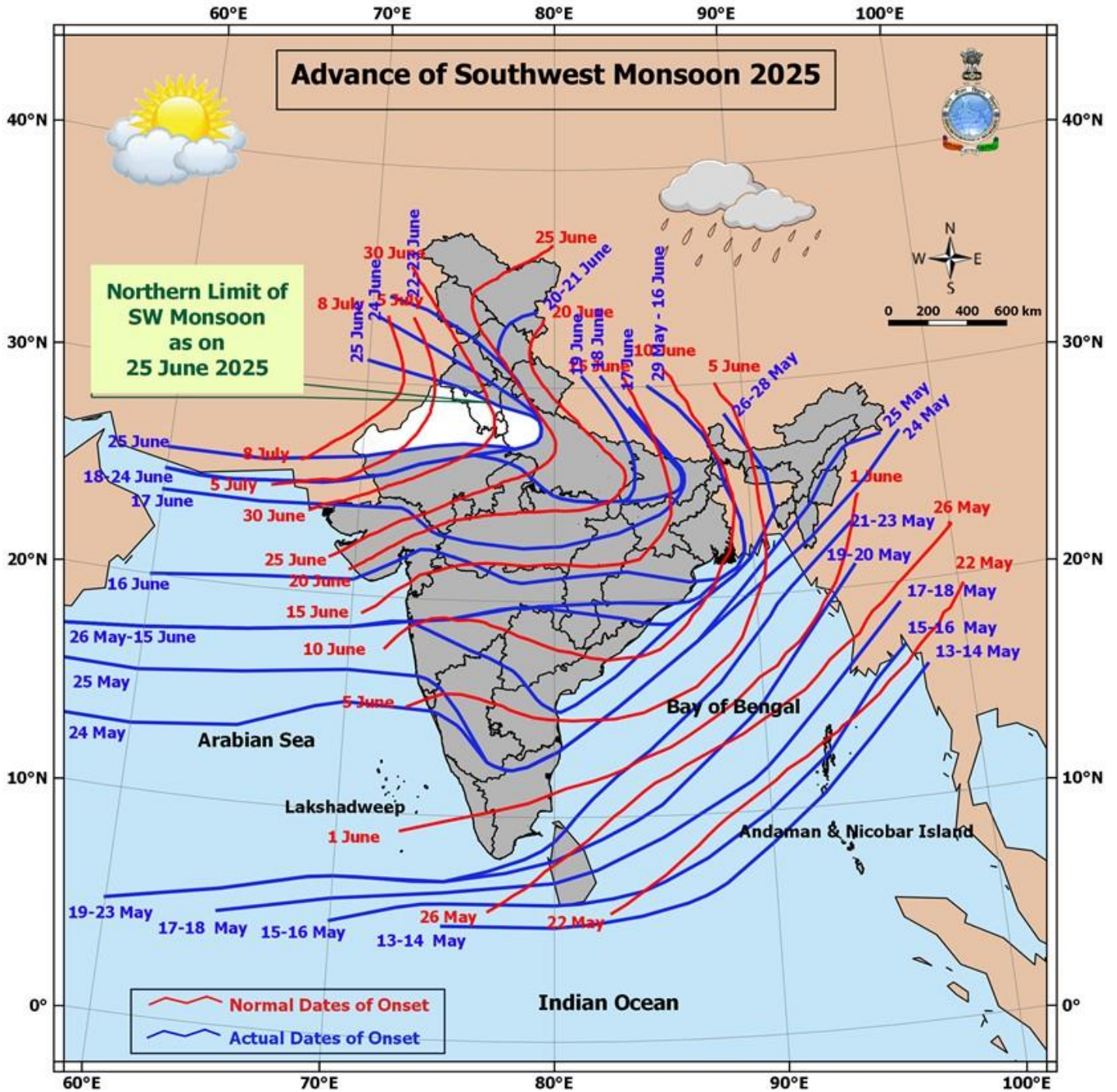


Meteorological Analysis (Based on 0530 hours IST)

- ❖ The Northern Limit of Monsoon continues to pass through 26.0°N/60.0°E, 26.0°N/65.0°E, 26.5°N/70.0°E, Nagaur, Sikar, Bharatpur, Rampur, Sonipat, Bhatinda and 31.0°N/70.0°E.
- ❖ The **upper air cyclonic circulation** over northeast Madhya Pradesh persists & now extends upto 1.5 km above mean sea level.
- ❖ The **upper air cyclonic circulation** over northwest Bay of Bengal and adjoining north Odisha-west Bengal coasts extending upto 7.6 km above mean sea level tilting southwestwards with height persists. Under its influence, a **low-pressure** area is likely to form over the same region during next 12 hours.
- ❖ The **trough now runs** from northeast Arabian Sea to the above cyclonic circulation over northwest Bay of Bengal and adjoining north Odisha-west Bengal coasts across south Gujarat, north Madhya Maharashtra, Vidarbha, south Chhattisgarh & extends between 3.1 & 5.8 km above mean sea level.

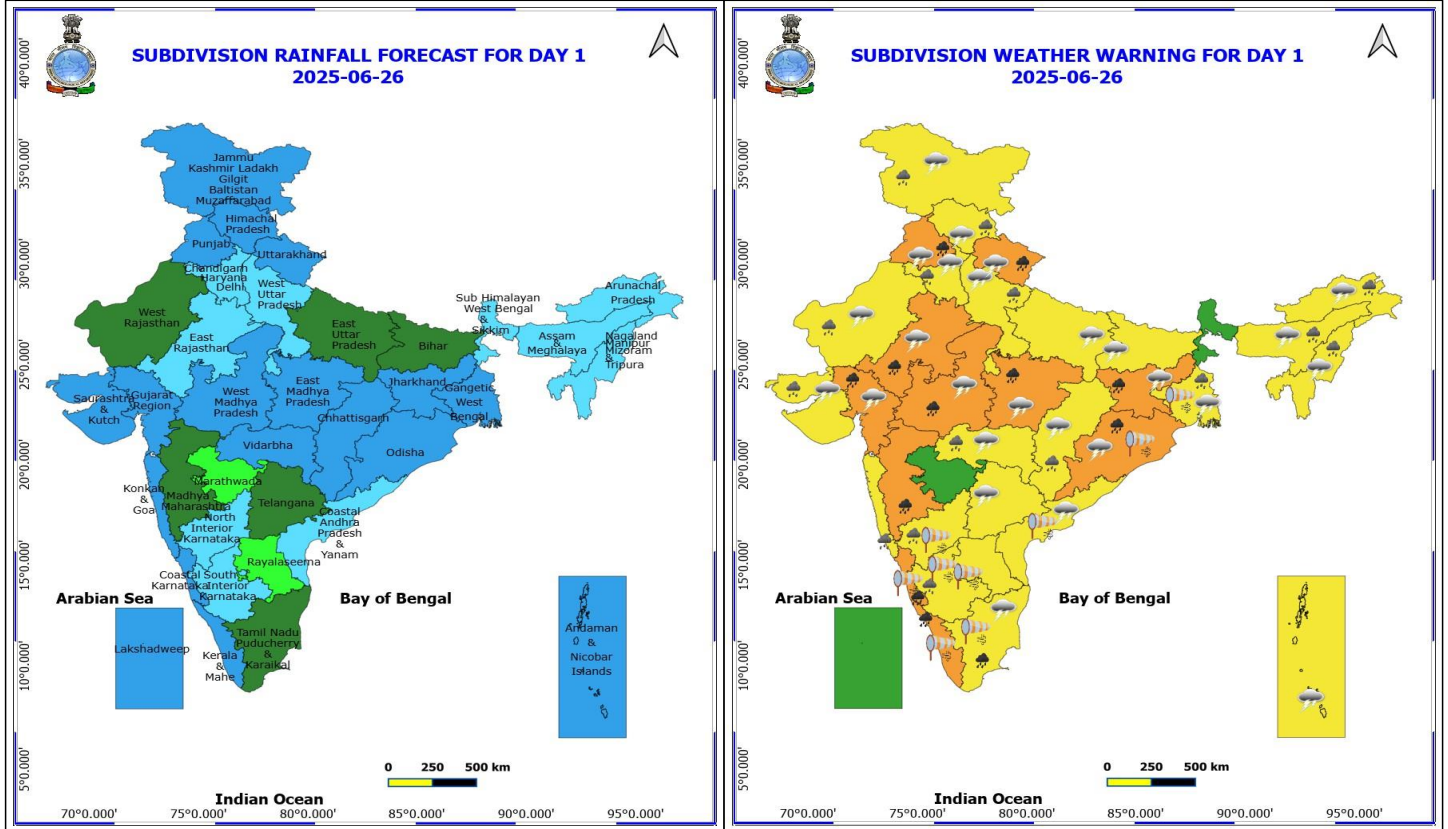
Weather Outlook for subsequent 3 days

- ♦ Scattered to fairly widespread rainfall very likely over central India, ghat area of western coast, eastern India & northwest India.
- ♦ Isolated to scattered rainfall very likely over the south peninsula India & western India.



*Red color warning does not mean "Red Alert" Red color warning means "Take Action"
Forecast and warning for any day is valid from 0830 hours IST of day till 0830 hours IST of next day
For more details kindly visit <https://mausam.imd.gov.in> or contact 011-2434-4599

(Service to the nation since 1875)



26 June (Day 1)

- ❖ **Heavy to Very Heavy Rainfall** very likely at isolated places over Coastal Karnataka, East Rajasthan, Gujarat Region, Jharkhand, Kerala & Mahe, Madhya Maharashtra, Madhya Pradesh, Odisha, Punjab, Tamil Nadu Puducherry & Karaikal and Uttarakhand.
- ❖ **Heavy Rainfall** very likely at isolated places over Arunachal Pradesh, Assam & Meghalaya, Chhattisgarh, Gangetic West Bengal, Haryana, Chandigarh & Delhi, Himachal Pradesh, Interior Karnataka, Jammu-Kashmir-Ladakh-Gilgit-Baltistan-Muzaffarabad, Konkan & Goa, Nagaland, Manipur, Mizoram and Tripura, Saurashtra & Kutch, Vidarbha, West Rajasthan and West Uttar Pradesh.
- ❖ **Thunderstorm accompanied with lightning & gusty winds(40-50kmph)** very likely at isolated places over Jammu-Kashmir-Ladakh-Gilgit-Baltistan-Muzaffarabad and Uttarakhand.
- ❖ **Thunderstorm accompanied with lightning & gusty winds(30-40kmph)** very likely at isolated places over Andaman & Nicobar Islands, Bihar, Gangetic West Bengal, Gujarat State, Jharkhand, Odisha, Rajasthan and West Madhya Pradesh.
- ❖ **Thunderstorm accompanied with Lightning** very likely at isolated places over Arunachal Pradesh, Assam & Meghalaya, Chhattisgarh, Coastal Andhra Pradesh, East Madhya Pradesh, Haryana, Chandigarh & Delhi, Himachal Pradesh, Nagaland, Manipur, Mizoram and Tripura, Punjab, Tamil Nadu Puducherry & Karaikal, Telangana, Uttar Pradesh and Vidarbha.
- ❖ **Strong Surface Winds** very likely at isolated places over Andhra Pradesh, Coastal Karnataka, Gangetic West Bengal, Interior Karnataka, Kerala & Mahe, Odisha and Tamil Nadu Puducherry & Karaikal.
- ❖ Squally wind speed reaching 45 kmph to 55 kmph gusting to 65 kmph is likely to prevail along and off Somalia, Oman & adjoining Yemen coasts, most parts of westcentral Arabian Sea & adjoining, some parts of eastcentral,

***Red color warning does not mean "Red Alert" Red color warning means "Take Action"**

Forecast and warning for any day is valid from 0830 hours IST of day till 0830 hours IST of next day

For more details kindly visit <https://mausam.imd.gov.in> or contact 011-2434-4599

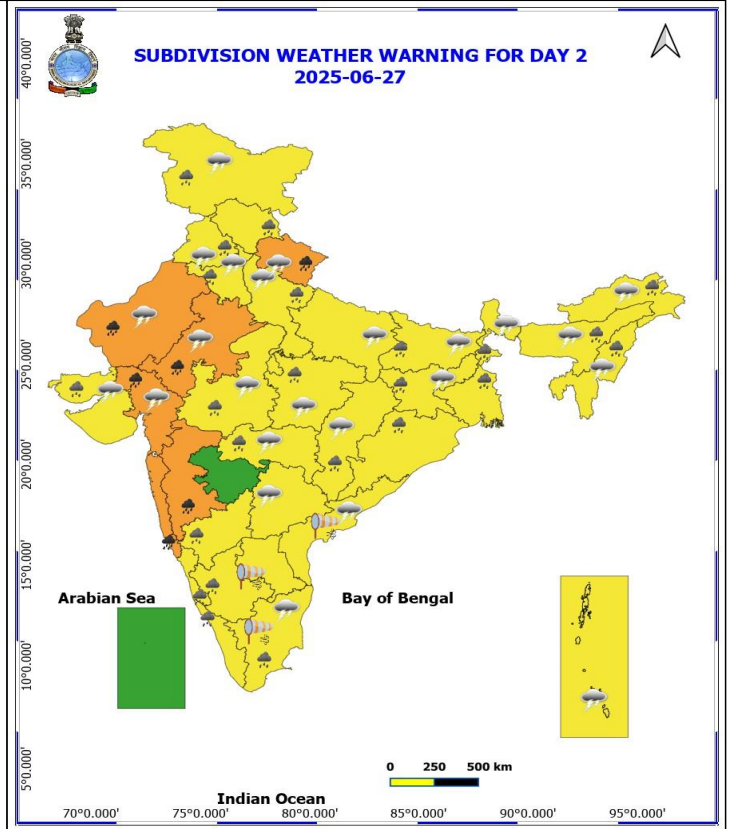
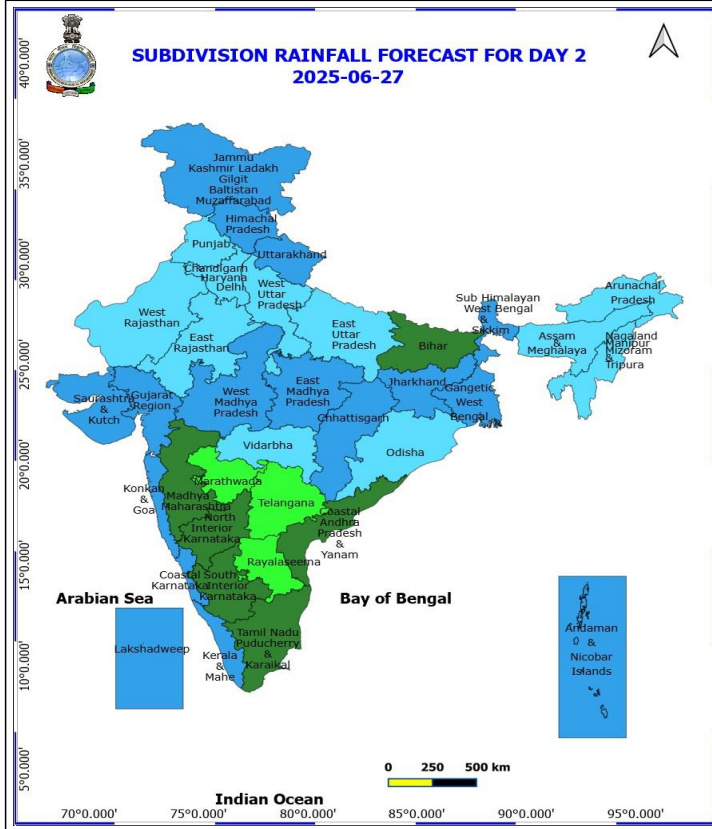
(Service to the nation since 1875)



adjoining north Arabian Sea & adjoining southwest Arabian Sea.

❖ Squally weather with wind speed 40 - 50 kmph gusting to 60 kmph likely to prevail over most parts of eastcentral & adjoining areas of westcentral, northeast, south Arabian Sea, along and off Konkan, Goa, Karnataka, Kerala coasts, along and off Odisha coast and adjoining north Andhra Pradesh coast, along and off West Bengal coast, most parts of northwest and adjoining northeast Bay of Bengal, many parts of westcentral and adjoining eastcentral Bay of Bengal, over Gulf of Mannar.

❖ Squally weather with wind speed reaching 45 kmph to 55 kmph gusting to 65 kmph likely to prevail over western parts of eastcentral & adjoining westcentral Arabian Sea, few western parts of westcentral Bay of Bengal.



27 June (Day 2)

- ❖ **Heavy to Very Heavy Rainfall** very likely at isolated places over Gujarat Region, Konkan & Goa, Madhya Maharashtra, Rajasthan and Uttarakhand.
- ❖ **Heavy Rainfall** very likely at isolated places over Arunachal Pradesh, Assam & Meghalaya, Bihar, Chhattisgarh, Coastal Karnataka, Haryana, Chandigarh & Delhi, Himachal Pradesh, Interior Karnataka, Jammu-Kashmir-Ladakh-Gilgit-Baltistan-Muzaffargarh, Jharkhand, Kerala & Mahe, Madhya Pradesh, Nagaland, Manipur, Mizoram and Tripura, Odisha, Punjab, Saurashtra & Kutch, Tamil Nadu Puducherry & Karaikal, Vidarbha, West Bengal & Sikkim and West Uttar Pradesh.
- ❖ **Thunderstorm accompanied with lightning & gusty winds(40-50kmph)** very likely at isolated places over Bihar, Jammu-Kashmir-Ladakh-Gilgit-Baltistan-Muzaffargarh and Uttarakhand.
- ❖ **Thunderstorm accompanied with lightning & gusty winds(30-40kmph)** very likely at isolated places over Andaman & Nicobar Islands, Gujarat State, Jharkhand, Rajasthan and West Madhya Pradesh.
- ❖ **Thunderstorm accompanied with Lightning** very likely at isolated places over Arunachal Pradesh, Assam & Meghalaya, Chhattisgarh, Coastal Andhra Pradesh, East Madhya Pradesh, Haryana, Chandigarh & Delhi, Nagaland, Manipur, Mizoram and Tripura, Punjab, Sub Himalayan West Bengal & Sikkim, Tamil Nadu Puducherry & Karaikal, Telangana, Uttar Pradesh and Vidarbha.
- ❖ **Strong Surface Winds** very likely at isolated places over Andhra Pradesh and Tamil Nadu Puducherry & Karaikal.
- ❖ Squally wind speed reaching 45 kmph to 55 kmph gusting to 65 kmph is likely to prevail along and off Somalia, Oman & adjoining Yemen coasts, most parts of westcentral Arabian Sea & adjoining, some parts of eastcentral, adjoining north Arabian Sea & adjoining southwest Arabian Sea.

*Red color warning does not mean "Red Alert" Red color warning means "Take Action"

Forecast and warning for any day is valid from 0830 hours IST of day till 0830 hours IST of next day

For more details kindly visit <https://mausam.imd.gov.in> or contact 011-2434-4599

(Service to the nation since 1875)

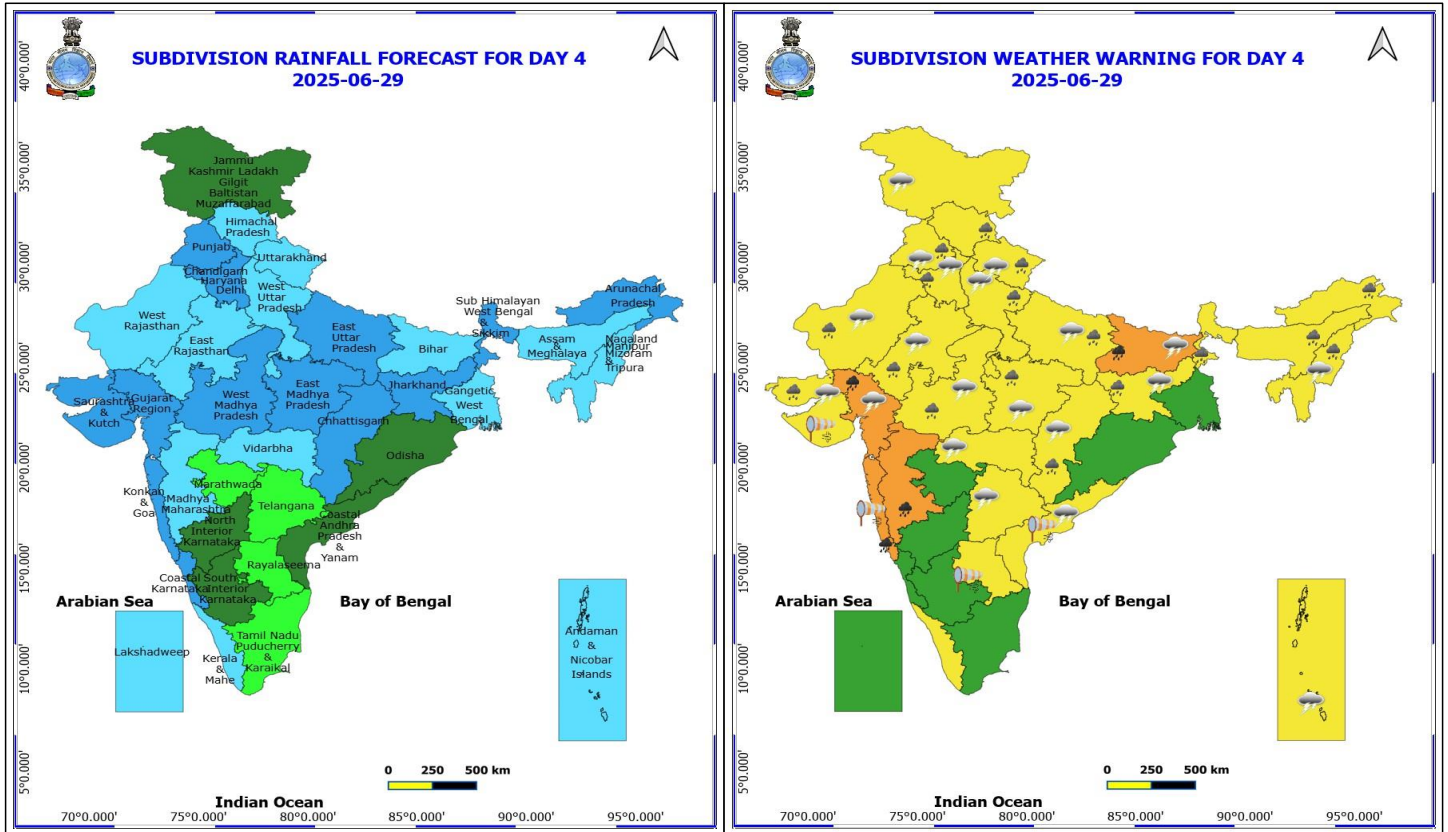


- ❖ Squally weather with wind speed 40 - 50 kmph gusting to 60 kmph likely to prevail over most parts of eastcentral & adjoining areas of westcentral, northeast, south Arabian Sea, over Lakshadweep area, off south Gujarat, Konkan coasts, along and off Karnataka, Kerala, Odisha, West Bengal coasts, most parts of northwest and adjoining northeast Bay of Bengal, many parts of westcentral & adjoining eastcentral Bay of Bengal, some parts of southwest Bay of Bengal, over Gulf of Mannar.
- ❖ Squally weather with wind speed reaching 45 kmph to 55 kmph gusting to 65 kmph likely to prevail over western parts of eastcentral & adjoining westcentral Arabian Sea.



Andhra Pradesh coast and adjoining south Odisha coast, most parts of westcentral Bay of Bengal and adjoining parts of northwest, eastcentral, southwest Bay of Bengal.

❖ Squally weather with wind speed reaching 45 kmph to 55 kmph gusting to 65 kmph likely to prevail over western parts of eastcentral & adjoining westcentral Arabian Sea, over Gulf of Mannar.



29 June (Day 4)

- ❖ **Heavy to Very Heavy Rainfall** likely at isolated places over Bihar, Gujarat Region, Konkan & Goa and Madhya Maharashtra.
- ❖ **Heavy Rainfall** likely at isolated places over Arunachal Pradesh, Assam & Meghalaya, Chhattisgarh, Haryana, Chandigarh & Delhi, Himachal Pradesh, Jharkhand, Madhya Pradesh, Nagaland, Manipur, Mizoram and Tripura, Punjab, Rajasthan, Saurashtra & Kutch, Sub Himalayan West Bengal & Sikkim, Uttar Pradesh and Uttarakhand.
- ❖ **Thunderstorm accompanied with lightning & gusty winds(40-50kmph)** likely at isolated places over Jammu-Kashmir-Ladakh-Gilgit-Baltistan-Muzaffarabad and Uttarakhand.
- ❖ **Thunderstorm accompanied with lightning & gusty winds(30-40kmph)** likely at isolated places over Andaman & Nicobar Islands, Bihar, Gujarat State, Jharkhand, Rajasthan and West Madhya Pradesh.
- ❖ **Thunderstorm accompanied with Lightning** likely at isolated places over Chhattisgarh, Coastal Andhra Pradesh, East Madhya Pradesh, Haryana, Chandigarh & Delhi, Nagaland, Manipur, Mizoram and Tripura, Punjab, Telangana, Uttar Pradesh and Vidarbha.
- ❖ **Strong Surface Winds** likely at isolated places over Andhra Pradesh, Konkan & Goa and Saurashtra & Kutch.
- ❖ Squally wind speed reaching 45 kmph to 55 kmph gusting to 65 kmph is likely to prevail along and off Somalia, Oman & adjoining Yemen coasts, most parts of westcentral Arabian Sea & adjoining, many parts of eastcentral, adjoining, some parts of north Arabian Sea & adjoining southwest Arabian Sea.
- ❖ Squally weather with wind speed 40 - 50 kmph gusting to 60 kmph likely to prevail over most parts of eastcentral &

***Red color warning does not mean "Red Alert" Red color warning means "Take Action"**

Forecast and warning for any day is valid from 0830 hours IST of day till 0830 hours IST of next day

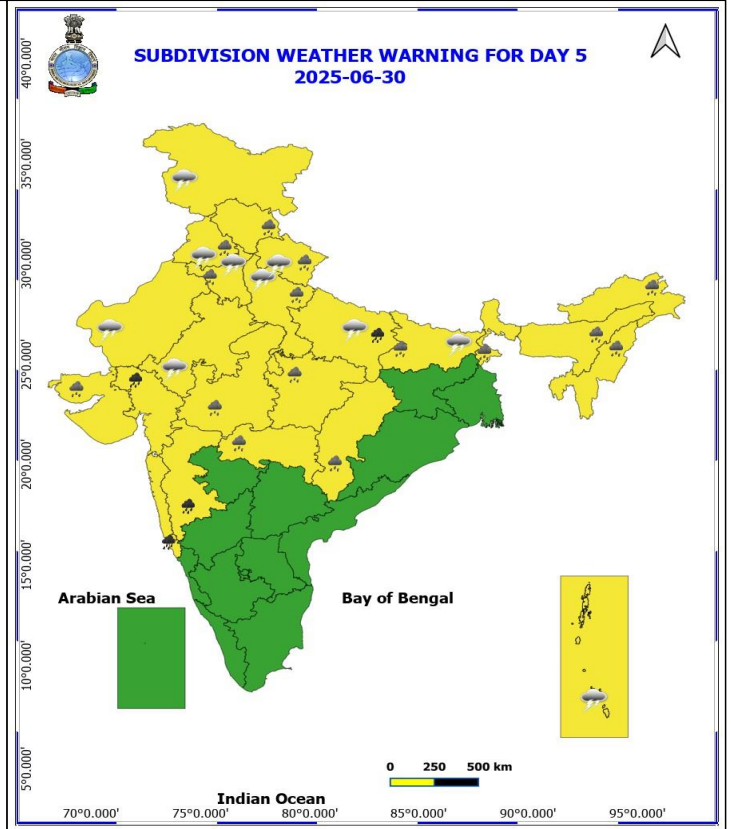
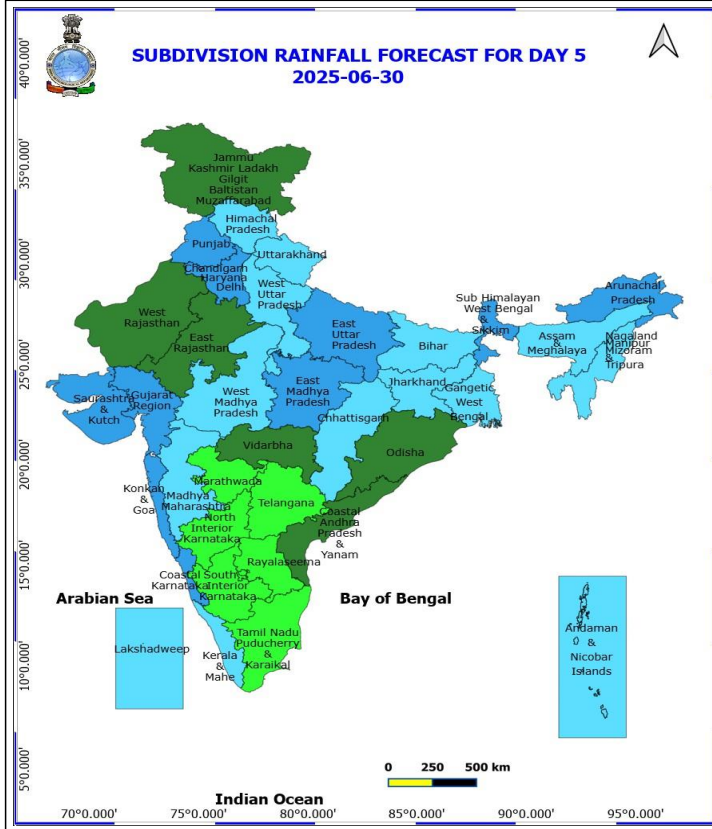
For more details kindly visit <https://mausam.imd.gov.in> or contact 011-2434-4599

(Service to the nation since 1875)



adjoining areas of westcentral, south Arabian Sea, most parts of northeast Arabian Sea, along and off Gujarat, Konkan coasts, many parts of central Bay of Bengal and adjoining parts of northwest, southeast Bay of Bengal.

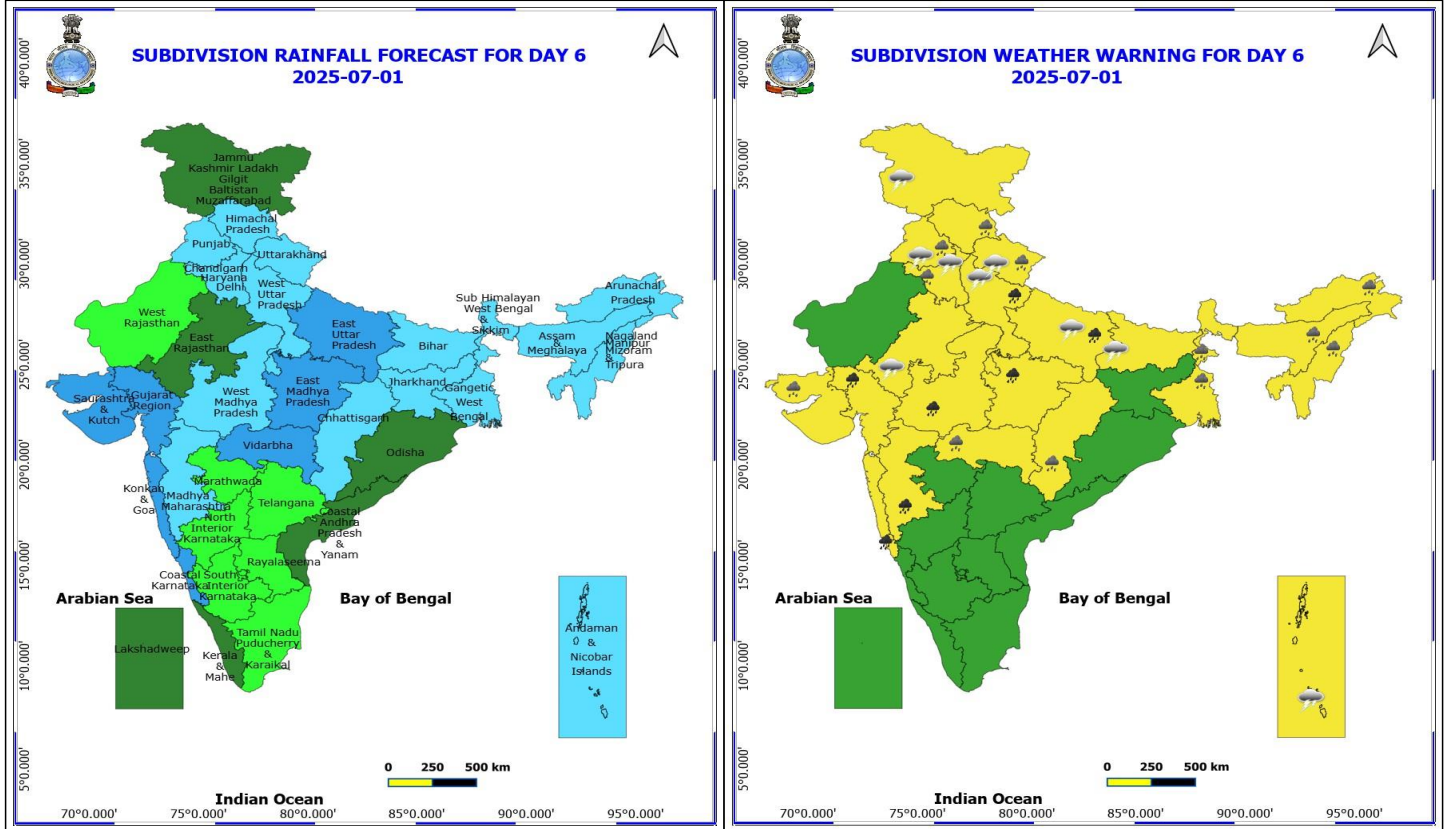
❖ Squally weather with wind speed reaching 45 kmph to 55 kmph gusting to 65 kmph likely to prevail over western parts of eastcentral & adjoining westcentral Arabian Sea.



30 June (Day 5)

- ❖ **Heavy to Very Heavy Rainfall** likely at isolated places over East Uttar Pradesh, Gujarat Region, Konkan & Goa and Madhya Maharashtra.
- ❖ **Heavy Rainfall** likely at isolated places over Arunachal Pradesh, Assam & Meghalaya, Bihar, Chhattisgarh, Haryana, Chandigarh & Delhi, Himachal Pradesh, Madhya Pradesh, Nagaland, Manipur, Mizoram and Tripura, Punjab, Saurashtra & Kutch, Sub Himalayan West Bengal & Sikkim, Uttarakhand, Vidarbha and West Uttar Pradesh.
- ❖ **Thunderstorm accompanied with lightning & gusty winds(40-50kmph)** likely at isolated places over Jammu-Kashmir-Ladakh-Gilgit-Baltistan-Muzaffargarh and Uttarakhand.
- ❖ **Thunderstorm accompanied with lightning & gusty winds(30-40kmph)** likely at isolated places over Andaman & Nicobar Islands, Bihar and Rajasthan.
- ❖ **Thunderstorm accompanied with Lightning** likely at isolated places over Haryana, Chandigarh & Delhi, Punjab and Uttar Pradesh.

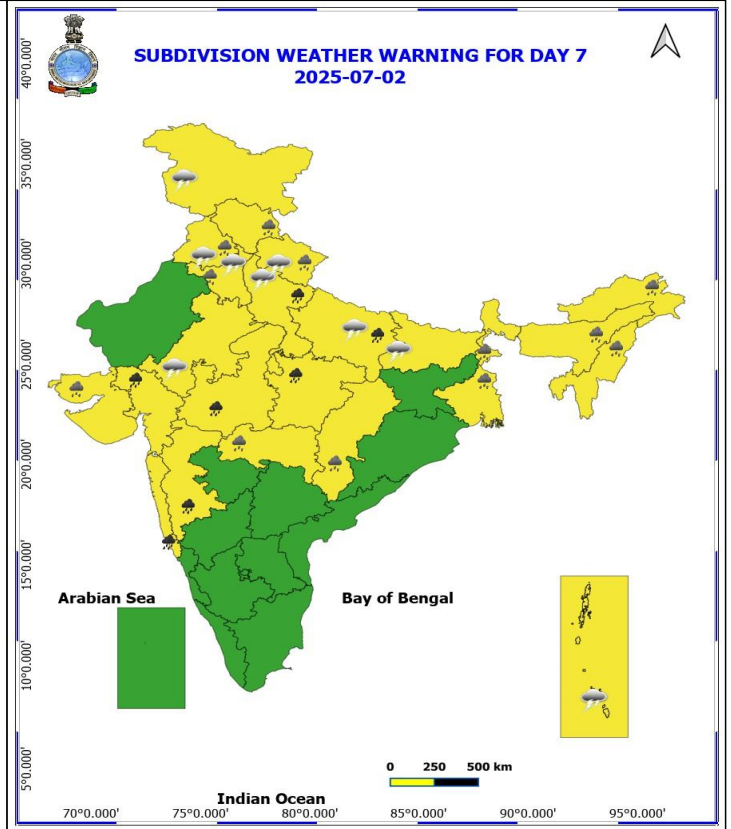
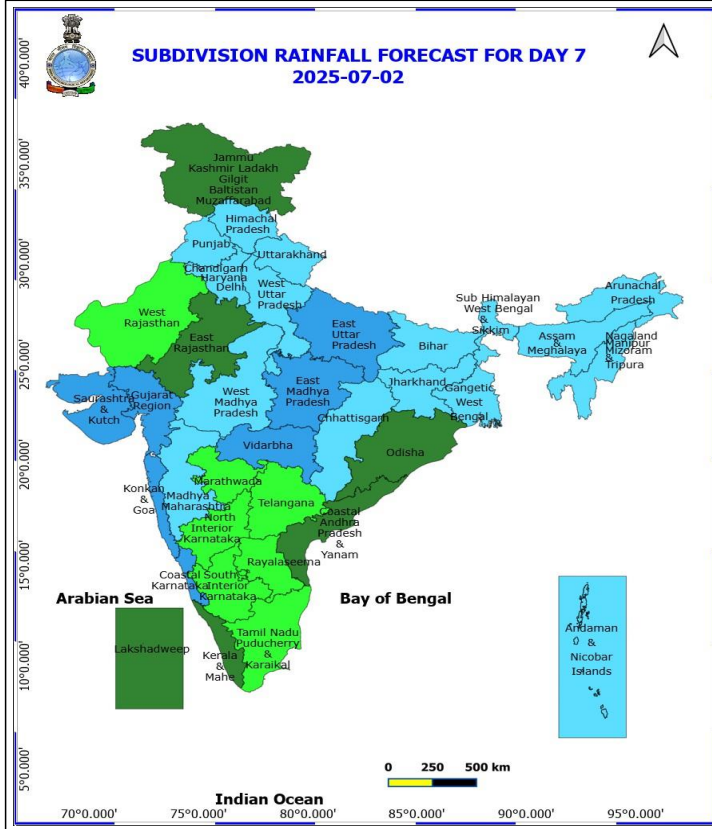
No Fishermen Warning



1 July (Day 6)

- ❖ **Heavy to Very Heavy Rainfall** likely at isolated places over Gujarat Region, Konkan & Goa, Madhya Maharashtra, Madhya Pradesh and Uttar Pradesh.
- ❖ **Heavy Rainfall** likely at isolated places over Arunachal Pradesh, Assam & Meghalaya, Chhattisgarh, Haryana, Chandigarh & Delhi, Himachal Pradesh, Nagaland, Manipur, Mizoram and Tripura, Punjab, Saurashtra & Kutch, Uttarakhand, Vidarbha and West Bengal & Sikkim.
- ❖ **Thunderstorm accompanied with lightning & gusty winds(40-50kmph)** likely at isolated places over Jammu-Kashmir-Ladakh-Gilgit-Baltistan-Muzaffarabad and Uttarakhand.
- ❖ **Thunderstorm accompanied with lightning & gusty winds(30-40kmph)** likely at isolated places over Andaman & Nicobar Islands, Bihar and East Rajasthan.
- ❖ **Thunderstorm accompanied with Lightning** likely at isolated places over Haryana, Chandigarh & Delhi, Punjab and Uttar Pradesh.

No Fishermen Warning



2 July (Day 7)

- ❖ **Heavy to Very Heavy Rainfall** likely at isolated places over Gujarat Region, Konkan & Goa, Madhya Maharashtra, Madhya Pradesh and Uttar Pradesh.
- ❖ **Heavy Rainfall** likely at isolated places over Arunachal Pradesh, Assam & Meghalaya, Chhattisgarh, Haryana, Chandigarh & Delhi, Himachal Pradesh, Nagaland, Manipur, Mizoram and Tripura, Punjab, Saurashtra & Kutch, Uttarakhand, Vidarbha and West Bengal & Sikkim.
- ❖ **Thunderstorm accompanied with lightning & gusty winds(40-50kmph)** likely at isolated places over Jammu-Kashmir-Ladakh-Gilgit-Baltistan-Muzaffargarh and Uttarakhand.
- ❖ **Thunderstorm accompanied with lightning & gusty winds(30-40kmph)** likely at isolated places over Andaman & Nicobar Islands, Bihar and East Rajasthan.
- ❖ **Thunderstorm accompanied with Lightning** likely at isolated places over Haryana, Chandigarh & Delhi, Punjab and Uttar Pradesh.

No Fishermen Warning

Flash Flood Warnings

24 hours Outlook for the Flash Flood Risk (FFR) till 0530 IST of 27-06-2025:

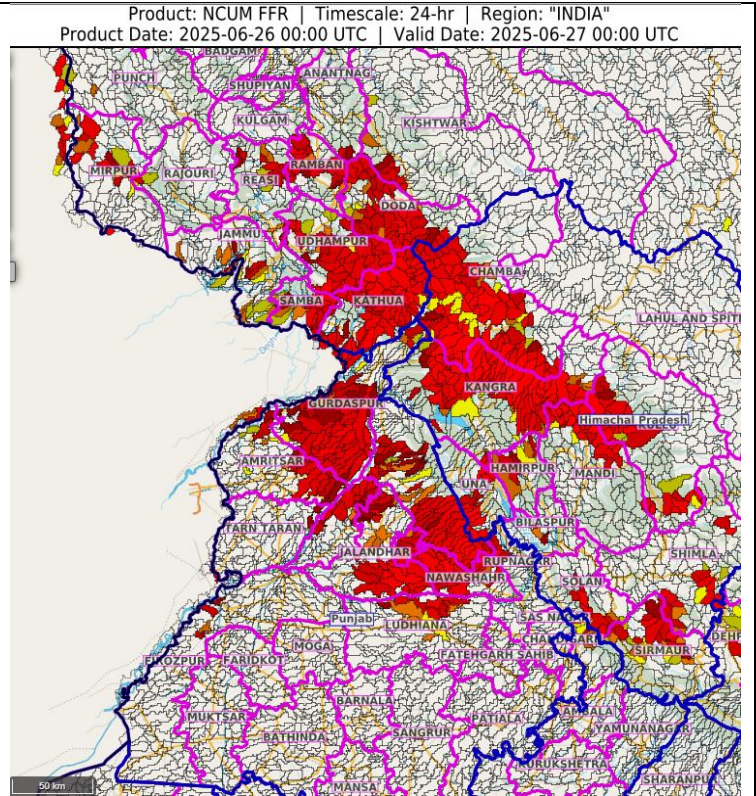
Moderate to High flash flood risk likely over few watersheds & neighbourhoods of following Met Sub-divisions during next 24 hours.

Himachal Pradesh - Bilaspur, Chamba, Hamirpur, Kangra, Kullu, Mandi, Shimla, Sirmaur, Solan and Una districts.

Jammu & Kashmir & Ladakh - Doda, Jammu, Kathua, Kistwar, Kulgam, Punch, Rajouri, Ramban, Riasi, Samba, Udhampur and Mirpur districts.

Punjab - Amritsar, Gurdaspur, Hoshiarpur, Jalandhar, Kapurthala, Ludhiana, Nawashahr and Rupnagar districts.

Surface runoff/ Inundation may occur at some fully saturated soils & low-lying areas over Area of Concern (AoC) as shown in map due to expected rainfall occurrence in next 24 hours.

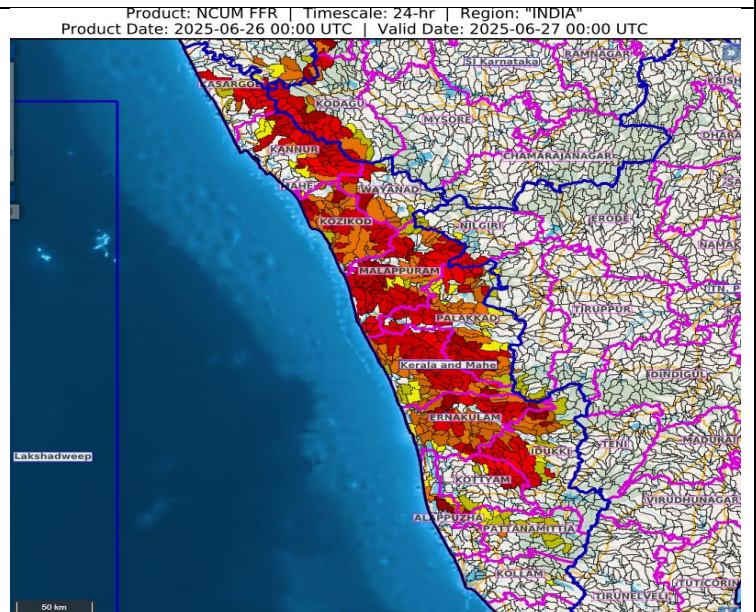


24 hours Outlook for the Flash Flood Risk (FFR) till 0530 IST of 27-06-2025 :

Moderate to High flash flood risk likely over few watersheds & neighbourhoods of following Met Sub-divisions during next 24 hours.

Kerala & Mahe - Alappuzha, Ernakulam, Idukki, Kannur, Kasargod, Kollam, Kottayam, Kozikod, Mahe, Malappuram, Palakkad, Pattanamittia, Trishur and Wayanad districts.

Surface runoff/ Inundation may occur at some fully saturated soils & low-lying areas over Area of Concern (AoC) as shown in map due to expected rainfall occurrence in next 24 hours.



*Red color warning does not mean "Red Alert" Red color warning means "Take Action"

Forecast and warning for any day is valid from 0830 hours IST of day till 0830 hours IST of next day

For more details kindly visit <https://mausam.imd.gov.in> or contact 011-2434-4599

(Service to the nation since 1875)

24 hours Outlook for the Flash Flood Risk (FFR) till 0530 IST of 27-06-2025 :

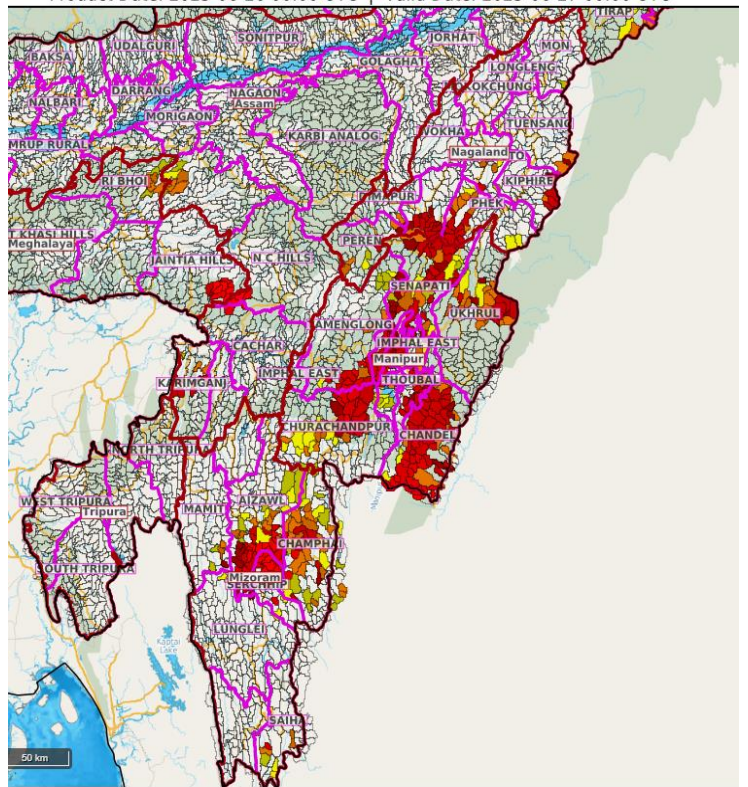
Product: GFS FFR | Timescale: 24-hr | Region: "INDIA"
Product Date: 2025-06-26 00:00 UTC | Valid Date: 2025-06-27 00:00 UTC

Low to Moderate flash flood risk likely over few watersheds & neighbourhoods of following Met Sub-divisions during next 24 hours. Nagaland Mizoram Manipur Tripura (NMMT) – Nagaland – Dimapur, Kiphire, Kohima, Peren, Phek districts.

Manipur - Tuensang, Zunheboto, , Imphal East, Imphal West, Senapati, Tamenglong, Thoubal and Ukhrul districts.

Mizoram – Aizawl, Champhai, Lawngtlai, Lunglei, Mamit, Saiha, Serchhip, Chandel, Churachandpur districts

Surface runoff/ Inundation may occur at some fully saturated soils & low-lying areas over Area of Concern (AoC) as shown in map due to expected rainfall occurrence in next 24 hours.



***Red color warning does not mean "Red Alert" Red color warning means "Take Action"**

Forecast and warning for any day is valid from 0830 hours IST of day till 0830 hours IST of next day

For more details kindly visit <https://mausam.imd.gov.in> or contact 011-2434-4599

(Service to the nation since 1875)



Table-1

7 Days Rainfall Forecast

S.No.	Subdivision	26- Jun	27- Jun	28- Jun	29- Jun	30- Jun	1- Jul	2- Jul
		Day 1	Day 2	Day 3	Day 4	Day 5	Day 6	Day 7
1	ANDAMAN & NICOBAR ISLANDS	WS	WS	WS	FWS	FWS	FWS	FWS
2	ARUNACHAL PRADESH	FWS	FWS	WS	WS	WS	FWS	FWS
3	ASSAM & MEHGHALAYA	FWS	FWS	FWS	FWS	FWS	FWS	FWS
4	N. M. M. & T.	FWS	FWS	FWS	FWS	FWS	FWS	FWS
5	S.H. WEST BENGAL & SIKKIM	FWS	WS	WS	WS	WS	FWS	FWS
6	GANGETIC WEST BENGAL	WS	WS	WS	FWS	FWS	FWS	FWS
7	ODISHA	WS	FWS	FWS	SCT	SCT	SCT	SCT
8	JHARKHAND	WS	WS	WS	WS	FWS	FWS	FWS
9	BIHAR	SCT	SCT	FWS	FWS	FWS	FWS	FWS
10	EAST UTTAR PRADESH	SCT	FWS	FWS	WS	WS	WS	WS
11	WEST UTTAR PRADESH	FWS	FWS	FWS	FWS	FWS	FWS	FWS
12	UTTARAKHAND	WS	WS	FWS	FWS	FWS	FWS	FWS
13	HARYANA, CHD & DELHI	FWS	FWS	WS	WS	WS	FWS	FWS
14	PUNJAB	WS	FWS	FWS	WS	WS	FWS	FWS
15	HIMACHAL PRADESH	WS	WS	FWS	FWS	FWS	FWS	FWS
16	JAMMU AND KASHMIR AND LADAKH	WS	WS	SCT	SCT	SCT	SCT	SCT
17	WEST RAJASTHAN	SCT	FWS	FWS	FWS	SCT	ISOL	ISOL
18	EAST RAJASTHAN	FWS	FWS	FWS	FWS	SCT	SCT	SCT
19	WEST MADHYA PRADESH	WS	WS	WS	WS	FWS	FWS	FWS
20	EAST MADHYA PRADESH	WS	WS	WS	WS	WS	WS	WS
21	GUJRAT REGION	WS	WS	WS	WS	WS	WS	WS
22	SAURASHTRA & KUTCH	WS	WS	WS	WS	WS	WS	WS
23	KONKAN & GOA	WS	WS	WS	WS	WS	WS	WS
24	MADHYA MAHARASHTRA	SCT	SCT	SCT	FWS	FWS	FWS	FWS
25	MARATHWADA	ISOL	ISOL	ISOL	ISOL	ISOL	ISOL	ISOL
26	VIDARBHA	WS	FWS	FWS	FWS	SCT	WS	WS
27	CHATTISGARH	WS	WS	WS	WS	FWS	FWS	FWS
28	COASTAL ANDHRA PRADESH	FWS	SCT	SCT	SCT	SCT	SCT	SCT
29	TELANGANA	SCT	ISOL	ISOL	ISOL	ISOL	ISOL	ISOL
30	RAYALASEEMA	ISOL	ISOL	ISOL	ISOL	ISOL	ISOL	ISOL
31	TAMILNADU & PUDUCHERRY	SCT	SCT	SCT	ISOL	ISOL	ISOL	ISOL
32	COSTAL KARNATAKA	WS	WS	WS	WS	WS	WS	WS
33	NORTH INTERIOR KARNATAKA	FWS	SCT	SCT	SCT	ISOL	ISOL	ISOL
34	SOUTH INTERIOR KARNATAKA	FWS	SCT	SCT	SCT	ISOL	ISOL	ISOL
35	KERALA	WS	WS	WS	FWS	FWS	SCT	SCT
36	LAKSHDWEEP	WS	WS	WS	FWS	FWS	SCT	SCT

Legend	Category	%Stations
WS	Widespread/Most Places	76-100
FWS	Fairly Widespread/Many Places	51-75
SCT	Scattered/ A Few Places	26-50
ISOL	Isolated Places	1-25
DRY	No Rain	0

***Red color warning does not mean "Red Alert" Red color warning means "Take Action"**
Forecast and warning for any day is valid from 0830 hours IST of day till 0830 hours IST of next day
For more details kindly visit <https://mausam.imd.gov.in> or contact 011-2434-4599

(Service to the nation since 1875)

Fig. 1: Maximum Temperatures Dated 2025-06-26

Fig. 2: Departure of Maximum Temp. Dated 2025-06-26

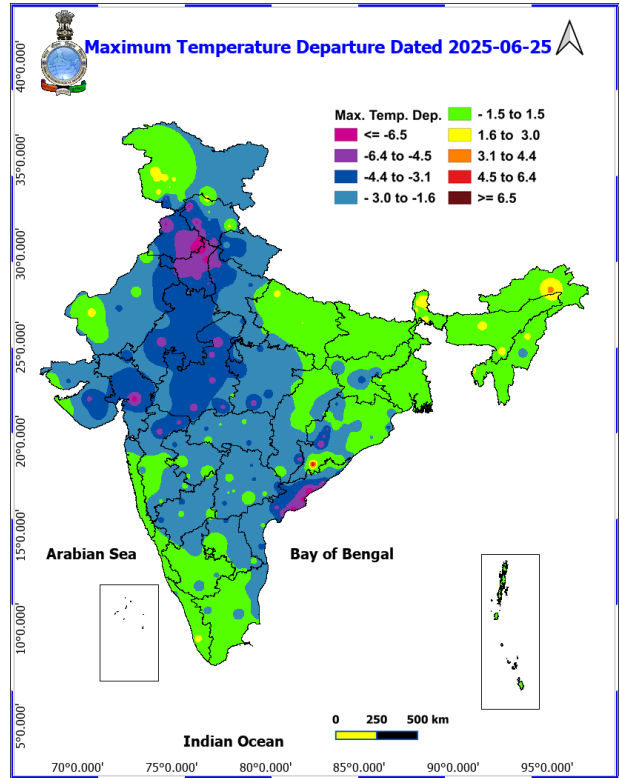
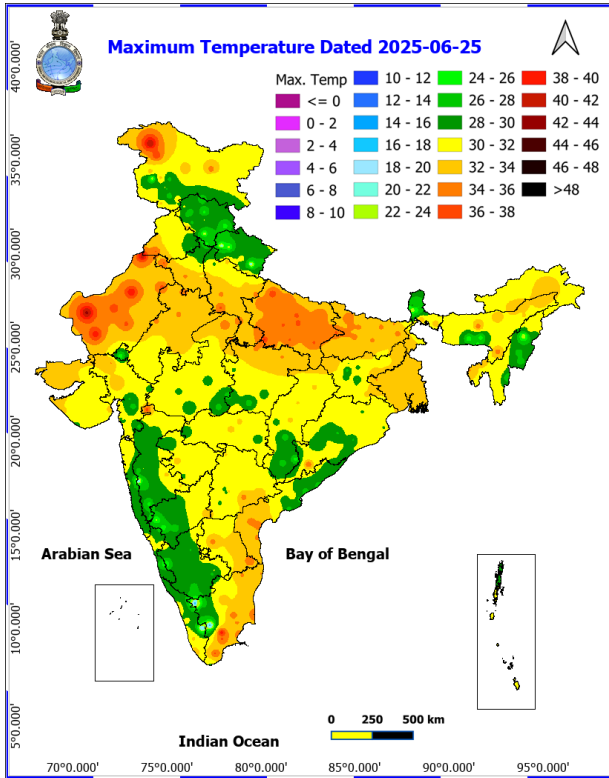
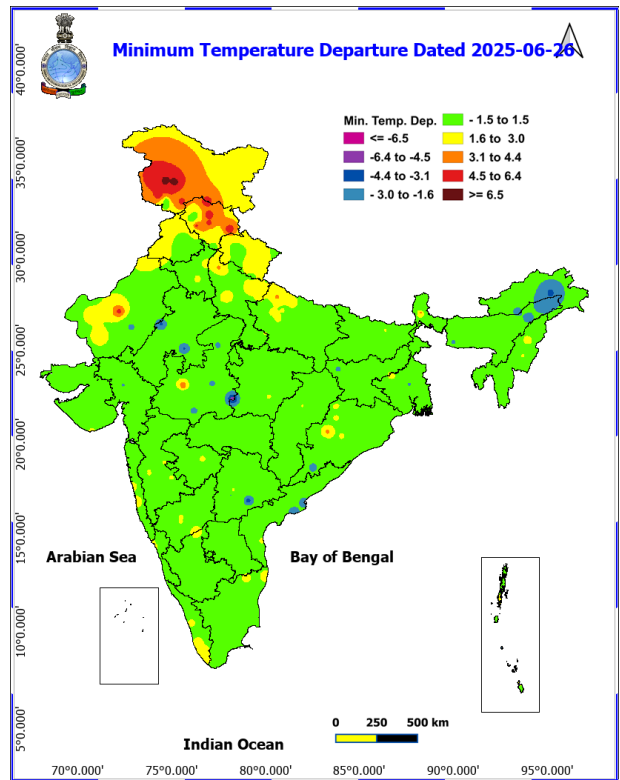
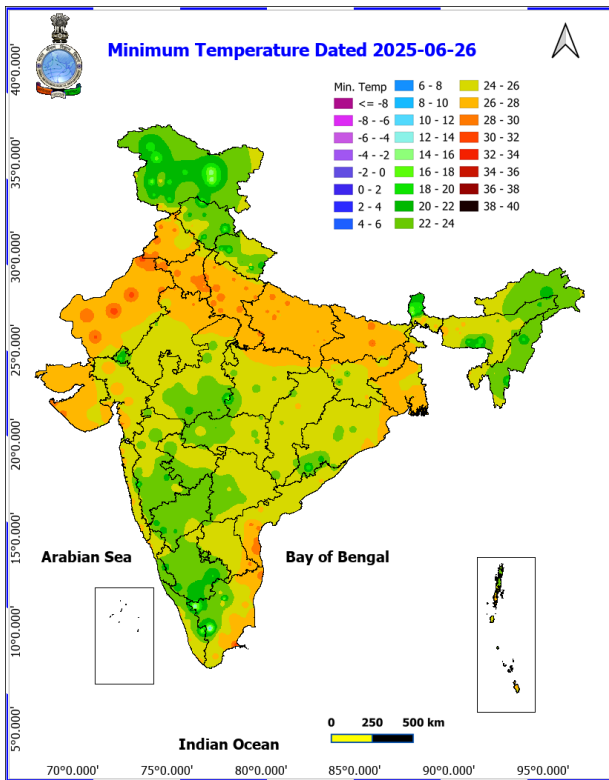


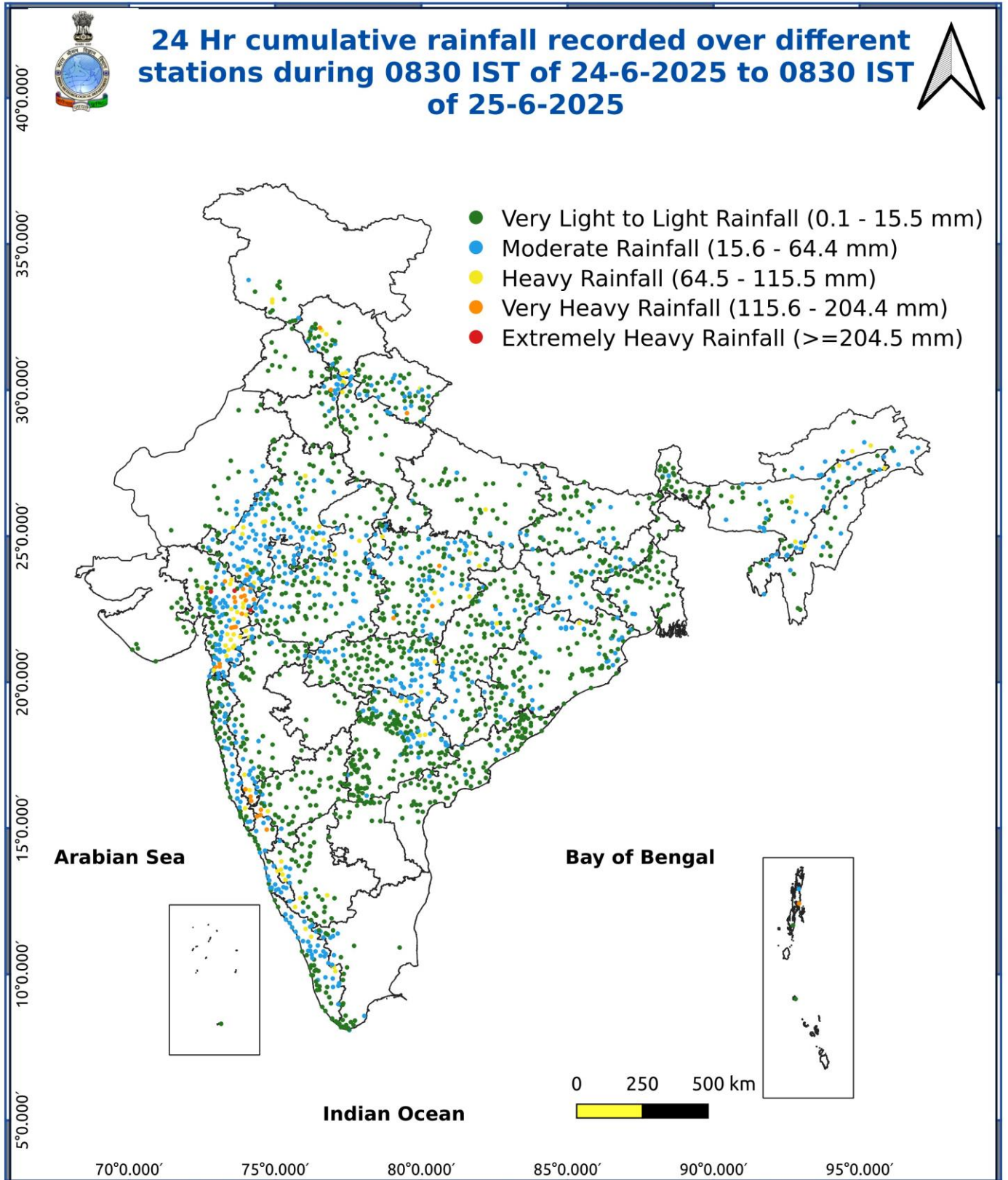
Fig. 3: Minimum Temperatures Dated 2025-06-26

Fig. 4: Departure of Minimum Temp. Dated 2025-06-26



***Red color warning does not mean "Red Alert" Red color warning means "Take Action"**
Forecast and warning for any day is valid from 0830 hours IST of day till 0830 hours IST of next day
For more details kindly visit <https://mausam.imd.gov.in> or contact 011-2434-4599

(Service to the nation since 1875)



*Red color warning does not mean "Red Alert" Red color warning means "Take Action"
Forecast and warning for any day is valid from 0830 hours IST of day till 0830 hours IST of next day
For more details kindly visit <https://mausam.imd.gov.in> or contact 011-2434-4599

(Service to the nation since 1875)

- ♦ **Very heavy rainfall** at isolated places likely over Konkan & Goa, ghat areas of Madhya Maharashtra, Gujarat region during 26th June-01st July; over East Rajasthan during 26th-28th; Uttarakhand on 26th & 27th; West Rajasthan on 27th; Punjab, Madhya Pradesh, ghatareas of Tamil Nadu, Coastal Karnataka and Kerala on 26th, West Uttar Pradesh on 01st July and East Uttar Pradesh on 30th June & 01st July; Sub-Himalayan West Bengal & Sikkim on 28th; Bihar on 28th & 29th; Jharkhand, Odisha on 26th June.

Impact Expected

Localized Flooding of roads, water logging in low lying areas and closure of underpasses mainly in urban areas of the above region.

Occasional reduction in visibility due to heavy rainfall.

Disruption of traffic in major cities due to water logging in roads leading to increased travel time. Minor damage to kutchha roads.

Possibilities of damage to vulnerable structure.

Localized Landslides/Mudslides/landslips/mudslips/landsinks/mudsinks.

Damage to horticulture and standing crops in some areas due to inundation.

It may lead to riverine flooding in some river catchments (for riverine flooding please visit Web page of CWC)

Action Suggested

Check for traffic congestion on your route before leaving for your destination. Follow any traffic advisories that are issued in this regard.

Avoid going to areas that face the water logging problem often. Avoid staying in vulnerable structure.

Agromet advisories for various parts of the country

Agromet advisories for likely impact of Heavy / Heavy to Very Heavy / Extremely Heavy Rainfall

(Based on the IBF and advisories issued by different AMFUs)

In **Gujarat**, postpone nursery sowing of rice. Ensure proper drainage facilities in already sown rice nurseries, sugarcane fields, banana and mango plantations to prevent waterlogging. Provide support to sugarcane and banana to prevent lodging. In **Saurashtra & Kutch**, postpone sowing of *kharif* groundnut, cotton, sesame, pearl millet, green gram, black gram, cowpea, pigeon pea, maize, sorghum and vegetables. Drain out excess rain water from vegetable nurseries and horticultural plantations.

***Red color warning does not mean "Red Alert" Red color warning means "Take Action"**
Forecast and warning for any day is valid from 0830 hours IST of day till 0830 hours IST of next day
For more details kindly visit <https://mausam.imd.gov.in> or contact 011-2434-4599

(Service to the nation since 1875)

In **West Madhya Pradesh**, Postpone harvesting of maize. Postpone sowing of pearl millet, soybean, pigeon pea and paddy nurseries. Make necessary arrangements to drain out excess water from vegetables and orchards to avoid waterlogging. In **Kymore Plateau and Satpura Hill Zone of East Madhya Pradesh**, harvest matured green gram and black gram crop and store in a safe place. In **Gird Zone of West Madhya Pradesh**, harvest matured maize crop and keep it in safe place. Postpone sowing of soybean and transplanting of chilli, tomato, brinjal etc. and ensure proper drainage in already sown / transplanted fields.

In **East Rajasthan**, harvest the matured vegetables such as okra and cucurbits and store them in safe place. Make arrangement for draining out excess water from the fields of groundnut and green gram.

In **Uttarakhand**, make proper drainage channels in rice nurseries, pigeon pea, groundnut, maize, soybean, barnyard millet and finger millet to avoid waterlogging. In **Bhabar and Tarai Zone of Uttarakhand**, harvest matured spring maize crop and vegetables (pumpkin, tomato, okra, chilli, French bean etc.) and store in safe place during clear weather.

In **Sub-Montane and Low Hills Sub-Tropical Zone of Himachal Pradesh**, provide drainage in maize and vegetable fields. Strengthen the support for creepers and tall vegetable crops (tomato, capsicum etc.). In **Mid Hills Sub-Humid Zone of Himachal Pradesh**, harvest matured fruits of plum, pear and stonefruit to minimize losses due to heavy rains. Make proper drainage channels in the fields of maize, apple, pear, pomegranate, kiwi, cucumber and tomato to avoid waterlogging. Provide support to cucumber vines and tomato plants to prevent lodging.

In **Sub-Himalayan West Bengal**, maintain proper drainage channels in rice nurseries and fields of jute and ginger to avoid water stagnation.

In **Jharkhand**, make necessary arrangements to drain out excess water from already sown maize fields, rice and vegetable nurseries.

In **Odisha**, ensure proper drainage from already sown rice nurseries, fields of maize and vegetables to prevent waterlogging. Cover rice and vegetable nurseries with plastic sheets to prevent washing away of seeds.

In **Chhattisgarh**, ensure proper drainage in rice nurseries.

In **Konkan & Goa** make arrangement to drain out excess water from rice nurseries, fields of finger millet, groundnut and orchards to prevent waterlogging. In **ghat areas of Madhya Maharashtra**, drain out excess water from rice nurseries and banana plantations to prevent waterlogging.

In **Coastal Karnataka**, ensure proper drainage facilities in rice nurseries, banana, coconut and arecanut plantations to prevent water logging. In **South Interior Karnataka**, cover young seedlings of rice with plastic sheets or agro-shade nets to protect them from heavy rains. Provide adequate drainage to remove excess water from rice nurseries, coffee, cardamom, coconut and arecanut plantations to prevent water logging. Provide support to sugarcane and banana to prevent lodging. In **North Interior Karnataka**, drain out excess water from the crops which are at seedling stage to prevent water logging.

In **Kerala**, ensure proper drainage facilities in rice nurseries, transplanted rice fields, coconut and banana plantations to prevent water logging. Undertake propping in banana to protect the plants from heavy rains.

In **Assam**, keep the harvested produce of sesame, foxtail millet, *Boro* rice, banana and citrus at safer places. Ensure proper drainage in *Sali* rice nursery, maize and sugarcane fields, arecanut and coconut plantations to prevent waterlogging. In **Barak Valley Zone of Assam**, postpone nursery sowing of *Sali* rice.

In **Meghalaya**, postpone nursery sowing of rice especially in valleys. Ensure proper drainage in the fields of maize, ginger, French bean, cowpea, vegetables and around rice nurseries to prevent waterlogging. Provide strong bamboo stakes or trellis support to cow pea, cucumber and bottle gourd to prevent vines from trailing on wet ground. Provide support to banana plant to prevent lodging.

In **Arunachal Pradesh**, keep the harvested produce of soybean and vegetables such as chilli and okra at a safer

***Red color warning does not mean "Red Alert" Red color warning means "Take Action"**

Forecast and warning for any day is valid from 0830 hours IST of day till 0830 hours IST of next day

For more details kindly visit <https://mausam.imd.gov.in> or contact 011-2434-4599

(Service to the nation since 1875)

place. Ensure proper drainage in rice nurseries, kiwi and apple orchards to avoid waterlogging.

In **Nagaland**, avoid transplanting of TRC/WRC rice. Postpone sowing of soybean. Provide proper staking to vine type plants.

Livestock / Fishery

Keep the animals inside the shed during heavy rainfall and provide them balanced feed.

Store feed and fodder in a safe place to prevent spoilage.

Construct an outlet with proper netting around the ponds to drain out excess water, thereby preventing fish from escaping in case of overflow.

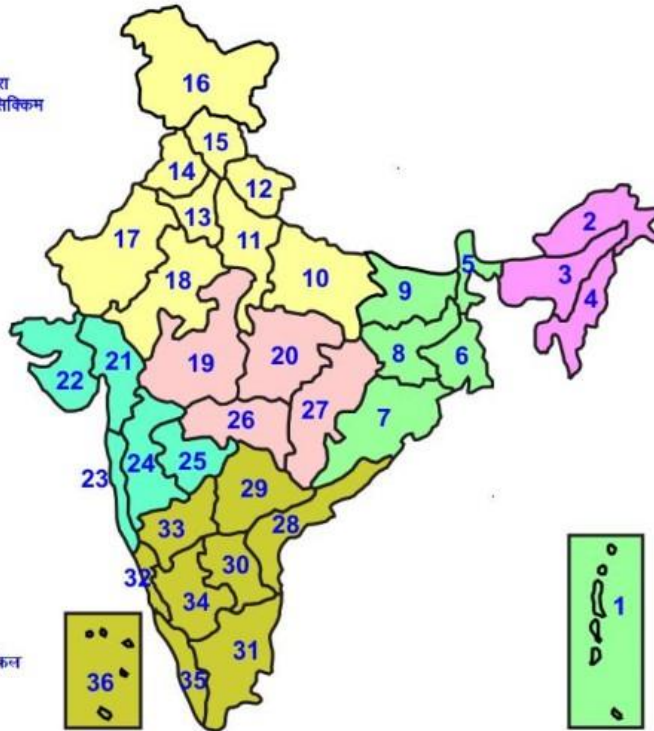
Agromet advisories for likely impact of Thunderstorm / Gusty Winds / Squally Winds

(Based on the IBF and advisories issued by different AMFUs)

Provide mechanical support to horticultural crops and staking or support to vegetables and young fruit plants / fruit-bearing plants to avoid lodging due to strong winds.

LEGENDS

- 1 अंडमान और निकोबार द्वीप समुह
- 2 अरुणाचल प्रदेश
- 3 असम और मेघालय
- 4 नागालैंड मनीपुर मीजोरम और त्रिपुरा
- 5 उप हिमालय पश्चिम बंगाल एवं सिक्किम
- 6 पश्चिम बंगाल
- 7 ओडिसा
- 8 झारखंड
- 9 बिहार
- 10 पूर्वी उत्तर प्रदेश
- 11 पश्चिम उत्तर प्रदेश
- 12 उत्तराखंड
- 13 हरियाणा चंडिगढ़ एवं दिल्ली
- 14 पंजाब
- 15 हिमाचल प्रदेश
- 16 जम्मू एवं कश्मीर एवं लद्दाख
- 17 पश्चिम राजस्थान
- 18 पूर्वी राजस्थान
- 19 पश्चिम मध्य प्रदेश
- 20 पूर्वी मध्य प्रदेश
- 21 गुजरात क्षेत्र
- 22 सौराष्ट्र एवं कच्छ
- 23 कोंकण एवं गोवा
- 24 मध्य महाराष्ट्र
- 25 मराठावाडा
- 26 विदर्भ
- 27 छत्तीसगढ़
- 28 तटीय आंध्र प्रदेश एवं यनम
- 29 तेलंगाना
- 30 रायलसीमा
- 31 तमिलनाडु, पुदुचेरी एवं कराईकल
- 32 तटिय कर्नाटक
- 33 आंतरिक उत्तरी कर्नाटक
- 34 आंतरिक दक्षिणी कर्नाटक
- 35 केरल एवं माहे
- 36 लक्षद्वीप



1. Andaman & Nicobar Islands
2. Arunachal Pradesh
3. Assam & Meghalaya
4. Nagaland, Manipur, Mizoram & Tripura
5. Sub-Himalayan West Bengal & Sikkim
6. Gangetic West Bengal
7. Orissa
8. Jharkhand
9. Bihar
10. East Uttar Pradesh
11. West Uttar Pradesh
12. Uttarakhand
13. Haryana, Chd & Delhi
14. Punjab
15. Himachal Pradesh
16. Jammu & Kashmir and Ladakh
17. West Rajasthan
18. East Rajasthan
19. West Madhya Pradesh
20. East Madhya Pradesh
21. Gujarat
22. Saurashtra
23. Konkan & Goa
24. Madhya Maharashtra
25. Marathwada
26. Vidharbha
27. Chhattisgarh
28. Coastal Andhra Pradesh & Yanam
29. Telangana
30. Rayalaseema
31. Tamilnadu, Puducherry & Karaikal
32. Coastal Karnataka
33. North Interior Karnataka
34. South Interior Karnataka
35. Kerala & Mahe
36. Lakshadweep

SPATIAL DISTRIBUTION (% of Stations reporting)

% Stations	Category	% Stations	Category
76-100	Widespread (WS/ Most Places)	26-50	Scattered (SCT/ A Few Places)
51-75	Fairly Widespread (FWS/ Many Places)	1-25	Isolated (ISOL)

Subdivision Colour

- NO WARNING
- WATCH (BE UPDATED)
- ALERT (BE PREPARED TO TAKE ACTION)
- WARNING (TAKE ACTION)

Probabilistic Forecast

Terms	Probability of Occurrence (%)
Unlikely	< 25
Likely	25 - 50
Very Likely	50 - 75
Most Likely	> 75

- | | | | |
|--------------------------|-----------------|----------------------|--------------------|
| Heavy Rain | Very Heavy Rain | Extremely Heavy Rain | Heavy Snow |
| Thunderstorm & Lightning | Hailstorm | Dust Storm | Dust Raising Winds |
| Strong surface winds | Heat Wave | Hot Day | Warm Night |
| Cold Wave | Cold Day | Ground Frost | Fog |
| Hot & Humid | | | |

*Red color warning does not mean "Red Alert" Red color warning means "Take Action"

Forecast and warning for any day is valid from 0830 hours IST of day till 0830 hours IST of next day

For more details kindly visit <https://mausam.imd.gov.in> or contact 011-2434-4599

(Service to the nation since 1875)

LEGENDS

WARNING

WARNING (TAKE ACTION)
ALERT (BE PREPARED)
WATCH (BE UPDATED)
NO WARNING (NO ACTION)

Probabilistic Forecast

Terms	Probability of Occurrence (%)
Unlikely	< 25
Likely	25 - 50
Very Likely	50 - 75
Most Likely	> 75



Heavy: 64.5 to 115.5 mm/cm *
Very Heavy: 115.6 to 204.4 mm/cm *
Extremely Heavy: > 204.4 mm/cm *



When maximum temperature of a station reaches $\geq 40^{\circ}\text{C}$ for plains and $\geq 30^{\circ}\text{C}$ for hilly regions
(a) Based on Departure from normal

Heat Wave: Maximum Temperature Departure from normal 4.5°C to 6.4°C .
Severe Heat Wave: Maximum Temperature Departure from normal $\geq 6.5^{\circ}\text{C}$

(b). Based on Actual maximum temperature
Heat Wave: When actual maximum temperature $\geq 45^{\circ}\text{C}$.
Severe Heat Wave: When actual maximum temperature $\geq 47^{\circ}\text{C}$

(c). Criteria for heat wave for coastal stations
When maximum temperature departure is $> 4.5^{\circ}\text{C}$ from normal. Heat Wave may be described provided maximum temperature $\geq 37^{\circ}\text{C}$



When maximum temperature remains 40°C

Warm Night: When minimum temperature departure 4.5°C to 6.4°C .
Severe Warm Night: When minimum temperature departure $> 6.4^{\circ}\text{C}$.



When minimum temperature of a station $\leq 10^{\circ}\text{C}$ for plains and $\leq 0^{\circ}\text{C}$ for hilly regions.
(a). Based on departure

Cold Wave: Minimum Temperature Departure from normal -4.5°C to -6.4°C .
Severe Cold Wave: Minimum Temperature Departure from normal $\leq -6.5^{\circ}\text{C}$

(b) Based on actual Minimum Temperature (for Plains only)
Cold Wave: When Minimum Temperature is $\leq 4.0^{\circ}\text{C}$
Severe Cold Wave: When Minimum Temperature is $\leq 2.0^{\circ}\text{C}$

(c) For Coastal Stations
When Minimum Temperature departure is $\leq -4.5^{\circ}\text{C}$ & actual Minimum Temperature is $\leq 15^{\circ}\text{C}$



When minimum temperature of a station $\leq 10^{\circ}\text{C}$ for plains and $\leq 0^{\circ}\text{C}$ for hilly regions
Based on departure

Cold Day: Maximum Temperature Departure from normal -4.5°C to -6.4°C .
Severe Cold Day: Maximum Temperature Departure from normal $\leq -6.5^{\circ}\text{C}$



Phenomenon of small droplets suspended in air and the horizontal visibility $< 1\text{km}$

Moderate Fog: When the visibility between 500-200 metres
Dense Fog: when the visibility between 50- 200 metres
Very Dense Fog: when the visibility < 50 metres



Sudden electrical discharges manifested by a flash of light (Lightning) and a sharp rumbling sound (thunder)



An ensemble of particles of dust or sand energetically lifted to great heights by a strong and turbulent wind.



Ice deposits on ground

Air temperature $\leq 4^{\circ}\text{C}$ (over Plains)



A strong wind that rises suddenly, lasts for atleast 1 minute.

Moderate: Wind speed 52-61 kmph
Severe: Wind speed 62-87 kmph
Very Severe: Wind speed > 87 kmph



Effect of various waves in the sea over specific area

Rough to very rough: Wind speed 41-62 kmph (22-33 knots) & Wave height 2.5-6 metre
High to very high: Wind speed 63-117 kmph (34-63 knots) & Wave height 6-14 metre
Phenomenal: Wind speed > 117 kmph (> 63 knots) & Wave height > 14 metre



Cyclonic Storm: Wind speed 62-87 kmph (34-47 knots)
Severe Cyclonic Storm: Wind speed 88-117 kmph (48-63 knots)
Very Severe Cyclonic Storm: Wind speed 118-165 kmph (64 - 89 knots)
Extremely Severe Cyclonic Storm: Wind speed 166-220 kmph (90 -119 knots)
Super Cyclone Storm: Wind speed > 220 kmph (> 119 knots)