

2026-01-05

Time of Issue: 07:45:00 hours IST  
(Morning)

## ALL INDIA WEATHER SUMMARY AND FORECAST BULLETIN

### Significant Weather Features

#### Weather Forecast and warning

- **Isolated light/moderate** rainfall/snowfall very likely over Jammu-Kashmir-Ladakh-Gilgit-Baltistan-Muzaffarabad during 5<sup>th</sup> -6<sup>th</sup> January; Himachal Pradesh on 5<sup>th</sup> & 6<sup>th</sup> January 2026, and Uttarakhand on 6<sup>th</sup> January 2026.
- **Ground frost** very likely at isolated places over Uttarakhand on 5<sup>th</sup> & 6<sup>th</sup> January 2026.

#### Forecast of minimum temperatures:

- No significant change in minimum temperature likely over northwest India during next 24 hour, gradual fall by 2-3°C likely during subsequent 2 days and no significant change thereafter.
- Gradual fall in minimum temperatures by 2-4°C likely over Central and East India during next 3 days and no significant change thereafter for next 4 days.
- No significant change in minimum temperature likely over Maharashtra during next 24 hours, gradual fall by 2-3°C likely during subsequent 4 days.
- Gradual rise in minimum temperature by 2-3°C likely over Gujarat state during next 4 days and no significant change thereafter.
- No significant change in minimum temperature likely over remaining parts of India.

#### Dense Fog, Cold day & Cold wave Warnings:

- **Dense to Very dense** fog conditions very likely to continue during night/morning hours at some places over Punjab, Haryana, Chandigarh till 07<sup>th</sup>; over east Uttar Pradesh till 08<sup>th</sup>; at isolated places over west Uttar Pradesh till 05<sup>th</sup>; over Madhya Pradesh and Odisha till 6<sup>th</sup> January, 2026.
- **Dense fog** conditions also likely during night/morning hours in isolated/ some pockets Himachal Pradesh and Uttarakhand till 9<sup>th</sup>; over Punjab, Bihar, Uttar Pradesh, Haryana Chandigarh till 11<sup>th</sup>; over West Rajasthan and Jharkhand till 6<sup>th</sup>; Assam & Meghalaya, Nagaland, Manipur, Mizoram & Tripura, Sub-Himalayan West Bengal & Sikkim and East Rajasthan till 7<sup>th</sup>, Madhya Pradesh and Odisha till 8<sup>th</sup>; Chhattisgarh and Gangetic West Bengal till 5<sup>th</sup> January 2026.
- **Cold day conditions** very likely at isolated pockets over Uttarakhand, Punjab, Haryana Chandigarh, West Madhya Pradesh and Bihar on 5<sup>th</sup> January 2026.
- **Cold wave** conditions very likely in isolated pockets of Punjab, Haryana, Chandigarh during 5<sup>th</sup>-8<sup>th</sup>; over West Rajasthan during 5<sup>th</sup>-9<sup>th</sup>; over East Rajasthan during 5<sup>th</sup>-10<sup>th</sup>; over Jharkhand on 6<sup>th</sup>-7<sup>th</sup> January 2026.

\*Red color warning does not mean "Red Alert" Red color warning means "Take Action"

Forecast and warning for any day is valid from 0830 hours IST of day till 0830 hours IST of next day

For more details kindly visit <https://mausam.imd.gov.in> or contact 011-2434-4599

(Service to the nation since 1875)

### Main Weather Observations:

- ❖ **Rainfall distribution** (from 0830 hours IST of yesterday to 0530 hours IST of today): **at isolated places** over Assam & Meghalaya, Jammu & Kashmir and Ladakh and Lakshadweep ; **Dry** over rest of the country.
- ❖ **Fog Condition Observed (at 0530 hours of today): Dense fog conditions:** at isolated places over Bihar, Uttar Pradesh, Rajasthan, Rajasthan and West Madhya Pradesh.
- ❖ **Visibility reported (at 0530 hours of today): Bihar:** Gaya (dist Gaya) 50; **West Rajasthan:** Sriganganagar (dist Sri Ganganagar) 50, Churu (dist Churu) 200; **West Madhya Pradesh:** Guna (dist Guna) 50, Bhopal-arera Hills (dist Bhopal) 200; **East Uttar Pradesh:** Varanasi (babatpur) AP (dist Varanasi), Azamgarh-obs (dist Azamgarh) 50 Each; **East Rajasthan:** Kota AP (dist Kota), Udaipur (dabok) AP (dist Udaipur) 50 Each; **West Uttar Pradesh:** Bareilly (dist Bareilly) 50; **Assam & Meghalaya:** Dibrugarh (dist Dibrugarh), Dhubri (dist Dhubri) 200 Each; **Nagaland, Manipur, Mizoram & Tripura:** Aizawl-lengpui (dist Mamit) 200; **Jharkhand:** Daltonganj (dist Palamu) 200; **East Madhya Pradesh:** Sagar (dist Sagar) 200;.
- ❖ **Minimum Temperature Departures (as on 04-01-2026):** below normal (-3.0°C to -1.6°C) at many places over Uttar Pradesh; isolated places over West Madhya Pradesh, east Rajasthan, Vidarbha, Gangetic West Bengal, Assam & Meghalaya and Tripura. The **lowest minimum temperature** of 1.1°C was observed at Fatehpur (Rajasthan) over the plains of India.
- ❖ **Maximum Temperature Departures (as on 04-01-2026):** below normal(-1.6°C to -3.0°C) at few places over Jharkhand and East Rajasthan; at isolated places over Bihar, East Uttar Pradesh and Punjab. **appreciably below normal(-5.0°C to -3.1°C)** at isolated places over Odisha. **The highest maximum temperature** of 35.4°C is reported at KARWAR (KARNATAKA).

\*Red color warning does not mean "Red Alert" Red color warning means "Take Action"

Forecast and warning for any day is valid from 0830 hours IST of day till 0830 hours IST of next day

For more details kindly visit <https://mausam.imd.gov.in> or contact 011-2434-4599

(Service to the nation since 1875)

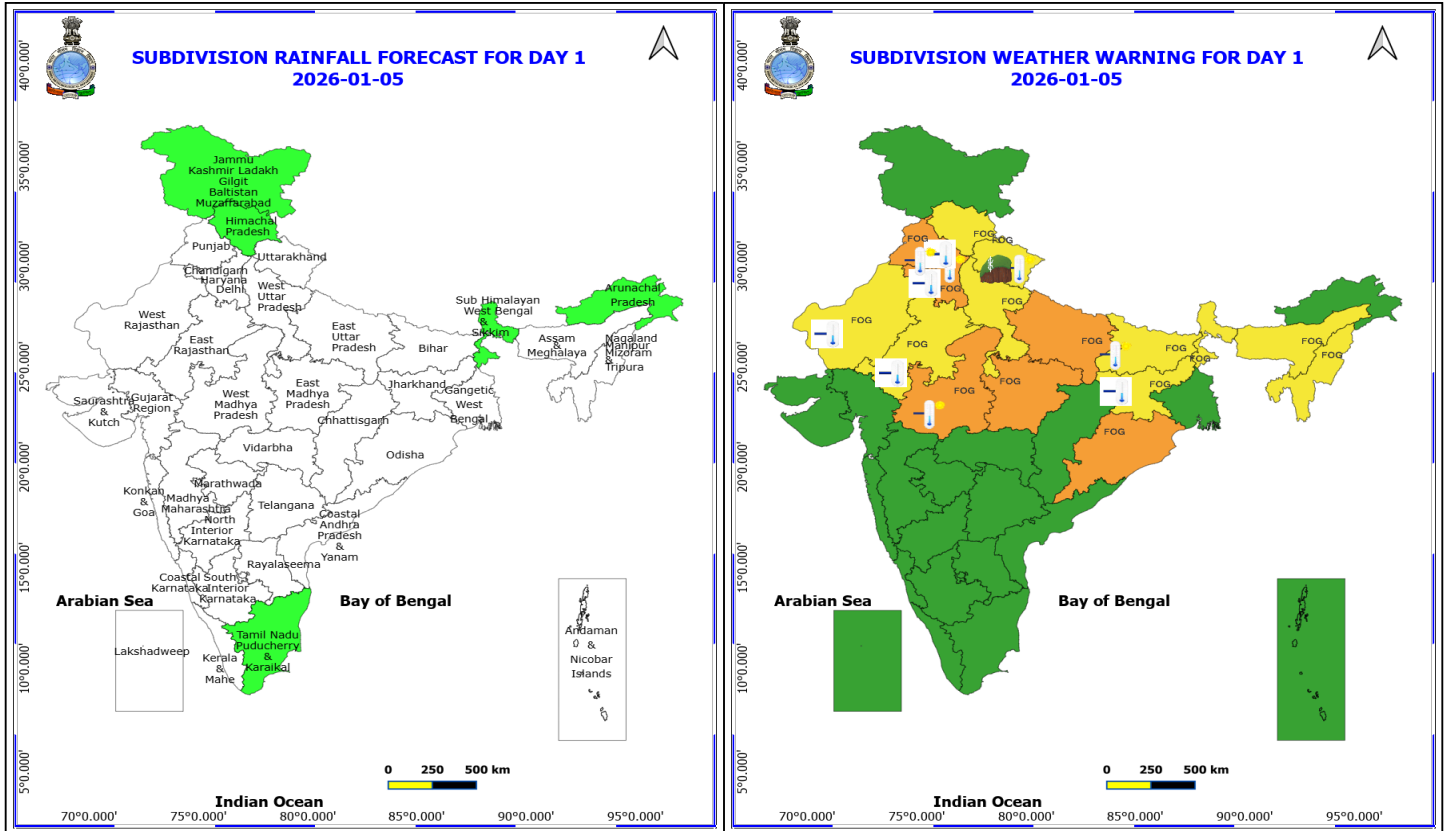


### Meteorological Analysis (Based on 0530 hours IST)

- The **upper air cyclonic circulation** over east Bangladesh and neighbourhood at 1.5 km above mean sea level persists.
- The **Western Disturbance** now seen as a cyclonic circulation over north Pakistan and adjoining Jammu at 3.1 km above mean sea level with the trough aloft in middle tropospheric westerlies with its axis at 5.8 km above mean sea level now runs roughly along 72°E to north of 32°N.
- **Subtropical westerly Jet Stream** with core winds of the order of 130 knots at 12.6 km above mean sea level prevail over northwest India.
- The **upper air cyclonic circulation** over southeast Arabian sea and adjoining South Kerala coast at 0.9 km above mean sea level persists.
- The **upper air cyclonic circulation** over southeast & adjoining southwest Bay of Bengal and Equatorial Indian ocean extending upto 5.8 km above mean sea level persists.

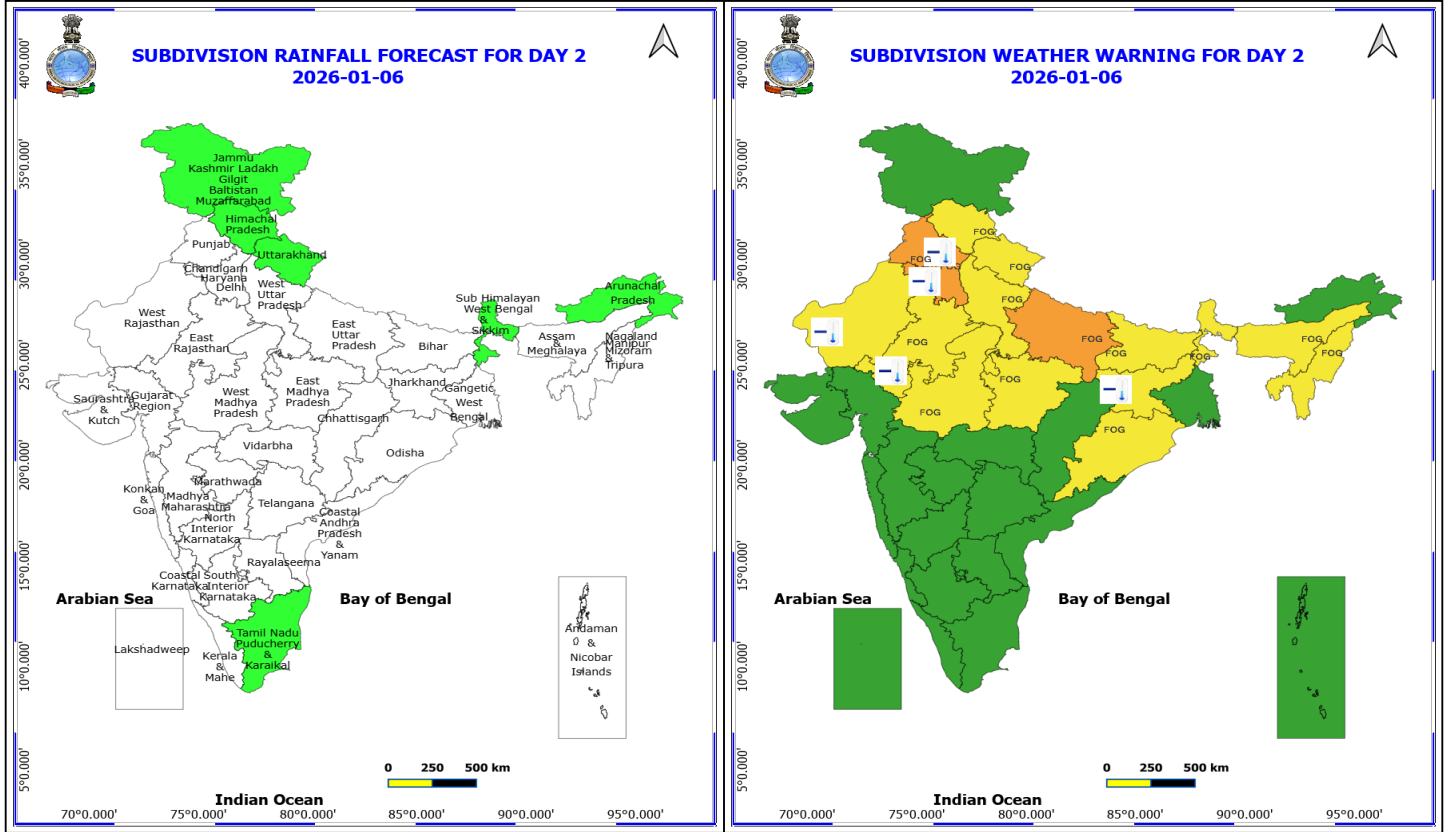
### Weather Outlook for subsequent 3 days

Isolated rainfall activity likely over Western Himalayan Region, Kerala, Tamil Nadu, Lakshadweep and Nicobar islands.



### 5 January (Day 1)

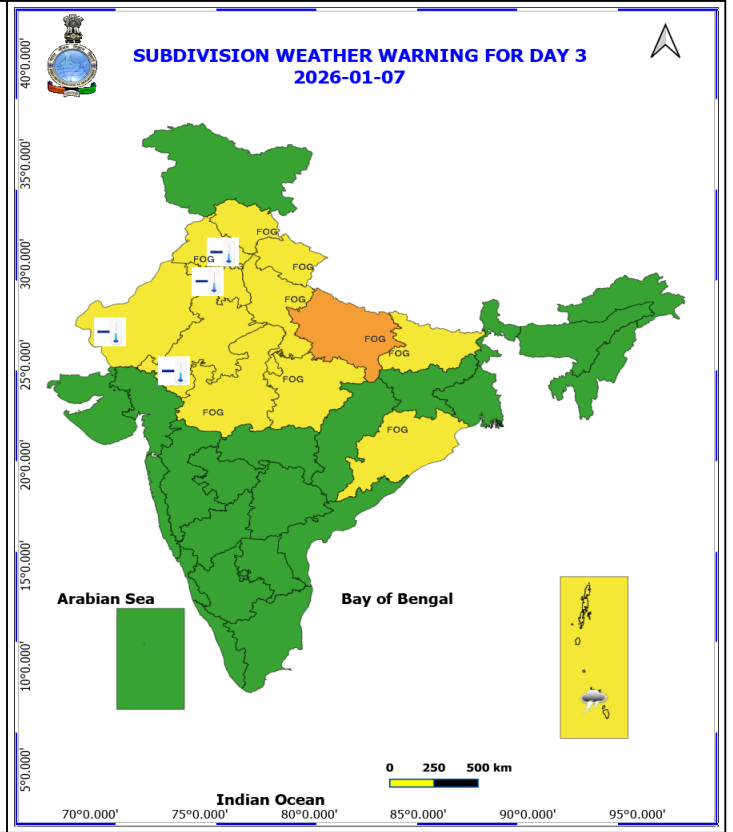
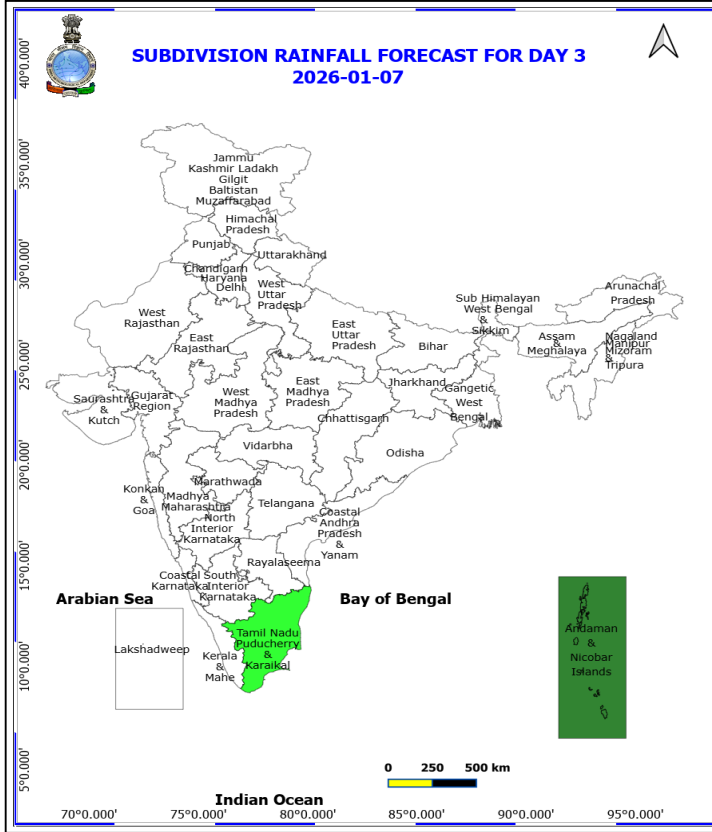
- ❖ **Cold wave conditions** very likely at isolated places over Haryana, Chandigarh & Delhi, Jharkhand, Punjab and Rajasthan.
- ❖ **Cold Day conditions** very likely at isolated places over Bihar, Haryana, Chandigarh & Delhi, Punjab, Uttarakhand and West Madhya Pradesh.
- ❖ **Ground Frost** very likely at isolated places over Uttarakhand.
- ❖ **Dense Fog** very likely at isolated places over Assam & Meghalaya, Bihar, Himachal Pradesh, Jharkhand, Nagaland, Manipur, Mizoram and Tripura, Rajasthan, Sub Himalayan West Bengal & Sikkim, Uttarakhand and West Uttar Pradesh.
- ❖ **Dense to Very Dense Fog** very likely at isolated places over East Uttar Pradesh, Haryana, Chandigarh & Delhi, Madhya Pradesh, Odisha and Punjab.
- ❖ **Squally weather with wind speeds reaching 35 kmph to 45 kmph gusting to 55 kmph** is likely to prevail along and off Sri Lanka coast, over most parts of southwest Bay of Bengal & adjoining, many parts of southeast Bay of Bengal.
- ❖ **Squally winds with speeds reaching 45 kmph to 55 kmph gusting to 65 kmph** is likely to prevail along and off Somalia coast and adjoining sea areas, over Gulf of Mannar and adjoining Comorin area.



**6 January (Day 2)**

- ❖ **Cold wave conditions** very likely at isolated places over Haryana, Chandigarh & Delhi, Jharkhand, Punjab and Rajasthan.
- ❖ **Dense Fog** very likely at isolated places over Assam & Meghalaya, Bihar, East Rajasthan, Himachal Pradesh, Madhya Pradesh, Nagaland, Manipur, Mizoram and Tripura, Odisha, Sub Himalayan West Bengal & Sikkim, Uttarakhand and West Uttar Pradesh.
- ❖ **Dense to Very Dense Fog** very likely at isolated places over East Uttar Pradesh, Haryana, Chandigarh & Delhi and Punjab.
- ❖ **Squally weather with wind speeds reaching 35 kmph to 45 kmph gusting to 55 kmph** is likely to prevail along and off Sri Lanka coast, over most parts of southwest Bay of Bengal & adjoining, many parts of southeast Bay of Bengal.
- ❖ **Squally winds with speeds reaching 45 kmph to 55 kmph gusting to 65 kmph** is likely to prevail along and off Somalia coast and adjoining sea areas, over Gulf of Mannar and adjoining Comorin area.

**\*Red color warning does not mean "Red Alert" Red color warning means "Take Action"**  
**Forecast and warning for any day is valid from 0830 hours IST of day till 0830 hours IST of next day**  
**For more details kindly visit <https://mausam.imd.gov.in> or contact 011-2434-4599**  
 (Service to the nation since 1875)



### 7 January (Day 3)

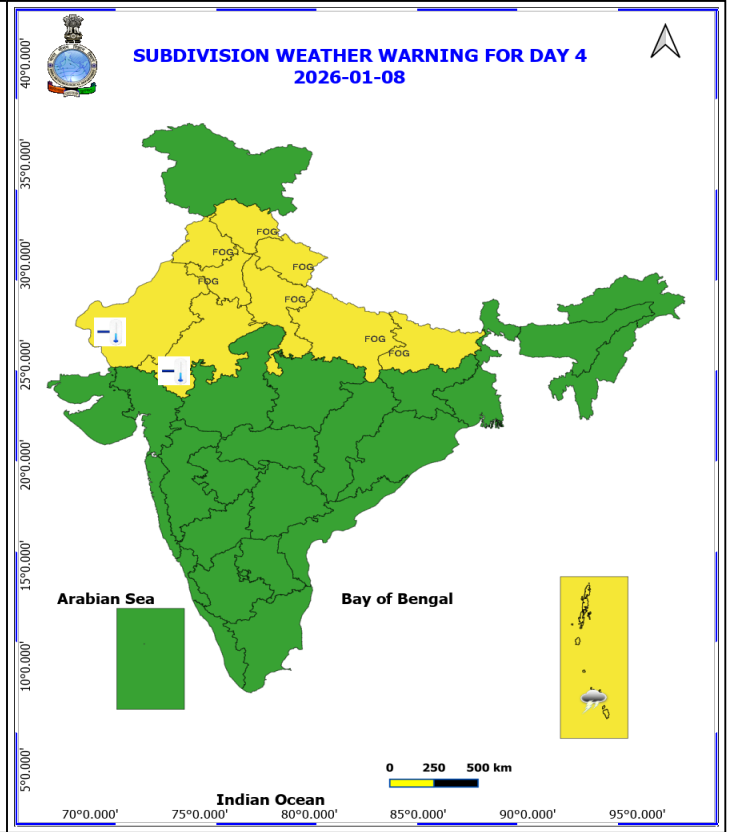
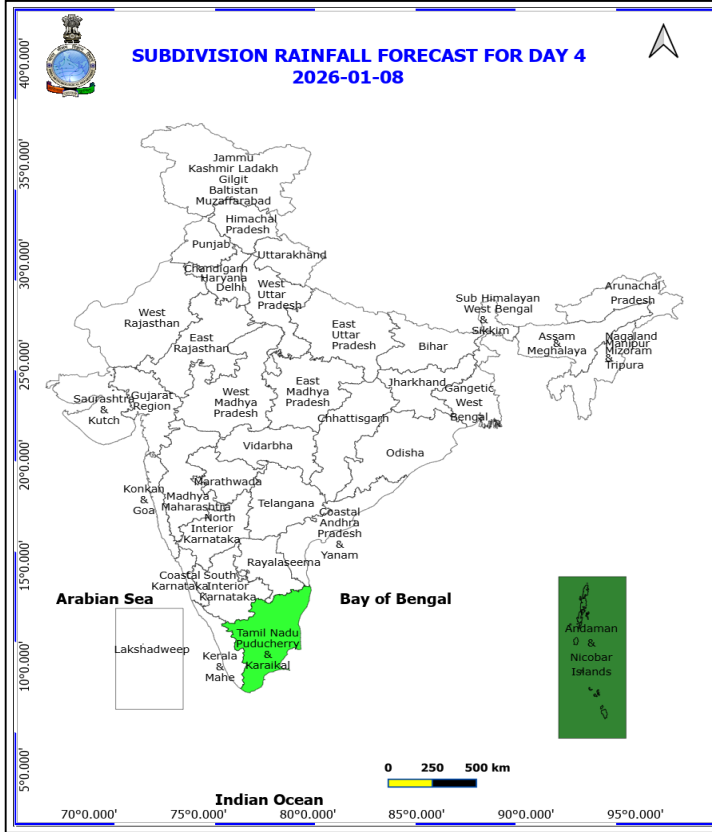
- ❖ **Thunderstorm accompanied with Lightning** very likely at isolated places over Andaman & Nicobar Islands.
- ❖ **Cold wave conditions** very likely at isolated places over Haryana, Chandigarh & Delhi, Punjab and Rajasthan.
- ❖ **Dense Fog** very likely at isolated places over Bihar, Haryana, Chandigarh & Delhi, Himachal Pradesh, Madhya Pradesh, Odisha, Punjab, Uttarakhand and West Uttar Pradesh.
- ❖ **Dense to Very Dense Fog** very likely at isolated places over East Uttar Pradesh.
- ❖ **Squally weather with wind speeds reaching 35 kmph to 45 kmph gusting to 55 kmph** is likely to prevail along and off Sri Lanka coast, over many parts of southwest Bay of Bengal & adjoining, many parts of southeast Bay of Bengal.
- ❖ **Squally winds with speeds reaching 45 kmph to 55 kmph gusting to 65 kmph** is likely to prevail along and off Somalia coast and adjoining sea areas, over Gulf of Mannar and adjoining Comorin area.

**\*Red color warning does not mean "Red Alert" Red color warning means "Take Action"**

Forecast and warning for any day is valid from 0830 hours IST of day till 0830 hours IST of next day

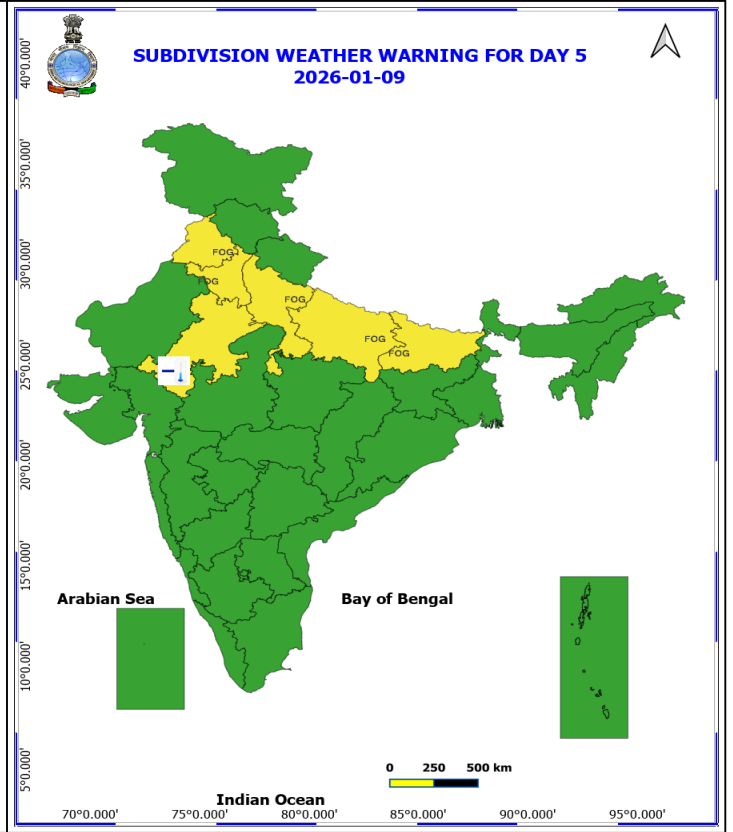
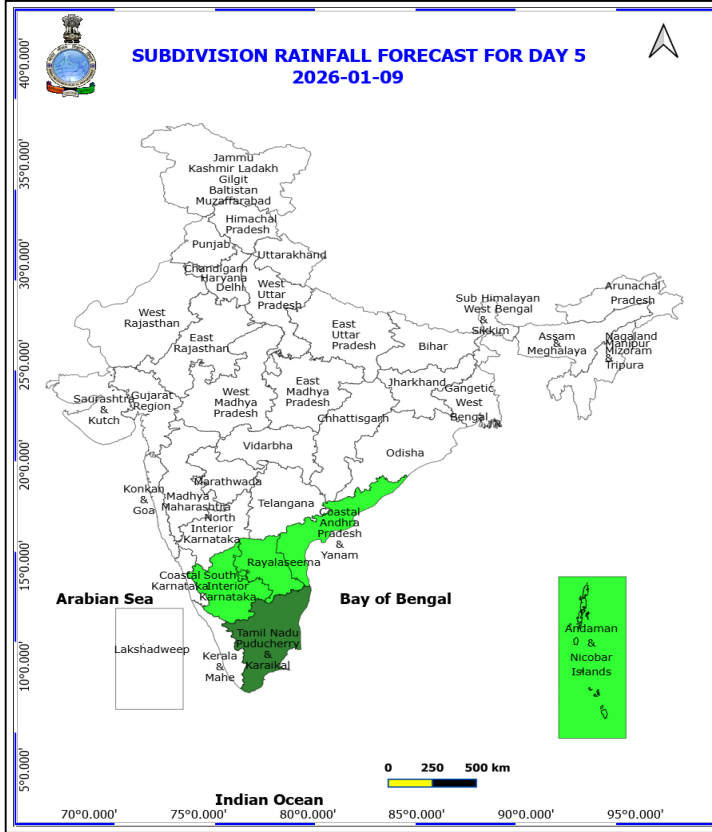
For more details kindly visit <https://mausam.imd.gov.in> or contact 011-2434-4599

(Service to the nation since 1875)



### 8 January (Day 4)

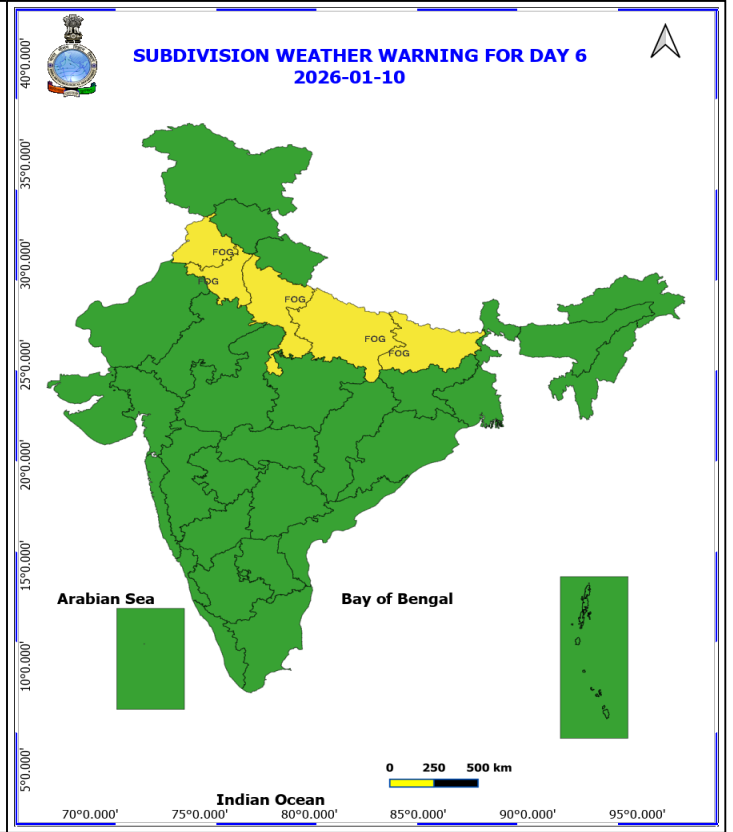
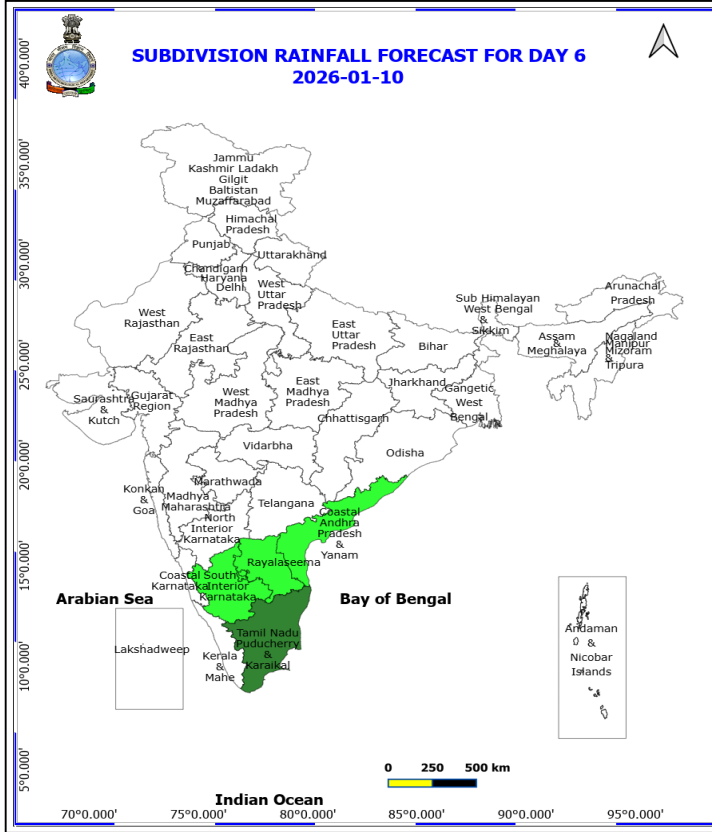
- ❖ **Thunderstorm accompanied with Lightning** likely at isolated places over Andaman & Nicobar Islands.
- ❖ **Cold wave conditions** likely at isolated places over Rajasthan.
- ❖ **Dense Fog** likely at isolated places over Bihar, Haryana, Chandigarh & Delhi, Himachal Pradesh, Punjab, Uttar Pradesh and Uttarakhand.
- ❖ **Squally weather with wind speeds reaching 35 kmph to 45 kmph gusting to 55 kmph** is likely to prevail along and off Sri Lanka coast, over many parts of southwest Bay of Bengal & adjoining, many parts of southeast Bay of Bengal.
- ❖ **Squally winds with speeds reaching 45 kmph to 55 kmph gusting to 65 kmph** is likely to prevail along and off Somalia coast and adjoining sea areas, over Gulf of Mannar and adjoining Comorin area.



### 9 January (Day 5)

- ❖ **Cold wave conditions** likely at isolated places over East Rajasthan.
- ❖ **Dense Fog** likely at isolated places over Bihar, Haryana, Chandigarh & Delhi, Punjab and Uttar Pradesh.
- ❖ **Squally weather with wind speeds reaching 35 kmph to 45 kmph gusting to 55 kmph** is likely to prevail along and off Sri Lanka coast, over many parts of southwest Bay of Bengal & adjoining, many parts of southeast Bay of Bengal.
- ❖ **Squally winds with speeds reaching 45 kmph to 55 kmph gusting to 65 kmph** is likely to prevail along and off Somalia coast and adjoining sea areas, over Gulf of Mannar and adjoining Comorin area.

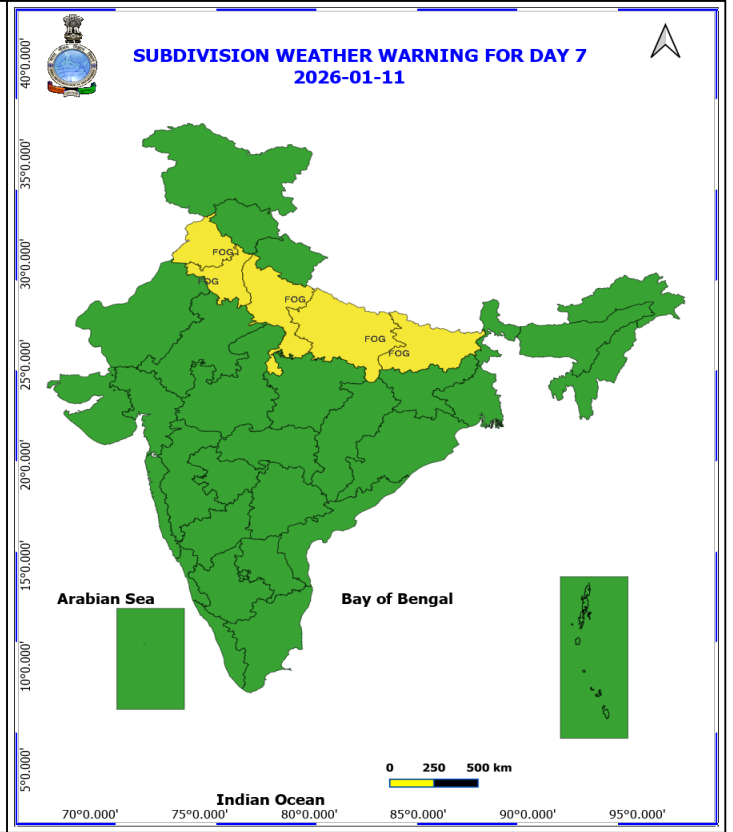
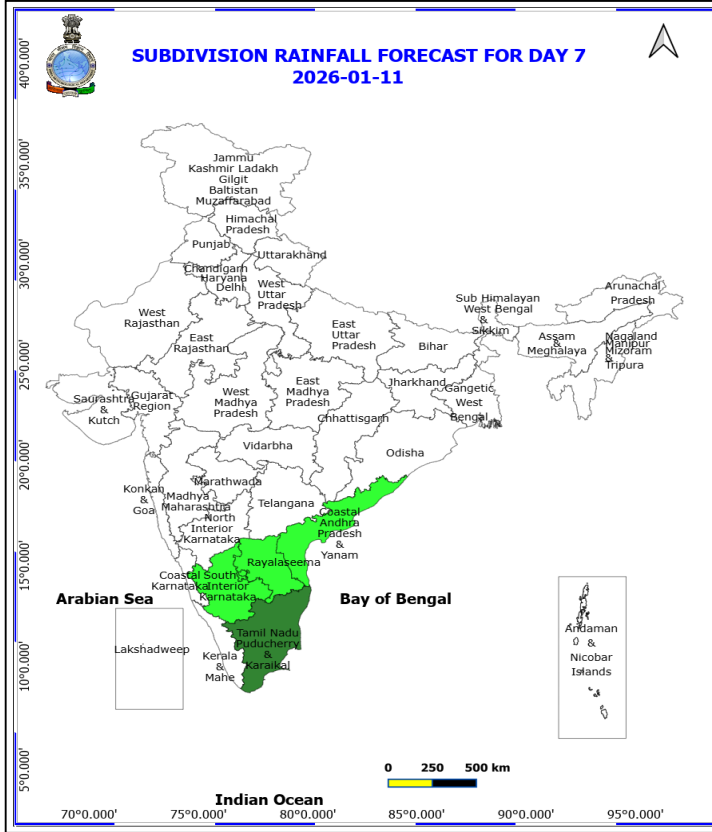
**\*Red color warning does not mean "Red Alert" Red color warning means "Take Action"**  
Forecast and warning for any day is valid from 0830 hours IST of day till 0830 hours IST of next day  
For more details kindly visit <https://mausam.imd.gov.in> or contact 011-2434-4599  
(Service to the nation since 1875)



**10 January (Day 6)**

❖ **Dense Fog** likely at isolated places over Bihar, Haryana, Chandigarh & Delhi, Punjab and Uttar Pradesh.

**No Fishermen Warning**



**11 January (Day 7)**

❖ **Dense Fog** likely at isolated places over Bihar, Haryana, Chandigarh & Delhi, Punjab and Uttar Pradesh.

**No Fishermen Warning**



## Table-1

### 7 Days Rainfall Forecast

S.No.	Subdivision	5- Jan	6- Jan	7- Jan	8- Jan	9- Jan	10- Jan	11- Jan
		Day 1	Day 2	Day 3	Day 4	Day 5	Day 6	Day 7
1	ANDAMAN & NICOBAR ISLANDS	DRY	DRY	SCT	SCT	ISOL	DRY	DRY
2	ARUNACHAL PRADESH	ISOL	ISOL	DRY	DRY	DRY	DRY	DRY
3	ASSAM & MEHGHALAYA	DRY	DRY	DRY	DRY	DRY	DRY	DRY
4	N. M. M. & T.	DRY	DRY	DRY	DRY	DRY	DRY	DRY
5	S.H. WEST BENGAL & SIKKIM	ISOL	ISOL	DRY	DRY	DRY	DRY	DRY
6	GANGETIC WEST BENGAL	DRY	DRY	DRY	DRY	DRY	DRY	DRY
7	ODISHA	DRY	DRY	DRY	DRY	DRY	DRY	DRY
8	JHARKHAND	DRY	DRY	DRY	DRY	DRY	DRY	DRY
9	BIHAR	DRY	DRY	DRY	DRY	DRY	DRY	DRY
10	EAST UTTAR PRADESH	DRY	DRY	DRY	DRY	DRY	DRY	DRY
11	WEST UTTAR PRADESH	DRY	DRY	DRY	DRY	DRY	DRY	DRY
12	UTTARAKHAND	DRY	ISOL	DRY	DRY	DRY	DRY	DRY
13	HARYANA, CHD & DELHI	DRY	DRY	DRY	DRY	DRY	DRY	DRY
14	PUNJAB	DRY	DRY	DRY	DRY	DRY	DRY	DRY
15	HIMACHAL PRADESH	ISOL	ISOL	DRY	DRY	DRY	DRY	DRY
16	JAMMU AND KASHMIR AND LADAKH	ISOL	ISOL	DRY	DRY	DRY	DRY	DRY
17	WEST RAJASTHAN	DRY	DRY	DRY	DRY	DRY	DRY	DRY
18	EAST RAJASTHAN	DRY	DRY	DRY	DRY	DRY	DRY	DRY
19	WEST MADHYA PRADESH	DRY	DRY	DRY	DRY	DRY	DRY	DRY
20	EAST MADHYA PRADESH	DRY	DRY	DRY	DRY	DRY	DRY	DRY
21	GUJRAT REGION	DRY	DRY	DRY	DRY	DRY	DRY	DRY
22	SAURASHTRA & KUTCH	DRY	DRY	DRY	DRY	DRY	DRY	DRY
23	KONKAN & GOA	DRY	DRY	DRY	DRY	DRY	DRY	DRY
24	MADHYA MAHARASHTRA	DRY	DRY	DRY	DRY	DRY	DRY	DRY
25	MARATHWADA	DRY	DRY	DRY	DRY	DRY	DRY	DRY
26	VIDARBHA	DRY	DRY	DRY	DRY	DRY	DRY	DRY
27	CHATTISGARH	DRY	DRY	DRY	DRY	DRY	DRY	DRY
28	COASTAL ANDHRA PRADESH	DRY	DRY	DRY	DRY	ISOL	ISOL	ISOL
29	TELANGANA	DRY	DRY	DRY	DRY	DRY	DRY	DRY
30	RAYALASEEMA	DRY	DRY	DRY	DRY	ISOL	ISOL	ISOL
31	TAMILNADU & PUDUCHERRY	ISOL	ISOL	ISOL	ISOL	SCT	SCT	SCT
32	COSTAL KARNATAKA	DRY	DRY	DRY	DRY	DRY	DRY	DRY
33	NORTH INTERIOR KARNATAKA	DRY	DRY	DRY	DRY	DRY	DRY	DRY
34	SOUTH INTERIOR KARNATAKA	DRY	DRY	DRY	DRY	ISOL	ISOL	ISOL
35	KERALA	DRY	DRY	DRY	DRY	DRY	DRY	DRY
36	LAKSHDWEEP	DRY	DRY	DRY	DRY	DRY	DRY	DRY

Legend	Category	%Stations
WS	Widespread/Most Places	76-100
FWS	Fairly Widespread/Many Places	51-75
SCT	Scattered/ A Few Places	26-50
ISOL	Isolated Places	1-25
DRY	No Rain	0

\*Red color warning does not mean "Red Alert" Red color warning means "Take Action"  
Forecast and warning for any day is valid from 0830 hours IST of day till 0830 hours IST of next day  
For more details kindly visit <https://mausam.imd.gov.in> or contact 011-2434-4599

(Service to the nation since 1875)

Fig. 1: Maximum Temperatures Dated 2026-01-04

Fig. 2: Departure of Maximum Temp. Dated 2026-01-04

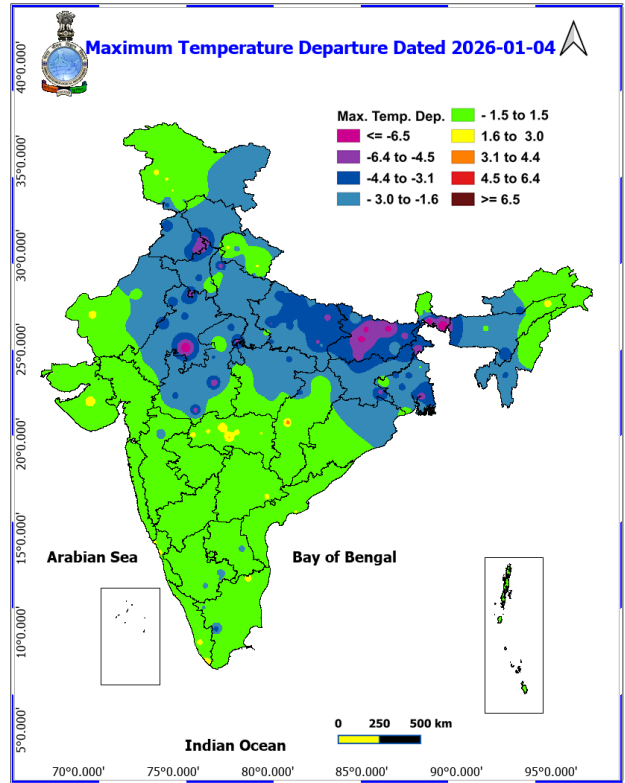
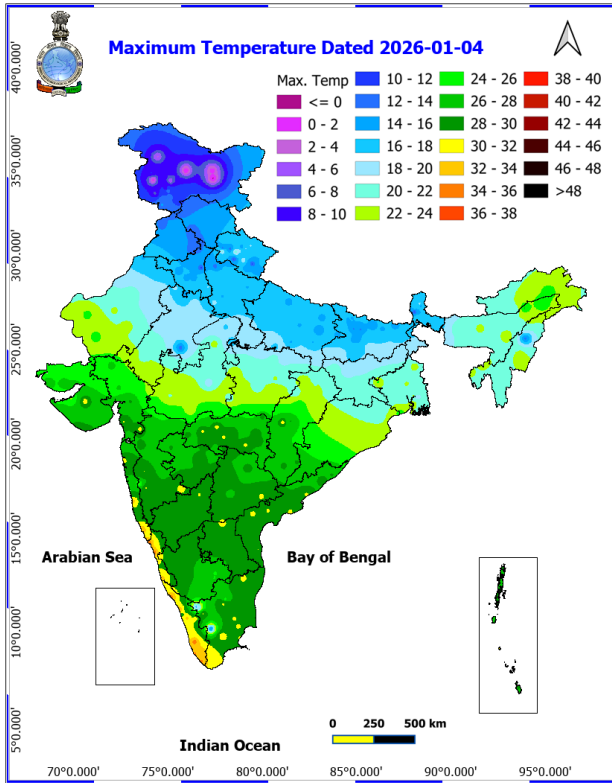
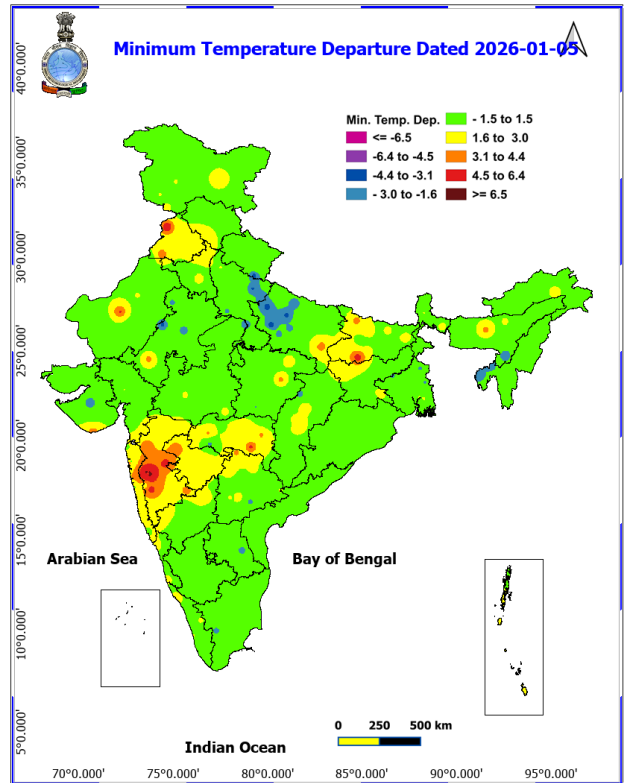
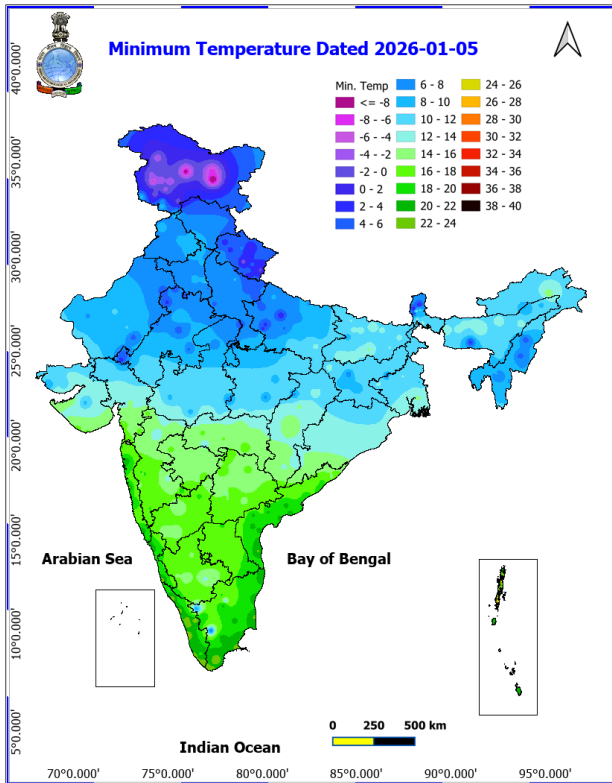


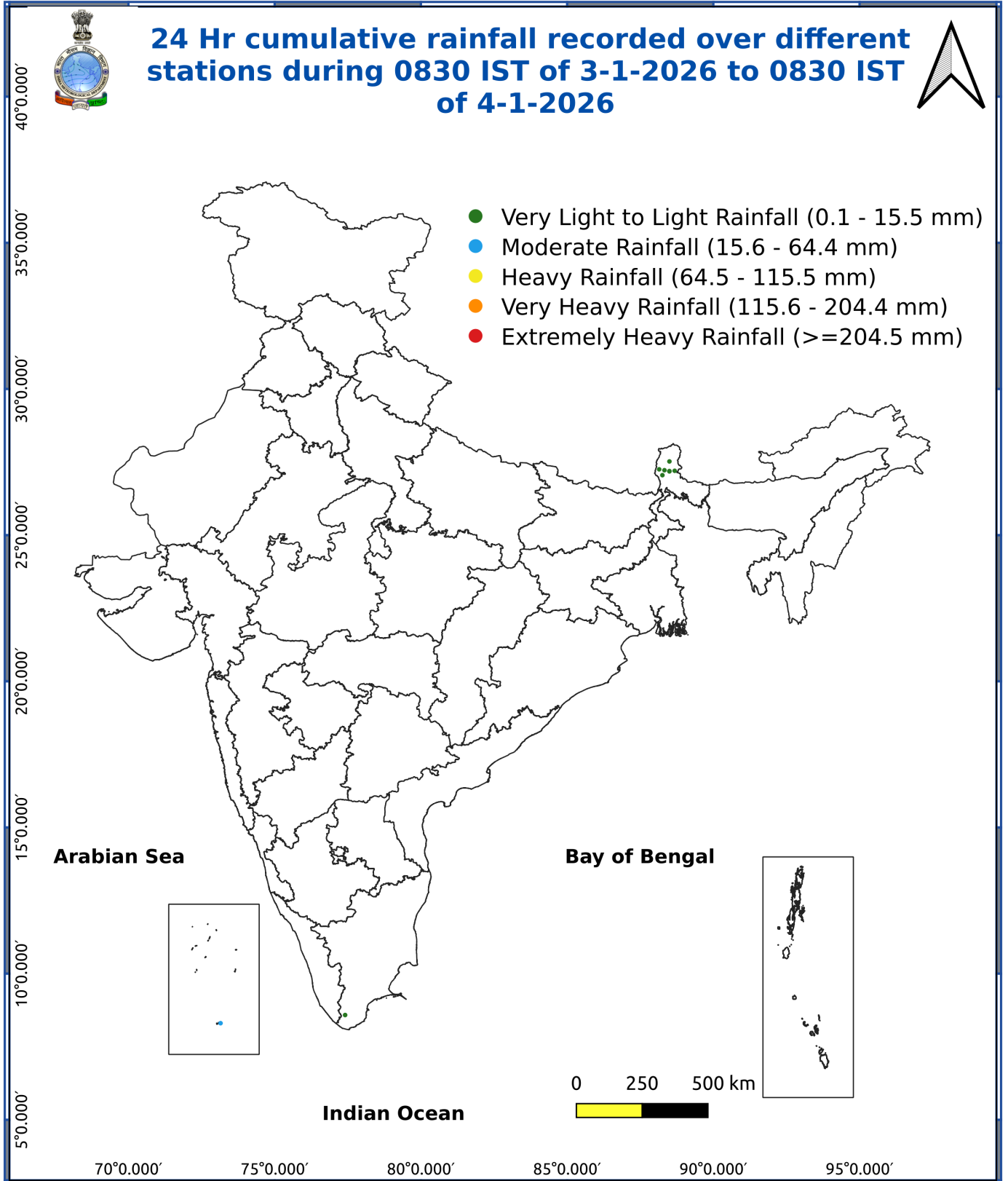
Fig. 3: Minimum Temperatures Dated 2026-01-04

Fig. 4: Departure of Minimum Temp. Dated 2026-01-04



**\*Red color warning does not mean "Red Alert" Red color warning means "Take Action"**  
Forecast and warning for any day is valid from 0830 hours IST of day till 0830 hours IST of next day  
For more details kindly visit <https://mausam.imd.gov.in> or contact 011-2434-4599

(Service to the nation since 1875)



## Impact and Actions

**Impact expected due to dense/very dense fog in the night/morning hours:** very likely to continue during night/morning hours at some places over Punjab, Haryana, Chandigarh till 07<sup>th</sup>; over east Uttar Pradesh till 08<sup>th</sup>; at isolated places over west Uttar Pradesh till 05<sup>th</sup>; over Madhya Pradesh and Odisha till 6<sup>th</sup> January, 2026.

### ❖ Transport and Aviation:

- May affect some airports, highways and railway routes in the areas of met- sub-division.
- Difficult driving conditions with slower journey times.
- Unless taken precautionary measures, it may lead to some road traffic collisions.

### ❖ Power Sector:

- Chances of Tripping of Power lines in the very dense fog routes.

### ❖ Human Health:

- Lung related health impacts: Dense fog contains particulate matter and other pollutants and in case exposed it gets lodged in the lungs, clogging them and decreasing their functional capacity which increases episodes of wheezing, coughing and shortness of breath.
- Impact on people having asthma bronchitis: Long time exposure to dense fog may cause respiratory problem for people having asthma bronchitis and other lung related health problems.
- Eye Irritation: Dense fog contains pollutions of various types and these Pollutants in the air if exposed may tend to irritate the membranes of the eye causing various infections leading to redness or swelling of the eye.

### Action suggested:

#### ❖ Transport and Aviation:

- Be careful while driving or outing through any transport.
- Use fog lights during driving.
- Be in touch with airlines, railways and state transport for schedule of your journey.

#### ❖ Power Sector:

- To keep ready Maintenance Team.
- Human Health: To avoid outing until unless emergency and to cover the face.

**Impact expected due to Cold Wave conditions:** very likely in isolated pockets of Punjab, Haryana, Chandigarh & Delhi during 5<sup>th</sup> -8<sup>th</sup>; over west Rajasthan during 5<sup>th</sup> -9<sup>th</sup>; over east Rajasthan during 5<sup>th</sup> -10<sup>th</sup>; over Jharkhand on 6<sup>th</sup> -7<sup>th</sup> January 2026.

- An increased likelihood of various illnesses like flu, running/ stuffy nose or nosebleed, which usually set in or get aggravated due to prolonged exposure to cold.
- Do not ignore shivering. It is the first sign that the body is losing heat. Get Indoors.
- Frostbite can occur due to prolonged exposure to cold. The skin turns pale, hard and numb and eventually

**\*Red color warning does not mean "Red Alert" Red color warning means "Take Action"**

**Forecast and warning for any day is valid from 0830 hours IST of day till 0830 hours IST of next day**

**For more details kindly visit <https://mausam.imd.gov.in> or contact 011-2434-4599**

**(Service to the nation since 1875)**

black blisters appear on exposed body parts such as fingers, toes, nose and or earlobes. Severe frostbite needs immediate medical attention and treatment.

- Impact on agriculture, crop, livestock, water supply, transport and power sector at some places.

**Action suggested:**

- Wear several layers of loose fitting, light weight; warm woollen clothing.
- Cover your head, neck, hands and toes adequately as majority of heat loss occurs through these body parts. Wear several layers of loose fitting, light weight; warm woollen clothing rather than one layer of heavy cloth.
- Eat vitamin-C rich fruits & vegetable and drink sufficient fluids preferably warm fluids to maintain adequate immunity.
- Avoid or limit outdoor activities.
- Keep dry, if wet, change cloths immediately to prevent loss of body heat. Wear insulated/waterproof shoes.
- Warm the affected area of the body slowly with lukewarm water; do not rub the skin vigorously.
- If the affected skin area turns black, immediately consult a doctor.
- Maintain ventilation while using Heaters to avoid inhaling toxic fumes.
- Take safety measures while using electrical and gas heating devices.
- Extreme care needed for vulnerable people.
- Seek medical attention as soon as possible for someone suffering from frostbite/ Hypothermia.
- Protect livestock from cold weather.

**Impact expected due to Cold Day conditions:** very likely at isolated pockets over Uttarakhand, Punjab, Haryana Chandigarh & Delhi, West Madhya Pradesh and Bihar on 5<sup>th</sup> January 2026.

- An increased likelihood of various illnesses like flu, running/ stuffy nose or nosebleed, which usually set in or get aggravated due to prolonged exposure to cold.
- Do not ignore shivering. It is the first sign that the body is losing heat. Get Indoors.
- Frostbite can occur due to prolonged exposure to cold. The skin turns pale, hard and numb and eventually black blisters appear on exposed body parts such as fingers, toes, nose and or earlobes. Severe frostbite needs immediate medical attention and treatment.
- Impact on agriculture, crop, livestock, water supply, transport and power sector at some places.

**Action suggested:**

- Wear several layers of loose fitting, light weight; warm woollen clothing.
- Cover your head, neck, hands and toes adequately as majority of heat loss occurs through these body parts. Wear several layers of loose fitting, light weight; warm Woolen clothing rather than one layer of heavy cloth.
- Eat vitamin-C rich fruits & vegetable and drink sufficient fluids preferably warm fluids to maintain adequate immunity.
- Avoid or limit outdoor activities.
- Keep dry, if wet, change cloths immediately to prevent loss of body heat. Wear insulated/waterproof shoes.
- Warm the affected area of the body slowly with lukewarm water; do not rub the skin vigorously.
- If the affected skin area turns black, immediately consult a doctor.
- Maintain ventilation while using Heaters to avoid inhaling toxic fumes.
- Take safety measures while using electrical and gas heating devices.
- Extreme care needed for vulnerable people.
- Seek medical attention as soon as possible for someone suffering from frostbite/ Hypothermia.
- Protect livestock from cold weather.

**Agromet advisories for various parts of the country**

**Agromet advisories for likely impact of Cold Waves/ Ground Frost/ Low Temperatures**

\*Red color warning does not mean "Red Alert" Red color warning means "Take Action"  
Forecast and warning for any day is valid from 0830 hours IST of day till 0830 hours IST of next day  
For more details kindly visit <https://mausam.imd.gov.in> or contact 011-2434-4599

(Service to the nation since 1875)

- In **Uttarakhand, Punjab, Haryana, Rajasthan and Jharkhand**, apply light and frequent irrigation to the standing crops in the evening to protect the crops from low temperature stress or cold injuries. Use mulching and cover vegetable nurseries and young fruit plants with straw / polythene sheets to maintain optimum soil temperature.

#### **Livestock / Poultry**

- Keep cattle inside the sheds during night and provide dry bedding to protect them from cold.
- Keep the chicks warm by providing artificial light in the poultry sheds.

#### **Agromet advisories for likely impact of Thunderstorm / Gusty Winds**

- Provide mechanical support to horticultural crops and staking or support to vegetables and young fruit plants / fruit-bearing plants to avoid lodging due to strong winds.

## LEGENDS

- 1 अंडमान और निकोबार द्वीप समुह
- 2 अरुणाचल प्रदेश
- 3 असम और मेघालय
- 4 नागालैंड मनीपुर मीजोरम और त्रिपुरा
- 5 उप हिमालय पश्चिम बंगाल एवं सिक्किम
- 6 पश्चिम बंगाल
- 7 ओडिसा
- 8 झारखंड
- 9 बिहार
- 10 पूर्वी उत्तर प्रदेश
- 11 पश्चिम उत्तर प्रदेश
- 12 उत्तराखंड
- 13 हरियाणा चंडिगढ़ एवं दिल्ली
- 14 पंजाब
- 15 हिमाचल प्रदेश
- 16 जम्मू एवं कश्मीर एवं लद्दाख
- 17 पश्चिम राजस्थान
- 18 पूर्वी राजस्थान
- 19 पश्चिम मध्य प्रदेश
- 20 पूर्वी मध्य प्रदेश
- 21 गुजरात क्षेत्र
- 22 सौराष्ट्र एवं कच्छ
- 23 कोंकण एवं गोवा
- 24 मध्य महाराष्ट्र
- 25 मराठावाडा
- 26 विदर्भ
- 27 छत्तीसगढ़
- 28 तटीय आंध्र प्रदेश एवं यनम
- 29 तेलंगाना
- 30 रायलसीमा
- 31 तमिलनाडु, पुदुचेरी एवं कराईकल
- 32 तटिय कर्नाटक
- 33 आंतरिक उत्तरी कर्नाटक
- 34 आंतरिक दक्षिणी कर्नाटक
- 35 केरल एवं माहे
- 36 लक्षद्वीप



1. Andaman & Nicobar Islands
2. Arunachal Pradesh
3. Assam & Meghalaya
4. Nagaland, Manipur, Mizoram & Tripura
5. Sub-Himalayan West Bengal & Sikkim
6. Gangetic West Bengal
7. Orissa
8. Jharkhand
9. Bihar
10. East Uttar Pradesh
11. West Uttar Pradesh
12. Uttarakhand
13. Haryana, Chd & Delhi
14. Punjab
15. Himachal Pradesh
16. Jammu & Kashmir and Ladakh
17. West Rajasthan
18. East Rajasthan
19. West Madhya Pradesh
20. East Madhya Pradesh
21. Gujarat
22. Saurashtra
23. Konkan & Goa
24. Madhya Maharashtra
25. Marathawada
26. Vidharbha
27. Chhattisgarh
28. Coastal Andhra Pradesh & Yanam
29. Telangana
30. Rayalaseema
31. Tamilnadu, Puducherry & Karaikal
32. Coastal Karnataka
33. North Interior Karnataka
34. South Interior Karnataka
35. Kerala & Mahe
36. Lakshadweep

## SPATIAL DISTRIBUTION (% of Stations reporting)

% Stations	Category	% Stations	Category
76-100	Widespread (WS/ Most Places)	26-50	Scattered (SCT/ A Few Places)
51-75	Fairly Widespread (FWS/ Many Places)	1-25	Isolated (ISOL)

### Subdivision Colour

- NO WARNING
- WATCH (BE UPDATED)
- ALERT (BE PREPARED TO TAKE ACTION)
- WARNING (TAKE ACTION)

### Probabilistic Forecast

Terms	Probability of Occurrence (%)
Unlikely	< 25
Likely	25 - 50
Very Likely	50 - 75
Most Likely	> 75

- |                          |                 |                      |                    |
|--------------------------|-----------------|----------------------|--------------------|
| Heavy Rain               | Very Heavy Rain | Extremely Heavy Rain | Heavy Snow         |
| Thunderstorm & Lightning | Hailstorm       | Dust Storm           | Dust Raising Winds |
| Strong surface winds     | Heat Wave       | Hot Day              | Warm Night         |
| Cold Wave                | Cold Day        | Ground Frost         | Fog                |
| Hot & Humid              |                 |                      |                    |

\*Red color warning does not mean "Red Alert" Red color warning means "Take Action"

Forecast and warning for any day is valid from 0830 hours IST of day till 0830 hours IST of next day

For more details kindly visit <https://mausam.imd.gov.in> or contact 011-2434-4599

(Service to the nation since 1875)

## LEGENDS

### WARNING

WARNING (TAKE ACTION)
ALERT ( BE PREPARED)
WATCH (BE UPDATED)
NO WARNING ( NO ACTION)

### Probabilistic Forecast

Terms	Probability of Occurrence (%)
Unlikely	< 25
Likely	25 - 50
Very Likely	50 - 75
Most Likely	> 75



Heavy: 64.5 to 115.5 mm/cm \*  
Very Heavy: 115.6 to 204.4 mm/cm\*  
Extremely Heavy: > 204.4 mm/cm \*



When maximum temperature of a station reaches  $\geq 40^{\circ}\text{C}$  for plains and  $\geq 30^{\circ}\text{C}$  for hilly regions  
(a) Based on Departure from normal

Heat Wave: Maximum Temperature Departure from normal  $4.5^{\circ}\text{C}$  to  $6.4^{\circ}\text{C}$ .  
Severe Heat Wave: Maximum Temperature Departure from normal  $\geq 6.5^{\circ}\text{C}$

(b). Based on Actual maximum temperature

Heat Wave: When actual maximum temperature  $\geq 45^{\circ}\text{C}$ .  
Severe Heat Wave: When actual maximum temperature  $\geq 47^{\circ}\text{C}$

(c). Criteria for heat wave for coastal stations

When maximum temperature departure is  $> 4.5^{\circ}\text{C}$  from normal. Heat Wave may be described provided maximum temperature  $\geq 37^{\circ}\text{C}$



When maximum temperature remains  $40^{\circ}\text{C}$

Warm Night: When minimum temperature departure  $4.5^{\circ}\text{C}$  to  $6.4^{\circ}\text{C}$ .  
Severe Warm Night: When minimum temperature departure  $> 6.4^{\circ}\text{C}$ .



When minimum temperature of a station  $\leq 10^{\circ}\text{C}$  for plains and  $\leq 0^{\circ}\text{C}$  for hilly regions.

(a). Based on departure

Cold Wave: Minimum Temperature Departure from normal  $-4.5^{\circ}\text{C}$  to  $-6.4^{\circ}\text{C}$ .  
Severe Cold Wave: Minimum Temperature Departure from normal  $\leq -6.5^{\circ}\text{C}$

(b) Based on actual Minimum Temperature (for Plains only)

Cold Wave : When Minimum Temperature is  $\leq 4.0^{\circ}\text{C}$   
Severe Cold Wave: When Minimum Temperature is  $\leq 2.0^{\circ}\text{C}$

(c) For Coastal Stations

When Minimum Temperature departure is  $\leq -4.5^{\circ}\text{C}$  & actual Minimum Temperature is  $\leq 15^{\circ}\text{C}$



When minimum temperature of a station  $\leq 10^{\circ}\text{C}$  for plains and  $\leq 0^{\circ}\text{C}$  for hilly regions  
Based on departure

Cold Day: Maximum Temperature Departure from normal  $-4.5^{\circ}\text{C}$  to  $-6.4^{\circ}\text{C}$ .  
Severe Cold Day: Maximum Temperature Departure from normal  $\leq -6.5^{\circ}\text{C}$



Phenomenon of small droplets suspended in air and the horizontal visibility  $< 1\text{km}$

Moderate Fog: When the visibility between 500-200 metres  
Dense Fog: when the visibility between 50- 200 metres  
Very Dense Fog: when the visibility  $< 50$  metres



Sudden electrical discharges manifested by a flash of light (Lightning) and a sharp rumbling sound (thunder)



An ensemble of particles of dust or sand energetically lifted to great heights by a strong and turbulent wind.



Ice deposits on ground

Air temperature  $\leq 4^{\circ}\text{C}$  ( over Plains)



A strong wind that rises suddenly, lasts for atleast 1 minute.

Moderate: Wind speed 52-61 kmph  
Severe: Wind speed 62-87 kmph  
Very Severe: Wind speed  $> 87$  kmph



Effect of various waves in the sea over specific area

Rough to very rough: Wind speed 41-62 kmph (22-33 knots) & Wave height 2.5-6 metre  
High to very high: Wind speed 63-117 kmph ( 34-63 knots) & Wave height 6-14 metre  
Phenomenal: Wind speed  $> 117$  kmph ( $> 63$  knots) & Wave height  $> 14$  metre



Cyclonic Storm: Wind speed 62-87 kmph (34-47 knots)  
Severe Cyclonic Storm: Wind speed 88-117 kmph (48-63 knots)  
Very Severe Cyclonic Storm: Wind speed 118-165 kmph (64 - 89 knots)  
Extremely Severe Cyclonic Storm: Wind speed 166-220 kmph (90 -119 knots)  
Super Cyclone Storm: Wind speed  $> 220$  kmph ( $> 119$  knots)

\*Red color warning does not mean "Red Alert" Red color warning means "Take Action"

Forecast and warning for any day is valid from 0830 hours IST of day till 0830 hours IST of next day

For more details kindly visit <https://mausam.imd.gov.in> or contact 011-2434-4599

(Service to the nation since 1875)