

2025-11-07

Time of Issue: 08:04:00 hours IST  
(Morning)

## ALL INDIA WEATHER SUMMARY AND FORECAST BULLETIN

### Significant Weather Features

#### South Peninsular India:

- Light to moderate rainfall/thunderstorm at most/many places with isolated heavy rainfall over Tamil Nadu on 07<sup>th</sup> & 08<sup>th</sup> & Kerala & Mahe during 08<sup>th</sup> -10<sup>th</sup> November.
- Light to moderate rain/thunderstorm at many/some places likely over Coastal Andhra Pradesh & Yanam, Rayalaseema & South Interior Karnataka on 07<sup>th</sup> November.

#### Forecast of temperature:

- No significant change in minimum temperature over northwest India during next 5-6 days, except over east Uttar Pradesh, where minimum temperature very likely to fall by 2-4 °C during next 24 hours and no significant change during subsequent 4-5 days.
- Fall in minimum temperature by 2-4 °C very likely over Central India during next 48 hours and no significant change during subsequent 3-4 days.
- No significant change in minimum temperature over east India during next 24 hours and fall by 2-3 °C very likely during subsequent 2 days.
- Fall in minimum temperature by 2-3 °C very likely over west India during next 4-5 days and over Gujarat fall by 2-3 °C during next 3 days.

\*Red color warning does not mean "Red Alert" Red color warning means "Take Action"

Forecast and warning for any day is valid from 0830 hours IST of day till 0830 hours IST of next day

For more details kindly visit <https://mausam.imd.gov.in> or contact 011-2434-4599

(Service to the nation since 1875)

**Main Weather Observations:**

- ❖ **Rainfall distribution** (from 0830 hours IST to 1730 hours IST of yesterday): **at many places** over Andaman & Nicobar Islands, Assam & Meghalaya, Sub-himalayan West Bengal & Sikkim, Nagaland, Manipur, Mizoram & Tripura, South Interior Karnataka, Rayalaseema and Tamilnadu Puducherry & Karaikal; **Dry** over rest of the country.
- ❖ **Significant rainfall recorded(in cm)** (from 0830 hours IST to 1730 hours IST of yesterday): **Tamil Nadu, Puducherry & Karaikal:** Kalavai (dist. Ranipet) 7, TIRUPATTUR\_COLLECTOROFFICE (dist. Tirupattur) 4, Poonamallee (dist. Tiruvallur) & Cheyyar (dist. Tiruvannamalai) 3 each.
- ❖ **Heavy Rainfall observed (from 0830 hours IST to 1730 hours IST of yesterday):** Heavy Rainfall observed at isolated places over Tamil Nadu.
- ❖ **Fog Condition Observed (at 0530 hours of today): Moderate fog conditions:** at isolated places over Nagaland, Manipur, Mizoram & Tripura **Shallow fog conditions:** at a few places over Nagaland, Manipur, Mizoram & Tripura, at isolated places over Assam & Meghalaya and Delhi.
- ❖ **Visibility reported (at 0530 hours of today):** Nagaland, manipur, mizoram & tripura: Aizawl-lengpui (dist Mamit) 200, Imphal (tulihal) AP (dist Imphal East), Kailashahar AP (dist Unakoti) 500 Each; Assam & meghalaya: Dibrugarh (dist Dibrugarh), Barapani/shillong (dist East Khasi Hills) 500 Each; Haryana chandigarh & delhi: New Delhi (safdarjung) (dist South West Delhi) 500.
- ❖ **Minimum Temperature Departures (as on 06-11-2025):** The lowest minimum temperature of 10.1°C is reported at HISSAR (HARYANA) over the Plains of India.
- ❖ **Maximum Temperature Departures (as on 06-11-2025):** below normal(-1.6°C to -3.0°C) at most places over Coastal Karnataka; at isolated places over Konkan & Goa. **The highest maximum temperature** of 35.2°C is reported at ERODE-OBS (TAMIL NADU).

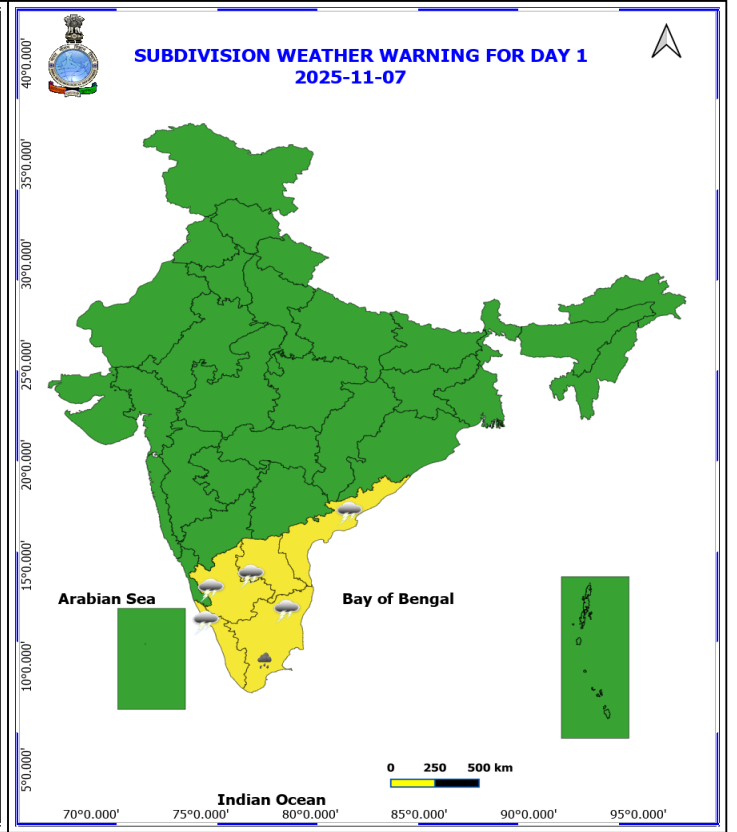
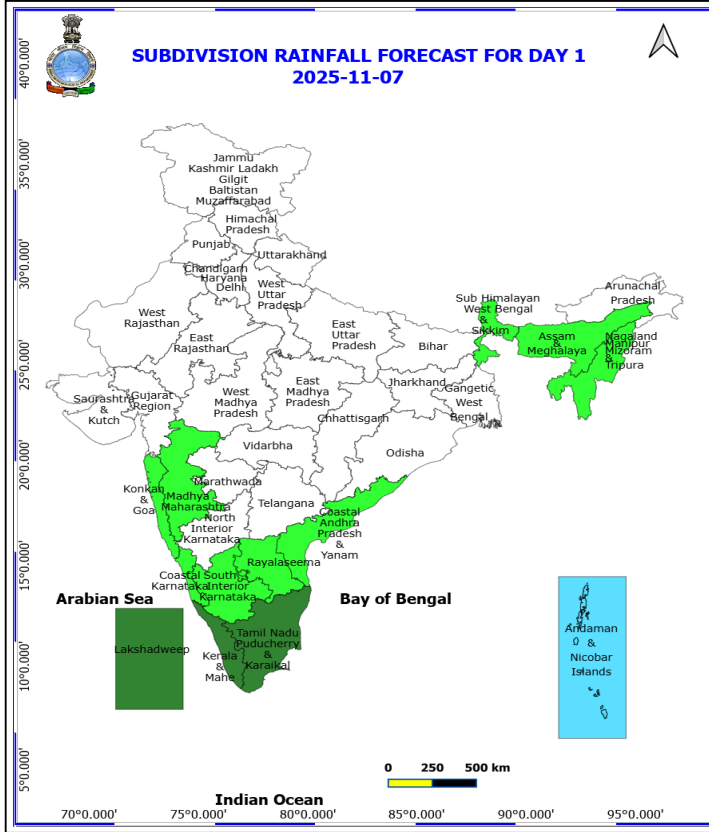


**Meteorological Analysis (Based on 0530 hours IST)**

- The **upper air cyclonic circulation** over eastcentral and adjoining northeast Bay of Bengal between 1.5 & 3.1 km above mean sea level persists.
- The **upper air cyclonic circulation** over Bangladesh and adjoining Tripura & south Assam extending upto 1.5 km above mean sea level persists.
- The **trough** from central Bay of Bengal to east central Arabian sea across Tamil Nadu, Karnataka between 1.5 to 5.8 km above mean sea level persists.
- An **upper air cyclonic circulation** lies over north Haryana & neighbourhood at 1.5 km above mean sea level.

**Weather Outlook for subsequent 3 days**

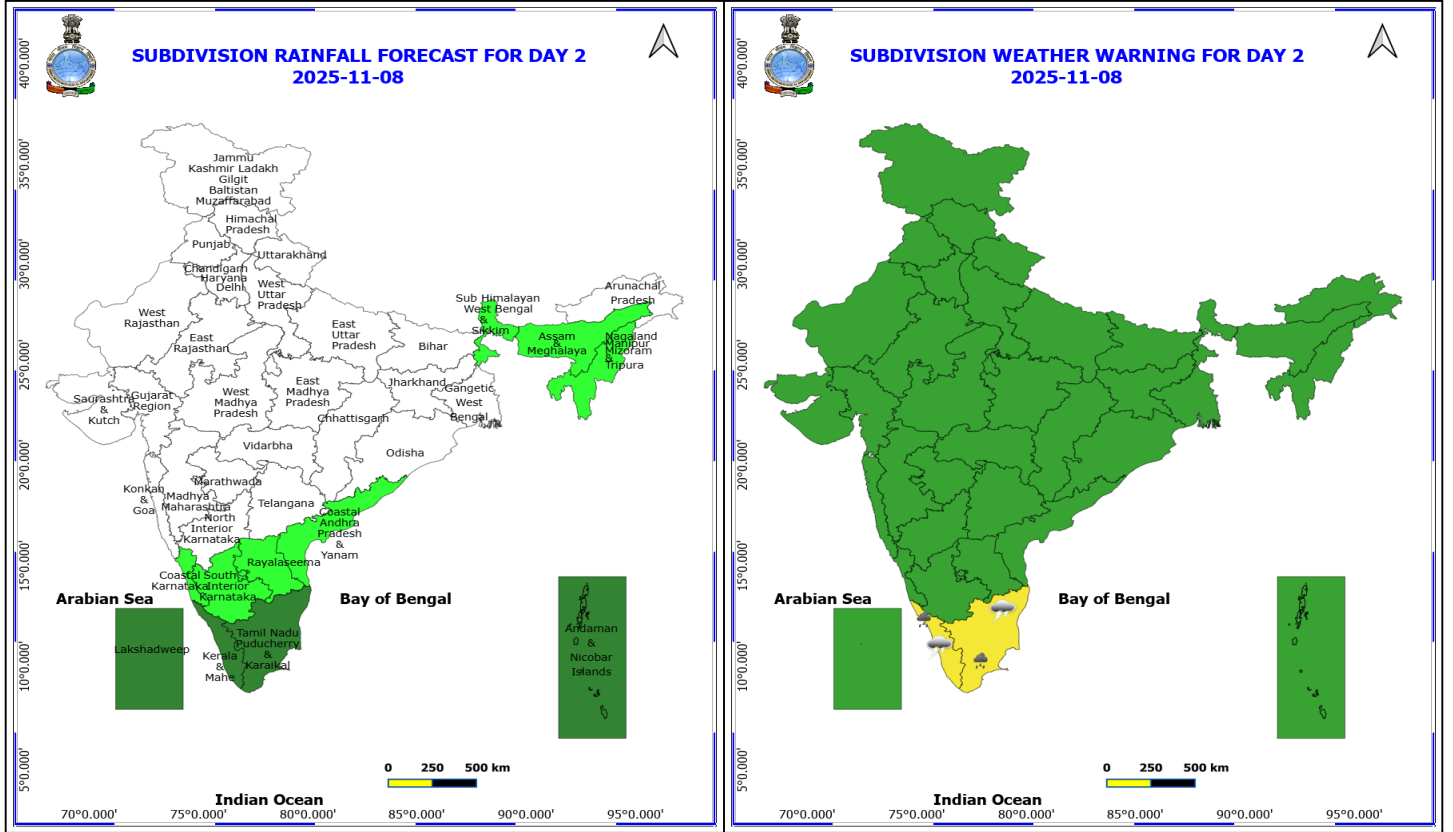
- Isolated to scattered rainfall activity likely over Tamil Nadu, Kerala, South Rayalaseema and South Coastal Andhra Pradesh and Islands.



**7 November (Day 1)**

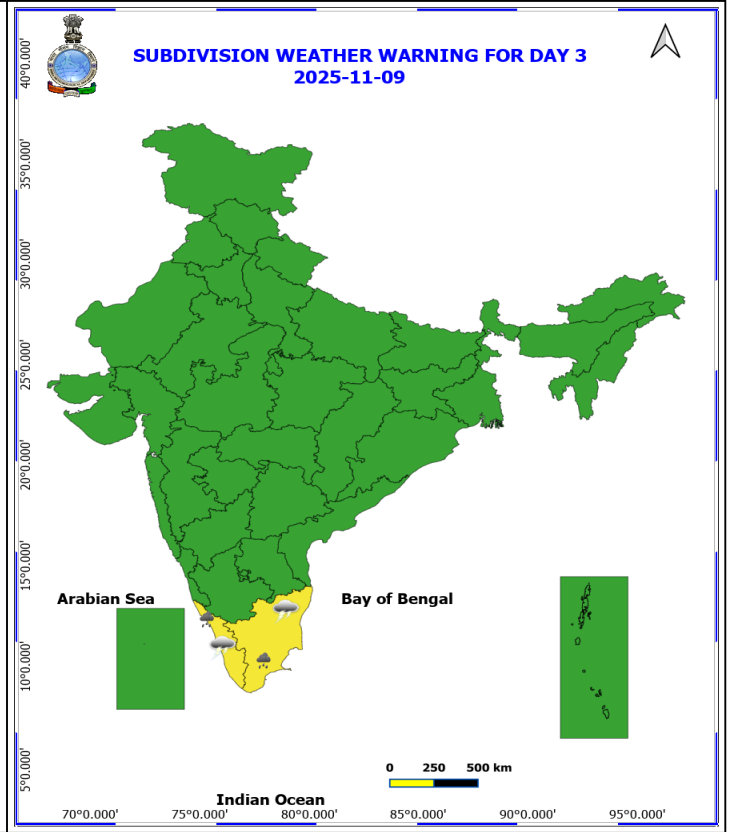
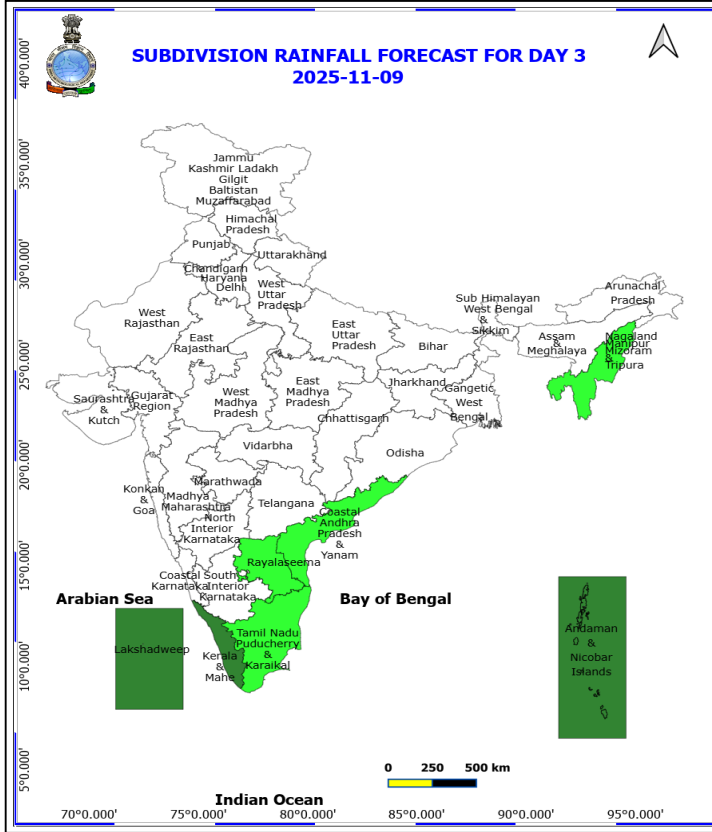
- ❖ **Heavy Rainfall** very likely at isolated places over Tamil Nadu Puducherry & Karaikal.
- ❖ **Thunderstorm accompanied with Lightning** very likely at isolated places over Andhra Pradesh, Kerala & Mahe, South Interior Karnataka and Tamil Nadu Puducherry & Karaikal.

**No Fishermen Warning**



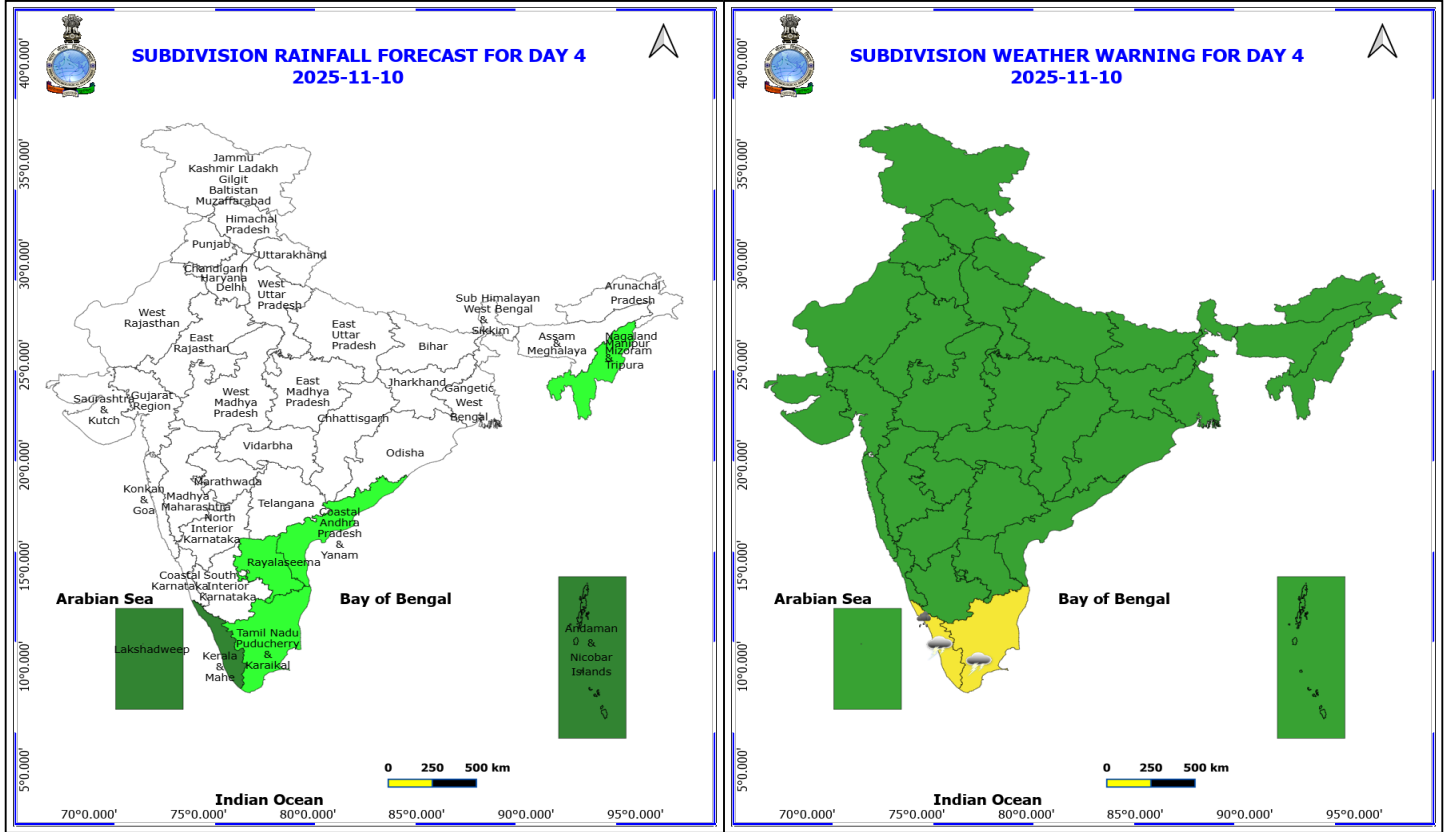
**8 November (Day 2)**

- ❖ **Heavy Rainfall** very likely at isolated places over Kerala & Mahe and Tamil Nadu Puducherry & Karaikal.
  - ❖ **Thunderstorm accompanied with Lightning** very likely at isolated places over Kerala & Mahe and Tamil Nadu Puducherry & Karaikal.
- No Fishermen Warning**



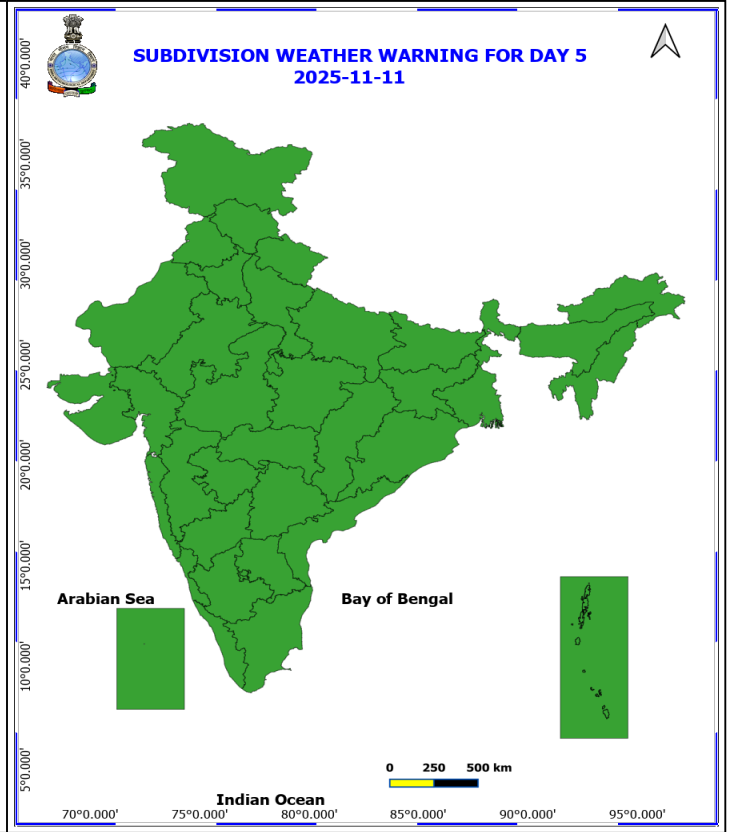
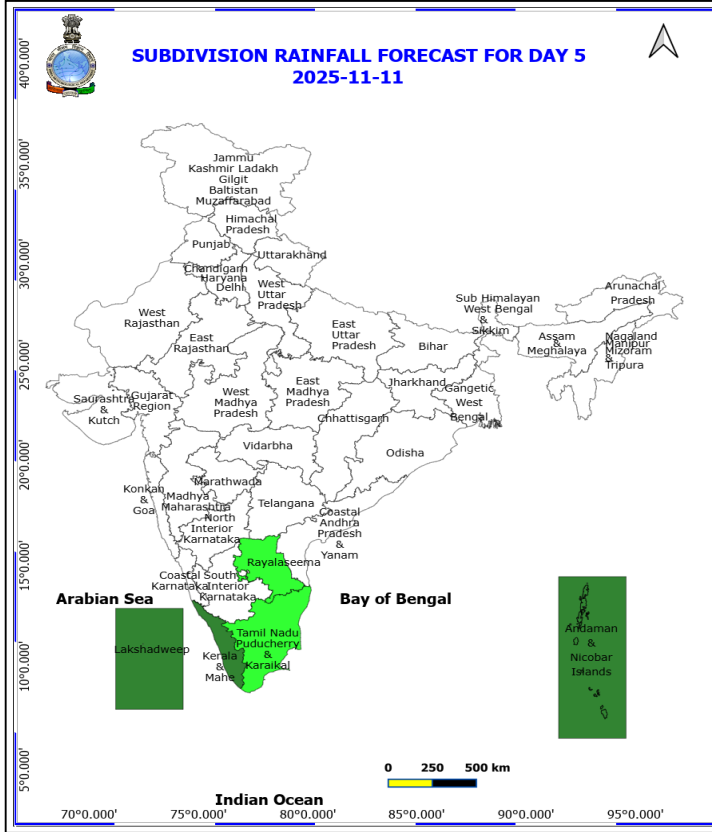
**9 November (Day 3)**

- ❖ **Heavy Rainfall** very likely at isolated places over Kerala & Mahe and Tamil Nadu Puducherry & Karaikal.
  - ❖ **Thunderstorm accompanied with Lightning** very likely at isolated places over Kerala & Mahe and Tamil Nadu Puducherry & Karaikal.
- No Fishermen Warning**



**10 November (Day 4)**

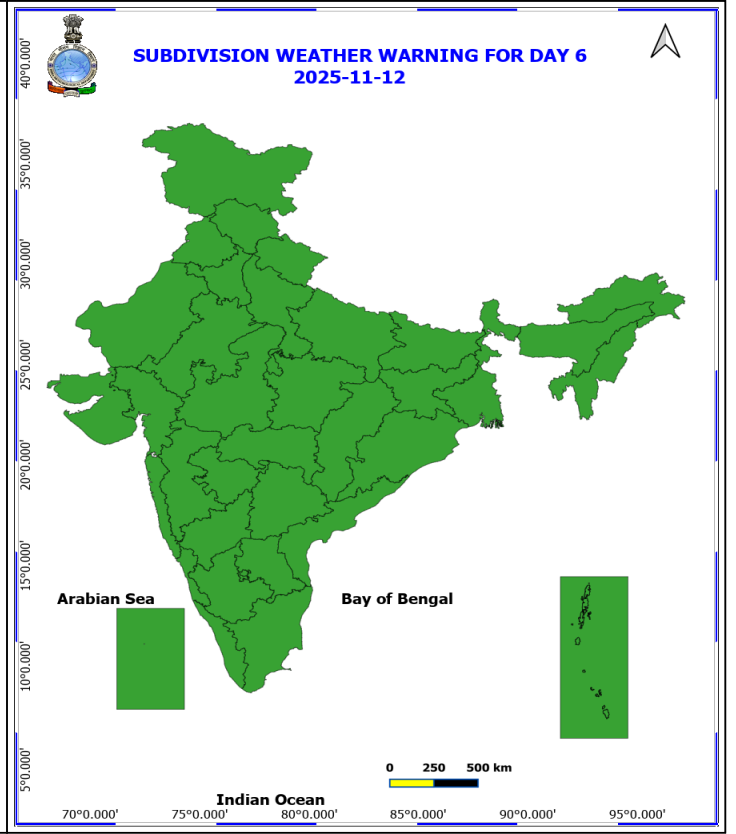
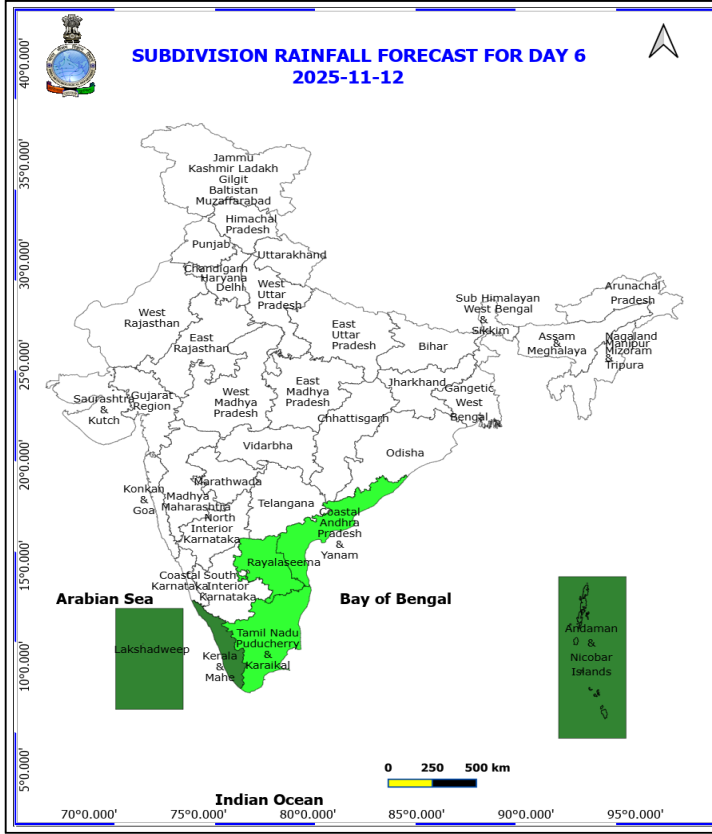
- ❖ **Heavy Rainfall** likely at isolated places over Kerala & Mahe.
  - ❖ **Thunderstorm accompanied with Lightning** likely at isolated places over Kerala & Mahe and Tamil Nadu Puducherry & Karaikal.
- No Fishermen Warning**



**11 November (Day 5)**

**No Warning**  
**No Fishermen Warning**

\*Red color warning does not mean "Red Alert" Red color warning means "Take Action"  
Forecast and warning for any day is valid from 0830 hours IST of day till 0830 hours IST of next day  
For more details kindly visit <https://mausam.imd.gov.in> or contact 011-2434-4599  
(Service to the nation since 1875)

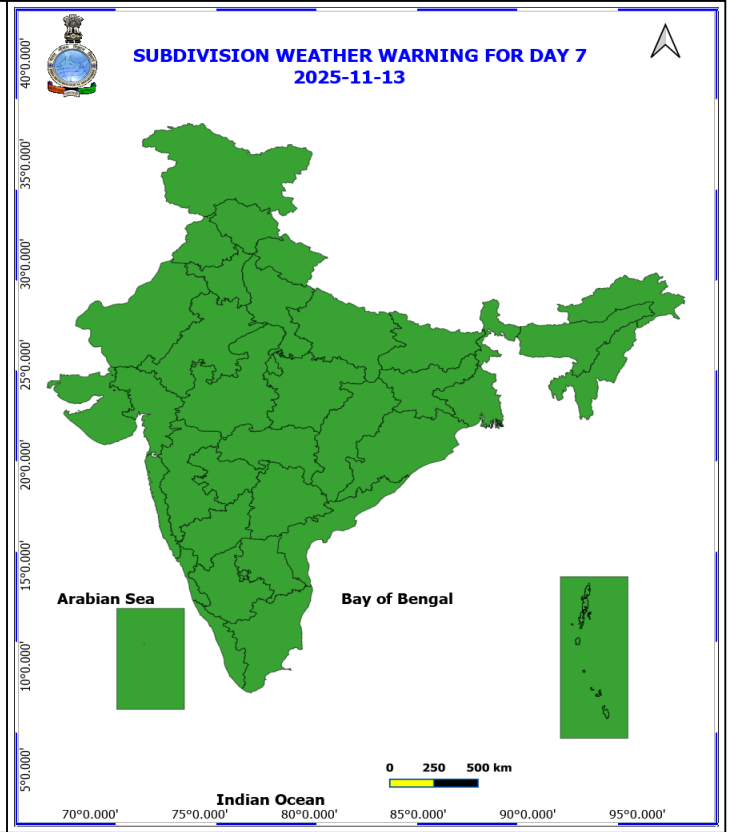
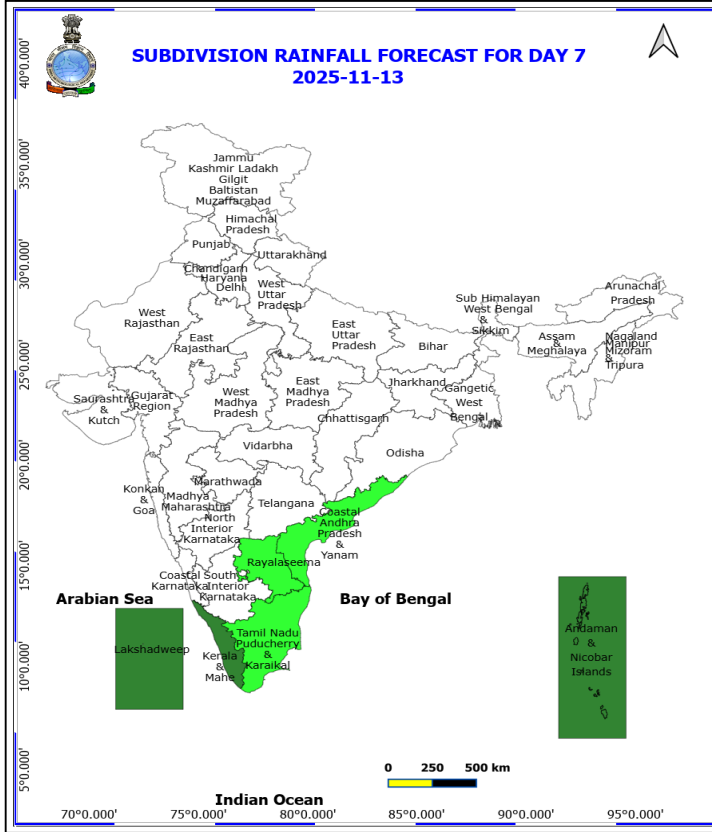


**12 November (Day 6)**

**No Warning**

**No Fishermen Warning**

\*Red color warning does not mean "Red Alert" Red color warning means "Take Action"  
Forecast and warning for any day is valid from 0830 hours IST of day till 0830 hours IST of next day  
For more details kindly visit <https://mausam.imd.gov.in> or contact 011-2434-4599  
(Service to the nation since 1875)



**13 November (Day 7)**

**No Warning**

**No Fishermen Warning**



## Table-1

### 7 Days Rainfall Forecast

S.No.	Subdivision	7- Nov	8- Nov	9- Nov	10- Nov	11- Nov	12- Nov	13- Nov
		Day 1	Day 2	Day 3	Day 4	Day 5	Day 6	Day 7
1	ANDAMAN & NICOBAR ISLANDS	FWS	SCT	SCT	SCT	SCT	SCT	SCT
2	ARUNACHAL PRADESH	DRY	DRY	DRY	DRY	DRY	DRY	DRY
3	ASSAM & MEHGHALAYA	ISOL	ISOL	DRY	DRY	DRY	DRY	DRY
4	N. M. M. & T.	ISOL	ISOL	ISOL	ISOL	DRY	DRY	DRY
5	S.H. WEST BENGAL & SIKKIM	ISOL	ISOL	DRY	DRY	DRY	DRY	DRY
6	GANGETIC WEST BENGAL	DRY	DRY	DRY	DRY	DRY	DRY	DRY
7	ODISHA	DRY	DRY	DRY	DRY	DRY	DRY	DRY
8	JHARKHAND	DRY	DRY	DRY	DRY	DRY	DRY	DRY
9	BIHAR	DRY	DRY	DRY	DRY	DRY	DRY	DRY
10	EAST UTTAR PRADESH	DRY	DRY	DRY	DRY	DRY	DRY	DRY
11	WEST UTTAR PRADESH	DRY	DRY	DRY	DRY	DRY	DRY	DRY
12	UTTARAKHAND	DRY	DRY	DRY	DRY	DRY	DRY	DRY
13	HARYANA, CHD & DELHI	DRY	DRY	DRY	DRY	DRY	DRY	DRY
14	PUNJAB	DRY	DRY	DRY	DRY	DRY	DRY	DRY
15	HIMACHAL PRADESH	DRY	DRY	DRY	DRY	DRY	DRY	DRY
16	JAMMU AND KASHMIR AND LADAKH	DRY	DRY	DRY	DRY	DRY	DRY	DRY
17	WEST RAJASTHAN	DRY	DRY	DRY	DRY	DRY	DRY	DRY
18	EAST RAJASTHAN	DRY	DRY	DRY	DRY	DRY	DRY	DRY
19	WEST MADHYA PRADESH	DRY	DRY	DRY	DRY	DRY	DRY	DRY
20	EAST MADHYA PRADESH	DRY	DRY	DRY	DRY	DRY	DRY	DRY
21	GUJRAT REGION	DRY	DRY	DRY	DRY	DRY	DRY	DRY
22	SAURASHTRA & KUTCH	DRY	DRY	DRY	DRY	DRY	DRY	DRY
23	KONKAN & GOA	ISOL	DRY	DRY	DRY	DRY	DRY	DRY
24	MADHYA MAHARASHTRA	ISOL	DRY	DRY	DRY	DRY	DRY	DRY
25	MARATHWADA	DRY	DRY	DRY	DRY	DRY	DRY	DRY
26	VIDARBHA	DRY	DRY	DRY	DRY	DRY	DRY	DRY
27	CHATTISGARH	DRY	DRY	DRY	DRY	DRY	DRY	DRY
28	COASTAL ANDHRA PRADESH	ISOL	ISOL	ISOL	ISOL	DRY	ISOL	ISOL
29	TELANGANA	DRY	DRY	DRY	DRY	DRY	DRY	DRY
30	RAYALASEEMA	ISOL	ISOL	ISOL	ISOL	ISOL	ISOL	ISOL
31	TAMILNADU & PUDUCHERRY	SCT	SCT	ISOL	ISOL	ISOL	ISOL	ISOL
32	COSTAL KARNATAKA	ISOL	ISOL	DRY	DRY	DRY	DRY	DRY
33	NORTH INTERIOR KARNATAKA	DRY	DRY	DRY	DRY	DRY	DRY	DRY
34	SOUTH INTERIOR KARNATAKA	ISOL	ISOL	DRY	DRY	DRY	DRY	DRY
35	KERALA	SCT	SCT	SCT	SCT	SCT	SCT	SCT
36	LAKSHDWEEP	SCT	SCT	SCT	SCT	SCT	SCT	SCT

Legend	Category	%Stations
WS	Widespread/Most Places	76-100
FWS	Fairly Widespread/Many Places	51-75
SCT	Scattered/ A Few Places	26-50
ISOL	Isolated Places	1-25
DRY	No Rain	0

\*Red color warning does not mean "Red Alert" Red color warning means "Take Action"  
Forecast and warning for any day is valid from 0830 hours IST of day till 0830 hours IST of next day  
For more details kindly visit <https://mausam.imd.gov.in> or contact 011-2434-4599

(Service to the nation since 1875)

Fig. 1: Maximum Temperatures Dated 2025-11-06

Fig. 2: Departure of Maximum Temp. Dated 2025-11-06

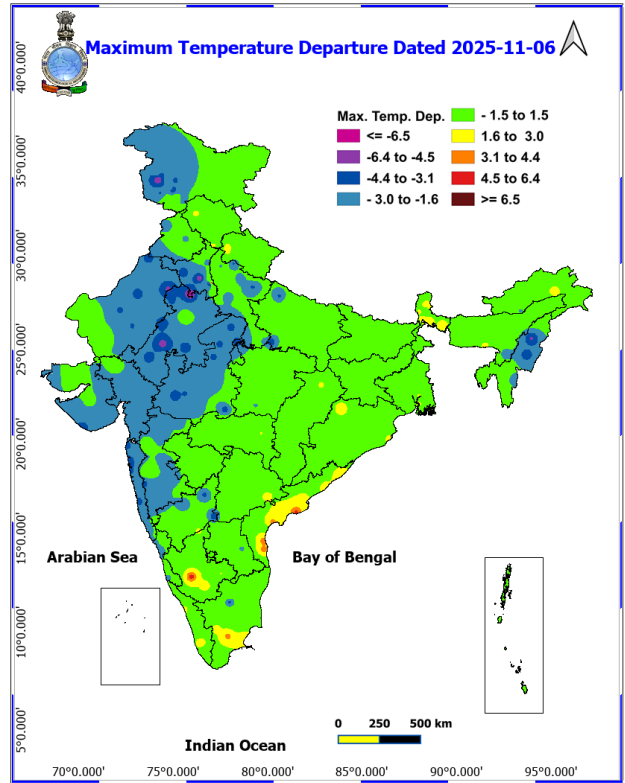
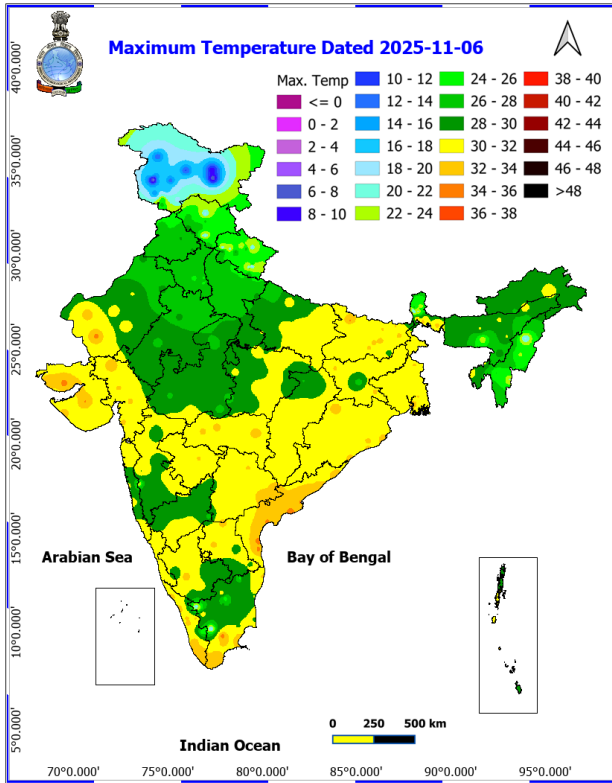
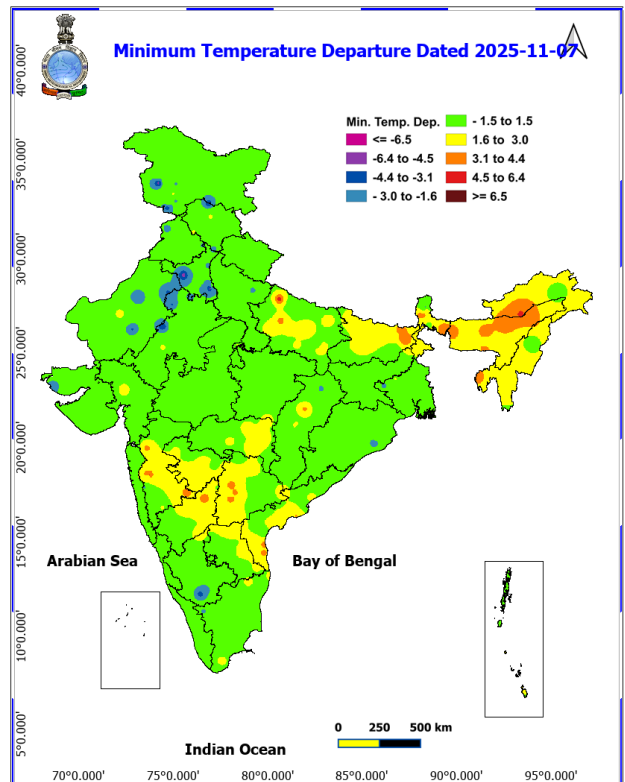
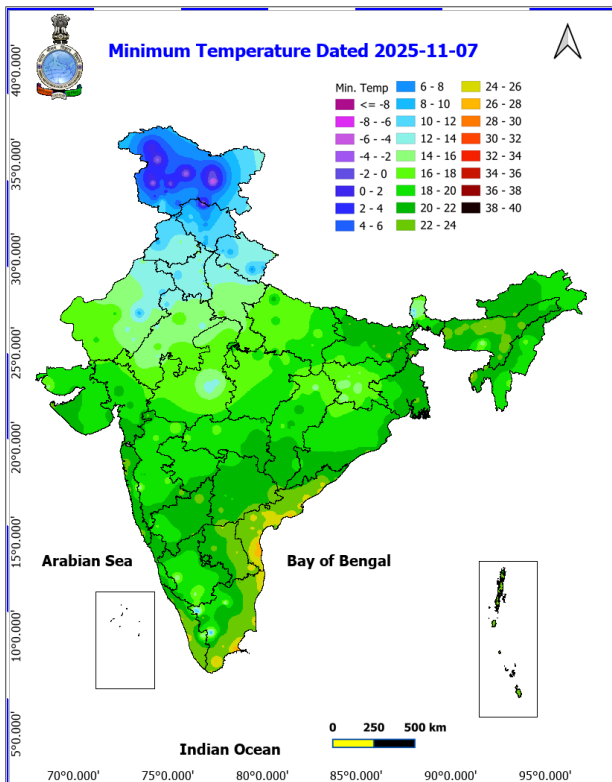
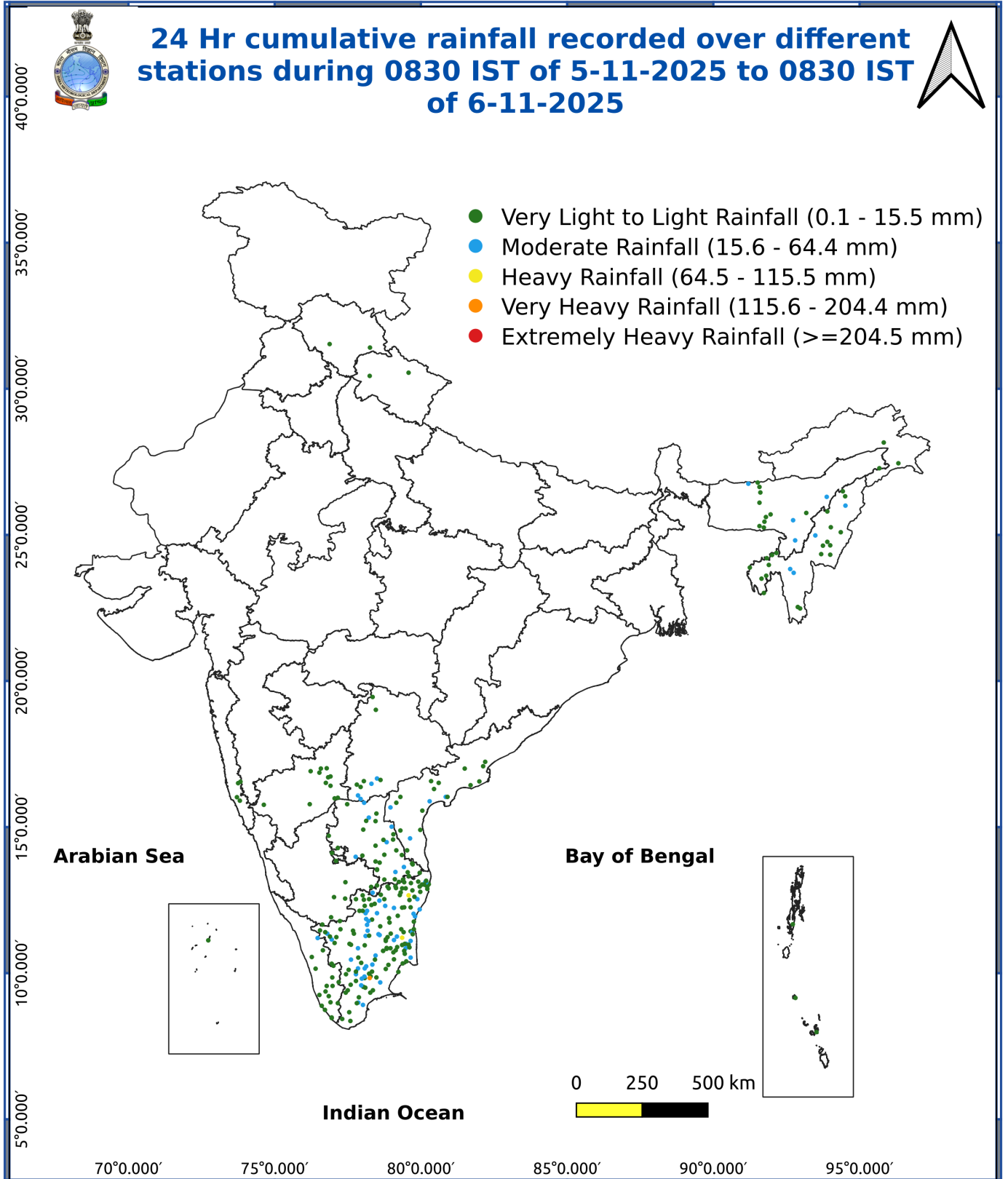


Fig. 3: Minimum Temperatures Dated 2025-11-06

Fig. 4: Departure of Minimum Temp. Dated 2025-11-06





**Agromet advisories for various parts of the country**

**Agromet advisories for likely impact of Heavy Rainfall**

In **Sub Himalayan West Bengal**, drain out excess water from rice, ginger, vegetables and fruit orchards.

In **Andaman and Nicobar Islands**, drain out excess water from the fields of rice, vegetable and plantation crops.

In **Bihar**, keep the harvested produce of rice and maize crops at safer places and drain out excess water from crop fields.

In **Gujarat**, keep the harvested produce of rice, groundnut, soybean, black gram, green gram, sesame, maize, pearl millet and vegetables (tomato, brinjal, chilly, okra, cucurbits etc.) in safe places. Ensure proper drainage to drain out excess water from standing crop fields.

In **Konkan**, keep the harvested produce of rice and finger millet in safer places. Make arrangements to drain out excess water from rice, finger millet, groundnut and turmeric fields. In **Madhya Maharashtra**, store the harvested produce of rice, soybean, maize, groundnut and pearl millet in safe places.

In **Arunachal Pradesh**, drain out excess water from the fields of rice, field pea and banana orchards.

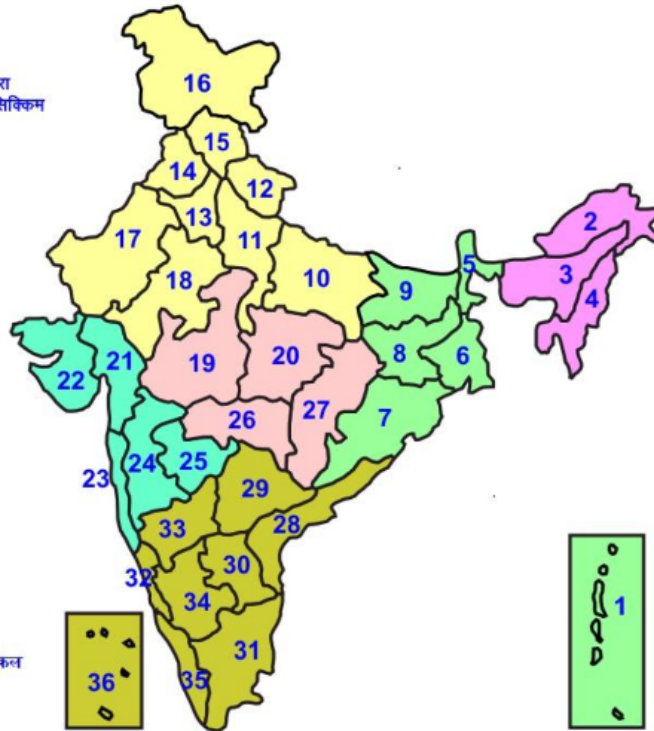
**Livestock / Fishery**

Keep the animals inside the shed during heavy rainfall and provide them balanced feed. Store feed and fodder in a safe place to prevent spoilage.

Construct an outlet with proper netting around the ponds to drain out excess water, thereby preventing fish from escaping in case of overflow.

## LEGENDS

- 1 अंडमान और निकोबार द्वीप समुह
- 2 अरुणाचल प्रदेश
- 3 असम और मेघालय
- 4 नागालैंड मनीपुर मीजोरम और त्रिपुरा
- 5 उप हिमालय पश्चिम बंगाल एवं सिक्किम
- 6 पश्चिम बंगाल
- 7 ओडिसा
- 8 झारखंड
- 9 बिहार
- 10 पूर्वी उत्तर प्रदेश
- 11 पश्चिम उत्तर प्रदेश
- 12 उत्तराखंड
- 13 हरियाणा चंडिगढ़ एवं दिल्ली
- 14 पंजाब
- 15 हिमाचल प्रदेश
- 16 जम्मू एवं कश्मीर एवं लद्दाख
- 17 पश्चिम राजस्थान
- 18 पूर्वी राजस्थान
- 19 पश्चिम मध्य प्रदेश
- 20 पूर्वी मध्य प्रदेश
- 21 गुजरात क्षेत्र
- 22 सौराष्ट्र एवं कच्छ
- 23 कोंकण एवं गोवा
- 24 मध्य महाराष्ट्र
- 25 मराठावाडा
- 26 विदर्भ
- 27 छत्तीसगढ़
- 28 तटीय आंध्र प्रदेश एवं यनम
- 29 तेलंगाना
- 30 रायलसीमा
- 31 तमिलनाडु, पुदुचेरी एवं कराईकल
- 32 तटिय कर्नाटक
- 33 आंतरिक उत्तरी कर्नाटक
- 34 आंतरिक दक्षिणी कर्नाटक
- 35 केरल एवं माहे
- 36 लक्षद्वीप



1. Andaman & Nicobar Islands
2. Arunachal Pradesh
3. Assam & Meghalaya
4. Nagaland, Manipur, Mizoram & Tripura
5. Sub-Himalayan West Bengal & Sikkim
6. Gangetic West Bengal
7. Orissa
8. Jharkhand
9. Bihar
10. East Uttar Pradesh
11. West Uttar Pradesh
12. Uttarakhand
13. Haryana, Chd & Delhi
14. Punjab
15. Himachal Pradesh
16. Jammu & Kashmir and Ladakh
17. West Rajasthan
18. East Rajasthan
19. West Madhya Pradesh
20. East Madhya Pradesh
21. Gujarat
22. Saurashtra
23. Konkan & Goa
24. Madhya Maharashtra
25. Marathawada
26. Vidharbha
27. Chhattisgarh
28. Coastal Andhra Pradesh & Yanam
29. Telangana
30. Rayalaseema
31. Tamilnadu, Puducherry & Karaikal
32. Coastal Karnataka
33. North Interior Karnataka
34. South Interior Karnataka
35. Kerala & Mahe
36. Lakshadweep

## SPATIAL DISTRIBUTION (% of Stations reporting)

% Stations	Category	% Stations	Category
76-100	Widespread (WS/Most Places)	26-50	Scattered (SCT/ A Few Places)
51-75	Fairly Widespread (FWS/ Many Places)	1-25	Isolated (ISOL)

### Subdivision Colour

- NO WARNING
- WATCH (BE UPDATED)
- ALERT (BE PREPARED TO TAKE ACTION)
- WARNING (TAKE ACTION)

### Probabilistic Forecast

Terms	Probability of Occurrence (%)
Unlikely	< 25
Likely	25 - 50
Very Likely	50 - 75
Most Likely	> 75

- |                          |                 |                      |                    |
|--------------------------|-----------------|----------------------|--------------------|
| Heavy Rain               | Very Heavy Rain | Extremely Heavy Rain | Heavy Snow         |
| Thunderstorm & Lightning | Hailstorm       | Dust Storm           | Dust Raising Winds |
| Strong surface winds     | Heat Wave       | Hot Day              | Warm Night         |
| Cold Wave                | Cold Day        | Ground Frost         | Fog                |
| Hot & Humid              |                 |                      |                    |

\*Red color warning does not mean "Red Alert" Red color warning means "Take Action"

Forecast and warning for any day is valid from 0830 hours IST of day till 0830 hours IST of next day

For more details kindly visit <https://mausam.imd.gov.in> or contact 011-2434-4599

(Service to the nation since 1875)

## LEGENDS

### WARNING

WARNING (TAKE ACTION)
ALERT ( BE PREPARED)
WATCH (BE UPDATED)
NO WARNING ( NO ACTION)

### Probabilistic Forecast

Terms	Probability of Occurrence (%)
Unlikely	< 25
Likely	25 - 50
Very Likely	50 - 75
Most Likely	> 75



Heavy: 64.5 to 115.5 mm/cm \*  
Very Heavy: 115.6 to 204.4 mm/cm\*  
Extremely Heavy: > 204.4 mm/cm \*



When maximum temperature of a station reaches  $\geq 40^{\circ}\text{C}$  for plains and  $\geq 30^{\circ}\text{C}$  for hilly regions  
(a) Based on Departure from normal

Heat Wave: Maximum Temperature Departure from normal  $4.5^{\circ}\text{C}$  to  $6.4^{\circ}\text{C}$ .  
Severe Heat Wave: Maximum Temperature Departure from normal  $\geq 6.5^{\circ}\text{C}$

(b). Based on Actual maximum temperature

Heat Wave: When actual maximum temperature  $\geq 45^{\circ}\text{C}$ .  
Severe Heat Wave: When actual maximum temperature  $\geq 47^{\circ}\text{C}$

(c). Criteria for heat wave for coastal stations

When maximum temperature departure is  $> 4.5^{\circ}\text{C}$  from normal. Heat Wave may be described provided maximum temperature  $\geq 37^{\circ}\text{C}$



When maximum temperature remains  $40^{\circ}\text{C}$

Warm Night: When minimum temperature departure  $4.5^{\circ}\text{C}$  to  $6.4^{\circ}\text{C}$ .  
Severe Warm Night: When minimum temperature departure  $> 6.4^{\circ}\text{C}$ .



When minimum temperature of a station  $\leq 10^{\circ}\text{C}$  for plains and  $\leq 0^{\circ}\text{C}$  for hilly regions.

(a). Based on departure

Cold Wave: Minimum Temperature Departure from normal  $-4.5^{\circ}\text{C}$  to  $-6.4^{\circ}\text{C}$ .  
Severe Cold Wave: Minimum Temperature Departure from normal  $\leq -6.5^{\circ}\text{C}$

(b) Based on actual Minimum Temperature (for Plains only)

Cold Wave : When Minimum Temperature is  $\leq 4.0^{\circ}\text{C}$   
Severe Cold Wave: When Minimum Temperature is  $\leq 2.0^{\circ}\text{C}$

(c) For Coastal Stations

When Minimum Temperature departure is  $\leq -4.5^{\circ}\text{C}$  & actual Minimum Temperature is  $\leq 15^{\circ}\text{C}$



When minimum temperature of a station  $\leq 10^{\circ}\text{C}$  for plains and  $\leq 0^{\circ}\text{C}$  for hilly regions  
Based on departure

Cold Day: Maximum Temperature Departure from normal  $-4.5^{\circ}\text{C}$  to  $-6.4^{\circ}\text{C}$ .  
Severe Cold Day: Maximum Temperature Departure from normal  $\leq -6.5^{\circ}\text{C}$



Phenomenon of small droplets suspended in air and the horizontal visibility  $< 1\text{km}$

Moderate Fog: When the visibility between 500-200 metres  
Dense Fog: when the visibility between 50- 200 metres  
Very Dense Fog: when the visibility  $< 50$  metres



Sudden electrical discharges manifested by a flash of light (Lightning) and a sharp rumbling sound (thunder)



An ensemble of particles of dust or sand energetically lifted to great heights by a strong and turbulent wind.



Ice deposits on ground

Air temperature  $\leq 4^{\circ}\text{C}$  ( over Plains)



A strong wind that rises suddenly, lasts for atleast 1 minute.

Moderate: Wind speed 52-61 kmph  
Severe: Wind speed 62-87 kmph  
Very Severe: Wind speed  $> 87$  kmph



Effect of various waves in the sea over specific area

Rough to very rough: Wind speed 41-62 kmph (22-33 knots) & Wave height 2.5-6 metre  
High to very high: Wind speed 63-117 kmph ( 34-63 knots) & Wave height 6-14 metre  
Phenomenal: Wind speed  $> 117$  kmph ( $> 63$  knots) & Wave height  $> 14$  metre



Cyclonic Storm: Wind speed 62-87 kmph (34-47 knots)  
Severe Cyclonic Storm: Wind speed 88-117 kmph (48-63 knots)  
Very Severe Cyclonic Storm: Wind speed 118-165 kmph (64 - 89 knots)  
Extremely Severe Cyclonic Storm: Wind speed 166-220 kmph (90 -119 knots)  
Super Cyclone Storm: Wind speed  $> 220$  kmph ( $> 119$  knots)

\*Red color warning does not mean "Red Alert" Red color warning means "Take Action"

Forecast and warning for any day is valid from 0830 hours IST of day till 0830 hours IST of next day

For more details kindly visit <https://mausam.imd.gov.in> or contact 011-2434-4599

(Service to the nation since 1875)