

Thursday, June 5, 2025
Time of Issue: 0815 hours IST
(MORNING)

ALL INDIA WEATHER SUMMARY AND FORECAST BULLETIN

Significant Weather Features:

Weather Forecast and Warnings:

Northeast India:

- ✓ Light/moderate rainfall at most places likely to continue over northeast India during next 7 days with isolated heavy rainfall on 05th June.

East & Central India:

- ✓ Light/moderate rainfall at most/many places likely to continue over Sub-Himalayan West Bengal & Sikkim during next 7 days.
- ✓ Light/moderate rainfall at some places accompanied with **thunderstorm, lightning & gusty winds speed reaching 40-50 kmph** likely over Madhya Pradesh, Vidarbha, Chhattisgarh during 05th-08th; Bihar, Gangetic West Bengal, Jharkhand on 05th June.

Northwest India:

- ✓ **Dust raising winds** likely over West Rajasthan during 07th-09th June.

South Peninsular India:

- ✓ Light/moderate rainfall at some places accompanied with **thunderstorm, lightning & gusty winds speed reaching 30-40 kmph** over Coastal Andhra Pradesh, Rayalaseema and Interior Karnataka during 05th-08th June.

Maximum Temperature Forecast:

- ❖ Gradual rise in maximum Temperatures by 4-6°C likely over Northwest India during next 2 days and no significant change thereafter.
- ❖ Gradual rise in maximum Temperatures by 2-4°C likely over Central India during next 3 days and no significant change thereafter.
- ❖ Maximum Temperatures likely to fall by 2-3°C over East India during next 24 hours and gradual rise by about 2°C thereafter.
- ❖ No significant change in maximum temperatures likely over rest parts of the country.

Heat wave and Hot & Humid warnings:

- ❖ **Heat wave conditions** are likely to prevail over Odisha on 05th & 06th and West Rajasthan during 07th-09th June.

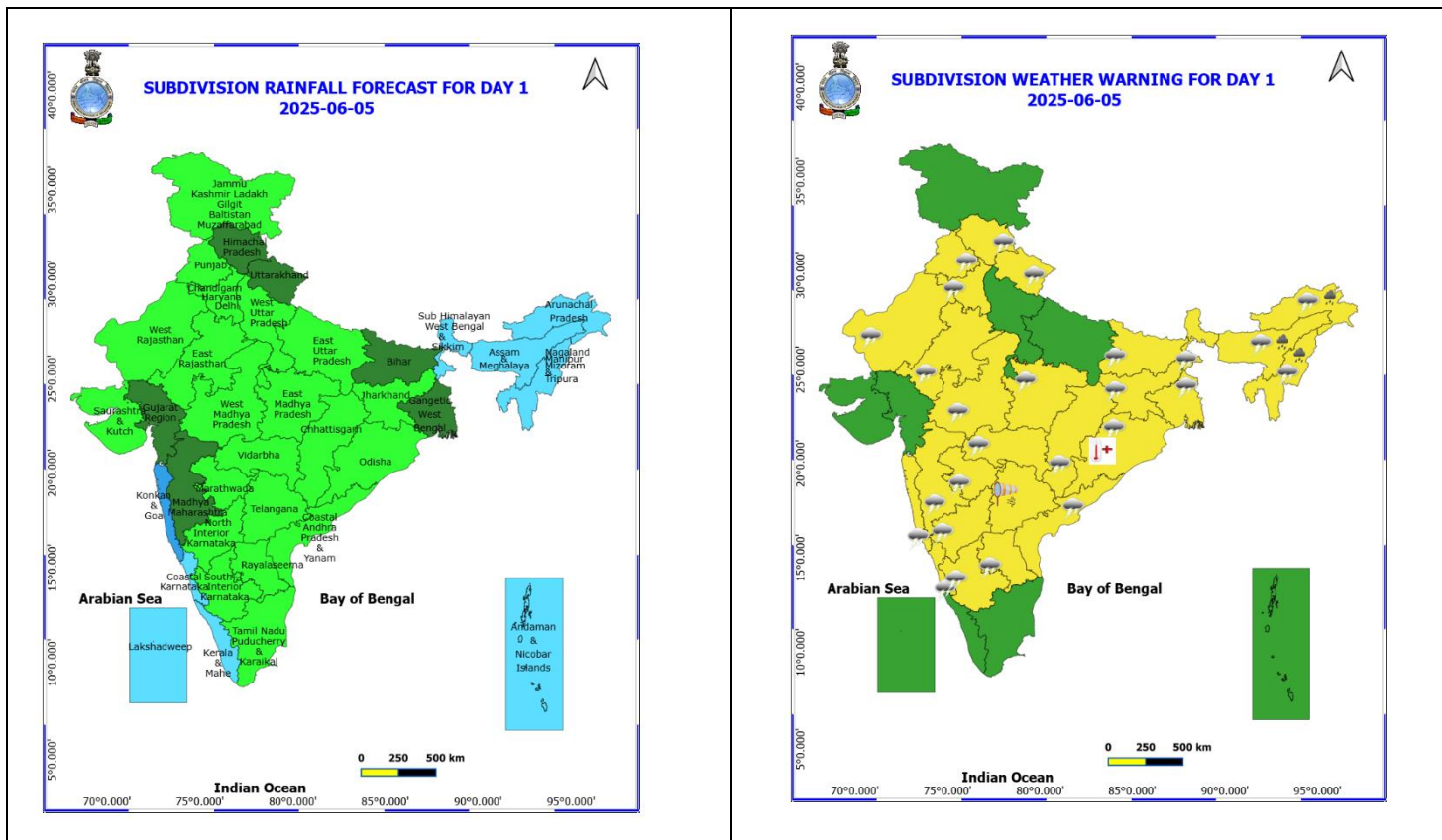
Main Weather Observations:

- ❖ **Significant rainfall recorded(in cm)** (from 0830 hours IST of yesterday to 0530 hours IST of today): **Konkan & Goa** : Alibag (dist Raigad) 5, Mumbai (colaba) (dist), Matheran (dist Raigad), T.B.I.A. (dist Thane) 2 Each, Mumbai (santacruz) AP (dist), Ratnagiri (dist Ratnagiri) 1 Each; **Odisha**: Bhubaneshwar (dist Khordha), Balasore (dist Balasore) 4 Each; **Gangetic West Bengal**: Canning (dist South 24 Parganas) 3, Contai (dist Purba Medinipur) 1; **Madhya Maharashtra** : Pune- Shivajinagar (dist Pune), Mahabaleshwar, Satara (dist Satara) 2 Each, Sangli (dist Sangli) 1; **Assam & Meghalaya**: Shillong (dist East Khasi Hills) 2, North Lakhimpur (dist Lakhimpur), Guwahati (dist Kamrup Metropolitan), Cherrapunji (dist East Khasi Hills), Rangia (dist Kamrup) 1 Each; **Kerala & Mahe**: Kottayam (dist Kottayam) 2, Kochi (cial) (dist Ernakulam) 1; **Tamilnadu Puducherry & Karaikal**: Tondi (dist Ramanathapuram), Valparai(upasitri) (dist Coimbatore) 2 Each; **Coastal Karnataka**: Karwar, Honavar (dist Uttara Kannada) 1 Each; **East Madhya Pradesh**: Chhindwara-obs (dist Chhindwara) 1; **East Rajasthan**: Ajmer (dist Ajmer) 1; **Jammu & Kashmir and Ladakh**: Gulmarg (dist Baramulla), Bhaderwah (dist Doda) 1 Each; **North Interior Karnataka**: Dharwad (dist Dharwad) 1; **West Uttar Pradesh**: Shahajahanpur (dist Shahjahanpur) 1; **East Uttar Pradesh**: Fursatganj (dist Amethi), Hardoi (dist Hardoi) 1 Each; **Jharkhand**: Ranchi AP (dist Ranchi) 1; **Sub-Himalayan West Bengal & Sikkim**: Darjeeling (dist Darjeeling) 1; **Nagaland, Manipur, Mizoram & Tripura**: Kailashahar AP (dist Unakoti) 1.
- ❖ **Minimum Temperature Departures (as on 04-06-2025)**: Minimum Temperatures were **markedly above normal (> 5.1°C)** at isolated places over Assam & Meghalaya, Bihar, East Uttar Pradesh, West Uttar Pradesh, West Rajasthan, East Madhya Pradesh and Saurashtra & Kutch; **appreciably above normal (3.1°C to 5.0°C)** at a few places over Arunachal Pradesh; at isolated places over Sub Himalayan West Bengal & Sikkim, Odisha, West Madhya Pradesh, Gujarat Region and Coastal Andhra Pradesh & Yanam; **above normal (1.6°C to 3.0°C)** at most places over Andaman & Nicobar Islands; at isolated places over Himachal Pradesh and Tamil Nadu, Puducherry & Karaikal and **near normal (-1.5°C to 1.5°C)** at most places over Nagaland, Manipur, Mizoram & Tripura, Madhya Maharashtra, Rayalaseema, South Interior Karnataka, Kerala & Mahe and Lakshadweep; at many places over Gangetic West Bengal, Konkan & Goa, Telangana, Coastal Karnataka and North Interior Karnataka; at a few places over Jammu-KashmirLadakh-Gilgit-Baltistan-Muzaffarabad, Marathwada and Chhattisgarh; at isolated places over Haryana-Chandigarh-Delhi, Punjab and East Rajasthan. Yesterday, **the lowest minimum temperature** of 16.0°C was reported at **Sikar (East Rajasthan)** over the Plains of India. (Fig.4).
- ❖ **Maximum Temperature Departures (as on 04-06-2025)**: Maximum Temperatures were **appreciably above normal (3.1°C to 5.0°C)** at isolated places over Gangetic West Bengal, Coastal Andhra Pradesh & Yanam and Tamil Nadu, Puducherry & Karaikal. **above normal (1.6°C to 3.0°C)** at isolated places over Andaman & Nicobar Islands, Nagaland, Manipur, Mizoram & Tripura, Odisha and East Madhya Pradesh. **near normal (-1.5°C to 1.5°C)** at many places over Assam & Meghalaya and Kerala & Mahe; at most places over Arunachal Pradesh, Saurashtra & Kutch, Coastal Karnataka and Lakshadweep; at few places over Sub Himalayan West Bengal & Sikkim, East Uttar Pradesh, West Rajasthan, Konkan & Goa, Rayalaseema and South Interior Karnataka; at isolated places over Bihar, West Uttar Pradesh, Himachal Pradesh, Gujarat Region and Chhattisgarh. Yesterday, **the highest maximum temperature** of 41.1°C was reported at **Rajkot (Gujarat)**.

Meteorological Analysis (Based on 0530 hours IST)

- ❖ The Northern Limit of Monsoon continues to pass through 17.0°N/55°E, 17.5°N/60°E, 18°N/65°E, 18.5°N/70°E, Mumbai, Ahilyanagar, Adilabad, Bhawanipatna, Puri, Sandhead Island, 23.5°N/89.5°E, Balurghat, 30°N/85°E.
- ❖ The **Western disturbance** seen as trough in middle & upper tropospheric levels with its axis at 5.8 km above mean sea level now runs roughly along Long. 78°E to the north of Lat. 24°N.
- ❖ The **upper air cyclonic circulation** over South Punjab & neighbourhood at 1.5 km above mean sea level persists.
- ❖ The **upper air cyclonic circulation** over North Bangladesh & neighbourhood at 0.9 km above mean sea level persists.
- ❖ The **upper air cyclonic circulation** over South Gujarat & neighbourhood between 1.5 & 3.1 km above mean sea level persists.
- ❖ The **north-south trough** roughly along Long. 88°E to the north of Lat. 22°N at 3.1 km above mean sea level persists.
- ❖ An **upper air cyclonic circulation** over central Pakistan & adjoining northwest Rajasthan at 0.9 km above mean sea level.
- ❖ An **upper air cyclonic circulation** over Haryana & neighbourhood at 1.5 km above mean sea level.
- ❖ A **trough** runs from south Chhattisgarh to north Bangladesh across interior Odisha, cyclonic circulation over Jharkhand & adjoining south Bihar, northern parts of West Bengal at 1.5 km above mean sea level.
- ❖ An **upper air cyclonic circulation** over Jharkhand & adjoining south Bihar at 1.5 km above mean sea level.
- ❖ An **upper air cyclonic circulation** over north interior Karnataka & adjoining Marathwada and Telangana at 3.1 km above mean sea level.
- ❖ The **upper air cyclonic circulation** over Northeast Assam & neighbourhood at 0.9 km above mean sea level has become less marked.

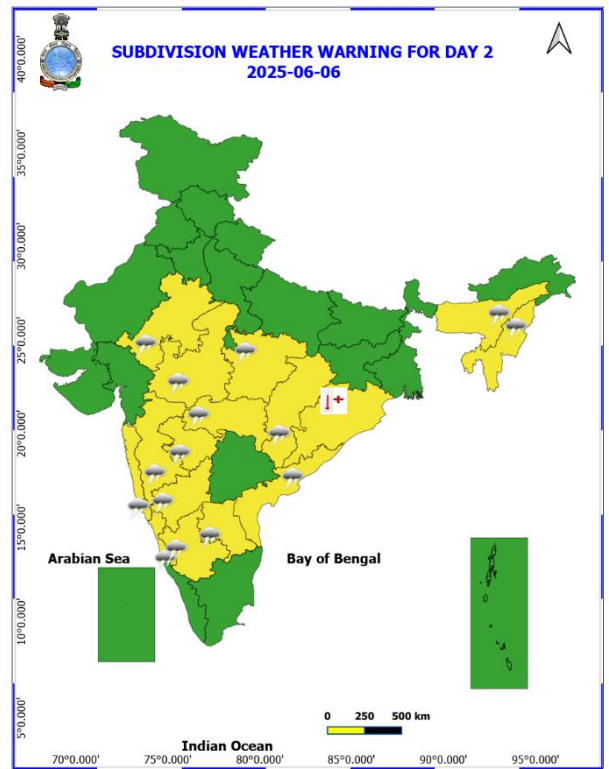
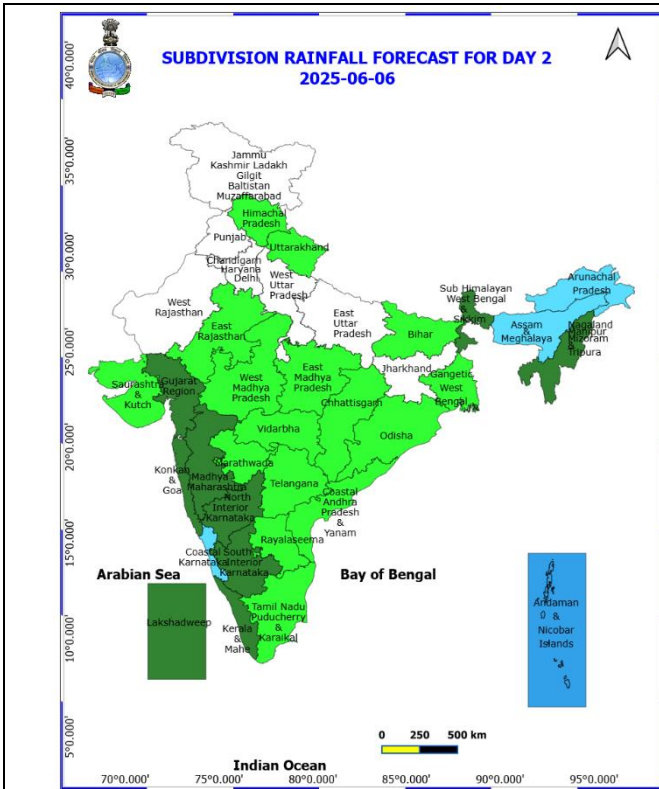
Weather Forecast & Warnings for next 7 days (Upto 0830 hours IST of 12th June, 2025)



05th June (Day 1)

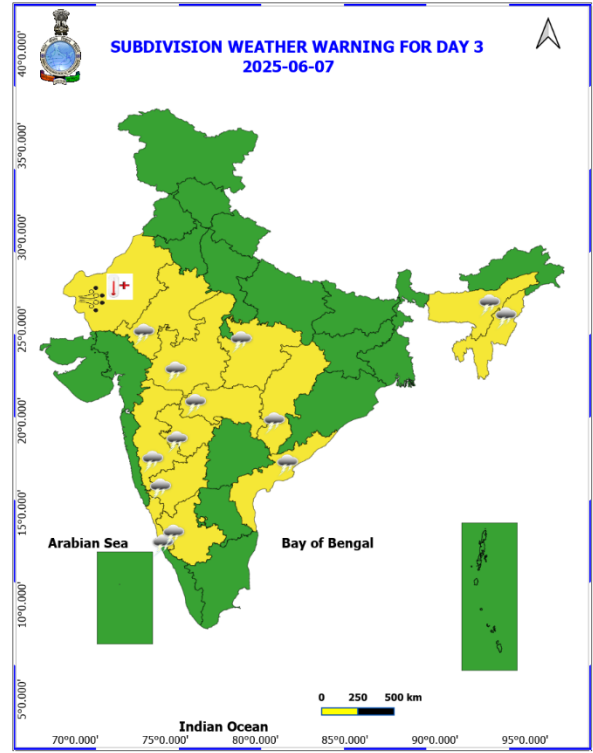
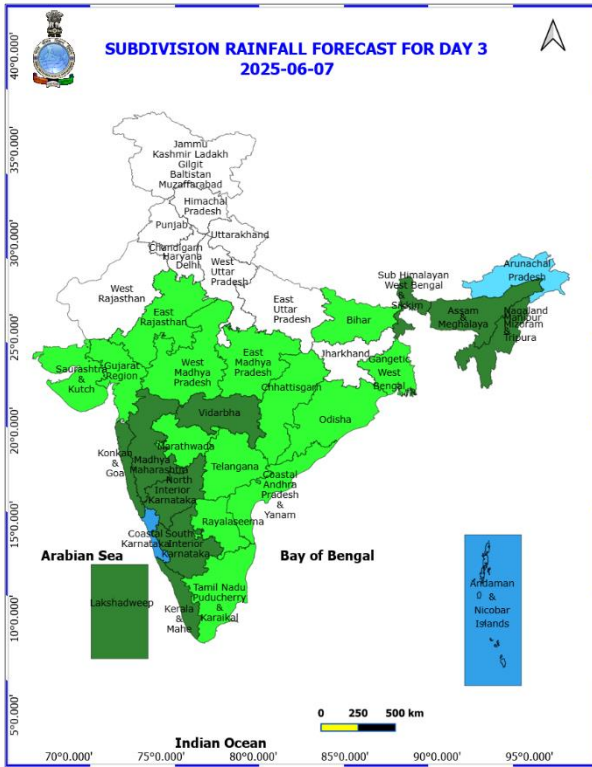
- ❖ **Heavy Rainfall** very likely at isolated places over Arunachal Pradesh, Assam & Meghalaya and Nagaland, Manipur, Mizoram and Tripura.
- ❖ **Thunderstorm accompanied with lightning & gusty winds(40-50kmph)** very likely at isolated places over Chhattisgarh, East Rajasthan, Gangetic West Bengal, Himachal Pradesh, Madhya Pradesh and North Interior Karnataka.
- ❖ **Thunderstorm accompanied with lightning & gusty winds(30-40kmph)** very likely at isolated places over Andhra Pradesh, Bihar, Coastal Karnataka, Konkan & Goa, Maharashtra, Nagaland, Manipur, Mizoram and Tripura, Odisha, South Interior Karnataka, Sub Himalayan West Bengal & Sikkim, Uttarakhand, Punjab, Haryana-Chandigarh-Delhi and West Rajasthan.
- ❖ **Thunderstorm accompanied with Lightning** very likely at isolated places over Arunachal Pradesh, Assam & Meghalaya and Jharkhand.
- ❖ **Strong Surface Winds** very likely at isolated places over Telangana.
- ❖ **Heat Wave conditions** very likely at isolated places over Odisha.
- ❖ **Squally wind with speed 45 kmph to 55 kmph gusting to 65 kmph** very likely to prevail along and off Somalia coast and adjoining parts of southwest Arabian Sea, some parts of westcentral Arabian Sea; **Squally weather with wind speed 35 kmph to 45 kmph gusting to 55 kmph** prevailing over off north Tamil Nadu and adjoining south Andhra Pradesh coast. Fisherman are not advised not to venture into the sea.

* Red colour warning does not mean "Red Alert", Red colour warning means "Take Action".
Forecast and Warning for any day is valid from 0830 hours IST of day till 0830 hours IST of next day.
For more details, kindly visit <https://mausam.imd.gov.in> or contact: 011-2434-4599
(Service to the Nation since 1875)



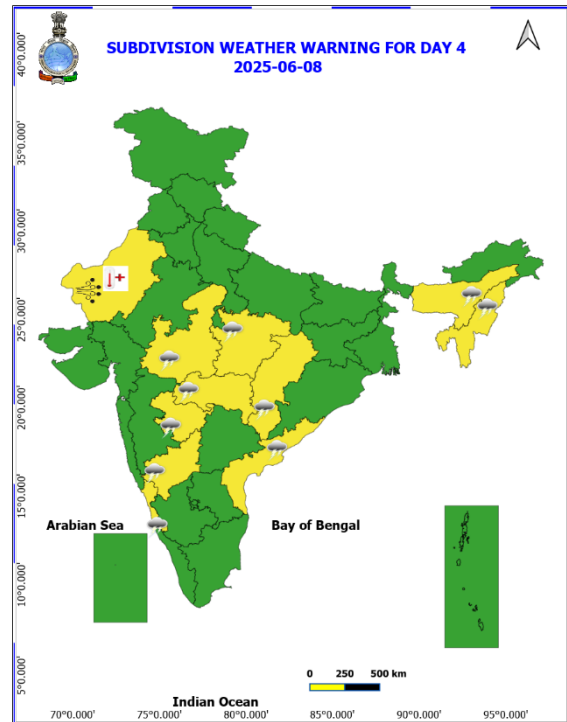
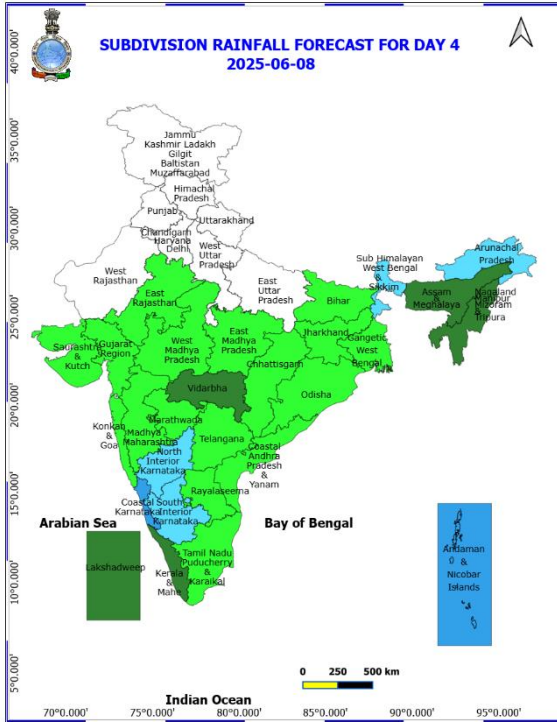
06th June (Day 2)

- ❖ **Thunderstorm accompanied with lightning & gusty winds(40-50kmph)** very likely at isolated places over Chhattisgarh, North Interior Karnataka and Vidarbha.
- ❖ **Thunderstorm accompanied with lightning & gusty winds(30-40kmph)** very likely at isolated places over Andhra Pradesh, Costal Karnataka, East Rajasthan, Konkan & Goa, Madhya Maharashtra, Madhya Pradesh, Marathwada and South Interior Karnataka.
- ❖ **Thunderstorm accompanied with Lightning** very likely at isolated places over Assam & Meghalaya and Nagaland, Manipur, Mizoram and Tripura.
- ❖ **Heat Wave conditions** very likely at isolated places over Odisha.
- ❖ **Squally wind with speed 45 kmph to 55 kmph gusting to 65 kmph** very likely to prevail along and off Somalia coast and adjoining southwest & westcentral Arabian Sea. Fisherman are not advised not to venture into the sea.



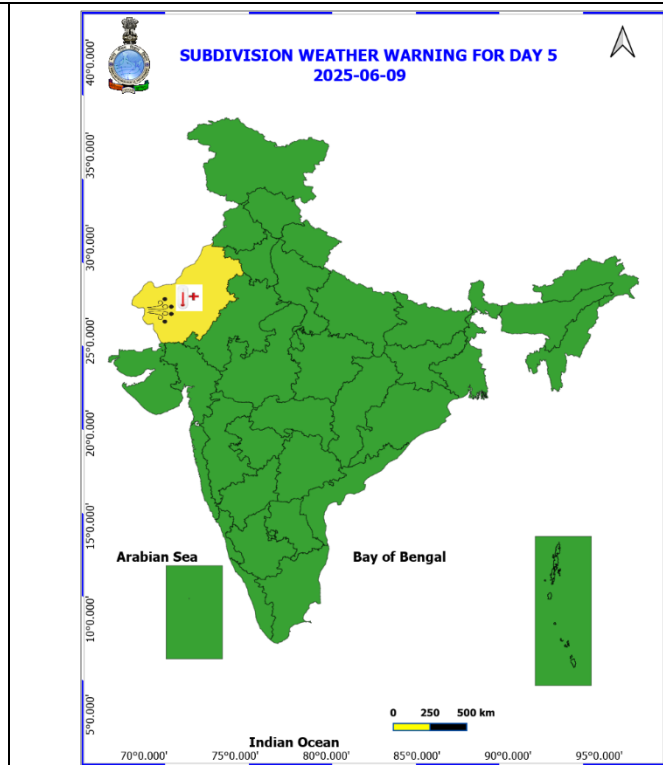
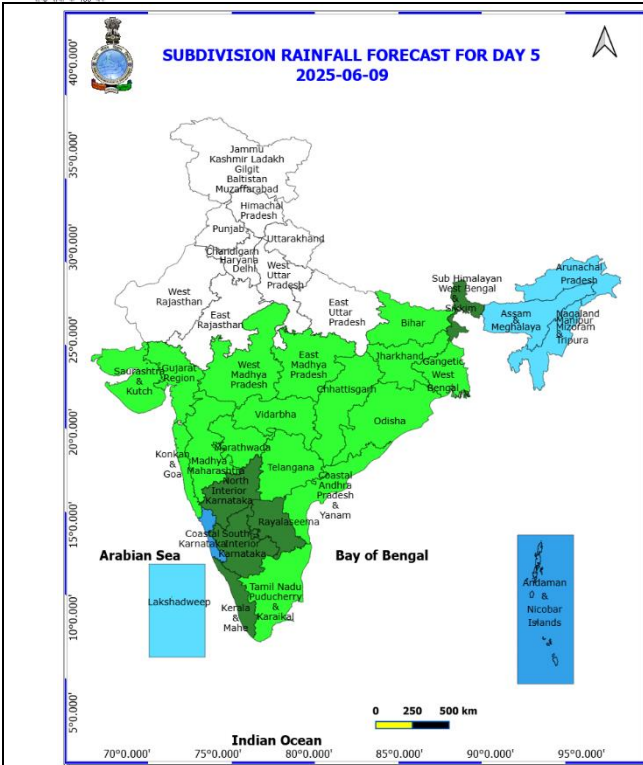
07th June (Day 3)

- ❖ **Thunderstorm accompanied with lightning & gusty winds(40-50kmph)** likely at isolated places over Chhattisgarh, North Interior Karnataka and Vidarbha.
- ❖ **Thunderstorm accompanied with lightning & gusty winds(30-40kmph)** likely at isolated places over Coastal Andhra Pradesh, Costal Karnataka, East Rajasthan, Madhya Maharashtra, Madhya Pradesh, Marathwada and South Interior Karnataka.
- ❖ **Thunderstorm accompanied with Lightning** likely at isolated places over Assam & Meghalaya and Nagaland, Manipur, Mizoram and Tripura.
- ❖ **Dust Raising Winds** likely at isolated places over West Rajasthan.
- ❖ **Heat Wave conditions** likely at isolated places over West Rajasthan.
- ❖ **Squally wind with speed 45 kmph to 55 kmph gusting to 65 kmph** likely to prevail along and off Somalia coast and adjoining southwest & westcentral Arabian Sea. Fisherman are not advised not to venture into the sea.



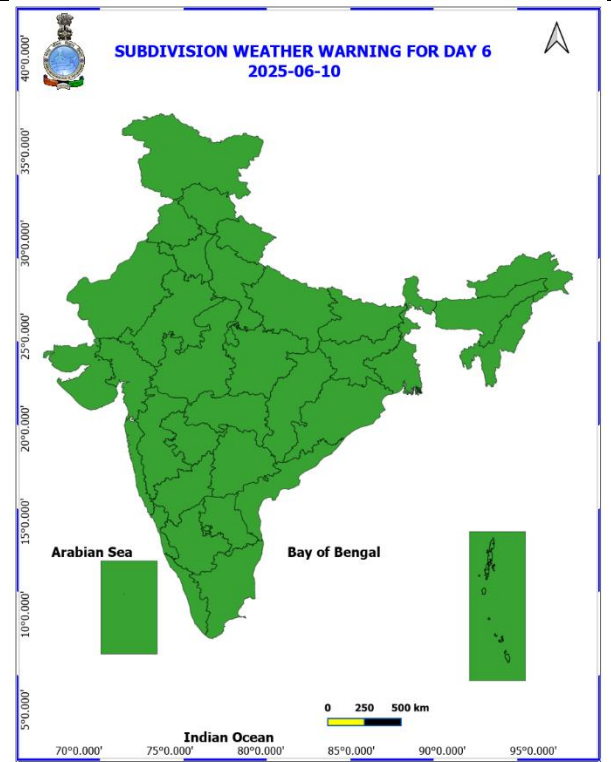
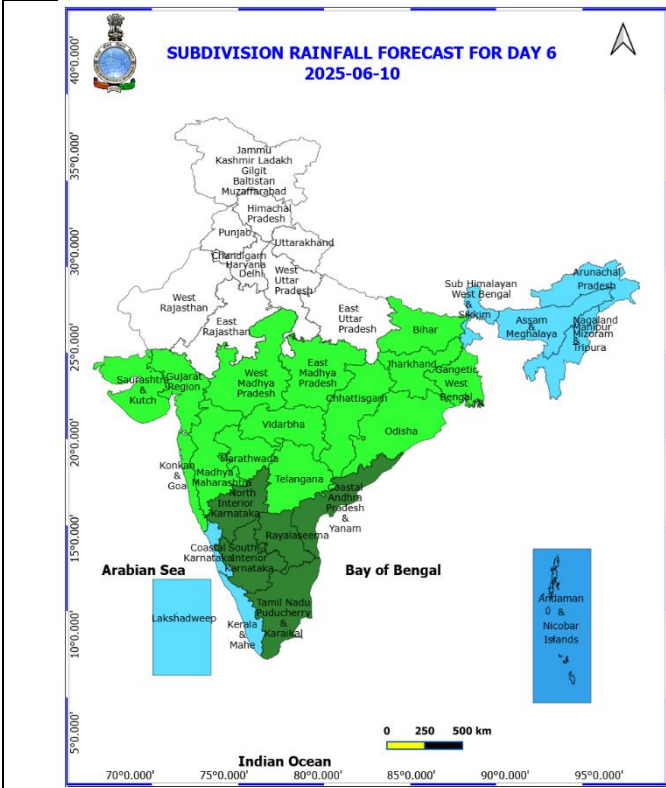
08th June (Day 4)

- ❖ **Thunderstorm accompanied with lightning & gusty winds(40-50kmph)** likely at isolated places over Chhattisgarh, North Interior Karnataka and Vidarbha.
- ❖ **Thunderstorm accompanied with lightning & gusty winds(30-40kmph)** likely at isolated places over Coastal Andhra Pradesh, Costal Karnataka, Madhya Pradesh and Marathwada.
- ❖ **Thunderstorm accompanied with Lightning** likely at isolated places over Assam & Meghalaya and Nagaland, Manipur, Mizoram and Tripura.
- ❖ **Dust Raising Winds** likely at isolated places over West Rajasthan.
- ❖ **Heat Wave conditions** likely at isolated places over West Rajasthan.
- ❖ **Squally wind with speed 45 kmph to 55 kmph gusting to 65 kmph** likely to prevail along and off Somalia coast and adjoining southwest & westcentral Arabian Sea. Fisherman are not advised not to venture into the sea.



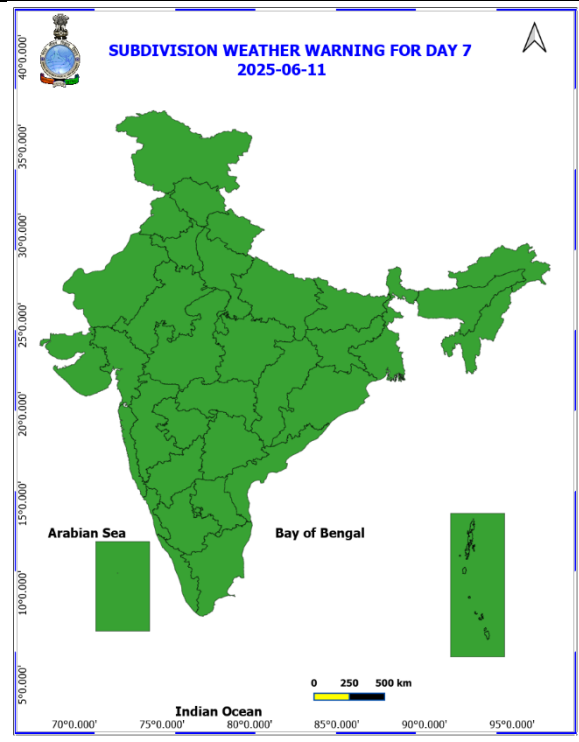
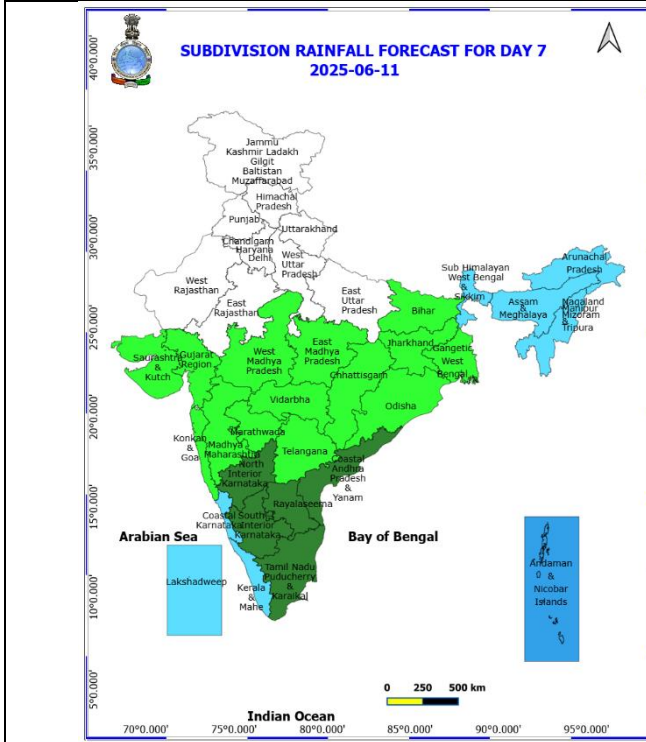
09th June (Day 5)

- ❖ **Dust Raising Winds** likely at isolated places over West Rajasthan.
- ❖ ❖ **Heat Wave conditions** likely at isolated places over West Rajasthan.



10th June (Day 6)

❖ No Warning.



11th June (Day 7)

❖ No Warning.

Weather Outlook for subsequent 3 days (During 12th June- 14th June, 2025)

- ❖ **Fairly widespread to widespread** rainfall activity likely over Northeast India, Sub-Himalayan West Bengal & Sikkim, Andaman & Nicobar Islands, Lakshadweep, Konkan & Goa, Marathwada, Coastal Karnataka, Telangana, Rayalaseema and Kerala & Mahe.
- ❖ **Isolated to scattered rainfall** likely over Jammu-Kashmir-Ladakh-Gilgit-Baltistan-Muzaffarabad, Odisha, south Chhattisgarh, Vidarbha, West Madhya Pradesh, Madhya Maharashtra, Interior Karnataka, East Uttar Pradesh, Bihar and Jharkhand.

- Action may be taken based on **ORANGE AND RED** COLOUR warnings.
- Vulnerable regions likely urban and hilly areas action may be initiated for heavy rainfall warning.
- As the lead period increases forecast accuracy decreases.

* Red colour warning does not mean "Red Alert", Red colour warning means "Take Action".
Forecast and Warning for any day is valid from 0830 hours IST of day till 0830 hours IST of next day.
For more details, kindly visit <https://mausam.imd.gov.in> or contact: 011-2434-4599
(Service to the Nation since 1875)

Fig. 1: Maximum Temperatures

Fig. 2: Departure of Maximum Temperatures

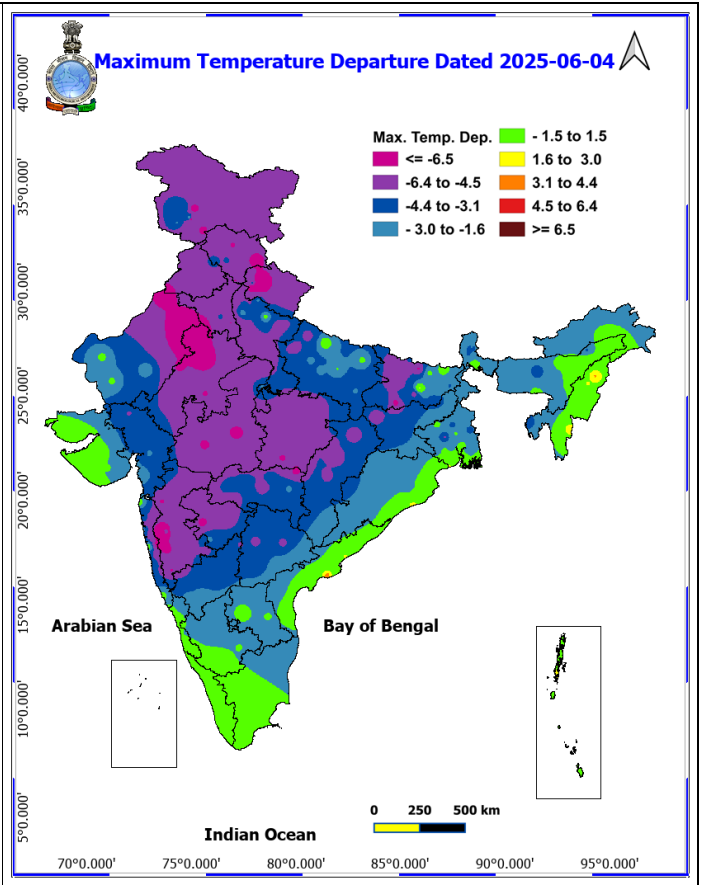
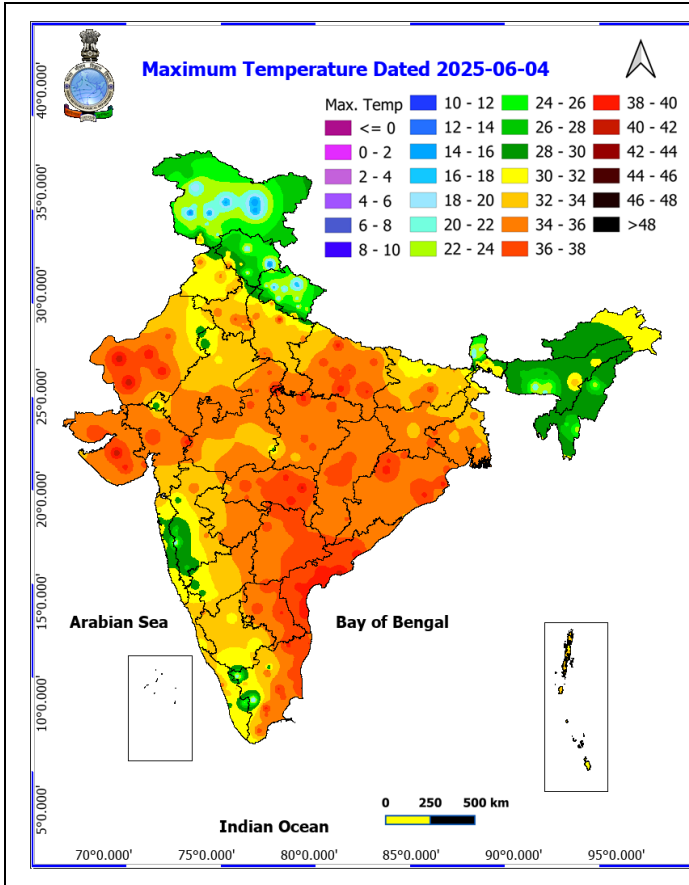


Fig. 3: Minimum Temperatures

Fig. 4: Departure of Minimum Temperatures

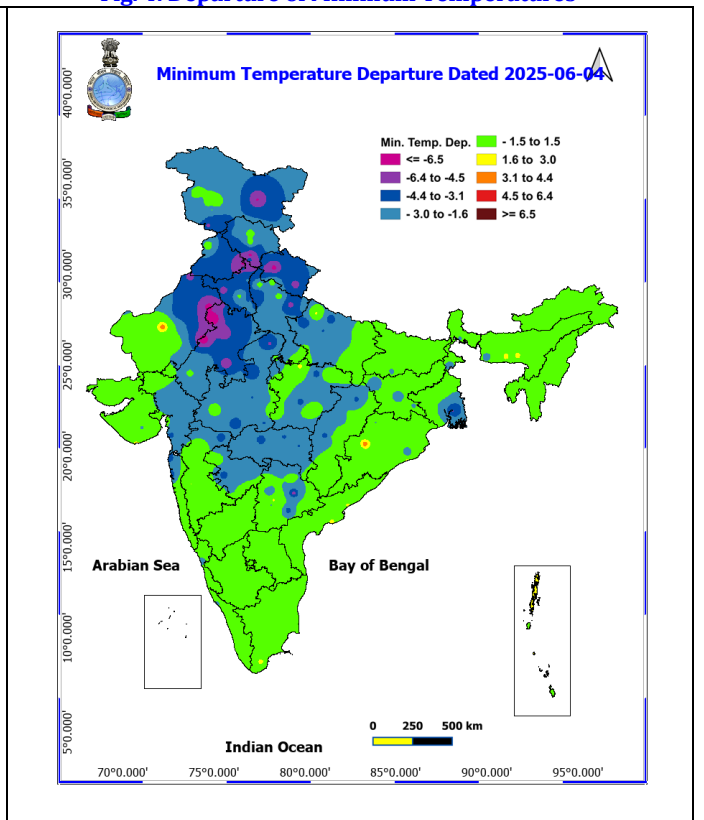
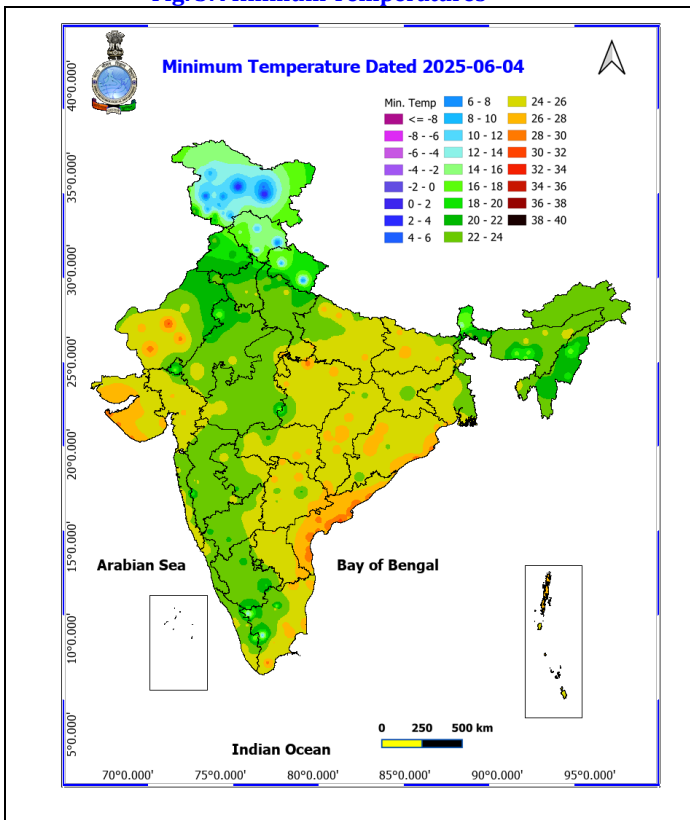
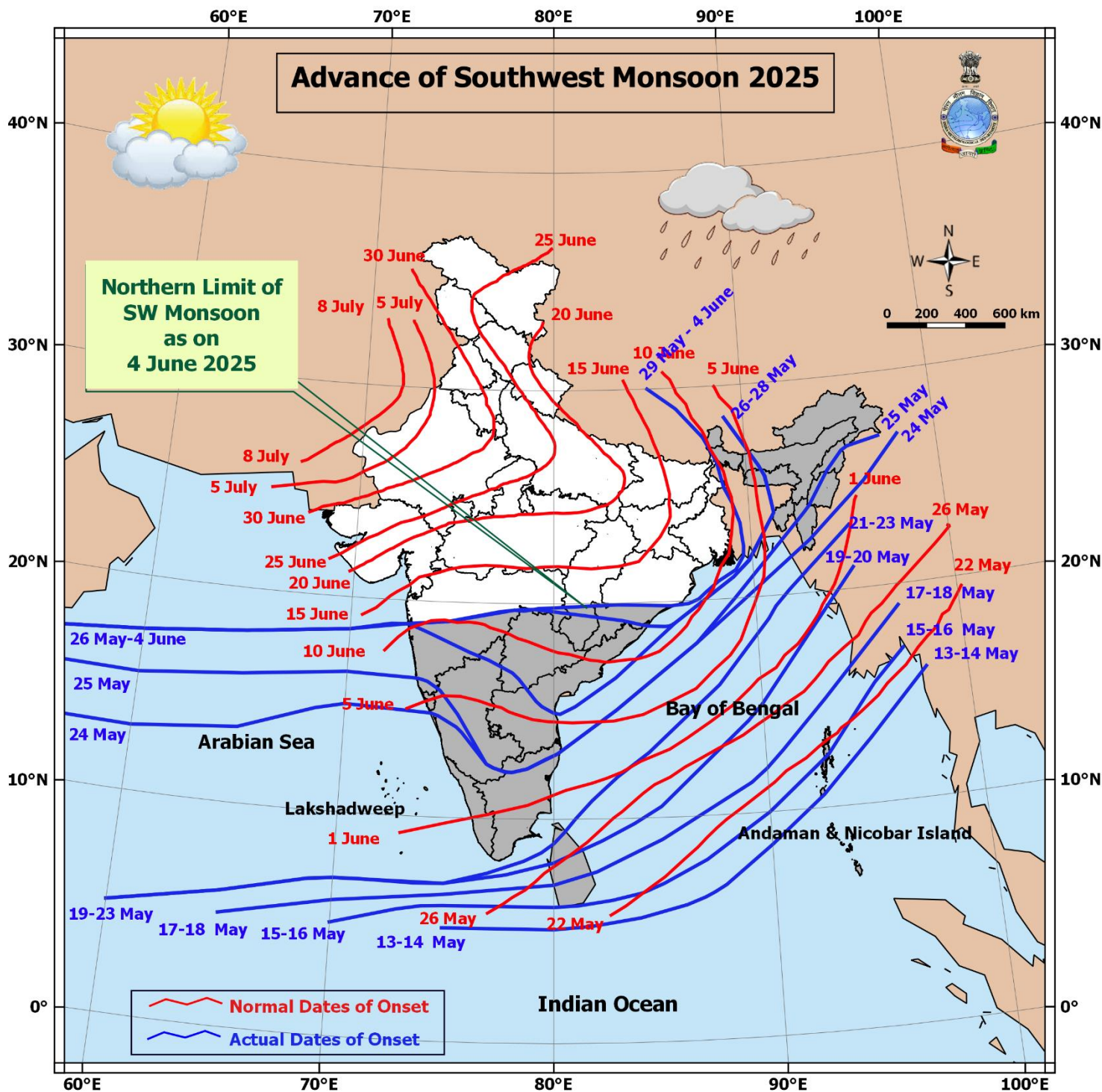
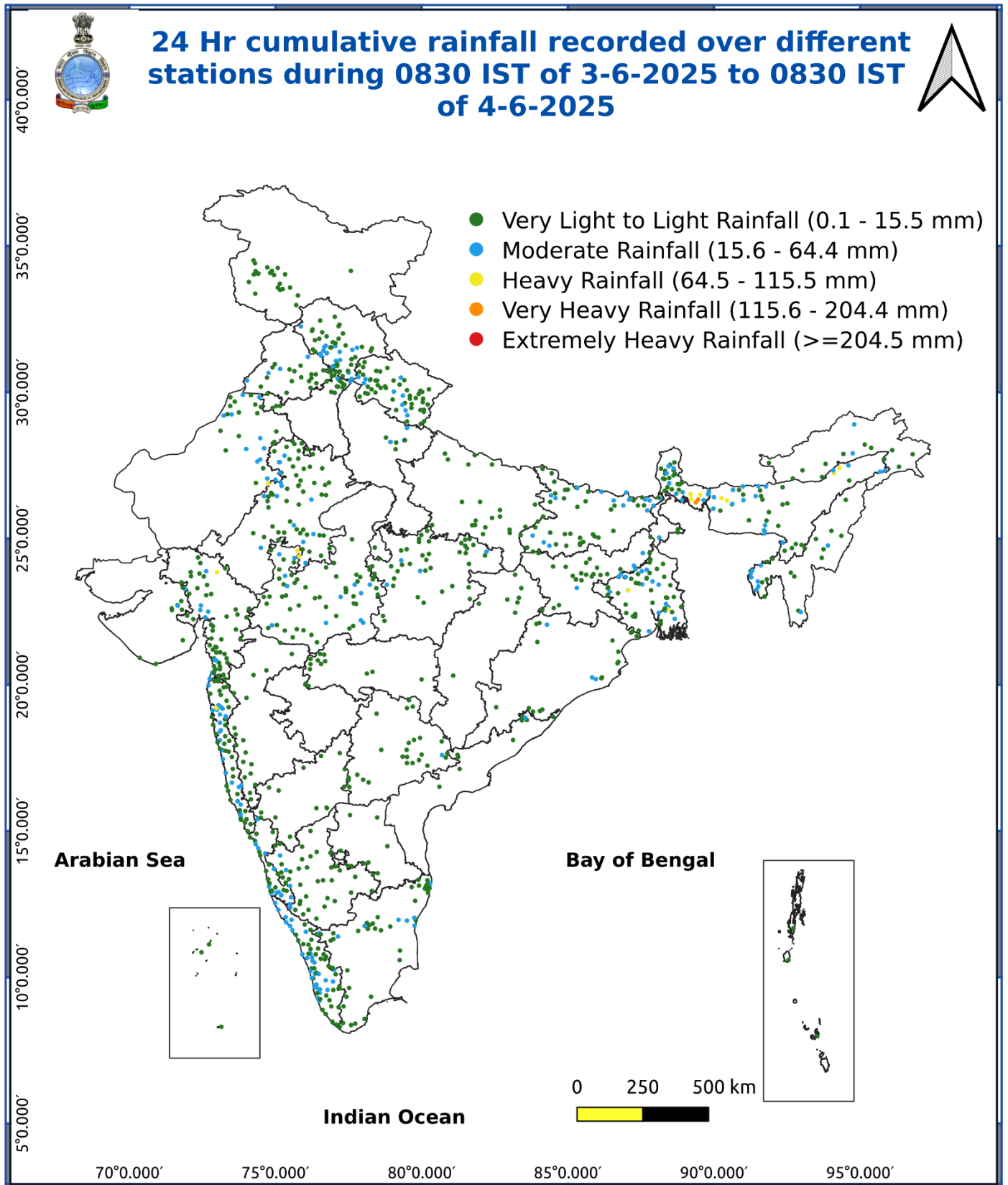


Fig. 5: Advance of Southwest Monsoon 2025



* Red colour warning does not mean "Red Alert", Red colour warning means "Take Action".
Forecast and Warning for any day is valid from 0830 hours IST of day till 0830 hours IST of next day.
For more details, kindly visit <https://mausam.imd.gov.in> or contact: 011-2434-4599
(Service to the Nation since 1875)

Fig. 6: Accumulated Rainfall (mm) during past 24 hours



* Red colour warning does not mean "Red Alert", Red colour warning means "Take Action".
Forecast and Warning for any day is valid from 0830 hours IST of day till 0830 hours IST of next day.
For more details, kindly visit <https://mausam.imd.gov.in> or contact: 011-2434-4599
(Service to the Nation since 1875)

Impact expected and action suggested due to isolated thunderstorm with lightning/gusty & Squally winds & Hailstorm.

- ❖ **Thundersquall wind speed reaching 40-50 kmph gusting to 60 kmph** over likely over Madhya Pradesh, Vidarbha, Chhattisgarh during 05th-08th; Bihar, Gangetic West Bengal, Jharkhand on 05th June.

Impact expected:

- Minor to Major damage to banana and papaya trees.
- Strong wind/hail may damage plantation, horticulture and standing crops.
- Partial damage to vulnerable structures due to strong winds.
- Minor damage to kutcha houses/walls and huts.
- Loose objects may fly.

Action suggested:

- People are advised to keep a watch on the weather for worsening conditions and be ready to move to safer places accordingly.
- Stay indoors, close windows & doors and avoid travel if possible.
- Take safe shelters; do not take shelter under trees.
- Do not lie on concrete floors and do not lean against concrete walls.
- Unplug electrical/ electronic appliances.
- Immediately get out of water bodies.
- Keep away from all the objects that conduct electricity.

Agromet advisories for likely impact of Heavy Rainfall / Gusty Winds

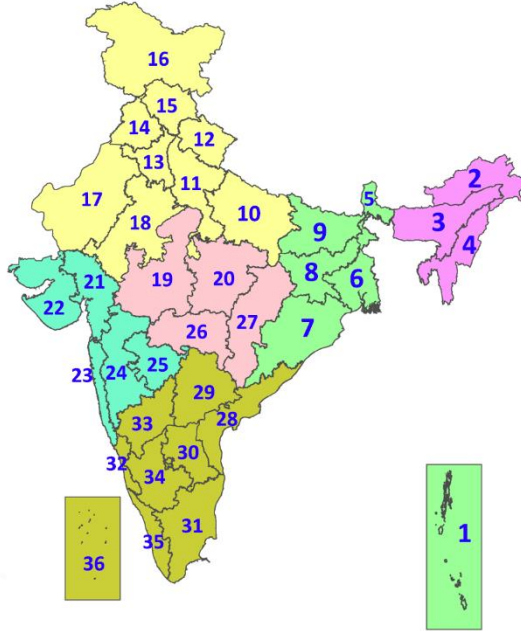
- Postpone sowing of *Sali* rice and vegetables in **Assam** and harvesting of rice in **Tripura**.
- Drain out excess water and ensure proper drainage in the rice nursery beds, fields of soybean, chilli, okra and other vegetables and in **Arunachal Pradesh**; rice, sesame, maize, sugarcane, ginger and turmeric in **Assam**; bottle gourd and French bean in **Meghalaya**; maize and upland rice in **Mizoram**; pre-*kharif* rice, soybean, finger millet, maize, black gram, vegetables and orchards in **Manipur**; cabbage, maize and orchards in **Nagaland**; rice fields, and *Aus* rice nurseries and vegetables in **Tripura**; Dalley Khorsani and tomato in **Sub Himalayan West Bengal** and rice nurseries, orchards and vegetables in **Kerala**.
- Shift the harvested produce in safer places or cover the produce with tarpaulin sheets in the fields. Tie the harvested crops properly and cover them to minimise the risk of displacement due to strong surface winds.
- Provide mechanical support and propping to horticultural crops and staking to vegetables to avoid lodging.

Livestock / Fishery

- Keep the animals inside the shed during heavy rainfall and provide them balanced feed.
- Store feed and fodder in a safe place to prevent spoilage.
- Construct an outlet with proper netting around the ponds to drain out excess water, thereby preventing fish from escaping in case of overflow.

LEGENDS

1. अंडमान और निकोबार द्वीपसमूह
2. अरुणाचल प्रदेश
3. असम और मेघालय
4. नागालैंड, मणिपुर, मिजोरम और त्रिपुरा
5. उप-हिमालयी पश्चिम बंगाल और सिक्किम
6. गंगीय पश्चिम बंगाल
7. ओडिशा
8. झारखंड
9. बिहार
10. पूर्वी उत्तर प्रदेश
11. पश्चिम उत्तर प्रदेश
12. उत्तराखंड
13. हरियाणा, चंडीगढ़ और दिल्ली
14. पंजाब
15. हिमाचल प्रदेश
16. जम्मू और कश्मीर और लद्दाख
17. पश्चिम राजस्थान
18. पूर्वी राजस्थान
19. पश्चिम मध्य प्रदेश
20. पूर्वी मध्य प्रदेश
21. गुजरात
22. सौराष्ट्र
23. कोंकण और गोवा
24. मध्य महाराष्ट्र
25. मराठवाड़ा
26. विदर्भ
27. छत्तीसगढ़
28. तटीय आंध्र प्रदेश और यनम
29. तेलंगाना
30. रायलसीमा
31. तमिलनाडु, पुडुचेरी और कराईकल
32. तटीय कर्नाटक
33. आंतरिक उत्तरी कर्नाटक
34. आंतरिक दक्षिणी कर्नाटक
35. केरल और माहे
36. लक्षद्वीप



1. Andaman & Nicobar Islands
2. Arunachal Pradesh
3. Assam & Meghalaya
4. Nagaland, Manipur, Mizoram & Tripura
5. Sub-Himalayan West Bengal & Sikkim
6. Gangetic West Bengal
7. Odisha
8. Jharkhand
9. Bihar
10. East Uttar Pradesh
11. West Uttar Pradesh
12. Uttarakhand
13. Haryana, Chandigarh & Delhi
14. Punjab
15. Himachal Pradesh
16. Jammu & Kashmir and Ladakh
17. West Rajasthan
18. East Rajasthan
19. West Madhya Pradesh
20. East Madhya Pradesh
21. Gujarat
22. Saurashtra
23. Konkan & Goa
24. Madhya Maharashtra
25. Marathwada
26. Vidarbha
27. Chhattisgarh
28. Coastal Andhra Pradesh & Yanam
29. Telangana
30. Rayalaseema
31. Tamilnadu, Puducherry & Karaikal
32. Coastal Karnataka
33. North Interior Karnataka
34. South Interior Karnataka
35. Kerala & Mahe
36. Lakshadweep

SPATIAL DISTRIBUTION (% of Stations reporting)

% Stations	Category	% Stations	Category
76-100	Widespread (WS/Most Places)	26-50	Scattered (SCT/A Few Places)
51-75	Fairly Widespread (FWS/Many Places)	1-25	Isolated (ISOL)

- | | | |
|----------------------|----------------------|--------------|
| Fog | Heavy Snow | Cold Wave |
| Heavy Rain | Dust Storm | Cold Day |
| Very Heavy Rain | Heat Wave | Ground Frost |
| Extremely Heavy Rain | Warm Night | |
| Thunder & Lightning | Hot Day | |
| Hailstorm | Hot & Humid | |
| Dust Raising Winds | Strong Surface Winds | |

COLOUR CODED WARNING

No Warning (No Action)
Watch (Be Aware)
Alert (Be Prepared To Take Action)
Warning (Take Action)

Probabilistic Forecast

Terms	Probability of Occurrence (%)
Unlikely	< 25
Likely	25 - 50
Very Likely	50 - 75
Most Likely	> 75

DEFINITION/CRITERIA

Rain/ Snow *

Heavy: 64.5 to 115.5 mm/cm *
Very Heavy: 115.6 to 204.4 mm/cm*
Extremely Heavy: > 204.4 mm/cm *

Heat Wave

When maximum temperature of a station reaches $\geq 40^\circ\text{C}$ for plains and $\geq 30^\circ\text{C}$ for hilly regions
(a) Based on Departure from normal

Heat Wave: Maximum Temperature Departure from normal 4.5°C to 6.4°C .

Severe Heat Wave: Maximum Temperature Departure from normal $\geq 6.5^\circ\text{C}$

(b). Based on Actual maximum temperature

Heat Wave: When actual maximum temperature $\geq 45^\circ\text{C}$.

Severe Heat Wave: When actual maximum temperature $\geq 47^\circ\text{C}$

(c). Criteria for heat wave for coastal stations

When maximum temperature departure is $>4.5^\circ\text{C}$ from normal. Heat Wave may be described provided maximum temperature $\geq 37^\circ\text{C}$

Warm Night

When maximum temperature remains 40°C

Warm Night: When minimum temperature departure 4.5°C to 6.4°C .

Severe Warm Night: When minimum temperature departure $>6.4^\circ\text{C}$.

Cold Wave

When minimum temperature of a station $\leq 10^\circ\text{C}$ for plains and $\leq 0^\circ\text{C}$ for hilly regions.
(a). Based on departure

Cold Wave: Minimum Temperature Departure from normal -4.5°C to -6.4°C .

Severe Cold Wave: Minimum Temperature Departure from normal $\leq -6.5^\circ\text{C}$

(b) Based on actual Minimum Temperature (for Plains only)

Cold Wave : When Minimum Temperature is $\leq 4.0^\circ\text{C}$

Severe Cold Wave: When Minimum Temperature is $\leq 2.0^\circ\text{C}$

(c) For Coastal Stations

When Minimum Temperature departure is $\leq -4.5^\circ\text{C}$ & actual Minimum Temperature is $\leq 15^\circ\text{C}$

Cold Day

When minimum temperature of a station $\leq 10^\circ\text{C}$ for plains and $\leq 0^\circ\text{C}$ for hilly regions
Based on departure

Cold Day: Maximum Temperature Departure from normal -4.5°C to -6.4°C .

Severe Cold Day: Maximum Temperature Departure from normal $\leq -6.5^\circ\text{C}$

Fog

Phenomenon of small droplets suspended in air and the horizontal visibility $< 1\text{km}$

Moderate Fog: When the visibility between 500-200 metres

Dense Fog: when the visibility between 50- 200 metres

Very Dense Fog: when the visibility < 50 metres

Thunderstorm

Sudden electrical discharges manifested by a flash of light (Lightning) and a sharp rumbling sound (thunder)

Dust/Sand Storm

An ensemble of particles of dust or sand energetically lifted to great heights by a strong and turbulent wind.

Frost

Ice deposits on ground

Air temperature $\leq 4^\circ\text{C}$ (over Plains)

Squall

A strong wind that rises suddenly, lasts for atleast 1 minute.

Moderate: Wind speed 52-61 kmph

Severe: Wind speed 62-87 kmph

Very Severe: Wind speed >87 kmph

Sea State

Effect of various waves in the sea over specific area

Rough to very rough: Wind speed 41-62 kmph (22-33 knots) & Wave height 2.5-6 metre

High to very high: Wind speed 63-117 kmph (34-63 knots) & Wave height 6-14 metre

Phenomenal: Wind speed >117 kmph (>63 knots) & Wave height >14 metre

Cyclone

Cyclonic Storm: Wind speed 62-87 kmph (34-47 knots)

Severe Cyclonic Storm: Wind speed 88-117 kmph (48-63 knots)

Very Severe Cyclonic Storm: Wind speed 118-165 kmph (64 - 89 knots)

Extremely Severe Cyclonic Storm: Wind speed 166-220 kmph (90 -119 knots)

Super Cyclone Strom: Wind speed >220 kmph (>119 knots)