

2025-07-10

Time of Issue: 08:30:00 hours IST
(Morning)

ALL INDIA WEATHER SUMMARY AND FORECAST BULLETIN

Significant Weather Features

Weather Forecast and Warnings

East & Central India

- Isolated **heavy rainfall** very likely to continue over Madhya Pradesh during 10th-15th; Vidarbha during 10th & 11th; Chhattisgarh on 10th, 11th, 14th & 15th; Sub-Himalayan West Bengal & Sikkim on 13th; Gangetic West Bengal on 14th; Odisha during 13th-15th July with **very heavy rainfall** over Madhya Pradesh during 10th-12th; Vidarbha, Chhattisgarh, Jharkhand on 10th July.
- Light/moderate rainfall at most/many places accompanied with thunderstorm, lightning & gusty winds speed reaching 30-40 kmph likely over the region during next 7 days.

Northwest India:

- Isolated **heavy rainfall** likely over East Rajasthan, Uttarakhand during 10th-15th, Himachal Pradesh on 10th and during 13th-15th; West Uttar Pradesh during 10th-13th; East Uttar Pradesh during 10th-11th; West Rajasthan during 12th-15th July with **very heavy rainfall** over Uttarakhand, Uttar Pradesh, Jammu-Kashmir, Punjab, Haryana on 10th, East Rajasthan during 11th-13th July.
- Light/moderate rainfall at most/many places accompanied with thunderstorm, lightning likely over western Himalayan region and some/many places over the plains during next 7 days.

West India:

- **Heavy rainfall** likely at isolated places over Konkan & Goa, Gujarat Region during 10th-15th; Ghat areas of Madhya Maharashtra on 10th; Saurashtra & Kutch on 12th & 13th July.
- Light/moderate rainfall at many/some places very likely over the region during next 7 days.

Northeast India:

- Light/moderate rainfall at most places accompanied with **thunderstorm, lightning** likely to continue over Northeast India during next 7 days.
- Isolated heavy rainfall very likely over Assam & Meghalaya, Nagaland, Manipur, Mizoram & Tripura during 10th-15th; Arunachal Pradesh during 11th-15th July.

South Peninsular India:

- Isolated **heavy rainfall** likely over Coastal Karnataka, Kerala during 10th-15th July.
- **Strong surface winds** (speed reaching 40-50 kmph) very likely over South Peninsular India during next 5 days.
- Light/moderate rainfall at many/some places over Kerala & Mahe, Lakshadweep, Karnataka, Rayalaseema; isolated to scattered rainfall over Coastal Andhra Pradesh & Yanam, Telangana during next 7 days.

*Red color warning does not mean "Red Alert" Red color warning means "Take Action"

Forecast and warning for any day is valid from 0830 hours IST of day till 0830 hours IST of next day

For more details kindly visit <https://mausam.imd.gov.in> or contact 011-2434-4599

(Service to the nation since 1875)

Main Weather Observations:

❖ **Rainfall distribution** (from 0830 hours IST to 1730 hours IST of yesterday): **at most places** over Uttarakhand, Jammu & Kashmir and Ladakh, Himachal Pradesh, Kerala & Mahe, Punjab, Sub-Himalayan West Bengal & Sikkim, East Madhya Pradesh, Gangetic West Bengal, Nagaland, Manipur, Mizoram & Tripura, Jharkhand, Vidarbha and Coastal Karnataka; **at many places** over Andaman & Nicobar Islands, Saurashtra & Kutch, Gujarat Region, East Rajasthan, West Rajasthan, East Uttar Pradesh, Bihar, Odisha, Madhya Maharashtra, Marathwada, West Madhya Pradesh, Assam & Meghalaya, Konkan & Goa, Chhattisgarh, West Uttar Pradesh, North Interior Karnataka, South Interior Karnataka, Tamilnadu Puducherry & Karaikal, Telangana and Coastal Andhra Pradesh & Yanam; **Dry** over rest of the country.

❖ **Significant rainfall recorded (in cm)** (from 0830 hours IST to 1730 hours IST of yesterday): **Uttarakhand:** Mukteshwar (Kumaon) (dist. Nainital) 10; East Madhya Pradesh: Damoh-orbs (dist. Damoh) 10, Satna (dist. Satna), Nowgong-orbs (dist. Chhatarpur) 4 Each; West Madhya Pradesh: Shivpuri (dist. Shivpuri) 7; Assam & Meghalaya: Cherrapunji (dist. East Khasi Hills) 5; Nagaland, Manipur, Mizoram & Tripura: Agartala AP (dist. West Tripura) 5; Konkan & goa : Matheran (dist. Raigad) 4; **Chhattisgarh:** Rajnandgaon (dist. Rajnandgaon) 4; West Uttar Pradesh: Agra (dist. Agra) 4; Gangetic west Bengal: Krishnanagar (dist. Nadia) 4; **Jharkhand:** Jamshedpur (dist. East Singhbhum) 4.

❖ **Heavy Rainfall observed** (from 0830 hours IST to 1730 hours IST of yesterday): **Heavy rain** at isolated places over Uttarakhand, West Madhya Pradesh and East Madhya Pradesh.

❖ **Minimum Temperature Departures (as on 09-07-2025): markedly above normal(> 5.1°C)** at isolated places over Assam & Meghalaya, East Uttar Pradesh, West Uttar Pradesh, Himachal Pradesh, Jammu-KashmirLadakh-Gilgit-Baltistan-Muzaffarabad, West Madhya Pradesh and Saurashtra & Kutch. **appreciably above normal(3.1°C to 5.0°C)** at few places over East Madhya Pradesh; at isolated places over Andaman & Nicobar Islands, Sub Himalayan West Bengal & Sikkim, Odisha, West Rajasthan and Gujarat Region. **above normal(1.6°C to 3.0°C)** at many places over Lakshadweep; at few places over Bihar, Konkan & Goa and Rayalaseema; at isolated places over Nagaland, Manipur, Mizoram & Tripura, Gangetic West Bengal, Uttarakhand, Madhya Maharashtra, Coastal Andhra Pradesh & Yanam, Tamil Nadu, Puducherry & Karaikal and Kerala & Mahe. **near normal(-1.5°C to 1.5°C)** at many places over Jharkhand, Haryana-Chandigarh-Delhi, East Rajasthan and Telangana; at most places over Arunachal Pradesh, Punjab, Marathwada, Coastal Karnataka, North Interior Karnataka and South Interior Karnataka; at few places over Vidarbha and Chhattisgarh. **The lowest minimum temperature** of 18.0°C was reported at KHARGONE-OBS (MADHYA PRADESH) over the Plains of India.

❖ **Maximum Temperature Departures (as on 09-07-2025): markedly above normal(> 5.1°C)** at few places over Arunachal Pradesh; at isolated places over Assam & Meghalaya and Jammu-KashmirLadakh-Gilgit-Baltistan-Muzaffarabad. **appreciably above normal(3.1°C to 5.0°C)** at few places over Coastal Andhra Pradesh & Yanam and Tamil Nadu, Puducherry & Karaikal; at isolated places over Bihar. **above normal(1.6°C to 3.0°C)** at many places over Kerala & Mahe; at few places over Lakshadweep; at isolated places over Himachal Pradesh, Konkan & Goa, Madhya Maharashtra, Rayalaseema and South Interior Karnataka. **near normal(-1.5°C to 1.5°C)** at many places over Sub Himalayan West Bengal & Sikkim, Haryana-Chandigarh-Delhi, Saurashtra & Kutch, Telangana and North Interior Karnataka; at most places over Andaman & Nicobar Islands and Coastal Karnataka; at few places over Odisha, East Uttar Pradesh, West Uttar Pradesh, Punjab, West Rajasthan, East Rajasthan and Gujarat Region; at isolated places over Nagaland, Manipur, Mizoram & Tripura, Gangetic West Bengal, Uttarakhand, West Madhya Pradesh and Chhattisgarh. **The highest maximum temperature** of 41.0°C was reported at MADURAI (A) (TAMIL NADU).

***Red color warning does not mean "Red Alert" Red color warning means "Take Action"**

Forecast and warning for any day is valid from 0830 hours IST of day till 0830 hours IST of next day

For more details kindly visit <https://mausam.imd.gov.in> or contact 011-2434-4599

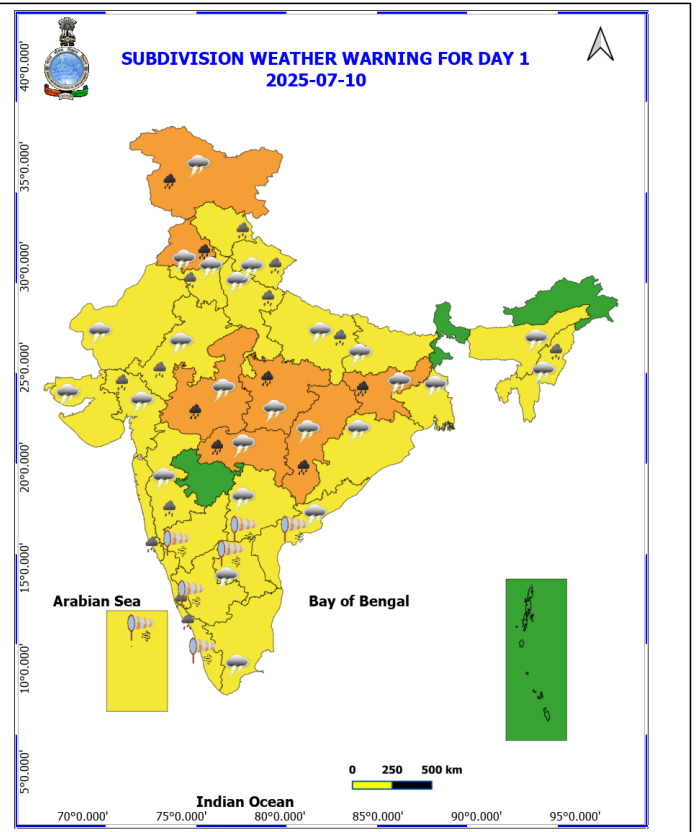
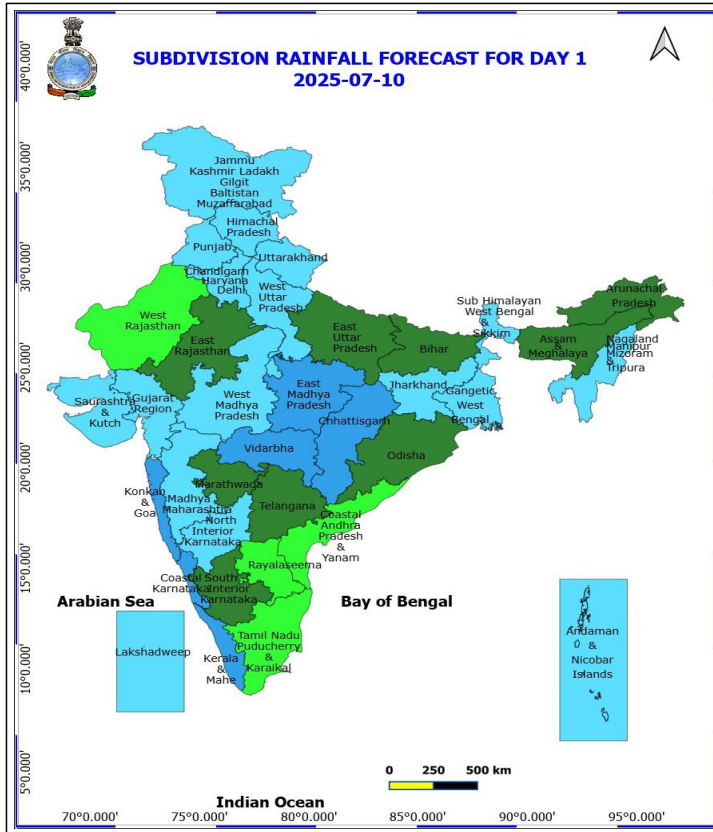
(Service to the nation since 1875)

Meteorological Analysis (Based on 0530 hours IST)

- ❖ The **Low-Pressure area** over Gangetic West Bengal & adjoining Jharkhand and the associated cyclonic circulation extending upto 7.6 km above mean sea level persisted over the same region at 0530 hrs IST of today, the 10th July 2025. It is likely to move slowly west-northwestwards across Jharkhand and north Chhattisgarh during next 2 days.
- ❖ The **monsoon trough** at mean sea level now passes through Suratgarh, Hissar, Hindon, Lucknow, Prayagraj, Daltonganj, centre of the **Low-Pressure area** over Gangetic West Bengal & adjoining Jharkhand, Digha and thence southeastwards to northeast Bay of Bengal.
- ❖ The **upper air cyclonic circulation** over north Haryana & neighbourhood now lies over Haryana & neighbourhood between 1.5 & 3.1 km above mean sea level.
- ❖ The **trough** now runs from northeast Arabian Sea to the cyclonic circulation associated with **Low-Pressure area** over Gangetic West Bengal & adjoining Jharkhand across south Gujarat Region, north Madhya Maharashtra, south Madhya Pradesh, north Chhattisgarh between 4.5 to 7.6 km above mean sea level persists.
- ❖ The **trough** now runs from west Assam to Telangana across the upper air cyclonic circulation associated with Low Pressure area over Gangetic West Bengal & adjoining Jharkhand, north Chhattisgarh at 3.1 km above mean sea level persists.
- ❖ The **upper air cyclonic circulation** over northwest Uttar Pradesh & neighbourhood at 0.9 km above mean sea level has become less marked.

Weather Forecast for next 7 days (Upto 0530 hours IST of 17 July)

- ♦ Fairly widespread to widespread rainfall very likely over Central India, along west Coast, Islands, East India, Northeast India & Northwest India.
- ♦ Scattered rainfall very likely over rest parts of the country.



10 July (Day 1)

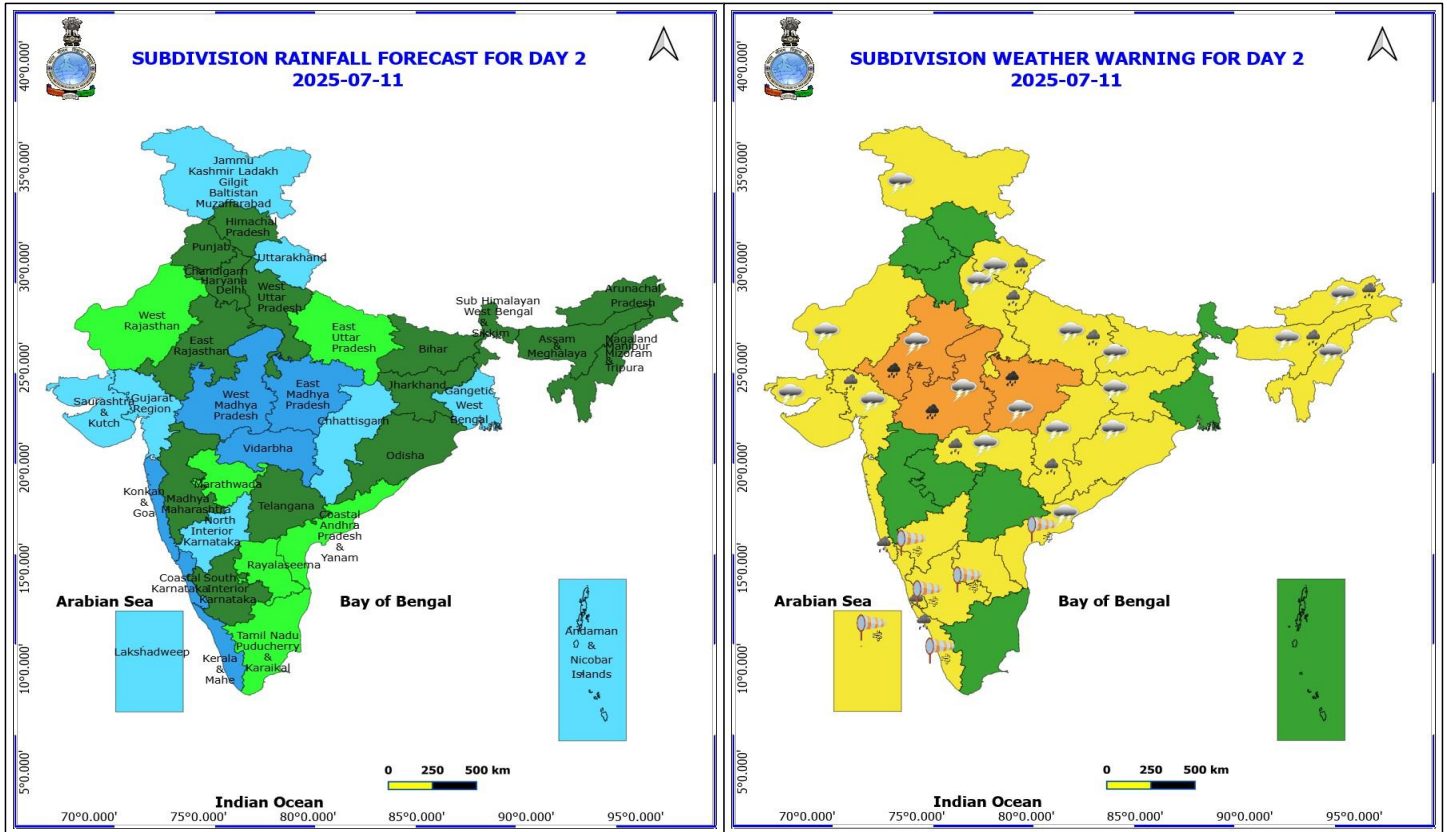
- ❖ **Heavy to Very Heavy Rainfall** very likely at isolated places over Jammu-Kashmir-Ladakh-Gilgit-Baltistan-Muzaffarabad, Punjab, Jharkhand, Chhattisgarh, Madhya Pradesh and Vidarbha.
- ❖ **Heavy Rainfall** very likely at isolated places over Coastal Karnataka, East Rajasthan, Gujarat Region, Haryana, Chandigarh & Delhi, Himachal Pradesh, Kerala & Mahe, Konkan & Goa, Madhya Maharashtra, Nagaland, Manipur, Mizoram and Tripura, Uttar Pradesh and Uttarakhand.
- ❖ **Thunderstorm accompanied with lightning & gusty winds(30-40kmph)** very likely at isolated places over Bihar, Jammu-Kashmir-Ladakh-Gilgit-Baltistan-Muzaffarabad, Jharkhand, Odisha, Rajasthan and West Madhya Pradesh.
- ❖ **Thunderstorm accompanied with Lightning** very likely at isolated places over Andhra Pradesh, Assam & Meghalaya, Chhattisgarh, East Madhya Pradesh, Gangetic West Bengal, Gujarat State, Haryana, Chandigarh & Delhi, Madhya Maharashtra, Nagaland, Manipur, Mizoram and Tripura, Punjab, Tamil Nadu Puducherry & Karaikal, Telangana, Uttar Pradesh, Uttarakhand and Vidarbha.
- ❖ **Strong Surface Winds** very likely at isolated places over Andhra Pradesh, Interior Karnataka, Kerala & Mahe, Lakshadweep and Telangana.
 - Squally wind speed reaching 45 kmph to 55 kmph gusting to 65 kmph is likely to prevail along and off Somalia, Oman & adjoining Yemen coasts, most parts of westcentral Arabian Sea & adjoining, some parts of eastcentral Arabian Sea, northern parts of southwest Arabian Sea, southern parts of northwest Arabian Sea, Gulf of Mannar.
 - Squally weather with wind speed 40 - 50 kmph gusting to 60 kmph likely to prevail over some parts of eastcentral, southeast & southwest Arabian Sea, over many parts of westcentral Bay of Bengal & adjoining parts of eastcentral, southwest and northwest Bay of Bengal.

*Red color warning does not mean "Red Alert" Red color warning means "Take Action"

Forecast and warning for any day is valid from 0830 hours IST of day till 0830 hours IST of next day

For more details kindly visit <https://mausam.imd.gov.in> or contact 011-2434-4599

(Service to the nation since 1875)



11 July (Day 2)

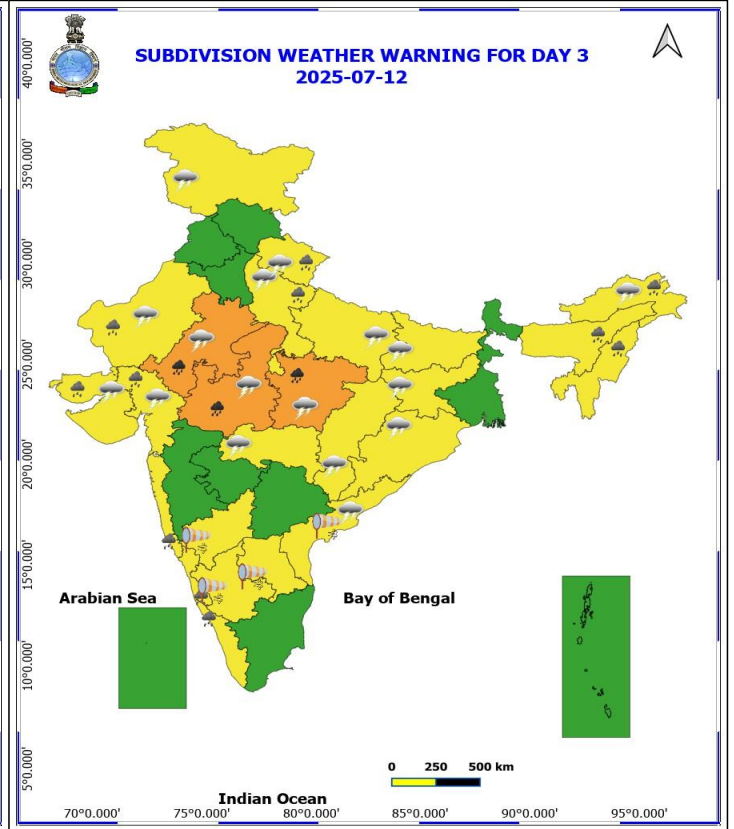
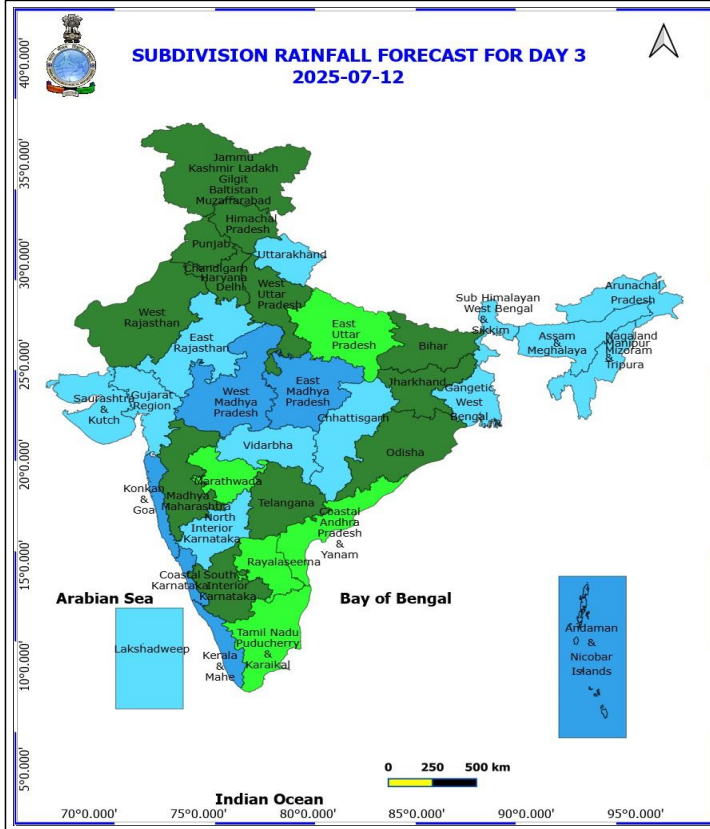
- ❖ **Heavy to Very Heavy Rainfall** very likely at isolated places over East Rajasthan and Madhya Pradesh.
- ❖ **Heavy Rainfall** very likely at isolated places over Arunachal Pradesh, Assam & Meghalaya, Chhattisgarh, Coastal Karnataka, Gujarat Region, Kerala & Mahe, Konkan & Goa, Uttar Pradesh, Uttarakhand and Vidarbha.
- ❖ **Thunderstorm accompanied with lightning & gusty winds(30-40kmph)** very likely at isolated places over Bihar, Jammu-Kashmir-Ladakh-Gilgit-Baltistan-Muzaffarabad, Odisha and Rajasthan.
- ❖ **Thunderstorm accompanied with Lightning** very likely at isolated places over Arunachal Pradesh, Assam & Meghalaya, Chhattisgarh, Coastal Andhra Pradesh, Gujarat State, Jharkhand, Madhya Pradesh, Nagaland, Manipur, Mizoram and Tripura, Uttar Pradesh, Uttarakhand and Vidarbha.
- ❖ **Strong Surface Winds** very likely at isolated places over Andhra Pradesh, Interior Karnataka, Kerala & Mahe and Lakshadweep.
 -) : Squally wind speed reaching 45 kmph to 55 kmph gusting to 65 kmph is likely to prevail along and off Somalia, Oman & adjoining Yemen coasts, most parts of westcentral Arabian Sea & adjoining, some parts of eastcentral Arabian Sea, northern parts of southwest Arabian Sea, southern parts of northwest Arabian Sea, Gulf of Mannar.
 - Squally weather with wind speed 40 - 50 kmph gusting to 60 kmph likely to prevail over some parts of eastcentral, southeast & southwest Arabian Sea, over many parts of westcentral Bay of Bengal & adjoining parts of southwest Bay of Bengal, some southern parts of south Bay of Bengal.

*Red color warning does not mean "Red Alert" Red color warning means "Take Action"

Forecast and warning for any day is valid from 0830 hours IST of day till 0830 hours IST of next day

For more details kindly visit <https://mausam.imd.gov.in> or contact 011-2434-4599

(Service to the nation since 1875)



12 July (Day 3)

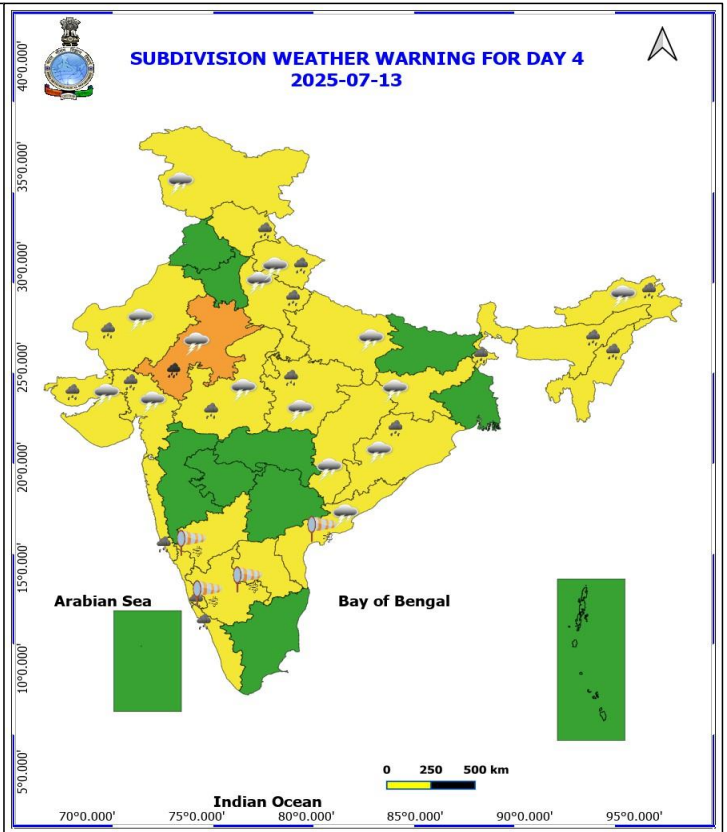
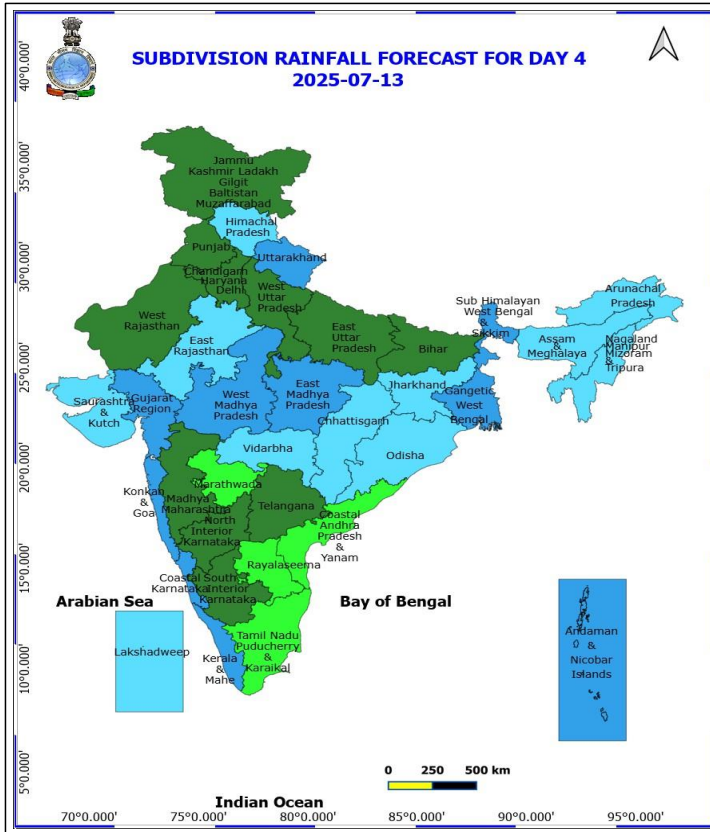
- ❖ **Heavy to Very Heavy Rainfall** very likely at isolated places over East Rajasthan and Madhya Pradesh.
- ❖ **Heavy Rainfall** very likely at isolated places over Arunachal Pradesh, Assam & Meghalaya, Coastal Karnataka, Gujarat State, Kerala & Mahe, Konkan & Goa, Nagaland, Manipur, Mizoram and Tripura, Uttarakhand, West Rajasthan and West Uttar Pradesh.
- ❖ **Thunderstorm accompanied with lightning & gusty winds(30-40kmph)** very likely at isolated places over Bihar, Jammu-Kashmir-Ladakh-Gilgit-Baltistan-Muzaffarabad, Odisha and Rajasthan.
- ❖ **Thunderstorm accompanied with Lightning** very likely at isolated places over Arunachal Pradesh, Chhattisgarh, Coastal Andhra Pradesh, Gujarat State, Jharkhand, Madhya Pradesh, Uttar Pradesh, Uttarakhand and Vidarbha.
- ❖ **Strong Surface Winds** very likely at isolated places over Andhra Pradesh and Interior Karnataka.
 - Squally wind speed reaching 45 kmph to 55 kmph gusting to 65 kmph is likely to prevail along and off Somalia, Oman & adjoining Yemen coasts, most parts of westcentral Arabian Sea & adjoining parts of eastcentral Arabian Sea, northern parts of southwest Arabian Sea, Gulf of Mannar.
 - Squally weather with wind speed 40 - 50 kmph gusting to 60 kmph likely to prevail over many parts of eastcentral Arabian Sea and few southern parts of north Arabian Sea, over some parts of westcentral and southwest Bay of Bengal & adjoining parts of southwest Bay of Bengal, some southern parts of south Bay of Bengal.

***Red color warning does not mean "Red Alert" Red color warning means "Take Action"**

Forecast and warning for any day is valid from 0830 hours IST of day till 0830 hours IST of next day

For more details kindly visit <https://mausam.imd.gov.in> or contact 011-2434-4599

(Service to the nation since 1875)



13 July (Day 4)

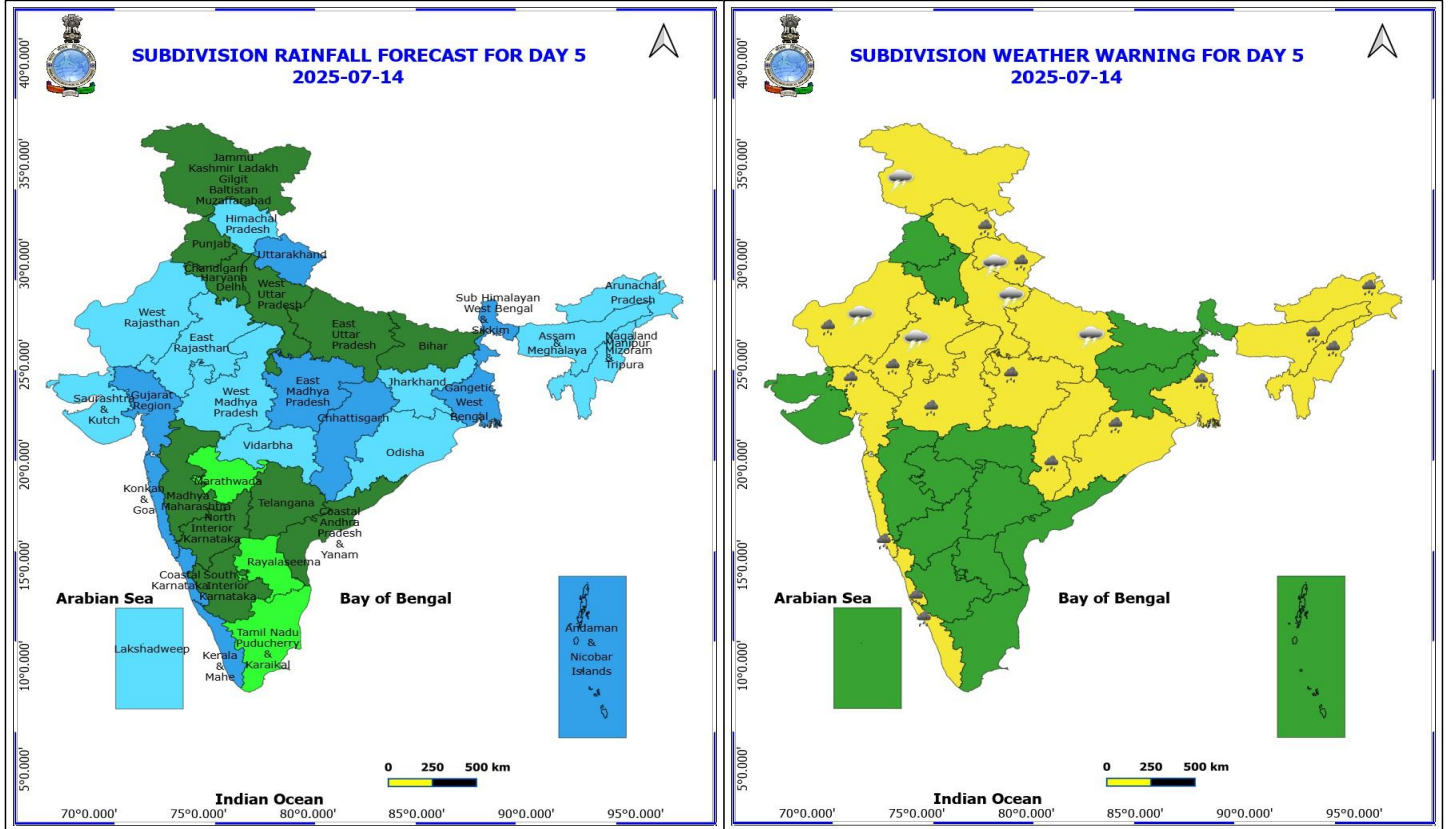
- ❖ **Heavy to Very Heavy Rainfall** likely at isolated places over East Rajasthan.
- ❖ **Heavy Rainfall** likely at isolated places over Arunachal Pradesh, Assam & Meghalaya, Coastal Karnataka, Gujarat State, Himachal Pradesh, Kerala & Mahe, Konkan & Goa, Madhya Pradesh, Nagaland, Manipur, Mizoram and Tripura, Odisha, Sub Himalayan West Bengal & Sikkim, Uttarakhand, West Rajasthan and West Uttar Pradesh.
- ❖ **Thunderstorm accompanied with lightning & gusty winds(30-40kmph)** likely at isolated places over Jammu-Kashmir-Ladakh-Gilgit-Baltistan-Muzaffarabad, Odisha and Rajasthan.
- ❖ **Thunderstorm accompanied with Lightning** likely at isolated places over Arunachal Pradesh, Chhattisgarh, Coastal Andhra Pradesh, Gujarat State, Jharkhand, Madhya Pradesh, Uttar Pradesh and Uttarakhand.
- ❖ **Strong Surface Winds** likely at isolated places over Andhra Pradesh and Interior Karnataka.
 - Squally wind speed reaching 45 kmph to 55 kmph gusting to 65 kmph is likely to prevail along and off Somalia, Oman & adjoining Yemen coasts, most parts of westcentral Arabian Sea & adjoining parts of eastcentral Arabian Sea, northern parts of southwest Arabian Sea, Gulf of Mannar.
 - Squally weather with wind speed 40 - 50 kmph gusting to 60 kmph likely to prevail over many parts of eastcentral Arabian Sea and few southern parts of north Arabian Sea, along and off Konkan coast, over some parts of westcentral Bay of Bengal, some southern parts of south Bay of Bengal.

***Red color warning does not mean "Red Alert" Red color warning means "Take Action"**

Forecast and warning for any day is valid from 0830 hours IST of day till 0830 hours IST of next day

For more details kindly visit <https://mausam.imd.gov.in> or contact 011-2434-4599

(Service to the nation since 1875)



14 July (Day 5)

❖ **Heavy Rainfall** likely at isolated places over Arunachal Pradesh, Assam & Meghalaya, Chhattisgarh, Coastal Karnataka, Gangetic West Bengal, Gujarat Region, Himachal Pradesh, Kerala & Mahe, Konkan & Goa, Madhya Pradesh, Nagaland, Manipur, Mizoram and Tripura, Odisha, Rajasthan and Uttarakhand.

❖ **Thunderstorm accompanied with lightning & gusty winds(30-40kmph)** likely at isolated places over Jammu-Kashmir-Ladakh-Gilgit-Baltistan-Muzaffarabad and Rajasthan.

❖ **Thunderstorm accompanied with Lightning** likely at isolated places over Uttar Pradesh and Uttarakhand.

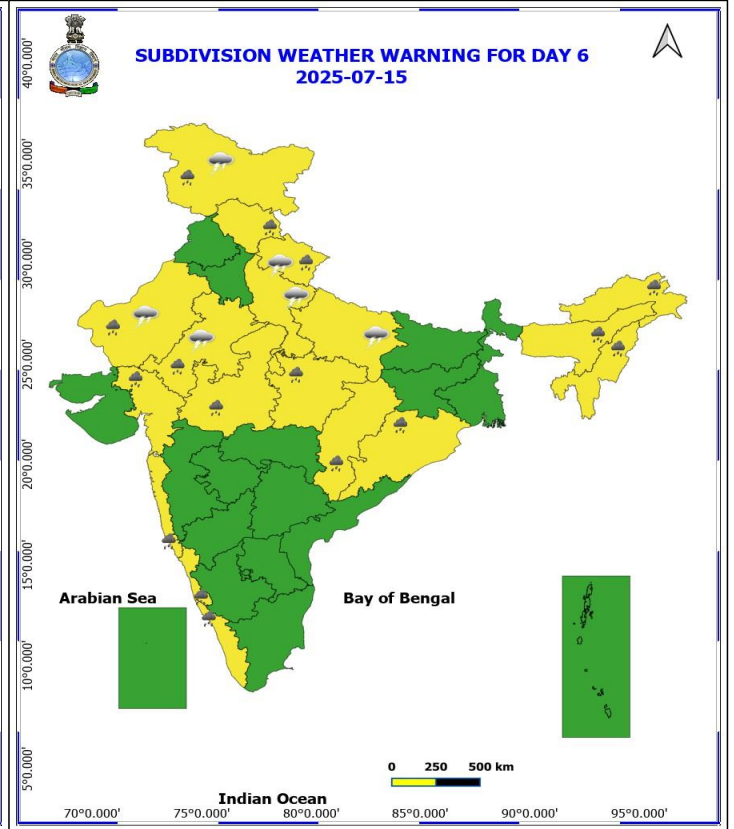
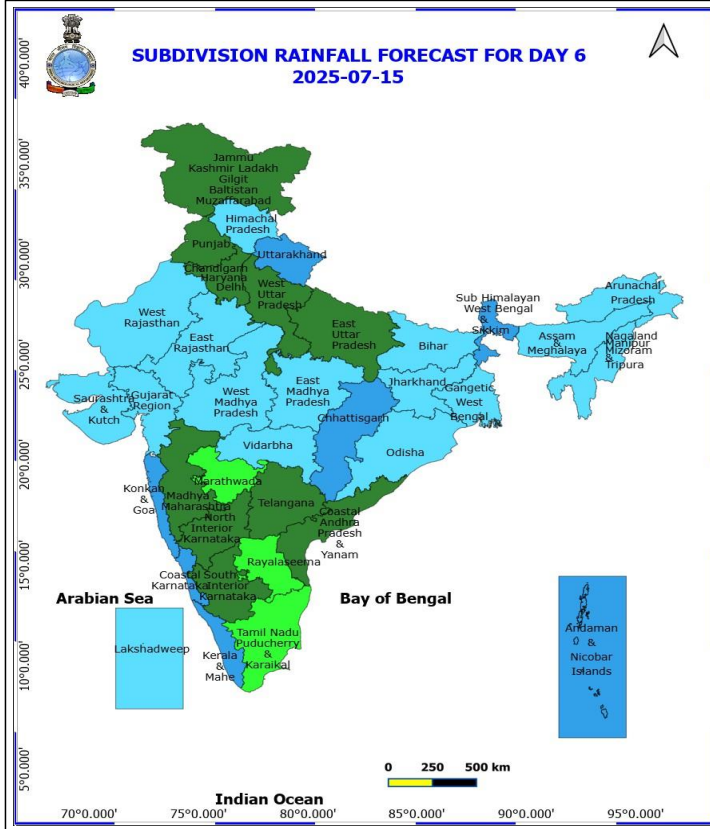
- Squally wind speed reaching 45 kmph to 55 kmph gusting to 65 kmph is likely to prevail along and off Somalia, Oman & adjoining Yemen coasts, most parts of westcentral Arabian Sea & adjoining parts of eastcentral Arabian Sea, northern parts of southwest Arabian Sea, Gulf of Mannar.
- Squally weather with wind speed 40 - 50 kmph gusting to 60 kmph likely to prevail over many parts of eastcentral Arabian Sea and few southern parts of north Arabian Sea, along and off Konkan coast, over some parts of westcentral Bay of Bengal, some southern parts of south Bay of Bengal.

***Red color warning does not mean "Red Alert" Red color warning means "Take Action"**

Forecast and warning for any day is valid from 0830 hours IST of day till 0830 hours IST of next day

For more details kindly visit <https://mausam.imd.gov.in> or contact 011-2434-4599

(Service to the nation since 1875)



15 July (Day 6)

❖ **Heavy Rainfall** likely at isolated places over Arunachal Pradesh, Assam & Meghalaya, Chhattisgarh, Coastal Karnataka, Gujarat Region, Himachal Pradesh, Jammu-Kashmir-Ladakh-Gilgit-Baltistan-Muzaffarabad, Kerala & Mahe, Konkan & Goa, Madhya Pradesh, Nagaland, Manipur, Mizoram and Tripura, Odisha, Rajasthan and Uttarakhand.

❖ **Thunderstorm accompanied with lightning & gusty winds(30-40kmph)** likely at isolated places over Jammu-Kashmir-Ladakh-Gilgit-Baltistan-Muzaffarabad and Rajasthan.

❖ **Thunderstorm accompanied with Lightning** likely at isolated places over Uttar Pradesh and Uttarakhand.

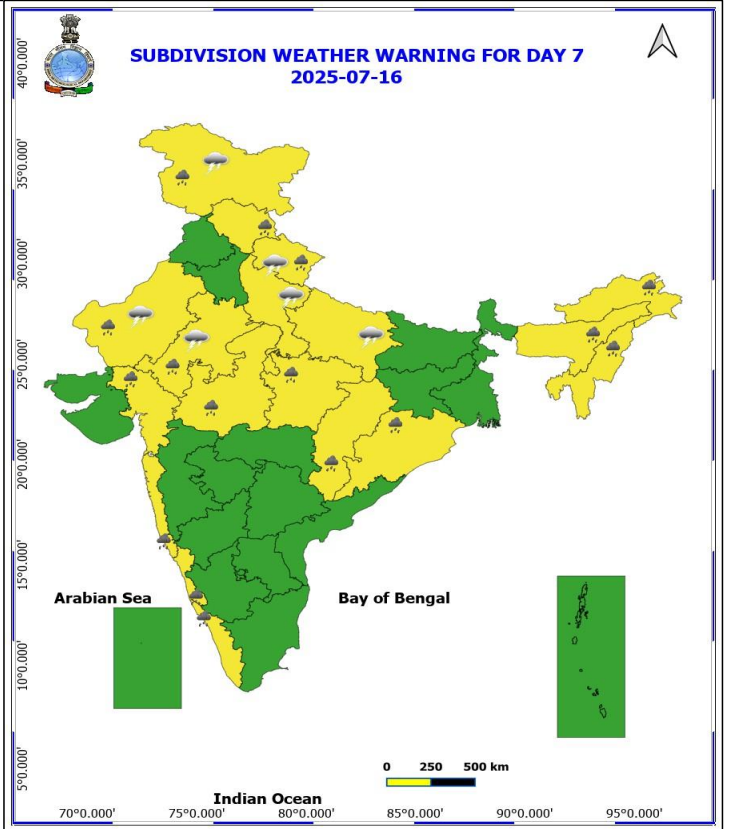
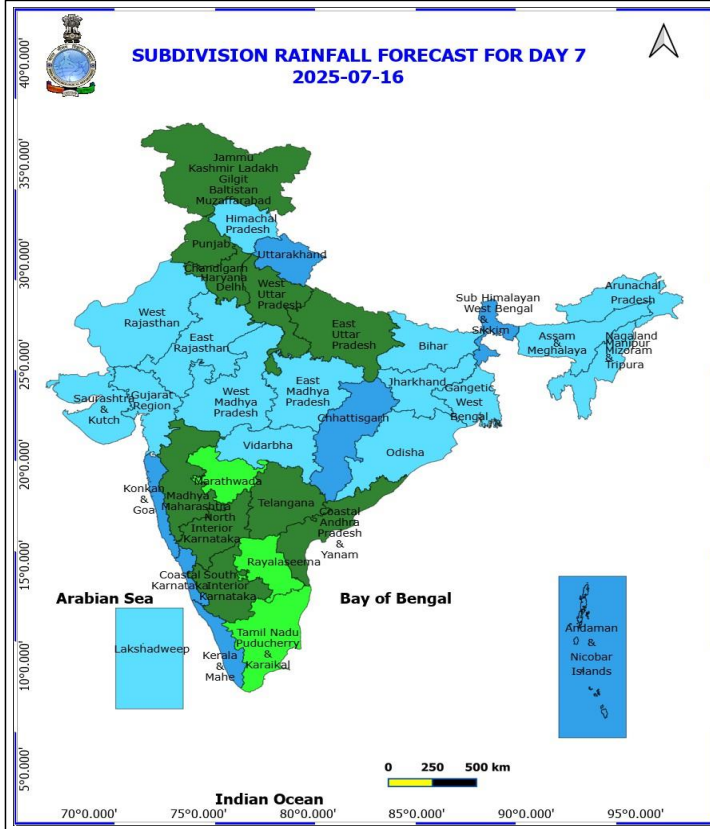
No Fishermen Warning

***Red color warning does not mean "Red Alert" Red color warning means "Take Action"**

Forecast and warning for any day is valid from 0830 hours IST of day till 0830 hours IST of next day

For more details kindly visit <https://mausam.imd.gov.in> or contact 011-2434-4599

(Service to the nation since 1875)



16 July (Day 7)

❖ **Heavy Rainfall** likely at isolated places over Arunachal Pradesh, Assam & Meghalaya, Chhattisgarh, Coastal Karnataka, Gujarat Region, Himachal Pradesh, Jammu-Kashmir-Ladakh-Gilgit-Baltistan-Muzaffarabad, Kerala & Mahe, Konkan & Goa, Madhya Pradesh, Nagaland, Manipur, Mizoram and Tripura, Odisha, Rajasthan and Uttarakhand.

❖ **Thunderstorm accompanied with lightning & gusty winds(30-40kmph)** likely at isolated places over Jammu-Kashmir-Ladakh-Gilgit-Baltistan-Muzaffarabad and Rajasthan.

❖ **Thunderstorm accompanied with Lightning** likely at isolated places over Uttar Pradesh and Uttarakhand.

No Fishermen Warning

***Red color warning does not mean "Red Alert" Red color warning means "Take Action"**

Forecast and warning for any day is valid from 0830 hours IST of day till 0830 hours IST of next day

For more details kindly visit <https://mausam.imd.gov.in> or contact 011-2434-4599

(Service to the nation since 1875)

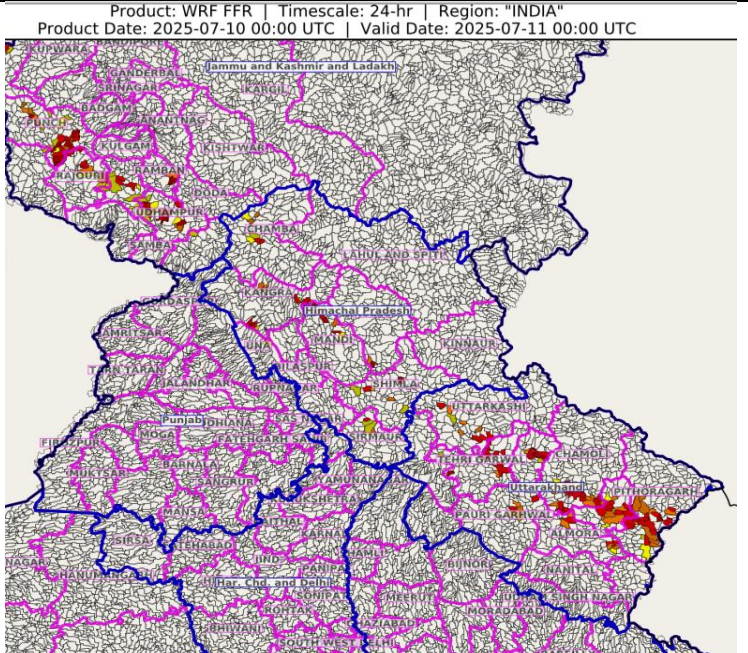
Flash Flood Warnings

24 hours Outlook for the Flash Flood Risk (FFR) till 0530 IST of 11-07-2025 :

Low to Moderate flash flood risk likely over few watersheds & neighbourhoods of following Met Sub-divisions during next 24 hours.

- Himachal Pradesh** - Chamba, Kangra, Kullu, Mandi, Shimla and Sirmaur districts.
- Jammu & Kashmir & Ladakh** - Kathua, Punch, Rajouri, Ramban, Riasi and Udhampur districts.
- Uttarakhand** - Almora, Bageshwar, Chamoli, Haridwar, Pauri Garhwal, Pithoragarh, Rudraprayag, Tehri Garwal and Uttarkashi districts.

Surface runoff/ Inundation may occur at some fully saturated soils & low-lying areas over Area of Concern (AoC) as shown in map due to expected rainfall occurrence in next 24 hours.



24 hours Outlook for the Flash Flood Risk (FFR) till 0530 IST of 11-07-2025 :

Low to Moderate flash flood risk likely over few watersheds & neighbourhoods of following Met Sub-divisions during next 24 hours.

- Chhattisgarh** - Balarampur, Balod, Baloda Bazar, Dhamtari, Durg, Korea, Mahasamund, Raipur and Surajpur districts.
- East Madhya Pradesh** - Balaghat, Chhindwara, Damoh, Dindori, Jabalpur, Katni, Mandla, Narshimpura, Sagar, Seoni, Shahdol, Sidhi and Umari districts.
- Vidarbha** - Bhandara, Gondiya and Nagpur districts.
- West Madhya Pradesh** - Ashoknagar and Raisen districts.
- Odisha** - Baleshwar, Baragarh, Bauda, Deogarh, Kendujhar, Mayurbhanj, Subarnapur and Sundargarh districts.
- Gangetic West Bengal** - Bankura, Eastmednipur, North 24 Praganas, Pashchim Medinipur, Puruliya and South 24 Parganas districts.
- Jharkhand** - Dhanbad, East Singhbhum, Giridih, Gumla, Khunti, Latehar, Lohardaga, Ranchi, Saraikela, Simdega and West Singhbhum districts.

Surface runoff/ Inundation may occur at some fully saturated soils & low-lying areas over Area of Concern (AoC) as shown in map due to expected rainfall occurrence in next 24 hours.

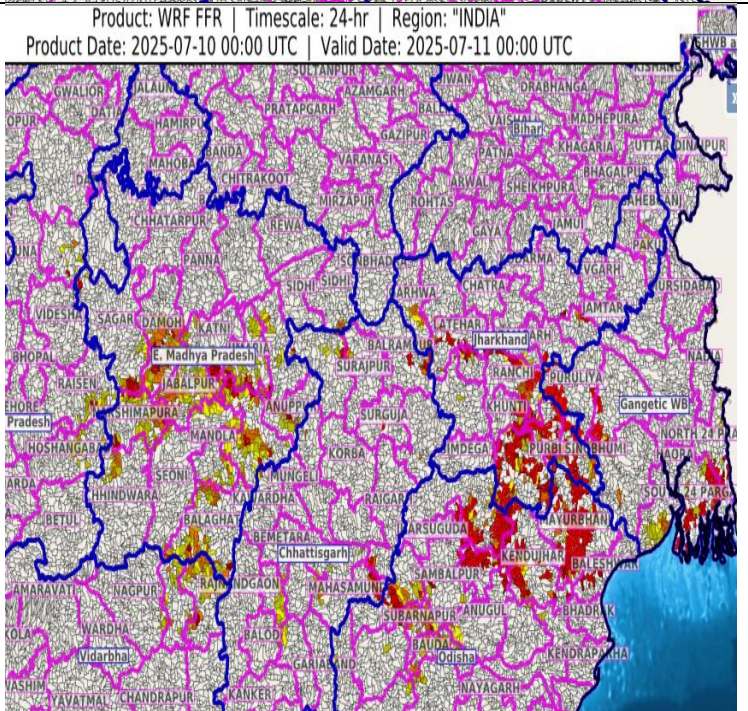




Table-1

7 Days Rainfall Forecast

S.No.	Subdivision	10- Jul	11- Jul	12- Jul	13- Jul	14- Jul	15- Jul	16- Jul
		Day 1	Day 2	Day 3	Day 4	Day 5	Day 6	Day 7
1	ANDAMAN & NICOBAR ISLANDS	FWS	FWS	WS	WS	WS	WS	WS
2	ARUNACHAL PRADESH	SCT	SCT	FWS	FWS	FWS	FWS	FWS
3	ASSAM & MEHGHALAYA	SCT	SCT	FWS	FWS	FWS	FWS	FWS
4	N. M. M. & T.	FWS	SCT	FWS	FWS	FWS	FWS	FWS
5	S.H. WEST BENGAL & SIKKIM	FWS	SCT	FWS	WS	WS	WS	WS
6	GANGETIC WEST BENGAL	FWS	FWS	FWS	WS	WS	FWS	FWS
7	ODISHA	SCT	SCT	SCT	FWS	FWS	FWS	FWS
8	JHARKHAND	FWS	SCT	SCT	FWS	FWS	FWS	FWS
9	BIHAR	SCT	SCT	SCT	SCT	SCT	FWS	FWS
10	EAST UTTAR PRADESH	SCT	ISOL	ISOL	SCT	SCT	SCT	SCT
11	WEST UTTAR PRADESH	FWS	SCT	SCT	SCT	SCT	SCT	SCT
12	UTTARAKHAND	FWS	FWS	FWS	WS	WS	WS	WS
13	HARYANA, CHD & DELHI	FWS	SCT	SCT	SCT	SCT	SCT	SCT
14	PUNJAB	FWS	SCT	SCT	SCT	SCT	SCT	SCT
15	HIMACHAL PRADESH	FWS	SCT	SCT	FWS	FWS	FWS	FWS
16	JAMMU AND KASHMIR AND LADAKH	FWS	FWS	SCT	SCT	SCT	SCT	SCT
17	WEST RAJASTHAN	ISOL	ISOL	SCT	SCT	FWS	FWS	FWS
18	EAST RAJASTHAN	SCT	SCT	FWS	FWS	FWS	FWS	FWS
19	WEST MADHYA PRADESH	FWS	WS	WS	WS	FWS	FWS	FWS
20	EAST MADHYA PRADESH	WS	WS	WS	WS	WS	FWS	FWS
21	GUJRAT REGION	FWS	FWS	FWS	WS	WS	FWS	FWS
22	SAURASHTRA & KUTCH	FWS	FWS	FWS	FWS	FWS	FWS	FWS
23	KONKAN & GOA	WS	WS	WS	WS	WS	WS	WS
24	MADHYA MAHARASHTRA	FWS	SCT	SCT	SCT	SCT	SCT	SCT
25	MARATHWADA	SCT	ISOL	ISOL	ISOL	ISOL	ISOL	ISOL
26	VIDARBHA	WS	WS	FWS	FWS	FWS	FWS	FWS
27	CHATTISGARH	WS	FWS	FWS	FWS	WS	WS	WS
28	COASTAL ANDHRA PRADESH	ISOL	ISOL	ISOL	ISOL	SCT	SCT	SCT
29	TELANGANA	SCT	SCT	SCT	SCT	SCT	SCT	SCT
30	RAYALASEEMA	ISOL	ISOL	ISOL	ISOL	ISOL	ISOL	ISOL
31	TAMILNADU & PUDUCHERRY	ISOL	ISOL	ISOL	ISOL	ISOL	ISOL	ISOL
32	COSTAL KARNATAKA	WS	WS	WS	WS	WS	WS	WS
33	NORTH INTERIOR KARNATAKA	FWS	FWS	FWS	SCT	SCT	SCT	SCT
34	SOUTH INTERIOR KARNATAKA	SCT	SCT	SCT	SCT	SCT	SCT	SCT
35	KERALA	WS	WS	WS	WS	WS	WS	WS
36	LAKSHDWEEP	FWS	FWS	FWS	FWS	FWS	FWS	FWS

Legend	Category	%Stations
WS	Widespread/Most Places	76-100
FWS	Fairly Widespread/Many Places	51-75
SCT	Scattered/ A Few Places	26-50
ISOL	Isolated Places	1-25
DRY	No Rain	0

*Red color warning does not mean "Red Alert" Red color warning means "Take Action"
Forecast and warning for any day is valid from 0830 hours IST of day till 0830 hours IST of next day
For more details kindly visit <https://mausam.imd.gov.in> or contact 011-2434-4599

(Service to the nation since 1875)

Fig. 1: Maximum Temperatures Dated 2025-07-09

Fig. 2: Departure of Maximum Temp. Dated 2025-07-09

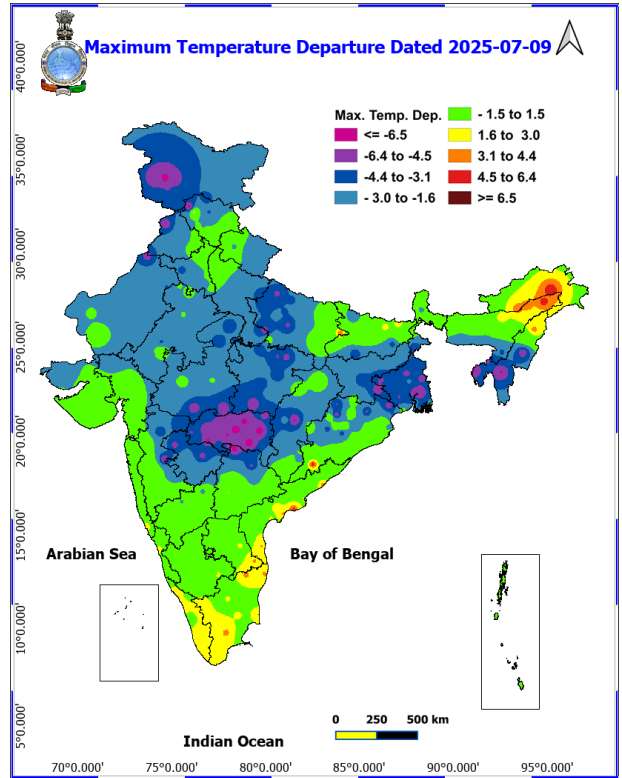
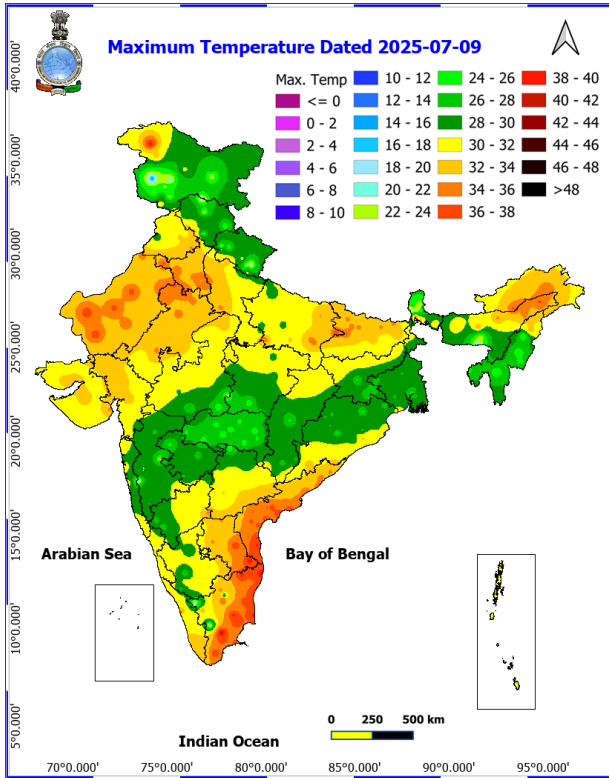
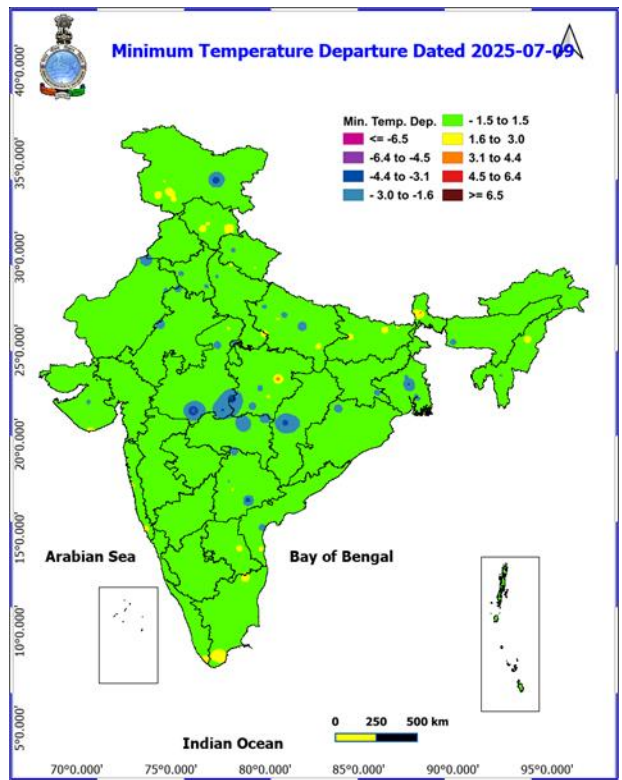
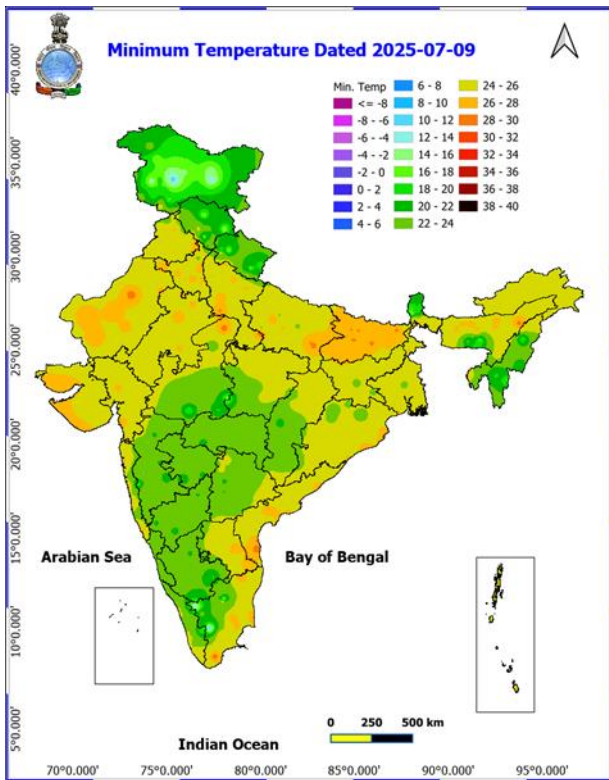


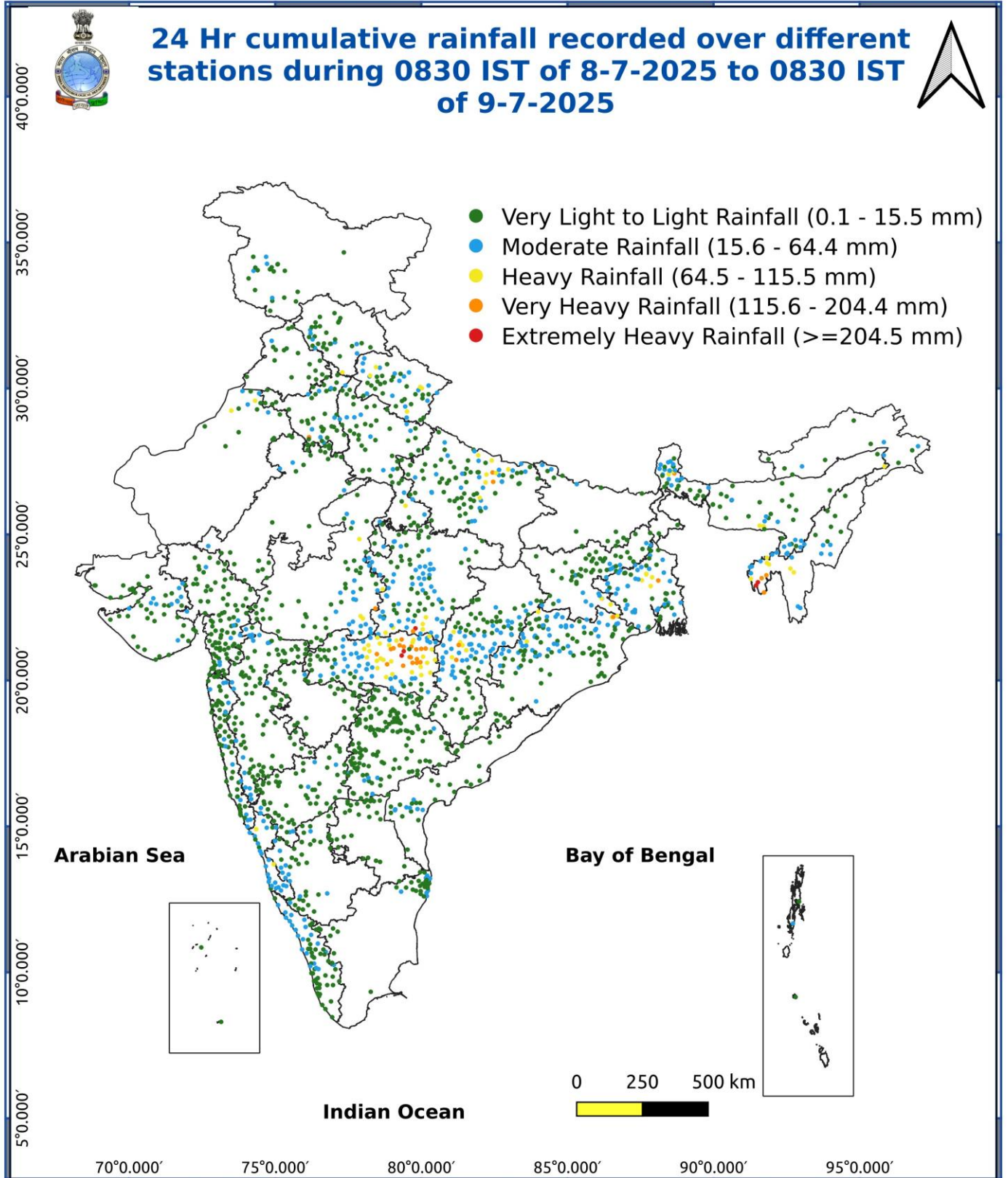
Fig. 3: Minimum Temperatures Dated 2025-07-09

Fig. 4: Departure of Minimum Temp. Dated 2025-07-09



***Red color warning does not mean "Red Alert" Red color warning means "Take Action"**
Forecast and warning for any day is valid from 0830 hours IST of day till 0830 hours IST of next day
For more details kindly visit <https://mausam.imd.gov.in> or contact 011-2434-4599

(Service to the nation since 1875)



Impact & Action Suggested

- ♦ **Very heavy rainfall** over Madhya Pradesh during 10th-12th; Vidarbha on 10th; Jammu-Kashmir-Ladakh-Gilgit-Baltistan-Muzaffarabad, Punjab, Jharkhand and Chhattisgarh on 10th July and East Rajasthan during 11th-13th July.

Impact Expected

- ♦ Localized Flooding of roads, water logging in low lying areas and closure of underpasses mainly in urban areas
- ♦ of the above region.
- ♦ Occasional reduction in visibility due to heavy rainfall.
- ♦ Disruption of traffic in major cities due to water logging in roads leading to increased travel time.
- ♦ Minor damage to kutcha roads.
- ♦ Possibilities of damage to vulnerable structure.
- ♦ Localized Landslides/Mudslides/landslips/mudslips/landsinks/mudsinks.
- ♦ Damage to horticulture and standing crops in some areas due to inundation.
It may lead to riverine flooding in some river catchments (for riverine flooding please visit Web page of CWC)

Action Suggested

- ♦
- ♦ Check for traffic congestion on your route before leaving for your destination.
- ♦ Follow any traffic advisories that are issued in this regard.
- ♦ Avoid going to areas that face the water logging problems often.
Avoid staying in vulnerable structure.

♦

Agromet advisories for various parts of the country

Inputs for Press Release

Agromet advisories for likely impact of Heavy / Heavy to Very Heavy / Extremely Heavy Rainfall

- ♦ In **Madhya Pradesh**, In **Gird Zone**, postpone sowing of soybean, pearl millet and drain out excess water from already sown fields. In **Satpura Plateau zone**, make arrangements for proper drainage in the fields of maize, soyabean and vegetables. Protect vegetable nursery with green net or any other medium. In **Ky more Plateau** and **Satpura Hill Zone**, drain out excess water from vegetables.
- ♦ In **Chhattisgarh**, ensure proper drainage in rice nurseries, fields of rice, maize, pigeon pea, minor millets and vegetables. Postpone line sowing / transplanting of rice and sowing of pigeon pea, maize and soybean in **Plain Zone**.
- ♦ In **Konkan**, make arrangement to drain out excess water from rice and finger millet nurseries, groundnut, vegetables and orchards. In **ghat areas** of **Madhya Maharashtra** drain out excess water from rice and finger millet nurseries. In **Vidarbha**, make arrangements to drain out excess water from already sown kharif crops, vegetable nurseries and orchards. Provide mechanical support to newly planted orchards and staking in vegetables, keep the farm animals indoor during thunderstorm and lightning periods.
- ♦ In **Gujarat region**, drain out excess water from rice nurseries, sugarcane fields, banana and mango plantations to prevent waterlogging. Provide support to sugarcane with strong bamboo or tie the leaves together to prevent lodging.
- ♦ In **Uttarakhand**, ensure proper drainage facilities in soybean, maize, barnyard millet, finger millet, pigeon pea, kidney beans, vegetables and orchards. Harvest matured vegetables and fruits and store in safe place.
- ♦ In **Odisha**, ensure proper drainage from already sown rice nurseries, fields of maize and vegetables to prevent waterlogging. Harvest matured vegetables and fruits and keep in safer places. In **West Central Table Land**

*Red color warning does not mean "Red Alert" Red color warning means "Take Action"

Forecast and warning for any day is valid from 0830 hours IST of day till 0830 hours IST of next day

For more details kindly visit <https://mausam.imd.gov.in> or contact 011-2434-4599

(Service to the nation since 1875)



Zone, postpone sowing of pigeon pea and groundnut. In case of poor germination / no germination in maize crop due to waterlogged condition, carry out re-sowing during favourable weather.

- ♦ In **West Bengal**, drain out stagnant water from the fields of *kharif* rice, green gram, brinjal and jute. In **Gangetic West Bengal**, maintain proper water level in seed bed of *Aman* rice; arrange proper drainage in betelvine and vegetables in **Coastal Saline Zone**. In **Hill Zone**, withhold sowing of soybean if sowing is not yet done. Maintain proper drainage channels in the fields of finger millet, already sown sobean and ginger fields. To avert the impact of rainfall on seeds, apply mulches.
- ♦ In **Jharkhand**, make necessary arrangements to drain out excess water from maize fields, rice and vegetable nurseries. Cover the vegetable nurseries with polythene sheets.
- ♦ In **Tripura** - Maintain good drainage in the fields of *Aus* rice and maize. Continue transplanting of *Aus* rice seedlings.

Livestock / Fishery

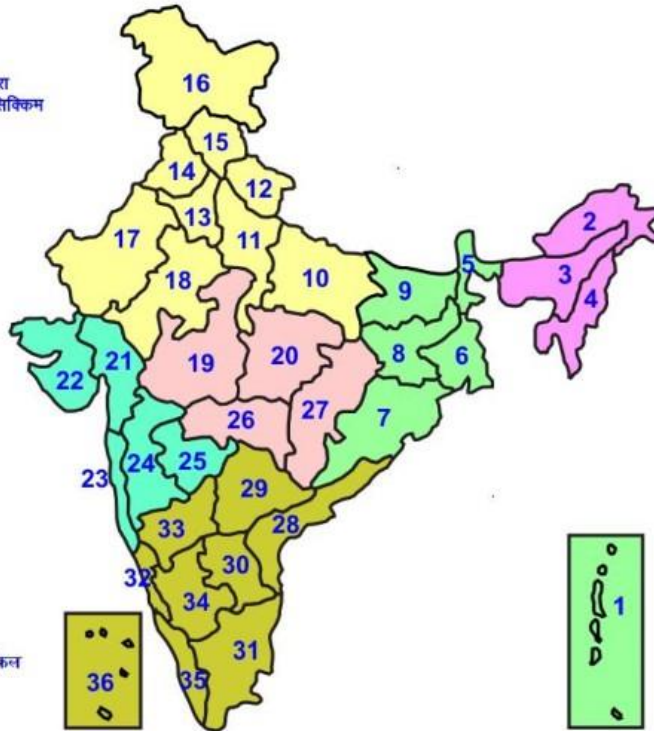
- ♦ Keep the animals inside the shed during heavy rainfall and provide them balanced feed.
- ♦ Store feed and fodder in a safe place to prevent spoilage.
- ♦ Construct an outlet with proper netting around the ponds to drain out excess water, thereby preventing fish from escaping in case of overflow.

Agromet advisories for likely impact of Thunderstorm / Gusty Winds / Squally Winds

- ♦ Provide mechanical support to horticultural crops and staking or support to vegetables and young fruit plants / fruit-bearing plants to avoid lodging due to strong winds.

LEGENDS

- 1 अंडमान और निकोबार द्वीप समुह
- 2 अरुणाचल प्रदेश
- 3 असम और मेघालय
- 4 नागालैंड मनीपुर मीजोरम और त्रिपुरा
- 5 उप हिमालय पश्चिम बंगाल एवं सिक्किम
- 6 पश्चिम बंगाल
- 7 ओडिसा
- 8 झारखंड
- 9 बिहार
- 10 पूर्वी उत्तर प्रदेश
- 11 पश्चिम उत्तर प्रदेश
- 12 उत्तराखंड
- 13 हरियाणा चंडिगढ़ एवं दिल्ली
- 14 पंजाब
- 15 हिमाचल प्रदेश
- 16 जम्मू एवं कश्मीर एवं लद्दाख
- 17 पश्चिम राजस्थान
- 18 पूर्वी राजस्थान
- 19 पश्चिम मध्य प्रदेश
- 20 पूर्वी मध्य प्रदेश
- 21 गुजरात क्षेत्र
- 22 सौराष्ट्र एवं कच्छ
- 23 कोंकण एवं गोवा
- 24 मध्य महाराष्ट्र
- 25 मराठावाड़ा
- 26 विदर्भ
- 27 छत्तीसगढ़
- 28 तटीय आंध्र प्रदेश एवं यनम
- 29 तेलंगाना
- 30 रायलसीमा
- 31 तमिलनाडु, पुदुचेरी एवं कराईकल
- 32 तटिय कर्नाटक
- 33 आंतरिक उत्तरी कर्नाटक
- 34 आंतरिक दक्षिणी कर्नाटक
- 35 केरल एवं माहे
- 36 लक्षद्वीप



1. Andaman & Nicobar Islands
2. Arunachal Pradesh
3. Assam & Meghalaya
4. Nagaland, Manipur, Mizoram & Tripura
5. Sub-Himalayan West Bengal & Sikkim
6. Gangetic West Bengal
7. Orissa
8. Jharkhand
9. Bihar
10. East Uttar Pradesh
11. West Uttar Pradesh
12. Uttarakhand
13. Haryana, Chd & Delhi
14. Punjab
15. Himachal Pradesh
16. Jammu & Kashmir and Ladakh
17. West Rajasthan
18. East Rajasthan
19. West Madhya Pradesh
20. East Madhya Pradesh
21. Gujarat
22. Saurashtra
23. Konkan & Goa
24. Madhya Maharashtra
25. Marathwada
26. Vidharbha
27. Chhattisgarh
28. Coastal Andhra Pradesh & Yanam
29. Telangana
30. Rayalaseema
31. Tamilnadu, Puducherry & Karaikal
32. Coastal Karnataka
33. North Interior Karnataka
34. South Interior Karnataka
35. Kerala & Mahe
36. Lakshadweep

SPATIAL DISTRIBUTION (% of Stations reporting)

% Stations	Category	% Stations	Category
76-100	Widespread (WS/ Most Places)	26-50	Scattered (SCT/ A Few Places)
51-75	Fairly Widespread (FWS/ Many Places)	1-25	Isolated (ISOL)

Subdivision Colour

- NO WARNING
- WATCH (BE UPDATED)
- ALERT (BE PREPARED TO TAKE ACTION)
- WARNING (TAKE ACTION)

Probabilistic Forecast

Terms	Probability of Occurrence (%)
Unlikely	< 25
Likely	25 - 50
Very Likely	50 - 75
Most Likely	> 75

- | | | | |
|--------------------------|-----------------|----------------------|--------------------|
| Heavy Rain | Very Heavy Rain | Extremely Heavy Rain | Heavy Snow |
| Thunderstorm & Lightning | Hailstorm | Dust Storm | Dust Raising Winds |
| Strong surface winds | Heat Wave | Hot Day | Warm Night |
| Cold Wave | Cold Day | Ground Frost | Fog |
| Hot & Humid | | | |

*Red color warning does not mean "Red Alert" Red color warning means "Take Action"

Forecast and warning for any day is valid from 0830 hours IST of day till 0830 hours IST of next day

For more details kindly visit <https://mausam.imd.gov.in> or contact 011-2434-4599

(Service to the nation since 1875)

LEGENDS

WARNING

WARNING (TAKE ACTION)
ALERT (BE PREPARED)
WATCH (BE UPDATED)
NO WARNING (NO ACTION)

Probabilistic Forecast

Terms	Probability of Occurrence (%)
Unlikely	< 25
Likely	25 - 50
Very Likely	50 - 75
Most Likely	> 75



Heavy: 64.5 to 115.5 mm/cm *
Very Heavy: 115.6 to 204.4 mm/cm *
Extremely Heavy: > 204.4 mm/cm *



When maximum temperature of a station reaches $\geq 40^{\circ}\text{C}$ for plains and $\geq 30^{\circ}\text{C}$ for hilly regions
(a) Based on Departure from normal

Heat Wave: Maximum Temperature Departure from normal 4.5°C to 6.4°C .
Severe Heat Wave: Maximum Temperature Departure from normal $\geq 6.5^{\circ}\text{C}$

(b). Based on Actual maximum temperature

Heat Wave: When actual maximum temperature $\geq 45^{\circ}\text{C}$.
Severe Heat Wave: When actual maximum temperature $\geq 47^{\circ}\text{C}$

(c). Criteria for heat wave for coastal stations

When maximum temperature departure is $> 4.5^{\circ}\text{C}$ from normal. Heat Wave may be described provided maximum temperature $\geq 37^{\circ}\text{C}$



When maximum temperature remains 40°C

Warm Night: When minimum temperature departure 4.5°C to 6.4°C .
Severe Warm Night: When minimum temperature departure $> 6.4^{\circ}\text{C}$.



When minimum temperature of a station $\leq 10^{\circ}\text{C}$ for plains and $\leq 0^{\circ}\text{C}$ for hilly regions.

(a). Based on departure

Cold Wave: Minimum Temperature Departure from normal -4.5°C to -6.4°C .
Severe Cold Wave: Minimum Temperature Departure from normal $\leq -6.5^{\circ}\text{C}$

(b) Based on actual Minimum Temperature (for Plains only)

Cold Wave : When Minimum Temperature is $\leq 4.0^{\circ}\text{C}$
Severe Cold Wave: When Minimum Temperature is $\leq 2.0^{\circ}\text{C}$

(c) For Coastal Stations

When Minimum Temperature departure is $\leq -4.5^{\circ}\text{C}$ & actual Minimum Temperature is $\leq 15^{\circ}\text{C}$



When minimum temperature of a station $\leq 10^{\circ}\text{C}$ for plains and $\leq 0^{\circ}\text{C}$ for hilly regions
Based on departure

Cold Day: Maximum Temperature Departure from normal -4.5°C to -6.4°C .
Severe Cold Day: Maximum Temperature Departure from normal $\leq -6.5^{\circ}\text{C}$



Phenomenon of small droplets suspended in air and the horizontal visibility $< 1\text{km}$

Moderate Fog: When the visibility between 500-200 metres
Dense Fog: when the visibility between 50- 200 metres
Very Dense Fog: when the visibility < 50 metres



Sudden electrical discharges manifested by a flash of light (Lightning) and a sharp rumbling sound (thunder)



An ensemble of particles of dust or sand energetically lifted to great heights by a strong and turbulent wind.



Ice deposits on ground

Air temperature $\leq 4^{\circ}\text{C}$ (over Plains)



A strong wind that rises suddenly, lasts for atleast 1 minute.

Moderate: Wind speed 52-61 kmph
Severe: Wind speed 62-87 kmph
Very Severe: Wind speed > 87 kmph



Effect of various waves in the sea over specific area

Rough to very rough: Wind speed 41-62 kmph (22-33 knots) & Wave height 2.5-6 metre
High to very high: Wind speed 63-117 kmph (34-63 knots) & Wave height 6-14 metre
Phenomenal: Wind speed > 117 kmph (> 63 knots) & Wave height > 14 metre



Cyclonic Storm: Wind speed 62-87 kmph (34-47 knots)
Severe Cyclonic Storm: Wind speed 88-117 kmph (48-63 knots)
Very Severe Cyclonic Storm: Wind speed 118-165 kmph (64 - 89 knots)
Extremely Severe Cyclonic Storm: Wind speed 166-220 kmph (90 -119 knots)
Super Cyclone Storm: Wind speed > 220 kmph (> 119 knots)

*Red color warning does not mean "Red Alert" Red color warning means "Take Action"

Forecast and warning for any day is valid from 0830 hours IST of day till 0830 hours IST of next day

For more details kindly visit <https://mausam.imd.gov.in> or contact 011-2434-4599

(Service to the nation since 1875)