

ALL INDIA WEATHER SUMMARY AND FORECAST BULLETIN

Significant Weather Features

Weather warning:

South Peninsular India:

- Light to moderate rainfall/thunderstorm at most/many places with isolated **heavy rainfall over** Coastal Karnataka, north interior Karnataka, Tamilnadu, Kerala & Mahe on 28th October with isolated **very heavy rainfall** over Tamil Nadu, Rayalaseema on 28th, Telangana on 28th & 29th; Coastal Andhra Pradesh & Yanam on 30th October.
- **Extremely heavy rainfall (≥ 21 cm)** likely at isolated places over Coastal Andhra Pradesh & Yanam on 28th & 29th October.
- Thunderstorm with lightning & gusty winds (speed reaching 30-40 kmph) likely over Tamil Nadu, Kerala & Mahe, Lakshadweep, Interior Karnataka and Rayalaseema on 28th October; Coastal Andhra Pradesh & Yanam and Rayalaseema during next 5 days.

East & Central India:

- Light to moderate rain/thunderstorm at some/isolated places with isolated **heavy rainfall** over West Madhya Pradesh on 30th; East Madhya Pradesh on 29th & 30th; Vidarbha during 28th -30th; Chhattisgarh and Odisha during 28th- 30th; Sub-Himalayan West Bengal & Sikkim on 30th -31st, Gangetic West Bengal and Jharkhand during 28th-31st; Bihar during 29th -31st October with isolated **very heavy rainfall** over Vidarbha and Chhattisgarh on 29th; Sub-Himalayan West Bengal & Sikkim on 31st; Bihar on 30th & 31st; Jharkhand on 30th October.
- **Extremely heavy rainfall (≥ 21 cm)** likely at isolated places over south Odisha on 28th & 29th; Chhattisgarh on 28th October.
- Thunderstorm with lightning and gusty winds (speed reaching 30-40 kmph) likely during next 5 days over the region.
- **Thundersquall wind speed reaching 60-70 kmph likely over Chhattisgarh on 28th; with wind speed reaching 50-60 kmph on 29th October.**

West India:

- Light to moderate rain/thunderstorm at many/some places with isolated **heavy rainfall** over south Konkan & Goa on 28th & 29th; Madhya Maharashtra on 28th & 29th; Gujarat State during 28th-31st October with isolated **very heavy rainfall** over Gujarat Region on 31st; Saurashtra & Kutch during 29th -31st October.
- Thunderstorm with lightning and gusty winds (speed reaching 30-40 kmph) likely over Gujarat State during next 5 days.
- Thunderstorm with lightning over Maharashtra during next 4 days.

Northeast India:

- Light to moderate rain/thunderstorm at many/some places with isolated **heavy rainfall** over Arunachal Pradesh, Assam & Meghalaya during 30th October – 02nd November; Nagaland,

***Red color warning does not mean "Red Alert" Red color warning means "Take Action"**

Forecast and warning for any day is valid from 0830 hours IST of day till 0830 hours IST of next day

For more details kindly visit <https://mausam.imd.gov.in> or contact 011-2434-4599

(Service to the nation since 1875)

Manipur, Mizoram & Tripura during 31st October – 02nd November with isolated **very heavy rainfall** over Assam & Meghalaya on 31st October & 01st November.

- Thunderstorm with lightning and gusty winds (speed reaching 30-40 kmph) over Northeast India during 29th -31st October.

Northwest India:

- Light to moderate rain/thunderstorm at isolated places with isolated **heavy rainfall** likely over East Rajasthan on 28th ; East Uttar Pradesh on 30th October.
- Thunderstorm with lightning and gusty winds (speed reaching 30-40 kmph) likely over West Uttar Pradesh on 30th; with thunderstorm with lightning East Uttar Pradesh on 29th & 31st; Rajasthan during next 3 days.

Main Weather Observations:

❖ **Rainfall distribution** (from 0830 hours IST of yesterday to 0530 hours IST of today): **at most places** over Coastal Andhra Pradesh & Yanam, Saurashtra & Kutch, Gujarat Region, East Rajasthan, Konkan & Goa, Andaman & Nicobar Islands, Rayalaseema, Kerala & Mahe, Coastal Karnataka, North Interior Karnataka, Marathwada, Madhya Maharashtra and Lakshadweep; **at many places** over West Rajasthan, East Uttar Pradesh, West Madhya Pradesh, Jharkhand, Nagaland, Manipur, Mizoram & Tripura, East Madhya Pradesh, Telangana, Odisha, Tamilnadu Puducherry & Karaikal, West Uttar Pradesh, Chhattisgarh and South Interior Karnataka; **Dry** over rest of the country.

❖ **Significant rainfall recorded(in cm)** (from 0830 hours IST of yesterday to 0530 hours IST of today):* **Coastal Andhra Pradesh:*** Ananadapuram_ARG (dist Visakhapatnam) 21, Visakhapatnam (dist Visakhapatnam) 14, Kalingapatnam (dist Srikakulam), Vishakhapatnam (dist Visakhapatnam) 10 Each, Tuni (dist Kakinada), Narsapur (dist Medak), Nellore (dist Sri Potti Sriramulu Nellore) 4 Each, Kakinada (dist Kakinada) 3; ***Tamilnadu:*** Ennore_Port (dist Chennai) 11, Chennai (Nungambakkam) (dist Chennai) 5, Chennai (Minambakkam) AP (dist Chennai) 3; ***Saurashtra & Kutch:*** Veraval (dist Gir Somnath) 11; ***Gujarat Region:*** Baroda AP (dist Vadodara) 11, Surat (dist Surat) 3; ***East Rajasthan:*** Kota AP (dist Kota), Udaipur (dabok) AP (dist Udaipur) 7 Each; ***West Uttar Pradesh:*** Jhansi (dist Jhansi) 5; ***Konkan:*** Ratnagiri (dist Ratnagiri) 3; ***Andaman & Nicobar Islands:*** Car Nicobar (vecx) (dist Nicobar) 3; ***Odisha:*** Gopalpur (dist Ganjam) 3.

❖ **Heavy Rainfall observed** (from 0830 hours IST of yesterday to 0530 hours IST of today):**Extremely heavy rain** at isolated places over Coastal Andhra Pradesh; **Heavy rain** at a few places over East Rajasthan, at isolated places over Tamilnadu, Gujarat Region and Saurashtra & Kutch.

❖ **Minimum Temperature Departures (as on 27-10-2025): markedly above normal(> 5.1°C)** at few places over Arunachal Pradesh, Bihar and Madhya Maharashtra; at isolated places over Assam & Meghalaya, East Uttar Pradesh and Gujarat Region. **appreciably above normal(3.1°C to 5.0°C)** at many places over Sub Himalayan West Bengal & Sikkim and Jharkhand; at most places over Marathwada; at few places over Nagaland, Manipur, Mizoram & Tripura, West Uttar Pradesh, East Rajasthan, Saurashtra & Kutch and Vidarbha; at isolated places over Gangetic West Bengal, West Rajasthan, Chhattisgarh, Telangana and Tamil Nadu, Puducherry & Karaikal. **above normal(1.6°C to 3.0°C)** at many places over Coastal Andhra Pradesh & Yanam and Rayalaseema; at few places over Haryana-Chandigarh-Delhi, North Interior Karnataka, South Interior Karnataka and Lakshadweep; at isolated places over Odisha, Punjab, Himachal Pradesh, Jammu-KashmirLadakh-Gilgit-Baltistan-Muzaffarabad, West Madhya Pradesh and East Madhya Pradesh. **near normal(-1.5°C to 1.5°C)** at many places over Kerala & Mahe; at most places over Andaman & Nicobar Islands, Uttarakhand, Konkan & Goa and Coastal Karnataka. **The lowest minimum temperature** of 10.8°C was reported at UNA (HIMACHAL PRADESH) over the Plains of India.

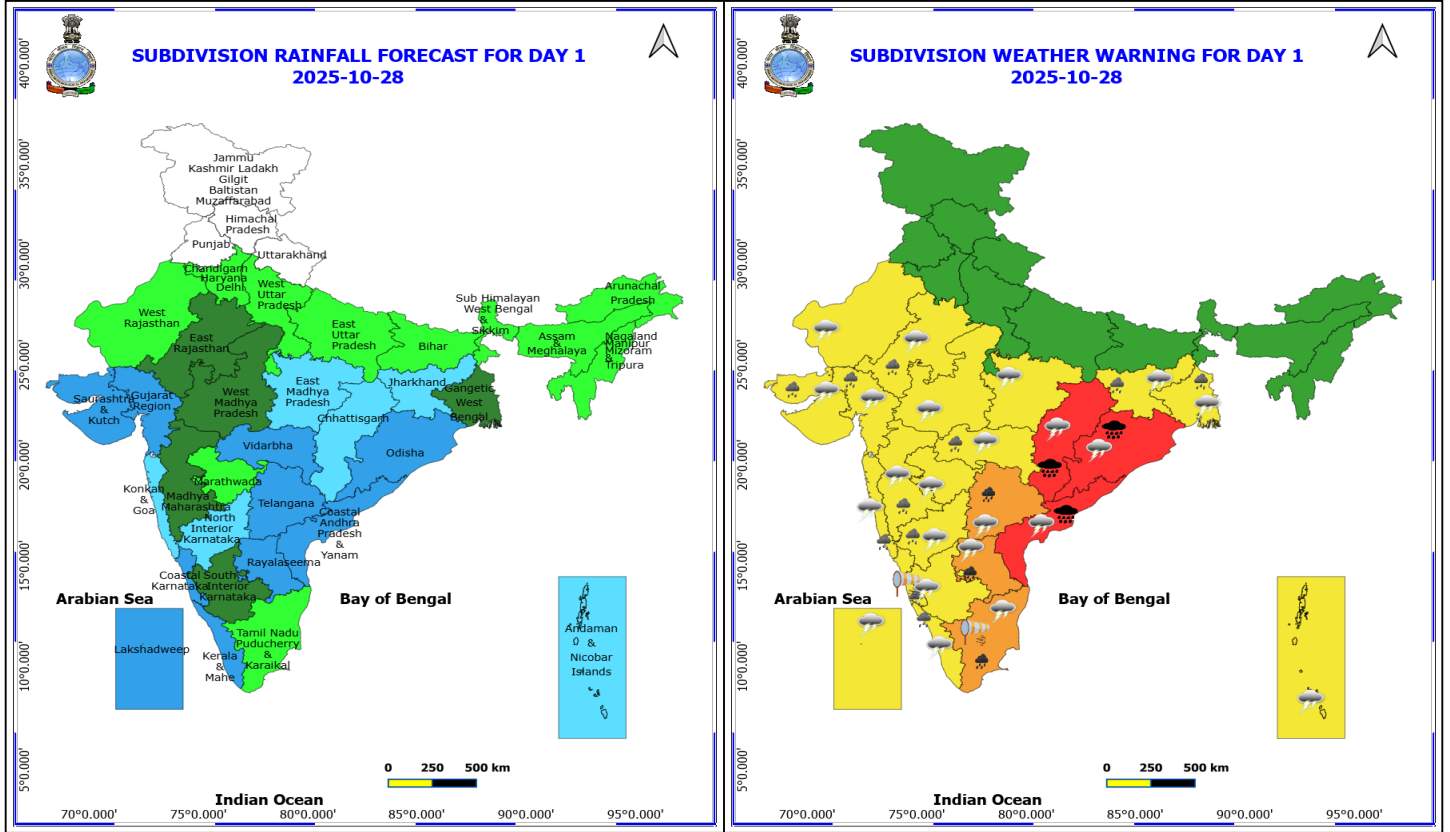
❖ **Maximum Temperature Departures (as on 27-10-2025): markedly above normal(> 5.1°C)** at isolated places over Assam & Meghalaya and Odisha. **appreciably above normal(3.1°C to 5.0°C)** at few places over Jammu-KashmirLadakh-Gilgit-Baltistan-Muzaffarabad; at isolated places over Nagaland, Manipur, Mizoram & Tripura, Gangetic West Bengal, Himachal Pradesh and Chhattisgarh. **above normal(1.6°C to 3.0°C)** at few places over Sub Himalayan West Bengal & Sikkim and Bihar; at isolated places over Jharkhand, Uttarakhand, Haryana-Chandigarh-Delhi, Punjab and Telangana. **near normal(-1.5°C to 1.5°C)** at many places over North Interior Karnataka and Lakshadweep; at most places over Vidarbha; at few places over Andaman & Nicobar Islands, Arunachal Pradesh, West Uttar Pradesh, West Rajasthan, Madhya Maharashtra, Marathwada and Rayalaseema; at isolated places over East Uttar Pradesh, West Madhya Pradesh, East Madhya Pradesh, Saurashtra & Kutch, Konkan & Goa, Tamil Nadu, Puducherry & Karaikal, South Interior Karnataka and Kerala & Mahe. **The highest maximum temperature** of 35.4°C was reported at ERODE-OBS (TAMIL NADU).

Meteorological Analysis (Based on 0530 hours IST)

- The **Cyclonic Storm “Montha” [Pronunciation: Mon-Tha]** over westcentral Bay of Bengal moved north-northwestwards with a speed of 15 kmph during past 6 hours, intensified into a severe cyclonic storm and lay centered at 0530 hrs IST of today, the 28th October 2025, over the same region, near latitude 14.7°N & longitude 83.1°E, about 190 km south-southeast of Machilipatnam (Andhra Pradesh), 270 km south-southeast of Kakinada (Andhra Pradesh), 340 km south-southwest of Visakhapatnam (Andhra Pradesh), 550 km south-southwest of Gopalpur (Odisha). It is likely to continue to move north-northwestwards and cross Andhra Pradesh coast between Machilipatnam and Kalingapatnam around Kakinada during evening/night of today, the 28th October as a severe cyclonic storm with a maximum sustained wind speed of 90-100 kmph gusting to 110 kmph.
- The **Depression** over eastcentral Arabian Sea moved northeastwards with a speed of 12 kmph during the last 06 hours and lay centered at 0530 hrs IST of today, the 28th October 2025, over the same region, near latitude 17.0°N & longitude 67.8°E, about 510 km south-southwest of Veraval (Gujarat), 580 km west-southwest of Mumbai (Maharashtra), 660 km west-northwest of Panjim (Goa), 840 km northwest of Aminidivi (Lakshadweep) and about 890 km west-northwest of Mangalore (Karnataka). It is likely to move nearly north-northeastwards across Eastcentral Arabian Sea during next 36 hours.
- The **upper air cyclonic circulation** over north Haryana & neighbourhood between 1.5 & 3.1 km above mean sea level persists.
- The **trough** from the upper air cyclonic circulation associated with **Depression** over eastcentral Arabian sea to west Madhya Pradesh across northeast Arabian sea and south Gujarat region between 1.5 & 3.1 km above mean sea level persists.
- The **Western Disturbance** as a trough in middle tropospheric westerlies with its axis at 5.8 km above mean sea level now runs roughly along Long. 72°E to the north of Lat. 30°N.

Weather Outlook for subsequent 3 days

- Scattered to Fairly widespread rainfall activity likely over the southern part of India.
- Isolated to scattered rainfall activity likely over Northeast and East India.



28 October (Day 1)

- ❖ **Heavy to Very Heavy Rainfall with isolated Extremely Heavy Rainfall** very likely at isolated places over Chhattisgarh, Coastal Andhra Pradesh and Odisha.
- ❖ **Heavy to Very Heavy Rainfall** very likely at isolated places over Rayalaseema, Tamil Nadu Puducherry & Karaikal and Telangana.
- ❖ **Heavy Rainfall** very likely at isolated places over Coastal Karnataka, East Rajasthan, Gangetic West Bengal, Gujarat State, Jharkhand, Kerala & Mahe, Konkan & Goa, Madhya Maharashtra, North Interior Karnataka and Vidarbha.
- ❖ **Thundersquall with wind speed reaching(50-60kmph)** very likely at isolated places over Chhattisgarh.
- ❖ **Thunderstorm accompanied with lightning & gusty winds(40-50kmph)** very likely at isolated places over Andaman & Nicobar Islands, Kerala & Mahe and Lakshadweep.
- ❖ **Thunderstorm accompanied with lightning & gusty winds(30-40kmph)** very likely at isolated places over Gangetic West Bengal, Gujarat State, Jharkhand, Odisha, Telangana, Vidarbha and West Madhya Pradesh.
- ❖ **Thunderstorm accompanied with Lightning** very likely at isolated places over Andhra Pradesh, East Madhya Pradesh, Gangetic West Bengal, Gujarat State, Interior Karnataka, Jharkhand, Konkan & Goa, Madhya Maharashtra, Marathwada, Odisha, Rajasthan, Tamil Nadu Puducherry & Karaikal and Telangana.
- ❖ **Strong Surface Winds** very likely at isolated places over Coastal Karnataka and Tamil Nadu Puducherry & Karaikal.
- **Squally weather with wind speed 35 kmph to 45 kmph gusting to 55 kmph speed likely to**

***Red color warning does not mean "Red Alert" Red color warning means "Take Action"**

Forecast and warning for any day is valid from 0830 hours IST of day till 0830 hours IST of next day

For more details kindly visit <https://mausam.imd.gov.in> or contact 011-2434-4599

(Service to the nation since 1875)

prevail along & off Gujarat, Konkan and Goa, Karnataka, Kerala Coasts and adjoining sea areas, over Lakshadweep, Maldives, Comorin areas, over Southeast, eastcentral Arabian Sea & adjoining areas.

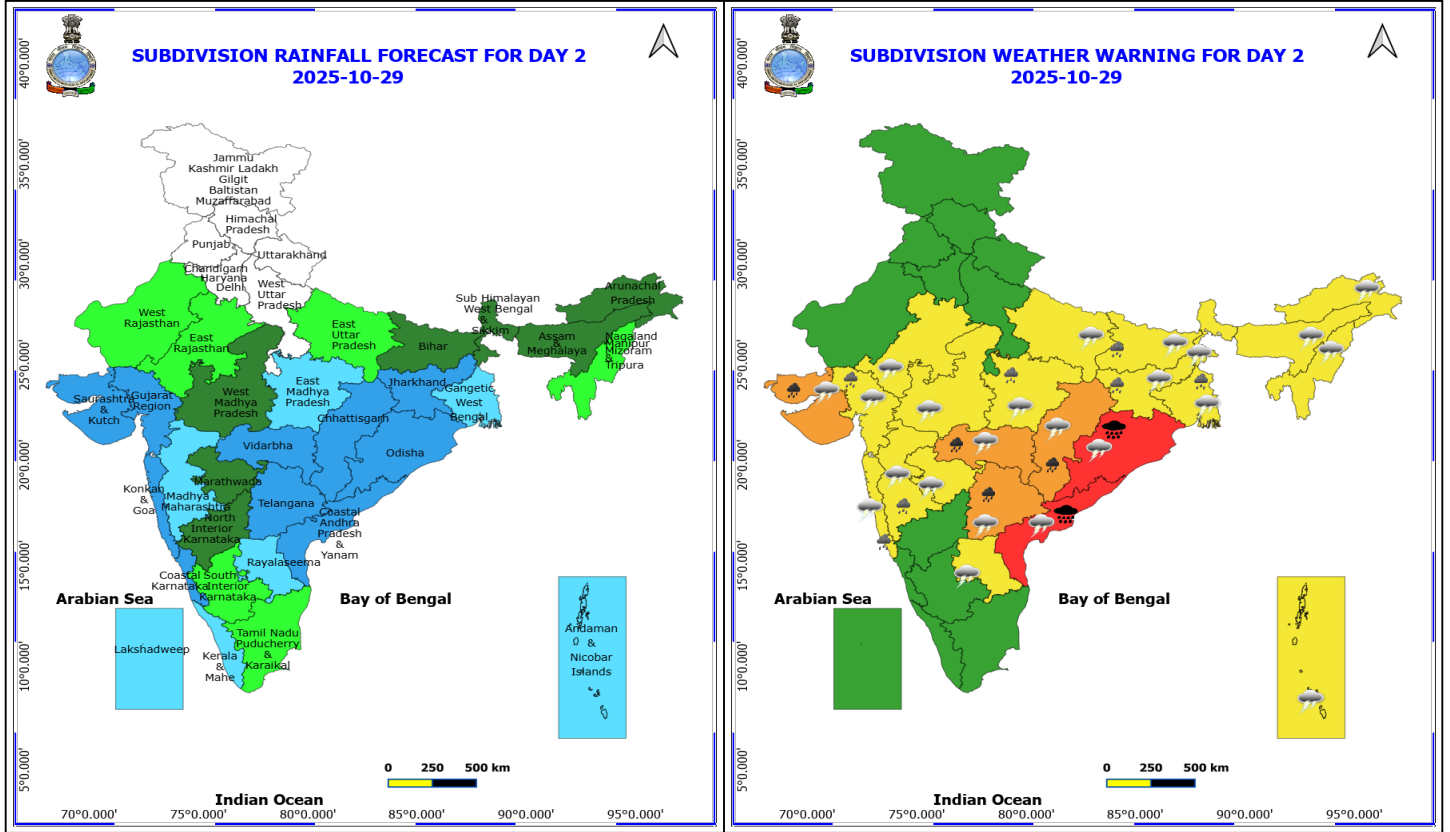
- **Squally weather with wind speed 35 kmph to 45 kmph gusting to 55 kmph speed likely to prevail** along & off Puducherry, Tamil Nadu, Andhra Pradesh, south Odisha coasts and adjoining sea areas, over south, central Bay of Bengal, most parts of north Bay of Bengal, over Gulf of Mannar, Andaman Sea.
- **Squally weather with wind speed 45 kmph to 55 kmph gusting to 65 kmph** likely to prevail over some parts of eastcentral Arabian Sea and adjoining westcentral Arabian Sea, along and off Puducherry, north Tamil Nadu, Andhra Pradesh, Odisha coasts, over westcentral Bay of Bengal and adjoining areas.
- **Squally weather with wind speed 55 kmph to 65 kmph gusting to 75 kmph** likely to prevail along and off Andhra Pradesh and south Odisha coasts and adjoining sea areas, westcentral Bay of Bengal and over adjoining areas.
- **CS with Gale wind speed reaching 60-80 kmph gusting to 90 kmph is likely to prevail** over westcentral Bay of Bengal, along and off north Andhra Pradesh coast.
- **SCS with Gale wind speed reaching 90-110 kmph gusting to 120 kmph is likely to prevail** over along and off north Andhra Pradesh coast around Kakinada and over some parts of westcentral Bay of Bengal.

***Red color warning does not mean "Red Alert" Red color warning means "Take Action"**

Forecast and warning for any day is valid from 0830 hours IST of day till 0830 hours IST of next day

For more details kindly visit <https://mausam.imd.gov.in> or contact 011-2434-4599

(Service to the nation since 1875)



29 October (Day 2)

- ❖ **Heavy to Very Heavy Rainfall with isolated Extremely Heavy Rainfall** very likely at isolated places over Coastal Andhra Pradesh and Odisha.
- ❖ **Heavy to Very Heavy Rainfall** very likely at isolated places over Chhattisgarh, Saurashtra & Kutch, Telangana and Vidarbha.
- ❖ **Heavy Rainfall** very likely at isolated places over Bihar, East Madhya Pradesh, Gangetic West Bengal, Gujarat Region, Jharkhand, Konkan & Goa and Madhya Maharashtra.
- ❖ **Thundersquall with wind speed reaching(50-60kmph)** very likely at isolated places over Chhattisgarh.
- ❖ **Thunderstorm accompanied with lightning & gusty winds(40-50kmph)** very likely at isolated places over East Madhya Pradesh.
- ❖ **Thunderstorm accompanied with lightning & gusty winds(30-40kmph)** very likely at isolated places over Andaman & Nicobar Islands, Bihar, Gujarat State, Jharkhand, Odisha, Telangana, Vidarbha and West Bengal & Sikkim.
- ❖ **Thunderstorm accompanied with Lightning** very likely at isolated places over Andhra Pradesh, Arunachal Pradesh, Assam & Meghalaya, Bihar, East Rajasthan, East Uttar Pradesh, Gangetic West Bengal, Gujarat State, Jharkhand, Konkan & Goa, Madhya Maharashtra, Madhya Pradesh, Marathwada, Nagaland, Manipur, Mizoram and Tripura, Odisha and Telangana.
- **usually weather with wind speed 35 kmph to 45 kmph gusting to 55 kmph speed likely to prevail along & off Gujarat, Konkan and Goa, Coasts and adjoining sea areas, over eastcentral and Arabian Sea & adjoining areas.**

***Red color warning does not mean "Red Alert" Red color warning means "Take Action"**

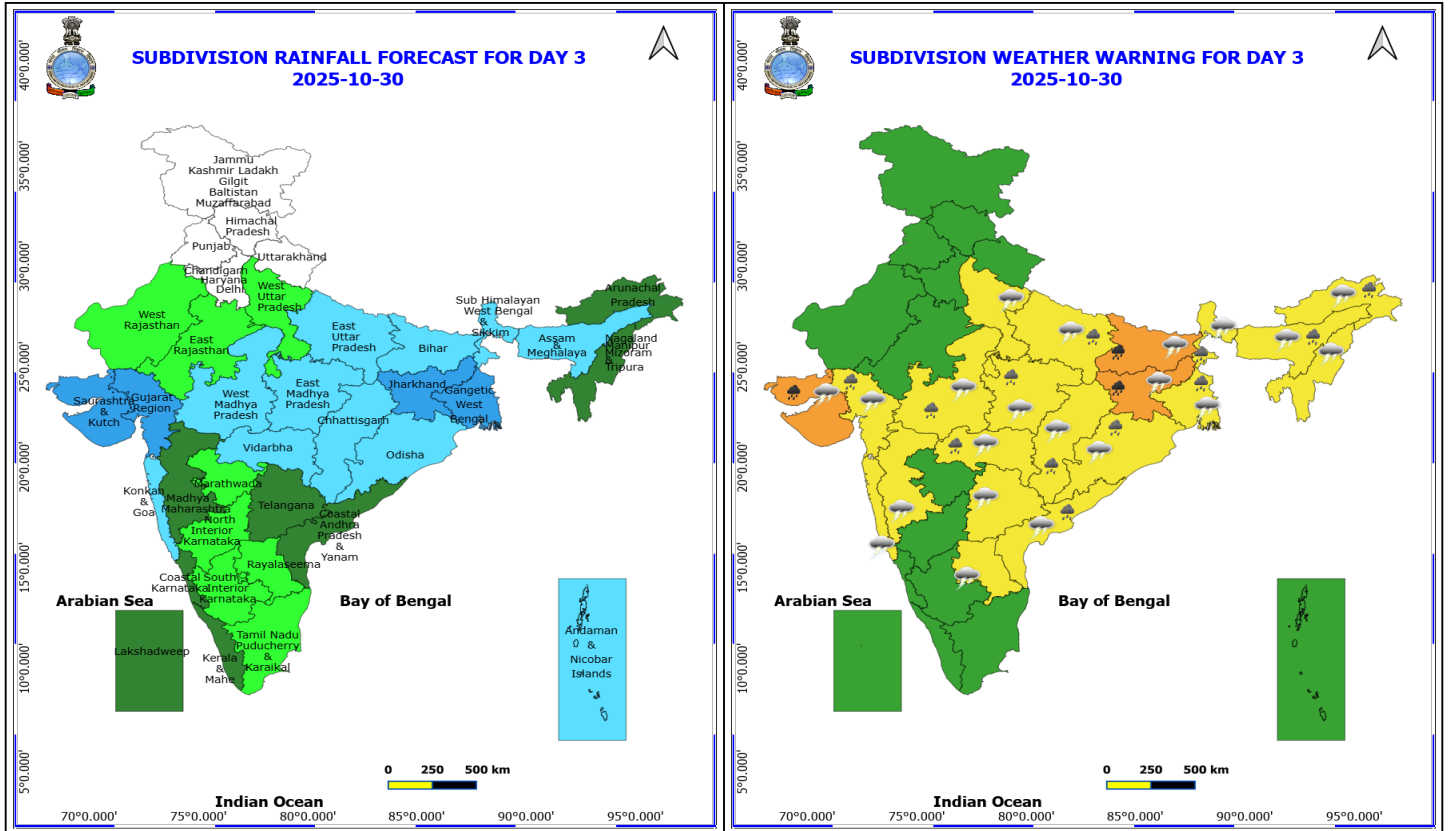
Forecast and warning for any day is valid from 0830 hours IST of day till 0830 hours IST of next day

For more details kindly visit <https://mausam.imd.gov.in> or contact 011-2434-4599

(Service to the nation since 1875)



- **Squally weather with wind speed 35 kmph to 45 kmph gusting to 55 kmph speed likely to prevail** along & off Puducherry, Tamil Nadu, Andhra Pradesh, south Odisha coasts and adjoining sea areas, over central Bay of Bengal and adjoining south Bay of Bengal, over northwest and adjoining northeast Bay of Bengal.
- **Squally weather with wind speed 45 kmph to 55 kmph gusting to 65 kmph** likely to prevail along and off Andhra Pradesh, south Odisha coasts, over westcentral Bay of Bengal and adjoining areas.
- **Squally weather with wind speed 55 kmph to 65 kmph gusting to 75 kmph** likely to prevail along and off north and adjoining south Andhra Pradesh, south Odisha coasts and adjoining sea areas.

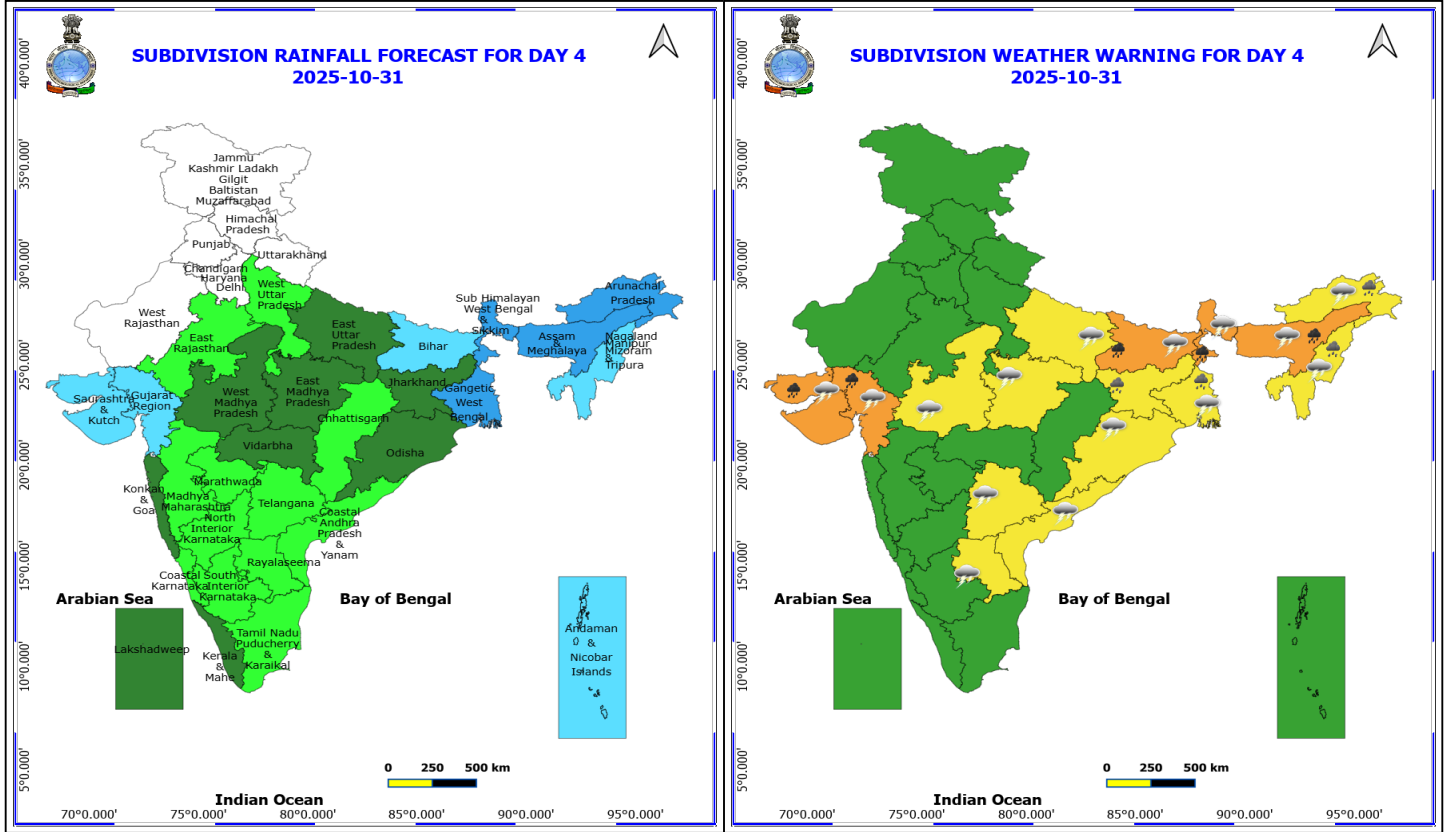


30 October (Day 3)

- ❖ **Heavy to Very Heavy Rainfall** very likely at isolated places over Bihar, Jharkhand and Saurashtra & Kutch.
- ❖ **Heavy Rainfall** very likely at isolated places over Arunachal Pradesh, Assam & Meghalaya, Chhattisgarh, Coastal Andhra Pradesh, East Uttar Pradesh, Gujarat Region, Madhya Pradesh, Odisha, Vidarbha and West Bengal & Sikkim.
- ❖ **Thunderstorm accompanied with lightning & gusty winds(40-50kmph)** very likely at isolated places over East Madhya Pradesh.
- ❖ **Thunderstorm accompanied with lightning & gusty winds(30-40kmph)** very likely at isolated places over Arunachal Pradesh, Assam & Meghalaya, Bihar, Gujarat State, Jharkhand, Odisha, Telangana, West Bengal & Sikkim and West Uttar Pradesh.
- ❖ **Thunderstorm accompanied with Lightning** very likely at isolated places over Andhra Pradesh, Bihar, Chhattisgarh, East Uttar Pradesh, Gangetic West Bengal, Gujarat State, Jharkhand, Konkan & Goa, Madhya Maharashtra, Madhya Pradesh, Nagaland, Manipur, Mizoram and Tripura, Odisha, Telangana and Vidarbha.
- **Squally weather with wind speed 35 kmph to 45 kmph gusting to 55 kmph speed likely to prevail along & off Gujarat, Konkan and Goa Coasts and adjoining sea areas, over eastcentral and Arabian Sea & adjoining areas.**
- **Squally weather with wind speed 35 kmph to 45 kmph gusting to 55 kmph speed likely to prevail along & off Andhra Pradesh adjoining south Odisha coasts and adjoining sea areas, over most parts of westcentral Bay of Bengal.**

***Red color warning does not mean "Red Alert" Red color warning means "Take Action"**
Forecast and warning for any day is valid from 0830 hours IST of day till 0830 hours IST of next day
For more details kindly visit <https://mausam.imd.gov.in> or contact 011-2434-4599

(Service to the nation since 1875)



31 October (Day 4)

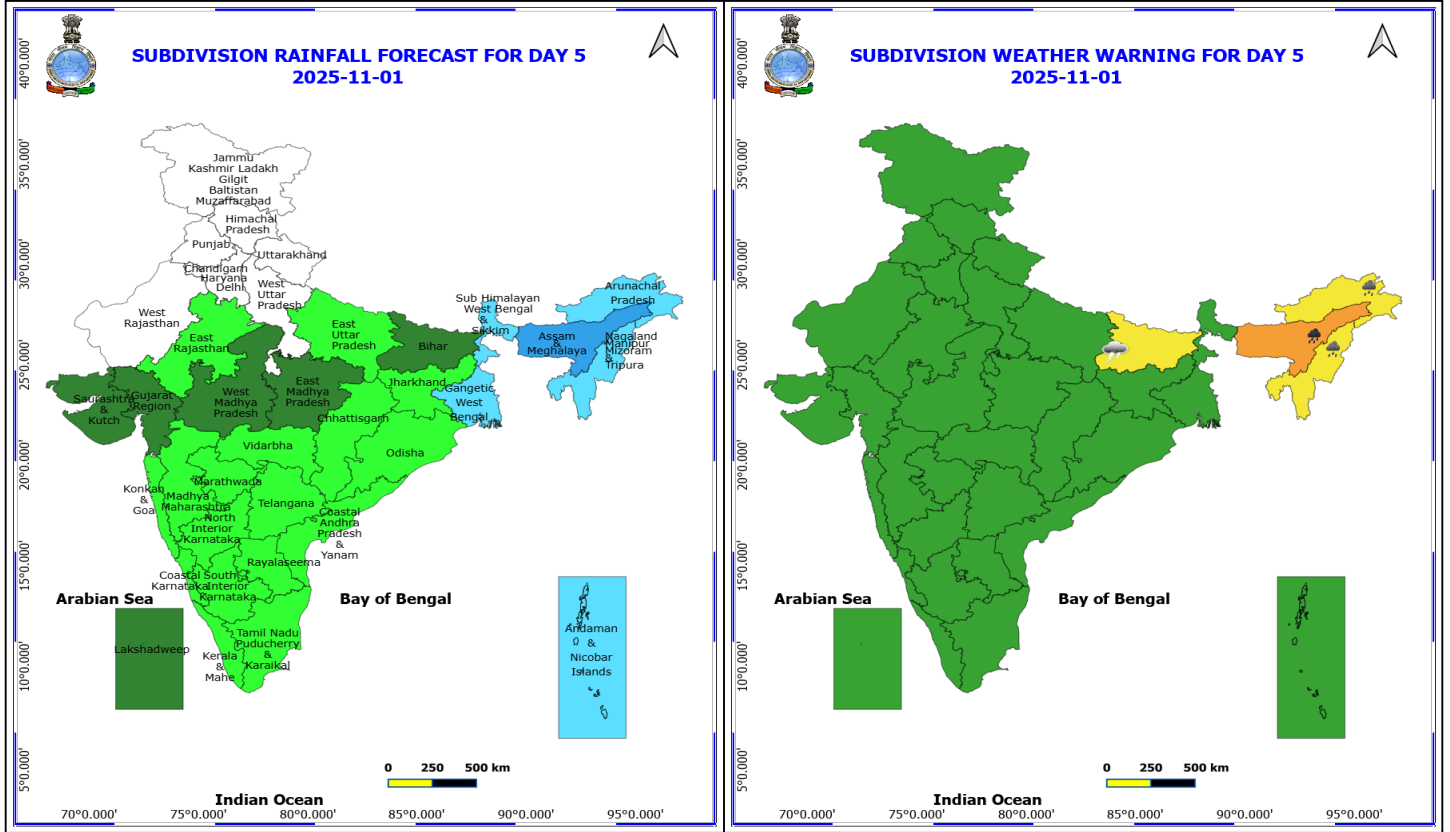
- ❖ **Heavy to Very Heavy Rainfall** likely at isolated places over Assam & Meghalaya, Bihar, Gujarat State and Sub Himalayan West Bengal & Sikkim.
- ❖ **Heavy Rainfall** likely at isolated places over Arunachal Pradesh, Gangetic West Bengal, Jharkhand and Nagaland, Manipur, Mizoram and Tripura.
- ❖ **Thunderstorm accompanied with lightning & gusty winds(40-50kmph)** likely at isolated places over Arunachal Pradesh.
- ❖ **Thunderstorm accompanied with lightning & gusty winds(30-40kmph)** likely at isolated places over Assam & Meghalaya, Bihar, East Uttar Pradesh, Gujarat State, Odisha, Telangana and West Bengal & Sikkim.
- ❖ **Thunderstorm accompanied with Lightning** likely at isolated places over Andhra Pradesh, Bihar, Gangetic West Bengal, Gujarat State, Madhya Pradesh, Nagaland, Manipur, Mizoram and Tripura, Odisha and Telangana.
- **Squally weather with wind speed 35 kmph to 45 kmph gusting to 55 kmph** speed likely to prevail along & off Gujarat, Konkan and Goa Coasts and adjoining sea areas, over most parts of eastcentral and Arabian Sea & adjoining areas.
Squally weather with wind speed 35 kmph to 45 kmph gusting to 55 kmph speed likely to prevail along & off Andhra Pradesh adjoining south Odisha coasts and adjoining sea areas.

***Red color warning does not mean "Red Alert" Red color warning means "Take Action"**

Forecast and warning for any day is valid from 0830 hours IST of day till 0830 hours IST of next day

For more details kindly visit <https://mausam.imd.gov.in> or contact 011-2434-4599

(Service to the nation since 1875)



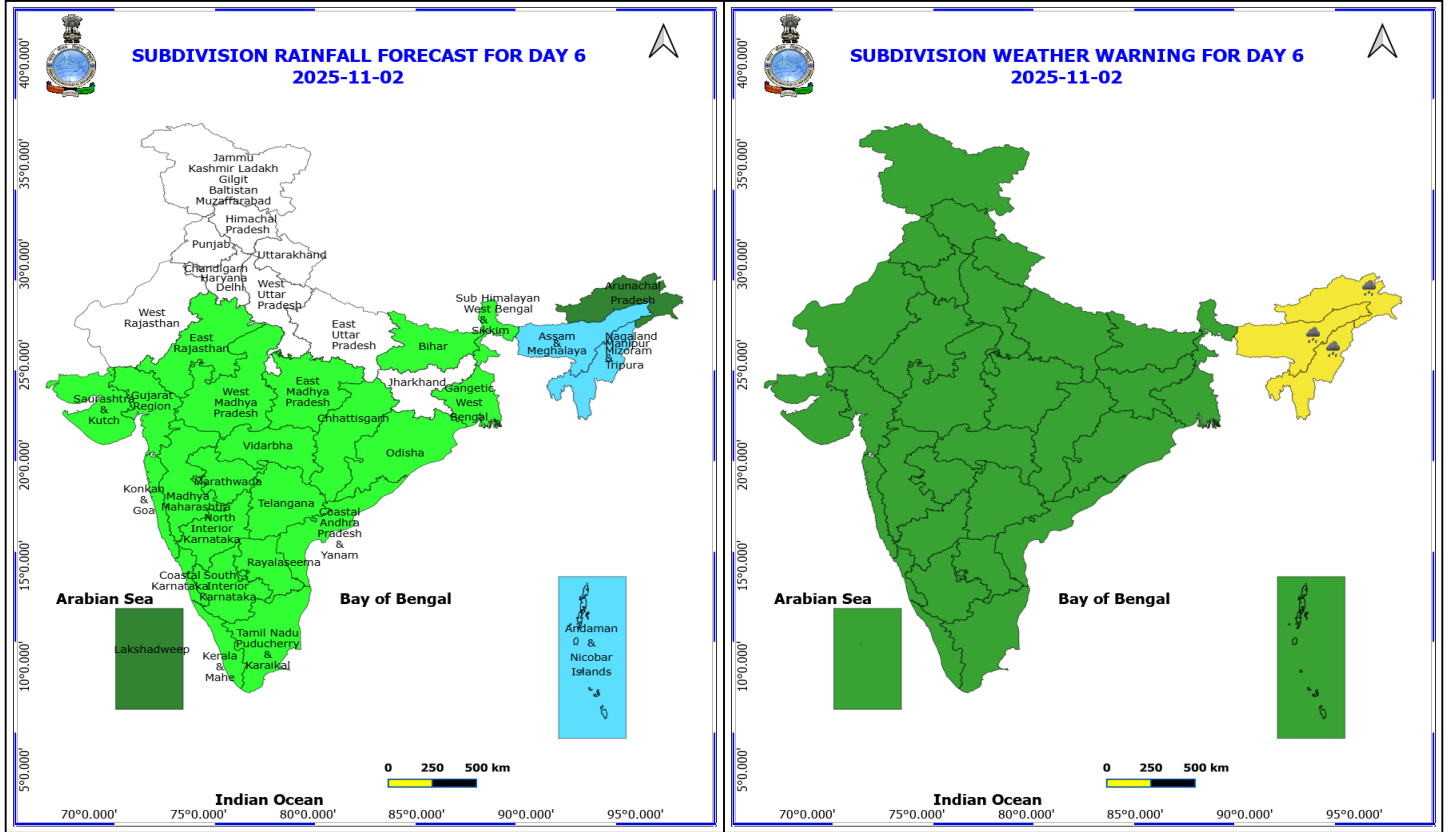
1 November (Day 5)

- ❖ **Heavy to Very Heavy Rainfall** likely at isolated places over Assam & Meghalaya.
- ❖ **Heavy Rainfall** likely at isolated places over Arunachal Pradesh and Nagaland, Manipur, Mizoram and Tripura.
- ❖ **Thunderstorm accompanied with lightning & gusty winds(30-40kmph)** likely at isolated places over Bihar.
- ❖ **Thunderstorm accompanied with Lightning** likely at isolated places over Bihar.

No Fishermen Warning

***Red color warning does not mean "Red Alert" Red color warning means "Take Action"**
Forecast and warning for any day is valid from 0830 hours IST of day till 0830 hours IST of next day
For more details kindly visit <https://mausam.imd.gov.in> or contact 011-2434-4599

(Service to the nation since 1875)

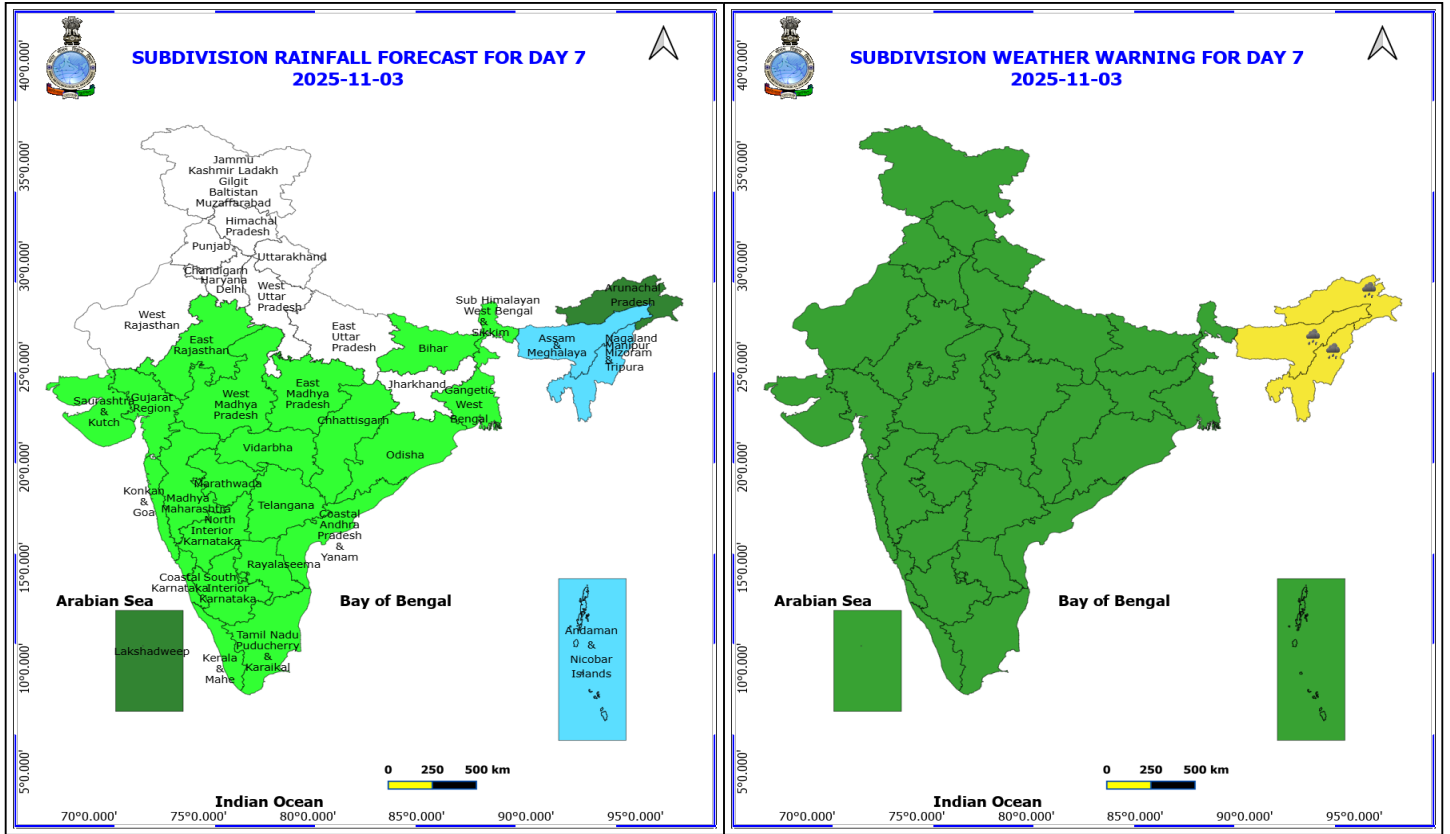


2 November (Day 6)

❖ **Heavy Rainfall** likely at isolated places over Arunachal Pradesh, Assam & Meghalaya and Nagaland, Manipur, Mizoram and Tripura.

No Fishermen Warning

*Red color warning does not mean "Red Alert" Red color warning means "Take Action"
Forecast and warning for any day is valid from 0830 hours IST of day till 0830 hours IST of next day
For more details kindly visit <https://mausam.imd.gov.in> or contact 011-2434-4599
(Service to the nation since 1875)



3 November (Day 7)

❖ **Heavy Rainfall** likely at isolated places over Arunachal Pradesh, Assam & Meghalaya and Nagaland, Manipur, Mizoram and Tripura.

No Fishermen Warning

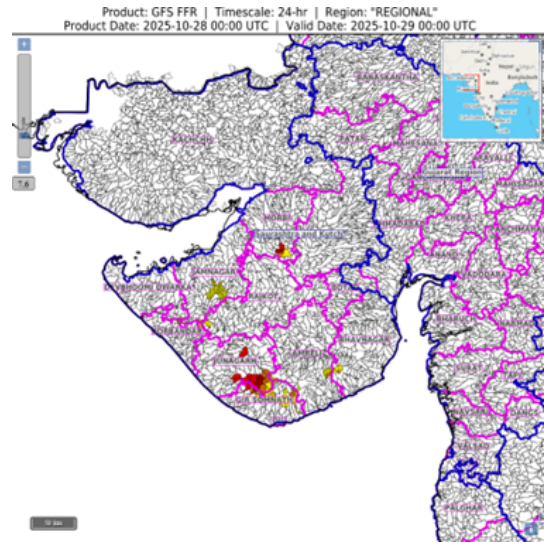
Flash Flood Warnings

24 hours Outlook for the Flash Flood Risk (FFR) till 0530 IST of 29-10-2025 :

Low to Moderate flash flood risk likely over few watersheds & neighbourhoods of following Met Sub-divisions during next 24 hours.

Saurashtra & Kutch - Amreli, Junagarh, Jamnagar, Morbi, Gir Somnath and Rajkot districts.

Surface runoff/ Inundation may occur at some fully saturated soils & low-lying areas over Area of Concern (AoC) as shown in map due to expected rainfall occurrence in next 24 hours.



24 hours Outlook for the Flash Flood Risk (FFR) till 0530 IST of 29-10-2025 :

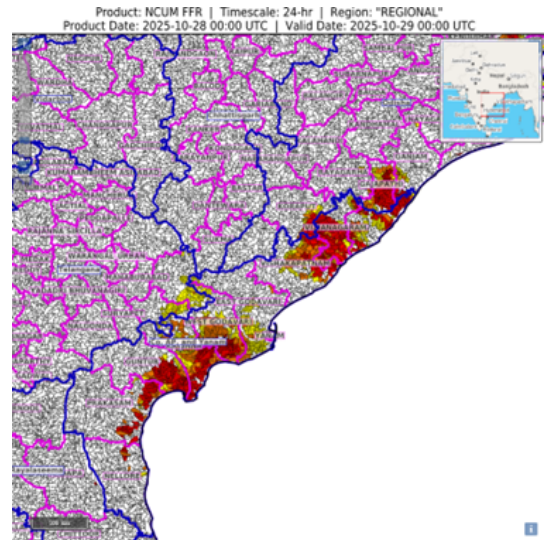
Moderate to High flash flood risk likely over few watersheds & neighbourhoods of following Met Sub-divisions during next 24 hours.

Coastal Andhra Pradesh & Yanam - Guntur, Krishna, West Godavari, East Godavari, Prakasam, Nellore, SriKakulam Vishakhapatnam and Vizianagaram districts.

Telangana – Bhadradi Kothagudem and Khammam districts.

Odisha – Gajapathi and Ganjam districts.

Surface runoff/ Inundation may occur at some fully saturated soils & low-lying areas over Area of Concern (AoC) as shown in map due to expected rainfall occurrence in next 24 hours.



*Red color warning does not mean "Red Alert" Red color warning means "Take Action"

Forecast and warning for any day is valid from 0830 hours IST of day till 0830 hours IST of next day

For more details kindly visit <https://mausam.imd.gov.in> or contact 011-2434-4599

(Service to the nation since 1875)



Table-1

7 Days Rainfall Forecast

S.No.	Subdivision	28- Oct	29- Oct	30- Oct	31- Oct	1- Nov	2- Nov	3- Nov
		Day 1	Day 2	Day 3	Day 4	Day 5	Day 6	Day 7
1	ANDAMAN & NICOBAR ISLANDS	FWS	FWS	FWS	FWS	FWS	FWS	FWS
2	ARUNACHAL PRADESH	ISOL	SCT	SCT	WS	FWS	SCT	SCT
3	ASSAM & MEHGHALAYA	ISOL	SCT	FWS	WS	WS	FWS	FWS
4	N. M. M. & T.	ISOL	ISOL	SCT	FWS	FWS	FWS	FWS
5	S.H. WEST BENGAL & SIKKIM	ISOL	SCT	FWS	WS	FWS	ISOL	ISOL
6	GANGETIC WEST BENGAL	SCT	FWS	WS	WS	FWS	ISOL	ISOL
7	ODISHA	WS	WS	FWS	SCT	ISOL	ISOL	ISOL
8	JHARKHAND	FWS	WS	WS	SCT	ISOL	DRY	DRY
9	BIHAR	ISOL	SCT	FWS	FWS	SCT	ISOL	ISOL
10	EAST UTTAR PRADESH	ISOL	ISOL	FWS	SCT	ISOL	DRY	DRY
11	WEST UTTAR PRADESH	ISOL	DRY	ISOL	ISOL	DRY	DRY	DRY
12	UTTARAKHAND	DRY	DRY	DRY	DRY	DRY	DRY	DRY
13	HARYANA, CHD & DELHI	ISOL	DRY	DRY	DRY	DRY	DRY	DRY
14	PUNJAB	DRY	DRY	DRY	DRY	DRY	DRY	DRY
15	HIMACHAL PRADESH	DRY	DRY	DRY	DRY	DRY	DRY	DRY
16	JAMMU AND KASHMIR AND LADAKH	DRY	DRY	DRY	DRY	DRY	DRY	DRY
17	WEST RAJASTHAN	ISOL	ISOL	ISOL	DRY	DRY	DRY	DRY
18	EAST RAJASTHAN	SCT	ISOL	ISOL	ISOL	ISOL	ISOL	ISOL
19	WEST MADHYA PRADESH	SCT	SCT	FWS	SCT	SCT	ISOL	ISOL
20	EAST MADHYA PRADESH	FWS	FWS	FWS	SCT	SCT	ISOL	ISOL
21	GUJRAT REGION	WS	WS	WS	FWS	SCT	ISOL	ISOL
22	SAURASHTRA & KUTCH	WS	WS	WS	FWS	SCT	ISOL	ISOL
23	KONKAN & GOA	FWS	WS	FWS	SCT	ISOL	ISOL	ISOL
24	MADHYA MAHARASHTRA	SCT	FWS	SCT	ISOL	ISOL	ISOL	ISOL
25	MARATHWADA	ISOL	SCT	ISOL	ISOL	ISOL	ISOL	ISOL
26	VIDARBHA	WS	WS	FWS	SCT	ISOL	ISOL	ISOL
27	CHATTISGARH	FWS	WS	FWS	ISOL	ISOL	ISOL	ISOL
28	COASTAL ANDHRA PRADESH	WS	WS	SCT	ISOL	ISOL	ISOL	ISOL
29	TELANGANA	WS	WS	SCT	ISOL	ISOL	ISOL	ISOL
30	RAYALASEEMA	WS	FWS	ISOL	ISOL	ISOL	ISOL	ISOL
31	TAMILNADU & PUDUCHERRY	ISOL	ISOL	ISOL	ISOL	ISOL	ISOL	ISOL
32	COSTAL KARNATAKA	WS	WS	SCT	ISOL	ISOL	ISOL	ISOL
33	NORTH INTERIOR KARNATAKA	FWS	SCT	ISOL	ISOL	ISOL	ISOL	ISOL
34	SOUTH INTERIOR KARNATAKA	SCT	ISOL	ISOL	ISOL	ISOL	ISOL	ISOL
35	KERALA	WS	FWS	SCT	SCT	ISOL	ISOL	ISOL
36	LAKSHDWEEP	WS	FWS	SCT	SCT	SCT	SCT	SCT

Legend	Category	%Stations
WS	Widespread/Most Places	76-100
FWS	Fairly Widespread/Many Places	51-75
SCT	Scattered/ A Few Places	26-50
ISOL	Isolated Places	1-25
DRY	No Rain	0

*Red color warning does not mean "Red Alert" Red color warning means "Take Action"
Forecast and warning for any day is valid from 0830 hours IST of day till 0830 hours IST of next day
For more details kindly visit <https://mausam.imd.gov.in> or contact 011-2434-4599

(Service to the nation since 1875)

Fig. 1: Maximum Temperatures Dated 2025-10-27

Fig. 2: Departure of Maximum Temp. Dated 2025-10-27

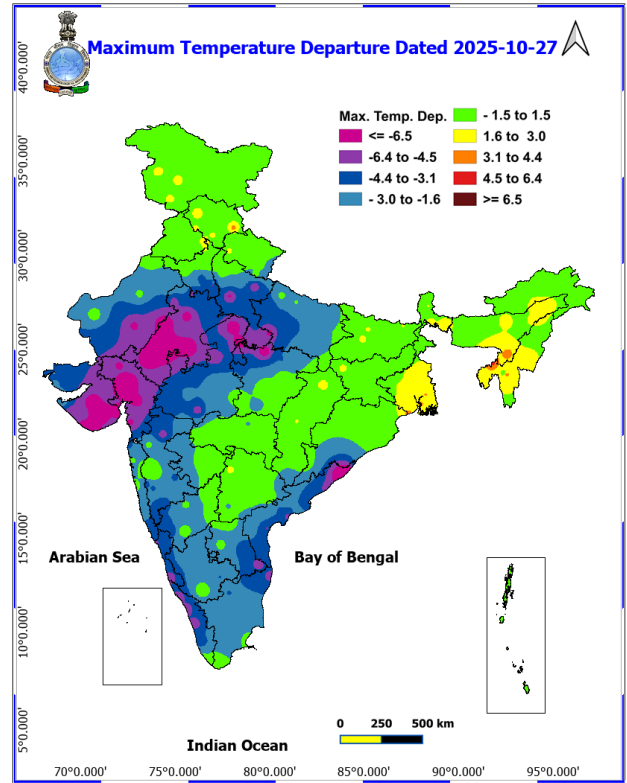
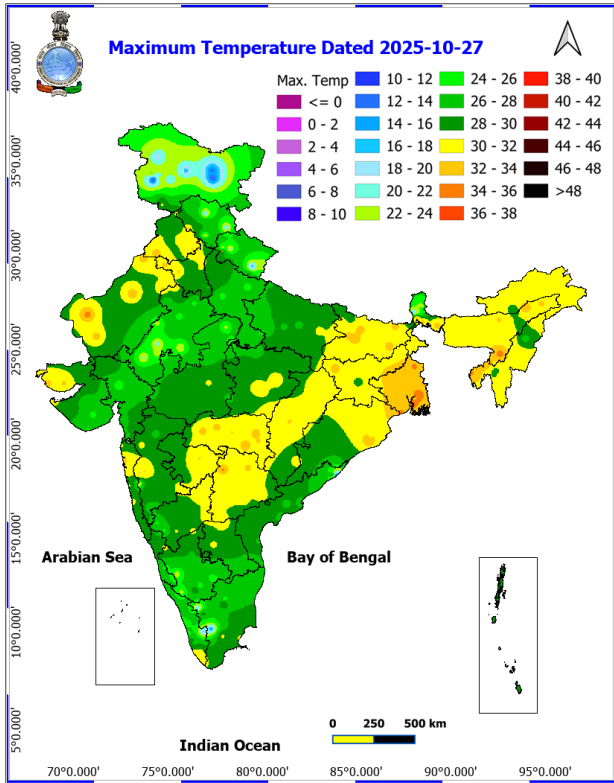
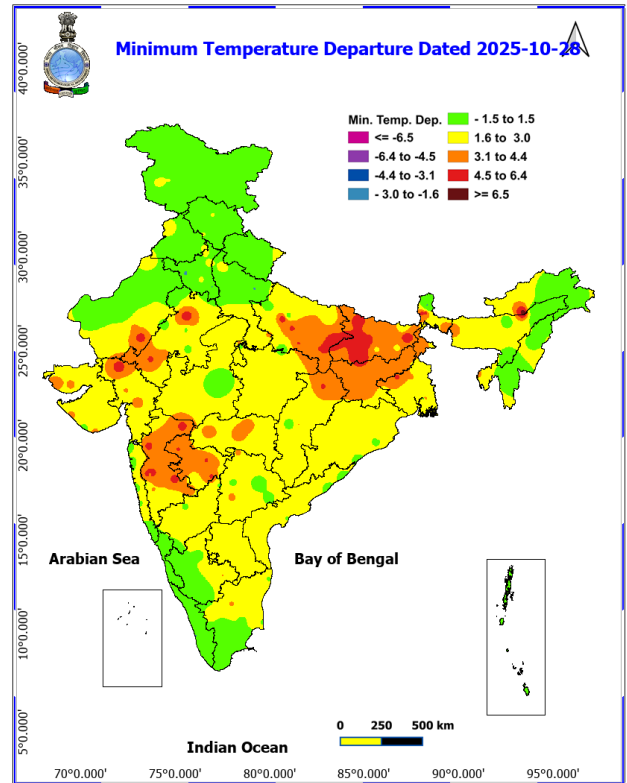
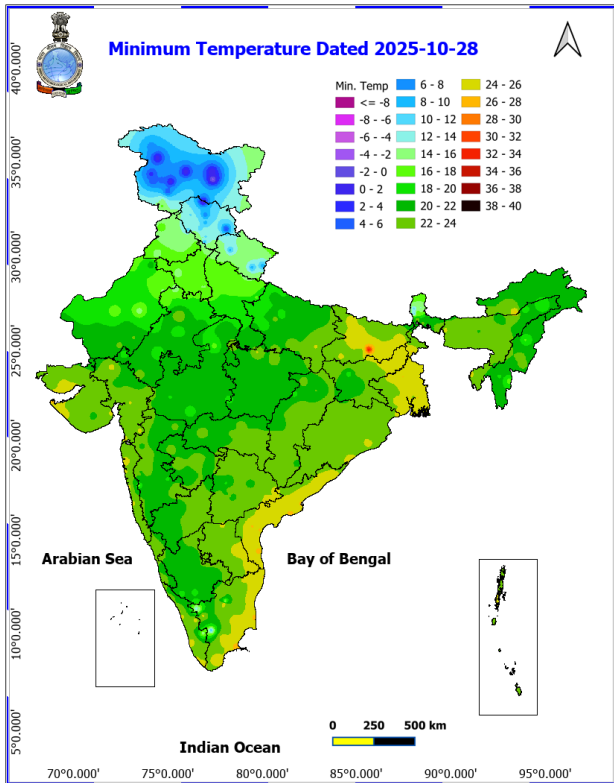


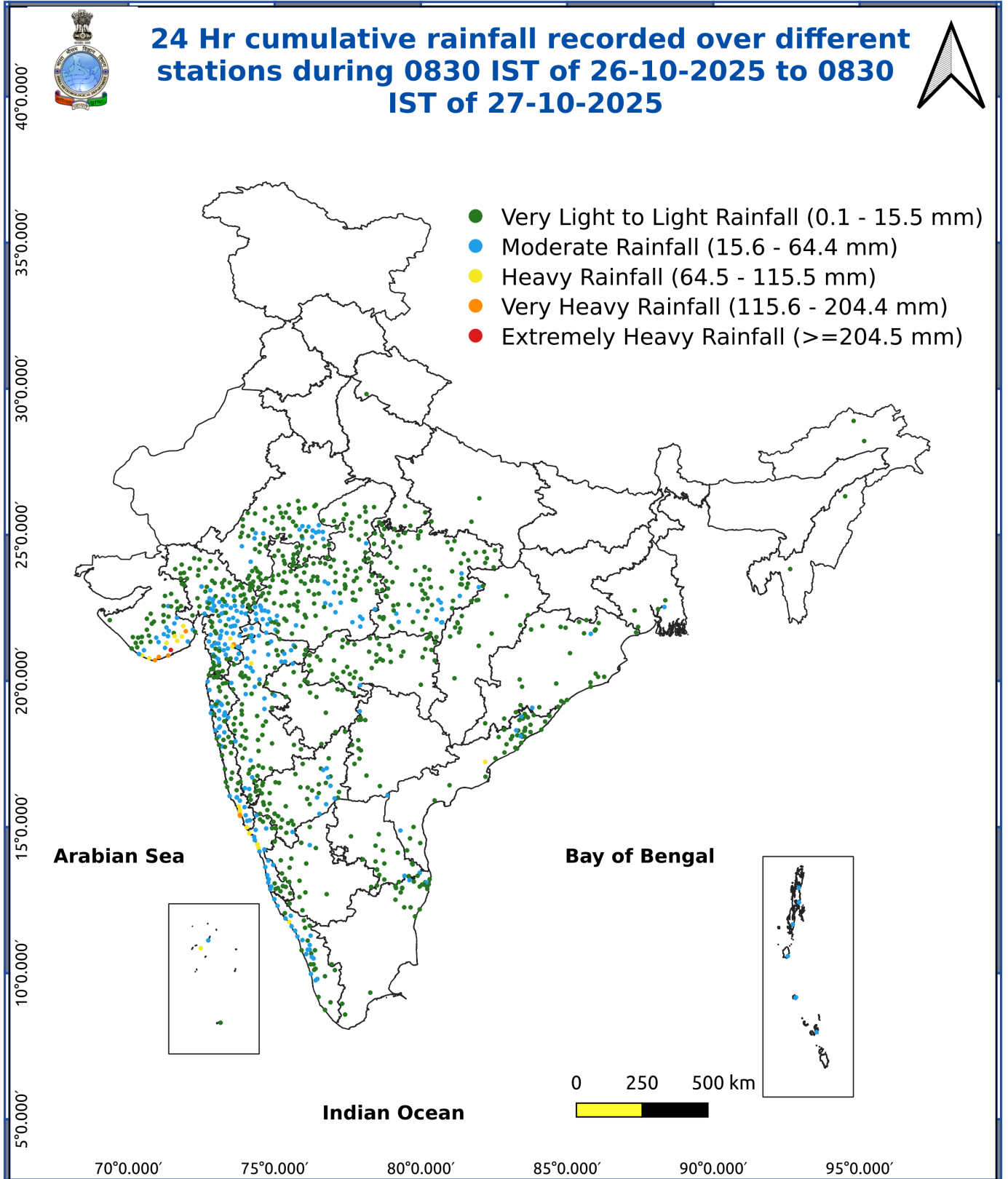
Fig. 3: Minimum Temperatures Dated 2025-10-28

Fig. 4: Departure of Minimum Temp. Dated 2025-10-28



***Red color warning does not mean "Red Alert" Red color warning means "Take Action"**
Forecast and warning for any day is valid from 0830 hours IST of day till 0830 hours IST of next day
For more details kindly visit <https://mausam.imd.gov.in> or contact 011-2434-4599

(Service to the nation since 1875)



Impact & Action Suggested due to

- **Extremely heavy rainfall (≥ 21 cm)** at isolated places over Coastal Andhra Pradesh & Yanam, south Odisha on 28th & 29th; Chhattisgarh on 28th October.
- **Very heavy rainfall (12-20 cm)** at isolated places over Tamil Nadu, Rayalaseema on 28th, Telangana on 28th & 29th; Coastal Andhra Pradesh & Yanam on 30th; Vidarbha and Chhattisgarh on 29th; Sub-Himalayan West Bengal & Sikkim on 31st; Bihar on 30th & 31st; Jharkhand on 30th October; Assam & Meghalaya on 31st October & 01st November.

Impact Expected

- Localized Flooding of roads, water logging in low lying areas and closure of underpasses mainly in urban areas of the above region.
- Occasional reduction in visibility due to heavy rainfall.
- Disruption of traffic in major cities due to water logging in roads leading to increased travel time.
- Minor damage to kutcha roads.
- Possibilities of damage to vulnerable structure.
- Localized Landslides/Mudslides/landslips/mudslips/landsinks/mudsinks.
- Damage to horticulture and standing crops in some areas due to inundation.
- It may lead to riverine flooding in some river catchments mainly over Bihar, Jharkhand and West Bengal (for riverine flooding please visit Web page of CWC)

Action Suggested

- Check for traffic congestion on your route before leaving for your destination.
- Follow any traffic advisories that are issued in this regard.
- Avoid going to areas that face the water logging problems often.
- Avoid staying in vulnerable structure.

Agromet advisories for various parts of the country

Agromet advisories for likely impact of Heavy / Heavy to Very Heavy / Extremely Heavy Rainfall

(Based on the IBF and advisories issued by different AMFUs)

- In **Andhra Pradesh**, postpone harvesting of groundnut crop during heavy rainfall periods and store the already harvested produce in safe places. Drain out excess water from fields of rice, maize, pigeon pea, black gram, green gram, cotton, groundnut, turmeric, ginger, vegetables and plantations of banana, coconut and arecanut. Avoid sowing of *rabi* crops (*rabi* maize, Bengal gram etc.) until the soil moisture reaches at optimum level.
- In **Tamil Nadu**, harvest matured rice and groundnut crops only during fair weather and store the harvested produce of rice, groundnut and harvested banana bunches in safer places. Make arrangements to drain out excess water from fields of rice, sugarcane, cotton, black gram, maize and vegetables and plantations of coconut, banana and black pepper to avoid water stagnation. Avoid transplanting or direct sowing of rice and sowing of maize during heavy rainfall.
- In **Kerala**, harvest matured rice crop immediately and keep the produce in safe places. Ensure adequate drainage facilities in fields of rice, vegetables and plantations of banana, coconut, arecanut, cardamom and black pepper.
- In **Coastal Karnataka**, postpone harvesting of rice during heavy rainfall periods and shift the already harvested produce to safer places. Drain out excess water from fields of rice and plantations of coconut, arecanut and black pepper.
- In **Telangana**, harvest matured cotton crop immediately and store the produce in safer places. Cover the already harvested produce of maize and soybean crops lying on the fields with tarpaulin or shift to a safer place.
- In **Andaman and Nicobar Islands**, store the harvested produce of rice at safe places to avoid degradation.

*Red color warning does not mean "Red Alert" Red color warning means "Take Action"

Forecast and warning for any day is valid from 0830 hours IST of day till 0830 hours IST of next day

For more details kindly visit <https://mausam.imd.gov.in> or contact 011-2434-4599

(Service to the nation since 1875)

Drain out excess water from fields of rice, vegetables and plantation crops.

- In **Odisha**, harvest rice crop if 85% of grains are matured and store in safer places before commencement of rains or cover the harvested produce in the fields with polythene. Harvest matured black gram, green gram, maize, vegetables (pumpkin, okra, brinjal, bitter gourd etc.), matured cobs of maize and matured bunches of banana and keep the produce in safer places. Make provision for draining out excess water from fields of rice, black gram, green gram, pigeon pea, maize, groundnut, cotton, sugarcane and vegetables and fruit orchards. Postpone sowing / planting of *rabi* crops (*rabi* pulses, vegetables etc.) till cessation of rains.
- In **Jharkhand**, harvest matured rice crop only during fair weather and store the harvested produce in safer places.
- In **Bihar**, harvest matured crops of rice and maize and shift the produce to safer places.
- In **Chhattisgarh**, harvest matured crops of rice, minor millets, maize, black gram, horse gram, groundnut and pigeon pea only during fair weather and keep the harvested produce at safer places. Make arrangements to drain out excess water from standing crop fields.
- In **Gujarat**, harvest the matured crops of rice, groundnut, soybean, black gram, green gram, sesame, maize, pearl millet and vegetables (tomato, brinjal, chilli, okra, cucurbits etc.) only during fair weather and store the produce in safe places. Drain out excess water from standing crop fields.
- In **Konkan**, keep the harvested produce of rice and finger millet in safer places. In **Madhya Maharashtra**, store the harvested produce of rice, soybean, maize, groundnut and pearl millet in safe places. In **Vidarbha**, harvest the matured crops of rice (early maturing varieties), soybean and cotton only during fair weather and keep the harvested produce at safer places.
- In **East Rajasthan**, harvest matured crops of maize and soybean. Store the harvested produce of rice, maize and soybean at safer places.

Livestock / Fishery

- Keep the animals inside the shed during heavy rainfall and provide them balanced feed.
- Store feed and fodder in a safe place to prevent spoilage.
- Construct an outlet with proper netting around the ponds to drain out excess water, thereby preventing fish from escaping in case of overflow.

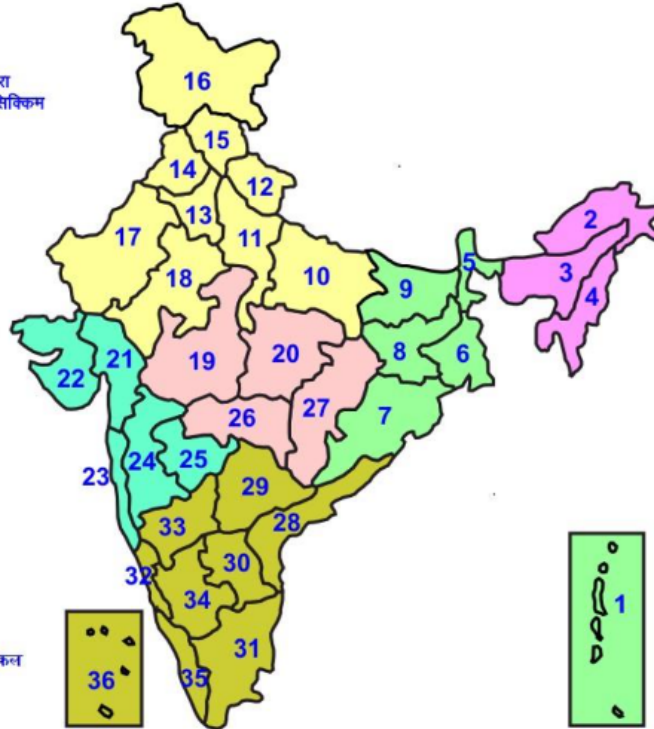
Agromet advisories for likely impact of Thunderstorm / Gusty Winds / Squally Winds

(Based on the IBF and advisories issued by different AMFUs)

- Provide mechanical support to horticultural crops and staking or support to vegetables and young fruit plants / fruit-bearing plants to avoid lodging due to strong winds.
- Tie the harvested crops properly and cover them to minimise the risk of displacement due to strong surface winds.

LEGENDS

- 1 अंडमान और निकोबार द्वीप समुह
- 2 अरुणाचल प्रदेश
- 3 असम और मेघालय
- 4 नागालैंड मनीपुर मीजोरम और त्रिपुरा
- 5 उप हिमालय पश्चिम बंगाल एवं सिक्किम
- 6 पश्चिम बंगाल
- 7 ओडिसा
- 8 झारखंड
- 9 बिहार
- 10 पूर्वी उत्तर प्रदेश
- 11 पश्चिम उत्तर प्रदेश
- 12 उत्तराखंड
- 13 हरियाणा चंडिगढ़ एवं दिल्ली
- 14 पंजाब
- 15 हिमाचल प्रदेश
- 16 जम्मू एवं कश्मीर एवं लद्दाख
- 17 पश्चिम राजस्थान
- 18 पूर्वी राजस्थान
- 19 पश्चिम मध्य प्रदेश
- 20 पूर्वी मध्य प्रदेश
- 21 गुजरात क्षेत्र
- 22 सौराष्ट्र एवं कच्छ
- 23 कोंकण एवं गोवा
- 24 मध्य महाराष्ट्र
- 25 मराठावाडा
- 26 विदर्भ
- 27 छत्तीसगढ़
- 28 तटीय आंध्र प्रदेश एवं यनम
- 29 तेलंगाना
- 30 रायलसीमा
- 31 तमिलनाडु, पुदुचेरी एवं कराईकल
- 32 तटिय कर्नाटक
- 33 आंतरिक उत्तरी कर्नाटक
- 34 आंतरिक दक्षिणी कर्नाटक
- 35 केरल एवं माहे
- 36 लक्षद्वीप



1. Andaman & Nicobar Islands
2. Arunachal Pradesh
3. Assam & Meghalaya
4. Nagaland, Manipur, Mizoram & Tripura
5. Sub-Himalayan West Bengal & Sikkim
6. Gangetic West Bengal
7. Orissa
8. Jharkhand
9. Bihar
10. East Uttar Pradesh
11. West Uttar Pradesh
12. Uttarakhand
13. Haryana, Chd & Delhi
14. Punjab
15. Himachal Pradesh
16. Jammu & Kashmir and Ladakh
17. West Rajasthan
18. East Rajasthan
19. West Madhya Pradesh
20. East Madhya Pradesh
21. Gujarat
22. Saurashtra
23. Konkan & Goa
24. Madhya Maharashtra
25. Marathawada
26. Vidharbha
27. Chhattisgarh
28. Coastal Andhra Pradesh & Yanam
29. Telangana
30. Rayalaseema
31. Tamilnadu, Puducherry & Karaikal
32. Coastal Karnataka
33. North Interior Karnataka
34. South Interior Karnataka
35. Kerala & Mahe
36. Lakshadweep

SPATIAL DISTRIBUTION (% of Stations reporting)

% Stations	Category	% Stations	Category
76-100	Widespread (WS/ Most Places)	26-50	Scattered (SCT/ A Few Places)
51-75	Fairly Widespread (FWS/ Many Places)	1-25	Isolated (ISOL)

Subdivision Colour

- NO WARNING
- WATCH (BE UPDATED)
- ALERT (BE PREPARED TO TAKE ACTION)
- WARNING (TAKE ACTION)

Probabilistic Forecast

Terms	Probability of Occurrence (%)
Unlikely	< 25
Likely	25 - 50
Very Likely	50 - 75
Most Likely	> 75

- | | | | |
|--------------------------|-----------------|----------------------|--------------------|
| Heavy Rain | Very Heavy Rain | Extremely Heavy Rain | Heavy Snow |
| Thunderstorm & Lightning | Hailstorm | Dust Storm | Dust Raising Winds |
| Strong surface winds | Heat Wave | Hot Day | Warm Night |
| Cold Wave | Cold Day | Ground Frost | Fog |
| Hot & Humid | | | |

*Red color warning does not mean "Red Alert" Red color warning means "Take Action"

Forecast and warning for any day is valid from 0830 hours IST of day till 0830 hours IST of next day

For more details kindly visit <https://mausam.imd.gov.in> or contact 011-2434-4599

(Service to the nation since 1875)

LEGENDS

WARNING

WARNING (TAKE ACTION)
ALERT (BE PREPARED)
WATCH (BE UPDATED)
NO WARNING (NO ACTION)

Probabilistic Forecast

Terms	Probability of Occurrence (%)
Unlikely	< 25
Likely	25 - 50
Very Likely	50 - 75
Most Likely	> 75



Heavy: 64.5 to 115.5 mm/cm *
Very Heavy: 115.6 to 204.4 mm/cm*
Extremely Heavy: > 204.4 mm/cm *



When maximum temperature of a station reaches $\geq 40^{\circ}\text{C}$ for plains and $\geq 30^{\circ}\text{C}$ for hilly regions
(a) Based on Departure from normal

Heat Wave: Maximum Temperature Departure from normal 4.5°C to 6.4°C .
Severe Heat Wave: Maximum Temperature Departure from normal $\geq 6.5^{\circ}\text{C}$

(b). Based on Actual maximum temperature

Heat Wave: When actual maximum temperature $\geq 45^{\circ}\text{C}$.
Severe Heat Wave: When actual maximum temperature $\geq 47^{\circ}\text{C}$

(c). Criteria for heat wave for coastal stations

When maximum temperature departure is $> 4.5^{\circ}\text{C}$ from normal. Heat Wave may be described provided maximum temperature $\geq 37^{\circ}\text{C}$



When maximum temperature remains 40°C

Warm Night: When minimum temperature departure 4.5°C to 6.4°C .
Severe Warm Night: When minimum temperature departure $> 6.4^{\circ}\text{C}$.



When minimum temperature of a station $\leq 10^{\circ}\text{C}$ for plains and $\leq 0^{\circ}\text{C}$ for hilly regions.

(a). Based on departure

Cold Wave: Minimum Temperature Departure from normal -4.5°C to -6.4°C .
Severe Cold Wave: Minimum Temperature Departure from normal $\leq -6.5^{\circ}\text{C}$

(b) Based on actual Minimum Temperature (for Plains only)

Cold Wave : When Minimum Temperature is $\leq 4.0^{\circ}\text{C}$
Severe Cold Wave: When Minimum Temperature is $\leq 2.0^{\circ}\text{C}$

(c) For Coastal Stations

When Minimum Temperature departure is $\leq -4.5^{\circ}\text{C}$ & actual Minimum Temperature is $\leq 15^{\circ}\text{C}$



When minimum temperature of a station $\leq 10^{\circ}\text{C}$ for plains and $\leq 0^{\circ}\text{C}$ for hilly regions
Based on departure

Cold Day: Maximum Temperature Departure from normal -4.5°C to -6.4°C .
Severe Cold Day: Maximum Temperature Departure from normal $\leq -6.5^{\circ}\text{C}$



Phenomenon of small droplets suspended in air and the horizontal visibility $< 1\text{km}$

Moderate Fog: When the visibility between 500-200 metres
Dense Fog: when the visibility between 50- 200 metres
Very Dense Fog: when the visibility < 50 metres



Sudden electrical discharges manifested by a flash of light (Lightning) and a sharp rumbling sound (thunder)



An ensemble of particles of dust or sand energetically lifted to great heights by a strong and turbulent wind.



Ice deposits on ground

Air temperature $\leq 4^{\circ}\text{C}$ (over Plains)



A strong wind that rises suddenly, lasts for atleast 1 minute.

Moderate: Wind speed 52-61 kmph
Severe: Wind speed 62-87 kmph
Very Severe: Wind speed > 87 kmph



Effect of various waves in the sea over specific area

Rough to very rough: Wind speed 41-62 kmph (22-33 knots) & Wave height 2.5-6 metre
High to very high: Wind speed 63-117 kmph (34-63 knots) & Wave height 6-14 metre
Phenomenal: Wind speed > 117 kmph (> 63 knots) & Wave height > 14 metre



Cyclonic Storm: Wind speed 62-87 kmph (34-47 knots)
Severe Cyclonic Storm: Wind speed 88-117 kmph (48-63 knots)
Very Severe Cyclonic Storm: Wind speed 118-165 kmph (64 - 89 knots)
Extremely Severe Cyclonic Storm: Wind speed 166-220 kmph (90 -119 knots)
Super Cyclone Storm: Wind speed > 220 kmph (> 119 knots)

*Red color warning does not mean "Red Alert" Red color warning means "Take Action"

Forecast and warning for any day is valid from 0830 hours IST of day till 0830 hours IST of next day

For more details kindly visit <https://mausam.imd.gov.in> or contact 011-2434-4599

(Service to the nation since 1875)