

2026-01-01

Time of Issue: 08:15:00 hours IST
(Morning)

ALL INDIA WEATHER SUMMARY AND FORECAST BULLETIN

Significant Weather Features

Weather Forecast and warning

- **Fairly widespread to widespread** heavy rainfall/snowfall very likely over Jammu-Kashmir-Ladakh-Gilgit-Baltistan-Muzaffarabad on 1st January and scattered to fairly widespread light/moderate rainfall/snowfall over Himachal Pradesh and Uttarakhand on 01st & 02nd January 2026.
- **Isolated to scattered** light rainfall likely over Punjab, Haryana Chandigarh, Rajasthan, west Uttar Pradesh and Delhi on 1st January 2026.
- **Isolated Thunderstorm and lightning** likely over gusty wind speed (30-40kmph) likely to prevail over Andaman & Nicobar Islands and Tamilnadu on 01st Jan 2026.

Forecast of minimum temperatures:

- Gradual rise in minimum temperature very likely over northwest India by 2-4°C during next 24 hours and thereafter fall by 2-4°C for subsequent 3 days and thereafter no significant change.
- Gradual rise in minimum temperature very likely over Central India by 2-3°C during next 2 days and thereafter fall by 2-4°C for the subsequent days.
- Gradual rise in minimum temperature very likely over East India by 2-3°C during next 2 days and no significant change thereafter.
- No significant change in minimum temperature likely over Maharashtra during next 24 hours and thereafter rise by 2-3°C for subsequent 4 days and thereafter rise over south Maharashtra by 2-3°C for subsequent 4 days.
- Fall in minimum temperature likely over Gujarat by 2-3°C for next 2 days and thereafter rise by 2-3°C for subsequent 5 days.
- No significant change in minimum temperature likely over northeast India during next 7 days.

Dense Fog, Cold wave & Cold day Warnings:

- **Dense to Very dense** fog conditions very likely to continue during night/morning hours over Odisha, Punjab, Haryana, Chandigarh & Delhi till 05th; East Uttar Pradesh till 02nd; West Rajasthan till 03rd 2026.
- **Dense fog** conditions also likely during night/morning hours at isolated pockets Jammu-Kashmir-Ladakh-Gilgit-Baltistan-Muzaffarabad and Jharkhand till 02nd; over Himachal Pradesh, Uttarakhand, Sub-Himalayan West Bengal & Sikkim, Assam & Meghalaya and Nagaland, Manipur, Mizoram & Tripura till 05th; Uttar Pradesh, Bihar, Punjab and Haryana, Chandigarh & Delhi till 7th; west Rajasthan till 04th; East Rajasthan during 02nd-04th; Madhya Pradesh till 01st and during 04th & 05th; Gangetic West Bengal till 03rd January 2026.
- **Cold day conditions** very likely at isolated pockets over Punjab, Haryana Chandigarh & Delhi and Bihar on 01st January 2026.
- **Cold wave** conditions very likely in isolated pockets of Himachal Pradesh during 02nd-04th; Punjab and Haryana Chandigarh & Delhi during 03rd-05th; Rajasthan on 05th & 06th; Telangana on 01st January 2026.

*Red color warning does not mean "Red Alert" Red color warning means "Take Action"

Forecast and warning for any day is valid from 0830 hours IST of day till 0830 hours IST of next day

For more details kindly visit <https://mausam.imd.gov.in> or contact 011-2434-4599

(Service to the nation since 1875)

Main Weather Observations:

- ❖ **Rainfall distribution** (from 0830 hours IST of yesterday to 0530 hours IST of today): **at most places** over West Rajasthan and Saurashtra & Kutch; **at many places** over Punjab, Haryana Chandigarh & Delhi, East Rajasthan, Jammu & Kashmir and Ladakh, Tamilnadu Puducherry & Karaikal, Gujarat Region and Konkan & Goa ; **Dry** over rest of the country.
- ❖ **Significant rainfall recorded(in cm)** (from 0830 hours IST of yesterday to 0530 hours IST of today): **Tamilnadu Puducherry & Karaikal**: Chennai (nungambakkam) (dist Chennai) 2; **West Rajasthan**: Churu (dist Churu) 2, Barmer 1; **Saurashtra & Kutch**: Dwarka (dist Devbhumi Dwarka), Rajkot AP (dist Rajkot) 1 Each.
- ❖ **Fog Condition Observed (at 0530 hours of today)**: **Very dense fog conditions at isolated places over Uttar Pradesh, Dense fog conditions** at isolated places over Bihar, West Uttar Pradesh, Punjab, Assam, Tripura, Madhya Pradesh, Odisha and Arunachal Pradesh.
- ❖ **Visibility reported (at 0530 hours of today)**: Prayagraj (Uttar Pradesh)0, Gorakhpur (Uttar Pradesh)0, Kanpur (Uttar Pradesh)0, Bareilly (Uttar Pradesh)0, Tezpur (Assam)50, Agartala (Tripura)50, Kalikunda (West Bengal)50, Gaya (Bihar)50, Khajuraho (Madhya Pradesh)50, Bhatinda (Punjab)100, Lakhimpur (Assam)100, Jorhat (Assam)100, Bhubaneswar (Odisha)100, Jorhat (Assam)100, Bhubaneswar (Odisha)100, Durgapur (West Bengal)100, Varanasi (Uttar Pradesh)100, Teju (Arunachal Pradesh)150.
- ❖ **Minimum Temperature Departures (as on 31-12-2025)**: **below normal(-1.6°C to -3.0°C)** at few places over Jharkhand, Konkan & Goa, Madhya Maharashtra, Vidarbha, Chhattisgarh, Tamil Nadu, Puducherry & Karaikal, Coastal Karnataka, North Interior Karnataka and Kerala & Mahe; at isolated places over Gangetic West Bengal, Odisha, East Uttar Pradesh, West Uttar Pradesh, Haryana-Chandigarh-Delhi, West Madhya Pradesh, East Madhya Pradesh, Telangana, Rayalaseema and South Interior Karnataka. **appreciably below normal(-5.0°C to -3.1°C)** at few places over Gangetic West Bengal, Vidarbha and North Interior Karnataka; at isolated places over Sub Himalayan West Bengal & Sikkim, Odisha, Bihar, East Uttar Pradesh, West Madhya Pradesh, East Madhya Pradesh, Chhattisgarh, Telangana, Rayalaseema, Tamil Nadu, Puducherry & Karaikal and South Interior Karnataka. **markedly below normal(< -5.0°C)** at few places over Gangetic West Bengal, West Madhya Pradesh, East Madhya Pradesh and Gujarat Region; at isolated places over Assam & Meghalaya, Sub Himalayan West Bengal & Sikkim, Odisha, Jharkhand, Bihar, East Uttar Pradesh, West Uttar Pradesh, Himachal Pradesh, Saurashtra & Kutch, Konkan & Goa, Chhattisgarh, Coastal Andhra Pradesh & Yanam, Telangana, Rayalaseema, Tamil Nadu, Puducherry & Karaikal, North Interior Karnataka and South Interior Karnataka. **The lowest minimum temperature** of 4.2°C is reported at ROHTAK (HARYANA), KHAJURAHU (MADHYA PRADESH), and AMBIKAPUR (CHHATTISGARH) over the Plains of India.
- ❖ **Maximum Temperature Departures (as on 31-12-2025)**: **below normal(-1.6°C to -3.0°C)** at few places over Arunachal Pradesh; at isolated places over Gangetic West Bengal and Bihar. **appreciably below normal(-5.0°C to -3.1°C)** at many places over Haryana-Chandigarh-Delhi and Punjab. **The highest maximum temperature** of 34.3°C is reported at KOTTAYAM (KERALA).

*Red color warning does not mean "Red Alert" Red color warning means "Take Action"

Forecast and warning for any day is valid from 0830 hours IST of day till 0830 hours IST of next day

For more details kindly visit <https://mausam.imd.gov.in> or contact 011-2434-4599

(Service to the nation since 1875)

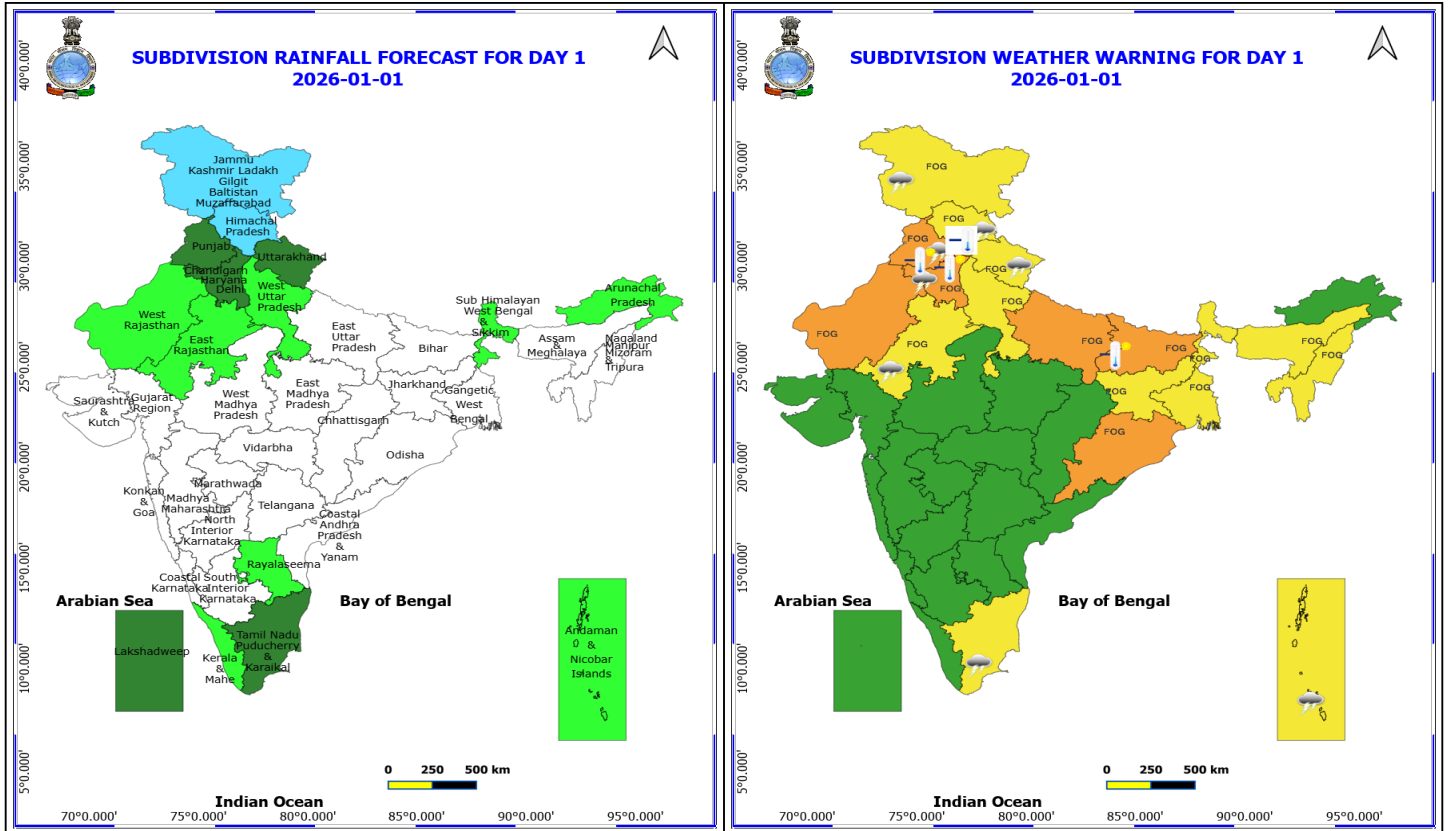


Meteorological Analysis (Based on 0530 hours IST)

- The **Western disturbance** as an **upper air cyclonic circulation** over north Pakistan & adjoining Afghanistan now lies over Punjab & neighbourhood at 3.1 km above mean sea level with a trough aloft in middle and upper tropospheric level with its axis at 5.8 km above mean sea level runs roughly along Long. 72°E to the north of Lat. 29°N.
- The **upper air cyclonic circulation** over north Haryana & neighbourhood now lies over Haryana & neighbourhood and extends upto 1.5 km above mean sea level.
- **Subtropical westerly Jet Stream** with core winds of the order of 120 knots at 12.6 km above mean sea level prevail over north India.
- The **upper air cyclonic circulation** over southwest Bay of Bengal off Sri Lanka coasts extending upto 3.1 km above mean sea level persists.

Weather Outlook for subsequent 3 days

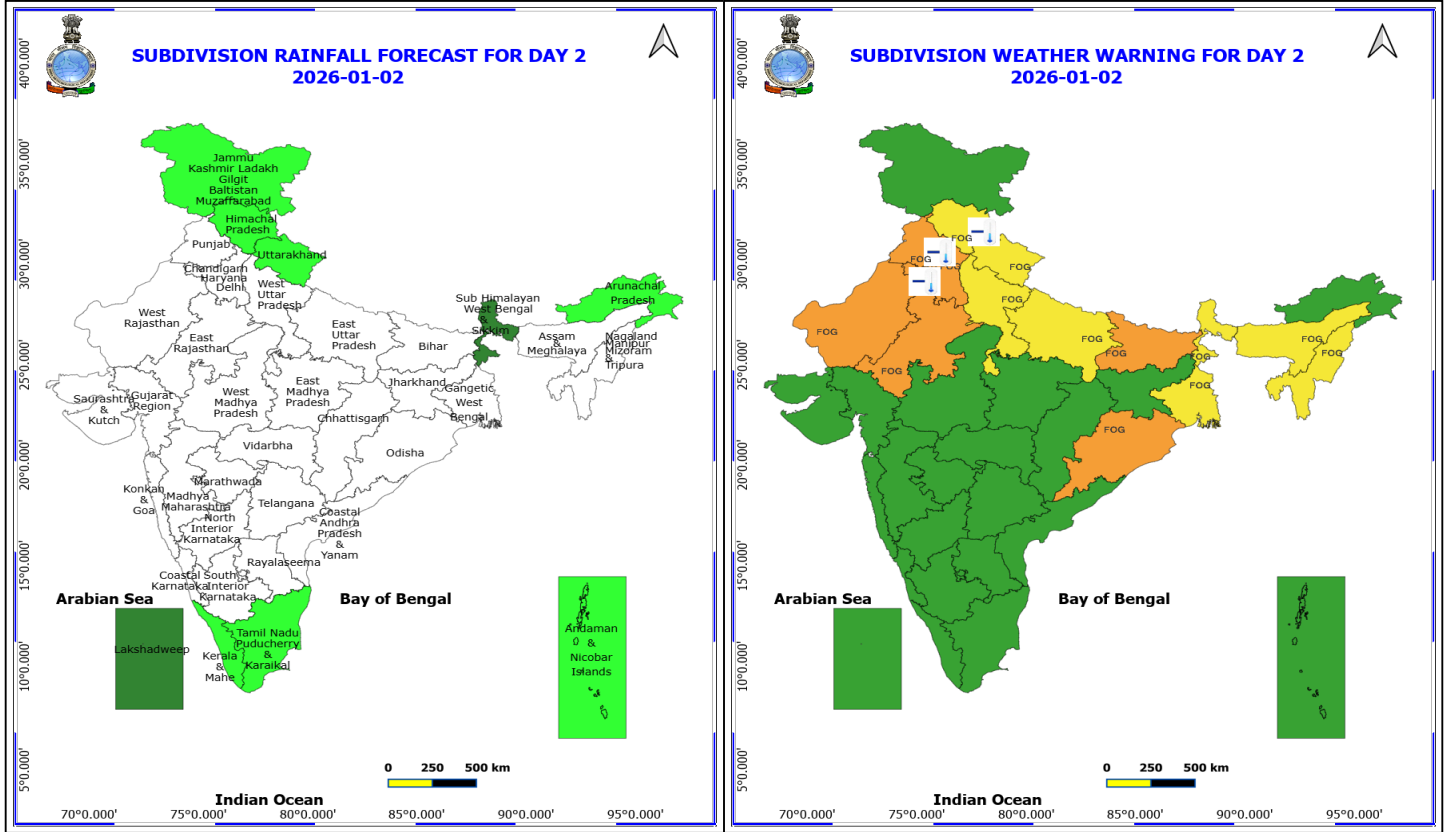
- Scattered to fairly widespread rainfall activity over Tamil Nadu and Nicobar islands.



1 January (Day 1)

- ❖ **Thunderstorm accompanied with lightning & gusty winds(30-40kmph)** very likely at isolated places over Andaman & Nicobar Islands.
- ❖ **Thunderstorm accompanied with Lightning** very likely at isolated places over East Rajasthan, Haryana, Chandigarh & Delhi, Himachal Pradesh, Jammu-Kashmir-Ladakh-Gilgit-Baltistan-Muzaffarabad, Punjab, Tamil Nadu Puducherry & Karaikal and Uttarakhand.
- ❖ **Cold wave conditions** very likely at isolated places over Himachal Pradesh.
- ❖ **Cold Day conditions** very likely at isolated places over Bihar, Haryana, Chandigarh & Delhi and Punjab.
- ❖ **Dense Fog** very likely at isolated places over Assam & Meghalaya, Bihar, East Rajasthan, Himachal Pradesh, Jammu-Kashmir-Ladakh-Gilgit-Baltistan-Muzaffarabad, Jharkhand, Nagaland, Manipur, Mizoram and Tripura, Uttarakhand, West Bengal & Sikkim and West Uttar Pradesh.
- ❖ **Dense to Very Dense Fog** very likely at isolated places over East Uttar Pradesh, Haryana, Chandigarh & Delhi, Odisha, Punjab and West Rajasthan.
- ❖ **Squally winds with speeds reaching 45 kmph to 55 kmph gusting to 65 kmph** is likely to prevail along and off Somalia coast.

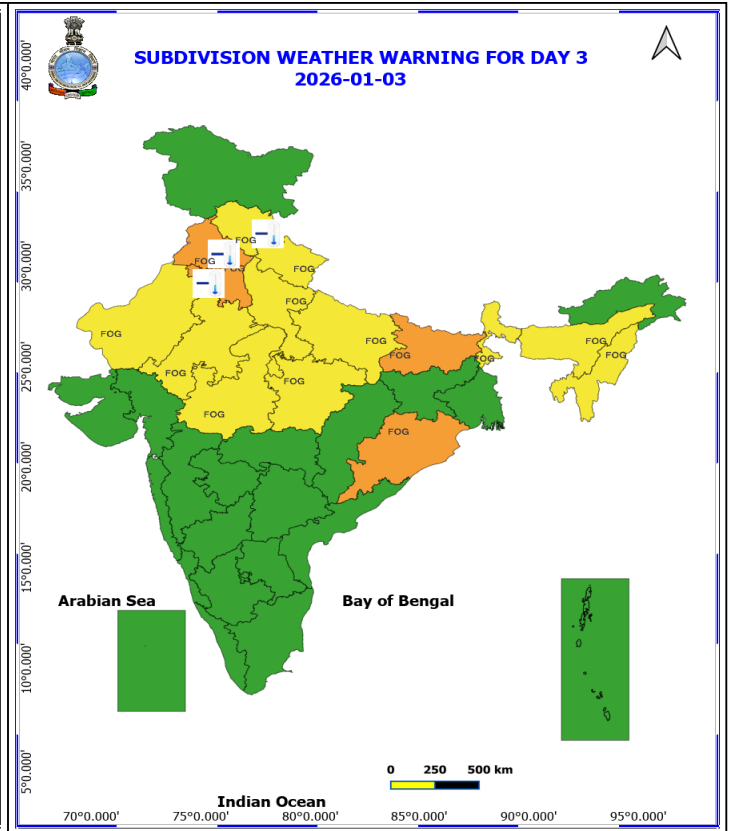
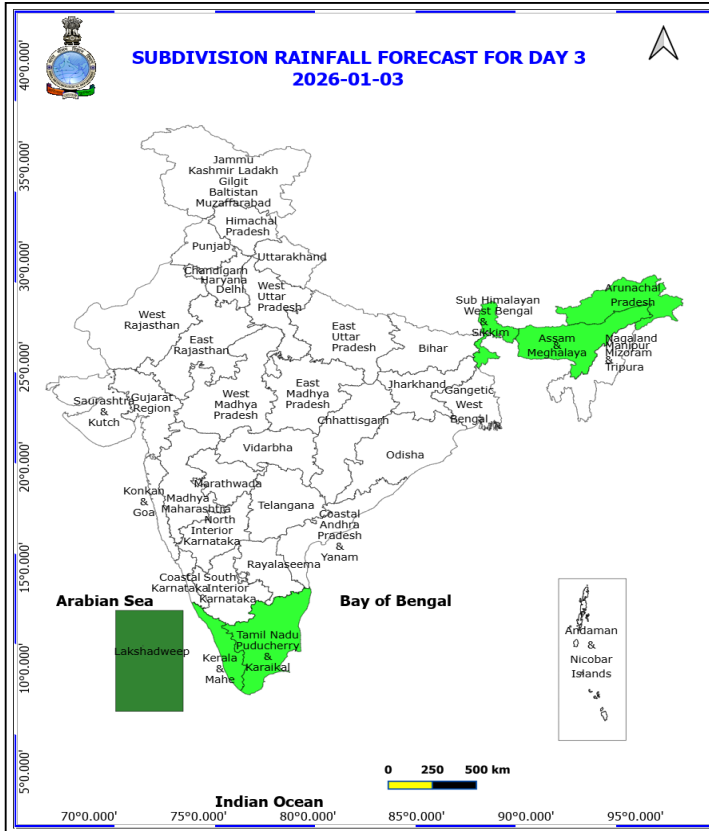
***Red color warning does not mean "Red Alert" Red color warning means "Take Action"**
Forecast and warning for any day is valid from 0830 hours IST of day till 0830 hours IST of next day
For more details kindly visit <https://mausam.imd.gov.in> or contact 011-2434-4599
 (Service to the nation since 1875)



2 January (Day 2)

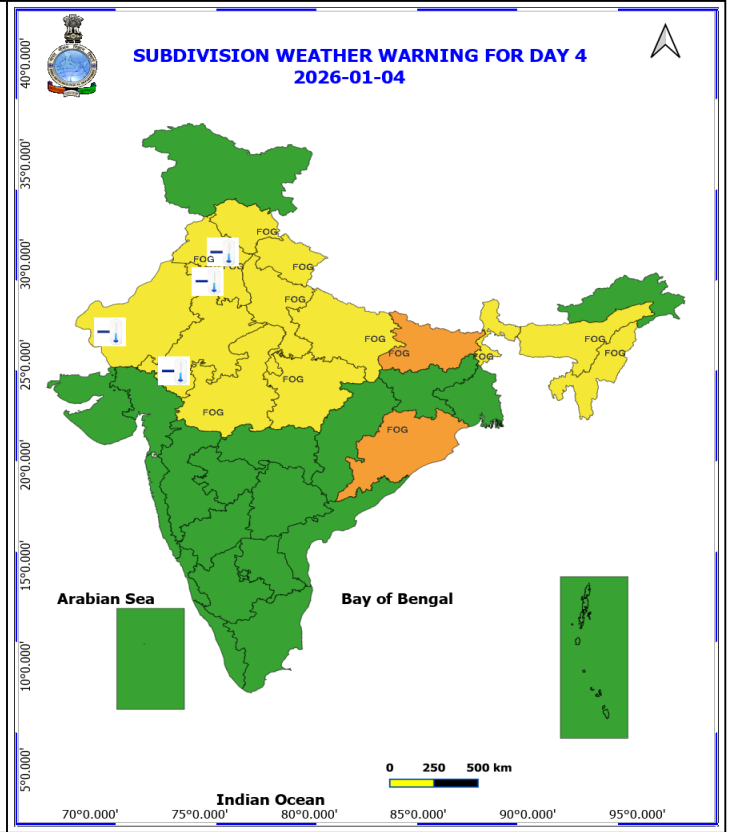
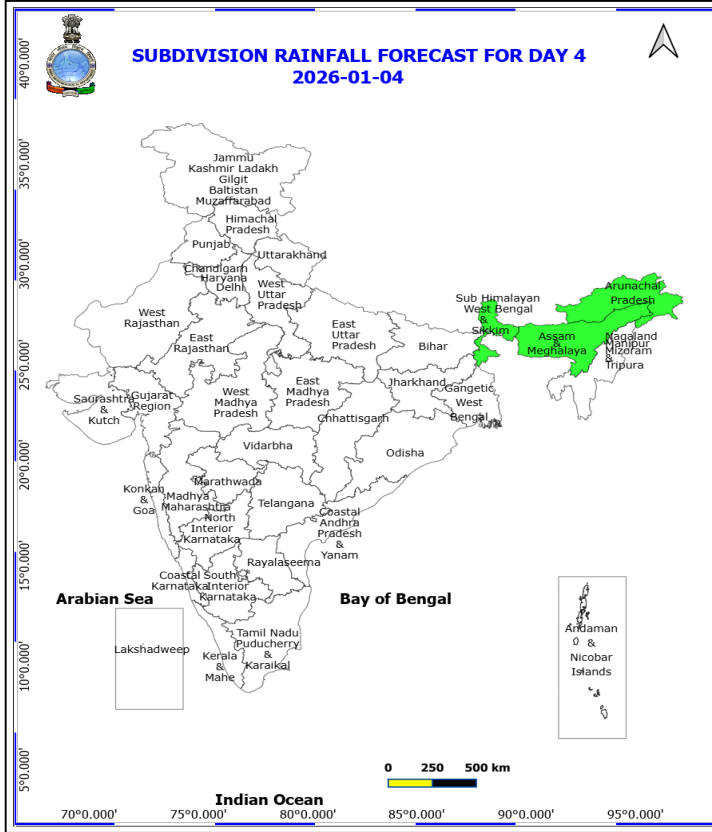
- ❖ **Cold wave conditions** very likely at isolated places over Haryana, Chandigarh & Delhi, Himachal Pradesh and Punjab.
- ❖ **Dense Fog** very likely at isolated places over Assam & Meghalaya, Bihar, Himachal Pradesh, Nagaland, Manipur, Mizoram and Tripura, Uttar Pradesh, Uttarakhand and West Bengal & Sikkim.
- ❖ **Dense to Very Dense Fog** very likely at isolated places over Haryana, Chandigarh & Delhi, Odisha, Punjab and Rajasthan.
- ❖ **Squally winds with speeds reaching 45 kmph to 55 kmph gusting to 65 kmph** is likely to prevail along and off Somalia coast, over Gulf of Mannar & adjoining, some parts of Comorin area.

***Red color warning does not mean "Red Alert" Red color warning means "Take Action"**
 Forecast and warning for any day is valid from 0830 hours IST of day till 0830 hours IST of next day
 For more details kindly visit <https://mausam.imd.gov.in> or contact 011-2434-4599
 (Service to the nation since 1875)



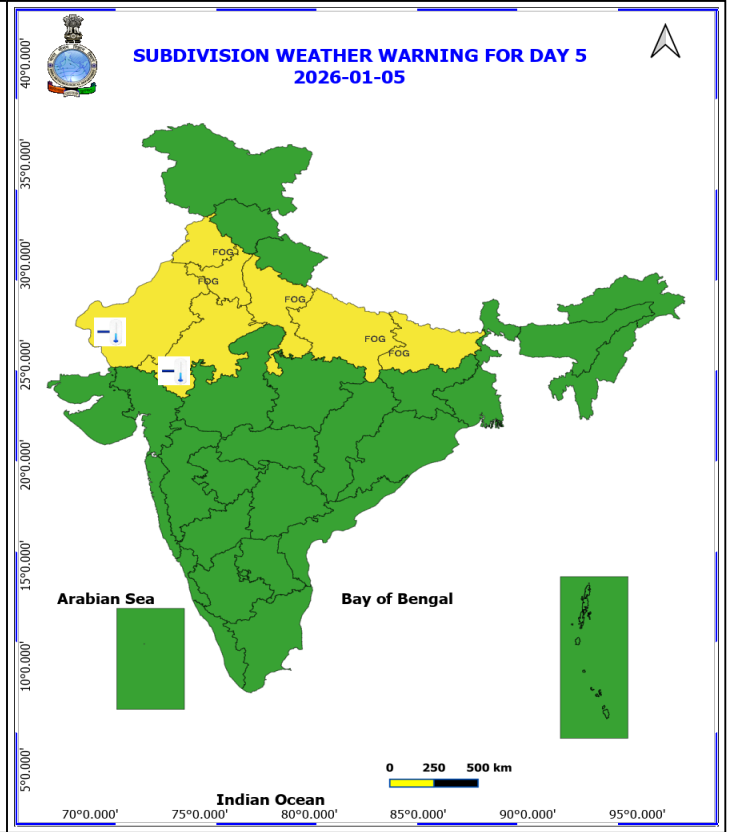
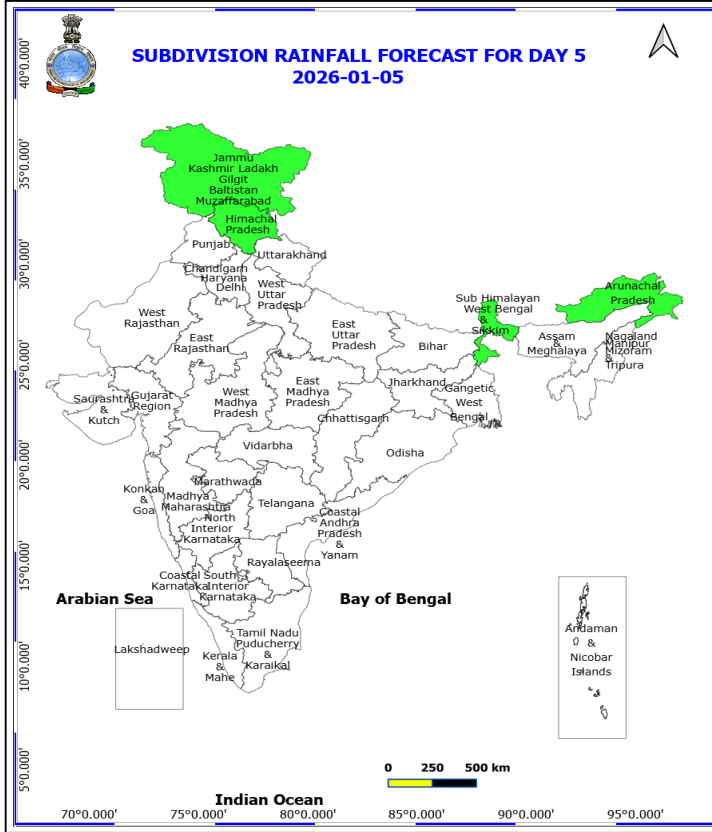
3 January (Day 3)

- ❖ **Cold wave conditions** very likely at isolated places over Haryana, Chandigarh & Delhi, Himachal Pradesh and Punjab.
- ❖ **Dense Fog** very likely at isolated places over Assam & Meghalaya, Bihar, Himachal Pradesh, Madhya Pradesh, Nagaland, Manipur, Mizoram and Tripura, Rajasthan, Sub Himalayan West Bengal & Sikkim, Uttar Pradesh and Uttarakhand.
- ❖ **Dense to Very Dense Fog** very likely at isolated places over Haryana, Chandigarh & Delhi, Odisha and Punjab.
- ❖ **Squally winds with speeds reaching 45 kmph to 55 kmph gusting to 65 kmph** is likely to prevail along and off Somalia coast, over Gulf of Mannar & adjoining, some parts of Comorin area.



4 January (Day 4)

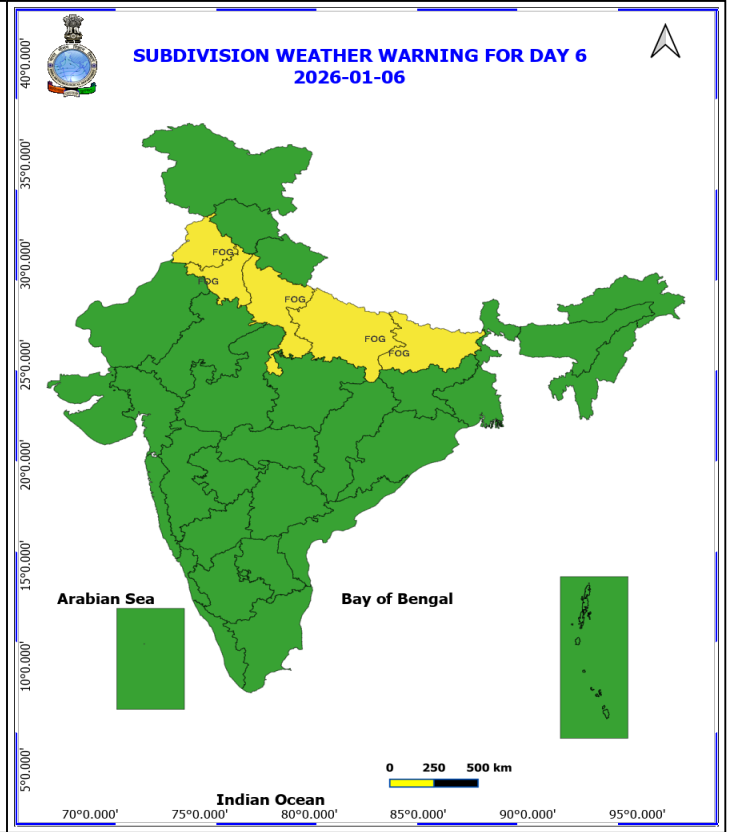
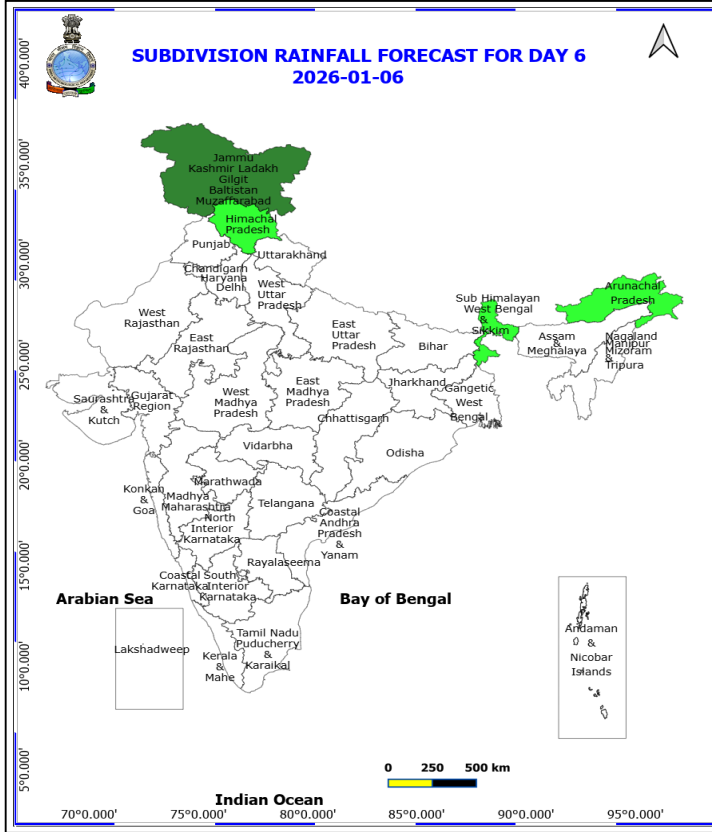
- ❖ **Cold wave conditions** likely at isolated places over Haryana, Chandigarh & Delhi, Punjab and Rajasthan.
- ❖ **Dense Fog** likely at isolated places over Assam & Meghalaya, Bihar, Himachal Pradesh, Madhya Pradesh, Nagaland, Manipur, Mizoram and Tripura, Sub Himalayan West Bengal & Sikkim, Uttar Pradesh and Uttarakhand.
- ❖ **Dense to Very Dense Fog** likely at isolated places over Haryana, Chandigarh & Delhi, Odisha and Punjab.
- ❖ **Squally winds with speeds reaching 45 kmph to 55 kmph gusting to 65 kmph** is likely to prevail along and off Somalia coast, over Gulf of Mannar & adjoining, some parts of Comorin area.



5 January (Day 5)

- ❖ **Cold wave conditions** likely at isolated places over Rajasthan.
- ❖ **Dense Fog** likely at isolated places over Bihar, Haryana, Chandigarh & Delhi, Punjab and Uttar Pradesh.

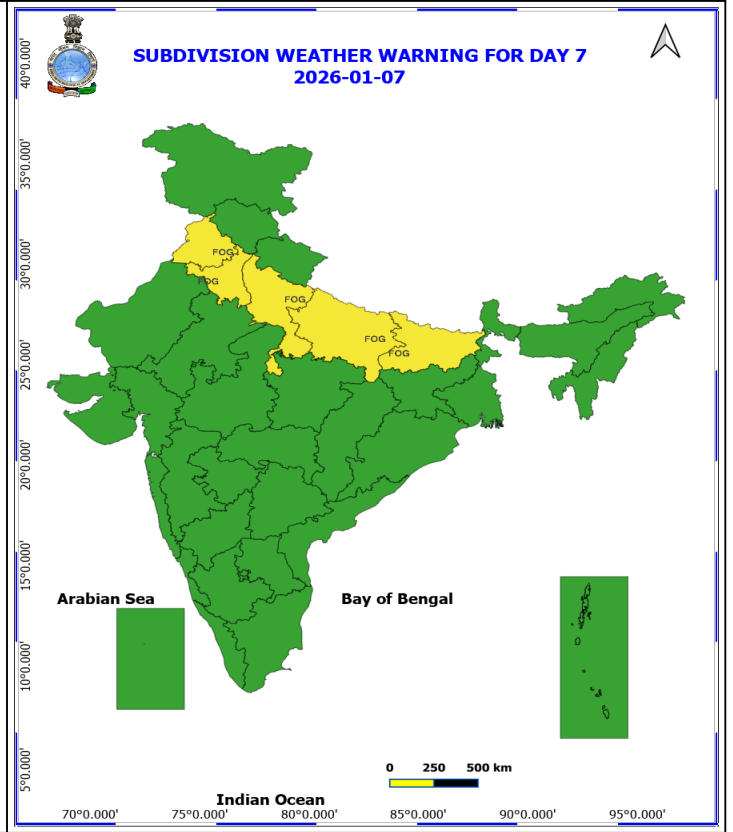
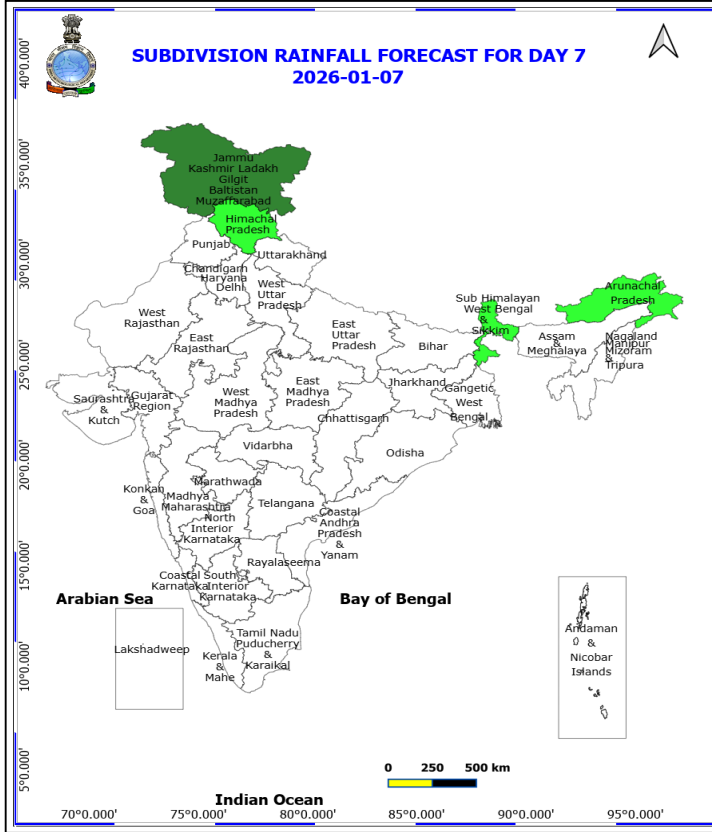
No Fishermen Warning



6 January (Day 6)

❖ **Dense Fog** likely at isolated places over Bihar, Haryana, Chandigarh & Delhi, Punjab and Uttar Pradesh.

No Fishermen Warning



7 January (Day 7)

❖ **Dense Fog** likely at isolated places over Bihar, Haryana, Chandigarh & Delhi, Punjab and Uttar Pradesh.

No Fishermen Warning



Table-1

7 Days Rainfall Forecast

S.No.	Subdivision	1- Jan	2- Jan	3- Jan	4- Jan	5- Jan	6- Jan	7- Jan
		Day 1	Day 2	Day 3	Day 4	Day 5	Day 6	Day 7
1	ANDAMAN & NICOBAR ISLANDS	ISOL	ISOL	DRY	DRY	DRY	DRY	DRY
2	ARUNACHAL PRADESH	ISOL	ISOL	ISOL	ISOL	ISOL	ISOL	ISOL
3	ASSAM & MEHGHALAYA	DRY	DRY	ISOL	ISOL	DRY	DRY	DRY
4	N. M. M. & T.	DRY	DRY	DRY	DRY	DRY	DRY	DRY
5	S.H. WEST BENGAL & SIKKIM	ISOL	SCT	ISOL	ISOL	ISOL	ISOL	ISOL
6	GANGETIC WEST BENGAL	DRY	DRY	DRY	DRY	DRY	DRY	DRY
7	ODISHA	DRY	DRY	DRY	DRY	DRY	DRY	DRY
8	JHARKHAND	DRY	DRY	DRY	DRY	DRY	DRY	DRY
9	BIHAR	DRY	DRY	DRY	DRY	DRY	DRY	DRY
10	EAST UTTAR PRADESH	DRY	DRY	DRY	DRY	DRY	DRY	DRY
11	WEST UTTAR PRADESH	ISOL	DRY	DRY	DRY	DRY	DRY	DRY
12	UTTARAKHAND	SCT	ISOL	DRY	DRY	DRY	DRY	DRY
13	HARYANA, CHD & DELHI	SCT	DRY	DRY	DRY	DRY	DRY	DRY
14	PUNJAB	SCT	DRY	DRY	DRY	DRY	DRY	DRY
15	HIMACHAL PRADESH	FWS	ISOL	DRY	DRY	ISOL	ISOL	ISOL
16	JAMMU AND KASHMIR AND LADAKH	FWS	ISOL	DRY	DRY	ISOL	SCT	SCT
17	WEST RAJASTHAN	ISOL	DRY	DRY	DRY	DRY	DRY	DRY
18	EAST RAJASTHAN	ISOL	DRY	DRY	DRY	DRY	DRY	DRY
19	WEST MADHYA PRADESH	DRY	DRY	DRY	DRY	DRY	DRY	DRY
20	EAST MADHYA PRADESH	DRY	DRY	DRY	DRY	DRY	DRY	DRY
21	GUJRAT REGION	DRY	DRY	DRY	DRY	DRY	DRY	DRY
22	SAURASHTRA & KUTCH	DRY	DRY	DRY	DRY	DRY	DRY	DRY
23	KONKAN & GOA	DRY	DRY	DRY	DRY	DRY	DRY	DRY
24	MADHYA MAHARASHTRA	DRY	DRY	DRY	DRY	DRY	DRY	DRY
25	MARATHWADA	DRY	DRY	DRY	DRY	DRY	DRY	DRY
26	VIDARBHA	DRY	DRY	DRY	DRY	DRY	DRY	DRY
27	CHATTISGARH	DRY	DRY	DRY	DRY	DRY	DRY	DRY
28	COASTAL ANDHRA PRADESH	DRY	DRY	DRY	DRY	DRY	DRY	DRY
29	TELANGANA	DRY	DRY	DRY	DRY	DRY	DRY	DRY
30	RAYALASEEMA	ISOL	DRY	DRY	DRY	DRY	DRY	DRY
31	TAMILNADU & PUDUCHERRY	SCT	ISOL	ISOL	DRY	DRY	DRY	DRY
32	COSTAL KARNATAKA	DRY	DRY	DRY	DRY	DRY	DRY	DRY
33	NORTH INTERIOR KARNATAKA	DRY	DRY	DRY	DRY	DRY	DRY	DRY
34	SOUTH INTERIOR KARNATAKA	DRY	DRY	DRY	DRY	DRY	DRY	DRY
35	KERALA	ISOL	ISOL	ISOL	DRY	DRY	DRY	DRY
36	LAKSHDWEEP	SCT	SCT	SCT	DRY	DRY	DRY	DRY

Legend	Category	%Stations
WS	Widespread/Most Places	76-100
FWS	Fairly Widespread/Many Places	51-75
SCT	Scattered/ A Few Places	26-50
ISOL	Isolated Places	1-25
DRY	No Rain	0

***Red color warning does not mean "Red Alert" Red color warning means "Take Action"**
Forecast and warning for any day is valid from 0830 hours IST of day till 0830 hours IST of next day
For more details kindly visit <https://mausam.imd.gov.in> or contact 011-2434-4599

(Service to the nation since 1875)

Fig. 1: Maximum Temperatures Dated 2025-12-31

Fig. 2: Departure of Maximum Temp. Dated 2025-12-31

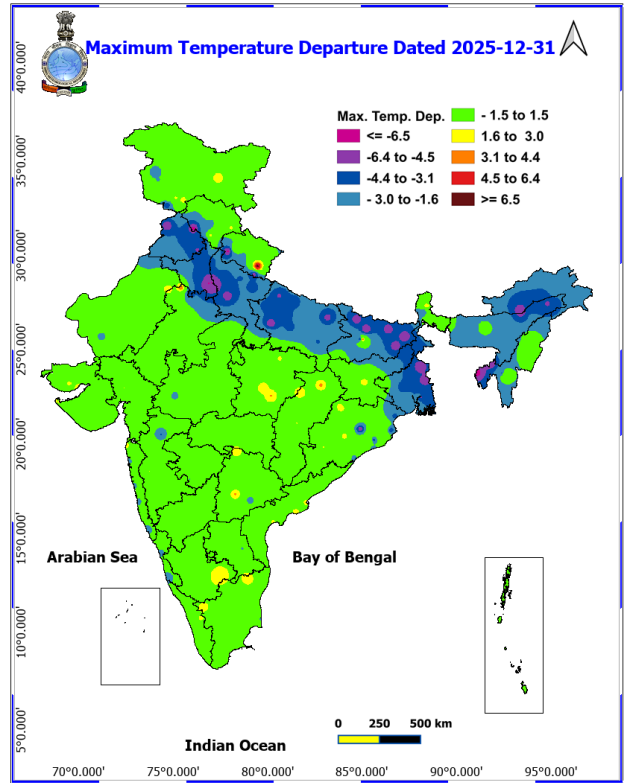
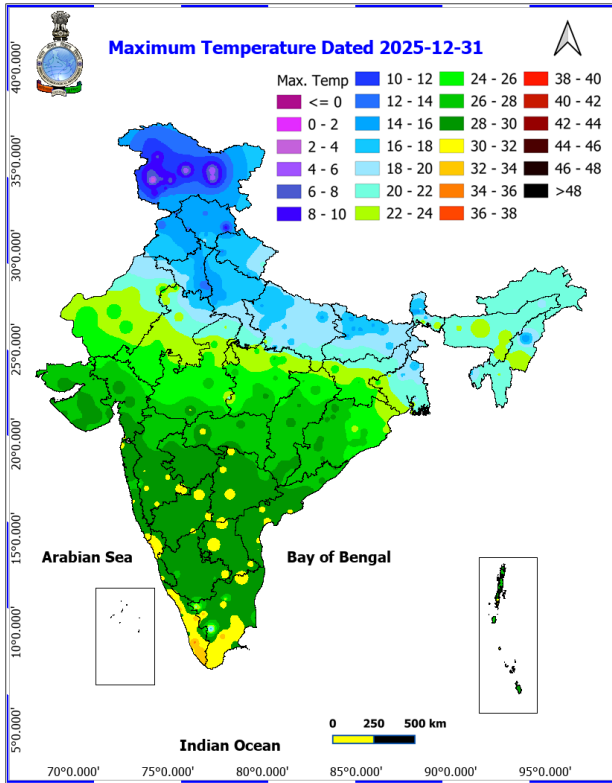
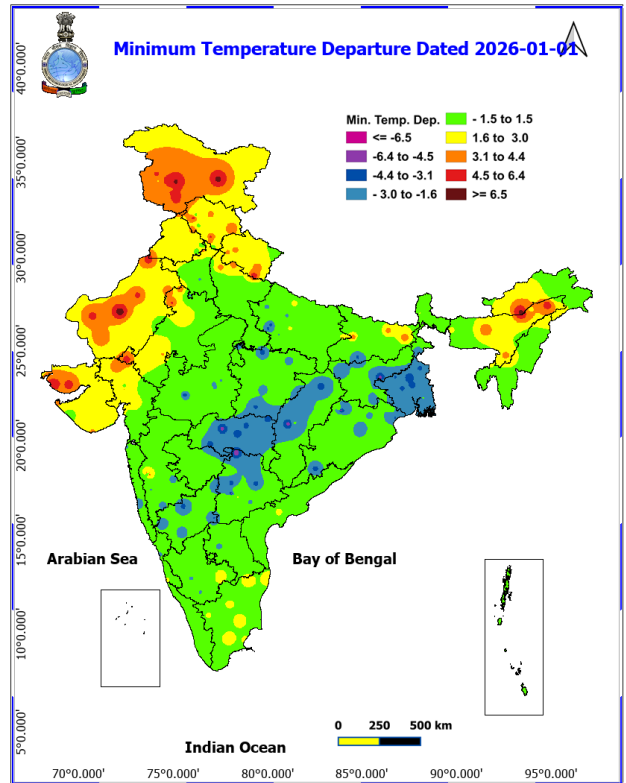
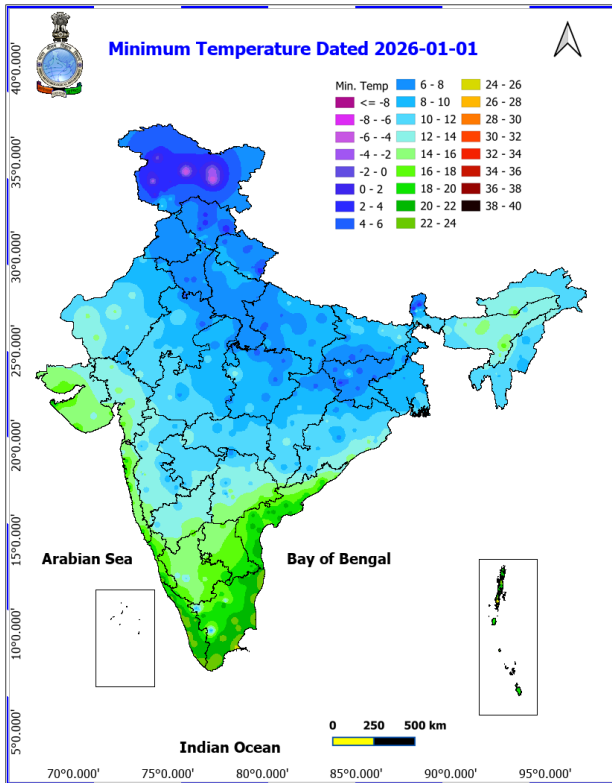
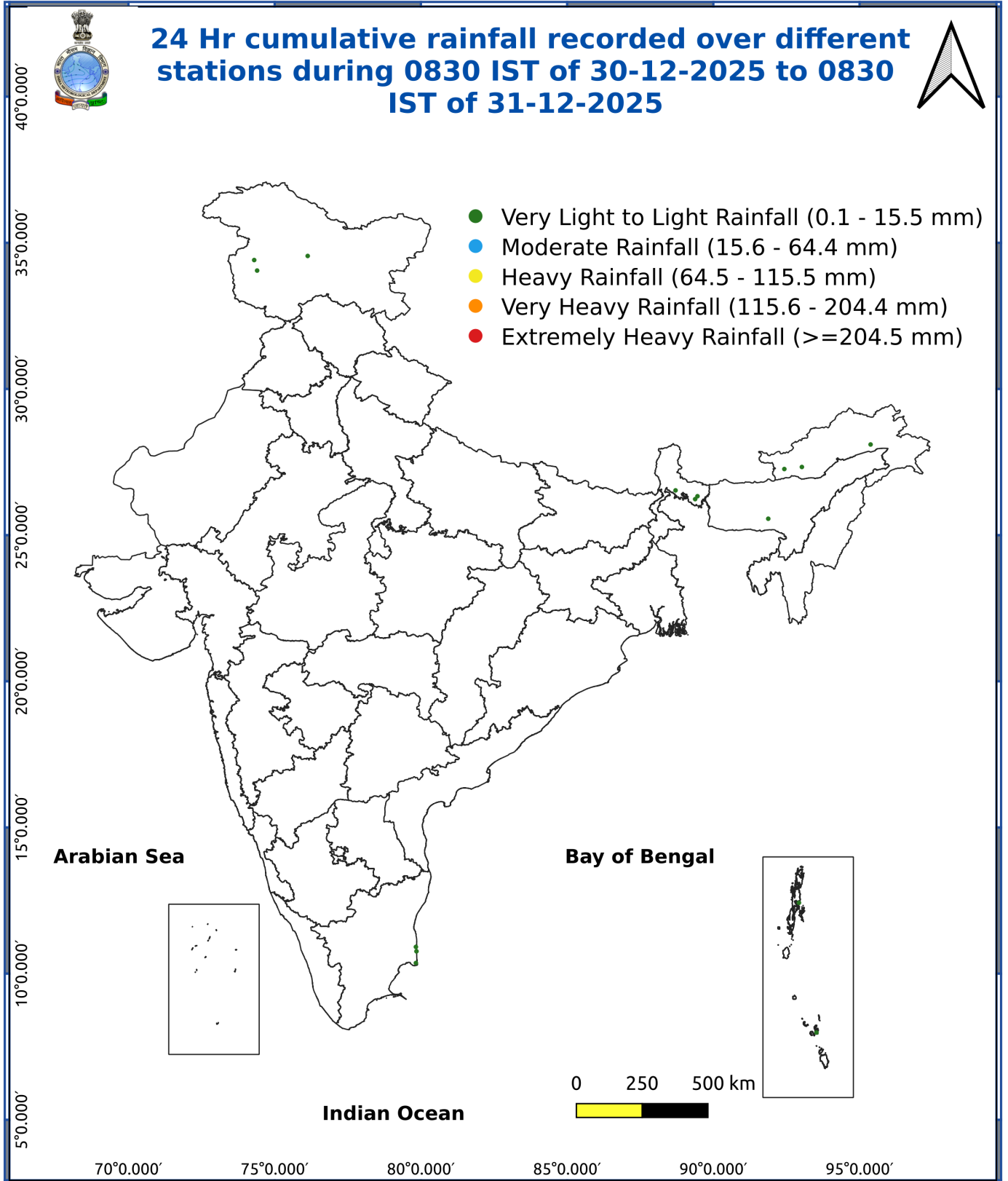


Fig. 3: Minimum Temperatures Dated 2025-12-31

Fig. 4: Departure of Minimum Temp. Dated 2025-12-31





Impact and Actions

Impact expected due to dense/very dense fog in the night/morning hours:

- **Dense to Very dense** fog conditions very likely to continue during night/morning hours over Odisha, Punjab, Haryana, Chandigarh & Delhi till 05th; East Uttar Pradesh till 02nd; West Rajasthan till 03rd 2026.
- **Dense fog** conditions also likely during night/morning hours at isolated pockets Jammu-Kashmir-Ladakh-Gilgit-Baltistan-Muzaffarabad and Jharkhand till 02nd; over Himachal Pradesh, Uttarakhand, Sub-Himalayan West Bengal & Sikkim, Assam & Meghalaya and Nagaland, Manipur, Mizoram & Tripura till 05th; Uttar Pradesh, Bihar, Punjab and Haryana, Chandigarh & Delhi till 7th; west Rajasthan till 04th; East Rajasthan during 02nd-04th; Madhya Pradesh till 01st and during 04th & 05th; Gangetic West Bengal till 03rd January 2026.

Transport and Aviation:

- May affect some airports, highways and railway routes in the areas of met- sub-division.
- Difficult driving conditions with slower journey times.
- Unless taken precautionary measures, it may lead to some road traffic collisions.

Power Sector:

- Chances of Tripping of Power lines in the very dense fog routes.

Human Health:

- Lung related health impacts: Dense fog contains particulate matter and other pollutants and in case exposed it gets lodged in the lungs, clogging them and decreasing their functional capacity which increases episodes of wheezing, coughing and shortness of breath.
- Impact on people having asthma bronchitis: Long time exposure to dense fog may cause respiratory problem for people having asthma bronchitis and other lung related health problems.
- Eye Irritation: Dense fog contains pollutions of various types and these Pollutants in the air if exposed may tend to irritate the membranes of the eye causing various infections leading to redness or swelling of the eye.

Action suggested:

Transport and Aviation:

- Be careful while driving or outing through any transport.
- Use fog lights during driving.
- Be in touch with airlines, railways and state transport for schedule of your journey.

Power Sector:

- To keep ready Maintenance Team.
- Human Health: To avoid outing until unless emergency and to cover the face.

- **Cold wave** conditions very likely in isolated pockets of Himachal Pradesh during 02nd-04th; Punjab and Haryana Chandigarh & Delhi during 03rd-05th; Rajasthan on 05th & 06th; Telangana on 01st January 2026.

Impact expected:

- An increased likelihood of various illnesses like flu, running/ stuffy nose or nosebleed, which usually set in or get aggravated due to prolonged exposure to cold.
- Do not ignore shivering. It is the first sign that the body is losing heat. Get Indoors.
- Frostbite can occur due to prolonged exposure to cold. The skin turns pale, hard and numb and eventually

***Red color warning does not mean "Red Alert" Red color warning means "Take Action"**

Forecast and warning for any day is valid from 0830 hours IST of day till 0830 hours IST of next day

For more details kindly visit <https://mausam.imd.gov.in> or contact 011-2434-4599

(Service to the nation since 1875)

black blisters appear on exposed body parts such as fingers, toes, nose and or earlobes. Severe frostbite needs immediate medical attention and treatment.

- Impact on agriculture, crop, livestock, water supply, transport and power sector at some places.

Action suggested:

- Wear several layers of loose fitting, light weight; warm woollen clothing.
- Cover your head, neck, hands and toes adequately as majority of heat loss occurs through these body parts. Wear several layers of loose fitting, light weight; warm woollen clothing rather than one layer of heavy cloth.
- Eat vitamin-C rich fruits & vegetable and drink sufficient fluids preferably warm fluids to maintain adequate immunity.
- Avoid or limit outdoor activities.
- Keep dry, if wet, change cloths immediately to prevent loss of body heat. Wear insulated/waterproof shoes.
- Warm the affected area of the body slowly with lukewarm water; do not rub the skin vigorously.
- If the affected skin area turns black, immediately consult a doctor.
- Maintain ventilation while using Heaters to avoid inhaling toxic fumes.
- Take safety measures while using electrical and gas heating devices.
- Extreme care needed for vulnerable people.
- Seek medical attention as soon as possible for someone suffering from frostbite/ Hypothermia.
- Protect livestock from cold weather.

- **Cold day conditions** very likely at isolated pockets over Punjab and Haryana Chandigarh & Delhi and Bihar on 01st January 2026.

- An increased likelihood of various illnesses like flu, running/ stuffy nose or nosebleed, which usually set in or get aggravated due to prolonged exposure to cold.
- Do not ignore shivering. It is the first sign that the body is losing heat. Get Indoors.
- Frostbite can occur due to prolonged exposure to cold. The skin turns pale, hard and numb and eventually black blisters appear on exposed body parts such as fingers, toes, nose and or earlobes. Severe frostbite needs immediate medical attention and treatment.
- Impact on agriculture, crop, livestock, water supply, transport and power sector at some places.

Action suggested:

- Wear several layers of loose fitting, light weight; warm woollen clothing.
- Cover your head, neck, hands and toes adequately as majority of heat loss occurs through these body parts. Wear several layers of loose fitting, light weight; warm woollen clothing rather than one layer of heavy cloth.
- Eat vitamin-C rich fruits & vegetable and drink sufficient fluids preferably warm fluids to maintain adequate immunity.
- Avoid or limit outdoor activities.
- Keep dry, if wet, change cloths immediately to prevent loss of body heat. Wear insulated/waterproof shoes.
- Warm the affected area of the body slowly with lukewarm water; do not rub the skin vigorously.
- If the affected skin area turns black, immediately consult a doctor.
- Maintain ventilation while using Heaters to avoid inhaling toxic fumes.
- Take safety measures while using electrical and gas heating devices.
- Extreme care needed for vulnerable people.
- Seek medical attention as soon as possible for someone suffering from frostbite/ Hypothermia.
- Protect livestock from cold weather.

Agromet advisories for various parts of the country

Agromet advisories for likely impact of Cold Waves / Low Temperatures

***Red color warning does not mean "Red Alert" Red color warning means "Take Action"**
Forecast and warning for any day is valid from 0830 hours IST of day till 0830 hours IST of next day
For more details kindly visit <https://mausam.imd.gov.in> or contact 011-2434-4599

(Service to the nation since 1875)



- In **Himachal Pradesh, Punjab, Haryana** and **Telangana**, apply light and frequent irrigation to the standing crops in the evening to protect the crops from low temperature stress. Use mulching and cover vegetable nurseries and young fruit plants with straw / polythene sheets to maintain optimum soil temperature.

Livestock / Poultry

- Keep cattle inside the sheds during night and provide dry bedding to protect them from cold.
- Keep the chicks warm by providing artificial light in the poultry sheds.

Agromet advisories for likely impact of Thunderstorm / Gusty Winds

- Provide mechanical support to horticultural crops and staking or support to vegetables and young fruit plants / fruit-bearing plants to avoid lodging due to strong winds.

LEGENDS

- 1 अंडमान और निकोबार द्वीप समुह
- 2 अरुणाचल प्रदेश
- 3 असम और मेघालय
- 4 नागालैंड मनीपुर मीजोरम और त्रिपुरा
- 5 उप हिमालय पश्चिम बंगाल एवं सिक्किम
- 6 पश्चिम बंगाल
- 7 ओडिसा
- 8 झारखंड
- 9 बिहार
- 10 पूर्वी उत्तर प्रदेश
- 11 पश्चिम उत्तर प्रदेश
- 12 उत्तराखंड
- 13 हरियाणा चंडिगढ़ एवं दिल्ली
- 14 पंजाब
- 15 हिमाचल प्रदेश
- 16 जम्मू एवं कश्मीर एवं लद्दाख
- 17 पश्चिम राजस्थान
- 18 पूर्वी राजस्थान
- 19 पश्चिम मध्य प्रदेश
- 20 पूर्वी मध्य प्रदेश
- 21 गुजरात क्षेत्र
- 22 सौराष्ट्र एवं कच्छ
- 23 कोंकण एवं गोवा
- 24 मध्य महाराष्ट्र
- 25 मराठावाडा
- 26 विदर्भ
- 27 छत्तीसगढ़
- 28 तटीय आंध्र प्रदेश एवं यनम
- 29 तेलंगाना
- 30 रायलसीमा
- 31 तमिलनाडु, पुदुचेरी एवं कराईकल
- 32 तटिय कर्नाटक
- 33 आंतरिक उत्तरी कर्नाटक
- 34 आंतरिक दक्षिणी कर्नाटक
- 35 केरल एवं माहे
- 36 लक्षद्वीप



1. Andaman & Nicobar Islands
2. Arunachal Pradesh
3. Assam & Meghalaya
4. Nagaland, Manipur, Mizoram & Tripura
5. Sub-Himalayan West Bengal & Sikkim
6. Gangetic West Bengal
7. Orissa
8. Jharkhand
9. Bihar
10. East Uttar Pradesh
11. West Uttar Pradesh
12. Uttarakhand
13. Haryana, Chd & Delhi
14. Punjab
15. Himachal Pradesh
16. Jammu & Kashmir and Ladakh
17. West Rajasthan
18. East Rajasthan
19. West Madhya Pradesh
20. East Madhya Pradesh
21. Gujarat
22. Saurashtra
23. Konkan & Goa
24. Madhya Maharashtra
25. Marathawada
26. Vidharbha
27. Chhattisgarh
28. Coastal Andhra Pradesh & Yanam
29. Telangana
30. Rayalaseema
31. Tamilnadu, Puducherry & Karaikal
32. Coastal Karnataka
33. North Interior Karnataka
34. South Interior Karnataka
35. Kerala & Mahe
36. Lakshadweep

SPATIAL DISTRIBUTION (% of Stations reporting)

% Stations	Category	% Stations	Category
76-100	Widespread (WS/ Most Places)	26-50	Scattered (SCT/ A Few Places)
51-75	Fairly Widespread (FWS/ Many Places)	1-25	Isolated (ISOL)

Subdivision Colour

- NO WARNING
- WATCH (BE UPDATED)
- ALERT (BE PREPARED TO TAKE ACTION)
- WARNING (TAKE ACTION)

Probabilistic Forecast

Terms	Probability of Occurrence (%)
Unlikely	< 25
Likely	25 - 50
Very Likely	50 - 75
Most Likely	> 75

- | | | | |
|--------------------------|-----------------|----------------------|--------------------|
| Heavy Rain | Very Heavy Rain | Extremely Heavy Rain | Heavy Snow |
| Thunderstorm & Lightning | Hailstorm | Dust Storm | Dust Raising Winds |
| Strong surface winds | Heat Wave | Hot Day | Warm Night |
| Cold Wave | Cold Day | Ground Frost | Fog |
| Hot & Humid | | | |

*Red color warning does not mean "Red Alert" Red color warning means "Take Action"

Forecast and warning for any day is valid from 0830 hours IST of day till 0830 hours IST of next day

For more details kindly visit <https://mausam.imd.gov.in> or contact 011-2434-4599

(Service to the nation since 1875)

LEGENDS

WARNING

WARNING (TAKE ACTION)
ALERT (BE PREPARED)
WATCH (BE UPDATED)
NO WARNING (NO ACTION)

Probabilistic Forecast

Terms	Probability of Occurrence (%)
Unlikely	< 25
Likely	25 - 50
Very Likely	50 - 75
Most Likely	> 75



Heavy: 64.5 to 115.5 mm/cm *
Very Heavy: 115.6 to 204.4 mm/cm*
Extremely Heavy: > 204.4 mm/cm *



When maximum temperature of a station reaches $\geq 40^{\circ}\text{C}$ for plains and $\geq 30^{\circ}\text{C}$ for hilly regions
(a) Based on Departure from normal

Heat Wave: Maximum Temperature Departure from normal 4.5°C to 6.4°C .
Severe Heat Wave: Maximum Temperature Departure from normal $\geq 6.5^{\circ}\text{C}$

(b). Based on Actual maximum temperature

Heat Wave: When actual maximum temperature $\geq 45^{\circ}\text{C}$.
Severe Heat Wave: When actual maximum temperature $\geq 47^{\circ}\text{C}$

(c). Criteria for heat wave for coastal stations

When maximum temperature departure is $> 4.5^{\circ}\text{C}$ from normal. Heat Wave may be described provided maximum temperature $\geq 37^{\circ}\text{C}$



When maximum temperature remains 40°C

Warm Night: When minimum temperature departure 4.5°C to 6.4°C .
Severe Warm Night: When minimum temperature departure $> 6.4^{\circ}\text{C}$.



When minimum temperature of a station $\leq 10^{\circ}\text{C}$ for plains and $\leq 0^{\circ}\text{C}$ for hilly regions.

(a). Based on departure

Cold Wave: Minimum Temperature Departure from normal -4.5°C to -6.4°C .
Severe Cold Wave: Minimum Temperature Departure from normal $\leq -6.5^{\circ}\text{C}$

(b) Based on actual Minimum Temperature (for Plains only)

Cold Wave : When Minimum Temperature is $\leq 4.0^{\circ}\text{C}$
Severe Cold Wave: When Minimum Temperature is $\leq 2.0^{\circ}\text{C}$

(c) For Coastal Stations

When Minimum Temperature departure is $\leq -4.5^{\circ}\text{C}$ & actual Minimum Temperature is $\leq 15^{\circ}\text{C}$



When minimum temperature of a station $\leq 10^{\circ}\text{C}$ for plains and $\leq 0^{\circ}\text{C}$ for hilly regions
Based on departure

Cold Day: Maximum Temperature Departure from normal -4.5°C to -6.4°C .
Severe Cold Day: Maximum Temperature Departure from normal $\leq -6.5^{\circ}\text{C}$



Phenomenon of small droplets suspended in air and the horizontal visibility $< 1\text{km}$

Moderate Fog: When the visibility between 500-200 metres
Dense Fog: when the visibility between 50- 200 metres
Very Dense Fog: when the visibility < 50 metres



Sudden electrical discharges manifested by a flash of light (Lightning) and a sharp rumbling sound (thunder)



An ensemble of particles of dust or sand energetically lifted to great heights by a strong and turbulent wind.



Ice deposits on ground

Air temperature $\leq 4^{\circ}\text{C}$ (over Plains)



A strong wind that rises suddenly, lasts for atleast 1 minute.

Moderate: Wind speed 52-61 kmph
Severe: Wind speed 62-87 kmph
Very Severe: Wind speed > 87 kmph



Effect of various waves in the sea over specific area

Rough to very rough: Wind speed 41-62 kmph (22-33 knots) & Wave height 2.5-6 metre
High to very high: Wind speed 63-117 kmph (34-63 knots) & Wave height 6-14 metre
Phenomenal: Wind speed > 117 kmph (> 63 knots) & Wave height > 14 metre



Cyclonic Storm: Wind speed 62-87 kmph (34-47 knots)
Severe Cyclonic Storm: Wind speed 88-117 kmph (48-63 knots)
Very Severe Cyclonic Storm: Wind speed 118-165 kmph (64 - 89 knots)
Extremely Severe Cyclonic Storm: Wind speed 166-220 kmph (90 -119 knots)
Super Cyclone Storm: Wind speed > 220 kmph (> 119 knots)

*Red color warning does not mean "Red Alert" Red color warning means "Take Action"

Forecast and warning for any day is valid from 0830 hours IST of day till 0830 hours IST of next day

For more details kindly visit <https://mausam.imd.gov.in> or contact 011-2434-4599

(Service to the nation since 1875)