

2026-01-21

Time of Issue: 08:10:00 hours IST
(Morning)

ALL INDIA WEATHER SUMMARY AND FORECAST BULLETIN

Significant Weather Features

Weather Forecast and warning:

- Isolated to scattered light to moderate rainfall/snowfall likely over Jammu-Kashmir-Ladakh-Gilgit-Baltistan-Muzaffarabad on 21st and fairly widespread to widespread rainfall/snowfall over Western Himalayan Region during 22nd-26th January; with **isolated heavy falls over Kashmir valley on 22nd & 23rd and higher reaches of Himachal Pradesh and Uttarakhand on 23rd January.**
- Isolated to scattered light to moderate rainfall over Punjab, Haryana, Chandigarh, West Uttar Pradesh during 22nd - 24th; East Uttar Pradesh on 23rd & 24th and Rajasthan on 22nd & 23rd January.
- Thunderstorm activity accompanied with **lightning & gusty winds (speed 30-50 kmph)** likely over Jammu-Kashmir-Ladakh-Gilgit-Baltistan-Muzaffarabad and Himachal Pradesh on 22nd & 23rd; Uttarakhand during 23rd-26th; Punjab, Haryana Chandigarh & Delhi, West Rajasthan during 22nd & 23rd; West Uttar Pradesh and East Rajasthan on 23rd; East Uttar Pradesh on 23rd & 24th January.
- Thunderstorm activity accompanied with **lightning likely** over Tamil Nadu, Puducherry & Karaikal on 24th January.

Forecast of minimum temperatures:

- No significant change in minimum temperatures likely over Northwest India during next 24 hours ; gradual rise by 3-5°C during subsequent 5 days.
- No significant change in minimum temperatures likely over Central India during next 2 days; gradual rise by 2-4°C during subsequent 3 days and no significant change thereafter.
- No significant change in minimum temperatures likely over Maharashtra India during next 24 hours; gradual rise by 2-4°C during subsequent 5 days.
- No significant change in minimum temperatures likely over rest parts of the country.

Dense Fog & Cold wave Warnings:

- **Dense fog** conditions also likely during morning/night hours in isolated pockets over Haryana, Chandigarh & till 22nd January.
- **Cold wave conditions** very likely in isolated pockets of Himachal Pradesh on 21st January 2026.
- **Cold day conditions** very likely in isolated pockets of Himachal Pradesh on 23rd January 2026.

Ground Frost Warning:

- **Ground Frost** very likely in isolated pockets of Uttarakhand on 21st January 2026.

*Red color warning does not mean "Red Alert" Red color warning means "Take Action"

Forecast and warning for any day is valid from 0830 hours IST of day till 0830 hours IST of next day

For more details kindly visit <https://mausam.imd.gov.in> or contact 011-2434-4599

(Service to the nation since 1875)

Main Weather Observations:

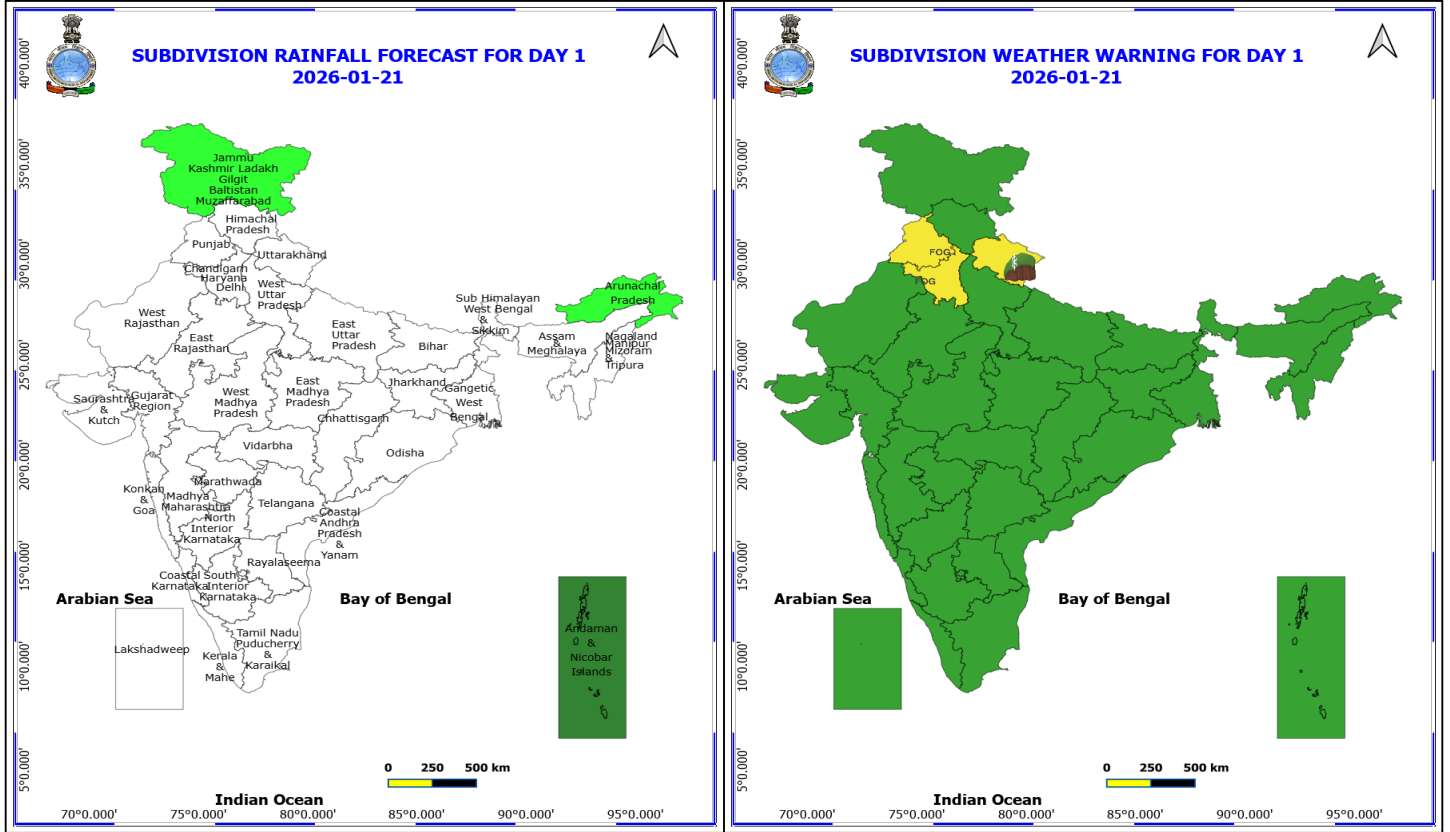
- ❖ **Rainfall distribution** (from 0830 hours IST of yesterday to 0530 hours IST of today): **Dry** over rest of the country.
- ❖ **Fog Condition Observed (at 0530 hours of today): Dense fog conditions:** at a few places over Punjab.
- ❖ **Visibility reported (at 0530 hours of today):** Punjab: Amritsar (rajasansi) AP (dist Amritsar) 50.0;
- ❖ **Minimum Temperature Departures (as on 20-01-2026):** above normal by (2°C to 5°C) over Central India and adjoining western India, Haryana, East Uttar Pradesh, Bihar, Assam & Meghalaya and below normal (-2°C to -4°C) at isolated places over Jharkhand, Chhattisgarh, Odisha, Telangana, Rayalaseema, Tamil Nadu and near normal over rest parts of the country. The **lowest minimum temperature** of 2.8°C was observed at Amritsar (**Punjab**) over the plains of India.
- ❖ **Maximum Temperature Departures (as on 20-01-2026):** The highest maximum temperature of 35.2°C is reported at KOTTAYAM (KERALA).

Meteorological Analysis (Based on 0530 hours IST)

- The **Western Disturbance** as a trough in middle and upper tropospheric westerlies with its axis at 5.8 km above mean sea level roughly along Long. 73°E to the north of Lat. 32°N persists.
- The upper air **cyclonic circulation** over northwest Uttar Pradesh & neighbourhood persists and now extends upto 3.1 km above mean sea level.
- A fresh **Western disturbance** seen as a trough in middle and upper tropospheric westerlies with its axis at 5.8 km above mean sea level roughly along Long. 50°E to the north of Lat. 28°N.
- The upper air **cyclonic circulation** over southeast Bay of Bengal & neighbourhood at 3.1 km above mean sea level persists.
- The upper air **cyclonic circulation** over northeast Assam & neighbourhood at 3.1 km above mean sea level persists.
- **Subtropical westerly Jet Stream** with core winds of the order of 120 knots at 12.6 km above mean sea level prevails over North India.

Weather Outlook for subsequent 3 days

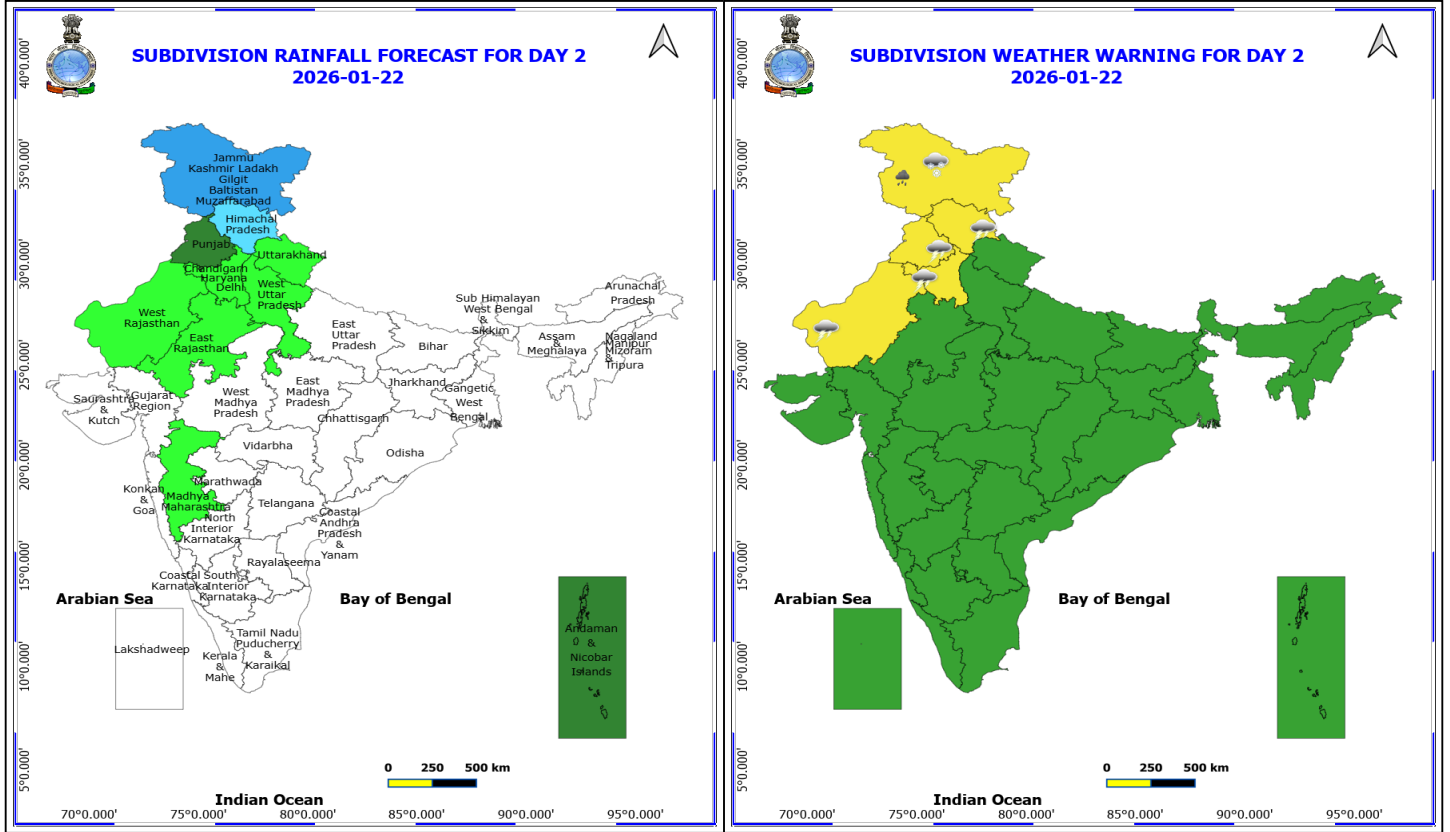
- Fairly widespread to widespread rainfall/snowfall activity likely over Western Himalayan Region.
- Fairly widespread to widespread rainfall activity likely over Punjab, Haryana, Delhi.
- Isolated/Scattered rainfall activity is likely over Uttar Pradesh, Rajasthan and West Madhya Pradesh.
- Isolated rainfall activity is likely over Lakshadweep and Nicobar islands.



21 January (Day 1)

- ❖ **Ground Frost** very likely at isolated places over Uttarakhand.
- ❖ **Dense Fog** very likely at isolated places over Haryana, Chandigarh & Delhi and Punjab.

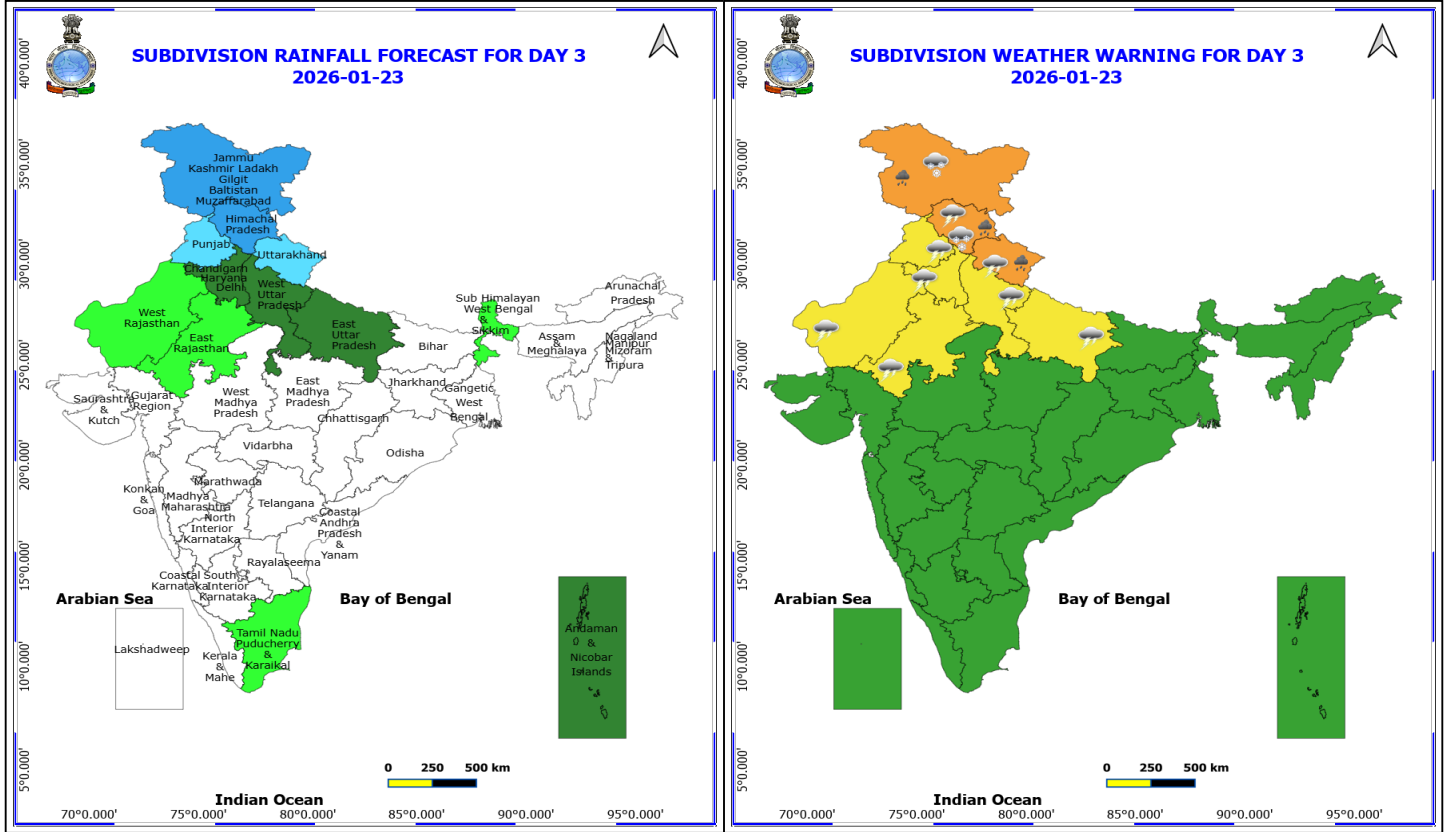
No Fishermen Warning



22 January (Day 2)

- ❖ **Heavy Rainfall** very likely at isolated places over Jammu-Kashmir-Ladakh-Gilgit-Baltistan-Muzaffarabad.
- ❖ **Heavy Snowfall** very likely at isolated places over Jammu-Kashmir-Ladakh-Gilgit-Baltistan-Muzaffarabad.
- ❖ **Thunderstorm accompanied with lightning & gusty winds(40-50kmph)** very likely at isolated places over Himachal Pradesh.
- ❖ **Thunderstorm accompanied with lightning & gusty winds(30-40kmph)** very likely at isolated places over Haryana, Chandigarh & Delhi, Punjab and West Rajasthan.
- ❖ **Squally winds with speeds of 45 to 55 kmph, gusting up to 65 kmph**, are expected over parts of the northwest Arabian Sea and adjoining areas, as well as along and off the Somalia coast and the western parts of the southwest Arabian Sea.

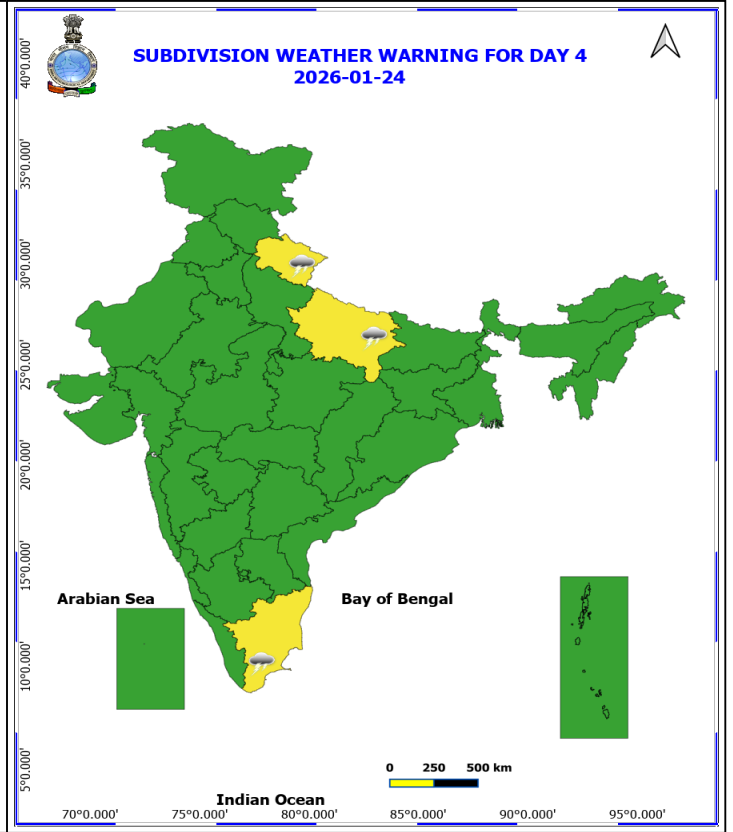
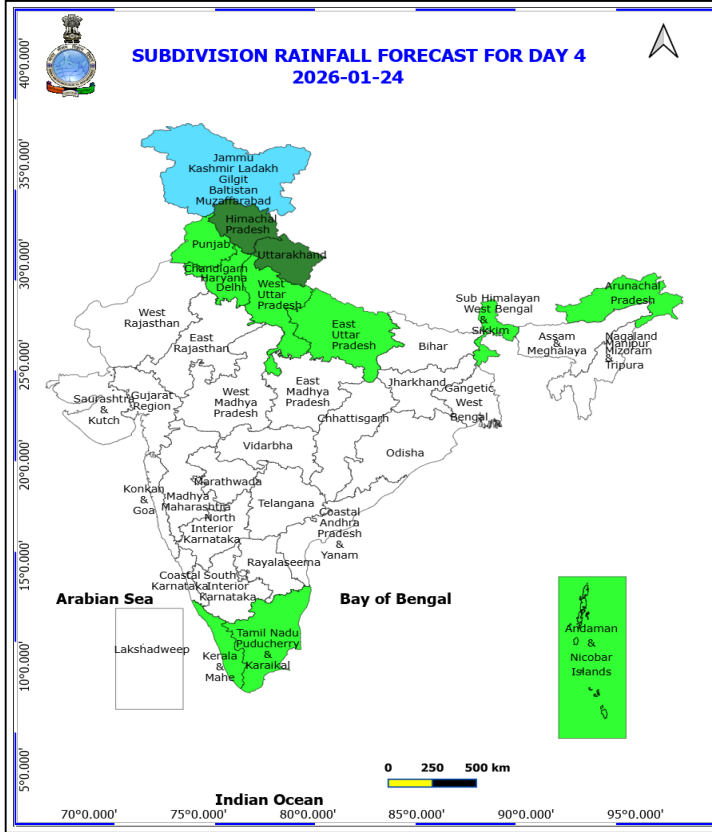
***Red color warning does not mean "Red Alert" Red color warning means "Take Action"**
Forecast and warning for any day is valid from 0830 hours IST of day till 0830 hours IST of next day
For more details kindly visit <https://mausam.imd.gov.in> or contact 011-2434-4599
 (Service to the nation since 1875)



23 January (Day 3)

- ❖ **Heavy Rainfall** very likely at isolated places over Himachal Pradesh, Jammu-Kashmir-Ladakh-Gilgit-Baltistan-Muzaffarabad and Uttarakhand.
- ❖ **Heavy Snowfall** very likely at isolated places over Himachal Pradesh and Jammu-Kashmir-Ladakh-Gilgit-Baltistan-Muzaffarabad.
- ❖ **Thunderstorm accompanied with lightning & gusty winds(40-50kmph)** very likely at isolated places over Haryana, Chandigarh & Delhi, Himachal Pradesh, Punjab and Rajasthan.
- ❖ **Thunderstorm accompanied with lightning & gusty winds(30-40kmph)** very likely at isolated places over Uttar Pradesh and Uttarakhand.
- ❖ **Squally winds with speeds of 45 to 55 kmph, gusting up to 65 kmph**, are expected over most parts of the northwest Arabian Sea, along and off the Oman coast, in parts of the west-central Arabian Sea, along and off the Somalia coast, and across the western parts of the southwest Arabian Sea.

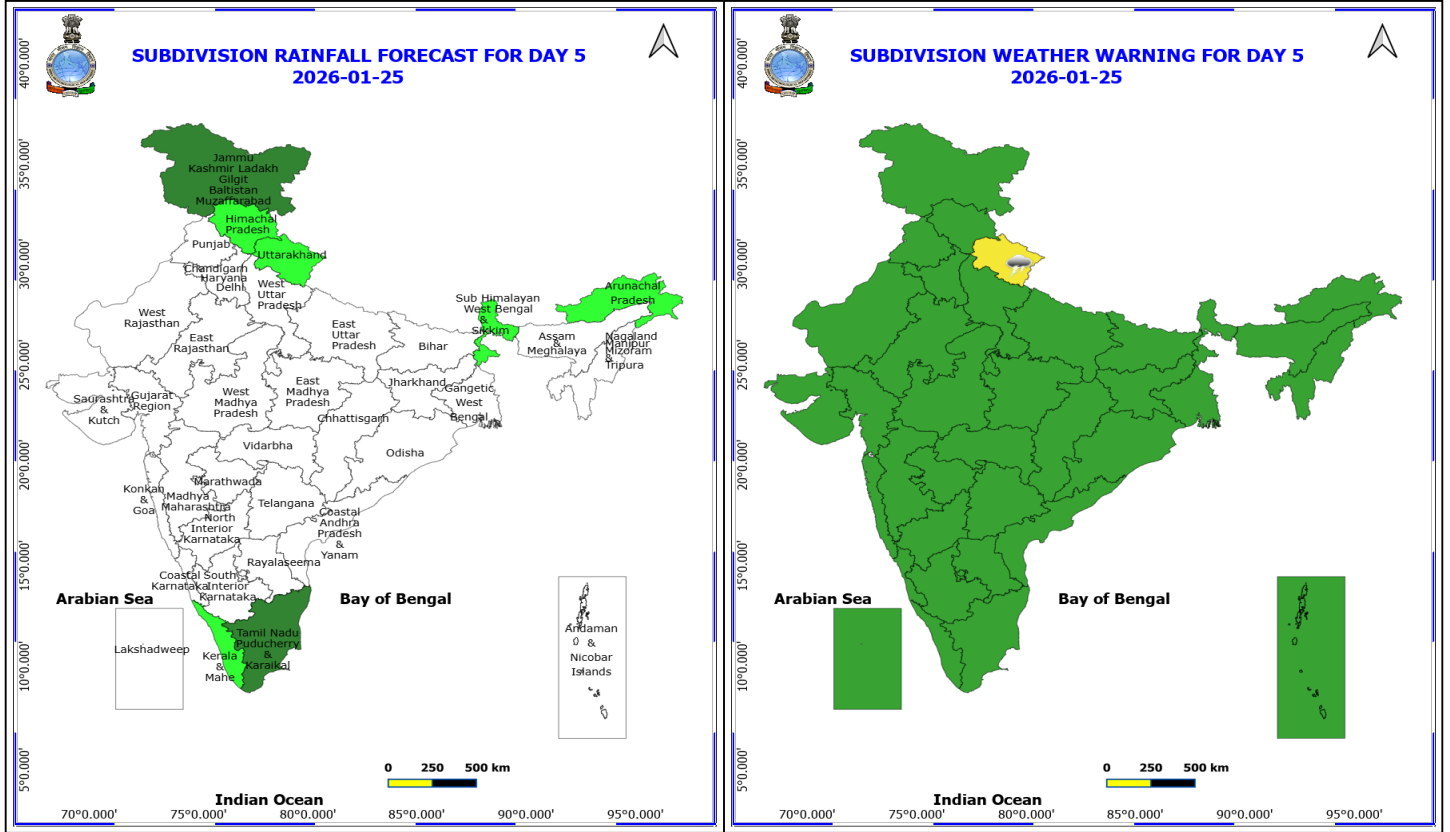
***Red color warning does not mean "Red Alert" Red color warning means "Take Action"**
Forecast and warning for any day is valid from 0830 hours IST of day till 0830 hours IST of next day
For more details kindly visit <https://mausam.imd.gov.in> or contact 011-2434-4599
(Service to the nation since 1875)



24 January (Day 4)

- ❖ **Thunderstorm accompanied with lightning & gusty winds(30-40kmph)** likely at isolated places over East Uttar Pradesh.
- ❖ **Thunderstorm accompanied with Lightning** likely at isolated places over Tamil Nadu Puducherry & Karaikal and Uttarakhand.
- ❖ **Squally winds with speeds of 45 to 55 kmph, gusting up to 65 kmph**, are expected along and off the Somalia coast, as well as over the western parts of the southwest Arabian Sea.

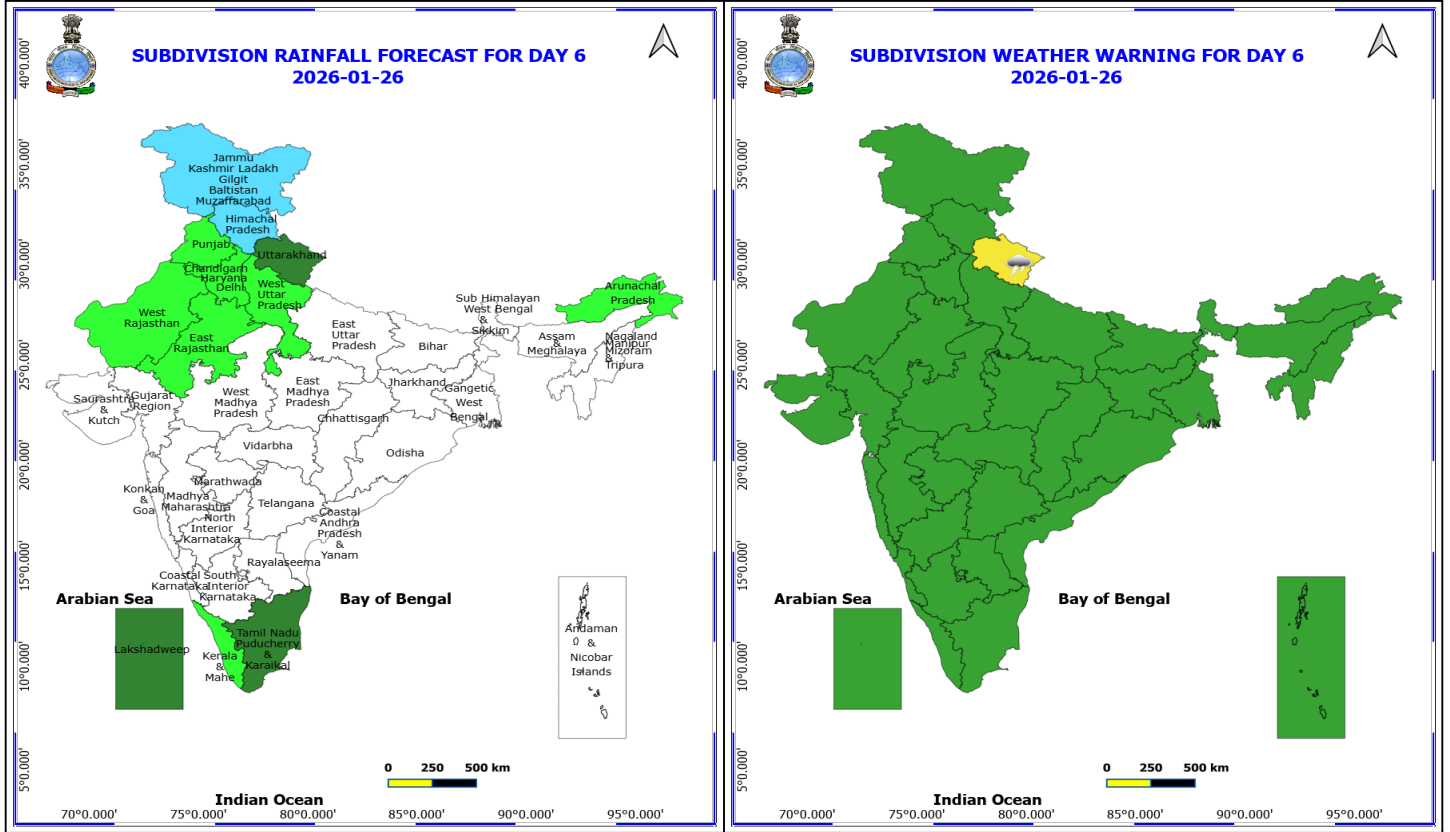
***Red color warning does not mean "Red Alert" Red color warning means "Take Action"**
Forecast and warning for any day is valid from 0830 hours IST of day till 0830 hours IST of next day
For more details kindly visit <https://mausam.imd.gov.in> or contact 011-2434-4599
(Service to the nation since 1875)



25 January (Day 5)

❖ **Thunderstorm accompanied with Lightning** likely at isolated places over Uttarakhand.

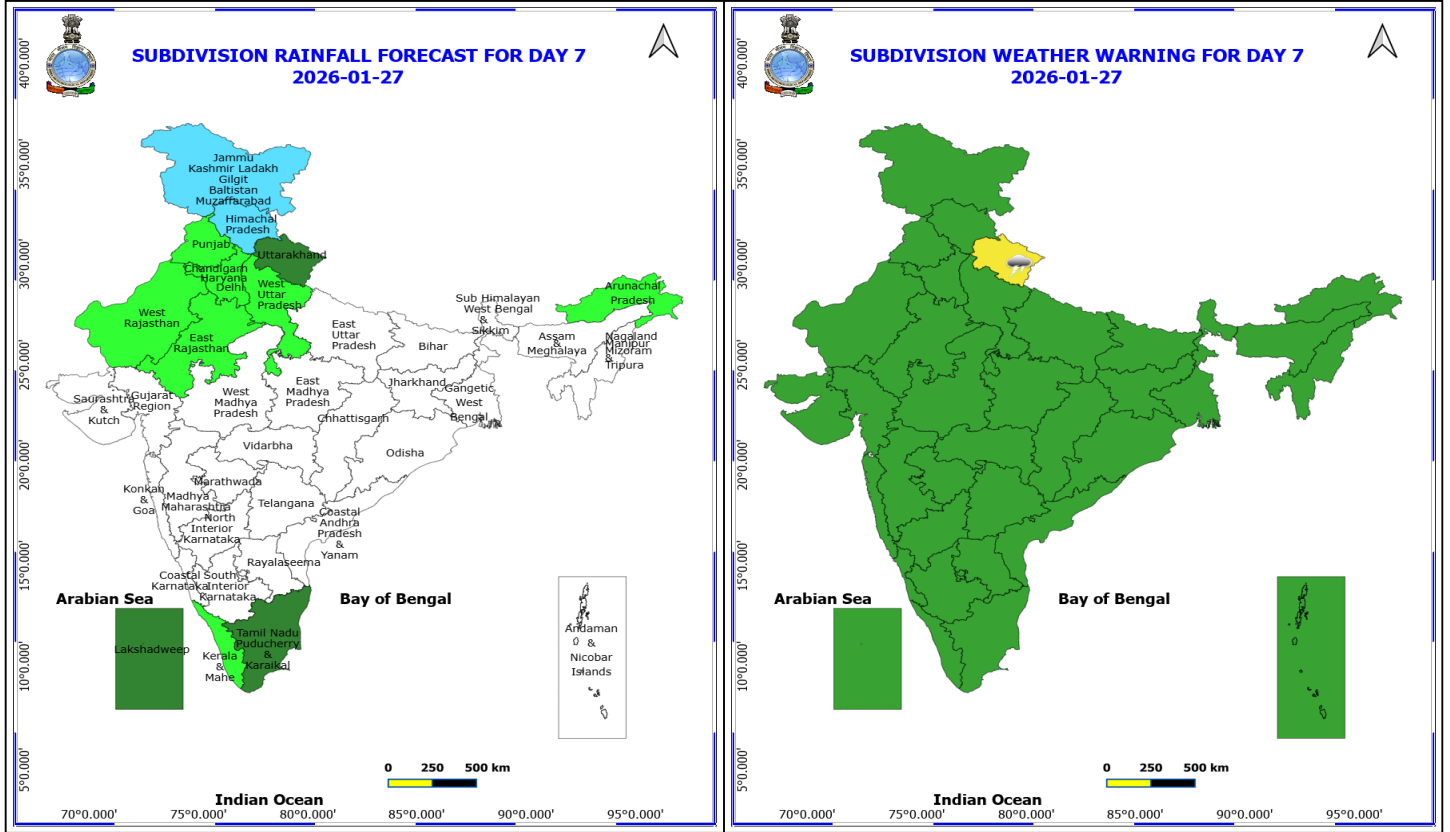
No Fishermen Warning



26 January (Day 6)

❖ **Thunderstorm accompanied with Lightning** likely at isolated places over Uttarakhand.

No Fishermen Warning



27 January (Day 7)

❖ **Thunderstorm accompanied with Lightning** likely at isolated places over Uttarakhand.

No Fishermen Warning



Table-1

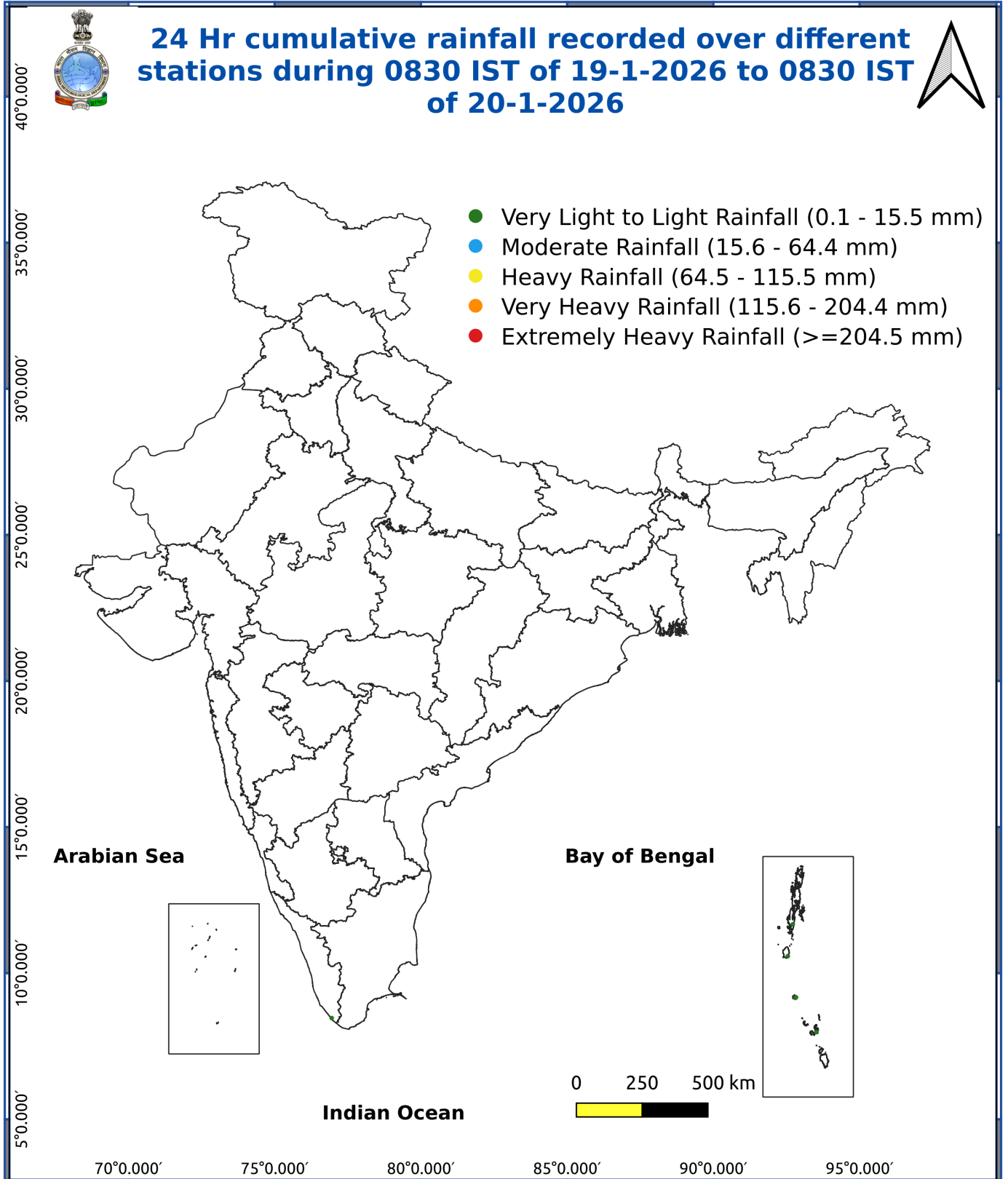
7 Days Rainfall Forecast

S.No.	Subdivision	21- Jan	22- Jan	23- Jan	24- Jan	25- Jan	26- Jan	27- Jan
		Day 1	Day 2	Day 3	Day 4	Day 5	Day 6	Day 7
1	ANDAMAN & NICOBAR ISLANDS	SCT	SCT	SCT	ISOL	DRY	DRY	DRY
2	ARUNACHAL PRADESH	ISOL	DRY	DRY	ISOL	ISOL	ISOL	ISOL
3	ASSAM & MEHGHALAYA	DRY	DRY	DRY	DRY	DRY	DRY	DRY
4	N. M. M. & T.	DRY	DRY	DRY	DRY	DRY	DRY	DRY
5	S.H. WEST BENGAL & SIKKIM	DRY	DRY	ISOL	ISOL	ISOL	DRY	DRY
6	GANGETIC WEST BENGAL	DRY	DRY	DRY	DRY	DRY	DRY	DRY
7	ODISHA	DRY	DRY	DRY	DRY	DRY	DRY	DRY
8	JHARKHAND	DRY	DRY	DRY	DRY	DRY	DRY	DRY
9	BIHAR	DRY	DRY	DRY	DRY	DRY	DRY	DRY
10	EAST UTTAR PRADESH	DRY	DRY	SCT	ISOL	DRY	DRY	DRY
11	WEST UTTAR PRADESH	DRY	ISOL	SCT	ISOL	DRY	ISOL	ISOL
12	UTTARAKHAND	DRY	ISOL	FWS	SCT	ISOL	SCT	SCT
13	HARYANA, CHD & DELHI	DRY	ISOL	SCT	ISOL	DRY	ISOL	ISOL
14	PUNJAB	DRY	SCT	FWS	ISOL	DRY	ISOL	ISOL
15	HIMACHAL PRADESH	DRY	FWS	WS	SCT	ISOL	FWS	FWS
16	JAMMU AND KASHMIR AND LADAKH	ISOL	WS	WS	FWS	SCT	FWS	FWS
17	WEST RAJASTHAN	DRY	ISOL	ISOL	DRY	DRY	ISOL	ISOL
18	EAST RAJASTHAN	DRY	ISOL	ISOL	DRY	DRY	ISOL	ISOL
19	WEST MADHYA PRADESH	DRY	DRY	DRY	DRY	DRY	DRY	DRY
20	EAST MADHYA PRADESH	DRY	DRY	DRY	DRY	DRY	DRY	DRY
21	GUJRAT REGION	DRY	DRY	DRY	DRY	DRY	DRY	DRY
22	SAURASHTRA & KUTCH	DRY	DRY	DRY	DRY	DRY	DRY	DRY
23	KONKAN & GOA	DRY	DRY	DRY	DRY	DRY	DRY	DRY
24	MADHYA MAHARASHTRA	DRY	ISOL	DRY	DRY	DRY	DRY	DRY
25	MARATHWADA	DRY	DRY	DRY	DRY	DRY	DRY	DRY
26	VIDARBHA	DRY	DRY	DRY	DRY	DRY	DRY	DRY
27	CHATTISGARH	DRY	DRY	DRY	DRY	DRY	DRY	DRY
28	COASTAL ANDHRA PRADESH	DRY	DRY	DRY	DRY	DRY	DRY	DRY
29	TELANGANA	DRY	DRY	DRY	DRY	DRY	DRY	DRY
30	RAYALASEEMA	DRY	DRY	DRY	DRY	DRY	DRY	DRY
31	TAMILNADU & PUDUCHERRY	DRY	DRY	ISOL	ISOL	SCT	SCT	SCT
32	COSTAL KARNATAKA	DRY	DRY	DRY	DRY	DRY	DRY	DRY
33	NORTH INTERIOR KARNATAKA	DRY	DRY	DRY	DRY	DRY	DRY	DRY
34	SOUTH INTERIOR KARNATAKA	DRY	DRY	DRY	DRY	DRY	DRY	DRY
35	KERALA	DRY	DRY	DRY	ISOL	ISOL	ISOL	ISOL
36	LAKSHDWEEP	DRY	DRY	DRY	DRY	DRY	SCT	SCT

Legend	Category	%Stations
WS	Widespread/Most Places	76-100
FWS	Fairly Widespread/Many Places	51-75
SCT	Scattered/ A Few Places	26-50
ISOL	Isolated Places	1-25
DRY	No Rain	0

***Red color warning does not mean "Red Alert" Red color warning means "Take Action"**
Forecast and warning for any day is valid from 0830 hours IST of day till 0830 hours IST of next day
For more details kindly visit <https://mausam.imd.gov.in> or contact 011-2434-4599

(Service to the nation since 1875)



Impact and Actions

Impact expected due to dense/very dense fog in the morning hours:

Dense fog conditions also likely during morning/night hours in isolated pockets over Haryana and Chandigarh till 22nd January.

Transport and Aviation:

- May affect some airports, highways and railway routes in the areas of met- sub-division.
- Difficult driving conditions with slower journey times.
- Unless taken precautionary measures, it may lead to some road traffic collisions.

Power Sector:

- Chances of Tripping of Power lines in the very dense fog routes.

Human Health:

- Lung related health impacts: Dense fog contains particulate matter and other pollutants and in case exposed it gets lodged in the lungs, clogging them and decreasing their functional capacity which increases episodes of wheezing, coughing and shortness of breath.
- Impact on people having asthma bronchitis: Long time exposure to dense fog may cause respiratory problem for people having asthma bronchitis and other lung related health problems.
- Eye Irritation: Dense fog contains pollutions of various types and these Pollutants in the air if exposed may tend to irritate the membranes of the eye causing various infections leading to redness or swelling of the eye.

Action suggested:

❖ Transport and Aviation:

- Be careful while driving or outing through any transport.
- Use fog lights during driving.
- Be in touch with airlines, railways and state transport for schedule of your journey.

❖ Power Sector:

- To keep ready Maintenance Team.
- Human Health: To avoid outing until unless emergency and to cover the face.

Impact expected due to Cold Wave to Severe Cold wave conditions:

Cold wave conditions very likely in isolated pockets of Himachal Pradesh on 21st January.

- An increased likelihood of various illnesses like flu, running/ stuffy nose or nosebleed, which usually set in or get aggravated due to prolonged exposure to cold.
- Do not ignore shivering. It is the first sign that the body is losing heat. Get Indoors.
- Frostbite can occur due to prolonged exposure to cold. The skin turns pale, hard and numb and eventually black blisters appear on exposed body parts such as fingers, toes, nose and or earlobes. Severe frostbite needs immediate medical attention and treatment.
- Impact on agriculture, crop, livestock, water supply, transport and power sector at some places.

Action suggested:

***Red color warning does not mean "Red Alert" Red color warning means "Take Action"**

Forecast and warning for any day is valid from 0830 hours IST of day till 0830 hours IST of next day

For more details kindly visit <https://mausam.imd.gov.in> or contact 011-2434-4599

(Service to the nation since 1875)

- Wear several layers of loose fitting, light weight; warm woollen clothing.
- Cover your head, neck, hands and toes adequately as majority of heat loss occurs through these body parts. Wear several layers of loose fitting, light weight; warm woollen clothing rather than one layer of heavy cloth.
- Eat vitamin-C rich fruits & vegetable and drink sufficient fluids preferably warm fluids to maintain adequate immunity.
- Avoid or limit outdoor activities.
- Keep dry, if wet, change cloths immediately to prevent loss of body heat. Wear insulated/waterproof shoes.
- Warm the affected area of the body slowly with lukewarm water; do not rub the skin vigorously.
- If the affected skin area turns black, immediately consult a doctor.
- Maintain ventilation while using Heaters to avoid inhaling toxic fumes.
- Take safety measures while using electrical and gas heating devices.
- Extreme care needed for vulnerable people.
- Seek medical attention as soon as possible for someone suffering from frostbite/ Hypothermia.
- Protect livestock from cold weather.

Agromet advisories for various parts of the country

Agromet advisories for likely impact of Cold Waves/ Low Temperatures

In **Himachal Pradesh**, apply light and frequent irrigation to the standing crops in the evening hours to protect crops from low temperature stress or cold injury. Use mulching and cover the vegetable nurseries and young fruit plants with straw / polythene sheets to maintain optimum soil temperature.

Livestock / Poultry

Keep the cattle in the sheds during night and provide dry bedding to protect them from cold.

Keep the chicks warm by providing artificial light in the poultry sheds.

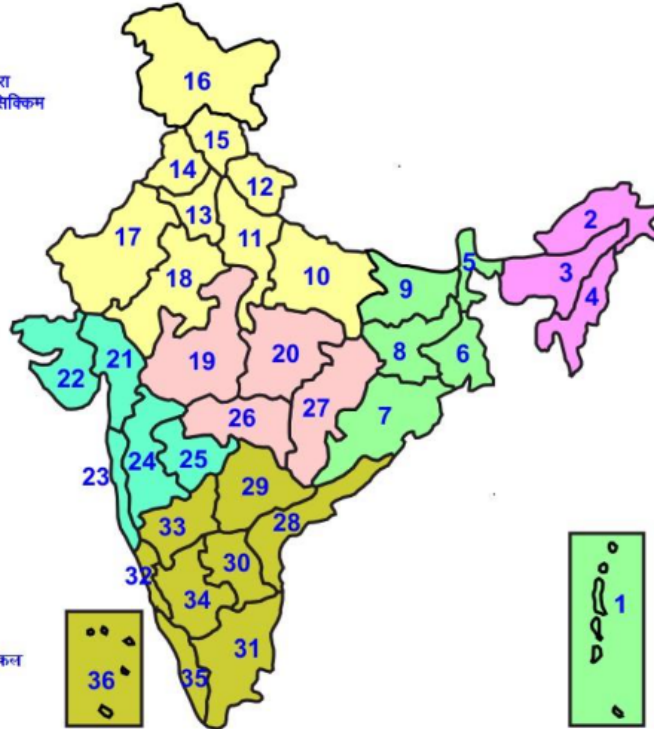
Legends & abbreviations:

Region wise classification of meteorological Sub-Divisions:

- **Northwest India:** Western Himalayan Region (Jammu-Kashmir-Ladakh-Gilgit-Baltistan-Muzaffarabad, Himachal Pradesh and Uttarakhand); Punjab, Haryana-Chandigarh-Delhi; West Uttar Pradesh, East Uttar Pradesh, West Rajasthan and East Rajasthan.
- **Central India:** West Madhya Pradesh, East Madhya Pradesh, Vidarbha and Chhattisgarh.
- **East India:** Bihar, Jharkhand, Sub-Himalayan West Bengal & Sikkim; Gangetic West Bengal, Odisha and Andaman & Nicobar Islands.
- **Northeast India:** Arunachal Pradesh, Assam & Meghalaya and Nagaland, Manipur, Mizoram & Tripura.
- **West India:** Gujarat Region, Saurashtra & Kutch, Konkan & Goa, Madhya Maharashtra and Marathawada.
- **South India:** Coastal Andhra Pradesh & Yanam, Telangana, Rayalaseema, Coastal Karnataka, North Interior Karnataka, South Interior Karnataka, Kerala & Mahe, Tamil Nadu, Puducherry & Karaikal and Lakshadweep.

LEGENDS

- 1 अंडमान और निकोबार द्वीप समुह
- 2 अरुणाचल प्रदेश
- 3 असम और मेघालय
- 4 नागालैंड मनीपुर मीजोरम और त्रिपुरा
- 5 उप हिमालय पश्चिम बंगाल एवं सिक्किम
- 6 पश्चिम बांग्लेश
- 7 ओडिसा
- 8 झारखंड
- 9 बिहार
- 10 पूर्वी उत्तर प्रदेश
- 11 पश्चिम उत्तर प्रदेश
- 12 उत्तराखंड
- 13 हरियाणा चंडिगढ़ एवं दिल्ली
- 14 पंजाब
- 15 हिमाचल प्रदेश
- 16 जम्मू एवं कश्मीर एवं लद्दाख
- 17 पश्चिम राजस्थान
- 18 पूर्वी राजस्थान
- 19 पश्चिम मध्य प्रदेश
- 20 पूर्वी मध्य प्रदेश
- 21 गुजरात क्षेत्र
- 22 सौराष्ट्र एवं कच्छ
- 23 कोंकण एवं गोवा
- 24 मध्य महाराष्ट्र
- 25 मराठावाडा
- 26 विदर्भ
- 27 छत्तीसगढ़
- 28 तटीय आंध्र प्रदेश एवं यनम
- 29 तेलंगाना
- 30 रायलसीमा
- 31 तमिलनाडु, पुदुचेरी एवं कराईकल
- 32 तटिय कर्नाटक
- 33 आंतरिक उत्तरी कर्नाटक
- 34 आंतरिक दक्षिणी कर्नाटक
- 35 केरल एवं माहे
- 36 लक्षद्वीप



1. Andaman & Nicobar Islands
2. Arunachal Pradesh
3. Assam & Meghalaya
4. Nagaland, Manipur, Mizoram & Tripura
5. Sub-Himalayan West Bengal & Sikkim
6. Gangetic West Bengal
7. Orissa
8. Jharkhand
9. Bihar
10. East Uttar Pradesh
11. West Uttar Pradesh
12. Uttarakhand
13. Haryana, Chd & Delhi
14. Punjab
15. Himachal Pradesh
16. Jammu & Kashmir and Ladakh
17. West Rajasthan
18. East Rajasthan
19. West Madhya Pradesh
20. East Madhya Pradesh
21. Gujarat
22. Saurashtra
23. Konkan & Goa
24. Madhya Maharashtra
25. Marathawada
26. Vidharbha
27. Chhattisgarh
28. Coastal Andhra Pradesh & Yanam
29. Telangana
30. Rayalaseema
31. Tamilnadu, Puducherry & Karaikal
32. Coastal Karnataka
33. North Interior Karnataka
34. South Interior Karnataka
35. Kerala & Mahe
36. Lakshadweep

SPATIAL DISTRIBUTION (% of Stations reporting)

% Stations	Category	% Stations	Category
76-100	Widespread (WS/ Most Places)	26-50	Scattered (SCT/ A Few Places)
51-75	Fairly Widespread (FWS/ Many Places)	1-25	Isolated (ISOL)

Subdivision Colour

- NO WARNING
- WATCH (BE UPDATED)
- ALERT (BE PREPARED TO TAKE ACTION)
- WARNING (TAKE ACTION)

Probabilistic Forecast

Terms	Probability of Occurrence (%)
Unlikely	< 25
Likely	25 - 50
Very Likely	50 - 75
Most Likely	> 75

- | | | | |
|--------------------------|-----------------|----------------------|--------------------|
| Heavy Rain | Very Heavy Rain | Extremely Heavy Rain | Heavy Snow |
| Thunderstorm & Lightning | Hailstorm | Dust Storm | Dust Raising Winds |
| Strong surface winds | Heat Wave | Hot Day | Warm Night |
| Cold Wave | Cold Day | Ground Frost | Fog |
| Hot & Humid | | | |

*Red color warning does not mean "Red Alert" Red color warning means "Take Action"

Forecast and warning for any day is valid from 0830 hours IST of day till 0830 hours IST of next day

For more details kindly visit <https://mausam.imd.gov.in> or contact 011-2434-4599

(Service to the nation since 1875)

LEGENDS

WARNING

WARNING (TAKE ACTION)
ALERT (BE PREPARED)
WATCH (BE UPDATED)
NO WARNING (NO ACTION)

Probabilistic Forecast

Terms	Probability of Occurrence (%)
Unlikely	< 25
Likely	25 - 50
Very Likely	50 - 75
Most Likely	> 75



Heavy: 64.5 to 115.5 mm/cm *
Very Heavy: 115.6 to 204.4 mm/cm*
Extremely Heavy: > 204.4 mm/cm *



When maximum temperature of a station reaches $\geq 40^{\circ}\text{C}$ for plains and $\geq 30^{\circ}\text{C}$ for hilly regions
(a) Based on Departure from normal

Heat Wave: Maximum Temperature Departure from normal 4.5°C to 6.4°C .
Severe Heat Wave: Maximum Temperature Departure from normal $\geq 6.5^{\circ}\text{C}$

(b). Based on Actual maximum temperature

Heat Wave: When actual maximum temperature $\geq 45^{\circ}\text{C}$.
Severe Heat Wave: When actual maximum temperature $\geq 47^{\circ}\text{C}$

(c). Criteria for heat wave for coastal stations

When maximum temperature departure is $> 4.5^{\circ}\text{C}$ from normal. Heat Wave may be described provided maximum temperature $\geq 37^{\circ}\text{C}$



When maximum temperature remains 40°C

Warm Night: When minimum temperature departure 4.5°C to 6.4°C .
Severe Warm Night: When minimum temperature departure $> 6.4^{\circ}\text{C}$.



When minimum temperature of a station $\leq 10^{\circ}\text{C}$ for plains and $\leq 0^{\circ}\text{C}$ for hilly regions.

(a). Based on departure

Cold Wave: Minimum Temperature Departure from normal -4.5°C to -6.4°C .
Severe Cold Wave: Minimum Temperature Departure from normal $\leq -6.5^{\circ}\text{C}$

(b) Based on actual Minimum Temperature (for Plains only)

Cold Wave : When Minimum Temperature is $\leq 4.0^{\circ}\text{C}$
Severe Cold Wave: When Minimum Temperature is $\leq 2.0^{\circ}\text{C}$

(c) For Coastal Stations

When Minimum Temperature departure is $\leq -4.5^{\circ}\text{C}$ & actual Minimum Temperature is $\leq 15^{\circ}\text{C}$



When minimum temperature of a station $\leq 10^{\circ}\text{C}$ for plains and $\leq 0^{\circ}\text{C}$ for hilly regions
Based on departure

Cold Day: Maximum Temperature Departure from normal -4.5°C to -6.4°C .
Severe Cold Day: Maximum Temperature Departure from normal $\leq -6.5^{\circ}\text{C}$



Phenomenon of small droplets suspended in air and the horizontal visibility $< 1\text{km}$

Moderate Fog: When the visibility between 500-200 metres
Dense Fog: when the visibility between 50- 200 metres
Very Dense Fog: when the visibility < 50 metres



Sudden electrical discharges manifested by a flash of light (Lightning) and a sharp rumbling sound (thunder)



An ensemble of particles of dust or sand energetically lifted to great heights by a strong and turbulent wind.



Ice deposits on ground

Air temperature $\leq 4^{\circ}\text{C}$ (over Plains)



A strong wind that rises suddenly, lasts for atleast 1 minute.

Moderate: Wind speed 52-61 kmph
Severe: Wind speed 62-87 kmph
Very Severe: Wind speed > 87 kmph



Effect of various waves in the sea over specific area

Rough to very rough: Wind speed 41-62 kmph (22-33 knots) & Wave height 2.5-6 metre
High to very high: Wind speed 63-117 kmph (34-63 knots) & Wave height 6-14 metre
Phenomenal: Wind speed > 117 kmph (> 63 knots) & Wave height > 14 metre



Cyclonic Storm: Wind speed 62-87 kmph (34-47 knots)
Severe Cyclonic Storm: Wind speed 88-117 kmph (48-63 knots)
Very Severe Cyclonic Storm: Wind speed 118-165 kmph (64 - 89 knots)
Extremely Severe Cyclonic Storm: Wind speed 166-220 kmph (90 -119 knots)
Super Cyclone Storm: Wind speed > 220 kmph (> 119 knots)

*Red color warning does not mean "Red Alert" Red color warning means "Take Action"

Forecast and warning for any day is valid from 0830 hours IST of day till 0830 hours IST of next day

For more details kindly visit <https://mausam.imd.gov.in> or contact 011-2434-4599

(Service to the nation since 1875)