

2025-08-21

Time of Issue: 08:32:00 hours IST
(Morning)

ALL INDIA WEATHER SUMMARY AND FORECAST BULLETIN

Significant Weather Features

Weather Forecast and Warnings:

West India:

Heavy to very heavy rainfall at a few places with isolated Extremely to Exceptionally heavy rainfall (≥ 30 cm) is very likely over Saurashtra on 21st August, 2025.

Rainfall activity is likely to reduce over Konkan and Madhya Maharashtra from today onwards with isolated heavy to very heavy rainfall over north Konkan (including Mumbai) and isolated heavy rainfall over the region during subsequent 3 days.

Strong surface winds (speed reaching 40-50 kmph) very likely over the region till 23rd August.

Light to moderate rainfall at most/many places very likely over the region during next 7 days.

Increase in rainfall activity over Konkan and Madhya Maharashtra and adjoining Gujarat from 25th Onwards.

East & Central India:

Isolated **heavy rainfall** likely over Madhya Pradesh, Chhattisgarh, Sub-Himalayan West Bengal & Sikkim, Bihar during next 7 days; Vidarbha on 25th & 26th; Odisha, Jharkhand, Gangetic West Bengal during 21st-25th August with isolated **very heavy rainfall over Jharkhand on 22nd; Bihar on 22nd & 23rd and Chhattisgarh on 25th & 26th August.**

Light to moderate rainfall at most/many places accompanied with thunderstorm & lightning likely over the region during next 5 days.

Northwest India:

Isolated **heavy rainfall** likely over Jammu-Kashmir during 22nd-26th; Himachal Pradesh, Uttarakhand, East Rajasthan during next 7 days; Punjab, Haryana during 22nd-26th; East Uttar Pradesh during 22nd-25th; West Uttar Pradesh during 23rd-26th; West Rajasthan on 23rd & 24th August with **isolated very heavy rainfall over Punjab on 23rd; over Uttarakhand, Himachal Pradesh during 23rd-25th; Haryana and East Rajasthan on 23rd August.**

Light/moderate rainfall at most/many places accompanied with thunderstorm & lightning likely over Jammu-Kashmir-Ladakh-Gilgit-Baltistan-Muzaffarabad, Uttarakhand & Rajasthan during next 7 days.

Northeast India:

Isolated **heavy rainfall** likely to continue over Assam & Meghalaya, Nagaland, Manipur, Mizoram & Tripura, Arunachal Pradesh during 7 days with **very heavy rainfall over Arunachal Pradesh, Tripura, Mizoram during 21st-24th and Assam & Meghalaya during 21th-23rd August.**

Light/moderate rainfall at many places accompanied with thunderstorm & lightning likely during next 3 days.

South Peninsular India:

Isolated **heavy rainfall** likely over Coastal & North Interior Karnataka on 26th; Telangana on 25th & 26th; Coastal Andhra Pradesh on 26th August.

Light to moderate rainfall at most/many places accompanied with thunderstorm & lightning likely over Tamil Nadu, Coastal Andhra Pradesh & Yanam and Telangana during next 5 days.

***Red color warning does not mean "Red Alert" Red color warning means "Take Action"**

Forecast and warning for any day is valid from 0830 hours IST of day till 0830 hours IST of next day

For more details kindly visit <https://mausam.imd.gov.in> or contact 011-2434-4599

(Service to the nation since 1875)

Main Weather Observations:

❖ **Rainfall distribution** (from 0830 hours IST of yesterday to 0530 hours IST of today): **at most places** over Saurashtra & Kutch, Himachal Pradesh, West Madhya Pradesh, Marathwada, North Interior Karnataka, Jharkhand, Nagaland, Manipur, Mizoram & Tripura, South Interior Karnataka, Coastal Karnataka, Assam & Meghalaya, Konkan & Goa, Sub-himalayan West Bengal & Sikkim, Gujarat Region, Bihar, Arunachal Pradesh, Madhya Maharashtra, Gangetic West Bengal, Vidarbha, East Madhya Pradesh, East Rajasthan, Uttarakhand and Chhattisgarh; **at many places** over Kerala & Mahe, Andaman & Nicobar Islands, West Rajasthan, Jammu & Kashmir and Ladakh, Punjab, Haryana Chandigarh & Delhi, West Uttar Pradesh, East Uttar Pradesh, Odisha, Telangana, Coastal Andhra Pradesh & Yanam and Rayalaseema; **Dry** over rest of the country.

❖ **Significant rainfall recorded(in cm)** (from 0830 hours IST of yesterday to 0530 hours IST of today): Saurashtra & kutch: Porbandar AP (dist Porbandar), Okha (dist Jamnagar) 22 Each, Dwarka (dist Devbhumi Dwarka) 14, Naliya (dist Kachchh), Rajkot AP (dist Rajkot) 4 Each, Veraval (dist Gir Somnath) 2; Assam & meghalaya: Cherrapunji (dist East Khasi Hills) 6, North Lakhimpur (dist Lakhimpur) 4, Dibrugarh (dist Dibrugarh), Guwahati (dist Kamrup Metropolitan) 3 Each, Silchar (dist Cachar) 2; Sub-himalayan west bengal & sikkim: Bagdogra AP (dist Darjeeling) 6; Gujarat region: Deesa (dist Banaskantha) 4, Ahmedabad (dist Ahmedabad), Surat (dist Surat) 2 Each; **Bihar**: Patna-airport (dist Patna) 4; Arunachal pradesh: Pasighat (dist East Siang) 4, Itanagar (dist Papum Pare) 3; Madhya maharashtra : Nashik (dist Nashik) 4; Gangetic west bengal: Kolkata (dum Dum) AP (dist North 24 Parganas), Diamond Harbour (dist South 24 Parganas), Haldia (dist Purba Medinipur) 3 Each; Konkan & goa : Mumbai (santacruz) AP, Mumbai (colaba) (dist), Panjim (dist North Goa) 2 Each; **Vidarbha**: Nagpur-sonegaon Airport (dist Nagpur) 2; East madhya pradesh: Sagar (dist Sagar) 2; East rajasthan: Jaipur (dist Jaipur), Kota AP (dist Kota) 2 Each; **Uttarakhand**: Dehra Dun-mokampur (dist Dehradun) 2.

❖ **Heavy Rainfall observed** (from 0830 hours IST of yesterday to 0530 hours IST of today): **Extremely heavy rain** at isolated places over Saurashtra & Kutch **Heavy to very heavy rain** at isolated places over Saurashtra & Kutch **Heavy rain** at a few places over Sub-himalayan West Bengal & Sikkim

❖ **Minimum Temperature Departures (as on 20-08-2025): markedly above normal(> 5.1°C)** at many places over Jammu-KashmirLadakh-Gilgit-Baltistan-Muzaffarabad; at few places over West Madhya Pradesh and East Madhya Pradesh; at isolated places over Assam & Meghalaya, East Uttar Pradesh, West Uttar Pradesh, Himachal Pradesh and West Rajasthan. **appreciably above normal(3.1°C to 5.0°C)** at isolated places over Sub Himalayan West Bengal & Sikkim, Odisha, Bihar, East Rajasthan, Gujarat Region and Saurashtra & Kutch. **above normal(1.6°C to 3.0°C)** at many places over Lakshadweep; at isolated places over Gangetic West Bengal, Uttarakhand, Haryana-Chandigarh-Delhi, Madhya Maharashtra, Vidarbha, Rayalaseema and Tamil Nadu, Puducherry & Karaikal. **near normal(-1.5°C to 1.5°C)** at many places over Konkan & Goa, Chhattisgarh and Telangana; at most places over Andaman & Nicobar Islands, Arunachal Pradesh, Nagaland, Manipur, Mizoram & Tripura, Jharkhand, Punjab, Marathwada, Coastal Andhra Pradesh & Yanam, Coastal Karnataka, North Interior Karnataka, South Interior Karnataka and Kerala & Mahe. **The lowest minimum temperature** of 19.0°C was reported at KHANDWA (MADHYA PRADESH), MATHERAN (MAHARASHTRA), JEUR (MAHARASHTRA), and MANDYA (KARNATAKA) over the Plains of India.

❖ **Maximum Temperature Departures (as on 20-08-2025): markedly above normal(> 5.1°C)** at many places over Jammu-KashmirLadakh-Gilgit-Baltistan-Muzaffarabad; at isolated places over Odisha. **appreciably above normal(3.1°C to 5.0°C)** at few places over West Rajasthan; at isolated places over Assam & Meghalaya, Uttarakhand, East Rajasthan and Tamil Nadu, Puducherry & Karaikal. **above normal(1.6°C to 3.0°C)** at few places over Jharkhand, East Madhya Pradesh, Kerala & Mahe and Lakshadweep; at isolated places over Bihar, East Uttar Pradesh, West Uttar Pradesh, Haryana-Chandigarh-Delhi and West Madhya Pradesh. **near normal(-1.5°C to 1.5°C)** at many places over Andaman & Nicobar Islands, Gangetic West Bengal, Chhattisgarh, Coastal Andhra Pradesh & Yanam, Telangana and Rayalaseema; at most places over Nagaland, Manipur, Mizoram & Tripura, Sub Himalayan West Bengal & Sikkim and Coastal Karnataka; at few places over Arunachal Pradesh, Punjab, Himachal Pradesh, Gujarat Region, Saurashtra & Kutch, Konkan & Goa, Vidarbha and South Interior Karnataka; at isolated places over Madhya Maharashtra. **The highest maximum temperature** of 40.1°C was reported at BARMER (RAJASTHAN).

*Red color warning does not mean "Red Alert" Red color warning means "Take Action"

Forecast and warning for any day is valid from 0830 hours IST of day till 0830 hours IST of next day

For more details kindly visit <https://mausam.imd.gov.in> or contact 011-2434-4599

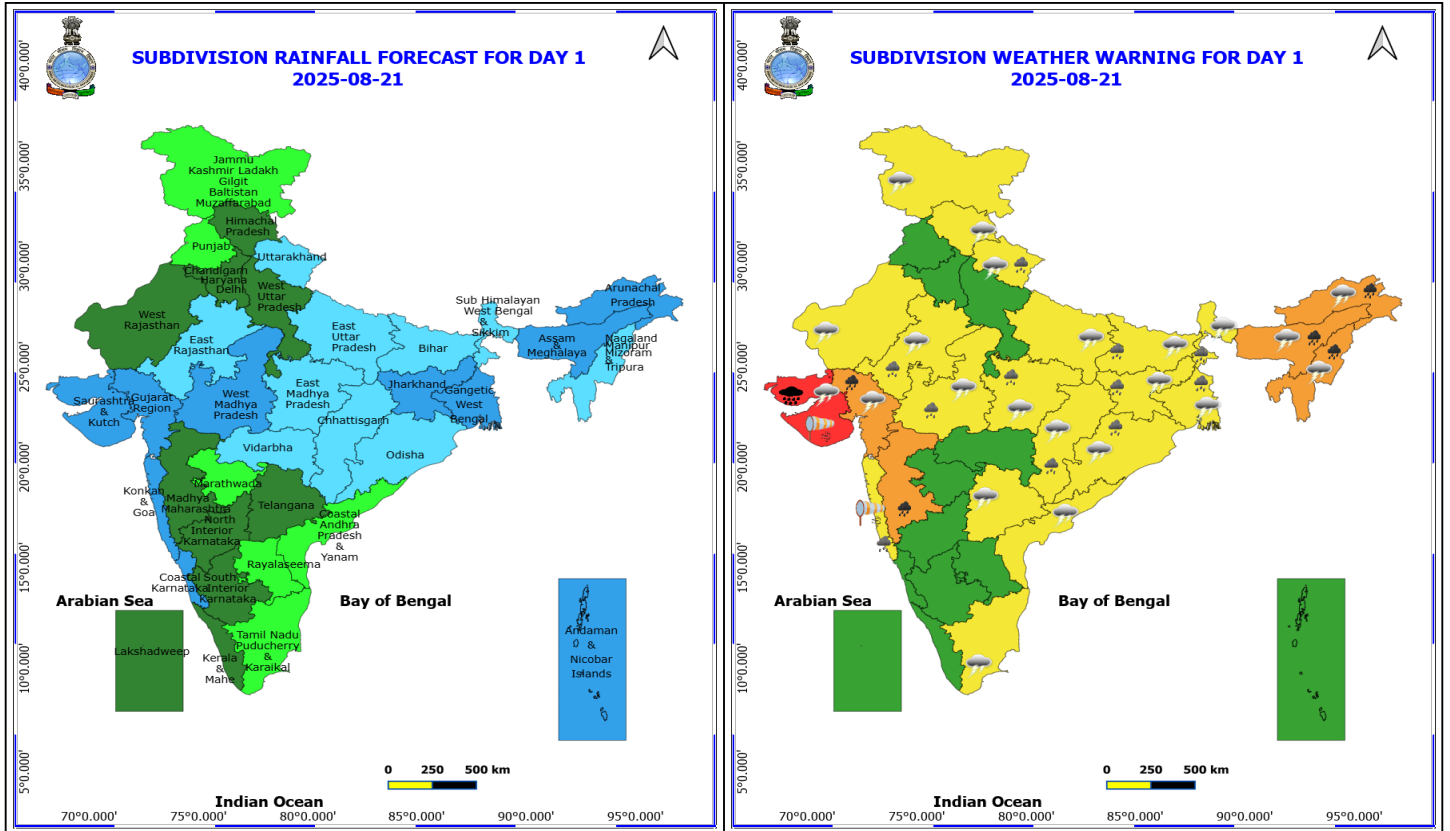
(Service to the nation since 1875)

Meteorological Analysis (Based on 0530 hours IST)

- The **monsoon trough** now passes through Naliya, Deesa, Kota, Guna, Satna, Daltonganj, Bankura, Digha and thence southeastwards to eastcentral Bay of Bengal and extends upto 1.5 km above mean sea level with its eastern end shifting northwards with height.
- The **off shore trough** at mean sea level along Gujarat -Maharashtra coasts persists.
- The **upper air cyclonic circulation** over southeast Madhya Pradesh now lies over northwest Madhya Pradesh & neighbourhood and extends upto 7.6 km above mean sea level.
- An **upper air cyclonic circulation** lies over northwest Bay of Bengal & adjoining areas of north Odisha and Gangetic West Bengal at 5.8 km above mean sea level.
- The **upper air cyclonic circulation** over northeast Arabian Sea & adjoining Gujarat now lies over Kutch & neighbourhood at 5.8 km above mean sea level.
- The **shear zone** now runs roughly along Lat. 24°N over the Indian region between 3.1 & 5.8 km above mean sea level.
- The **Western Disturbance** as a cyclonic circulation over Jammu division & neighbourhood at 3.1 km above mean sea level persists.
- The **upper air cyclonic circulation** over northeast Assam & neighbourhood extending upto 1.5 km above mean sea level persists.

Weather Outlook for subsequent 3 days

- Scattered to Fairly widespread rainfall likely over northern, western India, western peninsular and eastern India.



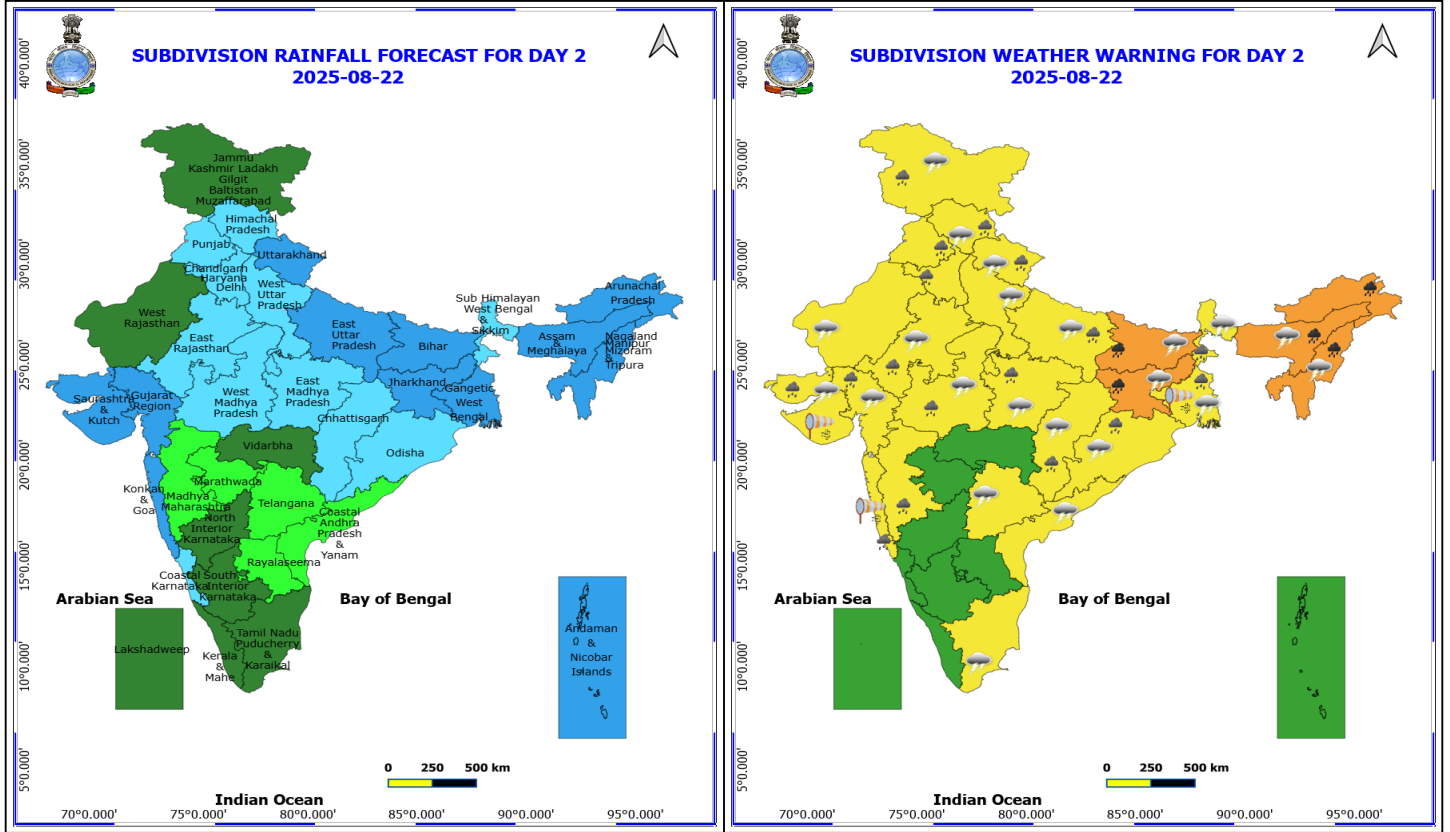
21 August (Day 1)

- ❖ **Heavy to Very Heavy Rainfall with isolated Extremely Heavy Rainfall** very likely at isolated places over Saurashtra & Kutch.
- ❖ **Heavy to Very Heavy Rainfall** very likely at isolated places over Arunachal Pradesh, Assam & Meghalaya, Gujarat Region, Madhya Maharashtra and Nagaland, Manipur, Mizoram and Tripura.
- ❖ **Heavy Rainfall** very likely at isolated places over Bihar, Chhattisgarh, East Rajasthan, Jharkhand, Konkan & Goa, Madhya Pradesh, Odisha, Uttarakhand and West Bengal & Sikkim.
- ❖ **Thunderstorm accompanied with lightning & gusty winds(30-40kmph)** very likely at isolated places over Bihar, Jammu-Kashmir-Ladakh-Gilgit-Baltistan-Muzaffarabad, Jharkhand, Odisha, Telangana and West Bengal & Sikkim.
- ❖ **Thunderstorm accompanied with Lightning** very likely at isolated places over Arunachal Pradesh, Assam & Meghalaya, Chhattisgarh, Coastal Andhra Pradesh, East Uttar Pradesh, Gujarat State, Himachal Pradesh, Madhya Pradesh, Nagaland, Manipur, Mizoram and Tripura, Rajasthan, Tamil Nadu Puducherry & Karaikal and Uttarakhand.
- ❖ **Strong Surface Winds** very likely at isolated places over Konkan & Goa and Saurashtra & Kutch.
- ❖ **Squally wind with speed reaching 45 kmph to 55 kmph gusting to 65 kmph** is likely to prevail along and off Somalia, Oman coasts, most parts of westcentral Arabian sea, adjoining & some parts of southwest, eastcentral Arabian Sea; Squally weather with wind speed reaching 40 - 50 kmph gusting to 60 kmph likely to prevail along and off north Gujarat, north Karnataka coasts, over most parts westcentral & adjoining eastcentral Bay of Bengal, north Bay of Bengal, north Andhra Pradesh & north Odisha, West Bengal coasts, over Gulf of Mannar; Squally weather with wind speed reaching 45 - 55 kmph gusting to 65 kmph likely to prevail over along & off south Gujarat coast, Konkan & Goa coasts and adjoining sea areas, most parts of eastcentral Arabian Sea; Squally wind with speed

***Red color warning does not mean "Red Alert" Red color warning means "Take Action"**
 Forecast and warning for any day is valid from 0830 hours IST of day till 0830 hours IST of next day
 For more details kindly visit <https://mausam.imd.gov.in> or contact 011-2434-4599
 (Service to the nation since 1875)



reaching 50 - 60 kmph gusting to 70 kmph likely to prevail over some parts of eastcentral Arabian sea and off south Gujarat & north Konkan coast.



22 August (Day 2)

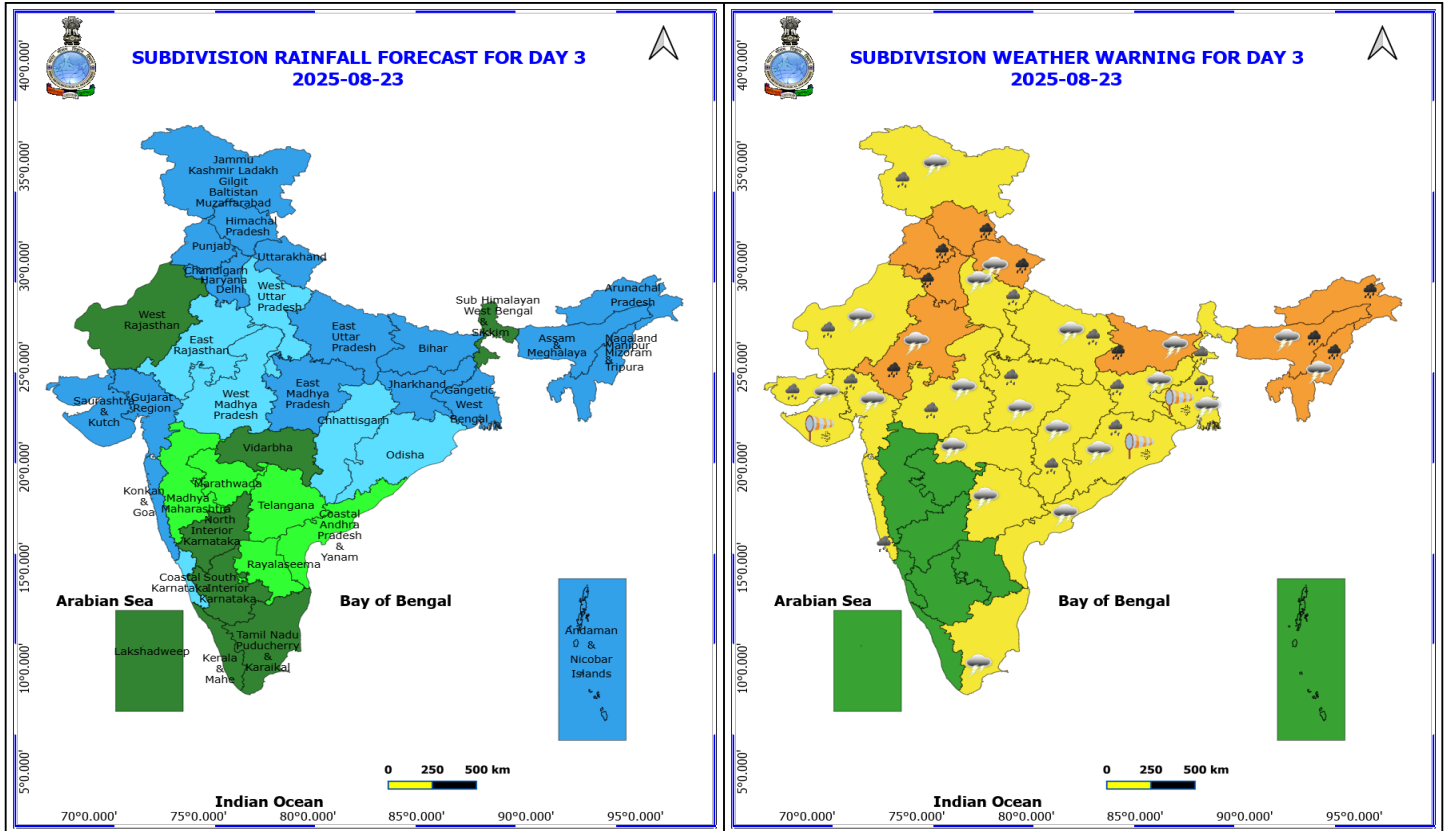
- ❖ **Heavy to Very Heavy Rainfall** very likely at isolated places over Arunachal Pradesh, Assam & Meghalaya, Bihar, Jharkhand and Nagaland, Manipur, Mizoram and Tripura.
- ❖ **Heavy Rainfall** very likely at isolated places over Chhattisgarh, East Rajasthan, East Uttar Pradesh, Gujarat State, Haryana, Chandigarh & Delhi, Himachal Pradesh, Jammu-Kashmir-Ladakh-Gilgit-Baltistan-Muzaffarabad, Konkan & Goa, Madhya Maharashtra, Madhya Pradesh, Odisha, Punjab, Uttarakhand and West Bengal & Sikkim.
- ❖ **Thunderstorm accompanied with lightning & gusty winds(30-40kmph)** very likely at isolated places over Bihar, Jammu-Kashmir-Ladakh-Gilgit-Baltistan-Muzaffarabad, Jharkhand, Odisha, Telangana and West Bengal & Sikkim.
- ❖ **Thunderstorm accompanied with Lightning** very likely at isolated places over Assam & Meghalaya, Chhattisgarh, Coastal Andhra Pradesh, Gujarat State, Himachal Pradesh, Madhya Pradesh, Nagaland, Manipur, Mizoram and Tripura, Rajasthan, Tamil Nadu Puducherry & Karaikal, Uttar Pradesh and Uttarakhand.
- ❖ **Strong Surface Winds** very likely at isolated places over Gangetic West Bengal, Konkan & Goa and Saurashtra & Kutch.
- ❖ **Squally wind with speed reaching 45 kmph to 55 kmph gusting to 65 kmph** is likely to prevail along and off Somalia, Yemen, Oman coasts, most parts of westcentral Arabian sea, adjoining & some parts of southwest, eastcentral Arabian Sea; Squally weather with wind speed reaching 40 - 50 kmph gusting to 60 kmph likely to prevail over few parts of westcentral and north Bay of Bengal, and Gulf of Mannar; Squally weather with wind speed reaching 45 - 55 kmph gusting to 65 kmph likely to prevail over along & off Gujarat Konkan & Goa coasts and adjoining sea areas, most parts of eastcentral, & northeast Arabian Sea.

***Red color warning does not mean "Red Alert" Red color warning means "Take Action"**

Forecast and warning for any day is valid from 0830 hours IST of day till 0830 hours IST of next day

For more details kindly visit <https://mausam.imd.gov.in> or contact 011-2434-4599

(Service to the nation since 1875)



23 August (Day 3)

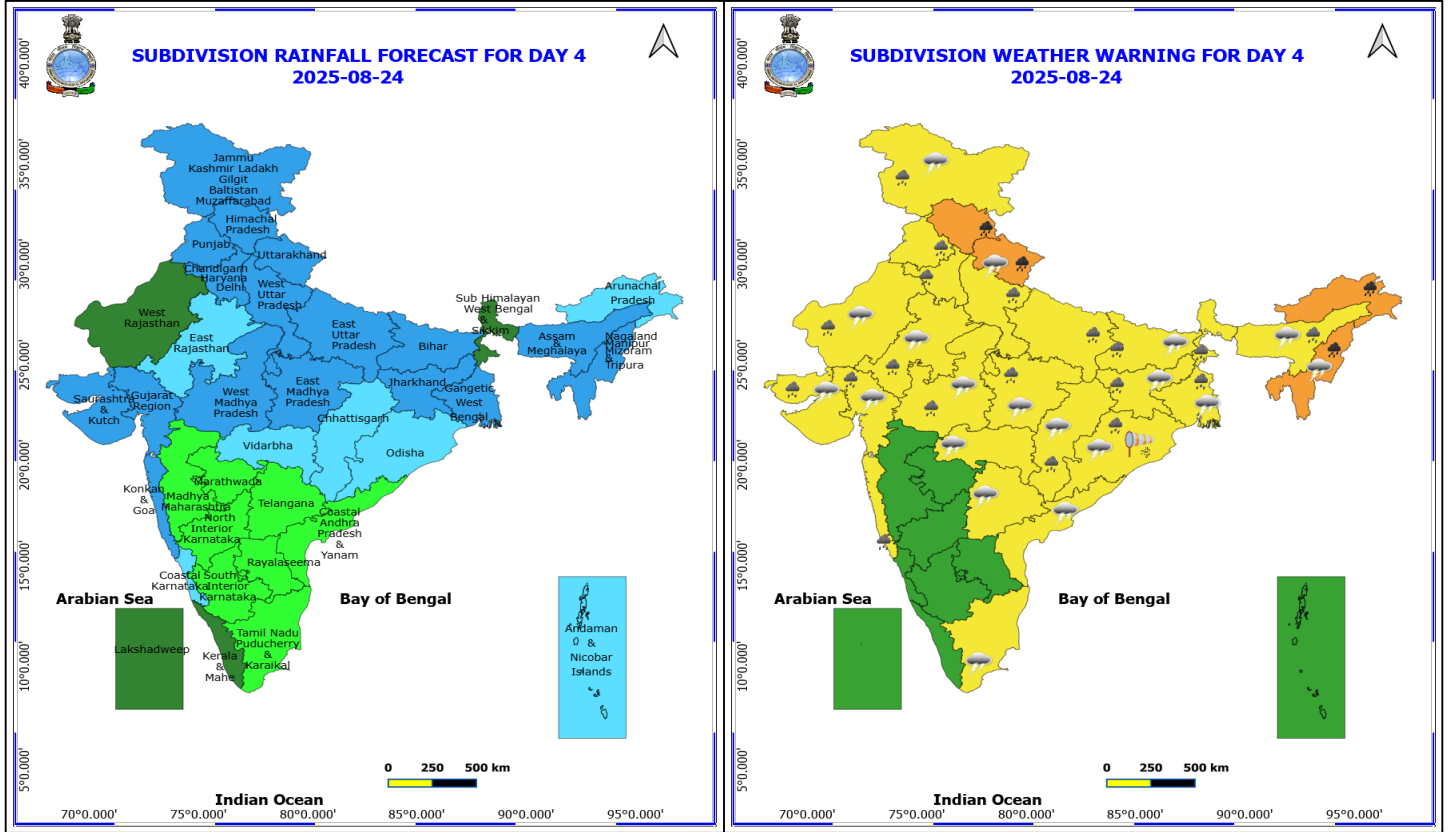
- ❖ **Heavy to Very Heavy Rainfall** very likely at isolated places over Arunachal Pradesh, Assam & Meghalaya, Bihar, East Rajasthan, Haryana, Chandigarh & Delhi, Himachal Pradesh, Nagaland, Manipur, Mizoram and Tripura, Punjab and Uttarakhand.
- ❖ **Heavy Rainfall** very likely at isolated places over Chhattisgarh, Gujarat State, Jammu-Kashmir-Ladakh-Gilgit-Baltistan-Muzaffarabad, Jharkhand, Konkan & Goa, Madhya Pradesh, Odisha, Uttar Pradesh, West Bengal & Sikkim and West Rajasthan.
- ❖ **Thunderstorm accompanied with lightning & gusty winds(30-40kmph)** very likely at isolated places over Bihar, Gangetic West Bengal, Jammu-Kashmir-Ladakh-Gilgit-Baltistan-Muzaffarabad, Jharkhand, Odisha and Telangana.
- ❖ **Thunderstorm accompanied with Lightning** very likely at isolated places over Assam & Meghalaya, Chhattisgarh, Coastal Andhra Pradesh, Gujarat State, Madhya Pradesh, Nagaland, Manipur, Mizoram and Tripura, Rajasthan, Tamil Nadu Puducherry & Karaikal, Uttar Pradesh, Uttarakhand and Vidarbha.
- ❖ **Strong Surface Winds** very likely at isolated places over Gangetic West Bengal, Odisha and Saurashtra & Kutch.
- ❖ **Squally wind with speed reaching 45 kmph to 55 kmph gusting to 65 kmph** is likely to prevail along and off Somalia, Yemen, Oman coasts, most parts of westcentral Arabian sea, adjoining & some parts of southwest, eastcentral Arabian Sea; Squally weather with wind speed reaching 40 - 50 kmph gusting to 60 kmph likely to prevail along and off south Konkan, Goa coasts, some parts of southeast Arabian Sea, over few parts of westcentral & north Bay of Bengal, off North Andhra Pradesh coast; Squally weather with wind speed reaching 45 - 55 kmph gusting to 65 kmph likely to prevail over Gujarat, north Konkan coasts and adjoining sea areas, most parts of eastcentral, northeast Arabian Sea.

***Red color warning does not mean "Red Alert" Red color warning means "Take Action"**

Forecast and warning for any day is valid from 0830 hours IST of day till 0830 hours IST of next day

For more details kindly visit <https://mausam.imd.gov.in> or contact 011-2434-4599

(Service to the nation since 1875)

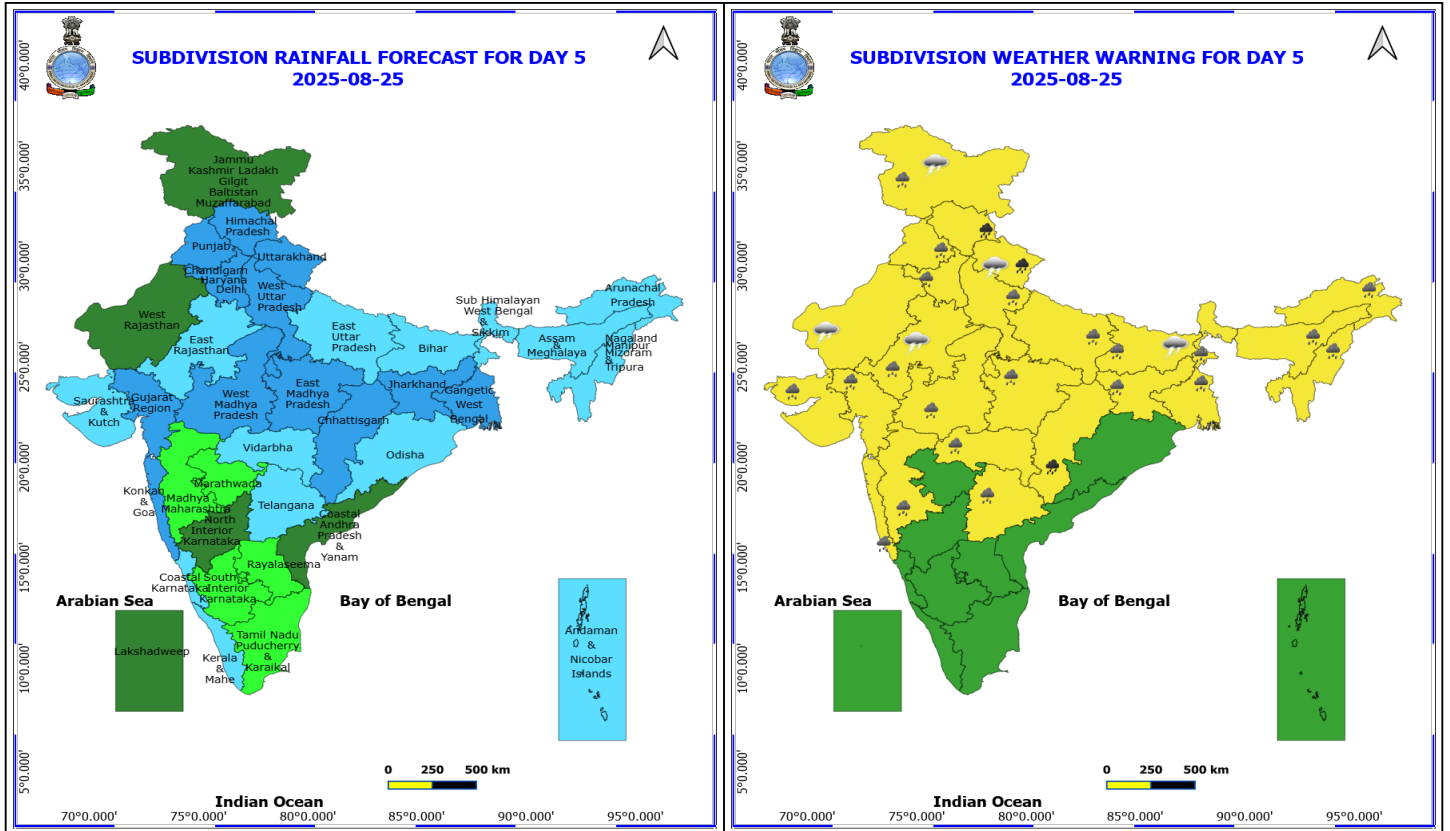


24 August (Day 4)

- ❖ **Heavy to Very Heavy Rainfall** likely at isolated places over Arunachal Pradesh, Himachal Pradesh, Nagaland, Manipur, Mizoram and Tripura and Uttarakhand.
- ❖ **Heavy Rainfall** likely at isolated places over Assam & Meghalaya, Bihar, Chhattisgarh, Gujarat State, Haryana, Chandigarh & Delhi, Jammu-Kashmir-Ladakh-Gilgit-Baltistan-Muzaffarabad, Jharkhand, Konkan & Goa, Madhya Pradesh, Odisha, Punjab, Rajasthan, Uttar Pradesh and West Bengal & Sikkim.
- ❖ **Thunderstorm accompanied with lightning & gusty winds(30-40kmph)** likely at isolated places over Bihar, Gangetic West Bengal, Jammu-Kashmir-Ladakh-Gilgit-Baltistan-Muzaffarabad, Jharkhand, Odisha and Telangana.
- ❖ **Thunderstorm accompanied with Lightning** likely at isolated places over Assam & Meghalaya, Chhattisgarh, Coastal Andhra Pradesh, Gujarat State, Madhya Pradesh, Nagaland, Manipur, Mizoram and Tripura, Rajasthan, Tamil Nadu Puducherry & Karaikal, Uttarakhand and Vidarbha.
- ❖ **Strong Surface Winds** likely at isolated places over Odisha.
- ❖ **Squally wind with speed reaching 45 kmph to 55 kmph gusting to 65 kmph** is likely to prevail along and off Somalia, Yemen, Oman coasts, many parts of northwest Arabian Sea, most parts of westcentral Arabian sea, adjoining & some parts of southwest, eastcentral Arabian Sea; Squally weather with wind speed reaching 40 - 50 kmph gusting to 60 kmph likely to prevail along and off south Konkan, Goa coasts, over many parts of north Bay of Bengal, along and off West Bengal, adjoining Bangladesh coast; Squally weather with wind speed reaching 45 - 55 kmph gusting to 65 kmph likely to prevail over Gujarat, off north Konkan coasts and adjoining sea areas, most parts of eastcentral, northeast Arabian Sea.

***Red color warning does not mean "Red Alert" Red color warning means "Take Action"**
Forecast and warning for any day is valid from 0830 hours IST of day till 0830 hours IST of next day
For more details kindly visit <https://mausam.imd.gov.in> or contact 011-2434-4599

(Service to the nation since 1875)



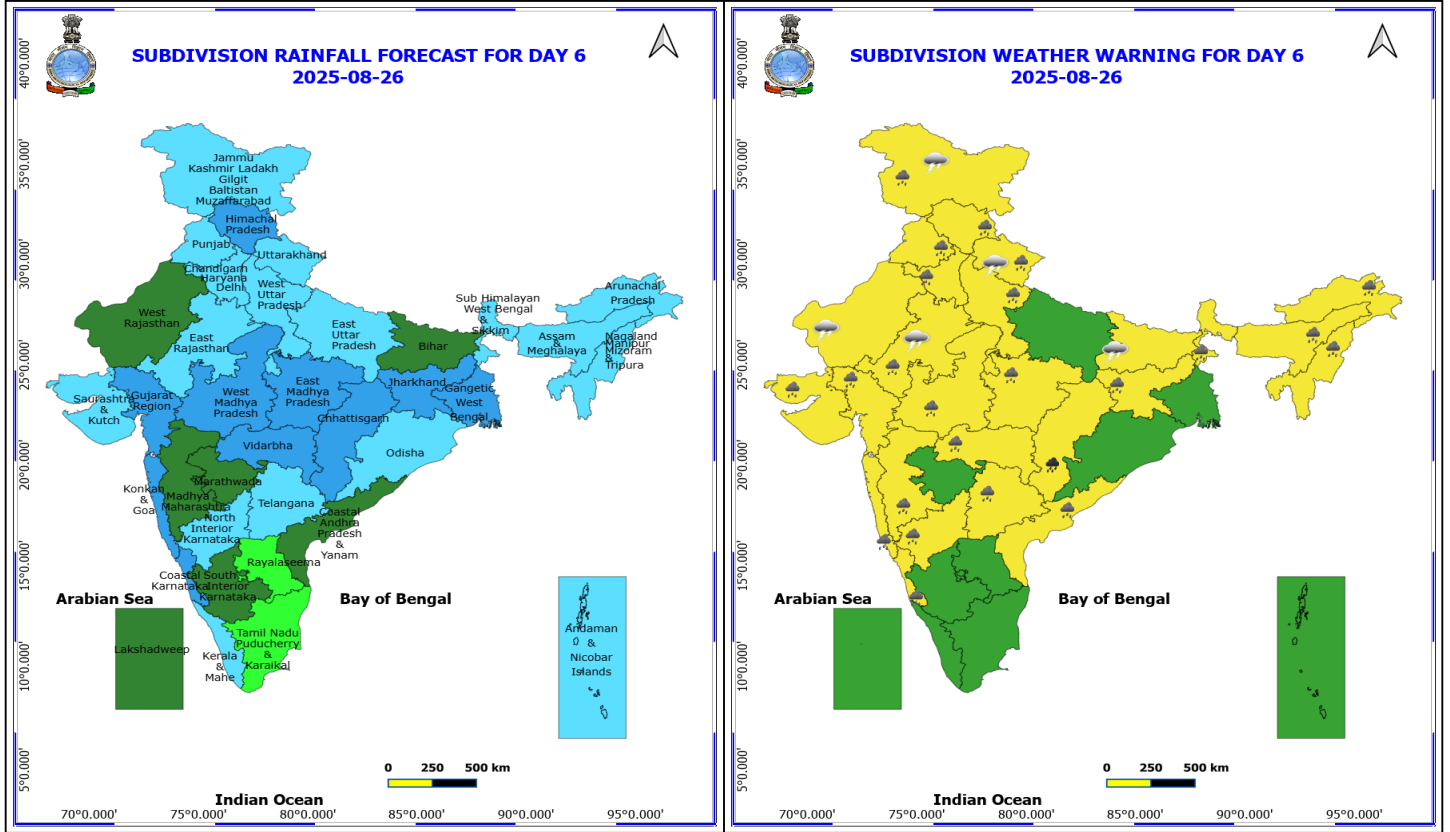
25 August (Day 5)

- ❖ **Heavy to Very Heavy Rainfall** likely at isolated places over Chhattisgarh, Himachal Pradesh and Uttarakhand.
- ❖ **Heavy Rainfall** likely at isolated places over Arunachal Pradesh, Assam & Meghalaya, Bihar, East Rajasthan, Gujarat State, Haryana, Chandigarh & Delhi, Jammu-Kashmir-Ladakh-Gilgit-Baltistan-Muzaffarabad, Jharkhand, Konkan & Goa, Madhya Maharashtra, Madhya Pradesh, Nagaland, Manipur, Mizoram and Tripura, Punjab, Telangana, Uttar Pradesh, Vidarbha and West Bengal & Sikkim.
- ❖ **Thunderstorm accompanied with lightning & gusty winds(30-40kmph)** likely at isolated places over Bihar and Jammu-Kashmir-Ladakh-Gilgit-Baltistan-Muzaffarabad.
- ❖ **Thunderstorm accompanied with Lightning** likely at isolated places over Rajasthan and Uttarakhand.

No Fishermen Warning

***Red color warning does not mean "Red Alert" Red color warning means "Take Action"**
Forecast and warning for any day is valid from 0830 hours IST of day till 0830 hours IST of next day
For more details kindly visit <https://mausam.imd.gov.in> or contact 011-2434-4599

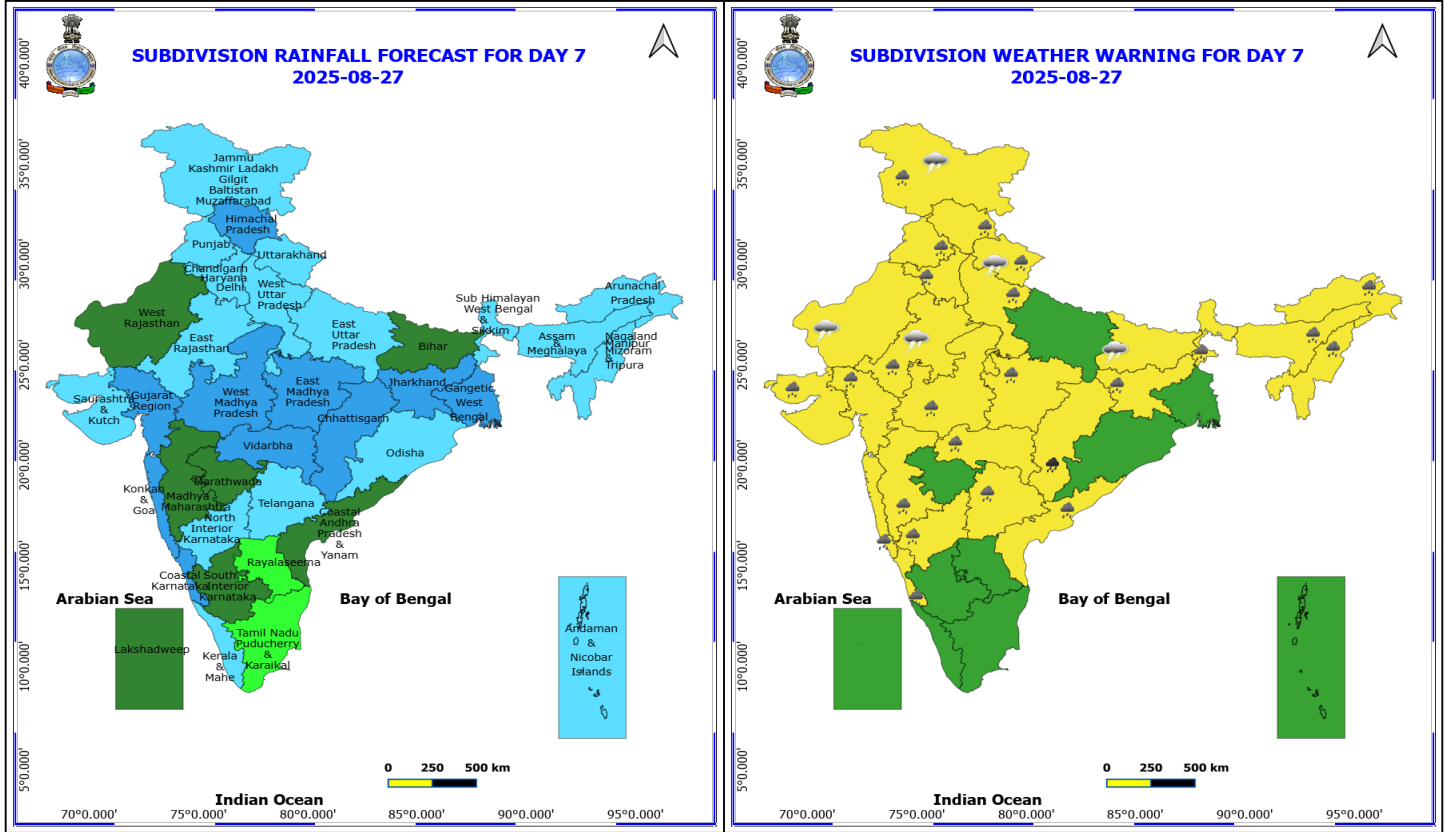
(Service to the nation since 1875)



26 August (Day 6)

- ❖ **Heavy to Very Heavy Rainfall** likely at isolated places over Chhattisgarh.
- ❖ **Heavy Rainfall** likely at isolated places over Arunachal Pradesh, Assam & Meghalaya, Coastal Andhra Pradesh, Coastal Karnataka, East Rajasthan, Gujarat State, Haryana, Chandigarh & Delhi, Himachal Pradesh, Jammu-Kashmir-Ladakh-Gilgit-Baltistan-Muzaffarabad, Jharkhand, Konkan & Goa, Madhya Maharashtra, Madhya Pradesh, Nagaland, Manipur, Mizoram and Tripura, North Interior Karnataka, Punjab, Sub Himalayan West Bengal & Sikkim, Telangana, Uttarakhand, Vidarbha and West Uttar Pradesh.
- ❖ **Thunderstorm accompanied with lightning & gusty winds(30-40kmph)** likely at isolated places over Bihar and Jammu-Kashmir-Ladakh-Gilgit-Baltistan-Muzaffarabad.
- ❖ **Thunderstorm accompanied with Lightning** likely at isolated places over Rajasthan and Uttarakhand.

No Fishermen Warning



27 August (Day 7)

- ❖ **Heavy to Very Heavy Rainfall** likely at isolated places over Chhattisgarh, Himachal Pradesh and Uttarakhand.
- ❖ **Heavy Rainfall** likely at isolated places over Arunachal Pradesh, Assam & Meghalaya, Bihar, East Rajasthan, Gujarat State, Haryana, Chandigarh & Delhi, Jammu-Kashmir-Ladakh-Gilgit-Baltistan-Muzaffarabad, Jharkhand, Konkan & Goa, Madhya Maharashtra, Madhya Pradesh, Nagaland, Manipur, Mizoram and Tripura, Punjab, Telangana, Uttar Pradesh, Vidarbha and West Bengal & Sikkim.
- ❖ **Thunderstorm accompanied with lightning & gusty winds(30-40kmph)** likely at isolated places over Bihar and Jammu-Kashmir-Ladakh-Gilgit-Baltistan-Muzaffarabad.
- ❖ **Thunderstorm accompanied with Lightning** likely at isolated places over Rajasthan and Uttarakhand.

No Fishermen Warning

***Red color warning does not mean "Red Alert" Red color warning means "Take Action"**
Forecast and warning for any day is valid from 0830 hours IST of day till 0830 hours IST of next day
For more details kindly visit <https://mausam.imd.gov.in> or contact 011-2434-4599

(Service to the nation since 1875)

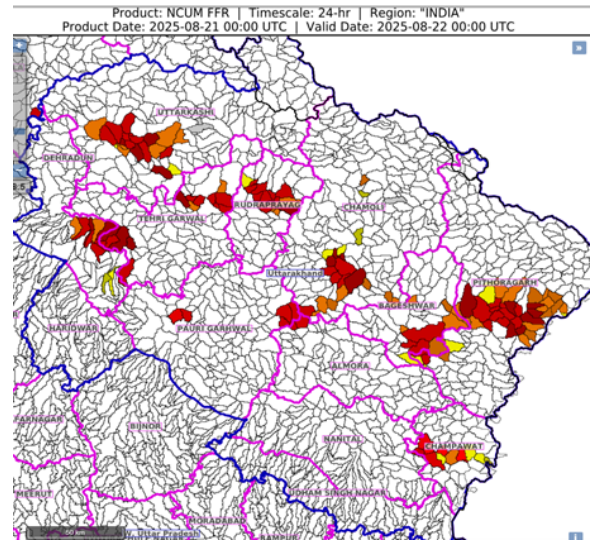
Flash Flood Warnings

24 hours Outlook for the Flash Flood Risk (FFR) till 0530 IST of 22-08-2025 :

Low to Moderate flash flood risk likely over few watersheds & neighbourhoods of following Met Sub-divisions during next 24 hours.

Uttarakhand - Almora, Bageshwar, Chamoli, Champawat, Dehradun, Pauri Garhwal, Pithoragarh, Rudraprayag, Tehri Garwal and Uttarkashi districts.

Surface runoff/ Inundation may occur at some fully saturated soils & low-lying areas over Area of Concern (AoC) as shown in map due to expected rainfall occurrence in next 24 hours.



24 hours Outlook for the Flash Flood Risk (FFR) till 0530 IST of 22-08-2025 :

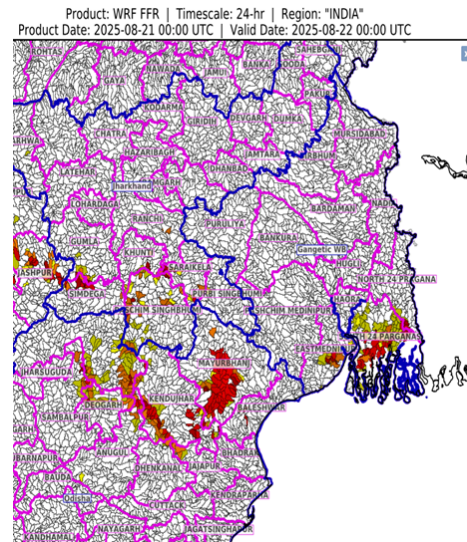
Low to Moderate flash flood risk likely over few watersheds & neighbourhoods of following Met Sub-divisions during next 24 hours.

Odisha - Anugul, Baleshwar, Deogarh, Jajapur, Kendujhar, Mayurbhanj, Sambalpur and Sundargarh districts.

Gangetic West Bengal - Eastmednipur, North 24 Praganas and South 24 Parganas districts.

Jharkhand - East Singhbhum, Gumla, Khunti, Ranchi, Saraikela, Simdega and West Singhbhum districts.

Surface runoff/ Inundation may occur at some fully saturated soils & low-lying areas over Area of Concern (AoC) as shown in map due to expected rainfall occurrence in next 24 hours.



24 hours Outlook for the Flash Flood Risk (FFR) till 0530 IST of 22-08-2025 :

Low to Moderate flash flood risk likely over few watersheds & neighbourhoods of following Met Sub-divisions during next 24 hours.

Assam & Meghalaya - Cachar, East Khasi Hills, South Garo Hills, West Khasi Hills and Jaintia Hills districts.

Surface runoff/ Inundation may occur at some fully saturated soils & low-lying areas over Area of Concern (AoC) as shown in map due to expected rainfall occurrence in next 24 hours.

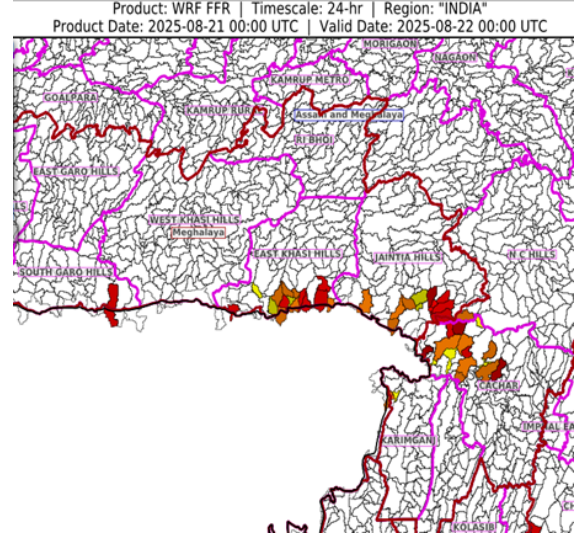




Table-1

7 Days Rainfall Forecast

S.No.	Subdivision	21- Aug	22- Aug	23- Aug	24- Aug	25- Aug	26- Aug	27- Aug
		Day 1	Day 2	Day 3	Day 4	Day 5	Day 6	Day 7
1	ANDAMAN & NICOBAR ISLANDS	WS	WS	WS	FWS	FWS	FWS	FWS
2	ARUNACHAL PRADESH	WS	WS	WS	FWS	FWS	FWS	FWS
3	ASSAM & MEHGHALAYA	WS	WS	WS	WS	FWS	FWS	FWS
4	N. M. M. & T.	FWS	WS	WS	WS	FWS	FWS	FWS
5	S.H. WEST BENGAL & SIKKIM	FWS	FWS	SCT	SCT	FWS	FWS	FWS
6	GANGETIC WEST BENGAL	WS	WS	WS	WS	WS	WS	WS
7	ODISHA	FWS	FWS	FWS	FWS	FWS	FWS	FWS
8	JHARKHAND	WS	WS	WS	WS	WS	WS	WS
9	BIHAR	FWS	WS	WS	WS	FWS	SCT	SCT
10	EAST UTTAR PRADESH	FWS	WS	WS	WS	FWS	FWS	FWS
11	WEST UTTAR PRADESH	SCT	FWS	FWS	WS	WS	FWS	FWS
12	UTTARAKHAND	FWS	WS	WS	WS	WS	FWS	FWS
13	HARYANA, CHD & DELHI	SCT	FWS	WS	WS	WS	FWS	FWS
14	PUNJAB	ISOL	FWS	WS	WS	WS	FWS	FWS
15	HIMACHAL PRADESH	SCT	FWS	WS	WS	WS	WS	WS
16	JAMMU AND KASHMIR AND LADAKH	ISOL	SCT	WS	WS	SCT	FWS	FWS
17	WEST RAJASTHAN	SCT	SCT	SCT	SCT	SCT	SCT	SCT
18	EAST RAJASTHAN	FWS	FWS	FWS	FWS	FWS	FWS	FWS
19	WEST MADHYA PRADESH	WS	FWS	FWS	WS	WS	WS	WS
20	EAST MADHYA PRADESH	FWS	FWS	WS	WS	WS	WS	WS
21	GUJRAT REGION	WS	WS	WS	WS	WS	WS	WS
22	SAURASHTRA & KUTCH	WS	WS	WS	WS	FWS	FWS	FWS
23	KONKAN & GOA	WS	WS	WS	WS	WS	WS	WS
24	MADHYA MAHARASHTRA	SCT	ISOL	ISOL	ISOL	ISOL	SCT	SCT
25	MARATHWADA	ISOL	ISOL	ISOL	ISOL	ISOL	SCT	SCT
26	VIDARBHA	FWS	SCT	SCT	FWS	FWS	WS	WS
27	CHATTISGARH	FWS	FWS	FWS	FWS	WS	WS	WS
28	COASTAL ANDHRA PRADESH	ISOL	ISOL	ISOL	ISOL	SCT	SCT	SCT
29	TELANGANA	SCT	ISOL	ISOL	ISOL	FWS	FWS	FWS
30	RAYALASEEMA	ISOL	ISOL	ISOL	ISOL	ISOL	ISOL	ISOL
31	TAMILNADU & PUDUCHERRY	ISOL	SCT	SCT	ISOL	ISOL	ISOL	ISOL
32	COSTAL KARNATAKA	WS	FWS	FWS	FWS	FWS	WS	WS
33	NORTH INTERIOR KARNATAKA	SCT	SCT	SCT	ISOL	SCT	FWS	FWS
34	SOUTH INTERIOR KARNATAKA	SCT	SCT	SCT	ISOL	ISOL	SCT	SCT
35	KERALA	SCT	SCT	SCT	SCT	FWS	FWS	FWS
36	LAKSHDWEEP	SCT	SCT	SCT	SCT	SCT	SCT	SCT

Legend	Category	%Stations
WS	Widespread/Most Places	76-100
FWS	Fairly Widespread/Many Places	51-75
SCT	Scattered/ A Few Places	26-50
ISOL	Isolated Places	1-25
DRY	No Rain	0

*Red color warning does not mean "Red Alert" Red color warning means "Take Action"
Forecast and warning for any day is valid from 0830 hours IST of day till 0830 hours IST of next day
For more details kindly visit <https://mausam.imd.gov.in> or contact 011-2434-4599

(Service to the nation since 1875)

Fig. 1: Maximum Temperatures Dated 2025-08-21

Fig. 2: Departure of Maximum Temp. Dated 2025-08-21

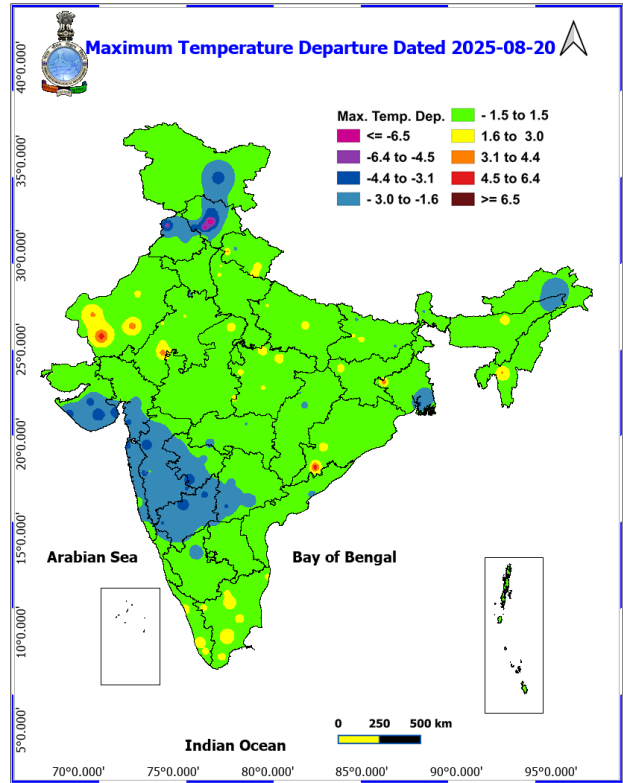
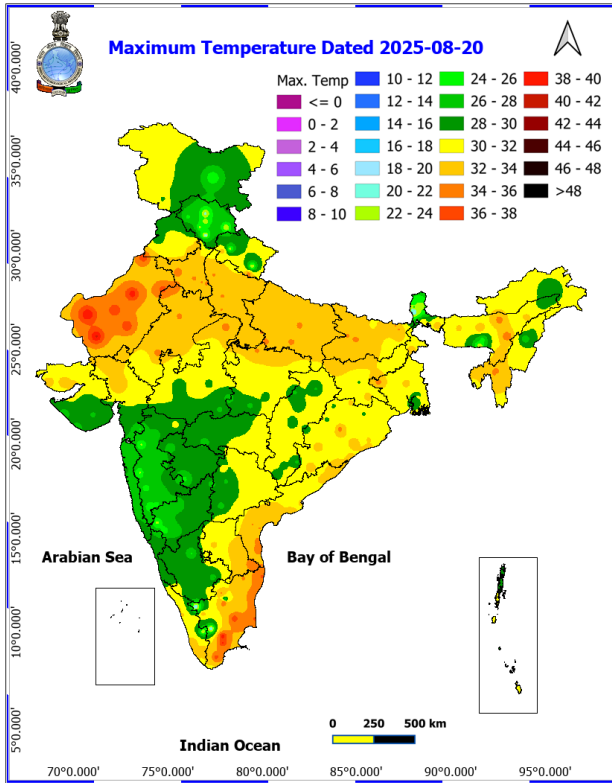
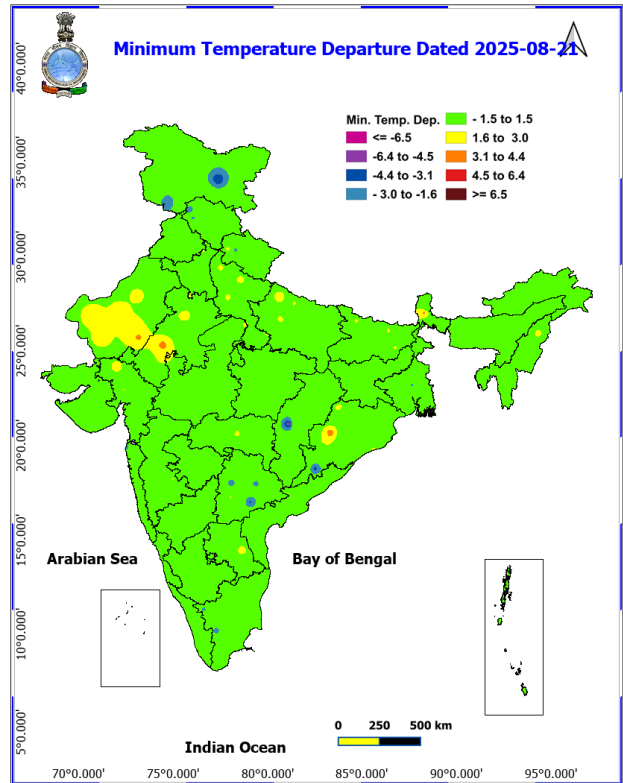
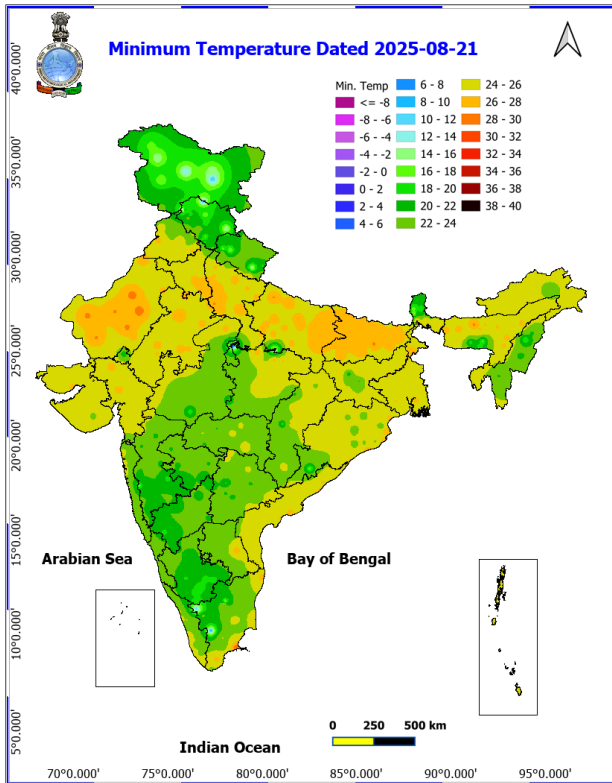
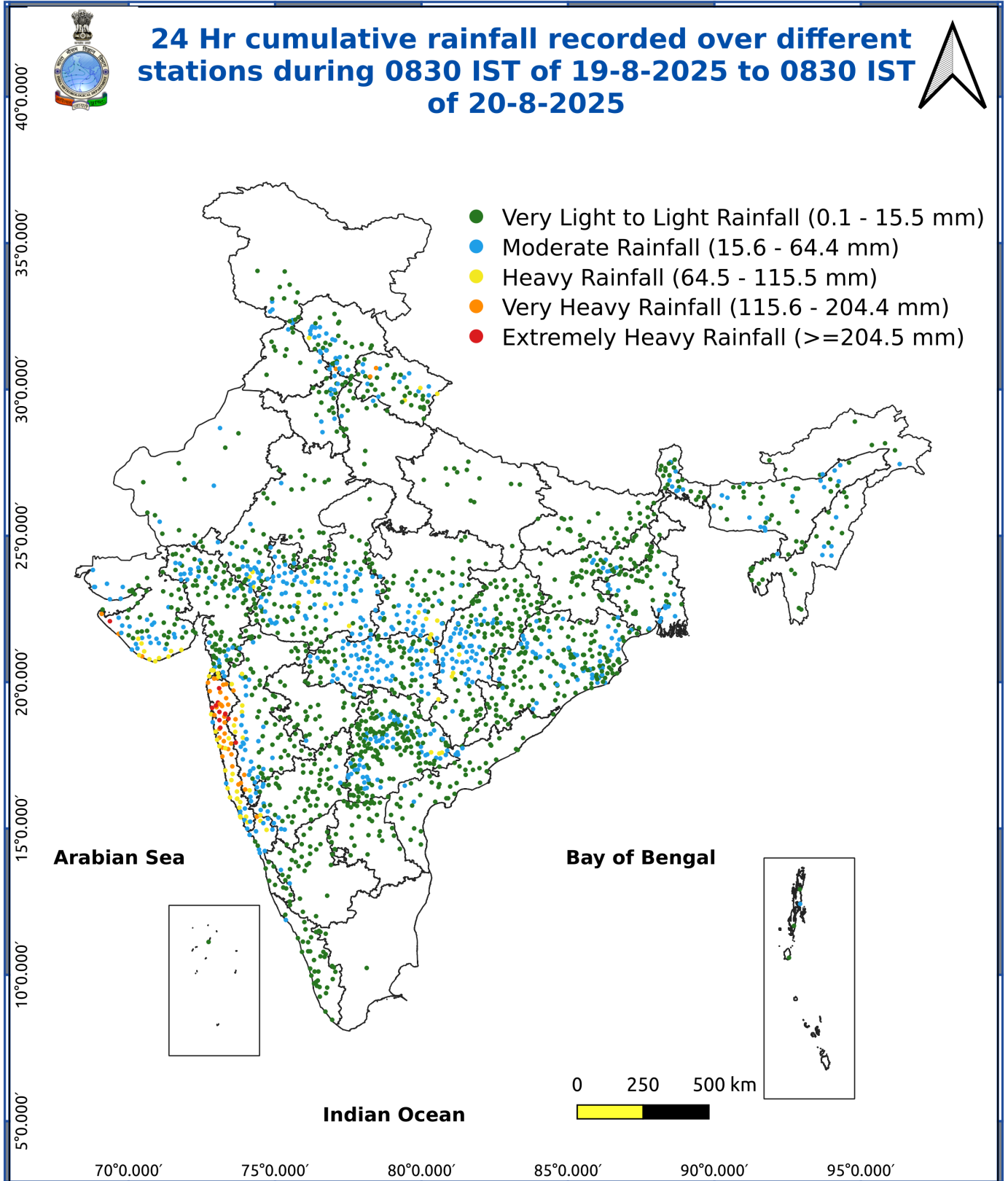


Fig. 3: Minimum Temperatures Dated 2025-08-21

Fig. 4: Departure of Minimum Temp. Dated 2025-08-21





Impact & Action Suggested due to

Extremely to Exceptionally heavy rainfall (≥ 30 cm) very likely over Saurashtra on 21st August.

Isolated **very heavy rainfall** likely to continue over Madhya Maharashtra on 21st; Gujarat State on 21st & 22nd; Jharkhand on 22nd; Bihar on 22nd & 23rd; Chhattisgarh on 25th & 26th; Uttarakhand, Himachal Pradesh during 23rd-25th; Punjab, Haryana, East Rajasthan on 23rd; Arunachal Pradesh, Tripura, Mizoram during 21st-24th and Assam & Meghalaya during 21st-23rd August.

Impact Expected

Localized Flooding of roads, water logging in low lying areas and closure of underpasses mainly in urban areas of the above region.

Occasional reduction in visibility due to heavy rainfall.

Disruption of traffic in major cities due to water logging in roads leading to increased travel time.

Minor damage to kutcha roads.

Possibilities of damage to vulnerable structure.

Localized Landslides/Mudslides/landslips/mudslips/landsinks/mudsinks.

Damage to horticulture and standing crops in some areas due to inundation.

It may lead to riverine flooding in some river catchments (for riverine flooding please visit Web page of CWC)

Action Suggested

Check for traffic congestion on your route before leaving for your destination.

Follow any traffic advisories that are issued in this regard.

Avoid going to areas that face the water logging problems often.

Avoid staying in vulnerable structure.

Agromet advisories for various parts of the country

Agromet advisories for likely impact of Heavy / Heavy to Very Heavy Rainfall

In **Maharashtra**, make arrangements to drain out excess water from rice fields maintaining 2.5 to 5 cm water level in **Konkan** and **ghat areas** of **Madhya Maharashtra**. In **Marathwada**, keep the harvested green gram produce in safer places. To prevent waterlogging, make provision for draining out excess water from fields of finger millet, turmeric, groundnut, vegetables and fruit orchards in **Konkan**; maize, groundnut, soybean, vegetables and fruit orchards in **ghat areas** of **Madhya Maharashtra**; groundnut, black gram, green gram, soybean, cotton, pigeon pea, pearl millet, turmeric, sugarcane, vegetables and fruit orchards in **Marathwada**; soybean and cotton in **West Vidarbha** and rice,

***Red color warning does not mean "Red Alert" Red color warning means "Take Action"**

Forecast and warning for any day is valid from 0830 hours IST of day till 0830 hours IST of next day

For more details kindly visit <https://mausam.imd.gov.in> or contact 011-2434-4599

(Service to the nation since 1875)

soybean, cotton, pigeon pea, vegetables and fruit orchards in **East Vidarbha**.

In **Gujarat**, make arrangements to drain out excess water from fields of rice, sugarcane, vegetables and tuber crops in **South Gujarat Heavy Rainfall Zone**; rice, cotton, sugarcane and pigeon pea in **South Gujarat Zone**; groundnut, cotton, soybean, black gram, green gram, sesame and pigeon pea in **South Saurashtra Zone**; groundnut, cotton and sesame in **North Saurashtra Zone** and rice, cotton, green gram, black gram, pigeon pea, pearl millet and vegetables in **Bhal and Coastal Zone**.

In **Madhya Pradesh**, provide adequate drainage in fields of maize, soybean, cotton and vegetables in **Satpura Plateau Zone**; soybean, maize and vegetables in **Malwa Plateau Zone**; rice, soybean, maize, sugarcane and vegetables in **Central Narmada Valley Zone**; soybean, pigeon pea, cotton and vegetables in **Nimar Valley Zone** and maize, soybean, black gram, cotton, and pigeon pea in **Vindhyan Plateau Zone**.

In **Chhattisgarh**, drain out excess water from fields of *kharif* maize, rice, minor millets, pulses and vegetables in **Bastar Plateau Zone**.

In **Kerala**, provide adequate drainage in rice, coconut, banana and ginger fields. Provide support to banana plantations. Make the vegetable pandals stronger.

In **Karnataka**, provide adequate drainage facilities in rice and ginger fields, and plantations of arecanut, coconut and banana in **Coastal Zone**; fields of rice, maize, cotton, ginger and plantations of arecanut in **Hill Zone** and fields of rice, maize and plantations of arecanut and coconut in **Southern Transition Zone**.

In **Telangana**, drain out excess water from fields of rice, cotton, maize, soybean, pigeon pea, turmeric and vegetables in **Northern Telangana Zone** and rice, cotton, soybean, vegetables and vegetable nurseries in **Southern Telangana Zone**.

In **Andhra Pradesh**, make arrangements to drain out excess water from fields of maize, cotton, sugarcane, rice, mesta, red gram, green gram, black gram and groundnut in **North Coastal Zone** and rice, maize and vegetable fields in **High Altitude Tribal Zone**.

In **Odisha**, make arrangements to drain out excess water from the fields of rice, maize, green gram, black gram, ginger, turmeric, vegetables and orchards in **Eastern Ghat High Land Zone** and **South Eastern Ghats**.

In **Himachal Pradesh**, maintain proper drainage channels in ginger, turmeric and maize fields in **Mid Hills Sub Humid Zone** and rice, maize and vegetable fields in **Sub Montane and Low Hills Sub Tropical Zone**. In **High Hills Sub Temperate Wet Zone**, harvest ripened tomatoes and ensure proper drainage in maize, kidney bean, vegetables and orchards.

In **Uttarakhand**, maintain proper drainage channels in fields of soybean, maize, pulses, finger millet, ginger, vegetable fields and fruit orchards in **Hill Zone**; barnyard millet, finger millet and already sown green gram in **Sub Humid Sub Tropical Zone**. Ensure proper drainage in rice, maize, soybean, green gram, and vegetables in Nainital district.

In **Punjab**, In **Undulating Plain Zone**, maintain proper drainage in chilli fields and remove stagnant rainwater immediately after rainfall. In **Sub-Montane Undulating Zone**, ensure proper drainage in sugarcane maize, soybean and green gram.

In **Haryana** - In **Eastern Zone**, postpone irrigation in cotton and pearl millet crop fields and make drainage system to drain out excess water.

Livestock / Fishery

Keep the animals inside the shed during heavy rainfall and provide them balanced feed.

Store feed and fodder in a safe place to prevent spoilage.



Construct an outlet with proper netting around the ponds to drain out excess water, thereby preventing fish from escaping in case of overflow.

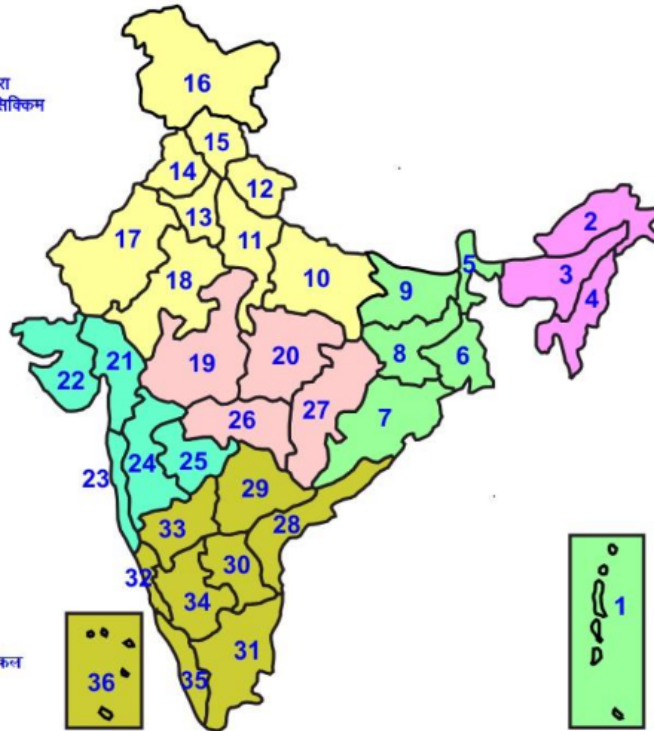
Agromet advisories for likely impact of Thunderstorm / Gusty Winds / Squally Winds

(Based on the IBF and advisories issued by different AMFUs)

Provide mechanical support to horticultural crops and staking or support to vegetables and young fruit plants / fruit-bearing plants to avoid lodging due to strong winds.

LEGENDS

- 1 अंडमान और निकोबार द्वीप समुह
- 2 अरुणाचल प्रदेश
- 3 असम और मेघालय
- 4 नागालैंड मनीपुर मीजोरम और त्रिपुरा
- 5 उप हिमालय पश्चिम बंगाल एवं सिक्किम
- 6 पश्चिम बंगाल
- 7 ओडिसा
- 8 झारखंड
- 9 बिहार
- 10 पूर्वी उत्तर प्रदेश
- 11 पश्चिम उत्तर प्रदेश
- 12 उत्तराखंड
- 13 हरियाणा चंडिगढ़ एवं दिल्ली
- 14 पंजाब
- 15 हिमाचल प्रदेश
- 16 जम्मू एवं कश्मीर एवं लद्दाख
- 17 पश्चिम राजस्थान
- 18 पूर्वी राजस्थान
- 19 पश्चिम मध्य प्रदेश
- 20 पूर्वी मध्य प्रदेश
- 21 गुजरात क्षेत्र
- 22 सौराष्ट्र एवं कच्छ
- 23 कोंकण एवं गोवा
- 24 मध्य महाराष्ट्र
- 25 मराठावाडा
- 26 विदर्भ
- 27 छत्तीसगढ़
- 28 तटीय आंध्र प्रदेश एवं यनम
- 29 तेलंगाना
- 30 रायलसीमा
- 31 तमिलनाडु, पुदुचेरी एवं कराईकल
- 32 तटिय कर्नाटक
- 33 आंतरिक उत्तरी कर्नाटक
- 34 आंतरिक दक्षिणी कर्नाटक
- 35 केरल एवं माहे
- 36 लक्षद्वीप



1. Andaman & Nicobar Islands
2. Arunachal Pradesh
3. Assam & Meghalaya
4. Nagaland, Manipur, Mizoram & Tripura
5. Sub-Himalayan West Bengal & Sikkim
6. Gangetic West Bengal
7. Orissa
8. Jharkhand
9. Bihar
10. East Uttar Pradesh
11. West Uttar Pradesh
12. Uttarakhand
13. Haryana, Chd & Delhi
14. Punjab
15. Himachal Pradesh
16. Jammu & Kashmir and Ladakh
17. West Rajasthan
18. East Rajasthan
19. West Madhya Pradesh
20. East Madhya Pradesh
21. Gujarat
22. Saurashtra
23. Konkan & Goa
24. Madhya Maharashtra
25. Marathawada
26. Vidharbha
27. Chhattisgarh
28. Coastal Andhra Pradesh & Yanam
29. Telangana
30. Rayalaseema
31. Tamilnadu, Puducherry & Karaikal
32. Coastal Karnataka
33. North Interior Karnataka
34. South Interior Karnataka
35. Kerala & Mahe
36. Lakshadweep

SPATIAL DISTRIBUTION (% of Stations reporting)

% Stations	Category	% Stations	Category
76-100	Widespread (WS/ Most Places)	26-50	Scattered (SCT/ A Few Places)
51-75	Fairly Widespread (FWS/ Many Places)	1-25	Isolated (ISOL)

Subdivision Colour

- NO WARNING
- WATCH (BE UPDATED)
- ALERT (BE PREPARED TO TAKE ACTION)
- WARNING (TAKE ACTION)

Probabilistic Forecast

Terms	Probability of Occurrence (%)
Unlikely	< 25
Likely	25 - 50
Very Likely	50 - 75
Most Likely	> 75

- | | | | |
|--------------------------|-----------------|----------------------|--------------------|
| Heavy Rain | Very Heavy Rain | Extremely Heavy Rain | Heavy Snow |
| Thunderstorm & Lightning | Hailstorm | Dust Storm | Dust Raising Winds |
| Strong surface winds | Heat Wave | Hot Day | Warm Night |
| Cold Wave | Cold Day | Ground Frost | Fog |
| Hot & Humid | | | |

*Red color warning does not mean "Red Alert" Red color warning means "Take Action"

Forecast and warning for any day is valid from 0830 hours IST of day till 0830 hours IST of next day

For more details kindly visit <https://mausam.imd.gov.in> or contact 011-2434-4599

(Service to the nation since 1875)

LEGENDS

WARNING

WARNING (TAKE ACTION)
ALERT (BE PREPARED)
WATCH (BE UPDATED)
NO WARNING (NO ACTION)

Probabilistic Forecast

Terms	Probability of Occurrence (%)
Unlikely	< 25
Likely	25 - 50
Very Likely	50 - 75
Most Likely	> 75



Heavy: 64.5 to 115.5 mm/cm *
Very Heavy: 115.6 to 204.4 mm/cm*
Extremely Heavy: > 204.4 mm/cm *



When maximum temperature of a station reaches $\geq 40^{\circ}\text{C}$ for plains and $\geq 30^{\circ}\text{C}$ for hilly regions
(a) Based on Departure from normal

Heat Wave: Maximum Temperature Departure from normal 4.5°C to 6.4°C .
Severe Heat Wave: Maximum Temperature Departure from normal $\geq 6.5^{\circ}\text{C}$

(b). Based on Actual maximum temperature

Heat Wave: When actual maximum temperature $\geq 45^{\circ}\text{C}$.
Severe Heat Wave: When actual maximum temperature $\geq 47^{\circ}\text{C}$

(c). Criteria for heat wave for coastal stations

When maximum temperature departure is $> 4.5^{\circ}\text{C}$ from normal. Heat Wave may be described provided maximum temperature $\geq 37^{\circ}\text{C}$



When maximum temperature remains 40°C

Warm Night: When minimum temperature departure 4.5°C to 6.4°C .
Severe Warm Night: When minimum temperature departure $> 6.4^{\circ}\text{C}$.



When minimum temperature of a station $\leq 10^{\circ}\text{C}$ for plains and $\leq 0^{\circ}\text{C}$ for hilly regions.

(a). Based on departure

Cold Wave: Minimum Temperature Departure from normal -4.5°C to -6.4°C .
Severe Cold Wave: Minimum Temperature Departure from normal $\leq -6.5^{\circ}\text{C}$

(b) Based on actual Minimum Temperature (for Plains only)

Cold Wave : When Minimum Temperature is $\leq 4.0^{\circ}\text{C}$
Severe Cold Wave: When Minimum Temperature is $\leq 2.0^{\circ}\text{C}$

(c) For Coastal Stations

When Minimum Temperature departure is $\leq -4.5^{\circ}\text{C}$ & actual Minimum Temperature is $\leq 15^{\circ}\text{C}$



When minimum temperature of a station $\leq 10^{\circ}\text{C}$ for plains and $\leq 0^{\circ}\text{C}$ for hilly regions
Based on departure

Cold Day: Maximum Temperature Departure from normal -4.5°C to -6.4°C .
Severe Cold Day: Maximum Temperature Departure from normal $\leq -6.5^{\circ}\text{C}$



Phenomenon of small droplets suspended in air and the horizontal visibility $< 1\text{km}$

Moderate Fog: When the visibility between 500-200 metres
Dense Fog: when the visibility between 50- 200 metres
Very Dense Fog: when the visibility < 50 metres



Sudden electrical discharges manifested by a flash of light (Lightning) and a sharp rumbling sound (thunder)



An ensemble of particles of dust or sand energetically lifted to great heights by a strong and turbulent wind.



Ice deposits on ground

Air temperature $\leq 4^{\circ}\text{C}$ (over Plains)



A strong wind that rises suddenly, lasts for atleast 1 minute.

Moderate: Wind speed 52-61 kmph
Severe: Wind speed 62-87 kmph
Very Severe: Wind speed > 87 kmph



Effect of various waves in the sea over specific area

Rough to very rough: Wind speed 41-62 kmph (22-33 knots) & Wave height 2.5-6 metre
High to very high: Wind speed 63-117 kmph (34-63 knots) & Wave height 6-14 metre
Phenomenal: Wind speed > 117 kmph (> 63 knots) & Wave height > 14 metre



Cyclonic Storm: Wind speed 62-87 kmph (34-47 knots)
Severe Cyclonic Storm: Wind speed 88-117 kmph (48-63 knots)
Very Severe Cyclonic Storm: Wind speed 118-165 kmph (64 - 89 knots)
Extremely Severe Cyclonic Storm: Wind speed 166-220 kmph (90 -119 knots)
Super Cyclone Storm: Wind speed > 220 kmph (> 119 knots)

*Red color warning does not mean "Red Alert" Red color warning means "Take Action"

Forecast and warning for any day is valid from 0830 hours IST of day till 0830 hours IST of next day

For more details kindly visit <https://mausam.imd.gov.in> or contact 011-2434-4599

(Service to the nation since 1875)