

2026-07-09

Time of Issue: 08:11:00 hours IST
(Morning)

ALL INDIA WEATHER SUMMARY AND FORECAST BULLETIN

Significant Weather Features

Advance of Southwest Monsoon 2026

- The **Northern Limit of Monsoon** continues to pass through 24.5°N/65°E, Barmer, Jodhpur, Rajgarh (Dist. Churu), Bhatinda and 32.5°N/70°E.
- Conditions are favourable for further advance of southwest monsoon into remaining parts of North Arabian Sea, Rajasthan, Haryana and Punjab, and hence entire country during next 2-3 days.

Weather forecast and Warnings:

Northwest India:

- **Fairly Widespread to Widespread** rainfall likely over Jammu-Kashmir-Ladakh-Gilgit-Baltistan-Muzaffarabad during 9th-12th July; Himachal Pradesh and Uttarakhand during 9th-14th July.
- **Fairly Widespread to Widespread** rainfall likely over Punjab on 9th July; Haryana Chandigarh & Delhi and West Uttar Pradesh during 9th-10th July; East Uttar Pradesh during 9th-13th July; East Rajasthan on 9th July.
- **Isolated to Scattered** rainfall likely over Jammu-Kashmir-Ladakh-Gilgit-Baltistan-Muzaffarabad during 13th-14th July.
- **Isolated to Scattered** rainfall likely over Punjab on 8th July and during 10th-14th July; Haryana Chandigarh & Delhi and West Uttar Pradesh during 11th-14th July; East Uttar Pradesh on 14th July; West Rajasthan during 9th-14th July; East Rajasthan during 10th-14th July.
- **Isolated thunderstorm, lightning & gusty winds (speed reaching 40-50 kmph gusting to 60 kmph)** likely over Jammu-Kashmir-Ladakh-Gilgit-Baltistan-Muzaffarabad during 9th-12th July.
- **Isolated thunderstorm, lightning & gusty winds (speed reaching 40-50 kmph gusting to 60 kmph)** likely over West Rajasthan on 9th July; East Rajasthan during 9th-10th July, **with gusty winds (speed reaching 30-40 kmph gusting to 50 kmph)** likely over East Rajasthan during 11th-12th July.
- **Isolated thunderstorm & lightning** likely over Jammu-Kashmir-Ladakh-Gilgit-Baltistan-Muzaffarabad during 13th-14th July; Uttarakhand during 9th-14th July.
- **Isolated heavy rainfall** likely over Jammu-Kashmir-Ladakh-Gilgit-Baltistan-Muzaffarabad during 11th-12th July; Himachal Pradesh during 9th-14th July; Uttarakhand on 9th July and during 11th-14th July; Haryana Chandigarh & Delhi and Punjab during 9th-12th July; West Uttar Pradesh during 10th-11th July; East Uttar Pradesh on 9th July and on 13th July; East Rajasthan on 10th July with isolated **very heavy rainfall** also likely over Uttarakhand on 10th July; East Rajasthan and West Uttar Pradesh on 9th July; East Uttar Pradesh during 10th-12th July.
- **Moderate to intense lightning activity over Jammu-Kashmir-Ladakh-Gilgit-Baltistan-Muzaffarabad on 11th & 12th; East Rajasthan on 09th July.**

Central India:

- **Fairly Widespread to Widespread** rainfall likely over West Madhya Pradesh during 9th-10th July; East Madhya Pradesh during 9th-11th July; Vidarbha on 9th July and during 13th-14th July; Chhattisgarh on 9th July and during 13th-14th July.
- **Isolated to Scattered** rainfall likely over West Madhya Pradesh during 11th-14th July; East Madhya Pradesh during 12th-14th July; Vidarbha during 10th-12th July; Chhattisgarh during 10th-12th July.
- **Isolated heavy rainfall** likely over West Madhya Pradesh on 10th July; East Madhya Pradesh during 11th-12th July; Vidarbha during 13th-14th July; Chhattisgarh during 12th-14th July with isolated **very heavy rainfall** also likely over West Madhya Pradesh on 9th July; East Madhya Pradesh during 9th-10th July.

East India:

- **Fairly Widespread to Widespread** rainfall likely over Andaman & Nicobar Islands during 9th-11th July and on 14th July; Sub-Himalayan West Bengal & Sikkim during 9th-14th July; Gangetic West Bengal during 10th-14th

***Red color warning does not mean "Red Alert" Red color warning means "Take Action"**

Forecast and warning for any day is valid from 0830 hours IST of day till 0830 hours IST of next day

For more details kindly visit <https://mausam.imd.gov.in> or contact 011-2434-4599

(Service to the nation since 1875)

July; Jharkhand during 9th-10th July and during 12th-14th July; Bihar during 10th-11th July.

- **Isolated to Scattered** rainfall likely over Andaman & Nicobar Islands during 12th-13th July; Gangetic West Bengal on 9th July; Jharkhand on 11th July; Bihar on 9th July and during 12th-14th July; Odisha during 9th-14th July.
- Isolated **thunderstorm, lightning & gusty winds (speed reaching 40-50 kmph gusting to 60 kmph)** likely over Andaman & Nicobar Islands during 10th-14th July; Gangetic West Bengal on 9th July; Jharkhand during 9th-12th July, **with gusty winds (speed reaching 30-40 kmph gusting to 50 kmph)** likely over Andaman & Nicobar Islands on 9th July; Gangetic West Bengal on 8th July and during 10th-14th July; Bihar during 10th-12th July; Odisha during 9th-12th July.
- Isolated **heavy rainfall** likely over Sub-Himalayan West Bengal & Sikkim during 10th-13th July; Gangetic West Bengal during 9th-10th July; Jharkhand on 12th July; Bihar during 11th-12th July with isolated **very heavy rainfall** also likely over Sub-Himalayan West Bengal & Sikkim on 9th July; Bihar during 9th-10th July.
- **Moderate to intense lightning activity over Bihar on 09th & 10th July.**

Northeast India:

- **Fairly Widespread to Widespread** rainfall likely over Arunachal Pradesh during 9th-11th July and on 14th July; Assam & Meghalaya during 9th-12th July and on 14th July; Nagaland, Manipur, Mizoram & Tripura during 9th-14th July.
- **Isolated to Scattered** rainfall likely over Arunachal Pradesh during 12th-13th July; Assam & Meghalaya on 13th July.
- Isolated **thunderstorm & lightning** likely over Arunachal Pradesh, Assam & Meghalaya and Nagaland, Manipur, Mizoram & Tripura during 9th-12th July.
- Isolated **heavy rainfall** likely over Arunachal Pradesh during 10th-14th July; Assam & Meghalaya during 10th-14th July; Nagaland, Manipur, Mizoram & Tripura during 9th-14th July with isolated **very heavy rainfall** also likely over Arunachal Pradesh during 8th-9th July; Assam & Meghalaya on 9th July.

West India:

- **Fairly Widespread to Widespread** rainfall likely over Konkan & Goa during 9th-14th July; Gujarat Region and Marathawada on 9th July.
- **Isolated to Scattered** rainfall likely over Madhya Maharashtra during 9th-14th July; Gujarat Region and Marathawada during 10th-14th July; Saurashtra & Kutch during 9th-14th July.
- Isolated **thunderstorm, lightning & gusty winds (speed reaching 40-50 kmph gusting to 60 kmph)** likely over Gujarat Region and Saurashtra & Kutch on 9th July.
- Isolated **heavy rainfall** likely over Konkan & Goa and Madhya Maharashtra on 9th July; Gujarat Region on 9th July.

South Peninsular India:

- **Isolated to Scattered** rainfall likely over Coastal Andhra Pradesh & Yanam, North Interior Karnataka, South Interior Karnataka, Tamil Nadu, Puducherry & Karaikal and Telangana during 9th-14th July; Kerala & Mahe during 12th-14th July; Lakshadweep during 10th-14th July; Rayalaseema during 9th-11th July.
- **Fairly Widespread to Widespread** rainfall likely over Kerala & Mahe during 9th-11th July; Lakshadweep on 9th July; Coastal Karnataka during 9th-14th July.
- Isolated **thunderstorm, lightning & gusty winds (speed reaching 40-50 kmph gusting to 60 kmph)** likely over Coastal Karnataka, North Interior Karnataka and South Interior Karnataka during 9th-10th July; Coastal Andhra Pradesh & Yanam on 9th July; Rayalaseema during 9th-11th July; Telangana during 10th-14th July, **with gusty winds (speed reaching 30-40 kmph gusting to 50 kmph)** likely over Coastal Karnataka, North Interior Karnataka and South Interior Karnataka during 11th-14th July; Coastal Andhra Pradesh & Yanam during 10th-14th July.
- Isolated **heavy rainfall** likely over Tamil Nadu, Puducherry & Karaikal on 9th July; Coastal Karnataka, Kerala & Mahe and South Interior Karnataka on 9th July;
- **Thundersquall (wind speed reaching 50-60 kmph gusting to 70 kmph)** likely over Tamil Nadu, Puducherry & Karaikal during 9th-10th July; Kerala & Mahe during 9th-12th July; Lakshadweep and Telangana on 9th July; Coastal Karnataka.

***Red color warning does not mean "Red Alert" Red color warning means "Take Action"**

Forecast and warning for any day is valid from 0830 hours IST of day till 0830 hours IST of next day

For more details kindly visit <https://mausam.imd.gov.in> or contact 011-2434-4599

(Service to the nation since 1875)

- Strong Surface Winds likely over Tamil Nadu, Puducherry & Karaikal during 9th-10th July; Kerala & Mahe during 9th-12th July; Lakshadweep on 9th July; Coastal Karnataka, North Interior Karnataka and South Interior Karnataka during 9th-14th July.

Fishermen Warning:

Arabian Sea:

- Along and off Somalia, Oman, over many parts of central and adjoining some parts of north Arabian Sea during 09th to 13th July; along and off south Gujarat on 08th July and entire Gujarat during 09th to 13th July. Konkan & Goa, Karnataka, Kerala coasts, over Lakshadweep area coasts and adjoining sea area during 09th to 10th July..

Bay of Bengal:

- Over Andaman Sea, south Myanmar coasts adjoining eastcentral & northeast Bay of Bengal during 10th to 13th July and over some parts of central and south Bay of Bengal on 12th July, few parts of northeast and eastcentral Bay of Bengal during 09th to 11th July.

Main Weather Observations:

❖ **Rainfall distribution** (from 0830 hours IST of yesterday to 0530 hours IST of today): **at most places** over Assam & Meghalaya, East Madhya Pradesh, Arunachal Pradesh, Jammu & Kashmir and Ladakh, Uttarakhand, West Uttar Pradesh, Gangetic West Bengal, Konkan & Goa, Nagaland, Manipur, Mizoram & Tripura, Chhattisgarh, Sub-himalayan West Bengal & Sikkim, Madhya Maharashtra, Marathwada, Vidarbha, Kerala & Mahe, Telangana, Coastal Karnataka and North Interior Karnataka; **at many places** over Punjab, East Rajasthan, West Rajasthan, West Madhya Pradesh, East Uttar Pradesh, Bihar, Odisha, Haryana Chandigarh & Delhi, Coastal Andhra Pradesh & Yanam, Tamilnadu Puducherry & Karaikal, Rayalaseema, South Interior Karnataka and Lakshadweep; **Dry** over rest of the country.

❖ **Significant rainfall recorded(in cm)** (from 0830 hours IST of yesterday to 0530 hours IST of today): **Assam & Meghalaya:** Cherrapunji (dist East Khasi Hills) 18, Shillong (dist East Khasi Hills) 6; **Nagaland, Manipur, Mizoram & Tripura:** Kailashahar AP (dist Unakoti) 11, Agartala AP (dist West Tripura) 6; Haryana Chandigarh & Delhi: New Delhi (safdarjung) (dist South West Delhi) 7; Sub-himalayan West Bengal & Sikkim: Malda (dist Malda) 7.

❖ **Heavy Rainfall observed** (from 0830 hours IST of yesterday to 0530 hours IST of today): **Heavy to very heavy rain** at isolated places over Assam & Meghalaya **Heavy rain** at most places over Sub-himalayan West Bengal & Sikkim, at isolated places over Nagaland, Manipur, Mizoram & Tripura and Haryana Chandigarh & Delhi

❖ **Minimum Temperature Departures (as on 08-07-2026): markedly above normal(> 5.1°C)** at few places over Assam & Meghalaya and Nagaland, Manipur, Mizoram & Tripura; at isolated places over Odisha, Bihar, West Uttar Pradesh, Himachal Pradesh, East Rajasthan, West Madhya Pradesh, East Madhya Pradesh and Saurashtra & Kutch. **appreciably above normal(3.1°C to 5.0°C)** at few places over Odisha, West Rajasthan and East Madhya Pradesh; at isolated places over Andaman & Nicobar Islands, Assam & Meghalaya, Sub Himalayan West Bengal & Sikkim, Bihar, East Uttar Pradesh, West Uttar Pradesh, East Rajasthan, West Madhya Pradesh, Gujarat Region, Konkan & Goa, Madhya Maharashtra, Coastal Andhra Pradesh & Yanam and Tamil Nadu, Puducherry & Karaikal. **above normal(1.6°C to 3.0°C)** at many places over Rayalaseema; at few places over Andaman & Nicobar Islands, Gangetic West Bengal, Odisha, Jammu-KashmirLadakh-Gilgit-Baltistan-Muzaffarabad, Coastal Andhra Pradesh & Yanam, Tamil Nadu, Puducherry & Karaikal, Coastal Karnataka and Lakshadweep; at isolated places over Uttarakhand, Punjab, Himachal Pradesh, West Madhya Pradesh, East Madhya Pradesh, Gujarat Region, Saurashtra & Kutch, Konkan & Goa, Madhya Maharashtra, Marathwada, Telangana and North Interior Karnataka. **near normal(-1.5°C to 1.5°C)** at many places over Assam & Meghalaya, Nagaland, Manipur, Mizoram & Tripura, Gangetic West Bengal, East Uttar Pradesh, West Uttar Pradesh, Uttarakhand, Punjab, Himachal Pradesh, Gujarat Region, Saurashtra & Kutch, Konkan & Goa, Madhya Maharashtra, Marathwada, Telangana, Tamil Nadu, Puducherry & Karaikal, Coastal Karnataka, Kerala & Mahe and Lakshadweep; at most places over Arunachal Pradesh, Sub Himalayan West Bengal & Sikkim, Jharkhand, Bihar, Vidarbha, Chhattisgarh, North Interior Karnataka and South Interior Karnataka; at few places over Andaman & Nicobar Islands, Odisha, Haryana-Chandigarh-Delhi, Jammu-KashmirLadakh-Gilgit-Baltistan-Muzaffarabad, West Rajasthan, East Rajasthan, West Madhya Pradesh, East Madhya Pradesh, Coastal Andhra Pradesh & Yanam and Rayalaseema. **The lowest minimum temperature** of 18.0°C was reported at HALFLONG (ASSAM) over the Plains of India.

❖ **Maximum Temperature Departures (as on 08-07-2026): appreciably above normal(3.1°C to 5.0°C)** at isolated places over Coastal Andhra Pradesh & Yanam, Rayalaseema and Tamil Nadu, Puducherry & Karaikal. **above normal(1.6°C to 3.0°C)** at few places over Assam & Meghalaya, Coastal Karnataka and Kerala & Mahe; at isolated places over Sub Himalayan West Bengal & Sikkim, Bihar, Jammu-KashmirLadakh-Gilgit-Baltistan-Muzaffarabad, West Rajasthan, Saurashtra & Kutch, Konkan & Goa, Telangana and North Interior Karnataka. **near normal(-1.5°C to 1.5°C)** at many places over Andaman & Nicobar Islands, East Uttar Pradesh and Gujarat Region; at most places over Arunachal Pradesh, Gangetic West Bengal, Jharkhand, Chhattisgarh, South Interior Karnataka and Lakshadweep; at few places over Uttarakhand, East Rajasthan, Madhya Maharashtra and Vidarbha; at isolated places over Nagaland, Manipur, Mizoram & Tripura, Odisha, West Uttar Pradesh, West Madhya Pradesh and Marathwada. **The highest maximum temperature** of 41.6°C was reported at JAISALMER (RAJASTHAN).



Meteorological Analysis (Based on 0530 hours IST)

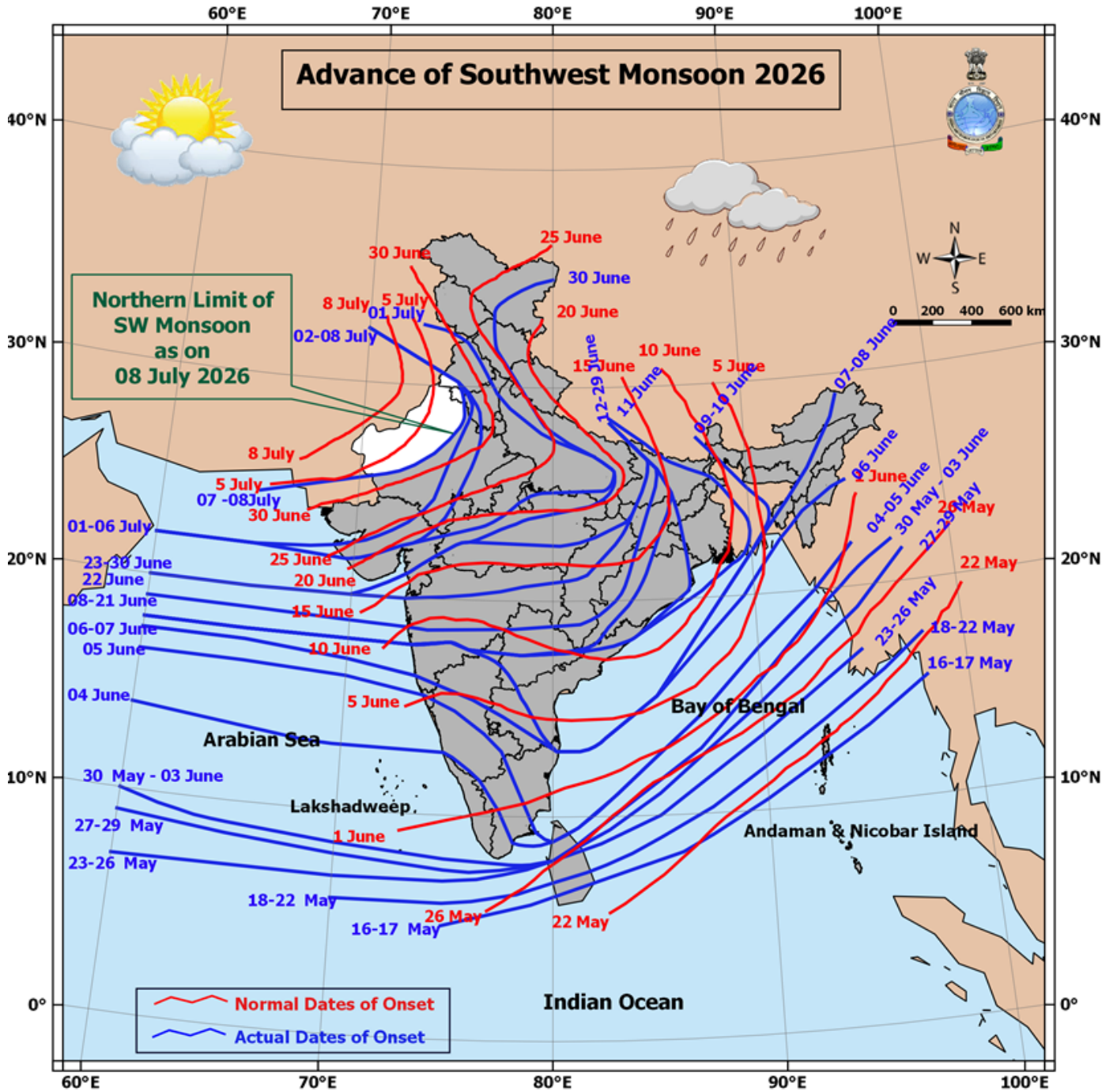
- The **Northern Limit of Monsoon** continues to pass through 24.5°N/65°E, Barmer, Jodhpur, Rajgarh (Dist. Churu), Bhatinda and 32.5°N/70°E.
- Conditions are favourable for further advance of southwest monsoon into remaining parts of North Arabian Sea, Rajasthan, Haryana and Punjab, and hence entire country during next 2-3 days.
- The **Well-Marked Low Pressure** area over Northwest Madhya Pradesh & adjoining Southwest Uttar Pradesh at 1730 hrs IST of today, the 8th July 2026 persists. The associated cyclonic circulation extends upto 9.6 km above mean sea level tilting southwards with height. It is very likely to move north-northwestwards for some time and recurve northeastwards thereafter.
- The **seasonal trough** at mean sea level from northwest Rajasthan to northeast Bangladesh across the centre of **Well Marked Low Pressure** area over Northwest Madhya Pradesh & adjoining Southwest Uttar Pradesh, Jharkhand, north Gangetic West Bengal and extending upto 1.5 above mean sea level persists.
- The **off-shore trough** at mean sea level from south Gujarat to central Kerala persists.
- The **trough** from Northeast Arabian Sea to Sikkim across Gujarat, cyclonic circulation associated with **Well Marked Low Pressure** area over Northeast Madhya Pradesh & adjoining Southeast Uttar Pradesh, and Bihar between 3.1 & 7.6 km above mean sea level persists.
- The **Western Disturbance** as a trough in middle & upper tropospheric westerlies with its axis at 5.8 km above mean sea level now runs roughly along Long. 72°E to the north of Lat. 31°N.
- The **upper air cyclonic circulation** over northeast Assam and extends upto 3.1 km above mean sea level persists.

***Red color warning does not mean "Red Alert" Red color warning means "Take Action"**

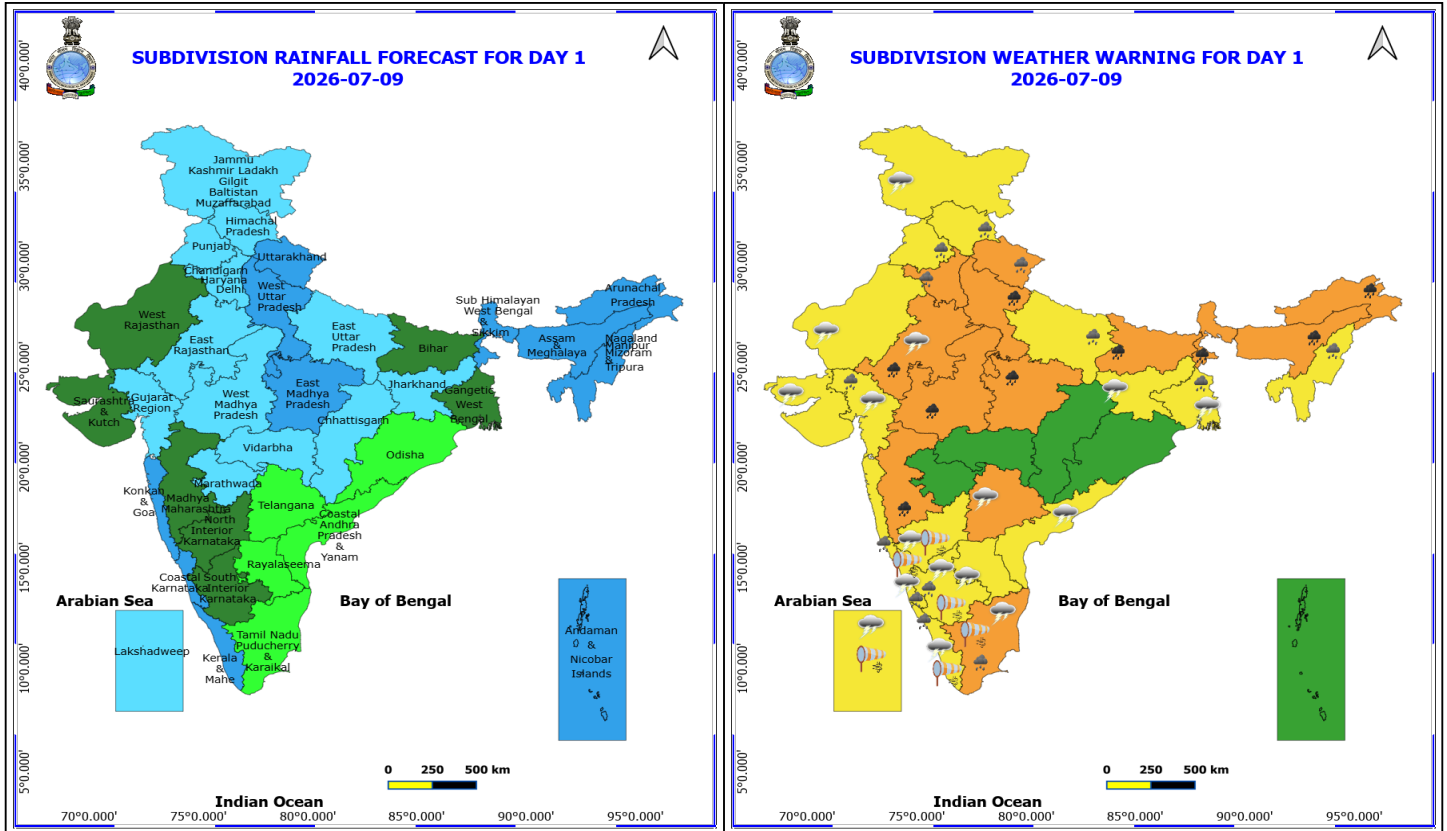
Forecast and warning for any day is valid from 0830 hours IST of day till 0830 hours IST of next day

For more details kindly visit <https://mausam.imd.gov.in> or contact 011-2434-4599

(Service to the nation since 1875)



*Red color warning does not mean "Red Alert" Red color warning means "Take Action"
Forecast and warning for any day is valid from 0830 hours IST of day till 0830 hours IST of next day
For more details kindly visit <https://mausam.imd.gov.in> or contact 011-2434-4599
(Service to the nation since 1875)



9 July (Day 1)

- ❖ **Heavy to Very Heavy Rainfall** very likely at isolated places over Arunachal Pradesh, Assam & Meghalaya, Bihar, East Rajasthan, Madhya Maharashtra, Madhya Pradesh, Sub Himalayan West Bengal & Sikkim and West Uttar Pradesh.
- ❖ **Heavy Rainfall** very likely at isolated places over Coastal Karnataka, East Uttar Pradesh, Gangetic West Bengal, Gujarat Region, Haryana, Chandigarh & Delhi, Himachal Pradesh, Kerala & Mahe, Konkan & Goa, Nagaland, Manipur, Mizoram and Tripura, Punjab, South Interior Karnataka, Tamil Nadu Puducherry & Karaikal and Uttarakhand.
- ❖ **Thundersquall with wind speed reaching(50-60kmph)** very likely at isolated places over Kerala & Mahe, Lakshadweep, Tamil Nadu Puducherry & Karaikal and Telangana.
- ❖ **Thunderstorm accompanied with lightning & gusty winds(40-50kmph)** very likely at isolated places over Andhra Pradesh, Gangetic West Bengal, Gujarat State, Jammu-Kashmir-Ladakh-Gilgit-Baltistan-Muzaffarabad, Jharkhand, Karnataka and Rajasthan.
- ❖ **Thunderstorm accompanied with lightning & gusty winds(30-40kmph)** very likely at isolated places over Andaman & Nicobar Islands and Odisha.
- ❖ **Thunderstorm accompanied with Lightning** very likely at isolated places over Arunachal Pradesh, Assam & Meghalaya, Nagaland, Manipur, Mizoram and Tripura and Uttarakhand.
- ❖ **Strong Surface Winds** very likely at isolated places over Karnataka, Kerala & Mahe, Lakshadweep and Tamil Nadu Puducherry & Karaikal.
- ❖ **Arabian Sea: Squally wind with speed 45-55 kmph gusting to 65 kmph** is likely to prevail over most parts of

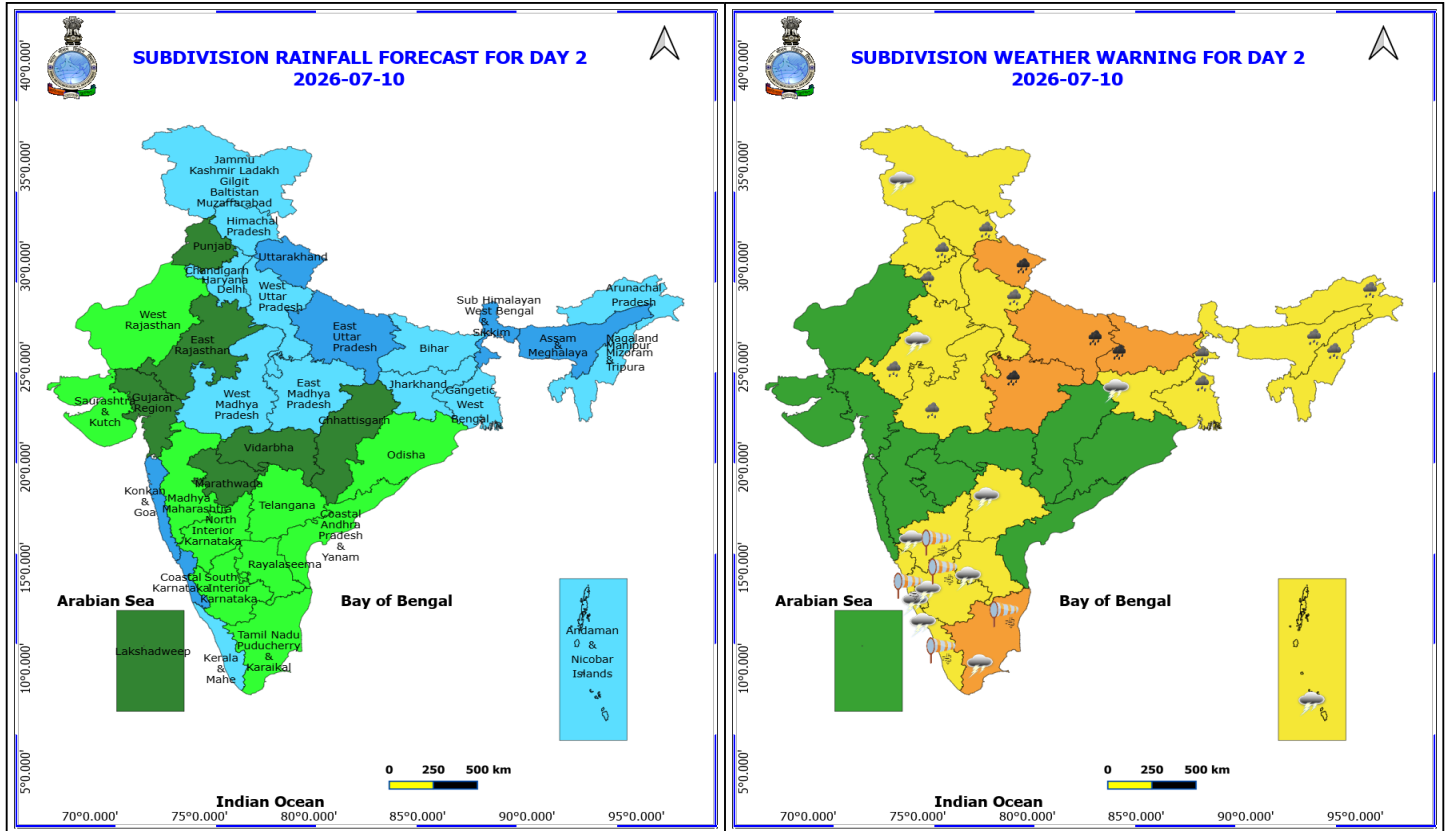
***Red color warning does not mean "Red Alert" Red color warning means "Take Action"**
 Forecast and warning for any day is valid from 0830 hours IST of day till 0830 hours IST of next day
 For more details kindly visit <https://mausam.imd.gov.in> or contact 011-2434-4599

(Service to the nation since 1875)



central adjoining some parts of south & few parts of north Arabian Sea, along and off Somalia & Oman coasts and adjoining sea areas.

❖ **Squally weather with wind speed 40-50 gusting to 60 kmph** is likely to prevail along & off Gujarat, Konkan & Goa, Karnataka, Kerala coasts, Lakshadweep area and adjoining eastcentral & northeast Arabian Sea



10 July (Day 2)

- ❖ **Heavy to Very Heavy Rainfall** very likely at isolated places over Bihar, East Madhya Pradesh, East Uttar Pradesh and Uttarakhand.
- ❖ **Heavy Rainfall** very likely at isolated places over Arunachal Pradesh, Assam & Meghalaya, East Rajasthan, Haryana, Chandigarh & Delhi, Himachal Pradesh, Nagaland, Manipur, Mizoram and Tripura, Punjab, West Bengal & Sikkim, West Madhya Pradesh and West Uttar Pradesh.
- ❖ **Thundersquall with wind speed reaching(50-60kmph)** very likely at isolated places over Kerala & Mahe and Tamil Nadu Puducherry & Karaikal.
- ❖ **Thunderstorm accompanied with lightning & gusty winds(40-50kmph)** very likely at isolated places over Andaman & Nicobar Islands, East Rajasthan, Jammu-Kashmir-Ladakh-Gilgit-Baltistan-Muzaffarabad, Jharkhand, Karnataka, Rayalaseema and Telangana.
- ❖ **Thunderstorm accompanied with lightning & gusty winds(30-40kmph)** very likely at isolated places over Bihar, Coastal Andhra Pradesh, Gangetic West Bengal and Odisha.
- ❖ **Thunderstorm accompanied with Lightning** very likely at isolated places over Arunachal Pradesh, Assam & Meghalaya, Nagaland, Manipur, Mizoram and Tripura and Uttarakhand.
- ❖ **Strong Surface Winds** very likely at isolated places over Karnataka, Kerala & Mahe and Tamil Nadu Puducherry & Karaikal.
- ❖ **Arabian Sea: Squally wind with speed 45-55 kmph gusting to 65 kmph** is likely to prevail over most parts of central adjoining some parts of southwest & few parts of north Arabian Sea, along and off Somalia & Oman coasts and adjoining sea areas.

***Red color warning does not mean "Red Alert" Red color warning means "Take Action"**

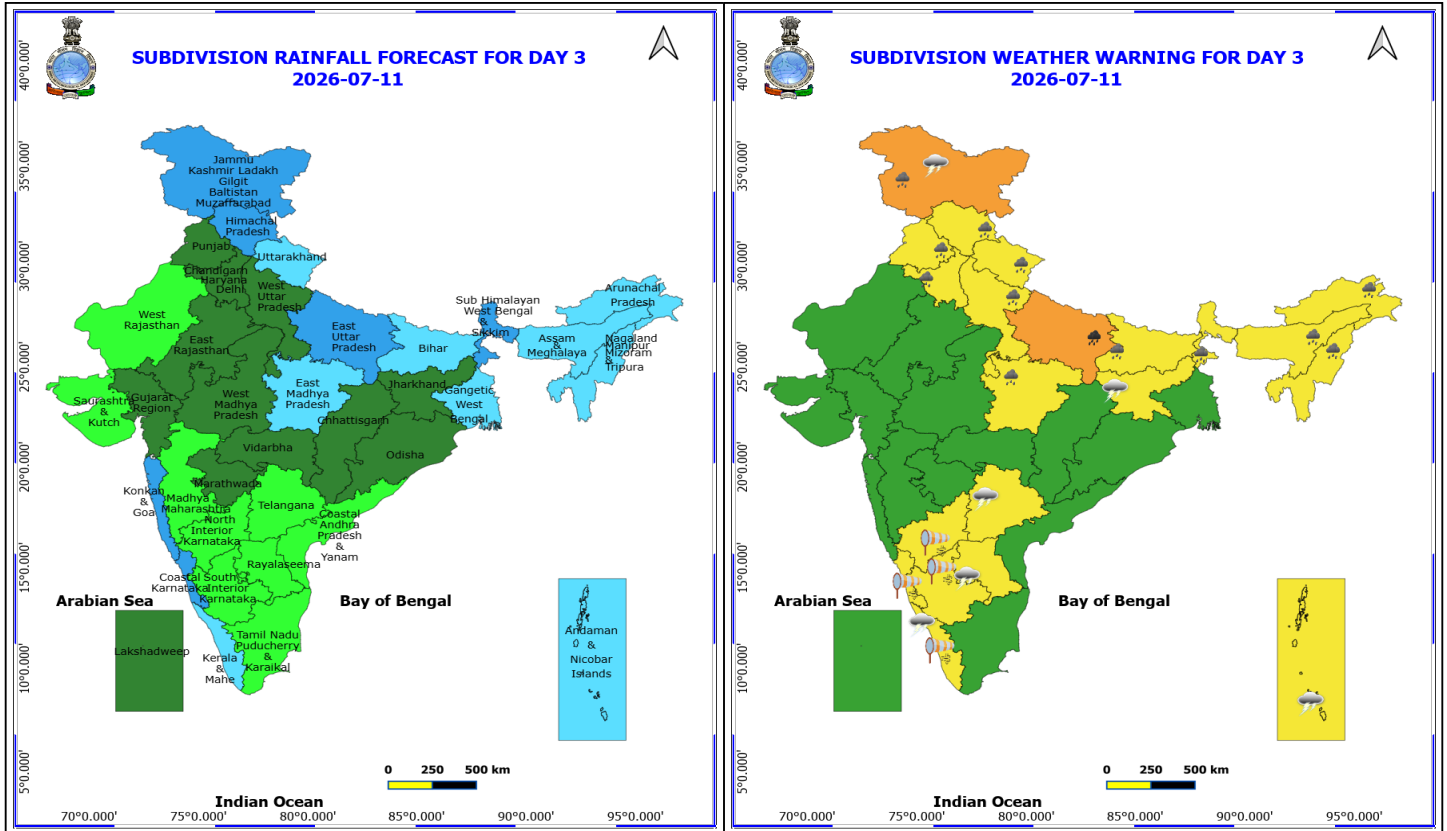
Forecast and warning for any day is valid from 0830 hours IST of day till 0830 hours IST of next day

For more details kindly visit <https://mausam.imd.gov.in> or contact 011-2434-4599

(Service to the nation since 1875)



- ❖ **Squally weather with wind speed 40-50 gusting to 60 kmph** is likely to prevail along & off Gujarat, Konkan & Goa, Karnataka, Kerala coasts, Lakshadweep area and adjoining eastcentral & northeast Arabian Sea.
- ❖ **Bay of Bengal: Squally Weather with wind speed 40-50 kmph gusting to 60 kmph** is likely to prevail over south Myanmar adjoining northeast Bay of Bengal.



11 July (Day 3)

- ❖ **Heavy to Very Heavy Rainfall** very likely at isolated places over East Uttar Pradesh.
 - ❖ **Heavy Rainfall** very likely at isolated places over Arunachal Pradesh, Assam & Meghalaya, Bihar, East Madhya Pradesh, Haryana, Chandigarh & Delhi, Himachal Pradesh, Jammu-Kashmir-Ladakh-Gilgit-Baltistan-Muzaffarabad, Nagaland, Manipur, Mizoram and Tripura, Punjab, Sub Himalayan West Bengal & Sikkim, Uttarakhand and West Uttar Pradesh.
 - ❖ **Thundersquall with wind speed reaching(50-60kmph)** very likely at isolated places over Kerala & Mahe.
 - ❖ **Thunderstorm accompanied with lightning & gusty winds(40-50kmph)** very likely at isolated places over Andaman & Nicobar Islands, Jammu-Kashmir-Ladakh-Gilgit-Baltistan-Muzaffarabad, Jharkhand, Rayalaseema and Telangana.
 - ❖ **Thunderstorm accompanied with lightning & gusty winds(30-40kmph)** very likely at isolated places over Bihar, Coastal Andhra Pradesh, East Rajasthan, Gangetic West Bengal, Karnataka and Odisha.
 - ❖ **Thunderstorm accompanied with Lightning** very likely at isolated places over Arunachal Pradesh, Assam & Meghalaya, Nagaland, Manipur, Mizoram and Tripura and Uttarakhand.
 - ❖ **Strong Surface Winds** very likely at isolated places over Karnataka and Kerala & Mahe.
-
- ❖ **Arabian Sea:** Arabian Sea: **Squally wind with speed 45-55 kmph gusting to 65 kmph** is likely to prevail over many parts of central adjoining some parts of southwest & few parts of north Arabian Sea, along and off Gujarat adjoining northeast Arabian Sea, Somalia & Oman coasts and adjoining sea areas.
 - ❖ **Bay of Bengal:** **Squally Weather with wind speed 40-50 kmph gusting to 60 kmph** is likely to prevail over

***Red color warning does not mean "Red Alert" Red color warning means "Take Action"**

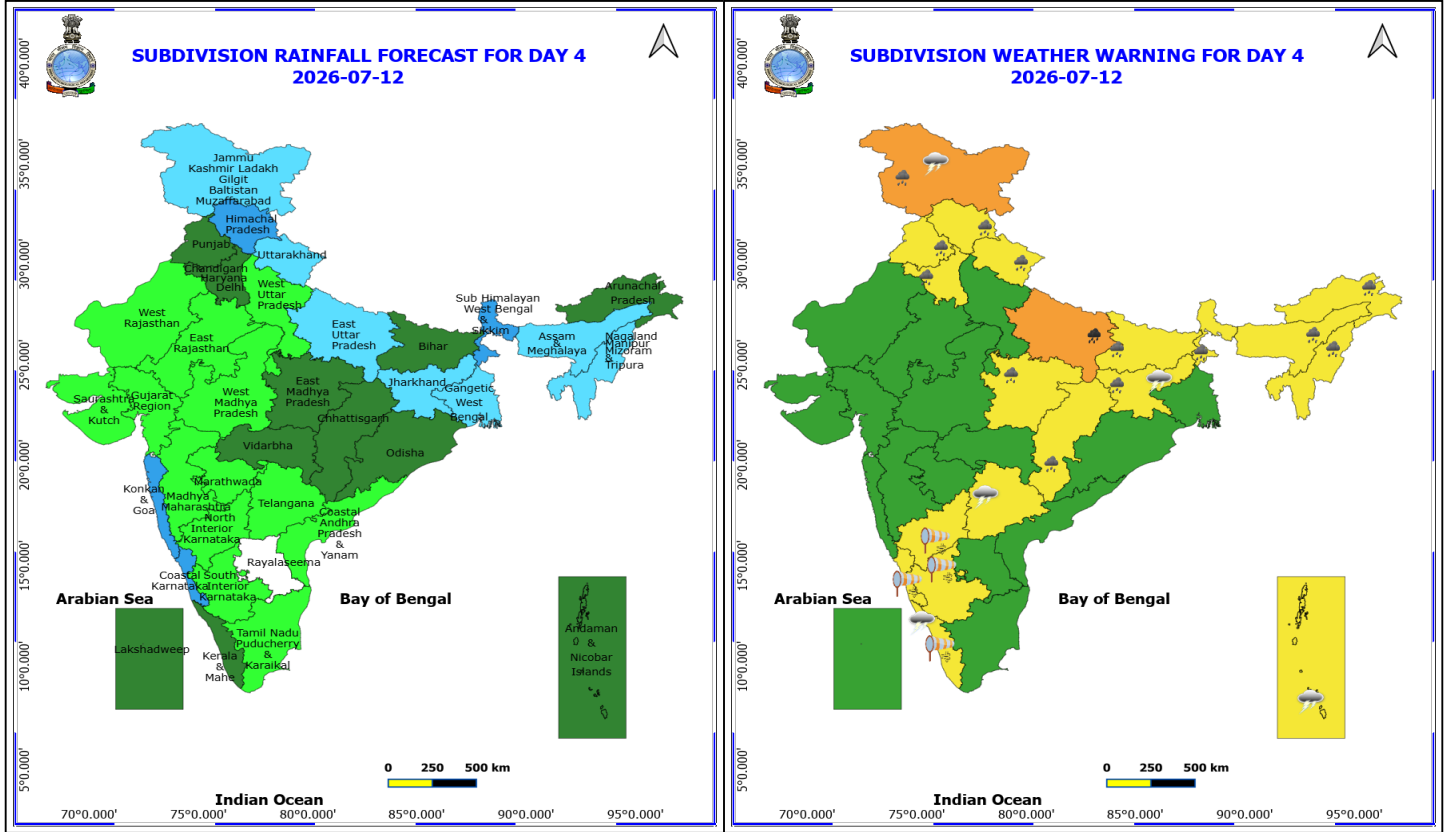
Forecast and warning for any day is valid from 0830 hours IST of day till 0830 hours IST of next day

For more details kindly visit <https://mausam.imd.gov.in> or contact 011-2434-4599

(Service to the nation since 1875)



Andaman Sea, south Myanmar adjoining eastcentral & northeast Bay of Bengal.



12 July (Day 4)

- ❖ **Heavy to Very Heavy Rainfall** likely at isolated places over East Uttar Pradesh.
- ❖ **Heavy Rainfall** likely at isolated places over Arunachal Pradesh, Assam & Meghalaya, Bihar, Chhattisgarh, East Madhya Pradesh, Haryana, Chandigarh & Delhi, Himachal Pradesh, Jammu-Kashmir-Ladakh-Gilgit-Baltistan-Muzaffarabad, Jharkhand, Nagaland, Manipur, Mizoram and Tripura, Punjab, Sub Himalayan West Bengal & Sikkim and Uttarakhand.
- ❖ **Thundersquall with wind speed reaching(50-60kmph)** likely at isolated places over Kerala & Mahe.
- ❖ **Thunderstorm accompanied with lightning & gusty winds(40-50kmph)** likely at isolated places over Andaman & Nicobar Islands, Jammu-Kashmir-Ladakh-Gilgit-Baltistan-Muzaffarabad, Jharkhand and Telangana.
- ❖ **Thunderstorm accompanied with lightning & gusty winds(30-40kmph)** likely at isolated places over Andhra Pradesh, Bihar, East Rajasthan, Gangetic West Bengal, Karnataka and Odisha.
- ❖ **Thunderstorm accompanied with Lightning** likely at isolated places over Arunachal Pradesh, Assam & Meghalaya, Nagaland, Manipur, Mizoram and Tripura and Uttarakhand.
- ❖ **Strong Surface Winds** likely at isolated places over Karnataka and Kerala & Mahe.
- ❖ **Arabian Sea:** Arabian Sea: **Squally wind with speed 45-55 kmph gusting to 65 kmph** is likely to prevail over some parts of central adjoining few parts of north Arabian Sea, along and off Gujarat adjoining northeast Arabian Sea, Somalia adjoining southwest Arabian sea & Oman coasts.
- ❖ **Bay of Bengal:** **Squally wind with speed 45-55 kmph gusting to 65 kmph** is likely to prevail over Andaman Sea.

***Red color warning does not mean "Red Alert" Red color warning means "Take Action"**

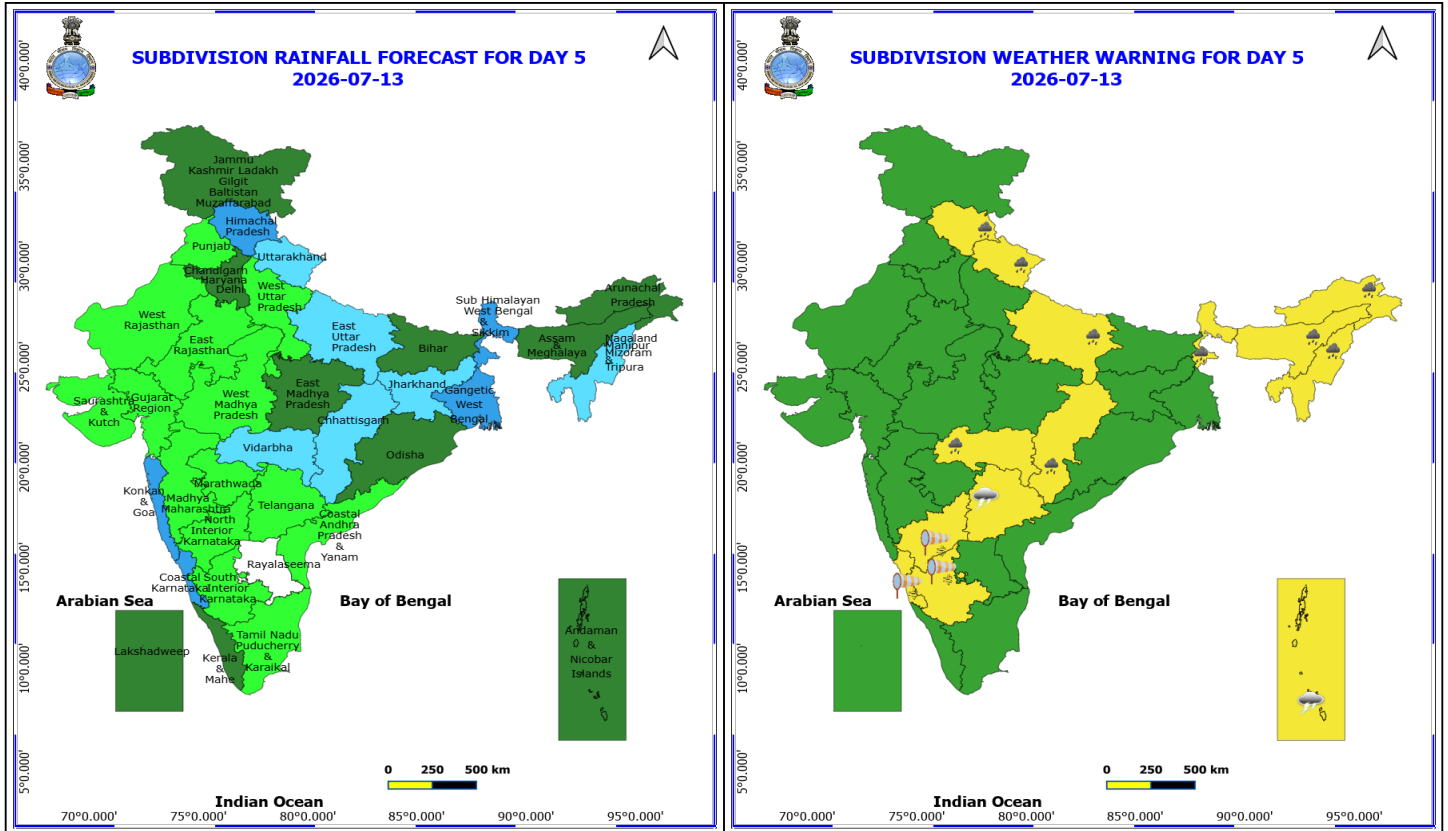
Forecast and warning for any day is valid from 0830 hours IST of day till 0830 hours IST of next day

For more details kindly visit <https://mausam.imd.gov.in> or contact 011-2434-4599

(Service to the nation since 1875)



❖ **Squally Weather with wind speed 40-50 kmph gusting to 60 kmph** is likely to prevail over south Andaman Sea, south Myanmar adjoining eastcentral & northeast Bay of Bengal.

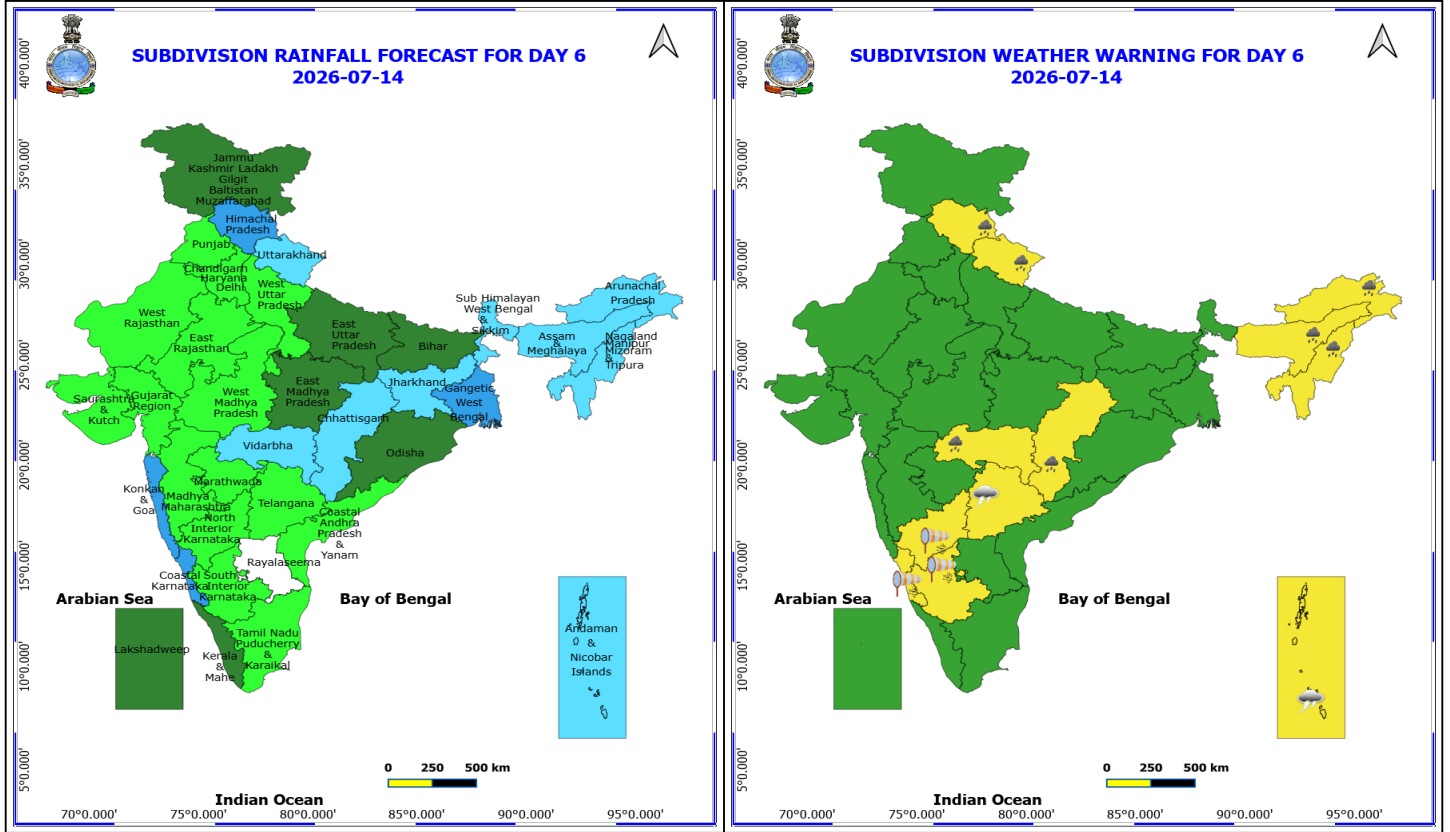


13 July (Day 5)

- ❖ **Heavy Rainfall** likely at isolated places over Arunachal Pradesh, Assam & Meghalaya, Chhattisgarh, East Uttar Pradesh, Himachal Pradesh, Nagaland, Manipur, Mizoram and Tripura, Sub Himalayan West Bengal & Sikkim, Uttarakhand and Vidarbha.
 - ❖ **Thunderstorm accompanied with lightning & gusty winds(40-50kmph)** likely at isolated places over Andaman & Nicobar Islands and Telangana.
 - ❖ **Thunderstorm accompanied with lightning & gusty winds(30-40kmph)** likely at isolated places over Andhra Pradesh, Gangetic West Bengal and Karnataka.
 - ❖ **Thunderstorm accompanied with Lightning** likely at isolated places over Jammu-Kashmir-Ladakh-Gilgit-Baltistan-Muzaffarabad and Uttarakhand.
 - ❖ **Strong Surface Winds** likely at isolated places over Karnataka.
-
- ❖ **Arabian Sea:** Arabian Sea: **Squally wind with speed 45-55 kmph gusting to 65 kmph** is likely to prevail over many parts of central adjoining few parts of north Arabian Sea, along and off Gujarat adjoining northeast Arabian Sea, Somalia & Oman coasts and adjoining sea areas.
 - ❖ **Bay of Bengal:** **Squally wind with speed 45-55 kmph gusting to 65 kmph** is likely to prevail over Andaman Sea, some parts of south and central Bay of Bengal.
 - ❖ **Squally Weather with wind speed 40-50 kmph gusting to 60 kmph** is likely to prevail over south Myanmar adjoining few parts of central, adjoining south & northeast Bay of Bengal.

***Red color warning does not mean "Red Alert" Red color warning means "Take Action"**
Forecast and warning for any day is valid from 0830 hours IST of day till 0830 hours IST of next day
For more details kindly visit <https://mausam.imd.gov.in> or contact 011-2434-4599

(Service to the nation since 1875)

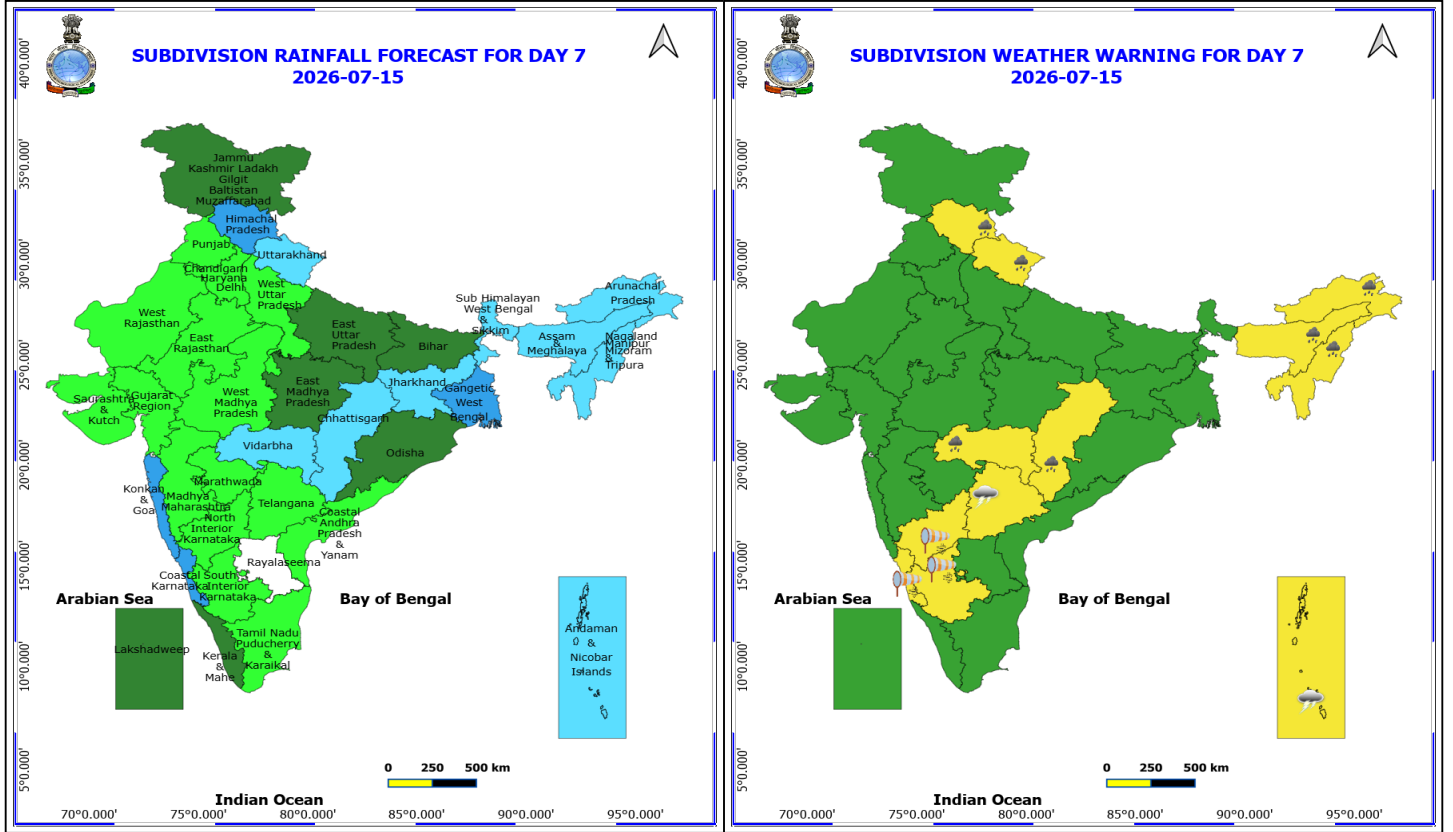


14 July (Day 6)

- ❖ **Heavy Rainfall** likely at isolated places over Arunachal Pradesh, Assam & Meghalaya, Chhattisgarh, Himachal Pradesh, Nagaland, Manipur, Mizoram and Tripura, Uttarakhand and Vidarbha.
- ❖ **Thunderstorm accompanied with lightning & gusty winds(40-50kmph)** likely at isolated places over Andaman & Nicobar Islands and Telangana.
- ❖ **Thunderstorm accompanied with lightning & gusty winds(30-40kmph)** likely at isolated places over Coastal Andhra Pradesh, Gangetic West Bengal and Karnataka.
- ❖ **Thunderstorm accompanied with Lightning** likely at isolated places over Jammu-Kashmir-Ladakh-Gilgit-Baltistan-Muzaffarabad and Uttarakhand.
- ❖ **Strong Surface Winds** likely at isolated places over Karnataka.

No Fishermen Warning

***Red color warning does not mean "Red Alert" Red color warning means "Take Action"**
Forecast and warning for any day is valid from 0830 hours IST of day till 0830 hours IST of next day
For more details kindly visit <https://mausam.imd.gov.in> or contact 011-2434-4599
(Service to the nation since 1875)



15 July (Day 7)

- ❖ **Heavy Rainfall** likely at isolated places over Arunachal Pradesh, Assam & Meghalaya, Chhattisgarh, Himachal Pradesh, Nagaland, Manipur, Mizoram and Tripura, Uttarakhand and Vidarbha.
- ❖ **Thunderstorm accompanied with lightning & gusty winds(40-50kmph)** likely at isolated places over Andaman & Nicobar Islands and Telangana.
- ❖ **Thunderstorm accompanied with lightning & gusty winds(30-40kmph)** likely at isolated places over Coastal Andhra Pradesh, Gangetic West Bengal and Karnataka.
- ❖ **Thunderstorm accompanied with Lightning** likely at isolated places over Jammu-Kashmir-Ladakh-Gilgit-Baltistan-Muzaffarabad and Uttarakhand.
- ❖ **Strong Surface Winds** likely at isolated places over Karnataka.

No Fishermen Warning

Flash Flood Warnings

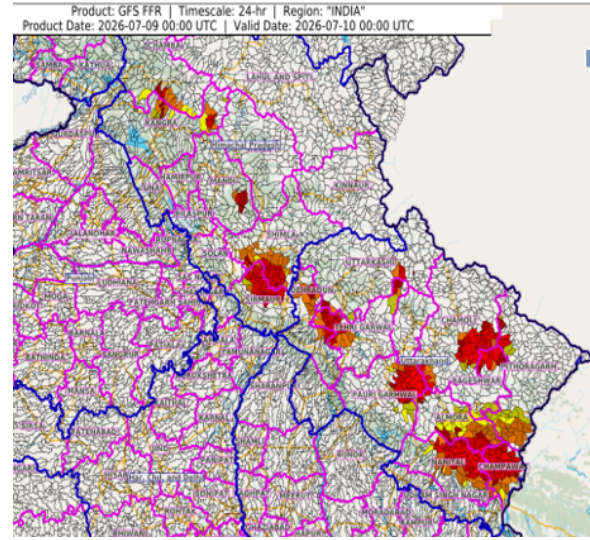
Flash Flood Risk (FFR) till 0530 IST of 10-07-2026:

Low to Moderate flash flood risk likely over few watersheds & neighbourhoods of following Met Sub-divisions during next 24 hours.

Uttarakhand: Almora, Bageshwar, Chamoli, Champawat, Dehradun, Garhwal Pauri, Garhwal Tehri, Nainital, Pithoragarh and Uttarkashi districts

Himachal Pradesh: Shimla, Sirmaur, Mandi, Kangra and Chamba districts

Surface runoff/ Inundation may occur at some fully saturated soils & low-lying areas over Area of Concern (AoC) as shown in map due to expected rainfall occurrence in next 24 hours.



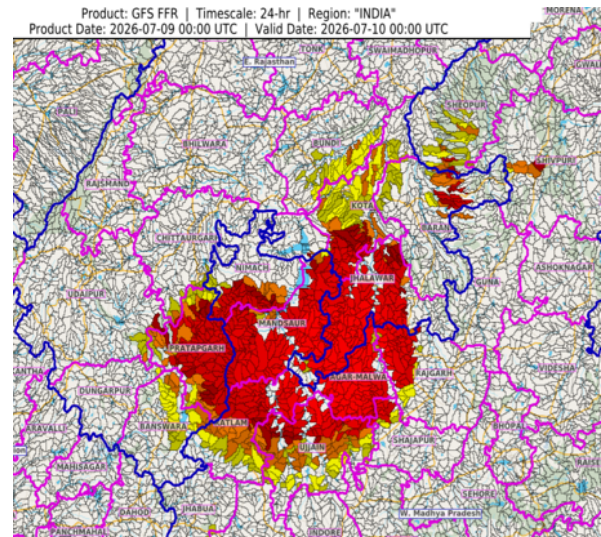
Flash Flood Risk (FFR) till 0530 IST of 10-07-2026:

Low to Moderate flash flood risk likely over few watersheds & neighbourhoods of following Met Sub-divisions during next 24 hours.

East Rajasthan: Banswara, Pratapgarh, Udaipur, Kota, Chittorgarh, Bundi, Baran and Jhalawar districts

West Madhya Pradesh: Indore, Mandsaur, Neemuch, Ratlam, Shajapur, Rajgarh, Agar-Malwa, Shivpuri and Sheopur districts

Surface runoff/ Inundation may occur at some fully saturated soils & low-lying areas over Area of Concern (AoC) as shown in map due to expected rainfall occurrence in next 24 hours.



Flash Flood Risk (FFR) till 0530 IST of 10-07-2026:

Low to Moderate flash flood risk likely over few watersheds & neighbourhoods of following Met Sub-divisions during next 24 hours.

Konkan & Goa: Raigad, Ratnagiri, Sindhudurg and South Goa districts

Surface runoff/ Inundation may occur at some fully saturated soils & low-lying areas over Area of Concern (AoC) as shown in map due to expected rainfall occurrence in next 24 hours.

***Red color warning does not mean "Red Alert" Red color warning means "Take Action"**

Forecast and warning for any day is valid from 0830 hours IST of day till 0830 hours IST of next day

For more details kindly visit <https://mausam.imd.gov.in> or contact 011-2434-4599

(Service to the nation since 1875)



Product: GFS FFR | Timescale: 24-hr | Region: "INDIA"
Product Date: 2026-07-09 00:00 UTC | Valid Date: 2026-07-10 00:00 UTC

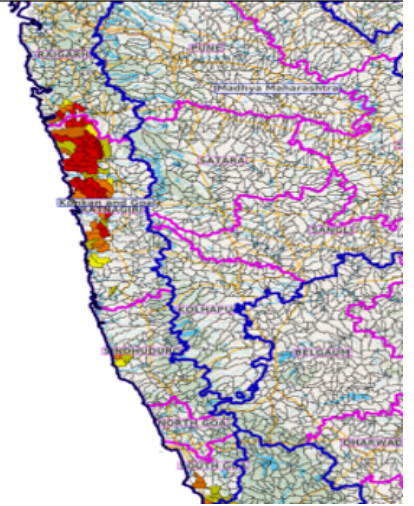




Table-1

7 Days Rainfall Forecast

S.No.	Subdivision	9- Jul	10- Jul	11- Jul	12- Jul	13- Jul	14- Jul	15- Jul
		Day 1	Day 2	Day 3	Day 4	Day 5	Day 6	Day 7
1	ANDAMAN & NICOBAR ISLANDS	WS	FWS	FWS	SCT	SCT	FWS	FWS
2	ARUNACHAL PRADESH	WS	FWS	FWS	SCT	SCT	FWS	FWS
3	ASSAM & MEHGHALAYA	WS	WS	FWS	FWS	SCT	FWS	FWS
4	N. M. M. & T.	WS	FWS	FWS	FWS	FWS	FWS	FWS
5	S.H. WEST BENGAL & SIKKIM	WS	WS	WS	WS	WS	FWS	FWS
6	GANGETIC WEST BENGAL	SCT	FWS	FWS	FWS	WS	WS	WS
7	ODISHA	ISOL	ISOL	SCT	SCT	SCT	SCT	SCT
8	JHARKHAND	FWS	FWS	SCT	FWS	FWS	FWS	FWS
9	BIHAR	SCT	FWS	FWS	SCT	SCT	SCT	SCT
10	EAST UTTAR PRADESH	FWS	WS	WS	FWS	FWS	SCT	SCT
11	WEST UTTAR PRADESH	WS	FWS	SCT	ISOL	ISOL	ISOL	ISOL
12	UTTARAKHAND	WS	WS	FWS	FWS	FWS	FWS	FWS
13	HARYANA, CHD & DELHI	FWS	FWS	SCT	SCT	SCT	ISOL	ISOL
14	PUNJAB	FWS	SCT	SCT	SCT	ISOL	ISOL	ISOL
15	HIMACHAL PRADESH	FWS	FWS	WS	WS	WS	WS	WS
16	JAMMU AND KASHMIR AND LADAKH	FWS	FWS	WS	FWS	SCT	SCT	SCT
17	WEST RAJASTHAN	SCT	ISOL	ISOL	ISOL	ISOL	ISOL	ISOL
18	EAST RAJASTHAN	FWS	SCT	SCT	ISOL	ISOL	ISOL	ISOL
19	WEST MADHYA PRADESH	FWS	FWS	SCT	ISOL	ISOL	ISOL	ISOL
20	EAST MADHYA PRADESH	WS	FWS	FWS	SCT	SCT	SCT	SCT
21	GUJRAT REGION	FWS	SCT	SCT	ISOL	ISOL	ISOL	ISOL
22	SAURASHTRA & KUTCH	SCT	ISOL	ISOL	ISOL	ISOL	ISOL	ISOL
23	KONKAN & GOA	WS	WS	WS	WS	WS	WS	WS
24	MADHYA MAHARASHTRA	SCT	ISOL	ISOL	ISOL	ISOL	ISOL	ISOL
25	MARATHWADA	FWS	SCT	SCT	ISOL	ISOL	ISOL	ISOL
26	VIDARBHA	FWS	SCT	SCT	SCT	FWS	FWS	FWS
27	CHATTISGARH	FWS	SCT	SCT	SCT	FWS	FWS	FWS
28	COASTAL ANDHRA PRADESH	ISOL	ISOL	ISOL	ISOL	ISOL	ISOL	ISOL
29	TELANGANA	ISOL	ISOL	ISOL	ISOL	ISOL	ISOL	ISOL
30	RAYALASEEMA	ISOL	ISOL	ISOL	DRY	DRY	DRY	DRY
31	TAMILNADU & PUDUCHERRY	ISOL	ISOL	ISOL	ISOL	ISOL	ISOL	ISOL
32	COSTAL KARNATAKA	WS	WS	WS	WS	WS	WS	WS
33	NORTH INTERIOR KARNATAKA	SCT	ISOL	ISOL	ISOL	ISOL	ISOL	ISOL
34	SOUTH INTERIOR KARNATAKA	SCT	ISOL	ISOL	ISOL	ISOL	ISOL	ISOL
35	KERALA	WS	FWS	FWS	SCT	SCT	SCT	SCT
36	LAKSHDWEEP	FWS	SCT	SCT	SCT	SCT	SCT	SCT

Legend	Category	%Stations
WS	Widespread/Most Places	76-100
FWS	Fairly Widespread/Many Places	51-75
SCT	Scattered/ A Few Places	26-50
ISOL	Isolated Places	1-25
DRY	No Rain	0

***Red color warning does not mean "Red Alert" Red color warning means "Take Action"**
Forecast and warning for any day is valid from 0830 hours IST of day till 0830 hours IST of next day
For more details kindly visit <https://mausam.imd.gov.in> or contact 011-2434-4599

(Service to the nation since 1875)

Fig. 1: Maximum Temperatures Dated 2026-07-08

Fig. 2: Departure of Maximum Temp. Dated 2026-07-08

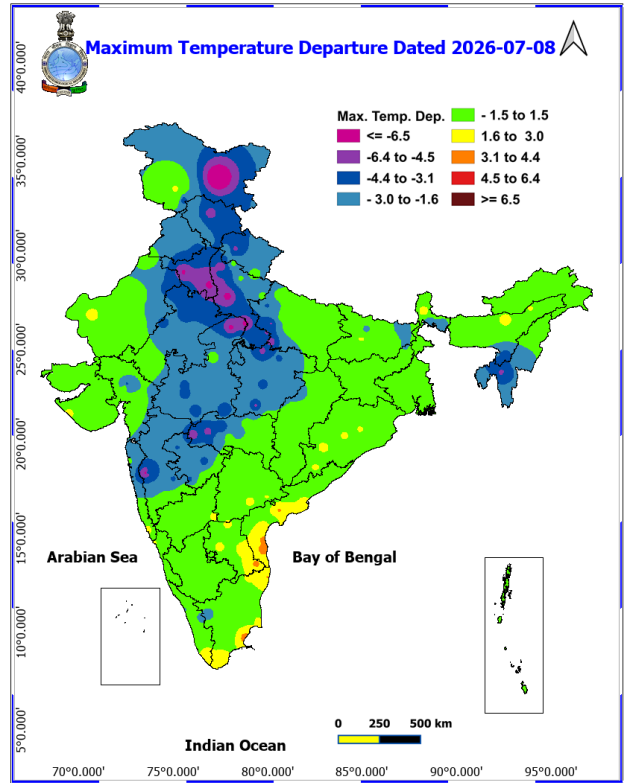
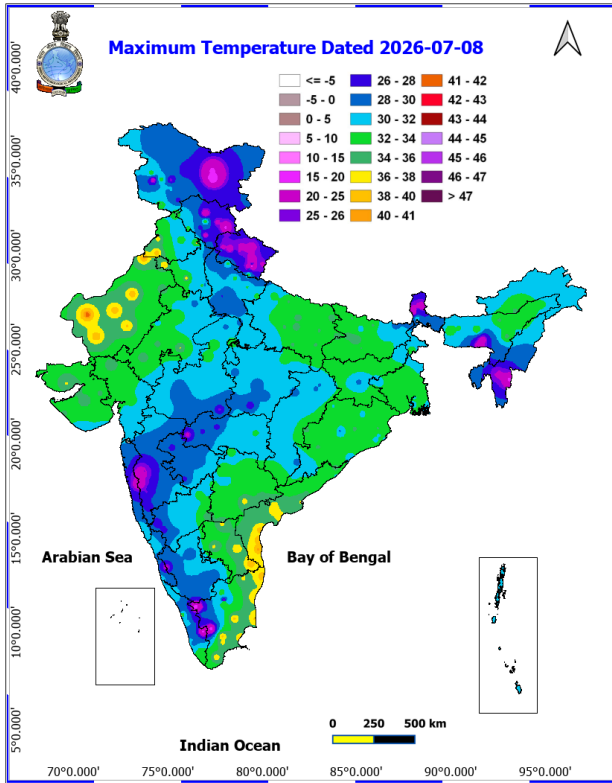
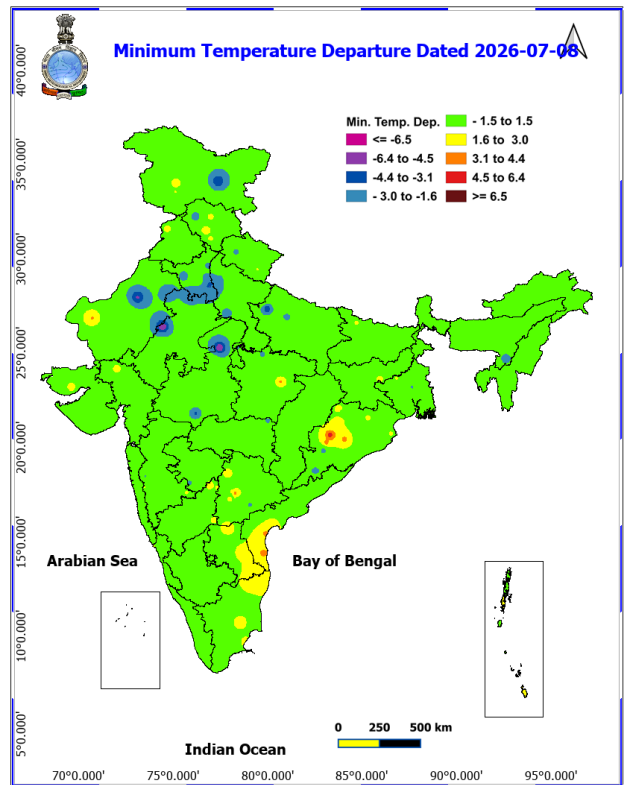
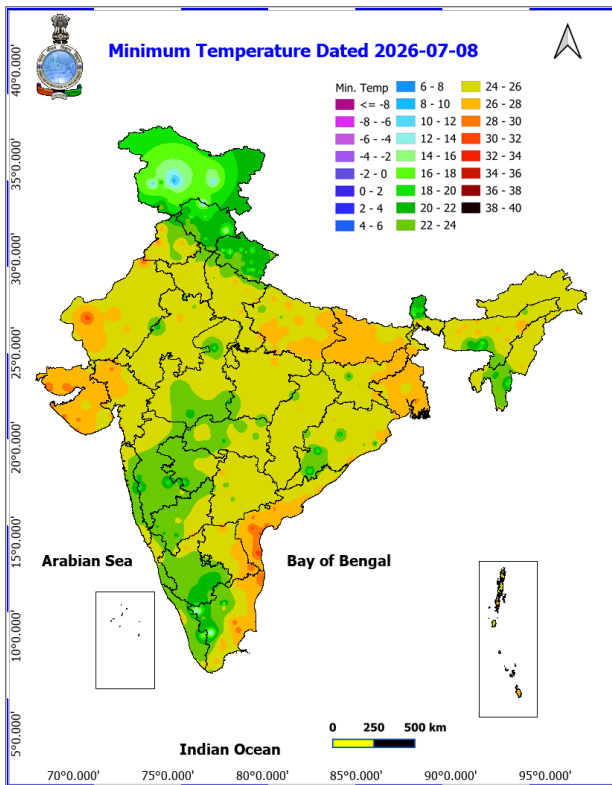
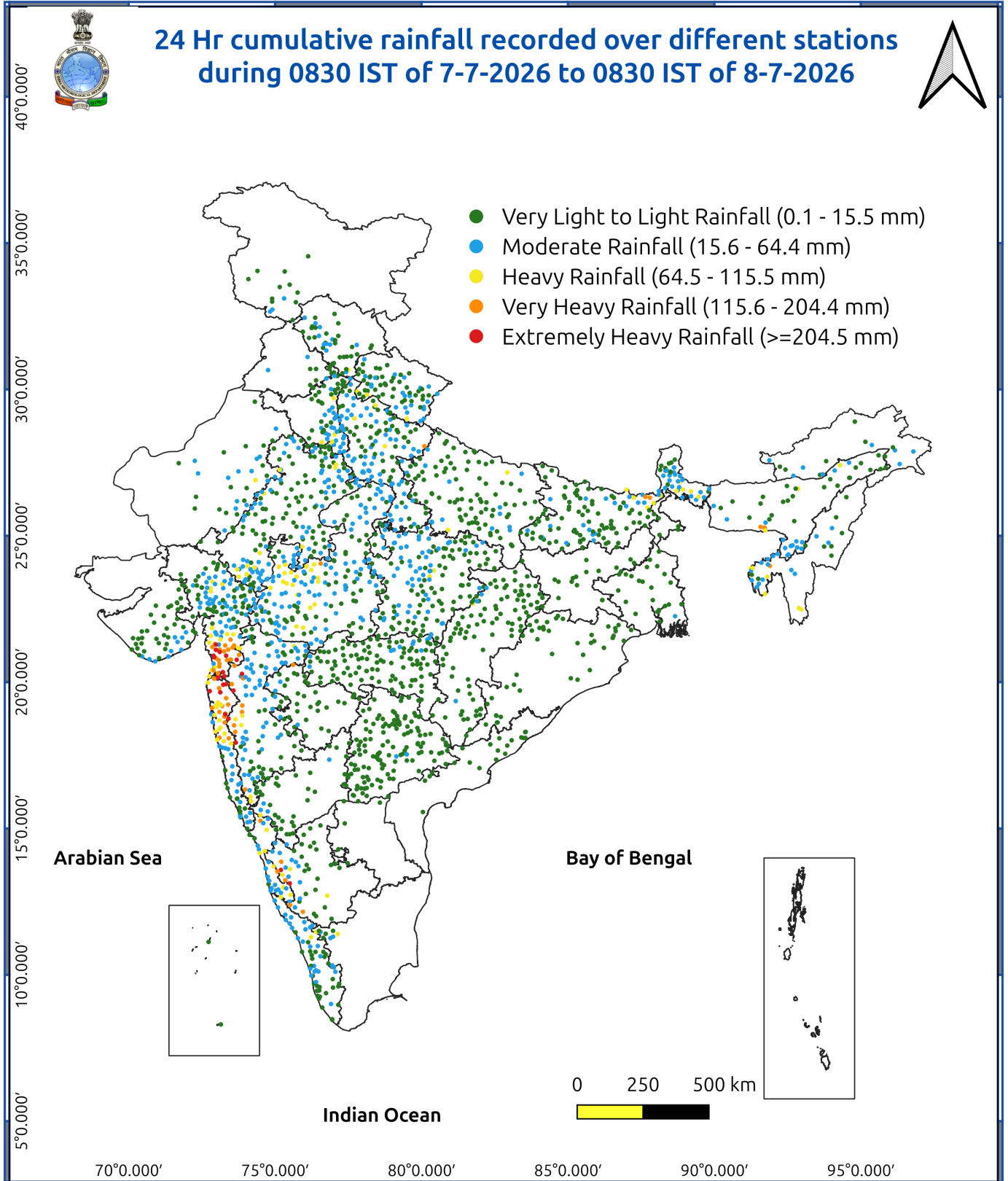


Fig. 3: Minimum Temperatures Dated 2026-07-08

Fig. 4: Departure of Minimum Temp. Dated 2026-07-08





Impact and Actions

Impact Expected & Action Suggested due to heavy/very heavy rainfall over

- **Heavy to Very Heavy Rainfall** very likely at isolated places over Arunachal Pradesh, Assam & Meghalaya, Bihar, East Rajasthan, Madhya Maharashtra, Madhya Pradesh, Sub Himalayan West Bengal & Sikkim and West Uttar Pradesh on 09th July.

Heavy to very heavy rainfall over parts of Northwest India, Central and East India today.

Impact Expected

- Localized Flooding of roads, water logging in low lying areas and closure of underpasses mainly in urban areas.
- Occasional reduction in visibility due to heavy rainfall.
- Disruption of traffic in major cities due to water logging in roads leading to increased travel time.
- Minor damage to kutcha roads.
- Possibilities of damage to vulnerable structure.
- Localized Landslides/Mudslides/landslips/mudslips/landsinks/mudsinks.
- Damage to horticulture and standing crops in some areas due to inundation.
- It may lead to riverine flooding in some river catchments (for riverine flooding please visit Web page of CWC)

Action Suggested

- Check for traffic congestion on your route before leaving for your destination.
- Follow any traffic advisories that are issued in this regard.
- Avoid going to areas that face the water logging problems often.
- Avoid staying in vulnerable structure.

Agromet advisories for various parts of the country

Agromet advisories for likely impact of Heavy Rainfall

In **Assam**, ensure proper drainage arrangements for quick removal of excess water from rice nurseries, jute, ginger, turmeric, vegetables, banana, citrus and papaya. Avoid nursery sowing of *Sali* rice and sowing of jute, maize and vegetables during heavy rainfall. Cover the already seeded area with natural mulching materials like straw, farm residues etc. Provide mechanical support to the sugarcane crop to prevent lodging.

In **Meghalaya**, ensure proper drainage channels in rice nurseries, maize, ginger, cowpea, vegetable fields and banana plantations. Protect young seedlings from direct exposure to heavy rainfall.

Use propping (bamboo or wooden poles) to support heavily laden plants.

In **Nagaland**, delay transplanting of brinjal in main field. For already transplanted seedlings, maintain proper drainage in and around the fields of maize, vegetables and orchard.

In **Manipur**, avoid transplanting of rice during heavy rainfall. Ensure proper drainage in soybean, chilli, ginger, turmeric, banana and other crop fields and newly transplanted seedlings and nursery crops to avoid water stagnation.

In **Mizoram**, create drainage channels surrounding the rice fields and utilize grass mulch to cover the seeds. Provide support to fruit-bearing or partially lodge plants/trees. Propping should be done to prevent maize plants from lodging.

In **Tripura**, ensure adequate drainage arrangements to remove excess water from rice and vegetable fields during heavy rainfall.

In **Odisha**, avoid sowing of green gram during heavy rainfall. Make provision to drain out excess rain water from fields

***Red color warning does not mean "Red Alert" Red color warning means "Take Action"**

Forecast and warning for any day is valid from 0830 hours IST of day till 0830 hours IST of next day

For more details kindly visit <https://mausam.imd.gov.in> or contact 011-2434-4599

(Service to the nation since 1875)

of rice, maize, millets and pulse crops and fruit orchards.

In **Himachal Pradesh**, maintain proper drainage channels in fields of maize, finger millet and vegetables to prevent waterlogging.

in **Uttarakhand**, ensure proper field drainage in fields of rice, maize, tomato, chilli, barnyard millet and finger millet to drain out excess rain water from the field.

In **Madhya Pradesh**, harvest mature green gram, vegetables and fruits and store the produce in safe place.

In **Gujarat**, drain out excess water from rice nursery; fields of sugarcane, okra, vegetables, yam and sapota orchards.

In **Konkan**, postpone nursery sowing of rice, finger millet and vegetables. Postpone sowing of groundnut and cucurbitaceous vegetables and planting of new orchards like mango, coconut, cashewnut and arecanut. Drain out excess water from nurseries of rice and finger millet and fields of rice and vegetables.

In *ghat* areas of **Madhya Maharashtra**, make arrangement to drain out excess water from nurseries of rice and finger millet.

In **Keralam**, drain out excess water from banana, coconut, cardamom, ginger, black pepper and vegetables. Provide staking support in banana plants and strengthen the pandals of vegetable crops. Avoid transplanting of rice during heavy rain.

In **Karnataka**, ensure proper drainage in rice seedbeds, rice fields, arecanut and coconut fields and fruit orchards to prevent water stagnation.

In the regions expecting heavy rainfall, including **Arunachal Pradesh, Jharkhand, Sub Himalayan West Bengal, Bihar, Punjab and Haryana, East Uttar Pradesh and East Rajasthan** withhold irrigation in standing crops, make necessary arrangements to remove excess rain water from the crop fields.

Agromet advisories for likely impact of Thunderstorm / Gusty Winds

Shift the harvested produce in safer places or cover the produce with tarpaulin sheets in the fields. Tie the harvested crops securely and cover them to minimize the risk of displacement from strong surface winds.

Provide mechanical support to horticultural crops and staking or support to vegetables and young fruit plants / fruit-bearing plants to avoid lodging due to strong winds.

Livestock / Poultry / Fisheries

Keep the animals inside the shed during heavy rainfall and provide them balanced feed.

Store the feed and fodder in a safe place to prevent spoilage.

In regions with high temperatures and heat wave conditions, provide clean, cool drinking water to animals, and cover the roofs of poultry sheds with grass to reduce the adverse effects of heat.

Construct an outlet with proper netting around the ponds to drain excess water, thereby preventing fish from escaping in the event of overflow.

Legends & abbreviations:

Region wise classification of meteorological Sub-Divisions:

Northwest India: Western Himalayan Region (Jammu-Kashmir-Ladakh-Gilgit-Baltistan-Muzaffarabad, Himachal Pradesh and Uttarakhand); Punjab, Haryana Chandigarh & Delhi; West Uttar Pradesh, East Uttar Pradesh, West Rajasthan and East Rajasthan.

***Red color warning does not mean "Red Alert" Red color warning means "Take Action"**

Forecast and warning for any day is valid from 0830 hours IST of day till 0830 hours IST of next day

For more details kindly visit <https://mausam.imd.gov.in> or contact 011-2434-4599

(Service to the nation since 1875)



Central India: West Madhya Pradesh, East Madhya Pradesh, Vidarbha and Chhattisgarh.

East India: Bihar, Jharkhand, Sub-Himalayan West Bengal & Sikkim; Gangetic West Bengal, Odisha and Andaman & Nicobar Islands.

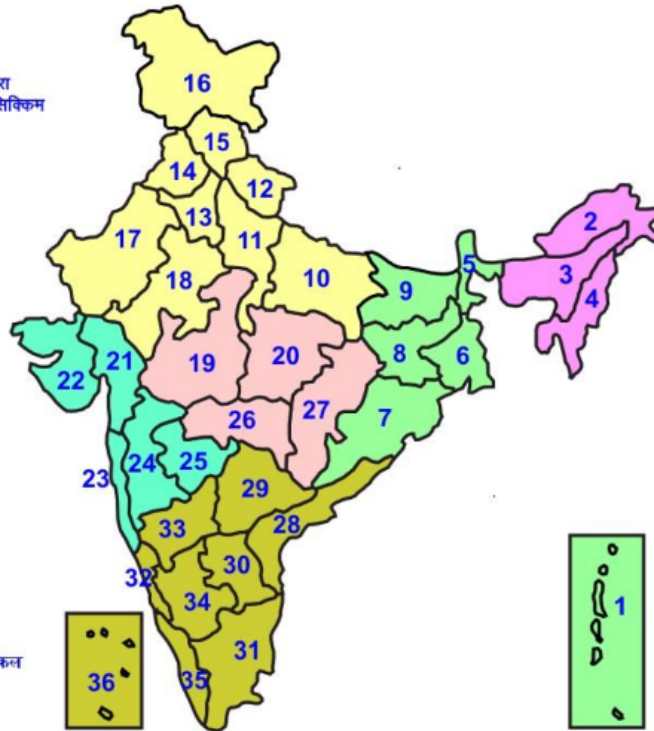
Northeast India: Arunachal Pradesh, Assam & Meghalaya and Nagaland, Manipur, Mizoram & Tripura.

West India: Gujarat Region, Saurashtra & Kutch, Coastal Maharashtra (Konkan) & Goa, Madhya Maharashtra and Marathawada.

South India: Coastal Andhra Pradesh & Yanam, Telangana, Rayalaseema, Coastal Karnataka, North Interior Karnataka, South Interior Karnataka, Kerala & Mahe, Tamil Nadu, Puducherry & Karaikal and Lakshadweep..

LEGENDS

- 1 अंडमान और निकोबार द्वीप समुह
- 2 अरुणाचल प्रदेश
- 3 असम और मेघालय
- 4 नागालैंड मनीपुर मीजोरम और त्रिपुरा
- 5 उप हिमालय पश्चिम बंगाल एवं सिक्किम
- 6 पश्चिम बंगाल
- 7 ओडिसा
- 8 झारखंड
- 9 बिहार
- 10 पूर्वी उत्तर प्रदेश
- 11 पश्चिम उत्तर प्रदेश
- 12 उत्तराखंड
- 13 हरियाणा चंडिगढ़ एवं दिल्ली
- 14 पंजाब
- 15 हिमाचल प्रदेश
- 16 जम्मू एवं कश्मीर एवं लद्दाख
- 17 पश्चिम राजस्थान
- 18 पूर्वी राजस्थान
- 19 पश्चिम मध्य प्रदेश
- 20 पूर्वी मध्य प्रदेश
- 21 गुजरात क्षेत्र
- 22 सौराष्ट्र एवं कच्छ
- 23 कोंकण एवं गोवा
- 24 मध्य महाराष्ट्र
- 25 मराठावाडा
- 26 विदर्भ
- 27 छत्तीसगढ़
- 28 तटीय आंध्र प्रदेश एवं यनम
- 29 तेलंगाना
- 30 रायलसीमा
- 31 तमिलनाडु, पुदुचेरी एवं कराईकल
- 32 तटिय कर्नाटक
- 33 आंतरिक उत्तरी कर्नाटक
- 34 आंतरिक दक्षिणी कर्नाटक
- 35 केरल एवं माहे
- 36 लक्षद्वीप



1. Andaman & Nicobar Islands
2. Arunachal Pradesh
3. Assam & Meghalaya
4. Nagaland, Manipur, Mizoram & Tripura
5. Sub-Himalayan West Bengal & Sikkim
6. Gangetic West Bengal
7. Orissa
8. Jharkhand
9. Bihar
10. East Uttar Pradesh
11. West Uttar Pradesh
12. Uttarakhand
13. Haryana, Chd & Delhi
14. Punjab
15. Himachal Pradesh
16. Jammu & Kashmir and Ladakh
17. West Rajasthan
18. East Rajasthan
19. West Madhya Pradesh
20. East Madhya Pradesh
21. Gujarat
22. Saurashtra
23. Konkan & Goa
24. Madhya Maharashtra
25. Marathawada
26. Vidharbha
27. Chhattisgarh
28. Coastal Andhra Pradesh & Yanam
29. Telangana
30. Rayalaseema
31. Tamilnadu, Puducherry & Karaikal
32. Coastal Karnataka
33. North Interior Karnataka
34. South Interior Karnataka
35. Kerala & Mahe
36. Lakshadweep

SPATIAL DISTRIBUTION (% of Stations reporting)

% Stations	Category	% Stations	Category
76-100	Widespread (WS/ Most Places)	26-50	Scattered (SCT/ A Few Places)
51-75	Fairly Widespread (FWS/ Many Places)	1-25	Isolated (ISOL)

Subdivision Colour

- NO WARNING
- WATCH (BE UPDATED)
- ALERT (BE PREPARED TO TAKE ACTION)
- WARNING (TAKE ACTION)

Probabilistic Forecast

Terms	Probability of Occurrence (%)
Unlikely	< 25
Likely	25 - 50
Very Likely	50 - 75
Most Likely	> 75

- | | | | |
|--------------------------|-----------------|----------------------|--------------------|
| Heavy Rain | Very Heavy Rain | Extremely Heavy Rain | Heavy Snow |
| Thunderstorm & Lightning | Hailstrom | Dust Storm | Dust Raising Winds |
| Strong surface winds | Heat Wave | Hot Day | Warm Night |
| Cold Wave | Cold Day | Ground Frost | Fog |
| Hot & Humid | | | |

*Red color warning does not mean "Red Alert" Red color warning means "Take Action"

Forecast and warning for any day is valid from 0830 hours IST of day till 0830 hours IST of next day

For more details kindly visit <https://mausam.imd.gov.in> or contact 011-2434-4599

(Service to the nation since 1875)

LEGENDS

WARNING

WARNING (TAKE ACTION)
ALERT (BE PREPARED)
WATCH (BE UPDATED)
NO WARNING (NO ACTION)

Probabilistic Forecast

Terms	Probability of Occurrence (%)
Unlikely	< 25
Likely	25 - 50
Very Likely	50 - 75
Most Likely	> 75



Heavy: 64.5 to 115.5 mm/cm *
Very Heavy: 115.6 to 204.4 mm/cm*
Extremely Heavy: > 204.4 mm/cm *



When maximum temperature of a station reaches $\geq 40^{\circ}\text{C}$ for plains and $\geq 30^{\circ}\text{C}$ for hilly regions
(a) Based on Departure from normal

Heat Wave: Maximum Temperature Departure from normal 4.5°C to 6.4°C .
Severe Heat Wave: Maximum Temperature Departure from normal $\geq 6.5^{\circ}\text{C}$

(b). Based on Actual maximum temperature

Heat Wave: When actual maximum temperature $\geq 45^{\circ}\text{C}$.
Severe Heat Wave: When actual maximum temperature $\geq 47^{\circ}\text{C}$

(c). Criteria for heat wave for coastal stations

When maximum temperature departure is $> 4.5^{\circ}\text{C}$ from normal. Heat Wave may be described provided maximum temperature $\geq 37^{\circ}\text{C}$



When maximum temperature remains 40°C

Warm Night: When minimum temperature departure 4.5°C to 6.4°C .
Severe Warm Night: When minimum temperature departure $> 6.4^{\circ}\text{C}$.



When minimum temperature of a station $\leq 10^{\circ}\text{C}$ for plains and $\leq 0^{\circ}\text{C}$ for hilly regions.
(a). Based on departure

Cold Wave: Minimum Temperature Departure from normal -4.5°C to -6.4°C .
Severe Cold Wave: Minimum Temperature Departure from normal $\leq -6.5^{\circ}\text{C}$

(b) Based on actual Minimum Temperature (for Plains only)

Cold Wave : When Minimum Temperature is $\leq 4.0^{\circ}\text{C}$
Severe Cold Wave: When Minimum Temperature is $\leq 2.0^{\circ}\text{C}$

(c) For Coastal Stations

When Minimum Temperature departure is $\leq -4.5^{\circ}\text{C}$ & actual Minimum Temperature is $\leq 15^{\circ}\text{C}$



When minimum temperature of a station $\leq 10^{\circ}\text{C}$ for plains and $\leq 0^{\circ}\text{C}$ for hilly regions
Based on departure

Cold Day: Maximum Temperature Departure from normal -4.5°C to -6.4°C .
Severe Cold Day: Maximum Temperature Departure from normal $\leq -6.5^{\circ}\text{C}$



Phenomenon of small droplets suspended in air and the horizontal visibility $< 1\text{km}$

Moderate Fog: When the visibility between 500-200 metres
Dense Fog: when the visibility between 50- 200 metres
Very Dense Fog: when the visibility < 50 metres



Sudden electrical discharges manifested by a flash of light (Lightning) and a sharp rumbling sound (thunder)



An ensemble of particles of dust or sand energetically lifted to great heights by a strong and turbulent wind.



Ice deposits on ground

Air temperature $\leq 4^{\circ}\text{C}$ (over Plains)



A strong wind that rises suddenly, lasts for atleast 1 minute.

Moderate: Wind speed 52-61 kmph
Severe: Wind speed 62-87 kmph
Very Severe: Wind speed > 87 kmph



Effect of various waves in the sea over specific area

Rough to very rough: Wind speed 41-62 kmph (22-33 knots) & Wave height 2.5-6 metre
High to very high: Wind speed 63-117 kmph (34-63 knots) & Wave height 6-14 metre
Phenomenal: Wind speed > 117 kmph (> 63 knots) & Wave height > 14 metre



Cyclonic Storm: Wind speed 62-87 kmph (34-47 knots)
Severe Cyclonic Storm: Wind speed 88-117 kmph (48-63 knots)
Very Severe Cyclonic Storm: Wind speed 118-165 kmph (64 - 89 knots)
Extremely Severe Cyclonic Storm: Wind speed 166-220 kmph (90 -119 knots)
Super Cyclone Storm: Wind speed > 220 kmph (> 119 knots)

*Red color warning does not mean "Red Alert" Red color warning means "Take Action"

Forecast and warning for any day is valid from 0830 hours IST of day till 0830 hours IST of next day

For more details kindly visit <https://mausam.imd.gov.in> or contact 011-2434-4599

(Service to the nation since 1875)