

2025-10-18

Time of Issue: 08:49:00 hours IST
(Morning)

ALL INDIA WEATHER SUMMARY AND FORECAST BULLETIN

Significant Weather Features

weather warning:

South Peninsular India:

- Light to moderate rain/thunderstorm at many/some places with isolated **heavy rainfall** over Tamil Nadu, Puducherry & Karaikal, Kerala & Mahe, South Interior Karnataka during 18th -23rd; Lakshadweep on 18th; Coastal Karnataka on 23rd; Coastal Andhra Pradesh & Yanam, Rayalaseema on 18th, 22nd & 23rd October.
- Thunderstorm with lightning/gusty winds (speed reaching 30-40 kmph) likely over the region during next 5 days.
- Strong surface winds (speed reaching 40-50 kmph) likely over South Interior Karnataka and Coastal Andhra Pradesh & Yanam on 22nd & 23rd October.

East & Central India:

- Light to moderate rain/thunderstorm at many places with isolated **heavy rainfall** over Andaman & Nicobar Islands on 20th & 21st October.
- Thunderstorm with lightning and gusty winds (speed reaching 30-40 kmph) likely over Odisha on 19th & 20th; Andaman & Nicobar Islands on 20th & 21st; with lightning over Chhattisgarh on 20th & 21st October.

West India:

- Thunderstorm with lightning likely over Konkan & Goa and Madhya Maharashtra on 20th & 21st; Marathwada on 21st October.

***Red color warning does not mean "Red Alert" Red color warning means "Take Action"**

Forecast and warning for any day is valid from 0830 hours IST of day till 0830 hours IST of next day

For more details kindly visit <https://mausam.imd.gov.in> or contact 011-2434-4599

(Service to the nation since 1875)

Main Weather Observations:

❖ **Rainfall distribution** (from 0830 hours IST to 1730 hours IST of yesterday): **at most places** over Tamilnadu Puducherry & Karaikal and Lakshadweep; **at many places** over Andaman & Nicobar Islands, Coastal Andhra Pradesh & Yanam, Rayalaseema, South Interior Karnataka, Kerala & Mahe and West Madhya Pradesh; **Dry** over rest of the country.

❖ **Significant rainfall recorded(in cm)** (from 0830 hours IST to 1730 hours IST of yesterday): **Lakshadweep**: Amini Divi (dist **Lakshadweep**) 6, Agathi (dist **Lakshadweep**) 4, Minicoy (dist **Lakshadweep**) 3; Tamilnadu Puducherry & Karaikal: Thanjavur (dist Thanjavur) 3, Tiruchirappalli AP (dist Tiruchirappalli) 2.

❖ **Minimum Temperature Departures (as on 17-10-2025): markedly above normal(> 5.1°C)** at isolated places over Assam & Meghalaya and Bihar. **appreciably above normal(3.1°C to 5.0°C)** at few places over Sub Himalayan West Bengal & Sikkim and West Uttar Pradesh; at isolated places over Haryana-Chandigarh-Delhi, Himachal Pradesh, Saurashtra & Kutch, Konkan & Goa, Madhya Maharashtra and Coastal Andhra Pradesh & Yanam. **above normal(1.6°C to 3.0°C)** at many places over Uttarakhand; at most places over Andaman & Nicobar Islands; at few places over Punjab, Jammu-Kashmir Ladakh-Gilgit-Baltistan-Muzaffarabad, Vidarbha and South Interior Karnataka; at isolated places over Nagaland, Manipur, Mizoram & Tripura, East Uttar Pradesh, West Rajasthan, West Madhya Pradesh, Telangana, Tamil Nadu, Puducherry & Karaikal and North Interior Karnataka. **near normal(-1.5°C to 1.5°C)** at many places over Odisha, East Rajasthan, East Madhya Pradesh and Chhattisgarh; at most places over Arunachal Pradesh, Gujarat Region, Marathwada, Rayalaseema, Coastal Karnataka and Kerala & Mahe; at few places over Gangetic West Bengal and Lakshadweep. **The lowest minimum temperature** of 13.9°C was reported at UNA (HIMACHAL PRADESH) over the Plains of India.

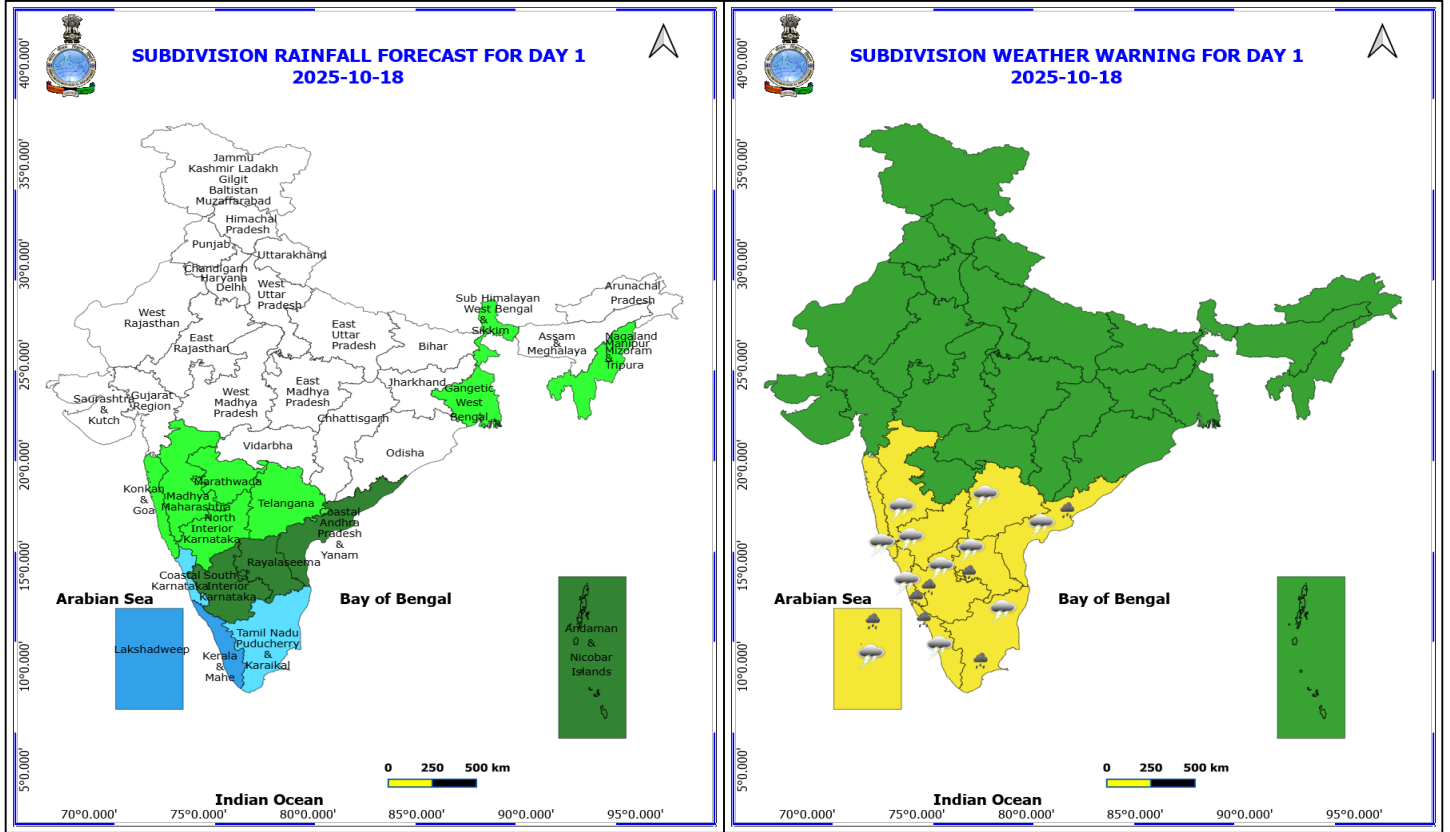
❖ **Maximum Temperature Departures (as on 17-10-2025): markedly above normal(> 5.1°C)** at isolated places over Uttarakhand, Himachal Pradesh and Jammu-Kashmir Ladakh-Gilgit-Baltistan-Muzaffarabad. **appreciably above normal(3.1°C to 5.0°C)** at few places over Arunachal Pradesh, Sub Himalayan West Bengal & Sikkim and Coastal Karnataka; at isolated places over Assam & Meghalaya, Saurashtra & Kutch and Konkan & Goa. **above normal(1.6°C to 3.0°C)** at many places over Nagaland, Manipur, Mizoram & Tripura; at isolated places over Andaman & Nicobar Islands, Gangetic West Bengal, Odisha, East Uttar Pradesh, Madhya Maharashtra, Marathwada, Vidarbha, Telangana, North Interior Karnataka and Kerala & Mahe. **near normal(-1.5°C to 1.5°C)** at many places over Jharkhand, Bihar, West Uttar Pradesh, East Rajasthan, West Madhya Pradesh, Gujarat Region and South Interior Karnataka; at most places over Punjab, West Rajasthan and Chhattisgarh; at few places over Haryana-Chandigarh-Delhi, East Madhya Pradesh, Coastal Andhra Pradesh & Yanam and Tamil Nadu, Puducherry & Karaikal; at isolated places over Rayalaseema. **The highest maximum temperature** of 37.6°C was reported at BARMER (RAJASTHAN).

Meteorological Analysis (Based on 0530 hours IST)

- Under the influence of the upper air cyclonic circulation over southeast Arabian Sea & adjoining Lakshadweep area, a **Low-Pressure** area has formed over southeast Arabian Sea & Lakshadweep area off Kerala-Karnataka coasts at 0530 hrs IST of today, the 18th October 2025. The associated cyclonic circulation extends upto 5.8 km above mean sea level. It is likely to move west north-westwards and intensify into a depression during next 48 hours.
- An **upper air cyclonic circulation** lies over southwest Bay of Bengal and adjoining Comorin area and extends upto 1.5 km above mean sea level.
- A feeble **Western Disturbance** will impact western Himalayan region from 21st October 2025.
- The trough from the above **upper air cyclonic circulation** over southeast Arabian Sea & adjoining Lakshadweep area to southwest Bay of Bengal across Comorin area & Sri Lanka extending upto 1.5 km above mean sea level has become less marked.
- The **upper air cyclonic circulation** over north Jharkhand & neighbourhood at 3.1 km above mean sea level has become less marked.

Weather Outlook for subsequent 3 days

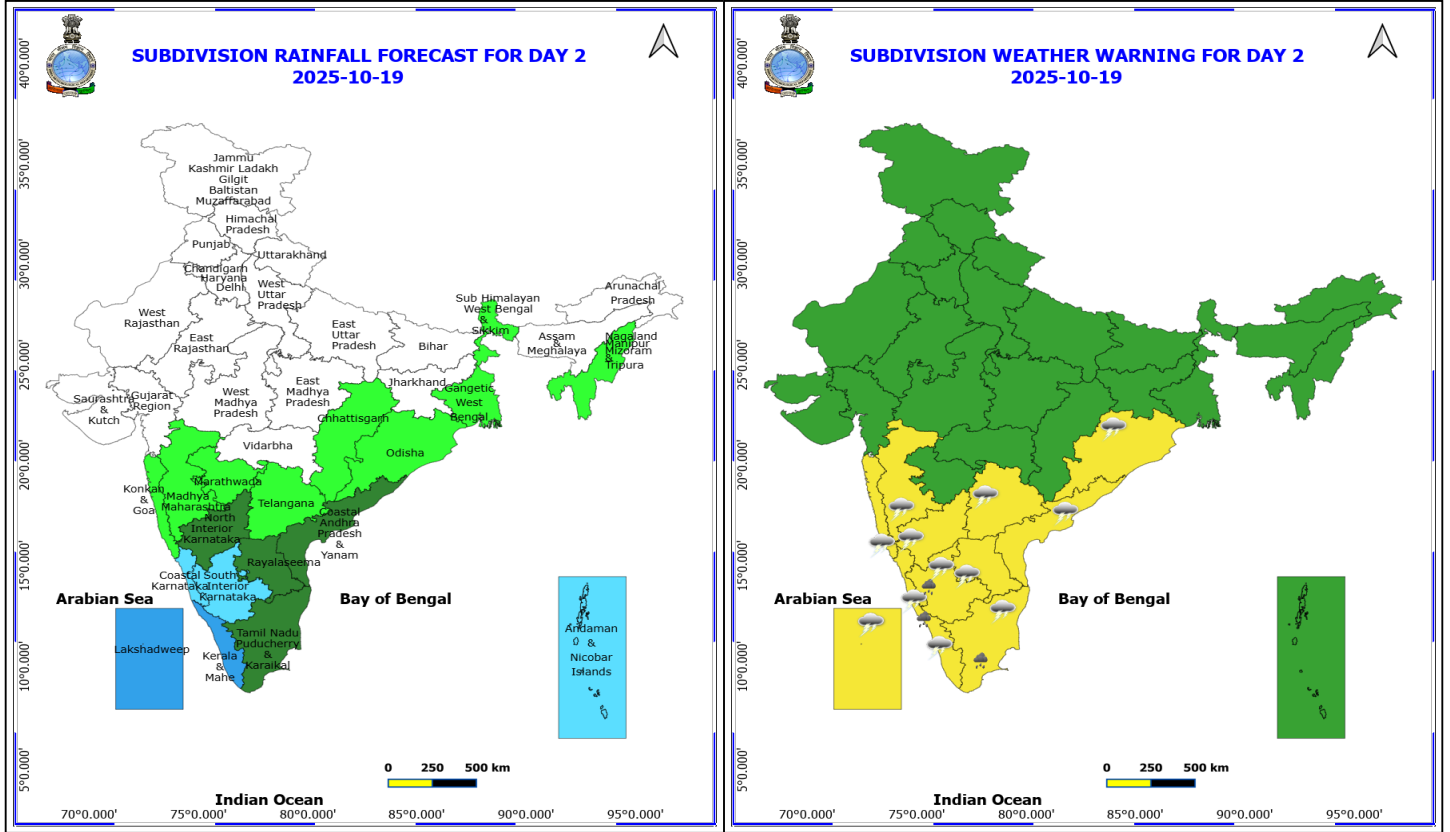
- A **low pressure area** is likely to form over southeast Bay of Bengal around 24th October, it is likely to move west-northwestwards and intensify further thereafter.



18 October (Day 1)

- ❖ **Heavy Rainfall** very likely at isolated places over Andhra Pradesh, Coastal Karnataka, Kerala & Mahe, Lakshadweep, South Interior Karnataka and Tamil Nadu Puducherry & Karaikal.
- ❖ **Thunderstorm accompanied with lightning & gusty winds(30-40kmph)** very likely at isolated places over Kerala & Mahe, Lakshadweep, South Interior Karnataka and Telangana.
- ❖ **Thunderstorm accompanied with Lightning** very likely at isolated places over Andhra Pradesh, Karnataka, Konkan & Goa, Madhya Maharashtra, Tamil Nadu Puducherry & Karaikal and Telangana.
- **Squally weather with wind speed 35 kmph to 45 kmph gusting to 55 kmph** likely to prevail along and off Kerala, Karnataka coasts and adjoining sea areas, over Lakshadweep, Comorin areas, Maldives, many parts of southeast Arabian Sea, over Gulf of Mannar.

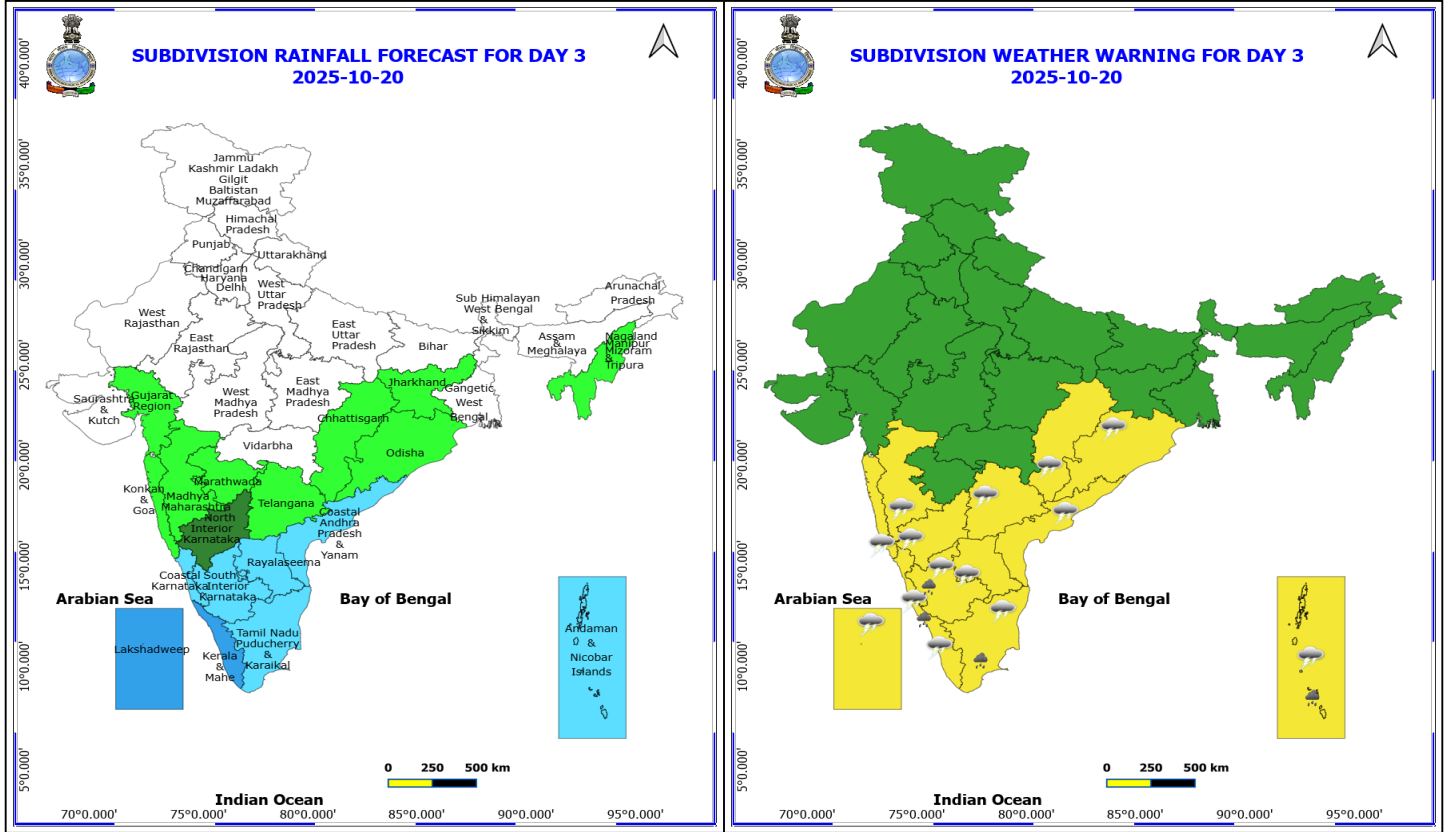
***Red color warning does not mean "Red Alert" Red color warning means "Take Action"**
Forecast and warning for any day is valid from 0830 hours IST of day till 0830 hours IST of next day
For more details kindly visit <https://mausam.imd.gov.in> or contact 011-2434-4599
(Service to the nation since 1875)



19 October (Day 2)

- ❖ **Heavy Rainfall** very likely at isolated places over Kerala & Mahe, South Interior Karnataka and Tamil Nadu Puducherry & Karaikal.
- ❖ **Thunderstorm accompanied with lightning & gusty winds(30-40kmph)** very likely at isolated places over Kerala & Mahe, Lakshadweep, Odisha, South Interior Karnataka and Telangana.
- ❖ **Thunderstorm accompanied with Lightning** very likely at isolated places over Andhra Pradesh, Karnataka, Konkan & Goa, Madhya Maharashtra, Tamil Nadu Puducherry & Karaikal and Telangana.
- **Squally weather with wind speed 35 kmph to 45 kmph gusting to 55 kmph** likely to prevail along and off Kerala, Karnataka coasts and adjoining sea areas, over Lakshadweep, Comorin areas, Maldives, most parts of southeast Arabian Sea & adjoining parts of eastcentral Arabian Sea, over Gulf of Mannar.

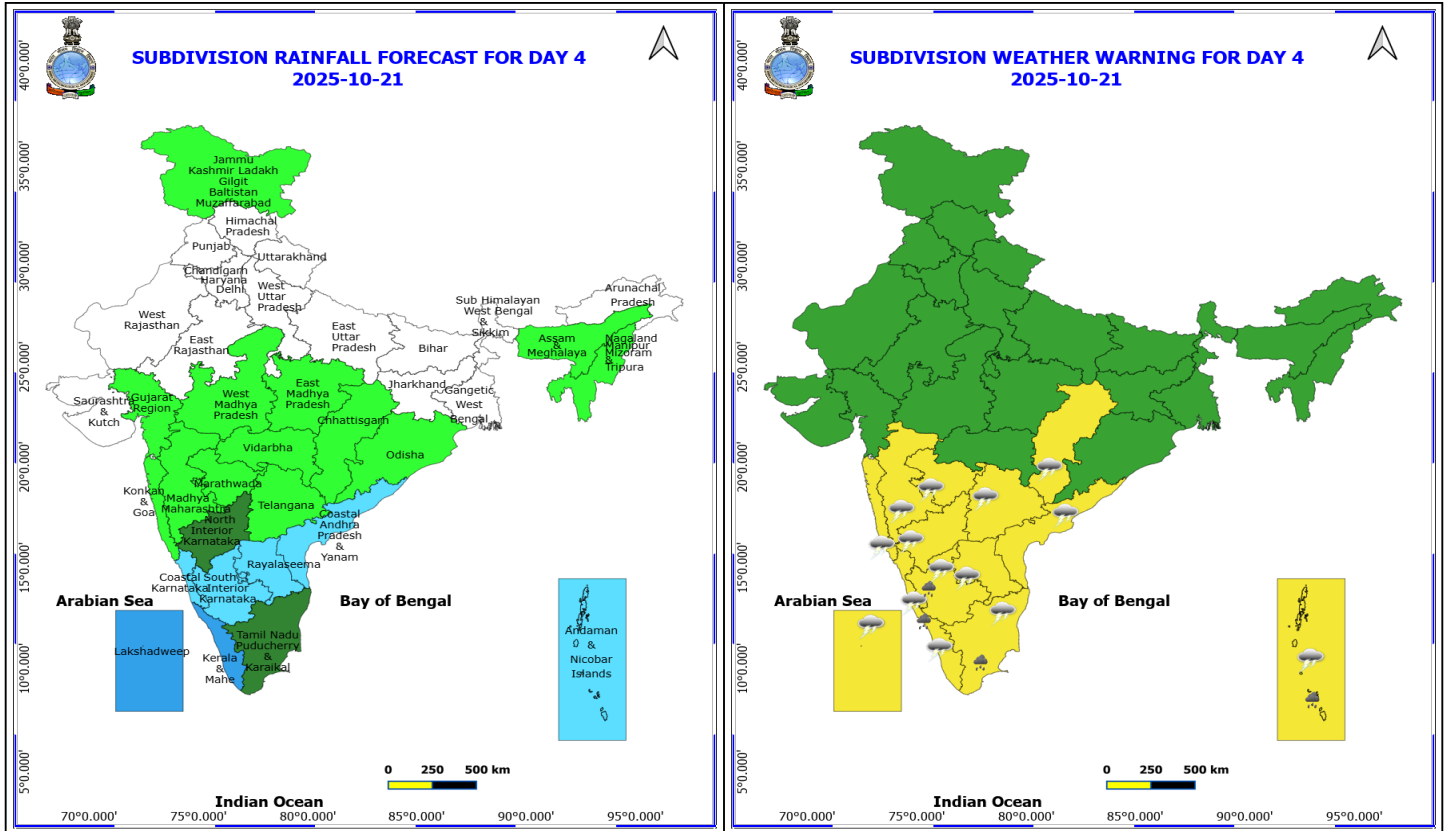
***Red color warning does not mean "Red Alert" Red color warning means "Take Action"**
Forecast and warning for any day is valid from 0830 hours IST of day till 0830 hours IST of next day
For more details kindly visit <https://mausam.imd.gov.in> or contact 011-2434-4599
(Service to the nation since 1875)



20 October (Day 3)

- ❖ **Heavy Rainfall** very likely at isolated places over Andaman & Nicobar Islands, Kerala & Mahe, South Interior Karnataka and Tamil Nadu Puducherry & Karaikal.
- ❖ **Thunderstorm accompanied with lightning & gusty winds(30-40kmph)** very likely at isolated places over Andaman & Nicobar Islands, Kerala & Mahe, Lakshadweep, Odisha, South Interior Karnataka and Telangana.
- ❖ **Thunderstorm accompanied with Lightning** very likely at isolated places over Andhra Pradesh, Chhattisgarh, Coastal Karnataka, Konkan & Goa, Madhya Maharashtra, North Interior Karnataka, Tamil Nadu Puducherry & Karaikal and Telangana.
- **Squally weather with wind speed 35 kmph to 45 kmph gusting to 55 kmph** likely to prevail along and off Kerala, Karnataka coasts and adjoining sea areas, over Lakshadweep, Comorin areas, Maldives, southeast Arabian Sea & adjoining, some parts of southwest, eastcentral Arabian Sea, over Gulf of Mannar, Andaman Sea.
- **Squally weather with wind speed 45 kmph to 55 kmph gusting to 65 kmph** likely to prevail over Lakshadweep area, some parts of southeast Arabian Sea.

***Red color warning does not mean "Red Alert" Red color warning means "Take Action"**
Forecast and warning for any day is valid from 0830 hours IST of day till 0830 hours IST of next day
For more details kindly visit <https://mausam.imd.gov.in> or contact 011-2434-4599
 (Service to the nation since 1875)



21 October (Day 4)

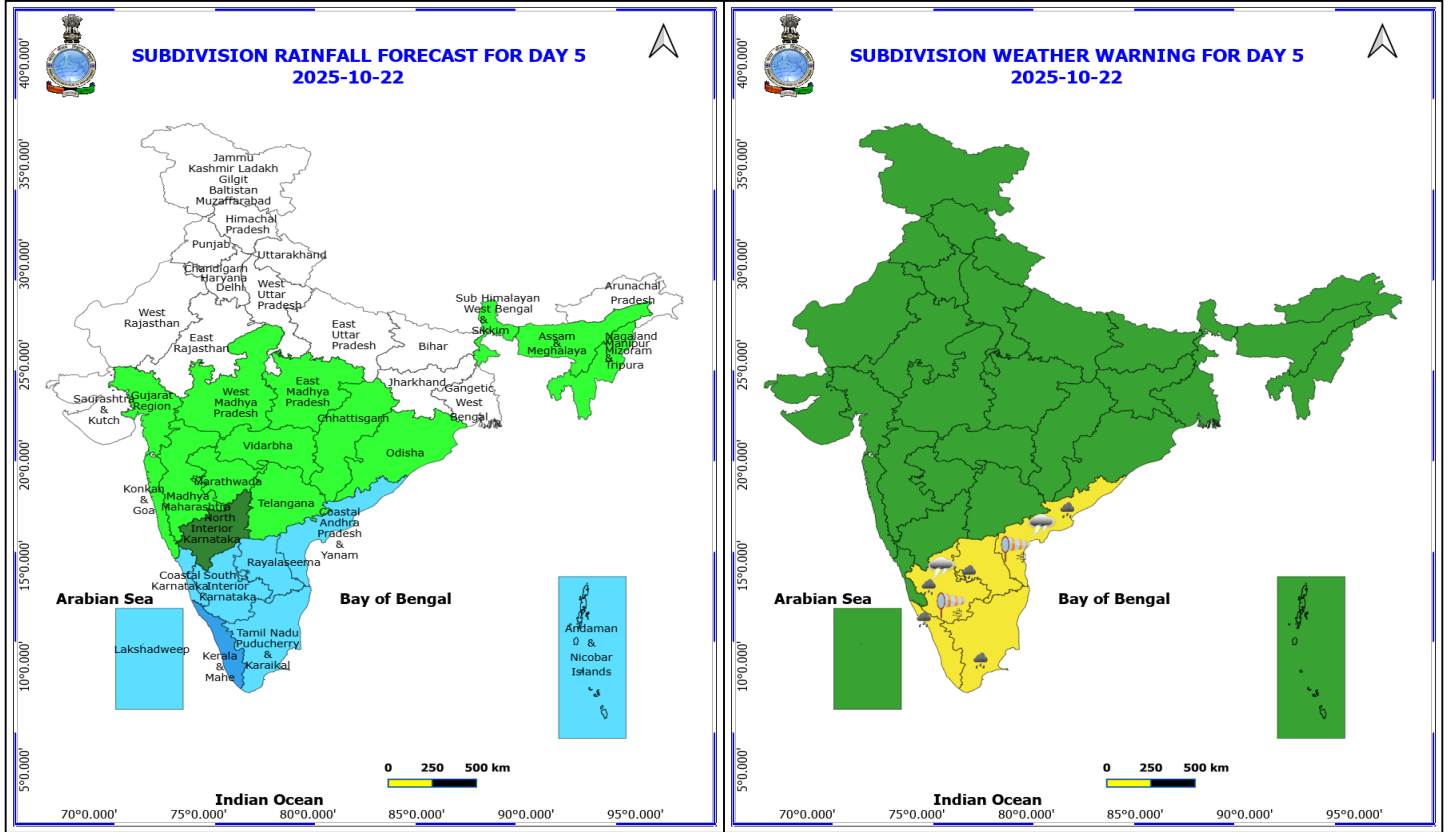
- ❖ **Heavy Rainfall** likely at isolated places over Andaman & Nicobar Islands, Kerala & Mahe, South Interior Karnataka and Tamil Nadu Puducherry & Karaikal.
 - ❖ **Thunderstorm accompanied with lightning & gusty winds(40-50kmph)** likely at isolated places over Andaman & Nicobar Islands.
 - ❖ **Thunderstorm accompanied with lightning & gusty winds(30-40kmph)** likely at isolated places over Interior Karnataka, Kerala & Mahe, Lakshadweep and Telangana.
 - ❖ **Thunderstorm accompanied with Lightning** likely at isolated places over Andhra Pradesh, Chhattisgarh, Coastal Karnataka, Konkan & Goa, Madhya Maharashtra, Marathwada and Tamil Nadu Puducherry & Karaikal.
- **Squally weather with wind speed 35 kmph to 45 kmph gusting to 55 kmph** likely to prevail along and off Kerala, Karnataka coasts and adjoining sea areas, over Lakshadweep, Comorin areas, Maldives, southeast Arabian Sea & adjoining, some parts of southwest, westcentral, eastcentral Arabian Sea, over Gulf of Mannar, Andaman Sea.
 - **Squally weather with wind speed 45 kmph to 55 kmph gusting to 65 kmph** likely to prevail over some parts of southeast Arabian Sea, adjoining parts of southwest, eastcentral Arabian Sea.

***Red color warning does not mean "Red Alert" Red color warning means "Take Action"**

Forecast and warning for any day is valid from 0830 hours IST of day till 0830 hours IST of next day

For more details kindly visit <https://mausam.imd.gov.in> or contact 011-2434-4599

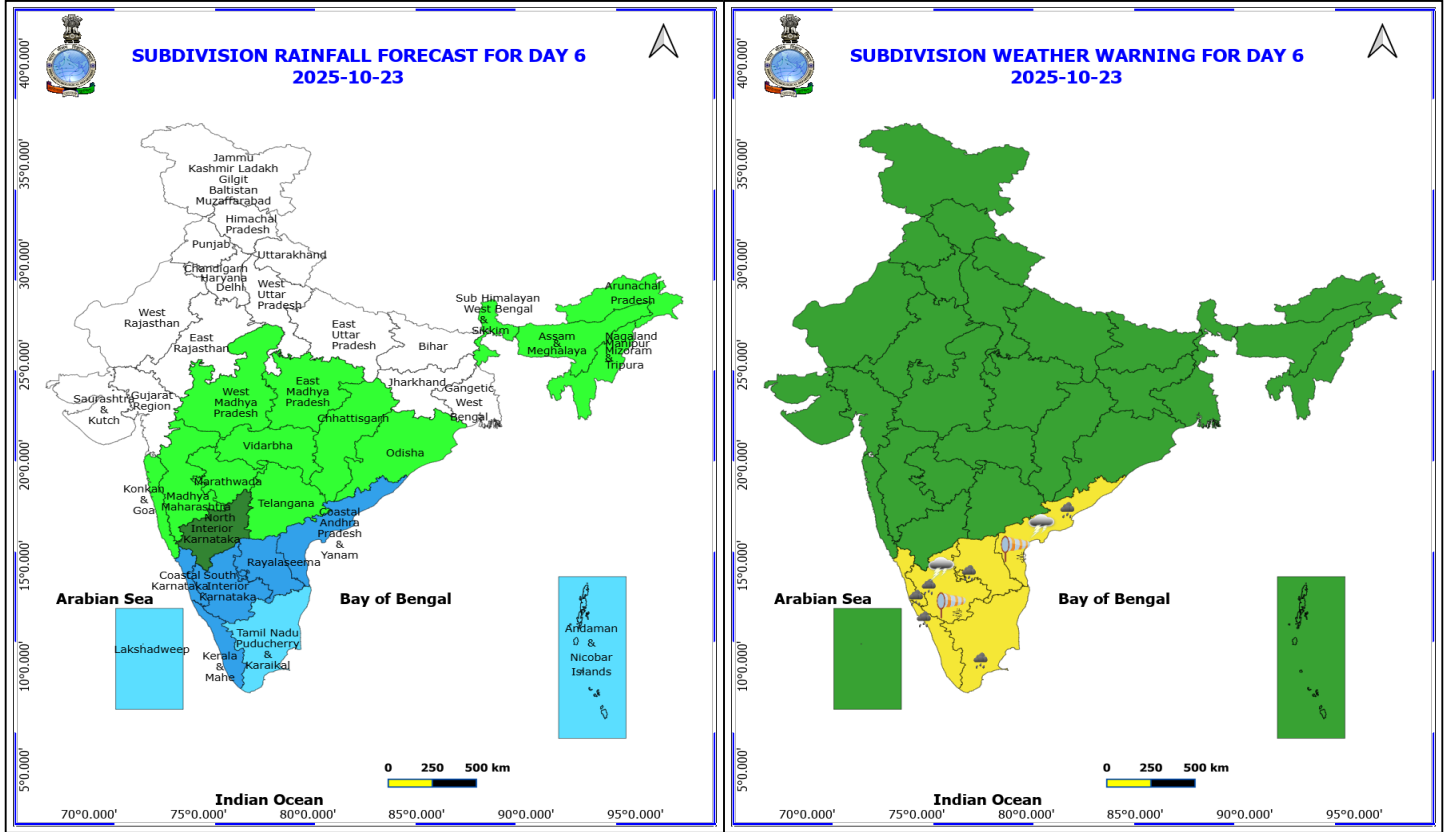
(Service to the nation since 1875)



22 October (Day 5)

- ❖ **Heavy Rainfall** likely at isolated places over Andhra Pradesh, Kerala & Mahe, South Interior Karnataka and Tamil Nadu Puducherry & Karaikal.
 - ❖ **Thunderstorm accompanied with lightning & gusty winds(40-50kmph)** likely at isolated places over Coastal Andhra Pradesh and South Interior Karnataka.
 - ❖ **Strong Surface Winds** likely at isolated places over Coastal Andhra Pradesh and South Interior Karnataka.
- No Fishermen Warning**

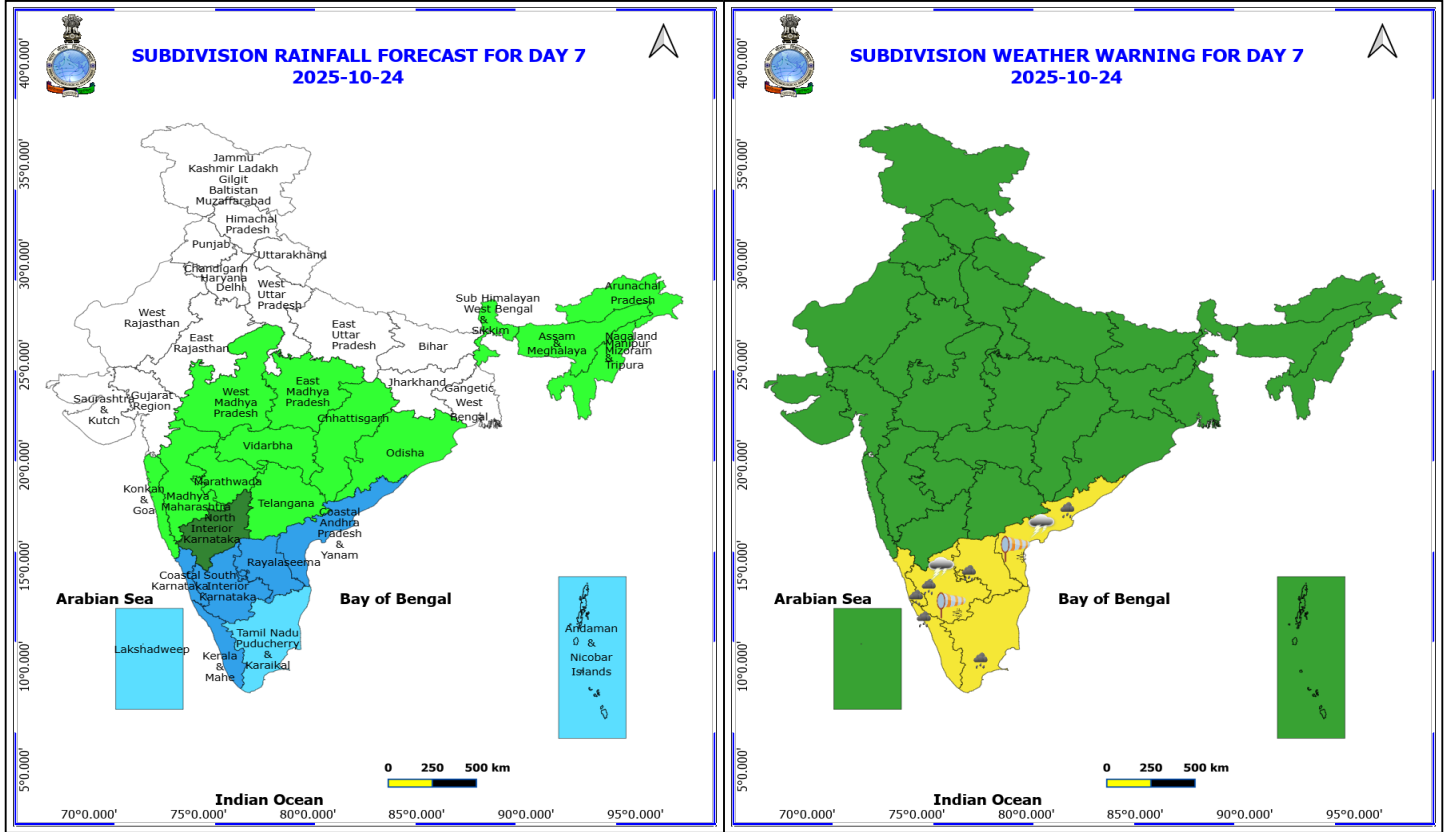
***Red color warning does not mean "Red Alert" Red color warning means "Take Action"**
 Forecast and warning for any day is valid from 0830 hours IST of day till 0830 hours IST of next day
 For more details kindly visit <https://mausam.imd.gov.in> or contact 011-2434-4599
 (Service to the nation since 1875)



23 October (Day 6)

- ❖ **Heavy Rainfall** likely at isolated places over Andhra Pradesh, Coastal Karnataka, Kerala & Mahe, South Interior Karnataka and Tamil Nadu Puducherry & Karaikal.
 - ❖ **Thunderstorm accompanied with lightning & gusty winds(40-50kmph)** likely at isolated places over Coastal Andhra Pradesh and South Interior Karnataka.
 - ❖ **Strong Surface Winds** likely at isolated places over Coastal Andhra Pradesh and South Interior Karnataka.
- No Fishermen Warning**

***Red color warning does not mean "Red Alert" Red color warning means "Take Action"**
Forecast and warning for any day is valid from 0830 hours IST of day till 0830 hours IST of next day
For more details kindly visit <https://mausam.imd.gov.in> or contact 011-2434-4599
(Service to the nation since 1875)



24 October (Day 7)

- ❖ **Heavy Rainfall** likely at isolated places over Andhra Pradesh, Coastal Karnataka, Kerala & Mahe, South Interior Karnataka and Tamil Nadu Puducherry & Karaikal.
 - ❖ **Thunderstorm accompanied with lightning & gusty winds(40-50kmph)** likely at isolated places over Coastal Andhra Pradesh and South Interior Karnataka.
 - ❖ **Strong Surface Winds** likely at isolated places over Coastal Andhra Pradesh and South Interior Karnataka.
- No Fishermen Warning**

***Red color warning does not mean "Red Alert" Red color warning means "Take Action"**
 Forecast and warning for any day is valid from 0830 hours IST of day till 0830 hours IST of next day
 For more details kindly visit <https://mausam.imd.gov.in> or contact 011-2434-4599
 (Service to the nation since 1875)



Table-1

7 Days Rainfall Forecast

S.No.	Subdivision	18- Oct	19- Oct	20- Oct	21- Oct	22- Oct	23- Oct	24- Oct
		Day 1	Day 2	Day 3	Day 4	Day 5	Day 6	Day 7
1	ANDAMAN & NICOBAR ISLANDS	SCT	FWS	FWS	FWS	FWS	FWS	FWS
2	ARUNACHAL PRADESH	DRY	DRY	DRY	DRY	DRY	ISOL	ISOL
3	ASSAM & MEHGHALAYA	DRY	DRY	DRY	ISOL	ISOL	ISOL	ISOL
4	N. M. M. & T.	ISOL	ISOL	ISOL	ISOL	ISOL	ISOL	ISOL
5	S.H. WEST BENGAL & SIKKIM	ISOL	ISOL	DRY	DRY	ISOL	ISOL	ISOL
6	GANGETIC WEST BENGAL	ISOL	ISOL	DRY	DRY	DRY	DRY	DRY
7	ODISHA	DRY	ISOL	ISOL	ISOL	ISOL	ISOL	ISOL
8	JHARKHAND	DRY	DRY	ISOL	DRY	DRY	DRY	DRY
9	BIHAR	DRY	DRY	DRY	DRY	DRY	DRY	DRY
10	EAST UTTAR PRADESH	DRY	DRY	DRY	DRY	DRY	DRY	DRY
11	WEST UTTAR PRADESH	DRY	DRY	DRY	DRY	DRY	DRY	DRY
12	UTTARAKHAND	DRY	DRY	DRY	DRY	DRY	DRY	DRY
13	HARYANA, CHD & DELHI	DRY	DRY	DRY	DRY	DRY	DRY	DRY
14	PUNJAB	DRY	DRY	DRY	DRY	DRY	DRY	DRY
15	HIMACHAL PRADESH	DRY	DRY	DRY	DRY	DRY	DRY	DRY
16	JAMMU AND KASHMIR AND LADAKH	DRY	DRY	DRY	ISOL	DRY	DRY	DRY
17	WEST RAJASTHAN	DRY	DRY	DRY	DRY	DRY	DRY	DRY
18	EAST RAJASTHAN	DRY	DRY	DRY	DRY	DRY	DRY	DRY
19	WEST MADHYA PRADESH	DRY	DRY	DRY	ISOL	ISOL	ISOL	ISOL
20	EAST MADHYA PRADESH	DRY	DRY	DRY	ISOL	ISOL	ISOL	ISOL
21	GUJRAT REGION	DRY	DRY	ISOL	ISOL	ISOL	DRY	DRY
22	SAURASHTRA & KUTCH	DRY	DRY	DRY	DRY	DRY	DRY	DRY
23	KONKAN & GOA	ISOL	ISOL	ISOL	ISOL	ISOL	ISOL	ISOL
24	MADHYA MAHARASHTRA	ISOL	ISOL	ISOL	ISOL	ISOL	ISOL	ISOL
25	MARATHWADA	ISOL	ISOL	ISOL	ISOL	ISOL	ISOL	ISOL
26	VIDARBHA	DRY	DRY	DRY	ISOL	ISOL	ISOL	ISOL
27	CHATTISGARH	DRY	ISOL	ISOL	ISOL	ISOL	ISOL	ISOL
28	COASTAL ANDHRA PRADESH	SCT	SCT	FWS	FWS	FWS	WS	WS
29	TELANGANA	ISOL	ISOL	ISOL	ISOL	ISOL	ISOL	ISOL
30	RAYALASEEMA	SCT	SCT	FWS	FWS	FWS	WS	WS
31	TAMILNADU & PUDUCHERRY	FWS	SCT	FWS	SCT	FWS	FWS	FWS
32	COSTAL KARNATAKA	FWS	FWS	FWS	FWS	FWS	WS	WS
33	NORTH INTERIOR KARNATAKA	ISOL	SCT	SCT	SCT	SCT	SCT	SCT
34	SOUTH INTERIOR KARNATAKA	SCT	FWS	FWS	FWS	FWS	WS	WS
35	KERALA	WS	WS	WS	WS	WS	WS	WS
36	LAKSHDWEEP	WS	WS	WS	WS	FWS	FWS	FWS

Legend	Category	%Stations
WS	Widespread/Most Places	76-100
FWS	Fairly Widespread/Many Places	51-75
SCT	Scattered/ A Few Places	26-50
ISOL	Isolated Places	1-25
DRY	No Rain	0

*Red color warning does not mean "Red Alert" Red color warning means "Take Action"
Forecast and warning for any day is valid from 0830 hours IST of day till 0830 hours IST of next day
For more details kindly visit <https://mausam.imd.gov.in> or contact 011-2434-4599

(Service to the nation since 1875)

Fig. 1: Maximum Temperatures Dated 2025-10-17

Fig. 2: Departure of Maximum Temp. Dated 2025-10-17

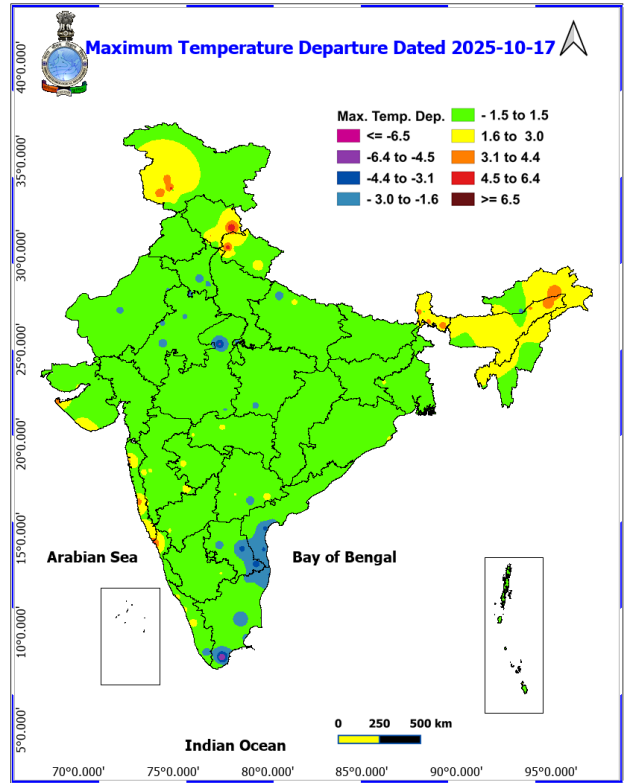
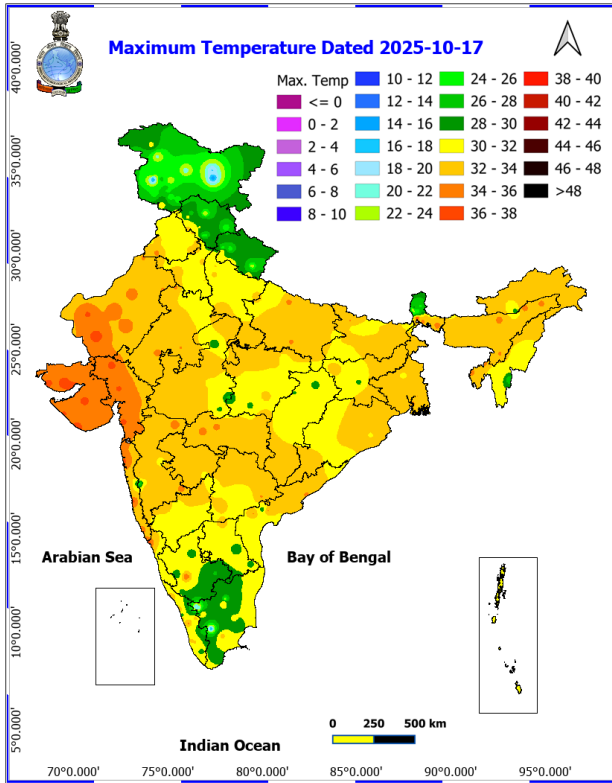
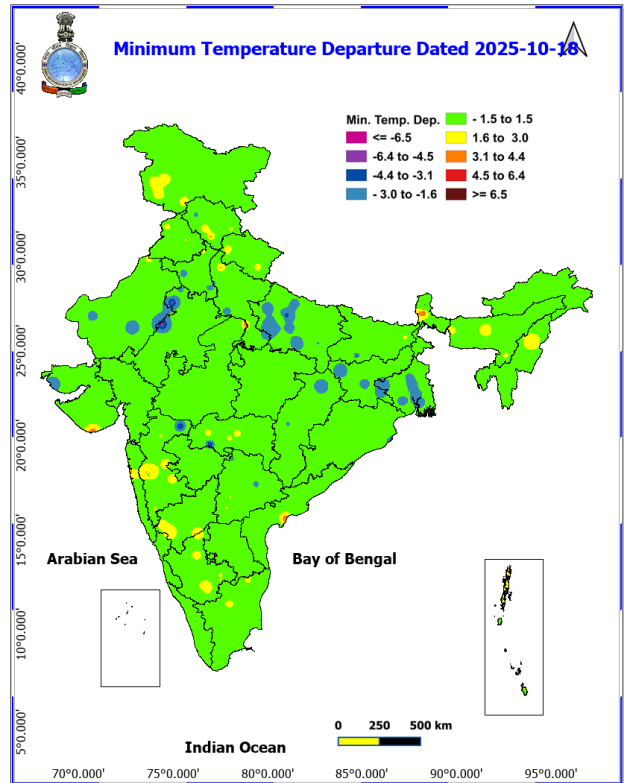
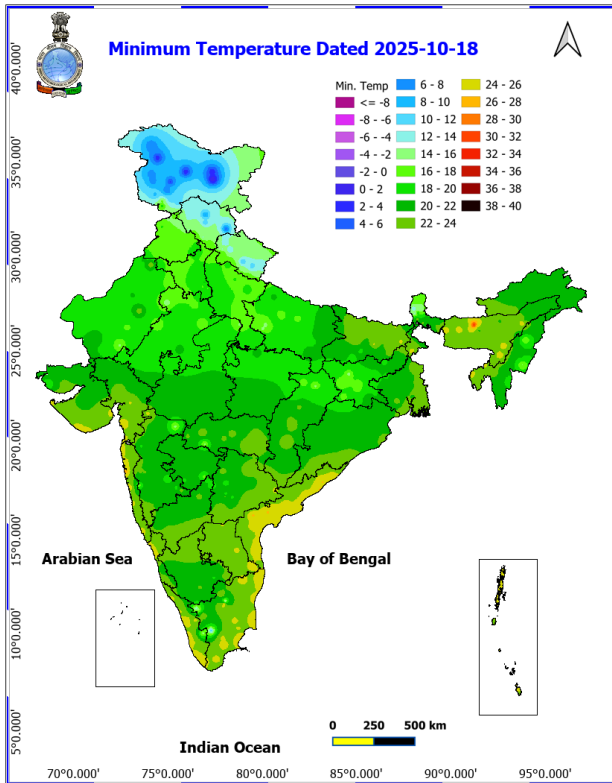
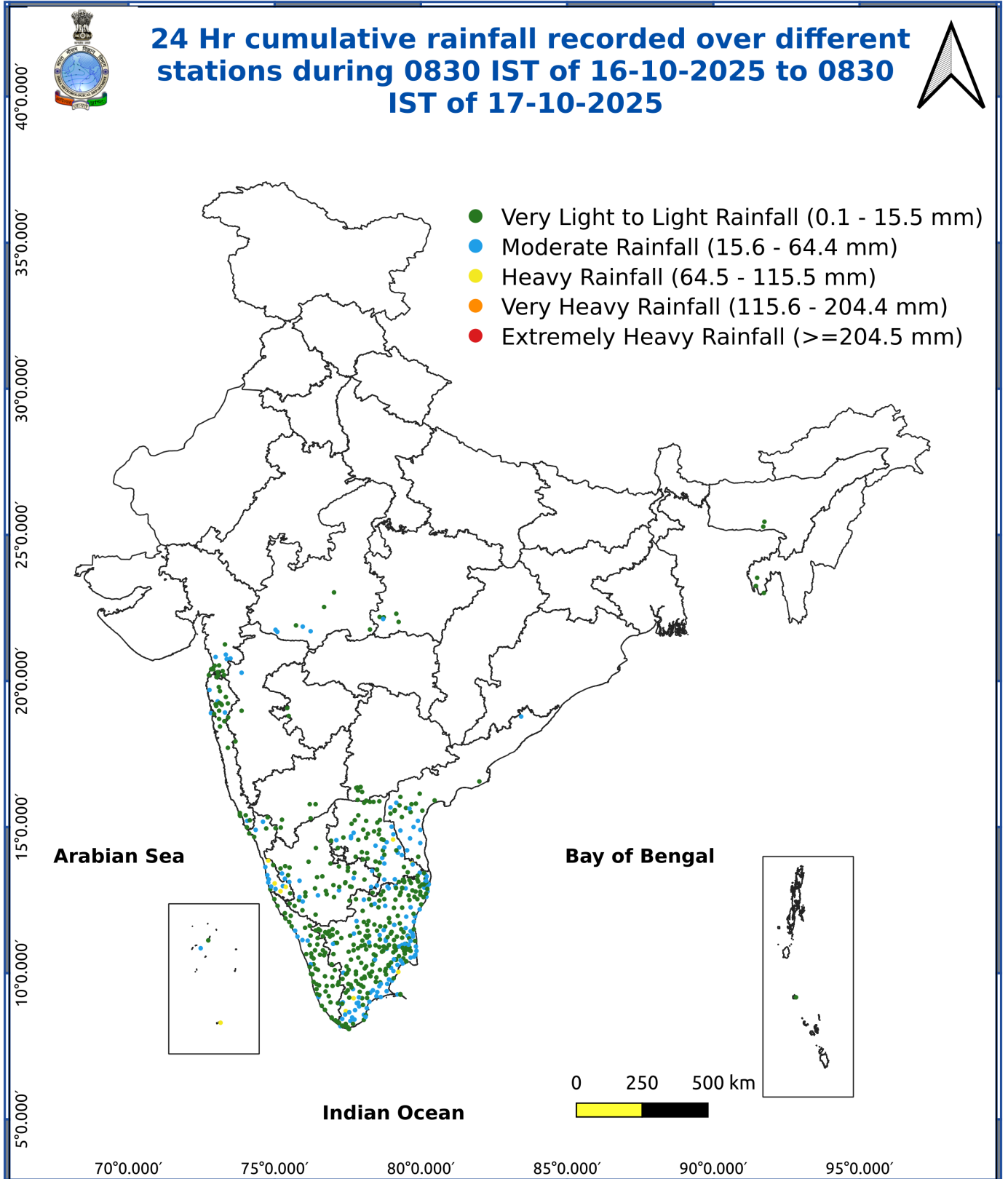


Fig. 3: Minimum Temperatures Dated 2025-10-18

Fig. 4: Departure of Minimum Temp. Dated 2025-10-18





Agromet advisories for various parts of the country

Agromet advisories for likely impact of Heavy Rainfall

(Based on the IBF and advisories issued by different AMFUs)

- In **Tamil Nadu**, store the harvested produce of rice and groundnut in safer places. Provide adequate drainage facilities in fields of rice, cotton, turmeric, garlic, ginger and vegetables and plantations of coconut, banana and black pepper to avoid water stagnation.
- In **Kerala**, make provision to drain out excess water from fields of rice and plantations of banana, coconut, arecanut and black pepper.
- In **Coastal Karnataka**, undertake harvesting of arecanut and coconut and keep the harvested produce at safer places. In **South Interior Karnataka**, keep the harvested produce of groundnut, maize pepper, cardamom, turmeric and coffee to dry, covered and ventilated areas or cover with tarpaulins in the fields. Make necessary arrangements to drain out excess water from fields of rice, maize, finger millet, pigeon pea, soybean, groundnut and vegetables and plantations of banana, black pepper, coconut and arecanut to avoid waterlogging.
- In **Coastal Andhra Pradesh**, provide adequate drainage facilities in fields of rice, maize, pigeon pea, black gram, green gram, groundnut, turmeric, ginger, vegetables and plantations of coconut, arecanut, banana, coffee and black pepper.
- In **Rayalseema**, maintain proper drainage in fields of rice, groundnut, cotton, turmeric and vegetables.

Livestock / Fishery

- Keep the animals inside the shed during heavy rainfall and provide them balanced feed.
- Store feed and fodder in a safe place to prevent spoilage.
- Construct an outlet with proper netting around the ponds to drain out excess water, thereby preventing fish from escaping in case of overflow.

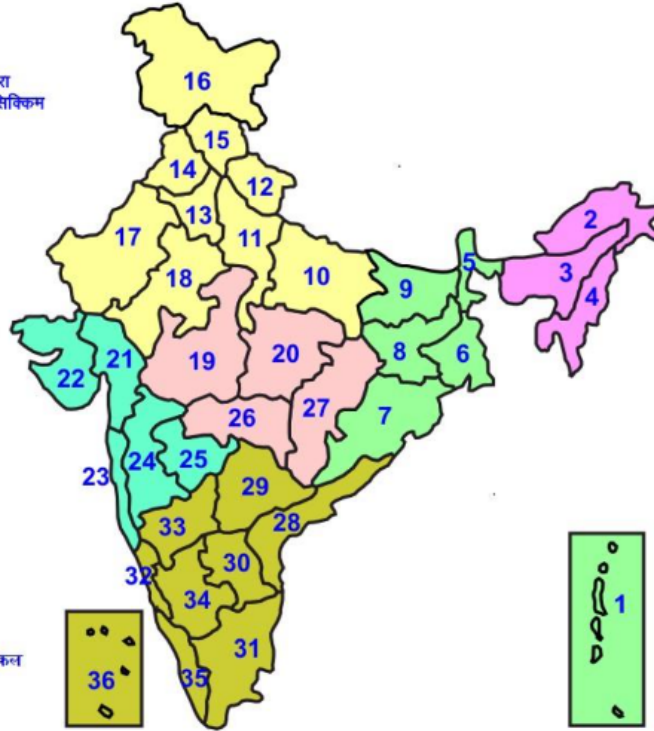
Agromet advisories for likely impact of Thunderstorm / Gusty Winds / Squally Winds

(Based on the IBF and advisories issued by different AMFUs)

- Provide mechanical support to horticultural crops and staking or support to vegetables and young fruit plants / fruit-bearing plants to avoid lodging due to strong winds.
- Tie the harvested crops properly and cover them to minimise the risk of displacement due to strong surface winds.

LEGENDS

- 1 अंडमान और निकोबार द्वीप समुह
- 2 अरुणाचल प्रदेश
- 3 असम और मेघालय
- 4 नागालैंड मनीपुर मीजोरम और त्रिपुरा
- 5 उप हिमालय पश्चिम बंगाल एवं सिक्किम
- 6 पश्चिम बंगाल
- 7 ओडिसा
- 8 झारखंड
- 9 बिहार
- 10 पूर्वी उत्तर प्रदेश
- 11 पश्चिम उत्तर प्रदेश
- 12 उत्तराखंड
- 13 हरियाणा चंडिगढ़ एवं दिल्ली
- 14 पंजाब
- 15 हिमाचल प्रदेश
- 16 जम्मू एवं कश्मीर एवं लद्दाख
- 17 पश्चिम राजस्थान
- 18 पूर्वी राजस्थान
- 19 पश्चिम मध्य प्रदेश
- 20 पूर्वी मध्य प्रदेश
- 21 गुजरात क्षेत्र
- 22 सौराष्ट्र एवं कच्छ
- 23 कोंकण एवं गोवा
- 24 मध्य महाराष्ट्र
- 25 मराठावाडा
- 26 विदर्भ
- 27 छत्तीसगढ़
- 28 तटीय आंध्र प्रदेश एवं चन्नम
- 29 तेलंगाना
- 30 रायलसीमा
- 31 तमिलनाडु, पुदुचेरी एवं कराईकल
- 32 तटिय कर्नाटक
- 33 आंतरिक उत्तरी कर्नाटक
- 34 आंतरिक दक्षिणी कर्नाटक
- 35 केरल एवं माहे
- 36 लक्षद्वीप



1. Andaman & Nicobar Islands
2. Arunachal Pradesh
3. Assam & Meghalaya
4. Nagaland, Manipur, Mizoram & Tripura
5. Sub-Himalayan West Bengal & Sikkim
6. Gangetic West Bengal
7. Orissa
8. Jharkhand
9. Bihar
10. East Uttar Pradesh
11. West Uttar Pradesh
12. Uttarakhand
13. Haryana, Chd & Delhi
14. Punjab
15. Himachal Pradesh
16. Jammu & Kashmir and Ladakh
17. West Rajasthan
18. East Rajasthan
19. West Madhya Pradesh
20. East Madhya Pradesh
21. Gujarat
22. Saurashtra
23. Konkan & Goa
24. Madhya Maharashtra
25. Marathawada
26. Vidharbha
27. Chhattisgarh
28. Coastal Andhra Pradesh & Yanam
29. Telangana
30. Rayalaseema
31. Tamilnadu, Puducherry & Karaikal
32. Coastal Karnataka
33. North Interior Karnataka
34. South Interior Karnataka
35. Kerala & Mahe
36. Lakshadweep

SPATIAL DISTRIBUTION (% of Stations reporting)

% Stations	Category	% Stations	Category
76-100	Widespread (WS/ Most Places)	26-50	Scattered (SCT/ A Few Places)
51-75	Fairly Widespread (FWS/ Many Places)	1-25	Isolated (ISOL)

Subdivision Colour

- NO WARNING
- WATCH (BE UPDATED)
- ALERT (BE PREPARED TO TAKE ACTION)
- WARNING (TAKE ACTION)

Probabilistic Forecast

Terms	Probability of Occurrence (%)
Unlikely	< 25
Likely	25 - 50
Very Likely	50 - 75
Most Likely	> 75

- | | | | |
|--------------------------|-----------------|----------------------|--------------------|
| Heavy Rain | Very Heavy Rain | Extremely Heavy Rain | Heavy Snow |
| Thunderstorm & Lightning | Hailstorm | Dust Storm | Dust Raising Winds |
| Strong surface winds | Heat Wave | Hot Day | Warm Night |
| Cold Wave | Cold Day | Ground Frost | Fog |
| Hot & Humid | | | |

*Red color warning does not mean "Red Alert" Red color warning means "Take Action"

Forecast and warning for any day is valid from 0830 hours IST of day till 0830 hours IST of next day

For more details kindly visit <https://mausam.imd.gov.in> or contact 011-2434-4599

(Service to the nation since 1875)

LEGENDS

WARNING

WARNING (TAKE ACTION)
ALERT (BE PREPARED)
WATCH (BE UPDATED)
NO WARNING (NO ACTION)

Probabilistic Forecast

Terms	Probability of Occurrence (%)
Unlikely	< 25
Likely	25 - 50
Very Likely	50 - 75
Most Likely	> 75



Heavy: 64.5 to 115.5 mm/cm *
Very Heavy: 115.6 to 204.4 mm/cm*
Extremely Heavy: > 204.4 mm/cm *



When maximum temperature of a station reaches $\geq 40^{\circ}\text{C}$ for plains and $\geq 30^{\circ}\text{C}$ for hilly regions
(a) Based on Departure from normal

Heat Wave: Maximum Temperature Departure from normal 4.5°C to 6.4°C .
Severe Heat Wave: Maximum Temperature Departure from normal $\geq 6.5^{\circ}\text{C}$

(b). Based on Actual maximum temperature

Heat Wave: When actual maximum temperature $\geq 45^{\circ}\text{C}$.
Severe Heat Wave: When actual maximum temperature $\geq 47^{\circ}\text{C}$

(c). Criteria for heat wave for coastal stations

When maximum temperature departure is $> 4.5^{\circ}\text{C}$ from normal. Heat Wave may be described provided maximum temperature $\geq 37^{\circ}\text{C}$



When maximum temperature remains 40°C

Warm Night: When minimum temperature departure 4.5°C to 6.4°C .
Severe Warm Night: When minimum temperature departure $> 6.4^{\circ}\text{C}$.



When minimum temperature of a station $\leq 10^{\circ}\text{C}$ for plains and $\leq 0^{\circ}\text{C}$ for hilly regions.
(a). Based on departure

Cold Wave: Minimum Temperature Departure from normal -4.5°C to -6.4°C .
Severe Cold Wave: Minimum Temperature Departure from normal $\leq -6.5^{\circ}\text{C}$

(b) Based on actual Minimum Temperature (for Plains only)

Cold Wave : When Minimum Temperature is $\leq 4.0^{\circ}\text{C}$
Severe Cold Wave: When Minimum Temperature is $\leq 2.0^{\circ}\text{C}$

(c) For Coastal Stations

When Minimum Temperature departure is $\leq -4.5^{\circ}\text{C}$ & actual Minimum Temperature is $\leq 15^{\circ}\text{C}$



When minimum temperature of a station $\leq 10^{\circ}\text{C}$ for plains and $\leq 0^{\circ}\text{C}$ for hilly regions
Based on departure

Cold Day: Maximum Temperature Departure from normal -4.5°C to -6.4°C .
Severe Cold Day: Maximum Temperature Departure from normal $\leq -6.5^{\circ}\text{C}$



Phenomenon of small droplets suspended in air and the horizontal visibility $< 1\text{km}$

Moderate Fog: When the visibility between 500-200 metres
Dense Fog: when the visibility between 50- 200 metres
Very Dense Fog: when the visibility < 50 metres



Sudden electrical discharges manifested by a flash of light (Lightning) and a sharp rumbling sound (thunder)



An ensemble of particles of dust or sand energetically lifted to great heights by a strong and turbulent wind.



Ice deposits on ground

Air temperature $\leq 4^{\circ}\text{C}$ (over Plains)



A strong wind that rises suddenly, lasts for atleast 1 minute.

Moderate: Wind speed 52-61 kmph
Severe: Wind speed 62-87 kmph
Very Severe: Wind speed > 87 kmph



Effect of various waves in the sea over specific area

Rough to very rough: Wind speed 41-62 kmph (22-33 knots) & Wave height 2.5-6 metre
High to very high: Wind speed 63-117 kmph (34-63 knots) & Wave height 6-14 metre
Phenomenal: Wind speed > 117 kmph (> 63 knots) & Wave height > 14 metre



Cyclonic Storm: Wind speed 62-87 kmph (34-47 knots)
Severe Cyclonic Storm: Wind speed 88-117 kmph (48-63 knots)
Very Severe Cyclonic Storm: Wind speed 118-165 kmph (64 - 89 knots)
Extremely Severe Cyclonic Storm: Wind speed 166-220 kmph (90 -119 knots)
Super Cyclone Storm: Wind speed > 220 kmph (> 119 knots)

*Red color warning does not mean "Red Alert" Red color warning means "Take Action"

Forecast and warning for any day is valid from 0830 hours IST of day till 0830 hours IST of next day

For more details kindly visit <https://mausam.imd.gov.in> or contact 011-2434-4599

(Service to the nation since 1875)