

2025-07-22

Time of Issue: 06:40:00 hours IST
(Morning)

ALL INDIA WEATHER SUMMARY AND FORECAST BULLETIN

Significant Weather Features

Weather Forecast and Warnings

Northwest India:

- **Isolated very heavy rainfall over Himachal Pradesh, Uttarakhand on 22nd July with heavy rainfall** likely over Jammu and Kashmir during 22nd-23rd; Himachal Pradesh during 22nd-27th; Uttarakhand, Punjab, Haryana during 22nd-24th; West Uttar Pradesh during 22nd-23rd & 26th, 27th; East Uttar Pradesh during 25th-27th; East Rajasthan on 27th July.
- Light/moderate rainfall at most/many places accompanied with thunderstorm, lightning likely over western Himalayan region and some places over the plains during next 7 days.

West India:

- **Heavy to very heavy rainfall** likely at isolated places over Konkan & Goa, Ghat areas of Madhya Maharashtra during 22nd-27th July and **heavy rainfall** over Gujarat State on 26th & 27th July.
- Light/moderate rainfall at many/some places very likely over the region during next 5 days.

South Peninsular India:

- Isolated **heavy to very heavy rainfall** likely over Kerala & Mahe, South Interior Karnataka during 25th-27th; Telangana on 22nd & 23rd; Coastal Karnataka on 27th July; isolated **heavy rainfall** over Tamil Nadu on 22nd; Kerala & Mahe, Coastal Andhra Pradesh & Yanam, Coastal & South Interior Karnataka during 22nd-27th; Rayalaseema during 22nd-23rd July.
- **Strong surface winds** (speed reaching 40-50 kmph) very likely over South Peninsular India during next 5 days.
- Light/moderate rainfall at most/many places over Kerala & Mahe, Lakshadweep, Karnataka, Rayalaseema, Coastal Andhra Pradesh & Yanam & Telanganaduring next 7 days.

East & Central India:

- Isolated **very heavy rainfall over West Madhya Pradesh on 26th & 27th; East Madhya Pradesh during 25th-27th; Vidarbha, Jharkhand on 24th & 25th; Chhattisgarh & Odisha during 23rd-26th July with heavy rainfall** very likely to continue over West Madhya Pradesh on 22nd & 25th; East Madhya Pradesh, Vidarbha, Chhattisgarh, Odisha during 22nd-27th; Sub-Himalayan West Bengal & Sikkim during 25th-27th; Gangetic West Bengal during 23rd-27th; Bihar & Jharkhand during 24th-27th July.
- Light/moderate rainfall at most/many places accompanied with thunderstorm, lightning & gusty winds (speed reaching 30-40 Kmph) likely over the region during next 7 days.

Northeast India:

- Light/moderate rainfall at many/some places accompanied with **thunderstorm, lightning** likely to continue over Northeast India during next 7 days.
- Isolated **heavy rainfall** very likely over Arunachal Pradesh, Assam & Meghalaya on 22nd & during 24th-27th; Nagaland & Tripura during 23rd-27th July.

Fishermen Warnings:

Fishermen are advised to avoid venturing into the following from 22nd July to 26th July 2025 to the following Areas:

Arabian Sea:

- Along and off Gujarat coast and adjoining sea area during 23rd to 26th July; along and off Konkan & Goa,

***Red color warning does not mean "Red Alert" Red color warning means "Take Action"**

Forecast and warning for any day is valid from 0830 hours IST of day till 0830 hours IST of next day

For more details kindly visit <https://mausam.imd.gov.in> or contact 011-2434-4599

(Service to the nation since 1875)



Kerala, Karnataka coasts, over Lakshadweep, Maldives, Comorin areas for 22nd to 26th; Along and off the Somalia coast and adjoining sea areas, south Oman and adjoining Yemen coast & adjoining sea areas during 22nd to 26th July; most parts of central Arabian Sea and adjoining, northern parts of south Arabian Sea for 22nd to 26th July.

Bay of Bengal:

- Along and off Tamil Nadu coast for 22nd to 26th July; South Andhra Pradesh coasts during 22nd to 24th July and Andhra Pradesh coasts during 24th to 26th July; Odisha, Gangetic West Bengal coasts, North Bay of Bengal for 24th July to 26th July; South and Central Bay of Bengal, Gulf of Mannar, Andaman Sea during
- 22nd to 26th July.

Main Weather Observations:

Rainfall distribution (from 0830 hours IST to 1730 hours IST of yesterday): **at most places** over Konkan & Goa , Arunachal Pradesh, Uttarakhand, Himachal Pradesh, Coastal Karnataka, Andaman & Nicobar Islands, Gujarat Region, Kerala & Mahe and Lakshadweep ; **at many places** over Odisha, West Uttar Pradesh, Jharkhand, Assam & Meghalaya, Sub-himalayan West Bengal & Sikkim, Gangetic West Bengal, East Uttar Pradesh, Haryana Chandigarh & Delhi, Punjab, West Rajasthan, Bihar, West Madhya Pradesh, Jammu & Kashmir and Ladakh, Vidarbha, Chhattisgarh, Saurashtra & Kutch, Madhya Maharashtra , Coastal Andhra Pradesh & Yanam, East Madhya Pradesh, Telangana, Rayalaseema, Tamilnadu Puducherry & Karaikal, North Interior Karnataka and South Interior Karnataka; **Dry** over rest of the country.

❖ **Significant rainfall recorded(in cm)** (from 0830 hours IST to 1730 hours IST of yesterday): Konkan & Goa : Mumbai (santacruz) AP (dist) 9, Panjim (dist North Goa) 5; Jammu & Kashmir and Ladakh: Katra (dist Reasi) 8; Coastal Karnataka: Honavar (dist Uttara Kannada) 4.

❖ **Heavy Rainfall observed** (from 0830 hours IST to 1730 hours IST of yesterday):**Heavy rain** at isolated places over Jammu & Kashmir and Ladakh and Konkan & Goa

❖ **Minimum Temperature Departures (as on 21-07-2025): markedly above normal(> 5.1°C)** at isolated places over Assam & Meghalaya, Bihar, East Uttar Pradesh, West Uttar Pradesh, Himachal Pradesh, Jammu-KashmirLadakh-Gilgit-Baltistan-Muzaffarabad, East Rajasthan, West Madhya Pradesh, East Madhya Pradesh and Saurashtra & Kutch. **appreciably above normal(3.1°C to 5.0°C)** at few places over Sub Himalayan West Bengal & Sikkim and Gujarat Region; at isolated places over Nagaland, Manipur, Mizoram & Tripura, Odisha, West Rajasthan and Vidarbha. **above normal(1.6°C to 3.0°C)** at many places over Gangetic West Bengal; at few places over Arunachal Pradesh, Marathwada, Chhattisgarh and Telangana; at isolated places over Andaman & Nicobar Islands, Jharkhand, Haryana-Chandigarh-Delhi, Punjab, Madhya Maharashtra and Tamil Nadu, Puducherry & Karaikal. **near normal(-1.5°C to 1.5°C)** at many places over Uttarakhand, Coastal Andhra Pradesh & Yanam, Rayalaseema and Kerala & Mahe; at most places over Konkan & Goa, Coastal Karnataka, North Interior Karnataka, South Interior Karnataka and Lakshadweep. **The lowest minimum temperature** of 19.6°C wasreported at MATHERAN (MAHARASHTRA), and MYSORE (KARNATAKA) over the Plains of India.

❖ **Maximum Temperature Departures (as on 21-07-2025): markedly above normal(> 5.1°C)** at isolated places over Sub Himalayan West Bengal & Sikkim and Gangetic West Bengal. **appreciably above normal(3.1°C to 5.0°C)** at many places over Marathwada; at most places over Vidarbha; at few places over Assam & Meghalaya, Jammu-KashmirLadakh-Gilgit-Baltistan-Muzaffarabad and West Madhya Pradesh; at isolated places over Odisha, Bihar, East Uttar Pradesh, East Madhya Pradesh, Madhya Maharashtra, Chhattisgarh, Telangana and Tamil Nadu, Puducherry & Karaikal. **above normal(1.6°C to 3.0°C)** at many places over Nagaland, Manipur, Mizoram & Tripura; at few places over Arunachal Pradesh; at isolated places over West Uttar Pradesh, Uttarakhand, East Rajasthan, Saurashtra & Kutch, Coastal Andhra Pradesh & Yanam and North Interior Karnataka. **near normal(-1.5°C to 1.5°C)** at many places over Jharkhand and Lakshadweep; at few places over Andaman & Nicobar Islands, Gujarat Region, Coastal Karnataka and Kerala & Mahe; at isolated places over Haryana-Chandigarh-Delhi, Punjab, Himachal Pradesh, West Rajasthan, Konkan & Goa and South Interior Karnataka. **The highest maximum temperature** of 38.0°C wasreported at TANJAVUR (TAMIL NADU).

***Red color warning does not mean "Red Alert" Red color warning means "Take Action"**

Forecast and warning for any day is valid from 0830 hours IST of day till 0830 hours IST of next day

For more details kindly visit <https://mausam.imd.gov.in> or contact 011-2434-4599

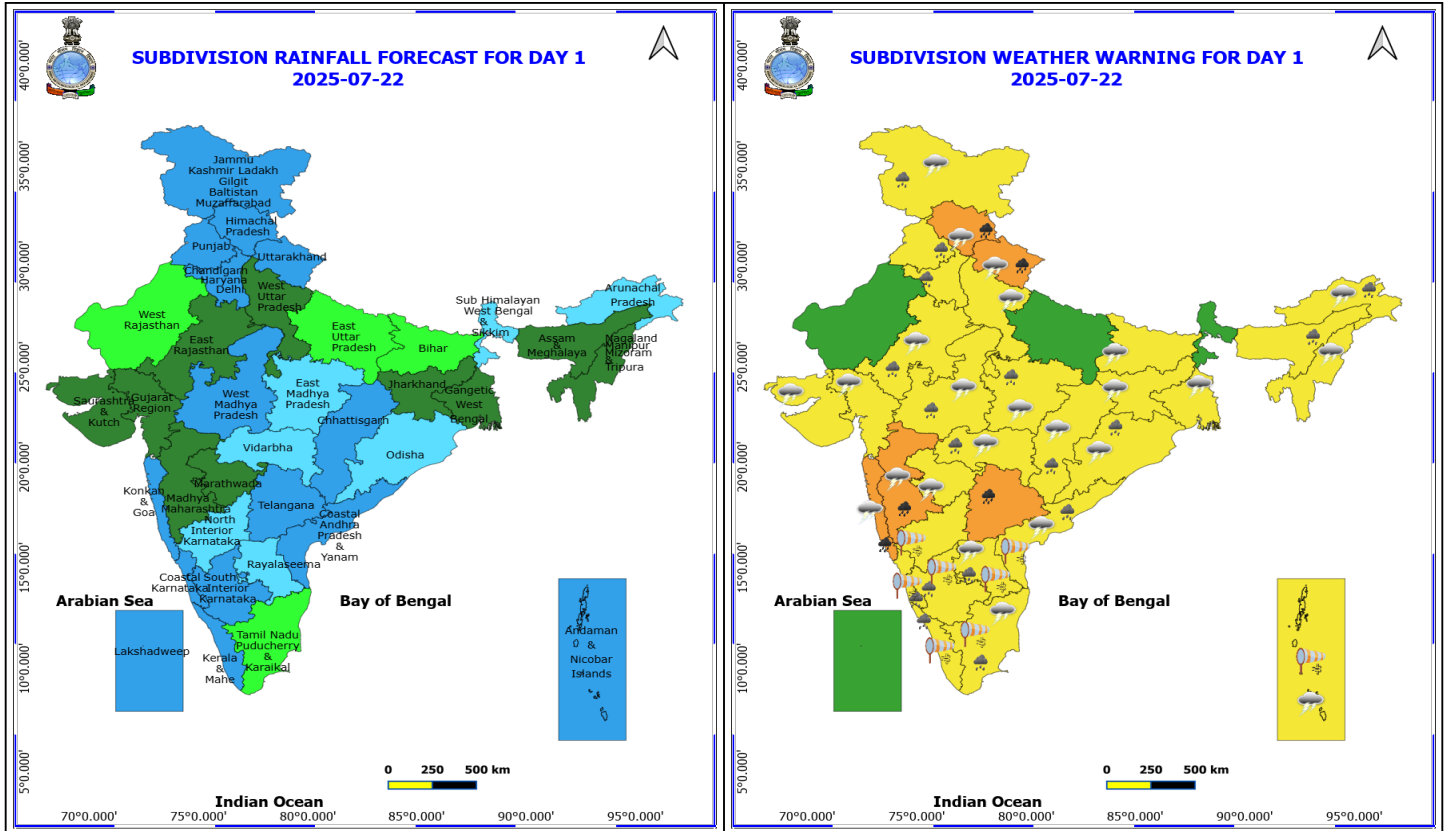
(Service to the nation since 1875)

Meteorological Analysis (Based on 0530 hours IST)

- The **monsoon trough** at mean sea level now passes through Ganganagar, Hissar, Delhi, Lucknow, Varanasi, Daltonganj, Jamshedpur, Bankura and thence eastwards to northeast Bay of Bengal.
- The **Upper air cyclonic circulation** over south Odisha & neighbourhood now lies over Coastal Andhra Pradesh & adjoining south Odisha coasts & neighbourhood and extends upto 5.8 km above mean sea level tilting southeastwards with height.
- The **east-west trough** now runs from North Interior Karnataka to central parts of Coastal Andhra Pradesh roughly along Lat. 15°N at 5.8 km above mean sea level.
- An **upper air cyclonic circulation** lies over south Chhattisgarh & neighbourhood and extends upto 1.5 km above mean sea level.
- An **upper air cyclonic circulation** lies over northeast Jharkhand & neighbourhood and extends upto 1.5 km above mean sea level.
- The **upper air cyclonic circulation** over northeast Assam & neighbourhood extending upto 1.5 km above mean sea level persists.
- A fresh **Low-Pressure area** is likely to form over north Bay of Bengal around 24th July, 2025.
- The **upper air cyclonic circulation** over west Rajasthan & adjoining Pakistan extending upto 3.1 km above mean level tilting southwards with height has become less marked.

Weather Outlook for subsequent 3 days

- **Fairly widespread to widespread rainfall** very likely over most parts of the country except Tamil Nadu where isolated to scattered rainfall is likely.



22 July (Day 1)

- ❖ **Heavy to Very Heavy Rainfall** very likely at isolated places over Himachal Pradesh, Konkan & Goa, Madhya Maharashtra, Telangana and Uttarakhand.
- ❖ **Heavy Rainfall** very likely at isolated places over Andhra Pradesh, Arunachal Pradesh, Assam & Meghalaya, Chhattisgarh, Coastal Karnataka, East Rajasthan, Haryana, Chandigarh & Delhi, Jammu-Kashmir-Ladakh-Gilgit-Baltistan-Muzaffarabad, Kerala & Mahe, Madhya Pradesh, Odisha, Punjab, South Interior Karnataka, Tamil Nadu Puducherry & Karaikal and Vidarbha.
- ❖ **Thunderstorm accompanied with lightning & gusty winds(40-50kmph)** very likely at isolated places over Andaman & Nicobar Islands and Uttarakhand.
- ❖ **Thunderstorm accompanied with lightning & gusty winds(30-40kmph)** very likely at isolated places over Bihar, Jammu-Kashmir-Ladakh-Gilgit-Baltistan-Muzaffarabad, Jharkhand and Odisha.
- ❖ **Thunderstorm accompanied with Lightning** very likely at isolated places over Andhra Pradesh, Arunachal Pradesh, Chhattisgarh, East Rajasthan, Gangetic West Bengal, Gujarat State, Himachal Pradesh, Konkan & Goa, Madhya Pradesh, Maharashtra, Nagaland, Manipur, Mizoram and Tripura, Tamil Nadu Puducherry & Karaikal and West Uttar Pradesh.
- ❖ **Strong Surface Winds** very likely at isolated places over Andaman & Nicobar Islands, Andhra Pradesh, Karnataka, Kerala & Mahe and Tamil Nadu Puducherry & Karaikal.
 - **Squally wind speed reaching 45 kmph to 55 kmph gusting to 65 kmph** is likely to prevail along and off Somalia, Yemen & south Oman coasts, most parts of westcentral Arabian Sea & adjoining parts of eastcentral Arabian Sea, some parts of southwest Arabian Sea.
 - **Squally weather with wind speed 40 - 50 kmph gusting to 60 kmph** likely to prevail over many parts of

***Red color warning does not mean "Red Alert" Red color warning means "Take Action"**

Forecast and warning for any day is valid from 0830 hours IST of day till 0830 hours IST of next day

For more details kindly visit <https://mausam.imd.gov.in> or contact 011-2434-4599

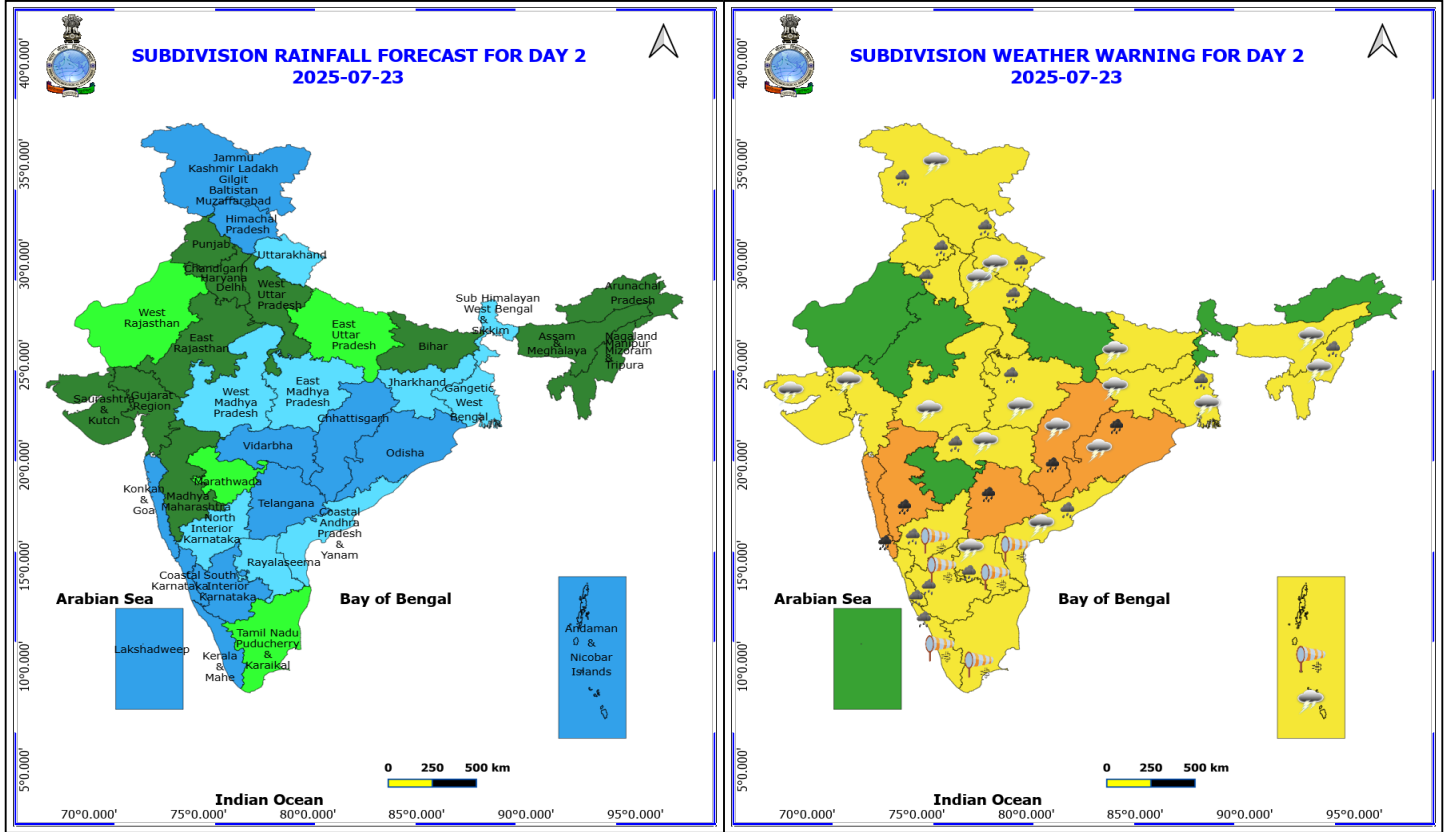
(Service to the nation since 1875)



eastcentral Arabian Sea & adjoining, some parts of westcentral Arabian Sea, northern parts of southeast Arabian Sea and adjoining southwest Arabian Sea, along and off, Kerala, Karnataka, Goa & south Konkan coasts, Tamil Nadu, South Andhra Pradesh coasts, over Lakshadweep, Maldives, Comorin areas, south Bay of Bengal & many parts of central Bay of Bengal, over Gulf of Mannar, along and off Sri Lanka coast, over Andaman Sea.

- **Squally weather with wind speed 45 - 55 kmph gusting to 65 kmph** likely to prevail over many parts of central and adjoining south Bay of Bengal, many parts of north Andaman Sea. Fishermen are advised not venture into these areas.

-



23 July (Day 2)

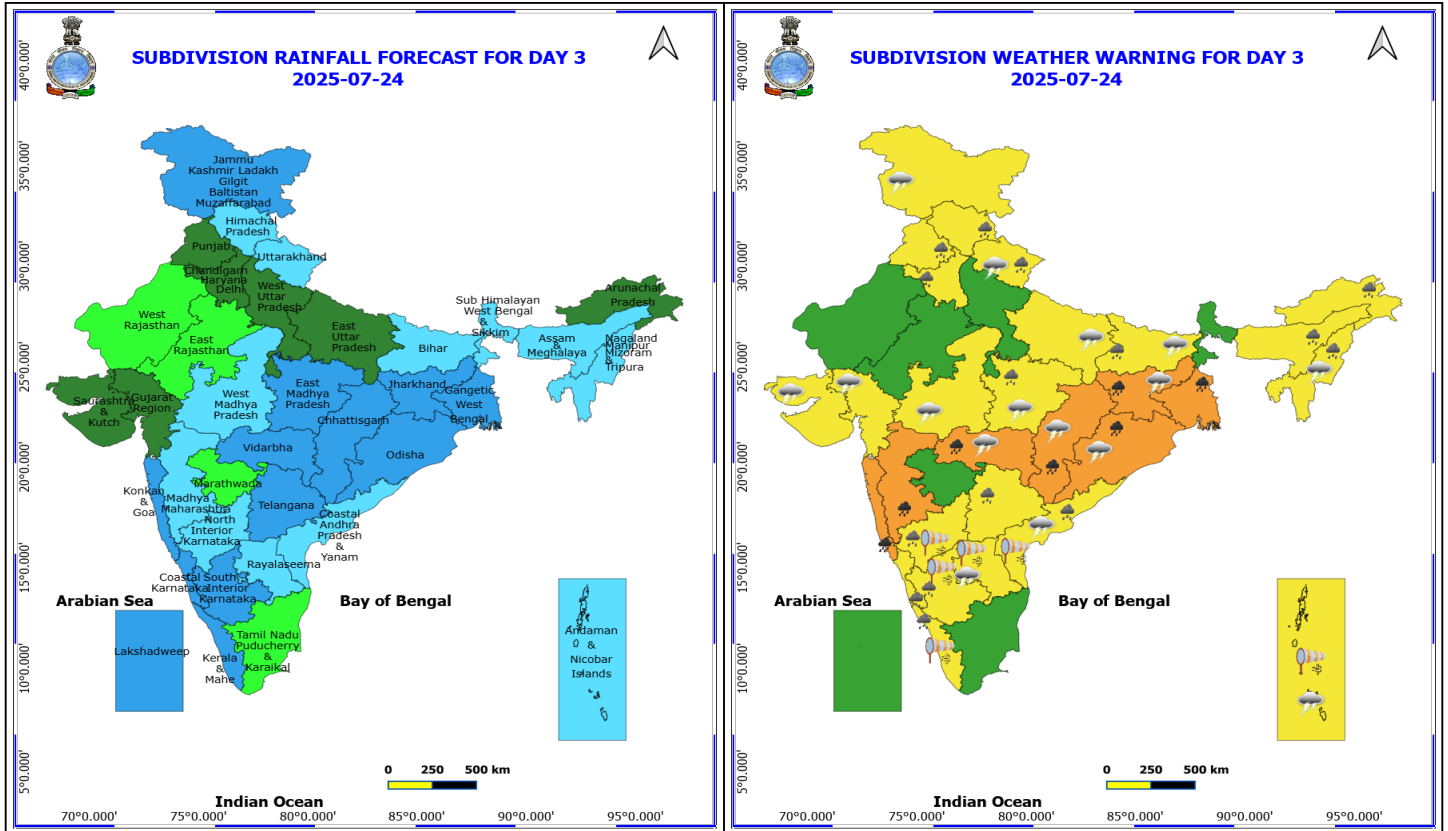
- ❖ **Heavy to Very Heavy Rainfall** very likely at isolated places over Chhattisgarh, Konkan & Goa, Madhya Maharashtra, Odisha and Telangana.
- ❖ **Heavy Rainfall** very likely at isolated places over Andhra Pradesh, East Madhya Pradesh, Gangetic West Bengal, Haryana, Chandigarh & Delhi, Himachal Pradesh, Jammu-Kashmir-Ladakh-Gilgit-Baltistan-Muzaffarabad, Karnataka, Kerala & Mahe, Nagaland, Manipur, Mizoram and Tripura, Punjab, Uttarakhand, Vidarbha and West Uttar Pradesh.
- ❖ **Thunderstorm accompanied with lightning & gusty winds(40-50kmph)** very likely at isolated places over Andaman & Nicobar Islands.
- ❖ **Thunderstorm accompanied with lightning & gusty winds(30-40kmph)** very likely at isolated places over Bihar, Jammu-Kashmir-Ladakh-Gilgit-Baltistan-Muzaffarabad, Jharkhand, Odisha and Uttarakhand.
- ❖ **Thunderstorm accompanied with Lightning** very likely at isolated places over Andhra Pradesh, Assam & Meghalaya, Chhattisgarh, Gangetic West Bengal, Gujarat State, Madhya Pradesh, Nagaland, Manipur, Mizoram and Tripura, Vidarbha and West Uttar Pradesh.
- ❖ **Strong Surface Winds** very likely at isolated places over Andaman & Nicobar Islands, Andhra Pradesh, Interior Karnataka, Kerala & Mahe and Tamil Nadu Puducherry & Karaikal.
- **Squally wind speed reaching 45 kmph to 55 kmph gusting to 65 kmph** is likely to prevail along and off Somalia, Yemen & south Oman coasts, most parts of westcentral Arabian Sea & adjoining parts of eastcentral Arabian Sea, some parts of southwest Arabian Sea.
- **Squally weather with wind speed 40 - 50 kmph gusting to 60 kmph** likely to prevail over many parts of eastcentral Arabian Sea & adjoining, some parts of westcentral Arabian Sea, northern parts of southeast Arabian Sea and adjoining southwest Arabian Sea, along and off Gujarat & Konkan coasts, Tamil

***Red color warning does not mean "Red Alert" Red color warning means "Take Action"**
 Forecast and warning for any day is valid from 0830 hours IST of day till 0830 hours IST of next day
 For more details kindly visit <https://mausam.imd.gov.in> or contact 011-2434-4599
 (Service to the nation since 1875)



Nadu, South Andhra Pradesh coasts, over Lakshadweep, Maldives, Comorin areas, south Bay of Bengal & most parts of central Bay of Bengal, over Gulf of Mannar, along and off Sri Lanka coast, over Andaman Sea.

- **Squally weather with wind speed 45 - 55 kmph gusting to 65 kmph** likely to prevail over many parts of central and south Bay of Bengal, many parts of north Andaman Sea. Fishermen are advised not venture into these areas.



24 July (Day 3)

- ❖ **Heavy to Very Heavy Rainfall** very likely at isolated places over Chhattisgarh, Gangetic West Bengal, Jharkhand, Konkan & Goa, Madhya Maharashtra, Odisha and Vidarbha.
- ❖ **Heavy Rainfall** very likely at isolated places over Arunachal Pradesh, Assam & Meghalaya, Bihar, Coastal Andhra Pradesh, East Madhya Pradesh, Haryana, Chandigarh & Delhi, Himachal Pradesh, Karnataka, Kerala & Mahe, Nagaland, Manipur, Mizoram and Tripura, Punjab, Telangana and Uttarakhand.
- ❖ **Thunderstorm accompanied with lightning & gusty winds(40-50kmph)** very likely at isolated places over Andaman & Nicobar Islands.
- ❖ **Thunderstorm accompanied with lightning & gusty winds(30-40kmph)** very likely at isolated places over Bihar, Jammu-Kashmir-Ladakh-Gilgit-Baltistan-Muzaffarabad, Jharkhand, Odisha and Uttarakhand.
- ❖ **Thunderstorm accompanied with Lightning** very likely at isolated places over Andhra Pradesh, Chhattisgarh, East Uttar Pradesh, Gujarat State, Madhya Pradesh, Nagaland, Manipur, Mizoram and Tripura and Vidarbha.
- ❖ **Strong Surface Winds** very likely at isolated places over Andaman & Nicobar Islands, Andhra Pradesh, Interior Karnataka and Kerala & Mahe.
- **Squally wind speed reaching 45 kmph to 55 kmph gusting to 65 kmph** is likely to prevail along and off Somalia, Yemen & south Oman coasts, most parts of westcentral Arabian Sea & adjoining parts of eastcentral Arabian Sea, some parts of southwest Arabian Sea.
- **Squally weather with wind speed 40 - 50 kmph gusting to 60 kmph** likely to prevail over many parts of eastcentral Arabian Sea & adjoining, some parts of westcentral Arabian Sea, northern parts of southeast Arabian Sea and adjoining southwest Arabian Sea, along and off Gujarat & Konkan coasts, Tamil Nadu, Andhra Pradesh, Odisha & West Bengal coasts, over Lakshadweep, Maldives, Comorin areas, south Bay of

***Red color warning does not mean "Red Alert" Red color warning means "Take Action"**

Forecast and warning for any day is valid from 0830 hours IST of day till 0830 hours IST of next day

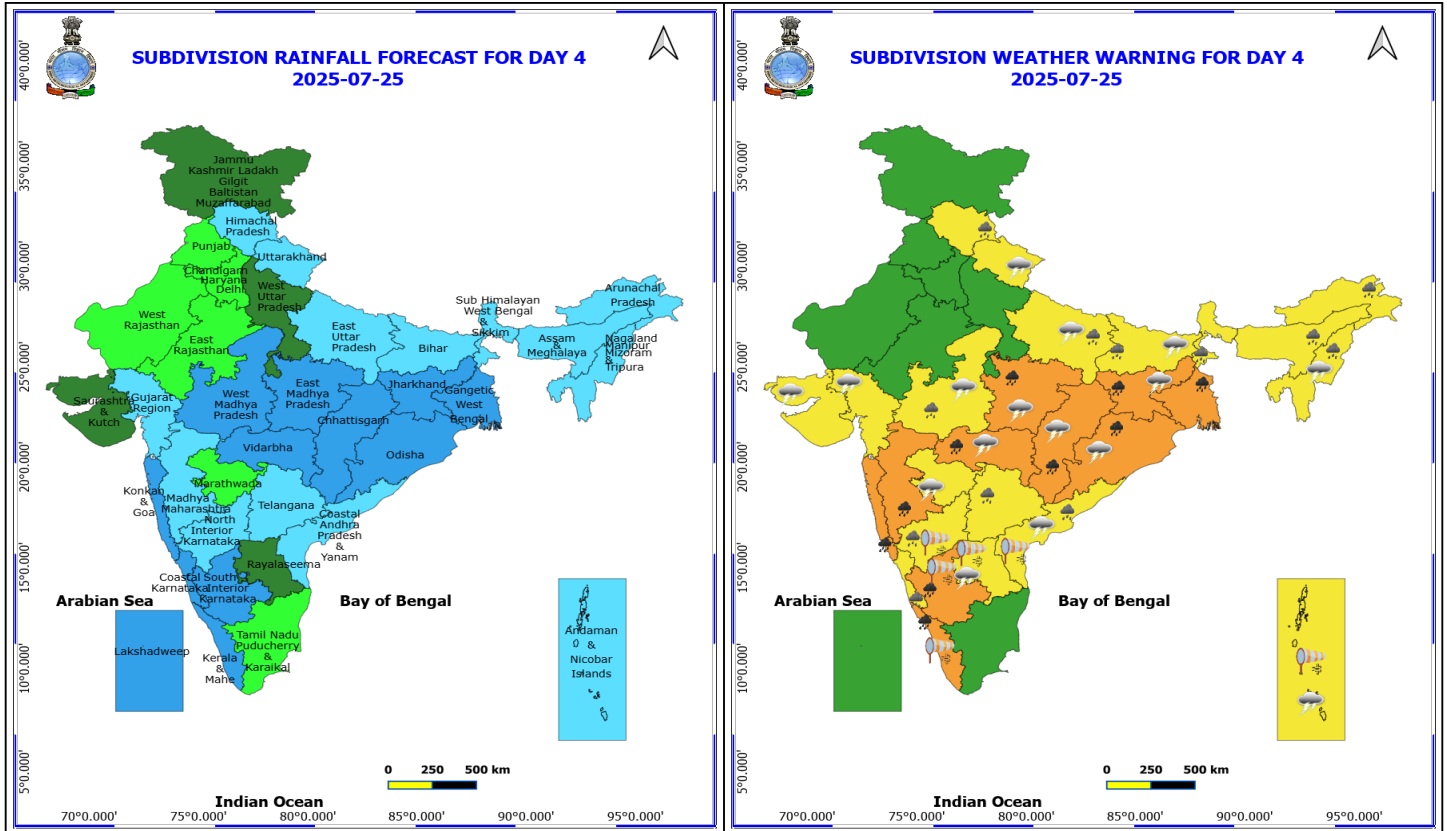
For more details kindly visit <https://mausam.imd.gov.in> or contact 011-2434-4599

(Service to the nation since 1875)



Bengal, most parts of central Bay of Bengal & adjoining parts of north Bay of Bengal, over Gulf of Mannar, along and off Sri Lanka coast, over Andaman Sea.

- **Squally weather with wind speed 45 - 55 kmph gusting to 65 kmph** likely to prevail over most parts of central and south Bay of Bengal, many parts of north Andaman Sea. Fishermen are advised not venture into these areas.



25 July (Day 4)

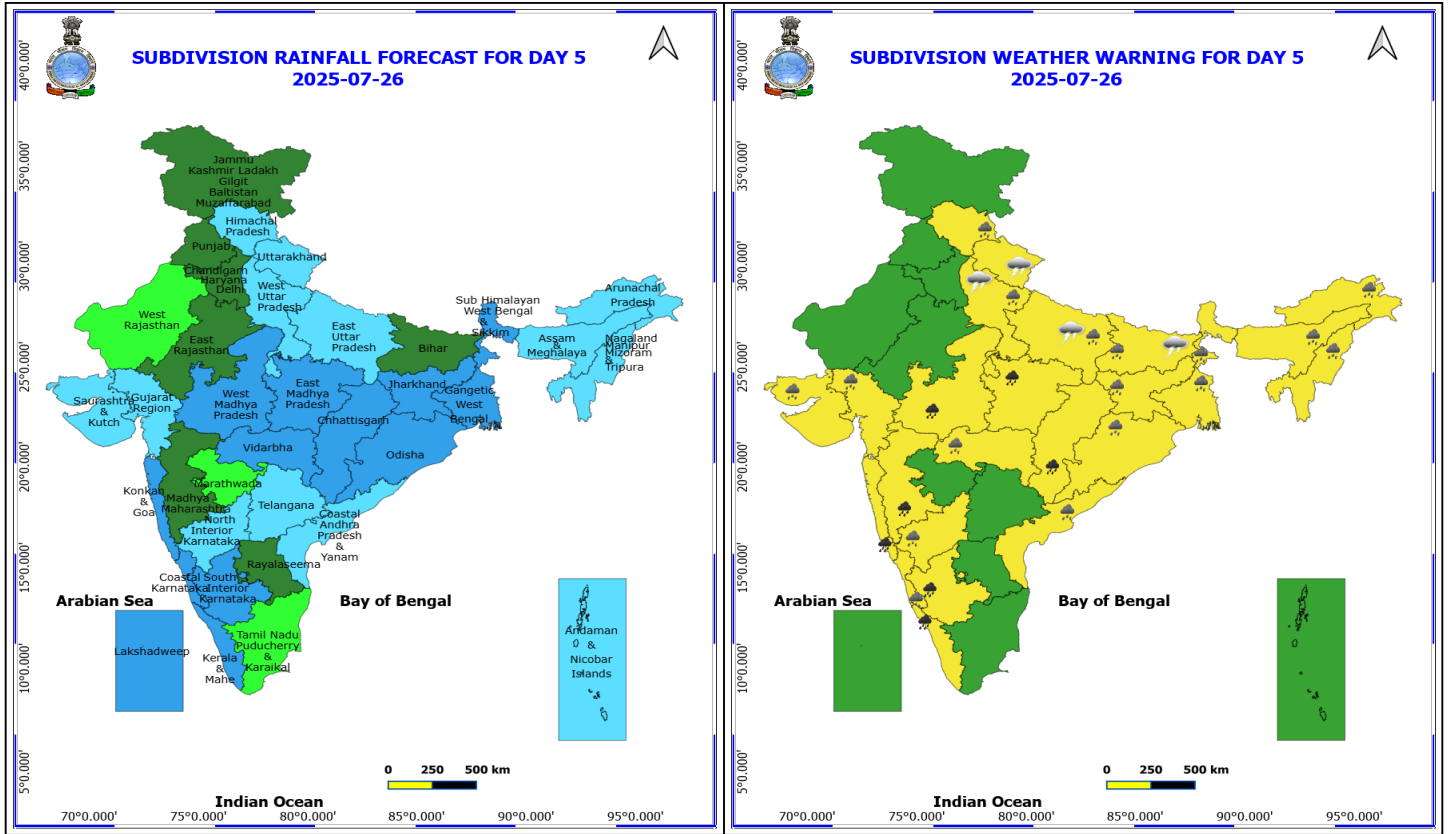
- ❖ **Heavy to Very Heavy Rainfall** likely at isolated places over Chhattisgarh, East Madhya Pradesh, Gangetic West Bengal, Jharkhand, Kerala & Mahe, Konkan & Goa, Madhya Maharashtra, Odisha, South Interior Karnataka and Vidarbha.
- ❖ **Heavy Rainfall** likely at isolated places over Arunachal Pradesh, Assam & Meghalaya, Bihar, Coastal Andhra Pradesh, Coastal Karnataka, East Uttar Pradesh, Himachal Pradesh, Nagaland, Manipur, Mizoram and Tripura, North Interior Karnataka, Sub Himalayan West Bengal & Sikkim, Telangana and West Madhya Pradesh.
- ❖ **Thunderstorm accompanied with lightning & gusty winds(40-50kmph)** likely at isolated places over Andaman & Nicobar Islands.
- ❖ **Thunderstorm accompanied with lightning & gusty winds(30-40kmph)** likely at isolated places over Bihar, Jharkhand, Odisha and Uttarakhand.
- ❖ **Thunderstorm accompanied with Lightning** likely at isolated places over Andhra Pradesh, Chhattisgarh, East Uttar Pradesh, Gujarat State, Madhya Pradesh, Marathwada, Nagaland, Manipur, Mizoram and Tripura and Vidarbha.
- ❖ **Strong Surface Winds** likely at isolated places over Andaman & Nicobar Islands, Andhra Pradesh, Interior Karnataka and Kerala & Mahe.
- **Squally wind speed reaching 45 kmph to 55 kmph gusting to 65 kmph** is likely to prevail along and off Somalia, Yemen & south Oman coasts, most parts of westcentral Arabian Sea & adjoining parts of eastcentral Arabian Sea, some parts of southwest Arabian Sea.
- **Squally weather with wind speed 40 - 50 kmph gusting to 60 kmph** likely to prevail over many parts of eastcentral Arabian Sea & adjoining, some parts of westcentral Arabian Sea, northern parts of southeast

***Red color warning does not mean "Red Alert" Red color warning means "Take Action"**
 Forecast and warning for any day is valid from 0830 hours IST of day till 0830 hours IST of next day
 For more details kindly visit <https://mausam.imd.gov.in> or contact 011-2434-4599
 (Service to the nation since 1875)



Arabian Sea and adjoining southwest Arabian Sea, along and off Gujarat & Konkan coasts, Tamil Nadu, Andhra Pradesh, Odisha & West Bengal coasts, over Lakshadweep, Maldives, Comorin areas, south Bay of Bengal, most parts of central Bay of Bengal & adjoining parts of north Bay of Bengal, over Gulf of Mannar, along and off Sri Lanka coast, over Andaman Sea.

- **Squally weather with wind speed 45 - 55 kmph gusting to 65 kmph** likely to prevail over most parts of central and south Bay of Bengal, many parts of north Andaman Sea. Fishermen are advised not venture into these areas.



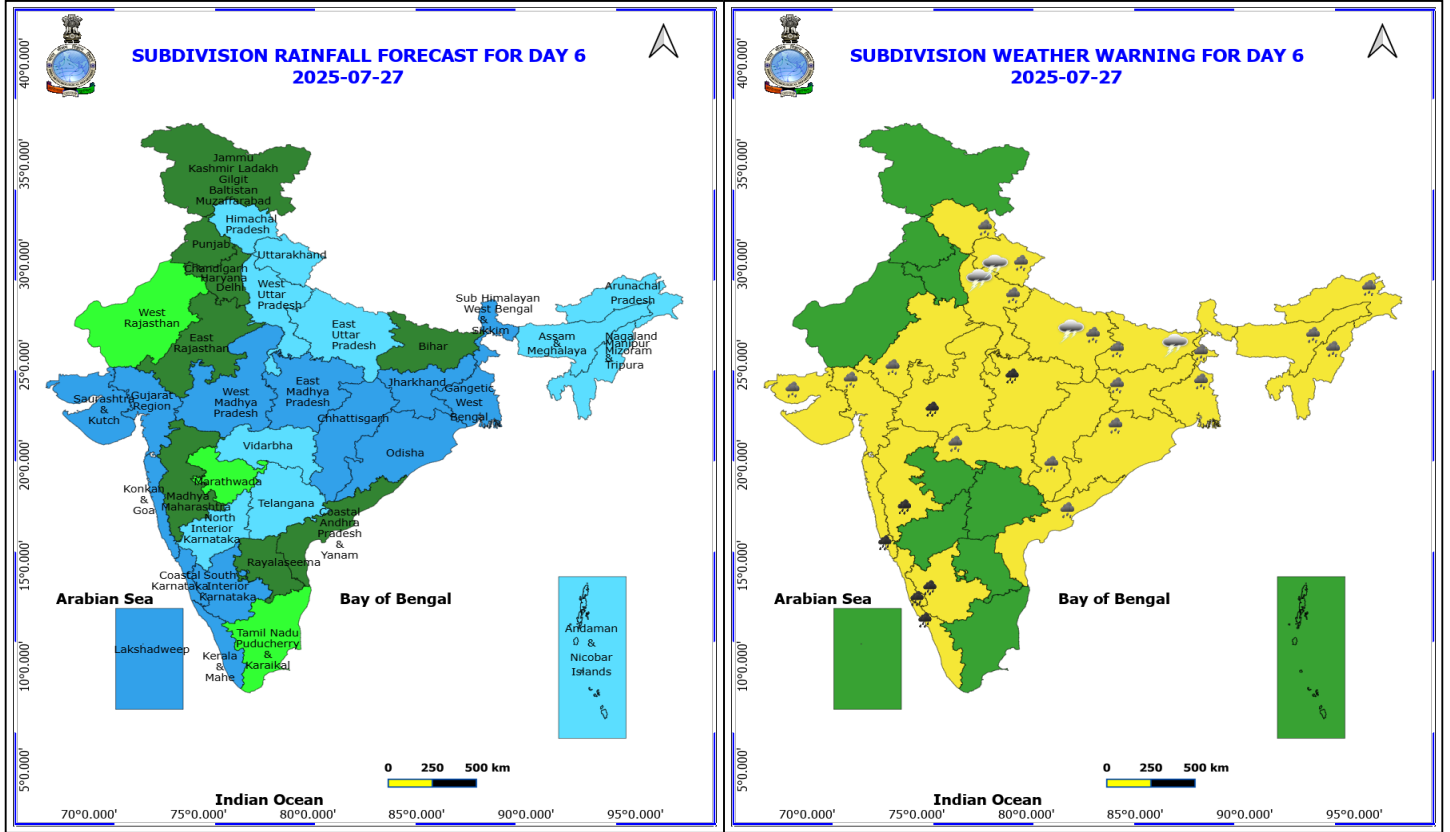
26 July (Day 5)

- ❖ **Heavy to Very Heavy Rainfall** likely at isolated places over Chhattisgarh, Kerala & Mahe, Konkan & Goa, Madhya Maharashtra, Madhya Pradesh and South Interior Karnataka.
- ❖ **Heavy Rainfall** likely at isolated places over Arunachal Pradesh, Assam & Meghalaya, Bihar, Coastal Andhra Pradesh, Coastal Karnataka, Gujarat State, Himachal Pradesh, Jharkhand, Nagaland, Manipur, Mizoram and Tripura, North Interior Karnataka, Odisha, Uttar Pradesh, Vidarbha and West Bengal & Sikkim.
- ❖ **Thunderstorm accompanied with lightning & gusty winds(30-40kmph)** likely at isolated places over Bihar and Uttarakhand.
- ❖ **Thunderstorm accompanied with Lightning** likely at isolated places over Uttar Pradesh.

No Fishermen Warning

***Red color warning does not mean "Red Alert" Red color warning means "Take Action"**
Forecast and warning for any day is valid from 0830 hours IST of day till 0830 hours IST of next day
For more details kindly visit <https://mausam.imd.gov.in> or contact 011-2434-4599

(Service to the nation since 1875)

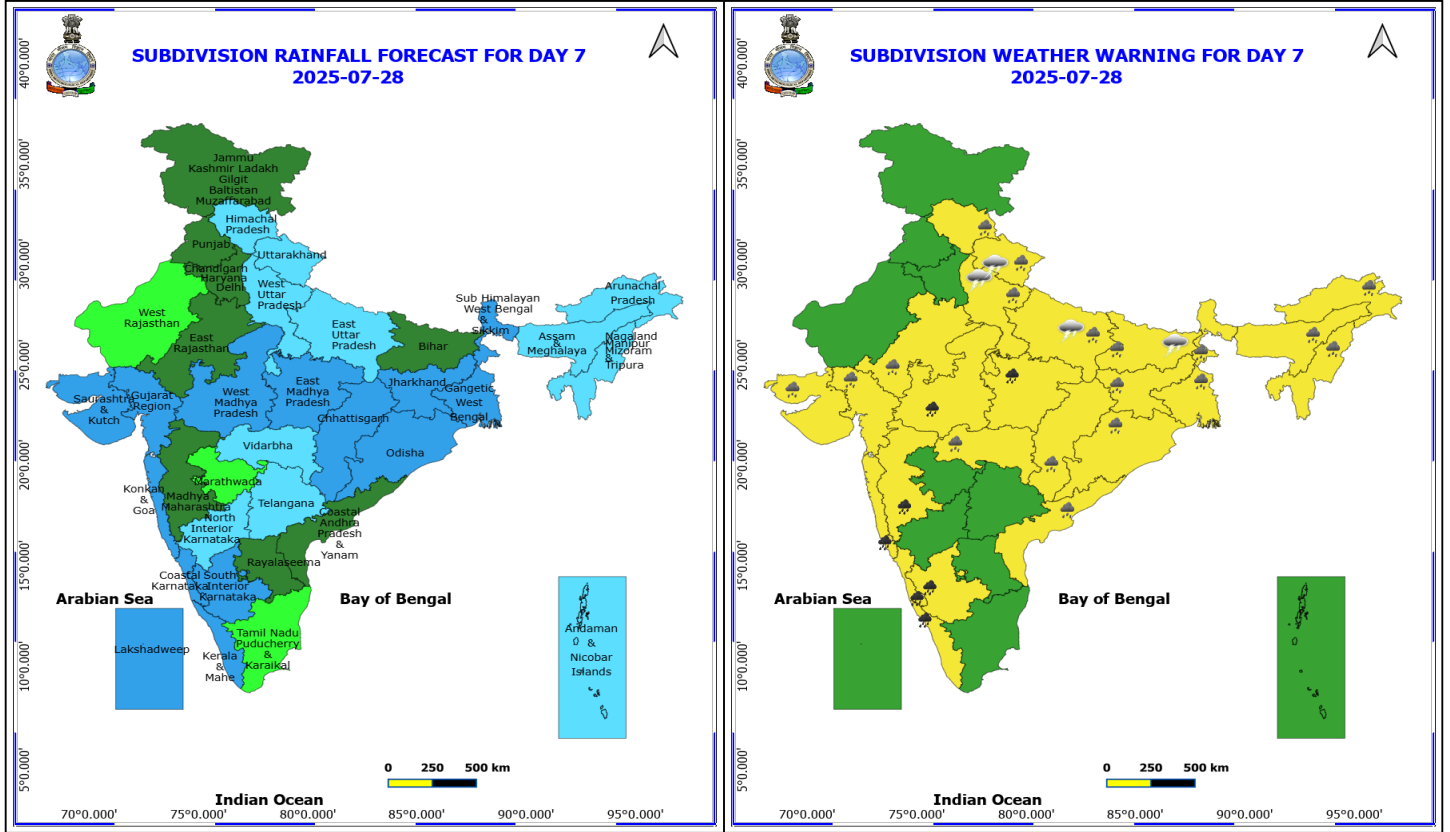


27 July (Day 6)

- ❖ **Heavy to Very Heavy Rainfall** likely at isolated places over Coastal Karnataka, Kerala & Mahe, Konkan & Goa, Madhya Maharashtra, Madhya Pradesh and South Interior Karnataka.
- ❖ **Heavy Rainfall** likely at isolated places over Arunachal Pradesh, Assam & Meghalaya, Bihar, Chhattisgarh, Coastal Andhra Pradesh, East Rajasthan, Gujarat State, Himachal Pradesh, Jharkhand, Nagaland, Manipur, Mizoram and Tripura, Odisha, Uttar Pradesh, Uttarakhand, Vidarbha and West Bengal & Sikkim.
- ❖ **Thunderstorm accompanied with lightning & gusty winds(30-40kmph)** likely at isolated places over Bihar and Uttarakhand.
- ❖ **Thunderstorm accompanied with Lightning** likely at isolated places over Uttar Pradesh.

No Fishermen Warning

***Red color warning does not mean "Red Alert" Red color warning means "Take Action"**
Forecast and warning for any day is valid from 0830 hours IST of day till 0830 hours IST of next day
For more details kindly visit <https://mausam.imd.gov.in> or contact 011-2434-4599



28 July (Day 7)

- ❖ **Heavy to Very Heavy Rainfall** likely at isolated places over Coastal Karnataka, Kerala & Mahe, Konkan & Goa, Madhya Maharashtra, Madhya Pradesh and South Interior Karnataka.
- ❖ **Heavy Rainfall** likely at isolated places over Arunachal Pradesh, Assam & Meghalaya, Bihar, Chhattisgarh, Coastal Andhra Pradesh, East Rajasthan, Gujarat State, Himachal Pradesh, Jharkhand, Nagaland, Manipur, Mizoram and Tripura, Odisha, Uttar Pradesh, Uttarakhand, Vidarbha and West Bengal & Sikkim.
- ❖ **Thunderstorm accompanied with lightning & gusty winds(30-40kmph)** likely at isolated places over Bihar and Uttarakhand.
- ❖ **Thunderstorm accompanied with Lightning** likely at isolated places over Uttar Pradesh.

No Fishermen Warning

***Red color warning does not mean "Red Alert" Red color warning means "Take Action"**
Forecast and warning for any day is valid from 0830 hours IST of day till 0830 hours IST of next day
For more details kindly visit <https://mausam.imd.gov.in> or contact 011-2434-4599

(Service to the nation since 1875)

Flash Flood Warnings

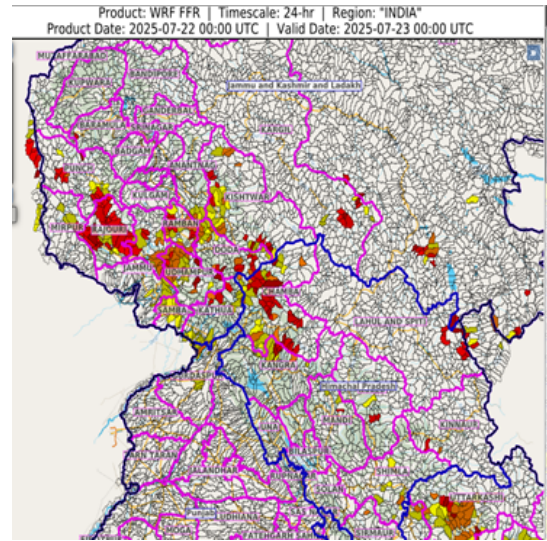
24 hours Outlook for the Flash Flood Risk (FFR) till 0530 IST of 23-07-2025 :

Low to Moderate flash flood risk likely over few watersheds & neighbourhoods of following Met Sub-divisions during next 24 hours.

Jammu & Kashmir & Ladakh – Kathua, Samba, Udhampur, Doda, Kishtwar, Ramban, Reasi, Jammu, Rajauri, Mirpur, Punch, Baramula, Anantnag, Kargil & Leh districts.

Himachal Pradesh – Shimla, Sirmaur, Kinnaur, Mandi, Kullu, Lahual & Spiti, Kangra and Chamba districts.

Surface runoff/ Inundation may occur at some fully saturated soils & low-lying areas over Area of Concern (AoC) as shown in map due to expected rainfall occurrence in next 24 hours.

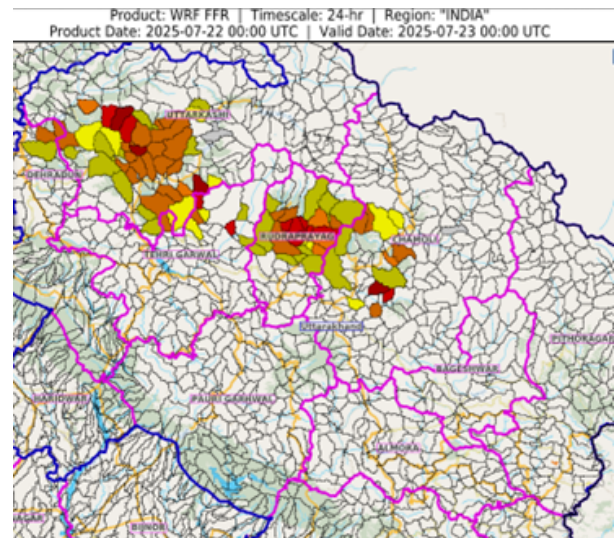


24 hours Outlook for the Flash Flood Risk (FFR) till 0530 IST of 23-07-2025 :

Low to Moderate flash flood risk likely over few watersheds & neighbourhoods of following Met Sub-divisions during next 24 hours.

Uttarakhand – Dehradun, Uttarkashi, Tehri Garhwal, Rudraprayag and Chamoli districts.

Surface runoff/ Inundation may occur at some fully saturated soils & low-lying areas over Area of Concern (AoC) as shown in map due to expected rainfall occurrence in next 24 hours.



24 hours Outlook for the Flash Flood Risk (FFR) till 0530 IST of 23-07-2025 :

Low to Moderate flash flood risk likely over few watersheds & neighbourhoods of following Met Sub-divisions during next 24 hours.

Kerala & Mahe – Kasargod, Kannur, Mahe, Kozikod, Wayanad, Mallapuram, Ernakulam, Kottayam, Alappuzha, Pattanamittia, Trishur, Kollam, Idukki,

***Red color warning does not mean "Red Alert" Red color warning means "Take Action"**

Forecast and warning for any day is valid from 0830 hours IST of day till 0830 hours IST of next day

For more details kindly visit <https://mausam.imd.gov.in> or contact 011-2434-4599

(Service to the nation since 1875)

Thiruvananthapuram and Palakkad districts.

Coastal Karnataka – Uttar Kannada, Dakshin Kannada and Udupi districts.

Konkan & Goa – South Goa, North Goa, Sindhudurg, Ratnagiri, Raigarh, Suburban Mumbai and Palghar districts.

Surface runoff/ Inundation may occur at some fully saturated soils & low-lying areas over Area of Concern (AoC) as shown in map due to expected rainfall occurrence in next 24 hours.

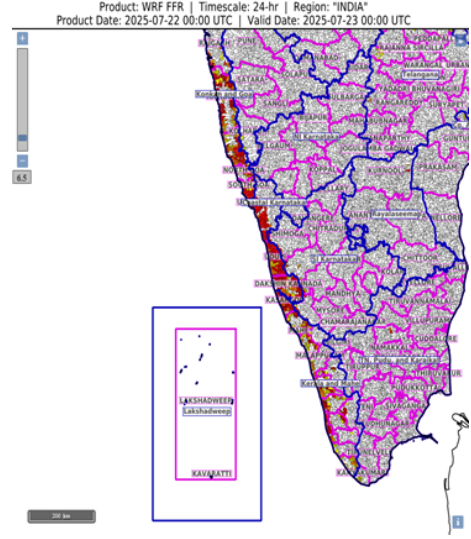




Table-1

7 Days Rainfall Forecast

S.No.	Subdivision	22- Jul	23- Jul	24- Jul	25- Jul	26- Jul	27- Jul	28- Jul
		Day 1	Day 2	Day 3	Day 4	Day 5	Day 6	Day 7
1	ANDAMAN & NICOBAR ISLANDS	WS	WS	FWS	FWS	FWS	FWS	FWS
2	ARUNACHAL PRADESH	FWS	SCT	SCT	FWS	FWS	FWS	FWS
3	ASSAM & MEHGHALAYA	SCT	SCT	FWS	FWS	FWS	FWS	FWS
4	N. M. M. & T.	SCT	SCT	FWS	FWS	FWS	FWS	FWS
5	S.H. WEST BENGAL & SIKKIM	FWS	FWS	FWS	FWS	WS	WS	WS
6	GANGETIC WEST BENGAL	SCT	FWS	WS	WS	WS	WS	WS
7	ODISHA	FWS	WS	WS	WS	WS	WS	WS
8	JHARKHAND	SCT	FWS	WS	WS	WS	WS	WS
9	BIHAR	ISOL	SCT	FWS	FWS	SCT	SCT	SCT
10	EAST UTTAR PRADESH	ISOL	ISOL	SCT	FWS	FWS	FWS	FWS
11	WEST UTTAR PRADESH	SCT	SCT	SCT	SCT	FWS	FWS	FWS
12	UTTARAKHAND	WS	FWS	FWS	FWS	FWS	FWS	FWS
13	HARYANA, CHD & DELHI	WS	SCT	SCT	ISOL	SCT	SCT	SCT
14	PUNJAB	WS	SCT	SCT	ISOL	SCT	SCT	SCT
15	HIMACHAL PRADESH	WS	WS	FWS	FWS	FWS	FWS	FWS
16	JAMMU AND KASHMIR AND LADAKH	WS	WS	WS	SCT	SCT	SCT	SCT
17	WEST RAJASTHAN	ISOL	ISOL	ISOL	ISOL	ISOL	ISOL	ISOL
18	EAST RAJASTHAN	SCT	SCT	ISOL	ISOL	SCT	SCT	SCT
19	WEST MADHYA PRADESH	WS	FWS	FWS	WS	WS	WS	WS
20	EAST MADHYA PRADESH	FWS	FWS	WS	WS	WS	WS	WS
21	GUJRAT REGION	SCT	SCT	SCT	FWS	FWS	WS	WS
22	SAURASHTRA & KUTCH	SCT	SCT	SCT	SCT	FWS	WS	WS
23	KONKAN & GOA	WS	WS	WS	WS	WS	WS	WS
24	MADHYA MAHARASHTRA	SCT	SCT	FWS	FWS	SCT	SCT	SCT
25	MARATHWADA	SCT	ISOL	ISOL	ISOL	ISOL	ISOL	ISOL
26	VIDARBHA	FWS	WS	WS	WS	WS	FWS	FWS
27	CHATTISGARH	WS	WS	WS	WS	WS	WS	WS
28	COASTAL ANDHRA PRADESH	WS	FWS	FWS	FWS	FWS	SCT	SCT
29	TELANGANA	WS	WS	WS	FWS	FWS	FWS	FWS
30	RAYALASEEMA	FWS	FWS	FWS	SCT	SCT	SCT	SCT
31	TAMILNADU & PUDUCHERRY	ISOL	ISOL	ISOL	ISOL	ISOL	ISOL	ISOL
32	COSTAL KARNATAKA	WS	WS	WS	WS	WS	WS	WS
33	NORTH INTERIOR KARNATAKA	FWS	FWS	FWS	FWS	FWS	FWS	FWS
34	SOUTH INTERIOR KARNATAKA	WS	WS	WS	WS	WS	WS	WS
35	KERALA	WS	WS	WS	WS	WS	WS	WS
36	LAKSHDWEEP	WS	WS	WS	WS	WS	WS	WS

Legend	Category	%Stations
WS	Widespread/Most Places	76-100
FWS	Fairly Widespread/Many Places	51-75
SCT	Scattered/ A Few Places	26-50
ISOL	Isolated Places	1-25
DRY	No Rain	0

*Red color warning does not mean "Red Alert" Red color warning means "Take Action"
Forecast and warning for any day is valid from 0830 hours IST of day till 0830 hours IST of next day
For more details kindly visit <https://mausam.imd.gov.in> or contact 011-2434-4599

(Service to the nation since 1875)

Fig. 1: Maximum Temperatures Dated 2025-07-22

Fig. 2: Departure of Maximum Temp. Dated 2025-07-22

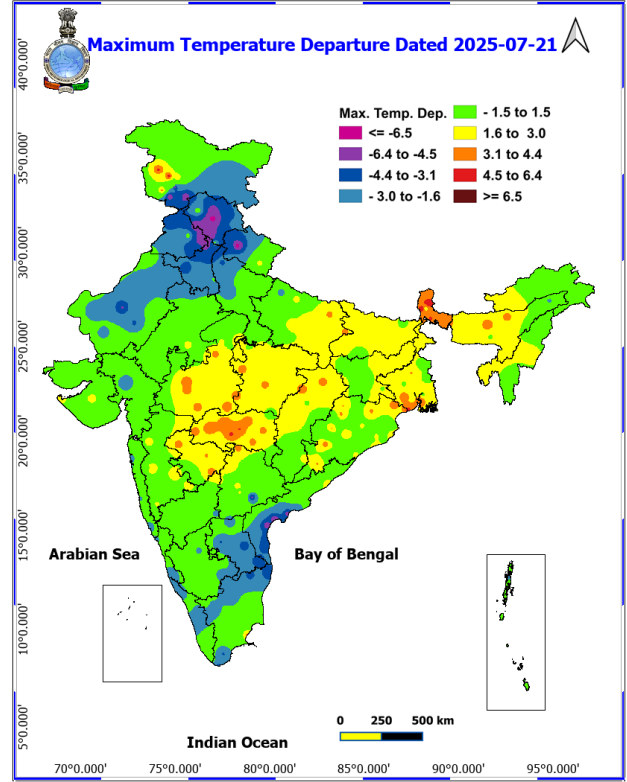
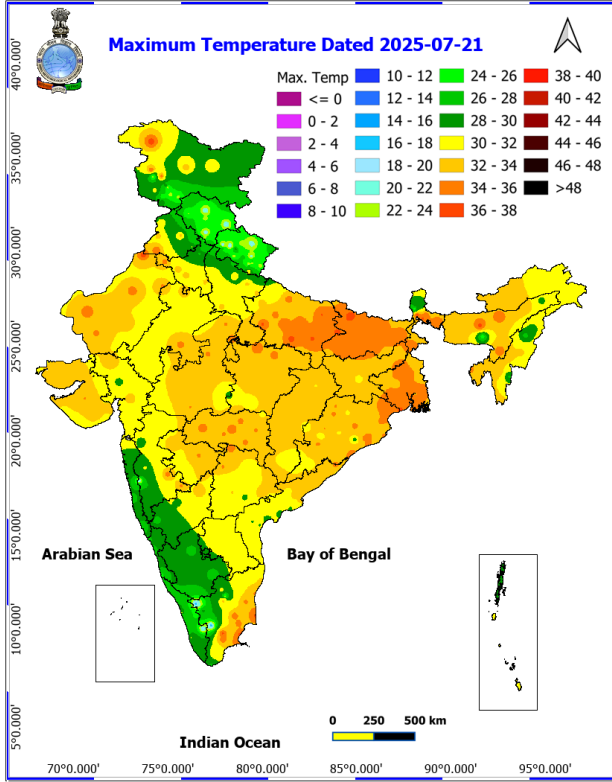
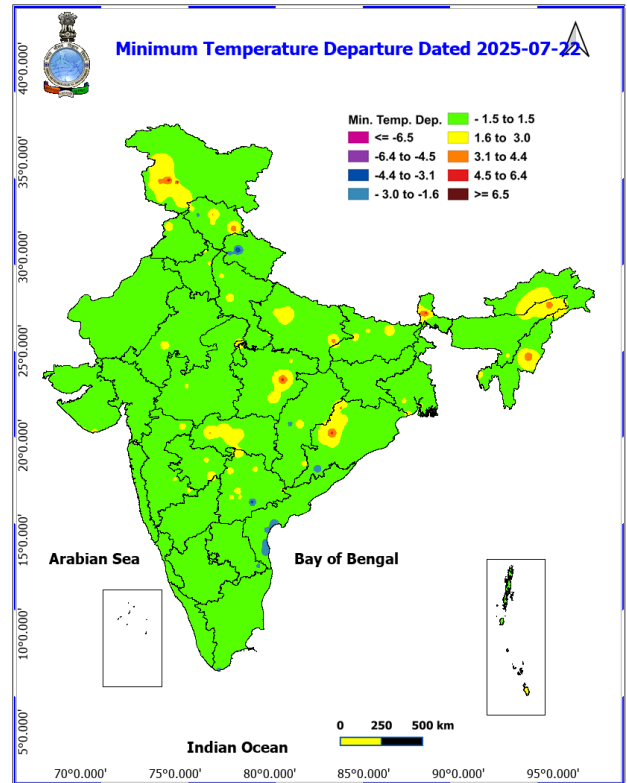
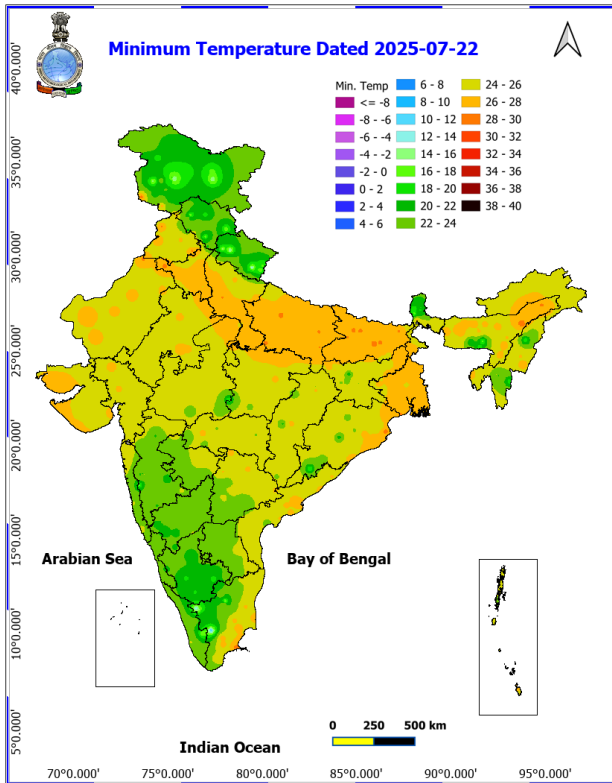
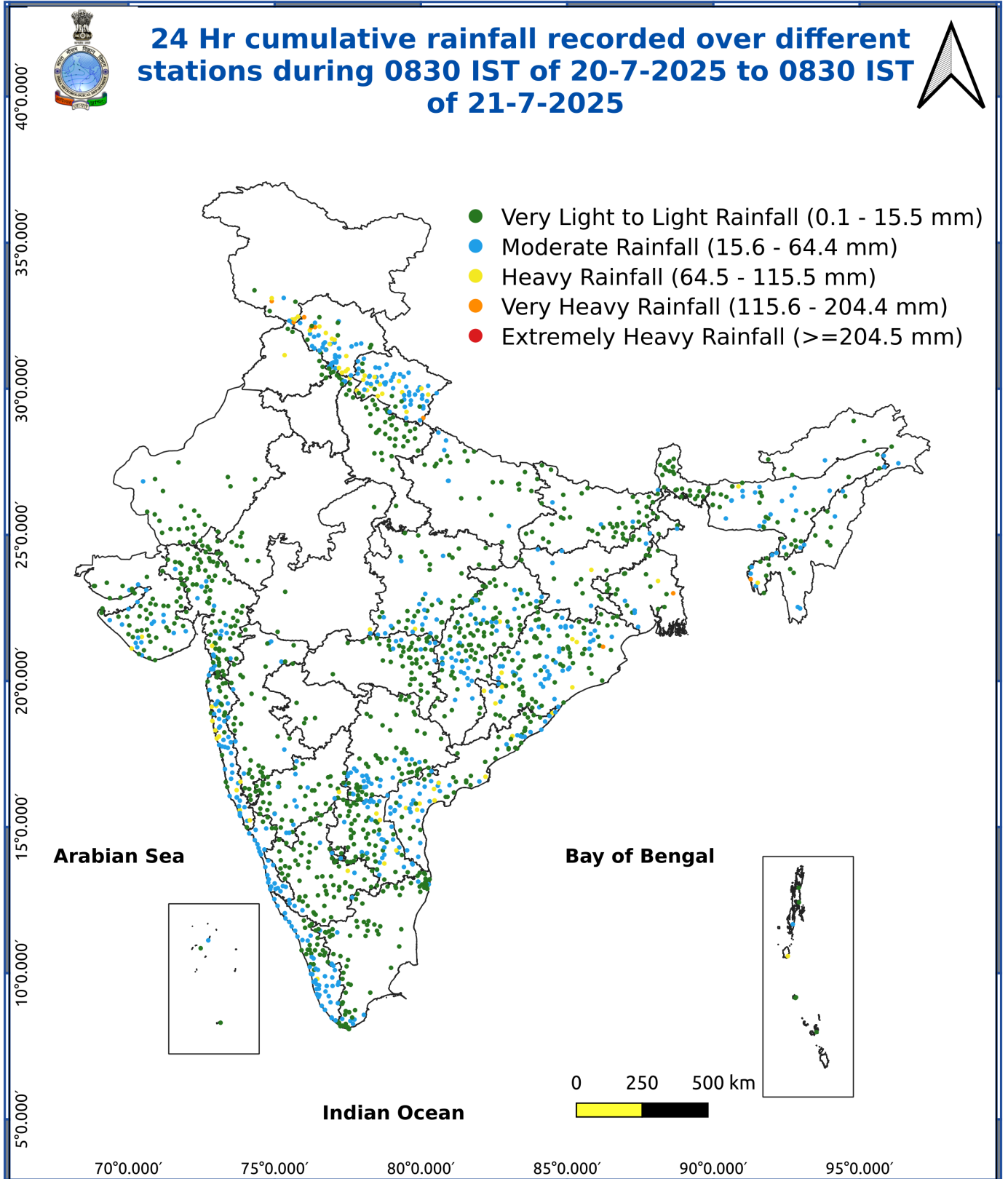


Fig. 3: Minimum Temperatures Dated 2025-07-22

Fig. 4: Departure of Minimum Temp. Dated 2025-07-22





Impact & Action Suggested

Very heavy rainfall over Himachal Pradesh, Uttarakhand on 22nd; Konkan & Goa, Ghat areas of Madhya Maharashtra during 22nd-27th; Kerala & Mahe, South Interior Karnataka during 25th-27th; Telangana on 22nd & 23rd; Coastal Karnataka on 22nd & 27th; West Madhya Pradesh on 26th & 27th; East Madhya Pradesh during 25th-27th; Vidarbha, Jharkhand on 24th & 25th; Chhattisgarh & Odisha during 23rd-26th July.

Impact Expected

Localized Flooding of roads, water logging in low lying areas and closure of underpasses mainly in urban areas of **(Rajasthan and West Madhya Pradesh)** the above region.

Occasional reduction in visibility due to heavy rainfall.

Disruption of traffic in major cities due to water logging in roads leading to increased travel time.

Minor damage to kutcha roads.

Possibilities of damage to vulnerable structure.

Localized Landslides/Mudslides/landslips/mudslips/landsinks/mudsinks.

Damage to horticulture and standing crops in some areas due to inundation.

It may lead to riverine flooding in some river catchments (for riverine flooding please visit Web page of CWC)

Action Suggested

Check for traffic congestion on your route before leaving for your destination.

Follow any traffic advisories that are issued in this regard.

Avoid going to areas that face the water logging problems often.

Avoid staying in vulnerable structure.

Agromet advisories for various parts of the country

Agromet advisories for likely impact of Heavy / Heavy to Very Heavy Rainfall

(Based on the IBF and advisories issued by different AMFUs)

- In **Jammu & Kashmir**, provide adequate drainage facilities in fields of maize, green gram, vegetables and transplanted rice in **Sub Tropical Zone** and maize fields and kharif pulses in **Intermediate Zone**.
- In **Uttarakhand**, maintain proper drainage channels in fields of rice in **Bhabar and Tarai Zone** and black gram in **Hill Zone**. Make necessary arrangements to drain out excess water from barnyard millet, finger millet, cucumber and rice fields in **Sub Humid SubTropic Zone**.
- In **Himachal Pradesh**, make proper drainage channels in the standing crops like maize, finger millet and vegetable fields. Provide staking to tall and leguminous crops and cucumber vines. In **Mid Hills Sub Humid Zone**, undertake harvesting of matured tomato, brinjal, capsicum and fruits and keep the harvested produce at

*Red color warning does not mean "Red Alert" Red color warning means "Take Action"

Forecast and warning for any day is valid from 0830 hours IST of day till 0830 hours IST of next day

For more details kindly visit <https://mausam.imd.gov.in> or contact 011-2434-4599

(Service to the nation since 1875)

safer places.

- In **Tamil Nadu**, provide drainage in rice nursery and recently transplanted rice fields in **Western Zone**; sorghum, sugarcane, maize, rice, banana and coconut fields in **Southern Zone** and standing crops in **High altitude Hilly Zone**.
- In **Kerala**, provide mechanical support to protect banana plants. Ensure proper drainage facilities in banana, coconut and rice in **Central Zone**; banana, coconut, ginger and vegetable fields in **Southern Zone** and rice nursery in **High Altitude Zone**. In **Northern Zone**, postpone sowing / nursery preparation of rice.
- In **Karnataka**, postpone nursery sowing of rice and provide drainage in arecanut fields and banana orchards in **Coastal Zone**. In **Hill Zone**, make arrangements to drain out excess water from rice nurseries, fields of maize, cotton, ginger and plantations of arecanut. In **Southern Transition Zone**, provide proper drainage in arecanut and coconut fields. In **Southern Dry Zone**, provide staking / support to maize, tomato and banana crop. Ensure proper drainage to prevent waterlogging especially in rice, vegetables and spice crops.
- In **Coastal Andhra Pradesh**, ensure proper drainage channels in fields of maize and direct seeded rice in **Krishna Godavari Zone**.
- In **Telangana**, ensure proper drainage facilities in the fields of maize, cotton and soybean.
- Make arrangement to drain out excess water from rice and finger millet nurseries, groundnut, vegetables and orchards in **Konkan** and rice and finger millet nurseries in **ghat areas of Madhya Maharashtra**.
- In **Chhattisgarh**, make arrangements for drainage of excess water from fields of rice, maize, pigeon pea, minor millets and vegetables. Provide mechanical support to tall/weak crops with stakes or bamboo to prevent lodging or breakage.
- In **Odisha**, drain out excess water from rice nurseries and fields of transplanted rice, maize, pulses, vegetable and plantation crops.
- In **Arunachal Pradesh**, maintain drainage in finger millet, orchards, vegetables and transplanted rice. Cover the nursery bed of millet with plastic sheet or shed, and cover the surface of already sown seed with light layer of natural mulches like leaves.
- In **Meghalaya**, maintain proper drainage channels around the nursery beds of rice. Ensure adequate drainage in maize, cow pea, okra, brinjal and pumpkin crop fields to prevent waterlogging. Provide support to banana plant to prevent lodging.

Livestock / Fishery

- Keep the animals inside the shed during heavy rainfall and provide them balanced feed.
- Store feed and fodder in a safe place to prevent spoilage.
- Construct an outlet with proper netting around the ponds to drain out excess water, thereby preventing fish from escaping in case of overflow.

Agromet advisories for likely impact of Thunderstorm / Gusty Winds / Squally Winds

(Based on the IBF and advisories issued by different AMFUs)

- Provide mechanical support to horticultural crops and staking or support to vegetables and young fruit plants / fruit-bearing plants to avoid lodging due to strong winds.

Legends & abbreviations:

- **Heavy Rain:**64.5-115.5mm; **Very Heavy Rain:**115.6-204.4mm; **Extremely Heavy Rain:** >204.4mm.
- **Obsy:** Observatory; Automatic Weather Station; **ARG:** Automatic Rain Gauge; **dist:** District; **NH:** National Highway; **KVK:** Krishi Vigyan Kendra; **DVC:** Damodar Valley Corporation; **PTO:** Part Time Office, **Aero:** Aerodrome, **IAF:** Indian Air Force.

Region wise classification of meteorological Sub-Divisions:

- **Northwest India:** Western Himalayan Region (Jammu-Kashmir-Ladakh-Gilgit-Baltistan-Muzaffarabad, Himachal Pradesh and Uttarakhand); Punjab, Haryana-Chandigarh-Delhi; West Uttar Pradesh, East Uttar

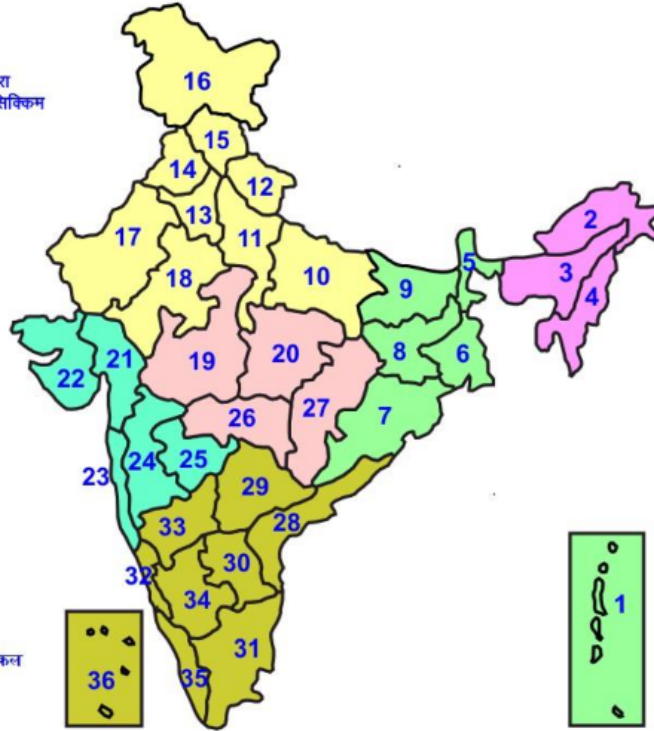


Pradesh, West Rajasthan and East Rajasthan.

- **Central India:** West Madhya Pradesh, East Madhya Pradesh, Vidarbha and Chhattisgarh.
- **East India:** Bihar, Jharkhand, Sub-Himalayan West Bengal & Sikkim; Gangetic West Bengal, Odisha and Andaman & Nicobar Islands.
- **Northeast India:** Arunachal Pradesh, Assam & Meghalaya and Nagaland, Manipur, Mizoram & Tripura.
- **West India:** Gujarat Region, Saurashtra & Kutch, Konkan & Goa, Madhya Maharashtra and Marathawada.
- **South India:** Coastal Andhra Pradesh & Yanam, Telangana, Rayalaseema, Coastal Karnataka, North Interior Karnataka, South Interior Karnataka

LEGENDS

- 1 अंडमान और निकोबार द्वीप समुह
- 2 अरुणाचल प्रदेश
- 3 असम और मेघालय
- 4 नागालैंड मनीपुर मीजोरम और त्रिपुरा
- 5 उप हिमालय पश्चिम बंगाल एवं सिक्किम
- 6 पश्चिम बंगाल
- 7 ओडिसा
- 8 झारखंड
- 9 बिहार
- 10 पूर्वी उत्तर प्रदेश
- 11 पश्चिम उत्तर प्रदेश
- 12 उत्तराखंड
- 13 हरियाणा चंडिगढ़ एवं दिल्ली
- 14 पंजाब
- 15 हिमाचल प्रदेश
- 16 जम्मू एवं कश्मीर एवं लद्दाख
- 17 पश्चिम राजस्थान
- 18 पूर्वी राजस्थान
- 19 पश्चिम मध्य प्रदेश
- 20 पूर्वी मध्य प्रदेश
- 21 गुजरात क्षेत्र
- 22 सौराष्ट्र एवं कच्छ
- 23 कोंकण एवं गोवा
- 24 मध्य महाराष्ट्र
- 25 मराठावाडा
- 26 विदर्भ
- 27 छत्तीसगढ़
- 28 तटीय आंध्र प्रदेश एवं यनम
- 29 तेलंगाना
- 30 रायलसीमा
- 31 तमिलनाडु, पुदुचेरी एवं कराईकल
- 32 तटिय कर्नाटक
- 33 आंतरिक उत्तरी कर्नाटक
- 34 आंतरिक दक्षिणी कर्नाटक
- 35 केरल एवं माहे
- 36 लक्षद्वीप



1. Andaman & Nicobar Islands
2. Arunachal Pradesh
3. Assam & Meghalaya
4. Nagaland, Manipur, Mizoram & Tripura
5. Sub-Himalayan West Bengal & Sikkim
6. Gangetic West Bengal
7. Orissa
8. Jharkhand
9. Bihar
10. East Uttar Pradesh
11. West Uttar Pradesh
12. Uttarakhand
13. Haryana, Chd & Delhi
14. Punjab
15. Himachal Pradesh
16. Jammu & Kashmir and Ladakh
17. West Rajasthan
18. East Rajasthan
19. West Madhya Pradesh
20. East Madhya Pradesh
21. Gujarat
22. Saurashtra
23. Konkan & Goa
24. Madhya Maharashtra
25. Marathawada
26. Vidharbha
27. Chhattisgarh
28. Coastal Andhra Pradesh & Yanam
29. Telangana
30. Rayalaseema
31. Tamilnadu, Puducherry & Karaikal
32. Coastal Karnataka
33. North Interior Karnataka
34. South Interior Karnataka
35. Kerala & Mahe
36. Lakshadweep

SPATIAL DISTRIBUTION (% of Stations reporting)

% Stations	Category	% Stations	Category
76-100	Widespread (WS/ Most Places)	26-50	Scattered (SCT/ A Few Places)
51-75	Fairly Widespread (FWS/ Many Places)	1-25	Isolated (ISOL)

Subdivision Colour

- NO WARNING
- WATCH (BE UPDATED)
- ALERT (BE PREPARED TO TAKE ACTION)
- WARNING (TAKE ACTION)

Probabilistic Forecast

Terms	Probability of Occurrence (%)
Unlikely	< 25
Likely	25 - 50
Very Likely	50 - 75
Most Likely	> 75

- | | | | |
|--------------------------|-----------------|----------------------|--------------------|
| Heavy Rain | Very Heavy Rain | Extremely Heavy Rain | Heavy Snow |
| Thunderstorm & Lightning | Hailstorm | Dust Storm | Dust Raising Winds |
| Strong surface winds | Heat Wave | Hot Day | Warm Night |
| Cold Wave | Cold Day | Ground Frost | Fog |
| Hot & Humid | | | |

*Red color warning does not mean "Red Alert" Red color warning means "Take Action"

Forecast and warning for any day is valid from 0830 hours IST of day till 0830 hours IST of next day

For more details kindly visit <https://mausam.imd.gov.in> or contact 011-2434-4599

(Service to the nation since 1875)

LEGENDS

WARNING

WARNING (TAKE ACTION)
ALERT (BE PREPARED)
WATCH (BE UPDATED)
NO WARNING (NO ACTION)

Probabilistic Forecast

Terms	Probability of Occurrence (%)
Unlikely	< 25
Likely	25 - 50
Very Likely	50 - 75
Most Likely	> 75



Heavy: 64.5 to 115.5 mm/cm *
Very Heavy: 115.6 to 204.4 mm/cm*
Extremely Heavy: > 204.4 mm/cm *



When maximum temperature of a station reaches $\geq 40^{\circ}\text{C}$ for plains and $\geq 30^{\circ}\text{C}$ for hilly regions
(a) Based on Departure from normal

Heat Wave: Maximum Temperature Departure from normal 4.5°C to 6.4°C .
Severe Heat Wave: Maximum Temperature Departure from normal $\geq 6.5^{\circ}\text{C}$

(b). Based on Actual maximum temperature

Heat Wave: When actual maximum temperature $\geq 45^{\circ}\text{C}$.
Severe Heat Wave: When actual maximum temperature $\geq 47^{\circ}\text{C}$

(c). Criteria for heat wave for coastal stations

When maximum temperature departure is $> 4.5^{\circ}\text{C}$ from normal. Heat Wave may be described provided maximum temperature $\geq 37^{\circ}\text{C}$



When maximum temperature remains 40°C

Warm Night: When minimum temperature departure 4.5°C to 6.4°C .
Severe Warm Night: When minimum temperature departure $> 6.4^{\circ}\text{C}$.



When minimum temperature of a station $\leq 10^{\circ}\text{C}$ for plains and $\leq 0^{\circ}\text{C}$ for hilly regions.

(a). Based on departure

Cold Wave: Minimum Temperature Departure from normal -4.5°C to -6.4°C .
Severe Cold Wave: Minimum Temperature Departure from normal $\leq -6.5^{\circ}\text{C}$

(b) Based on actual Minimum Temperature (for Plains only)

Cold Wave : When Minimum Temperature is $\leq 4.0^{\circ}\text{C}$
Severe Cold Wave: When Minimum Temperature is $\leq 2.0^{\circ}\text{C}$

(c) For Coastal Stations

When Minimum Temperature departure is $\leq -4.5^{\circ}\text{C}$ & actual Minimum Temperature is $\leq 15^{\circ}\text{C}$



When minimum temperature of a station $\leq 10^{\circ}\text{C}$ for plains and $\leq 0^{\circ}\text{C}$ for hilly regions
Based on departure

Cold Day: Maximum Temperature Departure from normal -4.5°C to -6.4°C .
Severe Cold Day: Maximum Temperature Departure from normal $\leq -6.5^{\circ}\text{C}$



Phenomenon of small droplets suspended in air and the horizontal visibility $< 1\text{km}$

Moderate Fog: When the visibility between 500-200 metres
Dense Fog: when the visibility between 50- 200 metres
Very Dense Fog: when the visibility < 50 metres



Sudden electrical discharges manifested by a flash of light (Lightning) and a sharp rumbling sound (thunder)



An ensemble of particles of dust or sand energetically lifted to great heights by a strong and turbulent wind.



Ice deposits on ground

Air temperature $\leq 4^{\circ}\text{C}$ (over Plains)



A strong wind that rises suddenly, lasts for atleast 1 minute.

Moderate: Wind speed 52-61 kmph
Severe: Wind speed 62-87 kmph
Very Severe: Wind speed > 87 kmph



Effect of various waves in the sea over specific area

Rough to very rough: Wind speed 41-62 kmph (22-33 knots) & Wave height 2.5-6 metre
High to very high: Wind speed 63-117 kmph (34-63 knots) & Wave height 6-14 metre
Phenomenal: Wind speed > 117 kmph (> 63 knots) & Wave height > 14 metre



Cyclonic Storm: Wind speed 62-87 kmph (34-47 knots)
Severe Cyclonic Storm: Wind speed 88-117 kmph (48-63 knots)
Very Severe Cyclonic Storm: Wind speed 118-165 kmph (64 - 89 knots)
Extremely Severe Cyclonic Storm: Wind speed 166-220 kmph (90 -119 knots)
Super Cyclone Storm: Wind speed > 220 kmph (> 119 knots)

*Red color warning does not mean "Red Alert" Red color warning means "Take Action"

Forecast and warning for any day is valid from 0830 hours IST of day till 0830 hours IST of next day

For more details kindly visit <https://mausam.imd.gov.in> or contact 011-2434-4599

(Service to the nation since 1875)