



Monday, August 14, 2023
Time of Issue: 0800 hours IST
(MORNING)

ALL INDIA WEATHER SUMMARY AND FORECAST BULLETIN

Significant Weather Features

Significant Weather features:

- ❖ The Monsoon Trough lies north of its normal position. It is likely to be north of its normal position or along the foothills of Himalayas during next 4-5 days and gradual shifts southwards towards its normal position thereafter.
- ❖ A cyclonic circulation lies over East Bangladesh & neighbourhood with trough aloft roughly along Long. 90°E to the north of Lat. 20°N in lower tropospheric levels.
- ❖ The Western Disturbance as a trough in middle tropospheric westerlies with its axis at 5.8 km above mean sea level runs roughly along Long. 75°E to the north of Lat. 32°N

Weather Forecast and Warnings:

Northwest India: Light/moderate scattered to fairly widespread rainfall with isolated **heavy rainfall** likely over Uttarakhand during 14th to 18th; over Himachal Pradesh, Punjab, Haryana, West Uttar Pradesh on 14th August, 2023.

Isolated **very heavy rainfall** activity very likely over Himachal Pradesh & Uttarakhand on 14th August.

East India: Light/moderate scattered to fairly widespread rainfall with **isolated heavy rainfall** activity very likely over Sub-Himalayan West Bengal & Sikkim during 14th-15th August; over Gangetic West Bengal on 16th & 17th; over Odisha during 15th to 18th, over Jharkhand during 15th to 17th and over Andaman & Nicobar Islands during 14th -16th August.

Northeast India: Light/moderate fairly widespread to widespread rainfall with isolated **heavy rainfall** activity very likely over Arunachal Pradesh, Assam & Meghalaya, Nagaland, Manipur, Mizoram & Tripura during 13th to 17th August.

Isolated **very heavy rainfall** over Assam & Meghalaya on 13th & 18th and over Nagaland on 18th August.

Central, West & South India: Light/moderate isolated to scattered rainfall with isolated **heavy rainfall** activity very likely over East Madhya Pradesh and Chhattisgarh on 16th & 17th August.

Subdued rainfall activity likely over remaining parts of these regions during next 7 days.

Main Weather Observations

- ❖ **Rainfall/thundershowers observed** (from 0830 hours IST to 1730 hours IST of yesterday): **at most places** over Uttarakhand; **at many places** over Sub-Himalaya West Bengal & Sikkim, Nagaland, Manipur, Mizoram & Tripura, Himachal Pradesh and Bihar; **at a few places** over Assam & Meghalaya, Odisha and Coastal Karnataka and **at isolated places** over Gangetic West Bengal, Jharkhand, Punjab, Madhya Pradesh, Chhattisgarh, Marathwada, Madhya Maharashtra, Konkan & Goa, Coastal Andhra Pradesh & Yanam, North Interior Karnataka and Andaman & Nicobar Islands.
- ❖ **Significant rainfall recorded** (from 0830 hours IST to 1730 hours IST of yesterday): **(in cm): Nagaland, Manipur, Mizoram & Tripura:** Lengpui -1; **Sub-Himalaya West Bengal & Sikkim:** Kalimpong3; Gangtok-2, Bagh Dogra and Jalpaiguri -1 each; **Bihar:** Purnea-1; **Jharkhand:** Ranchi-1; **Odisha:** Hirakud-2; **East Uttar Pradesh:** Gorakhpur and Fursatganj -1 each; **Himachal Pradesh:** Nahan and Sunder Nagar- 1 each; **Uttarakhand:** Dehradun-2; **Jammu-Kashmir-Ladakh-Gilgit-Baltistan-Muzaffarabad:** Katra-1; **Chhattisgarh:** Jagdalpur-1; **Madhya Maharashtra:** Mahabaleshwar -5.
- ❖ **Thunderstorm observed** (from 0830 hours IST of yesterday to 0530 hours IST of today): at isolated places over Uttarakhand, East Uttar Pradesh, Bihar, Gangetic West Bengal, Nagaland, Manipur, Mizoram & Tripura and Tamil Nadu, Puducherry & Karaikal.
- ❖ **Minimum Temperature Departures (as on 13-08-2023):** Minimum temperatures were **above normal (1.6°C to 3.0°C)** at many places over Jammu-Kashmir-Ladakh-Gilgit-Baltistan-Muzaffarabad, Himachal Pradesh, Punjab, Andaman & Nicobar Islands; at a few places over Chhattisgarh, Rayalaseema, Kerala & Mahe; at isolated places over East Uttar Pradesh, East Madhya Pradesh, Coastal Andhra Pradesh & Yanam. They were **below normal (-1.6°C to -3.0°C)** at a few places over Gangetic West Bengal; at isolated places over West Madhya Pradesh and Tamil Nadu, Puducherry & Karaikal and **near normal** over rest parts of the country. Yesterday, **the lowest minimum temperature of 19.6°C** was reported at **Gadag (North Interior Karnataka)** over the plains of the country.
- ❖ **Maximum Temperature Departures (as on 13-08-2023):** Maximum temperatures were **appreciably above normal (3.1°C to 5.0°C)** at many places over Chhattisgarh; at a few places over Coastal Andhra Pradesh & Yanam and Kerala & Mahe and at isolated places over Telangana Tamil Nadu, Puducherry & Karaikal and Jammu-Kashmir-Ladakh-Gilgit-Baltistan-Muzaffarabad; **above normal (1.6°C to 3.0°C)** at many places over Marathwada, Rayalaseema and North Interior Karnataka; at a few places over Punjab and at isolated places over East Uttar Pradesh, East Madhya Pradesh, Gujarat Region, Madhya Maharashtra, Konkan & Goa, Odisha and Andaman & Nicobar Islands. They were **appreciably below normal (-3.1°C to -5.0°C)** at many places over Uttarakhand; at a few places over Assam & Meghalaya, Sub-Himalaya West Bengal & Sikkim and Bihar and at isolated places over Gangetic West Bengal; **below normal (-1.6°C to -3.0°C)** at a few places over West Rajasthan and at isolated places over West Uttar Pradesh and Nagaland, Manipur, Mizoram & Tripura and **near normal** over rest parts of the country. Yesterday, **the highest maximum temperature of 38.8°C** was reported at **Vishakhapatnam (Coastal Andhra Pradesh & Yanam)**.



Meteorological Analysis (Based on 0530 hours IST)

- ❖ The **Monsoon Trough** at mean sea level now passes through Amritsar, Chandigarh, Bareilly, Gorakhpur, Patna, Malda and thence eastwards towards Nagaland.
- ❖ The cyclonic circulation over east Bangladesh & neighbourhood at 0.9 km above mean sea level with a trough aloft between 1.5 & 3.1 km above mean sea level roughly along Long. 90°E to the north of Lat. 20°N persists.
- ❖ The **Western Disturbance** as a trough in middle tropospheric westerlies with its axis at 5.8 km above mean sea level roughly along Long. 75°E to the north of Lat. 32°N persists.
- ❖ The cyclonic circulation over northwest Bay of Bengal & neighbourhood at 5.8 km above mean sea level persists.

Weather Forecast for next 5 days (Upto 0830 hours IST of 19th August, 2023)

- ❖ Meteorological sub-division wise detailed 5 days rainfall forecast is given in Table-1.
- ❖ Isolated light to moderate thunderstorm likely over northwest India.
- ❖ No significant change in maximum temperatures likely over most parts of country during next 5 days.

Weather Outlook for subsequent 2 days

- ❖ Fairly widespread to widespread light/moderate rainfall likely over along the foothills of the Himalayas, parts of east & northeast India, along the west coasts and islands.
- ❖ Scattered to fairly widespread light/moderate rainfall likely over Central India.
- ❖ Subdued rainfall activity with isolated to scattered rainfall likely over rest parts of the country.



Table-1

7 Days Rainfall Forecast								
S. No.	Subdivision	14-Aug	15-Aug	16-Aug	17-Aug	18-Aug	19-Aug	20-Aug
		Day 1	Day 2	Day 3	Day 4	Day 5	Day 6	Day 7
1	ANDAMAN & NICOBAR ISLANDS	WS	WS	WS	WS	WS	WS	WS
2	ARUNACHAL PRADESH	FWS	FWS	FWS	FWS	FWS	FWS	FWS
3	ASSAM & MEGHALAYA	FWS	FWS	FWS	FWS	FWS	FWS	FWS
4	NAGALAND, MANIPUR, MIZORAM & TRIPURA	FWS	WS	WS	WS	WS	FWS	FWS
5	SUB-HIMALAYAN WEST BENGAL & SIKKIM	WS	FWS	FWS	FWS	WS	WS	WS
6	GANGETIC WEST BENGAL	FWS	WS	WS	WS	FWS	SCT	SCT
7	ODISHA	SCT	FWS	FWS	FWS	FWS	FWS	FWS
8	JHARKHAND	FWS	FWS	FWS	FWS	FWS	FWS	FWS
9	BIHAR	SCT	SCT	SCT	SCT	FWS	FWS	FWS
10	EAST UTTAR PRADESH	SCT	SCT	SCT	SCT	SCT	FWS	FWS
11	WEST UTTAR PRADESH	FWS	SCT	SCT	SCT	SCT	ISOL	ISOL
12	UTTARAKHAND	WS	FWS	FWS	FWS	FWS	FWS	FWS
13	HARYANA CHANDIGARH & DELHI	SCT	SCT	ISOL	ISOL	ISOL	ISOL	ISOL
14	PUNJAB	SCT	SCT	ISOL	ISOL	ISOL	ISOL	ISOL
15	HIMACHAL PRADESH	WS	FWS	FWS	SCT	SCT	SCT	SCT
16	JAMMU & KASHMIR AND LADAKH	SCT	ISOL	ISOL	ISOL	ISOL	ISOL	ISOL
17	WEST RAJASTHAN	DRY	DRY	DRY	DRY	DRY	DRY	DRY
18	EAST RAJASTHAN	ISOL	ISOL	ISOL	ISOL	ISOL	ISOL	ISOL
19	WEST MADHYA PRADESH	ISOL	ISOL	SCT	SCT	SCT	SCT	SCT
20	EAST MADHYA PRADESH	ISOL	SCT	SCT	FWS	FWS	FWS	FWS
21	GUJARAT REGION	SCT	ISOL	ISOL	ISOL	ISOL	ISOL	ISOL
22	SAURASHTRA & KUTCH	ISOL	ISOL	ISOL	ISOL	ISOL	ISOL	ISOL
23	KONKAN & GOA	WS	WS	WS	WS	WS	WS	WS
24	MADHYA MAHARASHTRA	ISOL	ISOL	SCT	SCT	SCT	SCT	SCT
25	MARATHAWADA	ISOL	ISOL	ISOL	ISOL	ISOL	ISOL	ISOL
26	VIDARBHA	ISOL	SCT	SCT	FWS	FWS	FWS	FWS
27	CHHATTISGARH	ISOL	SCT	WS	FWS	FWS	WS	WS
28	COASTAL ANDHRA PRADESH & YANAM	ISOL	ISOL	ISOL	ISOL	SCT	SCT	SCT
29	TELANGANA	ISOL	ISOL	ISOL	ISOL	ISOL	ISOL	ISOL
30	RAYALASEEMA	ISOL	ISOL	ISOL	ISOL	ISOL	ISOL	ISOL
31	TAMILNADU PUDUCHERRY & KARAIKAL	ISOL	ISOL	ISOL	ISOL	ISOL	ISOL	ISOL
32	COASTAL KARNATAKA	SCT	SCT	SCT	SCT	SCT	SCT	SCT
33	NORTH INTERIOR KARNATAKA	ISOL	ISOL	ISOL	ISOL	ISOL	ISOL	ISOL
34	SOUTH INTERIOR KARNATAKA	ISOL	ISOL	ISOL	ISOL	ISOL	ISOL	ISOL
35	KERALA & MAHE	SCT	ISOL	ISOL	ISOL	ISOL	ISOL	ISOL
36	LAKSHADWEEP	SCT	SCT	SCT	SCT	SCT	SCT	SCT

Legend	Category	% Stations
WS	Widespread/Most Places	76-100
FWS	Fairly Widespread/Many places	51-75
SCT	Scattered/ A Few Places	26-50
ISOL	Isolated Places	1-25
DRY	No Rain	0

* Red color warning does not mean "Red Alert" Red color warning means "Take Action".
Forecast and Warning for any day is valid from 0830 hours IST of day till 0830 hours IST of next day For
more details kindly visit <https://mausam.imd.gov.in> or contact : 011-2434-4599
(Service to the Nation since 1875)

Fig. 1: Maximum Temperatures Dated 13.08.2023

Fig. 2: Departure of Maximum Temp. Dated 13.08.2023

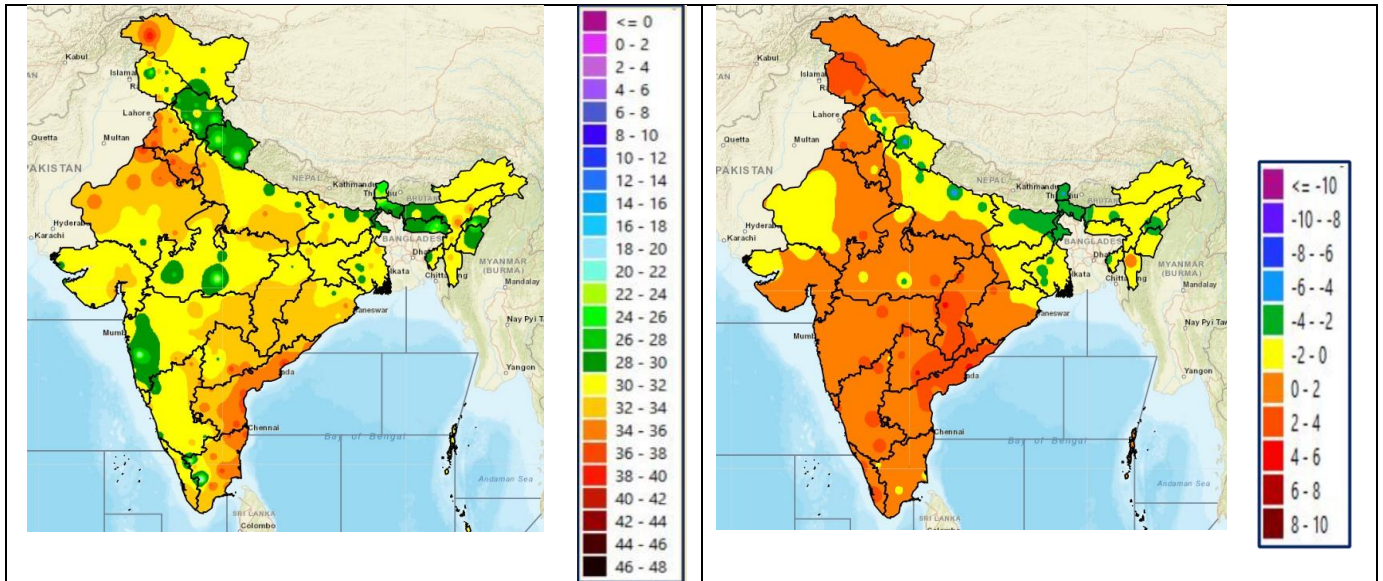


Fig. 3: Minimum Temperatures Dated 13.08.2023

Fig. 4: Departure of Minimum Temp. Dated 13.08.2023

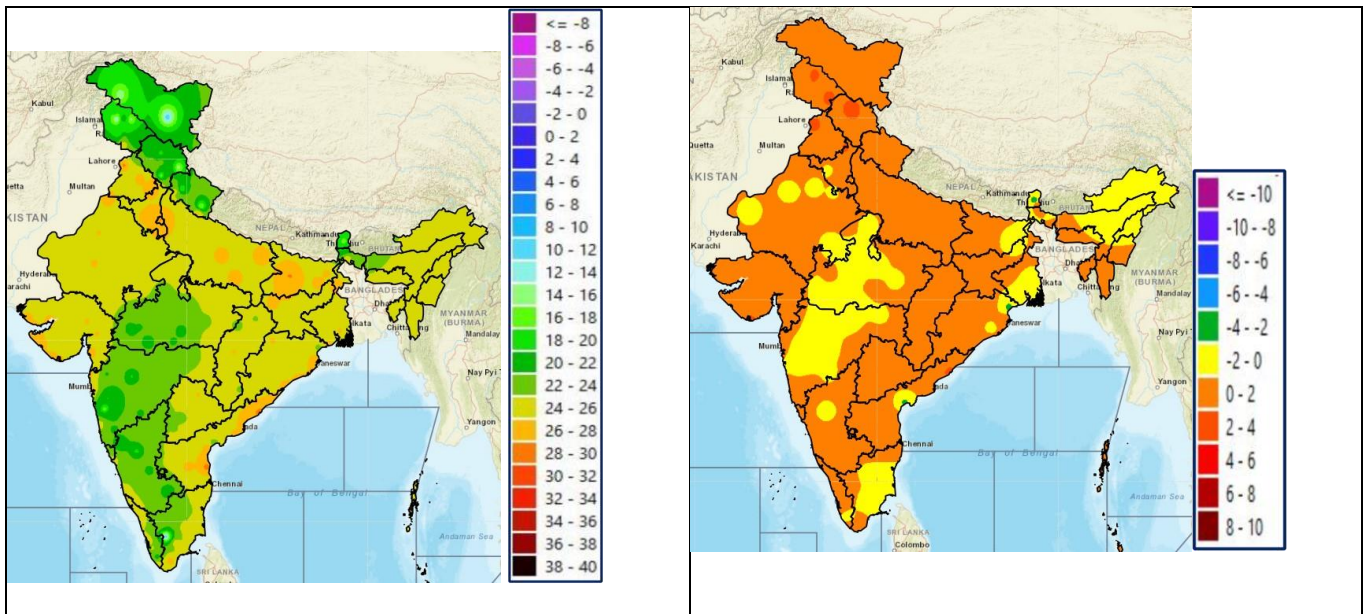
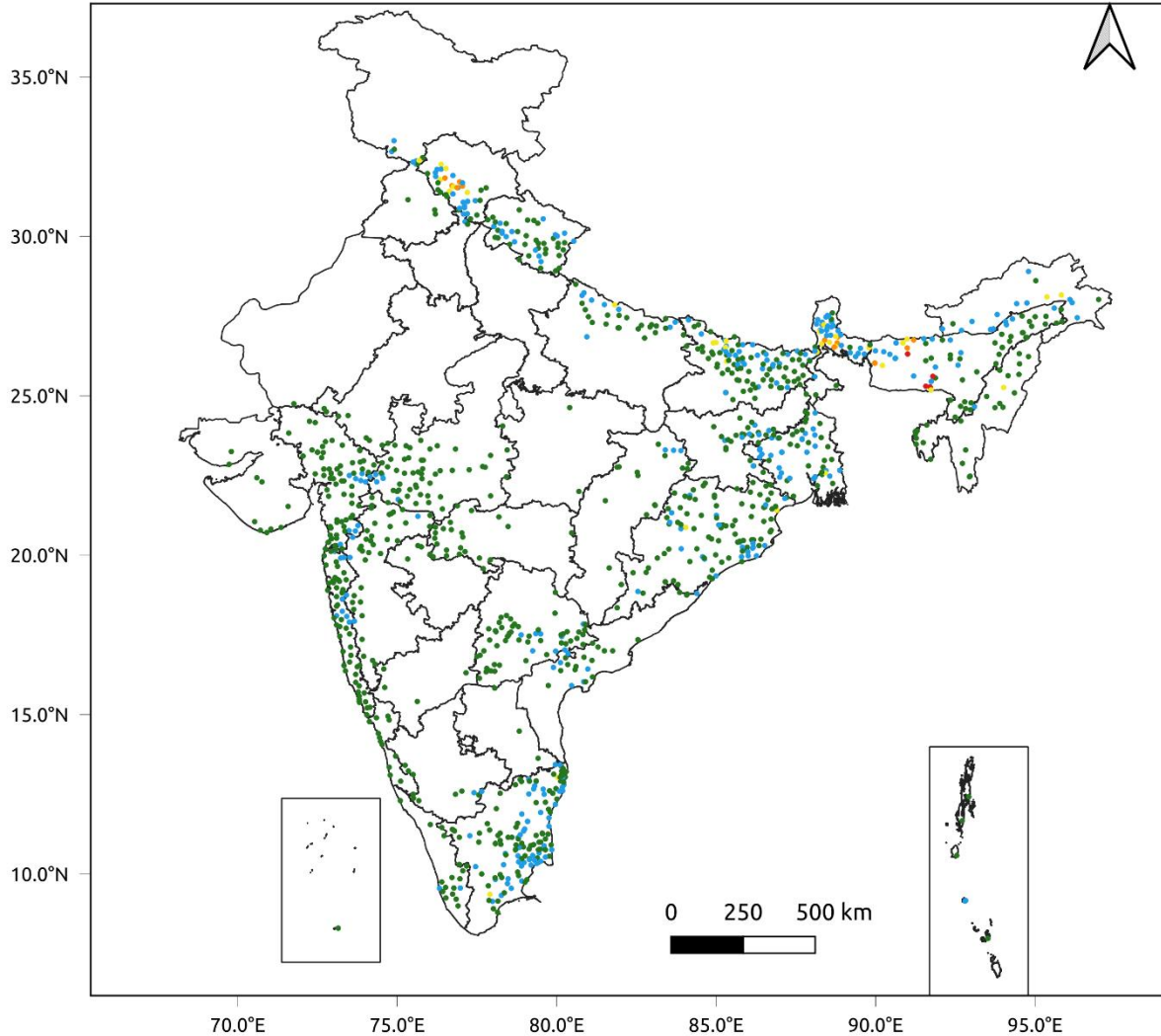


Fig. 5: Accumulated Rainfall (mm) during past 24 hours

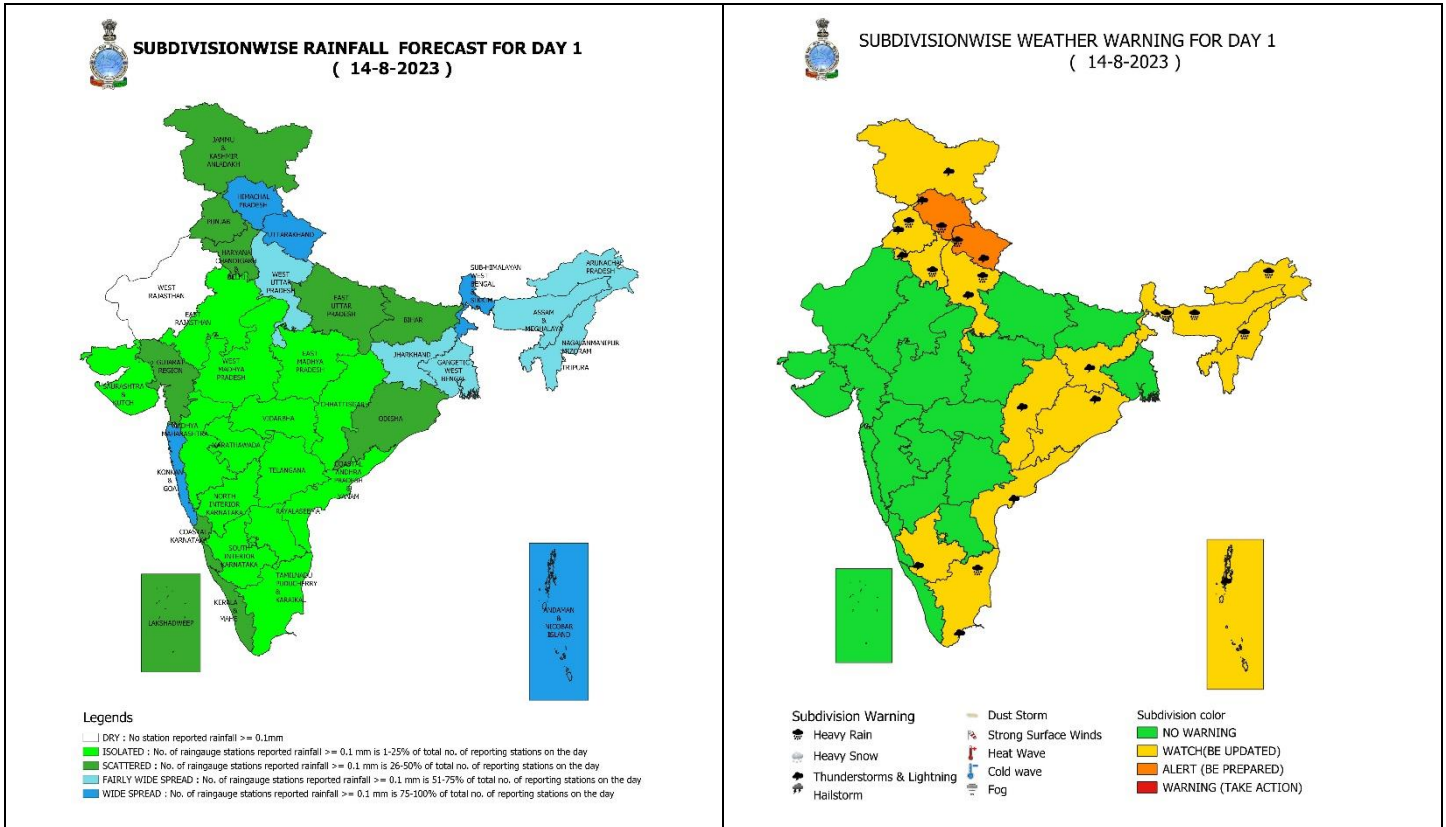


24 Hr cumulative rainfall recorded over different stations during 0830 IST of 12-8-2023 to 0830 IST of 13-8-2023



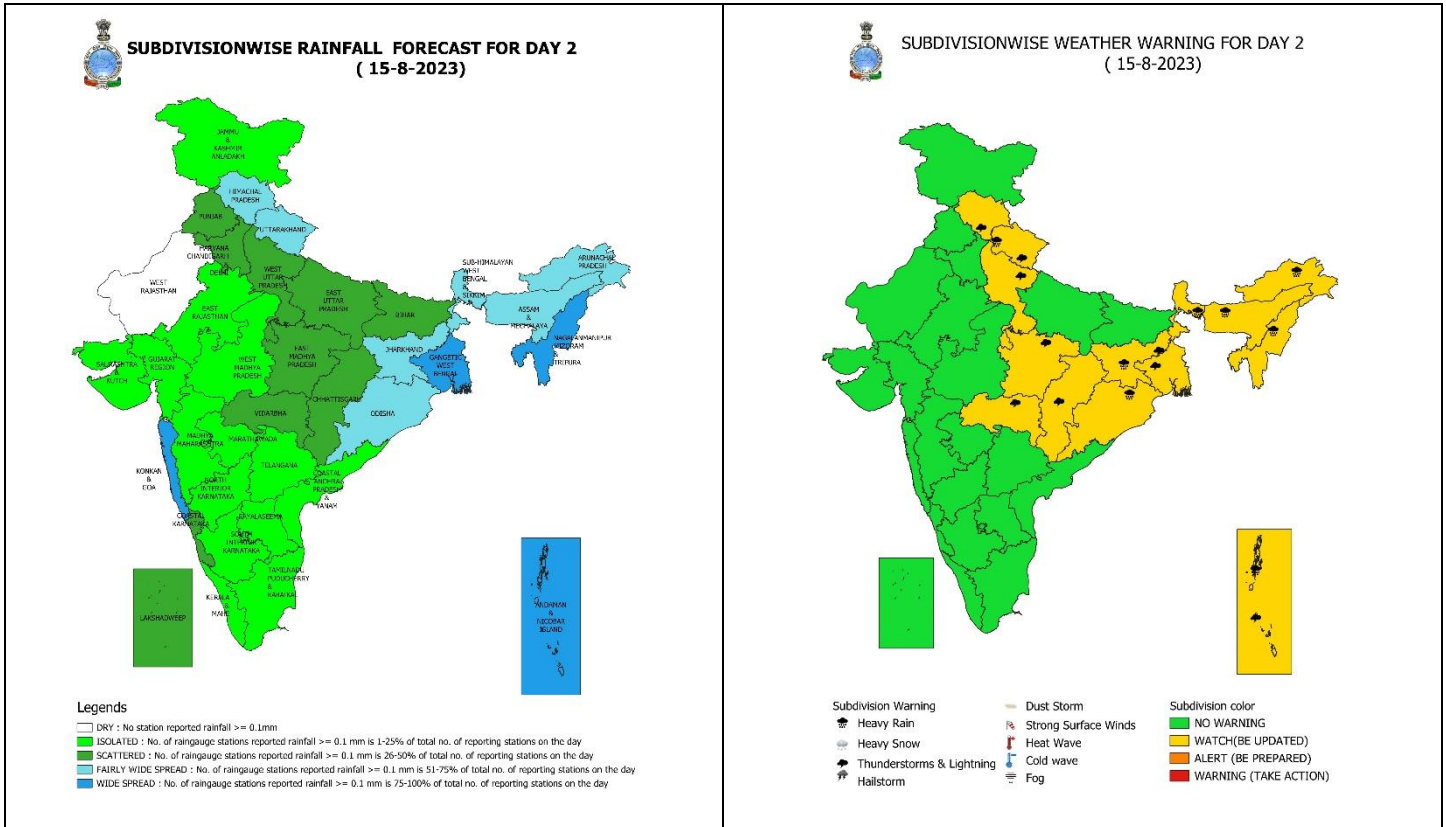
Legends

- Very Light to Light Rainfall (0.1 - 15.5 mm)
- Moderate Rainfall (15.6 - 64.4 mm)
- Heavy Rainfall (64.5 - 115.5 mm)
- Very Heavy Rainfall (115.6 - 204.4 mm)
- Extremely Heavy Rainfall (≥ 204.5 mm)



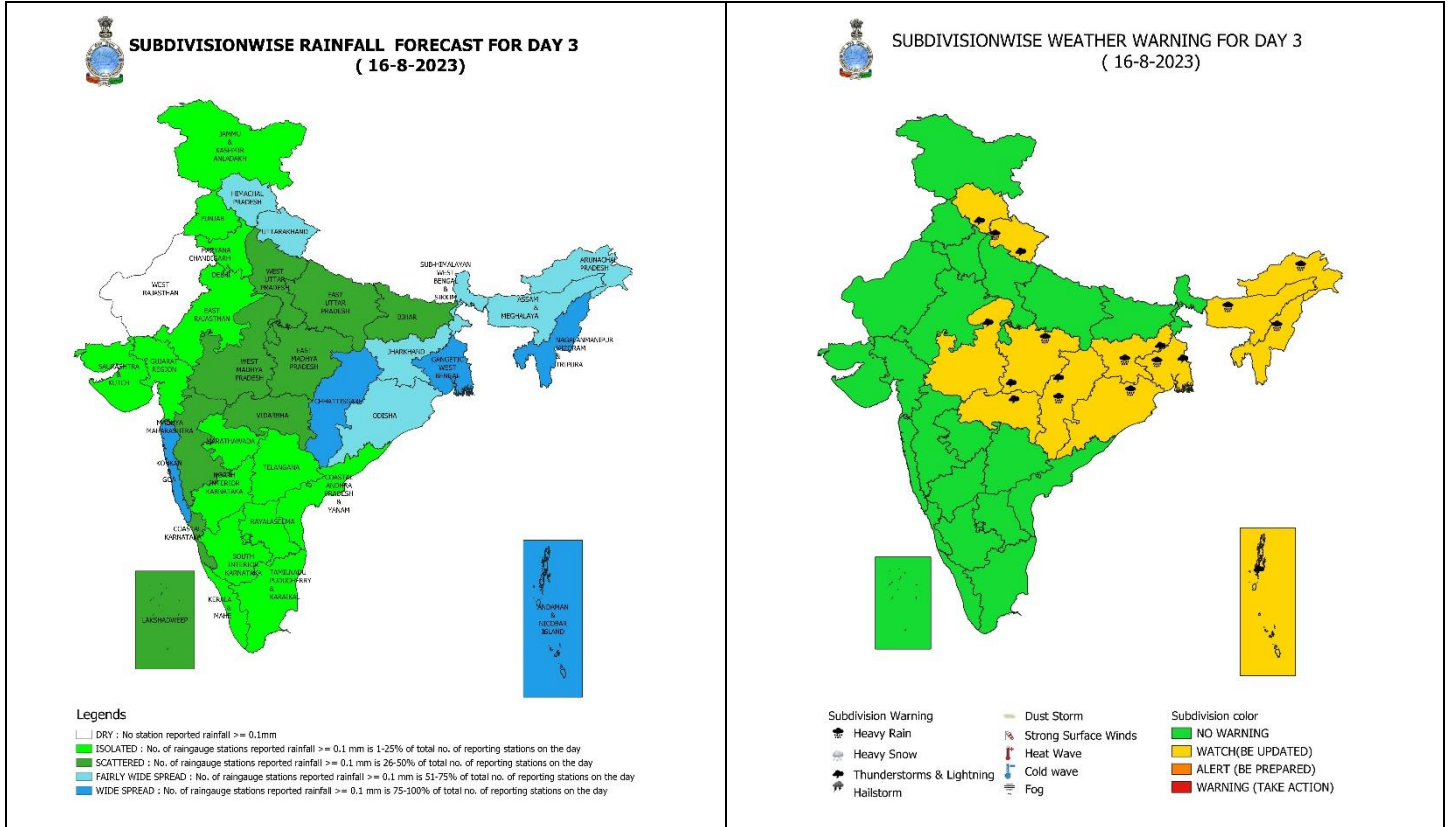
14 August (Day 1): -

- ❖ **Heavy to very heavy rainfall** very likely at isolated places over Uttarakhand and Himachal Pradesh and **Heavy rainfall** at isolated places over Punjab, Haryana-Chandigarh-Delhi, West Uttar Pradesh, Sub-Himalayan West Bengal & Sikkim, Arunachal Pradesh, Assam & Meghalaya, Nagaland, Manipur, Mizoram & Tripura and north Tamil Nadu, Puducherry.
- ❖ **Thunderstorm with lightning** very likely at isolated places over Jammu-Kashmir-Ladakh-Gilgit-Baltistan-Muzaffarabad, Himachal Pradesh, Uttarakhand, Punjab, Haryana-Chandigarh-Delhi, West Uttar Pradesh, Chhattisgarh, Andaman & Nicobar Islands, Jharkhand, Odisha, South Interior Karnataka, Coastal Andhra Pradesh & Yanam and Tamil Nadu, Puducherry & Karaikal.
- ❖ **Squally wind speed of 45-55 kmph gusting to 65 kmph** likely over Westcentral & adjoining Southwest and Northwest Arabian Sea. **Fishermen are advised not to venture into these areas.**



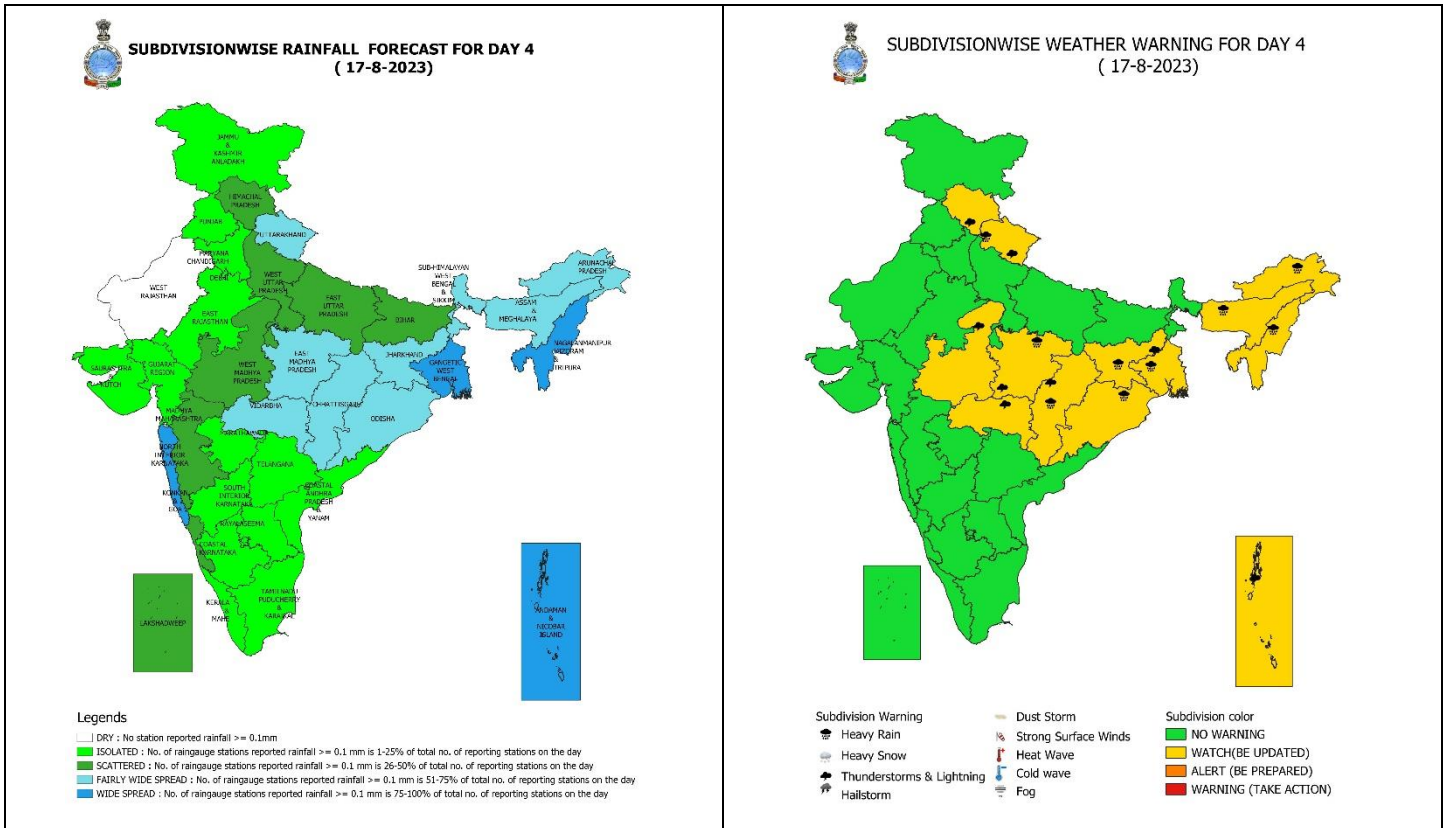
15 August (Day 2): -

- ❖ **Heavy rainfall** very likely at isolated places over Uttarakhand, Andaman & Nicobar Islands, Sub-Himalayan West Bengal & Sikkim, Jharkhand, Odisha, Arunachal Pradesh, Assam & Meghalaya, Nagaland, Manipur, Mizoram & Tripura.
- ❖ **Thunderstorm with lightning & gusty winds (speed 30-40 kmph)** very likely at isolated places over Andaman & Nicobar Islands and **with lightning** likely at isolated places over Himachal Pradesh, Uttarakhand, West Uttar Pradesh, East Madhya Pradesh, Vidarbha, Chhattisgarh, Gangetic West Bengal, Jharkhand.
- ❖ **Squally wind speed of 45-55 kmph gusting to 65 kmph** likely over Westcentral & adjoining Southwest Arabian Sea. **Fishermen are advised not to venture into these areas.**



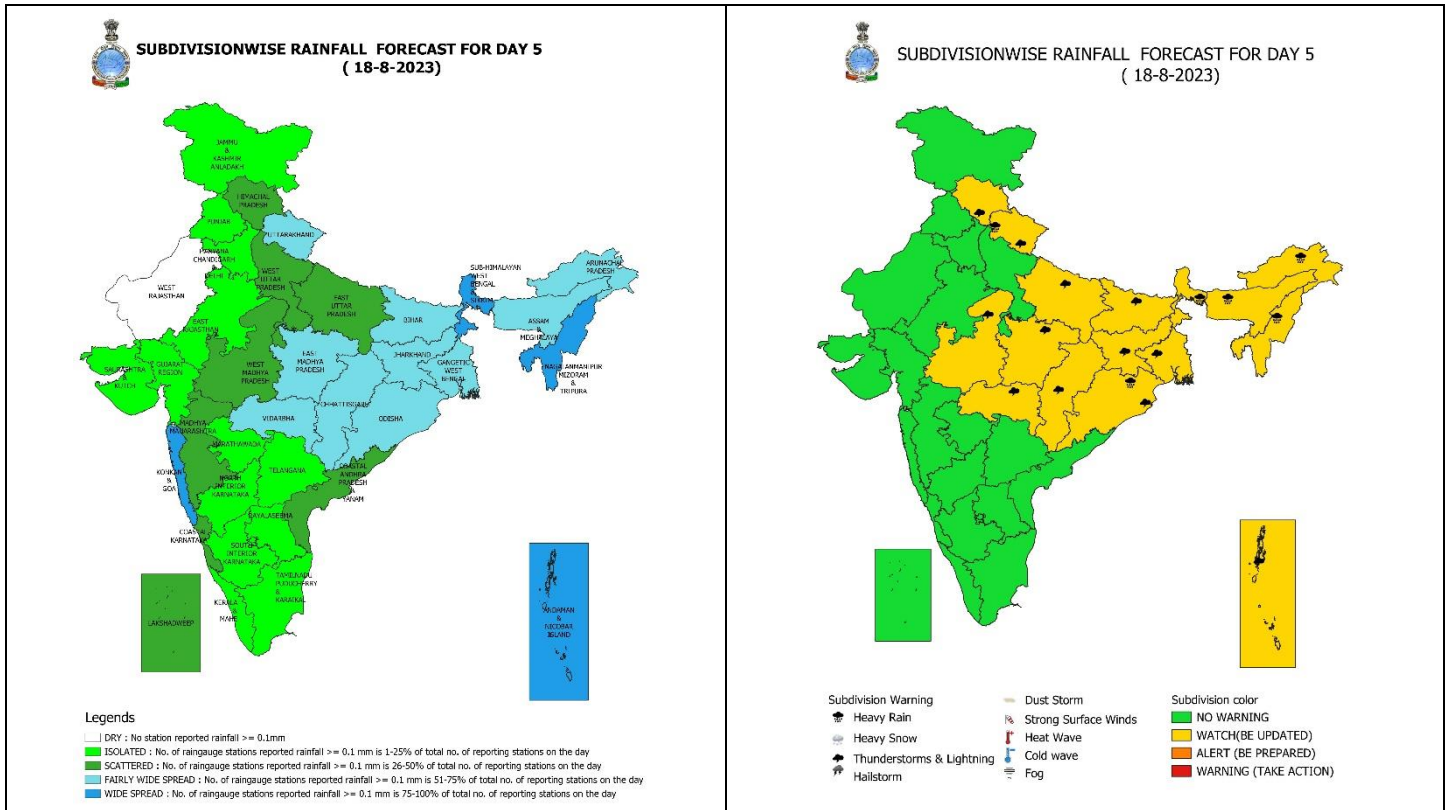
16 August (Day 3): -

- ❖ **Heavy rainfall** likely at isolated places over Uttarakhand, East Madhya Pradesh, Chhattisgarh, Gangetic West Bengal, Jharkhand, Odisha, Arunachal Pradesh, Assam & Meghalaya and Nagaland, Manipur, Mizoram & Tripura.
- ❖ **Thunderstorm with lightning & gusty winds (speed 30-40 kmph)** likely at isolated places over Andaman & Nicobar Islands and **with lightning** likely at isolated places over Himachal Pradesh, Uttarakhand, Madhya Pradesh, Vidarbha, Chhattisgarh, Gangetic West Bengal and Jharkhand.
- ❖ **Squally wind speed of 45-55 kmph gusting to 65 kmph** likely over Westcentral & adjoining Eastcentral and Southwest Arabian Sea. **Fishermen are advised not to venture into these areas.**



17 August (Day 4): -

- ❖ **Heavy rainfall** likely at isolated places over Uttarakhand, East Madhya Pradesh, Chhattisgarh, Gangetic West Bengal, Jharkhand, Odisha, Arunachal Pradesh, Assam & Meghalaya, Nagaland, Manipur, Mizoram & Tripura.
- ❖ **Thunderstorm with lightning & gusty winds (speed 30-40 kmph)** likely at isolated places over Andaman & Nicobar Islands and **with lightning** likely at isolated places over Himachal Pradesh, Uttarakhand, Madhya Pradesh, Vidarbha, Chhattisgarh and Jharkhand.
- ❖ **Squally wind speed of 45-55 kmph gusting to 65 kmph** likely over Westcentral & adjoining Eastcentral and Southwest Arabian Sea. **Fishermen are advised not to venture into these areas.**



18 August (Day 5): -

- ❖ **Heavy to very heavy rainfall** likely at isolated places over Assam & Meghalaya and Nagaland, Manipur, Mizoram & Tripura; **heavy rainfall** likely at isolated places over Uttarakhand, Odisha, Arunachal Pradesh and Sub-Himalaya West Bengal & Sikkim.
- ❖ **Thunderstorm with lightning & gusty winds (speed 30-40 kmph)** likely at isolated places over Andaman & Nicobar Islands and **with lightning** likely at isolated places over Himachal Pradesh, Uttarakhand, East Uttar Pradesh, Bihar, Gangetic West Bengal, Odisha, Madhya Pradesh, Vidarbha, Chhattisgarh and Jharkhand.
- ❖ **Squally wind speed of 45-55 kmph gusting to 65 kmph** likely over Westcentral & adjoining Eastcentral and Southwest Arabian Sea. **Fishermen are advised not to venture into these areas.**

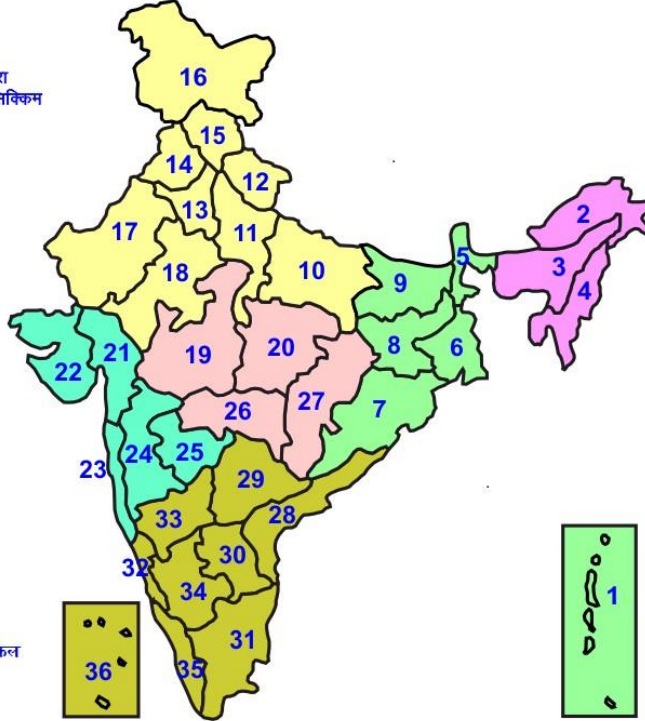
* Red color warning does not mean "Red Alert" Red color warning means "Take Action".

Forecast and Warning for any day is valid from 0830 hours IST of day till 0830 hours IST of next day For more details kindly visit <https://mausam.imd.gov.in> or contact : 011-2434-4599 (Service to the Nation since 1875)



LEGENDS

- 1 अंडमान और निकोबार द्वीप समुह
- 2 अरुणाचल प्रदेश
- 3 असम और मेघालय
- 4 नागालैंड मनीपुर मीजोरम और त्रिपुरा
- 5 उप हिमालय पश्चिम बंगाल एवं सिक्किम
- 6 पश्चिम गंगेय बंगाल
- 7 ओडिसा
- 8 झारखंड
- 9 बिहार
- 10 पूर्वी उत्तर प्रदेश
- 11 पश्चिम उत्तर प्रदेश
- 12 उत्तराखंड
- 13 हरियाणा चंडिगढ़ एवं दिल्ली
- 14 पंजाब
- 15 हिमाचल प्रदेश
- 16 जम्मू एवं कश्मीर एवं लद्दाख
- 17 पश्चिम राजस्थान
- 18 पूर्वी राजस्थान
- 19 पश्चिम मध्य प्रदेश
- 20 पूर्वी मध्य प्रदेश
- 21 गुजरात क्षेत्र
- 22 सौराष्ट्र एवं कच्छ
- 23 कोंकण एवं गोवा
- 24 मध्य महाराष्ट्र
- 25 मराठावाड़ा
- 26 विदर्भ
- 27 छत्तीसगढ़
- 28 तटीय आंध्र प्रदेश एवं यनम
- 29 तेलंगाना
- 30 रायलसेमा
- 31 तमिलनाडु, पुदुचेरी एवं कराईकल
- 32 तटिय कर्नाटक
- 33 आंतरिक उत्तरी कर्नाटक
- 34 आंतरिक दक्षिणी कर्नाटक
- 35 केरल एवं माहे
- 36 लक्षद्वीप



1. Andaman & Nicobar Islands
2. Arunachal Pradesh
3. Assam & Meghalaya
4. Nagaland, Manipur, Mizoram & Tripura
5. Sub-Himalayan West Bengal & Sikkim
6. Gangetic West Bengal
7. Orissa
8. Jharkhand
9. Bihar
10. East Uttar Pradesh
11. West Uttar Pradesh
12. Uttarakhand
13. Haryana, Chd & Delhi
14. Punjab
15. Himachal Pradesh
16. Jammu & Kashmir and Ladakh
17. West Rajasthan
18. East Rajasthan
19. West Madhya Pradesh
20. East Madhya Pradesh
21. Gujarat
22. Saurashtra
23. Konkan & Goa
24. Madhya Maharashtra
25. Marathwada
26. Vidharbha
27. Chhattisgarh
28. Coastal Andhra Pradesh & Yanam
29. Telangana
30. Rayalaseema
31. Tamilnadu, Puducherry & Karaikal
32. Coastal Karnataka
33. North Interior Karnataka
34. South Interior Karnataka
35. Kerala & Mahe
36. Lakshadweep

SPATIAL DISTRIBUTION (% of Stations reporting)

% Stations	Category	% Stations	Category
76-100	Widespread (WS/ Most Places)	26-50	Scattered (SCT/ A Few Places)
51-75	Fairly Widespread (FWS/ Many Places)	1-25	Isolated (ISOL)

WARNING

WARNING (TAKE ACTION)
ALERT (BE PREPARED)
WATCH (BE UPDATED)
NO WARNING (NO ACTION)

Probabilistic Forecast

Terms	Probability of Occurrence (%)
Unlikely	< 25
Likely	25 - 50
Very Likely	50 - 75
Most Likely	> 75



Heavy Rain



Heavy Snow



Thunderstorm



Dust Storm



Strong Winds



Visibility



Cyclone



Squall/ Hail



Frost



Cold Wave



Heat Wave



Sea State

* Red color warning does not mean "Red Alert" Red color warning means "Take Action".

Forecast and Warning for any day is valid from 0830 hours IST of day till 0830 hours IST of next day For more details kindly visit <https://mausam.imd.gov.in> or contact : 011-2434-4599

(Service to the Nation since 1875)

LEGENDS

WARNING

WARNING (TAKE ACTION)
ALERT (BE PREPARED)
WATCH (BE UPDATED)
NO WARNING (NO ACTION)

Probabilistic Forecast

Terms	Probability of Occurrence (%)
Unlikely	< 25
Likely	25 - 50
Very Likely	50 - 75
Most Likely	> 75



Rain/ Snow *

Heavy: 64.5 to 115.5 mm/cm *
Very Heavy: 115.6 to 204.4 mm/cm*
Extremely Heavy: > 204.4 mm/cm *



Heat Wave

When maximum temperature of a station reaches $\geq 40^{\circ}\text{C}$ for plains and $\geq 30^{\circ}\text{C}$ for hilly regions
(a) Based on Departure from normal

Heat Wave: Maximum Temperature Departure from normal 4.5°C to 6.4°C .

Severe Heat Wave: Maximum Temperature Departure from normal $\geq 6.5^{\circ}\text{C}$

(b). Based on Actual maximum temperature

Heat Wave: When actual maximum temperature $\geq 45^{\circ}\text{C}$.

Severe Heat Wave: When actual maximum temperature $\geq 47^{\circ}\text{C}$

(c). Criteria for heat wave for coastal stations

When maximum temperature departure is $> 4.5^{\circ}\text{C}$ from normal. Heat Wave may be described provided maximum temperature $\geq 37^{\circ}\text{C}$



Warm Night

When maximum temperature remains 40°C

Warm Night: When minimum temperature departure 4.5°C to 6.4°C .

Severe Warm Night: When minimum temperature departure $> 6.4^{\circ}\text{C}$.



Cold Wave

When minimum temperature of a station $\leq 10^{\circ}\text{C}$ for plains and $\leq 0^{\circ}\text{C}$ for hilly regions.

(a). Based on departure

Cold Wave: Minimum Temperature Departure from normal -4.5°C to -6.4°C .

Severe Cold Wave: Minimum Temperature Departure from normal $\leq -6.5^{\circ}\text{C}$

(b) Based on actual Minimum Temperature (for Plains only)

Cold Wave : When Minimum Temperature is $\leq 4.0^{\circ}\text{C}$

Severe Cold Wave: When Minimum Temperature is $\leq 2.0^{\circ}\text{C}$

(c) For Coastal Stations

When Minimum Temperature departure is $\leq -4.5^{\circ}\text{C}$ & actual Minimum Temperature is $\leq 15^{\circ}\text{C}$



Cold Day

When minimum temperature of a station $\leq 10^{\circ}\text{C}$ for plains and $\leq 0^{\circ}\text{C}$ for hilly regions
Based on departure

Cold Day: Maximum Temperature Departure from normal -4.5°C to -6.4°C .

Severe Cold Day: Maximum Temperature Departure from normal $\leq -6.5^{\circ}\text{C}$



Fog

Phenomenon of small droplets suspended in air and the horizontal visibility < 1km

Moderate Fog: When the visibility between 500-200 metres

Dense Fog: when the visibility between 50- 200 metres

Very Dense Fog: when the visibility < 50 metres



Thunderstorm

Sudden electrical discharges manifested by a flash of light (Lightning) and a sharp rumbling sound (thunder)



Dust/Sand Storm

An ensemble of particles of dust or sand energetically lifted to great heights by a strong and turbulent wind.



Frost

Ice deposits on ground

Air temperature $\leq 4^{\circ}\text{C}$ (over Plains)



Squall

A strong wind that rises suddenly, lasts for atleast 1 minute.

Moderate: Wind speed 52-61 kmph

Severe: Wind speed 62-87 kmph

Very Severe: Wind speed > 87 kmph



Sea State

Effect of various waves in the sea over specific area

Rough to very rough: Wind speed 41-62 kmph (22-33 knots) & Wave height 2.5-6 metre

High to very high: Wind speed 63-117 kmph (34-63 knots) & Wave height 6-14 metre

Phenomenal: Wind speed > 117 kmph (> 63 knots) & Wave height > 14 metre



Cyclone

Cyclonic Storm: Wind speed 62-87 kmph (34-47 knots)

Severe Cyclonic Storm: Wind speed 88-117 kmph (48-63 knots)

Very Severe Cyclonic Storm: Wind speed 118-165 kmph (64 - 89 knots)

Extremely Severe Cyclonic Storm: Wind speed 166-220 kmph (90 -119 knots)

Super Cyclone Storm: Wind speed > 220 kmph (> 119 knots)

* Red color warning does not mean "Red Alert" Red color warning means "Take Action".

Forecast and Warning for any day is valid from 0830 hours IST of day till 0830 hours IST of next day For more details kindly visit <https://mausam.imd.gov.in> or contact : 011-2434-4599

(Service to the Nation since 1875)