



2025-11-06

Time of Issue: 08:04:00 hours IST
(Morning)

ALL INDIA WEATHER SUMMARY AND FORECAST BULLETIN

Significant Weather Features

South Peninsular India:

- Light to moderate rainfall/thunderstorm at most/many places with isolated heavy rainfall over Tamil Nadu during 06th - 08th November.
- Light to moderate rain/thunderstorm at many/some places likely over Tamil Nadu during 06th – 09th; Rayalaseema, South Interior Karnataka during 06th -07th with lightning & gusty winds (speed reaching 30-40 kmph) .

Forecast of temperature:

- Fall in minimum temperature by 3-5 °C very likely over Northwest India for the next 2 days and no significant change thereafter.
- Fall in minimum temperature by 2-4 °C very likely over Central India for the next 2 days and no significant change thereafter.

***Red color warning does not mean "Red Alert" Red color warning means "Take Action"**

Forecast and warning for any day is valid from 0830 hours IST of day till 0830 hours IST of next day

For more details kindly visit <https://mausam.imd.gov.in> or contact 011-2434-4599

(Service to the nation since 1875)

Main Weather Observations:

- ❖ **Rainfall distribution** (from 0830 hours IST of yesterday to 0530 hours IST of today): **at most places** over Himachal Pradesh, Nagaland, Manipur, Mizoram & Tripura and Andaman & Nicobar Islands; **at many places** over Assam & Meghalaya, Madhya Maharashtra, Tamilnadu Puducherry & Karaikal, Rayalaseema, Kerala & Mahe, Coastal Andhra Pradesh & Yanam, North Interior Karnataka, South Interior Karnataka and Lakshadweep; **Dry** over rest of the country.
- ❖ **Significant rainfall recorded(in cm)** (from 0830 hours IST of yesterday to 0530 hours IST of today): **Assam & Meghalaya:** Silchar (dist Cachar) 2; **Tamil Nadu, Puducherry & Karaikal:** Pondicherry (dist Puducherry) 2, Salem (dist Salem), Madurai AP (dist Madurai) 1 Each; **Rayalaseema:** Kurnool (dist Kurnool) 2; **Kerala & Mahe:** Thiruvananthapuram-city (dist Thiruvananthapuram) 1; **Coastal Andhra Pradesh & Yanam:** Ongole (dist Prakasam), Amaravati-ap-obs2 (dist Guntur) 1 Each.
- ❖ **Fog Condition Observed (at 0530 hours of today):** **Moderate fog conditions:** at a few places over Madhya Maharashtra, at isolated places over Assam & Meghalaya **Shallow fog conditions:** at isolated places over Assam & Meghalaya.
- ❖ **Visibility reported (at 0530 hours of today):** **Assam & Meghalaya:** Cherrapunji (dist East Khasi Hills) 200.0, Barapani/shillong (dist East Khasi Hills) 500.0; **Madhya Maharashtra:** Nashik (dist Nashik) 200.0;.
- ❖ **Minimum Temperature Departures (as on 05-11-2025):** The lowest minimum temperature of 12.5°C is reported at AMBIKAPUR (CHHATTISGARH) over the Plains of India.
- ❖ **Maximum Temperature Departures (as on 05-11-2025):** below normal(-1.6°C to -3.0°C) at many places over Konkan & Goa; at most places over Coastal Karnataka; at few places over Jammu-KashmirLadakh-Gilgit-Baltistan-Muzaffarabad. The highest maximum temperature of 37.4°C is reported at MADURAI (A) (TAMIL NADU).

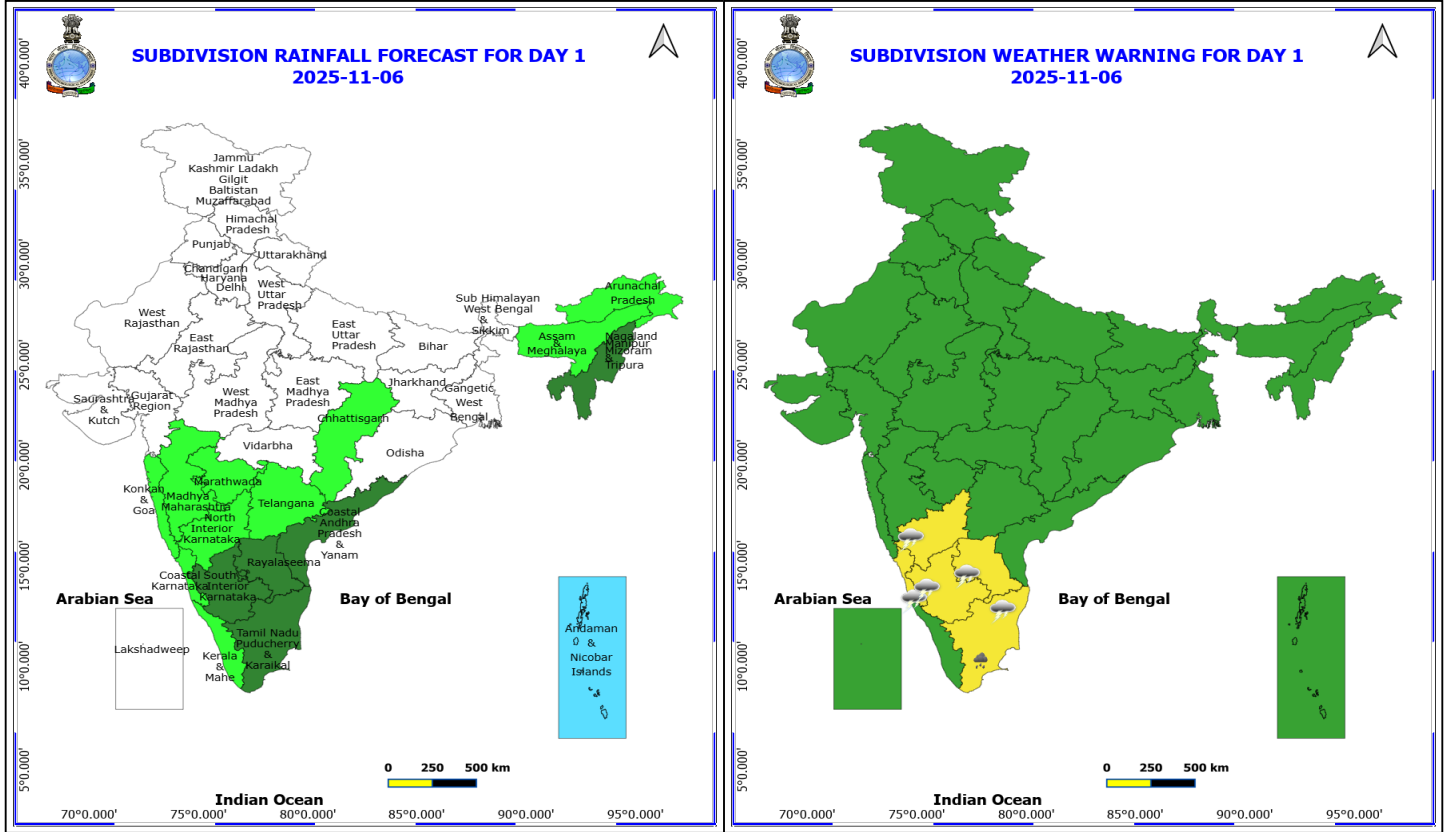


Meteorological Analysis (Based on 0530 hours IST)

- The **cyclonic circulation** over eastcentral and adjoining northeast Bay of Bengal extending upto 3.1 km above mean sea level persists.
- The **Western Disturbance** as a trough in middle tropospheric westerlies with its axis at 5.8 km above mean sea level runs roughly along Long. 77°E to the north of Lat. 32°N persists.
- The **trough** from southwest Bay of Bengal to north Kerala across interior Tamil Nadu at 5.8 km above mean sea level persists.

Weather Outlook for subsequent 3 days

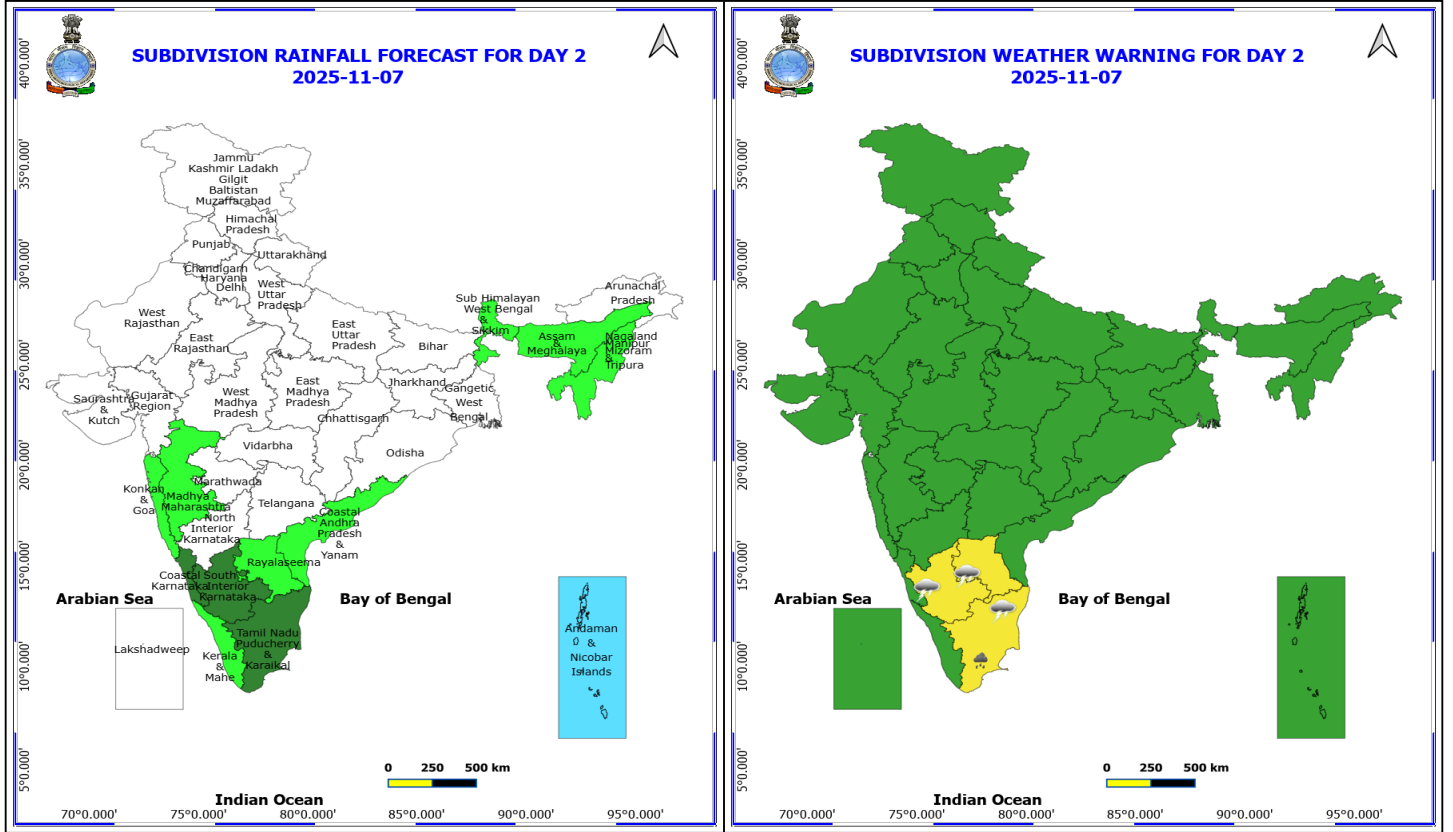
- Isolated to scattered rainfall activity likely over Tamil Nadu, Kerala, South Rayalaseema and South Coastal Andhra Pradesh and Islands.



6 November (Day 1)

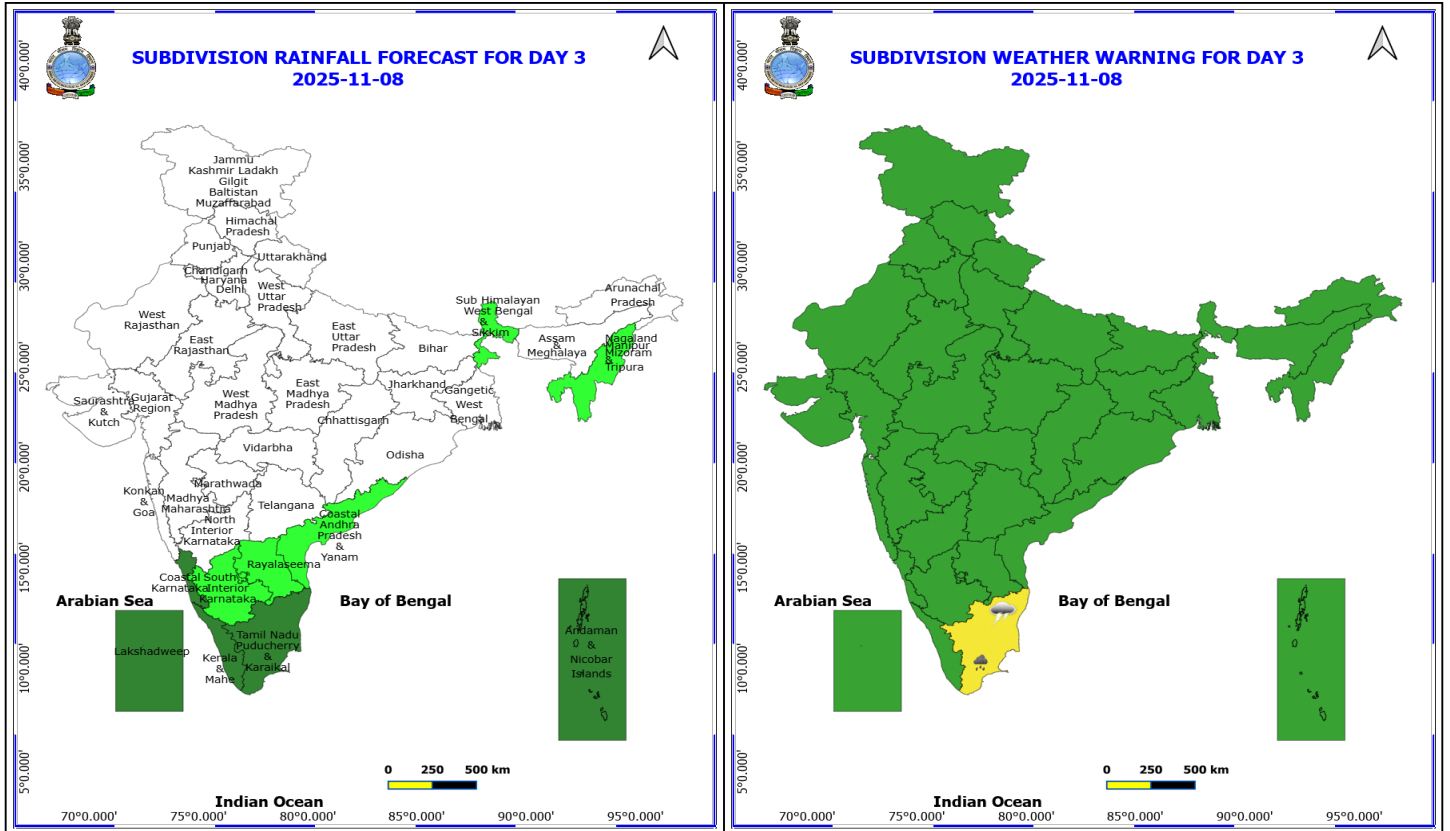
- ❖ **Heavy Rainfall** very likely at isolated places over Tamil Nadu Puducherry & Karaikal.
- ❖ **Thunderstorm accompanied with Lightning** very likely at isolated places over Karnataka, Rayalaseema and Tamil Nadu Puducherry & Karaikal.
- Squally weather with wind speed 35 kmph to 45 kmph gusting to 55 kmph likely to prevail over Andaman Sea, northeast Bay of Bengal, many parts of eastcentral Bay of Bengal, along & off Bangladesh and Myanmar coasts.

***Red color warning does not mean "Red Alert" Red color warning means "Take Action"**
Forecast and warning for any day is valid from 0830 hours IST of day till 0830 hours IST of next day
For more details kindly visit <https://mausam.imd.gov.in> or contact 011-2434-4599
 (Service to the nation since 1875)



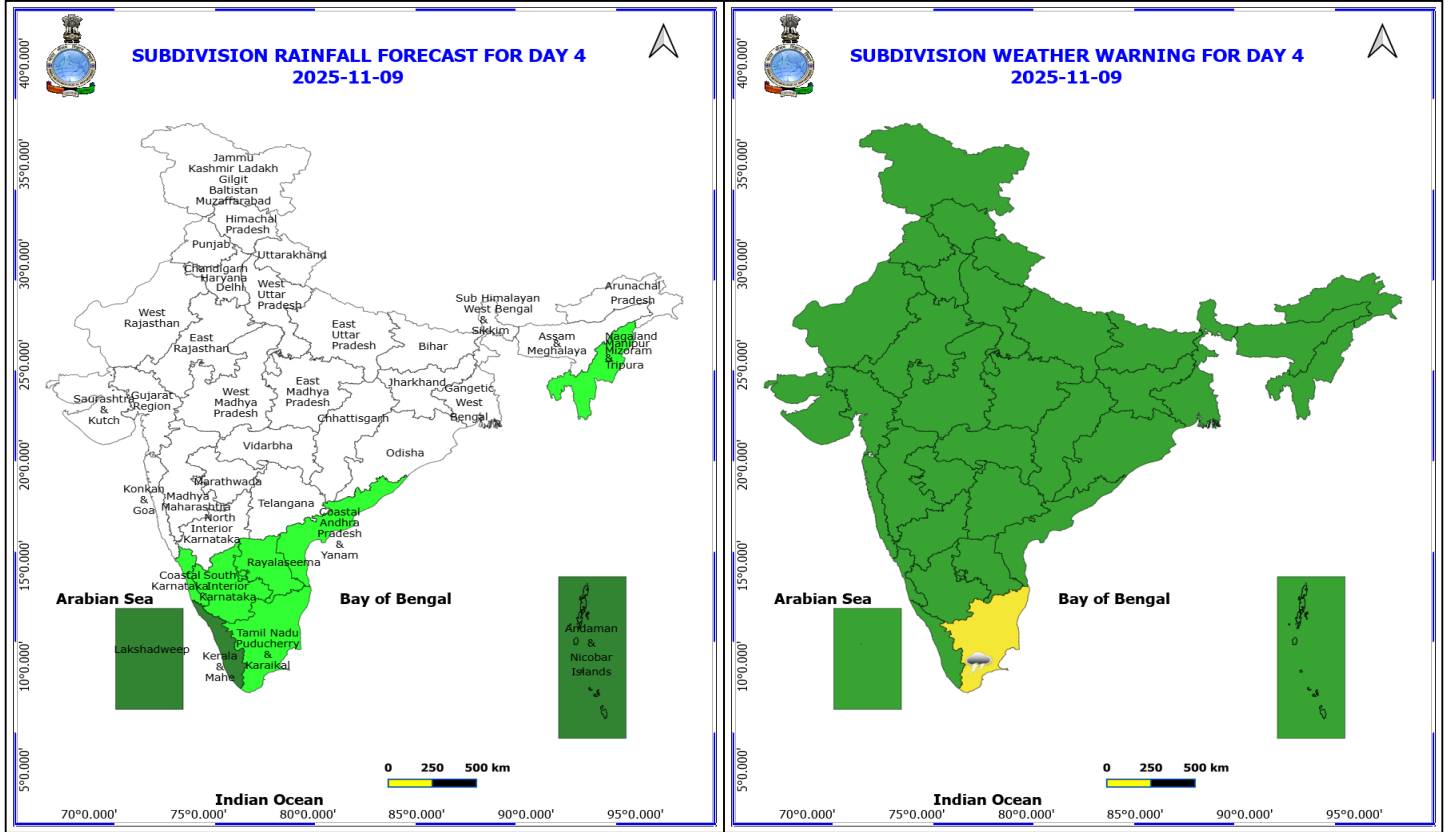
7 November (Day 2)

- ❖ **Heavy Rainfall** very likely at isolated places over Tamil Nadu Puducherry & Karaikal.
 - ❖ **Thunderstorm accompanied with Lightning** very likely at isolated places over Rayalaseema, South Interior Karnataka and Tamil Nadu Puducherry & Karaikal.
- No Warning.



8 November (Day 3)

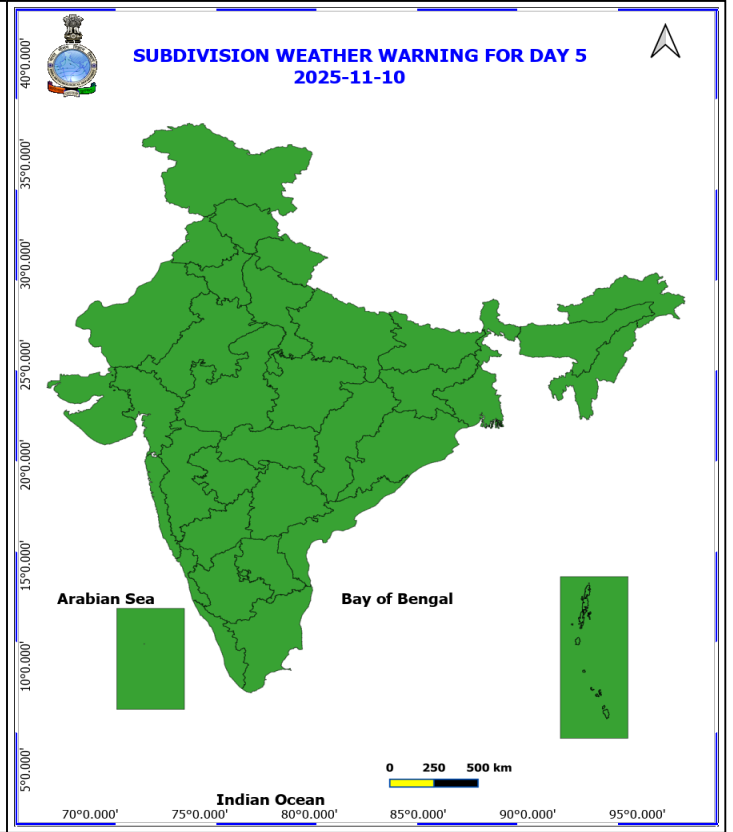
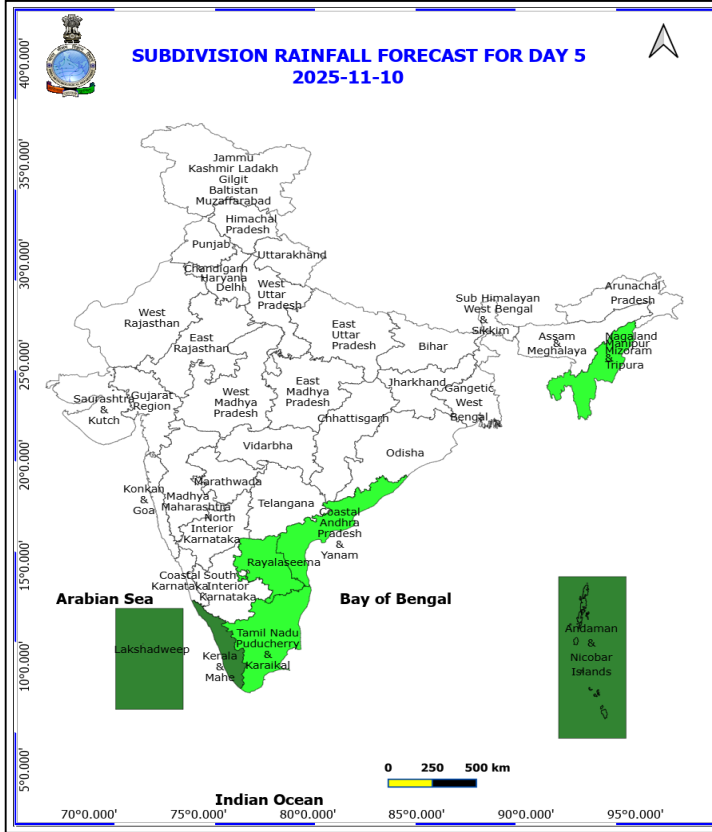
- ❖ **Heavy Rainfall** very likely at isolated places over Tamil Nadu Puducherry & Karaikal.
 - ❖ **Thunderstorm accompanied with Lightning** very likely at isolated places over Tamil Nadu Puducherry & Karaikal.
- No Warning.



9 November (Day 4)

❖ **Thunderstorm accompanied with Lightning** likely at isolated places over Tamil Nadu Puducherry & Karaikal.

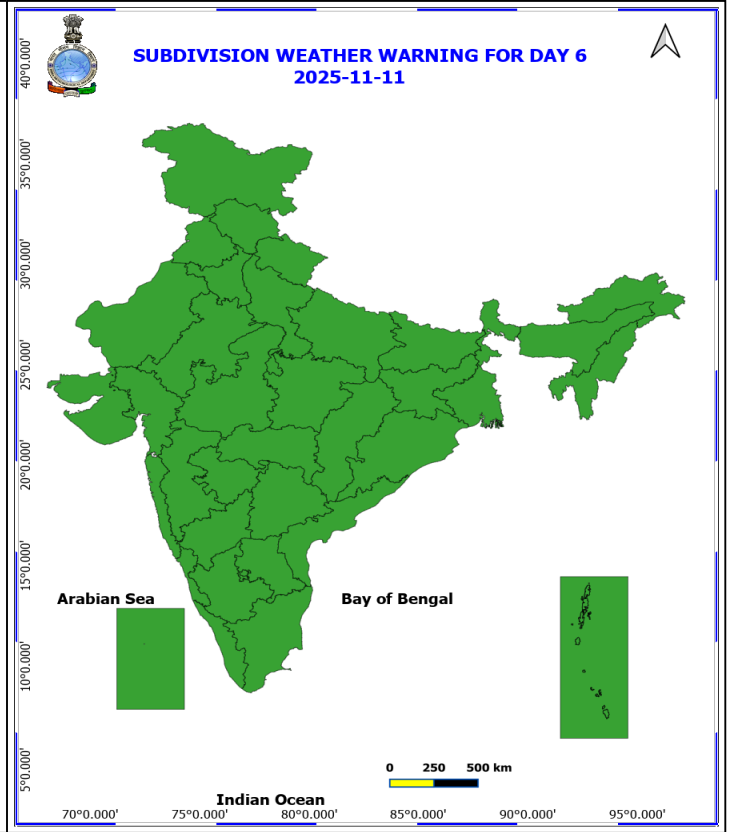
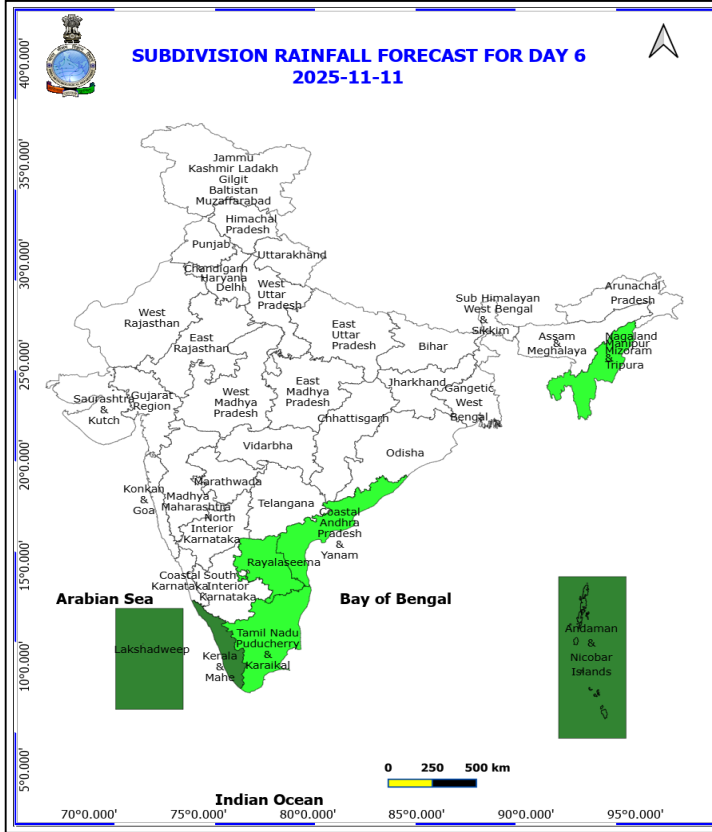
No Warning.



10 November (Day 5)

No Warning

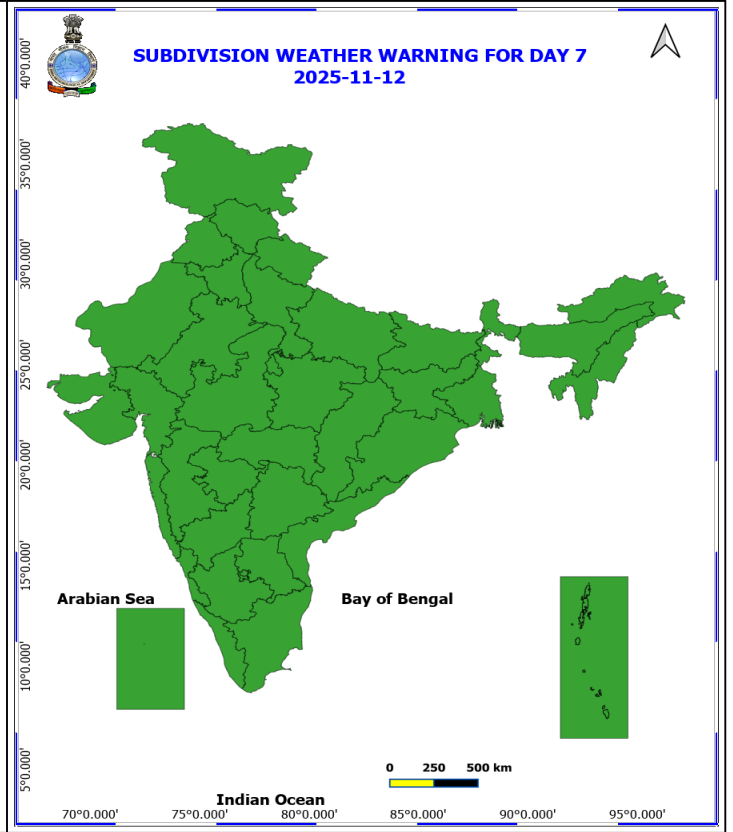
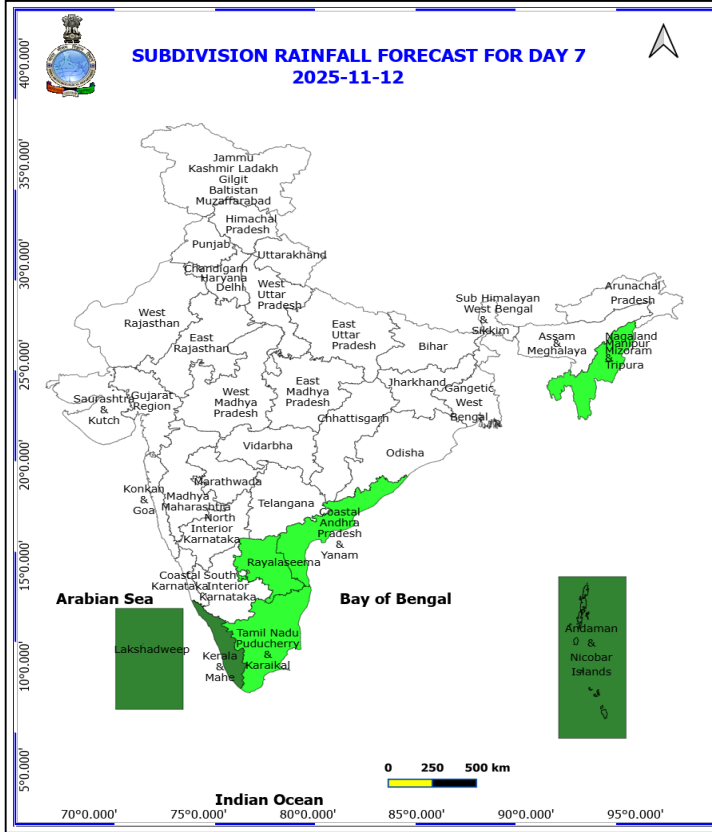
No Warning.



11 November (Day 6)

No Warning

No Fishermen Warning



12 November (Day 7)

No Warning
No Fishermen Warning

*Red color warning does not mean "Red Alert" Red color warning means "Take Action"
Forecast and warning for any day is valid from 0830 hours IST of day till 0830 hours IST of next day
For more details kindly visit <https://mausam.imd.gov.in> or contact 011-2434-4599
(Service to the nation since 1875)



Table-1

7 Days Rainfall Forecast

S.No.	Subdivision	6- Nov	7- Nov	8- Nov	9- Nov	10- Nov	11- Nov	12- Nov
		Day 1	Day 2	Day 3	Day 4	Day 5	Day 6	Day 7
1	ANDAMAN & NICOBAR ISLANDS	FWS	FWS	SCT	SCT	SCT	SCT	SCT
2	ARUNACHAL PRADESH	ISOL	DRY	DRY	DRY	DRY	DRY	DRY
3	ASSAM & MEHGHALAYA	ISOL	ISOL	DRY	DRY	DRY	DRY	DRY
4	N. M. M. & T.	SCT	ISOL	ISOL	ISOL	ISOL	ISOL	ISOL
5	S.H. WEST BENGAL & SIKKIM	DRY	ISOL	ISOL	DRY	DRY	DRY	DRY
6	GANGETIC WEST BENGAL	DRY	DRY	DRY	DRY	DRY	DRY	DRY
7	ODISHA	DRY	DRY	DRY	DRY	DRY	DRY	DRY
8	JHARKHAND	DRY	DRY	DRY	DRY	DRY	DRY	DRY
9	BIHAR	DRY	DRY	DRY	DRY	DRY	DRY	DRY
10	EAST UTTAR PRADESH	DRY	DRY	DRY	DRY	DRY	DRY	DRY
11	WEST UTTAR PRADESH	DRY	DRY	DRY	DRY	DRY	DRY	DRY
12	UTTARAKHAND	DRY	DRY	DRY	DRY	DRY	DRY	DRY
13	HARYANA, CHD & DELHI	DRY	DRY	DRY	DRY	DRY	DRY	DRY
14	PUNJAB	DRY	DRY	DRY	DRY	DRY	DRY	DRY
15	HIMACHAL PRADESH	DRY	DRY	DRY	DRY	DRY	DRY	DRY
16	JAMMU AND KASHMIR AND LADAKH	DRY	DRY	DRY	DRY	DRY	DRY	DRY
17	WEST RAJASTHAN	DRY	DRY	DRY	DRY	DRY	DRY	DRY
18	EAST RAJASTHAN	DRY	DRY	DRY	DRY	DRY	DRY	DRY
19	WEST MADHYA PRADESH	DRY	DRY	DRY	DRY	DRY	DRY	DRY
20	EAST MADHYA PRADESH	DRY	DRY	DRY	DRY	DRY	DRY	DRY
21	GUJRAT REGION	DRY	DRY	DRY	DRY	DRY	DRY	DRY
22	SAURASHTRA & KUTCH	DRY	DRY	DRY	DRY	DRY	DRY	DRY
23	KONKAN & GOA	ISOL	ISOL	DRY	DRY	DRY	DRY	DRY
24	MADHYA MAHARASHTRA	ISOL	ISOL	DRY	DRY	DRY	DRY	DRY
25	MARATHWADA	ISOL	DRY	DRY	DRY	DRY	DRY	DRY
26	VIDARBHA	DRY	DRY	DRY	DRY	DRY	DRY	DRY
27	CHATTISGARH	ISOL	DRY	DRY	DRY	DRY	DRY	DRY
28	COASTAL ANDHRA PRADESH	SCT	ISOL	ISOL	ISOL	ISOL	ISOL	ISOL
29	TELANGANA	ISOL	DRY	DRY	DRY	DRY	DRY	DRY
30	RAYALASEEMA	SCT	ISOL	ISOL	ISOL	ISOL	ISOL	ISOL
31	TAMILNADU & PUDUCHERRY	SCT	SCT	SCT	ISOL	ISOL	ISOL	ISOL
32	COSTAL KARNATAKA	ISOL	SCT	SCT	ISOL	DRY	DRY	DRY
33	NORTH INTERIOR KARNATAKA	ISOL	DRY	DRY	DRY	DRY	DRY	DRY
34	SOUTH INTERIOR KARNATAKA	SCT	SCT	ISOL	ISOL	DRY	DRY	DRY
35	KERALA	ISOL	ISOL	SCT	SCT	SCT	SCT	SCT
36	LAKSHDWEEP	DRY	DRY	SCT	SCT	SCT	SCT	SCT

Legend	Category	%Stations
WS	Widespread/Most Places	76-100
FWS	Fairly Widespread/Many Places	51-75
SCT	Scattered/ A Few Places	26-50
ISOL	Isolated Places	1-25
DRY	No Rain	0

*Red color warning does not mean "Red Alert" Red color warning means "Take Action"
Forecast and warning for any day is valid from 0830 hours IST of day till 0830 hours IST of next day
For more details kindly visit <https://mausam.imd.gov.in> or contact 011-2434-4599

(Service to the nation since 1875)

Fig. 1: Maximum Temperatures Dated 2025-11-05

Fig. 2: Departure of Maximum Temp. Dated 2025-11-05

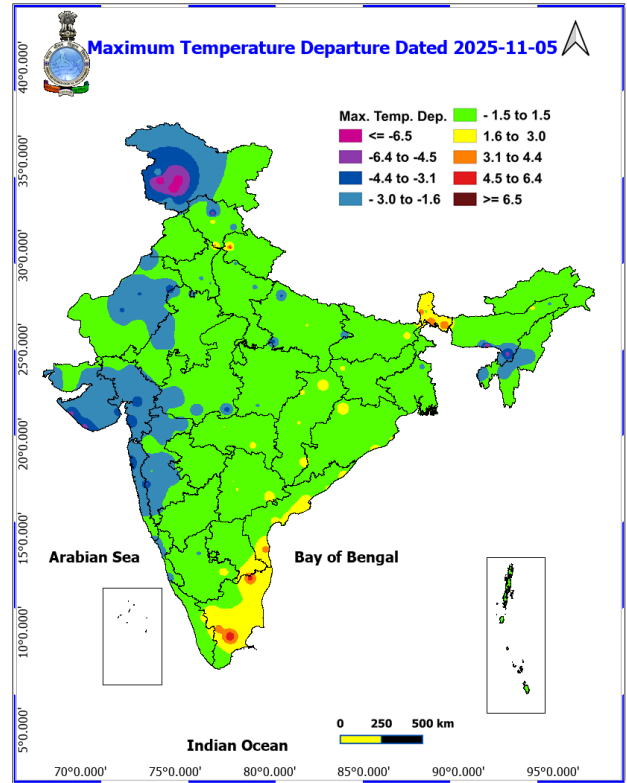
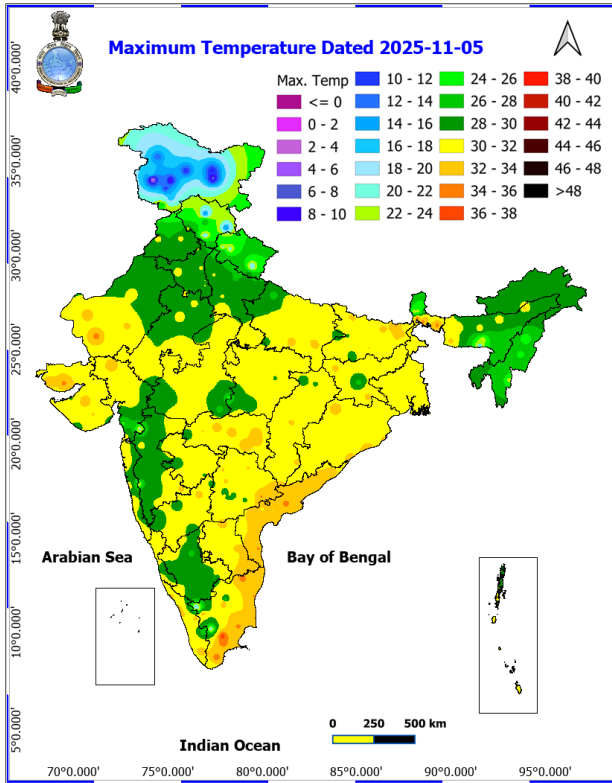
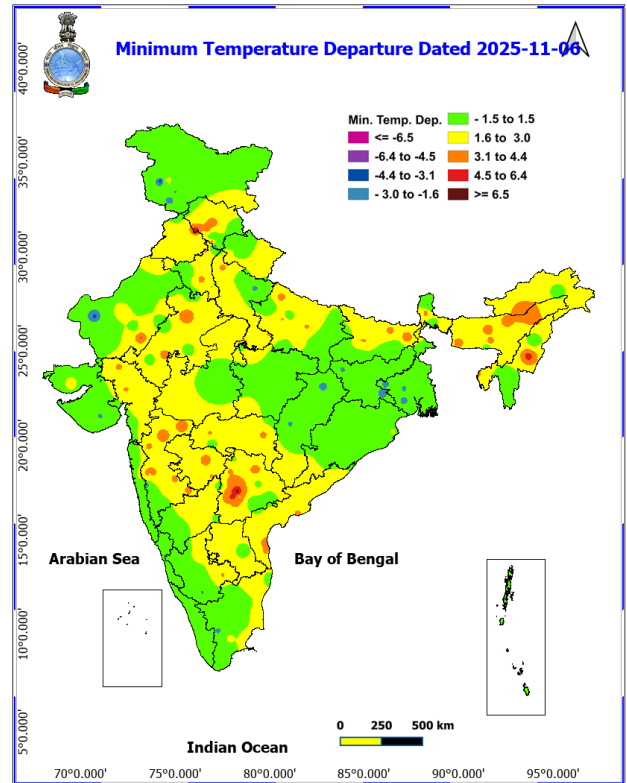
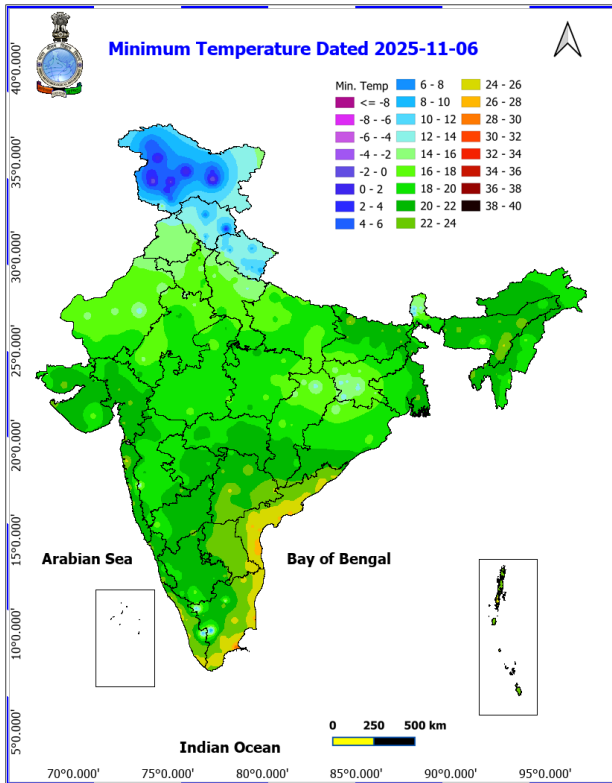
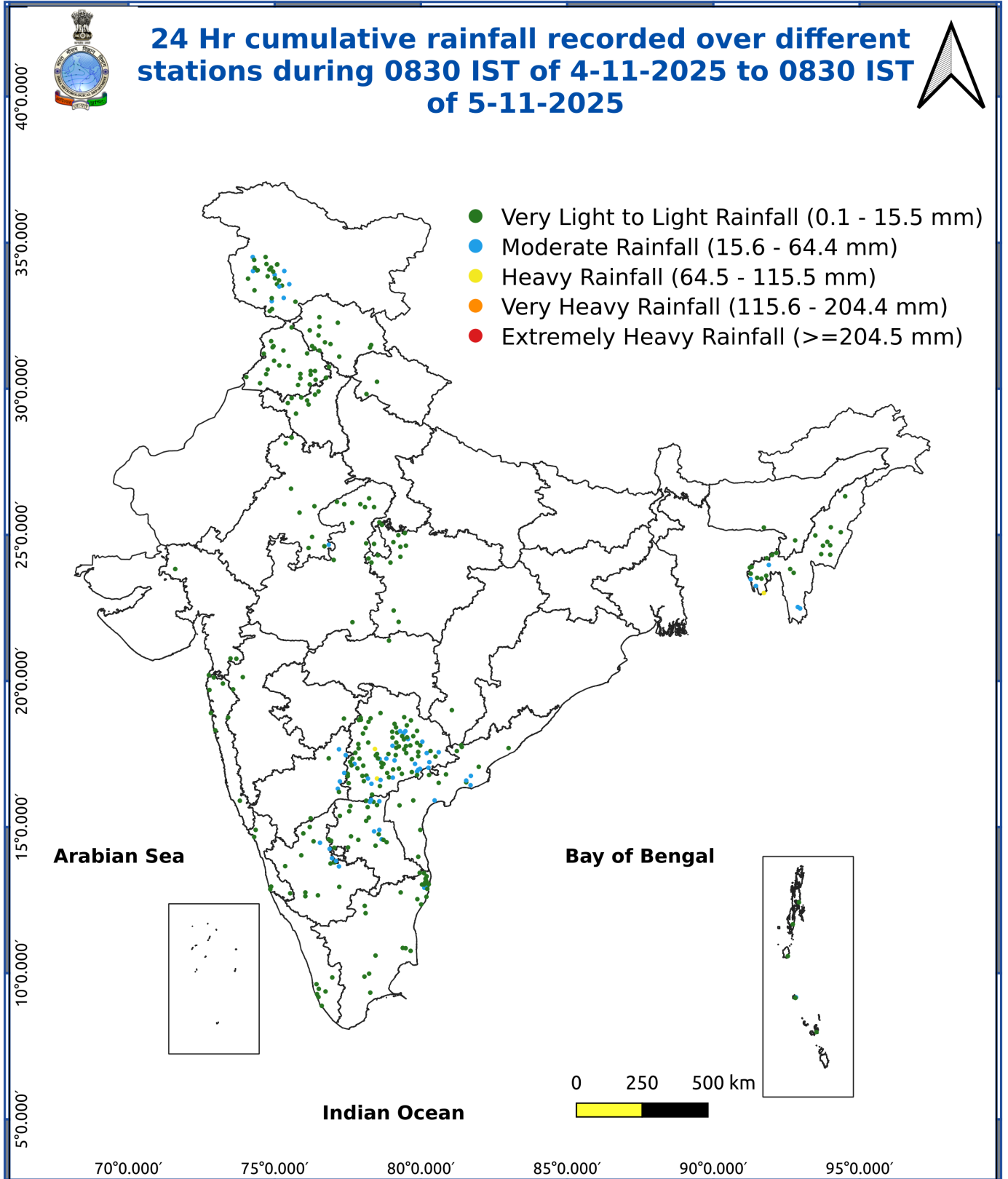


Fig. 3: Minimum Temperatures Dated 2025-11-05

Fig. 4: Departure of Minimum Temp. Dated 2025-11-05





Agromet advisories for various parts of the country

Agromet advisories for likely impact of Heavy Rainfall

- In **Tamil Nadu**, harvest matured rice and groundnut crops only during fair weather and store the harvested produce in safer places. Make arrangements to drain out excess water from fields of rice, sugarcane, cotton, black gram, maize and vegetables and plantations of coconut, banana and black pepper to avoid water stagnation.

Livestock / Fishery

- Keep the animals inside the shed during heavy rainfall and provide them balanced feed.
- Store feed and fodder in a safe place to prevent spoilage.
- Construct an outlet with proper netting around the ponds to drain out excess water, thereby preventing fish from escaping in case of overflow.

Agromet advisories for likely impact of Thunderstorm / Gusty Winds

- Provide mechanical support to horticultural crops and staking or support to vegetables and young fruit plants / fruit-bearing plants to avoid lodging due to strong winds.

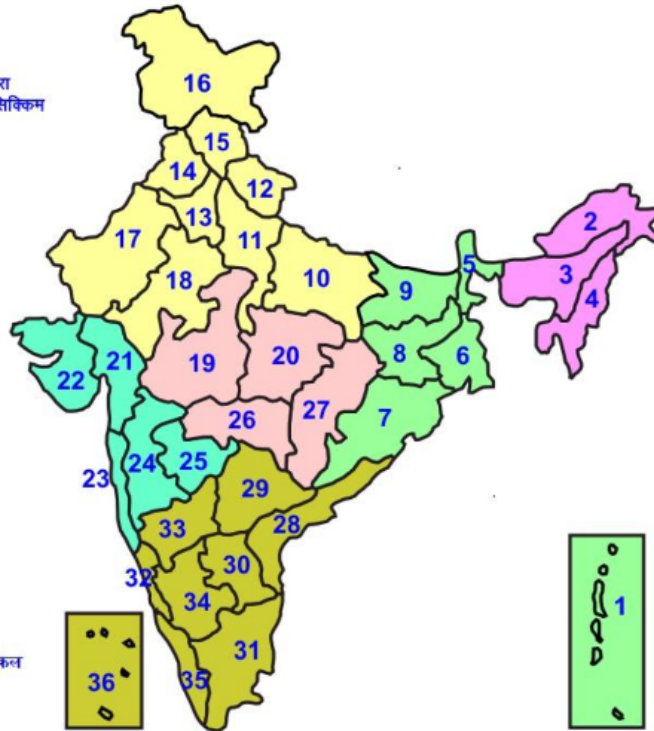
Legends & abbreviations:

Region wise classification of meteorological Sub-Divisions:

- **Northwest India:** Western Himalayan Region (Jammu-Kashmir-Ladakh-Gilgit-Baltistan-Muzaffarabad, Himachal Pradesh and Uttarakhand); Punjab, Haryana-Chandigarh-Delhi; West Uttar Pradesh, East Uttar Pradesh, West Rajasthan and East Rajasthan.
- **Central India:** West Madhya Pradesh, East Madhya Pradesh, Vidarbha and Chhattisgarh.
- **East India:** Bihar, Jharkhand, Sub-Himalayan West Bengal & Sikkim; Gangetic West Bengal, Odisha and Andaman & Nicobar Islands.
- **Northeast India:** Arunachal Pradesh, Assam & Meghalaya and Nagaland, Manipur, Mizoram & Tripura.
- **West India:** Gujarat Region, Saurashtra & Kutch, Konkan & Goa, Madhya Maharashtra and Marathawada.
- **South India:** Coastal Andhra Pradesh & Yanam, Telangana, Rayalaseema, Coastal Karnataka, North Interior Karnataka, South Interior Karnataka, Kerala & Mahe, Tamil Nadu, Puducherry & Karaikal and Lakshadweep.

LEGENDS

- 1 अंडमान और निकोबार द्वीप समुह
- 2 अरुणाचल प्रदेश
- 3 असम और मेघालय
- 4 नागालैंड मनीपुर मीजोरम और त्रिपुरा
- 5 उप हिमालय पश्चिम बंगाल एवं सिक्किम
- 6 पश्चिम बंगाल
- 7 ओडिसा
- 8 झारखंड
- 9 बिहार
- 10 पूर्वी उत्तर प्रदेश
- 11 पश्चिम उत्तर प्रदेश
- 12 उत्तराखंड
- 13 हरियाणा चंडिगढ़ एवं दिल्ली
- 14 पंजाब
- 15 हिमाचल प्रदेश
- 16 जम्मू एवं कश्मीर एवं लद्दाख
- 17 पश्चिम राजस्थान
- 18 पूर्वी राजस्थान
- 19 पश्चिम मध्य प्रदेश
- 20 पूर्वी मध्य प्रदेश
- 21 गुजरात क्षेत्र
- 22 सौराष्ट्र एवं कच्छ
- 23 कोंकण एवं गोवा
- 24 मध्य महाराष्ट्र
- 25 मराठावाडा
- 26 विदर्भ
- 27 छत्तीसगढ़
- 28 तटीय आंध्र प्रदेश एवं यनम
- 29 तेलंगाना
- 30 रायलसीमा
- 31 तमिलनाडु, पुदुचेरी एवं कराईकल
- 32 तटिय कर्नाटक
- 33 आंतरिक उत्तरी कर्नाटक
- 34 आंतरिक दक्षिणी कर्नाटक
- 35 केरल एवं माहे
- 36 लक्षद्वीप



1. Andaman & Nicobar Islands
2. Arunachal Pradesh
3. Assam & Meghalaya
4. Nagaland, Manipur, Mizoram & Tripura
5. Sub-Himalayan West Bengal & Sikkim
6. Gangetic West Bengal
7. Orissa
8. Jharkhand
9. Bihar
10. East Uttar Pradesh
11. West Uttar Pradesh
12. Uttarakhand
13. Haryana, Chd & Delhi
14. Punjab
15. Himachal Pradesh
16. Jammu & Kashmir and Ladakh
17. West Rajasthan
18. East Rajasthan
19. West Madhya Pradesh
20. East Madhya Pradesh
21. Gujarat
22. Saurashtra
23. Konkan & Goa
24. Madhya Maharashtra
25. Marathawada
26. Vidharbha
27. Chhattisgarh
28. Coastal Andhra Pradesh & Yanam
29. Telangana
30. Rayalaseema
31. Tamilnadu, Puducherry & Karaikal
32. Coastal Karnataka
33. North Interior Karnataka
34. South Interior Karnataka
35. Kerala & Mahe
36. Lakshadweep

SPATIAL DISTRIBUTION (% of Stations reporting)

% Stations	Category	% Stations	Category
76-100	Widespread (WS/ Most Places)	26-50	Scattered (SCT/ A Few Places)
51-75	Fairly Widespread (FWS/ Many Places)	1-25	Isolated (ISOL)

Subdivision Colour

- NO WARNING
- WATCH (BE UPDATED)
- ALERT (BE PREPARED TO TAKE ACTION)
- WARNING (TAKE ACTION)

Probabilistic Forecast

Terms	Probability of Occurrence (%)
Unlikely	< 25
Likely	25 - 50
Very Likely	50 - 75
Most Likely	> 75

- | | | | |
|--------------------------|-----------------|----------------------|--------------------|
| Heavy Rain | Very Heavy Rain | Extremely Heavy Rain | Heavy Snow |
| Thunderstorm & Lightning | Hailstorm | Dust Storm | Dust Raising Winds |
| Strong surface winds | Heat Wave | Hot Day | Warm Night |
| Cold Wave | Cold Day | Ground Frost | Fog |
| Hot & Humid | | | |

*Red color warning does not mean "Red Alert" Red color warning means "Take Action"

Forecast and warning for any day is valid from 0830 hours IST of day till 0830 hours IST of next day

For more details kindly visit <https://mausam.imd.gov.in> or contact 011-2434-4599

(Service to the nation since 1875)

LEGENDS

WARNING

WARNING (TAKE ACTION)
ALERT (BE PREPARED)
WATCH (BE UPDATED)
NO WARNING (NO ACTION)

Probabilistic Forecast

Terms	Probability of Occurrence (%)
Unlikely	< 25
Likely	25 - 50
Very Likely	50 - 75
Most Likely	> 75



Heavy: 64.5 to 115.5 mm/cm *
Very Heavy: 115.6 to 204.4 mm/cm*
Extremely Heavy: > 204.4 mm/cm *



When maximum temperature of a station reaches $\geq 40^{\circ}\text{C}$ for plains and $\geq 30^{\circ}\text{C}$ for hilly regions
(a) Based on Departure from normal

Heat Wave: Maximum Temperature Departure from normal 4.5°C to 6.4°C .
Severe Heat Wave: Maximum Temperature Departure from normal $\geq 6.5^{\circ}\text{C}$

(b). Based on Actual maximum temperature

Heat Wave: When actual maximum temperature $\geq 45^{\circ}\text{C}$.
Severe Heat Wave: When actual maximum temperature $\geq 47^{\circ}\text{C}$

(c). Criteria for heat wave for coastal stations

When maximum temperature departure is $> 4.5^{\circ}\text{C}$ from normal. Heat Wave may be described provided maximum temperature $\geq 37^{\circ}\text{C}$



When maximum temperature remains 40°C

Warm Night: When minimum temperature departure 4.5°C to 6.4°C .
Severe Warm Night: When minimum temperature departure $> 6.4^{\circ}\text{C}$.



When minimum temperature of a station $\leq 10^{\circ}\text{C}$ for plains and $\leq 0^{\circ}\text{C}$ for hilly regions.

(a). Based on departure

Cold Wave: Minimum Temperature Departure from normal -4.5°C to -6.4°C .
Severe Cold Wave: Minimum Temperature Departure from normal $\leq -6.5^{\circ}\text{C}$

(b) Based on actual Minimum Temperature (for Plains only)

Cold Wave : When Minimum Temperature is $\leq 4.0^{\circ}\text{C}$
Severe Cold Wave: When Minimum Temperature is $\leq 2.0^{\circ}\text{C}$

(c) For Coastal Stations

When Minimum Temperature departure is $\leq -4.5^{\circ}\text{C}$ & actual Minimum Temperature is $\leq 15^{\circ}\text{C}$



When minimum temperature of a station $\leq 10^{\circ}\text{C}$ for plains and $\leq 0^{\circ}\text{C}$ for hilly regions
Based on departure

Cold Day: Maximum Temperature Departure from normal -4.5°C to -6.4°C .
Severe Cold Day: Maximum Temperature Departure from normal $\leq -6.5^{\circ}\text{C}$



Phenomenon of small droplets suspended in air and the horizontal visibility $< 1\text{km}$

Moderate Fog: When the visibility between 500-200 metres
Dense Fog: when the visibility between 50- 200 metres
Very Dense Fog: when the visibility < 50 metres



Sudden electrical discharges manifested by a flash of light (Lightning) and a sharp rumbling sound (thunder)



An ensemble of particles of dust or sand energetically lifted to great heights by a strong and turbulent wind.



Ice deposits on ground

Air temperature $\leq 4^{\circ}\text{C}$ (over Plains)



A strong wind that rises suddenly, lasts for atleast 1 minute.

Moderate: Wind speed 52-61 kmph
Severe: Wind speed 62-87 kmph
Very Severe: Wind speed > 87 kmph



Effect of various waves in the sea over specific area

Rough to very rough: Wind speed 41-62 kmph (22-33 knots) & Wave height 2.5-6 metre
High to very high: Wind speed 63-117 kmph (34-63 knots) & Wave height 6-14 metre
Phenomenal: Wind speed > 117 kmph (> 63 knots) & Wave height > 14 metre



Cyclonic Storm: Wind speed 62-87 kmph (34-47 knots)
Severe Cyclonic Storm: Wind speed 88-117 kmph (48-63 knots)
Very Severe Cyclonic Storm: Wind speed 118-165 kmph (64 - 89 knots)
Extremely Severe Cyclonic Storm: Wind speed 166-220 kmph (90 -119 knots)
Super Cyclone Storm: Wind speed > 220 kmph (> 119 knots)

*Red color warning does not mean "Red Alert" Red color warning means "Take Action"

Forecast and warning for any day is valid from 0830 hours IST of day till 0830 hours IST of next day

For more details kindly visit <https://mausam.imd.gov.in> or contact 011-2434-4599

(Service to the nation since 1875)