

2025-10-03

Time of Issue: 09:01:00 hours IST
(Morning)

ALL INDIA WEATHER SUMMARY AND FORECAST BULLETIN

Significant Weather Features

East & Central India:

- **Isolated Extremely heavy rainfall (≥ 21 cm) likely over Bihar** on 03rd & 04th October.
- Light to moderate rain/thunderstorm at most/many places with isolated **heavy rainfall** likely over VidEast Madhya Pradesh & Chhattisgarh on 03rd-04th; Sub-Himalayan West Bengal & Sikkim during 03rd -06th; Gangetic West Bengal, Jharkhand during 03rd -05th; Bihar during 03rd -07th; Odisha on 03rd October with **isolated very heavy rainfall over Gangetic West Bengal, Odisha, Jharkhand and Chhattisgarh on 03rd; East Madhya Pradesh on 03rd; Sub-Himalayan West Bengal & Sikkim and Bihar during 03rd-05th October..**
- Thunderstorm & gusty winds (speed reaching 40-50 kmph) over Gangetic West Bengal on 03rd; (speed reaching 30-40 kmph) very likely over Sub-Himalayan West Bengal & Sikkim during next 3 days; Gangetic West Bengal during 04th -06th; Odisha on 03rd; Bihar during next 7 days; Jharkhand during next 5 days.

Northeast India:

- Light/moderate rain/thunderstorm at many/some places with isolated **heavy rainfall** likely over Arunachal Pradesh, Nagaland, Manipur, Mizoram & Tripura during the week except on 05th & 06th; Assam & Meghalaya during the week except on 06th & 07th with **very heavy rainfall** over Assam & Meghalaya on 03rd October.

South Peninsular India:

- Light to moderate rain/thunderstorm at many/some places with isolated **heavy rainfall** likely over Tamil Nadu during 03rd-05th, Coastal Andhra Pradesh & Yanam on 03rd October.
- Strong surface winds (speed reaching 50-60 kmph) over Coastal Andhra Pradesh & Yanam on 03rd October; (speed reaching 30-40 kmph) very likely over Telangana during next 5 days.

Northwest India:

- **Isolated Extremely heavy rainfall (≥ 21 cm) likely over East Uttar Pradesh** on 04th October.
- Isolated to scattered rainfall very likely over Northwest India during 03rd-04th and increase thereafter with fairly widespread to widespread rainfall accompanied with thunderstorm & lightning during 05th-08th October.
- isolated **heavy rainfall** likely over Jammu-Kashmir-Ladakh, Himachal Pradesh, Punjab during 05th -07th; east Uttarakhand and West Uttar Pradesh, Haryana Chandigarh & Delhi on 06th & 07th; East Uttar Pradesh during 03rd -05th; West Rajasthan on 05th & 06th; East Rajasthan on 06th October with **very heavy rainfall** over Jammu-Kashmir, Himachal Pradesh, Uttarakhand, Punjab, Haryana Chandigarh & Delhi on 06th; East Uttar Pradesh during 03rd-05th October.
- Isolated **hailstorm** activity is also likely over Jammu-Kashmir, Himachal Pradesh, Uttarakhand, Punjab on 05th & 06th; West Uttar Pradesh, Haryana Chandigarh & Delhi on 06th October.
- Strong surface winds (speed reaching 40-50 kmph) over East Uttar Pradesh during 03rd & 04th; (speed reaching 30-40 kmph) very likely over Jammu-Kashmir over 04th -08th, Himachal Pradesh 05th -07th; West Rajasthan on 05th & 06th; East Rajasthan on 06th October.

West India:

- Light to moderate rain/thunderstorm at most/many places during next 7 days.

*Red color warning does not mean "Red Alert" Red color warning means "Take Action"

Forecast and warning for any day is valid from 0830 hours IST of day till 0830 hours IST of next day

For more details kindly visit <https://mausam.imd.gov.in> or contact 011-2434-4599

(Service to the nation since 1875)

Main Weather Observations:

❖ **Rainfall distribution** (from 0830 hours IST of yesterday to 0530 hours IST of today): **at most places** over Assam & Meghalaya, Arunachal Pradesh, Uttarakhand, Bihar, Jharkhand, Sub-himalayan West Bengal & Sikkim, Nagaland, Manipur, Mizoram & Tripura, Saurashtra & Kutch, Odisha, Gangetic West Bengal, Chhattisgarh, Konkan & Goa and Coastal Karnataka; **at many places** over Haryana Chandigarh & Delhi, East Rajasthan, West Rajasthan, Jammu & Kashmir and Ladakh, Punjab, West Madhya Pradesh, West Uttar Pradesh, East Uttar Pradesh, East Madhya Pradesh, Coastal Andhra Pradesh & Yanam, Andaman & Nicobar Islands, Madhya Maharashtra, Vidarbha, Kerala & Mahe, Tamilnadu Puducherry & Karaikal, Rayalaseema, Gujarat Region, North Interior Karnataka, South Interior Karnataka and Lakshadweep; **Dry** over rest of the country.

❖ **Significant rainfall recorded(in cm)** (from 0830 hours IST of yesterday to 0530 hours IST of today): Assam & Meghalaya: Cherrapunji (dist East Khasi Hills) 8, North Lakhimpur (dist Lakhimpur) 5; Coastal andhra pradesh & yanam: Kalingapatanam (dist Srikakulam) 7; **Odisha**: Balasore (dist Balasore) 6; Gangetic west bengal: Diamond Harbour (dist South 24 Parganas) 4; **Chhattisgarh**: Raipur-lalpur (dist Raipur) 4.

❖ **Heavy Rainfall observed** (from 0830 hours IST of yesterday to 0530 hours IST of today):**Heavy rain** at isolated places over Assam & Meghalaya and Coastal Andhra Pradesh & Yanam

❖ **Minimum Temperature Departures (as on 02-10-2025): markedly above normal(> 5.1°C)** at isolated places over Assam & Meghalaya, Bihar, East Uttar Pradesh, West Uttar Pradesh, Himachal Pradesh, West Rajasthan and West Madhya Pradesh. **appreciably above normal(3.1°C to 5.0°C)** at many places over Punjab; at few places over Nagaland, Manipur, Mizoram & Tripura and East Madhya Pradesh; at isolated places over Sub Himalayan West Bengal & Sikkim, Odisha, Haryana-Chandigarh-Delhi, Jammu-KashmirLadakh-Gilgit-Baltistan-Muzaffarabad, East Rajasthan, Saurashtra & Kutch and Tamil Nadu, Puducherry & Karaikal. **above normal(1.6°C to 3.0°C)** at most places over Andaman & Nicobar Islands; at few places over Uttarakhand; at isolated places over Gangetic West Bengal, Gujarat Region, Vidarbha, Coastal Andhra Pradesh & Yanam and Kerala & Mahe. **near normal(-1.5°C to 1.5°C)** at many places over Konkan & Goa; at most places over Arunachal Pradesh, Jharkhand, Madhya Maharashtra, Marathwada, Chhattisgarh, Telangana, Rayalaseema, Coastal Karnataka, North Interior Karnataka, South Interior Karnataka and Lakshadweep. **The lowest minimum temperature** of 17.5°C was reported at JEUR (MAHARASHTRA) over the Plains of India.

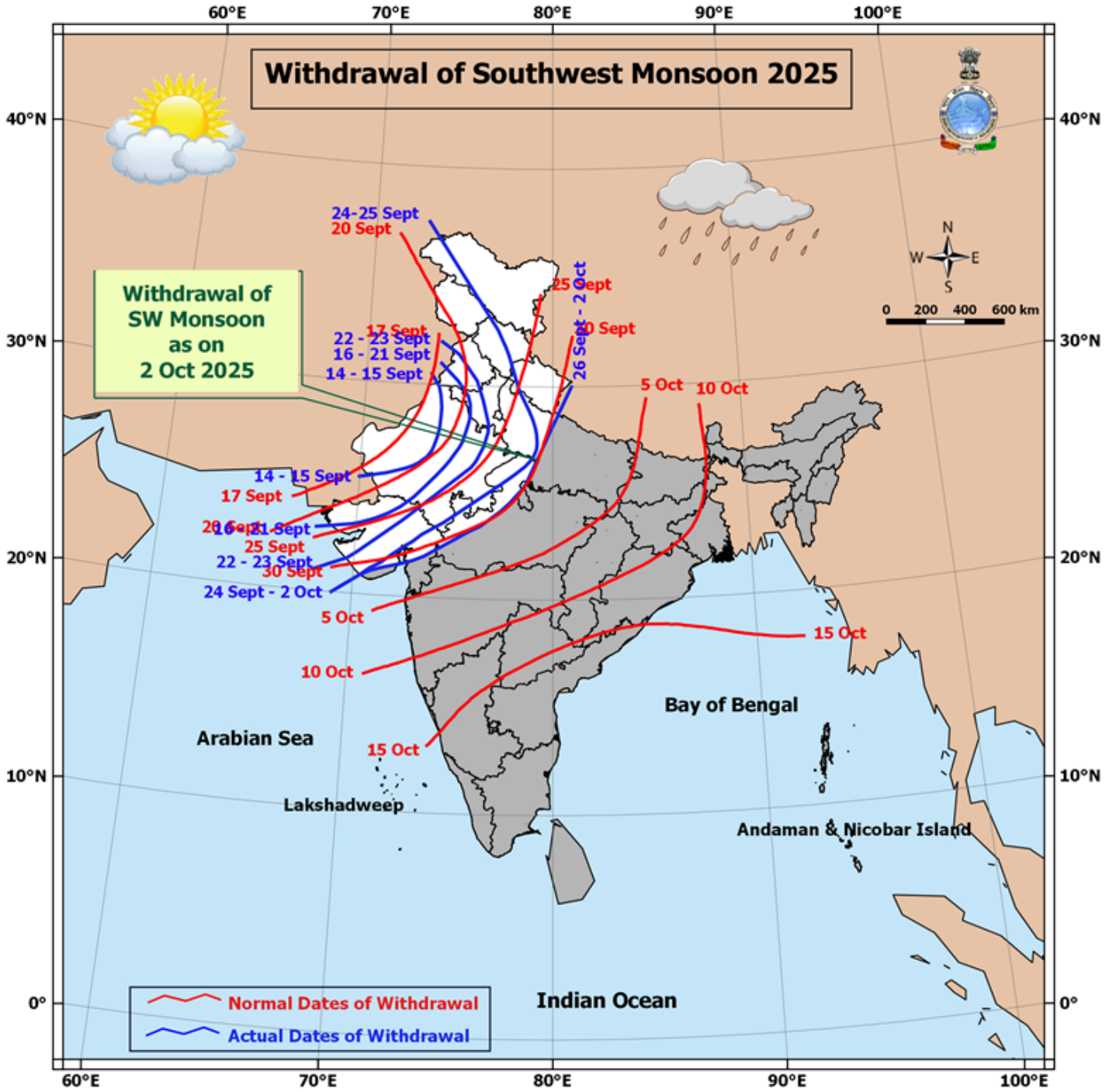
❖ **Maximum Temperature Departures (as on 02-10-2025): appreciably above normal(3.1°C to 5.0°C)** at isolated places over Jammu-KashmirLadakh-Gilgit-Baltistan-Muzaffarabad, Chhattisgarh and Tamil Nadu, Puducherry & Karaikal. **above normal(1.6°C to 3.0°C)** at many places over Himachal Pradesh; at most places over Lakshadweep; at few places over Punjab; at isolated places over Andaman & Nicobar Islands, Bihar, Uttarakhand, Haryana-Chandigarh-Delhi, Vidarbha, Rayalaseema and Kerala & Mahe. **near normal(-1.5°C to 1.5°C)** at many places over West Uttar Pradesh, North Interior Karnataka and South Interior Karnataka; at most places over Assam & Meghalaya, Konkan & Goa and Coastal Karnataka; at few places over Arunachal Pradesh, Sub Himalayan West Bengal & Sikkim, Jharkhand, West Rajasthan, West Madhya Pradesh, Madhya Maharashtra, Marathwada, Coastal Andhra Pradesh & Yanam and Telangana; at isolated places over Odisha, East Uttar Pradesh, East Rajasthan, East Madhya Pradesh and Saurashtra & Kutch. **The highest maximum temperature** of 39.5°C was reported at PALAYAMKOTTAI (TAMIL NADU).

Meteorological Analysis (Based on 0530 hours IST)

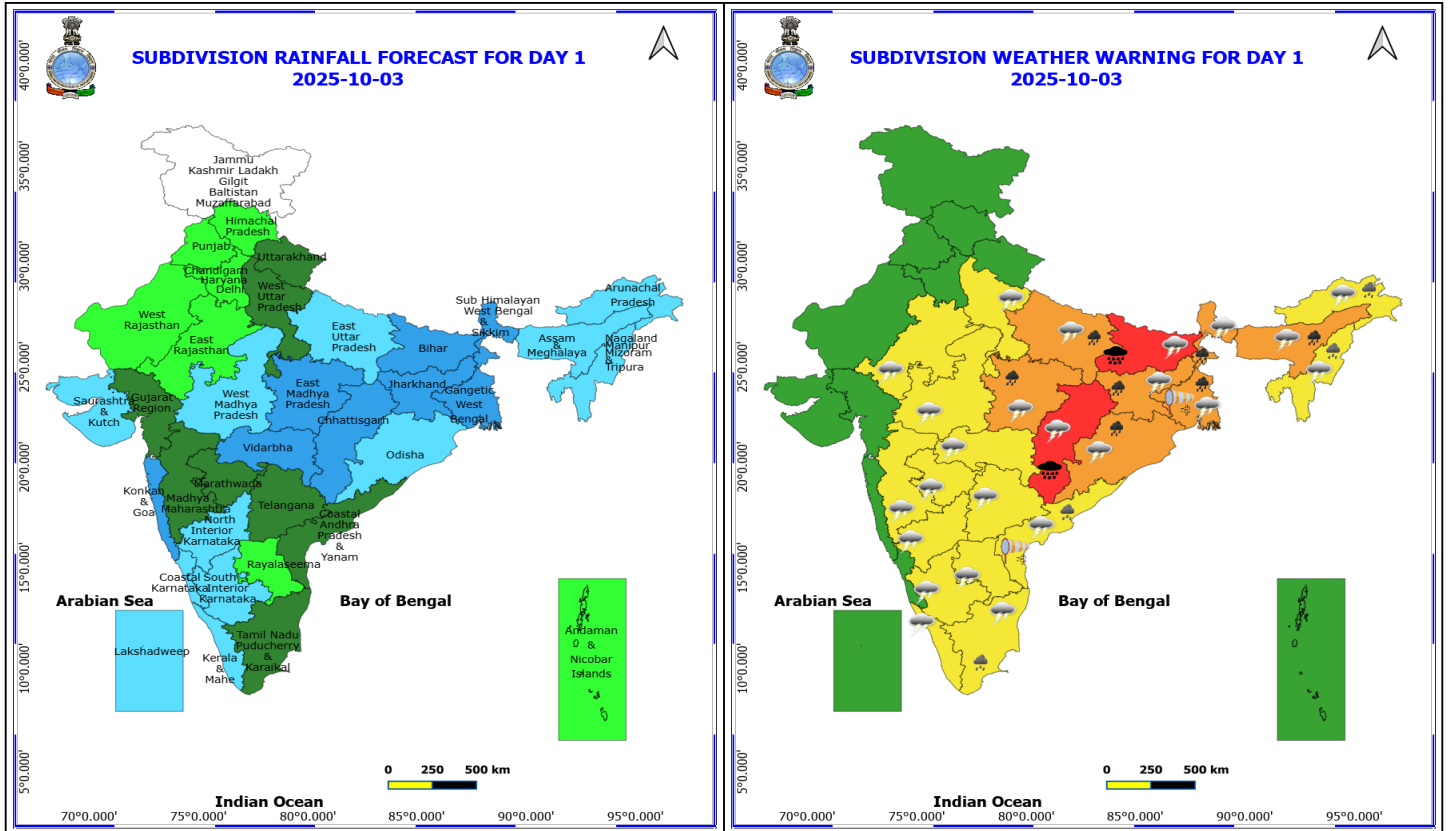
- The **line of withdrawal of southwest monsoon** continues to pass through 20°N/ 69°E, Veraval, Bharuch, Ujjain, Jhansi, Shahjahanpur and 30°N/81°E.
- The **Deep Depression** over south coastal Odisha moved northwestwards and lay centered at 2330 Hrs IST of yesterday, the 2nd October 2025 over south Odisha. It moved north-northwestwards with a speed of 10 kmph during past 6 hours, weakened into a **Depression** and lay centered at 0530 Hrs IST of today, the 3rd October 2025 over interior Odisha near latitude 20.2°N and longitude 84.1°E, about 40 km south-southwest of Phulbani (Odisha), about 100 km east-northeast of Bhawanipatna (Odisha), 140 km south of Sambalpur (Odisha), 190 km south of Jharsuguda (Odisha). It is very likely to move north-northwestwards across interior Odisha and weaken gradually into a **well-marked low pressure** during next 12 hours.
- The **Depression** over northeast Arabian Sea moved nearly westwards, intensified into a **Deep Depression** and lay centered at 2330 Hrs IST of yesterday, the 02nd October, 2025 over the same region. It moved west-northwestwards with a speed of 13 kmph during last 6 hours and lay centered at 0530 Hrs IST of today, the 3rd October, 2025 over the same region near latitude 21.3°N and longitude 67.1°E, about 240 km west-southwest of Dwarka, 270 km west of Porbandar, 280 km southwest of Naliya, and 400 km south of Karachi (Pakistan). It is likely to move west northwestwards and intensify into a **cyclonic storm** during next 12 hrs. Thereafter, it is like to move nearly westwards initially and then west-southwestwards and intensify further into a **severe cyclonic storm** during subsequent 24 hrs.
- The upper air **cyclonic circulation** over central Uttar Pradesh & neighbourhood between 1.5 & 3.1 km above mean sea level persists.
- The upper air **cyclonic circulation** over northwest Rajasthan & neighbourhood at 0.9 km above mean sea level persists.
- The upper air **cyclonic circulation** over Arunachal Pradesh & neighbourhood at 3.1 km above mean sea level persists.
- A fresh **Western Disturbance** is likely to affect northwest India from 04th October 2025.

Weather Outlook for subsequent 3 days

- Isolated to scattered rainfall activity likely over many parts of the country except Gangetic Plains, East Rajasthan, Madhya Pradesh, West & Central India where fairly widespread rainfall activity is likely.



*Red color warning does not mean "Red Alert" Red color warning means "Take Action"
Forecast and warning for any day is valid from 0830 hours IST of day till 0830 hours IST of next day
For more details kindly visit <https://mausam.imd.gov.in> or contact 011-2434-4599
(Service to the nation since 1875)



3 October (Day 1)

- ❖ **Heavy to Very Heavy Rainfall with isolated Extremely Heavy Rainfall** very likely at isolated places over Bihar and Chhattisgarh.
- ❖ **Heavy to Very Heavy Rainfall** very likely at isolated places over Assam & Meghalaya, East Madhya Pradesh, East Uttar Pradesh, Jharkhand, Odisha and West Bengal & Sikkim.
- ❖ **Heavy Rainfall** very likely at isolated places over Arunachal Pradesh, Coastal Andhra Pradesh, Nagaland, Manipur, Mizoram and Tripura and Tamil Nadu Puducherry & Karaikal.
- ❖ **Thundersquall with wind speed reaching(50-60kmph)** very likely at isolated places over Coastal Andhra Pradesh.
- ❖ **Thunderstorm accompanied with lightning & gusty winds(40-50kmph)** very likely at isolated places over East Uttar Pradesh and Gangetic West Bengal.
- ❖ **Thunderstorm accompanied with lightning & gusty winds(30-40kmph)** very likely at isolated places over Bihar, Interior Karnataka, Jharkhand, Odisha, Sub Himalayan West Bengal & Sikkim and Telangana.
- ❖ **Thunderstorm accompanied with Lightning** very likely at isolated places over Arunachal Pradesh, Assam & Meghalaya, Chhattisgarh, East Rajasthan, Kerala & Mahe, Madhya Pradesh, Maharashtra, Nagaland, Manipur, Mizoram and Tripura, Rayalaseema, Sub Himalayan West Bengal & Sikkim, Tamil Nadu Puducherry & Karaikal and West Uttar Pradesh.
- ❖ **Strong Surface Winds** very likely at isolated places over Coastal Andhra Pradesh and Gangetic West Bengal.
 - Squally wind with speed reaching 45 kmph to 55 kmph gusting to 65 kmph is likely to along and off

***Red color warning does not mean "Red Alert" Red color warning means "Take Action"**

Forecast and warning for any day is valid from 0830 hours IST of day till 0830 hours IST of next day

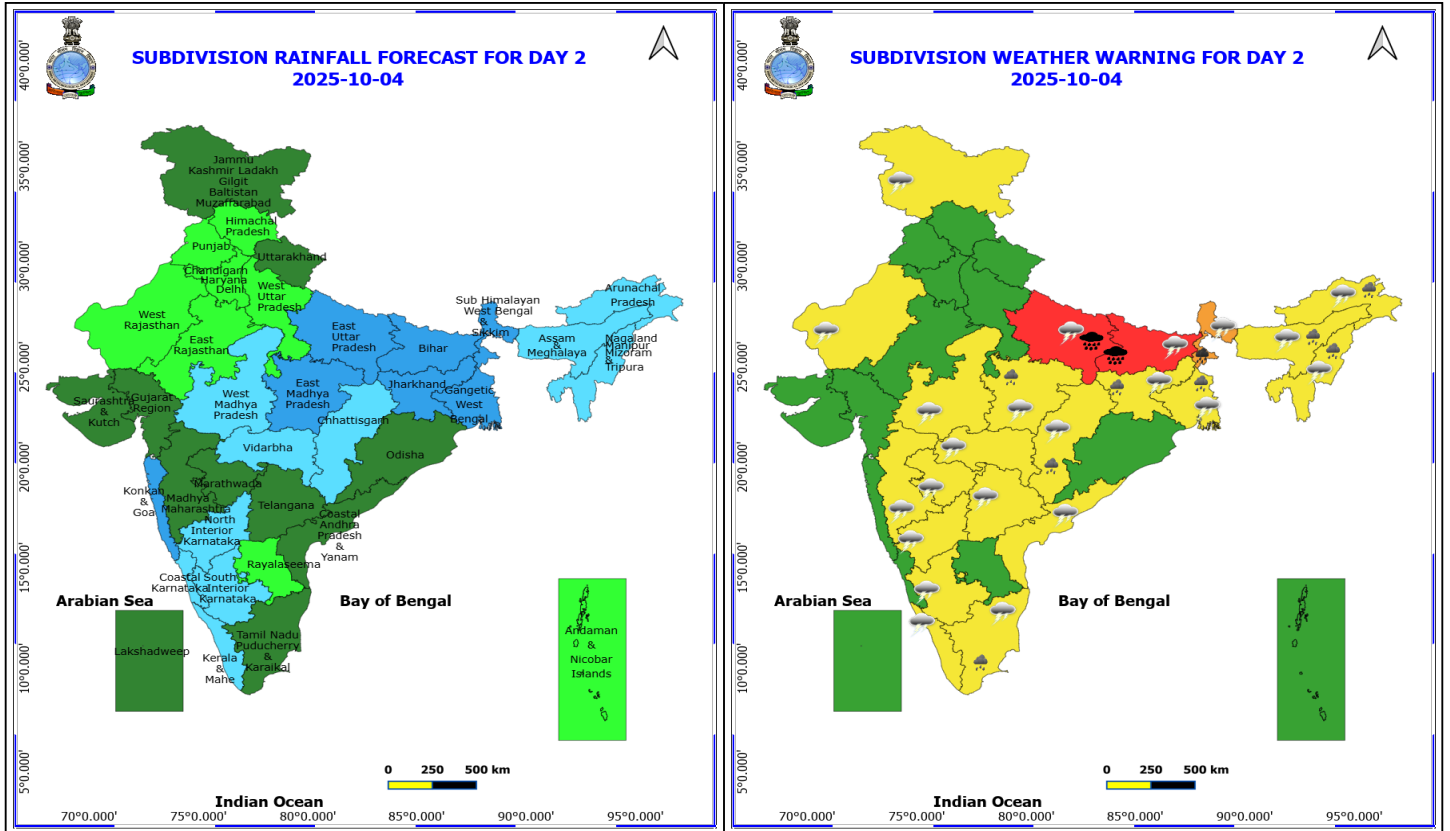
For more details kindly visit <https://mausam.imd.gov.in> or contact 011-2434-4599

(Service to the nation since 1875)



Somalia coast and adjoining areas.

- **Squally weather with wind speed reaching 40 - 50 kmph gusting to 60 kmph** likely to prevail along and off Gujarat coast, most parts of northeast Arabian Sea & some parts of northwest, eastcentral Arabian Sea & adjoining westcentral Arabian Sea, over Gulf of Mannar & adjoining Comorin area, over entire northwest, westcentral Bay of Bengal and adjoining areas of Bay of Bengal, along and off Andhra Pradesh, Odisha, West Bengal, adjoining Bangladesh coasts.
- **Squally weather with wind speed reaching 45 - 55 kmph gusting to 65 kmph** likely to prevail over some parts of northeast and eastcentral Arabian Sea & adjoining areas, along and off north Andhra Pradesh, Odisha coasts, over some parts of central north Bay of Bengal.



4 October (Day 2)

- ❖ **Heavy to Very Heavy Rainfall with isolated Extremely Heavy Rainfall** very likely at isolated places over Bihar and East Uttar Pradesh.
- ❖ **Heavy to Very Heavy Rainfall** very likely at isolated places over Sub Himalayan West Bengal & Sikkim.
- ❖ **Heavy Rainfall** very likely at isolated places over Arunachal Pradesh, Assam & Meghalaya, Chhattisgarh, East Madhya Pradesh, Gangetic West Bengal, Jharkhand, Nagaland, Manipur, Mizoram and Tripura and Tamil Nadu Puducherry & Karaikal.
- ❖ **Thunderstorm accompanied with lightning & gusty winds(40-50kmph)** very likely at isolated places over East Uttar Pradesh.
- ❖ **Thunderstorm accompanied with lightning & gusty winds(30-40kmph)** very likely at isolated places over Bihar, Interior Karnataka, Jammu-Kashmir-Ladakh-Gilgit-Baltistan-Muzaffarabad, Jharkhand, Telangana and West Bengal & Sikkim.
- ❖ **Thunderstorm accompanied with Lightning** very likely at isolated places over Arunachal Pradesh, Assam & Meghalaya, Chhattisgarh, Coastal Andhra Pradesh, Kerala & Mahe, Madhya Pradesh, Maharashtra, Nagaland, Manipur, Mizoram and Tripura, Sub Himalayan West Bengal & Sikkim, Tamil Nadu Puducherry & Karaikal and West Rajasthan.
- **Squally wind with speed reaching 45 kmph to 55 kmph gusting to 65 kmph** is likely to along and off Somalia coast and adjoining areas.
- **Squally weather with wind speed reaching 40 - 50 kmph gusting to 60 kmph** likely to prevail off Gujarat coast, entire northeast Arabian Sea, adjoining and many parts of north & central Arabian Sea, along and off north Andhra Pradesh, Odisha coasts and adjoining sea areas.

***Red color warning does not mean "Red Alert" Red color warning means "Take Action"**

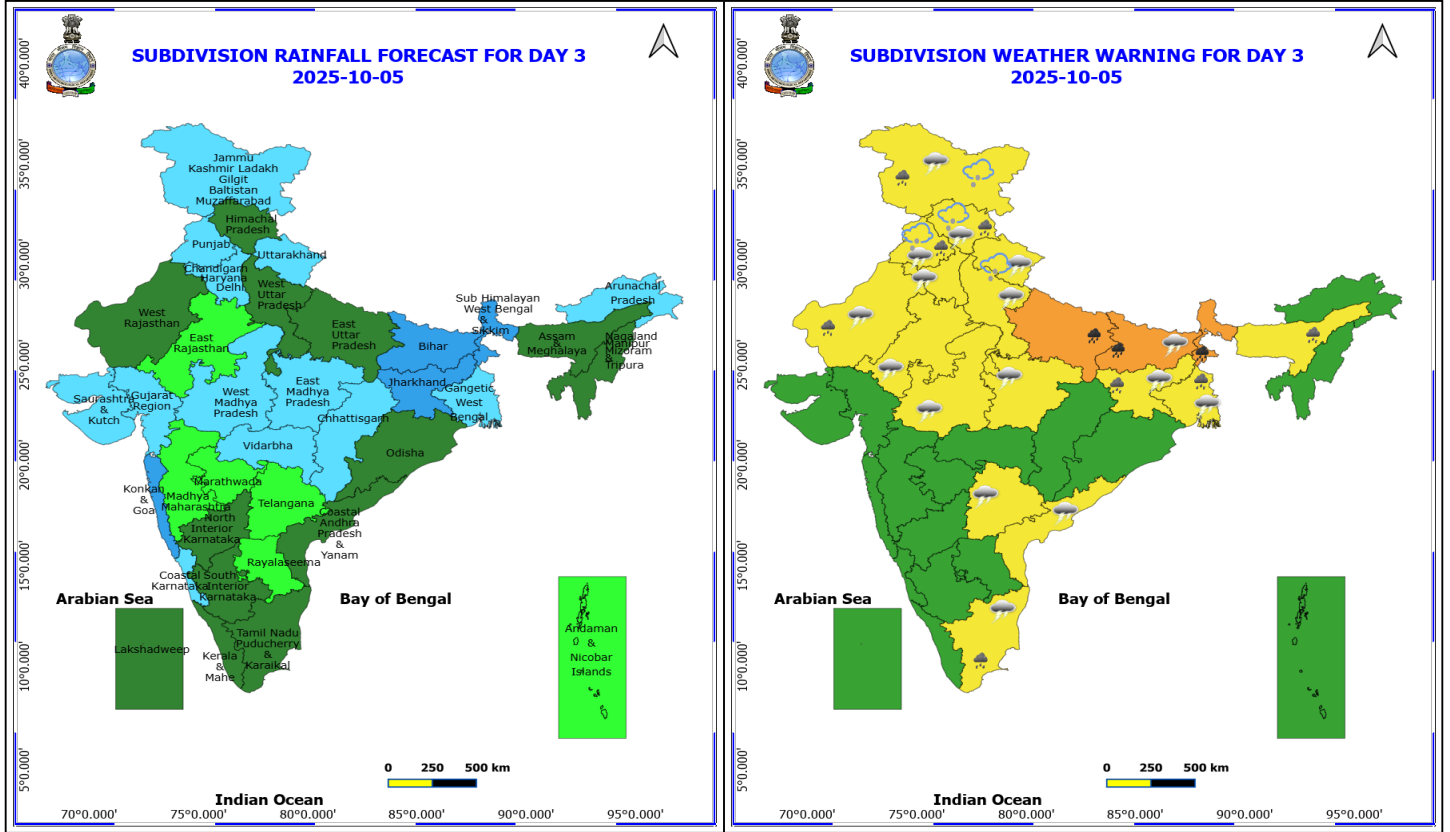
Forecast and warning for any day is valid from 0830 hours IST of day till 0830 hours IST of next day

For more details kindly visit <https://mausam.imd.gov.in> or contact 011-2434-4599

(Service to the nation since 1875)



- **Squally weather with wind speed reaching 45 - 55 kmph gusting to 65 kmph** likely to prevail over northeastern parts of westcentral Arabian Sea & adjoining areas.



5 October (Day 3)

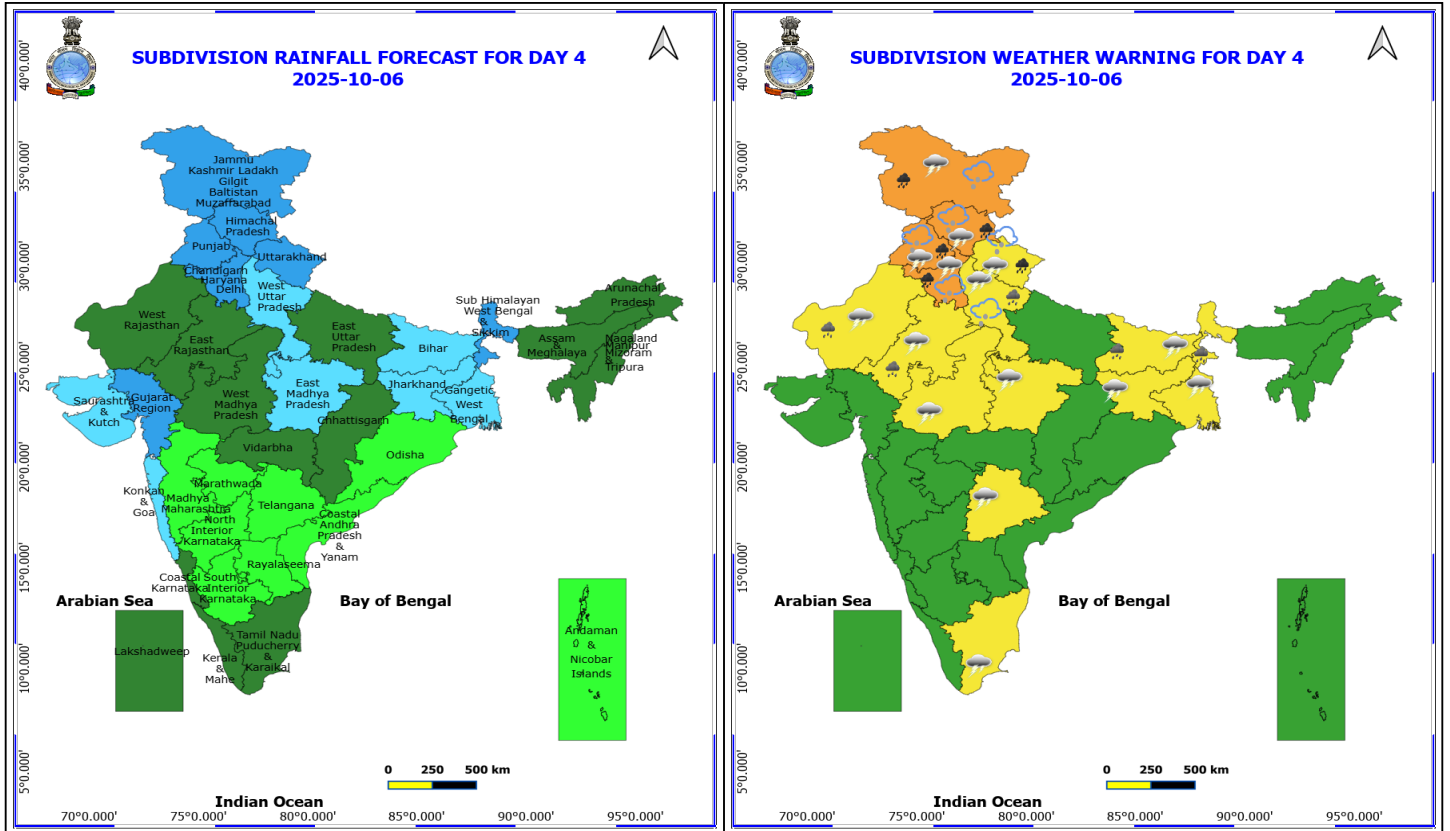
- ❖ **Heavy to Very Heavy Rainfall** very likely at isolated places over Bihar, East Uttar Pradesh and Sub Himalayan West Bengal & Sikkim.
- ❖ **Heavy Rainfall** very likely at isolated places over Assam & Meghalaya, Gangetic West Bengal, Himachal Pradesh, Jammu-Kashmir-Ladakh-Gilgit-Baltistan-Muzaffarabad, Jharkhand, Punjab, Tamil Nadu Puducherry & Karaikal and West Rajasthan.
- ❖ **Thunderstorm accompanied with Hailstorm** very likely at isolated places over Himachal Pradesh, Jammu-Kashmir-Ladakh-Gilgit-Baltistan-Muzaffarabad, Punjab and Uttarakhand.
- ❖ **Thunderstorm accompanied with lightning & gusty winds(40-50kmph)** very likely at isolated places over Himachal Pradesh and Punjab.
- ❖ **Thunderstorm accompanied with lightning & gusty winds(30-40kmph)** very likely at isolated places over Bihar, Gangetic West Bengal, Jammu-Kashmir-Ladakh-Gilgit-Baltistan-Muzaffarabad, Jharkhand, Telangana and West Rajasthan.
- ❖ **Thunderstorm accompanied with Lightning** very likely at isolated places over Coastal Andhra Pradesh, Haryana, Chandigarh & Delhi, Madhya Pradesh, Rajasthan, Tamil Nadu Puducherry & Karaikal, Uttarakhand and West Uttar Pradesh.
- **Squally wind with speed reaching 45 kmph to 55 kmph gusting to 65 kmph** is likely to along and off Somalia coast and adjoining areas.
- **Squally weather with wind speed reaching 40 - 50 kmph gusting to 60 kmph** likely to northern parts of westcentral Arabian Sea & adjoining areas.

***Red color warning does not mean "Red Alert" Red color warning means "Take Action"**

Forecast and warning for any day is valid from 0830 hours IST of day till 0830 hours IST of next day

For more details kindly visit <https://mausam.imd.gov.in> or contact 011-2434-4599

(Service to the nation since 1875)



6 October (Day 4)

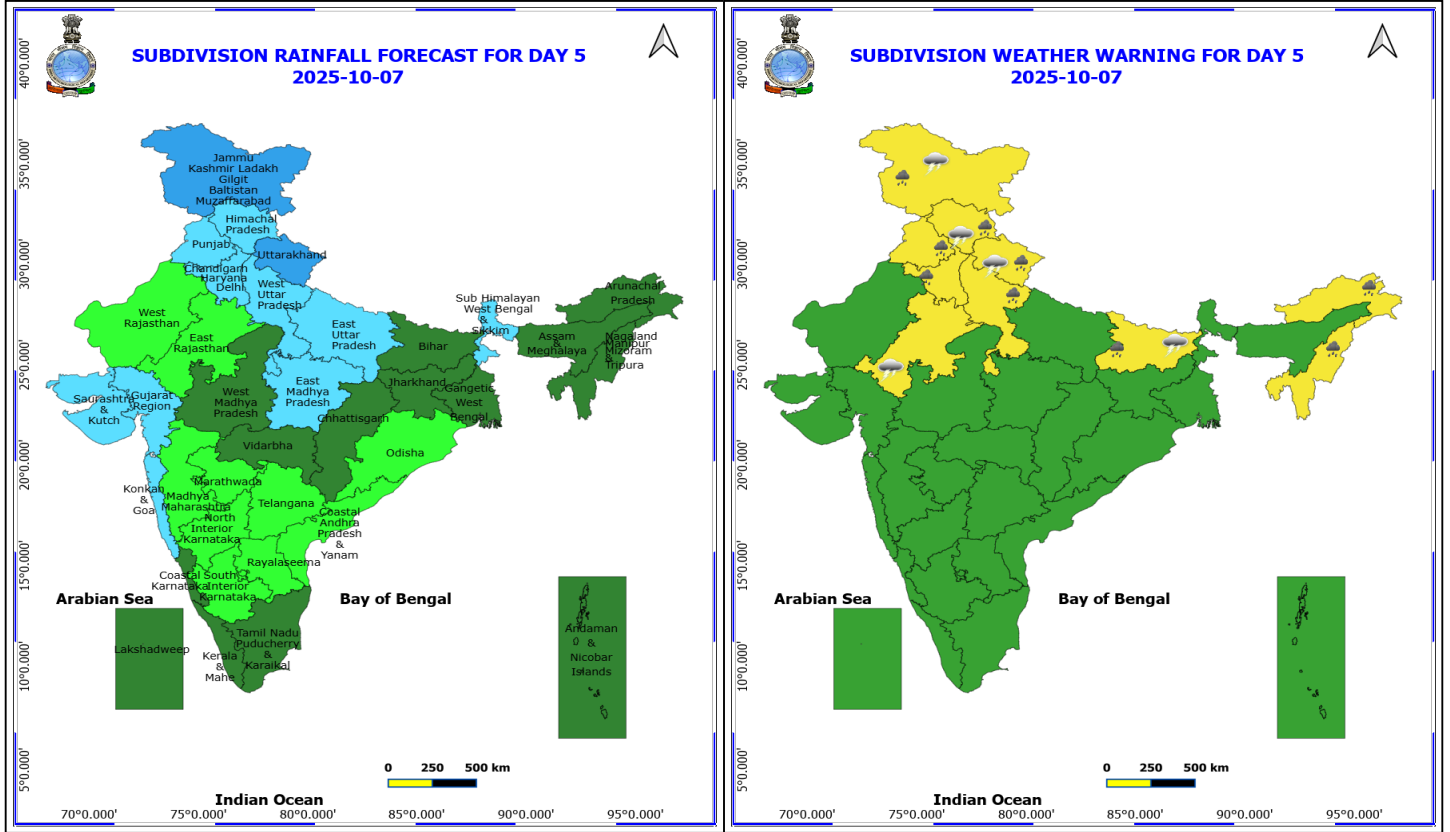
- ❖ **Heavy to Very Heavy Rainfall** likely at isolated places over Haryana, Chandigarh & Delhi, Himachal Pradesh, Jammu-Kashmir-Ladakh-Gilgit-Baltistan-Muzaffarabad, Punjab and Uttarakhand.
 - ❖ **Heavy Rainfall** likely at isolated places over Bihar, Rajasthan, Sub Himalayan West Bengal & Sikkim and West Uttar Pradesh.
 - ❖ **Thunderstorm accompanied with Hailstorm** likely at isolated places over Haryana, Chandigarh & Delhi, Himachal Pradesh, Jammu-Kashmir-Ladakh-Gilgit-Baltistan-Muzaffarabad, Punjab, Uttarakhand and West Uttar Pradesh.
 - ❖ **Thunderstorm accompanied with lightning & gusty winds(40-50kmph)** likely at isolated places over Himachal Pradesh and Punjab.
 - ❖ **Thunderstorm accompanied with lightning & gusty winds(30-40kmph)** likely at isolated places over Bihar, Gangetic West Bengal, Jammu-Kashmir-Ladakh-Gilgit-Baltistan-Muzaffarabad, Jharkhand, Rajasthan and Telangana.
 - ❖ **Thunderstorm accompanied with Lightning** likely at isolated places over Haryana, Chandigarh & Delhi, Madhya Pradesh, Rajasthan, Tamil Nadu Puducherry & Karaikal, Uttarakhand and West Uttar Pradesh.
- **Squally wind with speed reaching 45 kmph to 55 kmph gusting to 65 kmph** is likely to along and off Somalia coast and adjoining areas.
 - **Squally weather with wind speed reaching 40 - 50 kmph gusting to 60 kmph** likely to many parts of westcentral Arabian Sea & adjoining northwest Arabian Sea, along and off Oman coast.

***Red color warning does not mean "Red Alert" Red color warning means "Take Action"**

Forecast and warning for any day is valid from 0830 hours IST of day till 0830 hours IST of next day

For more details kindly visit <https://mausam.imd.gov.in> or contact 011-2434-4599

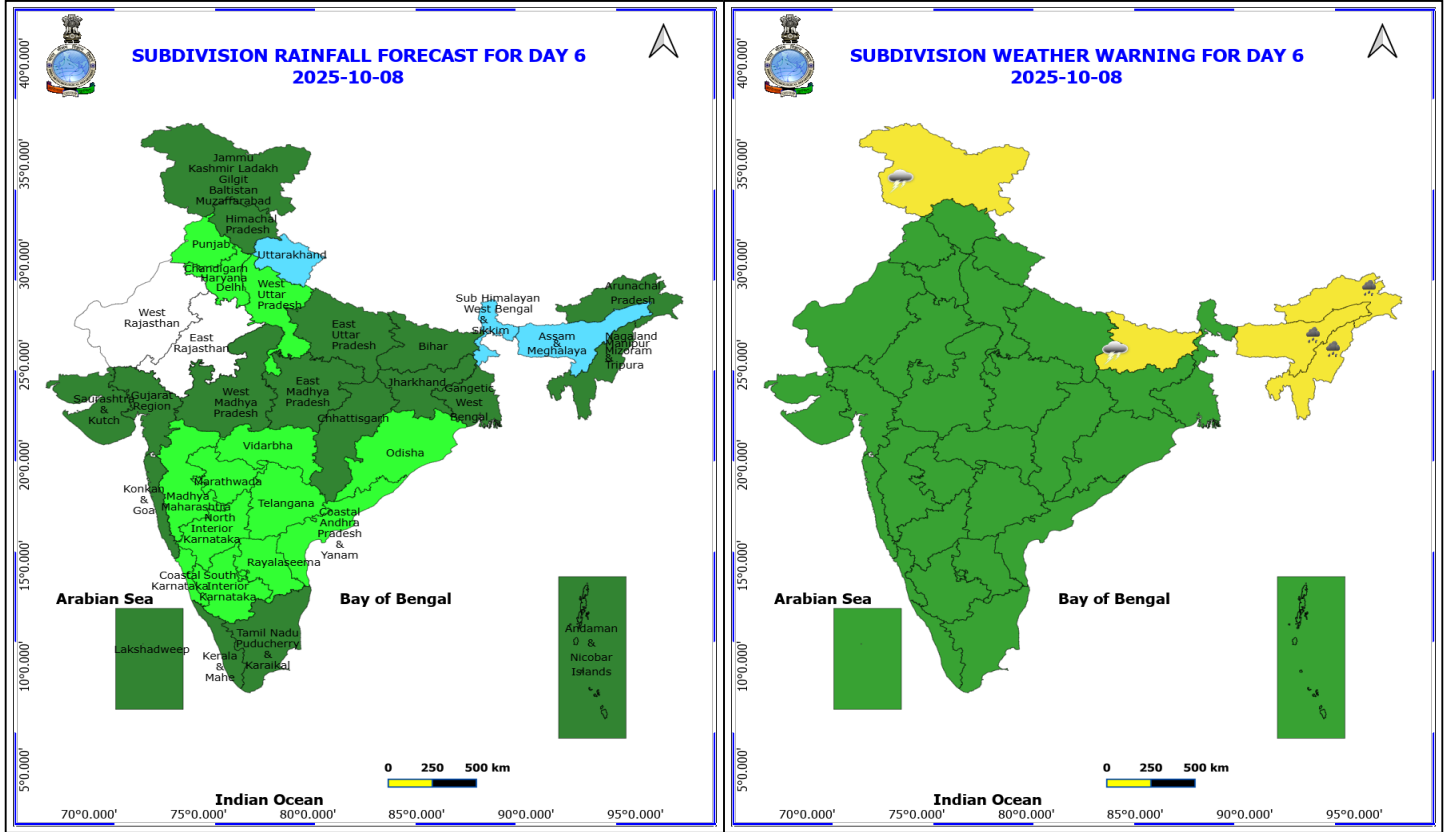
(Service to the nation since 1875)



7 October (Day 5)

- ❖ **Heavy Rainfall** likely at isolated places over Arunachal Pradesh, Bihar, Haryana, Chandigarh & Delhi, Himachal Pradesh, Jammu-Kashmir-Ladakh-Gilgit-Baltistan-Muzaffarabad, Nagaland, Manipur, Mizoram and Tripura, Punjab, Uttarakhand and West Uttar Pradesh.
- ❖ **Thunderstorm accompanied with lightning & gusty winds(30-40kmph)** likely at isolated places over Bihar, Himachal Pradesh and Jammu-Kashmir-Ladakh-Gilgit-Baltistan-Muzaffarabad.
- ❖ **Thunderstorm accompanied with Lightning** likely at isolated places over East Rajasthan, Himachal Pradesh and Uttarakhand.

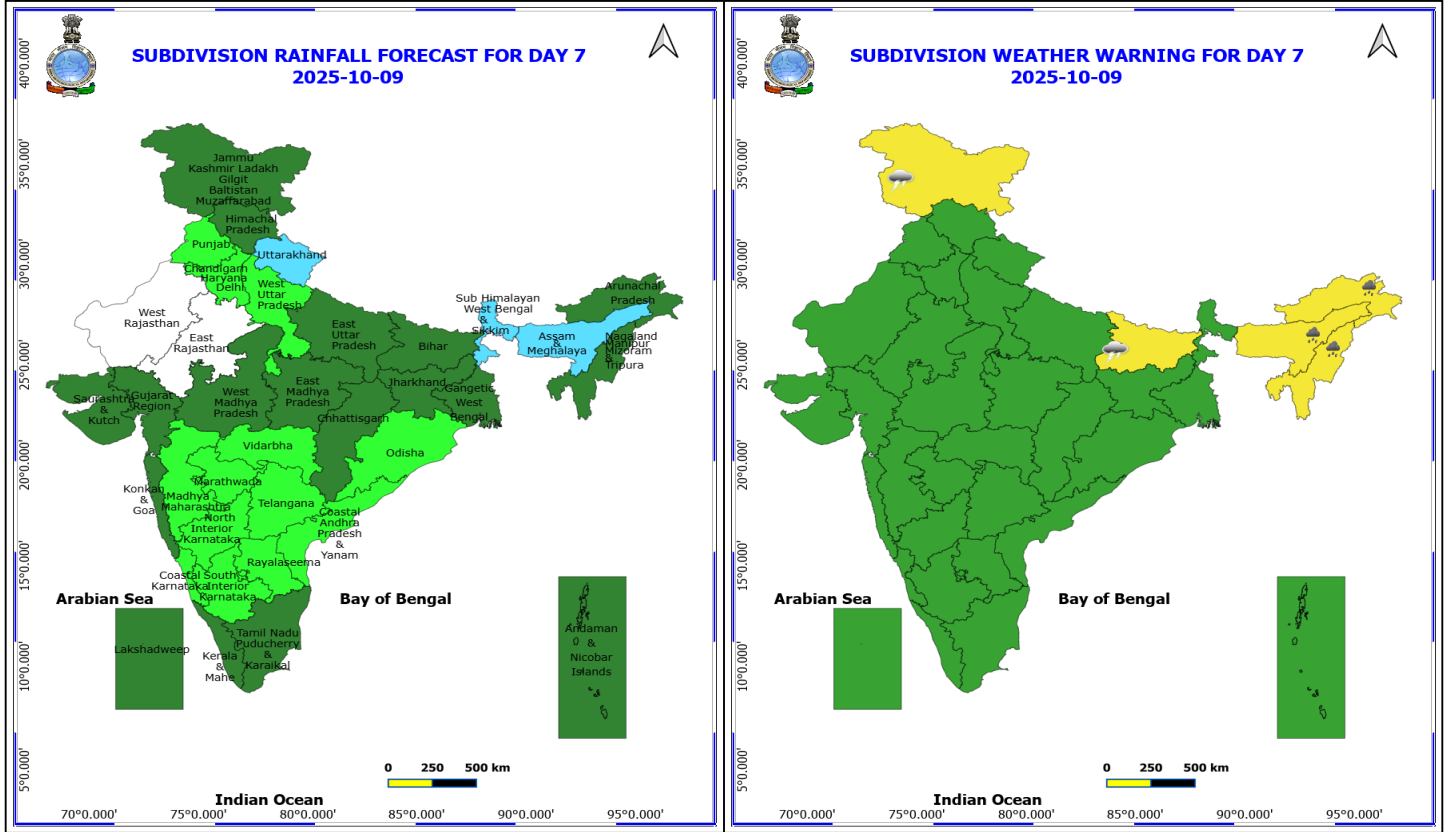
No Fishermen Warning



8 October (Day 6)

- ❖ **Heavy Rainfall** likely at isolated places over Arunachal Pradesh, Assam & Meghalaya and Nagaland, Manipur, Mizoram and Tripura.
- ❖ **Thunderstorm accompanied with lightning & gusty winds(30-40kmph)** likely at isolated places over Bihar and Jammu-Kashmir-Ladakh-Gilgit-Baltistan-Muzaffarabad.

No Fishermen Warning



9 October (Day 7)

- ❖ **Heavy Rainfall** likely at isolated places over Arunachal Pradesh, Assam & Meghalaya and Nagaland, Manipur, Mizoram and Tripura.
- ❖ **Thunderstorm accompanied with lightning & gusty winds(30-40kmph)** likely at isolated places over Bihar and Jammu-Kashmir-Ladakh-Gilgit-Baltistan-Muzaffarabad.

No Fishermen Warning

Flash Flood Warnings

24 hours Outlook for the Flash Flood Risk (FFR) till 0530 IST of 04-10-2025:

Low to Moderate Flash flood risk likely over few watersheds & neighbourhoods of following Met Sub-divisions during next 24 hours.

East Madhya Pradesh – Balaghat, Dindori, Mandla, Annupur, Sidhi, Shahdol, Umaria, Katni, Jabalpur, Seoni, Chhindwara, Narsimhapura, Damoh, Chhatarpur, Panna, Satna and Rewa districts.

Chhattisgarh – Balod, Rajnandgaon, Durg, Raipur, Dhamtari, Mahasumund, Baloda Bazar, Bemetara, Kawardha, Mungeli, Bilaspur, Janjgir_Champa, Surguja, Rajgarh, Jashpur, Balrampur, Surajpur and Korea districts.

Adjoining Odisha –Nuaparha, Balangir and Baragarh districts.

Surface runoff/ Inundation may occur at some fully saturated soils & low-lying areas over Area of Concern (AoC) as shown in map due to expected rainfall occurrence in next 24 hours.

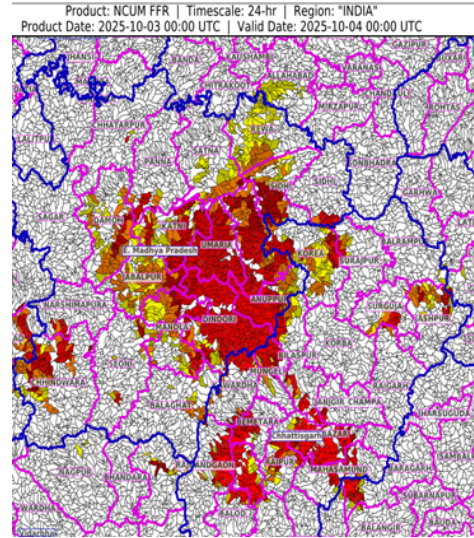




Table-1

7 Days Rainfall Forecast

S.No.	Subdivision	3- Oct	4- Oct	5- Oct	6- Oct	7- Oct	8- Oct	9- Oct
		Day 1	Day 2	Day 3	Day 4	Day 5	Day 6	Day 7
1	ANDAMAN & NICOBAR ISLANDS	ISOL	ISOL	ISOL	ISOL	SCT	SCT	SCT
2	ARUNACHAL PRADESH	FWS	FWS	FWS	SCT	SCT	SCT	SCT
3	ASSAM & MEHGHALAYA	FWS	FWS	SCT	SCT	SCT	FWS	FWS
4	N. M. M. & T.	FWS	FWS	SCT	SCT	SCT	SCT	SCT
5	S.H. WEST BENGAL & SIKKIM	WS	WS	WS	WS	FWS	FWS	FWS
6	GANGETIC WEST BENGAL	WS	WS	FWS	FWS	SCT	SCT	SCT
7	ODISHA	FWS	SCT	SCT	ISOL	ISOL	ISOL	ISOL
8	JHARKHAND	WS	WS	WS	FWS	SCT	SCT	SCT
9	BIHAR	WS	WS	WS	FWS	SCT	SCT	SCT
10	EAST UTTAR PRADESH	FWS	WS	SCT	SCT	FWS	SCT	SCT
11	WEST UTTAR PRADESH	SCT	ISOL	SCT	FWS	FWS	ISOL	ISOL
12	UTTARAKHAND	SCT	SCT	FWS	WS	WS	FWS	FWS
13	HARYANA, CHD & DELHI	ISOL	ISOL	FWS	WS	FWS	ISOL	ISOL
14	PUNJAB	ISOL	ISOL	FWS	WS	FWS	ISOL	ISOL
15	HIMACHAL PRADESH	ISOL	ISOL	SCT	WS	FWS	SCT	SCT
16	JAMMU AND KASHMIR AND LADAKH	DRY	SCT	FWS	WS	WS	SCT	SCT
17	WEST RAJASTHAN	ISOL	ISOL	SCT	SCT	ISOL	DRY	DRY
18	EAST RAJASTHAN	ISOL	ISOL	ISOL	SCT	ISOL	DRY	DRY
19	WEST MADHYA PRADESH	FWS	FWS	FWS	SCT	SCT	SCT	SCT
20	EAST MADHYA PRADESH	WS	WS	FWS	FWS	FWS	SCT	SCT
21	GUJRAT REGION	SCT	SCT	FWS	WS	FWS	SCT	SCT
22	SAURASHTRA & KUTCH	FWS	SCT	FWS	FWS	FWS	SCT	SCT
23	KONKAN & GOA	WS	WS	WS	FWS	FWS	SCT	SCT
24	MADHYA MAHARASHTRA	SCT	SCT	ISOL	ISOL	ISOL	ISOL	ISOL
25	MARATHWADA	SCT	SCT	ISOL	ISOL	ISOL	ISOL	ISOL
26	VIDARBHA	WS	FWS	FWS	SCT	SCT	ISOL	ISOL
27	CHATTISGARH	WS	FWS	FWS	SCT	SCT	SCT	SCT
28	COASTAL ANDHRA PRADESH	SCT	SCT	SCT	ISOL	ISOL	ISOL	ISOL
29	TELANGANA	SCT	SCT	ISOL	ISOL	ISOL	ISOL	ISOL
30	RAYALASEEMA	ISOL	ISOL	ISOL	ISOL	ISOL	ISOL	ISOL
31	TAMILNADU & PUDUCHERRY	SCT	SCT	SCT	SCT	SCT	SCT	SCT
32	COSTAL KARNATAKA	FWS	FWS	FWS	SCT	SCT	ISOL	ISOL
33	NORTH INTERIOR KARNATAKA	FWS	FWS	SCT	ISOL	ISOL	ISOL	ISOL
34	SOUTH INTERIOR KARNATAKA	FWS	FWS	SCT	ISOL	ISOL	ISOL	ISOL
35	KERALA	FWS	FWS	SCT	SCT	SCT	SCT	SCT
36	LAKSHDWEEP	FWS	SCT	SCT	SCT	SCT	SCT	SCT

Legend	Category	%Stations
WS	Widespread/Most Places	76-100
FWS	Fairly Widespread/Many Places	51-75
SCT	Scattered/ A Few Places	26-50
ISOL	Isolated Places	1-25
DRY	No Rain	0

*Red color warning does not mean "Red Alert" Red color warning means "Take Action"
Forecast and warning for any day is valid from 0830 hours IST of day till 0830 hours IST of next day
For more details kindly visit <https://mausam.imd.gov.in> or contact 011-2434-4599

(Service to the nation since 1875)

Fig. 1: Maximum Temperatures Dated 2025-10-02

Fig. 2: Departure of Maximum Temp. Dated 2025-10-02

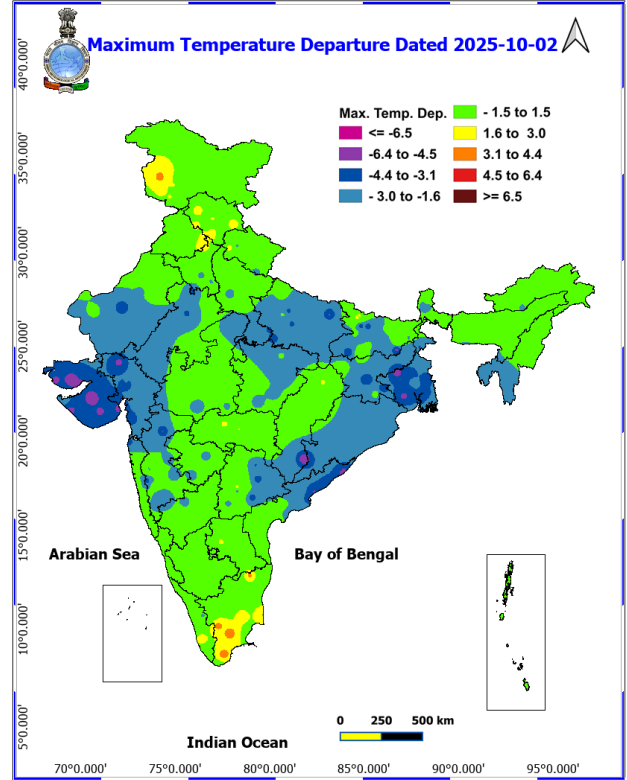
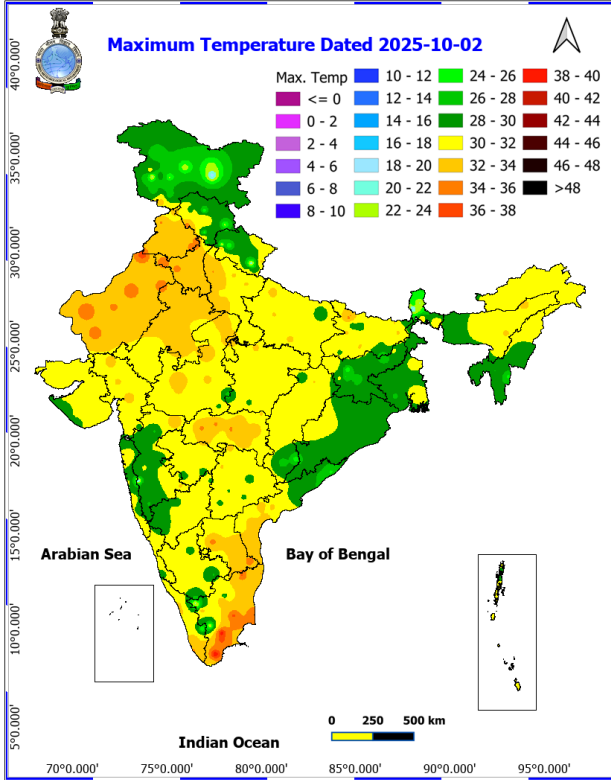
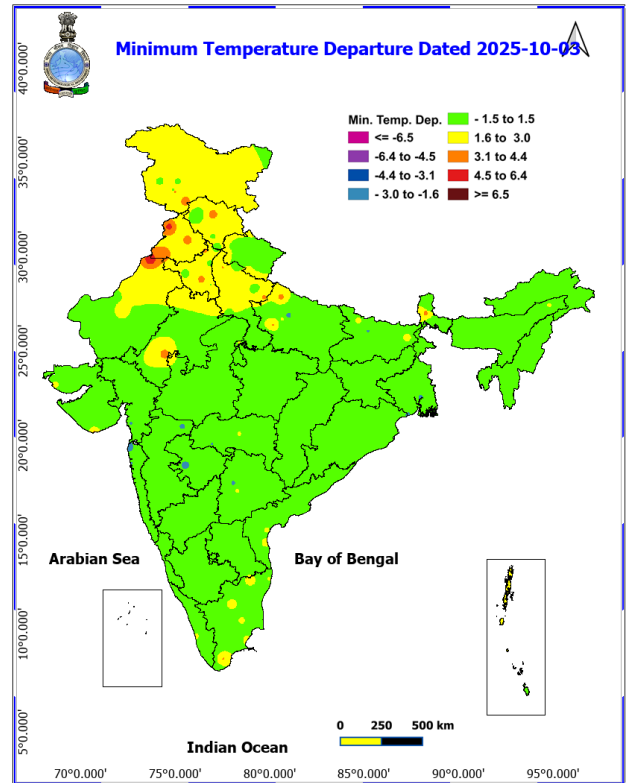
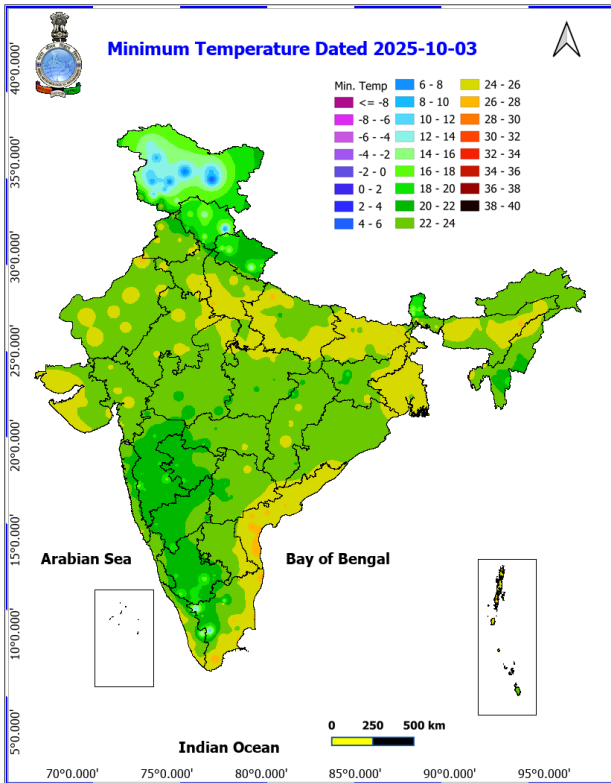
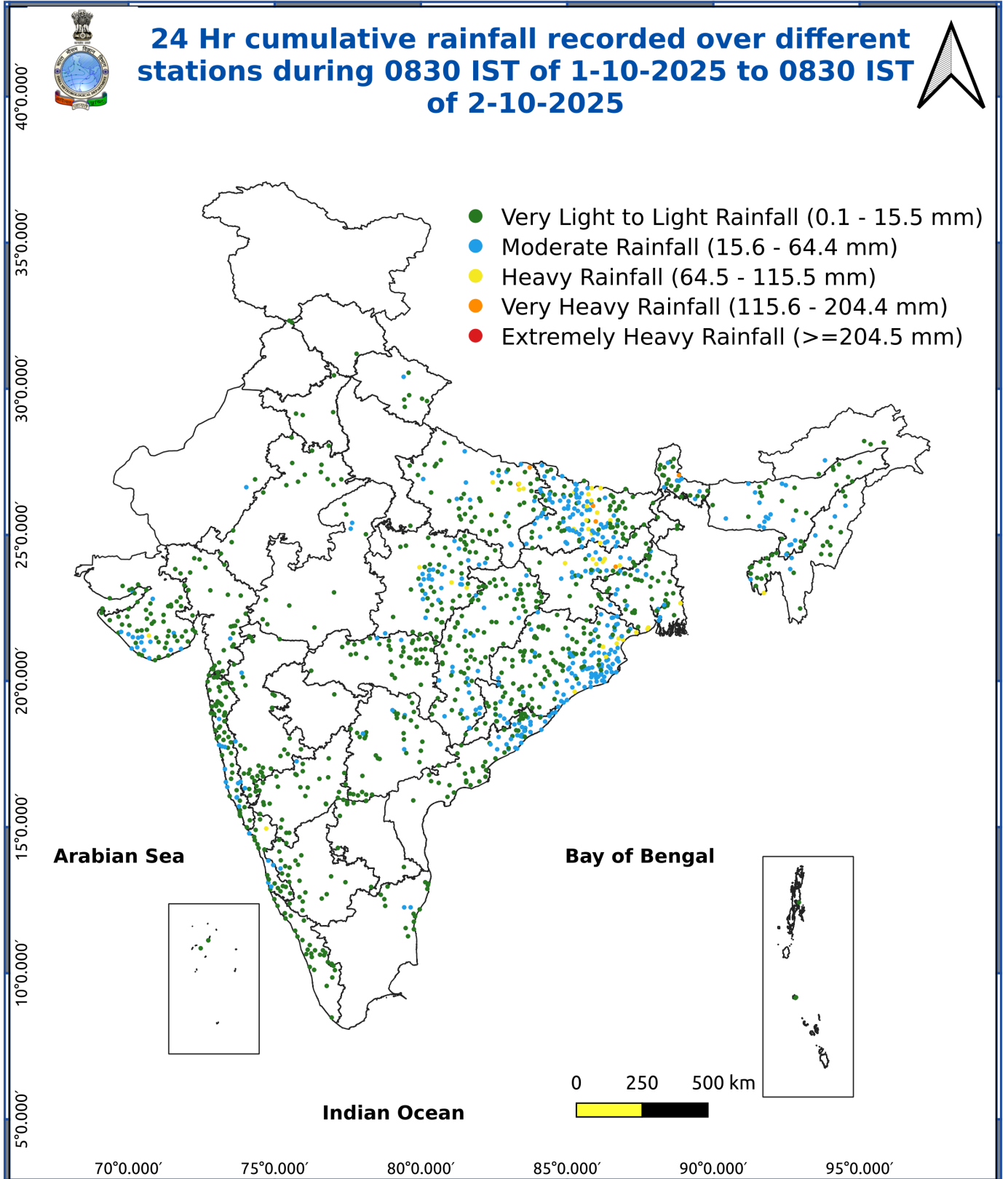


Fig. 3: Minimum Temperatures Dated 2025-10-03

Fig. 4: Departure of Minimum Temp. Dated 2025-10-03





Impact & Action Suggested due to

- **Isolated Extremely heavy rainfall (≥ 21 cm) likely over** Chhattisgarh on 03rd; Bihar on 03rd & 04th; East Uttar Pradesh on 04th October.
- **Very heavy rainfall over** Gangetic West Bengal, Odisha, Jharkhand and Chhattisgarh and East Madhya Pradesh on 03rd; East Uttar Pradesh, Sub-Himalayan West Bengal & Sikkim during 03rd-05th; Bihar during 03rd-05th; Assam & Meghalaya on 03rd; Jammu-Kashmir, Himachal Pradesh, Uttarakhand, Punjab, Haryana Chandigarh & Delhi on 06th October.

Impact Expected

- Water logging/ flooding in many parts of low lying area and river banks
- Localized and short term disruption to municipal services (water, electricity, etc.)
- Major disruption of traffic flow. Major roads/local trains affected.
- Possibility of danger to very old buildings and unmaintained structures, falling of trees etc
- Closure of roads crossing low water bridges.

Action Suggested

- Traffic may be regulated effectively
- People in the affected area may restrict their movement.

Agromet advisories for various parts of the country

- In **Odisha**, ensure proper drainage of excess rain water from fields of rice, finger millet, maize, pulses, groundnut, cotton, sesame, vegetables and fruit orchards. Cover the vegetables nurseries like chilli, okra and brinjal with plastic cover or polythene sheet.
- In **Sub-Himalayan West Bengal**, undertake harvesting of matured crops of cardamom, chilli (dalley khorsani) and matured fruits of kiwi and shift the produce to safer places to avoid losses. Make necessary arrangements to drain out excess water from fields of rice, black gram, green gram, ginger, vegetables and fruit orchards to avoid water stagnation. In **Gangetic West Bengal**, ensure proper drainage from the fields of rice, groundnut, vegetables and betel vine gardens.
- In **Jharkhand**, drain out excess water from the fields of rice, maize, finger millet and pulse crops.
- In **Bihar**, make necessary arrangements to drain out excess water from fields of rice, maize and vegetables.
- In **East Uttar Pradesh**, harvest the matured maize crop immediately and keep the harvested produce at safer places to avoid losses. Make necessary arrangements to drain out excess water from the field of rice, maize and vegetables.
- In **Chhattisgarh**, provide adequate drainage facilities in fields of rice, pigeon pea, black gram, maize and soybean. Keep the harvested produce at safer places.
- In **East Madhya Pradesh**, keep the harvested produce of maize and soybean at safer places to avoid losses. Make necessary arrangements to drain out excess water from the fields of rice, soybean, maize and vegetables.
- In **Coastal Andhra Pradesh**, provide adequate drainage facilities in fields of rice, maize, pigeon pea, black gram, cotton, sugarcane, groundnut, turmeric, vegetables and plantations of coconut, arecanut, banana, coffee and black pepper.
- In **Arunachal Pradesh**, harvest matured crops such as rice, maize, vegetables and finger millet and shift the produce to properly covered shelter to avoid losses. Ensure proper drainage in already sown / transplanted field pea and cabbage.
- In **Assam**, ensure proper drainage of excess water from fields of *Sali* rice, black gram, green gram and vegetables. Avoid sowing of cabbage and transplanting of cauliflower during heavy rainfall.

Livestock / Fishery

- Keep the animals inside the shed during heavy rainfall and provide them balanced feed.

*Red color warning does not mean "Red Alert" Red color warning means "Take Action"

Forecast and warning for any day is valid from 0830 hours IST of day till 0830 hours IST of next day

For more details kindly visit <https://mausam.imd.gov.in> or contact 011-2434-4599

(Service to the nation since 1875)

- Store feed and fodder in a safe place to prevent spoilage.
- Construct an outlet with proper netting around the ponds to drain out excess water, thereby preventing fish from escaping in case of overflow.

Agromet advisories for likely impact of Thunderstorm / Gusty Winds / Squally Winds

- Provide mechanical support to horticultural crops and staking or support to vegetables and young fruit plants / fruit-bearing plants to avoid lodging due to strong winds.

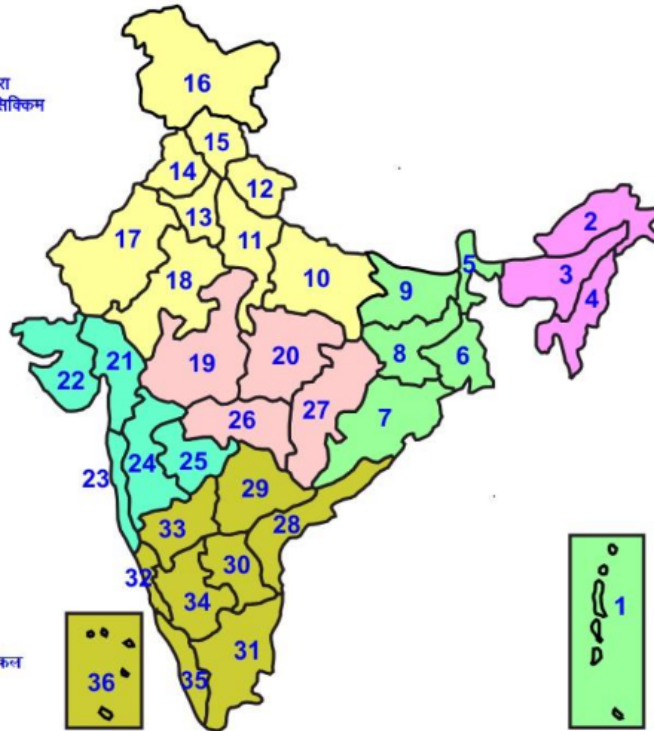
Legends & abbreviations:

Region wise classification of meteorological Sub-Divisions:

- **Northwest India:** Western Himalayan Region (Jammu-Kashmir-Ladakh-Gilgit-Baltistan-Muzaffarabad, Himachal Pradesh and Uttarakhand); Punjab, Haryana-Chandigarh-Delhi; West Uttar Pradesh, East Uttar Pradesh, West Rajasthan and East Rajasthan.
- **Central India:** West Madhya Pradesh, East Madhya Pradesh, Vidarbha and Chhattisgarh.
- **East India:** Bihar, Jharkhand, Sub-Himalayan West Bengal & Sikkim; Gangetic West Bengal, Odisha and Andaman & Nicobar Islands.
- **Northeast India:** Arunachal Pradesh, Assam & Meghalaya and Nagaland, Manipur, Mizoram & Tripura.
- **West India:** Gujarat Region, Saurashtra & Kutch, Konkan & Goa, Madhya Maharashtra and Marathawada.
- **South India:** Coastal Andhra Pradesh & Yanam, Telangana, Rayalaseema, Coastal Karnataka, North Interior Karnataka, South Interior Karnataka, Kerala & Mahe, Tamil Nadu, Puducherry & Karaikal and Lakshadweep.

LEGENDS

- 1 अंडमान और निकोबार द्वीप समुह
- 2 अरुणाचल प्रदेश
- 3 असम और मेघालय
- 4 नागालैंड मनीपुर मीजोरम और त्रिपुरा
- 5 उप हिमालय पश्चिम बंगाल एवं सिक्किम
- 6 पश्चिम बंगाल
- 7 ओडिसा
- 8 झारखंड
- 9 बिहार
- 10 पूर्वी उत्तर प्रदेश
- 11 पश्चिम उत्तर प्रदेश
- 12 उत्तराखंड
- 13 हरियाणा चंडिगढ़ एवं दिल्ली
- 14 पंजाब
- 15 हिमाचल प्रदेश
- 16 जम्मू एवं कश्मीर एवं लद्दाख
- 17 पश्चिम राजस्थान
- 18 पूर्वी राजस्थान
- 19 पश्चिम मध्य प्रदेश
- 20 पूर्वी मध्य प्रदेश
- 21 गुजरात क्षेत्र
- 22 सौराष्ट्र एवं कच्छ
- 23 कोंकण एवं गोवा
- 24 मध्य महाराष्ट्र
- 25 मराठावाडा
- 26 विदर्भ
- 27 छत्तीसगढ़
- 28 तटीय आंध्र प्रदेश एवं यनम
- 29 तेलंगाना
- 30 रायलसीमा
- 31 तमिलनाडु, पुदुचेरी एवं कराईकल
- 32 तटिय कर्नाटक
- 33 आंतरिक उत्तरी कर्नाटक
- 34 आंतरिक दक्षिणी कर्नाटक
- 35 केरल एवं माहे
- 36 लक्षद्वीप



1. Andaman & Nicobar Islands
2. Arunachal Pradesh
3. Assam & Meghalaya
4. Nagaland, Manipur, Mizoram & Tripura
5. Sub-Himalayan West Bengal & Sikkim
6. Gangetic West Bengal
7. Orissa
8. Jharkhand
9. Bihar
10. East Uttar Pradesh
11. West Uttar Pradesh
12. Uttarakhand
13. Haryana, Chd & Delhi
14. Punjab
15. Himachal Pradesh
16. Jammu & Kashmir and Ladakh
17. West Rajasthan
18. East Rajasthan
19. West Madhya Pradesh
20. East Madhya Pradesh
21. Gujarat
22. Saurashtra
23. Konkan & Goa
24. Madhya Maharashtra
25. Marathawada
26. Vidharbha
27. Chhattisgarh
28. Coastal Andhra Pradesh & Yanam
29. Telangana
30. Rayalaseema
31. Tamilnadu, Puducherry & Karaikal
32. Coastal Karnataka
33. North Interior Karnataka
34. South Interior Karnataka
35. Kerala & Mahe
36. Lakshadweep

SPATIAL DISTRIBUTION (% of Stations reporting)

% Stations	Category	% Stations	Category
76-100	Widespread (WS/ Most Places)	26-50	Scattered (SCT/ A Few Places)
51-75	Fairly Widespread (FWS/ Many Places)	1-25	Isolated (ISOL)

Subdivision Colour

- NO WARNING
- WATCH (BE UPDATED)
- ALERT (BE PREPARED TO TAKE ACTION)
- WARNING (TAKE ACTION)

Probabilistic Forecast

Terms	Probability of Occurrence (%)
Unlikely	< 25
Likely	25 - 50
Very Likely	50 - 75
Most Likely	> 75

- | | | | |
|--------------------------|-----------------|----------------------|--------------------|
| Heavy Rain | Very Heavy Rain | Extremely Heavy Rain | Heavy Snow |
| Thunderstorm & Lightning | Hailstorm | Dust Storm | Dust Raising Winds |
| Strong surface winds | Heat Wave | Hot Day | Warm Night |
| Cold Wave | Cold Day | Ground Frost | Fog |
| Hot & Humid | | | |

*Red color warning does not mean "Red Alert" Red color warning means "Take Action"

Forecast and warning for any day is valid from 0830 hours IST of day till 0830 hours IST of next day

For more details kindly visit <https://mausam.imd.gov.in> or contact 011-2434-4599

(Service to the nation since 1875)

LEGENDS

WARNING

WARNING (TAKE ACTION)
ALERT (BE PREPARED)
WATCH (BE UPDATED)
NO WARNING (NO ACTION)

Probabilistic Forecast

Terms	Probability of Occurrence (%)
Unlikely	< 25
Likely	25 - 50
Very Likely	50 - 75
Most Likely	> 75



Rain/ Snow *

Heavy: 64.5 to 115.5 mm/cm *
Very Heavy: 115.6 to 204.4 mm/cm*
Extremely Heavy: > 204.4 mm/cm *



Heat Wave

When maximum temperature of a station reaches $\geq 40^{\circ}\text{C}$ for plains and $\geq 30^{\circ}\text{C}$ for hilly regions
(a) Based on Departure from normal

Heat Wave: Maximum Temperature Departure from normal 4.5°C to 6.4°C .
Severe Heat Wave: Maximum Temperature Departure from normal $\geq 6.5^{\circ}\text{C}$

(b). Based on Actual maximum temperature

Heat Wave: When actual maximum temperature $\geq 45^{\circ}\text{C}$.
Severe Heat Wave: When actual maximum temperature $\geq 47^{\circ}\text{C}$

(c). Criteria for heat wave for coastal stations

When maximum temperature departure is $> 4.5^{\circ}\text{C}$ from normal. Heat Wave may be described provided maximum temperature $\geq 37^{\circ}\text{C}$



Warm Night

When maximum temperature remains 40°C

Warm Night: When minimum temperature departure 4.5°C to 6.4°C .
Severe Warm Night: When minimum temperature departure $> 6.4^{\circ}\text{C}$.



Cold Wave

When minimum temperature of a station $\leq 10^{\circ}\text{C}$ for plains and $\leq 0^{\circ}\text{C}$ for hilly regions.

(a). Based on departure

Cold Wave: Minimum Temperature Departure from normal -4.5°C to -6.4°C .
Severe Cold Wave: Minimum Temperature Departure from normal $\leq -6.5^{\circ}\text{C}$

(b) Based on actual Minimum Temperature (for Plains only)

Cold Wave : When Minimum Temperature is $\leq 4.0^{\circ}\text{C}$
Severe Cold Wave: When Minimum Temperature is $\leq 2.0^{\circ}\text{C}$

(c) For Coastal Stations

When Minimum Temperature departure is $\leq -4.5^{\circ}\text{C}$ & actual Minimum Temperature is $\leq 15^{\circ}\text{C}$



Cold Day

When minimum temperature of a station $\leq 10^{\circ}\text{C}$ for plains and $\leq 0^{\circ}\text{C}$ for hilly regions
Based on departure

Cold Day: Maximum Temperature Departure from normal -4.5°C to -6.4°C .
Severe Cold Day: Maximum Temperature Departure from normal $\leq -6.5^{\circ}\text{C}$



Fog

Phenomenon of small droplets suspended in air and the horizontal visibility $< 1\text{km}$

Moderate Fog: When the visibility between 500-200 metres
Dense Fog: when the visibility between 50- 200 metres
Very Dense Fog: when the visibility < 50 metres



Thunderstorm

Sudden electrical discharges manifested by a flash of light (Lightning) and a sharp rumbling sound (thunder)



Dust/Sand Storm

An ensemble of particles of dust or sand energetically lifted to great heights by a strong and turbulent wind.



Frost

Ice deposits on ground

Air temperature $\leq 4^{\circ}\text{C}$ (over Plains)



Squall

A strong wind that rises suddenly, lasts for atleast 1 minute.

Moderate: Wind speed 52-61 kmph
Severe: Wind speed 62-87 kmph
Very Severe: Wind speed > 87 kmph



Sea State

Effect of various waves in the sea over specific area

Rough to very rough: Wind speed 41-62 kmph (22-33 knots) & Wave height 2.5-6 metre
High to very high: Wind speed 63-117 kmph (34-63 knots) & Wave height 6-14 metre
Phenomenal: Wind speed > 117 kmph (> 63 knots) & Wave height > 14 metre



Cyclone

Cyclonic Storm: Wind speed 62-87 kmph (34-47 knots)
Severe Cyclonic Storm: Wind speed 88-117 kmph (48-63 knots)
Very Severe Cyclonic Storm: Wind speed 118-165 kmph (64 - 89 knots)
Extremely Severe Cyclonic Storm: Wind speed 166-220 kmph (90 -119 knots)
Super Cyclone Storm: Wind speed > 220 kmph (> 119 knots)

*Red color warning does not mean "Red Alert" Red color warning means "Take Action"

Forecast and warning for any day is valid from 0830 hours IST of day till 0830 hours IST of next day

For more details kindly visit <https://mausam.imd.gov.in> or contact 011-2434-4599

(Service to the nation since 1875)