

ALL INDIA WEATHER SUMMARY AND FORECAST BULLETIN

Significant Weather Features

Weather Forecast & Warnings

Northwest India:

- ♦ Isolated **heavy rainfall** likely over Himachal Pradesh, Uttarakhand, East Rajasthan, Punjab during 04th -09th July; East Uttar Pradesh, West Rajasthan during 04th & 05th; Haryana, Chandigarh, West Uttar Pradesh during 05th-09th; Jammu during 05th-08th July with **very heavy rainfall over Himachal Pradesh during 05th-07th; Uttarakhand, Punjab, Haryana on 06th & 07th and East Rajasthan during 04th-06th.**

West India;

- ♦ **Extremely heavy rainfall (≥21 cm)** very likely at isolated places over Ghat areas of Madhya Maharashtra on 06th & 07th July.
- ♦ **Heavy to very heavy rainfall** at isolated places likely over Konkan & Goa, Ghat areas of Madhya Maharashtra, Gujarat region and **heavy rainfall** over Saurashtra & Kutch during next 7 days.

East & Central India:

- ♦ Isolated **heavy rainfall** over Madhya Pradesh, Vidarbha, Chhattisgarh during 04th -09th July; Bihar, Jharkhand, Gangetic West Bengal, Odisha during 04th -06th; Sub-Himalayan West Bengal & Sikkim on 04th and during 07th-09th July with **very heavy rainfall** over East Madhya Pradesh during 04th -07th; West Madhya Pradesh during 04th-06th; Odisha on 04th & 05th; Chhattisgarh on 06th & 07th July.

Northeast India:

- ♦ Light/moderate rainfall at most places accompanied with **thunderstorm, lightning and isolated heavy to very heavy rainfall** likely to continue over Northeast India during next 7 days with **isolated extremely heavy falls (≥21 cm) over Meghalaya on 06th July.**

South Peninsular India:

- ♦ Isolated **heavy rainfall** likely over Kerala & Mahe, Interior Karnataka during 04th -06th July, Coastal Karnataka during 04th -09th July with **very heavy rainfall** over Coastal Karnataka on 04th & 05th and South Interior Karnataka on 04th July.
- ♦ **Strong surface winds** (speed reaching 40-50 kmph) very likely over South Peninsular India during next 7 days.



- ❖ **Rainfall distribution** (from 0830 hours IST to 1730 hours IST of yesterday): **at most places** over Konkan & Goa , Sub-Himalayan West Bengal & Sikkim, Gujarat Region, Jharkhand, Coastal Karnataka and Chhattisgarh; **at many places** over West Uttar Pradesh, Odisha, Madhya Maharashtra , Himachal Pradesh, Assam & Meghalaya, West Madhya Pradesh, East Madhya Pradesh, Jammu & Kashmir and Ladakh, Nagaland, Manipur, Mizoram & Tripura, East Uttar Pradesh, East Rajasthan, Bihar, Haryana Chandigarh & Delhi, Marathwada, Tamilnadu Puducherry & Karaikal, Coastal Andhra Pradesh & Yanam, Telangana, Rayalaseema, Saurashtra & Kutch, North Interior Karnataka, South Interior Karnataka, Kerala & Mahe, Vidarbha, Uttarakhand, Gangetic West Bengal, West Rajasthan and Andaman & Nicobar Islands; **Dry** over rest of the country.
- ❖ **Significant rainfall recorded(in cm)** (from 0830 hours IST to 1730 hours IST of yesterday): Coastal Karnataka: Honavar (dist. Uttara Kannada) 8, Karwar (dist. Uttara Kannada) 4; Saurashtra & Kutch: Rajkot AP (dist. Rajkot) 8, Keshod AP (dist. Junagadh) 4; Konkan & goa : Panjim (dist. North Goa) 5, Matheran (dist. Raigad) 2; Himachal Pradesh: Shimla-city (dist. Shimla) 4; **Odisha**: Sundargarh (dist. Sundargarh) 4, Bhubaneswar (dist. Khordha) 3; Gujarat region: Surendranagar (dist. Surendranagar), Gandhinagar (dist. Gandhinagar) 3 Each; Andaman & Nicobar islands: Port Blair (dist. South Andaman), Long Island (dist. North And Middle Andaman) 2 Each; **Chhattisgarh**: Bilaspur (dist. Bilaspur) 2; East Madhya Pradesh: Khajuraho (dist. Chhatarpur), Rewa (dist. Rewa), Mandla (dist. Mandla) 2 Each; West Rajasthan: Jodhpur, Phalodi-orbs (dist. Jodhpur) 2 Each; West Madhya Pradesh: Datia-orbs (dist. Datia) 2; Gangetic west Bengal: Kolkata-Howrah-Uluberia (dist. Howrah) 2; Assam & Meghalaya: Goalpara (dist. Goalpara) 2.
- ❖ **Heavy Rainfall observed** (from 0830 hours IST to 1730 hours IST of today): Yesterday, **Heavy rain** at a few places over Coastal Karnataka, at isolated places over Saurashtra & Kutch
- ❖ **Minimum Temperature Departures (as on 03-07-2025): markedly above normal(> 5.1°C)** at many places over Himachal Pradesh; at isolated places over Assam & Meghalaya, Sub Himalayan West Bengal & Sikkim, Bihar, East Uttar Pradesh, West Uttar Pradesh, Jammu-KashmirLadakh-Gilgit-Baltistan-Muzaffarabad, West Madhya Pradesh, East Madhya Pradesh and Saurashtra & Kutch. **appreciably above normal(3.1°C to 5.0°C)** at isolated places over Nagaland, Manipur, Mizoram & Tripura. **above normal(1.6°C to 3.0°C)** at few places over Andaman & Nicobar Islands, Uttarakhand, Haryana-Chandigarh-Delhi, Punjab, Gujarat Region and Lakshadweep; at isolated places over Gangetic West Bengal, Odisha, Jharkhand, West Rajasthan, Rayalaseema and Tamil Nadu, Puducherry & Karaikal. **near normal(-1.5°C to 1.5°C)** at many places over East Rajasthan, Konkan & Goa, Coastal Andhra Pradesh & Yanam, Telangana and Kerala & Mahe; at most places over Arunachal Pradesh, Madhya Maharashtra, Marathwada, Vidarbha, Chhattisgarh, Coastal Karnataka, North Interior Karnataka and South Interior Karnataka. **The lowest minimum temperature** of 18.0°C was reported at UNA (HIMACHAL PRADESH), and KHARGONE-OBS (MADHYA PRADESH) over the Plains of India.
- ❖ **Maximum Temperature Departures (as on 03-07-2025): markedly above normal(> 5.1°C)** at few places over Himachal Pradesh; at isolated places over Jammu-KashmirLadakh-Gilgit-Baltistan-Muzaffarabad. **appreciably above normal(3.1°C to 5.0°C)** at isolated places over Assam & Meghalaya and Odisha. **above normal(1.6°C to 3.0°C)** at most places over Arunachal Pradesh; at few places over Lakshadweep; at isolated places over Andaman & Nicobar Islands, Sub Himalayan West Bengal & Sikkim, Gangetic West Bengal, Bihar, East Uttar Pradesh, Uttarakhand and Kerala & Mahe. **near normal(-1.5°C to 1.5°C)** at many places over Nagaland, Manipur, Mizoram & Tripura, Jharkhand, Punjab, Konkan & Goa, Rayalaseema, Tamil Nadu, Puducherry & Karaikal and South Interior Karnataka; at most places over Haryana-Chandigarh-Delhi; at few places over West Uttar Pradesh, West Rajasthan, Saurashtra & Kutch, Madhya Maharashtra, Marathwada, Vidarbha, Coastal Andhra Pradesh & Yanam, Telangana and North Interior Karnataka. **The highest maximum temperature** of 40.3°C was reported at SRIGANGANAGAR (RAJASTHAN).

*Red color warning does not mean "Red Alert" Red color warning means "Take Action"

Forecast and warning for any day is valid from 0830 hours IST of day till 0830 hours IST of next day

For more details kindly visit <https://mausam.imd.gov.in> or contact 011-2434-4599

(Service to the nation since 1875)



Meteorological Analysis (Based on 0530 hours IST)

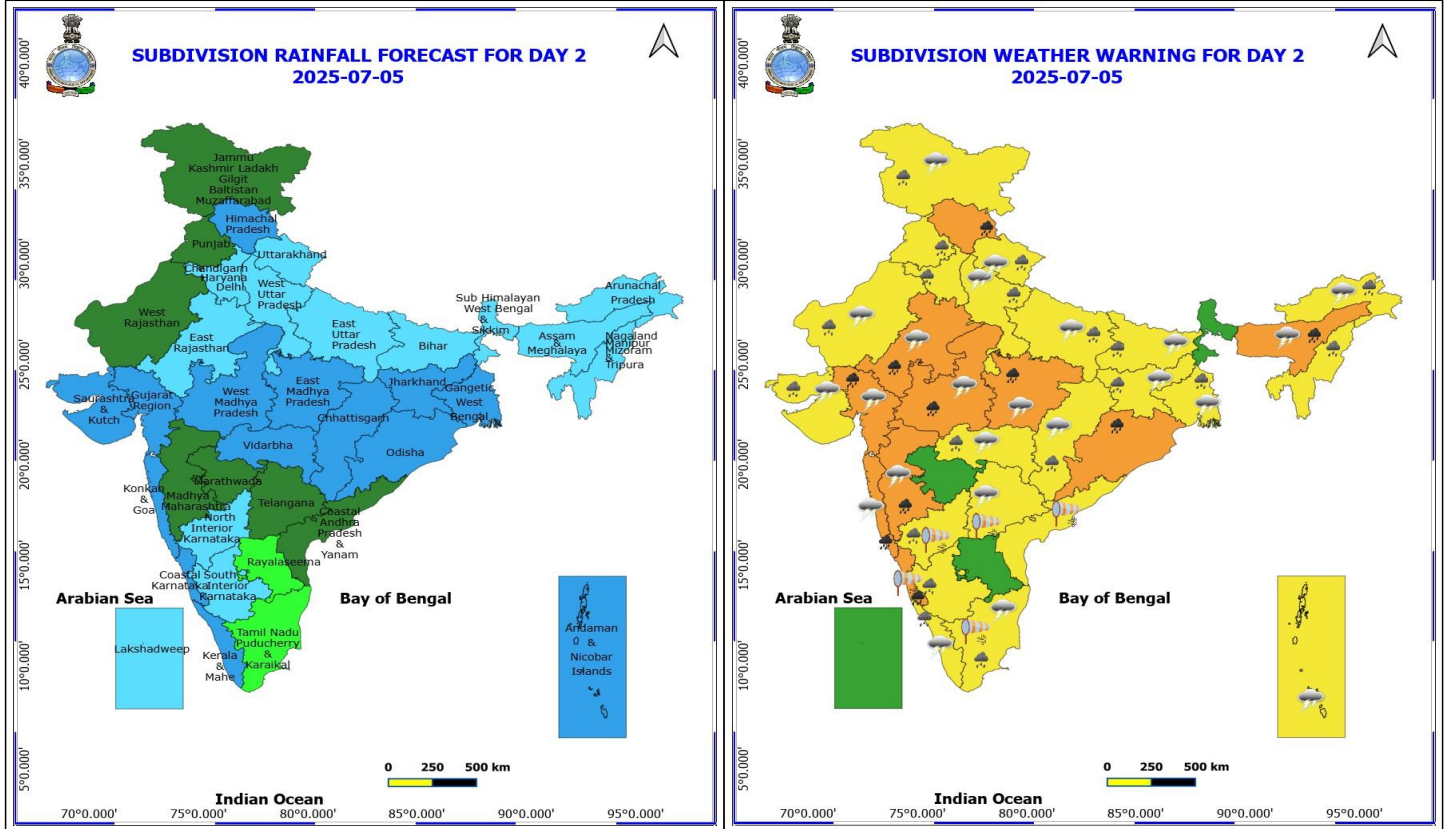
- ❖ The **monsoon trough** at mean sea level continues to pass through Bikaner, Sheopur, Sidhi, Daltonganj, Digha and thence east southeastwards to northeast Bay of Bengal.
- ❖ The **cyclonic circulation** over central parts of west Rajasthan now lies over northwest Rajasthan & neighbourhood at 0.9 km above mean sea level.
- ❖ The **cyclonic circulation** over Northeast Madhya Pradesh & neighbourhood upto 1.5 km above mean sea level persists.
- ❖ The **upper air cyclonic circulation** over north Odisha & adjoining Gangetic west Bengal now lies over northern parts of Gangetic West Bengal between 1.5 & 5.8 km above mean sea level tilting southwards with height.
- ❖ The **trough** from northeast Arabian sea to northwest Bay of Bengal across Gujarat, Madhya Pradesh, Chhattisgarh, the above cyclonic circulation over north Odisha adjoining Gangetic west Bengal between 3.1 & 5.8 km above mean sea level tilting southwestwards with height persists.
- ❖ The upper air **cyclonic circulation** over central Assam persists and now extends upto 1.5 km above mean sea level.
- ❖ The **off-shore trough** at sea level along Maharashtra-Karnataka coasts persists.

Weather Outlook for subsequent 3 days

- ♦ Fairly widespread to widespread rainfall very likely over Central India, along west Coast, Islands, East India & Northwest India.
- ♦ scattered rainfall very likely over rest parts of the country.



Gujarat and adjoining north Gujarat coasts, Konkan Goa coasts, adjoining sea areas, over southern parts of northeast Arabian Sea, most parts of westcentral Bay of Bengal and adjoining & some parts of southwest Bay of Bengal, along and off north Andhra Pradesh coast.



5 July (Day 2)

- ❖ **Heavy to Very Heavy Rainfall** very likely at isolated places over Assam & Meghalaya, Coastal Karnataka, East Rajasthan, Gujarat Region, Himachal Pradesh, Konkan & Goa, Madhya Maharashtra, Madhya Pradesh and Odisha.
- ❖ **Heavy Rainfall** very likely at isolated places over Arunachal Pradesh, Bihar, Chhattisgarh, Gangetic West Bengal, Haryana, Chandigarh & Delhi, Interior Karnataka, Jammu-Kashmir-Ladakh-Gilgit-Baltistan-Muzaffarabad, Jharkhand, Kerala & Mahe, Nagaland, Manipur, Mizoram and Tripura, Punjab, Saurashtra & Kutch, Tamil Nadu Puducherry & Karaikal, Uttar Pradesh, Uttarakhand, Vidarbha and West Rajasthan.
- ❖ **Thunderstorm accompanied with lightning & gusty winds(30-40kmph)** very likely at isolated places over Andaman & Nicobar Islands, Bihar, East Rajasthan, Gangetic West Bengal, Jammu-Kashmir-Ladakh-Gilgit-Baltistan-Muzaffarabad and Jharkhand.
- ❖ **Thunderstorm accompanied with Lightning** very likely at isolated places over Arunachal Pradesh, Assam & Meghalaya, Chhattisgarh, Gujarat State, Kerala & Mahe, Konkan & Goa, Madhya Maharashtra, Madhya Pradesh, Tamil Nadu Puducherry & Karaikal, Telangana, Uttar Pradesh, Uttarakhand, Vidarbha and West Rajasthan.
- ❖ **Strong Surface Winds** very likely at isolated places over Coastal Andhra Pradesh, Coastal Karnataka, North Interior Karnataka, Tamil Nadu Puducherry & Karaikal and Telangana.
- ❖ **Squally wind speed reaching 45 kmph to 55 kmph gusting to 65 kmph** is likely to prevail along and off Somalia, Oman & adjoining Yemen coasts, most parts of westcentral Arabian Sea & adjoining, many parts of eastcentral Arabian Sea, northern parts of southwest Arabian Sea, southern parts of northwest Arabian Sea.
- ❖ **Squally weather with wind speed 40 - 50 kmph gusting to 60 kmph** likely to prevail along and off south Gujarat and adjoining north Gujarat coasts, Konkan Goa coasts, adjoining sea areas, over southern parts of northeast Arabian Sea, over many parts of central Bay of Bengal & adjoining parts of north Bay of Bengal, along and off north

***Red color warning does not mean "Red Alert" Red color warning means "Take Action"**

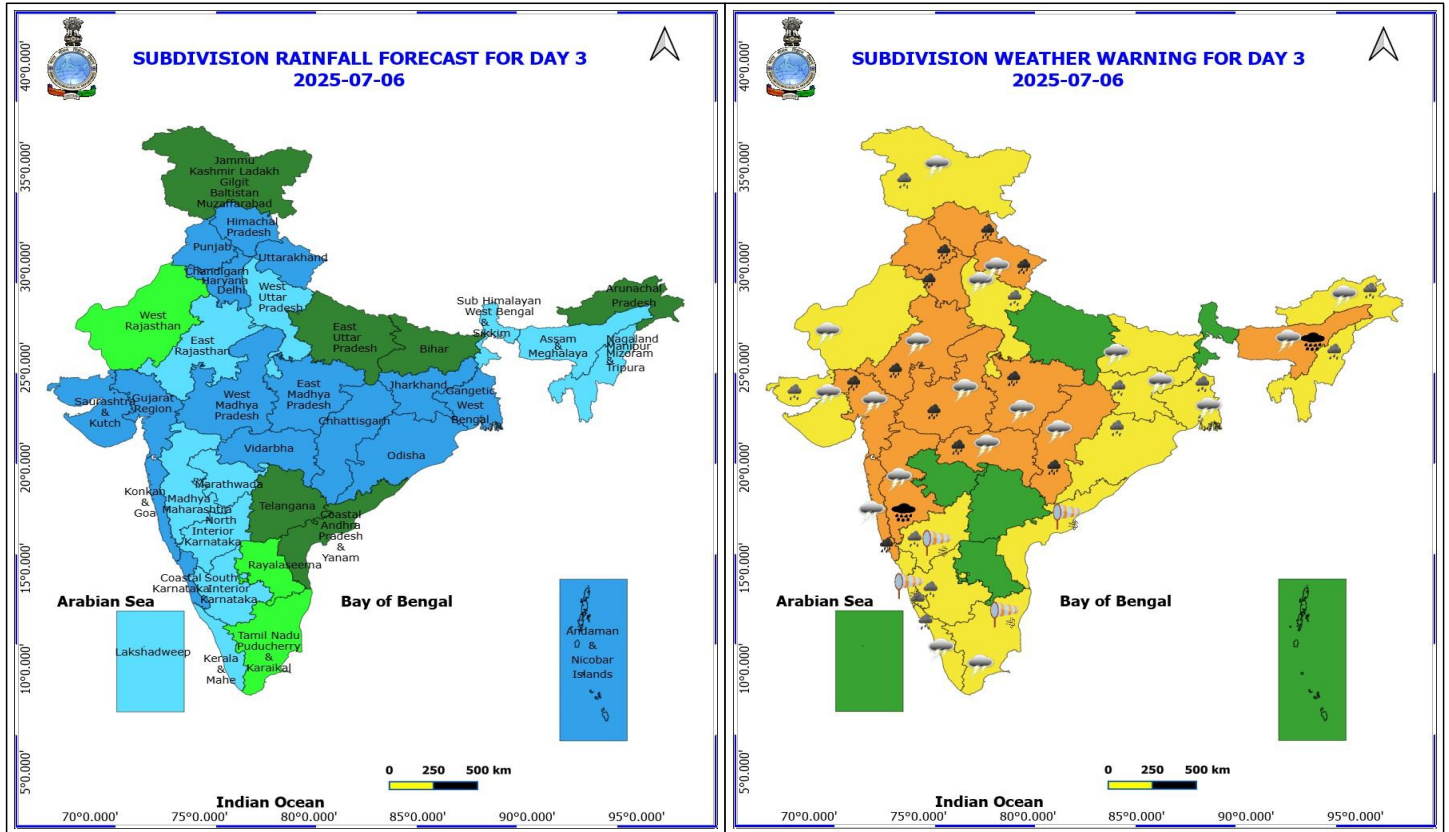
Forecast and warning for any day is valid from 0830 hours IST of day till 0830 hours IST of next day

For more details kindly visit <https://mausam.imd.gov.in> or contact 011-2434-4599

(Service to the nation since 1875)



Andhra Pradesh coast.



6 July (Day 3)

- ❖ **Heavy to Very Heavy Rainfall with isolated Extremely Heavy Rainfall** very likely at isolated places over Assam & Meghalaya and Madhya Maharashtra.
- ❖ **Heavy to Very Heavy Rainfall** very likely at isolated places over Chhattisgarh, East Rajasthan, Gujarat Region, Haryana, Chandigarh & Delhi, Himachal Pradesh, Konkan & Goa, Madhya Pradesh, Punjab, Uttarakhand and Vidarbha.
- ❖ **Heavy Rainfall** very likely at isolated places over Arunachal Pradesh, Gangetic West Bengal, Jammu-Kashmir-Ladakh-Gilgit-Baltistan-Muzaffarabad, Jharkhand, Karnataka, Kerala & Mahe, Nagaland, Manipur, Mizoram and Tripura, Odisha, Saurashtra & Kutch and West Uttar Pradesh.
- ❖ **Thunderstorm accompanied with lightning & gusty winds(30-40kmph)** very likely at isolated places over Bihar, East Rajasthan, Gangetic West Bengal, Jammu-Kashmir-Ladakh-Gilgit-Baltistan-Muzaffarabad and Jharkhand.
- ❖ **Thunderstorm accompanied with Lightning** very likely at isolated places over Arunachal Pradesh, Assam & Meghalaya, Chhattisgarh, Gujarat State, Kerala & Mahe, Konkan & Goa, Madhya Maharashtra, Madhya Pradesh, Tamil Nadu Puducherry & Karaikal, Uttarakhand, Vidarbha, West Rajasthan and West Uttar Pradesh.
- ❖ **Strong Surface Winds** very likely at isolated places over Coastal Andhra Pradesh, Coastal Karnataka, North Interior Karnataka and Tamil Nadu Puducherry & Karaikal.
- ❖ **Squally wind speed reaching 45 kmph to 55 kmph gusting to 65 kmph** is likely to prevail along and off Somalia, Oman & adjoining Yemen coasts, most parts of westcentral Arabian Sea & adjoining, many parts of eastcentral Arabian Sea, northern parts of southwest Arabian Sea.

***Red color warning does not mean "Red Alert" Red color warning means "Take Action"**

Forecast and warning for any day is valid from 0830 hours IST of day till 0830 hours IST of next day

For more details kindly visit <https://mausam.imd.gov.in> or contact 011-2434-4599

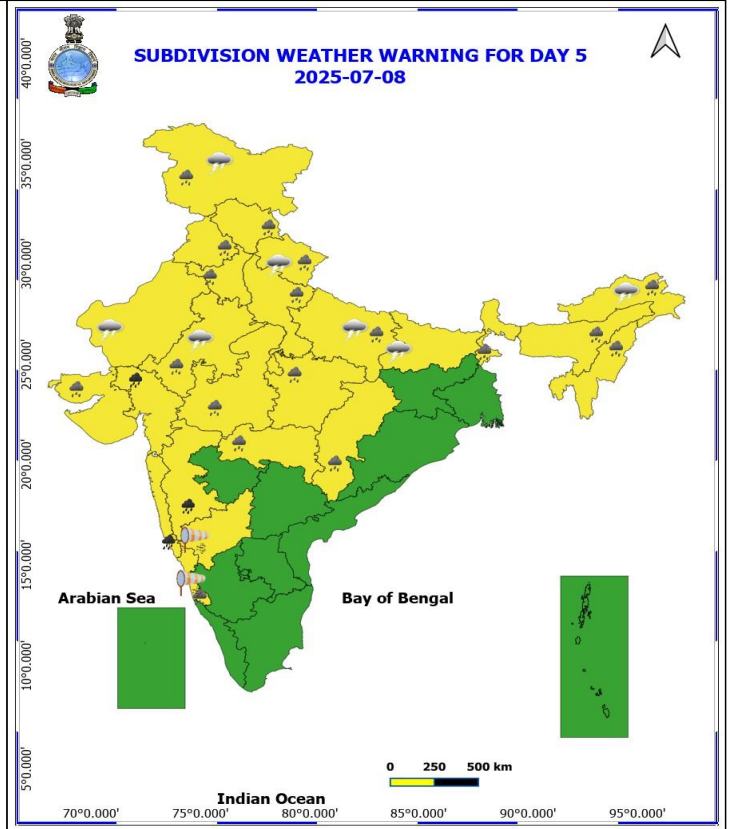
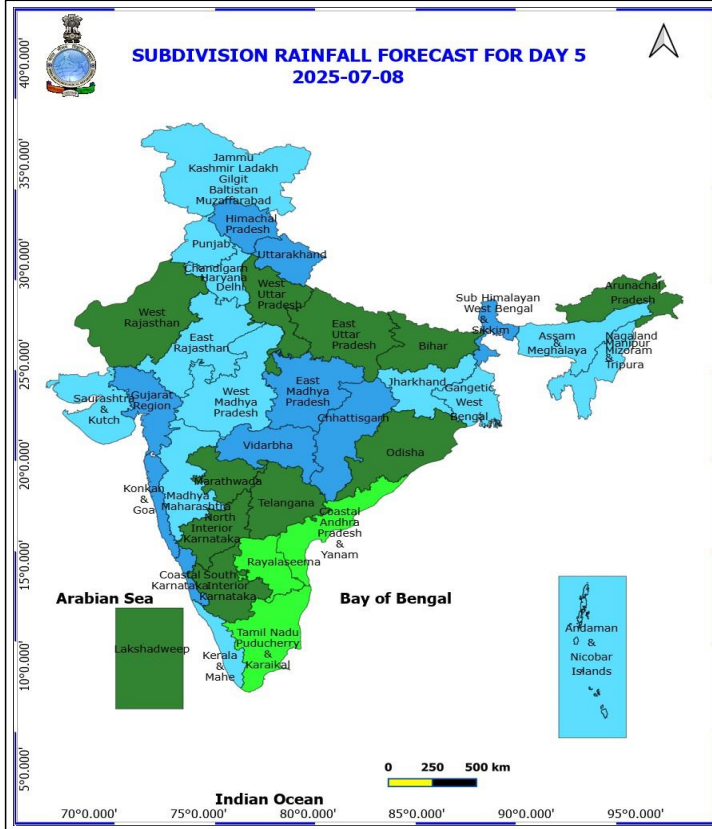
(Service to the nation since 1875)



❖ **Squally weather with wind speed 40 - 50 kmph gusting to 60 kmph** likely to prevail along and off south Gujarat and adjoining north Gujarat coasts, Konkan Goa coasts, adjoining sea areas, over southern parts of northeast Arabian Sea, over many parts of westcentral Bay of Bengal & adjoining few parts of southwest & eastcentral Bay of Bengal, along and off north Andhra Pradesh coast.



Konkan Goa coasts, adjoining sea areas, over southern parts of northeast Arabian Sea, over many parts of westcentral Bay of Bengal & adjoining few parts of southwest Bay of Bengal, off Tamil Nadu & Andhra Pradesh coasts.



8 July (Day 5)

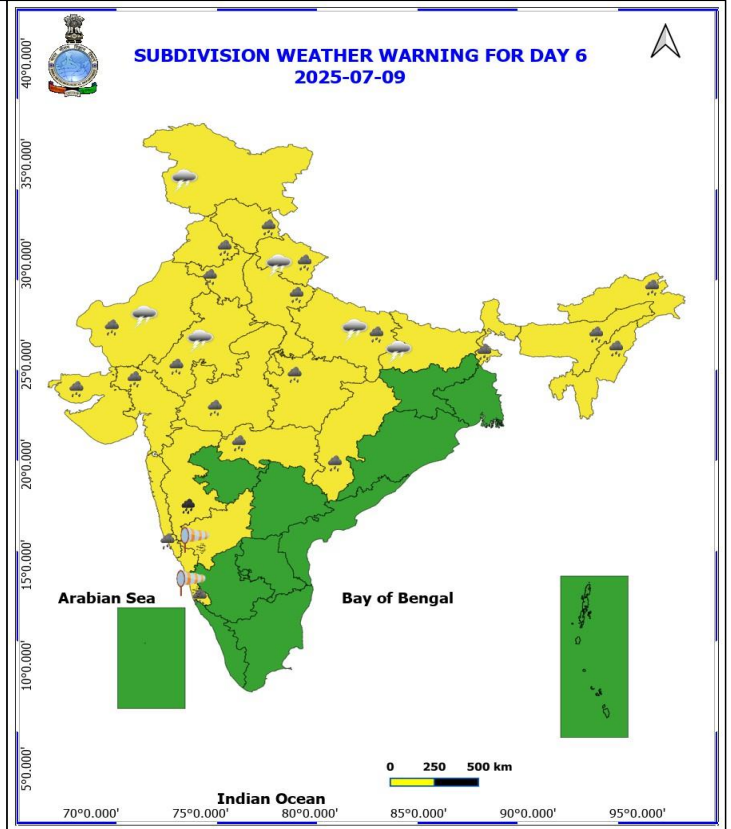
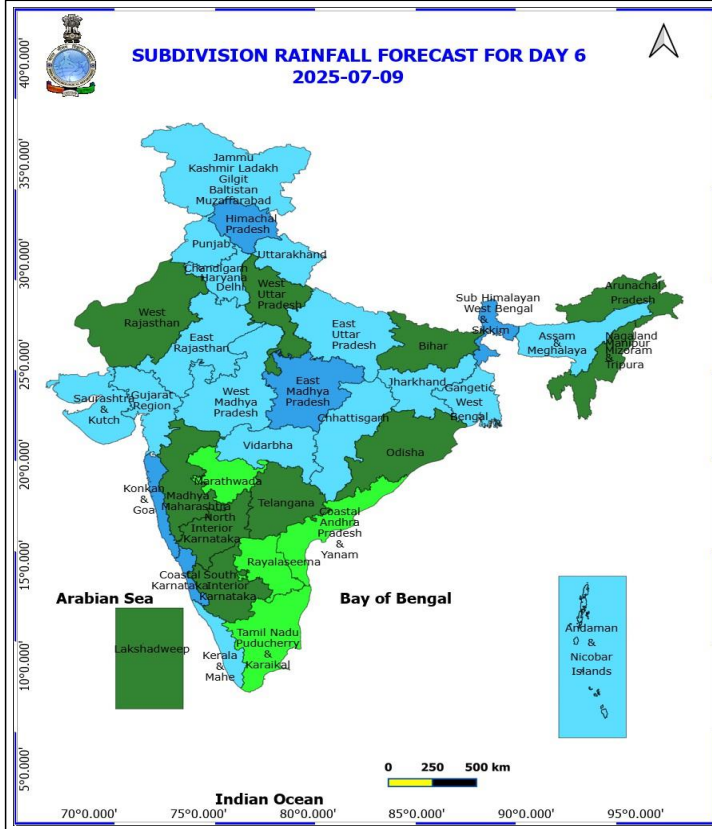
- ❖ **Heavy to Very Heavy Rainfall** likely at isolated places over Gujarat Region, Konkan & Goa and Madhya Maharashtra.
- ❖ **Heavy Rainfall** likely at isolated places over Arunachal Pradesh, Assam & Meghalaya, Chhattisgarh, Coastal Karnataka, East Rajasthan, Haryana, Chandigarh & Delhi, Himachal Pradesh, Jammu-Kashmir-Ladakh-Gilgit-Baltistan-Muzaffarabad, Madhya Pradesh, Nagaland, Manipur, Mizoram and Tripura, Punjab, Saurashtra & Kutch, Sub Himalayan West Bengal & Sikkim, Uttar Pradesh, Uttarakhand and Vidarbha.
- ❖ **Thunderstorm accompanied with lightning & gusty winds(30-40kmph)** likely at isolated places over Bihar, East Rajasthan and Jammu-Kashmir-Ladakh-Gilgit-Baltistan-Muzaffarabad.
- ❖ **Thunderstorm accompanied with Lightning** likely at isolated places over Arunachal Pradesh, East Uttar Pradesh, Uttarakhand and West Rajasthan.
- ❖ **Strong Surface Winds** likely at isolated places over Coastal Karnataka and North Interior Karnataka.
- ❖ **Squally wind speed reaching 45 kmph to 55 kmph gusting to 65 kmph** is likely to prevail along and off Somalia, Oman & adjoining Yemen coasts, most parts of westcentral Arabian Sea & adjoining, some parts of eastcentral Arabian Sea, northern parts of southwest Arabian Sea.
- ❖ **Squally weather with wind speed 40 - 50 kmph gusting to 60 kmph** likely to prevail along and off Gujarat, Konkan Goa coasts, adjoining sea areas, over southern parts of northeast Arabian Sea, over some parts of westcentral Bay of Bengal & adjoining few parts of southwest Bay of Bengal, off Tamil Nadu & Andhra Pradesh coasts.

***Red color warning does not mean "Red Alert" Red color warning means "Take Action"**

Forecast and warning for any day is valid from 0830 hours IST of day till 0830 hours IST of next day

For more details kindly visit <https://mausam.imd.gov.in> or contact 011-2434-4599

(Service to the nation since 1875)



9 July (Day 6)

- ❖ **Heavy to Very Heavy Rainfall** likely at isolated places over Madhya Maharashtra.
 - ❖ **Heavy Rainfall** likely at isolated places over Arunachal Pradesh, Assam & Meghalaya, Chhattisgarh, Coastal Karnataka, Gujarat State, Haryana, Chandigarh & Delhi, Himachal Pradesh, Konkan & Goa, Madhya Pradesh, Nagaland, Manipur, Mizoram and Tripura, Punjab, Rajasthan, Sub Himalayan West Bengal & Sikkim, Uttar Pradesh, Uttarakhand and Vidarbha.
 - ❖ **Thunderstorm accompanied with lightning & gusty winds(30-40kmph)** likely at isolated places over Bihar, East Rajasthan and Jammu-Kashmir-Ladakh-Gilgit-Baltistan-Muzaffargarh.
 - ❖ **Thunderstorm accompanied with Lightning** likely at isolated places over East Uttar Pradesh, Uttarakhand and West Rajasthan.
 - ❖ **Strong Surface Winds** likely at isolated places over Coastal Karnataka and North Interior Karnataka.
- No Fishermen Warning**

***Red color warning does not mean "Red Alert" Red color warning means "Take Action"**
Forecast and warning for any day is valid from 0830 hours IST of day till 0830 hours IST of next day
For more details kindly visit <https://mausam.imd.gov.in> or contact 011-2434-4599

(Service to the nation since 1875)

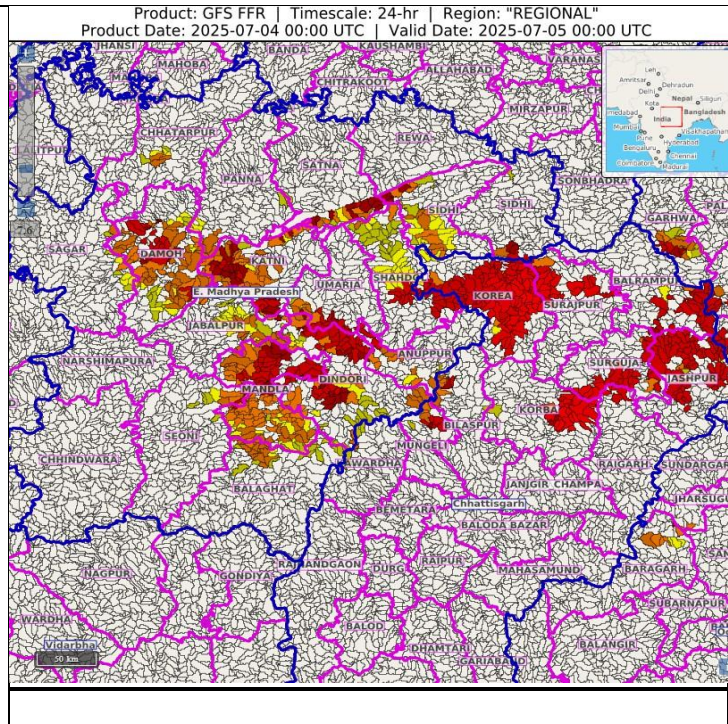
Flash Flood Guidance:

24 hours Outlook for the Flash Flood Risk (FFR) till 0530 IST of 05-07-2025 :

Low to Moderate flash flood risk likely over few watersheds & neighbourhoods of following Met Sub-divisions during next 24 hours.

East Madhya Pradesh – Damoh, Panna, Jabalpur, Mandla, Dindori, Umeria, Balaghat, Shahdol, Anupur and Sidhi districts.
Chhattisgarh – Korea, Surajpur, Bilaspur, Surguja, Korba and Jashpur districts.

Surface runoff/ Inundation may occur at some fully saturated soils & low-lying areas over Area of Concern (AoC) as shown in map due to expected rainfall occurrence in next 24 hours.



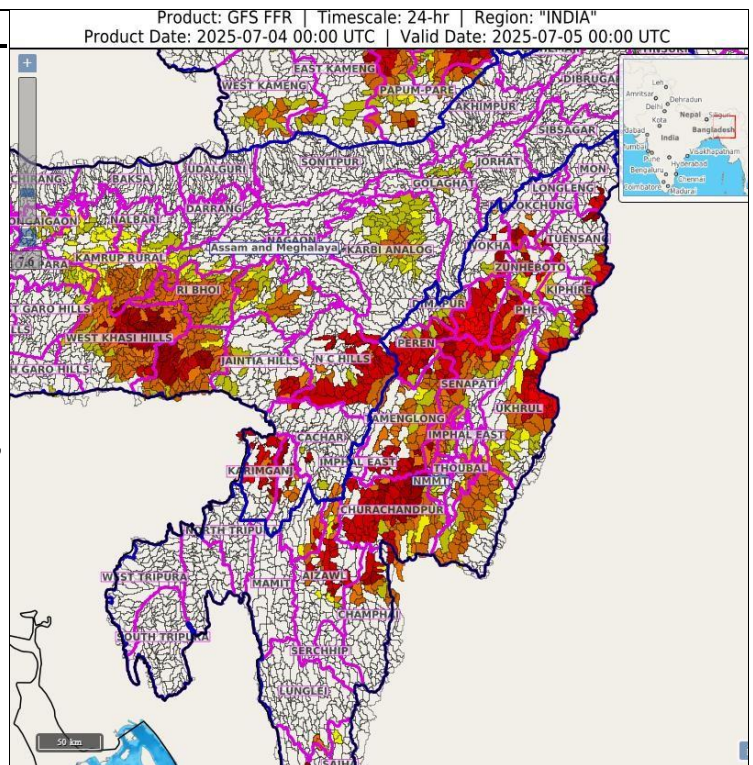
24 hours Outlook for the Flash Flood Risk (FFR) till 0530 IST of 05-07-2025 :

Moderate flash flood risk likely over few watersheds & neighbourhoods of following Met Sub-divisions during next 24 hours.

Assam & Meghalaya – Karimganj, Cachar, NC Hills, Karbi Analog, Jaintia Hills, RI Bhoi, East Khasi Hills, West Khasi Hills and Kamrup Rural districts

Nagaland Mizoram Manipur Tripura (NMMT) – Manipur- Bishnupur, Chandel, Churachandpur, Imphal East, Imphal West, Senapati, Tamenglong, Thoubal, Ukhrul, **Mizoram-** Aizawl, Champhai, Saiha, Kolasib, **Nagaland-** Dimapur, Kiphire, Kohima, Longleng, Mokokchung, Mon, Peren, Phek, Tuensang and Wokha districts.

Surface runoff/ Inundation may occur at some fully saturated soils & low-lying areas over Area of Concern (AoC) as shown in map due to expected rainfall occurrence in next 24 hours.



***Red color warning does not mean "Red Alert" Red color warning means "Take Action"**

Forecast and warning for any day is valid from 0830 hours IST of day till 0830 hours IST of next day

For more details kindly visit <https://mausam.imd.gov.in> or contact 011-2434-4599

(Service to the nation since 1875)



Table-1

7 Days Rainfall Forecast

S.No.	Subdivision	4- Jul	5- Jul	6- Jul	7- Jul	8- Jul	9- Jul	10- Jul
		Day 1	Day 2	Day 3	Day 4	Day 5	Day 6	Day 7
1	ANDAMAN & NICOBAR ISLANDS	WS	WS	WS	WS	FWS	FWS	FWS
2	ARUNACHAL PRADESH	FWS	FWS	SCT	SCT	SCT	SCT	SCT
3	ASSAM & MEHGHALAYA	WS	FWS	FWS	FWS	FWS	FWS	FWS
4	N. M. M. & T.	WS	FWS	FWS	FWS	FWS	SCT	SCT
5	S.H. WEST BENGAL & SIKKIM	WS	FWS	FWS	WS	WS	WS	WS
6	GANGETIC WEST BENGAL	WS	WS	WS	WS	FWS	FWS	FWS
7	ODISHA	WS	WS	WS	FWS	SCT	SCT	SCT
8	JHARKHAND	WS	WS	WS	FWS	FWS	FWS	FWS
9	BIHAR	FWS	FWS	SCT	SCT	SCT	SCT	SCT
10	EAST UTTAR PRADESH	FWS	FWS	SCT	SCT	SCT	FWS	FWS
11	WEST UTTAR PRADESH	SCT	FWS	FWS	FWS	SCT	SCT	SCT
12	UTTARAKHAND	FWS	FWS	WS	WS	WS	FWS	FWS
13	HARYANA, CHD & DELHI	SCT	FWS	WS	WS	FWS	FWS	FWS
14	PUNJAB	ISOL	SCT	WS	WS	FWS	FWS	FWS
15	HIMACHAL PRADESH	FWS	WS	WS	WS	WS	WS	WS
16	JAMMU AND KASHMIR AND LADAKH	SCT	SCT	SCT	FWS	FWS	FWS	FWS
17	WEST RAJASTHAN	SCT	SCT	ISOL	ISOL	SCT	SCT	SCT
18	EAST RAJASTHAN	FWS	FWS	FWS	FWS	FWS	FWS	FWS
19	WEST MADHYA PRADESH	WS	WS	WS	WS	FWS	FWS	FWS
20	EAST MADHYA PRADESH	WS	WS	WS	WS	WS	WS	WS
21	GUJRAT REGION	WS	WS	WS	WS	WS	FWS	FWS
22	SAURASHTRA & KUTCH	WS	WS	WS	WS	FWS	FWS	FWS
23	KONKAN & GOA	WS	WS	WS	WS	WS	WS	WS
24	MADHYA MAHARASHTRA	SCT	SCT	FWS	FWS	FWS	SCT	SCT
25	MARATHWADA	ISOL	SCT	FWS	FWS	SCT	ISOL	ISOL
26	VIDARBHA	FWS	WS	WS	WS	WS	FWS	FWS
27	CHATTISGARH	WS	WS	WS	WS	WS	FWS	FWS
28	COASTAL ANDHRA PRADESH	FWS	SCT	SCT	SCT	ISOL	ISOL	ISOL
29	TELANGANA	SCT	SCT	SCT	SCT	SCT	SCT	SCT
30	RAYALASEEMA	SCT	ISOL	ISOL	ISOL	ISOL	ISOL	ISOL
31	TAMILNADU & PUDUCHERRY	ISOL	ISOL	ISOL	ISOL	ISOL	ISOL	ISOL
32	COSTAL KARNATAKA	WS	WS	WS	WS	WS	WS	WS
33	NORTH INTERIOR KARNATAKA	WS	FWS	FWS	SCT	SCT	SCT	SCT
34	SOUTH INTERIOR KARNATAKA	WS	FWS	FWS	SCT	SCT	SCT	SCT
35	KERALA	WS	WS	FWS	FWS	FWS	FWS	FWS
36	LAKSHDWEEP	WS	FWS	FWS	FWS	SCT	SCT	SCT

Legend	Category	%Stations
WS	Widespread/Most Places	76-100
FWS	Fairly Widespread/Many Places	51-75
SCT	Scattered/ A Few Places	26-50
ISOL	Isolated Places	1-25
DRY	No Rain	0

***Red color warning does not mean "Red Alert" Red color warning means "Take Action"**
Forecast and warning for any day is valid from 0830 hours IST of day till 0830 hours IST of next day
For more details kindly visit <https://mausam.imd.gov.in> or contact 011-2434-4599

(Service to the nation since 1875)

Fig. 1: Maximum Temperatures Dated 2025-07-04

Fig. 2: Departure of Maximum Temp. Dated 2025-07-04

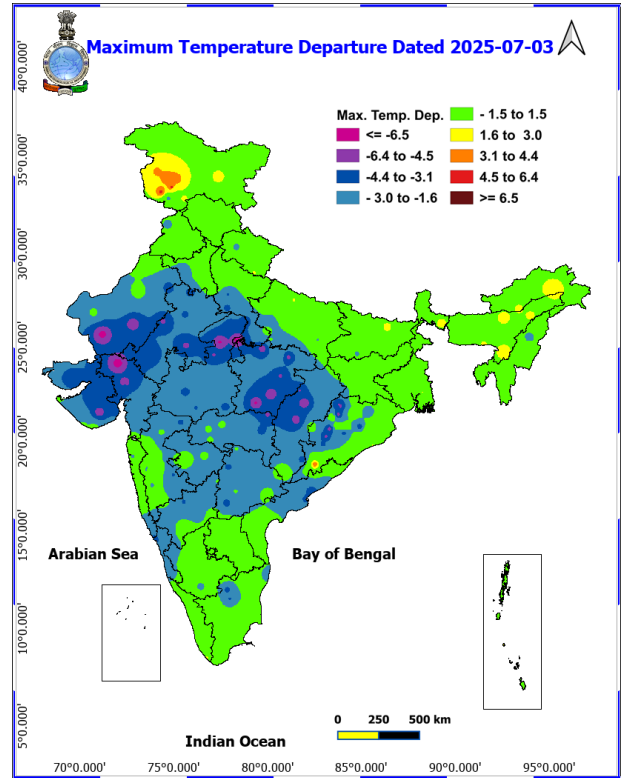
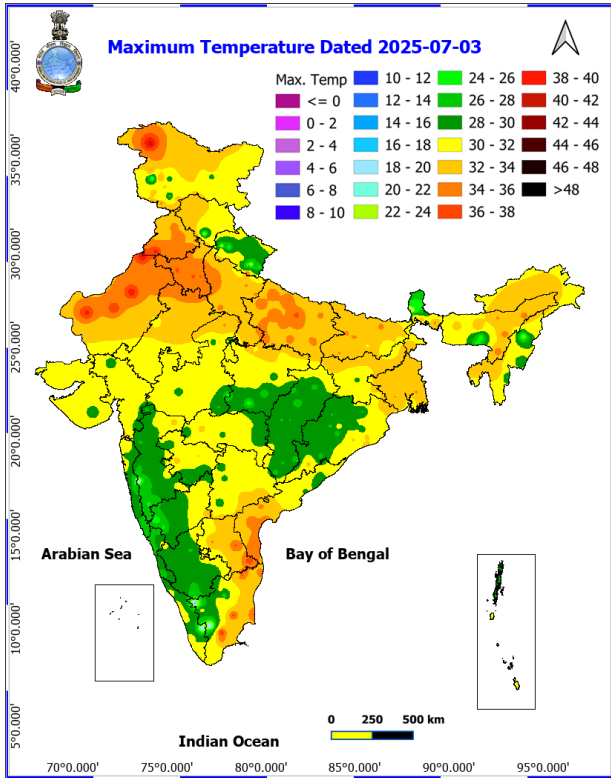
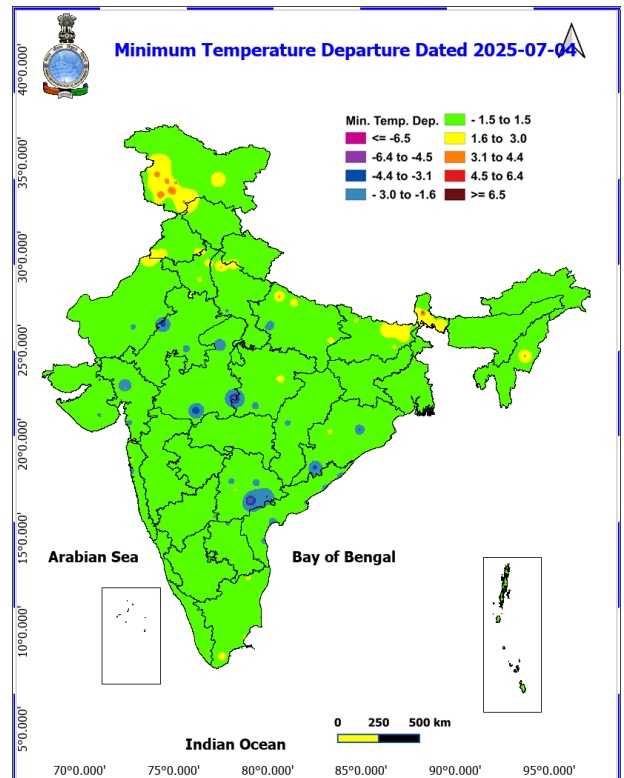
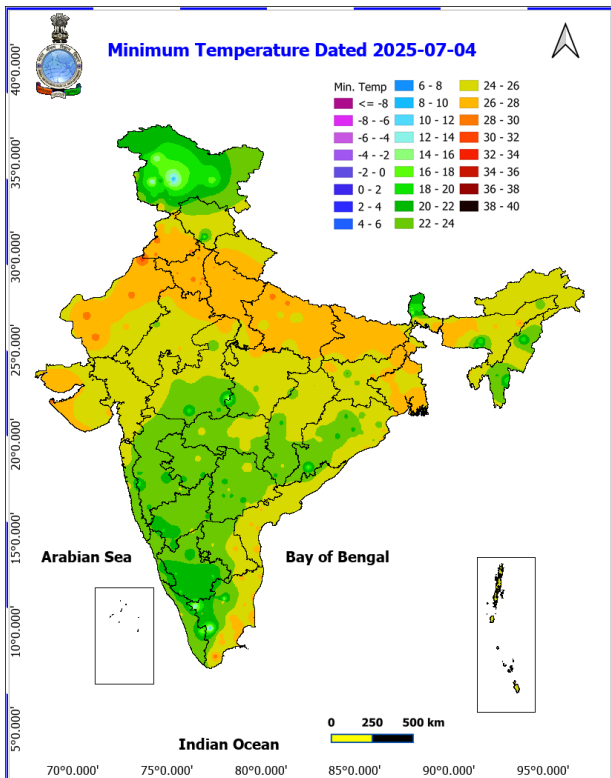


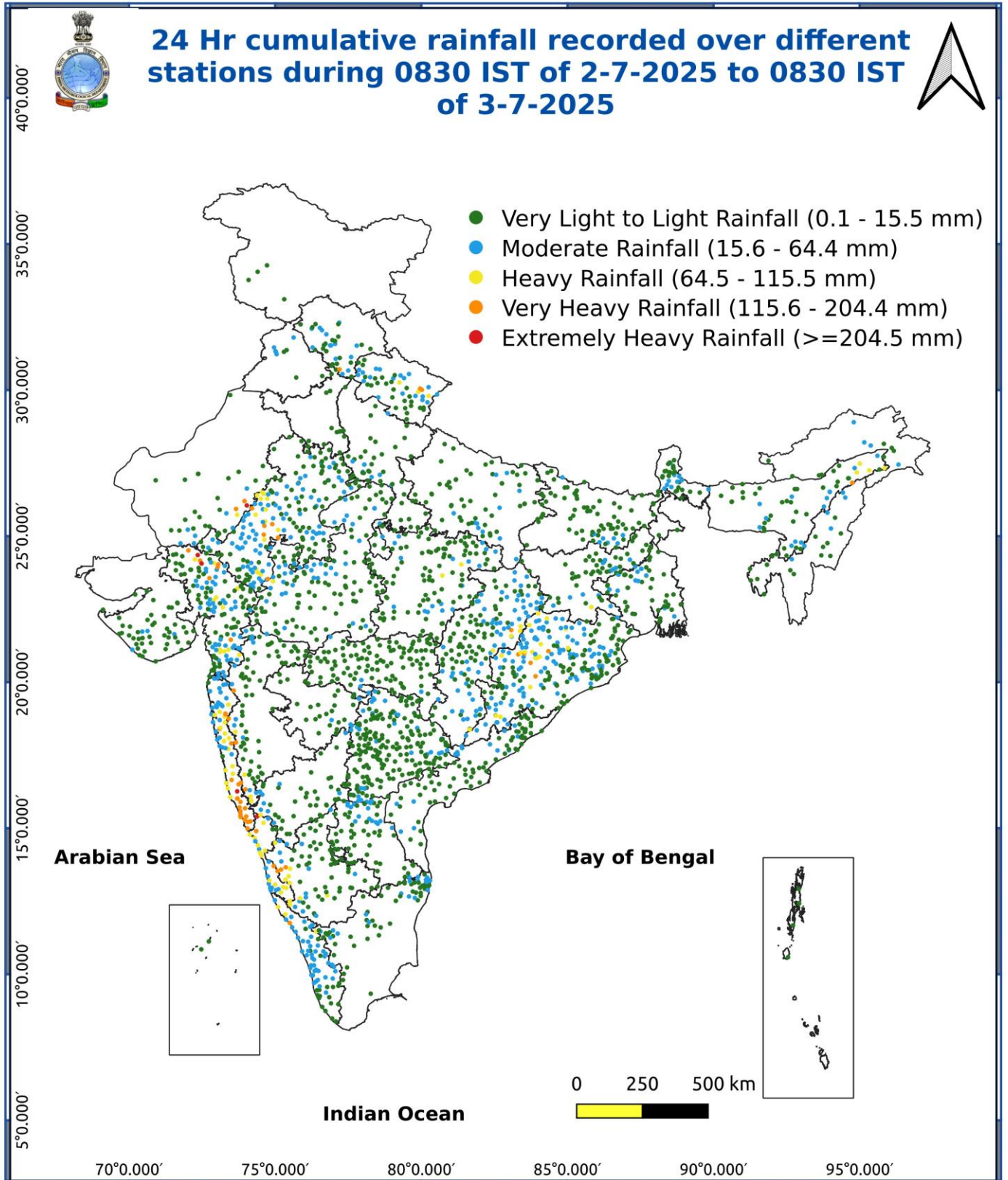
Fig. 3: Minimum Temperatures Dated 2025-07-04

Fig. 4: Departure of Minimum Temp. Dated 2025-07-04



***Red color warning does not mean "Red Alert" Red color warning means "Take Action"**
Forecast and warning for any day is valid from 0830 hours IST of day till 0830 hours IST of next day
For more details kindly visit <https://mausam.imd.gov.in> or contact 011-2434-4599

(Service to the nation since 1875)



***Red color warning does not mean "Red Alert" Red color warning means "Take Action"**
Forecast and warning for any day is valid from 0830 hours IST of day till 0830 hours IST of next day
For more details kindly visit <https://mausam.imd.gov.in> or contact 011-2434-4599

(Service to the nation since 1875)



Impact & Action Suggested due to very heavy/extremely heavy rainfall:

Heavy to very heavy rainfall activity over many parts of northwest, central, east & northeast India and along west coast during next 6-7 days with **Extremely heavy rainfall (≥ 21 cm)** at isolated places over East Rajasthan, Ghat areas of Madhya Maharashtra, south coastal Maharashtra & Goa, Coastal & South Interior Karnataka today, the 03rd July, 2025.

Heavy to very heavy rainfall over Himachal Pradesh and Uttarakhand during next 5 days.

Impact Expected

Localized Flooding of roads, water logging in low lying areas and closure of underpasses mainly in urban areas of the above region.

Occasional reduction in visibility due to heavy rainfall.

Disruption of traffic in major cities due to water logging in roads leading to increased travel time.

Minor damage to kutcha roads.

Possibilities of damage to vulnerable structure.

Localized Landslides/Mudslides/landslips/mudslips/landsinks/mudsinks.

Damage to horticulture and standing crops in some areas due to inundation.

It may lead to riverine flooding in some river catchments (for riverine flooding please visit Web page of CWC)

Action Suggested

Check for traffic congestion on your route before leaving for your destination.

Follow any traffic advisories that are issued in this regard.

Avoid going to areas that face the water logging problems often.

Avoid staying in vulnerable structure.

Agromet advisories for various parts of the country

- ✓ In **Odisha**, ensure proper drainage from already sown rice nurseries, fields of maize and vegetables to prevent waterlogging. Cover rice and vegetable nurseries with plastic sheets to prevent the washing away of seeds.
- ✓ Provide strong wooden support for papaya and banana plants to avoid lodging due to strong winds. In **West Central Table Land Zone**, postpone sowing of pigeon pea and groundnut. Carry out re-sowing of maize in case of poor germination / no germination due to waterlogged conditions. In **Keonjhar district**, postpone sowing of maize and green gram.
- ✓ In **Jharkhand**, make necessary arrangements to drain out excess water from already sown maize fields, rice and vegetable nurseries. Cover the vegetable nurseries with polythene sheets.
- ✓ In **West Madhya Pradesh**, make necessary arrangements to drain out excess water from vegetables and orchards to avoid waterlogging. In **Gird Zone of West Madhya Pradesh**, postpone sowing of pearl millet. In **East Madhya Pradesh**, keep the harvested produce of maize, green gram and black gram in safe places. Ensure proper drainage in already sown/transplanted fields.
- ✓ In **Chhattisgarh**, ensure proper drainage in rice nurseries, fields of maize, minor millets and vegetables. In **Bastar Plateau Zone**, postpone transplanting of paddy during heavy rainfall period.
- ✓ In **East Rajasthan**, harvest the matured vegetables such as okra and cucurbits and store them in safe places. Make arrangements for draining out excess water from the fields of groundnut and green gram.
- ✓ In **East Uttar Pradesh**, drain out excess water from late-sown rice nurseries, groundnut, green gram, maize and vegetables.
- ✓ In **Himachal Pradesh**, provide drainage in the fields of vegetables and fruit orchards. Strengthen the support for creepers and tall vegetable crops (tomato, capsicum etc.). Harvest matured fruits of plum, pear, stone fruit and keep in safe places to minimize losses due to heavy rains. Drain out excess water from rice nurseries and maize fields.
- ✓ In **Uttarakhand**, ensure proper drainage facilities in pigeon pea, groundnut, maize, sugarcane, barnyard millet, finger millet, rice nurseries, kidney beans, black gram, green gram, vegetable and

***Red color warning does not mean "Red Alert" Red color warning means "Take Action"**

Forecast and warning for any day is valid from 0830 hours IST of day till 0830 hours IST of next day

For more details kindly visit <https://mausam.imd.gov.in> or contact 011-2434-4599

(Service to the nation since 1875)

orchards. Harvest matured vegetables (pumpkin, tomato, okra, chilli, French bean etc.) and fruits and store in safe place. Tie the sugarcane plants together to avoid lodging.

- ✓ In **Konkan**, make arrangements to drain out excess water from rice nurseries, fields of finger millet, groundnut and orchards to prevent waterlogging. In **ghat areas of Madhya Maharashtra**, drain out excess water from rice nurseries, vegetables and orchards to prevent waterlogging.
- ✓ In **Gujarat**, make necessary arrangements to drain out excess water in rice nurseries, sugarcane fields, banana and mango plantations to prevent waterlogging. Provide support to sugarcane and banana to prevent lodging. In **Saurashtra & Kutch**, drain out excess rain water from vegetable nurseries and horticultural plantations.
- ✓ Undertake propping in sugarcanes with strong bamboo or tie the leaves together in a clump to protect against wind and heavy rain.
- ✓ In **Arunachal Pradesh**, ensure proper drainage in rice, soyabean, vegetable fields and orchards (kiwi, apple). Avoid fresh transplanting of rice in low-lying areas. Provide staking to vegetables. Provide strong support to banana plants using bamboo or wooden stakes to prevent lodging or stem breakage.
- ✓ In **Assam**, keep the harvested produce of sesame, foxtail millet, *Boro* rice, banana and citrus at safer places. Ensure proper drainage in *Sali* rice nursery, maize and sugarcane fields, arecanut and coconut plantations to prevent waterlogging.
- ✓ In **Meghalaya**, postpone nursery sowing of rice especially in valleys. Ensure proper drainage in the fields of maize, ginger, French bean, cowpea, vegetables and around rice nurseries to prevent waterlogging. Provide strong bamboo stakes or trellis support to cow pea, cucumber and bottle gourd to prevent vines from trailing on wet ground. Provide support to banana plant to prevent lodging.
- ✓ In **Coastal Karnataka**, ensure proper drainage in rice nurseries and remove excess rainwater to prevent water stagnation. Provide drainage to remove the excess water from the maize fields. In **South Interior Karnataka**, provide propping/support to banana and tomato to prevent their lodging. Ensure proper drainage in vegetables to avoid waterlogging.

Livestock / Fishery

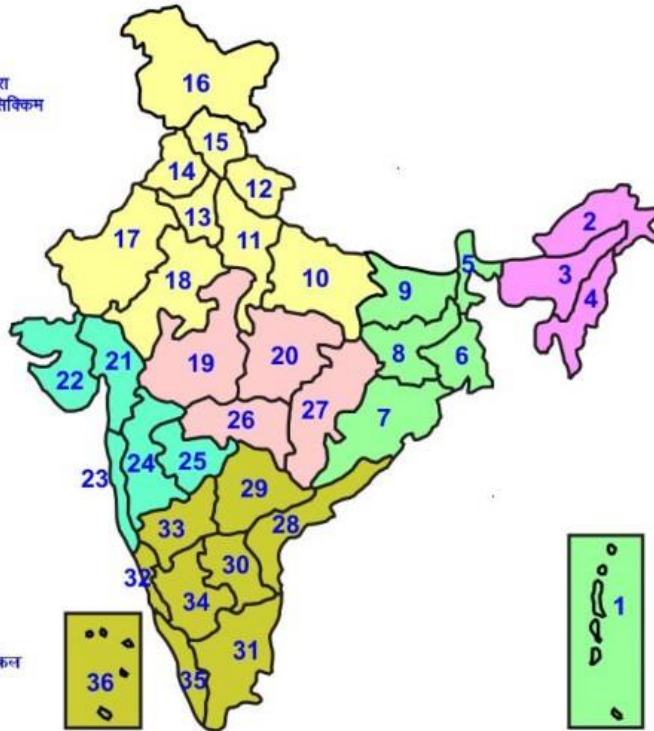
- Keep the animals inside the shed during heavy rainfall and provide them balanced feed. Store feed and fodder in a safe place to prevent spoilage.
- Construct an outlet with proper netting around the ponds to drain out excess water, thereby preventing fish from escaping in case of overflow.

Agromet advisories for likely impact of Thunderstorm / Gusty Winds / Squally Winds

- ✓ Provide mechanical support to horticultural crops and staking or support to vegetables and young fruit plants / fruit-bearing plants to avoid lodging due to strong winds.

LEGENDS

- 1 अंडमान और निकोबार द्वीप समुह
- 2 अरुणाचल प्रदेश
- 3 असम और मेघालय
- 4 नागालैंड मनीपुर मीजोरम और त्रिपुरा
- 5 उप हिमालय पश्चिम बंगाल एवं सिक्किम
- 6 पश्चिम बंगाल
- 7 ओडिसा
- 8 झारखंड
- 9 बिहार
- 10 पूर्वी उत्तर प्रदेश
- 11 पश्चिम उत्तर प्रदेश
- 12 उत्तराखंड
- 13 हरियाणा चंडिगढ़ एवं दिल्ली
- 14 पंजाब
- 15 हिमाचल प्रदेश
- 16 जम्मू एवं कश्मीर एवं लद्दाख
- 17 पश्चिम राजस्थान
- 18 पूर्वी राजस्थान
- 19 पश्चिम मध्य प्रदेश
- 20 पूर्वी मध्य प्रदेश
- 21 गुजरात क्षेत्र
- 22 सौराष्ट्र एवं कच्छ
- 23 कोंकण एवं गोवा
- 24 मध्य महाराष्ट्र
- 25 मराठावाडा
- 26 विदर्भ
- 27 छत्तीसगढ़
- 28 तटीय आंध्र प्रदेश एवं यनम
- 29 तेलंगाना
- 30 रायलसेमा
- 31 तमिलनाडु, पुदुचेरी एवं कराईकल
- 32 तटिय कर्नाटक
- 33 आंतरिक उत्तरी कर्नाटक
- 34 आंतरिक दक्षिणी कर्नाटक
- 35 केरल एवं माहे
- 36 लक्षद्वीप



1. Andaman & Nicobar Islands
2. Arunachal Pradesh
3. Assam & Meghalaya
4. Nagaland, Manipur, Mizoram & Tripura
5. Sub-Himalayan West Bengal & Sikkim
6. Gangetic West Bengal
7. Orissa
8. Jharkhand
9. Bihar
10. East Uttar Pradesh
11. West Uttar Pradesh
12. Uttarakhand
13. Haryana, Chd & Delhi
14. Punjab
15. Himachal Pradesh
16. Jammu & Kashmir and Ladakh
17. West Rajasthan
18. East Rajasthan
19. West Madhya Pradesh
20. East Madhya Pradesh
21. Gujarat
22. Saurashtra
23. Konkan & Goa
24. Madhya Maharashtra
25. Marathwada
26. Vidharbha
27. Chhattisgarh
28. Coastal Andhra Pradesh & Yanam
29. Telangana
30. Rayalaseema
31. Tamilnadu, Puducherry & Karaikal
32. Coastal Karnataka
33. North Interior Karnataka
34. South Interior Karnataka
35. Kerala & Mahe
36. Lakshadweep

SPATIAL DISTRIBUTION (% of Stations reporting)

% Stations	Category	% Stations	Category
76-100	Widespread (WS/ Most Places)	26-50	Scattered (SCT/ A Few Places)
51-75	Fairly Widespread (FWS/ Many Places)	1-25	Isolated (ISOL)

Subdivision Colour

- NO WARNING
- WATCH (BE UPDATED)
- ALERT (BE PREPARED TO TAKE ACTION)
- WARNING (TAKE ACTION)

Probabilistic Forecast

Terms	Probability of Occurrence (%)
Unlikely	< 25
Likely	25 - 50
Very Likely	50 - 75
Most Likely	> 75

- | | | | |
|--------------------------|-----------------|----------------------|--------------------|
| Heavy Rain | Very Heavy Rain | Extremely Heavy Rain | Heavy Snow |
| Thunderstorm & Lightning | Hailstorm | Dust Storm | Dust Raising Winds |
| Strong surface winds | Heat Wave | Hot Day | Warm Night |
| Cold Wave | Cold Day | Ground Frost | Fog |
| Hot & Humid | | | |

*Red color warning does not mean "Red Alert" Red color warning means "Take Action"

Forecast and warning for any day is valid from 0830 hours IST of day till 0830 hours IST of next day

For more details kindly visit <https://mausam.imd.gov.in> or contact 011-2434-4599

(Service to the nation since 1875)

LEGENDS

WARNING

WARNING (TAKE ACTION)
ALERT (BE PREPARED)
WATCH (BE UPDATED)
NO WARNING (NO ACTION)

Probabilistic Forecast

Terms	Probability of Occurrence (%)
Unlikely	< 25
Likely	25 - 50
Very Likely	50 - 75
Most Likely	> 75



Heavy: 64.5 to 115.5 mm/cm *
Very Heavy: 115.6 to 204.4 mm/cm *
Extremely Heavy: > 204.4 mm/cm *



When maximum temperature of a station reaches $\geq 40^{\circ}\text{C}$ for plains and $\geq 30^{\circ}\text{C}$ for hilly regions
(a) Based on Departure from normal

Heat Wave: Maximum Temperature Departure from normal 4.5°C to 6.4°C .
Severe Heat Wave: Maximum Temperature Departure from normal $\geq 6.5^{\circ}\text{C}$

(b). Based on Actual maximum temperature

Heat Wave: When actual maximum temperature $\geq 45^{\circ}\text{C}$.
Severe Heat Wave: When actual maximum temperature $\geq 47^{\circ}\text{C}$

(c). Criteria for heat wave for coastal stations

When maximum temperature departure is $> 4.5^{\circ}\text{C}$ from normal. Heat Wave may be described provided maximum temperature $\geq 37^{\circ}\text{C}$



When maximum temperature remains 40°C

Warm Night: When minimum temperature departure 4.5°C to 6.4°C .
Severe Warm Night: When minimum temperature departure $> 6.4^{\circ}\text{C}$.



When minimum temperature of a station $\leq 10^{\circ}\text{C}$ for plains and $\leq 0^{\circ}\text{C}$ for hilly regions.

(a). Based on departure

Cold Wave: Minimum Temperature Departure from normal -4.5°C to -6.4°C .
Severe Cold Wave: Minimum Temperature Departure from normal $\leq -6.5^{\circ}\text{C}$

(b) Based on actual Minimum Temperature (for Plains only)

Cold Wave : When Minimum Temperature is $\leq 4.0^{\circ}\text{C}$
Severe Cold Wave: When Minimum Temperature is $\leq 2.0^{\circ}\text{C}$

(c) For Coastal Stations

When Minimum Temperature departure is $\leq -4.5^{\circ}\text{C}$ & actual Minimum Temperature is $\leq 15^{\circ}\text{C}$



When minimum temperature of a station $\leq 10^{\circ}\text{C}$ for plains and $\leq 0^{\circ}\text{C}$ for hilly regions
Based on departure

Cold Day: Maximum Temperature Departure from normal -4.5°C to -6.4°C .
Severe Cold Day: Maximum Temperature Departure from normal $\leq -6.5^{\circ}\text{C}$



Phenomenon of small droplets suspended in air and the horizontal visibility $< 1\text{km}$

Moderate Fog: When the visibility between 500-200 metres
Dense Fog: when the visibility between 50- 200 metres
Very Dense Fog: when the visibility < 50 metres



Sudden electrical discharges manifested by a flash of light (Lightning) and a sharp rumbling sound (thunder)



An ensemble of particles of dust or sand energetically lifted to great heights by a strong and turbulent wind.



Ice deposits on ground

Air temperature $\leq 4^{\circ}\text{C}$ (over Plains)



A strong wind that rises suddenly, lasts for atleast 1 minute.

Moderate: Wind speed 52-61 kmph
Severe: Wind speed 62-87 kmph
Very Severe: Wind speed > 87 kmph



Effect of various waves in the sea over specific area

Rough to very rough: Wind speed 41-62 kmph (22-33 knots) & Wave height 2.5-6 metre
High to very high: Wind speed 63-117 kmph (34-63 knots) & Wave height 6-14 metre
Phenomenal: Wind speed > 117 kmph (> 63 knots) & Wave height > 14 metre



Cyclonic Storm: Wind speed 62-87 kmph (34-47 knots)
Severe Cyclonic Storm: Wind speed 88-117 kmph (48-63 knots)
Very Severe Cyclonic Storm: Wind speed 118-165 kmph (64 - 89 knots)
Extremely Severe Cyclonic Storm: Wind speed 166-220 kmph (90 -119 knots)
Super Cyclone Storm: Wind speed > 220 kmph (> 119 knots)

*Red color warning does not mean "Red Alert" Red color warning means "Take Action"

Forecast and warning for any day is valid from 0830 hours IST of day till 0830 hours IST of next day

For more details kindly visit <https://mausam.imd.gov.in> or contact 011-2434-4599

(Service to the nation since 1875)