



2025-10-15

Time of Issue: 08:17:00 hours IST
(Morning)

ALL INDIA WEATHER SUMMARY AND FORECAST BULLETIN

Significant Weather Features

Weather Forecast and Warnings:

South Peninsular India:

- Light to moderate rain/thunderstorm at some/ isolated places with Isolated **heavy rainfall** over Tamil Nadu and Kerala & Mahe during 15th – 20th; South Interior Karnataka, Coastal Andhra Pradesh & Yanam and Rayalaseema on 15th -16th; Lakshadweep during 16th -18th October.
- Thunderstorm with lightning and gusty wind (speed reaching 30-40 kmph) over the region for next 4-5 days.

East & Central India:

- Thunderstorm with lightning and gusty wind (speed reaching 30-40 kmph) over Odisha on 15th & 16th with lightning Vidarbha on 15th -16th; Madhya Pradesh on 16th & 17th October.

West India:

- Thunderstorm with lightning over Madhya Maharashtra during 15th -17th and Marathawada on 15th -16th; Konkan & Goa during 15th-17th October.

***Red color warning does not mean "Red Alert" Red color warning means "Take Action"**

Forecast and warning for any day is valid from 0830 hours IST of day till 0830 hours IST of next day

For more details kindly visit <https://mausam.imd.gov.in> or contact 011-2434-4599

(Service to the nation since 1875)

Main Weather Observations:

❖ **Rainfall distribution** (from 0830 hours IST of yesterday to 0530 hours IST of today): **at most places** over Tamilnadu Puducherry & Karaikal, Kerala & Mahe, Coastal Karnataka, Andaman & Nicobar Islands and Rayalaseema; **at many places** over Assam & Meghalaya, Coastal Andhra Pradesh & Yanam, Konkan & Goa, Telangana, North Interior Karnataka, South Interior Karnataka and Lakshadweep; **Dry** over rest of the country.

❖ **Significant rainfall recorded(in cm)** (from 0830 hours IST of yesterday to 0530 hours IST of today): Tamilnadu puducherry & karaikal: Nagapattinam (dist Nagapattinam), Adiramapatinam (dist Thanjavur) 3 Each, Karaikal (dist Karaikal), Tondi (dist Ramanathapuram), Chennai (minambakkam) AP (dist Chennai) 2 Each; Kerala & mahe: Thiruvananthapuram-city (dist Thiruvananthapuram) 3; Coastal karnataka: Mangalore (bajpe) AP (dist Dakshina Kannada) 2; Coastal andhra pradesh & yanam: Nellore (dist Sri Potti Sriramulu Nellore) 2.

❖ **Minimum Temperature Departures (as on 14-10-2025): markedly above normal(> 5.1°C)** at isolated places over Assam & Meghalaya, Bihar and West Rajasthan. **appreciably above normal(3.1°C to 5.0°C)** at few places over Nagaland, Manipur, Mizoram & Tripura; at isolated places over Sub Himalayan West Bengal & Sikkim, West Uttar Pradesh, Himachal Pradesh and Konkan & Goa. **above normal(1.6°C to 3.0°C)** at few places over Punjab and Jammu-KashmirLadakh-Gilgit-Baltistan-Muzaffarabad; at isolated places over Odisha, Haryana-Chandigarh-Delhi, Vidarbha, Telangana, Tamil Nadu, Puducherry & Karaikal, South Interior Karnataka and Kerala & Mahe. **near normal(-1.5°C to 1.5°C)** at many places over East Madhya Pradesh, Saurashtra & Kutch, Madhya Maharashtra, Chhattisgarh and North Interior Karnataka; at most places over Andaman & Nicobar Islands, Arunachal Pradesh, Gangetic West Bengal, Jharkhand, Uttarakhand, Coastal Andhra Pradesh & Yanam, Rayalaseema, Coastal Karnataka and Lakshadweep; at few places over East Uttar Pradesh, West Madhya Pradesh and Gujarat Region; at isolated places over East Rajasthan and Marathwada. **The lowest minimum temperature** of 13.4°C is reported at UNA (HIMACHAL PRADESH) over the Plains of India.

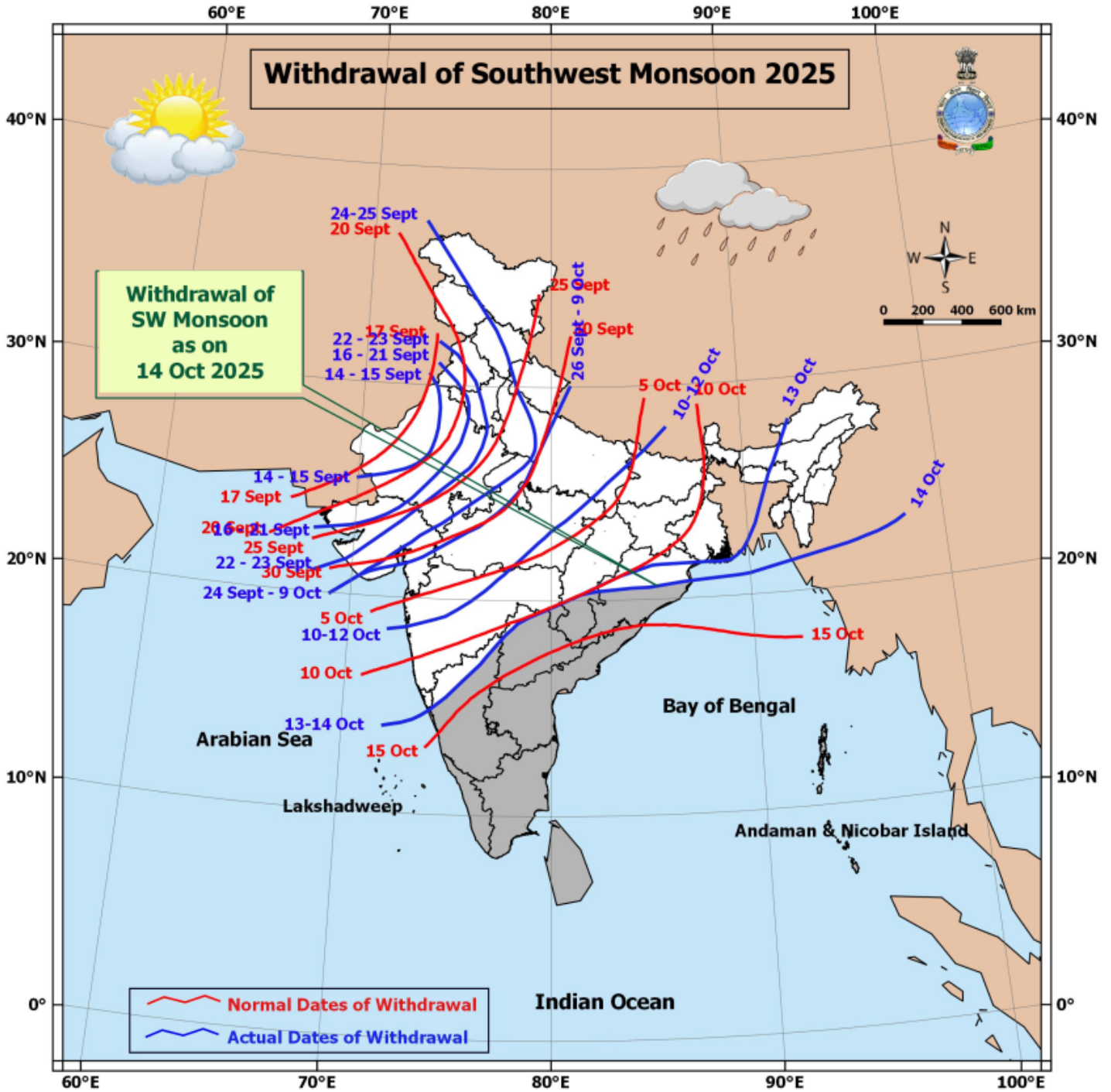
❖ **Maximum Temperature Departures (as on 14-10-2025): markedly above normal(> 5.1°C)** at isolated places over Assam & Meghalaya and Himachal Pradesh. **appreciably above normal(3.1°C to 5.0°C)** at few places over Arunachal Pradesh, Jammu-KashmirLadakh-Gilgit-Baltistan-Muzaffarabad, Coastal Karnataka and Lakshadweep; at isolated places over Sub Himalayan West Bengal & Sikkim, Konkan & Goa and Chhattisgarh. **above normal(1.6°C to 3.0°C)** at isolated places over Andaman & Nicobar Islands, Nagaland, Manipur, Mizoram & Tripura, Odisha, Bihar, Madhya Maharashtra, Vidarbha, Tamil Nadu, Puducherry & Karaikal and Kerala & Mahe. **near normal(-1.5°C to 1.5°C)** at many places over Jharkhand, East Uttar Pradesh, Uttarakhand, Punjab, Saurashtra & Kutch, Telangana and South Interior Karnataka; at most places over Gangetic West Bengal, West Rajasthan, Marathwada, Rayalaseema and North Interior Karnataka; at few places over West Uttar Pradesh, Haryana-Chandigarh-Delhi, East Rajasthan, East Madhya Pradesh, Gujarat Region and Coastal Andhra Pradesh & Yanam; at isolated places over West Madhya Pradesh. **The highest maximum temperature** of 36.4°C is reported at BARMER (RAJASTHAN), and SURAT (GUJARAT).

Meteorological Analysis (Based on 0530 hours IST)

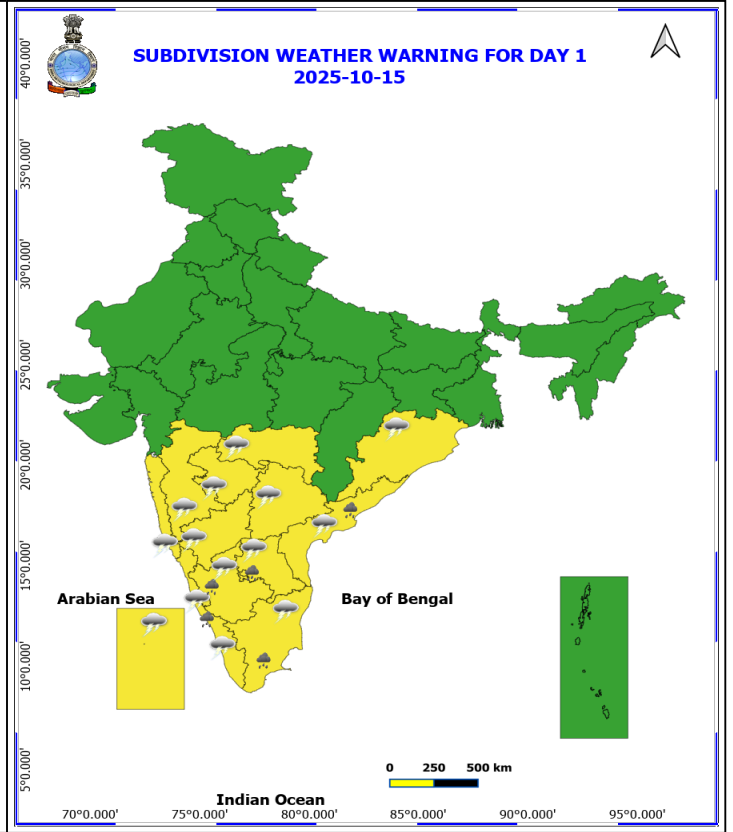
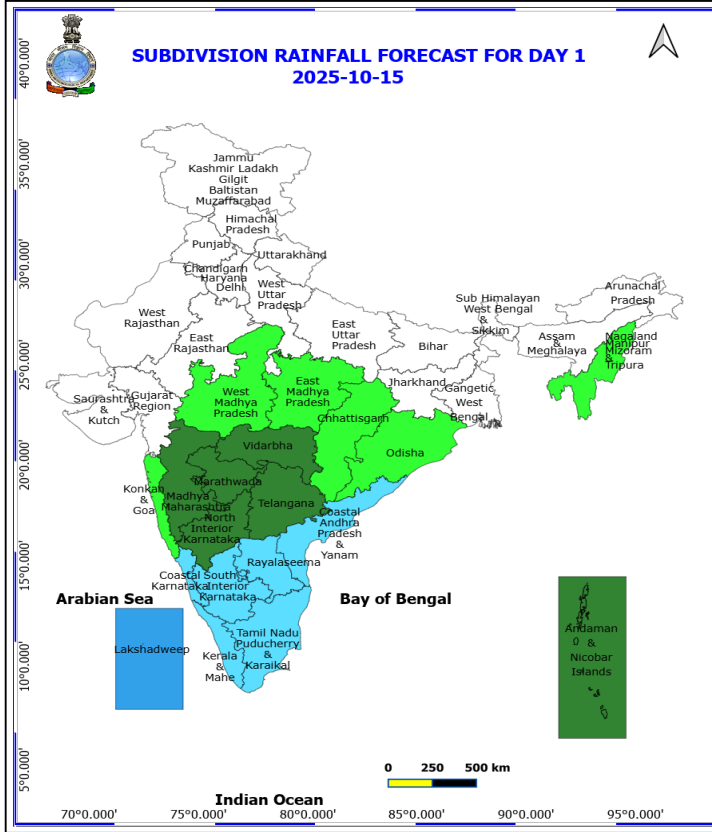
- The **line of withdrawal of southwest monsoon** continue to pass through 14°N/72°E, Karwar, Kalaburagi, Nizamabad, Kanker, Chandbali, 21.0°N/ 90.0°E, 22.0°N/ 95.0°E & 23.0°N/ 98.0°E.
- Conditions are favourable for further withdrawal of **southwest monsoon** from remaining parts of country during next 2 days. Simultaneously with the setting in of easterly & northeasterly winds over southern peninsular India and south & adjoining central Bay of Bengal, the **Northeast Monsoon** rainfall activity is likely to commence over south east peninsular region during the same period.
- The **upper air cyclonic circulation** over south Bangladesh & neighbourhood now lies over Mizoram & neighbourhood extending upto 1.5 km above mean sea level.
- The **upper air cyclonic circulation** over Gangetic West Bengal & Jharkhand between 3.1 & 4.5 km above mean sea level persists.
- The **upper air cyclonic circulation** over westcentral Arabian Sea extending upto 1.5 km above mean sea level persists.
- The **upper air cyclonic circulation** over southwest Bay of Bengal & adjoining Equatorial Indian Ocean now lies over south coastal Tamil Nadu & adjoining Comorin Area extending upto 1.5 km above mean sea level.
- An **upper air cyclonic circulation** lies over southeast Arabian Sea & adjoining Equatorial Indian Ocean between 3.1 & 5.8 km above mean sea level. Under its influence, a **low pressure area** is likely to form over southeast Arabian Sea & Lakshadweep area off Kerala-Karnataka coasts around 19th October, 2025.

Weather Outlook for subsequent 3 days

- Scattered to Fairly widespread rainfall activity likely over South Peninsular India.



*Red color warning does not mean "Red Alert" Red color warning means "Take Action"
Forecast and warning for any day is valid from 0830 hours IST of day till 0830 hours IST of next day
For more details kindly visit <https://mausam.imd.gov.in> or contact 011-2434-4599
(Service to the nation since 1875)



15 October (Day 1)

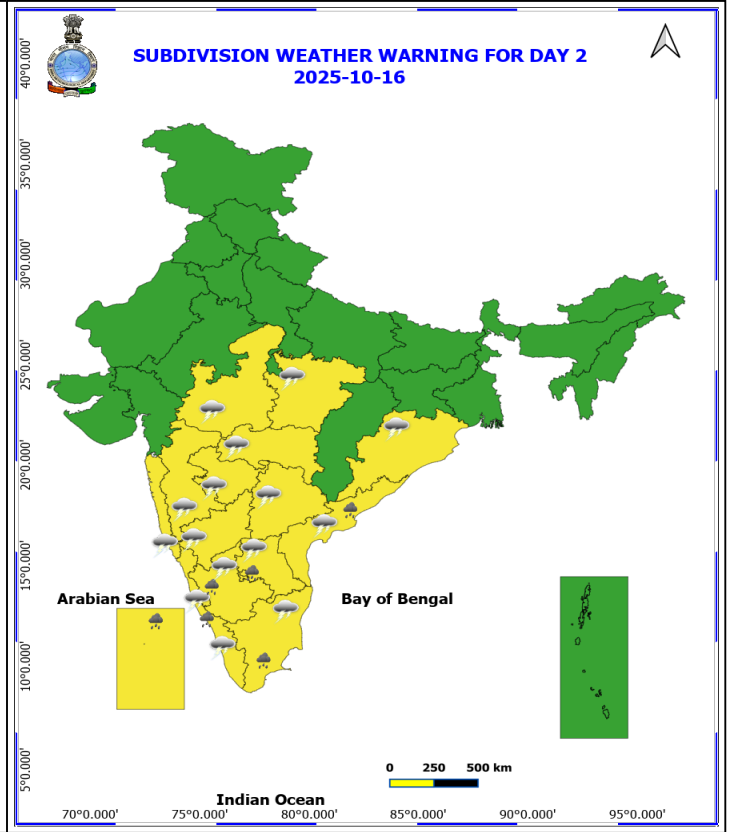
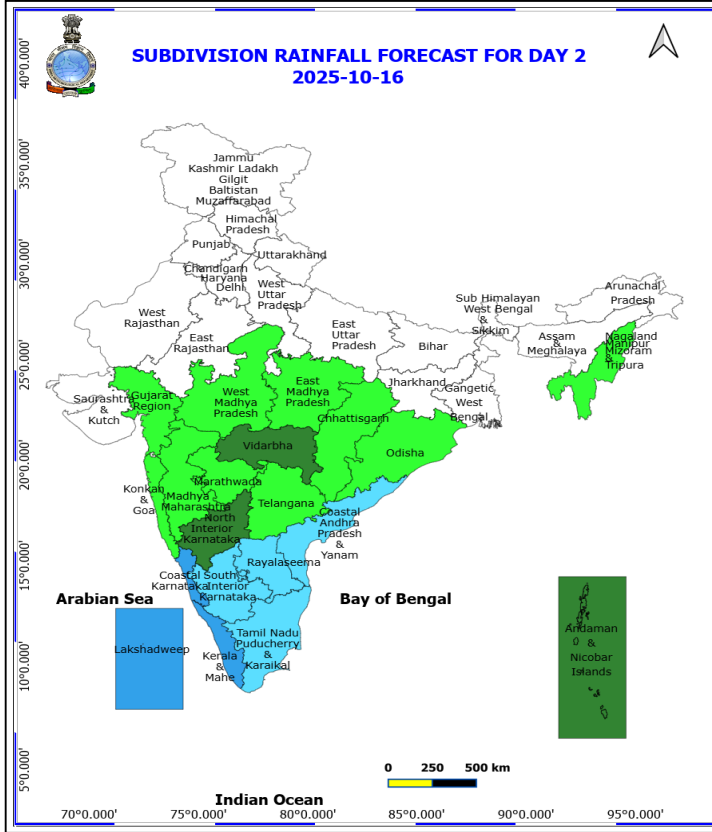
- ❖ **Heavy Rainfall** very likely at isolated places over Andhra Pradesh, Kerala & Mahe, South Interior Karnataka and Tamil Nadu Puducherry & Karaikal.
 - ❖ **Thunderstorm accompanied with lightning & gusty winds(30-40kmph)** very likely at isolated places over Interior Karnataka, Kerala & Mahe, Lakshadweep, Odisha and Telangana.
 - ❖ **Thunderstorm accompanied with Lightning** very likely at isolated places over Andhra Pradesh, Coastal Karnataka, Konkan & Goa, Maharashtra and Tamil Nadu Puducherry & Karaikal.
- Squally weather with wind speed 35 kmph to 45 kmph gusting to 55 kmph** likely to prevail along and off Kerala coasts and adjoining sea areas, over Lakshadweep, Maldives, Comorin areas, over Gulf of Mannar.

*Red color warning does not mean "Red Alert" Red color warning means "Take Action"

Forecast and warning for any day is valid from 0830 hours IST of day till 0830 hours IST of next day

For more details kindly visit <https://mausam.imd.gov.in> or contact 011-2434-4599

(Service to the nation since 1875)



16 October (Day 2)

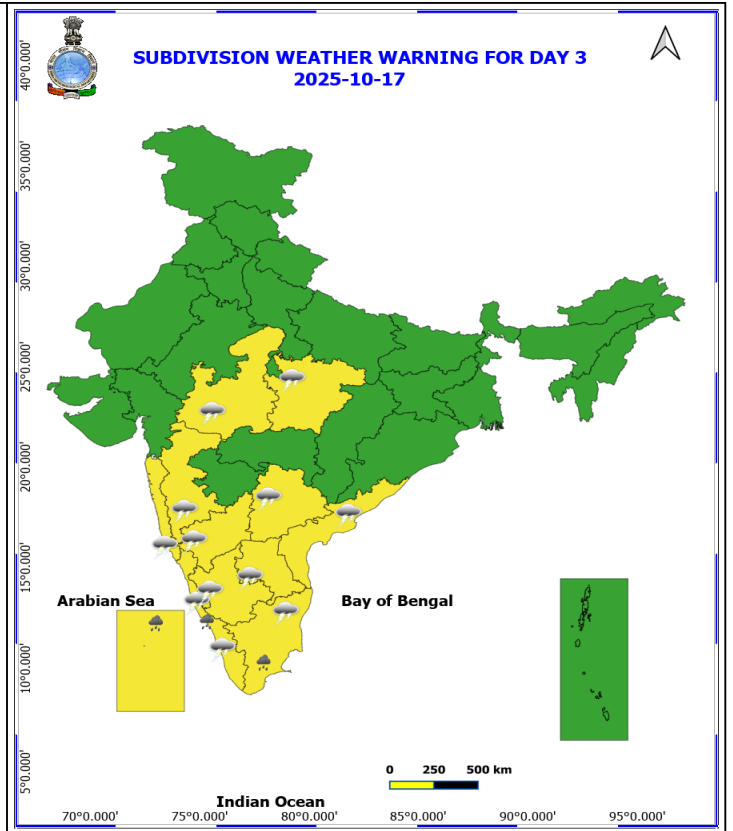
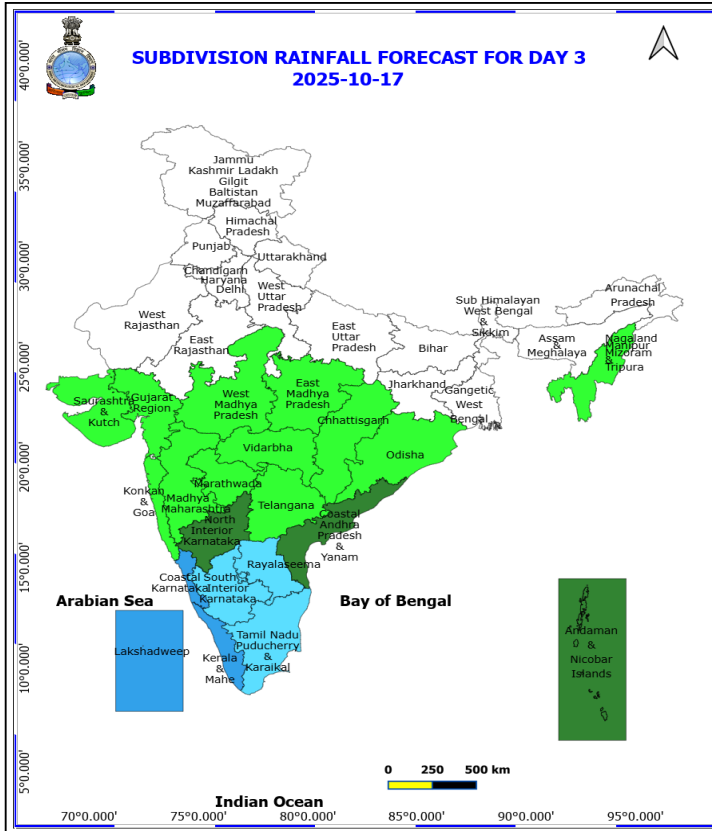
- ❖ **Heavy Rainfall** very likely at isolated places over Andhra Pradesh, Kerala & Mahe, Lakshadweep, South Interior Karnataka and Tamil Nadu Puducherry & Karaikal.
 - ❖ **Thunderstorm accompanied with lightning & gusty winds(30-40kmph)** very likely at isolated places over Interior Karnataka, Kerala & Mahe, Odisha and Telangana.
 - ❖ **Thunderstorm accompanied with Lightning** very likely at isolated places over Andhra Pradesh, Coastal Karnataka, Konkan & Goa, Madhya Pradesh, Maharashtra and Tamil Nadu Puducherry & Karaikal.
- Squally weather with wind speed 35 kmph to 45 kmph gusting to 55 kmph** likely to prevail along and off Tamil Nadu, Kerala coasts and adjoining sea areas, over Lakshadweep, Comorin areas, Maldives, over Gulf of Mannar, Southwest Bay of Bengal and along & off Tamilnadu & Puducherry and South Andhra Pradesh coasts.

*Red color warning does not mean "Red Alert" Red color warning means "Take Action"

Forecast and warning for any day is valid from 0830 hours IST of day till 0830 hours IST of next day

For more details kindly visit <https://mausam.imd.gov.in> or contact 011-2434-4599

(Service to the nation since 1875)



17 October (Day 3)

- ❖ **Heavy Rainfall** very likely at isolated places over Kerala & Mahe, Lakshadweep and Tamil Nadu Puducherry & Karaikal.
- ❖ **Thunderstorm accompanied with lightning & gusty winds(30-40kmph)** very likely at isolated places over Interior Karnataka, Kerala & Mahe and Telangana.
- ❖ **Thunderstorm accompanied with Lightning** very likely at isolated places over Andhra Pradesh, Coastal Karnataka, Konkan & Goa, Madhya Maharashtra, Madhya Pradesh and Tamil Nadu Puducherry & Karaikal.

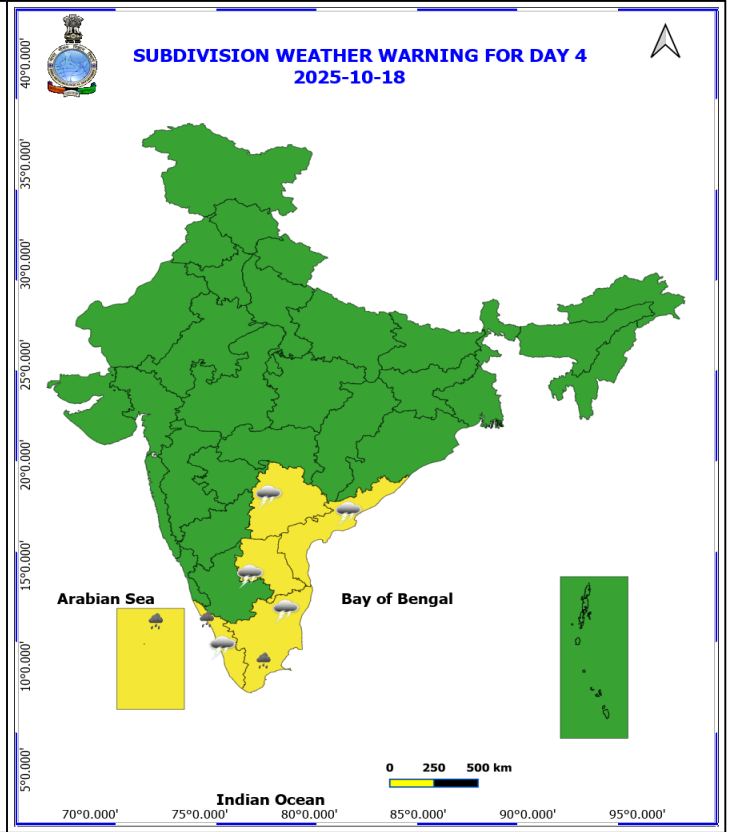
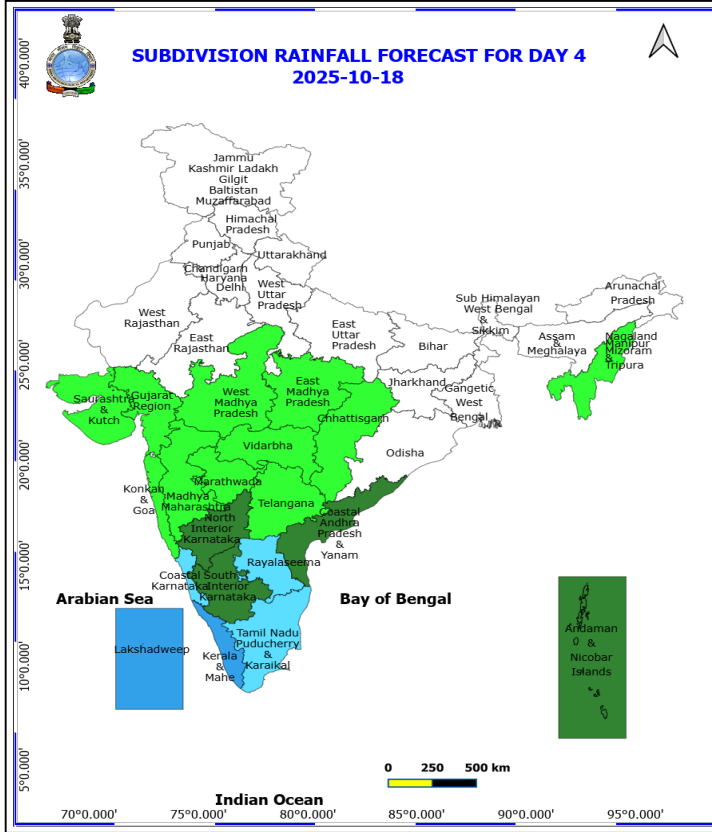
Squally weather with wind speed 35 kmph to 45 kmph gusting to 55 kmph likely to prevail along and off Tamil Nadu, Kerala coasts and adjoining sea areas, over Lakshadweep, Comorin areas, Maldives and Gulf of Mannar, Southwest Bay of Bengal and along & off Tamilnadu & Puducherry and South Andhra Pradesh coasts, Southeast Arabian Sea and along & off Karnataka.

***Red color warning does not mean "Red Alert" Red color warning means "Take Action"**

Forecast and warning for any day is valid from 0830 hours IST of day till 0830 hours IST of next day

For more details kindly visit <https://mausam.imd.gov.in> or contact 011-2434-4599

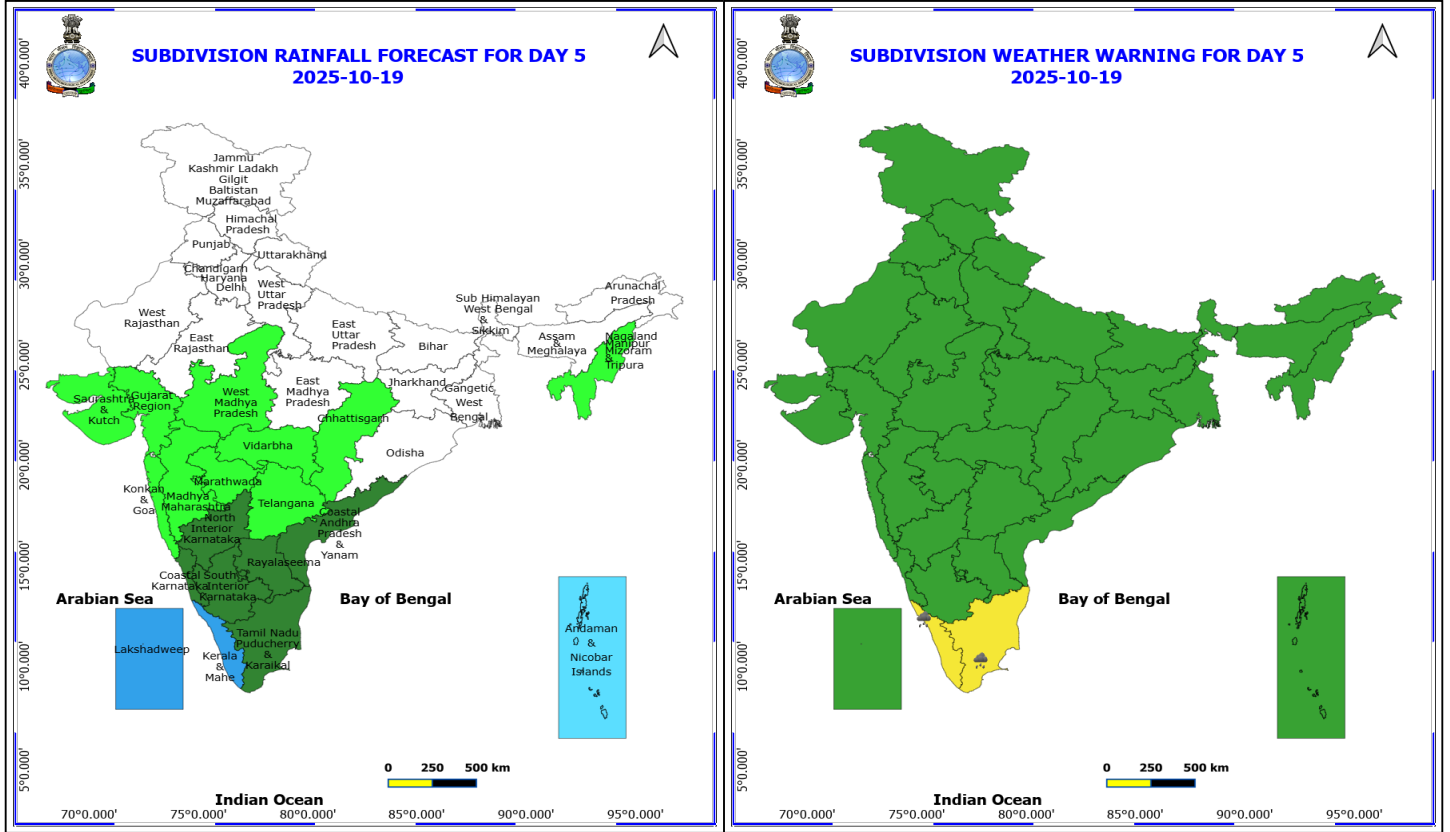
(Service to the nation since 1875)



18 October (Day 4)

- ❖ **Heavy Rainfall** likely at isolated places over Kerala & Mahe, Lakshadweep and Tamil Nadu Puducherry & Karaikal.
 - ❖ **Thunderstorm accompanied with lightning & gusty winds(30-40kmph)** likely at isolated places over Kerala & Mahe and Telangana.
 - ❖ **Thunderstorm accompanied with Lightning** likely at isolated places over Andhra Pradesh and Tamil Nadu Puducherry & Karaikal.
- Squally weather with wind speed 35 kmph to 45 kmph gusting to 55 kmph** likely to prevail along and off Kerala, over Lakshadweep, Maldives, Comorin areas and Gulf of Mannar, Southeast Arabian Sea and along & off Karnataka.

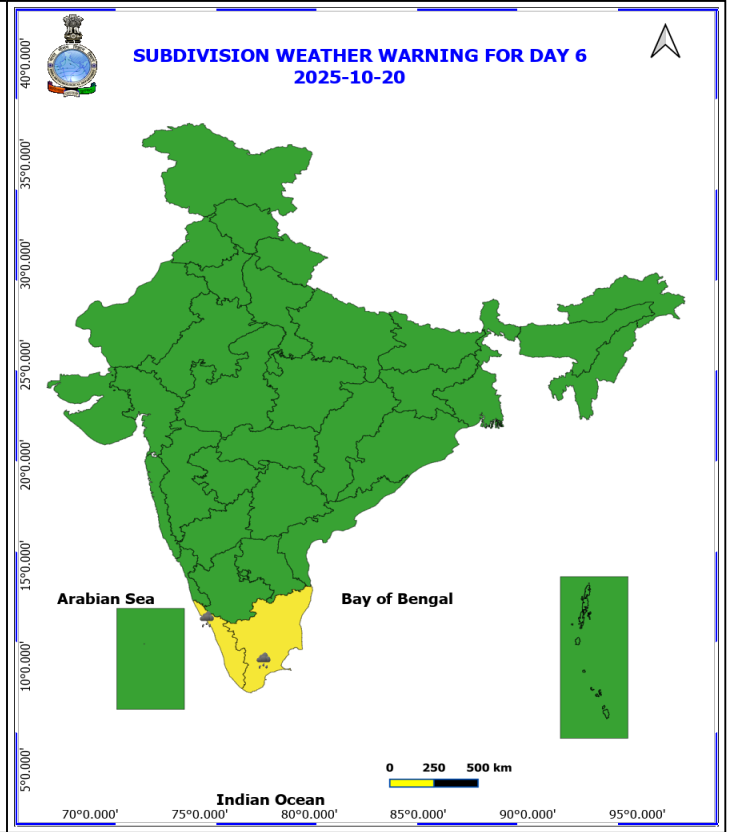
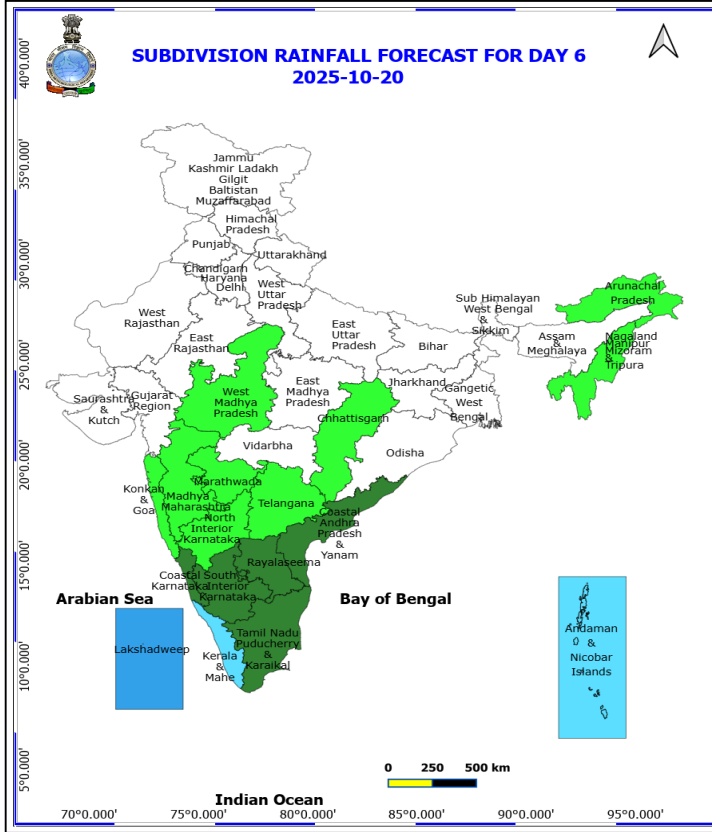
***Red color warning does not mean "Red Alert" Red color warning means "Take Action"**
Forecast and warning for any day is valid from 0830 hours IST of day till 0830 hours IST of next day
For more details kindly visit <https://mausam.imd.gov.in> or contact 011-2434-4599
(Service to the nation since 1875)



19 October (Day 5)

❖ Heavy Rainfall likely at isolated places over Kerala & Mahe and Tamil Nadu Puducherry & Karaikal.

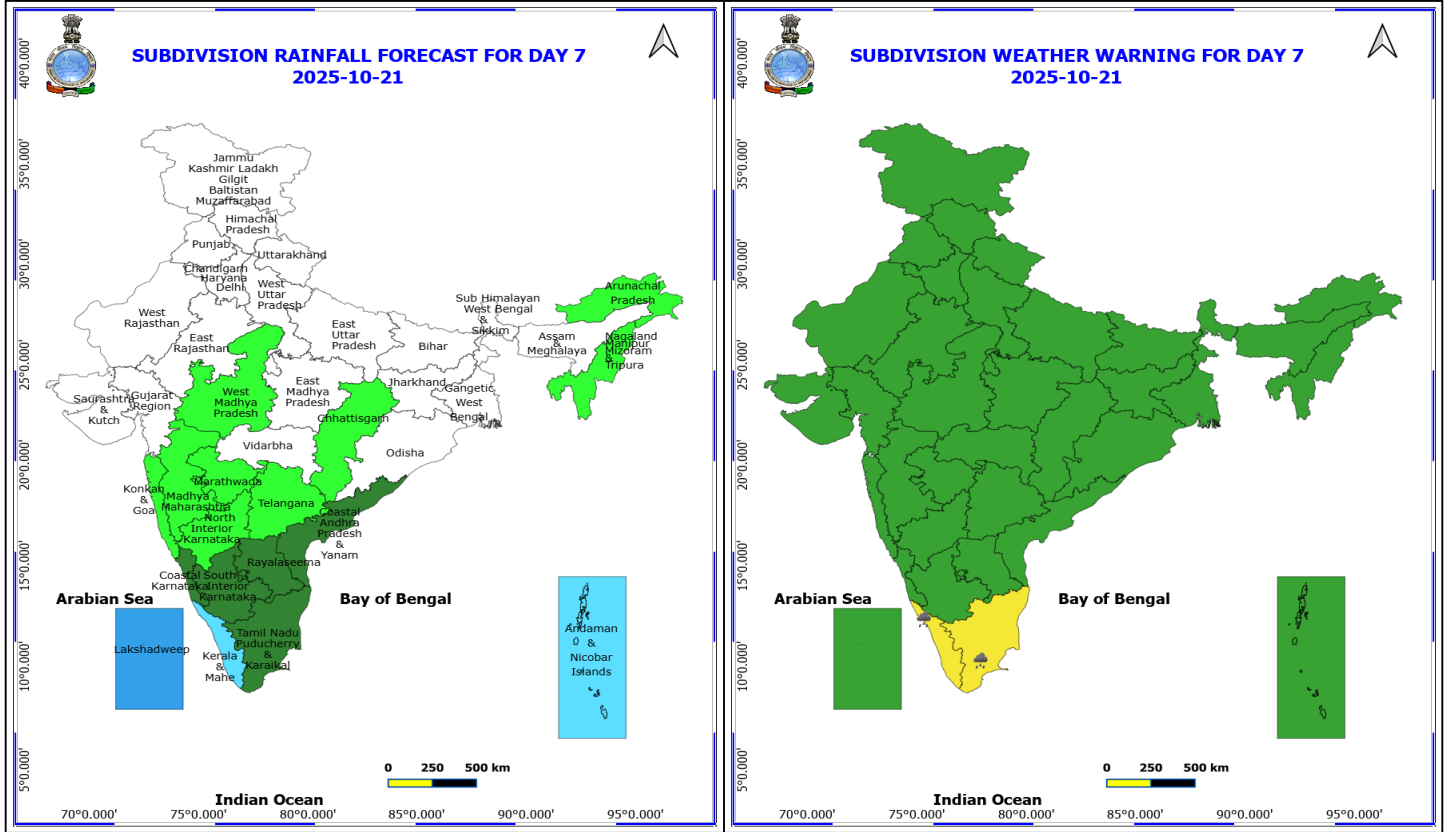
No Fishermen Warning



20 October (Day 6)

❖ Heavy Rainfall likely at isolated places over Kerala & Mahe and Tamil Nadu Puducherry & Karaikal.

No Fishermen Warning



21 October (Day 7)

❖ Heavy Rainfall likely at isolated places over Kerala & Mahe and Tamil Nadu Puducherry & Karaikal.

No Fishermen Warning



Table-1

7 Days Rainfall Forecast

S.No.	Subdivision	15- Oct	16- Oct	17- Oct	18- Oct	19- Oct	20- Oct	21- Oct
		Day 1	Day 2	Day 3	Day 4	Day 5	Day 6	Day 7
1	ANDAMAN & NICOBAR ISLANDS	SCT	SCT	SCT	SCT	FWS	FWS	FWS
2	ARUNACHAL PRADESH	DRY	DRY	DRY	DRY	DRY	ISOL	ISOL
3	ASSAM & MEHGHALAYA	DRY	DRY	DRY	DRY	DRY	DRY	DRY
4	N. M. M. & T.	ISOL	ISOL	ISOL	ISOL	ISOL	ISOL	ISOL
5	S.H. WEST BENGAL & SIKKIM	DRY	DRY	DRY	DRY	DRY	DRY	DRY
6	GANGETIC WEST BENGAL	DRY	DRY	DRY	DRY	DRY	DRY	DRY
7	ODISHA	ISOL	ISOL	ISOL	DRY	DRY	DRY	DRY
8	JHARKHAND	DRY	DRY	DRY	DRY	DRY	DRY	DRY
9	BIHAR	DRY	DRY	DRY	DRY	DRY	DRY	DRY
10	EAST UTTAR PRADESH	DRY	DRY	DRY	DRY	DRY	DRY	DRY
11	WEST UTTAR PRADESH	DRY	DRY	DRY	DRY	DRY	DRY	DRY
12	UTTARAKHAND	DRY	DRY	DRY	DRY	DRY	DRY	DRY
13	HARYANA, CHD & DELHI	DRY	DRY	DRY	DRY	DRY	DRY	DRY
14	PUNJAB	DRY	DRY	DRY	DRY	DRY	DRY	DRY
15	HIMACHAL PRADESH	DRY	DRY	DRY	DRY	DRY	DRY	DRY
16	JAMMU AND KASHMIR AND LADAKH	DRY	DRY	DRY	DRY	DRY	DRY	DRY
17	WEST RAJASTHAN	DRY	DRY	DRY	DRY	DRY	DRY	DRY
18	EAST RAJASTHAN	DRY	DRY	DRY	DRY	DRY	DRY	DRY
19	WEST MADHYA PRADESH	ISOL	ISOL	ISOL	ISOL	ISOL	ISOL	ISOL
20	EAST MADHYA PRADESH	ISOL	ISOL	ISOL	ISOL	DRY	DRY	DRY
21	GUJRAT REGION	DRY	ISOL	ISOL	ISOL	ISOL	DRY	DRY
22	SAURASHTRA & KUTCH	DRY	DRY	ISOL	ISOL	ISOL	DRY	DRY
23	KONKAN & GOA	ISOL	ISOL	ISOL	ISOL	ISOL	ISOL	ISOL
24	MADHYA MAHARASHTRA	SCT	ISOL	ISOL	ISOL	ISOL	ISOL	ISOL
25	MARATHWADA	SCT	ISOL	ISOL	ISOL	ISOL	ISOL	ISOL
26	VIDARBHA	SCT	SCT	ISOL	ISOL	ISOL	DRY	DRY
27	CHATTISGARH	ISOL	ISOL	ISOL	ISOL	ISOL	ISOL	ISOL
28	COASTAL ANDHRA PRADESH	FWS	FWS	SCT	SCT	SCT	SCT	SCT
29	TELANGANA	SCT	ISOL	ISOL	ISOL	ISOL	ISOL	ISOL
30	RAYALASEEMA	FWS	FWS	FWS	FWS	SCT	SCT	SCT
31	TAMILNADU & PUDUCHERRY	FWS	FWS	FWS	FWS	SCT	SCT	SCT
32	COSTAL KARNATAKA	FWS	WS	WS	FWS	SCT	SCT	SCT
33	NORTH INTERIOR KARNATAKA	SCT	SCT	SCT	SCT	SCT	ISOL	ISOL
34	SOUTH INTERIOR KARNATAKA	FWS	FWS	FWS	SCT	SCT	SCT	SCT
35	KERALA	FWS	WS	WS	WS	WS	FWS	FWS
36	LAKSHDWEEP	WS	WS	WS	WS	WS	WS	WS

Legend	Category	%Stations
WS	Widespread/Most Places	76-100
FWS	Fairly Widespread/Many Places	51-75
SCT	Scattered/ A Few Places	26-50
ISOL	Isolated Places	1-25
DRY	No Rain	0

*Red color warning does not mean "Red Alert" Red color warning means "Take Action"
Forecast and warning for any day is valid from 0830 hours IST of day till 0830 hours IST of next day
For more details kindly visit <https://mausam.imd.gov.in> or contact 011-2434-4599

(Service to the nation since 1875)

Fig. 1: Maximum Temperatures Dated 2025-10-14

Fig. 2: Departure of Maximum Temp. Dated 2025-10-14

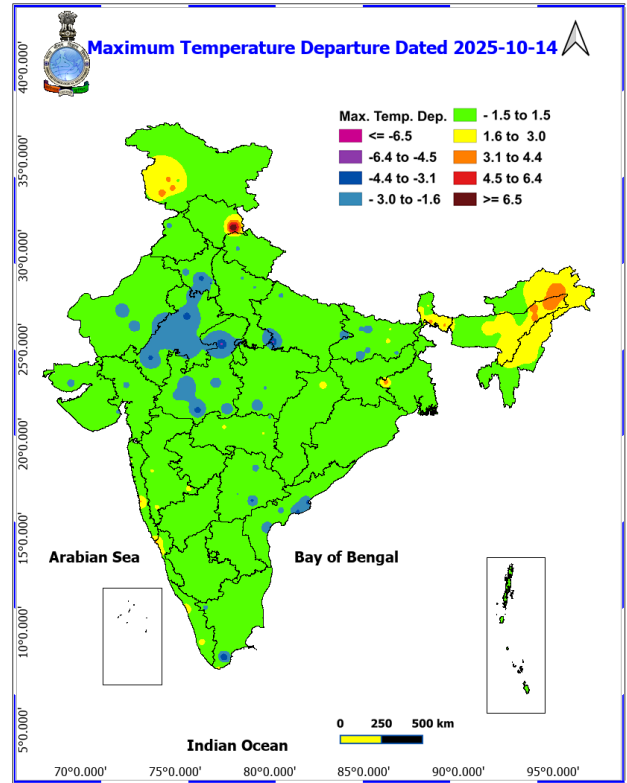
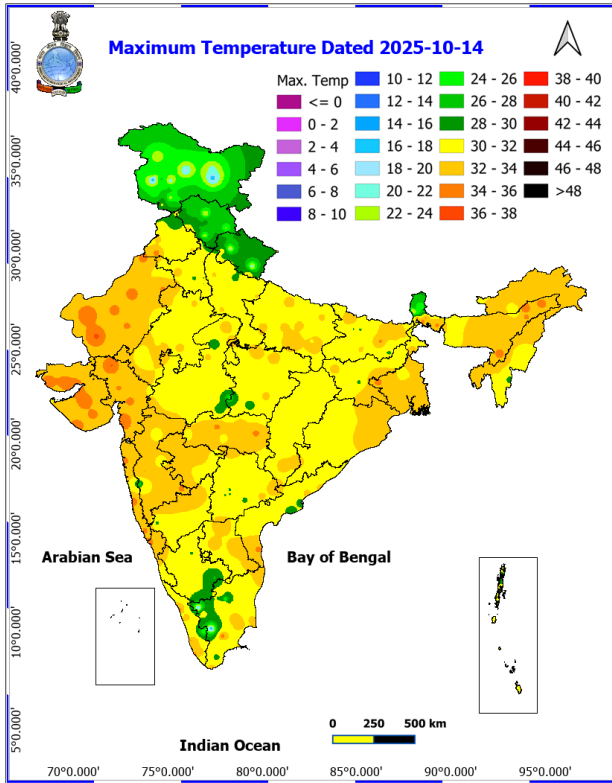
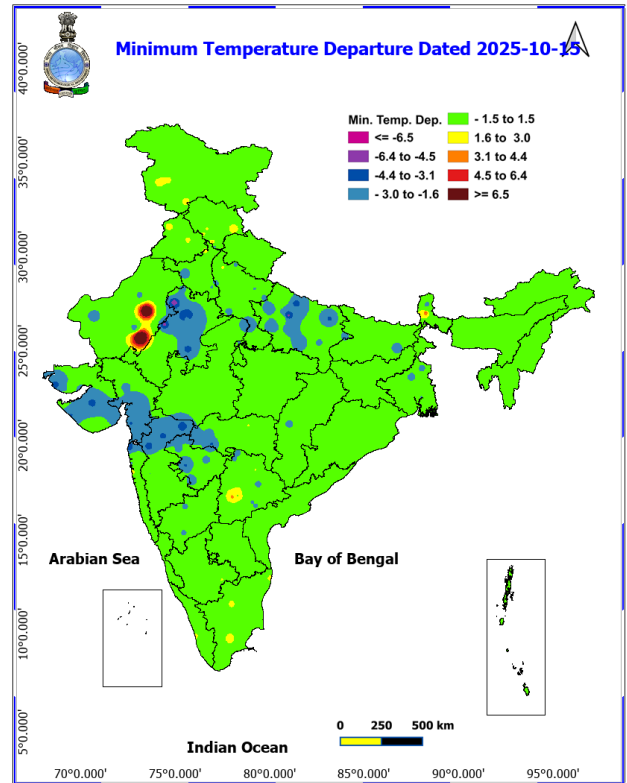
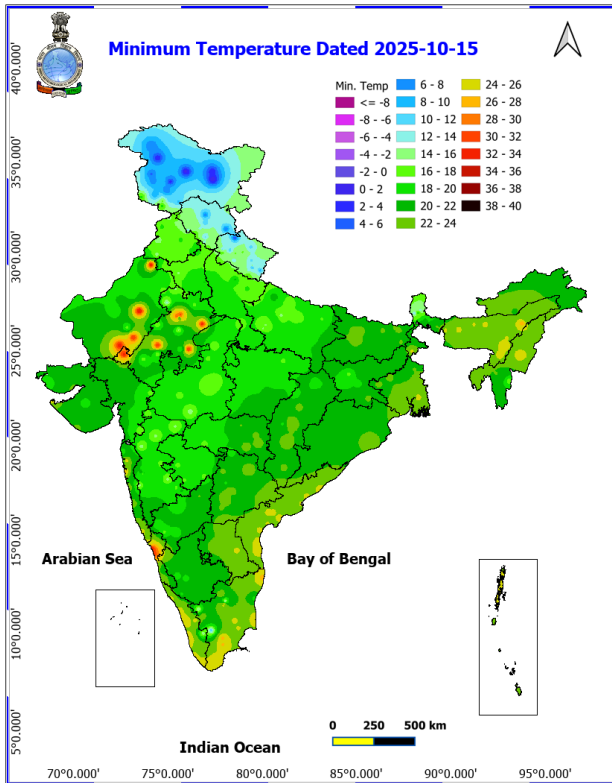


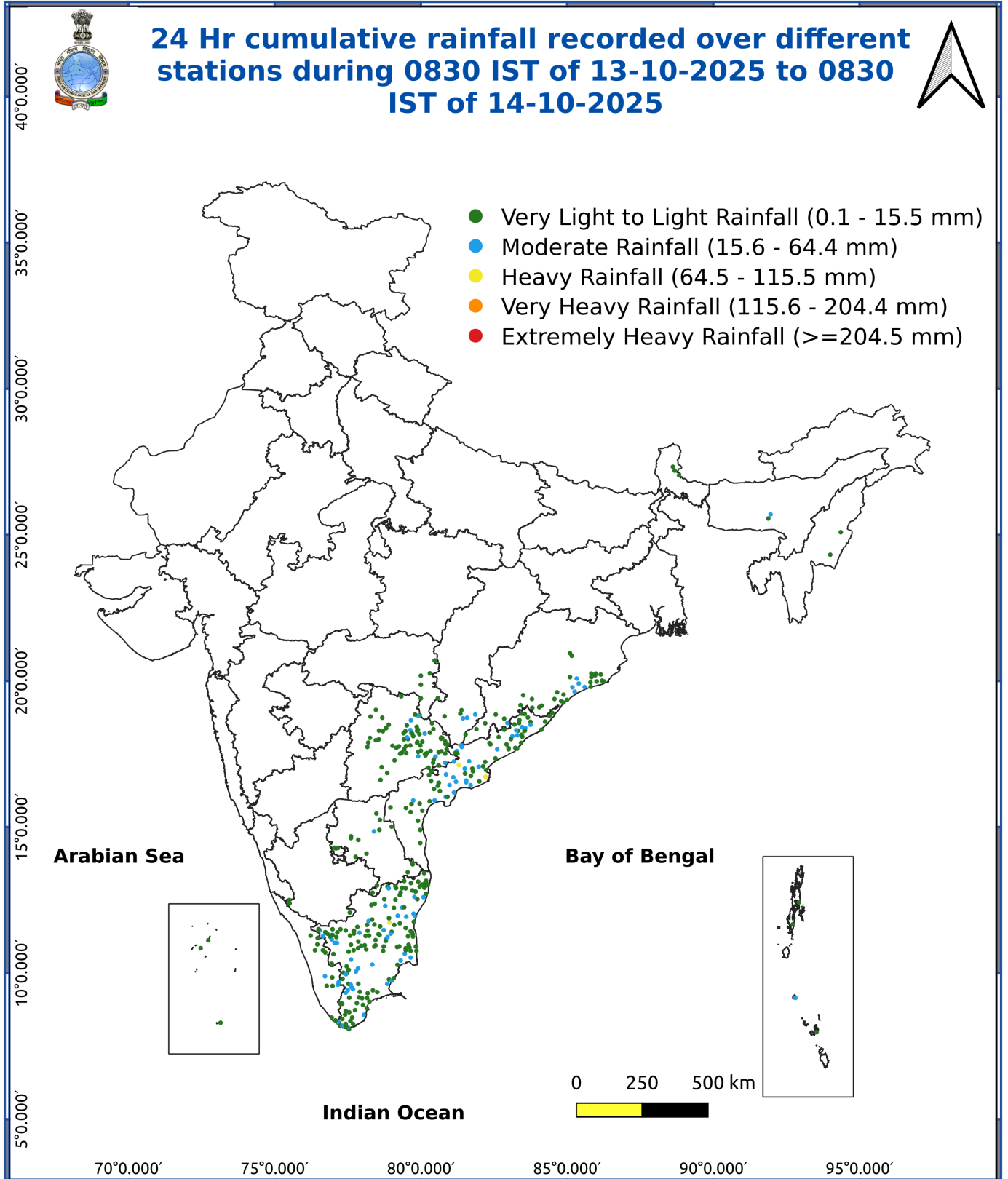
Fig. 3: Minimum Temperatures Dated 2025-10-14

Fig. 4: Departure of Minimum Temp. Dated 2025-10-14



***Red color warning does not mean "Red Alert" Red color warning means "Take Action"**
Forecast and warning for any day is valid from 0830 hours IST of day till 0830 hours IST of next day
For more details kindly visit <https://mausam.imd.gov.in> or contact 011-2434-4599

(Service to the nation since 1875)



Agromet advisories for various parts of the country

Agromet advisories for likely impact of Heavy Rainfall

- In **Tamil Nadu**, store the harvested produce of rice and groundnut in safer places. Provide adequate drainage facilities in fields of rice, cotton, turmeric, garlic, ginger and vegetables and plantations of coconut, banana and black pepper to avoid water stagnation.
- In **Kerala**, make provision to drain out excess water from fields of rice and plantations of banana, coconut, arecanut and black pepper.
- In **South Interior Karnataka**, keep the harvested produce of groundnut, maize pepper, cardamom, turmeric and coffee to dry, covered and ventilated areas or cover with tarpaulins in the fields. Make necessary arrangements to drain out excess water from fields of rice, maize, finger millet, pigeon pea, soybean, groundnut and vegetables and plantations of banana, black pepper, coconut and arecanut to avoid waterlogging.
- In **Coastal Andhra Pradesh**, provide adequate drainage facilities in fields of rice, maize, pigeon pea, black gram, green gram, groundnut, turmeric, ginger, vegetables and plantations of coconut, arecanut, banana, coffee and black pepper.
- In **Rayalseema**, maintain proper drainage in fields of rice, groundnut, cotton, turmeric and vegetables.

Livestock / Fishery

- Keep the animals inside the shed during heavy rainfall and provide them balanced feed.
- Store feed and fodder in a safe place to prevent spoilage.
- Construct an outlet with proper netting around the ponds to drain out excess water, thereby preventing fish from escaping in case of overflow.

Agromet advisories for likely impact of Thunderstorm / Gusty Winds / Squally Winds

(Based on the IBF and advisories issued by different AMFUs)

- Provide mechanical support to horticultural crops and staking or support to vegetables and young fruit plants / fruit-bearing plants to avoid lodging due to strong winds.
- Tie the harvested crops properly and cover them to minimise the risk of displacement due to strong surface winds.

Legends & abbreviations:

Region wise classification of meteorological Sub-Divisions:

Northwest India: Western Himalayan Region (Jammu-Kashmir-Ladakh-Gilgit-Baltistan-Muzaffarabad, Himachal Pradesh and Uttarakhand); Punjab, Haryana-Chandigarh-Delhi; West Uttar Pradesh, East Uttar Pradesh, West Rajasthan and East Rajasthan.

Central India: West Madhya Pradesh, East Madhya Pradesh, Vidarbha and Chhattisgarh.

East India: Bihar, Jharkhand, Sub-Himalayan West Bengal & Sikkim; Gangetic West Bengal, Odisha and Andaman & Nicobar Islands.

Northeast India: Arunachal Pradesh, Assam & Meghalaya and Nagaland, Manipur, Mizoram & Tripura.

West India: Gujarat Region, Saurashtra & Kutch, Konkan & Goa, Madhya Maharashtra and Marathawada.

South India: Coastal Andhra Pradesh & Yanam, Telangana, Rayalaseema, Coastal Karnataka, North Interior Karnataka, South Interior Karnataka, Kerala & Mahe, Tamil Nadu, Puducherry & Karaikal and Lakshadweep.

***Red color warning does not mean "Red Alert" Red color warning means "Take Action"**

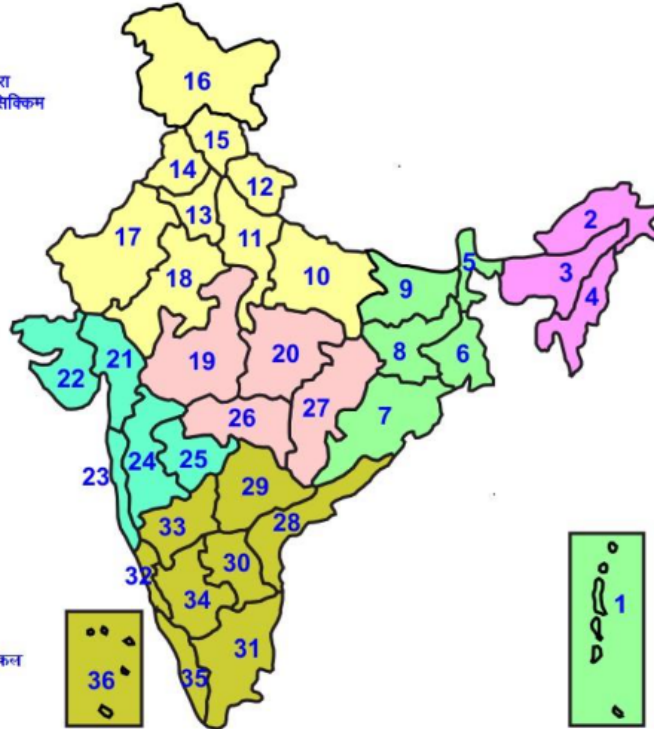
Forecast and warning for any day is valid from 0830 hours IST of day till 0830 hours IST of next day

For more details kindly visit <https://mausam.imd.gov.in> or contact 011-2434-4599

(Service to the nation since 1875)

LEGENDS

- 1 अंडमान और निकोबार द्वीप समुह
- 2 अरुणाचल प्रदेश
- 3 असम और मेघालय
- 4 नागालैंड मनीपुर मीजोरम और त्रिपुरा
- 5 उप हिमालय पश्चिम बंगाल एवं सिक्किम
- 6 पश्चिम बंगाल
- 7 ओडिसा
- 8 झारखंड
- 9 बिहार
- 10 पूर्वी उत्तर प्रदेश
- 11 पश्चिम उत्तर प्रदेश
- 12 उत्तराखंड
- 13 हरियाणा चंडिगढ़ एवं दिल्ली
- 14 पंजाब
- 15 हिमाचल प्रदेश
- 16 जम्मू एवं कश्मीर एवं लद्दाख
- 17 पश्चिम राजस्थान
- 18 पूर्वी राजस्थान
- 19 पश्चिम मध्य प्रदेश
- 20 पूर्वी मध्य प्रदेश
- 21 गुजरात क्षेत्र
- 22 सौराष्ट्र एवं कच्छ
- 23 कोंकण एवं गोवा
- 24 मध्य महाराष्ट्र
- 25 मराठावाडा
- 26 विदर्भ
- 27 छत्तीसगढ़
- 28 तटीय आंध्र प्रदेश एवं यनम
- 29 तेलंगाना
- 30 रायलसीमा
- 31 तमिलनाडु, पुदुचेरी एवं कराईकल
- 32 तटिय कर्नाटक
- 33 आंतरिक उत्तरी कर्नाटक
- 34 आंतरिक दक्षिणी कर्नाटक
- 35 केरल एवं माहे
- 36 लक्षद्वीप



1. Andaman & Nicobar Islands
2. Arunachal Pradesh
3. Assam & Meghalaya
4. Nagaland, Manipur, Mizoram & Tripura
5. Sub-Himalayan West Bengal & Sikkim
6. Gangetic West Bengal
7. Orissa
8. Jharkhand
9. Bihar
10. East Uttar Pradesh
11. West Uttar Pradesh
12. Uttarakhand
13. Haryana, Chd & Delhi
14. Punjab
15. Himachal Pradesh
16. Jammu & Kashmir and Ladakh
17. West Rajasthan
18. East Rajasthan
19. West Madhya Pradesh
20. East Madhya Pradesh
21. Gujarat
22. Saurashtra
23. Konkan & Goa
24. Madhya Maharashtra
25. Marathawada
26. Vidharbha
27. Chhattisgarh
28. Coastal Andhra Pradesh & Yanam
29. Telangana
30. Rayalaseema
31. Tamilnadu, Puducherry & Karaikal
32. Coastal Karnataka
33. North Interior Karnataka
34. South Interior Karnataka
35. Kerala & Mahe
36. Lakshadweep

SPATIAL DISTRIBUTION (% of Stations reporting)

% Stations	Category	% Stations	Category
76-100	Widespread (WS/ Most Places)	26-50	Scattered (SCT/ A Few Places)
51-75	Fairly Widespread (FWS/ Many Places)	1-25	Isolated (ISOL)

Subdivision Colour

- NO WARNING
- WATCH (BE UPDATED)
- ALERT (BE PREPARED TO TAKE ACTION)
- WARNING (TAKE ACTION)

Probabilistic Forecast

Terms	Probability of Occurrence (%)
Unlikely	< 25
Likely	25 - 50
Very Likely	50 - 75
Most Likely	> 75

- | | | | |
|--------------------------|-----------------|----------------------|--------------------|
| Heavy Rain | Very Heavy Rain | Extremely Heavy Rain | Heavy Snow |
| Thunderstorm & Lightning | Hailstorm | Dust Storm | Dust Raising Winds |
| Strong surface winds | Heat Wave | Hot Day | Warm Night |
| Cold Wave | Cold Day | Ground Frost | Fog |
| Hot & Humid | | | |

*Red color warning does not mean "Red Alert" Red color warning means "Take Action"

Forecast and warning for any day is valid from 0830 hours IST of day till 0830 hours IST of next day

For more details kindly visit <https://mausam.imd.gov.in> or contact 011-2434-4599

(Service to the nation since 1875)

LEGENDS

WARNING

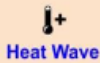
WARNING (TAKE ACTION)
ALERT (BE PREPARED)
WATCH (BE UPDATED)
NO WARNING (NO ACTION)

Probabilistic Forecast

Terms	Probability of Occurrence (%)
Unlikely	< 25
Likely	25 - 50
Very Likely	50 - 75
Most Likely	> 75



Heavy: 64.5 to 115.5 mm/cm *
Very Heavy: 115.6 to 204.4 mm/cm*
Extremely Heavy: > 204.4 mm/cm *



When maximum temperature of a station reaches $\geq 40^{\circ}\text{C}$ for plains and $\geq 30^{\circ}\text{C}$ for hilly regions
(a) Based on Departure from normal

Heat Wave: Maximum Temperature Departure from normal 4.5°C to 6.4°C .
Severe Heat Wave: Maximum Temperature Departure from normal $\geq 6.5^{\circ}\text{C}$

(b). Based on Actual maximum temperature

Heat Wave: When actual maximum temperature $\geq 45^{\circ}\text{C}$.
Severe Heat Wave: When actual maximum temperature $\geq 47^{\circ}\text{C}$

(c). Criteria for heat wave for coastal stations

When maximum temperature departure is $> 4.5^{\circ}\text{C}$ from normal. Heat Wave may be described provided maximum temperature $\geq 37^{\circ}\text{C}$



When maximum temperature remains 40°C

Warm Night: When minimum temperature departure 4.5°C to 6.4°C .
Severe Warm Night: When minimum temperature departure $> 6.4^{\circ}\text{C}$.



When minimum temperature of a station $\leq 10^{\circ}\text{C}$ for plains and $\leq 0^{\circ}\text{C}$ for hilly regions.

(a). Based on departure

Cold Wave: Minimum Temperature Departure from normal -4.5°C to -6.4°C .
Severe Cold Wave: Minimum Temperature Departure from normal $\leq -6.5^{\circ}\text{C}$

(b) Based on actual Minimum Temperature (for Plains only)

Cold Wave : When Minimum Temperature is $\leq 4.0^{\circ}\text{C}$
Severe Cold Wave: When Minimum Temperature is $\leq 2.0^{\circ}\text{C}$

(c) For Coastal Stations

When Minimum Temperature departure is $\leq -4.5^{\circ}\text{C}$ & actual Minimum Temperature is $\leq 15^{\circ}\text{C}$



When minimum temperature of a station $\leq 10^{\circ}\text{C}$ for plains and $\leq 0^{\circ}\text{C}$ for hilly regions
Based on departure

Cold Day: Maximum Temperature Departure from normal -4.5°C to -6.4°C .
Severe Cold Day: Maximum Temperature Departure from normal $\leq -6.5^{\circ}\text{C}$



Phenomenon of small droplets suspended in air and the horizontal visibility $< 1\text{km}$

Moderate Fog: When the visibility between 500-200 metres
Dense Fog: when the visibility between 50- 200 metres
Very Dense Fog: when the visibility < 50 metres



Sudden electrical discharges manifested by a flash of light (Lightning) and a sharp rumbling sound (thunder)



An ensemble of particles of dust or sand energetically lifted to great heights by a strong and turbulent wind.



Ice deposits on ground

Air temperature $\leq 4^{\circ}\text{C}$ (over Plains)



A strong wind that rises suddenly, lasts for atleast 1 minute.

Moderate: Wind speed 52-61 kmph
Severe: Wind speed 62-87 kmph
Very Severe: Wind speed > 87 kmph



Effect of various waves in the sea over specific area

Rough to very rough: Wind speed 41-62 kmph (22-33 knots) & Wave height 2.5-6 metre
High to very high: Wind speed 63-117 kmph (34-63 knots) & Wave height 6-14 metre
Phenomenal: Wind speed > 117 kmph (> 63 knots) & Wave height > 14 metre



Cyclonic Storm: Wind speed 62-87 kmph (34-47 knots)
Severe Cyclonic Storm: Wind speed 88-117 kmph (48-63 knots)
Very Severe Cyclonic Storm: Wind speed 118-165 kmph (64 - 89 knots)
Extremely Severe Cyclonic Storm: Wind speed 166-220 kmph (90 -119 knots)
Super Cyclone Storm: Wind speed > 220 kmph (> 119 knots)

*Red color warning does not mean "Red Alert" Red color warning means "Take Action"

Forecast and warning for any day is valid from 0830 hours IST of day till 0830 hours IST of next day

For more details kindly visit <https://mausam.imd.gov.in> or contact 011-2434-4599

(Service to the nation since 1875)