

ALL INDIA WEATHER SUMMARY AND FORECAST BULLETIN

Significant Weather Features

Weather Systems, Forecast and Warnings:

West India:

- ♦ Isolated **very heavy rainfall** likely over Konkan & Goa, Madhya Maharashtra, Gujarat region and isolated heavy rainfall over Saurashtra & Kutch during 25th-30th June.
- ♦ Light/moderate rainfall at most/many places likely over Gujarat State, Konkan & Goa, Madhya Maharashtra, Marathwada during 25th-30th June.

Northwest India:

- ♦ Isolated **heavy rainfall** likely over Punjab, Haryana, Himachal Pradesh, Uttarakhand, West Uttar Pradesh, Rajasthan during 25th-30th; Jammu-Kashmir-Ladakh-Gilgit-Baltistan-Muzaffarabad during 25th-27th; East Uttar Pradesh during 27th-30th June with **very heavy rainfall** over Uttarakhand during 25th-27th, West Rajasthan on 27th; East Rajasthan on 25th & 27th; Haryana, Punjab on 25th & 26th, West Uttar Pradesh on 25th & 27th; Jammu-Kashmir-Ladakh-Gilgit-Baltistan-Muzaffarabad on 25th June.
- ♦ Light/moderate rainfall at most/many places accompanied with **thunderstorm, lightning & gusty winds speed reaching 30-40 kmph** likely over Northwest India during 25th-30th June.

East & Central India:

- ♦ Isolated **heavy rainfall** over Bihar, Jharkhand, Odisha, Chhattisgarh during 25th-28th, Vidarbha on 25th, Gangetic West Bengal during 25th-27th, Sub-Himalayan West Bengal & Sikkim on 25th, 28th & 29th June with **very heavy rainfall** over Bihar on 28th; Jharkhand on 26th, Odisha on 25th & 26th June.
- ♦ Light/moderate rainfall at most/many places accompanied with **thunderstorm, lightning & gusty winds speed reaching 40-50 kmph** likely over Andaman & Nicobar Islands; Madhya Pradesh, Vidarbha, Chhattisgarh, Gangetic West Bengal, Bihar, Jharkhand, Odisha during 25th-30th June.

Northeast India:

- ♦ Light/moderate rainfall at many/most places accompanied with **thunderstorm, lightning and isolated heavy to very heavy rainfall** likely to continue over Northeast India during next 7 days.

South Peninsular India:

- ♦ Isolated **heavy rainfall** likely over Kerala, Karnataka during 25th-28th; Coastal Andhra Pradesh & Yanam on 27th; Tamil Nadu on 27th & 28th June with very heavy rainfall over Coastal Karnataka on 25th-26th June.
- ♦ **Strong surface winds** (speed reaching 40-60 kmph) very likely over Karnataka, Coastal Andhra Pradesh & Yanam, Rayalaseema, Telangana during 25th-28th June.
- ♦ Light/moderate rainfall at many/some places over Kerala & Mahe, Lakshadweep, Coastal Karnataka; isolated to scattered rainfall accompanied with isolated **thunderstorm, lightning** over Coastal Andhra Pradesh & Yanam, Telangana, Interior Karnataka during 25th-30th June.

Heat wave warning:

- ♦ Heat wave conditions likely over Jammu division on 25th June.

Main Weather Observations:

- ❖ **Rainfall distribution** (from 0830 hours IST of yesterday to 0530 hours IST of today): **at most places** over Nagaland, Manipur, Mizoram & Tripura, Uttarakhand, Assam & Meghalaya, Chhattisgarh, Himachal Pradesh, East Madhya Pradesh, Jharkhand, Odisha, Gangetic West Bengal, Telangana, Andaman & Nicobar Islands, Arunachal Pradesh, East Rajasthan, Madhya Maharashtra, Vidarbha, Coastal Andhra Pradesh & Yanam, Kerala & Mahe, Rayalaseema, Coastal Karnataka and North Interior Karnataka; **at many places** over Bihar, West Madhya Pradesh, West Rajasthan, Punjab, East Uttar Pradesh, West Uttar Pradesh, Sub-himalayan West Bengal & Sikkim, Gujarat Region, Jammu & Kashmir and Ladakh, Konkan & Goa, Tamilnadu Puducherry & Karaikal, South Interior Karnataka and Lakshadweep; **Dry** over rest of the country.
- ❖ **Significant rainfall recorded(in cm)** (from 0830 hours IST of yesterday to 0530 hours IST of today): Nagaland, manipur, mizoram & tripura: Imphal (tulihal) AP (dist Imphal East) 11; Jammu & kashmir and ladakh: Katra (dist Reasi) 11; Arunachal pradesh: Pasighat (dist East Siang) 8; East rajasthan: Jaipur (dist Jaipur) 8.
- ❖ **Heavy Rainfall observed** (from 0830 hours IST of yesterday to 0530 hours IST of today): **Heavy rain** at a few places over Arunachal Pradesh and Nagaland, Manipur, Mizoram & Tripura, at isolated places over Jammu & Kashmir and Ladakh and East Rajasthan

- ❖ **Minimum Temperature Departures (as on 24-06-2025): markedly above normal(> 5.1°C)** at many places over Jammu-KashmirLadakh-Gilgit-Baltistan-Muzaffarabad; at isolated places over Assam & Meghalaya, Bihar, East Uttar Pradesh, West Uttar Pradesh, Himachal Pradesh, West Madhya Pradesh, East Madhya Pradesh and Saurashtra & Kutch. **appreciably above normal(3.1°C to 5.0°C)** at few places over Gujarat Region; at isolated places over Sub Himalayan West Bengal & Sikkim, Odisha, Punjab, West Rajasthan, Coastal Andhra Pradesh & Yanam and Tamil Nadu, Puducherry & Karaikal. **above normal(1.6°C to 3.0°C)** at many places over Lakshadweep; at few places over Uttarakhand and Kerala & Mahe; at isolated places over Nagaland, Manipur, Mizoram & Tripura, Gangetic West Bengal, Haryana-Chandigarh-Delhi, Madhya Maharashtra, Marathwada and Rayalaseema. **near normal(-1.5°C to 1.5°C)** at many places over Jharkhand, Konkan & Goa and Telangana; at most places over Arunachal Pradesh, Vidarbha, Chhattisgarh, Coastal Karnataka, North Interior Karnataka and South Interior Karnataka; at few places over Andaman & Nicobar Islands and East Rajasthan. **The lowest minimum temperature** of 19.4°C is reported at KHARGONE-OBS (MADHYA PRADESH), and NARSINGHPUR (MADHYA PRADESH) over the Plains of India.

- ❖ **Maximum Temperature Departures (as on 24-06-2025): markedly above normal(> 5.1°C)** at few places over Jammu-KashmirLadakh-Gilgit-Baltistan-Muzaffarabad; at isolated places over Odisha. **appreciably above normal(3.1°C to 5.0°C)** at isolated places over Assam & Meghalaya, Nagaland, Manipur, Mizoram & Tripura, Himachal Pradesh and Tamil Nadu, Puducherry & Karaikal. **above normal(1.6°C to 3.0°C)** at few places over Lakshadweep; at isolated places over Gangetic West Bengal, West Rajasthan and Kerala & Mahe. **near normal(-1.5°C to 1.5°C)** at many places over East Uttar Pradesh, Konkan & Goa, Marathwada and South Interior Karnataka; at most places over Sub Himalayan West Bengal & Sikkim and Coastal Karnataka; at few places over Andaman & Nicobar Islands, Jharkhand, Bihar, Uttarakhand, Madhya Maharashtra, Telangana, Rayalaseema and North Interior Karnataka; at isolated places over West Uttar Pradesh, Saurashtra & Kutch, Chhattisgarh and Coastal Andhra Pradesh & Yanam. **The highest maximum temperature** of 42.8°C was reported at SRIGANGANAGAR (RAJASTHAN).

*Red color warning does not mean "Red Alert" Red color warning means "Take Action"

Forecast and warning for any day is valid from 0830 hours IST of day till 0830 hours IST of next day

For more details kindly visit <https://mausam.imd.gov.in> or contact 011-2434-4599

(Service to the nation since 1875)

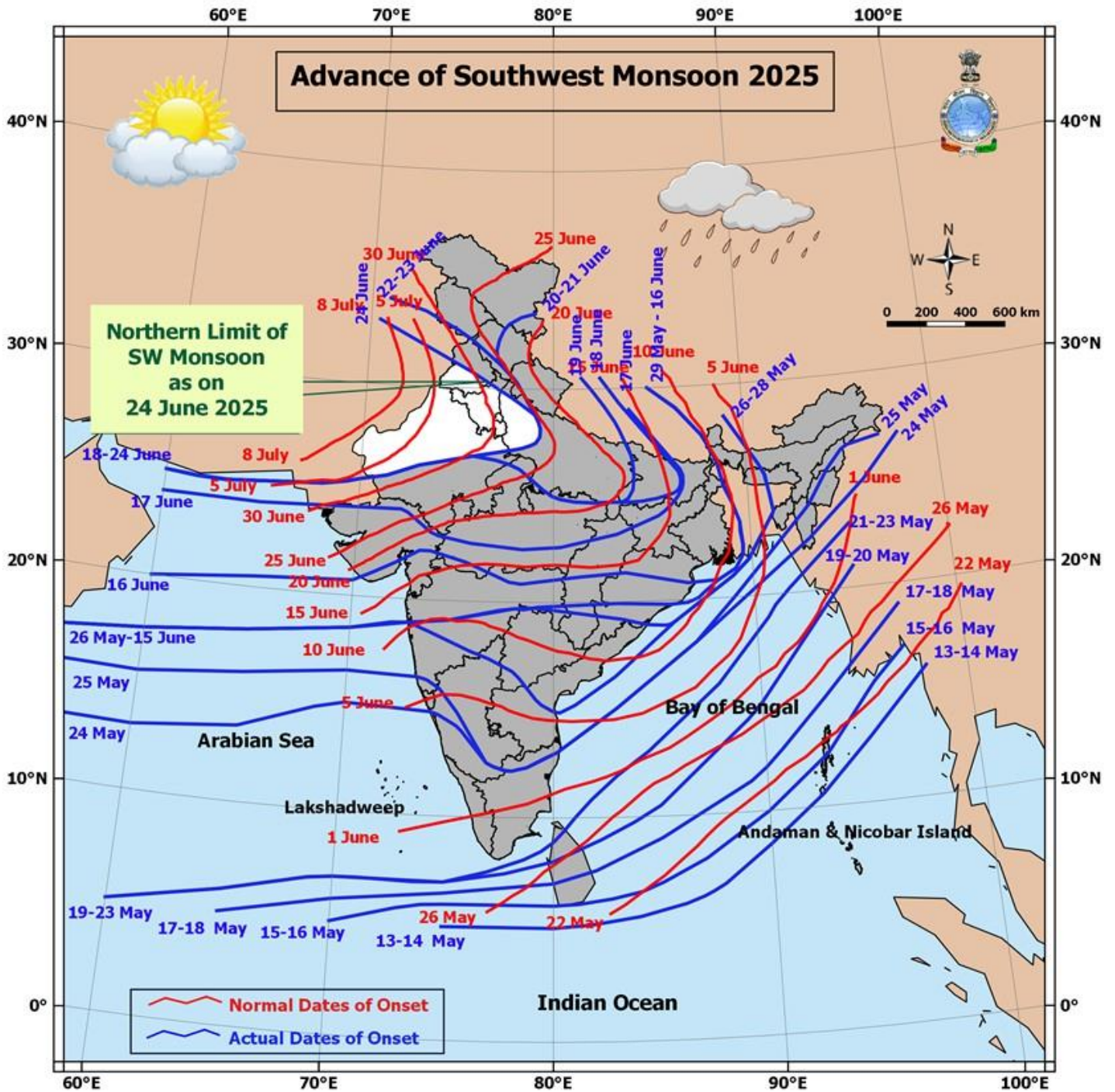


Meteorological Analysis (Based on 0530 hours IST)

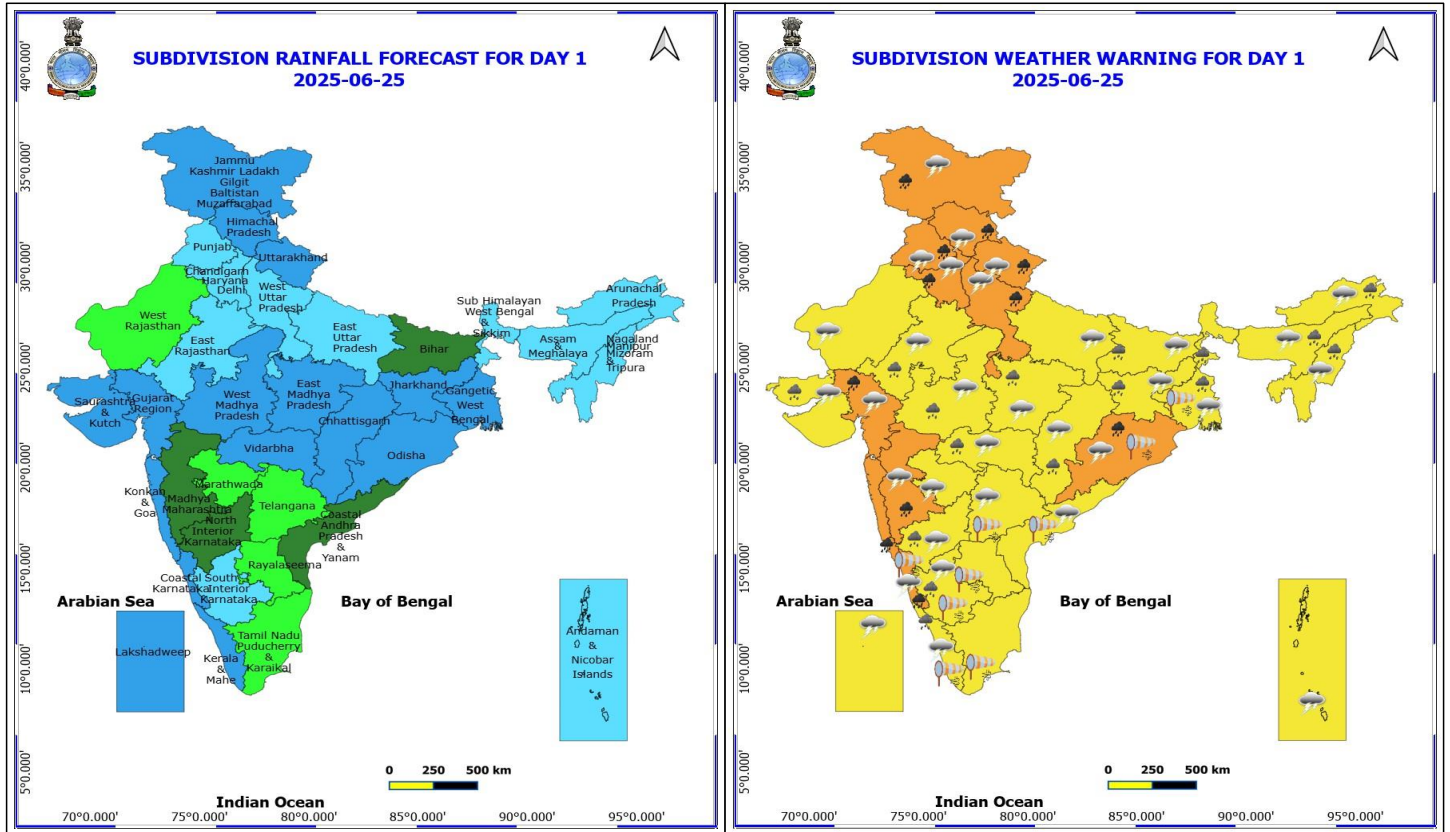
- Southwest monsoon has further advanced over remaining parts of north Arabian Sea, some more parts of West Uttar Pradesh, some parts of Haryana; Chandigarh, remaining parts of Himachal Pradesh & Jammu and some more parts of Punjab.
- The Northern Limit of Monsoon continues to pass through 25.0°N/60.0°E, 25.0°N/65.0°E, 25.5°N/70.0°E, Barmer, Jodhpur, Jaipur, Agra, Rampur, Bijnor, Karnal, Halwara and 33.0°N/70.5°E.
- Conditions are favourable for further advance of Southwest monsoon over some more parts of Rajasthan, Punjab, Haryana; Delhi and remaining parts of West Uttar Pradesh during next 24 hours.
- The **upper air cyclonic circulation** over central parts of south Uttar Pradesh now lies over central parts of northeast Madhya Pradesh extending upto 5.8 km above mean sea level tilting southwards with height.
- The **upper air cyclonic circulation** over northwest Bay of Bengal and adjoining north Odisha-west Bengal coasts persists and now extends upto 5.8 km above mean sea level tilting southwestwards with height.
- The **trough now runs from central parts of Pakistan** to the cyclonic circulation over northwest Bay of Bengal adjoining north Odisha-West Bengal coasts across northern parts of Rajasthan, cyclonic circulation over central parts of northeast Madhya Pradesh, north Chhattisgarh and north Odisha extending upto 1.5 km above mean sea level.
- The **trough** from northeast Arabian Sea to south Jharkhand now runs from northeast Arabian Sea to the above cyclonic circulation over northwest Bay of Bengal and adjoining north Odisha-west Bengal coasts across Gujarat, Madhya Pradesh, northern parts of Chhattisgarh, and north Odisha at 3.1 km above mean sea level.
- The **upper air cyclonic circulation** over central Assam & neighbourhood at 0.9 km above mean sea level has become less marked.
- The **upper air cyclonic circulation** over south Jharkhand & neighbourhood between 3.1 and 7.6 km above mean sea levels tilting southwards with height has become less marked.
- The **trough** from Punjab to north Bangladesh across the above cyclonic circulation over central parts of south Uttar Pradesh at 0.9 km above mean sea level has become less marked.

Weather Outlook for subsequent 3 days

- Scattered to fairly widespread rainfall very likely over central India, ghat area of western coast, eastern India & northwest India.
- Isolated to scattered rainfall very likely over the south peninsula India & western India.



*Red color warning does not mean "Red Alert" Red color warning means "Take Action"
 Forecast and warning for any day is valid from 0830 hours IST of day till 0830 hours IST of next day
 For more details kindly visit <https://mausam.imd.gov.in> or contact 011-2434-4599
 (Service to the nation since 1875)



25 June (Day 1)

- ❖ **Heavy to Very Heavy Rainfall** very likely at isolated places over Coastal Karnataka, Gujarat Region, Haryana, Chandigarh & Delhi, Himachal Pradesh, Jammu-Kashmir-Ladakh-Gilgit-Baltistan-Muzaffarabad, Konkan & Goa, Madhya Maharashtra, Odisha, Punjab, Uttarakhand and West Uttar Pradesh.
- ❖ **Heavy Rainfall** very likely at isolated places over Arunachal Pradesh, Assam & Meghalaya, Bihar, Chhattisgarh, East Rajasthan, Interior Karnataka, Jharkhand, Kerala & Mahe, Madhya Pradesh, Nagaland, Manipur, Mizoram and Tripura, Saurashtra & Kutch, Vidarbha and West Bengal & Sikkim.
- ❖ **Thunderstorm accompanied with lightning & gusty winds(40-50kmph)** very likely at isolated places over Kerala & Mahe, Lakshadweep and Uttarakhand.
- ❖ **Thunderstorm accompanied with lightning & gusty winds(30-40kmph)** very likely at isolated places over Andaman & Nicobar Islands, Bihar, Gangetic West Bengal, Gujarat State, Jammu-Kashmir-Ladakh-Gilgit-Baltistan-Muzaffarabad, Jharkhand, Madhya Maharashtra, Marathwada, Odisha, Rajasthan and West Madhya Pradesh.
- ❖ **Thunderstorm accompanied with Lightning** very likely at isolated places over Arunachal Pradesh, Assam & Meghalaya, Chhattisgarh, Coastal Andhra Pradesh, Coastal Karnataka, East Madhya Pradesh, Haryana, Chandigarh & Delhi, Himachal Pradesh, Interior Karnataka, Nagaland, Manipur, Mizoram and Tripura, Punjab, Telangana, Uttar Pradesh and Vidarbha.
- ❖ **Strong Surface Winds** very likely at isolated places over Andhra Pradesh, Coastal Karnataka, Gangetic West Bengal, Kerala & Mahe, Odisha, South Interior Karnataka, Tamil Nadu Puducherry & Karaikal and Telangana.

Squally wind speed reaching 45 kmph to 55 kmph gusting to 65 kmph is likely to prevail along and off Somalia, Oman & adjoining Yemen coasts, most parts of westcentral Arabian Sea & adjoining, some parts of eastcentral, adjoining north Arabian Sea & adjoining southwest Arabian Sea.

***Red color warning does not mean "Red Alert" Red color warning means "Take Action"**

Forecast and warning for any day is valid from 0830 hours IST of day till 0830 hours IST of next day

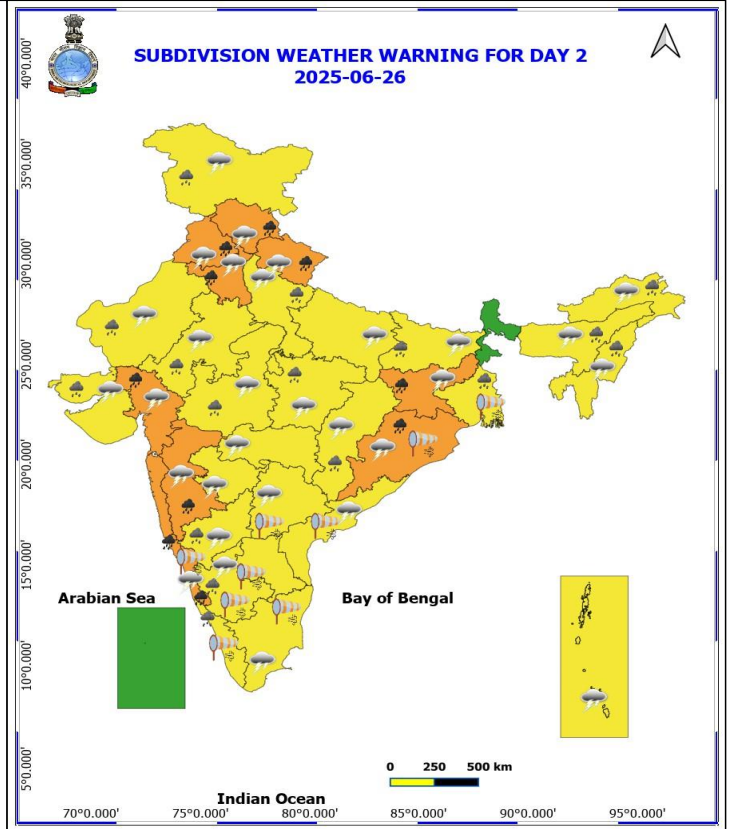
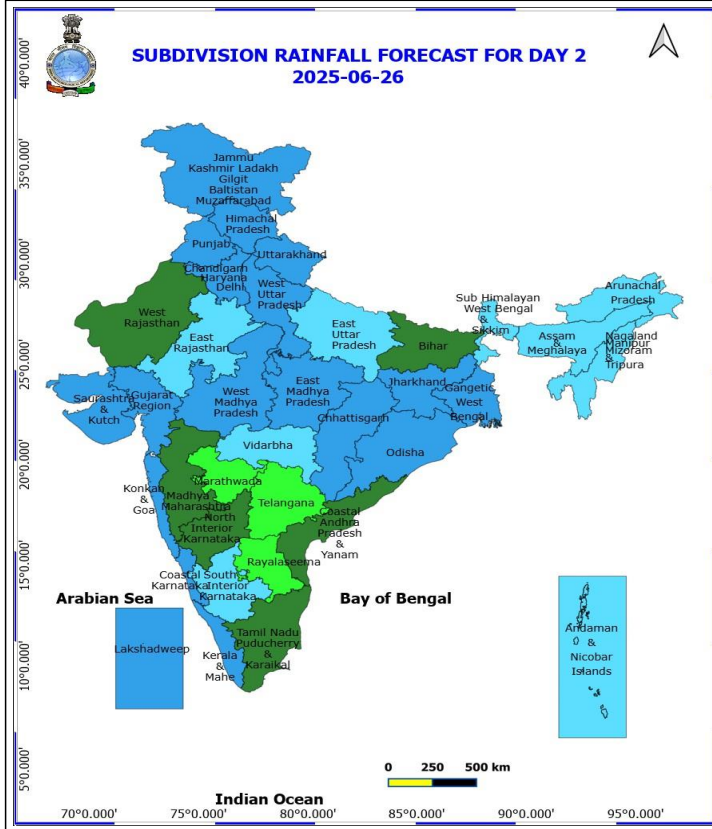
For more details kindly visit <https://mausam.imd.gov.in> or contact 011-2434-4599

(Service to the nation since 1875)



Squally weather with wind speed 40 - 50 kmph gusting to 60 kmph likely to prevail over most parts of eastcentral & adjoining areas of westcentral, northeast, south Arabian Sea, along and off south Gujarat Konkan, Goa, Karnataka coasts, adjoining Odisha coast, southern parts of north Bay of Bengal, most parts of central Bay of Bengal & adjoining, some parts of south Bay of Bengal, over Andaman Sea.

Squally weather with wind speed reaching 45 kmph to 55 kmph gusting to 65 kmph likely to prevail over western parts of eastcentral & adjoining westcentral Arabian Sea, over some parts of westcentral Bay of Bengal.



26 June (Day 2)

- ❖ **Heavy to Very Heavy Rainfall** very likely at isolated places over Coastal Karnataka, Gujarat Region, Haryana, Chandigarh & Delhi, Himachal Pradesh, Jharkhand, Konkan & Goa, Madhya Maharashtra, Odisha, Punjab and Uttarakhand.
- ❖ **Heavy Rainfall** very likely at isolated places over Arunachal Pradesh, Assam & Meghalaya, Bihar, Chhattisgarh, Gangetic West Bengal, Interior Karnataka, Jammu-Kashmir-Ladakh-Gilgit-Baltistan-Muzaffargarh, Kerala & Mahe, Madhya Pradesh, Nagaland, Manipur, Mizoram and Tripura, Rajasthan, Saurashtra & Kutch and West Uttar Pradesh.
- ❖ **Thunderstorm accompanied with lightning & gusty winds(40-50kmph)** very likely at isolated places over Uttarakhand.
- ❖ **Thunderstorm accompanied with lightning & gusty winds(30-40kmph)** very likely at isolated places over Andaman & Nicobar Islands, Bihar, Gujarat State, Jammu-Kashmir-Ladakh-Gilgit-Baltistan-Muzaffargarh, Jharkhand, Madhya Maharashtra, Marathwada, Odisha, Rajasthan and West Madhya Pradesh.
- ❖ **Thunderstorm accompanied with Lightning** very likely at isolated places over Arunachal Pradesh, Assam & Meghalaya, Chhattisgarh, Coastal Andhra Pradesh, Coastal Karnataka, East Madhya Pradesh, Haryana, Chandigarh & Delhi, Himachal Pradesh, Interior Karnataka, Nagaland, Manipur, Mizoram and Tripura, Punjab, Tamil Nadu Puducherry & Karaikal, Telangana, Uttar Pradesh and Vidarbha.
- ❖ **Strong Surface Winds** very likely at isolated places over Andhra Pradesh, Coastal Karnataka, Gangetic West Bengal, Kerala & Mahe, Odisha, South Interior Karnataka, Tamil Nadu Puducherry & Karaikal and Telangana.
- ❖ Squally wind speed reaching 45 kmph to 55 kmph gusting to 65 kmph is likely to prevail along and off Somalia, Oman & adjoining Yemen coasts, most parts of westcentral Arabian Sea & adjoining, some parts of eastcentral, adjoining north Arabian Sea & adjoining southwest Arabian Sea.

***Red color warning does not mean "Red Alert" Red color warning means "Take Action"**

Forecast and warning for any day is valid from 0830 hours IST of day till 0830 hours IST of next day

For more details kindly visit <https://mausam.imd.gov.in> or contact 011-2434-4599

(Service to the nation since 1875)

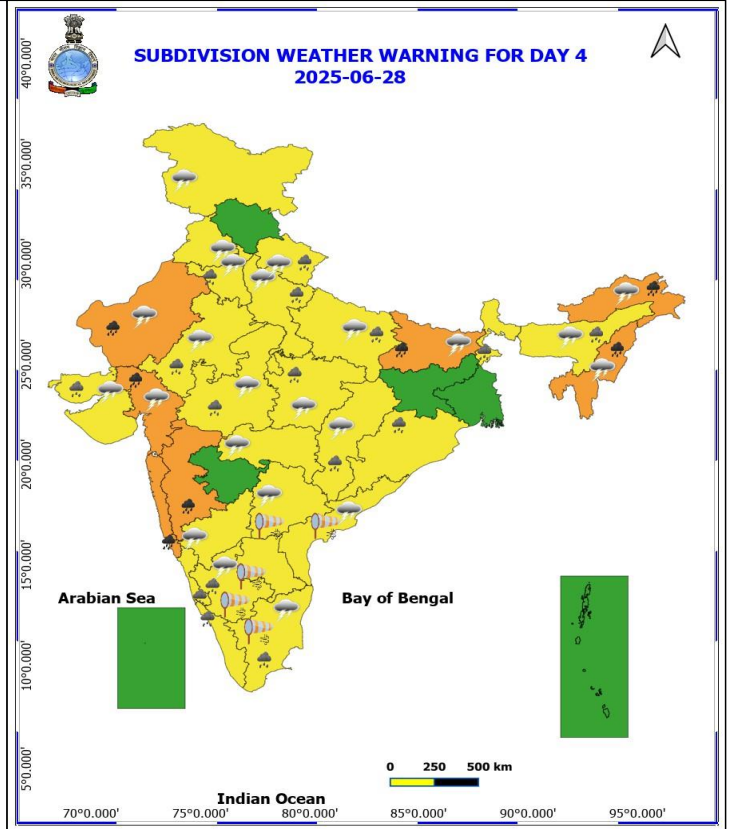
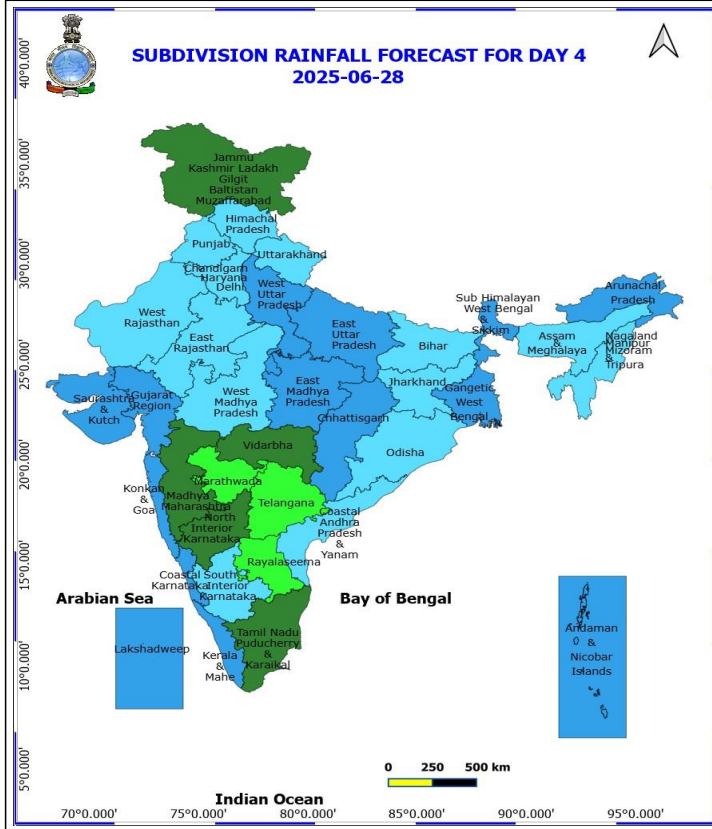


- ❖ Squally weather with wind speed 40 - 50 kmph gusting to 60 kmph likely to prevail over most parts of eastcentral & adjoining areas of westcentral, northeast, south Arabian Sea, along and off Konkan, Goa, Karnataka coasts, along and off Odisha, West Bengal coasts, most parts of northwest and adjoining northeast Bay of Bengal, many parts of central Bay of Bengal.
- ❖ Squally weather with wind speed reaching 45 kmph to 55 kmph gusting to 65 kmph likely to prevail over western parts of eastcentral & adjoining westcentral Arabian Sea.

adjoining north Arabian Sea & adjoining southwest Arabian Sea.

❖ Squally weather with wind speed 40 - 50 kmph gusting to 60 kmph likely to prevail over most parts of eastcentral & adjoining areas of westcentral, northeast, south Arabian Sea, over Lakshadweep area, off south Gujarat, Konkan coasts, along and off Karnataka, Kerala, Odisha, West Bengal coasts, most parts of northwest and adjoining northeast Bay of Bengal, many parts of westcentral & adjoining eastcentral Bay of Bengal, some parts of southwest Bay of Bengal.

❖ Squally weather with wind speed reaching 45 kmph to 55 kmph gusting to 65 kmph likely to prevail over western parts of eastcentral & adjoining westcentral Arabian Sea.



28 June (Day 4)

- ❖ **Heavy to Very Heavy Rainfall** likely at isolated places over Arunachal Pradesh, Bihar, Gujarat Region, Konkan & Goa, Madhya Maharashtra, Nagaland, Manipur, Mizoram and Tripura and West Rajasthan.
- ❖ **Heavy Rainfall** likely at isolated places over Assam & Meghalaya, Chhattisgarh, Coastal Karnataka, East Rajasthan, Haryana, Chandigarh & Delhi, Kerala & Mahe, Madhya Pradesh, Odisha, Saurashtra & Kutch, South Interior Karnataka, Sub Himalayan West Bengal & Sikkim, Tamil Nadu Puducherry & Karaikal, Uttar Pradesh and Uttarakhand.
- ❖ **Thunderstorm accompanied with lightning & gusty winds(40-50kmph)** likely at isolated places over Uttarakhand.
- ❖ **Thunderstorm accompanied with lightning & gusty winds(30-40kmph)** likely at isolated places over Bihar, Gujarat State, Jammu-Kashmir-Ladakh-Gilgit-Baltistan-Muzaffarabad, Rajasthan and West Madhya Pradesh.
- ❖ **Thunderstorm accompanied with Lightning** likely at isolated places over Arunachal Pradesh, Assam & Meghalaya, Chhattisgarh, Coastal Andhra Pradesh, East Madhya Pradesh, Haryana, Chandigarh & Delhi, Interior Karnataka, Nagaland, Manipur, Mizoram and Tripura, Punjab, Tamil Nadu Puducherry & Karaikal, Telangana, Uttar Pradesh and Vidarbha.
- ❖ **Strong Surface Winds** likely at isolated places over Andhra Pradesh, South Interior Karnataka, Tamil Nadu Puducherry & Karaikal and Telangana.
- ❖ Squally wind speed reaching 45 kmph to 55 kmph gusting to 65 kmph is likely to prevail along and off Somalia, Oman & adjoining Yemen coasts, most parts of westcentral Arabian Sea & adjoining, some parts of eastcentral, adjoining north Arabian Sea & adjoining southwest Arabian Sea.

***Red color warning does not mean "Red Alert" Red color warning means "Take Action"**

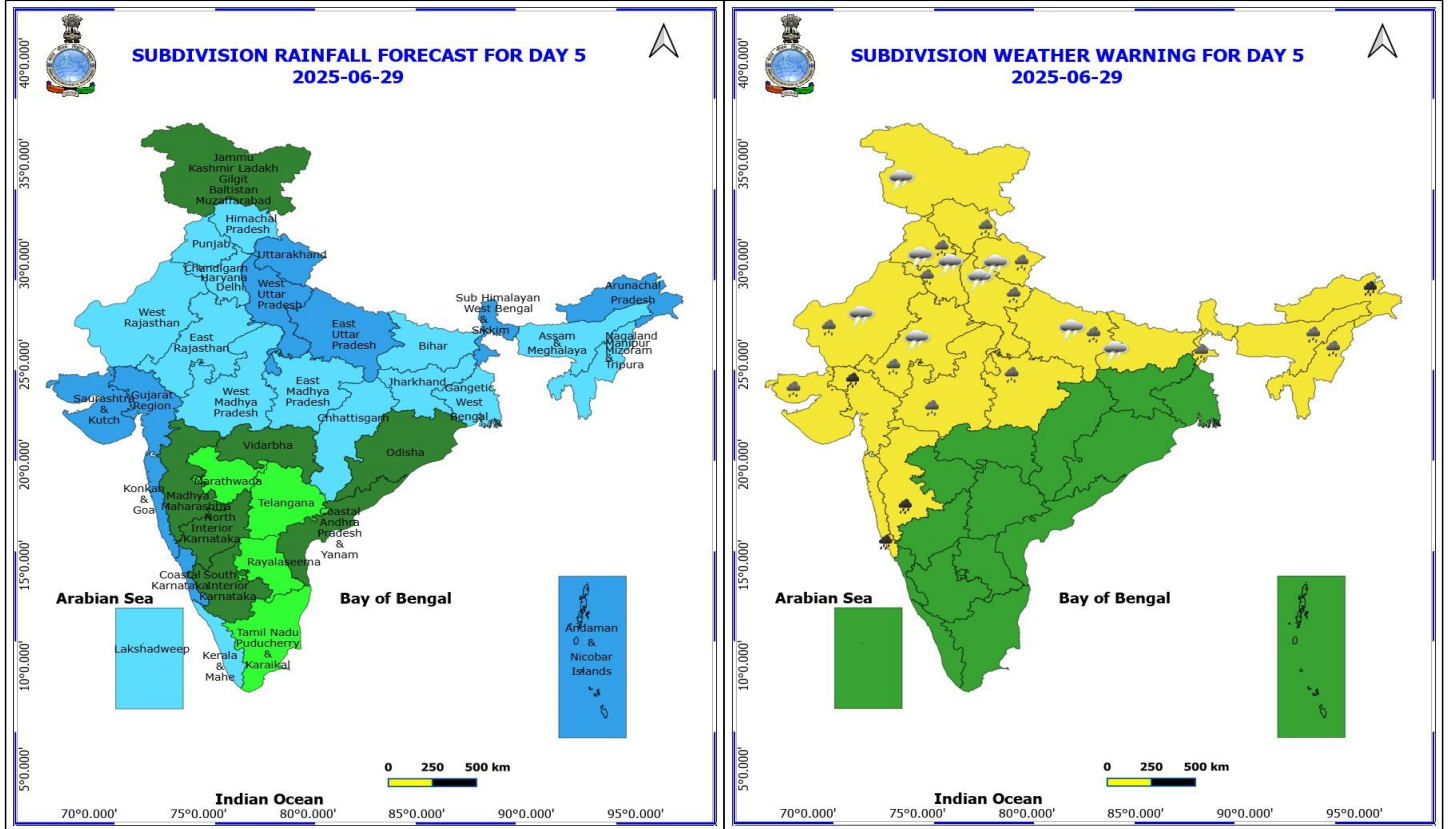
Forecast and warning for any day is valid from 0830 hours IST of day till 0830 hours IST of next day

For more details kindly visit <https://mausam.imd.gov.in> or contact 011-2434-4599

(Service to the nation since 1875)



- ❖ Squally weather with wind speed 40 - 50 kmph gusting to 60 kmph likely to prevail over most parts of eastcentral & adjoining areas of westcentral, northeast, south Arabian Sea, off south Gujarat, Konkan coasts, some parts of westcentral Bay of Bengal and adjoining southwest Bay of Bengal.
- ❖ Squally weather with wind speed reaching 45 kmph to 55 kmph gusting to 65 kmph likely to prevail over western parts of eastcentral & adjoining westcentral Arabian Sea, over Gulf of Mannar.



29 June (Day 5)

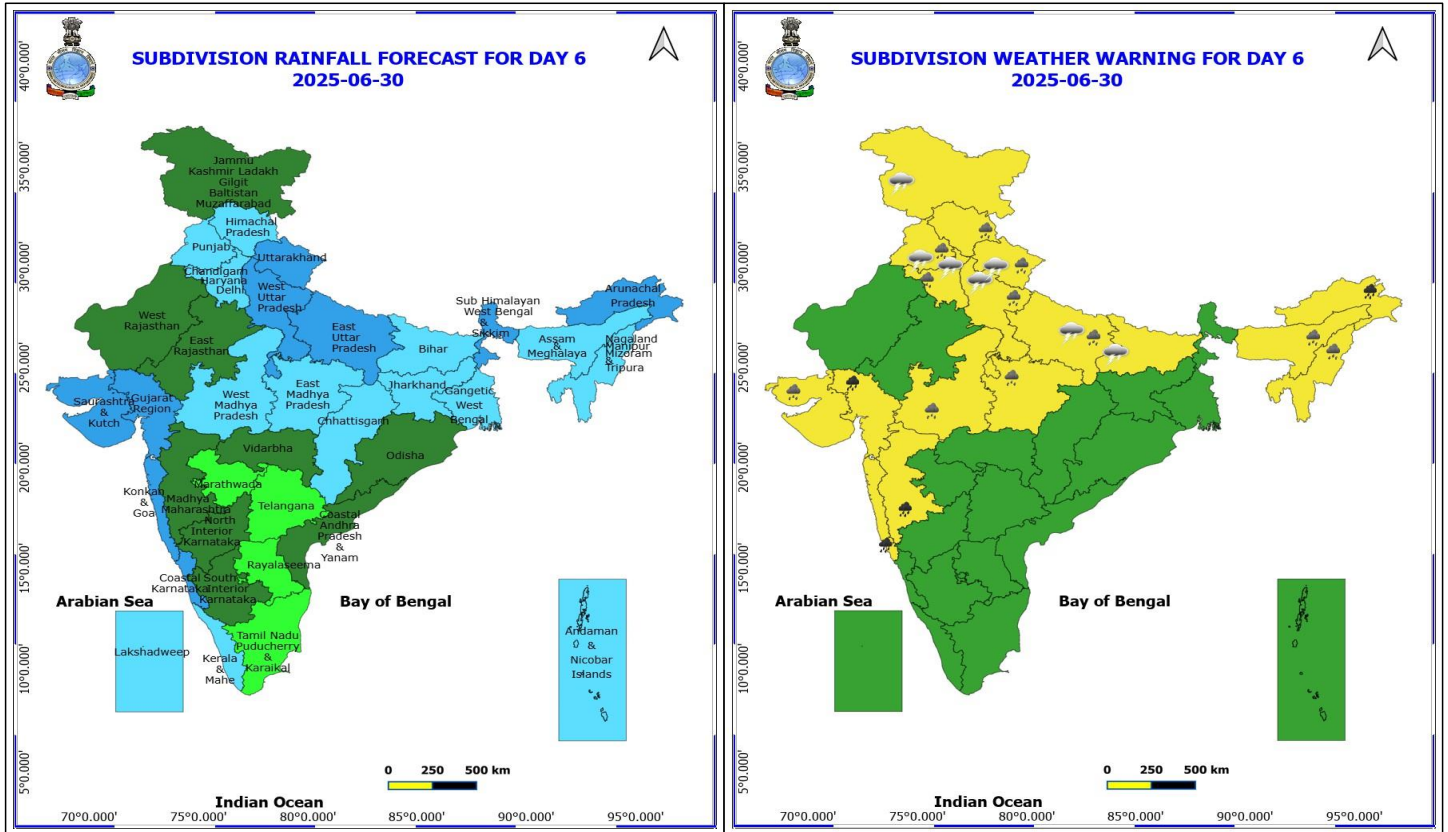
- ❖ **Heavy to Very Heavy Rainfall** likely at isolated places over Arunachal Pradesh, Gujarat Region, Konkan & Goa and Madhya Maharashtra.
- ❖ **Heavy Rainfall** likely at isolated places over Assam & Meghalaya, Haryana, Chandigarh & Delhi, Himachal Pradesh, Madhya Pradesh, Nagaland, Manipur, Mizoram and Tripura, Punjab, Rajasthan, Saurashtra & Kutch, Sub Himalayan West Bengal & Sikkim, Uttar Pradesh and Uttarakhand.
- ❖ **Thunderstorm accompanied with lightning & gusty winds(40-50kmph)** likely at isolated places over Uttarakhand.
- ❖ **Thunderstorm accompanied with lightning & gusty winds(30-40kmph)** likely at isolated places over Bihar, East Rajasthan and Jammu-Kashmir-Ladakh-Gilgit-Baltistan-Muzaffarabad.
- ❖ **Thunderstorm accompanied with Lightning** likely at isolated places over Haryana, Chandigarh & Delhi, Punjab, Uttar Pradesh and West Rajasthan.
- ❖ Squally wind speed reaching 45 kmph to 55 kmph gusting to 65 kmph is likely to prevail along and off Somalia, Oman & adjoining Yemen coasts, most parts of westcentral Arabian Sea & adjoining, some parts of eastcentral, adjoining north Arabian Sea & adjoining southwest Arabian Sea.
- ❖ Squally weather with wind speed 40 - 50 kmph gusting to 60 kmph likely to prevail over most parts of eastcentral & adjoining areas of westcentral, northeast, south Arabian Sea, off, Konkan coast, some parts of central Bay of Bengal.
- ❖ Squally weather with wind speed reaching 45 kmph to 55 kmph gusting to 65 kmph likely to prevail over western parts of eastcentral & adjoining westcentral Arabian Sea, over Gulf of Mannar.

***Red color warning does not mean "Red Alert" Red color warning means "Take Action"**

Forecast and warning for any day is valid from 0830 hours IST of day till 0830 hours IST of next day

For more details kindly visit <https://mausam.imd.gov.in> or contact 011-2434-4599

(Service to the nation since 1875)



30 June (Day 6)

- ❖ **Heavy to Very Heavy Rainfall** likely at isolated places over Arunachal Pradesh, Gujarat Region, Konkan & Goa and Madhya Maharashtra.
- ❖ **Heavy Rainfall** likely at isolated places over Assam & Meghalaya, Haryana, Chandigarh & Delhi, Himachal Pradesh, Madhya Pradesh, Nagaland, Manipur, Mizoram and Tripura, Punjab, Saurashtra & Kutch, Uttar Pradesh and Uttarakhand.
- ❖ **Thunderstorm accompanied with lightning & gusty winds(40-50kmph)** likely at isolated places over Uttarakhand.
- ❖ **Thunderstorm accompanied with lightning & gusty winds(30-40kmph)** likely at isolated places over Bihar and Jammu-Kashmir-Ladakh-Gilgit-Baltistan-Muzaffarabad.
- ❖ **Thunderstorm accompanied with Lightning** likely at isolated places over Haryana, Chandigarh & Delhi, Punjab and Uttar Pradesh.

No Fishermen Warning

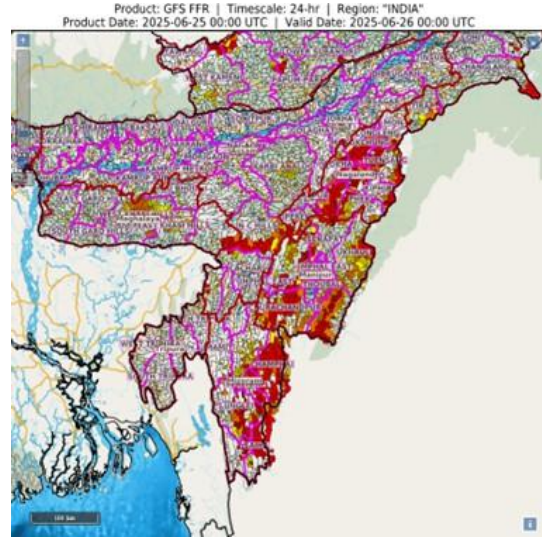
24 hours Outlook for the Flash Flood Risk (FFR) till 0530
IST of 26-06-2025

- ♦ Low to Moderate flash flood risk likely over few watersheds & neighbourhoods of following Met Sub-divisions during next 24 hours.

Assam & Meghalya - West Khasi Hills, East Khasi Hills, Karimganj, N C Hills districts.

- ♦ Nagaland Mizoram Manipur Tripura (NMMT) –
- ♦ Nagaland- Dimapur, Kiphire, Kohima, Mon, Peren, Phek, Mokochung, Tuensang and Zunheboto districts.
Manipur- Bishnupur, Chandel, Churachandpur, Imphal West, Imphal East, Senapati, Tamenglong, Ukhul,
- ♦ Mizoram- Aizawl, Champhai, Lunglei, Lawngtlai, Saiha, Serchhip,

Surface runoff/ Inundation may occur at some fully saturated soils & low-lying areas over Area of Concern (AoC) as shown in map due to expected rainfall occurrence in next 24 hours.





24 hours Outlook for the Flash Flood Risk (FFR) till 0530 IST of 26-06-2025 :

- Low to Moderate flash flood risk likely over few watersheds & neighbourhoods of following Met Sub-divisions during next 24 hours.
- Jammu & Kashmir – Udhampur, Doda, Ramban, Rajouri, Jammu districts
- **Himachal Pradesh**- Chamba, Mandi, Kangra, Shimla and Sirmour districts **Uttarakhand** - Bageshwar, Chamoli, Champawat, Dehradun, Nanital, Pauri Garhwal, Pithoragarh and Tehri Garwal districts.

Surface runoff/ Inundation may occur at some fully saturated soils & low-lying areas over Area of Concern (AoC) as shown in map due to expected rainfall occurrence in next 24 hours.

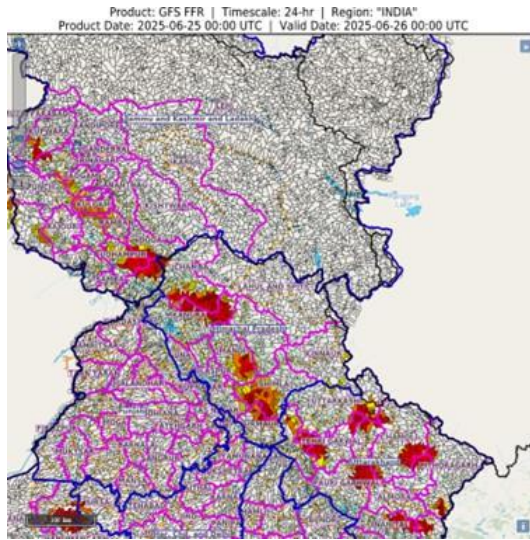




Table-1

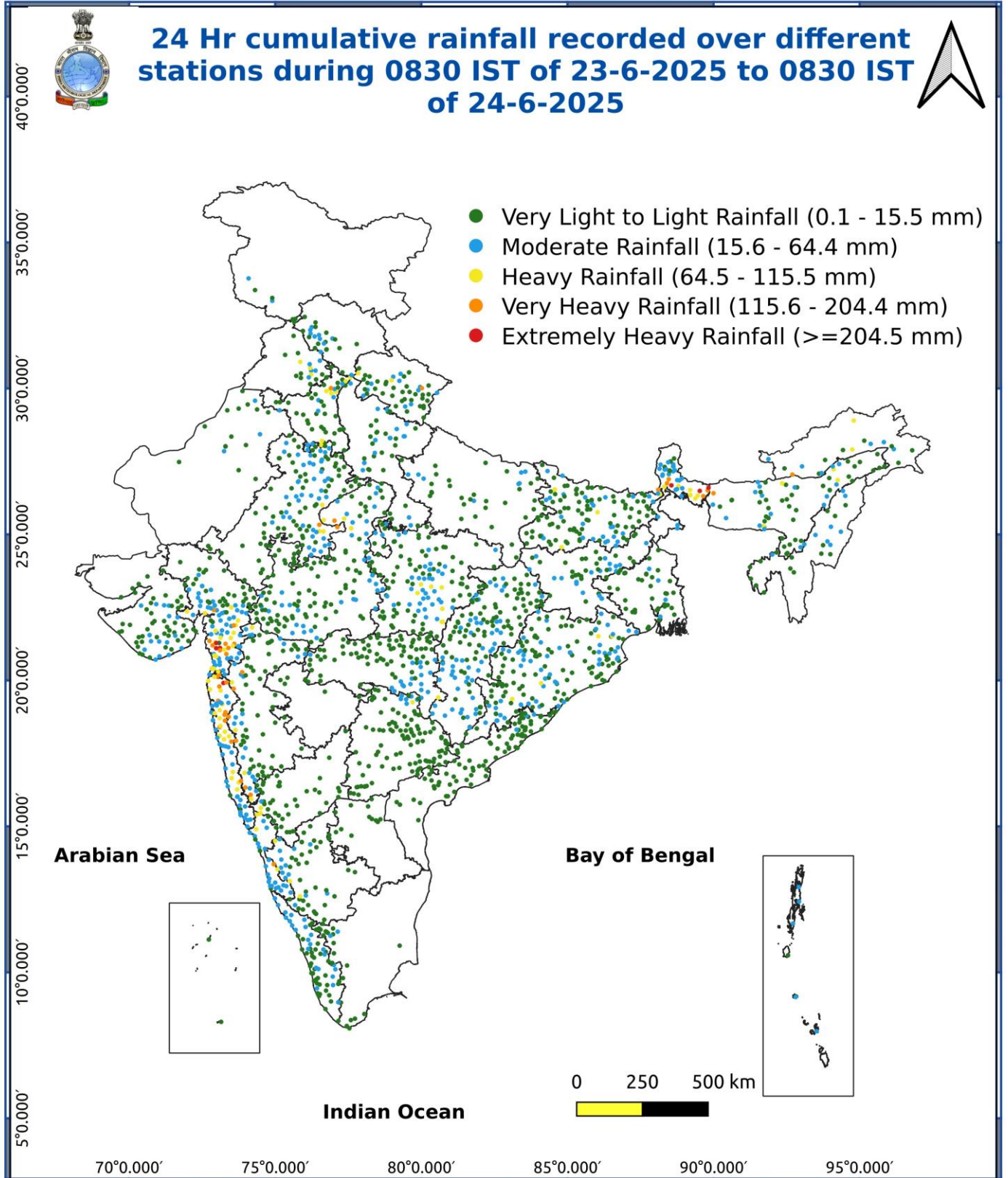
7 Days Rainfall Forecast

S.No.	Subdivision	25- Jun	26- Jun	27- Jun	28- Jun	29- Jun	30- Jun	1- Jul
		Day 1	Day 2	Day 3	Day 4	Day 5	Day 6	Day 7
1	ANDAMAN & NICOBAR ISLANDS	FWS	FWS	FWS	WS	WS	FWS	FWS
2	ARUNACHAL PRADESH	FWS	FWS	FWS	WS	WS	WS	WS
3	ASSAM & MEHGHALAYA	FWS	FWS	FWS	FWS	FWS	FWS	FWS
4	N. M. M. & T.	FWS	FWS	FWS	FWS	FWS	FWS	FWS
5	S.H. WEST BENGAL & SIKKIM	FWS	FWS	WS	WS	WS	WS	WS
6	GANGETIC WEST BENGAL	WS	WS	WS	WS	FWS	FWS	FWS
7	ODISHA	WS	WS	FWS	FWS	SCT	SCT	SCT
8	JHARKHAND	WS	WS	WS	FWS	FWS	FWS	FWS
9	BIHAR	SCT	SCT	SCT	FWS	FWS	FWS	FWS
10	EAST UTTAR PRADESH	FWS	FWS	WS	WS	WS	WS	WS
11	WEST UTTAR PRADESH	FWS	WS	WS	WS	WS	WS	WS
12	UTTARAKHAND	WS	WS	WS	FWS	WS	WS	WS
13	HARYANA, CHD & DELHI	FWS	WS	FWS	FWS	FWS	FWS	FWS
14	PUNJAB	FWS	WS	FWS	FWS	FWS	FWS	FWS
15	HIMACHAL PRADESH	WS	WS	WS	FWS	FWS	FWS	FWS
16	JAMMU AND KASHMIR AND LADAKH	WS	WS	WS	SCT	SCT	SCT	SCT
17	WEST RAJASTHAN	ISOL	SCT	FWS	FWS	FWS	SCT	SCT
18	EAST RAJASTHAN	FWS	FWS	FWS	FWS	FWS	SCT	SCT
19	WEST MADHYA PRADESH	WS	WS	WS	FWS	FWS	FWS	FWS
20	EAST MADHYA PRADESH	WS	WS	WS	WS	FWS	FWS	FWS
21	GUJRAT REGION	WS	WS	WS	WS	WS	WS	WS
22	SAURASHTRA & KUTCH	WS	WS	WS	WS	WS	WS	WS
23	KONKAN & GOA	WS	WS	WS	WS	WS	WS	WS
24	MADHYA MAHARASHTRA	SCT	SCT	SCT	SCT	SCT	SCT	SCT
25	MARATHWADA	ISOL	ISOL	ISOL	ISOL	ISOL	ISOL	ISOL
26	VIDARBHA	WS	FWS	FWS	SCT	SCT	SCT	SCT
27	CHATTISGARH	WS	WS	WS	WS	FWS	FWS	FWS
28	COASTAL ANDHRA PRADESH	SCT	SCT	FWS	FWS	SCT	SCT	SCT
29	TELANGANA	ISOL	ISOL	ISOL	ISOL	ISOL	ISOL	ISOL
30	RAYALASEEMA	ISOL	ISOL	ISOL	ISOL	ISOL	ISOL	ISOL
31	TAMILNADU & PUDUCHERRY	ISOL	SCT	SCT	SCT	ISOL	ISOL	ISOL
32	COSTAL KARNATAKA	WS	WS	WS	WS	WS	WS	WS
33	NORTH INTERIOR KARNATAKA	SCT	SCT	FWS	SCT	SCT	SCT	SCT
34	SOUTH INTERIOR KARNATAKA	FWS	FWS	WS	FWS	SCT	SCT	SCT
35	KERALA	WS	WS	WS	WS	FWS	FWS	FWS
36	LAKSHDWEEP	WS	WS	WS	WS	FWS	FWS	FWS

Legend	Category	%Stations
WS	Widespread/Most Places	76-100
FWS	Fairly Widespread/Many Places	51-75
SCT	Scattered/ A Few Places	26-50
ISOL	Isolated Places	1-25
DRY	No Rain	0

*Red color warning does not mean "Red Alert" Red color warning means "Take Action"
Forecast and warning for any day is valid from 0830 hours IST of day till 0830 hours IST of next day
For more details kindly visit <https://mausam.imd.gov.in> or contact 011-2434-4599

(Service to the nation since 1875)



***Red color warning does not mean "Red Alert" Red color warning means "Take Action"**
Forecast and warning for any day is valid from 0830 hours IST of day till 0830 hours IST of next day
For more details kindly visit <https://mausam.imd.gov.in> or contact 011-2434-4599

(Service to the nation since 1875)

- ♦ Very heavy rainfall over Konkan & Goa, Madhya Maharashtra, Gujarat region, Northeast India during 25th-30th June Uttarakhand during 25th-27th, West Rajasthan on 27th; East Rajasthan during 25th & 27th; Haryana, Punjab, Odisha on 25th & 26th, West Uttar Pradesh on 25th & 27th; Jammu-Kashmir-Ladakh-Gilgit-Baltistan-Muzaffarabad on 25th; Madhya Pradesh, Bihar on 28th; Jharkhand on 26th, Coastal Karnataka during 25th-26th June.

Impact Expected

- ♦ Localized Flooding of roads, water logging in low lying areas and closure of underpasses mainly in urban areas of the above region.
- ♦ Occasional reduction in visibility due to heavy rainfall.
- ♦ Disruption of traffic in major cities due to water logging in roads leading to increased travel time.
- ♦ Minor damage to kutchha roads.
- ♦ Possibilities of damage to vulnerable structure.
- ♦ Localized Landslides/Mudslides/landslips/mudslips/landsinks/mudsinks.
- ♦ Damage to horticulture and standing crops in some areas due to inundation.
- ♦ It may lead to riverine flooding in some river catchments (for riverine flooding please visit Web page of CWC)

Action Suggested

- ♦ Check for traffic congestion on your route before leaving for your destination.
- ♦ Follow any traffic advisories that are issued in this regard.
- ♦ Avoid going to areas that face the water logging problems often.
- ♦ Avoid staying in vulnerable structure.

Impact expected and action suggested due to isolated thunderstorm with lightning over Bihar, Jharkhand on 24th June.

Impact expected:

- ♦ Breaking of tree branches, uprooting of large avenue trees. Large dead limbs blown from trees. Damage to Standing crops.
- ♦ Minor to Major damage to banana and papaya trees.
- ♦ Minor to major damage to power and communication lines due to breaking of branches.
- ♦ Strong wind/hail may damage plantation, horticulture and standing crops.
- ♦ Partial damage to vulnerable structures due to strong winds.
- ♦ Minor damage to kutchha houses/walls and huts.
- ♦ Loose objects may fly.

Action suggested:

- ♦ People are advised to keep a watch on the weather for worsening conditions and be ready to move to safer places accordingly.
- ♦ Stay indoors, close windows & doors and avoid travel if possible.
- ♦ Take safe shelters; do not take shelter under trees.
- ♦ Do not lie on concrete floors and do not lean against concrete walls.
- ♦ Unplug electrical/ electronic appliances.
- ♦ Immediately get out of water bodies.
- ♦ Keep away from all the objects that conduct electricity.

Agromet advisories for various parts of the country

***Red color warning does not mean "Red Alert" Red color warning means "Take Action"**
Forecast and warning for any day is valid from 0830 hours IST of day till 0830 hours IST of next day
For more details kindly visit <https://mausam.imd.gov.in> or contact 011-2434-4599

(Service to the nation since 1875)

- In **Gujarat**, postpone nursery sowing of rice. Ensure proper drainage facilities in already sown rice nurseries, sugarcane fields, banana and mango plantations to prevent waterlogging. Provide support to sugarcane and banana to prevent lodging. In **Saurashtra & Kutch**, postpone sowing of *kharif* groundnut, cotton, sesame, pearl millet, green gram, black gram, cowpea, pigeon pea, maize, sorghum and vegetables. Drain out excess rain water from vegetable nurseries and horticultural plantations.
- In **West Madhya Pradesh**, Postpone harvesting of maize. Postpone sowing of pearl millet, soybean, pigeon pea and paddy nurseries. Make necessary arrangements to drain out excess water from vegetables and orchards to avoid waterlogging. In **Kymore Plateau and Satpura Hill Zone** of **East Madhya Pradesh**, harvest matured green gram and black gram crop and store in a safe place. In **Gird Zone** of **West Madhya Pradesh**, harvest matured maize crop and keep it in safe place. Postpone sowing of soybean and transplanting of chilli, tomato, brinjal etc. and ensure proper drainage in already sown / transplanted fields.
- In **East Rajasthan**, harvest the matured vegetables such as okra and cucurbits and store them in safe place. Make arrangement for draining out excess water from the fields of groundnut and green gram.
- In **Uttarakhand**, make proper drainage channels in rice nurseries, pigeon pea, groundnut, maize, soybean, barnyard millet and finger millet to avoid waterlogging. In **Bhabar and Tarai Zone** of **Uttarakhand**, harvest matured spring maize crop and vegetables (pumpkin, tomato, okra, chilli, French bean etc.) and store in safe place during clear weather.
- In **Sub-Montane and Low Hills Sub-Tropical Zone** of **Himachal Pradesh**, provide drainage in maize and vegetable fields. Strengthen the support for creepers and tall vegetable crops (tomato, capsicum etc.). In **Mid Hills Sub-Humid Zone** of **Himachal Pradesh**, harvest matured fruits of plum, pear and stonefruit to minimize losses due to heavy rains. Make proper drainage channels in the fields of maize, apple, pear, pomegranate, kiwi, cucumber and tomato to avoid waterlogging. Provide support to cucumber vines and tomato plants to prevent lodging.
- In **Sub-Himalayan West Bengal**, maintain proper drainage channels in rice nurseries and fields of jute and ginger to avoid water stagnation.
- In **Jharkhand**, make necessary arrangements to drain out excess water from already sown maize fields, rice and vegetable nurseries.
- In **Odisha**, ensure proper drainage from already sown rice nurseries, fields of maize and vegetables to prevent waterlogging. Cover rice and vegetable nurseries with plastic sheets to prevent washing away of seeds.
- In **Chhattisgarh**, ensure proper drainage in rice nurseries.
- In **Konkan & Goa** make arrangement to drain out excess water from rice nurseries, fields of finger millet, groundnut and orchards to prevent waterlogging. In **ghat areas of Madhya Maharashtra**, drain out excess water from rice nurseries and banana plantations to prevent waterlogging.
- In **Coastal Karnataka**, ensure proper drainage facilities in rice nurseries, banana, coconut and arecanut plantations to prevent water logging. In **South Interior Karnataka**, cover young seedlings of rice with plastic sheets or agro-shade nets to protect them from heavy rains. Provide adequate drainage to remove excess water from rice nurseries, coffee, cardamom, coconut and arecanut plantations to prevent water logging. Provide support to sugarcane and banana to prevent lodging. In **North Interior Karnataka**, drain out excess water from the crops which are at seedling stage to prevent water logging.
- In **Kerala**, ensure proper drainage facilities in rice nurseries, transplanted rice fields, coconut and banana plantations to prevent water logging. Undertake propping in banana to protect the plants from heavy rains.
- In **Assam**, keep the harvested produce of sesame, foxtail millet, *Boro* rice, banana and citrus at safer places. Ensure proper drainage in *Sali* rice nursery, maize and sugarcane fields, arecanut and coconut plantations to prevent waterlogging. In **Barak Valley Zone** of **Assam**, postpone nursery sowing of *Sali* rice.
- In **Meghalaya**, postpone nursery sowing of rice especially in valleys. Ensure proper drainage in the fields of maize, ginger, French bean, cowpea, vegetables and around rice nurseries to prevent waterlogging. Provide strong bamboo stakes or trellis support to cow pea, cucumber and bottle gourd to prevent vines from trailing on wet ground. Provide support to banana plant to prevent lodging.
- In **Arunachal Pradesh**, keep the harvested produce of soybean and vegetables such as chilli and okra at a safer place. Ensure proper drainage in rice nurseries, kiwi and apple orchards to avoid waterlogging.
- In **Nagaland**, avoid transplanting of TRC/WRC rice. Postpone sowing of soybean. Provide proper staking to vine type plants.

Livestock / Fishery

***Red color warning does not mean "Red Alert" Red color warning means "Take Action"**
Forecast and warning for any day is valid from 0830 hours IST of day till 0830 hours IST of next day
For more details kindly visit <https://mausam.imd.gov.in> or contact 011-2434-4599

(Service to the nation since 1875)



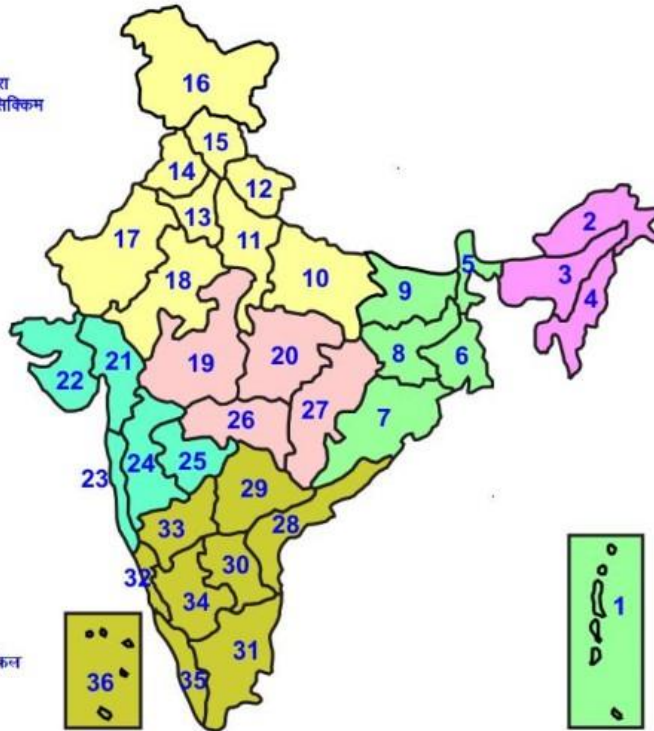
- Keep the animals inside the shed during heavy rainfall and provide them balanced feed.
- Store feed and fodder in a safe place to prevent spoilage.
- Construct an outlet with proper netting around the ponds to drain out excess water, thereby preventing fish from escaping in case of overflow.

Agromet advisories for likely impact of Thunderstorm / Gusty Winds / Squally Winds

- Provide mechanical support to horticultural crops and staking or support to vegetables and young fruit plants / fruit-bearing plants to avoid lodging due to strong winds.

LEGENDS

- 1 अंडमान और निकोबार द्वीप समुह
- 2 अरुणाचल प्रदेश
- 3 असम और मेघालय
- 4 नागालैंड मनीपुर मीजोरम और त्रिपुरा
- 5 उप हिमालय पश्चिम बंगाल एवं सिक्किम
- 6 पश्चिम बंगाल
- 7 ओडिसा
- 8 झारखंड
- 9 बिहार
- 10 पूर्वी उत्तर प्रदेश
- 11 पश्चिम उत्तर प्रदेश
- 12 उत्तराखंड
- 13 हरियाणा चंडिगढ़ एवं दिल्ली
- 14 पंजाब
- 15 हिमाचल प्रदेश
- 16 जम्मू एवं कश्मीर एवं लद्दाख
- 17 पश्चिम राजस्थान
- 18 पूर्वी राजस्थान
- 19 पश्चिम मध्य प्रदेश
- 20 पूर्वी मध्य प्रदेश
- 21 गुजरात क्षेत्र
- 22 सौराष्ट्र एवं कच्छ
- 23 कोंकण एवं गोवा
- 24 मध्य महाराष्ट्र
- 25 मराठावाड़ा
- 26 विदर्भ
- 27 छत्तीसगढ़
- 28 तटीय आंध्र प्रदेश एवं यनम
- 29 तेलंगाना
- 30 रायलसीमा
- 31 तमिलनाडु, पुदुचेरी एवं कराईकल
- 32 तटिय कर्नाटक
- 33 आंतरिक उत्तरी कर्नाटक
- 34 आंतरिक दक्षिणी कर्नाटक
- 35 केरल एवं माहे
- 36 लक्षद्वीप



1. Andaman & Nicobar Islands
2. Arunachal Pradesh
3. Assam & Meghalaya
4. Nagaland, Manipur, Mizoram & Tripura
5. Sub-Himalayan West Bengal & Sikkim
6. Gangetic West Bengal
7. Orissa
8. Jharkhand
9. Bihar
10. East Uttar Pradesh
11. West Uttar Pradesh
12. Uttarakhand
13. Haryana, Chd & Delhi
14. Punjab
15. Himachal Pradesh
16. Jammu & Kashmir and Ladakh
17. West Rajasthan
18. East Rajasthan
19. West Madhya Pradesh
20. East Madhya Pradesh
21. Gujarat
22. Saurashtra
23. Konkan & Goa
24. Madhya Maharashtra
25. Marathwada
26. Vidharbha
27. Chhattisgarh
28. Coastal Andhra Pradesh & Yanam
29. Telangana
30. Rayalaseema
31. Tamilnadu, Puducherry & Karaikal
32. Coastal Karnataka
33. North Interior Karnataka
34. South Interior Karnataka
35. Kerala & Mahe
36. Lakshadweep

SPATIAL DISTRIBUTION (% of Stations reporting)

% Stations	Category	% Stations	Category
76-100	Widespread (WS/ Most Places)	26-50	Scattered (SCT/ A Few Places)
51-75	Fairly Widespread (FWS/ Many Places)	1-25	Isolated (ISOL)

Subdivision Colour

- NO WARNING
- WATCH (BE UPDATED)
- ALERT (BE PREPARED TO TAKE ACTION)
- WARNING (TAKE ACTION)

Probabilistic Forecast

Terms	Probability of Occurrence (%)
Unlikely	< 25
Likely	25 - 50
Very Likely	50 - 75
Most Likely	> 75

- | | | | |
|--------------------------|-----------------|----------------------|--------------------|
| Heavy Rain | Very Heavy Rain | Extremely Heavy Rain | Heavy Snow |
| Thunderstorm & Lightning | Hailstorm | Dust Storm | Dust Raising Winds |
| Strong surface winds | Heat Wave | Hot Day | Warm Night |
| Cold Wave | Cold Day | Ground Frost | Fog |
| Hot & Humid | | | |

*Red color warning does not mean "Red Alert" Red color warning means "Take Action"

Forecast and warning for any day is valid from 0830 hours IST of day till 0830 hours IST of next day

For more details kindly visit <https://mausam.imd.gov.in> or contact 011-2434-4599

(Service to the nation since 1875)

LEGENDS

WARNING

WARNING (TAKE ACTION)
ALERT (BE PREPARED)
WATCH (BE UPDATED)
NO WARNING (NO ACTION)

Probabilistic Forecast

Terms	Probability of Occurrence (%)
Unlikely	< 25
Likely	25 - 50
Very Likely	50 - 75
Most Likely	> 75



Heavy: 64.5 to 115.5 mm/cm *
Very Heavy: 115.6 to 204.4 mm/cm *
Extremely Heavy: > 204.4 mm/cm *



When maximum temperature of a station reaches $\geq 40^{\circ}\text{C}$ for plains and $\geq 30^{\circ}\text{C}$ for hilly regions
(a) Based on Departure from normal

Heat Wave: Maximum Temperature Departure from normal 4.5°C to 6.4°C .
Severe Heat Wave: Maximum Temperature Departure from normal $\geq 6.5^{\circ}\text{C}$

(b). Based on Actual maximum temperature

Heat Wave: When actual maximum temperature $\geq 45^{\circ}\text{C}$.
Severe Heat Wave: When actual maximum temperature $\geq 47^{\circ}\text{C}$

(c). Criteria for heat wave for coastal stations

When maximum temperature departure is $> 4.5^{\circ}\text{C}$ from normal. Heat Wave may be described provided maximum temperature $\geq 37^{\circ}\text{C}$



When maximum temperature remains 40°C

Warm Night: When minimum temperature departure 4.5°C to 6.4°C .
Severe Warm Night: When minimum temperature departure $> 6.4^{\circ}\text{C}$.



When minimum temperature of a station $\leq 10^{\circ}\text{C}$ for plains and $\leq 0^{\circ}\text{C}$ for hilly regions.

(a). Based on departure

Cold Wave: Minimum Temperature Departure from normal -4.5°C to -6.4°C .
Severe Cold Wave: Minimum Temperature Departure from normal $\leq -6.5^{\circ}\text{C}$

(b) Based on actual Minimum Temperature (for Plains only)

Cold Wave : When Minimum Temperature is $\leq 4.0^{\circ}\text{C}$
Severe Cold Wave: When Minimum Temperature is $\leq 2.0^{\circ}\text{C}$

(c) For Coastal Stations

When Minimum Temperature departure is $\leq -4.5^{\circ}\text{C}$ & actual Minimum Temperature is $\leq 15^{\circ}\text{C}$



When minimum temperature of a station $\leq 10^{\circ}\text{C}$ for plains and $\leq 0^{\circ}\text{C}$ for hilly regions
Based on departure

Cold Day: Maximum Temperature Departure from normal -4.5°C to -6.4°C .
Severe Cold Day: Maximum Temperature Departure from normal $\leq -6.5^{\circ}\text{C}$



Phenomenon of small droplets suspended in air and the horizontal visibility $< 1\text{km}$

Moderate Fog: When the visibility between 500-200 metres
Dense Fog: when the visibility between 50- 200 metres
Very Dense Fog: when the visibility < 50 metres



Sudden electrical discharges manifested by a flash of light (Lightning) and a sharp rumbling sound (thunder)



An ensemble of particles of dust or sand energetically lifted to great heights by a strong and turbulent wind.



Ice deposits on ground

Air temperature $\leq 4^{\circ}\text{C}$ (over Plains)



A strong wind that rises suddenly, lasts for atleast 1 minute.

Moderate: Wind speed 52-61 kmph
Severe: Wind speed 62-87 kmph
Very Severe: Wind speed > 87 kmph



Effect of various waves in the sea over specific area

Rough to very rough: Wind speed 41-62 kmph (22-33 knots) & Wave height 2.5-6 metre
High to very high: Wind speed 63-117 kmph (34-63 knots) & Wave height 6-14 metre
Phenomenal: Wind speed > 117 kmph (> 63 knots) & Wave height > 14 metre



Cyclonic Storm: Wind speed 62-87 kmph (34-47 knots)
Severe Cyclonic Storm: Wind speed 88-117 kmph (48-63 knots)
Very Severe Cyclonic Storm: Wind speed 118-165 kmph (64 - 89 knots)
Extremely Severe Cyclonic Storm: Wind speed 166-220 kmph (90 -119 knots)
Super Cyclone Storm: Wind speed > 220 kmph (> 119 knots)

*Red color warning does not mean "Red Alert" Red color warning means "Take Action"

Forecast and warning for any day is valid from 0830 hours IST of day till 0830 hours IST of next day

For more details kindly visit <https://mausam.imd.gov.in> or contact 011-2434-4599

(Service to the nation since 1875)