

2025-10-09

Time of Issue: 07:35:00 hours IST
(Morning)

ALL INDIA WEATHER SUMMARY AND FORECAST BULLETIN

Significant Weather Features

Weather warnings:

South Peninsular India:

- Light to moderate rain/thunderstorm at many/some places with isolated **heavy rainfall** likely over Tamil Nadu, Kerala & Mahe during 09th-12th; South Interior Karnataka, Coastal Andhra Pradesh & Yanam, Rayalaseema on 09th & 10th; Coastal Karnataka on 10th October.
- **Thunderstorm with gusty wind (speed reaching 30-40 kmph)** likely over Tamil Nadu, Kerala & Mahe and Telangana during next 4 days; Lakshadweep on 09th; and Coastal Karnataka during next 2 days; **with lightning** over Coastal Andhra Pradesh & Yanam during next 4 days; Rayalaseema on 09th & 10th October.

Northwest India:

- Isolated to scattered rainfall very likely over Uttarakhand and Himachal Prdaesh on 09th & 10th October.

East India:

- Light to moderate rain/thunderstorm at some/ isolated places with isolated heavy rainfall likely over Gangetic West Bengal on 09th & 10th, Odisha during 09th – 11th October.

Northeast India:

- Light/moderate rain/thunderstorm at some/isolated places with isolated **heavy rainfall** likely over Assam & Meghalaya, Nagaland, Manipur, Mizoram & Tripura on 09th-10th; Arunachal Pradesh on 10th October.

*Red color warning does not mean "Red Alert" Red color warning means "Take Action"

Forecast and warning for any day is valid from 0830 hours IST of day till 0830 hours IST of next day

For more details kindly visit <https://mausam.imd.gov.in> or contact 011-2434-4599

(Service to the nation since 1875)

Main Weather Observations:

❖ **Rainfall distribution** (from 0830 hours IST of yesterday to 0530 hours IST of today): **at most places** over South Interior Karnataka, Himachal Pradesh, Uttarakhand, Gangetic West Bengal, Nagaland, Manipur, Mizoram & Tripura, Sub-himalayan West Bengal & Sikkim, Assam & Meghalaya, Arunachal Pradesh, Odisha, Andaman & Nicobar Islands and Coastal Karnataka; **at many places** over Punjab, Jammu & Kashmir and Ladakh, East Uttar Pradesh, Bihar, Jharkhand, North Interior Karnataka, Telangana, Coastal Andhra Pradesh & Yanam, Madhya Maharashtra, Tamilnadu Puducherry & Karaikal, Chhattisgarh, Rayalaseema and Lakshadweep; **Dry** over rest of the country.

❖ **Significant rainfall recorded(in cm)** (from 0830 hours IST of yesterday to 0530 hours IST of today): **South Interior Karnataka:** Chitradurga (dist Chitradurga) 8; **Nagaland, Manipur, Mizoram & Tripura:** Agartala AP (dist West Tripura) 7, Dimapur (dist Dimapur) 5, Aizawl-lengpui (dist Mamit) 2; **North Interior Karnataka:** Gadag (dist Gadag) 5; **Assam & Meghalaya:** Cherrapunji (dist East Khasi Hills) 4, Shillong (dist East Khasi Hills) 2; **Arunachal Pradesh:** Pasighat (dist East Siang) 4; **Odisha:** Bhubaneswar (dist Khordha) 4; **Telangana:** Hyderabad (dist Hyderabad) 3; **Coastal Andhra Pradesh & Yanam:** Amaravati-ap-obs2 (dist Guntur) 2; **Sub-Himalayan West Bengal & Sikkim:** Malda (dist Malda) 2.

❖ **Heavy Rainfall observed** (from 0830 hours IST of yesterday to 0530 hours IST of today): **Heavy rain** at a few places over South Interior Karnataka, at isolated places over Nagaland, Manipur, Mizoram & Tripura.

❖ **Minimum Temperature Departures (as on 08-10-2025):** **markedly above normal(> 5.1°C)** at isolated places over Assam & Meghalaya and Bihar. **appreciably above normal(3.1°C to 5.0°C)** at few places over Sub Himalayan West Bengal & Sikkim; at isolated places over Nagaland, Manipur, Mizoram & Tripura, Odisha, East Uttar Pradesh, West Uttar Pradesh and Konkan & Goa. **above normal(1.6°C to 3.0°C)** at many places over East Madhya Pradesh; at few places over Rayalaseema; at isolated places over Gangetic West Bengal, Jharkhand, East Rajasthan, West Madhya Pradesh, Gujarat Region, Saurashtra & Kutch, Marathwada, Chhattisgarh, Coastal Andhra Pradesh & Yanam, Telangana, Tamil Nadu, Puducherry & Karaikal and North Interior Karnataka. **near normal(-1.5°C to 1.5°C)** at many places over Himachal Pradesh, West Rajasthan and South Interior Karnataka; at most places over Andaman & Nicobar Islands, Arunachal Pradesh, Uttarakhand, Madhya Maharashtra, Vidarbha, Coastal Karnataka, Kerala & Mahe and Lakshadweep; at few places over Haryana-Chandigarh-Delhi and Punjab; at isolated places over Jammu-Kashmir-Ladakh-Gilgit-Baltistan-Muzaffarabad. **The lowest minimum temperature** of 10.2°C is reported at UNA (HIMACHAL PRADESH) over the Plains of India.

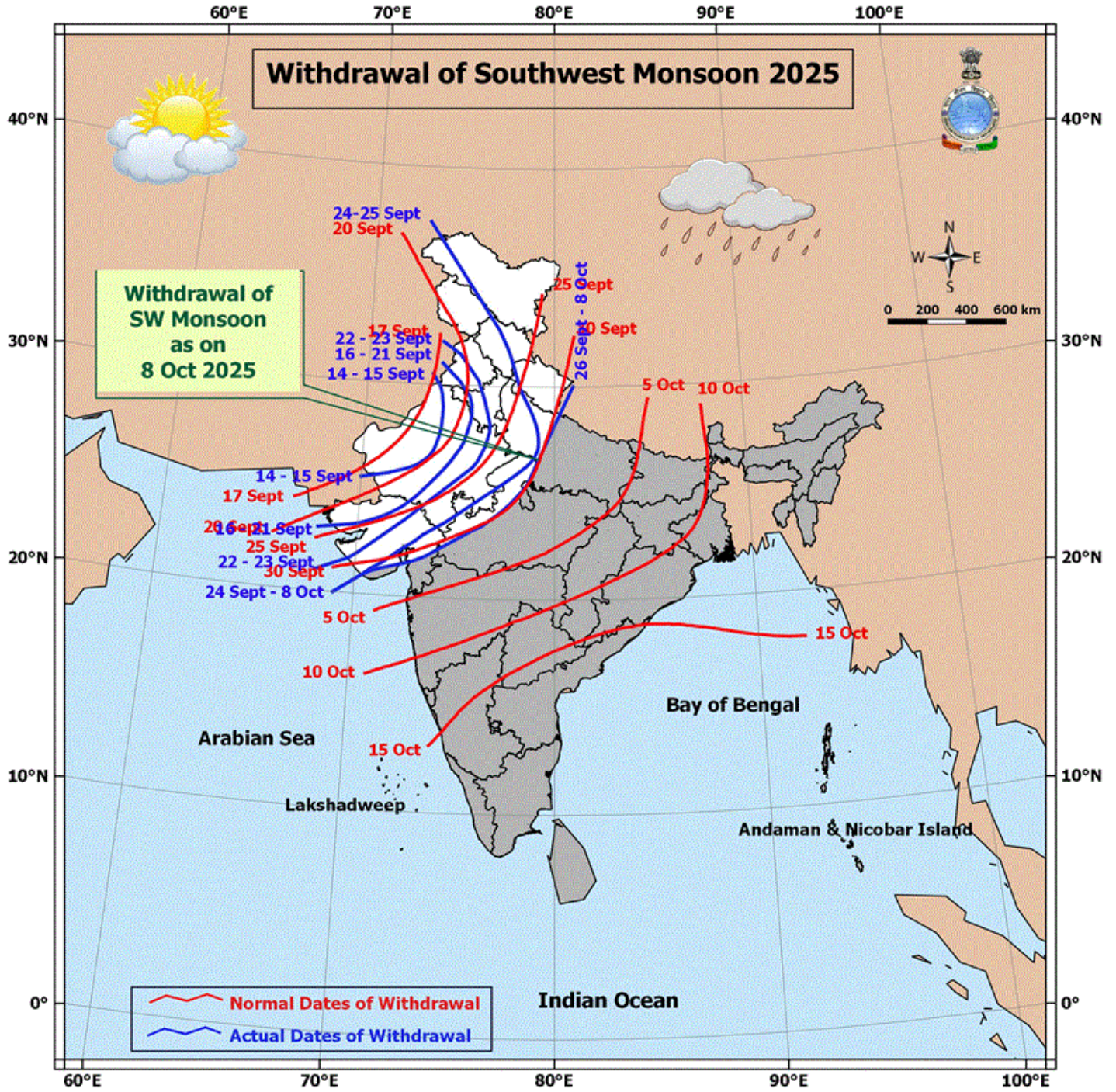
❖ **Maximum Temperature Departures (as on 08-10-2025):** **appreciably above normal(3.1°C to 5.0°C)** at few places over Arunachal Pradesh; at isolated places over Chhattisgarh, Coastal Andhra Pradesh & Yanam, Telangana, Rayalaseema, South Interior Karnataka and Kerala & Mahe. **above normal(1.6°C to 3.0°C)** at few places over Sub Himalayan West Bengal & Sikkim, Coastal Karnataka and Lakshadweep; at isolated places over Assam & Meghalaya, Madhya Maharashtra, Vidarbha, Tamil Nadu, Puducherry & Karaikal and North Interior Karnataka. **near normal(-1.5°C to 1.5°C)** at many places over Gangetic West Bengal, Jharkhand and Konkan & Goa; at most places over Marathwada; at few places over Andaman & Nicobar Islands, Nagaland, Manipur, Mizoram & Tripura, Bihar, East Uttar Pradesh and East Madhya Pradesh; at isolated places over Odisha, West Uttar Pradesh, Himachal Pradesh, Gujarat Region and Saurashtra & Kutch. **The highest maximum temperature** of 37.9°C is reported at KAVALI (ANDHRA PRADESH).

Meteorological Analysis (Based on 0530 hours IST)

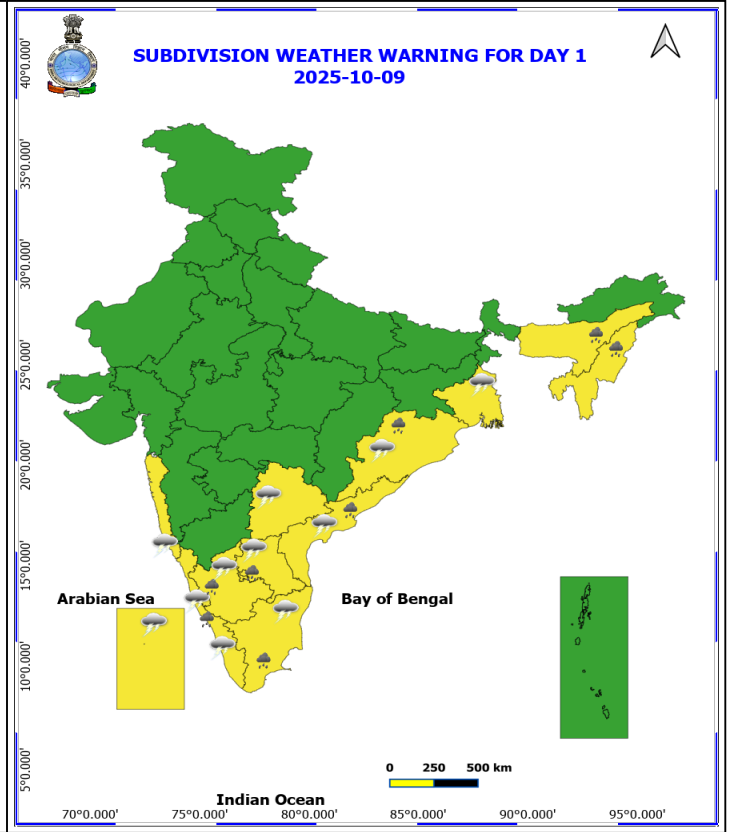
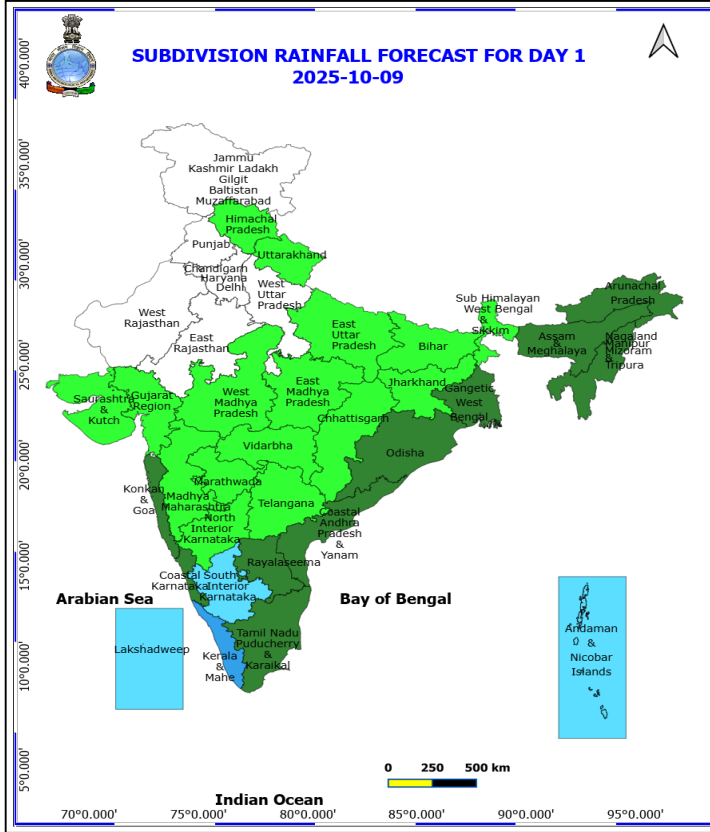
- The **line of withdrawal of southwest monsoon** continues to pass through 20°N/ 69°E, Veraval, Bharuch, Ujjain, Jhansi, Shahjahanpur and 30°N/81°E.
- Conditions are favourable for further withdrawal of southwest monsoon from remaining parts of Gujarat; some more parts of Madhya Pradesh and Uttar Pradesh and some parts of Maharashtra during next 2-3 days.
- The **well-marked low pressure (Remnant of Cyclonic Storm “Shakhti” [Pronunciation: Shakhti])** over westcentral Arabian Sea persists over the same region at 0530 hrs IST of today, the 9th October, 2025. The associated **cyclonic circulation** extended upto 5.8 km above mean sea level. It is likely to continue to move east-southeastwards over westcentral Arabian Sea and weaken further into a low pressure area during next 12 hours.
- The **upper air cyclonic circulation** over north Odisha & neighbourhood at 0.9 km above mean sea level persists.
- The **upper air cyclonic circulation** over central Assam & neighbourhood at 0.9 km above mean sea level persists.
- The **trough** from south Chhattisgarh to Gulf to Mannar now runs from south Odisha to Gulf of Mannar across Telangana, Rayalaseema, interior Tamil Nadu at 0.9 km above mean sea level.
- The **upper air cyclonic circulation** over Comorin area & neighbourhood at 1.5 km above mean sea level persists.
- The **Western Disturbance** as a cyclonic circulation over east Haryana & neighbourhood now lies over northwest Uttar Pradesh & neighbourhood upto 4.5 km with a trough aloft runs roughly along Long. 78°E to the north of Lat. 28°N at 5.8 km above mean sea level persists.
- An **upper air cyclonic circulation** lies over south Bangladesh & neighbourhood and extends upto 5.8 km above mean sea level.
- An **upper air cyclonic circulation** is likely to form over north Bay of Bengal around 10th October, 2025.

Weather Outlook for subsequent 3 days

- Isolated to scattered rainfall activity likely over South peninsular India.



*Red color warning does not mean "Red Alert" Red color warning means "Take Action"
Forecast and warning for any day is valid from 0830 hours IST of day till 0830 hours IST of next day
For more details kindly visit <https://mausam.imd.gov.in> or contact 011-2434-4599
(Service to the nation since 1875)



9 October (Day 1)

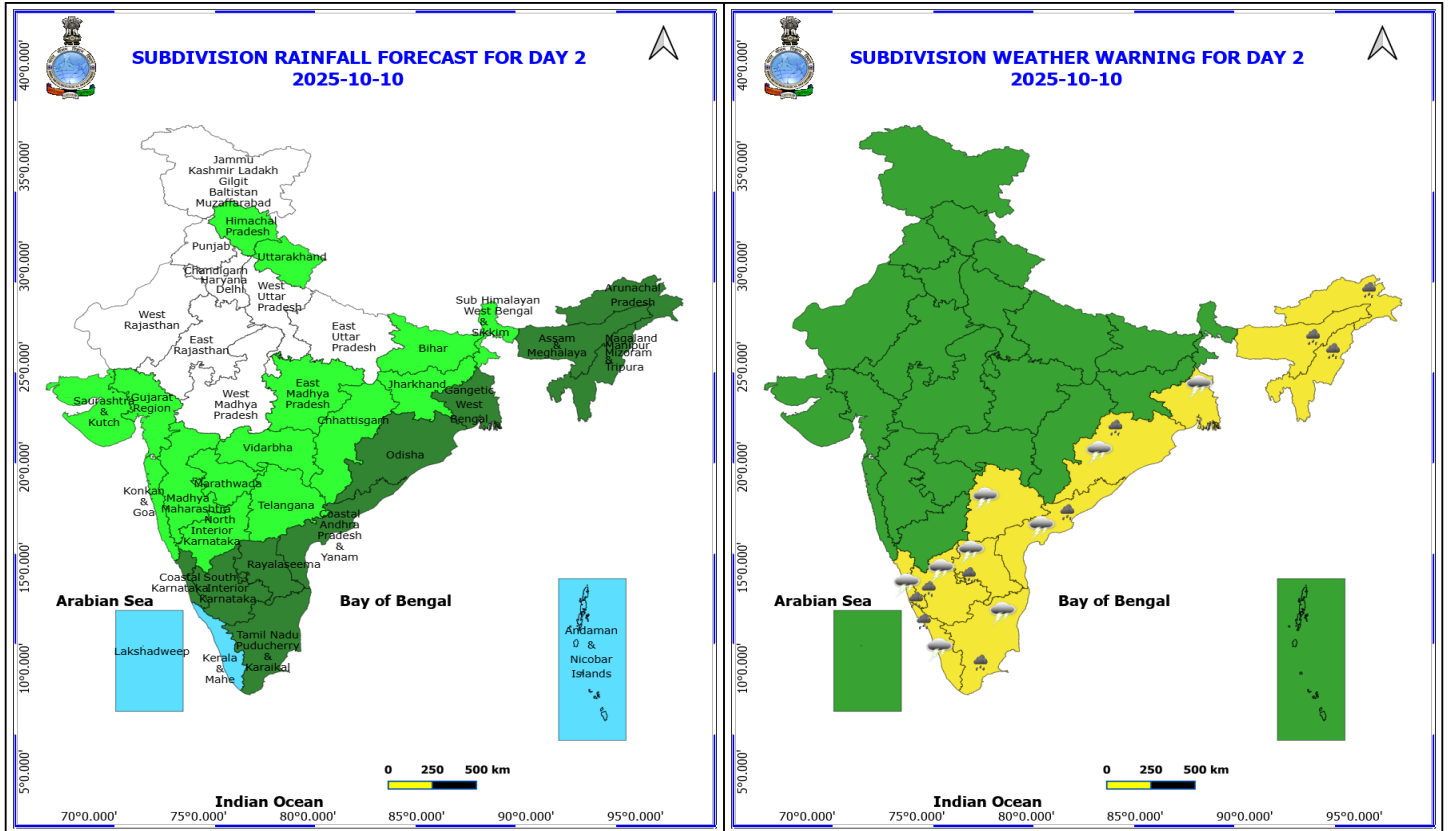
- ❖ **Heavy Rainfall** very likely at isolated places over Andhra Pradesh, Assam & Meghalaya, Kerala & Mahe, Nagaland, Manipur, Mizoram and Tripura, Odisha, South Interior Karnataka and Tamil Nadu Puducherry & Karaikal.
- ❖ **Thunderstorm accompanied with lightning & gusty winds(40-50kmph)** very likely at isolated places over South Interior Karnataka.
- ❖ **Thunderstorm accompanied with lightning & gusty winds(30-40kmph)** very likely at isolated places over Coastal Karnataka, Gangetic West Bengal and Odisha.
- ❖ **Thunderstorm accompanied with Lightning** very likely at isolated places over Andhra Pradesh, Kerala & Mahe, Konkan & Goa, Lakshadweep, Tamil Nadu Puducherry & Karaikal and Telangana.
- **Squally weather with wind speed reaching 35-45 kmph gusting to 55 kmph** likely to prevail over along and off Karnataka, Kerala coasts, Lakshadweep Area, Gulf of Mannar adjoining Comorin area and westcentral adjoining northwest Arabian sea.

*Red color warning does not mean "Red Alert" Red color warning means "Take Action"

Forecast and warning for any day is valid from 0830 hours IST of day till 0830 hours IST of next day

For more details kindly visit <https://mausam.imd.gov.in> or contact 011-2434-4599

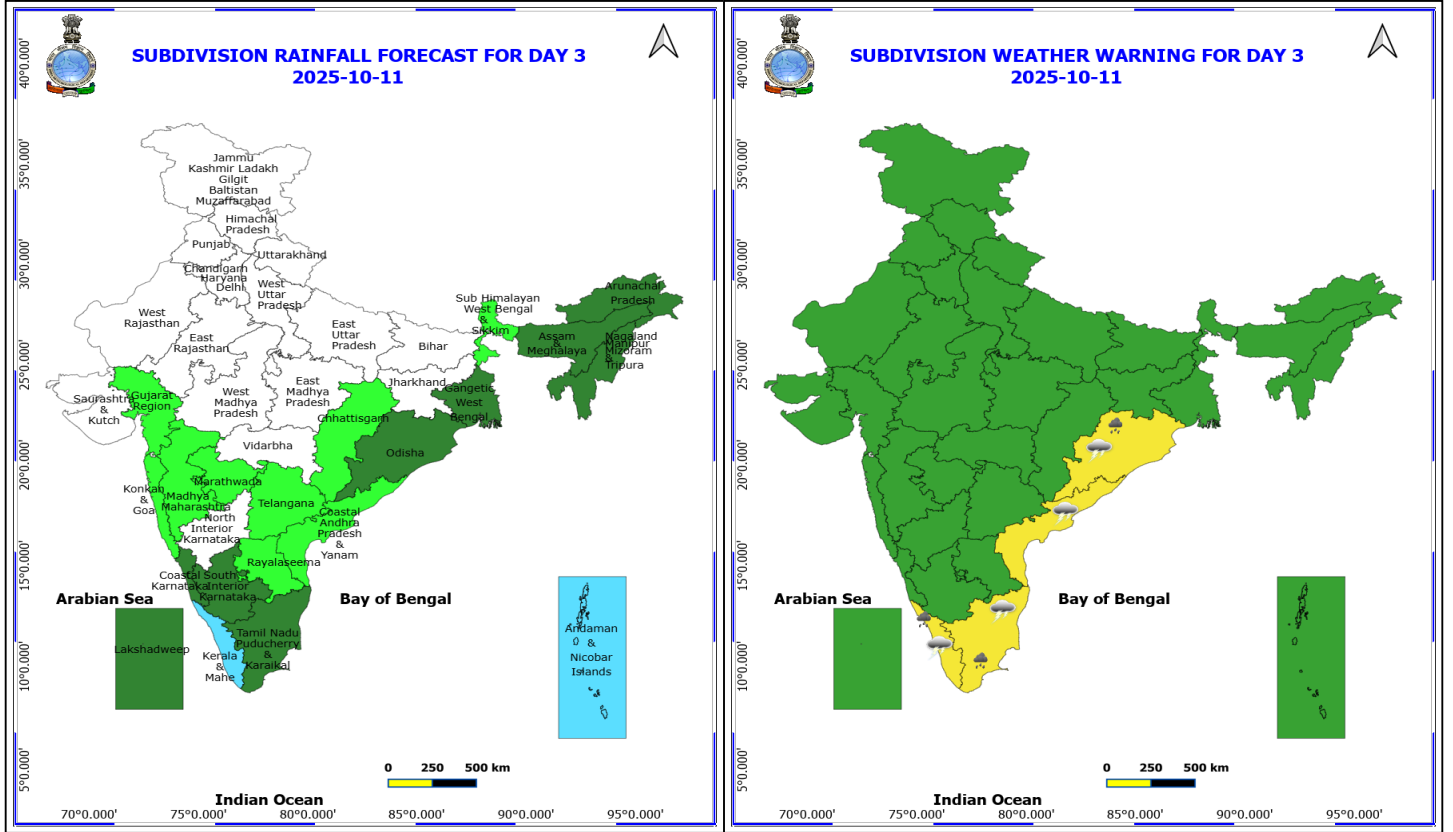
(Service to the nation since 1875)



10 October (Day 2)

- ❖ **Heavy Rainfall** very likely at isolated places over Andhra Pradesh, Arunachal Pradesh, Assam & Meghalaya, Coastal Karnataka, Kerala & Mahe, Nagaland, Manipur, Mizoram and Tripura, Odisha, South Interior Karnataka and Tamil Nadu Puducherry & Karaikal.
- ❖ **Thunderstorm accompanied with lightning & gusty winds(40-50kmph)** very likely at isolated places over South Interior Karnataka.
- ❖ **Thunderstorm accompanied with lightning & gusty winds(30-40kmph)** very likely at isolated places over Coastal Karnataka, Gangetic West Bengal and Odisha.
- ❖ **Thunderstorm accompanied with Lightning** very likely at isolated places over Andhra Pradesh, Kerala & Mahe, Tamil Nadu Puducherry & Karaikal and Telangana.
- **Squally weather with wind speed reaching 35-45 kmph gusting to 55 kmph** likely to prevail over Gulf Mannar and adjoining Comorin Area.

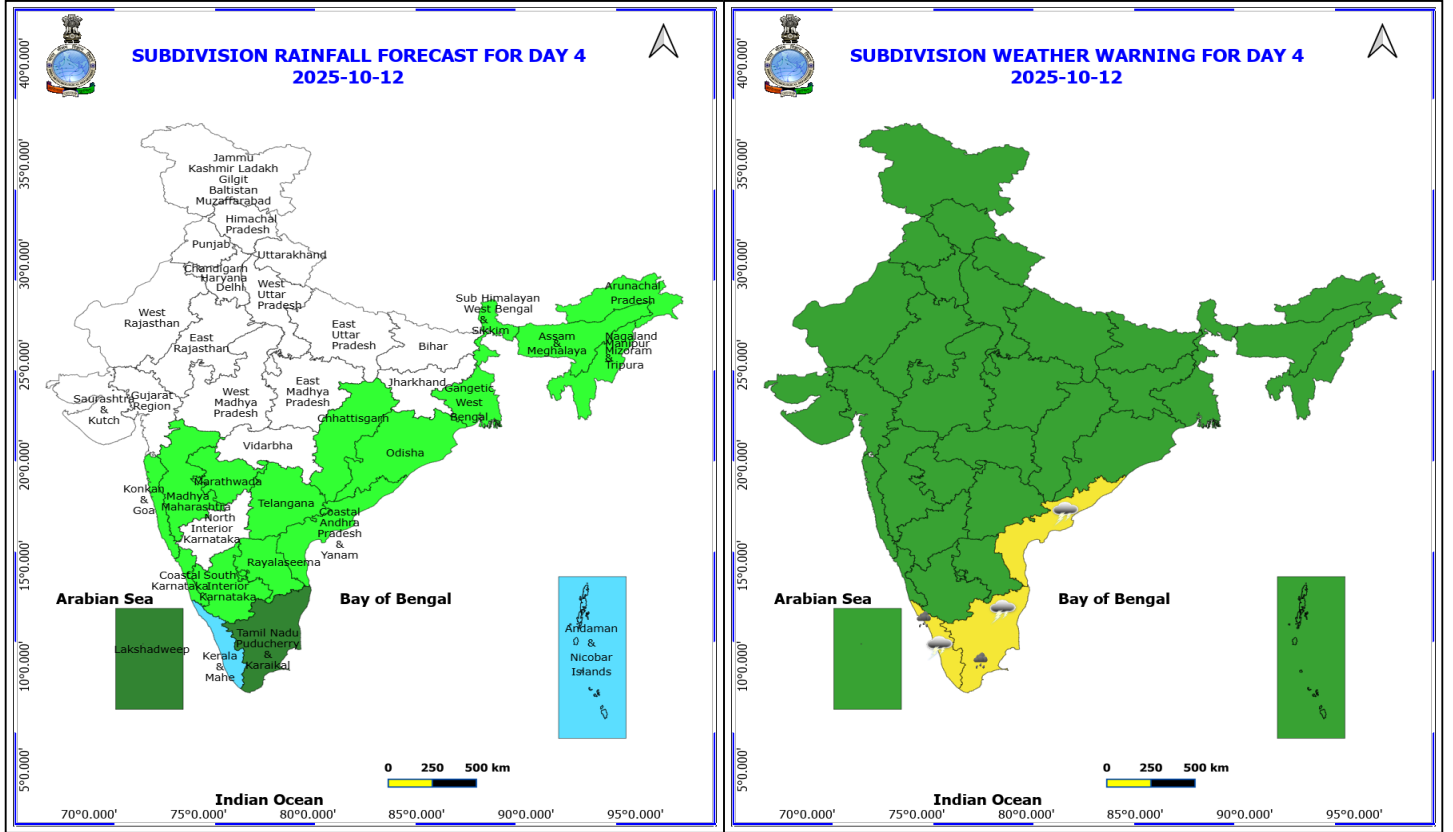
***Red color warning does not mean "Red Alert" Red color warning means "Take Action"**
 Forecast and warning for any day is valid from 0830 hours IST of day till 0830 hours IST of next day
 For more details kindly visit <https://mausam.imd.gov.in> or contact 011-2434-4599
 (Service to the nation since 1875)



11 October (Day 3)

- ❖ **Heavy Rainfall** very likely at isolated places over Kerala & Mahe, Odisha and Tamil Nadu Puducherry & Karaikal.
- ❖ **Thunderstorm accompanied with lightning & gusty winds(30-40kmph)** very likely at isolated places over Odisha.
- ❖ **Thunderstorm accompanied with Lightning** very likely at isolated places over Coastal Andhra Pradesh, Kerala & Mahe and Tamil Nadu Puducherry & Karaikal.
- **Squally weather with wind speed reaching 35-45 kmph gusting to 55 kmph** likely to prevail over Gulf Mannar and adjoining Comorin Area.

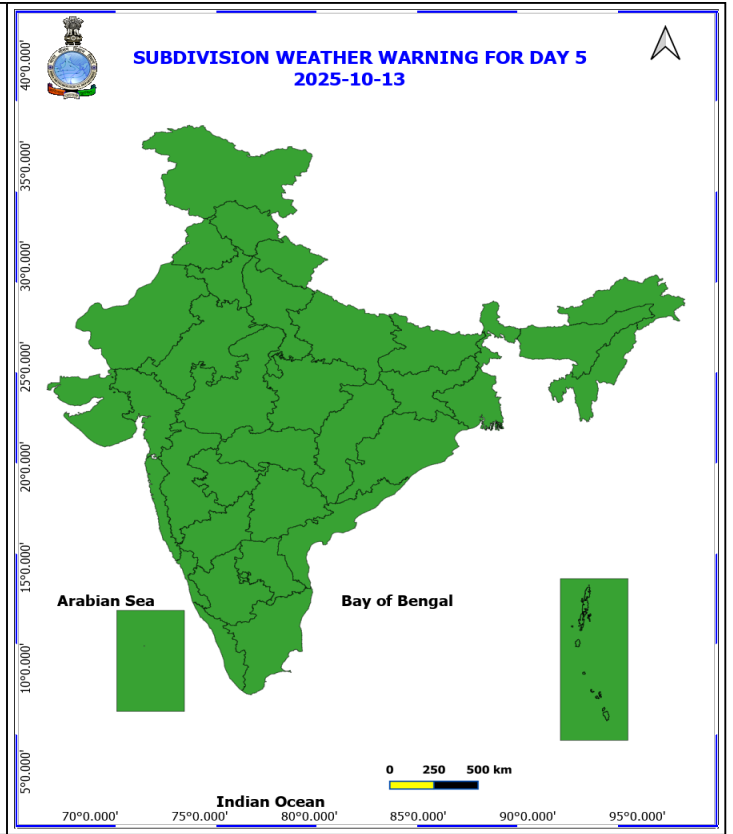
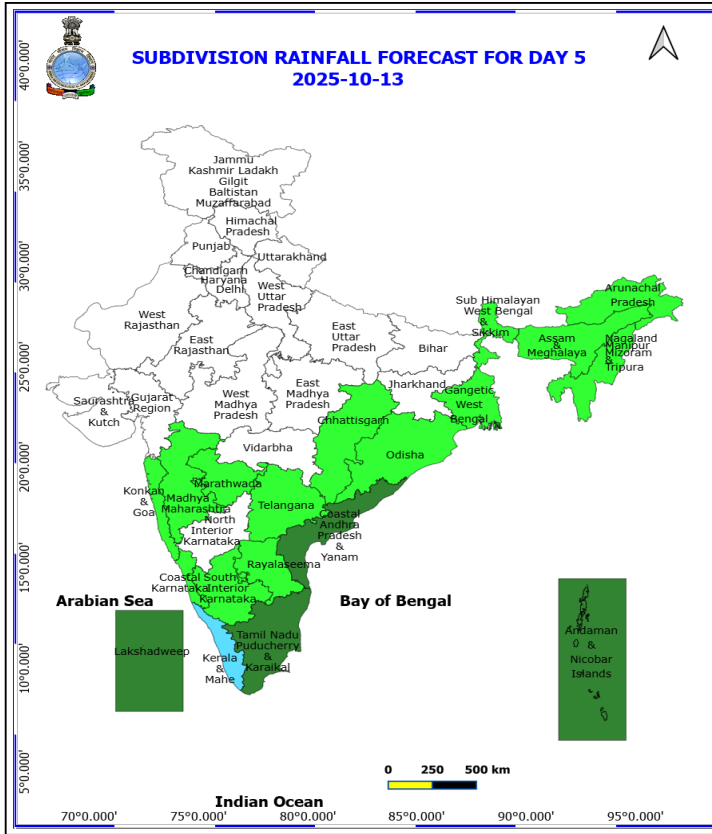
***Red color warning does not mean "Red Alert" Red color warning means "Take Action"**
Forecast and warning for any day is valid from 0830 hours IST of day till 0830 hours IST of next day
For more details kindly visit <https://mausam.imd.gov.in> or contact 011-2434-4599
 (Service to the nation since 1875)



12 October (Day 4)

- ❖ **Heavy Rainfall** likely at isolated places over Kerala & Mahe and Tamil Nadu Puducherry & Karaikal.
- ❖ **Thunderstorm accompanied with Lightning** likely at isolated places over Coastal Andhra Pradesh, Kerala & Mahe and Tamil Nadu Puducherry & Karaikal.
- **Squally weather with wind speed reaching 35-45 kmph gusting to 55 kmph** likely to prevail over Gulf Mannar and adjoining Comorin Area.

***Red color warning does not mean "Red Alert" Red color warning means "Take Action"**
Forecast and warning for any day is valid from 0830 hours IST of day till 0830 hours IST of next day
For more details kindly visit <https://mausam.imd.gov.in> or contact 011-2434-4599
 (Service to the nation since 1875)

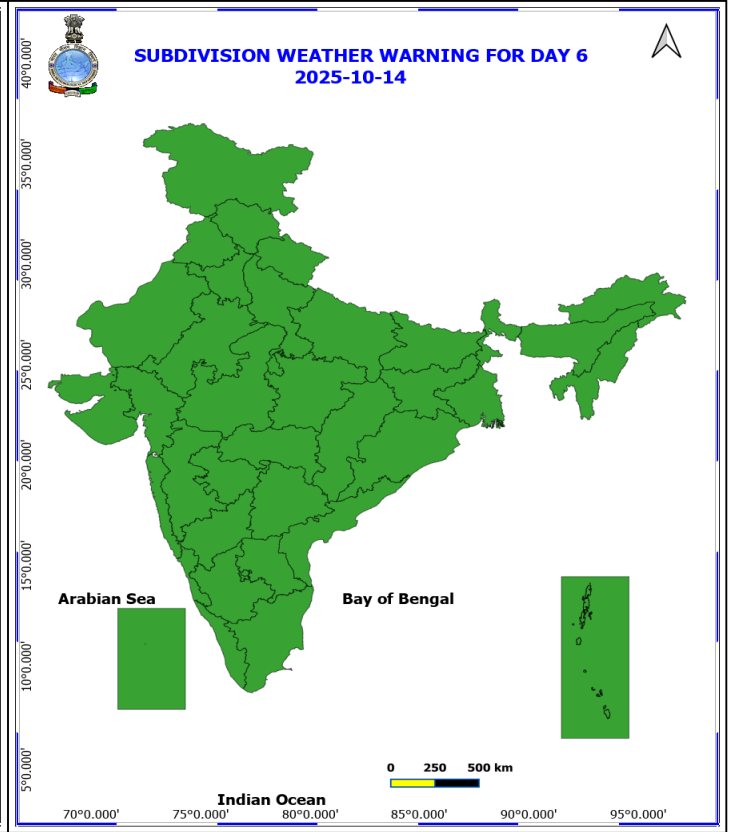
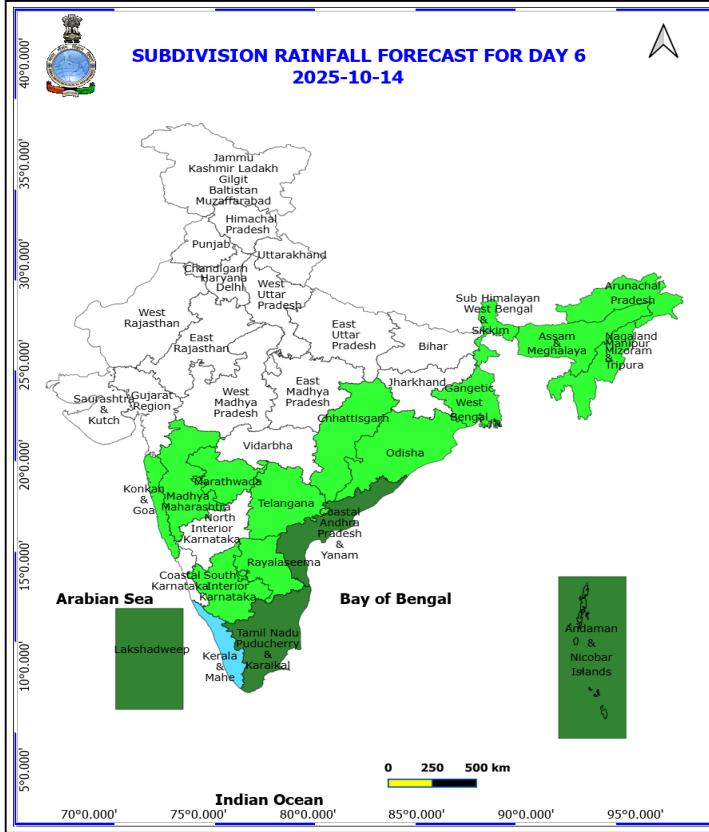


13 October (Day 5)

No Warning

No Fishermen Warning

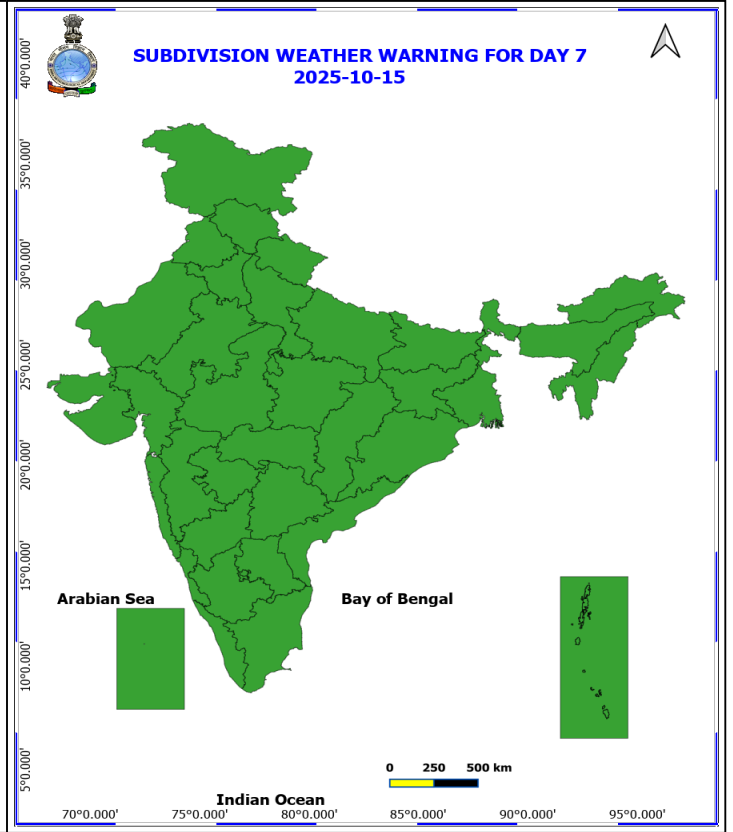
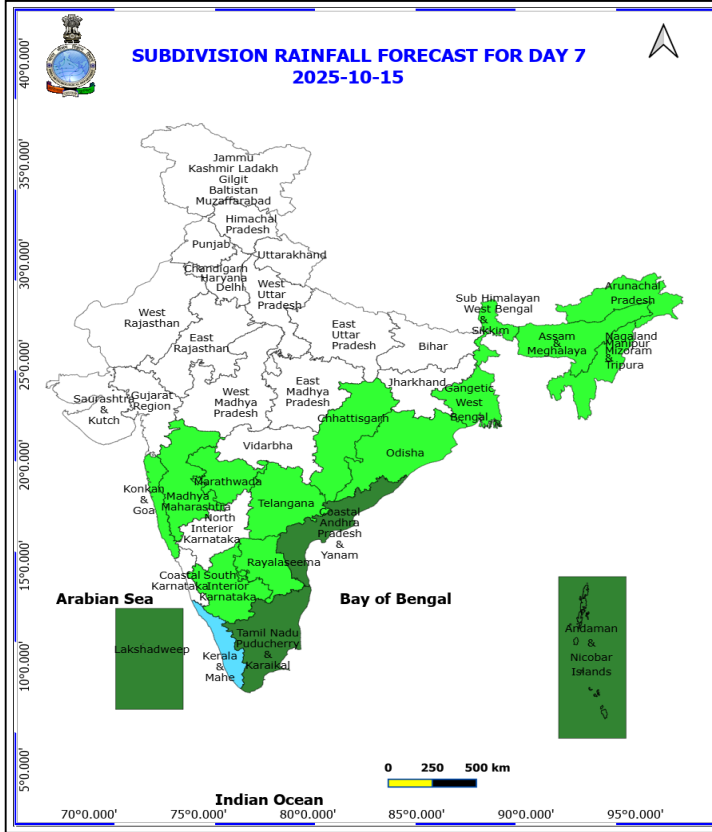
*Red color warning does not mean "Red Alert" Red color warning means "Take Action"
Forecast and warning for any day is valid from 0830 hours IST of day till 0830 hours IST of next day
For more details kindly visit <https://mausam.imd.gov.in> or contact 011-2434-4599
(Service to the nation since 1875)



14 October (Day 6)

No Warning
No Fishermen Warning

*Red color warning does not mean "Red Alert" Red color warning means "Take Action"
Forecast and warning for any day is valid from 0830 hours IST of day till 0830 hours IST of next day
For more details kindly visit <https://mausam.imd.gov.in> or contact 011-2434-4599
(Service to the nation since 1875)



15 October (Day 7)

No Warning
No Fishermen Warning

*Red color warning does not mean "Red Alert" Red color warning means "Take Action"
Forecast and warning for any day is valid from 0830 hours IST of day till 0830 hours IST of next day
For more details kindly visit <https://mausam.imd.gov.in> or contact 011-2434-4599
(Service to the nation since 1875)

Flash Flood Warnings

24 hours Outlook for the Flash Flood Risk (FFR) till 0530 IST of 10-10-2025 :

Low to Moderate flash flood risk likely over few watersheds & neighbourhoods of following Met Sub-divisions during next 24 hours.

Assam & Meghalaya - N.C Hills, East Khasi Hills, West Khasi Hills and Jaintia Hills districts.

Nagaland Mizoram Manipur Tripura (NMMT) -

Nagaland – Kohima, Mon, Phek, Tuensang, Wokha, and Zunheboto districts.

Mizoram – Aizawl, Champhai, Lunglei, and Saiha districts.

Manipur – Chandel, Senapati, Tamenglong, and Ukhrul districts.

Surface runoff/ Inundation may occur at some fully saturated soils & low-lying areas over Area of Concern (AoC) as shown in map due to expected rainfall occurrence in next 24 hours.

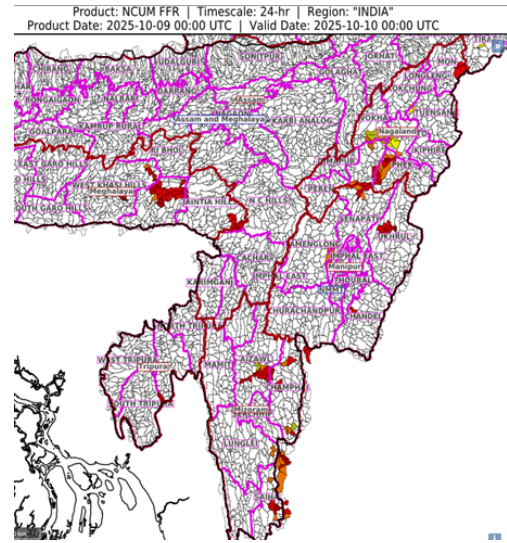




Table-1

7 Days Rainfall Forecast

S.No.	Subdivision	9- Oct	10- Oct	11- Oct	12- Oct	13- Oct	14- Oct	15- Oct
		Day 1	Day 2	Day 3	Day 4	Day 5	Day 6	Day 7
1	ANDAMAN & NICOBAR ISLANDS	FWS	FWS	FWS	FWS	SCT	SCT	SCT
2	ARUNACHAL PRADESH	SCT	SCT	SCT	ISOL	ISOL	ISOL	ISOL
3	ASSAM & MEHGHALAYA	SCT	SCT	SCT	ISOL	ISOL	ISOL	ISOL
4	N. M. M. & T.	SCT	SCT	SCT	ISOL	ISOL	ISOL	ISOL
5	S.H. WEST BENGAL & SIKKIM	ISOL	ISOL	ISOL	ISOL	ISOL	ISOL	ISOL
6	GANGETIC WEST BENGAL	SCT	SCT	SCT	ISOL	ISOL	ISOL	ISOL
7	ODISHA	SCT	SCT	SCT	ISOL	ISOL	ISOL	ISOL
8	JHARKHAND	ISOL	ISOL	DRY	DRY	DRY	DRY	DRY
9	BIHAR	ISOL	ISOL	DRY	DRY	DRY	DRY	DRY
10	EAST UTTAR PRADESH	ISOL	DRY	DRY	DRY	DRY	DRY	DRY
11	WEST UTTAR PRADESH	DRY	DRY	DRY	DRY	DRY	DRY	DRY
12	UTTARAKHAND	ISOL	ISOL	DRY	DRY	DRY	DRY	DRY
13	HARYANA, CHD & DELHI	DRY	DRY	DRY	DRY	DRY	DRY	DRY
14	PUNJAB	DRY	DRY	DRY	DRY	DRY	DRY	DRY
15	HIMACHAL PRADESH	ISOL	ISOL	DRY	DRY	DRY	DRY	DRY
16	JAMMU AND KASHMIR AND LADAKH	DRY	DRY	DRY	DRY	DRY	DRY	DRY
17	WEST RAJASTHAN	DRY	DRY	DRY	DRY	DRY	DRY	DRY
18	EAST RAJASTHAN	DRY	DRY	DRY	DRY	DRY	DRY	DRY
19	WEST MADHYA PRADESH	ISOL	DRY	DRY	DRY	DRY	DRY	DRY
20	EAST MADHYA PRADESH	ISOL	ISOL	DRY	DRY	DRY	DRY	DRY
21	GUJRAT REGION	ISOL	ISOL	ISOL	DRY	DRY	DRY	DRY
22	SAURASHTRA & KUTCH	ISOL	ISOL	DRY	DRY	DRY	DRY	DRY
23	KONKAN & GOA	SCT	ISOL	ISOL	ISOL	ISOL	ISOL	ISOL
24	MADHYA MAHARASHTRA	ISOL	ISOL	ISOL	ISOL	ISOL	ISOL	ISOL
25	MARATHWADA	ISOL	ISOL	ISOL	ISOL	ISOL	ISOL	ISOL
26	VIDARBHA	ISOL	ISOL	DRY	DRY	DRY	DRY	DRY
27	CHATTISGARH	ISOL	ISOL	ISOL	ISOL	ISOL	ISOL	ISOL
28	COASTAL ANDHRA PRADESH	SCT	SCT	ISOL	ISOL	SCT	SCT	SCT
29	TELANGANA	ISOL	ISOL	ISOL	ISOL	ISOL	ISOL	ISOL
30	RAYALASEEMA	SCT	SCT	ISOL	ISOL	ISOL	ISOL	ISOL
31	TAMILNADU & PUDUCHERRY	SCT	SCT	SCT	SCT	SCT	SCT	SCT
32	COSTAL KARNATAKA	SCT	SCT	SCT	ISOL	ISOL	DRY	DRY
33	NORTH INTERIOR KARNATAKA	ISOL	ISOL	DRY	DRY	DRY	DRY	DRY
34	SOUTH INTERIOR KARNATAKA	FWS	SCT	SCT	ISOL	ISOL	ISOL	ISOL
35	KERALA	WS	FWS	FWS	FWS	FWS	FWS	FWS
36	LAKSHDWEEP	FWS	FWS	SCT	SCT	SCT	SCT	SCT

Legend	Category	%Stations
WS	Widespread/Most Places	76-100
FWS	Fairly Widespread/Many Places	51-75
SCT	Scattered/ A Few Places	26-50
ISOL	Isolated Places	1-25
DRY	No Rain	0

*Red color warning does not mean "Red Alert" Red color warning means "Take Action"
Forecast and warning for any day is valid from 0830 hours IST of day till 0830 hours IST of next day
For more details kindly visit <https://mausam.imd.gov.in> or contact 011-2434-4599

(Service to the nation since 1875)

Fig. 1: Maximum Temperatures Dated 2025-10-08

Fig. 2: Departure of Maximum Temp. Dated 2025-10-08

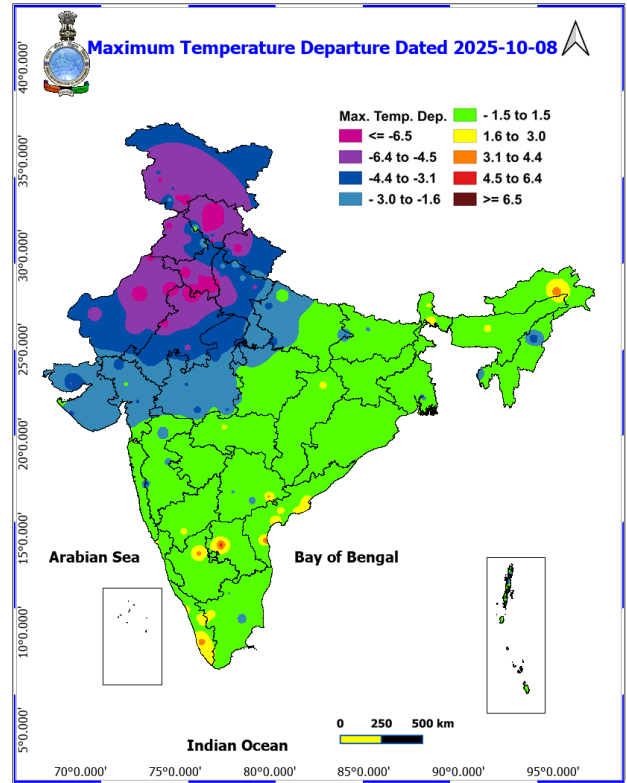
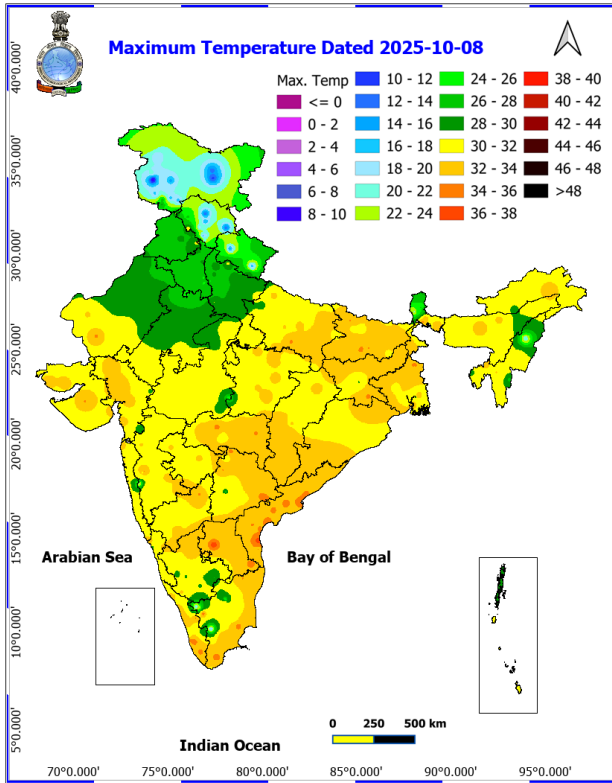
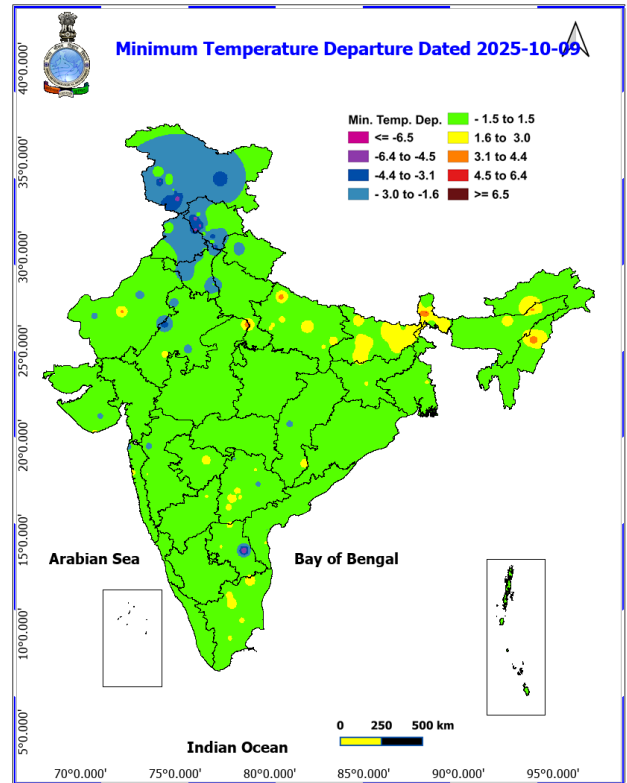
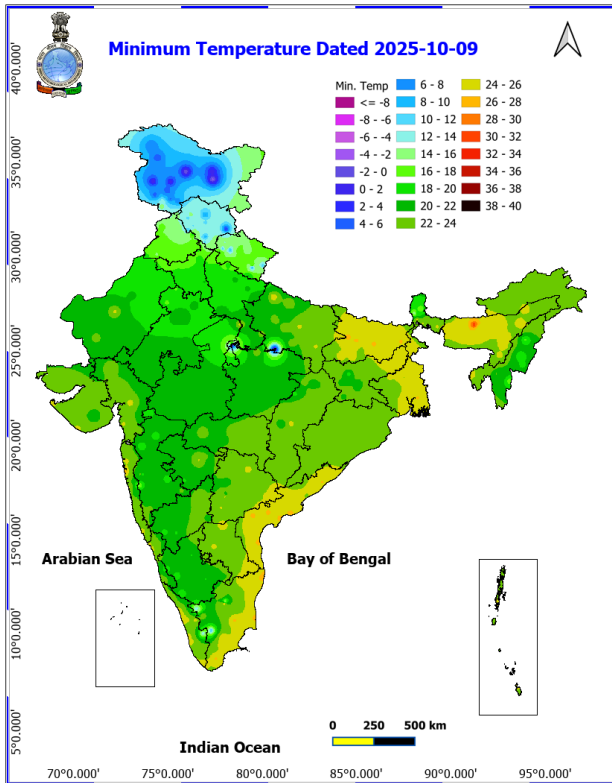
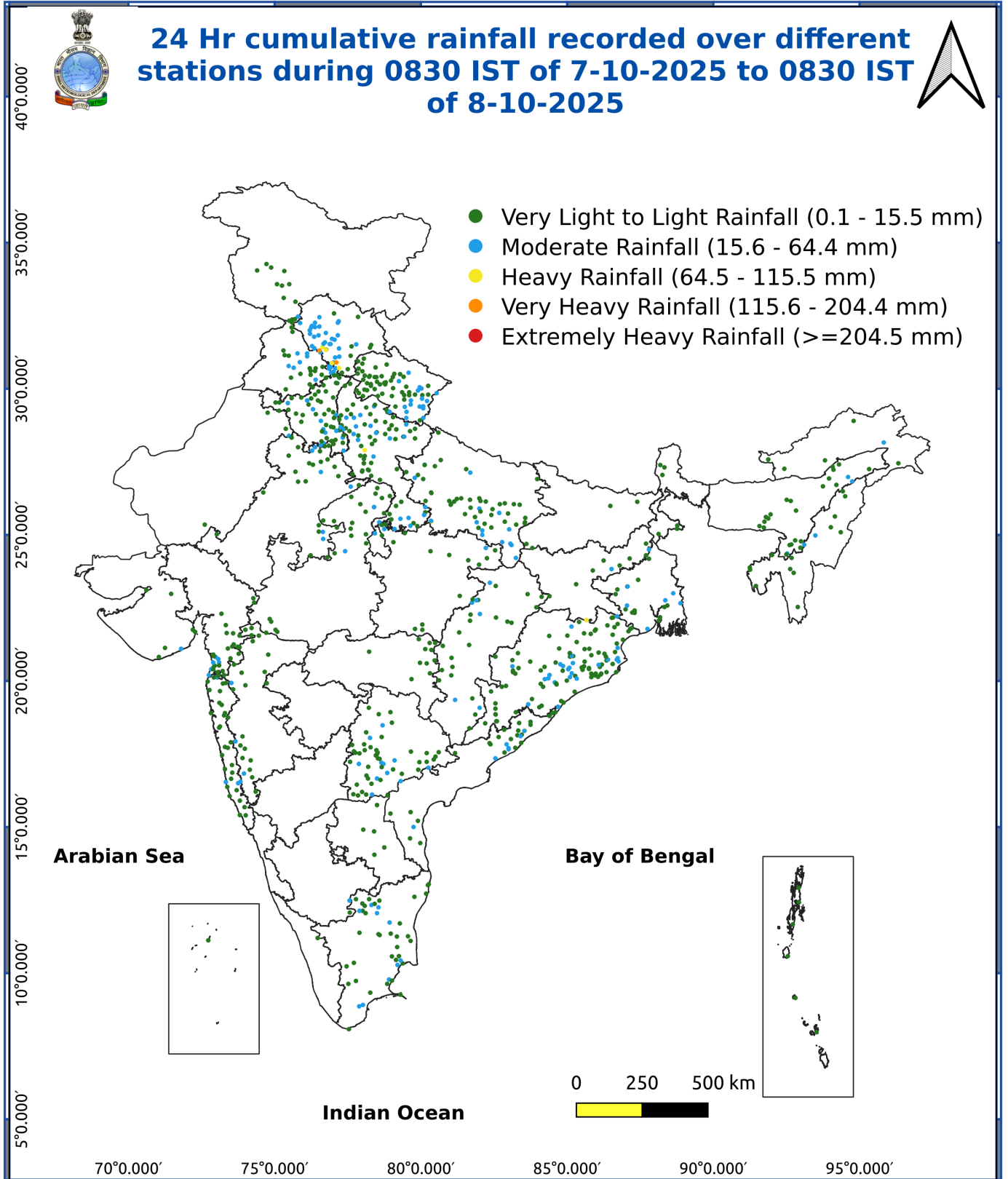


Fig. 3: Minimum Temperatures Dated 2025-10-08

Fig. 4: Departure of Minimum Temp. Dated 2025-10-08





Agromet advisories for various parts of the country

Agromet advisories for likely impact of Heavy Rainfall

- In **Tamil Nadu**, harvest matured crops of rice and groundnut and shift the harvested produce to safer places. Provide adequate drainage facilities in fields of rice, cotton, turmeric and vegetables and plantations of coconut and banana to avoid water stagnation.
- In **Kerala**, make provision to drain out excess water from fields of rice and plantations of banana, coconut, arecanut and black pepper.
- In **South Interior Karnataka**, harvest matured crops of groundnut and maize and store the produce in safer places. Shift the harvested produce of pepper, cardamom, turmeric and coffee to dry, covered and ventilated areas or cover with tarpaulins in the fields. Ensure proper drainage in fields of rice, maize, finger millet, pigeon pea, soybean, groundnut and vegetables and plantations of banana, black pepper, coconut and arecanut to avoid waterlogging.
- In **Coastal Andhra Pradesh**, harvest the matured fruits and vegetables. Provide adequate drainage facilities in fields of rice, maize, pigeon pea, black gram, green gram, groundnut, turmeric, vegetables and plantations of coconut, arecanut, banana, coffee and black pepper.
- In **Rayalseema**, harvest matured fruits and vegetables and store in safer places. Make provision to drain out excess water from fields of rice, groundnut, cotton, turmeric and vegetables.
- In **Coastal Karnataka**, make necessary arrangements to drain out excess water from fields of rice and plantations of coconut and arecanut.
- In **Assam**, harvest all the matured vegetables (tomato, cucumber, brinjal etc). Ensure proper drainage of excess water from fields of *Sali* rice, black gram, green gram and vegetables.
- In **Meghalaya**, make necessary arrangements to drain out excess water from fields of standing crops, vegetables and fruit orchards.
- In **Odisha**, ensure proper drainage in fields of rice, maize, green gram, black gram, groundnut, cotton and vegetables to prevent waterlogging.
- In **Himachal Pradesh**, drain out excess water from fields of rice, maize, kidney beans, finger millet, vegetables and fruit orchards.
- In **Punjab**, drain out excess water from fields of rice, maize, cotton and vegetables.
- In **Uttar Pradesh**, drain out excess water from fields of rice, maize, green gram, sugarcane, groundnut and vegetables.

Livestock / Fishery

- Keep the animals inside the shed during heavy rainfall and provide them balanced feed.
- Store feed and fodder in a safe place to prevent spoilage.
- Construct an outlet with proper netting around the ponds to drain out excess water, thereby preventing fish from escaping in case of overflow.

Agromet advisories for likely impact of Thunderstorm / Gusty Winds / Squally Winds

- Provide mechanical support to horticultural crops and staking or support to vegetables and young fruit plants / fruit-bearing plants to avoid lodging due to strong winds.

Legends & abbreviations:

Region wise classification of meteorological Sub-Divisions:

- **Northwest India:** Western Himalayan Region (Jammu-Kashmir-Ladakh-Gilgit-Baltistan-Muzaffarabad, Himachal Pradesh and Uttarakhand); Punjab, Haryana-Chandigarh-Delhi; West Uttar Pradesh, East Uttar Pradesh, West Rajasthan and East Rajasthan.
- **Central India:** West Madhya Pradesh, East Madhya Pradesh, Vidarbha and Chhattisgarh.
- **East India:** Bihar, Jharkhand, Sub-Himalayan West Bengal & Sikkim; Gangetic West Bengal, Odisha and Andaman & Nicobar Islands.
- **Northeast India:** Arunachal Pradesh, Assam & Meghalaya and Nagaland, Manipur, Mizoram & Tripura.



- **West India:** Gujarat Region, Saurashtra & Kutch, Konkan & Goa, Madhya Maharashtra and Marathawada.
- **South India:** Coastal Andhra Pradesh & Yanam, Telangana, Rayalaseema, Coastal Karnataka, North Interior Karnataka, South Interior Karnataka, Kerala & Mahe, Tamil Nadu, Puducherry & Karaikal and Lakshadweep.

LEGENDS

- 1 अंडमान और निकोबार द्वीप समुह
- 2 अरुणाचल प्रदेश
- 3 असम और मेघालय
- 4 नागालैंड मनीपुर मीजोरम और त्रिपुरा
- 5 उप हिमालय पश्चिम बंगाल एवं सिक्किम
- 6 पश्चिम बंगाल
- 7 ओडिसा
- 8 झारखंड
- 9 बिहार
- 10 पूर्वी उत्तर प्रदेश
- 11 पश्चिम उत्तर प्रदेश
- 12 उत्तराखंड
- 13 हरियाणा चंडिगढ़ एवं दिल्ली
- 14 पंजाब
- 15 हिमाचल प्रदेश
- 16 जम्मू एवं कश्मीर एवं लद्दाख
- 17 पश्चिम राजस्थान
- 18 पूर्वी राजस्थान
- 19 पश्चिम मध्य प्रदेश
- 20 पूर्वी मध्य प्रदेश
- 21 गुजरात क्षेत्र
- 22 सौराष्ट्र एवं कच्छ
- 23 कोंकण एवं गोवा
- 24 मध्य महाराष्ट्र
- 25 मराठावाडा
- 26 विदर्भ
- 27 छत्तीसगढ़
- 28 तटीय आंध्र प्रदेश एवं यनम
- 29 तेलंगाना
- 30 रायलसीमा
- 31 तमिलनाडु, पुदुचेरी एवं कराईकल
- 32 तटिय कर्नाटक
- 33 आंतरिक उत्तरी कर्नाटक
- 34 आंतरिक दक्षिणी कर्नाटक
- 35 केरल एवं माहे
- 36 लक्षद्वीप



1. Andaman & Nicobar Islands
2. Arunachal Pradesh
3. Assam & Meghalaya
4. Nagaland, Manipur, Mizoram & Tripura
5. Sub-Himalayan West Bengal & Sikkim
6. Gangetic West Bengal
7. Orissa
8. Jharkhand
9. Bihar
10. East Uttar Pradesh
11. West Uttar Pradesh
12. Uttarakhand
13. Haryana, Chd & Delhi
14. Punjab
15. Himachal Pradesh
16. Jammu & Kashmir and Ladakh
17. West Rajasthan
18. East Rajasthan
19. West Madhya Pradesh
20. East Madhya Pradesh
21. Gujarat
22. Saurashtra
23. Konkan & Goa
24. Madhya Maharashtra
25. Marathawada
26. Vidharbha
27. Chhattisgarh
28. Coastal Andhra Pradesh & Yanam
29. Telangana
30. Rayalaseema
31. Tamilnadu, Puducherry & Karaikal
32. Coastal Karnataka
33. North Interior Karnataka
34. South Interior Karnataka
35. Kerala & Mahe
36. Lakshadweep

SPATIAL DISTRIBUTION (% of Stations reporting)

% Stations	Category	% Stations	Category
76-100	Widespread (WS/ Most Places)	26-50	Scattered (SCT/ A Few Places)
51-75	Fairly Widespread (FWS/ Many Places)	1-25	Isolated (ISOL)

Subdivision Colour

- NO WARNING
- WATCH (BE UPDATED)
- ALERT (BE PREPARED TO TAKE ACTION)
- WARNING (TAKE ACTION)

Probabilistic Forecast

Terms	Probability of Occurrence (%)
Unlikely	< 25
Likely	25 - 50
Very Likely	50 - 75
Most Likely	> 75

- | | | | |
|--------------------------|-----------------|----------------------|--------------------|
| Heavy Rain | Very Heavy Rain | Extremely Heavy Rain | Heavy Snow |
| Thunderstorm & Lightning | Hailstorm | Dust Storm | Dust Raising Winds |
| Strong surface winds | Heat Wave | Hot Day | Warm Night |
| Cold Wave | Cold Day | Ground Frost | Fog |
| Hot & Humid | | | |

*Red color warning does not mean "Red Alert" Red color warning means "Take Action"

Forecast and warning for any day is valid from 0830 hours IST of day till 0830 hours IST of next day

For more details kindly visit <https://mausam.imd.gov.in> or contact 011-2434-4599

(Service to the nation since 1875)

LEGENDS

WARNING

WARNING (TAKE ACTION)
ALERT (BE PREPARED)
WATCH (BE UPDATED)
NO WARNING (NO ACTION)

Probabilistic Forecast

Terms	Probability of Occurrence (%)
Unlikely	< 25
Likely	25 - 50
Very Likely	50 - 75
Most Likely	> 75



Heavy: 64.5 to 115.5 mm/cm *
Very Heavy: 115.6 to 204.4 mm/cm*
Extremely Heavy: > 204.4 mm/cm *



When maximum temperature of a station reaches $\geq 40^{\circ}\text{C}$ for plains and $\geq 30^{\circ}\text{C}$ for hilly regions
(a) Based on Departure from normal

Heat Wave: Maximum Temperature Departure from normal 4.5°C to 6.4°C .
Severe Heat Wave: Maximum Temperature Departure from normal $\geq 6.5^{\circ}\text{C}$

(b). Based on Actual maximum temperature

Heat Wave: When actual maximum temperature $\geq 45^{\circ}\text{C}$.
Severe Heat Wave: When actual maximum temperature $\geq 47^{\circ}\text{C}$

(c). Criteria for heat wave for coastal stations

When maximum temperature departure is $> 4.5^{\circ}\text{C}$ from normal. Heat Wave may be described provided maximum temperature $\geq 37^{\circ}\text{C}$



When maximum temperature remains 40°C

Warm Night: When minimum temperature departure 4.5°C to 6.4°C .
Severe Warm Night: When minimum temperature departure $> 6.4^{\circ}\text{C}$.



When minimum temperature of a station $\leq 10^{\circ}\text{C}$ for plains and $\leq 0^{\circ}\text{C}$ for hilly regions.

(a). Based on departure

Cold Wave: Minimum Temperature Departure from normal -4.5°C to -6.4°C .
Severe Cold Wave: Minimum Temperature Departure from normal $\leq -6.5^{\circ}\text{C}$

(b) Based on actual Minimum Temperature (for Plains only)

Cold Wave : When Minimum Temperature is $\leq 4.0^{\circ}\text{C}$
Severe Cold Wave: When Minimum Temperature is $\leq 2.0^{\circ}\text{C}$

(c) For Coastal Stations

When Minimum Temperature departure is $\leq -4.5^{\circ}\text{C}$ & actual Minimum Temperature is $\leq 15^{\circ}\text{C}$



When minimum temperature of a station $\leq 10^{\circ}\text{C}$ for plains and $\leq 0^{\circ}\text{C}$ for hilly regions
Based on departure

Cold Day: Maximum Temperature Departure from normal -4.5°C to -6.4°C .
Severe Cold Day: Maximum Temperature Departure from normal $\leq -6.5^{\circ}\text{C}$



Phenomenon of small droplets suspended in air and the horizontal visibility $< 1\text{km}$

Moderate Fog: When the visibility between 500-200 metres
Dense Fog: when the visibility between 50- 200 metres
Very Dense Fog: when the visibility < 50 metres



Sudden electrical discharges manifested by a flash of light (Lightning) and a sharp rumbling sound (thunder)



An ensemble of particles of dust or sand energetically lifted to great heights by a strong and turbulent wind.



Ice deposits on ground

Air temperature $\leq 4^{\circ}\text{C}$ (over Plains)



A strong wind that rises suddenly, lasts for atleast 1 minute.

Moderate: Wind speed 52-61 kmph
Severe: Wind speed 62-87 kmph
Very Severe: Wind speed > 87 kmph



Effect of various waves in the sea over specific area

Rough to very rough: Wind speed 41-62 kmph (22-33 knots) & Wave height 2.5-6 metre
High to very high: Wind speed 63-117 kmph (34-63 knots) & Wave height 6-14 metre
Phenomenal: Wind speed > 117 kmph (> 63 knots) & Wave height > 14 metre



Cyclonic Storm: Wind speed 62-87 kmph (34-47 knots)
Severe Cyclonic Storm: Wind speed 88-117 kmph (48-63 knots)
Very Severe Cyclonic Storm: Wind speed 118-165 kmph (64 - 89 knots)
Extremely Severe Cyclonic Storm: Wind speed 166-220 kmph (90 -119 knots)
Super Cyclone Storm: Wind speed > 220 kmph (> 119 knots)

*Red color warning does not mean "Red Alert" Red color warning means "Take Action"

Forecast and warning for any day is valid from 0830 hours IST of day till 0830 hours IST of next day

For more details kindly visit <https://mausam.imd.gov.in> or contact 011-2434-4599

(Service to the nation since 1875)