

ALL INDIA WEATHER SUMMARY AND FORECAST BULLETIN

Significant Weather Features

Weather warning:

South Peninsular India:

- Light to moderate rainfall/thunderstorm at most/many places with isolated **heavy rainfall** over Tamil Nadu & Puducherry, Kerala & Mahe, Coastal & South Interior Karnataka on 27th & 28th; North Interior Karnataka on 27th; Coastal Andhra Pradesh & Yanam, Telangana during 27th-30th; Rayalaseema during 27th-29th October with isolated **very heavy rainfall** over Rayalaseema, Tamil Nadu, on 27th & 28th, Kerala & Mahe, Coastal Karnataka on 27th, Coastal Andhra Pradesh & Yanam during 27th-29th and Telangana on 28th & 29th October.
- **Extremely heavy rainfall (≥ 21 cm)** likely at isolated places over Coastal Andhra Pradesh & Yanam during 27th-29th and Telangana on 28th October.
- Thunderstorm with lightning & gusty winds (speed reaching 30-40 kmph) likely over Tamil Nadu on 27th -28th October. Thunderstorm with lightning likely over the region during next 4-5 days.

East & Central India:

- Light to moderate rain/thunderstorm at some/isolated places with isolated **heavy rainfall** over West Madhya Pradesh on 27th-28th; East Madhya Pradesh on 29th & 30th; Vidarbha during 28th -30th; Chhattisgarh and Odisha during 27th-30th; Bihar and Jharkhand during 29th-31st, Sub-Himalayan West Bengal & Sikkim on 30th & 31st; Gangetic West Bengal during 28th-31st October with isolated **very heavy rainfall** over Odisha during 27th-29th; Vidarbha on 28th and Chhattisgarh on 28th & 29th October.
- **Extremely heavy rainfall (≥ 21 cm)** likely at isolated places over south Odisha on 28th & 29th; Chhattisgarh on 28th October.
- Thunderstorm with lightning and gusty winds (speed reaching 30-40 kmph) likely over West Madhya Pradesh, Vidarbha on 27th-28th; Jharkhand during 29th -31st October.
- Thunderstorm with lightning and gusty winds (speed reaching 40-50 kmph) likely over West Madhya Pradesh on 29th & 30th; Chhattisgarh on 28th & 29th; Andaman & Nicobar Islands on 27th -28th.

West India:

- Light to moderate rain/thunderstorm at many/some places with isolated **heavy rainfall** over south Konkan & Goa on 27th; Gujarat Region during 27th-29th; Saurashtra & Kutch during 27th-30th October with isolated **very heavy rainfall** over Gujarat State on 27th October.
- Thunderstorm with lightning and gusty winds (speed reaching 30-40 kmph) likely over Gujarat State during next 4 days.
- Thunderstorm with lightning and gusty winds (speed reaching 40-50 kmph) likely over Konkan & Goa during next 4 days.

Northeast India:

- Light to moderate rain/thunderstorm at many/some places with isolated **heavy rainfall** over Arunachal Pradesh, Assam & Meghalaya and Nagaland, Manipur, Mizoram & Tripura during 30th October-02nd November.
- Thunderstorm with lightning and gusty winds (speed reaching 40-50 kmph) likely over Arunachal Pradesh and Assam & Meghalaya on 29th & 30th October.

Northwest India:

- Light to moderate rain/thunderstorm at isolated places with isolated **heavy rainfall** likely over East Rajasthan on 27th & 28th October with isolated **very heavy rainfall** over East Rajasthan on 27th October.
- Thunderstorm with lightning likely over West Uttar Pradesh on 27th; East Uttar Pradesh on 30th & 31st; West Rajasthan on 27th & 28th and East Rajasthan during next 4 days.

***Red color warning does not mean "Red Alert" Red color warning means "Take Action"**

Forecast and warning for any day is valid from 0830 hours IST of day till 0830 hours IST of next day

For more details kindly visit <https://mausam.imd.gov.in> or contact 011-2434-4599

(Service to the nation since 1875)

Main Weather Observations:

❖ **Rainfall distribution** (from 0830 hours IST of yesterday to 0530 hours IST of today): **at most places** over Konkan & Goa , Madhya Maharashtra , Marathwada, Andaman & Nicobar Islands, Gujarat Region, Lakshadweep , Kerala & Mahe, North Interior Karnataka and Coastal Karnataka; **at many places** over Nagaland, Manipur, Mizoram & Tripura, Odisha, East Madhya Pradesh, West Uttar Pradesh, East Uttar Pradesh, Gangetic West Bengal, Saurashtra & Kutch, East Rajasthan, South Interior Karnataka, Vidarbha, Tamilnadu Puducherry & Karaikal, Rayalaseema, Telangana, Coastal Andhra Pradesh & Yanam, Chhattisgarh and West Madhya Pradesh; **Dry** over rest of the country.

❖ **Significant rainfall recorded(in cm)** (from 0830 hours IST of yesterday to 0530 hours IST of today): **Konkan & Goa:** Panjim (dist North Goa) 11, Mumbai (colaba) (dist) 4, Mumbai (santacruz) AP (dist) 2; **Andaman & Nicobar Islands:** Port Blair (dist South Andaman), Car Nicobar (vecx) (dist Nicobar) 4 Each; **Gangetic West Bengal:** Kolkata-alipur (dist Kolkata) 4; **Gujarat Region:** Surat (dist Surat) 4, Baroda AP (dist Vadodara) 2; **Lakshadweep :** Amini Divi (dist Lakshadweep) 4; **Saurashtra & Kutch:** Veraval (dist Gir Somnath) 3; **Kerala & Mahe:** Cannanore (kannur) (dist Kannur) 3; **East Rajasthan:** Udaipur (dabok) AP (dist Udaipur) 2.

❖ **Heavy Rainfall observed** (from 0830 hours IST of yesterday to 0530 hours IST of today):**Heavy rain** at isolated places over Konkan & Goa

❖ **Minimum Temperature Departures (as on 26-10-2025):** **markedly above normal(> 5.1°C)** at few places over Bihar and Gujarat Region; at isolated places over Assam & Meghalaya, East Uttar Pradesh, Madhya Maharashtra, Marathwada and Chhattisgarh. **appreciably above normal(3.1°C to 5.0°C)** at many places over Jharkhand; at few places over Sub Himalayan West Bengal & Sikkim, Saurashtra & Kutch and Vidarbha; at isolated places over Gangetic West Bengal, Odisha, West Uttar Pradesh, Himachal Pradesh and East Rajasthan. **above normal(1.6°C to 3.0°C)** at many places over Nagaland, Manipur, Mizoram & Tripura, Punjab and Telangana; at few places over Haryana-Chandigarh-Delhi, West Rajasthan, East Madhya Pradesh, North Interior Karnataka and Lakshadweep; at isolated places over Andaman & Nicobar Islands, Uttarakhand, Jammu-KashmirLadakh-Gilgit-Baltistan-Muzaffarabad, Konkan & Goa, Coastal Andhra Pradesh & Yanam, Rayalaseema and Tamil Nadu, Puducherry & Karaikal. **near normal(-1.5°C to 1.5°C)** at many places over West Madhya Pradesh; at most places over Arunachal Pradesh, Coastal Karnataka, South Interior Karnataka and Kerala & Mahe. **The lowest minimum temperature** of 12.7°C was reported at NAGAUR (RAJASTHAN) over the Plains of India.

❖ **Maximum Temperature Departures (as on 26-10-2025):** **markedly above normal(> 5.1°C)** at isolated places over Himachal Pradesh. **appreciably above normal(3.1°C to 5.0°C)** at isolated places over Assam & Meghalaya, Sub Himalayan West Bengal & Sikkim, Gangetic West Bengal, Odisha, East Uttar Pradesh, Jammu-KashmirLadakh-Gilgit-Baltistan-Muzaffarabad, Coastal Andhra Pradesh & Yanam, Rayalaseema, Tamil Nadu, Puducherry & Karaikal, South Interior Karnataka and Kerala & Mahe. **above normal(1.6°C to 3.0°C)** at many places over Nagaland, Manipur, Mizoram & Tripura and Bihar; at most places over Chhattisgarh; at few places over Lakshadweep; at isolated places over Jharkhand, Uttarakhand, Haryana-Chandigarh-Delhi, Punjab, Vidarbha and Telangana. **near normal(-1.5°C to 1.5°C)** at many places over West Uttar Pradesh and North Interior Karnataka; at most places over West Rajasthan and Marathwada; at few places over Andaman & Nicobar Islands, Arunachal Pradesh, Saurashtra & Kutch, Konkan & Goa and Madhya Maharashtra; at isolated places over East Rajasthan. **The highest maximum temperature** of 36.0°C was reported at BARMER (RAJASTHAN), and MADURAI (A) (TAMIL NADU).

***Red color warning does not mean "Red Alert" Red color warning means "Take Action"**

Forecast and warning for any day is valid from 0830 hours IST of day till 0830 hours IST of next day

For more details kindly visit <https://mausam.imd.gov.in> or contact 011-2434-4599

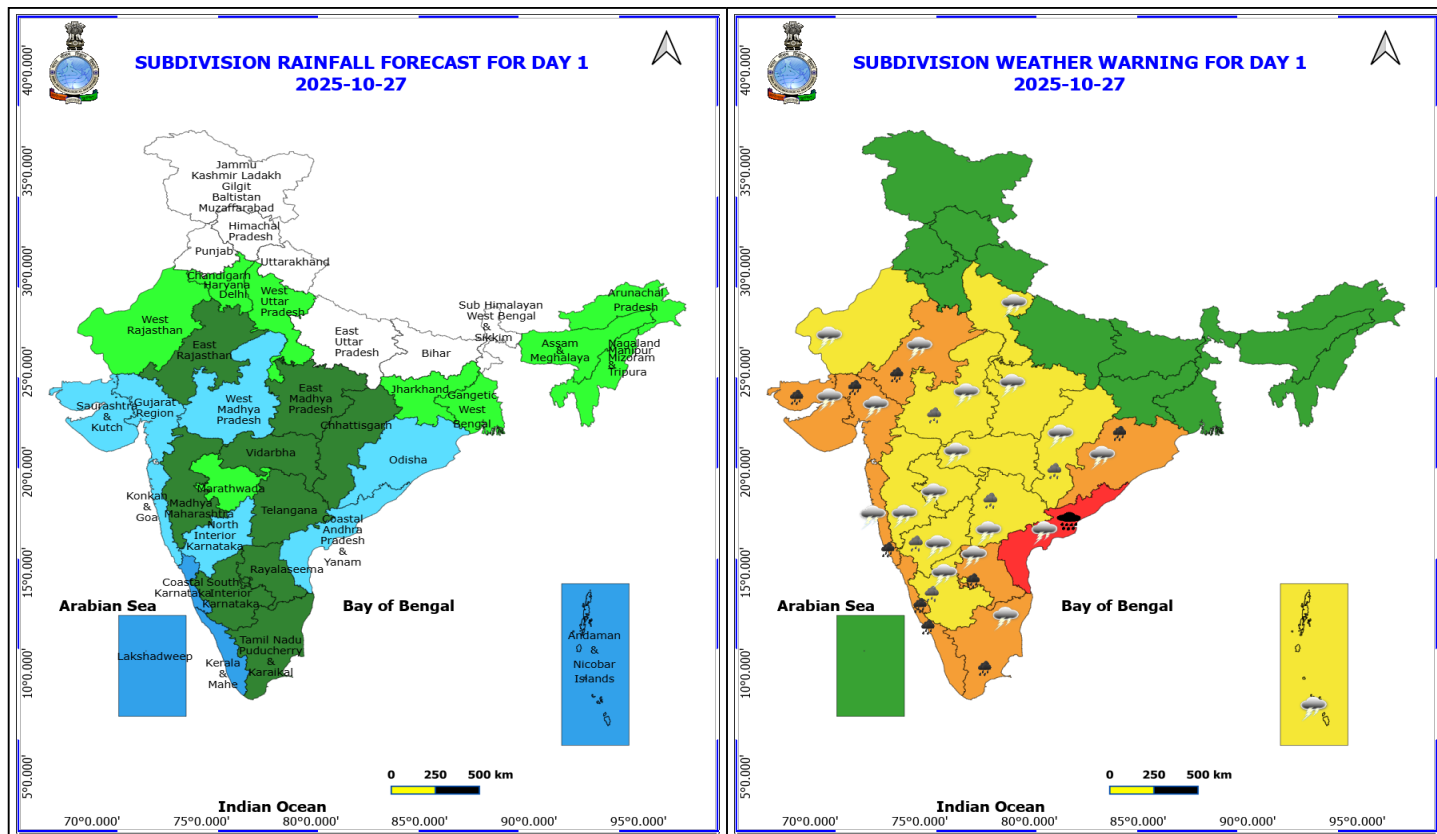
(Service to the nation since 1875)

Meteorological Analysis (Based on 0530 hours IST)

- The **Deep Depression** over southeast Bay of Bengal intensify into Cyclonic Storm "Montha" [Pronunciation: Mon-Tha] over Southwest & adjoining southeast Bay of Bengal at 2330 hrs IST of 26th October 2025. The Cyclonic Storm "Montha" [Pronunciation : Mon-Tha] over Southwest & adjoining southeast Bay of Bengal moved northwestwards with a speed of 15 kmph during past 6 hours and lay centered at 0530 hrs IST of today, the 27th October 2025, over Southwest & adjoining areas of Westcentral and southeast Bay of Bengal, near latitude 12.2°N & longitude 85.3°E, about 560 km east-southeast of Chennai (Tamil Nadu), 620 km south-southeast of Kakinada (Andhra Pradesh), 650 km south-southeast of Visakhapatnam (Andhra Pradesh), 790 km south of Gopalpur (Odisha) and 810 km west of Port Blair (Andaman & Nicobar Islands). It is likely to continue to move northwestwards over southwest & adjoining westcentral Bay of Bengal during next 12 hours, then north-northwestwards and intensify into a severe cyclonic storm by morning of 28th October. Continuing to move further north-northwestwards, it is very likely to cross Andhra Pradesh coast between Machilipatnam and Kalingapatnam around Kakinada during evening/night of 28th October as a severe cyclonic storm with a maximum sustained wind speed of 90-100 kmph gusting to 110 kmph.
- The **Depression** over eastcentral Arabian Sea moved north-northeastwards with a speed of 20 kmph during past 6 hours and lay centered at 0530 hrs IST of today, the 27th October 2025, over the same region, near latitude 16.1°N & longitude 66.8°E, about 720 km west-southwest of Mumbai (Maharashtra), 750 km west of Panjim (Goa), 850 km northwest of Aminidivi (Lakshadweep) and about 940 km west-northwest of Mangalore (Karnataka). It is likely to move nearly northeastwards across Eastcentral Arabian Sea during next 24 hours.
- The **trough** from the upper air cyclonic circulation associated with **Depression** over eastcentral Arabian sea to west Madhya Pradesh across northeast Arabian sea and south Gujarat region between 1.5 & 3.1 km above mean sea level persists.
- The **Western Disturbance** as a trough in middle tropospheric westerlies with its axis at 5.8 km above mean sea level roughly along Long. 61°E to the north of Lat. 28°N persists.

Weather Outlook for subsequent 3 days

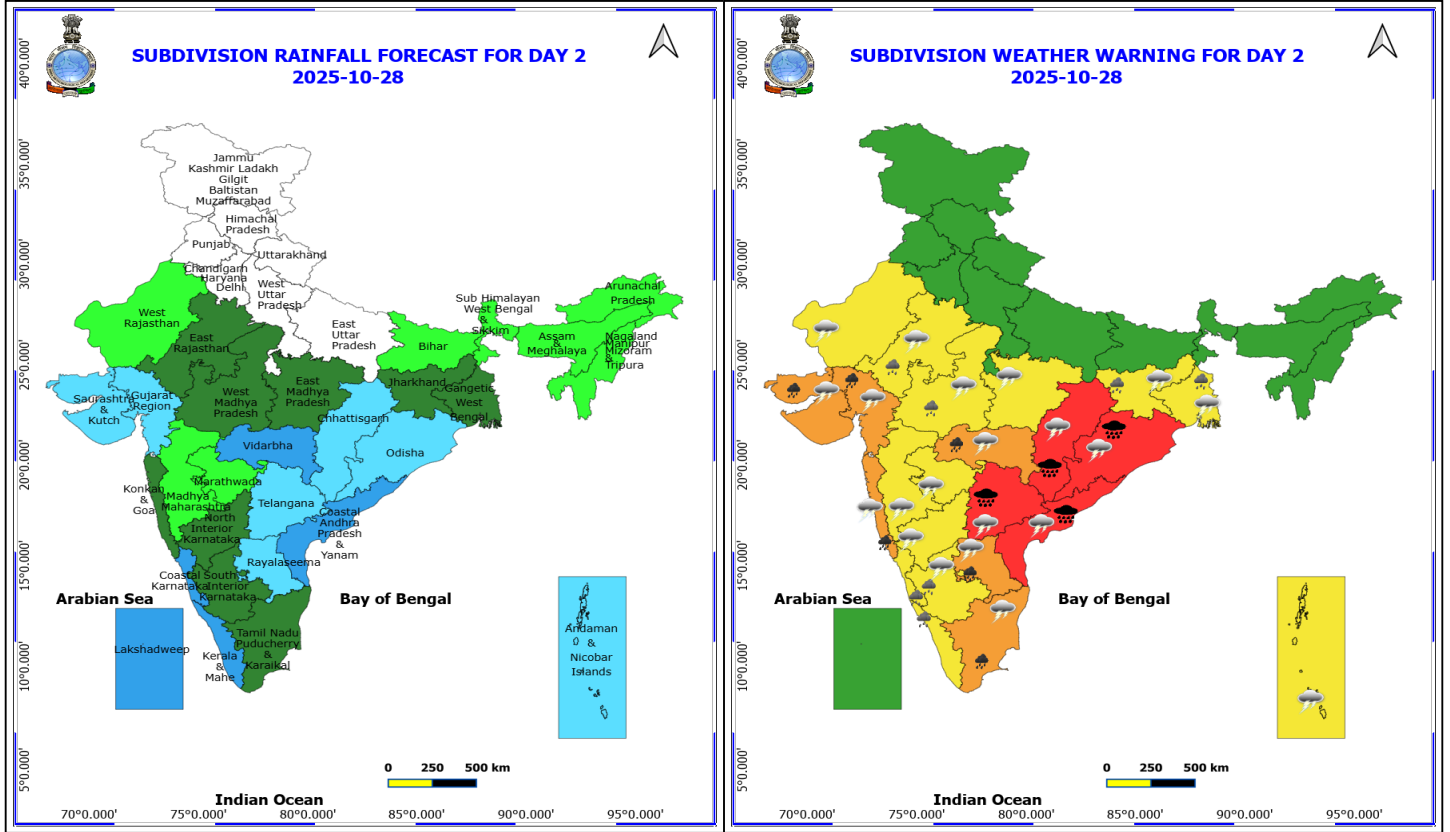
- Scattered to Fairly widespread rainfall activity likely over the southern part of India.
- Isolated to scattered rainfall activity likely over Northeast and East India.



27 October (Day 1)

- ❖ **Heavy to Very Heavy Rainfall with isolated Extremely Heavy Rainfall** very likely at isolated places over Coastal Andhra Pradesh.
 - ❖ **Heavy to Very Heavy Rainfall** very likely at isolated places over Coastal Karnataka, East Rajasthan, Gujarat State, Kerala & Mahe, Konkan & Goa, Odisha, Rayalaseema and Tamil Nadu Puducherry & Karaikal.
 - ❖ **Heavy Rainfall** very likely at isolated places over Chhattisgarh, Interior Karnataka, Telangana and West Madhya Pradesh.
 - ❖ **Thunderstorm accompanied with lightning & gusty winds(40-50kmph)** very likely at isolated places over Andaman & Nicobar Islands and Konkan & Goa.
 - ❖ **Thunderstorm accompanied with lightning & gusty winds(30-40kmph)** very likely at isolated places over Gujarat State, Odisha, Tamil Nadu Puducherry & Karaikal and West Madhya Pradesh.
 - ❖ **Thunderstorm accompanied with Lightning** very likely at isolated places over Andhra Pradesh, Chhattisgarh, Interior Karnataka, Madhya Pradesh, Maharashtra, Rajasthan, Telangana and West Uttar Pradesh.
- **Squally weather with, along & off south Odisha** wind speed 35 kmph to 45 kmph gusting to 55 kmph likely to along & off Tamil Nadu - Puducherry coast.
 - **Squally weather with wind speed 45 kmph to 55 kmph gusting to 65 kmph** likely to prevail over along and off south Odisha coast, along & off Andhra Pradesh & Yanam (of Puducherry) coasts.
 - **Gale wind speed reaching 80-90 kmph gusting to 100 kmph** over westcentral and adjoining northwest Bay of Bengal.

***Red color warning does not mean "Red Alert" Red color warning means "Take Action"**
 Forecast and warning for any day is valid from 0830 hours IST of day till 0830 hours IST of next day
 For more details kindly visit <https://mausam.imd.gov.in> or contact 011-2434-4599
 (Service to the nation since 1875)



28 October (Day 2)

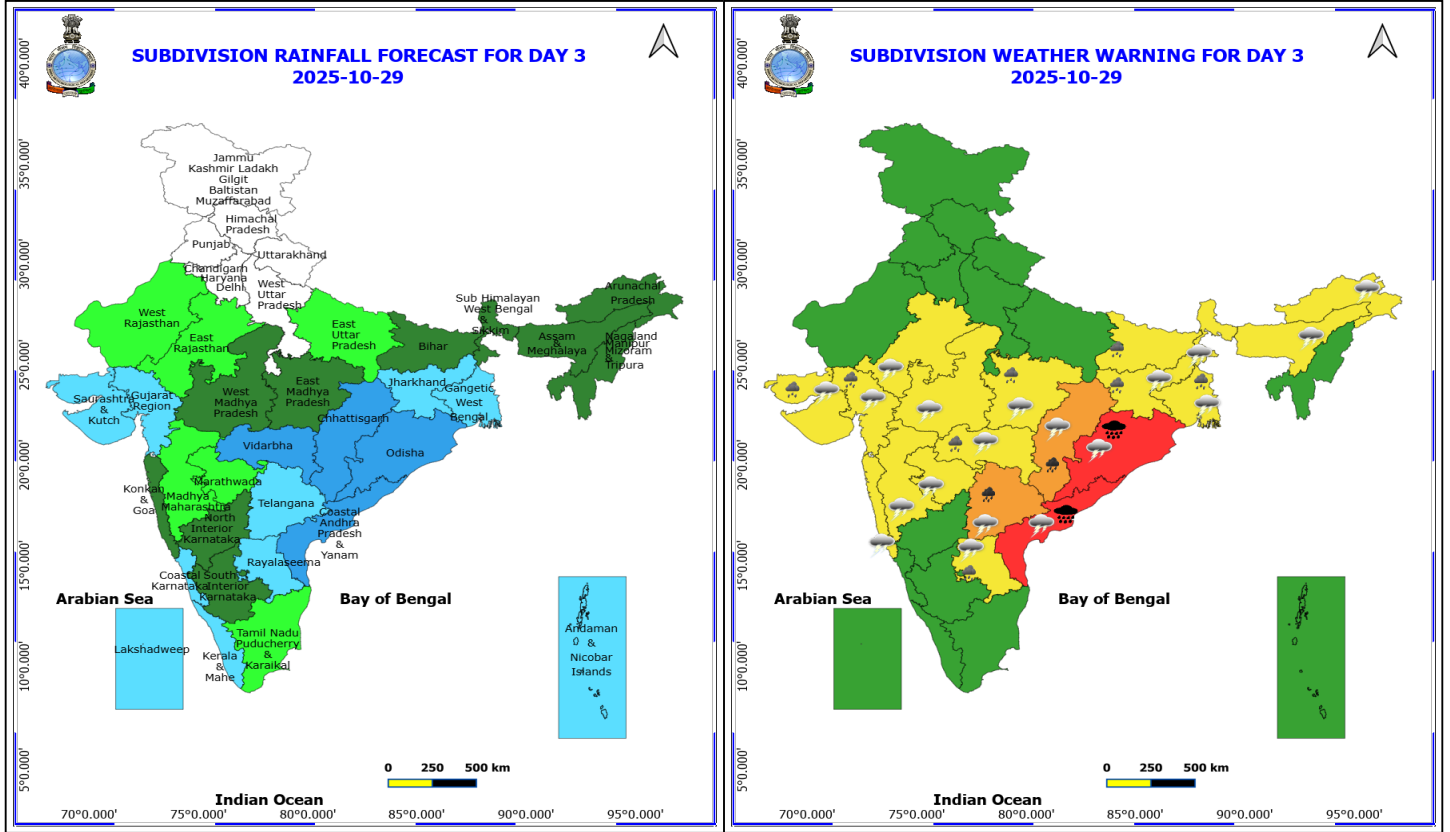
- ❖ **Heavy to Very Heavy Rainfall with isolated Extremely Heavy Rainfall** very likely at isolated places over Chhattisgarh, Coastal Andhra Pradesh, Odisha and Telangana.
- ❖ **Heavy to Very Heavy Rainfall** very likely at isolated places over Gujarat State, Konkan & Goa, Rayalaseema, Tamil Nadu Puducherry & Karaikal and Vidarbha.
- ❖ **Heavy Rainfall** very likely at isolated places over Coastal Karnataka, East Rajasthan, Gangetic West Bengal, Jharkhand, Kerala & Mahe, South Interior Karnataka and West Madhya Pradesh.
- ❖ **Thundersquall with wind speed reaching(50-60kmph)** very likely at isolated places over Odisha.
- ❖ **Thunderstorm accompanied with lightning & gusty winds(40-50kmph)** very likely at isolated places over Andaman & Nicobar Islands, Chhattisgarh and Konkan & Goa.
- ❖ **Thunderstorm accompanied with lightning & gusty winds(30-40kmph)** very likely at isolated places over Gujarat State, Jharkhand, Tamil Nadu Puducherry & Karaikal and West Madhya Pradesh.
- ❖ **Thunderstorm accompanied with Lightning** very likely at isolated places over Andhra Pradesh, Gangetic West Bengal, Interior Karnataka, Jharkhand, Madhya Pradesh, Maharashtra, Rajasthan and Telangana.
- **Squally weather with wind speed 35 kmph to 45 kmph gusting to 55 kmph** likely to prevail along & off Tamil Nadu - Puducherry coast.
- **Squally weather with wind speed 60-70 kmph gusting to 80 kmph** likely to prevail over along & off south Odisha coast.
- **Gale wind speed reaching 80-90 kmph gusting to 100 kmph** over westcentral and adjoining northwest Bay of Bengal.

***Red color warning does not mean "Red Alert" Red color warning means "Take Action"**

Forecast and warning for any day is valid from 0830 hours IST of day till 0830 hours IST of next day

For more details kindly visit <https://mausam.imd.gov.in> or contact 011-2434-4599

(Service to the nation since 1875)

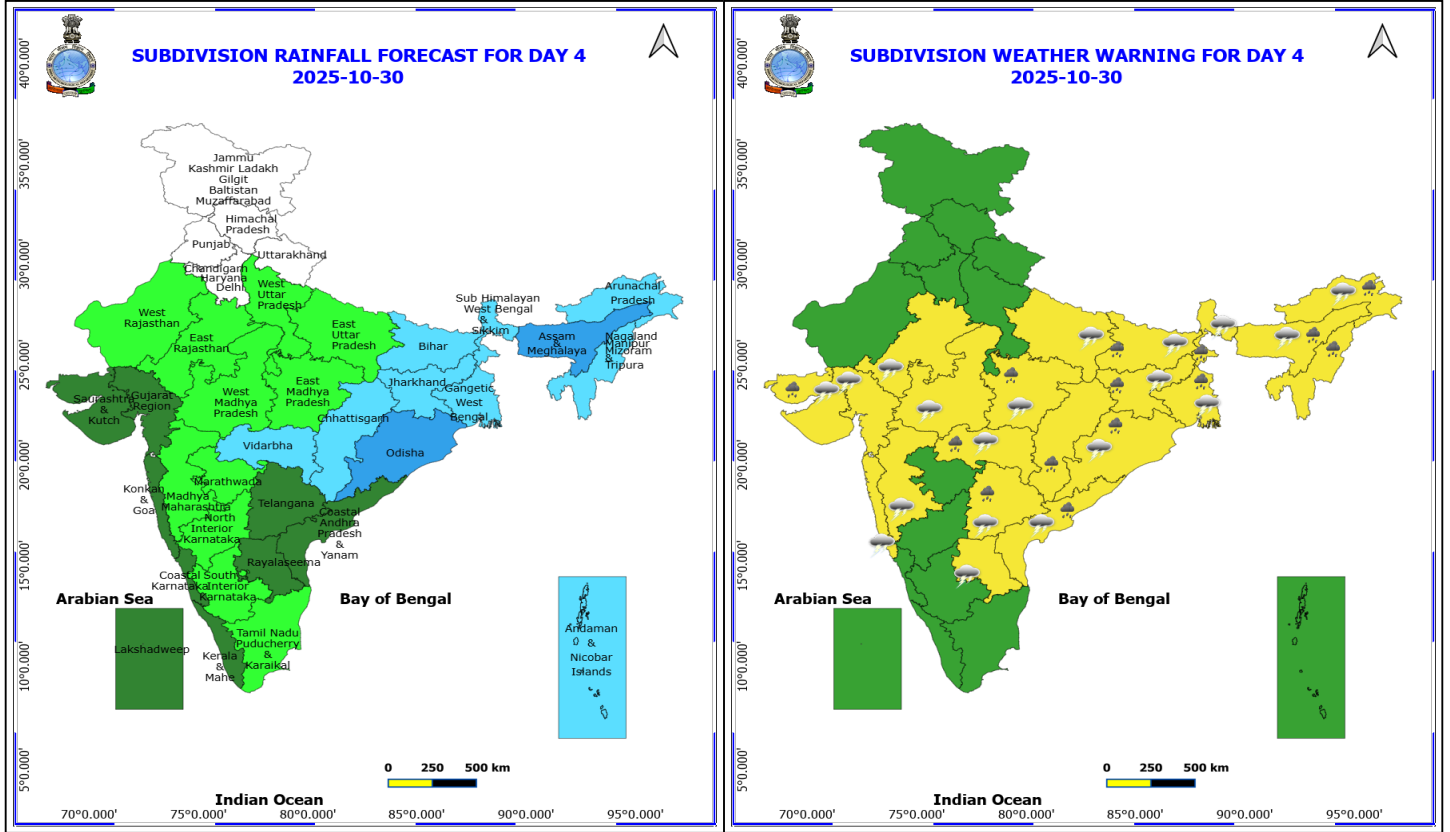


29 October (Day 3)

- ❖ **Heavy to Very Heavy Rainfall with isolated Extremely Heavy Rainfall** very likely at isolated places over Coastal Andhra Pradesh and Odisha.
- ❖ **Heavy to Very Heavy Rainfall** very likely at isolated places over Chhattisgarh and Telangana.
- ❖ **Heavy Rainfall** very likely at isolated places over Bihar, East Madhya Pradesh, Gangetic West Bengal, Gujarat State, Jharkhand, Rayalaseema and Vidarbha.
- ❖ **Thundersquall with wind speed reaching(50-60kmph)** very likely at isolated places over Odisha.
- ❖ **Thunderstorm accompanied with lightning & gusty winds(40-50kmph)** very likely at isolated places over Arunachal Pradesh, Chhattisgarh, Konkan & Goa and West Madhya Pradesh.
- ❖ **Thunderstorm accompanied with lightning & gusty winds(30-40kmph)** very likely at isolated places over Assam & Meghalaya, Gujarat State and Jharkhand.
- ❖ **Thunderstorm accompanied with Lightning** very likely at isolated places over Andhra Pradesh, Arunachal Pradesh, Assam & Meghalaya, East Rajasthan, Madhya Pradesh, Maharashtra, Telangana and West Bengal & Sikkim.
 - **Squally weather with wind speed 40-50 kmph gusting to 60 kmph** likely to prevail over along and off south Odisha coast.
 - **Squally weather with wind speed 60-70 kmph gusting to 80 kmph** likely to prevail over along & off along & off Andhra Pradesh & Yanam (of Puducherry) coasts.

***Red color warning does not mean "Red Alert" Red color warning means "Take Action"**
Forecast and warning for any day is valid from 0830 hours IST of day till 0830 hours IST of next day
For more details kindly visit <https://mausam.imd.gov.in> or contact 011-2434-4599

(Service to the nation since 1875)



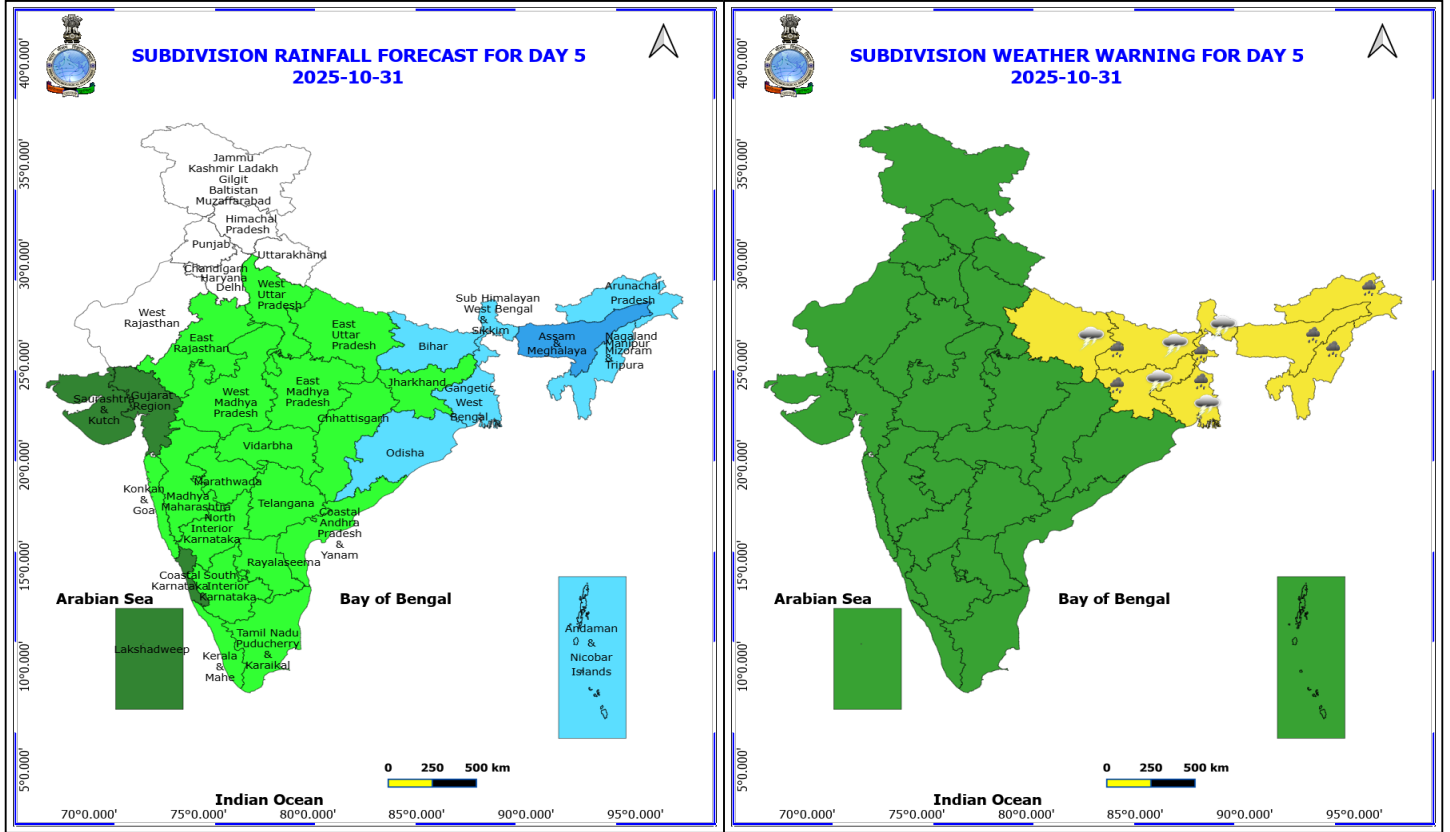
30 October (Day 4)

- ❖ **Heavy Rainfall** likely at isolated places over Arunachal Pradesh, Assam & Meghalaya, Bihar, Chhattisgarh, Coastal Andhra Pradesh, East Madhya Pradesh, Jharkhand, Nagaland, Manipur, Mizoram and Tripura, Odisha, Saurashtra & Kutch, Telangana, Vidarbha and West Bengal & Sikkim.
- ❖ **Thunderstorm accompanied with lightning & gusty winds(40-50kmph)** likely at isolated places over Arunachal Pradesh, Konkan & Goa and West Madhya Pradesh.
- ❖ **Thunderstorm accompanied with lightning & gusty winds(30-40kmph)** likely at isolated places over Assam & Meghalaya, Bihar, East Uttar Pradesh, Gujarat State and Jharkhand.
- ❖ **Thunderstorm accompanied with Lightning** likely at isolated places over Andhra Pradesh, East Rajasthan, Madhya Maharashtra, Madhya Pradesh, Odisha, Telangana, Vidarbha and West Bengal & Sikkim.

No Fishermen Warning

***Red color warning does not mean "Red Alert" Red color warning means "Take Action"**
Forecast and warning for any day is valid from 0830 hours IST of day till 0830 hours IST of next day
For more details kindly visit <https://mausam.imd.gov.in> or contact 011-2434-4599

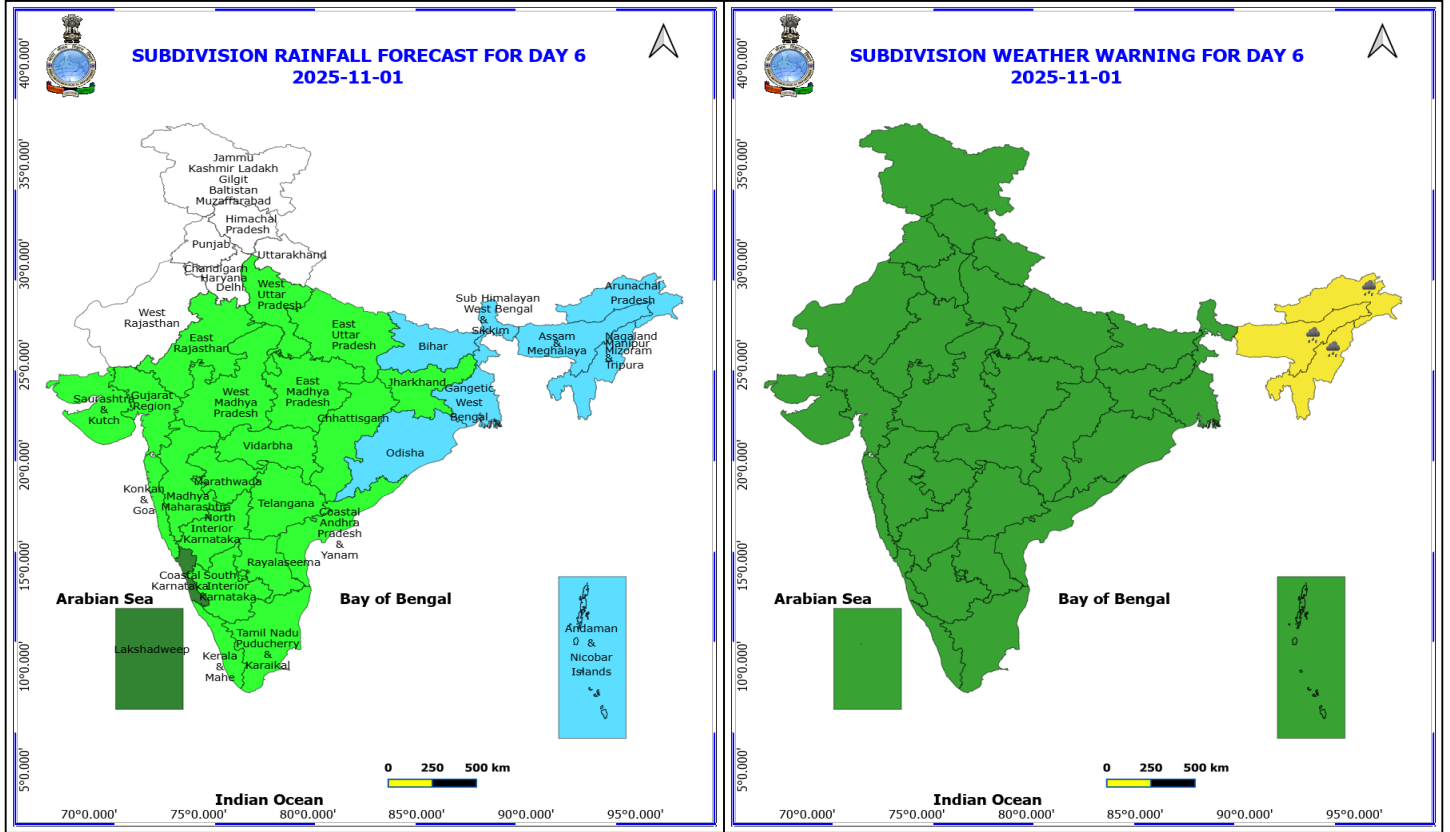
(Service to the nation since 1875)



31 October (Day 5)

- ❖ **Heavy Rainfall** likely at isolated places over Arunachal Pradesh, Assam & Meghalaya, Bihar, Jharkhand, Nagaland, Manipur, Mizoram and Tripura and West Bengal & Sikkim.
- ❖ **Thunderstorm accompanied with lightning & gusty winds(30-40kmph)** likely at isolated places over Bihar, East Uttar Pradesh and Jharkhand.
- ❖ **Thunderstorm accompanied with Lightning** likely at isolated places over West Bengal & Sikkim.

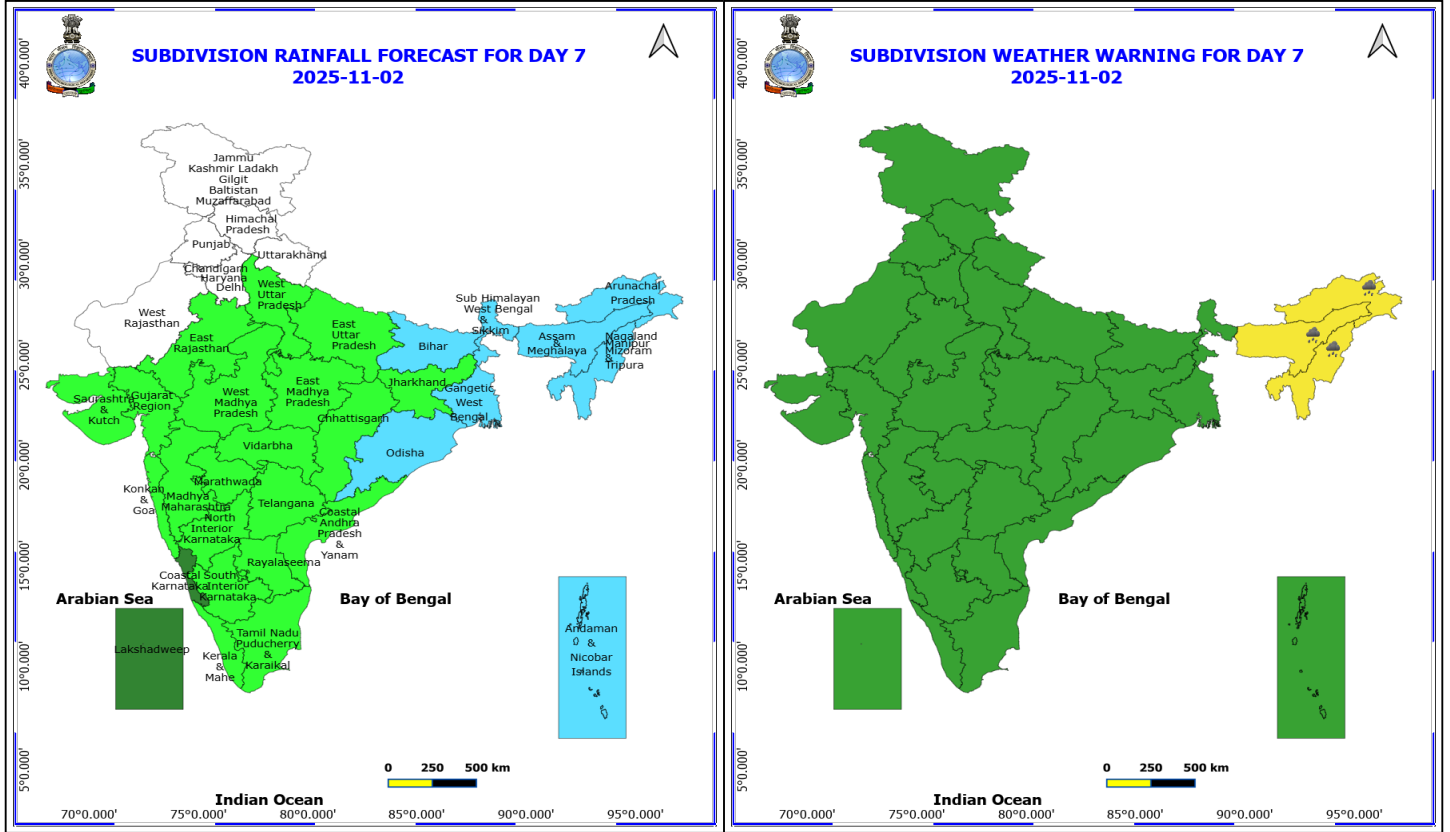
No Fishermen Warning



1 November (Day 6)

❖ **Heavy Rainfall** likely at isolated places over Arunachal Pradesh, Assam & Meghalaya and Nagaland, Manipur, Mizoram and Tripura.

No Fishermen Warning



2 November (Day 7)

❖ **Heavy Rainfall** likely at isolated places over Arunachal Pradesh, Assam & Meghalaya and Nagaland, Manipur, Mizoram and Tripura.

No Fishermen Warning

Flash Flood Warnings

24 hours Outlook for the Flash Flood Risk (FFR) till 0530 IST of 28-10-2025 :

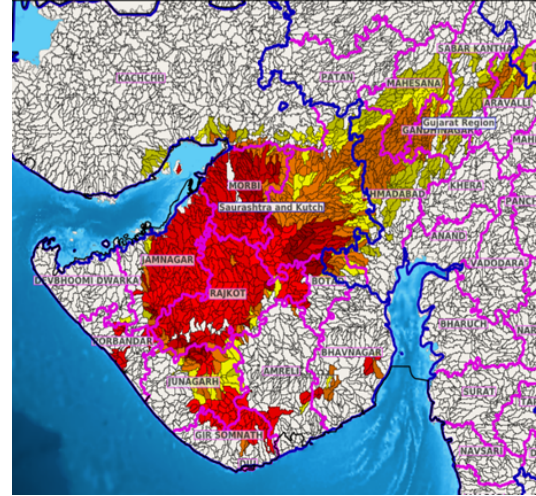
Low to Moderate flash flood risk likely over few watersheds & neighbourhoods of following Met Sub-divisions during next 24 hours.

Gujarat Region - Ahmadabad, Aravalli, Gandhinagar, Mahesana and Sabar Kantha districts.

Saurashtra & Kutch - Amreli, Botad, Devbhoomi Dwarka, Gir Somnath, Jamnagar, Junagarh, Porbandar, Rajkot, Morbi and Kachchh districts.

Surface runoff/ Inundation may occur at some fully saturated soils & low-lying areas over Area of Concern (AoC) as shown in map due to expected rainfall occurrence in next 24 hours.

Product: GFS FFR | Timescale: 24-hr | Region: "REGIONAL"
Product Date: 2025-10-27 00:00 UTC | Valid Date: 2025-10-28 00:00 UTC



24 hours Outlook for the Flash Flood Risk (FFR) till 0530 IST of 28-10-2025 :

Low to Moderate flash flood risk likely over few watersheds & neighbourhoods of following Met Sub-divisions during next 24 hours.

Coastal Andhra Pradesh & Yanam - Prakasam and Nellore districts.

Rayalaseema - Anantapuramu, Chittoor, Kurnool and Kadapa districts.

Tamil Nadu - Puducherry & Karaikal - Chennai, Cuddalore, Dharampuri, Kanchipuram, Krishnagiri, Salem, Tiruvallur, Tiruvannamalai, Vellore and Villupuram districts.

Surface runoff/ Inundation may occur at some fully saturated soils & low-lying areas over Area of Concern (AoC) as shown in map due to expected rainfall occurrence in next 24 hours.

Product: GFS FFR | Timescale: 24-hr | Region: "REGIONAL"
Product Date: 2025-10-27 00:00 UTC | Valid Date: 2025-10-28 00:00 UTC

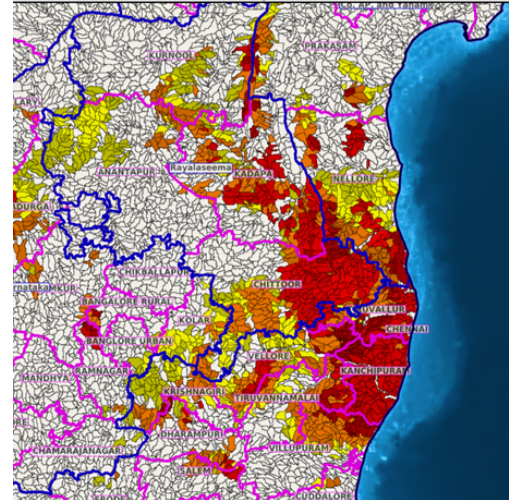




Table-1

7 Days Rainfall Forecast

S.No.	Subdivision	27- Oct	28- Oct	29- Oct	30- Oct	31- Oct	1- Nov	2- Nov
		Day 1	Day 2	Day 3	Day 4	Day 5	Day 6	Day 7
1	ANDAMAN & NICOBAR ISLANDS	WS	FWS	FWS	FWS	FWS	FWS	FWS
2	ARUNACHAL PRADESH	ISOL	ISOL	SCT	FWS	FWS	FWS	FWS
3	ASSAM & MEHGHALAYA	ISOL	ISOL	SCT	WS	WS	FWS	FWS
4	N. M. M. & T.	ISOL	ISOL	SCT	FWS	FWS	FWS	FWS
5	S.H. WEST BENGAL & SIKKIM	DRY	ISOL	SCT	FWS	FWS	FWS	FWS
6	GANGETIC WEST BENGAL	ISOL	SCT	FWS	FWS	FWS	FWS	FWS
7	ODISHA	FWS	FWS	WS	WS	FWS	FWS	FWS
8	JHARKHAND	ISOL	SCT	FWS	FWS	ISOL	ISOL	ISOL
9	BIHAR	DRY	ISOL	SCT	FWS	FWS	FWS	FWS
10	EAST UTTAR PRADESH	DRY	DRY	ISOL	ISOL	ISOL	ISOL	ISOL
11	WEST UTTAR PRADESH	ISOL	DRY	DRY	ISOL	ISOL	ISOL	ISOL
12	UTTARAKHAND	DRY	DRY	DRY	DRY	DRY	DRY	DRY
13	HARYANA, CHD & DELHI	ISOL	DRY	DRY	DRY	DRY	DRY	DRY
14	PUNJAB	DRY	DRY	DRY	DRY	DRY	DRY	DRY
15	HIMACHAL PRADESH	DRY	DRY	DRY	DRY	DRY	DRY	DRY
16	JAMMU AND KASHMIR AND LADAKH	DRY	DRY	DRY	DRY	DRY	DRY	DRY
17	WEST RAJASTHAN	ISOL	ISOL	ISOL	ISOL	DRY	DRY	DRY
18	EAST RAJASTHAN	SCT	SCT	ISOL	ISOL	ISOL	ISOL	ISOL
19	WEST MADHYA PRADESH	FWS	SCT	SCT	ISOL	ISOL	ISOL	ISOL
20	EAST MADHYA PRADESH	SCT	SCT	SCT	ISOL	ISOL	ISOL	ISOL
21	GUJRAT REGION	FWS	FWS	FWS	SCT	SCT	ISOL	ISOL
22	SAURASHTRA & KUTCH	FWS	FWS	FWS	SCT	SCT	ISOL	ISOL
23	KONKAN & GOA	FWS	SCT	SCT	SCT	ISOL	ISOL	ISOL
24	MADHYA MAHARASHTRA	SCT	ISOL	ISOL	ISOL	ISOL	ISOL	ISOL
25	MARATHWADA	ISOL	ISOL	ISOL	ISOL	ISOL	ISOL	ISOL
26	VIDARBHA	SCT	WS	WS	FWS	ISOL	ISOL	ISOL
27	CHATTISGARH	SCT	FWS	WS	FWS	ISOL	ISOL	ISOL
28	COASTAL ANDHRA PRADESH	FWS	WS	WS	SCT	ISOL	ISOL	ISOL
29	TELANGANA	SCT	FWS	FWS	SCT	ISOL	ISOL	ISOL
30	RAYALASEEMA	SCT	FWS	FWS	SCT	ISOL	ISOL	ISOL
31	TAMILNADU & PUDUCHERRY	SCT	SCT	ISOL	ISOL	ISOL	ISOL	ISOL
32	COSTAL KARNATAKA	WS	WS	FWS	SCT	SCT	SCT	SCT
33	NORTH INTERIOR KARNATAKA	FWS	SCT	SCT	ISOL	ISOL	ISOL	ISOL
34	SOUTH INTERIOR KARNATAKA	SCT	SCT	SCT	ISOL	ISOL	ISOL	ISOL
35	KERALA	WS	WS	FWS	SCT	ISOL	ISOL	ISOL
36	LAKSHDWEEP	WS	WS	FWS	SCT	SCT	SCT	SCT

Legend	Category	%Stations
WS	Widespread/Most Places	76-100
FWS	Fairly Widespread/Many Places	51-75
SCT	Scattered/ A Few Places	26-50
ISOL	Isolated Places	1-25
DRY	No Rain	0

*Red color warning does not mean "Red Alert" Red color warning means "Take Action"
Forecast and warning for any day is valid from 0830 hours IST of day till 0830 hours IST of next day
For more details kindly visit <https://mausam.imd.gov.in> or contact 011-2434-4599

(Service to the nation since 1875)

Fig. 1: Maximum Temperatures Dated 2025-10-26

Fig. 2: Departure of Maximum Temp. Dated 2025-10-26

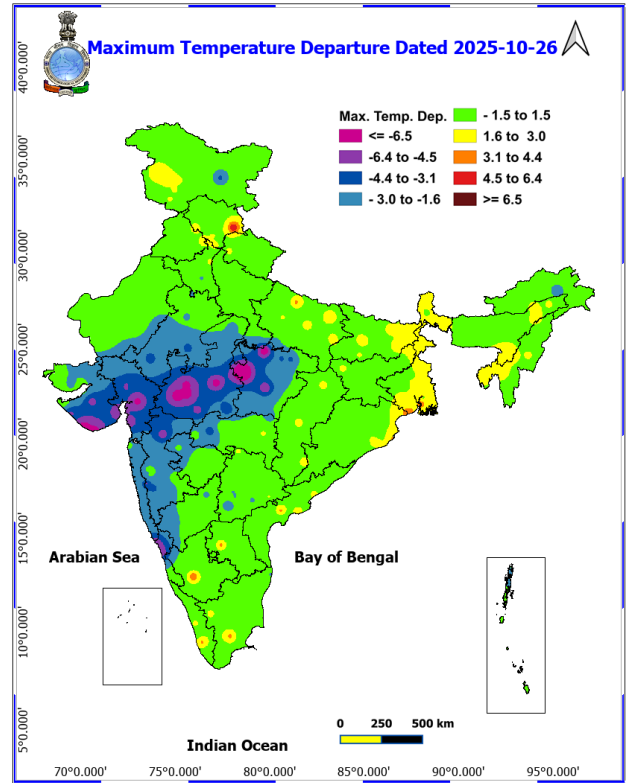
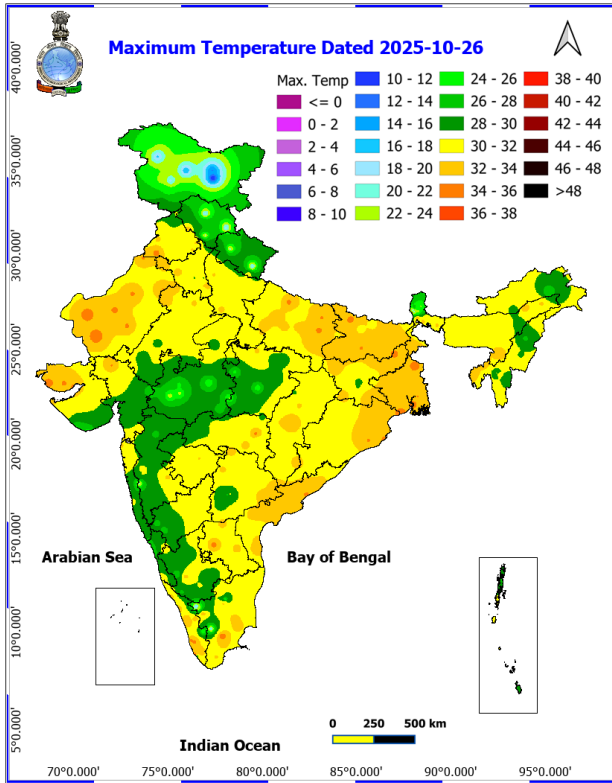
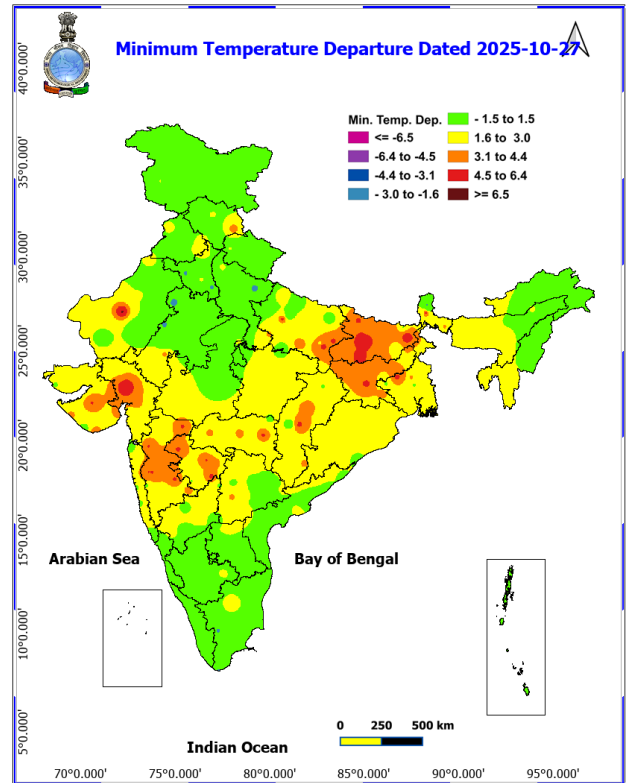
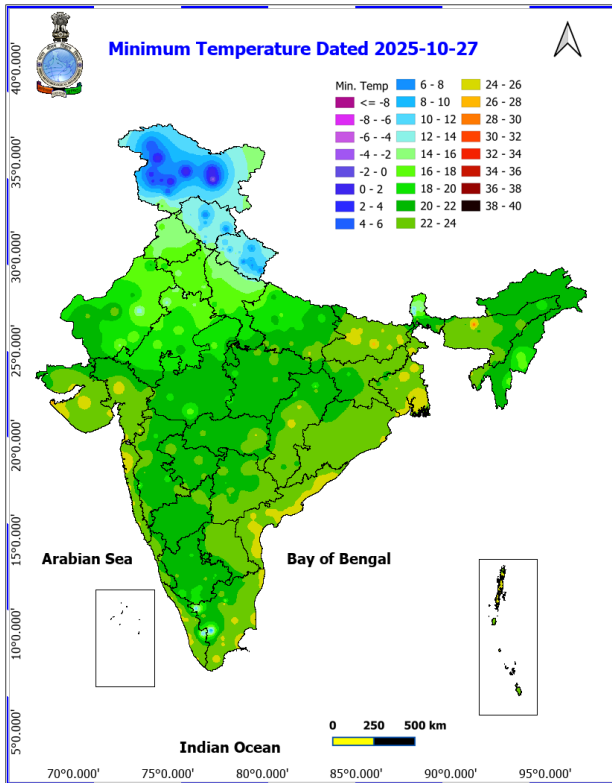
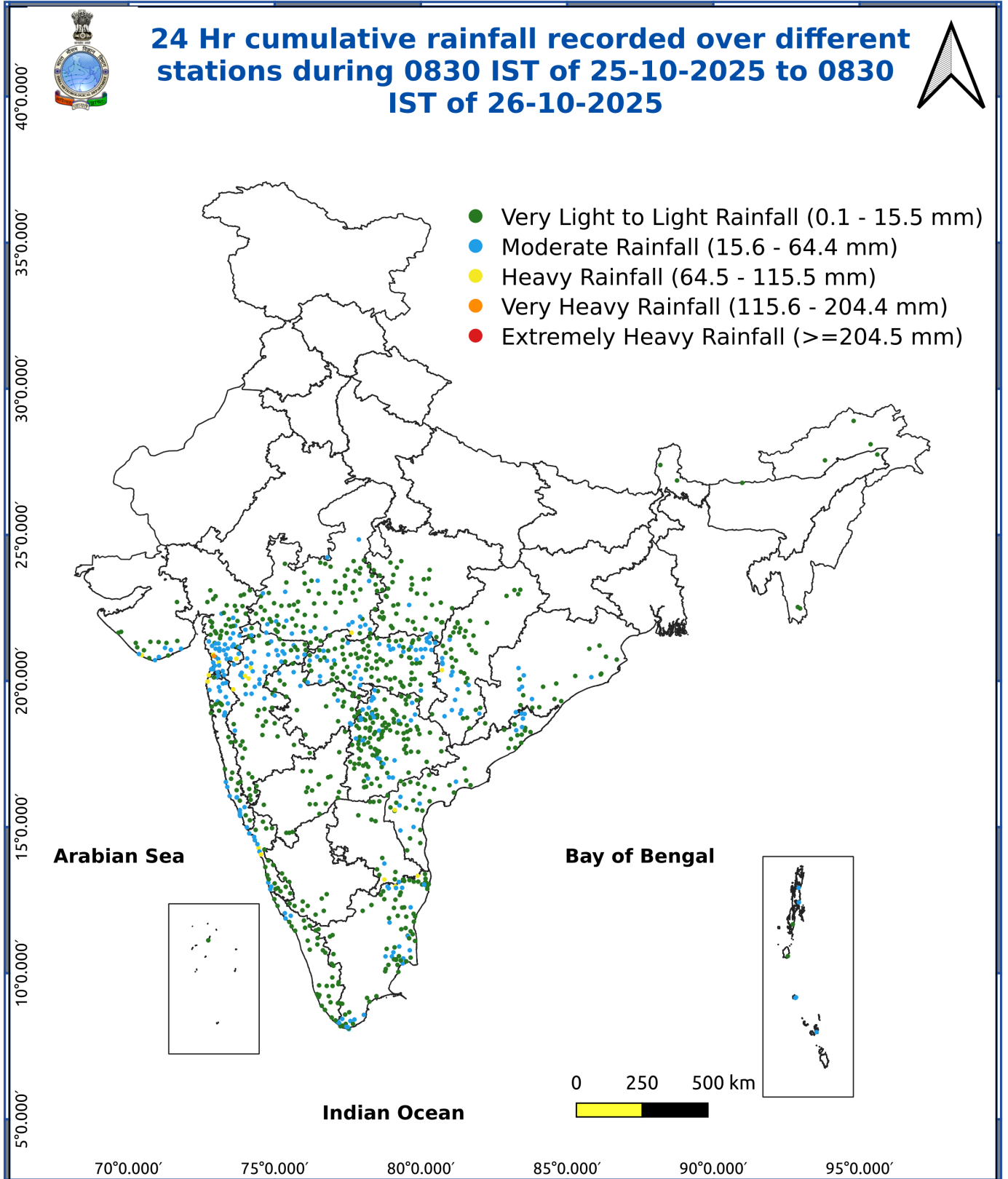


Fig. 3: Minimum Temperatures Dated 2025-10-27

Fig. 4: Departure of Minimum Temp. Dated 2025-10-27





Impact & Action Suggested due to

- **Extremely heavy rainfall (≥ 21 cm)** at isolated places over Coastal Andhra Pradesh & Yanam during 27th–29th, Telangana, Chhattisgarh on 28th; south Odisha on 28th & 29th October.
- **Very heavy rainfall (12-20 cm)** at isolated places Rayalaseema, Tamil Nadu on 27th & 28th, Kerala & Mahe, Coastal Karnataka, Gujarat State and East Rajasthan on 27th, Coastal Andhra Pradesh & Yanam, Odisha during 27th–29th and Telangana, Chhattisgarh on 28th & 29th; Vidarbha on 28th October.

Impact Expected

- Localized Flooding of roads, water logging in low lying areas and closure of underpasses mainly in urban areas of the above region.
- Occasional reduction in visibility due to heavy rainfall.
- Disruption of traffic in major cities due to water logging in roads leading to increased travel time.
- Minor damage to kutcha roads.
- Possibilities of damage to vulnerable structure.
- Localized Landslides/Mudslides/landslips/mudslips/landsinks/mudsinks.
- Damage to horticulture and standing crops in some areas due to inundation.
- It may lead to riverine flooding in some river catchments mainly over Bihar, Jharkhand and West Bengal (for riverine flooding please visit Web page of CWC)

Action Suggested

- Check for traffic congestion on your route before leaving for your destination.
- Follow any traffic advisories that are issued in this regard.
- Avoid going to areas that face the water logging problems often.
- Avoid staying in vulnerable structure.

Agromet advisories for various parts of the country

Agromet advisories for likely impact of Heavy / Heavy to Very Heavy / Extremely Heavy Rainfall

(Based on the IBF and advisories issued by different AMFUs)

- In **Andhra Pradesh**, postpone harvesting of groundnut crop during heavy rainfall periods and store the already harvested produce in safe places. Drain out excess water from fields of rice, maize, pigeon pea, black gram, green gram, cotton, groundnut, turmeric, ginger, vegetables and plantations of banana, coconut and arecanut. Avoid sowing of *rabi* crops (*rabi* maize, Bengal gram etc.) until the soil moisture reaches at optimum level.
- In **Tamil Nadu**, harvest matured rice and groundnut crops only during fair weather and store the harvested produce of rice, groundnut and harvested banana bunches in safer places. Make arrangements to drain out excess water from fields of rice, sugarcane, cotton, black gram, maize and vegetables and plantations of coconut, banana and black pepper to avoid water stagnation. Avoid transplanting or direct sowing of rice and sowing of maize during heavy rainfall.
- In **Kerala**, harvest matured rice crop immediately and keep the produce in safe places. Ensure adequate drainage facilities in fields of rice, vegetables and plantations of banana, coconut, arecanut, cardamom and black pepper.
- In **Coastal Karnataka**, postpone harvesting of rice during heavy rainfall periods and shift the already harvested produce to safer places. Provide adequate drainage facilities in fields of rice and plantations of coconut, arecanut and black pepper.
- In **Telangana**, harvest matured cotton crop immediately and store the produce in safer places. Cover the already harvested produce of maize and soybean crops lying on the fields with tarpaulin or shift to a safer place.
- In **Andaman and Nicobar Islands**, store the harvested produce of rice at safe places to avoid degradation. Drain out excess water from fields of rice, vegetables and plantation crops.

*Red color warning does not mean "Red Alert" Red color warning means "Take Action"

Forecast and warning for any day is valid from 0830 hours IST of day till 0830 hours IST of next day

For more details kindly visit <https://mausam.imd.gov.in> or contact 011-2434-4599

(Service to the nation since 1875)

- In **Odisha**, harvest rice crop if 85% of grains are matured and store in safer places before commencement of rains or cover the harvested produce in the fields with polythene. Harvest matured black gram, maize, vegetables (pumpkin, okra, bitter gourd etc.) and matured cobs of maize and keep the produce in safer places. Make provision for draining out excess water from fields of rice, black gram, pigeon pea, maize, groundnut, cotton, sugarcane and vegetables. Postpone sowing / planting of *rabi* crops (*rabi* pulses, vegetables etc.) till cessation of rains.
- In **Gujarat**, keep the harvested produce of rice, groundnut, soybean, black gram, green gram, sesame, maize, pearl millet and vegetables (tomato, brinjal, chilli, okra, cucurbits etc.) in safe places.
- In **Konkan**, keep the harvested produce of rice and finger millet in safer places. In **Madhya Maharashtra**, store the harvested produce of rice, soybean, maize, groundnut and pearl millet in safe places. In **Vidarbha**, harvest the matured crops of rice (early maturing varieties) and soybean only during fair weather and keep the harvested produce at safer places.
- In **Chhattisgarh**, keep the harvested produce of minor millets, maize, black gram and horse gram at safer places.
- In **East Rajasthan**, complete the harvesting of matured crops like maize and soybean. Keep the harvested produce of rice, maize and soybean at safer places.

Livestock / Fishery

- Keep the animals inside the shed during heavy rainfall and provide them balanced feed.
- Store feed and fodder in a safe place to prevent spoilage.
- Construct an outlet with proper netting around the ponds to drain out excess water, thereby preventing fish from escaping in case of overflow.

Agromet advisories for likely impact of Thunderstorm / Gusty Winds / Squally Winds

(Based on the IBF and advisories issued by different AMFUs)

- Provide mechanical support to horticultural crops and staking or support to vegetables and young fruit plants / fruit-bearing plants to avoid lodging due to strong winds.
- Tie the harvested crops properly and cover them to minimise the risk of displacement due to strong surface winds.

Legends & abbreviations:

Region wise classification of meteorological Sub-Divisions:

- **Northwest India:** Western Himalayan Region (Jammu-Kashmir-Ladakh-Gilgit-Baltistan-Muzaffarabad, Himachal Pradesh and Uttarakhand); Punjab, Haryana-Chandigarh-Delhi; West Uttar Pradesh, East Uttar Pradesh, West Rajasthan and East Rajasthan.
- **Central India:** West Madhya Pradesh, East Madhya Pradesh, Vidarbha and Chhattisgarh.
- **East India:** Bihar, Jharkhand, Sub-Himalayan West Bengal & Sikkim; Gangetic West Bengal, Odisha and Andaman & Nicobar Islands.
- **Northeast India:** Arunachal Pradesh, Assam & Meghalaya and Nagaland, Manipur, Mizoram & Tripura.
- **West India:** Gujarat Region, Saurashtra & Kutch, Konkan & Goa, Madhya Maharashtra and Marathawada.
- **South India:** Coastal Andhra Pradesh & Yanam, Telangana, Rayalaseema, Coastal Karnataka, North Interior Karnataka, South Interior Karnataka, Kerala & Mahe, Tamil Nadu, Puducherry & Karaikal and Lakshadweep.

LEGENDS

- 1 अंडमान और निकोबार द्वीप समुह
- 2 अरुणाचल प्रदेश
- 3 असम और मेघालय
- 4 नागालैंड मनीपुर मीजोरम और त्रिपुरा
- 5 उप हिमालय पश्चिम बंगाल एवं सिक्किम
- 6 पश्चिम बंगाल
- 7 ओडिसा
- 8 झारखंड
- 9 बिहार
- 10 पूर्वी उत्तर प्रदेश
- 11 पश्चिम उत्तर प्रदेश
- 12 उत्तराखंड
- 13 हरियाणा चंडिगढ़ एवं दिल्ली
- 14 पंजाब
- 15 हिमाचल प्रदेश
- 16 जम्मू एवं कश्मीर एवं लद्दाख
- 17 पश्चिम राजस्थान
- 18 पूर्वी राजस्थान
- 19 पश्चिम मध्य प्रदेश
- 20 पूर्वी मध्य प्रदेश
- 21 गुजरात क्षेत्र
- 22 सौराष्ट्र एवं कच्छ
- 23 कोंकण एवं गोवा
- 24 मध्य महाराष्ट्र
- 25 मराठावाडा
- 26 विदर्भ
- 27 छत्तीसगढ़
- 28 तटीय आंध्र प्रदेश एवं यनम
- 29 तेलंगाना
- 30 रायलसीमा
- 31 तमिलनाडु, पुदुचेरी एवं कराईकल
- 32 तटिय कर्नाटक
- 33 आंतरिक उत्तरी कर्नाटक
- 34 आंतरिक दक्षिणी कर्नाटक
- 35 केरल एवं माहे
- 36 लक्षद्वीप



1. Andaman & Nicobar Islands
2. Arunachal Pradesh
3. Assam & Meghalaya
4. Nagaland, Manipur, Mizoram & Tripura
5. Sub-Himalayan West Bengal & Sikkim
6. Gangetic West Bengal
7. Orissa
8. Jharkhand
9. Bihar
10. East Uttar Pradesh
11. West Uttar Pradesh
12. Uttarakhand
13. Haryana, Chd & Delhi
14. Punjab
15. Himachal Pradesh
16. Jammu & Kashmir and Ladakh
17. West Rajasthan
18. East Rajasthan
19. West Madhya Pradesh
20. East Madhya Pradesh
21. Gujarat
22. Saurashtra
23. Konkan & Goa
24. Madhya Maharashtra
25. Marathawada
26. Vidharbha
27. Chhattisgarh
28. Coastal Andhra Pradesh & Yanam
29. Telangana
30. Rayalaseema
31. Tamilnadu, Puducherry & Karaikal
32. Coastal Karnataka
33. North Interior Karnataka
34. South Interior Karnataka
35. Kerala & Mahe
36. Lakshadweep

SPATIAL DISTRIBUTION (% of Stations reporting)

% Stations	Category	% Stations	Category
76-100	Widespread (WS/ Most Places)	26-50	Scattered (SCT/ A Few Places)
51-75	Fairly Widespread (FWS/ Many Places)	1-25	Isolated (ISOL)

Subdivision Colour

- NO WARNING
- WATCH (BE UPDATED)
- ALERT (BE PREPARED TO TAKE ACTION)
- WARNING (TAKE ACTION)

Probabilistic Forecast

Terms	Probability of Occurrence (%)
Unlikely	< 25
Likely	25 - 50
Very Likely	50 - 75
Most Likely	> 75

- | | | | |
|--------------------------|-----------------|----------------------|--------------------|
| Heavy Rain | Very Heavy Rain | Extremely Heavy Rain | Heavy Snow |
| Thunderstorm & Lightning | Hailstorm | Dust Storm | Dust Raising Winds |
| Strong surface winds | Heat Wave | Hot Day | Warm Night |
| Cold Wave | Cold Day | Ground Frost | Fog |
| Hot & Humid | | | |

*Red color warning does not mean "Red Alert" Red color warning means "Take Action"

Forecast and warning for any day is valid from 0830 hours IST of day till 0830 hours IST of next day

For more details kindly visit <https://mausam.imd.gov.in> or contact 011-2434-4599

(Service to the nation since 1875)

LEGENDS

WARNING

WARNING (TAKE ACTION)
ALERT (BE PREPARED)
WATCH (BE UPDATED)
NO WARNING (NO ACTION)

Probabilistic Forecast

Terms	Probability of Occurrence (%)
Unlikely	< 25
Likely	25 - 50
Very Likely	50 - 75
Most Likely	> 75



Rain/ Snow *

Heavy: 64.5 to 115.5 mm/cm *
Very Heavy: 115.6 to 204.4 mm/cm*
Extremely Heavy: > 204.4 mm/cm *



Heat Wave

When maximum temperature of a station reaches $\geq 40^{\circ}\text{C}$ for plains and $\geq 30^{\circ}\text{C}$ for hilly regions
(a) Based on Departure from normal

Heat Wave: Maximum Temperature Departure from normal 4.5°C to 6.4°C .
Severe Heat Wave: Maximum Temperature Departure from normal $\geq 6.5^{\circ}\text{C}$

(b). Based on Actual maximum temperature

Heat Wave: When actual maximum temperature $\geq 45^{\circ}\text{C}$.
Severe Heat Wave: When actual maximum temperature $\geq 47^{\circ}\text{C}$

(c). Criteria for heat wave for coastal stations

When maximum temperature departure is $> 4.5^{\circ}\text{C}$ from normal. Heat Wave may be described provided maximum temperature $\geq 37^{\circ}\text{C}$



Warm Night

When maximum temperature remains 40°C

Warm Night: When minimum temperature departure 4.5°C to 6.4°C .
Severe Warm Night: When minimum temperature departure $> 6.4^{\circ}\text{C}$.



Cold Wave

When minimum temperature of a station $\leq 10^{\circ}\text{C}$ for plains and $\leq 0^{\circ}\text{C}$ for hilly regions.

(a). Based on departure

Cold Wave: Minimum Temperature Departure from normal -4.5°C to -6.4°C .
Severe Cold Wave: Minimum Temperature Departure from normal $\leq -6.5^{\circ}\text{C}$

(b) Based on actual Minimum Temperature (for Plains only)

Cold Wave : When Minimum Temperature is $\leq 4.0^{\circ}\text{C}$
Severe Cold Wave: When Minimum Temperature is $\leq 2.0^{\circ}\text{C}$

(c) For Coastal Stations

When Minimum Temperature departure is $\leq -4.5^{\circ}\text{C}$ & actual Minimum Temperature is $\leq 15^{\circ}\text{C}$



Cold Day

When minimum temperature of a station $\leq 10^{\circ}\text{C}$ for plains and $\leq 0^{\circ}\text{C}$ for hilly regions
Based on departure

Cold Day: Maximum Temperature Departure from normal -4.5°C to -6.4°C .
Severe Cold Day: Maximum Temperature Departure from normal $\leq -6.5^{\circ}\text{C}$



Fog

Phenomenon of small droplets suspended in air and the horizontal visibility $< 1\text{km}$

Moderate Fog: When the visibility between 500-200 metres
Dense Fog: when the visibility between 50- 200 metres
Very Dense Fog: when the visibility < 50 metres



Thunderstorm

Sudden electrical discharges manifested by a flash of light (Lightning) and a sharp rumbling sound (thunder)



Dust/Sand Storm

An ensemble of particles of dust or sand energetically lifted to great heights by a strong and turbulent wind.



Frost

Ice deposits on ground

Air temperature $\leq 4^{\circ}\text{C}$ (over Plains)



Squall

A strong wind that rises suddenly, lasts for atleast 1 minute.

Moderate: Wind speed 52-61 kmph
Severe: Wind speed 62-87 kmph
Very Severe: Wind speed > 87 kmph



Sea State

Effect of various waves in the sea over specific area

Rough to very rough: Wind speed 41-62 kmph (22-33 knots) & Wave height 2.5-6 metre
High to very high: Wind speed 63-117 kmph (34-63 knots) & Wave height 6-14 metre
Phenomenal: Wind speed > 117 kmph (> 63 knots) & Wave height > 14 metre



Cyclone

Cyclonic Storm: Wind speed 62-87 kmph (34-47 knots)
Severe Cyclonic Storm: Wind speed 88-117 kmph (48-63 knots)
Very Severe Cyclonic Storm: Wind speed 118-165 kmph (64 - 89 knots)
Extremely Severe Cyclonic Storm: Wind speed 166-220 kmph (90 -119 knots)
Super Cyclone Storm: Wind speed > 220 kmph (> 119 knots)

*Red color warning does not mean "Red Alert" Red color warning means "Take Action"

Forecast and warning for any day is valid from 0830 hours IST of day till 0830 hours IST of next day

For more details kindly visit <https://mausam.imd.gov.in> or contact 011-2434-4599

(Service to the nation since 1875)