



2025-10-10

Time of Issue: 07:59:00 hours IST
(Morning)

ALL INDIA WEATHER SUMMARY AND FORECAST BULLETIN

Significant Weather Features

Weather Forecast and Warnings:

South Peninsular India:

- Light to moderate rain/thunderstorm at some/ isolated places with isolated heavy rainfall likely over Tamil Nadu and Kerala & Mahe on 10th -14th; Coastal Karnataka on 10th; South Interior Karnataka during 10th – 13th; Coastal Andhra Pradesh & Yanam during 10th – 12th and Rayalaseema on 10th & 11th October.

East India:

- Light to moderate rain/thunderstorm at some/ isolated places with isolated heavy rainfall likely over Odisha during 10th – 12th October.

Northeast India:

- Light/moderate rain/thunderstorm at some/isolated places with isolated **heavy rainfall** likely over Assam & Meghalaya, Nagaland, Manipur, Mizoram & Tripura on 10th October.

***Red color warning does not mean "Red Alert" Red color warning means "Take Action"**

Forecast and warning for any day is valid from 0830 hours IST of day till 0830 hours IST of next day

For more details kindly visit <https://mausam.imd.gov.in> or contact 011-2434-4599

(Service to the nation since 1875)

Main Weather Observations:

❖ **Rainfall distribution** (from 0830 hours IST of yesterday to 0530 hours IST of today): **at most places** over Gangetic West Bengal, Coastal Andhra Pradesh & Yanam, Coastal Karnataka, Andaman & Nicobar Islands and Lakshadweep ; **at many places** over Assam & Meghalaya, Bihar, Nagaland, Manipur, Mizoram & Tripura, Odisha, Tamilnadu Puducherry & Karaikal, Jharkhand, Arunachal Pradesh, Kerala & Mahe, South Interior Karnataka, Rayalaseema and Chhattisgarh; **Dry** over rest of the country.

❖ **Significant rainfall recorded(in cm)** (from 0830 hours IST of yesterday to 0530 hours IST of today): Tamilnadu puducherry & karaikal: Salem (dist Salem) 6, Karaikal (dist Karaikal) 3; Coastal andhra pradesh & yanam: Ongole (dist Prakasam) 4, Tuni (dist Kakinada) 3, Kavali (dist Sri Potti Sriramulu Nellore), Machilipatnam (dist Krishna) 2 Each; Assam & meghalaya: Shillong (dist East Khasi Hills) 2; Nagaland, manipur, mizoram & tripura: Imphal (tulihal) AP (dist Imphal East) 2; Gangetic west bengal: Kolkata (dum Dum) AP (dist North 24 Parganas) 2.

❖ **Minimum Temperature Departures (as on 09-10-2025): markedly above normal(> 5.1°C)** at isolated places over Assam & Meghalaya, Sub Himalayan West Bengal & Sikkim, Bihar and East Uttar Pradesh. **appreciably above normal(3.1°C to 5.0°C)** at isolated places over West Uttar Pradesh, East Madhya Pradesh, Konkan & Goa and Tamil Nadu, Puducherry & Karaikal. **above normal(1.6°C to 3.0°C)** at few places over Nagaland, Manipur, Mizoram & Tripura; at isolated places over Andaman & Nicobar Islands, Gangetic West Bengal, Odisha, Jharkhand, Uttarakhand, Saurashtra & Kutch, Madhya Maharashtra, Vidarbha, Chhattisgarh, Coastal Andhra Pradesh & Yanam, Telangana, Rayalaseema and North Interior Karnataka. **near normal(-1.5°C to 1.5°C)** at many places over Haryana-Chandigarh-Delhi, Punjab, West Madhya Pradesh and South Interior Karnataka; at most places over Gujarat Region, Coastal Karnataka, Kerala & Mahe and Lakshadweep; at few places over Arunachal Pradesh, Himachal Pradesh, West Rajasthan, East Rajasthan and Marathwada; at isolated places over Jammu-KashmirLadakh-Gilgit-Baltistan-Muzaffarabad. **The lowest minimum temperature** of 11.2°C is reported at UNA (HIMACHAL PRADESH) over the Plains of India.

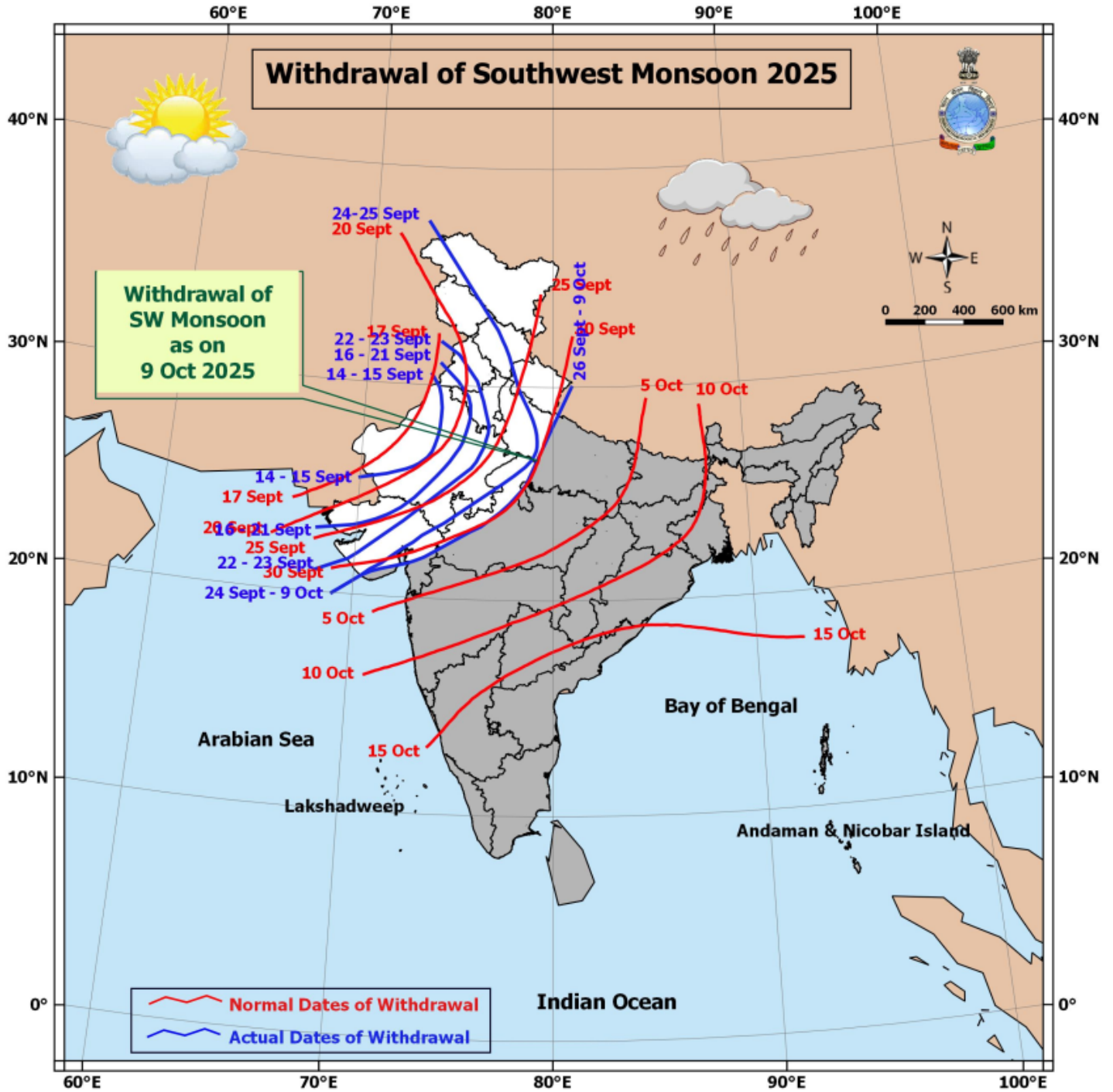
❖ **Maximum Temperature Departures (as on 09-10-2025): appreciably above normal(3.1°C to 5.0°C)** at isolated places over Assam & Meghalaya, Bihar, Jammu-KashmirLadakh-Gilgit-Baltistan-Muzaffarabad, Chhattisgarh and Coastal Andhra Pradesh & Yanam. **above normal(1.6°C to 3.0°C)** at few places over Arunachal Pradesh, Sub Himalayan West Bengal & Sikkim, Rayalaseema and Kerala & Mahe; at isolated places over Gangetic West Bengal, Konkan & Goa, Telangana, Tamil Nadu, Puducherry & Karaikal and South Interior Karnataka. **near normal(-1.5°C to 1.5°C)** at many places over Jharkhand and Uttarakhand; at most places over Nagaland, Manipur, Mizoram & Tripura, Madhya Maharashtra, Marathwada, Vidarbha, Coastal Karnataka, North Interior Karnataka and Lakshadweep; at few places over Andaman & Nicobar Islands, East Uttar Pradesh, Gujarat Region and Saurashtra & Kutch; at isolated places over Odisha, West Uttar Pradesh, Himachal Pradesh and East Madhya Pradesh. **The highest maximum temperature** of 38.0°C is reported at BASTI-OBS (UTTAR PRADESH).

Meteorological Analysis (Based on 0530 hours IST)

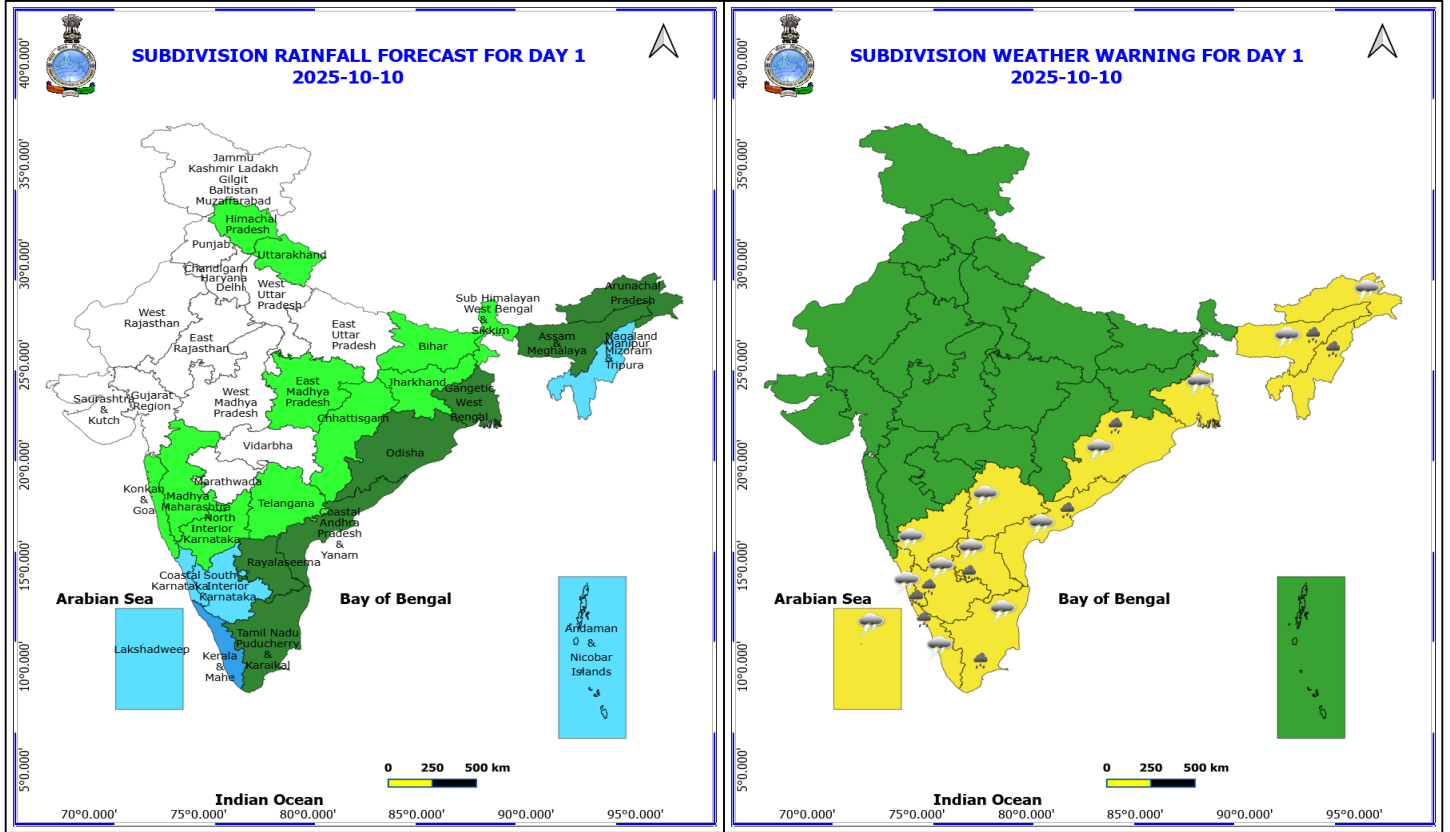
- The **line of withdrawal of southwest monsoon** continues to pass through 20°N/ 69°E, Veraval, Bharuch, Ujjain, Jhansi, Shahjahanpur and 30°N/81°E.
- Conditions are favourable for further withdrawal of southwest monsoon from remaining parts of Gujarat; some more parts of Madhya Pradesh and Uttar Pradesh and some parts of Maharashtra during next 24 hours.
- The **low pressure area (Remnant of Cyclonic Storm “Shakhti” [Pronunciation: Shakhti])** over westcentral Arabian Sea persists over the same region at 0530 hrs IST of today, the 10th October, 2025. The associated **cyclonic circulation** extended upto 5.8 km above mean sea level.
- The **upper air cyclonic circulation** over south Bangladesh & neighbourhood extending upto 5.8 km above mean sea level persists.
- The **trough** now runs from south Odisha to north Tamil Nadu across coastal Andhra Pradesh at 0.9 km above mean sea level.
- The **upper air cyclonic circulation** over Comorin area & neighbourhood at 3.1 km above mean sea level persists.
- The **upper air cyclonic circulation** over southeast Arabian Sea & adjoining north Kerala at 0.9 km above mean sea level persists.
- The **upper air cyclonic circulation** over central Assam & neighbourhood at 1.5 km above mean sea level persists.

Weather Outlook for subsequent 3 days

- Isolated to scattered rainfall activity likely over South peninsular India.



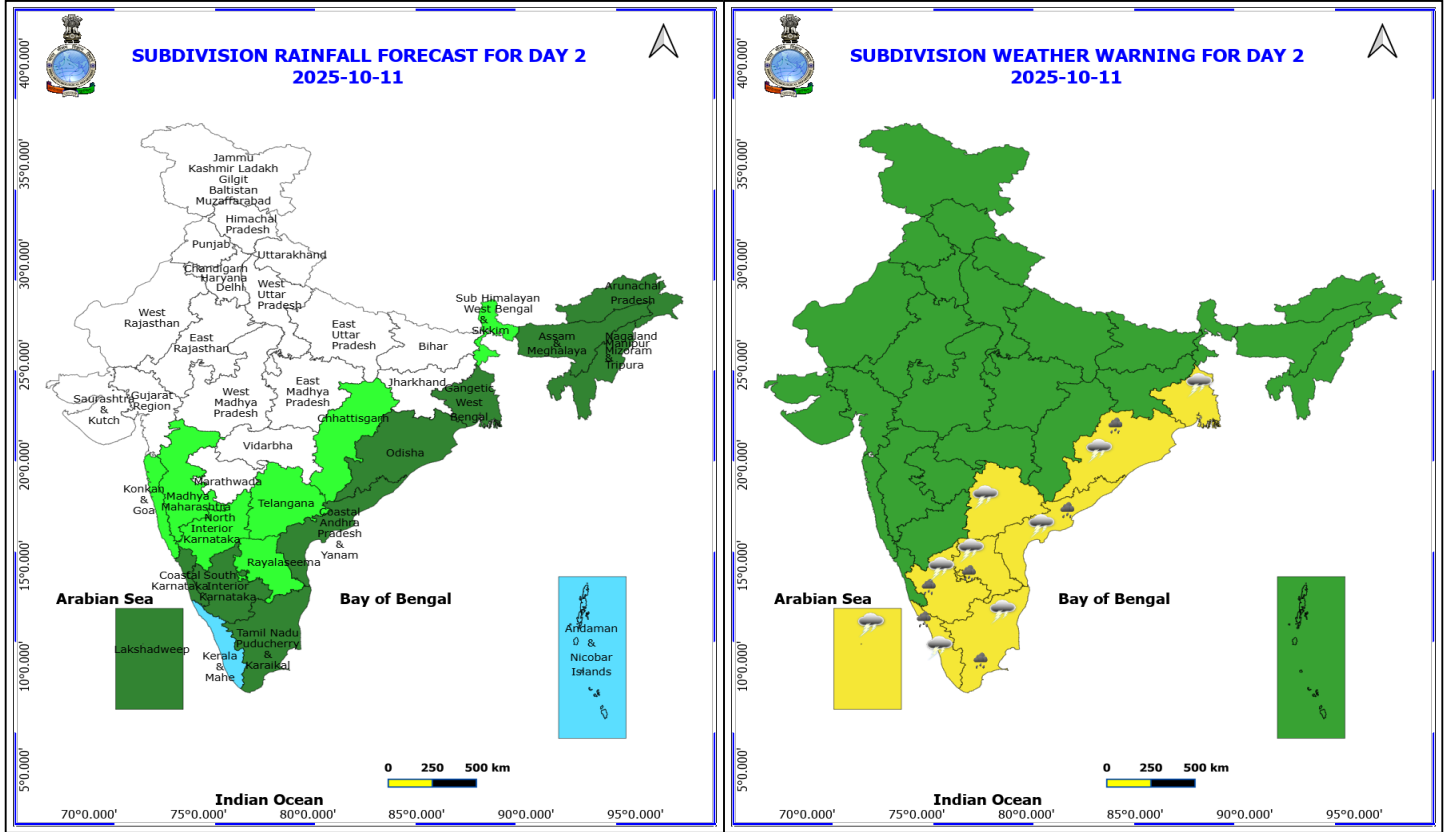
*Red color warning does not mean "Red Alert" Red color warning means "Take Action"
Forecast and warning for any day is valid from 0830 hours IST of day till 0830 hours IST of next day
For more details kindly visit <https://mausam.imd.gov.in> or contact 011-2434-4599
(Service to the nation since 1875)



10 October (Day 1)

- ❖ **Heavy Rainfall** very likely at isolated places over Andhra Pradesh, Assam & Meghalaya, Coastal Karnataka, Kerala & Mahe, Nagaland, Manipur, Mizoram and Tripura, Odisha, South Interior Karnataka and Tamil Nadu Puducherry & Karaikal.
- ❖ **Thunderstorm accompanied with lightning & gusty winds(30-40kmph)** very likely at isolated places over Karnataka and Telangana.
- ❖ **Thunderstorm accompanied with Lightning** very likely at isolated places over Andhra Pradesh, Arunachal Pradesh, Assam & Meghalaya, Gangetic West Bengal, Kerala & Mahe, Lakshadweep, Odisha, Tamil Nadu Puducherry & Karaikal and Telangana.
- ❖ **Squally weather with wind speed reaching 35-45 kmph gusting to 55 kmph** likely to prevail over westcentral adjoining northwest Arabian sea, over Gulf of Mannar & adjoining Comorin area.

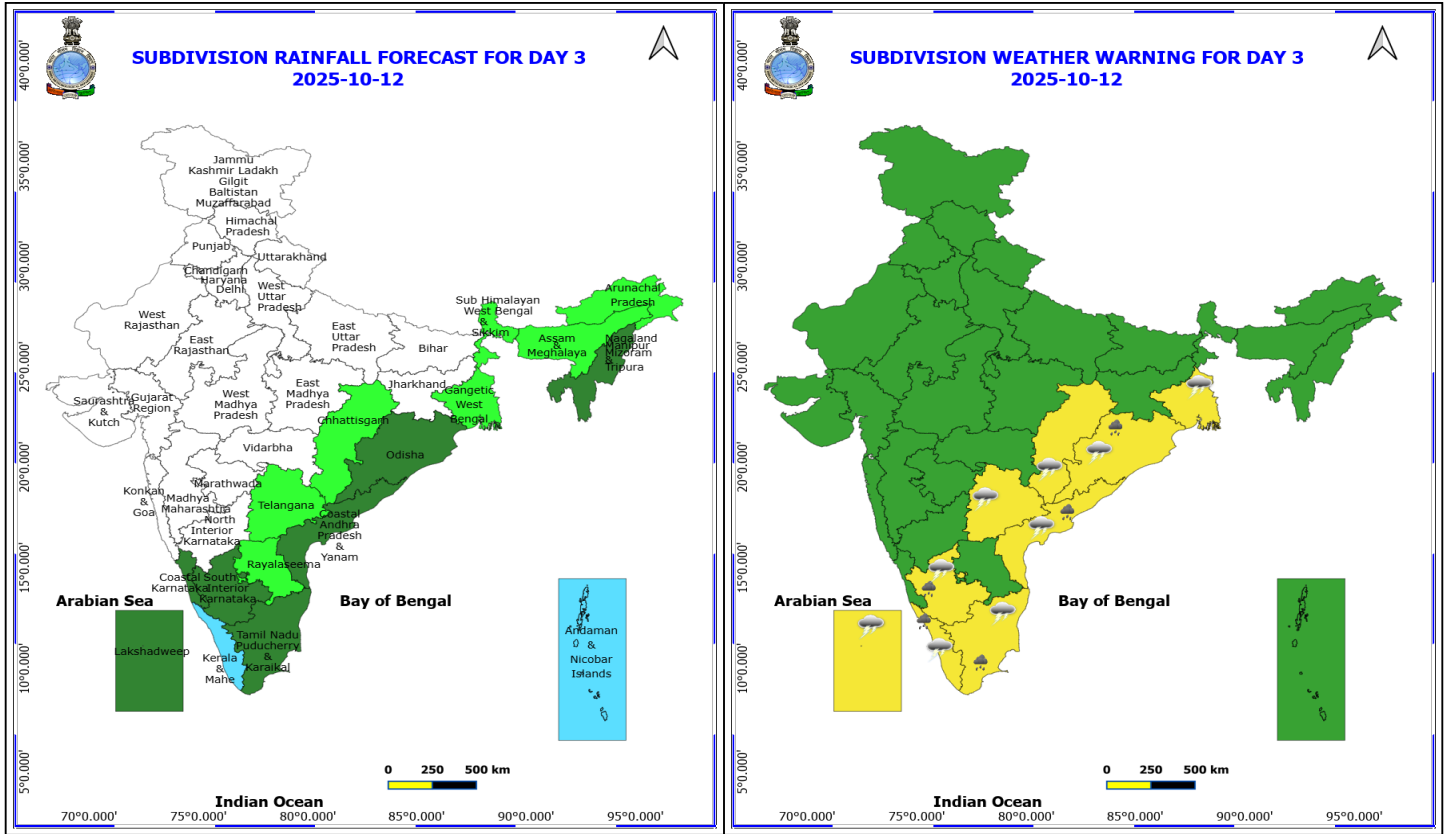
***Red color warning does not mean "Red Alert" Red color warning means "Take Action"**
 Forecast and warning for any day is valid from 0830 hours IST of day till 0830 hours IST of next day
 For more details kindly visit <https://mausam.imd.gov.in> or contact 011-2434-4599
 (Service to the nation since 1875)



11 October (Day 2)

- ❖ **Heavy Rainfall** very likely at isolated places over Andhra Pradesh, Kerala & Mahe, Odisha, South Interior Karnataka and Tamil Nadu Puducherry & Karaikal.
 - ❖ **Thunderstorm accompanied with lightning & gusty winds(30-40kmph)** very likely at isolated places over South Interior Karnataka and Telangana.
 - ❖ **Thunderstorm accompanied with Lightning** very likely at isolated places over Andhra Pradesh, Gangetic West Bengal, Kerala & Mahe, Lakshadweep, Odisha and Tamil Nadu Puducherry & Karaikal.
- No Fishermen Warning**

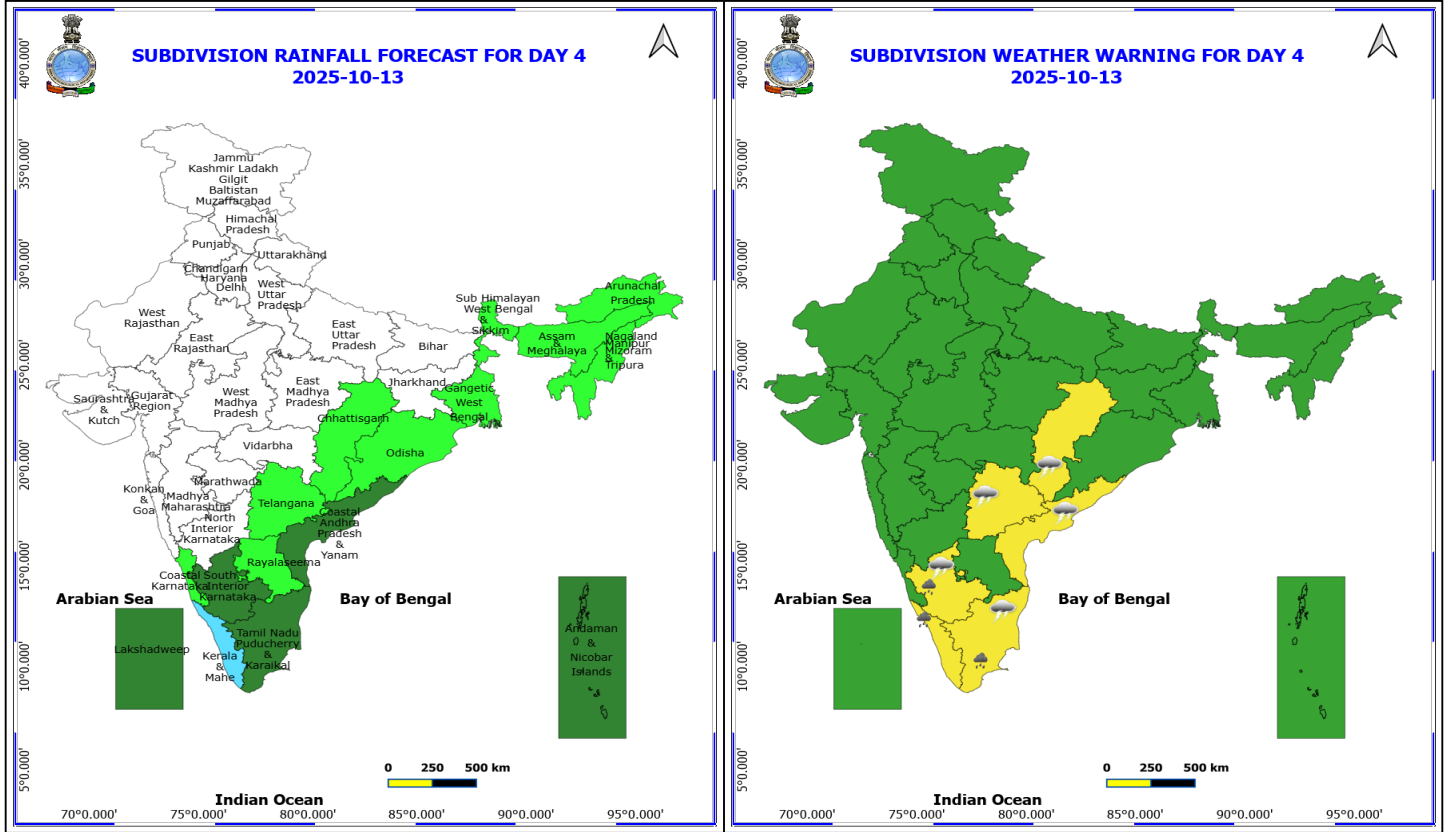
***Red color warning does not mean "Red Alert" Red color warning means "Take Action"**
 Forecast and warning for any day is valid from 0830 hours IST of day till 0830 hours IST of next day
 For more details kindly visit <https://mausam.imd.gov.in> or contact 011-2434-4599
 (Service to the nation since 1875)



12 October (Day 3)

- ❖ **Heavy Rainfall** very likely at isolated places over Coastal Andhra Pradesh, Kerala & Mahe, Odisha, South Interior Karnataka and Tamil Nadu Puducherry & Karaikal.
- ❖ **Thunderstorm accompanied with lightning & gusty winds(30-40kmph)** very likely at isolated places over South Interior Karnataka and Telangana.
- ❖ **Thunderstorm accompanied with Lightning** very likely at isolated places over Chhattisgarh, Coastal Andhra Pradesh, Gangetic West Bengal, Kerala & Mahe, Lakshadweep, Odisha and Tamil Nadu Puducherry & Karaikal.

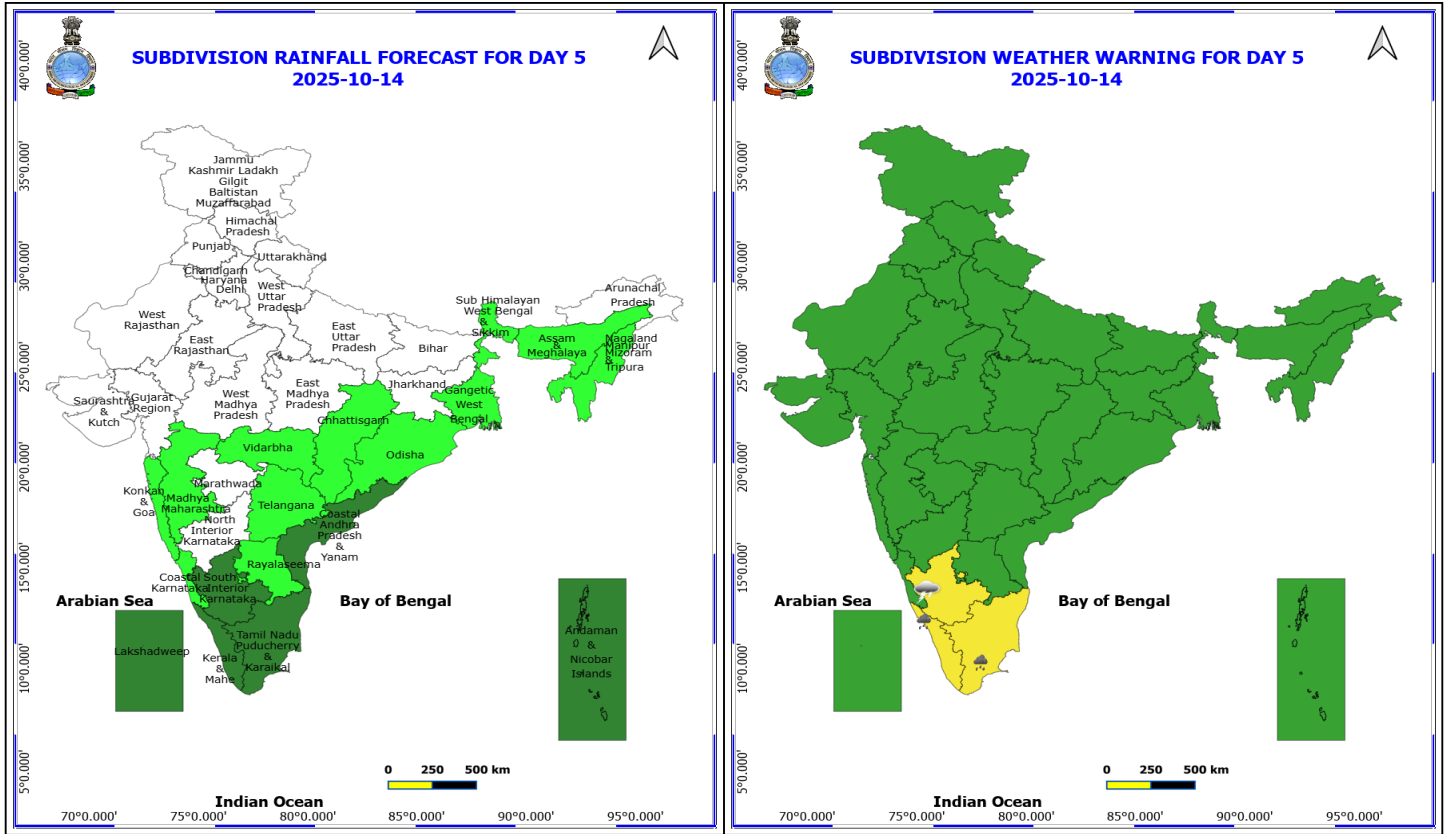
No Fishermen Warning



13 October (Day 4)

- ❖ **Heavy Rainfall** likely at isolated places over Kerala & Mahe, South Interior Karnataka and Tamil Nadu Puducherry & Karaikal.
- ❖ **Thunderstorm accompanied with lightning & gusty winds(30-40kmph)** likely at isolated places over South Interior Karnataka and Telangana.
- ❖ **Thunderstorm accompanied with Lightning** likely at isolated places over Chhattisgarh, Coastal Andhra Pradesh and Tamil Nadu Puducherry & Karaikal.

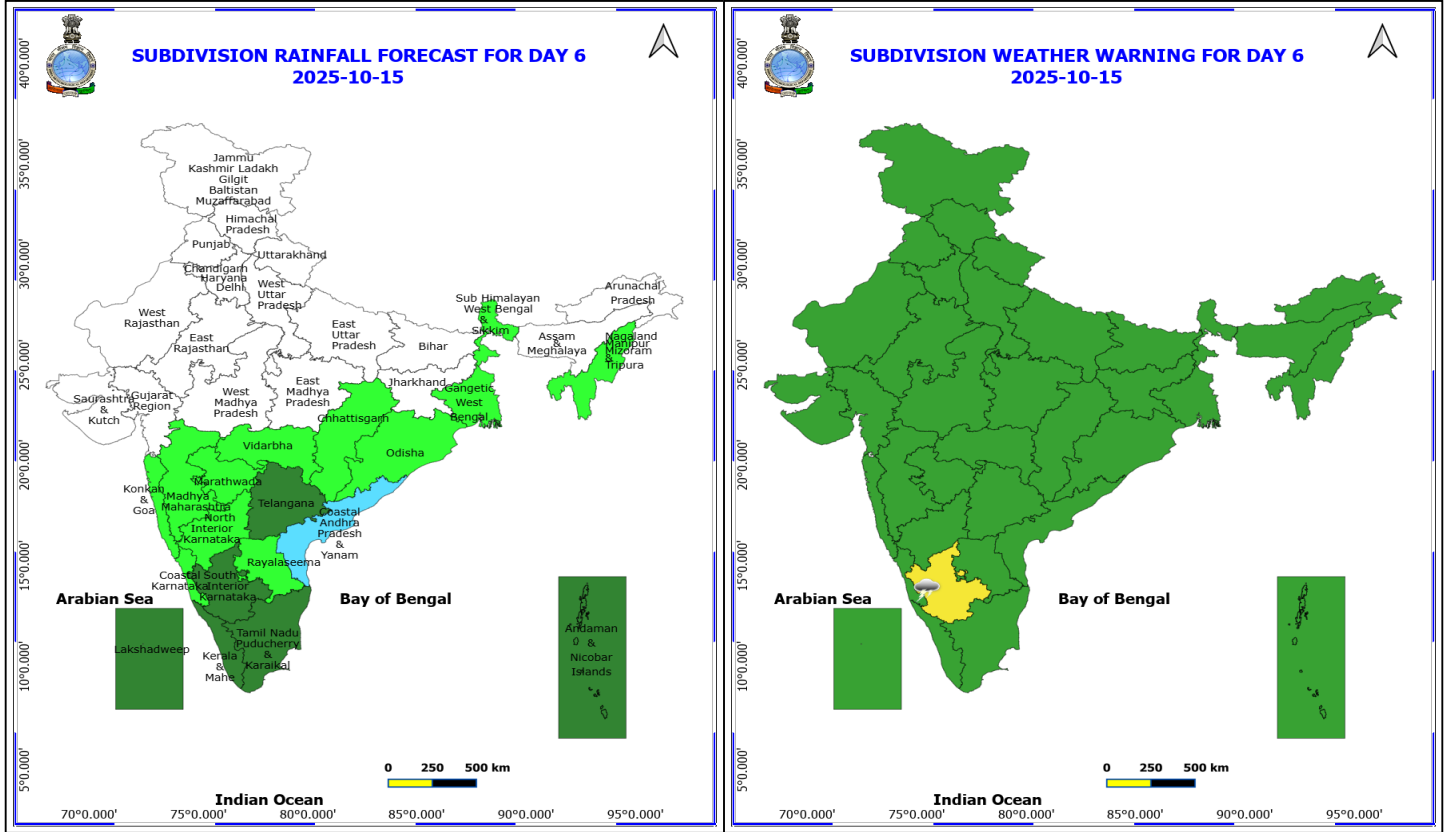
No Fishermen Warning



14 October (Day 5)

- ❖ **Heavy Rainfall** likely at isolated places over Kerala & Mahe and Tamil Nadu Puducherry & Karaikal.
- ❖ **Thunderstorm accompanied with lightning & gusty winds(30-40kmph)** likely at isolated places over South Interior Karnataka.

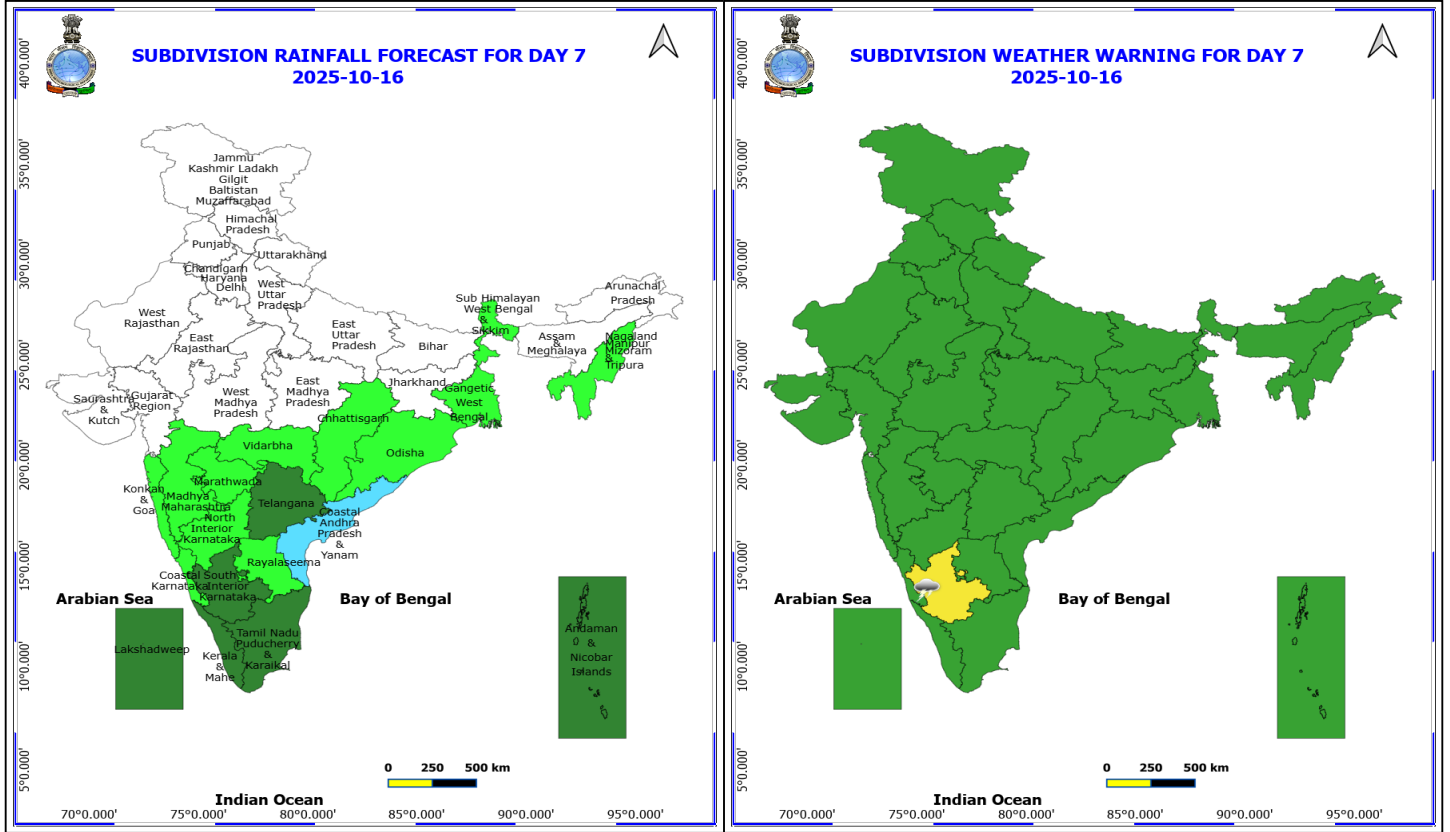
No Fishermen Warning



15 October (Day 6)

❖ **Thunderstorm accompanied with lightning & gusty winds(30-40kmph) likely at isolated places over South Interior Karnataka.**

No Fishermen Warning



16 October (Day 7)

❖ **Thunderstorm accompanied with lightning & gusty winds(30-40kmph) likely at isolated places over South Interior Karnataka.**

No Fishermen Warning



Table-1

7 Days Rainfall Forecast

S.No.	Subdivision	10- Oct	11- Oct	12- Oct	13- Oct	14- Oct	15- Oct	16- Oct
		Day 1	Day 2	Day 3	Day 4	Day 5	Day 6	Day 7
1	ANDAMAN & NICOBAR ISLANDS	FWS	FWS	FWS	SCT	SCT	SCT	SCT
2	ARUNACHAL PRADESH	SCT	SCT	ISOL	ISOL	DRY	DRY	DRY
3	ASSAM & MEHGHALAYA	SCT	SCT	ISOL	ISOL	ISOL	DRY	DRY
4	N. M. M. & T.	FWS	SCT	SCT	ISOL	ISOL	ISOL	ISOL
5	S.H. WEST BENGAL & SIKKIM	ISOL	ISOL	ISOL	ISOL	ISOL	ISOL	ISOL
6	GANGETIC WEST BENGAL	SCT	SCT	ISOL	ISOL	ISOL	ISOL	ISOL
7	ODISHA	SCT	SCT	SCT	ISOL	ISOL	ISOL	ISOL
8	JHARKHAND	ISOL	DRY	DRY	DRY	DRY	DRY	DRY
9	BIHAR	ISOL	DRY	DRY	DRY	DRY	DRY	DRY
10	EAST UTTAR PRADESH	DRY	DRY	DRY	DRY	DRY	DRY	DRY
11	WEST UTTAR PRADESH	DRY	DRY	DRY	DRY	DRY	DRY	DRY
12	UTTARAKHAND	ISOL	DRY	DRY	DRY	DRY	DRY	DRY
13	HARYANA, CHD & DELHI	DRY	DRY	DRY	DRY	DRY	DRY	DRY
14	PUNJAB	DRY	DRY	DRY	DRY	DRY	DRY	DRY
15	HIMACHAL PRADESH	ISOL	DRY	DRY	DRY	DRY	DRY	DRY
16	JAMMU AND KASHMIR AND LADAKH	DRY	DRY	DRY	DRY	DRY	DRY	DRY
17	WEST RAJASTHAN	DRY	DRY	DRY	DRY	DRY	DRY	DRY
18	EAST RAJASTHAN	DRY	DRY	DRY	DRY	DRY	DRY	DRY
19	WEST MADHYA PRADESH	DRY	DRY	DRY	DRY	DRY	DRY	DRY
20	EAST MADHYA PRADESH	ISOL	DRY	DRY	DRY	DRY	DRY	DRY
21	GUJRAT REGION	DRY	DRY	DRY	DRY	DRY	DRY	DRY
22	SAURASHTRA & KUTCH	DRY	DRY	DRY	DRY	DRY	DRY	DRY
23	KONKAN & GOA	ISOL	ISOL	DRY	DRY	ISOL	ISOL	ISOL
24	MADHYA MAHARASHTRA	ISOL	ISOL	DRY	DRY	ISOL	ISOL	ISOL
25	MARATHWADA	DRY	DRY	DRY	DRY	DRY	ISOL	ISOL
26	VIDARBHA	DRY	DRY	DRY	DRY	ISOL	ISOL	ISOL
27	CHATTISGARH	ISOL	ISOL	ISOL	ISOL	ISOL	ISOL	ISOL
28	COASTAL ANDHRA PRADESH	SCT	SCT	SCT	SCT	SCT	FWS	FWS
29	TELANGANA	ISOL	ISOL	ISOL	ISOL	ISOL	SCT	SCT
30	RAYALASEEMA	SCT	ISOL	ISOL	ISOL	ISOL	ISOL	ISOL
31	TAMILNADU & PUDUCHERRY	SCT	SCT	SCT	SCT	SCT	SCT	SCT
32	COSTAL KARNATAKA	FWS	SCT	SCT	ISOL	ISOL	ISOL	ISOL
33	NORTH INTERIOR KARNATAKA	ISOL	ISOL	DRY	DRY	DRY	ISOL	ISOL
34	SOUTH INTERIOR KARNATAKA	FWS	SCT	SCT	SCT	SCT	SCT	SCT
35	KERALA	WS	FWS	FWS	FWS	SCT	SCT	SCT
36	LAKSHDWEEP	FWS	SCT	SCT	SCT	SCT	SCT	SCT

Legend	Category	%Stations
WS	Widespread/Most Places	76-100
FWS	Fairly Widespread/Many Places	51-75
SCT	Scattered/ A Few Places	26-50
ISOL	Isolated Places	1-25
DRY	No Rain	0

*Red color warning does not mean "Red Alert" Red color warning means "Take Action"
Forecast and warning for any day is valid from 0830 hours IST of day till 0830 hours IST of next day
For more details kindly visit <https://mausam.imd.gov.in> or contact 011-2434-4599

(Service to the nation since 1875)

Fig. 1: Maximum Temperatures Dated 2025-10-09

Fig. 2: Departure of Maximum Temp. Dated 2025-10-09

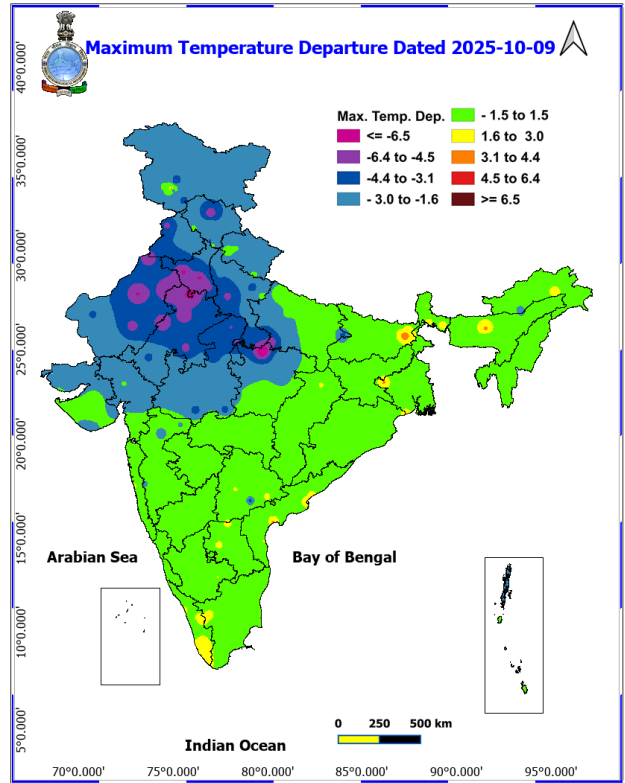
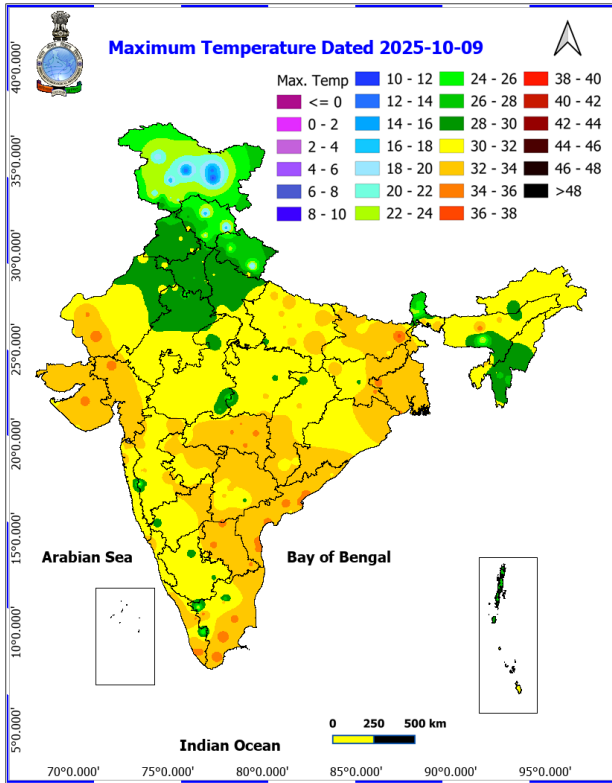
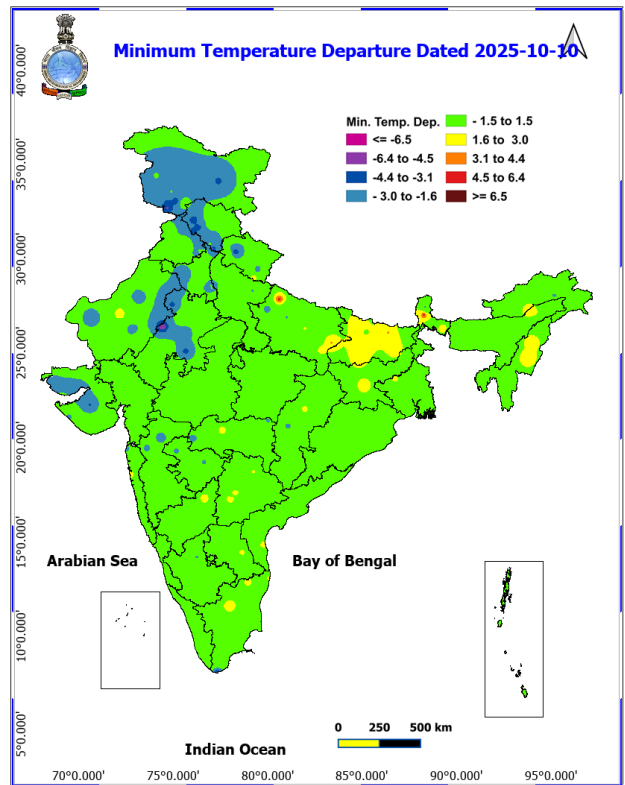
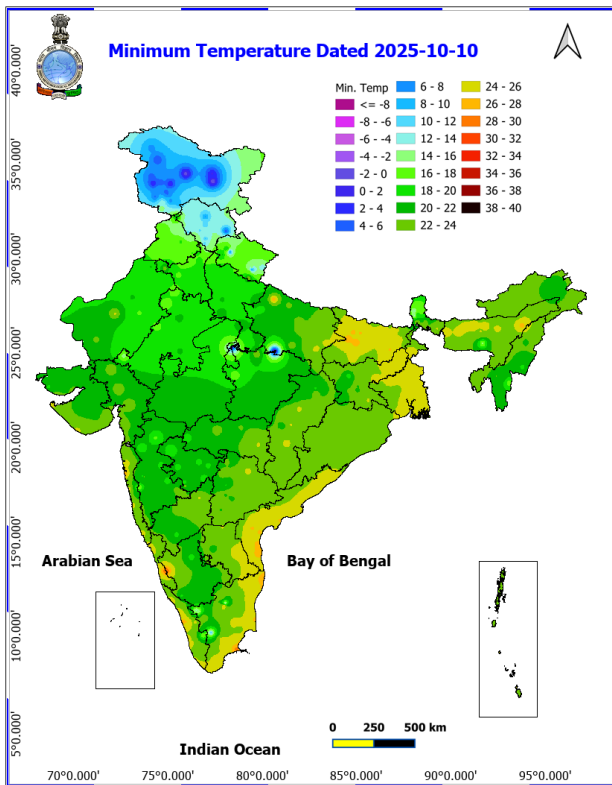
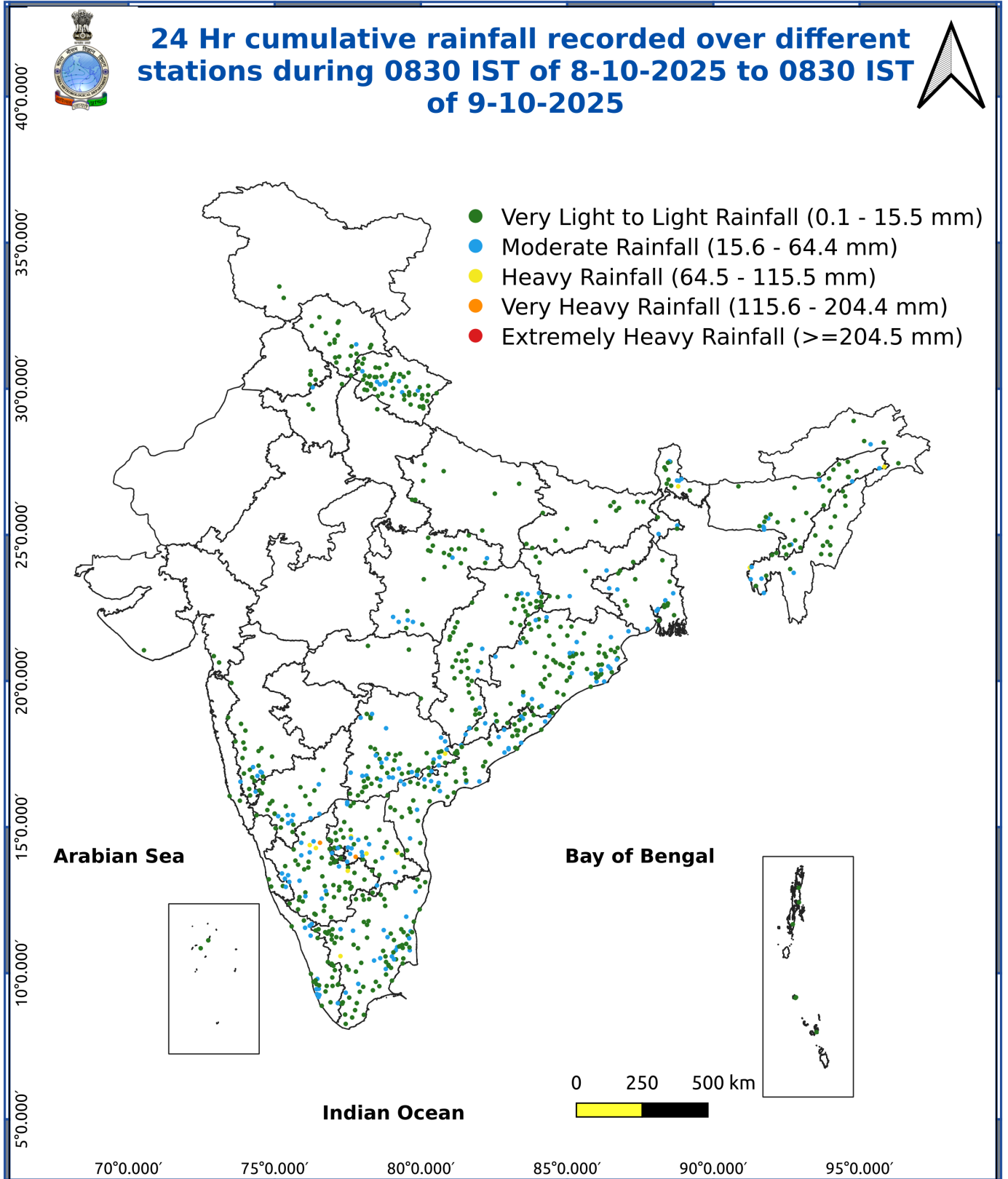


Fig. 3: Minimum Temperatures Dated 2025-10-09

Fig. 4: Departure of Minimum Temp. Dated 2025-10-09





Agromet advisories for various parts of the country

Agromet advisories for likely impact of Heavy/Heavy to Very Heavy Rainfall

In **South Interior Karnataka**, keep the harvested produce of groundnut, maize, pepper, cardamom, turmeric and coffee to dry, covered and ventilated areas or cover with tarpaulins in the fields. Drain out excess water from fields of rice, maize, finger millet, pigeon pea, soybean, groundnut and vegetables and plantations of banana, black pepper, coconut and arecanut to avoid waterlogging.

In **Tamil Nadu**, store the harvested produce of rice and groundnut in safer places. Provide adequate drainage facilities in fields of rice, cotton, turmeric and vegetables and plantations of coconut and banana to avoid water stagnation.

In **Kerala**, make provision to drain out excess water from fields of rice and plantations of banana, coconut, arecanut and black pepper.

In **Rayalseema**, store the harvested fruits and vegetables in safer places. Drain out excess water from fields of rice, groundnut, cotton, turmeric and vegetables.

In **Coastal Andhra Pradesh**, provide adequate drainage facilities in fields of rice, maize, pigeon pea, black gram, green gram, groundnut, turmeric, vegetables and plantations of coconut, arecanut, banana, coffee and black pepper.

In **Coastal Karnataka**, make necessary arrangements to drain out excess water from fields of rice and plantations of coconut and arecanut.

In **Assam**, harvest all the matured vegetables (tomato, cucumber, brinjal etc). Ensure proper drainage of excess water from fields of *Sali* rice, black gram, green gram and vegetables.

In **Meghalaya**, make necessary arrangements to drain out excess water from fields of standing crops, vegetables and fruit orchards.

In **Odisha**, ensure proper drainage in fields of rice, maize, green gram, black gram, groundnut, cotton and vegetables to prevent waterlogging.

Livestock / Fishery

Keep the animals inside the shed during heavy rainfall and provide them balanced feed. Store feed and fodder in a safe place to prevent spoilage.

Construct an outlet with proper netting around the ponds to drain out excess water, thereby preventing fish from escaping in case of overflow.

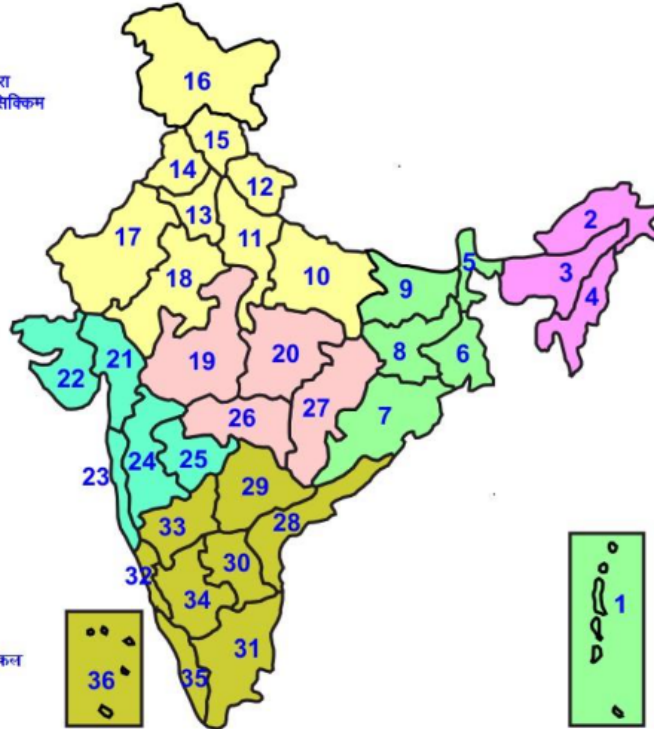
Agromet advisories for likely impact of Thunderstorm / Gusty Winds / Squally Winds

(Based on the IBF and advisories issued by different AMFUs)

Provide mechanical support to horticultural crops and staking or support to vegetables and young fruit plants / fruit-bearing plants to avoid lodging due to strong winds.

LEGENDS

- 1 अंडमान और निकोबार द्वीप समुह
- 2 अरुणाचल प्रदेश
- 3 असम और मेघालय
- 4 नागालैंड मनीपुर मीजोरम और त्रिपुरा
- 5 उप हिमालय पश्चिम बंगाल एवं सिक्किम
- 6 पश्चिम बंगाल
- 7 ओडिसा
- 8 झारखंड
- 9 बिहार
- 10 पूर्वी उत्तर प्रदेश
- 11 पश्चिम उत्तर प्रदेश
- 12 उत्तराखंड
- 13 हरियाणा चंडिगढ़ एवं दिल्ली
- 14 पंजाब
- 15 हिमाचल प्रदेश
- 16 जम्मू एवं कश्मीर एवं लद्दाख
- 17 पश्चिम राजस्थान
- 18 पूर्वी राजस्थान
- 19 पश्चिम मध्य प्रदेश
- 20 पूर्वी मध्य प्रदेश
- 21 गुजरात क्षेत्र
- 22 सौराष्ट्र एवं कच्छ
- 23 कोंकण एवं गोवा
- 24 मध्य महाराष्ट्र
- 25 मराठावाडा
- 26 विदर्भ
- 27 छत्तीसगढ़
- 28 तटीय आंध्र प्रदेश एवं यनम
- 29 तेलंगाना
- 30 रायलसीमा
- 31 तमिलनाडु, पुदुचेरी एवं कराईकल
- 32 तटिय कर्नाटक
- 33 आंतरिक उत्तरी कर्नाटक
- 34 आंतरिक दक्षिणी कर्नाटक
- 35 केरल एवं माहे
- 36 लक्षद्वीप



1. Andaman & Nicobar Islands
2. Arunachal Pradesh
3. Assam & Meghalaya
4. Nagaland, Manipur, Mizoram & Tripura
5. Sub-Himalayan West Bengal & Sikkim
6. Gangetic West Bengal
7. Orissa
8. Jharkhand
9. Bihar
10. East Uttar Pradesh
11. West Uttar Pradesh
12. Uttarakhand
13. Haryana, Chd & Delhi
14. Punjab
15. Himachal Pradesh
16. Jammu & Kashmir and Ladakh
17. West Rajasthan
18. East Rajasthan
19. West Madhya Pradesh
20. East Madhya Pradesh
21. Gujarat
22. Saurashtra
23. Konkan & Goa
24. Madhya Maharashtra
25. Marathawada
26. Vidharbha
27. Chhattisgarh
28. Coastal Andhra Pradesh & Yanam
29. Telangana
30. Rayalaseema
31. Tamilnadu, Puducherry & Karaikal
32. Coastal Karnataka
33. North Interior Karnataka
34. South Interior Karnataka
35. Kerala & Mahe
36. Lakshadweep

SPATIAL DISTRIBUTION (% of Stations reporting)

% Stations	Category	% Stations	Category
76-100	Widespread (WS/ Most Places)	26-50	Scattered (SCT/ A Few Places)
51-75	Fairly Widespread (FWS/ Many Places)	1-25	Isolated (ISOL)

Subdivision Colour

- NO WARNING
- WATCH (BE UPDATED)
- ALERT (BE PREPARED TO TAKE ACTION)
- WARNING (TAKE ACTION)

Probabilistic Forecast

Terms	Probability of Occurrence (%)
Unlikely	< 25
Likely	25 - 50
Very Likely	50 - 75
Most Likely	> 75

- | | | | |
|--------------------------|-----------------|----------------------|--------------------|
| Heavy Rain | Very Heavy Rain | Extremely Heavy Rain | Heavy Snow |
| Thunderstorm & Lightning | Hailstorm | Dust Storm | Dust Raising Winds |
| Strong surface winds | Heat Wave | Hot Day | Warm Night |
| Cold Wave | Cold Day | Ground Frost | Fog |
| Hot & Humid | | | |

*Red color warning does not mean "Red Alert" Red color warning means "Take Action"

Forecast and warning for any day is valid from 0830 hours IST of day till 0830 hours IST of next day

For more details kindly visit <https://mausam.imd.gov.in> or contact 011-2434-4599

(Service to the nation since 1875)

LEGENDS

WARNING

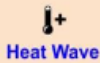
WARNING (TAKE ACTION)
ALERT (BE PREPARED)
WATCH (BE UPDATED)
NO WARNING (NO ACTION)

Probabilistic Forecast

Terms	Probability of Occurrence (%)
Unlikely	< 25
Likely	25 - 50
Very Likely	50 - 75
Most Likely	> 75



Heavy: 64.5 to 115.5 mm/cm *
Very Heavy: 115.6 to 204.4 mm/cm*
Extremely Heavy: > 204.4 mm/cm *



When maximum temperature of a station reaches $\geq 40^{\circ}\text{C}$ for plains and $\geq 30^{\circ}\text{C}$ for hilly regions
(a) Based on Departure from normal

Heat Wave: Maximum Temperature Departure from normal 4.5°C to 6.4°C .
Severe Heat Wave: Maximum Temperature Departure from normal $\geq 6.5^{\circ}\text{C}$

(b). Based on Actual maximum temperature

Heat Wave: When actual maximum temperature $\geq 45^{\circ}\text{C}$.
Severe Heat Wave: When actual maximum temperature $\geq 47^{\circ}\text{C}$

(c). Criteria for heat wave for coastal stations

When maximum temperature departure is $> 4.5^{\circ}\text{C}$ from normal. Heat Wave may be described provided maximum temperature $\geq 37^{\circ}\text{C}$



When maximum temperature remains 40°C

Warm Night: When minimum temperature departure 4.5°C to 6.4°C .
Severe Warm Night: When minimum temperature departure $> 6.4^{\circ}\text{C}$.



When minimum temperature of a station $\leq 10^{\circ}\text{C}$ for plains and $\leq 0^{\circ}\text{C}$ for hilly regions.

(a). Based on departure

Cold Wave: Minimum Temperature Departure from normal -4.5°C to -6.4°C .
Severe Cold Wave: Minimum Temperature Departure from normal $\leq -6.5^{\circ}\text{C}$

(b) Based on actual Minimum Temperature (for Plains only)

Cold Wave : When Minimum Temperature is $\leq 4.0^{\circ}\text{C}$
Severe Cold Wave: When Minimum Temperature is $\leq 2.0^{\circ}\text{C}$

(c) For Coastal Stations

When Minimum Temperature departure is $\leq -4.5^{\circ}\text{C}$ & actual Minimum Temperature is $\leq 15^{\circ}\text{C}$



When minimum temperature of a station $\leq 10^{\circ}\text{C}$ for plains and $\leq 0^{\circ}\text{C}$ for hilly regions
Based on departure

Cold Day: Maximum Temperature Departure from normal -4.5°C to -6.4°C .
Severe Cold Day: Maximum Temperature Departure from normal $\leq -6.5^{\circ}\text{C}$



Phenomenon of small droplets suspended in air and the horizontal visibility $< 1\text{km}$

Moderate Fog: When the visibility between 500-200 metres
Dense Fog: when the visibility between 50- 200 metres
Very Dense Fog: when the visibility < 50 metres



Sudden electrical discharges manifested by a flash of light (Lightning) and a sharp rumbling sound (thunder)



An ensemble of particles of dust or sand energetically lifted to great heights by a strong and turbulent wind.



Ice deposits on ground

Air temperature $\leq 4^{\circ}\text{C}$ (over Plains)



A strong wind that rises suddenly, lasts for atleast 1 minute.

Moderate: Wind speed 52-61 kmph
Severe: Wind speed 62-87 kmph
Very Severe: Wind speed > 87 kmph



Effect of various waves in the sea over specific area

Rough to very rough: Wind speed 41-62 kmph (22-33 knots) & Wave height 2.5-6 metre
High to very high: Wind speed 63-117 kmph (34-63 knots) & Wave height 6-14 metre
Phenomenal: Wind speed > 117 kmph (> 63 knots) & Wave height > 14 metre



Cyclonic Storm: Wind speed 62-87 kmph (34-47 knots)
Severe Cyclonic Storm: Wind speed 88-117 kmph (48-63 knots)
Very Severe Cyclonic Storm: Wind speed 118-165 kmph (64 - 89 knots)
Extremely Severe Cyclonic Storm: Wind speed 166-220 kmph (90 -119 knots)
Super Cyclone Storm: Wind speed > 220 kmph (> 119 knots)

*Red color warning does not mean "Red Alert" Red color warning means "Take Action"

Forecast and warning for any day is valid from 0830 hours IST of day till 0830 hours IST of next day

For more details kindly visit <https://mausam.imd.gov.in> or contact 011-2434-4599

(Service to the nation since 1875)