

2025-10-23

Time of Issue: 09:26:00 hours IST  
(Morning)

**ALL INDIA WEATHER SUMMARY AND FORECAST BULLETIN**

**Significant Weather Features**

**Weather warning:**

**South Peninsular India:**

Light to moderate rainfall/thunderstorm at many/some places with isolated **heavy rainfall** over Tamil Nadu on 23<sup>rd</sup> & 24<sup>th</sup> and during 26<sup>th</sup>-29<sup>th</sup>; South Interior Karnataka and Kerala & Mahe on 23<sup>rd</sup> & 24<sup>th</sup>; Coastal Karnataka and Telangana during 23<sup>rd</sup>- 25<sup>th</sup>; North interior Karnataka on 24<sup>th</sup>; Coastal Andhra Pradesh & Yanam and Rayalaseema during 23<sup>rd</sup> to 29<sup>th</sup> Oct with **very heavy rainfall over Coastal & South Interior Karnataka and Coastal Andhra Pradesh & Yanam, Rayalaseema on 23<sup>rd</sup> October.**

Thunderstorm with lightning likely over the region during next 5 days.

**East & Central India:**

Light to moderate rain/thunderstorm at many places with isolated **heavy rainfall** over Andaman & Nicobar Islands during 23<sup>rd</sup> -27<sup>th</sup> October.

Thunderstorm with lightning and gusty winds (speed reaching 30-40 kmph) likely over Andaman & Nicobar Islands during next 7 days; Odisha during 23<sup>rd</sup>-26<sup>th</sup> and with lightning over Madhya Pradesh, Vidarbha and Chhattisgarh during next 5 days.

Dense fog conditions likely over Odisha for 23<sup>rd</sup> October.

**West India:**

Light to moderate rain/thunderstorm at many places with isolated **heavy rainfall** over Konkan & Goa on 23<sup>rd</sup> & 24<sup>th</sup> and Madhya Maharashtra on 23<sup>rd</sup> October.

Thunderstorm with lightning likely over Konkan & Goa, Marathawada and Madhya Maharashtra during next 5 days.

**North India:**

Fall in minimum temperature by 2-4 °C over most part of Northwest India during next 2-3 days.

**\*Red color warning does not mean "Red Alert" Red color warning means "Take Action"**

**Forecast and warning for any day is valid from 0830 hours IST of day till 0830 hours IST of next day**

**For more details kindly visit <https://mausam.imd.gov.in> or contact 011-2434-4599**

**(Service to the nation since 1875)**

### Main Weather Observations:

❖ **Rainfall distribution** (from 0830 hours IST of yesterday to 0530 hours IST of today): **at most places** over Coastal Andhra Pradesh & Yanam, Kerala & Mahe, Lakshadweep, South Interior Karnataka, Tamilnadu Puducherry & Karaikal, Coastal Karnataka, Rayalaseema, Andaman & Nicobar Islands and North Interior Karnataka; **at many places** over Nagaland, Manipur, Mizoram & Tripura, Odisha, Jammu & Kashmir and Ladakh, Konkan & Goa, Madhya Maharashtra, Telangana and Chhattisgarh; **Dry** over rest of the country.

❖ **Significant rainfall recorded(in cm)** (from 0830 hours IST of yesterday to 0530 hours IST of today): Coastal andhra pradesh & yanam: Kakinada (dist Kakinada) 6, Ongole (dist Prakasam) 4, Visakhapatnam (dist Visakhapatnam), Kavali (dist Sri Potti Sriramulu Nellore) 3 Each, Tuni (dist Kakinada), Bapatla (dist Bapatla), Narsapur (dist Medak), Nellore (dist Sri Potti Sriramulu Nellore), Vishakhapatnam (dist Visakhapatnam) 2 Each; Kerala & mahe: Kochi (cochin) (dist Ernakulam) 5, Thiruvananthapuram-city (dist Thiruvananthapuram), Kozhikode (calicut) (dist Kozhikode) 3 Each, Cannanore (kannur) (dist Kannur) 2; **Lakshadweep** : Minicoy (dist **Lakshadweep**) 4; South interior karnataka: Chitradurga (dist Chitradurga) 4; Tamilnadu puducherry & karaikal: Tiruchirapalli AP (dist Tiruchirappalli) 4, Salem (dist Salem), Chennai (nungambakkam), Chennai (minambakkam) AP (dist Chennai) 2 Each; Coastal karnataka: Mangalore (bajpe) AP (dist Dakshina Kannada) 2; **Rayalaseema**: Tirupathi (dist Tirupati) 2; Konkan & goa : Panjim (dist North Goa) 2.

❖ **Minimum Temperature Departures (as on 22-10-2025): markedly above normal(> 5.1°C)** at isolated places over Assam & Meghalaya, Sub Himalayan West Bengal & Sikkim, Bihar and East Uttar Pradesh. **appreciably above normal(3.1°C to 5.0°C)** at many places over Madhya Maharashtra; at few places over West Uttar Pradesh, Uttarakhand and Vidarbha; at isolated places over Haryana-Chandigarh-Delhi, Himachal Pradesh, Jammu-KashmirLadakh-Gilgit-Baltistan-Muzaffarabad, East Madhya Pradesh, Gujarat Region, Konkan & Goa and Marathwada. **above normal(1.6°C to 3.0°C)** at many places over Punjab and Chhattisgarh; at most places over Nagaland, Manipur, Mizoram & Tripura; at few places over West Rajasthan and Saurashtra & Kutch; at isolated places over Andaman & Nicobar Islands, Gangetic West Bengal, East Rajasthan, West Madhya Pradesh, Coastal Andhra Pradesh & Yanam, Telangana, Rayalaseema, Tamil Nadu, Puducherry & Karaikal and North Interior Karnataka. **near normal(-1.5°C to 1.5°C)** at many places over Odisha and Jharkhand; at most places over Arunachal Pradesh, Coastal Karnataka, South Interior Karnataka, Kerala & Mahe and Lakshadweep. **The lowest minimum temperature** of 12.9°C was reported at UNA (HIMACHAL PRADESH) over the Plains of India.

❖ **Maximum Temperature Departures (as on 22-10-2025): markedly above normal(> 5.1°C)** at isolated places over Assam & Meghalaya. **appreciably above normal(3.1°C to 5.0°C)** at few places over Arunachal Pradesh, Nagaland, Manipur, Mizoram & Tripura, Sub Himalayan West Bengal & Sikkim and Uttarakhand; at isolated places over Gangetic West Bengal, Jammu-KashmirLadakh-Gilgit-Baltistan-Muzaffarabad, Saurashtra & Kutch, Konkan & Goa, Vidarbha and Chhattisgarh. **above normal(1.6°C to 3.0°C)** at many places over Jharkhand; at few places over Bihar and Himachal Pradesh; at isolated places over Odisha, East Uttar Pradesh, East Madhya Pradesh, Madhya Maharashtra, Coastal Andhra Pradesh & Yanam and Telangana. **near normal(-1.5°C to 1.5°C)** at many places over Andaman & Nicobar Islands, West Uttar Pradesh, Punjab, West Rajasthan, East Rajasthan, Gujarat Region, Coastal Karnataka and Lakshadweep; at most places over Marathwada and North Interior Karnataka; at few places over Haryana-Chandigarh-Delhi, West Madhya Pradesh, Tamil Nadu, Puducherry & Karaikal and Kerala & Mahe; at isolated places over South Interior Karnataka. **The highest maximum temperature** of 37.3°C was reported at BARMER (RAJASTHAN).

\*Red color warning does not mean "Red Alert" Red color warning means "Take Action"

Forecast and warning for any day is valid from 0830 hours IST of day till 0830 hours IST of next day

For more details kindly visit <https://mausam.imd.gov.in> or contact 011-2434-4599

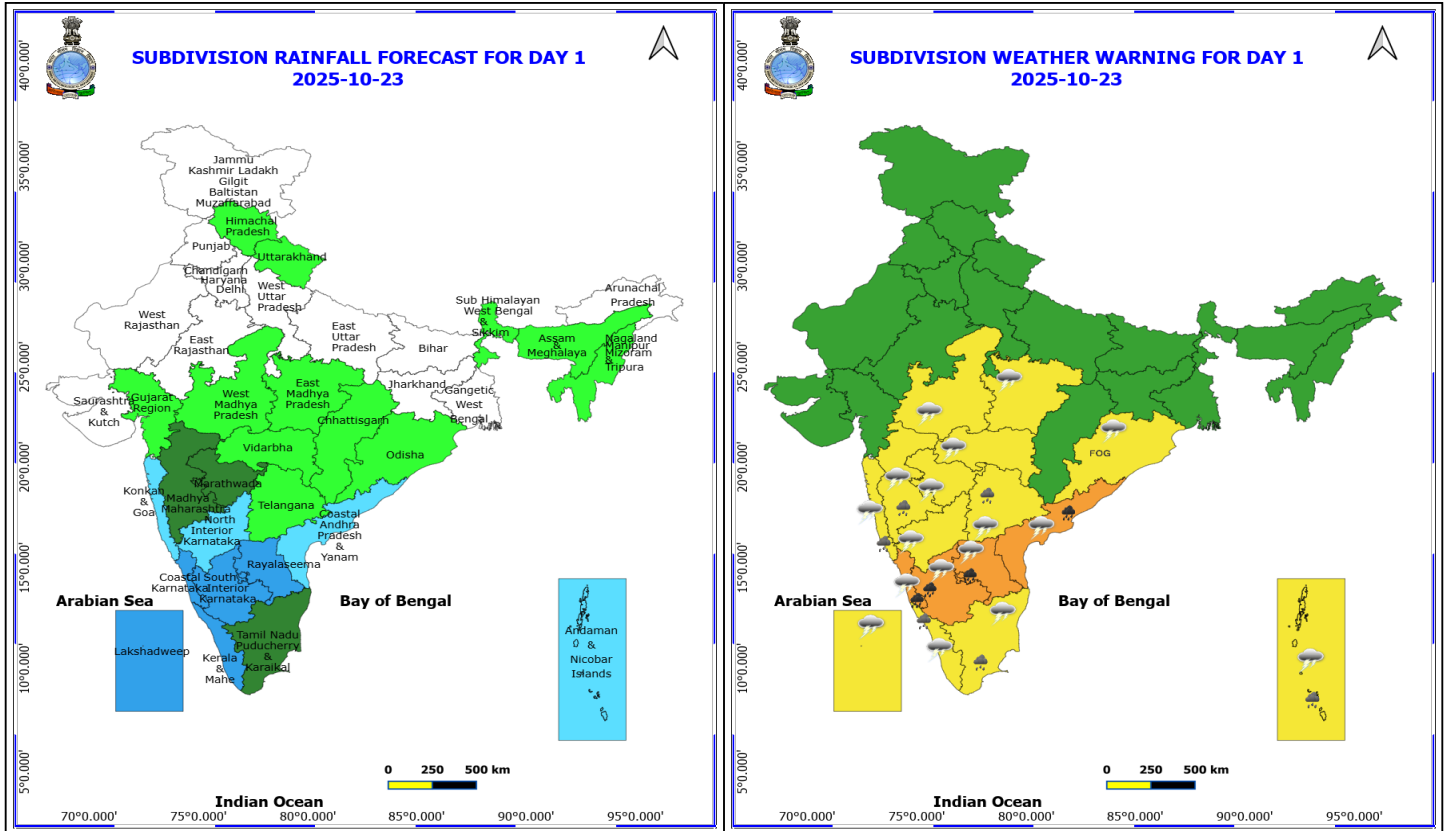
(Service to the nation since 1875)

### Meteorological Analysis (Based on 0530 hours IST)

- The **Depression** over southeast Arabian Sea moved slowly north-northeastwards with a speed of 3 kmph during past 6 hours and lay centered at 0530 hrs IST of today, the 23<sup>rd</sup> October 2025, over the same region, near latitude 9.7°N & longitude 67.7°E, about 570 km west-southwest of Aminidivi (Lakshadweep) and 920 km southwest of Panjim (Goa). It is likely to move nearly northeastwards across southeast Arabian Sea during next 24 hours.
- The **Well marked low pressure area** over north interior Tamil Nadu and neighbourhood moved west-northwestwards, weakened into a **low pressure area** and lay over north interior Tamil Nadu & adjoining south interior Karnataka at 0530 hrs IST of today, the 23<sup>rd</sup> October 2025. It is likely to continue to move west-northwestwards across south interior Karnataka and weaken further during next 24 hours.
- The **upper air cyclonic circulation** over south Andaman Sea & neighbourhood extending upto 5.8 km above mean sea level persists.
- The **upper air cyclonic circulation** over northwest Uttar Pradesh and adjoining Haryana at 3.1 km above mean sea level persists.
- The **Western Disturbance** as a trough in middle and upper tropospheric westerlies with its axis at 5.8 km above mean sea level now runs roughly along Long. 75°E to the north of Lat. 28°N.
- A fresh Western Disturbance likely to impact Western Himalayan Region from 27<sup>th</sup> October, 2025.
- The **upper air cyclonic circulation** over northeast Rajasthan & neighbourhood at 3.1 km above mean sea level has become less marked.

### Weather Outlook for subsequent 3 days

- Fairly widespread to widespread rainfall activity likely over the Northeast India.
- Isolated to scattered rainfall activity likely over West coast and East India.



## 23 October (Day 1)

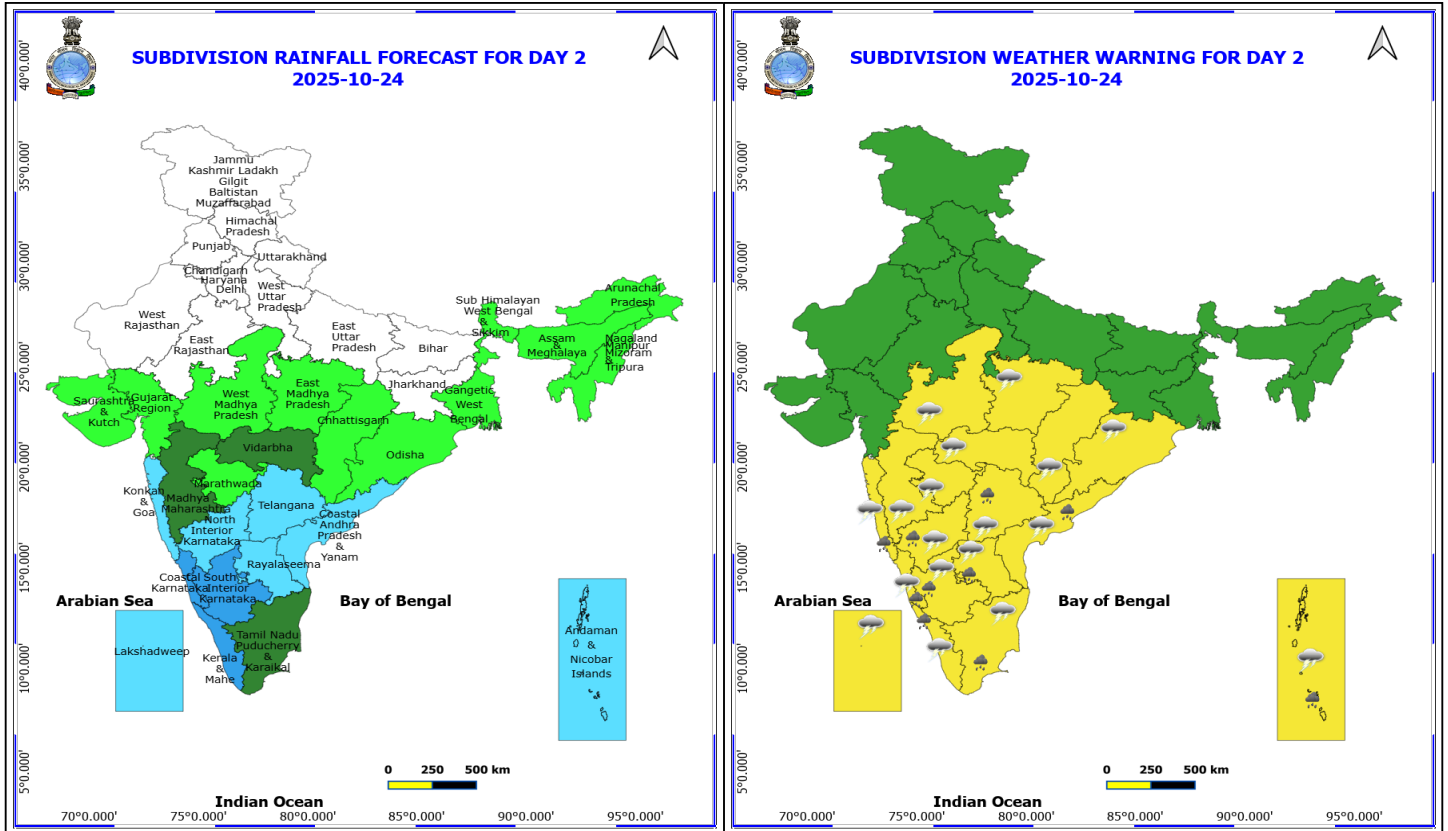
- ❖ **Heavy to Very Heavy Rainfall** very likely at isolated places over Andhra Pradesh and Coastal Karnataka.
- ❖ **Heavy Rainfall** very likely at isolated places over Andaman & Nicobar Islands, Kerala & Mahe, Konkan & Goa, Madhya Maharashtra, South Interior Karnataka and Tamil Nadu Puducherry & Karaikal.
- ❖ **Thunderstorm accompanied with lightning & gusty winds(40-50kmph)** very likely at isolated places over Andaman & Nicobar Islands.
- ❖ **Thunderstorm accompanied with lightning & gusty winds(30-40kmph)** very likely at isolated places over Karnataka, Kerala & Mahe, Lakshadweep, Odisha and Telangana.
- ❖ **Thunderstorm accompanied with Lightning** very likely at isolated places over Andhra Pradesh, Konkan & Goa, Madhya Pradesh, Maharashtra and Tamil Nadu Puducherry & Karaikal.
- ❖ **Fog** very likely at isolated pockets over Odisha.
- ❖ **Squally weather with wind speed 35 kmph to 45 kmph gusting to 55 kmph** likely to prevail along and off Kerala, Karnataka coasts and adjoining sea areas, over Lakshadweep, Comorin areas, Maldives, over southeast, and adjoining some parts of southwest, eastcentral Arabian Sea, over Gulf of Mannar, over south and many parts of central Bay of Bengal, along and off South Andhra Pradesh, Tamil Nadu, Sri Lanka coasts and over Andaman Sea.
- ❖ **Squally weather with wind speed 45 kmph to 55 kmph gusting to 65 kmph** likely to prevail over northeastern parts of southeast Arabian Sea and adjoining areas, along and off north Tamil Nadu, Puducherry, south Andhra Pradesh coasts and adjoining sea areas.

**\*Red color warning does not mean "Red Alert" Red color warning means "Take Action"**

Forecast and warning for any day is valid from 0830 hours IST of day till 0830 hours IST of next day

For more details kindly visit <https://mausam.imd.gov.in> or contact 011-2434-4599

(Service to the nation since 1875)



## 24 October (Day 2)

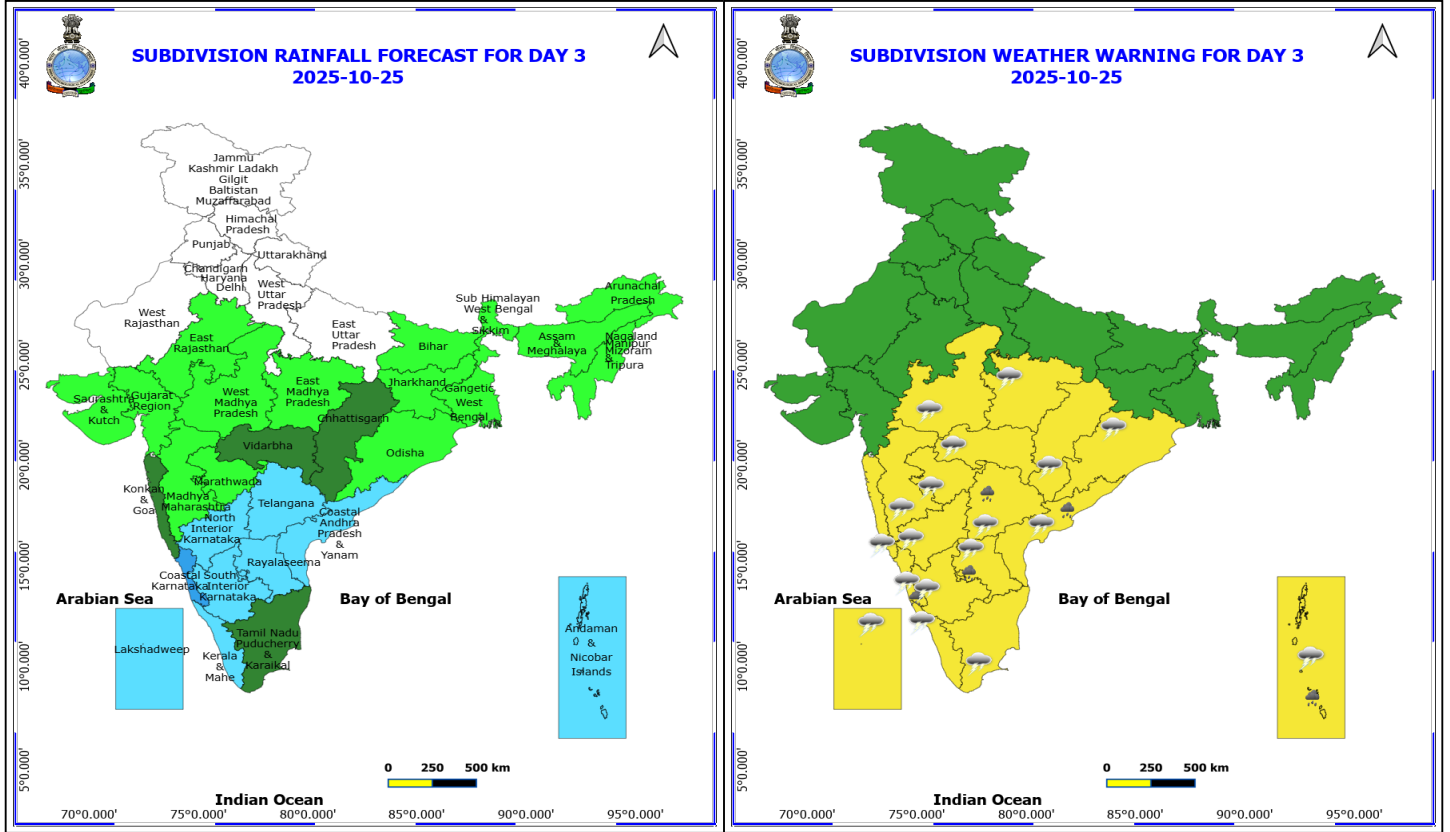
- ❖ **Heavy Rainfall** very likely at isolated places over Andaman & Nicobar Islands, Andhra Pradesh, Karnataka, Kerala & Mahe, Konkan & Goa, Tamil Nadu Puducherry & Karaikal and Telangana.
- ❖ **Thunderstorm accompanied with lightning & gusty winds(40-50kmph)** very likely at isolated places over Andaman & Nicobar Islands.
- ❖ **Thunderstorm accompanied with lightning & gusty winds(30-40kmph)** very likely at isolated places over Karnataka, Kerala & Mahe, Lakshadweep, Odisha and Telangana.
- ❖ **Thunderstorm accompanied with Lightning** very likely at isolated places over Andhra Pradesh, Chhattisgarh, Konkan & Goa, Madhya Pradesh, Maharashtra and Tamil Nadu Puducherry & Karaikal.
- ❖ **Squally weather with wind speed 35 kmph to 45 kmph gusting to 55 kmph** likely to prevail along and off Kerala, Karnataka coasts and adjoining sea areas, over Lakshadweep, Comorin areas, Maldives, over southeast, and adjoining some parts of central Arabian Sea, over Gulf of Mannar, over south and most parts of central Bay of Bengal, along and off South & adjoining north Andhra Pradesh coasts, Tamil Nadu, Sri Lanka coasts and over Andaman Sea.
- ❖ **Squally weather with wind speed 45 kmph to 55 kmph gusting to 65 kmph** likely to prevail over northeastern parts of southeast Arabian Sea and adjoining areas, northeastern parts of southeast Bay of Bengal and adjoining areas.

**\*Red color warning does not mean "Red Alert" Red color warning means "Take Action"**

Forecast and warning for any day is valid from 0830 hours IST of day till 0830 hours IST of next day

For more details kindly visit <https://mausam.imd.gov.in> or contact 011-2434-4599

(Service to the nation since 1875)



### 25 October (Day 3)

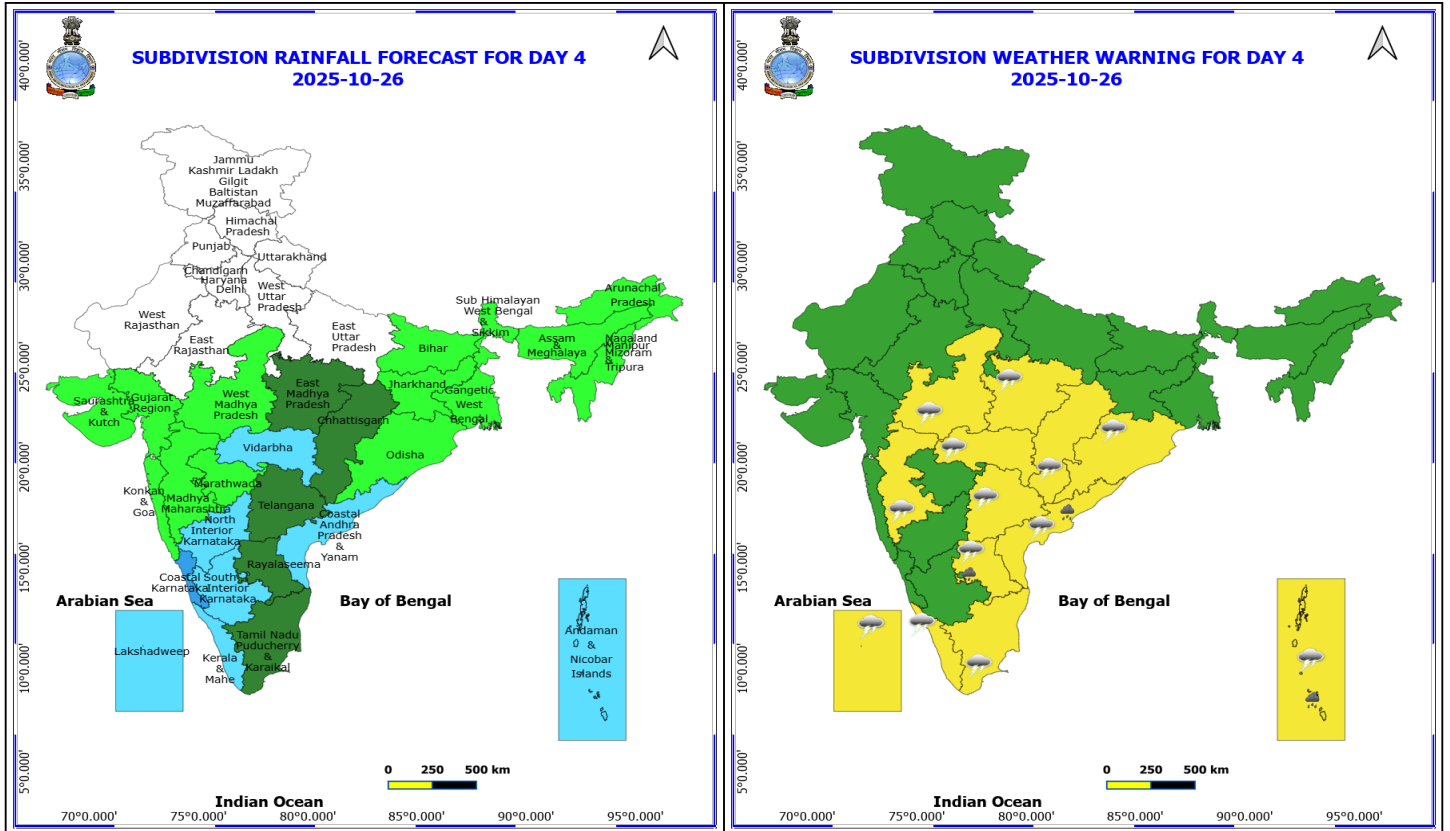
- ❖ **Heavy Rainfall** very likely at isolated places over Andaman & Nicobar Islands, Andhra Pradesh, Coastal Karnataka and Telangana.
- ❖ **Thunderstorm accompanied with lightning & gusty winds(40-50kmph)** very likely at isolated places over Andaman & Nicobar Islands.
- ❖ **Thunderstorm accompanied with lightning & gusty winds(30-40kmph)** very likely at isolated places over Kerala & Mahe, Lakshadweep, Odisha and Telangana.
- ❖ **Thunderstorm accompanied with Lightning** very likely at isolated places over Andhra Pradesh, Chhattisgarh, Karnataka, Konkan & Goa, Madhya Pradesh, Maharashtra and Tamil Nadu Puducherry & Karaikal.
- ❖ **Squally weather with wind speed 35 kmph to 45 kmph gusting to 55 kmph** likely to prevail along and off Kerala, Karnataka coasts and adjoining sea areas, over Lakshadweep, Comorin areas, Maldives, over southeast, and adjoining some parts of southwest, westcentral Arabian Sea, many parts of eastcentral Arabian Sea, over Gulf of Mannar, over south and most parts of central Bay of Bengal, along and off South & adjoining north Andhra Pradesh coasts, Tamil Nadu, Sri Lanka coasts and over Andaman Sea.
- ❖ **Squally weather with wind speed 45 kmph to 55 kmph gusting to 65 kmph** likely to prevail over southwestern parts of westcentral Bay of Bengal and adjoining areas.

**\*Red color warning does not mean "Red Alert" Red color warning means "Take Action"**

**Forecast and warning for any day is valid from 0830 hours IST of day till 0830 hours IST of next day**

**For more details kindly visit <https://mausam.imd.gov.in> or contact 011-2434-4599**

**(Service to the nation since 1875)**



## 26 October (Day 4)

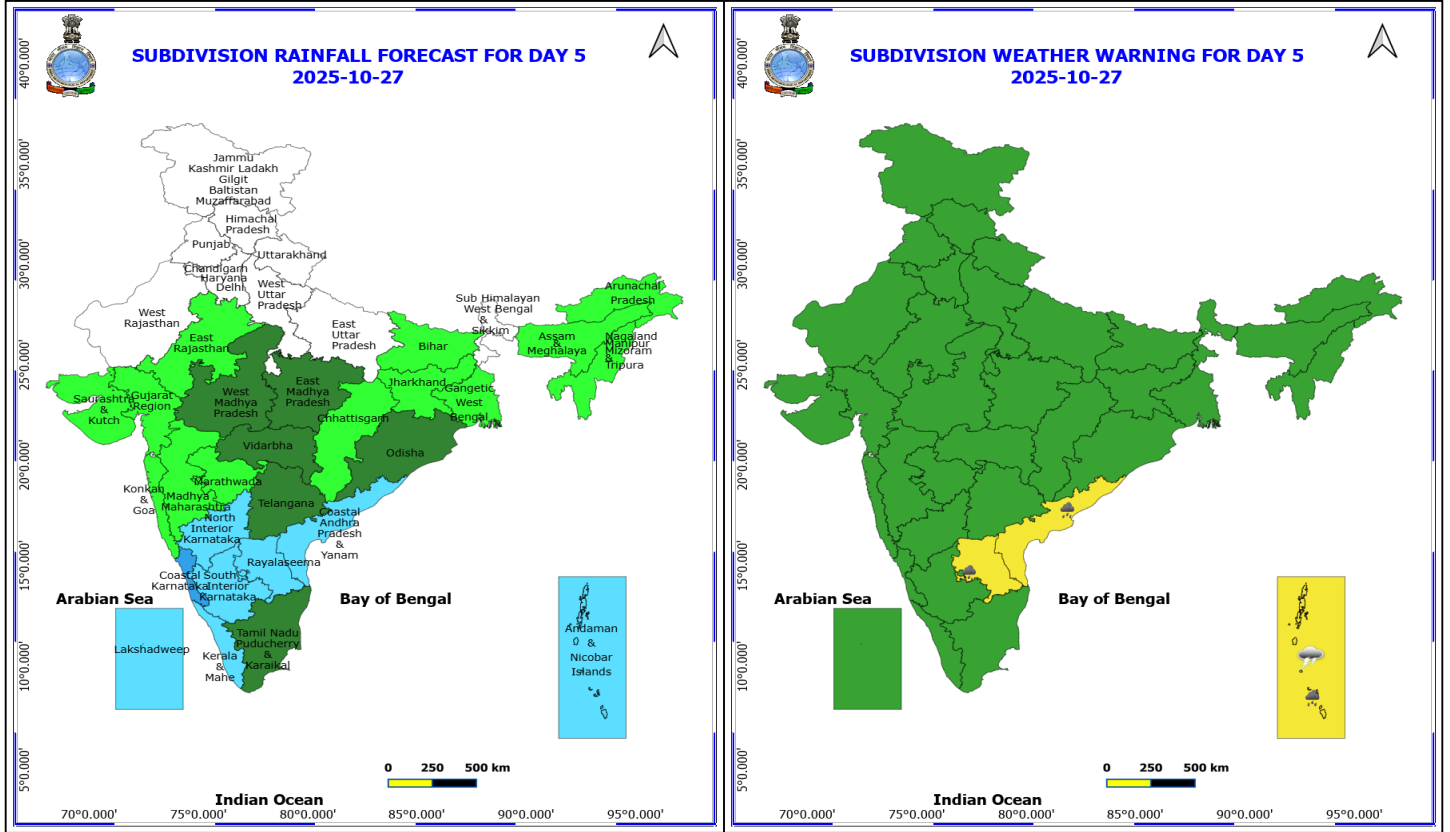
- ❖ **Heavy Rainfall** likely at isolated places over Andaman & Nicobar Islands and Andhra Pradesh.
- ❖ **Thunderstorm accompanied with lightning & gusty winds(40-50kmph)** likely at isolated places over Andaman & Nicobar Islands.
- ❖ **Thunderstorm accompanied with lightning & gusty winds(30-40kmph)** likely at isolated places over Kerala & Mahe, Lakshadweep, Odisha and Telangana.
- ❖ **Thunderstorm accompanied with Lightning** likely at isolated places over Andhra Pradesh, Chhattisgarh, Madhya Maharashtra, Madhya Pradesh, Tamil Nadu Puducherry & Karaikal and Vidarbha.
- ❖ **Squally weather with wind speed 35 kmph to 45 kmph gusting to 55 kmph** likely to prevail along and off Kerala, Karnataka coasts and adjoining sea areas, over Lakshadweep, Comorin areas, Maldives, over southeast, and adjoining some parts of southwest, westcentral Arabian Sea, many parts of eastcentral Arabian Sea, over Gulf of Mannar, over south and most parts of central Bay of Bengal, along and off South & adjoining north Andhra Pradesh coasts, Tamil Nadu, Sri Lanka coasts and over Andaman Sea.
- ❖ **Squally weather with wind speed 45 kmph to 55 kmph gusting to 65 kmph** likely to prevail over southwestern parts of westcentral Bay of Bengal and adjoining southwest Bay of Bengal.

**\*Red color warning does not mean "Red Alert" Red color warning means "Take Action"**

**Forecast and warning for any day is valid from 0830 hours IST of day till 0830 hours IST of next day**

**For more details kindly visit <https://mausam.imd.gov.in> or contact 011-2434-4599**

**(Service to the nation since 1875)**

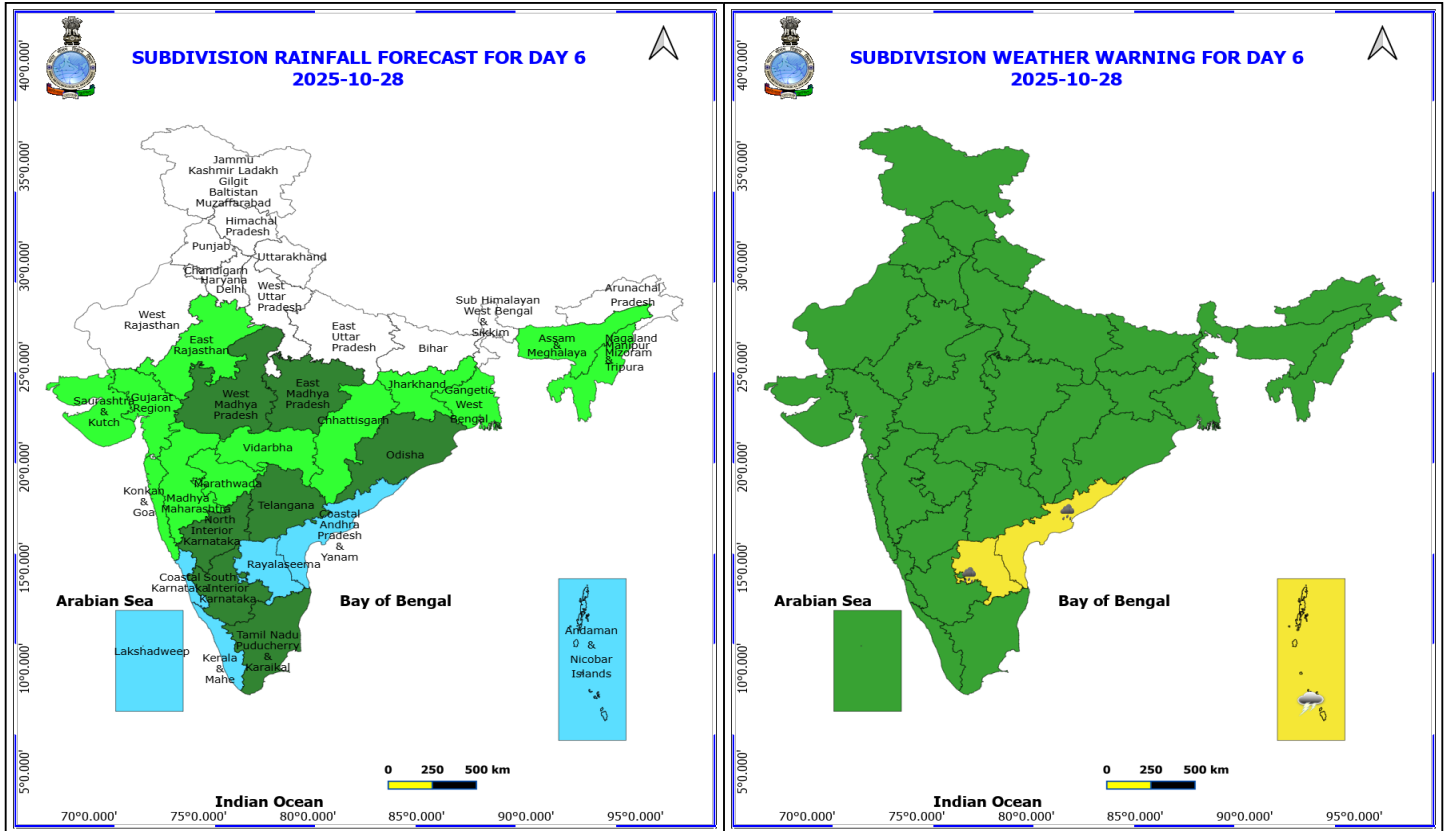


**27 October (Day 5)**

- ❖ **Heavy Rainfall** likely at isolated places over Andaman & Nicobar Islands and Andhra Pradesh.
- ❖ **Thunderstorm accompanied with lightning & gusty winds (40-50kmph)** likely at isolated places over Andaman & Nicobar Islands.

**No Fishermen Warning**

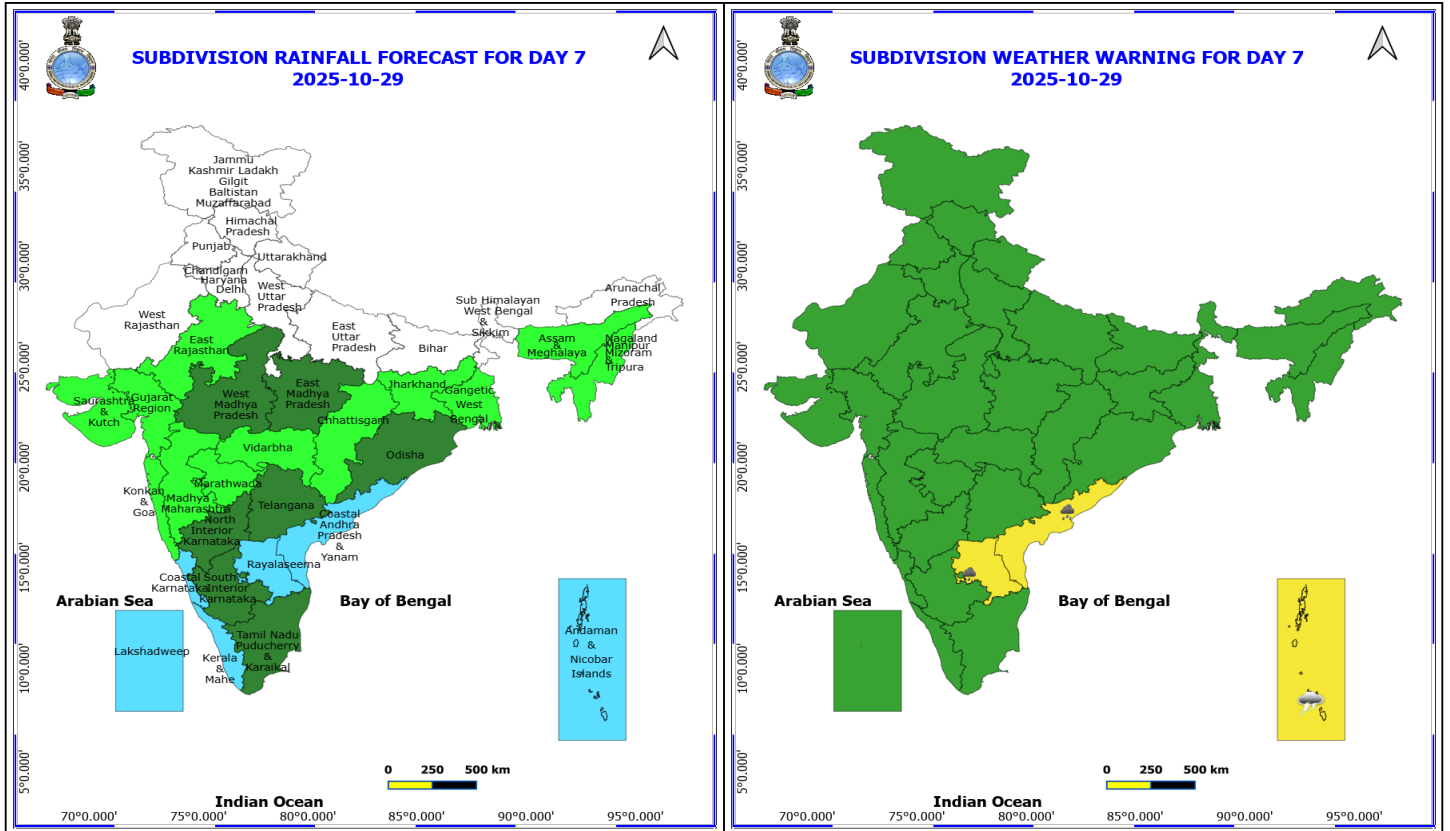
**\*Red color warning does not mean "Red Alert" Red color warning means "Take Action"**  
Forecast and warning for any day is valid from 0830 hours IST of day till 0830 hours IST of next day  
For more details kindly visit <https://mausam.imd.gov.in> or contact 011-2434-4599  
(Service to the nation since 1875)



**28 October (Day 6)**

- ❖ **Heavy Rainfall** likely at isolated places over Andhra Pradesh.
  - ❖ **Thunderstorm accompanied with lightning & gusty winds(40-50kmph)** likely at isolated places over Andaman & Nicobar Islands.
- No Fishermen Warning**

**\*Red color warning does not mean "Red Alert" Red color warning means "Take Action"**  
**Forecast and warning for any day is valid from 0830 hours IST of day till 0830 hours IST of next day**  
**For more details kindly visit <https://mausam.imd.gov.in> or contact 011-2434-4599**  
**(Service to the nation since 1875)**



**29 October (Day 7)**

- ❖ **Heavy Rainfall** likely at isolated places over Andaman & Nicobar Islands and Andhra Pradesh.
- ❖ **Thunderstorm accompanied with lightning & gusty winds (40-50kmph)** likely at isolated places over Andaman & Nicobar Islands.

**No Fishermen Warning**

\*Red color warning does not mean "Red Alert" Red color warning means "Take Action"  
Forecast and warning for any day is valid from 0830 hours IST of day till 0830 hours IST of next day  
For more details kindly visit <https://mausam.imd.gov.in> or contact 011-2434-4599

## Flash Flood Warnings

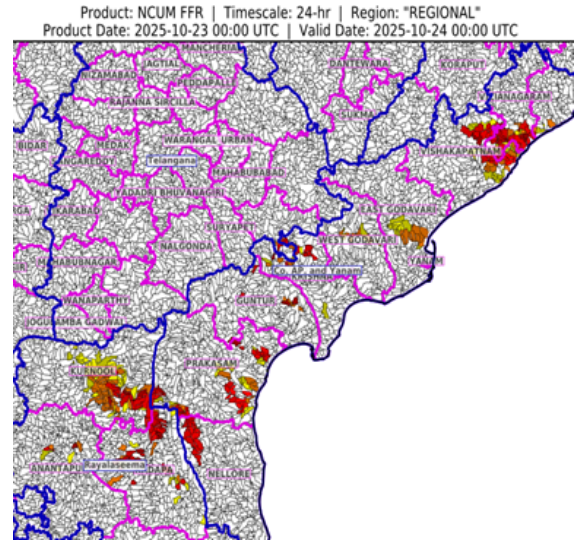
### 24 hours Outlook for the Flash Flood Risk (FFR) till 0530 IST of 24-10-2025:

**Low to Moderate Flash flood risk** likely over few watersheds and neighborhoods of following Met Sub-divisions during next 24 hours.

**Rayalaseema** – Anantapur, Kurnool and Kadapa districts.

**Coastal Andhra Pradesh & Yanam** – West Godavari, East Godavari, Vishakhapatnam, Vizianagaram, Srikakulam, Krishna, Guntur, Prakasam and Nellore districts.

Surface runoff/ Inundation may occur at some fully saturated soils & low-lying areas over Area of Concern (AoC) as shown in map due to expected rainfall occurrence in next 24 hours.



**\*Red color warning does not mean "Red Alert" Red color warning means "Take Action"**

Forecast and warning for any day is valid from 0830 hours IST of day till 0830 hours IST of next day

For more details kindly visit <https://mausam.imd.gov.in> or contact 011-2434-4599

(Service to the nation since 1875)



## Table-1

### 7 Days Rainfall Forecast

S.No.	Subdivision	23- Oct	24- Oct	25- Oct	26- Oct	27- Oct	28- Oct	29- Oct
		Day 1	Day 2	Day 3	Day 4	Day 5	Day 6	Day 7
1	ANDAMAN & NICOBAR ISLANDS	FWS	FWS	FWS	FWS	FWS	FWS	FWS
2	ARUNACHAL PRADESH	DRY	ISOL	ISOL	ISOL	ISOL	DRY	DRY
3	ASSAM & MEHGHALAYA	ISOL	ISOL	ISOL	ISOL	ISOL	ISOL	ISOL
4	N. M. M. & T.	ISOL	ISOL	ISOL	ISOL	ISOL	ISOL	ISOL
5	S.H. WEST BENGAL & SIKKIM	ISOL	ISOL	ISOL	ISOL	DRY	DRY	DRY
6	GANGETIC WEST BENGAL	DRY	ISOL	ISOL	ISOL	ISOL	ISOL	ISOL
7	ODISHA	ISOL	ISOL	ISOL	ISOL	SCT	SCT	SCT
8	JHARKHAND	DRY	DRY	ISOL	ISOL	ISOL	ISOL	ISOL
9	BIHAR	DRY	DRY	ISOL	ISOL	ISOL	DRY	DRY
10	EAST UTTAR PRADESH	DRY	DRY	DRY	DRY	DRY	DRY	DRY
11	WEST UTTAR PRADESH	DRY	DRY	DRY	DRY	DRY	DRY	DRY
12	UTTARAKHAND	ISOL	DRY	DRY	DRY	DRY	DRY	DRY
13	HARYANA, CHD & DELHI	DRY	DRY	DRY	DRY	DRY	DRY	DRY
14	PUNJAB	DRY	DRY	DRY	DRY	DRY	DRY	DRY
15	HIMACHAL PRADESH	ISOL	DRY	DRY	DRY	DRY	DRY	DRY
16	JAMMU AND KASHMIR AND LADAKH	DRY	DRY	DRY	DRY	DRY	DRY	DRY
17	WEST RAJASTHAN	DRY	DRY	DRY	DRY	DRY	DRY	DRY
18	EAST RAJASTHAN	DRY	DRY	ISOL	DRY	ISOL	ISOL	ISOL
19	WEST MADHYA PRADESH	ISOL	ISOL	ISOL	ISOL	SCT	SCT	SCT
20	EAST MADHYA PRADESH	ISOL	ISOL	ISOL	SCT	SCT	SCT	SCT
21	GUJRAT REGION	ISOL	ISOL	ISOL	ISOL	ISOL	ISOL	ISOL
22	SAURASHTRA & KUTCH	DRY	ISOL	ISOL	ISOL	ISOL	ISOL	ISOL
23	KONKAN & GOA	FWS	FWS	SCT	ISOL	ISOL	ISOL	ISOL
24	MADHYA MAHARASHTRA	SCT	SCT	ISOL	ISOL	ISOL	ISOL	ISOL
25	MARATHWADA	SCT	ISOL	ISOL	ISOL	ISOL	ISOL	ISOL
26	VIDARBHA	ISOL	SCT	SCT	FWS	SCT	ISOL	ISOL
27	CHATTISGARH	ISOL	ISOL	SCT	SCT	ISOL	ISOL	ISOL
28	COASTAL ANDHRA PRADESH	FWS	FWS	FWS	FWS	FWS	FWS	FWS
29	TELANGANA	ISOL	FWS	FWS	SCT	SCT	SCT	SCT
30	RAYALASEEMA	WS	FWS	FWS	SCT	FWS	FWS	FWS
31	TAMILNADU & PUDUCHERRY	SCT	SCT	SCT	SCT	SCT	SCT	SCT
32	COSTAL KARNATAKA	WS	WS	WS	WS	WS	FWS	FWS
33	NORTH INTERIOR KARNATAKA	FWS	FWS	FWS	FWS	FWS	SCT	SCT
34	SOUTH INTERIOR KARNATAKA	WS	WS	FWS	FWS	FWS	SCT	SCT
35	KERALA	WS	WS	FWS	FWS	FWS	FWS	FWS
36	LAKSHDWEEP	WS	FWS	FWS	FWS	FWS	FWS	FWS

Legend	Category	%Stations
WS	Widespread/Most Places	76-100
FWS	Fairly Widespread/Many Places	51-75
SCT	Scattered/ A Few Places	26-50
ISOL	Isolated Places	1-25
DRY	No Rain	0

\*Red color warning does not mean "Red Alert" Red color warning means "Take Action"  
Forecast and warning for any day is valid from 0830 hours IST of day till 0830 hours IST of next day  
For more details kindly visit <https://mausam.imd.gov.in> or contact 011-2434-4599

(Service to the nation since 1875)

Fig. 1: Maximum Temperatures Dated 2025-10-22

Fig. 2: Departure of Maximum Temp. Dated 2025-10-22

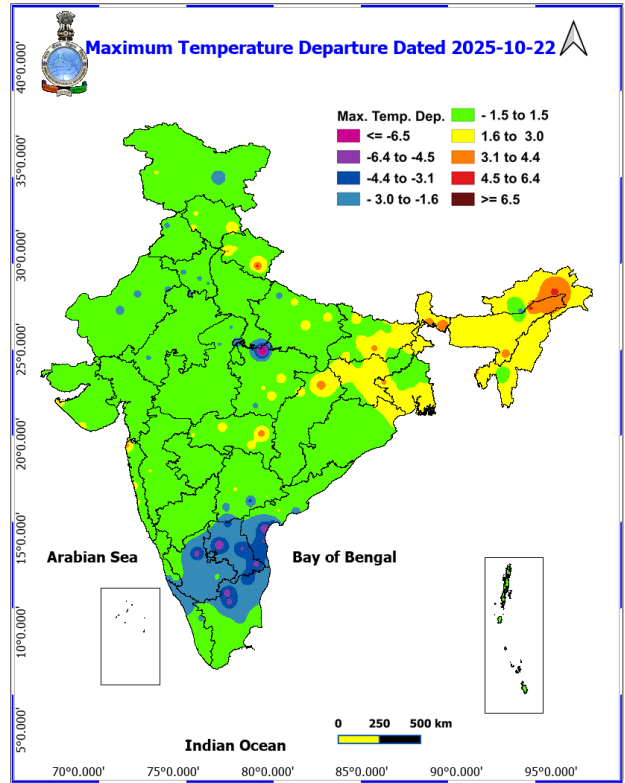
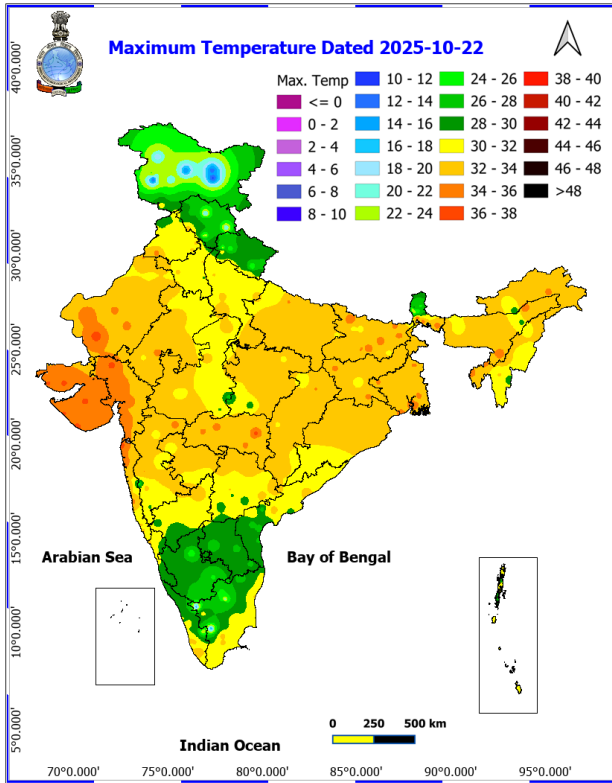
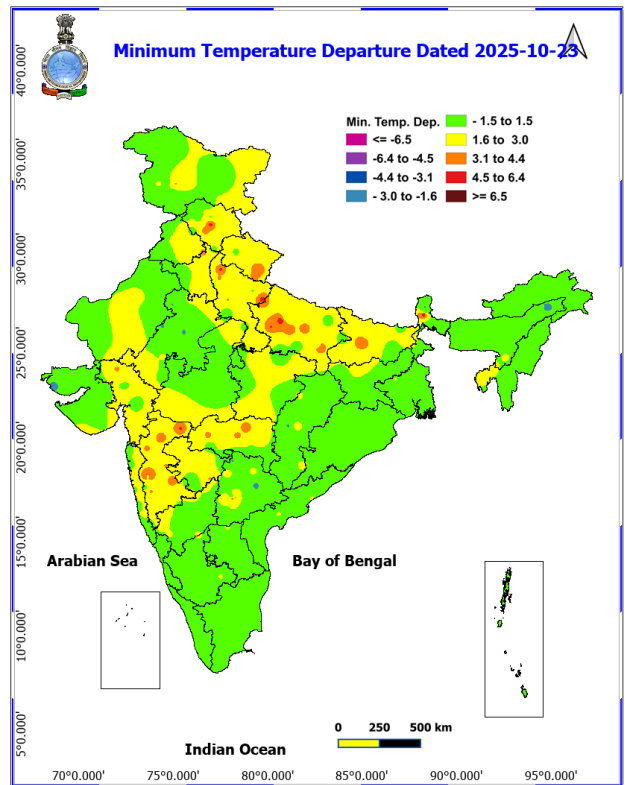
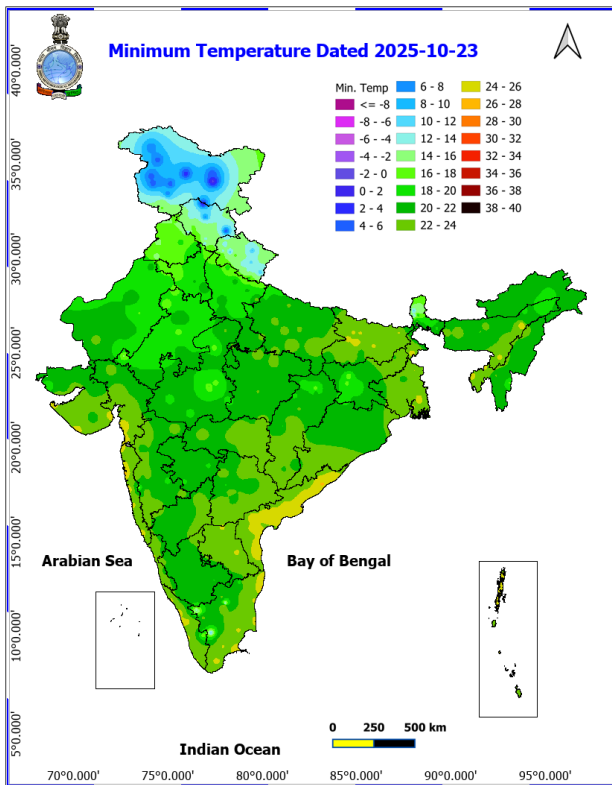


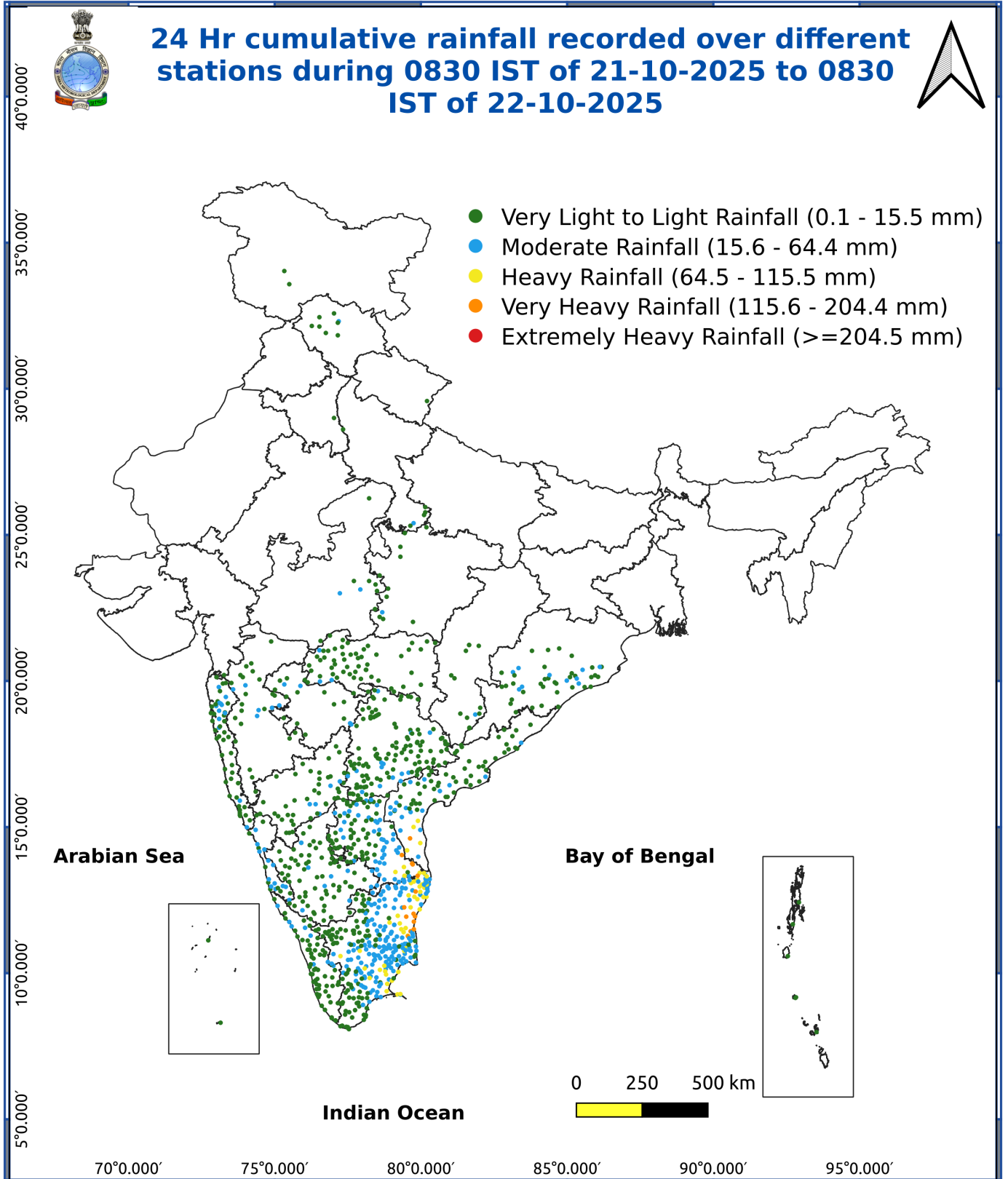
Fig. 3: Minimum Temperatures Dated 2025-10-23

Fig. 4: Departure of Minimum Temp. Dated 2025-10-23



**\*Red color warning does not mean "Red Alert" Red color warning means "Take Action"**  
Forecast and warning for any day is valid from 0830 hours IST of day till 0830 hours IST of next day  
For more details kindly visit <https://mausam.imd.gov.in> or contact 011-2434-4599

(Service to the nation since 1875)



### Impact & Action Suggested due to

- **Very heavy rainfall over** Coastal Karnataka, South Interior Karnataka, Coastal Andhra Pradesh & Yanam, Rayalaseema on 23<sup>rd</sup> October.

### Impact Expected

- Localized Flooding of roads, water logging in low lying areas and closure of underpasses mainly in urban areas of the above region.
- Occasional reduction in visibility due to heavy rainfall.
- Disruption of traffic in major cities due to water logging in roads leading to increased travel time.
- Minor damage to kutcha roads.
- Possibilities of damage to vulnerable structure.
- Localized Landslides/Mudslides/landslips/mudslips/landsinks/mudsinks.
- Damage to horticulture and standing crops in some areas due to inundation.
- It may lead to riverine flooding in some river catchments mainly over Bihar, Jharkhand and West Bengal (for riverine flooding please visit Web page of CWC)

### Action Suggested

- Check for traffic congestion on your route before leaving for your destination.
- Follow any traffic advisories that are issued in this regard.
- Avoid going to areas that face the water logging problems often.
- Avoid staying in vulnerable structure.

## Agromet advisories for various parts of the country

### Agromet advisories for likely impact of Heavy / Heavy to Very Heavy Rainfall

- In **Tamil Nadu**, store the harvested produce of rice and groundnut in safer places. Drain out excess water from fields of rice, cotton, black gram, maize, tapioca and vegetables and plantations of coconut, banana and black pepper to avoid water stagnation.
- In **Kerala**, keep the harvested produce of rice in safer places. Drain out excess water from fields of rice, vegetables and plantations of banana, coconut, arecanut, cardamom and black pepper.
- In **Andhra Pradesh**, harvest matured groundnut crop and matured cobs of maize during fair weather / non-rainy period only and store the produce in safe places. Provide adequate drainage facilities in fields of rice, maize, pigeon pea, black gram, green gram, groundnut, turmeric, ginger, vegetables and plantations of banana, coconut and arecanut.
- In **Coastal Karnataka**, drain out excess water from fields of rice and plantations of coconut, arecanut and black pepper. In **South Interior Karnataka**, keep the harvested produce of groundnut and maize in dry, covered and ventilated areas or cover with tarpaulins in the fields. Harvest matured crops such as rice, pulses, vegetables, cardamom and coffee during dry intervals and store the harvested produce in well-ventilated and moisture-free places. Make necessary arrangements to drain out excess water from fields of rice, maize, finger millet, pulses, groundnut and vegetables and plantations of banana, black pepper, cardamom, coffee, coconut and arecanut to avoid waterlogging.
- In **Andaman and Nicobar Islands**, store the harvested paddy at safe places to avoid their degradation. Make proper arrangements for drainage of excess water from the fields of paddy, vegetable and plantation crops.

### Livestock / Fishery

- Keep the animals inside the shed during heavy rainfall and provide them balanced feed.
- Store feed and fodder in a safe place to prevent spoilage.

\*Red color warning does not mean "Red Alert" Red color warning means "Take Action"  
Forecast and warning for any day is valid from 0830 hours IST of day till 0830 hours IST of next day  
For more details kindly visit <https://mausam.imd.gov.in> or contact 011-2434-4599

(Service to the nation since 1875)

- Construct an outlet with proper netting around the ponds to drain out excess water, thereby preventing fish from escaping in case of overflow.

#### Agromet advisories for likely impact of Thunderstorm / Gusty Winds / Squally Winds

- Provide mechanical support to horticultural crops and staking or support to vegetables and young fruit plants / fruit-bearing plants to avoid lodging due to strong winds.
- Tie the harvested crops properly and cover them to minimise the risk of displacement due to strong surface winds.

#### Legends & abbreviations:

#### Region wise classification of meteorological Sub-Divisions:

- **Northwest India:** Western Himalayan Region (Jammu-Kashmir-Ladakh-Gilgit-Baltistan-Muzaffarabad, Himachal Pradesh and Uttarakhand); Punjab, Haryana-Chandigarh-Delhi; West Uttar Pradesh, East Uttar Pradesh, West Rajasthan and East Rajasthan.
- **Central India:** West Madhya Pradesh, East Madhya Pradesh, Vidarbha and Chhattisgarh.
- **East India:** Bihar, Jharkhand, Sub-Himalayan West Bengal & Sikkim; Gangetic West Bengal, Odisha and Andaman & Nicobar Islands.
- **Northeast India:** Arunachal Pradesh, Assam & Meghalaya and Nagaland, Manipur, Mizoram & Tripura.
- **West India:** Gujarat Region, Saurashtra & Kutch, Konkan & Goa, Madhya Maharashtra and Marathawada.
- **South India:** Coastal Andhra Pradesh & Yanam, Telangana, Rayalaseema, Coastal Karnataka, North Interior Karnataka, South Interior Karnataka, Kerala & Mahe, Tamil Nadu, Puducherry & Karaikal and Lakshadweep.

## LEGENDS

- 1 अंडमान और निकोबार द्वीप समुह
- 2 अरुणाचल प्रदेश
- 3 असम और मेघालय
- 4 नागालैंड मनीपुर मीजोरम और त्रिपुरा
- 5 उप हिमालय पश्चिम बंगाल एवं सिक्किम
- 6 पश्चिम बंगाल
- 7 ओडिसा
- 8 झारखंड
- 9 बिहार
- 10 पूर्वी उत्तर प्रदेश
- 11 पश्चिम उत्तर प्रदेश
- 12 उत्तराखंड
- 13 हरियाणा चंडिगढ़ एवं दिल्ली
- 14 पंजाब
- 15 हिमाचल प्रदेश
- 16 जम्मू एवं कश्मीर एवं लद्दाख
- 17 पश्चिम राजस्थान
- 18 पूर्वी राजस्थान
- 19 पश्चिम मध्य प्रदेश
- 20 पूर्वी मध्य प्रदेश
- 21 गुजरात क्षेत्र
- 22 सौराष्ट्र एवं कच्छ
- 23 कोंकण एवं गोवा
- 24 मध्य महाराष्ट्र
- 25 मराठावाडा
- 26 विदर्भ
- 27 छत्तीसगढ़
- 28 तटीय आंध्र प्रदेश एवं यनम
- 29 तेलंगाना
- 30 रायलसीमा
- 31 तमिलनाडु, पुदुचेरी एवं कराईकल
- 32 तटिय कर्नाटक
- 33 आंतरिक उत्तरी कर्नाटक
- 34 आंतरिक दक्षिणी कर्नाटक
- 35 केरल एवं माहे
- 36 लक्षद्वीप



1. Andaman & Nicobar Islands
2. Arunachal Pradesh
3. Assam & Meghalaya
4. Nagaland, Manipur, Mizoram & Tripura
5. Sub-Himalayan West Bengal & Sikkim
6. Gangetic West Bengal
7. Orissa
8. Jharkhand
9. Bihar
10. East Uttar Pradesh
11. West Uttar Pradesh
12. Uttarakhand
13. Haryana, Chd & Delhi
14. Punjab
15. Himachal Pradesh
16. Jammu & Kashmir and Ladakh
17. West Rajasthan
18. East Rajasthan
19. West Madhya Pradesh
20. East Madhya Pradesh
21. Gujarat
22. Saurashtra
23. Konkan & Goa
24. Madhya Maharashtra
25. Marathawada
26. Vidharbha
27. Chhattisgarh
28. Coastal Andhra Pradesh & Yanam
29. Telangana
30. Rayalaseema
31. Tamilnadu, Puducherry & Karaikal
32. Coastal Karnataka
33. North Interior Karnataka
34. South Interior Karnataka
35. Kerala & Mahe
36. Lakshadweep

## SPATIAL DISTRIBUTION (% of Stations reporting)

% Stations	Category	% Stations	Category
76-100	Widespread (WS/ Most Places)	26-50	Scattered (SCT/ A Few Places)
51-75	Fairly Widespread (FWS/ Many Places)	1-25	Isolated (ISOL)

### Subdivision Colour

- NO WARNING
- WATCH (BE UPDATED)
- ALERT (BE PREPARED TO TAKE ACTION)
- WARNING (TAKE ACTION)

### Probabilistic Forecast

Terms	Probability of Occurrence (%)
Unlikely	< 25
Likely	25 - 50
Very Likely	50 - 75
Most Likely	> 75

- |                          |                 |                      |                    |
|--------------------------|-----------------|----------------------|--------------------|
| Heavy Rain               | Very Heavy Rain | Extremely Heavy Rain | Heavy Snow         |
| Thunderstorm & Lightning | Hailstorm       | Dust Storm           | Dust Raising Winds |
| Strong surface winds     | Heat Wave       | Hot Day              | Warm Night         |
| Cold Wave                | Cold Day        | Ground Frost         | Fog                |
| Hot & Humid              |                 |                      |                    |

\*Red color warning does not mean "Red Alert" Red color warning means "Take Action"

Forecast and warning for any day is valid from 0830 hours IST of day till 0830 hours IST of next day

For more details kindly visit <https://mausam.imd.gov.in> or contact 011-2434-4599

(Service to the nation since 1875)

## LEGENDS

### WARNING

WARNING (TAKE ACTION)
ALERT ( BE PREPARED)
WATCH (BE UPDATED)
NO WARNING ( NO ACTION)

### Probabilistic Forecast

Terms	Probability of Occurrence (%)
Unlikely	< 25
Likely	25 - 50
Very Likely	50 - 75
Most Likely	> 75



Rain/ Snow \*

Heavy: 64.5 to 115.5 mm/cm *
Very Heavy: 115.6 to 204.4 mm/cm*
Extremely Heavy: > 204.4 mm/cm *



Heat Wave

When maximum temperature of a station reaches  $\geq 40^{\circ}\text{C}$  for plains and  $\geq 30^{\circ}\text{C}$  for hilly regions  
(a) Based on Departure from normal

Heat Wave: Maximum Temperature Departure from normal $4.5^{\circ}\text{C}$ to $6.4^{\circ}\text{C}$ .
Severe Heat Wave: Maximum Temperature Departure from normal $\geq 6.5^{\circ}\text{C}$

(b). Based on Actual maximum temperature

Heat Wave: When actual maximum temperature $\geq 45^{\circ}\text{C}$ .
Severe Heat Wave: When actual maximum temperature $\geq 47^{\circ}\text{C}$

(c). Criteria for heat wave for coastal stations

When maximum temperature departure is  $> 4.5^{\circ}\text{C}$  from normal. Heat Wave may be described provided maximum temperature  $\geq 37^{\circ}\text{C}$



Warm Night

When maximum temperature remains  $40^{\circ}\text{C}$

Warm Night: When minimum temperature departure $4.5^{\circ}\text{C}$ to $6.4^{\circ}\text{C}$ .
Severe Warm Night: When minimum temperature departure $> 6.4^{\circ}\text{C}$ .



Cold Wave

When minimum temperature of a station  $\leq 10^{\circ}\text{C}$  for plains and  $\leq 0^{\circ}\text{C}$  for hilly regions.

(a). Based on departure

Cold Wave: Minimum Temperature Departure from normal $-4.5^{\circ}\text{C}$ to $-6.4^{\circ}\text{C}$ .
Severe Cold Wave: Minimum Temperature Departure from normal $\leq -6.5^{\circ}\text{C}$

(b) Based on actual Minimum Temperature (for Plains only)

Cold Wave : When Minimum Temperature is $\leq 4.0^{\circ}\text{C}$
Severe Cold Wave: When Minimum Temperature is $\leq 2.0^{\circ}\text{C}$

(c) For Coastal Stations

When Minimum Temperature departure is  $\leq -4.5^{\circ}\text{C}$  & actual Minimum Temperature is  $\leq 15^{\circ}\text{C}$



Cold Day

When minimum temperature of a station  $\leq 10^{\circ}\text{C}$  for plains and  $\leq 0^{\circ}\text{C}$  for hilly regions  
Based on departure

Cold Day: Maximum Temperature Departure from normal $-4.5^{\circ}\text{C}$ to $-6.4^{\circ}\text{C}$ .
Severe Cold Day: Maximum Temperature Departure from normal $\leq -6.5^{\circ}\text{C}$



Fog

Phenomenon of small droplets suspended in air and the horizontal visibility  $< 1\text{km}$

Moderate Fog: When the visibility between 500-200 metres
Dense Fog: when the visibility between 50- 200 metres
Very Dense Fog: when the visibility $< 50$ metres



Thunderstorm

Sudden electrical discharges manifested by a flash of light (Lightning) and a sharp rumbling sound (thunder)



Dust/Sand Storm

An ensemble of particles of dust or sand energetically lifted to great heights by a strong and turbulent wind.



Frost

Ice deposits on ground

Air temperature $\leq 4^{\circ}\text{C}$ ( over Plains)
---



Squall

A strong wind that rises suddenly, lasts for atleast 1 minute.

Moderate: Wind speed 52-61 kmph
Severe: Wind speed 62-87 kmph
Very Severe: Wind speed $> 87$ kmph



Sea State

Effect of various waves in the sea over specific area

Rough to very rough: Wind speed 41-62 kmph (22-33 knots) & Wave height 2.5-6 metre
High to very high: Wind speed 63-117 kmph ( 34-63 knots) & Wave height 6-14 metre
Phenomenal: Wind speed $> 117$ kmph ( $> 63$ knots) & Wave height $> 14$ metre



Cyclone

Cyclonic Storm: Wind speed 62-87 kmph (34-47 knots)
Severe Cyclonic Storm: Wind speed 88-117 kmph (48-63 knots)
Very Severe Cyclonic Storm: Wind speed 118-165 kmph (64 - 89 knots)
Extremely Severe Cyclonic Storm: Wind speed 166-220 kmph (90 -119 knots)
Super Cyclone Storm: Wind speed $> 220$ kmph ( $> 119$ knots)

\*Red color warning does not mean "Red Alert" Red color warning means "Take Action"

Forecast and warning for any day is valid from 0830 hours IST of day till 0830 hours IST of next day

For more details kindly visit <https://mausam.imd.gov.in> or contact 011-2434-4599

(Service to the nation since 1875)