

Friday, June 6, 2025
Time of Issue: 0800 hours IST
(MORNING)

ALL INDIA WEATHER SUMMARY AND FORECAST BULLETIN

Significant Weather Features:

Weather Systems, Forecast and Warnings:

- ❖ A Western disturbance as a trough in middle & upper tropospheric runs along Long. 80°E to the north of Lat. 22°N.
- ❖ An upper air cyclonic circulation lies over central Pakistan & adjoining northwest Rajasthan and another over south Haryana in lower tropospheric levels.
- ❖ A trough runs from south Chhattisgarh to northeast Bangladesh in lower tropospheric levels.
- ❖ An upper air cyclonic circulation over North Bangladesh in lower tropospheric levels.
- ❖ A north-south trough runs roughly along Long. 88°E to the north of Lat. 22°N in lower tropospheric levels.
- ❖ An upper air cyclonic circulation over North Interior Karnataka and adjoining Marathwada & Telangana in lower tropospheric levels.
- ❖ Under the influence of these systems, the following weather is likely:

Northeast India:

- ✓ Light/moderate rainfall at most/many places likely to continue over northeast India during next 7 days with isolated heavy rainfall over Assam & Meghalaya on 06th and during 09th-11th June.

East & Central India:

- ✓ Light/moderate rainfall at many/some places likely to continue over Sub-Himalayan West Bengal & Sikkim during next 7 days.
- ✓ Light/moderate rainfall at isolated accompanied with **thunderstorm, lightning & gusty winds speed reaching 40-50 kmph** likely over Madhya Pradesh on 06th & 07th; Vidarbha, Chhattisgarh during 06th-09th June.

South Peninsular India:

- ✓ Light/moderate rainfall at many/some places over Kerala & Mahe, Coastal Karnataka during next 7 days.
- ✓ Light/moderate rainfall at some/isolated places accompanied with **thunderstorm, lightning & gusty winds speed reaching 30-40 kmph** over Coastal Andhra Pradesh, Rayalaseema and Interior Karnataka on 06th & 07th June.

Maximum Temperature Forecast:

- ❖ Gradual rise by 4-6°C in maximum Temperatures likely over Northwest India during next 5 days and no significant change thereafter.
- ❖ Maximum Temperatures likely to rise by 2-4°C over Central India during next 3 days and no significant change thereafter.
- ❖ No significant change in maximum Temperatures likely over East India during next 24 hours and gradual rise by 2-4°C thereafter.
- ❖ No significant change in maximum temperatures likely over rest parts of the country.

Heat wave and Hot & Humid warnings:

- ❖ **Heat wave conditions** are likely to prevail over West Rajasthan during 08th-11th June.
- ❖ **Hot & humid weather** is likely to prevail over Tamilnadu Puducherry & Karaikal on 06th June.

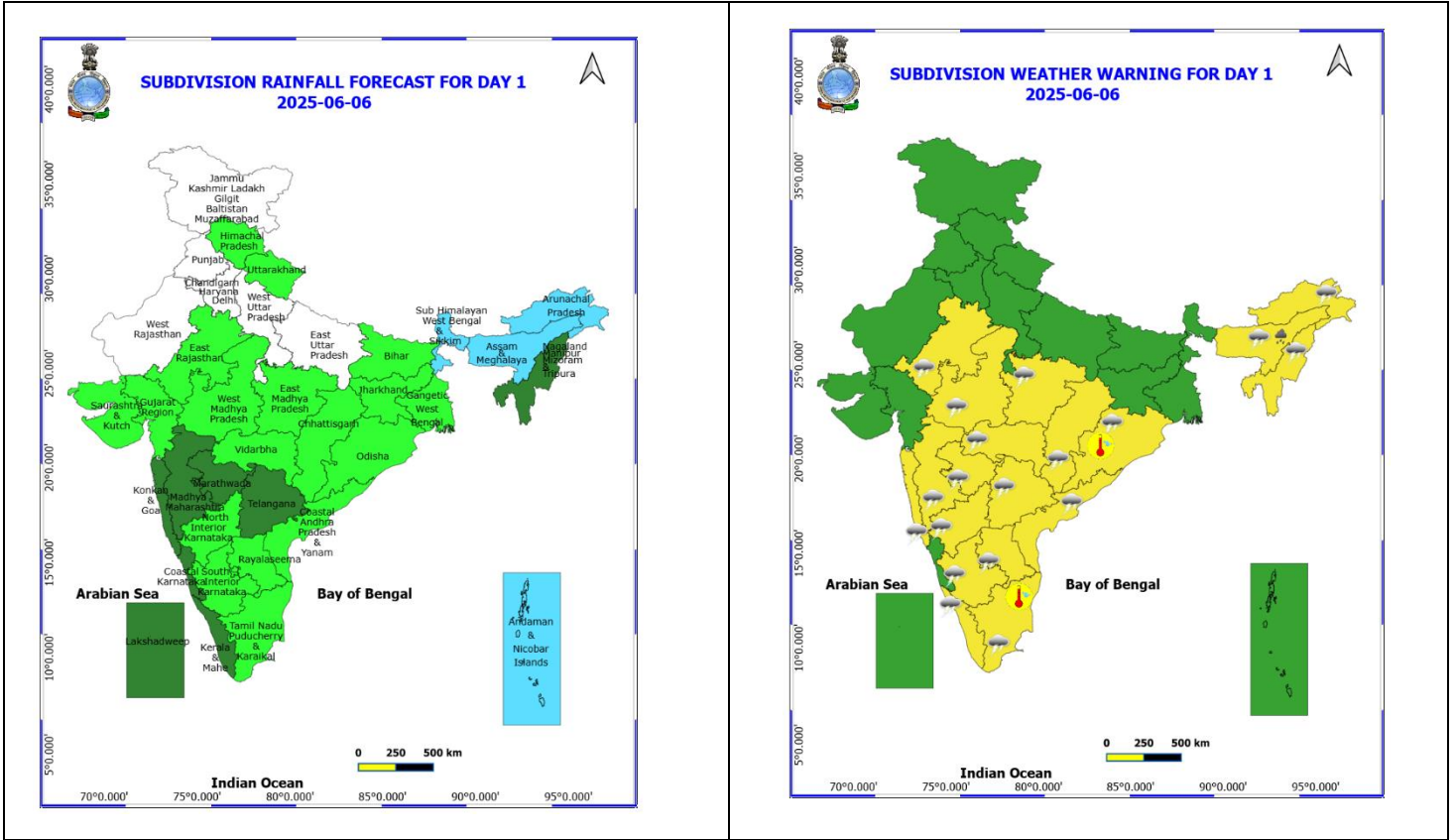
Main Weather Observations:

- ❖ **Rainfall distribution** (from 0830 hours IST to 1730 hours IST of yesterday): **at many places** over Assam & Meghalaya, Andaman & Nicobar Islands; **at isolated places** over Leh-Ladakh, Himachal Pradesh, Uttarakhand, Rajasthan, West Madhya Pradesh, Konkan & Goa, Madhya Maharashtra, Marathwada, Coastal Karnataka, Tamil Nadu, Puducherry & Karaikal, Coastal Andhra Pradesh & Yanam, Chhattisgarh, Odisha, West Bengal & Sikkim, Nagaland, Manipur, Mizoram & Tripura;
- ❖ **Significant rainfall recorded (in cm)** (from 0830 hours IST to 1730 hours IST of yesterday): **Konkan & Goa:** T.b.i.a (dist Thane) 3; **Madhya Maharashtra:** Kolhapur (dist Kolhapur) 3, Nashik (dist Nashik) 2; **West Madhya Pradesh:** Raisen (dist Raisen) 2; **Odisha:** Talchar 3.
- ❖ **Minimum Temperature Departures (as on 05-06-2025):** Minimum Temperatures were **markedly above normal (> 5.1°C)** at isolated places over Assam & Meghalaya, Bihar, East Uttar Pradesh, West Uttar Pradesh, West Rajasthan, Gujarat Region and Saurashtra & Kutch; **appreciably above normal (3.1°C to 5.0°C)** at isolated places over Sub Himalayan West Bengal & Sikkim, West Madhya Pradesh and East Madhya Pradesh; **above normal (1.6°C to 3.0°C)** at most places over Andaman & Nicobar Islands and Lakshadweep; at a few places over Coastal Andhra Pradesh & Yanam; at isolated places over Gangetic West Bengal, Odisha, Jharkhand, Himachal Pradesh, Telangana and Tamil Nadu, Puducherry & Karaikal and **near normal (-1.5°C to 1.5°C)** at most places over Nagaland, Manipur, Mizoram & Tripura, Rayalaseema, Coastal Karnataka, South Interior Karnataka and Kerala & Mahe; at many places over Marathwada; at a few places over Konkan & Goa, Vidarbha, Chhattisgarh and North Interior Karnataka; at isolated places over Haryana-Chandigarh-Delhi, Punjab, East Rajasthan and Madhya Maharashtra. Yesterday, **the lowest minimum temperature of 17.4°C** was reported at **Pilani (East Rajasthan)** over the Plains of India. (Fig.4).
- ❖ **Maximum Temperature Departures (as on 05-06-2025):** Maximum Temperatures were **appreciably above normal(3.1°C to 5.0°C)** at few places over Kerala & Mahe; at isolated places over Bihar; **above normal(1.6°C to 3.0°C)** at many places over Lakshadweep; at few places over Andaman & Nicobar Islands; at isolated places over Assam & Meghalaya, Nagaland, Manipur, Mizoram & Tripura, Gangetic West Bengal, Odisha, East Madhya Pradesh and Saurashtra & Kutch; **near normal(-1.5°C to 1.5°C)** at many places over West Uttar Pradesh; at most places over Arunachal Pradesh, Sub Himalayan West Bengal & Sikkim, Konkan & Goa, Coastal Andhra Pradesh & Yanam, Tamil Nadu, Puducherry & Karaikal, Coastal Karnataka and South Interior Karnataka; at few places over East Uttar Pradesh, West Rajasthan, Gujarat Region, Madhya Maharashtra, Chhattisgarh and North Interior Karnataka; at isolated places over Uttarakhand, Haryana-Chandigarh-Delhi, Himachal Pradesh, Jammu-KashmirLadakh-Gilgit-Baltistan-Muzaffarabad and West Madhya Pradesh. Yesterday, **the highest maximum temperature of 41.8°C** was reported at **Jaisalmer (West Rajasthan)**.

Meteorological Analysis (Based on 0530 hours IST)

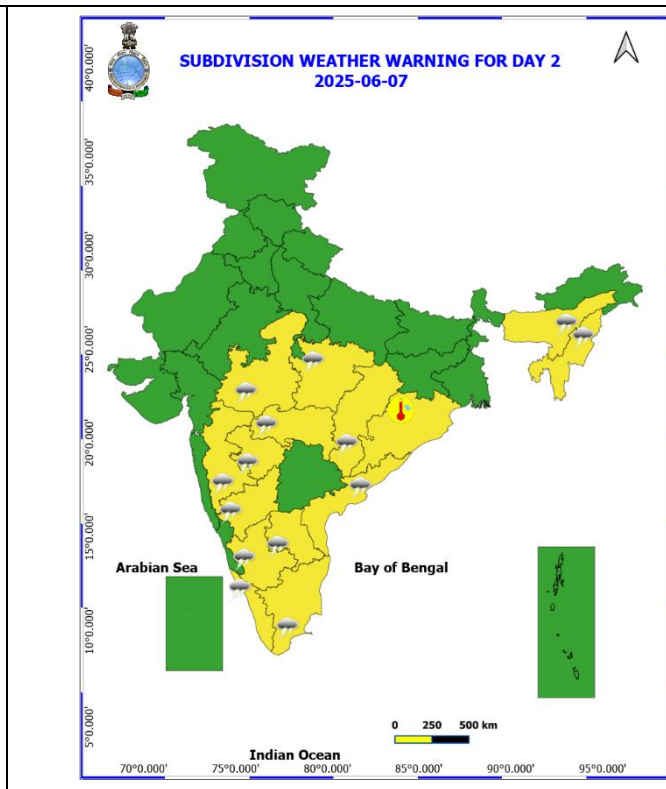
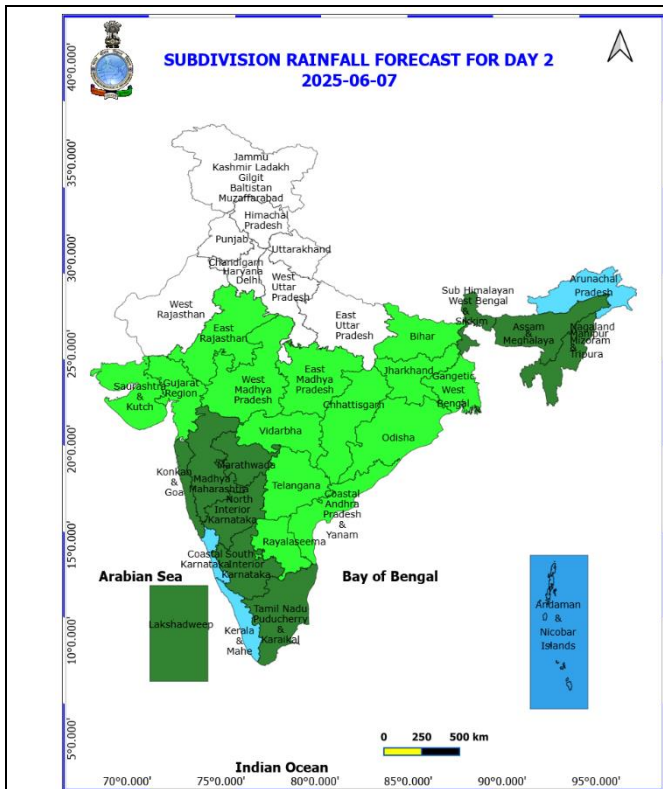
- ❖ The Northern Limit of Monsoon continues to pass through 17.0°N/55°E, 17.5°N/60°E, 18°N/65°E, 18.5°N/70°E, Mumbai, Ahilyanagar, Adilabad, Bhawanipatna, Puri, Sandhead Island, 23.5°N/89.5°E, Balurghat, 30°N/85°E.
- ❖ The **Western disturbance** as a trough in middle & upper tropospheric levels with its axis at 5.8 km above mean sea level now runs roughly along Long. 80°E to the north of Lat. 22°N.
- ❖ The **upper air cyclonic circulation** over central Pakistan & adjoining northwest Rajasthan at 0.9 km above mean sea level persists.
- ❖ The **upper air cyclonic circulation** over south Haryana & neighbourhood at 1.5 km above mean sea level persists.
- ❖ The **trough** from south Chhattisgarh to northeast Bangladesh across interior Odisha, Jharkhand & adjoining south Bihar, northern parts of West Bengal at 1.5 km above mean sea level persists.
- ❖ The **upper air cyclonic circulation** over North Bangladesh & neighbourhood at 0.9 km above mean sea level persists.
- ❖ The **north-south trough** roughly along Long. 88°E to the north of Lat. 22°N at 3.1 km above mean sea level persists.
- ❖ The **upper air cyclonic circulation** over north interior Karnataka & adjoining Marathwada and Telangana between 3.1 & 4.5 km above mean sea level persists.

Weather Forecast & Warnings for next 7 days (Upto 0830 hours IST of 13th June, 2025)



06th June (Day 1)

- ❖ **Heavy Rainfall** very likely at isolated places over Assam & Meghalaya.
- ❖ **Thunderstorm accompanied with lightning & gusty winds(40-50kmph)** very likely at isolated places over Chhattisgarh, East Rajasthan, Odisha and Vidarbha.
- ❖ **Thunderstorm accompanied with lightning & gusty winds(30-40kmph)** very likely at isolated places over Andhra Pradesh, Interior Karnataka, Konkan & Goa, Madhya Maharashtra, Madhya Pradesh, Marathwada, Nagaland, Manipur, Mizoram and Tripura, Tamil Nadu Puducherry & Karaikal and Telangana.
- ❖ **Thunderstorm accompanied with Lightning** very likely at isolated places over Arunachal Pradesh, Assam & Meghalaya and Kerala & Mahe.
- ❖ **Hot and Humid weather** very likely at isolated places over Odisha and Tamil Nadu Puducherry & Karaikal.
- ❖ **Squally wind with speed 45 kmph to 55 kmph gusting to 65 kmph** very likely to prevail along and off Somalia coast and adjoining southwest & westcentral Arabian Sea. Fisherman are not advised not to venture into the sea.



07th June (Day 2)

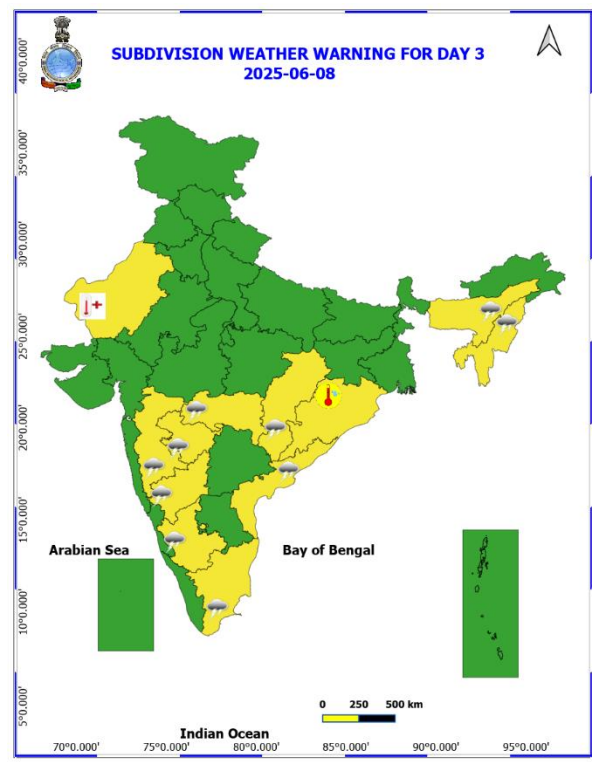
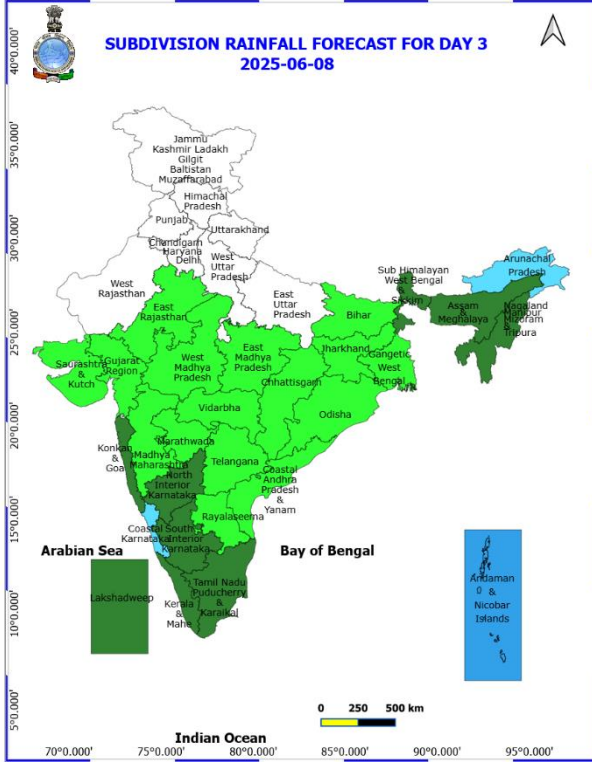
- ❖ **Thunderstorm accompanied with lightning & gusty winds(40-50kmph)** very likely at isolated places over Chhattisgarh, Coastal Andhra Pradesh and Maharashtra.
- ❖ **Thunderstorm accompanied with lightning & gusty winds(30-40kmph)** very likely at isolated places over Interior Karnataka, Madhya Pradesh, Rayalaseema and Tamil Nadu Puducherry & Karaikal.
- ❖ **Thunderstorm accompanied with Lightning** very likely at isolated places over Assam & Meghalaya, Kerala & Mahe and Nagaland, Manipur, Mizoram and Tripura.
- ❖ **Hot and Humid weather** very likely at isolated places over Odisha.
- ❖ **Squally wind with speed 45 kmph to 55 kmph gusting to 65 kmph** very likely to prevail along and off Somalia coast and adjoining southwest & westcentral Arabian Sea. Fisherman are not advised not to venture into the sea.

* Red colour warning does not mean "Red Alert", Red colour warning means "Take Action".

Forecast and Warning for any day is valid from 0830 hours IST of day till 0830 hours IST of next day.

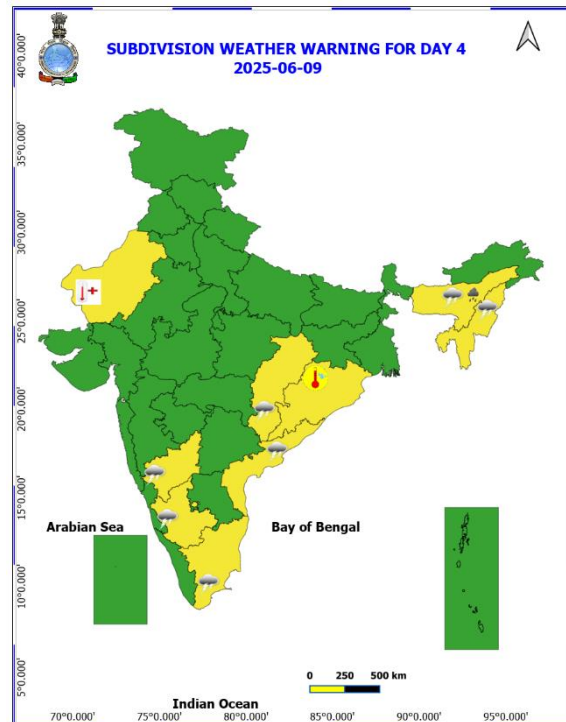
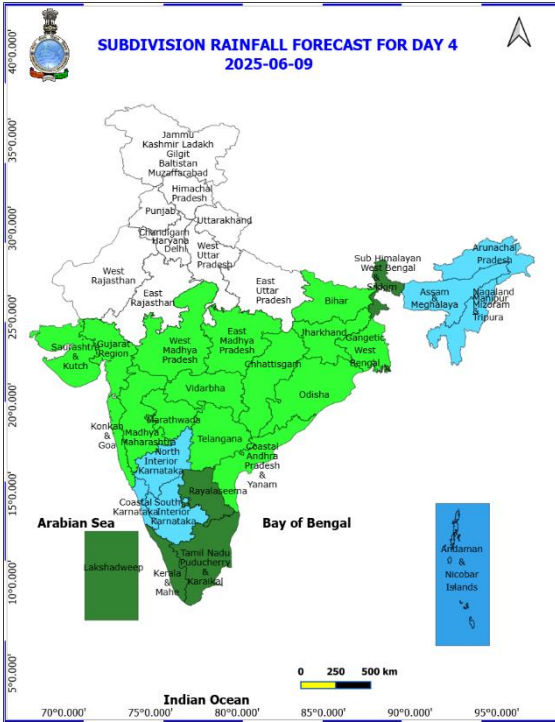
For more details, kindly visit <https://mausam.imd.gov.in> or contact: 011-2434-4599

(Service to the Nation since 1875)



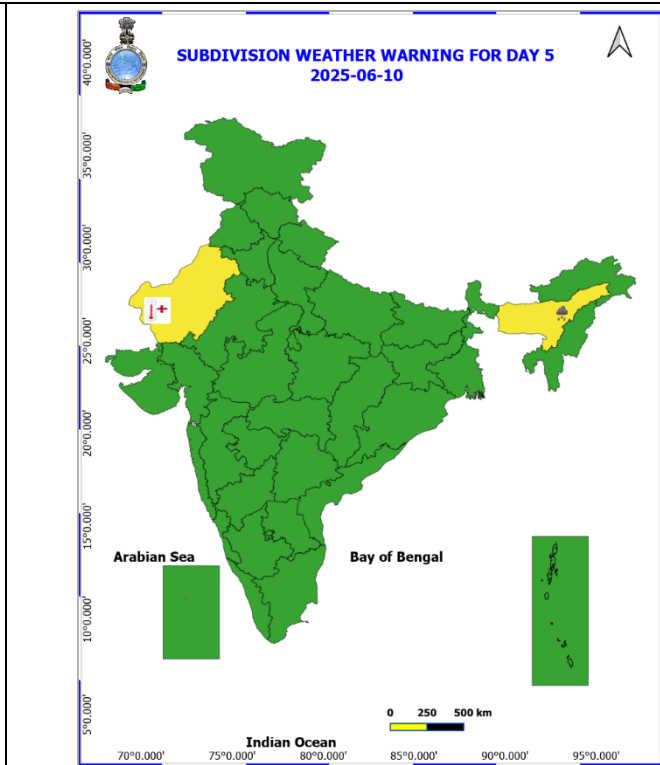
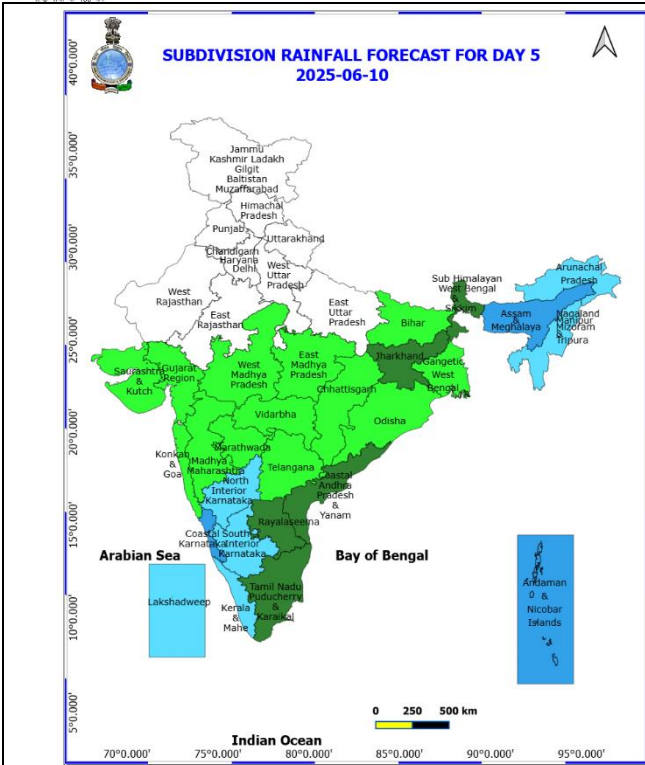
08th June (Day 3)

- ❖ **Thunderstorm accompanied with lightning & gusty winds(40-50kmph)** likely at isolated places over Chhattisgarh, Coastal Andhra Pradesh and Maharashtra.
- ❖ **Thunderstorm accompanied with lightning & gusty winds(30-40kmph)** likely at isolated places over Interior Karnataka and Tamil Nadu Puducherry & Karaikal.
- ❖ **Thunderstorm accompanied with Lightning** likely at isolated places over Assam & Meghalaya and Nagaland, Manipur, Mizoram and Tripura.
- ❖ **Heat Wave conditions** likely at isolated places over West Rajasthan.
- ❖ **Hot and Humid weather** likely at isolated places over Odisha.
- ❖ **Squally wind with speed 45 kmph to 55 kmph gusting to 65 kmph** likely to prevail along and off Somalia coast and adjoining southwest & westcentral Arabian Sea. Fisherman are not advised not to venture into the sea.



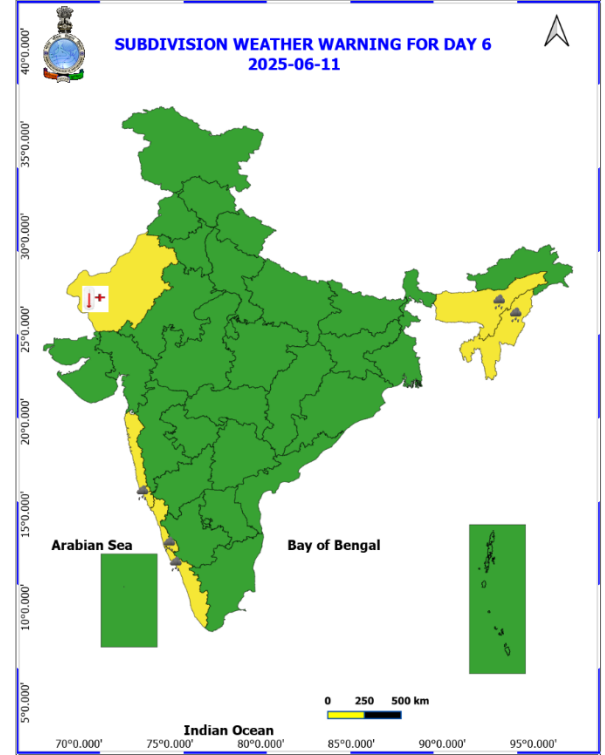
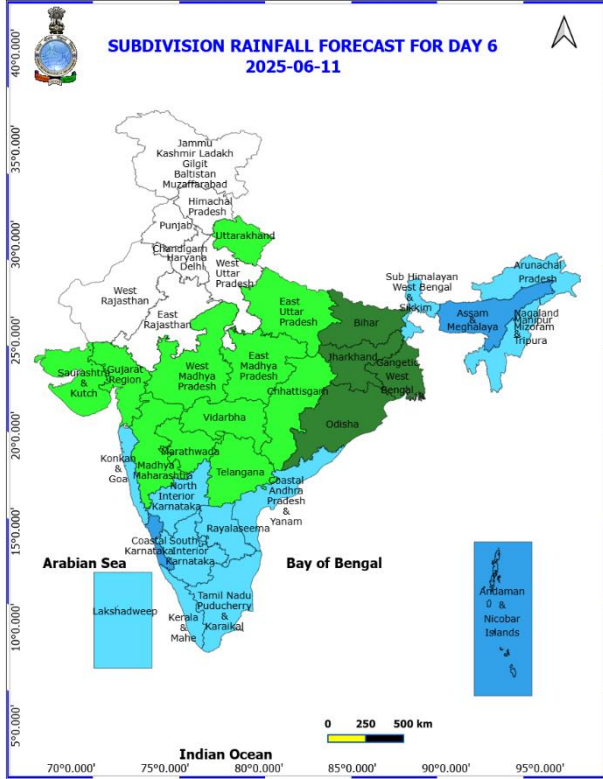
09th June (Day 4)

- ❖ **Heavy Rainfall** likely at isolated places over Assam & Meghalaya.
- ❖ **Thunderstorm accompanied with lightning & gusty winds(40-50kmph)** likely at isolated places over Chhattisgarh and Coastal Andhra Pradesh.
- ❖ **Thunderstorm accompanied with lightning & gusty winds(30-40kmph)** likely at isolated places over Interior Karnataka and Tamil Nadu Puducherry & Karaikal.
- ❖ **Thunderstorm accompanied with Lightning** likely at isolated places over Assam & Meghalaya and Nagaland, Manipur, Mizoram and Tripura.
- ❖ **Heat Wave conditions** likely at isolated places over West Rajasthan.
- ❖ **Hot and Humid weather** likely at isolated places over Odisha.
- ❖ **Squally wind with speed 45 kmph to 55 kmph gusting to 65 kmph** likely to prevail along and off Somalia coast and adjoining southwest & westcentral Arabian Sea; **Squally weather with wind speed 35 - 45 kmph gusting to 55 kmph** to prevail over many parts of south Bay of Bengal. Fisherman are not advised not to venture into the sea.



10th June (Day 5)

- ❖ **Heavy Rainfall** likely at isolated places over Assam & Meghalaya.
- ❖ **Heat Wave conditions** likely at isolated places over West Rajasthan.



11th June (Day 6)

- ❖ **Heavy Rainfall** likely at isolated places over Assam & Meghalaya, Nagaland, Manipur, Mizoram & Tripura Konkan & Goa, Coastal Karnataka, Kerala & Mahe.
- ❖ **Heat Wave conditions** likely at isolated places over West Rajasthan.

Fig. 1: Maximum Temperatures

Fig. 2: Departure of Maximum Temperatures

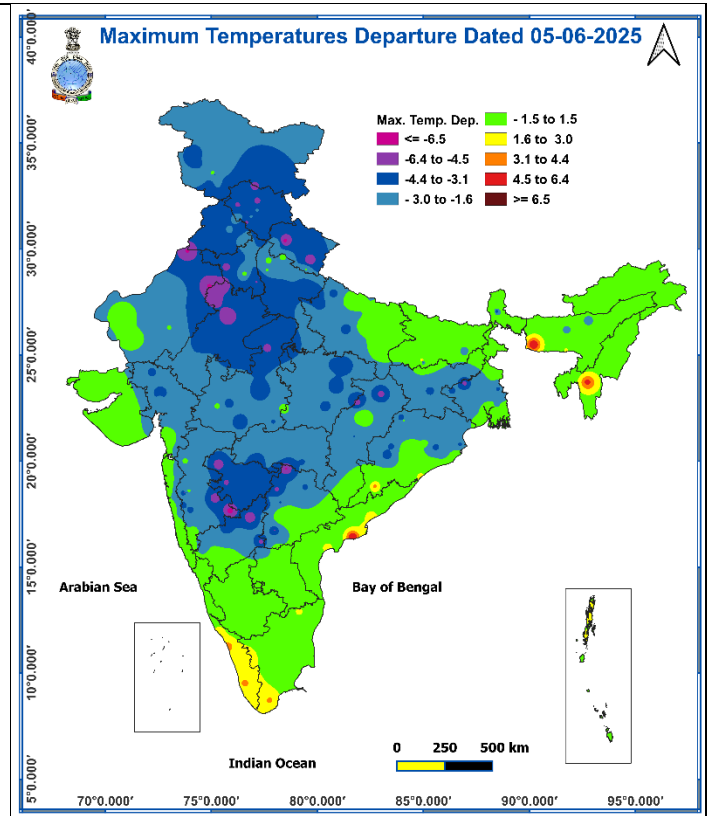
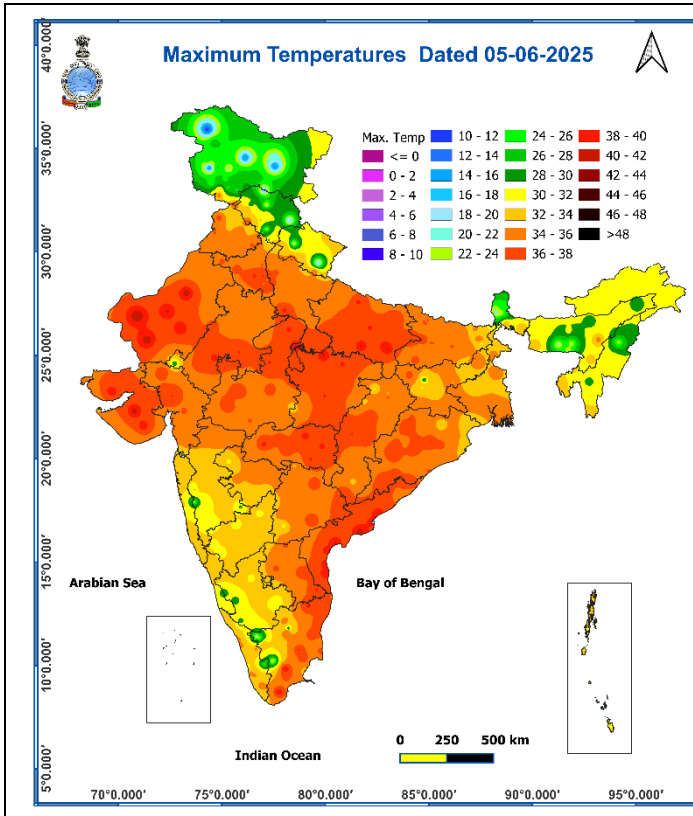


Fig. 3: Minimum Temperatures

Fig. 4: Departure of Minimum Temperatures

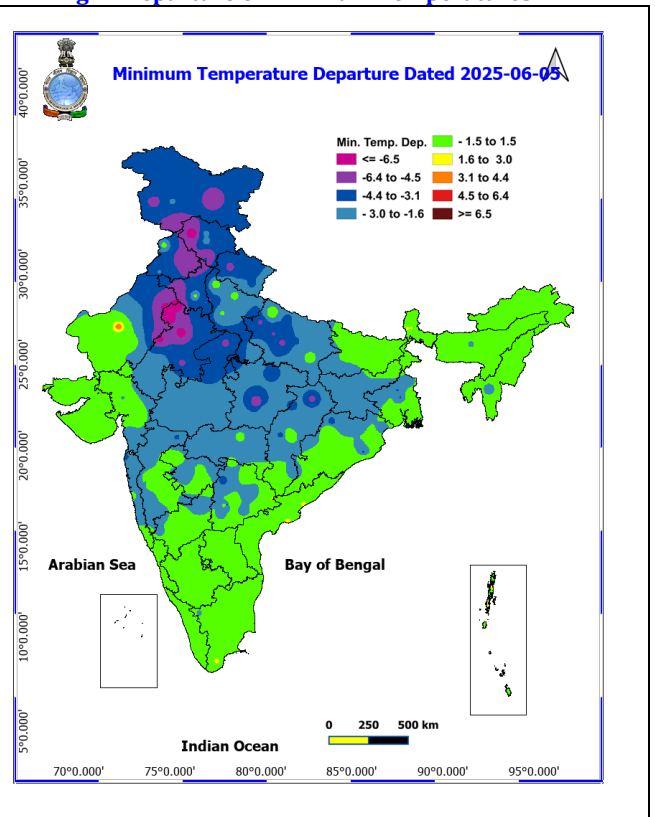
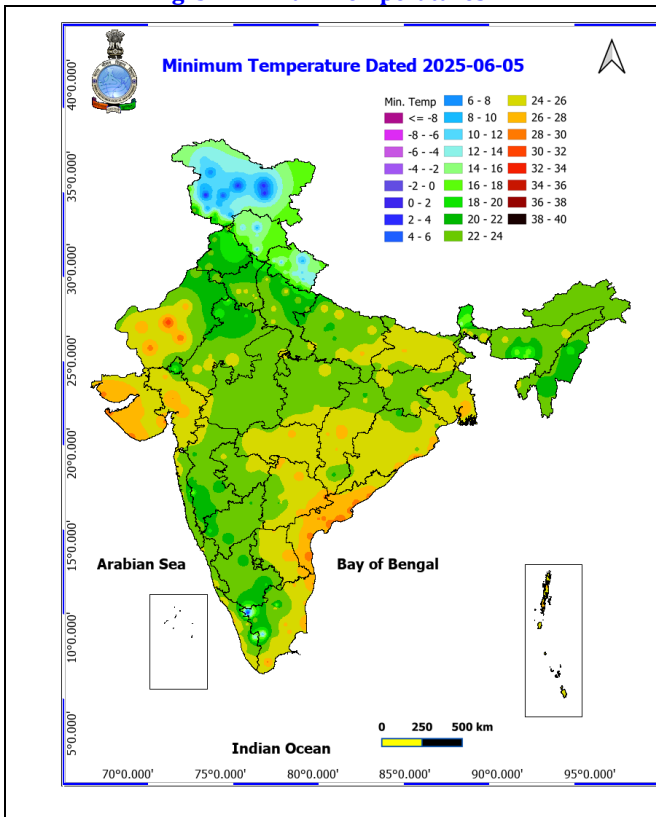
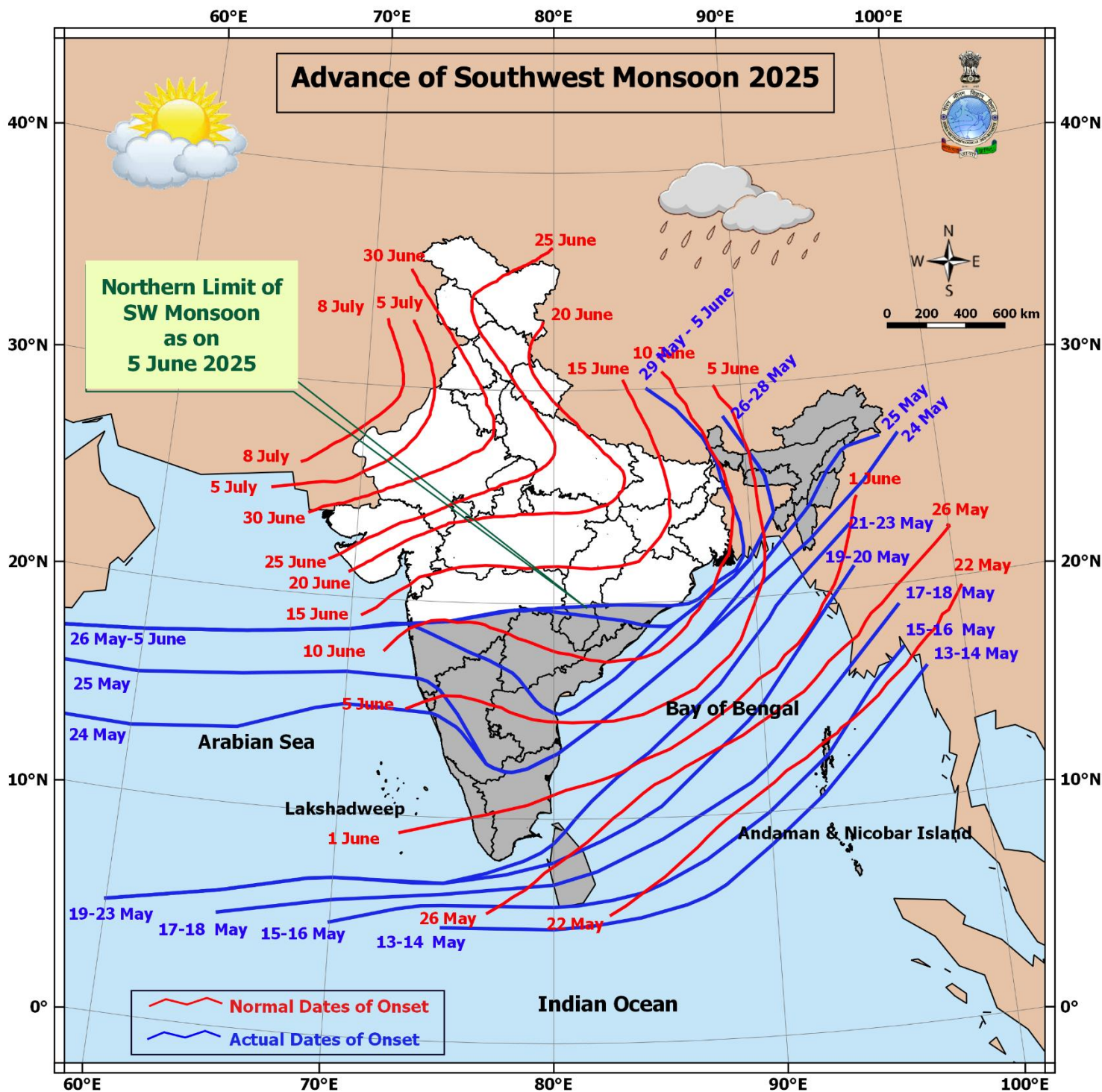
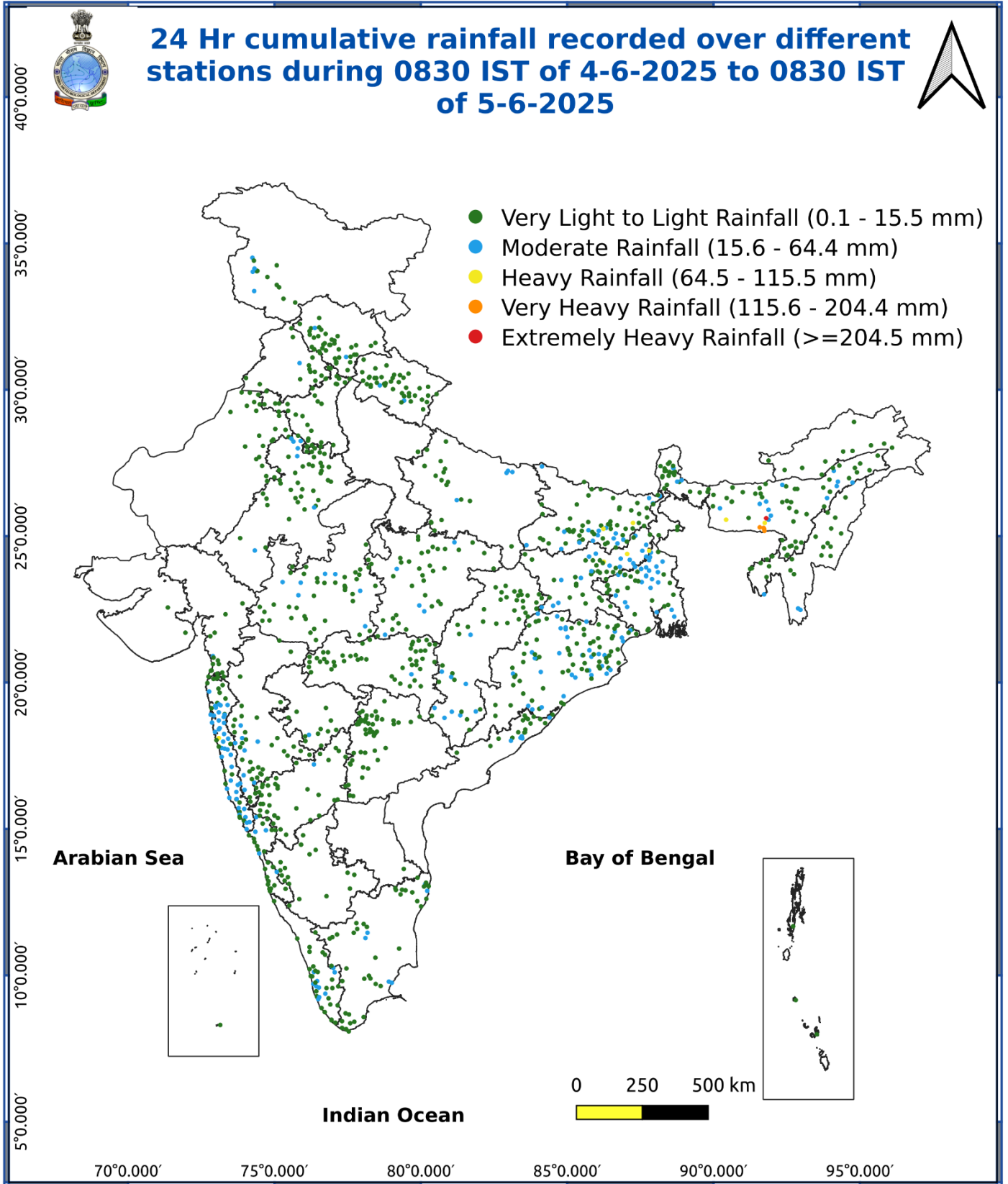


Fig. 5: Advance of Southwest Monsoon 2025



* Red colour warning does not mean "Red Alert", Red colour warning means "Take Action".
Forecast and Warning for any day is valid from 0830 hours IST of day till 0830 hours IST of next day.
For more details, kindly visit <https://mausam.imd.gov.in> or contact: 011-2434-4599
(Service to the Nation since 1875)

Fig. 6: Accumulated Rainfall (mm) during past 24 hours



* Red colour warning does not mean "Red Alert", Red colour warning means "Take Action".
Forecast and Warning for any day is valid from 0830 hours IST of day till 0830 hours IST of next day.
For more details, kindly visit <https://mausam.imd.gov.in> or contact: 011-2434-4599
(Service to the Nation since 1875)

Agromet advisories for likely impact of Heavy Rainfall / Gusty Winds

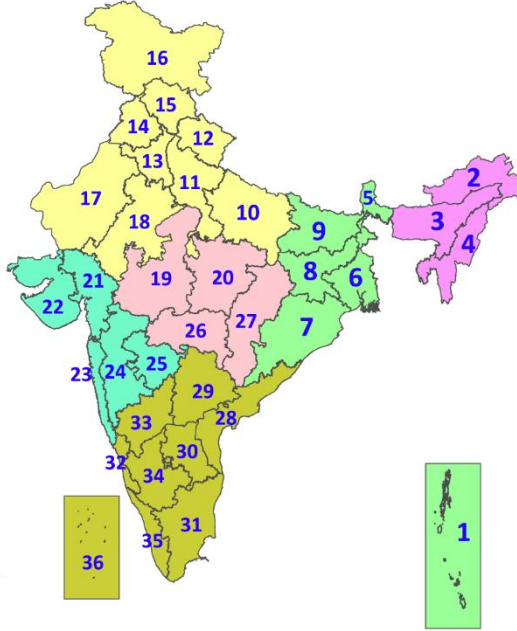
- Postpone sowing of *Sali* rice and vegetables in **Assam** and harvesting of rice in **Tripura**.
- Drain out excess water and ensure proper drainage in the rice nursery beds, fields of soybean, chilli, okra and other vegetables and in **Arunachal Pradesh**; rice, sesame, maize, sugarcane, ginger and turmeric in **Assam**; bottle gourd and French bean in **Meghalaya**; and rice fields, and *Aus* rice nurseries and vegetables in **Tripura**.
- Shift the harvested produce in safer places or cover the produce with tarpaulin sheets in the fields. Tie the harvested crops properly and cover them to minimise the risk of displacement due to strong surface winds.
- Provide mechanical support and propping to horticultural crops and staking to vegetables to avoid lodging.

Livestock / Fishery

- Keep the animals inside the shed during heavy rainfall and provide them balanced feed.
- Store feed and fodder in a safe place to prevent spoilage.
- Construct an outlet with proper netting around the ponds to drain out excess water, thereby preventing fish from escaping in case of overflow.

LEGENDS

1. अंडमान और निकोबार द्वीपसमूह
2. अरुणाचल प्रदेश
3. असम और मेघालय
4. नागालैंड, मणिपुर, मिजोरम और त्रिपुरा
5. उप-हिमालयी पश्चिम बंगाल और सिक्किम
6. गंगीय पश्चिम बंगाल
7. ओडिशा
8. झारखंड
9. बिहार
10. पूर्वी उत्तर प्रदेश
11. पश्चिम उत्तर प्रदेश
12. उत्तराखंड
13. हरियाणा, चंडीगढ़ और दिल्ली
14. पंजाब
15. हिमाचल प्रदेश
16. जम्मू और कश्मीर और लद्दाख
17. पश्चिम राजस्थान
18. पूर्वी राजस्थान
19. पश्चिम मध्य प्रदेश
20. पूर्वी मध्य प्रदेश
21. गुजरात
22. सौराष्ट्र
23. कोंकण और गोवा
24. मध्य महाराष्ट्र
25. मराठवाड़ा
26. विदर्भ
27. छत्तीसगढ़
28. तटीय आंध्र प्रदेश और यनम
29. तेलंगाना
30. रायलसीमा
31. तमिलनाडु, पुडुचेरी और कराईकल
32. तटीय कर्नाटक
33. आंतरिक उत्तरी कर्नाटक
34. आंतरिक दक्षिणी कर्नाटक
35. केरल और माहे
36. लक्षद्वीप



1. Andaman & Nicobar Islands
2. Arunachal Pradesh
3. Assam & Meghalaya
4. Nagaland, Manipur, Mizoram & Tripura
5. Sub-Himalayan West Bengal & Sikkim
6. Gangetic West Bengal
7. Odisha
8. Jharkhand
9. Bihar
10. East Uttar Pradesh
11. West Uttar Pradesh
12. Uttarakhand
13. Haryana, Chandigarh & Delhi
14. Punjab
15. Himachal Pradesh
16. Jammu & Kashmir and Ladakh
17. West Rajasthan
18. East Rajasthan
19. West Madhya Pradesh
20. East Madhya Pradesh
21. Gujarat
22. Saurashtra
23. Konkan & Goa
24. Madhya Maharashtra
25. Marathwada
26. Vidarbha
27. Chhattisgarh
28. Coastal Andhra Pradesh & Yanam
29. Telangana
30. Rayalaseema
31. Tamilnadu, Puducherry & Karaikal
32. Coastal Karnataka
33. North Interior Karnataka
34. South Interior Karnataka
35. Kerala & Mahe
36. Lakshadweep

SPATIAL DISTRIBUTION (% of Stations reporting)

% Stations	Category	% Stations	Category
76-100	Widespread (WS/Most Places)	26-50	Scattered (SCT/A Few Places)
51-75	Fairly Widespread (FWS/Many Places)	1-25	Isolated (ISOL)

- | | | |
|----------------------|----------------------|--------------|
| Fog | Heavy Snow | Cold Wave |
| Heavy Rain | Dust Storm | Cold Day |
| Very Heavy Rain | Heat Wave | Ground Frost |
| Extremely Heavy Rain | Warm Night | |
| Thunder & Lightning | Hot Day | |
| Hailstorm | Hot & Humid | |
| Dust Raising Winds | Strong Surface Winds | |

COLOUR CODED WARNING

No Warning (No Action)
Watch (Be Aware)
Alert (Be Prepared To Take Action)
Warning (Take Action)

Probabilistic Forecast

Terms	Probability of Occurrence (%)
Unlikely	< 25
Likely	25 - 50
Very Likely	50 - 75
Most Likely	> 75

DEFINITION/CRITERIA

Rain/ Snow *

Heavy: 64.5 to 115.5 mm/cm *
Very Heavy: 115.6 to 204.4 mm/cm*
Extremely Heavy: > 204.4 mm/cm *

Heat Wave

When maximum temperature of a station reaches $\geq 40^\circ\text{C}$ for plains and $\geq 30^\circ\text{C}$ for hilly regions
(a) Based on Departure from normal

Heat Wave: Maximum Temperature Departure from normal 4.5°C to 6.4°C .

Severe Heat Wave: Maximum Temperature Departure from normal $\geq 6.5^\circ\text{C}$

(b). Based on Actual maximum temperature

Heat Wave: When actual maximum temperature $\geq 45^\circ\text{C}$.

Severe Heat Wave: When actual maximum temperature $\geq 47^\circ\text{C}$

(c). Criteria for heat wave for coastal stations

When maximum temperature departure is $> 4.5^\circ\text{C}$ from normal. Heat Wave may be described provided maximum temperature $\geq 37^\circ\text{C}$

Warm Night

When maximum temperature remains 40°C

Warm Night: When minimum temperature departure 4.5°C to 6.4°C .

Severe Warm Night: When minimum temperature departure $> 6.4^\circ\text{C}$.

Cold Wave

When minimum temperature of a station $\leq 10^\circ\text{C}$ for plains and $\leq 0^\circ\text{C}$ for hilly regions.
(a). Based on departure

Cold Wave: Minimum Temperature Departure from normal -4.5°C to -6.4°C .

Severe Cold Wave: Minimum Temperature Departure from normal $\leq -6.5^\circ\text{C}$

(b) Based on actual Minimum Temperature (for Plains only)

Cold Wave : When Minimum Temperature is $\leq 4.0^\circ\text{C}$

Severe Cold Wave: When Minimum Temperature is $\leq 2.0^\circ\text{C}$

(c) For Coastal Stations

When Minimum Temperature departure is $\leq -4.5^\circ\text{C}$ & actual Minimum Temperature is $\leq 15^\circ\text{C}$

Cold Day

When minimum temperature of a station $\leq 10^\circ\text{C}$ for plains and $\leq 0^\circ\text{C}$ for hilly regions
Based on departure

Cold Day: Maximum Temperature Departure from normal -4.5°C to -6.4°C .

Severe Cold Day: Maximum Temperature Departure from normal $\leq -6.5^\circ\text{C}$

Fog

Phenomenon of small droplets suspended in air and the horizontal visibility $< 1\text{km}$

Moderate Fog: When the visibility between 500-200 metres

Dense Fog: when the visibility between 50- 200 metres

Very Dense Fog: when the visibility < 50 metres

Thunderstorm

Sudden electrical discharges manifested by a flash of light (Lightning) and a sharp rumbling sound (thunder)

Dust/Sand Storm

An ensemble of particles of dust or sand energetically lifted to great heights by a strong and turbulent wind.

Frost

Ice deposits on ground

Air temperature $\leq 4^\circ\text{C}$ (over Plains)

Squall

A strong wind that rises suddenly, lasts for atleast 1 minute.

Moderate: Wind speed 52-61 kmph

Severe: Wind speed 62-87 kmph

Very Severe: Wind speed > 87 kmph

Sea State

Effect of various waves in the sea over specific area

Rough to very rough: Wind speed 41-62 kmph (22-33 knots) & Wave height 2.5-6 metre

High to very high: Wind speed 63-117 kmph (34-63 knots) & Wave height 6-14 metre

Phenomenal: Wind speed > 117 kmph (> 63 knots) & Wave height > 14 metre

Cyclone

Cyclonic Storm: Wind speed 62-87 kmph (34-47 knots)

Severe Cyclonic Storm: Wind speed 88-117 kmph (48-63 knots)

Very Severe Cyclonic Storm: Wind speed 118-165 kmph (64 - 89 knots)

Extremely Severe Cyclonic Storm: Wind speed 166-220 kmph (90 -119 knots)

Super Cyclone Strom: Wind speed > 220 kmph (> 119 knots)