

Tuesday, June 3, 2025
Time of Issue: 0800 hours IST
(MORNING)

ALL INDIA WEATHER SUMMARY AND FORECAST BULLETIN

Significant Weather Features:

Weather Forecast and Warnings

Northeast India:

- ✓ Light/moderate rainfall at most places likely to continue over northeast India during next 7 days with isolated heavy to very heavy falls on 3rd June and isolated heavy falls during subsequent 24 hours.

Northwest India:

- ✓ Light/moderate rainfall at many/some places accompanied with **thunderstorm, lightning & gusty winds speed reaching 40-50 kmph** likely over Jammu-Kashmir-Ladakh-Gilgit-Baltistan-Muzaffarabad, Himachal Pradesh, Uttarakhand, Punjab, Haryana Chandigarh & Delhi; light/moderate rainfall at some/isolated places over Uttar Pradesh, Rajasthan on 03rd June.
- ✓ **Thundersquall wind speed reaching 50-60 kmph gusting to 70 kmph** likely over Punjab, Haryana Chandigarh & Delhi, West Uttar Pradesh, Rajasthan on 03rd June.
- ✓ **Isolated heavy rainfall** also likely over Uttarakhand, Punjab, Haryana on 03rd June and over East Rajasthan on 03rd June.
- ✓ **Dust storm** also very likely at isolated places over West Rajasthan on during 03rd-05th June.

East & Central India:

- ✓ Light/moderate rainfall at most/many places likely to continue over Sub-Himalayan West Bengal & Sikkim during next 7 days.
- ✓ Light/moderate rainfall at some places accompanied with **thunderstorm, lightning & gusty winds speed reaching 40-50 kmph** likely over Madhya Pradesh, Vidarbha, Chhattisgarh during 03rd-06th; Bihar, West Bengal, Jharkhand on 03rd & 04th June.
- ✓ **Thundersquall wind speed reaching 50-60 kmph gusting to 70 kmph** likely over West Madhya Pradesh on 03rd & 04th June.

South Peninsular India:

- ✓ Light/moderate rainfall at many places **over Kerala & Mahe, Coastal Karnataka** on 03rd-04th June with **isolated heavy rainfall** over Kerala & Mahe on 03rd & 04th June.
- ✓ Light/moderate rainfall at some places accompanied with **thunderstorm, lightning & gusty winds speed reaching 30-40 kmph** over Coastal Andhra Pradesh, Telangana and Interior Karnataka on 03rd & 04th June.

Maximum Temperature Forecast:

- ✓ No significant change in maximum temperatures likely over Northwest India during next 2 days; gradual rise by 3-5°C during subsequent next 5 days.
- ✓ No significant change in maximum temperatures likely over Central India during next 2 days; gradual rise by 2-4°C during subsequent next 5 days.
- ✓ Gradual rise by 3-4°C in maximum temperatures over East India during next 2 days and no large change thereafter.
- ✓ No significant change in maximum temperatures likely over rest parts of the country.

Hot & Humid warnings:

- ✓ **Hot & humid weather** is likely to prevail over Odisha during 03rd-06th; Gangetic West Bengal, Coastal Andhra Pradesh & Yanam, Tamilnadu Puducherry & Karaikal on 03rd-04th June.

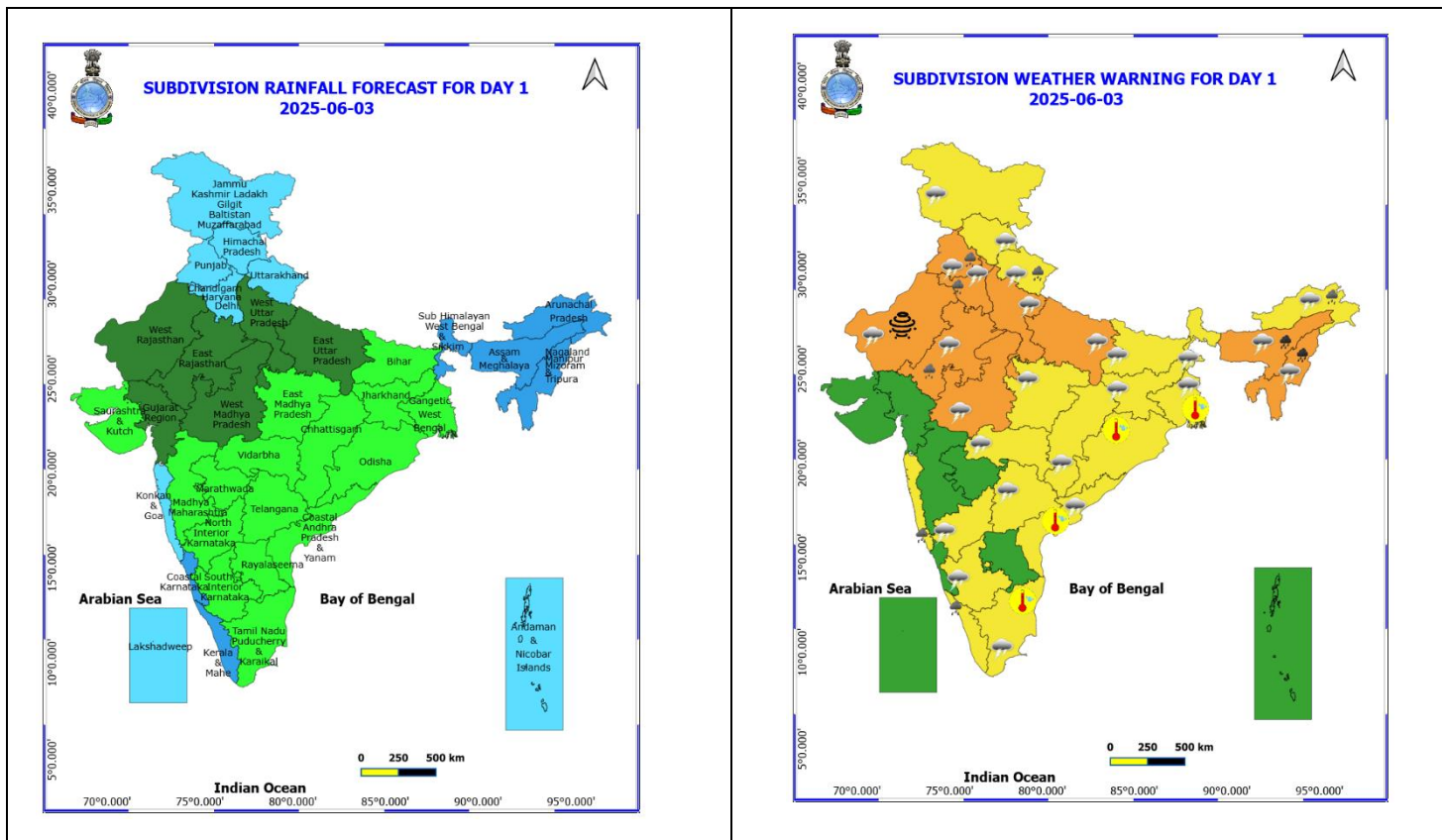
Main Weather Observations:

- ❖ **Significant rainfall recorded(in cm)** (from 0830 hours IST of yesterday to 0530 hours IST of today): **Assam & meghalaya:** Cherrapunji (dist East Khasi Hills) 11, Dhubri (dist Dhubri) 4, North Lakhimpur (dist Lakhimpur), Silchar (dist Cachar) 2 Each; **Nagaland, Manipur, Mizoram & Tripura:** Agartala AP (dist West Tripura) 7, Kailashahar AP (dist Unakoti) 3, Imphal (tulihal) AP (dist Imphal East) 1; **Coastal karnataka:** Mangalore (bajpe) AP (dist Dakshina Kannada) 4; **Kerala & mahe:** Kozhikode (calicut) (dist Kozhikode) 2, Cannanore (kannur) (dist Kannur) 1; **West Rajasthan:** Churu (dist Churu) 2, Bikaner (dist Bikaner) 1; **Lakshadweep :** Amini Divi (dist Lakshadweep) 1; **Himachal Pradesh:** Sundernagar (dist Mandi) 1; **North interior Karnataka:** Kalaburgi (dist Kalaburagi) 1; **Coastal Andhra Pradesh & Yanam:** Kavali (dist Sri Potti Sriramulu Nellore) 1; **Konkan & Goa :** Ratnagiri (dist Ratnagiri) 1; **East Rajasthan:** Ajmer (dist Ajmer) 1; **Jammu & Kashmir and Ladakh:** Pahalgam (dist Anantnag) 1; **West Madhya Pradesh:** Gwalior (dist Gwalior) 1; **Punjab:** Patiala (dist Patiala) 1; **Bihar:** Purnea (dist Purnia) 1.
- ❖ **Heavy Rainfall observed** (from 0830 hours IST of yesterday to 0530 hours IST of today):**Heavy rain** at isolated places over Assam & Meghalaya and Nagaland, Manipur, Mizoram & Tripura
- ❖ **Minimum Temperature Departures (as on 02-06-2025):** Minimum Temperature were **markedly above normal(> 5.1°C)** at few places over East Madhya Pradesh and Gujarat Region; at isolated places over Assam & Meghalaya, East Uttar Pradesh, West Uttar Pradesh, West Rajasthan and Saurashtra & Kutch; **appreciably above normal(3.1°C to 5.0°C)** at few places over Arunachal Pradesh; at isolated places over Andaman & Nicobar Islands, Sub Himalayan West Bengal & Sikkim, Gangetic West Bengal, Odisha, Bihar, West Madhya Pradesh and Tamil Nadu, Puducherry & Karaikal; **above normal(1.6°C to 3.0°C)** at few places over Lakshadweep; at isolated places over Jharkhand, Uttarakhand, Himachal Pradesh, Konkan & Goa, Coastal Andhra Pradesh & Yanam and Rayalaseema and **near normal(-1.5°C to 1.5°C)** at many places over Punjab, Madhya Maharashtra and Coastal Karnataka; at most places over Nagaland, Manipur, Mizoram & Tripura, South Interior Karnataka and Kerala & Mahe; at few places over Haryana-Chandigarh-Delhi, East Rajasthan and Telangana; at isolated places over Jammu-KashmirLadakh-Gilgit-Baltistan-Muzaffarabad, Marathwada, Vidarbha, Chhattisgarh and North Interior Karnataka. Yesterday, **the lowest minimum temperature** of 19.0°C was reported at Matheran (Maharashtra) over the Plains of India. (Fig.4).
- ❖ **Maximum Temperature Departures (as on 02-06-2025):** Maximum Temperatures were **markedly above normal (> 5.1°C)** at isolated places over Tamil Nadu, Puducherry & Karaikal. **appreciably above normal (3.1°C to 5.0°C)** at few places over Arunachal Pradesh, Gangetic West Bengal and Odisha; at isolated places over Assam & Meghalaya and Himachal Pradesh. **above normal (1.6°C to 3.0°C)** at few places over Sub Himalayan West Bengal & Sikkim; at isolated places over Nagaland, Manipur, Mizoram & Tripura, Bihar, East Madhya Pradesh, Saurashtra & Kutch, Coastal Andhra Pradesh & Yanam and Telangana. **Near normal (-1.5°C to 1.5°C)** at many places over Andaman & Nicobar Islands, West Uttar Pradesh and Kerala & Mahe; at most places over East Uttar Pradesh, Konkan & Goa and Lakshadweep; at few places over Uttarakhand, West Rajasthan, Gujarat Region and Rayalaseema; at isolated places over Jharkhand and Punjab. (Fig.2). Yesterday, **the highest maximum temperature** of 44.2°C was reported at Banda (East Uttar Pradesh).

Meteorological Analysis (Based on 0530 hours IST)

- ❖ The Northern Limit of Monsoon continues to pass through 17.0°N/55°E, 17.5°N/60°E, 18°N/65°E, 18.5°N/70°E, Mumbai, Ahilyanagar, Adilabad, Bhawanipatna, Puri, Sandhead Island, 23.5°N/89.5°E, Balurghat, 30°N/85°E.
- ❖ The **Western disturbance** as a **cyclonic circulation** over north Pakistan & adjoining Jammu now lies over Punjab & neighbourhood between 3.1 & 4.5 km above mean sea level with a trough aloft in middle tropospheric level with its axis at 5.8 km above mean sea level runs roughly along Long. 75°E to the north of Lat. 30°N.
- ❖ The **upper air cyclonic circulation** over northwest Uttar Pradesh extending upto 1.5 km above mean sea level persists.
- ❖ The **north-south trough** roughly along Long. 91°E to the north of Lat. 22°N persists and now seen at 1.5 km above mean sea level.
- ❖ The **trough** from East Uttar Pradesh to northeast Assam across central parts of Bihar, Sub-Himalayan West Bengal & Sikkim and Assam at 0.9 km above mean sea level persists.

Weather Forecast & Warnings for next 7 days (Upto 0830 hours IST of 10th June, 2025)



03rd June (Day 1)

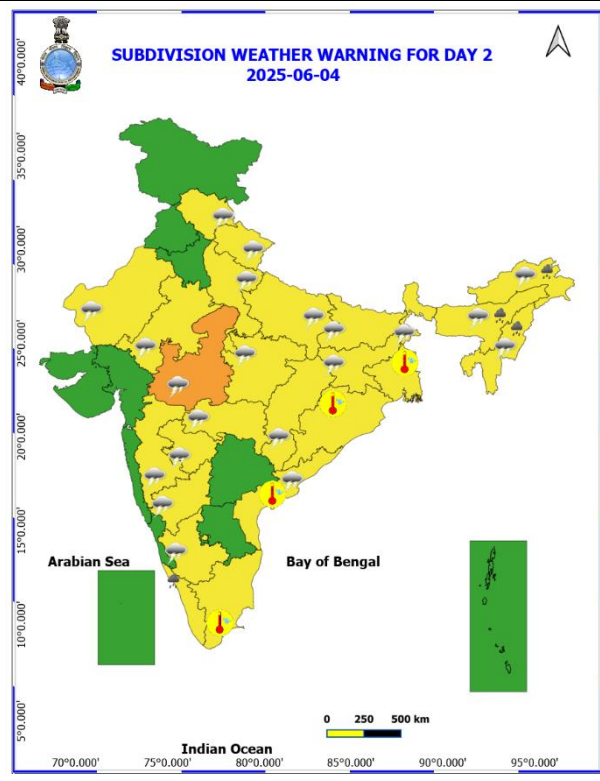
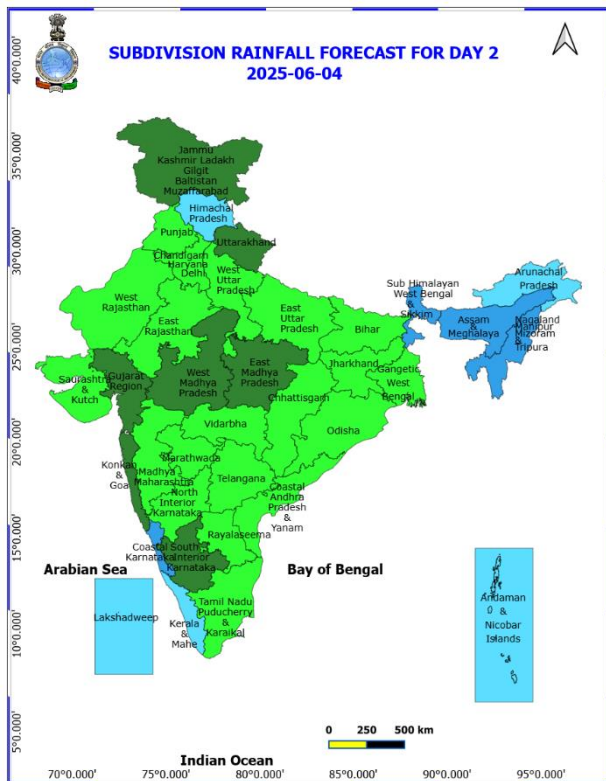
- ❖ **Heavy to Very Heavy Rainfall** very likely at isolated places over Assam & Meghalaya and Nagaland, Manipur, Mizoram and Tripura.
- ❖ **Heavy Rainfall** very likely at isolated places over Arunachal Pradesh, East Rajasthan, Haryana, Chandigarh & Delhi, Kerala & Mahe, Konkarn & Goa, Punjab and Uttarakhand.
- ❖ **Thundersquall with wind speed reaching(50-60kmph)** very likely at isolated places over Haryana, Chandigarh & Delhi, Punjab, Rajasthan, Uttar Pradesh and West Madhya Pradesh.
- ❖ **Thunderstorm accompanied with lightning & gusty winds(40-50kmph)** very likely at isolated places over Chhattisgarh, East Madhya Pradesh, Gangetic West Bengal, Himachal Pradesh, Jammu-Kashmir-Ladakh-Gilgit-Baltistan-Muzaffarabad and Uttarakhand.
- ❖ **Thunderstorm accompanied with lightning & gusty winds(30-40kmph)** very likely at isolated places over Assam & Meghalaya, Bihar, Coastal Andhra Pradesh, Interior Karnataka, Nagaland, Manipur, Mizoram and Tripura, Sub Himalayan West Bengal & Sikkim, Telangana and Vidarbha.
- ❖ **Thunderstorm accompanied with Lightning** very likely at isolated places over Arunachal Pradesh, Jharkhand and Tamil Nadu Puducherry & Karaikal.
- ❖ **Dust Storm** very likely at isolated places over West Rajasthan.
- ❖ **Hot and Humid weather** very likely at isolated places over Coastal Andhra Pradesh, Gangetic West Bengal, Odisha and Tamil Nadu Puducherry & Karaikal.
- ❖ **Squally wind with speed 45 kmph to 55 kmph gusting to 65 kmph** likely to prevail along and off Somalia coast and adjoining parts of southwest Arabian Sea & westcentral Arabian Sea. **Squally weather with wind speed 35 kmph to 45 kmph gusting to 55 kmph** prevailing over some parts of southwest and many parts of central Arabian Sea and adjoining parts of southeast Arabian Sea, over Lakshadweep area, off north Kerala, Karnataka coast, over Gulf of Mannar, over some parts of central Bay of Bengal and adjoining parts of north Bay of Bengal. Fisherman are not advised not to venture into the sea.

* Red colour warning does not mean "Red Alert", Red colour warning means "Take Action".

Forecast and Warning for any day is valid from 0830 hours IST of day till 0830 hours IST of next day.

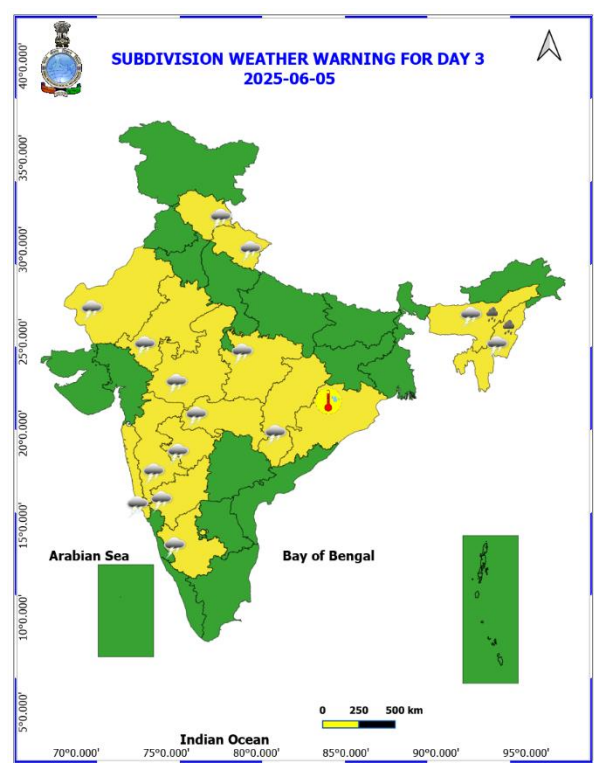
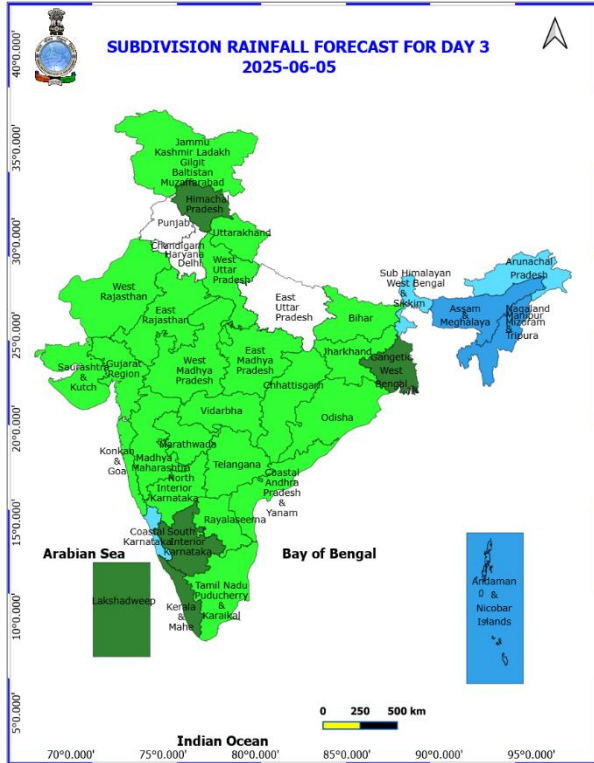
For more details, kindly visit <https://mausam.imd.gov.in> or contact: 011-2434-4599

(Service to the Nation since 1875)



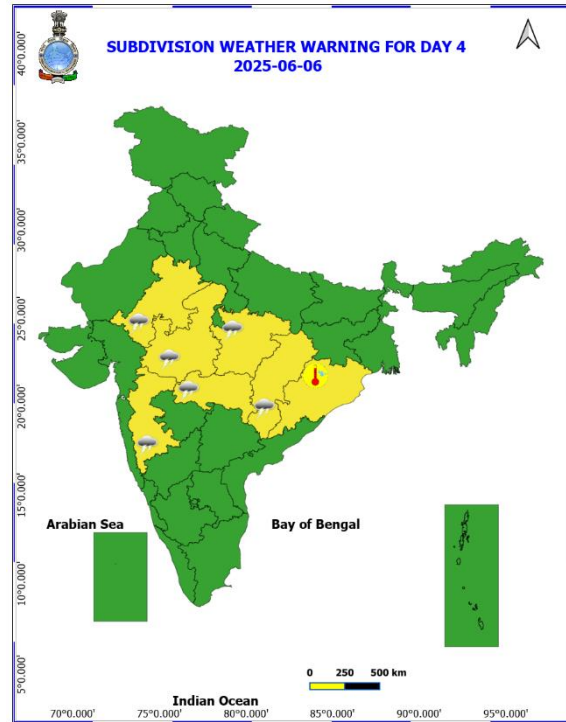
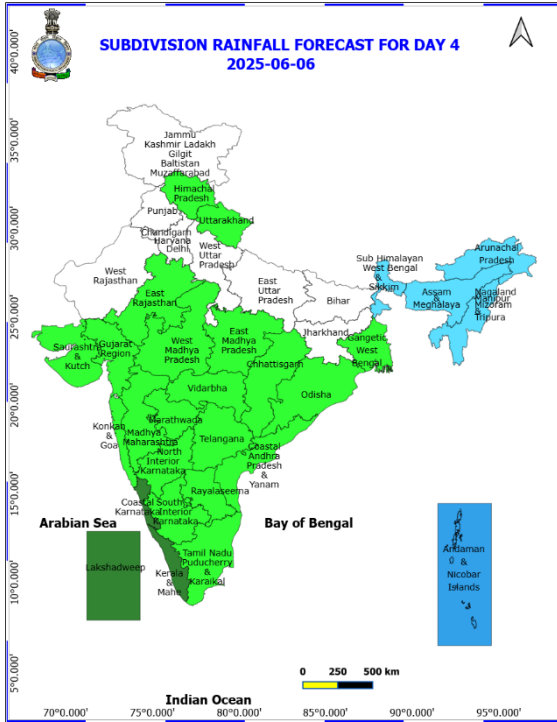
04th June (Day 2)

- ❖ **Heavy Rainfall** very likely at isolated places over Arunachal Pradesh, Assam & Meghalaya, Kerala & Mahe and Nagaland, Manipur, Mizoram and Tripura.
- ❖ **Thundersquall with wind speed reaching(50-60kmph)** very likely at isolated places over West Madhya Pradesh.
- ❖ **Thunderstorm accompanied with lightning & gusty winds(40-50kmph)** very likely at isolated places over Chhattisgarh, East Madhya Pradesh, East Rajasthan, Himachal Pradesh, Uttarakhand and Vidarbha.
- ❖ **Thunderstorm accompanied with lightning & gusty winds(30-40kmph)** very likely at isolated places over Assam & Meghalaya, Bihar, Coastal Andhra Pradesh, Interior Karnataka, Madhya Maharashtra, Marathwada, Sub Himalayan West Bengal & Sikkim, Uttar Pradesh and West Rajasthan.
- ❖ **Thunderstorm accompanied with Lightning** very likely at isolated places over Arunachal Pradesh, Jharkhand and Nagaland, Manipur, Mizoram and Tripura.
- ❖ **Hot and Humid weather** very likely at isolated places over Coastal Andhra Pradesh, Gangetic West Bengal, Odisha and Tamil Nadu Puducherry & Karaikal.
- ❖ **Squally wind with speed 45 kmph to 55 kmph gusting to 65 kmph** likely to prevail along and off Somalia coast and adjoining southwest Arabian Sea, westcentral Arabian Sea. **Squally weather with wind speed 35 kmph to 45 kmph gusting to 55 kmph** prevailing over off north Tamil Nadu coast, over northern parts of central Bay of Bengal and adjoining parts of north Bay of Bengal and along. Fisherman are not advised not to venture into the sea.



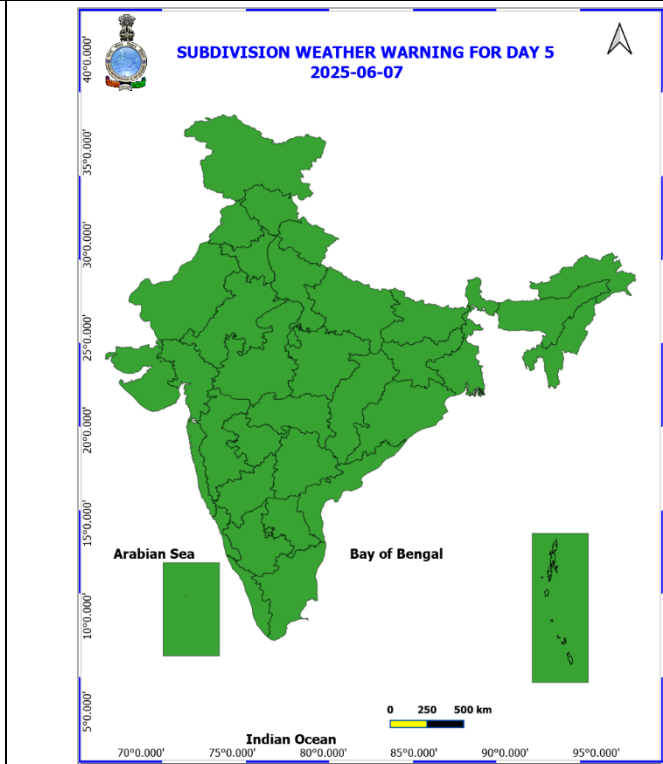
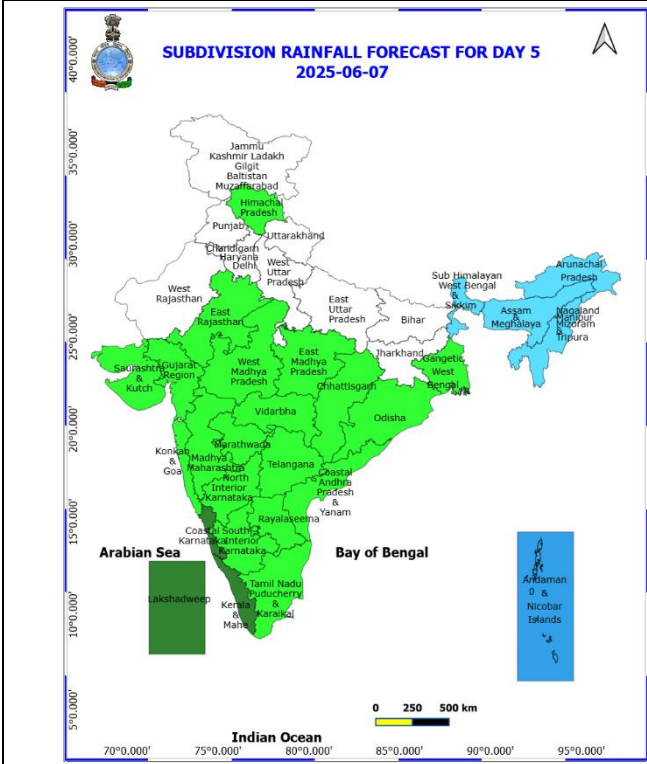
05th June (Day 3)

- ❖ **Heavy Rainfall** likely at isolated places over Assam & Meghalaya and Nagaland, Manipur, Mizoram and Tripura.
- ❖ **Thunderstorm accompanied with lightning & gusty winds(40-50kmph)** likely at isolated places over Chhattisgarh, East Rajasthan, Madhya Maharashtra, Madhya Pradesh and Vidarbha.
- ❖ **Thunderstorm accompanied with lightning & gusty winds(30-40kmph)** likely at isolated places over Himachal Pradesh, Interior Karnataka, Konkan & Goa, Marathwada, Uttarakhand and West Rajasthan.
- ❖ **Thunderstorm accompanied with Lightning** likely at isolated places over Assam & Meghalaya and Nagaland, Manipur, Mizoram and Tripura.
- ❖ **Hot and Humid weather** likely at isolated places over Odisha.
- ❖ **Squally wind with speed 45 kmph to 55 kmph gusting to 65 kmph** likely to prevail along and off Somalia coast and adjoining southwest & westcentral Arabian Sea, over few western parts of westcentral Arabian Sea. Fisherman are not advised not to venture into the sea.



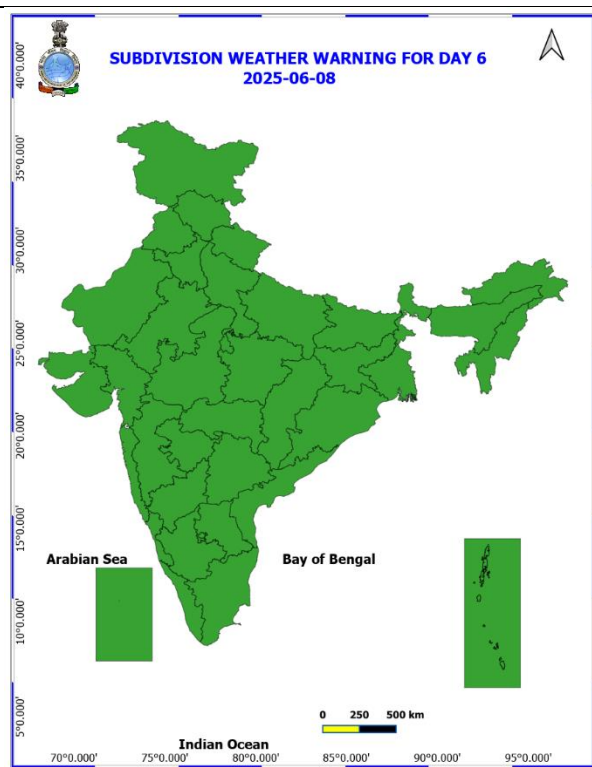
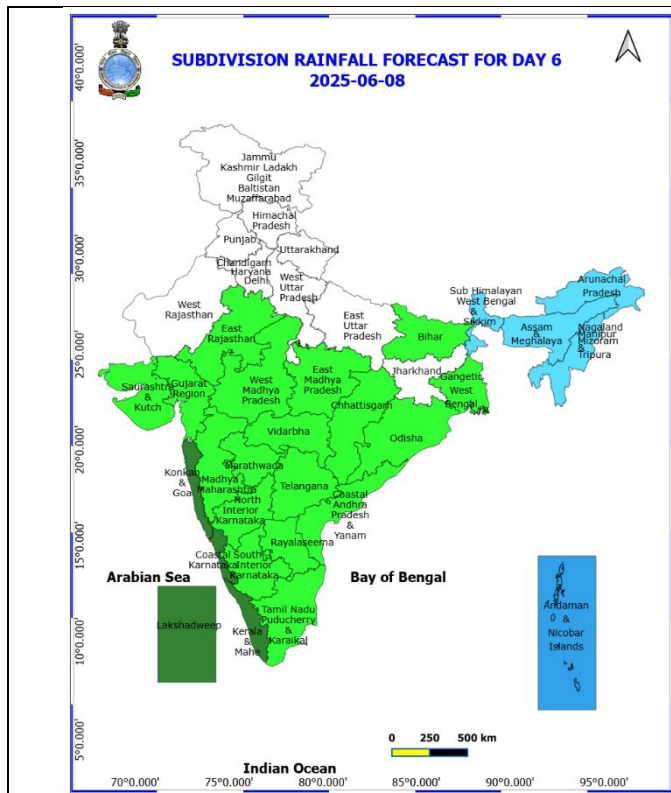
06th June (Day 4)

- ❖ **Thunderstorm accompanied with lightning & gusty winds(40-50kmph)** likely at isolated places over Chhattisgarh, Madhya Pradesh and Vidarbha.
- ❖ **Thunderstorm accompanied with lightning & gusty winds(30-40kmph)** likely at isolated places over East Rajasthan and Madhya Maharashtra.
- ❖ **Hot and Humid weather** likely at isolated places over Odisha.
- ❖ **Squally wind with speed 45 kmph to 55 kmph gusting to 65 kmph** likely to prevail along and off Somalia coast and adjoining sea area. Fisherman are not advised not to venture into the sea.



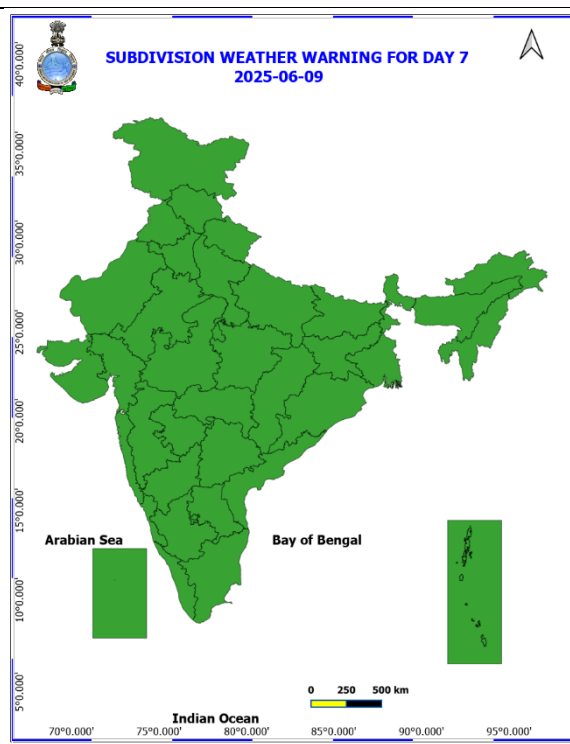
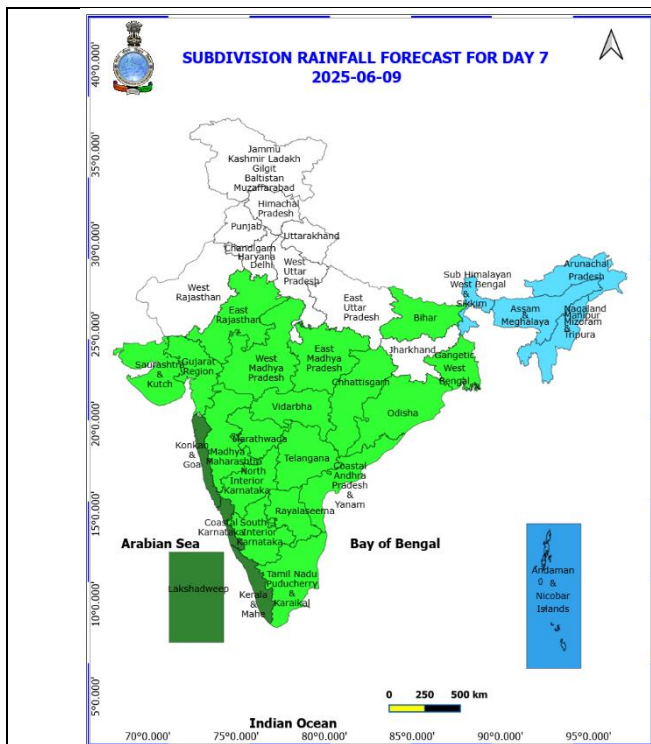
07th June (Day 5)

❖ No Warning.



08th June (Day 6)

❖ **No Warning.**



09th June (Day 7)

❖ **No Warning.**

Weather Outlook for subsequent 3 days (During 10th June- 12th June, 2025)

- ❖ **Fairly widespread to widespread** rainfall activity likely over Northeast India, Sub-Himalayan West Bengal & Sikkim, Andaman & Nicobar Islands, Lakshadweep, Konkan & Goa, Marathwada, Coastal Karnataka, Telangana, Rayalaseema and Kerala & Mahe.
- ❖ **Isolated to scattered rainfall** likely over Jammu-Kashmir-Ladakh-Gilgit-Baltistan-Muzaffarabad, Odisha, south Chhattisgarh, Vidarbha, West Madhya Pradesh, Madhya Maharashtra, Interior Karnataka, East Uttar Pradesh, Bihar and Jharkhand.

- Action may be taken based on **ORANGE AND RED** COLOUR warnings.
- Vulnerable regions likely urban and hilly areas action may be initiated for heavy rainfall warning.
- As the lead period increases forecast accuracy decreases.

* Red colour warning does not mean "Red Alert", Red colour warning means "Take Action".
Forecast and Warning for any day is valid from 0830 hours IST of day till 0830 hours IST of next day.
For more details, kindly visit <https://mausam.imd.gov.in> or contact: 011-2434-4599
(Service to the Nation since 1875)

Fig. 1: Maximum Temperatures

Fig. 2: Departure of Maximum Temperatures

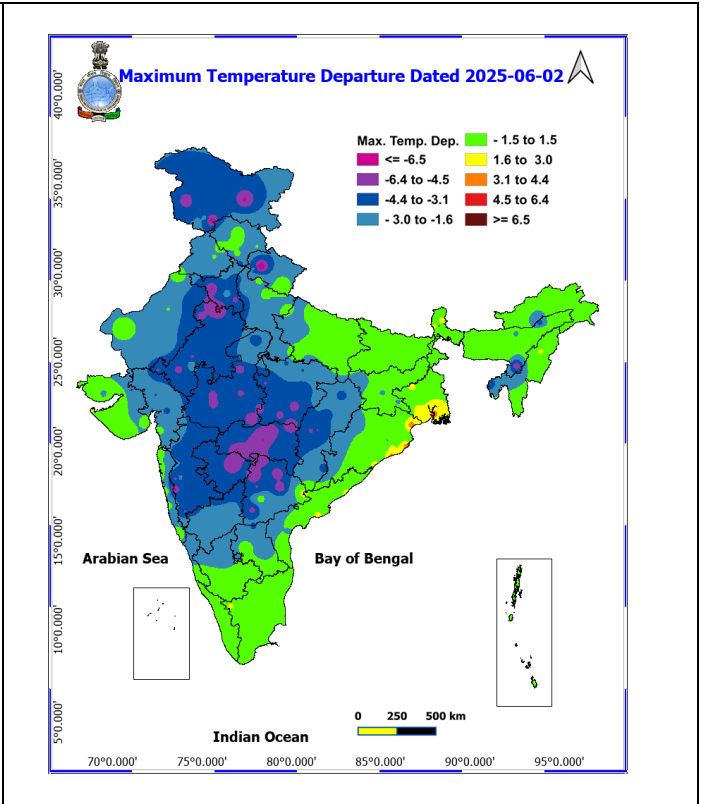
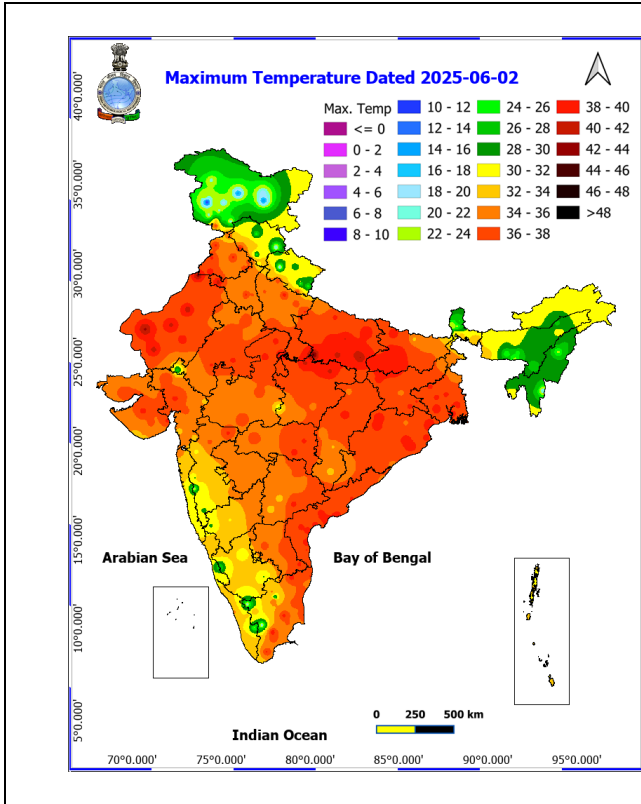


Fig. 3: Minimum Temperatures

Fig. 4: Departure of Minimum Temperatures

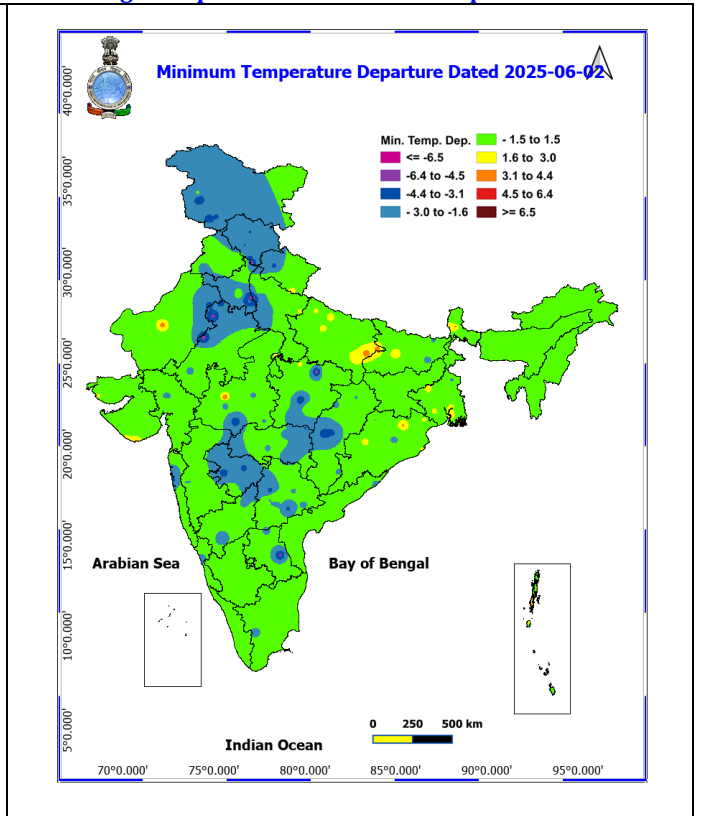
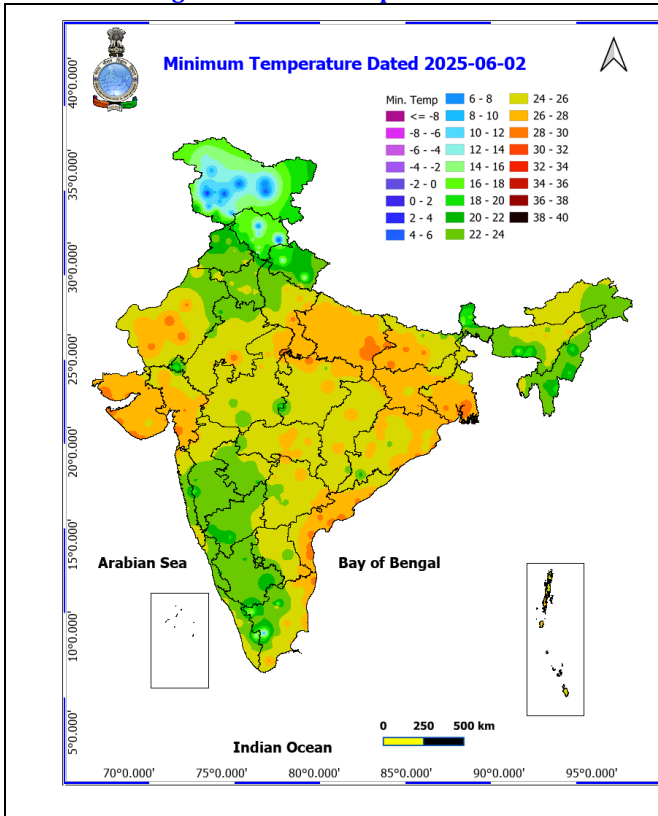
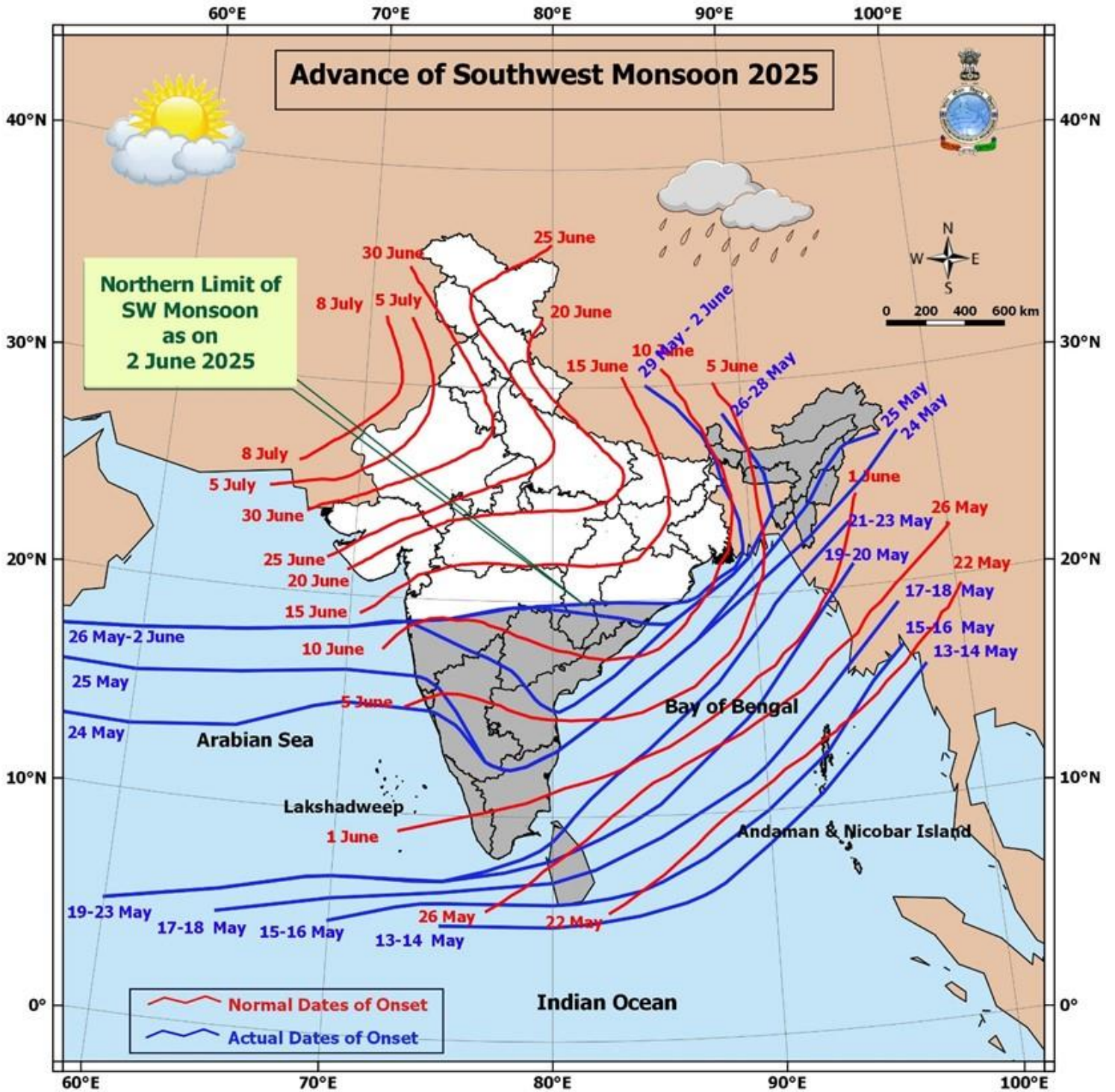
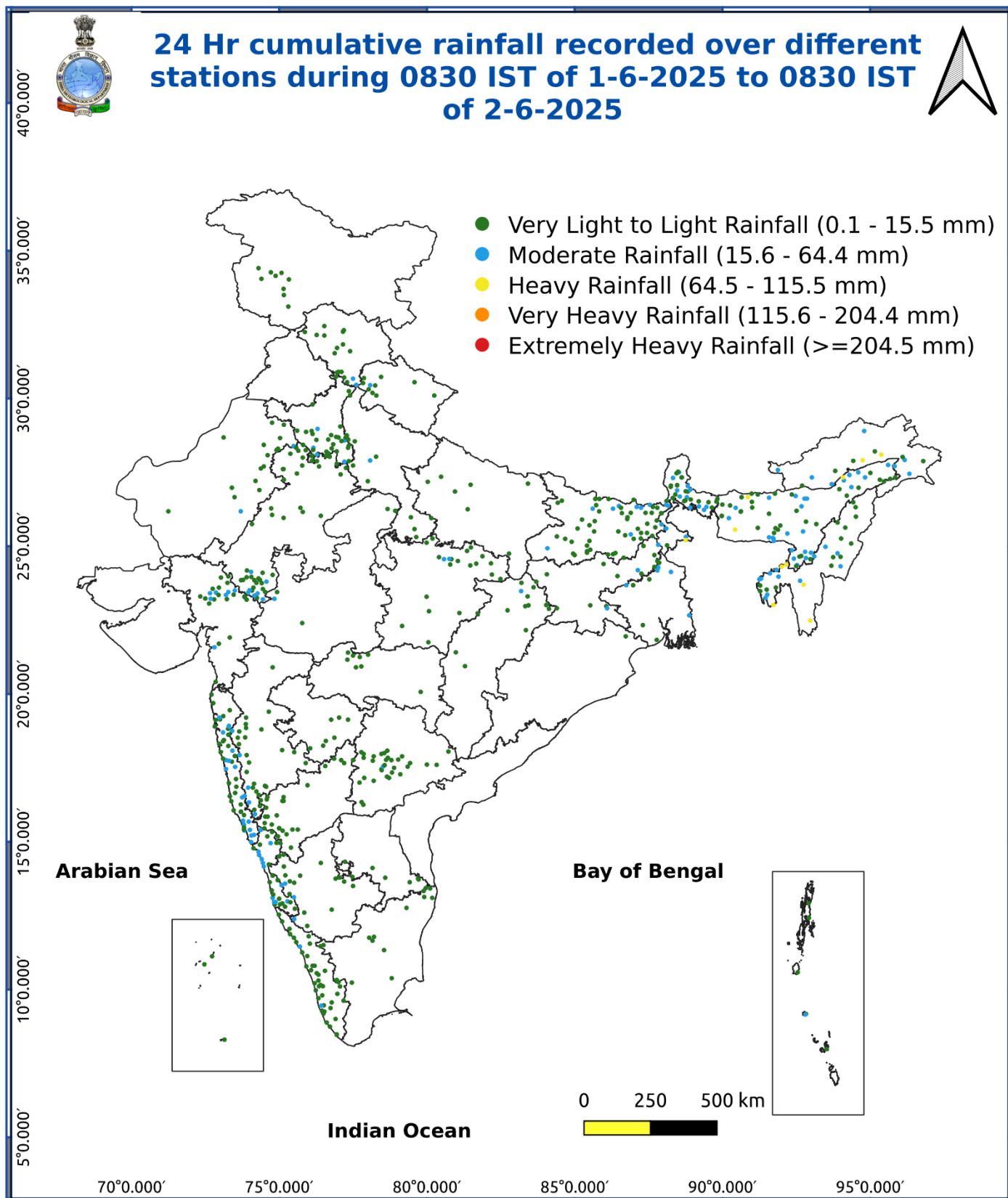


Fig. 5: Advance of Southwest Monsoon 2025



* Red colour warning does not mean "Red Alert", Red colour warning means "Take Action".
Forecast and Warning for any day is valid from 0830 hours IST of day till 0830 hours IST of next day.
For more details, kindly visit <https://mausam.imd.gov.in> or contact: 011-2434-4599
(Service to the Nation since 1875)

Fig. 6: Accumulated Rainfall (mm) during past 24 hours



* Red colour warning does not mean "Red Alert", Red colour warning means "Take Action".
Forecast and Warning for any day is valid from 0830 hours IST of day till 0830 hours IST of next day.
For more details, kindly visit <https://mausam.imd.gov.in> or contact: 011-2434-4599
(Service to the Nation since 1875)

Impact & Action Suggested due to heavy to very heavy rainfall over Assam & Meghalaya and Mizoram on 03rd June.
(For Orange colour warning areas)

Impact Expected

- ❖ Localized Flooding of roads, water logging in low lying areas of the above region.
- ❖ Occasional reduction in visibility due to heavy rainfall.
- ❖ Minor damage to kutcha roads.
- ❖ Possibilities of damage to vulnerable structure.
- ❖ Localized Landslides/Mudslides
- ❖ Damage to horticulture and standing crops in some areas due to inundation.
- ❖ It may lead to riverine flooding in some river catchments (for riverine flooding please visit Web page of CWC).

Action Suggested

- ❖ Check for traffic congestion on your route before leaving for your destination.
- ❖ Follow any traffic advisories that are issued in this regard.
- ❖ Avoid going to areas that face the water logging problems often.
- ❖ Avoid staying in vulnerable structure.

Impact expected and action suggested due to isolated thunderstorm with lightning/gusty & Squally winds over

- ❖ **Thundersquall wind speed reaching 50-60 kmph gusting to 70 kmph** likely over Punjab, Haryana Chandigarh & Delhi, West Uttar Pradesh, Rajasthan on 03rd, West Madhya Pradesh on 03rd & 04th June.

Impact expected:

- Minor to Major damage to banana and papaya trees.
- Strong wind/hail may damage plantation, horticulture and standing crops.
- Partial damage to vulnerable structures due to strong winds.
- Minor damage to kutcha houses/walls and huts.
- Loose objects may fly.

Action suggested:

- People are advised to keep a watch on the weather for worsening conditions and be ready to move to safer places accordingly.
- Stay indoors, close windows & doors and avoid travel if possible.
- Take safe shelters; do not take shelter under trees.
- Do not lie on concrete floors and do not lean against concrete walls.
- Unplug electrical/ electronic appliances.
- Immediately get out of water bodies.
- Keep away from all the objects that conduct electricity.

Agromet advisories for likely impact of Heavy Rainfall / Gusty Winds

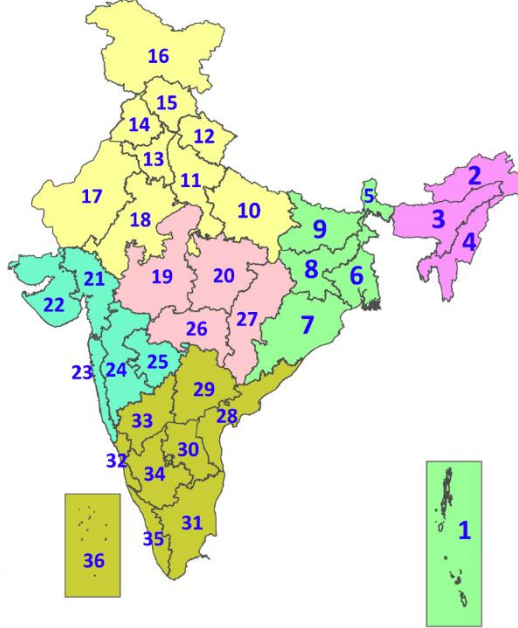
- Postpone transplanting of rice in **Arunachal Pradesh**; sowing of *Sali* rice and vegetables in **Assam**; sowing of finger millet, maize and black gram in **Manipur** and harvesting of rice in **Tripura**.
- Drain out excess water and ensure proper drainage in the rice nursery beds, fields of soybean, chilli, okra and other vegetables and in **Arunachal Pradesh**; rice, sesame, maize, sugarcane, ginger and turmeric in **Assam**; bottle gourd and French bean in **Meghalaya**; maize and upland rice in **Mizoram**; pre-*kharif* rice, soybean, finger millet, maize, black gram, vegetables and orchards in **Manipur**; cabbage, maize and orchards in **Nagaland**; rice fields, *Aus* rice nurseries and vegetables in **Tripura** and Dalley Khorsani and tomato in **Sub Himalayan West Bengal**.
- Shift the harvested produce in safer places or cover the produce with tarpaulin sheets in the fields. Tie the harvested crops properly and cover them to minimise the risk of displacement due to strong surface winds.
- Provide mechanical support and propping to horticultural crops and staking to vegetables to avoid lodging.

Livestock / Poultry / Fishery

- Keep the animals inside the shed during heavy rainfall and provide them balanced feed.
- Store feed and fodder in a safe place to prevent spoilage.
- Construct an outlet with proper netting around the ponds to drain out excess water, thereby preventing fish from escaping in case of overflow.

LEGENDS

1. अंडमान और निकोबार द्वीपसमूह
2. अरुणाचल प्रदेश
3. असम और मेघालय
4. नागालैंड, मणिपुर, मिजोरम और त्रिपुरा
5. उप-हिमालयी पश्चिम बंगाल और सिक्किम
6. गंगीय पश्चिम बंगाल
7. ओडिशा
8. झारखंड
9. बिहार
10. पूर्वी उत्तर प्रदेश
11. पश्चिम उत्तर प्रदेश
12. उत्तराखंड
13. हरियाणा, चंडीगढ़ और दिल्ली
14. पंजाब
15. हिमाचल प्रदेश
16. जम्मू और कश्मीर और लद्दाख
17. पश्चिम राजस्थान
18. पूर्वी राजस्थान
19. पश्चिम मध्य प्रदेश
20. पूर्वी मध्य प्रदेश
21. गुजरात
22. सौराष्ट्र
23. कोंकण और गोवा
24. मध्य महाराष्ट्र
25. मराठवाड़ा
26. विदर्भ
27. छत्तीसगढ़
28. तटीय आंध्र प्रदेश और यनम
29. तेलंगाना
30. रायलसीमा
31. तमिलनाडु, पुडुचेरी और कराईकल
32. तटीय कर्नाटक
33. आंतरिक उत्तरी कर्नाटक
34. आंतरिक दक्षिणी कर्नाटक
35. केरल और माहे
36. लक्षद्वीप



1. Andaman & Nicobar Islands
2. Arunachal Pradesh
3. Assam & Meghalaya
4. Nagaland, Manipur, Mizoram & Tripura
5. Sub-Himalayan West Bengal & Sikkim
6. Gangetic West Bengal
7. Odisha
8. Jharkhand
9. Bihar
10. East Uttar Pradesh
11. West Uttar Pradesh
12. Uttarakhand
13. Haryana, Chandigarh & Delhi
14. Punjab
15. Himachal Pradesh
16. Jammu & Kashmir and Ladakh
17. West Rajasthan
18. East Rajasthan
19. West Madhya Pradesh
20. East Madhya Pradesh
21. Gujarat
22. Saurashtra
23. Konkan & Goa
24. Madhya Maharashtra
25. Marathwada
26. Vidarbha
27. Chhattisgarh
28. Coastal Andhra Pradesh & Yanam
29. Telangana
30. Rayalaseema
31. Tamilnadu, Puducherry & Karaikal
32. Coastal Karnataka
33. North Interior Karnataka
34. South Interior Karnataka
35. Kerala & Mahe
36. Lakshadweep

SPATIAL DISTRIBUTION (% of Stations reporting)

% Stations	Category	% Stations	Category
76-100	Widespread (WS/Most Places)	26-50	Scattered (SCT/A Few Places)
51-75	Fairly Widespread (FWS/Many Places)	1-25	Isolated (ISOL)

- | | | |
|----------------------|----------------------|--------------|
| Fog | Heavy Snow | Cold Wave |
| Heavy Rain | Dust Storm | Cold Day |
| Very Heavy Rain | Heat Wave | Ground Frost |
| Extremely Heavy Rain | Warm Night | |
| Thunder & Lightning | Hot Day | |
| Hailstorm | Hot & Humid | |
| Dust Raising Winds | Strong Surface Winds | |

COLOUR CODED WARNING

No Warning (No Action)
Watch (Be Aware)
Alert (Be Prepared To Take Action)
Warning (Take Action)

Probabilistic Forecast

Terms	Probability of Occurrence (%)
Unlikely	< 25
Likely	25 - 50
Very Likely	50 - 75
Most Likely	> 75

DEFINITION/CRITERIA

Rain/ Snow *

Heavy: 64.5 to 115.5 mm/cm *
Very Heavy: 115.6 to 204.4 mm/cm*
Extremely Heavy: > 204.4 mm/cm *

Heat Wave

When maximum temperature of a station reaches $\geq 40^\circ\text{C}$ for plains and $\geq 30^\circ\text{C}$ for hilly regions
(a) Based on Departure from normal

Heat Wave: Maximum Temperature Departure from normal 4.5°C to 6.4°C .

Severe Heat Wave: Maximum Temperature Departure from normal $\geq 6.5^\circ\text{C}$

(b). Based on Actual maximum temperature

Heat Wave: When actual maximum temperature $\geq 45^\circ\text{C}$.

Severe Heat Wave: When actual maximum temperature $\geq 47^\circ\text{C}$

(c). Criteria for heat wave for coastal stations

When maximum temperature departure is $> 4.5^\circ\text{C}$ from normal. Heat Wave may be described provided maximum temperature $\geq 37^\circ\text{C}$

Warm Night

When maximum temperature remains 40°C

Warm Night: When minimum temperature departure 4.5°C to 6.4°C .

Severe Warm Night: When minimum temperature departure $> 6.4^\circ\text{C}$.

Cold Wave

When minimum temperature of a station $\leq 10^\circ\text{C}$ for plains and $\leq 0^\circ\text{C}$ for hilly regions.
(a). Based on departure

Cold Wave: Minimum Temperature Departure from normal -4.5°C to -6.4°C .

Severe Cold Wave: Minimum Temperature Departure from normal $\leq -6.5^\circ\text{C}$

(b) Based on actual Minimum Temperature (for Plains only)

Cold Wave : When Minimum Temperature is $\leq 4.0^\circ\text{C}$

Severe Cold Wave: When Minimum Temperature is $\leq 2.0^\circ\text{C}$

(c) For Coastal Stations

When Minimum Temperature departure is $\leq -4.5^\circ\text{C}$ & actual Minimum Temperature is $\leq 15^\circ\text{C}$

Cold Day

When minimum temperature of a station $\leq 10^\circ\text{C}$ for plains and $\leq 0^\circ\text{C}$ for hilly regions
Based on departure

Cold Day: Maximum Temperature Departure from normal -4.5°C to -6.4°C .

Severe Cold Day: Maximum Temperature Departure from normal $\leq -6.5^\circ\text{C}$

Fog

Phenomenon of small droplets suspended in air and the horizontal visibility $< 1\text{km}$

Moderate Fog: When the visibility between 500-200 metres

Dense Fog: when the visibility between 50- 200 metres

Very Dense Fog: when the visibility < 50 metres

Thunderstorm

Sudden electrical discharges manifested by a flash of light (Lightning) and a sharp rumbling sound (thunder)

Dust/Sand Storm

An ensemble of particles of dust or sand energetically lifted to great heights by a strong and turbulent wind.

Frost

Ice deposits on ground

Air temperature $\leq 4^\circ\text{C}$ (over Plains)

Squall

A strong wind that rises suddenly, lasts for atleast 1 minute.

Moderate: Wind speed 52-61 kmph

Severe: Wind speed 62-87 kmph

Very Severe: Wind speed > 87 kmph

Sea State

Effect of various waves in the sea over specific area

Rough to very rough: Wind speed 41-62 kmph (22-33 knots) & Wave height 2.5-6 metre

High to very high: Wind speed 63-117 kmph (34-63 knots) & Wave height 6-14 metre

Phenomenal: Wind speed > 117 kmph (> 63 knots) & Wave height > 14 metre

Cyclone

Cyclonic Storm: Wind speed 62-87 kmph (34-47 knots)

Severe Cyclonic Storm: Wind speed 88-117 kmph (48-63 knots)

Very Severe Cyclonic Storm: Wind speed 118-165 kmph (64 - 89 knots)

Extremely Severe Cyclonic Storm: Wind speed 166-220 kmph (90 -119 knots)

Super Cyclone Strom: Wind speed > 220 kmph (> 119 knots)