

2025-11-20

Time of Issue: 07:48:00 hours IST
(Morning)

ALL INDIA WEATHER SUMMARY AND FORECAST BULLETIN

Significant Weather Features

Weather Forecast and Warnings:

- Light to moderate rainfall/thunderstorm at many/some places with **isolated heavy rainfall** very likely over Tamil Nadu during 20th -25th; Kerala & Mahe during 21st - 24th; Coastal Andhra Pradesh & Yanam, Rayalaseema on 25th; Andaman & Nicobar Islands on during 20th -23rd November; with isolated **very Heavy rainfall** over Andaman & Nicobar Islands on 21st November.
- Thunderstorm with lightning very likely over Tamil Nadu during 20th -23rd; Kerala & Mahe during 21st -23rd; ; Coastal Andhra Pradesh & Yanam and Rayalaseema during 21st -23rd November.

Forecast of temperature and cold wave and cold day warnings:

- Gradual rise in minimum temperature likely by 2-4⁰C likely over Central India during next 4 days and no large change thereafter.
- No significant change in minimum temperature likely over plains of northwest India during next 5-6 days.
- Gradual rise in minimum temperature likely by 2-4⁰C over Maharashtra for next 4 days & 2-3⁰C over Gujarat for next 3 days and no large change thereafter.
- Rise in minimum temperature likely by 2-3⁰C over East India during next 24 hours and no significant change thereafter.
- **Cold wave to severe cold wave conditions** very likely to continue to prevail over some parts of West Madhya Pradesh on 20th and **Cold wave conditions** at isolated parts on 21st; **over** Madhya Maharashtra, East Madhya Pradesh and Telangana on 20th November.

*Red color warning does not mean "Red Alert" Red color warning means "Take Action"

Forecast and warning for any day is valid from 0830 hours IST of day till 0830 hours IST of next day

For more details kindly visit <https://mausam.imd.gov.in> or contact 011-2434-4599

(Service to the nation since 1875)

Main Weather Observations:

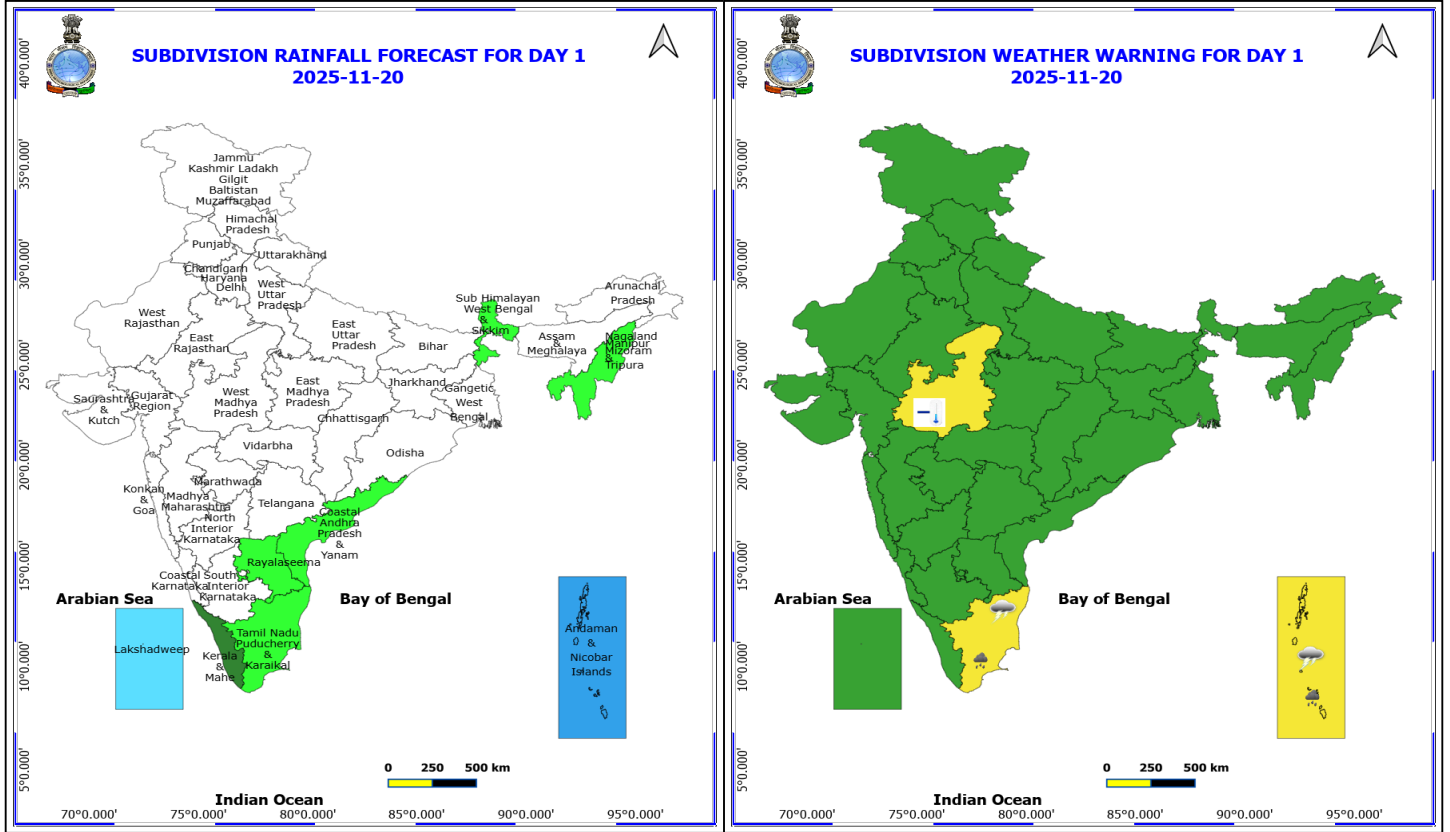
- ❖ **Rainfall distribution** (from 0830 hours IST of yesterday to 0530 hours IST of today): **at most places** over Andaman & Nicobar Islands; **at many places** over Lakshadweep , Tamilnadu Puducherry & Karaikal and Kerala & Mahe; **Dry** over rest of the country.
- ❖ **Significant rainfall recorded(in cm)** (from 0830 hours IST of yesterday to 0530 hours IST of today): **Lakshadweep** : Minicoy (dist **Lakshadweep**) 7; **Andaman & Nicobar Islands**: Port Blair (dist South Andaman) 3; **Kerala & Mahe**: Cannanore (kannur) (dist Kannur) 2.
- ❖ **Heavy Rainfall observed** (from 0830 hours IST of yesterday to 0530 hours IST of today):**Heavy rain** at a few places over Lakshadweep
- ❖ **Fog Condition Observed (at 0530 hours of today): Shallow fog conditions:** at isolated places over East Uttar Pradesh and West Madhya Pradesh
- ❖ **Minimum Temperature Departures (as on 19-11-2025): below normal(-1.6°C to -3.0°C)** at few places over East Rajasthan, Gujarat Region and Madhya Maharashtra; at isolated places over Vidarbha, Chhattisgarh and Telangana. **appreciably below normal(-5.0°C to -3.1°C)** at many places over Marathwada. **markedly below normal(< -5.0°C)** at most places over East Madhya Pradesh. **The lowest minimum temperature** of 10.1°C is reported at MORADABAD (UTTAR PRADESH) over the Plains of India.
- ❖ **Maximum Temperature Departures (as on 19-11-2025): The highest maximum temperature** of 36.0°C is reported at KARWAR (KARNATAKA).

Meteorological Analysis (Based on 0530 hours IST)

- The **Low-Pressure area** over Lakshadweep Islands & adjoining Maldives area persisted over the same region at 0530 hrs IST of today, the 20th November 2025. The associated cyclonic circulation now extends upto 3.1 km above mean sea level. It is likely to move slowly west-northwestwards during next 24 hours.
- The **cyclonic circulation** over Southwest Bay of Bengal & neighbourhood persists and now extends upto 5.8 km above mean sea level.
- A **low Pressure area** is likely to form over Southeast Bay of Bengal around 22nd November 2025. Thereafter, it is very likely to move west-northwestwards and intensify into **depression** over central parts of south Bay of Bengal around 24th November 2025. Thereafter, it will very likely to continue to move west-northwestwards and intensify further over southwest Bay of Bengal during subsequent 48 hours.

Weather Outlook for subsequent 3 days

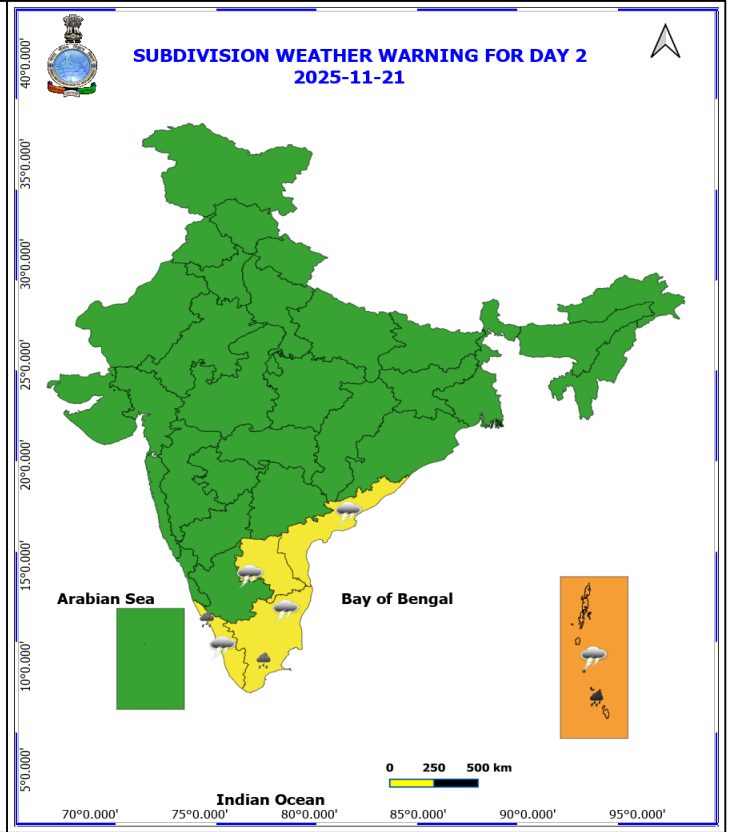
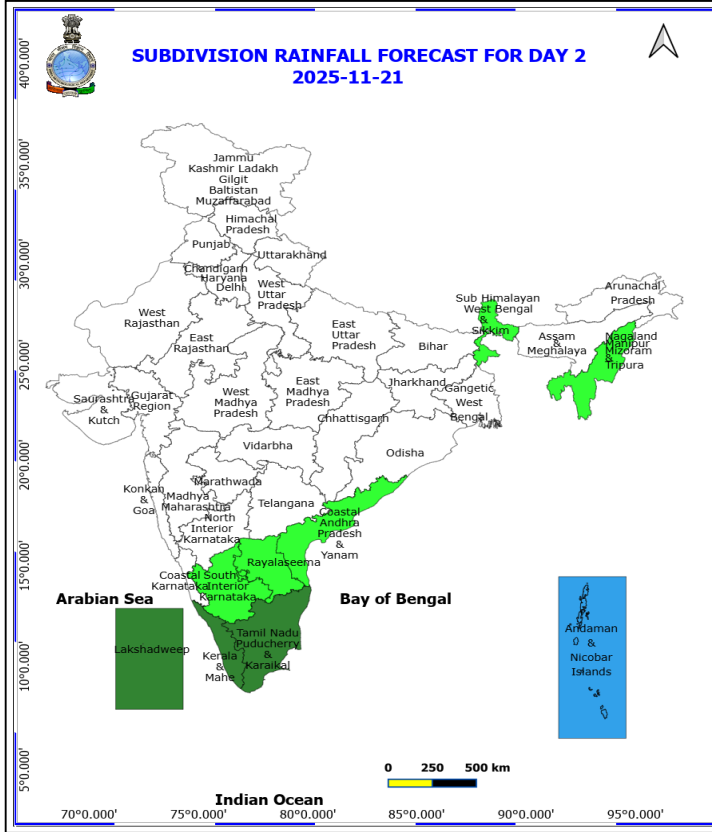
- fairly widespread to widespread rainfall activity likely over Tamil Nadu, Kerala and Islands.
- Isolated to Scattered rainfall activity over Coastal Andhra Pradesh, Coastal Karnataka and South Interior Karnataka.



20 November (Day 1)

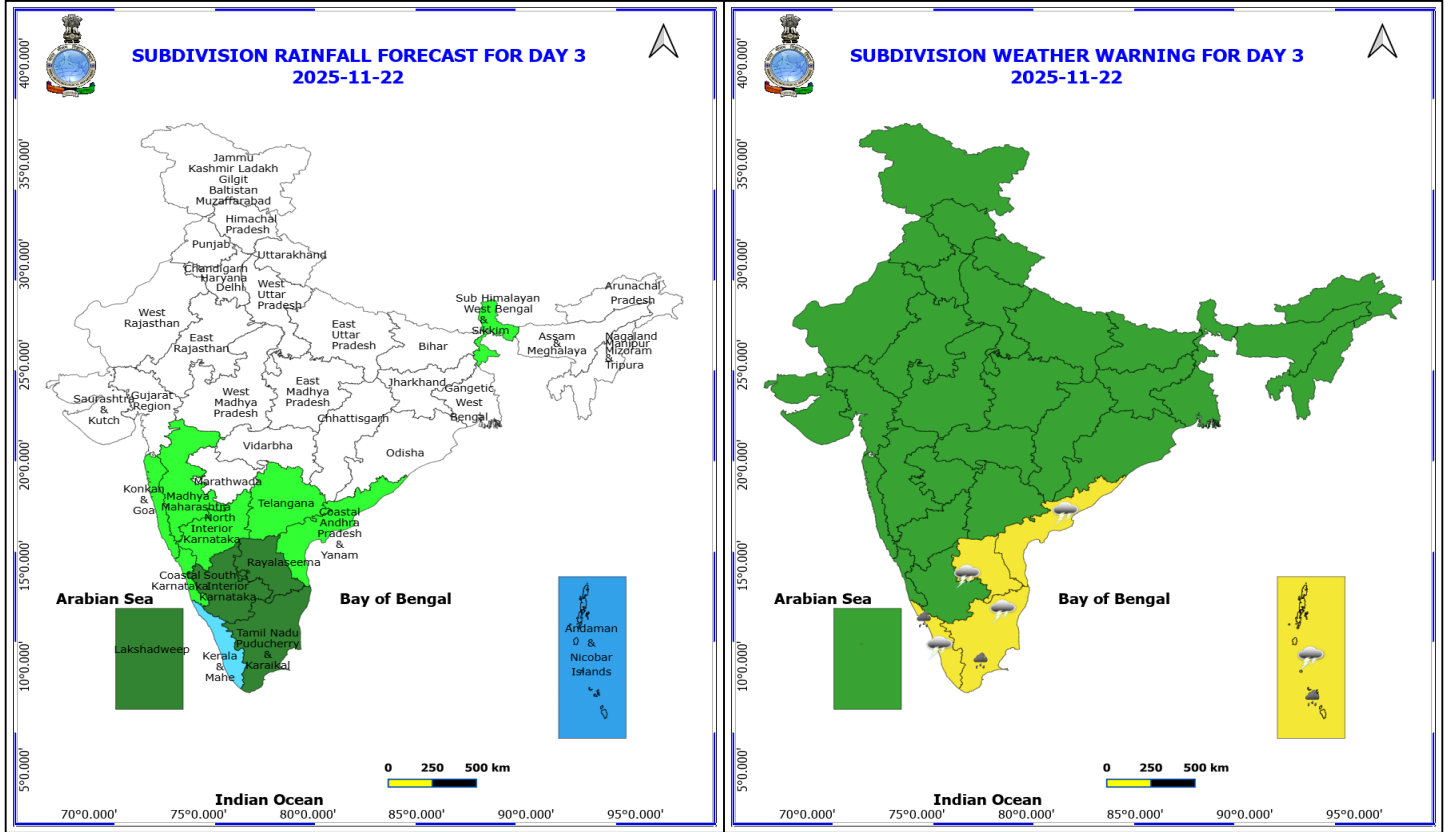
- ❖ **Heavy Rainfall** very likely at isolated places over Andaman & Nicobar Islands and Tamil Nadu Puducherry & Karaikal.
- ❖ **Thunderstorm accompanied with lightning & gusty winds(40-50kmph)** very likely at isolated places over Andaman & Nicobar Islands.
- ❖ **Thunderstorm accompanied with Lightning** very likely at isolated places over Tamil Nadu Puducherry & Karaikal.
- ❖ **Cold wave conditions** very likely at isolated places over West Madhya Pradesh.
- Squally weather with wind speeds reaching 35 kmph to 45 kmph gusting to 55 kmph will prevail over Lakshadweep and adjoining areas, over Andaman Sea, adjoining parts of southeast, eastcentral Bay of Bengal.

***Red color warning does not mean "Red Alert" Red color warning means "Take Action"**
Forecast and warning for any day is valid from 0830 hours IST of day till 0830 hours IST of next day
For more details kindly visit <https://mausam.imd.gov.in> or contact 011-2434-4599
(Service to the nation since 1875)



21 November (Day 2)

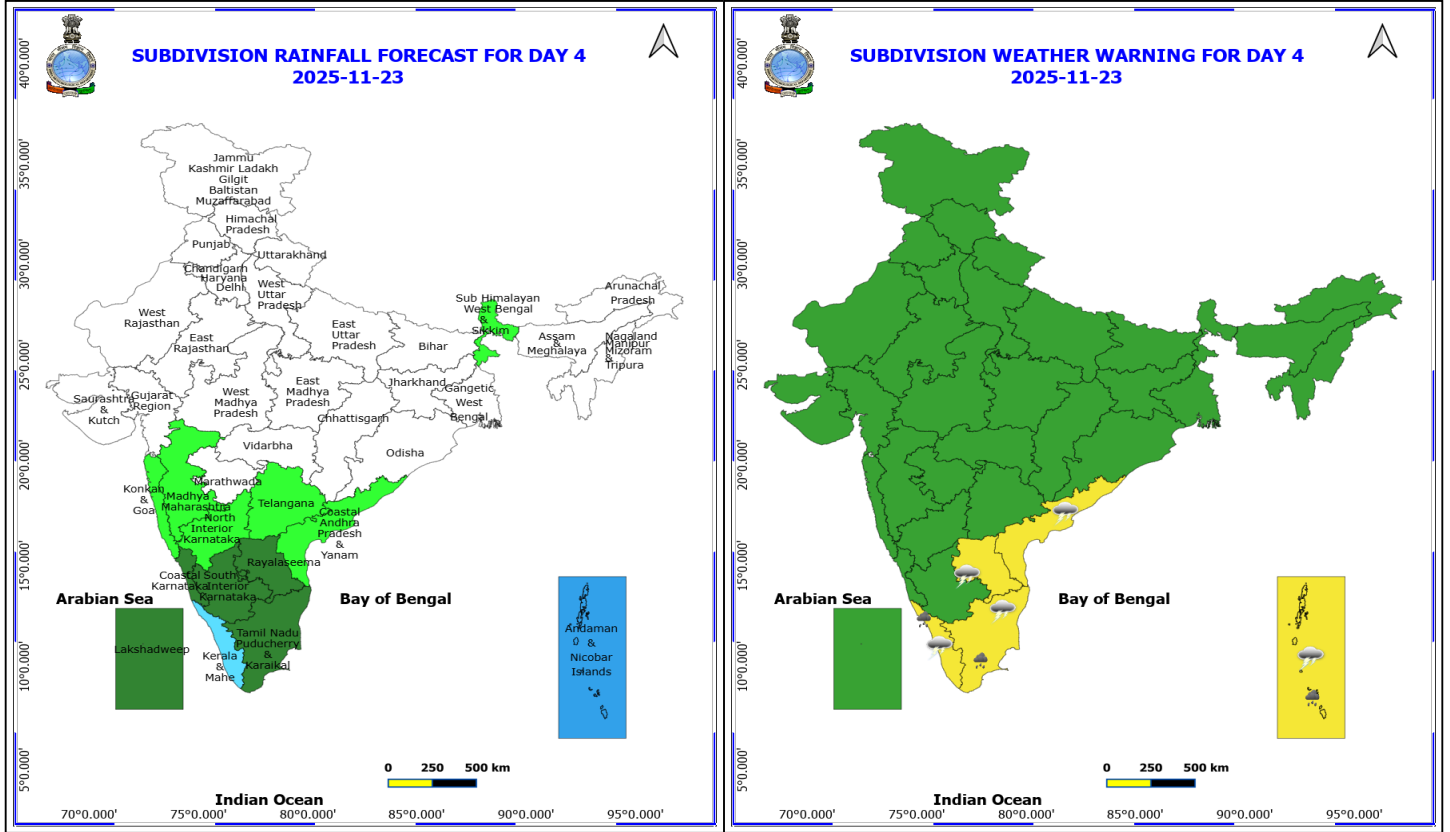
- ❖ **Heavy to Very Heavy Rainfall** very likely at isolated places over Andaman & Nicobar Islands.
- ❖ **Heavy Rainfall** very likely at isolated places over Kerala & Mahe and Tamil Nadu Puducherry & Karaikal.
- ❖ **Thunderstorm accompanied with lightning & gusty winds(40-50kmph)** very likely at isolated places over Andaman & Nicobar Islands.
- ❖ **Thunderstorm accompanied with Lightning** very likely at isolated places over Andhra Pradesh, Kerala & Mahe and Tamil Nadu Puducherry & Karaikal.
 - Squally weather with wind speeds reaching 40 kmph to 50 kmph gusting to 60 kmph will prevail over Andaman Sea, adjoining, many parts of southeast Bay of Bengal.
 - Squally weather with wind speeds reaching 45 kmph to 55 kmph gusting to 65 kmph will prevail over south Andaman Sea.



22 November (Day 3)

- ❖ **Heavy Rainfall** very likely at isolated places over Andaman & Nicobar Islands, Kerala & Mahe and Tamil Nadu Puducherry & Karaikal.
- ❖ **Thunderstorm accompanied with lightning & gusty winds(40-50kmph)** very likely at isolated places over Andaman & Nicobar Islands.
- ❖ **Thunderstorm accompanied with Lightning** very likely at isolated places over Andhra Pradesh, Kerala & Mahe and Tamil Nadu Puducherry & Karaikal.
 - Squally weather with wind speeds reaching 40 kmph to 50 kmph gusting to 60 kmph will prevail over Andaman Sea, over southeast & adjoining, some parts of southwest Bay of Bengal.
 - Squally weather with wind speeds reaching 45 kmph to 55 kmph gusting to 65 kmph will prevail over south Andaman Sea & adjoining southeast Bay of Bengal.

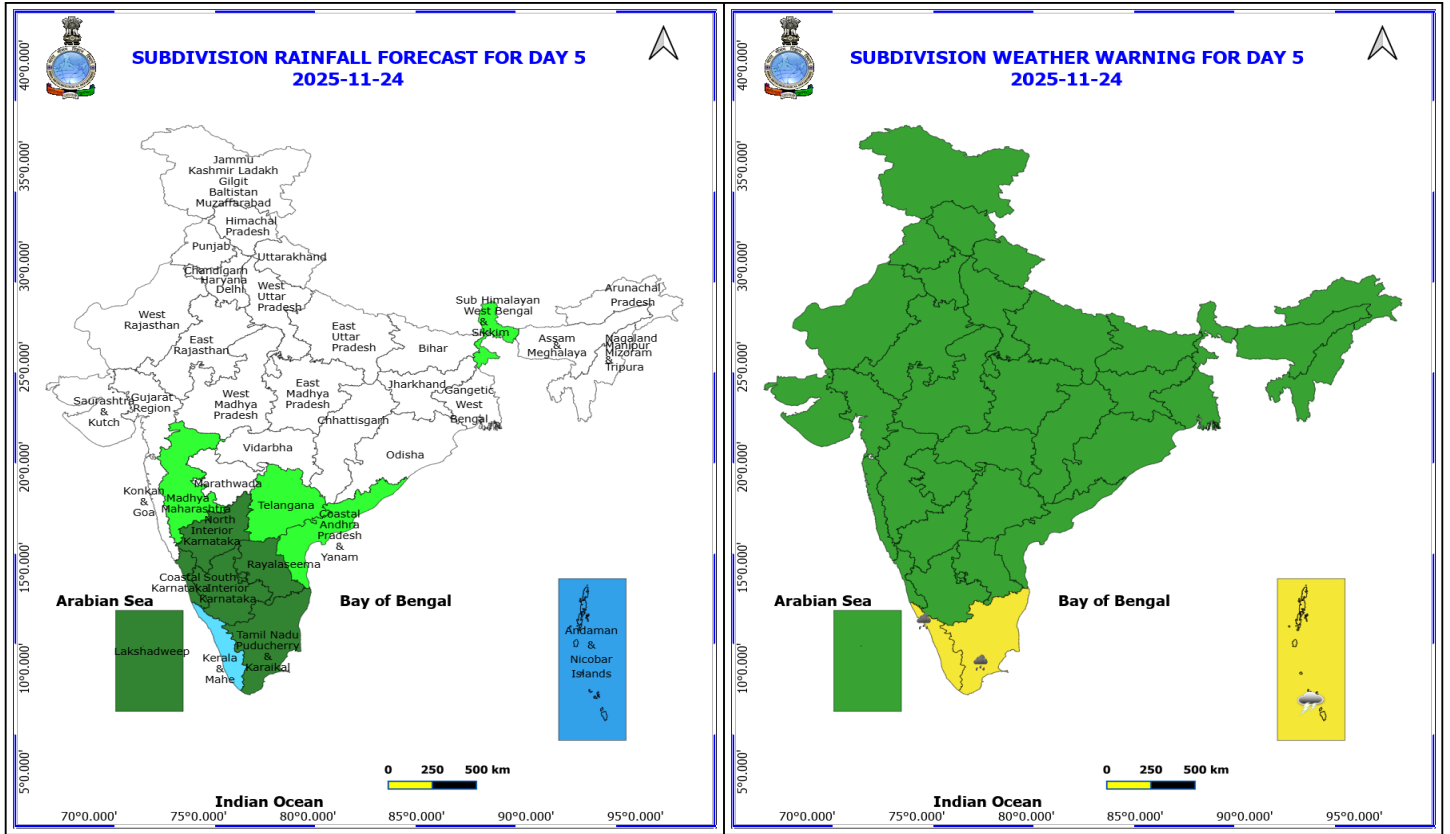
***Red color warning does not mean "Red Alert" Red color warning means "Take Action"**
Forecast and warning for any day is valid from 0830 hours IST of day till 0830 hours IST of next day
For more details kindly visit <https://mausam.imd.gov.in> or contact 011-2434-4599
 (Service to the nation since 1875)



23 November (Day 4)

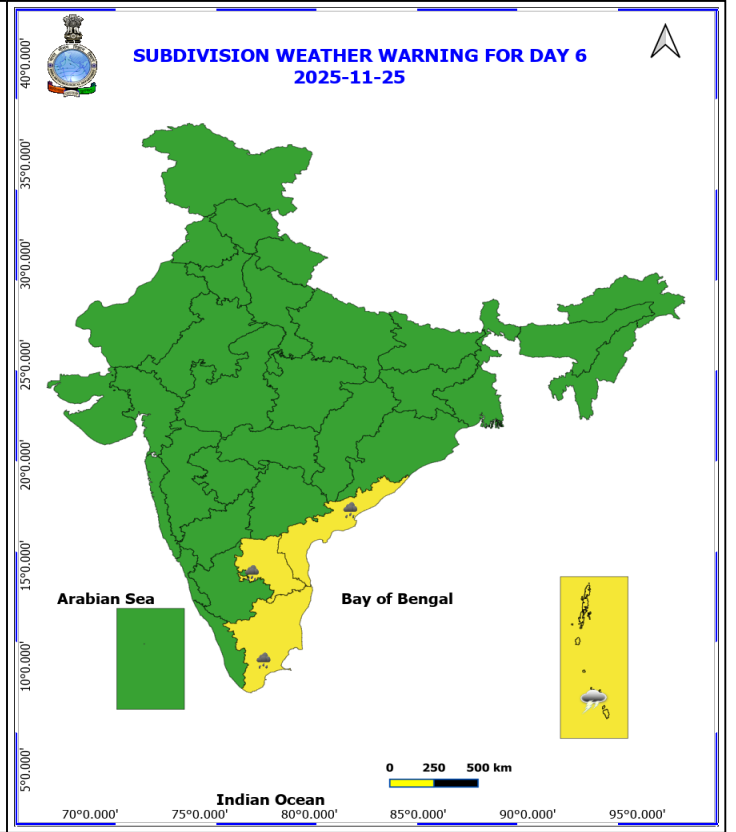
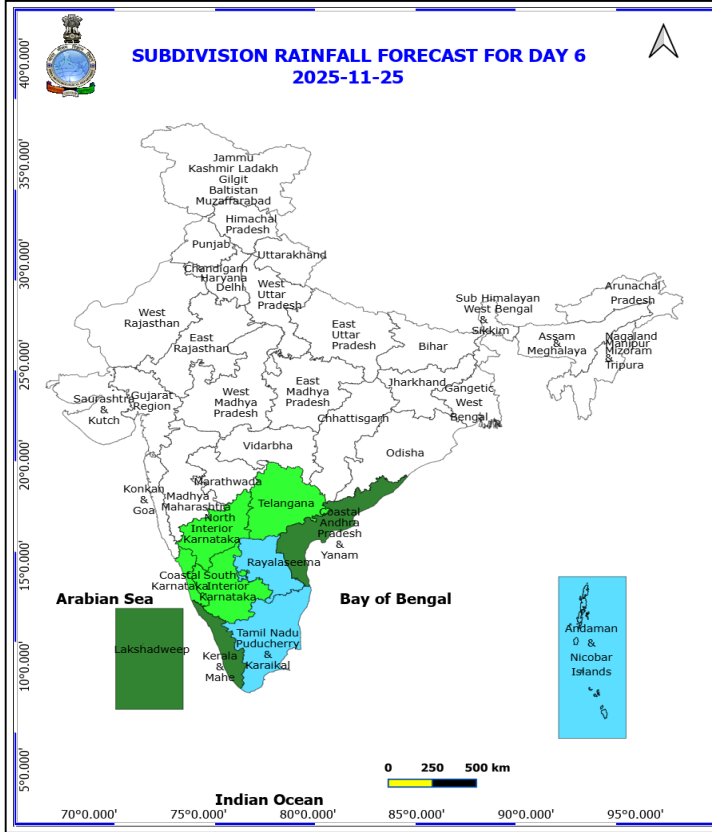
- ❖ **Heavy Rainfall** likely at isolated places over Andaman & Nicobar Islands, Kerala & Mahe and Tamil Nadu Puducherry & Karaikal.
 - ❖ **Thunderstorm accompanied with lightning & gusty winds(40-50kmph)** likely at isolated places over Andaman & Nicobar Islands.
 - ❖ **Thunderstorm accompanied with Lightning** likely at isolated places over Andhra Pradesh, Kerala & Mahe and Tamil Nadu Puducherry & Karaikal.
- Squally weather with wind speeds reaching 40 kmph to 50 kmph gusting to 60 kmph will prevail over Andaman Sea, over southeast & adjoining, many parts of southwest Bay of Bengal.
 - Squally weather with wind speeds reaching 45 kmph to 55 kmph gusting to 65 kmph will prevail over south Andaman Sea & adjoining, some parts of southeast Bay of Bengal.

***Red color warning does not mean "Red Alert" Red color warning means "Take Action"**
Forecast and warning for any day is valid from 0830 hours IST of day till 0830 hours IST of next day
For more details kindly visit <https://mausam.imd.gov.in> or contact 011-2434-4599
 (Service to the nation since 1875)



24 November (Day 5)

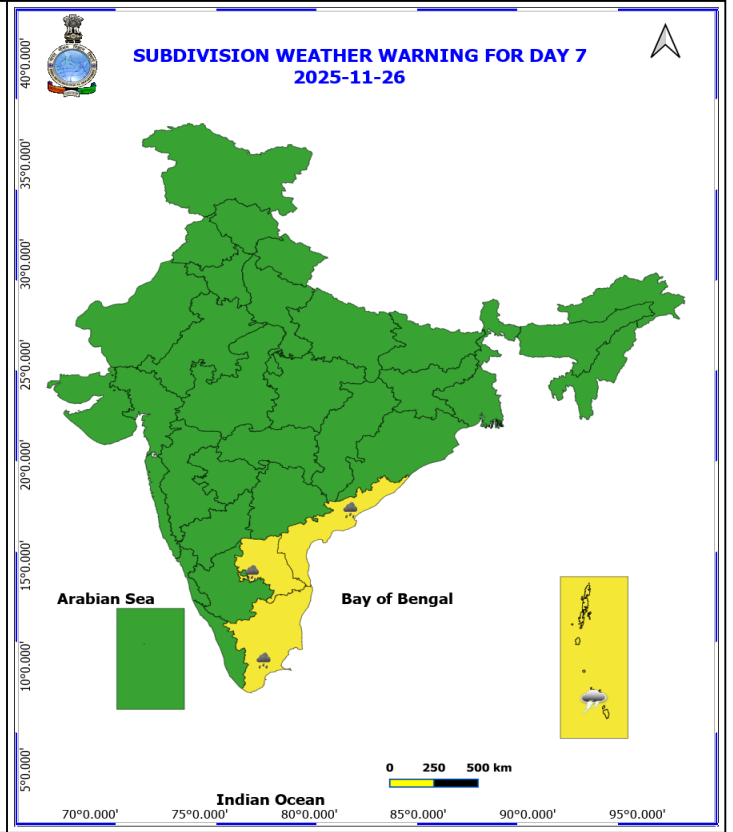
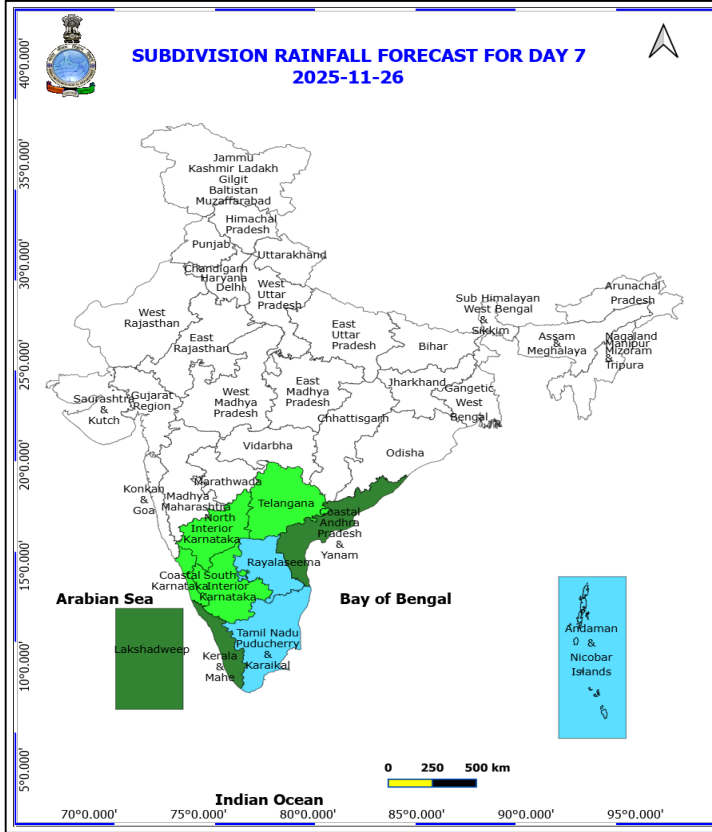
- ❖ **Heavy Rainfall** likely at isolated places over Kerala & Mahe and Tamil Nadu Puducherry & Karaikal.
 - ❖ **Thunderstorm accompanied with lightning & gusty winds(40-50kmph)** likely at isolated places over Andaman & Nicobar Islands.
- No Fishermen Warning**



25 November (Day 6)

- ❖ **Heavy Rainfall** likely at isolated places over Andhra Pradesh and Tamil Nadu Puducherry & Karaikal.
- ❖ **Thunderstorm accompanied with lightning & gusty winds(40-50kmph)** likely at isolated places over Andaman & Nicobar Islands.

No Fishermen Warning



26 November (Day 7)

- ❖ **Heavy Rainfall** likely at isolated places over Andhra Pradesh and Tamil Nadu Puducherry & Karaikal.
 - ❖ **Thunderstorm accompanied with lightning & gusty winds(40-50kmph)** likely at isolated places over Andaman & Nicobar Islands.
- No Fishermen Warning**

***Red color warning does not mean "Red Alert" Red color warning means "Take Action"**
 Forecast and warning for any day is valid from 0830 hours IST of day till 0830 hours IST of next day
 For more details kindly visit <https://mausam.imd.gov.in> or contact 011-2434-4599
 (Service to the nation since 1875)



Table-1

7 Days Rainfall Forecast

| S.No. | Subdivision | 20- Nov | 21- Nov | 22- Nov | 23- Nov | 24- Nov | 25- Nov | 26- Nov |
|-------|------------------------------|------------|------------|------------|------------|------------|------------|------------|
| | | Day 1 | Day 2 | Day 3 | Day 4 | Day 5 | Day 6 | Day 7 |
| 1 | ANDAMAN & NICOBAR ISLANDS | WS | WS | WS | WS | WS | FWS | FWS |
| 2 | ARUNACHAL PRADESH | DRY | DRY | DRY | DRY | DRY | DRY | DRY |
| 3 | ASSAM & MEHGHALAYA | DRY | DRY | DRY | DRY | DRY | DRY | DRY |
| 4 | N. M. M. & T. | ISOL | ISOL | DRY | DRY | DRY | DRY | DRY |
| 5 | S.H. WEST BENGAL & SIKKIM | ISOL | ISOL | ISOL | ISOL | ISOL | DRY | DRY |
| 6 | GANGETIC WEST BENGAL | DRY | DRY | DRY | DRY | DRY | DRY | DRY |
| 7 | ODISHA | DRY | DRY | DRY | DRY | DRY | DRY | DRY |
| 8 | JHARKHAND | DRY | DRY | DRY | DRY | DRY | DRY | DRY |
| 9 | BIHAR | DRY | DRY | DRY | DRY | DRY | DRY | DRY |
| 10 | EAST UTTAR PRADESH | DRY | DRY | DRY | DRY | DRY | DRY | DRY |
| 11 | WEST UTTAR PRADESH | DRY | DRY | DRY | DRY | DRY | DRY | DRY |
| 12 | UTTARAKHAND | DRY | DRY | DRY | DRY | DRY | DRY | DRY |
| 13 | HARYANA, CHD & DELHI | DRY | DRY | DRY | DRY | DRY | DRY | DRY |
| 14 | PUNJAB | DRY | DRY | DRY | DRY | DRY | DRY | DRY |
| 15 | HIMACHAL PRADESH | DRY | DRY | DRY | DRY | DRY | DRY | DRY |
| 16 | JAMMU AND KASHMIR AND LADAKH | DRY | DRY | DRY | DRY | DRY | DRY | DRY |
| 17 | WEST RAJASTHAN | DRY | DRY | DRY | DRY | DRY | DRY | DRY |
| 18 | EAST RAJASTHAN | DRY | DRY | DRY | DRY | DRY | DRY | DRY |
| 19 | WEST MADHYA PRADESH | DRY | DRY | DRY | DRY | DRY | DRY | DRY |
| 20 | EAST MADHYA PRADESH | DRY | DRY | DRY | DRY | DRY | DRY | DRY |
| 21 | GUJRAT REGION | DRY | DRY | DRY | DRY | DRY | DRY | DRY |
| 22 | SAURASHTRA & KUTCH | DRY | DRY | DRY | DRY | DRY | DRY | DRY |
| 23 | KONKAN & GOA | DRY | DRY | ISOL | ISOL | DRY | DRY | DRY |
| 24 | MADHYA MAHARASHTRA | DRY | DRY | ISOL | ISOL | ISOL | DRY | DRY |
| 25 | MARATHWADA | DRY | DRY | DRY | DRY | DRY | DRY | DRY |
| 26 | VIDARBHA | DRY | DRY | DRY | DRY | DRY | DRY | DRY |
| 27 | CHATTISGARH | DRY | DRY | DRY | DRY | DRY | DRY | DRY |
| 28 | COASTAL ANDHRA PRADESH | ISOL | ISOL | ISOL | ISOL | ISOL | SCT | SCT |
| 29 | TELANGANA | DRY | DRY | ISOL | ISOL | ISOL | ISOL | ISOL |
| 30 | RAYALASEEMA | ISOL | ISOL | SCT | SCT | SCT | FWS | FWS |
| 31 | TAMILNADU & PUDUCHERRY | ISOL | SCT | SCT | SCT | SCT | FWS | FWS |
| 32 | COSTAL KARNATAKA | DRY | DRY | ISOL | SCT | SCT | ISOL | ISOL |
| 33 | NORTH INTERIOR KARNATAKA | DRY | DRY | ISOL | ISOL | SCT | ISOL | ISOL |
| 34 | SOUTH INTERIOR KARNATAKA | DRY | ISOL | SCT | SCT | SCT | ISOL | ISOL |
| 35 | KERALA | SCT | SCT | FWS | FWS | FWS | SCT | SCT |
| 36 | LAKSHDWEEP | FWS | SCT | SCT | SCT | SCT | SCT | SCT |

| Legend | Category | %Stations |
|--------|-------------------------------|-----------|
| WS | Widespread/Most Places | 76-100 |
| FWS | Fairly Widespread/Many Places | 51-75 |
| SCT | Scattered/ A Few Places | 26-50 |
| ISOL | Isolated Places | 1-25 |
| DRY | No Rain | 0 |

*Red color warning does not mean "Red Alert" Red color warning means "Take Action"
Forecast and warning for any day is valid from 0830 hours IST of day till 0830 hours IST of next day
For more details kindly visit <https://mausam.imd.gov.in> or contact 011-2434-4599

(Service to the nation since 1875)

Fig. 1: Maximum Temperatures Dated 2025-11-19

Fig. 2: Departure of Maximum Temp. Dated 2025-11-19

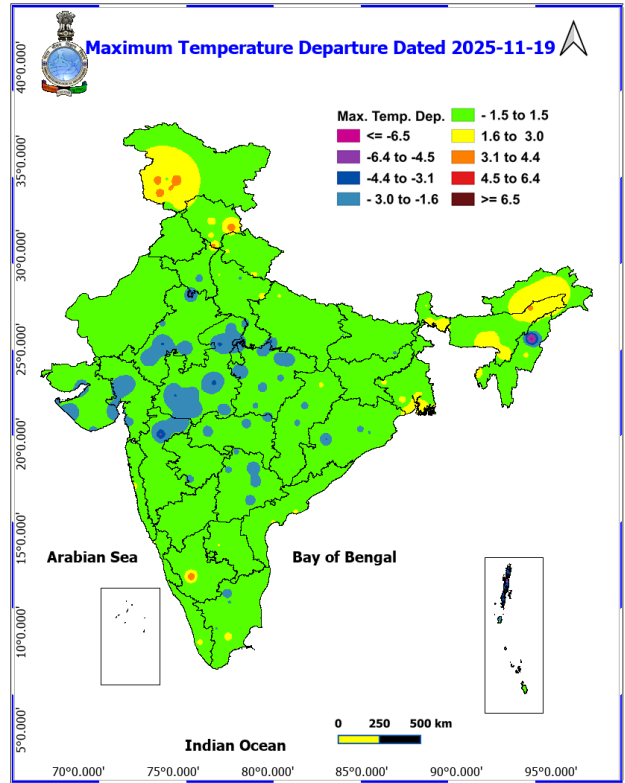
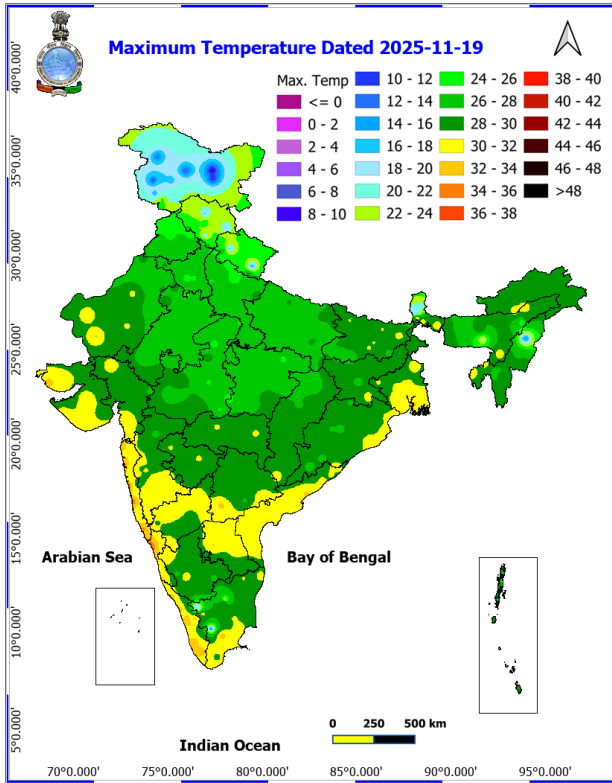
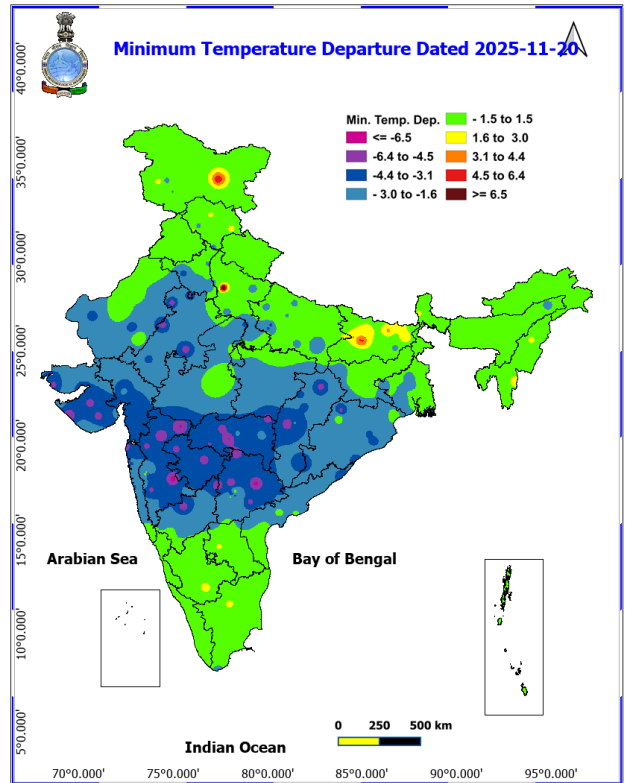
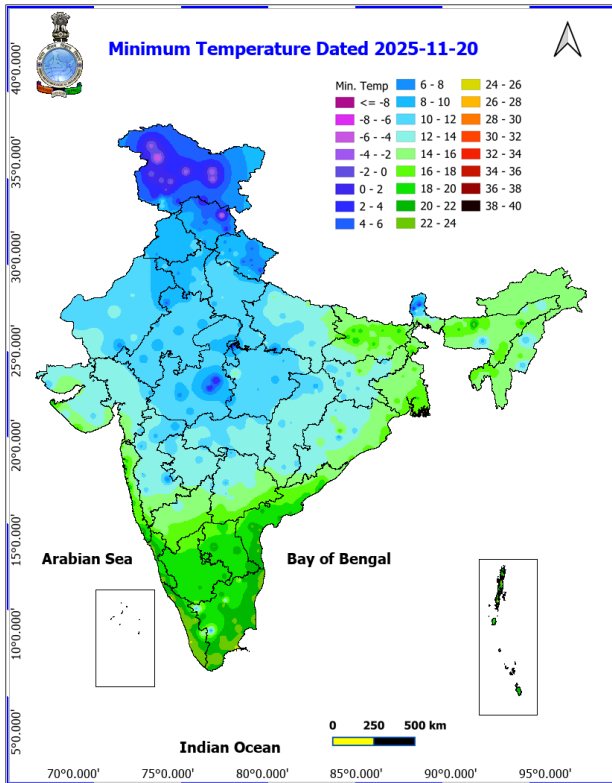


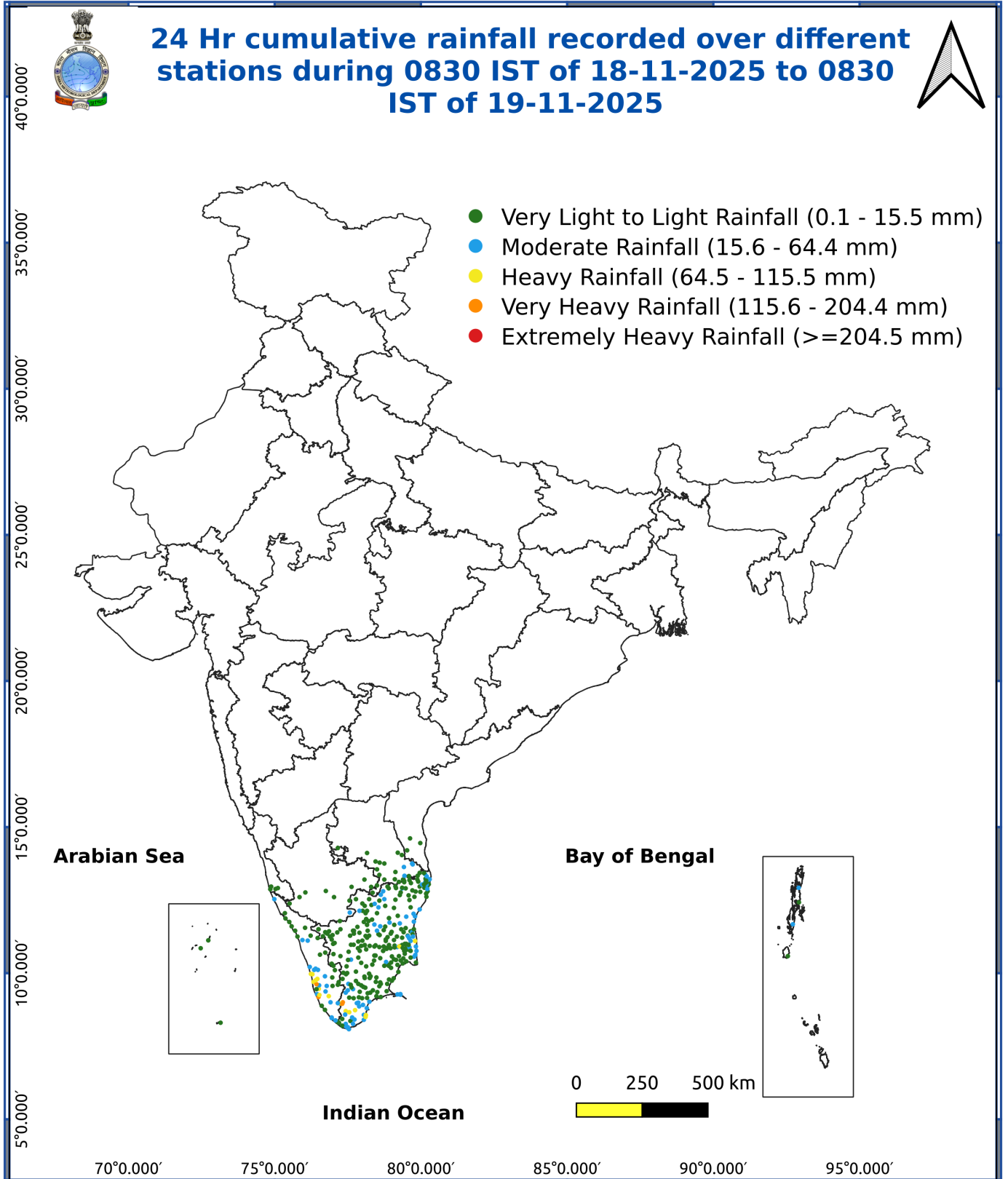
Fig. 3: Minimum Temperatures Dated 2025-11-19

Fig. 4: Departure of Minimum Temp. Dated 2025-11-19



***Red color warning does not mean "Red Alert" Red color warning means "Take Action"**
Forecast and warning for any day is valid from 0830 hours IST of day till 0830 hours IST of next day
For more details kindly visit <https://mausam.imd.gov.in> or contact 011-2434-4599

(Service to the nation since 1875)



Impact & Action Suggested due to

- Isolated **very Heavy rainfall likely** over Andaman & Nicobar Islands on 21st November.

Impact Expected

- Localized Flooding of roads, water logging in low lying areas and closure of underpasses mainly in urban areas of the above region.
- Occasional reduction in visibility due to heavy rainfall.
- Disruption of traffic in major cities due to water logging in roads leading to increased travel time.
- Minor damage to kutcha roads.
- Possibilities of damage to vulnerable structure.
- Localized Landslides/Mudslides/landslips/mudslips/landsinks/mudsinks.
- Damage to horticulture and standing crops in some areas due to inundation.
- It may lead to riverine flooding in some river catchments (for riverine flooding please visit Web page of CWC)

Action Suggested

- Check for traffic congestion on your route before leaving for your destination.
- Follow any traffic advisories that are issued in this regard.
- Avoid going to areas that face the water logging problems often.
- Avoid staying in vulnerable structure.

Impact expected due to Cold Day/Severe Cold day conditions:

- **Cold wave to severe cold wave** likely to prevail over West Madhya Pradesh on 20th November.

Impact Expected:

- An increased likelihood of various illnesses like flu, running/ stuffy nose or nosebleed, which usually set in or get aggravated due to prolonged exposure to cold.
- Do not ignore shivering. It is the first sign that the body is losing heat. Get Indoors.
- Frostbite can occur due to prolonged exposure to cold. The skin turns pale, hard and numb and eventually black blisters appear on exposed body parts such as fingers, toes, nose and or earlobes. Severe frostbite needs immediate medical attention and treatment.
- Impact on agriculture, crop, livestock, water supply, transport and power sector at some places.

Action suggested:

- Wear several layers of loose fitting, light weight; warm woollen clothing.
- Cover your head, neck, hands and toes adequately as majority of heat loss occurs through these body parts. Wear several layers of loose fitting, light weight; warm Woolen clothing rather than one layer of heavy cloth.
- Eat vitamin-C rich fruits & vegetable and drink sufficient fluids preferably warm fluids to maintain adequate immunity.
- Avoid or limit outdoor activities.
- Keep dry, if wet, change cloths immediately to prevent loss of body heat. Wear insulated/waterproof shoes.
- Warm the affected area of the body slowly with lukewarm water; do not rub the skin vigorously.
- If the affected skin area turns black, immediately consult a doctor.
- Maintain ventilation while using Heaters to avoid inhaling toxic fumes.
- Take safety measures while using electrical and gas heating devices.
- Extreme care needed for vulnerable people.
- Seek medical attention as soon as possible for someone suffering from frostbite/ Hypothermia.
- Protect livestock from cold weather.

***Red color warning does not mean "Red Alert" Red color warning means "Take Action"**

Forecast and warning for any day is valid from 0830 hours IST of day till 0830 hours IST of next day

For more details kindly visit <https://mausam.imd.gov.in> or contact 011-2434-4599

(Service to the nation since 1875)

Agromet advisories for various parts of the country

Agromet advisories for likely impact of Heavy Rainfall

- In **Tamil Nadu**, keep the harvested produce of rice and groundnut crops in safe places. Drain out excess rain water from fields of rice, sugarcane, cotton, black gram, maize and vegetables and plantations of coconut, banana, cinnamon and black pepper. Provide support to banana plants with wooden poles to prevent them from falling.
- In **Kerala**, drain out excess rain water from fields of rice, vegetables and plantations of banana, coconut, cardamom and black pepper. Carry out propping in banana plants to prevent falling due to heavy rainfall and strong winds.
- In **Andaman and Nicobar Islands**, store the harvested produce of rice in well-covered elevated places to prevent moisture damage. Harvest matured vegetables to avoid damage and provide support to banana, papaya and other tall crops with stakes to prevent lodging. Avoid sowing of pulses and oilseed crops during heavy rainfall. Protect young seedlings in nursery using temporary rain shelters or plastic covers.

Livestock / Fishery

- Keep the animals inside the shed during heavy rainfall and provide them balanced feed.
- Store feed and fodder in a safe place to prevent spoilage.
- Construct an outlet with proper netting around the ponds to drain out excess water, thereby preventing fish from escaping in case of overflow.

Agromet advisories for likely impact of Thunderstorm / Gusty Winds

- Provide mechanical support to horticultural crops and staking or support to vegetables and young fruit plants / fruit-bearing plants to avoid lodging due to strong winds.

Agromet advisories for likely impact of Cold Waves / Low Temperatures

- In **Madhya Pradesh, Madhya Maharashtra and Telangana**, apply light and frequent irrigation to the standing crops in the evening to protect the crops from low temperature stress or cold injuries. Use mulching and cover vegetable nurseries and young fruit plants with straw / polythene sheets to maintain optimum soil temperature. Cover banana bunches with 6% perforated plastic bags for protection from low temperatures.

Livestock / Poultry

- Keep cattle inside the sheds during night and provide dry bedding to protect them from cold.
- Keep the chicks warm by providing artificial light in the poultry sheds.

Legends & abbreviations:

Region wise classification of meteorological Sub-Divisions:

- **Northwest India:** Western Himalayan Region (Jammu-Kashmir-Ladakh-Gilgit-Baltistan-Muzaffarabad, Himachal Pradesh and Uttarakhand); Punjab, Haryana-Chandigarh-Delhi; West Uttar Pradesh, East Uttar Pradesh, West Rajasthan and East Rajasthan.
- **Central India:** West Madhya Pradesh, East Madhya Pradesh, Vidarbha and Chhattisgarh.
- **East India:** Bihar, Jharkhand, Sub-Himalayan West Bengal & Sikkim; Gangetic West Bengal, Odisha and Andaman & Nicobar Islands.
- **Northeast India:** Arunachal Pradesh, Assam & Meghalaya and Nagaland, Manipur, Mizoram & Tripura.
- **West India:** Gujarat Region, Saurashtra & Kutch, Konkan & Goa, Madhya Maharashtra and Marathawada.
- **South India:** Coastal Andhra Pradesh & Yanam, Telangana, Rayalaseema, Coastal Karnataka, North Interior Karnataka, South Interior Karnataka, Kerala & Mahe, Tamil Nadu, Puducherry & Karaikal and Lakshadweep.

*Red color warning does not mean "Red Alert" Red color warning means "Take Action"

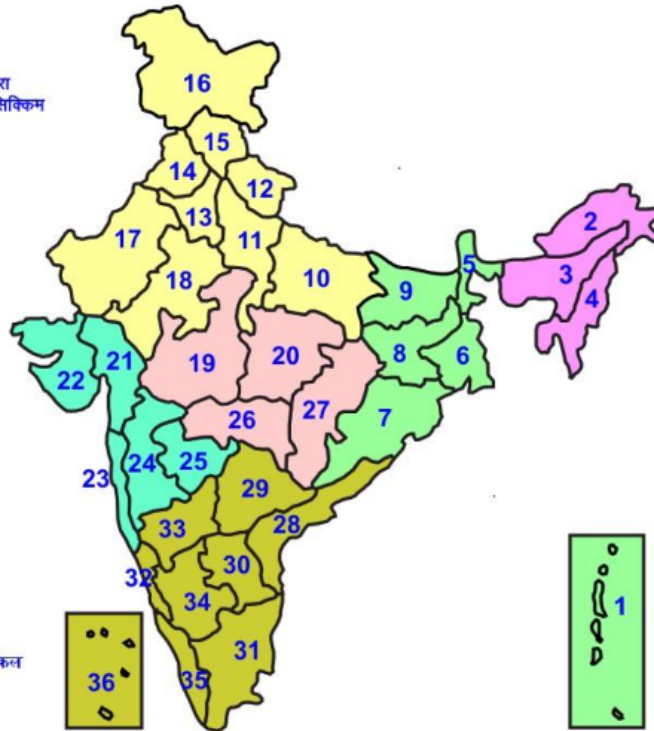
Forecast and warning for any day is valid from 0830 hours IST of day till 0830 hours IST of next day

For more details kindly visit <https://mausam.imd.gov.in> or contact 011-2434-4599

(Service to the nation since 1875)

LEGENDS

- 1 अंडमान और निकोबार द्वीप समुह
- 2 अरुणाचल प्रदेश
- 3 असम और मेघालय
- 4 नागालैंड मनीपुर मीजोरम और त्रिपुरा
- 5 उप हिमालय पश्चिम बंगाल एवं सिक्किम
- 6 पश्चिम बंगाल
- 7 ओडिसा
- 8 झारखंड
- 9 बिहार
- 10 पूर्वी उत्तर प्रदेश
- 11 पश्चिम उत्तर प्रदेश
- 12 उत्तराखंड
- 13 हरियाणा चंडिगढ़ एवं दिल्ली
- 14 पंजाब
- 15 हिमाचल प्रदेश
- 16 जम्मू एवं कश्मीर एवं लद्दाख
- 17 पश्चिम राजस्थान
- 18 पूर्वी राजस्थान
- 19 पश्चिम मध्य प्रदेश
- 20 पूर्वी मध्य प्रदेश
- 21 गुजरात क्षेत्र
- 22 सौराष्ट्र एवं कच्छ
- 23 कोंकण एवं गोवा
- 24 मध्य महाराष्ट्र
- 25 मराठावाडा
- 26 विदर्भ
- 27 छत्तीसगढ़
- 28 तटीय आंध्र प्रदेश एवं यनम
- 29 तेलंगाना
- 30 रायलसीमा
- 31 तमिलनाडु, पुदुचेरी एवं कराईकल
- 32 तटिय कर्नाटक
- 33 आंतरिक उत्तरी कर्नाटक
- 34 आंतरिक दक्षिणी कर्नाटक
- 35 केरल एवं माहे
- 36 लक्षद्वीप



1. Andaman & Nicobar Islands
2. Arunachal Pradesh
3. Assam & Meghalaya
4. Nagaland, Manipur, Mizoram & Tripura
5. Sub-Himalayan West Bengal & Sikkim
6. Gangetic West Bengal
7. Orissa
8. Jharkhand
9. Bihar
10. East Uttar Pradesh
11. West Uttar Pradesh
12. Uttarakhand
13. Haryana, Chd & Delhi
14. Punjab
15. Himachal Pradesh
16. Jammu & Kashmir and Ladakh
17. West Rajasthan
18. East Rajasthan
19. West Madhya Pradesh
20. East Madhya Pradesh
21. Gujarat
22. Saurashtra
23. Konkan & Goa
24. Madhya Maharashtra
25. Marathawada
26. Vidharbha
27. Chhattisgarh
28. Coastal Andhra Pradesh & Yanam
29. Telangana
30. Rayalaseema
31. Tamilnadu, Puducherry & Karaikal
32. Coastal Karnataka
33. North Interior Karnataka
34. South Interior Karnataka
35. Kerala & Mahe
36. Lakshadweep

SPATIAL DISTRIBUTION (% of Stations reporting)

| % Stations | Category | % Stations | Category |
|------------|--------------------------------------|------------|-------------------------------|
| 76-100 | Widespread (WS/ Most Places) | 26-50 | Scattered (SCT/ A Few Places) |
| 51-75 | Fairly Widespread (FWS/ Many Places) | 1-25 | Isolated (ISOL) |

Subdivision Colour

- NO WARNING
- WATCH (BE UPDATED)
- ALERT (BE PREPARED TO TAKE ACTION)
- WARNING (TAKE ACTION)

Probabilistic Forecast

| Terms | Probability of Occurrence (%) |
|-------------|-------------------------------|
| Unlikely | < 25 |
| Likely | 25 - 50 |
| Very Likely | 50 - 75 |
| Most Likely | > 75 |

- | | | | |
|--------------------------|-----------------|----------------------|--------------------|
| Heavy Rain | Very Heavy Rain | Extremely Heavy Rain | Heavy Snow |
| Thunderstorm & Lightning | Hailstorm | Dust Storm | Dust Raising Winds |
| Strong surface winds | Heat Wave | Hot Day | Warm Night |
| Cold Wave | Cold Day | Ground Frost | Fog |
| Hot & Humid | | | |

*Red color warning does not mean "Red Alert" Red color warning means "Take Action"

Forecast and warning for any day is valid from 0830 hours IST of day till 0830 hours IST of next day

For more details kindly visit <https://mausam.imd.gov.in> or contact 011-2434-4599

(Service to the nation since 1875)

LEGENDS

WARNING

| |
|-------------------------|
| WARNING (TAKE ACTION) |
| ALERT (BE PREPARED) |
| WATCH (BE UPDATED) |
| NO WARNING (NO ACTION) |

Probabilistic Forecast

| Terms | Probability of Occurrence (%) |
|-------------|-------------------------------|
| Unlikely | < 25 |
| Likely | 25 - 50 |
| Very Likely | 50 - 75 |
| Most Likely | > 75 |



Rain/ Snow *

| |
|-----------------------------------|
| Heavy: 64.5 to 115.5 mm/cm * |
| Very Heavy: 115.6 to 204.4 mm/cm* |
| Extremely Heavy: > 204.4 mm/cm * |



Heat Wave

When maximum temperature of a station reaches $\geq 40^{\circ}\text{C}$ for plains and $\geq 30^{\circ}\text{C}$ for hilly regions
(a) Based on Departure from normal

| |
|---|
| Heat Wave: Maximum Temperature Departure from normal 4.5°C to 6.4°C . |
| Severe Heat Wave: Maximum Temperature Departure from normal $\geq 6.5^{\circ}\text{C}$ |

(b). Based on Actual maximum temperature

| |
|---|
| Heat Wave: When actual maximum temperature $\geq 45^{\circ}\text{C}$. |
| Severe Heat Wave: When actual maximum temperature $\geq 47^{\circ}\text{C}$ |

(c). Criteria for heat wave for coastal stations

When maximum temperature departure is $> 4.5^{\circ}\text{C}$ from normal. Heat Wave may be described provided maximum temperature $\geq 37^{\circ}\text{C}$



Warm Night

When maximum temperature remains 40°C

| |
|---|
| Warm Night: When minimum temperature departure 4.5°C to 6.4°C . |
| Severe Warm Night: When minimum temperature departure $> 6.4^{\circ}\text{C}$. |



Cold Wave

When minimum temperature of a station $\leq 10^{\circ}\text{C}$ for plains and $\leq 0^{\circ}\text{C}$ for hilly regions.

(a). Based on departure

| |
|---|
| Cold Wave: Minimum Temperature Departure from normal -4.5°C to -6.4°C . |
| Severe Cold Wave: Minimum Temperature Departure from normal $\leq -6.5^{\circ}\text{C}$ |

(b) Based on actual Minimum Temperature (for Plains only)

| |
|--|
| Cold Wave : When Minimum Temperature is $\leq 4.0^{\circ}\text{C}$ |
| Severe Cold Wave: When Minimum Temperature is $\leq 2.0^{\circ}\text{C}$ |

(c) For Coastal Stations

When Minimum Temperature departure is $\leq -4.5^{\circ}\text{C}$ & actual Minimum Temperature is $\leq 15^{\circ}\text{C}$



Cold Day

When minimum temperature of a station $\leq 10^{\circ}\text{C}$ for plains and $\leq 0^{\circ}\text{C}$ for hilly regions
Based on departure

| |
|--|
| Cold Day: Maximum Temperature Departure from normal -4.5°C to -6.4°C . |
| Severe Cold Day: Maximum Temperature Departure from normal $\leq -6.5^{\circ}\text{C}$ |



Fog

Phenomenon of small droplets suspended in air and the horizontal visibility $< 1\text{km}$

| |
|--|
| Moderate Fog: When the visibility between 500-200 metres |
| Dense Fog: when the visibility between 50- 200 metres |
| Very Dense Fog: when the visibility < 50 metres |



Thunderstorm

Sudden electrical discharges manifested by a flash of light (Lightning) and a sharp rumbling sound (thunder)



Dust/Sand Storm

An ensemble of particles of dust or sand energetically lifted to great heights by a strong and turbulent wind.



Frost

Ice deposits on ground

| |
|---|
| Air temperature $\leq 4^{\circ}\text{C}$ (over Plains) |
|---|



Squall

A strong wind that rises suddenly, lasts for atleast 1 minute.

| |
|-------------------------------------|
| Moderate: Wind speed 52-61 kmph |
| Severe: Wind speed 62-87 kmph |
| Very Severe: Wind speed > 87 kmph |



Sea State

Effect of various waves in the sea over specific area

| |
|--|
| Rough to very rough: Wind speed 41-62 kmph (22-33 knots) & Wave height 2.5-6 metre |
| High to very high: Wind speed 63-117 kmph (34-63 knots) & Wave height 6-14 metre |
| Phenomenal: Wind speed > 117 kmph (> 63 knots) & Wave height > 14 metre |



Cyclone

| |
|--|
| Cyclonic Storm: Wind speed 62-87 kmph (34-47 knots) |
| Severe Cyclonic Storm: Wind speed 88-117 kmph (48-63 knots) |
| Very Severe Cyclonic Storm: Wind speed 118-165 kmph (64 - 89 knots) |
| Extremely Severe Cyclonic Storm: Wind speed 166-220 kmph (90 -119 knots) |
| Super Cyclone Strom: Wind speed > 220 kmph (> 119 knots) |

*Red color warning does not mean "Red Alert" Red color warning means "Take Action"

Forecast and warning for any day is valid from 0830 hours IST of day till 0830 hours IST of next day

For more details kindly visit <https://mausam.imd.gov.in> or contact 011-2434-4599

(Service to the nation since 1875)